

Spec. Col.

qLD

1017

.C88

1952


*Sequelle*

1952

LIBRARY  
CLARION STATE COLLEGE



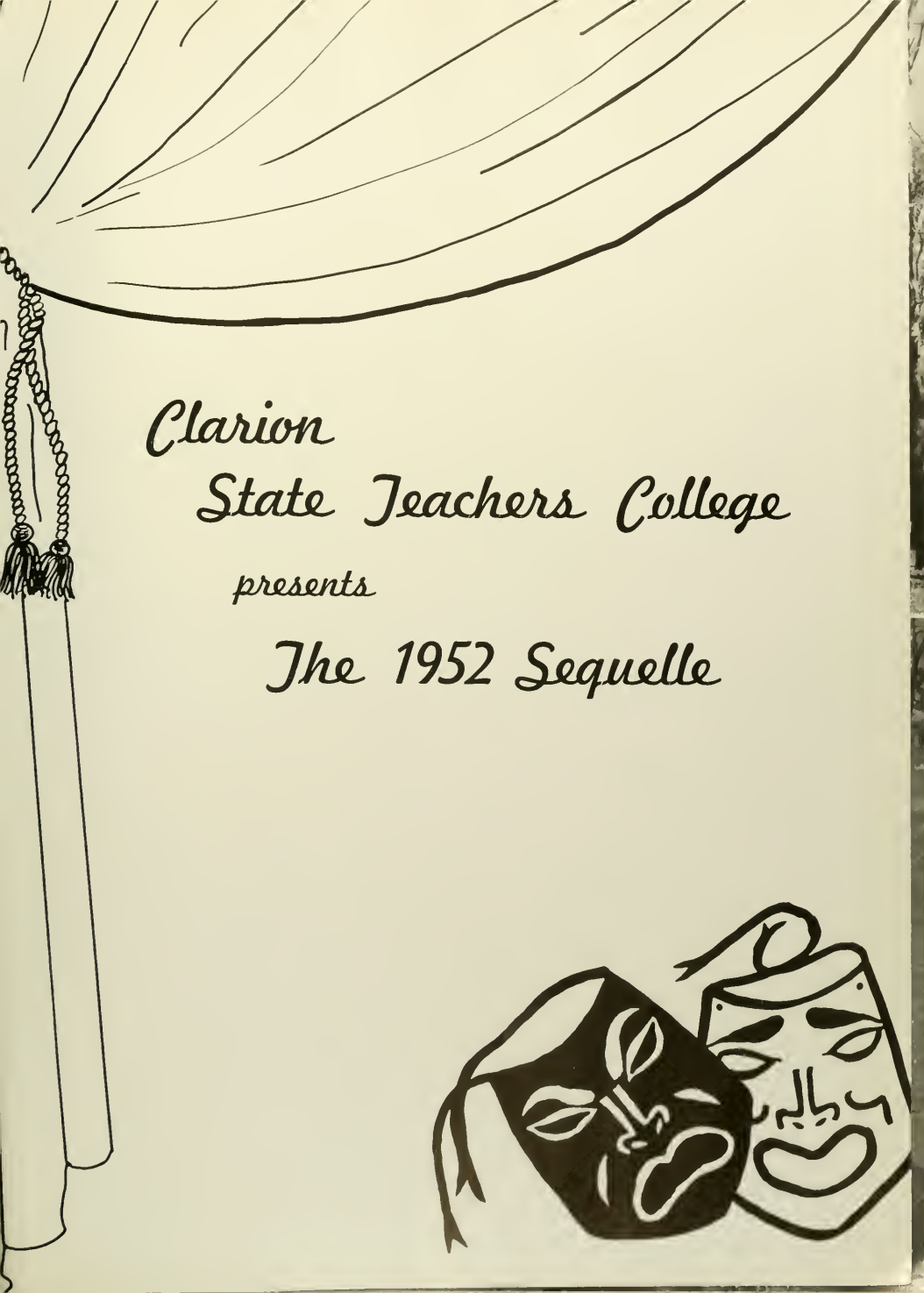
Carlson Library

A photograph of a stone archway at Clarion State Teachers College. The archway is made of large, rectangular stone blocks. A sign is mounted on the archway, reading "CLARION STATE TEACHERS COLLEGE". To the right of the archway is a tall, square stone pillar, also made of large rectangular blocks. On top of the pillar is a decorative lantern with a glass panel and a metal frame. The background is filled with dense, leafy trees, suggesting a campus setting. The overall scene is captured in a slightly desaturated, blue-toned color palette.

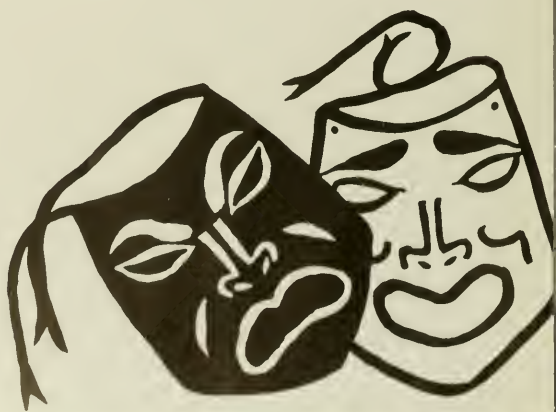
CLARION  
STATE  
TEACHERS  
COLLEGE

NO  
PARKING  
AT  
ANY  
TIME

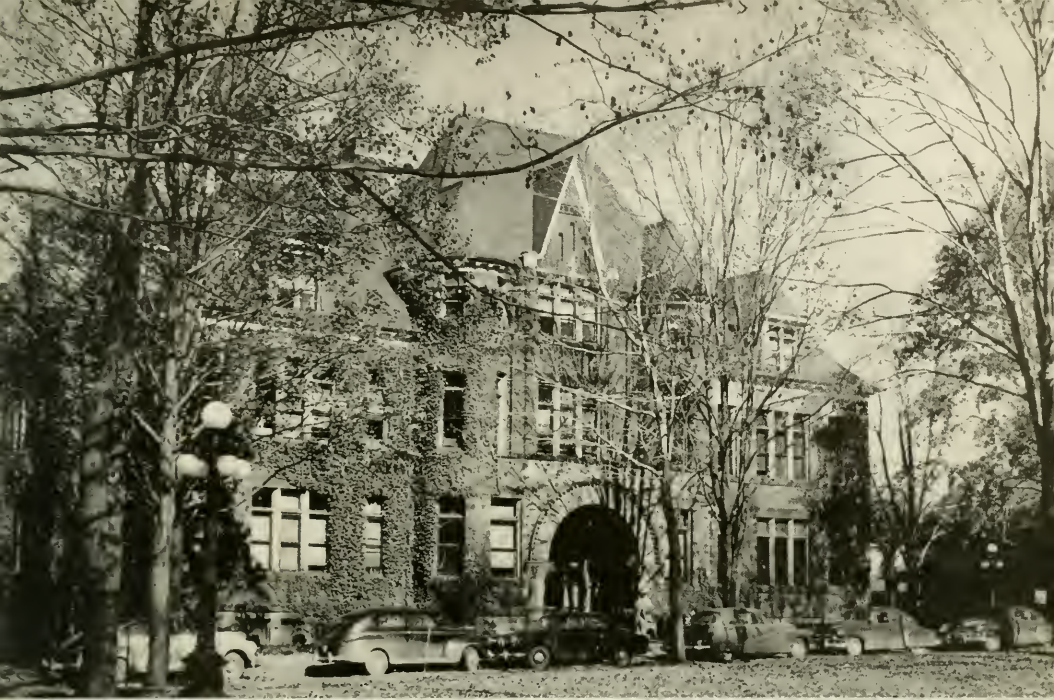




*Clarion*  
*State Teachers College*  
*presents*  
*The 1952 Sequelle*







1952

## *Dedication*

To Dr. Paul G. Chandler, president of  
Clarion State Teachers College, for his  
endeavors to better our college in his  
years of presidency.

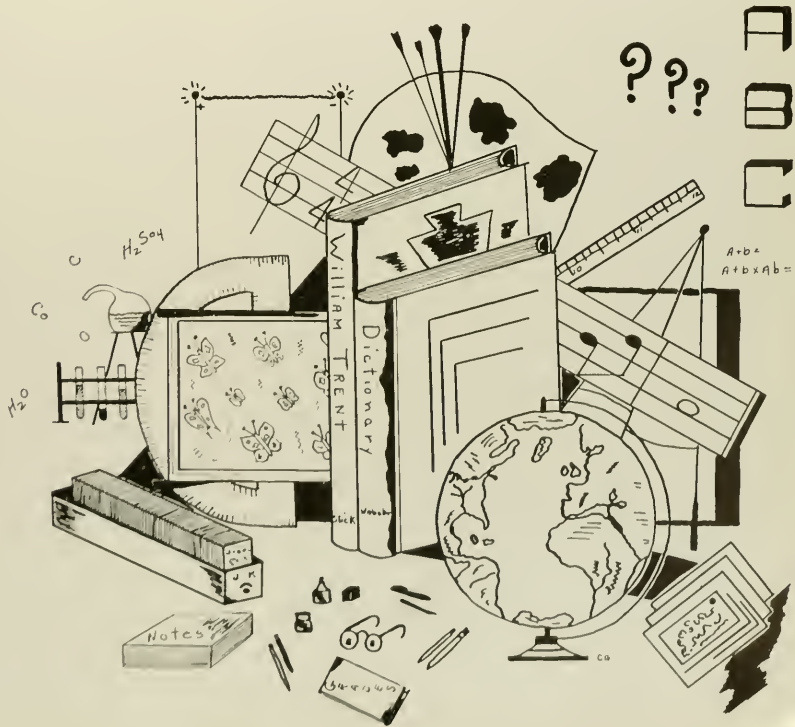




Dr. Paul G. Chandler



# Directors



# Faculty



**MARY KAY BANNER**

M. Ed., U. of Pittsburgh; Co-operative Teacher; Intermediate Grades

**HELEN BECKER**

M.A., Columbia University; Elementary Education

**MARGARET BOYD**

M.A., U. of Pittsburgh; English



**FRANK CAMPBELL**

M.A., Pennsylvania State College; Foreign Language

**RENA CARLSON**

M.A., University of Michigan; Librarian

**THOMAS CARNAHAN**

M.Ed., Pennsylvania State College; Mathematics



**FRANCES CARTER**

M.A., University of Iowa; Health and Physical Education

**BRUCE DINSMORE**

M.A., Columbia University; Science, Mathematics

**WALTER DOVERSPIKE**

M.Ed., U. of Pittsburgh; Co-operative Teacher, Sr. H. S.



**CHARLES FLACK**

M.A., U. of Illinois; Head of Library Science

**WAYNE FULTON**

B.S., Clarion State Teachers College; Co-operative Teacher, Sr. H. S.

**MILDRED GAMBLE**

M.A., Columbia University; Demonstration Teacher, Intermediate Grades



**RUTH GRAFF**

M.A., Columbia University; Demonstration Teacher, Primary Grades

**WALTER HART**

M. of F. A., Carnegie Institute of Technology, Head of Music

**HARRISON HARTMAN**

M.A., Columbia University; English, Social Studies, Geography

# Faculty

**JAMES KASSEL**

M. Litt., University of Pittsburgh; Co-operative Teacher, Jr. H. S.

**BENTON KRIBBS**

M. A., Pennsylvania State College; Physical Education

**CLARENCE KUHNER**

M. S., University of Wisconsin; Head of Geography

**MILDRED LENK**

M. A., University of Cincinnati; Demonstration Teacher, Sr. H. S.

**GEORGE LEWIS**

M. Litt., University of Pittsburgh; Head of Mathematics

**STANLEY LORE**

Ph. D., Pennsylvania State College; Director of Student Personnel, Psychology

**HARRY MANSON**

M. A., Grove City College; Head of Biological Science

**MARY McNEIL**

Dietitian

**LAWRENCE MARKS**

A. B., Pennsylvania State College; Co-operative Teacher, Sr. H. S.

**MARIE MARWICK**

M. A., Columbia University; Speech, English

**JAMES MOORE**

M. E., University of Pittsburgh; Dean of Instruction

**BERTHA NAIR**

M. A., University of Pittsburgh; Head of English

**FANNIE OWENS**

R. N., Nurse

**VIRGINIA PEMBERTON**

M. A., New York University; Demonstration Teacher, Primary Grades

**DONALD PIERCE**

Ph. D., University of Illinois; Head of Physical Science



# Faculty



**DONALD PREDMORE**  
Ph. D., University of Pittsburgh; Science

**HAZEL SANDFORD**  
M. A., New York University; Head of Art

**NELDA SCHNATTERLY**  
M. Ed., University of Pittsburgh; Co-operative  
Teacher, Primary Grades



**PAUL SHANK**  
Ph. D., University of Pittsburgh; Science

**HARRIET SKAGGS**  
M. A., Peabody College; English

**RICHARD SKINNER**  
M. A., Ohio State University; Demonstration  
Teacher, Jr. H. S.



**SEWELL SLICK**  
Ph. D., University of Pittsburgh; Head of Social Studies,  
Dean of Men

**WILLARD STEVENS**  
Ed. D., University of Pittsburgh; Demonstration  
Teacher, Jr. H. S.

**MARTHA STEWART**  
Ed. M., University of Pittsburgh; Librarian



**DANA STILL**  
M. A., Ohio State University; Demonstration  
Teacher, Jr. H. S.

**GRACE STROKE**  
M. A., Columbia University; Dean of  
Women

**EVELYN STROHECKER**  
M. A., Columbia University; Kinder-  
garten, Primary

**RUTH THOMPSON**  
M. Ed., University of Pittsburgh;  
Co-operative Teacher, Intermediate

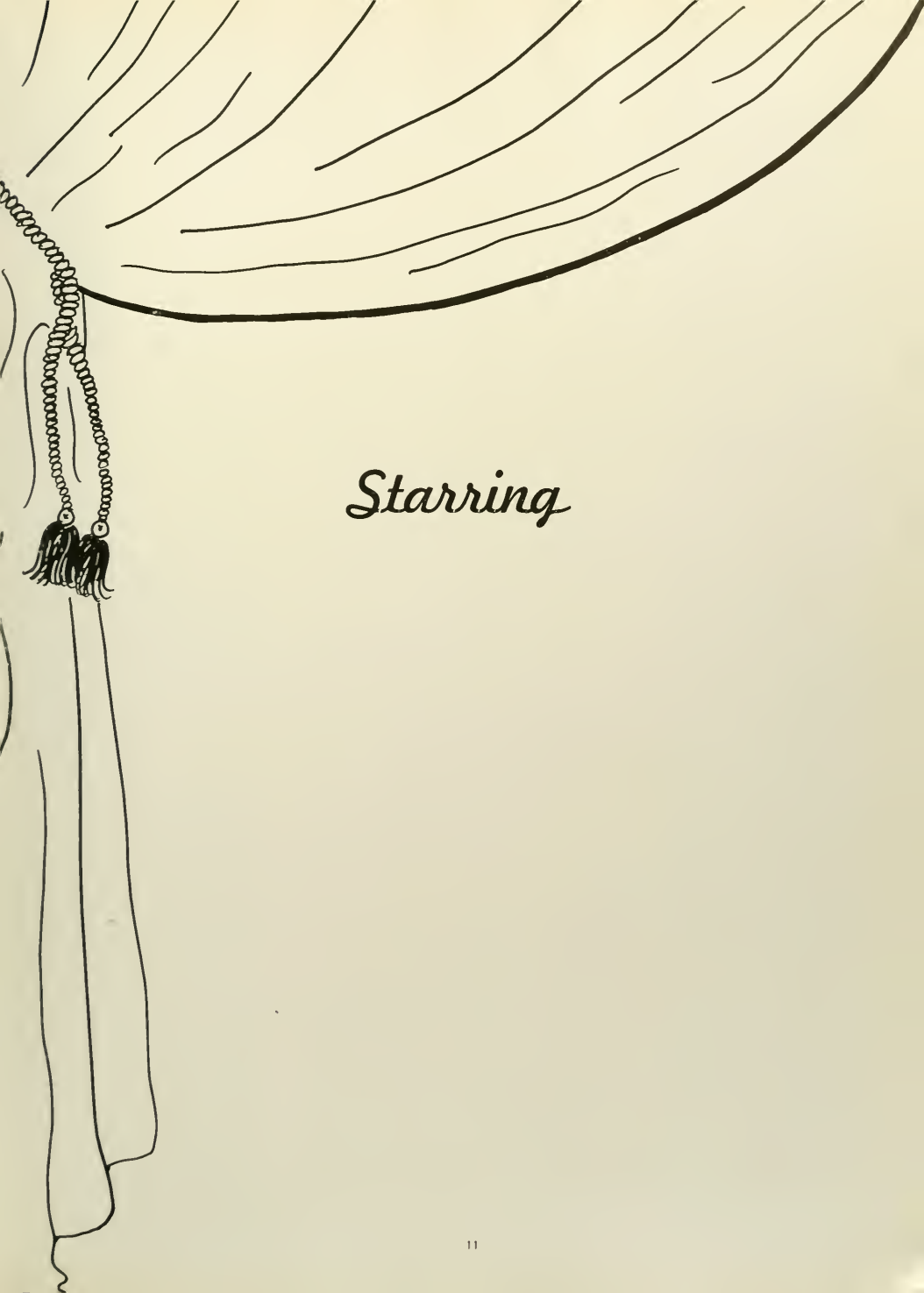


**WALDO TIPPIN**  
M. A., Columbia University; Head of Physical  
Education

**HAZEL USHER**  
M. A., University of Pittsburgh; Co-  
operative Teacher, Jr. H. S.

**SAMUEL WILHELM**  
Litt. M., University of Pittsburgh;  
Demonstration Teacher, Jr. H. S.

**LOTIE WINGARD**  
Registrar



*Starring*

## *To The Class of 1952*

My congratulations to the class of 1952 on your completion of the college course at the Clarion State Teachers College. You are now numbered among the 4000 alumni of this state institution of higher learning. As you meet at the annual banquets of the Alumni Association you will find a spirit of loyalty pervades them that is seldom found elsewhere. You will find that all of them are working to keep their college on the highest academic and scholastic plane possible and to make it the best possible force for preparing teachers in our Commonwealth.

Most of the men of your class will go for a time into the armed forces. As a draftee in the first contingent of the first world war I found it not bad after one once gets in. You will come back with a richer experience and broader outlook on life. This experience has caused many Clarion men to think more fondly of the college than if they had started teaching nearby.

**Dr. Paul G. Chandler,  
President,  
Clarion State Teachers College**





**KATHERINE ADAMS**

English  
Speech



**RICHARD ASTOR**

Geography  
Social Studies



**LOUISE ANDE**

Mathematics  
English  
Social Studies



**FRANK AUGUSTINE**

Geography  
Social Studies  
Safety Education



**ELEANOR ANDERSON**

Elementary



**CAROLYN BAKER**

Elementary



**BLAIR ANTILL**

Science  
Mathematics



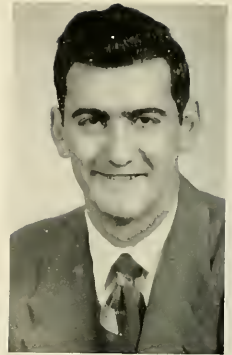
**DOROTHY BAKER**

Library Science  
English



**DONALD BALLAS**

Library Science  
Social Studies  
Geography



**EUGENE BOSCHINI**

Geography  
Social Studies  
English



**ARTHUR BENZIE**

Biological Science  
English  
Social Studies



**VIVIAN BOWSER**

Elementary



**MELVIN BENNETT**

Science  
Social Studies



**ANN MAREE BRADY**

Elementary



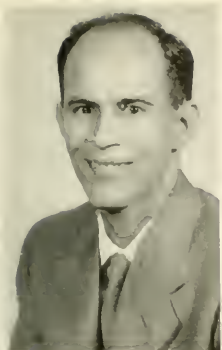
**RICHARD BLACK**

Science  
Mathematics



**ELAINE BOYER**

Library Science  
English



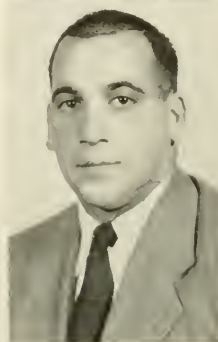
**HOMER BOYER**  
Mathematics  
Social Studies



**JOSEPH CAPPELLI**  
Social Studies  
English



**ALBERT BROWN**  
Elementary



**MICHAEL CARUSO**  
Social Studies  
Geography



**JOHN BUSCH**  
Social Studies  
Mathematics  
English



**HERBERT CERUTTI**  
Science  
Mathematics



**JUNE CAMPBELL**  
Science  
Mathematics



**ROBERT COURY**  
Science  
Social Studies



**DONNA CRIBBS**  
Library Science  
Social Studies  
English



**CHESTER DAUGHERTY**  
Science  
Mathematics



**FRANK CROWLEY**  
Geography  
Social Studies  
English



**DONNA DAUGHERTY**  
Elementary



**TERRY CROYLE**  
Geography  
Social Studies



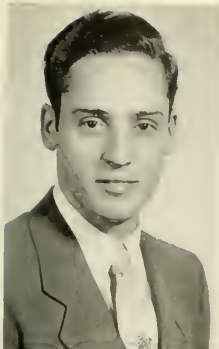
**CHARLES DAVIDSON**  
English  
Social Studies



**DONALD CURFMAN**  
Elementary



**RUTH DAVIS**  
Library Science  
English  
Speech



**CHARLES DeLONG**

Science  
Mathematics



**DOROTHY DORNBURG**

Elementary



**MARGARET DIBLE**

Elementary



**GLORIA DURBIN**

Library Science  
Social Studies



**ESTHER DICKEY**

English  
Mathematics



**MARJORIE EBERLE**

Mathematics  
English  
Physics



**MARY ROSE DITZ**

Elementary



**HERBERT ELIAS**

Social Studies  
English  
Safety Education



**EDWARD EWASKEY**

Science  
Social Studies  
English



**DORIS FREUDENBERGER**

Elementary



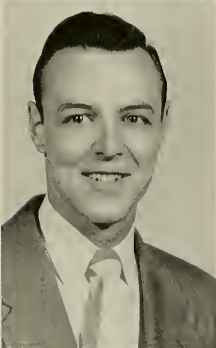
**DORETHA EXLEY**

Elementary



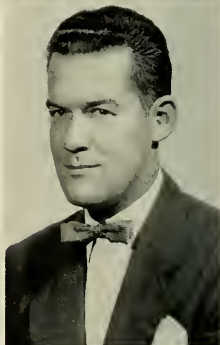
**NANCY GEORGE**

Elementary



**JOHN FELTON**

Science  
Social Studies



**RAYMOND GIERING**

Elementary



**HELEN FOX**

Elementary



**JOAN GIFFORD**

English  
Social Studies  
Geography



**DANIEL GOLDTHWAITE**

Science  
Mathematics



**JUDITH HANNA**

Elementary



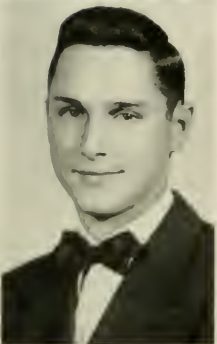
**JOHN GRAY**

Science  
Social Studies



**LENA HERRON**

Mathematics  
Social Studies  
English



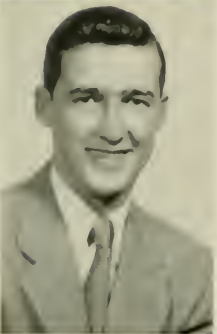
**JAMES HALE**

Science  
English



**JOANNE HILL**

Library Science  
English  
Social Studies



**GARY HAMIL**

Mathematics  
Social Studies  
English

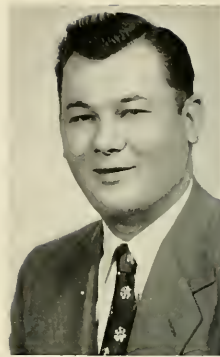


**ROBERT HILLIS**

Science  
Social Studies



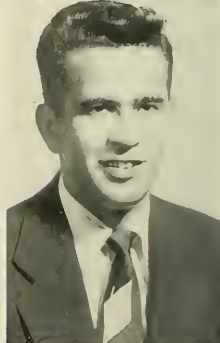
**EVERETT HIMES**  
Science  
Social Studies



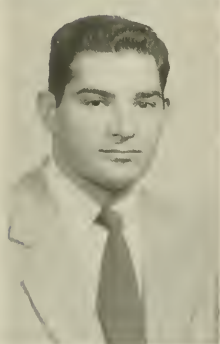
**JOHN JUBAN**  
Geography  
Social Studies  
Safety Education



**WILLIAM HIXSON**  
English  
Mathematics  
Social Studies



**GAIL KENNEMUTH**  
Elementary



**LAWRENCE IANNI**  
Mathematics  
English  
Social Studies



**JOHN KERIOTIS**  
Library Science  
Social Studies

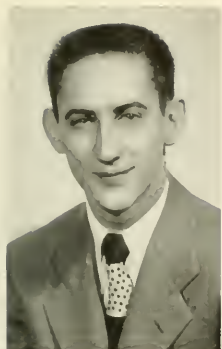


**JOAN JOHNSON**  
Elementary



**EDITH KIFER**  
Elementary

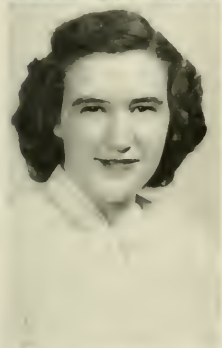




**ROBERT KIFER**  
Science  
Mathematics



**RAYMOND KOERBER**  
Elementary



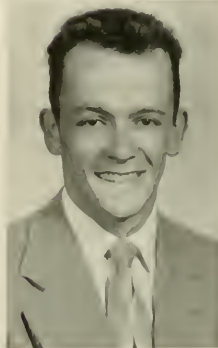
**LOIS KINDLEBERGER**  
Library Science  
Mathematics  
English



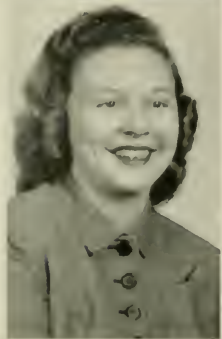
**PHYLLIS KRAMER**  
Elementary



**JOHN KING**  
Science  
Mathematics



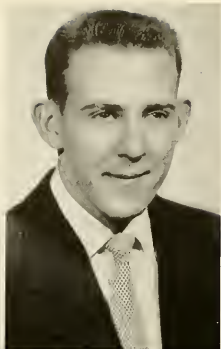
**CHARLES KREPPS**  
Social Studies  
Geography



**SALLY KNIGHT**  
Library Science  
English  
Social Studies



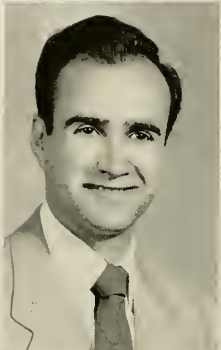
**GORDON LAIRD**  
Science  
Social Studies



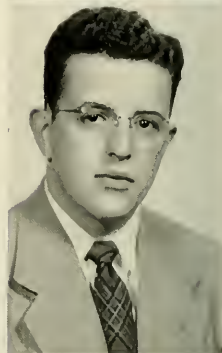
**CHARLES LEISH**  
Geography  
Social Studies



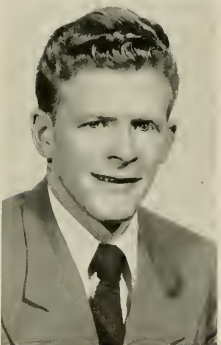
**ALICE MARSHALL**  
Elementary



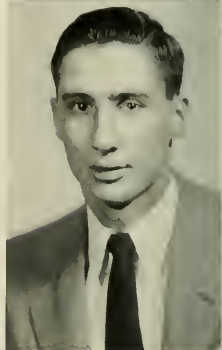
**ANTHONY LOSCHIAVO**  
Elementary



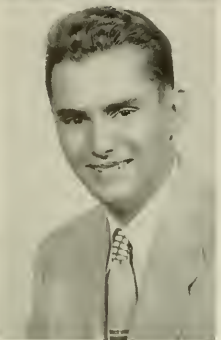
**JOSEPH MATTHEWS**  
Geography  
Social Studies  
English



**WALTER R. MAHLE**  
Science  
Social Studies



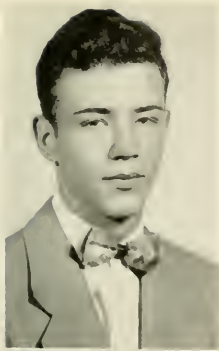
**BERNARD R. MAY**  
Mathematics  
English  
Social Studies



**MILO MARKLE**  
Social Studies  
English  
Geography



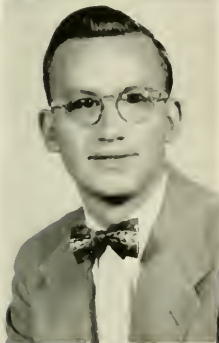
**JOHN MAYES**  
Elementary



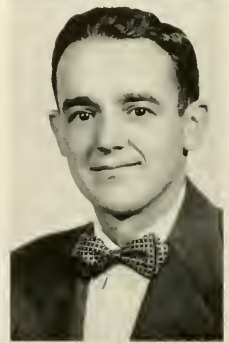
**MELVIN McCLEARY**  
Science  
English  
Safety Education



**JAMES L. MILLER**  
Biological Science  
Geography



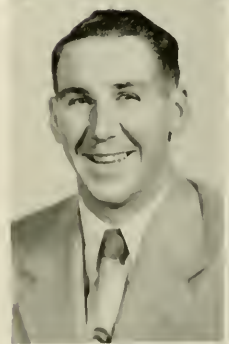
**PAUL McNAUGHTON**  
Elementary



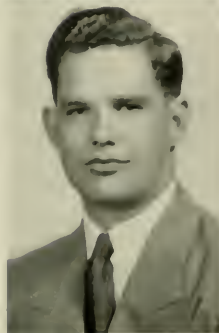
**KENNETH MILLER**  
Science  
Social Studies



**HARRY MEHALICK**  
Social Studies  
Geography  
English



**ROBERT MILLER**  
Social Studies  
Geography  
English



**MORRIS MERRIMAN**  
Social Studies  
English



**RUTH ANN MILLER**  
Elementary



**PATRICK MINEHAN**

Social Studies  
Geography



**HARRY MORRIS**

Social Studies  
Geography  
English



**PAUL MOCHNICK**

English  
Speech



**DONNA L. MORTLAND**

Spanish  
French



**PATRICIA R. MOCK**

Library Science  
English  
Social Studies



**EDWARD R. MOTT**

Elementary



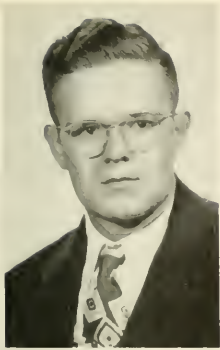
**ROBERT MOHNEY**

Geography  
Social Studies  
English

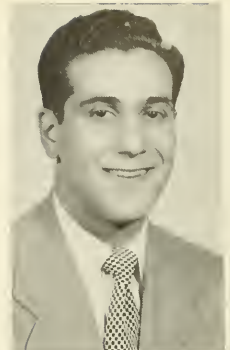


**WILMA MURPHY**

Elementary



**GALE OAKLEY**  
Science  
Mathematics



**FRANK PALAGGO**  
Social Studies  
Geography  
English



**EDWARD OGURCHAK**  
Elementary



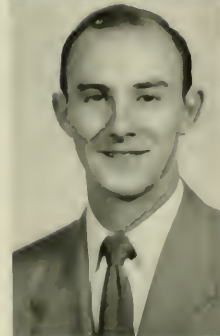
**WILLIAM PANCIERA**  
Library Science  
English  
Social Studies



**ALBERT ORRIS**  
English  
Social Studies



**SHIRLEY PERRY**  
Elementary



**ROBERT OSTERHOLM**  
Science  
Social Studies



**STANLEY S. PLAVNY**  
Library Science  
English  
Social Studies



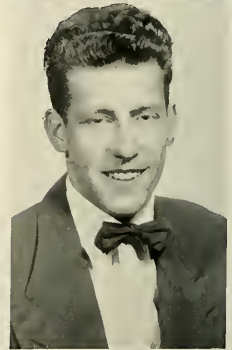
**RAYMOND PREDEBON**  
Science  
Mathematics



**D. JUNE RUSSELL**  
Elementary



**LENORE RAPP**  
Elementary



**SALVATORE RUSSO**  
Geography  
Social Studies  
Safety Education



**PEGGY L. REARICK**  
Elementary



**BEATRICE RYBISKI**  
Elementary



**RAYMOND R. REITZ**  
Science  
Mathematics



**RAYMOND SACOLIC**  
Elementary



**FRED SAXON**  
Science  
Social Studies



**CARL SERVEY**  
Science  
Social Studies



**GLORIA G. SCHMIDT**  
English  
French  
Spanish



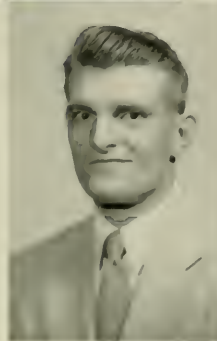
**MILTON J. SHAFER**  
English  
Social Studies



**PATRICIA SCHULTZ**  
Library Science  
English  
Speech



**FREDERICK SHARROW**  
Geography  
Social Studies



**PETER SCIERKA**  
Geography  
Social Studies



**DEAN SHOUP**  
English  
Social Studies



**PATRICIA SKINNER**

English  
Speech  
Spanish



**CONNELL STEWART**

Elementary



**DORIS ANN SMITH**

Library Science  
English  
Social Studies



**HAROLD D. STEWART**

Library Science  
English  
Social Studies



**HAROLD SMITH**

Geography  
Social Studies



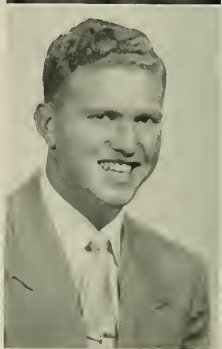
**DOROTHY STOWE**

Elementary



**A. JANE STERRETT**

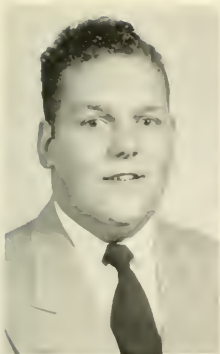
Elementary



**EUGENE TENAGLIA**

Social Studies  
Geography

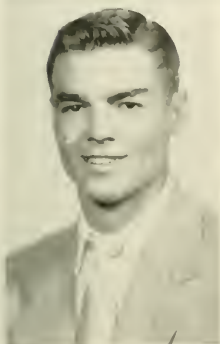




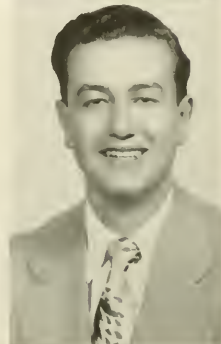
**JAMES TARR**  
Science  
English  
Safety Education



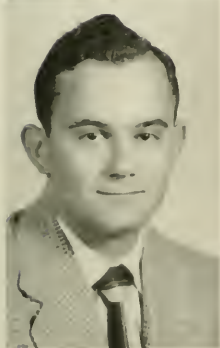
**WILLIAM VAIL**  
Science  
English



**BRUCE TAYLOR**  
Science  
Mathematics



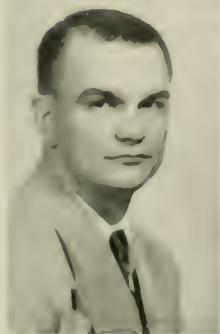
**SERGIO VALORI**  
Mathematics  
English



**GLENN THOMPSON**  
Elementary



**IRENE VOBRAK**  
Elementary



**JOSEPH UZMACK**  
Elementary



**GRACE OAKES VOGUS**  
Library Science  
English  
Social Studies



**DON E. WEITZ**  
Science  
English



**MIKE E. HELMINTOLLER**  
Elementary



**BETTY L. WILE**  
Elementary



**ROBERT L. KELLY**  
Social Studies  
English  
Safety Education



**YVONNE J. WONDERLY**  
Elementary



**KATHERINE ZERBE**  
Elementary



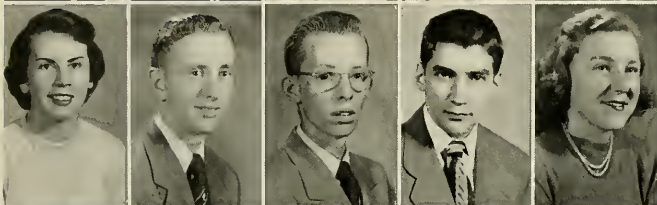
*Co-Starring*



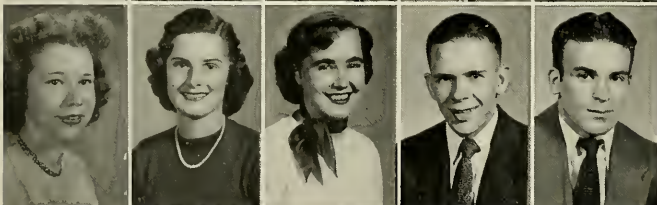
N. Allison  
 G. Barnes  
 M. Barto  
 A. Bastrass  
 K. Bauer



G. Beary  
 V. Bennett  
 D. Benson  
 D. Bevevino  
 E. Blissell



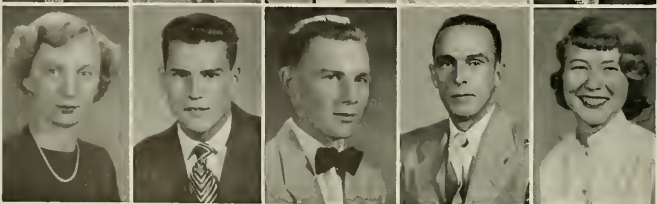
E. Bovo  
 T. Brady  
 B. Brock  
 J. Buck  
 J. Carbaugh



B. Cober  
 M. Craig  
 S. Creen  
 G. Curry  
 G. Czapski



H. DeFelice  
 M. Dolmayer  
 F. Donelli  
 P. Donovan  
 F. Dostal



C. Doverspike  
 D. Dunn  
 W. Edgar  
 C. Ellis  
 M. Engman

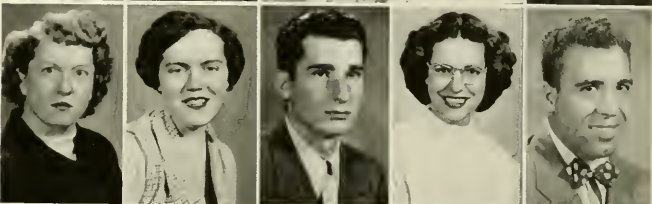
B. Etzel  
 I. Galli  
 J. Garbart  
 E. Gardakowski  
 J. Genovese



M. George  
 H. Gongaware  
 C. Graham  
 E. Grollmus  
 D. Hager



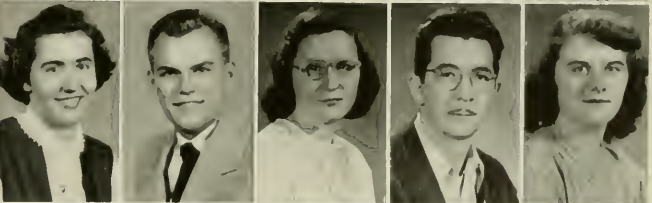
M. Hilliard  
 J. Harris  
 M. Harris  
 B. Heasley  
 G. Johnson



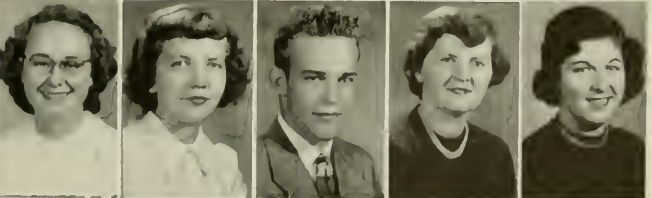
E. Keogh  
 M. Knapp  
 G. Law  
 J. Lewis  
 R. Logan

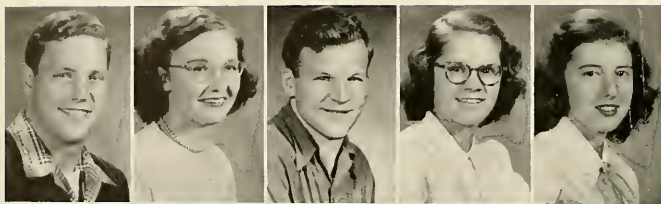


E. Ludwig  
 A. Marinich  
 M. McClune  
 R. McElhatten  
 E. Meegan



J. Millard  
 M. Morrison  
 G. Nichols  
 M. O'Connor  
 G. Ohl





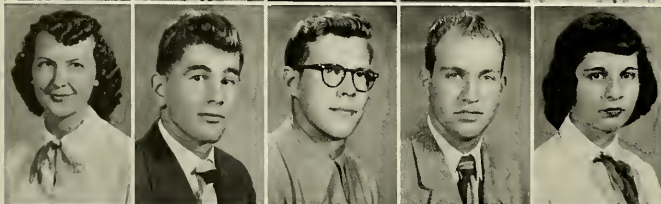
R. Ollinger  
 C. Phillips  
 H. Pugh  
 J. Pugh  
 L. Radus



P. Ray  
 M. L'esh  
 G. Rose  
 N. Salerno  
 L. Schulte



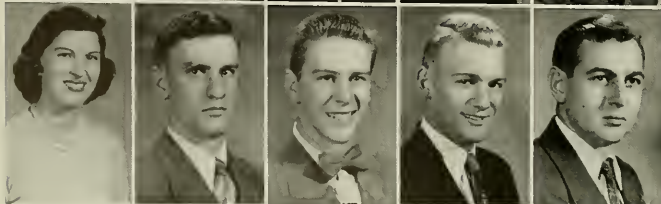
R. Shaw  
 H. Shindlecker  
 I. Shoffstal  
 S. Simka  
 E. Smith



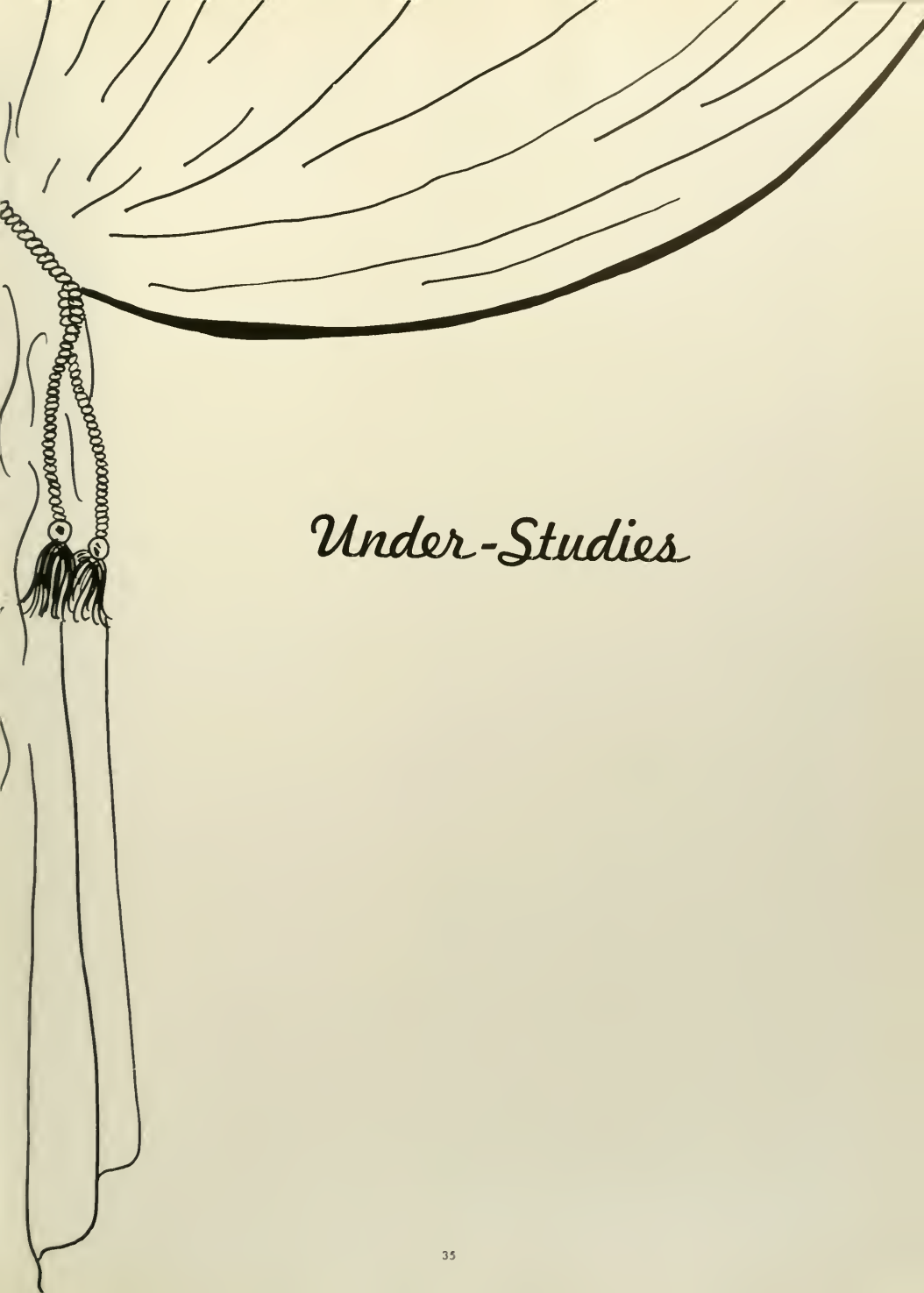
S. Smith  
 T. Stanka  
 R. Terwilliger  
 A. Umstead  
 C. Varrata



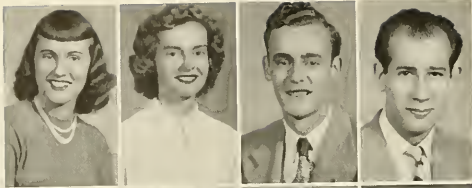
C. Ward  
 T. Wassum  
 A. Weaver  
 M. Weeks  
 E. Wensel



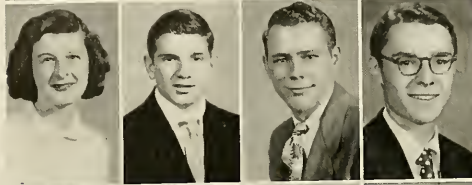
D. Wilson  
 J. Wilson  
 F. Wise  
 F. Wanderling  
 A. Woodman  
 J. Yarnovic



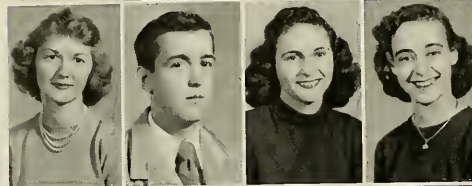
*Under-Studies*



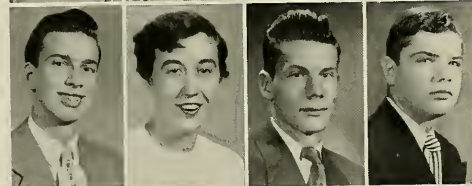
M. Abplanalp  
 D. Adelman  
 D. Ambrose  
 A. Ardito



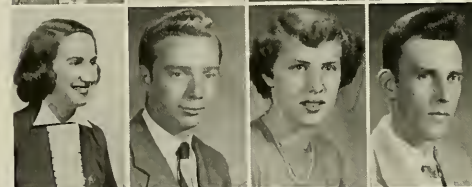
S. Bach  
 D. Borilar  
 M. Barnett  
 J. Black



E. Blough  
 J. Brown  
 R. Bruna  
 D. Butts



O. Burkett  
 N. Burneson  
 R. Cadugan  
 M. Carson



R. Cosarico  
 M. Conrad  
 M. Constable  
 G. Coon



S. Crowley  
 A. Dimino  
 B. Dinger  
 L. Dittman



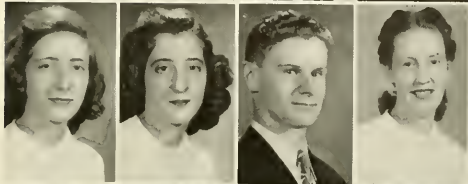
L. Dolby  
 D. Dunmire  
 C. Eberle  
 D. Eck



C. Ekis  
 S. Ewing  
 S. Farmerie  
 E. Gallagher



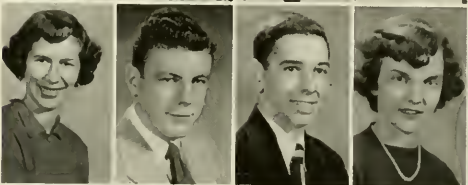
A. Galeria  
 G. Galteria  
 R. Gehrett  
 S. Gilbert



R. Gill  
 A. Govaletz  
 C. Grattenhalter  
 C. Hartge



C. Hartman  
 G. Hartnett  
 J. Hazlett  
 M. Heeney



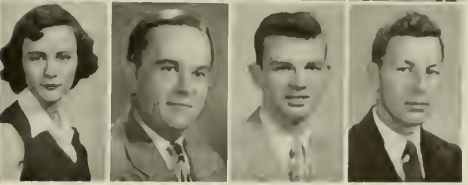
W. Helmintaller  
 S. Hildebrand  
 J. Howell  
 H. Hopkins

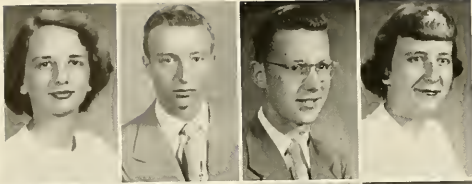


B. Hill  
 E. Hrivnak  
 R. Kaminski  
 D. Kline

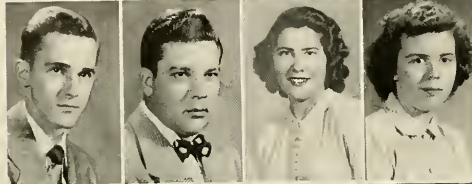


S. Kuhns  
 R. Lawson  
 J. Leathers  
 J. Leiber

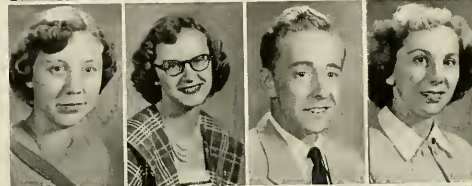




A. Leslie  
 F. Lewis  
 T. Lewis  
 P. Manny



R. McCord  
 W. McGinnis  
 I. McHenry  
 K. McKissick



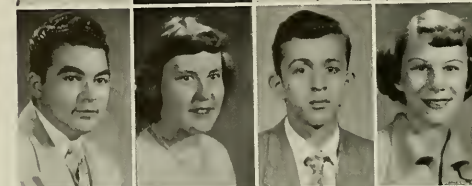
N. McQuiston  
 L. Mills  
 W. Mort  
 B. Mortland



M. Mortland  
 B. Naquin  
 R. Neiger  
 V. Oakley



J. O'Donnell  
 M. Orcutt  
 B. Otto  
 A. Pantazes

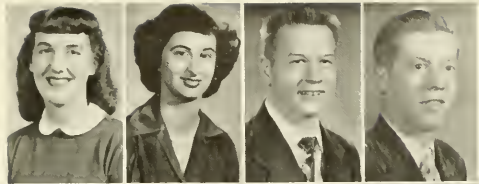


E. Papurello  
 V. Patten  
 S. Pishkopia  
 B. Popson



E. Price  
 H. Reosinger  
 J. Reiger  
 G. Rodriguez

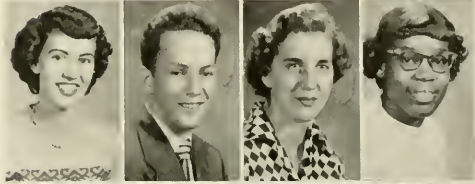
E. Rolls  
 J. Rudge  
 A. Sandusky  
 S. Schaeffer



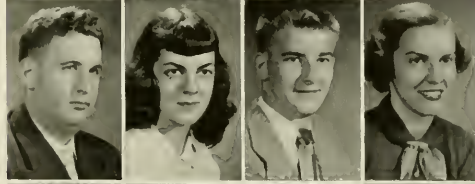
N. Shank  
 R. Sheffield  
 A. Smith  
 S. Snyder



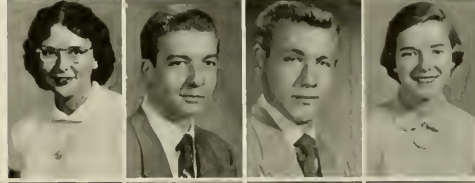
M. Spencer  
 R. Starr  
 P. Steltzer  
 F. Terry



J. Tessitore  
 N. Thompson  
 J. Toth  
 M. Voorhees



J. Wegner  
 E. Wolsh  
 W. Watt  
 A. Weaver



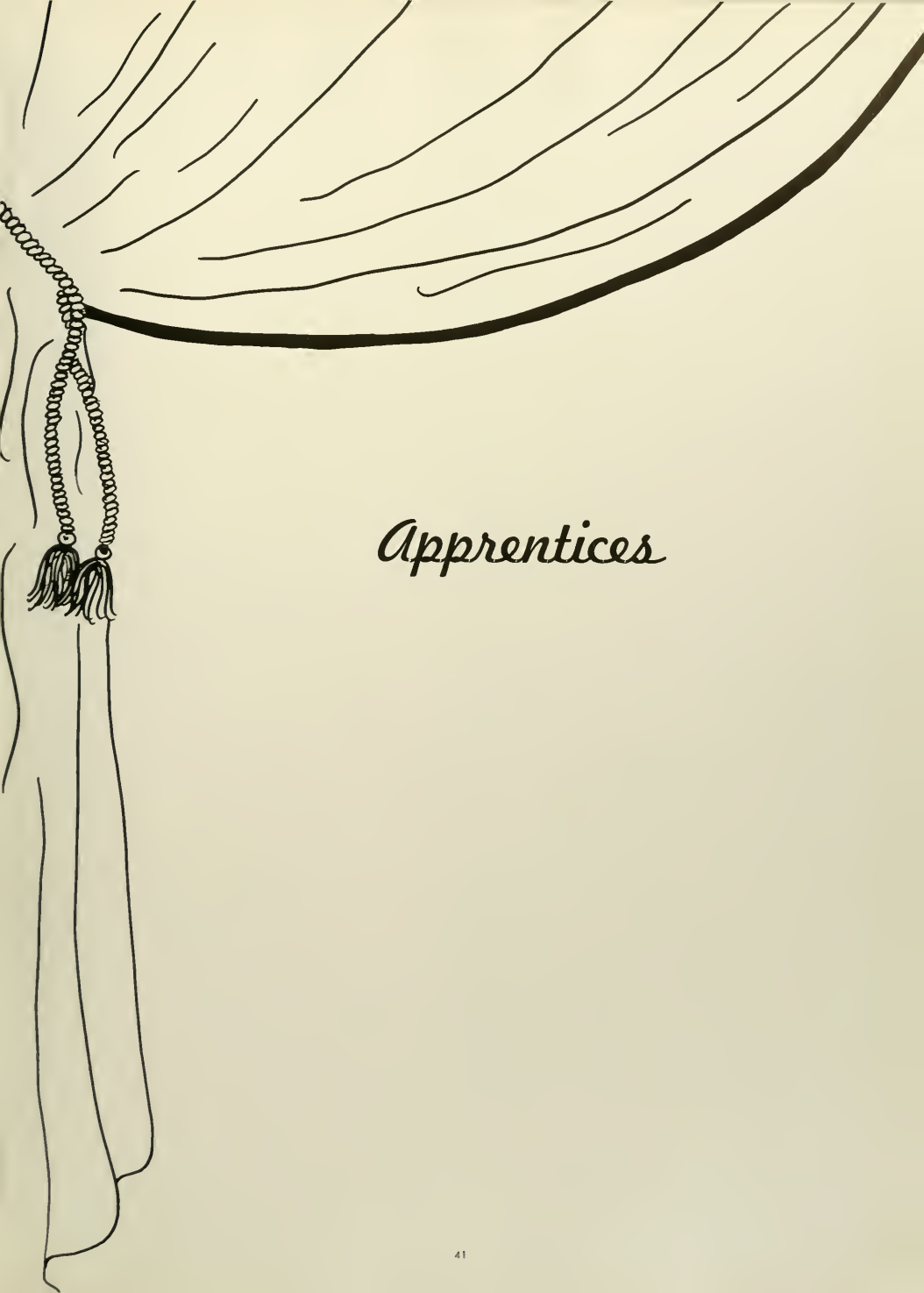
D. Weaver  
 A. Weborg  
 F. Weckerly  
 A. White  
 A. Weidl



S. Wolfe  
 P. Young  
 F. Zito  
 H. Zurasky  
 W. Zurasky



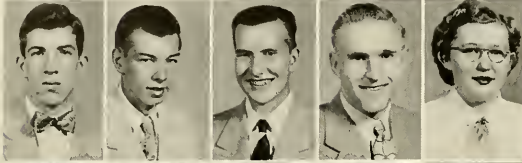




# *Apprentices*



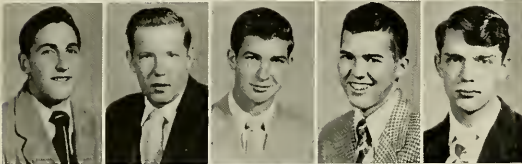
A. Aaron  
 A. Abbey ✓  
 W. Beachner ✓  
 K. Bish  
 P. Bowersox



R. Bowser  
 R. Buzard  
 C. Campbell  
 A. Carlson



P. Case  
 D. Clark  
 B. Cook  
 E. Corte  
 R. Damaso ✓



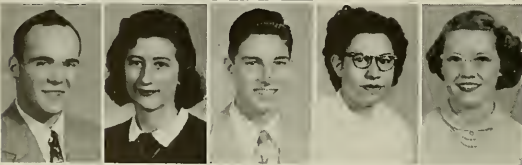
T. Dellaquilla ✓  
 J. Devey  
 R. Dimerling  
 L. Dunn  
 G. Eckman



R. Elden  
 J. Ernest ✓  
 J. Fazzinger  
 C. Fishcher  
 L. Fitzgerald



E. Fitzsimmons ✓  
 C. Fleming  
 J. Flick  
 M. Foley ✓  
 N. Folsen



R. Franklin  
 R. Goul  
 E. Gaul  
 C. Gentile  
 C. Gourley

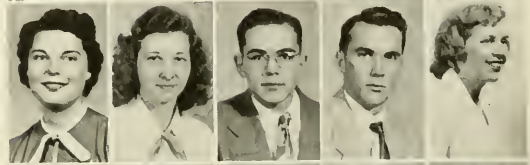
R. Greenwalt  
 N. Grubbs  
 E. Hack  
 R. Hartley  
 R. Headrick



E. Henry  
 T. Hoyer  
 M. Hugus  
 R. Hulquist  
 A. Hurd



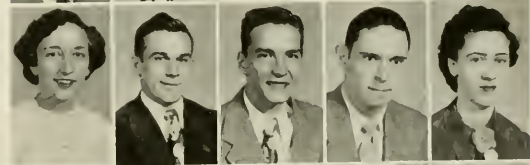
J. Jahson  
 N. Kelsa  
 P. Kepple  
 C. Keth  
 A. Kline



M. Kapnitsky  
 F. Kavalyak  
 S. Krause  
 J. Kristoff  
 W. Lane



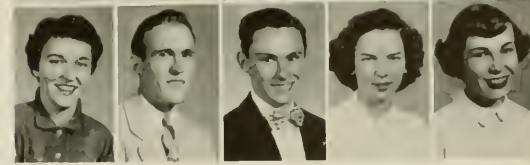
N. Liston  
 W. Lancheda  
 J. Larrigan  
 J. Lynch  
 I. Manning

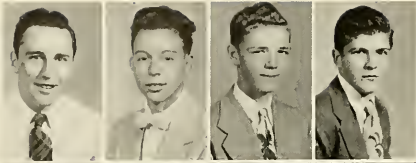


B. Marraccini  
 G. Middleton  
 D. Mills  
 Trueman Mills  
 M. Mitchell



M. Mahney  
 J. Murdock  
 R. Neubauber  
 E. Nuttall  
 D. Ogden





E. Palm  
G. Platt  
J. Peer  
J. Reed



D. Reno  
L. Rettig  
G. Schindler  
J. Servey



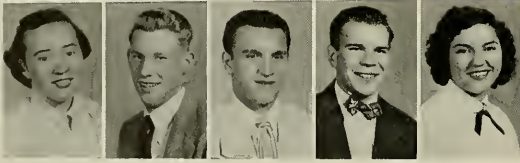
W. Servey  
E. Seybert  
H. Shapiro  
R. Sloy



D. Smith  
J. Smith  
S. Stohlman  
M. Seese



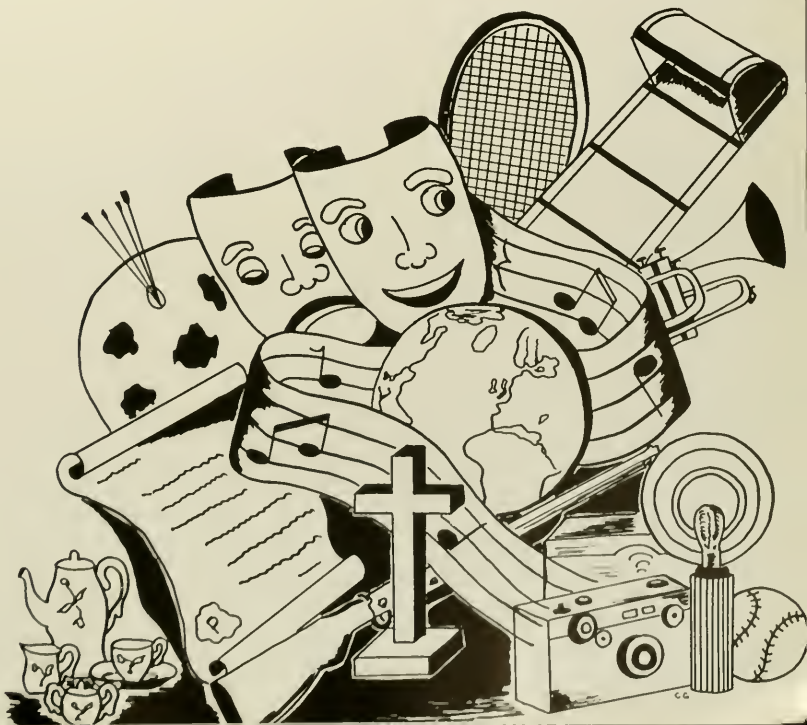
M. Thompson  
W. Thurou  
M. Vescio  
S. Walker



J. Worlock  
J. Winter  
E. Wisniewski  
B. Wroblewski  
N. Young



*Selected Short Subjects*





Row 1 D. Stowe, G. Rose, E. Anderson  
 Row 2 D. Freudenberger, J. Johnston, D. Curfmon, D. Dougherty, R. Miller

## *Association of Childhood Education*

The Association of Childhood Education is an organization founded principally for those students interested in elementary education. Meetings are held on the fourth Wednesday of each month.

The chief purposes of this organization are to acquaint interested persons in the progressive methods of elementary teaching, to gather and

distribute information concerning the education of young children, and to work in cooperation with Association of Childhood Education International by following their suggestions for worthwhile programs.

For those interested in early childhood education, the Association of Childhood Education has proved to be a worthwhile activity.

### OFFICERS

President	Dorothy Stowe
Vice-President	Glenna Rose
Secretary	Ann Maree Brady
Treasurer	Eleanor Anderson
Corresponding Secretary	Judy Hanna
Sponsor	Miss Evelyn Strohecker



Row 1 B. Otto, I. Vobrak, Miss Sandford, M. Kassel, J. Rolls, A. Kline

Row 2 R. Diebler, P. McNaughton, D. Ogden, E. Blissel, C. Hartge, R. Miller, C. Rhoades, R. Giering

## Art Club

The Art Club is an extra-curricular organization maintained for the purpose of benefiting those students who are particularly interested in art. The club strives to contribute what it can to the art consciousness of the college and community. We aid other organizations in the college by making posters, lettering of certificates, and assisting with dance decorations. Projects of interest engaged in by the club this year were etched trays, leather work, Christmas projects, and the selling of college stationery. When the club is so inclined, a trip to Pittsburgh is taken

to visit the Carnegie Galleries and other buildings of interest.

An important social event in the fall was the party given by the Kassels in their Rumpus Room. The Art and Press Club Banquet, now a colorful college tradition, was also a highly successful affair.

In May the Club will sponsor an exhibition of the paintings of one of its alumni, Mrs. Henry Morgan. The club feels it a privilege to be able to exhibit Mrs. Morgan's work which has received many high honors in Pennsylvania.

### OFFICERS

President

Beverly Otto

Vice-President

Ray Giering

Secretary-Treasurer

Robert Deibler



Row 1 M. Eberle, B. Hill, M. Engman, J. Harris, D. Wilson, J. Anderson  
 Row 2 D. Butts, J. Barnes, J. Gray, F. Terry, I. McHenry, D. Weaver  
 Row 3 D. Goldthwaite, A. Woodmon, G. Johnson, D. Weckerley, D. Thureau  
 Row 4 Dr. Pierce, J. King, J. Lieber, J. Murdock

## Camera Club

For anyone who wants to begin or continue his hobby in photography, we have the Camera Club under the very capable supervision of Dr. Peirce.

Here at Clarion there is a well equipped dark room plus a Speed Graphic which are at the disposal of the student at all times. If there is anyone who wants to learn how to develop films, print pictures, or use the Speed Graphic, the members of Camera Club and Dr. Peirce have been glad to teach him.

The Camera Club is also accredited with many of the pictures which appear in the

CLARION CALL and in the SEQUELLE.

During the year we have various programs for the club periods. Some programs, such as showing movies or the slides taken by a member of the club, are purely for our entertainment. Others, such as slides from the Eastern Kodak Company and guest speakers, are to increase our knowledge of photography.

One of the main events of each semester is going to Camp Coffman or to Cooks Forest. This was the time when fun was had by all—the time for sports plus plenty to eat.

### OFFICERS

President	Dan Goldthwaite
Vice-President	Marjorie Eberle
Secretary	Doris Wilson
Treasurer	Blanchard Brock



Row 1 D. Baker, M. Spencer, D. Stowe, C. Phillips, J. Hawell, S. Green  
 Row 2 E. Dickey, Miss Strohecker, F. George, K. McKissick, G. Law  
 Row 3 A. Galterio, P. Mock, E. Kifer, M. Knapp, E. Carli  
 Row 4 D. Curfman, V. Bowser, L. Kindleberger, E. Wensel, W. Panciera  
 Row 5 T. Loschivo, J. Sterrett, H. Cerrutti, M. Thompson, H. McCay

## *Future Teachers of America*

The Future Teachers of America, Clarion Chapter, was organized to deepen the interest in education in all students who expect to become teachers. The purposes and principles of the club are much the same as those of its parent organizations, the National Education Association and the Pennsylvania State Educational Association. Membership is open to all Clarion students.

Many activities fostered by the F. T. A. members have helped to set up F. T. A. organizations in high schools in the district. Our group has played host to high school F. T. A. clubs who were interested in our college. Social activities are planned throughout the year. Guest speak-

ers enlighten the students concerning modern educational practices. We often participate vicariously in classroom situations through the media of movies.

A merit system has been developed by which members may earn points as a result of participation in qualified activities. Such activities include working as an officer of the club, helping plan F. T. A. programs, teaching Sunday School or similar church activities, and working with such organizations as YWCA, YMCA and Boy Scouts. Having earned a required number of points a certificate of merit is issued upon graduation with the recommendation of our sponsor.

### OFFICERS

President	Clarice Phillips
Vice-President	Dorothy Stowe
Secretary-Treasurer	Mary J. Spencer
Librarian	Donald Curfman
Sponsor	Miss Evelyn Strohecker



## College Players

### OFFICERS

President Ann Gavoletz  
 Vice-President Shirley Hildebrand  
 Secretary Shirley Bach  
 Treasurer Ned Salerna

- Row 1. D. Bevevina, A. Pantazes, N. Salerna,  
 D. Benson, S. Hildebrand, P. Skinner  
 Row 2. R. Caserico, M. O'Connor, M. Mortland,  
 A. Gavoletz, P. Mochnick  
 Row 3. H. Gengoware, A. Leslie, E. Mott, E.  
 Price, B. Merriman  
 Row 4. P. Schultz, M. Canstable, B. Martland,  
 R. Lewis  
 Row 5. M. Canrad, S. Bach, C. Graham  
 Row 6. G. Thompson, R. Gebrett



- Row 1. S. Walker, G. Schindler, M. Vesio, J.  
 Warlock, K. Bish  
 Row 2. D. Kline, L. Schieberl, C. Gourley, S.  
 Kuhns, S. Snyder  
 Row 3. J. Peer, J. Johnstan, M. Mahney, J. Ser-  
 vey  
 Row 4. G. Eckman, J. Boyer, E. Smith, R. Ter-  
 williger

## College Players

The College Players is the oldest and one of the most active extra-curricular activities on campus. Various phases of drama are presented to the members such as play production, make-up, lighting, costuming, properties and acting techniques. The meetings for the year have been well planned and placed under specific chairmen to better present these phases. "The Man Who Married a Dumb Wife", a farce by Anatole

France, was presented the first semester and a three-act play the second semester.

The annual Christmas banquet with good food, wonderful entertainment and a visit from Santa (who had a good word and small token for all) highlighted the social aspect of the club.

Miss Marwick is the faculty advisor of the club and Miss Boyd is the faculty advisor of the make-up for the plays presented.



Row 1 E. Wensel, E. Meegan, N. Young, E. Dickey, P. Young, D. Ballas  
 Row 2 J. Waldorf, G. Ohl, S. Walfe, S. Gilbert, J. Mills, I. McHenry  
 Row 3 Mr. Kuhner, F. Sharrow, H. McCoy, P. McNaughton, A. Weaver

## *Geography Club*

The Geography Club is an organization for all students interested in geography and travel. Most of the members are geography majors or minors, but this is not a requirement for membership. Under the able guidance of Mr. Kuhner, the members themselves organize and sponsor their own activities.

Some of the past programs have been quiz programs, movies on travel and conservation, and various similar activities. Mrs. Davis has honored us by giving a lecture and showing colored slides on her journeys to Alaska and Europe.

The Geography Club has taken trips to Pittsburgh, the local glass plant, the Shipperville pottery, and the Coca-Cola Bottling Company of Clarion. Other interesting field trips are being planned for the future.

In addition to programs of an academic nature, this organization also participates in social events. Parties are held at various times throughout the year, and also picnics at Cooks Forest. All students are cordially invited to join the Geography Club and share in our many activities.

### OFFICERS

President	Don Ballas
Vice-President	Sue Wolfe
Secretary-Treasurer	Lucille Young
Sponsor	C. A. Kuhner



Row 1. A. Weaver, F. Sharrow, A. Loschiavo  
 Row 2. D. Butts, C. Gentile, J. Heeney, N. Lisan, L. Fitzgerald, W. Lane, M. Orcutt, G. Rodriguez, D. Bensen, E. Grollmus  
 Row 3. B. Merrimon, C. Hariman, F. Zito, J. Gifford, P. Schultz, L. Ande, C. Baker, B. Caber, G. Ohl, M. Barta, E. Blissell, J. Yarnovic  
 Row 4. R. Mahney, R. May, C. Vorrato, J. Corbaugh, I. Vabrok, E. Bavo, K. Zerbe, R. Bruna, Dr. Slick, G. Johnson

## *International Relations Club*

### OFFICERS

President .....	Gus Johnson
Vice-President .....	Rockne May
Secretary-Treasurer .....	Robert Mohney
Sponsor .....	Dr. S. E. Slick

The International Relations Club this year enjoyed one of its most successful years. Some of our activities were the picnic at Cook Forest, movies, and the highlight of the year, our annual trip to the United Nations Assembly at New York City.

The purpose of the club is to present to the members some of our current international prob-

lems, which are then opened for discussion by the group. Such topics as the Korean War, Universal Military Training, and the West Point scandal were discussed.

Our president, Gus Johnson, attended the I. R. C. conferences at Johns Hopkins and Temple University.





Row 1 G. Schindler, S. Crowley, M. Abplanalp, S. Ewing, J. Lewis, L. Shank  
 Row 2 Dr. Predmore, B. Gallagher, M. Leish, B. Papsan, A. Weaver, J. O'Dannell  
 Row 3 H. Gangaware, D. Wilson, M. Craig, B. Heasley, B. Blough  
 Row 4 F. Wise, J. Lupinocci, E. Walsh, M. Conrod, R. Dimerling, J. Hartnett, J. Toth, D. Barilar,  
 M. Kopnitsky

## Outdoor Club

For those who like the great outdoors, we have the Outdoor Club, whose aim is to provide recreation and healthful activities for its members. Once each semester the members of this club have an all day outing at Cooks Forest. During the day we take hikes on the various trails, play softball, eat, and then spend the rest of the time dancing. It is a day full of fun and activities.

When the weather man permits, we also make use of the toboggan slide which is located near the football field. After several trips up

and down the slide, we come in for refreshments.

The Nature Trail, which the Outdoor Club sponsors, is going to have a path added which will be a short cut for those who do not want to hike the regular 2½ mile trail. The members of the club have undertaken the job of preparing signs for this cut-off.

Our sponsor, Dr. Donald Predmore, has given us a great deal of assistance in our work and other activities and we appreciate his aid very much.

### OFFICERS

President	Jerry Hortnett
Vice-President	Mike Dolmoyer
Secretary	Jackie Lewis
Treasurer	Margie Leish



## Newman Club

### OFFICERS

President	Gene Baschini
Vice-President	Ned Salerno
Secretary	Elaine Bava
Treasurer	Jerry Hartnett
Chaplain	Edward Walsh
Moderator	Father A. A. Fisher
Sponsor	Miss Mary Kay Banner

- Row 1. B. Naquin, G. Galteria, R. Casarica, C. Varrata, K. Zerbe, E. Blassell
- Row 2. G. Hartnett, E. Walsh, N. Salerno, G. Baschini, Miss Banner, E. Bava
- Row 3. J. Anderson, F. Zita, B. Rybiski, G. Galteria, A. Brady, L. Schieberl, D. Bensen, A. Gavaletz, M. Vesio
- Row 4. D. Barilar, A. Marinich, T. Delaquilla, F. Lewis, R. Vidunas, P. Scierka, J. Lynch, R. Caury, M. Carusa



- Row 1. R. Dimerling, E. Matt, R. Papurella, J. Tury
- Row 2. P. Manny, C. Gentile, P. Kramer, E. Walsh, M. Dalmayer, B. Hill, J. Heeney, M. O'Connar
- Row 3. C. Grattenhalter, R. Damasa, D. Smith, G. Schmidt, J. Johnston, M. Faley, J. Wagner, L. Galli, J. Lupinacci
- Row 4. R. Sacali, T. Brady, R. May, E. Gall, A. Laschiava, L. Schulte, S. Russa, T. Malsky

## Newman Club

The Newman Club, open to all students of the Catholic faith, is organized for the promotion of spiritual, social and cultural life. Here on the campus the Newman Club fulfills these purposes throughout the year by conducting various activities. Meetings are held on alternate Wed-

nesday evenings. The program includes various speakers, group discussions and movies.

Social activities of the year have been a "get-acquainted" dance, a pre-Lenten dance, communion breakfast and a lecture by Father Griffin of Oil City.



Row 1 K. Bish, G. Rodriguez, P. Skinner, Miss Noir, C. Gentile, M. Voarhees  
 Row 2 W. Panciera, S. Bach, S. Kuhns, J. Wagner, B. Hill, S. Hildebrand, R. Gherett  
 Row 3 L. Schieberl, E. Henry, P. Schultz, E. Ludwig, N. McQuiston  
 Row 4 M. Longham, S. Plavney, L. Ianni, J. Black

## Press Club

The Press Club is the organization which is responsible for the production of the CLARION CALL, our college paper. The club members try to add interest to the newspaper by contributing amusing features in addition to the routine news reporting that they do.

The Press Club carries on an exchange

policy with other collegiate papers throughout the country. This enables them to compare their work with that of other papers.

The CALL had a good deal to report this year because of the immense success of our basketball team.

### OFFICERS

President  
 Editor  
 Secretary  
 Treasurer  
 Sponsors

Stanley Plavny  
 Lawrence Ianni  
 Shirley Hildebrand  
 William Panciera  
 Miss Harriet Skaggs  
 Miss Bertha V. Noir



## Royal Order of Waiters

### OFFICERS

President ..... Edward Walsh  
 Vice-President ..... Jack Black  
 Secretary ..... Helen R. Gangaware  
 Treasurer ..... Marilyn Craig  
 Social Chairman ..... Sam Farmerie  
 Spansar ..... Dr. Lare

- Row 1. J. Hartnett, A. Pantazes, H. Gangaware, M. Dalmoyer, E. Walsh, S. Lare  
 Row 2. M. O'Connor, B. Caber, E. Bova, P. Kramer, M. Weeks, B. Nacquin  
 Row 3. B. Franklin, J. Lieber, K. Bauer, G. Baschini, R. Gherrett, M. George



- Row 1. R. Dimerling, R. Sacalic, A. Mudrinich, S. Russo, L. Ianni, M. Canrad  
 Row 2. H. Shindlecker, A. Webarg, R. Miller, A. Marshall, J. Black, M. Craig, E. Keagh, N. Salerno  
 Row 3. F. Kavalyak, T. Malsky, B. Grasch, R. May, S. Farmerie, D. Rena, L. Gall

## Royal Order of Waiters

The primary goal of the Royal Order of Waiters is to provide the students of Clarion with efficient service in our dining hall. The club has a voluntary membership of all those students whose work is connected with the dining hall.

Decorating the tables and dining hall for all

our holiday dinners was our main project for the year.

The Waiters Club has also been very active socially. Club meetings, several record dances, a Christmas party, and the annual waiters' picnic at Cook Forest comprise their social activities.



**Row 1** E. Kifer, D. Freudenberger, A. Marshall, M. Weeks, M. Craig, J. Sterrett  
**Row 2** E. Dickey, D. Daugherty, M. Eberle, J. Russell, J. Hanna, S. Knight, G. Vogus, P. Mock, E. Anderscn, D. Smith  
**Row 3** N. Salerno, L. Ianni, L. Ande, L. Kindelberger, A. Brady, J. Yarnovic, E. Ewaskey, B. Wile, G. Schmidt, P. Schultz, C. Graham

## *Sequelle Staff*

### STAFF

<b>Co-editors</b>	Ed Ewaskey Lawrence Ianni	<b>Business Manager</b>	Louise Ande
<b>Photography</b>	Doris Smith Betty Wile	<b>Directory</b>	Pat Mock
<b>Art</b>	Patsy Schultz Mary Ellen Weeks Carl Graham	<b>Junior Member</b>	John Yarnovic
		<b>Advisor</b>	Mr. Kuhner

### To The Staff

We wish to thank the staff for its cooperation and helpfulness toward making this Sequelle possible. We wish to thank Mr. Kuhner for his great assistance and advice and to all those who helped in any way to make the Sequelle a success. Thank you.

Ed Ewaskey  
 Lawrence Ianni



Row 1 J. Servey, M. George, B. Otto, M. Vaarhees, M. Orcutt, D. Weckerly, J. Leathers  
 Row 2 H. Shingledecker, E. McKissick, R. Slay, V. Potton, E. Dickey, H. Benson, S. Green, P. Skinner  
 Row 3 Dr. Shank, M. Conrad, D. Ambrase M. Barnett, Dr. Lare, D. Curfman



Row 1 N. McQuistan, B. Gallagher, D. Smith, E. Hrivnack, J. Campbell  
 Row 2 P. Rearick, E. Price, B. Martland, B. Wile, D. Wilson, G. Bornes, J. Horris, J. Pugh  
 Row 3 M. Seese, J. Howell, I. Manning, A. Carlson, C. Hartge, S. Bach, P. Schultz, S. Snyder  
 Row 4 A. Hurd, L. Himes, K. Bauer, M. Byers, R. Reitz, J. Foley, D. Goldthwaite, J. Lawson

## *Student Christian Association*

### OFFICERS

President	John Leathers
Vice-President	Don Curfman
Secretary	Peggy Rearick
Treasurer	Eugenia Price
Advisors	Dr. Stanley Lore Dr. Paul Shank

The Student Christian Association is the answer to the spiritual and social needs of the student while he is on campus. It is the result of the fusion of the Y. W. C. A. and the Y. M. C. A.

The organization is inter-denominational and inter-racial and is open to all at any time.

This year the S. C. A. has enjoyed the largest membership in its history. The religious group

# Student Christian Association

has succeeded in the publication of its own paper called **SCAT**, The Student Christian Association Times, in which have appeared many fine editorials and articles.

Every Wednesday night devotions and programs are presented by various students in the college chapel. Several outstanding religious films have been shown and the organization has been privileged in hearing some of the best speakers obtainable. A series of three meetings was devoted to various phases of Racial Prejudices.

There has also been an excellent opportunity for fun and fellowship through various social activities including the picnic at Clarion Park, the Halloween Party, the Christmas Party and the banquet in Becht Hall—the highlight of the season.

We have had wonderful cooperation with the Newman Club in promoting such activities and projects as: the Freshman "Get Acquainted Party", Christmas Caroling, the WSSF Drive and the annual Cooks Forest picnic.

Row 1 E. Gourly, M. Hugus, D. Butts, G. Middleton, K. Bish, J. Ernst

Row 2 J. Mills, S. Wolfe, M. Eberle, D. Stowe, J. Johnston, L. Ande, S. Knight, G. Vogus, R. Niger

Row 3 F. Terry, P. Young, G. Ohl, S. Perry, E. Blough, P. Mock, L. Kindleberger, Y. Wonderly, S. Smith, M. Barto

Row 4 J. Kristoff, A. Weaver, E. Compbell, J. Hozlett, G. Eckman, T. Brown, A. Wiedl, N. Weimer, T. Hoyer, R. Neubauber



Row 1 J. Rolls, M. Constable, J. Rudge, N. Burneson, A. Morshall, A. Kline, J. Smith

Row 2 N. Grubbs, M. Hilliard, D. Exley, J. Reiger, A. Fisher, E. Nuttall, E. Grollmus, L. Young

Row 3 B. Moracini, N. Kelso, E. Seybert, N. Falser, J. Ogden, E. Kifer, M. Abplanalp, S. Crowley, S. Ewing, J. Millord

Row 4 S. Farmerie, R. Koerber, J. Felton, F. Sharrow, R. Gehrett, C. Graham, W. Mort, G. Johnson





Row 1 J. Winter, T. Palenski, E. Papurello, E. Llayd, W. Kruper, K. Bauer, J. Leathers  
 Row 2 F. Augustine, H. Reasinger, F. Crawley, C. Flack, M. Carusa, M. Walsanovitch  
 Row 3 J. Keriatas, V. Lang, L. Dunn, T. Brown, A. Wiedl, T. Lewis, D. Cassidy  
 Row 4 E. Palm, R. Kifer, C. Daugherty, J. Capizzi, H. Boyer  
 Row 5 R. Vidunas, A. Mudrinich, W. Vail, F. Kavalyak  
 Row 6 E. Wisniewski, L. Rettig, J. Tessitore, R. Bowser  
 Row 7 R. Damasco, E. Gall, J. Lynch, H. Shapira  
 Row 8 B. Etzel, J. Lutz, R. Hoffman

## *Sportsman's Club*

Every Tuesday evening the small bore enthusiasts of the college gather at the rifle range in Davis Hall. Here the members of the Sportsman's Club, under the supervision of Mr. Charles Flack, our sponsor, make use of five Remington 513 target rifles loaned to the club by the United States government. Under the sanction of the National Rifleman Association the members shoot a qualification course and are eligible for medals showing their achievements. A number of small bore matches are scheduled

during the year and the Clarion team always makes a good showing, although not winning every time. These matches have been a source of great interest in the club and have helped to attract many new members to the organization.

The club also sponsors a bowling team which competes with various teams from the surrounding area. Other members are able to gain access to various sources of information in sporting fields in which they may be interested.

### OFFICERS

President	Edward Lloyd
Vice-President	Frank Augustine
Secretary	Peter Scierka
Treasurer	Mike Caruso
Sponsor	Mr. Charles R. Flack



# W. A. A.

## OFFICERS

President	Daris Freudenberger
Vice-President	Ruth Miller
Secretary	Joanne Hill
Treasurer	Lois Radis
Social Chairman	Ellen Blissel
Sponsor	Frances Carter

- Row 1. J. Russell, D. Freudenberger, A. Marshall, D. Marland
- Row 2. A. Brady, M. Eberle, J. Johnston, J. Hanna, S. Knight, J. Hill, R. Davis
- Row 3. I. Vobrak, E. Kifer, B. Wile, R. Miller, L. Kindleberger, L. Ande, G. Schmidt, Miss Carter
- Row 4. D. Daugherty, D. Stawe, B. Rybiski, P. Mack, D. Cribbs, D. Smith, E. Anderson



- Row 1. B. Hill, A. Galterio, E. Keogh, D. Benson, J. Millard, E. Blissel, L. Radus
- Row 2. G. Galterio, M. Riggs, B. Heasley, N. McQuiston, S. Bach, J. Garbart, N. Allison
- Row 3. E. Gardokowski, C. Varrato, L. Shank, G. Rodriguez, J. Harris, E. Grollmuss, Miss Carter



## Women's Athletic Association

The WAA members are a group of sports-minded women on campus who are under the able sponsorship of Miss Carter. The membership of the WAA has practically doubled since last year, and we hope that it will continue to grow in the future.

The purposes of the organization are to stimulate the interest of the entire student body in athletics and recreational activities and to foster the spirit of friendliness, goodwill, and good sportsmanship.

The WAA's intramural program consists of the following sports: volleyball, basketball, softball, tennis, badminton, ping pang, bowling, hiking, archery, and dancing.

The WAA accepted several invitations from other colleges to participate in playdays. At all of these events the girls returned with reports of having formed new friendships and of having had wonderful times.

The club also instituted a "Play Night" for the entire college. Different activities were held in each of the main buildings on the campus. The students entered whole-heartedly into the activities, each doing whatever she chose for the evening.

When the girls have fulfilled their qualifications for joining the organization, they are awarded a letter.



Row 1 H. Mehallick, R. Shaw, H. Elias, R. Predeban, R. Coury, G. Czap, D. Bevevino  
 Row 2 D. Dunn, R. Yeskey, J. Juban, G. Boschini, J. Foley, S. Russa  
 Row 3 J. McCullaugh, R. Sheffel, M. Corson, J. Busch, M. Carusa

## *Varsity "C"*

The Varsity C Club is an organization on the campus consisting of athletes honored for their sportsmanship and their participation in the field of sports. The purpose of this organization is to help and to promote inter-collegiate athletics in the college. To gain membership in this organization a person must earn a letter in any of the varsity sports at Clarion.

It was the members of this group who sup-

plied you with the programs, pop and sandwiches at the sports events this year.

Special awards to seniors, three-year men and two-year men are being purchased with the money made from the sale of refreshments at various games held on the campus.

The Varsity C wishes to extend its thanks to the students of Clarion for helping the club in every manner.

### OFFICERS

President .....	Robert Coury
Vice-President .....	Raymond Predeban
Secretary .....	John Busch
Treasurer .....	Harry Mehallick



Row 1 P. Schultz, D. Freudenberger, D. Goldthwaite, G. Durbin  
 Row 2 M. Eberle, V. Bowersox, C. Gourley, K. Bish, J. Johnston, R. Lawson, J. Ernest, M. Borto, L. Shonk, N. Allison  
 Row 3 D. Exley, B. Mortland, R. Neubauer, S. Snyder, G. Hawk, L. Lios, E. Smith, N. Solerno, K. Bauer, R. Domosco, T. Mills, J. Moys, D. Dougherty  
 Row 4 A. Hurd, J. Winters, M. Hugus, J. Howell, J. Anderson, B. Wile

## *College Band*

The instrumental end of the campus musical program is an active publicity agent for the college. We provided background and spirit for our home football games, rain or shine, and also went with the team to most away games. Incidentally, we are an all-weather outfit now with our rain togs and new braid-trimmed winter jackets.

At the beginning of the second semester we

began our concert work, presenting an entirely new program of numbers in chapel assembly. Soon after this performance we started our annual tour of surrounding communities. New members to our fold have capably taken over several solo openings.

It was our privilege to be on hand for the thrilling basketball victories over Geneva and Millersville State Teachers College.



Left to right—D. Daugherty, E. Seibert, K. Adams, A. Marshall and P. Manny.

## *College Ensemble*

To answer short program requests of local and neighboring community organizations is the chief purpose of our College Ensemble. Composed of a trio—Kassi, Alice, and Donna—and a quartet—add Betty to the trio, the group pre-

sents some interesting arrangements for its audiences.

Mike Helmintoller accompanies us often to give even more variety to our program with his baritone solos. Mr. Hart acts as director and chauffeur.



Row 1 L. Radus, E. Seybert, K. Bish, E. Hrivnak, J. Garbart, E. Keogh, B. Mortland, G. Rose, D. Daugherty, A. Leslie, J. Rudge  
 Row 2 C. Hartge, J. Lewis, E. Blissell, B. Heasley, A. Weborg, D. Freudenberger, P. Manny, M. Constable, B. Gallagher, D. Kline, E. Price, P. Bowersax  
 Row 3 D. Galdthwaite, Dr. Lore, F. Kovalyok, G. Kennemuth, M. Byers, E. Gall, J. Boyer, G. Beary, N. Salerna, A. Dimino  
 Row 4 T. Hoyer, R. Lewis, R. Terwilliger, B. Etzel, H. Shindledecker, E. Smith, C. DeLong, K. Bauer, J. Mays

## *A Capella Choir*

The A Capella Choir, directed by Mr. Walter Hart, is one of the most active organizations on the campus. Each year this choral group gives many concerts in churches and schools of Western Pennsylvania. The choir also participates in an assembly program annually. Each year, as the Christmas season approaches, the Choir presents Handel's "Messiah" in an evening program in the chapel.

Over half the personnel of the choir this year are members returning from last year. These more experienced members are a helpful influence on the new members.

The concert trips are enjoyed by all members of the choir. Concerts scheduled for this year include Imperial, Burgettstown, Kane, Warren, Oil City, and Parker.

Each year several members of the choir are chosen to represent Clarion State Teachers College in the Intercollegiate All-State Choir.

Membership in the A Capella Choir is limited to students who are sincerely interested in choral work and merit awards of letters and sweaters are given on the basis of active participation.

### OFFICERS

President

Gail Kennemuth

Vice-President

Edward Mott

Secretary-Treasurer

Gerald Beary

Librarian

Jackie Lewis



H. Gangaware, E. Blissel, B. Gallagher, A. Bastress, D. Kline

## *Cheerleaders*

The rousing cheers at the football and basketball games were led by these five sparkling girls. The junior members are Ellen Blissel from Butler, Ann Bastress from Clarion, and Helen Gangaware from Jeannette. Betty Gallagher from Knox and Donna Kline from Franklin are sophomores. Miss Frances Carter, women's

athletic director, is the capable sponsor of the cheerleaders.

Try-outs for the cheerleading squad are held each fall. The girls are selected for their vim and vitality. Who wouldn't win games with these girls to cheer you on?









Row 1. G. Schmidt, M. Mortland, M. Dible, K. Zerbe  
 Row 2. R. McCard, R. Black, Dr. Chandler, M. Caruso, R. Krepps

## *Student Senate*

### OFFICERS

**President**  
**Vice-President**  
**Secretary**

Charles Krepps  
 Mike Caruso  
 Kitty Zerbe

The Student Senate is the executive body of the Community Government Association of Clarion State Teachers College. Its main purpose is drawing up the budget for the purpose of distributing the students activity fees among the different campus activities. It must determine the importance of one organization in relation-

ship to other organizations, and draw up their budget accordingly.

The major achievements of this year's Senate were the installation of television sets in each of the four major dormitories, and underwriting the expenses of the school basketball team to the N. A. I. B. tournament in Kansas.



*Senior  
Class Officers*

Row 1. M. Eberle, Mr. Flack, M. Dible

Row 2. R. Coury, F. Palaggo

*Student*



*Freshman  
Class Officers*

Row 1. L. Schierberl, J. Anderscn

Row 2. A. Mudrinich, T. Mills

*Junior  
Class Officers*

M. Morrison, G. Curry, Mr. Lewis,  
P. Mervosh



*Government*

*Sophomore  
Class Officers*

M. Voorhees, Dr. Lore, J. Hortnett,  
M. Alphonso





Row 1 M. Vescio, M. Hugus, A. Abbey  
 Row 2 A. Corlson, S. Green



Row 1 D. Freudenberger, D. Smith, P. Rearick  
 Row 2 B. Hill, K. Zerbe, N. Burneson, M. O'Conner

## House Council

The Women's House Council is the governing body of the women's dormitories of Science and Becht Halls. The members of the council are elected each spring to serve the following year.

Among the duties of the council are: hall

proctoring at all times, the selection of fire wardens, proposals for improvement of living conditions in the dormitories, and student relationships. The House Council is sponsored by Miss Groce Stoke, dean of women.



Row 1. Dr. Shank, D. Mortland, Dr. Lore  
 Row 2. N. Salerno, E. Bova, J. Black, P. Skinner

## *Social Committee*

### OFFICERS

Chairman  
 Vice-President  
 Treasurer  
 Secretary

Donna Mortland  
 Jack Black  
 Ned Salerno  
 Patricia Skinner

The Social Committee has the task of providing a well-rounded social program for the students at Clarion.

The members elected this year were: Patricia Skinner—senior class, Ned Salerno—junior class, Jack Black—sophomore class, Louella Schberie!—freshman class, Elaine Bova—Pan-Hell, Donna Mortland—Women's Dayroom, and Dick Black—Men's Dayroom.

The faculty sponsors, Miss Stoke, Miss Car-

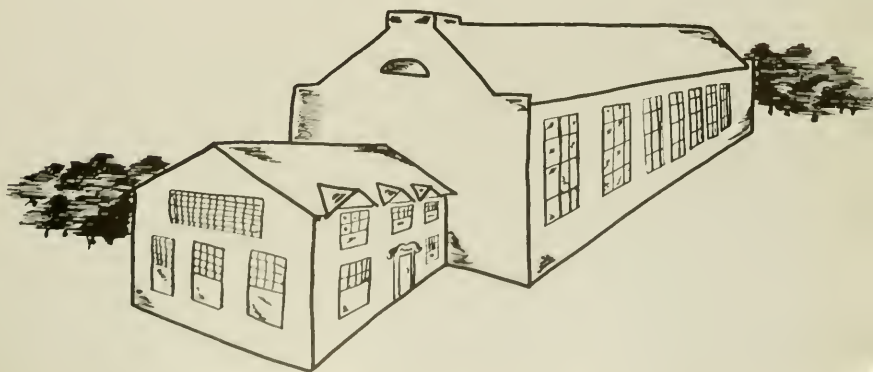
ter, Dr. Shank, and Dr. Lore, have all helped in our planning and in carrying out our program.

Featured this year on our social program were twilight, record and square dances, sponsored by the sororities, fraternities, and some campus clubs. The details of the four big dances were taken care of by the class organizations.

The social program this year has been successful and varied and will undoubtedly be enlarged next year.



*Sports  
Reel*



## *Coaches*



T. Carnahan, B. Kribbs, W. Sheridan, J. O'Brien

## *Season Record*

Clarion .....	12	Edinboro .....	6
Clarion .....	2	St. Vincent .....	14
Clarion .....	13	Thiel .....	13
Clarion .....	25	Brockport .....	20
Clarion .....	6	Indiana .....	0
Clarion .....	12	California .....	45
Clarion .....	19	Slippery Rock .....	14
<b>Total 89</b>		<b>Opp. Total 112</b>	
<b>Record: Won 4   Tied 1   Lost 2</b>			





Row 1 J. Busch, M. Caruso, R. Predeban, R. Caury, B. Taylor, G. Stennett, H. Elias, F. Danelli  
 Row 2 J. Tath, R. Olinger, G. Czap, D. Bevevina, R. Shaw, D. Dunn, E. Iendenski, D. Stewart  
 Row 3 R. Hoffman, R. Headrick, H. Reasinger, W. Lanchena, H. Zurasky, M. Mitchell, J. Kustaff, R. Yeskey  
 Row 4 A. Aaron, J. Hawk, J. Covalancia, M. Zeravica, J. McCullaugh, E. Wisniewski, V. Seesax, C. Fallera  
 Row 5 R. Baff, B. Graham, P. Tierney, J. Devey, P. Caristo, J. Jiaia, A. Sandusky, B. Watt

## *Football*

The high-flying Golden Eagles set an impressive record of 4 wins, 2 losses, and 1 tie in the gridiron battles of the '51-'52 season. Excellent passing, blocking, and sheer smart playing gave their opponents a game.

The Eagle Seniors on the squad will remember their victory over Indiana, our traditional rival, 6-0.

The Senior Eagles, who have played their lost college game, are Johnny Busch, Mike Caruso, Bob Coury, Herb Elias, Roy Predeban, Glenn Stennett, and Bruce Taylor.

Next year's Eagles will have these stars: Georgie Czap, John Louvre, Ed Wisniewski, and D. Bevevino among others.

# *Basketball*

Never before has Clarion State Teachers College received or deserved such favorable publicity as that which they received through the success of this year's basketball team, a team which accomplished the incredible by finishing its season undefeated and achieved the best record in the school's history.

Outscoring seventeen teams, the Golden Eagles stacked the unbelievable record of seventeen wins and no blemishes in the regular season. With this impressive record, the Kribbs coached team went into the NAIB play-offs.

At New Wilmington on Westminster's neutral floor, the Golden Eagles played only five men and came out victorious over the "big college" Geneva by the score of 87-75.

With one play-off game under their belts Clarion ventured to Altoona to win the NAIB District 30 taga from Millersville. In perhaps the

most thrilling game of the year, Stemmerich dumped the winning field goal with twenty-seven seconds remaining. The final score was 50-49.

The Wander Team then traveled to Kansas City to play some of the best in the Kansas City NAIB Tournament. Tall Utah State clipped the Eagles' wings and their winning streak at nineteen straight games. The only loss of the year's score was 85-68. The final record was 19-1.

Many of the Eagles will be back for more basketball next year, but the remaining Eagles are sure to miss John Wiberg and Bob Kelly. Both these men with their team-mates Stemmerich, R. Buck, and J. Blaney have been named on mythical championship teams throughout the state. Reserves Peter Mervosh, Sal Russo, and John Buck came through for the Eagles when the "iron men" were a little rusty.



Row 1 A. Mudrinich, R. Kelly, S. Russo, P. Mervash  
 Row 2 M. Carson, J. Blaney, J. Wiberg, J. Buck, J. Lorrigan, D. Reno, J. McCullough, D. Stemmerich,  
 J. Black, S. Shaeffer  
 Row 3 P. Fink, R. Buck, L. Rettig

### REGULAR SEASON

Clarion	97	Grove City	82	Clarion	71	Thiel	55	
Clarion	85	California	62	Clarion	82	Edinboro	68	
Clarion	72	Slippery Rock	71	Clarion	88	Indiana	53	
Clarion	88	Alliance	74	Clarion	78	Alliance	71	
Clarion	81	Indiana	56	Clarion	106	Edinboro	75	
Clarion	77	Slippery Rock	64	Clarion	71	Allegheny	67	
Clarion	75	Fenn	59	Clarion	88	Gannon	53	
Clarion	103	Thiel	54	Clarion	77	Grove City	71	
Clarion	99	California	69					
							Totals	1438
								1104

### NAIB PLAY-OFFS

Clarion	87	Geneva	75
Clarion	50	Millersville	49

### NAIB TOURNAMENT

Clarion	68	Utah State	85
Grand Totals	1660		1296

SEASON RECORD: WON 19 LOST 1



Row 1 J. Zelek, J. Juban, H. Elias

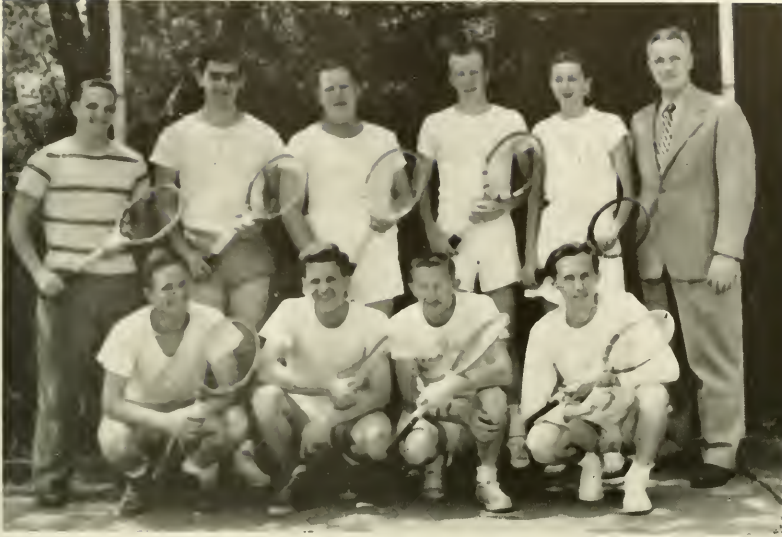
Row 2 B. Taylor, R. Stewart, J. McCullaugh, J. Hale, E. Stemmerich, H. Smith, E. Walsh, M. Carsan

Row 3 G. Rhades, R. Balam, E. Lendenski, R. Sheffel, H. Reasinger, L. Gregg, D. Balya, B. Kribbs

## *Baseball*

April showers brought muddy practice sessions to the Clarion diamond demons. Battery practice in Harvey Gym kept pitchers and catchers in prime condition, but fielding practice was practically nil.

Regulars Juban, Taylor, McCullaugh, Stemmerich, H. Smith, Lendenski, Sheffel, and Reasinger with freshmen talent hold high promises for the best baseball record at Clarion in the '52 season.



Row 1 M. Dolmayer, H. Kincaid, E. Turchik, M. Petruska  
Row 2 D. Bevevino, E. Boschini, L. Lias, J. Foley, M. Doverspike, T. Cornohan

## *Tennis*

Tom Carnahan's netters spring practice sessions promise an excellent record for the wearers of the blue and gold.

Sparked by last year's veterans Lias, Foley,

Dolmayer, Boschini, and Bevevino, the opponents are in for some tough opposition. The new freshman will strengthen the vets to make them hard to beat.



## Men's Intramural Champions

- Row 1 G. Curry, H. Elias  
 Row 2 T. Brady, R. Grosch, R. Logan,  
 D. Bevevino  
 Row 3 E. Dunmire, G. Boschini, G.  
 Hamil, D. Dunn



## Women's Intramural Champions

- Row 1 F. Terry, P. Manny, S. Bach  
 Row 2 M. Eberle, S. Knight, E. Dickey,  
 J. Rolls, P. Young

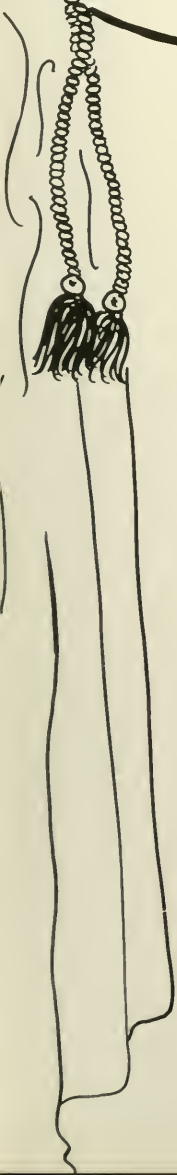
## Intramurals

In the football league of the intramurals, Gordon Laird's Cornell team was unbeatable and gathered in the football championship. In the winter months, basketball took over the leading interests and Lou Galli's Navy basketeers won the championship with nine consecutive victories including two impressive victories over Washington, champion of the West Section. In the

softball league, it was Navy in the East and Herb Elias' Chicago team that played for this championship. The Intramural Championship was also at stake. In this series, Chicago defeated Navy in two games to become Clarion State Teachers College Intramural Champions of 1950-51.



## *Added Attractions*





Row 1 F. Palaggo, R. Predebon  
 Row 2 R. Astar, F. Sharrow, A. Mehallick, H. Elias, L. Ianni, R. Coury, M. Caruso, P. Scierka  
 Row 3 A. Loschiavo, F. Crowley, G. Stennett, J. Gray, E. Ewaskey, G. Boschini, J. Matthews, M. Wol-sanovich, R. Sacolic



Row 1 F. Dostal, G. Czap, D. Bevevina, G. Curry, D. Bolyor, A. Marinich, F. Stanzak, T. Brady, L. Golli, L. Schulte, L. Lewandowski, R. Paperello  
 Row 2 R. Shaw, D. Dunn, J. Tessitare, J. Yarnovic, H. Shindledecker, P. Mervosh, A. Sandusky  
 Row 3 H. DeFelice, H. Reasinger, D. Cassidy, R. Yeskey, E. Dunmire, M. Conrad, F. Donelli

## Alpha Gamma Phi

Alpha Gamma Phi, the oldest and only fraternity on campus without national affiliation, is founded on the ideals of sportsmanship and fellowship.

The Gamma's are highly sportsminded and regard athletics as a fine relaxation and physical improvement.

The fraternity is quite proud of its spirit of fellowship which the brothers feel is second to

none on campus.

The Gamma's began an activity this year that they hope to make an annual affair. That activity was their Homecoming Banquet to which the fraternity invited all the men who have been members of the fraternity since its origin in 1930. The Gamma's are looking forward to seeing more of their alumni brothers in years to come.

President  
 Vice-President  
 Secretary  
 Treasurer  
 Historian  
 Judiciarian

### OFFICERS

Lawrence Ianni  
 Peter Mervosh  
 Robert Coury  
 Raymond Predebon  
 Albert Marinich  
 Frank Palaggo





Row 1. R. Terwilliger, L. Weaver, G. Thompson, R. Koerber  
 Row 2. C. Krepps, M. McCleary, H. McCoy, G. Hamil, W. Stockwell, R. Lewis, C. Graham, D. Goldthwaite  
 Row 3. H. Monson, G. Kennemuth, B. Etzell, W. Waddell, E. Smith, B. Merriman, C. Kuhner, S. Lore  
 Row 4. C. Grathenthaler, D. Predmore, R. Reitz, E. Himes, J. Leathers, K. Bauer, B. Taylor, G. Nichols, R. Lawson

## *Delta Kappa*

### OFFICERS

**President**  
**Vice-President**  
**Secretary**  
**Corresponding Secretary**  
**Treasurer**  
**Sergeant-at-Arms**  
**Chaplain**  
**Librarian**

Gary Hamil  
 Wells Stackwell  
 Gail Kenemuth  
 Carl Graham  
 Robert Kifer  
 Melvin Bennett  
 Harold McCoy  
 Russell Lewis

The Phi Chapter of Delta Kappa National Fraternity was formerly known as the Alpha Phi Alpha. The Delta Kappa Fraternity was founded in 1920 at Buffalo State Teachers College, Buffalo, New York, as a fraternity for young men entering the teaching profession. The fraternity was founded on the fundamental concepts: Uprightness, Guidance, and Honorableness. Any young man of good moral character, believing in a Supreme Being, shall be eligible for this fraternity, provided he has been a student of honor, industriously engaged in the school's activities.

The fraternity started out its year's activities with an initiation banquet held on the cam-

pus. The initiation was attended by the National Officers of the Fraternity and by representatives from other chapters.

Other activities of the fraternity included dances, parties, and sports. The highlight of the year was the initiation of new members, which was a very enjoyable occasion.

The annual spring convocation was held May 3rd and 4th at Oswego, New York. Several members of the local chapter attended and returned with many new ideas for the activities of the coming year. Besides the business meeting a formal prom was held in honor of the various visiting members.



Row 1 J. O'Donnell, N. McQuis'on, P. Rearick, R. DAVIS, J. Lewis, C. Daverspike  
 Row 2 D. Wilson, A. Marshall, B. Heasley, G. Rose, M. Craig, D. Kline, A. Bostress, H. Gongewere, D. Exley  
 Row 3 G. Barnes, B. Otto, A. Brady, A. Weaver, B. Blaugh, S. Ewing, M. Alplanalp, S. Crawley, J. Howell, D. Dornburg, J. Carbaugh  
 Row 4 M. Riggs, S. Perry, D. Daugherty, J. Rudge, R. Casarica, A. Goveletz, M. Dible, P. Donovan, M. Voorhees, M. Barta

## *Delta Sigma Epsilon*

Another year of memorable events has been put in the records of Alpha Zeta Chapter of Delta Sigma Epsilon. Delta Sig, the largest national sorority on campus, is founded on scholarship, leadership, and character.

Much emphasis is put on social life; some of the highlights of the year being our weekend at Cook's Forest, the Pan-Hellenic Dance, Christmas Party, parties with our Sig Tau brothers, Rush Party, and in general just every time we get together.

This year our rush party was a Navy theme. We took fifteen girls for a cruise on the Good Ship Delta Sig. We are very pleased to report

that thirteen of these girls decided to join us and keep sailing with the D. S. E.

To keep ourselves busy this year we have had rummage sales, food sales, sponsored dances, sent gifts, and endowed a bed for a war orphan.

This year we have Miss Frances Carter as our sponsor. Miss Peg Fisher paid us a visit during Miss Carter's initiation. Her visit was delightful and she extended us many suggestions. With these hints, our new sponsor, and our new girls; we Delta Sigs are looking forward to another successful year.

### OFFICERS

<p><b>President</b>  <b>Vice-President</b>  <b>Recording Secretary</b>  <b>Corresponding Secretary</b>  <b>Treasurer</b>  <b>Chaplain</b>  <b>Sponsor</b></p>	<p>Marilyn Craig            Glenna Rose            Anne Bastress            Doreatha Exley            Barbara Heasley            Marilyn Voorhees            Miss Frances Carter</p>
---	--



Row 1. E. Blissell, N. Schnatterly, P. Kramer, R. Graff, A. Weborg  
 Row 2. M. O'Conner, S. Kuhns, S. Hildebrand, P. Manny, V. Bennett, L. Herran,  
 R. Bruno

## *Lambda Chi Delta*

### OFFICERS

President  
 Vice-President  
 Secretary  
 Treasurer  
 Corresponding Secretary  
 Sponsors

Phyllis Kramer  
 Lena Herron  
 Virginia Bennett  
 Anne Weborg  
 Ellen Blissell  
 Mrs. Graff  
 Miss Schnatterly

The Lambda Chi is an active local group on the Clarion Campus. We were organized in 1931. To qualify for membership, a girl must exhibit good personal traits, excellent character, and a record of high level in academic achievement. The aim of our sorority is to provide congenial friends, social activities, and intellectual stimulation for all its sisters. Lambda Chi members may buy jackets, hats, and sweat shirts in sorority colors of coral and green. Pins may also be purchased by members who desire them. Activities of the year included a party for

the alumnae, a joint meeting with the other two local sororities, a card party, a week-end at Shreffler's cabin, a Mother's Day Tea, Christmas baskets for needy families and various other teas and parties.

This year's Rush Party was held in the gym under the chapel. The theme was the Beoux Arts Ball, and rushees and actives dressed accordingly. We have eleven rushees this semester.

Our two advisors have added efficiency and enthusiasm to the group and have helped us make it a most successful year.



Row 1. K. Adams, I. Vobrak, E. Bova, D. Benson  
 Row 2. M. Eberle, E. Dickey, M. Stewart, S. Gilbert, S. Wolfe, B. Nair, J. Mills, P. Young  
 Row 3. D. Stowe, E. Anderson, E. Kifer, V. Patton, J. Campbell, L. Kindelberger, N. Allison, R. Kominski  
 Row 4. B. Dinger, M. J. Spenser, E. Keogh, E. Hrivnok, B. Nacquín, K. Zerbe, P. Mock, P. Schultz

## *Sigma Delta Phi*

### OFFICERS

<b>President</b>	Eleanor Anderson
<b>Vice-President</b>	Dorothy Stowe
<b>Secretary</b>	Mary Jane Spencer
<b>Treasurer</b>	Nancy Allison
<b>Sponsors</b>	Miss Bertha Nair Miss Martha Stewart

The Sigma Delta Phi Sorority is the oldest on the campus. It was founded in 1930 and at present has a membership of twenty-seven.

In the fall of last year the girls spent a weekend at Cooks Forest. Another event was the Christmas party. At this time the sorority presented a basket of food to a needy family

of Clarion.

A hobo theme was used for our rush party this year. It was held in the social room of the Ross Memorial Library.

The Sigma Delta Phi is proud of its sponsors, Miss Bertha Nair and Miss Martha Stewart, who are always ready to help in any situation.



Row 1. P. Skinner, L. Radus, D. Cribbs, J. Wagner, N. Burneson, J. Russell  
 Row 2. R. Clark, J. Sterrett, J. Johnston, C. Boker, L. Ande, S. Knight, G. Vagus, E. Grollmus, D. Smith  
 Row 3. D. Mortlund, J. Gifford, J. Hanno, G. Durbin, J. Gray, P. Steltzer, B. Wile, B. Cober, G. Ohl, J. Hill, M. Weeks  
 Row 4. E. Boyer, E. Gardakowski, M. Mortlund, B. Hill, G. Rodriguez, L. Shonk, J. Heeny, R. Niger, S. Bach, Miss Banner, D. Baker

## *Sigma Sigma Sigma*

### OFFICERS

**President**  
**Vice-President**  
**Treasurer**  
**Corresponding Secretary**  
**Recording Secretary**  
**Keeper of Grades**  
**Co-Sponsors**

Gloria Schmidt  
 Jane Sterrett  
 Evelyn Gardakowski  
 Esther Grollmus  
 Patsy Skinner  
 June Russell  
 Miss Gamble  
 Miss Banner

Alpha Pi chapter of Sigma Sigma Sigma, one of the two national sororities on campus, was organized on the Clarion campus seventeen years ago. The purposes of this organization center mainly in the establishment of lasting friendly relationships among its sisters and in the development of high ideals of character in all its members.

Outstanding events of this year included a visit from the traveling secretary, Janet Mayer, in December. Miss Mayer found Tri Sigma matters in good order and thoroughly enjoyed the friendly Clarion campus.

Homecoming week-end was a triumph for

Tri Sigma; Jean Gray Garbart was crowned queen of Delta Kappa Fraternity; "The Sigma's Model" was an attractive float in the parade that day.

In February, "a haunted house" theme was carried out for second semester rushing. The situation at the party was "grave" but everyone had a good time.

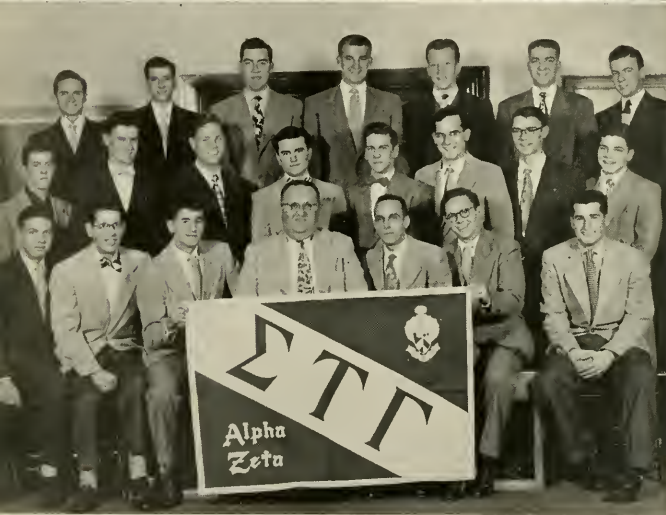
Mrs. Merrill Haines, recently appointed Alumnae Advisor, the Misses Gamble and Banner, co-sponsors, together with Mrs. Bird Riley, Mrs. C. A. Kuhner, Mrs. C. B. Long, patronesses, helped the sorority with their ever-present ideas and guidance.



**OFFICERS**

President	Charles Leish
Vice-President	George Ellis
Recording Secretary	Charles Davidson
Treasurer	Robert Osterholm
Corresponding Secretary	John Toth
Chaplain	Jerry Hartnett
Sponsors	Frank Campbell Dana Still

- Row 1. P. Mochnick, R. Mahney, C. Leish, C. Davidson, R. Osterholm, J. Hale, S. Russa
- Row 2. J. Miller, B. Antill, A. Brown, R. May, F. Saxon, G. Laird



- Row 1. N. Salerno, J. Keriat's, T. Stanko, F. Campbell, G. Ellis, M. Dal-mayer, M. Harris
- Row 2. S. Shaffer, R. Gherrett, R. Olinger, P. Roy, F. Wise, R. Logan, J. Black, M. Carson
- Row 3. D. Sheffel, J. Hazlett, M. Gerge, J. Toth, J. Foley, E. Walsh, J. Hartnett

## *Sigma Tau Gamma*

The Alpha Zeta chapter of the Sigma Tau Gamma national fraternity pledges members to its organization, not because of their past accomplishments, but because the chapter membership believes that they have the personal traits necessary for present and future accomplishment. Fraternity membership offers the individual an intimate relationship with others and a mutual interest in the personal growth and achievement of all its members. At all times, the Sig Tau member must recognize that his first loyalty, as a student, belongs to his college. He

should, therefore, participate enthusiastically in the formal educational activities of the institution.

The fraternity has experienced a very successful social year. The calendar, including participation in campus functions, rushing and pledging of new members, district and national conclaves, was highlighted by a party held for our sister sororities. Because of the success of this "brother-sister" function, the fraternity has adapted it as an outstanding feature of its annual social program.



Row 1. B. Rybiski, Miss Skaggs, A. Galterio  
 Row 2. C. Varrato, G. Galterio, C. Philips, M. Knopp

## *Theta Alpha Lambda*

### OFFICERS

President  
 Secretary  
 Treasurer

Beatrice Rybiski  
 Angela Galterio  
 Gloria Galterio

The Theta's have been located on this campus for a number of years. This year our enrollment was small and since we lost a number of members due to dropping out of school and transferring, we have decided to disband our sorority. We are sorry to have to do this but no other course is clear. Our associations with the sorority have always been pleasant ones. We would like to thank Miss Skaggs for working

with us and doing her best to make our sorority a good one. We hope all of the members will always keep in touch with their sorority sisters wherever they go. Three of our members were pledged to the Sigma Delt's. We are sure that no matter where we go we will always keep in mind the sorority ideals of sisterhood, loyalty, and friendship.



P. Skinner, P. Schultz, P. Mochnick, A. Govaletz, D. Benson

## *Alpha Psi Omega*

Alpha Psi Omega, national honorary dramatic fraternity, was installed on Clarion campus in 1936 by Miss Marie Marwick. Miss Margaret Boyd is the sponsor of Clarion's cast, Alpha Upsilon.

One of the largest fraternities of its type, it offers membership only to those students who have obtained recognition in the various phases

of play production. The fraternity attempts to promote and stimulate appreciation of the drama.

Rigid requirements and the honor of being a member of Alpha Psi presents a challenge to all those students affiliated with college dramatic clubs.





Dr. Lare, M. Banner, H. Skaggs, Dr. Slick

## *Pi Gamma Mu*

### OFFICERS

**President**

**Vice-President**

**Secretary-Treasurer**

**Sponsor**

William Lafranchi

Harriet Skaggs

Sewell E. Slick

Sewell E. Slick

One of the leading national honor societies at Clarion is Pi Gamma Mu. Majors in the field of social science who have completed twenty semester hours in that field with a "B" average are elected to the society. Due to these requirements only upper classmen, usually seniors, are elected as new members. New members initiated March 12, 1952, were: Gloria Durbin, Jacob

Shaffer, Stanley Plavny, Herman Brown, Joanne Hill and Frank Palaggo. The major active part of the society is made up of faculty members who possess the necessary requirements.

The official journal of Pi Gamma Mu is **Social Science** which is published quarterly and distributed to the various chapters.

"Ye shall know the truth and the truth shall make you free."



Row 1 A. Woodman, D. Galdthwaite, W. Kruper, E. Mott  
 Row 2 D. King, P. Machnick, D. Ballas, Wilson, K. Bauer, R. Black, R. Giering  
 Row 3 Mr. Skinner, B. Antill, Dr. Pierce, H. McCay, W. Byerly, S. Valari, Dr. Shank, R. McElhatten, Dr. Lore

## *Phi Sigma Pi*

The largest honorary fraternity at Clarion is Phi Sigma Pi, a professional educational fraternity. Requirements for membership are high scholarship and future promise of leadership in the field of education.

It is the purpose of our fraternity to advance educational ideals and meet the needs of close fellowship and social intercourse among men of like interests in teacher training institutions.

Clarion's Lambda Chapter was chartered in 1932. Dr. Stanley W. Lore, our sponsor, was one

of its charter members.

The foremost event of the first semester was the initiation of new members. Those entering into our fellowship included James Bierly, Wayne Kruper, Charles Kaas, Robert McElhatten, Edward Mott, Albert Orris, Raymond Predebon, Jacob Shaffer, Albert Waadman, and Mr. James D. Moore, Dean of Instruction at the college.

The events of the second semester included the Founders' Day Banquet and other activities of interest to all.

### OFFICERS

<b>President</b>		Kenneth G. Bauer
<b>Vice-President</b>		Richard L. Black
<b>Secretary</b>		Donald J. Ballas
<b>Treasurer</b>		Paul E. Mochnick
<b>Sponsor</b>		Dr. Stanley W. Lore

Row 1 E. Bova, J. Hill, L. Herran

Row 2 C. Varrato, D. Benson, M. Weeks, C. Phillips, H. Gangoware, S. Kuhns



Row 1 C. Krepps, M. Dalmayer, R. Astor

Row 2 J. Leothers, P. Mervash



## *Panhellenic And Interfraternity Councils*

The governing bodies of the sororities and fraternities on campus are the Panhellenic and Interfraternity Councils. Each sorority and fraternity elect their own representative to the Councils. The Councils conform to the National

Panhellenic and Interfraternity Council rules. Miss Boyd is advisor to the Panhellenic Council and Mr. Kuhner is advisor to the Interfraternity Council.



Row 1 I. Vobrak, K. Zerbe, P. Schultz, G. Durbin, R. Miller

Row 2 P. Mochnick, D. Daugherty, M. Ditz, A. Brady, J. Hill, J. Compbell, S. Valori

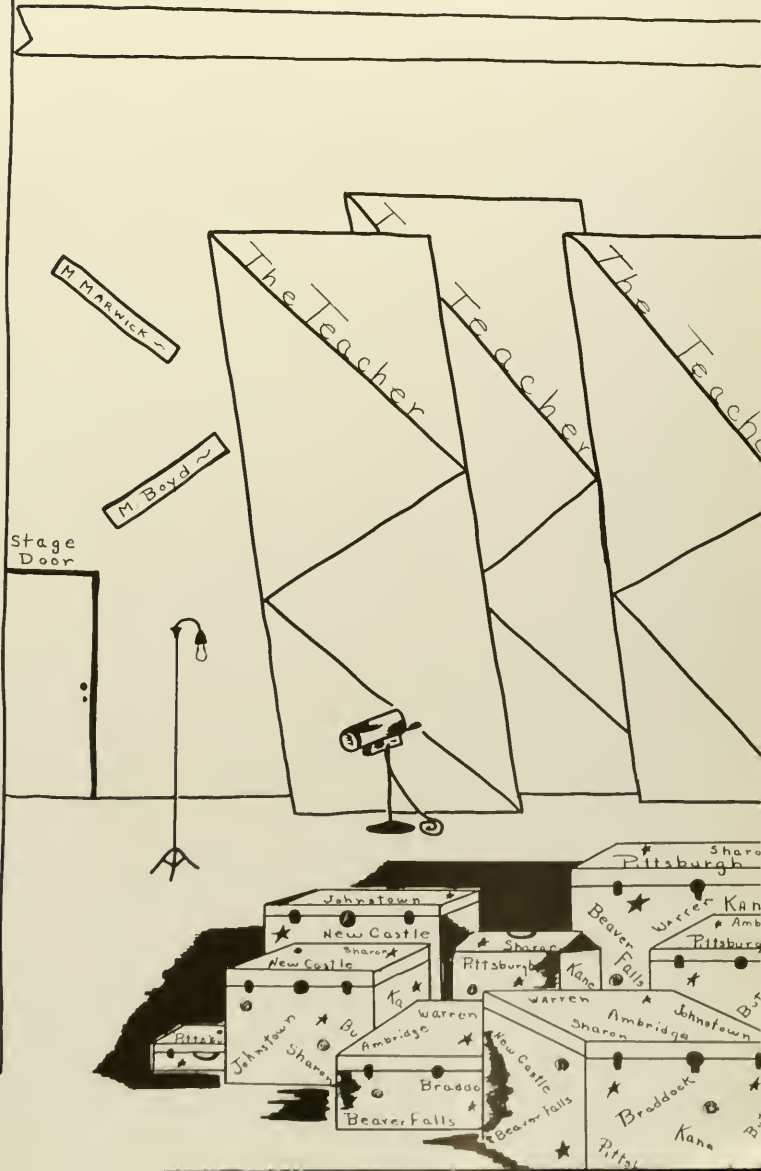
## *Who's Who*

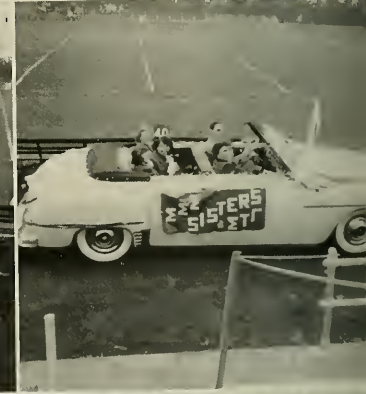
Members selected to "Who's Who" are made from seniors having an A or B average with the juniors having the highest averages completing the quota. These students are considered by a faculty committee as being superior in scholarship, leadership, and participation in campus activities. These students become members of "Who's Who in American Universities and Col-

leges." Over six hundred educational institutions elect members to this honorary organization. The members receive recognition in the annual publication of the organization and free placement service.

Clarion has had a "Who's Who" contingent since 1934. This year's group has twelve members.

# Behind The Scenes





## Homecoming Coronation



Row 1 Kay Bish, Joyce O'Donnell, Crown Bearer, Margie Abplanalp, Shirley Walker

Row 2 Margie Leish, Elo'ne Boyer, Robert Coury, Lena Herran, Marg'e Dible, Marilyn Craig

# Scenes from..

"The Man Who Married  
a Dumb Wife"



A dumb wife?



Harvey Gym  
Dance Hall



Alpha Gamma Phi  
Alumni Banquet





---

Compliments of

**ANDERSON HOTEL**

Bus Depot

Phone 175

Clarion, Pa.

---

BEST WISHES

TO

THE MEMBERS OF

THE GRADUATING CLASS

Compliments of

**L. & R. DECORATING CO., INC.**

---

Sales and Service

**RAGLEY MAYTAG STORE**

S. A. RAGLEY, Manager

750 Main St.

Clarion, Pa.

---

PHONE 66M

CLARION, PA.

## CARL AND DON STUDIO

"Photographs that Live Forever the Same"

School Work - Year Book Annua:is

Oil Painting

Copying

Postcard Views

---

---

“Get Educated”

WHEN YOU NEED INSURANCE

Phone 142

See

**BILL FLANAGAN**

508 Main Street

Clarion, Pa.

---

## CITIZEN'S TRUST COMPANY

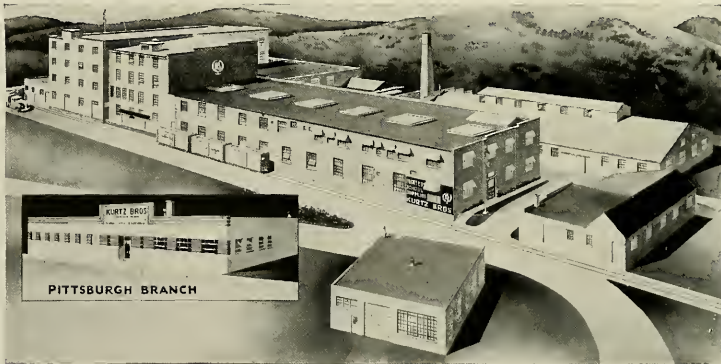
Clarion

Pennsylvania

Resources over \$7,000,000.00

Member of Federal Deposit Insurance Corporation

---



Built to Serve You . . .

Pictured above, Kurtz Bros. factory and warehouses along with the Pittsburgh Branch contain more than 112,000 square feet of floor space. Here, under one roof, your school annuals are printed, bound and covered. A plant built to serve your printing needs.

**KURTZ BROS. » » CLEARFIELD, PA.**

---

---

**HERMAN BROTHERS**

The Corner Store  
Fruits - Ice Cream  
Confections

Corner Wood & Eighth Clarion, Pa.

---

Compliments

of

**COLLEGE GRILL**

**GRADUATION GIFTS**

Watches  
Diamonds  
Jewelry

**DAVID A. KAUFMAN**

Clarion Penna.

---

The REXALL Store

**KING DRUG STORE**

Soda Fountain  
and  
Luncheonette Service

**LOWEST CUT PRICES**

---

**ZIMMERMAN ENGRAVING COMPANY**

SYKESVILLE, PENNSYLVANIA

---

---

Compliments of  
**HOTEL LOOMIS**

Completely Remodeled

Excellent Food & Rooms

---

**DORIAN SHOPPE**

Ladies' Apparel

---

"Modern Appliances for  
Better Living"

**WHITE APPLIANCES**

T-V Headquarters in Clarion  
"The Best In Music On Records"

518 Main Street                      Clarion, Pa.

---

**COCA-COLA BOTTLING CO.**

**OF CLARION, PA., INC.**

Clarion                                      Penna.

---

Compliments of

**SPINDLER & STARR**

Buick - Cadillac  
Chevrolet

Clarion                                      Penna.

---

**SPORT CENTER**

Everything in Sports  
and Tele-vision

---

Compliments of

**O'BRIEN'S SERVICE STATION**

Clarion, Pa.

---

Compliments

**HUGH M. OWENS**

Jeweler

Clarion, Pa.

Garby Theater Bldg.                      Phone 8

---

Compliments of

**MARIE'S SHOPPE**

"Exclusive but not Expensive"

Dresses - Millinery  
Costume Jewelry  
Sportswear - Accessories

---

---

Stationery

Magazines

Candy

Newspapers

M - E - R - W - I - N - ' S

FOUNTAIN SERVICE  
Hallmark Greeting Cards

Mtin Street

Clarion, Pa.

---

Compliments of

FIRST NATIONAL BANK OF CLAIRON

Member of Federal Deposit Insurance Corporation

Clarion

Pennsylvania

---

Compliments

Best

Food

in

M

O

D

E

R

D I N O R

Town

Friendly

Service

---

# Student Directory

## Seniors

1. ADAMS, Katherine	Knox	54. HALE, James	Turkey City	107. NAUGLE, Eugene	Clarion
2. ANDE, Helen Louise	Greenville	55. HAMIL, Gary	Hilliards	108. OAKLEY, Gale	Strattanville
3. ANDERSON, Eleanor	Tyrone	56. HANNA, Julia	Franklin	109. OGURCHAK, Edward	Clarion
4. ANTILL, Alan Blair	Titusville	57. HELMINTOLLER, Mike E.	Clarion	110. ORRIS, Albert	Sigel
5. ASTOR, Richard	Arnold	58. HERRON (STALEY), Lena	Clarion	111. OSTERHOLM, Robert	Nr. Braddock
6. AUGUSTINE, Frank	Clarion	59. HILL, Jeanne	Freepart	112. SHAGGLO, Frank	Reynoldsville
7. BAKER, Carol Ann	Erie	60. HILLIS, Robert E.	Rimersburg	113. PAJERSKY, Stephen	Clarion
8. BAKER, Dorothy Mae	Rixford	61. HIMES, Everett	Brookville	114. PANCIERA, William	Distont
9. BALLAS, Donald	Meadawlands	62. HIXSON, Marshall	Shippenville	115. PERRY, Shirley	Fertigs
10. BENNETT, Melvin	Sharpsville	63. IANNI, Lawrence	Creighton	116. PLAYNY, Stanley S.	Seminale
11. BENZIE, Arthur	Wilkinsburg	64. JANNUZI, John	Clarion	117. PREDEBON, Raymond	Arnold
12. BLACK, Richard	Clarion	65. JOHNSON, Joan		118. RAPP, Lenore	Fryburg
13. BOSCHINI, Eugene	Brockway	66. JUBAN, John	Ludlow	119. REARICK, Peggy L.	Vandergriff
14. BOYER, Elaine	Elderton	67. KELLY, Robert L.	Turtle Creek	120. REITZ, Ray R.	Summersville
15. BOYER	Knox	68. KENEMUTH, Gail L.	Van	121. RUSSELL, D. June	Oil City
16. BOWSER, Vivian	West Kittanning	69. KERIOTIS, John		122. RUSSO, Salvatore C.	Butler
17. BRADY, Ann Maree	Brookville	70. KIFER, Edith M.	Wilcox	123. RYBISKI, Beatrice C.	Kittanning
18. BROWN, Albert	Nr. Braddock	71. KIFER, Robert L.	Wilcox	124. SACOLIC, Raymond	Smoke Run
19. BROWN, Hermcn	Clarksville, N. Y.	72. KINDELBERGER, Lois	Oil City	125. SAXON, Fred	Munhall
20. BUSCH, Jahn	Shoran	73. KING, John	Chicago	126. SCHMIDT, Gloria G.	DeYoung
21. CAMPBELL, D. June	Hamlin Station	74. KNIGHT, Sora E.	New Bethlehem	127. SCHULTZ, Patricia	Baden
22. CAPPELLI, Joseph	Bethlehem	75. KOERBER, Raymond W.	Ardera	128. SCIERKA, Peter	Oil City
23. CARUSO, Mike	Fard City	76. KRAMER, Phyllis	Tarentum	129. SERVEY, Carl	Clarion
24. CERUTTI, Herbert	Seminole	77. KREPPS, Charles W.	Beaver Falls	130. SHAFFER, Jacob	Sigel
25. COURY, Robert	Arnold	78. KRESS (MARTZ), Shirley	Erie	131. SHARROW, Frederick	Clarion
26. COWAN, Jahn	Anito	79. KRUPER, Wayne	West Newton	132. SHINGLEDECKER, Berle	Clarion
27. CRIBBS, Dana Lee	Warren, Ohio	80. LAIRD, Gordon	Homestead	133. SHOUP, Dean	St. Petersburg
28. CROWLEY, Frank	Millvale	81. LANGHAM, Max	Clarion	134. SKINNER, Patricia	Corry
29. CROYLE, Terry	Brookville	82. LEISH, Charles	Conansburg	135. SMITH, Doris Ann	East Brady
30. CURFMAN, Donald	Sorver	83. LOSCHIAVO, Anthony	Aliquippa	136. SMITH, Harold	Pittsburgh
31. DAUGHERTY, Chester	Fisher	84. MAHLE, Walter R.	Oil City	137. STERNETT, Glenn	Clarion
32. DAUGHERTY, Danna	Smethport	85. MARKLE, Milo	New Bethlehem	138. STERRETT, A. Jane	Reynoldsville
33. DAVIDSON, Charles B.	Pittsburgh	86. MARSHALL, Alice	Oil City	139. STEWART, Cannell	Sligo
34. DAVIS, Ruth	Warren	87. MATTHEWS, Joseph S.	Titusville	140. STEWART, Harold D.	New Bethlehem
35. DeLONG, Charles	Franklin	88. MAY, Bernard	East Brady	141. STOCKWELL, Wells	Titusville
36. DIBLE, Marjorie	Verona	89. MAYES, John	Hozen	142. STOLZENBACK, Fred W.	Emlenton
37. DICKEY, Esther	Mohafey	90. McCLEARY, Melvin	Helen Furnace	143. STOWE, Dorothy	Porker
38. DITZ, Mary Rose	Fryburg	91. McCLUNE, Donald	Clarion	144. TARR, James	Pittsburgh
39. DORNBURG, Darothy	Pittsburgh	92. McNAUGHTON, Paul	Rimersburg	145. TAYLOR, Bruce	Showville
40. DURBIN, Gloria	Farrell	93. MEHALLICK, Harry	Schotlande	146. TENAGLIA, Eugene	Burgettstown
41. EBERLE, Marjorie	Zelienople	94. MERRIMAN, Marris	Sewickley	147. THOMPSON, Glenn W.	Harrisville
42. ELIAS, Herbert	Crenshaw	95. MILLER, James L.	Warren	148. UZMACK, Joseph	Clarion
43. ELLIS, George	Clarion	96. MILLER, Kenneth	Mayport	149. VAIL, William	Clarion
44. EWASKEY, Edward	Margon	97. MILLER, Robert	Baxter	150. VALORI, Sergio	Sligo
45. EWLEY, Deretha	Knox	98. MILLER, Ruth Ann	Brookville	151. VOBRAK, Irene	Ambridge
46. FELTON, John C.	Warren	99. MINAHAN, Patrick	Jahnstown	152. VOGUS (Oakes), M. Grace	Clintonville
47. FOX, Helen I.	New Bethlehem	100. MOCHNICK, Paul	Claridge	153. WEITZ, Don	Beaver Falls
48. FREUDENBERGER, Daris	Bethlehem	101. MOCK, Patricia R.	Unity	154. WIBERG, John	Altoona
49. GEORGE, Nancy Jane	New Bethlehem	102. MOHNEY, Robert	Brookville	155. WILE, Betty L.	Knox
50. GIERING, Raymond	Knox	103. MORRIS, Harry	Pittsburgh	156. WOODRURY, J. Yvanne	Bruin
51. GIFFORD, Joan	Titusville	104. MORTLAND, Donna L.	Clarion	157. ZERBE, Katherine	Kane
52. GOLDTHWAITE, Daniel	Marienville	105. MOTI, Edward R.	Oil City		
53. GRAY, John A.	Central City	106. MURPHY, Wilmo	Rouseville		

## Post Graduates

1. BINDER, Alma	Pittsburgh	2. SWEETAPPLE, Ronald	Franklin
-----------------	------------	-----------------------	----------

## Juniors

1. ALLISON, Nancy Jane	Franklin	5. BASTRESS, Ann Marie	Clarion	9. BENSON, Dorothy	Warren
2. BACK, Andrew	Ambridge	6. BAUER, Kenneth	Butler	10. BEVEVINO, Dovid	Warren
3. BARNES, Gladys	Mt. Lebanon	7. BEARY, Gerald	Venus	11. BIERLY, James	Clarion
4. BARTO, Marlys	Sligo	8. BENNETT, Virginia	Clarion	12. BLISSILL, Ellen	Butler

13.	BOVA, Elaine	Warren	50.	HEASLEY, Barbara	Reno	87.	RHOADES, Clayton	Rimersburg
14.	BRADY, Thomas	Johnsburg	51.	HEPNER, Herbert	Sligo	88.	RICE, Delores	Clarion
15.	BROCK, Blanchard	Kane	52.	HILLIARD, Mary	Sligo	89.	ROSE, Glenna	Imperial
16.	BUCK, John	Franklin	53.	JOHNSON, Gussie	Pittsburgh	90.	SALERNO, Ned	Warren
17.	CAFFREY, Edward	Washington	54.	KEOGH, Edna Mae	Pittsburgh	91.	SCHULTZ, Lawrence	Duquesne
18.	CARBAUGH, June	Munhall	55.	KERIOTIS, John	Aliquippa	92.	SCHULTZ, William	DuBois
19.	COBER, Elizabeth	Butler	56.	KOOS, Charles	St. Petersburg	93.	SHAW, Robert	Gibsonia
20.	CRAIG, Marilyn	Oil City	57.	KNAPP, Marie	Bradford	94.	SHINDLECKER, Harry	Tarentum
21.	CREEN, Shirley	Pittsburgh	58.	LAW, Gwendolyn	Brackville	95.	SMCKO, Sarah	Vanderbilt
22.	CRISSMAN, Arnauld	Kittanning	59.	LEISH, Marjorie	Brackville	96.	SMITH, Emmett	Oil City
23.	CURRY, Furman	Duquesne	60.	LEWIS, Jacqueline	Aliquippa	97.	SMITH, Shirley	Pleasantville
24.	CURRY, Gearge	Tyrone	61.	LEWIS, Russell	New Castle	98.	STANCZAK, Floyd	Erie
25.	CZAP, Gearge	Philipsburg	62.	LIAS, Clare	Clarion	99.	STANKO, Thomas	Canonsburg
26.	DeFELICE, Huga	New Kensington	63.	LINDQUIST, Walter	Oil City	100.	STEMMERICH, Donald	Pittsburgh
27.	DOLMAYER, Michael	Freeport	64.	LLOYD, Edward	Snake Run	101.	TOTH, John	North Braddock
28.	DONELLI, Fred	Bridgeville	65.	LOGAN, Robert	Oil City	102.	TURY, John	North Braddock
29.	DONOVAN, Patricia	Smethport	66.	LUDWIG, Edith	Oil City	103.	TURY, Michael	North Braddock
30.	DOSTAL, Francis	Canemaugh	67.	McCLUNE, Mildred	Clarion	104.	TERWILLIGER, Ronald	Clarion
31.	DUNN, David	Oakmont	68.	McCOY, Harold	Philipsburg	105.	TREMBACH, John	Pricedale
32.	EDGAR, William	Vanport	69.	McELHATTEN, Robert	Lamartine	106.	UMSTEAD, Archie	Van
33.	ENGMAN, Mary Ann	Eldred	70.	MARINICH, Robert	Uniontown	107.	VARRATO, Cecelia	Vandergrift
34.	ETZEL, Berlie	Shippenville	71.	MEEGAN, Elaine	Cannelsville	108.	WADDELL, William	Clarion
35.	FENCHAK, Paul	Madero	72.	MERVOSH, Peter	Pittsburgh	109.	WALDORF, Joann	Summersville
36.	FOLEY, James	Clarion	73.	MILLARD, Jaanne	Pleasantville	110.	WARD, Charles	Pittsburgh
37.	GALAYDA, Joseph	Pricedale	74.	MORGAN, Charles	Rimersburg	111.	WASSUM, Twila	Rimersburg
38.	GALL, Edward	McKees Rocks	75.	MORRISAN, Mary	Brookway	112.	WEAVER, Lawless	Sewickley
39.	GALLI, Louis	Arnold	76.	NICHOLS, Gordon	Wilcox	113.	WEEKS, Mary Ellen	Sligo
40.	GARDAKOWSKI, Evelyn	Harrison City	77.	O'CONNOR, Maureen	Braddock	114.	WENZEL, Elmer	Rimersburg
41.	GENOVESE, Joseph	Windfird	78.	OHL, Grace	Summersville	115.	WILSON, Doris	Bradford
42.	GEORGE, Marshall	Vandergrift	79.	OLINGER, Rodger	Kittanning	116.	WILSON, James	Coraopolis
43.	GONGAWERE, Helen	Jeannette	80.	PHILLIPS, Clarice	Clarion	117.	WIMER, Norman	Pittsburgh
44.	GRAHAM, Carl	Beaver Falls	81.	PUGH, Jaanne	Tarentum	118.	WISE, Fred	Clarion
45.	GROLLMUS, Esther	Verona	82.	PUGH, Harry	Creighton	119.	WOLSONOVICH, Michael	Ford City
46.	GROSCH, Robert	Warren	83.	RADUS, Lais	Turtle Creek	120.	WONDERLING, Robert	Callensburg
47.	HACKETT, Jack	McKeesport	84.	RANSEL, Clyde	Sigel	121.	YARNOVIC, John	McKeesport
48.	HAGER, Delores	Clarion	85.	RAY, Perry	Kittanning	122.	WOODMAN, Albert	East Brady
49.	HARRIS, Moyer	Pittsburgh	86.	REISER, William	Sewickley			

## Sophomores

1.	ABPLANALP, Margaret	Ridgway	31.	DEIBLER, Robert	Delmont	62.	HOWELL, Janet	Monessen
2.	ADELMAN, Diane	Franklin	32.	DENIO, Alfred	Clarion	63.	HRIVNAK, Elsie	Turtle Creek
3.	ALLEGRETTO, Laretta	Summersville	33.	DEMINO, Angela	Franklin	64.	KAMINSKI, Roberta	East Vandergrift
4.	AMBROSE, Dale	Adrian	34.	DINGER, Bonnie	Sligo	65.	KLINE, Danno	Franklin
5.	ARDITO, Anthony	Clarion	35.	DITTMAN, Lawrence	Lormartine	66.	KUHNS, Shirley	New Bethlehem
6.	BACH, Shirley	McKeesport	36.	DOLBY, Lois	Clarion	67.	LAWSON, Richard	Erie
7.	BARILAR, Dominic	Anita	37.	DODD, Vivian	DuBois	68.	LEATHERS, John	Johnsburg
8.	BARNETT, Merrell Dean	Knox	38.	DUNMIRE, Edwin	Rassier	69.	LEIBER, Joseph	Titusville
9.	BARRON, John	Canonsburg	39.	EBERLE, Carl	Zelienople	70.	LEBENSKI, Edward	Natrona
10.	BLACK, Jack	Pittsburgh	40.	ECK, Darl	East Brady	71.	LESUE, Alice	Beaver Falls
11.	BLISSSEL, Ellen	Butler	41.	EKIS, Chester	Clintonville	72.	LEWANDOWSKI, Lawrence	Wall
12.	BLOUGH, Elizabeth Ann	Pittsburgh	42.	EWING, Shirley	New Brighton	73.	LEWIS, Frank	Etno
13.	BOYER, Frank	Knox	43.	FINN, Jerold	Pittsburgh	74.	LONG, Vaughn	Knox
14.	BOYER, John	Knox	44.	GALLAGHER, Elizabeth	Knox	75.	LUPINACCI, James	Sewickley
15.	BROWN, John	Meadville	45.	GATES, Reuben	Bradford	76.	McDONALD, Charles	Wilkinsburg
16.	BRUNO, Ida Roseann	Tarentum	46.	GEHRETT, Richard	Pittsburgh	77.	McINTYRE, Iona	Strattonville
17.	BUCK, Ronald	Franklin	47.	GEORGE, Frances	New Bethlehem	78.	McINTYRE, Jackie	New Bethlehem
18.	BURKETT, Oran Irvin	Sprankle Mills	48.	GILBERT, Shirley	McDonald	79.	McQUISTON, Nancy	Fair Tawn, N. J.
19.	BURNESON, Nedo	West Bridgewater	49.	GILL, Raymond	New Bethlehem	80.	McCORD, Richard	Clarion
20.	BUTTS, Dorothy	Pittsburgh	50.	GOVALETZ, Anne	Perth Amboy, N. J.	81.	McCULLOUGH, James	Franklin
21.	CADUGAN, Richard	Pittsburgh	51.	GROTTENTHALER, Charles	Russellton	82.	McGENNIS, Billy	Knox
22.	CARSON, Matthew	Sewickley	52.	HARTGE, Charlotte	New Kensington	83.	McKEISSICK, Kathleen	Fryburg
23.	CASADAY, Dean	Rosetier	53.	HARTMAN, Cecelia	Cloridge	84.	MANNY, Patricia	Butler
24.	CASARICO, Rita	New Brighton	54.	HARTNETT, Gerald	Warren	85.	MILLS, Jean	Eldred
25.	CLANCY, Floyd	Clarion	55.	HAZLETT, Joseph	Frostburg	86.	MOORE, Glenn	Brookville
26.	CLAPKE, Rita	Reynoldsville	56.	HEENEY, Mary Joan	Johnstown	87.	MORT, William	New Castle
27.	CONRAD, Merle	Punxsutawney	57.	HELMINTOLLER, William	Clarion	88.	MORTLAND, Barbara	Knox
28.	CONSTABLE, Miriam	Oil City	58.	HILDEBRAND, Shirley	New Bethlehem	89.	MORTLAND, Marsue	Clarion
29.	COON, Glenn	Showville	59.	HILL, Barbara	Johnstown	90.	NAQUIN, Betty Lau	Aliquippa
30.	CROWLEY, Shirley	Pittsburgh	60.	HOPKINS, Howard	Clarion	91.	NEIGER, Ruth	Brookway

92.	O'DONNELL, Jayce	Beaver	110.	ROLLS, Joan	Punxsutawney	128.	VIDUNAS, Richard	Vandergrift
93.	OAKLEY, Veda	Strattanville	111.	RUDGE, Jaann	Canonsburg	129.	VOORHEES, Marilyn	Carnegie
94.	OLSON, Jerry	Braokville	112.	SANDUSKY, Alexander	McKees Racks	130.	WALSH, Edward	Pittsburgh
95.	ORCUTT, Margaret	Corsica	113.	SCHAFER, Samuel	Wilkinsburg	131.	WATT, William	Kittanning
96.	OTTO, Beverly	Punxsutawney	114.	SHANK, Nancy LuAnn	Baswell	132.	WAGNER, Janice	Butler
97.	PALENSKI, Theodore	Force	115.	SHEFFEL, Richard	Wilkinsburg	133.	WEAVER, Anna	New Kensington
98.	PANTAZES, Angela	Altoona	116.	SIMKO, Sara	Vanderbilt	134.	WEAVER, Donna	Knox
99.	PALM, Edward	Port Allegheny	117.	SMITH, Alice	Titusville	135.	WEBORG, Anne	Kane
100.	PAPURELLO, Enrico	Kelly Station	118.	SNYDER, Shirley	Shoran	136.	WEBSTER, Evelyn	Russell
101.	PATTON, Virginia	Clarian	119.	SPENCER, Mary Jane	Rena	137.	WECKERLY, Forest	Sligo
102.	PISHKOPIA, Sadat	East Pittsburgh	120.	STARR, Robert	Kittanning	138.	WIEBLE, Al	New Kensington
103.	POPSON, Barbara	Kittanning	121.	STELTZER, Patsy	Rimersburg	139.	WHITE, Ann	Shippenville
104.	PRACKO, Jahn	Tarentum	122.	STEWART, Catherine	Sharpsville	140.	WOLFE, Suzanne	Tyrane
105.	PRICE, Eugenia	Warren	123.	TERRY, Florence	Penn Township	141.	YOUNG, Pauline	Fair Oakes
106.	RAFERTY, Jack	DuBois	124.	TESSITORE, Joseph	Ford City	142.	YESKEY, Ronald	Warren
107.	REASINGER, Haward	Helvetia	125.	TEXTER, Walter	St. Petersburg	143.	ZITO, Frances	New Kensington
108.	REIGER, Jay Ann	Cachranon	126.	THOMPSON, Martin	Distant	144.	ZURASKY, Harry	New Castle
109.	RODRIGUEZ, Glar'a	McKeesport	127.	THOMPSON, Norma	Clorian	145.	ZURASKY, Walter	New Castle

## Freshmen

1.	AARON, Arthur	Strattanville	49.	GAUL, Eric	Russellton	98.	MUDRINICH, Albert	Farrell
2.	ABBEY, Ann	Smethport	50.	GAZVODA, Jahn	Canonsburg	99.	MURDOCK, Jack	Cranberry
3.	ALLISON, Yvonne	Limestone	51.	GENTILE, Christina	Ellwood City	100.	MURPHY, Harry	New Bethlehem
4.	ANDERSON, Joan	Clorian	52.	GOURLEY, Christina	Fairmont City	101.	NEUBAUER, Richard	Oil City
5.	BAYHURST, Joseph	Oil City	53.	GRAHAM, William	Harwick	102.	NOTTALL, Elizabeth	West Hickory
6.	BEICHNER, William	Clorian	54.	GREENAWALT, Robert	Sligo	103.	ODDEN, Donna Lee	Allison Park
7.	BENSON, Hape	Apolla	55.	GRUBBS, Nancy	Ookmant	104.	PAVLIC, Eugene	Faxburg
8.	BISH, Kay	Summerville	56.	HACK, Edwin	Shippenville	105.	PEER, James	Corsica
9.	BLANEY, James	Oil City	57.	HACKO, Frank	Beaver	106.	PLATT, George	Clorian
10.	BOFF, Ronald	Moan Run	58.	HARTLEY, Ray	Braokville	107.	REED, Jahn	Clorian
11.	BOWSER, Roymand	Parker	59.	HEADRICK, Richard	Conemaugh	108.	RENO, Donald	Beaver
12.	BOWSERSOX, Pearl	New Bethlehem	60.	HENRY, Elsie	Leeper	109.	RETTIG, Lee	East Brady
13.	BREHN, Donald	Brookville	61.	HOFFMAN, Ruben	Brookville	110.	ROSE, Richard	Albion
14.	BUZARD, Richard	Limestone	62.	HOYER, Thad	Manor	111.	SCHIERBERL, Luella	Clorian
15.	BROCIOUS, Emagene	Clorian	63.	HUGUS, Mary	Knox	112.	SCHINDLER, Gail	Pittsburgh
16.	BYERS, Mark	Summerville	64.	HUIQUIST, Richard	Clorian	113.	SEESE, Marjorie	Johnstown
17.	CAMPBELL, Charles	Oil City	65.	HURD, Austin	Sewickley	114.	SEEZOX, Vincent	Lyndora
18.	CAPIZZI, James	New Kensington	66.	JIOIO, Joseph	Lairrobe	115.	SERVEY, James	Clorian
19.	CARISTO, Paul	Moan Run	67.	JOHNSON, Joan	New Castle	116.	SERVEY, William	Clorian
20.	CARLSON, Avis	Kane	68.	KELSO, Norma	Pittsburgh	117.	SEYBERT, Elizabeth	Parker
21.	CASE, Pauline	Oil City	69.	KEPPEL, Paul	Callensburg	118.	SHAPIRO, Harvey	Pittsburgh
22.	CAVALANCIA, James	Trafford	70.	KETH, Clifford	Summerville	119.	SLAY, Ruby	Braokville
23.	CLARKSON, Darathy	Oil City	71.	KLEIN, Anna Mae	McDonald	120.	SMITH, Donno	Brookville
24.	COOK, Beverly	Kittanning	72.	KOBULNICKY, Albert	McKees Racks	121.	SMITH, Jeannine	Leechburg
25.	CORTE, Effie	Straitonville	73.	KOPNITSKY, Michael	Sykesville	122.	STAHLMAN, Shirley	Strattanville
26.	DAMASO, Rass	Sewickley	74.	KOVALYAK, Fred	Beaver	123.	STEWART, David	Kittanning
27.	DELLAQUILA, Thomas	Johnsburg	75.	KRAUSE, Sarah	Oil City	124.	STRINGFELLOW, Madison	Clorian
28.	DEVEY, Joseph	Hamestead	76.	KRISTOFF, Joseph	Torentum	125.	THURAU, William	Oil City
29.	DIMERLING, Robert	Freedom	77.	KUNKLE, Danald	St. Petersburg	126.	TIENEY, Paul	Coroapolis
30.	DORKO, Joseph	Munhall	78.	LA COTTA, Joseph	Vestaburg	127.	TODD, Blaine	Punxsutawney
31.	DUNN, Lee	Ookmant	79.	LANE, Wilma	Alliquipp	128.	TOMKO, Edward	Sharan
32.	ECKMAN, Wilber	Apolla	80.	LISTON, Nancy	Turtle Creek	129.	TRIBLEY, Jahn	Rimersburg
33.	ELDER, Ruth	Clorian	81.	LOGAN, Samuel	Miala	130.	VESCIO, Mary Rase	Sewickley
34.	ERNEST, Janice	Clorian	82.	LONCHENA, Walter	Lyndora	131.	VONGREY, Michael	Kittanning
35.	FALLARA, Carman	Punxsutawney	83.	LORIGAN, James	East Brady	132.	WALKER, Shirley	Butler
36.	FINK, Paul	Knox	84.	LOVRE, Jahn	Trafford	133.	WARDEN, Chester	Distant
37.	FISHER, Cathryn	Oil City	85.	LUTZ, Jahn	Portage	134.	WARLACK, Jaan	Pittsburgh
38.	FITZGERALD, Lois	East Pittsburgh	86.	LYNCH, Joseph	Oil City	135.	WEBSTER, Ronald	Clorian
39.	FITZSIMMONS, Eugene	Baxter	87.	MANNING, Iris	Pittsburgh	136.	WESNER, William	Knox
40.	FLEMING, Cynthia	Tidal	88.	MARRACCINI, Betty	Charlerai	137.	WILCOX, Floyd	Wilkinsburg
41.	FLICK, Jock	Warhington	89.	MIDDLEMAN, Jack	McKeesport	138.	WINTERS, James	Sewickley
42.	FOLEY, Mary	Smethport	90.	MIDDLETON, Gwendalyn	Emlentant	139.	WISNIEWSKI, Edward	Canonsburg
43.	FOLSER, Nancy	New Kensington	91.	MILLS, Dureon	Oil City	140.	WROBLESKI, Bernard	New Kensington
44.	FORRINGTON, Jahn	Clorian	92.	MILLS, Trueman	Clorian	141.	YANICK, Audrey	Midland
45.	FRANKLIN, Robert	Dawsan	93.	MITCHELL, Melvin	Punxsutawney	142.	YOUNG, Lucy	Mayport
46.	GALL, Raberto	Pittsburgh	94.	MOHNEY, Margie	Corsico	143.	YOUNG, Robert	Parker
47.	GANGEMI, John	Lairrobe	96.	MOLSKY, Thomas	Irwin	144.	ZERAVICA, Michael	Trafford
48.	GATHERS, Richard	Clorian	97.	MORRES, David	Braokville	145.	ZISSIS, Jahn	McKees Racks









3 9363 00150 7331

Spec. Col.  
qLD  
1017 Sequelle  
.C88  
1952

Spec. Col.  
qLD  
1017  
.C88  
1952

