

Spec. Col.  
QLD  
1017  
.C88  
1958  
c.2

SEQUELLE

I E S B

LIBRARY  
CLARION STATE COLLEGE  
CLARION, PA.



Carlson Library







"These

are

our

treasures

that

remain,"

Holmes

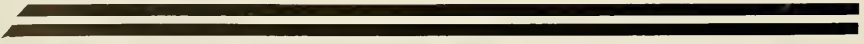
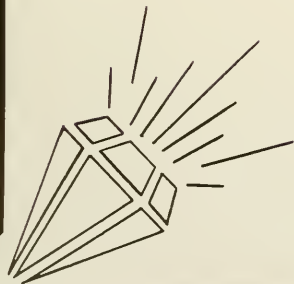


## Dedication

With pride and happiness, we, the Class of 1958 dedicate this Sequelle to our advisor, Dean Moore.

Dean Moore's warm smile and friendly greeting welcomed us our first year at Clorion ond continued with us as we approached our professional goals.

Now on the threshold of tomorrow, each of us will remember Dean Moore for his kind efforts ond willingness to become our friend.





# ADMINISTRATION

"To wind the mighty secrets of the past,  
And turn the key of time."

Henry White



Dr. Paul G. Chandler

#### **TO THE SENIOR CLASS OF 1958**

It seems less than a year ago that you enrolled as freshmen at Clarion. That was a new adventure for you. At that time the next four years looked like a long period. It is much shorter to look back on now. Just as we are getting well acquainted you are leaving and we will miss you in many ways. You have become leaders in activities such as music, intramurals, clubs, social affairs, etc. Now you are going into another new adventure. Here's wishing you all of the thrills that everybody is entitled to from new and challenging experiences.

**Paul G. Chandler**

# Deans



Miss Grace Pryor  
Dean of Women



Mr. James D. Moore  
Dean of Instruction



Miss Lottie Wingard  
Registrar



Dr. James C. King  
Dean of Men

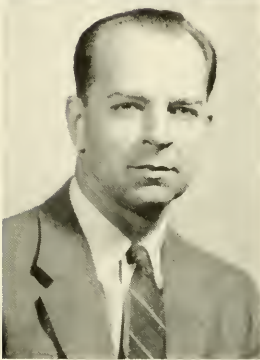
# Faculty



Mrs. Helen Becker M.A.  
Elementary Education



Dr. Alpha Bernard Ed.D.  
Head of Elementary  
Education Department



Mr. Carl Caldwell M.A.  
English and Speech



Mr. Frank M. Campbell M.A.  
Foreign Languages and  
Social Studies



Miss Reno Carlson M.A. L.S.  
Head Librarian



Mr. Thomas Carnahan M.Ed.  
Mathematics and Science



Miss Eleanor DeWald  
M.S. L.S.  
Librarian

# Faculty

Mr. Bruce H. Dinsmore M.S.  
Biological Science



Mr. Charles Flock M.A.  
Head of Library Science  
Department



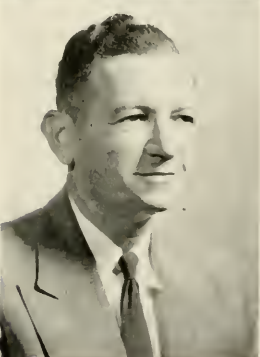
Mr. Walter Hart M. of F.A.  
Head of Music Department,  
Director of Student Per-  
sonnel



Mr. Ernest Johnson, Jr.  
M.Ed.  
Education



Mr. Clarence Kuhner M.S.  
Head of Geography  
Department



Dr. George Lewis Ed.D.  
Head of Mathematics  
Department



Mr. Frank Lignelli, Jr. M.Ed.  
Safety Education and  
Physical Education

# Faculty



Mr. William McDonald M.A.  
Music



Mr. John Mellon M. Litt.  
English



Dr. Lester Moody Ph.D.  
English



Mr. Galen Ober M.Ed.  
Physical Science



Dr. Donald Peirce Ph.D.  
Head of Physical Science  
Department



Dr. Donald Predmore Ph.D.  
Biological Science, Education



Mrs. Martho Riley M.A.  
Geography

# Faculty

Mr. Charles Robbe M.A.  
Social Studies



Mrs. Mildred Sondaz M.A.  
Biology



Dr. Paul Shank Ph. D.  
Physical Science and  
Education



Mr. Charles Shontz M.S.  
Biological Science

Mrs. Betty Simpson B.S.  
Health and Physical  
Education



Mr. Richard Skinner M.Ed.  
Director of Teacher Training,  
Education

Mr. Joseph Spence, Jr. M.Ed.  
Head of Art Department



# Faculty



Miss Martha Stewart  
M.Ed., L.S.  
Librarian



Dr. Dana Still Ph.D.  
Head of English Department



Mr. Arnold Stinchfield M.Ed.  
Social Studies



Mr. Waldo Tippin M.A.  
Education, Director of  
Athletics, Head of Physical  
Education Department



Miss Mary Kay Banner  
M.Ed.  
Demonstration Teacher,  
Intermediate Grades



Miss Mildred Gamble M.A.  
Demonstration Teacher,  
Intermediate Grades



Miss Roxana Irwin, M.Ed.  
Demonstration Teacher,  
Intermediate Grades



Miss Carolyn Mullin, M.Ed.  
Demonstration Teacher  
Primary Grades



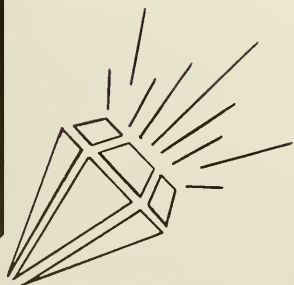
Miss Virginia Pemberton, M.A.  
Demonstration Teacher  
Primary Grades

Faculty members not pictured:

Mr. Ralph E. Meod, M.A.—Speech

Mrs. Marion Marshall, B.S.—Cooperating Teacher, Kindergarten

Mrs. Pauline Wiberg, B.S.—Cooperating Teacher, Third Grade



# SENIORS

The word "SENIORS" is rendered in a bold, black, stylized font. The letters are thick and blocky, with some decorative flourishes. Below the word is a curved banner containing a series of small, white, circular symbols arranged in a slightly wavy line.

"How sweet a thing it is to wear a crown,  
Within whose circuit is Elysium  
And all that poets feign of bliss and joy."

**William Shakespeare**



**President**  
James Wigton



**Treasurer**  
Max Ferguson



**Vice President**  
Anthony Zissis

## Senior Class

For all we know we may never meet again, but the memories born during the past four years will linger always.

Each of us will remember our confusion as freshmen, eagerness as sophomores, perseverance as juniors and responsibility as seniors. The variety of activities experienced by all filled this span of time with both pleasure and hard work.

As we depart from "the college on the hill", the Class of 1958 pushes these memories into the background and anticipates the future.

# Seniors



Jean Susan Alexander—Leisenring #1  
Newman Club, I.R.C., S.E.A.P., A.C.E., Camera Club

Janet Ruth Atwell—Eldred  
Lambda Chi Delta, S.E.A.P., S.C.A.

Mrs. Pearl Bonner—Part Allegany  
I.R.C., College Players, S.E.A.P., S.C.A

Nancy Janice Buzard—Rimersburg  
Art Club

Sue Buzard—Sigel  
Sigma Sigma Sigma, Outdoor Club, A.C.E., Chair, S.E.A.P.,  
W.A.A., Social Committee

Carol Ann Clark—Smethport  
Chair, S.C.A., A.C.E.



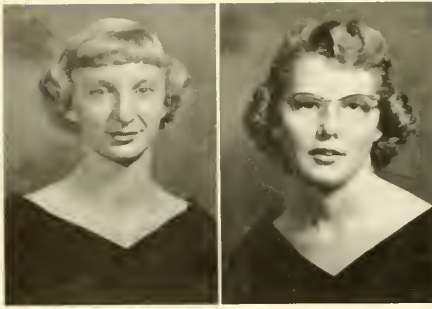
E  
L  
E  
M  
E  
N  
T  
A  
R  
Y



Donald Edward Christie—Aliquippa  
Newman Club, I.R.C., Football, Intramural Basketball, Alpha  
Gamma Phi

Jean Dahler—Ridgway  
S.C.A., Sigma Sigma Sigma, A.C.E.

# Seniors



Carolyn Rose Doverspike—Clarion  
Delta Zeta, Outdoor Club

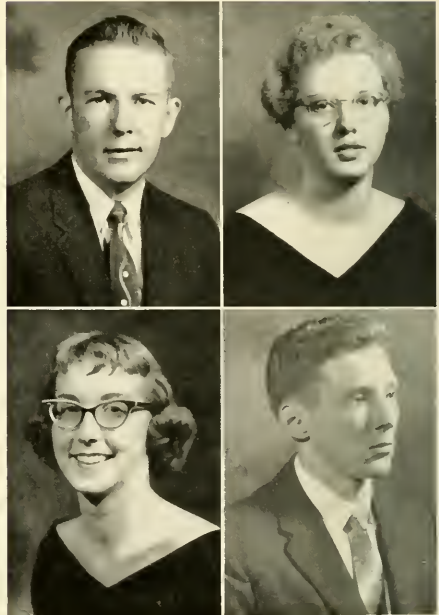
Janice Suzanne Divany—Johnsonburg  
Sigma Delta Phi

James R. Elder—Strattonville  
Choir, Band, Art Club, Delta Kappa

Arlene Ellyn Ellberg—Akeley  
Choir, Band, A.C.E., S.E.A.P., S.C.A., Pi Gamma Mu

Ruth Curll Elliott—Clarion  
Sigma Sigma Sigma

Dale Marshall Fogel—Kane  
Delta Kappa, Rifle Club



Anna Belle Fuller—Porker  
Art Club, Band

Patricia Lou Gathers—Fairmount City  
S.C.A., S.E.A.P., Choir



# Seniors

Margaret Arden Gourley—Franklin

Sigma Sigma Sigma, Band, Ensemble, Choir, Outdoor Club, Panhellenic Council

Harald Melvin Graham—Rockland

Delta Kappa, Phi Sigma Pi, Geography Club



Donald J. Gagan—Sewickley

Alpha Gamma Phi, Interfraternity Council, Student Senate, Art Club, S.E.A.P.

Jane Gromo—Pittsburgh

Delta Zeta, Choir, Outdoor Club



Raymond Hague—Clarion

Twila Moe Hedegar—Harrisville

S.E.A.P., S.C.A., A.C.E., I.R.C., Comera Club, Lambda Chi Delta, W.A.A.

Barbara Jean Hugus—Knox

S.C.A., S.E.A.P., Comera Club, Band, Intramurals, Sigma Sigma Sigma

Julia Grunalt Johnson—Brockway

Sigma Delta Phi, Press Club, S.E.A.P., A.C.E., Newman Club



# Seniors

**Rose Mary Landon—Pittsburgh**

Sigma Sigma Sigma, S.E.A.P., A.C.E., W.A.A., Women's House Council, Art Club, S.C.A., Sequelle, Student Senate



**Theda Alene Lewis—Shippenville**

S.C.A., College Players, S.E.A.P., A.C.E., Geography Club



**John Marrow—Kittanning**

Delta Kappa, Press Club, Art Club, Intromurals, Sports Publicity

**Sandra Maxwell—Sharon**

Sigma Sigma Sigma, Press Club, Clarion Call, S.E.A.P., A.C.E., W.A.A., S.C.A., Women's House Council, Student Senate, Art Club, Sequelle, Pi Gamma Mu

**Dawn Ann McGuire—Chicora**

College Players, Newman Club, Outdoor Club, Lambda Chi Delta

**Gladys Maxine McKinnis—Chicora**

S.C.A., I.R.C., Art Club

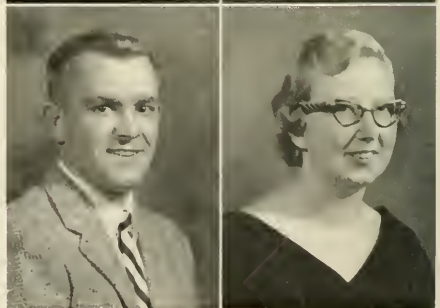


**John Menegheni—Clarion**

Alpha Gamma Phi, Baseball

**Bonita L. Mitchell—Saegertown**

Sigma Delta Phi, S.E.A.P., A.C.E., S.C.A., I.R.C.





# Seniors



**Maria Irene Myers—Evans City**  
Sigma Sigma Sigma, Art Club, S.E.A.P., Band, W.A.A.

**Edward Paprik—Fard City**  
Newman Club, Rifle Club, Choir, Student Senate, Intramurals, Alpha Gamma Phi



**Herbert Reed—Timblin**  
Baseball, Intramurals, Alpha Gamma Phi

**Mary Ellen Reed—New Kensington**  
Lambda Chi Delta, Panhellenic Council, S.C.A., W.A.A., A.C.E., S.E.A.P.

**Marilyn J. Robb—Beaverdale**  
A.C.E., Camera Club, I.R.C., S.C.A., Sigma Delta Phi

**Catherine Daugherty Shannan—Brookville**



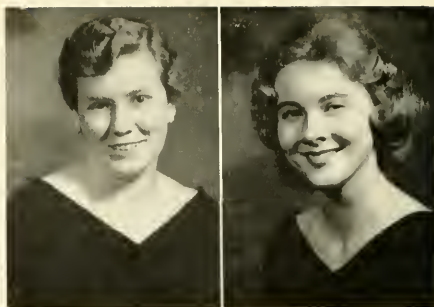
**Mary Esther Smith—Mayport**  
S.C.A., W.A.A., Geography Club, Waiters Club, Sigma Delta Phi

**Nancy Steele—Meadville**  
Women's House Council, Choir, Delta Zeta

# Seniors

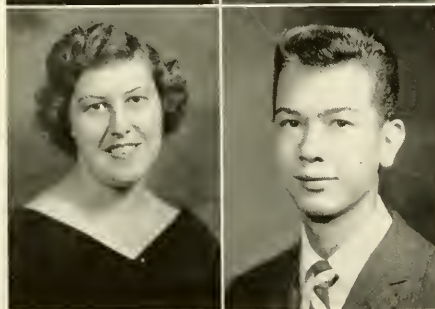
**Floda Pearl Swartfager**—New Bethlehem  
Art Club, S.C.A., S.E.A.P.

**Nancy Jane Tippin**—Clarion  
Sequelle, College Players, Sigma Sigma Sigma, S.C.A.



**Carol Mae Tribley**—Chicora  
S.C.A., I.R.C., Chair, Art Club, Sigma Sigma Sigma, Student Senate

**Nancy Elinor Trimbur**—Chicora  
I.R.C., Art Club, Newman Club



**Lorraine Agnes Waite**—Russell  
Art Club, Intramurals, I.R.C., S.C.A.

**James C. Whited**—Pittsburgh  
Alpha Gamma Phi, S.C.A., I.R.C., Intramurals

**Lou Ann Winger**—Clarion  
Sigma Sigma Sigma, Camera Club

**Mory Ann Wright**—Pleasantville  
S.C.A., I.R.C., College Players, Panhellenic Council, Sigma Delta Phi



# Seniors



**Theodore E. Aiken—Beaver Falls**

Major: Biological Science  
 Minor: Safety, Social Studies  
 Social Committee, Football, Baseball, Basketball, Intramurals, I.R.C., Varsity C, Alpha Gamma Phi

**Pete Allegretto—Summerville**

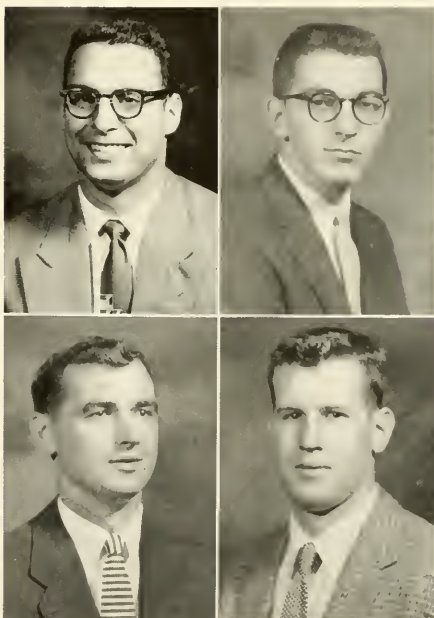
Major: English  
 Minor: Geography, Social Studies

**Alfred Aiello—Leechburg**

Major: English, Social Studies  
 Alpha Gamma Phi, Outdoor Club, Varsity C, Newman Club

**Somuel Floyd Barger—Petrolio**

Major: Mathematics  
 Minor: Chemistry, Social Studies  
 Sigma Tau Gamma, Waiters Club, S.C.A., Phi Sigma Pi



**Donald Joseph Begeny—Ludlow**

Major: Mathematics  
 Minor: Physical Science  
 Camera Club, Sigma Tau Gamma, Men's House Council, Interfraternity Council

**John Berry—Monessen**

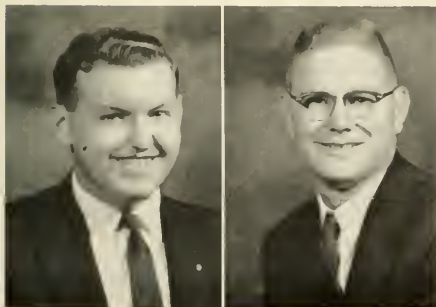
Major: Social Studies  
 Minor: Safety Education  
 Basketball, Alpha Gamma Phi

**Ronald Eugene Bickel—Oil City**

Major: English  
 Minor: Social Studies, Safety Education

**Chester Jay Billings—Smethport**

Major: Social Studies  
 Minor: Geography, Physical Science  
 Phi Sigma Pi



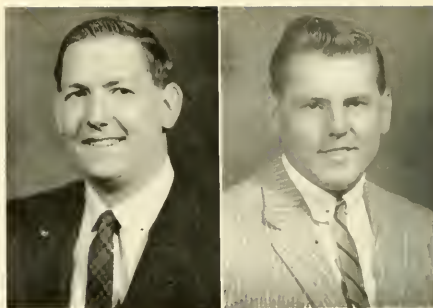
# Seniors

**Russell A. Brumbaugh—Fard City**

Major: Speech  
 Minar: English, Safety Education  
 Sigma Tau Gamma, Basketball

**Paul Bucar—Trafford**

Major: Geography, Social Studies  
 Minar: Safety Education  
 Baseball, Intramurals, Newman Club, Men's House Council, Geography Club, Alpha Gamma Phi



**Joyce E. Campbell—New Kensington**

Major: Mathematics, General Science  
 Minar: English  
 Delta Zeta, I.R.C., S.C.A.

**William Carroll—Leechburg**

Major: Geography  
 Minar: Social Studies  
 Newman Club, I.R.C., Alpha Gamma Phi

**Frank E. Chess Jr.—Farrell**

Major: Speech  
 Minar: English, Safety Education  
 Newman Club, Athletic Manager and Trainer, Sigma Tau Gamma

**Jane Davis—Ebensburg**

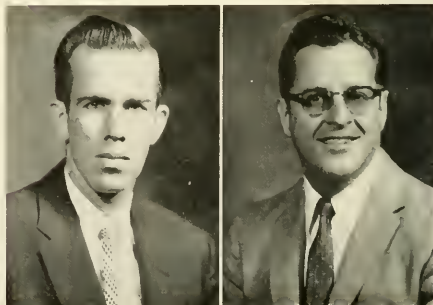
Major: Chemistry  
 Minar: English  
 Newman Club, I.R.C., Outdoor Club, W.A.A., Sigma Sigma Sigma

**James Willard Demski—Freeport**

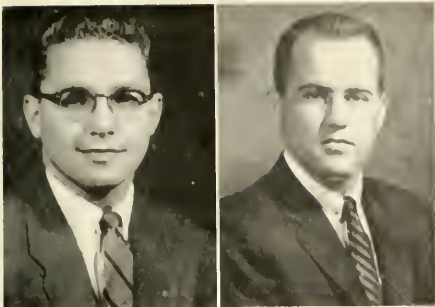
Major: Biological Science  
 Minar: Social Studies  
 S.C.A., I.R.C., Delta Kappa

**Lee G. Detar Jr.—Oil City**

Major: Social Studies  
 Minar: Geography, Safety Education  
 Geography Club, Phi Sigma Pi, Pi Gamma Mu, I.R.C., S.C.A.



# Seniors



**John L. Dolmayer—Freeport**

Major: Social Studies

Minor: Geography

Sigma Tau Gamma, Newman Club, Outdoor Club, Choir,  
Tennis, Intramurals, Homecoming Chairman

**Donald Reynolds Dombart—Butler**

Major: Social Studies

Minor: Geography

Alpha Gamma Phi, Varsity C

**Theodore A. Danelli—Bridgeville**

Major: Biology

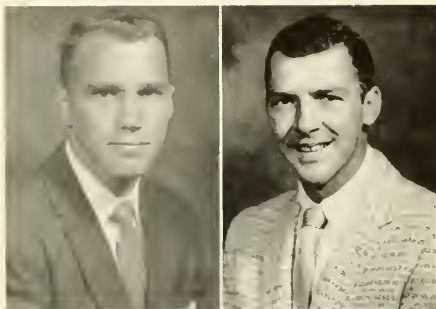
Minor: Social Studies

**Donald Ehrhart—Venus**

Major: Speech

Minor: English, Geography

Alpha Gamma Phi

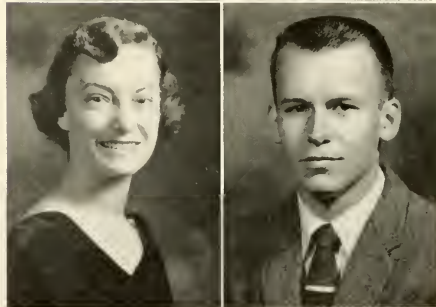


**Thelma Jeanne Elder—Sligo**

Major: English

Minor: Social Studies

S.C.A., Press Club, Sigma Sigma Sigma, Bond, I.R.C.

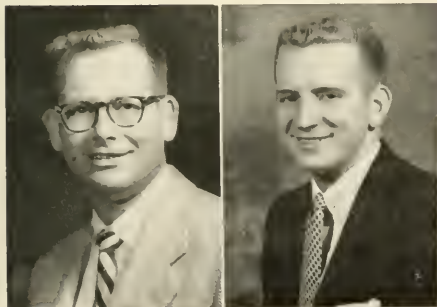


**Ronald Max Ferguson—Brookville**

Major: Chemistry, Mathematics

Minor: Biology

Camera Club, S.C.A., I.R.C., Rifle Club, Intramurals,  
Alpha Gamma Phi, Phi Sigma Pi



**Frances Gardner—Greensburg**

Past Graduate

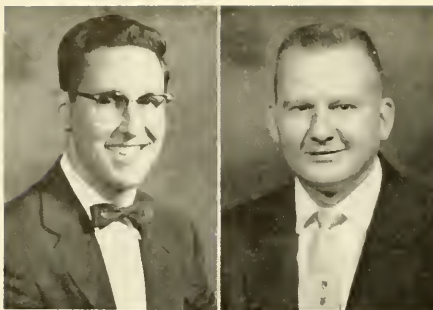
**Robert John Gray—Freeport**

Major: Social Studies

Minor: Biological Science

Alpha Gamma Phi, Outdoor Club, Newman Club

# Seniors



**John Kent Hole—Turkey City**

Major: Geography  
Minor: Social Studies  
Sigma Tau Gamma

**Paul P. Hamilton—Cheswick**

Major: Biology  
Minor: English  
Phi Sigma Pi



**Ray J. Hartley—Clarion**

Major: Biology  
Minor: Geography  
Sigma Tau Gamma

**John Edward Helmtoller—Clarion**

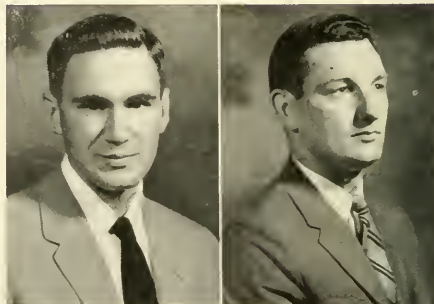
Major: Mathematics  
Minor: Social Studies  
Alpha Gamma Phi, I.R.C.

**Howard Sherman Hess—Solem**

Major: Biology  
Minor: Chemistry  
Delta Koppo

**James Ronald Higgs—DuBois**

Major: Mathematics  
Minor: Social Studies  
Sigma Tau Gamma



**James Leroy Higbee—Oil City**

Major: Mathematics  
Minor: Physical Science  
Alpha Gamma Phi, Phi Sigma Pi, Student Senate

**Edgar Sherwood Huffman—Ridgway**

Major: Social Studies  
Minor: Geography  
College Players, Waiters Club, Sigma Tau Gamma, Geography Club, I.R.C.



# Seniors

**Hugh Anslem Hagle Jr.—Pittsburgh**

Major: Social Studies, Geography

Minor: Safety Education

Sigma Tau Gamma, I.R.C., Student Senate, Geography Club

**Paul E. Hutchison—Butler**

Major: Social Studies, General Science

Minor: English



**William Lee Johnson—Ridgway**

Major: General Science

Minor: Social Studies

Rifle Club

**Beverly Mae Jase—Lemont Furnace**

Major: General Science

Minor: Mathematics

I.R.C., S.E.A.P., S.C.A., Art Club

**Raymond Louis Kramer—Natrona Heights**

Major: English

Minor: Speech

Delta Kappa, Press Club, College Players, Newman Club

**Benjamin A. Kundick—New Bethlehem**

Major: Mathematics

Minor: Physical Science

Alpha Gamma Phi, Varsity C



**Ronald Kupetz—Barnesboro**

Major: Biology

Minor: Social Studies

Alpha Gamma Phi



**Jack I. Lenovirt—Kittanning**

Major: Social Studies

Minor: Biology

Delta Kappa

# Seniors



**Delores Catharine Marshall—Chicora**  
Major: General Science  
Minor: Mathematics  
I.R.C., S.C.A., Chair, Art Club, Rifle Club

**Albert B. Mortonik—McKees Rocks**  
Major: Geography, Social Studies  
Minor: Drivers Education  
Alpha Gamma Phi, Outdoor Club, I.R.C.

**Philip Samuel Massalsky—Torentum**  
Major: Social Studies  
Minor: Geography

**Sara Rycman Massalsky—Madison**  
Major: General Science  
Minor: Mathematics



**Ann Messenger—Langeloth**  
Major: Social Studies  
Minor: Biology  
Newman Club, I.R.C., Women's House Council

**Carmen Micelelli—Kane**  
Past Graduate



**Harry Gilbert Mitchell—St. Marys**  
Major: English  
Minor: Biology  
Alpha Gamma Phi, Outdoor Club, S.C.A., Intramurals

**Thomas Jack Malsky—Irwin**  
Major: Geography  
Minor: Biology, Safety Education  
Newman Club, Waiters Club, Alpha Gamma Phi





# Seniors

**William George McDowell—Hawk Run**  
 Major: English  
 Minar: Social Studies  
 I.R.C., Sigma Tau Gamma

**John Barry McKeown—Grampian**  
 Major: Social Studies  
 Minar: Geography  
 Newman Club, Geography Club, I.R.C., Delta Kappa

**Thomas Nee—Pittsburgh**  
 Major: History  
 Minar: Geography  
 Football, Newman Club, Intramurals, Alpha Gamma Phi

**Marjorie A. Nicholson—Warren**  
 Major: Mathematics, Biology  
 Delta Zeta, Sequelle, Outdoor Club



**Shelby Jean Nalf—Pittsburgh**  
 Major: English  
 Minar: Social Studies  
 Delta Zeta

**Ralph Daniel Overheim—Parker**  
 Major: Mathematics  
 Minar: Physical Science  
 Camera Club, Waiters Club, S.C.A., Basketball, Student Senate, Intramurals, Men's House Council, College Players, Sigma Tau Gamma

**Theodore Paich—Rockland**  
 Major: Geography  
 Minar: Social Studies  
 Delta Kappa

**Fred Lyle Patterson—Cochran**  
 Major: English  
 Minar: Speech  
 College Players, S.C.A.,  
 Sigma Tau Gamma,  
 Phi Sigma Pi



# Seniors



Marilyn McDaniel Pattersen—Cochran  
 Major: French, Spanish, English  
 Band, S.C.A., College Players, Women's House Council,  
 Sigma Sigma Sigma

Calvin Payne—Clarion  
 Major: Biology  
 Minor: General Science  
 Alpha Gamma Phi, Sequelle, Phi Gamma Mu, Phi Sigma  
 Pi, Choir, Intramurals

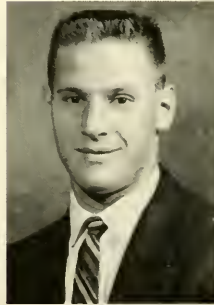


Richard J. Pesarcik—Vandergrift  
 Major: General Science  
 Minor: Social Studies  
 Sigma Tau Gamma, I.R.C., Tennis, Sequelle

James Ronald Priestler—Rimersburg  
 Major: English  
 Minor: Social Studies  
 Press Club, Delta Kappa, College Players

Albert Louis Ragozzini Jr.—Canonsburg  
 Major: Biology  
 Minor: Social Studies  
 Varisty C, Outdaar Club, Men's House Council, Alpha  
 Gamma Phi

Robert Keith Shaup—St. Petersburg  
 Major: General Science  
 Minor: Mathematics  
 Delta Koppo



Edward Joseph Slaff—Sykesville  
 Major: Geography  
 Minor: Social Studies  
 Geography Club, Newmon Club, Intramurals

Delores Hager Smothers—Clarion  
 Major: English  
 Minor: Social Studies

# Seniors

**Raymond Smith—Sligo**

Major: Biology  
Minor: Social Studies

**David Lee Snyder—Utica**

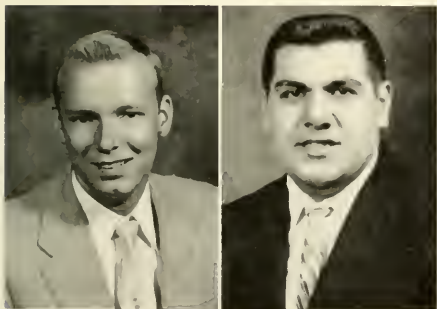
Major: Geography  
Minor: Biology  
Football, Sigma Tau Gamma

**Doris Ann Staley—Clorion**

Major: General Science  
Minor: Mathematics  
Sigma Sigma Sigma, Cheerleaders, Outdoor Club, Student Senate, S.C.A., Sequelle

**Richard Walter Stanford—Kittanning**

Major: Physical Science  
Minor: Biology  
Waiters Club, S.C.A., Sigma Tau Gamma



**Richard D. Thompson—Clorion**

Major: Mathematics  
Minor: Chemistry  
Sigma Tau Gamma, Phi Sigma Pi

**Richard Anthony Toskin—Farrell**

Major: Biology, Social Studies  
Minor: English  
Alpha Gamma Phi, Outdoor Club, Newman Club, I.R.C.

**Samuel Thomas Viviano—Scott Township**

Major: Biology  
Minor: Chemistry  
Camera Club, Rifle Club, Sigma Tau Gamma, Newman Club, Intramurals

**Coralie Ruth Whalen—Martinsburg**

Major: English  
Minor: Speech, History  
I.R.C., S.C.A.



James A. Wigton - Clarian  
 Major: Biological Science  
 Minor: Social Studies  
 Sequelle, Alpha Psi Omega, Sigma Tau Gamma, College Players, Tennis, Interfraternity Council



Garon Wilson - Ridgway  
 Major: Social Studies  
 Minor: English  
 College Players, S.C.A.

Richard Winslow - Farrell  
 Major: Chemistry  
 Minor: Mathematics  
 Sigma Tau Gamma



Anthony Zissis - McKees Rocks  
 Major: Mathematics  
 Minor: Geography  
 Alpha Gamma Phi, Student Senate, Outdoor Club, Phi Sigma Pi



James Dolan - Canemough  
 Major: Biological Science  
 Minor: Chemistry  
 Alpha Gamma Phi, Phi Sigma Pi

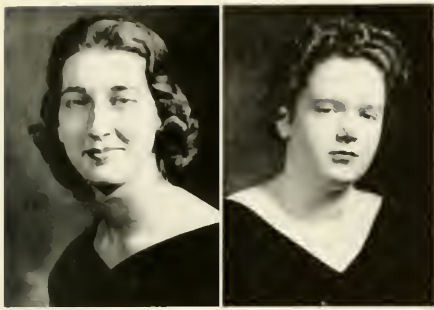


Virgil Lucos - Windber  
 Major: Chemistry  
 Minor: Mathematics  
 Sigma Tau Gamma, Camera Club



James McDonald  
 Marienville  
 Major: General Science  
 Minor: Geography  
 Camera Club

# Seniors



Virginia Ann Hartman—Clairton  
 Minor: English  
 Newman Club, Outdoor Club, Delta Zeta, W.A.A.

Carla Ann Kent—Manessen  
 Minor: Social Studies, English

Barbara Manning—McKeesport  
 Minor: History  
 S.C.A., I.R.C., W.A.A  
 Sigma Sigma Sigma

Lenore Jane Miller—Sarver  
 Minor: English  
 Choir, Ensemble, S.C.A.

Shirley Ann Naquin—Aliquippa  
 Minor: Mathematics  
 S.E.A.P., Newman Club, Waiters Club, Sigma Delta Phi

Georgia Carol Richardson—Monor  
 Minor: Spanish



L  
I  
B  
R  
A  
R  
Y  
  
S  
C  
I  
E  
N  
C  
E

Beverly Ann Thompson—Notrona Heights  
 Minor: English  
 I.R.C., College Players, S.E.A.P., S.C.A., Sigma Delta Phi

Regina Arlene Thornton—Pleasantville  
 Minor: English  
 Delta Zeta, Student Senate, Panhellenic Council, College  
 Players, Choir, Outdoor Club, Sequelle

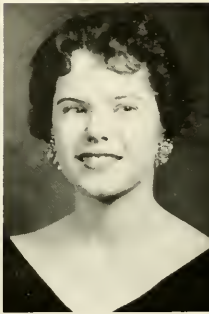




Dorothy May Wodsworth—  
Wesleyville  
Minor: English  
Chair, Band, W.A.A., Sigma Del-  
ta Phi



Audrey Towner—  
Coudersport  
Minor: Social Studies  
Delta Zeta, Outdoor Club



Diane Ruth Walter—  
Leeper  
Minor: English  
S.C.A., Sigma Sigma Sigma

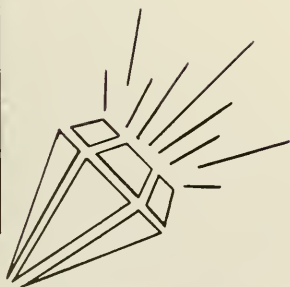


1st row: Carolyn Doverspike, George Koelish, Jim Higgs, Bill Mart, John McDonald, Ted Poich. 2nd row: Beverly Jose, Lee Johnson. 3rd row: Richard Robinson, Ted Donelli, Ben Kundick, Lee Deter, Doris Stoley, Dick Winslow. 4th row: Jack Lenovitt, James Kerr, Anno Fuller. 5th row: Nancy Tippin, Janice Divony, Floyd Barger, Ron Kupetz, Joseph Summerville, Jim Galbrieth. 6th row: Dot Wadsworth, Sandy Maxwell, Pete Allgretto, Tom Nee, Bernie Wroblecki. 7th row: Nancy Buzard, Janet Atwell, Mel Groham, Ted Ackin.

## January Graduates

On January 9, 1958, thirty-two seniors received a Bachelor of Science Degree from Clarion State Teachers. On January 21, 1958, they said "good-bye" to Clarion and "hello" to the world.

To each we wished a fond farewell, and much success and happiness in his new venture.







"Hanging in a golden chain  
This pendent world . . . . ."

John Milton



**President**  
Tony Donghia



**Secretary**  
Beverly Reese



**Vice President**  
Marlin Hartman



**Treasurer**  
Joyce Stewart

## Junior Class

The 1957-58 school year on C.S.T.C. campus presented a challenge to the returning juniors, and was welcomed with great enthusiasm. After a short time back on the campus, plans had already begun toward making the year a successful and memorable one.

For the third year the members of the junior class elected Tony Donghia as class president. With the able assistance of Dr. Bernard, our class sponsor, and the other officers of the class, many outstanding accomplishments were made.

Representing the class in the annual Homecoming were Sally Bryon and Priscilla Burns.

To the juniors, the Christmas season meant not only fun and vacation but also the Christmas Dance sponsored by the class. The Dance was held December 7, with Ice Landers Ball as the theme.

We, the members of the junior class look back on this past school year with pride and satisfaction. Also we look forward to our senior year with hope and anticipation.

# Juniors

William Abplanalp  
Ridgway

Jayce Abrams  
New Bethlehem

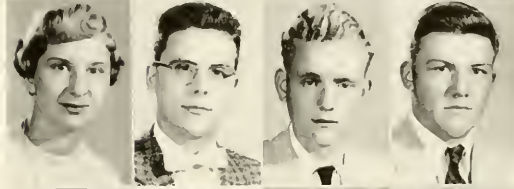


Sandra Adams  
Knox

Tony Aiella  
Farrell

Virginia Alcorn  
Titusville

Lynn Alter  
Tarentum



Mack Ambrase  
Adrian

Gerry Anderson  
Part Allegheny

Nick Armatas  
Titusville

Paul Ashbaugh  
St. Petersburg



Phaebe Barger  
Callensburg

Marian Bartley  
Pittsburgh

Virginia Beatty  
Karns City

Fred Bell  
East Brady



Betty Bentzley  
Corsica

Peggy Black  
Karns City

Daris Baak  
New Castle

Jane! Baor  
Venus

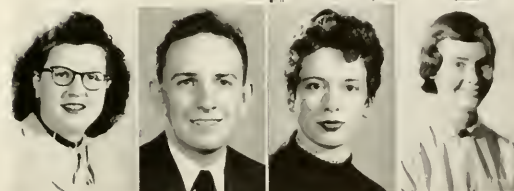


Theresa Barstaff  
Carry

John Basway  
Clarian

June Bauch  
Shippenville

Robert Brasanhan  
Knox

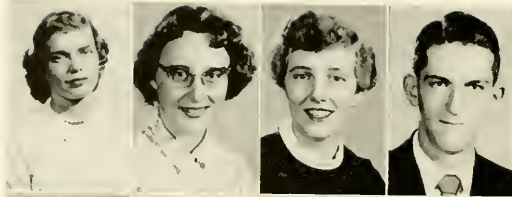


Sally Bryan  
Butler

Darathy Burkett  
Tyrane

Priscilla Burns  
Sliga

Caralyn Comp  
Leechburg



Mildred Cerutti  
Seminale

Jim Charlton  
Brackway

David Chestnut  
Sharon

Gerald Clark  
Clarion

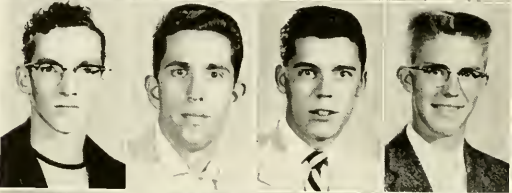


Jeanette Corbett  
Clarion

Sally Crain  
Duke Center

Grant Crawford  
Emlentan

Rocca D'Angela  
Pittsburgh



Chester Dallap  
Springdale

Dick Danielson  
Mt. Jewett

Dee Danzinger  
Pittsburgh

Tony Danghia  
Vandergrift



Faye Dryden  
Pittsburgh

Carmi Edwards  
Kittanning

William Emerick  
Brookville

Bab Essenwein  
Kittanning

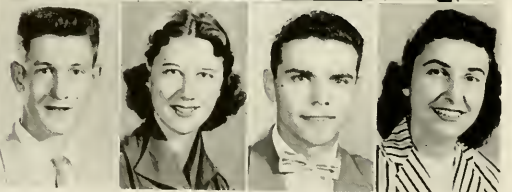


Alice Exley  
Knax

Jack Fox  
Rimersburg

Larry Frederick  
Kane

Marilyn Ginkel  
Shippenville



Donald Greggs  
Cochranon

Ardeth Gumphre  
Pittsburgh

Conrad Green  
Franklin

Harry Greer  
Knox

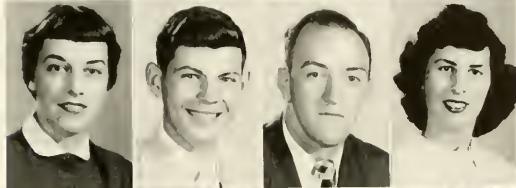


Elizabeth Gruber  
Corry

Gary Gustafson  
Gibsonia

Clevo Haight  
Johnsonburg

Arthur Harris  
Export

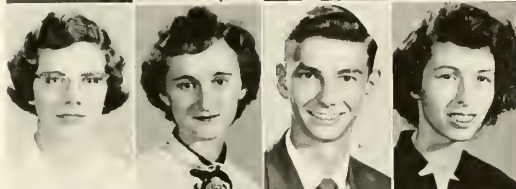


Marlin Hortman  
Mt. Pleasant

La Verne Haubrich  
Renton

Sandro Hepler  
Apollo

Carol Hague  
Oil City

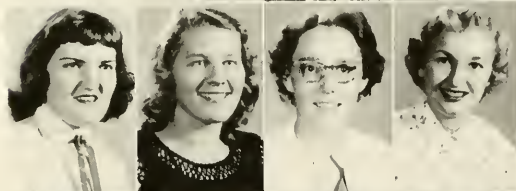


Jan Humeniuk  
New Kensington

Lydio Jackson  
Erie

Lois Jahson  
Ridgway

Jean Karp  
Pittsburgh



Nancy Kelly  
Corry

Hazel Krach  
Knox Dale

Robert Kunkle  
St. Petersburg

George Lord  
Mahaffey

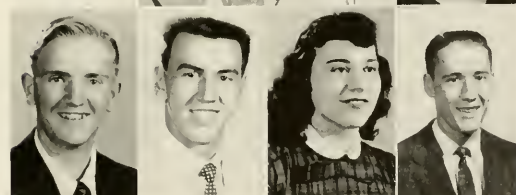


Virgil Lucas  
Beaverdale

Sally Lund  
Ridgway

Watson Luper  
Brookville

Mel Mandic  
Harwick



Charlotte Manganaro  
Verona

Bruce Melling  
Oil City

Bob McCullough  
Brookville

Evelyn Mezerski  
Carnegie



Beverly Miller  
Kittanning

James Miller  
Bradford

Marlin Miller  
Fairmount City

Nancy Mong  
Knox



Sally Monnoyer  
Brookville

David Moore  
Cecil

Rex Mergan  
Rimersburg

Richard Nelson  
Clune



William O'Connell  
Mt. Alan

Tom Quinn  
Reynoldsville

Carol Raboch  
Pittsburgh

Lee Rednack  
Jeannette



Beverly Reese  
Carnegie

Carol Roch  
Pittsburgh

Lester Schickling  
Clearfield

Ronald Schreengast  
Karns City



Janet Serena  
Caudersport

Gary Shay  
Knox

Dan Shilliday  
Franklin

Dean Singer  
Marienville



Pat Smathers  
Clarion

Ernest Smith  
Oil City

Jan Smith  
Charleroi

Elvin Snyder  
Timblin

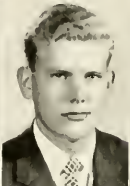


Joyce Stewart  
Titusville

Willard Suttan  
Tyranville

Dale Swanson  
Hazel Hurst

LaVerne Terwilliger  
Fisher



Helen Thampson  
Meadville

Joe Volansky  
Sykesville

Lais Walker  
Zelienople

Eugene Weinfurther  
Cheswick



Francis Whalen  
Wheatland

Raymond Whitmer  
Emporium

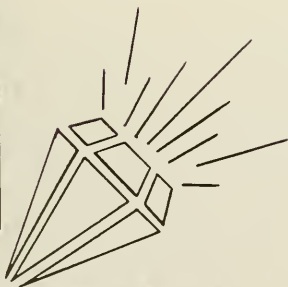
Richard Weisen  
Franklin

Neal Williams  
Clarion



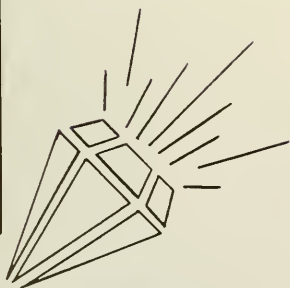
David Young  
New Bethlehem

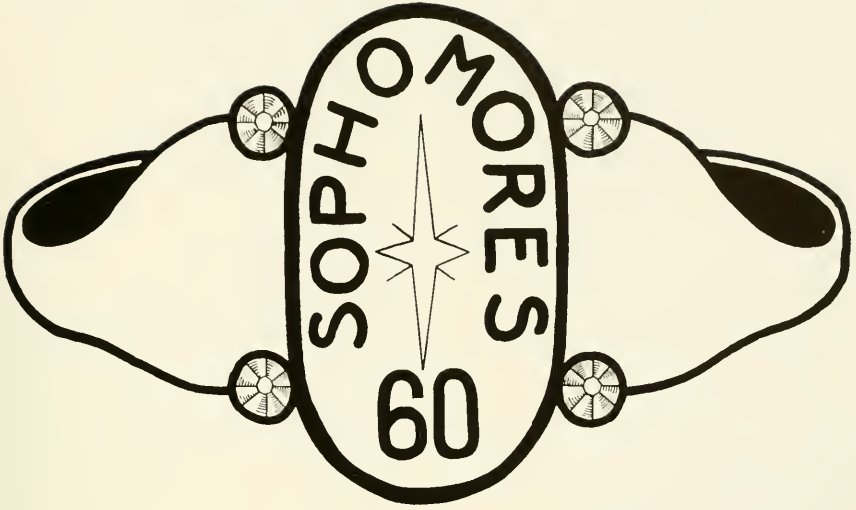
Dick Yaunt  
Fard City











"And taper fingers catching at all things,  
To bind them all about with tiny rings."

John Keats

**President**  
Jim Graziano



**Vice President**  
John Lawman



**Secretary**  
Doris Calhoun



**Treasurer**  
Bernie Uzelac



## Sophomore Class

After a summer of varied activities the sophomores returned; eager to get back to work and to renew old friendships. This, of course, we did at the Union. Very soon we began to make plans for Homecoming, an event in which we participated actively. Myrna Bastide and Linda Dillman were our attendants to the Homecoming Queen. Cardelia Douds was the Alpha Gamma Phi Queen. Selected by the Sigma Tau Gammas as their queens were Doris Calhoun and Marge McLaughlin.

The class was successful another year under the guidance of Dr. Dana Still. Doris Calhoun was re-elected as secretary. Some of the activities and pleasant events of which the class is proud were our sponsoring of the pre-Easter dance and Ilene Crassan's receiving the Alta Morehead scholarship.

Now as upperclassmen we are looking forward to more rewarding and enjoyable years at Clarion.

# Sophomores

Gloria Allen  
Pittsburgh



Alice Bickel  
Parker

Mercedes Bostide  
Sharon

Celeste Blockowicz  
Bridgeville

Ron Batz  
Parker



Mike Braddock  
Altoono

Claire Bowley  
Brookville

Janice Brozer  
New Kensington

Russell Buhite  
Reynoldsville



Tom Calkins  
Johnsonburg

Doris Calhoun  
Brookway

Emily Calloway  
Sewickley

Linda Conterno  
Freeport



Larry Carson  
Franklin

Linda Carlson  
Ridgway

Judy Clark  
Johnstown

Nancy Clark  
Corsica



Adela Cipallone  
New Kensington

Marjorie Clawson  
Salino

Ronald Cochran  
New Bethlehem

Norma Colton  
Meadville



Wayne Costo  
Library

Harold Contie  
Vondergriff

Bob Cross  
Clarion

Eileen Crosson  
Clarion



Thomas Dougherty  
Clarion

Ronald Danielson  
Mt. Jewett

Roger Daum  
Oil City

Roland Davis  
Franklin

Janet Decker  
Clarion

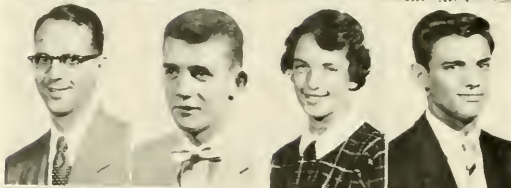


Jean Decker  
Clarion

Vera DeBlonder  
McDonald

Philip Delansky  
Osceola Mills

Daniel Depp  
Hamilton

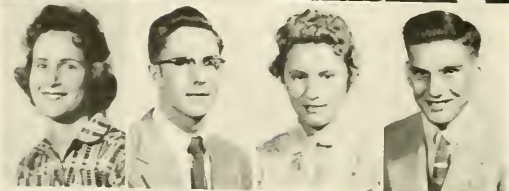


Linda Dillman  
DuBais

Nick DiNunzia  
Apallo

Cardelia Dauds  
Avanmore

Eugene Drayer  
Sligo

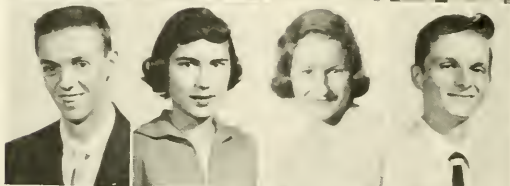


Thelma Dubick  
Ambridge

Jim Dunn  
Oakmont

Paul Enoch  
Canansport

Margaret Farkas  
Coraopolis



Sally Gazda  
Mt. Pleasant

James Gardan  
Mahanog

Ray Gourley  
Fairmount City

James Graziana  
Warren



Helen Grudawski  
Pittsburgh

Sandra Gustafson  
Warren

Dean Harfield  
Johnstown

Patricia Haupt  
Canemaugh

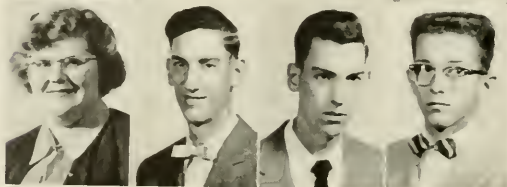


Lois Hebner  
Saegertown

Diana Hemstreet  
Elbion

Avanell Henry  
New Bethlehem

Irvin Henry  
Sligo



Marvin Henry  
Sligo

George Howe  
Pleasantville

Nancy Johnson  
Punxsutawney



Gerald Keneske  
Clorion

Ruth Kenemuth  
Knox



James Kifer  
Clorion

Joy Lathers  
Bellevue

Walter Klein  
McDonald

Betty Larimer  
Sligo

Herbert Laughman  
Hanover

Albert Lerch  
Sligo



James Little  
Jeannette

John Lewis  
Brookville

Caroline Livermore  
Foxburg

John Lowman  
Brookville



Adelaide Martin  
Sewickley

Harold Lucas  
New Bethlehem

Fred Matheson  
Ridgway

Doyle Maurhoff  
Bruin



Norman McCoy  
Rimersburg

Janet Maxwell  
Slippery Rock

Jaan McCrumb  
New Castle

Bill McCullough  
Franklin



Carolyn McKinney  
Sligo

Wayne McDowell  
Dora

Margie McLaughlin  
Erie

Wade Meyer  
Rural Valley



Pete Molinaro  
Warren

Keith Miller  
Knox

Donald Moore  
Brookville

Jim Maere  
New Kensington

Pat Murray  
Blairsville



Robert Myers  
Hamestead

Max Narby  
Emporium

Carol Nasan  
Erie

James Nelson  
Pleasantville



Jaanne Nalsheim  
Canaquenessing

Frederick Olan  
Clarian

Judy Pfeifer  
Evans City

Richard Platt  
DuBais



Veronica Palak  
Jahnstown

Judith Ann Pyle  
Salisbury

Ronald Rickhart  
Washington, Pa.

Deanna Ritchey  
Franklin



Judy Rogers  
Brackway

Tam Rassey  
Carsica

William Rassiter  
Petralia

Lee Rause  
Pittsburgh



Betty Rupert  
Oil City

Dan Ryber  
Jahnstown

Albert Sabatini  
Russellton

Betty Sarka  
New Castle



Charles Scalise  
Turtle Creek

Mary Schimp  
Clarian

Jaanne Scatt  
Pittsfield

Charles Shankel  
Templeton



Wesley Sherman  
Sligo

Carol Sherrieb  
Tarentum



Jahn Sias  
Castle Shannan

Helen Slattery  
DuBais



Jahn Slaugenhaupt  
Clarion

Karlene Smith  
Ridgway

William Smojice  
Canemaugh

Ray Smrekar  
Mt. Jewett



Barbara Sommerville  
Strattonville

Herbert Strain  
Valencia

Dick Summerville  
Knox

Nancy Swanson  
Duquesne



Eugene Szul  
Fard City

William Temple  
New Castle

Paul Terpak  
Grassflat

Fred Thickey  
Tarentum



Nancy Thomas  
DuBais

Katherine Tamson  
Mercer

William Truman  
Kane

Bernard Uzelac  
Canemaugh



Georgia Verlata  
Butler

Ray Weidner  
Clarion

Sharan Weisbaker  
New Castle

Bernice Welker  
Distant

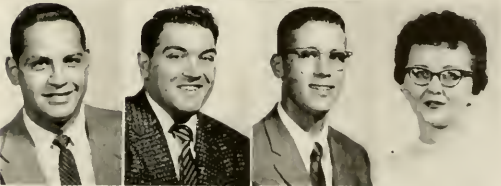


Ethel Whitaker  
Reynoldsville

Ruth Wherry  
Pittsburgh

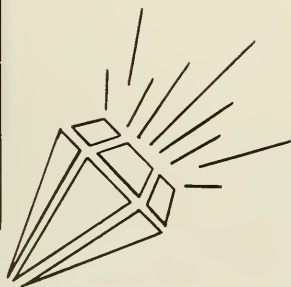
John Yeager  
Mt. Lebanon

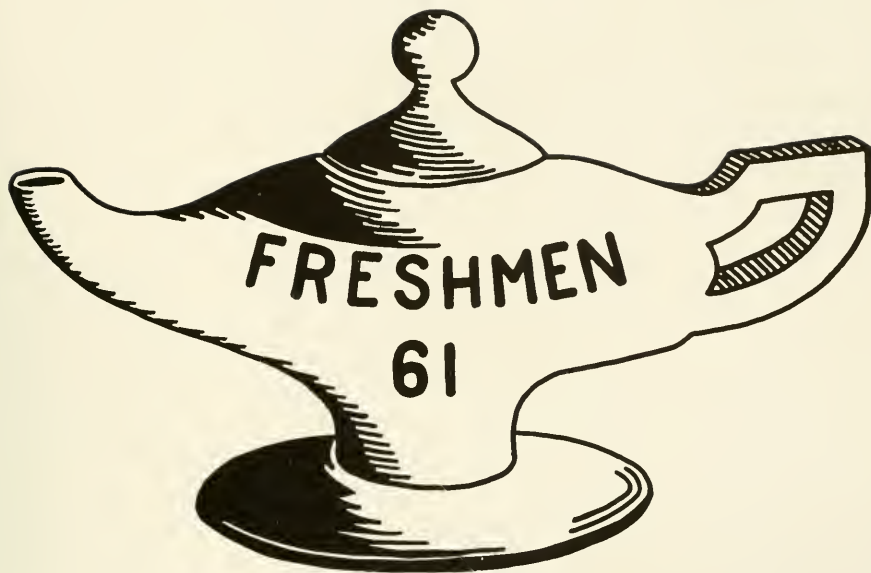
Jim Yaugh  
Clarion



Dean Yabp  
New Kensington

Adelia Zdanowski  
Arnold





“... we walk evermore  
To higher paths by brightening Reason’s lamp.”

**George Eliot**



President  
Jan Walters



Secretary  
Beverly Meyers



Treasurer  
Glenn Speedy

## Freshman Class

On September 5, 1957, freshmen registered and were assigned to their new homes in Becht, Ballentine, Egbert, Science, and Seminary Halls and private homes in the community. Excitedly we attended our first classes and social events.

Patty Dunmire and Lennie Steiner proudly represented the freshmen class on the Queen's Float at Homecoming.

The Homecoming Parade and exams were among the many new experiences for us this year. The final event of our freshmen year was the freshmen formal.

We hope to continue in the next three years with as much success.

# Freshmen

Joy Acklin  
Linesville  
Donald Anderegg  
Ellwood City



Joyce Andre  
Franklin  
Anthony Arpino  
Portage

George Artman  
Kittanning  
Turzoh Atwell  
Franklin



George Avery  
Fisher  
Steve Babish  
Portage

George Bako  
Brockway  
Rita Baker  
Sharon



Mariella Bornes  
Pittsburgh  
Raymond Barrett  
Dayton

Joseph Bayhurst  
Oil City  
Eleanor Beacom  
Tarentum



Barbara Beers  
Clorion  
William Beightal  
Franklin

Donald Bell  
Knox  
Christine Besson  
Saegertown



Richard Best  
Knox  
Ray Berkey  
Alum Bank

John Bertani  
McKeesport  
Raberta Berlinski  
New Kensington



Katherine Bish  
Summerville  
Jack Bloine  
Mt. Pleasant

Larry Blumer  
Pittsburgh  
Elizabeth Borden  
Sheffield



Daniel Bowser  
Eau Claire  
Charles Bowser  
Ford City

Corale Braund  
DuBois  
Mary Lee Brisson  
Foxburg



Janet Buddy  
Titusville  
Herbert Burns  
Clorion

Thomas Buzard  
Rimersburg  
Glenn Byers  
Summerville



John Comerote  
Greensburg  
Joseph Copizzi  
Ford City

Charles Carberry  
Albion

John Carley  
Kittanning

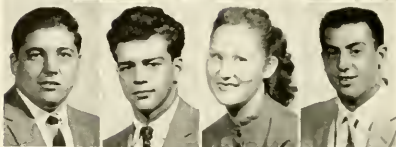


Delores Carlson  
Irwin

Vido Carlstrom  
Akeley

Micheal Chramyak  
Pittsburgh

David Clark  
Marble

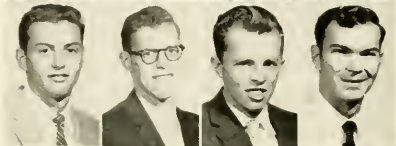


Virginia Claypaale  
Worthington

Joseph Cochran  
Ellwood City

Sanford Cohen  
Pittsburgh

William Colestra  
Bradford

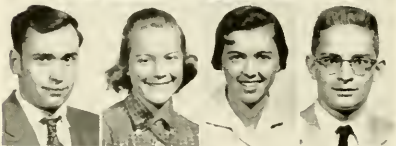


Richard Cammons  
Heathville

Jesse Copenhaver  
Clarion

Taylor Cotton  
Shippenville

Marianne Crosse  
Clarion

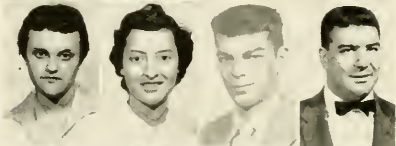


Frances Crowe  
Johnsburg

Richard Crum  
Clarion

Billie Cunningham  
Ford City

Christina D'Ascenza  
Pitcoirn

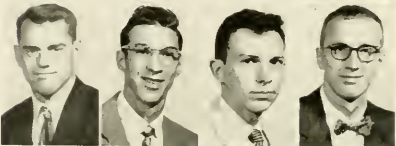


Louis Dougherty  
Clarion

William Doy  
Torentum

Richard Delang  
Johnsburg

James DeMarte  
Clarion



Joseph DeMarte  
Kone

Frederick Dembasky  
Punxsutawney

Patrick DiLuigi  
Bethel Park

Mary Ditz  
Fryburg

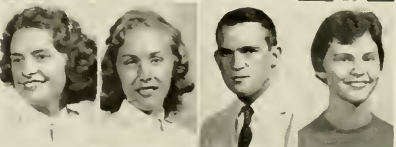


Janet Dalby  
Strattonville

James Damon  
Lloydell

Janet Douglas  
Oil City

Constance Dubart  
Springdale



Francis Dunlay  
Oakmont

Patricia Dunmire  
Grove City

Mortha Dunn  
Oakmant

Jay Duttan  
Taylorsville



Beverly Eberhart  
New Bethlehem

Charles Eddinger  
Knox

Charles Endlich  
New Kensington

Carol Engelbach  
Johnstown



Richard Engle  
Knoxdale

Daniel Estadt  
Pittsburgh

Hannah Evans  
Leechburg

Robert Everhart  
Tyrone



Mary Jo Eyth  
Butler

Roy Ferris  
Jerome

Charles Finnegan  
Windber

Karl Flarie  
Koppel



Nancy Foust  
Foxburg

Linda French  
Washington

Patricia French  
New Kensington

Claire Fuller  
Brookville



Donald Gaiser  
Korns City

Jan Gardner  
Greensburg

Jahn Gotea  
Mt. Altan

Delares Ganzales  
Springdale



Donald Grady  
Strattanville

Janet Grayson  
Pitcairn

Fae Grettler  
Franklin

Tam Hanford  
Clorion

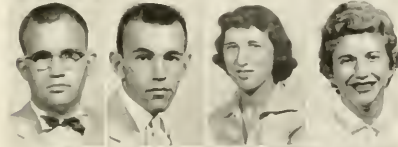


Harry Hankey  
Rimersburg

Alfred Harris  
Pittsburgh

Ray Harvey  
Sykesville

Clifford Hathaway  
Kittanning

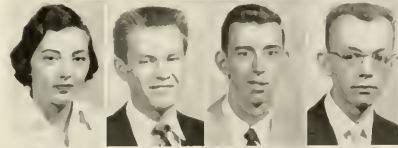


Carol Haubrich  
Rentan

Mary Hay  
DuBois

Charlotte Hayes  
Luthersburg

James Henderson  
Washington, Pa.

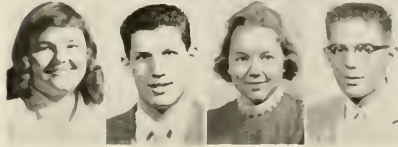


Keith Henry  
Mayport

Ronald Henry  
Shipperville

Rhoda Hickman  
Pittsburgh

Leroy Hill  
Borking



Rita Hilty  
New Kensington

Floyd Himes  
Braakville

Kenneth Himes  
Mayport  
Danna Hackman  
Oil City



George Hadak  
Dicksonville  
Richard Hahn  
Warthington

Jahn Haaver  
East Brady  
Rebecca Haaver  
California



Karen Hasack  
Clarian  
Nancy James  
Kane

Chester Johnson  
Titusville  
Jayce Johnson  
Shilaeta



Janet Karr  
Falls Creek  
Phyllis Keeler  
Pittsburgh

Linda Kelly  
Carry  
Ralph Kemmer  
Expart



Nancy Ketner  
Foxsburg  
Robert Killmer  
Tianesta

Jack King  
Ridgway  
Charles Klingensmith  
Leechburg



Carol Knapp  
New Kensington  
Michael Knasky  
Braakville

James Kackler  
Franklin  
Faith Kahler  
Braakville



Russell Kuntz  
Reynaldsville  
Steve Kurcis  
Windber

Paul Laing  
Bradford  
Diane Langham  
Kittanning



Donald Lash  
Lickingville  
James Laughen  
New Bethlehem

Emmett Lee  
Pittsburgh  
Margaret Lewis  
Warthington



John Lewark  
Windber  
Sylvia Lind  
Warren

Linda Long  
Irwin  
Edward Lucas  
Grassflat



Claude Luttrell  
St. Petersburg  
Betty Manna  
Johnsburg



Beverly Mansfield  
Johnstown

Raymond Marcucci  
Hillards

Ruth McChesney  
Pittsburgh

Narman McCay  
Rimersburg

Thomas McElhatten  
St. Petersburg

Robert McElravy  
Shippenville

Ronald McMaster  
New Bethlehem

Vivian McNutt  
Aliquippa

Danald Miklawick  
Pittsburgh

Helen Mindek  
Ambridge

Carol Maare  
Titusville

Robert Maare  
Kittanning

Kenneth Mundy  
Altaona

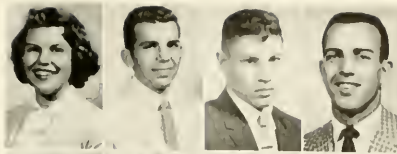
Gary Murtland  
Warthington

Robert Nichal  
Warthington

Allen Nichols  
Gibsonia

Lucy Park  
Braakville

Robert Patten  
Strattanville



John McCabe  
Philipsburg

Jack McCash  
Oil City



Nancy McCracken  
Kittanning

James McDonald  
Johnsburg



George McFarland  
Greensburg

David McLaughlin  
Pittsburgh



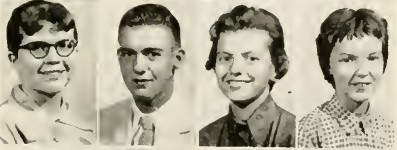
Richard Means  
Vandergrift

Beatrice Meckley  
Kane



Patricia Mitchell  
Braakville

John Malsky  
Irwin



Donna Maran  
Altaona

Dorothy Mareland  
Oil City



Robert Muse  
Franklin

John Naylor  
Windber



Ann Nalf  
Tarentum

Paul Palmer  
Pittsburgh



Robert Pearson  
Library

Georgianna Perry  
Clarian

Vonnie Pierre  
Har-Brack

Jahn Pilewski  
Oil City



Henry Palaska  
Windber

Fran Quattro  
Franklin

Angela Queria  
Vandergrift

Linda Rabatin  
Verona



Joseph Racioppi  
Canansburg

Claude Raible  
Pittsburgh

Judy Randall  
Smethpart

Mary Lau Raybuck  
Brookville



Catherine Richardson  
Clarion

Nancy Radgers  
Franklin

Beverly Roe  
Butler

David Rosenquest  
Strattanville

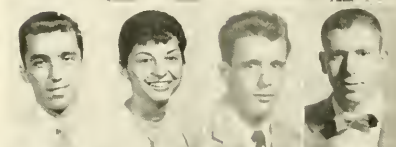


Harriet Rothrack  
Brookville

Arthur Sandy  
Sykesville

Cluey Sandy  
Sykesville

Janice Sarcinella  
Farrell



Paul Schuster  
Pittsburgh

Albert Sebring  
Summerville

Eugene Sheffer  
Van

Carl Shirey  
Sligo



Carol Schanek  
Jahnstawn

Jahn Shrapshire  
Pittsburgh

Ethel Sieber  
McKeesport

Marian Siegel  
Leeper

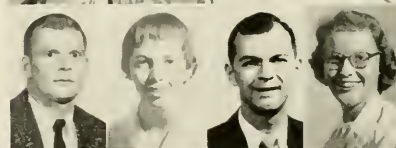


Phyllis Siegel  
Irwin

Nancimae Sillia  
Spartansburg

James Simpsan  
Brookville

Charlene Smathers  
Clarion

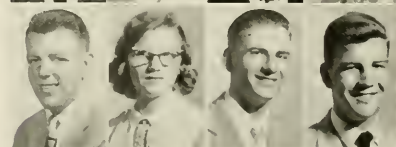


Donald Smith  
Sykesville

Eleanor Smith  
Summerville

Jahn Smith  
Mt. Pleasant

Barbara Snyder  
New Florence



Malcolm Snyder  
Luthersburg

William Snyder  
Timblin

James Sorenson  
Mt. Jewett

Glenn Speedy  
Rixford

Linnie Steiner  
Pittsburgh

Marjorie Stewart  
Titusville

James Stuart  
Knox

James Summerville  
St. Petersburg

Nancy Swape  
Luthersburg

Bloine Tadd  
Punxsutawney

Donald Turner  
Butler

Hilary Vida  
DuBois

Eugene Waitkus  
East Vandergrift

Jon Walter  
Kane

Joyce West  
Brookville

Thamos Whitmare  
Knox

Duane Walfe  
Claysville

William Yanek  
Sykesville

Ben Zappa  
Sharon

David Zilcosky  
Johnsburg

Leland Stahlman  
Emlenton

Robert Stahlman  
Corsico

Mary Stewart  
Oil City

Sharon Stewart  
Zelienople

Mox Summerville  
Knox

Lowell Switzer  
Knox

Dan Toplaski  
Cameron

Gilda Tarchia  
Johnsburg

Renald Vespa  
Windber

Robert Volansky  
Sykesville

Paul Wasson  
Duke Center

Nancy Wertz  
Winburne

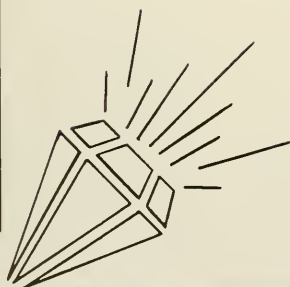
James Williams  
New Florence

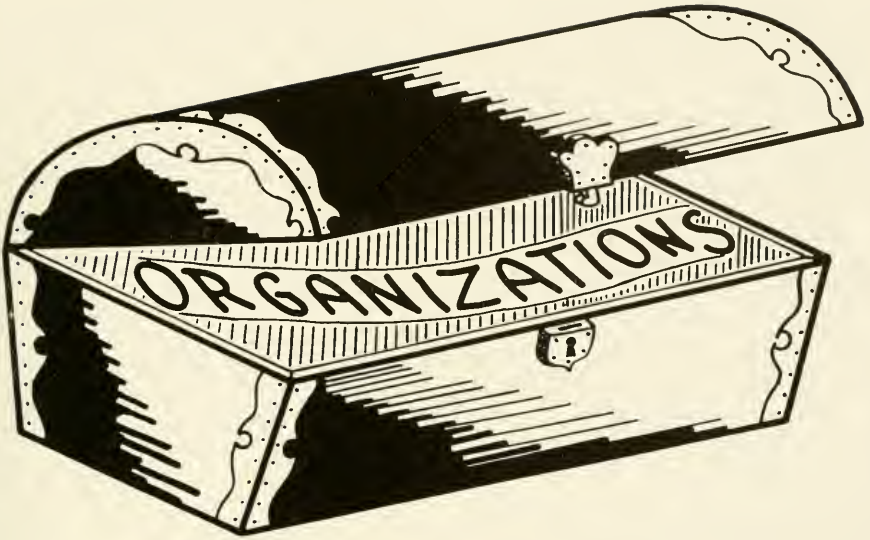
Gloria Wilson  
Tianesta

James Yaunt  
Vandergrift

Patricia Zacherl  
Clarion







This chest and all its store.



1st row: Doris Stoley, Jane Davis. 2nd row: Dorothy Wadsworth, Sandra Moxwell, Rose Mary Landon. 3rd row: Col Payne, Bill McDowell. 4th row: Tony Zisis, Floyd Barger, Chester Billings, Lee Deter.

## Who's Who

Fifteen of this year's seniors were elected to membership in Who's Who. Membership in "Who's Who in American Colleges and Universities" is based on scholastic achievement, leadership ability, and contribution to the school which the member is attending.

Clarion has been represented in "Who's Who" since the organization's beginning in 1934. Members of the organization receive national recognition in the annual publication of the organization entitled "Who's Who in American Colleges and Universities" and benefits from an excellent placement service affiliated with the organization.



1st row: Sandra Maxwell, Norma Colton, Dr. Chondler. 2nd row: Carol Emig, Rose Mary London. 3rd row: Ed Poprik, Jim Higby. 4th row: Tony Zissis, Don Overheim, Don Gragon.

## Student Senate

### Officers

President	Tony Zissis
Vice President	Ed Poprik
Secretary	Priscilla Burns
Advisor	Dr. Poul Chandler

The Student Senate is made up of representatives from the student body and is concerned with the welfare of the Clarion students. Under the guidance of Dr. Paul G. Chandler, the Senate discussed and approved the student activities' budget for the 1957-58 term.

Other business this year included setting up the rules for Freshman Week and sending representatives to the annual Student Government Conference.



1st row: Helen Grudawski, Ruth Decker, Jeanette Corbett. 2nd row: Rose Mary Landon, Carol Emig, Lindo Long, Marge Nicholson. 3rd row: Sandy Moxwell, Virginia Alcorn, Jim Wigton, Cal Payne, Regina Thornton. 4th row: Richard Pesarcik, Tany Cardimane, Dick Yount, Bill Long, Mr. Kuhner, Evelyn Mezerski.

## Sequelle

This year's **Sequelle** staff under the sponsorship of Mr. Kuhner chose the theme "Treasures" as the building block for the 1958 publication.

The fine art work in this year's book is due to the talent and efforts of Richard Pesarcik and Joy Lathers, the art staff. The photography of the publication was guided by the planning and work of Calvin Payne, co-editor of the 1958 **Sequelle**, and Dick Yount, photography editor. The literary department, under the guidance of Marge Nicholson, literary editor, and her staff of faithful workers and efficient typists, was able to add interest to the book. Jim Wigton, business manager, handled the financial problems.

All the members of the staff would like to thank Mr. Kuhner for his guidance and help and Dr. Moody for helping the literary department with its big job of proofreading.

We hope that the 1958 **Sequelle** is one you will remember for a long time as being a unique and representative depiction of days at "the college on the hill," a dearly remembered item in your treasure chest of life.





1st row: Ann Messinger, Rose Mary Landon, Dee Danziger 2nd row: Delores Gonzales, Carol Engleboch, Ginny Alcorn, Jonet Maxwell, Kathy Tomson, Sonly Maxwell, Vonnie Pierre.

## Women's House Council

### Officers

President

Rose Mary Landon

Vice President

Delores Danziger

Secretary

Katheryne Tomson

Treasurer

Ann Messinger

The Women's House Council is the governing body of the women's dormitories. It strives to improve dormitory living and express the women's opinions on important matters.

Among its activities are freshman orientation, the annual Christmas party, the big sister program for freshmen, and joint dinners with the Men's House Council.



1st row: James Graziano, James Miller, Dean Yabp, Jim Loughran. 2nd row: Joe DeMarte, Mel Mandic, Don Overhiem, Don Begany, Sam Viviana, Paul Palmer, Jon Walter.

## Men's House Council

The Men's House Council is actually composed of two separate house councils, Egbert Hall House Council and Ballentine Hall House Council.

However, the purpose and organization of the councils are the same. Each council is made up of representatives from the floors in each of the dorms. It is through these representatives that business concerning the dorms is transacted and complaints and adjustments are taken care of.

The men feel that this procedure is a fair and democratic way of accomplishing their tasks.



1st row: Joyce Andre, Miss Pryor, Faye Dryden. 2nd row: Cal Payne, Bob Meyers.

## Social Committee

This year the Social Committee reached new heights with its sponsorship of the "Woody Herman Concert".

The classes were represented by Clavin Payne, senior, Faye Dryden, junior, Robert Anderson, sophomore, and Joyce Andre, freshman.

Dances, movies, bowling, and a swimming party highlighted this year's social calendar.

In all this planning, the committee was ably assisted by Miss Pryor and Dr. King.



1st row: Dr. Bernard, Bob Meyers.  
 2nd row: Sally Gazda, Adela Cipillone, Rita Hilty, 3rd row: Adelaide Marjin, Julie Johnson, Delares Gonzales, Beverly Roe, Sharon Stewart, Bonita Mitchell, Theda Lewis, Mrs. Banner. 4th row: Beverly Reese, Phyllis Keeler, Pally Hay, Cristina D'Ascenza, Gloria Allen, Jeon Karp, Joan Alexander, Linda Dillman, Vannie Pierre.



1st row: Pat French, Jean Dahler, Linda Kelly, Marian Bartley, Ann Nolf. 2nd row: Carol Sherreib, Kathy Richardson, Pat Dunmire, Thelma Dubick, Janet Budday, Fae Grettler, Rose Mary London, Janet Douglas. 3rd row: Janet Serena, Carol Roch, Linda Carlson, Janet Dolby, Doris Book, Margaret Farkas, Angela Querio, Eleanor Smith, Janet Sarcinella.

## Student Education Association of Pennsylvania

### Officers

President  
 Vice President  
 Secretary  
 Treasurer  
 Sponsors

Marge Farkas  
 Gloria Allen  
 Jean Karp  
 Carole Sherreib  
 Miss Carolyn Mullen  
 Dr. Alpha Bernard

The Student Education Association of Pennsylvania formerly the F.T.A., is a very active organization on campus. Aside from regular meetings, Clarion was host for the Mid-Western Convention District Conference, and has been represented at other educational conferences.

At the regular meetings held in Seminary Hall, the members enjoy a fine program which includes speakers, discussions, workshops, and films. This educational program is supplemented by other projects such as a float for Homecoming, sponsoring a movie, reading to the children at Ross Memorial Library, and a banquet in the spring with the A.C.E.

The purpose of S.E.A.P. is to provide prospective teachers with a background for the teaching profession, to give them training in leadership, and to help them grow professionally.



1st row: Janet Doug'os, Rose Mary London, Linda Kelly. 2nd row: Delores Gonzoles, Beverly Reese, Margie Clowson, Cordelio Douds. 3rd row: Sandy Gustafson, Carol Rach, Joan Alexander, Ethel Whitaker. 4th row: Bonita Mitchell, Betty Sarko, Marilyn Rabb.

# Association for Childhood Education

## Officers

President

Rose Mary London

Vice President

Beverly Reese

Secretary

Sandra Gustafson

Treasurer

Betty Sarko

The A.C.E., Association for Childhood Education, is an organization whose purpose is to work for the education of children and aid in their well being. It also works to raise the standard of teacher preparation and to encourage professional growth of teachers and school leaders.

A.C.E., which meets the fourth Wednesday of each month, opened the year with a party for its old and new members. Its first big project of the year was the joint work project with S.E.A.P. on a float for Homecoming. Its major project for the year was a compilation of a booklet containing games, songs, stories, poems, units, and other materials and information of value to the student teacher.

A.C.E. had a profitable and enjoyable year under the guidance and assistance of its sponsor, Miss Pemberton.

1st row: Mr. Robbe, Carolie Whalen, Nancy Swanson, Marilyn Rabb. 2nd row: Pearl Banner, Marian Bartley, Carol Nason. 3rd row: Ja-Ann Scott, Dick Wiesen, Bonita Mitchell, Chuck Klingensmith, Rose Mory Landon. 4th row: John McKeown, Nick DiNunzio, Dick Commons, Richard Pesarick.



1st row: Carol Rach, Jean Karp, Jaan Alexander. 2nd row: Deanna Ritchey, Jean Elder, Ruth Decker, Jay Lothers. 3rd row: Max Ambrase, Judy Rodgers, Stan Strain. 4th row: Rich Nelson, Harold Conlie, Robert Brasnahan, Ran Reckhort, Nick Armatas, Rody Washowich.



## International Relations Club

### Officers

President  
 Vice President  
 Treasurer  
 Recording Secretary  
 Corresponding Secretary  
 Parliamentarian  
 Sponsors

Richard Wiesen  
 Bob Brasnahan  
 Roddy Wasowich  
 Ruth Decker  
 Carol Nason  
 Nick Armatas  
 Dr. James King

Mr. Arnold Stinchfield, Mr. Charles Rabbe

The International Relations Club welcomes the membership of all students who are interested in current international affairs. Clorion's I.R.C. is affiliated with both the Pennsylvania and the National Associations of International Relations Clubs, and the organization is encouraged to openly discuss and attempt to evaluate some of the important social problems of our world.

With the guidance of the club's sponsors, Dr. King, Mr. Stinchfield, and Mr. Robbe, I.R.C. had a program of activities which included discussions, debates, films and guest speakers. The climax of the year's activities is the annual United Nations trip to New York City which occurs in early spring. The trip always proves to be very enjoyable as well as educational.





1st row: Theodore MacDonald, Mr. Kuhner, Ed Sloff. 2nd row: John Bosway, John McKeown, Phil Massalsky, Lee Rouse, Paul Franklin, Hugh Hogle, Bob Essenwein, George Lord.

# Geography Club

## Officers

President

Ted MacDonald

Vice President

Duone Lucas

Secretary

Bab Essenwein

The Geography Club is made up of those students who are interested in this subject and learning more about it.

The club which meets during the fourth period on Tuesdays twice each month takes tours of various places of geographical interest in this area.





1st row: Don Grogan, Mr. Spence, John McCoy. 2nd row: Carol Tribley, Deon Yobp, John Shropshire, Silvio Lind, Carol Moore.

## Art Club

### Officers

President	John McCoy
Vice President	Don Grogan
Secretary	Pat Smathers
Treasurer	Deon Yobp
Sponsor	Mr. Spence

Art Club, under the sponsorship of Mr. Spence, provides opportunity for those students interested in art to further develop their talents in this area.

Each member is free to choose an area of art in which he is interested and to dabble in this area. Oil and water color painting, ceramics, textile painting and enrichment, leather work, and sculpture are among the popular interest areas.

Thanks and credit are due Mr. Spence, art instructor, for his continued guidance and encouragement.



1st row: Mr. Mead, Gloria Wilson, Rita Hilty, Helen Thompson, Mr. Caldwell. 2nd row: Noncimae Sillio, Mcrian Siegel, Mary Lee Ditz, Vonnie Pierre, Faith Kohler, Kathy Richardson, Marian Bortley, Peg Lewis. 3rd row: Janet Sorcinella, Fae Gretler, Joan McCrumb, Fred Bell, Roy Kramer, Nick Armatas, Dick Crum, Nancy Rodgers, Beverly Meyers, Carol Englebach. 4th row: Dean Singer, Jon Gardner, Ron Reckhart, Roland Davis, Paul Palmer, Edgar Huffman, Dick Hawells, Fred Thickey, Keith Henry, Lynn Alter, Jim Sarenson, Bob Meyers.

## The College Players

### Officers

President  
 Vice President  
 Secretary  
 Treasurer  
 Property Manager  
 Sponsors

Fred Thickey  
 Roy Kramer  
 Joan McCrumb  
 Fred Bell  
 Helen Thompson  
 Mr. Caldwell, Mr. Mead

The pungent odor of greasepaint, the dazzling shafts of the bright spots, the tremulous excitement of the last-minute hustle and bustle, the afterglow of satisfaction from an enervating performance—of such is the theater made up. And in all these phases of exciting theater work, The College Players are involved.

The College Players Dramatics Club is an organization for the advancement of drama appreciation and for the broadening of experiences in the fine arts. Its members are from many fields and from many backgrounds, but they all wish to acquire experience in any or all of the various facets of theater work, and acquire a knowledge and an understanding of the sparkling history of the stage.

Club meetings are given over to both business activity and social functions. Entertainment, instruction in practical theater knowledge, and preparing for the one-act assembly plays, skits for campus and town organizations, and the three-act plays take up the time at these meetings. The annual picnic at Cooks Forest is one of the high points of the year.

Mr. Caldwell and Mr. Mead, the faculty sponsors, have guided and directed The College Players through another very successful year and have many interesting ideas for the future.



1st row: Mr. Mellan, Carol Hague, Nancy Wertz, Dr. Still. 2nd row: Carolyn McKinney, Marion Bartley. 3rd row: Betty Larimer, Kay Bickel, James Gordon, Marilyn Ginkel, Kathy Richardson. 4th row: William Rossiter, Robert Brosnohan, Lynn Alter, Ray Kramer.

## Press Club

### Officers

President  
Secretary  
Sponsors

John Morrow  
Marilyn Ginkle  
Dr. Dana Still  
Mr. John Mellan

The Press Club is composed of members of the **Clarion Call** staff. The purpose of the staff is to publish a school paper, **The Clarion Call**, during the school year. Through the publishing of the Call the members gain valuable experience which will help them to prepare for future work as high school newspaper sponsors. When the members of the club are not preparing to publish the paper, they attend meetings at which programs related to various aspects of journalism are given.

Each year, the club elects students to serve as editors in the various departments. This year Lynn Alter served the staff as Editor-in-Chief, News Editor was Ray Kramer, Feature Editor was James Priestler, Sports Editor was John Marrow. Supervising organizational write-ups was Helen Thompson, while Joy Lathers supplied the art work, and James Miller and Bill Rossiter, along with Dr. George Lewis capably administered the photography work of the Call.

The members of the Press Club are to be congratulated for their earnest work in making a better newspaper for Clarion State Teachers College.



1st row: Carolyn McKinney, Connie Dubart, Dr. Lewis, Lois Jahson, Janet Douglas.  
 2nd row: Betty Larimer, Marilyn Ginkle, Doris Baak, Kay Bickel, Carol Hague.  
 3rd row: Alice Exley, Bill Abplonalp, Dick Yaunt, Virgil Lucas, Fred Matheson, Virginia Beaty.  
 4th row: Dale Swanson, Herbert Burns, Lester Schickling, Sam Viviono, Dan Overhiem, James Gardon, William Rassiter.

## Camera Club

### Officers

President	Fred Matheson
Vice President	Lester Schickling
Secretary	Marilyn Ginkle
Treasurer	Doris Book
Reporter	Carolyn McKinney
Advisors	Dr. Donald Peirce Dr. George Lewis

The Camera Club is an organization made up of students interested in photography. During the year demonstrations are made, slides shown, and talks are given on the taking, development, enlargement, and printing of pictures.

Each year the club has a photography contest and the best picture in each of four groups is chosen by a committee of judges. Requirements for entering the contest are to take, develop, and print the picture personally.

Club members may use the darkroom and photographic supplies at any time.



1st row: Margie McLoughlin, Cordelia Douds, Janet Serena, Adela Cipillone, Sally Gazda, Cathy Richardson. 2nd row: Jane Davis, Nancy Trimbur, Korlene Smith, Phyllis Siegel, Nancy Ragers, Betty Manno, Helen Grudawski. 3rd row: Solly Croin, Miss Bonner, Jerry Clark, Edward Poprik, Ed Slaff, Pete Molanaro, Dan Christie, Cannie Dubart.

## Newman Club

### Officers

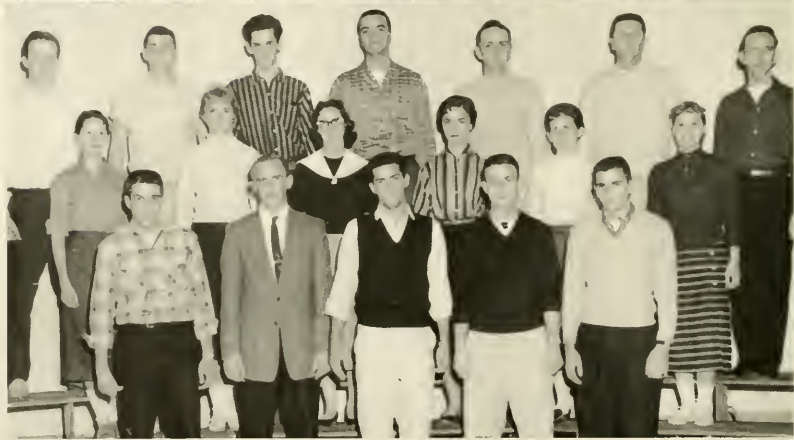
President	Edward Poprik
Vice President	John Dolmayer
Recording Secretary	Cordelia Douds
Corresponding Secretary	Helen Grudowski
Treasurer	Don Christie
Sponsors	Miss Mary Kay Banner Dr. Alpha Bernard
Chaplains	Father Schreifer Father Meisinger

The purpose of the Newman Club is to foster the growth of the "Catholic Intellectual Mind" on non-Catholic campuses, and the club has carried out these religious, social, and educational activities on the Clarion campus during the 1957-58 school year.

Panel discussions, guest speakers, and motion pictures provided the programs at the regular club meetings.

In October, ten members represented the Clarion chapter at the Middle Atlantic Province conference at Allegheny College, and in November, several members attended the Newman Club School of Catholic Thought at Hershey, Pennsylvania.

A Communion breakfast, an informal initiation, a get acquainted party, a combined S.C.A. and Newman Club weiner roast, maintenance of the bulletin board in Seminary Hall, erecting the Nativity scene with S.C.A., Christmas caroling and the observance of Cardinal Newman Day are some of the activities included in the Newman Club program.



1st row: Max Narby, Jim Laughman, James Graziano, James Little, Paul Terpak. 2nd row: Julia Davis, Nancy Swanson, Hanna Evans, Angela Querio, Mary Lee Ditz, Marian Sigel. 3rd row: Bill Yanek, Dave Chestnut, Charles Bower, Paul Schuster, Eugene Waitkus, Claude Rioble, Eugene Szul.

1st row: Art Sandy, Ed Lucas, Ron Vesper, Joe Capozzi, Joe Racoppoi. 2nd row: Mary Schimp, Bobbie Berlinski, Joan Alexander, Rita Baker, Potty Zocheral. 3rd row: Jim Damon, Paul Palmer, John Siso, Sam Viviano, Robert Brosnohan, Joe Valanski, Mike Braddock.



1st row: Ann Nolf, Marilyn Rabb, Jayce Johnson, Lois Johnson, Sylvia Lind. 2nd row: Eleanor Beacom, Jean Dahler, Mary Smith, Beverly Meyers, Alice Exley, Caralyn McKinney. 3rd row: Martha Dunn, Ginny Beatty, Kathy Tamsan, Sally Bryan, Turzoh Atwell, Naomi Page, Judy Clark. 4th row: Christine Besson, Joon McCrumb, Carl Doalittle, Bill Day, Jim Charleton, Tom Young, Nancimoe Silia, Nancy Johnson.

1st row: Peggy Lewis, Pat Dunmire, Linda Kelly, Mrs. Banner, Myrna Bastide. 2nd row: Helen Thompson, Phyllis Keeler, Lydia Jackson, Caroline Camp, Nancy Wertz, Jean Elder. 3rd row: Fae Grettler, Vannie Pierre, Marge Stewart, Doris Book, Carol Moore, Beverly Roe, Janet Budday. 4th row: Kathleen Hilty, Pat French, Glenn Speedy, Art Harris, Bill Temple, Dean Yabb Rheda Hickman, Nancy Thomas.

1st row: Helen Slattery, Doris Colhoun, Ethel Whitaker, Emily Calloway, Janet Douglas. 2nd row: Adelaide Martin, Linda Dillman, Eleanor Smith, Jay Lalters, Sharon Stewart, Janet Sarcinella, Delores Gonzales, Sandy Hepler. 3rd row: Mary Lee Stewart, Linda Rabatin, Jim Dunn, Dick Stanford, Sally Jo Lund, Gloria Allen, Linda Carlson, Jan Verlata. 4th row: Dr. Peirce, Doyle Marurhoff, Roger Daum, Virgil Lucas, Bill Truman, Leroy Hill, Dick Yount, Al Harris, Jayce Andrea, Dr. Lewis.



1st row: Rose Mary London, Carol Sherrieb, Jeanette Corbett, Theda Lewis, Carol Nason. 2nd row: Carol Emig, Delores Marshall, Jean Decker, Jean Karp, Ruth Decker, Beverly Reese. 3rd row: Carol Rach, Mary Hay, Margie Farkos, Jack Blaine, Larry Fredrick's, Jane Decker, Lucy Park. 4th row: Dale Swanson, Bill Abplanalp, Jack Acklin, Stan Strain, Charlotte Flack, Bob Muse, Ron Reckhart, Fred Matheson.



## Student Christian Association

### Officers

President (1st sem.)  
 (2nd sem.)  
 Vice President  
 Secretary  
 Attendance Secretary  
 Treasurer  
 Sponsors

Roger Daum  
 Gloria Allen  
 Jan Verlata  
 Linda Dillman  
 Sandra Hepler  
 Dick Stanford  
 Dr. Donald D. Pierce  
 Dr. George R. Lewis  
 Dr. Paul L. Shank

The Student Christian Association, a non-denominational group, strives to promote growth in Christian character and service through physical, social, mental, and spiritual training.

At Thanksgiving time a donation was sent to Doris Bloomster, who is working with the Navajo Indians. Other projects included Christmas caroling, a special Christmas program and the annual picnic at Cook's Forest.





1st row: Mr. Flack. 2nd row: Bob Nichal, Herbert Burns, William Rasser. 3rd row: Roberta Berlinski, Dale Fogel, Albert Sebring, Dick Yount, Eugene Szul, Martha Dunn. 4th row: Bernice Welker, Carmen Micelli, Jay Acklin, Leroy Hill, Claude Raible, Paul Terpak, Norma Calton.

## Rifle Club

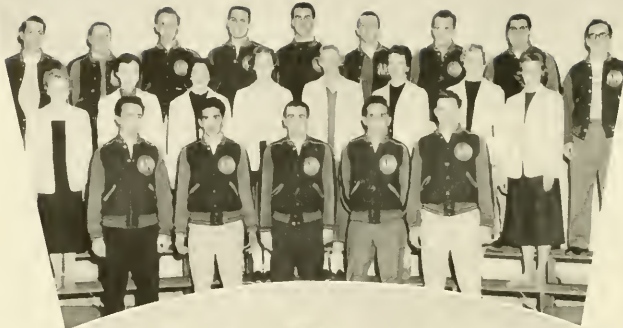
### Officers

President	Paul Terpak
Vice President	Walter Kline
Secretary	Roberta Berlinski
Treasurer	William Rossiter
Range Officers	Dale Fogel, Dick Yount
Publicity Officer	Grant Crawford
Sponsors	Mr. Charles Flack Mr. Galen Ober

The purpose of the Rifle Club is to encourage rifle proficiency and to engage in competitive activities with other college teams. Target practice for both men and women is provided with twenty-two caliber target rifles and the Army Garand semi-automatic Rifle. The Clarion State Teachers College Rifle Club is a member of the Western Pennsylvania College Rifle League composed of Clarion and the A.F.R.O.T.C. Rifle teams of Allegheny College, Grove City College and the University of Pittsburgh.

Improvements this year are 10 shooting coats which give better control over the rifle and should result in improved scores for every member of the club.

Through added conveniences and excellent leadership, the Rifle Club has had a successful and interesting year.



1st row: Bernie Uzelac, Tony Cardamone, John Lowman, Melvin Vuic, Rich Nelson.  
2nd row: Jan Boor, Ardie Gumphar, Dee Donziger, Nency Kelly, Carolyn Doverspike,  
Sally Bryon, Virginia Alcorn, Beverly Miller. 3rd row: Tom Young, Tony Aiello, Al  
Martonic, Alfred Aiello, Mel Mandic, Dan Mahony, Dave Moore, Rich Toskin, Tony  
Zissis.

1st row: Al Ragazzini, Jan Smith, Beverly Roe, Rita Baker. 2nd row: Priscilla Burns,  
Margie Nicholson, Dawn Ann McGuire, Sue Buzord, Jane Groma, Evelyn Mez-  
erski. 3rd row: Jane Davis, Jack Maare, Bob Meyers. Don Rybar, Horry Mitchell,  
Marlin Hartman, Cleve Haight.

## Outdoor Club

### Officers

President  
Vice President  
Secretary  
Treasurer  
Reporter  
Sponsors

Al Ragazzini  
Dave Moore  
Sue Buzard  
Bev Miller  
Priscilla Burns  
Dr. Donald R. Predmore  
Mr. Charles W. Robbe

bers participated in softball, archery and other sports. A chief project of the Outdoor Club is the maintenance and improvement of Cook's Forest Nature Trail. An active program is now being planned to provide new signs for the trail.

The Club's outstanding activity was the Winter Carnival, an annual all-college function held in February. An enjoyable afternoon of games and refreshments was highlighted by an evening of dancing at Harvey Gymnasium. The crowning of the Winter Carnival Queen took place at the dance.

Much credit goes to the club's sponsors, Dr. Predmore and Mr. Robbe, for their help and cooperation.

As a social organization the Outdoor Club is organized to provide recreation and healthful activities for its members. This year several outings were held at Cook's Forest where the mem-



1st row: Mary Smith, Jan Walter, Watson Luper, Mr. Campbell. 2nd row: Peggy Lewis, Turzah Atwell, Jim Charlton, Charlotte Flack, Jim DeMarte, Dee Danziger. 3rd row: Adelaide Martin, Jean Karp, Jan Humineck, Jay Acklin, Dan Overheim, Stan Strain, Dayle Marhauff, Marian Bartley. 4th row: Carol Maare, Beverly Meyers, Ed Lucas, Jack King, Edgar Huffman, Lester Schickling, Lee Rednack, Faye Dryden, Nancy Scott.

## The Waiter's Club

### Officers

President

Faye Dryden

Vice President

Ed Lucas

Secretary-Treasurer

Dan Overheim

Sponsor

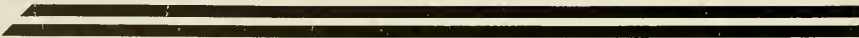
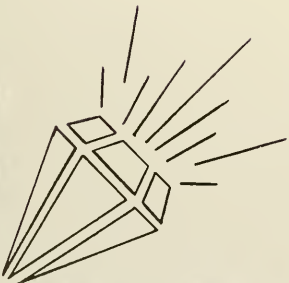
Mr. Frank Campbell

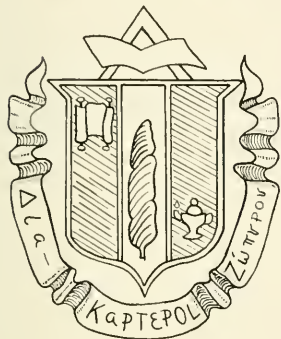
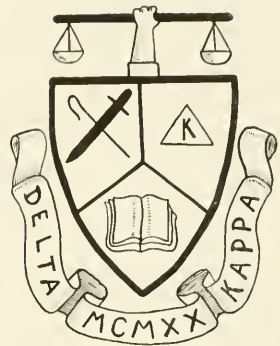
The Waiter's Club is an organization composed of the students who work in either the dining hall, the dish room, or the kitchen.

A new system of family service has been arranged in the dining hall. With the cooperation of the new dietitian, Mr. George Dayspring, and the students, it has been very successful.

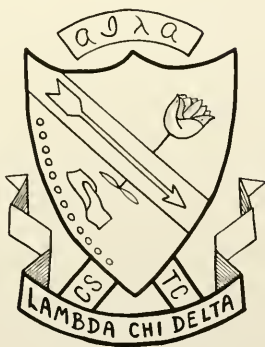
One of the original and main functions of the Waiter's Club is to decorate the dining hall for Thanksgiving and Christmas. Banquets, special parties, and other special activities held in the dining hall are served by the Waiter's Club.

Not only is the Waiter's Club a service organization, but it is also a social one. During the year, several parties are held for its members.





**ΦΚΦΑΓΦ**



"O mystic bond of brotherhood . . . ."

Carlyle



1st row: Mary Ellen Reed, Miss Pryor. 2nd row: Emily Callaway, Dee Danziger, Carol Roch.

## Panhellenic Council

### Officers

President	Carol Roch
Vice President	Mary Ellen Reed
Secretary	Mary Wright
Treasurer	Beverly Miller
Sponsor	Miss Pryor

The Panhellenic Council, which was formed on Clarion's campus in 1930, is made up of two members elected from each of the four sororities on campus. The organization is under the sponsorship of Miss Pryor.

The council, which acts as a governing body for the four sororities, regulates rushing and promotes various social activities. This year's social activities included the Panhellenic Reception, a Halloween Party for all college women, co-sponsorship with the Interfraternity Council of Greek Night, a spring dance, and the annual Panhellenic Bonquet for all sorority women.



1st row: Don Grogan, Don Begeny, Dick Wiesen. 2nd row: Paul Terpak, Bill Truman, Cal Payne, Jim Wigton.

## Interfraternity Council

### Officers

President

Donald Begeny

Secretary

Donald Erhardt

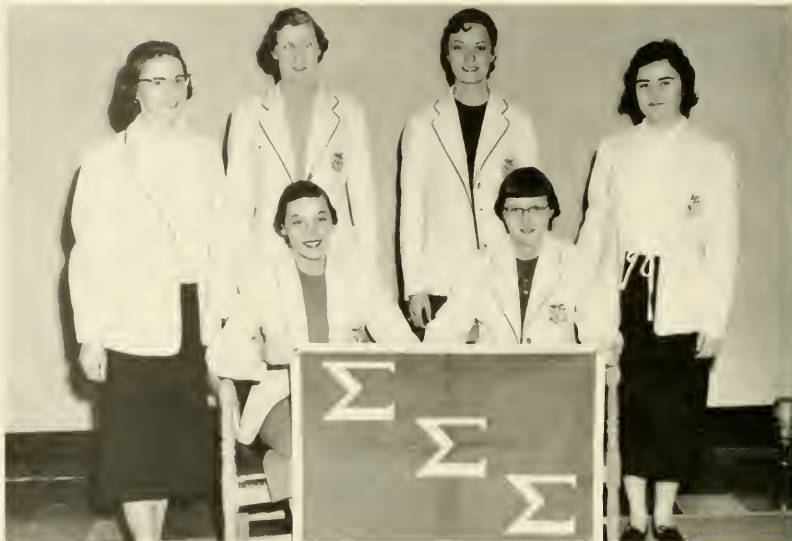
Sponsor

Dr. James C. King

The Interfraternity Council is the representative body of the three fraternities on campus. The purpose of the council is to co-ordinate and organize activities which are of interest to the three fraternities.

Among the activities sponsored by the Interfraternity Council this year were bowling and joint sponsorship with Panhellenic Council of the Thanksgiving Dance and Greek Night. The Council also established rules governing the "rushing" of new members by the fraternities.

The endeavors of the council were very successful, due to the very fine co-operation of the fraternities.



1st row: Sue Buzard, Beverly Reese. 2nd row: Janet Sereno, Joyce Stewart, Jean Elder, Rose Mary Landan.

## Sigma Sigma Sigma

### Officers

President	Sue Buzard
Vice President	Beverly Reese
Treasurer	Joyce Stewart
Recording Secretary	Jeanne Elder
Corresponding Secretary	Janet Sereno
Keeper of Grades	Rose Mary Landan
Panhellenic Representatives	Ardie Gourley Carol Roch
Sponsors	Miss Gamble Miss Banner

Alpha Pi Chapter of Sigma Sigma Sigma, one of the national sororities on campus, was founded on Clarion Campus in 1935. Tri Sigma aims to develop character, scholarship, citizenship, and spiritual consciousness among its members.

Tri Sigma had an enjoyable year of activities, including a Homecoming Tea, a dinner given to our members by the patronesses, chapter inspection by a visiting national officer, Mrs. Norma Kitchen, a Christmas party, rush party and initiations, the Founders Day Banquet, the Forest weekend, and senior sendoff.





1st row: Sue Buzard, Doris Staley. 2nd row: Lau Ann Winger, Ardie Gourley, Rose Mary Landon. 3rd row: Carol Tribley, Barb Hugus, Jane Davis, Jean Dahler. 4th row: Jean Elder, Sandy Maxwell, Ruth Elliott, Nancy Tippin, Marie Myers.

1st row: Carol Nason, Jeanette Corbett, Margie McLaughlin. 2nd row: Beverly Reese, Janet Serena, Linda Carlson, Carol Emig, Myrna Bas'ide. 3rd row: Linda Dillman, Carol Rach, Faye Dryden, Deanne Ritchey, Sony Hepler, Jan Verlato. 4th row: Kathy Tamson, Janet Decker, Betty Sarka, Sally Ja Lund, Joyce Stewart, Jean Decker, Vera DeBlonder.



1st row: Dawn McGuire. 2nd row: Charlatte Manganaro, Mary Ellen Reed, Theresa Borstoff.

## Lambda Chi Delta

### Officers

President	Dawn Ann McGuire
Vice President	Mary Ellen Reed
Secretary	Charlctte Manganaro
Treasurer	Theresa Borstoff
Corresponding Secretary	Twila Hedegor
Spansars	Mrs. Martha T. Riley Mrs. Mildred Sandoz

Lambda Chi Delta, one of the college's two local sororities, was founded 26 years ago. Since that time Lambda Chi has grown to be one of the most popular organizations on Clarion Campus. The aims of this sorority are to promote lasting friendships, to recognize scholastic achievements, and to enjoy social functions.

Included among the various activities of Lambda Chi Delta during the school year are the Rush Party, Pledge Party, a Mother's Day Tea, a party with the Alpha Gamma Phi fraternity, the sorority weekend at Cook's Forest, and a party for the senior sisters.



1st row: Mrs. Sandaz, Elizabeth Reed, Terry Barstaff, Margie Clawson, Mrs. Riley. 2nd row: Laverne Haubrich, Peg Black, Mitzie Cerutti, Twila Hedagar, Ethel Whitaker, Sally Gazda. 3rd row: Cardelia Dauds, Helen Slattery, Dawn McGuire, Jan Brazer, Ade'a Cipallane, Nancy Thomas. 4th row: Carol Sherreib, Helen Grudowski, Mary Ellen Reed, Karlene Smith, Carol Daalittle, Margaret Farkas, Charolette Manganara, Sandy Gustafson.

Besides these social activities, Lambda Chi takes part in two important service projects; a scholarship fund and a basket at Christmas time for the needy.

This year Cardelia Dauds was elected queen of Alpha Gamma Phi. Elizabeth Reed and Karlene Smith were chosen as members of the Homecoming Court.



1st row: Regino Thornton, Margie Nicholson, Doris Book. 2nd row: Lois Walker, Ginny Alcorn, Evelyn Mezerski.

## Delta Zeta

### Officers

President

Margie Nicholson

Vice Presidents

Doris Book  
Regina Thornton

Treasurer

Lois Walker

Recording Secretary

Evelyn Mezerski

Corresponding Secretary

Virginia Alcorn

Panhellenic

Beverly Miller  
Deloris Donziger

Sponsors

Miss DeWald  
Mrs. Becker

The girls on campus wearing white blazers with green piping are commonly known as "Delts". They represent Epsilon Theta Chapter of Delta Zeta, national social sorority.

Throughout the year the chapter has been active in college functions, social events and philanthropic projects. By working together in these activities, we strive for the betterment of each girl socially, intellectually and morally.



1st row: Marge Nicholson, Mrs. Becker, Regina Thorntan. 2nd row: Linda Canterna, Jayce Campbell, Judy Radgers, Daris Book, Jean Mills, Shelby Nalff, Celesta Blockowicz.

1st row: Lois Walker, Jody Steele, Evelyn Mezerski. 2nd row: Jan Boor, Ardie Gumphier, Alice Exley, Ginny Alcorn, Nancy Kelly, Sally Bryan, Dee Danzinger, Priscilla Burns.



1st row: Dot Wadsworth. 2nd row: Lydia Jackson, Glorío Allen, Marilyn Robb.

## Sigma Delta Phi

### Officers

President	Dorothy Wadsworth
Vice President	Carolyn Camp
Treasurer	Gloria Allen
Recording Secretary	Marilyn Robb
Corresponding Secretary	Lydia Jackson
Sponsor	Miss Stewart

Sigma Delto Phi, founded in 1930, has enjoyed many happy years on Clarion campus with the last one being one of the busiest. Our brothers the Delta Kappas treated us to a picnic in the fall. Homecoming became very special to us as we were awarded third prize for our float, "The Birth of Our Flag". Mary Wright was the Red Rose Queen elected by the Delta Kappas and the alumnae presented us with o tea held at Miss Nair's.



1st row: Miss Stewart, Bernice Weiker, Emily Calloway, Dorothy Wadsworth. 2nd row: Julie Johnson, Betty Lorimer, Bonita Mitchell, Clara Bowley, Marilyn Robb. 3rd row: Narma Caltan, Carol Hague, Diane Hemstreet, Mary Smith, Carolyn Camp. 4th row: Nancy Clark, Mary Wright, Alice Kay Bickel, Glaria Allen, Marilyn Ginkle, Lydia Jackson, Janice Divany.

As for other activities, we sold stationery, held an informal rush party the first semester, as well as our coke and formal rush party second semester.

We wish to congratulate Dorothy Wadsworth for being mentioned in "Who's Who in American Colleges and Universities."



1st row: Tony Zissis. 2nd row: Col Payne, Dave Moore, Al Martonik.

## Alpha Gamma Phi

### Officers

President  
 Vice President  
 Secretary  
 Treasurer  
 Judiciarian  
 Guard  
 Historian  
 Chaplain  
 Advisors

Tony Zissis  
 Lou Bucar  
 Al Martonik  
 Cal Payne  
 Rocco D'Angelo  
 Al Ragazzini  
 Dave Moore  
 Lee Dunn  
 Dr. Donald D. Peirce  
 Dr. L. D. Moody

Alpha Gamma Phi, the oldest fraternity on campus, is founded on the ideals of fellowship, scholarship, and character. Founded March 3, 1930, the Gammas have continued their tradition of being one of the school's most active organizations.

Homecoming Day this year proved to be a very successful one for the Gammas. Their float, "Raising the Flag on Iwo Jima," won first prize in the Homecoming parade and made them all very proud of their entry. The Homecoming banquet was equally successful and was enjoyed by both past and present members. Other activities of the year included the rushing of underclassmen and the annual Spring Banquet.

The talented and worthy group of pledges entering the fraternity this year show promise of continuing the fine spirit of friendship and brotherhood for which the Gammas have always been noted.



1st row: Cal Payne, Lou Bucar, Chuck Shonkel, Tony Zissis. 2nd row: Art Horris, Max Ferguson, Paul Enock, Gene Weinfur her, Bob Meyers. 3rd row: Albert Sobatine, Bernie Uzelac, Don Dombort, Jack Barry, Al Martonick.



1st row: Jim Yough, Alfred Aiella, Dr. Moody, Dr. Pierce, James Groziona, Tom Young. 2nd row: Don Ehrhart, Ed Poprick, Jack Helminstaller, Lee Dunn, Jim Dunn, Dan Rybar. 3rd row: Richard Toskin, Bob Grey, Gary Smith, Rocko D'Angello, Albert Ragazzini, Bill Smutko, Don Grogan.

1st row: Jim Galbraith, Jack Fax, Nick DiNunzia, Harald Contie, John Lowman, Gerry Anderson. 2nd row: Don Mahoney, Jerry Whalen, Chuck Scolise, Marlin Hartman, Ronald Batz, Pete Molinaro, Don Christe. 3rd row: Richard Nelson, Rody Washowich, Harry Mitchell, Dave Maare, Joe Schapp, Chester Dallap, Tony Cardamone, Melvin Viuc.





1st row: Fred Patterson, Richard Pesarcik, Donald Begeny. 2nd row: Fred Matheson, Lester Schickling, Sam Viviona, Bill Abplanalp, Jim Wigton.

## Sigma Tau Gamma

### Officers

President	Richard Pesarcik
Vice President	Donald Begeny
Treasurer	Fred Bell
Assistant Treasurer	Virgil Lucas
Recording Secretary	Fred Patterson
Corresponding Secretary	Jahn Hale
Reporter	Hugh Hagle
Sentinel	William McDowell
High Priest	Lester Schickling
Historian	William Abplanalp
Parliamentarian	James Wigton
Advisors	Frank Campbell, Dana Still, Ernest A'Harrah, George Lewis

Sigma Tau Gamma, a national social fraternity, belonging to the National Interfraternity Conference, stresses high standards of education, honorable social living, and participation in extra curricular activities.

The Alpha Zeta Chapter pledges members to its organization because of personal traits necessary for present and future accomplishments, not because of past experiences.

The social calendar for the first semester included the Homecoming float, "Clarion Praving Grounds," the Steak Dinner Dance, and the sale of Christmas cards. Highlighting the second semester was the annual rush party followed by the Sisters Party and the basketball game with the brothers of Sigma Tau from Indiana State Teachers College. The annual White Rose Dance ended a very successful year for all of the brothers of Sigma Tau Gamma.



1st row: Mr. Ernest Aharrh, Mr. Frank Campbell, Dr. Dana Still. 2nd row: William McDowell, Frank Chess, Richard Pesarick, Richard Standford. 3rd row: Jim Wigton, Dick Winslow, Floyd Barger, Jim Higgs, Dave Snyder. 4th row: Dan Overheim, Don Begey, Edgar Huffman, Sam Viviano, Jahn Hale.



1st row: Dale Terwilliger, Fred Bell, Pat Sherman. 2nd row: Jan Humenick, Jan Gallagher, William O'Connell, Dale Swanson. 3rd row: Dean Yabp, Larry Frederick, Jim Charlton, Bill Abplanalp, Fred Matheson.



1st row: Bill McCullough, Wayne Costa, Jim Moore, Phil Creed. 2nd row: Gary Shay, Roy Smerker, Joe Bayhurst, Carmi Edwards, Dick Thompson. 3rd row: Wade Myer, Ron Schreckengost, Jahn Sias, Bill Truman, Lester Schickling, Virgil Lucas, Stan Strain.



1st row: James Priester. 2nd row: Dick Wiesen, Lynn Alter, John McKeown.

## Delta Kappa

### Officers

President	James Priester
Vice President	Lynn Alter
Secretary	Dale Fogel
Treasurer	Dick Wiesen
Sponsors	Mr. Kuhner, Mr. Spence Dr. Predmore, Mr. Mellon

The Delta Kappa, a national fraternity, has as its main purpose the development of fellowship and leadership through the socializing influence of fraternal life. The Phi Chapter is located on Clarion's campus.

Miss Mary Wright reigned as the Red Rose Queen of Delta Kappa for this year's Homecoming.



1st row: Dick Wiesen, Dole Fogel, Mr. Spence, Mr. Mellon, Bob Essienwein, Paul Terpak. 2nd row: John Morrow, James Priestler, Ernie Smith, Nick Armotos, Lee Rednock, Herbert Marshall, Neal Miller. 3rd row: John McKeown, Fred Thickey, Mike Broddock, Ron Rechart, Marvin Henry, Jim Miller, Irvin Henry, Jim Elder, Tom Quinn.

1st row: George Lord, Watson Lupher, Mr. Kuhner, Dr. Predmore, Willard Sutton, James Little. 2nd row: Roy Kramer, William Rossiter, James Gordon, Norman McCoy, Max Ambrose, Eugene Szul, Laverne Terwilliger. 3rd row: Dick Summerville, Grant Crawford, Donald Lear, Horry Greer, Keith Miller, Roland Davis, Lynn Alter, Bob Bransnohan.



1st row: Dean Moore. 2nd row: Fred Bell, Virgil Lucas, Max Ferguson.

## Phi Sigma Pi

### Officers

President	Max Ferguson
Vice President	Virgil Lucas
Secretaries	Fred Patterson Lynn Alter
Treasurer	Fred Bell
Sponsor	Dr. James D. Moore

Phi Sigma Pi is a notional honorary educational fraternity and is a senior member of the Professional Interfraternity Conference. Clarion's Lambda Chapter was founded in 1932.

The purpose of Phi Sigma Pi is to attain high scholastic achievements and maintain the highest educational ideals in all fields of education. In fulfilling its purpose an average of 1.75 is necessary for membership.



1st row: Dr. Dana Still, Tony Zissis, Dick Weisen, John Basway, Dean James Maare. 2nd row: Laverne Terwilliger, Paul Hamilton, Bill McDowell, Lee Detar, Dan Greggs, Fred Bell. 3rd row: Max Ferguson, Harry Greer, Dale Swanson, Dave Chestnut, Dave Maare, Lee Rednack, Marlin Hartman. 4th row: Cal Payne, Chester Billings, Flayd Barger, Lester Schickling, Virgil Lucas, Dick Thampson, Jim Higby.

The outstanding annual event of the fraternity is a Founder's Day Banquet which is looked forward to by all of the members.

The sponsorship of the organization is under the direction of Dean Moore, Mr. Becker, and Dr. Still.



1st row: Lee Detar, Mr. Campbell. 2nd row: Mrs. Riley, Miss Stewart, Miss Gambel, Mrs. Becker.

## Pi Gamma Mu

### Officers

President

Lee G. Detar Jr.

Secretary-Treasurer

Miss Rena Carlson

Spansor

Dr. James C. King

Pi Gamma Mu, the National Social Science Honor Society at Clarion, is composed of students who have completed at least twenty semester hours of social science with a B average and have further distinguished themselves in the social sciences.

The purpose of the organization is to promote the improvement of scholarship in the social studies, to inspire social service to humanity, and to develop sympathy towards others with different opinions.

The lata Chapter, located on this campus, is just one of the one hundred and ten active chapters of the society in the United States.

The official journal of Pi Gamma Mu, *Social Science*, is published quarterly and distributed to the new members of the various chapters.

The motto of the Society is the epigram of the Master Teacher, "Ye shall know the truth and the truth shall make you free."





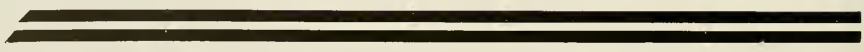
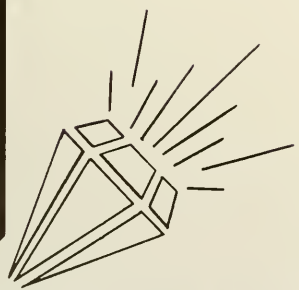
1st row: Marilyn Patterson, James Wigton, Helen Thompson. 2nd row: Fred Patterson, Fred Thickey.

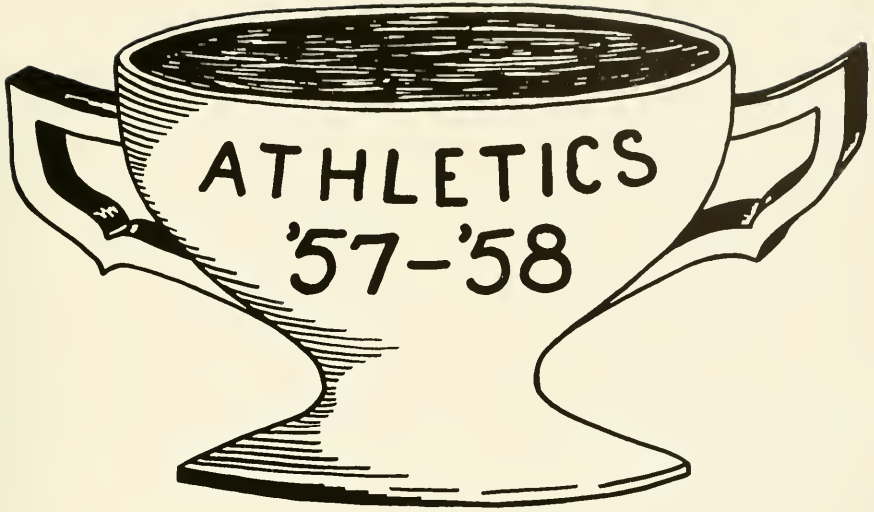
## Alpha Psi Omega

Clarion's Alpha Upsilon Chapter is part of Alpha Psi Omega, the largest national honorary dramatic fraternity in the United States. The local chapter was founded in 1936.

The national requirements for the organization are high and include participation in acting and various phases of stage work. Because it is restricted to those who meet these requirements, membership is small and is considered a coveted honor.

The club wishes to thank Mr. Ralph Mead for all of his help and assistance.





“. . . . . Trophies to thee . . . . .”

Sir John Denham

Clarion's intercollegiate athletic program includes football, basketball, tennis, baseball and, as student interest warrants, golf and wrestling. The college may very well be proud of the records these teams have made over the years.

The coaches of our teams this year are to be congratulated for getting the most from the material available. The members of the teams are to be complimented for their display of sportsmanship, leadership, and ability to work and play with their teammates.

This year there has been a renewal of interest in the intramural program. This program included touch football, basketball, volley ball, soft ball, wrestling, tennis, handball, and table tennis.



Mr. Johnson, Al Ragazzini,  
Dave Snyder, Mr. Lignelli



1st row: George Cindrich, Tom Nee, Bill Smutko, Karl Florie, Jay Dutton, Bob McCullaugh, Francis Dunloy. 2nd row: Dave McLaughlin, Steve Kurcis, John Naylor, Joe Cochran, Jim Damon, Tony Arpino, Dave Snyder, Al Ragazzini, Steve Babish. 3rd row: Jim Williams, Don Topolski, Steve Balaz, John Lewark, John Smith, Jack Fox, Duane Wolf, George McFarland, Lee Rouse. 4th row: Earl Tustan, Virgil Lucas, Glenn Speedy, Charles Finnegon, Paul Palmer, Don Mahaney, Tom Young, Wilber Mopes.

# Football

Clarion		Opponent
0	Edinboro	33
12	St. Vincent	43
14	Grove City	0
20	Cheney	7
0	California	6
0	Slippery Rock	20
0	John Carroll	6
7	Indiana	14

The new regime and our football annals were initiated this year as coaches Johnson and Lignelli took the reigns from former coach Tippin. Along with new coaches, there came to Clarion some promising football material which we hope will make up the nucleus of future outstanding teams. Although this year's record was not outstanding in the wins-losses columns, the "Golden Eagles" gained the respect of all concerned for their die-hearted playing. Despite the hampering aspect of a severe flu epidemic, only one game, that with Brockport, was called off. Our congratulations to Captain Snyder for his appointment to State Honorable Mention.



Mr. Carnahan, Dick Danielson, Mr. Johnson.

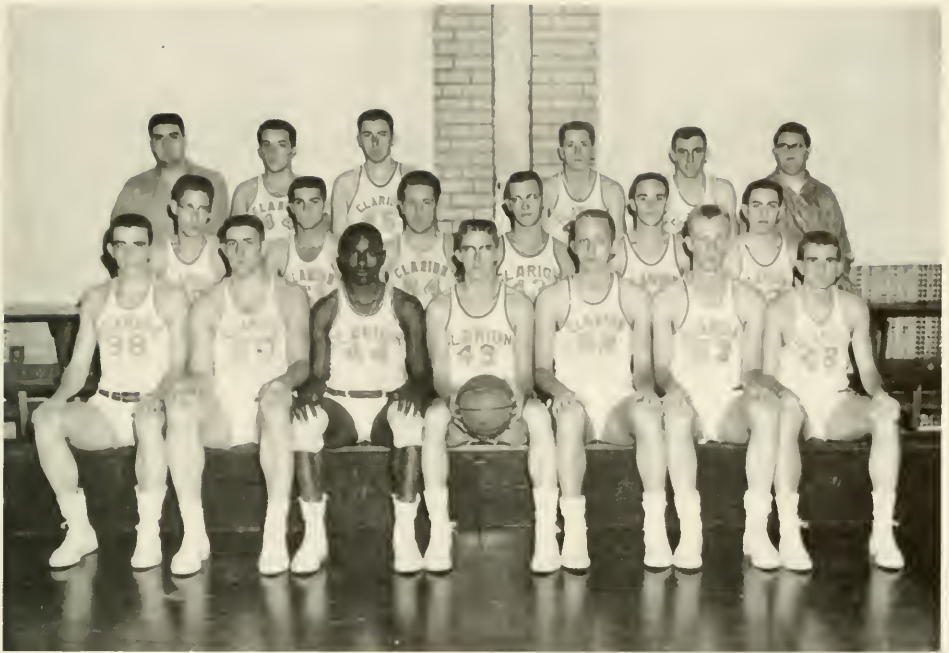
## Basketball

The 1957-58 Golden Eagles cage squad was composed of all underclassmen and these men gave the student body and their opponents an opportunity to observe the fine work of a unit that will be together for the next few seasons.

In compiling on 11-7 record, Coach Carnahan and Assistant Coach Ernest Johnson were able to view the mistakes caused by lack of experience. With the return of such men as Gary Smith, Ron Botz, Jack Bertoni, Dick Danielson, Ernie Smith, Ron Schrecengrost, Bob Volansky and Larry Beightal the coaches hope to put together a unit that will more than represent itself in the run for State Teachers College laurels.

This year's team gave evidence of its fine potential when it established a new single game high, by beating Edinboro 112-92. They furthered that mark by defeating Alliance 116-84. This team of "Fighting Eagles", also finished fourth in the State Teachers College Conference.

Congratulations to these players and coaches for a job well done. We will be rooting for you as you take to the hardwoods once again next season.



1st row: Ron Batz, Gary Smith, Ernie Smith, Dick Danielson, Ran Schrecengost, Bab Volansky, Jack Bertani. 2nd row: Ray Artman, Ron Vespa, Don Means, Paul Wasson, Jim Williams, Larry Beightol, Larry Beightol. 3rd row: Bill Day, John Camarate, Lonnie Sebring, Phil Creed, Jay Dutton, George Lord.

## Basketball Team's Scores

Clarion	Opponent	Clarion	Opponent
80	California	100	Mansfield
76	Slippery Rock	106	Slippery Rock
49	Indiana	101	California
67	Grove City	73	Allegheny
54	Lock Haven	58	Alliance
59	Fenn	99	Edinboro
112	Edinboro	116	Alliance
96	Lock Haven	66	Mansfield
86	Indiana	62	Grove City



1st row: Bill McCullough, Roddy Washawich, Dan Gelecko, John Lawre, Tony Donghia. 2nd row: Bob Fagley, Ben Kundick, Bob Murphy, John Menegheni, Alvin Snyder, Larry Fredericks. 3rd row: Herb Reed, Ted Kukich, Ted Aiken, Paul Terpok, Lou Bucar, Dave Snyder, Marlin Hartman.

## Baseball

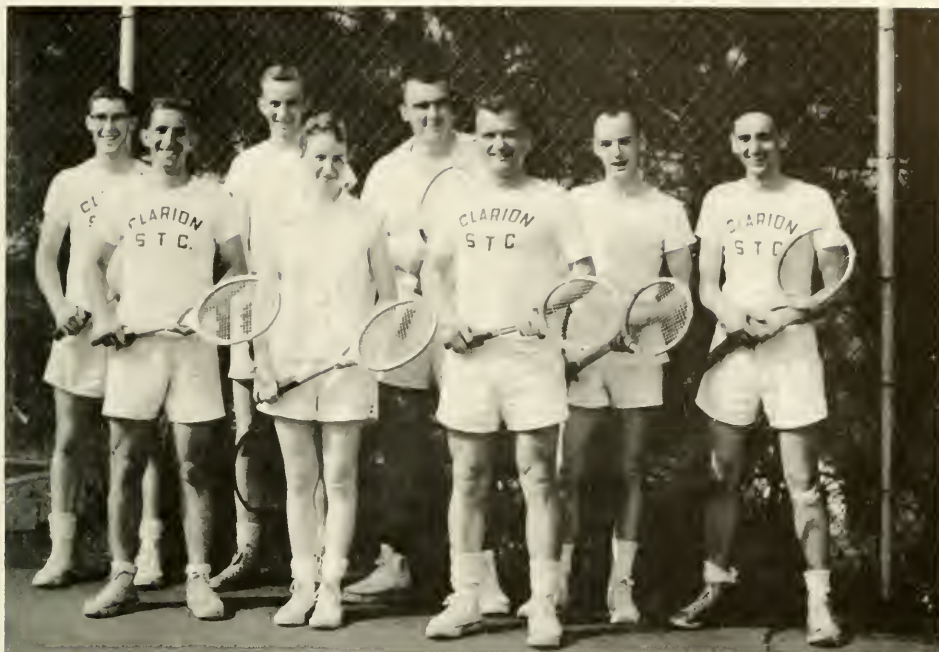
	Opponent	Clarion
	Slippery Rock	3 5
	Westminster	5 6
	Allegheny	2 3
	Pitt	6 12
	St. Vincent	6 1
	Alliance	5 6
	Alliance	0 8
	Geneva	4 2

The 1957 Golden Eagles piloted by faculty coach, Mr. Ernie Johnson, and capably assisted by student coaches, Gordon Parter and Bill McCullough, turned in a very impressive season, winning five and dropping three. A 12-6 win over Pitt was perhaps the most outstanding victory of the season.

The bulk of the pitching chores fell upon John Meneghino and Ron Bimel. The offensive attack was sparked by Bob Fagley, Lou Bucar, Ted Kukich, and Tony Donghia.

Mr. Johnson will again be coaching the '58 Golden Eagles. A very successful season is anticipated with the return of many experienced players plus the new freshman candidates.





1st row: Joe Lutz, Julie DAVIS, Rich Pesarcik. 2nd row: Bill Wescott, John Doverspike, Jim Miller, Jim Wigton, Chuck Brachetti.

## Tennis

	Opponent	Clarion
Slippery Rock	9	0
Indiana	8	1
Grove City	8	1
Grove City	8	1
Edinboro	8	1
Geneva	9	0

The local netmen were unable to break into the win column during the '57 season but on all but two occasions managed to win one match from their opponents.

Seniors playing in the 1957 season were Charles Brachetti, John Lutz, William Wescott, and William Watt. The '58 season will bring forth such experienced netmen as Julia Davis, Jim Miller, John Doverspike, Jane Davis, Richard Pesarcik, and James Wigton. It should prove of great value in the coming season with the experience gained in the preceding matches.

Mr. Carnahan is the capable coach of this group.



1st row: Doris Staley. 2nd row: Delares Gonzales, Mary Shimp, Jan Boor, Connie Dubart, Priscilla Burns.

## Cheerleaders

Six energetic and lively co-eds led the cheers and songs that were heard at Clarion's football and basketball games this year.

Four of last year's members, Doris Staley, head cheerleader, Jan Boor, Priscilla Burns, and Mary Shimp, returned to this year's squad. The two new members were freshmen, Connie Dubart, and Delares Gonzales.





1st row: Art Harris, Julia Davis, Albert Ragazzini. 2nd row: Ron Beigel, Dave Snyder, Marlin Hartman, Don Dambart, Tony Danghia, Jack Moore. 3rd row: John Menegheni, Frank Chess, Ron Schrecengast, Jim Miller, Jack Barry, Ted Aiken, Alvin Snyder, Tony Aiella. 4th row: George Lord, Paul Terpak, Ronald Danielson, Ron Batz, Ernie Smith, Gary Smith, John Daverspike, Dan Mahaney, Lou Bucar, Watson Luper.

## Varsity "C"

President	Al Ragazzini
Vice President	Dave Snyder
Secretary	Frank Chess
Treasurer	Julia Davis
Adviser	Mr. Frank Lignelli

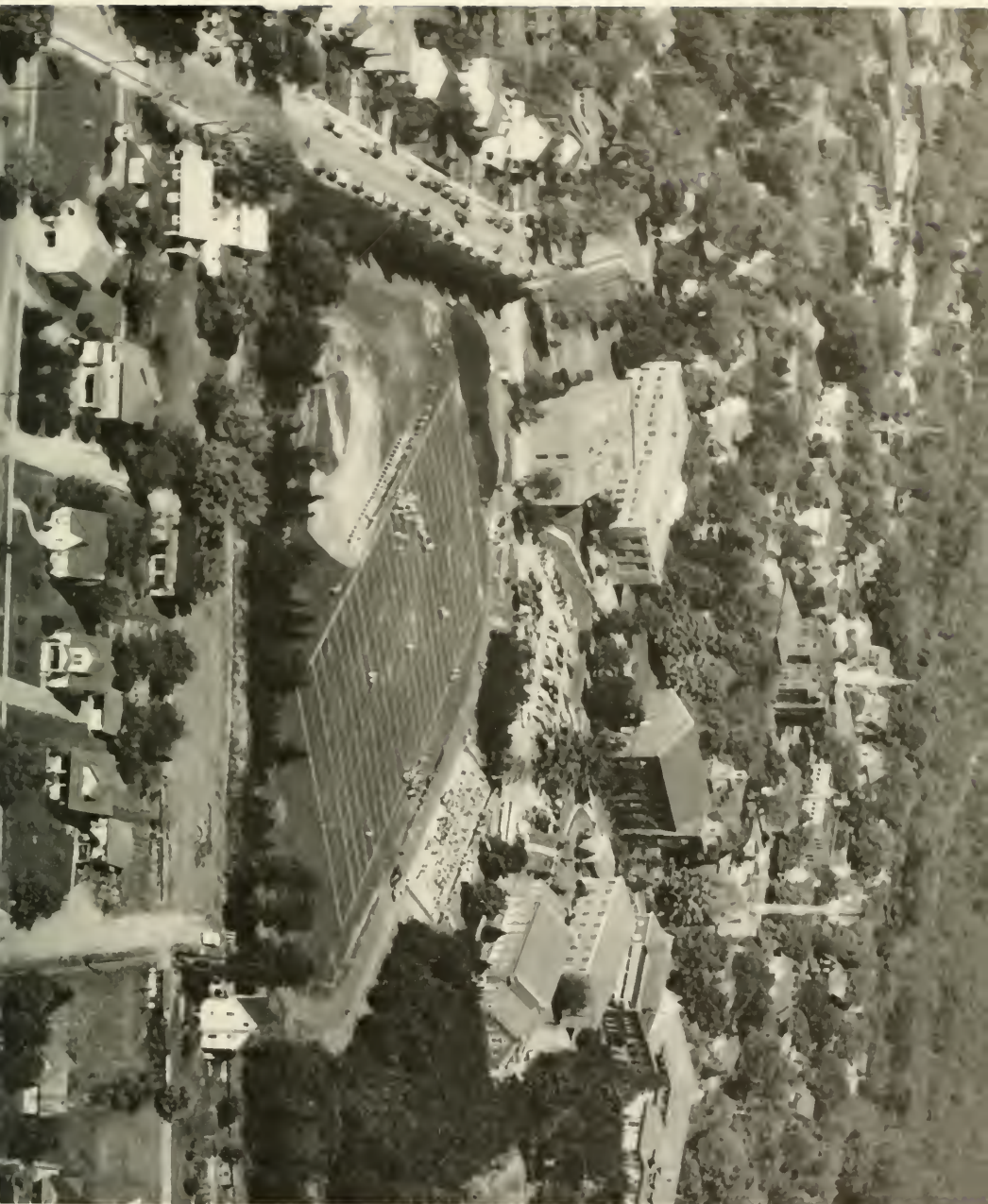
The Varsity C serves a threefold purpose: to promote sportsmanship, to supervise all athletic activities, and to create an interest in athletics among all men of the college.

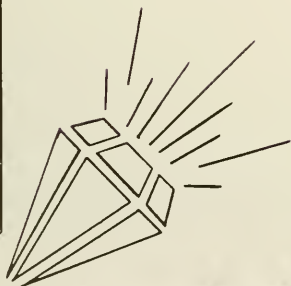
The Varsity C is composed of those men and women who have earned their letter by participating in any intercollegiate sport.

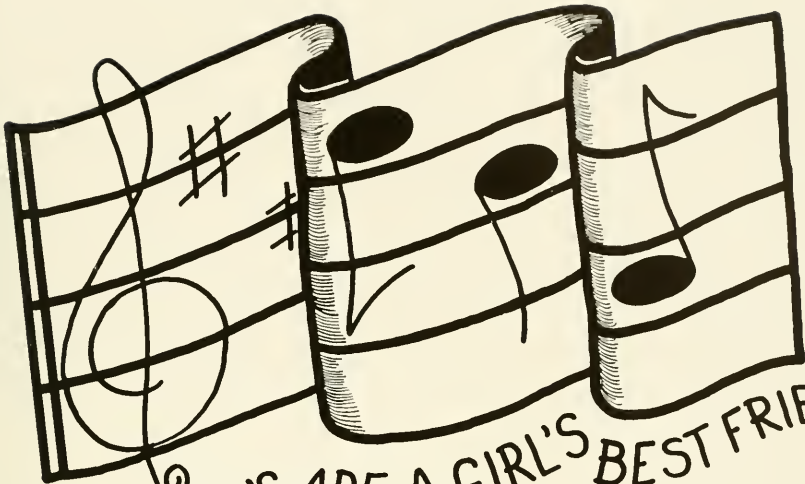
The members sell Homecoming pins, refreshments and programs at the home games during football and basketball season. This money is used to buy awards for the deserving athletes.

In the spring of the year, an All Sports Banquet will be held to honor the letter winners. Each member will invite two high school seniors to attend this banquet as their guests.

Mr. Frank Lignelli, assistant coach, has done an excellent job as sponsor of the group.







DIAMOND'S ARE A GIRL'S BEST FRIEND

"Music the beautiful disturber of the air."

George Dillion



Back row, left to right: Raland Davis, Bill Abp'anap, Ran Henry, Bob Muse, Donald Hall, Jim Hunter, Naomi Paige, Dot Mareland, Bob Beers, Mary Lee Stewart, Paul Palmer, Bill Day, Jim Damen, Ed Lucas, Ron Vespa, Tom Young. 3rd row: Jim Graziano, Jae Capizzi, Bud Barrett, Bob Hartz, Eugene Waitkus, Ernie Smith, Sharan Weisbaker, Gloria Willon, Laverne Haubrick, Regina Thornton, Janet Maxwell, Fred Thickey, Chuck Bowers, Doyle Maurhoff, Narman McCoy, Dick Crumb, Dean Hartfel. 2nd row: Sally Bryan, Yvonne Pierre, Carol Knopp, Janet Grayson, Elizabeth Bardan, Sally Lund, Carol Raback, Judy Clark, Lucy Park, Marge Stewart, Lennie Miller, Delores Carlson, Carol Clark, Delores Marshall, Helen Mindek, Jaanne Bish. 1st row: Janet Karr, Carol Englebach, Carol Tribley, Jane Gromo, Connie Dubart, Marge McLaughlin, Patty Zache-el, Daris Calhoun, Eleanor Beacom, Priscilla Burns, Lois Walker, Sandro Adams, Judy Pfeifer, Jan Boor.

## College Choir

The Clarion State Teachers College choir, which is composed of students with musical talents and abilities, has worked long and diligently this semester under the masterful hand of its new director, Mr. McDonald.

The first semester was devoted to preparation for the annual Christmas time presentation of Handel's "Messiah" which proved to be a moving and fitting performance.

The second semester was taken up with preparation for and performance of concerts for schools in the surrounding areas.





## Mixed Quartet

Elizabeth Borden, Barbara Beers,  
Dick Crumb, Ron Henry.

## Ensemble

Solly Bryon, Ardie Gourley,  
Jody Steele, Lucy Park, Rob-  
erto Berlinski.





1st row: Marge Stewart, Linda Dillman, Bob Eddinger, Sylvia Lind. 2nd row: Paul Laing, Jonet Decker, Diana Hemstreet, Bill Temple, Morge Clawson, Keith Henry, Martha Dunn. 3rd row: John Lowmon, Roger Daum, Bob Muse, Bill Smojice, Carol Emig, Jean Decker, Al Lerch, Marilyn Ginkle, Charlotte Flack, Jim McDonald, Roland Davis. 4th row: Eugene Szul, Joyce Stewart, Helen Grudowski, Doyle Mourhoff, Ron Henry, Ruth Decker, Jay Acklin, Art Sandy.

## Band

This year was one which brought a new band to Clarian. Under the direction of Mr. McDonald, its new leader, the band displayed fine marching style as well as new and interesting exhibitions at our football games. The exhibition at Homecoming was one which added interest to the half-time ceremonies and helped make the 1957 Homecoming a memorable one.



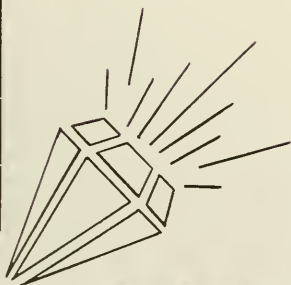
Carol Nason, Linda Canterna, Carol Haubrick, Mary Lee Stewart, Betty Sarka, Ardie Gumphier, Phyllis Keeler, Laverne Haubrick.

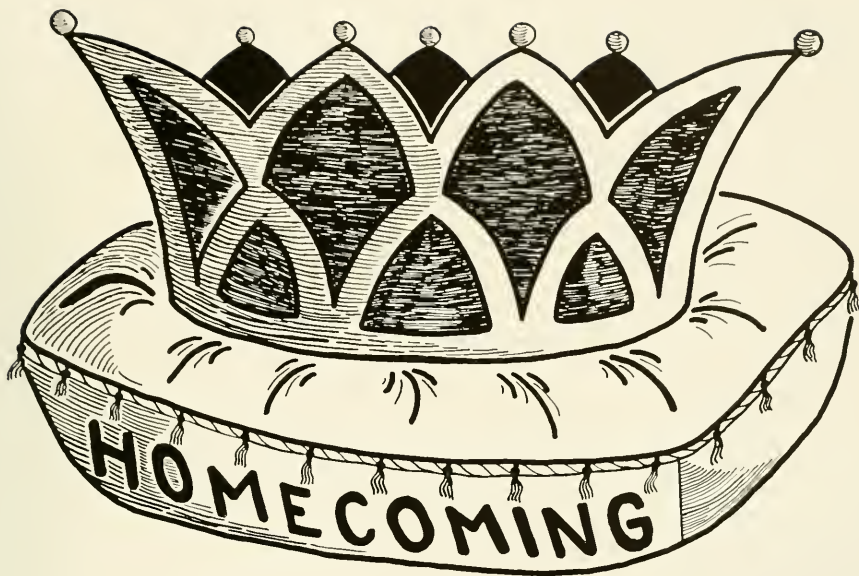
## Majorettes

The rhythmic marching of eight pairs of high stepping feet under the leadership of Betty Sarko, head majorette, made up this year's majorette squad.

This year brought with it some changes in and new additions to the squad. Betty Sarko moved into the high-stepping boots of the head majorette, Carol Nason, Linda Canterna, Ardie Gumphier, and Laverne Haubrick, last year's members, returned to their familiar boots, while freshmen Mary Lee Stewart and Carol Haubrick filled the empty boots left by some of last year's squad.

These girls are to be commended for their new and clever routines as well as the precision performances.





We crown thee, "Queen".



Our Queen



Elizabeth Reed, Albert Raggazini, Ardie Gourley, Dave Snyder, Julie Johnson, Daris Staley.

## Homecoming

In spite of postponement and a rainy day the Homecoming parade having the theme, "Historical Events", proved to be a success due to the efforts of Jack Dalmayer, chairman, and the cooperation of the clubs and fraternities. Prizes of \$40, First Prize, Alpha Gamma Phi; \$25, Second Prize, Sigma Sigma Sigma; and \$10, Third Prize, Sigma Delta Phi, were awarded by the Clarian Chamber of Commerce.

The Homecoming Queen, Margaret Gaurley, a smiling, friendly senior from Franklin, was chosen by the student body and was crowned during the always colorful half-time ceremonies by co-captains Albert Raggazini and Dave Snyder. The Queen's Court, Elizabeth Reed, Daris Staley, Sally Bryan, Priscilla Burns, Linda Dillman, Pat Dunmire, and Lennie Steiner, attended her during the ceremonies.

"Homecoming Makes History", the Homecoming dance proved to be a pleasant and happy one for those who attended.

The parade, football, caranation ceremonies, teas, and dance will be the memories that make the 1957 Homecoming a happy and unforgettable event in our lives at the "college on the hill."

## The Queen and Her Court



Elizabeth Reed, Senior; Margaret Gaurley, Queen; Daris Staley, Senior; Priscilla Burns, Junior; Linda Dillman, Sophomore; Solly Bryon, Junior; Karlene Smith, Sophomore; Patricia Dunmire, Freshman; Lennie Steiner, Freshman.



# Winning Floats

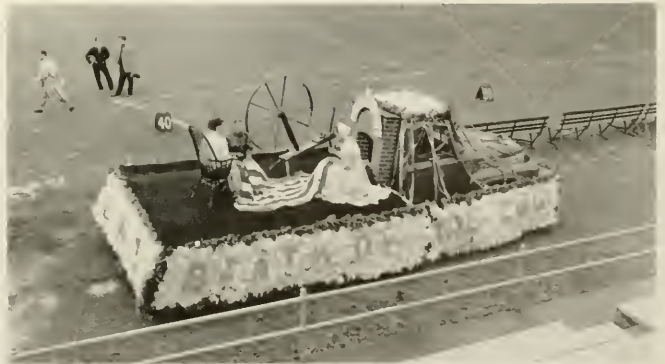
First Prize  
"Raising the Flag on Iwo Jima"  
Alpha Gamma Phi

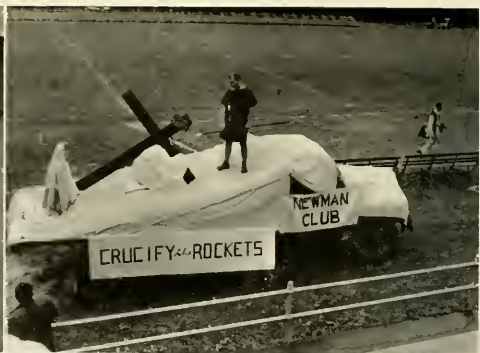


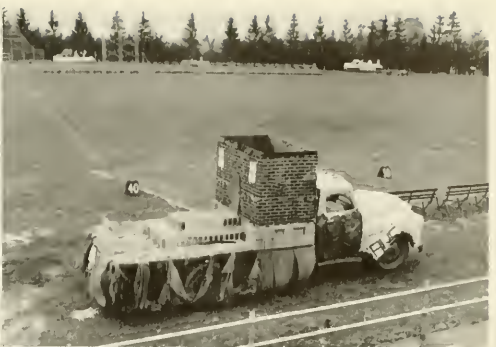
Second Prize  
"The Salk Vaccine"  
Sigma Sigma Sigma



Third Prize  
"The Birth of the Flag"  
Sigma Delta Phi





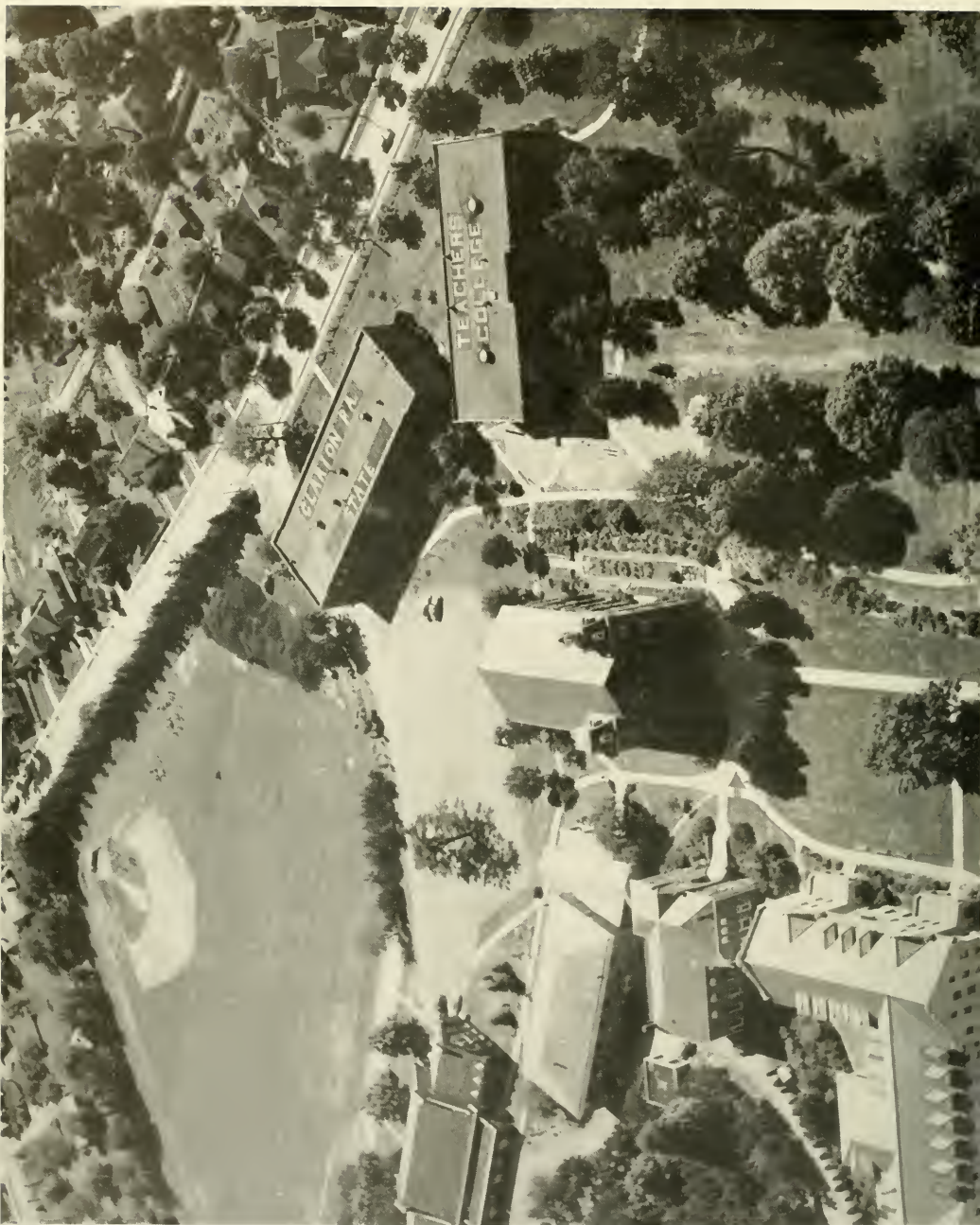


# Autographs













# Autographs

# Acknowledgments

The editors and staff of the 1958 **Sequelle** would like to take this opportunity to thank the faculty and the student body for their cooperation and assistance in compiling this year's publication. We would also like to extend a special thanks to Mr. Kuhner and Dr. Moody for their guidance and help. We also appreciate the suggestions given us by the photographer, engraver, and printer.

## **Photographer**

**CARL AND DON STUDIO**

Clarion, Pennsylvania

## **Engraver**

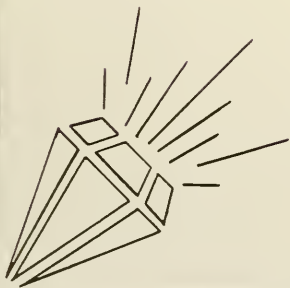
**ZIMMERMAN ENGRAVING COMPANY**

Sykesville, Pennsylvania

## **Printer**

**KURTZ BROS.**

Clearfield, Pennsylvania







CLARION UNIVERSITY OF PENNSYLVANIA



3 9363 00150 7414

Spec. Col.  
qLD  
107  
.C88  
1958  
c.2

