

Spec. Col.

qLD

1017

.C88

1959

c.2

1959


the

sequel

LIBRARY
CLARION STATE COLLEGE
CLARION, PA.



Carlson Library



Digitized by the Internet Archive
in 2010 with funding from
Lyrasis Members and Sloan Foundation

<http://www.archive.org/details/sequelle1959clar>

clarion

state teachers college

presents

the

sequelle

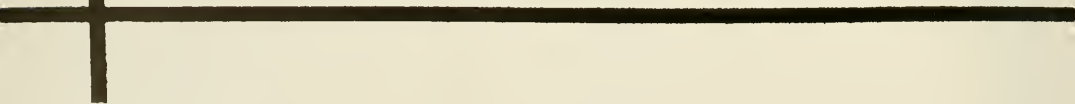
for

1959



We, the staff of the *Sequelle* for 1959, present our effort to the school and the student body. This publication represents the conscientious efforts of the *Sequelle* Staff to make permanent the memories of the Seniors of 1959.

It is with a great deal of pleasure that we present this book to you and hope that in the distant future it will help to make more vivid the fading remembrances of your Alma Mater.



administration





DR. PAUL G. CHANDLER

TO THE SENIOR CLASS OF 1959—

You are graduating at the most interesting time in the history of civilization. Man is looking into and using the forces at the periphery of the universe and at the center of the atom. This is one of those surges in history where the limits of knowledge are being pushed out fast (much more rapidly than ever before). Man is unleashing forces he can hardly control. You are a part of all this and I envy you the thrilling things you will see before 2000 A.D.

Paul G. Chandler



Miss Grace Pryar
Dean of Women



Dr. James C. King
Dean of Men



Dr. James D. Moore
Dean of Instruction



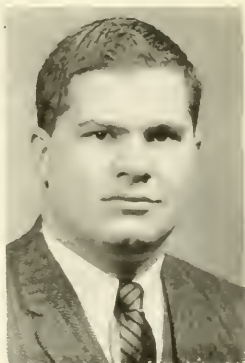
Miss Lattie Wingard
Registrar



Mr. Walter Hart
Director of Admissions



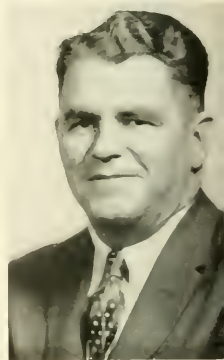
Bert Anson, Jr., Ph.D.
Social Studies



William E. Beattie, B.A.
Speech



Helen M. Becker, M.A.
Elementary Education



A. E. Bernard, Ed.D.
Elementary Education

C
l
a
r
i
o
n

Eleanor D. Moore
M.S. in L.S.
Librarian



Bruce H. Dinsmore, Ph.D.
Biological Science



Franklin G. Fitch, Ed.D.
Secondary Education



Charles R. Flock, M.A., 1
Library Science





Carl E. Caldwell, M.A.
English, Speech



Frank M. Campbell, M.A.
Foreign Languages, Social Studies



Rena M. Corlson, M.A., L.S.
Librarian



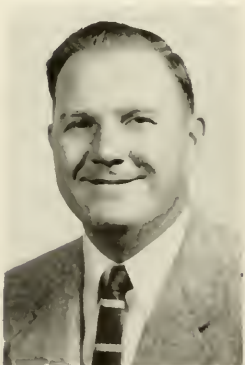
Thomas A. Cornahan
M.Ed
Mathematics, Science

f a c u l t y

William M. Force, M.A.
Speech



Ernest W. Johnson, Jr., M.Ed.
Education



Helen Knuth, Ph.D.
Social Studies



C. A. Kuhner, M.S.
Geography





George R. Lewis, Ed.D.
Mathematics



Frank Lignelli, Jr., M.Ed.
Safety Education, Physical Education



William M. McDonald, M.A.
Music



Nancy S. McKee, M.L.S.
Librarian

c l a r i o n



Donald D. Peirce, Ph.D.
Physical Science



Donald R. Predmore, Ph.D.
Biological Science, Education



Martha T. Riley, M.A.
Geography



Charles W. Rabbe, M.A.
Social Studies



John P. Mellan, M.Lit.
English



L. D. Maady, Ph.D.
English



Galen L. Ober, M.Ed.
Physical Science



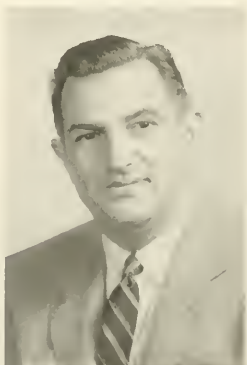
Charles G. Pearce, M.Ed.
Art

f
a
c
u
l
t
y

Mildred D. Sandoz, M.A.
Biology



Poul L. Shank, Ph.D.
Physical Science, Education



Charles J. Shontz, M.S.
Biological Science



Betty Simpson, B.S.
Health and
Physical Education





Richard C. Skinner, M.Ed.
Director of Teacher Training
Education



Joseph R. Spence, Jr., M.Ed.
Art



Martha Stewart, M.Ed., L.S.
Librarian

C
l
a
r
i
o
n

Mary Kay Bonner, M.Ed.
Demonstration Teacher
Intermediate Grades



Mildred E. Gamble, M.A.
Demonstration Teacher
Intermediate Grades



Ruby Hard, M.A.
Demonstration Teacher
Primary Grades





Dana S. Still, Ph.D.
English



Herbert H. Susbach, Ph.D.
Physical Science



Waldo S. Tippin, M.A.
Education, Director of Athletics,
Physical Education

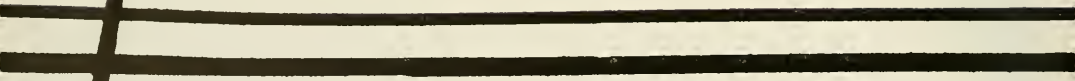
f a c u l t y

Roxana Irwin, M.Ed.
Demonstration Teacher
Intermediate Grades



Virginia Pemberton, M.A.
Demonstration Teacher
Primary Grades





seniors





Officers. Beverly Reese, Anthony Donghia.

senior class

What will the future bring? We ponder; we contemplate; and we anticipate great things.

Throughout our college lives we look ahead. As freshmen we look to the sophomores; as sophomores, to the juniors; and as juniors, to the seniors. Now, as seniors, we look back on our past experiences and activities; we remember the dances, football games, and sorority parties; we fondly recall our student teaching experiences; we realize with a sigh, that these are experiences of the past.

We, the seniors, give thanks to our officers who have served us faithfully through our years at Clarion. Special thanks is given to Tony Donghia who served as our class president for our entire four years.

As we, the class of 1959, leave Clarion, these memories blend with our background and provide a frame of reference for the future.

seniors

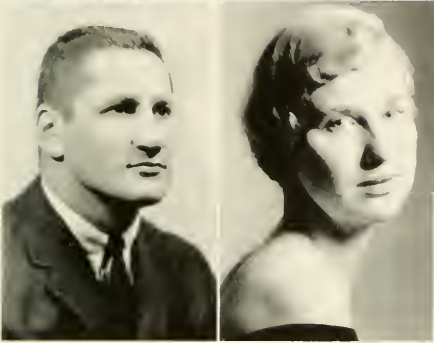


William Abplanalp
Mathematics, Physical Science

Sandra Adams
English, Speech

Anthony Aiella
English, Social Studies

Virginia Alcorn
English, Social Studies



Lynn Alter
English, Speech

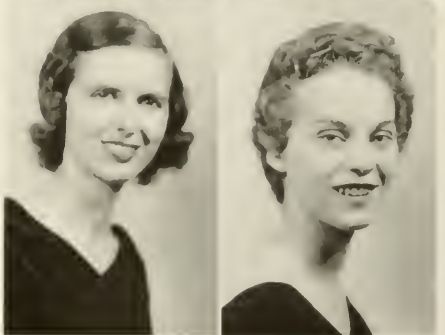
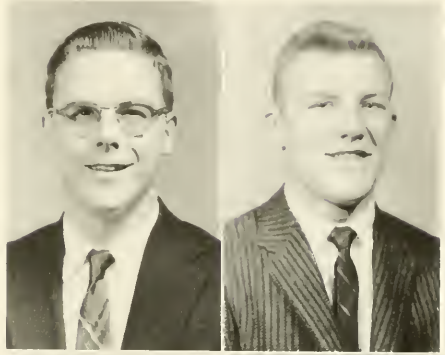
Gerry Anderson
Elementary

Paul D. Ashbaugh
Physical Science, Mathematics

Phoebe Barger
Library Science, English, Social Studies

Marian Bartley
Library Science, Social Studies

Virginia Beatty
Elementary



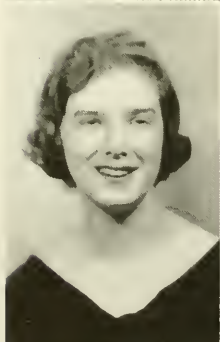
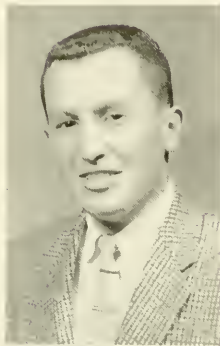
seniors

Theresa Barstorf
Library Science, English,
Spanish

Claire Bawley
Elementary

Lawrence Broken
Mathematics, Social
Studies

Janice Brozer
Elementary



Frederick Bell
Mathematics, Chemistry

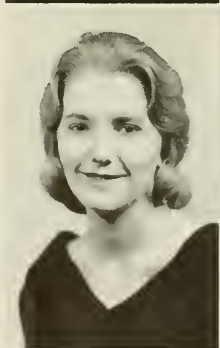
Betty Bentzley
Elementary

Margaret Black
Social Studies, English

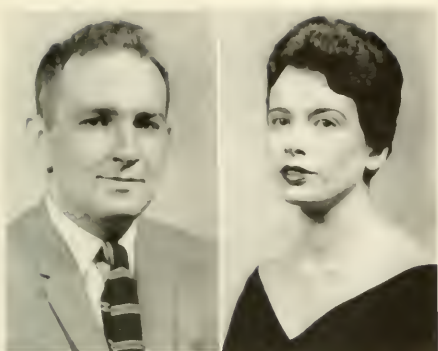
Doris Book
Elementary

Jonet Boor
English, Speech

John Bosway
Social Studies, Safety Education



seniors



Robert Brosnahan
English, Social Studies

Sally Bryon
Elementary

Dorothy Burket
Library Science, English

Carolyn Camp
Library Science, Social Studies, English



Anthony Cardamone
Elementary

Linda Carlson
English, Social Studies

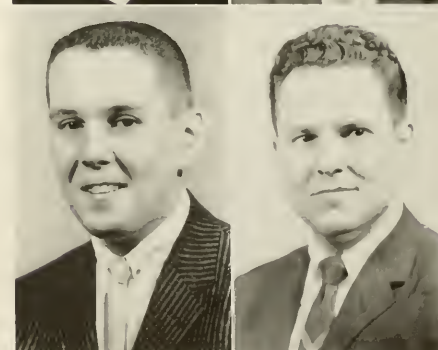
Mildred Cerutti
Library Science, English, Social Studies



James Charlton
Geography, Social Studies

David Chestnut
Biology, Social Studies

Gerald Clark
Physical Science, Biology



seniors

Richard Donielson
Chemistry, Biology

Philip Delansky
Elementary

Faye Dryden
Library Science, English

John Dwyer
Science, Social Studies



Dalph Cook
Biology, Chemistry

Jeonette Corbett
Elementary

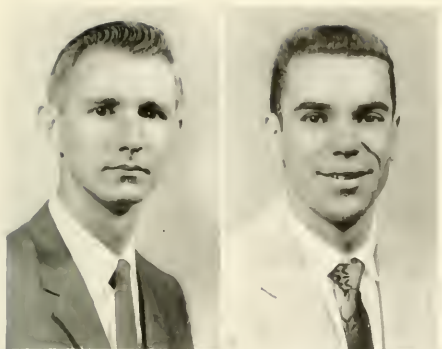
Sally Crain
Elementary

Grant Crawford
Biology, Physical Science

Rocco D'Angelo
Mathematics, Social Studies

Delores Danziger
Elementary

seniors



Carmi Edwards
Speech, Social Studies

William Emerick
Elementary

Coral Emig
Elementary

Robert Essenwein
Elementary



William Eustice
Social Studies, English, Safety Education

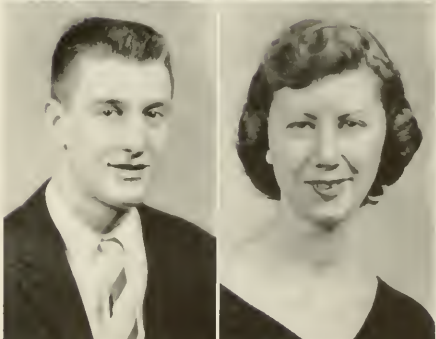
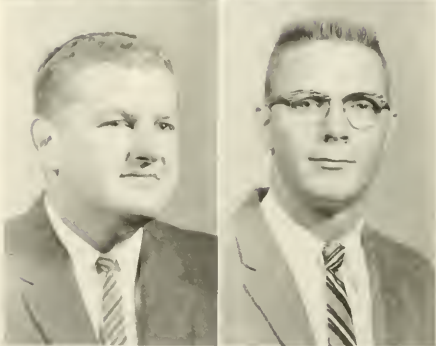
Alice Exley
Librory Science, English

John Fesenmyer
Elementary

Jack Fax
Social Studies, English

Lawrence Frederick
Social Studies, Geography

Marilyn Ginkel
Elementary



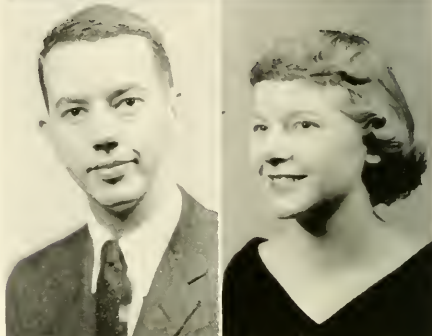
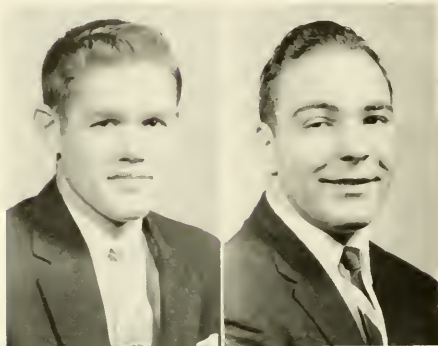
seniors

Elizabeth Gruber
Physical Science, Mathematics

Ardeth Gumph
Library Science, English

Gary Gustafson
English, Speech

Sandra Gustafson
Elementary



Roy Gourley
Biology, Physical Science

James Graziano
Speech, Social Studies, Safety Education

David Greene
Social Studies, English

Harry Greer
Biology, Physical Science

Danald Greggs
Library Science, Social Studies

William Griffin
Mathematics, Social Studies



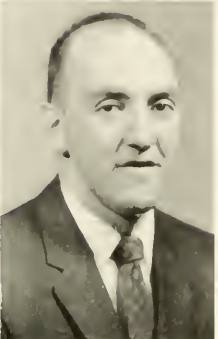


Cleve Haight
Elementary

Arthur Horris
Chemistry, Biology

Jane Hartman
Elementary

Marlin Hartmon
Mathematics, Physical Science



LaVerne Haubrich
French, Spanish, English

Sandra Hepler
Science, Mathematics

Dorothy Jean Hicks
Elementary

Coral Hague
Elementary

Dorothy Hosack
Library Science, English

Jan Humeniuk
Chemistry, Social Studies



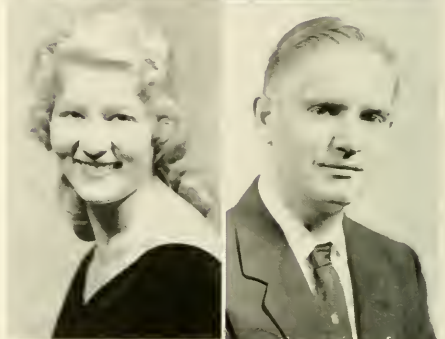
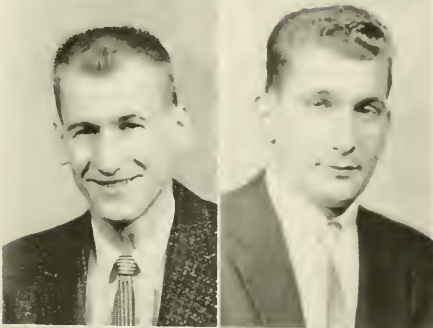
seniors

Virgil Lucas
Mathematics, Physical Science

Donald Ludwiczok
English, Social Studies

Sally Jo Lund
Elementary

Watson Lupher
Social Studies, Geography



Lois Johnson
Elementary

Jean Karp
Elementary

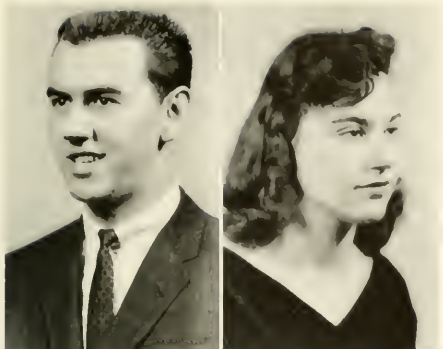
Gerald Keneske
Biology, Physical Science

Robert Kunkle
Physical Science

John Lewis
Mathematics, Physical Science

George Lord
Geography, Social Studies, Safety Education

seniors

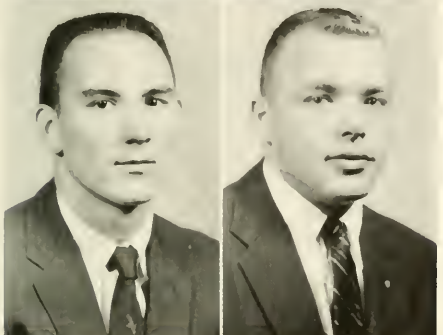


Melvin Mandic
Library Science, Social Studies

Charlotte Manganara
Library Science, English

Wilbur Mapes
Social Studies, Geography

Fred Matheson
Social Studies, Geography, Safety Education



Diane Mathias
English, Social Studies

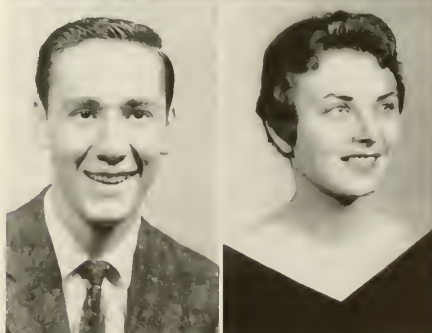
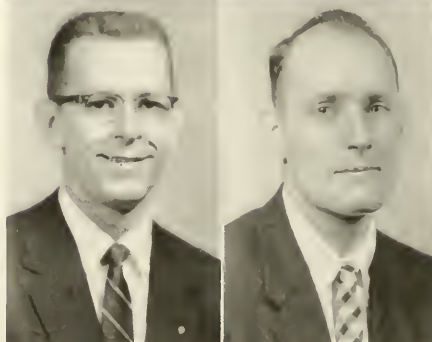
Janet Maxwell
English, Spanish

James McCarrier
Social Studies, Geography

James McElhatton
Social Studies, Geography

Bruce Mellring
Social Studies, Biology

Evelyn Mezerski
Elementary



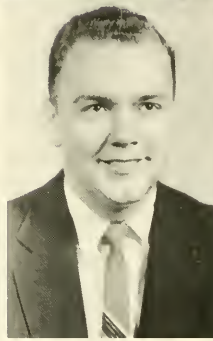
seniors

Nancy Mang
Elementary

Sally Monnoyer
Social Studies, English

David Moore
Biology, Chemistry

Priscilla Burns Maere
Elementary



Beverly Miller
Elementary

Blanche Miller
Elementary

James Miller
Social Studies, Geography

Marlin Miller
Social Studies, English

Neil Miller
Social Studies, English

Jean Mills
English, Speech



seniors



Vincent Nelson
Mathematics, Sociology



Ilene Nichol
Elementary

Phyllis Northey
Elementary

Margaret Nulph
Library Science, English



Naomi Paige
Elementary

Edward Paprik
Elementary

Richard Powell
Physical Science, Mathematics

Thomas Quinn
Mathematics, Physical Science

Carol Roboch
Library Science, English

Albert Rairigh
Physical Science, Biology



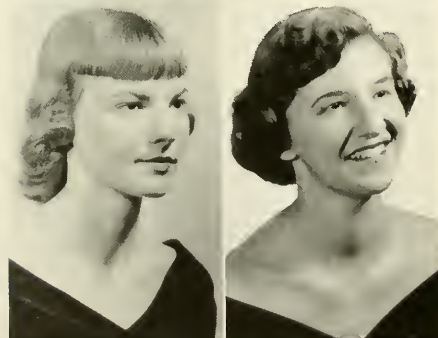
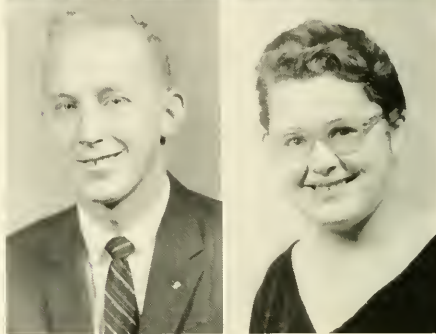
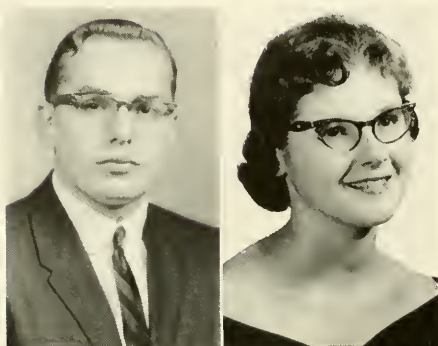
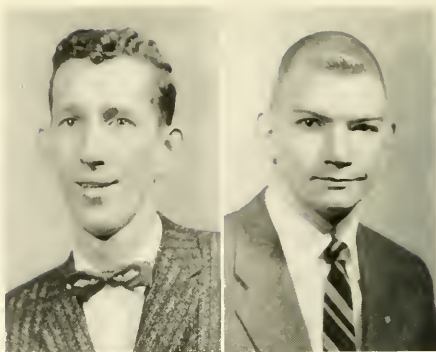
seniors

James Soyers
Social Studies, English

Lester Schickling
Biology, Chemistry

Ronald Schrecengost
Mathematics, Biology

Joanne Scott
Elementary



Lee Rednock
Physical Science, Biology

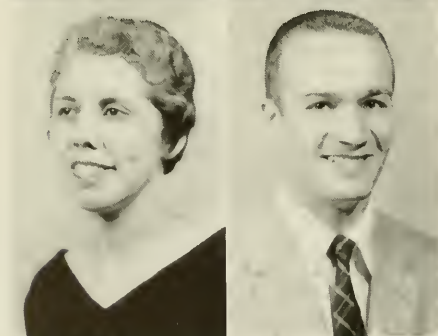
Beverly Reese
Elementary

Deanno Ritchey
Elementary

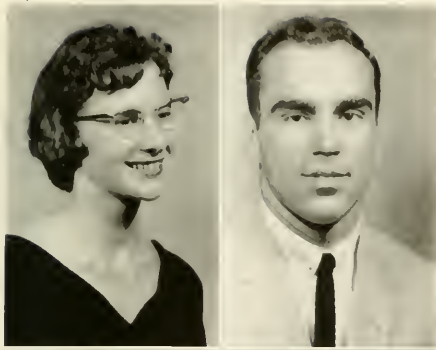
Carol Ann Roch
Elementary

Elizabeth Rupert
Library Science, Social Studies, English

Richard Russell
Biology, Social Studies



seniors



Janet Serena
Elementary



Ernest Smith
Elementary

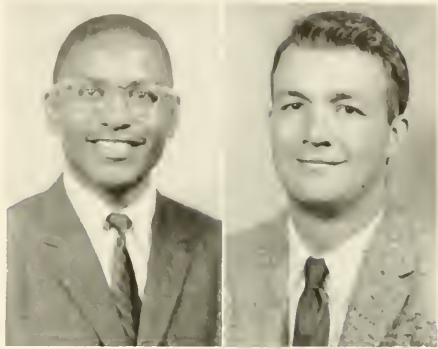
Elvin Snyder
Mathematics, Physical Science

Joyce Stewart
Library Science, English

Richard Summerville
Mathematics, Physical Science

Willard Sutton
Biology, Physical Science

Dale Terwilliger
Biology, Physical Science



Gary Shay
Biology, Physical Science



John Deon Singer
English, Speech



John Slougenheupf
Social Studies, English



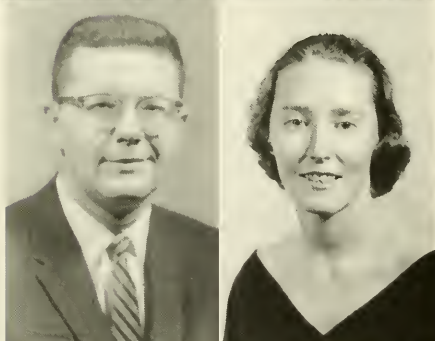
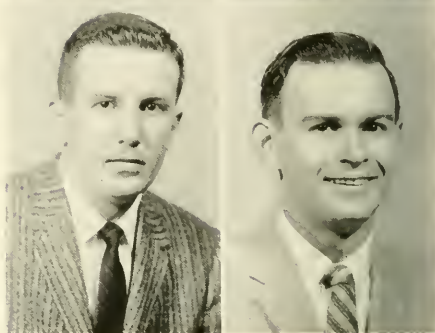
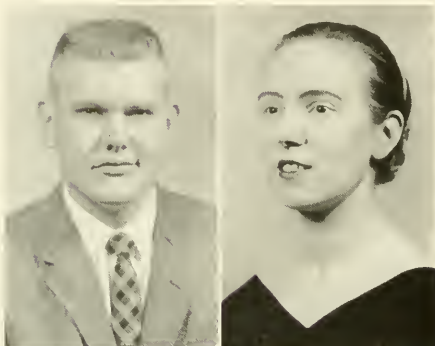
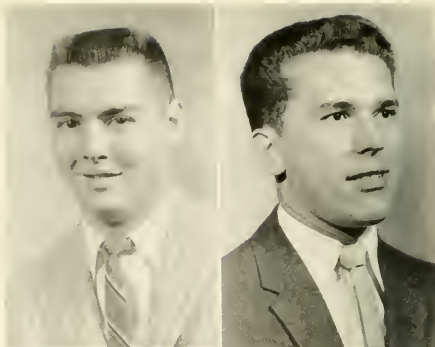
seniors

Roddy Washowich
Chemistry, Mathematics

Robert West
Social Studies, Geography

Raymond Whitmer
Elementary

Richard Wiesen
Mathematics, Physical Science



LaVerne Terwilliger
Physical Science, Mathematics

Helen Thompson
Library Science, English, Social Studies

Joseph Volansky
Social Studies, Geography

Nancy Kelly Vuic
Library Science, English

Lois Walker
English, Social Studies, Library Science

Patricia Warner
Library Science, Social Studies, English



seniors

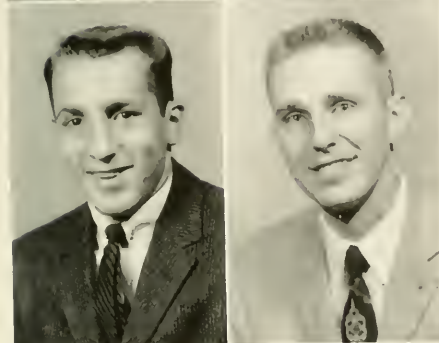


Neal Williams
Elementary

James Yough
Elementary

David Young
Elementary

Richard Yaunt
Physical Science, Biology



Adelia Zdanawski
Library Science, Social Studies

Herbert Strain
Social Studies, Geography

Not Pictured:

Robert Crose
Chester Dallap
Anthony Donghia
Darrell Franklin
Conrad Green
Richard Grave
Edwin Hach
Charles Hubauer
Paul Hutchisan
Lydia Jackson Main
Richard Marris
Donald Pepe
Fred Plavney
Harry Pugh
Gloria Ransan
James Rhoads
Jan Rae Smith
Dale Swanson
Richard Thampson





underclassmen





Officers. Patricia Murray, Peter Malinara, Paul Terpak, Helen Grudawski.

junior class

The Junior Class began its third year with high hopes and aspirations. To attain these, the class had to work harder this year because of the evaluation the College has undergone.

Homecoming was the first activity. This found the junior class represented by Judy Rodgers and Karlene Smith. Selected by Sigma Tau Gamma and Alpha Gamma Phi Fraternities as queens were Doris Calhaun and Jan Brazer.

Under the capable guidance of Dr. Dana Still, the class sponsored the Christmas Formal. The dance was held December 6, with the Westview Dance Band furnishing the music.

We, the members of the junior class, look back over our three years with mixed feelings. We are looking forward to our senior year and student teaching with hope and pleasant anticipation.



Gloria
Allen

Daris
Anderson

Albert
Barone

Mercedes
Bostide

Joseph
Boyhurst

Alice Kay
Bickel

Celeste
Blackawicz

Elizabeth
Barden

Ronald
Batz

Michael
Braddack

Russell
Buhite

Daris
Calhaun

Thomas
Calkins

Emily
Callaway

Linda
Conterno

Lawrence
Corson

Adele
Cipallane

Judith
Clark

Nancy
Clark

Marjorie
Clawson

Narma
Caltan

Harold
Cantie

Wayne
Casta

Robert
Crase

Ronald
Danielson

Roland
Davis

Vera
De Blander

Janet
Decker

Jean
Decker

Daniel
Depp

Linda
Dillman

Nicholas
Di Nunzio

Cordelia
Douds

Thelma
Dubick

James
Dunn

Paul
Enach

Margaret
Farkas

Sally
Gazda

James
Gordon

Helen
Grudowski

Lois
Hebner

Diana
Hemstreet

Avonell
Henry

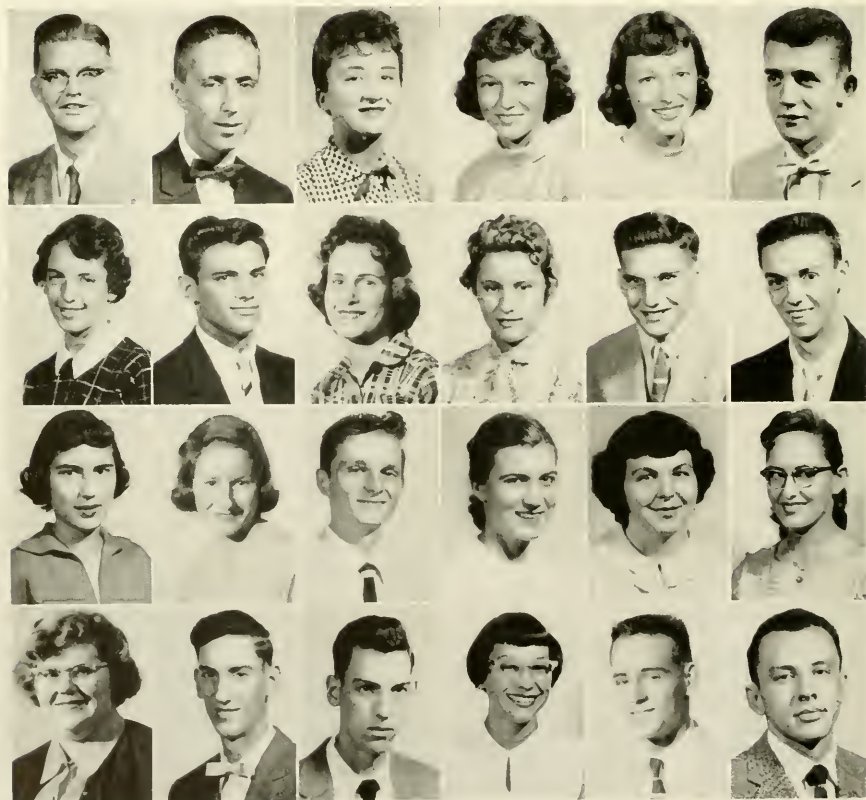
Irvin
Henry

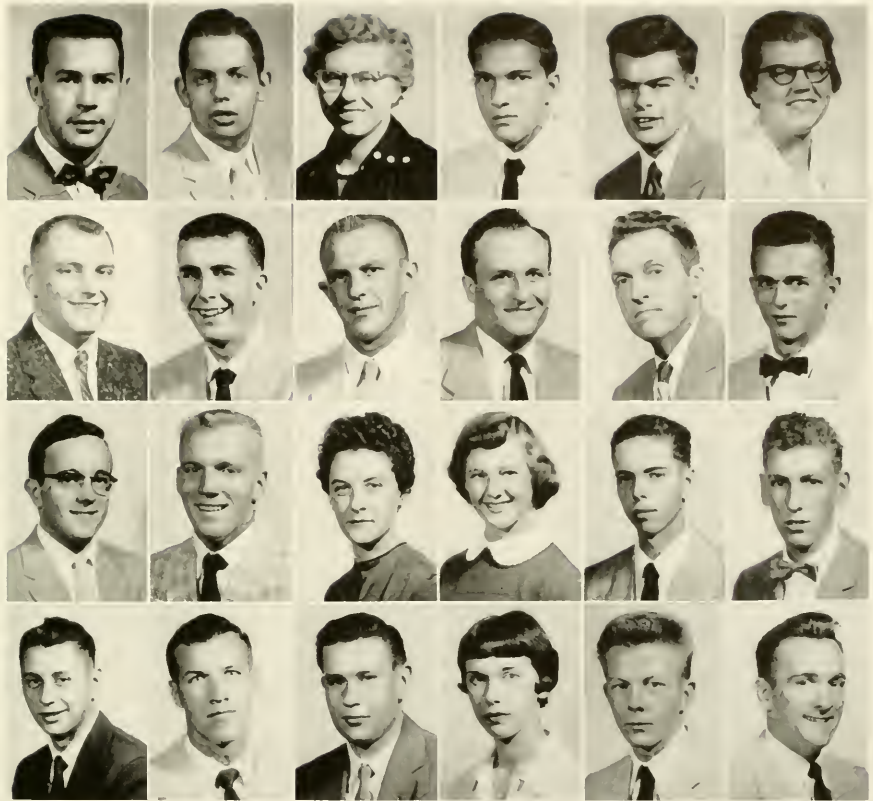
Marvin
Henry

Nancy
Johnson

James
Kifer

Michael
Knosky





Russell
Kuntz

Paul
Laing

Betty
Larimer

Herbert
Laughman

James
Little

Caroline
Livermare

James
Loughren

Jahn
Lowman

Edward
Lucas

Horald
Lucas

Harry
Matlak

Dayle
Maurhaff

Narman
McCoy

George
McFarland

Caralyn
McKinney

Marjarie
McLaughlin

Wade
Meyer

Keith
Miller

Peter
Malinara

Danald
Maare

James
Maare

Patricia
Murray

Robert
Myers

Maxwell
Narby

Carol
Nason

James
Nelson

Joanne
Nalsheim

William
O'Connell

Frederick
Olan

Judith
Pfeifer

Richard
Platt

Veronica
Palak

Ronald
Reckhart

Deanna
Rithey

Judith
Ragers

Thomas
Rossey

William
Rossiter

Lee
Rause

Danald
Rybar

Albert
Sobotini

Betty
Sarko

Mary
Schimp

Wesley
Sherman

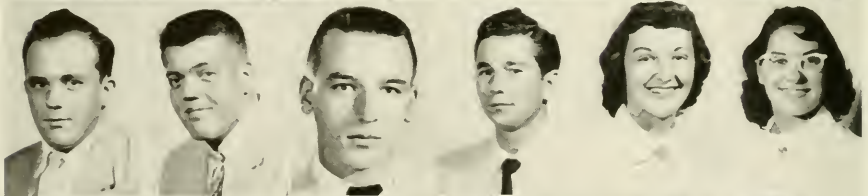
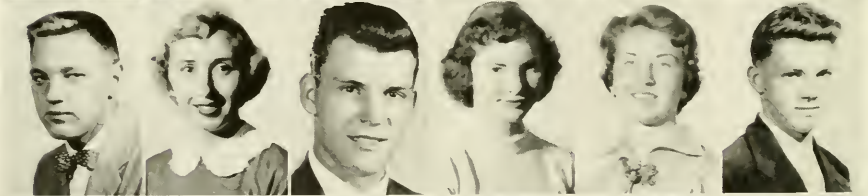
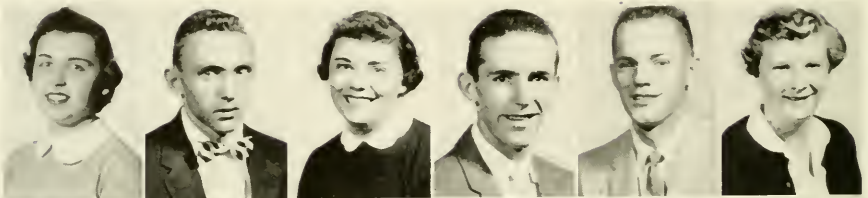
Carol
Sherrieb

John
Sias

Helen
Slottery

Karlene
Smith

Ray
Smrekar





Nancy Swanson

William Temple

Poul Terpok

Fredrick Thickey

Nancy Thomas

Katheryne Tamson

William Truman

Bernord Uzeloc

Georgia Verlota

Victar Weidner

Sharon Weisbaker

Bernice Welker

Ruth Wherry

Ethel Whitaker

Marjorie White

John Yeoger

Deon Yobp



Officers. Joyce Andre, Jon Walter, James Williams, Paul Palmer.

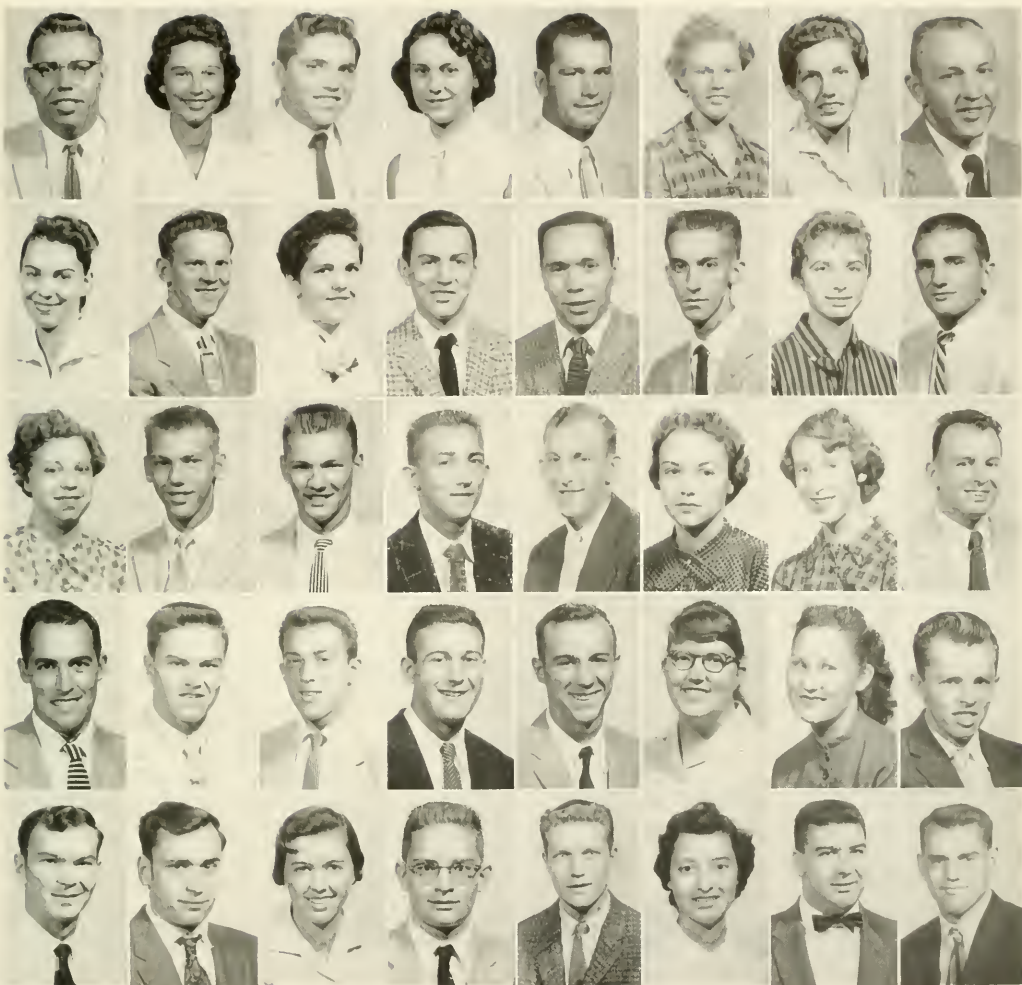
the sophomore class

The Sophomore Class, under the capable leadership of class president, Jon Walter, displayed many noteworthy distinctions and accomplishments throughout the school year. The highlight of the year was the decorating and planning of the Homecoming Dance, which was a very successful affair. Diligent students from the freshmen and sophomore classes were guided and directed by the sophomore class officers.

Joyce Andre and Connie Dubart were our Homecoming Attendants; Mary Lee Stewart was the Red Rose Queen of the Delta Kappa Fraternity; and Patricia Dunmire was the White Rose Queen of the Sigma Tau Gamma Fraternity.

Lucy Park was elected by the student body to represent Clarion in the Roto Queen Contest, conducted annually by the **Pittsburgh Press**.

We are proud to announce that Linnie Lou Steiner, the winner of last year's Miss C.S.T.C. Contest, also won the Miss Clarion County title and was a contestant in the Miss Pennsylvania Contest. Patricia Dunmire received second place in both the Miss C.S.T.C. Contest and the Miss Clarion County Contest.



Jay Acklin	Joyce Andre	Anthony Arpino	Turzah Atwell	Steve Babish	Betty J. Bach	Rita Boker	George Baka
Mariella Barnes	Raymond Barrett	Eleanor Beacom	William Beightal	Donald Bell	Ray J. Berkey	Roberta Berlinski	Jahn Bertani
Christine Besson	Richard Best	Jack Bloine	Daniel Bawser	Robert Bayer	Carole Braund	Janet Budday	Donald Burkett
Herbert Burns	Thomas Buzord	Jahn Carley	Joseph Capizzi	Jahn Carley	Dalares Carlsan	Virginia Claypaale	Richard Commons
Jesse Copenhagen	Taylor Cotton	Frances Crowe	Richard Crum	Robert Currie	Christine D'Ascenza	William Day	Richard DeLong

Frederick Dembasky

James DeMarte

Joseph DeMarte

Mary Lee Ditz

James Damen

Janet Douglas

Constance Dubart

Patricia Dunmire

Jay Dutton

Robert Eddinger

Charles Endlich

Carole Engelbach

Richard Engle

Daniel Estadt

Hannah Evans

Robert Everhart

Mary Ja Eyth

Anthony Fallera

Charles Finnegan

Karl Florie

Nancy Faust

Patricia French

Claire Fuller

Donald Gaiser

Jan Gardner

John Gates

Donald Grady

Janet Grayson

Fae Grattler

Harry Hankey

Alfred Harris

Roe Harvey

Coral Haubrich

Mary Hay

Jordan Heiberger

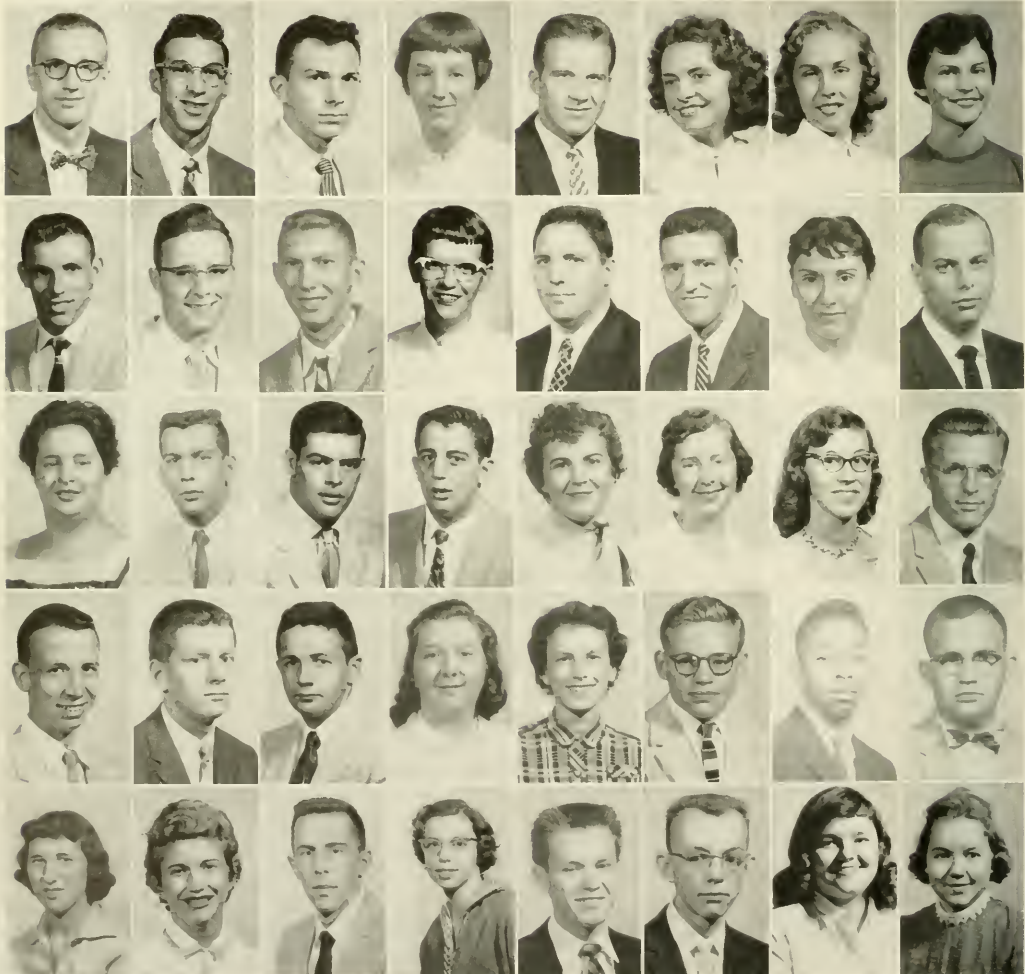
Barbara Heilman

James Henderson

Ronald Henry

Rhoda Hickman

Rita Hilty





Floyd Himes	Kenneth Himes	Richard Hohn	Rebecca Hoover	Karen Hasack	Nancy James	Chester Johnson	Frances Johnson
Jayne Johnson	Janet Karr	Ralph Kemerer	Nancy Kerner	Jack King	Charles Klingensmith	Coral Knapp	James Kockler
Faith Kohler	Steve Kurcis	Margaret Lewis	Sylvia Lind	Linda Lang	James Motlak	John McCabe	Jack McCash
Normon McCoy	Thomas McElhattan	Robert McElravy	David McLaughlin	Ronald McMaster	Vivian McNutt	Richard Means	Beatrice Meckley
Helen Mindek	Patricia Mitchell	Carol Moore	Dorothy Mareland	Gary Murtland	Robert Muse	John Naylor	Robert Nichol

William
Nicholson

Ann
Nolf

Paul
Palmer

Lucy
Pork

Robert
Pearson

Georgianna
Perry

LuVanne
Pierre

Henry
Polasko

Francis
Quattro

Angela
Quero

Joseph
Racioppi

Claude
Raible

Judith
Rondall

Mary
Raybuck

Catherine
Richardson

Nancy
Rodgers

Harriett
Rothrock

Arthur
Sandy

Cluey
Sandy

Janice
Sorcinelli

Paul
Schuster

Albert
Sebring

Ethel
Sieber

Eugene
Sheffer

Carl
Shirey

Carol
Shonek

John
Shrapshire

Morian
Siegel

Phyllis
Siegel

Nancimay
Silo

James
Simpson

Charlene
Smothers

Donald
Smith

Eleanor
Smith

John
Smith

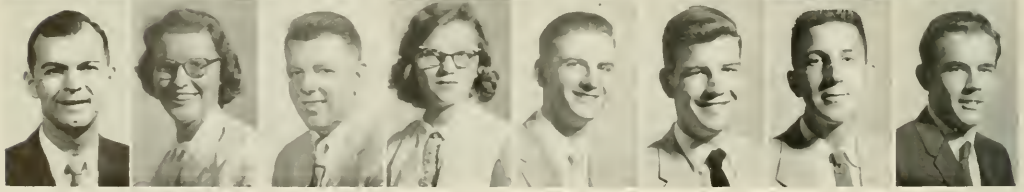
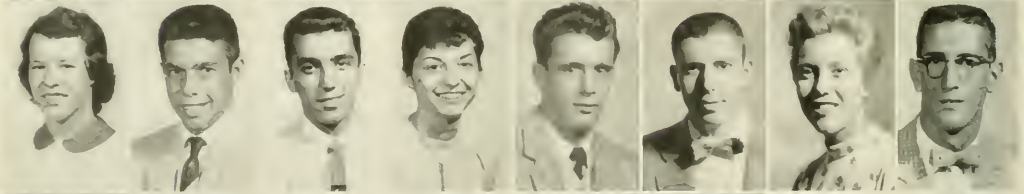
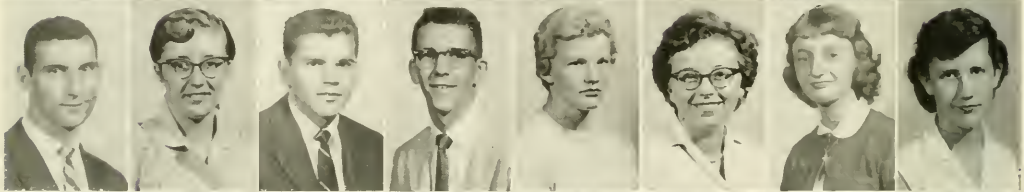
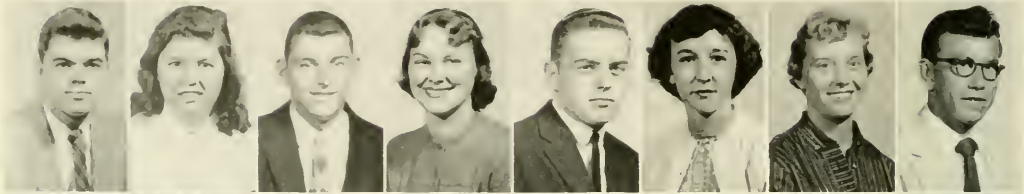
Barbara
Snyder

Malcolm
Snyder

William
Snyder

James
Sarensen

Leland
Stahlman





Robert
Stahlman

Linnie Lou
Steiner

George
Steltzer

Marjorie
Stewart

MaryLee
Stewart

Sharon
Stewart

John
Summerville

Mox
Summerville

Nancy
Swape

Blaine
Todd

Daniel
Tapalski

Gilda
Torchia

Ronald
Vespa

Hilary
Vida

Robert
Valansky

Jon
Walter

Nancy
Wertz

Joyce
West

James
Williams

Gloria
Wilson

William
Yonek

Patricia
Zacherl

Benjamin
Zappa

David
Zilcosky



Officers: Frank Rocco, Phoebe Etzel, Donno Bert, Richard Rogers.

freshman class

All through the summer months we waited anxiously for September the eighth. Then, all of a sudden, the time had come when we were to embark on our new experience which was later to become our everyday routine.

Attending such events as the Homecoming parade and dance, we began to realize that college was much more than just studies. Worrying about exams was one experience which we could have done without, although, we well realized that this was part of the well-roundedness that we are striving to achieve.

Nola Snyder and Donna Bert, represented the freshmen class proudly on the Queen's Float at Homecoming.

Combining our efforts with those of the Sophomore Class, we decorated Harvey Gym for the Homecoming Dance, using the theme "football."

As this first college year draws to a close, we are able to look back and see what we have accomplished. Anxiously we look into the future towards even greater accomplishments in the next three years.



Jerry
Adams

James
Alekn

Robert
Allen

Linda
Anchars

Gory
Anderson

James
Ashbough

Martha
August

Ellen
Bailey

Harald
Baker

Veronica
Borile

James
Barrett

Duane
Bashline

Janet
Boynham

Charles
Belavic

Joseph
Bennardo

Carol
Berberich

Danna
Berty

Elinor
Bickel

Beth
Bishop

William
Blöse

Richard
Blosser

Larry
Bobbert

Carol
Baddarf

William
Bona

Nick
Barilli

Corale
Baris

James
Basin

Daniel
Bawser

Walter
Bawser

Marilyn
Brand

Ted
Brewer

Ronald
Britton

Susan
Brougham

Maryonn
Buczek

Helen
Budzinski

Esther
Buhite

William
Buhite

Raymond
Bukosky

Charles
Burchfield

Judith
Burford

Edward
Burns

Judith
Collenburg

Christie
Campbell

Albert
Caratelli

Roger
Carl

Paul
Chantry

Thomas
Chopman

Ann
Chittister



Emilio Cipallone	Louis Ciucca	John Cliff	Robert Claherty	James Coffman	William Celgrove	John Colpa	Samuel Condeluci
Velma Copenhaver	Phyllis Carbett	George Cottrell	Frank Cox	Mary Crate	Edward Cravener	Anthony Crimarki	Sally Cupo
Patricia Cyphert	Sally Daley	Paula Dannels	Grant Daum	William Davis	Danald Day	Danna Delaney	Ronald Dellapina
Richard Delp	George Denarda	Danna Deveney	Donald Dininny	Danna Dittman	Carla Ditty	Roland Dobas	Edmund Duda
Dean Duff	Larry Duff	Thomos Eshelman	Phoebe Etzel	Thamas Fitzsimmons	Morion Ford	Judith Farringer	Rachel Foster
Judith Fax	Jahn France	Arthur Franks	Judith Freeburg	Wayne Friedhoff	Dennis Gaiser	Martin Galloher	Selma Gallogher



Doris
Glenn

William
Gaachee

Barbara
Garr

Kenneth
Gawetski

Edward
Graham

Jeanette
Graham

Richard
Greca

Leroy
Grasch

Shirley
Guida

MaryEllen
Hamrock

James
Hanna

Barbara
Harchuck

Joseph
Heilman

Barbara
Heller

Larry
Henry

Rachel
Henry

Joseph
Hixenbaugh

Charles
Hackinsan

Janet
Hopkins

Richard
Harmel

Richard
Hasey

Donald
Hurley

Mildred
Hutchins

Edward
Itell

Stephanie
Jellison

William
Jenkins

Jahn
Kahat

Eugene
Kanaan

James
Kane

Avis
Kemmer

Joanne
Kenemuth

Robert
Khalil

Scott
Kifer

Thomas
King

Darrell
Knopfel

Janice
Krathege

Susan
Kunselman

Lorraine
Kuzma

Martha
Lauffer

Gloria
Lee

Patricia
Lee

Suellen
Lehner

Patricia
Leksell

Barbara
Lewis

Harry
Lewis

Joyce
Lewis

Nancy
Lichka

Judith
Lieberum

Jahn
Lingfelter

Virginia
Linnon

Arthur
Lagan

Jack
Layo

Noel
Lucas

Patricia
Ludwiczak

Robert
MacClennan

Jahn
Magara

Judith
Marnic

Vera
Marshall

Carol
Martin

Joseph
Master

Sanja
Master

James
Matalik

Elva
Mathias

Jahn
Maus

Stanley
McCleary

Diana
McClaskey

Erma
McCaal

Martha
McCullough

Genevieve
McDonald

Jeanne
McDowell

James
McElwain

Phyllis
McGarry

Roberta
McGaughey

Ellen
McLaine

Agnes
McLoughlin

James
McLaughlin

Thomas
McManige

Thomas
McNamara

Sally
McNeil

Richard
McPherson

Farrest
McQuown

Sandra
Melick

Michael
Merritt

Charles
Meyer

Edward
Michel

Josephine
Midgley

Jack
Miller

Mary Jane
Miller

Sarah
Miller

Barry
Mahney

Wayne
Maare

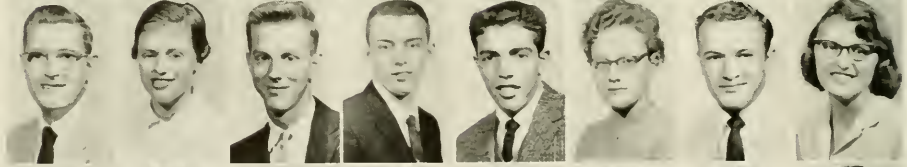
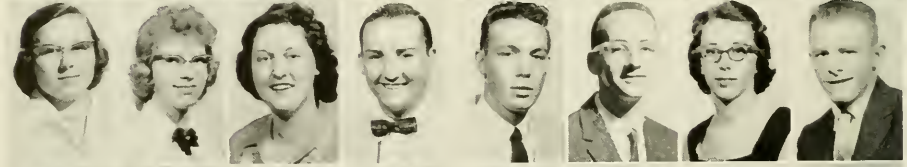
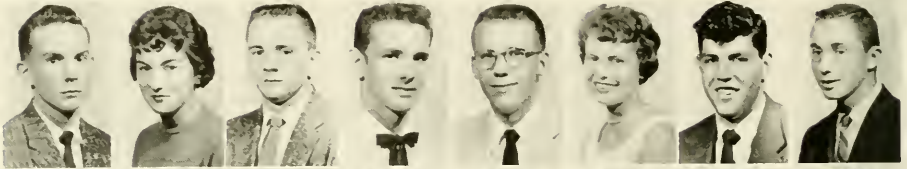
William
Marrow

Richard
Martimer

Paul
Mawry

Bruce
Murphy

Thomas
Murray





Dallas
Myers

James
O'Brian

Allen
Pence

Judith
Papielski

Patricia
Reed

Edna Mae
Rickenboch

Walter
Myers

Howard
O'Neil

Matthew
Petiko

Mary Lee
Parter

Richard
Reib

Donald
Roberts

Bonnie
Naro

Koy
Ordiway

Stephen
Petrick

Richard
Powell

Ronald
Remich

Frank
Racco

Thomas
Nega

William
Ozimek

Mory
Picardi

Olga
Purich

Beverly
Rendash

Jean
Rock

Cecelia
Noca

Ellery
Panoia

James
Pisoneschi

Ralph
Ralph

Mary Lee
Rhaodes

Richard
Ragers

Douglas
Nie

Francis
Parks

Nancy
Plummer

Fronces
Roneri

Patricia
Rice

Ruth
Rassey

Charles
Noonan

Danald
Porula

Gary
Plyler

William
Roy

Joon
Richards

John
Saksan

Shirley
Nardahl

Thomas
Pellis

Robert
Pampe

Jaan
Reed

Barbara
Richards

Carole
Schaeffer

Judith Schlemp	Judith Schlekot	Larry Schreckengast	Roger Schreckengast	Allen Schwartz	Richard Shaffer	Brian Shampooe	Charles Shanahan
Sally Shoner	James Shelly	Frederick Shick	Byran Shields	Donald Shilling	Clyde Shirey	Fred Shaemaker	Robert Shaup
Larry Shreckengast	Ranold Shumaker	Delbert Sinai	Gloria Skelly	David Skinner	Judy Slagle	Cannie Slay	Gilbert Sloan
Fred Slacum	Jahn Smith	Karen Smith	Leana Smith	William Smith	William Smaker	Gregg Smause	Judy Snyder
Nala Snyder	Robert Somers	Janet Spencer	Geraldine Stanovich	Alice Jean Steele	Ranald Stewart	Jahn Stimel	Jeanne Sturgeon
Henry Sullivan	Alvin Summerville	Raymond Supak	William Sutliff	Ruth Swartzfager	Maxine Szafran	Walter Szajna	Charles Terrana





Barbara
Terrill

William
Tubbs

Marilyn
Woddell

Daniel
Weikal

James
Wile

Fred
Zecker

Todd
Thompson

Carol
Turney

Kahle
Wagner

James
Welch

Patricia
Wilshire

Gloria
Torchio

Loreen
Uhrine

Leonard
Walkowiak

Margaret
Wellman

Dorsey
Wilson

Lorry
Tosh

Thomas
Ulmer

Judith
Wolton

Timothy
Welty

James
Wilson

Esther
Toy

Joseph
Ungvarsky

Ruth
Waters

William
Whalen

James
Wingote

Robert
Toy

Joseph
Vida

Rager
Weckerly

Heidi
Wiont

Paul
Wise

Janet
Trill

Marlene
Vida

Nola
Weed

Ernest
Widmar

Jaonne
Zacherl

Cathianne
Truby

John
Vangrey

Thomas
Wehrli

George
Wike

Albert
Zdravecky



organizations





1st Row: Deanna Ritchey, Sandra Hepler, Janet Sereno. 2nd Row: Lester Schickling, Richard Weisen.

who's who

Seventeen of this year's seniors were selected to represent Clarion in the 1958-59 publication of Who's Who Among Students in American Universities and Colleges. Those selected were: Frederick Bell, Carolyn Comp, LaVerne Houbrich, Sandra Hepler, Virgil Lucos, Diane Mothias, Janet Maxwell, Mrs. Elizabeth Rupert, Lester Schickling, Gloria Ranson, Deanno Ritchey, Janet Serno, Joyce Stewart, Richard Summerville, Dole Swanson, Helen Thompson, and Richard Weisen. This honor is delegated to those students who rank among the upper two per cent of the college and university students in the United States. Nomination to this organization implies the student's leadership and participation in academic and extra-curricular activities, his scholarship, his citizenship and service to the school, and his promise of future leadership.

In addition to receiving national recognition in the organization's annual publication, members are also entitled to the use of the excellent professional placement service affiliated with Who's Who. Recipients of this coveted honor are chosen by the Committee on Academic and Professional Standing. Clarion has been represented in Who's Who since the founding of the organization in 1934.



Seated: Delores Donziger, Christine D'Ascenzo, Doris Book. 2nd Row: Jeonette Corbett, Carol Emig. 3rd Row: Edward Poprik, Melvin Riffer, Janet Decker, Benjamin Deibler, Peter Malinaro.

student senate

Officers

President	Melvin Riffer
Vice President	Peter Molinaro
Secretary	Janet Decker
Advisor	Dr. Chandler

The Student Senate meets bi-monthly with Dr. Chandler as the advisor. The Senate, which establishes better relations between the students and the administration, is composed of twelve members representing the dormitory, town, and commuting students.

The business of the year included management of the student activities' budget, giving scholarship pins, and sending representatives to the Student Government Conference.



1st Row: Carole Braund, Delores Danzinger, Miss Pryar, Stephanie Jellison, Sandra Gustafson. 2nd Row: Mary Ann Buczek, Betty Sarka, Turzah Atwell, Mary Stewart.

women's house council

Officers

President	Delores Danzinger
Vice President	Doris Book
Secretary	Mory Lee Stewart
Treasurer	Carol Braund

The Women's House Council is the governing body of the women's dormitories. Made up of representatives from each building, it works toward better dormitory life and invites suggestions and opinions from the women.

Among its activities are freshmen orientation week, big sister program, Christmas party, Christmas decoration contest, women's rules and regulations revisions, and joint work with the men's house council.



1st Row: Joseph Gates, Robert McElravy, Gary Anderson, Paul Terpak. 2nd Row: Frank Rocca, Robert Meyer, Joseph DeMarte, Ronald Batz. 3rd Row: Jack King, Benjamin Deibler, Charles Endlich, Daniel Mahaney, William Smutka.

men's house council

Officers

President	Joseph E. Gates II
Secretary	Jack C. King
Treasurer	Paul Terpak

The Ballentine Hall House Council is in its third year of serving purposefully the dormitory men's interest on Clarion campus. During this time the council has had a sterling record in accomplishing their aims towards the development of the well rounded individual.

Among their major projects for the year were an Open House reception during the Homecoming celebration, various dormitory parties for the residents, and student government for the dormitories.

It is evident that in the future the student body will reap the benefits sowed by the mature foresight of this group.



1st Row: Faye Dryden, Lawrence Frederick, Miss Pryor. 2nd Row: Frank Bruno, Benjamin Deibler, Robert Myers.

social committee

The purpose of the Social Committee is to provide a well-rounded social program for the students of Clarion State Teachers College.

Through the innovations which the committee has made, as well as the continuance of past functions, Clarion's social calendar may well be claimed as one of the best.

Highlights of this year's program include outstanding motion pictures shown in the chapel, swimming, dancing, a spring week-end and fireworks.

Members are Miss Pryor, Richard Yount, Robert Myers, Frank Bruno, Faye Dryden, Constance Dubart, and Lawrence Frederick.



1st Row: Linda Long, Richard Wiesen. 2nd Row: Mr. Pearce, Carole Boris, Janet Maxwell, Adela Cipollone, Mr. Kuhner. 3rd Row: Lorraine Kuzma, Sondra Hepler. 4th Row: Doris Glenn, Jack King, Barbara Harchuck.

the sequelle staff

As a member of the college annual staff, each of us has had a part in presenting to you, the students of Clarion State Teachers College, this year's **Sequelle**. In attempting to portray the various student activities on campus, we have collected these pictures and records into an album which you will inevitably treasure in future years.

When you leafed through your yearbook, did you stop to realize who was responsible for this journalistic work? Richard Wiesen, Beverly Reese, and Carolyn Camp, in their position as co-editors, sacrificed many hours in organizing the material and leading their assistants. Linda Long, in her capacity as head of the literary department, and proof reader guided the many students who voluntarily prepared the various write-ups. A group with one of the most important tasks, the art staff, was headed by an able member of our college art department, Mr. Pearce. Assisting him in his efforts were Doris Glenn, Barbara Harchuck, and Constance Dubart. As business manager, Janet Boor handled the finances. Joe Gates worked hard as head of photography. Numerous typists and other workers can take credit for contributing to this fine publication.

We would like to thank Mr. Kuhner and Dr. Moody for their welcome advice throughout the preparation of the 1959 **Sequelle**—an indispensable souvenir in every student's college life.



art club

Art Club, under the sponsorship of Mr. Spence, provides opportunity for those students interested in art to further develop their talents in this field. This year, John Shropshire, Al Harris, Jim McElwain, Donna Pittman, Sonja Master, Janet Trill, and Carol Berberich are members.

Each member is free to choose an area of art in which he is interested and to dabble in the medium of his own selection. Oil and water color painting, ceramics, textile painting and enrichment, leather work, and sculpture are among the popular interest areas.

Thanks and credit are due Mr. Spence, art instructor and sponsor of the club, for his continued guidance and encouragement.





1st Row: Lorraine Kuzma, Cardelia Dauds, Nancy Faust, Nancy Thomas, Joan Reed.
 2nd Row: LuVonne Pierre, Marjorie Clowsan, Helen Slattery, Patricia Reed, Mary S. Lehner, Veronica Barile. 3rd Row: Georgianna Perry, Patricia French, Sharon Weisbaker, Claire Fuller, Patricia Mitchell. 4th Row: Mary Hay, Ethel Whitaker, Veronica Polak, Betty Sarko, Ruth Wherry, Linda Dillmon.

association for childhood education

Officers

President
 Vice President
 Secretary
 Treasurer
 Sponsor

Ruth Wherry
 Linda Canterna
 Veronica Polak
 Ethel Whitaker
 Miss Pemberton

The A.C.E., Association for Childhood Education, is an organization whose purposes are to work for the education of children and to aid in their well-being. It also works to raise the standard of teacher preparation and to encourage professional growth of teachers and school leaders.

A.C.E. meets on the fourth Wednesday of each month in the Training School. A few of our meetings this year consisted of demonstrations in science, art, and manuscript writing for the elementary grades.

Our programs were supplemented by such projects as selling book covers, joint work on the homecoming float with S.E.A.P., a spring banquet with S.E.A.P., and bowling.

A.C.E. had a profitable and enjoyable year under the guidance and assistance of its sponsor, Miss Pemberton.



1st Row: Dr. Dinsmore, Mrs. Sandoz, Patricia Murray, Robert Edinger, James Little, Mr. Shontz. 2nd Row: Ralph Cook, Victor Weidner, Kenneth Lynn, Lee Dunn, Daniel Depp, Roy Gourley. 3rd Row: Dole Terwilliger, Janet Decker, Jean Decker, David Moore, William DeHart, Daniel Topolski, Nancy Ketner. 4th Row: Nancy Clork, Michael Knosky, Gary Shay, William Smutko, Richard Platt, Lester Schickling, Albert Barone, Helen Grudowski.

bios club

Officers

President
 Vice President
 Secretary
 Treasurer
 Sponsors

Daniel Depp
 Gary Shay
 Patricia Murray
 Helen Grudawski
 Mrs. Sandoz
 Dr. Dinsmore

The Bios Club is one of the newest organizations on Clarion's Campus. Organized early in October, the club has already achieved its aim—that of furthering knowledge and interest in the biological sciences.

The club meets bi-monthly; and presents a program illustrating some practical phase of biology that will be useful to the members in their teaching careers. The club also reviews films from the college library in order to acquaint the members with these visual aids.

In the future, the Bios Club hopes to realize its aims by presenting materials pertinent to the technological progress which is now being made by the world's scientists and by relating this material to the individual needs of its members.



1st Row: Nola Snyder, Jean Decker, Dr. Lewis. 2nd Row: Lois Johnson, Cecelia Noca, Ethel Sieber, Nancy Swanson. 3rd Row: William Rossiter, Janet Moxwell, Richard Yount, Roberto Berlinski, Norman McCoy.

camera club

Officers

President
 Vice President
 Secretary
 Treasurer
 Editor
 Advisor

Doris Book
 William Rossiter
 Jean Decker
 Nola Snyder
 Ethel Sieber
 Dr. Lewis

The goals of the Camera Club are to stimulate interest in photography and to develop a greater understanding of the principles of photography. During the outings and field trips of the year pictures are taken and later studied for the purpose of developing technical and artistic skills.

The Camera Club has a photography contest each year, and the best picture in each of four groups is chosen by a committee of judges. Each contestant must take, develop, and print the picture personally.

The Camera Club has proved a rewarding experience to its members during this school term.



1st Row: Mr. Force, Joyce Jahnsan, Barbara Terrill, Bruce Murphy, Todd Thompson, Donald Smith, Jan Walters, Barbara Heilman, Mr. Beattie. 2nd Row: Veranica Barile, Nola Snyder, Richard Reib, Fred Thickey, Roland Davis, Joseph Gates, Shirley Guida. 3rd Row: Larry Bobbert, Jan Gardner, Paul Palmer, Robert MacClennan, William Calegrave, Eugene Szul, Beverly Myers, Sally Miller.

college players

Officers

President	Jon Gardner
Vice President	Paul Palmer
Secretary	Kothy Richardson
Treasurer	Beverly Myers
Sponsors	Mr. Force Mr. Beattie

The Clarion College Players is a student body organization devoted to directing, staging, and acting in theatrical productions. Through such activities members gain experience in dramatic work, and at the same time, take part in an absorbing creative experience.

Club activities normally include one-act assembly plays, skits for town and campus organizations, and three-act plays. This year's major productions were the Pennsylvania Dutch comedy, "Papa Is All," the Greek drama, "Oedipus Rex," and "Our Town," the well-known Thornton Wilder drama. In the spring, club affairs are brought to a close with the annual picnic.

The club works under the direction of its sponsors, Mr. William Force and Mr. William Beattie.



1st Row: Janet Trill, Judith Marnic, Caroline Livermore, Sanje Masters. 2nd Row: Lee Dunn, T. A. MacDonald, Robert Shaup, Leland Stahlman. 3rd Row: Donald Rybar, Jahn Naylor, Daniel Estadt, Ranald Batz. 4th Row: Lee Gilliland, Mr. Kuhner, Daniel Mahany, Herbert Burns.

geography club

Officers

President

Ronold Rybar

Vice President

Harold Lucas

Secretary

Caroline Livermore

Sponsor

Mr. Kuhner

The Geography Club affords all students the opportunity to participate in activities relative to the field of geography and travel. The club plans its own programs and activities for the interest and enjoyment of the entire group.

Some of the past programs have featured moving pictures of special interest, lectures and colored slides by people who have traveled extensively. Some of the most interesting trips have been to the Western Pennsylvania Artificial Breeders Cooperative, Owens Illinois Glass Plant, Bell Telephone Company, and the Clorion Bottling Company.

The Club enjoyed the movie "The Dew Line" and the spring trip to Pittsburgh.

The Geography Club encourages all students interested in geography to participate in the activities of the organization.



1st Row: Marjorie McLaughlin, Barbara Smyder. 2nd Row: Sally Gazda, James Groziano, Phyllis Siegel, Janet Brazer, Veranica Barile. 3rd Row: Mary Jane Miller, Thomas King, Delbert Sinai, Frances Crowe. 4th Row: Roberta Berlinski, Jack Loyo, Paul Palmer, Eugene Szul, Judith Schimp.

newman club

Officers

President	William O'Connell
Vice President	Paul Palmer
Secretary	James Graziano
Corresponding Secretary	Mary Lee Ditz
Treasurer	Sally Crain
Sponsors	Paul Schuster
Chaplains	Miss Mary Kay Banner
	Dr. Alpha Bernard
	Father Burke
	Father Meisinger

The Newman Club was established on the Clarian Campus with the purpose of fostering the spiritual, mental, and social growth of all Catholic students on the campus. This character enrichment is offered to members through the various club activities.

Included in the programs of the regular meetings are guest speakers, motion pictures, lectures by the chaplains, and panel and group discussions.

The annual communion breakfast, the maintenance of the bulletin board in Seminary Hall, an informal initiation for new members, a get-acquainted party, and the display of the Nativity scene are several of the other activities of the Newman Club.



1st Row: Sally Crain, Glaria Torchia. 2nd Row: Maxine Szafran, Nancy Rogers, Patricia Rice. 3rd Row: Michael Braddack, Edward Lucas, Christine D'Ascenza, Donald Parula. 4th Row: Judith Papielski, Ray Smrekar, William Calegrave, Michael Knasky, Mary Jane Garfello.

1st Row: Helen Budzinski, Nancy Swanson, Virginia Linnan, Margaret Wellman, Rita Baker. 2nd Row: Adela Cipallane, Mary Ann Buczek, Barbara Harchuck, Marlene Vido, Carole Baris, Patricia Zacherl. 3rd Row: Lorraine Kuzma, Helen Grudawski, Peter Malinara, Karlene Smith, Mary S. Lehner, Genevieve McDonald, Mildred Hutchins. 4th Row: James Little, Cecelia Noca, Edward Paprik, John Sias, Claude Raible, Alice Jean Steele, Patricia Ludwiczak.



1st Row: Carole Baris, Lorraine Kuzma, Olga Purich, Shirley Nordahl, Georgianna Perry. 2nd Row: Sandra Hepler, Carol Nason, Judith Marnic, Janet Decker, Carol Emig, Nancy Foust. 3rd Row: Richard Wiesen, James Hunter, John Nichol, Jack King.

international relations club

Officers

President
 Vice President
 Treasurer
 Recording Secretary
 Corresponding Secretary
 Sponsors

Richard Wiesen
 John Nicol
 Jack C. King
 Beatrice Meckley
 Carol Nason
 Dr. James King
 Dr. Bert Anson
 Mr. Charles Robbe

The International Relations Club has just finished a successful year in contributing considerably to the student understanding of international and domestic affairs. Through its programs, discussions, and projects this club has furthered its aim toward the development of this understanding and world peace.

Under the direction of its officers and sponsors the club has had a variety of activities some of which were the sponsorship of the student trip to New York and visit to the United Nations and a banquet in honor of the seniors.



1st Row: Linnie Lau Steiner, Doris Calhaun, Celeste Blackowicz, Janice Brazer. 2nd Row: Rita Baker, Lindo Canterno, Priscilla Burns Moore, Evelyn Mezerski. 3rd row: Shoron Weisboker, Deanna Ritchey, Helen Mindek, Mary Schimp, Beverly Miller. 4th Row: Anthony Cordamane, John Lowman, Melvin Vuic, Lee Dunn, Albert Sabatine, James Graziano.

1st Row: Dr. Predmore, Daniel Estadt, Doris Book, Benjamin Deibler, Donald Rybor. 2nd Row: Delores Danziger, Judith Rogers, Gary Smith, Virginia Alcorn. 3rd Row: Sally Shaner, Sally Bryon, Larry Blumer, David Moore, Roberta Berlinski. 4th Row: Anthony Aiella, Joseph Schapp, George McFarland, Bernard Uzelac, John Camerate.

the outdoor club

The Outdoor Club is a social club at Clarion whose purpose is to provide recreation and healthful activities for its members. This year several outings were held in Cooks Forest. The maintenance and improvement of Cooks Forest Nature Trail is a major project of the club.

A highlight of the club's activities during the year is the Winter Carnival, an annual all college function held in January. After an enjoyable afternoon of games and refreshments, the Winter Carnival Queen was crowned at the dance held in the evening.

The club gives credit to its sponsors, Dr. Predmore and Mr. Robbe for their help and guidance through the year.



1st Row: Veronica Barile, Diane Mathias, James Gardan, Bonnie Nara. 2nd Row: Dr. Still, Elinor Bickel, Judith Callenburg, Catherine Richardson, Mr. Mellon. 3rd Row: Frances Raneri, Katheryne Tamsa, Mary Hamrock, Alice Bickel, Selma Gallagher, Betty Larimer. 4th Row: Carole Boris, Dana Deveny, Charles Klingensmith, Morvin Henry, Jack King, Joseph Gates, Martha Lauffer.

press club

Officers

President	Alice Kay Bickel
Vice President	Diane Mathias
Secretary	Betty Larimer
Treasurer	Robert Brosnohon
Sponsors	Dr. Still Mr. Mellon

The Press Club is a group of students interested in publishing the school paper, **The Clarion Call**, and in gaining experience for possible sponsorship of high school newspapers. Alice Kay Bickel was the editor of the Press Club this year. The editor and sponsors appointed department editors from the group. These are: Carole Boris, news editor; Katheryne Tomson, features editor; Jack Fox, sports editor; Morvin Henry, art editor; and Frances Raneri, exchange editor.

The activity appropriation was raised this year to provide for the increased enrollment and exchange program. There is no definite number of issues to be published, although the staff sets nine papers as its goal. The first semester art work was original, with a syndicated cartoon introduced second semester. Dr. Lewis contributes the special photography. Several new columns and an altered layout were inaugurated this year.

Twice during each semester the staff sets aside its work and enjoys an informal party, and in the spring it holds a picnic.

The staff should be commended on its efforts to make the **Clarion Call** alive and interesting to the students and faculty.



1st Row: Paul Terpak, Daniel Bowser, Esther Tay, Jay Acklin, Robert Nichol, Avis Kemmer, William Rossiter. 2nd Row: Dean Duff, Jack Lingenfelter, Eugene Szul, Mr. Flack, James Wilson, Laurence McElwain, Richard Yaunt.

rifle club

Officers

President	Eugene Szul
Vice President	Grant Crawford
Secretary	Norma Colton
Treasurer	Bob Nichol
Ronge Officers	Paul Terpok, William Rossiter
Publicity Officer	Dick Yount
Sponsors	Mr. Charles Flack, Mr. Golen Ober

The purpose of the Rifle Club is to stimulate interest in and to engage in competitive activities with other college teams. Target practice for both men and women is provided with twenty-two caliber target rifles and the Army Garand semi-automatic rifle. The Clarion State Teachers College Rifle Club is a member of the Western Pennsylvania College Rifle League composed of Clarion and the A.F.R.O.T.C. Rifle teams of Allegheny College, Grove City College, and the University of Pittsburgh.

Better equipment was provided this year with the acquiring of more shooting coats which give better control over the rifle and should result in improved scores for every member of the club.

Through added conveniences and excellent leadership, the Rifle Club has had a successful and interesting year.



Officers. Jayce Andre, Dean Yabp, Roland Davis. 2nd Row: Mary Lee Stewart, Robert Muse, Marjorie Stewart, Dr. Lewis.
 1st Row: Jaan Reed, Carol Schaefer, Dr. Lewis, Nancy Wertz, Carole Maare. 2nd Row: Judith Waltan, Judith Freeburg, Diane McClasky, Nancy Lichka, Barbara Garr. 3rd Row: Sharon Stewart, Daris Glenn, Olga Purich, Avis Kemmer, Carol Baddarf, Fae Grettler. 4th Row: Sandra Melick, Danna Deveny, Jack Blaine, Jay Acklin, Glaria Allen, Dean Yabp.

student christian association

Officers

President	Roland Davis
Vice President	Joyce Andre
Secretary	Mary Lee Stewart
Attendance Secretary	Marjorie Stewart
Treasurer	Robert Muse
Sponsors	Dr. Donald Pierce, Dr. George Lewis, Dr. Paul L. Shank

Although the Student Christian Association is a nondenominational group, it is primarily made up of the Protestants on campus.

Our programs have consisted of such speakers as Mr. Frank Campbell, Richard Crum, Reverend Nefigar of Franklin, Doctor Pierce, and a representative of the World University Service. Other programs we have had include Moody Bible Institute movies, a Christmas program, and caroling.



1st Row: Julie Heil, Emily Callaway, Paula Dannels, Nala Snyder, Ethel Whitaker, Sally Miller, Nancy Thomas, Carole Sherrieb. 2nd Row: Catherine Truby, Stephanie Jellison, Georgianna Perry, Constance Slay, Shirley Nardahl, Mary Hay, Maribelle Lerch, Danna Deleny, Barbara Hileman. 3rd Row: Roberta McGaughy, Carol Turney, Vannie Pierre, Linda Dillman, Janet Hopkins, Elizabeth Bishop, Mary Hamrack, Lareen Uhrine. 4th Row: Edna Mae Rickenbach, Phyllis McGarry, Carol Hague, Alice Bickel, Carol Shaneck, Virgil Lucas, Arthur Harris, Katherine Tomsan, Elinar Bickel, Jayce Lewis, Judith Lieberum.

1st Row: Rita Hilty, Christine Bessan, Daris Calhoun, Martha Lauffer, Ruth Waters, Mercedes Bastide, Janet Douglas, Helen Slattery, Dr. Lewis. 2nd Row: Barbara Terrill, Vera Marshall, Patricia Reed, Janet Decker, Jeanette Corbett, Jean Decker, Ann Nalf, Betty White, Gladys McKinnis, Betty Larimer. 3rd Row: Lucy Park, Nancy James, Paul Laing, Albert Harris, James Saresan, Laurence Frederick, Elizabeth Barden, Eleanor Beacom, Norman McCoy. 4th Row: Patricia French, James Gardon, Martha McCullough, Janet Maxwell, Margaret Farkas, Ruth Wherry, Barbara Hillman, Carol Brawn, Janice Sarcinella.



1st Row: Rita Hilly, Julie Heil, Lorraine Kuzma, Adela Cipallane, Helen Budzinski, Stephanie Jellison, Ann Nolf, Barbara Snyder, Janet Daublas, Mr. Shontz. 2nd Row: Vannie Pierre, Mary Ellen Hamrack, Donna Deveney, Claire Fuller, Janet Maxwell, Ruth Wherry, Mary Hay, Linda Dillman, Eleanor Smith, Joan Reed. 3rd Row: Barboro Harcheick, George Cindrich, Veronica Palak, Kenneth Linn, Margaret Forkas, Christine D'Ascenzo, Patricia French, Fae Gretler, Patricia Mitchell. 4th Row: Jack Laya, Grant Daum, Henry Sulivon, Richard Blosser, Wayne Freidhoff, Donald Roberts, Eugene Ralls, Robert Currie.

student education association of pennsylvania

Officers

President	Marge Farkas
Vice President	Ken Linn
Secretary	Veronica Polak
Treasurer	George Cindrich
Co-Sponsors	Dr. Alpha Bernard, Mr. Charles Shontz

The purpose of S.E.A.P. is to provide prospective teachers with a background for the teaching profession, to give them training in leadership, and to help them grow professionally.

Meetings are held regularly each month. A variety of programs are presented for the benefit of the members. These programs include movies, panel discussions, speakers, and talk-arounds. Aside from regular meetings, the Clarion group attends district conferences and other educational conventions. This past year Chris D'Ascenzo served as midwestern district Secretary of S.E.A.P. The educational program is supplemented by other projects such as building a float for Homecoming, acting as guides for students touring the campus, and lastly a banquet in the spring with A.C.E.

S.E.A.P. has had an enjoyable year under the assistance and guidance of our sponsors, Dr. Bernard and Mr. Shontz.



1st Row: George Lord, George Wagner, Steve Babish, Fred Schimp, Anthony Aiella.
 2nd Row: Watson Lupher, John Comerate, George McFarland, Richard Danielsan,
 Ronald Batz, William Beightal, Paul Terpak. 3rd Row: George Boko, Elvin Snyder,
 William Doy, Ernest Smith, Jay Duttan, David MacLaughlin. 4th Row: John Naylor,
 William Smutko, Patrick Cummings, Gary Smith, Robert Volansky, Daniel Mahoney,
 Karl Florie.

varsity "c"

Officers

President
 Vice President
 Secretary
 Treasurer
 Advisor

Anthony Donghia
 William Smutko
 Anthony Aiello
 Elvin Snyder
 Mr. Frank Lignelli

The Varsity C serves a threefold purpose: to promote sportsmanship, to supervise all athletic activities, and to create an interest in athletics among all men of the college.

The Varsity C is composed of those men who have earned their letter by participating in any major intercollegiate sport.

The members sell Homecoming pins, refreshments, and programs at the home games during football and basketball season. This money is used to buy awards for the deserving athletes.

In the spring of the year, an All Sports Banquet will be held to honor the letter winners. Each member will invite two high school seniors to attend this banquet as their guests.

Mr. Frank Lignelli, assistant coach, has done an excellent job as sponsor of the group.



1st Row: Mr. Campbell, Jon Walter, Jaanne Scott. 2nd Row: Carol Haubrich, Faye Dryden, Carol Moore, Gloria Torchio. 3rd Row: Lee Rednock, Benjamin Zappa, Jean Karp, Beverly Myers, Mildred Hutchins. 4th Row: Ronald Reckhart, Jack King, Jay Acklin, James DeMarte, Edward Lucas, Dayle Maurhoff.
 1st Row: Jeanette Graham, James Wilson, Larry Babbert, Nancy Lichka. 2nd Row: Richard Harmel, Nola Weed, Thomas King, Selma Gallagher, Joyce Johnson. 3rd Row: Susan Braugham, Judi Callenburg, Albert Swartz, Richard Blosser, Avis Kemmer, Janet Karr. 4th Row: Barbara Harchuck, Claude Roible, Charles Endlich, John Lingenfelter, Barbara Heller.

the waiter's club

Officers

President	Jon Walter	Secretary-Treasurer	Edward Lucas
Vice President	Joanne Scott	Sponsors	Mr. Frank Campbell Mr. Frank Logan

The membership of the Waiter's Club is composed of all students who work in the dining hall. This club is constantly endeavoring to make the dining hall a more pleasant place.

It is the purpose of the Waiter's Club to give better service, to help the student in every way possible, and to make the dining hall a cheerful place. To accomplish this, the club decorates the hall at Thanksgiving, Christmas, and for other occasions, and assists in planning the special dinners for these holidays. It is through the cooperation of the Waiter's Club that these special events are made possible.



1st Row: Mrs. Simpson, Olga Purich, Roberto Berlinski, Solly Shaner. 2nd Row: Turzah Atwell, Carol Martin, Judith Schlekat. 3rd Row: Doris Glenn, Veronica Palak, Carol Shaneck, Barboro Horchuck. 4th Row: Martha McCullough, Christine D'Ascenzo, Glorio Allen, Delores Carlson, Janet Spenser.

1st Row: Doris Colhoun, Linda Long, Rita Baker, Coridelio Douds. 2nd Row: Helen Slattery, Carol Knopp, Carol Bardorf, Adele Cipollone, Sally Gazda. 3rd Row: Joyce Johnson, Janet Grayson, Carol Houbrich, Katherine Tomson, Emily Colloway, Nancy Thomas. 4th Row: Nancy Lichko, Ruth Wherry, Doris Book, Connie Sloy, Patricio Rice.

women's athletic association

Officers

President
 Vice President
 Secretary
 Intramurals Manager
 Sponsor

Gloria Allen
 Adela Cipollone
 Sally Gazda
 Nancy Johnson
 Mrs. Simpson

Clarion has a group of versatile co-eds who are very sportsminded. The members of W.A.A. participate in basketball, volleyball, softball, ping-pong, badminton, and occasionally, tennis. Officiating is another major activity which the members develop to insure the fulfillment of their purpose, that of promoting girls' athletics and the spirit of good sportsmanship in friendly competition.

This year many of the members are sporting white poplin jackets or pendants earned by their participation in sports.



greeks





1st Row: Delores Danziger, Miss Pryor, Emily Calloway. 2nd Row: Sharon Weisbaker, Helen Slottery, LaVerne Haubrich, Rito Hilly. 3rd Row: Betty Sarko, Mary Lee Stewart.

panhellenic council

Officers

President	Delores Danziger
Vice President	Carol Roch
Secretary	LaVerne Haubrich
Treasurer	Emily Calloway
Sponsor	Miss Pryor

The Panhellenic Council, under the sponsorship of Miss Pryor, was organized in 1930. It is composed of an active and a silent member, elected from each of the four sororities on campus.

The Council, in addition to acting as a governing body for the four sororities, regulates rushing and promotes various social activities. This year's social activities included the Panhellenic Reception and a Halloween Party for all college women, an assembly for Freshmen women, co-sponsorship with the Interfraternity Council of Greek Night, the annual Panhellenic Banquet for all college women, and the completion of the Panhellenic Handbook.



1st Row: William O'Connell, John Gerry Anderson, Eugene Szul. 2nd Row: Fred Bell, John Lowman, Anthony Cordamone, Normon McCoy.

interfraternity council

Officers

President

Gerry Anderson

Secretary

Eugene Szul

Sponsor

Dr. James King

The Interfraternity Council is the representative body for the four fraternities on campus. The purpose of the Council is to co-ordinate and to organize activities which are of interest to the four fraternities.

Among the activities sponsored by the Interfraternity Council this year were the Pre-Easter Dance and Greek Night.

In addition to these duties, the Interfraternity Council governs the establishment of new fraternities on Clarion Campus and establishes the rules for formal rushing of new men.

The endeavors of the Council have met with unique success due to the fine co-operation of member fraternities.



Officers: 1st Row: Patricia Murray, Mrs. Becker, Doris Book. 2nd Row: Judith Rogers, Linda Canterna, Celeste Blockawicz, Doris Calhoun.

delta zeta

Officers

President	Patricia Murray
First Vice President	Doris Book
Second Vice President	Judith Rogers
Recording Secretary	Doris Calhoun
Corresponding Secretary	Linda Canterna
Treasurer	Celeste Blockawicz
Historian	Sally Bryan
Sponsor	Mrs. Helen Becker
Advisor	Mrs. James Moore

The girls more commonly known as "Delts" represent the Epsilon Theta Chapter of Delta Zeta, a national social sorority. For each of us who wear the badge of gold, the Lamp's flame sends out a warm glow of sisterhood, fidelity, and friendship.

The many activities throughout the school year included the rush party, pledge party, Mother's Day Tea, coke parties which served as an informal get-together after the meetings, philanthropic projects, the week-end at Cook's Forest, and the building of a float for Homecoming.

The Delts felt quite honored this year to have Sally Bryan chosen as Homecoming Queen and Judith Rogers as junior attendant. Doris Calhoun was chosen Sig Tau White Rose Queen, and Delaris Danziger represented the Outdoor Club as queen of the Winter Carnival.

By working together as sisters, we strive for the betterment of each girl socially, intellectually, and morally. Delta Zeta attempts to set before its members a goal which brings forth each member's highest ideals of character and womanhood.



1st Row: Janet Boor, Virginia Alcorn, Evelyn Mezerski. 2nd Row: Pricilla Burns Maare, Sally Bryan, Daris Baak, Delores Danziger, Beverly Miller.

1st Row: Virginia Claypoole, Linda Canterna, Celeste Blackawicz, Doris Calhaun. 2nd Row: Mary Schimp, Helen Mindek, Judith Rogers, Patricia Murray, Sharan Weisbaker.



Officers: Carol Sherrieb, Margaret Black, Veronica Palak, Karlene Smith.

lambda chi delta

Officers

President	Margaret Black
Vice President	La Verne Haubrich
Secretary	Carole Sherrieb
Treasurer	Veronica Palak
Corresponding Secretary	Karlene Smith
Advisors	Mrs. Martha Riley Miss McKee

Lambda Chi Delta, one of the college's two local sororities, was founded in 1936. The Lambda Chi can be recognized on campus by the black blazers with white piping. The aims of this sorority are to promote lasting friendship, to recognize scholastic achievements, and to enjoy social functions.

Included among the various activities of Lambda Chi Delta during the school year are the rush party, pledge party, Mother's Day Tea, a party for our brothers, the Alpha Gamma Phi Fraternity, the sorority week-end at Cook's Forest, a party for our senior sisters, and our annual project of selling candy.

Besides these social activities, Lambda Chi takes part in two important service projects: a scholarship fund and a basket for the needy.

This year Janice Brazer was elected queen of Alpha Gamma Phi, and Karlene Smith was chosen as a member of the Homecoming Court. LaVerne Haubrich was elected to "Who's Who In American Colleges."



1st Row: Margaret Black, Karlene Smith, Veranica Palak. 2nd Row: Mrs. Riley, Janice Brazer, Ethel Whitaker, Nancy Thamas. 3rd Row: Carole Sherrieb, Adela Cipallane, Helen Slattery.

1st Row: Helen Grudawski, Margaret Farkas, Ruth Wherry. 2nd Row: Marjarie Clawson, Nancy James, Sandra Gustafson, Cardelia Dauds. 3rd Row: Frances Crawe, Carol Haubrich, Sally Gazda.



Officers: 1st Row: Norma Colton, Emily Calloway, Bernice Welker. 2nd Row: Lydia Jackson Main, Gloria Allen, Carol Hogue.

sigma delta phi

Officers

President	Lydia Jackson Main
Vice President	Bernice Welker
Recording Secretary	Carol Hogue
Corresponding Secretary	Norma Colton
Treasurer	Gloria Allen
Sponsors	Miss Stewart, Dr. Knuth

As we, the sisters of the Sigma Delta Phi Sorority, once again returned to the colorful Clarion campus, we redirected our thoughts from our pleasant summer to the work that lay ahead.

The first of our various activities was the Homecoming float. Homecoming also brought with it the alumnae who held a tea in our honor. Other first semester activities were rushing, a Christmas party, and our annual giving of a Christmas basket to a needy family of Clarion.

During the second semester most of our attention was focused upon the rushing of freshmen girls. Included among our other activities were a Mother's Day Tea and the Cook's Forest Week-end.

As this year draws to a close, we, the Sig Delt Sisters, are grateful to our sponsors, Miss Stewart and Dr. Knuth.



1st Row: Dr. Knuth, Alice Bickel, Dolores Carlson, Miss Stewart. 2nd Row: Rita Hilty, Elizabeth Barden, Glaria Allen, Janet Grayson, Rebecca Haaver. 3rd Row: Betty Larimer, Carol Hague, Claire Bawley, Carole Engelbach.



1st Row: Glaria Wilson, Sylvia Lind, Lydia Jackson Main, Patricia Mitchell. 2nd Row: Emily Callaway, Nancy Clark, Nancy Mang, Diana Hemstreet, Judith Pfeifer. 3rd Row: Norma Caltan, Nancy Swape, Nancy Wertz, Thelma Dubick, Bernice Welker.



Officers: 1st Row: Katherine Tomson, Carol Nason, Marjorie McLoughlin. 2nd Row: Georgio Verlato, Mercedes Bastide, Linda Dillman.

sigma sigma sigma

Officers

President	Carol Nason
Vice President	Marjorie McLoughlin Lucy Park
Treasurer	Katherine Tomson
Recording Secretary	Georgio Verlato
Corresponding Secretary	Linda Dillman
Keeper of the Grades	Mercedes Bastide
Panhellenic	Carol Roch, Betty Sarko, Mory Lee Stewart
Sponsors	Miss Gamble Miss Banner

The girls wearing purple and white on campus are known as the Alpha Pi Chapter of Sigma Sigma Sigma, one of the national sororities, founded on Clarion Campus in 1935.

Tri-Sigma had an enjoyable year of activities, including a Homecoming Tea, chapter inspection by Regional Collegiate Director Janet Way, a Christmas Party, a rush party and initiation, a formal Founder's Day Banquet, a week-end at Cook's Forest, and the Senior Farewell Party.

Special mention goes to Linnie Steiner, chosen Miss Clarion County; Patricia Dunmire, Sigma Tau Gamma White Rose Queen; also our Homecoming float, "Give me your tired, your poor . . .", which won first prize. Mory Lee Stewart was chosen Red Rose Queen of the Delta Kappa Fraternity.



1st Row: Katherine Tomson, Deanna Ritchey, Sally Ja Lund, Linda Carlson, Faye Dryden. 2nd Row: Janet Sereno, Linda Dillman, Sandra Hepler, Georgia Verlato. 3rd Row: Jeanette Carbett, Marjorie McLaughlin, Carol Emig, Mercedes Bostide, Carol Nason.

1st Row: Harriet Rothrock, Jean Decker, Mary Lee Stewart, Joyce Andre, Marjorie Stewart, Janet Decker, Constance Dubart. 2nd Row: Linnie Lou Steiner, Mary Lee Ditz, Carol Shonek, Betty Sarko, Vera DeBlander, Karen Hosack. 3rd Row: Carole Braund, Judith Clark, Lucy Park, Patricia Dunmire, Marion Siegel.



Officers. 1st Row: Peter Molinaro, Albert Sobotini, Melvin Vuic, Joseph Schopp.
2nd Row: James Dunn, Daniel Mahoney, Ronald Botz, William Smutko.

alpha gamma phi

Officers

President
Vice President
Secretary
Treasurer
Historian
Parliamentarian
Choplain
Guord
Sponsors

Albert Sobotini
William Smutko
Dan Mahoney
Pete Molinaro
Jim Dunn
Melvin Vuic
Joseph Schopp
Ronald Botz
Dr. Pierce
Dr. Moody

Alpha Gamma Phi, the oldest fraternity on campus, was founded March 3, 1930, with fellowship, scholarship, and character as its basic ideals. The 'Gammos' will continue their tradition of being one of the most active school organizations.

The first semester brought our annual Homecoming gathering which was very successful and which was enjoyed by both past and present members. The Spring Banquet, the party by the Lambda Chi's, our annual rush party, and the pledge banquet highlighted the events of the year.

The entering pledges of the fraternity show promise of contributing to the fine spirit of friendship and brotherhood.



1st Row: Bernard Uzelac, John Naylor, Daniel Mahoney, William Smutko, George McFarland, John Lowman. 2nd Row: Henry Polasko, Ronald Batz, Richard Platt, Daniel Estadt, Thomas Calkins. 3rd Row: Harold Contie, John Bertoni, Larry Beightol, Herbert Laughlin, Paul Enock, James Graziano. 4th Row: James Dunn, James Schoup, Peter Malinoro, Albert Sabotini, Steve Kurcis.

1st Row: Dr. Moody, Eric Gaul, Ronald Candio, Richard Delang, Gary Anderson. 2nd Row: Steve Bobish, Lee Rouse, Gary Smith, Don-old Clever, Thomas Young. 3rd Row: Anthony Cardimone, John Naylor, Richard Means, Benjamin Deibler, David Moore, Melvin Vuic. 4th Row: Nicholas Di Nunzio, Charles Finnigan, John Camerate, Lee Dunn, Arthur Harris.



Officers: 1st Row: LaVerne Terwilliger, Lynn Alter, Richard Wiesen. 2nd Row: James Gordon, Roland Davis, James Miller, Robert Brosnahan, Williard Suttan.

delta kappa

Officers

President	Lynn Alter
Vice President	LaVerne Terwilliger
Secretary	Robert Brosnahan
Corresponding Secretary	James Gordon
Treasurer	Richard Wiesen
Sergeant-at-Arms	Michael Broddock
Sponsors	Mr. Kuhner
	Mr. Spence
	Mr. Mellon
	Dr. Predmore

The Delta Kappa National Fraternity Incorporated has as its main purpose the development of fellowship through the socializing influence of fraternal life.

The social calendar of Phi Chapter for the past year has included such events as: the election of Miss Mary Lee Stewart as Phi's Red Rose Queen, the annual sponsors' banquet held at Knox, Penna., the winning of second place in the Homecoming Parade, the pledging of Mr. William McDonald as an honorary member, the visitation-inspection by the National Officers, the attendance of the delegates to the National Convention, and the rushing and pledging of new brothers.

Phi feels that this year has been very successful for Delta Kappa National Fraternity and expects to enjoy many more successful years in the future.



1st Row: Mr. McDonald, Mr. Kuhner, Robert Muse, Roland Davis, Dr. Predmore, Mr. Spence. 2nd Row: Eugene Szul, Jack King, Jahn Carley, Jon Gardner. 3rd Row: Watson Lupher, Robert Essenwein, Charles Endlich, Richard Wiesen, George Lard.

1st Row: Willard Suttan, Michael Braddock, Richard Summerville, Norman McCoy, James Gardan. 2nd Row: Robert Brosnahan, Jack Blaine, Fred Thickey, Joseph Gates. 3rd Row: James Little, James Miller, Marvin Henry, Ronald Reckhart. 4th Row: Lynn Alter, LaVerne Terwilliger, Neil Miller.



Officers. 1st Row: William O'Connell, Frederick Bell, Wayne Costa, Joseph Boyhurst, Wade Meyer.
2nd Row: William Abplanalp, Lester Schickling, John Sias, James Moore.

sigma tau gamma

Officers

President	Fred Bell
Vice President	William O'Connell
Secretary	James Moore
Corresponding Secretary	Jon Humenick
Treasurer	Wayne Costa
Assistant Treasurer	Gary Shay
Reporter	Wade Meyer
Sentinel	John Sias
High Priest	Roger Daum
Historian	Joseph Boyhurst
Parliamentarians	Dean Yobp, William O'Connell
Advisors	Mr. Frank Campbell, Dr. Dana Still, Mr. Ernest Aharrah, Dr. George Lewis

Sigma Tau Gamma, a national social fraternity, a member of National Interfraternity Conference, stresses high standards of education, honorable social living, and participation in extracurricular activities.

The Alpha Zeta Chapter pledges members to its organization who have personal traits necessary for present and future success.

The social calendar for the first semester included the Homecoming Float, "Pennsylvania," the Sisters Party, the sale of Christmas cards, and several basketball games with fraternity chapters from other colleges and teams from surrounding areas. Highlighting the second semester was the annual rush party followed by the steak dinner. The annual White Rose Dance ended a very successful year for the brothers of Sigma Tau Gamma.



1st Row: Jan Walters, Ralph Kemerer, James Daman, John Gates, William Yanek, Maxwell Norcy. 2nd Row: Robert Pearson, Fred Mathesan, William Truman, Joseph Capizzi, John Yeager. 3rd Row: Carl Shirey, Joseph De Marte, Ronald Danielson, Dean Yobp, Daniel Bowser, James Laughman. 4th Row: Arthur Sandy, Ronald Vespa, Albert Sebring, David McLoughlin, Cluey Sandy, Laurence Frederick.

1st Row: Dr. Still, Mr. Aharrah, William Abplanalp, Lester Schickling, Wayne Casto, Mr. Campbell. 2nd Row: Frederick Bell, William O'Connell, John Sias, Joseph Bayhurst, Dale Terwilliger. 3rd Row: Jay Dutton, Wade Meyer, James Moore, Roy Smerker, Jan Galligher, Paul Schuster. 4th Row: Robert Volansky, Virgil Lucas, James McCarrier, Gary Shay, Paul Palmer.



Officers. 1st Row: Robert Everhart, Kenneth Linn, Richard Crum. 2nd Row: Paul Laing, Eugene Rolls, John McNeil, Donald Smith.

phi sigma epsilon

Officers

President	Kenneth Linn
Vice President	Robert Everhart
Secretary	Richard Crum
Treasurer	John McNeil
Historian	Paul Laing
Advisors	Dr. Bert Anson, Jr. Dr. Franklin Fitch



1st Row: Dr. Fitch, Theadore McDonald, William Coleman, Robert Stahlman, Richard Crum, Dr. Ansan. 2nd Row: William Ditty, Paul Laing, Frederick Olan, John Sunmerville, Donald Smith. 3rd Row: Albert Harris, John McNeil, Lorry Galbreadth, Ranald McMasters, Eugene Ralls, Robert Everhart. 4th Row: Ronald Henry, John Shropshire, Richard Howells, Jay Acklin, Kenneth Linn.

Phi Sigma Epsilon, a national social fraternity, belongs to the National Interfraternity Conference. The main purpose of this organization is to promote a closer bond among men students of higher educational institutions, so that they might enter into more intimate fellowship with those dedicated to education. The Clarion Phi Eta Chapter was installed on January 31, 1959.

The big events for the year were the formation of the Triangles on November 24, 1958 with thirty-two charter members and our installation into the eternal triangle of fellowship and brotherhood of Phi Sigma Epsilon. An important second semester activity was the rushing of underclassmen.



Fred Thickey, Fred Bell, Mr. Force.

alpha psi omega

Officers

President	Frederick Bell
Vice President	Frederick Thickey
Secretary	Helen Thompson

Alpha Psi Omega is the largest national honorary dramatics fraternity in the United States. The Alpha Upsilon chapter at Clarion was founded in 1936. Hundreds of other chapters can be found throughout the United States on other college campuses.

Each year, candidates are considered for membership. This consideration and election is based upon acting, play production, make-up, lighting, publicity, directing, and stage work. Since the requirements are so high as instituted by the Grand Chapter, membership is a coveted honor.



1st Row: Mrs. Becker, Janet Sereno, Miss Stewart. 2nd Row: Sally Monnoyer, Lydia Jackson Main, Lindo Carlson.

pi gamma mu

Officers

President

Robert Myers

Vice President

Harry Matlack

Secretary-Treasurer

Miss Rena Carlson

Pi Gamma Mu, Iota Chapter, is the National Social Science Honor Society at Clarion. It is composed of students who have completed at least twenty semester hours of social science and have maintained a B average.

The purposes of Pi Gamma Mu are to inspire social service to humanity, to promote the improvement of scholarship in social studies, and to develop tolerance toward different opinions.

"Ye shall know the truth and the truth shall make you free," is the motto of the society.



1st Row: Paul laing, Danald Greggs. 2nd Row: Dalph Cook, Robert Myers, David Moore, Robert McElravy, Frederick Bell. 3rd Row: Richard Summerville, Irwin Henry, Virgil Lucas, Marvin Henry, Michael Knosky, Richard Wiesen. 4th Row: James Kockler, Lester Schickling, Fred Thickey, Paul Palmer, Thomas Calkins.

phi sigma pi

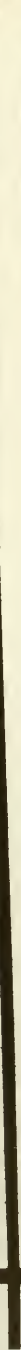
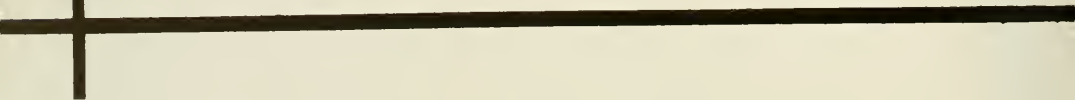
Officers

President	Richard Wiesen
Vice President	Richard Summerville
Secretary	Lester Schickling
Assistant Secretary	Robert Meyers
Treasurer	Dalph Cook

Phi Sigma Pi is a national honorary educational fraternity and is a senior member of the Professional Interfraternity Conference. Clarion's Lambda Chapter was founded in 1932.

The purpose of Phi Sigma Pi is to attain high scholastic achievements and maintain the highest educational ideals in all fields of education. In fulfilling its purpose an average of 1.75 is necessary for membership.





music





Collings Choir

1st Row: LuYvonne Pierre, Elizabeth Bardon, Judy Clark, Patricia Zedden, Vivian McNolt, Rachel Foster, Barbara Garr, Shirley Guido, Janice Sarci-
nelli, Sally McNeil, Virginia Linnan, Carole Turney, Margaret Wollman, Eleanore Bucccon, Glad Wilson, 2nd Row: Rita Hilby, Marjoe Clouston, Nancy
Liebko, Gloria Skelly, Nola Snyder, Charlene Smedleys, Carol Engelbach, Dorothy Moravcsik, Donna Berly, Beth Bishop, Dolores Carlson, Janet
Maxwell, Marjorie Stewart, Selly Shener, Marilyn Waddell, Mary Lee Stewart, Helen Mubels, Judy Pfeiffer, Sara Miller, 3rd Row: Gilbert
Sloan, John Megaro, Frank Rocco, Noel Lucas, Robert Hariz, Todd Thompson, James Hunter, Robert Claberty, Ted Brewer, Thomas O'Hare, Paul
Schuster, James Wingate, Joseph Bayhurst, George Wegner, Norman McCoy, Richard Carter, James McLaughlin, 4th Row: Donald Bell, Donald
Roberts, Wayne Friedhoff, Ronald Henry, Roland Dargis, Robert Moser, James Spornson, William Colgrove, Eric Gaul, Pete Perry, Fred Thickey, Paul
Palmer, William Day, Eugene Cioce, Edward Lucas, David Young, Paul Lewis.

college choir

The 1958-59 college choir enjoyed a successful year under the talented direction of Mr. William McDonald.

Included in the activities of the first semester was a program, consisting of various choral selections and solos, which was presented to the Kiwanis Clubs of this district. Another highlight of the semester was a trip to KDKA television station where a tape was recorded and presented at a later date. The choir also gave its annual presentation of Handel's "Messiah."

Second semester the choir began work on the religious and secular concerts which were presented in various churches and high schools throughout this area. They also appeared on television station KDKA again.



Margaret Wellman, Sally Shaner, Mary Lee Stewart, Danna Berty, Beth Bishop, LuVanne Pierre, Nancy Lichka.

girls' ensemble

The Girls' Ensemble sang for various organizations throughout the year. The highlight of their performance was when they appeared on College Panorama at KDKA-TV. They portrayed girls from a campus organization decorating a float for the Homecoming Parade.

The girls with their beautiful voices were truly an asset to our campus.



clarion college band

For the second year the Clarion College Band was under the talented baton of Mr. William McDonald.

The first semester saw the band performing clever maneuvers and snappy marching for half time entertainment at football games. The band also took part in three local parades.

The students of Clarion State Teachers College will long remember the band's interpretation of Homecoming at good old Po-Dunk University with Fred Thickey reigning as the beautiful Homecoming Queen.

Band Personnel

Paul Laing
Selma Gallagher
Jay Acklin
Julie Heil
Todd Thompson
Henry Sullivan
Eugene Szul
David Skinner
James Gordon
John McNeil
Pat Cyphert
Donna Delaney
Judi Callenburg
Robert Muse
Rager Daum
William Tubbs

Donald Parulo
Roland Davis
Arthur Sandy
Marjorie Stewart
William Calgrave
Thomas Murry
Charles Klingensmith
Kahle Wagner
David Magaro
Ellen McLaine
George Denardo
John Nicoll
Ruth Waters
Jean Decker
Diana Hemstreet
Judith Walton



1st Row: Nala Snyder, Barbara Lewis, Linda Canterna, Carole Baris. 2nd Row: Maxine Szafran, Sharon Weisbaker, Betty Sarka, Mary Lee Stewart.

majorettes

Twirling batons and high stepping boots—signs of the Clarian State Teachers College Majorettes.

The eight lively co-eds marching in front of our band this year were Betty Sarka, head majorette, Linda Canterna, Mary Lee Stewart, Sherry Weisbaker, Carole Baris, Barbara Lewis, Nala Snyder, and Maxine Szafran.

The activities of the majorettes include marching at football games, in parades, and at assemblies.

The girls will be remembered for their entertaining routines, especially their "hoala hoop" number which brightened the Homecoming Pageant.





athletics





1st Row: J. Wile, T. Pellis, J. Comerote, R. McFarland, J. Ungvarsky, W. Smutko,
 2nd Row: G. Cottrell, J. Haover, J. Fox, F. Ventresca, B. Smoker, L. Shreckengast,
 3rd Row: W. Moore, F. Wasylink, J. Duggan, A. DeCapite, C. Urban, L. Shreckengost,
 4th Row: C. Flarie, R. Mrisco, N. Krotsa, E. Boley, S. Babish,
 5th Row: R. MacClennan, S. Candeluci, F. Bruna, F. Shoemaker, B. Jackson, B. Itell.

football

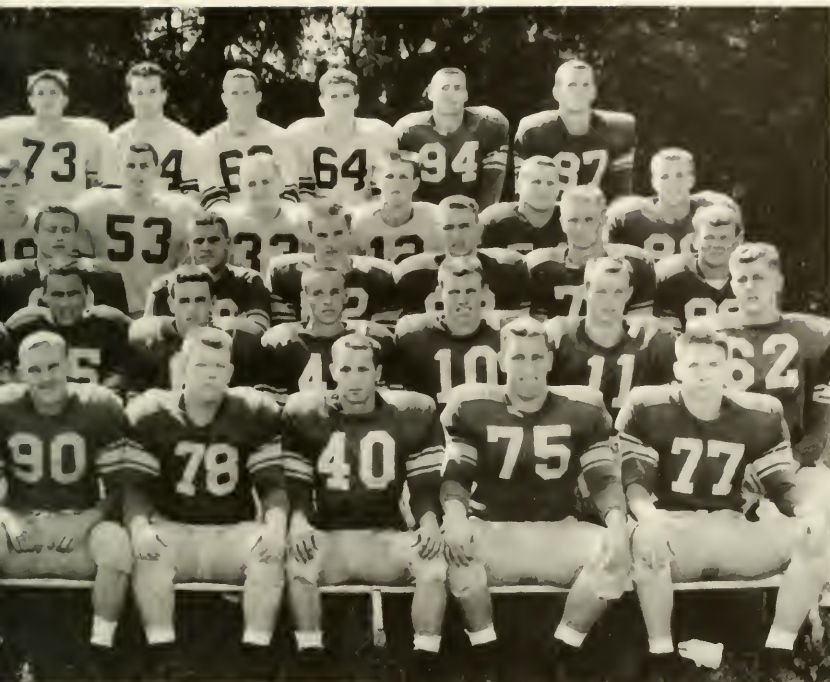
The "Golden Eagles" once again displayed a hard fighting team which, being inexperienced, possessed many fine prospective freshman on the starting eleven. Even though an unimpressive record of three wins and six losses was compiled by the Eagles, never would they admit defeat when losing by several touchdowns. The team is to be complimented for their display of sportsmanship, leadership, and ability to work and play with their teammates.

The 1958 edition of the "Golden Eagles" showed one of the finer freshman of the district. He was Erine Widmar who was named to the State Teachers College Honorable Mention List.

Also to be mentioned is the outstanding pass defense of the Eagles which was listed as sixth in the nation among small colleges yielding only thirty-one yards per game.

The outstanding game of the season proved to be the upset win over the strong Grave City Wolverines by the score of 27-14.

In as much as the Eagles lost several games by one touchdown or less, a fine team is anticipated for the coming year. Our compliments go to the coaches, Mr. Jahnsan and Mr. Lignelli, for their hard work and patience.



J. Naylor, J. Smith, D. Young, B. Ozimek, D. Mattarn.
 R. Pampe, O. Shirey, J. Williams, J. Duttan, J. Hixenbaugh, J. Coffman.
 J. Calpo, B. Khalil, T. Wehrl, L. Walkowiak, M. Petika, J. Hanna.
 E. Widmar, P. Palmer, S. Logan, T. Fernekes, T. Aiella, W. Mushrush.
 T. Arpina, R. Dabas, G. Cindrach, R. Greca, J. Stimel, D. Mahaney.

football

	Opponent	Clarion
Edinboro	19	0
St. Vincent	13	0
Slippery Rock	14	12
Brockport	20	12
Shippenburg	7	12
California	28	0
Grove City	14	27
Cheyney	0	28
Indiana	13	6



COACHES

Kneeling: Ernest Johnson, Frank Lignelli, Jr. Standing: Thomas Carnahan, William Sheridan.

MANAGERS

Wayne Costa, Vince Poscarello,
George Lord, Watson Luper,
Mike Bernardo.





1st Row: Don Ryber, Russell Kuntz, Karl Florie, John Cohan, Tony Danghia, Marlin Hartmcn, Paul Terpak, George Boka, John Carley. 2nd Row: Charlie Bauer, Pat Cummings, William Stewart, John Slaugenhaupt, Ted Kukich, Elvin Snyder.

baseball

	Opponent	Clarion
Slippery Rock	2	3
Westminster	11	3
Westminster	7	0
Allegheny	6	3
Alliance	3	11
Alliance	9	3
Indiana	9	7
Geneva	11	5

In the '58 baseball season the Golden Eagle team, coached by Mr. Ernest Johnson, was made up of both veterans and untried freshman. This combination completed the season with a 2-6 record with Pat Cummings the winning pitcher in both games and with Russell Kuntz, the fireman of the squad, turning in a fine relief performance.

The offensive attack was headed by Donghia, Terpak, Hartman, Baka, and Slaugenhaupt. The other lettermen were Kohan, Danielson, Snyder, Florie, Kukich and Carley.

With seven returning lettermen, Clarion can look forward to a more promising season in '59.

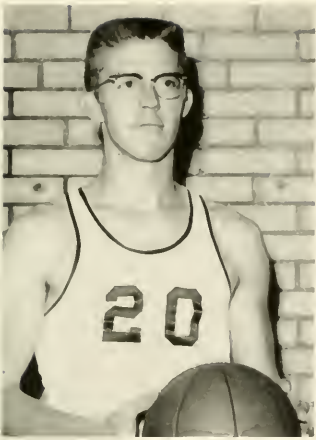


1st Row: Timothy Welty, Ronald Batz, William L. Beightol, John Bertani, Gory Smith, Richard Danielson, Ernest Smith, Robert Valonsky. 2nd Row: Emilia Cipallone, William Sutliff, Richard Martimer, James Wingate, Richard Powell, William Bona. 3rd Row: Abraham Adravecky, Dennis Gaiser, John Smith, Theodore Breur, Thomas McNamara.

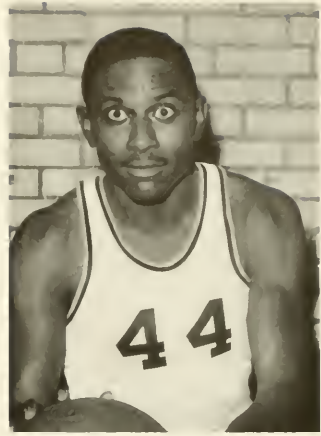
basketball team

Scores

Clarion	Opponent	Clarion	Opponent
55	Fenn	53	Lack Haven
90	California	77	Indiana
84	Slippery Rock	89	Mansfield
54	Fenn	51	Slippery Rock
103	Edinboro	88	Alliance
85	Indiana	98	Edinboro
61	Grave City	66	California
81	Lack Haven	70	Grave City
56	Mansfield	78	Alliance
		49	Lack Haven
		72	Indiana
		94	Mansfield
		95	Slippery Rock
		123	Alliance
		112	Edinboro
		98	California
		116	Grave City
		80	Alliance
			56
			78
			81
			75
			86
			104
			103
			100
			82



Dick Danielson



Ernie Smith

co-captains

Dick Danielson, a 6' 1" senior forward and three year letterman, is playing his fourth year of varsity ball with the Golden Eagles. Dick has been among the leading teachers college conference scorers for the past three years, and last year, averaged seventeen points per game. He is a very dependable performer.

Ernie Smith, a 6' 2" forward and a three year letterman, is playing his fourth year of varsity basketball for the Clarion State Teacher's College. Ernie has been an outstanding player for the Golden Eagles and is particularly skillful in handling rebounds. Ernie played high school basketball at Oil City High School.

varsity members

Gary Smith, 6' 4" center is a junior and two year letterman. He is an outstanding pivot man with a deadly hook shot. Gary is also a rugged competitor on rebounds.

Ron Botz of Parker, a 6' 1" guard and two year letterman, is playing his third year on the varsity of the Clarion State Teachers College Basketball team. Ron was the Golden Eagles' leading scorer last year, averaging 21 points per game, and was named to the first team of the all state teachers college conference team.

Bob Volansky of Sykesville, a 6' 4" sophomore letterman, is playing his second year on the Clarion State Teachers College basketball team. Bob, a center, showed a lot of promise last year in the pivot slot and is expected to help the team a great deal this year.



1st Row: Tony Arpino, George Wogner, Julie Davis, Fred Schimp, Steve Babish. 2nd Row: Jim Miller, Jim DeMarte, Mr. Carnahan, Jahn Doverspike, Ron Reckhort.

tennis

	Opponent	Clarion
Slippery Rock	9	0
Indiana	7	2
Grove City	6	3
Edinboro	9	0
Grove City	7	2
Edinboro	8	1
Indiana	6	3
Geneva	9	0

During the 1958 season the local netmen were unable to break into the win column.

However, with seven lettermen coming back to form a good squad and with Mr. Carnahan as the tennis coach, Clarion is looking forward to their most favorable season in many a year.



Bab Pearson, Jim Williams, Francis Dunlay, Joe DeMarte, Don Goiser, Jim Kifer.

golf

In 1958 an old intercollegiate sport was resumed at Clarion. Beginning as an intramural program, the golf team even though it was not in the State Teachers Conference, did play a series of matches with Slippery Rock, Edinboro, and California. Clarion also participated in the Presidents Cup Tournament at Allegheny College and the State Teacher's Tournament at Slippery Rack.

With experienced men back next year, the team should have a fairly good season as an integral part of the intercollegiate sports program.

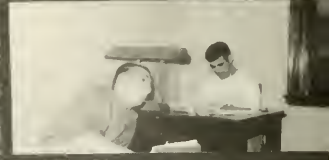


1st Row: Virginia Linnan, Patricia Zacherl, Mildred Hutchins. 2nd Row: Phoebe Etzell, Beverly Myers, Mary Schimp.


cheerleaders

The cheerleading squad at Clarion is made up of seven lively girls who have cheered our football and basketball teams on to victory and stood by them in defeat. These girls have worked very hard in promoting school spirit.




The cheerleaders are seen at all the football and basketball games, in parades, and at assemblies.







homecoming





our queen



Sandra Hepler, Anita King, Jack Fax, Sally Bryan, David Young, Carol Emig.

homecoming

A warm bright day greeted the returning alumni and the spectacular Homecoming parade this year. The efforts of Fred Motheson were very successful as indicated by the beauty and popularity of the parade. The prizes were awarded to Sigma Sigma Sigma, Delta Kappa, and Lambda Chi Delta—first, second, and third respectively. Surrounded by her court, the charming, attractive Miss Sally Bryan was crowned Queen at the halftime ceremonies. The combined resourcefulness of the freshmen and sophomore classes completed the day at the Homecoming dance. The teas, parade, football game, coronation ceremonies, and the dance of the Homecoming of 1959 will remain in the hearts of all those who attended.



Nola Snyder, Danna Berty, Joyce Andre, Connie Dubart, Karlene Smith, Judy Ragers, Sandy Hepler, Carol Emig, Sally Bryan.

queen's float

One of the highlights of the Homecoming Day Parade is the Queen's Float. Each class is represented by two girls who are attendants to the Queen.

Those attending the freshman class were Nola Snyder and Donna Berty. Joyce Andre and Connie Dubart were sophomore attendants and Karlene Smith and Judy Ragers were from the junior class. Carol Emig and Sandy Hepler were the two senior attendants to the queen, Sally Bryan.



Miss Linnie Lau Steiner, who was sponsored by the Geography Club, was selected as Clarion College's Miss C.S.T.C. of 1958. This small Pittsburgher's reading from Mark Twain's *Adam's Diary and Eve's Diary* displayed her talent and personality and won for her the acclaim of the judges.

Miss Steiner then won the title of Miss Clarion County. She represented Clarion County in the Miss Pennsylvania contest.

The friendly smiling sophomore reigned over the Autumn Leaf Festival as Miss Festival.

miss clarion county

winning floats



First Prize

"Give Me Your Tired, Your Poor"
Sigma Sigma Sigma



Second Prize

"Hawaii—Our Next State,
S.R.T.—Our Next Win"
Delta Kappa



Third Prize

"Moon Over Miami"
Lambda Chi Delta



faculty directory

- Bert Anson, Jr., Ph.D., Social Studies, De Pouw University, A.B.; Indiana University, M.A., Ph.D.
- William E. Beattie, B.A., Speech, Wayne University, B.A.; Graduate work, Ohio University and University of Illinois.
- Helen M. Becker, M.A., Elementary Education, Graduate, Clarion State Normal School; University of Pittsburgh, B.S.; Columbia University, M.A.
- Alpha E. Bernard, Ed.D., Head of Elementary Education Department, Northern Michigan College of Education, B.S.; Graduate work, University of Michigan; Indiana University, M.S. in Ed., Ed.D.
- Carl E. Caldwell, M.A., English, Speech, Hobart College, A.B.; Middlebury College, M.A.; Additional graduate work, McGill University, the Sorbonne, Middlebury College, University of Rochester.
- Frank M. Campbell, M.A., Spanish, Social Studies, Assistant Dean of Men, Grove City College, B.S.; Pennsylvania State College, M.A.
- Reno M. Carlson, M.A., L.S. Head Librarian, Greenville College, A.B.; Carnegie Institute of Technology, B.S.; Graduate work at University of Southern California; University of Michigan, M.A.
- Thomas A. Cornahan, M.Ed., Mathematics, Safety Education, Grove City College, B.S.; Pennsylvania State College, M.Ed.; Additional graduate work at University of Southern California; University of Pittsburgh.
- Bruce H. Dinsmore, Ph.D., Biological Science, Indiana State Teachers College, B.S.; Columbia University, M.A.; University of Pittsburgh, M.S., Ph.D.
- Franklin G. Fitch, Ed.D., Secondary Education, Ball State Teachers College, B.S.; Indiono University, M.A., Ed.D.
- William M. Force, M.A., Speech, Colgate University, B.A.; Northwestern University, M.A.
- Walter L. Hart, M. of F.A., Director of Admissions, Head of Music Department, Grove City College, B.M.; Carnegie Institute of Technology, M. of F.A.; Additional graduate work, St. Bonaventure College; University of Pittsburgh, New York University.
- Ernest W. Johnson, M.Ed., Education, Physical Education, and Assistant Dean of Men, Clarion State Teachers College, B.S.; University of Pittsburgh, M.Ed.
- James C. King, Ph.D., Social Studies, Dean of Men, Northeastern (Oklahoma) State College, B.A.; University of Utah, Ph.D.
- Helen Knuth, Ph.D., Social Studies, University of Dubuque, B.A.; Northwestern University, M.A., Ph.D.
- C. A. Kuhner, M.S., Head of Geography Department, Ohio University, B.S.; University of Wisconsin, M.S.; Additional graduate work, University of Chicago, University of Pittsburgh.
- George R. Lewis, Ed.D., Head of Mathematics Department, East Stroudsburg State Teachers College, B.S.; University of Pittsburgh, M.Litt.; Graduate work, Bucknell College; Pennsylvania State University, Ed.D.
- Frank Lignelli, M.Ed., Safety Education, Physical Education, Clarion State Teachers College, B.S.; University of Pittsburgh, M.Ed.; Additional work, Pennsylvania State University.
- William M. McDonald, M.A., Music, Indiana State Teachers College, B.S.; New York University, M.A.
- Nancy S. McKee, M.L.S., Librarian, Wilson College, A.B.; Carnegie Institute of Technology, M.L.S.; Additional graduate work, University of Pittsburgh.
- John P. Mellon, M.Litt., English, Clarion State Teachers College, B.S.; University of Pittsburgh, M.Litt.; Graduate work, University of Colorado.
- Lester D. Moody, Ph.D., English, Washington State College, B.A.; University of Washington, M.A., Ph.D.

faculty directory

- Eleanor D. DeWald Moore, M.S.L.S., Librarian Clarion State Teachers College, B.S.; University of Pittsburgh, M.Ed.; Columbia University, M.S. in L.S.
- James D. Moore, Ed.M., Dean of Instruction, Muskingum College, A.B.; University of Pittsburgh, Ed.M.
- Galen L. Ober, M.Ed., Physical Science, Indiana State Teachers College, B.S.; University of Pittsburgh, M.Ed.; Additional graduate work, University of Wisconsin.
- Charles G. Pearce, Ed.M., Art, Indiana State Teachers College, B.S.; Pennsylvania State College, Ed.M.; Additional graduate work, Pennsylvania State College.
- Donald D. Pierce, Ph.D., Head of Physical Science Department, Oberlin College, A.B.; Graduate work, University of Pittsburgh, Pennsylvania State University, University of Illinois, M.A., Ph.D.
- Donald R. Predmore, Ph.D., Biological Science, Education, Miami University, Undergraduate work, University of Pittsburgh, B.S., M.A., Ph.D.
- Grace Pryor, M.Ed., Dean of Women, Clarion State Teachers College, B.S.; University of Pittsburgh, M.Ed.; Additional graduate work at Duke University, University of Pittsburgh, Westminster College, Bucknell University, Pennsylvania State University.
- Martha T. Riley, M.A., Geography, Graduate, Farmville State Normal School; George Washington University, B.A.; Columbia University, M.A.; Additional graduate work, Cornell University, Harvard University, University of Virginia.
- Charles W. Rabbe, M.A., Social Studies, University of Iowa, University of Illinois, B.S.; The University of Vermont, M.A. Seminars—The University of Birmingham, England; University of Leyden, Holland; University of Paris, France; Chatelard School, Montreux, Switzerland; Additional graduate work, University of California, University of Texas, Harvard University.
- Mildred D. Sandaz, M.A., Biology, Oklahoma College for Women, B.A.; University of Illinois, M.A.; Additional graduate work, University of Washington, University of Oklahoma, University of Maryland, University of Texas, College of William and Mary, University of Houston.
- Paul L. Shank, Ph.D., Physical Science, Education, Bethany College, B.S.; Graduate work, University of West Virginia; University of Pittsburgh, M.Ed.; Ph.D.
- Charles J. Shontz, M.S., Biological Science, Indiana State Teachers College, B.S.; University of Pittsburgh, M.S.; Additional graduate work, University of Minnesota, University of Pittsburgh.
- Betty Simpson, B.S., Health and Physical Education, West Chester State Teachers College, B.S. in Health and Physical Education.
- Richard C. Skinner, M.Ed., Director of Teacher Training, Education, West Illinois State Teachers College, B.Ed.; Northwestern University, M.A.; University of Illinois, M.Ed.; Additional graduate work at University of Illinois.
- Joseph R. Spence, M.Ed., Head of Art Department, Edinboro State Teachers College, B.S.; Pennsylvania State University, M.Ed.; Additional graduate work, Syracuse University.
- Martha Stewart, M.Ed., Librarian, Northwestern University, B.A.; Carnegie Institute of Technology, B.S. in L.S.; University of Pittsburgh, M.Ed.
- Dana S. Still, Ph.D., English, Ohio State University, B.S., M.A.; University of Pittsburgh, Ph.D.
- Herbert H. Sussbach, Ph.D., Physical Science, University Breslau, Germany, B.S.; M.S.; Graduate work, University of Amsterdam, Holland; University of Southern California, Ph.D.
- Waldo S. Tippin, M.A., Education, Director of Athletics, Geneva College, B.S.; Graduate work, University of Michigan; Columbia University, M.A.; University of Pittsburgh.

seniors 1959

Abplanalp, William: Ridgway
 Adams, Sandra: Knax
 Aiella, Anthony: Farrell
 Alcorn, Virginia: Titusville
 Alter, Lynn: Tarentum
 Anderson, Gerry: Part Allegany
 Ashbaugh, Paul: Emlenton
 Barger, Phoebe: Callensburg
 Bartley, Marian: Pittsburgh
 Beatty, Virginia: Karns City
 Bell, Frederick: East Brady
 Bentzley, Betty: Carsica
 Black, Margaret: Karns City
 Baak, Daris: New Castle
 Baar, Janet: Venus
 Barstarff, Theresa: Carry
 Basway, Jahn: Clarian
 Bawley, Claire: Braakville
 Braken, Lawrence: Latrana Heights
 Brazer, Janice: New Kensington
 Brosnahan, Robert: Knax
 Bryan, Sally: Butler
 Burkett, Darathy: Tyrane
 Camp, Carolyn: Leechburg
 Cardamone, Anthony: Pitcairn
 Carlson, Linda: Ridgway
 Carutti, Mildred: Seminali
 Charlton, James: Brackway
 Chestnut, David: Sharon
 Clark, Gerald: Clarian
 Caak, Dalph: Clarian (Temp.)
 Corbett, Jeannette: Clarian
 Crain, Sally: Duke Center
 Crawford, Grant: Emlenton
 Crase, Robert: Kittanning
 Dallap, Chester: Springdale
 D'Angela, Racca: Pittsburgh
 Danielson, Richard: Mt. Jewett
 Danziger, Delores: Pittsburgh
 Delansky, Philip: Osceola Mills
 Donghia, Anthony: Apalla
 Dryden, Faye: Butler
 Dwyer, Jahn: New Bethlehem
 Edwards, Carmi: Kittanning
 Emerick, William: Braakville
 Emig, Carol: Clarian
 Essenwein, Robert: Kittanning
 Eustice, William: Clarian
 Exley, Alice: Knax
 Fesenmyer, Jahn: Oil City
 Fax, Jack: Rimersburg
 Franklin, Darrell: Oil City
 Frederick, Lawrence: Kane
 Ginkel, Marilyn: Shippenville
 Gaurley, Ray: Fairmount City
 Graziano, James: Warren
 Green, Conrad: Franklin
 Greene, David: Braakville
 Greer, Harry: Knax
 Greggs, Danald: Cochranon
 Griffin, William: Warren
 Gruber, Elizabeth: Carry
 Gumpfer, Ardeh: Pittsburgh
 Gustafson, Gary: Gibsonia
 Gustafson, Sandra: Warren
 Hach, Edwin: Shippenville
 Haight, Cleva: Johnsanburg
 Harris, Arthur: Export
 Hartman, Jane: Sliga
 Hartman, Marlin: Mt. Pleasant
 Haubrich, LaVerne: Irwin
 Hepler, Sandra: Apalla
 Hicks, Darathy Jaan: New Castle
 Hogue, Carol: Oil City
 Hasack, Darathy: Clarian
 Hubauer, Charles: Clarian
 Humeniuk, Jan: New Kensington
 Hutchison, Paul: Butler
 Jahnsan, Lais: Ridgway
 Karp, Jean: Pittsburgh
 Keneske, Gerald: Carsica
 Kunkle, Robert: St. Petersburg
 Lewis, Jahn: Braakville
 Lard, George: Mahaffey
 Lucas, Virgil: Beaverdale
 Ludwiczak, Danald: Arnold
 Lund, Sally: Ridgway
 Lupher, Watson: Erie
 Main, Lydia Jackson: Warren
 Mandic, Melvin: Harwick
 Manganara, Charlotte: Verona
 Mapes, Wilbur: Clarian
 Matheson, Fred: Ridgway
 Mathias, Diane: Rimersburg
 Maxwell, Janet: Slippery Rock
 McCarrier, James: Butler
 McElhottan, James: Brackport
 Mellring, Bruce: Carsica
 Mezerski, Evelyn: Carnegie
 Miller, Beverly: Kittanning
 Miller, Blanche: Shippenville
 Miller, James: Bradford
 Miller, Marlin: Fairmaunt City
 Miller, Neil: Fairmaunt City
 Mills, Jeanne W.: Clarian
 Mong, Nancy: Knax
 Mannayer, Sally: Braakville
 Moore, David: Cecil
 Moore, Priscilla Burns: Sliga
 Marris, Richard: Sliga
 Nelson, Vincent: Weedville
 Nicol, Ilene: Clarian
 Narthey, Phyllis O.: Reynoldsville
 Nulph, Margaret: Leeper
 Paige, Naomi: Johnstown
 Pepe, Danald: Bridgeville
 Plavney, Fred: New Bethlehem
 Paprik, Edward: Ford City
 Powell, Richard: Emlenton
 Pugh, Harry:
 Quinn, Thomas: Reynoldsville
 Rabach, Carol: Pittsburgh
 Raigh, Albert: Hillsdale
 Ranson, Gloria: Clarian
 Rednack, Lee: Jeannette
 Reese, Beverly: Carnegie
 Rhoads, James: Franklin
 Richey, Deanna: Franklin
 Rach, Carol Ann: Pittsburgh
 Rupert, Elizabeth: Clarian
 Russell, Richard: Franklin
 Sayers, James B.: Clarian
 Schickling, Lester: Clearfield
 Schrecengast, Ronald: Karns City
 Scatt, Joanne: Pittsfield
 Sereno, Janet: Cauderspart
 Shay, Gary: Knax
 Singer, John Dean: Marienville
 Slaughaupt, Jahn: Clarian
 Smith, Ernest: Oil City
 Smith, Jan Rae: Springdale
 Snyder, Elvin: Timblin
 Stewart, Joyce: Titusville
 Strain, Herbert: Valencia
 Summerville, Richard: Knax
 Sutton, Willard: Leeper
 Swanson, Dale: Hazelhurst
 Terwilliger, Dale: Parker
 Terwilliger, LaVerne: Fisher
 Thompson, Helen: Meadville
 Thompson, Richard: Clarian
 Valansky, Joseph: Sykesville
 Vuic, Nancy Kelly: Fallen Timber
 Walker, Lois: Zelienople
 Warner, Patricia: Samersset
 Washawich, Raddy: McKeesport
 West, Robert: Duquesne
 Whitmer, Raymond: Emporium
 Wiesen, Richard: Franklin
 Williams, Neal: Meadville
 Yaugh, James: East Brady
 Young, David: New Bethlehem
 Yaunt, Richard: Ford City
 Zdanowski, Adelia: Arnold

directory

JUNIORS

Secondary

Barone, Albert
Bastide, Mercedes
Botz, Ronald
Braddock, Mike
Burkett, Donald
Calkins, Thomas
Cindrigh, George
Clark, Nancy
Clever, Donald
Condio, Ronald
Costa, Wayne
Daum, Roger
Davis, Roland
Decker, Janet
Decker, Jean
Depp, Daniel
DiNunzio, Nicholas
Doverspike, John
Dubick, Thelma
Dunham, Richard
Dunn, James R.
Dunn, Lee
Enoch, Paul
Galbreath, Larry
Gates, Joseph
Gazda, Sally
Gordon, James
Grudowski, Helen
Hager, Donald
Henry, Irvin
Henry, Marvin
Howelle, Richard
Kifer, James
Knosky, Michael
Kockler, James A.

Secondary

Kohan, John
Kuntz, Russell
Laing, Paul
Laughman, Herbert
Linn, Kenneth
Little, James
Livermore, Caroline
Lott, Miles
Lucas, Edward
Lucas, Harold
MacDonald, Theodore
Magee, Richard
Mahony, Daniel
Matlak, Harry
McCoy, Norman R.
McFarland, George
McNeil, Carol
McNeil, John
McWilliams, Joseph
Meyer, Wade
Miller, Keith
Moore, Donald
Moore, James L.
Murray, Patricia
Myers, Robert
Narby, L. Maxwell
Nason, Carol Ann
Nelson, James
O'Connell, William
Olon, Frederick
Park, Lucy
Platt, Richard
Raybuck, MaryLou
Reckhart, Ronald
Rolls, Eugene
Rothrock, Harriet

Secondary

Rouse, Lee
Rybar, Donald
Sabatini, Albert
Schimp, Mary
Smith, Donald
Smith, Gary
Smrekar, Roy
Smutko, William
Szul, Eugene
Terpak, Paul
Todd, Blaine
Truman, William
Underwood, Archie
Uzelac, Bernard
VanNort, Arthur
Vida, Hilary
Weidner, Victor
White, Marjorie
Yeager, John

Elementary

Allen, Gloria Ann
Anderson, Doris
Bach, Betty Jane
Bayhurst, Joseph
Beacom, Eleanor R.
Borden, Elizabeth
Calhoun, Doris
Calloway, Emily
Canterna, Linda
Carson, Lawrence
Cipollone, Adela
Clawson, Marjorie
Colton, Norma Jean
DeBlander, Vera
Deibler, Benjamin
Dillman, Linda

directory

Elementary

Douds, Cordelia
Henry, Avonell
Kuty, Patricia
Lowman, John
Maurhoff, Doyle
Minich, Helen
Molinaro, Peter
Nolsheim, Joanne
Polak, Veronica
Rogers, Judith
Rossey, Thomas
Sarko, Betty
Schopp, Joseph N.
Slattery, Helen

Secondary

Aklin, Jay C.
Alcorn, William C.
Allshouse, Thomas
Andre, Joyce
Babish, Steve
Baka, George
Barnhart, David
Barrett, Raymond I.
Beightol, William
Bell, Donald
Bertani, John
Besson, Christine
Best, Richard W.
Blaine, Jack
Blumer, Larry
Bolan, Anne
Bowersox, Normo
Bowser, Daniel L.
Boyer, Robert
Budday, Janet E.
Burns, Edward F.

Elementary

Stewart, Mory Lee
Swanson, Nancy
Thickey, Fred George
Thomas, Nancy
Vuic, Melvin
Weisbaker, Sharon
Welker, Bernice
Wertz, Nancy
Wherry, Ruth
Whitaker, Ethel

Library Science

Bickel, Alice Kay
Blockowicz, Celeste

SOPHOMORES

Secondary

Camarate, John
Capizzi, Joseph
Carley, John
Carlson, Dolores
Carlson, William
Clark, David
Colman, William
Colegrove, William
Copenhaver, Jesse
Corbett, William
Cotton, Taylor
Crum, Richard
Cummings, Patrick
Currie, Robert
Daugherty, Louis
Day, William
DeCapite, Alfonse
DeLong, Richard
DeMarte, James
DeMarte, Joseph
Dembosky, Frederick

Library Science

Clark, Judith Ann
Farkas, Margaret
Gilliland, Lee
Hemstreet, Diana
Johnson, Frances
Johnson, Nancy
Larimer, Betty
Pfeifer, Judith
Rossiter, William
Smith, Karlene
Temple, William
Tomson, Katheryne
Verlato, Georgia
Wymer, Ruth

Secondary

Ditty, William E.
Doman, James
Dubart, Constance
Eddinger, Robert
Engle, Richard
Espy, Joyce F.
Estadt, Daniel
Everhart, Robert
Ferko, William
Finnegan, Charles P.
Florie, Karl
Ford, Marion
Freidhoff, Wayne
Gaiser, Donald
Gardner, Jon
Gaul, Eric
Gowetski, Stanley
Grady, Donald
Granater, Patrick
Grayson, Janet
Greene, LeVeda

directory

Secondary

Grenci, Nicola
Hankey, Harry
Harris, Alfred
Hartz, Robert
Hess, Robert
Hickman, Rhoda
Himes, Kenneth
Hackinsan, Charles
Hohn, Richard
Hunter, James
James, Nancy
Johnson, Chester
Kemerer, Ralph
Ketner, Nancy J.
King, Jack C.
Klingensmith, Charles
Kahler, Faith
Kurcis, Steve
Lerch, Marybelle
Lewis, Paul
Lockett, Thomas
Logan, Clifford
Long, Linda
Matlak, James
McCabe, John T.
McCash, Jack
McCoy, Norman K.
McCullough, William L.
McElhattan, Thomas
McLaughlin, Agnes
McLaughlin, David
McMaster, Ronald
Means, Richard D.
Mercuri, Frank
Miller, Curtis
Mindek, Helen
Mittereder, Conrad

Secondary

Malsky, Jahn
Murtland, Gary
Naylor, Jahn P.
Nichol, Robert
Northey, Robert
Palmer, Paul
Pascarella, Vincent
Perry, Darrell
Polasko, Henry
Querio, Angela
Raciappi, Joseph
Raible, Claude
Randall, Judith
Roberts, Daniel
Rosenberger, Robert
Sandy, Arthur
Sandy, Cluey
Sarcinella, Janice
Schimp, Frederick
Schuster, Paul
Sebring, Albert
Shirey, Carl
Shoup, Robert
Shropshire, John
Sieber, Ethel
Siegel, Marion
Simpson, James
Smith, John R.
Snyder, Malcolm
Snyder, Mary Grace
Snyder, William C.
Stablow, Thomas
Stahlman, Leland
Stahlman, Robert L.
Steltzer, George
Strycula, Stanley G.
Stupka, Edwin

Secondary

Summerville, John
Summerville, Max
Swanson, Donald
Taormina, Anthony
Topolski, Daniel
Torchio, Gildo
Urban, Clement
Vespa, Ranald
Volansky, Robert G.
Wagner, George
Wain, John
Walter, Jon
West, Joyce M.
Zappa, Benjamin
Zilcasky, David

Elementary

Archible, William
Arpino, Anthony
Atwell, Truzah
Baker, Rita M.
Barnes, Mariella
Berkey, Roy
Berlinski, Roberta
Braund, Carale Ann
Burns, Herbert
Byers, Glenn
Claypoale, Virginia
Crowe, Frances
Douglas, Janet Lee
Endlich, Charles
Engelback, Carole Ann
Evans, Hannah
Fallara, Anthony
Fleming, John R.
Faust, Nancy
French, Patricia

directory

Elementary

Fuller, Claire
Gates, John
Grettler, Foe
Haubrich, Carol
Hay, Mary
Henderson, James H.
Henry, Ronald
Hilty, Rita
Knapp, Carol
Lewis, Margaret
McCoy, Mary Louise
McNutt, Vivian
Meckley, Beatrice
Mitchell, Patricia
Moore, Carol
Moreland, Dorothy
Muse, Robert
Myers, Beverly
Nicholson, William
Panaia, Ellery
Perry, Georgionna

Secondary

Adams, Jerry L.
Aleksa, James
Allen, Robert
Anderson, Gary
Ashbaugh, James
Baker, Harold G.
Borrett, James K.
Bashline, Duone
Belavic, Charles
Berberich, Carol
Bickel, Elinor
Bobbert, Larry
Bono, William
Boris, Carole

Elementary

Pierre, LuVonne
Quattro, Francis
Richardson, Cotherine
Rodgers, Nancy Jane
Sheffer, Eugene
Shilling, Donald
Slagle, Judy
Smathers, Charlene
Smith, Eleanor
Snyder, Barbara
Sorenson, James
Steiner, Linie Lou
Stewart, Marjorie
Swope, Nancy
VanOrd, Ronald
Welms, John
Wilson, Gloria
Wright, Patrick
Zacherl, Patricio

Library Science

Cann, Betty

Library Science

D'Ascenzo, Christine
Dunmire, Patricio
Evans, Donn
Eyth, Mary Jo
Harvey, Ray
Heil, Julia A.
Heilman, Barbara
Hoover, Rebecca
Hasock, Karen
Johnson, Joyce
Karr, Janet
Lind, Sylvio
McElravy, Robert
Nolf, Ann
Pearson, Robert
Siegel, Phyllis
Silio, Nancimoy
Stewart, Shoron
Wike, George
Williams, James
Yanek, William

FRESHMEN

Secondary

Bosin, James
Bowser, Daniel R.
Bowser, Walter
Brand, Marilyn
Breuer, Arthur
Brittan, Ronald
Bruno, Frank
Buhite, William
Bukosky, Raymond
Callenburg, Judith
Caratelli, Albert
Carl, Roger
Chantrey, Paul
Chapman, Thomas
Ciuca, Louis

Secondary

Cliff, John B.
Cloherty, Robert
Coffman, Clarence James
Colpo, John R.
Condeluci, Samuel
Connor, Dorothy
Cook, James K.
Copenhaver, Velma
Cottrell, George
Cox, Frank
Crovener, Edward
Crimarki, Anthony
Cyphert, Patricia
Daum, Grant
Day, Donald

directory

Secondary

DeFrancis, Arthur
Delaney, Donna
Dellapina, Ronald
Denardo, George
Dininny, Donald
Ditty, Carla (Nurse)
Dauthett, William
Duggan, John
Eshbaugh, Robert
Eshelman, Thomas
Fernekes, Thamas
Fitzsimmons, Tany
France, John
Frank, Danald
Franks, Arthur
Gaiser, Dennis
Geary, Helen
Goachee, William
Gowetski, Kenneth Michael
Gracy, John
Graham, Edward
Greco, Richard
Grosch, LeRay
Hanna, James
Hannald, Gene
Heiberger, Jordan
Henry, Larry
Hixenbaugh, Joseph
Hoover, James
Hormel, Richard Lee
Hosey, Richard
Hurley, Donald
Itell, Edward
Jackson, William
Jenkins, William
Kahat, Jahn

Secondary

Kanaan, Eugene
Kane, James W.
Kemmer, Avis
Khalil, Robert
Kifer, Scott
King, Thamas
Knapfel, Darrell
Kratsa, James
Lee, Gloria
Lee, Patricia
Lenczewski, Lawrence
Lewis, Barbara
Lagan, Arthur Scott
Lucas, Nael
Ludwiczak, Patricia
MacClennan, Robert
Magaro, John
Marnic, Judith
Marshall, Vera
Martin, Carol
Master, Joseph
Matalik, James
Maus, Jahn L.
Mays, Jahn B.
McCleary, Stanley
McClaskey, Diana
McCoal, Erma
McElroy, Robert E.
McElroy, William
McLaughlin, Dennis
McLaughlin, James
McManigle, Thomas
McNamara, Thomas
McPherson, Richard
McQuawn, Farrest
Melick, Sandra

Secondary

Meyer, Charles
Miller, Mary Jane
Mahney, Barry
Moore, Wayne
Morrow, William
Mortimer, Richard
Mottarn, David
Mowry, Paul
Murphy, Bruce
Murray, Thomas
Myers, Dallas
Naonan, Charles
O'Neil, Haward
Ordiway, Kay
Ozimek, William
Parks, Francis
Parula, Danald
Pence, Allen
Petika, Matthew
Petrich, Stephen
Picardi, Mary
Pisaneschi, James
Plyler, Gary
Pompe, Robert
Papielski, Judith
Powell, Richard W.
Preisser, Dennis
Pritchard, Diane
Raneri, Frances
Ray, William
Reib, Richard
Rice, Patricia
Richards, Barbara (Nurse)
Richards, Joan (Nurse)
Rockey, John
Rogers, Richard M.

directory

Secondary

Sakson, John P.
Schaefer, Carole
Schlekat, Judith
Schrecongost, Larry B.
Schrecongost, Roger
Selway, David
Shaffer, Richard
Shanahan, Charles
Shaner, Sally
Sheely, James
Shick, Frederick
Shields, Byron
Shirey, Clyde
Shoemaker, Fred
Shoup, John L.
Shreckengost, Larry D.
Shumaker, Ronald
Skinner, David
Slay, Connie
Sloan, Gilbert
Smith, Gerald
Smith, John E.
Smoker, William
Snyder, Judy
Somers, Robert
Stewart, Ronald
Sullivan, Henry J.
Summerville, Alvin
Supak, Raymond
Sutliff, William
Swartfager, Ruth
Terrill, Barbara
Thompson, Todd
Torchio, Gloria
Tosh, Larry
Toy, Esther J.

Secondary

Toy, Robert
Tubbs, William George
Ulmer, Thomas
Ungvarsky, Jack
Ventresca, Rudolph
Vida, Joseph
Wagner, Kahle
Walkowiak, Leonard
Wasylink, Franklin
Weckerly, Roger
Wehrli, Thomas
Weikal, Daniel
Wellman, Margaret
Welty, Timothy
Whalen, William
White, John T.
Wiant, Heidi
Widmar, Ernest
Wile, James
Wilson, Dorsey
Wilson, James
Wingate, James
Zdravecky, Albert
Zecker, Fred

Elementary

Anchors, Linda
Barile, Veronica
Baynham, Janet
Bennardo, Joseph
Berty, Donna
Bishop, Beth
Blöse, William
Bokdorf, Carol
Borelli, Nick
Brougham, Susan
Buczek, Mary Ann

Elementary

Budzinski, Helen
Buhite, Esther
Burford, Judith
Cipollone, Emilio
Crate, Mary Catherine
Davis, William
Dittman, Donna
Dobos, Roland
Etsel, Phoebe
Forringer, Judith
Foster, Rachel
Fax, Judith
Freeburg, Judith
Gallagher, Selma
Glenn, Doris
Gorr, Barbara
Graham, Jeannette
Guido, Shirley
Harouse, Robert
Heller, Barbara
Henry, Rachel
Hopkins, Janet
Hutchins, Mildred
Jellison, Stephanie
Kenemuth, Joanne
Kratzge, Janice
Kunselman, Susan
Kuzma, Lorraine
Lauffer, Martha
Lehner, Suellen
Lewis, Joyce
Lichko, Nancy
Lieberum, Judy
Lingenfelter, John D.
Linnan, Virginia
Manno, Betty

directory

Elementary

Master, Sonja
Mathias, Elva
McCoy, Ronald
McCullough, Martha
McDawell, Jeanne
McElwain, James
McLaine, Mary Ellen
McNeil, Sally
Michel, Edward
Midgley, Josephine
Miller, Sarah
Myers, Walter
Nara, Bonnie
Nega, Thomas
Noca, Cecelia
Nordahl, Shirley
O'Brien, James
O'Brien, Robert Gary
Plummer, Nancy
Parter, Mary Lee
Ralph, Ralph
Reed, Joan

Secondary

Alcibiade, Scipione
Baldwin, John A.
Bishop, Cletus
Burtan, Ralph
Carter, Richard D.
Comes, Edward
Cawan, Rodger
Daugherty, David
DeCaro, Angelo S.
Dembaugh, Fred
Estak, Paul
Fulmer, James L.
Gadagno, Robert
Gealy, Paul

Elementary

Reed, Patricia
Rendash, Beverly
Rhodes, Mary Jane
Roberts, Donald
Rocca, Frank
Rock, Jean
Rassey, Ruth
Schimp, Judith
Sinai, Delbert
Skelly, Gloria
Smith, Karen
Smith, Leana
Snyder, Nola
Spencer, Janet
Szafran, Maxine
Trill, Janet
Truby, Catherine
Turney, Carole
Waddell, Marilyn
Walton, Judith
Waters, Ruth
Wilshire, Patricia

January FRESHMEN

Secondary

Grabeic, Richard
Graham, Richard J.
Houghtling, John
Ihnat, George
Jahns, Eleanor
Kolakawski, Harry M.
Krach, James F.
Mango, John S.
Mastovich, Michael
Mathias, Paul
Moberly, Arthur
Morgan, Marion D.
Newcome, Thomas
Peles, Lawrence

Elementary

Wise, Paul
Zacherl, Joanne

Library Science

August, Martha
Chittister, Ann
Daley, Sally
Dannels, Paula
Deveny, Danna
Hamrack, Mary Ellen
Harchuck, Barbara
Heilman, Jaanna
Kerr, Linda Ann
Laya, Jack
McDonald, Genevieve
McGarry, Phyllis
Purich, Olga
Richenbach, Edna Mae
Smause, Gregg
Steele, Alice Jean
Uhrine, Loreen
Vida, Marleen
Weed, Nola

Secondary

Preston, James P.
Reddinger, John A.
Shaffer, Kenneth
Tallarico, Richard
Watsan, Dan E.
Winters, Robert G.
Elementary
Bailey, Earl
Fortier, Joseph A.
Guthrie, Harold
Kolgare, Richard Lee
McCleary, Lois
Strickland, Carol
Yaunt, Keith

The editors and staff of the 1959 Sequelle would like to thank the members of the faculty and the students who have cooperated and assisted us in compiling this book. We also appreciate the suggestions given us by the photographer, engraver, and printer.

Photographer

CARL AND DON STUDIO

Clarion, Pennsylvania

Engraver

ZIMMERMAN ENGRAVING COMPANY

Sykesville, Pennsylvania

Printer

KURTZ BROS.

Clearfield, Pennsylvania



Spec. Col.
qLD
1017
.C88
1959
c.2

