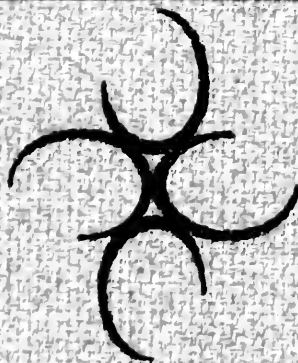


pec.Col.
D
017
88
964
.2

THE SEQUELLE

**1963
1964**



**CLARION
STATE
COLLEGE**



Carlson Library

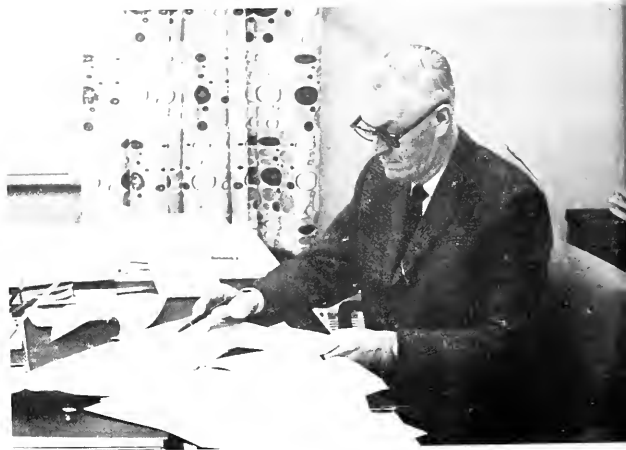


LIBRARY

CLARION STATE COLLEGE
CLARION, PA.

**CLARION
STATE
COLLEGE**

**THE
SEQUELLE
1963
1964**



PRESIDENT JAMES GEMMELL

If as Emerson wrote, "It is the eye which makes the horizon," then surely in a free society it is education which makes the eye. Education, above all, is a drawing out; it is not a cramming in. The trouble with most levels of formal education is that they have too much respect for information which so often becomes quickly obsolescent and too little for ideas, without which all information and meaningless. The difficulty is that no one can put ideas into our heads. We must put them there ourselves. A good education, however, can generate conditions conducive to the discovery of ideas, can nurture their growth, and can help us to find rational bases for them. The central task of education, therefore, is to aid man in his search for ideas that may be useful to him in his attempts to deal with chaotic bodies of new materials. This is the goal toward which Clarion students and faculty strive. I trust that your endeavors have been rewarded, and I covet for you the continued excitement that awaits you in the world of ideas.

JAMES GEMMELL, President

TABLE OF CONTENTS



FACULTY	4
SENIORS	17
UNDERCLASSMEN OFFICERS	50
VENANGO CAMPUS	54
HOMECOMING 1963	68
ACTIVITIES	76
MUSIC AND DRAMA	92
GREEKS	107
SPORTS	134
FACULTY DIRECTORY	154
CAMPUS CASUALS	160



| **FACULTY** |



James D. Moore, Dean of Instruction. Dr. Dana Still, Assistant Dean of Instruction.



Dr. Darrell Rishel, Dean of Students. Clesta L. Dickson, Dean of Women. Frank Lignelli, Assistant Dean of Students.

ADMINISTRATIVE STAFF



Daryl Callen, Virginia Wolbert, Beverly Taylor, Margaret Hultzuist, Gail Fields, Patty Walters, Ruth Bell, Charlotte Heeter, Anna Mary Osterried, Dorothy Nulph, Janet Hallock, Olivia Steub, Forrest Park.



Walter L. Hart, Director of Admissions; Mrs. Walter Hart, Secretary; Mrs. Melvin Caldwell, Secretary; Mrs. Jerry Wilson, Secretary; George Murdock, Assistant Director of Admissions.



Phyllis Elder, Shirley Henry, Phyllis Summerville, Lois McGregor.



Ernest Aharrah
Demonstration Teacher, Science



Vaughn Albertson
English



Francis Baptist
Art



Daniel C. Bardarik
Biological Science



Gwendolyn M. Bays
Foreign Languages



Robert A. Bays
Head of Foreign Language
Department



Mary Bechtold
Physical Science



Stanley A. Belfore
Biological Science



Alpha E. Bernard
Education



Pearl E. Bonner
Demonstration, Third Grade



James Bruno
Head of Music Department
Head of Division of Fine and
Performing Arts



Mary M. Butler
Librarian



Carl E. Caldwell
French



Frank M. Campbell
Social Studies

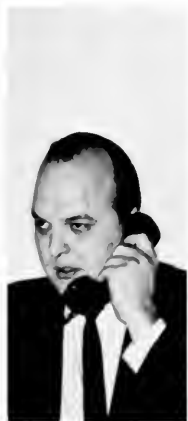


Thomas A. Carnahan
Mathematics, Physical Science



Alfred Charley
Art

7



Bob H. Copeland
Speech



Alistair T. Crawford
Social Sciences



Robert E. Crawford
Geography



Peggy S. Curry
Demonstration Teacher,
Kindergarten



Bruce H. Dinsmore
Biological Science



James A. Donachy
Biological Science



Edward G. Duffy
Social Studies



Kenneth F. Emerick
Librarian



Charles R. Flack
Head of Liberty Science Department



Ray K. Giering
Education



Edward Grejda
English



Edward Golla
Physical Science



William E. Grosch
Art



Joel L. Haines
Social Studies



Amelia Hoover
Speech



Roger Hufford
Speech



Norman B. Humphrey
Geography



Albert A. Jacks
Health and Physical Education



Ernest W. Johnson
Education



Margery Lu Johnson
Assistant Librarian



John A. Joy
Health and Physical Education



William Karl
English



Clifford M. Keth
Physical Science



Elaine King
Education



James C. King
Social Studies
Director of Academic Counseling



Joseph J. Knowles
Health and Physical Education



Helen Knuth
Social Studies



Gustav V. Konitsky
Social Studies



Ray Kuipers
Director of Audio-Visual Education



Anthony Lazzaro
Physical Science



George R. Lewis
Head of Mathematics Department



William M. McDonald
Music



Nancy S. McKee
Librarian



Stanley F. Michalski
Music



Lester D. Moody
Head of English Department



Eleanor D. Moore
Librarian



John N. Moorhouse
Education



Elbert Moses
Head of Speech Department



George Murdoch
Education
Assistant Director of Admissions



Gilbert Neiman
English



Max A. Nemmer
English



Henry W. Newman
English



Robert L. Northey
Mathematics



Lester C. Oakes
Geography



Galen L. Ober
Physical Science



Donald R. Pagano
Mathematics



William J. Page
Director of Student Teaching and
Placement



Hugh Winston Park
English



Charles G. Pearce
Art



Donald D. Peirce
Head of Division of Science



Lawrence L. Penny
Psychology and Reading



Werner H. Peterke
Social Science



Glenn B. Phipps
Speech



Andor S. P-Jobb
Art



Morrell B. Pratt
Spanish



Donald R. Predmore
Biological Science



Jock Reid
Audio-Visual Education



John F. Reinhardt
English



Eugene L. Rhoades
Mathematics



Jack K. Roadman
Physical Science



Charles W. Robbe
Social Studies



Edward Roncone
Music



Elizabeth A. Rupert
Library Science



Eugene A. Seelye
Art



Eugene Ross Senff
English



Paul L. Shank
Physical Science



Wilma Sherwin
English



James D. Shofestall
Physical Science



Charles J. Shontz
Head of Biological Science



Harold E. Simmons
Director of Professional Studies



Richard C. Skinner
Head of Department of Education



Betty R. Slater
Education



Nancy Snider
English



Joseph R. Spence
Head of Art Department
Director of Development



Martha Stewart
Head Librarian



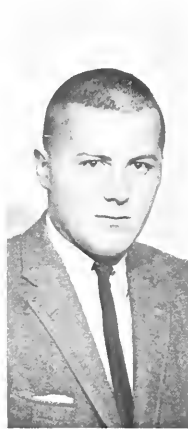
Richard Summerville
Mathematics



Imogene Sumner
Social Studies



Waldo S. Tippin
Education
Director of Athletics



J. David Truby
English
Director of Public Relations



Jay Van Bruggen
Social Studies



Robert Van Meter
Music



Kenneth J. Vayda
Director of Special
Education Curriculum



Glenn S. Weight
English



Margaret J. Wiant
Geography



Samuel A. Wilhelm
Head of Social Science



John E. Williams
Biological Science



John Winter
Philosophy



George F. Wollaston
Physical Science



Gloria A. Yough
Health and Physical Education

FACULTY NOT PICTURED:

Mary Kay Banner
Demonstration Teacher,
Intermediate Grades

Barbara Billings
Audio-Visual Education

Gifford Frazee
Economics

Donald Gerstoff
Speech

Harold V. Hartley
Special Education

Roxana Irwin
Demonstration Teacher,
Intermediate Grades

Robert Jones
Spanish

Joan Kuipers
Education

Allene H. Masterson
Social Science

Virginia M. Pemberton
Demonstration Teacher,
Primary Grades

Vernon Pierce
Speech

Fern A. Shannon
Librarian

Donna Jean Shirey
Demonstration Teacher,
Sixth Grade

Betty Simpson
Health and Physical Education

Jerome Squire
Music

Franklin S. Takei
Philosophy

Paul N. Terwillinger
Education

Pauline M. Wiberg
Demonstration Teacher,
Primary Grades



| **SENIORS** |

SENIOR CLASS OFFICERS

Robert Avery, President
 David Winger, Vice-President
 Gail Jandrew, Secretary
 Karen Wolfe, Treasurer
 Dr. Moody, Sponsor



Robert Avery



David Winger



Gail Jandrew



Karen Wolfe



Sally Aber
Pittsburgh, Pa.
English



Cleta Alcorn
Saxton, Pa.
Elementary



Patricia Allaman
Shippenville, Pa.
Elementary



Emma Allison
Luthersburg, Pa.
Elementary



Beverly Apple
Curwensville, Pa.
Library Science



Robert Arbuckle
Arnold, Pa.
Social Studies



Marian Arnal
Vandergrift, Pa.
Elementary



Lawrence Ashbaugh
Kane, Pa.
Social Studies



Eve Atkin
Tidioute, Pa.
English



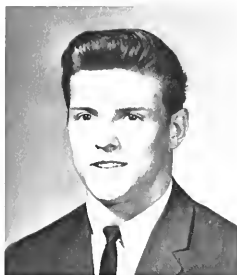
Robert Avery
Butler, Pa.
Speech and Dramatic Arts



Beverly Baer
Turtle Creek, Pa.
Elementary



Nell Bailey
Sykesville, Pa.
Elementary



Richard Baker
Jeannette, Pa.
Elementary



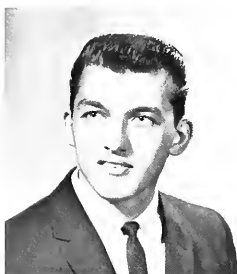
William Barefoot
Pittsburgh, Pa.
Social Studies



Patricia Barnhart
Chicora, Pa.
Elementary



Laura Barrett
Homestead, Pa.
English



Paul Battaglia
Pittsburgh, Pa.
Geography



Terry Baughman
Oil City, Pa.
Biology



Donald Beam
Lickingville, Pa.
Social Studies



Kathleen Bengel
Arnold, Pa.
Elementary



Beverly Best
Knox, Pa.
Elementary



Rosella Beveridge
Clarion, Pa.
Social Studies



John Bielick
Irwin, Pa.
Speech



Dorothy Bishop
Arnold, Pa.
Biology



Nancy Bizzak
Kane, Pa.
English



Patricia Black
Conemaugh, Pa.
Library Science



Eileen Bleil
Butler, Pa.
English



Lee Blose
Punxsutawney, Pa.
Mathematics



Paul Boback
Ford City, Pa.
Social Studies



Gayle Boring
Conemaugh, Pa.
Library Science

21



Martin Bosin
Leechburg, Pa.
Elementary



Peggy Botzer
Sligo, Pa.
English



Larry Bowser
Adrian, Pa.
Geography



Sally Bowser
Summerville, Pa.
Mathematics



Joann Brian
East Pittsburgh, Pa.
English



Robert Bridges
Johnstown, Pa.
Elementary



Robert Britton
Sigel, Pa.
English



Katharine Broadhurst
Titusville, Pa.
Elementary



Margaret Brocius
Timblin, Pa.
Chemistry



Jack Brown
Ford City, Pa.
Mathematics



Ronald Brozovich
Turtle Creek, Pa.
English



Bonnie Buljat
Somerset, Pa.
Elementary



Joseph Burg
Pittsburgh, Pa.
English and Social Studies



Eddylee Burkett
Manor, Pa.
English



Andrew Burlando
Leechburg, Pa.
English



Margaret Buzzard
Brackenridge, Pa.
Elementary



Carole Caputo
Blairsville, Pa.
Social Studies



Jean Carlson
Mathematics



Robert Carnahan
Springdale, Pa.
Social Studies



Jack Casaro
Force, Pa.
Social Studies



David Caslow
Greensburg, Pa.
Social Studies



Myron Caylor
Punxsutawney, Pa.
Elementary



Wayne Chapman
Strattanville, Pa.
Social Studies



Grace Cederquist
Warren, Pa.
English

23



Carol Ann Chiricuzio
Corry, Pa.
English



Juanita Clawges
James City, Pa.
Elementary



Darlene Cochran
Pittsburgh, Pa.
English



Edward Comes
Pleasantville, Pa.
English



Dianne Cook
Pittsburgh, Pa.
Elementary



Marjorie Cooney
Aliquippa, Pa.
Library Science



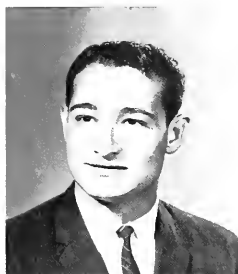
John Cooper
Mechanicsburg, Pa.
Social Studies



Carole Cope
Knox, Pa.
Elementary



Ronald Copenhaver
Ramey, Pa.
Elementary



Robert Cornali
Export, Pa.
Social Studies



Kathleen Costlow
Natrona Hights, Pa.
Elementary



Darlene Cowden
McDonald, Pa.
Elementary

24



Elaine Coxon
East McKeesport, Pa.
English



Martha Craig
Rimersburg, Pa.
Elementary



Donna Crawford
Pittsburgh, Pa.
Elementary



Eugene Csonka
Leechburg, Pa.
Biology



Michelina Curinga
Carnegie, Pa.
Elementary



Thomas Curtin
Sheffield, Pa.
Speech



Maxine Cutler
Pittsburgh, Pa.
Elementary



Linda Cvetnic
Pittsburgh, Pa.
Elementary



Gloria Cyphert
Clarion, Pa.
English



Henry Cyphert
Clarion, Pa.
Biology



Thomas Dale
Freeport, Pa.
Elementary



Audrey Dalzuffo
Bridgeville, Pa.
Elementary



Andrew Danko
Clarence, Pa.
Biology



James Darr
Knox, Pa.
Elementary



Prudence David
New Kensington, Pa.
English



Marshall Davies
Weedville, Pa.
Social Studies



Carol Debiak
Homestead, Pa.
English



Rose Marie DeBiasio
Vandergrift, Pa.
Speech



Marlene DeBlasio
Arnold, Pa.
Elementary



Mary Deible
Marienville, Pa.
Elementary



Margaret Demko
Punxsutawney, Pa.
Social Studies



Dorothea Dickert
Johnstown, Pa.
Elementary



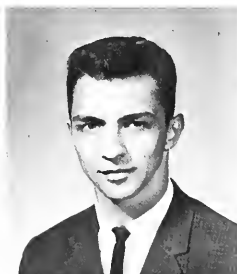
Carl Dickey
New Kensington, Pa.
English



Charity Dillant
Indiana, Pa.
Elementary



Nancy Lee Dotterer
Brookville, Pa.
Elementary



John Dudo
New Castle, Pa.
Mathematics



James Duffy
East Pittsburgh, Pa.
English



Frank Dunlay
Oakmont, Pa.
Social Studies



Karen Dygan
Irwin, Pa.
English



Patricia Eakin
New Castle, Pa.
Library Science



James Earley
Oil City, Pa.
Chemistry



Judith Edwards
Clarion, Pa.
Elementary



Florence Eiler
Verona, Pa.
Elementary



Geoffrey Ellis
Bradford, Pa.
Elementary



Miriam English
Carnegie, Pa.
Elementary



Thomas English
Oakmont, Pa.
Speech



Nancy Exley
Knox, Pa.
Elementary



John Fedorko
Johnsonburg, Pa.
Mathematics



Michael Ferraro
Cheswick, Pa.
Social Studies



Jerry Fiddler
Brockway, Pa.
English



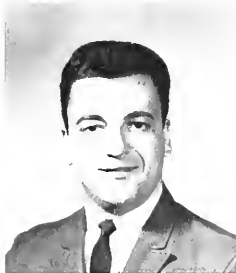
Carol Fisher
Greensburg, Pa.
Library Science



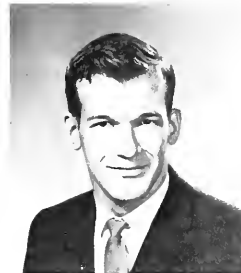
Catherine Flanigan
East Brady, Pa.
Elementary



Gerald Frantz
Punxsutawney, Pa.
Chemistry



Arthur Gallo
Vandergrift, Pa.
Social Studies



Raymond Ganoe
Clarion, Pa.
Chemistry



Dene Garvin
Natrona Hights, Pa.
Elementary



Cassandra Gentile
Glassport, Pa.
Library Science



Edward George
Fairmont City, Pa.
Chemistry



Lawrence Geraci
Vandergrift, Pa.
Social Studies



Peter Gereluk
Warren, Pa.
English



Sally Ann Gibb
West Middlesex, Pa.
Social Studies



Robert Gillingham
Monessen, Pa.
English



Marjorie Gilmore
Munhall, Pa.
Elementary



Kenneth Glenn
Corsica, Pa.
Biology



Marlene Glucki
Aliquippa, Pa.
Elementary



Judith Good
Leechburg, Pa.
Geography



Robert Gray
Jeannette, Pa.
English



Joanne Graziano
Warren, Pa.
Elementary



Edgar Green
Brockway, Pa.
Social Studies



Gary Gruda
Sykesville, Pa.
Social Studies

29



Peter Guarnero
Leechburg, Pa.
Biology



Rose Marie Gusherowski
Weedville, Pa.
Elementary



Elizabeth Gutowski
Kersey, Pa.
Elementary



Joseph Gutowski
Kersey, Pa.
Social Studies



Dennis Haas
Lamartine, Pa.
Social Studies



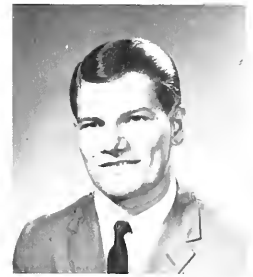
Martha Haas
Kennerdell, Pa.
English



Andrea Hall
New Kensington, Pa.
Elementary



Signora Hall
Pittsburgh, Pa.
English



David Harbison
Natrona Hights, Pa.
Geography



Marcia Harenski
Pittsburgh, Pa.
Elementary



Bonnie Harkness
Murrysville, Pa.
Elementary



Alice Harned
Natrona Hights, Pa.
Elementary



Mary Ann Harriett
Pittsburgh, Pa.
Elementary



Carolyn Hartman
Apollo, Pa.
Elementary



Margaret Hartman
Pittsburgh, Pa.
Elementary



Emily Hauber
St. Marys, Pa.
Elementary



Arnell Hawks
Wampum, Pa.
Library Science



Gerald Heller
Swissvale, Pa.
Social Studies



Ernest Helms
Monroeville, Pa.
English



Diana Hereda
New Kensington, Pa.
Biology



Judy Hewitt
Warren, Pa.
Elementary



Elizabeth Hill
Freeport, Pa.
Elementary



Carolyn Himes
Punxsutawney, Pa.
English



Dianne Hohn
Clarion, Pa.
Library Science

31



Naomi Hulings
Clarion, Pa.
Elementary



James Hooks
Adrian, Pa.
Library Science



Nancy Horlick
Ambridge, Pa.
English



George Howard
Freeport, Pa.
Elementary



John Howard
Bridgeville, Pa.
Social Studies



William Hubler
Allport, Pa.
English



Charles Herefner
Franklin, Pa.
Elementary



Marjorie Hughey
Pittsburgh, Pa.
Elementary



Norman Hulse
Brookville, Pa.
Social Studies



Carol Fye Hunter
Dubois, Pa.
Elementary



Patricia Hunter
Pittsburgh, Pa.
Library Science



Margaret Huntington
Tidioute, Pa.
Elementary



Merrily Hurley
Speech



Lawrence Hynes
Oil City, Pa.
Social Studies



Marilyn Ivill
Pittsburgh, Pa.
English



Gail Jand'rew
Shinglehouse, Pa.
English



Murl Jeffries
Bradfordwoods, Pa.
English



Gladene John
Adrian, Pa.
Elementary



Sandra Johnson
Clarion, Pa.
Social Studies



Wilma Johnson
Oil City, Pa.
Library Science



Norman Johnston
Ridgway, Pa.
Chemistry



Catherine Jones
Freedom, Pa.
English



Jeanne Justham
Sykesville, Pa.
Elementary

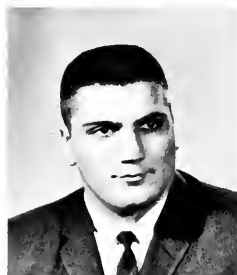


Ronald Kalup
North Braddock, Pa.
Biology

33



Barbara Keeney
Greensburg, Pa.
Speech



Harry Keklak
Conemaugh, Pa.
Elementary



Patrick Kelly
Jeannette, Pa.
English



John Kleck
Oil City, Pa.
Elementary



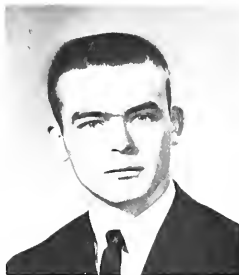
Carol Keltz
Port Allegheny, Pa.
Elementary



Loretta Kidd
Butler, Pa.
Library Science



Dianne Kiser
Seneca, Pa.
Elementary



William Kiser
Bradford, Pa.
Mathematics



Sue Klingensmith
Export, Pa.
Elementary



Joanne Koch
Rimersburg, Pa.
Library Science



Margaret Koch
Bridgeville, Pa.
English



Darlene Kovach
Butler, Pa.
Library Science



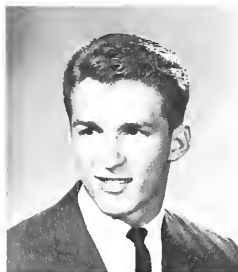
David Knepper
Sidman, Pa.
Social Studies



Elizabeth Krieger
Carnegie, Pa.
Elementary



Dennis Kukulski
New Kensington, Pa.
Biology



Lawrence Kuzma
Aliquippa, Pa.
Mathematics



Louis Labino
Clarion, Pa.
Elementary



Ruth Ann Land
Pittsburgh, Pa.
Social Studies



David Lapato
Cheswick, Pa.
Elementary



James Lauer
Pittsburgh, Pa.
Liberal Arts



James Laughlin
Hookstown, Pa.
Social Studies



Robert Lebda
Clarion, Pa.
Mathematics



Judith Leech
Falls Creek, Pa.
Elementary



Diana Leonard
Hilliards, Pa.
Speech



Polly Ann Leshock
New Bethlehem, Pa.
Mathematics



Sally Joan Leshock
New Bethlehem, Pa.
English



Jean Liebler
Erie, Pa.
Library Science



Lois Lofink
Gibsonia, Pa.
Library Science



Linda Luca
Ellwood City, Pa.
Elementary



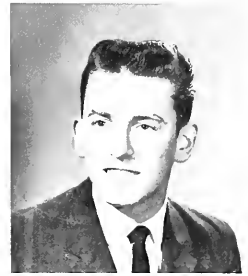
Carol L. Lucas
Sommerville, Pa.
English



Joseph Mahkovec
Penn, Pa.
Social Studies



Nancy Maier
Oil City, Pa.
English



Peter Maleniak
East Conemaugh, Pa.
Comprehensive Science



Eilene Mangini
New Kensington, Pa.
English



Charles Mann
New Kensington, Pa.
English



Arlene Manross
Clarion, Pa.
English



Carl Manross
Titusville, Pa.
Library Science



Adeline Marinelli
Creighton, Pa.
Elementary



Sue Marshinke
Franklin, Pa.
Elementary



Nancy Martin
Kinzua, Pa.
Elementary



Donna Martinelli
Turtle Creek, Pa.
Elementary



Joyce Maruski
Aliquippa, Pa.
Speech



John Mason
Glenshaw, Pa.
Social Studies



Jean Matthews
Brookville, Pa.
Elementary



Carmen Mazza
Sharon, Pa.
Social Studies



Cheryl McDowell
Franklin, Pa.
Elementary



Frances McGrath
Mercer, Pa.
Library Science and
Social Studies



Barbara McGraw
Tidioute, Pa.
Elementary



Theresa McGrosky
Bethel Park, Pa.
Elementary



Rance McIntyre
New Kensington, Pa.
English



Mary McKean
Sandy Lake, Pa.
Elementary



Judith McKillip
Richardsville, Pa.
Mathematics



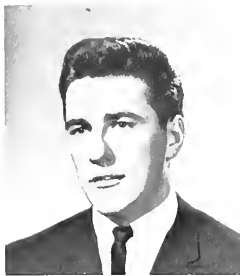
Douglas McKinney
Pittsburgh, Pa.
Social Studies



Joan McKinney
Clearfield, Pa.
Elementary



Judith McLaine
Clarion, Pa.
Social Studies



Gary McLaughlin
Vandergrift, Pa.
Elementary



David Mensch
Marienville, Pa.
Biology



Dorothy Mercer
Leetsdale, Pa.
Elementary



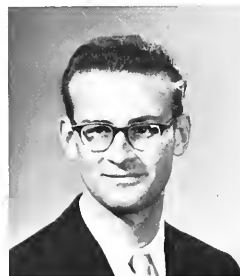
Duane Mercer
Shippenville, Pa.
Elementary



Frank Miller
Windber, Pa.
English



Joel Miller
Jeannette, Pa.
Social Studies



Verner Miller
Pittsburgh, Pa.
Geography



Rosemary Milligan
Aliquippa, Pa.
Speech



Frances Molsky
North Irwin, Pa.
Spanish



Elaine Moore
Clarion, Pa.
Library Science



James Moore
McKeesport, Pa.
Mathematics



Margaret Moore
Reynoldsville, Pa.
Library Science



Hazel Morgan
St. Petersburg, Pa.
Elementary



Barbara Muck
Pittsburgh, Pa.
Elementary



Jamet Munn
Mt. Lebanon, Pa.
Social Studies



Alex Murnyack
Clarence, Pa.
Social Studies



Sally Myers
Evans City, Pa.
Elementary



Leonard Nolan
Oakmont, Pa.
Social Studies



John Nold
Natrona Hights, Pa.
English and Social Studies



Jean Nollinger
Shippenville, Pa.
Mathematics



Harry Nyquist
Ridgway, Pa.
Social Studies



Louis O'Korn
Bridgeville, Pa.
Mathematics



Joanne O'leary
Pittsburgh, Pa.
Elementary



Robert Olejarz
Etna, Pa.
Social Studies



Jakoba Olmes
Oil City, Pa.
Elementary



Kathryn Overturf
Karthaus, Pa.
Spanish



William Overturf
Benezett, Pa.
English



Anita Passenger
Oil City, Pa.
Library Science



Richard Pavlock
Johnsonburg, Pa.
Chemistry



Ralph Pence
Fairmount City, Pa.
Chemistry



Joan Pepperman
Eldred, Pa.
Elementary



Earl Petrucci
Burgettstown, Pa.
Social Studies



Carl Pierce
Oil City, Pa.
Social Studies



Jay Pifer
Hazen, Pa.
Social Studies



Sandra Pifer
Punxsutawney, Pa.
Elementary



Glenn Plyler
Kittanning, Pa.
Chemistry



Domenic Port
Elwood City, Pa.
Biology



Albert Porter
Tarentum, Pa.
Social Studies



Sandra Potter
Pittsburgh, Pa.
English



John Powell
Strattanville, Pa.
English



Evaline Prather
Titusville, Pa.
Elementary



Sandra Querio
Vandergrift, Pa.
Elementary



Arlene Quinlan
Oak Ridge, Pa.
Speech



Carol Reed
New Bethlehem, Pa.
Biology



Harold Reed
Ringgold, Pa.
Comprehensive Science



Patricia Reiter
Warren, Pa.
Elementary



Allen Richards
Brookville, Pa.
English



Phyllis Richards
Natrona Hights, Pa.
Elementary



Marilyn Rose
Milbourne, Fla.
Elementary



Stacy Rousseau
Pittsburgh, Pa.
Elementary



Linda Runyan
Knox, Pa.
Library Science



Nancy Sailor
Pittsburgh, Pa.
Elementary



Joseph Sarbo
New Castle, Pa.
English



William Schall
Apollo, Pa.
Elementary



Bonnie Schantz
Oil City, Pa.
Elementary



Paul Schick
Clairton, Pa.
Biology



JoAnn Schinitzki
Wampum, Pa.
Elementary



Fay Seigworth
Fryburg, Pa.
Chemistry



Judith Servey
Clarion, Pa.
Elementary



John Sexton
Clarion, Pa.
Physics



Sara Shafer
Oil City, Pa.
English



Carolyn Shakley
Butler, Pa.
Elementary



Joseph Shaw
Harwick, Pa.
Social Studies



Juanita Shay
Parker, Pa.
Social Studies



Harry Sherry
Mayport, Pa.
English



Jacqueline Shoemaker
Verona, Pa.
Elementary



John Shofestall
Corsica, Pa.
Comprehensive Science



Larry Shoup
Mahoning, Pa.
Physics



Elizabeth Sibley
Franklin, Pa.
English



Phyllis Siegel
Irwin, Pa.
Elementary



Joan Simeik
Kittanning, Pa.
Elementary



Carol Simmers
Natrona Hights, Pa.
Elementary



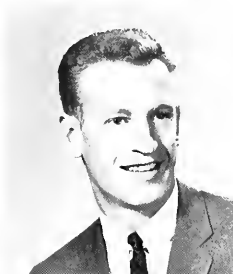
Phyllis Scilingo
Johnsonburg, Pa.
Mathematics



Rose Sita
East Brady, Pa.
Elementary



Charles Skidmore
Chicora, Pa.
Social Studies



Robert Sleigh
Export, Pa.
Biology



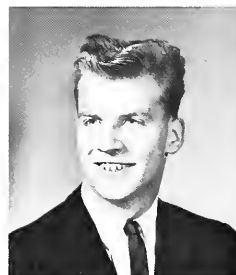
Karl Slippy
Penn Run, Pa.
Geography



Carol Smith
Apollo, Pa.
Library Science



Gary C. Smith
Oak Ridge, Pa.
Biology



Tom Snyder
Bradford, Pa.
Elementary



Frank Sokol
Earth and Space Science



Donna Spinos
Pittsburgh, Pa.
Elementary



Paul Stack
Natrona Hights, Pa.
Social Studies



Sandra Starr
Kittanning, Pa.
Speech



Sandra Stolkovich
Hookstown, Pa.
English



Dorothea Strain
Oil City, Pa.
English



Sandra Struble
Acme, Pa.
Elementary



Joanne Sutej
New Brighton, Pa.
English



Christine Swarm
Limestone, Pa.
Library Science



Stephen Taraphchak
Central City, Pa.
Biological Science



Nancy Thom
Tarentum, Pa.
Elementary



Lucille Tommasone
English



Roberta Truitt
Fairmont City, Pa.
Elementary



Darwin Tucker
Saegertown, Pa.
Geography



Donald Uberti
Force, Pa.
Earth and Space Science



Andrew Ulatsky
Windber, Pa.
Social Studies



Joseph Urban
Greensburg, Pa.
Social Studies



Eugene Valko
Pittsburgh, Pa.
English and Reading



Carol Veitch
Irwin, Pa.
Library Science



James Venture
Sykesville, Pa.
Mathematics



Theresa Vereb
Munhall, Pa.
Mathematics



John Vesnesky
Dubois, Pa.
Social Studies



Thomas Vizza
Reynoldsville, Pa.
Elementary



Brenda Wagner
Sligo, Pa.
Elementary



Walter Waitlevetch
Irwin, Pa.
Elementary



John Wallo
Tarentum, Pa.
Mathematics



Edward Walsh
Rankin, Pa.
Biology



Carol Watson
Greensburg, Pa.
Elementary



Gary Watson
Brackenridge, Pa.
Elementary



Jack Welsh
Trafford, Pa.
English



Joan Wesley
Pittsburgh, Pa.
English



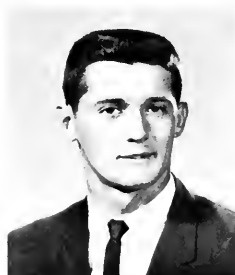
John Whelan
Kittanning, Pa.
Speech



Larry Whipkey
Greensburg, Pa.
Social Studies



George White
Punxsutawney, Pa.
Geography



James Wilkinson
Armbrust, Pa.
Social Studies



David Winger
Oil City, Pa.
Mathematics



Jack Winger
Oil City, Pa.
English



Patricia Winger
Shippenville, Pa.
English



Karen Winkler
Penfield, Pa.
Social Studies



Karen Wolfe
Kittanning, Pa.
Elementary



Laura Wylie
Pittsburgh, Pa.
Elementary



Tom Yankello
Sewickley, Pa.
Social Studies



Nada Yanshak
Verona, Pa.
Library Science



Margaret Yeaney
Marienville, Pa.
Elementary



Kenneth Zamberlan
Bradford, Pa.
Physics



Brenda Zanotti
Apollo, Pa.
Elementary



Melva Zatezalo
Jeannette, Pa.
Elementary

SENIORS NOT PICTURED

48

Joseph Alese Kittanning, Pa. Elementary	Robert Buriak Ford Cliff, Pa. Geography	Barbara Dzuiban New Kensington, Pa. Elementary	Sally Jo King Ironwood, Mich. English	William Nabors McKeesport, Pa. Elementary	Robert Shumaker Manorville, Pa. Biology
Richard Allen Bovaird, Pa. Comprehensive Science	Judy Cain Apollo, Pa. Library Science	Miriam English Carnegie, Pa. Elementary	Charlie Klamer Besemer, Pa. Geography, Earth and Space Science	David Neal Clarion, Pa. Social Studies	David Smith Elizabethtown, Pa. Social Studies
William Anderson Turtle Creek, Pa. Social Studies	Patricia Carroll Schenley, Pa. Library Science	Jeanette Fillgrove Emblenton, Pa. Elementary	Barbara Kline Brockway, Pa. Elementary	Albert Palko Natrona Heights, Pa. Mathematics	William Smojice Conemaugh, Pa. Elementary
Richard Andre Fryburg, Pa. English	John Carson Tionesta, Pa. Mathematics	Peter Forno Lawrence, Pa. Social Studies	Terry Koelsch Irwin, Pa. Elementary	Steve Predajna New Stanton, Pa. Social Studies	Clarence Tabler Clarion, Pa. Social Studies
Jeral Angove Akeley, Pa. Mathematics	Michael Casey Hadley, Pa. Library Science	Ann Gearhart Hadley, Pa. Library Science	Robert Lichy Gibsonia, Pa. Social Studies	Martin Prytherch Pittsburgh, Pa. Elementary	Charles Terrana New Kensington, Pa. Speech, Geography
William Angove Akeley, Pa. Geography	Beverly Cassels Weedville, Pa. Elementary	Patrick Granater Sykesville, Pa. Social Studies	William Link New Kensington, Pa. Elementary	Carolyn Pugh Greighton, Pa. Elementary	Paul Tutmaher Chandlers Valley, Pa. Mathematics
Grace Bailey Carnegie, Pa. Speech	Edward Chalot Oil City, Pa. English	Walter Greenert Butler, Pa. Social Studies	Robert J. Love Apollo, Pa. Geography, Earth and Space Science	Nick Radosevich Pittsburgh, Pa. Social Studies	Wayne Vollentine Warren, Pa. Social Studies
Karen Bautz Charleroi, Pa. Library Science	Lee Chew Washington, Pa. Speech	James Hach Clarion, Pa. Mathematics	Randall Manning Mt. Jewitt, Pa. Library Science	James Reilly Pittsburgh, Pa. Elementary	Howard Wagner Freeport, Pa. Elementary
Edward Bednarczyki Pittsburgh, Pa. Elementary	Mary Clemons Tarentum, Pa. English	Jane Hallman Franklin, Pa. Library Science	Leonard McElhose Pittsburgh, Pa. Social Studies	Peter Remaley Springdale, Pa. English	James Wayland Summerville, Pa. Liberal Arts
David Blanchard Pleasantville, Pa. Geography	Virginia Collett Corsica, Pa. Elementary	Irene Hansen Dubois, Pa. Elementary	Fred Mendenhall Brookville, Pa. Biology	Dale Richards Sharon, Pa. Elementary	James Weber Brackenridge, Pa. Mathematics
Kathleen Bloss Corry, Pa. English	Thomas Crawford Falls Creek, Pa. Biology	Louis Helfrich Titusville, Pa. Biology	Raymond Miller Erie, Pa. Geography, Earth and Space Science	Barbara Roofner Pittsburgh, Pa. Elementary	Howard Wentzel Youngwood, Pa. Social Studies
Joan Borgia Franklin, Pa. Elementary	Louis Cvetnic Rochester, Pa. Social Studies	John Holodnik Export, Pa. English	Darla Mitchell Butler, Pa. Library Science	Robert Schlemmer Punxsutawney, Pa. Earth and Space Science	Donald White Juncos, Pa. Geography
David Bowser Tarentum, Pa. Social Studies	Lucille Dailey New Castle, Pa. Spanish	Raymond Homola Clarion, Pa. Biology	Constance Mock Clarion, Pa. Biology	Marian Schmid Slippery Rock, Pa. Library Science	Kathleen Whiteshot Warren, Pa. Elementary
George Brothers Karns City, Pa. Chemistry	S. Angelo DeCaro Ellwood, Pa. Social Studies	Naomi Hulings Clarion, Pa. Elementary	Walter Moran Oil City, Pa. English	Gorman Shaffer Punxsutawney, Pa. Biology	Sara Willoughby Warren, Pa. Elementary
Joseph Bucceri Seward, Pa. Comprehensive Science	David Deffenbaugh East McKeesport, Pa. Social Studies	Louis Jumbercotta Oakmont, Pa. Social Studies	James Morandini Vandergrift, Pa. Geography	William Shick Brookville, Pa. English	Robert Winters Brookville, Pa. Elementary
Joseph Bukosky Lloydell, Pa. Social Studies	Theodore Dorrian Tiona, Pa. English	Louis Kereszturi Leechburg, Pa. Elementary	Thomas Shreffler Clarion, Pa. Mathematics		



| The Choir drowns out Mac during rehearsal for "Elijah". |

49



| "Hey, it's not raining this minute — this is Clarion?" |



UNDERCLASSMEN OFFICERS



Richard Seman



Kenneth Schuster



Eloise Hanby



Tom George

JUNIOR CLASS OFFICERS

Richard Seman, President
Kenneth Schuster, Vice-President
Eloise Hanby, Secretary
Tom George, Treasurer
Dr. Weight, Sponsor

SOPHOMORE CLASS OFFICERS

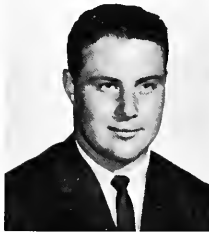
Dennis Sheraw, President
 John Cuthbertson, Vice-President
 Joe Tuminella, Secretary
 Ralph Cutruzzula, Treasurer



Dennis Sheraw



John Cuthbertson



Joe Tuminella



Ralph Cutruzzula



Ronald Reed



Michael Flory

FRESHMAN CLASS OFFICERS

Ronald Reed, President
Michael Flory, Vice-President
Christine Stevens, Secretary
Sue Conroy, Treasurer
Mr. Jones, Sponsor

53



Christine Stevens



Sue Conroy



| VENANGO CAMPUS |



To the Students of Venango Campus:

There certainly need be no bottom to our barrel, so to speak. The only limits on learning and maturing at Venango Campus are those that students of limited imagination impose on themselves.

Here, at our branch Campus, we recognize that educational opportunities are as far-reaching as time itself . . . because in every one of the many ways Venango Campus serves your needs, we concentrate on doing our share to help you share in a better future for yourself. Ours is a serious attempt to brighten, enlighten, and heighten your future.

Are you doing your share to prepare for that future, or is your limited imagination placing the bottom in the barrel?



Joseph F. Clovesko
Biology

VENANGO CAMPUS FACULTY



Robert J. Crawford
Geography



Werner H. Peterke
Economics



Allene H. Masterson
Foreign Language



Harry A. Dennis
Mathematics

56



Henry W. Newman
English



Mary E. Williams
Librarian



Lloyd S. Bromley
Physical Science



John F. Reinhardt
English



Charlotte A. Boyles
Secretary

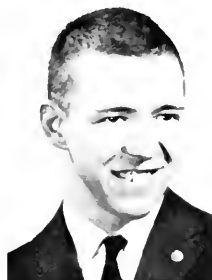


Alstair T. Crawford
Social Studies

| SOPHOMORE CLASS OFFICERS |



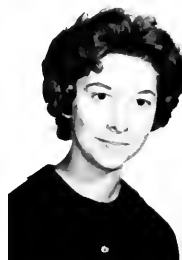
James Morton
President
Secondary



Roger Lore
Vice President
Secondary



Marsha Viele
Secretary
Library Science



Janet Slye
Treasurer
Elementary

| FRESHMAN CLASS OFFICERS |



Terry Martin
President
Secondary



Maureen McGinty
Vice President
Elementary



Margaret Stewart
Secretary-Treasurer
Liberal Arts

57

| SOPHOMORES |



Gay Babbington
Elementary



Clinton Best
Liberal Arts



Marilyn Burch
Elementary



Wallace Crum
Secondary



J. Thomas Curran
Liberal Arts



Mary Davidson
Elementary



Barbara DeShong
Elementary



Thomas Deslatte
Secondary



Jean Donley
Elementary



Frank Emanuelo
Elementary



Susan English
Elementary



William Heckathorne
Secondary



Linda Homan
Secondary



Douglas House
Secondary



Gayle Hovis
Elementary



Robert Hudak
Elementary



Elizabeth Hugus
Elementary



Rodger Hurt
Secondary



Mary Kerr
Elementary



William Kingsley
Secondary



Margaret Kirkwood
Elementary



Fredrick Kluck
Liberal Arts



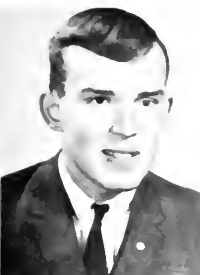
Herman McCreary
Secondary



Kimball McDowell
Elementary



James McFetridge
Secondary



Alan Montgomery
Secondary



Mary Nunemaker
Elementary



Donna Oakes
Secondary



Joanne Osman
Secondary



Patricia Patch
Secondary



Thomas Perry
Secondary



Richard Priester
Secondary



Robert Reynolds
Liberal Arts



Carol Rogers
Elementary



Gary Rothrock
Secondary



Susan Shreve
Elementary



John Skiba
Liberal Arts



Thomas Socha
Secondary



Jerry Spangler
Secondary



Elaine Speece
Library Science



Gary Squire
Liberal Arts



Diane Stevens
Elementary



John Stover
Elementary



Vincent Straub
Liberal Arts



Robert Szafran
Liberal Arts



Mary Turk
Elementary



Karen VanAllen
Secondary



Thomas Witherup
Secondary



James Wygant
Secondary

| SPRING FORMAL |



STUDENT SENATE

PRESIDENT — Jerry Spangler
 VICE-PRESIDENT — Jim Klebonis
 SECRETARY-TREASURER — Gayle Hovis

The Student Senate of Venango Campus consists of five Sophomores, and four Freshmen. Each representative with the exception of the President and Secretary-Treasurer is appointed to one of the five committees. These representatives appropriate the funds of the Student Association for various campus activities. Some of the projects include the purchasing of a piano and bringing cultural events to the college. The Student Senate has proved to be a valuable organization that tries to better the opportunities at Venango Campus.

Seated — A. Masterson, M. O'Polka, G. Hovis, J. Spangler, S. English, R. Hudak. Standing — A. Montgomery, W. Rosenberger, F. Burger, J. Klebonis.



ATHLETIC COMMITTEE

Seated — M. Kerr, M. Viele, B. Hugus, P. Gridwood.
 Standing — R. McClain, P. Simonic, L. Coangle, T. Curran,
 J. Klebonis, chairman.



61

CULTURAL COMMITTEE

Seated — L. Homan, A. Montgomery, chairman; C. Baker.
 Standing — F. Burger, co-chairman; G. Squire.





PUBLICITY COMMITTEE

Seated — J. Slye, M. McGinty, P. Green, C. Rogers.
Standing — R. McClain, W. Rosenberger, co-chairman;
T. Deslatte, R. Hudak, Chairman.



SOCIAL COMMITTEE

Seated — K. VanAllen, M. Nunemaker, S. English,
chairman; C. Davidson, J. Sibley.
Standing — R. Robbins, P. Jones.



STUDENT ORGANIZATIONS

Seated — J. Lauer, J. Osman, M. Stewart, T. Manka.
Standing — M. O'Polka.

CIRCLE K

PRESIDENT — Jerry Spangler
 VICE-PRESIDENT — Jon Gustafson
 SECRETARY — Bob Hudak
 TREASURER — Alan Montgomery

The Circle K Club, organized in 1962, is one of the newest organizations founded on Venango Campus. It is a service organization for men and is associated with Kiwanis. It has been a service to both the community and school.

It sponsors social events during the year which include dances and the election of a Circle K Sweetheart.

The Circle K encourages self-development of each member through leadership, education and good citizenship.

Seated—P. Jones, A. Montgomery, J. Spangler, R. Hudak, G. Glass. Standing—J. Wygant, J. Klebonis, T. Deslotte, T. Peterson, T. Withrup.



63

PHOTOGRAPHY CLUB

PRESIDENT — Lulu Belle Brooks
 VICE-PRESIDENT — Dan Revak
 SECRETARY-TREASURER — Terry LaPorte

The Photography Club is a new addition to Venango Campus this year. The main idea of this organization is to teach students the importance of photography as a teaching tool.

Developing, printing, and enlarging of pictures is taught along with lectures on the chemical composition, portrait lighting and color photography. The photographic club takes the pictures for the yearbook.

Seated—J. Wygant, G. Babbington, L. Brooks, T. LaPorte. Standing—R. McClain, J. Spangler, P. Jones, R. Hudak.



HOMECOMING REPRESENTATIVES

64



Our homecoming representatives were: Seated—Barbara L. DeShong, sophomore, and standing—Priscilla A. Green, freshman.

ACTIVITIES



Me Tarzan, You Jane!



It's what's up front that counts.



Size two, please!



Attentive audience watches Silhouettes.

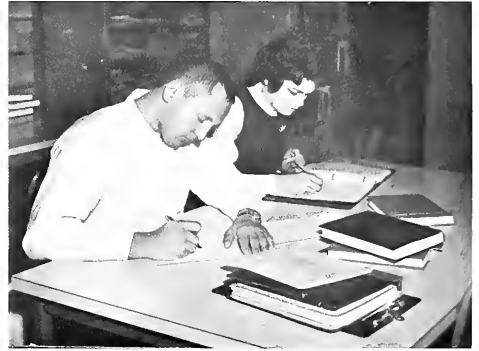


The Silhouettes entertain.



STUDENTS WITH VARIED INTERESTS

Ho Ho Ho, Guess we've failed another one!



Studying for exams.

This is studying?



A lesson in filling inside straights —
"Philosophy of pasteboards 330"



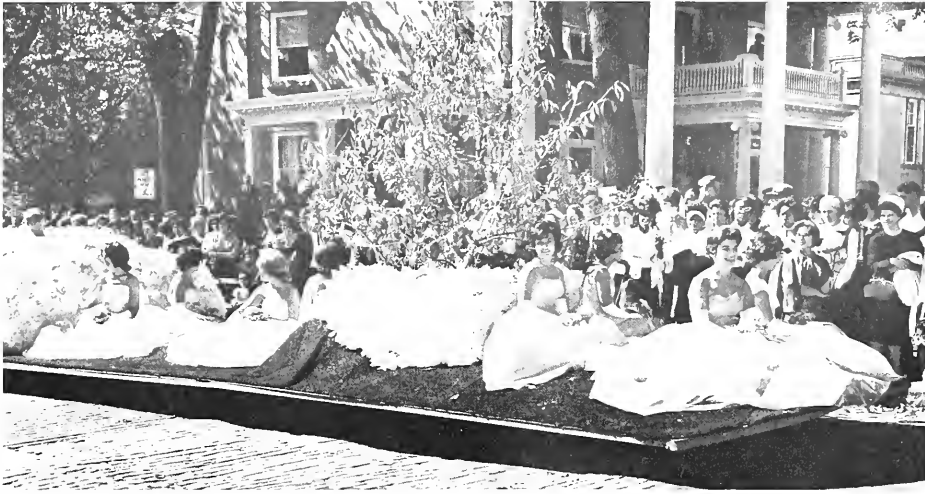


| **HOMECOMING 1963** |

HOMECOMING QUEEN AND COURT

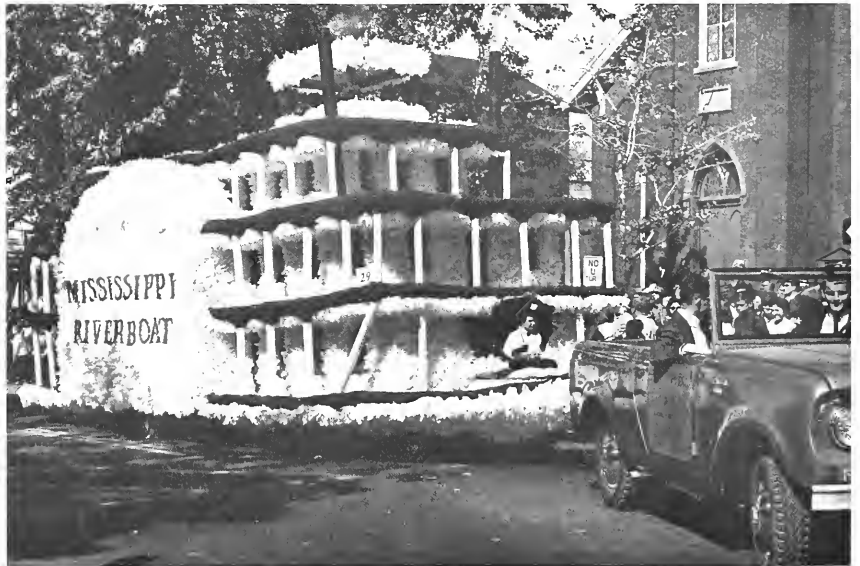


(Court Identification) — Barbara Lynn Deshong, Linda Ralston, Janet Susa, Barbara Shaw, Susan Crieghton, Barbara Blackburn, Mickey Curinga, Bonnie Harkness, Priscilla Green, Betty Krieger, Celeta Guinipero.

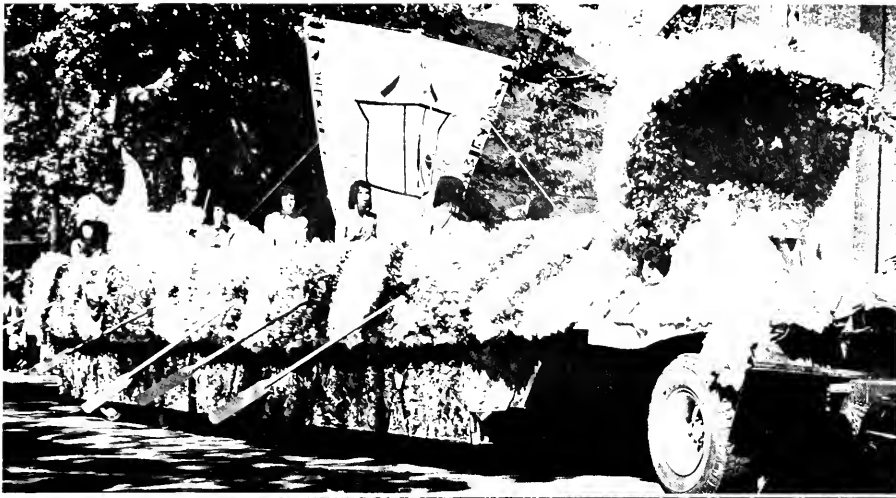


| The Queen's float. |

70



| An entry by Theta XI. |



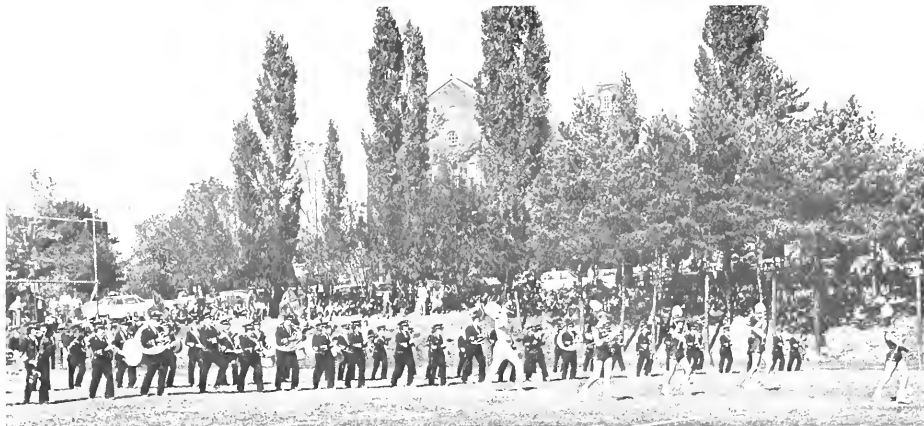
First prize:
Delta Zeta



Second prize:
Sigma Sigma Sigma



Third prize:
Beta Chi Upsilon



Pre-game activities.

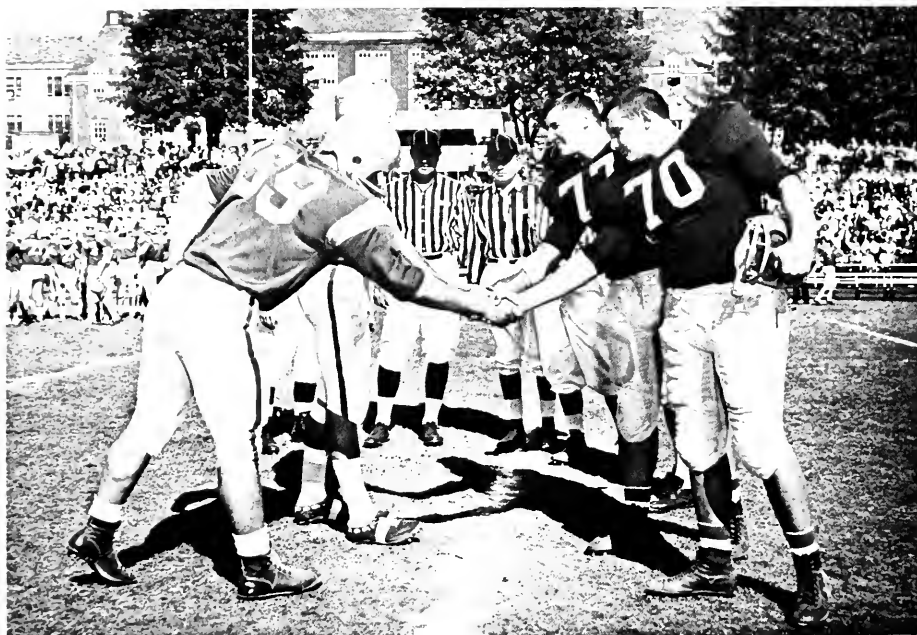


Self-Explanatory.

72

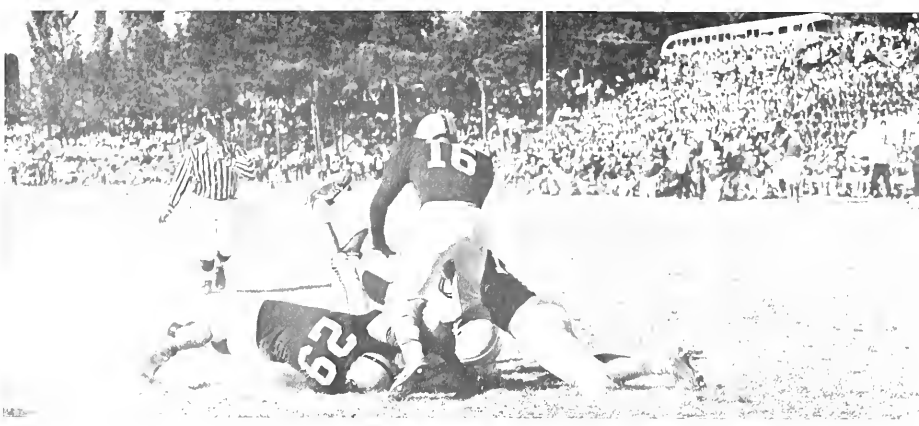
Go, Avery!



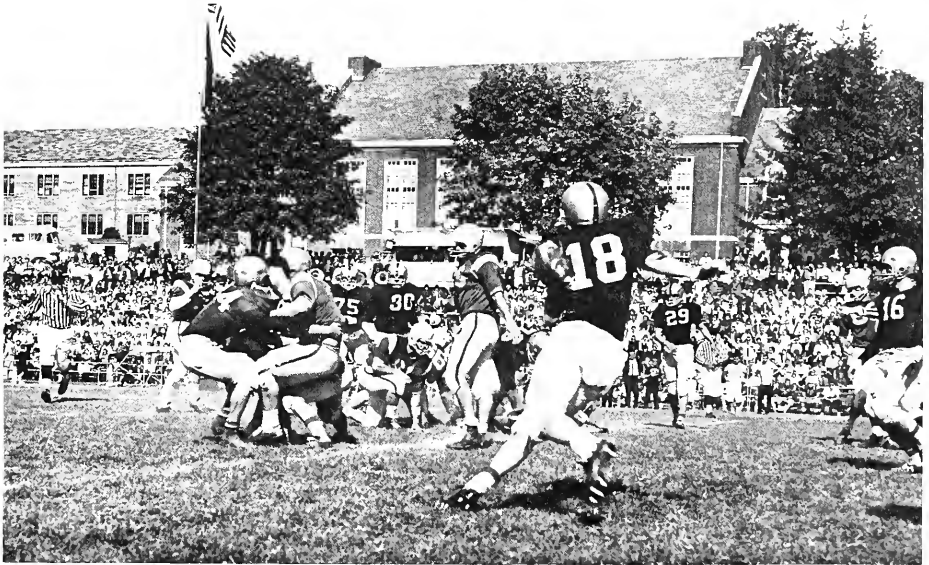


Homecoming game
Clarion State 27
Lock Haven 0





| C.S.C. vs. Lock Haven |



74



| Friday Night Pep Rally |



What's New





| ACTIVITIES |



Row 1: Robert Avery, Ed Lambert, Ken Gaudi, C. Darrel Sheraw, Steve Tarapchak, Dr. Rishel.

Row 2: Al Lynch, Earl Wentzel, John Buzzinotti, Frank Stewart, Judy Symionof, Tom George, Karen Wolfe, Barbara Hankey.

STUDENT SENATE

STUDENT SENATE OFFICERS

C. Darrel Sheraw, President
Steve Tarapchak, Vice-President
Virginia Crowe (hired), Secretary
Robert Avery, Parliamentarian

The Student Senate is an elected body of students chosen to represent the students in administrative matters. The major functions include appropriating the funds of the Clarion's Student's Association to the various campus organizations and appointing various students to serve on Student Affairs Committees. The Senate now has its own office in Music Hall and will coordinate student affairs from there. The Student Senate is a representative organization and therefore must derive its strength from the student body. Active participation and interest on the part of the students are vital to insure an effective student governing organization.

Circle K International is a service organization for college men, sponsored by Kiwanis International and maintaining the same ideals and objectives. There are more than 9,500 members on its rolls, representing a total of over 480 clubs on as many college campuses. This Clarion club sponsors such events as the blood drive, Silver Dollar Days, and Winter Capades, as well as ushering for various college and community functions. The club won a gold plaque for being the most active club in Pennsylvania for the school year 1962-63. This year the club is working toward that same goal.

CIRCLE K OFFICERS

Rick Richards, President
 Vaughn Garvin, Vice-President
 Dan John, Recording Secretary
 Wade Garland, Treasurer
 Dennis Kanouff, Corresponding Secretary
 Bob Avery, Lt. Governor, Dist. 9

78



Row 1: Wade Garland, Mike Gula, Bob Avery, Dennis Kanouff, Dan John, William Bell, Rick Richards.
 Row 2: William Curll, Terry McCoy, Chuck Klammer.

ASSOCIATION OF WOMEN STUDENTS



79

The Association of Women Students is one of the newest organizations on Clarion's campus and hopes very soon to become a member of the National Association of Women Students. A.W.S. is the governing body which represents all women students enrolled at Clarion State College. Through various academic and social activities, it strives to encourage the personal development of each woman by promoting high standards of scholarship, ethical conduct, and campus leadership.

Some of the activities this past year included sponsoring Big-Little Sister Party, supervising the election of House Council members, supplying resident halls with magazines and newspapers, promoting Christmas parties and caroling, and Mother's Day Teas, and sending two A.W.S. officers to the Intercollegiate Association of Women Students Convention in Rochester, New York.

OFFICERS ASSOCIATION OF WOMEN STUDENTS

Sally Luczka, President
Bonnie Buljat, Vice-President
Mary Clemons, Secretary
Donna Brown, Treasurer
Linda Luca, Historian

MEN'S HOUSE COUNCIL

MEN'S HOUSE COUNCIL OFFICERS

Chuck Ross, Balantine Hall, President

Jerry Marterer, Elk Hall, President

The Men's House Council is the governing body of the men's dormitories. The members are under the sponsorship of Mr. Edward Duffy, the Dean of Men. The primary purposes of the house council are to promote dormitory leadership, and to provide a better place in which to live and work. Regular meetings to consider disciplinary problems and ways in which to improve dormitory life are also held.

80



Row 1: John Buzzinotti (advisor), James R. Willison, Jerry Marterer.

Row 2: Joe Thomas, Frank Stewart (advisor), Chuck Ross, David Blair, Ronald Stanton, Bob Sellari, Ott F. Jensen, Chuck Hensley.

STUDENT RESIDENTS



Row 1: Co-ordinators — Marilyn Rose, Mary Deible, Barbara Dzuiban, Sally Luczka, Janet Munn, Frank Stewart, John Buzzinotti.

Row 2: Dayle Stang, Gloria Ravera, Linda Marshall, Nary Janice Ihnat, Jane Bright, Paige Ann Carver, Jackie Clark, Jean McConnell, Celeste Cruse, Marlene Scardamalia.

Row 3: Ken Garrison, Pete Remaley, Gwen Hummel, Chuck Klamer, Lois Petrovich, Robert Butt, Earl Wensel, (missing) Ann Hansen.

The Student Residents are the supervisors of all the dormitories on campus. As well as maintaining discipline among the dormitory residents, they also aid the students with any problems they may have. By holding floor meetings once a week, this group tries to function as representatives for all the dormitory students.



Row 1: Mary Clemons, Bonnie Buljat, Jim Duffy, Bob Gillingham, Kathy Whiteshot, Linda DeJoseph, Gloria Kopan, Veronica Vayda.

Row 2: Beth Enzian, Joyce Grimes, Peg Hartman, Eloise Hanby, Joyce Wagner, Julia Yates, Frances A. Molsky, Donna Brown, Sue Klingensmith.

Row 3: Lorraine Donati, Marilyn Rose, Elizabeth Mae Krieger, Arthur Gray, Janet Rabold, Jayne Moore, Connie Woolslayer, Karen Crisman, Maxine Goodrich.

Row 4: Robert Arbuckle, Robert Carnahan, Dale Richards, Richard A. Seman, Andie Hall, Patty Forejt, Mildred Bichsel, Mary Rizmerski, Dorothy Pavlock, Dorothy Dickert, Gayle Boring.

The Student Pennsylvania State Education Association State Education Association seeks to develop and cultivate such desirable professional qualities as leadership, character, and scholarship among the prospective teachers at Clarion. Its purpose is to afford its members a thorough knowledge of the teaching profession. The S.P.S.E.A. is the largest student organization on campus.

STUDENT PSEA OFFICERS

Frank Stewart, President
Lois Petrovich, Vice-President
Linda DeJoseph, Secretary
Connie Woolslayer, Treasurer
Mr. Moorhouse, Sponsor



Row 1: Kathy Hewston, Kathy Curry, Jan Callen, Lou Trent, Bob Jannone, Tom Kudes.
Row 2: Roger Hufford, Coach, Nancy Caldwell, Barbara Artuso, M. Arnell Hawks, D. Merrill: Naugle, R. Bueter, Cathy Edner.

DEBATE TEAM

DEBATE CLUB OFFICERS

Kathy Hewston, President
M. Arnell Hawks, Vice-President
Lou Trent, Treasurer

The Debate Team is composed of young men and women who strive for perfection in the art of public speaking. Undoubtedly, debating is work, but it has many advantages. Besides going on trips and meeting students from other colleges, debating affords the student the opportunity to learn to "think on his feet," to do research on interesting subjects, and to find the fallacies of superficially sound reasoning.

The debaters of Clarion State College are thankful for a successful year and are looking forward to many more.

BIOS CLUB

The aim of the Bios Club is to afford the student of Biology a broader prospective in the field of biological science. In order to accomplish this aim, monthly speakers are obtained from other colleges, high schools, communities, and our own faculty. These programs range from the practical phase of new development and research in the biological sciences.

In addition to these regular meetings, the Bios Club is planning to participate in several one day field trips, and at least one weekend field trip to some research laboratory outside the state. Also in the planning stage this year is the formation of Beta Beta Beta a national honorary fraternity for biology students.

BIOS CLUB OFFICERS

Tom Arnold
Judy Kuhns
Don Stahlman



Row 1: Preston Friend, Douglas Cargo, Tom Arnold, Judy Kuhns, Sue Jane Ferguson.
Row 2: Robert Carberry, Eugene Csonka, Dr. Bardarick, Vaughn Garvin, Mr. John Williams, Duke Stahlman.



Row 1: Candy Cooley, Bobbie Chervenick, Sally Witter, Donna Krieger, Catherine Jones, Jackie Beadling.
Row 2: Nancy Neubert, Kenneth Schuster, Carol McCracken, Richard Williams, Janet Coleman, Signora Hall, Kathleen Loop, Elizabeth Johnson, Ellen Allen, M. Arnell Hawks.

CLARION CALL OFFICERS

Sally Witter, Editor
Bobbie Chervenick, Associate Editor
Ken Schuster, Business Manager
Catherine Jones, Senior Advisor
J. David Truby, Advisor

For the first time in its history, the Clarion Call became a bi-monthly publication featuring paid advertising. These accomplishments were largely due to an increase in the staff headed by editor-in-chief, Sally Witter, associate editor, Barbara Chervenick, and business manager, Ken Schuster. Further honors came to the Call when it was voted into affiliation with the Pennsylvania Newspaper Publisher's Association. Mr. J. David Truby was the advisor aided by student advisors Eva Atkin and Catherine Jones.

STUDENT CHRISTIAN ASSOCIATION



Row 1: Lois Lemmon, Jean Lemish, Judy Hewitt, Judy McKillip, Nancy Radaker, Janice Flynn.

Row 2: Donna Brown, Marian Lang, Bill Bell, Vaughn Garvin, Pershing Coleman, David Miller, Jean Carlson, Hazel Morgan.

86

S.C.A., a non-denominational Christian organization, has made its goal that of setting forth a Christian witness on campus. The purpose of S.C.A. is to increase the spiritual and social growth of all students of Clarion State College. We encourage attendance in the various Clarion churches for further Christian fellowship. The regular Tuesday night meetings of S.C.A. include guest speakers, Bible charades, panel discussions, sing-spirations, and special holiday services. S.C.A. has present at each meeting one chaplain provided by the Ministerial Association of Clarion to assist with devotional guidance of all members. S.C.A.'s outstanding accomplishment for this year was the rewriting of its constitution. This new constitution, by itself has better equipped the S.C.A. to serve the Clarion State College campus.

S. C. A. OFFICERS

Pershing Coleman, President
Vaughn Garvin, Vice-President
Bob Olivett, Secretary-Treasurer
Dr. Weight, Sponsor
Rev. Zerbe, Sponsor



Row 1: Joanne Graziano, Jean Liebler, Robert Jannone, Randall Manning, Phyllis Scillingo, Marie DiMaggio.

Row 2: Manine Cutler, Pete Catanese, John Coury, Bobbie Chervenick, Pat Tamiggi, Mary Ann Silagyi.

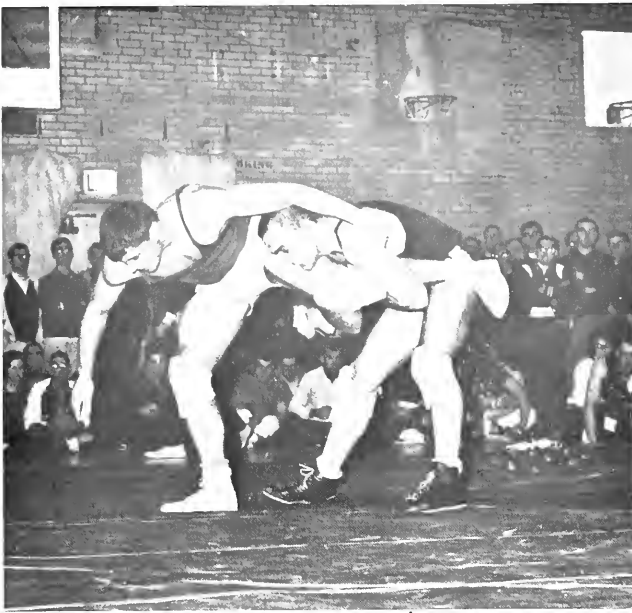
Row 3: Roger Colucci, Judy Rodgers, Jim Fuchs, Jan Barbero, Joe Kiesel, Phyllis Slater, Michael Botti.

NEWMAN CLUB OFFICERS

John Coury, President
 Roger Colucci, Vice-President
 Marlene Viscome, Secretary
 Phyllis Slater, Treasurer
 Dr. Bernard, Sponsor
 Father Moynihan, Sponsor

The Newman Club is a co-educational organization which provides for the spiritual and cultural heritage of Catholic students. Its activities are guided by a priest or a chaplain. The purpose of the Newman Club is to deepen the spiritual and to enrich the temporal lives of its members through a balanced program of religious, intellectual, and social activities. Its policies are suggested by the National Federation and the Regional Province of Newman Clubs, to which the chapter on the Clarion Campus belongs.

The Newman Club provides several formal classes in the academic curriculum of theology and the social effect of the Christian heritage in our American way of life past and present; participates in the college's program with other groups to develop school spirit and loyalty to our alma mater, operates a student center at 723 Main Street as place for the students to develop a variety of interests; sets up masses and Sacraments at a time available to students; and gives an opportunity to provide greater social life in their college days — dances, pizza nites, buzz sessions, etc.



| I want to be first in line for the new Sequelle! |

88



| Senior Advisor — Al Richards |



| Editor — Jack Schreckengost |



| Senior Member — Larry Whipkey |

SEQUELLE STAFF

Al Richards, Senior Advisor
 Jack Schreckengost, Editor
 Linda Whipkey, Assistant Editor
 Dan John, Literary Editor
 Millie Bichsel, Sports Editor
 Patty Forejt, Photography Editor
 Carol Gazabera, Faculty Editor
 Rick McIntyre, Staff Photographer
 Sponsors — J. David Truby
 Charles Pearce
 Advisors — Jock Reed
 William Karl

"Who's this character?" "Think of a caption for this picture, will ya?" "Type this write-up." "Gimme a cigarette!" These are just a few of the cries that are typical of a *Sequelle* meeting. Meeting deadlines, planning layouts, picking the cover, and deciding upon which picture to use are also an inherent part of our meetings. As each layout was completed and each deadline met (on the spur of the moment) the 1963-64 *Sequelle* came nearer and nearer to completion. The *Sequelle* now before you is the final result of months of planning and work. We of the *Sequelle* staff sincerely hope you will appreciate the product of our efforts.



Row 1: Dan John, Linda Whipkey, Jack Schreckengost.

Row 2: Patty Forejt, Millie Bichsel, Carol Gazabera, Bev Hazi, Sandy Wooton, Karla Snyder, Ruth Carson.

| SPEECH AND HEARING CLUB |



Row 1: Rance McIntyre, Paige Carver, Mildred Bichsel, Rose Milligan, Jan Flynn.
Row 2: Mike Gula, Jackie Clark, Mary Clemons, David Crawford, Denny Hetrick, Harold Hartley, advisor.

The Speech and Hearing Club was started three years ago. It is a club for those interested in the field of speech and hearing therapy. The club is sponsored by the head of the Speech and Hearing Clinic, Mr. Harold V. Hartley. In the past years the club has invited speakers from various branches of the field of speech therapy. The members are interested mainly in learning more about the field in which they are majoring as well as creating an interest in the field for others.

SPEECH AND HEARING CLUB OFFICERS

John Whelan, President
Denny Hetrick, Vice-President
Rose Milligan, Secretary
Dave Crawford, Treasurer



| Dedicated to Dr. Donald Pierce, Head of the Chemistry Department. |



| MUSIC AND DRAMA |

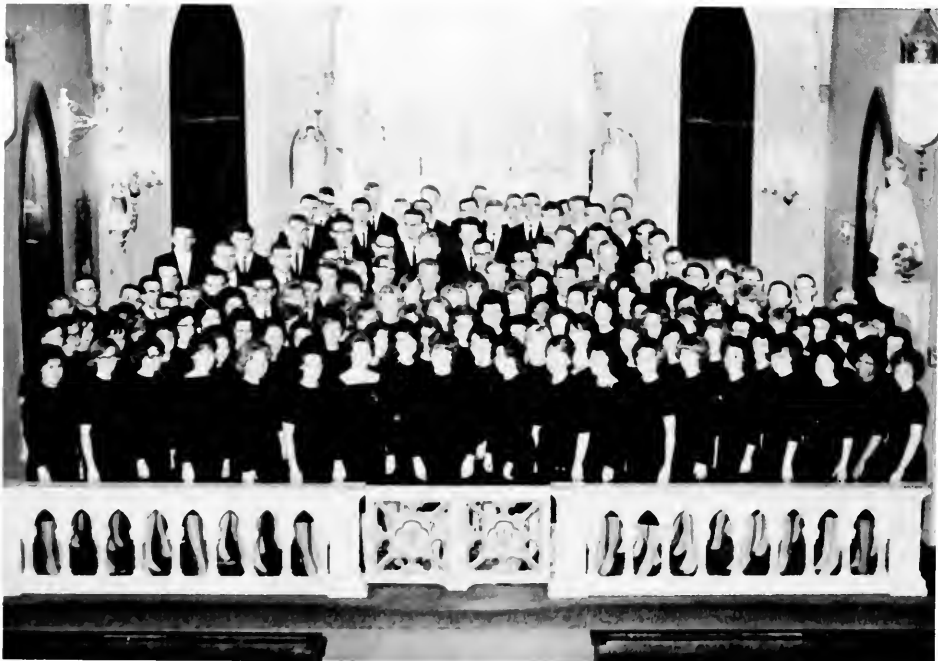
A CAPPELLA CHOIR

DIRECTOR: WM. M. MACDONALD

The one hundred and fifty members of the Clarion State College A Cappella Choir inaugurated a new era in the history of the college on December 14, 1963 when they, together with choristers from Peabody Conservatory and Morgan State College, performed G.F. Handel's oratorio, *The Messiah*, with the Baltimore Symphony Orchestra. For the first time, Clarion choristers had the opportunity to perform a major work with an established symphony orchestra—and perform they did! The audience was captivated by the youthful exuberance and musical ability of the choristers and the critical reviews in the Baltimore papers the next morning were all very favorable. All in all—a lasting and aesthetically satisfying experience!

The second semester 1963-64 brought with it an intense rehearsal schedule for the choir. With Mendelssohn's *Elijah* scheduled for March 23rd and the musical, *West Side Story*, scheduled for May 4 through 9, the Spring Semester was a busy one indeed. Rehearsal followed, each becoming more pointed, and sometimes overlapping. Such is the way of a busy choir. The choral students a Clarion set very high standards during the 1963-64 college year, standards which will serve as goals for Clarion State College Choirs of the future.

93





CSC CONCERT BAND

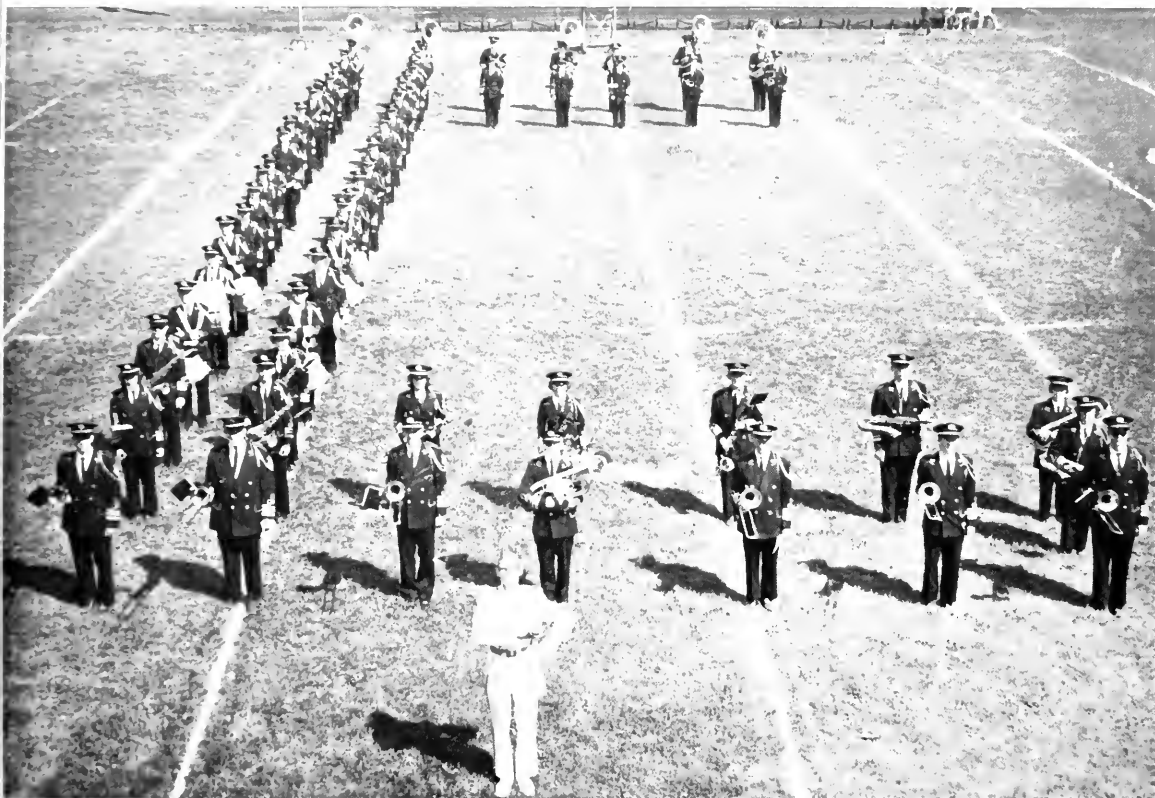
DIRECTOR: STANLEY MICHALSKI, Jr.

The Concert Band is open to all students of the college. This group is dedicated to the performance of concert music written for band. Also included in its repertoire is the symphonic band literature from the classical period to the modern arrangements of recent Broadway shows. Outstanding and accomplished musicians such as Rafael Mendez, Robert Lowry, and James Burke have made guest appearances with the band. In addition to presenting formal concerts on campus, the Concert Band participates in educational programs sponsored by the school and community. The Concert Band also conducts an annual band clinic and tour throughout Western Pennsylvania.

OFFICERS

Jim Hecker, President
 Doug Cargo, Vice-President
 Karen Crisman, Secretary
 Denton Bond, Treasurer
 Wesley Semple, Manager





95

GOLDEN EAGLE MARCHING BAND

DIRECTOR: STANLEY MICHALSKI, Jr.



The Golden Eagle Marching Band is traditionally a marching unit and functions only during the football season. This fine group of musicians contributes to the spirit and enthusiasm of athletic events, performs at pep rallies, presents halftime shows which are precise marching drills plus formations based on thematic ideas, and participates in community events and parades such as the annual Autumn Leaf Festival. The Golden Eagle Marching Band performs at all home football games and two away games. Membership in this band is gained by qualifying auditions which are administered during the first week of school.

OFFICERS

Denton Bond, Treasurer
 Bob Avery, Drum Major
 Doug Cargo, Vice-President
 Mr. Michalski, Director
 Wesley Semple, Manager
 Jim Hecker, President



96

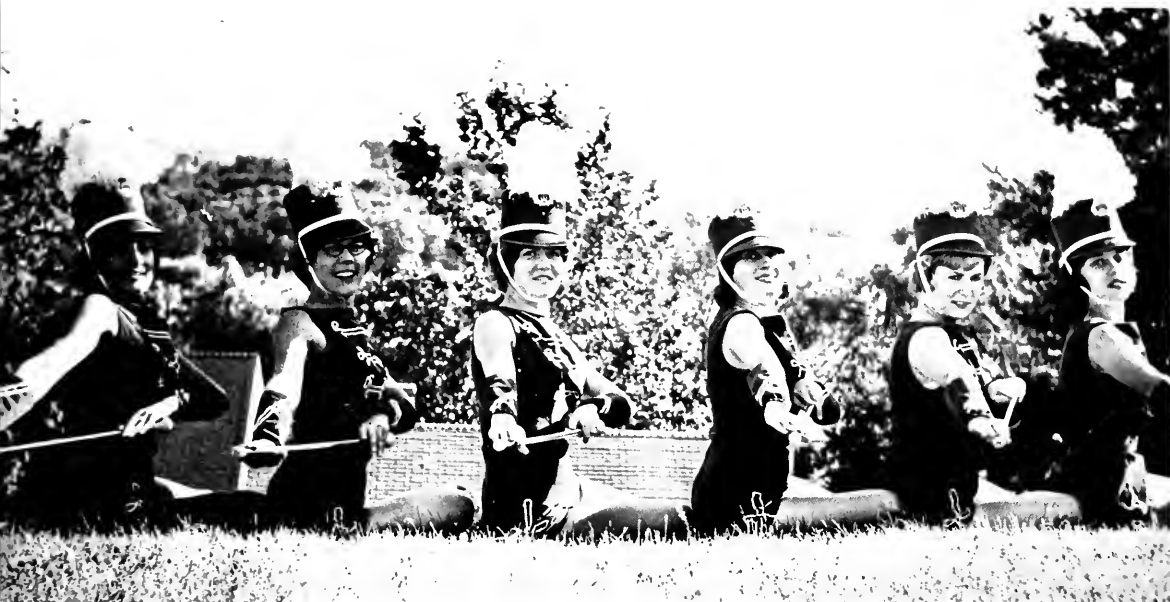
Row 1: Nancy Garmong, singer; Bill Stankiewicz, John Howard, Rich Conley, Dave Pisani, Harvey Bailey, Ray Kort, Mr. Michalski.

Row 2: Kaylene Biley, Denton Bond, Douglas Cargo, Bill Himes, Rick Shaffer, John McLaughlin, Bob Bridges, Dave Kaufman, Jim Hecker, Jack Schreckengost.

COLLEGE DANCE BAND

DIRECTOR: STANLEY F. MICHALSKI, Jr.

The Dance Band is open to all students of the college by audition. This ensemble is a highly select group of players who furnish music for social functions at the college, such as the Homecoming Dance and the Spring Formal Dance. This band performs locally for civic organizations and presents an annual Spring Concert devoted to the study and development of the jazz idiom in music. The Dance Band presents a limited number of high school assemblies in surrounding communities.



Left to right: Janet Susa, Peggy Debelko, Amy Woody, Virginia Collett, Mary Lou Stewart, Joyce Hinderliter.



Captained by Virginia Collett.





Robert Lowry, clarinet soloist, appeared
with The College Concert Band in 1963.



Guest appearance of Stan
Kenton at C.S.C.





| Mr. Michalski, Mr. James F. Burke, Dr. Gemmell. |



| James F. Burke, nationally regarded
cornet soloist, appeared with
The College Concert Band at their
annual Spring Concert. |

99

| Vance Packard, author, and lecturer. |





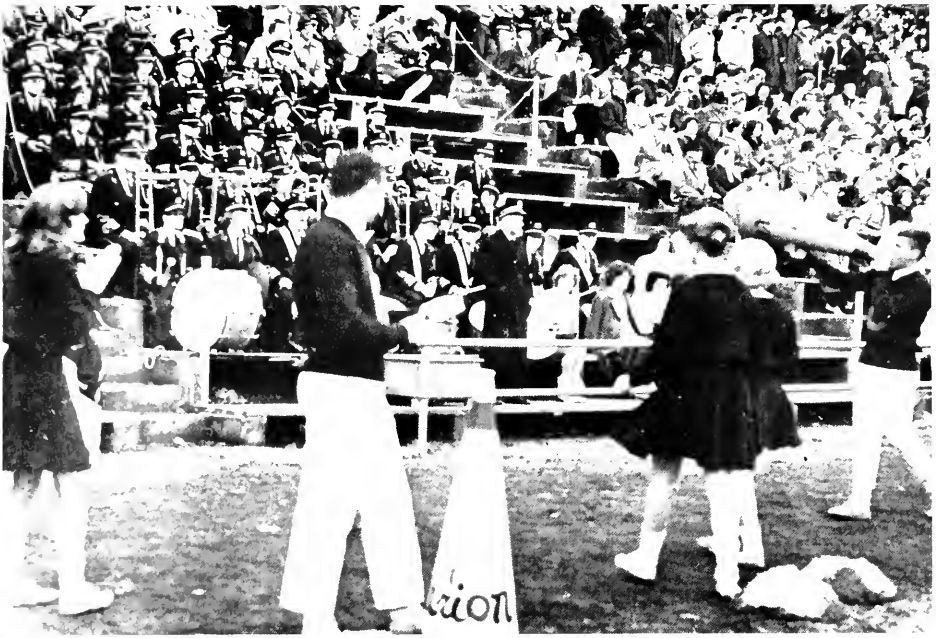
After presenting a lecture, Hans Conried talks with students back-stage.



The annual Christmas Dance. Music by Warren Covington and Orchestra.



The Swinging Slides with Mr. Michalski.



Tom Arnold with the Clarion Area Symphony.

| What is our Drum Major up to now? |



101



| Is everyone in formation? |



| A practice session with Mr. MacDonald and the A Cappella Choir. |

COLLEGE PLAYERS

Row 1: Carol McDonald, Bill Hughes, Linda Whipkey, Sallie King, Georgia Blanchard, Caren Brammer.

Row 2: Sandie Lynn, Bob Avery, Barbara Keeney, Judith Blum, Arlene Manross, Carl Manross, B. J. Richardson, Ken Turner, Rosemary Milligan, Gladys Rhodes.

Row 3: Regi Wichrowski, Barbara Hankey, Bob Jannone, Stan Zogas, Bill Brady.



102



COLLEGE PLAYERS OFFICERS

Caren Brammer, President
Sandra Lynn, Vice-President
Gladys Rhodes, Secretary

Director: Robert Copeland

The aims of College Players are to stimulate dramatic and production talents through experience on stage, back stage, and as part of the audience; to broaden the cultural background and appreciation in our fellow students; and to provide that satisfaction, experience, and enjoyment that comes from participation in good theatre.

Activities for the past year included "The Gazebo" (USO tour of the Northeast Command), "Medea", "The Cats" (American premier of a Finnish play), "Waiting for Godot", "Plays from Bleeker Street", "Italian Straw Hat", "The Fantastics" and "See the Jaquar". There was also the Ritual of Initiation last spring for new members with awards presented to outstanding students of the combined play productions.



The sisters sing verses
of - ♪ ♪ — ♪ ♪ — ♪ —

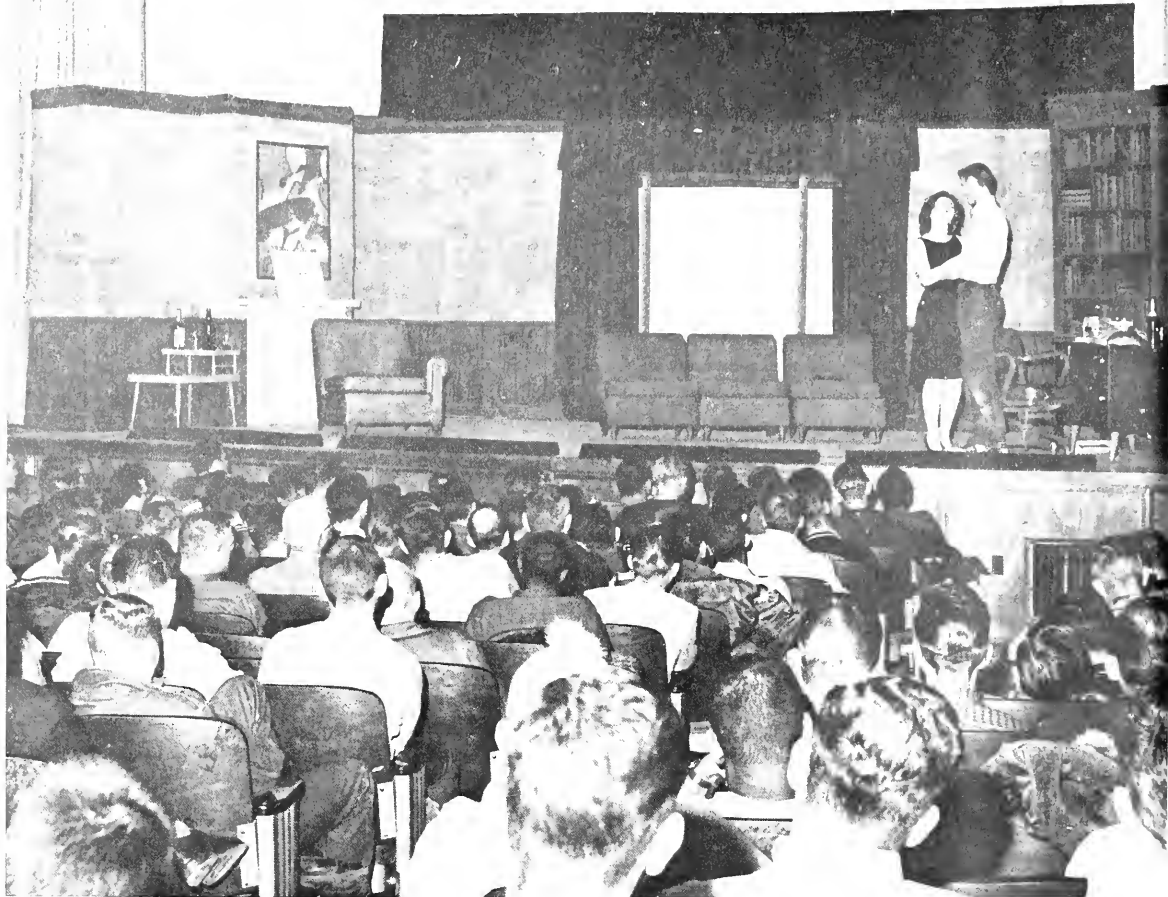
TAKE HER SHE'S MINE



Letters from home
are read aloud



"This place is a god damn nunnery"



The "Gazebo" on tour at Sondrestrom, Greenland.



"Waiting for Godot".



Guest star Arnold Moss talks on phone in "Take Her She's Mine."



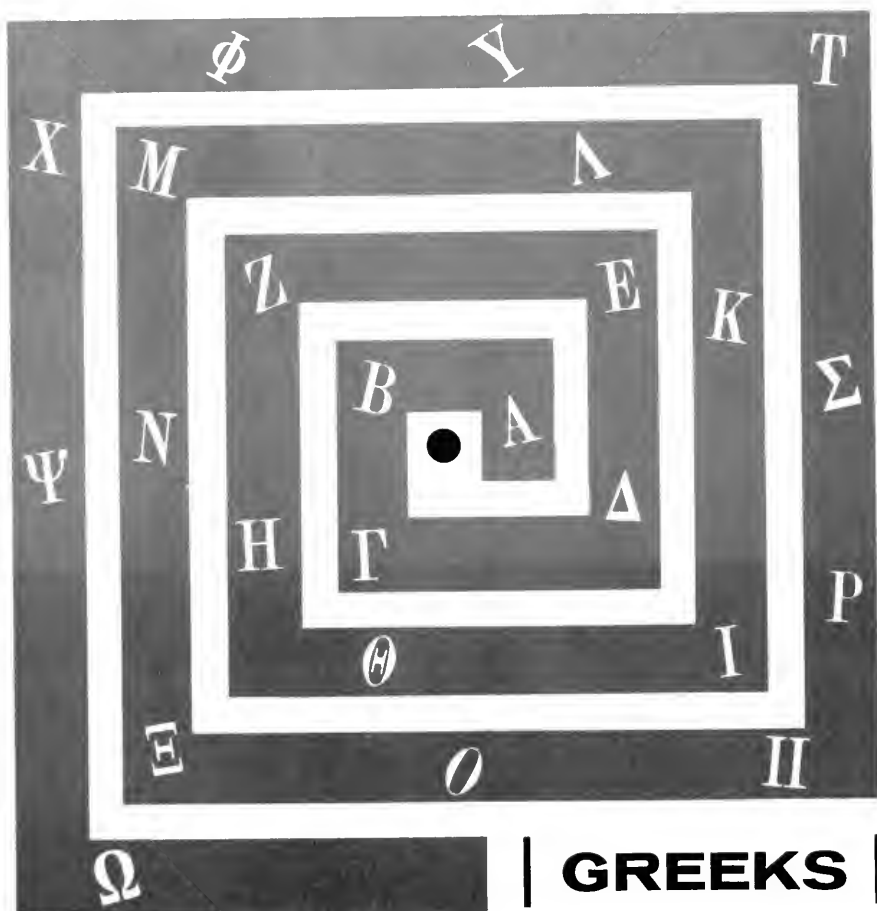
| PHOTOS FROM MEDEA |

105





"... silent winding river, it haunts me still."



PANHELLENIC COUNCIL

Panhellenic Council is the advisory governing board for the five sororities on campus. The main purpose of the council is to maintain a cooperative relationship between the sororities and also with the administration. Panhellenic Council is responsible for all the rules and activities pertaining to rush, pledging, and initiation.

This year, the Panhellenic Council sponsored a freshman reception and, for the first time, a similar reception for the upperclass women. Later in the year, the freshmen girls were given a further opportunity to meet the sorority girls in a meeting in the chapel. Panhellenic also cooperated with Inter-Fraternity Council for the annual Greek Sing and Dance.



Row 1: Anne Planker, Kathy Brickner, Mary Jo Sullivan, Carolyn Pugh, Julie Yates.
Row 2: Dayle Stang, Mickey Zabec, Mary Lou Crittenden, Carroll Byers, Cynthia Walley.

PANHELLENIC OFFICERS

Mary Jo Sullivan, President
Dayle Stang, Vice-President
Anne Planker, Secretary
Carolyn Pugh, Treasurer
Carroll Byers, Social Secretary
Mickey Zabec, Active Member



Row 1: Bill Ewing, Jim Duffy, John Buzzinotti, Tedd Stewart, Tim Kyle.

Row 2: William Nabors, William Hoover, William Crouch, Bill Downs, Robert Butt, Jim Weber.

INTERFRATERNITY COUNCIL

The Interfraternity Council is made up of two members from each of the six fraternities on campus. The six fraternities which make up the council are Alpha Chi Rho, Alpha Gamma Phi, Phi Sigma Epsilon, Sigma Tau Gamma, Theta Chi, and Theta Xi. The organization is under the direction of Dr. Rishel, the Dean of Students. The Council acts as a lawmaking and problem-solving body for the fraternities. Under its constitution, the Council regulates the quality point average required of pledges and other pledging activities of the fraternities. It also handles fraternity violations and tries to solve any problems a fraternity may have.

The Interfraternity Council also governs the establishment of the new fraternities on the campus. The Council adds to the social life of the Clarion students by sponsoring a Pre-Easter Dance. With the cooperation of member fraternities and the Panhellenic Council, the Interfraternity Council also has high hopes of holding other social events which will benefit the entire student body.

INTRA-FRATERNITY COUNCIL OFFICERS

Jim Weber, President

Jim Duffy, Vice-President

Tedd Stewart, Secretary-Treasurer

BETA CHI UPSILON



BETA CHI UPSILON

Marianne Barnhart, President
 Nancy Schneider, Vice-President
 Judy Coble, Treasurer
 Mary Ann Gallmeyer, Corresponding Secretary
 Dorothy Pavlock, Recording Secretary



Row 1: Dorothy Pavlock, Cynthia Walley, Mary Ann Gallmeyer, Nancy Schneider, Marianne Barnhart, Mrs. Ray Giering, Sponsor; Mrs. Al Jacks, Sponsor; Mrs. Pearl Bonner, Sponsor.

Row 2: Carolyn Pugh, Janice Mitchell, Kathy Hewston, Frances H. Molsky, Judy Coble.

Row 3: Ev Barnes, Marlene DeBlasio, Sue Gilcrest, Marilyn Parsons, Carolyn Hartman.

Beta Chi Upsilon, the newest sorority on campus, is recognized by the sisters wearing our white blazers with red piping. The three-fold purpose of the sorority strives to strengthen the sisters socially, spiritually, and scholastically. Socially, Beta Chi participates in Homecoming festivities, Panhellenic teas, the annual Christmas caroling party, rush parties, weekend parties, Greek Sing, Spring Weekend at Cook Forest, Miss C.S.C. Contest, and our Mother's Day Tea. Service to community, nation, and world is promoted by donating a basket to a needy family at Thanksgiving, making tray favors for the patients of Clarion Hospital at Christmas and Easter, contributing to Houston Mission in Kentucky, aiding in the National Cancer Drive, and participating in other worldwide philanthropic projects. To help finance these projects Greek glasses and small CSC pennants were sold. This past year scholastic competition between the sisters was climaxed by a Smarty Party in which the team with the lowest grade average gave a party to the sisters with the highest average. Not only are Beta Chis found on the Dean's List, but also in speech, music, and sport activities, and are employed on campus. The sisters of Beta Chi Upsilon like to include their mascot, the Beta Bunny in all events and activities.

DELTA ZETA OFFICERS

Linda Thomas, President
 Bonnie Harkness, 1st Vice-President
 Kathy Bengel, 2nd Vice-President
 Nancy Ziener, Recording Secretary
 Barbara Blackburn, Corresponding Secretary
 Loretta Sierka, Treasurer
 Mary Jo Sullivan, President of Panhellenic Council
 Mickey Zabec, Member of Panhellenic Council
 Andrea Lancy, Member of Panhellenic Council
 Karen Wolf



Epsilon Theta chapter of Delta Zeta national sorority, founded in 1956, is only one of the 142 collegiate chapters in the nationwide chain of sisterhood and friendship. The "Deltas" are active in various activities throughout the year, including Homecoming float (which we are proud to say won first prize this year), Alumni Tea, "Trick or Treat" for Polk State Hospital, a philanthropic project, Christmas Party, rush parties, Greek Sing (competition in which we won first prize for the second year in a row), Spring Banquet, and Mother's Day Tea. Pink Roses to Bonnie Harkness, Homecoming Queen; Janet Susa, Barbara Blackburn, and Barbara Shaw, Attendants; Karen Lundsten, Sigma Tau Gamma White Rose Queen; Melissa Rosensteel, Theta Chi Dream Girl; and Micky Zabec, one of the finalists in last years Miss CSC Contest. The girls of the pink and green are also found in music, in drama, on the Dean's List, and on the cheerleading and majorette squads. Delta Zeta is ever striving to promote the spirit of love and service among its members as well as seeking to promote our moral and spiritual culture.



Row 1: Jayne Starnes, Polly Ritts, Janet Susa, Jackie Lloyd, Jerrie Lee Richey, Mary Lou Oliver, Mary Jo Sullivan, Dottie Mercer.

Row 2: Jane Yount, Micky Zabec, Toni Martinelli, Maureen Sullivan, Cheri Picadio, Marlene Scardamalia, Bev Mick, Kathy Ward, Lois Petrovich, Joyce Maruski.

Row 3: Karen Dwyer, Brenda Zanotti, Sandy Daily, Lorna Palmer.

Row 4: Charity Dillant, Andrea Lancy, Barbara Blackburn, Karen Lundsten, Marilyn Meier, Dana Zook, Linda Thomas, Dene Garvin, Nancy Hughan, Kathy Bengel, Linda Craig, Cindy Gardina, Lois Evans.

Row 5: Connie Woolslayer, Barbara Shaw, Virginia Collett, Gretchen Titus.

SIGMA DELTA PHI

SIGMA DELTA PHI OFFICERS

Maxine Goodrich, President
Gail Hartland, Vice-President
Judy Rodgers, Secretary
Amy Riddell, Treasurer
Pat Patch, Corresponding Secretary



Our white blazers with navy piping distinguish us as sisters of the Sigma Delta Phi Sorority. Ours is the oldest sorority on Clarion's campus, having been founded on November 5, 1930. Our purpose is to promote a sisterly feeling among our members. We stress courtesy, friendliness, tolerance, truthfulness, and trustworthiness. The "Sig Delt" calender this year was filled as our sisters participated in events such as the Homecoming Parade, Cook's Forest Weekend, Parent's Day Tea, Alumni Tea, Christmas party, and, of course, our rush parties. We point with pride to our high scholastic rating as a sorority, to our loyalty to one another as sisters, and to our philanthropic projects.



Row 1: Becky Stewart, Bonnie Nettle, Yaeko Takeuchi, Dianne Botti.

Row 2: Joyce Wagner, Rosemarie Zuccarelli, Gail Hartland, Judy Barber, Helen Sassie, Pauline Morreale, Donna Kahle, Maxine Goodrich.

Row 3: Linda Sweeney, Margaret Gaiser, Janice Flynn, Donna Casciolo, Faye Daniels, Susan Hartlep, Gail Lieb, Pat Patch, Sandy Wootton, Ann Lemish.

Row 4: Julie Yates, Linda Kohl, Amy Riddell, Judy Rodgers, Gayle Boring, Joanne Sutej, Linda Bigley, Mary Anne Singer, Dayle Stang, Mary Clemens, Rosemary Milligan, Florence Eller.

**SIGMA
SIGMA
SIGMA**

SIGMA SIGMA SIGMA OFFICERS

Joann Hrivnak, President
Judy Gamble, Vice-President
Nancy Frantz, Treasurer
Anita DeCesare, Recording Secretary
Sally Myers, Keeper of the Grades



This year once again the purple and white was well known and recognized on the Clarion Campus. Since 1935 Sigma Sigma Sigma's Alpha Pi Chapter has been active at Clarion, making it the oldest national sorority on campus. For the second year in a row, Tri Sigma's float placed in Homecoming competition. This year we won second prize. Some of our other activities included Homecoming Tea, Forest Weekend, Founder's Day Banquet, Mother's Day Tea, and Greek Sing. We were visited by Mrs. Helen Marie Snyder, our national inspector. Other activities included rush parties and a very successful spaghetti dinner. Purple violets go to: Anne Planker, Sigma Tau Gamma Queen; Elizabeth Krieger, homecoming attendant; Kathy Flannigan, Miss CSC, Miss Laurel Festival, Miss Northwestern Pennsylvania, and candidate for Miss Football (a contest held in Berkley, California); and to Miss Margaret Wiant and Miss Roxanna Irwin to whom we owe a great debt of gratitude.



Row 1: Mary Lou Crittenden, LoRaine Constantino, Carol Kengor.

Row 2: Rosemary Hrabovsky, Sue Zerbe, Eileen Moore, Barb Dorotics, Joann Hrivnak, Judith Gamble, Nancy Frantz, Anita DeCesare.

Row 3: Carol Blair, Mary Louise Stewart, Bonnie Dudek, Sally Myers, Mary K. Barrett, Carol Perry, Jo Nemeth, Ginny Lusebrink.

Row 4: Nada J. Yansbak, Linda Miller, Karen R. Crisman, Kathy Dilts, Sandy Dermidzakis, Betty Mae Krieger, Linda Bartolotta.

Not Pictured: Sandra Trehar, Frankie Planker, Debbie Reading, Kerry Markwell, JoAnn Kersch, Rosemary Dilisio, Marilyn Rose, Susan Buhot.

ZETA TAU ALPHA

ZETA TAU ALPHA OFFICERS

Bertha Vidak, President
Sally Miller, Vice-President
Judy Courage, Secretary
Eloise Hanby, Treasurer
Kathleen Doyle, Historian
Diane Zimmer, Membership Chairman



The Delta Iota Chapter of Zeta Tau Alpha International Fraternity is ever striving to accomplish its aim of assisting each girl, through the different activities of the chapter, to work out for herself a program for living. This aim is accomplished by developing the qualities of friendship, scholarship, citizenship, and a well-rounded personality. The "Zetas" throughout the year sponsor various activities; these include participation in the Homecoming festivities, initiating several service projects, promoting a dinner-dance, Christmas party, various teas, sorority weekends, rush parties, and an Initiation-Senior banquet. The "Zetas" object, through this aim and these various activities, is a benefit the campus and surrounding community.



Row 1: Patricia Grau, Ronda Master, Kathie Homitz, Jean Liebler, Linda Addis, Carole Kourkoulis.

Row 2: Sally Luczka, Eloise Hanby, Diane Zimmer, Sally Miller, Bertha Vidak, Kathleen Doyle, Judy Courage, Alice Harned.

Row 3: JoLinda Mays, Jane Bright, Kathy Brickner, Martis Hemphill, Judy Kuhns, Karen Kleeman, Jackie Clark, Cathie Stoehr, Carroll Byers.

Row 4: Jackie Shoemaker, Carol Craig, Karen Martz, Rosemary Losch, Maria Colonna, Judy Symionof, Carole Murin, Barbara Keller, Sally Gibb, Roberta Sirianni, Mary Lou Mouer, Connie Harned, Adele Campbell.

ALPHA CHI RHO

ALPHA CHI RHO OFFICERS

Dennis Kanouff, President
 Ken Rigby, Vice-President
 Lou Labino, Treasurer
 Dan John, Recording Secretary
 David Blisard, Corresponding Secretary
 Chuck Klamer, Chaplain
 Dennis Raymer, Historian
 Bob Schweitzer, Parliamentarian



Alpha Chi Rho the newest Fraternity on Clarion State's campus, has been quite active in this its second year in existence. Our many activities include participation in the Homecoming Parade, the Intramural Sports Program, Winter Capades, and Greek Sing. We also held several parties throughout the year including a Christmas party and a spring formal. The highlight of the year came when we were instituted as a chapter of Alpha Chi Rho National Social Fraternity. The Brothers of Alpha Chi Rho are ever striving to maintain their purpose of promoting intellectual, spiritual, social, and physical development among its members. We are especially grateful to our past president, Tom Curtin, for guiding us toward our goal of becoming affiliated with a national fraternity.



Row 1: Glenn Roadman, Kenneth Roadman, Dan W. John, Rick Richards, Dennis Kanouff, Mike Maloney, Vaughn M. Garvin.

Row 2: Tom Curtin, Bill Schall, Dennis Raymer, Ken Rigby, Jack Park, Robert Schweitzer, Eugene Csonka.

Row 3: John Cooper, Dave Blisard, Chuck Klammer, Duane Mercer, Louis Labino, Fred Melhatten.

ALPHA GAMMA PHI

ALPHA GAMMA PHI OFFICERS

Robert Cornali, President
 Alex Murnyack, Vice-President
 Jim Wilkinson, Parliamentarian
 Buzz Joyce, Chaplain
 Earl Petrucci, Guard
 Larry Kuzma, Social Chairman
 Bill Hoover, I. F. C.
 Frank Dunlay, Historian
 Bob Butt, I. F. C.
 John Dudo, Treasurer



Alpha Gamma Phi, the oldest fraternity on campus, holds as its ideals fellowship, scholarship, and character. Ever since its founding on March 3, 1930, the Gammas have carried on the tradition of being one of the school's most active organization. Some of the activities of the Gammas are the annual Homecoming float, Spring and Fall Rush Parties, Alumni Banquet, Spring Formal, participation in the annual Greek Sing, participation in the Winter Capades and Spring Carnival, and in various other formal and informal social events. Gammas live up to their reputation through the years of being the most athletic fraternity. They participate in all intramural sports and have brothers in every intercollegiate sport. Spirit and leadership in this organization has been unprecedented over the decades, and each year the Gammas seem to become a more important cog in the transmission of the high ideals at Clarion.



Row 1: Tom English, Joe Shaw, Alex Murnyack, Art Gallo, Mance Parks, Ed Green, Bill Powell, Guy Rippole.

Row 2: Don Uberti, John Whelan, John Pielick, Terry Koelsch, Frank Dunlay, Earl Petrucci, John Dudo, Larry Kuzma.

Row 3: Richard Pisegna, Ralph Cutruzzula, Ken Gaudi, Felix Persi, Ken Garrison, Robert Dominici, Lou Jumbercotta, William Hoover, Vincent Nola, Donald Mikus, Buzz Joyce.

Row 4: Donald Peirce, Nick Rebeck, Bill Sacco, Jim Griffin, Harry Miller, Pat Shaughnessy, Bob Elders, Jerry Woolslayer, Gary Lucas, Art Mayers, Stan Rafalko.

Row 5: Ken Warnick, Joseph Basile, Bill Snyder, Joseph Tuminella, Bob Cornali, DeWayen Hilton, Chas. Thomas, Jerry Kemp, Joe Hancharick, Don Gesin.

Row 6: Donald White, Ken Burgun, James Morandini, Bob Montgomery, Jim Goodman, Ron Repasky, Norton Norris, Vic DallaBetta, Robert Butt, Jack Mills, Ron Wise, Jim Wilkinson, Gary Sharkey.

PHI SIGMA EPSILON

PHI SIGMA EPSILON OFFICERS

Richard Seman, President
 Jerry DiGiacobbe, Vice-President
 Mark Kavsky, Recording Secretary
 Don Saddler, Treasurer
 Mike Gula, Corresponding Secretary
 Dale Richards, Sergeant-at-Arms
 Tom Hall, Chaplain
 Sponsor, Dr. Weight
 Absent — Mr. Knowles, Sponsor



Phi Sigma Epsilon is a national social fraternity which was founded in February, 1910. It has been a member of the National Interfraternity Conference since 1952. The main objective of Phi Sigma Epsilon is to promote a closer bond among men students of higher educational institutions, so that they might enter into a more intimate fellowship with those dedicated to education and a better understanding of men. Phi Sigma Epsilon installed its Phi Eta Chapter at Clarion State College on January 31, 1959. Clarion's "Phi Sigs" continued in traditional style with their booming sound of the Phi Sig cannon at every football game of the year to stir enthusiasm and pep among students and Golden Eagle grid team. Our entry in the Homecoming float competition, "Transportation and Communication from the Old World to the New," received honorable mention placing fourth in the competition. Miss Judy Kuhns reigned as our "Tea Rose Queen" throughout the year. The parties held throughout the year were highlighted by the outstanding ones at Halloween, Thanksgiving, Christmas, and Easter for which live entertainment was featured by Count and the Valiants. Winter finds Phi Sigma Epsilon active in the Winter Capades snow sculpturing in which we placed third, and the various intramural sports. The rushing and pledging of freshman, Greek Night, and intramurals highlight the spring semester. Our annual "Tea Rose Formal" was the colorful climax to one of our most eventful and successful years ever held by the fraternity. The Brothers of Phi Sigma Epsilon owe a special debt of gratitude to Professor Frank M. Campbell for his friendship and guidance, which so greatly contributed to the success of all our social functions and to the lives of every Phi Sig.

125



Row 1: Bill Scilingo, Dick Seman, John Coxon, Jim McNeil, Dave Pisani, Dave Kaufman, John Howard, Van Crouch.

Row 2: Mark Y. Kovsky, Jim Nelles, Larry Townsend, Larry Gaspersie, John Coury, Jerome DiGiacobbe, D. R. Richards, Mike Gula, Jim Opeka.

Row 3: Don Jarosz, Rance McIntyre, Rick McIntyre, John Maitland, Clem DeFrancesco, Ken Lockey, Bill Downs, Don Saddler, Tom Bartoe, John McDonald.

Row 4: Preston Friend, Fred Wolfgang, Tom Rankin, Wade Garland, Ron Young, Dom Port, Tom Novak, Phil Glogowski, Rich Hajnasz, Bob Foster, Denny Dolmajer.

Row 5: Al Rodemoyer, Chuck Kammerdeiner, Bob Carberry, Wm. Stankiewicz, Thomas Hall, Ray Beatty, Gene Desch, Ray Miller, Tom Hamilton, John Platt, Glenn Bowser, Jim Leighton, Joe Kosko.

SIGMA TAU GAMMA

SIGMA TAU GAMMA OFFICERS

Dave Winger, President
Paul Battenfield, Vice-President
Woods Cunningham, Recording Secretary
Tom Conner, Treasurer
Steve Goisovich, Corr. Secretary



Since it was founded in 1920, Sigma Tau Gamma has been dedicated to high ideals of manhood and brotherhood, good scholarship, democratic principals, good citizenship, development of good personal characteristics and social poise, mature thinking and action, loyalty and service to college, community, and fraternity.

Being primarily a social fraternity, we sponsor and participate actively in a number of social functions. During the year we are active in various intercollegiate and intramural sports. With the coming of Autumn Leaf Festival and Homecoming, we are busily engaged in parade float competition. In October, we have our fall rush party followed by the initiation of upperclassmen in December. Spring activities include Greek Night, open house, alumna day, spring rush party, initiation of freshman, and a number of costume parties. As a high point of the Spring semester Sigma Tau Gamma holds an annual White Rose Ball.



Row 1: Michael Botti, Richard Kautz, Frank Fultz, John Buzzinotti, Dave Winger, Paul Battenfield, Al Porter, Ed Lambert, Tom Dalton.

Row 2: Ernest Aharrah, advisor, Jim Duffy, Dennis Sheraw, Tom Murray, Bill Vistein, Ed Pieropan, Bill Sferro, Lou Helfrich, Richard Terrill.

Row 3: Ken Querio, Chuck Mann, Paul Yacisin, Bob Quigley, Mike Donovan, James Ross, Bob Carlson, Dick Rossi, Bill Emmonds, Clem Rothele, Tom Conner, Darrel Sheraw.

Row 4: Al Petri, Scot Wentzel, Carl Eberline, Steve Goisovich, John Zadakis, Bob Avery, Jim Racchini, Bob Walkowiak, Woods Cunningham, Perry Coffman, Al Lynch, Al Veronick, Mike Lebda.

THETA CHI

THETA CHI OFFICERS

Richard Summerville, Sponsor
Charles Robbe, Sponsor and Brother
D. R. Predmore, Sponsor
Steve Taraphak, President
Lennie Berlin, Treasurer
Bob Gill, Marshall
Daryll Bauer, Graphite
Ron Keller, Vice President



The men of Epsilon Xi Chapter of Theta Chi National Fraternity, the seventh largest national social fraternity in the United States, diligently strive to develop a high level of leadership and citizenship, to create a keen sense of responsibility, to foster high ideals, to promote high standards of scholarship, to encourage social and democratic living, to encourage high standards of ethical and moral conduct among the brothers, and to work cooperatively and constructively with the administrative staffs of the college and the community.

Theta Chi opened its activities this year with the selection of Miss Melissa Rosensteel as the "Dream Girl of Theta Chi." Other festivities of Epsilon Xi Chapter include the reception for parents at Homecoming, a Halloween Dance, the Founders' Day Banquet on December 10, the Red Carnation Banquet and Dance during the second semester, rush parties, pledge parties and competition in the intramural sports league.

In all campus and intellectual activities, the brothers manifest a dynamic spirit for high achievements in these events, thereby serving as an example to all their fellow students. For many years the men of this organization have been molding the lives of Clarion graduates.



Row 1: Bill Temple, Terry Ashbaugh, Joel Foster, Bob Albert, Joe Preston, Steve Taraphak, John Sproull, Chuck Galbreath, Darryl Bauer, Ted Stewart.

Row 2: Douglas Cargo, Don Hartley, Bob Shevchik, Jerry Matson, D. R. Predmore, Lennie Berlin, R. Bruce Humes, Daniel Miller, Nelson Enos.

Row 3: Ken Jones, Bill Straitiff, Joe Kiesel, Bob Gill, Tim Kyle, Pete Peles, Tom Panek, Bob Bauman, Richard Schmeltz.

Row 4: Joseph Gutowski, Paul Elliott, Ronald Copenhaver, Ron Keller, Jack Schreckengost, James Hecker, Duke Stahlman, Dennis Gelvin, Robert Miller.

THETA XI

THETA XI OFFICERS

John Elliott, President
 John Romisher, Vice-President
 Tom George, Corresponding Secretary
 Albert Heinricher, Treasurer
 Andrew Danko, Social Chairman
 William Vandervort, Pledge Master
 David Phanco, Scholastic Chairman
 William Ewing, Historian
 Sponsors, Dr. Penny
 Mr. Phipps



The purpose of Theta Xi is to provide a college home environment for its active members in which fellowship and alumni guidance lead to wholesome mental, moral, physical, and spiritual growth. To that end Theta Xi actively supports and augments college and community efforts to make individual members more mature, and chapter groups more useful units of society.

The brothers of the Beta Omicron chapter of Theta Xi strive for these goals. Throughout the year the brothers take part in the following activities; Intramural Sports, Homecoming Festival, Winter Capades, and Greek Sing. Theta Xi National Fraternity has eighty chapters from Maine to California with the Clarion chapter having over sixty members. This year the brothers of Theta Xi throughout the nation will be celebrating their one-hundredth year as a fraternity.



Row 1: Tom Waring, Russ Luellen, Howard E. Williams, Ronald C. Chalmers, Dave Santore, John Acklin.

Row 2: Bill Ewing, James Hickman, Larry Miller, John W. Elliott, Bill Nabors, Bob Nichols, Randy Girling.

Row 3: David E. Phanco, Edward C. Swab, Andrew Danko, Tom George, William Vandervort, Ted Olson, Dan Kims, John Romisher, Rich Lewis.

Row 4: William Lutz, Frank Stewart, Edward Van Allen, Edward Parry, Leonard DeLuca, Ed Sciranko, Avery John Moffett, Jack Casaro.

Row 5: Albert Heinricher, Jim Weber, John F. Hultquist, Dick Pavlock, Tom Mentecki, Art Gray, Larry Kraft, John Stanton, Ron Brozovich, Ed Mills, Mike Ladley.

ALPHA PSI OMEGA



Row 1: Caren Brammer, Bob Avery, Barbara Keeney, B. J. Richardson, Arlene Manross, Bob Jannone, Carol McDonald, Rosemary Milligan, Gladys Rhodes, Barbara Hankey.

Alpha Psi Omega is a national honorary dramatic fraternity. The organization strives to create a greater interest in all phases of the theatre.

To become a member of Alpha Psi Omega and reap the many rewards the theatre has to offer one must contribute time, effort, and interest to the staging of plays and to the theatre in general. It is a great honor to be initiated into the Alpha Upsilon cast of Alpha Psi Omega at Clarion State College.

ALPHA PSI OMEGA OFFICERS

Gladys Rhodes, President
B. J. Richardson, Vice-President
Rosemary Milligan, Secretary-Treasurer

Phi Sigma Pi is a national scholastic fraternity for men. It is founded on the basis of superior scholarship and with the avowed purpose of advancing intellectual ideals. Phi Sigma Pi has supported such campus activities as speeches by Senator Lyle Hall and British Council Mundel and Guy Fawkes Day. The main purposes of Phi Sigma Pi are the acquisition and dissemination of knowledge and the fostering of fraternal fellowship within its ranks.

PHI SIGMA PI



133

PHI SIGMA PI OFFICERS

Harry K. Nyquist, President
C. Darrel Sheraw, Vice-President
Norm Johnston, Secretary
Larry Gaspersic, Treasurer
Sponsor: Mr. Grejda
Dr. King
Mr. Van Bruggen

Row 1: Jim Duffy, Ed Lambert, Bob Avery.

Row 2: Roger Colucci, Karl Slippi, Michael Botti, Richard Lewis, Albert Heinricher, Edward S. Grejda (Advisor), Jay Van Bruggen (Advisor).

Row 3: Jack Schreckengost, Art Gray, Robert Wood, Joseph Eckhardt, John Fedorko, Louis O'Korn, Thomas Heilman.

Row 4: Larry Miller, Tom Waring, John Petrunak.

Not Pictured: Robert Arbuckle, Bob Carnahan, Myron Caylor, Anthony Emanuel, Gerald Frantz, Dennis Gelvin, Bruce Hare, John Holodnik, Randy Manning, Don Mikus, Bob Miller, Ralph Pence, Pete Remeley, Bob Slifko, Gary Smith, Tom Snyder, Rich Terrill, Jim Venture, Tom Vizza.



SPORTS



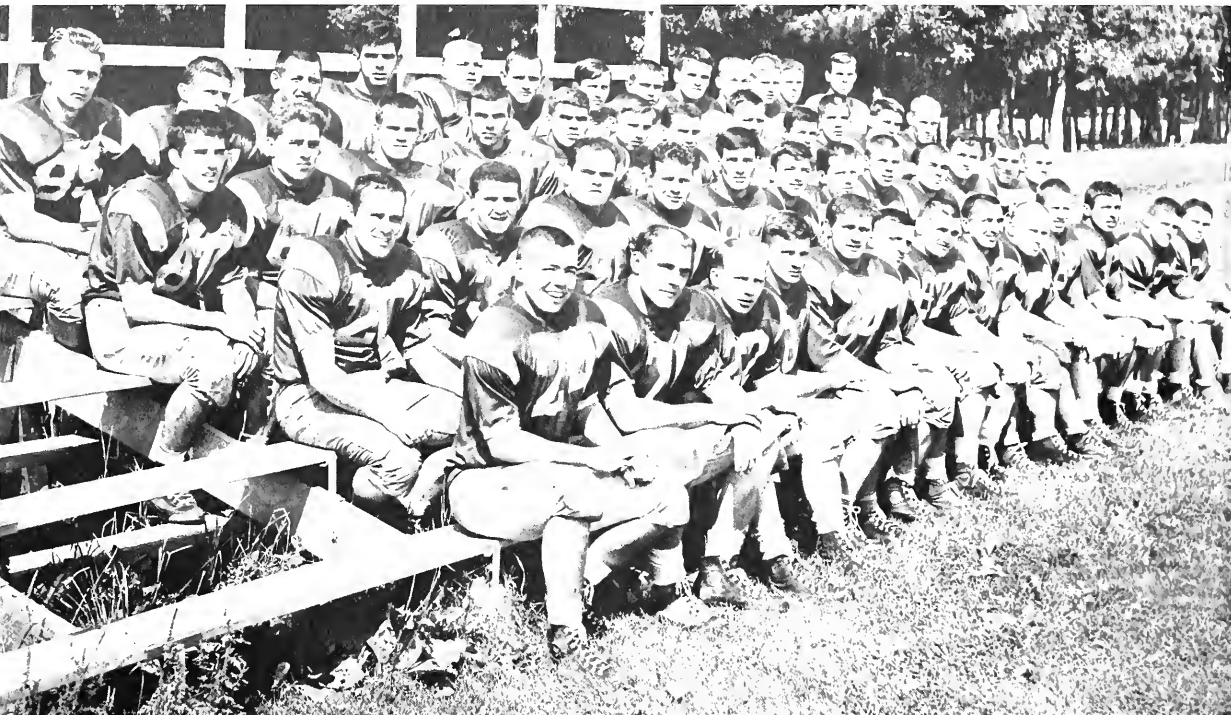
| Let's Go! |

The varsity squad cheerleaders are Lorna Palmer, Jayne Starnes, Kathy Bengal, Sherry Koch, and Diane Hershberger.

135

| CHEERLEADERS |





Row 1: Ken Gaudi, Jerry Angove, Steve Predajna, Scott Wentzel, Alex Murnyack, Lou Jumbercotta, Al Porter, Joe Urban, Mike Lebda
 Van Crouch, Ralph Cuttruzola, John Gemmell, Bob Garritano.
 Row 2: Larry Croyle, Tony Treonze, Vaughn Fisher, Joe Tuminella, Paul Kalander, Al Le Fevre, Jim Knowles, D. Hohman, Jim Miller,
 Tom Hamilton, Harry George, Andy Sidorik.
 Row 3: J. DeRiggi, B. Cristol, Phil Mosesso, C. Ross, B. Elder, J. Keisel, G. Rippole, P. Yacisin, Rick D'Amico, B. Leckie, Bob Butt,
 Alex Arth.
 Row 4: Bill Curren, D. Stellute, B. Brant, S. Cottrell, Fess, P. Mosesso, Jim Levey, Kerseri, Woods Cunningham, J. Dunmire, Baugh-
 man, Fred Harkness, Ed Zizzi.



Clarion		Opp.
34	Brockport	0
20	Grove City	0
27	Lock Haven	0
7	Edinboro	6
0	Indiana	34
3	California	6
7	Shippensburg	15
0	Slippery Rock	30

Assisted by Mr. Joy, Mr. Lignelli and Mr. Knowles, Coach Al Jacks in his first year at Clarion worked hard for a good year on the gridiron.



| Alex Murynack |



| Jeral Angove |

137



| The back judge watches as Clarion battles to "hold that line". |

Clarion battled every inch of the way under Coach Al Jacks leadership. During the first four games of the year Clarion walked off the field unscathed against. Homecoming 1963 saw the Clarion Golden Eagles victorious over the Bald Eagles of Lock Haven. This year's team was made up primarily of underclassmen who will be back next year.

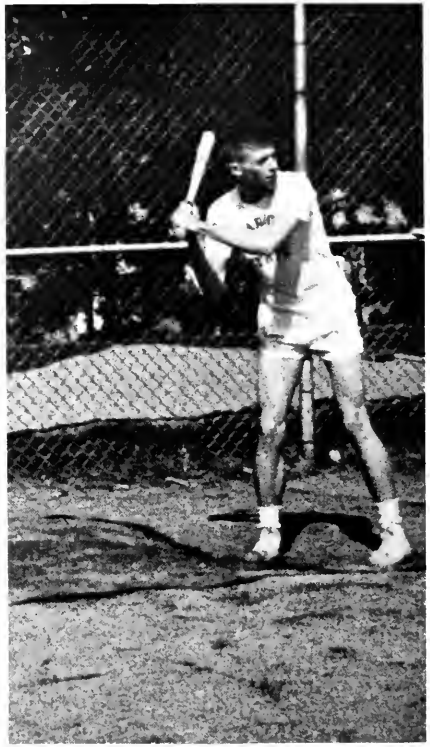
| BASKETBALL |



Row 1: Mr. Joy, Jim Patterson, Kene Griffen, Ken Bracco, Terry Thompson, Jim Rachinni, Jack Derlink, Gene Hauman, Earl Highlands, Mike Janovick.

Row 2: Dan Bartolovic, Gene Florianni, Bill Muha, Bob Sellari, Sam Intreri, Alex Demster, Dennis Doyle, Jim Shallenberger, Mark Conroy.

C.S.C.		OPP.
102	Malone	81
82	St. Vincent	60
62	Alliance	68
72	California	82
66	Edinboro	84
74	Indiana	97
77	Slippery Rock	79
79	Grove City	71
78	Malone	77
95	Fenn	81
83	Slippery Rock	72
73	Indiana	75
67	Lock Haven	64
99	California	92
83	Grove City	80
90	Edinboro	95
104	Lock Haven	82
72	Alliance	92



| I'll clobber the guy that took my basketball! |

139

This year's basketball team can be proud of their efforts. Although they finished the season with a record of 10-8, they were as sharp as a needle on the court. With the fine ball handler, Earl Highlands, a freshman, Clarion starred in dribbling, passing and maneuvering. Terry Thompson, Ken Griffin and Jack Derlink sent the ball through the hoop time after time and Jim Rachinni did his part by sweeping the backboard clean. Remember its not how well you win, its how you play the game. There was never a dull game at Harvey Gym.



Row 1: Tom Todd, Don McCollim, Jack Davis, Marty Ruley, Tony Catalano, Joe Izzi, John Moffet, Frank Grundler, Dale Frye, Earl Petrucci.

Row 2: Ken Warnick, Terry Moore, Bob Ebner, Keith Will, Jerry Kemp, Paul Kennedy, Bob Dominici, Clem DeFrancisco, Ted Kelly, Ken Lockey, Ed Bradley, Mr. Lignelli.

The 1963-64 Clarion State College Wrestling Team remains undefeated. They captured the western Pennsylvania crown for the third straight year. Under the more than excellent coaching of Mr. Frank Lignelli, the team completed an 11-0 season. Our fantastic grapplers averaged 27 points per match. The Clarion College matmen also participated in the Bloomsburg Tournament. Mr. Lignelli assures us next year's team will be right on top also. Good luck to them.



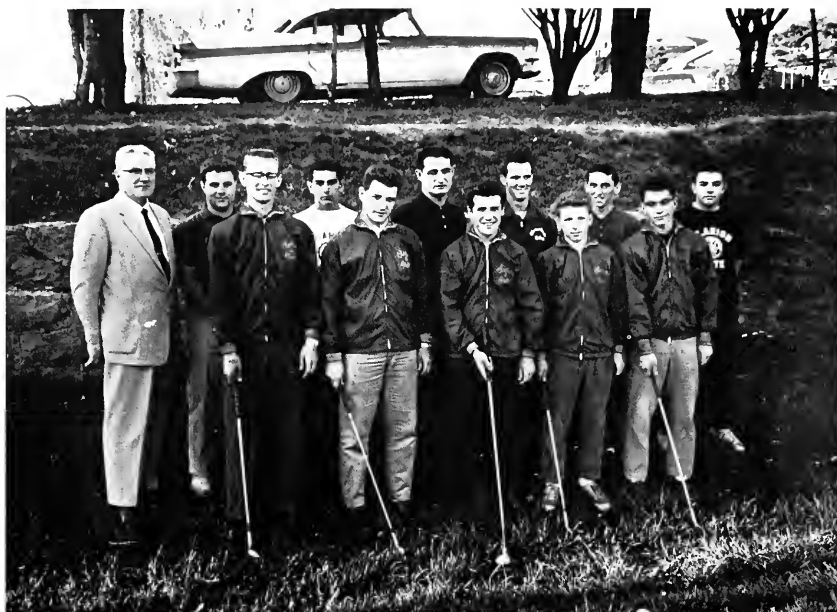
In the upper photograph is Dale Frye, a sophomore from Tyrone, Pa. One of the team's captains, Dale finished with a record of twelve wins and one less. Earl "Peaches" Petrucci is a senior member of the team from Burgettstown. He is the team's heavyweight wrestler finishing the season with a 3-0-1 record.

Clarion		Opp.
36	St. Vincent	0
34	St. Francis	0
24	Grove City	6
29	Grove City	3
29	West Liberty	3
21	Slippery Rock	13
27	Indiana	8
28	Edinboro	8
32	California	2
30	St. Vincent	0
31	St. Francis	5

This is the first undefeated wrestling season in the history of Clarion State College; won the Pre-Christmas Western Penna. State College Wrestling Tournament and placed fourth in the State Tournament held at Bloomsburg State College.



GOLF TEAM



Row 1: Desch, Schuster, Koelsch, Meyers, Istanish.

Row 2: Mr. Carnahan, Tumminella, Persi, Cornali, Carson, Filkosky, Cirignano.

The 1963 golf team parred and birdied its way to a fine record of ten wins and only three losses under the direction of Mr. T. A. Carnahan. Again this year the team took part in the State Tournament at West Chester. Clarion was first with a low of 334, followed by California, 338; Lock Haven, 344; Shippensburg, 344; W. Chester, 344; Indiana, 346; and Slippery Rock, 347. Meyers was second in the state with a score of 78. Lechman, Koelsch, and Schuster were also low.

C.S.C.		OPP.
12½	Slippery Rock	6½
14	Geneva	5
10	Grove City	9
10½	Gannon	8½
14	Edinboro	5
13	Indiana	6
17	Alliance	2
7½	Indiana	10½
6½	California	8½
12	Edinboro	6
14½	Alliance	3½
6	Youngstown	18
11½	Mt. Union	8½

RIFLE TEAM

The Rifle Club under the sponsorship of Mr. Galen Ober, Mr. Clifford Keth and Mr. James Shofestall demonstrates to interested students the proper care and use of rifles. Safety rules are strictly enforced and posted in plain view at the firing range. The team has participated in matches with the other state colleges and are proud of their opportunity to compete.



143

Row 1, kneeling — Dave Phanco, Dave Mensch, Jan Peters, Dave Rose, Jim Blose.
Row 2: Jim Lucas, unknown, Ed Kerr, Mr. Ober, advisor.

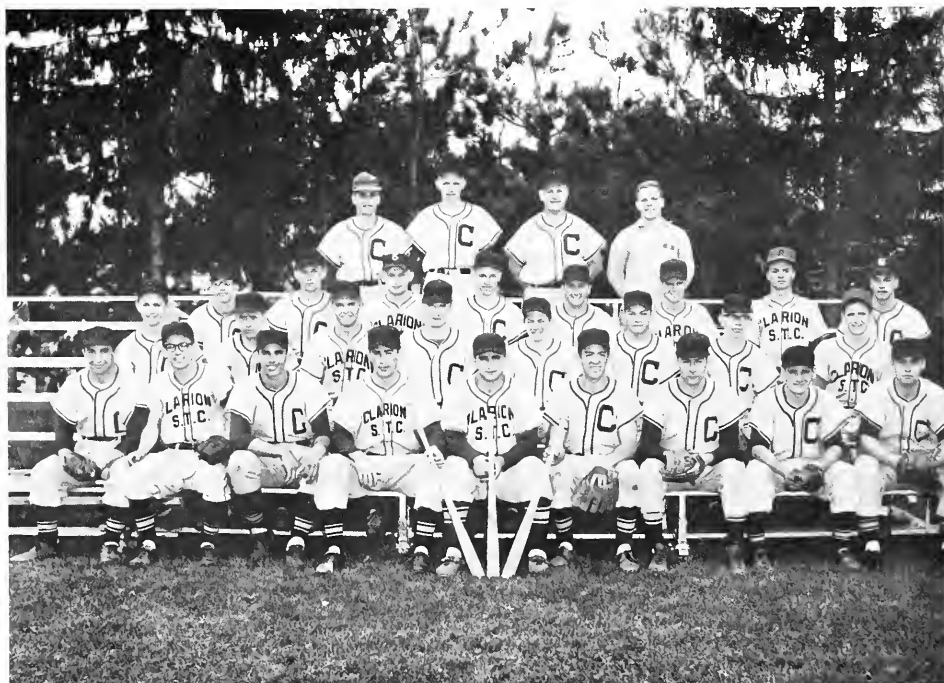
RIFLE CLUB OFFICERS

William Kiser, President
James Blose, Vice-President
Rebecca Clever, Secretary
David Phanco, Treasurer
Lee Blose, Range Officer
Sponsors, Galen Ober
Clifford Keth
James Shofestall

BASEBALL

The Clarion State 1963 baseball team finished the season with a record of five wins, ten losses, and one tie. They were coached by the able and enthusiastic, Mr. E. W. Johnson. Although our team did not go undefeated, they did make a fine showing against Grove City and Alliance. Next season we hope for better luck in league play.

C.S.C.		OPP.
2	Lock Haven	4
3	Lock Haven	4
2	Geneva	5
4	St. Vincent	5
7	St. Vincent	9
9	Grove City	3
rain	University of Pittsburgh	rain
7	Youngstown	11
1	Youngstown	2
4	Indiana	1
2	Indiana	9
0	California	3
3	California	0
4	Alliance	1
13	Alliance	3
3	Slippery Rock	4
3	Slippery Rock	3 (rain)



Row 1: Joe Urban, Ed Bednarczyk, Jim Rachinni, Gary McLaughlin, Alex Murnyak, Dave Washburn, Paul Hopkins, Jim Matalik, Harry Miller.

Row 2: Ed Joyce, John Fedarko, Ed Witek, Paul Buttenfield, Paul Stack, Doug Dickey, Dave Phacco, Don Gesin.

Row 3: Sam Strano, Chuck Zerbe, Andy Adamchik, Ward Beaton, Ron Wise, Dave Jones, Mike Gula, Jim Hartman.

Row 4: Bob Nitzell — Manager, Stan Refalko, Ernest Johnson — Head Coach; Tom English — Manager.

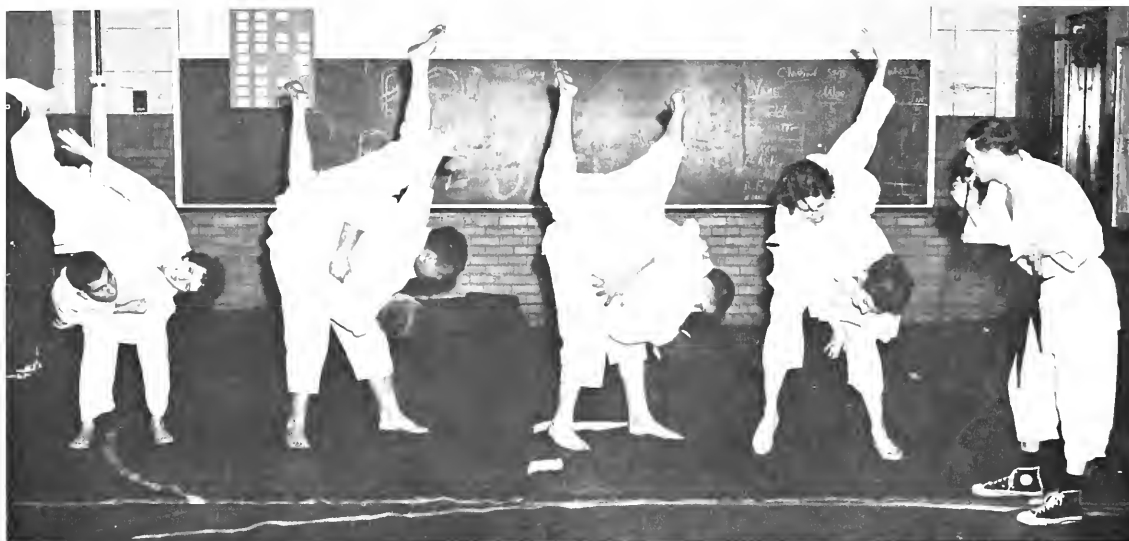
TENNIS

The 1963 tennis team, coached by Dr. Samuel Wilhelm, put forth a valiant effort to bring tennis honors to Clarion State College; however, the team finished the season without winning a match. Next year's team will find playing tennis even more difficult, since the tennis courts are being replaced by the new cafeteria.

C.S.C.		OPP.
3	Alliance	4
0	Edinboro	7
0	Slippery Rock	9
0	Edinboro	9
1	Alliance	8
0	California	9
2	Indiana	7
rain	Grove City	rain
rain	Indiana	rain



This year's team displayed the talents of Larry Miller, Jerry Frantz, Darrel Sheraw, Joe Gutowski, Tom Chmiel, Randy Girling, and Greg Surowski and Rick Psegina, not pictured.



| On signal from Mr. P-Jobb the Judo team demonstrates an elementary throw. |

146

| JUDO TEAM |



| Whoops! |

The Judo Team is newly organized on campus this year. Under the direction of Mr. P-Jobb, interested students have been learning the art of self-defense. During the evening sessions, they have learned to defend themselves from attack from behind, knife thrusts and strong arm bullies. Next year the judo team hopes to compete in intercollegiate matches.



Row 1: Anthony Catalano, Jeff Ellis, Donn Uberti, John Gemmell, Bob Garritano, Jim Wilkinson, Harry Miller, Stan Rafalko, Ron Wise.

Row 2: Buzz Joyce, Richard Pisegna, William Kiser, Ralph Cutruzzola, Ken Gaudi, Gene Desch, Darrel Sheraw, Ken Lockey, Vincent Nola, Lou Jumbercotta, Art Myers.

Row 3: Terry Koelsch, Joe Gutowski, James Blose, Tom English, Earl Petrucci, Alex Murnyack, Frank Grundler, Harry George.

Row 4: Pat Shaughnessy, Dale S. Frye, Robert Butt, Denny Schuster, Ed Green, Joe Tumnella, Jerry Kemp, Ed Witek.

147

VARSITY C CLUB

OFFICERS

Ron Wise, President
 Buzz Joyce, Vice-President
 Don Gesin (missing), Secretary
 Harry Miller, Treasurer
 Mr. Lignelli, Advisor

The Varsity "C" Club is made up of men of the college who have earned the "C" in one of the intercollegiate sports.

The objectives of this club are to aid in the maintenance of pleasant relationships with other colleges and to promote a high standard of conduct on the part of members of the athletic teams.

Under the excellent sponsorship of Mr. Lignelli, this club is one of the most active clubs on campus. Blazers, sweaters, and jackets are awarded to the members of the club for earning their "C" for two or more years.

Money for these awards is raised by such activities as selling refreshments at football and basketball games, by selling homecoming pins, and by soliciting student body and faculty contributions through booster sales.

The Varsity "C" Club also sponsors an All-Sports Banquet in the Spring to which members and guests are invited.



Row 1: Lana Carpenter, Candy Johnson, Catherine Jones, Ellen Allen, Lois Cherry, Janice Warren, Jeanne Kiser.
Row 2: Donna Brown, Joyce Lee, Signora Hall, Celeste Cruse, Pam Murphy, Mary Jones.

The Women's Athletic Association sponsors the intramural competition for women. Membership is ascertained by the acquiring of a certain number of points gained through the participation in sports. The intramural program furnishes an opportunity for those with officiating as well as playing abilities.

Development of desirable traits of sportsmanship and leadership and the ability to work and play with others are promoted at all times. Efforts toward improvement of personal skills are likewise encouraged through class intramural participation. The purpose of the program is to make athletics functional in the life of the individual in school and after graduation.

W. A. A. OFFICERS

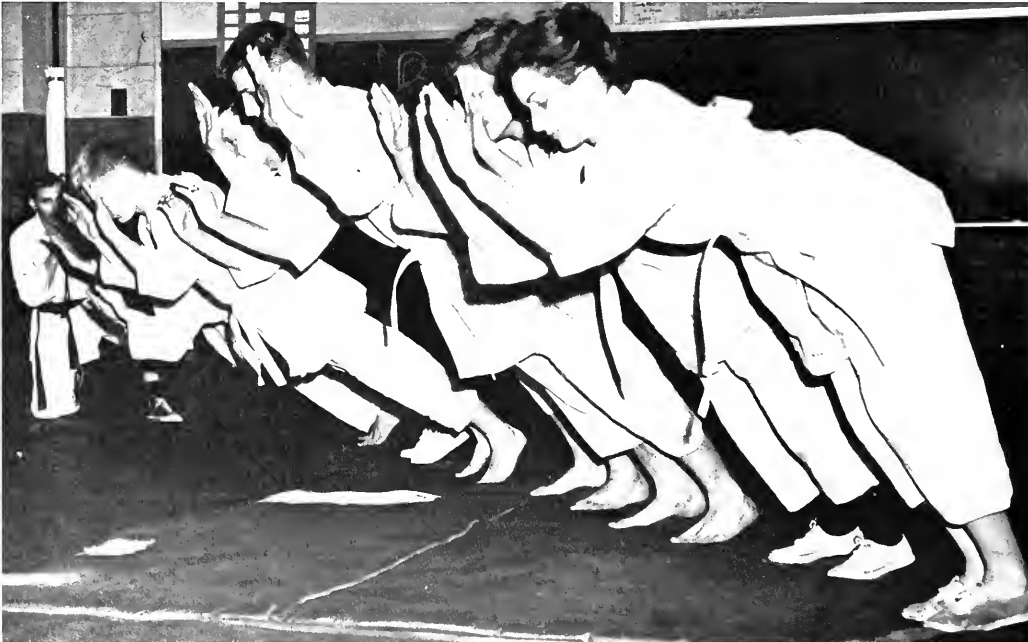
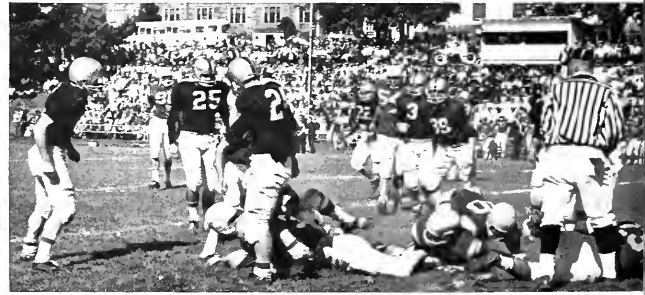
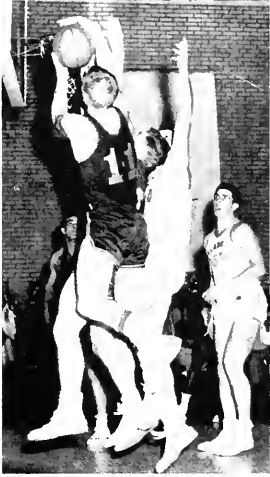
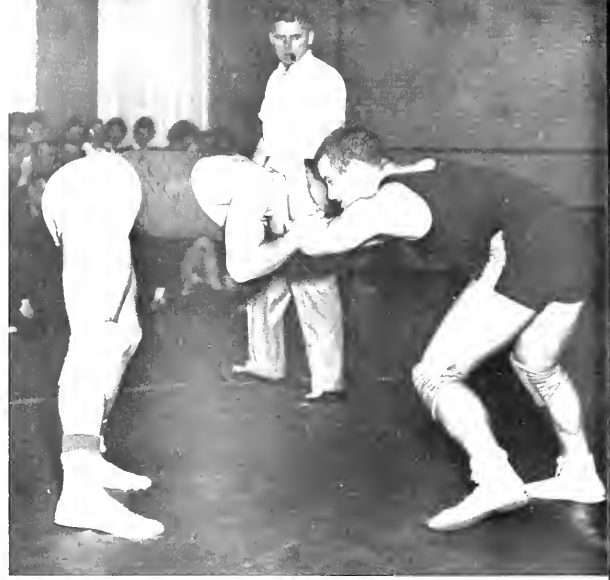
Jeanne Kiser, President
Lana Carpenter, Vice-President
Cathy Jones, Secretary-Treasurer
Ellen Allen, A. W. S. Representative
Lois Cherry, Sports Manager
Essie Broad, Basketball Manager
Candy Johnson, Volleyball Manager
Miss Yough, Sponsor
Mrs. Simpson, Sponsor

| SKI CLUB |



149

On Saturday, February 29, 1964, Clarion State College students participated in the Pennsylvania Inter-Collegiate Ski Championship at Blue Knob. It was the first time our skiers have participated in such a tournament. Although you could probably hear their knees knocking, the team placed first in the intermediate slalom, second in the women's slalom, and first in the giant slalom. After practicing on Given Slope all day, the skiers can get warm again by the glow from the three trophies they brought home from the Knob.

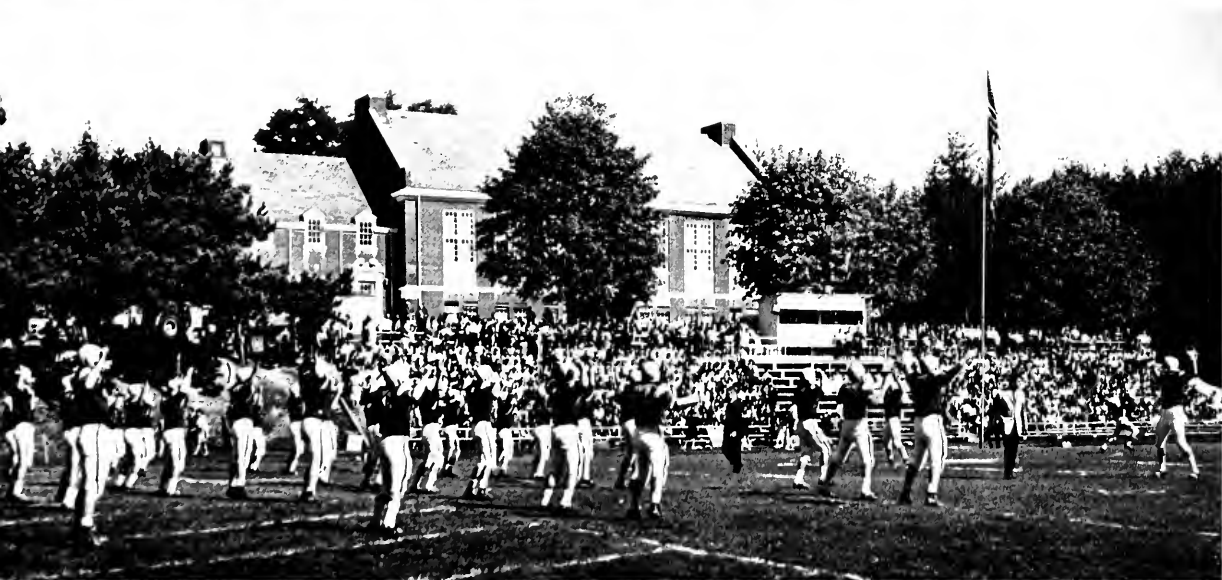


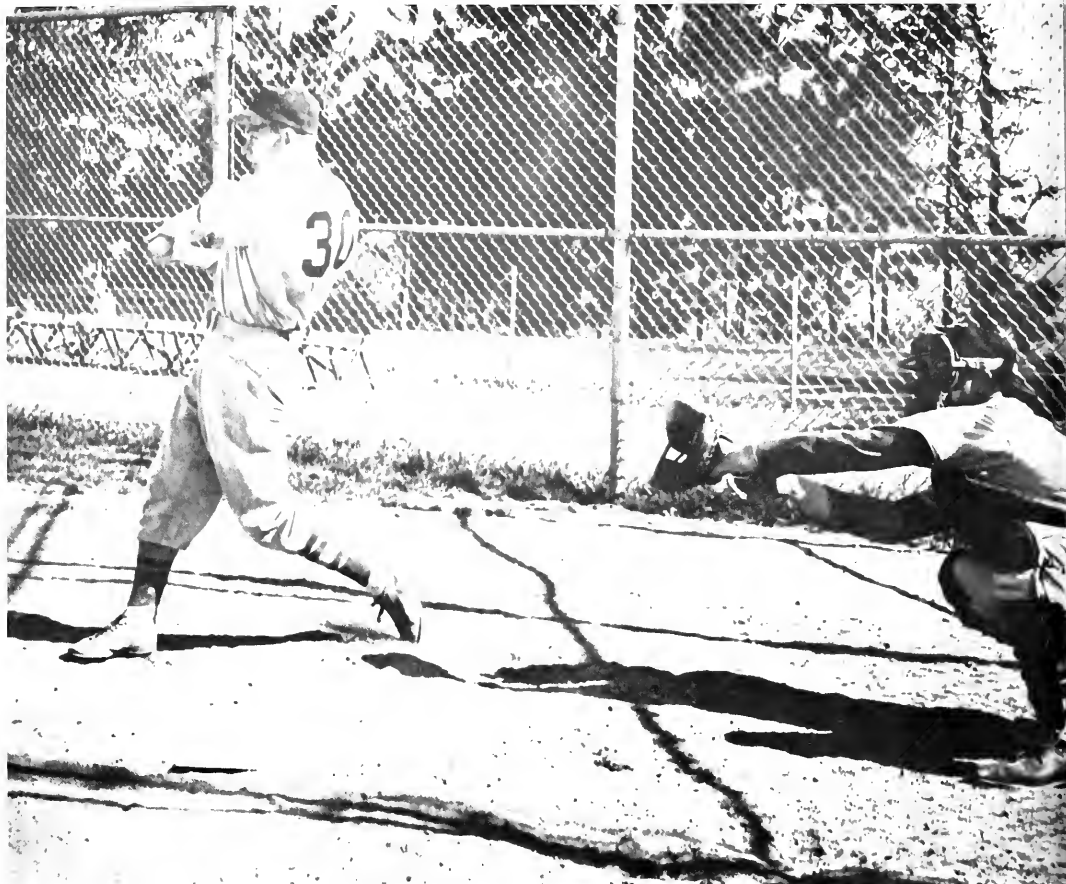


FOOTBALL ACTION

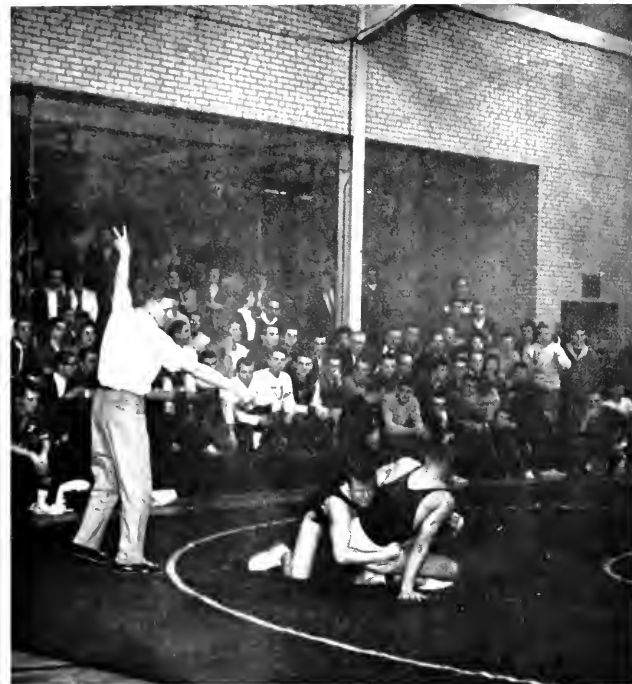


151





Hey, there's my girl over there!



John Moffet scores two points in a reversal with his opponent.



After first period Saturday Gym Class, one student was heard to exclaim "Gee, I've got just five minutes to shower, change, and pack my suitcase".



An interested fan watches as the Eagles prepare for the season's opener.



Thugs beware! Clarion's prepared.

FACULTY DIRECTORY

JAMES GEMMELL, Ed.D., President: University of Wyoming, B.S.; Syracuse University; State University of New York, M.S.; New York University, Ed.D.; Additional study at Harvard University.

ERNEST C. AHARRAH, M.S., Assistant Professor, Demonstration Teacher, Sr. H.S. Science; Clarion State College, B.S.; Pennsylvania State University, M.Ed.; University of Pittsburgh, M.S.

VAUGHN ALBERTSON, M.A., Associate Professor, English; Rice Institute, B.A.; Columbia University, M.A.; Additional work at New York University.

MARY KAY BANNER, M.Ed., Assistant Professor, Demonstration Teacher, Intermediate Grades; Seton Hill College, B.A.; Clarion State College; University of Pittsburgh, M.Ed.; Additional graduate work at University of Pittsburgh.

FRANCIS BAPTIST, M.F.A., Assistant Professor, Art; Wisconsin State College, B.S.; State University of Iowa, M.F.A.; Additional work at Pennsylvania State University.

DANIEL G. BARDARIK, Ph.D., Associate Professor, Biological Science; University of Pittsburgh, B.S., M.S., Ph.D.

GWENDOLYN M. BAYS, Ph.D., Associate Professor, Foreign Languages; Agnes Scott College, B.A.; Emory University, M.A.; Yale University, Ph.D.; Additional graduate study at University of Paris (Sorbonne).

ROBERT A. BAYS, Ph.D., Associate Professor, Head of Foreign Language Department; Emory University, B.A.; Yale University, M.A., Ph.D.; Additional study at University of Heidelberg (Germany).

MARY M. BECHTOLD, M.S., Assistant Professor, Physical Science; Duquesne University, B.S., M.S.

STANLEY A. BELFORE, M.S., Assistant Professor, Biological Science; Indiana State College, B.S. in Ed.; University of Pittsburgh, M.S.

ALPHA E. BERNARD, Ed.D., Professor, Education; North Michigan College of Education, B.S.; Indiana University, M.S. in Ed., Ed.D.

BARBARA BILLINGS, M.A., Instructor, Audio-Visual Education; Bucknell University, B.A.; Syracuse University, M.A.; Additional work at University of Bristol, England.

PEARL E. BONNER, B.S., Instructor, Demonstration, 3rd Grade.

LLOYD S. BROMLEY, M.Ed., Assistant Professor, Physical Science; Allegheny College, B.S.; University of Pittsburgh, M.Ed.; Additional graduate work at Leyballe Laboratory in Cologne, Germany.

JAMES B. BRUNO, Ed.D., Professor, Head of Music Department, Head of Division of Fine and Performing Arts; Indiana State College, B.S.; New York University, M.A., Ed.D.; Columbia University, M.A.; Additional work at Juilliard School of Music.

MARY M. BUTLER, M.S.S., Assistant Professor, Librarian; University of Pittsburgh, B.A.; Carnegie Institute of Technology, M.L.S.; Graduate work at Columbia University.

CARL E. CALDWELL, M.A., Associate Professor, French; Hobart College, A.B.; Middlebury College, M.A.; Additional graduate work at University of Rochester.

FRANK M. CAMPBELL, M.A., Assistant Professor, Social Studies; Grove City College, B.A.; Pennsylvania State College, M.A.

MARTHA CARNAHAN, B. A., Instructor, Librarian; Goucher College, B.A.; Graduate work at University of West Virginia.

THOMAS A. CARNAHAN, M. Ed., Associate Professor, Mathematics, Physical Science; Grove City College, B. S.; Pennsylvania State College, M.Ed.; Additional graduate work at University of Pittsburgh.

JOSEPH F. CLOVESKO, M.S., Assistant Professor, Biology; Clarion State College, B.S.; Western Reserve University, M.S.

BOB H. COPELAND, M.A., Assistant Professor, Speech; University of Wichita, B.A., M.A.; Additional work at Directors Studio of New York City, University of Denver.

ALISTAIR T. CRAWFORD, M.A., Assistant Professor, Social Sciences; Upsala College, B.S.; Montclair State College, M.A.; Additional graduate work at Northern Illinois University.

ROBERT E. CRAWFORD, M.A., Assistant Professor, Geography; Slippery Rock State College, B.S.; University of Pittsburgh, M.A.

PEGGY S. CURRY, B.S., Demonstration Teacher, Kindergarten; Indiana State College, B.S. in Ed.

- HARRY A. DENNIS, M.A., Assistant Professor, Mathematics; University of Missouri, B.S.; University of Denver, M.A.; Additional graduate at University of Colorado.
- CLESTA L. DICKSON, M.S., Assistant Professor, Associate Dean of Students; Marshall University, B.S.; Indiana University, M.S.
- BRUCE H. DINSMORE, Ph.D., Professor, Biological Science; Indiana State College, B.S.; Columbia University, M.A.; University of Pittsburgh, M.S., Ph.D.
- JAME A. DONACHY, M.S., Assistant Professor, Biological Science; Clarion State College, B.S.; Ohio University, M.S.; Additional work at Pennsylvania State University.
- EDWARD G. DUFFY, M.A., Assistant Professor, Social Studies; Pennsylvania State University, B.A., M.A.; Additional graduate work at Pennsylvania State University.
- KENNETH F. EMERICK, M.L.S., Assistant Professor, Librarian; Clarion State College, B.S.; Rutgers University, M.L.S.
- CHARLES R. FLACK, M.A., Associate Professor, Head of Library Science Department; Library School, University of Wisconsin; University of Alberta, B.A.; University of Illinois, B.L.S.; M.A.; Graduate work at University of Chicago.
- GIFFORD FRAZEE, M.A., Associate Professor, Economics; West Liberty State College, A.B.; University of West Virginia, M.A.; Additional graduate work at American University.
- DONALD GERSTOFF, M.A., Assistant Professor, Speech; Carnegie Institute of Technology, B.A.; University of Denver, M.A.
- RAY K. GIERING, M.Ed., Assistant Professor, Education; Clarion State College, B.S.; Pennsylvania State University, M.Ed.
- EDWARD GREJDA, B.S., Assistant Professor, English; Clarion State College, B.S., University of Pittsburgh, M.Litt.
- EDWARD GOLLA, B.S., Physical Science; Clarion State College, B.S.; Additional work at Carnegie Institute of Technology.
- WILLIAM E. GROSCH, M.Ed., Assistant Professor, Art; Edinboro State College, B.S.; Pennsylvania State University, M.Ed.; Additional study in ceramics at Haystack Mt. School of Crafts.
- JOEL L. HAINES, Ph. D., Professor, Social Studies; Franklin and Marshall College, B.A.; University of Pennsylvania, M.A., Ph.D.
- WALTER L. HART, M. of F.A., Associate Professor, Director of Admissions; Grove City College, B.M.; Carnegie Institute of Technology, M. of F.A.; Additional graduate work at New York University.
- HAROLD V. HARTLEY, Jr., M.Ed., Associate Professor, Special Education; Bloomsburg State College, B.S.; Pennsylvania State University, M. Ed.; Additional graduate work, Pennsylvania State University.
- AMELIA HOOVER, M.A., Assistant Professor of Speech; Wayne State University, B.A., M.A.; Doctoral candidate at University of Michigan.
- ROGER HUFFORD, Ph.D., Associate Professor, Speech, Director of Forensics; Illinois State University, B.S., M.S.; Kings College, Durham University, England, M.Litt; Southern Illinois University, Ph.D.
- NORMAN B. HUMPHREY, M.S., Associate Professor, Geography; Slippery Rock State College, B.S.; Florida State University, M.S.; Additional graduate work at Pennsylvania State University.
- ROXANA IRWIN, M.S. in Ed., Assistant Professor, Demonstration Teacher, Intermediate Grades; Clarion State College, B.S.; Westminster College, M.S. in Ed.
- ALBERT A. JACKS, M.A., Assistant Professor, Health and Physical Education; Pennsylvania State University, B.S., M.A.
- ERNEST W. JOHNSON, M.Ed., Associate Professor, Education; Clarion State College, B.S.; University of Pittsburgh, M. Ed.
- MARGERY LU JOHNSON, B.S., Instructor, Assistant Librarian; Clarion State College, B.S.; Graduate work at Pennsylvania State University.
- ROBERT JONES, M.A., Spanish; University of Wisconsin, B.A.; National University of Mexico, M.A.; Additional study at Northwestern University.
- JOHN A. JOY, M.Ed., Assistant Professor, Health and Physical Education, Chairman Division of Fine and Performing Arts; Slippery Rock State College, B.S.; University of Pittsburgh, M.Ed.; Additional work at University of Pittsburgh.
- WILLIAM KARL, M.A., Assistant Professor, English; Clarion State College, B.S.; Columbia University, M.A.

- CLIFFORD M. KETH, M.Ed., Assistant Professor, Physical Science; Clarion State College, B.S.; Pennsylvania State University, M.Ed.
- JAMES C. KING, Ph.D., Professor, Social Studies, Director of Academic Counseling; Northeastern Oklahoma State College, B.S.; University of Utah, Ph.D.
- JOSEPH J. KNOWLES, M.Ed., Associate Professor, Health and Physical Education; Waynesburg College, B.S.; University of Pittsburgh, M.Ed.; Additional work at Pennsylvania State University.
- HELEN KNUTH, Ph.D., Professor, Social Studies; University of Dubuque, A.B.; Northwestern University, M.A., Ph.D.
- JOAN KUIPERS, Ed.D., Associate Professor, Education; Northern Michigan College, B.S., University of Michigan, M.A.; Wayne State University, Ed.D.
- GUSTAV V. KONITZKY, Ph.D., Associate Professor, Social Studies, Purdue University, M.S.; Indiana University, Ph.D.; Post-doctorate research associate (Anthropology) Indiana University.
- RAY KUIPERS, Ed.D., Professor, Director of Audio-Visual Education, Wayne State University, B.S., M.S., Ed.D.
- ANTHONY LAZZARO, M.Ed., Assistant Professor, Physical Science; California State College, B.S.; University of North Carolina, M.Ed.; Additional work at Cornell University.
- GEORGE R. LEWIS, Ed.D., Professor, Head of Mathematics Department, Director of Computer Center; East Stroudsburg State College, B.S.; University of Pittsburgh, M.Litt; Graduate work at Bucknell University; Pennsylvania State University, Ed.D.
- FRANK LIGNELLI, M.Ed., Associate Professor, Safety Education, Assistant Dean of Students; Clarion State College, B.S.; University of Pittsburgh, M.Ed.; Additional work at Pennsylvania State University.
- ALLENE H. MASTERSON, M.Litt., Assistant Professor, Social Science; Geneva College, B.A.; University of Pittsburgh, M.Litt.; Additional graduate work at Duke University.
- WILLIAM M. McDONALD, M.A., Assistant Professor, Music; Indiana State College, B.S.; New York University, M.A.
- NANCY S. McKEE, M.L.S., Assistant Professor, Librarian; Wilson College, A.B; Carnegie Institute of Technology, M.L.S.; Additional work at University of Pittsburgh.
- STANLEY F. MICHALSKI, Jr., M.Ed., Associate Professor, Music; Pennsylvania State University, B.S.; Additional graduate work at Pennsylvania State University, University of Pittsburgh; Additional study at Wyoming Seminary.
- LESTER D. MOODY, Ph.D., Professor, Head of English Department, Chairman of Humanities Division; University of Washington, M.A.; Washington State University, B.A.; University of Washington, Ph.D.
- ELEANOR D. MOORE, M.S.L.S., Associate Professor, Librarian; Clarion State College, B.S.; University of Pittsburgh, M. Ed.; Columbia University, M.S.L.S.
- JAMES D. MOORE, Ed.M., Assistant Professor, Dean of Instruction; Muskingum College, A.B.; University of Pittsburgh, Ed.M.
- JOHN N. MOORHOUSE, M.Ed., Assistant Professor, Education; California State College, B.S.; University of Pittsburgh, M. Ed.; Additional work at University of Utah, N.S.F.
- RUSSELL V. MORGAN, Ed.D., Professor, Administrative Head at Venango Campus; Slippery Rock State College, B.S.; University of Pittsburgh, M.Ed., Ed.D.
- ELBERT MOSES, Ph.D., Professor, Head of Speech Department; University of Pittsburgh, A.B.; University of Michigan, M.S.; Additional graduate work at Pittsburgh School of Speech.
- GILBERT NEIMAN, Ph.D., English; University of New Mexico, B.A.; University of New Mexico, Ph.D.
- MAX A. NEMMER, Ph.D., Associate Professor, English, University of Pittsburgh, B.A., M.A. and Ph.D.
- HENRY W. NEWMAN, M.A., Assistant Professor, English; Syracuse University, B.A.; University of Pennsylvania, M.A.
- ROBERT L. NORTHEY, B.S., Instructor, Mathematics; Clarion State College, B.S.
- LESTER C. OAKES, M.S., Associate Professor, Geography; Teachers College of Connecticut, B.Ed.; New York University, M.A.; Union College, Schenectady, N.Y., M.S.; Teachers College, Columbia University, Professional Diploma.
- GALEN L. OBER, M.Ed., Assistant Professor, Physical Science; Indiana State College, B.S.; University of Pittsburgh, M.Ed.; Additional graduate work at Oregon State.
- DONALD R. PAGANO, M.S., Assistant Professor, Mathematics; Duquesne University, B.S.; Syracuse University, M.S.; Additional Graduate Work at Oregon State.

- WILLIAM J. PAGE, Ed.D., Professor, Director of Student Teaching and Placement; Fredonia State Teachers College; Temple University, B.S., M.Ed. and Ed.D.
- HUGH WINSTON PARK, Ph.D., Professor, English; Hiram College, B.A.; Western Reserve University, M.A.; University of Utah, Ph.D.
- CHARLES G. PEARCE, M.Ed., Assistant Professor, Art; Indiana State College, B.S.; Pennsylvania State University, M. Ed.; Additional study at Pennsylvania State University.
- DONALD D. PEIRCE, Ph.D., Professor, Head of Division of Science; Oberlin College, B.A.; University of Illinois, M.A., Ph.D.
- VIRGINIA M. PEMBERTON, M.A., Assistant Professor, Demonstration Teacher, Primary Grades; Fredonia State Teachers College, Hofstra College, New York University, B.S., M.A.; Additional work at Pennsylvania State University.
- LAWRENCE L. PENNY, Ed.D., Professor, Psychology and Reading, Psychological Counseling, Oklahoma State University, B.S. in Ed.; Kansas University, Ed.D.; Additional work at Pennsylvania State University.
- WERNER H. PETERKE, M.A., Assistant Professor, Social Science; Cornell University, B.S.; Kent State University, M.A.; Additional graduate work at University of Illinois.
- GLENN B. PHIPPS, M.Ed., Assistant Professor, Speech; College of Emporia, A.B.; University of Pittsburgh, M.Ed.; Additional work at Northwestern Missouri State College.
- VERNON PIERCE, M.A., Assistant Professor, Speech, University of Denver, B.A. M.A.
- ANDOR S. P-JOBB, M.F.A., Assistant Professor, Art; Art Academy of Budapest; Kent State University, B.F.A., M.F.A.
- MORRELL B. PRATT, M.Ed., Associate Professor, Spanish; Westminster College B.A.; Pennsylvania State University, M.Ed.
- DONALD R. PREDMORE, Ph.D., Professor, Biological Science, Education; University of Pittsburgh, B.S., M.A., Ph.D.; Additional graduate work at University of Miami.
- JOCK N. REID, M.S., Instructor, Audio - Visual Education; Utica College, B.A.; Syracuse University, M.S.; Additional Work at Syracuse University.
- JOHN F. REINHARDT, M.A., Instructor, English; Grove City College, B.A.; New York University, M.A.; Additional graduate work at University of Pittsburgh.
- EUGENE L. RHOADS, M.S. in Ed., Assistant Professor, Mathematics; Clarion State College, B.S.; University of Pennsylvania, M.S.; Additional graduate work at University of Kansas.
- DARRELL F. RISHEL, D. Ed., Professor, Dean of Students; Pennsylvania State University, B.S., M.Ed., D.Ed.
- JACK K. ROADMAN, M. Ed., Assistant Professor, Physical Science; California State College, B.S. in Ed.; University of Pittsburgh, M.Ed.; Additional graduate work at the University of Pittsburgh.
- CHARLES W. ROBBE, M.A., Assistant Professor, Social Studies, University of Iowa, University of Illinois, B.S.; University of Vermont, M.A.; Additional graduate research at Harvard University.
- EDWARD RONCONE, B.A., Assistant Professor, Music; Carnegie Institute of Technology, B.A.; Additional graduate work at Berkshire Music Center.
- ELIZABETH A. RUPERT, M.S.L.S., Instructor, Library Science; Clarion State College, B.S.; Syracuse University, M.S.L.S.; Doctorate work at Pennsylvania State University.
- EUGENE A. SEELYE, M.A., Assistant Professor, Art; Indiana State College, B.S.; Columbia University, M.A.
- EUGENE ROSS SENFF, B.A., Assistant Professor, English; Northwest Bible College, B.A.; Seattle Pacific College, B.A.; Graduate work at University of Washington.
- PAUL L. SHANK, Ph.D., Professor, Physical Science; Bethany College, B.S.; University of Pittsburgh, M.Ed., Ph.D.; Graduate work at University of West Virginia.
- FERN A. SHANNON, M.A., Librarian; Simpson College, B.A. in English Literature, University of Wisconsin, B.A. in Journalism; University of Denver, M.A.; Graduate work at University of Iowa.
- WILMA SHERWIN, Ph.D., Associate Professor, English; Western Illinois University, B.S., M.S.; University of Illinois, Ph.D.
- DONNA JEAN SHIREY, M. Ed., Assistant Professor, Demonstration Teacher, 6th Grade.
- JAMES D. SHOFESTALL, M.Ed., Assistant Professor, Physical Science; Clarion State College, B.S.; University of Pittsburgh, M.Ed.; Additional work at Texas A & M.
- CHARLES J. SHONTZ, Ph.D., Professor, Head of Biological Science; Indiana State College, B.S.; University of Pittsburgh, M.S., Ph.D.; Additional work at University of Minnesota.

HAROLD E. SIMMONS, Ed.D., Associate Professor, Director of Professional Studies; Iowa B.A.; Drake University, M.S.; Teachers College, Columbia University, Ed.D.

BETTY SIMPSON, B.S., Instructor, Health and Physical Education; West Chester State College, B.S.

RICHARD C. SKINNER, M.Ed., Associate Professor, Education, Head of Department of Education; West Illinois State Teachers College, B.Ed. Northwestern University, M.A.; University of Illinois, M. Ed.; Additional work at University of Illinois.

BETTY R. SLATER, Ed.D., Associate Professor, Education; Buffalo State College, B.S. in Ed.; University of Buffalo, M. Ed.D.

NANCY SNIDER, Ph.D., English; University of Michigan, B.A., M.A., and Ph.D.

JOSEPH R. SPENCE, M.Ed., Assistant Professor, Head of Art Department, Director of College Development; Edinboro State College, B.S.; Pennsylvania State University, M.Ed.; Additional graduate work at Pennsylvania State University.

158

JEROME SQUIRE, M.S., Assistant Professor, Music; University of California, B.A.; State University of Fredonia, M.S.; Additional study at Eastman School of Music.

MARTHA STEWART, M.Ed., Associate Professor, Head Librarian; Northwestern University, B.A.; Carnegie Institute of Technology, B.S. in L.S.; University of Pittsburgh, M.Ed.

DANA STILL, Ph.D., Professor, Assistant Dean of Instruction; Ohio State University, B.S., M.A.; University of Pittsburgh, Ph.D.

RICHARD M. SUMMERVILLE, M.A., Instructor, Mathematics; Clarion State College, B.S.; Kent State University, M.A.

IMOGENE SUMNER, M.A., Assistant Professor, Social Studies; Coe College, B.A.; University of Chicago, M.A.; Additional work at University of Chicago.

FRANKLIN S. TAKEI, M.A., Assistant Professor, Philosophy; University of Hawaii, B.A.; Fuller Theological Seminary, B.D.; University of Hawaii, M.A.; Additional graduate work at Pennsylvania State University.

PAUL N. TERWILLIGER, M.A., Assistant Professor, Education; Clarion State College, B.S.; Lehigh University, M.A.; Additional graduate work at Pemble University.

WALDO S. TIPPIN, M.A., Assistant Professor, Education, Director of Athletics; Geneva College, B.S.; Columbia University, M.A.; Additional work at University of Pittsburgh.

J. DAVID TRUBY, M.A., Instructor, English, Director of Public Relations; Pennsylvania State University, B.A., M.A.

JAY VAN BRUGGEN, M.A., Assistant Professor, Social Studies; Calvin College, B.A.; State University of Iowa, M.A.; Additional graduate work at University of Nebraska.

KENNETH J. VAYDA, M.S., Associate Professor, Director, Special Education Curriculum; Pennsylvania State University, B.S., M.S.

GLENN S. WEIGHT, Ph.D., Associate Professor, English; Pennsylvania State University, B.A., M.A., and Ph. D.; Carnegie Institute of Technology, M.S.

MARGARET J. WIANT, M.Litt., Associate Professor, Geography; Clarion State College, B.S.; University of Pittsburgh, M.Litt.; Additional work at University of Washington, Duke University, Pennsylvania State University.

PAULINE M. WIBERG, B.S., Instructor, Demonstration Teacher, Primary Grades; Clarion State College, B.S.

SAMUEL A. WILHELM, Ph.D., Professor, Head of Social Science Department; Clarion State College, B.S.; University of Pittsburgh, M.Litt., Ph.D.; Graduate work at University of Wisconsin and Harvard University.

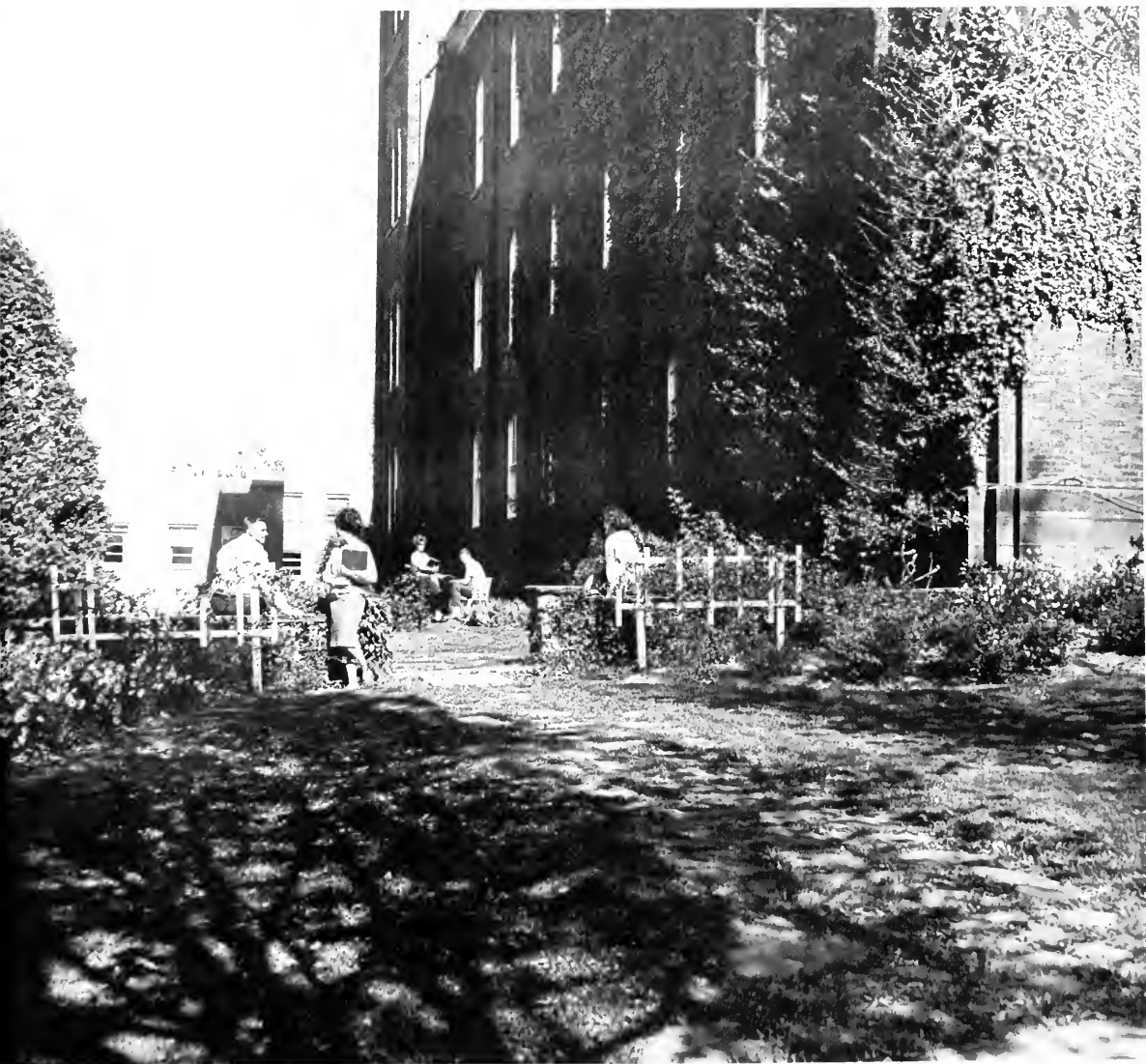
JOHN E. WILLIAMS, B.S., Pennsylvania State University, B.S.; Working toward Ph.D. at University of Illinois.

MARY WILLIAMS, B.S., Instructor, Librarian; Clarion State College, B.S.; Additional work at Pennsylvania State University.

JOHN WINTER, M.A., Associate Professor, Philosophy; Juniata College, B.A.; Lancaster Theological Seminary, B.D.; Villanova University, M.A.; Doctorate work at Temple University.

GEORGE F. WOLLASTON, M. Ed., Assistant Professor, Physical Science; Clarion State College, B.S.; Pennsylvania State University, M.Ed.; Additional graduate work at Case Institute of Technology.

GLORIA A. YOUGH, M.A., Assistant Professor, Health and Physical Education; University of Michigan, B.S., M.A.; Additional work at University of Michigan.





| CAMPUS CASUALS |

**MISS
CSC
1963**



Governor William Scranton and Harry B. Wood, President of United Natural Gas Company, form a dignified frame for Cathy Flanigan, Miss CSC and Queen of the Laurel Festival.

161



Miss Cathy Flanigan







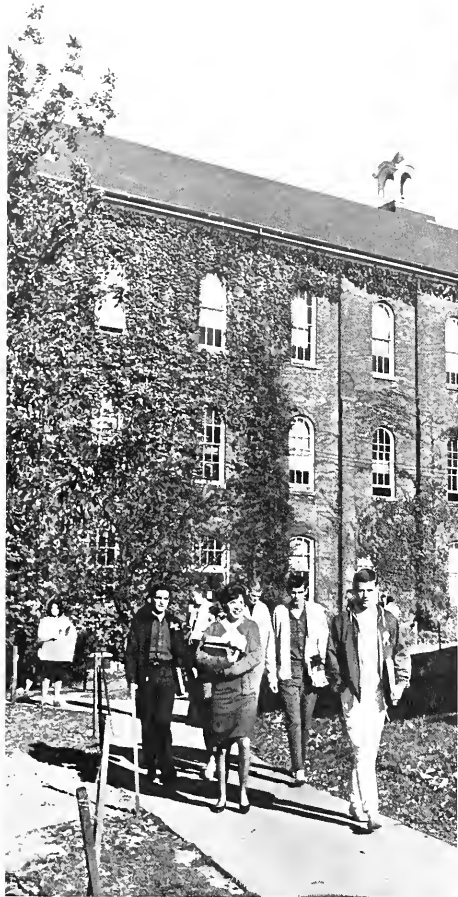
| If he doesn't come in an hour, I'm leaving! |



| The old vs. the new. |



| Mass confusion reigns supreme! |



Quality with a price that's right?

Hi, Ho! Hi, Ho! to the Eagle's Nest we go!



Where we study sometimes?





Sing along with "Mitch"
Donald — MacDonald, that is.

165



Dr. Gemmel speaks at Stu-
dent Leadership Workshop.



Hmm, I see the class pictures
were taken yesterday.

This is a poor picture of "Mickey and the Del-tones" on our closed-circuit TV show, "Cool Yule".



166



Damn-it Miller! You're suppose to stand still for a picture.



Notice the straight-line design of the ceiling lights in this fire-trap.

167



Now this is a real candid photo of some Radston Hall residents.



An instructor ponders this young lady's question.



Everyone is sure Joe doesn't spell his name backwards. (The negative, as you can see, was printed in reverse.)



Two chemistry majors hard at work searching for their unknowns in Qual.



| It may as well be spring. |



| This is a free advertisement for George W. Wolf's Pennzoil station. |

| Dr. Lewis instructing a class in the newly inaugurated computer course. |



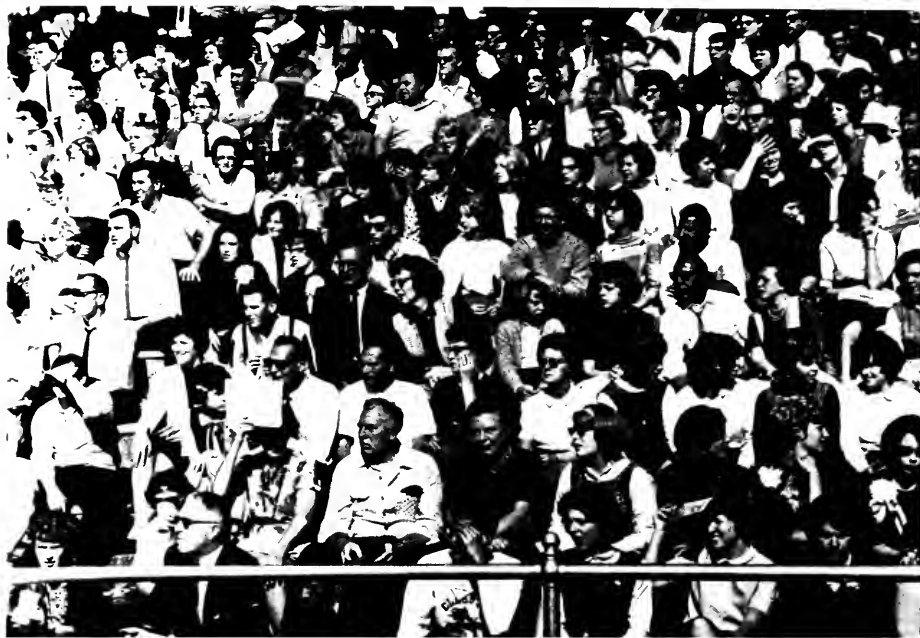


"We're not standing in line for free money, either!"

170

One step closer to ptomaine poisoning.





| What's everyone looking at? |



| Who's the Theta Chi in the middle? |



| Gee, I wish I had such a gentlemanly brother-in-law! |

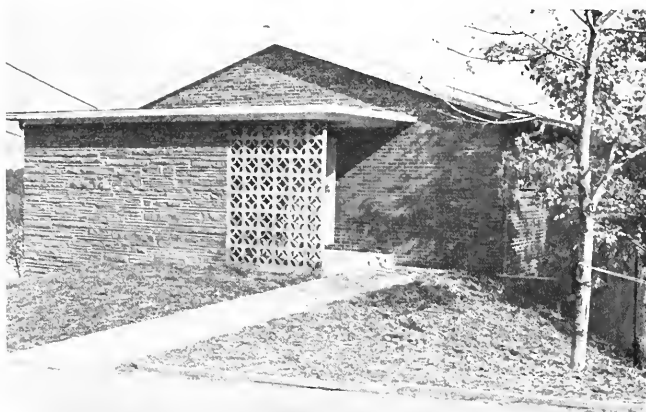


| The Theta Chi House. |

172



| The Sigma Tau Gamma House. |



| The new Alpha Gamma Phi House. |



| The Phi Sigma Epsilon House. |



| The Phi Sigs blow off steam again. |

173



| I don't care what you say, I still think it's too big for a dinner bell. |



| The Theta Xi House. |



| The buildings may be old but the spirit's high. |

174





Refer to page 183 of the 1963 Sequelle for the rest of the picture.



Our apologies to the member of the 1962- 63 Homecoming Court whom we cut off on page 17 of the 1962-63 Sequelle.

WE'RE NOT PERFECT!



Another one lost in the Clarion haze.



| Clarionites hard at work. |

176



| You say your foot's ticklish? |



| One of Clarion's swinging dances? |



| Who are the clowns in the background? |



| Mother never told me about books like this. |





| Clarion at Night. |



FINAL DAYS AT C.S.C.

JANUARY 19, 1964



179



SUCCESS AT LAST



CLARION'S FUTURE



181

Mr. Joseph Spence, Director of College Development, discusses Clarion's Future with F. Earl Wensel at Student Leadership Workshop held the first week of September, 1963.



| The home of the marble staircase-Ralston Hall, the campus's newest women's residence hall. |

182



| Jefferson Hall, a residence hall for women, which houses the Sigma Sigma Sigma, Delta Zeta, and Beta Chi Upsilon sororities. |



Clarion is more than a college. Its dimensions are varied, obvious, subtle, and nebulous. It has its own culture, its guidelines to the future, and an interrelationship with the past. These all play a significant role in the student's experience and literally shape and give form to his being. The physical environment is a vital component within these broad dimensions.

We have accepted the challenge to develop and create for Clarion the rich physical environment so essential to a dynamic educational experience. The building program currently underway was initiated with the designing of the comprehensive master plan in 1960. This plan is not static but involves continuous review and modification directed by changing means and ends.

Planning involves an interplay between the philosophic goals, policies, programs, and aspirations of the college as a whole. The buildings currently under construction reflect the sensitive judgment of many people who have given long and considered study to the varying concepts and needs of Clarion. It is only through a complete integration of ideas that a building can attain significant form and function.

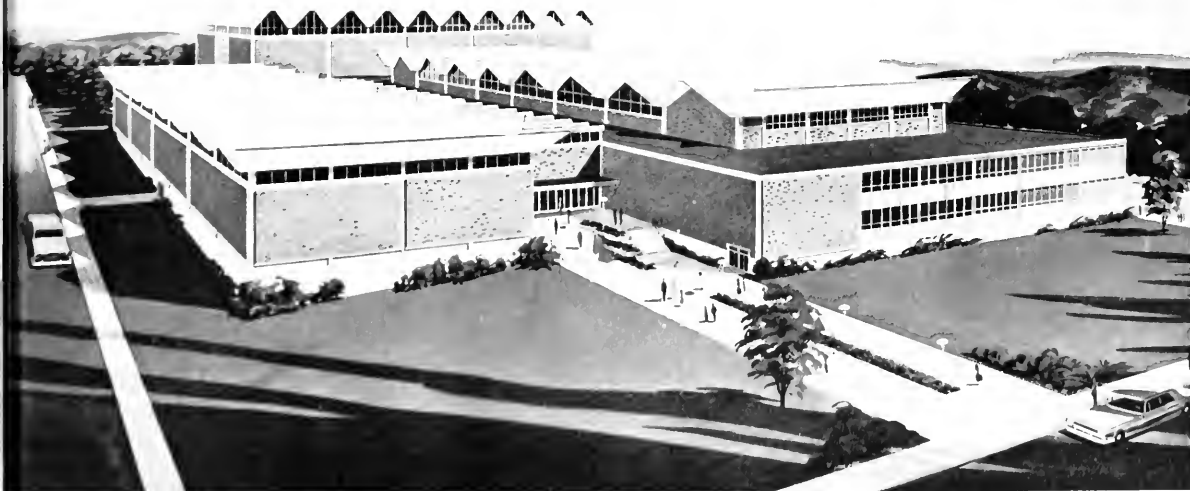
Clarion has begun an ambitious physical expansion program. Additional facilities are in the planning stage and we are looking forward to the realization of the comprehensive master plan. The challenge to assure final success is extended to all.

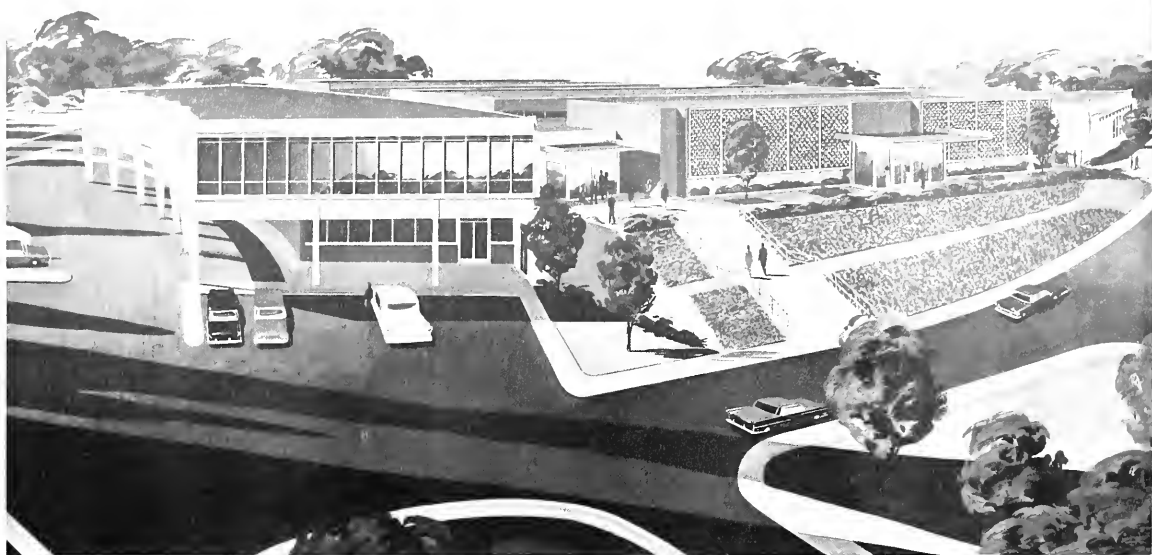


Clarion's newest addition is the closed-circuit TV system shown here with operator Bill Mushrush.

183

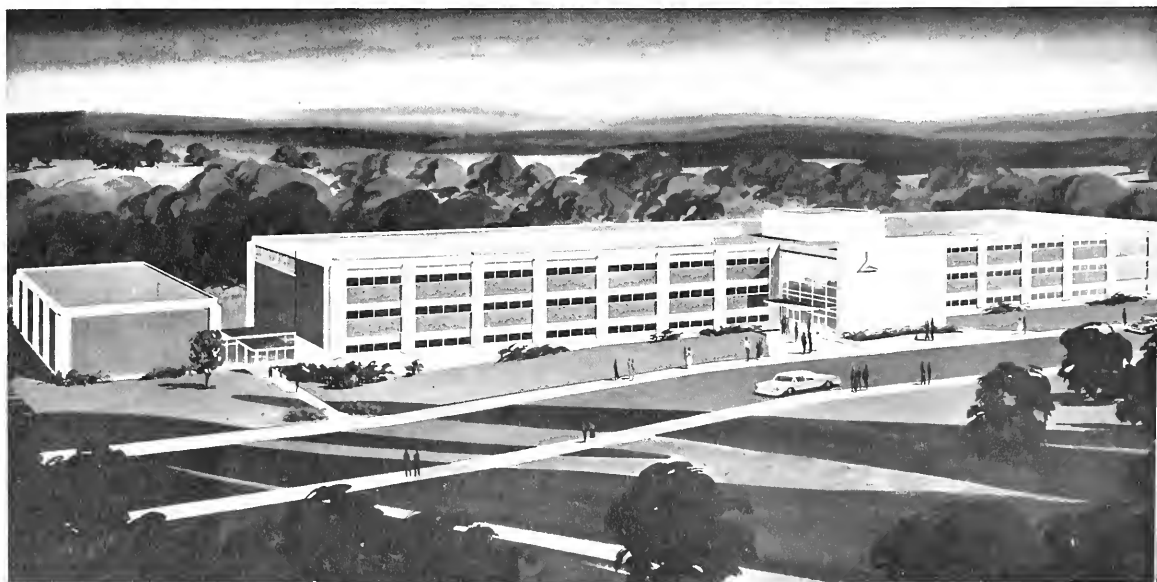
The proposed Field House and Gymnasium to be built in 1972.





| The new dining hall and kitchen which is to replace our present tennis court. |

184



| Our future science classroom building and planetarium. |

Spec. Col.
qLD
1017
.C88
1964
c.2



NO
PARKING
ANY
TIME

