

**SEQUELLE**

**1969**



Carlson Library





# SEQUELLE

## CLARION STATE COLLEGE

CLARION, PENNSYLVANIA

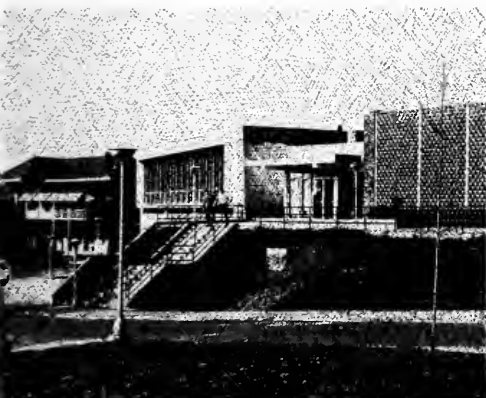
Advisor: Michael H. Johnson  
Editor: Janet L. Beary



9LD  
1017  
.C88  
1960  
3.2

# TABLE of CONTENTS





Seasons of Clarion	6
Organizations	38
Fine Arts	58
Beauties	70
Greeks	82
Sports	122
Venango Campus	158
Faculty	186
Seniors	202





*Dr. James Gemmell*

*President*





In every generation mankind divides into two basic categories. There are those who set sail in the pursuit of comfort, seeking a harbor innocent of challenge, free of doubt, secure and certain. And there are the others whose restlessness and idealism drive them into hazard, discomfort, challenge, uncertainty—and accomplishment.

Institutions like Clarion are the focal points of the sorting process. Here there is challenge aplenty; here there is intellectual hazard; here our most important product is doubt. Here, more than in any other segment of social endeavor, is where the action is. If we—the faculty, students, and administration of the college—have done our job well, we have rigorously questioned a *priori* certainties, cast doubt on received assumptions, glorified intellectual hazard, made belief and conviction the prize of hard endeavor and not the easy stipend of mindless conformity.

There is a parallel here at Clarion between what is happening to our campus, physically, and what you whose activities are recorded in this book have undergone during this past year. If we have succeeded in what we set out to do, the old ivy-covered walls of out-worn ideas, prejudice, and ignorance have come tumbling down, to be replaced with something new and bright and clean. But I hope we may all remember that even new walls are far from immortal, that tearing down and re-building are inevitable aspects of life extending from the most primitive biological processes to the most complex evolutions of political thought. If we have rendered you less happy—in the happiness of complacency—we are not very sorry. The last boat to illusion awaits you, and it is not very seaworthy.

Sincerely,

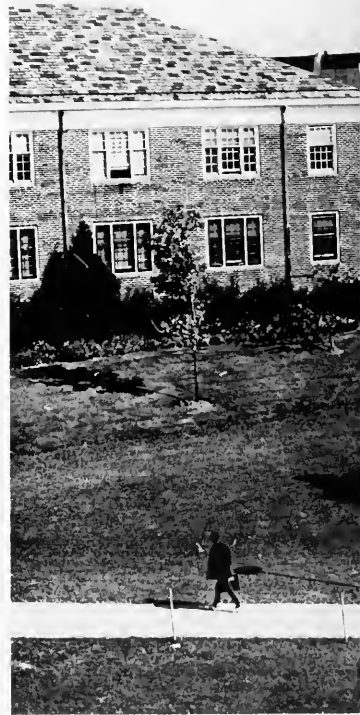
*James Gemmell*

James Gemmell, President



# SEASONS of CLARION









Fall at C.S.C. is unlike fall at any other western Pennsylvania college. September greets freshmen, seniors, and all those inbetweens with that unmistakable college atmosphere. The dormitories come to life, friendships are established and the students move into the jam-packed life which is to be theirs on campus, and into a whizzing world "where the action is."

Introducing the grind of study and the buzz of duty is the hustle of orientation and registration. For freshmen, orientation week is not cluttered with study, but neither is it a time for napping. Between official welcomings and indoctrination meetings, the freshmen discover the hills and river, the Union, and other freshmen with problems similar to their own. For everyone at Clarion the fall semester is punctuated with "Where is . . . ? ", and "Could you tell me . . . ? ". Freshmen—welcome to four years of seasons, and seasons to come.

For seniors, that last semester and student teaching are the pinnacles of interest. To the topdogs of campus the days remaining until June graduation seem an eternity away.

To the Sophomores and Juniors, it's welcome back to football games, parties, termpapers and exams. Fall at C.S.C. has begun.





As the semester swings into high gear, the amount of work increases accordingly. Although studying is predominant, work of all kinds is included, and the results may be either slow or quick in coming.

With the semester progression a seemingly endless cycle of college life emerges: eat—study—sleep.





What am I? Regardless of the amount of work a student faces, a few precious moments of quiet can always be found to do some soul searching for the answer. If the student finds his own solitary corner of the campus and asks himself this question not once but many times, these quiet moments of scrutiny, of probing, of doubt, bring him face to face with self—that quality which keeps him a distant individual apart from others, despite the sharing of dozens of common experiences. The questioner in his solitary corner comes to realize that self has meaning only in relation to others, that he is really many different people at many different times. When impulses are stirred, inspirations are felt, and ideas emerge. It is from these ideas that the answer slowly becomes evident to the self.









Minutes are frames of motion exploding in energy, and nowhere is this more evident than on the football field.

While always outplaying their opponents, this year's football team provided C.S.C. fans with performances leading to near heart attacks as well as heartbreak. Regardless of whether the game was won or lost, the "Eagles" team commanded pride and respect from all students.

The fans themselves were also to be commended for the everlasting support given the team. The signs around campus and the size of the Saturday afternoon crowds were visual proof of the loyalty held by "Eagle" fans.



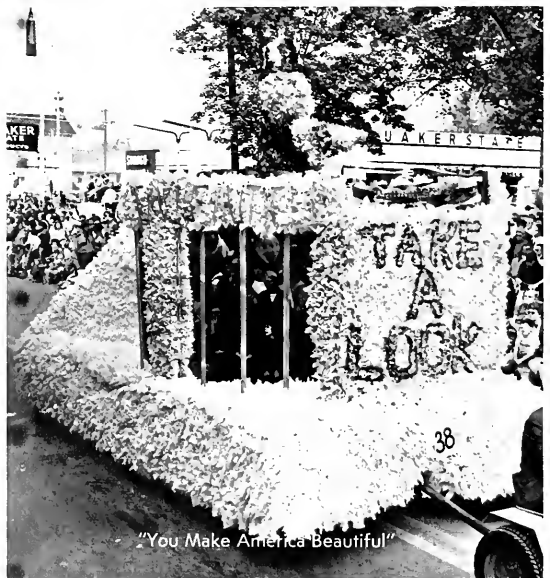


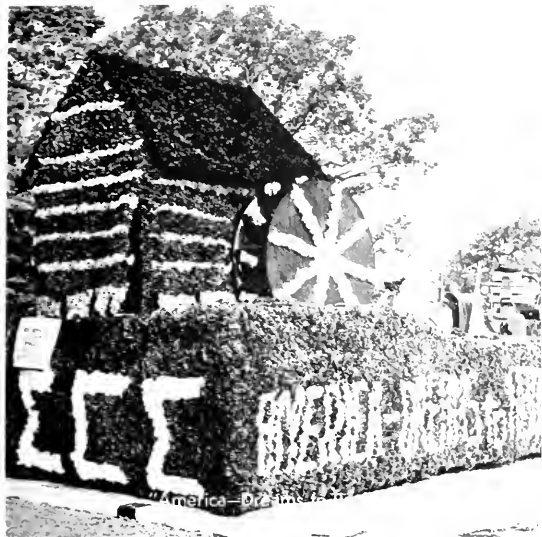


Solitude for reflection, but company for fun. These are the sometimes happy, sometimes sad, always poignantly felt moments when no perplexing questions are asked, no answers sought. Books are shelved, classes temporarily forgotten. The individual becomes part of the group, bringing with him his unique contribution to the moment.









Saturday morning of Homecoming drew hundreds of Clarionites as well as students to view the Annual Autumn Leaf Festival Parade. The theme of the 1968 parade was "America the Beautiful," and C.S.C. was well represented through the efforts of sororities, fraternities and various college organizations.

Trophies for the outstanding fraternity floats went to first place Theta Zī's "The Beauty of Liberty;" second place, Phi Sigma Epsilon's "Keep America Beautiful;" and third place, Sigma Tau Gamma's "You Make America Beautiful."

The sisters of Delta Zeta won the first place trophy among the sororities with their float "Horn of Plenty;" the second place went to the Tri Sigs "America—Dreams to Reality;" and the third place trophy was captured by the Zeta Tau Alpha's "America—God's Crucible."

Long hours and enjoyable hard work went into making these floats the best C.S.C. has seen yet.







With the end of the football season, comes the end of Fall; and for a month, the concentration of a majority of students is placed on studying.

During the first half of the first semester, the students become relentlessly involved with their environment—each coping with it according to his own needs and wishes.

Some become chameleons, altering facades to fit the present situation; some strive for integrity of character; while still others developed values in true perspective.

With Fall ending, the brightest colors of the campus fade, and all settle down to face the next of the seasons—Winter.

# Winter: Time Out For Study

Winter. The first snow. Nobody really knew what had happened. Just yesterday there were football games to go to, and scarlet and yellow leaves to see, and now today, only a bleak world of gray and white.

But winter brings its own treasures too, a white campus lawn which remains momentarily without footprints, basketball games, snowball battles, a crunching under foot, and Christmas.

There is no logical reason for the existence of a snowflake any more than there is for evolution. It is an apparition from that mysterious shadow world beyond nature, that final world which contains—if anything contains—the explanation of men and catfish and green leaves.

Loren Eiseley  
The Immense Journey









There are sights and sounds which surround us daily, challenging our senses and appreciations. Often, during our walks about campus, we pass oblivious to them. Yet, we cannot ever really ignore them. They are of this time and this place, and as an integral part of the college atmosphere, they become a part of our lives. These sights and sounds leave pleasant impressions and memories that linger, transcending the passing of years.







Winter, for all its uniqueness, remained winter. When you got up for your 8:00 class, it was dark, and when you got back from your two to five lab, it was dark. The weather remained hesitant all season, trying to decide between being semi-tropical one day and sub-zero the next.

From December to February there was a regular parade of colorful hats, scarfs and mittens. But by March everyone had put away most of their winter togs, and were eagerly awaiting the soon to come spring season.





## Spring: Hardest Part Of The Second Semester





What is it about spring that makes a student want to skip classes and soak up some rays, or take a long walk and forget everything for awhile? Whatever it is, that's what makes spring the hardest part of the second semester.

The semester begins with the student approaching the arduous task of registration in one of two ways. Either he signs up for a light load of easy "B" electives to up that Q.P., or he signs up for the courses he blew in the first semester with the hope of redeeming himself. But the distractions from studies are at a peak and take their toll regardless.

The climate was definitely the main factor which made the distractions so irresistible, as the hot and sometimes humid air created unbearable conditions for studying in the dorms. Refuge from the heat was taken either in the air conditioned library or on the front lawn. If the student chose the latter he invariably ended up in a bull session while everyone soaked up the rays.





Spring is the time of year when the news on the graffiti boards flourishes; the steps of the Union are constantly filled with people, with only the faces changing every forty minutes; the trees and bushes surrounding the campus and buildings are in full bloom.

It's also the time of the year when classes seem more boring than they really are. Occasionally you get shocked out of your dream world by realizing that tests and pop quizzes and term papers still exist.









As the end of spring approaches, thoughts turn to finals and summer vacation. Students work less and less, and talk more and more. "After all, the year's almost over."



# Summer: What A Way To Spend Vacation

About the only thing summer school had going for it was the air conditioned classrooms. Nevertheless, hordes of students withstood the pain of "vacation studies" to either catch up or get ahead. Some of them were freshmen who not only got a taste of college before going to work, but also a few credits toward their degree. Much swimming and many games of golf were played to relieve the long, hot weeks of study.

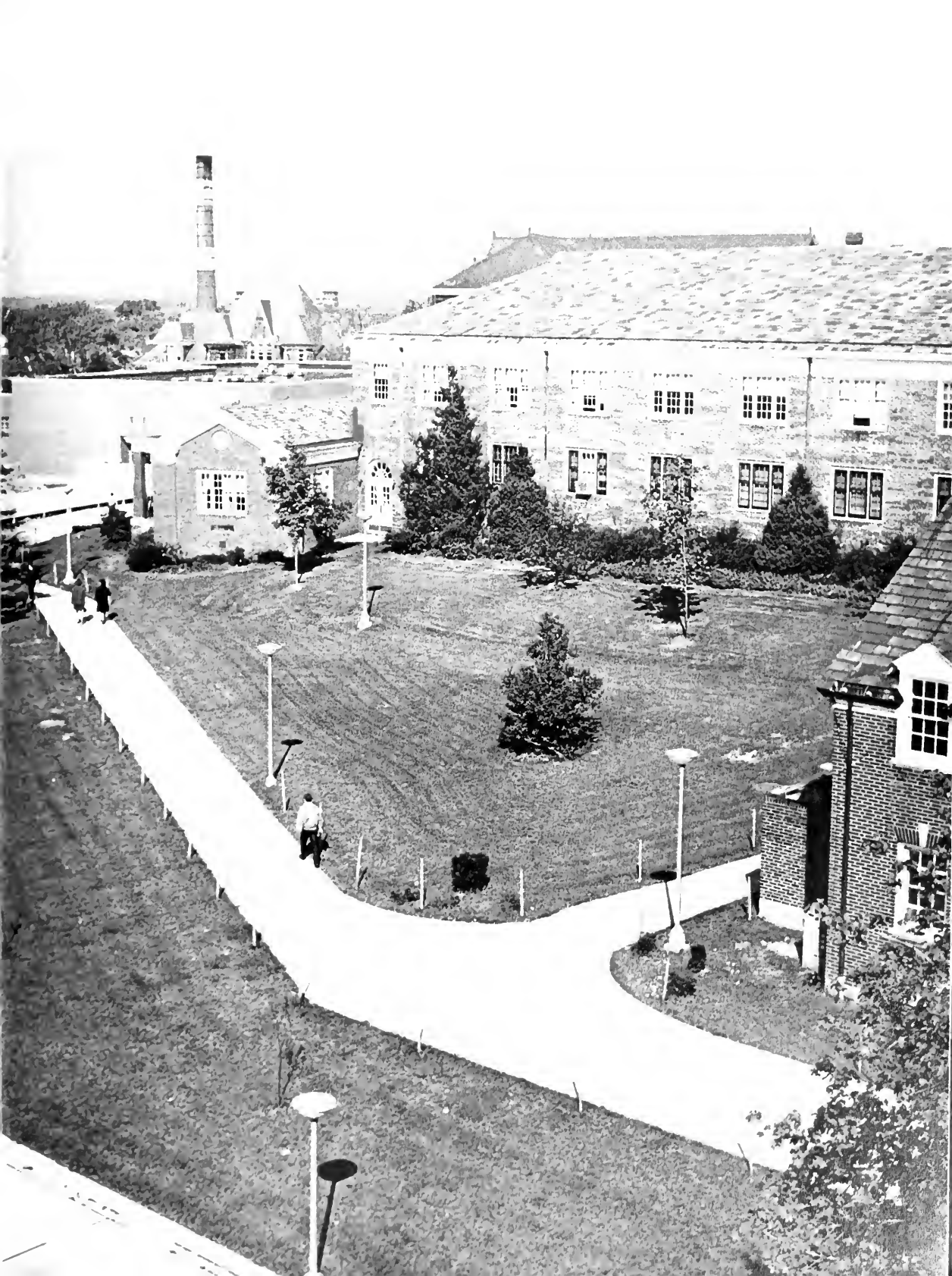






Because we live from moment to moment, the experiences we share today will never again seem as vivid or as immediate to us. Later in life, our memories marred by time, we will reminisce about these moments, but they will not be the same. We will no longer feel the events, only imagine how they felt, how they shaped us. Living today, we learn and learning, live. Our living and learning is done, for the most part, during the four seasons at C.S.C.





# ORGANIZATIONS





# Student

## Sequelle



Row 1: Melanie Silvernail, Janet Beary, Mary Lou Bednar.  
Row 2: Jeanie O'Hop, Pam Rider, Dan Gaido, Kathleen McGrath, Ann Rougeux.

The compiling of yearbook material is a difficult and often thankless task. Many tedious hours must be spent gathering information, numerous meetings must be conducted to exchange ideas, and deadlines must be met.

Sequelle does not merely represent a nostalgic sourcebook to C.S.C. upperclassmen. To those on the staff it is the embodi-

ment of a year's worth of mass confusion, wound up in triplicate forms, photographs, typewriters, and little bits of paper.

In September when the book is given out and congratulations are passed around, the last minute madness has faded into memory and the work begins on Sequelle '70.

# Publications

## Clarion Call



Row 1: Carolyn Welesko.  
Row 2: Sue Fair, Rosemary Slebodnik, Nandy Deisel, Pam Rider, Peg Foley, Ann Rohrbaugh, Nancy Sarringer, Elizabeth Curley.  
Row 3: Dr. Richard Redfern, Ed Wozniak, Linda Sonnenfield, Georganna Winters, Larilyn Andre.

Freedom of expression and opinion to all students is offered by the staff of the college newspaper, the Clarion Call. Every Clarion student is free to express his opinion in Letters to the Editor, as long as he meets the requirements of good journal-

istic practice. It prohibits printing falsehood in any form, violating criteria of good taste, and opposing the laws of libel and slander. Accurate reporting and objective journalism are stressed by the Call.

# Student Senate



Row 1: Carol Robinson, Ginny Elish, Bob Dornan, Tom Paolino, Jim Ryland, Judy Macuga.  
Row 2: Pam Mattern, Tony Mattern, Marg Butler, Don Kress, Pat Losik, Katie Westcott.

The goals of the Senators are to represent the student body in administrative matters, to work in conjunction with faculty, students and administration, and to stimulate an atmosphere of cultural and intellectual development.

C.S.C.'s Student Senate does the work of a constitution committee, budget committee, student activities board and election board. The Senate works in conjunction with other organizations in creating and carrying out various projects during the school year, is responsible for the expenditure of student activity fees through allocations to the various activities and organizations, and confirms student appointments to college standing committees.



Junior

# Class Officers

## JUNIOR CLASS

CHERYL BENNETT	TREAS.
JAMES RYLAND	PRES.
SUE PAUL	VICE PRES.

## SENIOR CLASS

TANA FAIRFAX	SECRETARY
LARRY COPE	PRES.
HOPE HENRY	VICE PRES.
JANICE HOFFMAN	TREAS.

## SOPHOMORE CLASS

MIKE BOZICK	PRES.
KATHY BURGASON	TREAS.
LIN KLIMEKOS	SEC.
LORRIE DAVID	VICE PRES.

## FRESHMAN CLASS

TERRY JENKINS	VICE PRES.
MIKELL YOWELL	SEC.-TREAS.
LARRY TRUDGEN	PRES.



Senior



Sophomore



Freshman



Row 1: Joe Camgemi, Richard Cullen, John McGinnis.  
 Row 2: Doug Hall, Dan Kimmel, Rick Morgart, Don Huber, John Bowser, Rob Mongiello.

## Men's Inter-Hall Council

To improve residence hall life, and solve the problems of the individual men's residence halls are the goals of the M.I.C.

The head governing body of the men's residence halls is formed by the president, vice president, and a representative of the hall council.

## Residence Hall

### Women's Inter-Hall Council

Comprised of the presidents of the councils of each of the five women's residence halls, under the advisement of Deans Riesman and Vairo, the W.I.C. serves as the governing body for the women's dormitories.

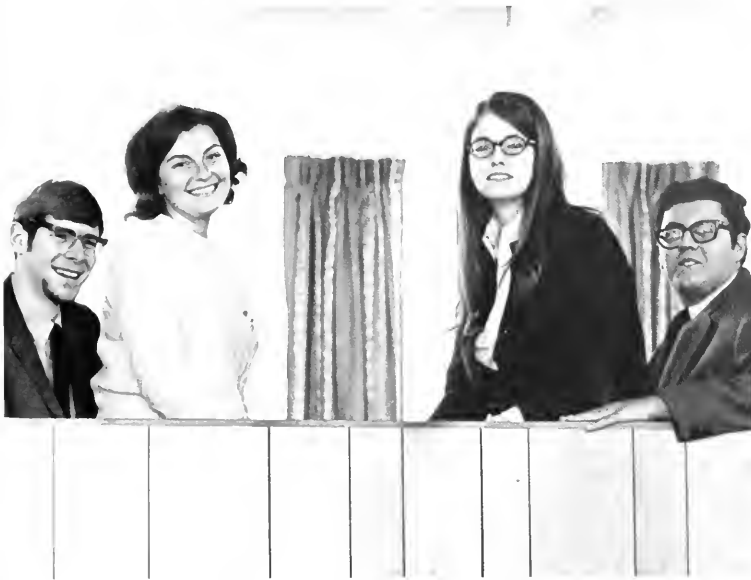
Determining new rules and enforcing established ones, as well as considering any problem related to residence hall living, are their prime objectives.



Kathy Lloyd, Susan Pelino, Linda Emerick, Cathy Smith, Bonnie Siepiela, Mary Palmer, Janet Kochin, Phyllis Romano, Jeanie O'Hop.



# Student Union Board



Richard Cullen, Laurel King, Marg Butler, Tom Paolino.

The Student Union Board was founded to aid in the planning and functioning of the college student union.

In the near future, the state is to construct a college union building at each of the state colleges. The members of the board are awaiting state action so that C.S.C. can have a new college union.

# Association of Women Students



The Association of Women Students was organized for the purpose of representing on-campus and off-campus coeds of the college. Its function is to direct and maintain social and academic standards among its women students by means of instilling in them a sense of independent maturity.

AWS sponsors many activities throughout the year including the "Big Sis-Little Sis Party," Homecoming, the making of Christmas wreaths, the Spring Fashion Show and the Mother's Day Tea.

Row 1: Leslie Hudak, Jeanie O'Hop, Pat Losik.  
Row 2: Sandy Bordick, Marsha Kramarik.

# Campus Politics



Row 1: Patricia Morse, Pam Mattern, Jo Ann Mortimer, Elizabeth Ogden.  
Row 2: Lawrence Carter, Richard Helms, Tony Mattern, Ray Yutzzy, Alfred Serff, Owen Winters.

## Intercollegiate Conference on Government



## Young Republicans

The Young Republicans were organized with the purpose of providing the students with an opportunity to discuss and express their views on current political matters, politicians and policies of the Republican Party.

Elizabeth Ogden  
Al Serff  
Ray Yutzzy  
Richard Helms  
Tony Mattern  
Jo Ann Mortimer  
Pam Mattern

# Ski Club

This winter Mother Nature provided C.S.C. skiers with little opportunity to test their knowledge of the principles of the sport. But when the few chances did appear, the members of the Ski Club utilized them with overwhelming enthusiasm.



Gloria Rafail, Niki Wilson, Cindy Leese, Olga Leondiades, Patty Gresh, Helen Delmaso.

# Collegiate Rainbow



Recently organized by Dr. Elbert Moses, advisor, and Miss Ruth Fleming, Grand Deputy, the Beta Chapter of Collegiate Rainbow is an association of non-sectarian Christian women. Providing women with an opportunity for a more creative life is the basis of their organization.

Row 1: Jill Lowe, Pam Rider, Dr. Moses, Sue Anne Knowles, Miss Ruth Fleming, Cheryl Yonker, Diane Schulteiss, Larilyn Andre.  
Row 2: Linda Yowan, Sue Beenting, Kathy Sepos, Sue Riddle, Bev Squire, Elva Butterworth, Linda Gmegy, Candy Skinner.

# Sigma Tau Delta



Sandy Bordick, Linda Mason, Marlene Miller, Roseann Castellano, Sharon Hall, Michael Seyler, Rosemaria Szczerba, Connie Carter, Chris Romanus.

# Honorary Fraternity English

Sigma Tau Delta, symbolizing "sincerity, truth, and design," is an honorary English fraternity which meets for the purpose of promoting the mastery of written expression, encouraging worthwhile reading, and fostering a spirit of fellowship among men and women who are specializing in English. Sigma Tau Delta maintains a flexible program to enable the members to enjoy a variety of selected topics in the inexhaustible field of literature.

# Alpha Mu Gamma

## Honorary Fraternity Language

Alpha Mu Gamma is a professional language fraternity which has as its objectives the furthering of professional interest in foreign languages, especially French, German, Russian and Spanish, and the strengthening of student and professional capabilities. Appreciation and understanding of foreign languages is a basic goal.



Row 1: Donna Sacco, Trina Lorah, Carolyn Banjak, Barb Jakub, Chris Nevel.  
Row 2: Donna Bickerstaff, Martha Zvonik, Pam Grantham, Olga Leonides, Lynda Oskin.

# Kappa Delta Pi



Row 1: Ruth Johnston, Cindy Hovis, Barb Jakub.  
 Row 2: Rosemarie Szczerba, Linda Toney, Jill Elliott.  
 Row 3: Helen Dalmaso, Donna Bickerstaff, Josephine Szczerba.  
 Row 4: Carol Wray, Michael Seyler, Nancy Mincemoyer, L. D. Sauvage, John Carroll.

The primary purpose of Kappa Delta Pi, honorary educational fraternity, is to recognize and reward the achievements of those outstanding students who are aspiring to a career in the teaching profession. Members strive to establish a professional attitude and acquaint each other with new developments in the field of education.

## Honorary Fraternity Speech Pathology and Audiology

Sigma Alpha Eta, national honorary fraternity for majors of speech pathology and audiology, provides opportunities for faculty and students to work together to advance their profession. By offering opportunities for social and professional fellowship, a spirit of unity persists throughout this group of individuals dedicated to common goals.

## Sigma Alpha Eta



Row 1: Margaret Nuhfer, Linda Robinson, Mary Ott, Linda Toney, Sharon Bridge, Sharon Cariss.  
 Row 2: John Balco, Janet Kuester, Bob Hull, Linda Ummer, Judy Selfer, Marg Butler, Dorothy Lawry, E. P. Simpson, Michaline Chesonis

## Pi Kappa Delta

Long hours of preparation for participation in inter-collegiate debate, oratory and extemporaneous speaking make C.S.C.'s Pi Kappa Delta members outstanding in competition. The many trophies and honors brought from all parts of the U.S. reinforce the excellence of the members of the national honorary fraternity in forensics.

## Honorary Fraternity Forensics



Kaye Berkey, Pat Dobson, Mary Lou McCauliff, Roger Hufford.



## Debate Team

Row 1: Rebecca Gasper, Lillian Pfaff, Jetta Jean Gilligan, Karla Jantsch.  
 Row 2: Kaye Berkey, Judy Rosensteel, Eileen McGinley, Judy McAuley.  
 Row 3: Patricia Dobson, Mary Lou McCauliff, Sue Anne Knowles.  
 Row 4: Roger Hufford, Barry McCauliff, Bob Banks, Alan Carraway.



Row 1: Peggy Britton, Connie Jones, Linda Sonnenfeld, Bill Pore, Sue Riddle, Bill Santee, Pamela Rider, Rosemarie Szczerba, Niki Wilson, Row 2: Marcia Berlin, Dorla Emery, Jeanie O'Hop, Dan Gaido, Doug Hall, Ken McNulty, Richard Helms, Georgana Winters, Sheila Donaldson

The Student Pennsylvania State Education Association seeks to develop and cultivate such desirable professional qualities as leadership, character and scholarship among prospective teachers engaged in their preparatory work.

This year Clarion hosted the Regional SPSEA banquet and the Regional PFTA fall convention held during the month of October. Other highlights for the year include participation in the Regional spring SPSEA meeting at Geneva College and in the state convention at Harrisburg.

## Council for Exceptional Children

The Council for Exceptional Children is an organization established to unite those interested in "exceptional" children. The yearly programs are planned to improve the educational opportunities for these children. The organization helps to make members aware of the various adjustments that must be made in the classroom to satisfy the needs of the individual child.



Row 1: Carrie Tabacheck, Cindy Hovis, Susan DePiggi, Connie Jones, Linda Sonnenfeld, Mary Lou Nowacki, Ginger Apple, Sandy Vittorel, Row 2: Shelly Perkins, Toni Burkholder, Eileen Querio, Nancy Muncemoyer, Betty Stiglitz, Judy Trotta, Bonnie Sweptala, Kathy Mollick, Margie McHenry, L. D. Sauvage

# Alpha Psi Omega

# Theater



Alpha Psi Omega is the national honorary dramatics fraternity at C.S.C. Proficiency in the theatrical arts is the basis for student recognition.

The members work closely putting on the various productions in the Chapel each year. The organization helps the members develop their talent and the art of acting. Through the development of a taste for good drama, the dramatic groups of many colleges and universities are united.





# Arts

# College Readers



Row 1: Connie Kusiplek, Connie Carter, George Hall, J. B. Anderson, Joanne Long.  
Row 2: Herb Michaels, Ken Miller, Paul Gaffney.  
Row 3: Steve Brizzo, John Soloman, Jackie Gerard, Cece Carter.

# College Players

The College Players is one of the hardest working groups on campus. Longer hours than one imagines are spent in rehearsals and planning for their yearly productions. Although talent is almost a necessity, even more necessary is a willingness to work. Besides acting talent, the group possesses talents in painting, designing, directing and other important facets of play production. The College Players have obtained a great deal of recognition, personal satisfaction, and have done much to provide the campus with outstanding entertainment.



Row 1: Carla Fabra, Connie Carter.  
Row 2: John Soloman, Jackie Gerard, Larilyn Andre, George Hall, Dorothy Shafo, Nancy Peese.  
Row 3: Ken Miller, Pam McFeaters, Connie Alexis, Terry Daum, Joanne Long, Janice Anderson, Cece Carter.  
Row 4: Herb Michaels, Judy Cross, Connie Kusiolek, Theophil Ross, Cheryl Summy, Steve Brizzo, Paul Gaffney.



## Bios Club

Under the direction of Doctors Twiest and Williams, the Bios club members endeavor to enrich their understanding of the "life" science. Guest and student speakers, as well as various field trips, are included in their year long activities.

Dr. Gilbert Twiest, Dr. John Williams, Carmen Tyler, Judy Treskovich, Mary Anne Sydlik, Elaine Thomas, Kathy Zajackowski.

## Student Affiliates of the American Chemical Society

Student affiliation is a program of the American Chemical Society for undergraduate students enrolled in course work leading toward a degree in chemistry. Meetings on campus consist of discussions of topics in the field of chemistry, informative motion pictures and lectures. Various publications received by the members serve to better acquaint them with their field.



Row 1: Linda Lauer, Larkey Miller.  
Row 2: Gary West, Carl Shaffer, H. Ray Hough, Dr. Paul Beck, Terry McAninch.

# Geography Club



The Geography Club strives to create more student interest in the different phases of geographical thought through various activities. Included in these activities are lectures from distinguished guests and slide and film presentations.

# Math Club

The Math Club of C.S.C. is involved in supplementing and extending the member's knowledge of the subject. To do this, members are furnished with background information, recent mathematical developments and new studies in advanced fields of mathematics.



Row 1: Roger Engle, Phyllis Marshall, Helen Dalmaso, Joyce Crable, Naomi Buch.  
Row 2: Nancy Fleet, Jill Elliot, Bill Weidler, Judy Bishop, Hope Henry.

# Women's Athletic Association



Janet Marasko, Sandy Artac, Nicki Wilson, Miss Francis Shope, Joanne Vance, Barb Smith, Cathy Peterson, Alberta Kilpatrick, Cindy Leese, Elsie Esseck, Maureen Elcard.

The Women's Athletic Association established to promote physical fitness and good sportsmanship, provides intramural activities for all women on campus. A varied program includes basketball, volleyball, swimming and badminton.

# Eagle Cheerleaders



# Varsity "C"



Row 1 Elmer Schuetz, Tom Humphrey, Andy Brindger, John Nakich  
Row 2 Charles Matsko, Bob Gevaudan, Fran Sirianni, Ray Costello, Al Emerick

The men of the Varsity "C" are recognized for their promotion of high standards and fair play in intercollegiate sports.

Those who have earned the "C" can be proud of their accomplishments.

# FINE ARTS





# Golden Eagle Marching Band









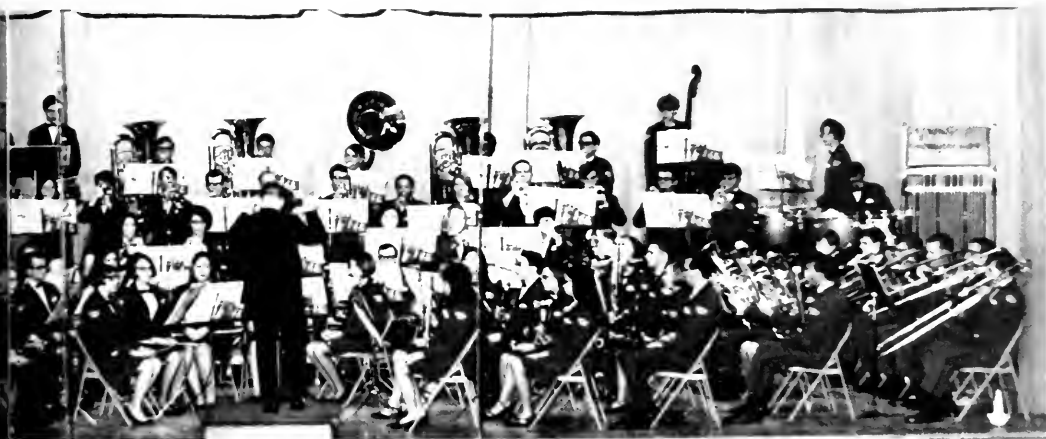
## Concert



This year's Concert Band made several appearances in high schools across Pennsylvania and neighboring states, in the Annual Mother's Day Concert, and in their Spring Concert.

The group of talented performers offers a wide variety of selections from the standard marches and overtures to Broadway show tunes. In the appearances both in the community and on campus, their flexibility and adroitness gave enjoyment to all.

# Band



# Concert Choir





**Madrigal Singers**



Scenes from:  
"Ah, Wilderness"





Scenes from:





# Carnival



The campus dramatic organization known as the College Players, offers unprecedented opportunities for gaining experience in the various phases of play production and theater technique. Their aims are to stimulate dramatic and production talents through experience on stage, backstage, and out front; to broaden the cultural background and appreciation of the student body; and to provide that satisfaction, experience, and enjoyment that comes from participation in good theater.

In addition to four major productions each year, the College Players offer two studio productions, and several student-directed one-act plays for public viewing. There is also a summer theater program which offers five productions. Large productions for the last year included: "Herr Biederman and the Firebugs", "After the Fall", "Ah, Wilderness", and "Carnival".

# BEAUTIES







*Miss Clarion State College 1968*

*Miss Kathryn A. Sepos*

*The true test of a queen is poise and serenity. In 1968 Miss Clarion State College, Kathryn A. Sepos, these two qualities are in abundance. Whether walking down a runway or enchanting both audience and judges, Kathy was poise personified.*

*But the talented coed who captivated the hearts of her co-contestants, the judges, the stage crew and the audience proved she possessed many top qualities other than those of congeniality and poise.*

*Kathy's warmth was infectious throughout the pageant, as was her wit and determination.*

*Daughter of Mr. and Mrs. Frank A. Sepos of Midland, Pennsylvania, Kathy was a Speech Pathology and Audiology major, and an active member of Sigma Alpha Eta, honorary fraternity for Speech Pathology and Audiology majors.*



*Homecoming Queen 1968*  
*Miss Barbara J. Dimmerling*

*Popular, poised and pretty describe the lovely lass that reigned on campus as Homecoming Queen, 1968. Queen Barbara Dimmerling, daughter of Mr. and Mrs. Carl B. Dimmerling of Pittsburgh, Pennsylvania, is a senior at Clarion State College. She is a Secondary Mathematics Education major who frequently makes the Dean's List.*

*While a student at Clarion, Barb participated in many activities including being an active member of the Zeta Tau Alpha Sorority. She was a member of various intramural teams, and worked as a student secretary. In addition, Miss Dimmerling served as an "Eagle" cheerleader.*



*Attendants  
and  
Escorts*



*Miss Clarion State College 1969*

*Miss Lynda Ziegler*





*Lynda Ziegler of Van, Pennsylvania, worked her way through eliminations to the coveted title of Miss Clarion State College, 1969.*

*A sophomore at C.S.C., Lynda is an Elementary Education major with a concentration in Mathematics, and an active member of the Zeta Tau Alpha Sorority.*

*Miss Ziegler is the daughter of Mr. and Mrs. Donald D. Ziegler of Van.*





*Miss Northwestern Pennsylvania Laurel Queen*

*Miss Diane M. Neal*

*Clarion was especially honored this year to have Miss Diane Marie Neal chosen as the Laurel Queen and Miss Northwestern Pennsylvania in the annual pageant at Brookville. In this contest she was sponsored by Alpha Xi Omega, C.S.C., at which time she presented a dramatic interpretation of a poem for her talent. Diane, a brown-eyed brunette with fair complexion, appeared there in a bright red floor-length chiffon gown.*

*Miss Neal, a junior at Clarion, is from Clarion, Pennsylvania, and the daughter of Mr. and Mrs. Alvin R. Neal of the same address. A Liberal Arts major, she is very active in theatrical productions including playing the female lead in "Suddenly East Summer" at C.S.C. In addition, Diane appeared in several plays with the Genesee players at State University of New York, and worked at Fentier Village at Salamanca, New York, appearing in variety shows.*

*Clarion is very proud of Diane for bestowing this honor on the school.*

# Keen Competition





Talent  
A  
Must

# GREEKS







Pamela Grantham, Dorothy Lawry, Michele Kalverny, Susan Loucks, Lorrie David, Shawn Williams, Bonnie Allwein, Marsha Kramarik, Diane Wilson, Cathy Wildnauer.

## Panhellenic Council



## Interfraternity Council



Bob Lucas, Lou Vescio, Jim Hubert, Bob Hull, Bob Ament, Jim Cassin, Phil Payne.



MELINDA BECKSTINE  
ELLEN BLOUGH  
BARBARA BLAKE  
DIANA BUSSARD  
WENDY CHRISTOFF



LINDA CURRAN  
MICHELE DALVERNY  
CLAUDIA DANIELS  
PATRICIA DERIKART  
ELIZABETH FELDMAN



KAREN FITZSIMMONS  
DENISE FOLMAR  
MARY JORDAN  
LAUREL KING  
LOUISE KISH



DEE MENOZZI  
SANDRA MERTEN  
PATRICIA OGBORNE  
PATRICIA OLEAN  
LINDA PENCE



BEVERLY REED  
PHYLLIS ROMANO  
FRANCES SHANDOR  
LINDA SHERMAN  
CAROL STEWART



FILOMENA VROTNY  
LINDA WOLF



AGNES YOUNG  
KARYN ZUNICH

Alpha Sigma Alpha

The Gamma Omicron Chapter of Alpha Sigma Alpha began May 6, 1967. The narcissus and aster are our flowers; the pearl and ruby our jewels. On color day and special occasions the Alpha Sigma Alphas can be seen wearing crimson suits and white blouses. Besides participating in many local service projects, Alpha Sigma Alpha's national philanthropic project is in the field of special education.

In its second year of growth, Alpha Sigma Alpha, along with the other Greeks, worked long hours on its float based on the theme "America the Beautiful." During fall rush, the Alpha Sigs welcomed their pledges into the sisterhood.

Congratulations were sent to sisters Pat Olean and Laurel King who were selected to appear in *Who's Who in American Colleges*. Honors also went to Betsy Feldman who was initiated into Alpha Mu Gamma, and Jackie Tytke who held a position as majorette.

The fundamental object of a sorority is to cultivate those qualities which will help its members to meet more happily and successfully the events of life. The Alpha Sigs participate in Greek activities to nurture an atmosphere of mutual love and fellowship in a common venture of co-operation. Our efforts center in service to all in Homecoming, rush parties, Red Cross Drive, Founder's Banquet, Greek Weekend, Miss C.S.C. Pageant and a Mother's Day Tea.

To establish a sisterhood that provides for the physical, intellectual, social, and spiritual development of its members is our aim. With this thought we would like to send a special thanks to our advisors, Mrs. Bonner and Mrs. Kodrich, who have helped us so much throughout the year.

Nancy J. Wescott  
 March 8, 1948—October 14, 1968  
 daughter of  
 James G. and Rose Marie Wescott  
 graduate of  
 Peters Township High School  
 Canonsburg  
 special education major  
 Clarion State  
 Alpha Sigma Alpha  
 May 1968

JUDITH MICHAUX  
 PRES.  
 CATHY MILLER  
 VICE PRES.  
 JACKIE TYTKE  
 SEC.



PAT SIMON  
 CORRES. SEC.  
 VICKI HARDWAY  
 TREAS.  
 ELIZABETH BONNER  
 SPONSOR  
 HENRIETTA KODRICH  
 SPONSOR





CINDY ALLEN  
ROBERTA BAUM  
JANE BLAIR  
NANCY BODEN  
ALETA BURD



PAT BUSHYAGER  
JULIE CAMPBELL  
CHRISTINE CARLSON  
KATHLEEN DARAK  
BARBARA DAY



ANNA MAE DEEMER  
BECKY DIXON  
SHARON FIERST  
SALLY FORMOSA  
ROSE GATESMAN



SUSAN GRAHAM  
NANCY GRANBERG  
GAIL HOLDEN  
BEVERLY JONES  
PATRICIA JOSEPH



CAROL KAHLE  
DONNA LALLI  
CHRISTINE MALETIC  
MARY HELEN MILOWICKE  
NENE MORELLA



PEGGY NEMANIC  
CAROL PALINKAS  
CAROL PETERS  
JANET PETERS  
NANCY PLESE



KAREN REED  
CATHY STINARD  
JUDITH THOMPSON  
CATHY WILDNAUER  
LAURA WILLIAMS

Alpha Sigma Tau



Alpha Sigma Tau, Alpha Omicron Chapter, was initiated on Clarion Campus in January, 1966. The colors of Alpha Tau are emerald green and gold, and our flower is the yellow rose. The sisters help to keep the spirit of Greek organizations alive on campus by working together under the motto "Active, Self-Reliant and Trustworthy."

The Alpha Sigma Tau sisters strive for attainments by participating in the following activities: Homecoming Parade, hostessing at football games, holding our Founder's Day Banquet, the Mother's Day Tea, Greek Sing, Greek Week-end, our Spring Dinner Dance and the Miss C.S.C. contest, among the activities which benefit the campus and the community. This past April the Taus placed first in the Greek Sing Competition with "Al Di La" and "Love Is A Many Splendored Thing." All the sisters shared in preparing boxes of classroom materials to be sent to Pine Mountain Settlement School as our national service project.

We extend a hearty welcome to our seven new pledges into the sisterhood of Alpha Sigma Tau.

Yellow roses are sent out to the sisters who held various honors this year: Laura Williams, senior Homecoming attendant and Tana Fairfax, Phi Sigma Kappa "Moonlight Girl." All the Taus hearts and good wishes are with our advisor, Mrs. Suzanne P-Jobb, who is on sabbatical leave at Kent State University this year.

Alpha Sigma Tau is a hardworking, happy sisterhood—a land of lasting friendships.

CAROL DEMOSS  
PPRES  
SUSAN PAUL  
VICE PPRES.



COOKIE MORGAN  
CORRES. SEC  
DEBRA NOBLE  
RECORDING SEC  
DEBORAH RAGO  
TREAS.





LINDA COOPER  
ELIZABETH CURLEY



CATHY DECKER  
KAREN DIXON  
MARILYN EVERETT



RAMONA FAULKNER  
JANEAN GARMONG  
LINDA HELT



CINDY LEESE  
JEAN McEWEN  
CHRIS McKNIGHT  
BARBARA PELICAN

Beta Xi Omega



Beta Xi Omega, a newly formed local sorority, became part of Clarion State College Campus in November of 1968. The purposes cultivated by the sisters include scholarship, friendship, sociability, and genuine involvement with others. Yellow and brown are our colors, and the carnation is our flower.

Our first activity was an open rush program in November which brought new members to the sisterhood, and the official recognition of Beta Xi Omega.

Spring semester was anxiously anticipated, for we hoped it would bring entrance into a national sorority, as well as a host of activities exciting and filled with "firsts." Plans included activities in our "first" pledge class, our "first" Greek Sing, our "first" philanthropic project, and our "first" sorority formal.

This year will be a trying one, yet it will be special and promising to the sisters, for in setting high ideals and a firm foundation for a new sorority, we will be achieving a purpose and a goal.

JULIE TOMPOS  
PRES  
DIANE CARVER  
VICE PRES.



DORNA BLAIR  
SEC  
CONNIE MILLIKEN  
TREAS.  
MRS. MARYLOU PAE  
ADVISOR





BONNIE ALLWEIN  
PARTICIA BACKUS



DIANNE BEST  
MARY BURKE  
KATHY CANNIONE



DIANNA CHERRY  
MARCIA EVANKO  
JILL FRICKER  
MILLIE GASPER



LYNN HANNOLD  
MARGARET KISKADDON  
JANET KOCHIN  
MICHELE McCAFFERTY



MARILYN MORTICHESKY  
FRANCES MUCZYNSKI  
JEANIE O'HOP  
CHARLEEN PFANNENSCHMIDT  
SUSAN RODELLA



JUDY SELKER  
SALLY WEETER  
CAY WELDON  
CHRISTINA WYNKOOP  
SANDRA YOUNG

Delta Lambda Tau





The sisters of Delta Lambda Tau have had a short but prolific history. With formal recognition by Panhellenic Council and Student Senate, the sisters began to participate in regular Greek activities. After building a float and ushering at the Homecoming football game, the sisters were faced with their rush. Together with the new pledges, the sisters shared in Christmas caroling and holiday parties.

The sisters have sponsored money-raising projects including "Slave Days" and the sale of address labels to help meet the expense of acquiring a national charter. Once a week each sister has offered her time at the Cerebral Palsy Day-Care Center in Clarion, doing exercises with the victims of the disease.

Spring semester found the sisters involved once again in a rush period. This was followed by participation in Greek Weekend—Sing and Olympics. Plans were made for their spring formal at the Le Mont in Pittsburgh, and also for their weekly pledge parties. For a newly organized group, the sisters feel that much progress has been made. It is their hope now to affiliate with a national sorority.

Through service projects and activities the sisters are learning the true values and benefits of sisterhood. The sisters are especially grateful to their founder, Ginny Elish, and also to Miss Roxanne Plapp, Delta Lambda Tau advisor, for her guidance, advice and encouragement in every problem encountered. Through her, they hope to build a strong national sorority on this campus.

GINNY ELISH  
PRES.  
JOANNE MECKLEY  
VICE PRES.  
JUDY MANNOZZI  
REC. SEC.



CHERYL BRYNER  
COR. SEC.  
LINDA BEPES  
TREAS.  
LINDA GIESMANN  
HIST.  
MISS ROYANNE PLAPP  
ADVISOR





LEONA ACQUAVIVA  
CHRISTINE ADAMS  
LINDA ALLSHOUSE  
DARLENE BOCK  
SANDY BROYD



SUSAN BRUCE  
SHARON CAMPBELL  
DEBRA CARSON  
ANNA MARIE CHIRILLO  
LINDA DAVISON



JANICE DAY  
JANICE DeAUGUSTINO  
LINDA DeCAPUA  
SUSAN DERIGGI  
LINDA DETTLING



LESLIE FREEBURN  
MERRIANNE GIFFEN  
PAMELA GRANTHAM  
SHARON HOLLERAN  
SANDI HUNT



CANDICE JAMES  
MARTHA JUFINKO  
MARIAN KERR  
KATHY KINLEY  
LINDA KLIMKOS



DEBORAH LEWIS  
JAN LICHTENBERGER  
SUSAN McCARTHY  
JUDIE McKENNA  
LINDA MYERS



PORTIA NICELY  
LINDA OLEKSA  
CATHY PERNAZZA  
BEVERLY REES  
PATRICIA RENN

Delta Zeta



CAROL RIEFSTAHL  
LINDA ROCKHILL  
DONNA SACCO  
JUDY TROTTA



LORETTA VASTADORE  
SARA WAUGH  
MARSHA WURST

Delta Zeta is a sorority held together by bonds of love, congeniality, loyalty, and high ideals. The sisters proudly wear their colors of old rose and vieux green, also a golden lamp above their hearts.

Delta Zeta nationally carries on such philanthropic projects as aiding the United States government Hospital for victims of Hansen's disease, in Carville, Louisiana, and Galladut College, a school for the deaf, in Washington, D.C. Epsilon Theta chapter at Clarion annually collects candy at Halloween for Polk Hospital and solicits for the Red Cross and the March of Dimes.

Our campus activities include participation in Homecoming, Greek Weekend, Founder's Day Banquet, Annual Dinner Dance, and Rush.

The Delta Zetas at Clarion take an active part in campus affairs. This year we won first place in the sorority division for our float in the Homecoming Day parade. Several of our sisters hold prominent positions as class officers, A.W.S. officers, and members of House Council. We are also proud of our sisters who have been chosen for various honors: Sandy Brody and Marsha Kramarik, Homecoming attendants; Vicki Wilcox, Tau Kappa Epsilon Sweetheart; Sue Deriggi, Theta Xi Homecoming Queen; and Lin Meyers, Theta Xi Sweetheart.

Our chapter is grateful for the help and guidance provided by Mrs. Gail Grejda, our College Chapter Director.

KAREN MONBORNE  
PRES  
VICKIE WILCOX  
1ST V.P.  
JEANNE STRUBLE  
2ND V.P.



SANDPA BORDICK  
SEC  
PEGGY YAPGAR  
SEC  
LOPETTA DAVID  
HISTORIAN  
MARSHA KRAMARIK  
PANHELLENIC REP





KATHY BURGESSON  
 BARB BURFORD  
 LINDA BROWN  
 CHERYL BOWSER  
 NANCY BREADLINGER



JOYCE CHIATELLO  
 CAROL CHRISTIE  
 BECKY DAVIES  
 ELAINE DAUGHERTY  
 ELAINE DEBIAK



DIANA DETWILER  
 DONNA EVANKO  
 MERRILYN FIRESTONE  
 SUE FLOOD  
 SUE GILDESLLEEVE



JAN GORENCIC  
 LINDA GREEN  
 KATHY GUNNELL  
 SHARON HALL  
 KATHY HAMILTON



JANET HARNISH  
 KATHY HEAD  
 DEBBIE HESSELGESSER  
 KAREN KLOTZ  
 PAMELLA MEYER



JOYCE OTTO  
 SUE PELINO  
 JANET PRICE  
 GAIL RELICK  
 RAE RICHARDS



RITA ROPER  
 CONNIE SAVENKO  
 GINNY SCOTT  
 CAROL SHUGARTS  
 PAM SLEZAK

Sigma Sigma Sigma



SHIRLEY TAYLOR  
PAMELA TYLWALK  
KATHY WANECK



PEGGY WARD  
SHAWN WILLIAMS  
AMY WLADYKA  
SUSIE WRIGHT

Alpha Pi Chapter of Sigma Sigma Sigma began in Clarion in 1935 making this sorority the oldest national on campus. Royal purple and white are the colors of Tri-Sigma with the purple violet as our flower and the pearl as our jewel. Tri Sigma girls strive for high scholastic attainments, high morals, as well as a well-rounded social life through giving, loving, and sharing.

Sigmas strive to fulfill these aims by participating in the Homecoming parade and Greek Weekend, by serving as hostesses for a game, by holding our annual Formal Dinner-Dance, Shaker Sweater Sale, Founder's Day Banquet, Senior Send-Off, and of course, Rush. This past year Tri Sigmas placed second in Greek Sing, received the first place trophy for Greek Day activities, and won second place in sorority float competition on Homecoming. Our most rewarding activities include supporting our adopted Greek Boy, Constantine, and contributing to the North Carolina Memorial Hospital through our National Robbie Page Memorial Fund.

Purple violets go to the sisters who received honors this year: Sharon Hall, junior Homecoming attendant; Cathy Smith, Sigma Tau Gamma Homecoming Queen; Shawn Williams, Theta Chi Dream Girl; and to our faculty advisor, Miss Margaret Wiant.



GINGER APPLE\*  
PRESIDENT  
JUDY MACUGA  
VICE PRESIDENT  
DEBBIE MCKELVEY  
RECORDING SEC.



MARCIE HUNNELL  
COPRES. SEC.  
CATHY SMITH  
TREAS.  
MARJLOW NOWACKI  
KEEPER OF THE GRADES  
DOROTHY LAWRY  
SP. PARHELIC



SANDRA ARTAC  
RENEE BOURG  
ROSEANN BRYER  
ROSEANN CASTELLANI  
CATHIE CONDON



SARA COX  
KATHLEEN CURRIE  
DONNA DANNIBALE  
DIANE DAVIS  
LINDA DEZENRICK



CAROL DIETZ  
BARB DIMMERLING  
JUDY DRAB  
BOBBIE EGIDI  
LINDA FERRIS



CATHI FOUST  
CARMELLA FUCILLO  
HOPE HENRY  
RUTH HODSON  
JANICE HOFFMAN



ROSE INGRAM  
KATHLEEN JOHNS  
MARY KAPP  
LINDA LAUDERMILCH  
BEVERLY LECHNER



SUSAN LOUCKS  
KERRY MCCALL  
PEGGY MCCAULEY  
DEBORAH MOORE  
LOUISE MUZYKA



CHRISTINE NEVEL  
PATRICIA PETRUSKA  
MIM PYLE  
CAROLE REIS  
MICHOL SAM

Zeta Tau Alpha

LYNN SCHULER  
 SUSAN SCOTT  
 MARSHA SESACK  
 JANET STEIS  
 RUTHANN SWARTZWELDER  
 MARY TASSOTTI



GERALDINE TROZZI  
 BARBARA VERISH  
 DIANE WILSON  
 LYN ZIEGLER



Turquoise blue and steel gray are the colors. The white violet is the flower. To promote scholarship, activities, and friendship, thus strengthening the bonds of love and sisterhood, is the purpose. This is the Delta Iota chapter of Zeta Tau Alpha national women's fraternity established at Clarion campus in 1960.

During the Spring, the Zetas participated in Greek Sing, Greek Day, and were the recipient of the First Place Scholarship Award. The annual banquet honoring parents, seniors, and initiates was held. At this time the White Violet Queen Award was presented for outstanding contributions to the sorority. Two sisters represented Zeta in the Miss C.S.C. Pageant.

The Homecoming celebration was a memorable occasion for the Zetas. The sorority contributed both sophomore representatives, a fraternity sweetheart, and the 1968 Homecoming Queen, Barbara Dimmerling. The float, "America—God's Crucible" received third prize.

Each year the sisters strive to become favorable assets to campus life. Three cheerleaders, two majorettes and C.S.C.'s Golden Girl, Janice Hoffman, seek supporting spirit at every football game. Other sisters hold offices in many clubs and the student senate. Some are members of honorary fraternities and some participated in dorm committees.

Each sister, in some way contributed her talents and together built a sisterhood to be loved and shared by all its members. The Zetas wish to express special thanks to the patronesses and advisors for helping to make this possible.

ELAINE DIGIULIO  
 PRES.  
 LINSAY BAIRD  
 VICE PRES.  
 CATHY CONFLENTI  
 SEC.



POKANNE GRASSO  
 TREAS.  
 DEBBY BÜPFGHARDT  
 HISTORIAN  
 JUDY TRESKOVICH  
 RITUAL CHAIRMAN  
 PATTY SKURKAY  
 MEMBERSHIP CHAIRMAN





## Greek Life



To be a Greek means: being a rushee, attending endless parties, signing a bid and becoming a sister or brother, proudly wearing "the" colors, and enjoying tradition and newness intertwined.

It means friendship, competition, entertainment, meetings, floats, and Greek Weekend. It means an endless list of activities and new people. That is what it means to be a Greek.







One of the most hectic periods of the year comes during the two or three weeks preceding the Annual Autumn Leaf Festival. These weeks are spent building floats, finding cars or tractors to pull them, losing sleep, cutting classes, eating aspirin, and discussing the now very near homecoming weekend.





Competition, entertainment and just plain fun marked the flow of festivities during Greek Weekend, 1969. All fraternities and sororities took part in the prevailing fun.

Highlights of the weekend included Greek Sing and Greek Olympics. The Olympics consisted of the pyramid building contest, pie-eating contest, powder-puff football game, egg toss and the keg roll.

A competitive air abounded as the Greeks vied for recognition.





It was just a year ago that most sorority members stood on that same sidewalk imagining the ease and security of rush from the inside. Only after having been through rush as actives do sorority members realize that they, themselves, behind those huge doors, feel more tense than any rushee. To the actives, rush involves hours of practice and preparation, tired feet, last minute instructions, and clowning to release tensions.



ΑΣΑ

ΑΣΤ

ΒΞΩ

ΔΛΤ

ΔΖ

ΣΣΣ

ΖΤΑ

ΛΓΦ

ΑΧΡ

ΘΞ

ΘΧ

ΣΤΓ

ΤΚΕ

ΦΣΕ

ΦΣΚ



WILLIAM BOTTI



MICHAEL BOZICK  
MICHAEL CAMPAYNO



GARY DeCARLO  
CARL DeRIGGI



JOSEPH FILIA  
JIM FRONTINO  
JACK IRWIN



JOSEPH DONEY  
THOMAS KOMENDA  
RALPH MARASIA  
GEORGE MCGARY



JOHN MCGOWAN  
JIM MULLEN  
BERNARD POLSKI  
DENNIS POSLOWSKI  
DANIEL RANIERI



THOMAS TOLAND  
LEE VRCEK  
BRAD WHOOLERY  
WILLIAM WINGARD  
WILLIAM WOOD

Alpha Gamma Phi



Alpha Gamma Phi, a local fraternity, was established at Clarion State College in 1930. The fraternity is the school's oldest social organization. The Alpha Chapter of Alpha Gamma Phi was created in order to offer its membership the type of fraternal environment necessary for the promotion of superior intellectual, scholastic, athletic, and social achievement.

In the past years, the Gammas have demonstrated their unity and willingness to compete by capturing first places in the intramural program, participating in Greek Sing and Greek Olympics, as well as sponsoring the annual Children's Hospital Fund Drive, the Red Cross Blood Mobile, and many other social activities. The strong cooperation among the brothers of Alpha Gamma Phi is evident in all phases of college life both on and off campus.

The brothers of Alpha Gamma Phi participate in all Inter-Collegiate sports. Among our membership are the two captains of the football team, the nucleus of the basketball team, outstanding baseball players, a state champion wrestler, and members of the track team. Other members of the football, baseball, basketball, wrestling and track squads carry Gamma ideals onto the various fields of athletic competition.

At this time we would like to thank advisors Dr. Moody, head of the English department, and Mr. Graybill, a member of the Social Studies department, for their benevolent and generous guidance so necessary for the improvements of Alpha Gamma Phi.



SANDY MERTEN  
FRATERNITY SWEETHEART



DAVID ARENDAS



JAMES BELL  
JOHN BURT



JERRY COLEMAN  
RICHARD FLAGE  
PHILLIP FLOYD



BARRY GOULD  
ROBERT HULL  
FRANK LARENTIS  
THOMAS LONG

Alpha Chi Kho



ROBERT MYERS  
PAUL PANZA  
EDMUND SCHANTZ  
JOHN WARZINIAK  
RAYMOND WEAVER





The Mu Phi Chapter of Alpha Chi Rho was instituted on the Clarion Campus in May, 1964. Since our founding we have gradually been expanding our interests to cover many areas. We have participated in the Homecoming Parade, the Autumn Leaf Festival, Greek Weekend, and many intramural activities. Since we are primarily a social fraternity, we are especially proud of the Scholarship Award which we received from our National every year since our founding.

Fortunately the Brothers did not allow the Award winning to interfere with their social life. They somehow managed to tear themselves away from their studies to attend such parties as the Blues Party, the Cabaret Party, the Christmas Party, and the Super-Psychedelic Party. The high point of the Crow's social life is the Annual Alpha Chi Formal which is held every April.

The Chi Rho's are a small close-knit Brotherhood. However, in the future we hope to grow both in size and in achievements.



GARY COX  
PRES.



HENRY RAYMOND HUFF  
V.P.  
RICHARD DEMARTE  
SEC.  
LYNN KNEPP  
TREAS.



DAVID ADAMS  
E. BROCKJUNER  
JAY CAROLUS  
JOHN DONLIN  
RICHARD FALLER



ROBERT FLAUS  
EDWARD GLADORA  
E. GOLEMBIESKY  
JAMES GREER  
JAMES HAYS



M. HINDERLITER  
JAMES HOFFMAN  
MICHAEL JOHNSON  
CHARLES KEARNEY  
DONALD KNISELY



RAYMOND LENZI  
PHILIP LOZOROV  
CARY McDONAGLE  
RICHARD MIHALIC  
ALAN MIKULA



LEONARD MITCHELL  
JAMES MONDALE  
WILLIAM NANOVSKY  
THOMAS PALOINO  
SAMUEL FELCHAR



SHELLY PUGRANT  
MARIO ROSSETTI  
THOMAS RUSALEM  
RAYMOND RYKACESKI  
CHARLES SAPONSKY



JOHN SCHMIDT  
KENNETH SEHMAN  
CARL SHELLGREN  
PAUL SHELLGREN  
THOMAS SOMERS

Theta Xi

WALTER ULLRICH  
DENNIS WEAVER  
ROBERT WELCH  
ERNIE WESTERMAN  
GARY YUSKO



JOHN ZAHORAM  
RONALD ZEMBROSKI  
SUSAN DeRIGGI  
HOMECOMING QUEEN  
LINDA MYERS  
SWEETHEART



Since Theta Xi was founded in 1864, its goal has been to provide a college home environment for its members in which fellowship leads to wholesome mental, moral, physical, and spiritual growth.

Beta Omicron Chapter of Theta Xi has followed this tradition by participating in activities both on and off campus. We are proud of our showing in college functions such as the Homecoming Parade, in which our float was awarded first place, Greek Day, Greek Sing, and intramural athletics. Together with these and other activities and community services we hope to round out our education and become more capable individuals.

Many of our parties, the Psychedelic, Hippie, Hell's Angels and the Cave party, are open so that others may enjoy them as the Brothers do. Each semester a dinner-dance is held exclusively for the Brotherhood, the Christmas formal and in the spring the Blue Iris formal. Along with our parties, we have sponsored many social functions on campus.

We would like to thank our Board of Advisors, Professors Penny, Seelye, Garcia, Diaz, Mr. Zerfoss and Mr. Clemens, for their guidance so necessary for the continual improvement of Theta Xi.

Our deepest thanks also goes to Mrs. Hale for being such a helpful and understanding housemother.

We feel that our pride and achievement in the five years we have been established on this campus can only continue and progress at a faster pace.

THOMAS PARSONS  
PRES.  
JERRY ZARY  
V. PRES.  
DAVID STEWART  
SEC.  
BARRY ROMESBURG  
TREAS.  
FRANK TOSKEY  
SCHOLASTIC CHAIRMAN  
BOB DRAGOVICH  
PLEDGEMASTER



THOMAS GRIFFEN  
HOUSE MANAGER  
GARNET HALE  
HOUSEMOTHER  
RAFAEL DIAZ-DIAZ  
ADVISOR  
JOSE GARCIA  
ADV.  
DR. LAWRENCE PENNY  
ADV.  
EARL ZERFOSS  
ADV.





SAM ADAMS  
ROBERT AMOS  
WILLIAM BISHOP



RICHARD BOGGIO  
JOHN BRUMBERG  
THOMAS CAMISE  
ALAN DOBIES



RAYMOND FORD  
JOHN HAFERA  
ROBERT HALL  
FRANCIS HARLON



WILLIAM HERBERT  
RICHARD LEWIS  
DONALD METCALF  
DAMON MORRIS  
DAVID PRESTON



WALTER RAPP  
RAYMOND RECKNER  
VINCENT ROONEY  
ROBERT RYBERG  
EDWARD SADOSKY



RICHARD SCHNEIDER  
DOUG SHAFFER  
EUGENE SMITH  
THOMAS TESSENA  
LARRY VALASEK

Theta Chi



The Epsilon Xi Chapter of Theta Chi was granted their charter on December 10, 1960. The charter was received from the Theta Chi International Fraternity, which was founded in the year of 1856. The brothers, "as one," assume the responsibilities placed upon them by their country, their school, and their brotherhood. The traditions and ideals of Theta Chi mold sturdy men and build an institution that rests on a foundation of knowledge, culture, and pride. As an organization of brotherhood the fraternity receives the respect of its environment socially as well as academically.

As a social organization it provides the many means that are necessary to produce well-rounded individuals. Theta Chi is active as an intramural participant, and as a result has done quite well. Open as well as closed parties are another of its activities which function as a means to achieve its ultimate goal—friendship. The Epsilon Xi chapter was actively involved in Greek weekend, the Homecoming Parade, the Miss Clarion State College Pageant, and the annual Heart Fund Drive. We, the brothers of Theta Chi, support all campus activities as well as community projects.

Theta Chi has been proud of its accomplishments over the past nine years. We will prove to be proud of our future accomplishments; the brothers are constantly striving for improvement.

EDWARD SMITH  
PRES.  
MICHAEL SHEFFER  
V. PRES.



GREGORY PIERCE  
SEC.  
LARRY PEER  
TREAS.  
DAVID STOVER  
PLEDGE MASTER

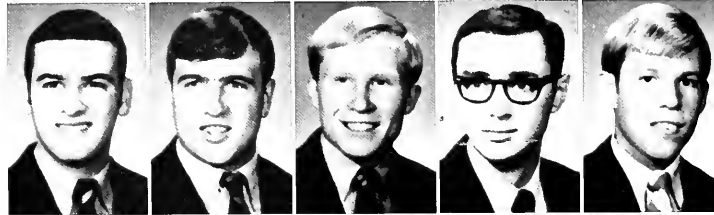




WILLIAM ABBOTT  
JOHN BALKO  
JAMES BELL  
MICHAEL BORRELLI  
JACK BREMAN



WILLIAM BROWN  
PAUL CARROLL  
JOHN COPPER  
RONALD CORCETTI  
R. CUNNINGHAM



MICHAEL DOMINICK  
J. DUDZINSKY  
RICHARD EDDY  
JOSEPH FILIPOWSKI  
THOMAS FLEIG



PATRICK GOLDEN  
ROBERT HAMMAR  
LARRY HANNA  
DANIEL HOFFMAN  
MARK HOGREFE



GARY HOSOPPLE  
PAUL JAGDMANN  
WILLIAM JONES  
ALLAN KESTER  
WAYNE KOELSCH



ROBERT LANG  
JOHN LAWRENCE  
DENNIS LESSLIE  
JAMES MANUEL  
ROBERT MARKS



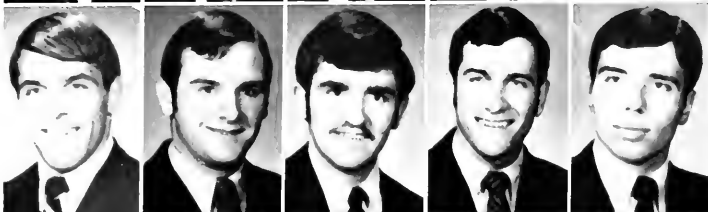
PAUL McDOWELL  
RICHARD MORGART  
DONALD MORRISON  
REGIS NAGGY  
DAVID NAPOLITAN

Sigma Tau Gamma

ROBERT NIZNIK  
JACK REIGEL  
ALAN ROSS  
JAMES RYLAND  
DAVID SCHANK



ROBERT SCHMIDT  
KERMIT SHAULIS  
MILTON SHAULIS  
FRANCIS SIRIANNI  
JOHN SPANG



EDWARD TAPPE  
JOHN TULAK  
JAMES WILLIAMSON  
EDWARD WOZNIAK



Since it was founded in 1946, the Alpha Zeta Chapter of Sigma Tau Gamma has been dedicated to the high ideals of manhood and brotherhood, scholarship, character, honesty, and clean living.

Sigma Tau Gamma has always been an active participant in all of the college functions throughout the school year. This has been demonstrated in the sponsoring of entries in the Homecoming Parade, Autumn Leaf Festival, Greek Weekend, all intramural activities, and other college-community operations.

The fraternity social calendar would be incomplete without our special parties: The High School Harry Party, Roman Glutton Party, Christmas Party, Pajama Party, Beach Party, and Playboy Party.

The Sig Tau House is a large colonial style building located near the campus. Accommodations for 35 brothers are easily arranged. Renovations have been taking place this past year which have improved some of the features of the house.

Sigma Tau Gamma has always strived to be a progressive organization. It constantly encourages individual improvement, and will always take pride in its members and support them in achieving their goals of tomorrow.

ARTHUR TRAGESSER  
PRES.  
LARRY MORRIS  
V. PRES.



MICHAEL McCORMICK  
SEC.  
PODNEY GASTON  
TREAS.  
ERNEST AHARRAH  
ADVISOR  
THADDEUS DROAST  
ADVISOR





RONALD ALLAMAN  
EDWARD BAUER  
STEVEN BAUM



KELLY BRUCKART  
WILLIAM BURKES  
JAMES CASSIN  
RONALD COLLAND



JAMES CRAFT  
JAMES CUPP  
N. DEMARTINO  
ROBERT DORNAN  
TOM ELVERSON



GENE GARRETT  
GERALD GASPERINI  
RICHARD GENSEL  
WILLIAM HARTMAN  
ROBERT HOFFER



GERN INGRAM  
JOHN KELOUGH  
EDWARD KING  
ROBERT KLAUS  
JAMES KYPTA



GARY LAUDERBAUGH  
KENNETH LOBAUGH  
THOMAS MARSHALL  
ANTHONY MAYDAK  
RANDALL McNEAR



WALT MICHALIC  
JOHN MORAVETZ  
DENNIS MORROW  
GARY MOWER  
LARRY MOYER

Tau Kappa Epsilon



JAMES ORR  
 RAYMOND ORZULAK  
 STEPHEN FOHLIT  
 RAUL REISCH  
 J. SCHELLENBERGER



GREGG SCHLIEPER  
 JAMES SERAFIN  
 CRAIG TERRY  
 ROBERT TOTH  
 JAMES VIDANOFF



ROBERT WILLIAMS  
 JAMES WOOD  
 THOMAS YOUNG  
 HAROLD ZUBER  
 VICKI WILCOX  
 FRATERNITY SWEETHEART



On May twentieth the Lambda Epsilon Chapter of Tau Kappa Epsilon observed its second anniversary on campus. From the date of its founding Tau Kappa Epsilon has stood for men, not wealth, rank, or honor, but for personal worth and character. The Fraters of Lambda Epsilon Chapter strive to keep up the tradition.

In the short time that Tau Kappa Epsilon has been on campus the Fraters have brought about results that can only be attained by a "tight" fraternity. Being fundamentally a social fraternity, Tau Kappa Epsilon has participated in many social functions such as Greek Week-end, the Autumn Leaf Festival and the Homecoming Parade. Working along with community projects, the Fraters have assisted the Chamber of Commerce and participated in the Heart Fund Drive.

The "men of red and gray" are proud of their accomplishments in the past and eagerly look into the future resolved in being a progressive organization.

GARY WILSHER  
 PRES.  
 KEN EDWARDS  
 V. PRES.



RONALD DeWOODY  
 SEC.  
 RALPH PFEFFER  
 TREAS.  
 KENNETH MECHLING  
 ADVISOR





THOMAS ABARAY



JAMES ANDERSON  
JERRY BILINSKI



ROBERT CULP  
DENNIS DIXON



BRIAN DUBOVSKY  
GLENN DUNCAN  
JACK INSKIP



WILLIAM JONES  
RICHARD KARG  
FRED LIECHTI  
GARY MARTIN



RICHARD MEARS  
WILLIAM NASSIS  
PHILIP PAYNE  
ALAN PETRO



JOE ROBOSKY  
DEAN SALVUCCI  
CYRIL SCHMADER  
JOHN SCHMADER  
ART TRIVERI

Phi Sigma Epsilon

Phi Sigma Epsilon, known also by various endearments, is a national social fraternity. The local chapter attempts to take part in many academic, athletic, and social activities. Not being able to point out any particular academic activities of note, we will go on with our other interests.

Under rhinocerotoc leadership and spurred on by the sweet nectar of the Bacchic gods, our Doinysian efforts on the athletic field were not without reward. Overall, our hallowed mantel is resplendent with the intramural symbol of athletic excellence. Our squads of valiant and undaunted Promethians battled victoriously (sometimes) against the worthy opposition. Not only do we back our own athletes, but on the intercollegiate level, we are also heated athletic supporters. The blast of our cannon resounded throughout the hills and dales of Western Pennsylvania.

Out of the caves of the giant MOTHRA emerges the embryo of social activity metamorphosizing into grosstewque and altogether hideous heights. Although hindered by some turkey-flukey misconceptions, our intercourse of social activities has remained above average.

Our well greased diplomatic Peace Corps spread its greetings lasciviously throughout the land (i.e., Princeton, Cornell, Adrian, etc.). Owing to the carelessness of some of our brothers, our social activities are carried on in a rather stilted manner.

The brothers' fondest hope is that the fraternity will continue to propagate and ensue towards even greater heights.



JOHN BOYER



MARTHA JUPINKO  
MISS C.S.C. CANDIDATE



MICHAEL CZLONKA  
WILFRED EISENMAN



ROBERT FURDON  
MICHAEL HOFFMAN  
JAMES HUBERT



THOMAS KRUPA  
ROBERT LAWS  
JOHN LAYMAN  
ROBERT LUCAS



FRANK O'BLOCK  
BERNARD PASQUALINI  
BRUCE PETERS  
WILLIAM PORE  
THEOPHIL ROSS



RICHARD SMITH  
GARY TALKINGTON  
LOUIS VESCO  
JAMES YOUNKINS  
TED ZELJAK

Phi Sigma Kappa



The Nu Pentaton Chapter of Phi Sigma Kappa was founded as a colony in 1964 and received national charter on February 11, 1967. Since its inception, the fraternity's purpose has been the furthering of the Cardinal principles: to Promote Brotherhood, to Stimulate Scholarship, and to Develop Character.

The social functions of the fraternity are many. The highlights this year have been the traditional Mary Bulbinytz party, the Hell's Angels party and annual Moonlight Formal.

The Phi Sigs have participated in many college and community functions in the past year as well. Members of the fraternity have been very active in intramural athletics, the Interfraternity Council, PSEA, Homecoming activities, and the rifle team. Also the Phi Sigs have held their fourth annual Christmas party for the patients of the local convalescent home.

We believe that we have not only strengthened the Greek system on Clarion's Campers, but also have furthered the Phi Sigma Kappa image and purpose.

WILLIAM KREUER  
PRES.



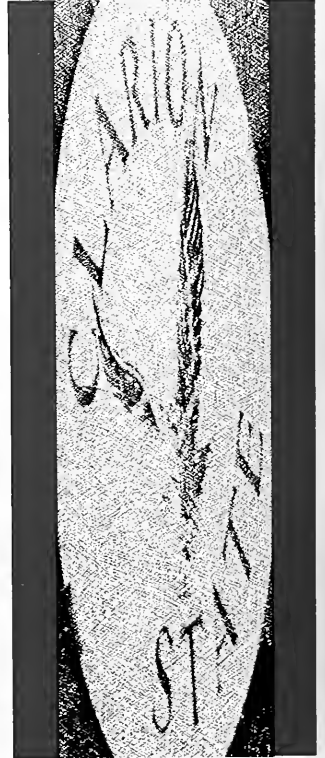
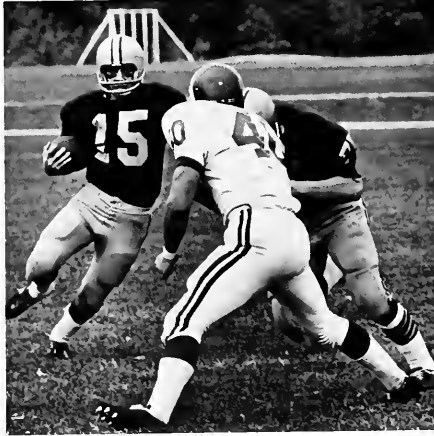
BRYCE HEASLEY  
V.P.  
DELMAR DAVISON  
CORRES. SEC.



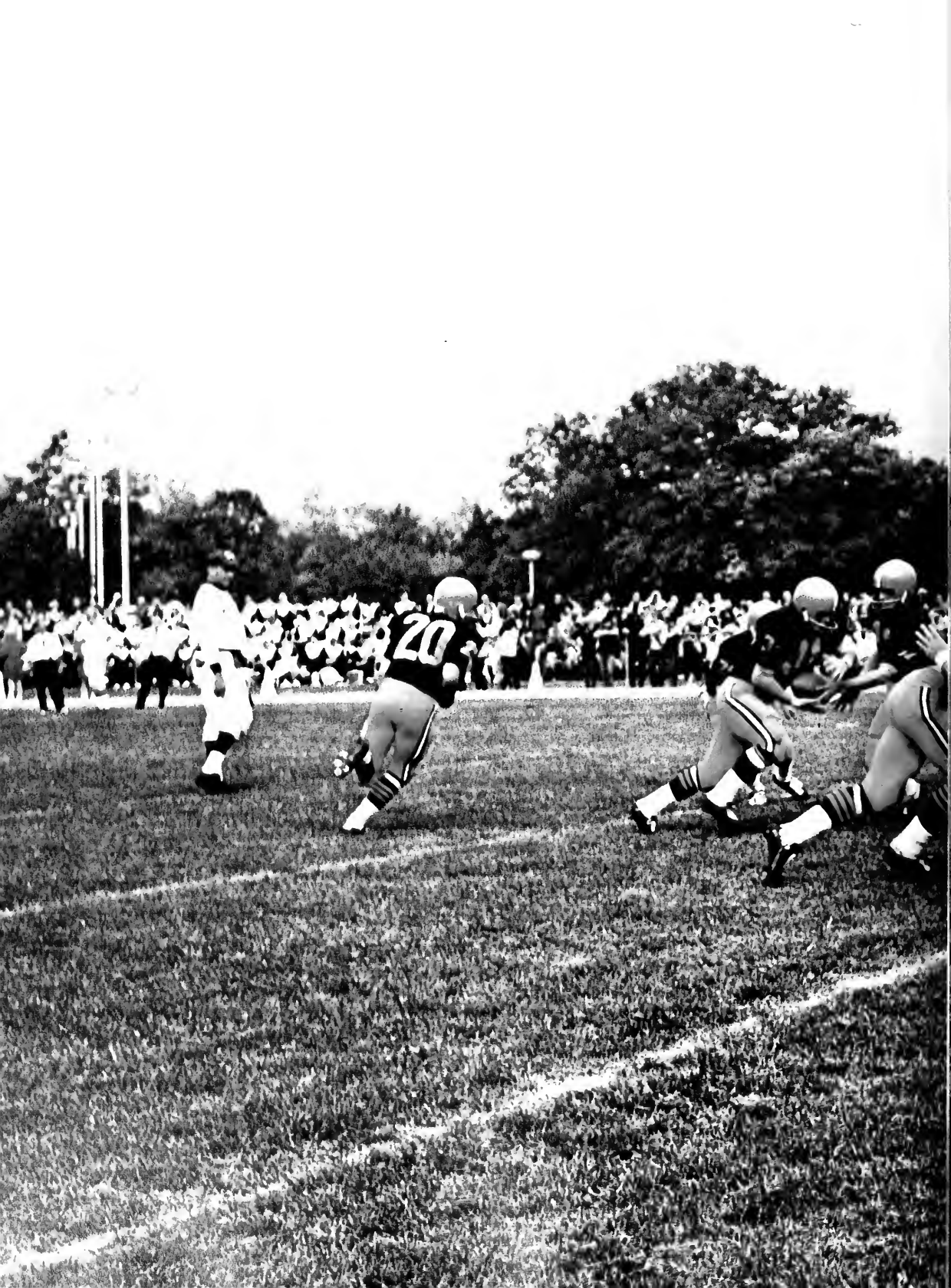
DAVID CZLONKA  
REC. SEC.  
ROBERT PRATT  
TREAS.  
EDITH HEETER  
HOUSEMOTHER  
ADAM WEISS  
ADVISOR



# SPORTS











The key word for the 1968 football season was almost. With a near perfect League record of 7 wins and one loss, this year's Eagle team made Saturday afternoons something special for football fans.

Although young, this season's team had all the ingredients for a perfect year, leadership, teamwork, depth and an extensive series of plays.

Becker, Erdeljac and Wise were the top ground gainers for Clarion this year. Jim Becker caught 49 receptions gaining a total of 778 yards. C.S.C.'s quarterback Erdeljac passed for a total of 1798 yards out of 135 completions. Bill Wise was C.S.C.'s top ground gainer rushing for 319 yards averaging 3.7 yards per carry.

With Jones and Becker being the two most valuable players, defensively and offensively respectively, C.S.C. averaged 352.8 yards per game over the opponents' 271.1 yards.





Row 1: Jim Jones, Rick McWilliams, Larry McNultin, Bill Wise, Jim Becker, Fran Sirianni, Bob Gevaudan, Joe Lavella, Roy Smeltz, Fred Wickstrom, Ed Tappe, George Pastierb, Paul McDowell, Art Tragesser.  
 Row 2: Bob Cunningham, Elmer Schuetz, Jim Kocan, John Nakich, Regis Ruane, Dave Dapra, Bill Zener, Art Triveri, Tom Humphrey, Andy Brindger, Rich Schneider, Larry Morris, Chuck Matsko.  
 Row 3: Bob Robinson, Bob Oberdorf, Chuck Koval, Larry McKean, Mike Bozick, Joe Abal, Bob Erdeljac, Pete Hrenko, Bill Kenney, Rick Terze, Mike Sheridan, Tom Tomeo, Mike Giunta, Carl DeRiggi.  
 Row 4: Bill Shulis, John Monrean, Jim Weinenberger, Paul Jadgean, Joe Dudzinsky, Mike Campayno, Tom Komenda, Rich Smith, Mike Andree, Roland Sparrow, Jesse Jones, Tom Eddy, Brad Whoolery.

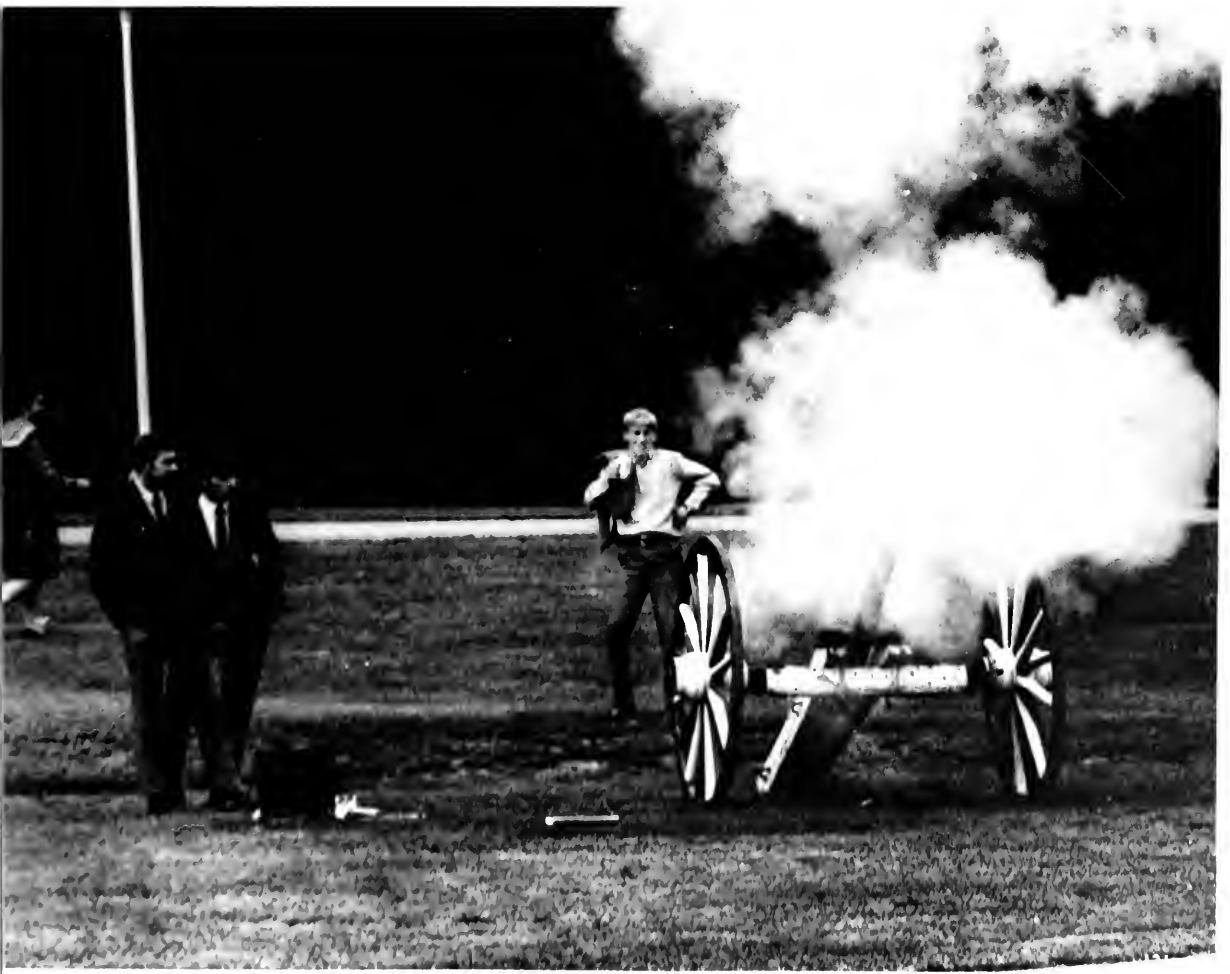








C.S.C.		Opp.
14	Mansfield State	13
22	Delaware State	34
42	Geneva College	7
14	Lock Haven	3
37	Edinboro State	13
13	Indiana U. of Pa.	18
21	California State	26
35	Shippensburg	0
23	Slippery Rock	17



Plagued by injuries and scholastic deficiencies, the Golden Eagle cagers did not have one of their better seasons in 1968-69, but finished ahead of their 1967-68 record with a 7-15 showing.

Returning to Coach John Joy's squad were senior Captain Joe Chalmers, Larry Kubovchick, Buddy Martin, George Lawry, Dennis Luce and Bob Fusco.

Over the holidays the Eagle Basketeers won the second place trophy and two All-Star individual awards at the Troy-Alabama Tournament. The All-Star awards went to Buddy Martin and Dennis Luce. In addition the team copped a third place consolation award at the Indiana University of Pennsylvania Christmas Tournament.

High scorer for the season was Martin, with 297 points, followed by Luce with 230 and Kubovchick with 229.



## Basketball



R. Rykaceski, J. Chalmers, J. Podolak, R. Ruane, D. Luce, R. Martin, L. Kubovchick, B. Fusco, D. Dixon, E. Westerman, G. Lawry, J. Park.

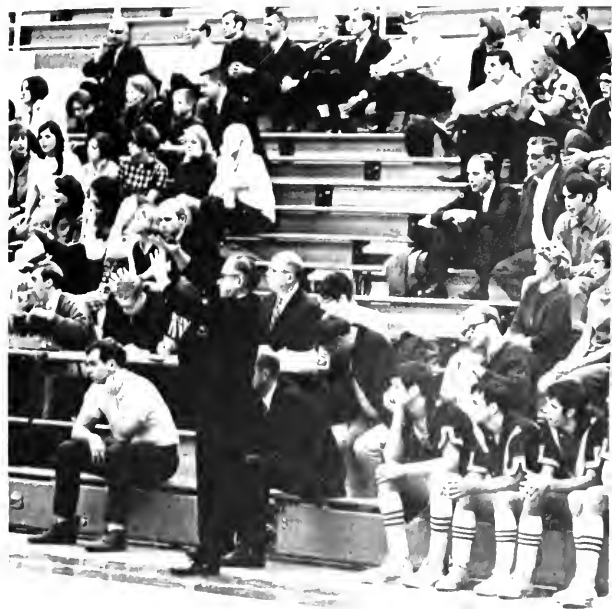


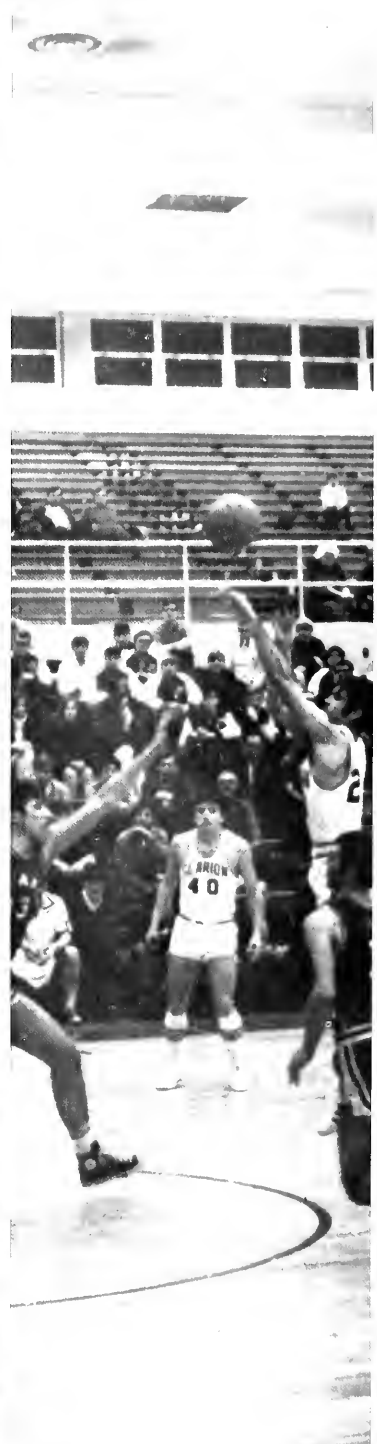




C.S.C.		Opponents
85	Walsh	79
68	Slippery Rock	61
59	Geneva	47
80	Alliance	84
69	Edinboro	71
56	Point Park	71
47	California	62
51	Fredonia	65
62	Slippery Rock	65
56	Indiana	93
60	Lock Haven	61
102	California	106
78	Mansfield	105
74	Lock Haven	68
78	Edinboro	112
88	Grove City	75
75	Alliance	86
	Walsh	











C.S.C.	Opponents	
45	Howard Univ.	0
45	Frostburg St.	0
34	Brockport St.	2
35	Shippensburg	6
43	Slippery Rock	0
38	Indiana U. of Pa.	2
7	Bloomsburg	30
14	Univ. of Pitt.	20
27	Indiana U. of Pa.	6
37	Edinboro	6
10	Lock Haven	30
26	California	10
29	Grove City	5
43	St. Francis	2

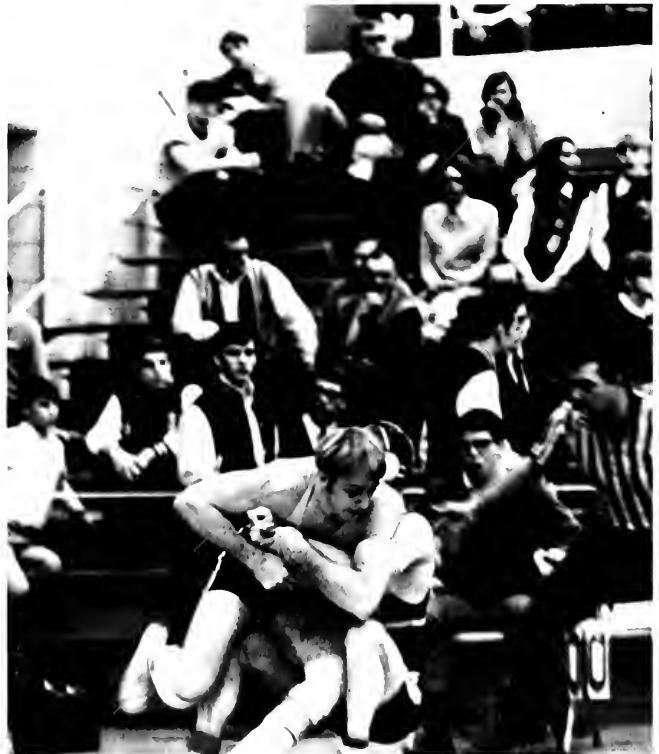


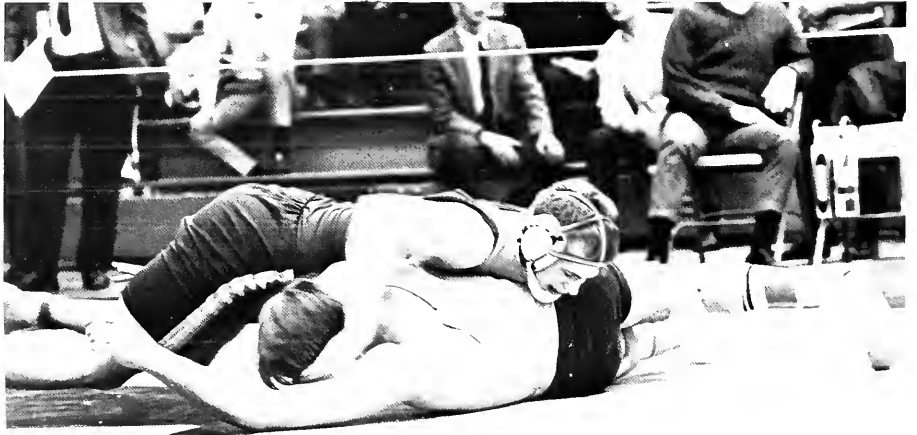
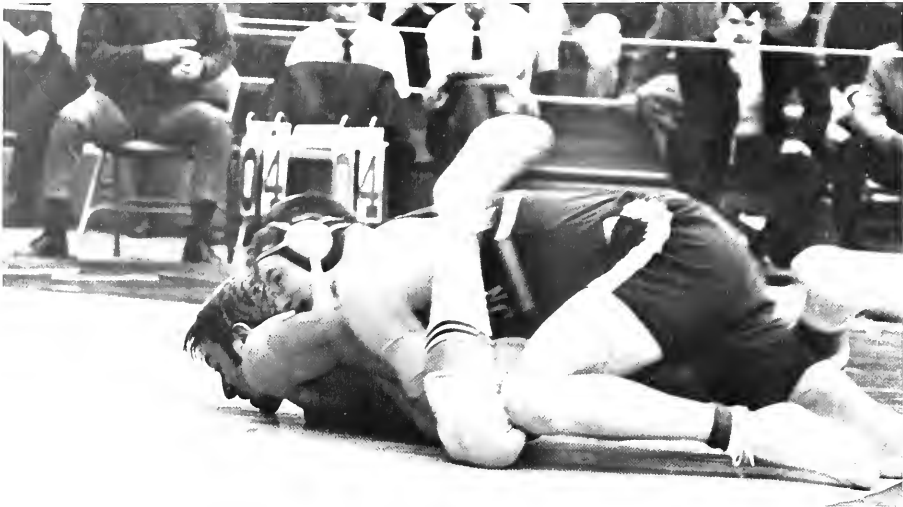


While not as great as their 1965 state championship year, it was still a year to be proud of as Head Coach Bob Bubb and Assistant Coach Neil Turner put the C.S.C. wrestling team to the test of the best of small college mat circles and found little to be wanting.

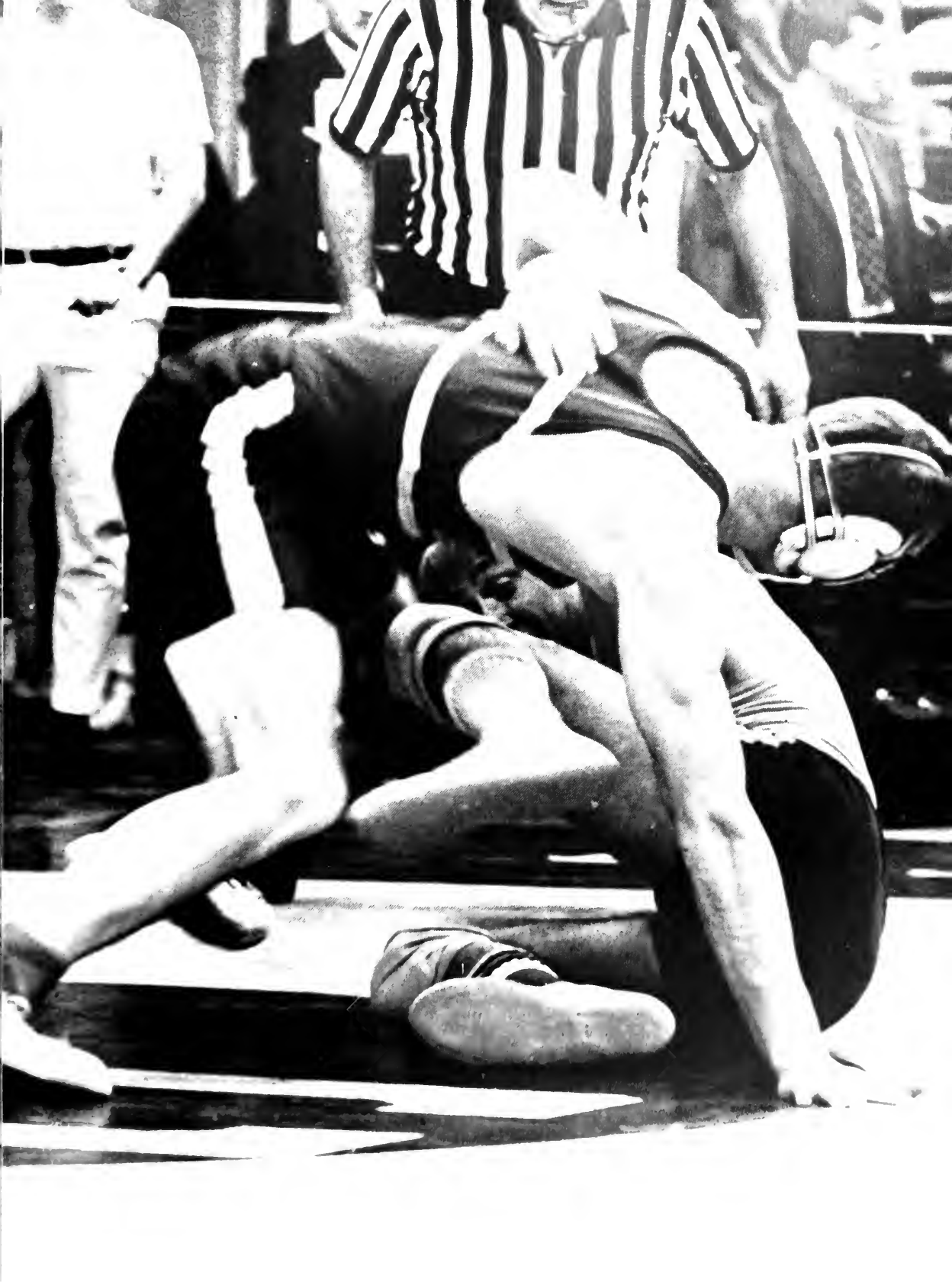
Clarion State grapplers wound up their regular mat season with an 11-3 record and copped second team honors and one individual championship in the 25th Annual State College Wrestling Tournament which they hosted in the new Waldo S. Tippin Gymnasium. The Eagles took the second place honors with 78 team points while Lock Haven was first with 96. Senior captain Doug Niebel was one of two finalists for the Eagles, winning an individual trophy as he swept the 160 lb. class.

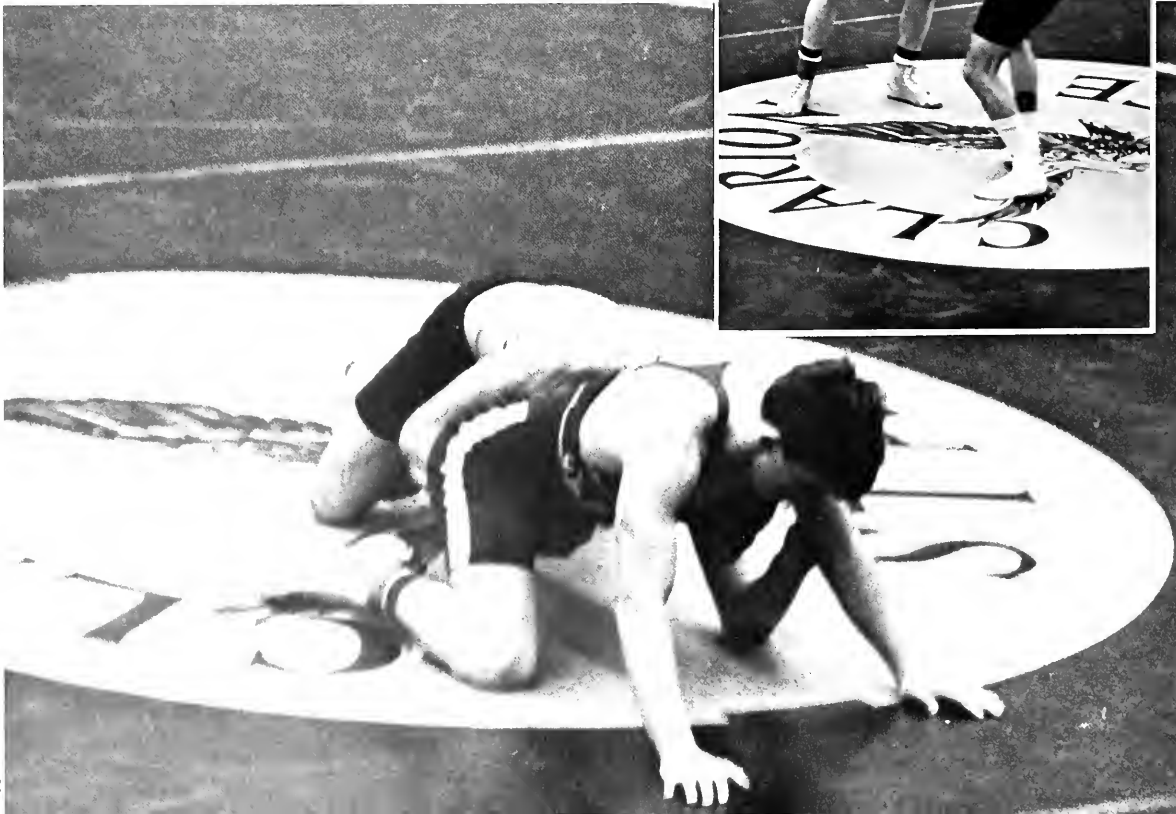
This year's team also placed 9th among the top 10 at the National Association of Intercollegiate Athletic Wrestling Tournament, and 8th out of 13 in the U.S. Naval Academy Invitational Tournament.

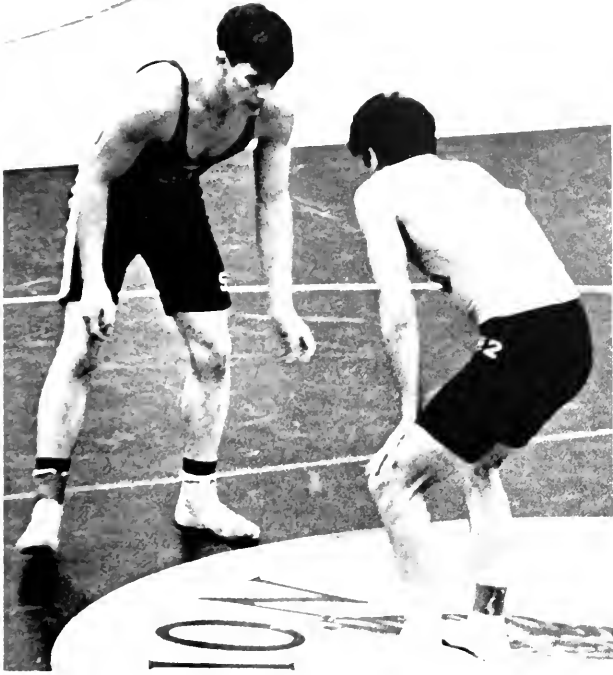


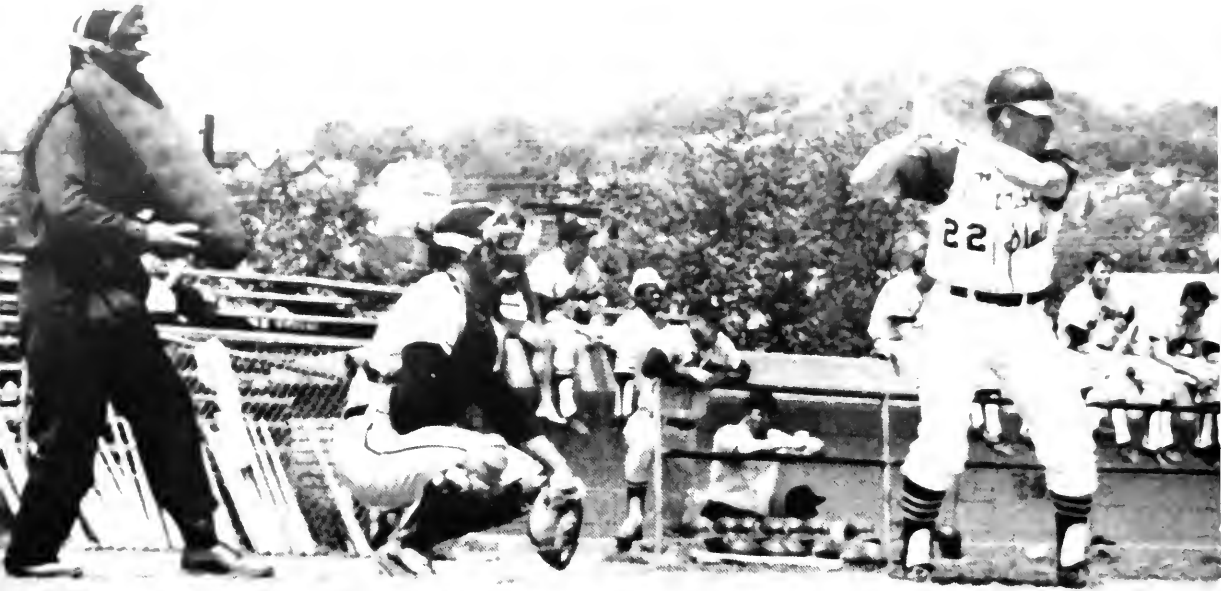












## Varsity Baseball











Row 1: Dick Bartholomew, Phil Floyd, Jim Bell, Ed Schantz.  
Row 2: Russ Alderton, Larry Holly, Ron Colland, Tom Tessena, Jesse Jones.  
Row 3: Ray Costello, Dennis Leslie, Eric Barkley, Larry McNulty, Bob Flaus, Jim Stevens, George Hackett.







## Track 1969





Relay  
Team





# Rifle Team



Row 1: C. Bates, R. Burns, H. Hileman, J. Daley, B. Heasley, R. Pratt, W. Chessman.  
 Row 2: G. Ober, E. Larson, D. Emerick, W. Kleegh, R. McKinnis, W. Conti, C. Barrett, D. Weible

Coach Galen Ober fielded one of the best rifle teams in Clarion's history in 1968-69, completing his 16 match card with a 13-3 record and second place in the league.

Both individual and team scoring records fell as the Golden Eagle gunners for the first time broke the 1,300 mark in team scoring. Hazen Hileman shot a 278 for the best individual mark ever attained.

Eighteen veterans and seven newcomers started the season in November in the highly competitive Western Pennsylvania Intercollegiate Rifle League.

C.S.C.	Opponent	
1257	Allegheny	1303
1247	Indiana U. of Pa.	1244
1283	St. Francis	1158
1277	W. and J.	1205
1277	Carnegie-Mellon	1271
1263	Indiana U. of Pa.	1261
1269	St. Francis	1173
1271	Allegheny	1296
1286	Pitt.	1314
1262	W. and J.	1218
1280	Duquesne	1248
1292	Geneva	1253
1315	Geneva	1280
1298	Carnegie-Mellon	1276
1300	Duquesne	1239
1300	Pitt.	1287



# C.S.C. Hun Judo Club

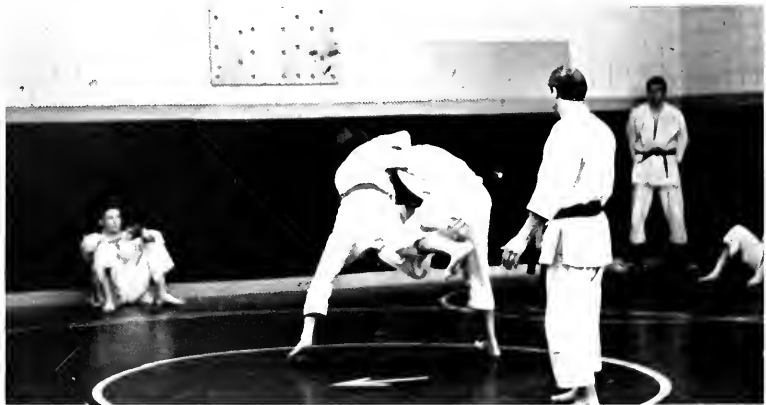


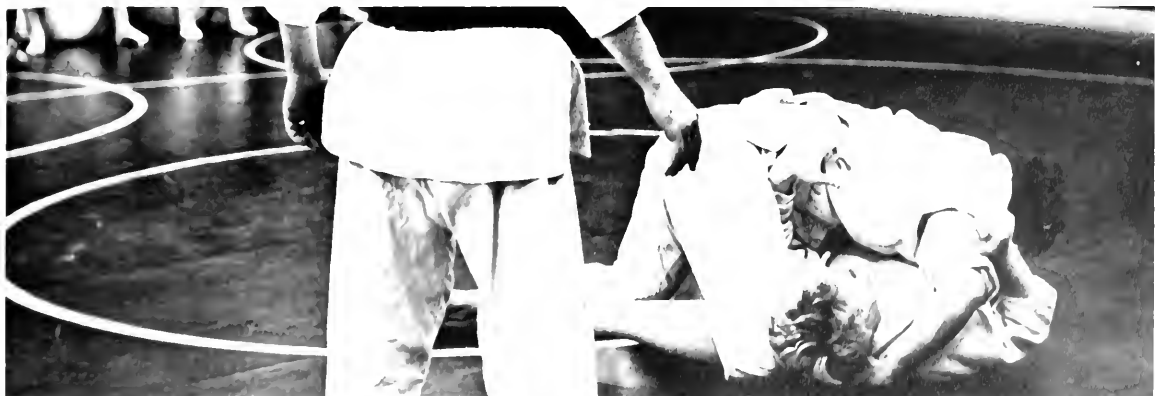
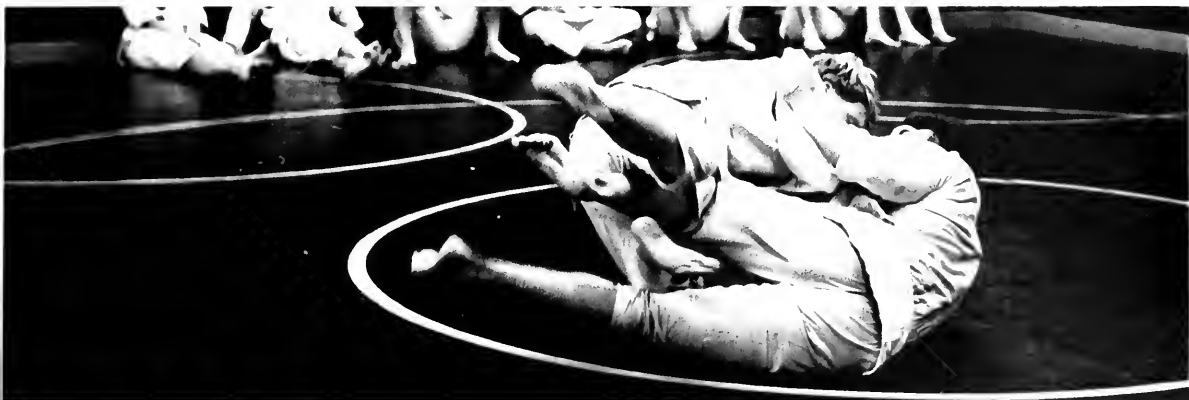
Row 1: A.S.P.-Jobb, Marilyn Zajac, Jenny Shaffer.  
 Row 2: Larry Cohen, Mary Jo Palyszeski, Dianne Best.  
 Row 3: Andy Conway, Steve Jobb, Robert Covel, Bill Clark.  
 Row 4: Tom Komis, Rick Jones.

The C.S.C. Hun Judo Club, founded by Professor Andor S. P-Jobb in the fall of 1963, is one of the busiest extra-curricular activities on campus. Judo, at Clarion, is a co-ed sport based on Kodokan Judo which was invented by Jigaro Kano of Japan in the last century.

Every year at the end of both September and January, the Judo Club is reorganized, registering new members both from the student body and from the faculty.

The team participates in intercollegiate meets, traveling hundreds of miles into east coast competitions. The team also competes against private clubs and Y.M.C.A. teams. In coming years, the Judo Club expects to host many competitions in their new facilities in Tippin Gymnasium.





# Golf Team



Row 1: John Schmidt, Ed Malek, Al Weingartner  
Row 2: Mr. Thomas A. Ceranahan, Mr. Lester C. Oakes.  
Row 3: Norm Jula, Chris Tyner, John Hafner.



# Coach John Joy

Mr. John Joy, head basketball coach at Clarion since 1961, announced his retirement from the profession after 30 years as a cage mentor at both the secondary and college levels.

Although planning to take a semester's leave in the first half of the 1969-70 academic year, he will remain at Clarion to devote full time to teaching, with the idea of participating in the expansion of the school's health education department.

Mr. Joy's words after submitting his resignation to Dr. Gemmell were these,

"It's not easy to retire after thirty years of coaching, but I thought if I were ever to move ahead as a teacher, the time to make the break would be now. It's been challenging, sometimes frustrating, but always rewarding regardless of the record at the end of the year. It's been a wonderful thirty years working with young men".

In leaving the coaching ranks, the cage mentor also resigned from a recent appointment as a member of the National Amateur Athletic Union basketball committee, and as secretary-treasurer of the National Association of Intercollegiate Athletics Basketball Coaches Association.

A native of Butler, Coach Joy is a graduate of Slippery Rock State College, and received his Master of Education degree at the University of Pittsburgh. He has done additional graduate work at the University of Pittsburgh and Indiana University of Pennsylvania. He expects to further his study in health education either at Colorado University or at Miami University of Florida.

Before coming to Clarion, Coach Joy held high school coaching posts at Jennette, Har-Brack, Springdale, Monaca and Meadville.

Leaving coaching with a record of 76 victories and 80 losses at Clarion, Mr. Joy has a .669 average over 30 years of coaching with 442 wins and 209 losses. A 15-15 record last year and a 5-17 windup in 1968-69 marked by injuries and player retention problems marred his last years in the sport.

On behalf of the student body, the 1969 Sequelle Staff says "Thank you, Coach Joy".



# VENANGO CAMPUS







Mrs. Charlotte Boyles  
Secretary



Miss Patricia Hancox  
Secretary



Dr. Russel L. V. Morgan  
Administrative Head

## Faculty



Leonard Abate  
History



Frank Clark  
Speech



John Cliff  
Mathematics



Dalph Cook  
Biology



Alastair Crawford  
History



Vincent Curran  
Health



Charles Dugan  
Art



Lee Heilman  
English



Arnold Jeschke  
English



Larry Landis  
Music



Georgly Markos  
Geography



Allene Masterson  
Languages



Garrison McCaslin  
Physical Science



Glenn McElhattan  
Physical Science



Lois Mushrush  
Mathematics



John Reinhardt  
English



Susan Reinhardt  
Psychology



Susan Secor  
Librarian



Mary Williams  
Librarian

## In Memoriam



"I wanted only to try to live in accord with the prompting which came from my true self. Why was that so very difficult?"

Herman Hesse  
Demian

Lee M. Bluestein  
December 4, 1938—June 27, 1968

# Sophomore Class Officers

Left to right: Dave Lavery, President, Joan Gielas, Secretary, Barb McNutt, Treasurer, Larry Norris, Vice-President.



Barbara Ausel  
Kennerdell



Donna Bazala  
Rilton



Willard Beck  
Sheffield



William Beggs  
Franklin



Carol Blakeslee  
Spartansburg



Linda Bogovich  
Turtle Creek



Clifford Bortz  
Delmont



Barbara Brantner  
Gettysburg

# Sophomore Class

Larry Cummings  
Oil City



Kathleen Cunningham  
Oil City



Jay Dimond  
South Fork



Edward Dobosh  
Oil City



Rosemary Downs  
McKees Rocks



Timothy Dunkle  
Franklin



Joyce Fischer  
Oil City



Joan Gielas  
Pittsburgh



Deborah Gillen  
Oil City



Sandra Gierlach  
Oil City



Linda Hefferman  
Cooperstown



Mary Hoh  
Johnsburg

Leon Hont  
Brownsville



John Horvath  
McKeesport



David Lavery  
Oil City



George Loper  
Venus



Larry McCauley  
Seneca



Maureen McConnell  
Erie



Melinda Martin was Venango Campus's nomination for the 1969 Miss C.S.C. contest. This was the first year that Venango Campus has been represented in the Miss C.S.C. contest.



Barbara McNutt  
Philadelphia



Melinda Martin  
Oil City





Rosie Downs and Fran Poulter were two sophomores who took part in a panel discussion on *Death at an Early Age* by Jonathan Kozol for a high school F.T.A. tea.

Richard Martyna  
Oil City



Sally Minnich  
Franklin



Daniel Moon  
Oil City



Larry Norris  
Clearfield



Patricia Novak  
Uniontown



Emily Olbeter  
Creighton



Diana Ozimek  
Pittsburgh



Frances Poulter  
Oil City



Robert Ragon  
Oil City



Kathleen Rodgers  
Audubon, New Jersey



Martha Schwabenbauer  
Titusville



Richard Smith  
Pittsburgh



Barbara Stephen  
Mt. Pleasant



Kathy Watson  
Pleasantville



Judy Wilson never lets her lack of height interfere with her search for knowledge.

Eugene Williams  
Franklin



Mary Ann Williams  
Garland



Judith Wilson  
Rimersburg



Rose Wolf  
Baldwin, New York



## Freshman Class Officers

Right to left: Don Tatar, President, Ray Pulcini,  
Vice-President, Jill Wagner, Secretary, Joetta Sat-  
kovich, Treasurer.

# Student Organizations



Student Senate: Row one: K. Rodgers, B. McNutt—president, Mr. J. Reinhardt—advisor, D. Reitz—vice-president. Row two: B. Winkler, J. Wiliszowski, T. Pfeiffer, T. Dunkle, S. Kagle.



Student Organization Committee: S. Kagle—chairman, L. Kapanak, J. Smith.



Student Union Committee: L. Norris, C. Blakeslee—chairman, T. Pappas, P. Novak.



Social Committee: Mrs. L. Mushrush—advisor, J. Smith, W. Beggs, J. Rowe, K. Bender, T. Dunkle—chairman, D. Mackey, S. Boyles.



Publicity Committee: Mr. G. McCaslin, Mr. F. Clark, Mr. L. Heilman—advisors, C. Klinger, B. Winkler, K. Rodgers—chairman, M. Dudrow.



Yearbook staff: Row one: J. Wilson, L. Facciolo, L. Kapanak, S. Kengierski. Row two: M. Ruby, J. Caspersen, J. Gielas, C. Harpster, M. L. Humeny, M. O'Rourke, M. McDonough.



Newspaper staff: Row one: N. Antonino, B. Stephen, L. Bogovich, L. Stevenson. Row two: J. Will, B. Branter, A. Accardi, S. Martin, J. Zak. Row three: D. Mackey, S. Busco, M. Lindew.



Cultural Committee: S. Martin, P. Downs, C. Siegel, D. Ozimek, J. Ackerman, B. Winkler, chairman.



Athletic Committee: L. Amos, R. Yonkafski, C. Kistler, Mr. G. McElhatten—advisor, M. Lindow, T. Pfeiffer—chairman.

# The First Days



Lines are the worst part of registration, as any Venango student will agree.



Mixed emotions appear on the faces of many Frosh as they wait to see who will be next to be put before Kangaroo Court.



Melinda Martin checks off Don Becker's name as he pays his activity fee.



"You sure need a lot of books for one course."



Jay Rowe finds out what happens to a Frosh who talks back to a sophomore.

# Homecoming

Venango Campus enthusiastically worked toward making Clarion's homecoming celebration a successful event this year. In conjunction with the Autumn Leaf Festival parade theme "Keep America Beautiful" Venango entered a float which was a huge red, white, and blue foot and a litterbug entitled "Stomp Out Litterbugs." Students worked steadily for two weeks making tissue flowers and traveling to main campus to construct the float. All the time and effort was not in vain because this float won a first prize and a trophy.

Venango Campus had two homecoming representatives in the parade. Rosie Downs was the attendant for the Sophomores and Pat Moser for the Freshmen.

The Student Senate officers also rode in the parade. Occupying the Student Senate car were Barb McNutt, President, Dave Reitz, Vice-President, and Deb Michaels, Secretary.



Pat Moser and Rosie Downs smile on as the Venango Campus homecoming attendants.



# Life at Montgomery Hall



Kathy Rodgers, Rosie Downs, Lynn Kortz, and Jill Shepler take time from studies to discuss world affairs.



Participating in one of the Venango boy's favorite pastime, Tom Anderson blocks Bill McKenzie as their teammates wait anxiously.



Jill Ware and Jill Will have a good laugh as they discuss with Sanday Martin the events of the day during a meal in the Montgomery Hall cafeteria.





Head Resident: Mrs. Alice Ault

In Montgomery Hall at Venango Campus an atmosphere of cheerfulness prevails and reflects confidence among the students. Sharing in this confidence is the Head Resident, Mrs. Alice Ault. Although this is Mrs. Ault's last year at Montgomery Hall she still counsels the students in their future problems. Helping Mrs. Ault in her numerous duties are the Resident Assistants and clerks. Their duties vary from nursemaid to confidant; they are also present to keep order and enforce regulations. The House Council and Referral Board set the rules and sponsor dances and parties for the enjoyment of the students.



Resident Assistants: Row one: L. Norris, M. Williams, C. Blakeslee, J. Wiliszowski. Row two: G. Vano, R. Downs, D. Micheals, J. Horvath.



Clerks: V. Klovanih, J. Ackerman, B. Stephen, B. Winkler.



House Council. Row one: L. Shuler—secretary, R. Wolf, A. Accardi, J. Wilson. Row two: T. Pappas, J. Shaffer, C. Kramer, C. Kralinger, D. Gliptis, H. Hont—president



Referral Board: Row one: R. Wolf—president, B. Musselman, L. Wheatley, J. Satkovich. Row two: K. Muchleisen, D. Gliptis, V. Lockhart, D. Stemler.

# A Day at Venango



"Out of my way, I'm going to be late for class," seem to be the words on everyone's lips.



Mr. McElhattan tries his best to make the discussion of electrical circuits interesting.



Mr. Cook and Charles Stewart seem to have found a good slide.



Dick Dalmaso takes the lead in leaving the classroom building at the end of the day.



Terry McGinty lunges forward to make his point.



Ann Abernathy enthusiastically tells of her unique classroom experience.



Carol Pewers finds after class lab work most interesting.



Linda Hahn and Maurice Warrick find time during their busy schedules for some culture.

# Seasons

Fall is a season of mixed emotions at Venango. September brings sadness as students think of leaving behind their sun-filled and frolicking summer. The joy of renewed friendships also comes with the fall.

Pleasant summer over  
And all the summer flowers,  
The red fire blazes,  
The gray smoke towers.

Winter brings the snow and the ice to Oil City. The cold wind blows through the trees constantly during the long season's stay.

All around the wind doth blow  
And coughing drowns the parson's saw

And birds sit brooding in the snow.

Spring brings a new life to Venango Campus. As the trees bud and blossoms the students take to the out-of-doors. Spring, although short, is a season of gaiety.

Walk softly over the earth,  
Spring winds breathe gently.



The Bridge of Sighs is one of the most picturesque and frequently visited spots on campus.

## Fall



Tom Anderson anxiously received his first letter from home while Wayne Watson's only mail was Newsweek.



Tim Dunkle and Mr. McElhattan show onlookers how to make the most of a square dance.



The prize winning door of Cindy Ficciolo, Penny Nelson and Nancy Young shows Venango's Christmas spirit.

## Winter



Students find the library study room a warm and welcome solution to the problems of winter weather and studying.



Winter brought a festive occasion to Venango's Christmas semi, "Sleigh Bells in the Snow."

# Spring



As the spring weather comes, Carol Pearson, Chris Graeff, Carol Proctor and Ted Pappas find it easier to study outdoors.



Sunshine and green grass make Venango's pond a popular study area during the spring months as Fran Poulter and Pat Casey exemplify.



This spring brought a new addition to Venango Campus. A mobile unit was purchased to provide office space for the instructors.

# *Paris in the Springtime*

## *May 17, 1969*



Venango's Eiffel Tower added much to the atmosphere of the evening and also provided a setting for much socializing.

This year's Queen, Faye Kreckel, and her date, Bill Reckner, in their smiles reflect the feeling of all present toward their Paris evening.



The members of this year's court: Faye Kreckel, this year's Queen, and Fran Poulter, Harry Hont, Claudia Kramer, Mike Lindow, Don Tatar, Dr. Russell L. V. Morgan, Diane Dudreck, Miss Venango Campus 1968, Dave Reitz, April Diesel, Tim Dunkle, and Barb Stephen.



# Athletics

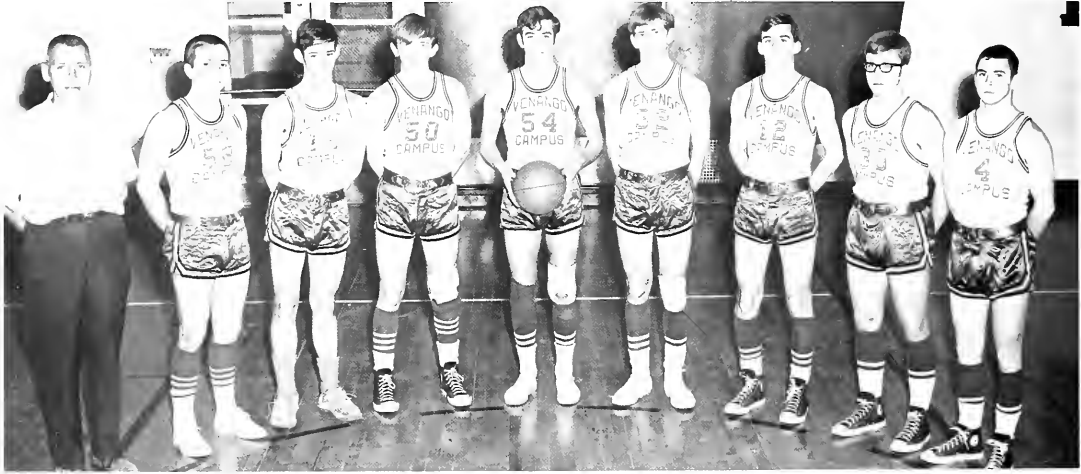
Venango Campus students are very proud of their athletic teams. The Vulcan's basketball team finished with a 5-7 record. The team was plagued by a lack of height, but they made up for it with hustle and determination. Despite the disappointing season, students at Venango supported and cheered for their hoopsters.

The golf team spent much time at Venango's home course during the spring months. Many of the fall months were spent in extra practice for the spring. As a third year team, the golf team made great use of their potential.

Vincent Curren is the coach of both the 1968-69 Vulcan basketball and golf teams.



Golf Team: Coach Vincent Curran, J. Kralinger, C. Kistler, P. Scurry, R. Lucas, T. Pfeiffer, J. Shaffer.



Basketball Team: Coach Vincent Curran, L. Harton, P. Hogan, P. Casey, T. Pfeiffer, M. Lindow, T. Anderson, T. Pappas, P. Mannion.



The Venango Cheerleaders promoted a gallant spirit among the students.



Cheerleaders: Clockwise, J. Wagner, S. Kagle, C. Kramer, K. Squire, B. Stephen, K. Prince, J. Dodd.





Charles Burnett collects two from the charity line to add to a Vulcan victory.



Charles Burnett goes high for an opening tip which will give his team control of the ball.



Once again Charles Burnett tips the ball as his teammates wait.

# Campus Players

During the 1968-69 school sessions, the Venango Campus Players presented six one-act plays under the supervision of Mr. Arnold Jeschke, of the English Department. Three plays were presented on November 22 and 23 and three again on May 2 and 3.

*The Wedding* by Anton Chekov was a delightful comedy centering around the reception of a young couple and their guests.

*The Anniversary*, also by Chekov, was a humorous play about the numerous distractions of a bank president on the fifteenth anniversary of that bank.

*The Bear*, by Chekov, also a comedy was a pleasant love story of two stubborn people.

Thornton Wilder was author of *The Long Christmas Dinner*, a sharp tragedy about the passing generations of the Bayard family.

*The Proposal* was a brilliant comedy about a hypochondriacal suitor who quarrels with the girl he wants to marry.

Finally, the Players presented Edmond Rostand's *The Romancers*. This is a story of two sentimental youngsters who rebel against their parents' wishes to marry.

These plays were very successful and displayed much talent and hard work on everyone's part.



Gary Miller proposes to Kathy Squire as Melinda Martin watches on in a scene from *The Bear*.



The characters in Anton Chekov's *The Anniversary* were portrayed by Larry Norris, Terri Aiken, Sue Boyle, Chris Graeff, Mary Lou Byers, and Sam Busco.



Arnold Jeschke competently directed this year's six dramatic productions.



Shown here are the actors and actresses who took roles in Chekov's *The Wedding*. They are 1st Row: Harry Buhay, Linda Bogovich, Cindy Facciolo, Andrea Accardi, and Bernard Wolf. Second row: Mark Stevenson, Barbara Ausel, David Reitz, Lorraine Kapanak, Lynn Shuler, Richard Martyna, Mark. Hail, and Gary Hennon.



Arnold Jeschke helps Becky Sheavly with her lines during a rehearsal.



Becky Sheavly and Sam Busco attempt to revive Ron Brown after an attack of palpitations of the heart in a scene from *The Proposal*.



Brian Musselman romantically reads poetry to Linda Schumacker during an opening scene from *The Romancers*.



Jerry Krallinger slowly wheels Old Mother Bayard (Sue Lesco) from the stage as the young Bayards watch sadly. Portraying the young Bayards in *The Long Christmas Dinner* are Peggy Orouke, Don Tatt'r, and Lynn Shuler.

# Philosophes



Officers: Seated: Mr. Crawford, advisor, H. Hont, president. Standing: S. Kagle, R. Martyna, M. Dudrow.



One of the major activities of the Venango Campus Philosophes this year was an open panel discussion on the controversy, Branch Campus vs. Community College.

## Choir

The Venango Choir, under the direction of Mr. Landis, highlighted each semester with a specially prepared program. Performances were organized primarily as Christmas and Spring concerts.

Concentrating upon various Christmas arrangements during the first semester enabled the concert choir to give performances for the Rotary Club, The Association of the Blind, and Venango Campus itself. An entertaining addition, a brass section composed of five talented students, was formed to accompany the choir's performances.

The major interest of second semester choral activities was the Spring Concert, based on a variety of numbers for Easter, including folk and spiritual music.



Brass section: Dave McElhanev, Charles Siegel, Dave Reitz, Bernard Wolf, Dale Young.

Choir: Row one: J. Will, S. Gierlach, M. Byers, R. Smith, B. Musselman, J. Rowe, L. Bogovich, K. Rodgers. Row two: Larry Landis—director, E. Olbeter, C. Proctor, A. Abernathy, M. Cunningham, J. Groner, D. Reitz, G. Kauffman, J. Satkovich, N. Young. Row three: J. Wilson, M. Williams, J. Piccirillo, D. McElhanev, J. Jeselnick, C. Siegel, W. Walenia, R. Roche, M. Dudrow, K. Watson.



# Assistants

The student assistants are the students who work in the office, in the library, in the bookstore, and for the teachers.

Those in the office, besides aiding with general clerical work, often take visitors on tours of Venango.

The library assistants acquaint the students with the library. They microfilm, photocopy, and help with reference work.

The bookstore assistants send orders to Clarion for books and supplies, sell the books and deposit the money.

The teacher aids relieve the teachers of much work. Correcting papers, typing exams, and doing research work are all a part of their everyday job.



Library Assistants: Row one: B. Mikula, D. Marcher. Row two: I. Fisher, R. Wolf. Row three: J. Satkovich, D. Mackey. Row four: J. Nellis, H. Buhay.



Teacher Aids: M. Blair, T. Dunkle, D. Moon



Office Aids: Seated: M. Martin, D. Bazala. Standing: J. Smith.

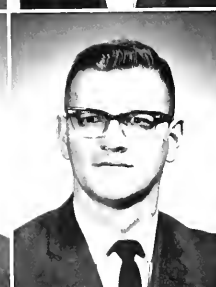
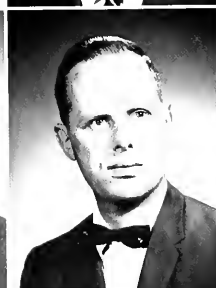
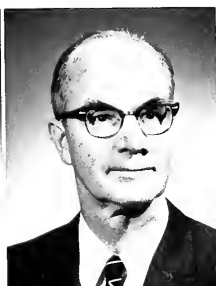


Bookstore Assistants: S. Kagle, D. Lavery, J. Smith.

# ADMINISTRATION and FACULTY







Martha M. Ames  
Education  
Dr. Paul E. Beck  
Chemistry  
Dr. Nicholas Bezak  
Mathematics

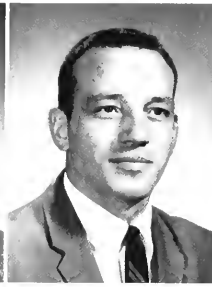
Dr. John R. Arscott  
English  
Stanley Belfore  
Biological Science  
Jack N. Blaine  
Physics

Dr. E. W. Averill  
Mathematics  
Vahe H. Berberian  
Music  
Pearl Bonner  
Education

Inez Fay Baker  
Audio Visual  
Dr. Alpha E. Bernard  
Education  
Dr. Olive Bower  
Chemistry

Mary Kay Banner  
Education  
Thomas M. Bertsch  
Business Administration  
Dr. Richard Bradley  
Education



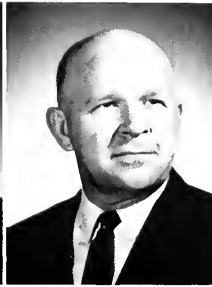


William A. Brady  
Speech

Dr. R. Wallace Brewster  
Political Science

Robert G. Bubb  
Health and Phys. Ed

Carl E. Caldwell  
Foreign Language



Dr. Cruz A. Cancel  
Special Education

Thomas A. Carnahan  
Mathematics

Dr. Forest C. Carter  
Business Administration



Marilyn E. Carter  
Education

Marion M. Carr  
Speech

Dr. Earl Chalfant  
Education



Dr. William D. Chamberlain  
Biological Science

Susan Coerr  
Art

Dr. James H. Cole  
Audio Visual



Doris Cooper  
English

Robert E. Crawford  
Geography

Rafael Diaz y Diaz  
Foreign Language

Dr. Bruce Dinsmore  
Biological Science



Dr. Dempsey M. Dupree  
*Business Administration*

Charles Economus  
*Library Science*

Dr. Allan R. Elliott  
*Dean of Students*

Roger A. Engle  
*Mathematics*





Roland D. Gassler  
*Biological Science*

Dan W. Graves  
*Library*

Bryce C. Gray  
*Student Finance*

Emmett D. Graybill, Jr.  
*Political Science*



Francis G. Greco  
English  
Edward S. Grejda  
English

William E. Grosch  
Art  
Dr. George A.  
Harmon  
Biological Science

Walter L. Hart  
Admissions  
Harold V.  
Hartley, Jr.  
Special Education

Irvin C. Henry  
Mathematics  
Dr. G. Eugene Hill  
Education



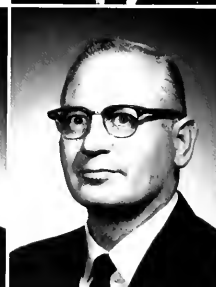
Janice H. Horn  
Library



Roger G. Horn  
Library



Dr. Roger A. Hufford  
Speech



Norman B. Humphrey  
Geography



John C. Hutchins  
Biological Science



Dr. Helen E. Knuth  
History  
Ronald A. Kopas  
Mathematics

Ernest W. Johnson  
Psychology

Joseph F. Kippert  
Astronomy

Henrietta O. Kodrich  
Education

Dr. Alfred E. Junod  
Foreign Language

David H. Klindienst  
Education

Dr. William R. Kodrich  
Biological Science

Dr. Mohammad I. Khan  
History

Myron Klingensmith  
Business Manager  
Student's Association

Dr. Gustav A. Konitzky  
Anthropology

Elaine A. King  
English

Dr. Bong Ki Kim  
Music

Joseph J. Knowles  
Health and Phys. Ed.





Dr. John A. Laswick  
Chemistry

Frank Lignelli, Jr.  
Dir. Athletics

Dr. Kenneth J. Linton  
Biological Science

Victor Liscinsky  
Health and Phys. Ed.



Walter F. Koukal  
Education

Walter Lockhart  
Philosophy





Dr. Charles L. Marlin  
Speech

Dr. William A. McCauley  
Dean, Graduate Studies

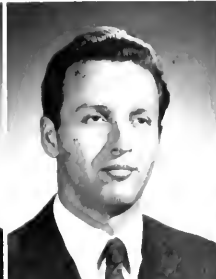


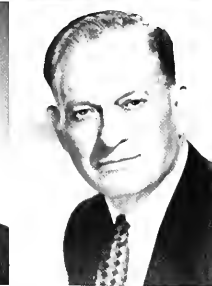
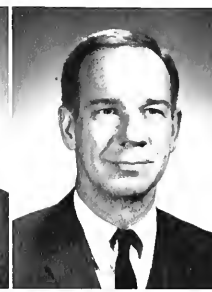
Donald K. Lowe  
Mathematics

John G. Mager  
Library

David R. Mallory  
Music

Matthew H. Marder  
Business Administration





James E. McDaniel  
*Library*

Nancy S. McKee  
*Library*

Kenneth R. Mechling  
*Biological Science*

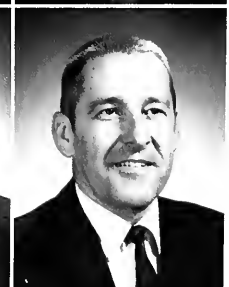
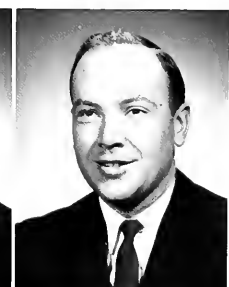
Dr. John P. Mellon  
*Dean, Liberal Arts*

Richard M. Metcalf  
*Audio Visual*

Dr. Stanley F. Michalski, Jr.  
*Music*

Melvin A. Mitchell  
*Mathematics*

Dr. L. D. Moody  
*English*



Elaine D. Moore  
*Library*

Eleanor D. Moore  
*Library Science*

James D. Moore  
*Dean, Academic Affairs*

Dr. J. Robert Moore  
*Biological Science*

John N. Moorhouse  
*Education*

Don L. Morgan  
*Educational Research*

Dr. Elbert R. Moses, Jr.  
*Speech*

Peter H. Nachtwey  
*Counselor*





Dr. John A. Nanovsky  
*Dir. Student Union*

Henry W. Newman  
*English*

Dr. Gilbert H. Neiman  
*English*

Lester C. Oakes  
*Geography*



Galeo L. Ober  
*Chemistry*

Accanto V. Pesche  
*Music*

Richard L. Pae  
*Health and Phys. Ed*

Roxanne F. Plapp  
*Speech*

Dr. William J. Page  
*Education*

William A. Proudfit  
*Dir. Public Relations*

Charles G. Pearce  
*Art*

Dr. Richard Y. Redfern  
*English*

Dr. Lawrence Penny  
*Psychology*

William A. Redin  
*Physics*

Eugene L. Rhoads  
Mathematics

Charles W. Robbe  
Social Studies

Dr. Richard C. Romoser  
Psychology

Edward A. Roncone  
Music

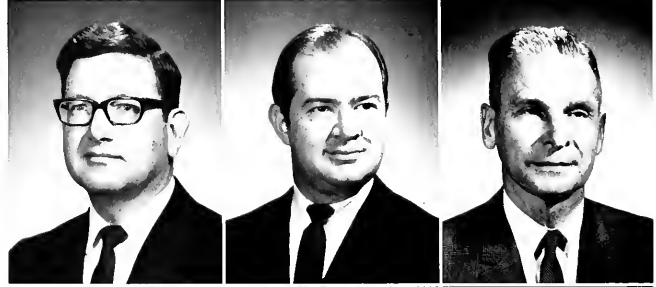
Lawrence D. Sauvage  
Special Education

William F. Shenk  
Educational Research

Roy H. Schreffler  
Special Education

Richard W. Schurient  
Asst. Dir. Admissions

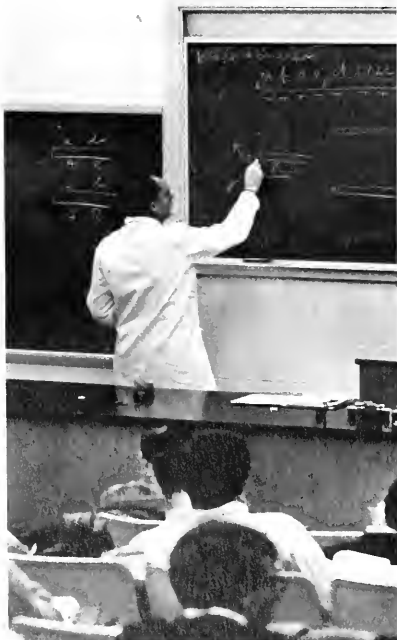
Robert C. Segebarth  
Dir. of Financial Aid

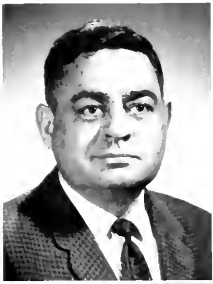


Dr. Ralph W. Sheriff  
Asst. Dir. Student  
Teaching and Placement  
James D. Shofestall  
Physics

Dr. Daniel K. Shirey  
Special Education  
Frances M. Shope  
Health and Phys. Ed.

George S. Shirey  
Geography  
Ronald C. Shumaker  
English





Dr. Harold E. Simmons  
Dean, Professional Studies

Edwin E. Simpson  
Special Education

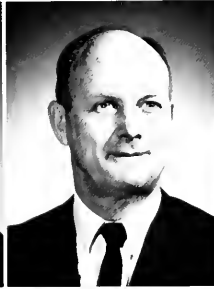
Serjit Singh  
Political Science



Glenn L. Sitzman  
Library Science

Dr. Betty R. Slater  
Education

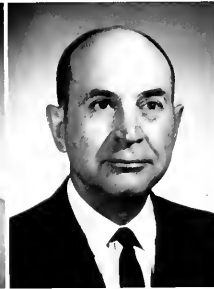
DeWayne E. Slaughaupt  
Physics



Jack H. Smith  
Speech

Dr. Lawrence Smith  
Education

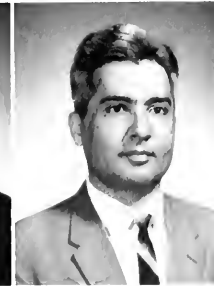
Dr. Phyllis W. Smith  
Education



Joseph P. Spence, Jr  
Art

Dr. Dana S. Still  
Asst. Dean, Academic Affairs

Dr. Christine M. Totten  
Foreign Language



Dr. Don E. Totten  
Geography

Gilbert L. Twiest  
Biological Science

Heedet Ucoluk  
Mathematics



Ethel B. Vairo  
Asst. Dean of Students  
Jay J. VanBruggen  
Social Studies



Dr. Kenneth G. Vayda  
Special Education  
Philip N. Wallace  
Admissions



Anne L. Weiss  
Foreign Language  
Margaret J. Wiant  
Geography



Dr. John E. Williams  
Biological Science  
George F. Wollaston  
Chemistry



J. Kenneth Wyse  
Library

Dr. Robert M. Yoho  
Education

Dr. Arnold H. Zaeske  
Education

# Faculty Not Pictured

Ernest C. Aharrah  
Alumni

Dr. Prabhakar S. Akolekar  
Business Administration

Dr. Ned B. Allen  
English

Dr. Philip J. Baldacchino  
Chemistry

Dr. Francis Baptist  
Art

Dr. George S. Barber  
English

Dr. Gwendolyn M. Bays  
Foreign Language

Dr. Robert Bays  
Foreign Language

Mary M. Bechtold  
Chemistry

Thomas L. Beck  
Health and Phys. Ed.

Janet Berberian  
Music

Charles Blochberger  
Counselor

Christian Bohlen  
Music

Judy Brown  
Health and Phys. Ed.

Margaret V. Buckwalter  
Library

Dr. Tracy Buckwalter  
Geography

Mary Butler  
Library

Terry P. Caesar  
English

David S. Campbell  
Audio Visual

Frank M. Campbell  
Social Studies

Alfred B. Charley  
Art

Dr. Mary M. Colby  
Geography

Dr. William F. Combs  
Psychology

Robert H. Copeland  
Speech

Sunda Cornetti  
Education

Peggy Curry  
Education

George W. Curtis  
Asst. Dean of Students

James A. Donachy  
Biological Science

Nadine D. Donachy  
Biological Science

Edward G. Duffy  
Social Studies

Donald D. Dyas  
Audio Visual

Robert A. Eftmann  
Library Science

Kenneth F. Emerick  
Library

Henry L. Fueg  
Audio Visual

Jose G. Garcia  
Foreign Language

Rachel M. Glenn  
Library

Dom W. Greco  
Business Administration

Dr. Joel L. Haines  
Social Studies

Stanley P. Hallman  
Asst. Dean of Students

Burton E. Hardin  
Music

Dr. Mary R. Hardwick  
Speech

Dr. William J. Hart  
Chemistry

William L. Henry  
Business Administration

Richard D. Hetrick  
Special Education

Dr. David A. Hilton  
Asst. to President

Roxana Irwin  
Education

Albert A. Jacks, Jr.  
Health and Phys. Ed.

Margery Johnson  
Library

Eugene R. Karasek  
Social Studies

William J. Karl  
English

Robert A. Keenan  
Education

Clifford M. Keth  
Physics

Chai K. Kim  
Library

Elaine M. King  
English

Dr. James C. King  
Social Studies

Karen King  
Education

Dr. Katherine M. Kochno  
Psychology

Margaret M. Kordecki  
Geography

Vera Kramarevskaja  
Foreign Language

Joan C. Lauderbach  
Education

Milton Lazich  
Music

Donald E. Leas  
Health and Phys. Ed.

Dr. George R. Lewis  
Dir. Computer Center

Aatis E. Lillstrom  
Audio Visual

Dr. Irvin Lilly  
Psychology

Joyce S. Lilly  
Social Studies

Dr. Earl N. Lockard  
English

John R. Luskay  
Library Science

Bruce MacBeth  
English

Marie C. Mazurowski  
Library Science

Jon A. McClure  
Education

William M. McDonald  
Music

Dr. John D. McLain  
Educational Research

James F. Metress  
Anthropology

J. Rex Mitchell  
Music

Dr. L. D. Moody  
English

Dr. W. Lee Morrison  
Psychology

Paul R. Mosser  
Education

Dr. Donald A. Nair  
Asst. Dean of Students

Charles E. Nanz  
Health and Phys. Ed.

Dr. Max A. Nemmer  
English

Robert Northey  
Mathematics

Paul I. Nornes  
Education

Donald R. Pagano  
Mathematics

Frank A. Palaggio  
Education

Dr. Hugh W. Park  
English

Leonard A. Pfaff  
Audio Visual

Andor S. P-Jobb  
Art

John L. Reese  
Education

Thomas P. Reinwald  
Business Administration

Betty L. Reisman  
Asst. Dean of Students

Sally J. Ringland  
Education

Elizabeth A. Rupert  
Library Science

Charles A. Ruslavage  
Health and Phys. Ed.

Dr. Mohamed S. Said  
Physics

Dr. Curtis N. Sandage  
Educational Research

Eugene A. Seelye  
Art

Dr. Paul L. Shank  
Physics

Dr. Charles J. Shontz  
Asst. Dean, Academic Affairs

Betty Simpson  
Health and Phys. Ed.

Dr. Sarjit Singh  
Business Administration

Richard C. Skinner  
Education

Dr. William H. Snedegar  
Physics

Dr. Walter F. Snyder  
Social Studies

Cordelia L. Stiles  
Education

Imogene Sumner  
Social Studies

Dr. Zoe Swecker  
Social Studies

Dr. Franklin S. Takei  
Philosophy

Ngo Dinh Tu  
Business Administration

Neil W. Turner  
Health and Phys. Ed.

Donald F. Utter, Jr.  
Mathematics

Dr. Joseph Uzmack  
Education

Dr. Robert S. VanMeter  
Music

Susan VanMeter  
Social Studies

Dr. Adam F. Weiss  
Speech

Pauline M. Wiberg  
Education

Dr. Samuel A. Wilhelm  
Education

Dr. Robin S. Wilson  
English

Thomas V. Wimer  
Mathematics

Twila M. Wollaston  
English

Richard Zallys  
Philosophy

# SENIORS







Sue Ann Adams  
Social Studies  
Butler

Donald Lee Adamsky  
Speech Pathology  
Ebensburg

Renee Aiello  
Library Science  
North Braddock



John Francis Alcorn  
English  
Sigel

Linda L. Allehouse  
Elementary Education  
Coraopolis

Don J. Altman  
Sociology  
Brookville



William Robert Ament  
Liberal Arts  
Pittsburgh

Douglas L. Angone  
Physics  
Warren

Bernadette M. Antkowiak  
Mathematics  
Lower Burrell

David William Arends  
Mathematics  
North Versailles

Betty L. Ashcroft  
English  
Spangler

Linda C. Aufseeser  
Library Science  
Vineland, New Jersey

Stephen James Bagnato,  
Jr.  
English  
Oil City

Carolyn A. Banjok  
Mathematics  
Sharon

Beverly Jo Banyay  
English  
Evans City

Cynda L. Bargerstock  
Elementary Education  
Kittanning







Richard K. Bartholomew  
Secondary Education  
Sharon, Pa.

Edward J. Bauer  
Chemistry  
Pittsburgh



Frank E. Bartley  
Social Studies  
Clarion

Priscilla I. Beblo  
Elementary Education  
Butler



Clyde Basinger, Jr.  
Biology  
Clarion

Sandra E. Beck  
English  
Pittsburgh



Mary Lynne Becker  
Special Education  
Pittsburgh

Donna M. Bickerstaff  
Spanish  
Beaver Falls

Linda C. Beer  
Special Education  
Franklin

Forrest S. Bish II  
Secondary Education  
Philipsburg

James A. Bell  
History  
Rochester

Donald L. Blanchard  
Psychology  
Clarion

William Edward Bell  
Mathematics  
Knox

David C. Bochert  
Mathematics  
DuBois

Kathryn L. Best  
Geography  
Knox

Darlene Beck  
Elementary Education  
Glenshaw





Michael V. Borelli  
History  
Van Voorhis  
  
Penny Boudros  
Mental Retardation  
Baden



Mariam T. Bowman  
Psychology  
Apollo  
  
Linda L. Bracco  
English  
Pittsburgh



Donald E. Brady  
Geography  
Tarentum

Karen H. Brady  
Elementary Education  
Clarion



Harriet L. Brewer  
Elementary Education  
Brookville

Sharon K. Bridge  
Speech Pathology  
North Braddock



Charles R. Broad  
Mathematics  
Du Bois

Sandra Brody  
Elementary Education  
West Mifflin



Robert E. Brown  
Mathematics  
New Castle

Joyce E. Bryan  
Elementary Education  
Arnold

Frances Brucculeri  
French  
Jamestown, N.Y.

William C. Burkes Jr.  
Biology  
Coraopolis



Judith A. Bradalich  
Speech  
Bethel Park

Bonnie D. Brannen  
Elementary Education  
Pittsburgh



Mary L. Brem  
English  
Kersey

John Brestensky  
Mathematics  
New Kensington





Elva M. Butterworth  
Library Science  
Philipsburg

Janet L. Calfo  
Elementary Education  
McMurray

Elizabeth A. Cameron  
English  
Curwensville

Johanna Camp  
Elementary Education  
Butler

Julie E. Campbell  
Elementary Education  
Emlenton

M. Lynn Campbell  
Elementary Education  
Butler

Joseph N. Caputo  
Elementary Education  
Altoona

Paul W. Cardoni  
Secondary Education  
Export

Sharon A. Cariss  
Elementary Education  
Penn

M. Christine Carlson  
Elementary Education  
Philipsburg



Virginia L. Carlson  
Elementary Education  
McKeesport

James K. Carr  
Mathematics  
Monroeville

John E. Carroll  
Mathematics  
Lucinda

Margaret E. Carroll  
Mathematics  
Emlenton

Constance A. Carter  
English  
McDonald

Timothy F. Casey  
Library Science  
History  
Beaver Falls



Frank C. Catanese  
Elementary Education  
Sagamore



Hilda S. Chamberlain  
Elementary Education  
Franklin



Teresa T. Conroy  
Elementary Education  
Natrona Heights



Carolyn L. Chandler  
Psychology  
Edinburg



Ann L. Cheers  
Elementary Education  
Emlenton



Larry R. Cope  
Mathematics  
Knox



William A. Chessman  
Elementary Education  
Pittsburgh



Bernice J. Chovanec  
Library Science  
Johnstown



Linda M. Copello  
Secondary Education  
St. Marys



Wendy Christoff  
English  
Ridgeway



James J. Cihon  
Mathematics  
Oil City



Lee L. Copper  
Chemistry  
McKeesport



Beverly J. Clayton  
Library Science  
Eighty Four



H. Jean Coleman  
Mathematics  
Oakmont



Lorraine H. Corbin  
Special Education  
Munhall



Barbara A. Covell  
Elementary Education  
St. Benedict

Janet S. Coyle  
Elementary Education  
Collingdale

Rebecca A. Coyle  
Elementary Education  
Erie

John R. Craig  
Speech  
Leechburg

Judith L. Cronenweth  
Social Studies  
Allison Park

Martha M. Crooks  
Elementary Education  
Murrysville

Judith C. Cress  
Speech  
Tionesta

Linda C. Cunningham  
Elementary Education  
Aliquippa

James P. Cupp  
Elementary Education  
Butler

Kathleen A. Currie  
Elementary Education  
North East



Ronald S. Dalby  
Mathematics  
Carnegie

Helen J. Dalmaso  
Mathematics  
Franklin



Dennis C. Darling  
Political Science  
York

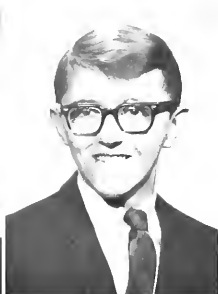


Ronnieann Dalruple  
Elementary Education  
Warren

Judith A. Dapra  
Elementary Education  
Oakmont



Maryann Daugerdas  
Elementary Education  
New Kensington

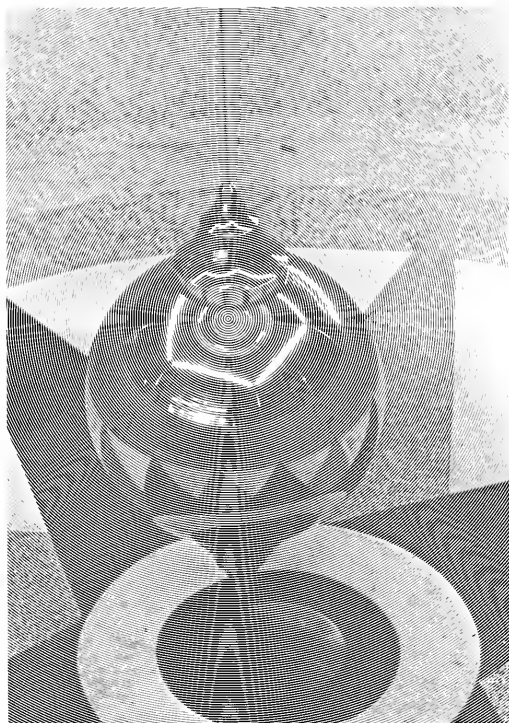


Nancy E. Davison  
Library Science  
Wampum

Delmar J. Davison  
Elementary Education  
Avonmore

Faye Davidson  
Library Science  
Verona

Anna Mae Deemer  
French  
Avonmore



Barbara L. Degano  
Elementary Education  
Bolivar

Dixie L. DeLong  
Mathematics  
Emlenton

Constance DeMarte  
Library Science  
Kane

Dennis N. DeMarte  
Earth Science  
Kane

William V. Demma  
Speech  
English  
Tarentum

Patricia G. Derikart  
Elementary Education  
Natrona Heights

Linda A. Dezenrick  
Elementary Education  
Pittsburgh

Linda C. Dillon  
Elementary Education  
Shipperville

Barbara J. Dimmerling  
Mathematics  
Pittsburgh

Donald J. Dinell  
Social Studies  
Coraopolis





Judith A DiSalvo  
Mathematics  
West Mifflin

David George Dix  
Elementary Education  
Clarion

Kristine M. Dix  
Elementary Education  
Clarion

Patricia L. Dobson  
Library Science  
Verona

Theodora E. Donovan  
Speech Pathology  
Clearfield

Clinton L. Doolittle  
Social Science  
Greenville

Joan V. Durham  
Elementary Education  
Ducannon

Ruth A. Durica  
Elementary Education  
Munhall

Terri A. Durst  
Library Science  
Salisbury

Carole A. Dvorak  
Spanish  
Heidelberg

Robert J. Emery  
Elementary Education  
Rural Valley

Barbara L. Emmer  
Library Science  
Clairton

David R. English  
Elementary Education  
Mercer

Phillip S. Esno  
English  
Burgettstown

Judy A. Evanko  
Elementary Education  
Clearfield

Tana L. Fairfax  
Mathematics  
Irwin



Kenneth W. Edwards  
Elementary Education  
Clarion

Jill K. Elliott  
Mathematics  
Greensburg





**Thelka W. Fall**  
German  
Clarion

**Richard J. Faller**  
Elementary Education  
Oil City

**Brenda J. Falstick**  
Elementary Education  
Johnstown

**M. Evelyn Federovich**  
English  
Pittsburgh

**Elizabeth E. Feldman**  
French  
Pittsburgh

**Paul M. Ferianc**  
Speech  
Cullery

**Karen S. Fetsko**  
Elementary Education  
Johnstown

**Joseph J. Filipowski**  
English  
Munhall

**Aileen E. Fingerhut**  
Elementary Education  
Philadelphia

**Linda Marie Fisher**  
Elementary Education  
Gibsonia

**Philip D. Floyd**  
Biology  
Aliquippa

**Valerie J. Frederick**  
Library Science  
Knox

**Darlene F. Fuss**  
Elementary Education  
New Brighton

**Mike Galek**  
Spanish  
Pittsburgh

**Margaret A. Gallagher**  
Mental Retardation  
Philipsburg

**Fred Gallo**  
Business Administration  
Latrobe

**Jan R. Garda**  
Secondary Education  
Harwick

**Donald I. Geedey**  
Mathematics  
Mifflintown

**J. Christopher Gemmell**  
English  
Clarion

**Christie E. Gesler**  
Library Science  
Speech  
Pittsburgh







Merrienne Giffin  
Elementary Education  
DuBois



Carolyn S. Geldersleeve  
Social Sciences  
Stoneboro



Helen L. Glasauskas  
Geography  
Munhall



Carl Paul Glass  
Scene Design  
Lighting  
Clarion



Daniel E. Gilbert  
Library Science  
Johnstown



Terry L. Graham  
Elementary Education  
Zelienople



Joan L. Grove  
Elementary Education  
Oil City



Kathryn M. Hagins  
Russian  
Freeport



John P. Hallock  
Secondary Education  
Niles, Ohio



Kathryn R. Hamilton  
Mental Retardation  
Lower Burrell



Janet A. Hannah  
Elementary Education  
Shipperville



Francis Harlan Jr.  
Social Studies  
Windbor

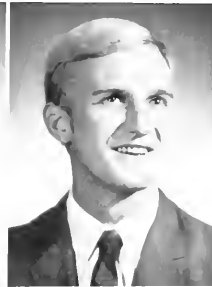
Karyl L. Hanst  
Elementary Education  
Franklin



Rita J. Haluska  
Elementary Education  
Patton



Virginia B. Harrison  
Elementary Education  
Oil City





Linda Helhowski  
Mathematics  
East Vandergrift



Hope A. Henry  
Mathematics  
Knox

Carla J. Hartz  
Earth and Space  
Geography  
Allison Park

Arnold B. Hazlett  
Earth and Space  
Portage

Priscilla J. Hathaway  
Mathematics  
Lake City

Gwendolyn K. Heckman  
Mathematics  
Brookville

Jack O. Havelly Jr.  
Elementary Education  
Lower Burrell

Gertrude M. Heintz  
Elementary Education  
Erie

Linda J. Hepline  
Mathematics  
East Carnegie

Mary K. Herzog  
Elementary Education  
Kane

S. Eugene Herritt  
English  
Montoursville

William M. Hess  
Comprehensive Science  
Pittsburgh

Douglas M. Herzog  
Elementary Education  
Smethport

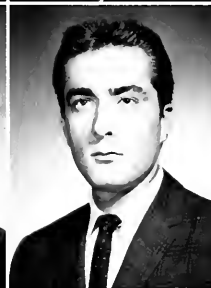
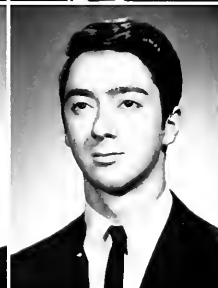
Hazen Ellsworth Hileman  
English  
Cherry Tree

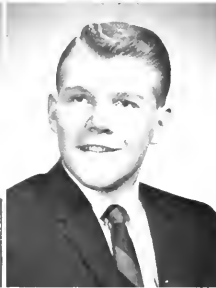
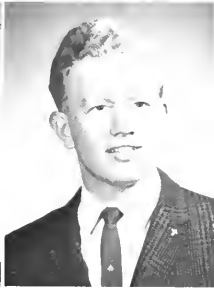
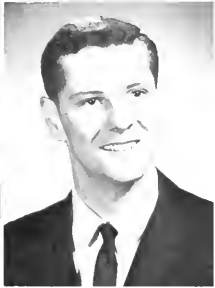


Nancy L. Henry  
Elementary Education  
Pittsburgh



Margaret M. Hepler  
Library Science  
New Bethlehem





Patricia L. Hillen  
Spanish  
Turtle Creek

Dorothy A. Heffman  
Elementary Education  
Ebensburg

Janice A. Hoffman  
Elementary Education  
Aliquippa

Michael Hoffman  
Social Science  
Levittown

Mark Hogrefe  
Social Science  
Worthington

Sandra R. Hollenbaugh  
English  
Strattanville

Lawrence G. Holly  
History  
Rimersburg

Susan J. Holmberg  
Elementary Education  
Johnsonburg

David A. Holste  
Social Science  
Pittsburgh

James W. Horton  
Business Administration  
Clarion

Gerald M. Houston  
Elementary Education  
Oakmont

Cynthia J. Hovis  
Special Education  
Seneca

William A. Howard  
Earth and Space  
Oil City

Virginia Lynne Huff  
Spanish  
Franklin





Marilyn M. Hughes  
Elementary Education  
New Castle

Robert A. Hull Jr.  
Speech Pathology  
Mineral Springs



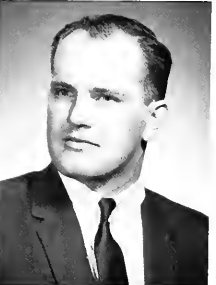
Michael H. Johnson  
Elementary Education  
Springdale

Judith A. Johnson  
Elementary Education  
Irwin



Stephen J. Hurni  
Mathematics  
Aliquippa

Marianne Huyett  
Library Science  
Sports, N.J.



Rose A. Ingram  
Elementary Education  
Clinton

Richard L. Jack  
Elementary Education  
Cranberry

Ruth L. Johnston  
Elementary Education  
Pittsburgh

Constance R. Jones  
Special Education  
Sharon

Patricia A. Joseph  
English  
Library Science  
Belle Vernon

John A. Joy Jr.  
Biology  
Shipperville



Barbara A. Jakub  
Library Science  
Irwin

Raymond J. Jenkins  
Biology  
Beaver



Carol B. Johnson  
Elementary Education  
Titusville

Carol S. Johnson  
Elementary Education  
Erie





Gloria Jean Kerestan  
Elementary Education  
Creighton

Marion R. Kerr  
Elementary Education  
Pittsburgh



Pamela Jane Kielty  
Speech Pathology  
Pittsburgh

Dan R. Kimmel  
Elementary Education  
Berlin



Edward M. Karpinski  
Mathematics  
Knox

Daniel J. Kauffman  
Special Education  
Beaverdale

Sandra Kaufman  
Elementary Education  
Music  
Johnstown

Robert M. Keener  
Biology  
Fairmount City

June R. Kindel  
Elementary Education  
Brockville

Karen E. King  
Special Education  
Houston



Suellen Kiser  
Library Science  
Knox

Louise Ann Kish  
Elementary Education  
Coraopolis

Laurel J. King  
English  
Washington

Mary M. Kinney  
Special Education  
Cross Fork



Robert John Klaus  
Library Science  
Brockville

Joseph William  
Klinehamer  
Chemistry  
Oil City





Barbara L. Klinger  
Elementary Education  
Canonsburg



Joan M. Klingler  
English  
Harrisburg



John C. Klingler  
Mathematics  
Middle Creek



MariEtta Hill Klingler  
Elementary Education  
Wilkesburg



Donald A. Kobert  
Geography  
Pittsburgh

Sally L. Koslik  
Library Science  
Monessen

Karen A. Kotchey  
History  
Pittsburgh

Frederick Michael Kovalyak  
Elementary Education  
Reynoldsville

Linda M. Kovanis  
Elementary Education  
Carnegie

Marcella A. Kozier  
Elementary Education  
Creighton

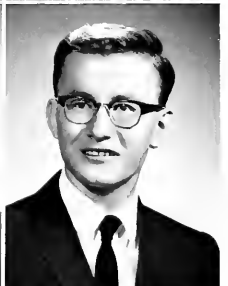
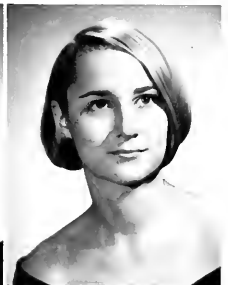
Donald H. Kruss  
Biology  
Zelienople

Gene E. Krueger  
History  
Geography  
Pittsburgh

Thomas J. Krupa  
Mathematics  
Philipsburg

Madgelene Kruest  
Library Science  
Freedom

Janet R. Kuester  
Speech Pathology  
Audiology  
Irwin





Karen S. Kuznicki  
Elementary Education  
Pittsburgh



Albert Larson  
Natural Science  
Corsica



Mary Ellen Laur  
Biology  
Pittsburgh



John R. Lawrence  
Social Studies  
Monaca



Joseph M. Lavella  
Geography  
Herminie



A. Jeanne Law  
Library Science  
Apollo

Georgia D. Layton  
Elementary Education  
Johnstown

Anne C. LeJeune  
French  
Aliquippa

Raymond F. Lenzi  
Comprehensive Social  
Studies  
Ford City

Susan R. Levine  
Secondary Education  
Revere, Mass.





Judith M. Levy  
Elementary Education  
Pittsburgh



Marsha K. Lewis  
Speech Pathology  
Audiology  
Pittsburgh



Laura L. Liechti  
Mathematics  
Canonsburg



JoAnne M. Long  
Elementary Education  
Reading



Susanne M. Long  
Mathematics  
Reading



Carol A. Lowry  
Elementary Education  
Oil City



Marlin J. Lower  
English  
New Bethlehem



Delia A. Luke  
Library Science  
Geography  
North East



Robert A. Lucas  
Social Studies  
Pittsburgh



Samuel J. Lucci  
Comprehensive Social  
Studies  
Monaca



Constance M. Lyda  
Spanish  
Monroeville

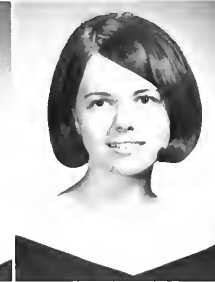
Judith A. Macuga  
Psychology  
New Brighton

Rosalind G. Mader  
Spanish  
Langeldth

Constance L. Magnuson  
Elementary Education  
Greensburg

Christine V. Maletic  
Elementary Education  
Ambridge

George W. Mandel  
Elementary Education  
Hawk Run



Picture  
Not  
Available



Linda A. Markovich  
Special Education  
Titusville



Charles C. Matsko  
Special Education  
Leisenring



John R. Matusky  
Elementary Education  
Sykesville



Patricia L. Marshall  
English  
Latrobe



John W. Matviko  
Speech  
Arnold



Mary Ellen  
Mawhinney  
Spanish  
McKees Rocks



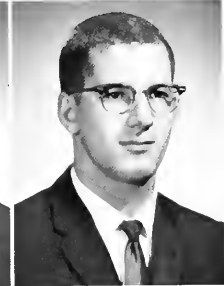
Jane L. Martz  
Speech Pathology  
Audiology  
Segel



Anthony R. Maydak  
Biology  
West Mifflin



Terry L. McAninch  
Chemistry  
Strattanville



Janice K. Maruzwki  
Elementary Education  
Bridgeville



Mary Ann McClelland  
Library Science  
New Castle



Susan McClain  
Special Education  
Altونا



Leslie K. Marvin  
Elementary Education  
Oil City



Susan J. McCormack  
Speech Pathology  
Audiology  
Coraopolis



Harry E. McCullough  
Comprehensive  
Science  
Imperial





**Kathleen McDermott**  
English  
Spanish  
Penn Hills

**Dennis Lee McDonald**  
Comprehensive Social  
Studies  
Franklin

**Wilbert Berton  
McGeorge**  
Elementary Education  
Beaver Falls

**Fred C. McIlhattan**  
Comprehensive Social  
Studies  
Sligo

**Sandy McKee**  
Elementary Education  
French  
Curwensville

**Judie Lynn McKenna**  
Elementary Education  
Clirion  
Aliquippa

**Gary Chesley McMillan**  
Biology  
Zelenople

**Martha L. McMinn**  
Library Science  
Brockway

**Cynthia Lee McMurdo**  
Spanish  
New Kensington

**Ruth C. McMurdy**  
Elementary Education  
Emlenton

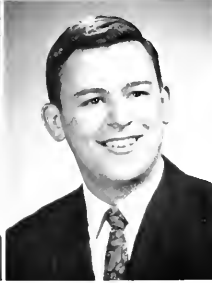
**Thomas Michael McNamara**  
Business Administration  
Clarion

**Dean McQuaide**  
Mathematics  
Ashtabula, Ohio

**Robert P. Means**  
Geography  
Brookville

**Jo Anne Meckey**  
Special Education  
Natrona Heights





Barbara G. Mecklenburg  
Elementary Education  
Avalone

Ga'll E. Metz  
Elementary Education  
Pittsburgh

Herb Michaels, Jr.  
Elementary Education  
East McKeesport

Richard A. Mihalic  
Biology  
Sewickley

Josephine N. Mike  
English  
New Kensington

Alan R. Mikula  
Comprehensive Social Studies  
Vandergrift

Alan G. Milanovich  
Mathematics  
Rimersburg

Charles Edward Milburn  
Mathematics  
Pittsburgh

Barbara Ann Miller  
Elementary Education  
Somerset

Carole A. Miller  
Library Science  
Ellwood City



Doris M. Miller  
Elementary Education  
Aliquippa

Marlene Miller  
English  
Rixford

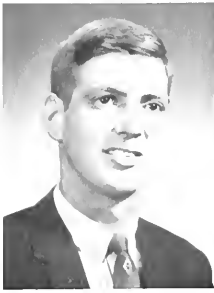
William Roger Miller  
Elementary Education  
Oil City



Nancy Carole Mincemoyer  
Elementary Education  
Bridgeville

Leonard L. Mitchell, Jr.  
Mathematics  
Beaver Falls

Anita Marie Molchany  
Elementary Education  
Johnstown



Joseph J. Molhoek  
Mathematics  
Gibsonia



Kathleen Ann Mollick  
Elementary Education  
Ligonier



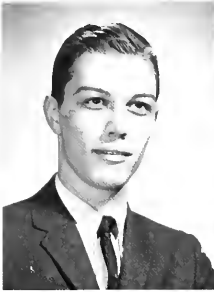
Mary Susan Moore  
English  
McKeesport



Karen V. Morley  
Elementary Education  
Shifffield



Donald W. Morrison  
Special Education  
Irwin



Edson H. Morrison  
Natural Science  
Clarion



Linda Carol Morrone  
Elementary Education  
Pittsburgh



William J. Muldoon  
History  
Oil City



Glenn E. Murphy  
Mathematics  
New Castle



Myrna Jean Murphy  
Biology  
Pittsburgh



Carol Ann Musgrove  
Elementary Education  
Bovard

Judy Myers  
Elementary Education  
Saltsburg

Maureen Kaye Myers  
French  
Plum Borough

Carla J. Naylor  
Special Education  
Belle Vernon

William G. Neese  
Political Science  
Monaca

Ross Z. Neidich  
Elementary Education  
Franklin





Richard R. Neilson  
Mathematics  
Ridgeway

Elaine B. Newhouse  
English  
Vandergrift

Bonnie A. Nicely  
Special Education  
Ligonier

Portia L. Nicely  
Elementary Education  
Youngstown

Nancy Henderson Nixon  
Elementary Education  
Pittsburgh

Roberta Anne Norton  
Biology  
Lewis Run

MaryAnn Novak  
Library Science  
Natrona Heights

Nawel E. Oakes  
English  
Clarian

Laird H. Ober  
Psychology  
Reynoldsville

Frank W. O'Block  
Physics  
Mahoning

Kenneth James O'Brien  
Business Administration  
Harrisburg

Janet Ohler  
Humanities  
Clarian

Jane F. Ohrman  
Elementary Education  
Pittsburgh

Patricia A. Olean  
Library Science  
Creighton

Linda M. Oleksa  
Elementary Education  
Aliquippa

Margery E. Olson  
Spanish  
Youngsville

Lynda D. Oskin  
Elementary Education  
Verona

Carol Osterman  
Elementary Education  
McKeesport

Don M. Paradise  
Library Science  
Donora

George Pasierb  
Geography  
Central City





Lala A. Patsch  
Elementary Education  
Houston

Donna Irene Paul  
Library Science  
Meyersdale

Charles J. Payne  
Mathematics  
Tyrone

Jill A. Pierce  
Mathematics  
Clarion

Carol Jean Peters  
English  
Curwensville

Ronald A. Peters  
Social Studies  
Baden

Carol A. Pfeifer  
Biology  
Evans City

Willis V. Phillips  
Economics  
Lower Burrell

Barbara A. Pickerill  
Elementary Education  
Johnstown

Gregory W. Pierce  
Social Science  
Knox

Carol A. Pizor  
Elementary Education  
Mercer

Kathleen A. Plocki  
Speech Pathology  
Natrona Heights

Patricia A. Poliwczak  
Elementary Education  
McKees Rocks

Mickey L. Pond  
Elementary Education  
Bulger



Leslie A. Popp  
French  
Freedom

LaVerne R. Poulas  
Elementary Education  
North Braddock

Carla R. Pozzani  
Elementary Education  
Verona





Mary E. Priestes  
Mental Retardation  
Pittsburgh

Ruth A. Pushkar  
Library Science  
Spanish  
Monessen

Eileen O. Querio  
Elementary Education  
Oakmont

Denise M. Ramicone  
Library Science  
Charleroi

Juliann C. Ranieri  
Elementary Education  
Aliquippa

Margaret B. Ravas  
Social Science  
Clarion

Edward I. Raybuck  
Mathematics  
Brockway

Joseph G. Reasinger  
Secondary Education  
DuBois

Donna L. Reed  
Biology  
Reynoldsville

Beverly A. Rees  
Mathematics  
Valencia



Lynne L. Rees  
Social Studies  
Port Allegheny

Donald L. Rehner  
Social Studies  
Strattonville

Linda K. Riddle  
Elementary Education  
Franklin

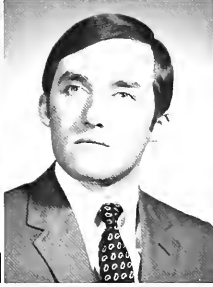
Cheryl J. Ripper  
Elementary Education  
Beaver Falls

Carole E. Reis  
Elementary Education  
Garden City, N. Y.

Raoul P. Reisch  
Social Studies  
Glenshaw

Gloria J. Ricciardulli  
Elementary Education  
McKees Rocks





Donna M. Ritts  
*Elementary Education*  
Van

William E. Robertson  
*Biology*  
Franklin

Carole A. Robinson  
*Elementary Education*  
Pittsburgh

Patricia S. Rodgers  
*Elementary Education*  
Franklin

Georgette Rostron  
*Elementary Education*  
Bridgeville

Robert J. Rodgers  
*Mathematics*  
Franklin

Mary Ann Roman  
*Mathematics*  
Reynoldsville

Robert D. Roncone  
*Business Administration*  
Clarion

Vincent J. Rooney  
*Elementary Education*  
Pittsburgh

Marjorie A. Rumisek  
*Biology*  
Pittsburgh

Donald R. Rupnik  
*Chemistry*  
Murrysville

Nicolas Rutherford  
*Elementary Education*  
Farmington

Eleanor Ruttner  
*Speech Pathology*  
Ambridge

Carol A. Sams  
*Mathematics*  
Washington

Barbara M. Samuels  
*Mathematics*  
Pittsburgh

Nancy Ellen Sarver  
*Elementary Education*  
Freeport

Constance M. Savenko  
*Elementary Education*  
Ingomar







Ronald Saville  
Social Studies  
Clarion

Bonita M. Scalzott  
Elementary Education  
Vandergrift

Joann L. Scaparra  
Elementary Education  
Pittsburgh

David R. Schank  
Social Studies  
Lancaster

Janice K. Scheick  
Spanish  
Erie

Robert F. Schmidt  
Social Studies  
Canonsburg

Sandra L. Schoenberger  
Elementary Education  
Pittsburgh

Connie L. Schrecengost  
Elementary Education  
Clarion

Thomas H. Schrecengost  
Mathematics  
Brookville

Michael C. Seyler  
English  
Franklin

Harry D. Shaffer  
Social Studies  
Mayport

Ford W. Shankle  
Social Studies  
Kittanning

Carl H. Shellgren  
Business Administration  
Irwin

Andrea L. Shields  
English  
Johnstown

Delores P. Shisha  
Elementary Education  
Coraopolis

Marjorie P. Shumaker  
Elementary Education  
Brookville

Francis J. Sirianni  
Comprehensive Science  
Kane

Carol Ann Sjoberg  
Elementary Education  
McKeesport





Roy L. Smeltz II  
Comprehensive Social  
Studies  
State College

R. Elaine Smeltz  
Special Education  
Lemont

Richard E. Smith  
Elementary Education  
Rimersburg

Thomas M. Smith  
History  
Franklin



Bonnie M. Snyder  
Elementary Education  
Polk

Jean M. Snyder  
Elementary Education  
Franklin

Michael P. Snyder  
Library Science  
Clarion

Judith P. Sobey  
Elementary Education  
Sharon



Wilma J. Soliday  
Speech Pathology  
Audiology  
Fairmount City

Thomas L. Sollinger  
Elementary Education  
Franklin



Linda F. Sonnenfeld  
Special Education  
Beachwood, N. J.

Lorraine F. Stephenson  
Elementary Education  
Beaver Falls



Elizabeth M. Stiglitz  
Elementary Education  
Special Education  
Franklin

Ruth E. Swallow  
Mathematics  
Central City





Ruth Anne Swartzwelder  
Elementary Education  
Pittsburgh

David A. Sysyn  
Mathematics  
Ambridge



Josephine Ann Szczerba  
Elementary Education  
West Mifflin

Rosemarie Szczerba  
English  
West Mifflin



Stephenie Talaber  
Speech Pathology  
Pcughkeepsie, New York

Mrs. Suzanne Sell Tatrai  
Elementary Education  
Pittsburgh



Thomas R. Teeters  
Business Administration  
Brackenridge

Marie Elena Tegano  
Elementary Education  
Ridgeway

Edward Tesla  
Library Science  
Aliquippa

Thomas Michael Tessena  
Mathematics  
Crosby



Connie A. Thomas  
Elementary Education  
Franklin

Jerry R. Thomas  
Elementary Education  
Irwin

Joan E. Thomson  
Elementary Education  
Pittsburgh

Jill M. Thorwart  
Mathematics  
Ridgway



Linda C. Toney  
Speech Pathology-  
Audiology  
New Castle



Robert W. Toth  
Elementary Education  
Pittsburgh



Geraldine M. Trozzi  
Spanish  
Verona



Carol J. Turner  
Elementary Education  
Titusville



Don Turowski  
Mathematics  
Natrona



George W. Tweedy  
Geography  
Seward



John Ashley Turner  
English  
Titusville



George C. Trautman  
Spanish  
Ambridge

Donald R. Uber  
Economics  
Harbircreek

Linda E. Ummer  
Speech Pathology-  
Audiology  
East Pittsburgh

Sally Ann Tylwalk  
Elementary Education  
Clearfield

Lawrence Leo Valasek  
Biology  
Ford City

Harriet A. VanDyke  
English  
St. Mary's

F. Ellen Vaile  
Library Science  
Johnstown

Ronald S. VanSice  
Mathematics  
DuBois



Mary Lou Triola  
English  
Franklin



Geraldine M. Trozzi  
Spanish  
Verona



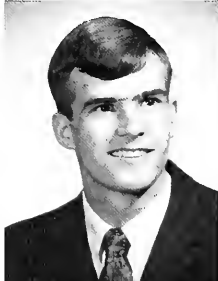
Carol J. Turner  
Elementary Education  
Titusville



John Ashley Turner  
English  
Titusville



Judy Ann Trotta  
Elementary Education  
Butler



Don Turowski  
Mathematics  
Natrona



George W. Tweedy  
Geography  
Seward



John Ashley Turner  
English  
Titusville



Janene A. Versaw  
Elementary Education  
Pittsburgh



James N. Vidanoff  
Business Administration  
Ford City



Louis Vescio  
Mathematics  
Sewickley



Paul E. Vokish  
Comprehensive Social  
Science  
Natrona Heights



Judith Lee Walcott  
Elementary Education  
Beaver Falls



Donna M. Wolfinger  
Elementary Education  
Philadelphia



Robert Francis Walko  
Social Studies  
Ambridge



Linda E. Waltermire  
Earth-Space Science  
Ligonier



Robert Ward Jr.  
Secondary Education  
McKeesport

David C. Wartinbee  
Biology  
Pittsburgh

Rebecca Anne Weeber  
Biology  
Irwin

David M. Weiland  
Spanish  
Butler

Gail L. Westren  
English  
Duke Center

Thomas L. Weyand  
Mathematics  
Normalville





Freda E. Wheeler  
Elementary Education  
North Versailles

James P. Wildman  
Social Studies  
Clarion



Frank Joseph Witkowski  
Earth-Space Science  
Clinton



Diane E. Wile  
Elementary Education  
Franklin

Robert E. Williams  
Chemistry  
Aliquippa



Josephine M. Wlazlowski  
Elementary Education  
Altoona



Nichola Suzanne  
Wilson  
Elementary Education  
Rimersburg

James L. Wilson  
Business Administration  
Clarion



Albert S. Womer  
Social Studies  
Knoxdale



Joseph L. Winkler  
History  
Emlenton

Georgana Winters  
Elementary Education  
Rochester



Janet G. Wood  
Social Science  
Pittsburgh



Joanne M. Wisniewski  
Elementary Education  
McMurray

G. Richard Wist  
Comprehensive  
Science  
Pittsburgh



Bonita Suzanne  
Woolbaugh  
Special Education  
Hallstead



Edward G. Wozniak Jr.  
Secondary Education  
Baden

Carol Lois Wray  
Library Science  
Pittsburgh

Eleanor Margaret Wright  
Elementary Education  
Patchogue, N. Y.

Sandra L. Wright  
Mathematics  
Pittsburgh



Thomas Michael Wulk Jr.  
Social Studies  
Sewickley

Shari Ann Wynkoop  
Psychology  
Clarion

James E. Younkins  
Secondary Education  
Freeport

Anelia M. Yount  
Elementary Education  
DuBois



Gary Edward Yusko  
Comprehensive Social  
Education  
Portage

Theodore Zeljak  
Elementary Education  
Aliquippa



Vic Ziegler  
Elementary Education  
Lickingville

# Seniors Not Pictured:

## EDUCATION

Allen, J.  
Bailey, D.  
Barron, J.  
Bartel, D.  
Barton, L.  
Becker, J.  
Bell, J.  
Berzonsky, C.  
Bish, J.  
Black, M.  
Boden, N.  
Book, D.  
Boulden, D.  
Brem, M.  
Breniman, S.  
Brinkley, P.  
Brush, A.  
Burt, J.  
Caldwell, C.  
Campbell, D.  
Chalmers, L.  
Christenson, K.  
Clark, W.  
Cooley, J.  
Coon, A.  
Cox, C.  
Coward, H.  
Cummings, J.  
Cuprinka, M.  
Curran, L.  
Darak, K.  
Davies, C.  
Day, D.  
DeFelice, J.  
DeMao, J.  
Detwiler, D.  
Dietz, C.  
Domenick, J.  
Doyle, W.  
Dutkos, E.  
Elders, M.  
Farrell, K.  
Fedorka, D.  
Feketi, R.  
Ferrari, A.  
Flenner, H.  
Flood, W.  
Foster, T.  
Franzetta, M.  
Fulgenzi, J.  
Fuller, C.  
Furyk, M.  
Fusco, R.  
Garland, S.  
Gaston, R.  
Gbur, N.  
German, R.  
Gesler, C.  
Gess, F.  
Giffin, D.  
Gilfillan, F.  
Grau, J.  
Grim, C.  
Harrison, S.  
Heid, J.  
Heinricher, S.

Hesselgesser, D.  
Hickman, J.  
Hindman, S.  
Hoffman, D.  
Hollibaugh, T.  
Hoover, T.  
Hopkins, J.  
Hrinya, E.  
Hubler, J.  
Huff, D.  
Hughes, K.  
Innocent, D.  
Irvine, D.  
Jarosick, J.  
Kampert, M.  
Kindel, J.  
Klimezek, M.  
Kozenski, S.  
Kramich, L.  
Kriebel, K.  
Kriebel, T.  
Kurfess, K.  
Lang, R.  
Lesslie, D.  
Levis, B.  
Little, M.  
Lizik, C.  
Logue, T.  
Lucas, R.  
Lucci, A.  
Luketich, H.  
Maderia, G.  
Mahaffey, V.  
Marks, R.  
Martin, G.  
Mason, R.  
Master, B.  
Matlack, J.  
Matson, J.  
Maxwell, R.  
May, S.  
McClincey, P.  
McLain, P.  
McNulty, L.  
McWilliams, E.  
Minich, R.  
Mitchell, K.  
Mohney, E.  
Montana, A.  
Morgan, J.  
Mori, W.  
Morreale, C.  
Morrie, G.  
Morris, P.  
Morrow, D.  
Murphy, R.  
Mushrush, P.  
Naccarato, B.  
Nelson, J.  
Notto, H.  
Orosz, P.  
Orr, R.  
Pefferman, M.  
Pietropola, P.  
Plocki, K.  
Pollock, S.

Powell, J.  
Preston, D.  
Price, S.  
Reed, R.  
Rhoads, L.  
Richard, R.  
Rinaldi, J.  
Romano, S.  
Rose, E.  
Rupert, E.  
Sabato, C.  
Santillo, R.  
Schrecengost, D.  
Schollaert, D.  
Schwartz, C.  
Schwietering, D.  
Scopel, D.  
Sebring, D.  
Sesack, B.  
Sewchok, M.  
Sheridan, D.  
Sherman, W.  
Shotts, S.  
Shoup, J.  
Shropshire, B.  
Silverberg, A.  
Simpson, S.  
Sinclair, D.  
Slingwine, N.  
Smarick, R.  
Smathers, S.  
Smith, G.  
Stark, K.  
Stark, P.  
Stayrook, W.  
Steele, S.  
Steighner, P.  
Stetz, G.  
Stewart, D.  
Stover, D.  
Strattan, S.  
Stuart, L.  
Taylor, D.  
Thomas, J.  
Thompson, R.  
VeHaun, S.  
Verrelli, G.  
Vincent, J.  
Wallace, W.  
Walter, M.  
Walters, E.  
Walther, C.  
Warner, S.  
Way, K.  
Wetzel, S.  
White, L.  
Whiting, C.  
Wickstrom, F.  
Williams, L.  
Wynkoop, D.  
Yeany, N.  
Yuksic, K.  
Zezza, P.

## LIBRARY SCIENCE

Beatty, S.  
Casey, T.

Dean, D.  
Jaynes, C.  
Munjack, L.  
Orris, C.  
Reinsel, B.  
Thomas, M.  
Weaton, D.  
Wilsher, G.

## LIBERAL ARTS

Baum, J.  
Bulger, N.  
Bunnell, D.  
Conwell, V.  
Daski, R.  
Day, J.  
DeMaio, L.  
Dilettuso, M.  
Domen, J.  
Douglass, J.  
Kahle, D.  
Kohut, J.  
Krivansky, R.  
Mechas, J.  
Ohler, J.  
Poder, F.  
Popcke, C.  
Puryear, C.  
Schmader, M.  
Shultz, J.  
Storc, P.  
Takar, T.  
Vendor, I.  
Yount, G.

## SPEECH PATHOLOGY

Nuhfer, M.  
Schalcosky, K.  
Schuler, L.  
Soliday, W.  
Solomon, M.  
Zagorac, M.

## MENTAL RETARDATION

Dunkle, T.  
Gehrig, K.  
Ggvaudan, R.  
Hamrock, D.  
Nemie, C.  
Niebel, D.  
Scott, V.

## BUSINESS ADMINISTRATION

Droney, D.  
Humes, W.  
Morgan, M.  
Powell, N.  
Schalcosky, P.

## MASTER OF EDUCATION

Bowley, C.  
Pierotti, C.  
Smith, N.



CSC



'69

# Editor's Epitaph

The nature of any college presupposes perpetual activity: academic, social, cultural.

Clarion State College is 101 years old and rapidly expanding, and many of the activities generated here are unique and exciting. The many people involved with this publication—especially editors—have attempted to visually and verbally capture that uniqueness, and that special kind of excitement indigenous to learning. We have tried to give continuity to the book, and hope that it recalls the year as you remember it.

An undertaking of this complexity involves the hard work and cooperation of many people. They all deserve much credit, and the editorial staff deserves extra plaudits. Dan Gaido was as fine a right arm as any editor could have. The hours of taking pictures, doing layouts, and offering suggestions were appreciated more than most people realize. Dedication is epitomized in his work as Sports Editor.

Mary Lou Bednar gets my vote for being a great Greek Editor and typist. Her fervor and drive should bring her success with the 1970 SEQUELLE.

Work on the Senior Section is never easy. For their endless sacrifices my appreciation goes to Kathleen McGrath and Melanie Silvernail, co-editors.

A special thank you and congratulations goes to Carol Osterman for her outstanding work as Photography Editor. She was the only member of the staff to be married during the past year.

To the professional photographers from Merin Studios, Incorporated, Eddie Dix, Tad Yoder, and Al Podolski, I extend my heartfelt thanks for some of the finest photographic work I have seen.

The four men to whom I owe the most, Michael H. Johnson, my ever understanding advisor, Myron Klingensmith, to whom I could run with a problem whenever I thought it was necessary, William "Red" Moore, Taylor Publishing Company representative, for keeping a watchful eye on this year's SEQUELLE and for being so understanding, and last, but not least, Marvin Merin, of Merin Studios, Incorporated, for smoothing out problems encountered in the photography portion of the book. To these four I shall be forever grateful.

In closing this book I remind you, the students, faculty, and administration, that this yearbook is a result of the hard work of a minority of the students. To these people you owe your thanks, your gratitude, and your satisfaction, and it is they you should also remember when, in future years, you have the pleasure of recalling your days at Clarion State College.

This, then, is SEQUELLE 69. I sincerely hope you like it.

Janet Beary



Miss Janet L. Beary 1969 Sequelle Editor



**TAYLOR PUBLISHING COMPANY**

"The World's Best Yearbooks Are Taylor-made"





CLARION UNIVERSITY OF PENNSYLVANIA



3 9363 00127 9816

1017  
1017  
1017  
1017  
1017

qLD  
1017  
.C3c  
1900  
c.2

YEARBOOKS



TAYLOR