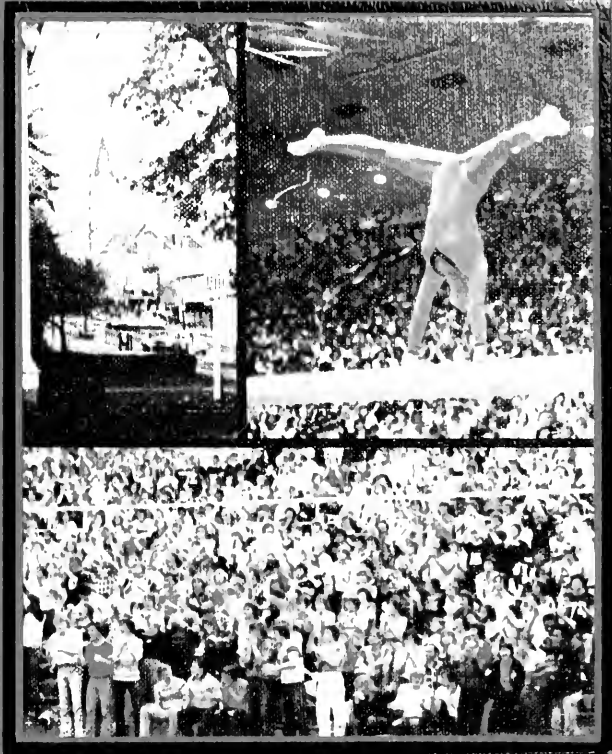


SENIORS



1977





Digitized by the Internet Archive
in 2010 with funding from
Lyrasis Members and Sloan Foundation

<http://www.archive.org/details/sequelle1977clar>

1977

SEQUELLE

Clarion State College
Clarion, Pa.

TABLE OF CONTENTS

Dedication.....	2
Potpourri.....	4
Groups.....	16
Special Events.....	44
Sports.....	52
Fine Arts.....	88
Features.....	120
Greeks.....	152
Faculty.....	178
Seniors.....	198
Memorial.....	238
Index.....	239
Editor's Message.....	240

Dedication

Dr. Gemmell's tenure as President of the college included the turbulent growing sixties and more than half a decade of the conservative seventies. Under his quiet but firm leadership, Clarion State College experienced the most significant developments of its one hundred nine year history. It was transformed from a single degree school to a modern college offering five undergraduate and five graduate degrees covering a broad array of major programs.

The statistics covering this period are quite impressive. Enrollment increased from fourteen hundred to more than fifty one hundred students. Venango Campus and McKeever Center were established while the base campus grew from twenty three acres to nearly one hundred acres. Seventeen new buildings have been built on Main Campus, two at Venango and five at McKeever.

President Gemmell believed that the real strength of any college is its instructional staff and involved the faculty in college governance through the organization of a faculty senate. He placed increasing responsibility upon academic departments by seeking their more active participation. He let it be known that Clarion should strive for the best in order to be the best, and in all things he set the example.

The results of Dr. Gemmell's work are well known to the ten's of thousands of students and faculty who were fortunate to have been associated with Clarion State College during his tenure. They will remain as a legacy for future benefit to those who follow us at Clarion.

It is in appreciation of this dedicated and outstanding service that this book is respectfully dedicated.





Dr. James Gemmell
President: 1960-1976



If I had it to do over again. . .
I'd try to make more mistakes next time.
I would relax a little more,
I would limber up quite a bit,
And be sillier than I have been this trip.



I know there would be very few things
I would take so seriously,
and I certainly would be less hygenic.
I'd take more chances,
I'd take more nonsense journeys.
I would climb more mountains
and swim more rivers
and watch more sunsets.
I'd fuss about myself, and think a little more
of the value of myself.
I would burn a great deal more gasoline.





I'd eat more ice cream and less beans.
I'd have more actual troubles
and fewer imaginary ones.
You see, I'm one of those people
who is highly organized. . .
very sane and sensible,
that's why I live hour after hour
and day after day.



Oh, I have had my moments. . .
and if I had it to do over again,
I'd have more of them!
In fact, that's what I'd have most of. . .
just moments. . .
one after another,
instead of this living
so many years ahead of each day.



I have been one of those people
who never go anywhere
without a thermometer, a raincoat,
second this or that.
But if I had it to do over again,
I would go more places,
I'd get up and go quickly
and travel much lighter
than I ever have
and I would go places
I never dreamed I'd go.



If I had my life to live again
I would start barefooted
earlier in the spring
and I would stay that way
until later in the fall.
I would play hookey more,
and I wouldn't
make such good grades, either. . .
except by accident.
I would ride more merry-go-rounds. . .
and I'd certainly pick more daisies.

ANONYMOUS



How much has Clarion changed since you've been here? Not much you say? Well, I can remember a beautiful yellow house where McDonalds now stands. And how about the Catholic Church? Even if you don't attend that one, you can't help but notice their new building. Perhaps you were there the day the other one came down.





You may be old enough to have been here when the "art objects" were placed in People's Park. If not, you are not aware of the controversy over it-letters to the *Civilian* and all- even though you probably walked through it today without noticing their presence. And what else? Oh, they say Clarion will be honored to be a Donut Shop in the near future.

It may be interesting to see in the next few years how the Clarion you remember will change. The familiar things of today may not be here tomorrow.

Snow, Snow, Snow.
When is it going to stop?
Tumbling out of bed
for that 8:00 class,
only to see it has snowed again.
When is it going to stop?
Realizing the maintenance people
must have slept in and
you've just ruined another pair of pants.
When is it going to stop?
Boots were the big thing this year,
and if your old ones weren't in style,
you just let your feet freeze.
When will it stop?
With all of the cutbacks in gas,
isn't it nice to know that
Clarion has a double fuel system?
Chin up - predictions are that
next winter will be worse.

A.G.





What will you miss most about C.S.C.?
Perhaps you never thought about it,
but buildings reflect much about
the people who occupy them.
And one quick look around campus will reflect,
even to the most unobservant person,
that Clarion State College
is as varied and unique
as the people you find here.





I am a part
of all
that I have met.

Tennyson

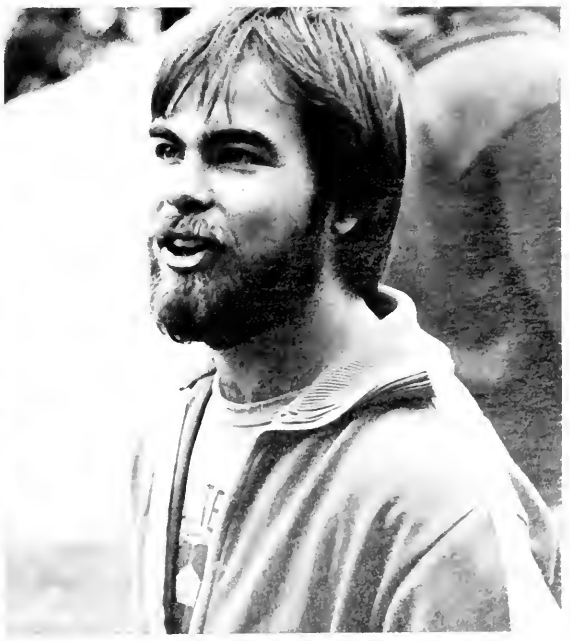


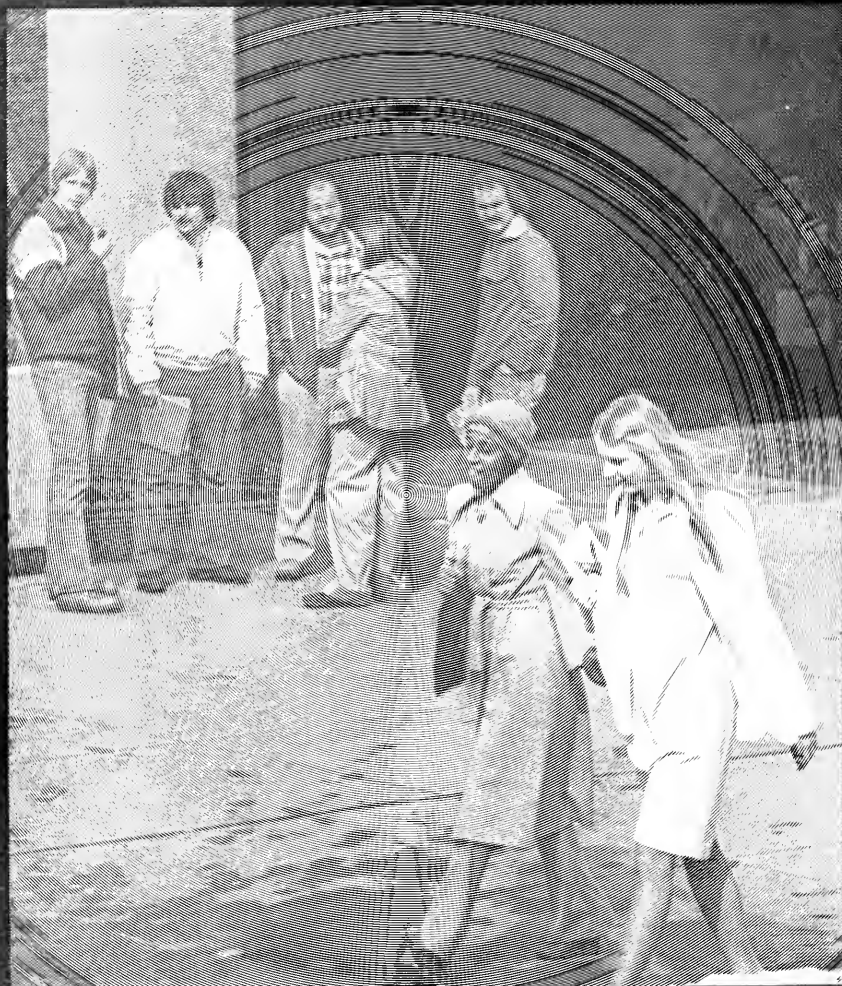


The days pass
so quickly as to go unnoticed.
Friends are made.
Studying is done.
Ideas are formed.
Good times are always waiting.
And suddenly
it is no more.
The flight of time
was so swift and silent.
We were unaware
it would end so quickly.
But the thoughts remain,
the friends are kept,
and the good times are still waiting,
along with a life,
endowed with happiness and success.
Go to it in peace.

Unknown









G R O U P S

Phi Alpha Theta



Phi Alpha Theta was founded to foster and encourage an active interest in history. It is part of an international organization that encourages research in history and the sharing of it through publications and lectures. Their activities included films and a guest speaker.

L to R-L. Gill(Sec.), G. Hill, L. Speer(Pres.), L. Dilling(V.P.), W. Snyder.

Phi Beta Alpha

Phi Beta Alpha honors outstanding academic achievement in the fields of Business Administration. This group tries to stimulate the desire for achievement and support of an outstanding program in Bus. Admin. Students selected must have a 3.2 or better QPA and be of junior standing.



Bottom L to R-F. Pici, B. Fowler, V. Long, M. Coyle, N. Messer, J. Marshall, J. Gadzala, J. Fox, K. Brezack, M. Cutrone, unknown. Row 2-T. Macaluso, K. McDermott, J. Kennedy, G. Kreisher, S. Gill, M. Norris, J. Vaira, S. McGinley, A. McAuley. Row 3-J. Raybuck, M. Frick, W. Saxe, S. Hedrick, A. Irlbacher, G. Ziegler, R. Buck. Row 4-M. McClurg, J. Thompson, B. Hall, Whitting, D. Whitting, J. Hafer, J. Doran, T. Hastings, G. Kazor. Row 5-G. Chambers, J. Maverio, J. Wiedgomas, J. Hermanson, R. Pfingsten, R. Kramer, G. Lockhart, M. Morse, Row 6-N. VanEpps, A. Zuvich, B. Tribone, C. Vawryk, B. McArdle, C. King, P. Ditillo, R. Dechant, J. Eicher. Row 7-D. Elliot, Dr. Longhill, P. DeLeys, J. Bohn, L. Gorman, B. Thayer, S. Haines, D. Eichenlaub, K. Martin, C. Tzymanski.



Bus.

Assoc.

The Business Association is open to all students in the field of Business Admin. The club was organized with the intent of providing its members with an insight into the working of the business world. One of their activities in the past was to participate in Career Day.

Bottom L to R-R. Dechant, D. McWilliams, L. Mykulowycz, S. Rogers, B. Smith, V. Long, J. Marshall, L. Lazusky, J. Bennett.
 Row 2-R. Wieser, J. Hermanson, B. Tribone, M. Raddsevich, unknown. Row 3-B Vorel, J. Gmuer, T. Hennessy, B. Shiner,
 L. Albright, C. Landau.

Clarion International Association



The Clarion International Assoc. was established to promote better understanding among people of all nations, to introduce and share international customs and cultural backgrounds, and to assist foreign students on the Clarion campus. Among their various activities were a Halloween party and an international Christmas party. Another highlight of the year was an International Evening.

Bottom Row L to R-A. Utah, E. Wong, J. Kambouras(V.P.), B. Rose, S. Boni-Awotwi(Pres.), A. Tremer(Sec),
 K. Bui, L. Amure. Row 2-G. Igwe, A. Downie, H. Oziegbe, D. Cheung, P. Cheung, O. Oshinusi, D. Sing,
 E. Henderson.

Arch.

Assoc.

The Archeology Association at CSC is open to students interested in archaeology. In the past they have spent a weekend digging on a historical site, visited an exhibit at the National Art Gallery, and built a float for the Autumn Leaf Festival Parade. The assoc. attended the Ohio Valley Arch. Conference, Society for Pa. Arch. meeting, and the Site Surveys Council for N. E. Arch.



Bottom L to R-M. Tromans, J. Wenger, C. Banks, L. Kammerer, K. Davis, A. Coudriet, K. Kosarich. Row 2-D. Niederriter, C. Ambrose, B. Harkema, B. McCuen, S. Hannum, A. Rice, R. Walters, D. Tighe, D. Frizzola, B. Beveridge, Dr. Straffin, J. Eschelma. Row 3-F. Burnisky, D. Zmoda, B. Fenton, B. Schoendorf, D. Mason.

German Club

German Club affords students the opportunity to become acquainted with the cultural aspects of the German speaking countries through participation in events as folk dancing, singing, and classes in German cooking. Activities include performing short plays and skits for high school students and sponsoring a "Faschings Ball."



Bottom L to R-L. Dilling(V.P.), B. Huet(Pres.), J. Eshleman, C. Metz. Row 2-S. Stimmel(Sec.), P. Bryer, Dr. Totten(Advisor), Mrs. Hegewald(Advisor), B. Chaney, J. Hampson, D. Bell(Treas.).



Kappa Delta Pi

Kappa Delta Pi was founded in 1911. Lambda Eta, the Chapter here at Clarion State College, was installed in 1967. To be eligible, students must achieve an overall high academic rating. This chapter sponsors speakers and movie presentations.

Bottom L to R-L. Helsel, N. Compernelle, E. Pifer, S. Slangenaupt, C. Belfore, S. D'Agaro, C. Flye, C. Cropcho. Row 2-B. Brinkley, L. Biddle, G. Miller, K. Fullerton, J. Marrone, S. Buzzard, C. Cobler, G. Amthor. Row 3-A. McCandless, S. Gaydos, L. Stopp, J. VanNorman, D. Yohman, K. Kinor, S. Reich, J. Wiley. Row 4-S. Gearhart, L. Charles, M. Boythe, N. Glessner, A. Wilson, E. Smart, C. Shank, J. Packard. Row 5-S.

Smith, J. Melillo, D. Scanlon, K. Maus, M. Miller, V. Mohnshine, D. Beining, C. Sulkowski. Row 6-D. Servey, D. Myers, C. Krause, L. Facko, K. Koppel, M. Spickler, S. Akers, B. Weinmann, C. Supplee. Row 7-K. Anderson, D. McCoy, J. Owens, M. Sargeson, J. Himes, M. Cauley, M. Pollack, K. Sandford, D. Haver. Row 8-S. Marttala, K. Kleinberger, D. McFarland, D. Colledge, M. Troyan, K. Cillo, J. Brown, C. Snader, D. Harr.



English Club

The English Club was organized by English majors, but is open to all students. It is an outlet to interact in a social basis combining literature and the arts. Some of the functions include monthly programs drawing on local talent, poetry workshops, and "Dare", the student literary magazine.

Bottom L to R-K. Betz(V.P.), Texas Gay Bugler IV, J. Dunbar(Pres.). Row 2-J. Smith(Treas.), Dr. Wilson(adv.)

Individual Speaking Events Team

The Individual Speaking Events Team travels to ten different colleges throughout the year participating in intercollegiate forensics tournaments. During the 76-77 year, the I. E. Team competed in tournaments in Pa., Conn., Md., and Ohio. Over fifty individual and six team awards were received by team members, once again becoming one of the most active and successful programs in the state.



Bottom L to R-M. Neagley, J. Gareis(Pres.). Row 2-M. Cauley, J. Ringbloom, Y. Mason, K. Lemon, B. Kirkhoff. Row 3-D. Hauck, J. Owens, M. Babnis, C. Miller, D. Jannone, C. Harvey(Sec.). Row 4-G. Jackson, D. Paul(Hist.), J. Elmes (adv.), A. Avery(V.P.), R. Marcinko, T. Harrity(Parliamentarian), M. Jeter.

American Chemical Society

The American Chemical Society is an organization of chemistry majors whose function is to give the members an opportunity to secure the intellectual stimulation that arises from professional association, and to instill a professional pride in chemistry. Activities have included a number of speakers and other social events. An "open house" is sponsored each fall which drew approximately 350 High School students this past November.



Bottom L to R-R. Schill, Dr. Sharpe(adv.), L. Andrew, E. Ober. Row 2-K. McKittrick, M. Kochon, R. Mercer, B. Grazier(V.P.), B. Batson, J.Figenbom, L. Ober, S. Kurtz.

Pre-Med Club



The Pre-med Club was formed to serve students as an information source for careers in the health care field. Activities have included speakers, films, and a trip to Gessinger Medical Center.

Bottom L to R-L. White, N. Jacisin(Sec.-Treas.), D. Burnett, R. Walter. Row 2-L. Haberman, E. Henderson, K. Ellenmeyer(V.P.), H. Oziegbe, B. Cramer, M. Backouski. Row 3-C. Novak, B. Edgal, Dr. Harmon(adv.), J. Matia, G. Iqwe.

Marketing Association



The Marketing Association was chartered in fall 1975. Some of its functions are to promote marketing concepts, integrate practical experience with classroom study, and widen the students' scope of marketing activities. Some of the activities during the year were meetings, a speaker from Kaufman's Department Store, and two Career Days.

Bottom L to R-T. Brodahl, C. Bump, D. Miaoulis, S. McFadden. Row 2-M. Radosevich(Pres.), S. Stiver, J. Fox(mem. V.P.), D. Sakulsky, J. Burd. Row 3-M. McClurg, D. Harr, J. Thompson, J. Gadzala(Prog. V.P.), S. Haines, M. Cherico. Row 4-unknown, J. Krecek, H. Bernstein, J. Marshall, unknown, M. Coyle, V. Gadzala, M. Spratt, K. Lepionka, M. Rich. Row 5-B. Tribone, R. Dechant, M. Robbins, J. Sample, C. Crummy, E. Hughes. Row 6-unknown, J. McKain(sec.), C. Andrew, E. Sandora, L. McMullen, R. Kightlinger, K. Vanatt, J. Pollock.

Clarion Call

The Clarion Call is the campus newspaper of CSC. Published each Wednesday, the Call is funded through the student activity fees and advertising revenues obtained by the staff. The paper is printed in a tabloid form and exists to provide the college community with regular coverage of issues, events and opinions.



Co-editors-in-chief: Bob Yeatts, Maureen Malthaner.



Seated L to R-M. Malthaner, C. Robinson, W. Taylor, S. Turanin. Standing-B. Paige, D. McDermott, L. Yingling, T. Heyl, J. Zumpano, J. Stunda, R. Morton, M. Bungard, B. Yeatts, D. Little, K. Weibel, J. Carlson, A. Phillips, L. Stopp, K. Snyder.



Executive Board I to R-B. Paige(Business Manager), J. Carlson(Sports Editor), B. Yeatts, M. Malthaner(Co-editors), D. McDermott(Co-feature Editor).



Lambda Sigma

Lambda Sigma is a local honorary fraternity of those students majoring in Library Science. Its purpose is to promote fellowship and further the professional knowledge of its members. Among the various activities are field trips, programs for freshmen and incoming students in Library Science, and service projects.



Bottom L to R-M. Miller(V.P.), A. McCandless, J. Marrone, G. Miller(Pres.), J. Vicari, J. Mock. Row 2-J. Brown, C. Sangston, N. Smith, L. Stephens(Treas.), L. Stopp(Rec. Sec.), P. Yohe, T. Stancel, K. Fullerton, B. Kosnac, S. Smith(Parlia.). Row 3-L. Shaffer, L. Speer, D. Servey(Rep.), S. Thelin, V. Cranmer(Treas.), S. Connacher, M. B. Keister. Row 4-D. Burtnett, K. Masters, S. Carmody, S. Helsel, A. Wilson, K. Anderson, A. Samuelson(Parlia), J. Smith.

Clarion Geographical Society

The Clarion Geographical Society was founded to promote an interest in the subject of cultural and physical geography. They met twice a month and went on several field trips throughout the year.



Bottom L to R-J. Brown(Pres.), L. Peterson(Sec.), J. Godlove(Treas.), J. Balombiny, L. Gasparato, R. Carlisle. Row 2-Dr. Shirey, Ms. Kordecki, B. Stauffer, M. Dougherty, J. Beacher, A. Geissinger. Row 3-T. Piccirilli, J. Turcol, R. Hopkins, J. Vinski, F. Brumm, D. Webster.

Bios Club

This is an organization open to all students, both undergraduates and graduates, who have an interest in the natural sciences and preservation of our wildlife and natural areas. During the spring the club went on a trip to the Florida Everglades and the Virginia Shore. Also, in the fall, the club visited Algonquin Provincial Park in Canada. Various campus projects included "Slave-days" and plant sales.



Bottom L to R-B. Burn(Pres.), M. Zwiener(Treas.), S. Wilson(V.P.), D. White. Row 2-D. Davidson(sec.), S. Osborne, L. Sigismondi, K. Ellermeyer, K. Ganster. Row 3-Dr. Dalby(Adv.), G. Augustine, L. Osborne, N. Jacisin, J. Culton, M. Shotts, B. Vanhouten.

Pi Kappa Delta

Pi Kappa Delta is the National Honorary Society in debate and forensics. Students earn a right to membership through active participation in either the Clarion Debate or Forensics team.



Bottom L to R-J. Smith, K. Cox(treas.), R. Dunst, J. Elmes(Adv.). Row 2-B. McCauliff(Adv.), M. Neagley, S. Barefoot(V.P.), S. McGinley, K. Lemon(Pres.), J. Gareis, B. Kirkhoff(Sec.), A. Avery, D. Paul, R. Hufford(Adv.).

Accounting Club

The Accounting Club was formed to encourage the interests of accounting students. Active participation of student members in the National Association of Accountants is also enabled, providing a means for the students to meet practicing accountants. The club attends the N.A.A. monthly and in April the Third Annual Accounting Seminar.



Bottom L to R-G. Lockhart, unknown, R. Kramer, J. Moon, J. Vasco, J. Gooch, P. Antoske. Row 2-V. Long, N. Mesner, A. Morgan, S. Smith, L. Soeder, K. Pazniak, M. Kolbas(Treas.), J. Petrodsky. Row 3-B. Fowler, J. Hermanson, K. Lehman, C. Shiverdecker, L. Boosinger, J. Drabot, unknown, D. Wolfe, F. Pici(Pres.), J. Eicher(V.P.). Row 5-N. Eik, J. Vaira, B. McArdle, D. Farney, R. Panucci, A. Irlbacher, J. Gmuer. Row 6-M. Frick, R. Divvens, J. CarFagna, D. Vavro, R. Wagner, S. Arman, G. Werner, M. Yusko, J. Needham. Row 7-M. O'Block, J. Garrity, unknown, D. Whitling, K. Martin, D. Whitling, R. Mitne. Row 8-G. Slavka, B. Clarke, unknown, D. Orange, B. Sprecher, unknown, J. Hintenach, D. Eichenlaub. Row 9-T. Smith, unknown, B. Smith, unknown, P. Ditillo, unknown, G. Beatrice, M. Kushner, J. Benet, B. Vorel. Row 10-R. Martin, S. Zimmerman, T. McHenna, L. Manella, B. Paige, M. Toth, J. Bird, J. Mavero, unknown, G. Chambers, M. Norris, J. Martin, R. Zeigert, D. Murray, R. Hornak.

History Club

The History Club was founded to promote an interest in history and to provide an opportunity for students to participate in history oriented events. During the fall, the club sponsored a mock presidential debate and also had a guest speaker on Western Pa. Indians.



Bottom L to R-W. Snyder(Adv.)B. Seman(Pres.), Row 2-J. Adler, B. Dunst(V.P.), L. Dilling (Sec.-Treas.).

C.E.C

Council for Exceptional Children is a professional organization of individuals interested in working with and helping the handicapped. Their activities include monthly speakers and weekly visits to Polk. In conjunction with NSSHA, they held a Christmas party for handicapped children of the area. A highlight of the year was the international convention in Atlanta, Ga.



Bottom L to R-N. Appleby, S. Tosten. Row 2-D. Smith, K. Speice, V. Mohnshine, E. Smart, S. Rairie, R. Zanglio, J. Crowl, A. Fizzhead. Row 3-D. Davison, M. Holcomb(Sec.-Treas.), M. Demchak, C. Cobler, K. Bintrim, K. Deere.

N S S H A



Bottom L to R-D. Plutt, N. Glassner, L. Hesel, C. Holterbach, J. Pinnock. Row 2-J. Trees, M. Toby, S. Martala, D. Vinansky, C. Tremont, J. Lunger, L. Lenkner, J. Himes, D. Keith, K. Stoeckly, B. Kinkead. Row 3-P. Hannaford, C. Moriarty, C. Sulkowski, M. Boythe, K. Maus, E. Gibson, S. Dutzman, P. Magnanelli, S. Ressler, V. Posch, J. Hicks, K. Koppel, C. Best. Row 4-K. Hardex, D. Haver, C. Supplee, G. Semour, W. Barton, R. Rowe, L. Rissone, Mr. Simpson(adv), B. Kreismer, D. Presutti, K. Cauthorn, D. Howard, N. McDaniel, M. Colteryan, P. Hannon, A. Terhune, P. Boynton, K. Mechenbier, E. Shuey.

The National Student Speech and Hearing Association is open to anyone interested in speech and communicative disorders. NSSHA's involvement for 1976-1977 included the following activities: field trips, a seminar on articulation, fund

raising programs, observance of Deaf Awareness Week, annual spring banquet, conventions, and monthly meetings with guest speakers and film.

Sigma Tau Delta



Sigma Tau Delta is an English honorary, dedicated to promoting a sincere approach to English. This is accomplished through social activities and people interaction. Members attended an All-Eastern English conference in Ohio and helped in sponsoring the Mideval Conference held in Clarion.

Bottom L to R- Dr. Wilson, D. Little, A. Samuelson, Row 2- A. Lingle, J. Gidlow, J. Dunbar.

The Circle F Club

The circle F club is an organization for French students and those interested in the French language and culture. The advisor is Dr. Pierre Fortis. Some of the highlights of the year included International Night and a presentation for the local high school students.



Bottom row, L to R- A. Cynkar, Dr. Pierre Fortis, D. Orendorf, E. Demchak, B. Kaufinger, D. Loepp, B. Brocius. Second Row: J. McDevitt, J. Auer, S. Gardner, C. Kramer.

Student PSEA

Student Pennsylvania State Education Association seeks to develop and cultivate such desirable professional qualities as leadership, character, and scholarship among prospective teachers engaged in their preservice preparatory work. The organization is unique in that it has the possibility of providing active participation in local, state and national educational associations. Membership is encouraged for college students in all curricula.



Bottom L to R-T. Gallo, J. Esapovich, C. Ellermyer, J. McDevitt, J. Knee, Dr. Kenemuth. Row 2-M. Postich, B. Dunst, T. Majors.

Tennis Club



Bottom-B. Gaskin. Row 2-K. Howick, S. Steinmetz, D. Berdar, Row 3-D. Miller, D. Grove, unknown.

The Sequelle Staff

The *Sequelle* staff is made up of students from all class levels and majors who volunteer their time to bring a yearbook to Clarion State College. It is the attempts and wishes of the staff to cover each phase of college life and activities as thoroughly and completely as possible.

The staff itself is comprised of photographers, typists, section editors, assistant ed., and editor, plus the countless others that contribute in other equally important ways.

The Editor would at this time like to thank all of those who contributed to the working of the 1977 book. It is with such cooperation and active participation that we bring this book to you, the students.



Editor A. Gloekler, Assistant Editor K. Erb.



Bottom L to R-M. Green, K. Reckhart, P. Silvis, A. Fluck, T. Capozzoli.
Row 2-K. Owatt, C. Bachman, M. Wesson, J. Knee, S. D'Agaro, C.
Supplee, B. Smith. Row 3-J. Alexander, S. Luy, M. A. Demchak, B.

Hammil, D. McWilliams, J. Marshall, A. Cynkar, D. Zanot, M. Rhodes,
J. Zumpano, C. Morrow, J. Eonta, S. Weinheimer, B. Rhodes. Missing:
L. Bair; K. Zimmerman, Photographer; J. Cuiffi.



Co-Editors: L to R- M. Rhoades, Features: K. Owatt, Groups: M. A. Demchak, Groups Row 2- M. Green, Features: J. Marshall, Seniors: S. Weinheimer, Faculty. Row 3: P. Silvis, Greeks; D. McWilliams, Greeks; B. Smith, Sports; C. Supplee, Sports; B. Hammil, Fine Arts; J. Eonta, Fine Arts. Missing: L. Barr, Faculty; M. B. Decker, Seniors.



Alpha Phi Omega

Alpha Phi Omega is a fraternity designed to promote friendship, leadership, and service. Clarion's chapter is presently local, however they are trying to achieve their goal of becoming a national chapter. Activities for the year included painting of the rifle range, making a gunrack for the rifle team, and making a backboard for the swimming pool. Members also helped at the ALF parade and worked for the Nov. elections.



Bottom L to R-V. Rue, B. Brocius, J. Mock, L. Jones, J. Sedlock. Row 2-J. Schnur, C. Woods, C. Cretti, D. Hoffman, L. Kessler, Row 3-J. Smith, J. Pandolph, R. Ruth, C. Mollica, G. Loomis.

Black Student Union

The B.S.U. was organized and chartered in Jan. of 1971 and has been working toward making Clarion more relevant for black students. The function of the BSU is to create an atmosphere in which black students, as well as all C.S.C. and community, can bring cultural, social, political, and academic changes to Clarion.



Bottom L to R-A. Peagler, Y. English, K. Manning, M. Audain, D. Alston, L. Philips, V. Bradshaw, C. Cooper, K. McKintosh. Row 2-J. Smith, J. M. Russell, C. Williams, S. Hobson, C. Sheffield, G. Bailey, S. Stroy, M. Young, L. Lewis, M. Hobson, L. Johnson. Row 3-L. Mitchell, S. Tate, M. Beaford, C. Griffy,

T. Sheppard, P. Hudson, K. Johnson, P. Jones, C. Johnson, D. Clisby, A. Miles, K. Lampkins, A. Ridley, S. Johnson, L. Baltimore. Row 4-R. McCoy, A. Lewis, K. Fant, J. Lovelace, R. Grant, L. White, T. Douglas, L. Pickett, P. Purifoy, J. Chalmers, G. Woodruff, G. Maxwell, A. Johnson, P. Hudson.

Spanish Club

Spanish Club serves to promote an interest in the Spanish language, Spanish-speaking countries, and customs. All members of the college community interested in the Spanish culture are invited to participate in the club's activities. Last year's activities included slide presentations, Mexican Day, guest speakers, participation in CIA week, and decorating the display cases in the library.

L. to R.-L. Kessler, Dr. Diaz, S. Gardner.

Beta Chapter

Beta Chapter was founded at Clarion in 1969. Its purpose is to continue fraternal ties from home assemblies while at college, through service to the community. Activities during the year included sending Christmas cards to servicemen and missionaries, visiting Grandview Home and Clarion Hospital, and holding their formal banquet for collegiate chapters across the state.



L Row-S. Gearhart, V. Cramer, B. Jeffreys, unknown. Middle Row-J. Fugalli, C. Saxton, P. Bucek, R Row-unknown, B. Leasher.

WCCB

WCCB was founded in September of 1971 and has since grown to a staff of nearly 100 students. Students are trained in the area of broadcast, journalism, production, and performance of the media. All students volunteer their time to better themselves in understanding the electronic media, its uses and enjoyment. WCCB has done many things to help the student and the community. WCCB has broadcast sports events and the station's biggest accomplishment, the annual Children's Hospital Fund Drive. The station offers specials of many kinds relation to the student, and has the best in music, sports, and information.



Disc Jockeys: Bottom L to R-M. Megan, B. Hower, T. Palangio, K. Shaffer, D. Swager. Row 2-M. Maranowski, R. Pflingsten, B. White, K. Zuk, T. Zippi, E. Frontino, L. Garvin, B. O'Toole. Row 3-J. Kwasneski, unknown, M. Malthaner, C. Hosfeld, D. Berner, A. Vavra, G. Brown, G. Seymour, N. Miller. Missing: A. Gloekler, J. Martin, J. Culligan, B. Angus, L. Jones.



News Team: Bottom L to R-E. Lindbloom, M. Murphy, K. Shaffer, C. Hawkins, B. Mullison, P. Mignanelli, S. Hawkins, D. Gallagher. Row 2-D. Fillenbaum, J. Nelson, D. Cush, F. Tunno, M. McCartney. Row 3-J. Turzanski, S. Blum, S. Snyder, J. Picciato, D. Assalone, G. Beatrice, T. Heyl. Standing in back-M. Greene, L. Jacobs.



Sports Team: L to R-H. P. McDonough, R. Weaver.



Executive Board: L to R-G. Brown, E. Frontino, A. Vavra, K. Zuk, D. Berner.

Center Board



Bottom L to R-B. Satterlee, M. Demich, N. Zidek, Miss Rose, W. Iwanyszyn, J. Douthett, K. Totten. Row 2-R. Rebhun, H. Wassink. D. Black, C. Zifchak, K. Galla, Dr. Nanovsky.

P o e t r y W o r k s h o p



The Poetry Workshop meets on a weekly basis to provide criticism and direction for creative writers.

Bottom L to R-D. Beercheck, D. Verderber, J. Dunbar, J. Adler, C. Hawkins. Row 2-B. Mallison, J. Smith, Dr. Wilson (Advisor), P. Grubbs.

Outing Society

The Outing Society provides students an excellent opportunity for outdoor activities. These include backpacking, camping, canoeing, bicycling, trail building, and community clean-ups. Activities for the past year include trips to Minister creek, Tracy Ridge and Kinzua Dam, and a clean-up project near Clarion.



Bottom L to R-J. McCarty, J. Doran, D. Hein, K. Hartenbaugh. Row 2-W. Bianchi, N. Dana, B. Dupler, M. Lynch, B. Brocius, D. Burnett. Row 3-T. Callagher, M. Kusnir, L. Becher, B. Wire. Row 4-J. Dowling, J. Mitchell, D. Tighe, G. Caylor, L. Munn.



I n t e r - H a l l

Bottom L to R-M. Bungard, J. Cushma, L. D. White. Row 2-G. Leidigh, N. Frye, M. Norrif, D. Ewing, B. Buffner. Row 3-S. Bright, C. Ellermeyer, E. Ord, M. Frick, M. McCullough.

C.A.S.

The Commonwealth Association of Students is a student organization that speaks, through lobbying, for students in all the Pennsylvania State Colleges. The Clarion chapter has been involved with activities such as sponsoring buses for games, parties, voter registration, forums, working for decriminalization of marijuana, and fighting for a tuition freeze. Membership is open to all students.



Bottom L to R-S. Dagaró, D. Little. Row 2-R. Morton, B. Welter, J. Marrone, unknown. Row 3-J. Sunda, J. VanNorman, M. Taylor, L. Stopp, A. Hill.



Sigma Tau Delta

Bottom L to R-Dr. Wilson, D. Little, A. Samuelson, Row 2-A. Lingle, J. Gidlow, J. Dunbar.



Student Experimental Television

S. E. T. was created to familiarize students with the technical aspects of television and to provide practical experience in creating a production. S.E.T. produced an interview with former Pres. Gemmel, video-taped a CSC swim meet and created and produced a series titled "Antiques Old and New." It continues to train people to work on the "Paul Gaudino Show."

Bottom L to R-S. Clauson, C. Williams, B. Mallison, D. Assalune, Row 2-D. Weaver, S. Donski, D. Weikel, G. Koehler, J. Marrone.

Pi Mu Epsilon

Pi Mu Epsilon is the national mathematics honorary fraternity. This organization was established to promote scholarly activity and interest in all fields of mathematics among the general college community.



Standing: N. Compennalle, R. Mattern, C. Zifchak. Sitting: L. Harbridge.

Student Senate

The Student Senate is the official representative voice of the student body. All funds from the Clarion Student Association pass through this organization to be distributed for student activities. Recognition of student organizations, starting new committees, and appointing students to existing committees are all functions of Student Senate.



Row 1: K. Brown, C. Landau, J. Niedenthal (V.P.), M. Malthaner (Pres.), C. Dushac, M. McCartney. Row 2: D. Bell, G. Kazor, M. Osterman, C. Snodgrass, M. Cutrone, J. Marrone, B. Termin, Mr. Krull.



Russian Club

Row 1: K. Gabel, D. Nikoulin, L. Kruse. Row 2: B. Kauffman, G. Ross, A. Tremor, J. Brundy, unknown.

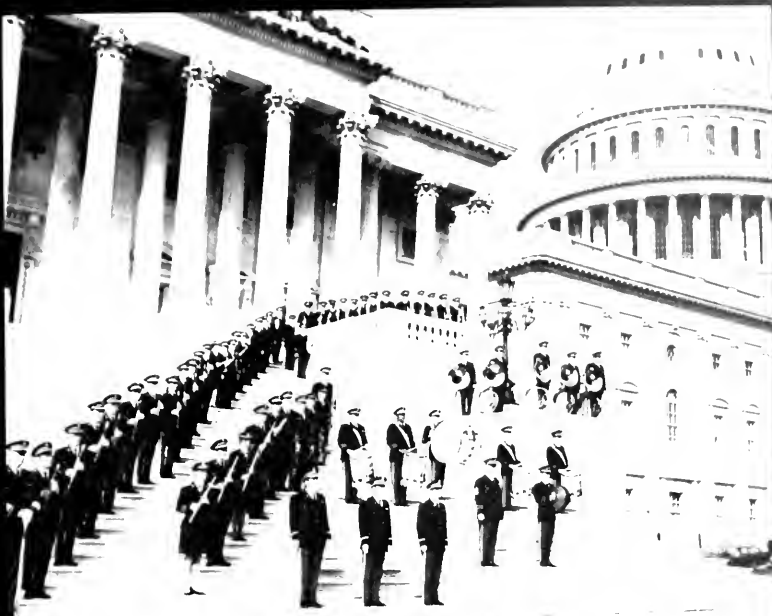


Psi Chi

Psi Chi is the national honorary society in Psychology. It's purpose is to promote scholarship, especially in the field of Psychology. It was founded on this campus in April 1975. Psi Chi sponsored a Panel Discussion Concerning graduate schools, sponsored a hoagie sale, presented a movie "Other Voices," and attended the EPA Conference in Boston.

Row 1: C. Grecek, K. Bethea, R. Walthour. Row 2: E. Shvey, G. Woomer. Row 3: J. Dinnock (sec.-treas.), N. Zidek. Row 4: M. A. Schuetz (V.P.), L. Bruno. Row 5: D. Schillhammer (Pres.).





THE
UNITED STATES
ARMY FIELD BAND
Washington, D.C.



SPECIAL
EVENTS

Center Board Sponsors Varied Cultural Events



Eric Friedman



The Waverly Consort



Joffrey Ballet Company



Lotte Boslar's
Pantomime
Circus



Northwestern University Mime Company

Director Of Air Force Band Presented With Key To City





George Benson
“Breezin’ ” By
In Concert

The Piano Man
Billy Joel
Comes to CSC

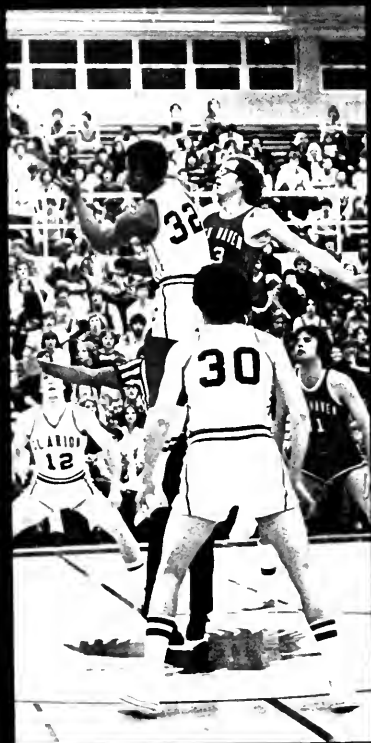




Awards
For
Award-Winning
People







S P O R T S



Football

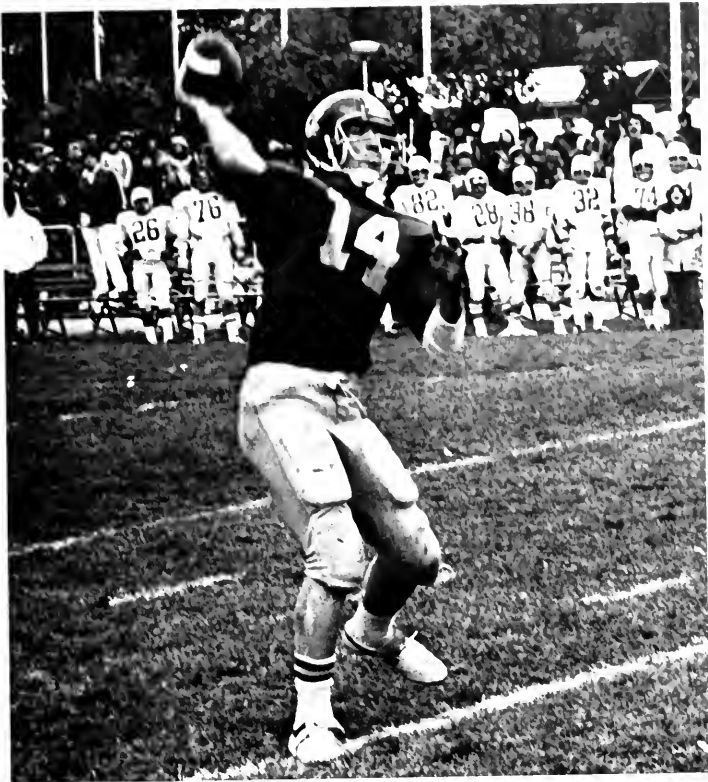


Row 1. M. Miloser, J. Ridgeley, T. Huffman, R. Purdy, M. Rich, K. Bussey, B. Holsopple, J. Dellostretto, R. Snodgrass. Row 2. J. Colin, D. Hawkins, K. Eichenlaub, J. Gooch, D. Burks, R. Zema, T. Lawrence, K. Roebuck, J. Cully, J. Christy, C. Simon. Row 3. B. Russo, T. Bright, J. Yohn, R. Studds. S.

Stephens, K. Nelson, E. Lynch, D. Olson, J. Baycura, E. Arndt, J. Fleeson. Row 4. M. Baker, J. Shofestall, B. Dugan, A. Latronica, P. Gillis, M. Polenski, J. Langham, J. Hayes, R. Palombi. Row 5. D. Salem, B. Holt, A. Spear, P. Cooper, M. Kusnir, unidentified, M. Grichor, L. Kanski.

	C.S.C.	OPP
Central Conn.....	13.....	6
Delaware St.....	16.....	0
Geneva.....	10.....	7
West Liberty.....	25.....	8
Lock Haven.....	9.....	6
Edinboro.....	20.....	25
Indiana.....	14.....	16
California.....	24.....	8
Shippensburg.....	29.....	26
Slippery Rock.....	10.....	14



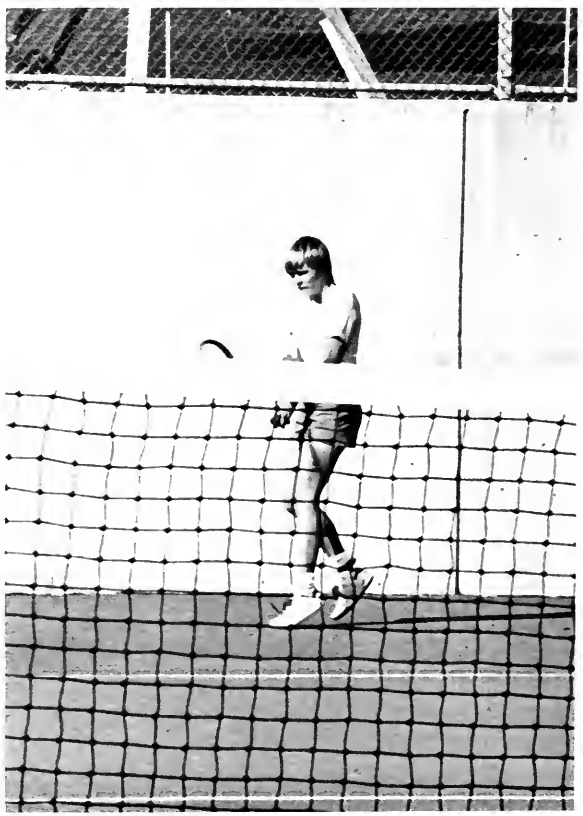


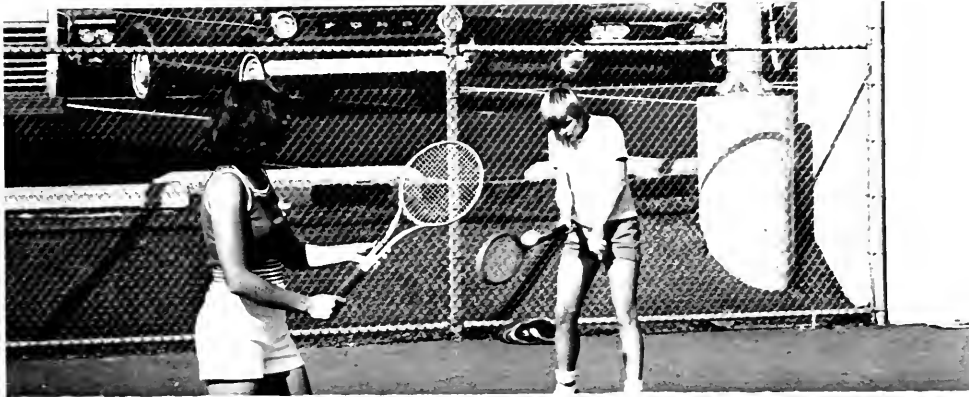


Row 1. S. Gill, B. Christie, D. Miller, D. Rittenour, A. Bamberger, T. Bennardo, V. Soldo, K. McDermott, L. Soeder, S. Kardish, L. Crede, Riker, B. Nicholas. Row 2. M. Habecker, V. Wise, H. Tinsman, C.

Tennis

	C.S.C.	OPP
Geneva	2.....	4
Indiana.....	0.....	5
Lock Haven	1.....	12
Mercyhurst	4.....	3
Mercyhurst	5.....	2
Alleheny.....	2.....	8
Robert Morris.....	2.....	3
Grove City.....	won by forfeit





Cross Country

California Inv.	- 10th
vs. Lock Haven	- Won
vs. California	- Won
vs. Edinboro	- Lost
vs. Shippensburg	- Lost
vs. Indiana	- Lost
vs. Slippery Rock	- Lost
NAIA District 18	- 6th
Penn-Ohio Meet	- 9th
PSCAC Meet	- 8th



Row 1: D. Billig, B. Slike, J. Charles, P. Dalo, E. Bucher, B. Woods, R. Breighner, M. Wiley. Row 2: D. Newton, S. Bolla, B. Breniman, B. Beck, T. Hastings, B. Washabaugh, S. Selleck, J. Vinski, J. Turcol, Coach English.



Volleyball

Row 1: J. Bru, A. Stover, G. Wolf, H. Dalkiewicz, Row 2: L. Geardard (Student Asst.), D. Pelletier, J. DiMarzio, D. Wellmon, B. Sadowy, D. Gorey, D. Larson, Row 3: Coach Ferguson, C. Borza, C. Fetzeck, S. Weyel, M. Eriksson, S. Schmidt, J. Pore, C. Nardone, J. Jansen, V. Keay, P. Shields (Mgr.).



Grove City	8-12,	3-15	
Mercyhurst	15-11,	14-16	15- 8
Indiana	15-13,	15- 9	
Edinboro	1-15,	2-15	
Gannon	16-14,	15- 1,	15- 6
Slippery Rock	15- 4,	15- 3,	3-15
Slippery Rock	7-15,	4-15	
Indiana	7-15,	15-12,	15-13
Duquesne	forfeit,	15-17	
West Virginia	15- 9,	15- 6	
Pitt	2-15,	12-15	
Thiel	15- 6,	15-13	
Geneva	14-16,	11-15	
California	15- 9,	15-10	
Slippery Rock	9-15,	15- 4,	17-15
Robert Morris	15- 3,	15- 4	
Youngstown	7-15,	15- 9,	15- 4
Edinboro	15- 9,	7-15,	
Edinboro	11-15,	7-15	



Rifling

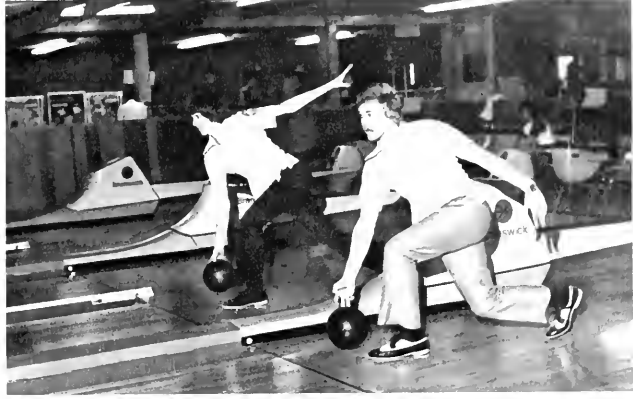
	C.S.C.	OPP
CMU	1318 . . .	1272
Duquesne	1304 . . .	1218
Grove City	1337 . . .	1226
Grove City	1330 . . .	1256
Geneva	1330 . . .	1272
Indiana	1349 . . .	1347
Pitt	1336 . . .	1260
W. & J.	1333 . . .	1141
Duquesne	1318 . . .	1235
Indiana	1323 . . .	1327
Pitt	1314 . . .	1298
W. & J.	1314 . . .	1028
Geneva	1319 . . .	1300
Edinboro	1331 . . .	1300
Edinboro	1330 . . .	1292
Indiana	1348 . . .	1320
CMU	forfeit	



Kneeling: D. Frizzola, K. Gaul, D. Burnett, C. Minnemeyer, C. Mollica. Standing: J. Moorhouse, M. Gostkowski, M. Miller, T. Clay, F. Ashbrook, G. Ober.

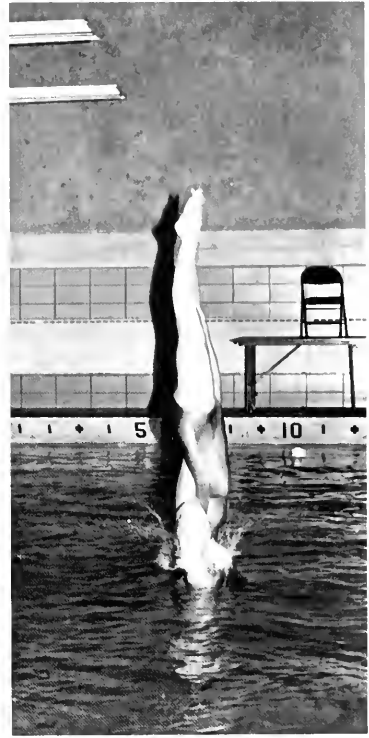


Bowling



Row 1: F. Bitritto, D. Neff, E. Bucher, T. Jordan. Row 2: S. Hawk, M. Morse, R. Harper, R. Rice, M. Berke.

Women's Swimming



400 FREE REL.	W. W. W. W.	3:12.21	W. W. W. W.	3:12.21
800 FREESTYLE	W. W. W. W.	10:41.23	W. W. W. W.	10:41.23
400 BUTTERFLY	W. W. W. W.	5:49.99	W. W. W. W.	5:49.99
400 BACKSTROKE	W. W. W. W.	5:49.99	W. W. W. W.	5:49.99
100 BREASTSTROKE	W. W. W. W.	1:07.75	W. W. W. W.	1:07.75
100 DIVING	W. W. W. W.	502.80%	W. W. W. W.	502.80%
100 DIVING	W. W. W. W.	530.78%	W. W. W. W.	530.78%

W. W. W. W. PENNSYLVANIA STATE CONFERENCE CHAMPION 1971-1972 1973-1974 1975 & 1976



Row 1: A. Barker, Y. Fanic, R. Czerwonka, T. Sheerin, P. Jones, T. Adams, N. Moguee, L. Cashier. Row 2: Coach Clay, J. White, G. Sando, L. Thompson, A. Schmid, S. Crofton, A. Rise, S. Callan, L. Murgatroyd, C. Magnusson, T. Thoressen, M. Lininger, K. Galla. Row 3: Coach Leas, C. Hess, H. Harris, D. Wire, D. DeViney, C. Kohlhaas, K. Jones, G. Bunce, D. Picking, B. Christie, F. Moffett. Row 4: S. Riley, B. Lodie, J. Pavlick, E. Cassino, J. Larkin, D. Timmins, L. Furth, N. Spangler, C. Roberts.



	C.S.C.	OPP
Slippery Rock	90	41
Cleveland State	85	46
West Chester	70	61
Pitt	58	73
Allegheny.....	98	33
Kent State.....	86	45
Penn State.....	33	98
East Stroudsburg.....	90	43
Lock Haven.....	85	47
Indiana.....	86	46



Women's Basketball

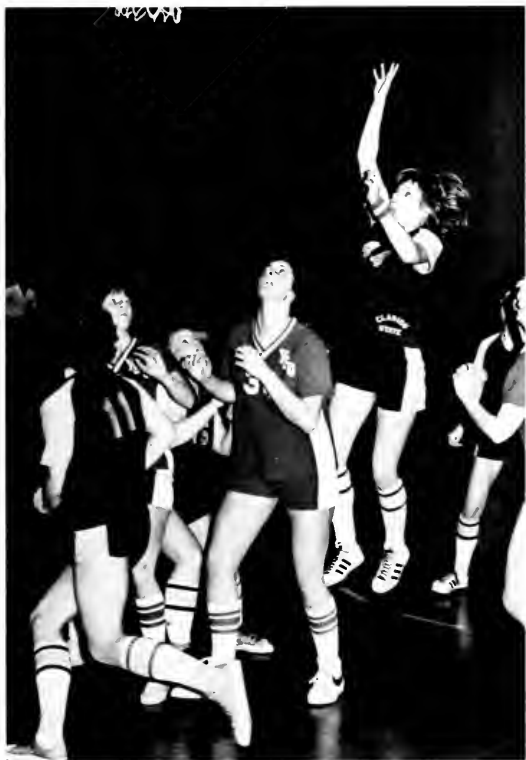


Row 1: P. Cauley, D. Billigs, J. O'Connor, K. Cole, P. Shields, B. Hale. Row 2: Coach Ferguson, L. Mykulowycz, G. Pacsi, P. Hastings, K. Golden, V. Picketts, S. Kovensky, J. Tsepelis, D. Hughes, Coach Capvano.





	C.S.C.	OPP
Lock Haven	46	89
Slippery Rock	29	82
Geneva.....	46	49
Gannon	77	22
Robert Morris.....	75	31
Edinboro	67	80
Allegheny	73	53
Indiana	86	89
Cleveland State.....	64	55
Allegheny	65	44
Youngstown	64	48
Villa Maria	won-forfeit	



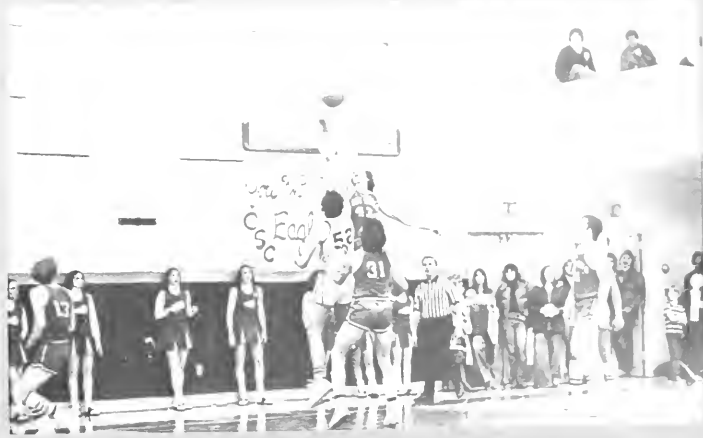
Men's Basketball

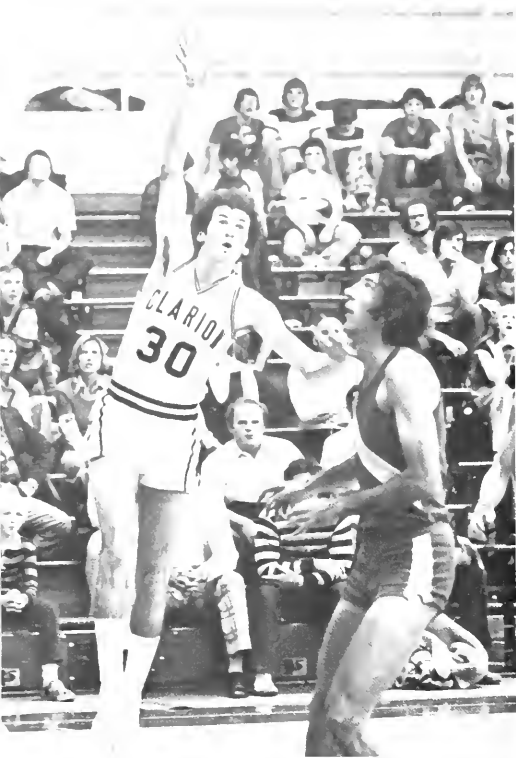


Row 1: Mark (mgr.), R. Phillips, C. Grinage, J. Mattingly, M. Sisinni, J. Abrahamovich, B. Irwin. Row 2: Coach DeGregorio, Coach Baschnagel, J. Ebner, B. Armstrong, T. Roseto, D. Chojnacki, R. Wells, M. Lockridge, S. Dudrich, B. Chambers (mgr.).



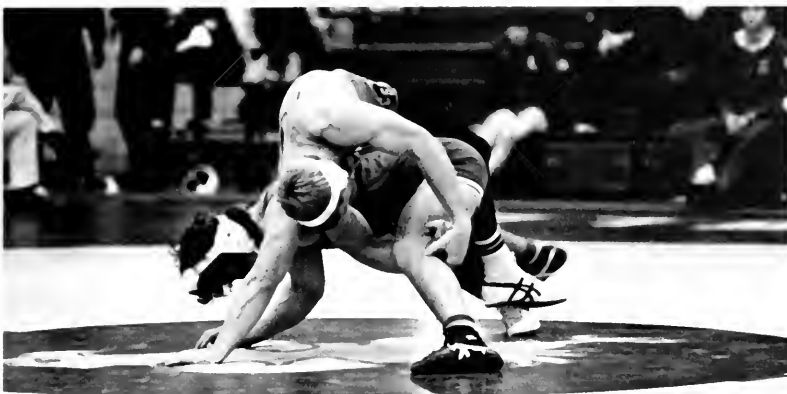
	C S C	OPP
Alliance	104	86
Edinboro	87	86
Geneva	97	83
Frostburg	80	78
Indiana	79	70
Buffalo State	80	73
John Carroll	91	81
Wooster	84	83
Mercyhurst	86	79
Geneva	111	83
Lock Haven	68	60
Pitt-Johnston	86	85
Slippery Rock	80	66
Frostburg	88	86
Indiana	83	70
Lock Haven	66	56
California	81	77
Slippery Rock	73	71
Dyke	86	67
Edinboro	89	90
St. Vincent	87	71
Lock Haven	69	63
Grove City	117	89
Behrend	120	73
California	81	79
Cheyney	81	85
Point Park	88	86
Pitt-Johnstown	103	90
Augsburg	88	84
Grand Valley	65	79







Wrestling



Row 1: R. Wade, D. Merriam, M. Houtz, P. Morelli, T. Turnbull, K. Smith, M. Caruso. Row 2: E. Paige, J. Herbert, D. Morelli, S. Harner, M. Mitchell, D. Conaway, K. Bales, P. Haines, S. Bohla, M. Gill. Row 3: W.

Steinhauer, D. Kress, M. Terry, G. Frantz, J. Hockenbroch, J. Campbell, R. Standridge, D. Gilbert, G. Freeman, E. Booth, G. Englert.







Connie Jo Israel
AIAW Floor Exercise Champion



Women's Gymnastic Team
Second straight AIAW National Champions



Wrestling Team
Pa. Conference Champions



Men's Swim Team
Seventh straight Pa. Conference Championships



CONFERENCE CHAMPS
'71 '72, '73, '74, '75, '76

Men's Basketball Team
District 18 Champions

Sharpshooting Team
NRA Sectional Champions



Division I		Division II	
1	46.64	TERMINI	CLARION PA 17:50.17
2	00.22	SCHNOTZ	PETERS TWP. H.S. 1:58.18
4	47.67	KENNY	UPPER ST. CLAIR H.S. 4:45.07
2	14.64	SEAGRAVE	E. STROUDSBG PA 2:13.45
1	DIVES 342.90 PTS.	ZUCCA	CLARION PA 330.50 PTS
ERNIN	3:13.04	BLACK	TH. CLAREMONT CALIF 3:13.82
SER	16:41.27	LEE	INES CANADA 17:02.14
	54.78	M	N VA 153.22
	54.78	P	A 155.80
	1:01.68	W	ADA 1:01.08
1	DIVES 508.00		502.80 PTS ZUCC
11	DIVES 5:27.68		608.00 PTS KURA
ANIA			71.73 1.75





Men's Swimming



Sitting: G. Nicholas, G. Ebner, D. J. Beveing (capt.), G. Borschel, D. Ashe, J. Godlove, S. Spungen (capt.). Kneeling: B. Amick, B. Kannegieser, M. VanDyke, B. Termin. Row 3: K. Pilsten (mgr.), S. Weiss (mgr.), J. Fox (mgr.), T. Raybuck, M. Zucca, P. Huffman, M. McNulty, T. Perriello, M. George, M. Tannous, F. Brumm, J. Niedenthal, J. Kelly, D. Wagner, Coach Nanz. Row 4: T. McCullough (mgr.), T. Gerlach, K. Hess, M. Cutrone (mgr.), M. Gavin, R. Minarich, D. Townsen, B. Euginicles, B. Knoll, B. Kilroy, F. Machokas, T. Ferrara, K. Zimmermann, D. Moguee. Row 5: M. Driebelbis, C. McDermott, J. Weichman, J. Kline, T. Roberts, A. Pagano, D. McKee, M. Osterman.



	CSC	OPP
Alfred State	64.	.47
Slippery Rock	73.	.36
East Stroudsburg	57	.56
Indiana	62.	.51
Walsh	62.	.38
Edinboro	70.	.43
Fairmont State.....	65.	.48
Buffalo State.....	70.	.36

Cheerleaders



Row 1: R. Finlayson, J. Kemmerer. Row 2: J. McHenry (capt.), S. Boykan, A. Leffingwell. Row 3: R. Carney, S. French, L. Kruse, B. Chiapelli.





Gymnastics



	C.S.C.	OPP.
Canisius	146.15	131.70
West Virginia Univ.	146.20	106.55
West Chester.....	145.10	126.50
Pitt	145.85	126.60
Penn State	148.75	147.30
West Virginia Univ.	143.52	118.72
East Stroudsburg.....	148.45	126.85
Temple.....	148.45	126.50
Kent State	151.80	138.25
Slippery Rock.....	151.80	129.95
Univ. of Mass.	144.00	142.85
Towson	144.00	131.70

Left to right: T. Sheridan, D. Johnson, D. Johnson, D. Johnson, C. Israel, M. McConaughey, C. Englert, S. Stevens, J. Skwarcha, K. Brezack, S. Werner, D. Rivet, R. Finlayson.





G
o
l
f



Season
Record:
19-13

Row 1: M. Buzzinotti, W. Solle, unknown. Row 2: C. Craver, unknown, unknown, B. Conner. Missing from picture: D. Brown, D. Unrue.



Judo

Row 1: C. Blankenstein, K. Weise, S. McCord, C. Cowan, M. Crawford, M. Iaderosa, J. Sparber, J. Kennedy (capt.), D. Esposito. Row 2: K. Bui, E. Wong, P. Cheung, R. Andrew, D. Spierto, Coach P-Jobb. Row 3: N. Reade, D. Cheung, J. Popson, J. Filloy.



Track



Row 1: D. Gaetaniello, C. Snader, L. Kilgallen, C. Nardone. Row 2: P. Dalò, J. Pearlberg, L. Bucher, G. Walker, K. Hogue. Row 3: M. Audain, H. Dalkiewicz, M. Munn.





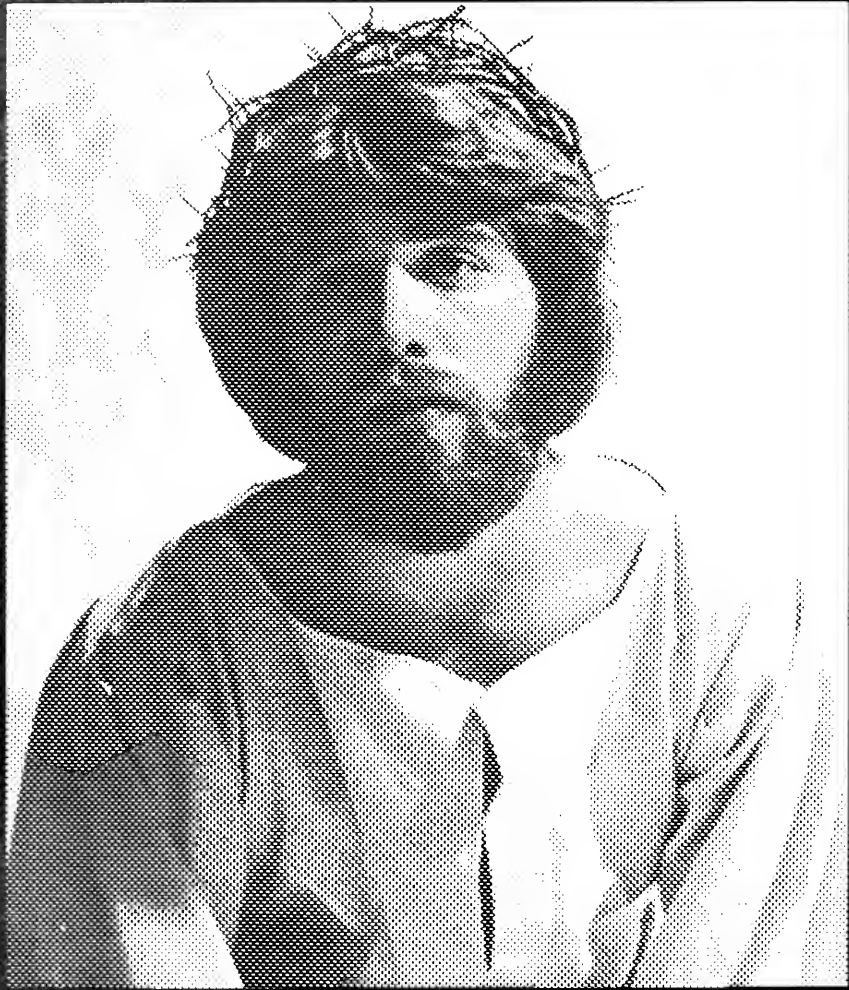
Baseball



First row: D. Socrates, J. Grafton, R. Desano, S. Bupp, J. Koontz, C. Abbot, Zimmerman, J. Gardiner, L. Ruscilelli, T. Sterba. Row 4: C. Russel, H. M. Powell, T. Zuvich. Row 2: T. Bickel, J. Zuraffleff, J. Matala, J. Escheiman, Dennis, R. Hobaugh, D. Sarkis, D. Taber. Not Pictured: J. Bickel, J. Maverro, K. Stewart, C. Finnegan, D. Smith. Row 3: unknown, unknown, S. R. Snodgrass, R. Rettig, J. Deluca, B. Beatty, R. Price.



Season Record:
14-8





FINE



ARTS

Miss Reardon

Catherine Reardon..... Mary Neagley

Anna Reardon..... Shirley Fisher

Ceil Adams..... Jeannie Gundel

Fleur Stein..... Jan McCauley

Bob Stein..... Bill Bender

Mrs. Pentrano..... Cathy Kustin

Delivery Boy..... Brian Leshner





Little Mary Sunshine





Taming Of The Shrew



Baptista Minola	Bob H. Copeland
Kate the shrew	Marie Tr...
Petruchio	George J. J...
Lucentio	Dale G. Pau...
Gremino	Bill Be...
Hortensio	Darrell Par...
Vincentio	George Lake...
A Pendant	Mark Metzler
Tranio	Albert Latronica
Biondello	Bryan Lesh...
Grumio	Joe Colligan
Curtis	Steve Mierzejek
Nathanial	David R. Green
Peter	Frank L. Sabino
A Tailor	Denis Heatherington
A Widow	Jane Youtz
Dancers	Peter H... Jackie Ringblo...
.....	Scott Hummel, Pat... bac, Marie Metri...
Musician	Jack Schmi...



Best Of Broadway



Die Fledermaus



Peter Pan



Judas Iscariot Rob Trow
 Jesus of Nazareth Jeff Link
 Mary Magdalene Malina Nardone
 Caiaphas Thomas W. Douglas
 Annas Craig Coon
 Simon Zealotes Pete Hudson
 Pontius Pilate George Lakes
 Peter Paul Stover
 King Herod Bell Bender
 Priests John G. Masters
 Steve Mierzejek
 Bill Huson
 Apostles Keith Shaffer
 Philip Pratt
 Frank Braccia
 Bryce Conner
 Sam Puglisi
 David Green
 Terry Hennessy
 Dean Morns
 Michael Malthaner



Jesus Christ Superstar



College Readers



Row 1: N. Whitehouse, D. Jannone, T. Harrity, B. Huson, D. Gallagher. Row 2: D. Dougherty, V. Mason, S. Dutzman, S. Snyder, K. Lemon. Row 3: J. Smith, M. Pantano, M. Neagley, J. Gareis, B. Mallison, D. Paul. Row 4: K. Fuchs, G. Watkins, J. Gundel, J. Haqer, S. Fisher, A. Avery, C. Kustin, B. Leshner, S. Hummel.

Alpha Psi Omega



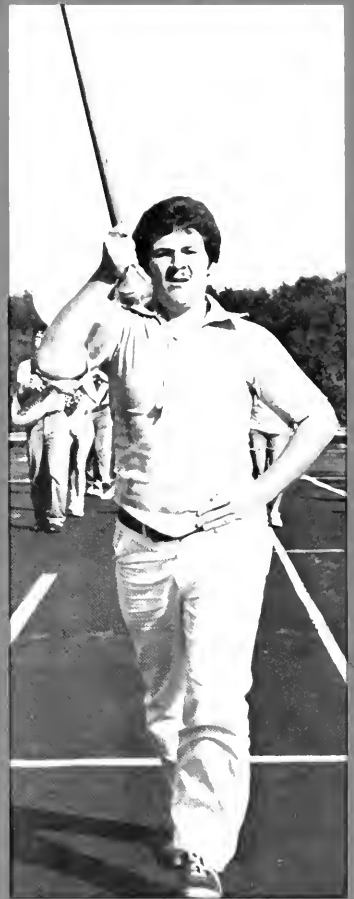
Row 1: B. Leshner, A. Fierst. Row 2: A. Patella, P. Hudson, K. Shaffer, D. Paul, M. Ross.

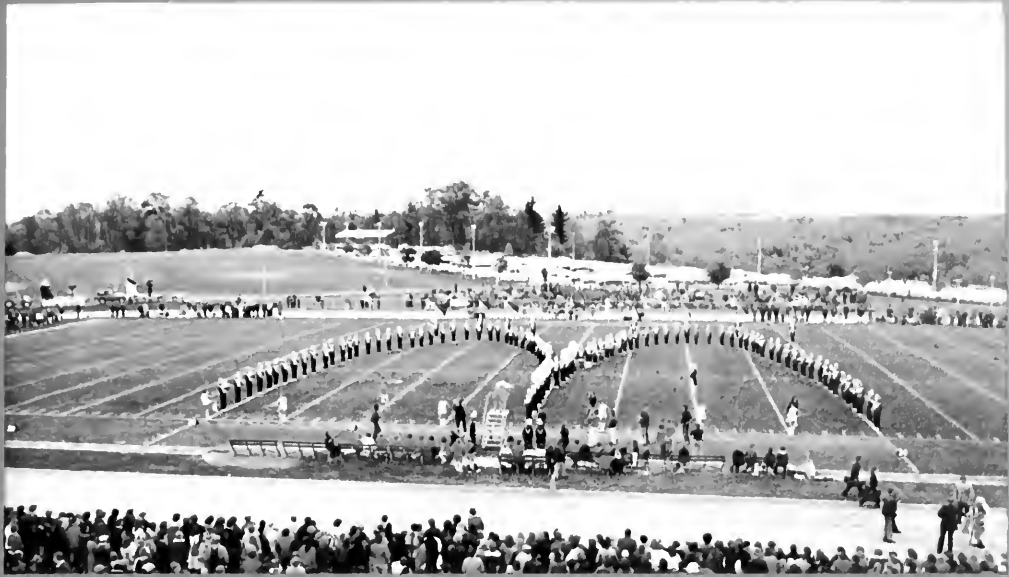


Free
To
Create

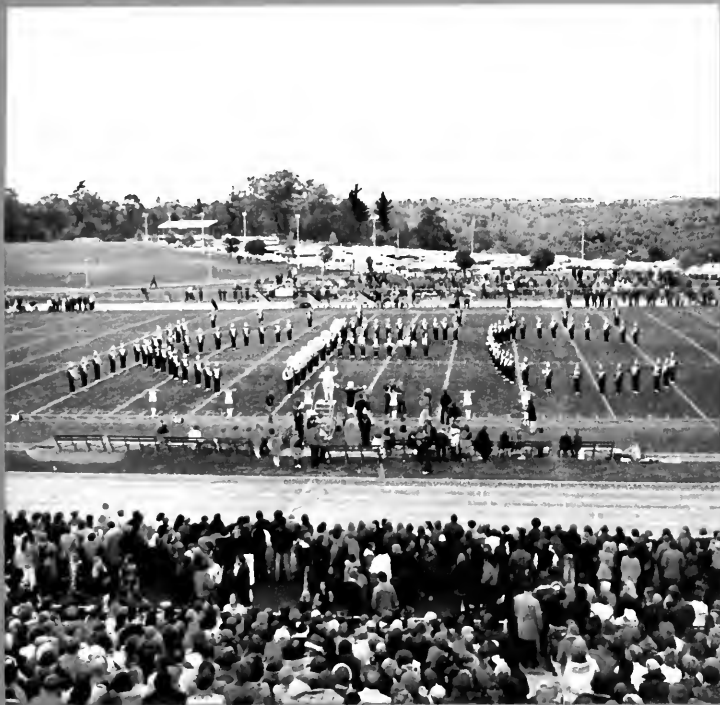


Hard Work And Practice...





...They Do It All For You!!



1976 Golden Eagle Marching Band



FLUTES

B. Brown
K. Brown
K. Byron
E. Demchack
S. Henning
C. Hosfeld
J. Kissinger
K. Mitchell
G. Schneck
G. Walker
N. Wareham
M. Wooding
P. Zeleznik

CLARINETTS

B. Cave
M. Cremi
D. Cunningham
W. Davidson
P. Dusha
P. English
K. Erb
C. Fehlman
D. Gallaher
D. Hemler
J. Koehler
T. McCaffery
N. Newsome

S. Rairie
S. Ross
S. Schrecker
S. Spangler
S. Vargo
J. Whisler

ALTO CLARINET

L. Adams
D. Sedoris

PERCUSSION

C. Eberle
L. Koch
N. Lepovetsky

B. Muthler

M. Nigro

C. Pirone

J. Schmidt

H. Striech

SAXOPHONE

N. Appleby

E. Colonna

C. Gatti

F. Harlan

S. Kurtz

L. Lacko

R. Nelson

R. Reefer

P. Robins

T. Snyder
L. Tower
K. Weibel
P. Wilmot
H. Wheeler

TRUMPETS

J. Beercheck
D. Beggs
B. Bendal
J. Burkett
K. Buterbaugh
B. Estep
D. Gecelosky

J. Hall

J. Hulburt

F. Lobaugh

V. Mannella

B. Molnar

B. Nulph

B. School

K. Sikorski

J. Waldron

J. Wilder

D. Wilson

HORNS

J. Anderson

L. Barscz

B. Leasher

K. McElheny
M. Sinibaldi
H. Tartalone
S. Thompson

TROMBONES

R. Johnston
R. Knight
J. Lesnick
B. Lindahl
E. Ludwig
B. Sacolic
J. Stewart

R. Swackhammer

BARITONE

M. Campanella
P. Cancilla
A. Damiano
B. Jeffreys
R. Paine

TUBA

L. Bornes
J. Farwell
N. Kinch
J. Klinger
M. Kurtz
M. Nelson
P. O'Leary
S. Palmer



Mr. J. Floyd - ass't conductor, K. Lozzi - head majorette, R. Reefer - drum major, C. Shakely - golden girl, Dr. S Michalski - conductor.



Flag Team: Row 1. K. Beisner, M. Miller. Row 2. D. Eister, L. Ransel. Row 3. M. Audain, J. Denstinger, J. Williams, M. Pasche.

Majorettes



Lf. to Rt.: C. Todorich, B. Lily, B. Querriera, C. Shakely, K. Lozzi, B. Lewis, C. Jioio.



Alumni Band



Tau Beta Sigma

Row 1: P. English, P. Robins Row 2: L. Adams, B. Muthler, M. Kurtz, P. Cancilla Row 3: B. Laub Row 4: B. Jeffreys, M. Wooding Row 5: K. Vergith, L. Corey, B. Leasher, P. Wilmot Row 6: K. Brown, C. Fehlman, L. Tower, S. Gearhart Row 7: B. Cave, S. Schrecker, F. Harlan Row 8: D. Cunningham, L. Lacko, P. Zeleznick, G. Walker.



Kappa Kappa Psi



Row 1 J. Schmidt, J. Wilder Row 2: M. Nigro, K. Sikorski, R. Johnston, E. Demchack Row 3: M. Campanella, J. Klingler. Row 4 J. Lesnick, J. Haluska



Lab
Jazz
Band



Row 1: M. Bandzej, C. Vergith, T. Snyder, M. Nelson, D. Orange, R. Reefer, J. Schmidt. Row 2: Dr. Mitchell, R. Johnson, C. Fehiman, P. Robins, L. Tower, P. English, R. Ravotti, R. Knight. Row 3: B. Edwards, D. Wilson, K. Sikorski, B. School, J. Hulbert, V. Manella, B. Estep, K. Glass.

Brass Choir



Row 1: Dr. Farnham, K. McElhery, L. Barset, S. Thompson, B. Leasher, H. Tartalone. Row 2: M. Nelson, B. Lindahl, R. Knight, R. Johnston, P. Cancilla, J. Haluska. Row 3: B. Ray, J. Hulbert, V. Mannella, D. Wilson, B. Estep, J. Wilder, M. Bandzej.



Orchestra



Row 1: S. Uzmack, M. Wooding, K. Crissy, M. Cremi, C. Fehlmon, R. Reefer, T. Damieno. Row 2: D. Zerby, W. Hamlin, C. Banks, D. Hershiser, P. Cancilla, B. Jeffreys, L. Deckman. Row 3: L. Zarszc, B. Lecsher, S. Thompson, H. Tartalone, J. Hulbert, R. Knight, R. Swackhomer, J. Lesnick, J. Haluska. Row 4: Dr. Ostrow-conductor, B. Weinman, D. Ostrow, E. Grazier, C. Perone, B. Ray, J. Schmidt, D. Potts, M. Ostrow, H. Willeumier, S. Thilin, P. Kellner, R. Longwell, C. Frank.

Percussion Ensemble



Lf. to rt.: C. Perone, D. Potts, H. Streich, J. Schmidt, Mr. John M. Floyd, Conductor, B. Ray, L. Koch. Not shown: P. Concilla, P. Rehwald, M. Bandzej, R. Patella, R. Knight, R. Johnston.



Concert Band



Concert Choir



Row 1: B. Brinkley, Mr. W. McDonald - conductor, K. Mitchell. Row 2: A. Eyler, M. Miller, C. Kustin, D. Weible, J. Marrone, P. Stover, D. Wilder, C. Coon, S. Wrights, D. Pierce, J. Gathers. Row 3: S. Caldwell, A. Stambaugh, S. Toth, S. Mong, K. Murray, J. Myers, B. Lindhal, D. Orris, C. Creigh, M. Guerra, C. Reefer, C. Vawryk, S. Mrdjenovich. Row 4: S. McCord, C. West, N. Barnett, K. Muller, A. Terhune, M. Kress, B. Rhodes, S. Bright, J. Swarlis, J. Stewart, G. Holsinger, P. Pratt, K. Shaffer, K. Kase, M. Lewis, P. Work, S. Palmer. Row 5: L. Pitoniak, K. Krach, B. Mallison, K. Hoebler, T. Routman, S. Summerville, J. Showers, T. Hennessy, M. Malthaner, B. Conner, C. Shank, K. Cauthom, J. Fritchey, J. Meeder, J. Rembold, M. Houtz, G. Olney, B. Bigler, R. Baumann, D. Hoak. Row 6: J. Zuck, T. Kurtz, L. Gruber, J. Williams, S. Blair, J. Gidlow, D. McCall, M. Socha, L. Pifer, L. Brown, B. Thayer, R. Eakman, C. Maybee, K. Masters, S. Webster, J. Kendrick. Row 7: D. Forbes, J. Kissinger, S. Holter, D. Pulcini, C. Anderson, J. Lesnick, D. Gallagher, J. Link, D. Burdett, B. Brown, K. Neely, B. Yancosek, W. Taylor, K. Edinger, K. Norwood.



Lyric Opera Workshop



Row 1: A. Stambaugh, J. Meeder, Dr. Connor, E. Pifer, J. Kissinger, M. Malthaner. Row 2: J. Masters, T. Douglass, S. Toth.
 Row 3: E. Anderson, D. Gallagher, J. Fritchey, D. Diven, K. Neely, K. Murray, F. Bracua, J. VanZanvoord, C. Shank, P. Pratt,
 D. Burdett, L. Gruber, G. Lakes. Row 4: K. Norwood, L. Pifer, S. Mong, J. Link, D. Wilder, J. Rembold.

Madrigals



Row 1: D. Forbes, S. Toth, K. Neely, B. Schultz, N. Faust. Row 2: E. Anderson, J. Kissinger, K. Norwood, L. Deckman, C. Vawryk. Row 3: D. Morris, P. Stover, M. Malthaner, D. Diven, D. Hoak.
 Row 4: D. Wilder, C. Coon. Row 5: K. Shaffer, T. Hennessy, S. Meirzechak, J. Meeder, T. Douglass, J. Kembold.

Music Educator's National Conference



Row 1: M. Wooding, N. Faust, M. Cremi, B. Schultz, K. Vergith. Row 2: B. Leasher, B. Kemp. Row 3: J. Link, D. Cunningham, P. English, P. Cancilla, C. Vawryk, J. Masters, B. Jeffreys, B. Weimann, S. Mong, H. Tartalone. Row 4: J. Haluska, P. Wilmot, B. Brinkley, C. Frank, K. Murray, M. Nardone, G. Amthor, J. Hulburt, L. Pifer. Row 5: P. O'Leary, J. Rembold, D. Burdett, L. Tower, B. Cave, J. Schmidt, L. Cook, K. Fehlman. Row 6: J. Lesnick, K. Norwood, D. Wilder, P. Pratt, V. Manella, D. McCall. Row 7: T. Damiano, S. Webster, F. Harlan, D. Hoak, B. Estep, R. Johnston, R. Reefer. Row 8: R. Nelson, T. Douglass, K. McElheny, T. Snyder, J. Burkett, J. Beercheck, B. Lindhal.



Gospeliers



Row 1: S. Stroy, E. Williams. Row 2: A. Miles, C. Williams, P. Dill. Row 3: J. Valentine, G. Woodruff, D. Clisby, K. Lampkins. Row 4: L. Phillips, T. Johnson, D. Bell, W. Hefflin. Row 5: P. Hudson, L. Eaddy, L. Savoy, M. Audain. Row 6: K. Cauthorns, R. McCoy, P. Hudson.

Multitudes
of talent. . .





. . .displayed at CSC







FEATUURES

Reflecting Upon The Past

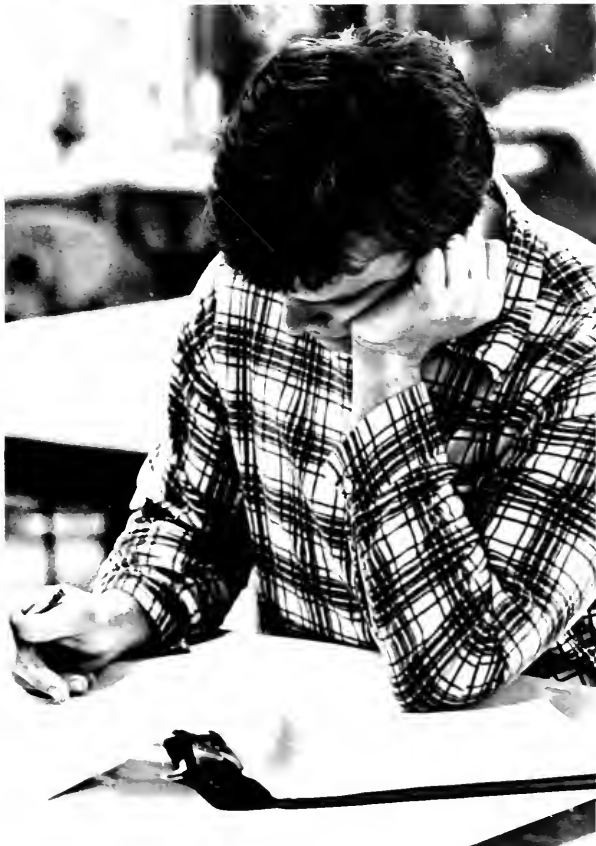


We Shall Remember . . .



The Studying







The Learning



The Smiles



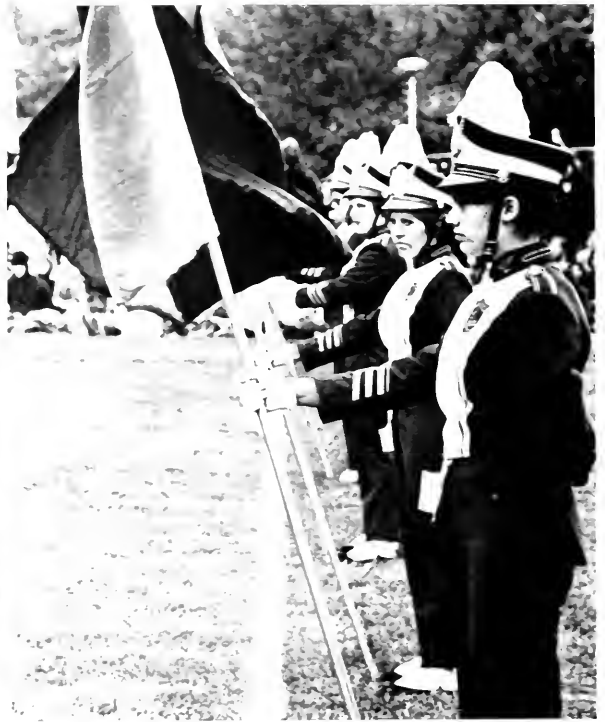


The Spirit





The Faces



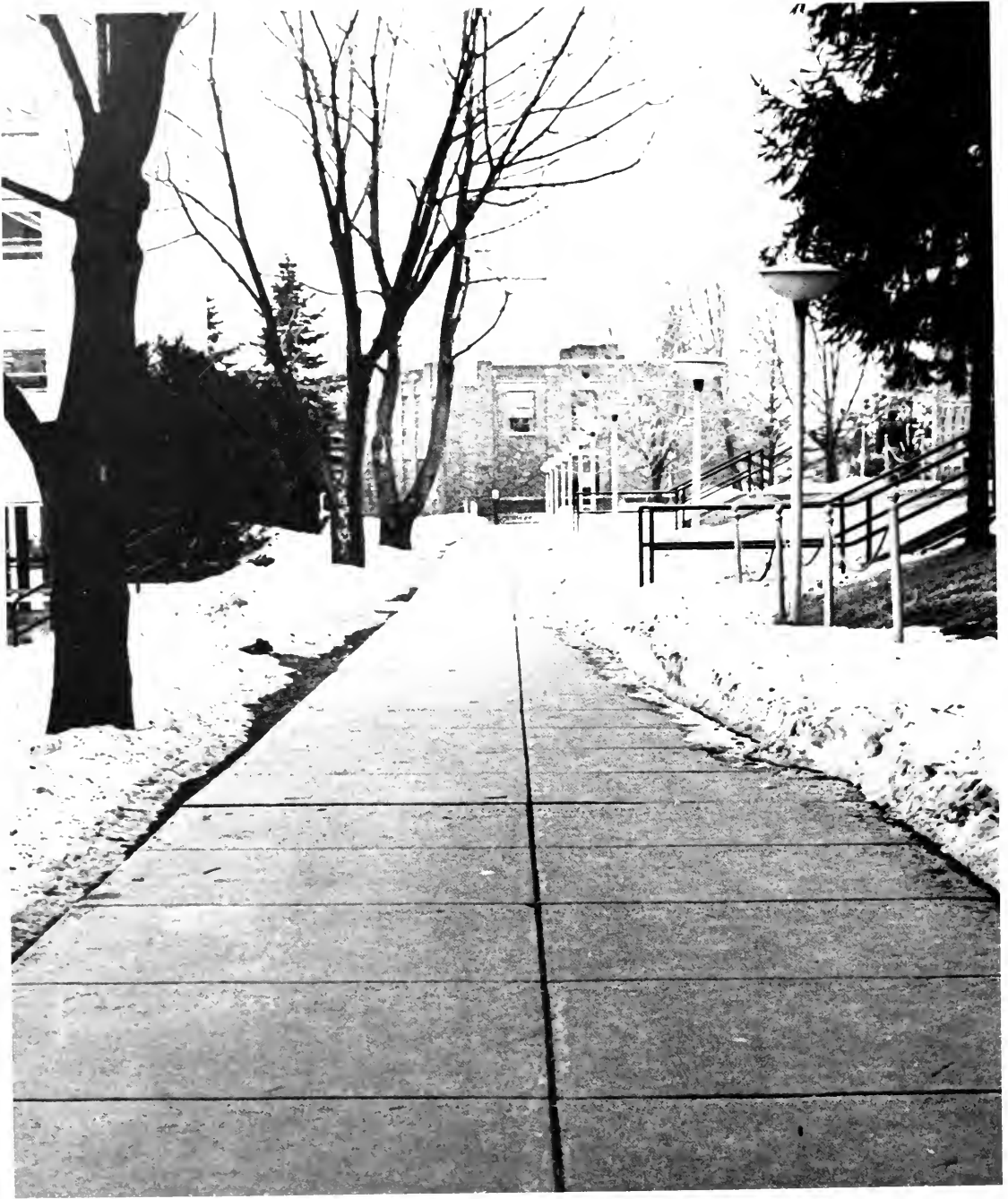


The People

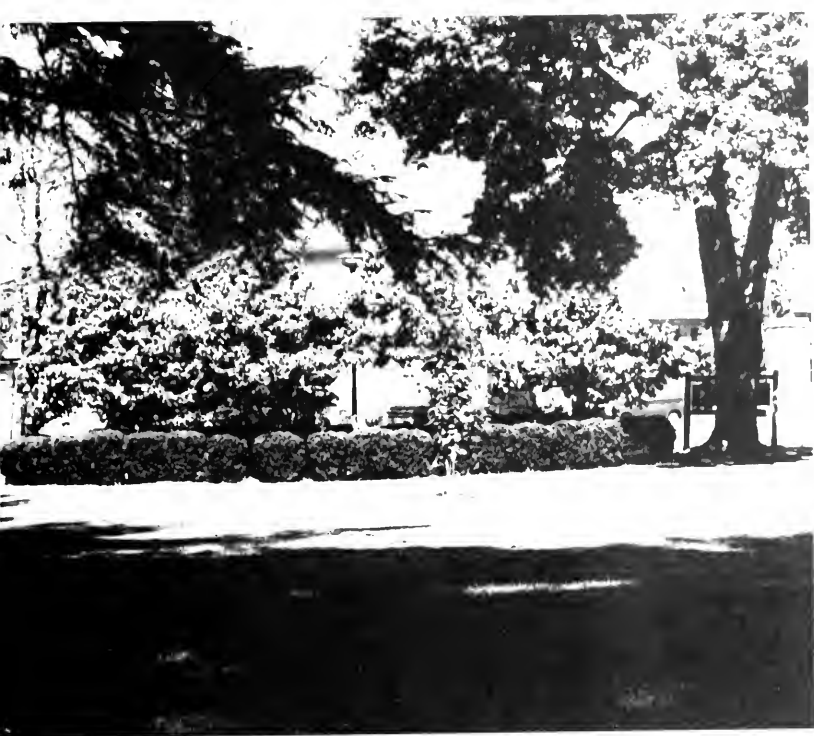




and the echo of . . .



. . . all things must pass



A Dream Of Perfect
Bliss, Too Beautiful
To Last.



Row 1. S. Phillips, A. Leffingwell, C. Aspril, M. Wise, Queen S. Reich, P. Magaro, C. Londeen, C. Moriarty, P. Houston. Row 2. S. Robatin, K. Yager, B. Zehner, J. Maverro, M. Tiesi, K. Slye, G. Kriebel, D. O'Donnell, J. Dixon. missing: D. Beatty, V. Sickles.



Homecoming Float Winners

- Sororities 1st Sigma Sigma Sigma
 2nd Alpha Sigma Alpha
- Fraternities 1st Alpha Sigma Chi
 2nd Tau Kappa Epsilon
- Campus Organizations 1st Forest Manor
 2nd Campbell Hall





America: Let's Celebrate





1977 Miss CSC
Kim Lemon



Contestants (L-R): C. Shakely, F. Harlan, K. Lemon, K. Norwood, D. Hoak, A. Eyer, M. Munn, D. Houk, C. Jioio.



F. Harlan, 4th runner-up; M. Munn, 2nd runner-up; K. Lemon, winner, C. Shakely, 1st runner-up, K. Norwood, 3rd runner-up.



Who's Who



Dotty Yourish . . . Biology . . . Alpha Sigma
Tau . . . WCCB . . . Interhall Council . . .
Intramurals.

Theresa Leisey . . . German . . . Rifle Team
. . . Ski Club . . . Alpha Mu Gamma . . .
German Dance Club.

Sonya Thelin . . . Humanities . . . Zeta Tau Alpha
. . . Orchestra . . . Lambda . . . Miss CSC 1976
. . . Miss Pa. Scholarship Finalist and preliminary
Swimsuit Winner.



Sandy Barefoot . . . Speech Communications
 . . . Debate Team . . . Individual Speaking Events
 Team . . . Pi Kappa Delta . . . Student Senate
 . . . CAS.

Susan McGinley . . . Accounting . . . Pi Kappa
 Delta . . . Phi Beta Alpha . . . Debate Team . . .
 Individual Speaking Events Team . . . Marketing
 Club . . . Accounting Club.

Mary Neagley . . . Humanities . . . Pi Kappa Delta
 . . . Individual Speaking Events Team . . .
 College Readers . . . College Players.

John Gareis . . . Speech Communications . . .
 Pi Kappa Delta . . . Individual Speaking Events
 Team . . . College Readers . . . Concert Choir.

Michelene Pantano . . . Communication Arts
 . . . Alpha Psi Omega . . . Pi Kappa Delta . . .
 College Readers . . . Forensics . . . College
 Players . . . Student Senate.



James Hendberg . . . Special Education . . . Human Relations Planning Commission . . . Committee for Talented Students . . . Campus Ministry Council . . . CROP Committee . . . Orientation Leader . . . Vice President-Interhall Council

Kim Grove . . . Elementary Education . . . Alpha Sigma Alpha-President . . . Student Senate's President Advisory Board . . . Ski Club . . . Kappa Delta Pi . . . Panhellenic Council

Richard Kish . . . Secondary Education, Math . . . Lambda Gamma Sigma . . . Math Club . . . Football Veteran's Club - President . . . Kappa Delta Pi - President

Ardyth Avery . . . Speech Communication and Theatre . . . College Plays . . . Forensics -Vice President . . . Pi Kappa Delta



Gretchen Amthor

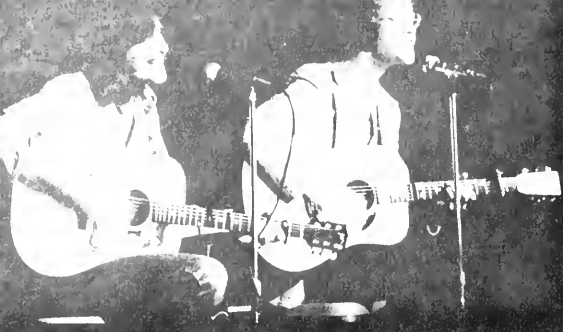
Scott Hedrick . . . Business
Administration . . . Phi Sigma
Kappa . . . Student Senate . . .
Phi Beta Alpha . . . Rules and
Regulations Committee

Debbie Yohman . . . Elementary
Education . . . Women's
Gymnastics . . . Student Senate
. . . Rules and Regulation Com-
mittee . . . Finance Committee
. . . Zeta Tau Alpha-Social
Chairman and Fraternity Educa-
tor

Nancy Compennolle . . . Second-
ary Education-Math . . .
Kappa Delta Pi . . . Pi Mu
Epsilon . . . Math Club

D. J. Bevevino . . . Secondary
Education-Science . . . Student
Senate-Vice President . . . Fin-
ance Committee . . . Men's
Swimming and Diving Team . . .
Kappa Delta Pi . . . All American
Diving Team





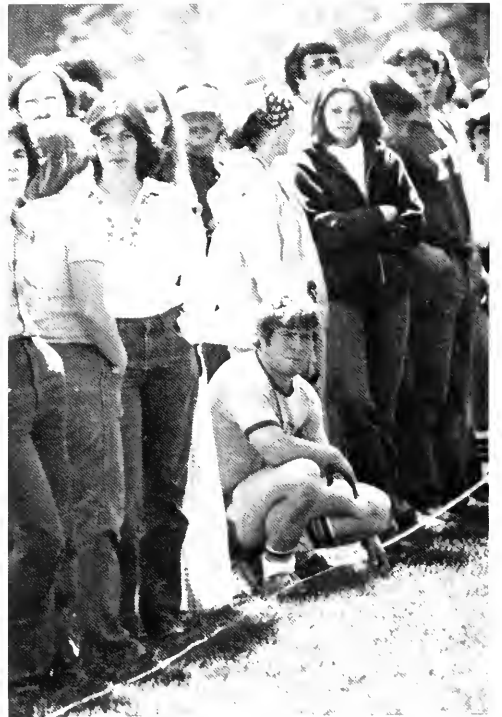




GRAB A CHICK

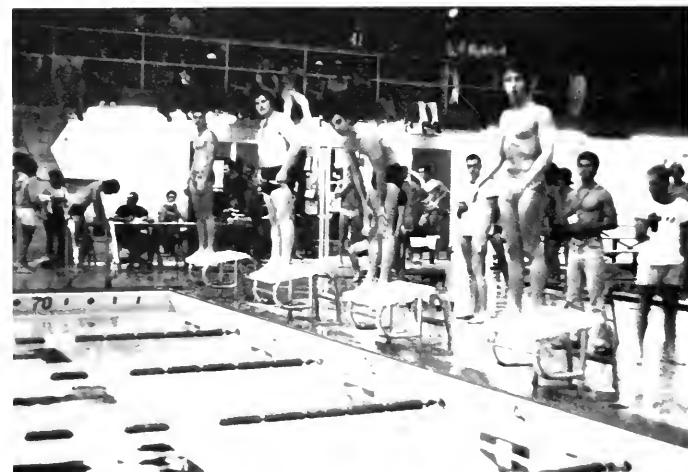


G
R
E
F
F
L
I
K
S



Greek Week





First Place Greek Sing:



Greek Week Results

Beer Race
Fraternities
Phi Sigma
Sigma Tau

Sororities
Zeta Tau Alpha
Phi Sigma Sigma

Greek Bowl
Fraternities
Phi Sigma
Theta Xi

Sororities
Alpha Sigma Tau
Delta Zeta

Greek Banner Contest
Sigma Sigma Sigma
Alpha Sigma Chi

Greek Olympics
Fraternities
Sigma Tau
Phi Sigma

Sororities
Alpha Sigma Tau
Alpha Xi Delta

Greek Swim
Fraternities
Theta Xi
Theta Chi

Sororities
Sigma Sigma Sigma
Delta Zeta

Greek Sing
Fraternities
Alpha Chi Rho
Phi Sigma Kappa

Sororities
Alpha Xi Delta
Sigma Sigma Sigma

Greek Scholarship
Fraternities
Sigma Tau
Alpha Chi Rho

Sororities
Alpha Xi Delta
Delta Zeta

Overall Trophy
Fraternities
tie: First
Phi Sigma
Theta Xi
tie: Third
Alpha Chi Rho
Sigma Tau

Sororities
tie: First
Alpha Sigma Tau
Alpha Xi Delta
Third
Sigma Sigma Sigma

Second Place Greek Sing:





First row: R. Verbano, K. Fedorek, D. Ghia, J. Balombiny, L. Pickett, M. Shuster, G. Kazor, C. Krug, Second row: B. Boylan, N. Lepovetsky, H. Wassink, R. Johnston, J. Lovelace, K. Zimmerman, S. Hedrick, K. McCormick, W. O'Neill, M. Johnston, J. Vasco.

Interfraternity Council

The Interfraternity Council (IFC) is the governing group of Clarion's nine fraternities. Two representatives from each fraternity serves on the council which coordinates the social, service, rushing and pledging activities of member fraternities.

IFC tries to promote many areas of activities on the Clarion State Campus. In working with Panhellenic Council, IFC has co-sponsored all campus movies, United Way Drive and Greek Week. Fraternities also are involved in intramural and sports as well as other organizations such as WCCB, Student Senate, Center Board, The Call, and the Autumn Leaf Festival.

Scholarship is not neglected, however, as each Spring during Greek Week trophies are presented for 1st and 2nd place in both active and pledge categories.

The purpose of IFC is to promote cooperation not only between fraternities, but with the campus, as well as the community of Clarion.

This year's officers are: President - Mark A. Shuster, Vice-President - Ray Verbano, Secretary - Larry Pickett, Treasurer - Del Ghia, Advisor - Hal Wassink.





Panhellenic Council

The Panhellenic Council serves as the governing group for the nine sororities on our campus. It correlates all sororities' activities and sets up regulations for all Greek women's groups. A sorority is an organization of women who are bound in sisterhood and dedicated to set purposes and goals. The facets of Greek life are many. In the community, as Panhellenic, we helped in collecting for the United Way and played an active role in the Homecoming activities. We helped IFC with the fund drive for the March of Dimes. On Greek Weekend, we have College Bowl (scholastic ability), Greek Sing (musical ability), and Greek Olympics (physical ability) where trophies are awarded. With IFC we had a Movie Night and we also have sponsored a Dance Marathon with WCCB. Each Greek is to work in harmony with her own group and all of Panhellenic for the promotion of campus activities and the betterment of student life at the college.

This year's officers are: President - Barbara Porto, Vice-President - P. J. Magaro, Secretary - Connie Elack, Treasurer - Nancy Finnessy, Advisor - Kathy Konhurst.



First row: J. Lunger, K. Abel, K. Jackson, C. Engle, J. McHenry, C. Eyre. Second row: L. Peterson, C. Black, N. Finnessy, P. J. Magaro, D. Durante. Third row: C. Valone, B. Bussard, D. McCurdy, M. Beaford, M. Murray, S. Smith, P. Purifoy, R. Barnes.

AXP

This year's officers are: President - Roger Johnston, Vice-president - Ray Knight, Secretary - Russ Reefer, Treasurer - Gerry Flanagan, Corresponding Secretary - George Clarke, Ritual Officer - Richard Kuhns, Advisor - Dr. Frank Battista.

The Mu Phi Resident Chapter of the Alpha Chi Rho Fraternity was founded on the Clarion campus May 24, 1964. Since that time we have grown to our present strength of 28. Never placing an emphasis on numbers, we are one of the most closely knit groups on campus. The brothers have donated money to the Library for eight of the last nine years and will do so again this year. Scholarship and Greek Sing are our strong points. We took first place honors in the Greek Sing Competition last year. The brothers participated in the United Way and March of Dimes Fund Drive this past year. Never neglecting the social life, we have a Spring Formal, Semi-Formal Christmas Party, and a Summer Picnic to mention a few. With 83 years national fraternity history behind us, we welcome all to visit us at our new house at 148 Liberty Street.



First row: J. Shaw, G. Clark, G. Flanagan, R. Knight, B. Estep, B. School, R. Johnston, Second row: S. Thompson, N. Lepovetsky, E. Colonna, D. Hummell, R. Wilson, D. O'Neal, D. Gelenosky, E. Edwards, J. Rinkus, R. Kuhns, M. Nelson.



ALPHA

First row: T. Bright, J. Downing, K. Driscoll, L. Bashline, P. Ross, M. Keator, T. Steiner, J. Dean. Second row: R. Rice, M. Shuster, A. Leffingwell, J. Wilson, C. Krug, J. Harper, J. Higgins, R. Buck. Third row: unidentified, D. Liebert, J. Janssen, K. Able, V. Soldo, D. Gaetaniello, D. Stahr, C. Abbott, F. Pascoe, J. Marrone. Fourth row: M. Gostkowski, J. Phillips, K. Crowe, J. Zirkovich, P. Daylo, A. M. Fagnano, D. Kaczmarek, D. Neff, B. Beck, R. Smith. Fifth row: D. Blasdell, B. Patuch, R. Kramer, J. Rodgers, L. Shouck, C. Long, D. Bager, J. Limano, D. Silor, G. Kazor. Sixth row: J. Spanitz, J. Hawkins, S. Jacobs, M. Quici, K. Mitchell, D. Nuzzo, B. Curret, B. Kaschak. Seventh row: M. Ross, R. Stuaic, C. McNavish, D. Foster, T. Cappucci, M. Shuster, J. Kuhn, T. Dawson, G. Bateman, D. Celento, R. Hackett. Eighth row: B. Courtney, E. Ord, S. Robatin, J. Reden, B. Follett, J. Budbin, J. Sadlack, J. Miller, J. Geiger



This year's officers are:
President - Charles Krug,
Vice-president - Kevin Drincoll,
Treasurer - Jack Dean,
Recording Secretary - Mike Keator,
Corresponding Secretary - Tom Bright,
Pledgemaster - Rick Buck,
Advisors - Howard Barger and Tom Steiner.



Alpha Sigma Chi was founded on December 17, 1969 as a service fraternity. It is not a petitioning local chapter of National Sigma Chi Fraternity. Over the past eight years, we have raised over \$31,500 for various charities, including the United Way, Children's Hospital in Pittsburgh, Rita Ohler Kidney Machine, and the Leukemia Foundation through our Annual Dribble-a-thon.

The 55 active brothers are proud of our past but we continue to be involved in other aspects of college life. We participate in intramural sports, Greek Week and are perennial powers in float competition for the Autumn Leaf Festival Parade. In fact, we won the overall trophy, this past fall, for the second time, for best float in the parade. Other activities we sponsor are our alumni, semi-formal date parties at the Holiday Inn, Spring Formal, and Senior Banquet.

Alpha Sigma Chi believes that a fraternity should be diversified not only in its activities, but in its members. We feel that we fulfill both and that's what makes us a unique group, united in brotherhood, which continues to be interestingly successful at CSC.

KAPΨ

This year's officers are: Polemarch - Mike Goodman, Vice Polemarch - Von Booker, Keeper of the Records - Larry Pickett



First row: J. Lovelace. Second row: M. Goodman, J. M. Russel. Third row: R. Grant, L. White. Fourth row: L. Pickett. Not pictured: R. McCoy, A. Lewis, K. Fant, S. Tate, V. Booker.

Kappa Alpha Psi was founded on January 5, 1911. The aim of Kappa Alpha Psi is to provide a climate within which students may acquire a sound moral, intellectual and social basis for effective living. Kappa Alpha Psi seeks to implement this aim by exerting beneficial influence upon attitudes of members and pledges; providing leadership training, assisting in choice of careers and curricula, encouraging **ACHIEVEMENT**, fostering socialization, and instilling principles of democratic living.



ΨΧΚ

Phi Sigma Kappa was founded on March 15, 1873 on the cardinal principles of Brotherhood, Scholarship, and Character. The many activities many brothers and little sisters are involved in along with many social functions help promote brotherly love and create an atmosphere of working together.

Since the fraternity stresses involvement, some of the activities in which we participate in are the Clarion Call, Sequelle, Student Senate, WCCB Radio, Concert Choir and Madrigals, the Golf Team, Rifle Team, Track & Field and the Clarion Foundation.

The fraternity also attempts to benefit and assist the college through activities such as the semi-annual book co-op, the distribution of desk blotters and many fund raising and charity projects.

This year's officers are: President - Scott Hedrick, Vice-President - Jeffrey Moist, Treasurer - Jeffrey Gmuer, Secretary - Daniel Shavensky, Pledgemaster - Kurt Snyder, Sentinel - David Stancel, Inductor - Bill Noel, Corresponding Secretary - Mark Marinowski, Advisors - Dr. Adam Weiss and Lynn Lineman.



First row: J. Martin, T. Hennessy. Second row: M. Halchak, D. Unrue, J. Johnston, C. Valenza, D. Smith, T. Rogan, D. Gittings, J. Gmuer, M. Miller. Third row: S. Patterson, B. Wolbert, N. Zidek, C. Krause, V. Rozic, D. McWilliams. Fourth row: S. Hedrick, D. Bell, M. Marinowski, T. Clay, C. Hetrick, J. Westerman, D. Shavensky, M. Malthaner, S. Radomski, S. Zimmerman, M. Malthaner, K. Snyder, M. Socha. Fifth row: J. Malthaner, D. Stancel, R. Adams, R. Bailey, P. Bagot, W. Noel, S. Burnham, B. Conner.



Originally as Phi Sigma Epsilon, the fraternity was among the first fraternities on the Clarion campus. Phi Sigma was established to promote a closer bond among male students of higher education institutions, so that they might enter into a more intimate fellowship with those dedicated to education and a better understanding of men. Members are active in such campus activities as Student Senate, Athletics, Honor Societies, Clarion Call, and many many others. We "Phi Sigs", maintain a solid fraternity, both scholastically and socially. There is nothing that one Phi Sig would not do for another, and it is this fraternity spirit that makes us what we are.

This year's officers are:
President - Joe Sarso, Vice-president - Bob Christ, Recording Secretary - Dan Kennedy, Corresponding Secretary - Jim Coyle, Treasurer - Andy Kish, Pledgemaster - Andy Kish, House Manager - Doug Brown, Advisors - Kent Pope, Mark Glossner, and Mike Iaderosa.



First row: J. Beacher, A. Phillips, J. Balombiny, J. Colligan, J. Sarso, A. Kish, D. Galati, D. Champion, Second row: F. Trefelner, D. Brown, B. Kearney, R. Furdak, T. Mannion, B. McDonough, C. Laudenslager, B. King, D. Harr, Third row: B. Kastelic, B. Christ, G. Huhn, D. Kennedy, J. O'Keeffe, R. Divins, C. Snodgrass, M. Kinter, G. Dapp, B. Burke.

TAKE



This year's officers are: President - Gary Kriebel, Vice-president - Steve Berg, Secretary - Ken Yager, Treasurer - Rich Sinclair, Advisor - Mr. Kenneth Traynor.

Tau Kappa Epsilon is the largest male social fraternity in the world. Our chapter (Lambda Epsilon) celebrated our 10th Anniversary of national membership in May. Our brothers attend national meetings every year.

The brothers of Tau Kappa Epsilon during 1976-1977 were quite active on the Clarion campus. Our float for Homecoming took second place, Brad Washabaugh participated in the Marine Corps. Marathon, our formal at Niagra Falls was a success, the fraternity also held it's annual snowmobile party in which all sororities were invited. We are currently involved in acquiring land on which we are going to build a new house.

First row: J. Hogan, Second row: M. Hillard, S. Bishop, Third row: G. Kriebel, S. Snyder, M. Paich, Fourth row: M. Cherico, B. Washabough, R. Sinclair, G. Savel, K. Yager, Fifth row: M. Weir. Missing due to Solitary confinement: T. Wilshire, T. Laush, J. Boylan, S. Berg, G. Kriebel, R. McElhatten, R. Schill, M. Hogg, N. Vukotich, L. Wolf, R. Goble.



ΣΤ

The officers for this year are:
President - Joseph Vasco, Vice
President - Charles Coryea, Treas-
urer - Richard Hutton, Secretary
- Michael Johnston, Intramurals -
Bob Miller, Social Chairman - Bill
Logan.



First row: G. Mignogna, J. Gooch, K. Fritsch, B. Holsopple, J. Vasco, Second row: R. Simoni, R. Zema, H. McDonough, T. Ritson, D. Thompson. Third row: A. Pizzurro, T. Valentine, B. Davis. Fourth row: R. Maloy, J. Colin, T. Krizan, P. Antoske, M. Yarros, J. Moon, J. Kocis, D. Hanlon, B. Beatty, M. Johnston, B. Miller, J. Miller, E. Dellapina, P. Haines, D. Fleming, K. Dankovich, D. Webster. Sixth row: R. Hutton, D. Burks, B. Logan, B. Brizzi, D. Stuart, L. Gasparato, D. Gazzaro. Seventh row: M. Hansen, T. Tomko, T. Walker. Missing from picture: T. Capozzoli, J. Frontino, D. Cooley, C. Coryea, B. Emberg, K. Loughrey.

Sigma Tau, local fraternity, was founded at Clarion State in September, 1972. Formerly Sigma Tau Gamma National, the brotherhood consists of approximately sixty members. The brothers are active in all intercollegiate as well as intramural sports.

During the past year the brothers won their tenth consecutive Greek Olympics as well as overall intramurals. The brotherhood also placed first in scholastic achievement for active brothers and pledges. We take great pride in our college relations, sports and academic attainments.



OX

The officers for this year are:
 President - Gustave Naccarato,
 Vice President - Ken Fedorek,
 Treasurer - Keith Ward, Secretary
 - David Newton, Pledge Marshal -
 Delmiro Ghia, Advisor - Mr. Richard Pae.

Theta Chi has existed on Clarion State campus since December 10, 1960. The brothers participate in all Greek activities and have an active social life. We stress academic excellence and social awareness. Our house at 703 Wood Street is at present being modernized and remodeled.

Our activities for the year include delivering survival kits during finals week and participation the United Way collection. We held a party to raise funds for Muscular Dystrophy.

Each year as the new officers are elected and take office we, the members of Theta Chi, get to observe as our fraternity grows under it's new leadership.



First row: C. Steck, C. Kant, T. Carr, J. Marsh, M. Blake, M. Lucas. Second row: D. Akens, J. Anoker, G. Linstrom, K. Plate, R. Verbano, J. Bonello, K. Fedoreck, C. Mangone, G. Waccaralo, B. Elford, K. Ward, D. Ghia. Not pictured: D. Newton, P. Lucas, R. Paranic.



This year's officers are: President - Thomas Williamson, Vice-president - Timothy Conlon, Secretary - Mark Henninger, Treasurer - Thomas Macaluso, Pledgemaster - Richard Carlisle, Advisors - Dr. Lawrence Penny, Earl Zerfoss, Andor P-Jobb.



The Beta Omicron Chapter of Theta Xi National Fraternity was founded on May 9, 1963. Since that time we have initiated over 350 brothers. Our house is located right next to campus at 36 Greenville Avenue. It has a large partyroom, lounge, gameroom, and enough space to house 42 brothers. Some of our activities include intramurals, collegiate athletics, community service projects, and Greek Week. We also sponsor dinners, a formal, parties, and formal parties for brothers and alumni of our chapter.



First row: M. Hart, K. Bussey, M. Henninger, Second row: H. Hoh, J. Christy, R. Cook, R. Seidel, M. Rich, W. Scala, C. Krokoski, D. O'Donnell, J. Powney, M. Guy, T. Macaluso, W. O'Neill, B. Lander, Third row: M. Polenski, S. Laird, A. Peterson, H. Mangel, K. Dahl, T. Sullivan, M. Anderson, G. O'Hara, F. Christensen, T. Koutsky, T. Nindle, T. Davis, J. Eyer, Fourth row: R. Conlon, M. Wiley, T. Sechrist, S. Smiley, S. Jewell, R. Scott, G. Caylor, R. Hayes, J. Eshenour, T. Senic, J. Stumbaugh, W. Byers, M. Duck, D. Bickerstaff, K. Bush, Fifth row: E. Barrett, R. Mang, E. Hughes, T. Conlon, C. Sharnburg, J. Pollock, T. Williamson, Missing: J. Dougherty, J. Charles, W. Brizzi, J. Bergman, D. Adams, R. Frasinelli, R. Carlisle, J. Kline, M. Luchini, D. Majoy, T. Bell.



First row L. Baltimore, M. Young, K. Bethea, Second row: M. Beaford, A. Ridley, P. Purifoy, Third row: L. Johnson, L. Brown, Missing: G. Bailey, P. Brown, C. Sheffield.

AKA

This year's officers are: President - Lillie A. Brown, Vice-president - Linda Baltimore, Treasurer - Marquita E. Beaford, Recording Secretary - Cheryl Sheffield, Corresponding Secretary - Patricia Purifoy, Parliamentarian - Leatrice Johnson.

Alpha Kappa Alpha was the first predominately Black sorority ever. Founded in 1908 at Harvard University, we have grown to a national active membership of over 60,000 women. We are a Service oriented sorority not a social one. Some of our national service projects include the Cleveland Job Corp. Center for Women, The Reading Experience Workshop.

Alpha Kappa Alpha is the only government funded sorority. Our purpose is to cultivate and encourage high ethical and scholastic standards, to promote unity and friendship among college women, to study and help alleviate problems concerning girls and women in order to improve the social stature, to maintain a progressive interest in college life and to be a service to all mankind. Our colors are salmon pink and apple green. Kappa Zeta Chapter of Alpha Kappa Alpha celebrated our first anniversary on Clarion State College campus February 14, 1977.



This year's officers are: President - Pamela M. Brock, Vice President - Darlene Colberson, Secretary - Virginia Bernard, Treasurer - Gloria J. Adams, Advisor - Mrs. Patricia Payne.



First row: Gloria Jean Adams, Juanita Hannon, Ardella Miles, Linda Thorton. Second row: Mrs. Patricia Payne (advisor) Peggy Manley, Rhonda Barnes. Third row: Pam Brock, Ladonna Lewis, Yvette Williams.

Delta Sigma Theta was founded on this campus February 23, 1974. We are a public service organization with a membership of 40,000 across the U.S., Canada, Haiti, and Liberia.

We sponsored a Can Food party for Clarion Welfare. Activities that we have been this year are U.N.I.C.E.F., Convalescent Home, Ross Memorial Library, Southern Poverty Law Center, and the N.A.A.C.P. We also have sponsored a child, Thelma Cook, monthly for Save the Children.

Every year in December we have our Peppermint Ball, the proceeds go to Sickle Cell anemia. We are also active in the Annual Black Womanhood Week.

This year's officers are: President - Leslie Bruno, Vice President - Kathy Deere, Recording Secretary - Mary Ann Stahl, Corresponding Secretary - Heidi Savage, Treasurer - Sue Rairie, Advisor - Mrs. P-Jobb.

ALPHA



First row: P. Yohe, D. Yourish, K. McMunn, K. Burkner. Second row: L. Shaffer, F. Harlan, K. Deere, L. Kotan, L. Bruno, E. Wagner, M. A. Stahl, D. Bierbaum, S. Rairie, D. Houk, L. Speer, B. Helm, M. Lesnik, D. Leisure, A. Eyer, R. Feura, J. Matzel. Third row: D. Heskett, K. Sanders. Fourth row: H. Savage, A. Lingel. Fifth row: J. Lunger, D. Kallay. Sixth row: K. Boyle, K. Pazyniak. Seventh row: K. Sardi, A. Reddinger. Eighth row: T. Carl, L. Framiglio. Ninth row: M. Sinibaldi, C. Peyronel. Tenth row: D. Keith, T. Stancel. Eleventh row: D. Cunningham, D. McGill, M. A. Schaetz. Twelfth row: C. Moriarty, P. Morrison, G. Swart.



The Alpha Omicron Chapter was established at Clarion on January 29, 1966. The sisters of green and gold are currently living on the first floor of Ralston Hall. For the past four years the Taus have been awarded their national scholarship trophy for the highest academic average. Last year the sisters received a trophy for outstanding overall sorority on campus for their achievements during "Greek Week". The sisters also participate in intramurals as well as other campus activities and organizations. Highlights of the year include a Founder's Day Banquet, Christmas Date Party, Yellow Rose Formal, and Sponsors of the Red Cross Bloodmobile. The sisters strive for active involvement and a close bond of affection.

ALPHA XI DELTA

This year's officers are: President - Kim Maus, Vice-President - Hope Tartalone, Treasurer - Sandy Stiver, Recording Secretary - Sharon Marttela, Corresponding Secretary - Susie Zakula, Membership - Mary Wright, Pledge Trainer - Mary Lynne Learish, and Chaplain - Linda Helsel.



First row: B. Cave, S. Smith, B. Antonelli, L. Andrew, P. Whiteman, Second row: D. Hollinger, M. Stephens, N. Finnessy, D. Davidson, L. DiBernardo, C. Starr, J. Whisler, L. Thompson, N. Medzius, T. Miller, L. Andersen, L. Helsel, D. Hemler, C. Hemler, C. Grecek, C. Mansor, G. Boughter, D. Gallaheer, Third row: P. Ray, S. Gardner, D. Sebak, C. Reasinger, L. Somerville, T. Beggy, M. Ward, S. Stiver, S. Zakula, L. Facko, S. Marttela, C. Eyre, K. Maus, L. Gill, L. George, B. McCleaf, N. Orr, Fourth row: D. Scanlon, L. Ettinger, J. Sedzock, H. Tartalone, M. Learish, L. Rizzone, M. Wright, C. Bennardo, B. Hepting, B. Staley, P. Bangs, C. Zebly, L. McIntire, L. Grubich, Missing: L. Koch, A. Kunkel, D. Rivet, S. Spangler, N. Mack.



Alpha Xi Delta has been a national sorority at Clarion State since March, 1970. The sisters take part in a number of campus organizations and activities including sports, clubs, and women's intramurals. They are also active in community affairs and past projects have included collecting pennies and participating in the dance Marathon to benefit Children's Hospital, visiting a home for the elderly on Halloween, raffling off an Autumn Leaf Rug to help out an *alumni* of the sorority, and collecting for the heart and kidney funds. Their national philanthropic project involves sending gifts to Pittman Hall, a home for girls, each year.

Every spring, the Alpha Xi's participate in Greek Week and have won numerous awards over the past several years. Last Spring these included third place in Greek Olympics and second place in Greek Sing, Greek Bowl, and Outstanding Overall Sorority.

This year's officers are: President - Kathi Carlson, Vice-President - Roberta Foster, Secretary - Kathy Dengel, Treasurer - Carol Eberle, Advisor - Miss Barbara Rose.

MEM



The Gamma Gamma Chapter of Phi Sigma Sigma was founded nationally, November 26, 1913 and May 8, 1971 at Clarion State College. The sisters have been active in campus activities and community services. In the past year, Phi Sigma Sigma collected for United Cerebral Palsy and the National Kidney Foundation. The sisters also participate in Greek activities and are included in social events within the sorority such as fund raising activities, national conventions, and holiday celebrations.



First row: C. Eberle, R. Foster, R. Rebhun, K. Morningstar, P. Maguire, Second row: N. Meador, D. Macurdy, S. Frye, E. Cassino, J. Rebhun, K. Galla, K. Carlson, M. Chertik, Third row: L. Peterson, K. Coburn, J. London, K. Dengel, J. Caldwell, D. Baker, Missing: T. Showers, J. Jackson, S. Walters, K. Cole, J. Surkalo, T. Miller, L. Paladino, W. Taylor, N. Davis, S. Stephens, C. Eberhart.



This year's officers are: President - Kim Rilling, Vice President - Pledge - Vickie Snyder, Vice President - Rush - Pam Feaster, Recording Secretary - Kathy McGervey, Corresponding Secretary - Judy Picciotto, Treasurer - Lori Gault, Historian - Ricka Marcello, Advisor - Mr. Lois Mushrush.

First row: B. Luer, C. Belfore, M. Ballough, S. Zendron, M. Schwartz, S. Renckley, D. Doutrich, S. Miller, P. Feaster. Second row: C. Thompson, S. Bartok, K. Smith, K. Keiser, J. McHenry, V. Snyder. Third row: J. Eleon, J. Fennell, L. Gault, R. Marcello, C. Lundeen, C. Aspril, M. Munn, K. Rilling, Mrs. Mushrush. Fourth row: K. McGervey, C. Lombardo, K. Harrington, R. Sessi, D. Murphy, C. Shank, E. Gibsen, J. Picciotto, N. Heindl, C. Engle.



The Epsilon Theta Chapter of Delta Zeta sorority was established in 1956. Our sisters are currently involved in many activities both off and on campus.

This past year we have had many service projects, including Trick or Treating for Polk State Hospital and Caroling and making cards for Grandview Convalescent Home. We also treated a Clarion family to a Thanksgiving dinner.

In the past year the suite has been moved from campus to the third floor of Jefferson Apartments.

ZETA



Delta Iota chapter of Zeta Tau Alpha was founded in Clarion State on April 13, 1960 and is one of 173 chapters throughout the country. At the national Zeta convention, the Zetas received an award for the best activities program.

The Zeta suite is located in Wilson Hall on Wilson Avenue. We have been quite proud of our first place trophies in Greek Olympics and second place for our homecoming float. The sisters are working hard to make the coming year even more successful.

This year's officers are: President - Sharon Argast, Vice President - Cathy Cropcho, 2nd Vice President - Kathy Kinol, Secretary Richia Freeburg, Treasurer - Joni Fox, Ritual Chairman - Sue Chianelli, Membership Chairman - Sonya Theum, Historian - Reporter - Judy Slater.



First row: J. Fox, B. Doyle, K. Abel, V. Soldo, B. Marquis, M. Spratt, D. Yohman, S. Helmick. Second row: C. Jioio, C. Shakley, D. Arnold, C. Cropcho, S. Adkins, K. Boyle, J. Alexander, S. Boykan, M. Evanovich. Third row: S. Weiss, S. Hummel, D. Hauck, A. Comas, K. Jones, K. Kinol, J. Slater, P. Hoch. Fourth row: B. Nicholas, S. Scarton, S. Buzzard, S. Thelin, C. Todorich, S. Argast, K. Doyle, K. Mechenbier, B. Martin. Fifth row: J. Gadzala, K. Jackson, S. Chianelli, C. Elak, C. Lundy, A. Heller, L. Locke, A. Leffingwell, N. Lewis, S. Reich. Not pictured: C. Nardone, B. Stavros, S. Finnegan, R. Woods, G. Amthor, C. McCathren, D. Vottero, G. Seymour, S. Clement, R. Freeburg.



The Alpha Pi Chapter of Sigma Sigma Sigma was founded at CSC on April 27, 1935. Today, the chapter includes 56 active sisters. Aside from individual money-making projects, we support the Robbie Page Memorial Fund.

In 1976, Sigma Sigma Sigma took first place in both Greek Sing and the Sorority division of homecoming floats.

Our sorority suite is located on the first floor of Jefferson Apartments on East Main Street.

This year's officers are: President - Dana Gusky, Vice-President - Leigh Beth Kingston, Secretary - Cindy Martin, Treasurer - Deb DiGiorno, Ed. Director - Kathy Anderson, Rush Director - Alexa Costanza, Advisor - Kathryn Knohorst.



First row: L. Caldwell, M. Murray, M. McCartney, D. McDermott, S. Rectewald, D. McMillan, B. Stankovic. Second row: N. Russell, K. Orr, K. Shuman, J. Batchen, L. Kingston, J. Bologna, C. Horner, C. Martin, P. Magaro, N. Faust, C. Starr, C. Presher, E. Cherico, J. Stahman. Third row: J. Baird, T. Cathcart, C. Brown, J. Weaver, P. Herrold, K. Lazzari, B. Hornstorm, D. Gusky, D. DiGiorno, A. Costanza, K. Kemmerer, V. Schreffler, A. Manilla, S. Gaydos, P. Dittilo. Fourth row: K. Karpinsky, K. Berfield, D. Hoak, C. Baird, G. Hughes, K. Demharter, M. J. Dold, K. Anderson, N. Elk, L. Kerestan, D. Cuckovic, M. Nelson, A. Frye, B. White, K. Fuchs, M. H. Rice, M. Colteryahn, J. Keath. Missing: C. Magnusson.

This year's officers are: President - Beverly Nau, Vice-President - Cherie Maxwell, Recording Secretary - Laura Habermen, Treasurer - Judy Kassab, Corresponding Secretary - Karla Derbaum, Advisor - Jackie Campbell and Julie Evanish.

ΑΣΑ



First Row: B. Newton, S. Clyde, J. Oshnock, K. Stoner, B. Nau, D. Blackburn, J. Pinnock, L. Gibson, S. Sowa, J. Schmid, Second Row: B. Ruby, B. Hartshorne, K. Nihart, L. Habermen, A. Dinning, P. Rudinsky, V. Posch, P. Distasi, S. Merry, C. Betz, L. Kunselman, B. Bussard, K. Derbaum, Third Row: T. Perez, C. Sulkowski, Fourth Row: C. Maxwell, K. Breisch, D. Scileny, Fifth Row: C. Valone, M. Bartholomew, J. Packard, J. Kassab, K. Skoczylas, K. Grove, Not pictured: K. Blank, J. Festa, D. Larkin, L. Tobias, N. Wareham.



On November 15, 1901, at Longwood College, a new sorority was organized and named Alpha Sigma Alpha. As stated in the Charter, "The purpose of the association shall be to cultivate friendship among its members, and in every way to create pure and elevating sentiments, to perform such deeds and to mold opinions as will tend to elevate and enable womanhood in the world."

The sisters have an Easter Egg Hunt and a Halloween Party for the area children each year. We participate in Greek Week Activities, have an alumni tea, a Founder's Day Dinner at the Holiday Inn, and go Christmas caroling for Children's Hospital.

On May 6, 1977, Alpha Sigma Alpha will celebrate its 10th Anniversary on the campus of Clarion State College.





F A C U L T Y

A Warm Welcome To Our New President Dr. Clayton L. Sommers

Dr. Sommers, from 1971 to the present, has been the Dean of Faculty Affairs of the California State University and Colleges.

Dr. Sommers' home was in Los Angeles, California. He was born on July 17, 1931 in Chicago, Illinois. In 1953 he graduated Magna Cum Laude with a B.A. at Harvard College. He is a member of the Phi Beta Kappa, Algpa Chapter, in Massachusetts. In 1956, Dr. Sommers graduated from Harvard Law School and was admitted to the California Bar Association. From 1959 to 1961 he had a Private Law Practice and was Deputy County Counsel for Los Angeles County. On March 1, 1977, Dr. Sommers became president of Clarion State College.

Dr. Sommers feels Clarion is about the right size for a college to function properly. "Students at large institutions have no feeling of belonging. The institution is only a place for faculty to work and for the students to attend classes and nothing more."

The *Sequelle* would like to extend best wishes and good luck to Dr. Sommers and his family.





Dr. Sommers' wife, Janet, has a B.A. and an M.A. in Human Development, Early Childhood. She teaches and conducts a school for infants and toddlers and their parents. Mrs. Sommers also conducts classes in Parent Effectiveness Training.

The president has three daughters: Cary, 19; Melanie, 16; and Valery, 15. His oldest daughter, Cary, is currently in her junior year at Harvard University. Melanie graduated from high school in June. Valery will be in eleventh grade this year in Clarion.

Dr. Sommers and his wife, Janet.



Administration



Top, l to r: Dr. Dana Still, V.P. for Academic Affairs; Dr. Charles Shontz, Dean of Academic Services and Summer Sessions. Middle: Dr. John Bodoh, Dean Liberal Arts; Dr. Charles Leach, V.P. for Administration. Bottom: Dr. Forest Carter, Dean Business Administration; Dr. Robert Baldwin, Dean Professional Studies.





Top, from left: Ernest Johnson, Director of Public Affairs; Bryce Gray, Assistant to Dean Academic Serv.; Hal Wassink, Coordinator of Student Activities.



Middle, from left: John Nanovsky, Director of College Centers; Philip Wallace, Assistant Director of Professional Ed. Serv.; Dr. William Page, Director of Professional Ed. Serv.



Matthew Marder
Dean of Administration



Robert Crawford
Director of Physical Plant



Domenic Vallosio
Business Manager



Top, from left: Jerry Clemens, CSA Administrative Assistant; Lee Krull, CSA Business Manager.

Student Affairs



Left to right: Barbara Rose, Carol Gradziel, Dr. George Curtis.

Head Residents



Left to right: David Tomeo, Ralston; Kathryn Konhorst, Campbell; James P. Kole, Baientine; Noan Hart Jr., Forest Manor; Kent Reynolds, Wilkinson; Judith McKee, Nair.

Student Development



(Left to Right) Lou Tripodi, Assistant to the Director; Terri Robinson, Academic Advisor; Richard AsBerry, Director (not shown); Dr. Earl Siler, Education Specialist.



Counseling Center

Back Row: Dr. Charles Blockberger, Director; Dr. Herbert Bolland, Counselor. Front Row: Mrs. Betty Hoff, Counseling Intern; Miss Francine McNairy. Missing: Mr. Peter Nachtwey, on Sabbatical.

Mathematics



Standing l to r: Dr. Nicholas Bezak, Dr. Benjamin Freed, Dr. Sahib Singh, Mr. Ronald Kopas, Mr. Irvin Henry, Mr. Melvin Mitchell, Mr. Donald Pagano, Mr. Thomas Wimer. Seated: Dr. Stephen Gendler (chairman). Not pictured: Mr. John Cliff, Dr. Daniel Cronin, Mr. Roger Engle, Mr. Donald Lowe, Mrs. Lois Mushrush, Mr. Robert Northey, Dr. Michel Ossesia, Mr. Eugene Rhoads, Miss Sally Ringland

Mr. Lowe: "That reminds me of a story....."

Dr. Singh: "Just for your reference...."



Mrs. Mushrush: "Does anybody need anything from downstairs?"

A
c
c
o
u
n
t
i
n
g

F
i
n
a
n
c
e



Standing l to r: Dr. Thomas Schaeffer, Mr. Gregory Barnes, Dr. Demsey Dupree, Mr. Stephen Huntsburger, Mr. William Henry, Dr. Charles Townsend, Mr. Curtis Bagley, Mr. Sid Breman, Mr. Random Otle. Seated: Mrs. Susan Traynor, Mrs. Elizabeth Ross, Mr. William Campbell, Mrs. Nancy Vernon, Mrs. Barbara Reed (sec.). Not pictured: Mr. Gerald Bish, Dr. Chang Choi, Mr. Richard Kooman, Mr. Kent Pope, Mrs. Pat Wilburn, Mr. Woodrow Yeaney.



C
o
m
p
u
t
e
r

S
c
i
e
n
c
e

L to R: Dr. George Lewis (director), Mrs. Michelle Marmer, Mr. Regis Walters, Mr. C. A. Males, Mr. Ken Rearick, Mrs. Martha Mapes, Mr. Richard Lewis, Mr. Mal Bowser, Missing, Mr. William Schell and Mrs. Darlyn Fink.



L
i
b
r
a
r
y

F
a
c
u
l
t
y



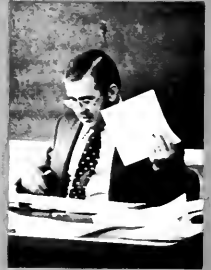
Standing l to r: Mrs. Elaine Moore, Mrs. Rachel Glenn, Mr. Roger Horn, Mrs. Margaret Buckwalter, Mrs. Margery Johnson, Miss Nancy McKee, Mr. John Mager. Seated: Mrs. Janice Horn, Mr. J. Kenneth Wyse, Mr. Dan W. Graves, Mr. Kenneth Emerick, Mr. Glenn Sitzman.

"Get away from the crowd when you can. Keep yourself to yourself, if only for a few hours daily."—Arthur Brisbane, American journalist.

Library
Media



Standing l. to r.: Dr. Bernard Vavrak, Mr. Jack Luskey, Mr. Charles Economdus, Dr. John Head, Dr. Ahmad Gamaluddin. Seated: Mrs. Patricia Payne, Dr. Margaret Jetter, Dr. Elizabeth Rupert.



Well we will no.
maybe . . . no . . .

Education



Back row l. to r.: Mr. Walter Koukai, Dr. Frank Battista, Dr. Robert Yoho (chairman), Mr. Paul Mosser. Front row: Dr. John Moorhouse, Dr. Earl Siler, Mr. Frank Palaggo, Dr. Arnold Zaeske, Dr. Lawrence Smith, Dr. Betty Slater, Ms. Harriet Caplan, Dr. Phyllis Smith. Not pictured: Dr. Richard Bradley, Dr. Gail Kenemuth, Dr. David Klinkenst, Dr. Earl Chalfant, Dr. Joseph Uzmack.



Speech Pathology And Audiology

Back row l. to r.: Mr. Jack Smith, Dr. Harold Hartley, Jr. (chairman), Mr. Edwin Simpson, Ms. Janice Ditz, Mrs. Brenda Barrett. Front row: Mr. Robert Keenan, Mr. Dennis Hetrick. Not pictured: Dr. Donald Dinlany.

Special Education



Back row l. to r.: Dr. Robert Kern, Dr. Daniel Shirey Jr., Dr. Roy Schreffler, Dr. Kenneth Vayda, Mr. Terri Dunkle. Front row Ms. Janice Ditz, Mrs. Brenda Barett, Mrs. Priscilla Peterson, Mrs. Katherine Reed. Missing: Mrs. Alberta Cole, Mrs. Ruby John.

C h e m i s t r y



L. to r., Mr. Galen Ober, Dr. William Brent, Dr. William Sharpe, Dr. Olive Bower, Mr. George Wollaston, Dr. Paul Beck, (Chairman), Dr. Patty Laswick Not pictured Dr William Krugh, Dr. John Laswick, Dr. Glen McElhahan.

B i o l o g y



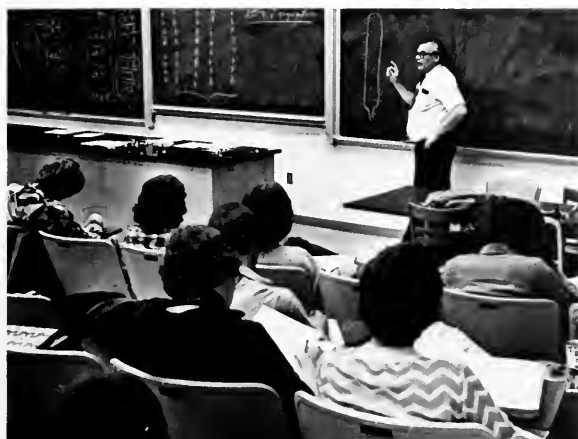
L. to r.: Dr. James Donachy, Dr. William Kodrick, Mr. Dalph Cook, Dr. Terry Morrow, Dr. John Williams, Dr. J. Robert Moore, Dr. Bruce Dinsmore, (Chairman), Dr. Kenneth Linton, Dr. Ernest Aharrah, Dr. Gilbert Twiest, Dr. William Chamberlain, Mrs. Nadine Donachy, Dr. George Harmon. Not pictured: Mr. Peter Dalby, Dr. Wanda Jetkiewicz, Dr. Ken Mechling.

P
h
y
s
i
c
s



Standing, l. to r.: Mr. DeWayne Slaughaupt, Dr. Albert Exton, Dr. W. H. Snedear, Mr. Jack Blaine. Seated: Dr. Mohamed Said, Dr. Clifford Keth, Dr. Gary Borzin.

Dr. Harmon: "Did I make any other mistakes?"



E
a
r
t
h

S
c
i
e
n
c
e

A
n
d

G
e
o
g
r
a
p
h
y



L. to R.: Dr. Don Totten, Dr. Tracy Buckwalter, Mr. Lester Oakes, Miss Margaret Kordecki, Mr. Norman Humphrey. Missing from picture: Dr. George Shirey.

M
o
d
e
r
n

L
a
n
g
u
a
g
e
s

A
n
d

C
u
l
t
u
r
e
s



Back Row l. to r.: Dr. Alfred Junod, Mr. Rafael Diaz Y Diaz, Dr. Jose Garcia, Mr. Carl Caldwell. Front Row: Mrs. Irmgard Hegewald, Dr. Teresa Gloss, Dr. Dilara Nikoulin, Dr. Christine Totten. Not Pictured: Dr. Allene Masterson.

Frau Totten: "Guten Morgen, Meinen Damen und Herrn."

History



Back row l. to r.: Dr. James King, Mr. Alstar Crawford, Dr. Gilbert Hill (chairman), Mrs. Suzanne Van Meter, Dr. Helen Knuth, Dr. Mohammed Cahn. Front row: Mr. Leonard Abate, Dr. Edward Duffy, Dr. Joel Haines, Dr. Walter Snyder. Not Pictured: Dr. Anne Day, Miss Imogene Sumner, Dr. Zoe Swecker.

Dr. Duffy, "It's about that time . . ."

Dr. Kahn, "You rascals, you!"



Standing l. to r.: Dr. Franklin Takei, Mr. Richard Zallys, Dr. Dean Straffin, Dr. Robert Ruth, Mr. Emmett Graybill, Dr. Eldon Somers. Seated: Dr. Jack Bertsch, Dr. Gustav Konisky (chairman), Dr. Ngotu. Not Pictured: Mr. Jay Van Bruggan.

Dr. Straffin, "We're going to have a rite of passage."

S
o
c
i
a
l

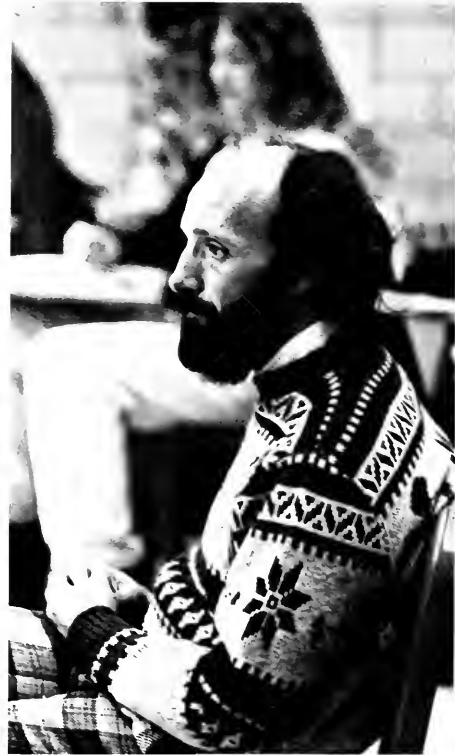
S
c
i
e
n
c
e

Psychology



Seated l to r: Dr. Katherine Kochno, Dr. William Combs, Dr. Hugh A. Semon, Dr. W. Lee Morrison. Standing: Dr. Lawrence Penny, Dr. Alpha Bernard, Dr. Allan Elliott, Dr. Pat Moore (no longer on staff), Dr. Givens Thornton (chairman).

Dr. Kochno: "Try to understand my friends; this *is* the cerebral cortex!!"



Dr. Bernard: "How do you spell that?"

English



Seated l to r: Dr. Edward Grejda, Dr. Ronald Shumaker, Dr. James Knickerbocker. Standing: Dr. Donald Wilson, Mr. Bruce Macbeth, Dr. Richard Redfern, Mr. William Kittle. Not pictured: Dr. George Barber, Mrs. Sarah Clark, Mrs. Doris Cooper, Mr. Arnold L. Jeschke, Mr. William Karl, Mrs. Elaine King, Mrs. Janice McClaine, Dr. Henry Newman, Dr. Hugh Park, Dr. John Reinhardt.



Dr. Grejda: "What *is* the author's purpose?"

Dr. Wilson: "Well, what do ya know that's good gang?"

Mr. Macbeth: "Don't go a fishing up the Chesapeake!"

S
p
e
e
c
h

A
n
d

C
o
m
m
u
n
i
c
a
t
i
o
n

T
h
e
a
t
r
e



Standing l to r: Dr. David R. Wright, Dr. Rodger Hufford, Ms. Jane Elmes, Mr. Barry McCauliff. Seated: Dr. Adam F. Weiss, Dr. Mary R. Hardwick, Dr. Alan Marston (chairman). Not pictured: Dr. Charles L. Marlin, Dr. Bob H. Copeland, Ms. Debbie Tappendorf.

Elms: "Okay, let's get into our groups and pretend that...."

Marston: "You will enjoy this, this will be fun...."

Communications



L to R: Dr. William McCavitt, Mr. Leonard A. Pfaff, Dr. Richard Metcalf, Dr. James Cole (Dean-school of Comm.), Dr. Carmen Felicetti, Miss Inez Baker, Ms. Patricia Marini. Missing: Dr. Henry Fueg.

Baker: "Oh! Did you do that freehand?"

R.O.T.C.

L to R: Capt. George A. Barstis, Capt. Robert W. Starnes, Sgt. F. C. Raymond L. Smith.

Capt. Barstis: "The method to my madness is this . . ."



Health And Physical Ed.



Front Row L to R: Miss Pat Ferguson (W. Basketball and Volleyball), Miss Fran Shope (Assn't Athletic Director), Mr. Al Jacks (chairman and Football), Mrs. Ernestine Weaver (Gymnastics), Mr. Frank Lignelli Jr. (Director of Athletics), Mr. Joe DeGregorio (M. Basketball). Back Row: Mr. Chuck Nanz (M. Swimming), Mrs. Betty Simpson (Cheerleaders), Miss Carol Clay (W. Tennis and W. Swimming), Mr. Don Leas (Diving), Mr. Gene Sobolewski (Football), Mr. Dick Pae (Football), Mr. Charles Ruslavage (Football), Mr. Norbert Baschnagel (Basketball), Mr. Jack Davis (Wrestling), Mr. Bob Leonard (Trainer), Mr. Bob Bubb, (Wrestling).

Mr. Leonard: "You people need me - God love ya!", "Didn't we talk about this?"

Mr. Knowles: "As far as this is concerned . . ."



Coach Sobolewski: "Repetition is boring."

Art

L to R: Dr. Robert Hobbs (chairman), Dr. William Edwards Jr., Mr. Charles Pearce, Mr. Eugene Seelye, Dr. Francis Baptist, Mr. Alfred Charley, Mr. Andor P-Jobb, Mr. William Grosch

Mr. Seelye: Didn't anybody do *anything* cultural over the weekend?

Mr. Pearce: "I just said that to let you know I knew it"

Music



Back row L to R: Dr. Christian Bolen, Mr. Donald Black, Miss Kathleen Duck, Mr. William McDonald, Mr. Milton Lazich. 2nd row: Miss Grace Urrico (chairman), Mr. Jack Hall, Mrs. Annette Pesche. 3rd row: Dr. Dean Farnham, Dr. Patricia Conner. 4th row: Dr. Issac Ostrow, Mr. John Floyd.

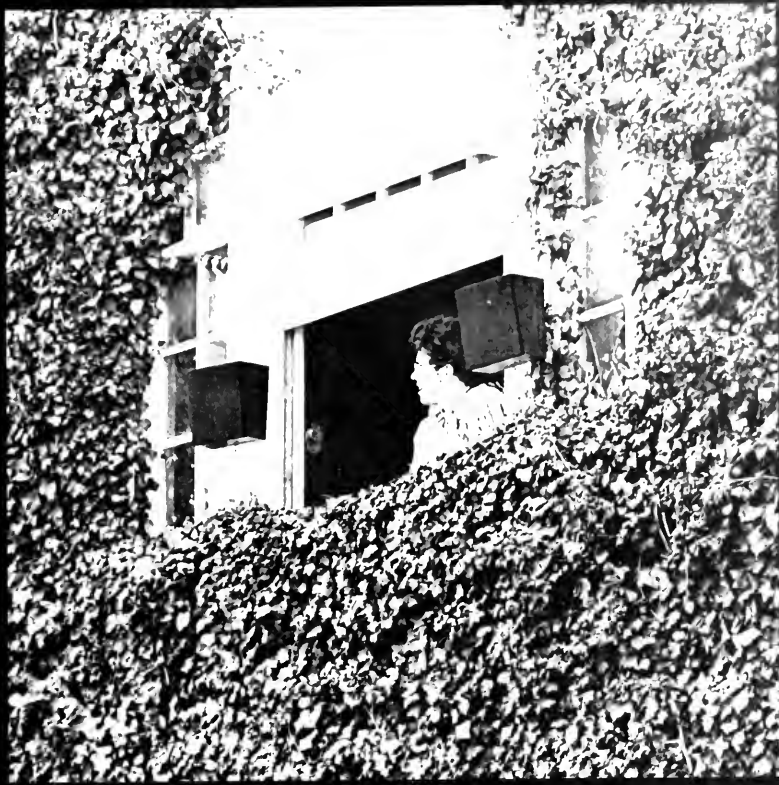


Admissions

Seated: Mr. Walter Hart. Standing L to R: Mr. Fred Clark, Mr. John Shropshire, Mr. Alvin Kennedy.

Dave "Phil" Swoger A six year fixture at C.S.C.





SUNNYSIDE

Jay Abrahamovich
Business
 Steven Affolder III
Management
 Patricia Albert
Psychology
 Linda Allison
Special Education
 Marilyn Ament
Special Education



Stephen Amsler
Biology
 Gretchen Amthor
Music
 Brooke Anderson
Library Science
 Michael Andrejco
Social Studies
 Beverly Angus
Elementary



Warren Anthony
Accounting
 James Archer
Business
 Dennis Arthur
Marketing
 David Ashe
Management
 Susan Augustine
Special Education



Dale Aushman
Accounting
 Cam Auxer
Special Education
 Ardyth Avery
Comm. Arts
 Melvin Babilon
Accounting
 Gayle Bailey
Elementary





Albert Baker
Elementary
Anne Ball
Library Science
Michelle Ballough
Economics
Jan Balombiny
Geography
Linda Baltimore
Elementary



Rob Bamford
Management
Sandra Barefoot
Speech Comm.



George Barker
Marketing
Cheryl Bartlett
Mathematics



Wendy Barton
Speech Path-Audi
Ronald Baumgartel
Social Sciences



Cheryl Baur
Mathematics
Joseph Beacher
Earth Science
Lynneve Becki
Marketing
Karen Sue Beebe
Special Education
Deborah Beercheck
English



Carol Belfore
Elementary
William Bender
Comm. Arts
Doria Bernhart
Elementary
Howard Bernstein
Management
Kim Bethea
Psychology

D. J. Bevevino
General Science
Deborah Bierbaum
Accounting



Karen Bintrim
Special Education
Beverly Bishop
Special Education



Susan Bissett
Library Science
Kim Blauser
Nursing



Karen Boggs
Elementary
Kathy Bonetti
Nursing



Gene Boughter
Special Education
James Bowman
Real Estate



Thomas Bowman
Accounting
Richard Bozart
Management





Robert Bozart
Political Science
Larry Bracco
History



Thomas Bright
History
Gail Brindle
Elementary



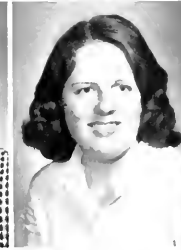
Pamela Brock
Comm. Arts
Gaylord Brooks
Special Education



Dollie Brosius
Mathematics
Douglas Brown
Accounting
Lorrie Bruker
Elementary
Scott Bupp
Marketing
Joseph Burd
Accounting



Dorothy Burger
English
Michele Burke
Nursing
David Burks
Management
Debra Burtnett
Library Science
Kenneth Bush
Management

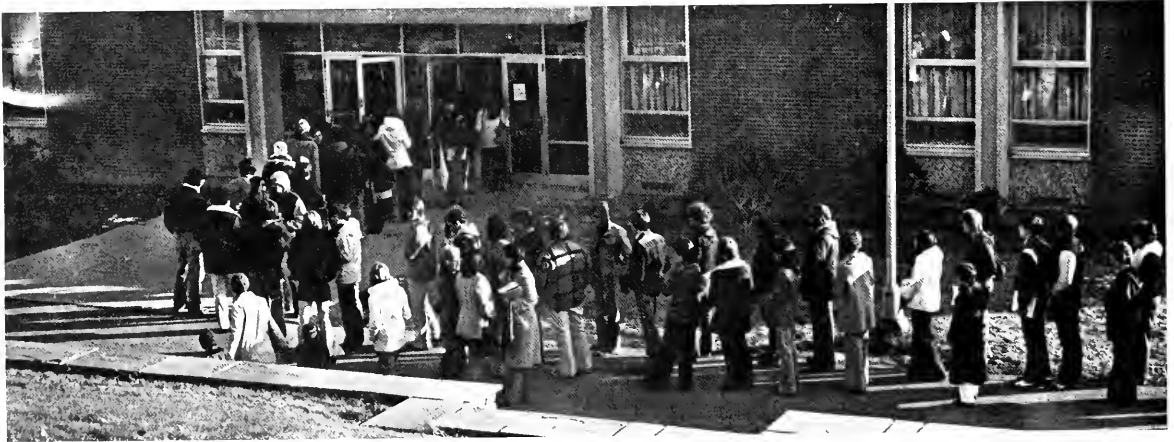
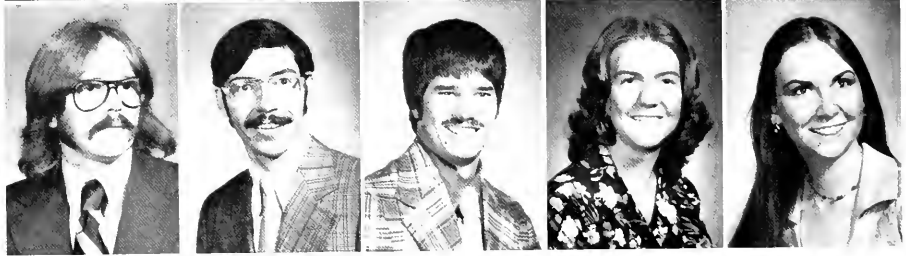


Sandy Buzzard
Elementary
William Byers III
Accounting
John Cain
Management
Karen Cameron
Comm. Arts
Margaret Cancilla
Music

Vincent Capuano
Social Studies
 Russ Carlson
Accounting
 Deborah Carr
Special Education
 Deborah Carson
Nursing
 Stephen Cassel
Comm. Arts



Robert Cassidy
Accounting
 Robert Chaney
German
 Michael Cherico
Marketing
 Deborah Cherish
Mathematics
 Nancy Chittester
Elementary



Robert Christ
Business
 Rebecca Christie
Special Education
 Karen Cifranick
Biology
 Jennifer Cleland
Marketing
 Susan Clement
Elementary





Linda Cleveland
Elementary
Charlet Cobler
Special Education
Margaret Colteryahn
Speech Path-Audi
Nancy Compennolle
Mathematics
Tim Conlon
Accounting



Cynthia Cook
Biology
Cathy Courson
Med. Tech.



Margaret Covel
Nursing
Victoria Cranmer
Library Science



Catherine Cropcho
Elementary
Cynthia Crummy
Management



Margaret Dalo
Elementary
Maryann Dandoy
Library Science
Shirley Datt
Social Studies
Dee Davidson
Biology
Thomas Davis
Marketing



Janet Dechant
Accounting
Peter DeHaven
Management
Rick DeLoia
Marketing
Ed Demchak
French
Debbie Dickson
Speech Path-Audi

Rita DiDominic
Comm. Arts
Lois Dilling
German



Patrice Ditillo
Accounting
John Dittman
Marketing



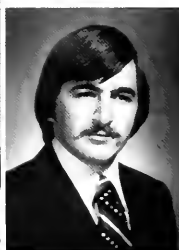
Nancy Dittrich
Nursing
Randy Divins
Accounting



Paula Donatelli
Nursing
James Doran
Accounting



Denise Dottavio
Speech Path-Audi
Jean Drabot
Computer Science
John Dramer
Social Sciences
Cheryl Drevna
English
Pam Drobac
Elementary



Kim Duckett
Elementary
Stephen Dudurich
Accounting
Gary Duespohl
Marketing
Joy Dunbar
English
Stuart Dunkle
Accounting





Jeffrey Dunmyre
Marketing
Doris Durain
Special Education
Gregory Ebner
Business
Kim Eichenlaub
Management
Jeffrey Eicher
Accounting



Kathy Ellermeyer
Biology
Douglas Elliott
Accounting
Mary Ellis
Elementary
Larry Ellison
Mathematics
Craig Emanuel
Management



Mary Beth Englert
Elementary
Terry Enzian
Special Education



John Esworthy
Management
Betsy Fanning
Library Science

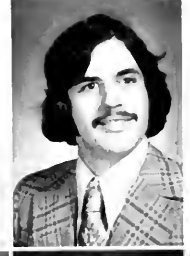


Douglas Farney
Accounting
Beth Faust
Elementary



Janet Feldman
Elementary
Cindy Ferrese
Elementary

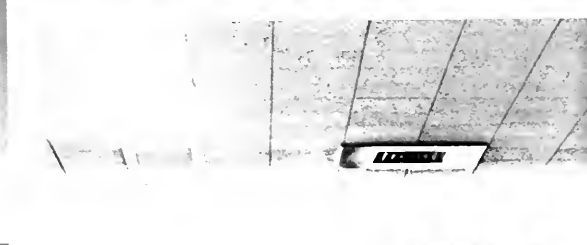
Anita Fierst
Comm. Arts
Janet Figenbaum
Chemistry
Sandra Finnegan
Elementary
Nina Fiorilla
Nursing
Richard Fischer
Psychology



Ed Flanagan
Sociology
Maureen Flanagan
Speech Path-Audi
Lynn Fletcher
Nursing
Sarah Flick
Art
Carole Flye
Spanish



Cheryl Fornof
Nursing
Joni Fox
Marketing



Marilyn Jo Francis

Rickia Freeburg
Elementary



Dennis Fritsch
Political Science
Edwin Frontino
Biology



Joe Frontino
Elementary
Rose Fuda
Elementary





Kathleen Fullerton
Library Science
Joan Gadzala
Management
Debbie Gallagher
Speech Comm
Phyllis Gallagher
English
Diane Gallaher
Elementary



Alice Gannon
Nursing
Shawn Gardner
French
John Gareis
Speech Comm.
Dave Gartner
Management
Linda Gartner
Elementary



Lawrence Gasparato
Geography
Sharon Gaydos
Elementary
Nancy Germer
Special Education



Esther Gibson
Speech Path-Audi
 Leanne Gill
Social Studies
 Sylvia Gill
Real Estate



John Godlove Jr
Geography
 Jeffrey Gooch
Accounting
 Henry Gorman
Accounting
 Mark Gostkowski
Earth Science



Robert Gower
Accounting
 Elizabeth Grazier
Chemistry
 Cynthia Grecek
Sociology
 Nancy Jo Green
Elementary
 George Gregg III
Marketing



Carl Grinage
Elementary
 Kimberly Grove
Elementary
 Terry Grumley
Social Science
 Jeannie Gundel
Humanities
 Terri Guttshall
Business





Jack Hafer
Accounting
James Hager Jr
Comm Arts



Susan Haines
Marketing
Beverly Hall
Special Education



Anna Halo
Speech Path-Audi
Judith Hampson
German



Catherine Handwerger
Biology
Susan Hanna
Nursing
Lillian Harbridge
Mathematics
Susan Harmon
Library Science
Kathy Harrington
Speech Path-Audi



Jane Heckendorn
Special Education
Scott Hedrick
Management
Deborah Hemler
Special Education
James Hendberg
Special Education
Beth Hepting
Elementary



David Hershier
German
Michael Hesketh
Management
Jeneane Hetherington
Mathematics
Thomas Heyl
Speech Comm.
Tom Hilliard
Accounting

Lee Hillwig Jr
Biology
 Robert Hodgson
Accounting
 Gregory Holsinger
Business
 Susan Hood
Special Education
 Gail Holzer
Elementary



Diane Hopperstead
Biology
 Jeffrey Hosek
Biology
 Karen Howe
Elementary
 Paul Huffman
Elementary
 Cheryl Hughes
Mathematics



Richard Hughes
Elementary



Gary Huhn
Psychology

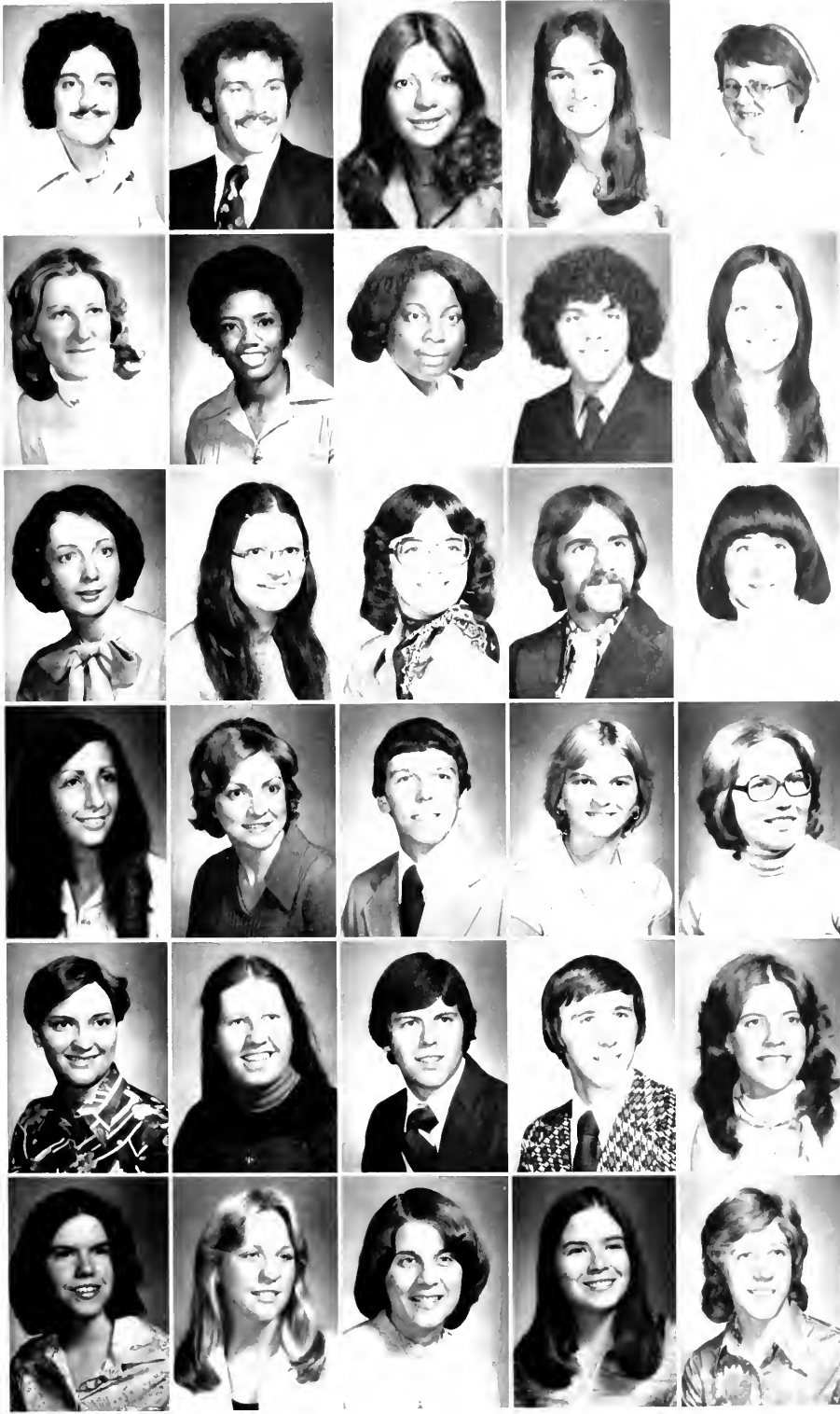


John Hummel
Accounting



Sue Hummel
Elementary





Richard Iozzi
Management
 Rich Ivof
Marketing
 Waltra Iwanyszyn
Sociology
 Nancy Jacisin
Biology
 Ann Janney
Nursing
 Cheryl Johnson
Elementary
 Leatrice Johnson
Special Education
 Sharon Johnson
Sociology
 Boyce Jones
Spanish
 Denise Jones
Elementary
 Dorothy Kahl
Elementary
 Lois Kahle
Business
 Laura Kammerer
Sociology
 Barry Karns
Social Science
 Zoe Karns
Political Science
 Judith Kassab
Marketing
 Valerie Kauffman
Elementary
 James Keibler
Mathematics
 Mary Keister
Library Science
 Debbie Keith
Speech Path-Audi
 Mary Jo Kellgren
Management
 Mary Jo Kelly
Elementary
 Michael Kelly
Elementary
 Thomas Kelly
Management
 Candace Jo Kemmerer
Mathematics
 Brenda Kemp
Music
 Joyce Kendrick
English
 Cynthia Kenemuth
Elementary
 Karen Kennedy
Marketing
 Susan Kennedy
Elementary

Kathleen Kepple
Elementary
Patricia Kerr
Comm. Arts
Kerry Kifer
Socia. Studies
Roy Knightinger
Management
Sissy Kimmel
Speech Path-Audi.



Kathleen Kinol
Special Education
Andrew Kish
Mathematics
Richard Kish
Mathematics
James Klinger
Management
David Klochak
Marketing



Janet Knee
Elementary
Lynn Knight
Nursing
Patricia Knight
Speech Path-Audi.
Joanna Koble
Elementary
Carol Kohlhaas
Elementary





Barbara Kosnac
Library Science



Joan Kosnosky
Elementary



Terry Koutsky
Management



Karol Kovach
Elementary
Mary Ann Kozelski
Biology
Richard Kramer
Accounting
Sharon Kramer
Special Education
Carol Krause
Elementary



Gary Kreisher
Accounting
Chester Krokoski Jr.
Speech Comm.
Cynthia Krzywicki
Elementary
Jim Kudelko
Computer Science
Karl Kuntz
Biology



Mary Kurtz
Elementary
Janice Kusma
Library Science
Sheryl Lackey
Speech Path-Audi
Joseph Lamendola
Accounting
Beth Ann Laub
Library Science

Craig Laudenslager
Business
 Anthony Leach
Social Studies
 Barbara Lee
Social Studies
 Theresa Leisey
German
 Kevin Lepionka
Marketing



Janet Less
Comm. Arts
 Patrick Lewis Jr.
Elementary
 Jeffery Lindhilm
Special Education
 Elizabeth Lindow
Elementary
 Jeffrey Link
Music



Gary Lockhart
Accounting
 Bill Logan
Management



William Logan Jr.
Business
 Christine Long
Speech Comm.



Vickie Long
Accounting
 Beverly Longdon
German



Mary Loston
Elementary
 Wendy Loutzenhiser
Elementary

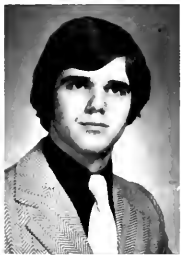




John Lovelace
Social Studies
Elizabeth Lynch
Nursing
Della Jo Mack
Elementary
Mary Anne Mackey
English
Paula Magaro
Accounting



Jon Magnuson
Elementary
Ruth Ann Mahlon
Business
Richard Maloy
Management
Craig Mangone
Mathematics
Thomas Mannion
Management



Thomas Marcinko
Biology
Brenda Marshall
Speech Path-Audi
Joan Marshall
Economics
Doris Masisak
Elementary
Robert Mattern
Mathematics



Cheryl Maxwell
Elementary
Barney McArdle
Accounting
Michael McAvoy
Accounting
Julie McCarty
Library Science
Michael McClurg
Marketing

Wendy McCord
Voc. Tech.
Kevin McCormick
Social Studies



Mary McCoy
Elementary
Dennis McCulla
Elementary



James McCune
Geography
Tricia McDermott
Elementary



Marian McDermott
Special Education
Janet McDevitt
French



Debra McElrath
Speech Path-Audi
Diane McGill
Management



Susan McGinley
Accounting
Robin McGinnis
Elementary





Leah McGraw
Nursing
Lisa McHugh
Speech Path-Audi



Jon McKain
Marketing
Marguerite McKenna
Special Education



Mark McMahon
Accounting
Matthew McMahon
Accounting



Larry McMullen
Marketing
Robert McNeil
Biology



Jeffrey McQuilkin
Library Science
Dawn McWilliams
Finance



Joyce Means
Library Science
John Meeder
Music

Timothy Megyesy
Psychology
 David Mercer
Biology
 Nancy Messer
Accounting
 Maribeth Metcalf
Special Education
 Marie Metrisin
Psychology



Donna Mihalik
Speech Path-Audi
 Deanna Miller
Accounting
 Marilyn Miller
Library Science



Matthew Miller Jr.
Marketing
 Michael Miller
Special Education
 Sandi Mineweaser
Elementary



Patti Misner
Elementary
 LeeAnn Mizak
Elementary
 Robert Mohr
Biology



Jeffrey Moist
Accounting
 Pamela Montgomery
Nursing
 John Moon
Accounting



Susan Moore
Elementary
 Thomas Moore
Accounting
 Gary Morris
Accounting
 Michelle Morse
Elementary
 Judith Morton
Special Education





Raymond Morton
Management
Tom Mountain
Mathematics
Michael Mummert
Mathematics
Karen Murray
Music
Linda Nameth
Mathematics



Beverly Nau
Special Education
Mary Neagley
Humanities
James Needham
Accounting



Trudy Neumyer
Special Education
Andrew Nuhfer
Biology
James O'Keefe
Accounting



Margaret O'Neill
Nursing
Larry Onesi
Management
John Olesnevich
Accounting



Raymond Oschman
Accounting
Bob O'Shea
Psychology
Robert Otroba
Accounting



Janet Owens
Elementary
Jill Packard
Elementary
Robert Paige
Accounting
Russell Paine Jr.
Economics
John Pandolph
Accounting

James Pannell
Sociology



Mickey Pantano
Comm. Arts



Alberta Patella
Comm. Arts



Jane Patterson
Management



Darrell Paul
Theater
Kim Pazyniak
Accounting
Theresa Perez
Special Education
Tim Permigiani
Business
Virginia Petroski
Nursing



Jean Petrosky
Accounting
Ann Phinney
Chemistry
Theresa Piatek
Special Education
Julie Piccirillo
Elementary
Frank Pici
Accounting





Larry Pickett
Art
 Karen Pickles
Special Education
 Eloise Pifer
Music
 Karen Pilston
Finance
 Joyce Pinnock
Speech Path-Audi

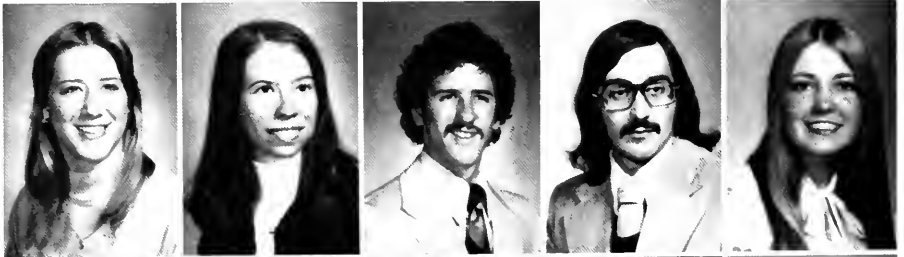
Mark Pochakilo
Biology
 David Pohlit
Accounting
 Marilyn Pollak
Elementary
 Janet Pore
Accounting
 Gwen Porr
German

Chris Porzucek
Economics
 Michele Postich
Elementary
 Pamela Powers
Biology
 Laura Prater
Psychology
 Bonita Proper
English





Vicki Pung
Med. Tech.
 Martha Randall
Elementary
 Mark Radosevich
Management
 John Rawski
Social Science
 Jane Rea
Special Education



Sharon Reich
Speech Path-Audi
 Richard Reiter
Marketing
 Susan Renckley
Humanities
 Ann Richey
History
 Joan Rietmann
Social Science



Carolyn Riley
Management
 Kenneth Ritts
Finance
 Michael Robbins
Management
 Gloria Roberts
Special Education
 Virginia Roberts
Elementary





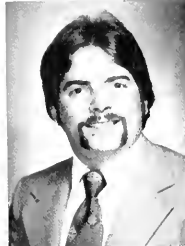
Debra Robson
Med. Tech.
Elizabeth Romanko
Nursing
Terry Roseto
Elementary
Ginger Rowan
Special Education
Veronica Rozic
Mathematics



Rudy Rudolph
Comm. Arts
Kris Ruhl
Management
Diane Ruhlman
Comm. Arts
Jason Rusiewicz
Marketing
Robert Ruth Jr.
Accounting



Michael Rybczynski
Accounting
Richard Sacolic
Elementary
Jane Saksa
Psychology
Debbi Sakulsky
Management
Kathryn Sandford
Elementary



Edward Sandora
Management
Mary Kay Sargeson
Comm. Arts



Joseph Sarso
Management
William Saxe
Accounting



Deborah Schafer
Nursing
Vicki Schmelzer
German

Janet Schmidt
Psychology
Thomas Schneider
Business
Heinrich Schostarez
Chemistry



William Schwab
Elementary
Raymond Schwabenbauer
Accounting
Georgia Scileny
Elementary
William Seles
Marketing



Gale Seymour
Speech Path-Audi
Linda Shaffer
Library Science
Charles Shank
Music
Cindy Shank
Comm. Arts
Daniel Shavensky
Elementary





James Shaw
Music
Renee Shirley
Nursing
Bonnie Shiner
Nursing
William Shiner
Management
Mark Shuster
Speech Comm



J Mark Sibley
Elementary



Clifford Simon
Elementary



Richard Simoni
Marketing



Darcy Simms
Marketing



Debra Skinner
Speech Path-Audi

Nancy Skinner
Elementary
 Susan Slaughaupt
Speech Path-Audi



David Smith
Marketing
 Deborah Smith
Special Education



Helen Smith
Elementary
 Robert Smith
Geography



Patrick Smith
Business
 Suzanne Smith
Library Science
 Rhonda Snow
Nursing
 Clyde Snyder
Social Studies
 Gary Snyder
Politica Science





Vickie Snyder
Business
Virginia Snyder
Library Science
Lynn Sorder
Accounting
Laura Somerville
Sociology
Richard Sonoski
Art



Dennis Spanedda
Elementary
Karen Spaniel
Humanities
Laura Speer
History
Kathleen Speice
Special Education
Linda Spencer
Accounting



Mary Spickler
Speech Path-Audi
Margaret Spratt
Business
Steven Spungen
Biology
Blaine Stahlman
Earth-Space Sci.
David Stancel
Elementary



Terri Stancel
Library Science
Barbara Stavros
Elementary
Melanie Steele
Accounting
Linda Stevenson
Nursing
Karen Stewart
Nursing

Jeffrey Storm
Social Science
Mary Sutika
Elementary



Eileen Swanson
Social Science
Judith Swiderski
Music



Jamie Syrylo
Med. Tech.
Beverly Taylor
Special Education



Sharon Taylor
Special Education
Bradford Thayer
Accounting



Sonya Thelin
Humanities
Clyde Thompson
Accounting



Linda Thornton
Social Studies
Kathleen Tielke
Special Education





Michelle Toboy
Speech Path-Audi
Cheryl Todorich
Elementary
Marsha Travaglia
Nursing
Ann Tromer
German
Loretta Tressler
Nursing



Robert Tucci
Accounting
Joe Tulak Jr
Marketing
Frances Tunno
Elementary
Susan Turanin
English
Timothy Umbreit
Accounting



Andrew Utah
Accounting
Andrea Valach
Elementary
Julie Van Alstine
Spanish
Kathy Vanatt
Marketing
Ned Van Epps
Accounting

David Vavro
Accounting
Sonja Vidunas
Elementary
Dawn Wagner
English
Terry Walker
Marketing
Craig Walters
Psychology



Dennis Webster
Earth-Space Sci.
Ronald Weisser
Accounting
Diane Wellmon
Elementary



Joanne Wenger
Anthropology
Edgar Westerman
Management
Keith Whipkey
Accounting



George White
Biology
Norma Whitehouse
Elementary
Dennis Whitting
Accounting



Donald Whitting
Accounting
Eileen Wiesner
Biology
Donald Wilds
Social Studies



Dawn Wilkins
Comm. Arts
Claudette Williams
English
Yvette Williams
Speech Comm.





John Willison
Accounting
Patricia Wilmot
Music
Nancy Wilt
Nursing
Mary Wise
Elementary
William Wissler Jr.
Secondary Ed.



Yvonne Wojciechowicz
Special Education
Bonnie Wolbert
English



Mark Wolf
Marketing
Ruth Woods
Special Education



Eric Woolman
Marketing
Mary Wright
Spanish



Michelle Yelenic
Speech Path-Audi
Paula Yohe
Library Science

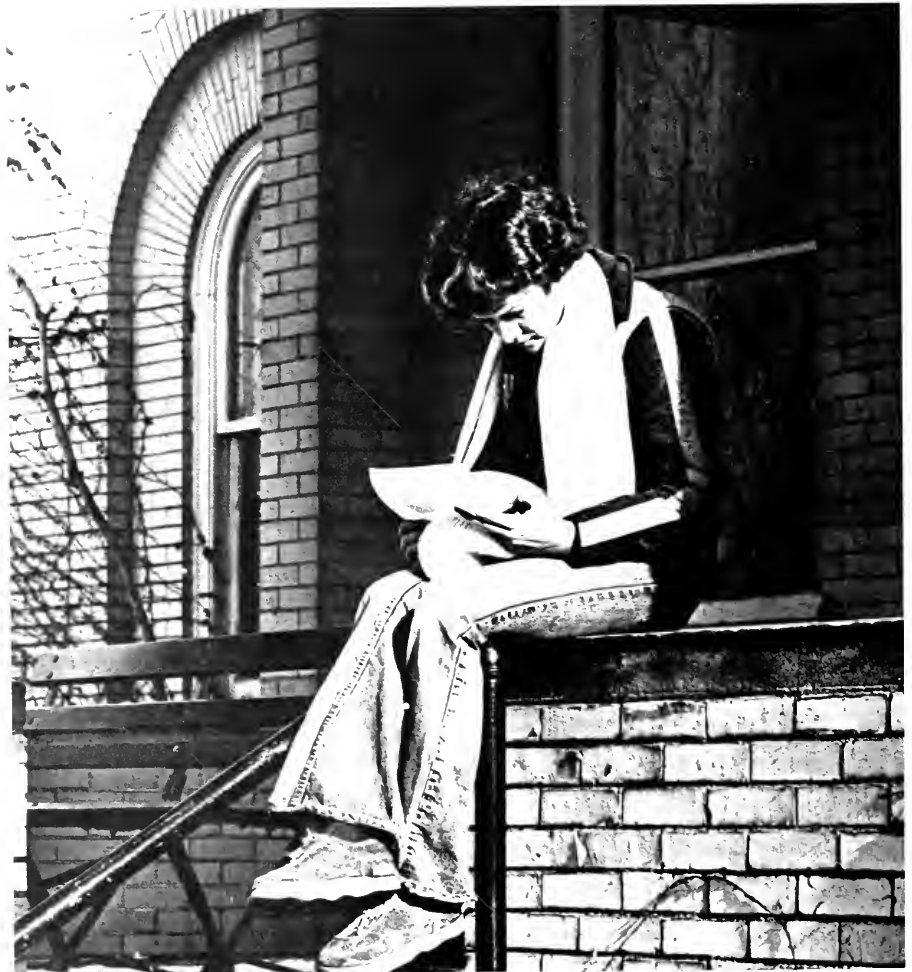


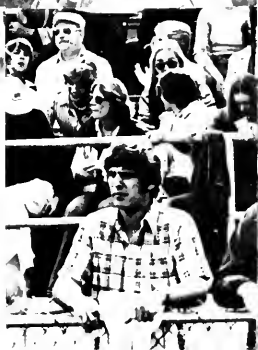
Debra Yohman
Elementary
Theodore Young
Management

Dorothy Yourish
Biology
 Robert Zaccari
Elementary
 Deborah Zanot
Computer Science
 Laurie Zawrotny
Elementary
 Valerie Zebrak
Special Education



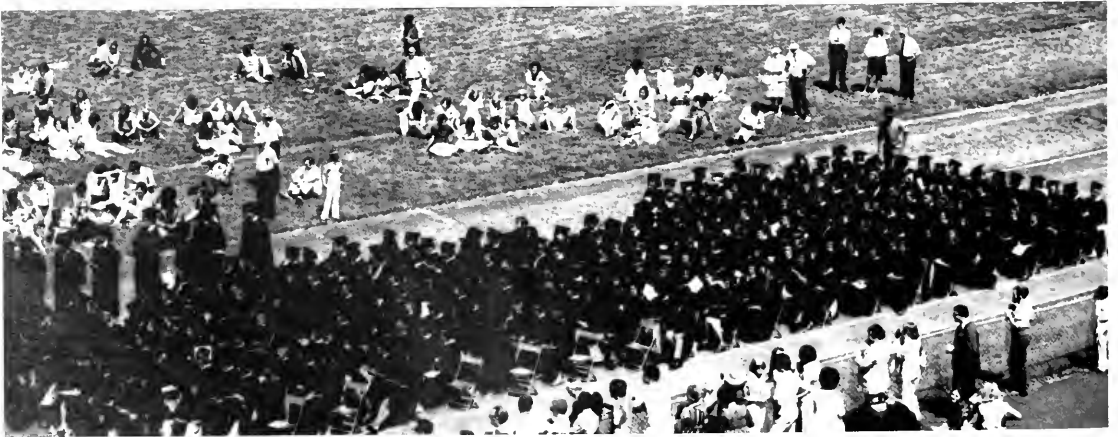
Susan Zendron
Social Studies
 Gary Ziegler
Accounting
 Susan Zimmerman
Marketing
 Tina Zippi
Marketing
 David Zmoda
Sociology





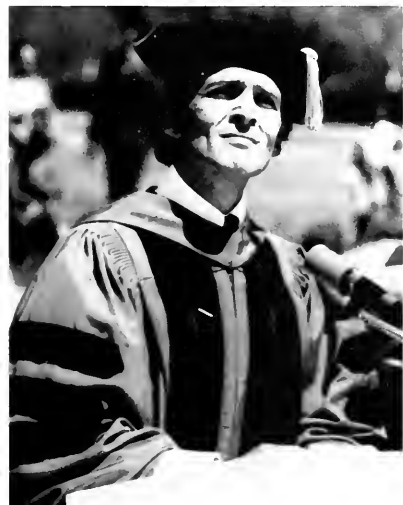


Graduation:
May 22, 1977





Behind us are the shadows
of what we might have been,
And ahead —
the image of what we hope to be.



ANNUAL COMMENCEMENT



THE SHIP

I am standing upon the seashore. A ship at my side spreads her white sails to the morning breeze and starts for the blue ocean.

She is an object of beauty and strength, and I stand and watch her until at length she is only a speck of white cloud just where the sea and sky meet and mingle with each other. Then someone at my side exclaims, "There, she's gone."

Gone where? Gone from my sight, that is all. She is just as large in hull and mast and spar as she was when she left my side, and just as able to bear her load of living freight to the place of her destination. Her diminished size is in me, not in her.

And just at the moment when someone at my side says, "She's gone," there are other eyes watching for her coming and other voices ready to take up the glad shout, "There, she comes." And that is dying.



Unknown

MEMORIAL

Tom Cirincione
Ronald E. Dilley
Tom Lowe

INDEX

Groups

Accounting Club	28
Alpha Mu Gamma	33
Alpha Phi Omega	34
American Chemical Society	22
Archeology Association	20
Beta Chapter	35
Bios Club	27
Black Student Union	34
Business Association	19
C.A.S.	40
C.E.C.	29
Center Board	38
Circle F Club	30
Clarion Call	24
Clarion Geographical Society	26
Clarion International Association	19
English Club	21
German Club	20
History Club	28
Individual Events Speaking	22
Inter-Hall Council	39
Kappa Delta Pi	21
Lambda Sigma	26
Marketing Association	23
N.S.S.H.A.	29
Outing Society	39
Phi Alpha Theta	18
Phi Beta Alpha	18
Pi Kappa Delta	27
Pi Mu Epsilon	42
Poetry Workshop	38
Pre-Med Club	23
Psi Chi	43
Russian Club	43
Sequelle Staff	32
Sigma Tau Delta	30
Spanish Club	35
Student Experimental Television	41
Student PSEA	31
Student Senate	42
Tennis Club	31
WCCB Radio	36

Fine Arts

Alpha Psi Omega	100
Alumni Band	106
Brass Choir	111
College Readers	100
Concert Band	114
Concert Choir	115
Gospellers	117
Kappa Kappa Psi	109
Lab Jazz Band	110
Lyric Opera Wordshop	116
Madrigals	116

Marching Band	104
Music Educators National Conference	117
Orchestra	112
Percussion Ensemble	113
Tau Beta Sigma	108

Greeks

Interfraternity Council	158
Alpha Chi Rho	160
Alpha Sigma Chi	161
Kappa Alpha Psi	162
Phi Sigma	164
Phi Sigma Kappa	163
Sigma Tau	166
Tau Kappa Epsilon	165
Theta Chi	167
Theta Xi	168
Panhellenic Council	159
Alpha Kappa Alpha	169
Alpha Sigma Alpha	177
Alpha Sigma Tau	171
Alpha Xi Delta	172
Delta Sigma Theta	170
Delta Zeta	174
Phi Sigma Sigma	173
Sigma Sigma Sigma	176
Zeta Tau Alpha	175

Faculty

Accounting and Finance	186
Administration	182
Admissions	197
Art	197
Biology	190
Chemistry	190
Communications	195
Computer Science	187
Earth Science and Geography	192
Education	188
English	194
Health and Physical Ed.	196
History	193
Library Faculty	187
Library Media	188
Mathematics	186
Modern Languages and Cultures	192
Music	197
Physics	191
Psychology	194
R.O.T.C.	196
Social Science	193
Special Education	189
Speech Communication and Theater	195
Speech Pathology and Audiology	189

The background of the page is a black and white photograph. It shows a snowy outdoor scene. In the foreground, there is a set of stairs with a metal railing. To the right, a brick building is visible. The sky is overcast, and there are bare trees in the background.

Editor's Message

There are many things that could be said on this last page. But what is most important is to say "Thank-you" to those people who made this yearbook possible, and my life a little bit easier:

Bernard H. Magirl, Walsworth Publishing Company, Inc.

Abe Orlick, Davor Photo, Inc.

Lee Krull, Business Manager, Student Association

Janet Cuiffi

Anita Lingle

John Stunda

Kurt Zimmerman

the Sequelle Staff

and an extra special "Thank-you" to:

Kathy Erb, Assistant Editor.

What is left of the past year is only a memory. What we make of the future is entirely up to each of us. Good luck to everyone in all you do!

Ann Gloekler
Editor





CLARION UNIVERSITY OF PENNSYLVANIA



3 9363 00454 0271



