


'79 SEQUELLE



LIBRARY
CLARION UNIVERSITY
OF PENNSYLVANIA
CLARION, PA.



Digitized by the Internet Archive
in 2010 with funding from
Lyrasis Members and Sloan Foundation

<http://www.archive.org/details/sequelle1979clar>

1979 SEQUELLE

CLARION STATE COLLEGE

Clarion, Pennsylvania 16214

Table Of Contents

Introduction	2
Organizations	16
Sports	52
Fine Arts	88
Features	118
Greeks	142
Faculty	170
Seniors	194
Senior Directory	226
Graduation	236
Memorial	238
Index	239
Editor's Message	240





I'm going to miss
CSC for a million
different reasons.
I remember what it
was like as a
freshman at Clarion...
the campus seemed
a little bigger then...
and so mysterious!

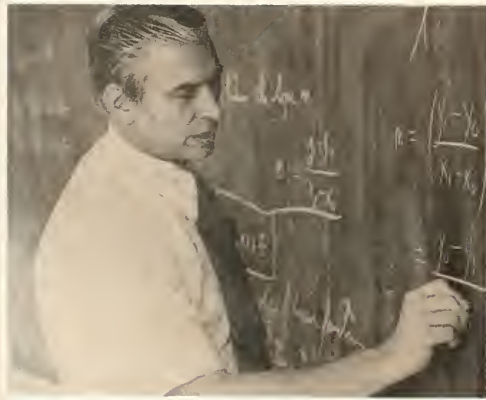




I remember seeing hallways
and stairways and
auditoriums filled with
unfamiliar faces,
hoping to find someone to
share my confusion with...
and feeling so grateful
whenever anyone smiled.



At times, I wondered how
I would ever fit
into this new world
I so bravely entered...
but now I wonder
what I was so worried
about... soon confidence
came, and so did the fun!





What an assortment
of unforgettable
characters I've
met here!



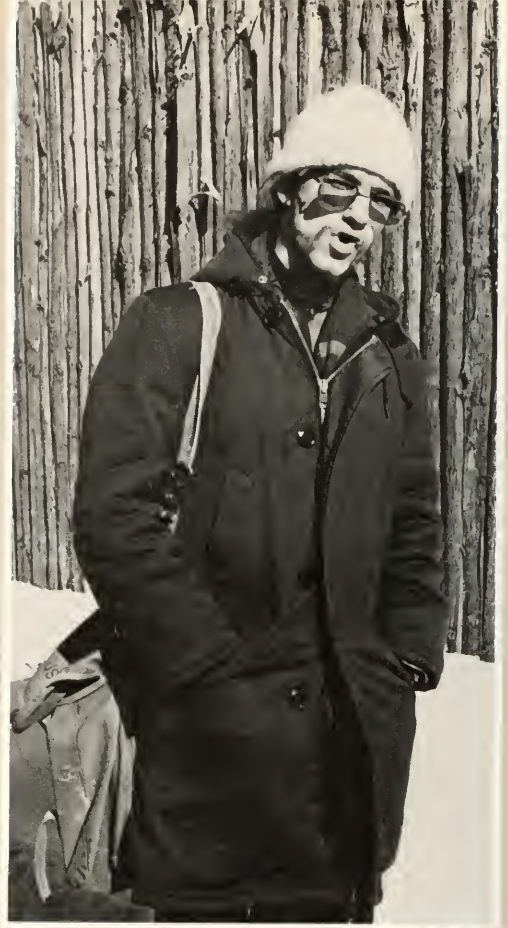




But most of all, there were the good friends I made... and all the together times we shared.

How do you ever say thank-you for so many beautiful memories?







Sunshine,
Blizzard,
Monsoon...
What more can be said?





STATE CHAMPS AGAIN???

Guns, Death and Chaos

Amid the fallout from revolution, the U.S. evacuates Iran

*The grapes are not yet ripe
And the wine are already drunk on
the wine.*

—Ancient Persian saying

Pres. Sommers Proclaims Oct. 2-9
Voter Registration Week 1978!

A revolution was spinning out of control. With nonviolent protests and uncommon discipline, the people of Iran had ended the tyranny of the Shah. Their reward was not freedom but chaos, as the forces united around Ayatollah Ruhollah Khomeini last week showed the first dread signs of schism. Suddenly, guns were everywhere, in every hand, as self-styled "freedom fighters" liberated weapons from police stations and army barracks. In Tehran, Tabriz and other cities, sporadic fighting raised the death toll for the week to an estimated 1,500. A bewildering motley of forces was involved: troops loyal to the Shah, ethnic separatists, mojahedeen (literally crusaders) who backed the new government of Prime Minister Mehdi Bazargan, and, ominously, Marxist fedayeen (sacrificers) who felt that the revolution had not moved far enough to the left.

Out from the underground and initially bringing with them arms supplied by the Palestine Liberation Organization, the Marxists were primarily responsible for an ugly outburst of anti-Americanism, long latent in Iran but never before so viciously expressed. At midweek, leftist gunmen attacked the U.S. embassy in downtown Tehran (see following pages), taking 70 American prisoners, killing one Iranian employee and injuring two Marines. One of the prisoners was Ambassador William Sullivan. Forces loyal to Khomeini were able to lift the siege after two hours, but the Carter Administration (as well as the British and several other Western governments) concluded that the lives of foreigners in Iran could no longer be protected. On Friday, in the first stage of an exodus from anarchy, a Pan American 707 flew from Tehran's Mehrabad Airport to Frankfurt and New York with 151 people aboard. On Saturday, under tight security provided by the Khomeini regime, chartered Pan Am 747s began the full-scale evacuation of Americans to Frankfurt and Rome.

No one seriously expected that the coalition of disparate forces that backed Khomeini's revolution would hold solidly

together for very long. But neither was it expected that the Marxists, well disciplined and well armed, would emerge so soon as a challenge to Iran's provisional government. It was plain from the beginning that the Marxists had aims that differed sharply from those of the fervent Shi'ite mullahs and their followers. But the speed and efficiency with which the Marxists moved last week raised serious questions about the ability of Khomeini

together for very long. But neither was it expected that the Marxists, well disciplined and well armed, would emerge so soon as a challenge to Iran's provisional government. It was plain from the beginning that the Marxists had aims that differed sharply from those of the fervent Shi'ite mullahs and their followers. But the speed and efficiency with which the Marxists moved last week raised serious questions about the ability of Khomeini

together for very long. But neither was it expected that the Marxists, well disciplined and well armed, would emerge so soon as a challenge to Iran's provisional government. It was plain from the beginning that the Marxists had aims that differed sharply from those of the fervent Shi'ite mullahs and their followers. But the speed and efficiency with which the Marxists moved last week raised serious questions about the ability of Khomeini

together for very long. But neither was it expected that the Marxists, well disciplined and well armed, would emerge so soon as a challenge to Iran's provisional government. It was plain from the beginning that the Marxists had aims that differed sharply from those of the fervent Shi'ite mullahs and their followers. But the speed and efficiency with which the Marxists moved last week raised serious questions about the ability of Khomeini

together for very long. But neither was it expected that the Marxists, well disciplined and well armed, would emerge so soon as a challenge to Iran's provisional government. It was plain from the beginning that the Marxists had aims that differed sharply from those of the fervent Shi'ite mullahs and their followers. But the speed and efficiency with which the Marxists moved last week raised serious questions about the ability of Khomeini



Bodies of Iranian generals* executed by firing squad
Seemingly at variance with Khomeini's ideals.

together for very long. But neither was it expected that the Marxists, well disciplined and well armed, would emerge so soon as a challenge to Iran's provisional government. It was plain from the beginning that the Marxists had aims that differed sharply from those of the fervent Shi'ite mullahs and their followers. But the speed and efficiency with which the Marxists moved last week raised serious questions about the ability of Khomeini

together for very long. But neither was it expected that the Marxists, well disciplined and well armed, would emerge so soon as a challenge to Iran's provisional government. It was plain from the beginning that the Marxists had aims that differed sharply from those of the fervent Shi'ite mullahs and their followers. But the speed and efficiency with which the Marxists moved last week raised serious questions about the ability of Khomeini

Looking back
I'm amazed that so many
shocking events have occurred
in this world - in such a short
period of time . . .
What must we expect of the future?

Lines at the Pumps Again?

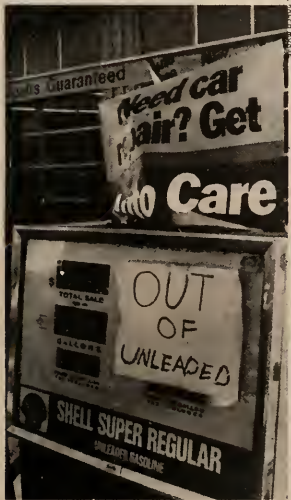
A threat of fuel curbs and Sunday closings in April if...

A bumpy stretch of gasoline shortages and substantially higher prices may well be lurking just around the bend for American motorists. That was the message coming from Washington and the nation's oil industry last week. The threat of scarcities is being raised by the political upheaval in Iran, which has virtually shut down that country's vast oilfields and is reducing supplies worldwide. Last week Energy Secretary James Schlesinger warned that unless Iran's wells are pumping again by April 1—which is unlikely, given the complexity of the job of resuming production even if the political crisis is soon resolved—the Administration will have to take steps to clamp mandatory restraints on U.S. gasoline and oil consumption.

Until now the Administration has given the impression that the U.S. could ride out the loss of Iranian oil without mandatory cutbacks until late spring or summer. The 900,000 bbl.-a-day shortfall in crude supplies resulting from the Iranian shutdown has so far been made up by increasing imports from other countries and drawing down domestic reserves. But Schlesinger said that the Government would move more quickly than expected to cut consumption so that stockpiles for next winter can be replenished over the spring and summer.

Schlesinger reported that his department is preparing "a variety of measures" to curb demand after April 1 if such moves become necessary. The most likely step: limiting the crude oil and gasoline made available to refiners and dealers. Another possibility is the mandatory closing of

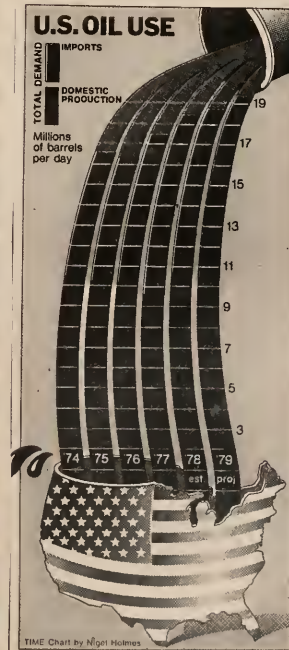
Cars lined up for gas during 1974 crisis; below: ominous sign of new scarcity



Jacks Adds 100th Win to "Golden Era"



Kreskin Unveils ESP Mystique



The Price of Stormy Petrol

It won't be easy saying good-bye to CSC,
but so much more must be learned . . .





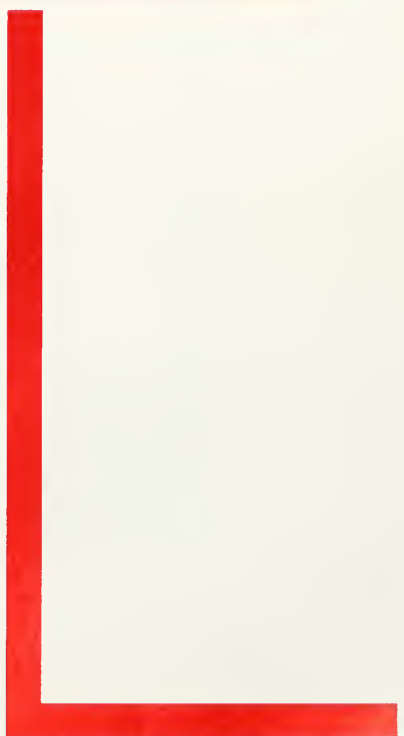
about the world,
about life...



and the time
to begin,
is now! J.E.



Organizations





CLARION'S CALL

• COLLECT • COLLECT • COLLECT • COLLECT • COLLECT • COLLECT • COLLECT • COLLECT • COLLECT • COLLECT •



Row 1: R. Boyle (Editor), F. Hallet (Head Photographer), M. Cekovsky (News Editor) Row 2: J. Coyne (Circulation Mgr.), M. Lowdermiik (Head Typist), G. Phillippi (Sports Editor), E. Lindbloom (Bus. Mgr.), C. Sowl (Feature Editor), G. Silvestri (Layout Editor).



Row 1: T. Solonsen, M. Cekovsky, J. Coyne, S. Kovenski, J. Perri, G. Kulisch. Row 2: B. Kowalski, J. Kerr, S. Hartzell, F. Hallett, P. Park, G. Silvestri, G. Phillippi, C. Sowl, R. Boyle, Jr., S. Applegate, J. Lowdermilk, E. Lindbloom.

Clarion's Call/Collect was a vital force behind some of the many changes Clarion State College experienced during the 1978-1979 school year. Every Thursday afternoon thousands of CSC students waited patiently until their student newspaper was released. The Call/Collect offers the students a way to express their opinions, report facts and entertain themselves every week of the school calendar.

Marketing Association



The Marketing Association was chartered in fall, 1975. Some of its functions are to promote marketing concepts, integrate practical experience with classroom study, and widen the students' scope of marketing activities. These activities include monthly meetings, and participation in Activities Day.



Investment Club



Row 1: D. Arbutal, R1 Colleke, M. Baric, M. Lucas. Row 2: W. Shrec, Dr. Choi. Row 3: P. Martin, R. Eigner, D. Lucas, L. Swarm.

The goal of the Investment Club is to gain first-hand experience with investment procedures dealing in stock market. Each member is responsible for the financial examination of a stock or stocks which can be recommended for actual purchase by the club. In addition, seminars are held centered on specific aspects of investment.

Business Association



Row 1: L. Moore, L. Danko, R. Horncek, M. Kurshnr, J. Tedeschi, B. Nicholas, J. Bennet, P. Morrison, J. Matzel, L. Picariello. Row 2: B. Faverty, K. Bynum, M. Harpster, J. Sheling, J. Fury, P. Miller, K. Macuroy, D. Rudolph, L. Shafer, B. Fenton, D. Leasure, T. Hennessy, G. Hines. Row 3: R. Leeper, A. Mayer, C. Cover, D.

Hine, A. Stover, P. Zisa. Row 4: P. Obenroder, P. Stover, M. Lucas, M. Yesko, M. Kosoglow, J. Bowersox, R. Partrige, L. Kosko. Row 5: B. Beck, D. Kaoyjarek, J. Hentenocho, D. Connelly, R. Martin, J. Tooney, M. Lovorn, B. Sprecher, D. Orange.

The Business Association is open to all students in the field of business administration. The club was organized with the intent of providing its members with an insight into the working of the business world.

Pre Med Club



L to R, Row 1: R. Arena (V.P.), W. Kati (Pres.), B. Renniger, Mitchell, E. Henderson, J. Matia, D. Guzik, D. Burnett, Mascot, D. Austin (Sec.), S. Pollina. Row 2: B. Van Houton, L.

American Chem. Society

The American Chemical Society is a national organization of Chemists. The Student Affiliate Chapter is a part of the American Chemical Society dedicated to giving intellectual stimulation and encouragement to its members - which may or may not be chemistry majors - in approximately 800 colleges in the United States and Canada. The Clarion Student Affiliate Chapter is a very active chapter sponsoring various academic and social activities such as seminars by industrial and research chemists; tours of educational, research, and industrial chemical facilities; picnics; and other social events. The Chapter also sponsors an annual Chemistry Department "Open House," in which chemistry students from area high schools tour the chemistry department at Clarion.



L to R, Row 1: D. Hetrick, E. Henderson, I. Deckman, L. Sigismondi. Row 2: D. Burnett, F. Tarasi, L. Zalvidar. Row 3: W. Kati, K. Mayberry, D. Baxter, D. Austin, G. Zelinkzi, S. Kurtz. Row 4: E. Ludwig, Dr. Sharpe (Advisor), B. Lutz, N. Dana, J. Matia, R. Buechele, E. Ober.



Bios Club

The Bios Club is open to all students at CSC regardless of major. It is dedicated to promoting scholarly and recreational activities for members interested in the Biological Sciences. Club activities include guest speakers and major and minor trips in and out of state. New members are always welcome.

L to R, Row 1: B. Van Houten, P. Graesch, M. Helwig, T. Allenbaugh, S. Nesley. Row 2: L. Sigismondi, M. Chemski, T. Timmins, C. Bistis, A. Pegler, S. Cole, K. Dowling, E. Boer, S. Welch. Row 3: C. Eberhart, C. Cowan, N. Sarsfield, P. Donahue, R. Cramer, Dr. P. Dalby. Row 4: K. Wickline, E. Cass, C. Borell.

Psychology Club



Psychology Club is an organization interested specifically in psychology. Therefore, activities include field trips, guest speakers, and other means of exploring the field of psychology.

L to R, Row 1: M. Hagenmeier, T. Lemon, C. Hassell, D. Lombardi, P. Basab, B. Edminston. Row 2: M. Taylor, M. Cuzzola, C. Minnemeyer, T. Conley, L. Gibson.

History Club



The History Club is an organization of students who have an interest in the field of history. Some of the events this past year included guest speakers, a field trip, and a conference on Vietnam in conjunction with Academic Festival Day.

Row 1: J. Conrad, L. Kelley, Mr. B. Dunn, M. Luksik, Row 2: D. Peterson, B. Ellis, S. Allen, S. Myers, Dr. S. Van Meter, D. McKown, K. Hill

Math Club





Society of Physics Students

This is an organization newly formed this year which is open to all students who have an interest in physics. The purpose of this Chapter shall be the advancement and diffusion of knowledge of the science of physics and the encouragement of student interest in physics through speakers, social events, and field trips.

Row 1: D. Crawford, R. Claypool, M. Daus, P. Leggett. Row 2: D. Grove, T. Kurtz, D. Keth, R. Dunkle, R. Hutton, D. Kiska. Row 3: K. Hartenbach, C. Slicker, K. Adeyemi, Dr. A. Exton, J. Vinski.



Anthropology Association



The Clarion State College Anthropology Association was founded to give students the opportunity to participate in anthropological and archaeological research. Membership is open to all students. Meetings are held monthly and field trips are taken to important museums in major cities.

Clockwise L to R: C. Whest, D. Niederriter (V.P.), M. Tromans, C. Ambrose, D. Fizzola, B. McCuen, T. Stanley (Sec.-Treas.), C. Levisch, J. Kratzer (Pres.), L. Nichols.

P.S.E.A.

Student P.S.E.A. has sponsored numerous programs for its members and interested students. These programs include an annual student-faculty social, a mock interview, various speakers, along with conferences and conventions. Through P.S.E.A., members gain useful knowledge of the opportunities and requirements related to teaching. Students in all curricula who are concerned about education are encouraged to join.



L to R, Row 1: R. Mates, T. Sherdon, B. Yancosik, T. Majors, C. Ellermeyer, J. Bines, D. Pelletier. Row 2: T. Gallo (Pres.), D. Sebak, B. J. Fox, D. Erisman, S. Himes, D. Dick, J. Wolski, C. Marovis, Unknown, T. Kline, Dr. Kenemuth (Advisor). Row 3: T. James, D. Hawk, J. Zvech, M. A. McCall, C. Peoples, B. Vrey, D. Diana, D. Maloy, P. Stablie, Unknown, K. Fritz, B. Hunter, M. Calla. Row 4: J. Schner, M. Grubbs, J. Kundie, L. Smith, E. Hartenback, M. Riener, T. Thompson, D. Skoke, M. Ferguson (Treas.).

C.E.C



L to R, Row 1: J. Rusiewicz, Unknown, L. Weaver, S. Bikacsan, E. Noah, T. James, J. Barsh (Sec.-Treas.), T. Ferris (Pres.), G. Schneck (V.P.), Mr. L. Gurecka (Advisor). Row 2: S. Tosten, C. Kasproicz, T. Brochetto, C. Gorin, D. Simth, E. Duggan, D. Anderson, S. Bibb, R. Sirabella. Row 3: S. Cleveland, Unknown, G. Smith, M. A. Demchak, K. Serafin, Unknown, C. McNulty, T. Fowler. Row 4: M. A. McCall, J. Stahlman, E. S. Thompson, D. Tinz, S. Ebbitt, C. Minnemeyer.

Council for Exceptional Children is a professional organization for anyone interested in working with special people. Among C.E.C.'s activities this year were special guest speakers, weekly visits to Polk, a convention in Philadelphia, a Halloween Party, and a Christmas Party held in conjunction with NSSHA. C.E.C. also took part in a PARC Bike-a-thon. The big event of the year was the third annual campus-wide Peace Festival.



L to R, Row 1: M. Vogt (Sec.), B. Kreismen (Treas.), S. Eriksson, P. Hannaford, G. Villella (V.P.), J. Schmincke, J. Mitch (Pres.). Row 2: N. Headlee, L. Liebold, C. Hartweg, D. Asper, J. Eller, L. Puz, D. Waterloo. Row 3: J. Klutcher, J. Hicks, C. Best, N. Schumann, D. Lipko, S. Caldwell, T. Little, M. Kress, N. Lucas, Mr. J. Smith (Advisor).

NSSHA

The National Student Speech and Hearing Association is open to anyone interested in speech and communicative disorders. NSSHA's involvement for 1978-79, included a field trip to Gallaudet College in Washington, D.C., a seminar on language assessment and intervention, fund-raising programs, conventions, monthly meetings with guest speakers, and our annual spring banquet.



L to R. Row 1: J. Tursanski, J. Mueller, C. Snyder (V.P.), N. Jobs (Pres.), C. Kiessling, Unknown, C. Leijten, J. Weller. Row 2: Mrs. Hegewald, M. Heidenwolf, A. Woods, C. Vavryk, S. Huck, J. Olney, R. Yoder (Treas.).

Dr. C. Totten. Row 3: K. McJuinness, R. Dehl, L. Cedzo, S. Trick, V. Landas, E. Shriver, E. Freuyd. Row 4: L. French.

Circle F

The Circle F Club is the French Club at Clarion State College. The purpose of the club is to inform the local schools and surrounding communities of the French people and their culture.

Activities of the past year included: a Xenophile banquet, participation in International Afternoon, and aided in sponsoring a visit of the Vice Consul to the Consulate of Canada. The club is still planning a trip to Quebec.



L to R: S. Irick holding Porky, K. Henry (V.P.), C. Paulhamus (Sec./Treas.), D. Orendorf, J. Auer.

Accounting Club



The Accounting Club was the first business-oriented club formed at Clarion. Since that time the organization has grown to become one of the largest and most active organizations on campus. The main purposes of the club are to broaden the education and interests of accounting students and to expose the accounting profession on our fine program here. These objectives are met through activities which this year included: guest speakers from the various fields of accounting, attending seminars at area colleges, a dinner meeting with the Grove City Accounting Society.

A. Atwell, C. Bachman, A. Barto, G. Beatrice, H. Bitzer, J. Bogniak, L. Boosinger, B. Bossart, E. Bucher, D. Bush, T. Campbell, T. Cancilla, R. Christopher, S. Claus, R. Colledge, P. Comes, D. Connelly, C. Cover, L. Danko, J. Datt, P. DeLoia, H. Dennis, J. DeSantis, K. Duhaia, T. Edwards, D. Ewing, B. Facchine, H. Fairlamb, M. Fleming, P. Flynn, J. Furey, C. Gatti, L. George, D. Golden, M. Goucher, J. Green, C. Handford, J. Harmon, D. Hein, S. Helwig, J. Hepburn, D. Hinderliter, J. Hintenach, R. Hornak, C. Horvath, K. Huffman, K. Ignasiak, P. Jaquith, D. Kaczmarek, J. Karkoske, P. Larstetter, K. Kasmerski, H. Kassof, B. Kelly, M. Killeen, J. Kirkoff, J. Koehler, L. Kotun, S. Koza, J. Kramer, D. Krepps, B. Kyle, E. Mack, K. Macurdy, M. Malizia, L. Mannella, R. Martin, J. Mattingly, J.

Matzel, J. McArdle, K. McCaw, R. McDonald, G. Shaffer, J. Sheline, L. Simonetti, R. Sinclair, T. Slagel, T. Smith, D. Snyder, B. Sprecher, A. Stover, S. Stroy, B. Sukaly, L. Swarm, M. Toward, D. Trudgen, R. Wagner, D. Waltz, D. Williams, D. Wolfe, R. Woloszyn, M. Yusko, J. Zangrilli, P. Morrison, J. Minto, B. Dagar, K. DiPietro, J. Hopech, M. Smarto, M. Demich, D. Hunnel, S. Kolcun, R. Anderson, D. Hall, K. Hannold, T. Timmins, B. Murphy, B. McDonough, L. Crede, E. Bennett, J. Raspanli, T. McCauley, P. McGrath, T. McGarrity, T. McKenna, D. McVay, S. Michalak, T. Miller, M. Morgus, M. Moyer, S. Mullen, L. Munn, S. Myers, C. Neuberger, B. Nicholas, R. Novak, M. O'Block, D. Orange, B. O'Toole, S. Palmer, D. Perich, E. Roth, N. Sartain, L. Schnell, D. Sellers.

Psi Chi

On May 6, 1975 the Clarion State College Chapter of Psi Chi, the National Honor Society in Psychology was established on this campus. Our petition for a charter was approved by Psi Chi National Council on April 6, 1975. The purpose of Psi Chi is primarily to advance the science of psychology; and secondly to encourage, stimulate and maintain the scholarship of the individual members, in all academic fields, particularly in psychology. Chapter membership requires being a psychology major or minor with an overall Q.P.A. of at least 2.7 and a Q.P.A. in psychology of at least 3.0.



Row 1: S. Lauth, B. Guerliera, L. Wilcox, P. Burkett, P. Obenreder. Row 2: D. Bosak (Sec./Treas.), M. Juliana (Pres.), Dr. Gackenbach (Advisor), P. Thomas (V. Pres.), L. Framiglio, P.

Carlin, D. Lombardi. Row 3: D. Orendorf, C. Minnemeyer, L. Gibson, C. Saxton, T. Castelli, T. Conley, V. Posch. Row 4: B. Budzinski, B. Edmiston, C. Best, L. Shiderly.

Lambda Sigma

Lambda Sigma is the honorary Library Science Fraternity on campus. For membership you must have completed nine credits in Library Science and have an overall Q.P.A. of 2.7 and a 3.0 Q.P.A. in your Library Science courses. We are primarily a service fraternity. During this semester we taught library skills to the students at Immaculate Conception School. Our purpose is to promote fellowship and further the professional knowledge of our members.



Row 1: P. Carlin, B. Sheffo, S. Jacobus, L. Loase, M. Clark. Row 2: L. Jacobs, L. Framiglio, M. McClure, K. Corner, L. Zeybel, G. Cook, J.

Swanson. Row 3: J. Smith, L. Jones, A. Glasgow, M. Ferguson, P. Schneider, K. Masters.

Outing Society



The Clarion Outing Society is a group of people dedicated to having a good time in the out-of-doors. They have gone on a variety of interesting expeditions: backpacking in the Allegheny National Forest, canoeing on the Kinzua Reservoir, caving at Penn State, rock climbing at Panther Caves and cross-country skiing in Clarion County. They have served the College by renting cross-country skis and hosting a Christmas Craft show and sale. No matter where they go or what they do, the Outing Society members always have a good time!

Row 1: S. Mumford, T. Clark. Row 2: M. McCullough, S. Turner, C. Shimer, C. Heaney, R. Phillips.
Row 3: D. Taymans, T. Chieffe, B. Nicholas, S. Huch, T. Jacques. Row 4: G. Wagner, S. Austen, S. Kerr, B. Filer, A. Ussia, J. Michner, A. Maury, D. Holquist.

Clarion International



Row 1: D. Ojomo, E. Wong, L. Bastian, E. Henderson, C. Leijten. Row 2: S. Nkansah-Mensah, A. Johnson, A. Ibe, B. Manitsas, M. Tregaskes, C. Nwosu.

Kappa Delta Pi

Kappa Delta Pi is a national honor society in education. The local chapter of Lambda Eta was chartered in 1967. Our organization sponsors distinguished speakers, organizes service projects, and helps education students become more aware of the opportunities within their profession.

Membership is by invitation only. To be eligible a student must attain a 3.0 or higher academic rating in their college studies.



Row 1: J. Selle (Pres.), C. Saxton (Memb. Chair), W. Welton (Sec.), J. Eonta (Hist.), Dr. P. Smith (Advisor), Row 2: S. Boyd, R. Eakman, K. Byron, P. Carlin. Row 3: K. Masters, L. Jacobs, J. Rusiewicz, D. Pulcini. Row 4: T. Sheridan, B. Vensel, M. Calla, T. Gallo, C. Anderson. Row 5: B. Yancosek, R. Mates, J. Smith, L. Wilson.

Muslin Student Association

The Muslin Student Association has embarked on a five year plan that seeks to emphasize the following areas of Islamic activity: dissemination of Islamic knowledge, establishment of Islamic institutions, assistance in performing religious obligations, organization of the Da'wah Program, and promotion of the unity of Muslin conscience.



Row 1: H. Abdelshafi, U. Shanneb, A. Bugis, S. Sharaejem, C. Rashad. Row 2: A. Tobacki, S. Mohammed, M. Youssef, T. Cishafey, S. Al-Jalaud.



L to R, Row 1: W. Ross, D. Hein. Row 2: K. Stewart, S. Schmidt, M. Ostermann (Treas.). Row 3: S. Singh, D. Stewart, W. Fenton, G. Kapusta (V.P.), T. Vernon.

Omicron Delta Epsilon

Omicron Delta Epsilon, the international Honor Society in Economics established the Omega Chapter of Clarion State College during the fall of 1975. The organization encourages study and academic achievement in the field of economics through programs, speakers, field trips, and the presentation of two international awards of the college-wide Honors Banquet in the spring of each year. Membership is restricted to those students who show both overall academic ability and achieve honors in a minimum of 12 hours of economic course work.



L to R, Row 1: L. Greggs, (V.P.), P. Zisa, D. Hein (Treas.), B. Nicholas (Sec.), T. Crowley (Pres.). Row 2: B. Fenton, L. Danko, J. Matzel, P. Morrison, D. Kaczmarek, R. Hornak, M. Kusnir, R. Fitzimmons, S. Chitester, A. Stover, S. Patterson. Row 3: H. Fairlamb, D. Miller, J. Bowersox, J. Bennet, C. Bachman, K. McCurdy, M. Demich, D. McVay, D. Trudgen. Row 4: C. Coon, J. Stajderhar, L. Shafer, C. Newberger, L. Bieloski, P. Obenreder, K. Duhala. Row 5: Unknown, B. Bossart, T. McGainty, D. Perrich, M. Zindel, Two Unknowns, P. Lindberg, G. Kapusta, K. Stufft, G. Beatrice, R. Sinclair, J. Hintenoch.

Phi Beta Alpha

Phi Beta Alpha, the Business Honorary fraternity, through recognition of qualified students, promotes excellence in the field of Business Administration. Requirements for membership are a 3.2 Q.P.A. or better, and service to the college and the community.

Pershing Rifles



Row 1: V. Kuras, S. Burnham, A. Downie. Row 2: J. Siggelow, R. Ellenberger, D. Edwards, J. Harrison, K. Muir, D. Gilbert, R. Schwartz, D. Martin, CPE S. Wolfe (Advisor).



Pershing Rifles is a fraternal organization started by General John J. Pershing in 1891 to increase the morale of the ROTC cadets at Nebraska University. Since that time Pershing Rifles has become a society open to all members of a college campus where the society is present. We at Clarion, Company Y-1 are a tactical and social society open to all students.

Alpha Phi Omega



Row 1: M. Janovec, K. Cauthorn, T. James, C. Mollica, C. Simpson, C. Kiessling, P. Mozes. Row 2: T. Baker, K. Fritz, C. Brown, K. Walker, J. Cuiffi, M. Calla, S. Camp. Row 3: E. Lindbloom, L. Jones, C. Cadwallader, B. Sheffo, K. Masters, B. Charles, K. Lambert. Row 4: J. Auer, J. Myers, V. Mason, D. Rudolph, J. Clute, R. Woodring, G. Loomis, M. Monfre, M. Cummings, T. Gallo, J. Smith.

Brotherhood through SERVICE has been the major goal of the Omega Mu chapter of Alpha Phi Omega in our three years of existence. We have been founded on the principles of Leadership, Friendship, and Service and each member strives to meet these goals.

This year's activities included assisting both Bloodmobiles, ushering at various events, assisting WCCB with the Children's Hospital Drive, and sponsoring a Sing-a-Thon and a Marathon Card Playing event for the American Cancer Society and C.A.R.E. & the Sickle Cell Foundation respectively. We also conduct paper drives, hold fall and spring Rush parties, initiation banquets for our pledges, and a Spring Formal. This year has been special for Omega Mu as we were host to the 1979 Spring Sectional.



Brothers Inc.

Brothers Incorporated was the first black organization on Clarion's campus, founded in the fall of 1972. Our purpose is to promote social development for the college, community, and students; to aid all members in academic achievement; also to promote Unity and to strive to unite people as a whole.



L to R, Row 1: P. Hudson, (Sec.), L. Smith, L. Jones (Treas.) K. Cauthorn (Pres.), E. Maxwell, B. Johnson, L. McCleod (V.P.), G. Benjimen, M. Littlejohn, S. Caldwell.

Sisters Inc.

Sisters Incorporated, founded in 1975, is a social and service organization set up to help other people in need and promote unity among the college women. Sisters Incorporated celebrated their first anniversary as a chartered organization on March 13, 1979.



L. to R, Row 1: D. Alston (V.P.), N. Caldwell (Pres.), T. Little (Treas.), T. Johnson, C. Robinson, V. Rue (Sec.), P. Brown. Row 2: L. Savoy, K. Welbie, J. Jarrett. Row 3: D. Brown, S. Stroy, D. Underwood, K. Finn.

Black Campus Ministry



L to R, Row 1: D. Underwood, T. Brown, A. Johnson, N. Hubbard. Row 2: W. Hefflin, K. Finn, S. Stroy.

Black Campus Ministry began in Clarion six years ago. It is sponsored by United Ministries in Higher Education. The purpose of Black Campus Ministry is to help provide an atmosphere for black students to worship while sharing the Black religious culture with the college and local community. This is accomplished through worship services and joint community activities.

College Republicans



L to R: D. Hayden, R. Johnson, K. J. Gordon (Treas.), D. Lasch, G. Murphy, D. Tarr, J. Kimmy (V. Chrmn.), B. Burtell, E. Roth, J. Spencer (Sec.), R. Lashley (Chrmn.), T. Leriots. Organizations/37

The purpose of the Clarion State College Republicans is to educate its members in methods and forms of political activity in the United States, with the further objective of providing a more enlightened electorate, regardless of party affiliation. We are a charter member of the Pennsylvania College Republicans. We attend conventions and exchange our views with students from other colleges. We also hold fund-raisers, banquets, parties, and work in political campaigns.

Center Board

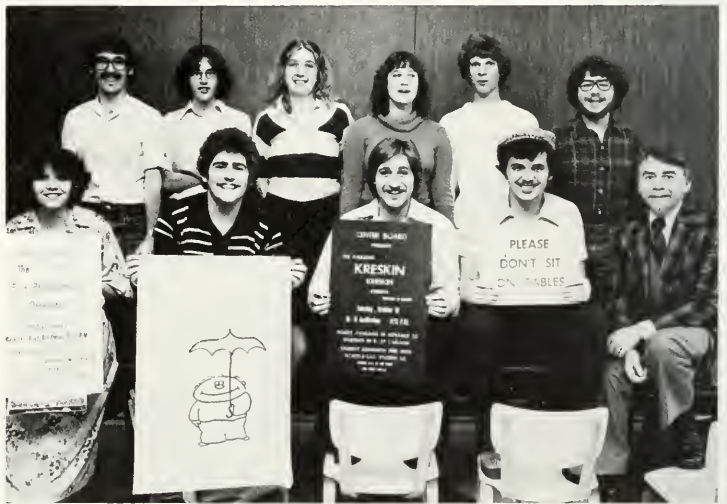
The Center Board is the administrative organization responsible for developing, promoting, and scheduling the recreational, cultural, and social programs on campus. Activities include dances, movies, coffeehouses, and special appearances. The Board consists of elected student officers, committee chairmen, faculty, and representatives from Student Affairs.



L to R: A. McLean (Sec.), C. Akers, Dr. J. Nanovsky (Advisor), J. H. Smith, J. Spanitz, B. Satterlee, K. Galla (Pres.), R. Baade, C. Reed (V.P.), J. Douthett, B. Rose, M. Demich, H. Wassink, J. London.

Center Arts Committee

The Center Arts Committee has brought in many events this semester such as Kreskin, National Theater of the Deaf, Erie Philharmonic, and Elizabeth Hycnge. We are looking forward to another great year.



L to R, Row 1: C. McKee, J. Spencer, T. Damiano, K. McElheny, M. J. Smith. Row 2: J. Douthett, D. Umbach, K. Holst, D. Finz, D. Fry, M. Monfre.

Recreation Committee



L to R.: B. Stewart, M. Dudain, T. Cancilla, C. Winnemeyer, C. Bruce.



Commonwealth Association of Students

The Commonwealth Association of Students (C.A.S.) is a student funded, non-profit lobbying organization for the fourteen state owned colleges and universities in the Commonwealth of Pennsylvania. The prime purpose of C.A.S. is to actively promote public, low cost, quality, higher education within PA for citizens of all income brackets.



L to R, Row 1: R. Miller, (Coord.). Row 2: V. Hall, J. Fugagli, K. Stanley, B. Piper, P. Elliot. Row 3: A. Kennedy, D. Kulusich, D. Tarr, S. Porter, B. Faverty, R. Toney. Row 4: P. Kennedy, P. Mooney, J. Reese, J. Silcox, M. Lewis, B. Michell.

Student Senate

Student Senate is the representative voice of the student body in all official capacities. The Senate is responsible for recognizing student organizations, appointing students to Faculty-Student committees, allocation of Clarion Students Association funds, and requesting audits of allocations made.



L to R, Row 1: M. Beaman, C. Mitchell, K. Kase (Pres.), J. Kirkhoff (V-pres.), R. Boyle, K. Lampkins, B. Palmer. Row 2: Dr. Nair (Adv.), L. Rankin, M. Babnis (Parl.), J. Smith, B. Kowalski (Sec.), J. Malthaner, L. Krull (Adv.). Row 3: C. Dinsmore, J. Montanile, L. Faett, R. Rubin, S. Boss, J. Stewart.

A.C.E.I.



Row 1: R. Eakman, N. Wareham, P. Burkett, T. Majors, K. Downie. Row 2: J. Oxendale, D. Erisman, L. Wilcox, B. Newton, D. Sebak, B. Vensel. Row 3: Unknown, S. Dorrión, Unknown, K. Smith, R. Mates, Dr. J. Smith, B. Yancosek.

A.C.E.I. is an organization mainly composed of elementary and early childhood education majors though it is open to any who are interested in helping children. We sponsor many activities for the community such as a story hour at the Clarion Public Library, and publish a Quality Child Care List for Parents. Every month we offer a meeting with a keynote speaker from the campus, community, or elsewhere in the area. These speakers focus on their aspect of vocation and apply it to early childhood and how we as teachers may benefit.

Inter-Hall Council



Row 1: B.J. Fox, R. Hannberger, M. Paris, S. Palmer, M. Palumbo, D. Yorr. Row 2: M. Esposito, L. Bollibon, J. Lowdermilk, S. Ross, J. Elias, M. Nelko. Row 3: K. Reynolds, J. Moore, D. Stoner, S. Bright, D. Best, M. Scanlon.



Row 1: R. Zand, L. Richert, B. Hower, G. Phillippi, B. Bothwell. Row 2: J. Smiley, V. Benoit, M. Robinson, C. Johnson, J. Ereges, L. Difernando, N. Nestich, B. White, J. Simon. Row 3: B. Mallison, E. Lindbloom, M. Babnis, S. Peters, K. Lampkins, A. Kennedy, R. Anton, R. Toney. Row 4: D. Shirey, C. Hawkins, C. Corbin, S. Dorsey, S. Jaycox, N. Commella, C. Levis, R. Rogers, J. Hayes. Row 5: J. Silcox, Givens, B. Johnson, B. Nulph.

Executive Board

- B. Bothwell Public Relations
- M. Babnis Traffic Manager
- J. Hayes Sports Director
- M. Cochran News Director
- J. Silcox Music Director
- B. Mallison Program Director
- L. Richert Station Manager
- Dr. McCavitt General Manager





WCUC-FM received its license from the FCC on April 26, 1977. WCUC is a public non-profit radio station serving the community and the college. Our objectives are to provide our listeners with an alternative sound in radio and to bring them the best in news, sports and music. We broadcast all the football and basketball games on the Golden Eagle Network and offer a variety of music and programming. This year we ran a radio-thon for the American Heart Association which we hope will become an annual event. Interested students are welcome to learn about the broadcasting profession through on-air and off-air positions.

WCCB



Row 1: B. Lange, M. Smiley, S. Blum, T. Routman, N. Miller, B. Burtell.
 Row 2: B. O'Toole, D. Veloyo, L. Jacobs, T. Jay, B. White, D. Huss, A. Santelli, C. Hogan, N. Reade. Row 3: M. Reitz, L. Garvin, C. Pinto, K.

Abrams, M. Markey, B. Stenberg, P. Badger, D. Parsons, J. Markey, R. Anton, Row 4: C. Hosfield, S. Huff, G. Phillipp, B. Johnson, K. Haverstock, R. Partridge, R. Weaver.

Executive Board



Row 1: Scott Blum (General Manager), Mike Smiley (Program Director). Row 2: Barb Burtell (Business Manager), Tracey Routman (Public Relations), Barb White (News Director). Row 3: Ned Reade (Chief Engineer), Rich Weaver (Sports Director).

WCCB

Newscasters



Row 1: P. Badger, B. Stenberg, B. White, L. Jacobs, B. Lange, G. Phillippi, C. Hogan, M. Reitz, B. Johnson, M. Markey.

WCCB's purpose is two-fold: to be an entertainment source by providing a wide variety of the best music, and also to be an up-to-date information service. WCCB strives to broadcast the most relevant information in campus, state, and national news and sports. Some services and programs available to the student body are RIDES-RIDERS, LISTENER LINE, REQUEST SHOWS, and CONCERT HAPPENING.

WCCB keeps actively involved with the campus by sponsoring activities such as concerts, various give-away programs, and the annual fund drive at Christmas time for Children's Hospital in Pittsburgh. Finally, WCCB also provides students with an education in all aspects of broadcasting, public relations and business.

1979
Sequelle
Staff



Co-editors
Joetta Eonta, Brian Smith.



Section Editors-clockwise: S. Bibb (Seniors), B. Costantini (Sports), S. Moore (Sports), D. Fry (Organizations), B. Mallison (Features), S. Palmer (Fine Arts), S. Bikacsan (Organizations), D. Mack (Greeks), M. Upchurch (Greeks). Missing from the picture: B. Hammill (Seniors), D. Dougherty (Faculty), D. Pierce (Faculty).



Janet Cuiffi - Typist

The *Sequelle* Staff is composed of students from all class levels and majors who volunteer their time to present a yearbook to Clarion State College. The staff is comprised of photographers, a typist, section editors, and two co-editors, plus a number of other people contributing in equally important ways.

Although problems do occur throughout the year such as missed deadlines, missing section editors, and a few forgetful photographers, we did attempt to cover as much of college life and activities as completely as possible.

The co-editors thank all of those who contributed to the working of the 1979 *Sequelle*, and would like to present this book to you, the students.



Photographers - Row 1: S. Turner, D. Pierce. Row 2: N. Stulak, M. Woodward, D. Devine, K. Mizak.

Debate Team

The Clarion State College Debate Team travels throughout the country to compete against colleges and universities at a variety of tournaments. During the 1978-79 school year the debaters have traveled to approximately 30 different tournaments in Pennsylvania, and adjoining states, and also the Pi Kappa Delta National Tournament in St. Louis, Missouri. The record in '79 reflects the reputation the team has had since 1972 when the debate team was nationally ranked for the first time and will hopefully continue the national rankings the team has enjoyed since that time.



Clockwise: A. Weekley, B. Mallison, L. Lacko, T. Anderson, B. Myers, B. McCauliff, L. Kline, M. Sekelsky, S. Humphrey, K. Panella, P. Kelley.

I.E. Team

The Individual Speaking Events Program is the public speaking organization on campus. Members compete in persuasive, informative, impromptu, extemporaneous, entertainment, and oral interpretation events at intercollegiate tournaments across the nation. Members travel to fifteen tournaments each year, in PA and adjoining states. The team currently holds the 1979, PA State Championship title.



Row 1: K. Schneider, J. Mueller, T. Dougherty, L. Gordon. Row 2: G. Lakes, L. Pifer, C. Keissling, M. Babnis, B. Mallison, S. Peters, U. Retort, J. Elmes (Advisor). Row 3: C. Hriso, D. Kemorer, N. Newson, T. Anderson, K. Kase, J. Smith.

Fantasia Dance Troupe



Row 1: J. Jarrett, T. Alston, P. Jones. Row 2: T. Carter, D. Boyd, S. Thompson.



The Fantasia Dance Troupe was started in October of 1978. It is a combination of modern dance, jazz, and ballet dancing. Our main purpose is to give the audience as much pleasure as possible from our dancing. Our motto is that Fantasia is an experience in dance.

Pi Delta Kappa

The purpose of this organization is to stimulate progress in and to further the interests of intercollegiate speech activities and communication in an effort to provide functional leadership training for life, and at the same time encourage a spirit of fellowship, brotherly cooperation and incentive for achievement.



L to R, Row 1: S. Humphrey, M. Babnis, A. Weekley, K. Panella, E. Lacko (V.P.). Row 2: B. McCauliff, T. Anderson (Sec./Treas.), B. Mallison, C. Hawkins, B. Myers, L. Kline (Pres.).

Phi Alpha Theta

Phi Alpha Theta is Clarion's Nat'l Honor Society in History. The purpose of the organization is to explore and promote the study of history, both within its membership and at Clarion.



L to R, Row 1: K. Kosanich (Pres.), Dr. Duffy. Row 2: M. Luksik (V.P.), D. McKown, S. Humphrey (Sec./Treas.).

Russian Club



L. to R.: J. Metcalfe, C. Frey, G. Mittlestadt, Dr. Nikoulin, M. Luksic, M. Kerlinger, Dr. Fortis, L. Kruse, C. Leyton, D. McKown, M. Armstrong, S. Mueller, C. Hrabovsky, S. Lilly, P. Steve, B. Seman.

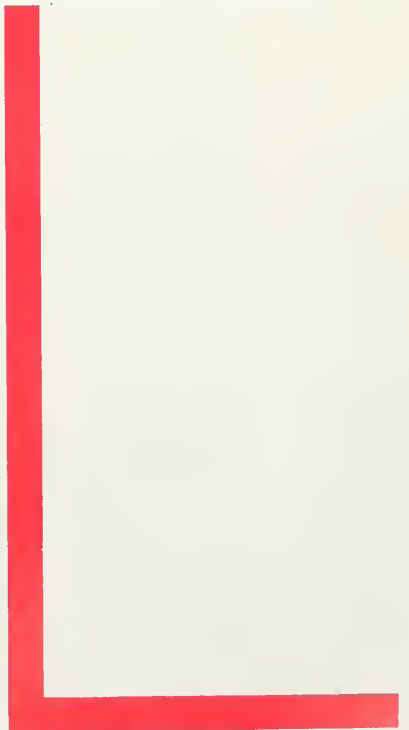
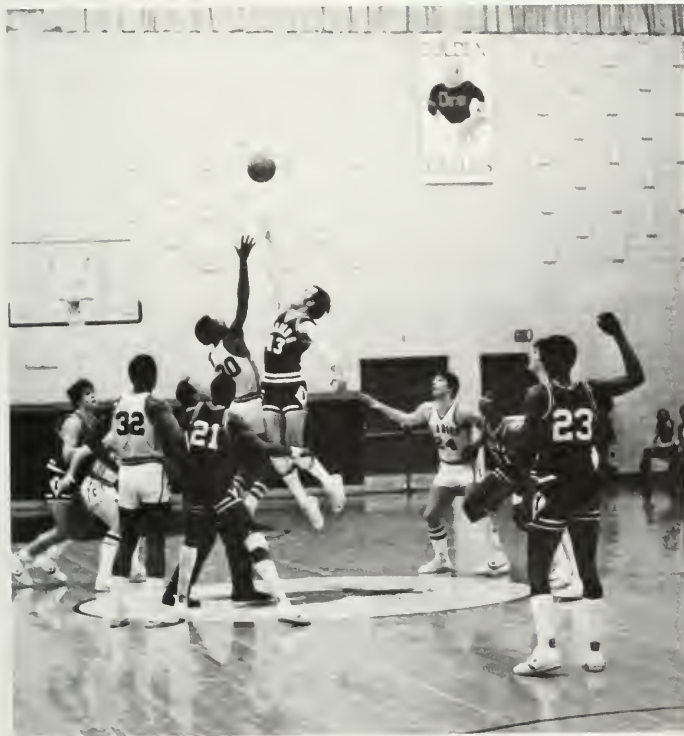


Ski Club

Our praise and admiration goes out to all those who participated with us. This experience will, in a small way, broaden your perception and add a new dimension to your life.



Sports





Golf



Row 1: D. DeWitt, M. Solle, S. Mazur, C. Bradley. Row 2: T. Czwalgo, J. Thompson, J. Boss, D. Trujillo, W. Solle, K. Paulovkin.



Cheerleaders



Women's Basketball Has Losing Season



Although many records were set and many players had outstanding seasons, the Women's Basketball team ended up with a record of 4 wins and 13 losses. Coach Pat Ferguson attributed this partly to a lack of leadership, but not ability. The team lost starters Linda Pagni to torn ligaments and Celia Reardon to torn cartilage. The team captains' spot was shared by Leda Best, Susan Kovensky, and Linda Pagni.

Lisa Zitalone set three records to become Most Valuable Player. She was the leading scorer with 287 points for the season, 20 rebounds in one game and 208 total rebounds.

Coach Ferguson said that the team fought to the end in every contest and exhibited an extreme friendliness, which, despite the losing record, must have provided a good time for all players.



Kneeling: D. Hanes, F. Caple, L. Pagni. Row 2: K. Garred, D. Ebbert, R. Cipilonni, L. Corker, L. Best, N. Thackleberry. Row 3: Coach Ferguson, J. Phillips, G. Pacsi, S. Kovensky, C. Reardon, L. Zitalone, S. Klujarich, J. Pagano, Coach Stobbs, S. Ebbit (Manager).



	CSC	Opp.
Cal. State	62	57
U.P.J.	82	99
Lock Haven	57	71
Cleveland State	89	92
Slippery Rock	67	72
Youngstown	54	63
U.P.J.	73	76
Kent State	59	70
Indiana	77	78
Allegheny	72	64
Robert Morris	49	60
Edinboro	62	71
Gannon	67	79
Duquesne	73	74
U.P.J.	69	92
Cal. State	59	58
Geneva	65	61

Women's Softball





	CSC	OPP
Geneva	7	3
Robert Morris	12	13
Robert Morris	12	1
IUP	6	5
IUP	2	0
Penn State	0	6
Penn State	2	9
Slippery Rock	1	6
Slippery Rock	0	2
Lock Haven	6	3
Lock Haven	2	7
IUP	3	4
IUP	9	6
Edinboro	0	11
Edinboro	3	6
Allegheny	6	5



Baseball



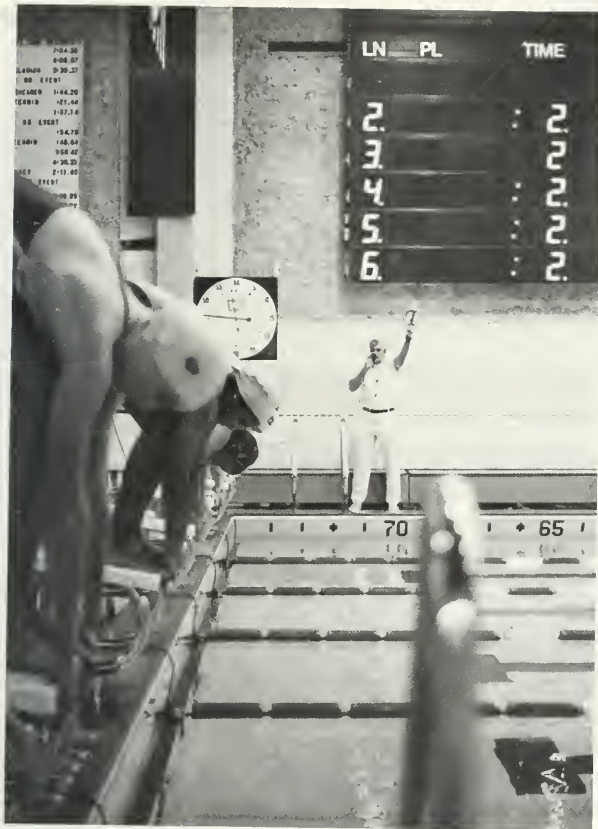


	CSC	OPP
Virginia Apprentice	6	8
Virginia Apprentice	6	11
California State	4	1
California State	2	5
IUP	5	2
IUP	3	2
Penn St.-Behrend	7	9
Penn St.-Behrend	4	3
Univ. of Akron	2	4
Univ. of Akron	0	4
Point Park	4	7
Point Park	3	11
Edinboro	5	2
Edinboro	5	8
Westminster	2	1
Westminster	4	1
Lock Haven	6	5
Lock Haven	5	3
Slippery Rock	0	4
Slippery Rock	8	9
Pitt	3	0
Pitt	4	7
Youngstown	3	7
Youngstown	2	3

Women's Swimming



Row 1: N. Spangler, L. Meinen, R. Phillips, L. Trapp, L. Murgatroyd, S. Dunn. Row 2: B. Clark (Manager), S. Jones, K. Jones, N. Farrar, M. Eyles, D. Picking, S. Crofton, S. Towner. Row 3: B. Lodie (Manager), C. Champion, T. Thoresen, K. Kijucanic, P. Potter, S. Kohler, K. Gable, Coach Clay, B. Gaskin (Manager).



	CSC	OPP
Cleveland State	81	50
Kent State	67	64
Slippery Rock	89	42
Bloomsburg	41	29
Allegheny	102	27
West Chester	96	35
West Virginia U	74	57
Penn State	44	87
Pitt	41	90
Pa. Conference Champions		
5th at AIAW Nationals		

Women's Tennis



Kneeling A. Curry, T. Wojek, S. Malagieri, C. Ford, P. Rauso, L. Brown, D. Williams Standing: Coach Clay, B. Gaskin (Manager), B. Kifer, J. Connors, G. Blaho, T. Riker, H. Bliss, D. Miller, D. Gavett (Manager).



Women's Volleyball Team Has First Losing Season

Allegheny	Won
Penn State	Lost
Indiana Univ. of PA	Lost
Univ. of Pitt, Johnstown	Lost
Slippery Rock	Lost
West Virginia Univ	Lost
Youngstown Univ.	Won
Geneva	Won
Slippery Rock	Won
Duquesne	Lost
Grove City	Lost
Gannon	Won
Robert Morris	Won
Eдинboro	Lost

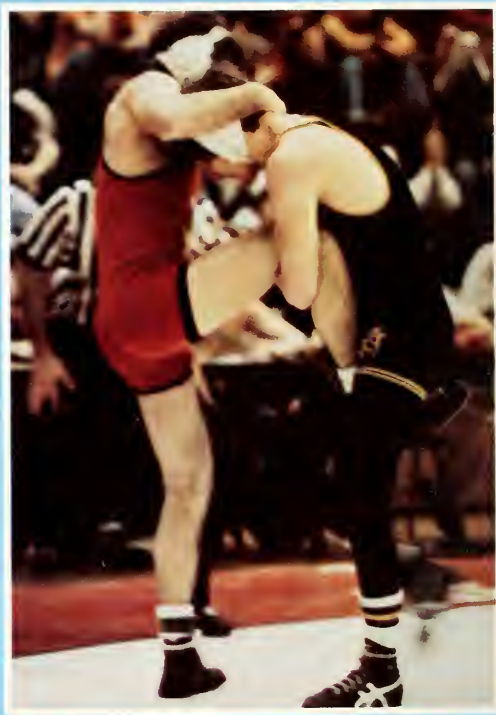
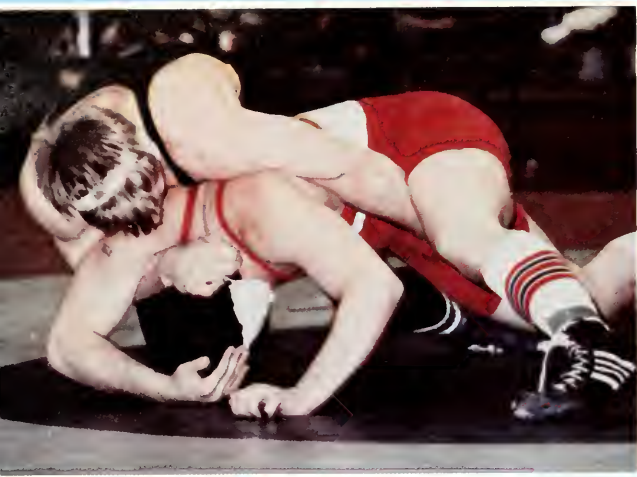


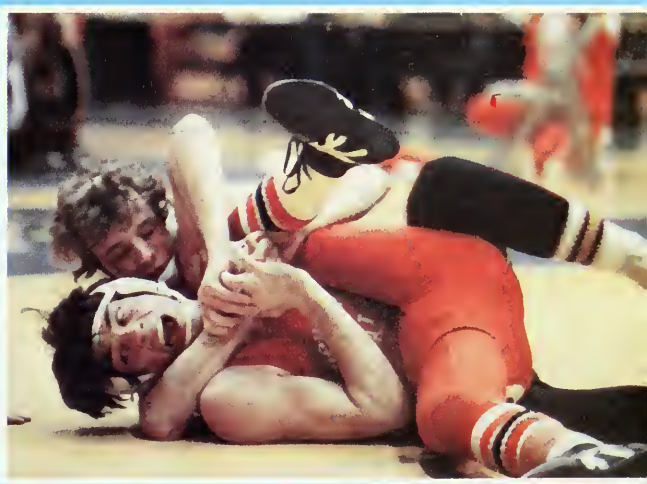
The Women's Volleyball team hopes for a better season next year after a disappointing record of 6 wins and 8 losses. Coach Pat Ferguson said things look good for next year if recruiting goes well. Coach Ferguson returned from a brief illness to an anxious and enthusiastic group of young women. A tough schedule and a young team hampered the team's effort in securing a spot in the regionals. This was the first losing season for the team. Hopefully new members, hard work, enthusiasm, and that Clarion spirit will bring a winning season for next year's team.



Row 1: H. Pharo, P. Hargenrader, B. Frye, T. Peer, J. Bru, P. Gannon, C. Yount, J. Janssen. Row 2: K. DiPetro, Coach Ferguson, M. Zuck, D. Gorey, M. Krajovic, S. Schmidt, L.

Zitalone, S. Ebbitt, J. Vincent, C. Fetzcek, L. Barrett, L. Picariello, Coach Staub.







	CSC	Opp.
Syracuse	29	10
Edinboro	47	4
California St.	42	5
I.U.P.	42	6
Kentucky	36	5
Ohio State U.	20	22
Bloomsburg St.	16	15
Penn State	23	13
West Virginia U.	36	4
Lock Haven	26	9
Univ. of Pitt	25	13
Slippery Rock	21	14
John Carroll U.	27	12
Cleveland St.	19	21

A strong, experienced team lead the Golden Eagles to a winning season record of 12 wins and 2 losses. The team placed first in the Wilkes Open Tournament, second in the Western PA Conference, third in the Penn State invitational and nationally they placed 13th in the NCAA Division I Standings. Also, they tried for 1st with Lehigh in the Eastern Mat Poll.

Individual titles went to many members, but a few of them are: Jack Campbell received the Outstanding Wrestler Award at the NCAA Eastern Qualifiers; he was also 4th at Nationals. Randy Miller was 7th at Nationals. Both own All-American titles.

The fastest pin of the season was made by Dan Kennedy in 32 seconds.

Once again Coach Bubbs can be proud of another fine wrestling team. Their outstanding performances provided many exciting matches for eager Clarion fans.



Row 1: J. Clark, T. Diamond, R. Miller, D. Merriam, R. Wade. Row 2: D. Gilbert, R. Standridge, D. Coleman, J. Campbell, J. Hockenbroch, E. Booth.



Girl's Gymnastics Unbeaten



Row 1: E. Lengyel, C. Malinchak, A. Waldron, D. Kempthorn, L. Davis. Row 2: Coach Weaver, D. Dudt, N. Jones, A. Woods, M. Heidenwolf.

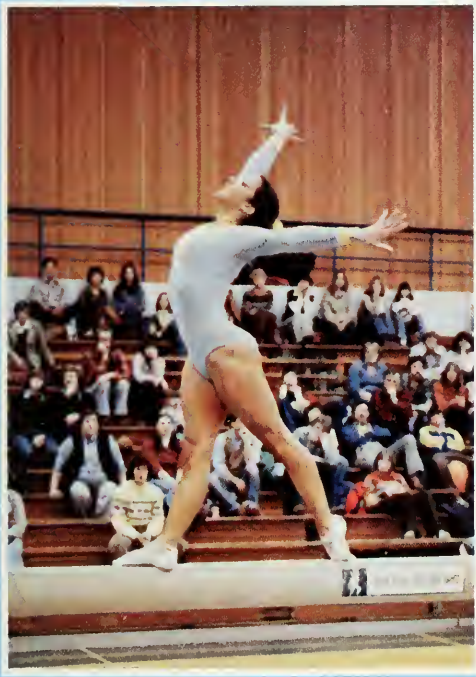
The Girl's Gymnastics team had an outstanding 78-79 season winning all ten of their meets. Individual effort and determination was rewarded with high scores and a third place finish at college nationals.

Appearances by Ann Woods and Nancy Jones on nationwide television in April, and Clarion's hosting of the World University Games Final Trials are hallmarks of the quality and excellence in sportsmanship that Coach Weaver and her team bring to Clarion.



	CSC	OPP
Canisius	135.15	90.00
Ohio State	135.25	121.55
Kent State	139.20	122.90
New Hampshire	140.90	131.70
East Stroudsburg	129.20	105.65
Univ. of Pitt	141.25	130.75
West Virginia	142.65	126.50
Slippery Rock	142.75	120.65
Michigan State	142.50	132.65





Judo



Row 1: C. Wuest, D. Sedoris, C. Kiessling, P. Stevenson. Row 2: M. Esposito, M. Dayton, D. Trudgen, B. Templeton, B. Holowell.
Row 3: Coach P. Jobb, M. Woodward, T. O'Connell, D. Elbert, A. Sahib, C. Hoop, B. Goepfarth.



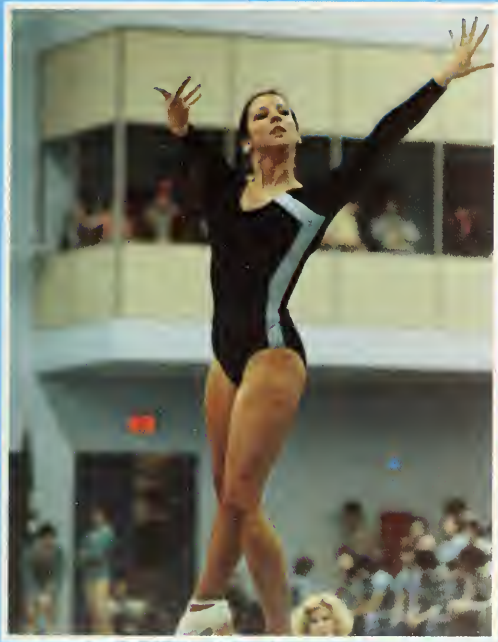
Cross Country

	CSC	OPP
Grove City	23	34
Lock Haven	25	31
California State	21	35
IUP	61	28
Shippensburg	61	61.5
Slippery Rock	61	70

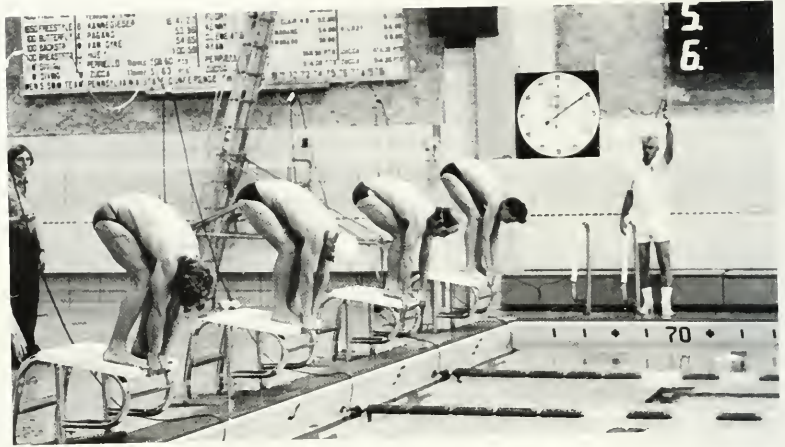
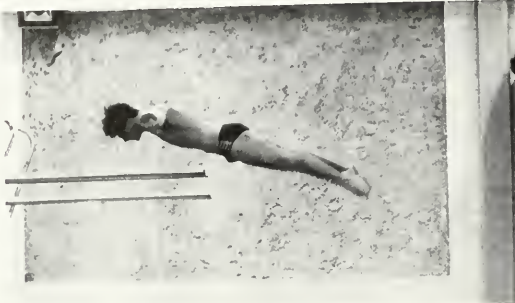
- 7th at California Invitational
- 6th at IUP Invitational
- 3rd at Districts
- 5th at NCAA Division II Regionals
- 3rd at Canisius Invitational
- 6th at PA Conference Meet



Clarion Sports, A Winning Combination



Swimmers Take 9th Consecutive Championship



L to R, Row 1: R. Green, B. Termin, K. Zimmerman, T. Eayre, B. Kanngieser, D. Mogee, M. VanDyke, R. Malanarich, J. Kline. Row 2: K. Ondriezok, B. Knoll, K. Townsen, C. Stock, D. Walker, T. Ferrera, D. Kaufman, B. Frank, J. O'Hara, N. Mack (Manager), T. Bodine (Manager). Row 3: M. Milanarich

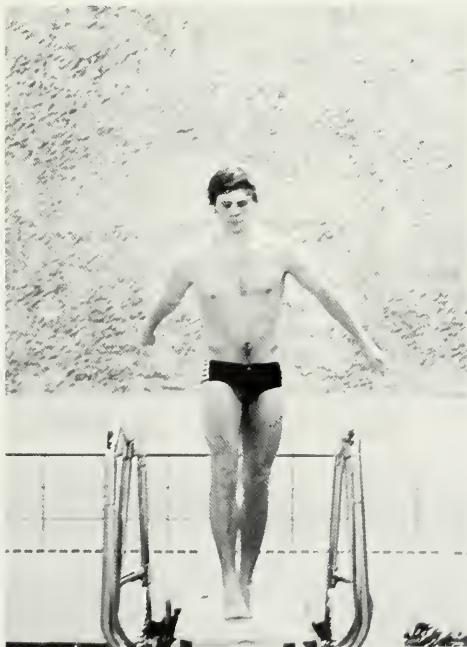
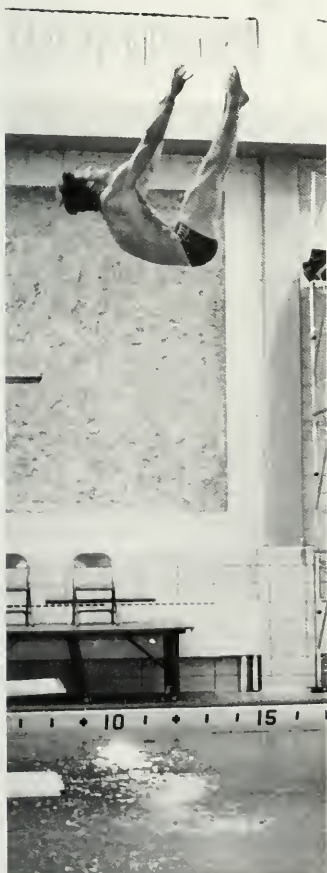
(Manager), B. Fox (Manager), T. Riggs, M. Kochenash, C. Beach, B. Johnson, T. Gillooly, R. Klamut, J. Huey, M. Tannous (Manager). Row 4: S. Carls, J. Buescher, S. VanDyke, S. Shearer, A. Pagano, M. Nanz, M. Nanz.



Once again the swim team took first place in their conference to claim the 9th consecutive championship in their section.

Team captains Bob Kannegieser and Drew Mogee lead the team for a great season of 7 wins and 1, only loss to Pitt. Coach Bill Miller had 15 All-American titles coming from his team.

Many records were established this season, among them were Jim Huey's 200 meter breast stroke, Dan Walker in the 200 meter fly, and the 500 freestyle by Mark Van Dyke, to name a few. Also, Tony Perriello took the NAIA National Championship in the 3 meter diving competition.

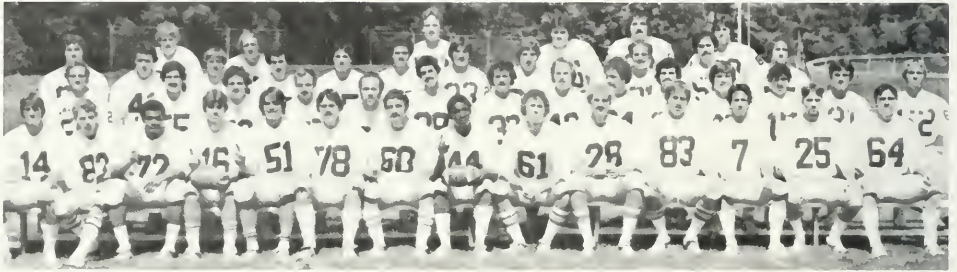


	CSC	Opp.
East Stroudsburg	67	46
Shippensburg	72	42
Slippery Rock	68	50
Fairmont	60	56
Youngstown	60	56
Edinboro	70	44
Bloomsburg	65	53
Pitt	65	82





	CSC	Opp.
West Liberty	28	0
Delaware State	31	10
Geneva	22	3
Edinboro	42	7
Ithaca	0	17
Lock Haven	35	13
Shippensburg	17	34
California	35	18
Slippery Rock	21	10
Indiana	17	0
East Stroudsburg	4	49



Row 1: B. Beatty, J. Stubbs, B. Carter, D. Skok, J. Langrans, M. Grichor, J. Ridgeley, P. Cooper, J. Fleeson, M. Miloser, M. Baker, S. Donelli, T. Krizan, J. Kearns. Row 2: M. Kunselman, J. Thomas, G. Dapp, E. Albright, M. Fredericks, C. Mastrogiacomo, J. McCullough, D. Hallock, D. Kohley, B. Carpenter, G. Frantz, G.

Toth, T. Haftmann, B. Gefert. Row 3: R. Studdes, D. Eury, M. Greiner, G. Knapp, C. Campagna, J. Deluca, R. Cathcart, S. Scillitani, B. May, B. Huffman, S. Brown. Row 4: D. Sikora, D. Fafinski, A. Dinkfelt, B. Brennan, D. Roberts, G. McCauley.



With 11 major injuries and many changes in personnel, the Golden Eagles still went on to a great season with 8 wins and 3 losses. The season ended with a disappointing loss to East Stroudsburg 49-4 for the State Championship.

The team captains were Mike Miloser, Paul Cooper, Joe Ridgeley, and Jerry Fleeson. The most valuable players were Bernie Carpenter on defense and Jeff Laughans on offense. Jeff was also named NCAA College Division All-American. Thirteen players were given special recognition from NAIA All American-NAIA District 18 team, PA Conference West All Conference, and Pittsburgh Press All-District Team. Gary Frantz set a career record for most yards rushing, 1772 in 3 years.

Al Jacks, Head Coach of the Golden Eagles was named to the Western PA Football Hall of Fame with a career record of 104 wins, 37 losses and 5 ties in 16 years of coaching.



Rifle Team

	CSC	OPP
Edinboro	1281	1338
Washington and Jefferson	1331	1126
Geneva	1269	1253
Pitt	1299	1227
IUP	1296	1344
Duquesne	1273	1218
Edinboro	1278	1331
Duquesne	1320	1181
Pitt	1272	1161
Washington and Jefferson	1273	1229
IUP	1286	1328
Geneva	1286	1323



Men's Track



Sprinters: B. Engel, P. Maze



Weight Men: M. Scanlon, K. Long, M. Picarski.

Clarion's track team started slow but was able to take third place at the NAIA District 18 meet. Captains this year were Dan Devine and Ken Gribshaw.



Jumpers: Row 1: E. Fagan, M. Curtis, D. Vertner. Row 2: D. Hunter, K. Mayberry, J. Lewis, K. Koziana.



Hurdlers: D. Devine, T. Paige, V. Braham.



Distance Runners: Kneeling: D. O'Brien, K. Gribshaw, S. Carls, B. Wiedler. Standing: D. Kneram, B. Kemmerer, R. Graham, B. Lindberg, B. Franks.

Women's Track

	CSC	OPP
Allegheny	101	24
Fairmont	66	61
California State	66	47
St. Bonaventure	59	7
IUP	55	50
Slippery Rock	55	111
Bloomsburg	55	9
St. Bonaventure	38	11

3rd at Pa. Conference Championships



Men's Basketball Has Winning Season



Under the leadership of coach Joe DeGregorio this year's Golden Eagle Cagers went on to grasp the Western PA Conference Championship with an overall season record of 76 wins and 6 losses. The team was plagued by many injuries, but outstanding performances by Reggie Wells, the team's co-captain and MVP, Mike Sissini, also a co-captain, Jeff Ebner, and Mark Lockridge sparked the team to victory. Their tough season schedule ended with a loss to Point Park College.

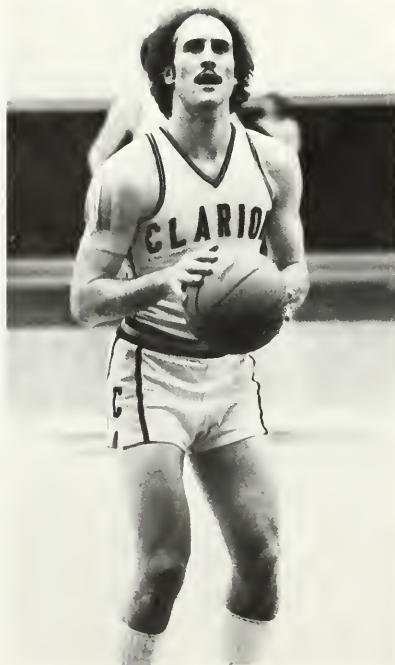
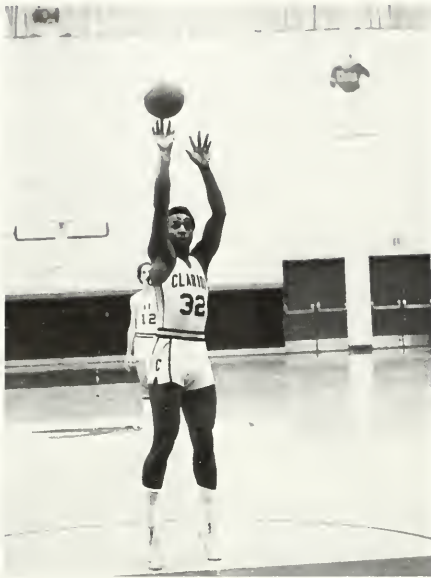
Two records were set this year with Reggie Wells becoming the all-time Leading Scorer for a total of 1,011 points. Mike Sissini became the all-time leader in assists.

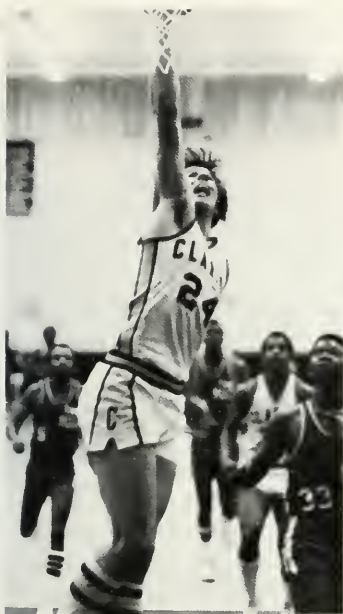
Coach DeGregorio commented that the group played well together and the team as a whole exemplified the aggressiveness and dedication needed to fight for a winning season.



Left bottom up: J. Szumigale, J. Ebner, D. Chojnacki, B. Brizzi, N. Bashnagel (ass't. coach), M. Curtis, R. Wells, V. King. Right Bottom up: J. Tooles, M. Sissini, R. McMahon, B. Fosbenner, A. Bibson, T. Johnson, C. Anglin, B. Holsten, M. Lockridge, Coach J. DeGregorio.

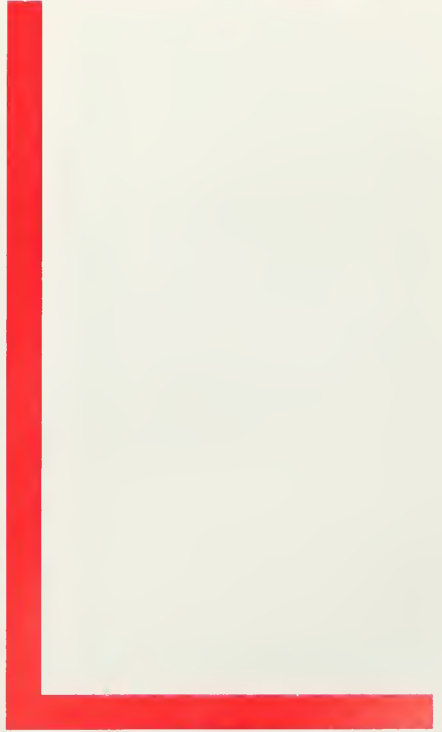
OPP	SCORE
Mercyhurst	74-66 W
Mansfield	97-61 W
Heidleburg	106-76 W
Clarkson College	105-78 W
Buffalo	66-56 W
Alliance	99-67 W
Bloomsburg State	94-90 W
St. Vincent	68-64 W
St. Francis	77-64 L
Steubenville	109-85 W
Mercyhurst	98-97 L
Point Park	83-62 L
Lock Haven	82-56 W
California	82-77 W
Indiana	62-60 W
St. Vincent	93-69 W
Edinboro	69-65 W
Slippery Rock	76-58 W
UPJ	93-76 W
Lock Haven	93-57 W
California	72-56 W
Indiana	67-65 L
Edinboro	96-84 W
Slippery Rock	113-80 W
Grove City	81-80 W
Cheyney State	72-71 L
PSU-Behrend	111-88 W
Point Park	97-84 L







Fine Arts



The Brass Choir is a musical organization devoted to the performance of literature that has either been especially written for or transcribed for brass instruments. It utilizes various combinations of brass instruments from three or four piece ensembles up to the full resources of the group, which consists of sixteen brass players and one percussionist. The Brass Choir specializes in music of the 16th to early 18th centuries as well as music of the 20th century. The Brass Choir has appeared in concerts throughout Pennsylvania and outside the state as well.

Brass Choir



Row 1: J. Burkett, R. Swackhammer, D. Wilson. Row 2: K. Berry, L. Barscz, J. Clark, J. Gasper, K. McElheny, Mr. Terry Pierce (Director).

Row 3: B. Lindahl, J. Evans, G. Gaffney, V. Novak, R. Knight, S. Bolstad, R. Yasher, R. Hetrick, K. Michaels.

Percussion Ensemble

The Percussion Ensemble is a group of talented students who perform chamber music for percussion instruments. They study contemporary works, transcriptions of early music, songs of various ethnic groups, and jazz-rock works, for the purpose of refining their skills. Under the direction of Mr. Lawrence Wells, the musicians present a wide variety of styles in their concerts both on campus and on tour.



Left to right: C. Pirone, E. Livengood, R. Dell, K. Berry, N. Hubbard, T. Lashua, D. Potts, Mr. Wells (Director), H. Streich.

MENC

Music Educators National Conference Student Chapter seeks to acquaint students with the music education profession through workshops, programs, performing groups, discussions, and assisting the Music Department with various projects.



Row 1: P. Dusha, L. Barscz, P. Koellner, R. Nelson, V. McKay, T. Cochran, S. Jones, S. McFetridge, L. Pifer. Row 2: J. Spencer, M. Wooding, S. Egle, C. Pirone, J. Evans, K. Berry, D. Rubisch, E. Pancerev, R. Fisanick. Row 3: R. Hetrick, L. Fortney, G. Gaffney, J. Burkett, D. Bertolini, K. McElheny, T. McCaffery, C. McKee, B. Dell, J. Gasper.

Gospeliers

The C.S.C. Gospeliers consists of approximately 36 students and is presently directed by Sylvia Stroy. It is open to all students who enjoy the Gospel of Christ through song. They began on campus eight years ago, and since then have shared their talents with various congregations throughout the Pennsylvania and New Jersey areas.



Row 1: P. Hudson, S. Stroy, L. McCleod. Row 2: G. Woodruff, A. Armstrong, A. Miles, M. Audain, L. Savoy, C. Cooper, C. Cooper. Row 3: K. Lampkins, G. Johnson, K. Finn, V. Rue, R. Moore, L. Davis, C. Brown, M. Lee, W. Hefflin. Row 4: T. Alston, A. Johnson, T. Brown, P. Jones, N. Hubbard, K. Cauthorn, P. Brown, D. Brown, M. Hallums, D. Underwood, J. Morgan, J. Samuels. Not Pictured: C. Dreher, R. Wilburn, T. Jones, K. Weible, C. Overton, L. Corker, L. Blackston.

College Players

The campus dramatic organization open to all students is known as The College Players. Members have the opportunity to gain experience in the various phases of play productions through the four or five major shows each year. Along with their advisor, Dr. Bob Copeland, The College Players also offer five productions in the summer theatre.



Sitting: S. Richards, D. Sedoris, S. Celento, J. Clark, B. Threnhauser, P. Elliott. Standing: S. Eck, D. Umbach, N. Newson, G. Lakes, C. Culbertson, M. Varkonda, K. Schneider, A. Weiss, V. Gadzala, R. Yaconis.



Row 1: J. Clark, S. Celento, S. Richards, P. Elliott, D. Sedoris. Row 2: J. Elmes, A. Clover, G. Lakes, A. Marston, A. Weiss, D. Morris. Not pictured: B. Mallison, D. Fellenbaum, P. Hudson, T. Dougherty.

Alpha Psi Omega

Alpha Upsilon is the Clarion chapter of Alpha Psi Omega, National Honorary Dramatics Fraternity. The members of Alpha Psi Omega earn their membership through an expressed desire for growth in theatre and through points given as a result of work done in College Theatre, Individual Speaking Events, College Readers, and on the campus radio and television stations.

Opera Workshop

Lyric Opera Workshop meets twice a week in Marwick-Boyd. Each semester the group performs several times; for community gatherings, in an Opera Gala, and in the spring the production of a major opera. The group is open to all interested students.



Row 1: Dr. Connor, G. Koehler, L. Pifer, M. Matthaner, J. Kissinger, S. Snyder, S. McFetridge, S. Jones. Row 2: D. Rubish, C. Cadwallader, K. Lambert, S. Toth, K. Hartnett, J. Weller, M.

Montre, T. Cochran, M. Mills, D. Diven. Not pictured: W. Ford, J. Spencer.



Lab Jazz Band

The Lab Jazz Band consists of approximately twenty-five musicians, selected through auditions. Styles performed range from the music of the 1930's to the new "big band" sound, with emphasis on recent trends in composition and arranging. Each year the band performs two concerts and tours various high schools in Western Pennsylvania.



Row 1: V. Skibo, Mr. Wells (Director), R. Nelson, R. Yoder, F. Harlan, T. Snyder, J. Chiprean, V. McKay, R. Frederickson. Row 2: C. Pirone, N. Hubbard, R. Swackhammer, M. Stattler, R. Knight, B. Lindahl, G. Gaffney. Row 3: T. Damiano, D. Roe, B. Nickoloff, J. Burkett, D. Wilson, R. Hetrick, S. Bolstad, J. Walsron. Not pictured: M. Nelson, B. Estep.



Row 1: R. Nelson, J. Gasper, B. Burtell, B. Lindahl, R. Hetrick, G. Gaffney, G. Kulusich, R. Snyder, S. Schultz, J. Burkett. Row 2: J. Jaskowak, S. Bolstad, K. McElheny, C. Pirone, K. Berry, R. Yasher.

Kappa Kappa Psi

Kappa Kappa Psi is a national honorary band fraternity dedicated to the promoting of musicianship, leadership, citizenship, service to the band, and friendship among its brothers.





Tau Beta Sigma

Tau Beta Sigma, the national honorary band sorority, is dedicated to the ideals of promoting musicianship, leadership, service to the band, and friendship among sisters. Membership is open to students in the college band who have actively participated for one semester in the band program and have successfully completed a pledge program.



Seated: P. Dusha, J. Kissinger, S. Egley, R. Greco. Standing Row 1: M. Wooding, L. Barscz, B. Jeffreys, K. Byron, C. Rebman, M. Miller. Standing Row 2: S. Palmer, C. Gatti, F. Harlan, G. Scheck, C. McKee, D. Cunningham.

Golden Eagle Marching Band





1978 Golden Eagle Marching Band



CLARINETS

J. Cherico
P. Dusha
D. Ezster
R. Frey
S. Jones
K. Lamb
K. Lambert
T. McCaffery
C. McKee
C. Naugle
S. Smith
E. S. Thompson

FLUTES

M. Arellano
M. Campbell
M. Clark
S. Egle
J. Focke
R. Greco
C. Hosfeld
J. Jaskowak
E. Moody
K. Ossesia

G. Schneck

L. Tower
G. Walker

SAXOPHONES

N. Appleby
D. Bertolini
H. Cameron
J. Chiprean
R. Fisanick
L. Gaidoslt
C. Gatti
D. Guzik
V. McKay
R. Nelson
P. Sanate
T. Snyder
H. Wheeler
R. Yoder

HORNS

M. Campanella
J. Clark
A. Damiano
M. Ferguson
C. Fry

J. Gasper

B. Jeffrey
D. Keen
C. Kurtz
B. Leasher
K. McElheny
S. Shultz

TROMBONES

J. Baum
S. Beggs
J. Evans
W. Franks
R. Knight
R. Lindahl
K. Michael
M. Stattler
J. Stewart
R. Swackhammer

TRUMPETS

D. Beggs
S. Bolstad
J. Burkett
B. Burtell
K. Buterbaugh

R. Estep

L. Fortney
M. Glace
R. Hetrick
D. Kaltenbaugh
B. Nickoloff
V. Novak
R. Nulph
D. Petersen
J. Waldron
J. Wilder

TUBAS

S. Chobot
B. Dittman
D. Edminston
G. Gaffney
M. Nelson
S. Palmer
L. Smith
A. Walbert
R. Yasher

PERCUSSIONS

K. Berry
J. Bigley

N. Cadwallader

R. Dell
R. Griffin
C. Harkless
E. Livengood
M. Miller
C. Pirone
C. Rebman
J. Schnur
D. Umbach
MANAGER
D. Lapp
PHOTOGRAPHER
G. Blaho
ANNOUNCER
M. Malthaner



Left to right: Dr. S. Michalski (Conductor), J. Lilly (Flag Captain), L. Barszc (Drum Major), C. Shakley (Golden Girl), B. Lilly (Head Majorette), Mr. Wells (Asst. Conductor).



Flags - Left to right: J. Bigley, P. Work, C. Melvin, J. Williams, S. Toth, C. Kasprovicz, B. Hamberger, J. Lilly.



Majorettes - Left to right: E. Oris, J. Shaddock, C. Shakley (Golden Girl), S. Bibb, S. Palmer, B. Lilly (Head Majorette), B. Querriera, T. Bochak.

“A Midsummer Night’s Dream”



Thesus, Duke of Athens	Mike Caruso
Egeus, Father to Hermia	Mark Metzler
Lysander	Ken Titzel
Demetrius	Lawrence Barrett
Philostrate	David Green
Peter Quince, a carpenter	David Umbach
Snug, a joiner	Elizabeth Threnhauser
Nick Bottom, a weaver	Bob H. Copeland
Francis Flute, a bellows mender	Warren Ebel
Tom Snout, a tinker	Emmett Graybill
Robin Starveling, a tailor	Tom Dougherty
Hippolyta, Queen of the Amazons	Rebecca Faulkner
Hermia, in love with Lysander	Megan Murphy
Helena, in love with Demetrius	Esther Armstrong
Oberon, King of the Fairies	James Coleman
Titania, Queen of the Fairies	Marie Trusits
Puck, or Robin Goodfellow	William Hudson
First Fairy	Sandee Hay
Peaseblossom	Roni Gore
Cobweb	Debbie Schoeppner
Moth	Poppy Badger
Mustardseed	Beth Crawford
Attendants	Scott Hummel
	Kevin Lambert
	Hal Siegel
	Jonathan Wilson
Changeling Boy	Scott Kemp





"A Midsummer Night's Dream" propelled the audience into a realm of fantasy. This Shakespearean comedy was beautifully interpreted by director Mary Hardwick. The ingredients of love, magic, and good natured tomfoolery were correctly mixed for a production of pure fun.

Lyric Opera Workshop

PERFORMERS
Cathie Cadwallader
Diana Diven
Wendy Ford
Gary Koehler
Gail Kulusich
Kevin Lambert
Sue McFetridge
Mark Mills
Shelby Mong
Karen Norwood
Lydia Pifer
Keith Schäffer
Jim Spencer
John Weller





The Gondoliers



One Flew Over The Cuckoo's Nest



Chief Bromden	R.E. Klingensmith
Aide Warren	Bernie Carpenter
Aide Williams	Bob Nulph
Nurse Ratched	Snook Richards
Nurse Flinn	Deb Sedoris
Dale Harding	Mark Metzler
Ellis	Hal Siegel
Billy Babbit	Jonathan Wilson
Scanlon	Dan Ziff
Cheswick	Raymond Oschman
Martini	Steven Herb
Ruckly	Brian Berlin
Fredericks	Phillip Elliott
Sefelt	Ken Titzel
Col. Matterson	Dave Umbach
Randle P. McMurphy	Michael Short
Dr. Spivey	Arnie Zaeske
Aide Turkle	Jim Coyne
Candy Starr	Frankie VanMeter
Nurse Makamura	Mary D'Innocenzo
Technicians	Kathy Frye
	Stephanie Cambro
Sandra	Mary Ann Varkonda
Nurse	Nancy Newson
Aides	Rick Yaconis
	Tom Dougherty





One Flew Over the Cuckoo's Nest in play form, is an adaptation from Ken Kessey's novel of the same name. The play centers around McMurphy, a fugitive from a work farm who fakes insanity and swaggers into a mental institution hoping for prompt release. As he attempts to overrule the cool, yet iron-fisted dominion of Nurse Ratched, he finds to his dismay that he is one of the few who are committed, leaving little chance for release. McMurphy befriends an Indian, Chief Bromden, and instills a lost confidence in him. As the play ends, McMurphy tragically becomes a symbol of the power of the institution, but Chief Bromden emerges as the new protagonist.

Beauty And The Beast

Wizard Jonathon Wilson
 Mikey Stephanie Celento
 The Beastly Prince Rick Yaconis
 Mr. Clement Michael Rogers
 Jonquiline Brenda Lange
 Jessamine Rebecca Faulkner
 Beauty Deb Sedoris



Gypsy

Uncle Jocko's Kiddies	G. Arthur, J. VanBrugen, L. Greco, S. Griebel, S. Kemp, K. Porter, J. Prelog, L. Russell, L. Wilkinson, L. Wilson.
Stage Mothers	S. Celento, S. Dorrión, R. Hamberger, K. Stanley, N. Thackaberry, S. Thompson.
Uncle Jocko	Warren Ebel
Georgie	Ken Titzel
Baby June	Shannon Park
Baby Louise	Megan Park
Rose	Anne Stambaugh
Pop	Scott Hummel
Rich Man	David Umbach
Rich Man's Son	Scott Kemp
Dancing Urchin	Tim Prelog
Weber	Jonathan Wilson
June	Judy Clark
Louise	Esther Armstrong
Angie	Rick Yaconis
Tulsa	James Coleman
Waitress	Sharon Eck
Miss Cratchitt	Kim Stanley
Mazeppa	Mary A. Varkonda
Renee	Stephanie Cambro





The American Musical is perhaps the clearest creation of a country that is uncomfortable gazing at the light of truth unless it is disguised as the spotlight of entertainment. The best musicals have always blended those lights into a magic blaze to cheer America's spirit. The musical GYPSY is about that spirit, incarnated in Rose, the ultimate stage mother, and her ultimate offspring, Miss Gypsy Rose Lee.



Concert Choir

The Concert Choir is a select group of performers under the direction of Mr. William MacDonald. Many long hours of rehearsal are devoted to mastering major compositions. In addition to their Christmas and spring concerts, the choir members share their songs with high school students during their annual spring tour.





SOPRANO I

M. Burk
 S. Cambro
 T. Ferguson
 C. Fix
 D. Forbes
 K. Hartnett
 B. Jastromb
 J. Kissinger
 G. Kulusich
 B. Markunas
 K. Muller
 A. Ortman
 K. Pitts
 M. Pitts
 D. Pulcini
 S. Toth
 E. Weaver
 A. Weekley

SOPRANO II

L. Barscz
 B. Birckbichler
 S. Blair
 J. Cuiffi
 P. Depew
 D. Diven
 S. Dorrión
 K. Downie
 W. Ford
 C. Hayes

L. Ludwig
 T. Majors
 K. McCall
 S. McFetridge
 B. Owens
 L. Pifer
 L. Pitoniak
 L. Roberts
 K. Shook
 B. Smith
 M. Socha
 C. West
 ALTOS I
 H. Carter
 C. Cover
 B. Duchene
 S. Eirkson
 L. Gaidosh
 J. Gathers
 M. Guerra
 L. Haney
 T. Jacques
 S. Jacobus
 M. Luksik
 G. Owen
 S. Palmer
 D. Pierce
 S. Ross
 D. Rubisch
 L. Stoker

D. Tinz
 B. Yager
 ALTO II
 B. Bigler
 C. Birocco
 H. Cameron
 T. Campbell
 R. Frey
 N. Haupt
 K. Masters
 C. Maybee
 G. Olney
 D. Parcell
 E. Rapp
 S. Scott
 C. Slick
 K. Stanley
 H. Wheeler
 J. Womeldorf
 TENOR I
 C. Coon
 R. Craig
 S. Ebron
 T. Goedker
 M. Hallums
 J. Holcomb
 B. Johnson
 K. Kocis
 M. Monfre
 TENOR II

S. Bright
 G. Crain
 M. Malthaner
 E. Mensurati
 J. Spencer
 T. Wotus
 BASS I
 T. Cochran
 T. Dougherty
 J. Fritchey
 G. Gaffney
 M. Houtz
 G. Koehler
 J. Moore
 P. Pratt
 H. Siegal
 N. Stulak
 J. Weller
 BASS II
 R. Davison
 M. Evans
 L. Fortney
 L. French
 C. Hanna
 M. Mills
 J. Sheline
 K. Titzel

Madrigal Singers



Row 1: D. Wilder, C. Coon, J. Rembold, K. Hanna. Row 2: L. Deckman, L. Pifer, D. Forbes, C. Varwyk, J. Kissinger, A. Stambaugh.
Row 3: P. Stover, S. Caldwell, K. Norwood, K. Neely. Row 4: R. Craig, G. Koehler, M. Evans.



The Madrigal Singers is made up of talented students who possess the techniques and skills to work with a specialized area of music. At Christmas, they present a Madrigal Dinner, and in the spring they present a concert.

The Orchestra presents a number of major performances during the school year which includes the standard literature for orchestra, works with chorus, opera workshops, all-college musicals, and a Concerto program in which students are featured as the soloists of the evening.

Orchestra



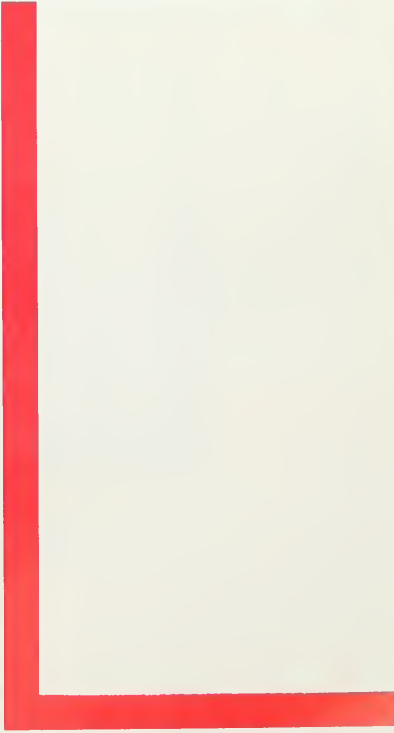
Fine Arts At Work







Features



Miss Clarion State College 1979



Left to right: JoAnn McKain, Gail Kulusich, Lauren Barscz, Suzanne Eriksson, Sherry Dunn, Crystal Marousis, Pam Work, Lydia Pifer, Kelli Stephenson, Catherine Cooper.



On March 17, 1979 Lydia Pifer was crowned Miss Clarion State College. The pageant was directed by Emily Anderson, last year's queen. Pete Hudson and Kim Lemon served as the evening's emcees. Of the ten finalists, four runner-ups were chosen: Pam Work, 4th runner-up; Crystal Marousis, 3rd runner-up; JoAnn McKain, 2nd runner-up; and Gail Kulusich, 1st runner-up.

Miss Pifer is now eligible to represent Clarion in the Miss Pennsylvania Pageant.





Kreskin, Oct. 10





Serenade, Oct. 5

Tamburitzans, Oct. 26



Homecoming 1978



Homecoming 1978 marked the 25th Anniversary of the Autumn Leaf Festival. Despite another rainy day, Cathy Rykaczewski was crowned Homecoming Queen during halftime of the football game.

Many campus organizations added to the parade with various floats. First place went to Phi Sigma Sigma and the sisters of Alpha Sigma Alpha.

The Golden Eagle football team highlighted the afternoon with a win over Lock Haven.



Row 1: Pam Hannaford, Laurie Gerst, Janet Schmincke, Gail Woodruff. Row 2: Mitzi Munn, Brenda Penpek, Cathy Rykaczewski, Barbara Doyle. Not pictured: Candi Zimmerman.



Cathy Rykaczewski
1978 Homecoming Queen



3rd Annual Dance Marathon, Nov. 11-12

On November 11 and 12 from 5:00 P.M. to 5:00 P.M. in Harvey Hall, 27 couples danced for the kids at Children's Hospital. Within the 24 hour period approximately \$2,000.00 was made.

The marathon was a joint effort between Panhellenic Council and WCCB, with Denise Durante acting as chairman.

Numerous special dances were awarded during the marathon. Debbie Rudolph and Nick Stulak won the Disco and Jitterbug contests while Daria Gorniak and Craig Kant "Bumped" for their prize. Terry Hennessy and Elaine Merlack won the Twist; John Gasper and Val Novak captured the Polka title. The door prize was awarded to Nancy Schumann and Mickey Sekelsky for wearing lucky number 18. Couple #3, Karen Yager and Mary Zamboldi won the \$60.00 prize for receiving \$297.53 in pledges.

Thanks goes to everyone who helped make the marathon a great success.





USA Gymnastics Exhibition, Dec. 17

On December 17, 1978, Clarion State College hosted the USA Gymnastics Exhibition-1978. Among the participants were Kurt Thomas, floor exercise gold medalist in the 1978 World Games; Elfi Schlegel, the national champion of Canada; Kelly McCoy, a member of the 1978 USA Women's National Team; Sandy Wirth, a member of the 1978 USA Women's National Team; Linda Kardos, USA representative in international competition; Gigi Amandos; and Heidi Anderson. Also participating in the exhibition were Clarion's Nancy Jones, Ann Woods, and Mary Heidenwolf.



Rostal-Schaefer,
Jan. 25

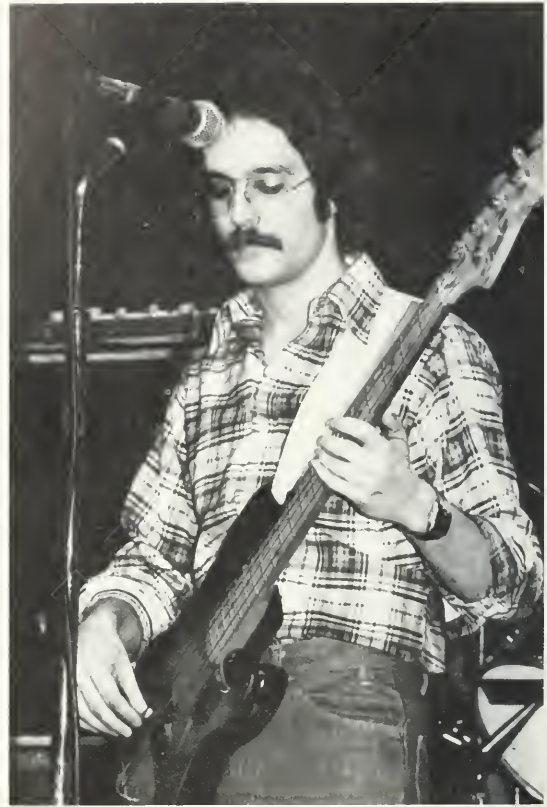


Erie Philharmonic, Feb. 1



Theatre For Deaf, Feb. 20
Maya Angelou, Feb. 26





David Bromberg, Feb. 27





Vincent Bugliosi, March 12



Mexico Folklorico, April 1
Elizabeth Hymes, May 1

We Can
Build A Bridge
April 21, 1979



Activities Day





USA World University Games Final Trials

On May 4th and 5th, Clarion State hosted the 1979 USA World University Games Final Trials. Thirteen of the top collegiate gymnasts in the country competed hoping to earn a place on the USA team which will be competing in Mexico City in September.

Clarion's Ann Woods finished in first place with a two day total score of 74.70. Beth Johnson of Centenary finished second with a score of 74.30. The rest of the USA team consists of Penn State's Margie Foster (73.95), Nancy Jones of Clarion State (73.80), and Susan Archer of Cal. State-Fullerton (73.30).





USA Team: Nancy Jones (Clarion State), Beth Johnson (Centenary), Ann Woods (Clarion State), Margie Foster (Penn State), Susan Archer (Cal. State-Fullerton).

Who's Who in American Universities and Colleges

Joan B. Vicari (Library Science) - Hall Council, Alpha Phi Omega, Kappa Delta Pi, Lambda Sigma, Spanish Club, Campus Crusade for Christ.



Left to right: George L. Lakes (Speech Comm./Theater)-Alpha Psi Omega, College Readers, College Players, IE Team, Concert Choir, Lyric Opera Workshop, Madrigals. Mary E. Mallison (Speech Comm./Theater)-Alpha Psi Omega, Pi Kappa Delta, WCCB, WCUC, Dare, Sequelle, SET, College Readers, College Players, Debate, IE Team, English Club,

Concert Choir, Lyric Opera Workshop. Mariann C. Babnis (Speech Comm./Theater)- Pi Kappa Delta, IE Team, WCUC, SET, Concert Choir, Student Senate. Joseph P. Colligan (Speech Comm./Theater)-Phi Sigma, Alpha Psi Omega, Pi Kappa Delta, College Players, IE Team, Lower Board, Intramurals, RA.



Left to right: Diana M. Miller (Marketing/Management)-Tennis Team, Phi Beta Alpha, Accounting Club, Business Assoc., Marketing Assoc., Tennis Club, Assoc. of Women Students. Douglas L. Hein (Accounting)-Phi Beta Alpha, Omicron Delta Epsilon, Accounting Club, Business Assoc.,

Clarion Outing Society, Hall Council. Dawn M. Macurdy (Marketing)-Phi Sigma Sigma, Student Senate, Center Board, Marketing Assoc., Hall Council, Assoc. of Women Students.



Theresa M. Gallo (Elementary Ed.)-Alpha Phi Omega, PSEA, Lower Board.



Left to right: Linda S. Bieloski (Marketing/Management) - Delta Zeta, Phi Beta Alpha, Lower Board, Business Assoc., Marketing Assoc., RA. John T. Stunda (Management)- Call, Sequelle, Student Senate, CAS, Marketing Assoc., Young Democrats, Hall Council.



Left to right: Barbara L. White (Speech Comm./Theater)- Sigma Sigma Sigma, IE Team, WCCB New Director, WCUC, Intramurals. Jeffrey P. Douthett (Speech Comm./Theater)- Center Board, Marching Band, Community Orchestra, Concert Band, Symphonic Band,

Call. Elizabeth J. Lacko (Speech Comm./Theater) - Pi Kappa Delta, Tau Beta Sigma, Debate Team, Marching Band, Concert Band, Ski Club, Concert Band, Student Advisory Board.



Left to right: Linda L. Kruse (Russian)- Zeta Tau Alpha, Alpha Mu Gamma, Cheerleader, Russian Club, Spanish Club. John M. Sheline (Accounting) - Accounting Club., Business Assoc., Archaeological Assoc., Concert Choir, Lyric Opera Workshop,

Middle Board. Vickie L. Posch (Speech Path./Aud.) - Kappa Delta Pi, Psi Chi, NSSHA, Alpha Sigma Alpha, Math Club, Hall Council, Campus Crusade for Christ.



Mark J. Baric (Accounting) - Theta Chi, Investment Club, Intramurals, Lower Board, Campus Crusade for Christ, RA.



Left to right, Mariann E. Luksik (History) - Phi Alpha Theta, History Club, Russian Club, Concert Choir. Cynthia L. Eyre (Social Studies) - Panhellenic Council, Kappa Delta Pi, Phi Alpha Theta, Psi Chi, History Club, Lower Board, Intramurals. Below: Patricia A. Carlin (Library Science) - Alpha Sigma Tau, Kappa Delta Pi, Lambda Sigma, Sigma Tau Delta, Sequelle, College Readers, Concert Choir, Psi Chi, Lower Board, Intramurals.



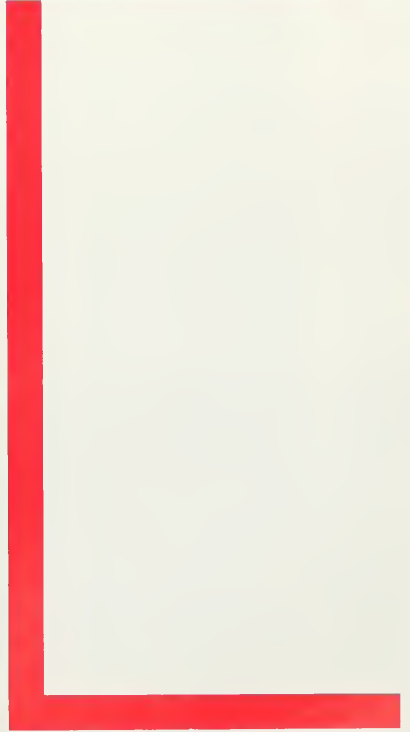
Not pictured, Kimberly A. Abel (Elementary Education), Mary Ann Demchak (Elementary/Special Education), Diana L. Diven (Education), Colleen A. Ellermeyer (Elementary Education), Debra A. Erisman (Education), Judd E. Fritchey (Music Education), Marian J. Green (Education), Roberta Hammill (English), George M. Kapusta (Economics), Becky L. Leasher (Music Education), Nancy L. Mack (English), Vicky S. Mason (Library Science), Kathryn A. Mechenbier (Speech Path./Aud.), Michele T. Miller (Music Education), Kathy A. Nori (Speech Comm./Theatre), Karen A. Norwood (Music Education), Deb A. Sedoris (Communication Arts), Steven A. Thompson (Music Education), Rita K. Zanaglio (Special Education).

Below: Left to right: Vicky K. Kemmerer (Medical Tech.) - Cheerleader, Track Team, Bios Club, Pre Med Club, Campus Crusade for Christ, R.A., Intramurals. Lauren A. Murgatroyd (Medical Tech.) - Women's Swim Team, Intramurals.





Greeks



The officers are: B. Molnar (Pres.), K. Fedorek (V.-Pres.), T. Wyant (Sec.), S. Radomski (Treas.).

The Interfraternity Council (IFC) is the governing body of Clarion's ten fraternities. Two representatives from each fraternity serve on the council which co-ordinates the social, service, rushing, and pledging activities of member fraternities. In working with Panhellenic Council, IFC has sponsored charity projects and Greek Week. Fraternities are also involved in intramurals and collegiate sports as well as WCCB, Student Senate, The Call, and Marching Band.

Scholarship is not neglected, as each spring during Greek Week, trophies are presented for first and second place for both active and pledge categories.

Interfraternity Council



Row 1: B. Molnar, T. Wyant, K. Fedorek, S. Radomski. Row 2: C. Smith, J. Gills, T. Mediate, D. Merlino, D. Dascenzo, G. Majkut, T. Watkins, M. Weinzierl. Row 3: J. Wilson, D. Zonarich, E. Rusnak, J. Pailin, S. Erickson, T. Hennessy. Not pictured: Hal Wassink (Advisor).



Panhellenic Council

The officers are: S. Mackey (Pres.), S. Smith (V.-Pres.), N. Wareham (Sec.), D. Accurdy (Treas.).

The Panhellenic Council is the governing body of the nine sororities on campus. It is responsible for correlating all social, pledging, rushing, and sororities' service activities. This year Pan Hel was responsible for the dance marathon for Children's Hospital. Pan Hel is an important organization because it helps to form, and keep strong the bonds of sisterhood shared between Greeks.



Seated: D. Macurdy, S. Smith, S. Mackey, N. Wareham, J. Perry.
 Standing: T. Wells, B. Chiapelli, D. Dick, G. Ferragine, D. Wecksler,
 J. Zuech, S. Rutherford, J.A. McKain, B. Goodling, N. Wagner, R.

Marcello, J. Matzel, T. Larsen, S. Spencer. Not pictured: C.
 Mitchell, B. Palmore, G. Raymer.



Phi Sigma Kappa

Row 1: M. Malthaner, B. Adams, J. Malthaner, B. B. Sylvester, D. Miller, L. Adamson, K. Schickling, V. Radomski. Row 2: V. Benz, R. Cassell. Row 3: J. Walter, T. Hennessy, M. Reitz, T. Price, S. Stambaugh, B. B. Smith, A. Zediker, J. Moro, D. Wallisch, D. Schaffer, J.

McGonnell, K. Zimmerman, L. Cvijic, J. Westerman, L. Van Orden, C. McWilliams, D. Tinz, D. Gittings, B. Noel. Row 4: J. McGonigle, P. Tartaglione, D. Leathers, J. Cramer, J. English, S. Burnham.



The officers are: T. Hennessy (Pres.), B. Noel (V. Pres.), M. Reitz (Treas.), S. Stambaugh (Sec.), D. Gittings (Sentinel), D. Shaffer (Inductor).

The Ny Pentaton Chapter of Phi Sigma Kappa was founded on February 11, 1967. Since that time, nearly 200 brothers have been initiated into the ever growing throng. Presently we are at a strength of 25 brothers.

The brothers of Phi Sigma Kappa are involved in many phases of campus life, including Student Senate, Center Board, WCCB, Football, and Cross Country.

We hold many social functions during the course of the year, such as our annual Christmas Party, Founders Day Dinner, Spring Formal, and the infamous Mary's Party. The Brotherhood also offers services to both the college and community by our book co-op, our distribution of desk blotters, and the Children's Hospital Fund Drive.

"Our idea is so old, it's back in style . . . living together to help and understand one another. It should never have gone out."



Omega Psi Phi

L to R: K. Jones, J. Pailin, J. Pollard, P. Cooper, G. Smith.

Que-Essence



L to R, Row 1: D. Mack, B. Hardy, G. Woodruff, C. Tate, A. Miles, D. Alston, P. Jones. Row 2: S. Thompson, J. Lewis, T. Cartir, L. Grisham, C. Cooper, C. Cooper, S. Thorn, T. Gary. Row 3: M. Anderson, M. Upchurch, A. Armstrong, C. Johnson, A. Murphy.

Omega Psi Phi was founded on the campus of Howard University in 1911. The Brothers strive to uphold such Cardinal Principles as Manhood, Scholarship, perseverance, and uplift. Omega Psi Phi is an International Fraternity with chapters on all major college campuses as well as in other countries. The Epsilon Kappa Chapter at Clarion State College has existed since 1976. Fraternity Motto: Friendship is essential to the soul.

The Que-Essence Club of Omega Psi Phi Fraternity Inc. was founded in the fall of 1975. Our purpose is to assist our brothers in their organizational activities. We also function as a group of women serving the college and the Clarion Community.

Alpha Chi Rho



The officers are: E. Livengood (Pres.), B. Lindahl (V.-Pres.), T. Snyder (Treas.), S. Bolstad (Sec.), B. Robinson (Rush Chairman), Mr. J. Hall (Advisor).

The Mu Phi Resident Chapter of Alpha Chi Rho Fraternity was founded on the Clarion campus May 24, 1964. We are a closely knit brotherhood with 85 years of National Fraternity behind us. As a whole, our 28 active brothers combined a Q.P.A. of 3.512; the first time a fraternity at C.S.C. has been eligible for the Dean's List. We have donated \$1700 to the library over the last 11 years for a high academic standing. We took 1st place honors in the Overall Greek Week competition with the strong points being in Greek Sing (1st place three years in a row) and the Academic Grade Average.

We also have enjoyed a rather successful social year mixing with sororities and participating in the Annual "Crow" Bowl at Penn State. Our traditional Christmas and Spring formals went off with great success as well as a trip to Pittsburgh for opening day with the Pirates.



Row 1: M. Johnson, P. Sanute, K. Michaels, A. Walbert, G. Gaffney, M. Evans, R. Yasher. Row 2: E. Livengood, R. Knight, R. Swackhammer, R. Hetrick, B. Molnar, S. Walters, B.

Lindahl. Row 3: S. Bolstad, L. Fortney, T. Snyder, B. Robinson, J. Burkett, D. Wilson, T. Kiplinger, D. Merlino, D. Stewart, R. Eichner, M. Graham.



Row 1: K. Bussey, A. Byerly. Row 2: K. Martin, T. Starmack, B. White, J. Eshnour, M. Grubbs, J. Kline, J. Gill. Row 3: R. Masi, M. Nanz, J. Tegowski, D. Reinhardt, B. Brosious, R. Milnarish, T. Senic, T. Mediate, G. O'Hara. Row

4: M. Polinski, B. Scala, B. Hayes, T. Hennessy, T. Sullivan, B. Knoll, Row 5: C. Pyle, F. Young, B. Sundo, D. Snyder. Row 6: D. Orndorf, M. Anderson, D. White.

Theta Xi

The officers are: T. Senic (Pres.), J. Kline (V. Pres.), R. Hayes (Treas.), J. Gill (Sec.), R. Milnarish (House Mgr.), B. White (Ass't. House Mgr.), D. Snyder (Pledge-master), T. Starmack and B. Sundo (Clarion Operating Comm.), M. Grubbs (Scholastic Chmn.).

The Beta Omicron Chapter of Theta Xi National Fraternity was founded on May 9, 1963. Since that time we have initiated over 370 Brothers. Our house is located right next to the campus at 36 Greenville Avenue. It has a large party room, lounge, TV room, gameroom, and enough space to house 42 Brothers. We are active in Greek Week, Collegiate Activities, and Community Service Projects. In intramurals we won first place in football and foul shooting, and took second in golf. We also have a formal, and formal parties for Brothers and Alumni of our Chapter.





Sigma Chi

Row 1: J. Rhea, R. Breigher, E. Ord, Li Damasceno, J. Battin, J. Redella, T. Ressler, D. Bush, R. Smith. Row 2: J. Ross, D. Celento, G. Mervosh, R. Dean, C. Wolfarth, B. Delany. Row 3: R. Baade, D. Lashley, T. Bopp, M. Duckert, B. Kaschak, S. Mazur, G. Bateman, M. Ruehrshneck, P.

Obenreder, M. Keepports, D. Zonarich. Row 4: M. Weakrecht, B. Bettin, J. Wilson, S. Hood, B. Wieand, J. Hawkins, S. Jacobs, B. Harshman, B. Hannum.

The officers are: J. Wilson (Consul), J. Downing (Pro Consul), M. Duckett (Magister), G. Bateman (Quaester), E. Ord (Annot.), J. Spanitz (Tribune), T. Ressler (Rush Chmn.).

After more than three years of hard work in the process of petitioning Sigma Chi, the International Fraternity, the dreams of the Brothers and Alumni of the local fraternity Alpha Sigma Chi were realized when, on May 27, 1978, we were installed at CSC as the 173rd active chapter in Sigma Chi.

Sigma Chi was founded on June 28, 1855 at Miami University of Ohio, and is one of the three original American Fraternities. The high ideals of it's founders matched those of the founders and Brothers of Alpha Sigma Chi, and it is upon these high ideals that we base our daily actions toward each other, and to those around us.



The officers are: G. Majkut (Pres.), E. Rusnak (V. Pres.), D. Lehnortt (Sec.), D. Miller (Treas.).

The Lambda Epsilon Chapter of Tau Kappa Epsilon was founded in May, 1967 here at Clarion State. TKE is the largest male social fraternity in the world.

The Brothers are active in intramurals and various inter-collegiate sports. The fraternity comprises men of all types and is proud to have little sisters as part of our organization.

Tau Kappa Epsilon



Row 1: R. Walters, M. Roderick, C. Caliguri, P. Henrich, V. Goldberg, D. Laubentine, K. Bonesteel, C. Fry, P. Karstetter, D. Lehnortt, B. Berlin, K. Yager, K. Yager, P. Kravetz, J. Bru, P. J. Huber, C. Lewandowski, L. Yarish, V. Redmond, V. Benninger, S. Carleton, S. Kennedy, S. Basl, S. Cleveland, G. Wiedwald. Row 2: M. Kral, B. Hobaugh,

R. Greene, E. Rusnak, C. Weisman, B. Eugenides, M. Reeves, B. Perry, R. Nailor, E. Watchorn, R. Partridge, M. Hardy, J. Jacobs, J. Pendolino. Row 3: R. Cunningham, G. Rhoads, J. Wolf, T. Griffin, R. Sinclair, D. Hanhold, D. Miller, G. Majkut, R. Sanford, R. Knapp.

Theta Chi

This year's officers were: T. Wyant (Pres.), T. Watkins (V.Pres.), M. Hordies (Sec.), D. Dascenzo (Treas.), M. Rombaush (Pledgemaster), E. Lorei (Social Chmn.).

The Clarion Theta Chi's are growing in both size and stature. It has been long overdue but our prosperity is inevitable.

As always the Chi's are active in Greek functions, college athletics, intramurals, and charitable contributions. Greek Week competition, our spring formal, and Student Rescue Services are just a few of the activities of 703 Wood Street. As the brotherhood develops we are becoming more involved and aware of the goings on at Clarion State. This is what Greek life is all about.

In 1856 Theta Chi National Fraternity was founded. It was not until 1960 that our Epsilon Xi Chapter was initiated at Clarion. After 19 years we believe we have established a permanent residence with many more happy years to come.



Row 1: T. Small, K. Fedorek, B. Bigi, M. Miller, K. Ward, D. Brunozzi, T. Wyant, J. Saxton, J. Botti, M. Hordies, J. Dabbs, L. Patton, S. Kukolski, D. Bartoli. Row 2: J. Shaffer, M. Shaefer,

K. Stohl, D. Dascenzo, T. Lamboree, D. Akins, M. Lucas, J. Pultan, K. Ondriezek, B. Duffry, M. Rumbaugh, J. Garrison, T.D. Baric, T. Watkins, D. Edmiston, E. Lorri, W. Dillon.



Row 1: J. Kearns, T. Bezuseigneur, B. Brizzi, J. Gozzard, D. Myers, Row 2: G. Toth, D. Hanlon. Row 3: R. Hutton, M. Klees, J. Kann, M. Weinziert, T. Haftmann, D. Taber, R. Piekanski. Row 4: D. Stewart, J. Stubbs, S. McGony, J. Tripodi, D. Lemana, T. Krizan.

Sigma Tau

This year's officers were: R. Hutton (Pres.), D. Myers (V. Pres.), T. Barron (Treas.), B. Brizzi (Sec.), J. Stubbs (House Mgr.), T. Haftmann (House Mailman).

The Sigma Tau Fraternity was established on the campus of Clarion State College in 1972. We are very proud of our large white pillar house on Wood Street, and especially proud of the renovations that follow: complete painting of the exterior of the house, installation of fire doors as a protective measure, sprinkler system on the third floor, and of course our new lighted dance floor.

The brothers are proud of their accomplishments in intramural sports and of the fact that we have won Greek Olympics twelve consecutive years. An emphasis has also been placed on academic achievements as evidenced by our overall scholarship awards.



Phi Sigma

This year's officers were: S. Ericson (Pres.), B. Kearney (V. Pres.), S. Klezek (Rec. Sec.), G. Stinner (Corr. Sec.), S. Kostelec (Treas.), C. Dyer (House Manager).

Originally as Phi Sigma Epsilon, our fraternity was among the first on Clarion's campus. Phi Sigma was established to promote a closer bond among male students, so that they might enter into a more intimate fellowship with those dedicated to education and a better understanding of men.

Members are active in such campus activities as Athletics, Honor Societies, Clarion Call and many others. We "Phi Sigs" maintain a solid fraternity, both socially and scholastically. There is nothing that one Phi Sig would not do for another, and it is this fraternity spirit that makes us what we are.



Kneeling: B. Weidberg, F. Hintz Row 1: J. Kraus, J. Engleman, K. Montgomery, E. Loftquist, F. Leske, B. Ericson, B. Gray, S. Kostelec, T. Solomon, Row 2: S. Ericson, M. Anzenberger, C. McFerran, S. Klezek, B. Strasser, S. Anderson, C. Snodgrass, C. Dyer, B. Sentak, B. Lipman, G. Ferraco, A. Yochum.





Clockwise: T. Lewis, M. Goodman, V. Booker, B. Mitchell, L. White.

Kappa Alpha Psi

The officers are: A. Lewis (Polemarch), L. White (Dean of Pledges), R. Mitchell (Ass't. Dean of Pledges), M. Goodman (Treas.), V. Booker (Sweetheart Liason).

Kappa Alpha Psi was founded on January 5, 1911. Under the theme, training for leadership, Kappa Alpha Psi promotes a style of intellectual and aesthetic evaluation for more than 50,000 college men. Rooted in a genuine concern for human development, the Kappa Gestalt exhorts its members to stretch themselves in all directions while holding fast to a sustaining principle of achievement.

The Sweethearts Klub of Kappa Alpha Psi was founded on Clarion's Campus in 1974. Presently there are 40 Sweethearts in the "Yard." Their purpose is to aid the brothers in their aim of "Achievement" in every field of human endeavor.

Sweethearts



Row 1: F. Capble, S. Dozier, K. Macintosh, B. Uttertack, S. Lewis, E. Randolph, M. Alston. Row 2: C. Johnson, L. Philips, V. Gibson, E.M. Bruce, E. Robinson, J. McClary, C. Robinson, Row 3: D. Clisby, T. Phelps, D. Boyd, A. Groom, S. Dorsey, S. Hobson, Y. Hardening, C. Johns, L. Allen, P. James.

Sigma Sigma Sigma



Row 1: K. Demharter, K. Baird, A. Frye, C. Hartman, J. Johnston, N. Newson, L. Weaver, R. Lukenda, D. Sierota, D. MacMillan. Row 2: D. Hawk, J. Brown, G. Hughes, J. McKain, D. Snyder, B. Penpek, D. Lambden, B. Bates, M. J. Rice. Row 3: S. Hay, C. Magnusson, B. Jacobs, R. Greco, K. Dudas, T. Bochak, W. Swenson, B. White, S. Brown, D. Brennan. Row 4: D. Hoak, A. Kappel, A. Bellavia, S. Clouser, J. Katcher, K. Karpinski, J. Frankhouser, D. Durante. Row 5: D. Weckster, B. Reiland, R. Carney, L. Malcolm.

This year's officers were: President, Kim Karpinski; Vice-President, Brenda Penpek; Treasurer, Barb Reiland; Secretary, Kathy Dudas; Membership Rush, Diane Brennan; and Education Director, Nancy Newson.

The Alpha Pi chapter of SIGMA SIGMA SIGMA was founded at CSC on April 27, 1935.

The "Tri-Sig" suite is located on first floor of Jefferson Apartments of East Main Street. The sisters take part in a number of campus activities, including intramurals, clubs, Homecoming Court, cheerleading, and Greek Week. They are also active in community affairs such as Children's Hospital Fund Drive, and donation money to the Heart Association.

Their National Philanthropic Project is the Robbie Page Memorial, which is designed to finance therapy programs for hospitalized children throughout the country.



Delta Sigma Theta



Row 1: C. Akers, M. Audain, R. Moore, J. Hannon, D. Jackson, S. Rutherford. Row 2: D. Underwood, M. Hallums, T. Gary, B. Palmore, K. Wallace, D. Mack, D. Brown, L. Lewis.



This year's officers are: President, Ardella Miles; Vice-President, Renee Moore; Secretary, Dawn Underwood; and Treasurer, Denise Jackson.

Delta Sigma Theta, Inc. a national sorority established at Howard University on January 13, 1919. The aim of the founders was to make Delta Sigma Theta a public service sorority dedicated to serving the college and community. The Lambda Beta chapter of Delta Sigma Theta was founded on this campus on February 23, 1974.

The sisters strive to keep the spirited aim of the founders alive through involvement in various activities. These include the UNICEF Drive, Save the Children, and an annual Black Womanhood Week. In addition we have an annual Peppermint Ball where the proceeds are donated to a charitable organization.

MID is an organization of men interested in the purpose of Delta Sigma Theta, Inc. They were founded on this campus Feb. 7, 1977. Their aim is to assist the sisters in their service to the college and community.

This year's officers are: President, Robert Mitchell; Vice-President, Ronald Wilburn; Secretary, Corwin Smith; and Treasurer, Thomas Alston.

MID



Row 1: M. Robinson. Row 2: G. Walker, R. Wilburn, R. Mitchell, E. Paige. Row 3: R. Franklin, J. Samuels, T. Alston, B. Johnson, D. Blakey, W. Hutch, K. Cauthorn, J. Johnson, A. Cosby

The officers this year were: L. Gibson, Pres., M. Bartholomew, V.-Pres., L. Ransel, Treas., M. Whiting, Rec. Sec., D. Smith, Corr. Sec., D. Blackburn, Chap., V. Posch, Editor, D. Larkin, Mem. Dir., A. Sekel, Rush Chmn.

The Sisters of the Gamma Omicron Chapter of Alpha Sigma Alpha are actively involved in many campus activities. In the fall, the sisters participate in Homecoming and Greek activities such as sorority rush and mixers. In the spring, they find themselves busy with Greek Olympics and Sing, as well as their Formal and Senior Banquet. Along with the many Greek Activities, time is still found to hold their annual Halloween and Easter parties for the underprivileged children. The sisters of Alpha Sigma Alpha are located on 6th floor Wilkinson and they invite all girls interested in sorority life to become better acquainted with them.

Alpha Sigma Alpha



Alpha Sigma Tau



The officers for this year were: President, N. Appleby; Vice-President, G. Villella; Treasurer, M. Malizia; Recording Secretary, M. Hilovsky; Corresponding Secretary, R. Feuro; Advisor, S. P-Jobb.

Alpha Sigma Tau, a national sorority, was established at Clarion State College on January 29, 1966. Last winter the Alpha Omicron chapter was awarded the traveling scholarship cup and was commended for its efficiency by the national organization.

The Taus take an active role in Greek life on campus. In the spring of 1978, the sisters placed second overall in Greek Week; which included our first place Greek Sing trophy. Last fall we and the brothers of Alpha Chi Rho built an award-winning float for the Autumn Leaf Festival Parade, and we enjoyed caroling with the other sororities at Christmastime.

We celebrate Founders' Day with a banquet, and the Christmas season with a date party. Each semester we serve as helpers at the Red Cross Bloodmobile. Our hoogie sales are well-known, and the munching is with one goal in mind: a beautiful Yellow Rose Formal.

First floor Ralston Hall is home to most of the Tau Tigers.



L to R, Row 1: K. Krach, L. Klahr. Row 2: M. Malizia, B. Klinger, N. Appleby, P. Work, D. Leasure, S. Welch, L. Purash. Row 3: S. Rairie, S. Mickle, G. Villella, D. Best, B. Goodling, P. Morrison, C. Stuteman, J. Matotek. Row

4: C. Mtzger, M. Lesnick, L. Kotun, J. Schmincke, E. Wagner, J. Matzel, M. Hilovsky, S. Eriksson, K. McMunn, K. Keller, T. Matarrese, C. Slick, K. Boyle. Row 5: R. Feura, K. Burkner, K. Sanders, H. Bliss, J. Harrison.

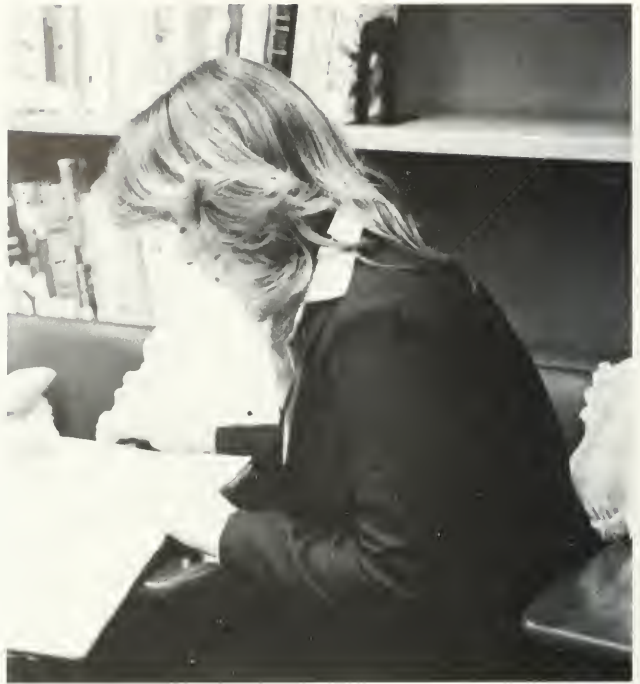
Delta Zeta

The officers are: K. Leopardo (Pres.), S. Reft (V. Pres.-Rush), J. Ballard (V. Pres.-Pledge), S. Scott (Recording Sec.), K. Diesel (Corresponding Sec.), A. Truit (Historian), L. Wilson (Treasurer), J. Zumpano (Comm. Director).

The Epsilon Theta Chapter of Delta Zeta sorority was established in 1956.

The sisters are active in many events throughout the semester, including numerous philanthropic services.

Our suite is located at the Jefferson Apartments-third floor. All are welcome to come and visit.



Row 1: D. Murphy, K. Mattozzi, D. Lipko, "Rusty", J. Van Dine, M. Munn, P. Stabile, R. Marcello, A. Truit, K. Boring. Row 2: S. Spencer, L. Hurrle, S. Reft, G. Volpe, L. Wilson, L. Bielowski. Row 3: D. Ritter, D. Gorniak, J. Ballard, D. Hall, K. Kerns, D. Malloy, B. Pedreira, M. Thompson, D. Diana. Row 4: C. Cowan, K. Stanek, L. Oakes, K. Francis, S. Scott, K. Diesel,

R. Raucci, A. Hopperstead, C. Lightburn, A. Santelli, M. Prenatt, R. Sessi. Row 5: S. Madelena, C. Corbin, J. Zumpano, M. Quinn. Not pictured: L. Gault, G. Fetzner, T. Kline, C. Lombardo, L. Buscaglio, R. Finlayson, N. Commella, Lois Linnan (Advisor).

Phi Sigma Sigma



The officers are: G. Fowler (Pres.), L. Paladino (V. Pres.), R. Seelbach (Recording Sec.), D. Macurdy (Corresponding Sec.), S. Coyer (Treas.).

The Gamma Gamma chapter of Phi Sigma Sigma was founded on May 8, 1971 at Clarion State College.

This past summer, our chapter was awarded the National Achievement Award and the Division Achievement Award at our National Convention. We were proud to receive these awards because of hard work, effort, and cooperation among our sisters.

We are active in various campus organizations such as Student Senate, Center Board, and Campbell Hall activities. Building a first place ALF float, hosting our National president, and a Christmas semi-formal were highlights of our fall semester.



Row 1: L. Peterson, S. Stephens, P. Brenznican, M. Hagenmeier, D. Macurdy, L. Moorhouse, G. Fowler. Row 2: J. Alberth, C. Eberhart, L. Paladino, J. Hanchek, M. McAllister, S. Coyer, S.

Schmehl, J. London. Row 3: D. Rogan, K. Galla, N. Meador, R. Seelbach, S. Walters, G. Raymer. Not pictured: C. McGoogan, Miss Barbara Rose (Advisor).

Zeta Tau Alpha

The officers are K. Mechenbier (Pres.), M. Jacobs (V.-Pres. I), M. Cvanovich (V.-Pres. II and Pledgema-ster), C. Shakley (Sec.), M. Lyle (Treas.), S. Palmer (Historian), M. Harris (Ritual), B. Marquis (Membership Chairman).

The Delta Iota Chapter of Zeta Tau Alpha was founded at Clarion State on April 13, 1960. The Zeta house is located at Wilson Hall on Wilson Avenue.

The Zetas are actively involved in campus activities such as cheerleading, majorettes, Miss C.S.C., intramurals, and scholastic clubs. At our last national conference, our chapter received two awards: a membership award, and the Sustained Excellence in a Chapter award.

Every year, we fund raise for the local Juvenile Diabetic Association and the National Association for Retarded Children as our service projects.



Row 1: L to R, K. Zorzi, D. Hughes, L. Leech, C. Lundy, C. Marousis, T. Murray, M. Kupfner, A. Leffingwell, C. Headlee, Elsadot. Row 2: H. Carlton, D. Dick, M. Herald, P. Perinis, C. Zimmerman, D. Niederriter, M. Lyle, C. Middleton, C. Todorich, P. McCoy. Row 3: J. Zisa, J. Devine, C. Hartweg, L. Wood, J.

Kun, S. Mackey, L. Kruse, A. Cunningham, B. Querriera, B. Marquis, B. Martin, B. Doyle, S. Lauth, K. Mechenbier, M. Evanovich, H. Harris. Row 4: C. Jioid, J. Alexander, K. Kelly, K. Blaney, C. Shakley, K. Abel, M. Jacobs, S. Palmer.

Alpha Xi Delta



L to R, Row 1: K. Stoeckle, J. Kirkhoff, P. Hannaford, C. Anderson, S. Gray, L. Crede, N. Schumann. Row 2: N. Mack, J. Whisler, S. Smith, C. Eyre, L. Ethinger, M. Learish. Row 3: T. Beggy, C. Reasinger, C. Bennardo, C. Zebley, J. Sedlock. Row 4: C. Starr, N. Sebak, L. DiBernardo. Row 5: T. Miller, J. Zuech, K. Wensel, C. Lipowcan. Row 6: J. Hicks, B. Urey, G. Ferragine, C. Hriso. Row 7: R. Rindy, D. Donnelly. Row 8: K. Zaffuto, C. Kopetsky, K. Retort, T. Bodine. Row 9: S. Massalsky, A. Schumann, D. Fragle. Row 10: B. Lawson, P. Donahue, L. Wilhour.



The officers are: C. Anderson (Pres.), S. Gray (V.-Pres.), K. Stoeckle (Recording Secretary), T. Beggy (Corresponding Secretary), L. Crede (Treas.), M. Leansh (Pledge Trainer), C. Hriso (Chaplin), P. Hannaford (Membership).

The Zeta Beta Chapter of Alpha Xi Delta was founded nationally, April 17, 1893 and March 1970, at Clarion State College. The Alpha Xi Delta suite is located on 6th floor Nair Hall. Presently, there are 49 active sisters who are involved in numerous campus activities and organizations. The Alpha Xi's are also involved in community projects such as selling daffodils for the American Cancer Society, collecting money for Children's Hospital, and also dancing in the annual dance marathon which also benefits Children's Hospital. This year, our philanthropic project is collecting for ALS.

The sisters also take a very active part in Greek Week. In 1978, their awards included 1st place in Scholarship, 1st place in Olympics, 2nd in Greek Sing, 2nd in Greek Bowl, and Outstanding Overall Sorority for 1978.

Alpha Kappa Alpha

This year's officers were: C. Mitchell (Pres.), K. Mackey (V. Pres.), Y. English (Treas.), D. Morehead (Rec. Sec.), V. Hall (Corr. Sec.), K. Manning (Parliament.).

Alpha Kappa Alpha was the first predominately Black Sorority. Founded in 1908 at Howard University, we have grown to a national active membership of over 70,000 women. We are a service oriented sorority, not a social one. Some of our national service projects include the Clevelenad Job Corp. Center for Women and The Reading Experience Workshop.

Alpha Kappa Alpha is the only government founded sorority. Our purpose is to cultivate and encourage high ethical and scholastic standards, to promote unity and friendship among college women, and to be a service to all mankind. Our colors are salmon green and apple green. Kappa Zeta Chapter of Alpha Kappa Alpha celebrated its third anniversary on the Clarion State College campus, February 14, 1979.



Row 1: V. Bradshaw, T. Wells, K. Mackey, A. Armstrong, English, F. McNairy, A. Peagler, K. Manning, D. Morehead, K. McIntosh.
Row 2: A. Wingfield, T. Phelps, D. Scott, V. Hall, B. Lyons, C. Mitchell, B. Stewart, P. Andrews. Row 3: C. Cooper, Y.



Greek Sing





1979 Greek Week Results

Beer Race

1. Phi Sigma

Sing

1. Alpha Chi Rho
2. Phi Sigma Kappa

Bowl

1. Phi Sigma
2. Alpha Chi Rho

Olympics

1. Sigma Tau
2. Phi Sigma

Scholarship Pledges

1. Alpha Chi Rho
2. Sigma Chi

Activities

1. Alpha Chi Rho
2. Sigma Chi

Overall

1. Alpha Chi Rho
2. Phi Sigma
3. Sigma Chi

Beer Race

1. Alpha Sigma Tau

Sing

1. Alpha Sigma Tau
2. Alpha Xi Delta

Bowl

1. Alpha Xi Delta
2. Zeta Tau Alpha

Olympics

1. Alpha Sigma Tau
2. Zeta Tau Alpha

Scholarship Pledges

1. Alpha Xi Delta
2. Alpha Sigma Tau

Activities

1. Alpha Sigma Tau
2. Alpha Xi Delta

Overall

1. Alpha Sigma Tau
2. Alpha Xi Delta
3. Zeta Tau Alpha

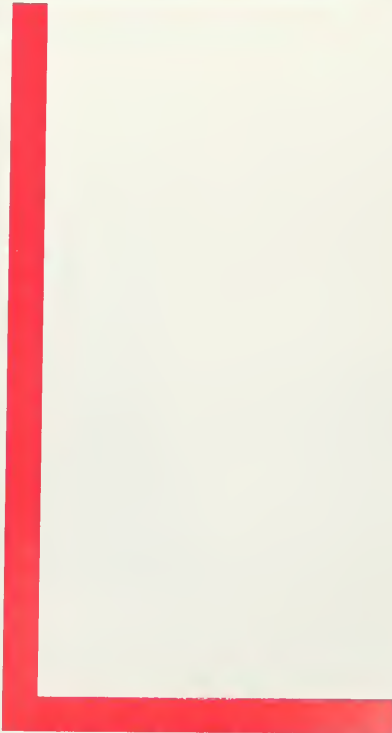






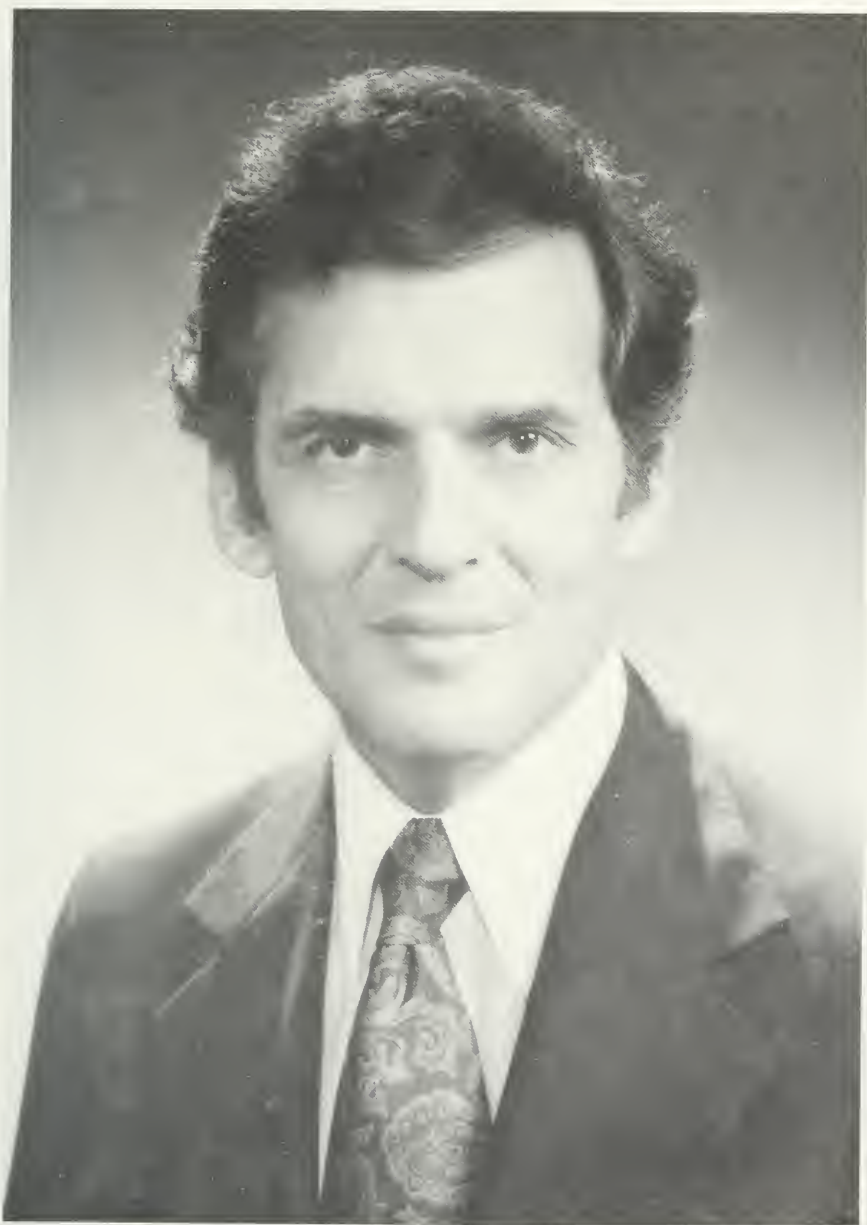


Faculty



President
Clayton
Sommers





Clockwise: Dr. Charles Leach - V.P. for Administration, D. Graves - Director of Libraries, Dr. Dana Still - V.P. for Academic Affairs, P. Wallace - Director of Professional Education Services.





Left to right: D. Vallosio - Business Manager, L. Krull - CSA Business Manager.



Left to right: A. Lasko - Director of Financial Aid, J. Shropshire - Director of Admissions

Admissions

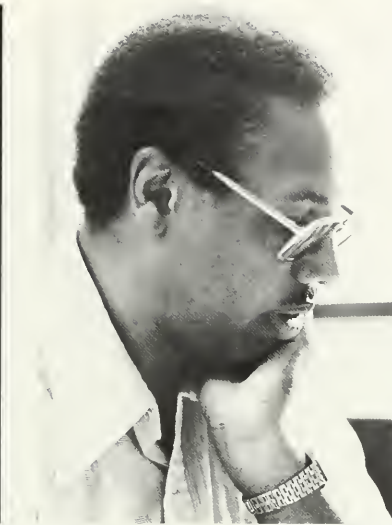


Mr. Clarke, Mr. Kennedy, Miss McMillen (not pictured).

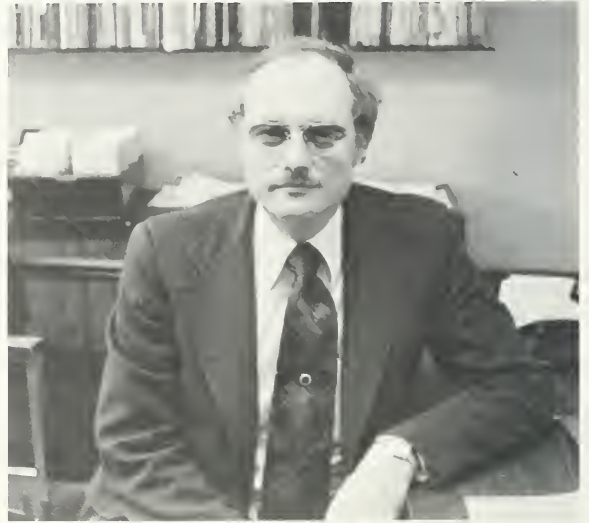
Library Faculty



Mrs. Buckwalter, Mr. Emerick, Mrs. Gamaluddin, Mr. Graves (Director), Mr. Horn, Mrs. Horn, Mrs. Johnson, Mr. Krieger, Mr. Mager, Mr. McDaniel, Miss McKee, Mrs. Moore, Mr. Sitzman, Mr. Wyse, Mrs. Williams.



School Of Arts And Sciences



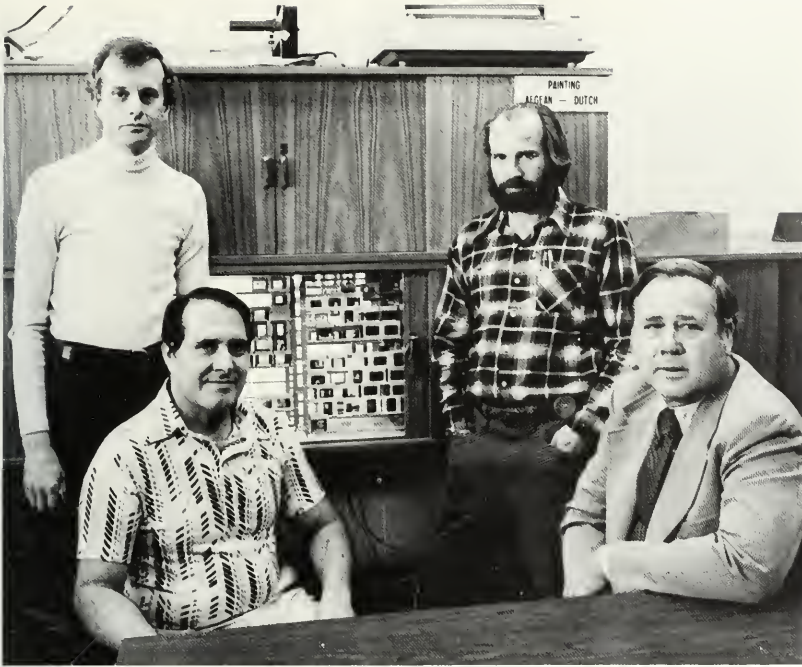
Dr. J. Bodoh, Dean

Social Sciences

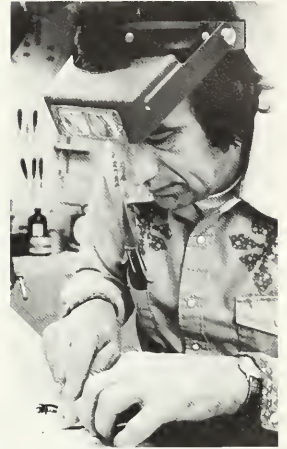


Mr. E. Graybill - Chair., Dr. J. Bertsch, Dr. Konitzky, Dr. R. Rath, Dr. E. Somers, Dr. D. Straffin, Dr. F. Takei, Dr. Tu, Dr. J. VanBruggen, Mr. R. Zallys.

Art



Dr. Hobbs-chair, Dr. Baptist, Mr. Charley, Dr. Edwards, Mr. Grosch, Mrs. ElSadat, Mr. P-Jobb, Mr. Seelye.



Biological Science



Dr. Chamberlain-chair, Dr. Aharrah, Dr. Baker, Dr. Dalby, Mr. Donachy, Mrs. Donachy, Dr. Harmon, Dr. Jetkiewicz, Dr. Kodrich, Dr. Linton, Dr. Mechling, Dr. Moore, Dr. Morrow, Dr. Rutherford, Dr. Twiest, Dr. Williams.

Chemistry



Dr. Beck (Chair.), Dr. Bower, Dr. Brent, Dr. Krugh, Dr. J. Laswick, Dr. P. Laswick, Dr. Sharpe, Ms. Stewart, Dr. Wollaston.

English



Dr. Grejda (Chair.), Dr. Barber, Mr. Caesar, Ms. Carlson, Ms. Clark, Dr. Greco, Mrs. Huffman, Mrs. Hufford, Mr. Jaschke, Mr. Karl, Ms. Kerr, Dr. Knickerbocker, Mr. MacBeth, Mrs. McClaine, Dr. Newman, Ms. Osterholm, Dr. Park, Ms. Poole, Dr. Reinhardt, Dr. Sheraw, Dr. Shumaker, Mrs. Steele, Dr. Wilson.

Geography



Dr. Buckwalter (Chair.), Mr. Humphrey, Ms. Kordecki, Mr. Oakes, Dr. Shirey, Dr. Totten.

Modern Languages And Cultures



Dr. R. Bays, Dr. G. Bays, Mr. Diaz, Dr. Fortis, Dr. Garcia, Mrs. Hegewald, Dr. Junod, Ms. Lemmon, Dr. Masterson, Dr. Nikoulin, Dr. Totten.

Music



Mr. Lazich-chair, Mr. Berberian, Mr. Black, Mr. Bohlen, Dr. Connor, Mr. Hall, Mr. Lassowsky, Dr. McLean, Mrs. McComb, Mr. McDonald, Dr. Michalski, Dr. Mitchell, Mrs. Pesche, Mr. Pierce, Dr. VanMeter, Mr. Wells.

Physics



Dr. Snedegar-chair, Mr. Blaine, Dr. Exton, Dr. Keth, Dr. Said, Mr. Shofestall, Mr. Slaughaupt.

Psychology

Dr. Soricelli-chair, Dr. Bernard, Dr. Combs, Dr. Gackenbach, Dr. Morrison, Dr. Semon, Dr. Thornton, Dr. Wallace, Dr. Reinhardt, Mr. Hamilton, Mr. Snyder.



Speech, Communication, and Theatre.

Dr. Martston-chair, Mr. Burke, Mr. Coleman, Dr. Copeland, Ms. Elmes, Dr. Hardwick, Dr. Hufford, Dr. Marlin, Ms. Mata, Mr. McCauliff, Ms. Sussmann, Dr. Weiss, Dr. Wright.



School Of Communication



Dr. J. Cole, Dean

Communications



I. Baker, C. Feicetti, P. Marini, W. McCavitt, R. Metcalf, L. Pfaff.

School Of Library Media/Information Science



Dr. E. Rupert, Dean



Dr Rupert - Chair, Mr Economous, Dr Gamaluddin, Dr Head, Dr. Jetter, Mr. Luskay, Mrs. Payne, Dr. Vavrek.

School of Professional Studies



Dr. R.H. Baldwin, Dean

Education



Dr. Yoho-chair, Dr. Battista, Dr. Willoughby-Herb, Dr. Kenemuth, Dr. Klindienst, Mrs. Lloyd, Dr. Moorehouse, Mr. Mosser, Dr. Siler, Dr. J. Smith, Dr. P. Smith, Dr. Zaeske, Dr. Chalfant, Mr. Palaggo, Dr. Uzmack.

Special Education



Mrs. A. Cole, Mr. Dunkle, Mr. Gurecka, Mr. Huwar, Mrs. John, Dr. Kauffman, Dr. Kern, Mrs. Peterson, Mrs. Reed, Dr. Schreffler, Dr. Shirey, Dr. Vayda.

Health And Physical Education



A. Jacks (Chair.), D. Avery, N. Baschnagel, B. Bubb, C. Clay, J. Davis, J. DeGregorio, P. Ferguson, D. Leas, B. Leonard, F. Lignelli, D. Pae, C. Ruslavage, F. Shope, B. Simpson, G. Sobolewski, E. Weaver.



Speech Pathology And Audiology



Mr. Hetrick - Chair., Dr. Dininny, Dr. Hartley, Mr. Keenan, Mr. Simpson, Mr. Smith.

School of Business Administration

Mr. M. Marder, Acting Dean



Accounting and Finance



Dr. Yeaney (Chair.), Mr. Bagley, Mr. Barnes, Mr. Bender, Mr. Bish, Mr. Campbell, Dr. Carter, Dr. Choi, Dr. Dupree, Mr. Henry, Dr. Hong, Mr. Hun'sberger, Mr. Kifer, Mr. Kooman, Mr. Lewis, Mr. Liber, Mr. Otte, Mrs. Ross, Dr. Schaeffer, Dr. Townsend, Mrs. Traynor, Mrs. Vernon, Mr. Yutzey

Administrative Sciences

Mr. Clark (Chair.), Dr. Amaram, Dr. Davis, Mr. Ditz, Mrs. Felicetti, Mr. Fulmer, Dr. Grunenwald, Mr. Kavosi, Dr. Kim, Dr. Maxwell, Dr. Reed, Dr. Traynor.

Economics

Dr. Wichmann (Chair.), Mrs. Bender, Mrs. Dennis, Dr. Mohan, Dr. Ross, Dr. Singh, Mr. Stewart, Mrs. Stewart, Dr. Vernon.

The yearbook staff apologizes to any administrator or department if your picture does not appear in this edition of the Sequelle.





Dr. F. Sessions,
Dean Of Continuing
Education

ROTC (Military Science)

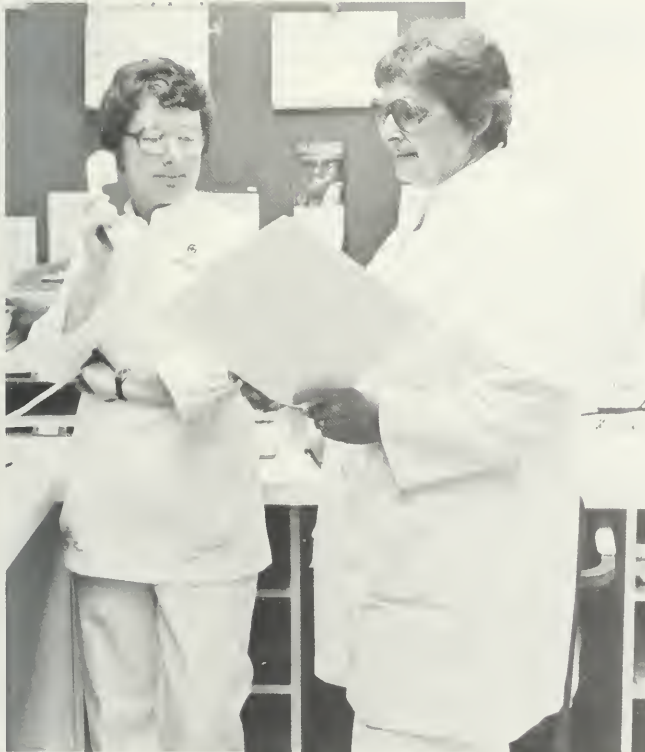


Major R. Italia, CPT R. Starns, CPT S. Wolfe, SSG D. Barnhart, SSG T. Turner.



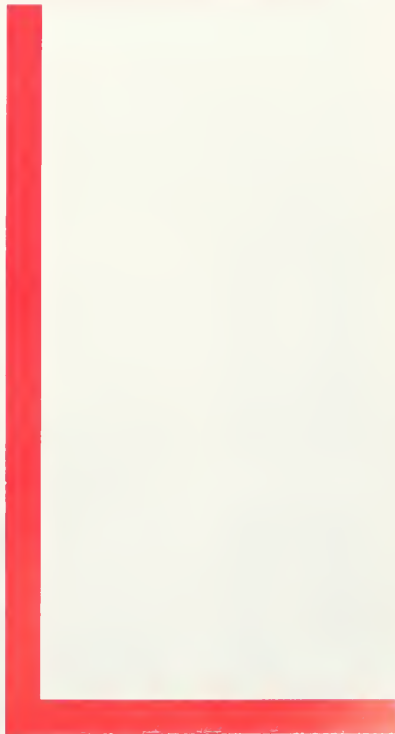
Infirmery Staff

Dr. L. Gilford





Seniors



Kimberly Abel
David L. Akins
Linda Albright
Jane Alexander
Jennifer Alexander

Susan Allen
Dale Allmendinger
Denise Alston

Justina Amaram
Cassandra Ambrose
Laurie Andrews

Phil Andrews
Lynn Anderson
Judith Anderson

Mark Armstrong
Dorothy Arnold
Richard Arena

Ronald Babjak
Mariann Babis
Christine Bachman
Ruth Bachner
James Balderson





Kathleen Baird
 Paula Balik
 Jayne Barnett
 Lawrence Barrett
 Thomas Barron

Marie Bartholomew
 Gay Bartlebaugh
 Gary Baternan
 Brayton Batson
 Harry Baxter

Greg Beatrice
 Linda Becker
 Theresa Beggy
 Beth Benchley
 Cynthia Bennardo

Elaine J. Bennett
 Margaret Berbach
 Celeste Bertolina
 Timothy Bickel
 Linda Bieloski

Linda Bienkowski
 Dina Billings
 Darlene Blackburn
 Nancy Bloomquist
 Vaughn Booker

Linda Boosinger
 Mary Boscardin
 Wendelyn Bossart
 Jane Bowersox
 Susan Boyd



Kass Boyle
 Beverly Bracken
 Gregory Braughler
 Robert Brezicki
 Mark Bricker

Steven Bright
 Marion Brink
 Bruce Brizzi
 Barbara Brocius
 Deborah Brown

Henry Brown
 Dana Brush
 Joyce Bryant
 Richard Buechele
 Maryann Burk

Susan Burnham
 Donald Buterbaugh
 Karen Byron

Cathie Cadwallader
 Maurie Campanella
 Linda Campbell

James Capra
 Patricia Carlin
 Carl Carlson Jr.



Mary L. Carson
Gary E. Caylor
Dennis Celento

James Chavous
Thomas Cheritt
Philip Cheung

Thomas Chieffe
Sandra Chitester
Korrine Chlebove

Alice Chubb
Jeffrey Clark
Rebecca L. Coen
Jace Colin
Lawrence Conley

Danette Connelly
Joan Conrad
Dale Cook
Kenna Cook
Richard Cook

Craig Coon
Carolyn Cooper
Paul Cooper
Linda Corey
Patricia Cortazzo



Brian Courtney
Christine Cover

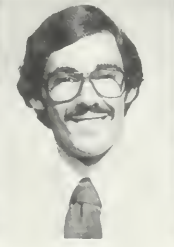
Keith Cox
Sharon Coyer

Douglas Crawford
Linda Crede
Shelley Crous
Thomas Crowley
Diana Cunningham

Therese Cunningham
Marie Curtis
Neal Dana
Linda Danko
Alan Davis

Dilworth Davis
Diane Davison
Maureen Deeney
R. Eric Dellapina
Paul DeLoia Jr.

Mary A. Demchak
Mary Demich
Harry Dennis
Marilyn Depew
John DeSantis



Michele DeSantis
Denise Detone
Randy Detweiler
Gayle Devey
Linda DiBernardo

Karen DiFilippo
Diane Diven
Donna Dougherty
Jeffrey Douglas
Jeffrey Douthett

Karen Downie
Joseph Downing
Barbara Doyle
Robert Duffner
William Dugan

Karen Duhala
Denise Durante
Margaret Dusha
Carol Dushac
Reneda Eakman

Brenda Easter
Timothy Eayre

Cynthia Eberhart
Jeffrey Ebner

Thoman Eckenrode
Terry Edwards

Nancy Eiler
Colleen Ellermeyer

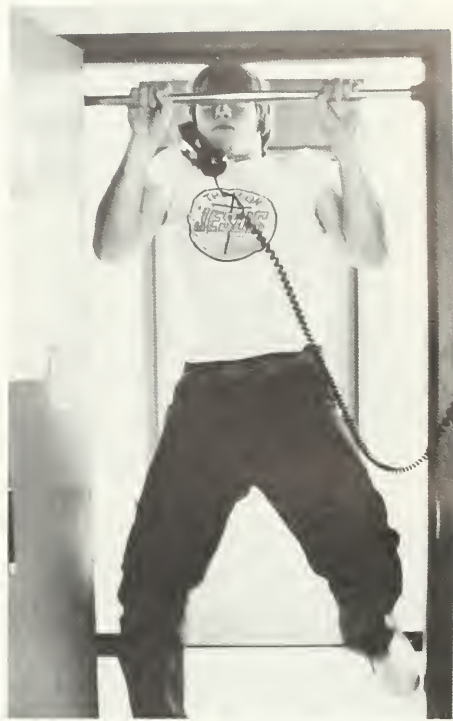
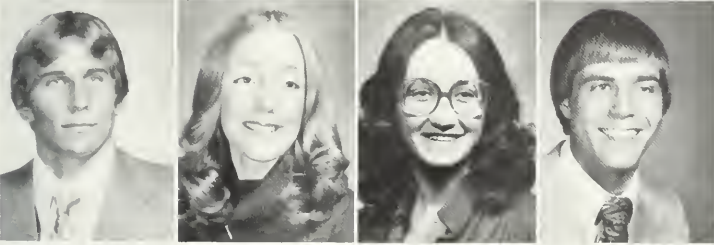
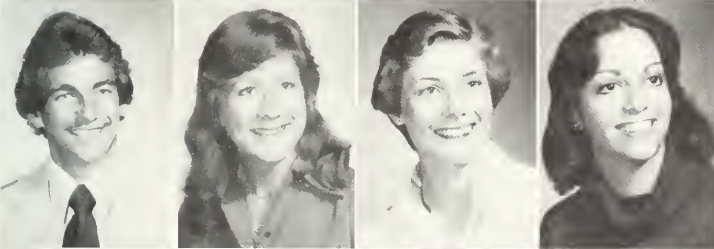
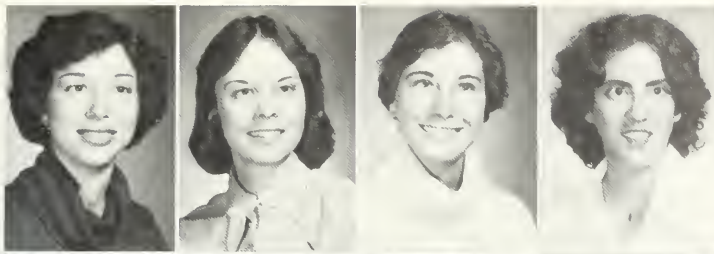
Joan Ellis
Janice Elson
Christine Engle
George Englert
Rachel English

Frances Eno
Dawn Enos
Joetta R. Eonta
Marie Erikson
Debra Erisman

Mary Ernesty
JoAnn Esapovich
James Eshenour
Jan Eshleman
Robert Estep

Lou Ann Ettinger
Michele Evanovich
Ann Eyer
Cynthia Eyre
Daniel Facko





Ann Fagnano
Helen Fairlamb
Pamela Feaster
Kenneth Fedorek
John Fedorek

Cathie Fehiman
Debra Fellenbaum
William Fenton
Cynthia Fike
Lora Fittro

Ruthan Fitzsimmons
Deborah Fleming
Mark Fleming
Kathy Foor
Cheryl A. Fornal

Barbara J. Fox
Tammy Fox
Glen Frailey
Lisa Framiglio
Robert Freeman

Judd Fritchey
Amy Frye

Nanna Frye
Kimberly Fuchs



George Fulkman

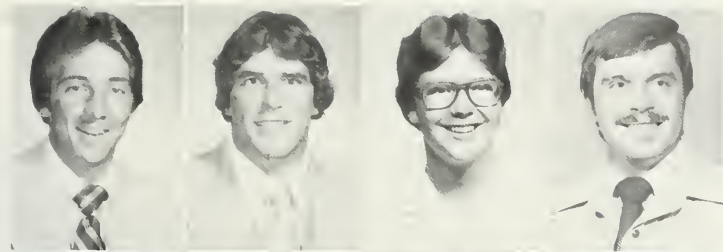
Danny Fultz

Thomas Fusco
Virginia Gadzala
Russ Gall
Theresa Gallo
Marcie Gannoe

Larry Garvin
William Gaskin
Jean Gathers
Lorene Gault
Christine Gerwick

Lisa E. Gibson
Michael A. Gill
Leonel Girouard III
Alice M. Glasgow
Janine Glenn

Katherine Golden
Thomas Goodge
Michael Goodman
Donna Goodson
Cathy Gorin



Donald Gozzard
Mark Grabigel
Barbara Green
Theodore Green Jr.
Elena M. Greggs

Martin Grichor
Elizabeth Gruber
Marie Guerra
Gail Guyton
Carol Hadaway

Beth Hale
Daniel R. Hall
John P. Hall
Ronald Hallberg
Lynda S. Hallman

James A. Haluska
Roberta Hammill
David Hanlon
Juanita Hannon
Patricia E. Hannon

Shirley K. Hare

Faith Harian



Jeffrey Harmon
James Harrison
Ken Hartenbach
Patrick Hartman
Beth Hartshorne

Jeffrey Hawkins
Susan M. Hawkins
Sandra L. Hay
Wendy J. Hayden
Jeffrey Hayes

Barry Headland
Carol Heagy
Erin Healey
Julie K. Heath
Wanda J. Hefflin

Douglas L. Hein
Nancy Heindl
Marybeth Helm
Susan Helwig
Terrence Hennessy

Charles L. Henry
Sue E. Herman
Tammi Higbee
Kenneth R. Hill
Marsha Himes

Dennis Hinderliter
Gary M. Hines
James R. Hintenach
Diane Hoak
Susan L. Hobson

Kimberly Hoenes
Kelly Hogue
W. Gareth Horan

Richard Hornak
Roslyn A. Hosak
Corinne Hosfeld

Deborah L. Houk
Michael Houtz
Diane K. Howard

Duane Howell
Kevin L. Howick
David P. Hubbell

Thomas H. Hudson
James C. Huet
Deborah Hughes
David Hunnell
Susan Irick

Bruce Irwin
Denise L. Jackson
Elizabeth Jackson
Linda L. Jacobs
Frank E. James



Jennifer Janssen
Brenda L. Jeffreys
Joseph Jiamachello

Cheryl Jioio
Raymond Johnson
Steven Johnson

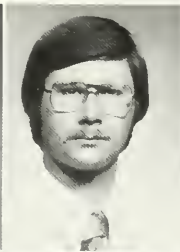
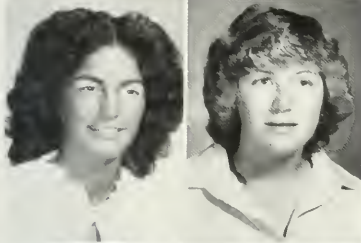
Janis L. Johnston
Lauraine Jones
Rande Joy

Linda Joyce
Deborah Kaczmarek
Robert Kannegieser

Amy L. Kappel
George Kapusta
Anne Karban
Margaret Kasanicky
Warren Kati

Lisa Keil
Rebecca S. Keil
Erin S. Kelley
Timothy A. Kelley
Daniel L. Kennedy





Lori R. Kessler
Mary D. Killeen
Paul Kimicata
Luan K. Kinch
Alan King

Barbara Kirkhoff
Holly A. Kiser
Elizabeth Klahr
LuAnn Kletzli
Max Knickerbocker

John M. Knoebel
Lisa Koch
Gary Koehler

Steven Kolcun
Pamela A. Konetsky
James Koontz

Mary A. Koperna
Karen Kosarich
Lawrence Kosko

Marybeth Kosoglow
Lias Kotun
Susan Kovensky



Judson Kratzer
 Keith A. Kraus
 Karen Kretzler
 Ruth A. Kroh
 Steven Kronenwetter

Susan C. Kurtz
 J. Michael Kusnir
 John Kwasneski
 Elizabeth Lacko
 Carol A. Landau

Pamela Langietti
 Cheryl L. Lavick
 Louise Lazusky
 Kristene Lazzeri
 Mary L. Learish

Becky L. Leshar
 Debra S. Leasure
 Randy J. Leeper
 Amber Leffingwell
 Kimberly Lemon

Karen Leopardo
 Maureen Lesnick
 Carolyn Levish
 Anthony Lewis
 Cynthia Lewis

Mark A. Lewis
 Katrina Liek
 Lawrence Lighthiser
 Paul Lindberg
 Mark Lockridge

Joan London
 William LoPresti
 Michael G. Lovorn
 Michael G. Lucas
 Mariann Luksik

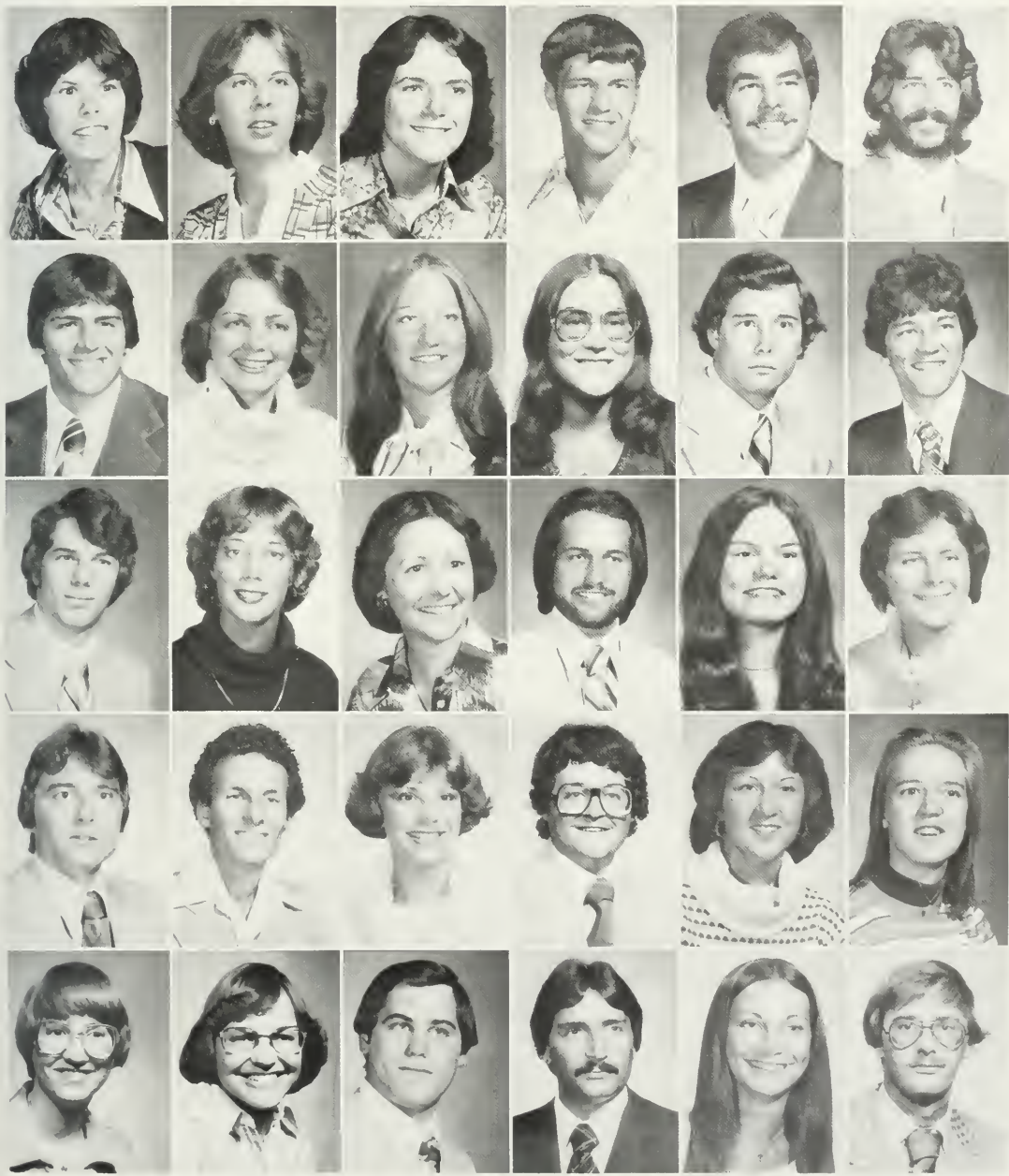
Jean M. Lundberg
 Carol A. Lundy
 Jean Lunstford
 D. Scott Lutz
 Sharon L. Luy

Mary M. Lynch
 Nancy L. Mack
 Deborah Macmillan
 Dawn Macurdy
 Keith Macurdy

Mark Mahlon
 Terri B. Majors
 Daniel Majoy
 Michael Malthaner
 Bruce Mann

Victor Mannella
 Gary Marcink
 Linda Marcinko
 Barbara Marquis
 Barbara J. Martin

Robert Martin
 Ronald J. Martin
 Vicky Mason
 Karen N. Masters
 H. Joe Matala



James Mattingly
Janice Matzel
Carrie Mauck
Carol M. Maybee
Constance McAninch

Charlene McCarthy
James McCarthy
Thomas McCauley

Keith McCaw
Pamela J. McCleary
Kimberlee McClure

Melinda McClure
Terry McGarrity
Wendy McIlvaine

Edward McKarski
David McKelvey
Judith McKnight

Suzanne McMillen
Karen McMunn
Mary McNaughton
Michael McNicholas
Daniel McVay





Nancy Meador
 Kathryn Mechenbier
 David Metzler
 Pamela Mignanelli
 Michael Mihalik

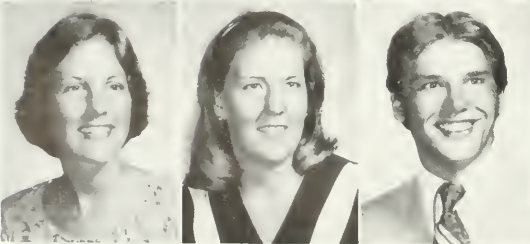
Ardella Y. Miles
 Diana M. Miller
 Jeffrey Miller
 Michele Miller
 Nancy O. Miller

Thomas W. Miller
 Kathleen L. Mills
 Drew F. Moege
 William J. Molnar
 Shelby A. Mong

Jennifer Montague
 Linda L. Moore
 Renee J. Moore
 Donna M. Morehead
 Michael K. Morgus

Colleen Moriarty
 Judith Morrell
 A. Dean Morris
 Barbara J. Morris
 Pamela A. Morrison

Maureen Moyer
 Kathy J. Muller
 Lois Munn
 Mitzi Munn
 Deborah Murphy



Megan Murphy
Sherry Murray
Jeffrey L. Myers
John T. Myers
Karen M. Neely

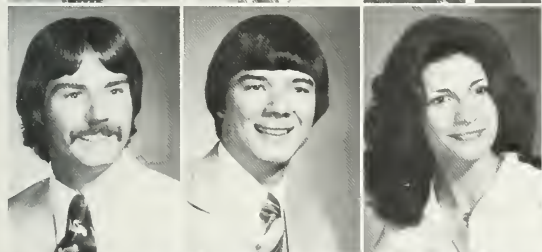
Mark E. Nelson
Mark Nemecek
Carol Neuberger
Barbara J. Newton
Beth Nicholas

Bonnie Nickell
Kathy Nori
Karen A. Norwood
Randy Novak
John Novosel

Barbara J. Nuhfer
Nick Nuzzo
Paul J. Obenreder

Esther Ober
Mark E. O'Block
Gerry O'Hara

Margaret O'Leary
Gay Olney
Roger Oltman



Osadolor Omorodian
Daniel O'Neill
David Onorato

Dennis R. Orange
Edward S. Ord
Debra Orendorf

David E. Orris
Alice F. Ortman
Marcy Osiecki

Patrick O'Toole
Robert O'Toole
Kimberlee Owatt
Jeanne Oxendale
Joseph Pailin

Joanne Palka
Raymond Palombi
Clifford Panneton
Margaret M. Park
Nancy R. Parme

Jon D. Parr
Alice Passarelli
Edward Patosky
Susan Patterson
Denise Pavone



Susan M. Peel
Debbie Perich

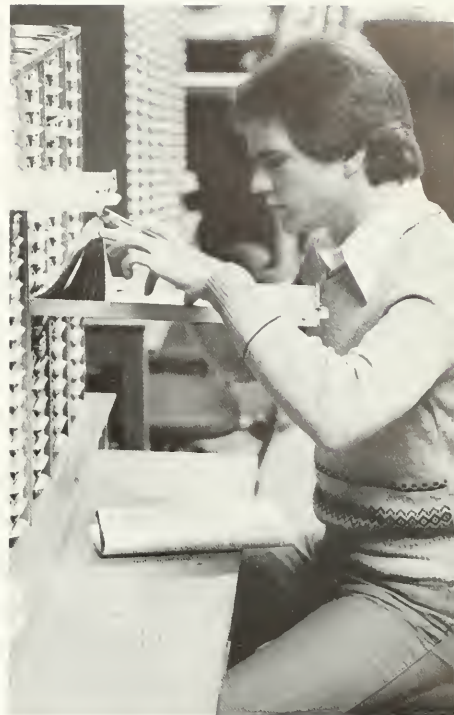
Joseph Perriello
Anthony Perriello

Deborah Peterson
Edward Peterson III
Lynne Peterson
Ronald Phillips Jr.
Lenore Picariello

Michael Piccirilli
Debra Pierce
Terrance Pierucci
Jeffrey Plake
Mark Polenski

James M. Pollard
Samuel C. Pollina
Vickie Posch
Kristine A. Powell
Mark W. Powell

Michael Progen
Samuel Puglisi
Leigh A. Puzs
Lauren Quillman
Karen Quinn



Steven Radomski
 Jeffrey J. Rahuba
 Susan Rairie
 Cynthia Ravetto
 Ned L. Reade

Cynthia Reasinger
 Kenda Reckhart
 Dawn Reddick
 Ray Reichenbach
 Michael Reinsel

Jerry Rombold
 Theresa A. Renz
 Bruce A. Resnak
 Sue A. Ressler
 Nancy M. Reynolds

Greg Rhoads
 Mary J. Rice
 Kevin Rieg
 Tracy A. Riker
 Michele Rimolt

Nancy Rippin
 Cathy Roberts

Linda Roberts
 John Rogers

Christine Roeder
James Rogan

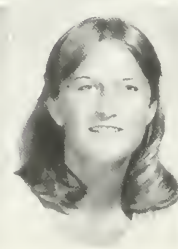
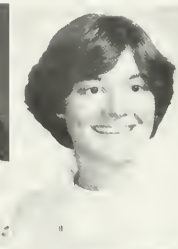
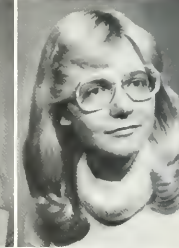
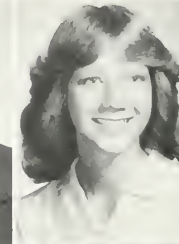
Terri C. Rogan
Pamela E. Rohrer

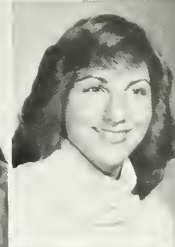
W. Jerry Rooney
Kenneth L. Root
Kurt Rosander
Sara J. Ross
Michael Rossi

Mary Beth Rudick
Sharon Rudy
Marilee Ruffo
Karen S. Rushin
Lisa Rutishauser

Cathy Rykaczewski
Brian R. Sacolic
Daniel E. Salem
Karen K. Sanders
Lesa Santonico

Barbara Santorum
Carla J. Sardi
Noelle Sartain
William Satterlee
Lynette Savoy





Cynthia Saxton
 William D. Scala
 Wayne D. Schlegel
 Sue Schmidt
 Sue Schnitker

DuAnn Scott
 Denise E. Sebak
 Timothy Sechrist
 Joyce Sedlock
 Deborah Sedoris

Lori Selesky
 Jane N. Selle
 Mary Selvaggio
 Barbara Seman
 Karen J. Serafin

Mary J. Serafin
 Robin Sessi
 Lauren S. Shafer
 Keith L. Shaffer
 Randy R. Shaffer

Candace Shakley
 Harry R. Shapiro

Cathy L. Shaver
 John M. Sheline



Scott Shelly

Robin Shemuha

Joyce Shoemaker
Gloria Shrawder
Linda Sigismondi
David Siler
Greg Silvestri

Richard Sinclair
Mary Sinibaldi
Kathleen Sipe
Michael Sisinni
John Skelly

Karen Skoczylas
Jan Skwarcha
Thomas Stagel
Cynthia Slick
Andrew Smale

Barbara Smith
Cynthia L. Smith
Jaye L. Smith
Sharon Smith
Thomas D. Smith



Wayne E. Smith
Debra L. Snyder
Kurt R. Snyder
Sally L. Snyder
Mary L. Socha

Vicki Soldo
Wynn Solle
Susan Sowa
John Spanitz
William Sprecher

Lawrence Sroka
Jill Stahlman
John Stajduhar
Barbara L. Staley
Kim Stallsmith

Ronald Standridge
Cynthia C. Starr
Susan Stehle
Jamie C. Stello
Timothy Sterba

Thomas Stewart

Mark Stickley



Donald Stoyer
Brenda Stohr
Janet E. Stout
Nancy A. Stover
Perry Strausbaugh

Dorothy Strawoet
Sylvia Stroy
John T. Stunda
Bruce Sukaly
Barbara Sullivan

Suzanne Summerville
Lori L. Swarm
Daniel Swartz
Jacqueline Szeligo
Peter Talleri

Sandra W. Tarr
Carol A. Tate
Estella Tate
Anthony Tate
David W. Taymans

John Tedeschi
Abby Terhune
Buddy Termin
Martha Thomas
Patricia Thomas

Beverly Thompson
Ronald Thompson
Steven Thompson
Anne Thrower
Julie Tidball

Joseph C. Tierno
Dawn Timmins
Hollie Tinsman
Lisa D. Tower
E. Robin Troxell

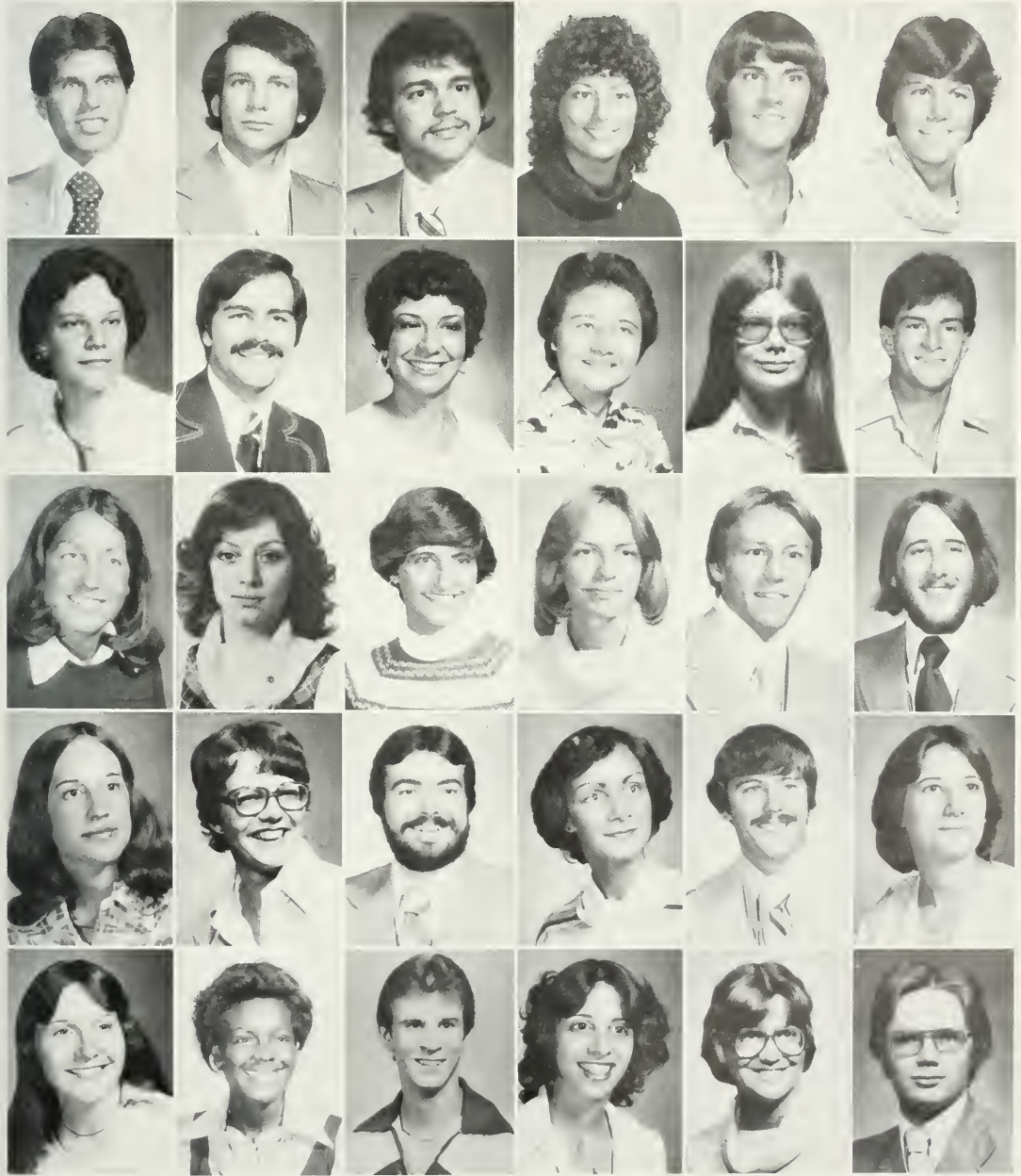
Daniel Trudgen
David Trujillo
Marie Trusits
Regina Turin
Dawn Underwood

David M. Urey
Camille Valenza
Carole Valone
David Vandermark
Mark Vanek

Sherrí Vargo
Karen Vavra
Barbara Vensel
Cindy Vicari
Joan B. Vicari

Judith Vornhold
Suzanne Vroman
Raymond P. Wade
Randy J. Wagner
Geraldine Walker

Cindy Walter
Keith T. Ward
William Warrick
Mary Weatherill
Richard Weaver



Tim Weaver
 Kim Weibel
 Nora L. Weimer
 Susan Weinheimer
 Kathy Weise

Sandra Welch
 Glee B. Weller
 Reginald A. Wells
 Wendy L. Welton
 Kris Wensel

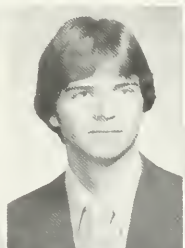
Cynthia S. West
 Heidi L. Wheeler
 Joleen Whisler
 Barbara White
 Laetitia M. White

R. Douglas Whitehill
 Eric J. Whitman
 Douglas E. Wilder
 Jonathan Wilder
 Dean E. Will

Cindy S. Williams
 Linda R. Wilcox
 Jennifer Wilson
 Richard E. Wilson
 Amy Wise

Vicki Wise
 Donna J. Wolfe
 Eddie M. Wong
 Craig Wonsidler
 Gail Woodruff





Robert Woods
Marvin Woodward
Vernon Wykoff
Kenneth E. Yager
Lee A. Yingling

Richard Yocum
David S. Yon
Robin G. Yost
Mary E. Yourish
Michael Yusko

Thomas Zampogna
Rita Zanaglio
Jeffrey Zangrilli
Carol Zebley

Alan Zediker
Linda Zerblis
Timothy Zeitz
Curtis Zimmerman

Kurt Zimmerman
Samuel Zimmerman
Mark Zindel
Patricia Zizza

Linda Bombach
Jay Hockenbroch
Andre W. Lo
Andrea Peagler

Senior Directory

Abel, Kimberly
Special Education
Coraopolis, PA

Akins, David L.
Elementary Ed.
Apollo, PA

Albright, Linda
Management
Verona, PA

Alexander, Jane M.
Elementary Ed.
Meadville, PA

Alexander, Jennifer L.
Psychology
Sharpsville, PA

Allen, Susen L.
Social Science
Franklin, PA

Allmendinger, Dale E.
Accounting
Warren, PA

Alston, Denise A.
Communication/History
Philadelphia, PA

Amaram, Justina
Elementary Ed.
Clarion, PA

Ambrose, Cassandra S.
Anthropology/Sociology
White Plains, NY

Andrews, Laurie M.
Economics
McKees, Rocks, PA

Andrews, Phil
Mktg./Mgmt.
Erie, PA

Andersen, Lynn
Speech Pathology/Audiology
Roslyn, PA

Anderson, Judie
Medical Technology
Aliquippa, PA

Armstrong, Mark M.
Russian
Appollo, PA

Arnold, Dorothy
Elementary Education
Pittsburgh, PA

Arena, Richard
Biology
Coraopolis, PA

Babjak, Ronald J.
Secondary Ed./History
North Braddock, PA

Babnis, Mariann
Speech Communication
Sharon, PA

Bachman, Christine M.
Accounting
Pittsburgh, PA

Bachner, Ruth Ann
Elementary Ed.
Pittsburgh, PA

Balderson, James
Accounting
Rochester, PA

Baird, Kathi
Special Ed./Life Management
Butler, PA

Balik, Paula M.
Marketing
New Brighton, PA

Barnett, Jayne
Elementary Ed.
Knox, PA

Barrett, Lawrence
Scene Design and Direction
Berwick, PA

Barron, Thomas H
Secondary Ed.
Zelienople, PA

Bartholomew, Marie
Special Ed.
Tatama, PA

Bartlebaugh, Gay
Life Management
Milroy, PA

Bateman, Gary R.
Marketing
Sharpsville, PA

Batson, W. Brayton
Chemistry
Falls Creek, PA

Baxter, Harry N. III
Chemistry
Pittsburgh, PA

Beatrice, Greg
Accounting
Ellwood City, PA

Becker, Linda D.
Marketing
Lancaster, PA

Beggy, Theresa M.
Management/Finance
Pittsburgh, PA

Bennardo, Cynthia J.
Elementary Ed./Early Childhood
Pittsburgh, PA

Bennett, E. Joyce
Accounting
Aliquippa, PA

Berbach, Margaret
Library Science/Social Studies
Leechburg, PA

Bertolini, Celeste
Elementary Ed./Early Childhood
Warren, PA

Bickel, Timothy A.
Elementary Ed.
Erie, PA

Bieloski, Linda S.
Marketing/Management
Latrobe, PA

Bienkowski, Linda
Speech Pathology/Audiology
Nanticoke, PA

Billings, Dina L.
Medical Technology
Bradford, PA

Blackburn, Darlene
Special Education
Curwensville, PA

Bloomquist, Nancy
Elementary Ed.
Indiana, PA

Booker, Vaughn A.
Political Science
Rochester, PA

Boosinger, Linda
Accounting
Pittsburgh, PA

Boscardin, Mary Jearn
English
Pittsburgh, PA

Bossart, W. Becky
Accounting
Export, PA

Bowersox, Jane E.
Marketing
New Bethlehem, PA

Boyd, Susan F.
Speech Pathology/Audiology
Sandy Lake, PA

Boyle, Kass
Medical Technology/Biology
Derry, PA

Bracken, Beverly A.
Biology
Pittsburgh, PA

Brauglier, Gregory
Accounting
New Bethlehem, PA

Brezicki, Bob
Library Science/Elementary Ed.
Greensburg, PA

Bricker, Mark
Biology
New Tripoli, PA

Bright, Steven
Computer Science
Pittsburgh, PA

Brink, Marion J.
Marketing
Pittsburgh, PA

Brizzi, Bruce
Management
West Newton, PA

Brocius, Barbara
Secondary Ed.
Dubois, PA

Brown, Deborah
Communications
Sewickley, PA

Brown, Henry O.
Elementary Ed.
Tidioute, PA

Brush, Dana K.
Social Science
New Castle, PA

Bryant, Joyce L.
Secondary Ed.
Kane, PA

Buechele, Richard
Chemistry
East Brady, PA

Burk, Maryann J.
Elementary Ed.
Gibsonia, PA

Burnham, Susan B.
Earth Science
Emmaus, PA

Buterbaug, Donald
Music Ed.
Meyersdale, PA

Byron, Karen
Elementary Ed.
McKeesport, PA

Cadwallader, Cathie
Music Ed.
Pittsburgh, PA

Campanella, Maurie
Political Science
Dallastown, PA

Campbell, Linda K.
Elementary Ed.
Oil City, PA

Capra, James A.
Management
McDonald, PA

Carlin, Patricia A.
Library Science
Sharon, PA

Carlson, Carl
Accounting
Emporium, PA

Carson, Mary L.
Library Science/Elementary Ed.
Royersford, PA

Caylor, Gary E.
Marketing/Management
Punxsutawney, PA

Celento, Dennis
Marketing/Management
Houston, PA

Chavous, James
Business Administration
Philadelphia, PA

Cheritt, Thomas
Psychology
West Middlesex, PA

Cheung, Philip
Management
Hong Kong

Chieffe, Thomas
Accounting
Coraopolis, PA

Chitester, Sandra
Accounting/Computer Science
Akron, Ohio

Chlebove, Korinne
Biology
Allentown, PA

Chubb, Alice E.
Special Ed.
Camp Hill, PA

Clark, Jeffrey
Elementary Ed.
Oil City, PA

Coen, Rebecca L.
German
Pittsburgh, PA

Colin, Jace
Business
Pittsburgh, PA

Conley, Lawrence
Biology
Bethel Park, PA

Connelly, Danette
Accounting
West Mifflin, PA

Conrad, Joan
Finance
Franklin, PA

Cook, Dale M.
Accounting
Spartansburg, PA

Cook, Kenna A.
Elementary Ed.
New Eagle, PA

Cook, Richard
Management
Ellwood City, PA

Coon, Craig W.
Management/Marketing
Sigel, PA

Cooper, Carolyn J.
Elementary Ed.
Pittsburgh, PA

Cooper, Paul
Secondary Ed.
Reading, PA

Corey, Linda
Special Ed.
Conneaut Lake, PA

Cortazzo, Patricia A.
Medical Technology
Irwin, PA

Courtney, Brian
Secondary Ed.
Meadville, PA

Cover, Christine
Management
Gladwyne, PA

Cox, Keith
Speech Communication
Pittsburgh, PA

Coyer, Sharon
Accounting
Grove, City, PA

Crawford, Douglas
Physics
Natrona Heights, PA

Crede, Linda
Accounting
Erie, PA

Crous, Shelley J.
Medical Technology

Nantyglo, PA

Crowley, Thomas
Marketing
Eldred, PA

Cunningham, Diane L.
Music Ed.
Verona, PA

Cunningham, Therese
Accounting
Pittsburgh, PA

Curtis, Marie E.
Elementary Ed.
Punxsutawney, PA

Dana, Neal
Chemistry
Morrisville, PA

Danko, Linda
Accounting
Harrisburg, PA

Davis, Alan J.
English
Philadelphia, PA

Davis, Dilworth III
Secondary Ed.
Corry, PA

Davison, Diane
Life Management
Polk, PA

Deeny, Maureen
English
Feasterville, PA

Dellapina, R. Eric
Management
Oakdale, PA

DeLoia, Paul
Accounting
Ellwood City, PA

Demchak, Mary A.
Special Ed./Elementary Ed.
Johnstown, PA

Demich, Mark R.
Accounting
Pittsburgh, PA

Dennis, Harry
Accounting
Wyomissing, PA

Depew, Marilyn P.
Geography
Mifflintown, PA

DeSantis, John F.
Accounting
Bradford, PA

DeSantis, Michele
Biology
Jeannette, PA

Detone, Denise R.
Speech Pathology/Audiology
Scottsdale, PA

Detweiler, Randy
Elementary Ed.
Bradford, PA

Devey, Gayle J.
Special Ed./Elementary Ed.
West Mifflin, PA

DiBernardo, Linda
Elementary Ed.
Pittsburgh, PA

DiFilippo, Karen
Elementary Ed.
Avondale, PA

Diven, Diana L.
Special Education
Monroeville, PA

Dougherty, Donna M.
Secondary Ed.
Pittsburgh, PA

Douglas, Jeff
Accounting
Reston, VA

Douthett, Jeffrey
Speech Communication/Theatre
Warrendale, PA

Downie, Karen S.
Elementary Ed./Early Childhood
Beaver, PA

Downing, Joseph
Marketing
Pittsburgh, PA

Doyle, Barbara
General Science
Harrisburg, PA

Duffner, Robert
Accounting
Elizabeth, PA

Dugan, William
Management
Greensburg, PA

Duhala, Karen
Accounting/Finance
Mt. Pleasant, PA

Durante, Denise
Communication
Clarion, PA

Dusha, Margaret
Music Ed.
Clarksville, PA

Dushac, Carol
History
Aliquippa, PA

Eakman, Reheda L.
Elementary Ed.
Greenville, PA

Easter, Brenda
Mathematics
MannsChoice, PA

Eayre, Timothy
Education
Toms River, NJ

Eberhart, Cynthia
Biology
Clarion, PA

Ebner, Jeffrey E.
Management
Allentown, PA

Eckenrode, Thomas H.
Management
McMurray, PA

Edwards, Terry
Accounting
Philipsburg, PA



Eiler, Nancy E
Elementary Ed
Aliquippa, PA

Ellermeyer, Colleen A
Elementary Ed.
Kittanning, PA

Ellis, Joan E
Psychology
Ambler, PA

Elson, Janice
Speech Communication
New Kensington, PA

Engle, Christine A.
Accounting
Bowmanstown, PA

Englert, George
Elementary Ed.
Columbia, PA

English, Rachel A.
Elementary Ed.
Warren, PA

Eno, Frances
Spanish
Marietta, PA

Enos, Dawn D.
Elementary Ed.
Oil City, PA

Eonta, Joetta R.
Elementary Ed.
Ellwood City, PA

Eriksson, Marie
Special Ed.
West Chester, PA

Erisman, Debra A.
Elementary Ed./Early Childhood
Bethlehem, PA

Ernesty, Mary
Marketing
Connellsville, PA

Esapovich, JoAnn
Elementary Ed.
Industry, PA

Eshenour, James A.
Marketing/Management
Bethel Park, PA

Eshleman, Jan
Library Science
Coopersburg, PA

Estep, Robert A.
Music Ed.
Brookville, PA

Ettinger, LouAnn
Speech Communication/Theatre
Warren, PA

Evanovich, Michele
Elementary Ed.
Wall, PA

Eyler, Ann E.
Elementary Ed.
Pittsburgh, PA

Eyre, Cynthia
Social Studies
Ridley Park, PA

Facko, Dan
Management
Sharon, PA



Fagnano, Ann M.
Secondary Ed.
Milton, PA

Fairlamb, Helen E.
Accounting
Stoneboro, PA

Feaster, Pamela
Life Management
Bedford, PA

Fedorek, Ken
Marketing
Leechburg, PA

Fedorek, John
Accounting
Oil City, PA

Fehlman, Cathie S.
Music Ed.
Russell, PA

Fellenbaum, Debra A.
Communication Arts
Blueball, PA

Fenton, William
Management
Philadelphia, PA

Fike, Cynthia C.
Life Management
Knox, PA

Fitfro, Lora
Special Ed./Elementary Ed.
Pittsburgh, PA

Fitzsimmons, Ruthan
Accounting
Brookville, PA

Fleming, Deborah
Elementary Ed.
Huntingdon, PA

Fleming, Mark
Accounting
Sharon, PA

Foor, Kathy L.
Computer Science
Erie, PA

Fornal, Cheryl A.
Medical Technology
Oil City, PA

Fox, B. J.
Elementary Ed.
Harrisburg, PA

Fox, Tammy
Unknown
Clarion, PA

Frailey, Glen
Communication
Stroudsburg, PA

Framiglio, Lisa
Library Science
Pittsburgh, PA

Freeman, Robert W.
Marketing
Knox, PA

Fritchey, Judd E.
Music Ed.
North Versailles, PA

Frye, Amy F.
Biology
Latrobe, PA

Fry, Nanna K.
Library Science
Sharon, PA

Fuchs, Kimberly
Library Science
Pittsburgh, PA

Fulkman, George K.
Management
Volant, PA

Fultz, Danny L.
Marketing/Management
Lewistown, PA

Fusco, Thomas P.
Management
Ambler, PA

Gadzala, Virginia M.
Marketing
Aston, PA

Gall, Russ J.
Secondary Ed./Biology
Littlestown, PA

Gallo, Theresa M.
Elementary Ed.
East Brunswick, NJ

Gannoe, Marcie L.
Secondary Ed.
Eminton, PA

Garvin, Larry
Management
Zelienople, PA

Gaskin, William J. II
Political Science
Ligonier, PA

Gathers, Jean
Elementary Ed.
Clarion, PA

Gault, Lorene M.
Elementary Ed.
Smethport, PA

Gerwick, Christine
Life Management
Franklin, PA

Gibson, Lisa E.
Psychology
Enola, PA

Gill, Michael A.
Social Studies
Clearfield, PA

Girovard, Leonel J. III
Business Administration
Pittsburgh, PA

Glasgow, Alice M.
Library Science
Fallen Timber, PA

Glenn, Janine
Business Administration
Chambersburg, PA

Golden, Kathy
Elementary Ed.
Levittown, PA

Goodge, Thomas R. Accounting Pulaski, PA	Erie, PA	Helm, Marybeth Elementary Ed. Aliquippa, PA	Shinglehouse, PA
Goodman, Michael C. Psychology Philadelphia, PA	Hannon, Juanita R. Speech Pathology/Audiology Pittsburgh, PA	Helwig, Susan L. Accounting Berwick, PA	Howell, Duane Management Allison Park, PA
Goodson, Donna Biology Emporium, PA	Hannon, Patti E. Speech Pathology/Audiology Franklin, PA	Hennessy, Terry Marketing/Management Pittsburgh, PA	Howick, Kevin L. Management Cochranon, PA
Gorin, Cathy Secondary Ed. Rockville, MD	Hare, Shirley K. Biology New Castle, PA	Henry, Charles L. Accounting Big Run, PA	Hudson, Thomas H. Accounting Latrobe, PA
Gozzard, Don Marketing Pittsburgh, PA	Harlan, Faith Music Ed. St. Marys, PA	Herman, Sue E. Medical Technology Manchester, PA	Huet, James C. Real Estate Tarentum, PA
Grabigel, Mark Chemistry Freeport, PA	Harmon, Jeffrey S. Accounting Pittsburgh, PA	Higbee, Tammi Secondary Ed. Oil City, PA	Hughes, Debbiee Art Brockway, PA
Green, Barbara J. Accounting Brookville, PA	Harrison, James M. Political Science/Sociology Gettysburg, PA	Hill, Kenneth R. History Lower Burrell, PA	Hunnell, Dave Accounting Washington, PA
Green, Ted Jr. Chemistry/Business Franklin, PA	Hartenbach, Kenneth A. Physics/Earth Science Baden, PA	Himes, Marsha Elementary Ed./Early Childhood Clarion, PA	Irick, Susan French/German Lansdale, PA
Greggs, Elena M. Accounting Stoneboro, Pa	Hartmen, Patrick Geography Oakdale, PA	Hinderliter, Dennis L. Accounting Sarver, PA	Irwin, Bruce Business Administration Greensburg, PA
Grichor, Martin Speech Communication/Theatre Wexford, PA	Hartshorne, Beth Elementary Ed. Clearfield, PA	Hines, Gary M. Marketing Verona, PA	Jackson, Denise L. Computer Science Harrisburg, PA
Gruber, Elizabeth A. Secondary Ed. Shippenville, PA	Hawkins, Jeffery P. Management Bressler, PA	Hintenach, James R. Accounting Erie, PA	Jackson, Elizabeth I. Biology Brockway, PA
Guerra, Marie L. Communication Pittsburgh, PA	Hawkins, Susan M. Marketing Verona, PA	Hoak, Diane Music Ed. McKeesport, PA	Jacobs, Linda L. Library Science Meadville, PA
Guyton, Gail M. Medical Technology Erie, PA	Hay, Sandra L. Psychology/Speech Communication Clearfield, PA	Hobson, Susan L. Elementary Ed. Philadelphia, PA	James, Frank E. Mathematics Meyersdale, PA
Hadaway, Carol F. Biology Erie, PA	Hayden, Wendy J. Medical Technology Pittsburgh, PA	Hoenes, Kimberly A. Marketing/Management Gibsonia, PA	Janssen, Jennifer Biology Hillsdale, NJ
Hale, Beth Life Management Oil City, PA	Hayes, Jeffrey Speech Communication/Theatre Bridgeville, PA	Hogue, Kelly Elementary Ed. Lewistown, PA	Jeffreys, Brenda L. Music Ed. Slippery Rock, PA
Hall, Daniel R. Accounting/Management Oil City, PA	Headland, Barry Physics Rochester, PA	Horan, W. Gareth Finance/Management Warminster, PA	Jiamachello, Joseph E. Management Brockway, PA
Hall, John P. Music Ed. East Brady, PA	Heagy, Carol Marketing/Management Tunkhannock, PA	Hornak, Richard Accounting Donora, PA	Jioio, Cheryl Elementary Ed. Greensburg, PA
Hallberg, Ronald J. Management Kane, PA	Healey, Erin Management West Mifflin, PA	Hosak, Roslyn A. Real Estate/Finance Whitehall, PA	Johnson, Raymond Jr. Business Administration Pittsburgh, PA
Hallman, Lynda S. Elementary Ed. Gettysburg, PA	Heath, Julie K. Secondary Ed. DuBois, PA	Hosfeld, Corinne Library Science/German Mountville, PA	Johnson, Steven D. Management Harrisburg, PA
Haluska, James A. Unknown Patton, PA	Hefflin, Wanda J. Business Administration Pittsburgh, PA	Houk, Deborah L. Speech Pathology/Audiology New Castle, PA	Johnston, Janis L. Elementary Education Pittsburgh, PA
Hammill, Roberta English Pittsburgh, PA	Hein, Douglas L. Accounting Coopersburg, PA	Houtz, Mike Elementary Education Mifflintown, PA	Jones, Laurine N. Library Science Royerford, PA
Hanlon, David English	Heindl, Nancy Management St. Marys, PA	Howard, Diane K. Speech Pathology/Audiology	Joy, Rande Psychology Corry, PA

Joyce, Linda Life Management Pittsburgh, PA	Knickerbocker, Max Business Administration McMurray, PA	Landau, Carol A. Mathematics Washington, PA	McKees, Rocks, PA
Kaczmarek, Deborah E Accounting/Finance Clarion, PA	Knoebel, John M. Accounting Clarks Summit, PA	Langietti, Pam Elementary Education Greenville, PA	London, Joan Elementary Education Brockway, PA
Kaminski, Linda S. Elementary Education Greensburg, PA	Koch, Lisa Music Franklin, PA	Lavick, Cheryl L. Accounting New Kensington, PA	LoPresti, William J. Accounting Finleyville, PA
Kannegieser, Robert Marketing Harrisburg, PA	Koehler, Gary W. Communications Gibsonia, PA	Lazusky, Louise J. Management Cochranton, PA	Lovorn, Michael G. Accounting Harrisburg, PA
Kappel, Amy L. Psychology Ligonier, PA	Kolcun, Steven G. Accounting Pittsburgh, PA	Lazzeri, Kristene Elementary Education Dayton, PA	Lucas, Michael G. Accounting/Finance Apollo, PA
Kapusta, George Unknown Coraopolis, PA	Konetsky, Pamela A. Elementary Education Erie, PA	Learish, MaryLynne English Clearfield, PA	Luksik, Mariann E. History Pittsburgh, PA
Karban, Anne Management Bethlehem, PA	Koontz, James A. Accounting Littlestown, PA	Leasher, Becky L. Music Education Alverton, PA	Lundberg, Jean M. Management Falls, Creek, PA
Kasanicky, Marcie Elementary Education Leechburg, PA	Koperna, Mary A. Secondary Education Coaldale, PA	Leasure, Debra S. Marketing/Management Warren, PA	Lundy, Carol A. Secondary Education Williamsport, PA
Kati, Warren, M. Biology Zelienople, PA	Kosarich, Karen L. History Glenshaw, PA	Leeper, Randy J. Business Administration Aliquippa, PA	Lunsford, Jean Speech Pathology/Audiology Wareen, PA
Keil, Lisa E. Elementary Education Oil City, PA	Koska, Lawrence Management West Mifflin, PA	Leffingwell, Amber L. Library Science Linesville, PA	Lutz, D. Scott Accounting Butler, PA
Keil, Rebecca S. Speech Pathology/Audiology Pittsburgh, PA	Kosoglow, Marybeth Business Administration Clardige, PA	Lemon, Kimberly A. Speech Communication Lancaster, PA	Luy, Sharon L. Library Science Madison, JJ
Kelley, Timothy A. Sociology/Psychology Fombell, PA	Kotun, Lisa Accounting Aliquippa, PA	Leopardo, Karen Medical Technology Ellwood, City, PA	Lynch, Mary M. English Dushore, PA
Kennedy, Daniel L. English Oil City, PA	Kovensky, Susan M. Secondary Education Holidaysburg, PA	Lesnick, Marueen Elementary Education Punxsutawney, PA	Mack, Nancy L. English Ligonier, PA
Kessler, Lori R. Spanish DuBois, PA	Kratzer, Judson M. Sociology Mt. Bethel, PA	Levish, Carolyn Anthropology/Sociology Brackenridge, PA	MacMillan, Deborah L. Sociology/Psychology Wingate, PA
Killeen, Mary D. Accounting Glenshaw, PA	Kraus, Keith A. Biology Pittsburgh, PA	Lewis, Anthony Speech Communication Philadelphia, PA	Macurdy, Dawn M. Marketing Sarver, PA
Kimicata, Paul Biology Pittsburgh, PA	Kretzler, Karen Communication Pittsburgh, PA	Lewis, Cynthia J. Special Education Watsonstown, PA	Macurdy, Keith L. Accounting Butler, PA
Kinch, LuAn K. Finance/Real Estate Tionesta, PA	Kroh, Ruth A. Speech Pathology/Audiology Brookville, PA	Lewis, Mark A. Accounting Cranberry, PA	Mahlon, Mark Psychology Emporium, PA
King, Alan Elementary Education Brookville, PA	Kronewetter, Steven W. Accounting St. Marys, PA	Liek, Katrina M. Psychology Manchester, PA	Majors, Terri B. Elementary Education New Castle, PA
Kirkhoff, Barbara M. Elementary Education Pottstown, PA	Kurtz, Susan C. Chemistry Knox, PA	Lighthiser, E. Lawrence Management Pittsburgh, PA	Majoy, Dan Marketing Huron, Ohio
Kiser, Holly A. Elementary Education Altoona, PA	Kusnir, J. Michael Accounting New Brighton, PA	Lindberg, Paul C. Marketing/Real Estate Sheffield, PA	Malthaner, Michael J. Music Education Erie, PA
Klahr, Elizabeth A. Medical Technology Erie, PA	Kwasneski, John L. Social Sciences Pittsburgh, PA	Lo, Andre W. Management Causeway Bay, Hong Kong	Mann, Bruce Marketing Pittsburgh, PA
Kletzli, Lu Ann Accounting/Comp. Science Imperial, PA	Lacko, Elizabeth New Castle, PA	Lockridge, Mark S. Management	Mannella, Victor F. Jr. Music Education Vandergriff, PA

Marcink, Gary Accounting/Finance Baden, PA	Accounting Allison Park, PA	Greenville, PA	Moorehead, Donna M. Speech Pathology/Audiology Fort Washington, MD
Marcinko, Linda Special Education McKean, PA	McCaw, Keith Accounting Butler, PA	Matzler, David Management Erie, PA	Morgus, Michael K. Accounting Greenville, PA
Marquis, Barb Elementary Education Warren, PA	McCleary, Pamela Jean Elementary Education Knox, PA	Mignanelli, Pamela A. Speech Pathology/Audiology New Brighton, PA	Moriarty, Colleen Speech Pathology/Audiology Greenbelt, MD
Martin, Barbara J. Secondary Education Pittsburgh, PA	McClure, Kimberlee Marketing Annandale, VA	Mihaliuk, Michael J. Jr. Medical Technology North Versailles, PA	Morrell, Judy Elementary Education Pittsburgh, PA
Martin, Robert Biology Oil City, PA	McClure, Melinda A. Library Science Apollo, PA	Miles, Ardella Y. Finance/Marketing Philadelphia, PA	Morris, A. Dean Secondary Education Latrobe, PA
Martin Ronald J. Accounting Trafford, PA	McGarrity, Terry E. Accounting Oak Ridge, PA	Miller, Diana M. Marketing/Management Benton, PA	Morris, Barbara J. Special Elementary Education McKeesport, PA
Mason, Vicky Library Science/Communication West Decatur, PA	McIlvaine, Wendy Biology Greensburg, PA	Miller, Jeff Management Pittsburgh, PA	Morrison, Pamela A. Accounting Pittsburgh, PA
Masters, Karen M. Library Science Flourtown, PA	McKarski, Edward J. Prelaw Clarendon, PA	Miller, Michele Music Education Pittsburgh, PA	Moyer, Maureen Accounting/Computer Science Knox, PA
Matala, H. Joe Accounting Lebanon, PA	McKelvey, David Business Administration Penfield, PA	Miller, Nancy O. English/Art Allentown, PA	Muller, Kathy J. Secondary Education Temple, PA
Mattingly, James E. Accounting Forestville, MD	McKnight, Judy Elementary Education Ellington, CT	Miller, Thomas W. Management Claysville, PA	Munn, Lois Accounting Lowellville, OH
Matzel, Janice Accounting Hermitage, PA	McMillen, Suzanne Elementary Education Worthington, PA	Mills, Kathleen L. Art McMurray, PA	Munn, Mitzi Elementary Education Zielenople, PA
Mauck, Carrie Business Administration Pittsburgh, PA	McMunn, Karen Elementary Education Lewistown, PA	Mogee, Drew F. Management West Chester, PA	Murphy, Deborah Elementary Education Clarion, PA
Maybee, Carol M. Medical Technology Hadley, PA	McNaughton, Mary A. Mathematics/Computer Science North Huntingdon, PA	Molnar, William J. Biology Leechburg, PA	Murphy, Megan M. Acting Sharon, PA
McAninch, Constance Elementary Education Brookville, PA	McNicholas, Michael J. Mgt./Real Estate New Castle, PA	Mong, Shelby A. Music Education Knox, PA	Myers, Jeffery L. Accounting New Bethlehem, PA
McCarthy, Charlene Elementary Education Oil City, PA	McVay, Dan Accounting Penn Hills, PA	Montagve, Jennifer L. Special Education Pittsburgh, PA	Myers, John T. Elementary Ed. Ebensburg, PA
McCarthy, James Accounting Hershey, PA	Meadon, Nancy L. Special Education Beaver Falls, PA	Moore, Linda L. Management/Marketing DuBois, PA	Neely, Karen M. Psychology Pittsburgh, PA
McCauley, Tom	Mechenbier, Kathryn Speech Pathology/Audiology	Moore, Renee J. Communications Pittsburgh, PA	Nelson, Mark E. Music Education Pittsburgh, PA



Nori, Kathy
Speech Communication
Hollidaysburg, PA

Norwood, Karen A.
Music Education
Bethel Park, PA

Novak, Randy
Accounting
Pittsburgh, PA

Novosel, John
Marketing
Kane, PA

Nuhfer, Barbara J.
Special Education
Southold, NY

Nuzzo, Nick
Business Administration
Industry, PA

Obenreder, Paul J.
Business
Fryburg, PA

Ober, Esther
Chemistry
Clarion, PA

O'Block, Mark E.
Accounting
Pittsburgh, PA

O'Hara, Gerry
Management/Marketing
Warminster, PA

O'Leary, Margaret R.
Unknown
Carrolltown, PA

Olney, Gay M.
German
Westfield, PA

Oltman, Roger J.
Special Education
Natrona Heights, PA

Omorodion, Osadolor
Accounting/Finance
Benin City, Nigeria

O'Neill, Daniel K.
Geography
Titusville, PA

Onorato, David
Marketing/Management
Pittsburgh, PA

Orange, Dennis R.
Computer Science/Accounting
Tratford, PA

Ord, Edward S. Jr.
Management

Warren, PA

Orendorf, Debra D.
French
Meyersdale, PA

Orris, David E.
Elementary Education
Middleburg, PA

Ortman, Alice F.
Elementary Education
Meadville, PA

Osiecki, Marcy
Elementary Education

Canonsburg, PA

O'Toole, Bob
Accounting
Carnegie, PA

O'Toole, Patrick T.
Elementary Education
Tionesta, PA

Owatt, Kimberlee
Elementary Education
Ebensburg, PA

Oxendale, Jeanne L.
Elementary Education
Allison Park, PA

Pailin, Joseph F. Jr.
Accounting
Philadelphia, PA

Palka, JoAnne
Psychology
Sewickley, PA

Palombi, Ray
Marketing
Sharpsville, PA

Panneton, Cliff
Management
Allison Park, PA

Park, Margaret M.
Sociology/Psychology
Emporium, PA

Parme, Nancy R.
Communications
Pittsburgh, PA

Parr, Jon D.
Speech Communication/Theatre
Bethel Park, PA

Passarelli, Alice
Marketing/Management
Butler, PA

Patosky, Edward J.
Elementary Education
Jeannette, PA

Patterson, Sue
Business Administration
Pittsburgh, PA

Pavone, Denise
German
Northport, NY

Peel, Susan M.
Life Management
Pittsburgh, PA

Perich, Debbie
Accounting
Jeannette, PA

Perriello, Joseph C.
Elementary Education
Lower Burrell, PA

Perriello, Tony
Management
Sharpsville, PA

Peterson, Deborah M.
Medical Technology
Greenville, PA

Peterson, Edward B.
Secondary Education
Montoursville, PA

Peterson, Lynne E.
Earth Science/Geography
Harvey's Lake, PA

Phillips, Ron
Elementary Education
Pittsburgh, PA

Picariello, Lenore
Accounting/Computer Science
King of Prussia, PA

Piccirilli, Mike
Biology
Sharpsville, PA

Pierce, Debra L.
Elementary Education
Corsica, PA

Pierucci, Terry
Business Administration
Sligo, PA

Plake, Jeffrey S.
Management
West Mifflin, PA

Polenski, Mark
Sociology/Psychology
Garrett, PA

Pollard, James M. Jr.
Speech Communication/Theatre
Philadelphia, PA

Pollina, Samuel C.
Biology
Johnstown, PA

Posch, Vickie
Speech Pathology/Audiology
Pittsburgh, PA

Powell, Kristine A.
Speech Pathology/Audiology
Aliquippa, PA

Powell, Mark W.
Social Studies
Johnstown, PA

Progen, Michael
Finance
Doylestown, PA

Puglisi, Samuel E.
Management/Accounting
Donora, PA

Puzz, Leigh A.
Speech Pathology/Audiology
Ellwood City, PA

Quillman, Lauren M.
Secondary Education
Blandon, PA

Quinn, Karen
Spanish/French
Littlestown, PA

Radomski, Stephen
Management
Lansdale, PA

Rahuba, Jeffrey J.
Special Education
Carnegie, PA

Rairie, Susan
Special Education
Corry, PA

Ravetto, Cynthia L.
Special Education



Leechburg, PA

Reade, Ned L.
Management/Finance
Erie, PA

Reasinger, Cynthia A.
Elementary Education
Troutville, PA

Reckhart, Kenda J.
Secondary Education
Clarks Mills, PA

Reddick, Dawn
Speech Pathology/Audiology
Slippery Rock, PA

Reichenbach, Ray A.
Accounting
Shamokin Dam, PA

Reinsel, Michael
Management
Limestone, PA

Rembold, Jerry A.
Music Education
Seneca, PA

Renz, Theresa A.
Management
Pittsburgh, PA

Resnak, Bruce A.
Management/Marketing
Elizabeth, PA

Ressler, Sue A.
Speech Pathology/Audiology
Monroeville, PA

Reynolds, Nancy M.
English
Pittsfield, PA

Rhoads, Greg B.
Accounting
Clarion, PA

Rice, Mary J.
Sociology/Psychology
Clarion, PA

Rieg, Kevin
Management
Pittsburgh, PA

Riker, Tracy A.
German
Media, PA

Rimolt, Michele
Biology
Pittsburgh, PA

Ripplin, Nancy
Elementary Education
Monroeville, PA

Roberts, Cathy
Real Estate
Allentown, PA

Roberts, Linda L.
Elementary Education
Seneca, PA

Rodgers, John T.
Secondary Education
Johnstown, PA

Rolder, Christine S.
Secondary Education
Pittsburgh, PA

Rogan, James

Business
Fombell, PA

Rogan, Terri C.
Secondary Education
New Castle, PA

Rohrer, Pamela E.
English
Meadville, PA

Rooney, W. Jerry, Jr.
Marketing/Management
Furlong, PA

Root, Kenneth L.
Management
Chester Springs, PA

Rosander, Kurt
Real Estate
Wexford, PA

Ross, Sara J.
Elementary Education
Goshen, CT

Rossi, Michael
Marketing
Sharon, PA

Rudick, Mary B.
Elementary Education
Coraopolis, PA

Rudy, Sharon
Library Science
Dalton, OH

Rutto, Marilee
Secondary Education
Youngwood, PA

Rushin, Karen S.
Elementary Education
Clarion, PA

Rutishauser, Lisa A.
Special Education
Montrale, NJ

Rykaczewski, Cathy M.
Management/Comp. Science
Natrona Heights, PA

Sacolic, Brian R.
Earth Science
Strattanville, PA

Salem, Daniel E.
Marketing/Management
New Kensington, PA

Sanders, Karen K.
Speech Path./Aud.
Kane, PA

Santonico, Lesa
Life Management
Lock Haven, PA

Santorum, Barbara
Social Sciences
Tire Hill, PA

Sardi, Carla J.
Medical Technology
Clarion, PA

Sartain, Noelle E.
Accounting
Pittsburgh, PA

Satterlee, William T.
Business Administration
Hollidaysville, PA

Savoy, Lynette
Special Education
Philadelphia, PA

Saxton, Cynthia J.
Elementary Education
Northumberland, PA

Scala, William D.
Accounting
Bethel Park, PA

Schlegel, Wayne D.
Secondary Education
Pittsburgh, PA

Schmidt, Susan
Accounting/Marketing
Springfield, PA

Schnitker, Sue A.
Elementary Education
Brockway, PA

Scott, DuAnne
Marketing/Management
Pittsburgh, PA

Sebak, Denise E.
Early Childhood
Bethel Park, PA

Sechrist, Timothy J.
Accounting
York Haven, PA

Sedlock, Joyce
Communication
Elizabeth, PA

Sedoris, Deborah A.
Communication Arts
Punxsutawney, PA

Selesky, Lori E.
Life Management
Latrobe, PA

Selle, Jane M.
Elementary Education
St. Marys, PA

Selvaggio, Mary E.
English/Art
Allison Park, PA

Seman, Barbara
Social Sciences
Pittsburgh, PA

Seratin, Karen J.
Special Education
Oil City, PA

Serafin, Mary J.
Management
Oil City, PA

Sessi, Robin
Special Education
North Huntingdon, PA

Shafer, Lauren S.
Management
Pittsburgh, PA

Shaffer, Keith L.
Communication Arts
Glen Rock, PA

Shaffer, Randy R.
Management
Mayport, PA

Shakley, Candace R.
Special Education

Butler, PA

Shapiro, Harry R.
Business Administration
McMurray, PA

Shaver, Cathy L.
Elementary Education
Corry, PA

Sheline, John M.
Accounting
Rochester, PA

Shelley, Scott
Social Sciences
Lemoyne, PA

Shemuha, Robin R.
Psychology/Sociology
Punxsutawney, PA

Shoemaker, Joyce E.
Management/Marketing
Pittsburgh, PA

Shrowder, Gloria J.
Elementary Education
Middleburg, PA

Sigismondi, Linda A.
Chemistry/Biology
Kingston, PA

Siler, David
Management/Marketing
Seneca, PA

Silvestri, Gregory
Communication
Pottstown, PA

Sinclair, Richard D.
Accounting
Coraopolis, PA

Sinibaldi, Mary M.
Elementary Education
St. Mary's, PA

Sipe, Kathleen
Life Management
Pittsburgh, PA

Sisinni, Michael C.
Business Administration
Erie, PA

Skelly, John
Speech Communication
Gibsonia, PA

Skoczlas, Karen A.
Accounting/Comp. Science
Verona, PA

Skwarcha, Jan L.
Accounting/Finance
Coraopolis, PA

Slagel, Thomas R.
Accounting
Glenshaw, PA

Slick, Cindy
Elementary Education
Erie, PA

Smale, Andrew R.
Management
Allentown, PA

Smith, Barbara
Secondary Education
Bradford, PA

Smith, Cynthia L.
Elementary Education
Kane, PA

Smith, Jaye L.
Accounting
Mechanicsburg, PA

Smith, Sharon
Accounting
Pittsburgh, PA

Smith, Thomas D.
Accounting
Aliquippa, PA

Smith, Wayne E.
Communication
Leechburg, PA

Snyder, Debra L.
Accounting
Camp Hill, PA

Snyder, Kurt R.
Communication Arts
Wind Gap, PA

Snyder, Sally L.
Elementary Education
Pittsburgh, PA

Socha, Mary L.
Communication Arts
Titusville, PA

Soldo, Victoria
Elementary Education
Coraopolis, PA

Solle, Wynn
Marketing/Management
Franklin, PA

Sowa, Susan M.
Library Science
Kane, PA

Spanitz, John
Business Administration
Coplay, PA

Sprecher, William E.
Accounting
Pittsburgh, PA

Sroka, Lawrence
Management
Pittsburgh, PA

Stahlman, Jill E.
Life Management
Clarion, PA

Stajduhar, John D.
Accounting
Clarion, PA

Staley, Barbara L.
Life Management
Falls Creek, PA

Stallsmith, Kim L.
Political Science
Carlton, PA

Standridge, Ronnie R.
Elementary Education
Kenvil, NJ

Starr, Cynthia C.
Elementary Education
Duke Center, PA

Stehle, Susan
Business Administration

Shipperville, PA

Stello, Jamie C.
Secondary Education
Punxsutawney, PA

Sterba, Tim
Business Administration
Pittsburgh, PA

Stewart, Thomas L.
Management
Rimersburg, PA

Stickley, Mark A.
Accounting
Imperial, PA

Stoey, Donald E.
Accounting
DuBois, PA

Stohr, Brenda
Elementary Education
Port Allegany, PA

Stout, Janet E.
Biology
Port Allegany, PA

Stover, N. Ann
Accounting
York, PA

Strausbaugh, Perry W.
Accounting
Gettysburg, PA

Strawoet, Dorothy A.
Elementary Education
Springdale, PA

Stroy, Sylvia D.
Accounting
Philadelphia, PA

Stunda, John T.
Business Administration
Burgetstown, PA

Sukaly, Bruce
Accounting
McKees Rocks, PA

Sullivan, Barbara V.
Communication Arts
Franklin, PA

Summerville, Suzanne
Secondary Education
Rimersburg, PA

Swarm, Lori L.
Accounting/Comp. Science
Limestone, PA

Swartz, Daniel
Management
Fredonia, PA

Szeligo, Jacqueline
Accounting
Pittsburgh, PA

Talleri, Peter
Management
Butler, PA

Tarr, Sandra W.
Psychology
Franklin, PA

Tate, Carol A.
Computer Science
Wilkinsburg, PA

Tate, Estella
Sociology/Psychology
Erie, PA

Tate, Tony
Real Estate
Llymes, PA

Taymans, David W.
Business Administration
Pittsburgh, PA

Tedeschi, John
Marketing/Management
Belleville, PA

Terhune, Abby L.
Speech Path./Aud.
Ambler, PA

Termin, Buddy
Elementary Education
Dauphin, PA

Thomas, Martha V.
Speech Path./Aud.
Sharon, PA

Thomas, Patricia
Sociology/Psychology
Pittsburgh, PA

Thompson, Beverly A.
Special Education
Knox, PA

Thompson, Ronald P.
Computer Science
Philadelphia, PA

Thompson, Steven A.
Music Education
Butler, PA

Thrower, Anne J.
Political Science
Bridgeport, CT

Tidball, Julie M.
Biology
Bradford, PA

Tierno, Joseph C.
Management/Real Estate
Pittsburghs, PA

Timmins, Dawn E.
Special Education
Langhorne, PA

Tinsman, Hollie A.
Elementary Education
Erie, PA

Tower, Lisa D.
Music Education
Erie, PA

Troxwill, E. Robin
Biology
Sugar Grove, PA

Trudgen, Daniel M.
Accounting/Finance
Kittanning, PA

Trujillo, David P.
Management
Penn Hills, PA

Trusits, Marie
Theatre
Nauet, NY

Turin, Regina
Library Science

Greensburg, PA

Underwood, Dawn V.
Communication
Cleveland, OH

Urey, David M. III
Management/Marketing
Mercer, PA

Valenza, Camille
Special Education
Clearfield, PA

Valone, Coral A.
Elementary Education
Warren, PA

Vandermark, David
Accounting
Gillett, PA

Vanek, Mark
Geography
Allentown, PA

Vargo, Sherri
Management
Sharpsville, PA

Vavra, Karen
Finance/Real Estate
Clarion, PA

Vensel, Barbara
Elementary Education
Chicora, PA

Vicari, Cindy
Medical Technology
Butler, PA

Vicari, Joan B.
Library Science
Warminster, PA

Vornhold, Judith
Early Childhood
Hulmeville, PA

Vroman, Suzanne M.
Spanish
Bethel Park, PA

Wade, Raymond P.
Biology
Massillon, OH

Wagner, Randy J.
Accounting
Homeworth, OH

Walker, Geraldine
Special Education
Norristown, PA

Walter, Cindy
Special Education
Harrisville, PA

Ward, Keith T.
Marketing/Management
Clarion, PA

Warrick, Bill
Elementary Education
Richland, WA

Weatherill, Mary E.
Special Education
Millville, PA

Weaver, Richard T.
Speech Communication
Marble, PA

Weaver, Tim

Management
Bradford, PA

Weibel, Kim R.
Elementary Education
East Brady, PA

Weimer, Nora L.
Library Science
Leechburg, PA

Weinheimer, Susan
Communication Arts
Glenshaw, PA

Weise, Kathy
Elementary Education
West Mifflin, PA

Weich, Sandra
Biology
Sharon, PA

Weller, Glee B.
Management
Chicora, PA

Wells, Reginald A.
Communication
Philadelphia, PA

Welton, Wendy L.
Elementary Education
DuBois, PA

Wensel, Kris
Elementary Education
Erie, PA

West, Cynthia S.
Social Science
Indiana, PA

Wheeler, Heidi L.
Elementary Education
Indiana, PA

Whisler, Joleen M.
Elementary Education
Hanover, PA

White, Barbara
Speech Communication
Coraopolis, PA

White, Laetitia
Elementary Education
Ridgway, PA

Whitehill, R. Douglas
Secondary Education
Clarion, PA

Whitman, Eric J.
Management
Philipsburg, PA

Wilder, Douglas E.
Music Education
Gowanda, NY

Wilder, Jonathan
Music Education
Gowanda, NY

Will, Dean
Accounting
Pittsburgh, PA

Williams, Cindy S.
Elementary Education
Oil City, PA

Wilcox, Linda R.
Elementary Education
DuBois, PA

Wilson, Jenniter
Mathematics
Macungie, PA

Wilson, Richard E.
Music Education
North Apollo, PA

Wise, Amy
Medical Technology
Harmony, PA

Wise, Vicki
Life Management
York, PA

Wolfe, Donna J.
Accounting
Jeannette, PA

Wong, Eddie M.
Accounting
Hong Kong

Wonsidler, Craig
Biology
Hatfield, PA

Woodruff, Gail I.
Speech Communication
Pittsburgh, PA

Woods, Bob
Marketing/Management
Clarendon, PA

Woodward, Marvin L.
Elementary Education
Rochester, PA

Wykoff, Vernon
Biology
Williamsport, PA

Yager, Kenneth E.
Real Estate/Management
Monaca, PA

Yingling, Lee A.
English/Library Science
Milton, PA

Yocum, Richard W.
Accounting
Tralford, PA

Yon, David S.
Management
Mars, PA

Yost, Robin G.
Special Education
Butler, PA

Yourish, Mary E.
Sociology/Psychology
Latrobe, PA

Yusko, Michael S.
Accounting
Manor, PA

Zampogna, Thomas C.
Accounting
Kane, PA

Zanaglio, Rita
Special Education
Punxsutawney, PA

Zangrilli, Jeffrey D.
Accounting
Pittsburgh, PA

Zebley, Carol A.
Special Education

Pittsburgh, PA

Zediker, Alan C.
Marketing
Butler, PA

Zerblis, Linda
Special Education
Mars, PA

Zietz, Timothy R.
Biology
Media, PA

Zimmerman, Curtis L.
Marketing

Waretown, NJ

Zimmerman, Kurt
Computer Science
Wayne, NJ

Zimmerman, Samuel H.
Accounting
Stoystown, PA

Zindel, Mark
Accounting
Wayne, NJ

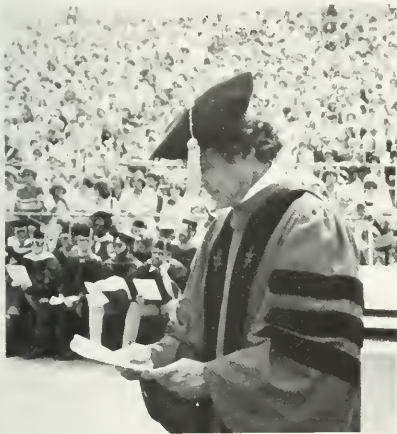
Zisa, Patricia A.
Management
Greencastle, PA







Graduation May 20, 1979



Every individual has a place to fill in this world, and is important, In some respect, whether he chooses to be so or not.

Anatole France

All adventures arrive at an end.
Dreaming is enacted by doing with each
act becoming a challenge that results in
victory or defeat.

Four distinctive individuals have left
students and faculty of Clarion State
College with exceptional memories —
exceptional because no four persons
with their character, mannerisms or
ideals will journey this way again.

Memorial

Anna Black
Dave Mercinko
Mr. Charles Pearce
Dr. Betty Slater



Editor's Message

Much is involved in organizing a college yearbook — a goal is set, with problems occurring while striving to attain that goal. With the help of people working together the challenge becomes somewhat easier with time. It is important for me to say "Thank-you" to those special people who helped in so many ways to make this yearbook possible:

Bernie Magirl - Walsworth Publishing Co.
Abe Orlick - Davor Photo
Lee Krull - Business Manager, Student Assoc.
Mary Weyer - Cover
John Stunda
Hal Wassink
The Sequelle Staff,

and a special "Thank you" to my co-editor, Brian Smith.

I hope the events in this book will remain as memories in the hearts of all. Good luck to everyone and may you find happiness and success in all you do!

Take care,

Joetta Eonta
Co-editor

CLARION UNIVERSITY OF PENNSYLVANIA

3 9363 00385 7767

Carlson Library
Clarion University
Of Pennsylvania

ADG 3.9 1991

10 5 MAR 2003

