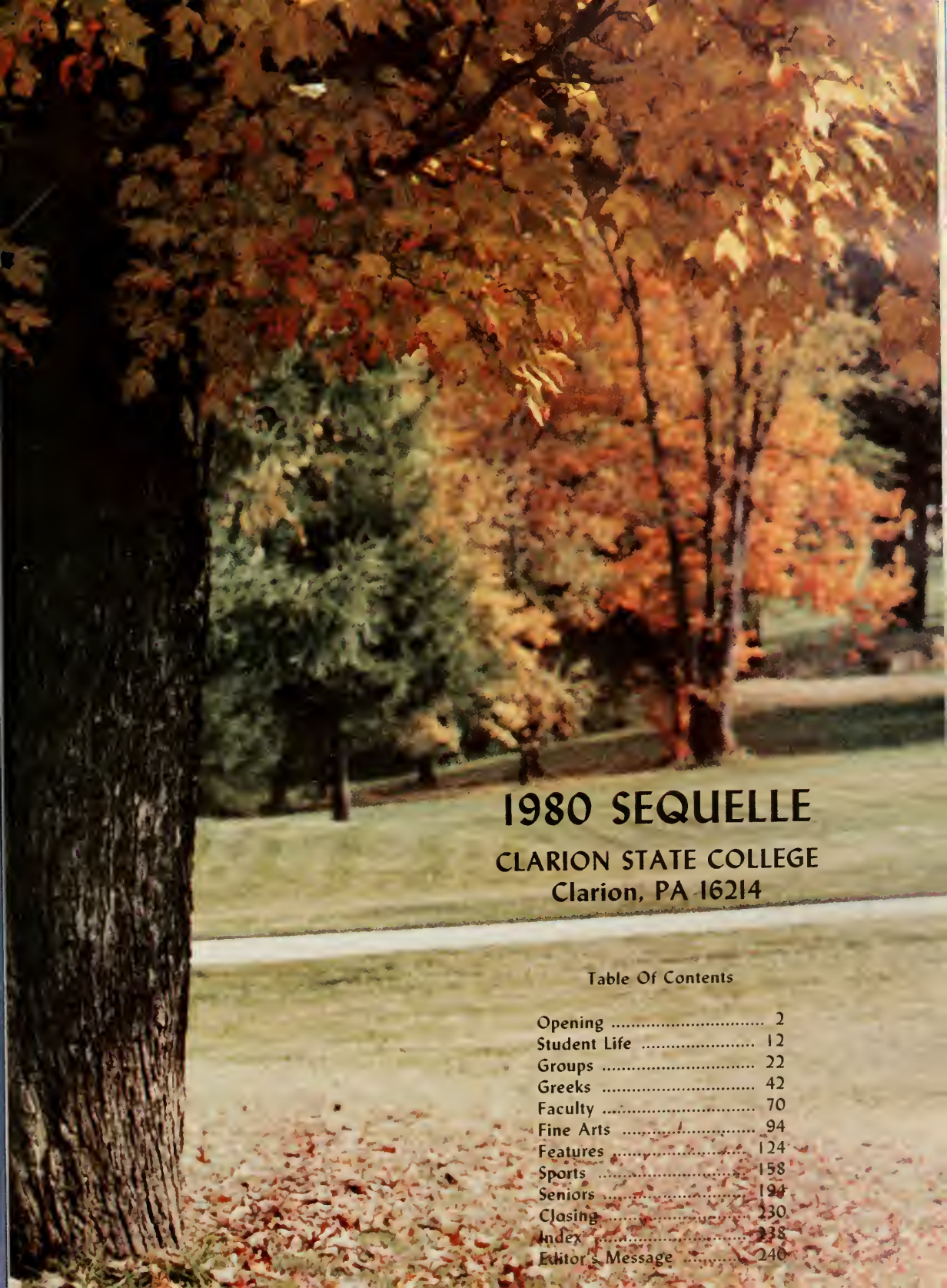


1980 SEQUELLE





1980 SEQUELLE

CLARION STATE COLLEGE
Clarion, PA 16214

Table Of Contents

Opening	2
Student Life	12
Groups	22
Greeks	42
Faculty	70
Fine Arts	94
Features	124
Sports	158
Seniors	194
Closing	230
Index	238
Editor's Message	240



I traced my footsteps
through the sands of yesterday.
Back the way I came I was returning.



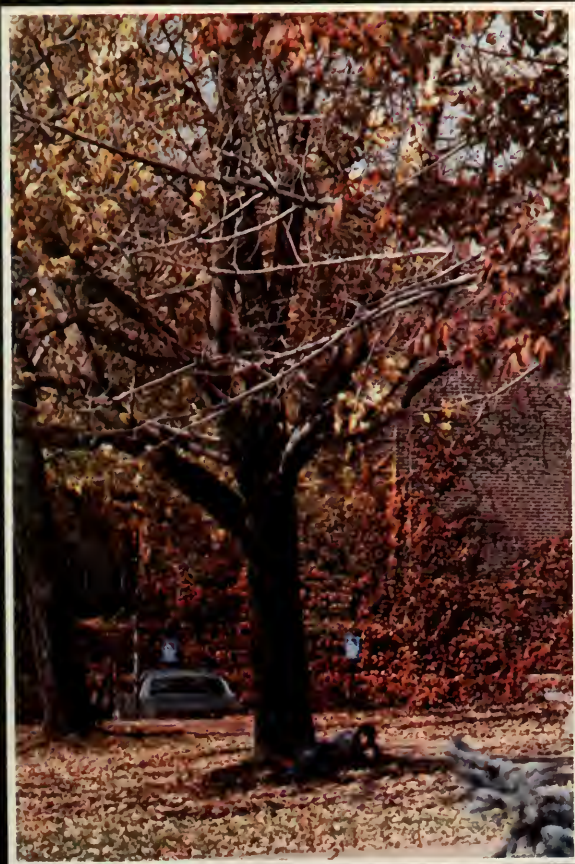


And when I saw me
standing just across the river,
just across the bridge
that I'd left burning.



It was all reaching out to me;
Now my reflection
in the water's all I see.





**Back to the laughing green
of summer days,
Back to the chilly golden autumn haze
To a place called yesterday.**



**Come on in and sit down,
It's good to be in your town.
We're gonna take you
for a rainbow ride.**



We could get together
for a rainbow ride.
Close your eyes and let it happen.
Bright and breezy,
nice and easy.



Hold on while the music
takes you way up high;
We can race the moon
across the evening sky;
See the night time
rainbow colors flying by.



Close your eyes and let it happen,
Rising, falling,
gently calling you.







Let the evening fly away,
while you're dreamin'
Come on, take that rainbow ride with me.



STUDENT LIFE

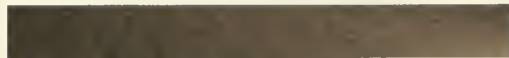


Ballentine Hall

Ballentine Hall, a dormitory housing all men, is located on Wood Street. Being located next to Chandler Dining Hall provides Ballentine residents with easy and quick meals. The dormitory also allows easy access to all buildings on campus, especially their neighbors, the women of Becht Hall.

The hall was named for Professor John Ballentine who taught and served at times as Acting President between 1887 and 1920.





Becht Hall

Becht Hall, an all girls dormitory, is centrally located on campus across from the Carlson Library. Becht women have easy access to Chandler Dining Hall as well as the library and other buildings. Becht Hall also houses offices for Psychology, Foreign Language, and Social Science departments, which includes a first floor exhibit of ancient artifacts and relics.

The hall was named for J. George Becht, President of the college from 1904 to 1912.

Campbell Hall

Campbell Hall, the newest dormitory located at the corner of Payne and Wilson Streets, houses both men and women. Campbell residents enjoy the tennis courts behind the dorm as well as easy access to most buildings on campus. However, the journey to Dana Still Hall usually contains a "pit stop" at the dining hall. This year Campbell's hall council sponsored numerous events, concluding with a rock concert. The sisters of Phi Sigma Sigma have their suite on the 5B Wing.

The hall was named for Frank M. Campbell, Professor of Social Science from 1938 to 1972.





Forest Manor

Forest Manor, a privately owned residence hall located on Grant Street, houses almost exclusively freshman students. Since the dorm is well off-campus, the Manor residents often feel isolated from the rest of the campus. However being almost all freshmen and new to college life, residents meet new friends and learn to adapt to college demands easier. A cafeteria, located in the center of the dorm, can offer easy and quick meals for the residents of the Manor.



Ralston Hall

Ralston Hall, located next to Given Hall on the hill, provides a quieter atmosphere. The dorm is co-ed with the majority of residents being juniors and seniors. Ralston residents enjoy the spacious field adjacent to the dorm, which is the site of many football, softball, soccer, and frisbee games. The sisters of Alpha Sigma Tau have their suite on the first floor.

The hall was named for Mrs. Amabel Lee Ralston, Dean of Women at the college from 1922 to 1930.



Given Hall

Given Hall, an all girls dormitory, is situated on the hill behind Chandler Dining Hall. Many of the girls stay active with dorm functions, as well as campus organizations. Given women also take advantage of the space behind the dorm to bask in the sun whenever possible. The dorm is used in the summer for orientation housing.

The hall is named for Lorena M. Given, a teacher at the college from 1893 to 1919.





Nair Hall

Nair Hall, located on Main Street, provides housing for 450 co-eds. Tennis and basketball courts, found behind the dorm, offer relaxation as well as competitive games for the residents. Advantages to housing in Nair include easy access to the business building and town. The sisters of Alpha Xi Delta have their suite on the sixth floor.

The hall was named for Miss Bertha Nair, a faculty member in the Department of English for 38 years.



Wilkinson Hall

Wilkinson Hall, located next to Nair Hall on Main Street, provides housing for both men and women. Wilkinson residents share many facilities with Nair residents such as the tennis and basketball courts behind the dorm. The sisters of Alpha Sigma Alpha have their suite on the sixth floor.

The hall was named for Dr. J. W. F. Wilkinson, Dean of Instruction between 1924 and 1935.





Off-campus Life

An alternative to dormitory housing is off-campus living. Whether it's College Park, Jefferson or McKean, or town apartments, upperclassmen find this form of living quite popular, mainly because it offers more responsibility and freedom. Now with a greater demand for dorm housing due to the influx of new students, apartment life is becoming almost mandatory for some students rather than a chosen alternative.





GROUPS





Brian Smith - 1980 Editor

Sequelle Staff

The *Sequelle* is the college yearbook. The staff is comprised of students from any major field of study and positions held include an editor, section editors, and photographers. Some assistance is available to the staff, but the work is done entirely by students.

Although problems do occur, the staff tried to cover as much of the college happenings as completely as possible.



Editorial staff: Row 1: R. Pail (Seniors), B. Charles (Fine Arts), P. Lemley (Seniors). Row 2: D. Hepler (Features), C. Rice (Greeks), C. Johnson (Greeks), C. Cashmere (Groups), B. Costantini (Groups). Not pictured: L. Jacobs (Fine Arts), S. Ward (Faculty).

Photographers: K. Lantzy, K. Mizak (Photography co-editor), N. Stulek (Photography co-editor), J. Bigley. Not pictured: M. Bowker, J. Grosso, J. Jeziorski, A. Senic, J. Susko.





C.A.S. - Seated: J. Jeziorski, R. Miller, A. Heckett. Row 2: K. Kase, B. Baraldi, L. Christianson, B. Faverty, S. Porter.

C.A.S.

The Commonwealth Assoc. of Students is a non-profit lobbying organization for the 14 state owned colleges in PA.

On October 24, C.A.S. sponsored a state-wide boycott of classes in protest of a possible tuition increase and state cutbacks in programs.

Interhall Council

Interhall Council, under its president Mark Palumbo, sponsored many campus activities of the dorms. Among them were the Dating Game and Casino Night.



Interhall Council - Row 1: P. Higgins, P. Gunst, R. Hudson, J. A. Elias, T. Gulla, M. Palumbo. Row 2: D. Barka, S. Snyder, G. Unitas, J. Kole, R. Stewart, M. Przestrzelski, B. Hartman, J. Moore.

Data Processing Management Association

The club attends vendor shows where different computer equipment is shown, holds local chapter meetings where various speakers speak on data processing, and demonstrate a computerized car for the Academic Festival.



Row 1: R. Burns, C. Neagle, S. Brubaker, P. Martin, D. Christianson, D. Gourley, T. Newcomer. Row 2: T. Cancilla, B. Facchine, K. Huffman, S. Chobot, D. Martin, D. Stewart, J. Gardiner, P. Flynn, D. Gadsby, K. Kinch. Row 3: J. Willit, E. Ross, S. Chitester, L. Dornblaser, N. Ligette, K. Holst, L. Furth, K. Kelly, C. Gatti, D. Dreier, R. Snyder, R. Ober. Row 4: D. Sellers, J. Kramer, L. Kelley, D. Rudolph, M. Goucher, N. Lembcke, A. Smith, D. Niederriter, M. Feeser, T. Bochak, M. McAllister.

Accounting Club

The Accounting Club was the first business-oriented club formed on campus. The main purposes of the club are to broaden the education and interests of accounting students and to expose the accounting profession to our fine program here. These objectives are met through activities which included: guest speakers from the various fields of accounting and attending National Association of Accountants dinner meetings.



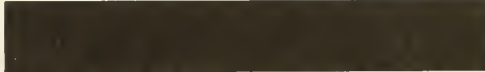
Row 1: P. Rhodes, D. Golden, L. Simonetti, T. Miller, J. Fury, T. Ransel, R. Reucci. Row 2: J. Kerkoaki, J. Kramer, S. Koza, L. Schnell, H. Dupree, J. Maruccio, unknown, unknown, L. Przybocki, D. Butcher, P. P. Jacquith. Row 3: D. Lindahl, J. Bogniak, J. Brocious, T. Cancilla, K. Huffman, M. Fleck, J. Cole, G. Yesenosky, D. Reed.

Student Senate



Student Senate is the elected representative body of the students. In addition to being in charge of allocating Clarion Student Association funds to all campus organizations, Senate also represents students in faculty and state governmental organizations. Participation in committee work and enthusiasm in bettering campus life are also requirements of a senator.

Row 1: L. Faett, A. Weekley (President), K. Natale (Vice-President), B. Baraldi. Row 2: D. MacEwen, H. Cawley, E. Roth, D. Zumburum, R. Gandy, R. Free. Row 3: Dr. Nair (Advisor), Mr. Krull (Advisor), S. Porter, B. Faverly, D. Tarr, M. Przestrzeiski (Secretary), S. Rutherford, S. Boggan, J. Smith (Parliamentarian). Not pictured: D. McCooley.



Center Board



Center Board is the administrative organization responsible for developing, promoting, and scheduling the recreational, cultural, and social programs for the entire campus. The Board consists of elected student officers, committee chairpeople, faculty, alumni, and a representative from Student Affairs.

Left to right: Dr. Herdwick, Dr. Nenovsky (Advisor), C. Minnemeyer, J. Spencer, C. Reed, M. Audsin, D. Tomeo, Miss Rose, M. Anderson, C. McKee, K. Schneider, Mr. Wassink, M. Sollee, Mr. Smith.

Phi Beta Alpha



Phi Beta Alpha is the honorary society for Business Administration students. Its purposes are threefold: to honor outstanding achievement, to stimulate the desire for achievement, and to sustain and support an outstanding program in the field of business.

Row 1: S. Chitister, E. Ross, L. Kelley, S. Koze, T. Miller, G. Yesenosky, C. Handford, M. Melizia, T. Cancilla. Row 2: M. Baric, E. Buscher, C. Gatti, L. Larimer, L. Simonetti, J. Furey, G. Braughler, D. Beggs. Row 3: W. Ross, D. Stewart, D. Gourley, D. Golden, J. Hopeck, J. Douglas.



Row 1: T. Newcombe, J. Bogniak, B. Christman, H. Kahle, V. Matusik, D. Heffner, C. Fulton. Row 2: K. Kinch, S. Myera, K. Atwood, N. Gorelli, P. McGrath, B. Connelly, P. Dalessandro, B. Putay, B. Dalmaso, P. Rhodes, M. Goucher. Row 3: B. Burtell,

T. Cook, P. Flynn, D. Dieier, J. Kramer, J. Koehler, M. Hurley, J. Minto, J. Karkowaki, J. Dalzell, G. Shaffer. Row 4: Dr. Fleck, J. Miller, G. Dalessandro, T. Wetkins.



WCCB

WCCB's purpose is two-fold: to be an entertainment source by providing a wide variety of the best music and to be an up-to-date information service. WCCB keeps actively involved with the campus by sponsoring activities such as concerts, various give-away programs, and the annual fund drive for Children's Hospital at Christmas.

Row 1: L. Richert, M. Markey, S. Blum. Row 2: C. Hogan, J. Sporrer, C. Connerty, M. Brown. Row 3: B. Johnson, B. Yager, C. Koehler, D. Parsons, L. Jacobs. Row 4: D. Huss, K. Haverstock, E. Lindbloom, C. Pinto. Row 5: B. Burtell, C. Melvin, B. Stenberg, M. Reitz. Row 6: G. Phillippi, M. Smiley, K. Abrams, R. Partridge, R. Anton.

WCUC-FM

WCUC is a public non-profit radio station serving the community and the college. Our objectives are to provide our listeners with an alternative sound in radio and to bring them the best in news, sports and music. Again this year WCUC ran a radio-thon for the American Heart Association.



WCUC Staff: A. Kennedy, B. Franks, J. Susko, A. Doughty, L. Rodriguez, P. Doeringer, E. Trow, C. Henna, M. Gulden, D. Berg, J. Segreve, J. Harman, M. Reid, G. Kibler, K. Ream, D. Bejster, B. Bothwell, V. Benoit, S. Peters, M. Betti, C.

Licata, N. Commelle, B. Mallison, J. Rudzik, N. Nestich, P. Denio, R. Rodgers, S. Huff, A. Banks, S. Turner, E. Jones, C. Heywood.

Clarion Call

The Clarion Call is the campus newspaper that is published weekly. The Call follows regular newspaper style and format. Letters must be signed, but names will be withheld upon request. The Call also offers the students a way to express their opinions, report facts, and entertain themselves every week of the school year.



Executive Board - Left to right: T. Daris (Sports Editor), M. D'Innocenzo (News Editor), E. Lindbloom (Business Manager), G. Silvestri (Editor-in-chief), C. Post (Feature Editor).



Staff - Row 1: M. Benoit, C. Boyer, E. Lindbloom, T. Daris, G. Silvestri, C. Post, M. D'Innocenzo. Row 2: J. Deger, J.

Nardontonia, V. Marino, C. Hartman, P. Mitchell, J. Lowermilk, M. Clark, B. Yutzky.

L.M.I.S. Society



Sitting: E. Mergott, R. Romance, J. Swanson, R. Woodring, J. Bigley, L. Loase. Standing: K. Fisanick, M. Lennart, L. Aharrah, B. Letteri, M. Clark, P. Lindemuth, D. Zauski, L. Schroll, M. Ferguson, S. Garmon, S. Jacobus, A. Divins, T. Grove. Not pictured: D. Tarr.

The purpose of the Library Media and Information Science Society is to advance the professional knowledge of its members, to promote fellowship, and to provide practical experience in librarianship. Members attend conferences, hold fund raising activities, and sponsor informative speakers and colloquims.

Lambda Sigma



Sitting: E. Mergott, M. Clark, J. Bigley, S. Jacobus. Standing: P. Lindemuth, J. Swanson, D. Zauski, L. Schroll, M. Ferguson, S. Garmon, L. Loase. Not pictured: H. Bliss, J. Brown, G. Cook, J. Smith, D. Tarr, L. Zaybel, A. Fitzgibbons, T. Grove, R. Romance, B. Stenberg.

Lambda Sigma is the honorary fraternity for Library Science majors. For membership, a student must have completed nine credits in Library Science, complete a number of service hours, and go through a pledging period. Although service to the profession is our main objective, we also participate in social activities.

C.E.C.

Council for Exceptional Children is a professional organization for anyone interested in working with special people. Among C.E.C.'s activities were special guest speakers, weekly visits to Polk, and the annual campus-wide Peace Festival.



Row 1: K. Boyle, C. Kasprovic, L. Ludwig. Row 2: L. Gurecka, J. Rusiewicz, S. Ebbitt, E. Thompson, J. Barsh, Dr. Shirey.

Kappa Delta Pi

Kappa Delta Pi is a National Honor Society in Education which encourages excellence in scholarship and improvement in teacher preparation. This year the Lambda Eta Chapter held a bookmark contest at surrounding elementary schools, distributed member-created learning packets to area schools, and sponsored a T-shirt sale. An Education Workshop designed to aid the beginning teacher was held and a representative was sent to the National Convention.



Sitting: D. Pulcini, L. Keneske, S. Demme, J. Barsh, B. Kreisner. Standing: T. Sheridan, J. Rusiewicz, N. Wareham, J. Clute, M. Cella, R. Sirabella, P. Beals, J. Smith, Dr. Smith.

A.C.E.I.

Association of Childhood Education International is a group of Elementary and Early Childhood majors which provides services for the Clarion Area Library and Saturday morning workshops. Throughout the year the club sponsored various professionals from child related fields to speak at the monthly meetings.



Row 1: unknown, C. Bryan, P. McCoy, J. Castinino, M. Lonski, K. Pitts, T. Meneghini, K. Lieble. Row 2: T. Harris, A. Sweetapple, L. Amorillo, Mr. Smith, T. Wisneski, J. McCoy, L. Amorillo.

Psychology Club

The Psychology Club provides presentations, speakers, and activities that meet the wants of the club members. Faculty members, town professionals, and student work have all been part of the presentations. Some students went to the Eastern Psychological Association Convention which proved very worthwhile.



Row 1: C. Ellermeyer, M. Sweetapple, B. Coen, S. Spohn, G. Kirsh, J. Saul. Row 2: T. Roth, M. Craig, E. Centeno, K. Heilman, C. Bamford, T. Lashua.

Psi Chi

The purpose of Psi Chi is primarily to advance the science of psychology and to encourage, stimulate, and maintain the scholarship of the members in all academic fields. This year a film festival and various other fund raising activities were sponsored.



Sitting: M. Hagenmeier, Dr. Gackenbach & Trina, D. Bosak. Standing: D. Trinz, S. Foxall, E. Thompson, S. Lauth. Not pictured: D. Smith, N. Bonnett, J. Rusiewicz, A. Pilewski, A. Eckstine, J. Schlecht, S. Rhodes, R. Dell, B. Budzinski, B. Querriera.

Pershing Rifles

This year the Pershing Rifles - CO Y-1 participated in local parades and drill meets, trained in tactical exercises, intramurals, community services, rapelling, and other outdoor activities. Formals and other social activities were also held.



Sitting: B. Thomas, J. Siggelow, R. Schwartz, L. French, A. Downie, R. Ellenberger. Standing: S. Smith, V. Kuras, D. Edwards, J. Rothlisberger, K. Muir, CPT Wolfe, J. Harrison, D. Martin, J. Gaetano, R. Miller, M. King. Not pictured: M. Harrison.

Black Student Union



Row 1: K. Mackey, K. Lampkins, L. McCleod, M. Audain. Row 2: K. Cauthorn, V. Hall, C. Haywood, S. Ellison, K. Colbert. Not pictured: B. Mitchell, P. Andrews, L. Allen, B. Stewart.

The Black Student Union is composed of the entire population of black students on campus. It was formed to help the student with problems faced by a black student and promote an atmosphere of cultural and academic enrichment.

Sisters Incorporated

Sister Incorporated is a social service organization which consists of an exclusive group of women whose main purpose is to unite the college, community, and students. Sister Inc. have aided the CROP program, Campus Ministry, and the Red Cross by means of various service projects.



Row 1: K. Finn, V. Rua, M. Hallums, P. Brown. Row 2: T. Davis, C. Robinson, J. Garret, A. Johnson.

German Club

Members of the German Club enjoy many cultural aspects of the four German speaking countries through dancing, singing, and cooking. We perform for various workshops and events. Picnics and trips to German heritage centers are end of the year highlights.



Row 1: C. Snyder, R. Yoder, K. Nursa, R. Dehl, S. Huch, J. Turzanaki, J. Karkoski. Row 2: G. Wilberg, E. Shriver, V. Landas, J. Mueller, C. Kieffer, L. Aharrah, S. Claar. Row 3: Mrs. Hegewald, L. Bianchi, S. Brubaker, M. Sweetapple, J. Donahue, E. Larigan.

Russian Club



Row 1: J. Metcalfe, W. Lenz, D. Berg, M. Furman, Dr. Nikoulin, K. Garmong, J. Lilly. Row 2: J. McLaughlin, J. Carl, T. Ernst,

C. Rieffer, L. Krusa, E. Frey. Row 3: C. Hrabovsky, G. Jackson, L. McGrea, G. Fultz, Dr. Bays.

Beta Beta Beta

This society is a newly formed organization on campus. It emphasizes stimulation of scholarships, dissemination of scientific knowledge, and proof biological research.



Row 1: B. Tregaskes, L. Krietzer, B. Renninger, S. Cole, J. Colangelo, B. Householder, B. VanHouten, M. Tennous. Row 2: Dr. Rutherford, Dr. Jetkiewicz, C. Bauch, L. Mansfield, N. Wagner, J. Amsler, B. Mejoy, K. Wickline, G. Ustik, C. Borell, P. Graesch, C. Pinto. Row 3: C. Nwosu, A. Betts, J. McGonigle, L. Logue, S. Luko, D. Boyle, L. Mercuri, M. Billings.

Bios Club

This Bios Club is open to all students on campus regardless of major. It is dedicated to promoting scholarly and recreational activities for members interested in the biological sciences. Club activities include guest speakers and major and minor trips in and out of state.



Officers: T. Allenbaugh - Pres., M. Johnson - Vice Pres., T. Timmins - Treasurer, P. Donahue - Sec., K. McKelvey - Historian, Dr. Dalby - Advisor.

N.S.S.H.A.



The National Student Speech and Hearing Association is a professional organization for students interested in working with people who have communicative disorders. Our activities included trips to the National Technical Institute for the Deaf and the Western Pa. School for the Deaf. They also held their annual seminar with speakers discussing bilingual education and dialect patterns. In addition monthly meeting with guest speakers were held and the year ended with a spring banquet.

Row 1: L. Kahrer, N. Lucas, J. Rombach, J. Moscicki, F. Lamison, N. Lane, D. Collar, M. Vogt, J. Schmincke. Row 2: S. McFeely, C. Brush, J. Jarecki, S. Russell, M. Trzeciak, D. Shantz, M. Perrone, C. Winters. Row 3: Mr. Simpson, W. Bennett, J. Jabczynski, K. Neely, C. Creadan, L. Vuich, M. Matotek, P. White.

Chess Club



The Chess Club is an affiliate of the United States Chess Federation. Our activities included four team matches and five on-campus tournaments. We also attended a simultaneous exhibition in Bradford and ended the year with a spring banquet.

Left to right: J. Cole, D. Rudnick, D. Mohr, T. Roth, J. Beck, St. S. Etzel. Not pictured: F. Stitely, J. Manni.

English Club

The English Club publishes DARE, student literary magazines. It also sponsors a poetry workshop, monthly programs with speakers on literary topics, and semesterly trips to a variety of cultural activities in the western Pa. area.



Left to right: K. Stanley, J. Smith, R. Tone. Not pictured: P. Dutton, T. Welsh, A. Kennedy, S. Applegate, B. Mellison, L. Smith, M. Williams, G. Wilberg, Dr. Wilson.

Antropology Association

The Anthropology Association was founded to give students the opportunity to participate in anthropological and archeological research. Membership is open to all students. Meetings are held monthly and field trips are taken to important museums in major cities.



Row 1: A. Austin, J. Eberhart, M. Tromans, J. English. Row 2: Scott, A. Stoffey, K. Gerdner, R. McCuen, T. Slaney. Row 3: Dr. Straffin, D. Frizzola, A. Sickles.



P.S.E.A.

Student P.S.E.A. has a record of useful service programs in which its members gain useful knowledge of the opportunities and requirements related to teaching. We provide active participation on the local, state, and national levels of the education association.

College Republicans

The CSC Republicans are dedicated to the further development of student interest and activity in our government. The College Republicans have voter registration drives, club membership drives, actively participate in local, state, and national campaigns, attend conventions, have fund raisers, organize phone banks on election days, and host a spring banquet.

Row 1: K. Kauffman, L. Amoriello, D. Parcell. Row 2: M. Lonski, S. Himes, C. Rice, K. Urbanik. Row 3: M. Ferguson, M. Brunelli, L. Amoriello, C. Hriso, K. Pitts, Dr. Yoho.



Row 1: D. Krebs, G. Kulusich, P. Rhoades, K. Walker. Row 2: R. Lashley, B. Burtell, M. Keeports, D. Chantler, S. Camp, Dr. Marston. Row 3: T. Black, J. Kimmy, R. Woodring. Not pictured: R. Johnson.

Alpha Phi Omega

Alpha Phi Omega is the National Co-ed Service Fraternity. The Omega Mu chapter, established in 1975, has been very active in the college and the community. This past year we assisted the American Red Cross with their semesterly bloodmobile, built the Homecoming float for Center Board, ushered for plays, worked for the News Election Service, plus various other service projects on campus and in the community. Through these projects, each member does his best to exemplify the principles that we are founded on - Leadership, Friendship, and Service.



Circle K

Circle K is a social and service organization sponsored by the Brookville and Clarion Kiwanis Clubs. Helping others and enjoying activities are the goals of the organization. Any student of good character and of satisfactory scholastic standing who is officially enrolled in the college may be eligible for election to active membership in this club.

Row 1: J. Cuiffi, B. Charles, E. Veres, B. Sheffo, M. Calla, D. Martin. Row 2: D. Rudolph, C. Kiessling, S. Camp. Row 3: K. Walker, J. Clute, K. Fritz, J. Weller, A. Fitzgibbons, J. Donoughe. Row 4: J. Smith, E. Crowell, J. Jarecki, K. Fisanick, E. Lindbloom. Row 5: D. Zumbum, B. Yochim, M. Anderson, B. Hardy, T. Cochran, R. Woodring, B. Smith, L. Mitchell, M. Janovec. Row 6: R. Saboski, D. Krebs, D. Marple, E. Roth, G. Murphy. Not pictured: T. Alston, T. Baker, C. Cadwalleder, K. Cauthorn, S. Ebron, V. Rue, S. Thompson, C. Simpson, K. Johnson, V. Mason, C. Brown, P. Higgins.



Row 1: Dr. Ross, E. Thompson, D. Varney, L. Smith, C. Rice. Row 2: S. Bowman, S. Klein, H. Cameron, C. Newman, M. Goucher.

Marketing Association



Row 1: D. Beggs, D. Elbert, P. Heagy, P. Gray, R. Andrews, S. Taylor, P. McGrath, K. Kepple. Row 2: M. Thomas, B. Hines, N. Ligette, G. Kulusich, P. Memo, J. Duncan, J. Gleixner, B. Palamara, R. Rittig, R. Armentano, J. Walker, T. Bennett. Row 3: J. Grunenwald, J. Beausigner, D. Synboraki, R. Zeiders, L. Mentch, member, member,

D. Drier, K. Hess, S. Gray, J. Kun, L. Larimer, B. Rollinson, K. Keating, D. White, D. Stoner. Row 4: R. Free, S. Larrca, J. Sponer, L. Parente, N. Alauzen, L. Trapp, C. Lipowcan, E. George, D. Eiater, D. Vanderhorst.

Outing Society



Row 1: S. Huch, R. Phillips. Row 2: S. Austen, R. Haney, G. Wagner, K. Daley, C. Byran.

The Marketing Association, founded in 1975, promotes marketing concepts, integrate practical experience with classroom study, and widen the students' scope of marketing activities. These activities include monthly meetings and participation in Activities Day.

The Outing Society is active in a number of activities such as backpacking, caving, canoeing, and rapelling. We sponsor the annual Craft Show and the Blue Grass Festivals.



GREEKS



Interfraternity Council

IFC is the governing body of Clarion State's fraternity system. Each fraternity is represented by two members who meet to discuss the service, social, and pledging activities of the fraternity. In working with Panhel, IFC sponsors charity projects, an Activities Day movie, and Greek Week.



Row 1: F. Hintz, D. Merlino, J. Ognibene. Row 2: E. Jones, S. Kiefer, M. Lorei, L. Damascano, R. Dean, D. Daencenzo. Row 3: G. Stinner, Mr. H. Wassink, T. Wyucik, J. McGonigle, R. Pertridge, B. Eugennities, M. Ansenberger, J. Wilson, T. Wektins.

Panhellenic Council



Row 1: L. Hoeck, J. Zliech, N. Wagner. Row 2: C. Katskel, K. McCall, K. Krach, D. Dick, R. Marcello. Row 3: J. Ferragine, S. Erickson, L. Wilhour. Row 4: L. Larson, D. Campbell, S. Spencer. Not pictured: P. Andrews, S. Rutherford, J. McKain, J. Letsner, J. Frankhouser



The Panhellenic Council is the governing body of the nine sororities on campus. It is responsible for correlating all social, pledging, rushing, and service activities. This year Panhel provided Thanksgiving dinners for deserving families in the Clarion area and raised money for Children's Hospital.

AKA

Alpha Kappa Alpha

Alpha Kappa Alpha was the first predominately black sorority. Founded in 1908 at Howard University, we have grown to a national active membership of over 80,000 women. Some of our national service projects include the Cleveland Job Corp. Center and the Reading Experience Workshop.

Alpha Kappa Alpha is the only government funded sorority. Our purpose is to cultivate and encourage high ethical and scholastic standards, to promote unity and friendship among college women, and to be a service to mankind. Kappa Zeta chapter of AKA celebrated its fourth anniversary at Clarion State College on February 14, 1980.

The officers were: T. Phelps-Pres., B. Lyons-Vice Pres., V. Hall-Recording Sec., T. Wells-Corresponding Sec., A. Wingfield-Treasurer, Dr. F. McNairy-Advisor.



Row 1: A. Wingfield, P. Andrews, P. Jones, B. Lyons, V. Hall, K. Mackey, T. Wells. Row 2: S. Doziar, B. Utterback, L. Mitchell, K. Manning, F. McNairy, B. Stewart, Y. English, A. Peagler. Not pictured: T. Phelps.

AXP

Alpha Chi Rho



The Mu Phi Resident chapter of Alpha Chi Rho fraternity was founded on the Clarion campus on May 24, 1964. We are a closely knit brotherhood with 30 active brothers and 86 years of national brotherhood behind us. Our chapter has donated \$2,000 to the Carlson Library over the last 12 years for a high academic standing.

The brothers have enjoyed a rather bizarre, yet successful year-mixing with sororities, participating in Autumn Leaf Festival, and our yearly migration to the annual "Crow Bowl" at Penn State. Our traditional Christmas and Spring Formals went off with great success.

The officers were: B. Robinson-Pres., S. Walters-Vice Pres., D. Stewart-Treasurer, R. Hetrick-Secretary, D. Merlino-Rush Chairman, J. Hall-Advisor, W. Molnar-Advisor



Row 1: B. Lindahl, B. Meyer, S. Walters, B. Robinson, M. Evans, R. Hetrick, M. Echenoz, L. Forlney, J. Spencer, S. Cressley, A. Pears, A. Toola. Row 2: R. Swackhammer, S. Bolstad, D. Stewart, P. Hale, T. Snyder, D. Merlino, R. Whisler, T. Kiplinger, R. Yaaser, J. Burkell, S. Steale, E. Livengood, B. Nicoloff, P. Samute, B. Renkin, Not pictured: M. Johnson, K. Michael, R. Eichner, G. Gaffney.

AΣA

Alpha Sigma Alpha

The sisters of the Gamma Omicron chapter of Alpha Sigma Alpha have been active at Clarion State College for twelve years. We participate in many college and community events. In the fall we proudly took first place for our Homecoming float, built with the Sigma Chi brothers. We held our annual Halloween party for the underprivileged and handicapped children of Clarion. On Nov. 15, we celebrated our Founder's Day with our alumnae. Christmas time found us carolling for the Special Olympics.

Springtime brings our formal, Greek Olympics, and our children's Easter party. Our chapter suite is located on 6th floor Wilkinson and we invite all women interested in sorority life to come and visit us.

The officers were: J. Boehn-Pres., L. Ransel-Vice Pres., T. Ransel-Treasurer, J. Kelly-Recording Sec./Rush Chairperson, J. Powers-Corresponding Sec., C. Powell-Membership Director, D. Smith-Chaplain, M. McCosby-Editor.



Row 1: N. Wagner, C. Kutskel, K. Gordon, J. Powers, K. Kramer, J. Kelly. Row 2: L. Ransel, T. Ransel, T. Larson, D. Smith. Row 3: M. McCosby, C. Powell, J. Boehm, D. Larkin.

KΑΨ

Kappa Alpha Psi



Left to right: J. Morgan, M. Robinson, W. Hutchinson, R. Mitchell, D. Blekey, E. Jones.

Kappa Alpha Psi, Inc. was founded on January 5, 1911 at Indiana University, Bloomington, Indiana. The fraternity stresses achievement in every field of human endeavor.

The brothers conducted various service projects. The most notable being Black on Black, an attempt to bring Black and African students closer together.

The officers were: R. Mitchell-Polemarch, J. Morgan-Treasurer, E. Jones-Sec.

AΣΤ

Alpha Sigma Tau

The sisters of Alpha Sigma Tau take great pride in their national organization and the busy chapter established here at Clarion on January 29, 1966. Successfully balancing the social and the academic life, the Alpha Omicron chapter claims possession of the traveling scholarship cup awarded each year by the national organization.

On campus and in the community, the sorority assumes responsibilities: singing in the Christmas show to benefit Children's Hospital and helping out each semester at the Red Cross Bloodmobile. Individual sisters are willing workers in a variety of clubs. Promoting the Greek life, the Taus always participate in the float competition in the Autumn Leaf Festival parade.

We celebrate each holiday with a date party and the national Founder's Day with a banquet. Fundraising projects serve to guarantee a memorable Yellow Rose Formal. The Tau tigers are settled in a friendly and informal suite on the first floor of Ralston.

The officers were: M.A. Simpson-Pres., J. Schmincke-Vice Pres., S. Mickle-Treasurer, B. Klinger-Recording Sec., B. Goodling-Corresponding Sec., S. P-Jobb-Advisor.



Floor: M. Hees. Row 1: C. Stutzman, N. Lucas, D. Waterloo, P. Best, A. Zottola, K. Mewosh, K. Krach. Row 2: L. Purash, D. Best, K.J. Bucker, M.J. Melizia, K. Beisner, G. Villella, T. Matarrese, T. Wojcik, K. Anderson, P. Tysarczyk, M. Mitchell. Row 3: L. Fugent, S. Eriksson, J. Matotek, L. Cain, Mrs. P-Jobb, M.A. Simpson, J. Schminke, S. Mickle, B. Klinger, C. Walchack, V. Novak, A. Vozel, N. Johnson, W. Putnam, B. Goodling. Row 4: S. Troxell, A. Hackett, J. Harrison, H. Bliss, A.M. Sheets. Not pictured: M. Hilovsky, N. Appleby, P. Work, R. Feura.

ΦΣ

Phi Sigma



The brothers of Phi Sigma are from diverse backgrounds, have varying interests, and yet form an active, close, solid fraternity. Activities include participation in intramurals, intercollegiate athletics, and many campus organizations. Our major service project is the annual "Phi Run For Cancer," a 100 mile endeavor. Many parties and mixers, dances, and our annual Spring Formal are held each year. There is hardly a thing one Phi Sig would not do for another, and it is this fraternal spirit that makes us one.

The officers were: M. Anzenberger-Pres., J. Krause-Vice Pres., B. Lipman-Treasurer, F. Hintz-Recording Sec., T. Soloman-Corresponding Sec., E. Lofquist-House Manager.



Row 1: A. Yochum, C. LaMantia, M. Anzenberger, B. Sentak. Row 2: B. Kearney, K. Montgomery, B. Ericson, B. Lipman, S. Ericson, G. Stinner. Row 3: S. Klezek, C. McFerran, F. Hintz, T. Brobst, D. Conley. Row 4: S. Koatelec, J. Engleman, B. Keatelic, B. Gray, J. Sarao, B. Strasser. Row 5: J. Krause, E. Lofquist, B. Wideberg, T. Soloman, J. Albert. Not pictured: J. Schmeck, J. Raspanti, D. Morelli, D. Kennedy, J. Shoemaker, C. Sullivan, R. Latimer, P. Parker, S. Bonavita.

AEA

Alpha Xi Delta

The Zeta Beta chapter of Alpha Xi Delta was founded nationally on April 17, 1893 and on campus March 1970. The suite is located on 6th floor Nair Hall. Presently, there are 49 active sisters who are involved in numerous campus activities and organizations. The Alpha Xi's are also involved in community projects such as selling daffodils for the American Cancer Society, collecting money for ALS, and collecting money for Children's Hospital.

The officers were: C. Anderson-Pres., C. Kopetsky-Vice Pres., K. Stoeckle-Recording Sec., J. Kirkhoff-Corresponding Sec., K. Retort-Treasurer, B. Lawson-Pledge, C. Hriso-Chaplain, K. Zaffuto-Membership, D. Wolbert-Province Director.



Row 1: K. Retort, K. Zaffuto, C. Kopetsky, C. Anderson, K. Stoeckle, B. Lawson, N. Schumann. Row 2: J. Zuech, J. Hicks, D. Wolbert, P. Hannaford, C. Hriso, S. Gray, J. Kirkhoff, C. Lipowcan, B. Stenberg. Row 3: G. Ferragine, B. Bateman, D. Fragle, D. Donnelly, B. Fox, R. Rindy, T. Bodine, A. Rossi, C. Csatlós, S. Massalsky, H. Cameron. Row 4: J. Markey, T. Williams, D. Hay, K. Pitts, B. Kling, K. Newtz, P. Donahue, L. Nichols, D. Plaine, A. Schumann, C. Zelenak, L. Wilhour. Row 5: L. Couden, L. Reynolds, M. Care, B. Yancosek, D. Bills, G. Hovanic, J. Evans, M. Vogt.



ΦΣΚ

Phi Sigma Kappa



The Nu Pentaton chapter of Phi Sigma Kappa was founded on Feb. 11, 1967. Since that time over 200 brothers have been initiated. Presently our Brotherhood consists of 25, with our Little Sister organization of 18.

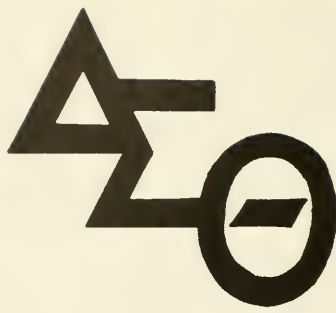
It has become our tradition to benefit both the college and community by sponsoring the Book Co-ops, a Christmas Children's Hospital fund drive, and our distribution of desk blotters.

The officers were: J. McGonigle-Pres., D. Shaffer-Vice Pres., S. Stambaugh-Sec., M. Reitz-Treasurer, R. Cassell-Inductor, D. Gittings-Sentinel.



Row 1: J. Moratelli, D. Tinz, S. Stambaugh, R. Burchfield, D. Shaffer, D. Wallisch, Row 2: L. Cvijic, D. Gittings, C. McWilliams, P. Meurer, L.A. Sylvester, J. Cook, A. Zedicker, P. Tartaglione, J. Cramer. Row 3: D. Latschaw, J. Westerman, D. Christianson, J. McGonnell, J. Malthaner, J. McGonigle, D. Miller, C. Mickey,

J. Geary, R. Lawson. Row 4: J. Strugelaki, J. Anne, J. Walter, J. Moro, Rick Cassell, M. Reitz, J. Beck, J. English, T. Fitzgerald, B. Bates, H. Brown. Not pictured: K. Shook, V. Benz, R. Cassell, R. Heckel, K. Lyle, L. Van Orden, B. Adams, B. Lynch.



Delta Sigma Theta



Delta Sigma Theta, a public service sorority, was established at Howard Univ. on January 13, 1913. We were the first black sorority founded on campus on Feb. 23, 1974. We are a group of college women dedicated to serving the community. Some of our projects include: UNICEF and Sickle Cell drives, Save the Children, and can food drives. We also hold an Annual Peppermint Ball each December with the proceeds donated to charity. We are also active in recognizing distinguished women in our annual Black Womanhood Week.

The officers were: T. Gary-Pres., D. Mack-Vice Pres., S. Rutherford-Sec., K. Wallace-Treasurer, Mrs. Payne-Advisor.

Row 1: M. Audain, T. Carter, E. Corker, L. Allen, E.M. Bruce, B. Coaxum, C. Akers. Row 2: D. Mack, M. Hallums, T. Gary, K. Wallace, S. Rutherford, Mrs. Payne, B. Palmore.



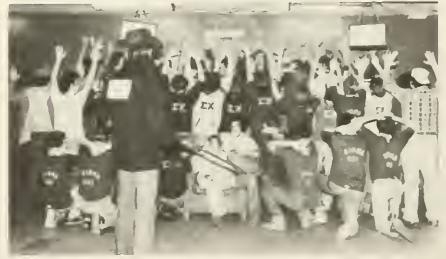
ΣΧ

Sigma Chi



The Theta Alpha chapter of Sigma Chi is a national social fraternity founded on campus on May 27, 1978. Our brotherhood has been growing steadily and we are proud of our past accomplishments and are continuing to strive for high ideals. We are active in many activities at CSC, some being Greek Week and collegiate activities, plus service projects in the community.

The officers were: L. Damasceno-Consul, M. Weaknecht-Pro Consul, J. Wilson-Magister, R. Lashley-Rush Chairman, B. Wieand-Quaester, D. Chantler-Annotater.



Row 1: J. Santini, J. DeFeo, B. Smith, C. Clark, J. Petruski, M. Tansey. Row 2: B. Hannum, D. Bush, J. Rhea, R. Bohrer, S. Burke, D. Kemmer, S. Hallet, R. Lashley, J. Thompson, B. Courtney, S. Mazur, M. Cauley, B. Wieand, M. Keeporta, M. Duckett, J. Baltin, G. Shuart, J. Enright, J. Wilson, M. Latini, K. Ruhle, M. Weaknecht, D. Zonarich, T. Anderson. Row 3: B. Danner, B. Fornoff, J. Rodella,

S. Betush, J. Travalini, T. Bopp, R. Dean, B. Battin, R. Brieghtner, R. Smith, C. Wollarth, B. Delaney, D. Chantler. Not pictured: H. Banks, J. Spangler, S. Bland, R. Baade, L. Damasceno, M. Ruashneck, M. Linder, D. Brown, S. Mazur, D. Williams, K. Ruhle, J. Nicholette.

ΔΖ

Delta Zeta



Row 1: B. Pedriera, G. Keller, R. Raucchi, A. Truitt, K. Horanik, T. Signorino. Row 2: K. Stanek, C. Lightborn, T. Deysher, P. Szwec, J. Zumpano, C. Cowan, C. Sams, R. Vannatta, L. Yingling. Row 3: "Spot". Row 4: P. Stabile, M. Quinn, J. Feichtel, K. Diesel, T. Wright, L. Herrie, N. Bernhart, S. Spencer, J. VanDine, S. Scott, R. Marcallo,

B. Holt. Row 5: T. Brickner, L. Oakes, K. Francis, S. Madolena, B. Snyder, C. Klacik, L. Cirrincione, M. Thompson. Not pictured: K. Moltozzi, C. Corbin, D. Malloy, A. Hopperstead, G. Fetzner, L. Lamonna, T. Brocius, T. Hetherington, M. Snapko, D. Huselton, B. Gaydos.



The Epsilon Theta chapter of Delta Zeta sorority was established in 1956. This past year we have had many service projects including trick or treating for Polk State Hospital, collecting for the Hemophilia Foundation, and caroling at the Grandview Convalescent Home.

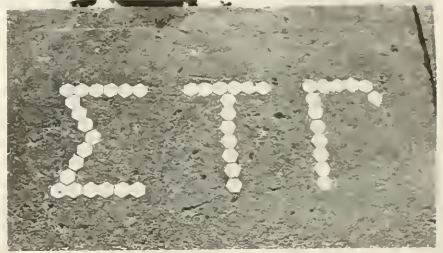
The sisters take part in a number of campus activities including intramurals, clubs, R.A.'s, WCCB, Yearbook, Call, and Greek Week. Social functions include a Spring Formal, Date Parties, Cabin Parties and basically a general attempt to have a great time in college while maintaining high scholastic standards.

Out suite is located on the third floor of Jefferson Apts.

The officers were: A. Truitt - Pres., K. Francis - Rush Vice Pres., K. Diesel - Pledge Vice Pres., C. Cowan - Corresponding Sec., S. Scott - Recording Sec., R. Raucchi - Treasurer, S. Madolena - Historian, J. Zumpano - Publicity, L. Linnan - Advisor.

ΣΤ

Sigma Tau



The Sigma Tau Fraternity was established on campus in 1972. The large white colonial house which housed many of the brothers was recently torn down for use as a parking lot.

The brothers are very proud of their accomplishments in intramurals and in Greek Olympics. Although we are very successful in intercollegiate sports, an emphasis has also been placed on academic achievements as evidenced by our overall scholarship awards.

The officers were: D. Myers - Pres., J. Stubbs - Vice Pres., R. Piekarski - Sec., K. Hoyak - Treasurer.

ΦΣΣ

Phi Sigma Sigma



The Gamma Gamma chapter of Phi Sigma Sigma was founded on May 8, 1971 at Clarion State College. The suite is located on 5th floor Campbell Hall. The sisters not only participate in the Greek activities, but are also active in various campus organizations, dorm activities, and athletics. The sorority also includes fund-raising activities, Christmas caroling, and formals among their many social events.

The officers were: L. Paladino - Pres., C. McGoogan - Vice Pres., G. Fowler - Recording Sec., L. Moorhouse - Corresponding Sec., M. McAllister - Treasurer, Miss Rose - Advisor.



Row 1: B. McShane, F. Barlett, M. Hagenmier, M. German. Row 2: L. Verne, A. Luper, N. Ligette, P. Newsome, B. Brown. Row 3: D. Campbell, L. Paladino, S. Stephens, L. White, T. Vargo. Row 4: J. Vavro, G. Fowler, S. Radsker, J. Neider, L. Hoeck. Not pictured: J. Alberth, S. Durr, A. King, M. McAllister, C. McGoogan, L. Moorhouse, S. Schmehl, S. Welters, Miss Rose.

TKE

Tau Kappa Epsilon



Tau Kappa Epsilon, the world's largest international fraternity, was founded here at Clarion in May 1967. Lambda Epsilon chapter is active in many campus activities such as Greek Week, intramurals, service projects and wild parties at the V.F.W.

The officers were: B. Eugenides - Pres., R. Partridge - Vice Pres., M. Reeves - Sec., P. Karlstetter - Treasurer, P. Hedrick - Social Chairman, M. Hardy - Pledge-master, D. Laubenstine - Pledge-master.

T. Magrini, J. Majkut, G. Ross, B. Eugenides, M. Hardy, P. Hedrick, N. Weissman, R. Partridge, W. Hoffman, D. Laubenstine, P. Karlstetter, T. Reese, M. Quindlen, J. Gostic, M. Reeves, M. Roderick, F. Stitley, D. Handhold, B. Hobough, E. Rusnak, J. Wherling, L. Barsody, M. Snyder, C. Baggot, D. Miller, D. Lehnortt, T. Griffin, C. Caligurie, R. Walters, J. Pendolino, P. Kravets, R. Nailor, V. Benninger, R. Hill, S. Carlton, S. Cleveland, P. Huber, L. Yarnish.



Sigma Sigma Sigma

The Alpha Pi chapter of Sigma Sigma Sigma holds the distinction of being the first national sorority on campus, founded April 27, 1935. The Tri Sigs are active in various campus activities, including: intramurals, Homecoming court, cheerleading, athletics, drama, and Greek Week. They are also active in community affairs such as the March of Dimes Walk-a-thon, Children's Hospital fund drive, and donations to the Heart Association.

Their National Philanthropic Project is the Robbie Page Memorial, which is designed to finance therapy programs for hospitalized children throughout the country.

The officers were: R. Greco-Pres., J.B. Short-Vice Pres., J.B. Tall-Treasurer, A. Bellavia-Membership Director, L. Malcolm-Sec., A. Currie-Education Director.



Row 1: W. Swenson, J.B. Tall, R. Korzon, J. Shutt, K. Hirsch, B. Bates, K. Nuccitelli, S. Hummer, Row 2: S. Snyder, S. Panichelli, D. Lamden, B. Jacobs, R. Lukenda, A. Currie, C. Hartman. Row 3: J.B. Short, K. Malinowski, D. Collins, D. Hawk, R. Greco, R. Secco, B. Reiland, T. Bochak, K. Frasier. Row 4: K. McGinley, K. Lawlor, J. Frankhouser, M. Litwinchuk, S. Falvo, B. Laconi, Row 5: L. Malcolm, A. Shutay, S. Clouser, A. Bellavia, B. Greco, N. Manilla, D. Bohner, Not pictured: R. Christopher, S. Fairchild, D. Brennan, J. McKain, N. Newson, M. Kinderman, D. Thomsic, L. Cincutti, M. Kobus, F. Fisher, K. Kling.

ΘΧ

Theta Chi



The brothers, in addition to their many diversified social events, have engaged in activities such as delivering student survival kits, answering telephones for WGED telethon, and house clean for the elderly people of the community. The Chi's have excelled in intramurals throughout the year. They have also enjoyed the use of their stately house, which blends historic features with a completely remodeled interior.

The officers were: M. Lorei-Pres., D. Dascenzo-Vice Pres., J. Ognibene-Sec., M. Miller-Treasurer.



Row 1: J. Ognibene, P. Bohla. Row 2: T. Watkins, M. Rumbaugh, C. Clark, J. Grosao, J. Pultan, B. Duffey, B. McClure, M. Miller, D. Brunozzi, B. Bigi, J. Saxon, T. LaMorse, D. Mahoney, J. Garrighan, J. Kenny, T. Small. Row 3: M. Lorei, D. Dascenzo, M. Hordias, J. Botti, T. Wyant, C. Stohl, M. Kubasky, H. Laird, T. Wadsworth, M. Baric,

M. Schaefer, K. Ondriezok, J. Schaffar, Z. Dillon. Not pictured: M. Shaffer, L. Patton, B. McDaniel, B. Quinn, P. Ungerman, J. Grosao, M. Fazio, T. Blashok, J. Chadwell, S. Joyce, J. Stewart, D. Edmiston, D. Bartoli.

ZTA

Zeta Tau Alpha

The Delta Iota chapter was founded on campus on April 13, 1960. Along with participation of the greek life, the sisters are active in many other activities such as cheerleading, majorettes, Miss C.S.C., intramurals, and scholastic clubs.

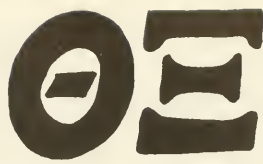
Every year the sisters have fund raisers to help the local Diabetic Association and the Association for the Retarded Children. This year the sorority also helped out with the Special Olympics.

The officers were: M. Lyle-Pres., S. Lauth-Vice Pres., K. Blaney-Vice Pres., L. Wood-Sec., K. Kelly-Treasurer, L. Leech-Historian, D. Hughes-Ritual, S. Palmer-Membership Chairperson.



Sitting: M.K. Jacobs, D. Niederriter, J. Hartweg. Kneeling: L. Jioio, L. Wood, P. McCoy, C. Hartweg, M. Gerguilo. Standing: D. Dick, B. Ludwick, D. Hughes, J. Millen, S. Palmer, K. Blaney, K. McCall, C. Maroueis, D. Kirsch, L. Furth, M. Lilly, T. Ferguson, C. Todorich, K. Carr, C. McAllister. Not pictured: K. Kelly, M.

Lyle, S. Lauth, D. Shontz, B. Rollison, C. Stasiowski, B. Stewart, K. Rernaïd, L. Ordivay, S. Cambro, C. Carlo, M. Kupflore, P. Perines, K. Zorzi, L. Leech, B. Querriera, A. Cunningham, L. Kruse.



Theta Xi



The Beta Omicron chapter of Theta Xi national fraternity was founded on May 9, 1963. Since that time we have initiated over 380 brothers. Our house is located right next to campus at 36 Greenville Ave. It has a partyroom, lounge, gameroom, and space to house 40 brothers. Some of our activities include Greek Week, intramurals, collegiate athletics, and community service projects. We also sponsor dinners, a formal, and formal parties for brothers and alumni of our chapter.

The officers were: M. Luchini-Pres., R. Mlinarich-Vice Pres., B. Hayes-Treasurer, B. White-Sec., T. Mediate-House Manager, J. Gill-Pledgmaster, D. Orndorf-Scholastic Chairman.

Row 1: D. Snyder, J. Gill, M. Luchini, B. Sundo, T. Starmack, M. Guy, C. Shamburg, T. Mediate. Row 2: V. Socha, R. Masi, F. Young. Row 3: C. Pyle, P. Stevens, C. Barret, K. Martin, T. Senic, D. White, Tribes, T. Black, D. Guzik, M. Metcalf, M. Quastrella, B. Seth. Row 4: E. Mensurali, J. Ramsey, J. Kline, P. Puleo, B. Hayes, J. Tegowski, B. White, D. Miller, R. Mlinarich. Not pictured: M. Anderson, D. Orndorf, R. Andrews, J. Gearhart, M. Downing, E. Albright, T. Sullivan, R. Stewart, M. Pandolph, M. Grubbs, T. Hennessy, B. Brosius.

Greek Week

FRATERNITIES

BEER RACE

-Sigma Tau

SING

-Alpha Chi Rho

BOWL

-Sigma Chi

SWIM

-Theta Xi

OLYMPICS

-Sigma Tau

SCHOLARSHIP

-Alpha Chi Rho

BANNER

-Alpha Chi Rho

OVERALL

-Alpha Chi Rho

SORORITIES

BEER RACE

-Alpha Sigma Alpha

SING

-Alpha Sigma Tau

BOWL

-Alpha Xi Delta

SWIM

-Sigma Sigma Sigma

OLYMPICS

-Alpha Sigma Tau

SCHOLARSHIP

-Alpha Sigma Alpha

BANNER

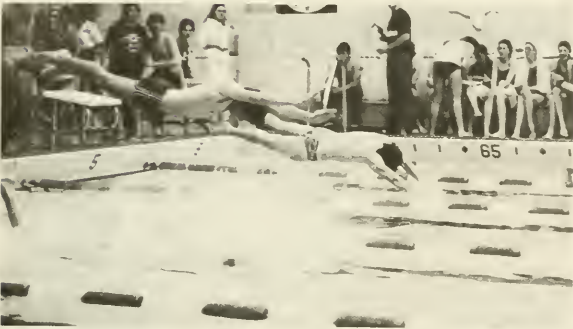
-Alpha Xi Delta

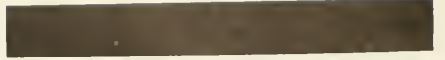
OVERALL

-Alpha Sigma Tau







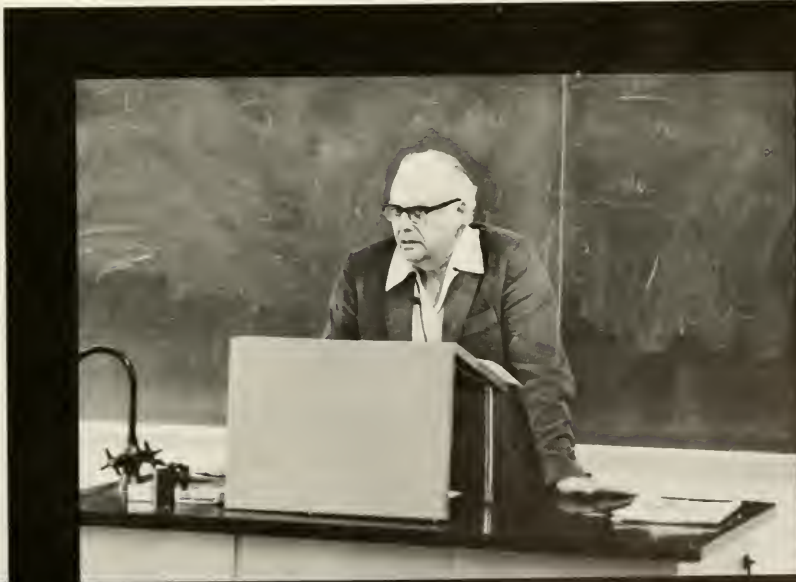








FACULTY

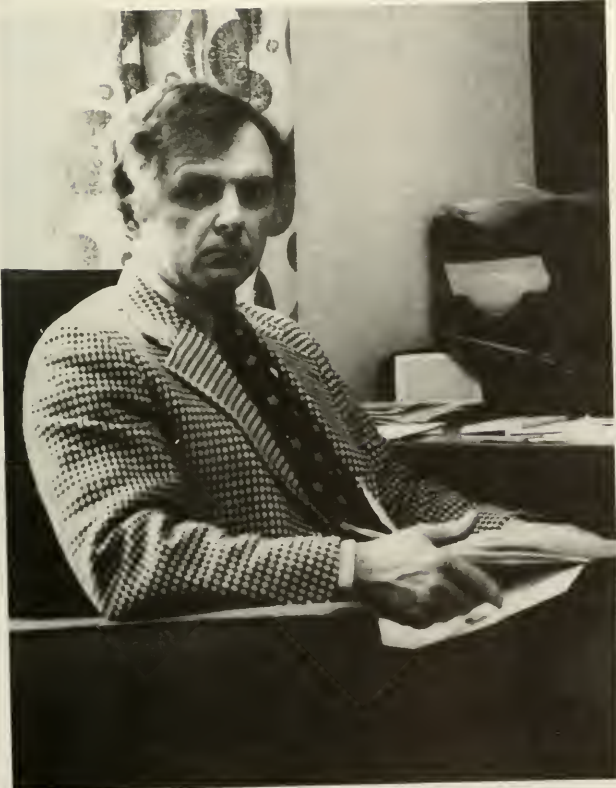


**Interim President -
Dr. Charles Leach**

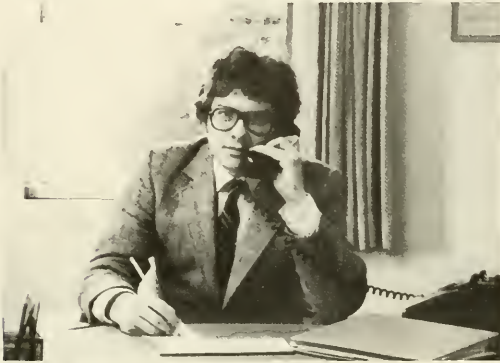




Left: Dr. Donald Nair-Vice President for Student Affairs. Above: Dr. Dana Still-Vice President for Academic Affairs.



Right: J. Nanovsky-Director of College Center. Lower right: R. Lasko-Director of Financial Aid. Below: R. Wilshire-Public Affairs. Lower Left: C. Blochberger-Director of Counseling Center.





Left: D. Graves-Director of Library. Lower left: L. Krull-Clarion Student Assoc. Manager. Above: D. Vallosio-Business Manager. Lower right: B. Gray-Registrar. Not pictured: Dr. Sheriff-Director of Career Planning and Placement, P. Wallace-Director of Professional Education Services, H. Wassink-Director of Student Activities.

School Of Arts And Sciences

Art

Dr. J. Bodoh, Dean



Seated: C. Joslyn, F. Baptist. Standing: E. Seelye, R. Hobba (Chairman), W. Edwards.
Not pictured: A. Charley, A. P-Jobb, W. Groach.

Biology



Row 1: J. Donechy, N. Donachy, G. Harmon, K. Linton, K. Rutherford. Row 2: E. Aharrah, W. Kodrich, D. Cook, W. Chamberlain (Chairman), G. Twiest, P. Dalby, T. Morrow. Not pictured: W. Jetkiewicz, G. McCaslin, K. Mechling, J. Moore, J. Williams.

Chemistry



Row 1: O. Bower, P. Beck (Chairman), J. Laawick. Row 2: G. Wollaston, W. Brent, W. Sharpe. Not pictured: W. Krugh, P. Laawick, G. Ober, G. McElhattan.



English



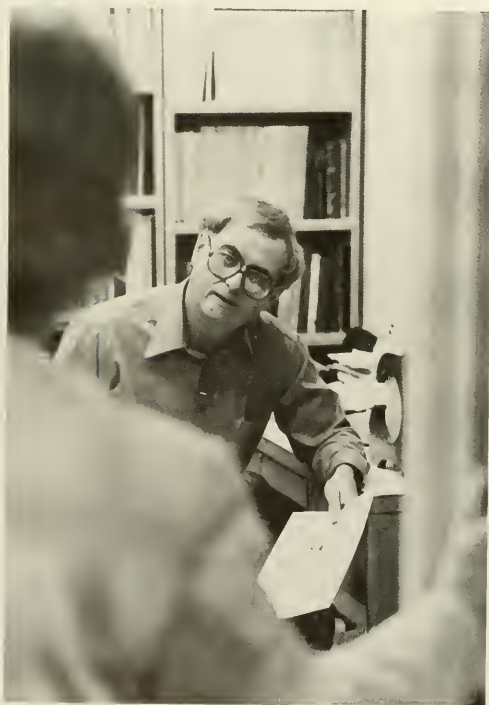
Row 1: R. Redfarn, L. Dennis, D. Sheraw, D. Wilson, H. Newman, J. Knickerbocker, F. Greco, K. Osterholm. Not pictured: G. Barber, T. Caesar, E. Grejda (Chairman), A. Jeschke, W. Karl, B. MacBeth, H. Park, J. Reinhardt, R. Shumaker.

Earth Science and Geography



Left to right: T. Leavy, G. Shirey, D. Totten, N. Humphrey, L. Oakes, T. Buckwalter. Not pictured: M. Kordacki (Chairperson).

History



Left to right: Z. Swecker, S. Sims, J. Haines, E. Duffy, M. Khan, S. VanMeter. Not pictured: A. Day, B. Dunn, I. Sumner.

Mathematics



Left to right: Mr. Rhoads, Mr. Pagano, Mr. Lowe, Dr. Freed, Dr. Bizak. Not pictured: S. Gendler (Chairman), D. Cronin, R. Engle,

I. Henry, R. Kopas, L. Linnan, M. Mitchell, R. Northey, M. Ossesia, S. Ringland, S. Singh, T. Wimer.

Modern Languages And Cultures



Seated: D. Nikoulin, C. Totten. Standing: J. Garcia, P. Fortis (Chairman), I. Hegeweld, R. Diaz.

Music



Row 1: R. Prindle, G. Urrico, A. Pesch, V. Berberian, J. Lassowsky. Row 2: D. Prindle, J. McLean, D. Farnham, C. Bohlen, D. Black, R. VanMeter, L. Wells, M. Lazich (Chairman), S. Michelski. Not pictured: J. Hell, J. Mitchell, W. McDonald.

Physics

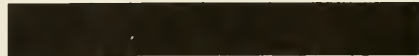


Row 1: J. Blaine, J. Shofestall, C. Keth. Row 2: A. Exton, W. Snedegar (Chairman), D. Slaughaupt, M. Seid.

Psychology



Sitting: A. Bernard, J. Gackenbach, W. Morrison, S. Reinhardt. Standing: T. Snyder, D. Soricelli (Chairperson), P. Nachtwey, W. Combs. Not pictured: H. Semon.



Speech Communication and Theater



T. Burke, B. Copeland, N. Dodge, J. Elmes (Chairperson), M. Hardwick, A. Hartley, R. Hufford, C. Marlin, A. Marston, C. Mata, B. McCauliff, A. Weiss, D. Wright. (1978-79 picture)



School of Business Administration



Dr. R. Fleck-Dean

Accounting and Finance



Row 1: F. Carter, C. Pineno. Row 2: W. Yeaney (Chairperson), C. Choi, S. T. Hong, T. Schaeffer. Row 3: E. Ross, E. Pauksta, W. Campbell, W. Henry, C. Townsend, C. Bagley. Row 4: M. Pae, M. Baker, W. Smith, E. Kocher, S. Traynor, R. Otte. Not pictured: G. Barnes, T. Bickel, G.

Biah, D. Dupree, J. Eichlin, A. Hall, J. Holden, S. Huntsberger, L. Kifer, R. Kooman, R. Lewis, K. Pope, B. Rosen, R. Russell, J. Smathers, R. Sherwin, N. Vernon.

Administrative Sciences



Left to right: J. Reed, D. Amaram, W. Fulmer, J. Kavooosi, T. Davis. Not pictured: F. Clark (Chairman), R. Ditz

Economics



Row 1: D. Mohan, T. Vernon, A. Wichmann (Chairman). Row 2: S. Singh, E. Dennis, K. Stewart, D. Stewart. Not pictured: J. Bowersox, L. Bender, W. Ross.

Marketing



Left to right: K. Traynor (Chairman), P. Kim, J. Grunenwald. Not pictured: L. Falicetti.

School Of Communications



Communications

Dr. James H. Cole, Dean



Row 1: P. Marini, J. Cole, I. Baker. Row 2: R. Metcalf, C. Felicetti, A. Larson. Not pictured: H. Feug, L. Pfaff.

School Of Library Media And Information Science

Dr. E. Rupert, Dean



Library Science Faculty

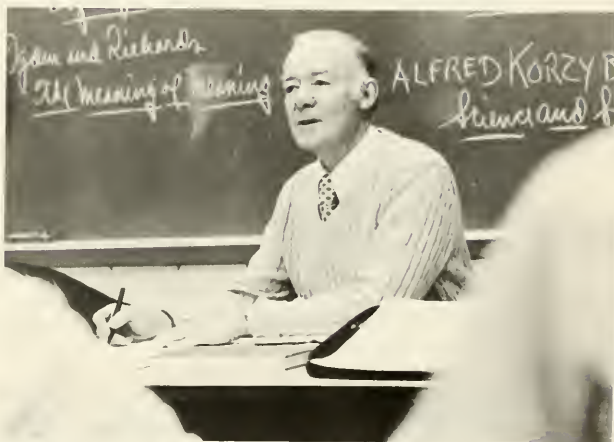


Left to right: J. Head, E. Rupert, A. Gamaluddin, C. Jones, B. Vavrek, C. Economous, M. Jattar, P. Payne, J. Luskay.

School Of Professional Studies



Left: Dr. R. Baldwin-Dean



Education

Left to right: unknown, A. Zaeske, J. Moorhouse, E. Siler, P. Smith. Not pictured: F. Battista, J. Dale, S. Herb, G. Kenemuth, D. Klindienst, P. Moasser, J. Smith, J. Uzmeck, R. Yoho.

Health And Physical Education



Sitting: G. Truitt-Bean, R. Rutt, F. Shope, F. Lignelli. Row 2: P. Ferguson, J. DeGregorio, R. Pae, J. Davis, R. Bubbs, N. Baschnagel.

Row 3: B. Miller, A. Jacks, G. Sobolewski, R. Leonard, B. English. Not pictured: D. Leas, K. McGirr.



Education



Row 1: R. Schreffler, R. Kern (Chairperson), D. Shirey. Row 2: D. Keuffman, B. Huwer, P. Peterson. Row 3: K. Vayda, L. Gurecka, T. Dunkle.



Speech Pathology And Audiology

Left to right: J. Smith, H. Hartley, D. Hetrick,
(Chairperson), E. Simpson, D. Dininny, R.
Keenan.



Dr. F. Sessions - Dean of Continuing Education



Dr. G. Curtis - Dean of Student Life Services

Student Development

Left to right: R. Schlecht, L. Tripodi, T. White,
E. Asberry.





Mr. J. Shropshire - Director of Admissions

Admissions



Left to right: F. Clark, J. Shropshire, A. Kennedy, S. McMillen.



ROTC

Front row: Sergeant Medlock, Sergeant Turner. Back row: Major Italia, Captain Wolfe, Captain McGreth.

Computer Center



Seated: K. Rearick, R. Walters, G. Lewis (Director). Standing: V. Doult, C. Males, M. Bowser, R. Lawis, K. Dupres.

Infirmiry Staff



Seated: J. Eshbaugh. Row 2: A. Spindler, J. Paine, R. Hartle, R. Kapp, B. McCord.



Dr. L. Gilford

Counseling



Row 1: F. McNairy, C. Reed. Row 2: H. Bolland, C. Blochberger.

Library Faculty

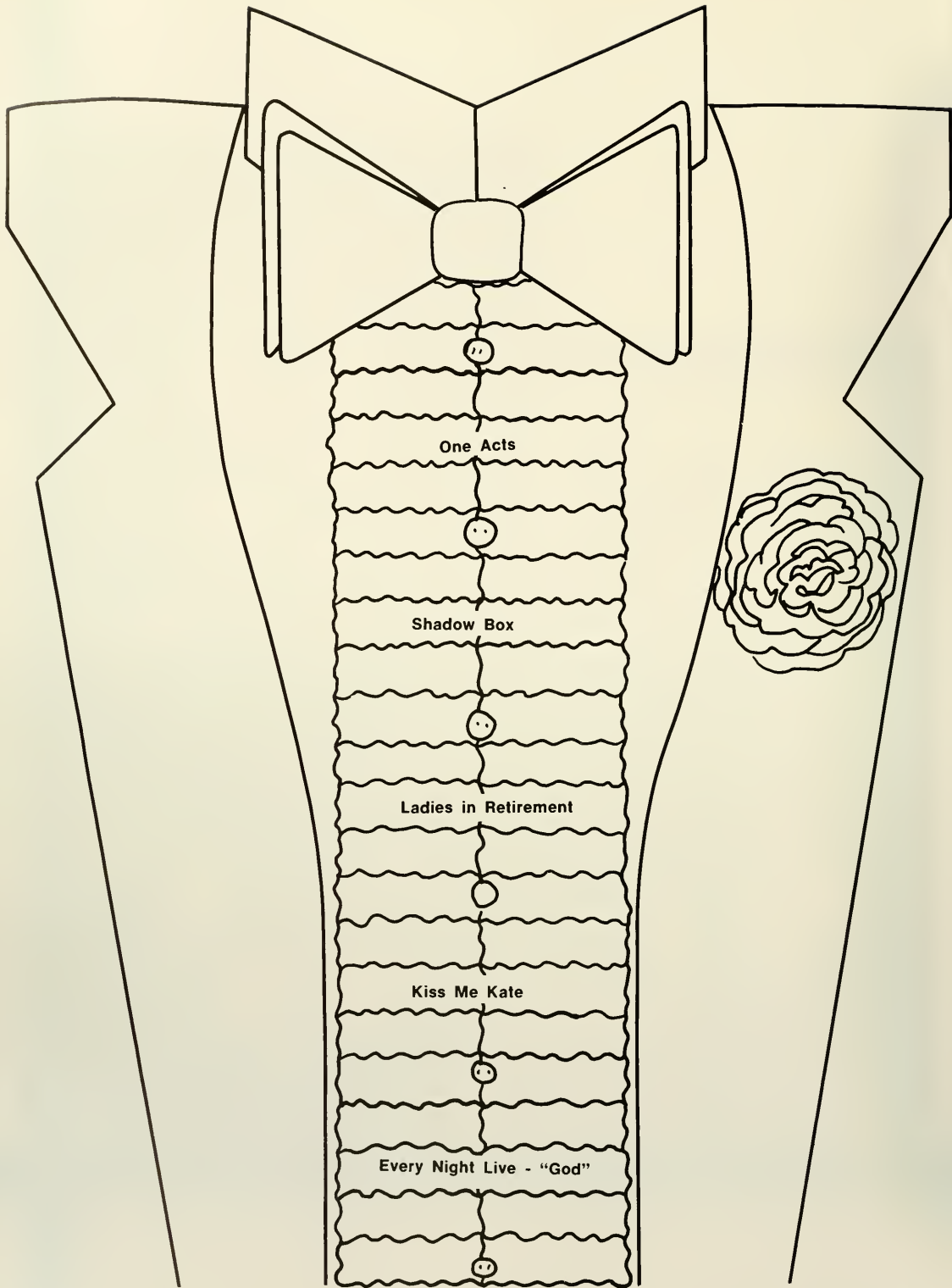


Row 1: J. Wyse, E. Moore, C. Gamaluddin, N. McKee, M. Buckwalter. Row 2: D. Graves, M. Johnson, J. McDaniel, J. Horn, G. Sitzman, J. Meger, K. Emerick. Not pictured: R. Horn.



FINE ARTS





Alpha Psi Omega



Row 1: G. Jackson, S. Celento, P. Elliott, G. Lakes, L. Jacobs, R. Hartley. Row 2: A. Meeder, S. Hannings, L. Gordon, R. Ysconis, N. Newson, T. Sherry, C. Culbertson, B. Nulph, K. Hartnett.

The members of Alpha Psi Omega, the Alpha Upsilon chapter of the National Dramatics Fraternity, are versatile as well as talented. They range from professors to students and their usefulness is seen through their work with all the productions. They award the Alan Kroh Memorial Scholarship each year to an aspiring student with the hopes of aiding their education.

Pi Kappa Delta



Row 1: R. Hamberger, C. Culbertson, N. Newson, A. Weekley, L. Rankin, J. Mueller. Row 2: Dr. Hufford, L. Gordon, G. Jackson, J. Cole, R. Heimbach, P. Kelley, A. Meedar, R. Hartley. Row 3: P. Elliott, L. Kline, G. Lakes, K. Lentzy, B. Myers, K. Kese.

The purpose of Pi Kappa Delta is to stimulate progress in and to further the interests of intercollegiate speech activities and communication in an effort to provide functional leadership training for life, and at the same time encourage a spirit of fellowship, brotherly cooperation and incentive for achievement.

Debate Team



Row 1: L. Kline, A. Weekley, P. Kelley, C. Robinson, L. Rankin, S. Humphrey. Row 2: R. Lashley, B. Myers, J. Cole, K. Lantzy, V. Benoit, Dr. Hufford, M. McCauliff.



Row 1: R. Hamberger, J. Mueller, R. Hartley, C. Culbertson. Row 2: L. Jacobs, P. Elliott, G. Jackson, L. Gordon, P. Kelley, G. Lakee.

I.E. Team

Forensics here at Clarion State engulf a wide variety of talents and techniques that made us the well known school of champions. The Debate Team is a vital part of our victories in Forensics and through the coaching of Dr. Hufford and Barry McCauliff the tournaments are fun as well as beneficial. It all starts with picking teams, research upon endless research, compiling your files, and then the practice rounds. Practice does make perfect and becomes almost essential when you're up against some of the best teams in the state and midwest.

The other half of Forensics is the Individual Speaking Events Team. Through the coaching efforts of Ron Hartley, the I.E.'ers charmed listeners in the events of Persuasive, Extemporaneous, Impromptu, Informative, Dramatic Duo, Prose, Poetry, and After Dinner which won the team the State Championship title again this year. They journeyed to the National Tournament in Alabama where they placed 11th as a team out of over 130 schools. Accentuating their accomplishment, Laura Gordon won the National title in Poetry interpretation. The team was also represented at the AFA National Tournament in Colorado, where they continued to carry on in their winning tradition.



"The Stronger" - Connie Culbertson



"Glory in the Flower" - Mary Anna Varkonda



"Vanities" - Rick Yaconis



"The Tenor" - Anne Meeder



"Passionella" - George Lakes

"Chicago" - Bob Nulph

One Acts

Each year Clarion students enrolled in Directing class are given the opportunity of producing their own show. Directors are given the responsibility of selecting, casting, and rehearsing a show of their choice. The student directed one acts are used to showcase new talent and the performances offer a variety of enjoyable entertainment.

The Shadow Box

The Shadow Box, a Pulitzer Prize winning drama by Michael Christopher, confronts an issue which many of us can not accept . . . death. The play deals with the struggle faced by three families who must come to grips with the imminent death of a loved one.

As a cast, we tried to convey the various feelings which are present in both those who are dying and those who are left behind. I think we were all aware of the challenge that such a play demands. We did our best to be sincere and truly representative of the message intended by Michael Christopher. - Laura Gordon



Joe	Hud McDonough
Steve	J. Martin Kutney
Maggie	Connie Culberston
Brian	Jonathan Wilson
Mark	Rick Yaconis
Beverly	Mary Ann Varkonda
Agnes	Laura Gordon
Felicity	Gayle Jackson
The Interviewer	Bob Nulph



Ladies In Retirement

In mid November, a Clarion audience sat on the edge of their seats during the suspense murder mystery - *Ladies in Retirement*. Director Mary Hardwick made the characters come alive through the elements of fear, trickery, and a twist of comedy. The 19th century set and costumes pulled the audience back in time only to arouse their curiosity, tickle their funny bone, and tingle their spine. - Anne Meeder





Lucy Gilham Elizabeth Threnhauser
 Leonora Fiske Anne Meeder
 Ellen Creed Connie Culberston
 Albert Feather Scott Hummell
 Louisa Creed Judy Clark
 Emily Creed Mary Ann Varkonda
 Sister Theresa Kimberly Stanley
 Bates Rick Yaconis

Kiss Me Kate

The 1980 spring musical, *Kiss Me Kate*, possessed many themes. It is a story of pride, stubbornness, enthusiasm, and most of all love . . . a love that lasts through fights, disappointments, and broken hearts. This is the message I believe we were trying to convey to our audiences and to ourselves with each performance.

Kiss Me Kate is unique in that it intertwines the love story from Shakespeare's "The Taming of the Shew" with a surprisingly similar contemporary love story. This, combined with the music of Cole Porter, results in a message the reaffirms the essence of the famous Shakespear-ean line, "love conquers all." - Stephanie Cambro

Fred (Petruccio)	Paul Stover
Lillie Vanessi (Katherine) ...	Stephanie Cambro
Harry (Baptista)	Roland Hribal
Lois (Bianca)	Julie McCauley
Paul (Grenrio)	Bob Nulph
Bill (Lucentio)	Todd Sherry
1st gangster	Jonathan Wilson
2nd gangster	Tom Dougherty
Harrison Howell	Ed Zeitler
Ralph	Bill Koslasky
Hattie	Judy Clark
Haberdasher	David Umbach
Gugay	Ken Gribshaw
Cab Driver	Joe Rodella





Every Nite Live With Woody Allen's "God"

Performing as one of the Prime Time Players in the production of *Every Nite Live With Woody Allen's "God (a play)"* was a most enjoyable experience. The production staff did a fine job of pulling all the skits, commercials, songs, dances, and special effects together with such great success. This show gave the cast and crew the rare chance to display our many talents in a fast-paced comedy format that I hope the audience enjoyed.-Nancy Newson



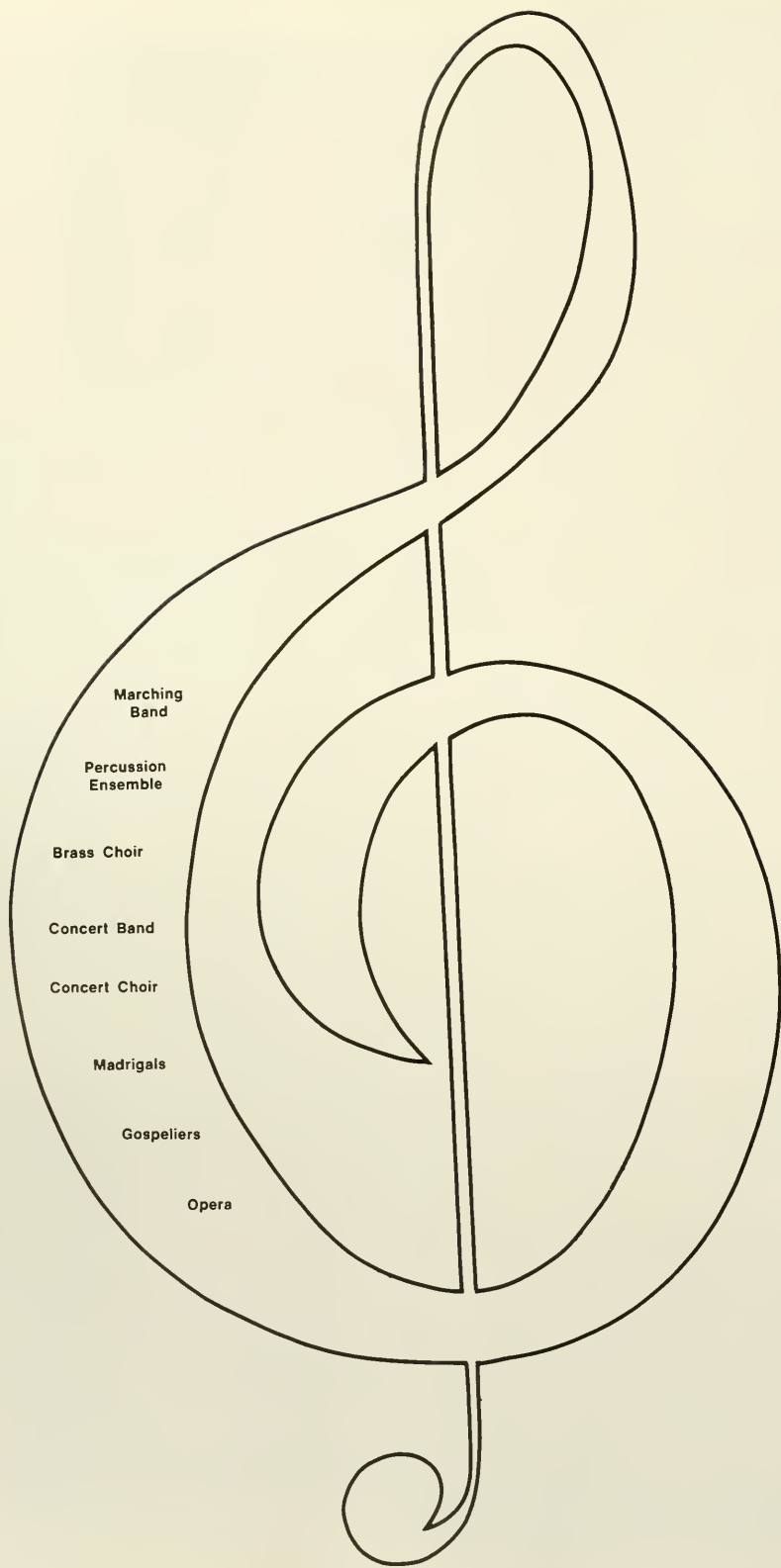


Band/Singers

Tom Alston
 Judy Clark
 Sabrina Conto
 Julie McCauley
 Bob Nulph
 Kathleen Pamer
 Eric Sandstrom
 Jeff Start
 Gretchen Tillitt
 Mike Watkins
 Jonathan Wilson
Dancers
 Scott Hummell
 Betsy Hallaman
 Laurie Leslie
 Cathy Paulhamus
 Diane Ringel
 Bob Robinson
 Todd Sherry
 Sue Westenhoefer

Prime Time Players

Stephanie Cambro
 Stephanie Celento
 Bruce Gwin
 Betsy Hallaman
 Laurie Leslie
 Nancy Newson
 Bob Nulph
 Francisco Palacios
 Paul Puleo
 Mike Quatrella
 Diane Ringel
 Theresa Scoggins
 Todd Sherry
 Hal Siegel
 Rick Yaconis
 Ed Zeitler
 Dan Ziff



Marching
Band

Percussion
Ensemble

Brass Choir

Concert Band

Concert Choir

Madrigals

Gospeliers

Opera

Kappa Kappa Psi



Kappa Kappa Psi is the National Honorary Band fraternity, founded on the Clarion campus in 1970. The purpose of the fraternity is to promote the college band program, to honor outstanding band members, and to encourage the development of a high degree of musicianship within the band organizations.

Tau Beta Sigma



Tau Beta Sigma, the National Honorary Band sorority, is dedicated to the ideals of promoting musicianship, leadership, service to the band, and friendship among sisters. Membership is open to students who have actively participated for one semester in the college band program and have successfully completed a pledge program.





We start them young
With practice.
We try . . .
We learn . . .
And we make friends.





We play in rain
And sunshine
Until we're the best
We can be.
That's when we become . . .



. . . The 1979 Golden Eagle Marching Band



FLUTES
 Arellano, Mary
 Bigley, Joey
 Egley, Susan
 Geahry, Alison
 Moody, Elizabeth
 Musgrave, Charlene
 Saulesbery, Tammy
 Schneck, Gail
 Shultz, Barbara

CLARINETS
 Ferguson, Mary
 Fitzgerald, Patrick
 Funciello, Ann
 Hall, Juliann
 Jenkins, Donna
 Jones, Sherry
 Lamb, Kathleen
 McGaffery, Ted
 McKee, Cindy
 McNulty, Gail
 Miszuk, Teresa
 Rippin, Shari

Romanowski, Ellen
 Thompson, Evie-Sue

SAXOPHONES
 Bahr, Corina
 Benn, Jacqueline
 Cameron, Heidi
 Chiprean, James
 Cressley, Scott
 Cressman, Andrew
 Fisanick, Rebecca
 Gaidosh, Laurie
 Hanan, Sharon
 Heasley, Lisa
 McKay, Valerie
 Rittenhouse, Kerry
 Roessing, Nancy
 Sanute, Pierce
 Scherder, Kathie
 Smith, Richard
 Wood, Diane

TRUMPETS
 Alexander, Traci

Balstad, Steve
 Burkett, Jeffrey
 Cook, Vicki
 Fortney, Lane
 Harnish, Brenda
 Hetrick, Royce
 Hrivetter, Mike
 Manni, Joseph
 Meneely, Gail
 Nelson, Stephen
 Nickoloff, Brian
 Novak, Valerie
 Orris, Brett
 Toole, Alfred
 Troxell, Daniel
 Waldron, James

HORNS
 Fry, Curt
 Furman, Marilee
 Gasper, John
 Greene, Lori
 Jeffreys, Walter
 McElheny, Kevin

TROMBONES
 Anslar, Beverly
 Baum, John
 Beggs, Scott
 Evans, Joni
 Franks, William
 Gressley, Denise
 Michael, Kevin
 Pears, Andrew

BARITONE
 Johnson, Terri
 Meagher, Randall
 Shultz, Steve
 White, Dee

TUBA
 Caldwell, Paul
 Chobot, Stephen
 Gaffney, Gregory
 Smith, Lisa
 Smith, Ralph
 Steele, Scott
 Walbert, Allen

Yasher, Ronald

PERCUSSION
 Bigley, Judy
 Bixel, Allen
 Cadwallader, Nancie
 Ingram, Lisa
 Jaskowak, James
 Lowers, Harry
 Snyder, Susan
 Wagner, Richard

DRUM MAJOR
 Rankin, Bill

DIRECTORS
 Michalski, Dr. Stanley
 Wells, Mr. Lawrence



Majorettes - Left to right: L. Leslie (Golden Girl), T. Bochak, B. Querriera, S. Palmer, T. Ferguson, L. Ordiway, M. Gargiulo, S. Bibb (Head Majorette).



Flags - Row 1: C. Kasprovicz (Co-captain), C. Melvin, J. Lakawicz. Row 2: C. Stewart N. Blough, J. Lilly (Co-captain), N. Coulter. Missing from the picture: S. Toth.



Symphonic Band



The CSC Symphonic Band, under the direction of Dr. Stanley Michalski, has four major objectives: cultural, the development of music appreciation and understanding through performances; education, the development of good performers, teachers, and conductors; service, to promote the dignity and reputation of the college through on and off campus concerts; and recreational, an emotional outlet and leisure time outlet.



Lab Jazz Band

The Laboratory Jazz Band, directed by Mr. Lawrence Wells, is a comprehensive study of various schools and styles of jazz through performance, utilizing a jazz ensemble of approximately 25 instrumentalists selected on the basis of playing ability. Performance literature includes representative works ranging from the styles of the 1930's to the present.



Brass Choir



Row 1: R. Hetrick, S. Bolstad, V. Novak, B. Nicholoff, B. Hornish, V. Cook, J. Astrowski, B. Rankin, R. Meagher, R. Swackhammer, B. Anslar, J.

Evans, D. Gressley, K. Michael, B. Lindahl. Row 2: R. Wagner, A. Bissel, J. Gasper, D. Klink, L. Greene, R. Yasher, G. Gaffney, Dean Farnham.

The Brass Choir consists of 15 to 20 instrumentalists who play trumpets, french horns, trombones, baritones, tubas, and percussion. Music from all periods and styles is rehearsed and performed each semester in concert and on tour.

The Percussion Ensemble is a highly specialized organization offering outstanding students an opportunity to study and perform chamber music for percussion instruments. The ensemble performs music from a wide variety of styles. Contemporary works, transcriptions of early music, music of various ethnic groups, and jazzrock works are studied and performed.

Percussion Ensemble



Participants: A. Bixel, K. Berry, R. Dell, N. Hubbard, E. Livengood, T. Snyder, C. Pirone, R. Wagner.

Lyric Opera Workshop



The Lyric Opera Workshop, which is composed of all interested students on campus, offers singing experience in lyric music theatre. Costumes, orchestration, and acting, as well as lighting, make-up, and scene design are incorporated into the workshop.

Left to right: S. McFetridge, G. Geffney, C. Cadwallader, A. Toole, T. Cochran, S. Toth, B. Russell, R. Prindle.

MENC



The Clarion Chapter of the Music Educators National Conference works to acquaint the music education student with the profession they have chosen through workshops, programs, performance groups, and assisting the Music Department are planned by the chapter members.

Members: G. Dotterer, J. Eaton, R. Fisanick, W. Ford, B. Amsler, J. Benn, D. Bertolini, A. Bixel, T. Cochran, V. Cook, S. Curry, R. Davidson, L. Deckman, R. Dell, S. Egley, G. Geffney, J. Gasper, S. Geidel, L. Greene, D. Gressley, C. Harley, B. Harnish, S. Hileman, L. Igram, W. Jeffreys, S. Jones, J. Kisinger, D. Klink, K. McElheny, S. McFetridge, V. McKay, C. McKee, R. Meagher, V. Novsk, L. Pifer, S. Rippin, J. Spencer, K. Thomas, D. Troxell, C. Vawryk, D. Wood, R. Yasher.

Gospeliers

Gospeliers was begun on campus in 1971 with a few students who had a desire to spread the gospel through song. Though the size of the group has changed considerably, our constant prayer is that someone's life may be touched through our message. Gospeliers is open to all students regardless of race or religion. We just have a good time praising the Lord.



Members: L. Allen, T. Alston, E. Barnett, T. Brown, D. Cameron, K. Ceuthor, M. Cory, C. Dreher, S. Ellison, M. Hallums, C. Kiessling, K. Lempkins, M. Lee, K. Mackey, L. Mayberry, L. McCloud, C. Perry, M. Powell, V. Rue, M. Smith.



**Fall
Opera**



Madrigal Singers

The Madrigal Singers are a group of talented students who possess the techniques and skills to work with a specialized area of music. Many long hours of rehearsal are devoted to mastering major compositions. The Madrigals perform concerts both off and on campus including their Madrigal Dinner just before Christmas.



Row 1: G. Tillitt, D. Wolbert, L. Wimer, S. McFtridge, C. Vawryk. Row 2: S. Nelson, T. Cochran, L. Clarke, M. Evans, T. Wotus, G. Unitus, R. Craig, M. Heck, S. Caldwell, W. Ford, T. Saulsberg. Missing from the picture: C. Cedwallader, L. Deckman, S. Erikson, C. Hanna, K. Hanna, N. Haupt, B. Hicks, J. Kissinger, G. Koehler, G. Kulusich, M. Mills, L. Pitar, J. Spencer, P. Stover, N. Stulak.





Concert Choir

The Concert Choir is a select group of performers under the direction of Mr. William MacDonald. Many long hours of rehearsal are devoted to mastering major compositions. In addition to their Christmas and spring concerts, the choir members share their songs with high school students during their annual spring tour.



SOPRANO I
 Stephanie Caldwell
 Stephanie Cambro
 Judy Cwik
 Terri Ferguson
 Colleen Fix
 Wendy Ford
 Sue Gillooly
 Kathy Hartnett
 Brenda Jastromb
 Patty Lashus
 Barb Moltane
 Pam Nichols
 Diane Rhoads

SOPRANO II
 Linda Clarke
 Kim Creig
 Sandra Dorrian
 Cheryl Eidenmiller
 Patty Frazier
 Beth Markunas
 Patti McGrath
 Sue McFetridge

Gail McNultz
 Diane Reese
 Tammy Saulsbery
 Susan Sybert
 Lisa Wimer

ALTO I
 Jackie Benn
 Lois Bogniak
 Debbie Brown
 Susan Palinosky
 Diane Rubisch
 Debbie Sanker
 Lisa Smith
 Lauren Stoker
 Gretchen Tillitt
 Denise Tinz
 Diane Wolbert
 Joan Womeldorf

ALTO II
 Rose Alisantrino
 Brenda Harnish
 Nancy Haupt

Diane Hebrank
 Michelle Heck
 Trish Jacques
 Donna Parcell
 Carol Pinto
 Fay Wilson

TENOR
 Craig Bradley
 Ron Craig
 Steve Curry
 Tony Damiano
 Stan Ebron
 Mark Emerick
 Terry Goedecker
 Jim Jaskowak
 Mett Johnson
 Ernie Mensureti
 Steve Nelson
 Gordon Unitus
 Tom Wotus

BASS
 Steve Balstad

Scott Beggs
 Wayne Carroll
 Rany Davison
 Brian Donley
 Tom Dougherty
 Mark Evans
 Greg Gaffney
 Curt Hanna
 Walter Jeffreys
 Gary Koshler
 Renny Meeghar
 Mark Mills
 Tom Snyder
 Nick Stulek
 Al Toole
 Ron Yasher

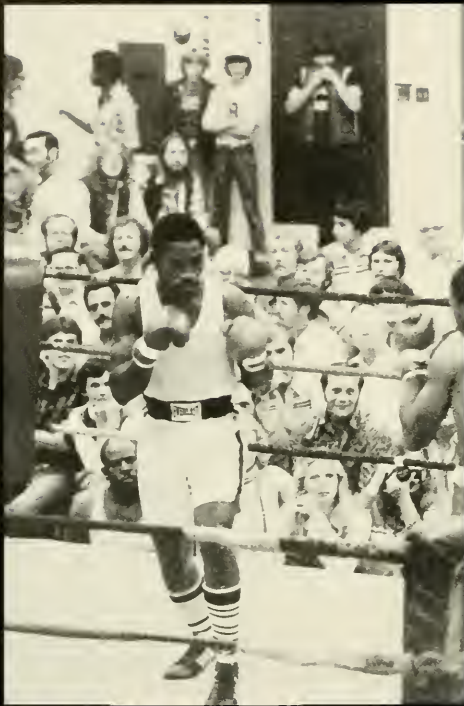
DIRECTOR
 Mr. William McDonald

Fine Arts . . .



Talent At Work





FEATURES



Who's Who in American Universities and Colleges

Right: Cindy Minnemeyer (Special Education) - Center Board, C.E.C. Psi Chi, Kappa Delta Pi, Psychology Club, Orientation Leader, Rifle Team. Below left to right: Kevin Kase (Speech Comm. and Theater) - Student Senate President, I.E. Team, Pi Kappa Delta, Concert Choir, R.A. LeRoy Kline (Speech Communication) - Debate Team, Pi Kappa Delta, R.A., Honors Colloquim. Brenda S. Querriera (Psychology) - Zeta Tau Alpha, Majorette, Psi Chi, C.A.S., Spanish Club, R.A. Genevieve Rowan (Medical Technology) - Basketball Statistician, Beta Beta Beta, D.P.M.A., R.A.





Top left to right: Patricia McGrath (Marketing) - Business Association, Marketing Association, R.A. Mary Kathryn Jacobs (Special Education) - Zeta Tau Alpha, C.E.C., Kappa Delta Pi. Left: Lydia Pifer (Music Education) - Miss C.S.C. 1979, Lyric Opera Workshop, M.E.N.C., Madrigals, Concert Choir, Kappa Delta Pi, I.E. Team. Kevin R. McElheny (Music Education) - M.E.N.C., Kappa Kappa Psi, Band, Orchestra, Brass Choir.





Right: Pamela A. Hannaford (Speech Pathology and Audiology) - Alpha Xi Delta, N.S.S.H.A., Kappa Delta Pi, Psi Chi. Below left to right: Jamie Boran (Elementary Education) - C.E.C., Clarion Call. Evelyn-Sue Thompson (Special Education) - Circle K, Marching Band, Concert Band, C.E.C., Tau Beta Sigma, Psi Chi, Kappa Delta Pi. Jay E. Stewart (Elementary Education) - Marching Band, Concert Choir, Interhall Council, Student Senate, Orientation Leader, R.A.





Above left to right: Bennett VanHouten (Biology) - Bios Club, Pre-Med Club, Beta Beta Beta. Elizabeth A. Palmer (Communication) - Student Senate, R.A., Clarion Call. Thomas J. Snyder (Music Education) - Alpha Chi Rho, Lab Jazz Band, Marching Band, Concert Band, Kappa Kappa Psi, Kappa Delta Pi, M.E.N.C. Left: Lisa A. Rankin (Speech Communication and Theater) - Debate Team, Student Senate, R.A., Lower Board, Middle Board.



Left to right: Cynthia Eberhart (Biology) - Bios Club, American Chemical Society, Beta Beta Beta, Psi Chi, Phi Sigma Sigma, Ski Club, C.A.S., Outing Society,

Tutor. Dennis W. Beggs (Marketing/Management) - Phi Beta Alpha, Kappa Kappa Psi, Marching Band, Marketing Association, Business Association.

Left to right: Cathy J. Best (Speech Pathology and Audiology) - N.S.S.H.A., Psi Chi, Kappa Delta Pi. Derek B. McKown (History) - History Club, Phi Alpha Theta, Russian Club.





Above left: Susan C. Bibb (Special Education) - Majorette, Spanish Club, C.E.C., Sequelle, Hall Council, Tau Beta Sigma, Kappa Delta Pi, Cheerleader. Daniel J. Devine (Geography) - Geographical Society, Track Team, Gamma Theta Upsilon, Sequelle. Above right: Snook Richards (Theater-B.F.A.) - Alpha Psi Omega (1979 Best Actress Award), I.E. Team, College Players, 1979 A.C.T. Festival Regional Finalist, 1980 National Dramatic Duo Semi-Finalist. Left: Leslie Faett (Management) - ROTC, Phi Beta Alpha, Student Senate, Center Board, Hall Council, R.A. Barbara Burtell (Economics) - College Republicans, Band.

Not pictured: Lauren J. Barscz (Music Education), Michael J. Calla (Elementary Education), Lisa M. Deckman (Music Education), Margaret A. Dusha (Music Education), Judy L. Hichks (Speech Pathology and Audiology), Kimberly K. Keating (Marketing), Janet F. Kissinger (Music Education), Patricia J. Lawson (English), Carolyn Levish (Anthropology), Cynthia Sowl (English).

1979 Homecoming - A Child's Fantasy



Homecoming Court: Debra Zielinski, Kathi McCall, Valerie Trivelpiece, Cheryl Kelyman, Kathie Stoeckle, Kathryn Mackey, Ruth Smith, Precious Andrews, Lynne Allen, Lynn Cowden, Colleen Triebel.



"A Child's Fantasy" was the theme of the 26th annual Autumn Leaf Festival. The parade down Main Street was led by the Golden Eagle Marching Band followed by many colorful floats depicting this year's theme. First place in the float competition went to Sigma Chi and Alpha Sigma Alpha, with second place awarded to Alpha Chi Rho and Alpha Xi Delta.

Kathryn Mackey was crowned Homecoming Queen during halftime of the football game, in which the Golden Eagles defeated the Ithaca Bombers.

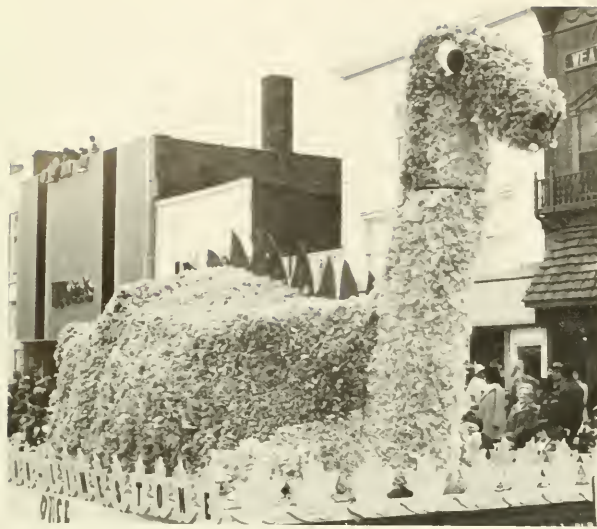


Senior Homecoming Court: Kathie Stoeckle, Kathryn Mackey (Queen), Ruth Smith, and escorts.

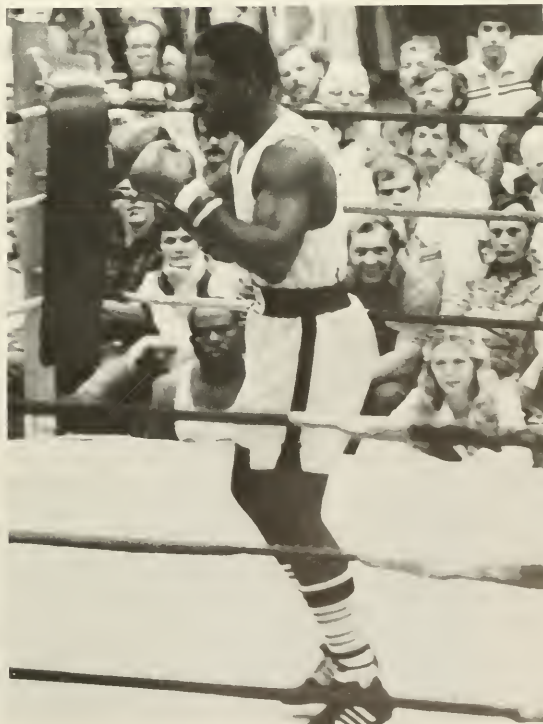
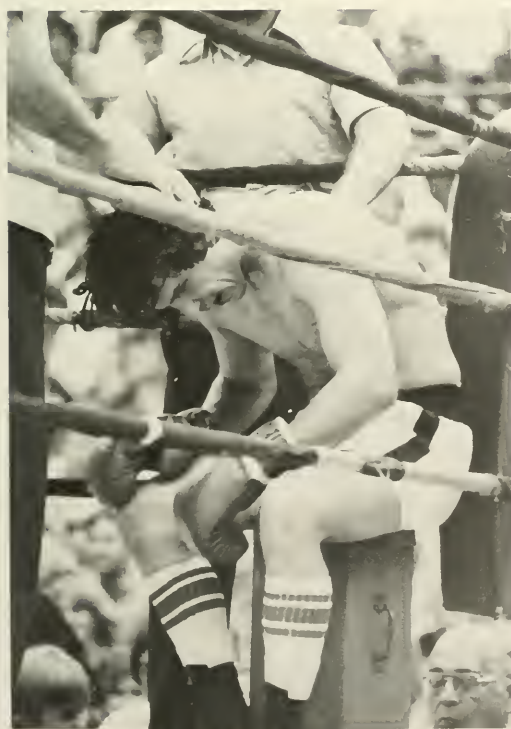
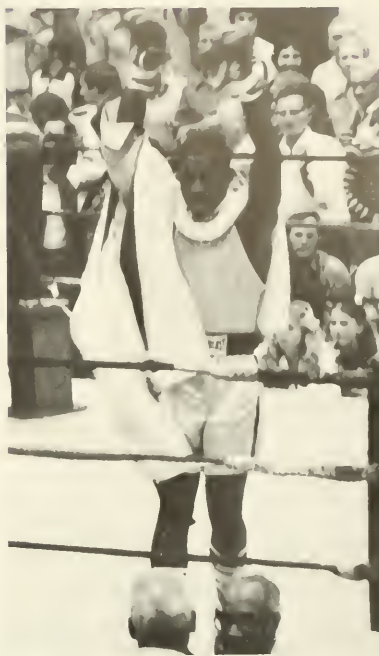


Kethryn Mackey - 1979 Homecoming Queen





Boxing Show, Oct. 3

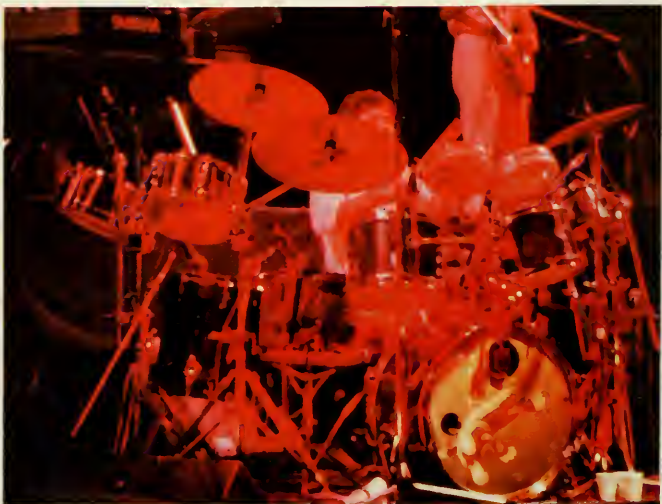


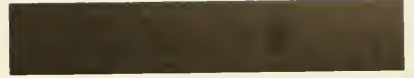


Little River Band, Oct. 4

On October 4, 1979, the Little River Band played to a packed house at Tippin Gym. The internationally known band from Australia entertained the capacity crowd with their impressive string of Top Ten Hits. Included in the show were the songs "Lady", "Cool Change", "Lonesome Loser", and "Happy Anniversary". This concert was definitely a highlight of the 1979 Homecoming Week.

Carlene Carter and her band performed before the headlining Little River Band.





Dave Mason Concert





Dave Mason appeared in Tippin Gym on April 23. Throughout his career, he has played with numerous famed musicians both live and in the studio. The past several years Dave Mason has completed several concert tours in the U.S., Europe, and Australia. His audiences have ranged from immense crowds of music festivals to smaller college audiences.

Rock-and-roller Rick Derringer opened the evening with his music.

Miss Clarion State College



Lydia Pifer
Miss C.S.C. 1979



Left to right: Elaine Oris, Shari Fairchild, Melody Traub, Ella Mae Bruce, Terri Ferguson, Ann Marie Sheets, Becky Fox, Jaanetta Pavelko, Deborah Rudolph, Stephanie Cambro.



On March 8, 1980, Ann Marie Sheets was crowned Miss Clarion State College. The pageant was directed by Lydia Pifer last year's winner. Rob Partridge and Emily Anderson, 1978 Miss C.S.C., served as the evening's emcees.

Miss Sheets is now eligible to represent Clarion State College in the Miss Pennsylvania State Pageant.

Left to right: Becky Fox-4th runner-up, Elaine Oris-2nd runner-up, Ann Marie Sheets-Miss Clarion State College, Stephanie Cambro-1st runner-up, Terri Ferguson-3rd runner-up.



New Addition: Dana Still Hall





The summer of 1979 marked the opening of the Dana Still building. The new four story edifice houses the School of Business Administration and features a new computer center, a modern auditorium and larger classrooms. The building will be used by a large proportion of students.

With the business program at Clarion so rapidly expanding, it is refreshing to see a building that reflects this growth.



Activities Day, Sept. 8





September 8th marked the second annual activities day on campus. The purpose of this day is for students to get information on extra-curricular activities, whether educational, Greek, or just for fun. Many of the displays were original and had a way of drawing people to them.

During the day, a band from Pittsburgh called the "Flashcats" entertained outside of Stevens Hall.



Interhall Council's Casino Night





Peace Festival, April 19





A Variety of Featured Events





Center Board Presents:



Ken Wooden: Speaker on Child Abuse, Sept.



**Stolzenburg and Belmont:
Masters of Mime, Oct. 18**





Trinidad Folk Festival, Nov. 5



**Fred Waring and the Young Pennsylvanians,
Oct. 24**



**Dan Ford,
January 24
Star Trek's
"Mr. Sulu", Nov. 29
Count Basie,
December 4**





Kelly Monteith,
February 4
Measure By Measure,
March 18



**Godspell,
March 13**





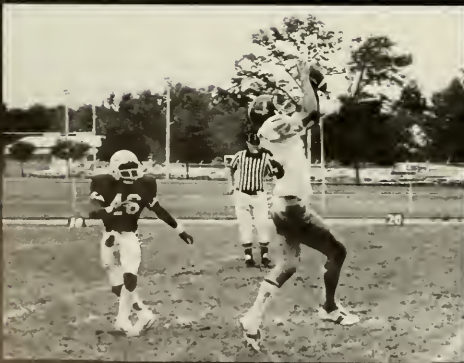
The Magic Trips

March 4



Camerata Woodwinds,

April 30



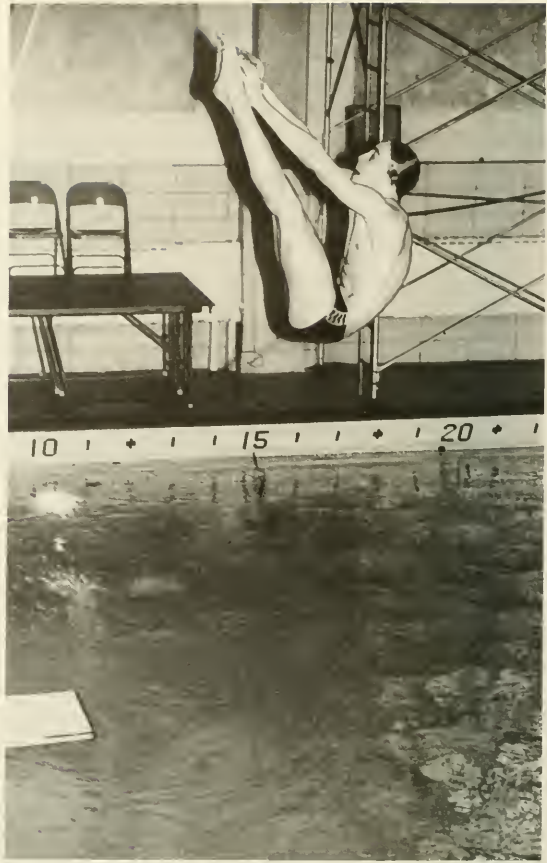
SPORTS



Men's Swimming - "Again For Ten"

Again this year the Men's Swim Team capped a fine 6-2 season by capturing the Pennsylvania State Conference Championship for the tenth straight year. At the NCAA Division II Championship held at Youngstown State University, Clarion placed 14th with seven swimmers gaining All-American status. These swimmers were Jack Buescher, Ray Gandy, Mark VanDyke, Jim Huey, Don Walker, Terry Ferrara, and Bob Theune.

Coach Miller will be losing four swimmers to graduation, all All-Americans - Terry Ferrara, Jim Huey, Anthony Pagano, and Mark VanDyke.



	CSC	OPP
Youngstown	62.....	51
East Stroudsburg	74.....	39
Shippensburg	49.....	64
Pitt	45.....	64
Slippery Rock	80.....	31
Bloomsburg	67.....	45
Fairmont	62.....	49
Edinboro	76.....	37



Row 1: G. Muchalansky, C. Dush, J. O'Hara, J. Huey, M. VanDyke, T. Ferrara, A. Pagano, D. Toween, T. Bodine. Row 2: M. Quail, M. Walsh, J. Britling, P. Hyeer, B. Frank, M. Cascianto, T. Riggs, B. Fox. Row 3: E. Weber, member, J. Riley, B. Klamut, J. Buescher, T. Gillooly, C.

Beach, M. Kochenash, K. Arnold, B. Duchene. Row 4: M. Halfhill, B. Strohl, D. Rinkacs, M. Janak, R. Theune, R. Gandy, member. Row 5: Coach Leas, B. Quinn, C. McDermott, C. Stack, D. Walker, E. Franks, R. Hanlon, Coach Miller.





Football -

The football team compiled an impressive 9-1 season under coach Al Jacks, but their only loss to Lock Haven kept them from the State Championship game. A highlight of the season was the fine comeback victory on Homecoming against Ithaca by defeating them 12-10.

Gary Frantz broke the CSC all-time rushing record thus earning him the Most Valuable Player on offense. Gary rushed for 878 yards this year for an 87.8 yard average per game. Bernie Carpenter, a leader in tackles and interceptions, was named Defensive MVP. Placekicker Bill May was named to the 1st Team NAIA All-American Team for his accurate kicking ability.





9-1 Season

	CSC	OPP
West Liberty	24	7
Deleware State	45	12
Geneva	23	7
Edinboro	13	0
Ithaca	12	10
Lock Haven	13	19
Shippensburg	16	14
California St.	13	10
Slippery Rock	23	7
IUP	30	15



Row 1: S. Brown, B. Huffman, D. Kuhley, D. Skok, G. Frantz, D. Roberts, B. Carpenter, T. Krizan, B. Brennan, R. Studds, M. Fredericks, D. Hallock, M. Greiner, G. Toth, C. Mastrogiocoma. Row 2: J. Kearns, G. McCauley, J. Stubbs, B. May, J. Williamson, C. Campagne, R. Cethcart, S. Scillitani, D. Eury, G. Dapp, J. McCullough, M. Harrison, L. Herding. Row 3: M. Crovak, B. Betts, J. Grosso, G. Smith, D. Sikora, M. Earley, S. Crouch, L. Gallette, L. Sekely, A. Nye, B. Kundick, A. Colecchi, S. Hockenberry, K. Izydore. Row 4: S. VanPelt, T. Sutton, D. Davault, T. Scott J. Leipheimer, B. Lynch, J. O'Shea, D. Dragovich, J. Kumar, R.

Hammar, B. Fello, J. Chadwell, J. Kristien. Row 5: M. Dellostretto, M. Richard, E. Havens, J. Leipheimer, J. Eberts, D. Straub, P. Parker, C. Olson, T. Onestak, K. Kleinhample, T. Wuyscik, M. Madslens, K. Barnacheur. M. Vesslich. Row 6: S. Joyce, P. Sullivan, C. Oakes, R. Alberts, E. Flowers, F. Palacios, D. Yohe, J. Golias, W. Patton, K. Hetzel, J. Wilson, M. Novak, J. Arnold, P. Ulgerman, A. Smith. Row 7: M. Davidson, S. Lehman, M. Latronica, B. Delucia, D. Liberatore, W. Halter, J. Manion, M. May, J. Emminger, M. Holman, G. Lippert, K. Keller, C. Konop.





Wrestling -

	CSC	OPP
Syracuse	28	11
Edinboro	33	8
Auburn	14	29
IUP	38	8
Oklahoma	12	27
Kentucky	13	25
Univ. of Illinois	32	12
Bloomsburg	21	12
Penn State	31	12
West Virginia	28	9
Lock Haven	32	11
Slippery Rock	22	17
Cleveland State	30	9
Ohio State	39	6
Pittsburgh	29	6
First - Penn State Invitational		
First - Wilkes Tournament		
Second - Pa. Conference Championships		
First - Eastern Wrestling League		
Tournament		
16th at NCAA Div. I Championships		





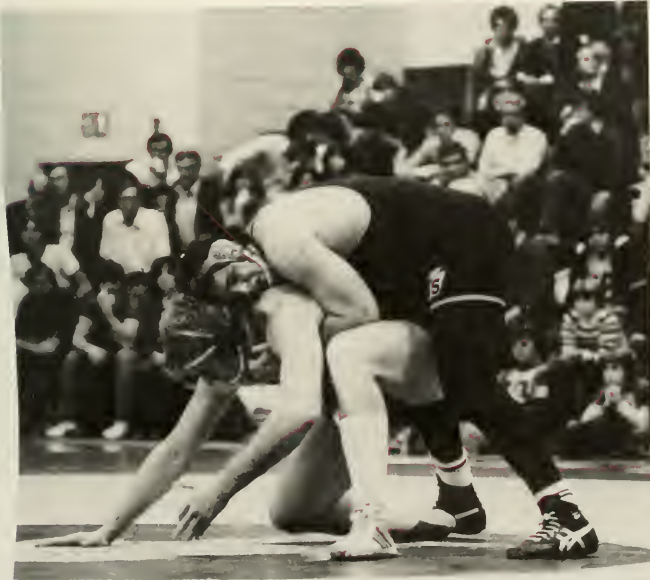
Kneeling: J. Clark, S. Jastrabek, R. Miller, J. Braunstein, S. Glass. Standing: R. Albert, C. Heller, J. Campbell, M. Downing, E. Booth, C. Menzie, D. Gilbert.

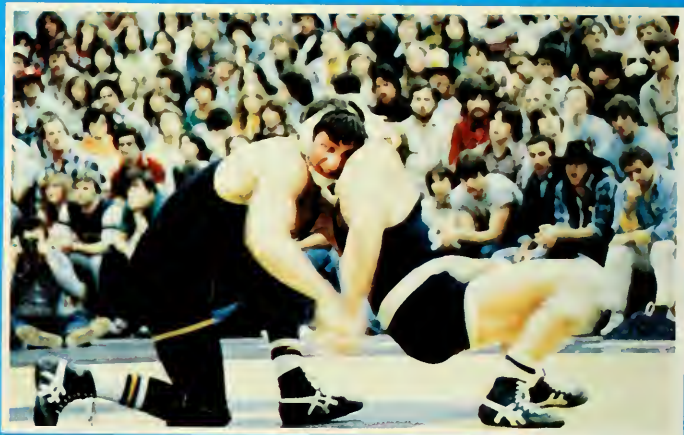
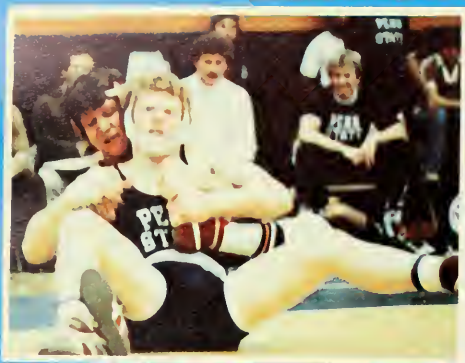


Eastern League Champions

Under the direction of Coach Bubb, the wrestling team finished with a strong 12-3 record. Plagued by many injuries, the team had the talent and depth needed to win match after match. Highlights this season included big wins over Syracuse, Bloomsburg, and Penn State. The Golden Eagle wrestlers finished second at the Pennsylvania State Conference Championships behind Bloomsburg. The team won their first Eastern Wrestling League Championship with Randy Miller (134), Dale Gilbert (158), Charlie Heller (177), Mark Downing (190), and Jack Campbell (HWT) winning individual titles qualifying them for nationals.

At the NCAA Division I Championships, Clarion placed 16th in the final standings. Charlie Heller finished fourth at the championships thus earning him the status of All-American.









Left to right: R. Yoder, N. Greco, Coach Truitt-Bean, K. Krout, M. Minderler, D. Kucia, K. Stevenson, J. Wright

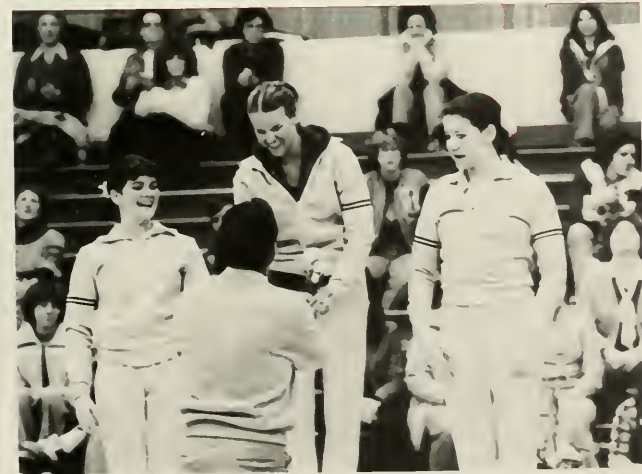
Gymnastics- A Rebuilding Year

With the resignation of Ernestine Weaver and the transfer of five gymnasts, new head coach Gayle Truitt-Bean was faced with a rebuilding situation. However, five dedicated gymnasts comprised a team that would not give up. At the Pa. State Conference Championships, the team captures one-third of the possible awards.

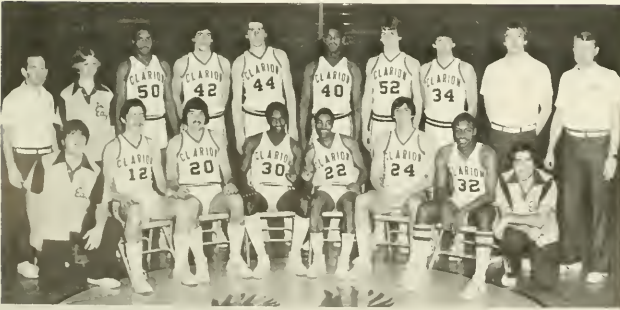
A bright spot of the season was the return of junior Kelli Stevenson from a back injury. At the Conference Championships, Kelli won the all-around (34.55), the balance beam (8.90), and the floor exercise (9.00) titles. She also placed second on the uneven bars (8.45). Also placing high at the championships were Kelly Krout, Debbie Kucia, and Meg Minderler.

	CSC	OPP
East Stroudsburg	116.35	120.40
Pitt	114.85	127.85
Ohio State	120.90	131.75
Eastern Michigan	120.90	129.35
West Chester	123.55	127.85
West Virginia	125.40	135.25
Penn State	125.25	144.85





Men's Basketball —



Row 1: J. Jurcism, A. Gibson, V. King, B. Fosbenner, C. Roosevelt. Row 2: Coach DeGregorio, S. Radaker, J. Copeland, J. Malis, D. Chojnacki, J. Tooles, K. Glass, T. Johnson, D. Vanderhorst, Asst. Coach Baschnagel.



“A New Era Of Excitement”



	CSC	OPP
Hunter College	105	69
Bloomsburg State	93	80
PSU-Behrend	89	73
Point Park	70	72
St. Bonaventure	92	105
Alliance	88	59
Mercyhurst	75	74
Roanoke	62	66
West Va. State	95	60
Randolph Macon	71	61
Radford	65	66
Slippery Rock	66	55
Steubenville	94	82
Indiana	95	73
California State	91	76
Gannon	87	82
Lock Haven	74	56
Edinboro	49	52
UPJ	89	69
Slippery Rock	85	64
St. Vincent	55	57
Indiana	63	61
California State	100	77
Lock Haven	55	57
Edinboro	84	71
Grove City	79	77
Cheyney State	59	66
Edinboro	80	72
Waynesburg	78	73
Grand Canyon	83	75
Lores	79	71
Huron	52	61



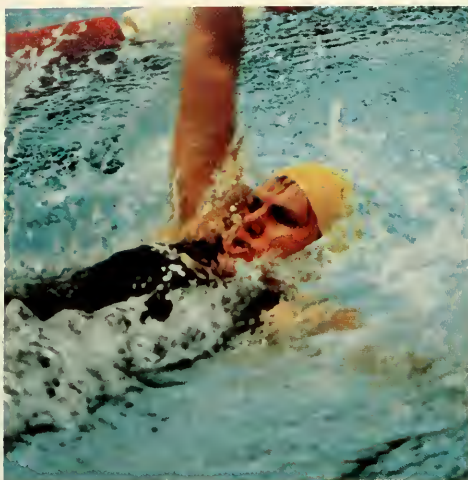
This season truly exemplified the team slogan of "A New Era of Excitement." Although the season was believed to be a rebuilding year, the team finished with an overall record of 23-9. Again the Golden Eagles went to the Conference championship game, but lost to Cheyney State by seven points. However, the excitement then began. First Clarion defeated Waynesburg for the District 18 Championship and a "Journey to the Tourney" in Kansas City. In the first round of the NAIA Championships, Clarion won over a highly favored Grand Canyon team, then went on to defeat Lores. The team then stumbled to a 61-52 quarterfinal loss to Huron. This marked the farthest a Clarion team has ever gone in the school's history.

Leading the scoring attack this season was Alvin Gibson with an average of 20.5 points per game and an excellent showing at nationals. Against UPJ, Alvin scored 41 points. Senior co-captain Dan Chojnacki provided the muscle under the boards and a scoring average of 15.6 points per game. Early in the season Dan surpassed the 1,000 point plateau in his college career. Other key players included co-captain Terry Johnson, Vernon King, Jim Tooles, Chris Roosevelt, and Joe Malis.





Women's Swimming — A 3rd AIAW National Championship





The Women's Swim Team, under first year coach Becky Rutt, capped a successful season by capturing their fifth straight Pennsylvania State Conference Championship and their third AIAW National Championship. The national meet, held at Clarion State, was not decided until the last event in which the relay team of Sue Strymer, Polly Potter, Nancy Galata, and Nan Farrar placed fourth to out-point the Cal. State-Northridge team. Nan Farrar, repeating her 1978 performance, won the 200 yard backstroke. Rhonda Phillips won the 3 meter diving title giving her a second national title. Numerous other swimmers placed high making the national championship a total team effort.

Coach Becky Rutt will only be losing one swimmer, 1979-80 captain Amy Barker, to graduation. During Amy's four year career, she has been on three national championship teams, won two national championship titles, and earned 16 All-American awards.



Women's Basketball-



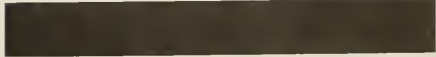
Row 1: Coach Ferguson, P. Lewis, L. Pagni, L. Best, F. Caper. Row 2: R. Jenkins, T. Olszewski, K. Garred, J. Glowasky. Row 3: L. Kaufmann, D. Artman, P. Pfendler. Row 4: J. Pagnano, C. Reardon, Asst. Coach McGirr.



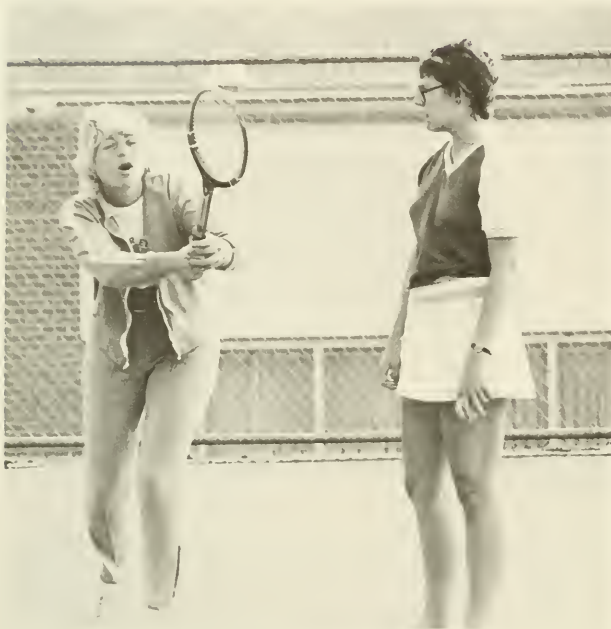


Compiles 7-14 Season

	CSC	OPP
Shippensburg	54	66
Gannon	60	65
Robert Morris	64	66
Grove City	60	59
Youngstown	47	82
Loyola	45	76
Lehigh	63	83
Gannon	57	58
Lock Haven	83	64
Cleveland	52	65
Slippery Rock	48	72
Cal. State	85	76
Kent State	51	77
UPJ	45	70
IUP	68	92
Allegheny	71	31
Edinboro	62	106
Geneva	78	31
Duquesne	64	60
UPJ	55	106
St. Francis	Forfiet	



Women's Tennis - Nets Even Record



The Women's Tennis Team closed their season with a 4-4 record. Under new coach Becky Rutt, the spirited young team improved greatly. At the PSAC Championships, Clarion placed 8th with Freshman Karen Stevenson winning the singles competition.

	CSC	OPP
Geneva	61
Slippery Rock	09
Allegheny	45
Chatham	32
Cal. State	32
Gannon	71
Grove City	23
Edinboro	18



Cheerleaders



Basketball Squad - Bottom: S. Clouser, B. Klecick (Capt.), D. Bohner, K. Keller. **Top:** K. Rupakus, K. Gilfilan, N. Manilla.

Wrestling Squad - Sitting: D. Donnelly, M. A. Kobus (Capt.), K. Malinowski, K. Zorzi. **Standing:** K. Porter, M. Patrick.



Football Squad - Row 1: J. Katcher, E. Oris, B. Klecick, M. Russell, C. Marousis (Capt.), N. Smith, A. Littlehale. **Row 2:** C. Pohl, B. Angotti, B. Shugarts, R. Raling.

Volleyball



Row 1: L. Petrosky, A. Turano, S. Lingenfelter, J. Bru, T. Peer, D. Kirsh, B. Frye, W. Wilt. Row 2: Asst. Coach McGirr, P. Gannon, D. Lasch, L. Yost, M. Zuck, J. Vincent, S. Ebbitt, A. Schneider, M. Krajovic, L. Furth, L. Petrosky, Coach Ferguson.



	CSC-OPP
Gannon	15- 5, 15- 6, 15- 5
Indiana	13-15, 16-14, 15- 9, 12-15, 15-12
Mercyhurst	15- 5, 3-15, 15- 9
Youngstown	15-12, 7-15, 12-15
Cal. State	15- 7, 16-14
Duquesne	15- 4, 15- 9
St. Francis	15- 9, 15- 3
Slippery Rock	1-15, 12-15
West Virginia Univ.	16-14, 13-15, 10-15
Robert Morris	15- 7, 15- 0
Geneva	15-13, 15- 7
UPJ	15- 8, 14-16, 15-11, 12-15, 10-15
Slippery Rock	4-15, 5-15, 15-13, 15-13, 11-15
Grove City	15-12, 10-15, 16-14
Penn State	13-15, 4-15
Edinboro	5-15, 15-11, 16-14, 6-15, 2-15
East Stroudsburg	12-15, 7-15
Edinboro	4-15, 10-15
Mansfield	15- 8, 15-12

Baseball





Softball





Cross Country



Men's Track



Women's Track



Judo

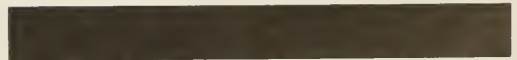
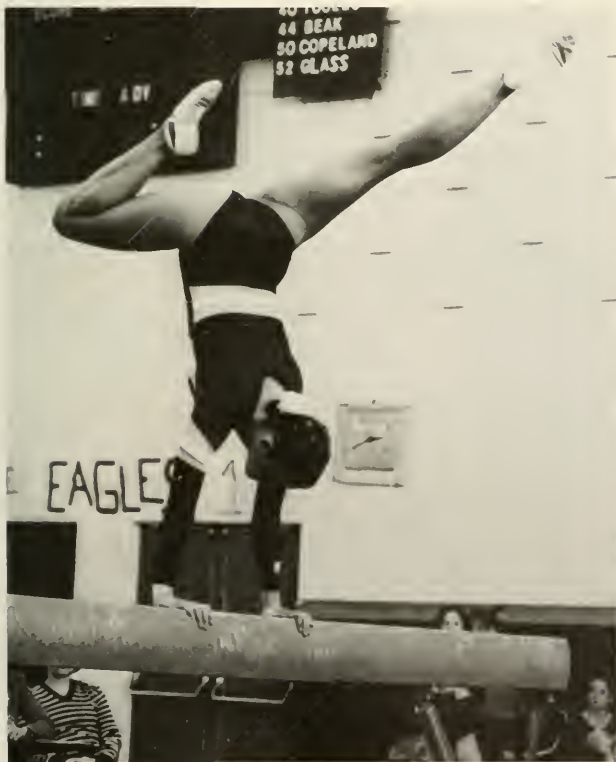


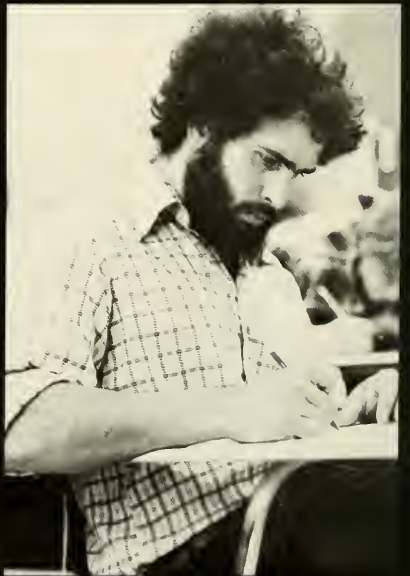
Rifling

Golf

Clarion Sports- A Winning Tradition







SENIORS



Carolyn Adams
Medical Technology
 Robert C. Adams
Biology
 Thomas M. Adams
Accounting
 Carmen E. Akers
Accounting
 Nancy J. Alauzen
Marketing



Thomas B. Albert
Management
 Jeanne Alberth
Elementary Education
 Cherie Allen
Special Education
 Tom Allenbaugh
Biology
 Salvatore Amato
Accounting



Cynthia L. Anderson
Speech Path./Aud.
 Dawn L. Anderson
Special Education
 Richard J. Anderson
Accounting
 Timothy W. Anderson
Speech Communication
 Richard D. Andrew
Marketing



William A. Angotti
Accounting
 Nancy Appleby
Accounting

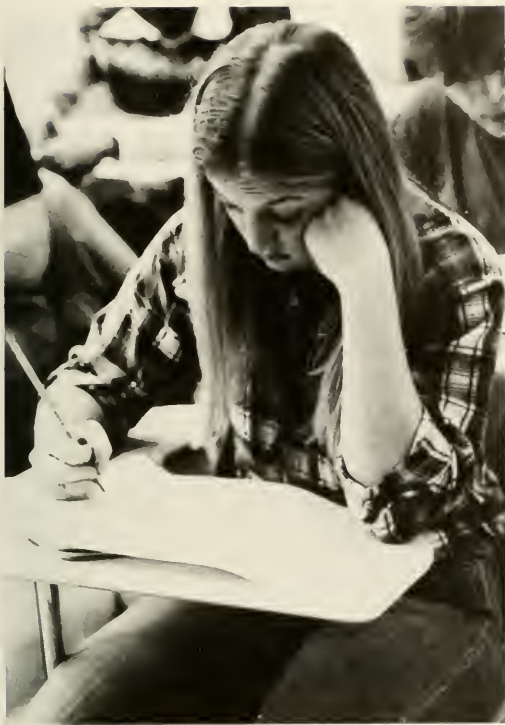


Susan Applegate
Communication
 Melissa Audain
Elementary Education



Deborah S. Austin
Chemistry
 Kevin E. Bailey
Accounting





Jodi A. Baker
Elementary Education
Jacqueline L. Ballard
Accounting



Thomas L. Barger
Political Science
Mark Baric
Accounting



John R. Barker
Accounting
Cynthia A. Barraclough
Elementary Education



Raymond P. Barron
Business
Laureen J. Barscz
Music Education
Jean M. Barsh
Special Education
Robin Baumann
Elementary Education
Pamela J. Beals
Elementary Education



Robert Beatty
English
Joe Beauseigneur
Marketing
Dennis W. Beggs
Marketing
Kimberly S. Beisner
Marketing
Linda S. Beitler
Accounting



Barbara Belfore
Computer Science
Beth Benchley
Special Education
Deborah A. Berg
Art
Douglas P. Bertolini
Music Education
Cathy J. Best
Speech Path./Aud.

Donna Best
Elementary Education
 Arnold J. Betts, Jr.
Secondary Education



Susan C. Bibb
Special Education
 Cindi Bierwerth
Communications



Bonnie Bigler
Special Education
 Judy Bines
Elementary Education



Marvin Birner
Real Estate
 Candi Bistis
Biology
 Howard J. Bitzer
Accounting
 Karen Black
Elementary Education
 Richard B. Black
Marketing



Gretchen E. Blaho
Management
 Sandy Blair
Music Education
 Kathleen M. Blaney
Library Science
 Cindy Blankenstein
Marketing
 Scott Blum
Management



Tamara A. Bochak
Computer Science
 Julie A. Boehm
Elementary Education
 Loraine A. Bollibon
Elementary Education
 Nanette Bonnett
French
 Eric D. Booth
Management





Jamie Boran
Elementary Education
Victor J. Borrelli
Management
Carol Borza
Habilitative Services
Diane M. Bosak
Psychology
John L. Boss III
Business



Barbara Bothwell
Communications
Victoria A. Bowers
Elementary Education
Brenda L. Bowes
Early Childhood
Karin Lyn Boyle
Special Education
Vera A. Bradshaw
Sociology



Nancy Breene
Real Estate
Randa J. Breighner
Marketing
Ben Breniman
Geography
Bruce Brenkus
Management
Ronald R. Brennan
Real Estate



Tina Brochetti
Special Education
Jack K. Brocius
Accounting
Chandra Brown
Special Education
Eric M. Brown
Earth Science
Joseph G. Brown
Management



R. Scott Brown
Marketing



Janice Bru
Special Education

Darlene Bruce

Finance

Eric Bucher

Computer Science

Patricia Buck

Accounting

Betty E. Budzinski

Sociology

Kathy Jo Burkert

Elementary Education



Jeffrey Burkett

Music Education

Derek M. Burnett

Chemistry

Dean Burrelli

Business

Dale W. Bush

Accounting

Daniel P. Bush

Accounting



Mary K. Buzzard

Psychology

Kimberly Byerly

Library Science

Stephanie L. Caldwell

Speech Path./Aud.

Michael J. Calla

Elementary Education

Anthony J. Cancilla

Accounting



Larry Capra

Business

Renee D. Carney

Special Education

Bernard E. Carpenter

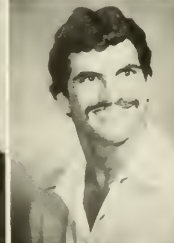
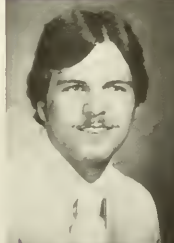
Communication

David C. Carpenter

Speech Path./Aud.

Aleta Cashdollar

Elementary Education



Linda Cashier

Elementary Education

Teresa Castelli

Sociology



Kiehl C. Cauthorn

Management

Michele M. Cekovsky

Communication





Joanne Cerasi
Special Education
Jeffrey Chalmers
Business



David W. Chantler
Accounting
Beth E. Charles
Marketing



Stacy S. Chase
Special Education
James C. Chiprean, Jr.
Marketing
Daniel Chojnacki
Management
Brian Christman
Accounting
Doriane L. Clisby
Accounting



Janice Clute
Elementary Education
Richard A. Cmar
Management
Janet Colangelo
Biology
Keith D. Colbert
Management
Sandra Cole
Biology



Floyd R. Collins
Accounting
David C. Conaway
Elementary Education
Tricia Conley
Sociology
Brenda Connelly
Management
Glenda E. Cook
Library Science



Susan Cooper
Medical Technology
Karen Corner
Library Science
Beth Craig
Communication
Roger W. Cramer, Jr.
Medical Technology
Stephanie Crofton
Business

Janet Cuiffi
Management



Martin E. Cummings
Management



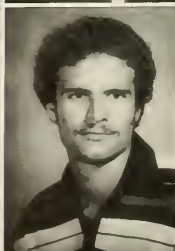
Ann Cunningham
French
Mark A. Curtis
Secondary Education
William Dagar
Accounting
Paula Dalessandro
Management
Anthony E. Damiano
Music Education



Jean Datt
Management
Valerie Daubenspeck
Communication
James A. Davis
Management
Mark G. Daus
Physics
Lisa M. Deckman
Music Education



Ricarda Dehl
French/German
Augusto F. Delorme
Economics
Richard DeLuca
Earth Science
Bernie Demharter
Management
Karen Demharter
Medical Technology



Sharon L. Demme
Speech Path./Aud.
Diane L. Devel
Library Science
Daniel J. Devine
Geography
Debi Diana
Elementary Education
Kathy A. DiPietro
Accounting





Mary B. Dolecki
Special Education
 Richard Donatelli, Jr.
Real Estate
 Stacey Dorsey
Speech Comm./Theatre
 Alastair M. Downie
Earth Science
 Diane Doyle
Biology
 Christopher Driscoll
Mathematics
 Kathy Dudas
Marketing
 David W. Dunkle
Business
 Jo Ann Duncan
Marketing
 Paula Dunlap
Elementary Education
 Leslie Ann Dye
Special Education
 David Edwards
Earth Science
 Richard A. Eichner
Finance
 Debra A. Eister
Management
 David M. Elbert
Marketing
 Jo Ann Elias
Biology
 Joseph G. Engelman
Management
 Yvonne English
Marketing
 Steve Ericson
Management
 Michele Esposito
Special Education
 Deborah Lee Ewing
Computer Science
 Margaret Feeser
Computer Science
 James W. Fenwick
Math/Biology
 Terence J. Ferrara
Math/Comp. Science
 Thomas Ferris
Special Education
 Cynthia J. Fetzeck
Spanish
 Robyn Feura
Special Education
 Bradley J. Filer
Management
 James G. Filipic
Accounting
 William A. Fiscus
Accounting

Debbie Forbes
Music Education
 Gayle Fowler
Management
 Susan Foxall
Psychology
 Gary Frantz
Speech Path./Aud.
 Gary W. Freeman
Elementary Education



Anna Fridman
Speech Pathology
 Kim R. Fritz
Elementary Education
 David J. Frizzola
Anthropology
 Judith L. Fugagli
Social Studies
 Linda J. Fugant
Marketing



Chris Fulton
Accounting
 Jim Furey
Accounting
 Laura B. Furth
Computer Science
 James Gaffney
Business
 Richard B. Galante
Secondary Education



Mary Galati
Elementary Education
 Joseph R. Gardiner
Computer Science
 Taryn M. Gary
Early Childhood
 Carol Gatti
Accounting
 William A. Gaul
Real Estate



Brian Gefert
Biology
 Elizabeth George
Marketing
 Cynthia L. Gilbert
Elementary Education
 Dale Gilbert
Business
 Carol Ging
Special Education



Judith A. Gleixner
Marketing
 William T. Goepfarth
Accounting
 Douglas W. Golden
Accounting
 Anthony Gonnella
Social Studies
 Robert Gordon
Accounting





Debra A. Gorey
Habilitative Services
 Edith Grady
Speech Path./Aud.
 Patrick Graesch, Jr.
Biology
 Pam Gray
Marketing
 Susan D. Gray
Marketing
 Marianne Graziano
Special Education
 Sue Green
Marketing
 Jaquetta Griffith
Management
 Angela L. Groom
Computer Science
 Kathleen S. Grossi
Elementary Education

Darryl J. Grove
Physics



Mark S. Grubbs
Elementary Education



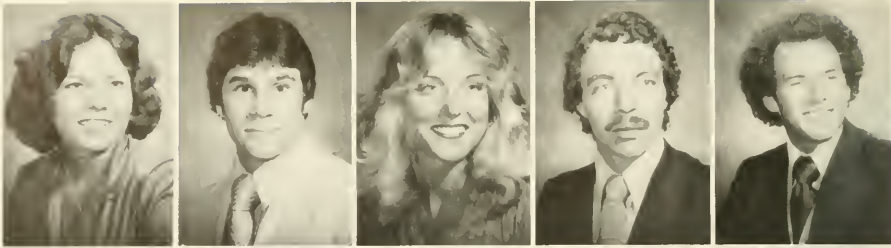
Eugene Lee Gruber
Accounting



Cheryl L. Guzan
Marketing



Mona M. Hagenmeier
Psychology
William Hager
Finance
Deborah Hall
Special Education
Robert G. Hall
Special Education
Stuart Hall
Special Education



Marguerite Hallums
Special Education
Barry E. Hammaker
Accounting
Christiana Handford
Accounting
Pamela A. Hannaford
Speech Path./Aud.
Kenneth T. Hannold
Accounting

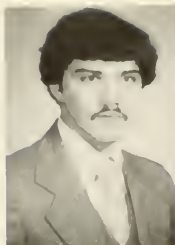


Beverly R. Hardy
Psychology
Rhonda L. Harger
Accounting
Holly Harris
Elementary Education
Jason B. Harrison
Earth Science
Erin E. Hartenbach
Elementary Education



Dean A. Hartman
Communications
Sarah E. Hartzell
Communications
Thomas P. Harvey
Accounting
Cameron Harwick
Marketing
Nancy J. Haupt
Elementary Education





Dale R. Hawthorne
Finance
Robert Hayes
Accounting



Patricia A. Heagy
Marketing
David D. Heffner
Accounting



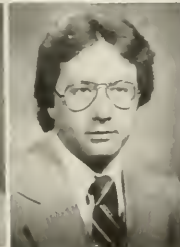
Michael S. Helwig
Biology
Earl Henderson
Biolgoy



Grace L. Henkel
Elementary Education
Karen M. Henry
French
Lori A. Herrle
Accounting
Cheryl L. Hess
Special Education
Judy L. Hicks
Speech Path./Aud.



Heather A. Hill
Art
Michelle Hilovsky
Speech Path./Aud.
Sherri D. Himes
Elementary Education
Elizabeth Hines
Marketing
Michele L. Hobson
Special Education



Shavawn Hoebeck
Accounting
Wayne D. Hoffman
Real Estate
Dale R. Hohman
Marketing
Delbert W. Holowell
Math
James Hopeck
Accounting

Michael Hordies
Accounting
Cynthia M. Horvath
Accounting



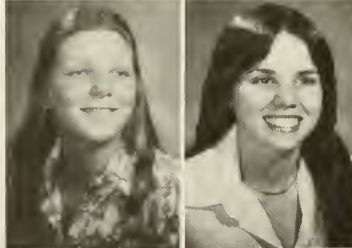
Phil Houseknecht
Management
Elaine Houtz
Secondary Education



Christine J. Hrabovsky
Political Science
Carol A. Hriso
Elementary Education



Phyllis J. Huber
Psychology
Vicki L. Hubler
Speech Path./Aud.



James Huey
Management
Diane Hulings
General Science
Michael P. Humenik
Management
F. Sandra Humphrey
Social Studies
Rebecca S. Hunter
Elementary Science



Cathy Hunzinger
Elementary Education
Diane L. Huss
Communication
Keith N. Husted
Management
Grant N. Igwe
Biology
Mark W. Ingham
Speech Comm./Theatre





Linda J. Innerst
Elementary Education



Melanie Jablonovsky
Speech Path./Aud.



Gayle Jackson
Russian/French
Laurene G. Jacobs
Speech Comm./Theatre
Mary K. Jacobs
Special Education
Terri James
Special Education
Joyce E. Jeziorski
Communications



Nancy A. Jobs
Computer Science
Antonia J. Johnson
Psychology
Carolyn Y. Johnson
Secondary Education
Cyndy Johnson
Communications
James B. Johnson
Social Science



Kim Y. Johnson
Elementary Education
Ron Johnson
Secondary Education
Pauline E. Jones
Psychology
Bradley J. Judy
Business
Jeffrey Kann
Communications



Kim A. Karpinski
Special Education
Paul L. Karstetter
Accounting/Real Estate
Kevin P. Kase
Speech Comm./Theatre
Linda M. Kavulic
English
Brian Kearney
Management

Kimberly K. Keating
Marketing
Laura L. Kelley
Computer Science
Vicky Kemmerer
Medical Technology
Lu Keneske
Elementary Education
Jeraldine L. Kennedy
Elementary Education



Kenneth A. Kepple
Marketing
Lori L. Kimes
Sociology
John Kimmy
Secondary Education
Neil J. Kinch
Finance
Joan L. Kirkhoff
Accounting



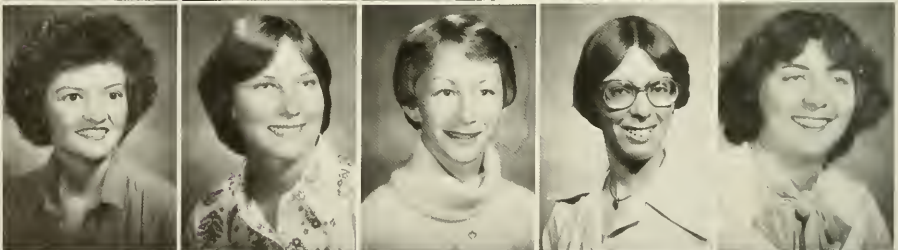
Janet F. Kissinger
Music Education
Daniel J. Klein
Business
Stanley J. Klezek
Marketing
LeRoy D. Kline, Jr.
Speech Communication
Tina Kline
Elementary Education



Joyce Koehler
Accounting
Debra Koelbel
Elementary Education
Paul J. Koellner
Music Education
Steve Kostelec
Marketing
Sandra J. Koza
Accounting



Kandace C. Krach
Elementary Education
Judy M. Kramer
Accounting
Betsy Kreisner
Speech Path./Aud.
Lois Kreitzer
Monica Kress
Speech Path./Aud.



Tim Krizan
Real Estate
Linda L. Kruse
Russian
Gail Kulusich
Marketing
Joyce Kun
Marketing
Kimberly R. Kunselman
Real Estate





Veronica A. Kuras
Biology
 Theresa M. Kurtz
Physics/Math
 John N. Kusich
Accounting
 Pete Laboda
Accounting
 George L. Lakes
Speech Comm./Theatre
 Donna M. Larkin
Elementary Education
 Judith Larkin
Elementary Education
 Susan F. Larrea
Marketing
 Patricia J. Lawson
English
 Rodger B. Lawson
Elementary Education
 Lynn E. Leech
Secondary Education
 Philip E. Leggett
Physics
 Ronald L. Lepionka
Accounting
 Edward Levkulich
Management
 Robert Lindahl
Music Education
 Eric G. Lindbloom
Business
 Paul Lintelman
Management
 Deborah M. Lipko
Speech Path./Aud.
 Carol Lipowcan
Marketing
 Kenneth Liss
Accounting
 Brian A. Little
Accounting
 Terry E. Little
Speech Path./Aud.
 James E. Livengood
Music Education
 Barbara A. Lodie
Accounting
 Diane Logan
Management
 Debra Lombardi
Sociology
 Margaret M. Lonski
Elementary Education
 Greg Loomis
Management
 Jo Lowdermilk
Math
 Michael Luchini
Accounting

Ronald E. Luckock
Accounting



Edward Ludwig, Jr.
Chemistry



Marcia Lyle



Elementary Education



Frank A. Machokas

Real Estate



Denise J. Mack

Special Education

Kathryn R. Mackey



Computer Science



Carol A. Magnusson

Elementary Education

Bradley J. Majoy

Biology

Mary Jo Malizia

Accounting

Mary E. Mallison

Speech Comm./Theatre

Deborah A. Malloy



Elementary Education



John P. Malthaner

Secondary Education

Kimberly M. Manning

Communications

Ricka S. Marcello

Management

Crystal M. Marousis

Elementary Education

L. Douglas Martin

Business

Patrick Martin

Computer Science



Teresa E. Marusiak

Habilitative Services

Pam Mascaro

Elementary Education



Patrick Mastrian

Secondary Education

Chris Mastrogiacomo

Management





Renee L. Mates
Elementary Education
John J. Matia
Chemistry



Kimberly A. Mattozzi
Communications
Vincent M. Matusik
Accounting



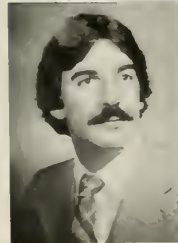
Keith L. Mayberry
Chemistry
David Maze
Marketing



Beth G. Mazzotta
Elementary Education
Maryanne McAllister
Computer Science
Jane M. McArdle
Accounting
Theodore L. McCaffery
Music Education
Mary A. McCall
Special Education



Sandi S. McCord
Management
Mary A. McCosby
Management
Phyllis G. McCoy
Elementary Education
Robert G. McCuen
Anthropology
Rodney McDonald
Accounting



William E. McDonough
Accounting
Kevin R. McElheny
Music Education
Marcia D. McEwen
Accounting
David McFee
Marketing
Catherine McGoogan
Business

Shawn M. McGorry
Management
 Patricia McGrath
Marketing



Kim L. McIntosh
Speech Comm./Theatre
 Bob McIntyre
Speech Comm./Theatre



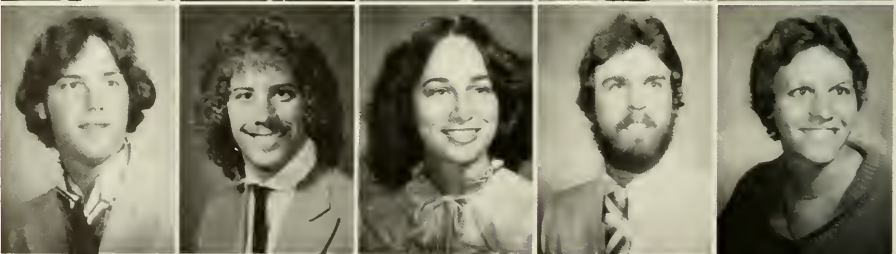
Thomas McKissick, Jr.
Special Education
 Derek B. McKown
History



Ann Meeder
Speech Comm./Theatre
 Larry K. Meminger
Management
 Linda L. Mentch
Marketing
 Susan M. Michalak
Accounting
 Paul A. Miele
Management



David Miller
Management
 Dennis Miller
Elementary Education
 Terri G. Miller
Accounting
 Timothy Miller
Marketing
 Julie A. Miner
Management



Cindy M. Minnemeyer
Special Education
 John C. Minto
Business
 Jim Mitch
Speech Path./Aud.
 Carol L. Mitchell
Communications
 Chris R. Mitchell
Marketing





Margaret A. Mitchell
Communications
Melvin A. Mitchell
Finance
Robert C. Mitchell
Management
Raymond Mlinarich
Marketing
Thomas A. Mock
Accounting



Mary Ann Mooney
Habilitative Services
Steve Moore
Computer Science
Laurie Moorhouse
Sociology
Kevin T. Muir
Math
Lauren Murgatroyd
Medical Technology



Barbara J. Murphy
Accounting
George Murphy
Biology
Patricia Murphy
Accounting
Daniel Myers
Business
David Myers
Secondary Education



William Myers
Political Science
Abdullah Nasim
Accounting
Ronald C. Nelson
Music Education
Sandy Nesley
Biology
Thomas J. Newcomer
Business



Candice L. Newman
Special Education



Nancy L. Newson
Communications

Earl H. Nichol
Secondary Education
 Ellen Nicholette
Management
 Michelle Nichols
Elementary Education
 Dolcee Niederriter
Computer Science
 Elizabeth M. Noah
Special Education



Robert G. Nulph
Secondary Education
 David I. Ojomo
Math
 John O'Palenick
Management
 David A. Orndorf
Chemistry
 Jaan K. Paarlberg
Special Education



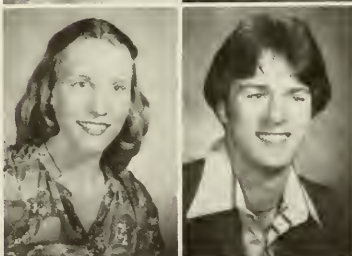
Gloria A. Pasci
Elementary Education
 Anthony M. Pagano
Management
 Lee C. Page
Sociology
 Laura Paladino
Management
 William Palamara, Jr.
Business



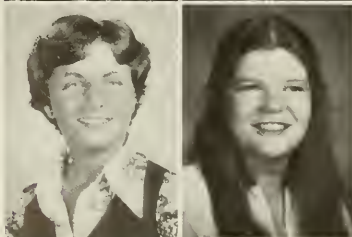
Loukas Pallis
Marketing
 Elizabeth A. Palmer
Communication
 Susie Palmer
Communication
 Betty A. Palmore
Speech Comm./Theatre
 Ellen E. Pancerev
Music Education



Kellie M. Panella
English
 Frank A. Pannebaker
Elementary Education



Diane Pelletiere
Elementary Education
 Cynthia A. Peoples
Elementary Education

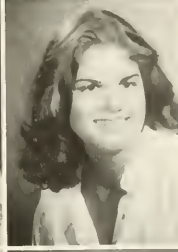




Philip J. Perrotti
Accounting
Steve Perry
Accounting



Kathy I. Pertz
Special Education
Theresa Phelps
Computer Science



Linda D. Phillips
Communication
Shelley Phillips
Communication
Diane Picking
Marketing
Lydia Pifer
Music Education
Ann Pilewske
Special Education



Carol F. Pinto
Biology
Charles A. Pirone
Music Education
Lois L. Pitoniak
Elementary Education
Nancy Pitts
Sociology
Christopher K. Pohl
Business



Cheryl A. Powney
Secondary Education
William L. Pressler
Accounting
Christina Prokay
Habilitative Services
Diane M. Pulcini
Elementary Education
Lydia Purash
Elementary Education



Brenda S. Querriera
Psychology
Bernadette Ragon
Management
Lisa A. Rankin
Speech Comm./Theatre
Laurel J. Ransel
Accounting
Joseph P. Raspanti
Accounting

Teresa Raucci
Accounting



Cynthia Reed
Elementary Education



Patricia A. Reed
Speech Path./Aud.
Barbara J. Reiland
Accounting
Betsy J. Renninger
Biology
Raymond L. Rettig
Marketing
John Rhea
Marketing



Annette M. Riccaboni
Math/English
William Richards III
Communication
Daniel S. Roberts
Geography
Charlotte Robinson
Speech Comm./Theatre
William C. Robinson
Marketing

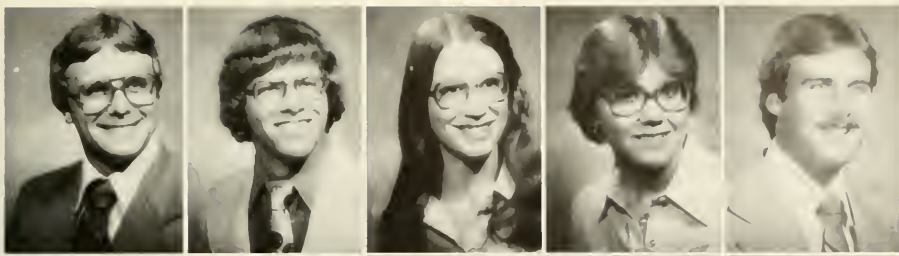


Elaine Rohr
Elementary Education
Sydney J. Rohrer
Political Science
Deborah Roncace
Elementary Education
Tracey Routman
Communication
Richard D. Rubin
Secondary Education

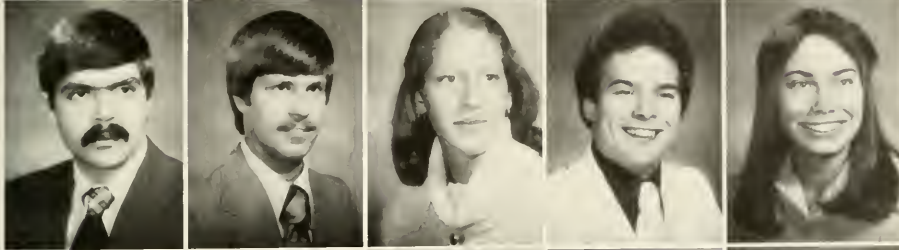


Stephanie K. Rudy
Real Estate
Gary Rudzik
Accounting
Vicki J. Rue
Social Science
Mark Ruehrschneck
Biology
Meg Ruhlman
Psychology





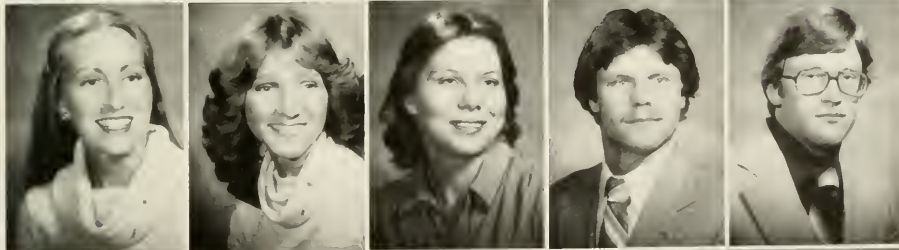
Mark Rumbaugh
Management
Len Rusciollelli
Accounting
Linda Rush
Elementary Education
Jean A. Rusiewicz
Special Education
Joe Ryan
Elementary Education



Michael B. Ryan
Secondary Education
Darryl Sabados
Management
Angela L. Santelli
Communication
Jeffrey R. Schmeck
Business
Gail Schneck
Special Education



Pam Schneider
Library Science
Jeffrey A. Schnur
Elementary Education
Wilbur Schreck, Jr.
Management
Nancy V. Schumann
Speech Path./Aud.
Randall K. Schwartz
Liberal Arts



Sarah E. Scott
Elementary Education
Susan M. Scott
Marketing
Raelene R. Seelbach
Psychology
William Sentak
Business
George A. Schaffer
Accounting



Ibrahim Sharayem
Accounting
Belinda Sheffo
Library Science
Rita L. Shemuha
Elementary Education
Teresa M. Sheridan
Elementary Education
Suzanne Sherren
Elementary Education

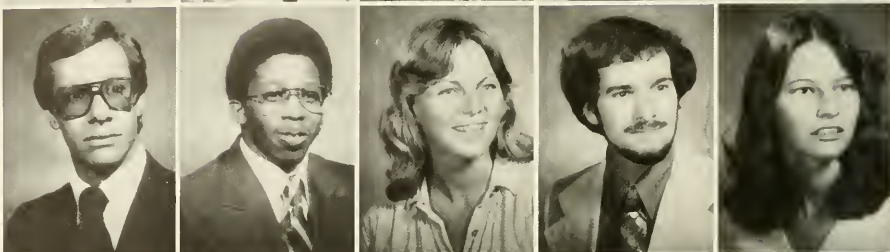


Luanne M. Shiderly
Special Education
Alice G. Sickles
Anthropology
Rose M. Sirabella
Elementary Education
Julie A. Sisk
Elementary Education
David F. Skok
Elementary Education

Thomas K. Slaney
Anthropology
 Linda K. Slater
Habilitative Services
 Michael G. Smarto
Accounting
 Bill Smathers
Secondary Education
 Michael S. Smiley
Communication



Brian J. Smith
Accounting
 Corwin J. Smith
Biology
 Linda L. Smith
Elementary Education
 John H. Smith
Library Science
 Ruth Smith
Speech Comm./Theatre



Craig Snodgrass
Speech Comm./Theatre
 Dale R. Snyder
Real Estate
 J. Ronald Snyder, Jr.
Accounting
 Thomas J. Snyder
Music Education
 Susan M. Soisson
Elementary Education



Cynthia Sowl
English
 Patricia Spangenberg
Elementary Education
 Nanci J. Spangler
Biology
 James Spencer
Music Education
 Susan Spencer
Marketing



Richard W. Sprenger
Management
 Pamela Stabile
Elementary Education
 Barry Stablein
Marketing
 Jeff Stanko
Accounting
 James J. Stasko
Accounting



James B. Steffan
Finance
 Mark A. Stepich
Management
 David S. Stewart
Computer Science
 Jay Stewart
Elementary Education
 Kathy M. Stoeckle
Communication





Darrell E. Stoner
Management
Paul A. Stover
Acting
Darlene Synborski
Business
Carol Takach
Special Education
Michael J. Tannous
Biology



Douglas J. Tabar
Management
Frank Tarasi III
Chemistry
Jeff Texter
Elementary Education
Amy S. Thompson
Speech Path./Aud.
Derek A. Thompson
History



Mary Thompson
Elementary Education



Sandra Thompson
Secondary Education



Terry Timmons
Accounting



Gregory Toth
Secondary Education

Sally Jo Tosten
Habilitative Services
Mark S. Toward
Accounting
Mark Tromans
Social Sciences
Susan G. Turner
English
Gary L. Tuomi
Real Estate



Joseph J. Turzanski
Communications
Diane Ulrich
Math
Michael D. Upchurch
Political Science
Rebecca J. Urey
Elementary Education
Douglas Vanderhorst
Marketing



Mark E. VanDyke
Management
Bennett VanHouton
Biology
Cynthia Vawryk
Music Education
Gina M. Villella
Speech Path./Aud.
Thomas Vukic
Real Estate



Samuel J. Wagner
Management
James Walker
Management
Karen Wallace
Political Science
Sandra J. Walters
Special Education
Steven K. Walters
Math





David B. Waltz
Accounting
Nancy Wareham
Elementary Education



Janet L. Waryanka
Marketing
Brian D. Wassel
Marketing



Thomas J. Watkins
Management
Lori J. Weaver
Habilitative Services



Stephen M. Webb
Accounting
Pam Weidner
Communications
Betty Wells
Communications
Elizabeth Weltner
Elementary Education
Janet Westcott
English



Nancy Westover
Elementary Education
David Whalen
Business
Eric M. Whelan
Accounting
Daniel E. White
Marketing
Patricia A. White
Speech Path./Aud.



Robert White
Finance
Julie Whitehead
French
Marsha L. Whitting
Library Science
Robert M. Wieand
Accounting
Gabriele Wilberg
English/French

David Williams
Accounting
Julie L. Williams
Music Education



Leslie Williamson
Special Education
Jeffrey H. Willit
Business



Robert A. Willow
Accounting
Lisa Wilson
Early Childhood



W. Scott Windisch
Management
Jeffrey M. Winger
Management



Robert S. Wingert
Accounting
Craig Witherow
Management
Jerri L. Witner
Management
Judith A. Wolski
Elementary Education
George E. Wood
Accounting



Pam Work
Music Education
Christie Wuest
Anthropology
Thomas Wyant
Management
Beth A. Yancosek
Elementary Education
Lenore M. Yarish
Elementary Education





George A. Yesenosky
Accounting
Bruce Young
Elementary Education
Betty Yutzey
Communications
Kevin Zanot
Secondary Education
Lynn E. Zawilla
Computer Science



Richard Zeiders, Jr.
Marketing
Grace A. Zelinski
Chemistry
Candace Zimmerman
Management
David A. Zonarich
Marketing
Julie D. Zuech
Special Education



Julie Zumpano
English



CLARION STATE COLLEGE

ANNUAL
COMMENCEMENT



MAY 18, 1980 2:00 P.M.
MEMORIAL STADIUM





Honorable Governor Dick Thornburgh









I SEVE A Decade Tragedy A

Nuclear plant accident stuns the nation, world

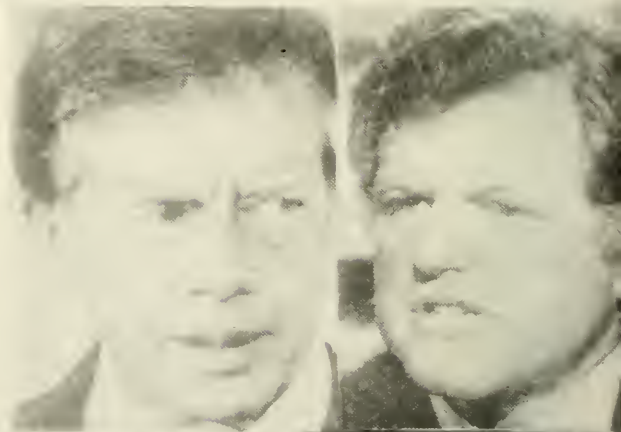
Traders after Iranian oil
play a game of nerves



STAR TREK

Gold Soaring Ever Upward

TV's Top 10
Events Of 1970s
include: Pines,
Watergate,
Olympic Jinx



**Athletes win
their freedom**



The Seventies

NTIES Of Turmoil, and Change

Wars Faded, Dollar Declines

Positives And Negatives

Exchange
Gasoline, Fuel
Outlook Shaky

**WHATEVER THE FATE OF THE
HOSTAGES, IRAN'S FANATIC RULER
LEADS HIS NATION TOWARD CHAOS**



The 1970



SOMMERS APPOINTED COMMISSIONER

SULU SOARS

SWIMMERS WIN STATES
Journey to the Tourney
Swimmin', Women Reign

WRESTLERS WIN EWL CHAMP

BOY
TUITION
Only

26th Annual
Autumn Leaf Festival
Sept. 30 to Oct. 7, 1979
Clarion, Pennsylvania



—INTERNATIONAL YEAR OF THE CHILD—

THEME:
*"A Child's
Fantasy"*

THE "COUN
JAMS AT M
MONTEITH HUMORS

Fire Blazes
ACADEMIC

WCCB's 5th ANNUAL
CHILDREN'S HOSPITAL
FUND DRIVE

LADIES IN R

ONSHIP!

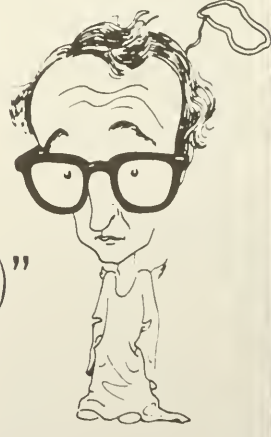
LOT

INCREASED
at Clarion



EVERY NITE LIVE
WITH WOODY ALLEN'S

"**GOH** (a play)"



Presenting: "The Shadow Box"

MISS CSC PAGEANT

CLARION

Forensics Up Top

Thru Wilkinson FESTIVAL SLATED

BEER RACE

- 1. Sigma Tau
- 1. Alpha Sigma Alpha

SING

- 1. Alpha Chi Rho
- 1. Alpha Sigma Tau

BOWL

- 1. Sigma Chi
- 1. Alpha Xi Delta

SWIM

- 1. Theta Xi
- 1. Sigma Sigma Sigma

OLYMPICS

- 1. Sigma Tau
- 1. Alpha Sigma Tau

SCHOLARSHIP

- 1. Alpha Chi Rho
- 1. Alpha Sigma Alpha

BANNER

- 1. Alpha Chi Rho
- 1. Alpha Xi Delta

OVERALL

- 1. Alpha Chi Rho
- 1. Alpha Sigma Tau

E T I R E M E N T





**There's no excuse,
Not to relax and get loose,
And let us take you for a rainbow ride.**

It's been a long, hard day,
But now it's time to play,
Cause we've got it all planned;





**We're gonna strike up the band;
We're gonna take you for a rainbow ride.**



Index

Accounting Club	26
Accounting/Finance Dept.	83
A.C.E.I.	32
Activities Day	144
Administrative Science Dept.	84
Administrators	72
Admissions Staff	91
Alpha Chi Rho	47
Alpha Kappa Alpha	46
Alpha Phi Omega	40
Alpha Psi Omega	97
Alpha Sigma Alpha	48
Alpha Sigma Tau	50
Alpha Xi Delta	52
Anthropology Association	38
Art Dept.	76
Ballentine Hall	14
Baseball	184
Basketball, Men's	172
Basketball, Women's	178
Becht Hall	15
Beta Beta Beta	36
Biology Dept.	76
Bios Club	36
Black Student Union	34
Brass Choir	116
Boxing Exhibition	135
Camerata Woodwinds	157
Campbell Hall	16
C.A.S.	25
Casino Night	146
C.E.C.	32
Center Board	27
Cheerleaders	181
Chemistry Dept.	77
Chess Club	37
Circle K	40
Clarion Call	30
College Republicans	39
Communications Dept.	85

Index

Computer Center Staff	92
Concert Choir	121
Counseling Staff	93
Count Basie	154
Cross Country	188
Dana Still Hall	142
Debate Team	98
Delta Sigma Theta	54
Selta Zeta	56
D.P.M.A.	26
Earth Science Dept.	78
Economics Dept.	84
Education Dept.	87
English Club	38
English Dept.	77
<i>Every Night Live</i>	106
Ford, Dan	154
Forest Manor	17
Football	162
German Club	35
Given Hall	18
<i>Godspell</i>	156
Golf	191
Gospeliers	118
Graduation	226
Greek Week	64
Gymnastics	170
Health/Physical Education Dept.	88
History Dept.	78
Homecoming	132
I.E. Team	98
Infirmary Staff	92
Interfraternity Council	44
Interhall Council	25
Judo	191
Kappa Alpha Psi	49
Kappa Delta Pi	32
Kappa Kappa Psi	109
<i>Kiss Me Kate</i>	104
Lab Jazz Band	115



STATE

Index

<i>Ladies in Retirement</i>	102
Lambda Sigma	31
Library Faculty	93
Library Science Dept.	86
Little River Band Concert	136
L.M.I.S. Society	31
Lyric Opera Workshop	117
Madrigals	120
Magic Trip, The	157
Marching Band	110
Marketing Association	41
Marketing Dept.	84
Mason Concert, Dave	138
Math Dept.	79
Measure By Measure	155
M.E.N.C.	117
Miss C.S.C. Pageant	140
Modern Language and Culture Dept.	79
Montieth, Kelly	155
Mr. Sulu	154
Music Dept.	80
Nair Hall	19
N.S.S.H.A.	37
Off-campus life	21
One Acts	99
Opera	119
Outing Society	41
Panhellenic Council	45
Peace Festival	148
Percussion Ensemble	116
Pershing Rifles	33
Phi Beta Alpha	28
Phi Sigma	51
Phi Sigma Kappa	53
Phi Sigma Sigma	58
Physics Dept.	80
Pi Kappa Delta	97
P.S.E.A.	39
Psi Chi	33
Psychology Club	33

Index

Psychology Dept.	81
Ralston Hall	18
Rifling	191
ROTC	91
Russian Club	35
<i>Sequelle</i> Staff	24
<i>Shadow Box, The</i>	100
Sigma Chi	55
Sigma Sigma Sigma	60
Sigma Tau	57
Sisters Incorporated	34
Softball	186
Special Educaion Dept.	89
Speech Comm./Theater Dept.	82
Speech Path./Audiology Dept.	89
Stolzenburg and Belmont	152
Student Development Staff	90
Student Senate	27
Swimming, Men's	160
Swimming, Women's	176
Symphonic Band	114
Tau Beta Sigma	109
Tau Kappa Epsilon	59
Tennis	180
Theta Chi	61
Theta Xi	63
Track, Men's	189
Track, Women's	190
Trinidad Folk Festival	153
Volleyball	182
Waring, Fred	153
WCCB	29
WCUC-FM	29
Who's Who Students	126
Wilkinson Hall	20
Wooden, Ken	152
Wrestling	166
Zeta Tau Alpha	62

Editor's Message

Putting together this yearbook meant giving a lot of time and energy. Of course problems occurred, but with the help of a few people these problems were resolved. I would like to thank some special people who helped make this yearbook possible.

Hat Band Music for the use of lyrics found on pages

2-11, 234-237. © 1978 Hat Band Music

International copyright secured.

All rights reserved.

Lee Krull - Business Manager

Bernie Magirl - Walsworth Publishing Co.

Abe Orlick - Davor Photo

Linda Schultz - Davor Photo photographer

Hal Wassink

Judy Bigley and Kent Stohl - artwork

the Section Editors

and a special thank you to my photography co-editors Kevin Mizak and Nick Stulak for all the time they put into this book.

I hope everyone enjoys the 1980 edition of the *Sequelle*. I wish good luck and success to all in everything you do.

Brian Smith
1980 Editor

