

THE SHAW DIVINITY SCHOOL

RALEIGH, NORTH CAROLINA



HISTORIC MESERVE HALL
"Home of the Shaw Divinity School"

Official Catalog 1984 — 1987

SHAW DIVINITY SCHOOL

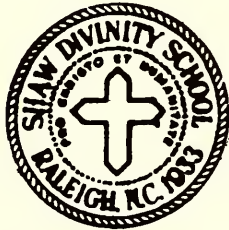
118 East South Street
Raleigh, North Carolina 27611

The provisions of this Catalog describe the School's programs as of the Fall, 1985, and covers the period 1984-1987. They are not to be regarded as an irrevocable contract between a student and the School. The School reserves the right to change any provision or requirement at any time. Changes in course offerings subsequent to the publication of the Catalog are inevitable. The courses listed are subject to alteration or substitutions and the School is not bound to the announced program. For current information on any provision or requirement, contact the Office of the Dean of Academic Affairs at (919) 755-4846.

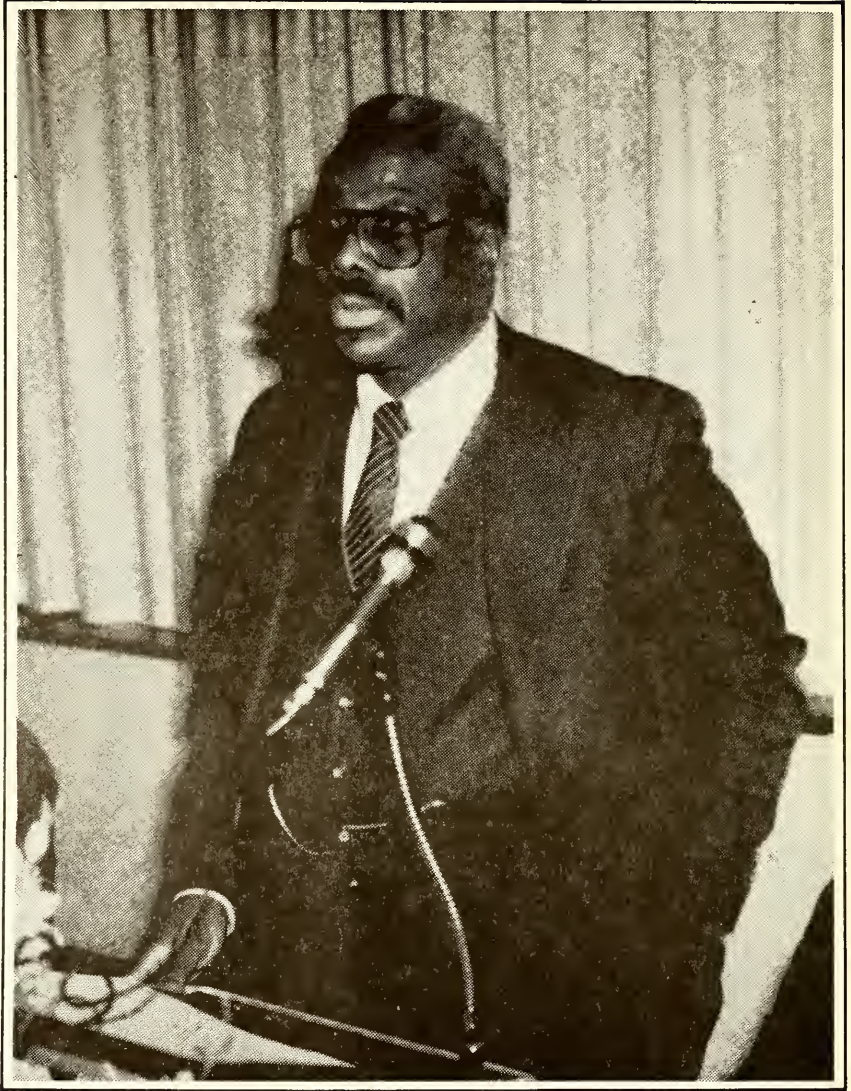
The School admits students of any race, sex, color, national and ethnic origin, or disability, to all the rights, privileges, programs, and activities generally accorded or made available to students at the School. The School does not discriminate on the basis of race, sex, color, national and ethnic origin, or of handicap, in the administration of its educational policies, scholarship and loan programs, nor in any other School administered program.

THE SHAW DIVINITY SCHOOL

118 EAST SOUTH STREET
RALEIGH, NORTH CAROLINA 27611
(919) 775-4811, 755-4846



Official Catalogue 1984-1987
of the Shaw Divinity School



Dr. Stanley H. Smith
President

TABLE OF CONTENTS

THE CALENDAR 1984 - 1987

SECTION I GENERAL INFORMATION

History and Statement of Mission	6-9
Location, Facilities, Activities	10-11
Admissions Procedures	12
Academic Policies and Regulations	13-15
Tuition and Fees	16-17
Student Financial Assistance	17-20

SECTION II COMPREHENSIVE COURSE OFFERINGS FOR THE MASTER OF DIVINITY DEGREE

Field Education	33-35
The Master of Divinity Program	37-38
Master of Divinity, Cape and B. Th. Programs	39

SECTION III INSTITUTES

Institutes	40-41
------------------	-------

SECTION IV THE DIVISION OF CONTINUING EDUCATION

The Department of Continuing Christian Education	42
The Division of Seminary Extension	44
Projected Programs	45
The Diploma InTheology Program	48
Comprehensive Continuing Education Courses	50
Field Education	54

SECTION V THE BOARD OF TRUSTEES, BOARD OF VISITORS, AND BOARD OF ASSOCIATES

Board of Trustees	57-59
Roster of Members	60-61
Board of Visitors	62-63
Board of Associates	64

SECTION VI THE ADMINISTRATION AND FACULTY

Administration	66
Faculty	67-69

SECTION VII ALUMNI AFFAIRS AND PUBLIC INFORMATION

Alumni Affairs and Public Information	71-72
Special Activities	73-75
Photos	2, 5, 9, 15, 20, 21, 23, 42, 47, 55, 61,65,69,73,74,75

THE SHAW DIVINITY SCHOOL

Raleigh, North Carolina

Calendar 1984-1985

FALL SEMESTER - 1984

- August 25 — Registration for Fall Semester begins
- September 1 — Classes begin
8 — Formal Registration for Fall Semester ends
15 — General Assembly (Orientation for Students)
- October 10 — Trustee's Executive Meeting
- November 15 — Semi-Annual Meeting of the Board of Trustees
22 — Thanksgiving Holiday
27 — Classes resume
- December 11-15 — Final Examinations for Fall Semester
15 — Fall Semester Ends
15 — Registration for Spring Semester begins
- December 18 — Christmas recess begins

SPRING SEMESTER - 1985

- January 1 — Christmas recess ends
3 — Classes begin
12 — Formal Registration for Spring Semester ends
16 — Trustee's Executive Meeting
19 — General Assembly (Orientation for Students)
- February — Religious Emphasis Days
16 — New Pastor's Conference (GBSC)
- March 18 — Opening Session of the Twelfth Annual Albert W. Peques Pastor's Conference (9:15 a.m.)
18 — Alumni-Pastors-Founder's Day Banquet (7:00 p.m.)
20 — Theological Alumni Day (11:30 a.m.)
20 — Luncheon (1:00 p.m.)
20 — Closing of the Annual Albert W. Peques Pastor's Conference
- April 10 — Annual Meeting of the Board of Trustees (Brooklyn, New York)
5-8 — Easter recess (week)
9 — Classes begin
- April 30-May 4 — Final examinations for the Spring Semester
4 — Spring Semester ends
4 — Registration for Summer Semester
11 — Convocation for the Conferring of Degrees (Shaw University and Shaw Divinity School)

SUMMER SEMESTER - 1985

- May 4 — Registration for Summer Session begins
18 — Classes begin
25 — Formal Registration for Summer Semester ends
- June 10-14 — Annual Church Leaders Conference

SUMMER SEMESTER - 1986

- May 3 — Registration for Summer Semester
 10 — COMMENCEMENT
 13 — Classes begin
 24 — Formal Registration for Summer Semester ends
- June 9-13 — Annual Church Leaders Conference
- July 9 — Trustees' Executive Meeting
 12 — Fourth Annual Rural Church Conference (GBSC)
- August 1-2 — Eighth Annual Christian Leadership Workshops
 23 — Final examinations for the Summer Semester

1986 — 1987

FALL SEMESTER - 1986

- August 23 — Registration for Fall Semester begins
- September 4 — Classes begin
 13 — Formal Registration for Fall Semester ends
 20 — General Assembly (Orientation for Students)
- October 9 — Trustees' Executive Meeting
- November 13 — Semi-Annual Meeting of the Board of Trustees
 — Homecoming (Convocation) Shaw University
 27-29 — Thanksgiving recess
- December 2 — Regular Classes resume
 16-20 — Final examinations for Fall Semester
 18 — Registration for Spring Semester begins
 20 — Fall Semester ends

SPRING SEMESTER - 1987

- January 2 — Administrative Offices open
 3 — Registration
 10 — Classes Begin
 14 — Trustee's Executive Meeting
 17 — General Assembly (Orientation for Students)
 Formal Registration for Spring Semester Ends
- February — Religious Emphasis Days
 14 — New Pastor's Conference (GBSC)
- March 16 — Opening Session of the Fourteenth Annual
 Albert W. Peques Pastor's Conference
 (9:15 A.M.)
 16 — Alumni-Pastors-Founder's Day Banquet (7:00 P.M.)
 18 — Theological Alumni Day (11:30 A.M.)
 18 — Luncheon (1:00 P.M.)
 18 — Closing of the Annual Albert W. Peques
 Pastor's Conference

SECTION 1

GENERAL INFORMATION



LIBRARY HOLDINGS

A BRIEF HISTORY

Gathered in the old Guion Hotel of Raleigh, North Carolina on a windy first of December day in 1865 were an ex-Union Army Chaplain and a group of former slaves for a class in theology that was to develop into a chartered university just ten years later.

Barely had the smoke from the guns of the Civil War cleared the air before Dr. Henry Martin Tupper, an ex-Union Army Chaplain of Monson, Massachusetts, boarded a Seaboard train in Massachusetts accompanied by his wife, Mrs. Sarah B. Turner Tupper, en route to Raleigh, North Carolina, resolved to provide educational opportunity for former slaves. Dr. and Mrs. Tupper arrived in Raleigh October 10, 1865.

The theological class comprised of former slaves was a visible expression of Dr. Tupper's efforts since his arrival. Its rapid growth was Dr. Tupper's mandate to expand his activities. With \$500.00 he had saved while in the army, Dr. Tupper bought a lot on the corner of Blount and Cabarrus Streets. On this location Dr. Tupper and his adherents built a two-story frame structure with trees they had cut from the forests. Referred to as the Raleigh Institute, it was one of the largest buildings in Raleigh at that time. By mid-summer 1886, it housed an enrollment of seventy-five students preparing for the ministerial and teaching professions!

In 1870, the old Barringer estate was purchased and the Raleigh Institute was moved to this location, the site on which Shaw University stands today. In 1871 the name of the school was changed to Shaw Collegiate Institute, a name it retained until 1875 when it was chartered by the North Carolina Legislature as "The Shaw University."

Shaw University had developed into a full-orbed university by the end of the nineteenth century and was comprised of Schools of Medicine, Pharmacy and Law, and a College of Liberal Arts with a Theological Department. Legend is that while Dr. Tupper was immersed in developing the various university components, Ms. Tupper kept a watchful eye on the Theological Department, an area of special interest dating to 1865. In 1918, the Schools of Medicine, Pharmacy and Law were dissolved because of inadequate finances; the College of Liberal Arts with a Theological Department remained.

The Theological Department conferred its first Bachelor of Theology degrees on four students in 1900. Although the University was reorganized into six departments for the 1919-1920 academic year and a Missionary Training School was established in 1919 to prepare home and foreign missionaries, social service workers, pastors' assistants, and Sunday school leaders, the Theological Department continued basic ministerial preparation and the conferring of the Bachelor of Theology degree. It continued in this role until 1933.

On April 15, 1933, the School of Religion as a graduate school for theological education was established by the Board of Trustees of Shaw University. The School of Religion was empowered by the Board of Trustees to confer the Bachelor of Divinity degree in combination with the Bachelor of Arts. Six years were required to complete the program and the Bachelor of Arts and the Bachelor of Divinity degrees were conferred at the same Convocation for the Conferring of Degrees.

Effective for the 1960-61 academic year the name of School of Religion was changed to Shaw Divinity School; the combination A.B. — B.D. degree program was discontinued and replaced with a three year graduate program leading to the

Bachelor of Divinity with a Bachelor of Arts degree or its equivalent required for admission; and the Shaw Divinity School began to function as a quasi-autonomous body under the direction of the Shaw University Board of Trustees. Full autonomy was not achieved until 1969 when four significant events conjoined to set a new direction for the Shaw Divinity School.

The first of these events occurred in September 1969 when a board of six incorporators, with Dr. King V. Cheek, then president of Shaw University, serving as chief agent, applied for corporate status for the Shaw Divinity School with the Office of the Secretary of State of North Carolina. At 2:35 p.m. on October 21, 1969, a charter establishing the Shaw Divinity School as a Non-Stock, Non-Profit Corporation, was granted by the Secretary of State.

The second event was the creation of a separate Board of Trustees for the Shaw Divinity School. The six original incorporators constituted the first Board, but the Board has now been completely organized and is comprised of forty-eight members and associate members. Officers and members of the Board appear later in this catalogue.

The third event involved changing the name of the Bachelor of Divinity degree to the Master of Divinity and the creation of a Bachelor of Theology program, now the Diploma in Theology. These programs are described on subsequent pages.

The fourth event was the initiation of a dialogic process involving Shaw University and Shaw Divinity School trustees, administrators, students and alumni designed to discover and develop innovative and substantive approaches to theological education for the Shaw Divinity School. Many of the programs and processes described on the following pages evolved out of this dialogic process.

The continuing process of theological education at Shaw since its beginning reveals an attempt to adapt its programs and processes to the changing demands of ministry, incorporating the best features of theological education occurring in the most creative seminaries in the United States, and an innovative spirit that seeks to service the varied needs of church and community. The implementation of the regular and Saturday Models of class scheduling for on-campus study and the creation of the Seminary Without Walls are examples of this innovative spirit.

At present, Shaw Divinity School has as a top priority full-accreditation by the Association of Theological Schools (ATS). To this end, the divinity school has been reorganized, the Regular and Saturday models have been combined, and we have engaged the following: (1) several full-time faculty persons, (2) a Dean of Academic Affairs with a terminal degree; (3) A Dean of Continuing Education; and (4) a Director of Development and Alumni Affairs. In addition, our faculty and students have access to new classroom facilities, area libraries, and new programs have been developed.

At this hour in history, we are continuing the great tradition of Dr. Henry Martin Tupper — a tradition of quality and excellence in theological education. We solicit your continuing prayers, encouragement and support.

STATEMENT OF MISSION

1. MISSION

- a. From its inception, the principle mission of the Shaw Divinity School has been to prepare persons for service as pastors of Christian congregations, and this commitment still stands. A *secondary* mission is to prepare persons for the effective practice of Christian ministries more broadly defined, both clerical and lay.
- b. We believe strongly that every Christian believer is a potential minister of Christ and the Christian Gospel. Thus our continuing education program is geared to meet the demands of this commitment.
- c. Within the framework and spirit of our mission, the Shaw Divinity School has, since its founding, maintained and exercised a continuing commitment to the preparation of persons for ministries reflective of the Afro-American experience, traditionally in pastoral ministry.
- d. Our educational and service programs have been developed to provide theological education and training to our majority constituency — mostly married, bi-vocational, commuting, non-residential students — with built-in flexibility for the accommodation of all who might enroll.

2. COMPETENCIES

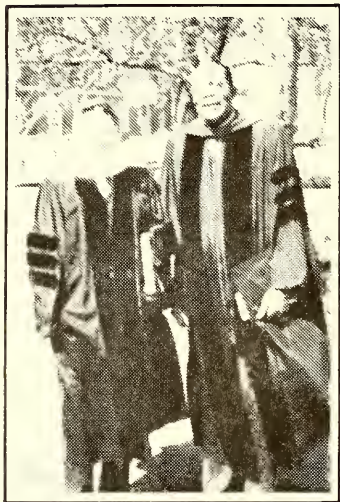
To support its mission, the Shaw Divinity School seeks to promote the development of its students by helping them become:

- a. Thoroughly conversant with the Judaeo-Christian heritage (BIBLICAL);
- b. Thoroughly knowledgeable about the theological, ethical, and philosophical concepts of Christianity and skilled in the application of those concepts for the welfare of church and community (THEOLOGICAL and ETHICAL);
- c. Possessed of an adequate grasp of the history of the Christian Church and acutely aware of the opportunities and challenges in fulfillment of her mission in local and global contexts (HISTORICAL);
- d. Analytical perceptrors who can take the particularities, patterns and processes of the black religious experience and through a creative ministry incorporate them into the kaleidoscopic setting of a pluralistic society (SOCIOLOGICAL and CULTURAL);
- e. Keenly prophetic in perception and boldly prophetic in proclamation (HOMILETICAL);
- f. Possessed of an in-depth understanding of human behavior and motivation in its positive and negative orientations and effective mediators of priestly counsel and comfort to the bruised, broken and burdened (PSYCHOLOGICAL and CLINICAL);
- g. Skilled in the communication of Christian values and capable of developing programs and processes conducive to Christian growth (EDUCATIONAL);
- h. Effective in the management of “the Household of God,” and efficient in the variety of services which Christian ministries demand (ADMINISTRATIVE);

Deeply committed to the Great Galilean and dedicated to continuing his unfinished business of liberation so clearly enunciated in Luke 4: 18—19:

*The Spirit of the Lord is upon me
because he has anointed me to
preach good news to the poor.*

*He has sent me to proclaim release to
the captives and recovering of sight to
the blind, to set at liberty those
who are oppressed, to proclaim the
acceptable year of the Lord (ECCLESIASTICAL).*



Founder's Day



Alumni Breakfast



**Rabbi Rosensweig
Retires**

LOCATION, FACILITIES, AND ACTIVITIES

LOCATION

THE SHAW DIVINITY SCHOOL is located in Raleigh, North Carolina in the historic Meserve Hall at the corner of South and Wilmington Streets. Raleigh is North Carolina's Capitol City and the center of government, education and culture. Raleigh has a population of 167,230 people, more than 300 manufacturing firms in the general area, two universities and seven colleges which together enroll some 31,500 students. Raleigh is one of the three larger cities around the Research Triangle Park which houses some of the most advanced technology in the world.

There are some fifty shopping centers, including malls, in the Raleigh area, three lakes in driving distance, and at least twenty parks. Thus, the city of Raleigh is a resource of immense educational and enrichment value.

FACILITIES

Meserve Hall

Pictured on the front cover is historic Meserve Hall, a building constructed in the nineteenth century. It is the "home" of the Shaw Divinity School and houses its administrative offices, and library/conference room.

Library Facilities

At present, the library in Meserve Hall houses several thousand volumes of the most up to date reference books and other books. In addition to this, the Shaw Divinity School has contractual access to the Learning and Resources Center of Shaw University. Through an informal arrangement, faculty and students at Shaw Divinity School have access to resources at the Southeastern Baptist Theological Seminary, Wake Forest, N. C. upon presenting proper identification. This facility is approximately fifteen miles from Shaw Divinity School.

Classroom Facilities

Through a contractual arrangement with Shaw University, the Shaw Divinity School classes meet in the modern and spacious International Studies Center Meserve Hall, and the Shaw University Chapel.

Housing

The Shaw Divinity School provides housing in "Fellowship House" just across the street from Meserve Hall at 121 East South Street. Fellowship House is a recently renovated two-story dwelling currently being leased by the Shaw Divinity School specifically for student housing. The house will comfortably accommodate 10-12 students.

The Dean of Students assists students who desire housing to secure other living accommodations in Raleigh and adjacent communities.

Food Service

Although the Shaw Divinity School does not maintain a food service facility, students may eat individual meals in the Shaw University Cafeteria at rates

established by the University and during designated meal hours. “Snacks” may also be obtained in the University Snack Bar. Shaw Divinity School is also in walking distance of fast food restaurants and off campus cafeterias.

Bookstore

While the Shaw Divinity School does not maintain an active bookstore, our faculty and students have access to the Shaw University Bookstore and to the Bookstore at Southeastern Theological Seminary, Wake Forest.

In addition, we have formal arrangements with Stevens Bookstore, Wake Forest, and the Baptist Bookstore, Raleigh.

The James Z. Alexander Bookstore to be operated by the Shaw Divinity School is in the planning stage.

ACTIVITIES

Preaching Laboratory

Each Saturday that classes are held, students and faculty gather in the chapel or in a large classroom for fellowship and to hear the proclamation of the gospel or a lecture by a student, or faculty member, or visiting preacher or lecturer. The Student Government Association (SGA) in cooperation with the Dean of Students coordinates this activity.

The President’s Luncheon

Once a month the SGA officers have lunch with the President, Executive Vice President and the Dean of Students at the expense of the Divinity School. This affords a great opportunity for meaningful dialogue between students and administrators that is mutually beneficial to both.

Identification (I.D.) Cards

Each student enrolled in the Shaw Divinity School will be issued an identification (I.D.) card. Students are strongly advised to keep their I.D. cards with them at all times.

The Student Government Association (SGA)

The SGA is the official student organization of the Shaw Divinity School. The President of the SGA is an ex-officio member of the Shaw Divinity School’s Board of Trustees. All SGA officers are elected annually by the student body. The SGA meets monthly, and concerns itself with student life at Shaw Divinity School. This organization is expected to have a close working relationship with the Dean of Students.

The Department of Continuing Education

Several other activities which are available to students are sponsored by the Department of Continuing Education. These activities are designed to inspire and inform. These activities are discussed in more detail in subsequent pages (see pages 42 — 54).

ADMISSIONS PROCEDURES

Procedures

A. General Procedures

1. Students desiring admission to the Shaw Divinity School should secure the appropriate Application for Admission form from:

*The Admissions Officer
The Shaw Divinity School
Raleigh, North Carolina 27611*

The completed Application for Admission form should be returned to the Admissions Officer accompanied by a \$15.00 non-refundable application fee.

2. Students should have sent official transcripts of high school or collegiate education. A high school transcript is required to pursue the Diploma In Theology; a collegiate transcript is required to pursue the Master of Divinity degree.
3. A prospective student who is to be admitted receives a letter of admission to the Shaw Divinity School after the completed application form and official transcripts have been received.
4. Former students who have not matriculated within a two-year period must reapply for admission.

B. Special Procedures

1. Before the student's file is complete two recommendations from persons who know the applicant well and whose names appear on his/her application for admission form will be secured by the Admissions Officer of the Shaw Divinity School.
2. After the Admissions Officer has received the completed application forms, official transcripts, and the two letters of recommendation, the admissions process is complete.

Veteran's Certificate of Eligibility

The Shaw Divinity School is approved by the Veterans Administration. Veterans desiring to enroll for educational benefits in the Shaw Divinity School should initiate procedures with the Veterans Administration. The Shaw Divinity School completes and returns to the Veterans Administration the Certificate of Eligibility issued by the Veterans Administration.

When To Apply

Students desiring to enroll for the first semester of the academic year should apply by August 1st; students desiring to enroll for the second semester should apply by December 1st; and students desiring to enroll for the summer semester should apply by April 15th.

ACADEMIC POLICIES AND REGULATIONS

A. The Master of Divinity

Applicants for admission to the Shaw Divinity School for the Master of Divinity degree must possess a Bachelor of Arts degree or its equivalent from an accredited college or university. Applicants from non-accredited colleges or universities must be approved by the Admissions Committee of the Shaw Divinity School.

B. Certificate In Theology For Professionals

The Certificate in Theology for Professionals is designed to be flexible and geared to the person who is trained in a field other than theology, but desires some certification in the field of theology. Classes are taken at the Master of Divinity level. The structure and content of the program will be determined by the candidate and the Dean of Academic Affairs.

C. The Diploma in Theology

An applicant for admission as a candidate for the Diploma in Theology degree must possess at least a high school diploma or a high school equivalency certificate or must secure in writing from the Dean of Academic Affairs permission to enter on probation. Applicants entering on probation must be approved by the Admissions Committee.

D. The Church Vocations Certificate

A high school diploma or high school equivalency certificate is required for admission as a candidate for the Church Vocations Certificate except in special circumstances.

E. Transfer Students

Transfer credits from accredited theological schools consistent with academic requirements of the Shaw Divinity School are accepted by the Shaw Divinity School. Transfer credits from unaccredited seminaries are accepted upon approval of the Admissions Committee of the Shaw Divinity School. All transfer students, however, must earn at least thirty hours in resident study to qualify for the Master of Divinity degree from Shaw Divinity School. At least twenty-seven hours in resident study are required for the Diploma in Theology. In all courses for which transfer credit is awarded the student must have received at least a grade of "C".

Withdrawals

Any student desiring to withdraw from the Shaw Divinity School must state the intention in writing to the Dean of Academic Affairs. The effective date of withdrawal is the date the letter is received by the Dean of Academic Affairs. Failure to comply with this regulation forfeits the student's right to the tuition refund to which he/she may be entitled and the assignment of an administrative grade of "F" in the courses in which he/she has enrolled.

Returning students who complete course requirements are assigned withdrawal status if they fail to register for two consecutive semesters.

Absences

In case of illness or other extenuating circumstances, Shaw Divinity School

students are permitted three (3) excused absences per course per semester. When a student has incurred the third absence in a course, the professor or instructor will refer him/her to the Dean of Academic Affairs for consultation. Students exceeding three (3) absences without the permission of the Dean of Academic Affairs will receive a grade of “F” in the courses in which the limit is exceeded.

Dismissals

Any Shaw Divinity School student whose behavior orientation reaches such negative proportions that he/she can no longer benefit from the educational programs and services provided by the Shaw Divinity School is subject to dismissal from the Shaw Divinity School.

The Grading System

Scale 3.0

Grade Symbols

- A — Excellent 3 grade points multiplied by the hour value of the course
- B — Good 2 grade points multiplied by the hour value of the course
- C — Fair 1 grade point multiplied by the hour value of the course
- D — Poor, but passing..... No grade point value
- F — Failing
- W — Withdrew
- WP — Withdrew Passing
- WF — Withdrew Failing
- I — Incomplete

Elaboration on Grading Symbols

“D” Grades

The letter grade “D” is passing, but reflects below average work and is of no grade point value. However, as each “D” grade is the result of course work attempted, it is computed in the cumulative hour and grade point average.

“F” Grades

The letter grade “F” denotes failure in a course. However, as each “F” grade is the result of course work attempted, it is computed in the cumulative hour and grade point average.

The “W” Symbol

The letter symbol “W” indicates that a student officially withdrew before an assessment of his academic performance could be made.

The “WP” Symbols

The letter symbols “WP” indicate that a student’s academic performance was satisfactory at the time of his withdrawal.

The “WF” Symbols

The letter symbols “WF” indicate that the student was failing in academic performance at the time of his withdrawal.

“I” Grades

The “I” grade is awarded at the discretion of professors or instructors when a student is unable to complete required work because of an unavoidable circumstance such as illness. If the “I” is not removed during the succeeding semester (summer is no exception), it will be recorded as an “F.” An “I” is considered an “F” in the determination of quality point averages.

Academic Probation

Students enrolled whose cumulative grade point average drops below 1.0 or “C” will be placed on academic probation. Students on academic probation whose cumulative average does not reach the 1.0 or “C” average two semesters after having been placed on academic probation may have their study program temporarily suspended or terminated.



“Fellowship House”



*Rev. Joyceline Thompson
Manager, Fellowship House*

TUITION AND FEES

The Shaw Divinity School reserves the right to change without notice any charges printed in this catalogue and to add other necessary fees.

Tuition for full-time study (at least 9 semester hours) for degree candidates is currently \$480.00 per semester, plus a \$10.00 matriculation fee, and is payable at registration according to one of the following tuition payment schedules:

A. Students not receiving financial assistance from the Shaw Divinity School.

Fall Semester		Spring Semester	
At Registration	\$130.00	At Registration	\$130.00
October 1	120.00	February 1	120.00
November 1	120.00	March 1	120.00
December 1	120.00	April 1	120.00
Summer Semester			
At Registration	\$130.00		
June 1	120.00		
July 1	120.00		
August 1	120.00		

B. Students receiving the maximum \$225.00 per semester financial assistance award from the Shaw Divinity School.

Fall Semester		Spring Semester	
At Registration	\$130.00	At Registration	\$130.00
October 1	70.00	February 1	70.00
November 1	65.00	March 1	65.00
Summer Semester			
At Registration	\$130.00		
June 1	70.00		
July 1	65.00		

C. Students receiving financial assistance from the Shaw Divinity School of less than \$225.00 and/or amounts from other sources will work out a payment schedule with the Cashier. However \$130.00 must be paid at registration.

D. Part-time Students

Students registered for part-time study or for less than a nine semester hour course load are assessed tuition charges of \$120.00 per course plus a \$5.00 matriculation fee. Part-time students are not eligible for financial assistance awarded by the Shaw Divinity School.

E. Additional Fees

Application Fee	\$10.00
Graduation Fees	50.00
Transcript Fees (per transcript)	2.00

F. Exceptions to Payment Schedules

Students are expected to pay their bills on time as indication of academic

seriousness and positive character orientation. Students who discover that they cannot meet financial obligations on schedule should consult with the Cashier before his/her payments are due.

G. Refunds

Students who withdraw officially from the Shaw Divinity School will receive tuition refunds according to the following tuition refund rate schedule:

- During the first two weeks all tuition cancelled
- During the third week 3/4 tuition cancelled
- During the fourth week 1/2 tuition cancelled
- During the fifth week 1/4 tuition cancelled
- No cancellation of tuition after the fifth week

H. Means of Paying Bills

It is expected that bills will be paid by cash, cashier's check, money order, or checks from a church or credible organization or business. Personal checks will be received at the discretion of the administration. There is a \$15.00 penalty for returned checks.

STUDENT FINANCIAL ASSISTANCE

The Purpose of Financial Assistance

The purpose of student financial assistance is to help the student who otherwise would find it impossible to attend the Shaw Divinity School. It is also provided to meet emergencies and always to encourage thorough academic work.

Such funds are not available to finance indebtedness incurred prior to enrollment in the Shaw Divinity School.

Policies to be Observed

1. Students should apply to the Divinity School for financial assistance only as a last resort.
2. Students should ask for the minimum amount necessary for doing thorough academic work and for completing the course of study pursued.
3. All students must be enrolled or accepted for enrollment by the Divinity School Office of Admissions as full-time students before application for financial assistance can be considered, except in special circumstances.
4. All Divinity School financial assistance, except in unusual cases, shall be applied to the students' accounts.
5. Students will be granted Divinity School financial assistance on the basis of actual need and availability of funds.
6. When a decision for awarding financial assistance must be made between prospective students and students enrolled whose circumstances are very similar the criterion for award is the date the Application for Financial Assistance was received.
7. The maximum amount of student financial assistance awarded by the Shaw Divinity School is \$225.00 per semester, renewable annually.

Scholarship Resources

Financial assistance awarded by the Shaw Divinity School is derived from the following sources:

1. **The Shaw Divinity School Tuition Scholarship Awards.** Scholarship awards up to a maximum of \$225.00 per semester on an annual renewable basis and as student need and the availability of funds dictate.
2. **Dr. G.S. Stokes Memorial Scholarship.** A \$400.00 annual scholarship award given by the Wake Baptist Association in honor and memory of Dr. G.S. Stokes.
3. **Watts Street Baptist Church Scholarship Award.** An \$800.00 annual scholarship award given by the Watts Street Baptist Church of Durham, North Carolina.
4. **The Reverend W.L. Reaves Scholarship Award.** A \$400.00 annual scholarship award given by the Lumber River Baptist Association in honor and memory of the Reverend W. L. Reaves.
5. **The Reverend T.H. Dwellie Scholarship Award.** A \$400.00 annual scholarship award given by the First Baptist Church of Fayetteville in honor and memory of the Reverend T.H. Dwellie.
6. **The Reverend C.J. Cooper Scholarship Award.** A \$400.00 scholarship award given by the St. John's Baptist Association in honor and memory of the Reverend C.J. Cooper.
7. **The Reverend S.G. Dunston Scholarship Award.** Given by the S.G. Dunston Family in honor and memory of the Reverend S.G. Dunston. The amount of the award varies annually.
8. **Dr. John L. Tilley Scholarship Award.** Awarded by the Shaw Divinity School Board of Trustees and Administrative Staff in honor and memory of Dr. John L. Tilley. The amount of the award varies annually.
9. **Dr. Miles Mark Fisher Scholarship Award.** An annual scholarship award given by the Shaw Theological Alumni Association in honor and memory of Dr. Miles Mark Fisher. The amount varies annually.
10. **The Reverend Coleman W. Kerry, Sr. Scholarship Award.** An annual scholarship award of \$400.00 given by Friendship Baptist Church of Charlotte, North Carolina, in honor and memory of the Reverend Coleman W. Kerry, Sr.
11. **Rowan Baptist Scholarship Award.** An annual \$500.00 scholarship awarded by the Rowan Baptist Association.
12. **The O.E. Dunn Scholarship Award.** A \$400.00 annual scholarship award given by the First Nazareth Baptist Church of Asheville, North Carolina in honor and memory of the Reverend O.E. Dunn.
13. **The W.L. Mason Scholarship Award.** A \$400.00 scholarship award given by the Saint James Baptist Church of Rocky Mount, North Carolina in honor and memory of the Reverend W.L. Mason.
14. **The A.S. Croom Memorial Scholarship.** An annual scholarship award of \$200.00 given by the Union Baptist Church of Durham, North Carolina, in honor and memory of Dr. A.S. Croom.
15. **The C.E. Griffin Memorial Scholarship.** An annual scholarship given by the First Calvary Baptist Church of Norfolk, Virginia, in honor and memory of Dr. C.E. Griffin. The amount of the award varies annually.

16. **The Howell-Rutherford Scholarship.** An annual scholarship of \$400.00 given by the First Baptist Church of Marion, North Carolina, in honor and memory of Reverend L.R. Howell and Rev. D.W. Rutherford.
17. **The J.E. Barber Scholarship Fund.** A scholarship fund of \$600.00 provided by the First Baptist Church of Chadbourn, North Carolina.
18. **The J.W. Croom Memorial Scholarship.** An annual scholarship of \$400.00 given by the First Baptist Church of Statesville, North Carolina, in honor and memory of Reverend J.W. Croom.
19. **The J.W. Jones Memorial Scholarship.** An annual scholarship of \$400.00 given by the First Cosmopolitan Baptist Church of Raleigh, North Carolina, in honor and memory of Reverend J.W. Jones.
20. **The E.T. Browne Memorial Scholarship.** An annual scholarship of \$500.00 given by the Mount Vernon Baptist Church of Durham, North Carolina, in honor and memory of Dr. E.T. Browne.
21. **The O.S. Bullock Memorial Scholarship.** An annual scholarship of \$300.00 given by the First Baptist Church of Raleigh, North Carolina, in honor and memory of Dr. O.S. Bullock.
22. **The P.A. Bishop Memorial Scholarship.** An annual scholarship of \$400.00 given by the Northampton County Baptist Association in honor and memory of Dr. P.A. Bishop.
23. **The R. Mack Pitts Memorial Scholarship.** An annual scholarship of \$400.00 given by the Shiloh Baptist Church of Winston-Salem, North Carolina, in honor and memory of Dr. R. Mack Pitts.
24. **The Samuel R. Spencer Scholarship.** An annual scholarship contribution given by Reverend Samuel R. Spencer, Pastor, Morning Star Baptist Church, Raleigh, North Carolina.
25. **The Thomas H. Slater Memorial Scholarship.** An annual scholarship of \$400.00 given by the Bethel Baptist Church, White Plains, New York, in honor and memory of Reverend Thomas H Slater.
26. **The Robert E. Powell Scholarship.** An annual scholarship given by Robert E. Powell.
27. **Dr. A.D. Logan, Sr. Memorial Scholarship.** An annual scholarship of \$500.00 given by the First Baptist Church, Reidsville, North Carolina, in honor and memory of Dr. A.D. Logan, Sr.
28. **The Reverend J.J. Alexander Scholarship Award.** A scholarship award given by his family in honor and memory of the Reverend J.J. Alexander.
29. **The Thomas J. Boyd Scholarship.** An annual scholarship of \$500.00 established by Ms. Gloria Hall, a member of Salem Baptist Church, Brooklyn, New York, in honor of her pastor, Dr. Thomas J. Boyd.
30. **The Fred and Hazel Lee Scholarship.** An annual scholarship of \$500.00 established by First Baptist Church, New Hill, North Carolina in honor of Deacon Fred Lee and Deacon Hazel Lee.
31. **The William Henry Davidson Scholarship.** An annual scholarship of \$1,000.00 established by Mt. Carmel Baptist Church, Charlotte, North Carolina in honor of its former pastor, William Henry Davidson.
32. **The Fuller-Paige Scholarship.** An annual scholarship of \$500.00 established by Dr. Joseph C. Paige in honor of his parents, Mr. and Mrs. Bennie Paige and his uncle, Dr. and Mrs. William F. Fuller.

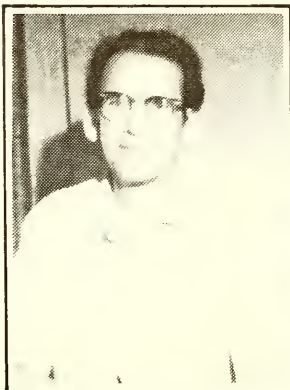
33. **The Carl L. Headen Scholarship.** An annual scholarship established by Mrs. Rochelle (Shirley) Headen in honor of her late husband, Rev. Carl L. Headen, Washington, D.C.
34. **The T. C. Graham Scholarship.** An annual scholarship of \$500.00 established by West Durham Baptist Church in honor of its former pastor, Dr. T. C. Graham.
35. **The E. B. Turner Scholarship.** An annual scholarship of \$1,000 established by the Deep River Missionary Baptist Association in honor of Dr. E. B. Turner.
36. **The J. L. Morgan Scholarship.** An annual scholarship of \$1,000 established by First Calvary Baptist Church, Sanford, in honor of their pastor, Dr. J. L. Morgan.
37. **The Joncie Watson — Fannie Johnson Fund.** An annual scholarship established by Ms. Jonice Watson, Goldston, in honor of her late husband and mother. The amount varies from year to year.
38. **The William and Mildred Pretty Fund.** An annual fund endowed by Mr. and Mrs. William Pretty of Sanford, N.C. Some of the fund may be used for scholarship support.



Left to right: Dr. J. Z. Alexander, Barbara Faulcon, Jo-Ellen Paige, Dr. Gregory T. Headen, Dr. Joseph C. Paige.



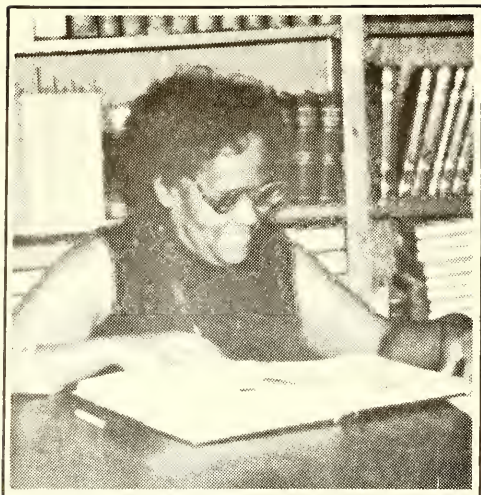
Brenda Hollings



Lamma Adams



Jo-Ellen Paige



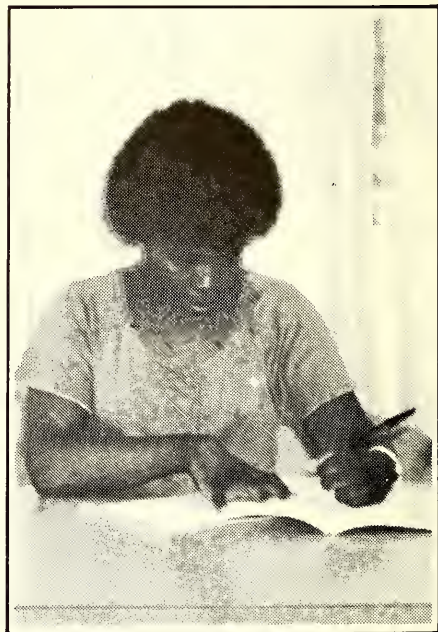
Raymona Jones
Library Consultant



Helen McLaughlin
Associate in Development
and Special Assistant for
Women's Concerns



Marcia Wade
Summer Intern



Helen Morrison
Library Aide

SECTION II

**COMPREHENSIVE COURSE
OFFERINGS FOR
THE MASTER OF DIVINITY DEGREE**



*Dr. Gregory T. Headen
Dean of Academic Affairs
Acting Dean of Students*

COMPREHENSIVE COURSE OFFERINGS FOR THE MASTER OF DIVINITY DEGREE

B = BIBLICAL

H = HISTORICAL

T = THEOLOGICAL/ETHICAL

P = PRACTICAL THEOLOGY

M = Practice of Ministry

C = Ministry in Community

X = Christian Education

P = Psychology and Pastoral Care

R = Religion and Sociology

G = The Church in Global Context

F = Field Education

S = SEMINARS, READING COURSES AND CONFERENCES

Biblical Studies (B)

THE OLD TESTAMENT

B 501, 502 SURVEY OF THE OLD TESTAMENT. These courses are an introduction to the people, history and developing religion of ancient Israel. Israel's social and religious character and basic concerns are examined and the contemporary meaning of the Old Testament is stressed. Emphasis is also placed on the critical study of the texts of the Old Testament. (501 - FALL, 502 - SPRING) 3 hours each

B 503 PROPHETS AND PROPHECY. A study of the prophetic movement in Israel and history of Old Testament prophecy. The prophetic books, basic elements of prophetic theology and the abiding role and task of the prophet are viewed. Contemporary application is stressed. 3 hours

B 506 PSALMS. The course deals with the role that the Psalms have played in the history of religion and civilization. It deals with the various types of Psalms that appear in the Psalter — their origin, the history of their development, their meaning, their interpretation and their relevance to modern times. It concerns itself with the solution that Psalms may have for many of our present day problems. 3 hours

B 508 JEREMIAH. A study of significant passages dealing with the relation between God and the nation or the individual. 3 hours

B 509 ISAIAH. An examination of his prophetic call, his role as prophet and statesman, his messianic prophecies and their relevance. Deutero-Isaiah will be

considered as well. 3 hours

B 514 DEAD SEA SCROLLS. Discovery and age of scrolls, origin and beliefs of Qumran community, contribution of scrolls to the study of Judaism and Christianity. 3 hours

B 518 EZEKIEL. Emphasis is placed on the problems of the modern clergyman in his role as priest, prophet and pastor utilizing the method of demonstration in teaching a personal religion. 3 hours

B 532 WISDOM LITERATURE OF THE HEBREW BIBLE. A study of Proverbs, Ecclesiastes and Job as they relate to modern Judaeo-Christian concepts and religious problems. 3 hours.

B 534 READING COURSE IN OLD TESTAMENT. Reading various works by Old Testament authors under the guidance of a faculty member who is competent in the area of the student's reading interests.

B 600, 601 INTRODUCTORY BIBLICAL HEBREW. Introductory Hebrew grammar and readings. 3 hours each semester.

B 602 ADVANCED BIBLICAL HEBREW. Reading of selected passages from the Old Testament in Hebrew. The purpose is to give a working knowledge in the language. Prerequisites: DVB, 600, 601. 3 hours

B 605 OLD TESTAMENT THEOLOGY. An examination of the unity and diversity of theological perspective as seen in the Old Testament. 3 hours

THE NEW TESTAMENT

B 603, 604 SURVEY OF THE NEW TESTAMENT. These courses are designed to introduce students to the skills and tools of critical analysis while understanding the literature of the New Testament in historical context and contemporary relevance. (603 FALL, 604 - SPRING) 3 hours each

B 605 THE SYNOPTIC GOSPELS. A study of Matthew, Mark, and Luke seen as a single scripture. They are studied synoptically to show the relationships between them and to consider their common emphases and sources. The central focus is the person and life of Jesus and the course is basic for the development of a Christology. 3 hours

B 607 THE THEOLOGY OF PAUL. This course examines Pauline theology in the light of Biblical scholarship, past and present. Paul's apostolate is discerned in the light of Acts and Epistles. 3 hours

B 608 — INTRODUCTORY NEW TESTAMENT GREEK. Introductory Greek grammar and readings. 3 hours

B 609 INTRODUCTORY NEW TESTAMENT GREEK. Readings of selected passages from the Greek New Testament for the purpose of gaining a working knowledge of the language. Prerequisite: B 608. 3 hours

B 610 THE GOSPEL OF JOHN. A study of the structure, meaning, and spiritual value of the Fourth Gospel. Prerequisite B 603, 604. 3 hours

B 611 THE BOOK OF REVELATION. A study of Apocalyptic Literature and Thought. Reference will be made to the Book of Daniel and other Apocalyptic writings.

B 612 THE EPISTLE TO THE ROMANS. An indepth study of the book of Romans based on the English Text. Prerequisite: B 603, 604. 3 hours

B 613 THE EPISTLES TO THE CORINTHIANS. A study of the epistles to gain an insight into the practical and theological problems of Gentile Christianity. Prerequisite: B 603, 604 3 hours

B 614 THE BOOK OF ACTS. This course aims to understand the growth of the Christian movement in the period covered. There will be a constant effort to discover preaching values in the history. Prerequisite: B 603, 604. 3 hours

B 615 THE PASTORAL EPISTLES. These epistles are interpreted to get their meaning from their own time and their permanent religious value. Prerequisite B 603, 604. 3 hours

B 616 HEBREWS. A critical examination of the book of Hebrews in terms of its context and content. Prerequisite: B 603, 604. 3 hours

B 617 THE GENERAL EPISTLES. A critical examination of the General Epistles in terms of their contexts and content. Special attention will be given to their permanent religious value. Prerequisite: B 603, 604. 3 hours

B 618 NEW TESTAMENT THEOLOGY. An examination of the unity and diversity of theological perspective as seen in the New Testament. 3 hours

B 619 READING COURSE IN NEW TESTAMENT. Reading various works by New Testament scholars under the guidance of a faculty member. 3 hours

Historical Studies (H)

H 521, 522 HISTORY OF THE CHRISTIAN CHURCH. These courses trace the historical development of the Christian Church from the New Testament Period to modern times. (521 - FALL, 522 - SPRING) 3 hours each

H 578 MEDIEVAL CHRISTIANITY. A study of the history of Christianity in the medieval period. Prerequisite: H 521, 522. 3 hours

H 601 AMERICAN CHURCH HISTORY. The place of religion and the development of the Christian Church in American Life. 3 hours

H 625 HISTORY OF THE CHURCH AMONG AFRO-AMERICANS. A study of the historical development, beliefs, practices and contemporary significance of the Black Church. The course examines the historical realities of

the Black religious community and its ministry while lifting the responses it has made as a proper preparation for sustained reflection on that experience. 3 hours

H 629 MODERN RELIGIOUS CULTS. A study of history, doctrine, practices, and numerical strength of present day cults and sects, especially those among minority Americans. 3 hours

H 634 HISTORY OF CHRISTIAN DOCTRINE. A survey of the main lines in the development of Christian doctrine. The teaching of Origen, Augustine, Aquinas, Luther, Calvin, Schleiermacher and other outstanding theologians will be studied. Prerequisite 521, 522. 3 hours

H 637 HISTORY OF CHRISTIAN DEVOTIONS. A study of the great works, such as Augustine's Confessions, The Book of Common Prayer, Loyola's Spiritual Exercises, Pilgrims Progress, and the Prayers of Martineau. Attention will also be given to the validity of mysticism. 3 hours

H 640 THE OTHER REVOLUTION. An intellectual, cultural, and spiritual history of the African in the Americas. Relating ethics, theology, and ministry to black people is the focus of this course. 3 hours

H 641 AN INTRODUCTION TO AFRICAN RELIGIONS. A survey covering the philosophy, history, and significance of a variety of religions in Africa. It is a sharing of the ancient religious experiences, values, mythology and their meaning and function for black people. The course notes the impact of Asian and African religions of the West. 3 hours

H 642 READING COURSE IN CHURCH HISTORY. Reading various works by outstanding church historians under the guidance of a faculty member competent in this area. 3 hours

H 643 CONTEMPORARY AFRICAN RELIGIONS. This course examines the African motifs and strands in the African and American Christian experience today. A look at African Christianity today reveals a vital religion that may transform internationally. 3 hours

H 644 CULTURAL HISTORY OF AFRO-AMERICANS. An examination of the historical roots and ramifications of Afro-American culture. 3 hours

Theological, Philosophical and Ethical Studies (T)

T 643, 644 SYSTEMATIC THEOLOGY. An examination of doctrines and themes of the Christian faith and an assessment of major problems of Christian belief. A contemporary restatement of major Christian doctrines and themes and the relevance to contemporary social and political problems is pursued. (643 - FALL, 644 - SPRING) 3 hours each

T 645 NEW DIRECTIONS IN THEOLOGY: AFRO-AMERICAN PERSPECTIVES. A look at historical realities of the black religious community and an analytical study of recent black theologians. Special emphasis is placed on Joseph Washington, James Cone, Albert Cleage, Jr., J. Deotis Roberts, Jones, et. al. 3 hours

T 646 PHILOSOPHICAL THEOLOGY. The Critical relationship and difference between philosophy and theology are revealed. The history of dialogue between them is studied. The importance of various well-known modern philosophies is seen in the penetrating light of black religion, life, and experience. 3 hours

T 647 THE PHILOSOPHY OF RELIGION. A study of the origin, nature, and development of religion. Special attention is devoted to the idea of God, the philosophical anthropology and the concept of history in relation to divine and human purposes. 3 hours

T 650 READING COURSE IN THEOLOGY AND ETHICS. Reading various works by Christian Theologians and/or Christian Ethicists under the guidance of a professor competent in the area. 3 hours

T 748 CHRISTIAN ETHICS AND CONTEMPORARY SOCIETY. An introduction to the principles, assumptions, biblical, theological, and philosophical issues involved in the creation of Christian Ethics. The course focuses on racism, colonialism, war, and other social issues, as well as personal-vocational ethics. 3 hours

T 750 SUFFERING AND THE PROBLEM OF EVIL. A philosophical evaluation of the problem of evil for a God of love. What do we think and how do we act when we encounter personal suffering, corporate evil, and natural calamities? God's relationship to pain, depression, and displacement will be discussed. 3 hours

T 752 THE ETHICS OF RESISTANCE AND REVOLUTION. How oppressed people tried to liberate themselves in the past and today can help guide contemporary Christian ethics. The rebellion against American slavery and economic imperialism is considered in relation to God's will. Current crisis situations in the United States and the world will be evaluated especially in regard to what people can do to resist oppression, liberate the enslaved, and revolutionize a nation. 3 hours

T 754 THEOLOGIES OF LIBERATION. The attack upon traditional theology and institutionalized evil by black, feminist, and third world writers is investigated to heighten one's awareness and to motivate one's actions regarding racism, sexism, and classism. Creative reflection upon one's own theology and praxis will be encouraged. 3 hours

Practical Theology (P)

M — THE PRACTICE OF MINISTRY

PM 503 SPEECH. The mechanism, common skills and general hygiene of the voice are studied. Emphasis is placed on public speaking, scripture reading, prayers and poetry with a view to their oral interpretation and spiritual significance. The aim is to create harmony in voice and action. 3 hours

PM 560 HOMILETICS. A basic course in sermon preparation and delivery. FALL 3 hours

PM 561 HOMILETICS: THEORY AND PRACTICE. Moving from text to sermon, the course analyzes sermon infrastructure, meaning, styles and language and explores hermeneutical, cultural and theological questions. SPRING 3 hours

PM 562, 563 SEMINARS IN ADVANCED SERMON ANALYSIS. These seminars are designed to trace the development of Black preaching and its place in the Black church and community. Through the use of analysis of taped sermons, the course facilitates the development of personal styles and the ability to contrast and structure several types of sermons. A more philosophical understanding of homiletical and theological problems is pursued and a more philosophical understanding of the preacher's task is fostered. 3 hours

PM 564 BIOGRAPHIES OF GREAT PREACHERS. A study of the biographies of outstanding preachers of Christian history. Designed for independent study upon approval of professor. 3 hours

PM 781 CHURCH ADMINISTRATION AND INSTITUTIONAL MANAGEMENT. Church administration and management are viewed in the light of basic principles and dynamics of Institutional Management. 3 hours

PM 782 THE AFRO-AMERICAN PASTOR AND HIS WORK. The concern is the uniqueness and distinctiveness of the Afro-American minister's role. He is viewed as administrator, counselor, preacher and community leader. 3 hours

PM 783 WORSHIP. A study of the history and forms of Christian worship. Attention will be devoted to the art of conducting recurring services of worship, developing meaningful programs for special occasions and the exploration of new and creative expressions of worship. 3 hours

PM 785 EVANGELISM. The study of the biblical background, the theological basis and history and methods of Christian evangelism. Considered in the context of the churches, attention will be given to the art of evangelistic preaching, preparation for special emphasis on evangelism and the conservation of the results of evangelism. 3 hours

PM 786 MINISTERIAL ETHICS AND ETIQUETTE. This course explores appropriate ministerial conduct and offers guidance for special occasions and specific situations confronting the Christian minister. 3 hours

PM 787 THE GENERAL BAPTIST STATE CONVENTION OF NORTH CAROLINA, INC. An in-depth, comprehensive study of the General Baptist State Convention of North Carolina. Attention will be given to its Auxiliaries, objectives, structure, and mission. 3 hours

PM 788 BAPTIST HISTORY, POLITY, AND DOCTRINE. A study of Baptist history, polity and doctrine. Special consideration is given to the interrelatedness of doctrine and practice. 3 hours

PM 790 READING COURSE IN PRACTICAL THEOLOGY. Reading various works by great pastors or other works that pertain to the practice of ministry under the guidance of a competent faculty member in this area. 3 hours

C — MINISTRY IN COMMUNITY

PC 700 RELIGION AND CONTEMPORARY LIFE. A comprehensive study of the organization, function and programs of the various social, industrial, educational and religious institutions and agencies of contemporary life. The purpose is to acquaint students with the facts in these areas and to explore the church's role in fostering social betterment. 3 hours

PC 701 THE CHURCH AND COMMUNITY. A study of current social problems and the ways the church should meet them. Social reforms are briefly traced and problems in connection with housing and family life, delinquency and crime, public education, commercialized recreation and the broader uses of leisure are studied with a view to discovering avenues of church cooperation with local agencies in solving these problems. 3 hours

PC 502 URBAN STUDIES. Urban studies are designed to facilitate the development of the kind of ministers who can become agents of urban and rural change. The course consists of special lectures by persons with expertise in the dynamics of urban and rural America, assigned readings, class discussion and a field experience. Completion of the course will require a paper on the student's observations and reactions during his field experience and the development of a strategy or strategies for changes. 3 hours

PC 503 HEALTH AND HUMAN SERVICES THROUGH THE CHURCH. This course is designed to introduce students to the Health and Human Services Program of the General Baptist State Convention of North Carolina. Emphasis will be placed on the role of the local church in human health and services and the theological foundations for the wholistic approach to human health. 3 hours

X — CHRISTIAN EDUCATION

PX 501, 502 CHRISTIAN EDUCATION. An exploration of the problem and opportunities faced by leaders of education programs through the use of case studies and discussion. The courses are designed to increase the proficiency of teaching supervision; to foster an understanding of the theory, evaluation and selection of curricula materials; the development of curricula models; and the

integration of accumulated insights, principles and techniques. (501 - FALL, 502 SPRING)— 3 hours each

PX 503 CHRISTIAN EDUCATION FOR CHILDREN. A study of the basic needs of children, pre-schoolers and elementary, with emphasis on fulfilling some of those needs in Christian context. 3 hours

PX 504 CHRISTIAN EDUCATION FOR YOUNG PEOPLE. A study of the needs and problems of high school and college youth with special attention to their religious development. 3 hours

PX 505 CHRISTIAN EDUCATION FOR ADULTS. A study of the basic needs and problems of adults with special attention to their religious growth and development. 3 hours

PX 506 PROGRAM PLANNING AND CURRICULUM BUILDING. This course is designed to aid the student in understanding the theory of curriculum building so he will be in position to build and plan programs for the various organizations of the church. 3 hours

PX 504 LEADERSHIP TRAINING IN THE CHURCH. This course fosters the development of the ability to design and execute programs of education for various leadership roles in the local church. 3 hours

P — PSYCHOLOGY AND PASTORAL CARE

PP 502 PSYCHOLOGY OF RELIGION. An examination of the relationship of Biblical, theological, sociological and psychological understandings on pastoral care and an exploration of their implications for marriage and family life, interpersonal relationships and understandings. Psychological means and methods of interpreting the religious life will be pursued. 3 hours

PP 503 PASTORAL COUNSELING. Fundamental assumptions, principles, and methods of counseling are considered in the context of pastoral care. The course is designed to equip the minister to address himself effectively to the psychological, sociological, and theological needs of people in a variety of situations. 3 hours

PP 504 PROBLEMS IN PASTORAL COUNSELING. The focus of this course is on special problems encountered by the minister and the examination of methods for dealing with crisis situations. 3 hours

PP 505 RELIGION AND PERSONALITY PROCESS. The focus pursues an understanding of the psychological growth process and the personality factors that relate to religious development. It views faith and patterns of belief and their relationship to causal factors in negative behavioral patterns. 3 hours

PP 506 FIELD EDUCATION IN COUNSELING. This course focuses on special problems in ministerial practice. The specific training is conducted in an institution (hospital, clinic, psychiatric care facility, etc.) under the direction of

supervisor and with access to institutional personnel who will demonstrate counseling competency. 3 hours

PP 507 HUMAN GROWTH AND DEVELOPMENT. A study of human growth and development from the beginning of life through adulthood. 3 hours

PP 508 CLINICAL PASTORAL CARE. This course provides opportunity to learn pastoral care through interpersonal relations in an appropriate institution, such as a hospital, prison, church, or other clinical situation, where an integrated program of theory and practice is realized with the supervision and collaboration of an inter-professional staff. 3 hours

PP 509 CLINICAL PASTORAL EDUCATION. This course differs from PP 508 in that it is accredited by the Association for Clinical Pastoral Education and is physically located at one of several convenient certified training centers. The student should select a center and make appropriate application for a basic unit. The course may be taken during the Summer as a 50 hour per week ten week experience or extended over the Fall and/or Winter semesters, depending on the scheduling of the student to accumulate the required 400 hours. 8 hours

PP 510 ADVANCED CLINICAL PASTORAL EDUCATION. A status that may be granted by a CPE committee during the second basic unit. As with PP 509 this course is located off campus. 8 hours.

PP 511 CLINICAL PASTORAL EDUCATION INTERNSHIP. A full year (12 months) of 40 hours per week in clinical, didactic and personal growth experience under individual supervision at an accredited off campus center. 16 hours

PP 512, 513 CLINICAL PASTORAL ORIENTATION. An introductory course in clinical pastoral care. Seminar involving supervised calling and case conferences. One full day (eight hours) each week. (PP 513 has the same content, but meets two days a week for four hours). 4 hours

PP 514 THE CHAPLAINCY. A survey of the opportunities for pastoral care in a variety of settings: the campus, industry, institutions, the military, with the field trips and presentations by those actively engaged in such activities appropriate to the goals of the course. Denominational resources and requirements are explored. Relationships between chaplains and other pastors will be studied. 3 hours

PP 600 UNDERSTANDING AND COPING WITH DEPRESSION. Designed to provide students with a basic knowledge of the concept of depression — a problem which may impact on their effective functioning as ministers. The emphasis will be on teaching students how to recognize depression if it occurs, and to provide useful methods for coping with it. 2 hours

R — RELIGION AND SOCIOLOGY

PR 500 SOCIOLOGY OF RELIGION. The study of the social forms of religion, its organizational structure and dynamics and the social forces which provide the milieu for religious institutions. 3 hours

PR 501 THE SOCIOLOGY OF THE AFRO-AMERICAN EXPERIENCE.

This course is an in-depth study of the economic, racial, political and technical developments of a people who were predominately rural before 1910 to a people who are predominantly urban today. Special consideration will be given to those institutions, movements and programs that were instrumental in this evolutionary process. 3 hours.

G — THE CHURCH IN GLOBAL CONTEXT

PG 501 THE CHURCH AND WORLD ORDER. A look at Christianity in the world today as it attempts to minister to ideologies, totalitarianism, and neo-colonialism around the world. Interpreters of Black thought, African leaders, South American revolutionaries and the material from the Detroit Conference on Liberation Theology in the Americas are considered and the World Council of Churches in Nairobi, Kenya is discussed. 3 hours

PG 502 THE CHRISTIAN WORLD MISSION. This course considers the theological foundations of the Christian Mission. It evaluates the strengths and weaknesses of the guiding principles of mission and central emphasis is placed on strategies, principles, problems and goals of Christian Mission, especially in the Third World. 3 hours

PG 503 HISTORY OF CHRISTIAN MISSION. A survey of the spread of Christianity from the Apostolic Age to the present. Attention is given to the problems of missionary expansion in the present world order and to the Ecumenical Movement. 3 hours

PG 504 WORLD RELIGIONS. A study of the history of the living religions of the world and their comparison with Christianity. Specialized study will be made of some non-Christian religions. 3 hours

F — FIELD EDUCATION

Each student enrolled in the Shaw Divinity School is expected to successfully complete a minimum of three semester hours in Field Education. This requirement rests on the conviction that theory and practice in the disciplines of Theology must be integrated, and that the student, while in divinity school, should be provided with a situation in life and appropriate supervision wherein this integration can take place.

Program Objectives

The field experience is designed to: (1) assist students in developing vocational identity as ministers by providing experience with a variety of ministry tasks; (2) provide a context for testing and reconstructing theological concepts; (3) develop the ability to do critical and reflective thinking by relating theory and practice; (4) provide the opportunity to achieve a level of professional competence; and (5) bring academic studies, personal experience, and critical reflection into meaningful dialogue for effective ministry.

Options

Several options will be available to the student for satisfying the field education requirement. A student may earn more than three (3) hours credit in Field Education, but not to exceed sixteen (16) hours for M. Div. candidates (assuming CPE), nor nine (9) hours for Diploma candidates. Except in special circumstances, Certificate candidates will be limited to three (3) hours in field education.

Field Education for Master of Divinity Candidates

Candidates for the Master of Divinity degree may satisfy the requirements for Field Education by enrolling in Clinical Pastoral Education (CPE) at a center certified by the Association of Clinical Pastoral Education. There are several such centers in North Carolina. Among them are Wake Memorial Hospital, Raleigh; North Carolina Memorial Hospital, Chapel Hill; Duke Medical Center, Durham; Baptist Hospital, Winston-Salem; and John Umstead. Butner. The Dean of Academic Affairs will have information concerning CPE. The following CPE courses are available for M. Div. candidates:

PF 509 CLINICAL PASTORAL EDUCATION. This course differs from DVP 508 in that it is accredited by the Association for Clinical Pastoral Education (ACPE) and is physically located at one of several convenient certified training centers. The student should select a center and make appropriate application for a basic unit. The course may be taken during the Summer as a 40 hour per week ten week experience or extended over the Fall and or Winter semesters, depending on the scheduling of the student to accumulate the required 400 hours. (8 hours credit)

PF 510 ADVANCED CLINICAL PASTORAL EDUCATION. A status that may be granted by the CPE committee during the second basic unit. As with DVP 509, this course is located off campus. (8 hours credit)

PF 511 CLINICAL PASTORAL EDUCATION INTERSHIP. A full year (12 months) of 40 hours per week in clinical, didactic and personal growth experience under individual supervision at an accredited off campus center. (16 hours credit)

Other Field Education Options

PF 501 SUPERVISED MINISTRY FOR STUDENTS SERVING AS PASTORS. Students who are pastors are strongly advised to limit their course load to nine hours per semester and to use their pastoral appointments as learning contexts for field education programs initiated by the school. A supervisor will be assigned to guide students learning activities in the Parish. 3 hours

PF 502 SUPERVISED MINISTRY IN AN INSTITUTIONAL CONTEXT. For students planning an institutional ministry or who desire an exposure to ministries other than the pastorate. Supervised ministry can be arranged and approved in an institutional context such as a hospital or prison. 3 hours

PF 601 CREATING A MINISTRY. Ministry in a non-ecclesiastical context (Street corner, game room, clubs, etc.) under the supervision of an experienced

field supervisor in the area and a faculty member whereby the student explores ways of bringing the Gospel to bear upon the unchurched. Prerequisite: a proposal approved by the faculty.

PF 602 CONCURRENT INTERNSHIP. Concurrent internship in a church or agency under the supervision of the director of field education and a field supervisor approved by the faculty. Ten hours per week of supervised ministry are required for three (3) hours credit.

PF 603 SUPERVISED MINISTRY IN THE PARISH. Supervised ministry in a local parish under the supervision of the pastor or other qualified person approved by the faculty. A minimum of 10 hours per week is required for (3) hours credit per semester. 3 hours

Length of Time

While certain field education courses are expected to be completed in one semester, in extenuating circumstances, the student may receive a grade of "I" (Incomplete) and be allotted more time.

Compensation of Supervisors

To the extent practical, and except in special circumstances, local church and agency supervisors and committees will serve as volunteers, without cost to the student or the Shaw Divinity School. They may be appointed as adjunct faculty (without rank) for the purpose of giving official status to their role as supervisors.

Orientation and Training of Supervisors

All volunteers, supervisors, coordinators and related personnel are expected to participate in a special orientation and training program provided by the Shaw Divinity School.

Students and faculty may refer to the detailed Field Education Plan on file in the Dean's office for further information about the specific responsibilities of students, supervisors, and the institution in Field Education.

Other creative arrangements and paradigms in field education are encouraged. These must first be approved by the Dean of Academic Affairs before any academic credit can be given for the experience (s). All field supervisors must be approved by the Dean of Academic Affairs.

Seminars and Reading Courses (S)

S 700 THESIS SEMINAR. A seminar designed for thesis writers to understand the dynamics and nature of thesis writing. 3 hours

S 701 THESIS SEMINAR. Degree candidates engaged in the writing of a thesis in consultation with a supervisory committee. 3 hours

S 703 PROJECT DEVELOPMENT SEMINAR Utilizing his/her total seminary education and training as a resource, the senior candidate develops a church or community project. 6 hours

There are special reading seminars in the various disciplines of theology in addition to the seminars above (i. e. B 534, B 629, H 642, T 650, and PM 790). These seminars involve guided reading and research under the supervision of a faculty member who is competent in the area of the student's interests. Only students who have demonstrated their skills at analysis and comprehension will be permitted to such courses.

S 750 SPECIAL SEMINARS. Other seminars will be sponsored from time to time addressing a variety of issues and topics of general and specific interest to our constituencies. They will be numbered consecutively as presented each year.

CONFERENCES

S 760 CONFERENCES. Credit may be awarded upon petition to the Dean of Academic Affairs, for attendance and participation in local, state, regional, national or international of study. Appropriate documentation will be required to support the petition.

ADDENDUM:

PG 505: DIALOGUE WITH PEOPLE OF LIVING FAITHS AND IDEOLOGIES. Designed to provide group and one-on-one dialogue between students and practitioners of the various faith communities. Includes discussion and examination of tenets and beliefs of religious, religious movements, beliefs and ideologies in atmosphere of economical friendship. Open and frank discussion encouraged. No effort made to convert anyone from their present religious learnings or beliefs.

THE MASTER OF DIVINITY (M. DIV.) PROGRAM

The Master of Divinity Program is a graduate program of Theological Education. It is designed for students who aspire to achieve a high level of competence in theological education and ministry. The Bachelor of Arts degree or its equivalent from an acceptable college or university is required for admission to the program. Conferring of the degree is contingent upon the successful completion of eighty-four hour (84) semester hours and one hundred and five (105) grade points. Successful completion of a graduate level thesis will account for six (6) of the required semester hours.

Summary of Requirements

Every candidate for the M. Div. degree is required to complete the twenty-two (22) courses prescribed by the Divinity School as basic core curriculum, a total of sixty (66) hours of credit. Two of these courses (6 hours) pertain directly to the thesis. Students entering the program who have completed the Bachelor of Theology (B. Th.) Program at Shaw Divinity School will receive special consideration as discussed on subsequent pages of this catalogue.

Each candidate is expected to complete an additional six (6) courses as electives, a total of eighteen (18) hours of credit. At least one elective must be taken in each of the four areas of theology (Bible, Theology/Ethics, Church History, and Practical Theology). The remaining two electives are unrestricted.

Students may take a maximum of three courses on Saturdays, and may take another course(s) during the week. Students enrolled in the day program during the week may also take classes on Saturdays. It is strongly recommended that full-time pastors or bi-vocational students who are employed thirty-five (35) or more hours per week limit their course load to three courses or nine hours per semester. Any decision to do otherwise must be approved by the Dean of Academic Affairs.

The following is the recommended paradigm for the Master of Divinity Program:

THE FIRST YEAR	Credit Hours
Fall Semester	
Survey of the Old Testament — B 501	3
Survey of the New Testament — B 603	3
History of the Church Among Afro-Americans — H 625	3
Homiletics — PM 560	3
	12
Spring Semester	
Survey of the Old Testament — B 502	3
Survey of the New Testament — B 604	3
New Directions in Theology — T 645	3
Homiletics — PM 561	3
	12
Summer Semester	
Worship — PM 783	3
Church Administration and Institutional Management — PM 781	3
Elective	3
	9

SECOND YEAR

Fall Semester

History of the Christian Church — H 521	3
Systematic Theology — T 643	3
Christian Education — X 501	3
Elective	3

12

Spring Semester

History of the Christian Church — H 522	3
Systematic Theology — T 644	3
General Baptists Convention of N.C. — PM 787	3
Elective	3

12

Summer Semester

Pastoral Counseling — PP 503	3
Christian Ethics and Contemporary Society — T 748	3
Elective	3

9

THIRD YEAR

Fall Semester

Thesis Seminar — S 700	3
Baptist History, Polity & Doctrine — PM 788	3
Elective	3

9

Spring Semester

Field Education*	3
Thesis Seminar — S 701	3
Elective	3

9

TOTAL HOURS

84

* The field education requirement may be satisfied through one of several options as described under the "field education" section of the comprehensive course offerings.

MASTER OF DIVINITY, CAPE AND B. TH. PROGRAMS

1. Persons who have earned the Bachelor of Theology (B. Th.) degree from Shaw Divinity School and have earned the B. A. or B. S. degree through the Shaw University CAPE Program may earn the Master of Divinity Degree as indicated below:
 - a. Successful completion of thirty (36) additional hours of course work not previously taken, six (6) of which will be awarded for a Master's level thesis.
 - b. Repeat all courses previously taken in the B. Th. program wherein a grade of less than "C" was earned. In addition, based on an examination to be administered by the Dean of Academic Affairs, and at his discretion, other courses may be required.
 - c. Successful completion of the comprehensive examinations required of all M. Div. candidates.
 - d. The above arrangement between the Shaw University CAPE Program and the Shaw Divinity School will be in effect through the 1989-90 academic year.
2. Persons who have not earned a baccalaureate degree may enroll in the Master of Divinity Program with the understanding that this degree will not be granted until the baccalaureate degree has been conferred, provided:
 - a. The student is actively pursuing the baccalaureate degree at the time of enrollment in the M. Div. program.
 - b. The student is within one year of completing the baccalaureate degree, except in special circumstances.

NOTE: The provisions of number two (2) above apply to non—CAPE students as well.
3. Except in special circumstances, not more than ten percent (10%) of the student enrollment in the M. Div. program will be comprised of persons who have earned the baccalaureate degree. NOT
4. Students who dropped out of the B. Th. program prior to the fall semester, 1983, having successfully completed a minimum of sixty (60) hours, may return and continue pursuing the B. Th. degree. The cut of date for awarding the B. Th. degree is the Convocation for the Awarding of Degrees, 1987-88. Exceptions may be granted by the Dean of Academic Affairs.

SECTION III

INSTITUTES

INSTITUTES

The Institute For the Study of Religious Thought

The Institute for the Study of Religious Thought was recently established by the Board of Trustees for the purpose of facilitating healthy dialogue between different religious denominations, religious movements and groups, including adults. It will seek to sponsor programs and services, either by grants or in cooperation with other organizations, institutions or religious groups. Its aim is to promote deeper understanding of the polarities and the universals in religion.

The Institute has already sponsored several dialogue sessions with various religious groups including Jews, Muslims, and the Unification Church.

Institute for the Study of Women and Religion

This institute was recently established by the Board of Trustees to address the specific concerns, problems and opportunities of women in religion. It seeks to bring resourceful women to the campus, sponsor workshops and conferences that will focus on specific issues.

Institute for the Study of Rural Church Problems and Concerns

The Institute for the Study of Rural Church Problems and Concerns was recently established by the Board of Trustees to address the specific and peculiar issues related to the Rural church, its assets and liabilities. It gives priority to the needs of the rural church, recognizing that the majority of the constituency churches of the Divinity School's affiliate convention are rural.

The institute will sponsor workshops, conferences, etc., to address rural church concerns. It will also seek funding through grants and other means for this purpose.

The Institute for the Study of Race, Religion and Politics

This institute is still in the developmental stage, but will attempt to affirm the interrelatedness of ethnicity, religion and politics.

For additional information write:

Gregory T. Headen
Dean of Academic Affairs
Shaw Divinity School
Raleigh, North Carolina 27611
(919) 755-4846

SECTION IV

THE DEPARTMENT OF
CONTINUING EDUCATION



*Dr. James Z. Alexander
Dean of Continuing Education*

THE DIVISION OF CONTINUING EDUCATION

Continuing Education in the Shaw Divinity School provides a variety of educational opportunities for ministers and laypersons through on-campus and field experiences. On-campus indicates those educational experiences (courses, workshops, conferences, etc.) held on the Shaw University Campus. Field experiences are held at centers in locations away from the campus.

I. On Campus Opportunities

A. The Diploma In Theology Program

The Diploma In Theology Program (old Bachelor of Theology) is designed to provide matriculants comprehensive exposure to the basic disciplines of theological education over a sustained period of study. A high school diploma is required for admission to the program. Seventy-five (75) hours and grade points are required for its successful completion. Requirements are satisfied through required and elective courses and educational experiences taught and/or supervised by a competent faculty employed by the Shaw Divinity School.

Classes are conducted on Saturdays only and currently meet in Shaw University's International Studies Center.

The current cost of the program is \$490 per semester, \$480 for tuition and a \$10 matriculation fee. Persons admitted to this program are eligible for all scholarship and loan programs provided by the Shaw Divinity School.

B. In-Service Class for Ministers

The In-Service Class for Ministers provides annual study opportunities in the basic disciplines of theological education for ministers and laypersons on Tuesday evenings, excluding holidays, from September through May. It seeks to address the needs and aspirations of persons with a high school diploma or less formal education. Twelve courses are required to complete the program. Persons completing the program will have completed courses in Biblical, Theological, Historical and Practical Studies. A preaching laboratory is conducted at the end of each class session.

The study year is divided into two semesters. Four units of study may be completed in a single year and the entire program in three years. Registrants receive a Certificate of Progress each year specifying courses completed during that year. Upon completion of twelve courses a Certificate of Graduation is awarded at the Annual Commencement for In Service Ministers. The cost of the program is \$25.00 per semester or \$50.00 per year.

C. The Albert W. Pegues Annual Pastor's Conference

The Albert W. Pegues Annual Pastor's Conference is a three day, national convocation for pastors held annually in March. It addresses themes of contemporary and abiding relevance to pastors and seeks to foster intellectual stimulation and spiritual renewal in an atmosphere conducive to ministerial fellowship.

Resource personnel of national and international repute are secured. Pre-registration is conducted and lodging may be secured in the many fine hotels of the Raleigh area. The current registration fee is \$45.00.

D. The Annual Church Leaders Conference

The Annual Church Leaders Conference is a five day conference held annually in June. Its purpose is to provide an intensive educational and inspirational experience for church leaders. It is specifically designed for ministers, missionaries, Sunday School and vacation church school leaders, Baptist training Union leaders and church ushers.

A resource person of renown is secured to be the principal resource person during the conference. Four lectures on an assigned theme, daily classes, workshops and seminars are conducted by competent personnel. Worship services feature outstanding preachers of local and state congregations are provided.

The current registration fee is \$35.00. Food and lodging may be secured on the Shaw University Campus at rates established by the University.

E. The Annual Christian Leadership Workshops

The annual Christian Leadership Workshops are held each year in August. They are designed for church secretaries/church clerks, deacons, church music leaders, and interested persons. Their objectives are to deepen the understanding of these positions by persons currently holding them and to enhance their skills for more effective and efficient service.

The current cost of the full conference is \$35.00. This figure covers the cost of registration, the banquet, overnight lodging in Shaw University dormitories, breakfast and lunch on Saturdays. The current registration fee for the workshops is \$25.00.

II. Continuing Education/Field Experiences

A. The Ministers and Lay Leaders Institutes

The Ministers and Lay Leaders Institute are field programs for ministers and lay persons requiring the completion of twelve (12) courses on the field and attendance at the Annual Church Leaders Conference at Shaw University for four years.

Courses on the field may be completed through programs sponsored by the Shaw Divinity School or by associations and churches provided a transcription of courses completed is supplied by the appropriate association or church officials.

B. The Seminary Extension Department

Seminary Extension is an in-service seminary type, certificate and diploma study program for ministers and church leaders. Two series of study material are provided: (1) Basic and (2) College level.

The basic series is especially designed for those desiring easy-to-read materials in biblical studies, Church work, and pastoral ministries. Ten courses of eighteen (18) hours each are required to successfully complete the program. The Certificate of Merit is awarded for its successful completion. The Distinguished Citation Certificate may be earned by successfully completing ten (10) additional courses.

The College-Level Series is designed to provide a variety of courses in biblical, theological, historical and practical study areas. Four diploma programs are offered through this Series. Each requires the successful completion of sixteen (16) courses. Each course meets a minimum of eighteen (18) hours. The diploma programs are: (1) Diploma in Pastoral Ministries, (2) Diploma in Educational Ministries, (3) Diploma in Biblical Studies, and (4) an Advanced Diploma for completing sixteen (16) additional courses.

The Shaw Divinity School will grant one (1) semester hour of credit (electives only) at the Diploma in Theology Level for every ten (10) contact hours of college level seminary extension course work, not to exceed fifteen (15) hours of credit.

The courses are provided in centers located throughout the State of North Carolina. Centers are currently located in the following North Carolina cities: Asheville, Charlotte, Fairmont, Fayetteville, Forest City, Fuquay-Varina, Gastonia, Kannapolis, Raleigh, Rockingham, Reidsville, Roxboro, Rocky Mount, Shelby, Wadesboro, Whiteville, Wilson, Winston-Salem, Oxford, Jacksonville. An out-of-state center is located in Norfolk, Virginia.

For further information write or call:

Dr. James Z. Alexander
Dean of Continuing Education
The Shaw Divinity School
Raleigh, North Carolina 27611
Telephone: (919) 755-4811

or

Dr. Corbin L. Cooper
Director, Seminary Extension
P.O. Box 26508
Raleigh, North Carolina 27611
Telephone: (919) 467-5100

Projected Programs

I. Church Vocations

The purpose of the projected Church Vocations Program is twofold: (1) to teach persons the Church's purpose, nature, and mission and (2) to equip them with the necessary skills and competencies in the Church's management, mission development and promotion. The Church Vocations Program is designed expressly for lay persons.

As a general practice persons enrolling in Church Vocations attend classes on Saturdays only with candidates for the Diploma in Theology. A high school diploma is required for admission, except in special circumstances, and the successful completion of thirty-three (33) semester hours which include a field education project. The paradigm is described in subsequent pages of this catalog.

II. Faculty Seminar Series

The Faculty Seminar Series uses regular faculty persons to deliver special lectures or conduct seminars in their areas of concentration with special

attention to new trends and/or developments in the various disciplines. Resource persons beyond the Shaw Divinity School faculty are also scheduled under this series. A minimum of two seminars is planned for each semester. These seminars are without cost to full-time students. Lunch is available at cost.

III. Lay Seminar Series

The Lay Seminar Series brings to the campus resourceful lay persons of demonstrated competence in some phase of the Church's ministry or in some phase of life of the broader society impacting significantly on the life of the Church. There are three seminars per year; one each semester.

Registration is minimal. Lunch is available at cost. The seminars are without cost to full-time students.

IV. Special Conferences, Workshops, Institutes

Other conferences, workshops, and Institutes sponsored by the General Baptist State Convention, the Shaw Divinity School will be held on the Shaw University Campus. One to two (1-2) semester hours of credit may be granted to students for attendance and participation at these events as determined by the Dean of Academic Affairs and the Dean of Continuing Education.

V. Action Research Projects

Students may also receive credit for participation in action research projects sponsored by the Shaw Divinity School as determined by the Dean of Academic Affairs and the Dean of Continuing Education.

VI. The University Church

The University Church will be used as a learning context wherein students may develop their skills in ministry (preaching, administrative skills, evangelism, etc.).

THE ADVISORY COUNCIL OF THE DIVISION OF CONTINUING EDUCATION

The Advisory Council of the Division of Continuing Education of the Shaw Divinity School is comprised of persons who occupy the following positions:

President of the Shaw Divinity School

Dean of Academic Affairs

Dean of Continuing Education

Dean of Roanoke Collegiate Institute

President of General Baptist State Convention of N. C., Inc.

Executive Secretary of the General Baptist State Convention of N.C., Inc.

Director of Christian Education of the General Baptist State Convention of N.C., Inc.

President of the Woman's Baptist Home and Foreign Missionary Convention of N.C.

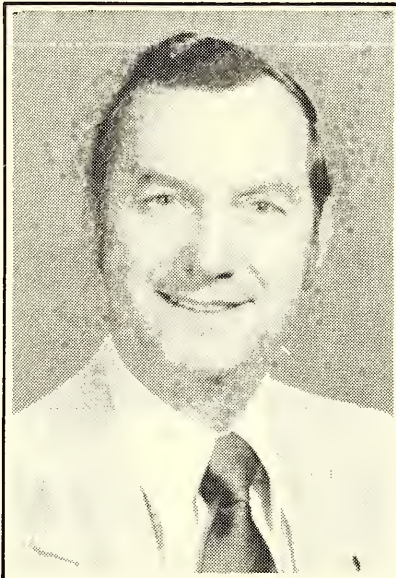
Executive Secretary of the Woman's Baptist Home and Foreign Missionary Convention of N.C.

President of Alumni and Minister's Institute

Two Representatives of Free Will Baptist Denomination

Designees.

Chairman, Board of Trustees, Shaw Divinity School (Ex-officio)



Dr. Corbin Cooper
Director of Seminary Extension

THE DIPLOMA IN THEOLOGY (Dip. Th.)

The Diploma in Theology is a program in theological education for the student who does not have a baccalaurate degree, but aspires to gain competence in theology and the skills for ministry. Admission to the program requires a high school diploma or its equivalent. Conferring of the diploma is contingent upon the successful completion of seventy-five (75) semester hours credit with at least seventy-five (75) grade points. Sixty (60) of these hours are prescribed by Shaw Divinity School as core curriculum which all students must take. The remaining fifteen (15) hours are electives. No more than three courses (9 hours) may be taken as independent study, though independent study is highly recommended as an opportunity for the student to pursue an area of interest.

The Diploma in Theology replaces the old Bachelor of Theology Program at Shaw Divinity School. The Diploma in Theology is not looked upon as a dead end, but as a foundation for the student who desires to go further and as a wholesome program of study for the minister who may never avail himself or herself of graduate level work.

Summary of Requirements

The following is the recommended paradigm for the Diploma in Theology. It is understood that modifications will occur.

FIRST YEAR

Credit Hours

Fall Semester

Survey of the Old Testament — B 101	3
Survey of the New Testament — B 203	3
Grammar and Composition — PM 101	3
	9

Spring Semester

Survey of the Old Testament — B 102	3
Survey of the New Testament — B 204	3
Grammar and Composition — PM 102	3
	9

Summer Semester

History of the Church Among Afro-Americans — H-225	3
The General Baptist Convention of N.C. — PM 387	3
Electives	3
	9

SECOND YEAR

Fall Semester

Homiletics PM 160	3
History of the Christian Church — H 121	3
Systematic Theology — T 243	3
	9

Spring Semester

Homiletics — PM 161	3
Systematic Theology — T 244	3
History of the Christian Church — H 122	3
	9

Summer Semester

Pastoral Counseling — PP 103	3
Christian Ethics and Contemporary Society — T 248	3
Field Education — X 250*	3
Elective	3

12

THIRD YEAR

Fall Semester

Church Administration and Institutional Management — PM 381	3
New Directions in Theology — T 245	3
Elective	3

9

Spring Semester

Clinical Pastoral Training — PP 108	3
Baptist History, Polity and Doctrine**	3
Elective	3

9

TOTAL HOURS

75

* The field education requirement may be satisfied through several options as elaborated in the "field education" section of the comprehensive course offerings.

** Students not affiliated with the Baptist denomination may substitute a comparable course.

CONTINUING EDUCATION COURSES

Courses Available to Candidates for the Diploma in Theology

B= BIBLICAL

H = HISTORICAL

T = THEOLOGICAL/ETHICAL

P = PRACTICAL THEOLOGY

M = Practice of Ministry

C = Ministry in Community

X = Christian Education

P = Psychology and Pastoral Care

R = Religion and Sociology

G = The Church in Global Context

F = Field Education

S = SEMINARS, CONFERENCES, READING COURSES

Biblical Studies (B)

OLD TESTAMENT

B 101, 102 SURVEY OF THE OLD TESTAMENT. Designed to introduce the student to the religion of ancient Israel, her history, customs, and faith. The critical study of the texts and the contemporary theological significance of the OT are emphasized. (101 - FALL, 102 - SPRING) 3 hours each

B 103 PROPHETS AND PROPHECY. A study of the prophetic movement and literature in the Old Testament. 3 hours

B 111 JEWISH RELIGION AND HISTORY. A study of the Origin, content and significance of Judaism. 3 hours

B 114 DEAD SEA SCROLLS. Discovery and age of scrolls, origin and beliefs of qumran community, and their significance for the study of Judaism and Christianity. 3 hours

B 132 WISDOM LITERATURE OF THE HEBREW BIBLE. A study of Proverbs, Ecclesiastes and Job as they relate to modern Judeo-Christian concepts and religious problems. 3 hours

NEW TESTAMENT

B 203, 204 SURVEY OF THE NEW TESTAMENT. Introduces the student to

the skills and tools of critical analysis while understanding the literature of the New Testament in historical context and contemporary relevance. (203 - FALL, 204 - SPRING) 3 hours each

B 207 THE THEOLOGY OF PAUL. An analysis of Pauline Theology in light of Biblical scholarship, past and present. Paul's Apostolate is discerned in the light of Acts and Epistles. Pre-requisite B 206. 3 hours

B 210 THE JOHANNINE LITERATURE. A critical survey of the Gospel of John, I,II, and III John, and Revelation in terms of authorship, content and theological significance. Special attention is given to Jewish Apocalyptic thought as related to the book of Revelation. 3 hours

B 214 THE BOOK OF ACTS. The course is designed to increase the student's understanding of the growth of the Christian movement in the period covered. A constant effort will be made to discover preaching values in the history. 3 hours

Historical Studies (H)

H 121, 122 HISTORY OF THE CHRISTIAN CHURCH. Designed to trace the historical development of the Christian Church from the New Testament period to the present. (121 - FALL, 122 - SPRING) 3 hours each

H 225 HISTORY OF THE CHURCH AMONG AFRO-AMERICANS. A study of the historical development, beliefs, practices and contemporary significance of the Black Church in America. 3 hours

H 240 THE OTHER REVOLUTION. A study of the intellectual, cultural and spiritual dimensions of the African's life in the Americas. The aim is to relate theology, ethics and ministry to black people. 3 hours

Theological, Philosophical and Ethical Studies (T)

T 243, 244 SYSTEMATIC THEOLOGY. These courses are designed to introduce the student to the major doctrines and themes of the Christian faith and their inter-relatedness as well as the major problems of Christian belief. Attention is given to the ethical implications of these doctrines and problems. (243 - FALL, 244 - SPRING) 3 hours each

2T 245 NEW DIRECTIONS IN THEOLOGY: AFRO-AMERICAN PERSPECTIVES. An analytical study of recent Black theologians and a look at the historical realities of the Black religious community. 3 hours

T 248 CHRISTIAN ETHICS AND CONTEMPORARY PROBLEMS. An introduction to the principles, assumptions and theological and philosophical issues involved in the formation of Christian Ethics. Scripture provides the basic norms. The course focuses on the issues of racism, colonialism, war and other social issues. 3 hours

Practical Theology (PT)

M — THE PRACTICE OF MINISTRY

PM 101, 102 WRITING AND RESEARCH SEMINARS. Basic English courses for Diploma in Theology candidates, teaching composition, grammar, and the skills and techniques of scholarly research. The courses are designed to equip the student to produce well written and well documented research papers. (101 - FALL, 102 - SPRING) 3 Hours each

PM 160 HOMILETICS. A basic course in sermon preparation and delivery. This course deals primarily with the theory of preaching. FALL 3 hours

PM 161 HOMILETICS. Moving from text to sermon, the course analyzes sermon infrastructure, meaning styles and language and explores hermeneutical, cultural and theological questions. This course focuses on the practice of preaching. SPRING 3 hours

PM 381 CHURCH ADMINISTRATION AND INSTITUTIONAL MANAGEMENT. Church administration and management are viewed in the light of basic principles and dynamics of Institutional Management. 3 hours

PM 382 THE AFRO-AMERICAN PASTOR AND HIS WORK. The course focuses on the uniqueness and distinctiveness of the Afro-American minister's role. He/she is viewed as administrator, counselor, preacher and community leader. 3 hours

PM 383 WORSHIP. A study of the history and forms of Christian worship. Attention will be devoted to the art of conducting recurring services of worship, developing meaningful programs for special occasions and the exploration of new and creative expressions of worship. 3 hours

PM 385 EVANGELISM. Introduction to the Biblical background, the theological bases, history and methods of Christian evangelism. Special attention will be given to evangelism in the context of the local church. 3 hours

PM 386 MINISTERIAL ETHICS AND ETIQUETTE. Explores appropriate ministerial conduct and offers guidance for special occasions and specific situations confronting the Christian minister. 3 hours

PM 387 GENERAL BAPTISTS. A comprehensive study of the General Baptist State Convention of North Carolina, Inc. and its Auxiliaries. 3 hours

PM 388 BAPTIST HISTORY, POLITY, AND DOCTRINE. A study of Baptist History, polity, and doctrine. Special attention is given to the relationship of theology and practice. 3 hours

C — MINISTRY IN COMMUNITY

PC 300 RELIGION AND CONTEMPORARY LIFE. Study of the organiza-

tion, function, and programs of the various social, industrial, educational and religious institutions and agencies of contemporary life. The purpose is to acquaint students with the facts in these areas and to explore the church's role in fostering social betterment. 3 hours

PC 102 URBAN STUDIES. Urban Studies are designed to facilitate the development of the kind of ministers who can become agents of urban and rural change. The course consists of special lectures by persons with expertise in the dynamics of urban and rural America, assigned readings, class discussions and field experiences. Completion of the course will require a paper on the student's observations and reactions during his field experience and the development of a strategy or strategies for change. 3 hours

X — CHRISTIAN EDUCATION

PX 101, 102 INTRODUCTION TO CHRISTIAN EDUCATION. Introduction to problems and opportunities faces by leaders of educational programs the use of case studies and discussion. The aim is to equip the student to apply sound educational processes to the disseminating of the content of the Christian faith. (101 FALL, 102 - SPRING) 3 hours each

PX 106 PROGRAM PLANNING AND CURRICULUM BUILDING. Designed to aid the student in understanding the theory of curriculum building for the purpose of building and planning programs for the various organizations of the church. 3 hours

PX 107 LEADERSHIP TRAINING IN THE CHURCH. Fosters the development of the ability to design and execute programs of education for various leadership roles in the local church. 3 hours

P — PSYCHOLOGY AND PASTORAL CARE

PP 101 INTRODUCTION TO PSYCHOLOGY. A basic course in Psychology designed to introduce various areas of psychology and to explore the dynamics of human behavior and interpersonal relations. 3 hours

PP 103 PASTORAL COUNSELING. An introduction to the fundamental assumptions, principles, and methods of counseling aimed at equipping the minister to address himself/herself effectively to the psychological, sociological, and theological needs of people in a variety of situations. 3 hours.

PP 106 FIELD EDUCATION IN COUNSELING. Focuses on special problems in ministerial practice. Conducted in an institutional setting (hospital, clinic, psychiatric care facility, etc.) under the direction of a supervisor and with access to institutional personnel who will demonstrate counseling competency. 3 hours

PP 108 CLINICAL PASTORAL CARE. Provides opportunity to learn pastoral care through interpersonal relations in an appropriate institution (i. e. hospital, prison, etc.) where an integrated program of theory and practice is realized with the supervision and collaboration of an inter-professional staff. Prerequisite PP 101. 3 Hours

R — RELIGION AND SOCIOLOGY

PR 200 SOCIOLOGY OF RELIGION. The study of the social forms of religion, its organizational structure and dynamics and the social forces which provide the milieu for religious institutions. 3 hours

PR 201 THE SOCIOLOGY OF THE AFRO-AMERICAN EXPERIENCE. Study of the economic, racial, political and technical developments of a people who were 73% rural before 1910 to a people who are at least 73% urban today. Special consideration will be given to those institutions, movements and programs that were instruments in this evolutionary process. 3 hours.

G — THE CHURCH IN GLOBAL CONTEXT

PG 102 THE CHRISTIAN WORLD MISSION. Explores the theological foundations of the Christian Mission and evaluates the strengths and weaknesses of the guiding principles. Special attention is given to strategies, principles, problems and goals of Christian Mission, especially in the Third World. 3 hours.

PG 104 WORLD RELIGIONS. A study of the major religions of the world and their comparison with Christianity. 3 hours

F — FIELD EDUCATION

General

Each candidate for the Diploma in Theology will be required to complete at least three (3) semester hours of field education or supervised ministry. This may be done in a local church, agency, or other institution. Opportunities for additional credit in this area are also available to students.

Field experience is designed to: (1) assist students in developing vocational identity as ministers by providing experience with a variety of ministry tasks; (2) provide a context for testing and reconstructing theological concepts; (3) develop the ability to do critical and reflective thinking by relating theory and practice; (4) provide the opportunity to achieve a level of professional competence; and (5) bring academic studies, personal experiences, and critical reflection into meaningful dialogue for effective ministry.

Field Education Courses

PF 101 SUPERVISED MINISTRY FOR STUDENTS SERVING AS PASTORS. Many of the students served by Shaw Divinity School are pastors. Such students are strongly advised to limit their course load to nine hours per semester and to use their pastoral appointments as learning contexts for field education programs initiated by the school. A supervisor will be assigned to guide student learning activities in the parish. 3 hours

PR 102 SUPERVISED MINISTRY IN AN INSTITUTIONAL CONTEXT. For students planning an institutional ministry or who desire an exposure to ministries other than the pastorate. Supervised ministry can be arranged and approved in an institutional context such as a hospital or prison. 3 hours

PF 201 CREATING A MINISTRY. Ministry in a non-ecclesiastical context (street corner, game room, club, etc.) under the supervision of an experienced field supervisor in the area and a faculty member whereby the student explores ways of bringing the Gospel to bear upon the unchurched. Prerequisite: a proposal approved by the faculty. 3 hours

PF 202 CONCURRENT INTERNSHIP. Concurrent internship in a church or agency under the supervision of the director of field education and a field supervisor approved by the faculty. Ten hours per week of supervised ministry are required for 3 hours credit.

PF 203 SUPERVISED MINISTRY IN THE PARISH. Supervised ministry in a local parish under the supervision of the pastor or other qualified person approved by the faculty. A minimum of 10 hours per week is required for three (3) hours credit per semester.

LENGTH OF TIME, COMPENSATION OF SUPERVISORS, ORIENTATION AND TRAINING

With respect to length of time, compensation of supervisors, and orientation and training of supervisors, the same criteria and conditions elaborated in items 6, 7 and 8 under Field Education in the Comprehensive Course Offerings for Master of Divinity Candidates will obtain.

SEMINARS

S 350 SPECIAL SEMINARS. Other seminars will be sponsored from time to time addressing a variety of issues and topics of general and specific interest to our constituencies. They will be numbered consecutively as presented each year.

CONFERENCES

S 360 CONFERENCES. Credit may be awarded upon petition to the Dean of Academic Affairs, for attendance and participation in local, state, regional, national or international meetings believed to be relevant to the student's course of study. Appropriate documentation will be required to support the petition.

READING COURSES

S 370 READING COURSES. Students may receive credit for guided reading in the various disciplines of theology upon approval by the Dean of Academic Affairs and appointment of a faculty advisor.

SECTION V

THE BOARD OF TRUSTEES,
THE BOARD OF VISITORS
and
THE BOARD OF ASSOCIATES



*Dr. E. B. Turner, Chairman
Board of Trustees*

THE SHAW DIVINITY SCHOOL

BOARD OF TRUSTEES

OFFICERS

- E. B. Turner, *Chairman* Lumberton, North Carolina
Minister, The First Baptist Church
- George Debnam, *Vice Chairman* Raleigh, North Carolina
Chairman, Board of Trustees
The Shaw University
- Priscilla A. Brodie Franklinton, North Carolina
Executive Secretary-Treasurer, Woman's Baptist Home
and Foreign Missionary Convention
- Howard L. Mitchell, *Treasurer* Gatesville, North Carolina
Minister, New Hope, Mill Neck, and Union Branch
Baptist Churches
- James L. Lassister, *Parliamentarian* Winston-Salem, North Carolina
Attorney-At-Law

TERM EXPIRES 1986

- Louise Allen Durham, North Carolina
Retired Educator
- Samuel Austin Brooklyn, New York
Minister, Brown Memorial Baptist Church
- Haywood Gray Pelham, North Carolina
Minister, Shady Grove Baptist Church
- Arlee Griffin Greenville, North Carolina
Minister, Cornerstone Baptist Church
- William M. Freeman South Orange, New Jersey
Minister, Union Baptist Church
- James L. Lassiter Winston Salem, North Carolina
Attorney-At-Law
- Oscar McLaughlin Port Chester, New York
Minister, St. Frances AME Church
- J. B. McLester Winston Salem, North Carolina
Retired School Teacher
- William B. Moore Mobile, Alabama
Minister, Tenth Memorial Baptist Church
- Nathaniel A. Richardson Mobile, Alabama
Retired Professor
- E. B. Turner Lumberton, North Carolina
Minister, First Baptist Church
- Joseph Z. Windley Wilmington, North Carolina
Minister, First Baptist Church

TERM EXPIRES 1987

- Nilous M. Avery Asheville, North Carolina
Minister, Hill Street Baptist Church
- Lehman D. Bates Washington, DC
Minister, First Baptist Church

- J. Ray Butler Winston Salem, North Carolina
Minister, Shiloh Baptist Church
- Chauncy R. Edwards Fayetteville, North Carolina
Minister, First Baptist Church
- H. S. Diggs Charlotte, North Carolina
Minister, Mayfield Memorial Baptist Church
- W. B. Lewis Raleigh, North Carolina
Minister, First Cosmopolitan Baptist Church
- Howard L. Mitchell Gatesville, North Carolina
Minister, New Hope, Mill Neck, and Union Branch Baptist Churches

TERM EXPIRES 1988

- Thomas L. Boyd Brooklyn, New York
Minister, Salem Baptist Church
- Miles Mark Fisher Washington, D.C.
Consultant
- Raymond L. Lassiter Philadelphia, Pennsylvania
Minister, Greater White Rock Baptist Church
- Lorine C. McLeod Fayetteville, North Carolina
Greater United Order of Tents
- Charles R. Mosley Asheville, North Carolina
Minister, Nazareth Baptist Church
- William Revely Washington, D.C.
Minister, Mount Gilead Baptist Church
- Lorenzo M. Robinson Stamford, Connecticut
Minister, Greater Faith Tabernacle Baptist Church
- Marshall L. Shephard Philadelphia, Pennsylvania
Minister, Mount Olivet Tabernacle Baptist Church
- J.W. White Asheville, North Carolina
Minister, Mount Zion Baptist Church
- Johnny L. White Norfolk, Virginia
Minister, First Calvary Baptist Church
- J.C. Harris Statesville, North Carolina
Minister, First Baptist Church

TERM EXPIRES: SERVES DURING TENURE OF POSITION

- Priscilla A. Brodie Franklinton, North Carolina
*Executive Secretary-Treasurer, Woman's Baptist Home
and Foreign Missionary Convention*
- C. C. Craig Raleigh, North Carolina
*Executive Secretary Treasurer, General Baptist State
Convention of North Carolina, Inc.*
- Thelma C. Horton Goldsboro, North Carolina
*President, Woman's Baptist Home and Foreign Missionary
Convention*

HONORARY MEMBERS

- William Cobey Chapel Hill, North Carolina
Congressman, Republican — North Carolina
- S. D. Johnson Winston Salem, North Carolina
*Bishop, Macedonia True Vine Pentecostal Holiness
Church of God, Inc.*

- R. K. Hash Winston Salem, North Carolina
Bishop, St. Peters Church of God Apostolic
- John E. Riddick Kinston, North Carolina
Bishop, United American Free Will Baptist Denomination, Inc.
- Harold William Durham, North Carolina
Bishop, Mount Calvary Holy Churches of America
- J. R. Manley Chapel Hill, North Carolina
Former President, General Baptist State Convention
- Carl Lee Wilmington, North Carolina
Former Chairman, Board of Visitors
- Louis Wade White Plains, New York
Former President, Alumni Association
- O. L. Sherrill Raleigh, North Carolina
Former Chairman, Board of Trustees, Shaw University
- Edolphus Towns Brooklyn, New York
Congressman, Democrat — New York

EX-OFFICIO

- James D. Ballard Winston Salem, North Carolina
Chairman, Board of Visitors
Pastor, United Metropolitan Baptist Church
- Charles T. Bullock Rocky Mount, North Carolina
President, Alumni Association
- *G. Franklin Wiggins Peekskill, New York
Chairman, Board of Associates
Pastor, Mount Olivet Baptist Church
- George Debnam Raleigh, North Carolina
Chairman, Board of Trustees, The Shaw University
- Joseph Lovelace Raleigh, North Carolina
President, Student Government Association (SGA)

*Regular Member of Board

ROSTER OF THE BOARD OF TRUSTEES OF THE SHAW DIVINITY SCHOOL

1984 — 1985

Miss Louise Allen
Post Office Box 664
Durham, NC 27707

Dr. Samuel Austin
484 Washington Avenue
Brooklyn, NY 11238

Dr. Nilous Avery
46 Old Chunns Cove Road
Asheville, NC 28805

Dr. J. D. Ballard
3510 Brookbank Drive
Pfafftown, NC 27040

Dr. Lehman D. Bates
4934 "B" Street, SE
Marshall Heights
Washington, DC 20019

Dr. Thomas J. Boyd
1284 President Street
Brooklyn, NY 11213

Dr. Priscilla A. Brodie
444 South Main Street
Franklinton, NC 27525

Dr. Charles T. Bullock
216 Dover Road
Rocky Mount, NC 27801

Dr. J. Ray Butler
2800 Gilmer Avenue, NE
Winston-Salem, NC 27105

Congressman William W. Cobey
U.S. House of Representatives
Washington, DC 20515

Dr. C. C. Craig
2217 Sanderford Road
Raleigh, NC 27610

Dr. George C. Debnam
1615 East Davie Street
Raleigh, NC 27610

Dr. H. S. Diggs
1064 Mount Kisco Drive
Charlotte, NC 28213

Dr. C. R. Edwards
1502 Boris Drive
Fayetteville, NC 28303

Dr. Miles Mark Fisher, IV
Post Office Box 2340
Washington, DC 20013

Dr. William M. Freeman
512 Finlay Place
South Orange, NJ 07079

Reverend Haywood T. Gray
Post Office Box 104
Pelham, NC 27311

Reverend Arlee Griffin
Post Office Box 7204
Greenville, NC 27834

Dr. J. C. Harris
840 Armstrong Street
Statesville, NC 28677

Bishop R. K. Hash
4122 Rosalie Street
Winston-Salem, NC 27104

Dr. Bethenia Horne
2933 Reynolds Park Road
Winston-Salem, NC 27107

Dr. Thelma C. Horton
802 Poplar Street
Goldsboro, NC 27530

Bishop S. D. Johnson
Post Office Box 2012
Winston-Salem, NC 27102

Attorney James L. Lassiter
457 West 25th Street
Winston-Salem, NC 27105

Dr. Raymond L. Lassiter
19 North 56th Street
Philadelphia, PA 19139

Dr. Carl E. Lee
315 Colony Circle
Wilmington, NC 28401

Dr. W. B. Lewis
1209 Howard Street
Raleigh, NC 27610

Rev. Joseph Lovelace
2117 Tee Dee Street
Raleigh, NC 27610

Dr. H. L. Mitchell
Post Office Box 166
Gatesville, NC 27938

Reverend William B. Moore
19th and Masters Street
Philadelphia, PA 19121

Dr. C. R. Mosley
3 Devonshire Place
Asheville, NC 28803

Dr. Oscar L. McLaughlin
23 Grove Street
Port Chester, NY 10573

Mrs. Lorine C. McLeod
1310 Robinson Street
Fayetteville, NC 29301

Dr. J. B. McLester
907 Morehead Avenue
Durham, NC 27701

Dr. William Revely
617 Rock Creek Church Road, NW
Washington, DC 20010

Professor Nathaniel A. Richardson
354 Robbins Street
Mobile, AL 36603

Dr. John E. Reddick
Post Office Box 3303
Kinston, NC 28501

Dr. Lorenzo M. Robinson
22 Duke Drive
Stamford, CT 06905

Dr. Marshall L. Shepard
42 and Wallace Streets
Philadelphia, PA 19139

Dr. O. L. Sherrill
2213 Candyflower Place
Raleigh, NC 27610

Congressman Edolphus Towns
U.S. House of Representatives
Washington, DC 20515

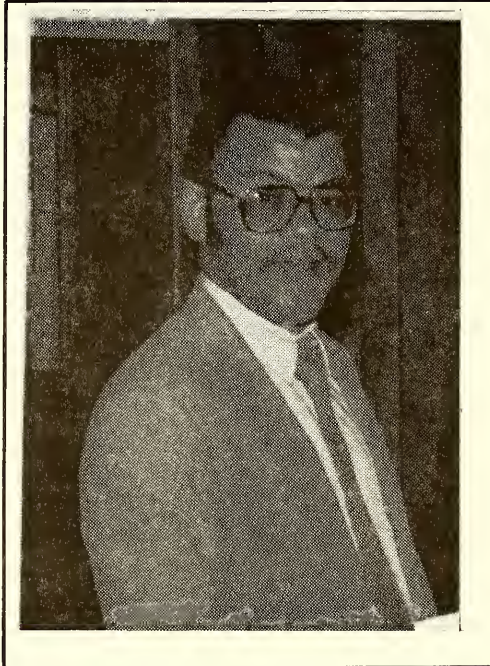
Dr. E. B. Turner
301 Lincoln Street
Lumberton, NC 28358

Dr. Louis H. Wade
One Fisher Avenue
White Plains, NY 10601

Dr. Johnny L. White
813 Henry Street
Norfolk, VA 23504

Dr. J. W. White
19 Cisco Road
Asheville, NC 28801

Reverend Joseph Z. Windley
5th and Campbell Streets
Wilmington, NC 28401



Haywood T. Gray
Youngest Board Member

BOARD OF VISITORS

Chairman: J. D. Ballard

Dr. J. D. Ballard
3510 Brookbank Drive
Pfafftown, NC 27040

Rev. Willard Boone
P. O. Box 7115
Ettrick, VA 23803

Rev. C. T. Bowen
Route 1, Box 264
Riegelwood, NC 28456

Rev. George Brooks
2503 Daye Drive
Greensboro, NC 27406

Rev. Cardes Brown
5004 Coltsfoot Road
Greensboro, NC 27405

Dr. Charles T. Bullock
216 Dover Road
Rocky Mount, NC 27801

Dr. J. Ray Butler
2800 Gilmer Avenue, NE
Winston-Salem, NC 27105

Rev. A. J. Cherry
Route 1, Box 65-B
Windsor, NC 27893

Rev. O. B. Cook
2920 North Greenway Avenue
Winston-Salem, NC 27105

Rev. B. F. Daniels
3911 Tony Drive
Winston-Salem, NC 27105

Dr. L. T. Daye
633 20th Street
Newport News, VA 23607

Rev. Jesse G. Everett
501 Burke Street
Monroe, NC 28110

Rev. J. H. Ferguson
804 Leak Street
Rockingham, NC 28379

Rev. David C. Forbes
1001 East Martin Street
Raleigh, NC 27610

Dr. Albert L. Gee
1640 Johnson Road, #107A
Petersburg, VA 23803

Dr. Percy High
6123 Yellowstone Drive
Durham, NC 27702

Rev. Clyde Johnson
1443 Talley Avenue
Petersburg, VA 23803

Rev. Joseph Jones
1243 Martha Avenue
Rural, NC 27045

Rev. W. E. Lytle
135 4th Avenue. SW
Hickory, NC 28601

Rev. Robert L. Milhouse
407 Alpha Street
Laurinburg, NC 28352

Rev. Bertha Moore
Post Office Box 148
Moncure, NC 27559

Dr. Joseph L. Morgan
820 Boykin Avenue
Sanford, NC 27320

Rev. Gregory K. Moss
57 Chestnut Drive
Concord, NC 27025

Rev. John T. Parks, Jr.
1110 Fulcher Lane
New Bern, NC 28560

Dr. J. R. Person
203 Cameron Street
Farmville, NC 27828

Mr. William Pretty
Post Office Box 1630
Sanford, NC 27330

Rev. John Prince
305 Oberlin Road
Raleigh, NC 27605

Rev. Joseph L. Ratliff
810 Oberlin Road
Raleigh, NC 27605

Rev. James A. Raye
Post Office Box 1253
Fayetteville, NC 28302

Dr. Morris Shearin
Route 1, Box 47
Garysburg, NC 27831

Rev. Clyde B. Walton
3120 Woodbine Court
Raleigh, NC 27610

Dr. Ronald Weatherford

Dr. Johnny L. White
813 Henry Street
Norfolk, VA 23504

Dr. Leo Williams, Jr.
1121 Savannah Drive
Raleigh, NC 27610

Rev. Spencer Williams
608 Poplar Street
Goldsboro, NC 27530

BOARD OF ASSOCIATES

Dr. G. Franklin Wiggins, *Chairperson*

1282 Maple Drive
Peekskill, New York 10566

Church: (914) 737-7567
Home: (914) 737-3674

PARTIAL LISTING

Dr. Fred J. Boddie, Jr.
First Church of Newport News
Newport News, Virginia

Dr. Curtis H. Cofield
Immanuel Baptist Church
New Haven, Connecticut

Rev. Roscoe D. Cooper
Fifth Street Baptist Church
Richmond, Virginia

Dr. Dwight Jones
First Baptist Church of
South Richmond
Richmond, Virginia

Dr. Samuel Robinson
Rochester, Minnesota

Rev. Allen Stanley
President
Empire State Baptist Convention
New York, New York

Dr. Frederick Terry
Marian, Indiana

Rev. Michael Patrick Williams
Antioch Baptist Church
Houston, Texas

SECTION VI

ADMINISTRATION AND FACULTY



Dr. Joseph C. Paige
Executive Vice President

ADMINISTRATION

- Dr. Stanley H. Smith President
B.A. — Fisk University
M.A. — Fisk University
Ph. D. — Washington State University
- Dr. Joseph C. Paige Executive Vice President
B.S. — North Carolina A & T University
Ed. M. — Boston University
Ed. D. — American University
— Special Study, Certificate in Theology for
Professionals, Shaw Divinity School
- Dr. Gregory T. Headen Dean of Academic Affairs
B.A. — Pembroke State University
M. Div. — Duke Divinity School
Certificate — (CPE) UNC - Chapel Hill (Memorial Hospital)
D. Min. — Southeastern Baptist Theological Seminary
- Dr. James Z. Alexander Dean of Continuing Education
B.A. — Shaw University
M. Div. — Andover Newton Theological School
S.T.M. — Andover Newton Theological School
Graduate — Fifth Graduate School of Ecumenical Studies,
The Ecumenical Institute, Celigny, Switzerland
D.D. — The Shaw Divinity School
- Dr. Corbin L. Cooper *Director*, Seminary Extension
B.A. — Wake Forest University
M. Div. — Southeastern Seminary
Ed. D. — North Carolina State University
D.D. — The Shaw Divinity School
- Ms. Jo-Ellen Paige Assistant to the Executive Vice President
for Admission, Financial Aid, and Fiscal Management
— UNC Greensboro; Bennett College
- Ms. Brenda Hollings Assistant to the Dean of Academic Affairs
for Registration, Veterans' Affairs and Purchasing
— A & T State University
- Mr. Lamma Adams Bookkeeper
B.S. — National Business College
- Rev. Helen McLaughlin Assistant Director of Development
B. Th. — Shaw Divinity School
- Rev. Alphonso Fullwood Assistant Director of Development
B. Th. — Shaw Divinity School

FACULTY

- Dr. Gregory T. Headen Associate Professor of Practical Theology
B. A. — Pembroke State University
M. Div. — Duke Divinity School
Certificate — (CPE) UNC - Chapel Hill (Memorial Hospital)
D. Min. — Southeastern Baptist Theological Seminary
- Dr. James Z. Alexander Professor of New Testament
B.A. — Shaw University
M. Div. — Andover Newton Theological School
S.T.M. — Andover Newton Theological School
Graduate — Fifth Graduate School of Ecumenical Studies,
The Ecumenical Insititute, Celigny, Switzerland
D. D. — The Shaw Divinity School
- Dr. Grady Davis Professor, Psychology of Religion
B.A. — Shaw University
B. D. — Andover Newton Theological School
Ph. D. — Boston University
- Dr. Larkin Rossitter Assistant Professor of Theology & Ethics
B.A. — Baylor University
M. Div. — Southeastern Baptist Theological Seminary
Th. M. — Southeastern Baptist Theological Seminary
Ph. D. — Southern Baptist Theological Seminary
- Dr. Joseph C. Paige Professor of Church Administration
B.S. — North Carolina A & T University
Ed. M. — Boston University
Ed. D. — American University
— Special Study, Certificate in Theology for
Professionals, Shaw Divinity School

Adjunct Faculty

- Dr. Vann D. Battle Instructor in Church History
B.A. — Atlantic Christian College
M. Div. — Southeastern Baptist Theological Seminary
Certificate — CPE, John Umstead Hospital, Butner
D. Min. — Southeastern Baptist Theological Seminary
- Dr. Charles T. Bullock Professor of New Testament and Counseling
B.A. — Shaw University
M. Div. — Shaw Divinity School
D. Min. — Howard University Divinity School

Dr. Harold Cobb Professor of Christian Education

- B. A. — Shaw University
- M. Div. — Shaw Divinity School
- M. Div. — Southeastern Baptist Theological Seminary
- M. A. — North Carolina University
- D. Ed. — East Carolina University

Dr. Herbert O. Edwards Professor of Theology and Ethics

- B.A. — Morgan State University
- S.T.B. — Harvard Divinity School
- Ph. D. — Brown University

Ms. Naomi P. Franklin *Instructor*, Biblical Hebrew

- B.A. — City College of New York
- M.A. — Brandeis University
- M. Div. — Union Theological Seminary, New York
- Duke University-Ph. D. Candidate with concentration in Old Testament

Rev. Nathaniel Gaylord *Instructor* in English Grammar and Composition

- B.A. — Shaw University
- M. Div. — Shaw Divinity School
- M.A. — North Carolina Central University

Rev. George C. Hawkins *Instructor*, UCC Polity

- B.S. — Alabama State University
- M.S. — Alabama State University
- M. Div. — Duke Divinity School

Dr. James D. Hunt *Professor*, Sociology of Religion

- B.A. — Tufts College
- S.T.B. — Boston University School of Religion
- S.T.M. — Boston University School of Religion
- Ph. D. — Syracuse University

Ms. Evelyn Kirkley *Instructor*, Writing and Research

- B.A. — College of William and Mary
- M. Div. — Union Theological Seminary, New York

Rev. Archie Logan *Instructor*, Practical Theology

- B.A. — Wake Forest University
- M. Div. — Duke Divinity School
- Th. M. — Duke Divinity School

Rev. Lafayette Maxwell *Instructor*, Black Church Studies

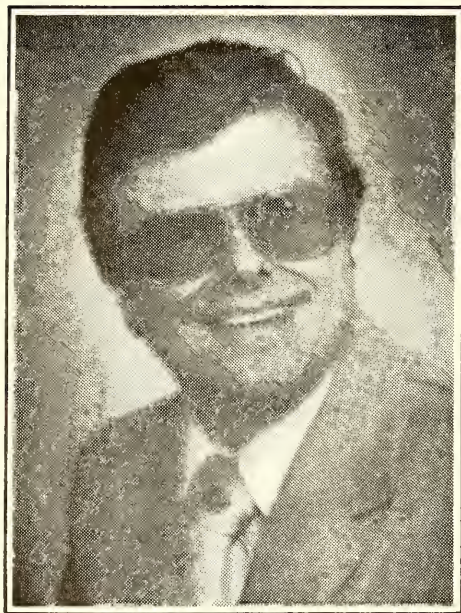
- B.A. — University of Florida
- M. Div. — Southeastern Baptist Theological Seminary

Rev. John Mendez *Instructor*, Black Church Studies

- B.A. — Shaw University
- M. Div. — Southeastern Baptist Theological Seminary

Rev. Claude R. TrotterProfessor of Practical Theology
B. A. — Shaw University
B. D. — Shaw Divinity School
M. Div. — Southeastern Baptist Theological Seminary
D. D. — Shaw Divinity School

Dr. Frank B. WeaverProfessor of Homiletics
B.S. — Fayetteville State University
M. A. — Columbia University, N. Y.
M. Div. — Shaw Divinity School
D. Ed. — Pennsylvania State University



***Dr. Larkin Rossitter
Professor of
Theology & Ethics***



***Dr. Grady Davis
Professor of the
Psychology of Religion***

SECTION VII

**ALUMNI AFFAIRS
and
PUBLIC INFORMATION**

OFFICE OF ALUMNI/AE AFFAIRS

Alumni/ae Relations

The Director of Alumni/ae Affairs is responsible for coordinating all matters relating to alumni/ae. He is responsible for the alumni/ae and placement services of Divinity School. This office maintains a roster of all former students which contains such information as current address, a record of achievements, and biographical synopsis. The office is frequently called upon to research this biographical information, for which service a small fee may be charged.

Each decade, it is planned to publish a **Biographical Catalogue** listing all alumni/ae of the Divinity School. This catalogue will contain date and place of birth, degrees received, and places of service. The **Biographical Catalogue** will be available for purchase at a nominal fee.

All persons who matriculated at Shaw Divinity School, both those who received degrees and those who did not complete a full program, are considered alumni/ae. As members of the Shaw Divinity School Alumni/ae Association, they receive **The Seminarian**, annual calendars of events, and such other publications as may be printed from time to time.

Alumni/ae Association

The Association holds its annual meeting on campus on Monday following the third Sunday in March, which is also Founder's Day and the first day of the annual Pastor's Conference. The Association is considering plans for an alumni/ae council representative of the geographical areas in which alumni/ae reside.

Alumni/ae chapters will be developed in various geographical areas where alumni/ae live. These chapters will assist the Divinity School in the recruitment of students, provide a network system for alumni/ae relocation, and give support to the Office of Development of the Divinity School.

Placement

Placement is facilitated through the Placement Council which is comprised of the Director of Alumni Affairs, the Dean of Academic Affairs, the Dean of Continuing Education and the Dean of Students. Together, they seek to interview all seniors prior to graduation to review with them their dossiers and vocational plans. They assist all who need help in placement in the variety of ministries available to graduates.

The council serves as a clearing house for any church or institution desiring to call or employ a graduate of the School. In addition to circulating dossiers for graduating seniors, the office maintains a current vacancy list and other aids to the placement process.

OFFICE OF PUBLIC INFORMATION

The Office of Public Information is an activity of the Office of Development. This office interprets the life and work of the Divinity School to its graduates, to the church, and to the general public. Opportunities for supply preaching and speaking engagements for students and faculty are coordinated by the office.

Major events of the General Baptist family and of Shaw University are highlighted for the School community and the public is kept informed of the many lectures, workshops, and services at the Divinity School campus open to them.

All communication with the news media about the Divinity School is coordinated through the office as are requests for information and interpretative materials from the judicatories of the church. The office also maintains placement files for former students who seek relocation.

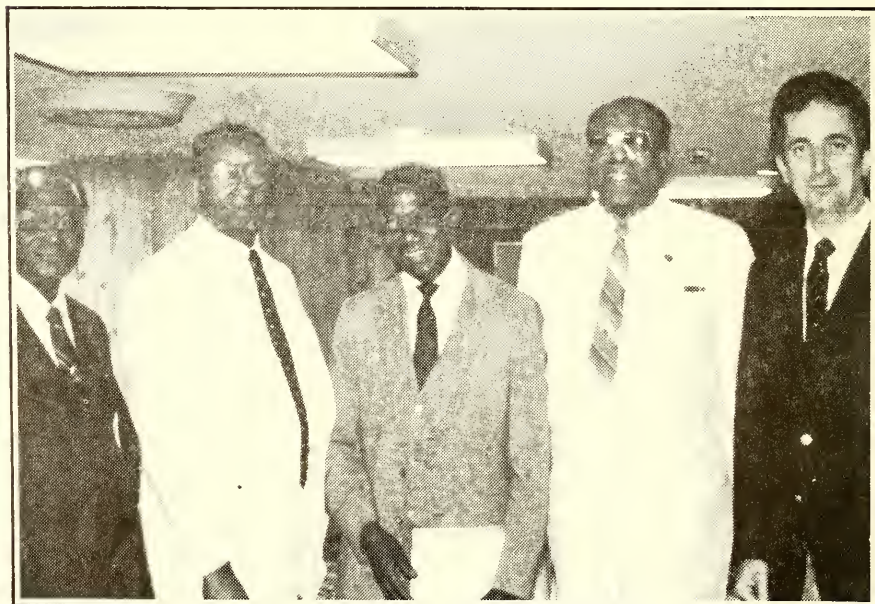
Currently, the duties of the office of Public Information are coordinated by the Director of Development. It is planned, later on, to engage a full-time or part-time person to handle these duties.

SPECIAL ACTIVITIES



*Dr. Louis Wade
Former President of the
Theological Alumni Association*

*Dr. Charles Bullock
President of the
Theological Alumni Association*



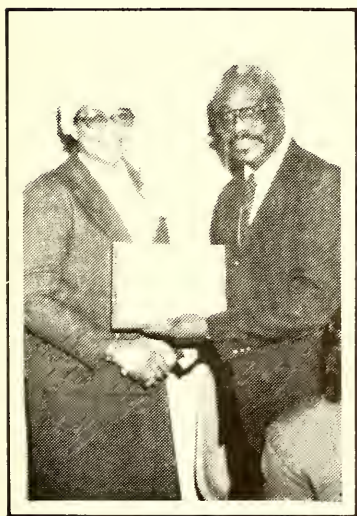
*Left to Right: Dr. C.C. Craig, Dr. C.R. Edwards, Dr. Sampson Buie, Jr.,
Dr. E.B. Turner, Dr. Robert Spinks (Shaw Divinity School Pride Day)*



Little King and Queen Contest



Workstudy



Awards Banquet



*Ms. Louise Allen, Chairperson
Women's Interdenominational
Support Committee*



*Dr. Stanley Smith
Ms. Bronnie Daniels*



*Dr. Paige
Dr. Richards
Dr. Smith*



Dr. Wm. Friday



Little Queen



*Julian Bond
Dr. E. B. Turner*



Dr. and Mrs. Willis Beard



*Dr. Stanley H. Smith
Dr. Clifford Jones*

OPPORTUNITIES TO SHARE

A Life Income Gift

The Shaw Divinity School offers several types of gift plans which provide income for life to the donor, along with certain tax benefits, and also further the support of the Seminary. These plans are:

The Gift Annuity or the Deferred Gift Annuity
The Endowment Fund

A Scholarship

Gifts up to \$1,000 will provide partial to full scholarship aid for one year. A gift of \$2,500 or more initiates an identified endowment fund providing income for a partial scholarship. A \$10,000 gift or more creates a fully endowed scholarship fund, the income of which sustains an annual full scholarship.

A Bequest

An outright bequest may be made to the Shaw Divinity School or the residuary interest assigned, or the Shaw Divinity School may be designated a contingent beneficiary.

A form of bequest is: I bequeath to the Shaw Divinity School, located at Raleigh, North Carolina, the sum of \$_____ to be used for the general purpose of the Shaw Divinity School or as follows:

The corporate name of the school is

The "Shaw Divinity School"
of Raleigh, North Carolina

For Further Information

Full information about any of these opportunities will be provided on request. Please write or call the Executive Vice President and Director of Development, Shaw Divinity School, Raleigh, North Carolina 27611. The telephone is (919) 755-4811.

NOTES

Contract Printing & Graphics
218 Lord Anson Drive
Raleigh, North Carolina
(919) 829-1441

**THE
SHAW
DIVINITY
SCHOOL**



Shaw Divinity School Chapel

Academic Catalog

1984 — 87

Raleigh, North Carolina