

ARCHIVES  
SHAW UNIVERSITY.

THE  
SHAW UNIVERSITY  
JOURNAL



COMMENCEMENT NUMBER

CLASS OF  
1938





BECAUSE OF THE MERITORIOUS SERVICE THAT HE HAS RENDERED THE "CLASS OF 1938" DURING THE PAST TWO YEARS OF ITS LIFE AT SHAW, THE *JOURNAL* STAFF IS HAPPY TO DEDICATE THIS COMMENCEMENT NUMBER TO MR. J. FRANCIS PRICE. IT IS HOPED THAT THE MOST PROFOUND APPRECIATION OF THE SENIOR CLASS FOR THIS VALUABLE SERVICE, MAY BE ILLUSTRATED BY THIS MILD FORM OF HONOR. THUS IN THE SAME SPIRIT THAT HE HAS SERVED THIS CLASS, WE DEDICATE THIS ISSUE TO HIM.

MAY FROM YEAR TO YEAR AS YOU OBSERVE THESE PAGES, YOUR MEMORY BE REFRESHED WITH THE GRANDEST "SHAW SPIRIT." IF TO LOOK HEREIN CAN BUT STIMULATE WITHIN YOU A FOND REGARD FOR YOUR ALMA MATER, THE HOPES AND DESIRES OF THE *JOURNAL* STAFF WILL HAVE BEEN SATISFIED.

THE SENIOR CLASS,  
By Authority of the *Journal* Staff.

1938 JOURNAL STAFF

BOBBIE L. DUNN.....	<i>Editor-in-Chief</i>
GEORGE W. GANT.....	<i>Associate Editor</i>
EVA FRAZIER.....	<i>Assistant Editor</i>
LEROY McLAURIN.....	<i>Assistant Editor</i>
ELSIE SPELLER.....	<i>Feature Editor</i>
VINA PHILLIPS.....	<i>Humor Editor</i>
VICTORIA GRAVES.....	<i>Literary Editor</i>
JUANITA PRICE.....	<i>Exchange Editor</i>
JOHN EISEBEY.....	<i>Art Editor</i>
WILLIAM C. SHANKS.....	<i>Sports Editor</i>
FREDERICKA RICHARDSON.....	<i>Typist</i>
BEATRICE FLETCHER.....	<i>Typist</i>
LEON FRAZIER.....	<i>Typist</i>
WILLIAM A. BINGHAM.....	<i>Business Manager</i>
NOAH LOFTIN.....	<i>Advertising Manager</i>
RONALD COLEY.....	<i>Circulation Manager</i>
OPHELIA DURHAM.....	<i>Chief Reporter</i>
FOSTER P. PAYNE.....	<i>Faculty Adviser</i>

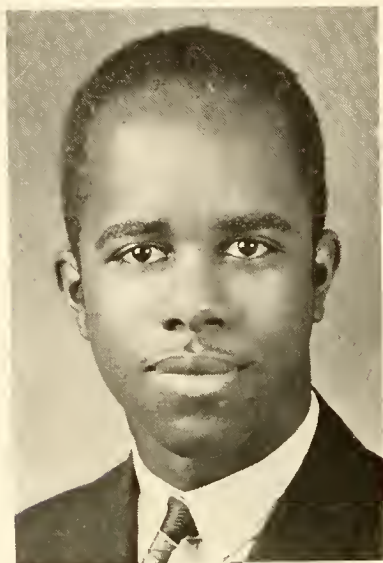
*Assistant Reporters*

MARGUERITE CARSON	RUTH LEE
VINCENT TIBBS	ELMER HAIRSTON

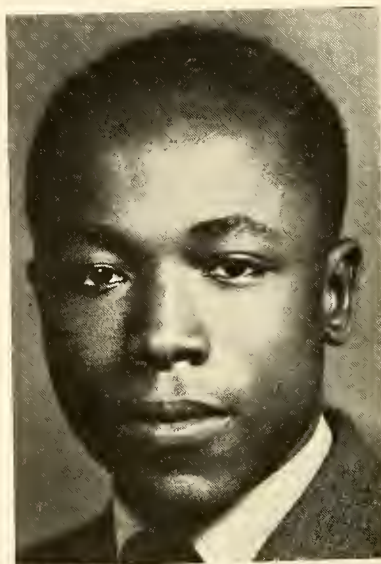


## FACULTY AND OFFICERS FOR 1937-1938

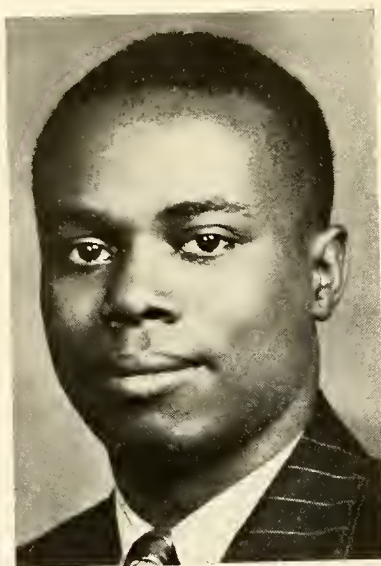
DR. ROBERT P. DANIEL, *President*ADDISON, LORENZO W., *Biology*AUSTIN, A. E., *University Nurse*BOTTS, EMPSIE, *Matron*BROWN, MARTHA J., *Matron*BURNS, JESSIE M., *Bookkeeper*BUTLER, FLORENCE, *Education*CARTER, SAMUEL, *Religion*COLEMAN, J. H., *Biology*COOK, LENOIR, *French*EASON, C. R., *Mathematics*EASON, N. D., *Social Sciences*FISHER, MILES M., *Religion*FRANCIS, ALOIS H., *Librarian*FRIERSON, MARGUERITE, *Education*GADSON, A. RUTH, *Secretary to the Dean  
and the Registrar*GIL-SMYTHE, HARRY, *Music*HALL, MINNIE J., *Education*HARLAN, J. C., *History*HARRIS, N. H., *Education*HOUSTON, WM. H., *English*HUNT, E. V., *Home Economics*JACKSON, L. J., *Maintenance*JEWEL, A. D., *Physics and Chemistry*JONES, BEULAH, *Home Economics*JONES, C. A., *History*JONES, G. E., *Business Manager*LYTLE, JAMES E., *Coach*MARTIN, SARAH E., *Romance Languages*MILLER, H. A., *Psychology*PAYNE, FOSTER, *Dean of College, English*PERRIN, H. C., *Chemistry*PERRY, G. A., *Assistant Matron*PRICE, J. FRANCIS, *Registrar, German*ROBERTS, P. F., *University Physician*SILLS, MARJORIE, *Stenographer*SMITH, ADA, *Matron*SNOWDEN, GEORGE, *Education*SULLEY, ROSE, *Librarian*TILLEY, JOHN L., *Dean of School of  
Religion*TURNER, MARY L., *Dean of Women,  
English*WATSON, MELVIN, *Dean of Men, Religion*



**BOBBIE L. DUNN**  
Retiring Editor



**W. A. BINGHAM**  
Retiring Business Manager



**A. LEROY McLAURIN**  
Editor-Elect



**B. A. COLLIER**  
Retiring President



**JOCILE POWELL**  
Retiring Vice President



**WM. C. RAINES**  
President-Elect



**MILDRED MOORE**  
Vice President-Elect

### SENIOR CLASS OFFICERS

ROBERT GARRET.....*President*  
MARIE TYLER.....*Vice President*  
BLANDENA DAVIS.....*Secretary*  
KENNIE DIXON.....*Treasurer*

MOTTO: *Launched but not anchored*

FLOWERS: *Pink and White Carnations*

COLORS: *Garnet and White*

BLANCH LEE ALLEN, A.B.  
Lillington, N. C.

WILLIAM ALONZO BINGHAM, B.S.  
902 Rich Avenue  
Winston-Salem, N. C.

*"Little minds are tamed and subdued by misfortune, but great minds rise above it."*

Crescent Club 1, 2; Phi Beta Sigma Fraternity 3, 4; Science Club 3, 4; Business Manager of the *Journal* 4; *Journal* Staff 4; Y.M.C.A. 1-4; Hi-Y Leader 4; Alpha Omicron Honor Society 4; Vice President Phi Beta Sigma Fraternity and Dean of Pledges 4.

ROY CONRAD BODDIE, A.B.  
Nashville, N. C.  
Omega Psi Phi







LENA MAE BRANCH, A.B.  
Mt. Olive, N. C.



MABEL LENORA BREWINGTON, B.S.  
Wilson, N. C.  
"Kiddie"

Science Club 3, 4; Home Economics Club 1, 2, 3, 4; President Home Economics Club 4; President's Club 4; Y.W.C.A.



WILLIAM T. BROWN, A.B., B.D.  
Lumber Bridge, N. C.

Omega Phi Psi Fraternity prize 1; Theological Fraternity 1, 2, 3, 4, 5, 6; Y.M.C.A. 1, 2, 3, 4, 5, 6; Junior Class prize 3; Crescent Club 3, 4; Alpha Omicron Honor Society 3, 4, 5, 6; Phi Beta Sigma Fraternity 5, 6; Assisted professor Newell D. Eason of the Department of Sociology at Shaw University, on a survey of Negro family income in the city of Raleigh, N. C. 5; Kings Mountain Y.M.C.A. Council 5; Planning Committee the Southern Christian Student Conference 5; Enumerator on a survey of farm tenancy for the Federal Government in Union County, N. C., and Crockett County, Tenn. 5; Delegate to the special convention of the Southern Tenant Farmer's Union at Memphis, Tenn. 6; Member of the resolutions committee of the special convention of the Southern Tenant Farmer's Union at Memphis, Tenn. 6; Sociology Club 6.



ESTELLA BUSBEE, A.B.  
Snow Hill, N. C.



IRENE CLEO CLARKE, A.B.  
909 S. Bloodworth St.  
Raleigh, N. C.  
"Rene"

*"Poised to Perfection,  
With dignity and grace,  
The bearing of Queen,  
With a Madonna's face."*

Chairman of Social committee of class 1; Class representative on University Social Committee 1; Chairman of program committee of Class 2; Member of Art Club 3; Secretary of the Brush and Palette Club 4; Member of Y.W.C.A. 4; Treasurer of Student Body 4; University Concert and Lecture Committee 4.

ALICE M. CROWE, A.B.

Duon, N. C.

*"Modest, Kind and Gentle was her manner; she too, is a lady"*

Y.W.C.A. 1, 2, 3, 4, President 4; Student Representative to King's Mountain 3; Dramatic Club 1; President's Club 4; Treasurer of Estey House Organization 4; History and Political Science Club 2; Hayes Fleming Student Volunteer Society 2; Treasurer Ivy Leaf Club 4; Alpha Kappa Alpha Sorority 4; Tamiochus of Alpha Kappa Alpha Sorority 4.



JULIA ELLEN CRUMP, B.S.

Raleigh, N. C.

*"Nothing ventured, nothing gained."*

Y.W.C.A. 1, 2, 3, 4; Science Club 2, 3; Secretary 3.



EMILY MAE DANIELS, A.B.

Wintou, N. C.

*"Still water runs deep . . . impressive earnestness and sincerity . . . unassuring reserve."*

Member of Y.W.C.A. 1, 2, 4; Pyramid Club 1; History and Political Science Club 2; Sociology Club 2, 3; Delta Sigma Theta Sorority 2, 3, 4; Secretary of Class 3; Secretary of Delta Sigma Theta 3; Dramatic Club 2, 3, 4; *Journal* Staff 2; Shaw Players 2; Robert B. Tyler Book Club 3, 4; German Club 3; Student Council 1, 2; Dining Hall Council 3; Alpha Omicron 4; Salutatorian of Senior Class 4.



BLANDENA DALPHENIA DAVIS, A.B.

Hamlet, N. C.

"Bland"

*"Pleasing to meet"*

President Estey House Organization 4; Secretary Senior Class 4; Secretary Shaw Dramatic Club 1, 2, 3, 4; Y.W.C.A. 1, 2, 3, 4; Member Le Cerele Francais 3, 4; Member Sociology Club 3, 4; Pledgee and Treasurer of Pledge 3; Member Political Science Club 3; Member Student Volunteer Society 2, 3; Vice President Student Dining Hall Committee 4; Student Representative University Social Committee 4; Member President's Club 4.



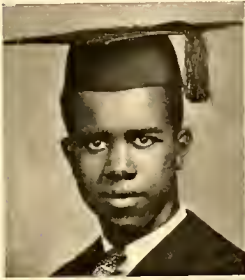
KENNIE BROWN DIXON, A.B.

Snow Hill, N. C.

*"Always quiet, unassuming, ladylike"*

Political Science Club 1, 3; Hayes Fleming Society 4; Y.W.C.A. 1, 2, 3, 4; Treasurer Y.W.C.A. 4; Ivy Leaf Club 4; Treasurer Senior Class 4; Secretary House Organization 3; Alpha Kappa Alpha Sorority 4; Sociology Club 4; Dean of Pledge Club of Alpha Kappa Alpha Sorority 4.





BOBBIE L. DUNN, B.S.

Raleigh, N. C.

"Bob"

*"One has not failed until he admits it to himself"*

Science Club 2, 3, 4, President 2; President German Club 2; President Crescent Club 1, 2; Student Council 2, 4; Phi Beta Sigma Fraternity 3, 4; Hi-Y Leader 2, 3; Chairman of Food Preparation Committee for Older Boys Conference at Washington High School 2; Editor of *Shaw University Journal* 4; President Phi Beta Sigma Fraternity 4; President Tau Sigma Rho Debating Society 3, 4; Varsity Debater 2, 3, 4; Intramural Debate 2; Coach Freshmen Debating Team 4; President's Club 4; President Class 2; Head of Department of Sex Hygiene, Hi-Y Club, Washington High School 2; N.A.A.C.P. 3, 4; American Student Union 4; Y.M.C.A. 1, 2, 3, 4, Cabinet 4; Robert B. Tyler Book Club 4; National Chairman of Pledgemasters of Phi Beta Sigma Fraternity 4.



CORNELIA CLEOPATRA ELLIS, A.B.

Louisburg, N. C.

Member of Le Cercle Francais 2, 3, 4; Member of Y.W.C.A. 4; Member Archonian Club 4; Member Zeta Phi Beta Sorority 4.



BEATRICE ELIZABETH FLETCHER, A.B.

315 Battle Street

Raleigh, N. C.

"Bea"

*"Determined and forceful, a yet full of fun;  
With an eye to the future and the rising sun."*

Palmer Memorial Institute 1, 2; Member of Science Club 3; Member of Art Club 3; Assistant in Department of Extension 4; Chairman of Program Committee of Brush and Palette Club 4; Secretary to the Faculty Members of Educational Department 4; Member of Y.W.C.A. 4; Member of the Sociology Club 4; Member of Economics Credit Union 4; Member of Robert P. Tyler Book Club 4.



EVA LOUISE FRAZER, B.S.

Raleigh, N. C.

Delta Sigma Theta Sorority.



HARVEY FREEMAN, B.S.

Richmond, Va.

*"True happiness consists not in multitude of friends, but in worth and choice."*

Saint Paul Normal and Industrial School 1, 2; Choral Society 3, 4; Science Club 3, 4; Cooks Chorus 3; Young Men's Christian Association 3, 4; Student Volunteer Society 3, 4; Hayes Fleming Society 4; Secretary Sphinx Club 3; Recording Secretary Alpha Phi Alpha Fraternity 4.

VIOLET ODESSA FULLER, A.B.

Mebane, N. C.

"Vj"

German Club 1, 2; Le Cerele Francais 3, 4; The Archonian Club of Zeta Phi Beta Sorority 2; Zeta Phi Beta Sorority 3, 4; Y.W.C.A. 4; Hayes Fleming Student Volunteer Society 4.

ROBERT LOUIS GARRETT, A.B.

205 W. Normet St.

Gastonia, N. C.

Varsity Football 1, 2, 3, 4; University Choral Club 1, 2, 3, 4; Double Sextette 2, 3, 4; Varsity Club 1, 2, 3, 4; Men's Glee Club 3, 4; Vice President Varsity Club 3; Sociology Club 3, 4; Business Manager Choir 3; President Choral Club 4; President of Class 2, 3, 4; Dramatic Club 1, 2, 3, 4; State Dramatic Festival 3, 4; Omega Psi Phi Fraternity 2, 3, 4; Lampodas Club 1; The National Intercollegiate Dramatic Association 3, 4; President Lampodas Club 1; Y.M.C.A. 1, 2, 3, 4; Shaw Players 1, 2, 3, 4; Student N.A.A.C.P. 3; Assistant Director of Dramatics 4; Resolution Committee, Youths Religious Conference 4; Parliamentarian, Student Body 2; Student Credit Union 4; Vice President of Class 1; Receiving Committee Youth Conference 4; President's Club 4; Head of Department of Sex Hygiene, Hi-Y Club, Washington High School 3, 4; Receiving Line President's Reception 4; Student Representative on Arrangement Committee for N.I.D.A. 3.

LEWIS VAN DORN GRAVES, A.B.

Jersey City, N. J.

Editor of *Sentinel Dormitory Journal*; Member of Alpha Phi Alpha Fraternity; Football 1, 2, 3, 4; Track Captain 2, 3, 4, 5.

LORLE MARION GRIFFIN, B.S.

Hendersonville, N. C.

"Lois"

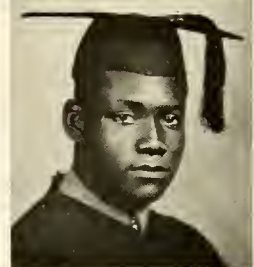
Bennett College 1; Zeta Phi Beta Sorority 2, 3, 4; Girls' Chorus 2; Y.W.C.A. 2, 4; Hayes Fleming Volunteer Society Representative of Estey House Organization, Science Club 2, 3, 4.

JULIUS ANDERSON HOLDEN, B.S.

105 Fuller Street

Smithfield, N. C.

Student Credit Union 4; Y.M.C.A. 1, 2, 3, 4; Crescent Club 2; Phi Beta Sigma Fraternity 3, 4; Varsity Club 1, 2, 3, 4; Parliamentarian of Student Body 4; Science Club 2, 3, 4; Corresponding Secretary of Phi Beta Sigma Fraternity 3; Secretary Phi Beta Sigma Fraternity 4; Varsity Basketball Team 1, 2, 3, 4; Captain Basketball Team 3, 4.





MARY MAGDALENE HOLT, A.B.  
314 Bragg Street  
Goldsboro, N. C.

Pyramid Club 1; Y.W.C.A. 1, 2, 3, 4; Delta Sigma Theta Sorority 2, 3, 4; Le Cercle Francais 2, 3, 4; Treasurer of Delta Sigma Theta Sorority 3, 4; Adviser to Pledges 3; Alpha Omicron Honor Society 4.



PURCELL HOWELL, A.B.  
575 Franklin Avenue  
Brooklyn, N. Y.

Virginia State College 1, 2; University Choir 3, 4; University Double Sextett 3, 4; German Club 3; Sociology Club 3.



VALDOSIA JAMES, A.B.  
Burgaw, N. C.



FLORENCE ELIZABETH JONES, A.B.  
Baltimore, Md.  
"Flo"

Livingstone College 1, 2; Zeta Phi Beta Sorority 2, 3, 4; Sponsors to Chapter Pledges 3, 4; Le Cercle Francais 3, 4; Treasurer of Le Cercle Francais 4; Y.W.C.A. 3, 4; Hayes Fleming Society 4; Representative of Estey House Organization 4.



IDA ELIZABETH JONES, A.B.  
427 Smith Street  
Raleigh, N. C.

*"Where there is a will there is a way"*

Y.W.C.A.; Hayes Fleming Student Volunteer Society; Brush and Palette Art Club.

IDA VANDALIA LARKIN, A.B.

Lumberton, N. C.

"Van"

*"A better sportswoman is hard to find"*

Barber-Scotia Junior College 1, 2; Bennett College 3; Shaw University 4; Alpha Kappa Alpha Sorority 4; Epistoleus 4; Reporter 4; Hayes Fleming Society 4; Reporter 4; Sociology Club 4; N.A.A.C.P. 4, Secretary 4; Y.W.C.A. 4; Student Credit Union 4; Publicity Agent 4.



LOUISE SPICER LASSITER, A.B.

Rocky Mount, N. C.

Y.W.C.A.; Hayes Fleming Volunteer Society.



CECELIA ESTELLE LAWRENCE, A.B.

Raleigh, N. C.



FANNIE MAE LAWSON, A.B.

108 East Main Street

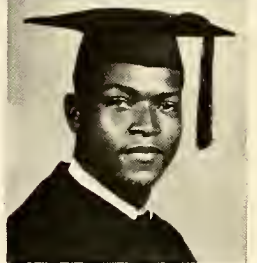
Hamlet, N. C.

Archonian Club 2; Zeta Phi Beta Sorority 3, 4; Dramatics Club 1, 2; Sociology Club 1, 2, 3; Hayes Fleming Volunteer Society 1, 2; Y.W.C.A. 4; Woman's Glee Club 2; Choral Society 3, 4; Intramural Basketball 2, 3.



JAMES HERBERT McCULLERS, B.S.

Raleigh, N. C.





RUBY THERESA MORAYNE, B.S.

Raleigh, N. C.

"Home Economic"

Member of Home Economics Club 1, 2, 3, 4; Y.W.C.A. 4; Chairman of Society Committee of Home Economics 4; Member of Science Club 3, 4.



KARENA MORRIS, A.B.

Colerain, N. C.

"Kay"

*"Truth is my virtue"*

Y.W.C.A. 1, 2, 3, 4; H. E. Club 1, 2; Hayes Fleming Volunteer 3; Student's Credit Union 4; Art Club 1, 2; Girls' Glee Club 2.



MARY ESTHER MORRISEY, A.B.

749 S. Blount Street

Raleigh, N. C.

"Mac"

Member of Y.W.C.A. 2, 3, 4; Member of German Club 1; Class Representative to the University Social Committee 2, 4; President of Brush and Palette Club 4; Member of the President's Club 4; Member of the Program Committee of Class 4.



WYLMA HAZELENE OWENS, A.B.

Asheville, N. C.

"Hazel"

*"Her sense of Humor is her great asset"*

University Choral Society 1, 2; Le Cercle Francais 3, 4; Ivy Leaf Club 4; Y.W.C.A. 1, 3, 4.



TEDDY ROOSEVELT OWENS, A.B., B.D.

New Haven, Conn.

CATHERINE D. PERRY  
Raleigh, N. C.  
"Cat"

*"Nothing is impossible to a willing heart"*

Y.W.C.A.; Brush and Palette Art Club.



DAISY LEE PRYOR, A.B.  
Garner, N. C.

Y.W.C.A.; Hayes Fleming Volunteer Society.



NORMAN EDWARD RICE, A.B.  
Garysburg, N. C.

Cresecent Club 1, Secretary 2; Le Cercle Francais 1, 2, 4; Inter-  
mural Tennis Team 1, 2.



JAMES CHESTER RIDDICK, A.B.  
Pantego, N. C.

History and Political Science Club 2; Dramatic Club 2; Sociology  
Club 3, 4; Secretary of Y.M.C.A. 4; Chairman of Supervisory  
Board of Credit Union 4.



SALLIE BELLE SILLS, A.B.  
Raleigh, N. C.

St. Augustine College 1, 2, 3; Brush and Palette Club 4; Archonian  
Club 4; Y.W.C.A. 4. (Finished end first semester.)







INEZ ROGERS SMITH  
403 Ninth Avenue  
Hickory, N. C.

*"To strive, to seek, to find, and not to yield"*



ELSIE LOUISE SPELLER, A.B.  
Philadelphia, Penn.



JAMES ARTHUR SPRULL, A.B.  
Macon, N. C.

Y.M.C.A. 1, 2, 3, 4; Art Club 1, 2; Student and Credit Union 4;  
Social Science Club 1, 2, 3; Dramatic Club 4.



NEVIE MAYDELLE STREETER, A.B.  
Macon, N. C.  
"Lil' Bit"

Y.W.C.A. 1, 2, 3, 4; Hayes Fleming Student Volunteer Society  
1, 2, 3, 4, Program Committee 4, Social Committee 2; Kodak  
Club 3; Secretary to Class Council 3; Intramural Sports 1, 2, 3;  
Representative for House Organization 4; History and Political  
Science Club 1; Dramatic Club 1.



LOVIE SWINSON  
Warsaw, N. C.  
"Dee"

Y.W.C.A. 4; Hayes Fleming Volunteer Society 4; Student Credit  
Union 4.

FANNIE ODELL VAUGHAN, A.B.

Elizabeth City, N. C.

Y.W.C.A. 1, 2, 3, 4; University Choir 2, 3, 4; French Club 3, 4.



THEORA MARILYN WEAVER, A.B.

Winton, N. C.

"The"

Dramatics Club 1, 2, 4; Sociology Club 3, 4; Hayes Fleming Volunteer Society 1; Y.W.C.A. 1, 2, 3, 4; Estey House Organization 2, 3, 4; Cheer Leading Squad 4.



MARY DOUGLAS WILLIAMS, A.B.

516 East Second Street

Charlotte, N. C.

"Doug"

*"The Stature, poise and Reserve of a Goddess"*

Dramatic Club 1, 2, 3, 4; President Shaw Players 4; University Choral Society 2, 3, 4; Member Presidents Club 4; Assistant Secretary Presidents Club 4; Vice President Senior Class 4; Le Cercle Francais 2, 3, 4; Y.W.C.A. 4; Basileus of Ivy Leaf Club 4; Alpha Kappa Alpha Sorority 4, Basileus 4.



JOSEPH DAVIS WOMBLE, B.S.

Pittsboro, N. C.

Y.M.C.A. 4; Art Club 4; Science Club 4.



GWENDOLYN P. YARBOROUGH, A.B.

941 S. Main St.

Louisburg, N. C.

*"Little by little does the trick"*

Y.W.C.A. 2; Hayes Fleming Student Volunteer Society 1; Assistant Secretary Student Body 1; Brush and Palette Club 2; Zeta Sorority 1.



## SENIOR CLASS HISTORY

Never before had Shaw University seen such a multitude of Freshmen as swarmed the campus in 1934. The "Class of '38" broke the Freshmen record by coming in 198 strong.

We believed from the very beginning that we were destined to make certain achievements, for we found ready to welcome us, a most kind and able President, Dr. Wm. S. Nelson, assisted by a faculty equally competent in its capacity as he. We realized the attitude toward Freshmen from the very beginning, and we vowed that with the kind assistance of the ever dependable faculty, we, the class of '38, would show the upperclassmen that here was a class entering the walls of Shaw University to be different, distinctive. We felt we had talents of merit, and we were determined that more than ourselves should be aware of them.

With an apology for the egotism you might find here, the class of '38 modestly presents its record of achievements during each of our four years here:

As Freshmen we were active in extra-curricular activities on the campus to the following extent; many of the main-stays on the football team were freshmen. At the end of the first semester eight persons on the honor roll out of thirty-seven, were members of our class. We were represented in the University Choral Society by eight persons, and on the men and women's basketball team by five and three persons respectively. We were also well represented in the Dramatics Club and productions.

The class of '38 showed a 43 per cent increase over the 1933-34 school enrollment. The average age for the men of the freshman class was 20.1, while that of the ladies was 18.3. There were three young ladies who were fifteen years of age at the time of registration.

Under the leadership of Mr. Edward Littlejohn as President, the class of '38 made its debut at Shaw University one of success. He had as his co-workers Miss Mamie Yeargin, Vice President; Miss Frances Parker, Secretary; Miss Magdalene Walker, Assistant Secretary; and Mrs. Fannie Taylor, Treasurer. We were represented on the Student Council by Miss Emily Daniels and Mr. Grant Jones, and Miss Theora Weaver won the Y.W.C.A. popularity contest.

We were especially proud to have as our class adviser, Mr. James Lee, who worked with us unerringly in our endeavors.

The Sophomore year found us more determined to make for ourselves a name, for the waves of life had decreased our number to ninety-one. We returned in the midst of the 70th Anniversary Campaign, with Mr. Benjamin Quarels as our adviser, and Mr. Robert Garrett as our President. The Sophomore Class pressed on, although often under unfavorable conditions. We felt keenly the loss of those in our midst, but we, the class of '38, were not to be stopped. Robert Garrett had as his co-workers Miss Magdalene Walker, Secretary, and Mr. Benjamin Collier, Treasurer.

At the end of the first semester we were represented on the honor roll by seven persons. We showed our wisdom, so characteristic of sophomores, by having four campus organizations led by members of our class. We were also represented on the football, basketball, and track teams. During this year, three persons in the double sextet were Sophomores. This group had the distinction of broadcasting over the facilities of the National Broadcasting Company. We were more than proud of our representatives.

During this year the dormitory councils were formed in Shaw and Estey Hall. We were represented by Mr. Benjamin Collier, and Miss Marie Tyler respectively. In the Y.W.C.A. popularity contest, we were represented by Miss Cecelia Lawrence.

With the close of school in our Sophomore year, we pledged ourselves to return to Shaw the following fall, being even more ably prepared and ready to seek higher achievements.

With the sophistication that only Juniors can have, we returned to Shaw University feeling proud that we had come this far together. Our number had been decreased to seventy-one, but during this year we surpassed our achievements of the past two years by far. Surely, we felt ourselves to be nearing the goal we set when we entered Shaw 198 strong in 1934.

We found awaiting us a new President, accompanied by fourteen new faculty members. Surely the Junior Class had to make themselves recognized. In an effort to do just this, we had five men on the football team, six persons leading student activities, and seven persons on the honor roll. We topped our year's achievements by having one of our members make the Alpha Omicron Honor Society. During the following spring, three members of our class attended the Y.W.C.A. Conference at Kings Mountain, N. C.

We had as our President, Robert Garrett. As his co-workers we had Miss Emily Daniels, Secretary, and Mr. Richard Smith, Treasurer. Under the careful guidance of Mr. J. F. Price, the Junior Class gave one of the most elaborate Junior and Senior Proms given by colleges of our race in the State. We left school feeling quite pleased over our work, but realizing all too well that a much larger job awaited us next fall.

Sixty-five dignified Seniors returned to Shaw University. We were Cognizant from the beginning that we had dwindled from 198 to 65. This made our job even larger, for the sixty-five of us left, had the same, and more responsibilities facing us that we faced when there were 198. We were not in the least discouraged. We knew we could do, and we were willing to prove it.

Under the guidance of Mr. J. F. Price as our adviser for the second consecutive year, we are quite pleased with our achievements up to the present. We have as our President, Mr. Robert Garrett, who has served in this capacity for the past three years. As his co-workers we have Miss Mary D. Williams, Vice President; Miss Blandena Davis, Secretary; Miss Marie Tyler, Assistant Secretary; and Miss Kennie Dixon, Treasurer.

We have eleven persons leading Student Activities, and four persons in the Alpha Omicron Honor Society. A member of our class, Miss Eva Frazer, was the Y.W.C.A. representative at Oxford, Ohio, while Mr. Benjamin Collier had the honor of being captain of the football team.

During our four years here we have participated in every extra-curricular activity on the campus, having one in our midst to become *Miss Shaw* this year.

The Class of '38 has lived under two presidents, and under two graduation requirements.

With this record of achievements, the Class of '38 says adieu to Shaw University. We hope that our efforts here for the past four years have not been in vain, and that those of you left behind will see something in our past worth emulating. With the sincere wish that Shaw University and you may always receive God's blessings, *we leave you.*



JUNIOR CLASS



FRESHMAN CLASS



### STUDENT COUNCIL

B. A. COLLIER ..... *President*    JOCILO POWELL ..... *Vice President*  
MILDRED LUTON ..... *Secretary*



### CHORAL SOCIETY

ROBERT GARRETT ..... *President*    LEROY McLAURIN ..... *Vice President*  
PAULINE WILLIAMS ..... *Secretary*    HARRY GIL-SMYTHE ..... *Director*



Y. W. C. A. CABINET

ALICE CROWE  
MARIE TYLER

*President* PRIMROSE BARNWELL  
*Vice President* KENNIE DIXON  
W. L. TURNER *Adviser*

*Secretary*  
*Treasurer*



Y. M. C. A. CABINET

FRANK A. MATTHEWSON  
CHESTER RIDDICK

*President* TEDDY OWENS  
*Secretary* H. A. MILLER

*Treasurer*  
*Adviser*



### ZETA PHI BETA SORORITY

JOCILE POWELL  
MILDRED LUTEN

*President* OPHELIA DURHAM  
*Treasurer* LOUISE PERRIN

*Secretary*  
*Adviser*



### ARCHONIAN CLUB

GEORGIA COOK  
ANNA LUCILE WALL

*President* MARY J. LONG  
*Secretary* FLORENCE JONES

*Treasurer*  
*Adviser*





### ALPHA KAPPA ALPHA SORORITY

MARY D. WILLIAMS *Basilis*      PAULINE WILLIAMS *Grammateus*  
MARGUERITE ROGERS *Anti-Basilis*      JESSIE B. SNOWDEN *Adviser*



### IVY LEAF CLUB

MARY LORRITS *President*      NAOMI TINNIN *Secretary*  
KENNIE DIXON *Dean of Pledges*



### DELTA SIGMA THETA SORORITY

MARGUERITE CARSON ..... *President* HELEN MITCHELL ..... *Secretary*  
PRIMROSE BARNWELL ..... *Vice President* LENA GRAVES ..... *Treasurer*  
MOLLIE H. LEE ..... *Adviser*



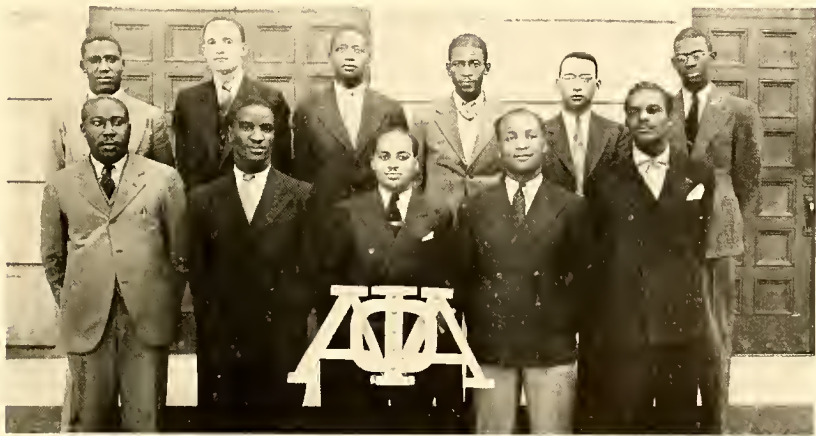
### PYRAMID CLUB

DOROTHY SMITH ..... *President* EDITH WEAVER ..... *Secretary*  
ROSA BRYANT ..... *Treasurer*



**PHI BETA SIGMA FRATERNITY**

BOBBIE L. DUNN ..... *President*      JULIUS HOLDING ..... *Secretary*  
WILLIAM A. BINGHAM ..... *Vice President*      GEORGE W. GANT ..... *Treasurer*  
JAMES E. LYTLE, JR. .... *Adviser*



**ALPHA PHI ALPHA FRATERNITY**

CLAUDE R. TROTTER ..... *President*      GEORGE D. MARSHALL ..... *Secretary*  
W. COLEMAN SHANKS ..... *Vice President*      B. GOVAN ..... *Treasurer*  
W. H. QUARLES ..... *Adviser*



### OMEGA PSI PHI FRATERNITY

VINCENT TIBBS  
ROY C. BODDIE

*Basilens* PAUL GREEN  
*Vice Basilens* SPENCER DURANT  
C. A. JONES *Adviser*

*Keeper of Finance*  
*Dean of Pledgees*



### LAMPODAS CLUB

GEORGE BRICKAUS  
JERRY C. GILMORE

*President* LAWRENCE BRYANT  
*Vice President* JOSEPH GREEN  
*Secretary*  
*Treasurer*



N. A. A. C. P.

WILLIAM C. RAINES . . . . . *President*    VANDALIA LARKINS . . . . . *Secretary*  
BROOKS LUVETTE . . . . . *Treasurer*



CHEER LEADERS



GIRLS' BASKETBALL TEAM

## AUTOGRAPHS

# AUTOGRAPHS









