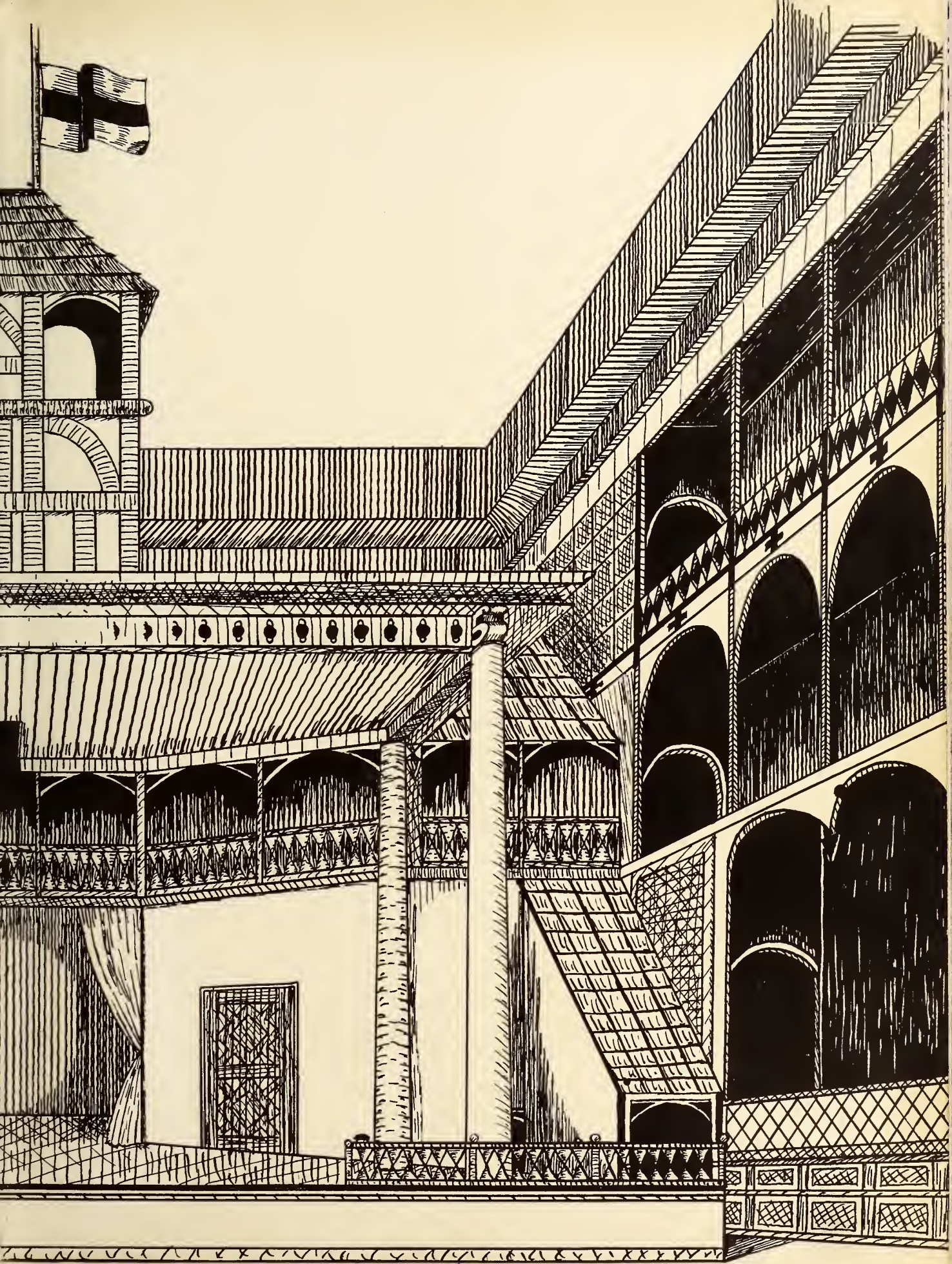


विश्वविद्यालय



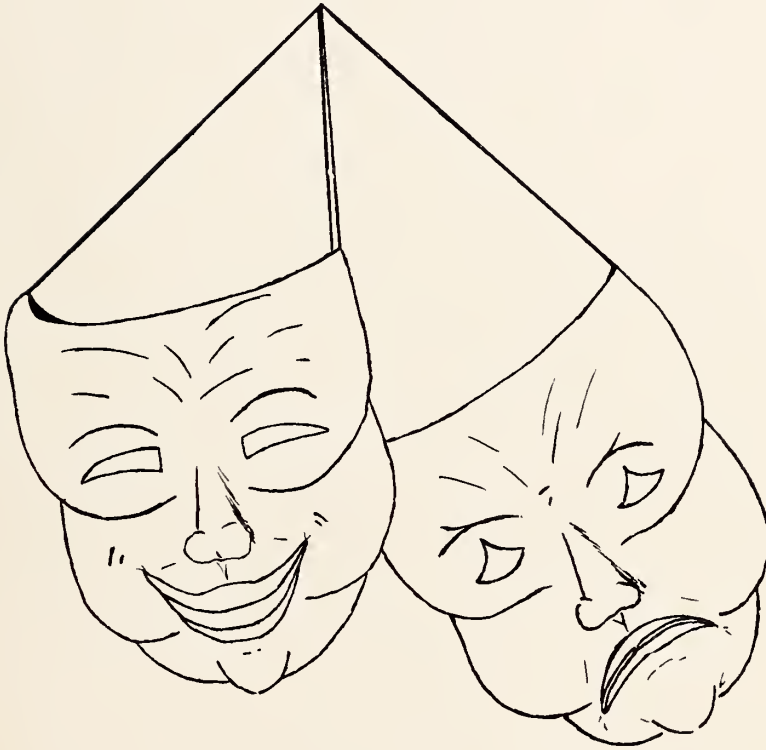
1951





"A Book? O rare one! Be not, as is our
fangled world, a garment nobler than that
it covers."

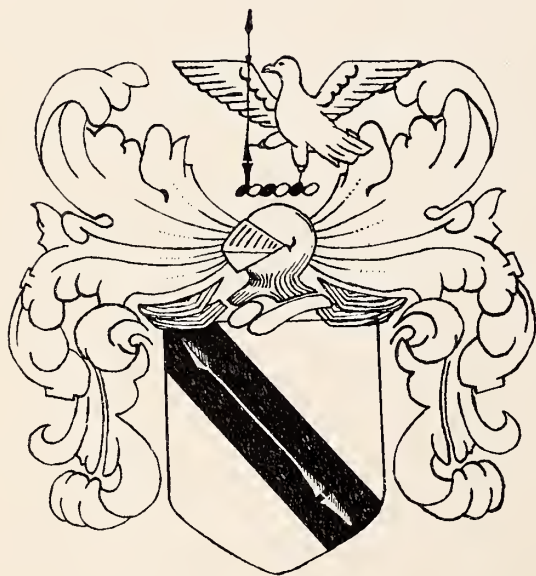
Shakespeare



Presenting The 1951

"All the world's a stage,
And all the men and women, merely players:
They have their exits and their entrances;
And one man in his time plays many parts,
His acts being seven ages."

As You Like It





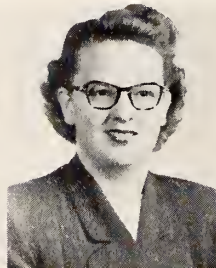
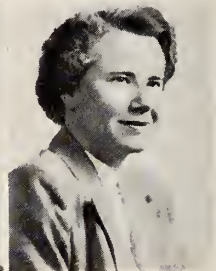
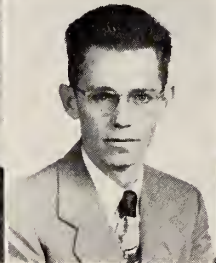
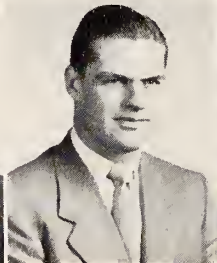
HEAD

Published by
THE SENIOR CLASS
of
SMITHFIELD HIGH SCHOOL
Smithfield, N. C.

1951

EARL McCOLLERS Editor-in-Chief
DICKIE WALLACE Business Manager

Stage Directors



MR. A. G. GLENN
Principal
MISS LUCY HARRINGTON
History, English
MRS. MARY SPHANGOS
French, English
MISS MARY TAYLOR
Science
MR. ROY J. BROWN
History, Coach
MRS. A. G. GLENN
English, Speech

MR. DAVID WALKER
Algebra, Band
MISS ELIZABETH EDWARDS
Mathematics
MISS SUSAN BYNUM
Home Economics
MISS DE LENA JONES
English, Latin
MISS IMOGENE NARRON
Commercial
MISS ANNE PRUITT
English, Librarian

Dedication



"I hold you as a thing enskied, and sainted;
An immortal spirit;
And to be talk'd with in sincerity
As with a saint."

Measure For Measure




We, the Senior Class of 1951, dedicate this second edition of "The Shield" to our class sponsor, Mrs. A. G. Glenn. It is fitting that her beloved Shakespeare should furnish the theme for this annual.

In recent years every graduate of Smithfield High School has felt Mrs. Glenn's guidance throughout his senior year. She concentrates her amazing energy and ability not only on teaching the principles of grammar or giving her dramatic best to some choice Shakespearean line, but she also finds time to direct the class play, to coach debaters and contest entrants, and to chaperon countless school parties, as well as to advise "The Shield" Staff.

If Mrs. Glenn has one great gift, it is her ability to develop the personalities and talents of her students. Patiently she guides us, all the while moulding character and culture. Skillfully, hidden talents are exposed. Her only reward is the knowledge that another boy or girl enters the outside world with greater confidence and poise.

This record of our final high school year we leave to Mrs. Glenn with love and gratitude.

Class History



Lights dim. Curtains part. And on this stage of life the characters appear, each knowing well he has a part to play. This drama is a strange one, for even the players do not yet know whether it is comedy, tragedy, or historical drama in which their parts are cast. A hushed stillness prevails in the audience as the play opens.

As Act I unfolds, we, the actors and actresses in this drama realize that this is the beginning of the most important four years of our lives. The first year in high school found every freshman alert and anxious not to miss his cue. Yes—one had to be alert to become accustomed to changing classes, attending school dances, taking part in athletics, and fitting into the high school pattern in general.

In Act II as in all Shakespearean plays, the plot begins to thicken. We now perform our parts with an air of self-confidence not evident before. The highlights of this, our sophomore year, were the highly successful magazine campaign, the World Peace Oratorical Contest, and the honor received by a few of our classmates of attending the annual Junior-Senior Banquet as waiters and waitresses.

Ah! The third act! Each word spoken was filled with special meaning, because we were juniors and next in line to be the school's most honored class. Such an active year we had never experienced before! Our football heroes began to come to light as our arch rival was defeated in the Thanksgiving game. And the taste of victory was still sweet as we danced that night under our traditional red and white canopy.


Along with the honor of being upper classmen came responsibilities and many they were. Among the first of our duties was to present a class play. We discovered that those long nights of practice repaid us in a deep sense of satisfaction at having produced a successful performance.

Then came the time for us to put aside our dramatic abilities and concentrate on the more down-to-earth school activities. Then into our humdrum existence suddenly came the overwhelming knowledge that this year it was our job to make the Junior-Senior Banquet a success. Everyone was looking to us to make that climax of the social calendar the great success it had always been. Once again we felt that inner satisfaction which comes from participating in a job well done.

The curtains part; this time for Act IV — our final and climactic scene. We perform our parts with enthusiasm. There is comedy — speech class, chapel programs, the halls during recess, stale jokes told in the locker rooms, good friends laughing together. There is tragedy — a broken test tube in the smoke-filled chemistry lab., the bitter sting of defeat on the football field or basketball court, the painful memories of some faded romance. Even the historical drama, Shakespeare's third type of play, is represented, for after all, will not the class of 1951 be remembered by posterity?

The curtain slowly begins to close on this the final act. Nothing stands between us and the adult world but a scrap of paper to be clutched by our eager hands. Even as we speak our closing lines the scenery is being changed for another drama. The characters will be different; the plot is the same. We feel only deep regret at being so quickly replaced but . . .

"All the world's a stage" . . .



Seniors



ROSE MARIE JOHNSON
President



AUSTIN STEVENS
Vice-President



MARY JEAN LEE
Secretary



BOBBY FARMER
Treasurer



ELLIE RUTH ALLEN

"A mind that is happy must be great."
Library Club 1; Home Ec. Club 2, French Club 3;
Vice-President Commercial Club 4, Decoration Com-
mittee Junior-Senior 3, Play Committee 4.

JULIA ALICE ALLEN

"Originality is the true evidence of genius."
Journalism Club 1, 2, 3, 4, Vice-President 3, Presi-
dent 4; Glee Club 1, 2, 4, Publicity Chairman 4;
Marshal 3; Girls' State 3, Chairman Entertainment
Committee Junior-Senior 3; Basketball 1, 2, 3, 4,
Manogram Club 3, 4, Secretary-Treasurer 4, Play
Committee 4, "High Times" Staff 3, 4, Assistant Editor
3, Editor-in-Chief 4, Assistant Editor "The Shield" 4,
Winner Angier B. Duke Scholarship award 1951.



MONA MAE ALLEN

"Gentle of speech, beneficent of mind."
Art Club 1, Home Ec. Club 2, Needlecraft Club
3, 4, Arrangement Committee Junior-Senior 3, "High
Times" Staff 4, Cap and Gown Committee.

ELSIE NORINE BARBOUR

"A happy life consists of tranquillity of mind."
Camera Club 1, Home Ec. Club 2, Needlecraft
Club 3, 4, Faad Committee Junior-Senior 3, Cap and
Gown Committee.

VIOLA MATILDA BATTEN

"And in their vaunted works of Art, the masters
stroke is her part."

Art Club 1, Home Ec. Club 2, Needlecraft 3, 4,
Vice-President 4, Placement Committee Junior-Senior
3, Cap and Gown Committee 4, "High Times"
Staff 4.

CATHRYN EVA CHEEK

"None knew thee but to like thee."

Secretary Camera Club 1, Vice-President Home
Ec. Club 2, Journalism Club 3, 4, Glee Club 1, 2, 4,
Secretary 4, Entertainment Committee Junior-Senior
3, "High Times" Staff 4, Business Staff "The Shield"
4, Social Committee 4.



CHESTER RICHARD COOKE

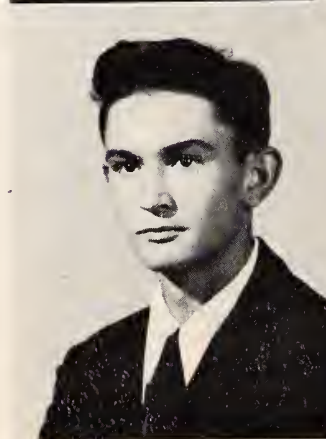
"Sum up thy speech, say much in little."

4-H Club 1, Sports Club 2, 3, Etiquette Club 4,
Decorating Committee Junior-Senior 3, Business Staff
"The Shield" 4, Ring Committee 4.

JOYCE FAYE DAUGHTRY

"Kindly speech maketh many friends"

4-H Club 1, Home Ec. Club 2, Needlecraft Club
3, 4, Glee Club 1, Junior-Senior Entertainment Com-
mittee 3, Cap and Gown Committee.



WILLIAM DANIEL DAVIS

"Rich and with a happy heart is he who tills the soil."

4-H Club 1; Handicraft Club 2; Wildlife Club 3; Commercial Club 4; Mascot Committee.

EDITH ROSE DORMAN

"A various, vigorous, versatile mind."

Camera Club 1; Home Ec. Club 2; Needlecraft Club 3; Secretary Commercial Club 4; Glee Club 1, 2, 3, 4; Decoration Committee Junior-Senior 3; "High Times" Staff 4; Editorial Staff "This Shield" 4.

ROBERT LEON FARMER

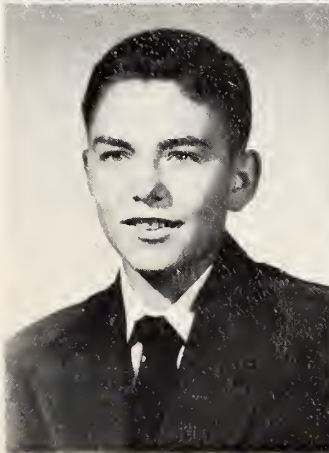
"Full of wit and fun, everything he does well done."

Sports Club 1, 3; Wildlife Club 2; Secretary-Treasurer Model Airplane Club 4; Glee Club 4; Entertainment Committee Junior-Senior 3; Junior Play; Morshol 3; Basketball 1, 2, 3, 4, Captain 4; Baseball 3, 4; Monogram Club 3, 4, Vice-President 4; Treasurer 4; Sociol Committee 4; "High Times" Staff 3; Editoriol Stoff "The Shield" 4; County winner Public Speaking Contest 1951.

CONNIE LOUISE FINCH

"The force of her own merit wins her way."

Sanford High School 1; Secretary-Reporter Home Ec. Club 2; Needlecraft Club 3; Wildlife Club 4; Vice-President 3; Placement Committee and Co-Chairmon Food Committee Junior-Senior 3; Ploy Committee 4; Business Staff "The Shield" 4.



ANNA JAQUELINE FITZGERALD

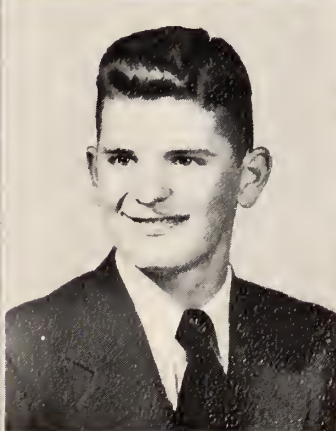
"She's gentle and shy, but there's mischief in her eye."

4-H Club 1; Home Ec. Club 2; Needlecraft Club 3, 4; Glee Club 2, 4; Decoration Committee Junior-Senior 3; Mascot Committee.

REBA JEAN FLOWERS

"She smiles and the shadows depart."

Camera Club 1; Home Ec. Club 2; Journalism Club 3, 4; Glee Club 1, 2, 3; Basketball 1, 2, 3, 4; Monogram Club 3, 4; Ring Committee.



RUTH MARIE HANSLEY

"A willing heart, attractive grace, A charming girl with dimpled face."

Library Club 1; Home Ec. Club 2; Vice-President French Club 3; Commercial Club 4; Decoration Committee Junior-Senior 3; Ring Committee.

FREDERICK EUGENE HILL

"Dependability demands respect."

4-H Club 1; Wildlife 2; Sports Club 3; Etiquette Club 4; Glee Club 4; Junior Play; Properties Committee Junior-Senior 3; Cop and Gown Committee; Business Staff "The Shield" 4.



JOEL EDWARD HILL

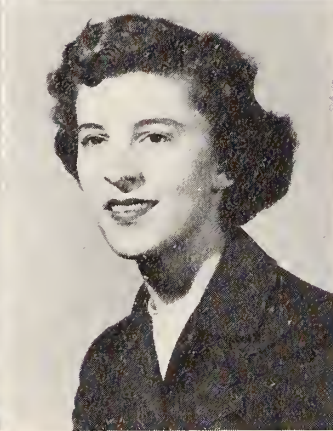
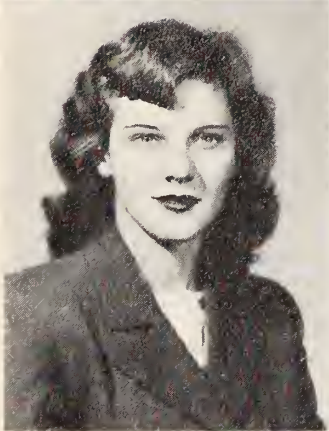
"The reward of study is understanding."

4-H Club 1; Career Club 2; Sports Club 3; Vice-President Etiquette Club 4; Glee Club 3; Band 1, 2, 3, 4; Entertainment Committee Junior-Senior 3; Mascot Committee.

DAVID ELVIN JOHNSON, JR.

"The best way to have a friend is to be one."

Sports Club 1, 3; Wildlife Club 2; Etiquette Club 4; Decorating Committee Junior-Senior 3; Baseball 1, 2, 3, 4, Captain 4; Basketball 3, 4; Managram Club 3, 4; Social Committee 4.



MARLAN JEAN JOHNSON

A willing heart, a helping hand."

Comero Club 1; Home Ec Club 2; Needlecraft Club 3; Journalism Club 4; Entertainment Committee Junior-Senior 3; Basketball 2, 3, 4; Managram Club 3, 4; Cap and Gown Committee.

ROSE MARIE JOHNSON

"She mixes reason with pleasure and wisdom with mirth."

Speech Club 2; Journalism Club 3, 4; Glee Club 3, 4; Junior Play; Program Committee Junior-Senior 3; NEPH Essay Winner 3; President 4; Debating 4; "High Times" Staff 3; Editorial Staff "The Shield" 4.

SHERRILL HOOKS JOHNSON

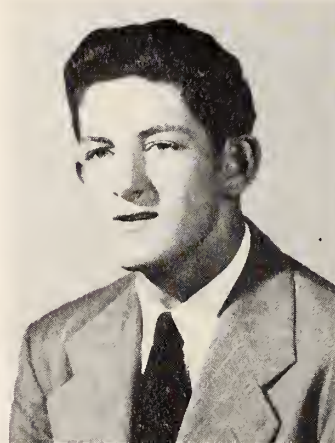
"Victory follows me, and all things follow victory."

4-H Club 1; Wildlife Club 2; Sports Club 3; Etiquette Club 4; Entertainment Committee Junior-Senior 3; Basketball 3, 4; Football 2, 3, 4, Co-Captain 4; Baseball 1, 2, 3, 4; Monogram Club 3, 4, Sergeant-at-Arms 3; Cap and Gown Committee; Business Staff "The Shield" 4.

DELICIE JEAN LASSISTER

"A thing that is lovely — can tear a heart in two."

4-H Club 1; Speech Club 2; Home Ec. Club 3; Reporter Commercial Club 4; Glee Club 1, 2; Decoration Committee Junior-Senior 3; Business Staff "The Shield" 4.



ELLEN IONE LAWHON

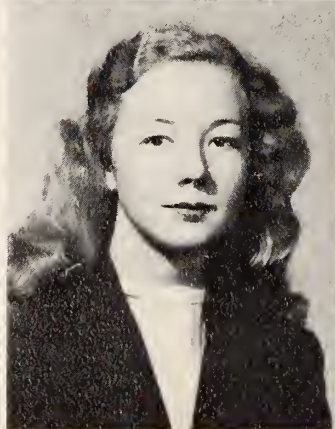
"A silent address is the genuine eloquence of sincerity."

Library Club 1; Home Ec. Club 2; 4-H Club 3; Needlecraft Club 4; Refreshment Committee Junior-Senior 3; Chairwoman Cap and Gown Committee.

IDA MARIE LEE

"Of quiet taste and manners mild."

Comera Club 1; Career Club 2; Needlecraft Club 3; Commercial Club 4; Food and Decoration Committee Junior-Senior 3; Mascot Committee.



MARY JEAN LEE

"Intelligence is just one of her charms."

Camera Club 1; Home Ec. Club 2, 3, Scrapbook Chairman 3; Glee Club 1, 3, 4; President Needlecraft Club 4; Marshal 3; Food Committee Junior-Senior 3; Mascot Committee; Business Staff "The Shield" 4.

RACHEL LEE

"A good heart is better than all the heads in the world."

4-H Club 1, Treasurer 2; Needlecraft Club 3, 4, Secretary-Treasurer 3, Vice-President 1, President 2; Food Committee Junior-Senior 3; Invitation Committee.

LUDIE MAE MAXWELL

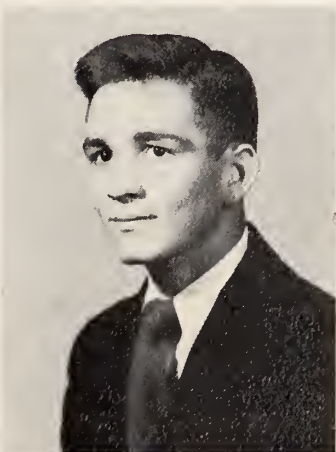
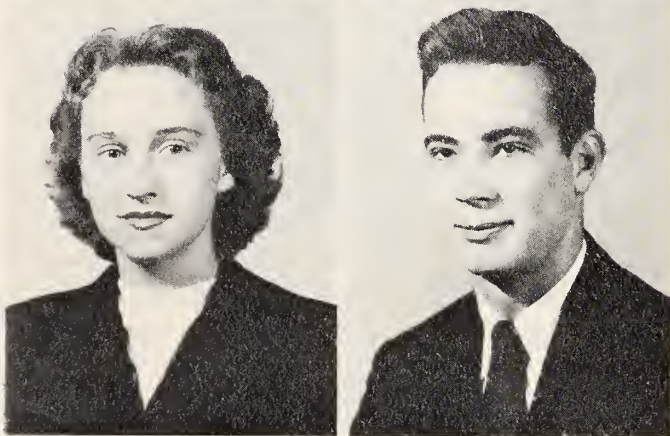
"She talks of what she loves."

Oxford High School, Oxford, N. C., 1, 2, 3; (Home Economics Club 1; Girls' Athletic Association 2, 3; Basketball 3; Cheerleader 1, 2, 3); Needlecraft Club 4.

LAWRENCE EARL McCULLERS

"Doing easily what others find difficult is talent; doing what is impossible for talent is genius."

Physical Ed. Club 1; Wildlife Club 2; Sports Club 3; Model Airplane Club 4; Glee Club 3, 4, Secretary 3, Publicity Director 4; Monogram Club 3, 4; Football 1, 2, 3, 4, Co-Captain 4; Marshal 3; Decorating Committee Junior Senior 3; Chairman Senior Play Committee; Editor-in-Chief "The Shield" 4.



PATRICIA ANN MEYER

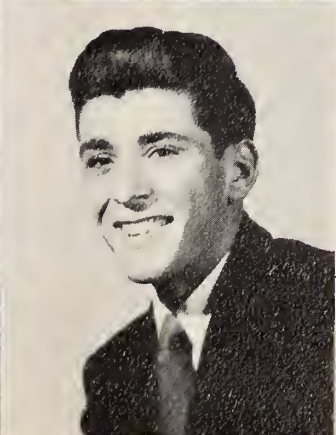
"Cold weather and lovely girls come out of the North."

Long Branch High School, Long Branch, New Jersey, 1, 2, 3, 4; Needlecraft Club 4.

WILLIAM LEE MOORE

"Never trouble trouble 'til trouble troubles you."

Sports Club 1, 3; Wildlife Club 2; Reporter Etiquette Club 4; Junior Play; Entertainment Committee Junior-Senior 3; Football 1, 2, 3, 4; Monogram Club 3, 4; Business Staff "The Shield" 4.



MARTHA VIRGINIA OSBORNE

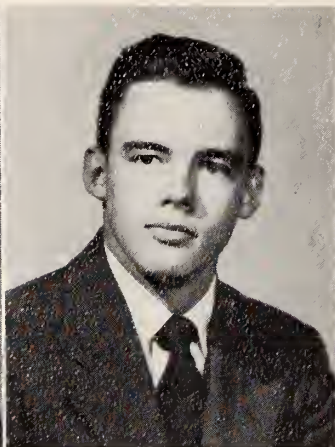
"Great art is on instant arrested in eternity."

Art Club 1; Home Economics Club 2; Journalism Club 3, 4, Scrapbook Secretary 4; Junior Play; Decoration Committee Junior-Senior 3; Art Editor "High Times" 3, 4; Co-Art Editor "The Shield" 4; Chairman Social Committee 4.

KENNETH LAWRENCE PARRISH

"Not simple conquest; triumph is his aim."

Roundtable Discussion Club 1; Wildlife Club 2; Sports Club 3; Model Airplane Club 4; Decoration Committee Junior-Senior 3; Football 1, 2, 3, 4; Monogram Club 3, 4; Mascot Committee; Advertising Staff "The Shield" 4.



SADIE VIOLA PHILLIPS

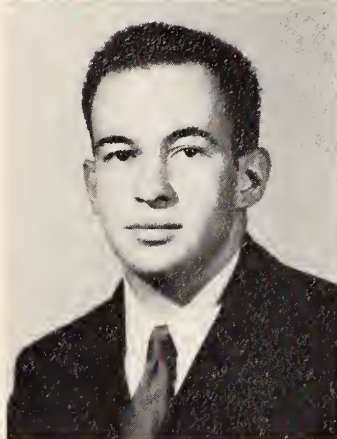
"In silence many virtues be."

4-H Club 1; Camera Club 2; French Club 3; Needlecraft Club 4; Arrangement Committee Junior-Senior 3; Invitation Committee.

CALVIN COLLINS PIPPIN

"Nothing can come out of an artist that is not in the man."

Wakelan High School 1, 2, French Club 3; Madel Airplane Club 4, Glee Club 3, 4; Band 3, 4; Decorating Committee Junior-Senior 3; Ring Committee; Art Editor "The Shield" 4.



WILLIAM HECTOR RACKLEY

"A winner never quits and a quitter never wins."

Roundtable Discussion Club 1; Sparts Club 2; Sergeant-at-Arms First Aid Club 3; President Career Club 4; Invitation Committee 4; Football 1, 2, 3, Co-Captain 3; Basketball 2; Baseball 1, 2.

FRED WILSON ROBERTS

"Wise to resolve, patient to perform."

4-H Club 1; Wildlife Club 2; Sparts Club 3; Madel Airplane Club 4; Properties Committee Junior-Senior 3; Invitation Committee.

EDITH POWELL ROSE

"A little mischief now and then is relished by the wisest men."

Camera Club 1; Home Ec. Club 2; Journalism Club 3, 4; Entertainment Committee Junior-Senior 3; "High Times" Staff 3; Business Staff "The Shield" 4; Chairman Mascot Committee; Cheerleader 3, 4; Monogram Club 4.

MARY BODDIE SANDERS

"A lovely face is the mirror of the mind."

Science Club 1; Home Ec. Club 2, 3; Program Chairman 2; President 3; Secretary-Treasurer Career Club 4; Glee Club 1, 2, 3, 4; Vice-President 4; Junior Play; Girls' State 3; Decoration Committee Junior-Senior 3; Ring Committee; Business Staff "The Shield" 4.

MILDRED ELIZABETH SELLERS

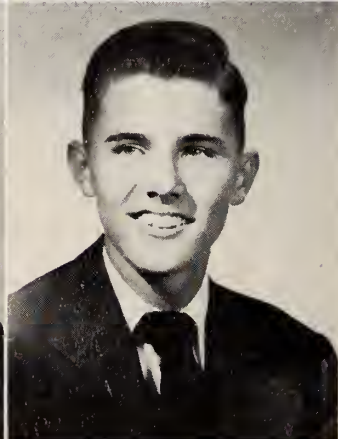
"A wealth of red hair many hearts may ensnare."

Princeton High School 1, 2; Library Club 3; Needlecraft Club 4; Properties Committee 3; Invitation Committee.

ROBERT ALLEN SMITH

"Strang is he that masters his own spirit."

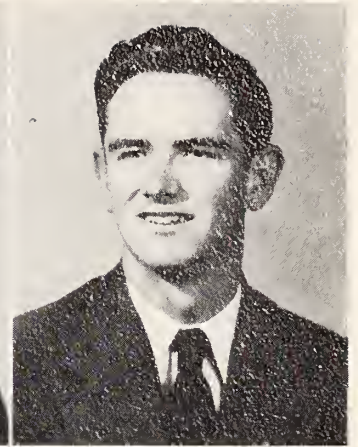
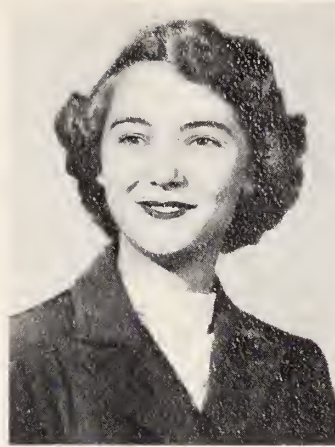
Sports Club 1; Wildlife Club 2; Sparts Club 3; Madel Airplane Club 4; Glee Club 3, 4; Monogram Club 3, 4; Baseball 2; Basketball 2, 3, 4.



CLARA JEAN STALLINGS

"Beauty and intelligence—what a rare combination."

Camera Club 1; Speech Club 2; Reporter Home Ec. Club 3; President Commercial Club 4; Glee Club 2, 3, 4, President 2; Junior Play; Marshal 3; Ring Committee; Editorial Staff "The Shield" 4.



DENNIS FULTON STANLEY

"A merry heart maketh many friends."

Wilson's Mills High School 1; Wildlife Club 2, 3; Madel Airplane Club 4; Properties Committee Junior-Senior 3; Invitation Committee.

LEE AUSTIN STEVENS

"Work fascinates him: he can sit and look at it for hours."

Sports Club 1, 2, 3, Secretary-Treasurer 1, 2, Secretary 3; Etiquette Club 4; Secretary 2, 3, Vice-President 4; Marshal 3; Football 1, 2, 4; Baseball 3, 4; Manogram Club 3, 4, Secretary-Treasurer 3, President 4; "High Times" Staff 3; Editorial Staff "The Shield" 4.



JOYCE LEE TALTON

"How near to good is what is fair."

4-H Club 1, 2, 3, 4, President 3, Sang Leader 4; Glee Club 4; Banquet Committee Junior-Senior 3; "High Times" Staff 4; Chairmen Invitation Committee.



SARAH EVELYN TOOLE

"Silence is a virtue of the wise."

4-H Club 1; Home Ec. Club 2; Needlecraft Club 3; Commercial Club 4; Invitation Committee Junior-Senior 3; Ring Committee.

DAVID CARLTON TWIGG

"In scorn of nature, art gave lifeless life."

Art Club 1, 4; Wildlife Club 2; French Club 3; Junior Play; Debating Club 3; Banquet Committee Junior-Senior 3; Art Editor "High Times" Staff 3; Business Staff "The Shield" 4; Play Committee.



BOBBY BATES UNDERWOOD

"A paragon of gentlemanly courtesy."

Sports Club 1, 2, 3; Commercial Club 4; Glee Club 3, 4; Marshal 3; Banquet Committee Junior-Senior 3; Invitation Committee; Business Staff "The Shield" 4.

CHARLES DIXON WALLACE

"Many follow where he leads."

Science Club 1; Miscellaneous Club 2; French Club 3; Music Club 4; President 1, 3; Glee Club 1, 3, 4; Chief Marshal 3; Football 1, 2, 3, 4; Monogram Club 3, 4; World Peace Oratorical Winner 2; Debating Club 3; Business Manager "The Shield" 4; Ring Committee.



BLANCHE FAYE WARD

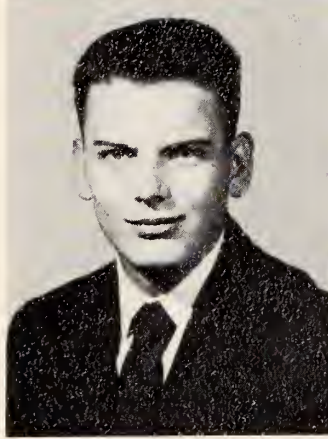
"Dark eyes that look into the very soul."

Camera Club 1; Home Ec. Club 2; Needlecraft Club 3; Wildlife Club 4; Glee Club 1; Junior Play; Banquet Committee Junior-Senior 3; Invitotion Committee; Business Staff "The Shield" 4.

CLARENCE WESTBROOK WARRICK, JR.

"An ounce of wit is worth a pound of sorrow."

Science Club 1; Wildlife 2; Sports Club 3; Model Airplane Club 4; Glee Club 1, 3, 4, Vice-President 3, 4; Junior Play; "High Times" Stoff 4; Business Stoff "The Shield" 4; Ring Committee.



CHARLES DENNIS WATSON

"I might os well take my time, there's a whole life ahead of me."

Science Club 1; First Aid Club 2; Vice-President Sports Club 3; Journolism Club 4; Junior Play; Football 2, 3, 4; Monogrom Club 3, 4; Editorial Staff "The Shield" 4; Mascot Committee.

HORTENSE WIGGS

"To those who know thee not, no words can paint."

Home Ec. Club 1, 2, 3, President 2; Music Club 4; Glee Club 1, 2, 4, President 4; Secretary 1; Junior Play; Marshol 3; Basketball 1, 2, 3; Cheerleader 3, 4, Chief 4; Monogram Club 3, 4; "High Times" Stoff 3; Advertising Monager "The Shield" 4; Superior rating State High School Music Contest 1951.

MELVIN LAMBERT WILKINS

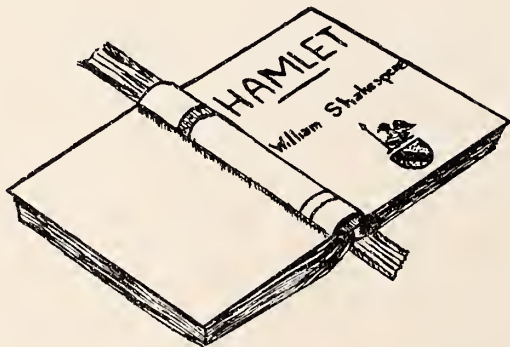
"A gread ship osks deep woters."

Hobby Club 3; Journalism Club 4; Entertainment Committee Junior-Senior 3; Cap and Gown Committee.

NAN ELIZABETH WILLIAMS

"A light heart lives long."

Voldosta High School, Valdosta, Ga. 1; Home Ec. Club 2; Journolism Club 3, 4; Glee Club 3, 4; Refreshment Committee Junior-Senior 3; Cheerleader 4; Monoaram Club 4; "High Times" Stoff 4; Business Staff "The Shield" 4; Social Committee 4.



" . . . To thine own self be true,
And it must follow, as the night the doy,
Thou const not then be false to any man."

Hamlet

Superlatives

"But you, O you,
So perfect and so peerless, are created
Of every creature's best."

The Tempest



Mascots



WILLIAM CRAIG OVERBY, JR.

JEANNE BENTON WILSON

W
i
t
t
i
e
s
t



BILL MOORE

EDITH ROSE

"There's a skirmish of wit between them."

Much Ado About Nothing

M
o
s
t
A
c
c
o
m
o
d
a
t
i
n
g

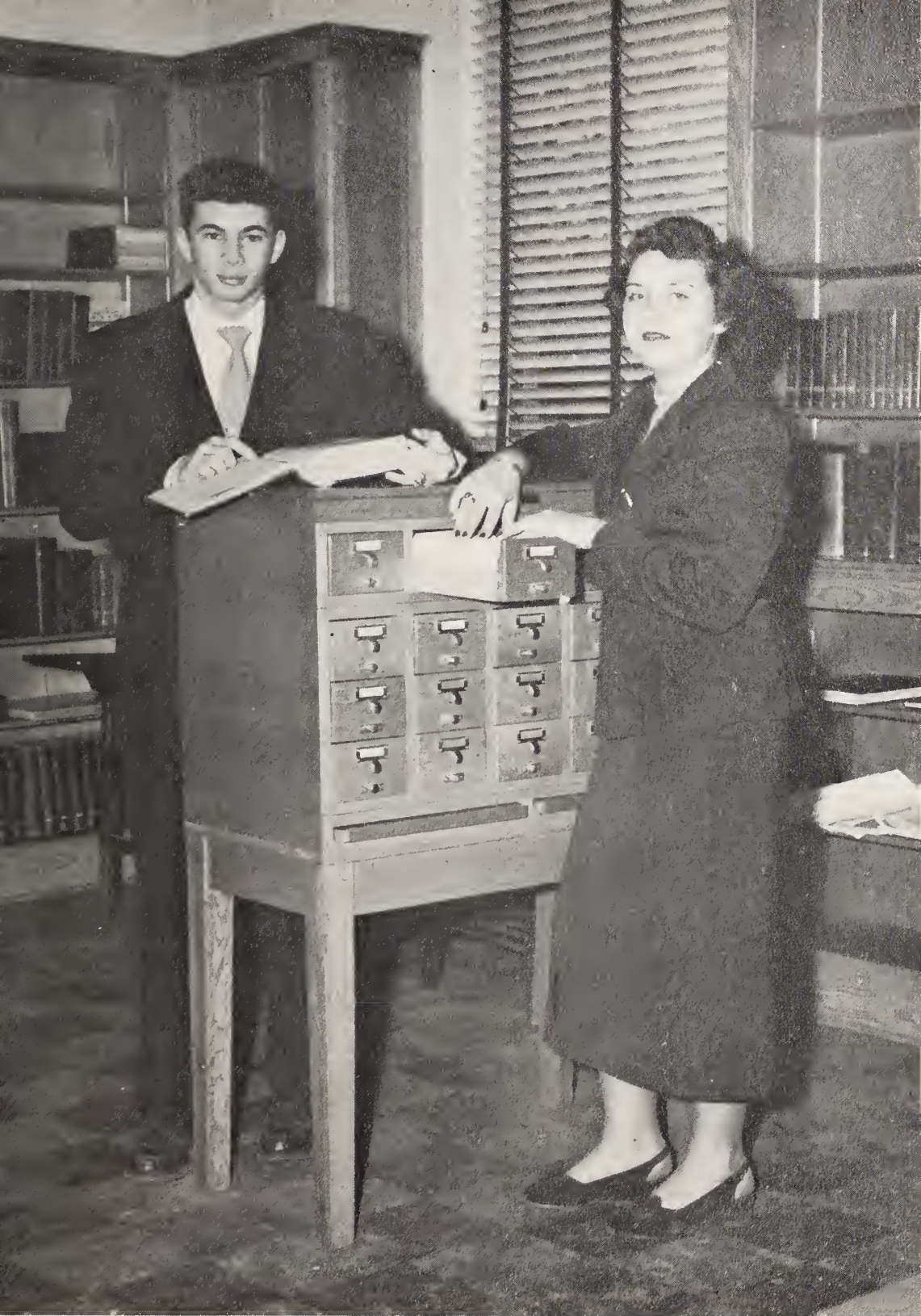


ROSE MARIE JOHNSON BOBBY FARMER

"Your spirits shine through you."

Macbeth

M
o
s
t
I
n
t
e
l
l
e
c
t
u
a
l



DICKIE WALLACE

MARY JEAN LEE

"Exceedingly well read . . ."

Henry IV

M
o
s
t
P
o
p
u
l
a
r

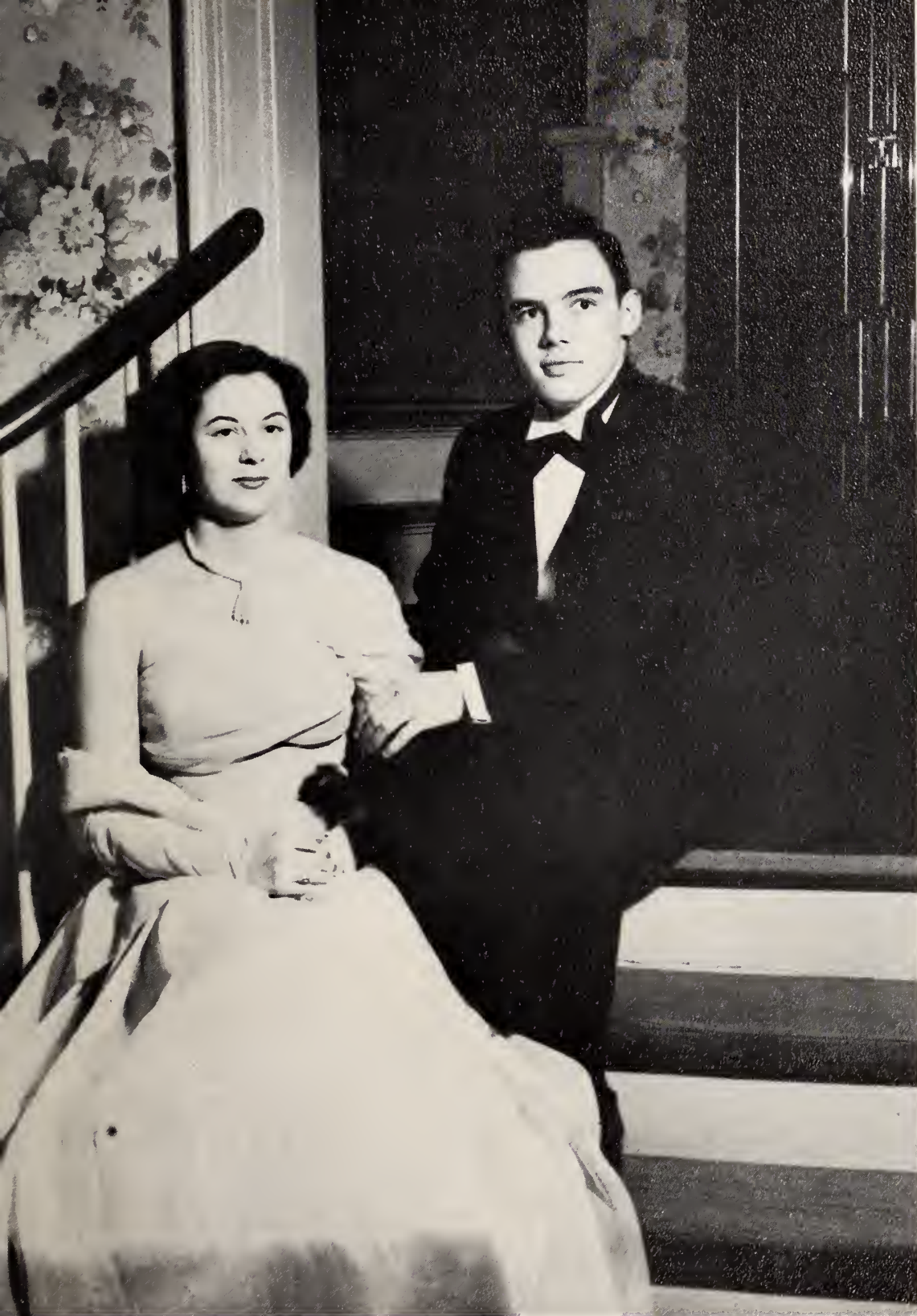


AUSTIN STEVENS

NAN WILLIAMS

"I have a way to win their loves."

King John



B
e
s
t
L
o
o
k
i
n
g

JEAN LASSITER

COLLINS PIPPIN

" 'Tis beauty truly blent . . . "

Twelfth Night

B
e
s
t
A
l
l
R
o
u
n
d



HORTENSE WIGGS

EARL McCULLERS

"Of Nature's gifts thou may'st with lilies boast."

King John

M
o
s
t
A
t
h
l
e
t
i
c



SHERRILL JOHNSON

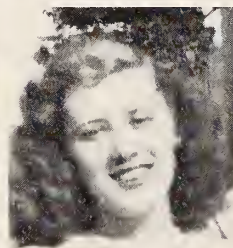
JULIA ALLEN

"O, it is excellent to have a giant's strength."

Measure For Measure



SAGACIOUS SENIORS



Juniors

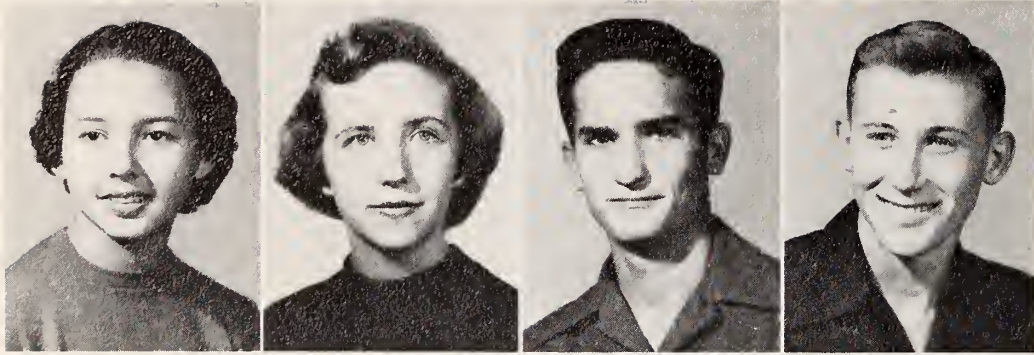


A. J. THOMPSON
Vice-President

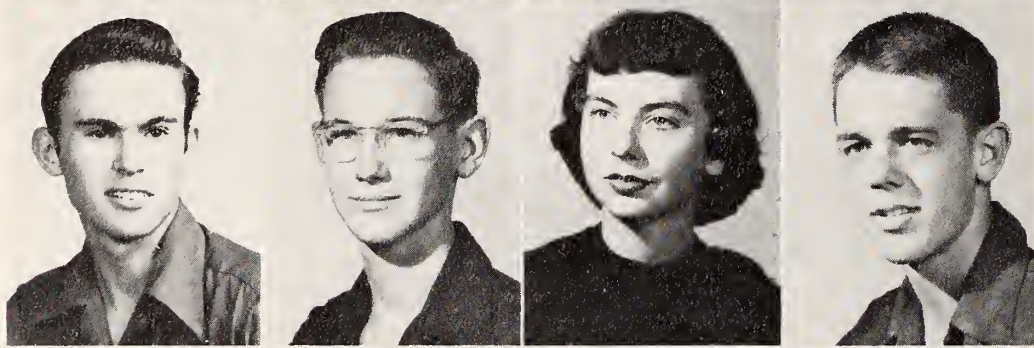
DAVID JONES
President

ALICE LEE STEVENS
Secretary

NANCY ABBOTT
Treasurer



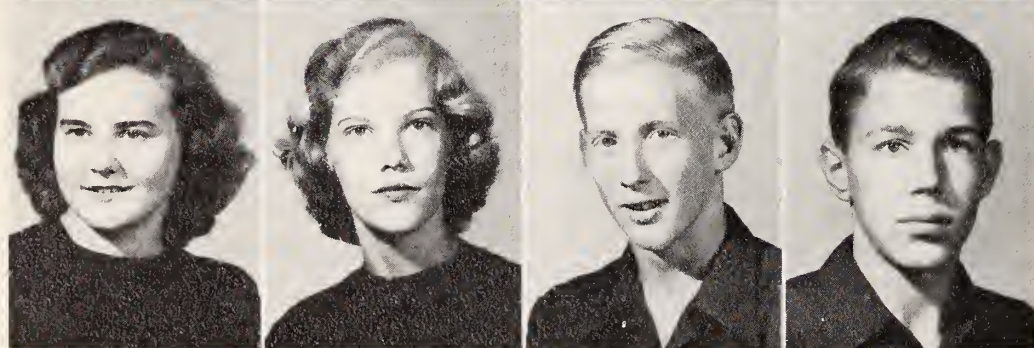
Nancy Abbott
Faye Abell
Tommy Allen
Glenn Barnes



Thomas Beasley
Jimmy Brown
Frances Byrd
Jimmy Cheatham



Jerrel Cobb
Shirley Ann Collier
Peggy Joyce Creech
Ann Crocker

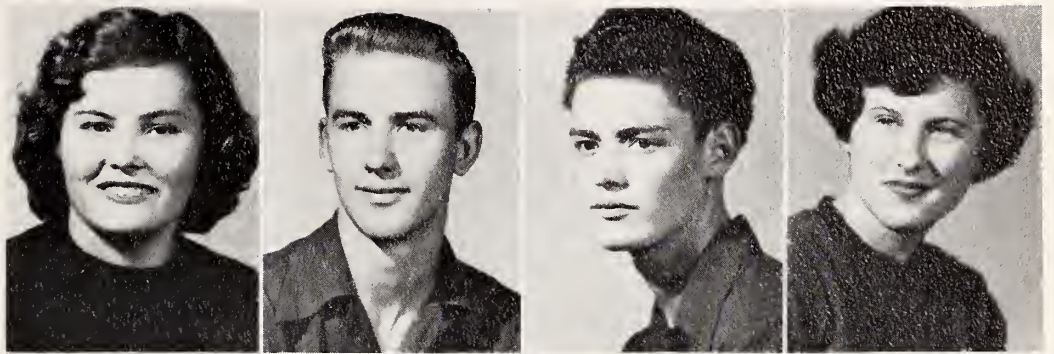


Janet Daughtery
Joyce Davis
Billy Dickens
Curtis Dupree

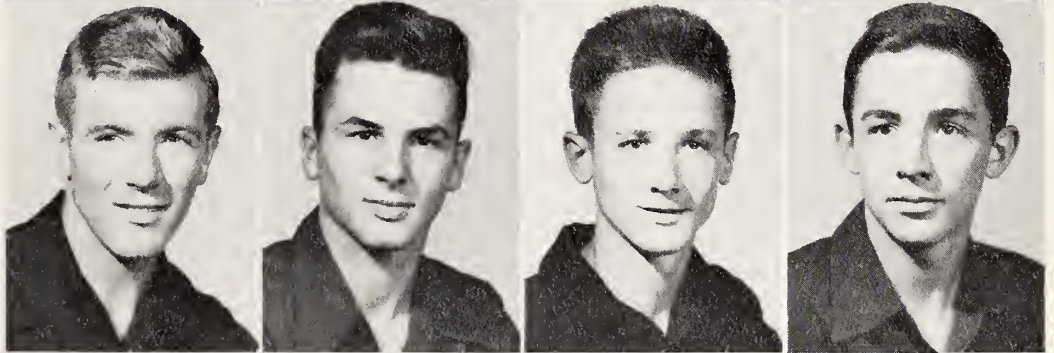


Joe Dupree
Peggy Ann Gordon
Brick Grantham
Lovey Jeanne Hicks

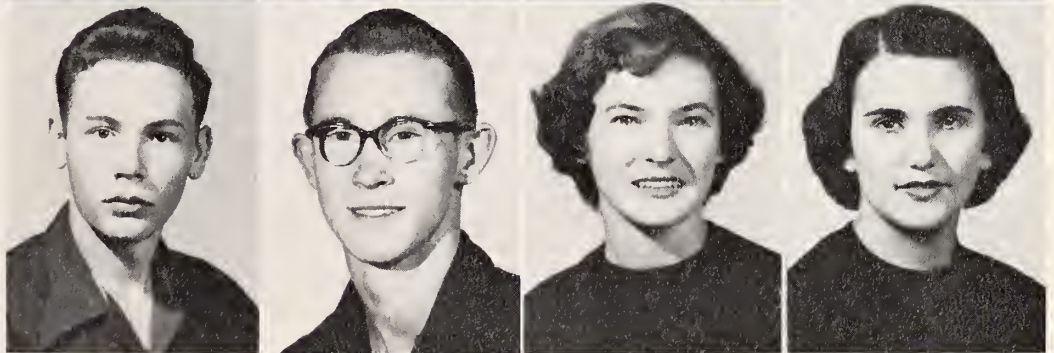
Mary Elizabeth Hill
Dennis Hobbs
Gerald Johnson
Margaret Johnson



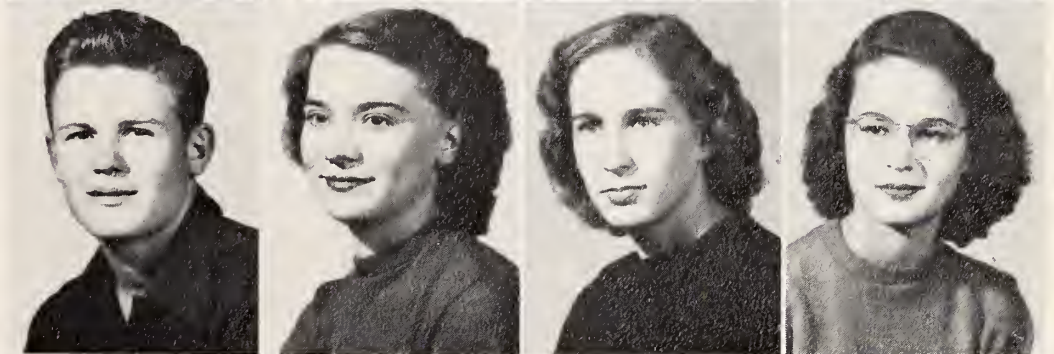
Pete Johnson
Ruffin Johnson
Wilton Johnson
David Jones



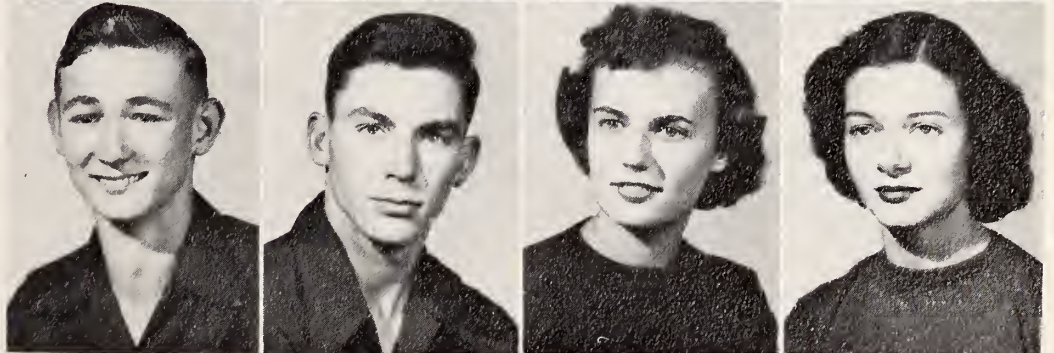
Ben Langdon
Braxton Langdon
Ella Ann Lee
Alice Mattox

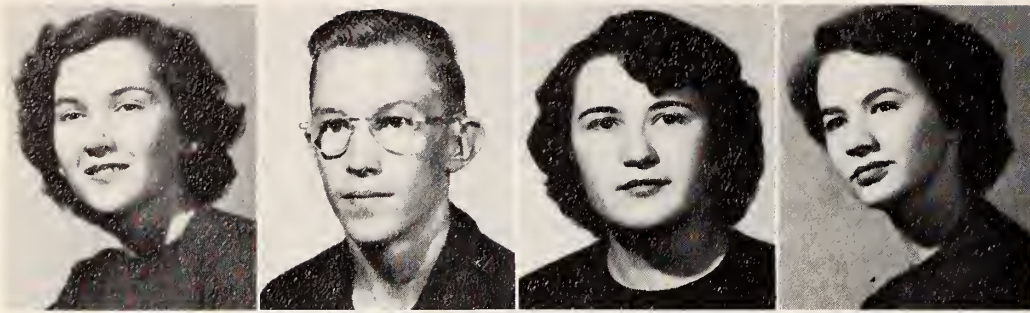


Billy Olive
Betty Ruth Penny
Bessie Peterson
Elsie Mae Peterson

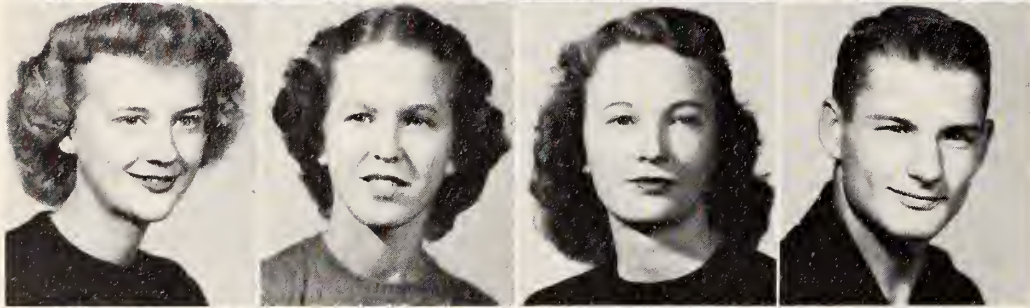


Verney Peterson, Jr.
Jack Pilkington
Barbara Jean Pope
Clem Ola Poston





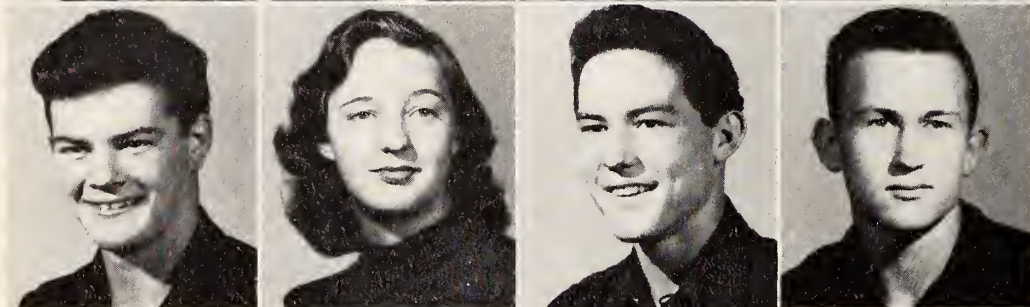
Betty Price
J. D. Ryals
Carol Stallings
Edith Stanley



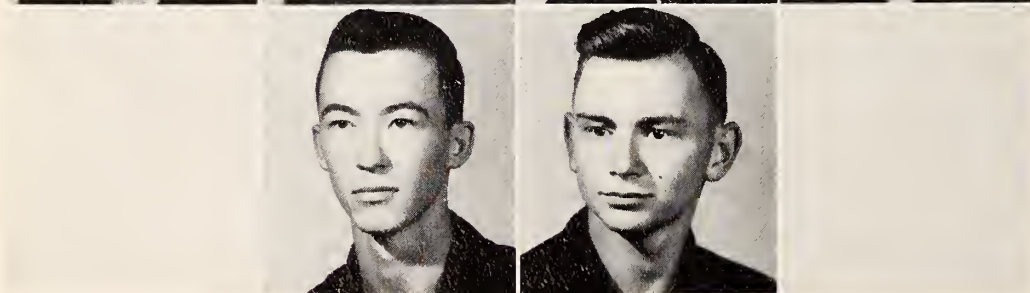
Vahnis Stephenson
Alice Stevens
Wilma Lee Stewart
Rodin Sugg



Harry Swicord
A. J. Thompson
Peggy Tomlinson
LeMay Turner



Monte Warr
Jean Warren
Freddy Weeks
Bruce Wilkins



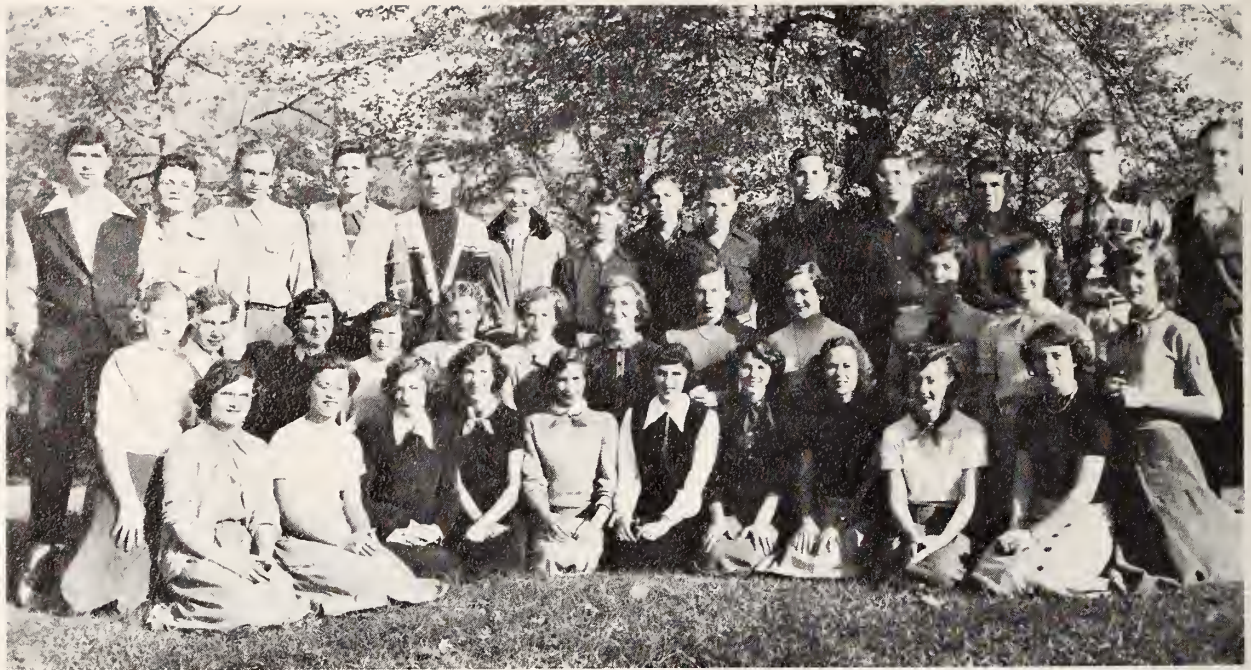
Charles Woodall
Julius Woody

Sophomores



Freshmen

Sophomores



MISS EDWARD'S HOMEROOM: FIRST ROW: left to right: Rebecca Ann Whitley, Betty Davis, Jean Day, Jo Ann Johnson, Shirley Jones, Elinor Wallace, Nell Rose Wallace, Jackie Ennis, Barbara Lee, Shirley Massengill . . . SECOND ROW: Alice Ruth Byrd, Patsy Vinson, Gail Hathaway, Jo Evelyn Underwood, Mary Edna Grimes, Mary Reich Moore, Dorothy Johnson, Mary Ellington Smithwick, Carol Jordan, Peggy Sanders, Daisy Neighbors, Janice Stephenson . . . THIRD ROW: Vartan Davidian, Bill Starling, George Meyer, Watt Huntley, Curtiss Daughtry, Bruce Jones, Harold Moore, Winston Moore, Harold Langdon, Dennis Whitley, J. C. Johnson, Jimmy Olive, Elmer Owens, Wilbert Blackman . . . ABSENT: Edward Melvin, Harold Stephenson.

MISS TAYLOR'S HOMEROOM: FIRST ROW: left to right: Margie Cox, McDonald Johnson, Annie Muriel Moore, Elsie Lynch, Margaret Lee Overbee, Janie Brantley, Frances Peedin, Amelia Thompson, Jo Ann Anderson . . . SECOND ROW: Robert Johnson, Betty Ruth Dupree, Swade Barbour, Betty Braswell, Ralph Johnson, Laverne Whitley, Harvey Johnson, Shirley Thornton, Bobby Dupree, Peggy Whitehurst, Eddie Baroody, Barbara Cockrell . . . THIRD ROW: Walter Langdon, Dwight Barbour, Mary Alice Stephenson, Louise Hill, Lucile Lee, Bernard Lee, Eugene Pittman, Joyce Daniels, Jane Lancaster, Annie Ruth Pearce, Betty Jean Wray, Doris Jean Pittman, Ed Paddison . . . ABSENT: Pauline Anderson, Hilda Barbour, Mary Johnson.

Freshmen



MR. WALKER'S HOMEROOM: FIRST ROW: left to right: Barbara Ann Welch, Sherwood Ward, Lillian Narron, Dennis Wallace, Virginia West, James Roberts, Patricia Ward, Russell Thompson . . . SECOND ROW: Vara Lee Matthews, Cecil Capps, Bette Johnson, Bobby Thomas Hill, Elizabeth Beaty, Tommy Hayes, Mary Ann Finch, Ray Hill, Faye Davis . . . THIRD ROW: Mr. Walker, Charles Johnson, Spencer Braswell, Frances Taylor, Robert Strickland, Bobby Blackman, Jean Barbour, Spotswood Johnson, Frank Daughtry . . . ABSENT: Hubert Lee Capps, Lester Coats, Bobbie Lee Dixon, Marilyn House, Bobby Moore, Edna Merle Thompson.

MR. BROWN'S HOMEROOM: FIRST ROW: left to right: Phyllis Johnson, Shirley Hales, Naomi Eason, Clara Lee Johnson, Victoria Ellis, Elizabeth Putnam, Myrtle Barbour, Letha Barbour, Martha Johnson . . . SECOND ROW: Linwood King, Donald Johnson, Kenneth Crocker, Gene Hill, Bobby Godwin, Wade Creech, Ronald Coe, Bill Johnson, David Earl Strickland, Walter Holt . . . THIRD ROW: Larry Moseley, Charles Hill, Mac Sellers, Frank Johnson, Norman Johnson, Jack Davis, Everette Lawhon, Eugene Snead, Edward Baker, Lawrence Thompson . . . ABSENT: Joe Grantham, Rayford Johnson, Anna Stanley.

Freshmen



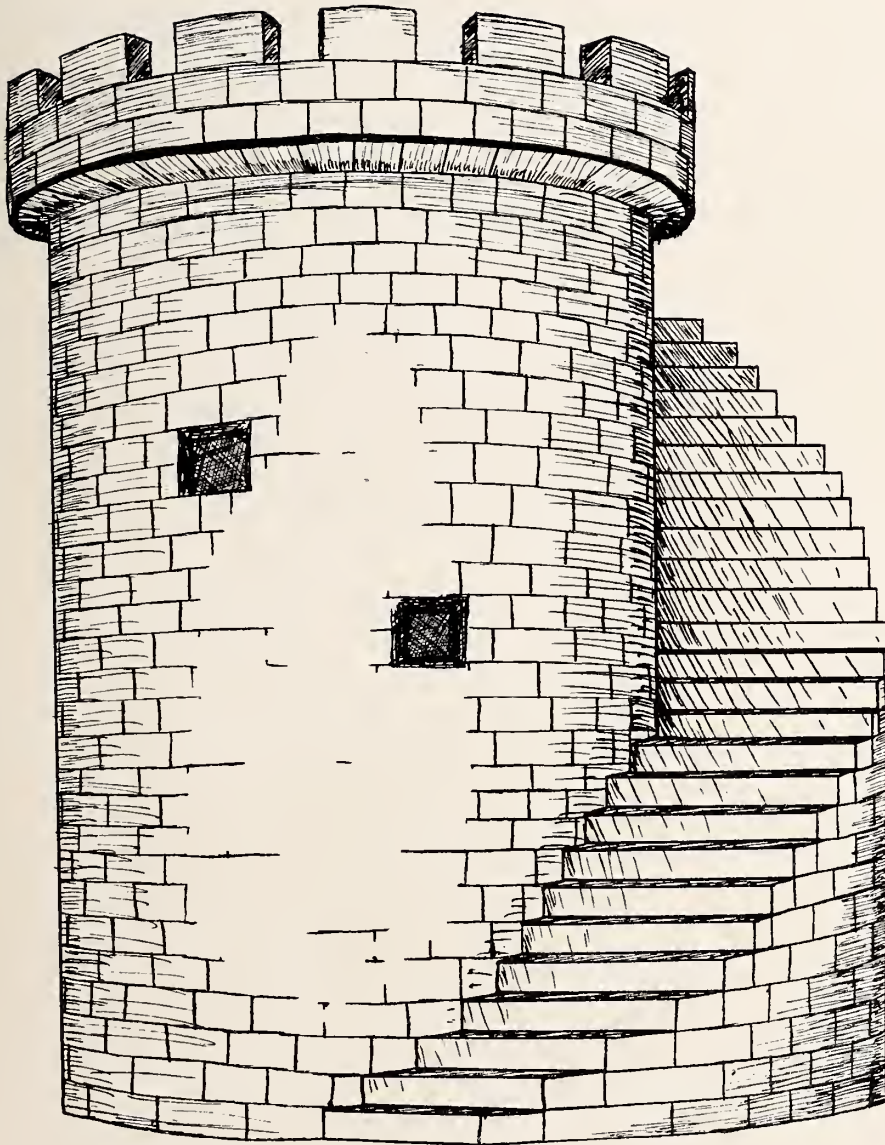
MISS JONES' HOMEROOM: FIRST ROW: left to right: Lossie Holley, Carolyn Massengill, Caroline Osborne, Nancy Whitley, Sarah Hill, Ann Lee, Peggy Johnson, Barbara Moore, Shelva Parrish, Marjorie Gwyn Batten . . . SECOND ROW: Carter Stephenson, Bobby Baggett, William Huntley, Mike Wallace, Rivers Upchurch, Earl Langdon, Billy Massey, Donald Sullivan, George McLemore, Freddy Blackman, George Willis Austin . . . THIRD ROW: Ann Corbitt, Joyce Stevens, Mae Dixon, Alice Dickens, Burton Stevens, Celia Coates, Nancy Davis, Betty Jean Davis, Geraldine Barbour, Shirley Baker, Lola Twigg.

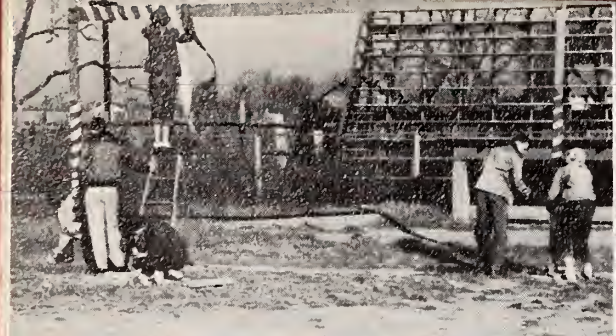


Activities

"I do perceive here a divided duty."

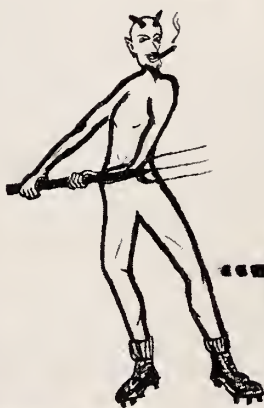
Othello.





HOME

SELMA 51



"THE COMEDY"





COMING

SMITHFIELD O

OF ERRORS



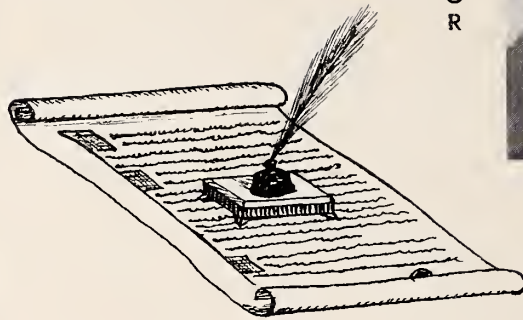
High



NAN WILLIAMS

A
D
V
E
R
T
I
S
I
N
G

M
A
N
A
G
E
R



E
D
I
T
O
R

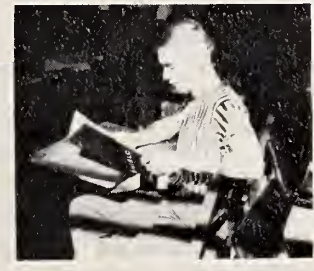


JULIA ALLEN

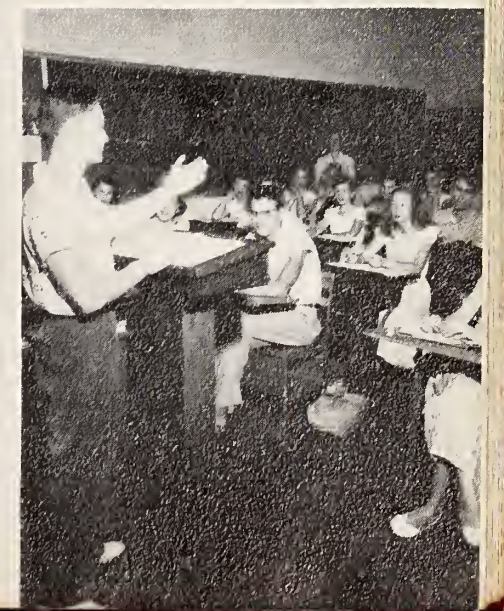
Times



SEATED: left to right: Matilda Batten, Asst. Art Editor; Joyce Talton, Exchange Editor; Martha Osborne, Art Editor; Ella Ann Lee, Asst. Editor; Faye Abell, Asst. Humor Editor; C. W. Warrick, Sports Editor; Cathryn Cheek, Humor Editor . . . STANDING: left to right: Miss Narron, Faculty Advisor; Mona Allen, Jean Warren, Wilma Stewart, Marie Hansley, Edith Stanley, Typists; Rose Dorman, Printer; Peggy Tomlinsan, Glenn Barnes, Typists; Mante Warr, Asst. Advertising Mgr.; Ben Langdon, Typist; David Twigg, Art Editor; Radin Sugg, Asst. Art Editor; Jimmy Brown, LeMay Turner, Typists; Charles Woodall, Asst. Art Editor; Miss Harrington, Faculty Advisor . . . ABSENT: Jackie Fitzgerald, Printer.



THROUGH
THESE HALLS



Journalism Club



Mrs. A. G. Glenn and Miss Lucy Harrington, sponsors; Vice-President Faye Abell, President Julia Allen, Janie Brantley, Alice Ruth Byrd, Frances Byrd, Cathryn Cheek, Curtiss Daughtry, Vartan Davidian, Betty Davis, Reba Jean Flowers, Mary Edna Grimes, Elizabeth Hill, Watt Huntley, Dorothy Johnson, J. C. Johnson, Marian Jean Johnson, Rose Marie Johnson, Bruce Jones, Shirley Jones, Ben Langdon, Ella Ann Lee, Elsie Lynch, Alice Mattox, Annie Muriel Moore, Harold Moore, Mary Reich Moore, Daisy Neighbors, Martha Osborne, Edith Rose, Bill Starling, Harry Swicord, Elinor Wallace, Nell Rose Wallace, Peggy Whitehurst, Melvin Wilkins, Nan Williams, Dennis Watson.

4-H Club



Mr. Walter McPherson and Miss Goldie Knowles, sponsors; Dwight Barbour, Letha Barbour, Myrtle Barbour, Swade Barbour, Glenn Barnes, Elizabeth Beaty, Spencer Braswell, Cecil Capps, Celia Coates, Wade Creech, Ann Crocker, Frank Daughtry, Jack Davis, Martha Johnson, Braxton Langdon, Earl Langdon, Harold Langdon, Vice-President, Jack Pilkington, Betty Price, Barbara Pope, Elizabeth Putnam, J. D. Ryals, Joyce Stevens, Joyce Talton, Frances Taylor, Shirley Thornton, Nancy Whitley, President Charles Woodall.

Art Craft Club



Miss Anne Pruitt, sponsor; Shirley Cockrell, President Kenneth Crocker, Alice Dickens, Bobby Godwin, Vice-President Walter Holt, Peggy Johnson, Lenwood King, Ann Lee, Mac Sellers, David Earl Strickland, Robert Strickland.

Career Club



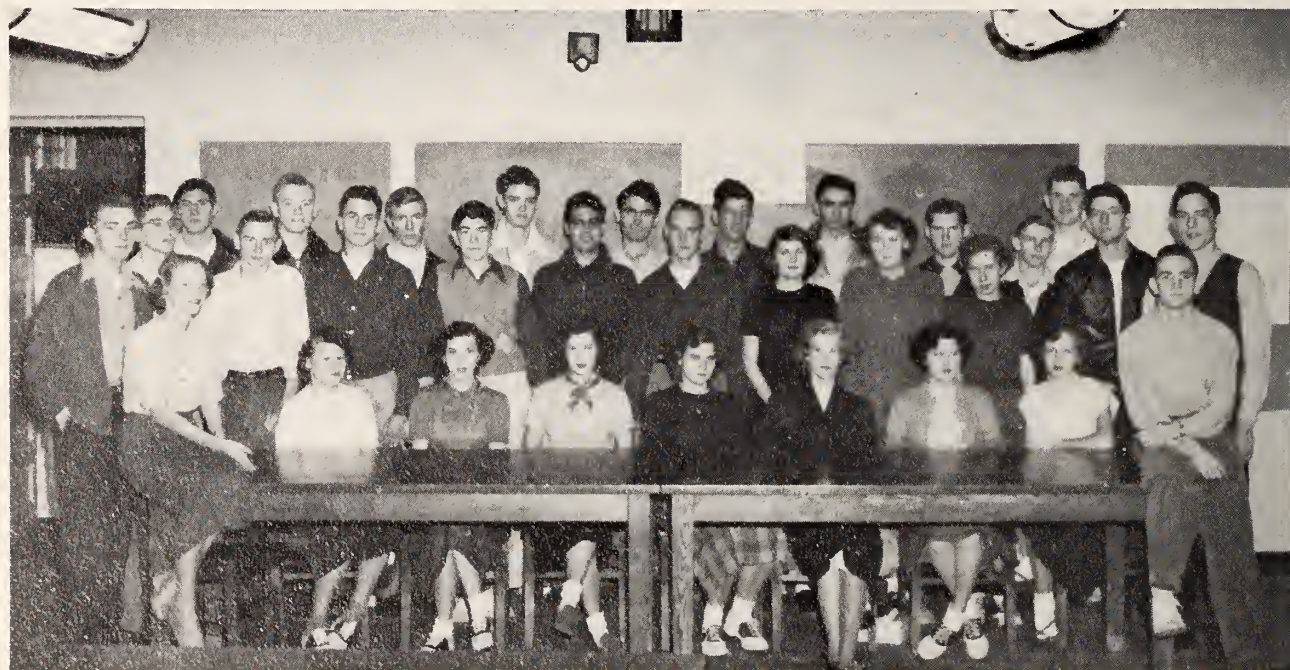
Miss Mary Taylor, sponsor; Hilda Barbour, Edward Baker, Swade Beasley, Barbara Cockrell, Ronald Coe, Betty Ruth Dupree, Jackie Ennis, Charles Hill, Louise Hill, Bill Johnson, Donald Johnson, Frank Johnson, Norman Johnson, Everett Lawhon, Lucile Lee, President Billy Rackley, Polly Sanders, Vice-President Carol Stallings, Lawrence Thompson.

Commercial Club



Miss Imogene Norron, sponsor, Vice-President Ellie Ruth Allen, Bobby Baggett, Joyce Doniels, Rose Dorman, Morie Honsley, Robert Johnson, Wilton Johnson, Jean Lossister, Marie Lee, Winston Moore, Billy Olive, Frances Peedin, Eugene Pittman, President Cloro Stallings, Mory Alice Stephenson, Sarah Toole, Bobby Underwood.

Etiquette Club



Miss Susan Bynum, sponsor; President Eddie Barody, Betty Braswell, Jerrel Cobb, Al Cooke, Joyce Davis, Janet Daughtry, Joe Dupree, Vice-President Joel Hill, Elvin Johnson, Gerald Johnson, Harvey Johnson, Jo Ann Johnson, Morgaret Johnson, Pete Johnson, Ruffin Johnson, Sherrill Johnson, Bernard Lee, Bill Moore, Morgoret Lee Overbee, Elmer Owens, Janice Stephenson, Austin Stevens, A. J. Thompson, Amelia Thompson, Patsy Vinson, Freddy Weeks, Laverne Whitley, Frederick Hill, Julius Woody, Wolter Langdon.

Model Airplane Club



Mrs. Mary Sphangos, sponsor; Tommy Allen, Freddy Blackman, Billy Dickens, Bobby Farmer, George Meyer, Earl McCullers, Larry Moseley, Ed Paddison, Lawrence Parrish, Collins Pippin, Fred Roberts, James Roberts, Bobby Smith, Eugene Snead, Dennis Stanley, Vice-President Rodin Sugg, Russell Thompson, Rivers Upchurch, Dennis Wallace, Sherwood Ward, President Monte Warr, C. W. Warrick, Dennis Whitley.

Art Club



Mr. Roy Brown, sponsor; Nancy Abbott, Jean Day, Peggy Ann Gordon, Gail Hathaway, Tommy Hayes, Sarah Hill, William Huntley, President Carcl Jordan, Mary Johnson, Ralph Johnson, Jane Lancaster, Bobby Moore, Barbara Moore, Doris Jean Pittman, Peggy Sanders, Vice-President Mary Smithwick, Alice Lee Stevens, David Twigg, LeMay Turner, Jo Evelyn Underwood.

Editorial Staff

E
D
I
T
O
R

I
N

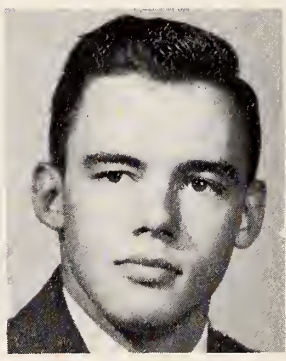
C
H
I
E
F



EARL McCULLERS



JULIA ALLEN
Assistant Editor



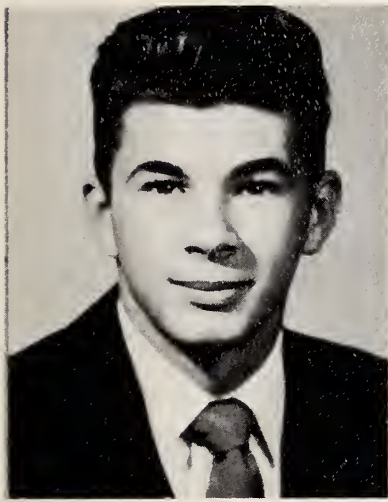
COLLINS PIPPIN
Art Editor



MARTHA OSBORNE
Art Editor



Left to right: Rose Dorman, Bobby Farmer, Typists; Clara Stallings, Dennis Watson, Snapshot Editors; Rose Marie Johnson, Austin Stevens, Typists.



B
U
S
I
N
E
S
S

M
A
N
A
G
E
R

DICKIE WALLACE

Business Staff



HORTENSE WIGGS
Advertising Manager



MRS. A. G. GLENN
Faculty Advisor



SEATED: left to right: Nan Williams, Connie Finch, Al Cooke, Faye Ward, Fred Hill, Jean Lassiter . . . STANDING: Bill Moore, Edith Rose, Mary Jean Lee, C. W. Warrick, Bobby Underwood, Polly Sanders, David Twigg, Lawrence Parrish, Cathryn Cheek, Sherrill Johnson.

Wildlife Club



Miss De Lena Jones, sponsor; George Austin, Bobby Blackman, Jimmy Brown, President Jimmy Cheatham, Mae Dixon, Curtis Dupree, Connie Finch, Bobby Hill, Charles Johnson, Vice-President David Jones, Bill Massey, George McLemore, Jimmy Olive, Verney Peterson, Carter Stephenson, Burton Stevens, Donald Sullivan, Faye Ward, Mike Wallace, Wilbert Blackman, Bruce Wilkins.

Needlecraft Club



Miss Elizabeth Edwards, sponsor; Mona Allen, Pauline Anderson, Jo Ann Anderson, Jean Barbour, Norine Barbour, Vice-President Matilda Batten, Marjorie Gwyn Batten, Ann Corbett, Margie Lee Cox, Joyce Daughtry, Faye Davis Naomi Eason, Jackie Fitzgerald, Shirley Hales, Lovey Jeanne Hicks, Clara Lee Johnson, Bobbie Lee Johnson, Ellen Lawhon, Barbara Lee, President Mary Jean Lee, Rachel Lee, Shirley Massengill, Vera Lee Mathews, Pat Meyer, Caroline Osborne, Bessie Peterson, Elsie Peterson, Sadie Phillips, Clem Ola Poston, Mildred Sellers, Edith Stanley, Vahnis Stephenson, Wilma Stewart, Peggy Tomlinson, Lola Twigg, Jean Warren, Rebecca Whitley, Ludie Maxwell, Alice Lee.

Music Club



Mr. David Walker, spansar; Geraldine Barbour, Betty Davis, Nancy Davis, Bobby Dupree, Mary Ann Finch, Ray Hill, Dennis Hobbs, Lossie Holley, Bette Jahson, Phyllis Johnson, Vice-President Carolyn Massengill, Shelva Parrish, Anna Stanley, Edna Thompsan, Pat Ward, Dickie Wallace, Barbara Welch, Virginia West, President Hartense Wiggs, Bobby Waoldridge, Betty Jean Wray.

Senior Class Play, 1951



"Our Hearts Were Young And Gay"



OUR MISS BRIGHT LEAF



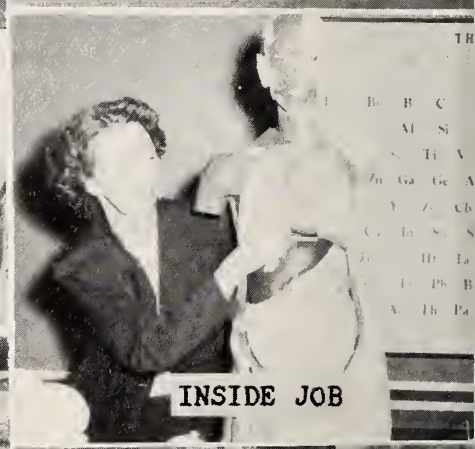
LOUISE AND JOE



FARMERS DAY



EX LIBRIS



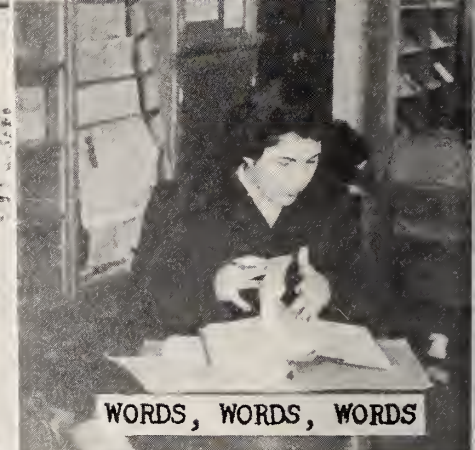
INSIDE JOB



HOOKS FOR LOOKS



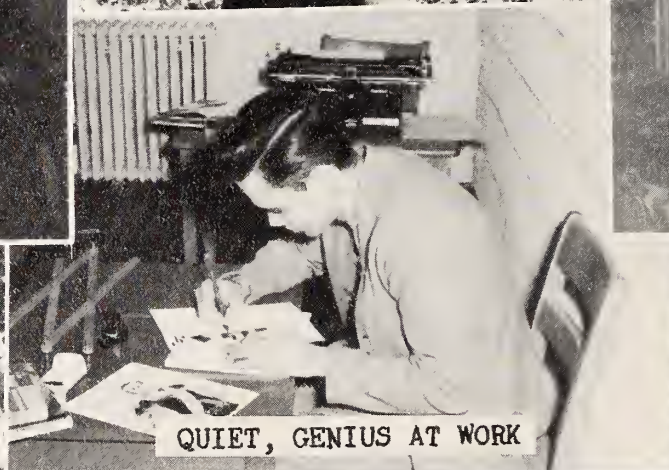
FOURTH QUARTER SMILE



WORDS, WORDS, WORDS



"THE THING"



QUIET, GENIUS AT WORK



WHAT, NO HAT?



MISSED



"WHA' HOPPEN'D?"



SWISH

Junior-Senior Banquet



"Small cheer and great welcome
makes a merry feast."

The Comedy of Errors



"By my troth a goad sang . . ."

Much Ado About Nothing

Glee



FIRST ROW: left to right. Jonet Doughtry, Ludie Maxwell, Joyce Tolton, Elinor Wallace, Nell Rose Wallace, Mary Reich Maare, Shirley Boker, Amelio Thompson . . . SECOND ROW: Hartense Wiggs, Alice Dickens, Rose Marie Jahson, Dorothy Johnson, Mae Dixan, Betty Price, Doisy Neighbors, Ann Carbutt . . . THIRD ROW: Mary Edno Grimes, Shirley Jones, Cathryn Cheek, Nancy Whitley, Polly Sonders, Alice Lee Stevens, Joyce DAVIS, Burton Stevens . . . FOURTH ROW: Fronk Doughtry, Billy Dickens, Ben Langdon, Charles Waadoll, Cecil Copps, Bobby Boggett, Freddy Blackmon . . . FIFTH ROW: Callins Pippin, Ralph Johnson, Spencer Braswell, Dickie Wollace, Ruffin Johnson, Bobby Former, Fred Hill.

Club



FIRST ROW: left to right: Clara Stallings, Nan Williams, Sarah Hill, Maraaret Johnson, Carolvn Mas-sengill, Jane Lancaster, Jo Evelyn Underwood, Lovey Jean Hicks, Miss Parker . . . SECOND ROW: Peggy Whitehurst, Julia Allen, Rose Dorman, Faye Abell, Peggy Ann Gordon, Jean Day, Alice Mattox . . . THIRD ROW: Carol Jordan, Nancy Abbott, Mary Ellington Smithwick, Peggy Sanders, Doris Pittman, Mary Jean Lee, Ella Ann Lee, Celia Coates, Joyce Stevens . . . FOURTH ROW: Bobby Thomas Hill, Joe Dupree, Earl McCullers, Bruce Jones, Monte Warr, Elmer Owens, Bobby Underwood, Robert Strickland . . . FIFTH ROW: Bobby Smith, David Jones, George Austin, Dennis Hobbs, C. W. Warrick, Eugene Pittman, Bobby Dupree.

Music Masters

"If music be the food of love, play on . . ."

Twelfth Night

SENIOR QUARTET



MISS FLORA PARKER
Glee Club Director



COLLINS PIPPIN	DICKIE WALLACE	EARL McCULLERS	C. W. WARRICK
First Tenor	Second Tenor	First Bass	Second Bass



MISS FLORA CANADY
Piano



MRS. MARVIN LORENZ
Piano



MISS MARY ELLEN MATTHEWS
Piano



MR. DAVID WALKER
Director



NELL ROSE WALLACE — CAROLINE OSBORNE
Majorettes



BRUCE JONES
Drum Major



FIRST ROW: left to right: David Jones, Sherrill Peterson, Johnny Wallace, George Austin, Bill Starling, M. T. Baggett, Dennis Hobbs . . . SECOND ROW: Collins Pippin, Carol Jordan, Spencer Braswell, Bobby Baggett, Freddy Blackman, Vartan Davidian, Bobby Dupree, Joel Hill, Bobby Wooldridge, Monte Montgomery, Harold Langdon, Ben Daughtry, Lehman Barnes . . . THIRD ROW: standing: Mr. David Walker, Director; Watt Huntley, Sherwood Ward, Curtiss Daughtry, Eugene Pittman, Ralph Johnson.



MAGAZINE CONTEST WINNERS



TONI TWINS



SOPHOMORE SOCIALITES



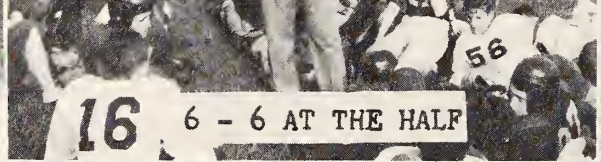
SCHOOL'S OUT



HOOD'S CORNER



FREE THROW



16 6 - 6 AT THE HALF



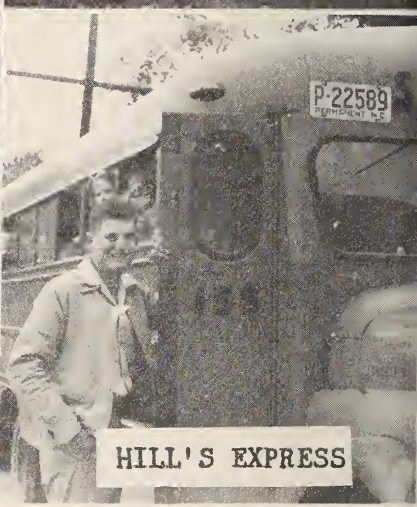
MONTE'S EXTRA POINT



"SEVENTEENTH SUMMER"



LOVE ?



HILL'S EXPRESS



TIMELY TWOSOME

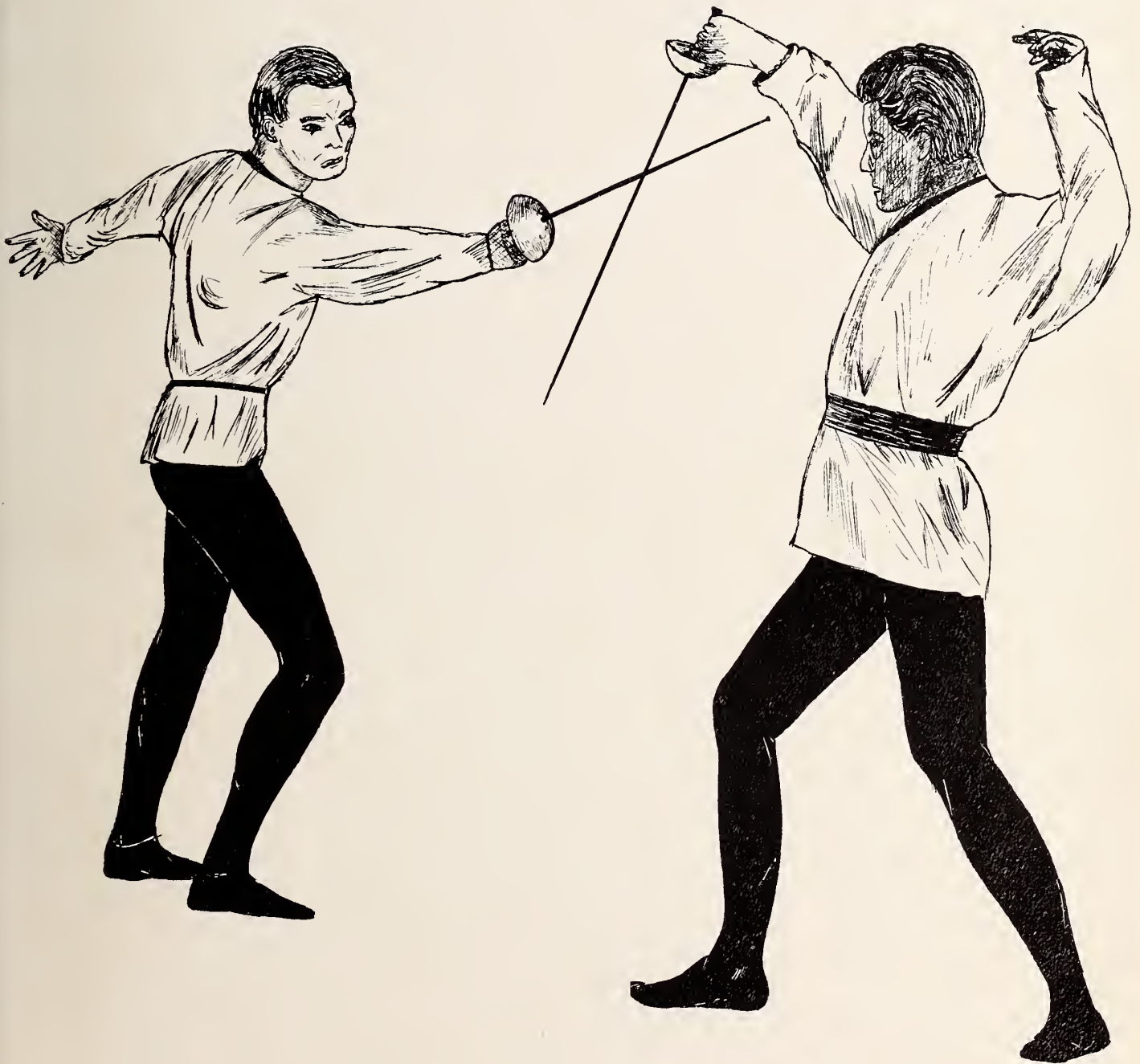


MERCENARY MONOGRAMERS



OFF SIDES

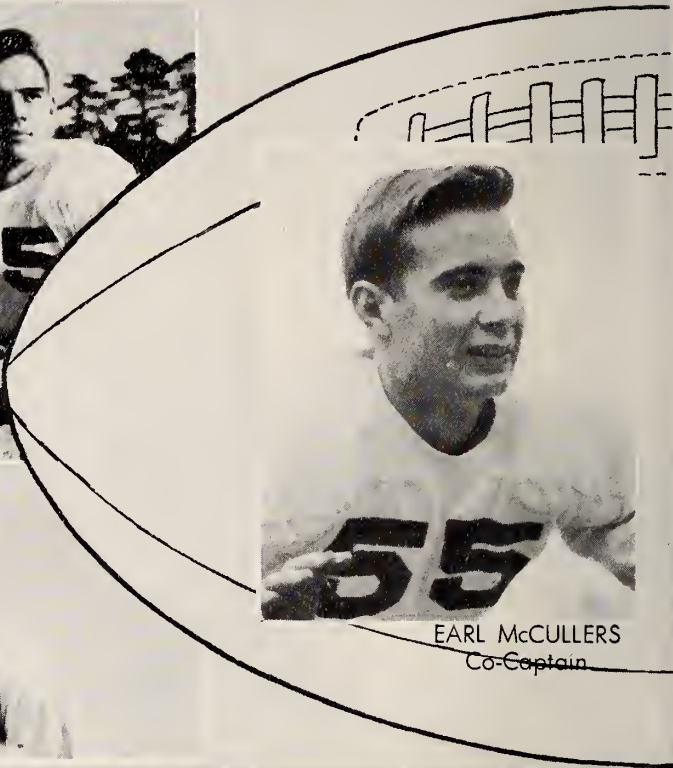
Athletics



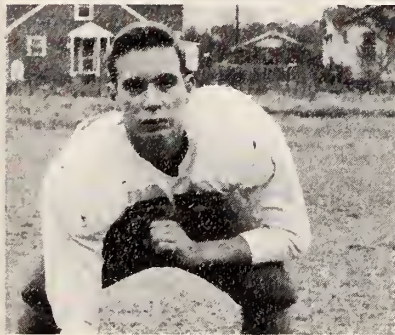
FOOT



Coach

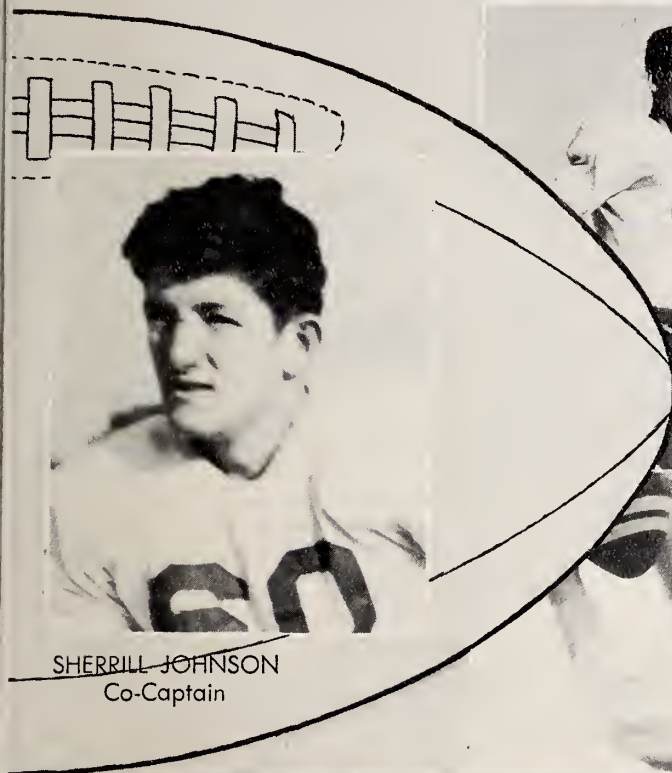


EARL McCULLERS
Co-Captain



FIRST ROW: left to right: Rivers Upchurch, Mike Wallace, Jack Pilkington, Earl McCullers.
SECOND ROW: Eddie Baroody, Julius Woody, Bill Starling, Ed Paddison, Rodin Sugg
THIRD ROW: Coach Brown, Jimmy Cheatham, Ruffin Johnson, Bruce Wilkins, Lawrence Parrish, Joe Dupree.

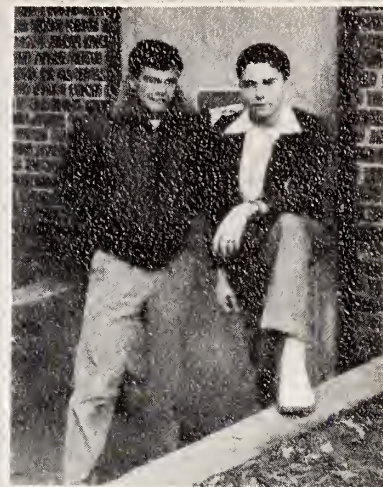
BALL



SHERRILL JOHNSON
Co-Captain



MONTE WARR BOBBY FARMER
Managers



S Q U A D

FIRST ROW: left to right: Sherrill Johnson, Bill Moore, Collins Pippin, Tommy Hayes
SECOND ROW: Elmer Owens, Austin Stevens, Billy Dickens, Freddie Weeks, Ben Langdon
THIRD ROW: Dickie Wallace, Ralph Johnson, Dennis Watson, Eugene Snead, George Meyer
ABSENT: Dennis Whitley, Bobby Thomas Hill, Billy Massey.

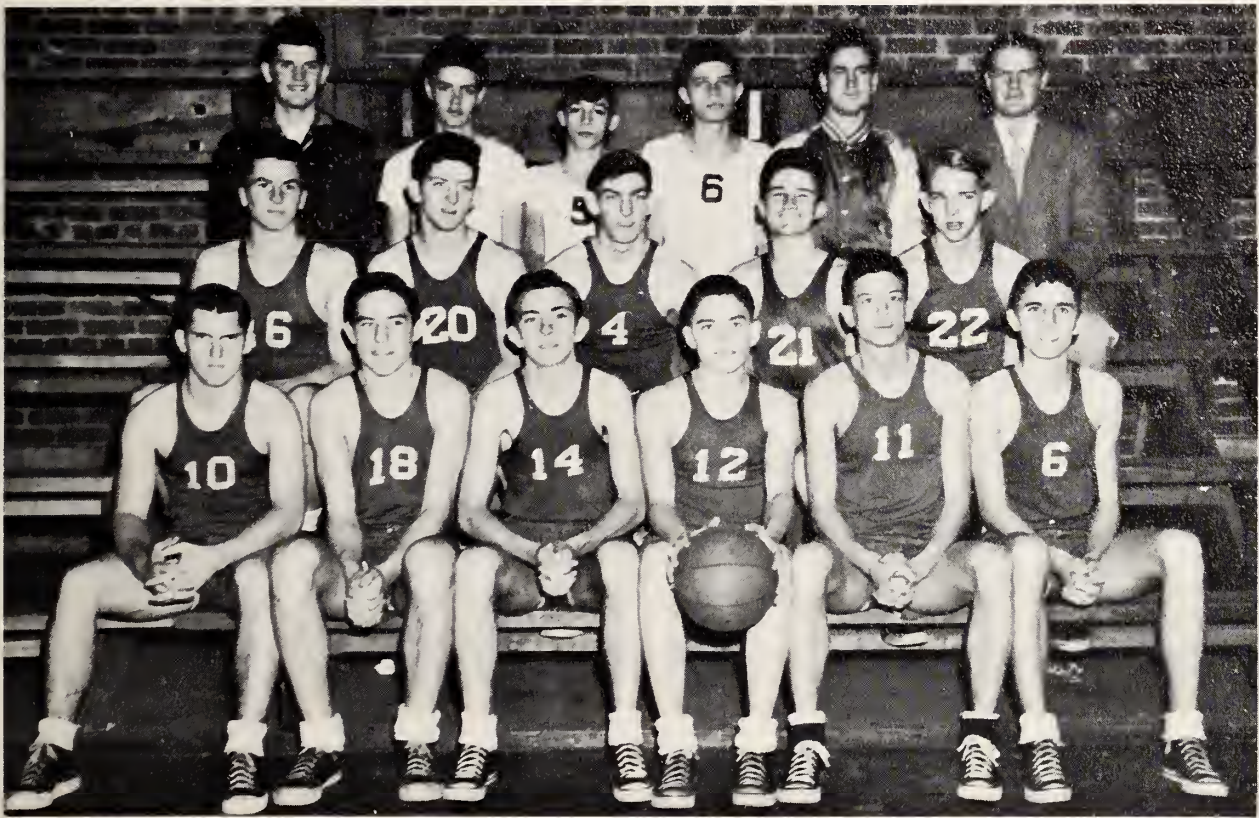
BASKET



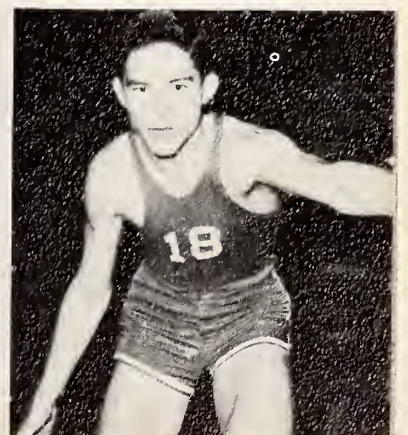
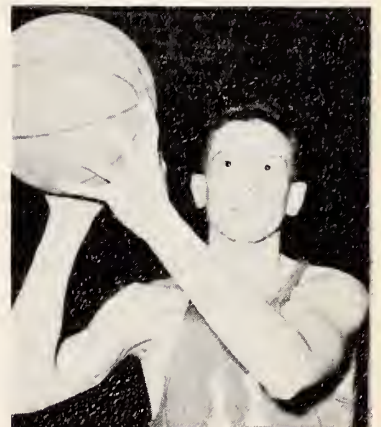
FIRST ROW: left to right: Frances Peedin, Annie Ruth Pearce, Reba Jean Flowers, Mary Alice Stephenson, Jean Warren, Marian Jean Johnson, Alice Dickens, Mae Dixon . . . SECOND ROW: Frances Byrd, Mary Edna Grimes, Joyce Daniels, Carol Jordan, Burton Stevens, Ella Ann Lee, Captain Julia Allen, Coach Luby Royal.



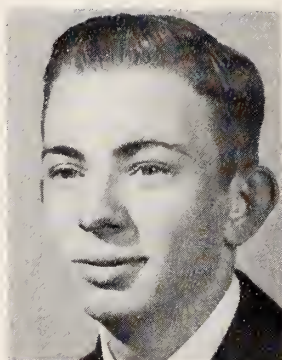
BALL



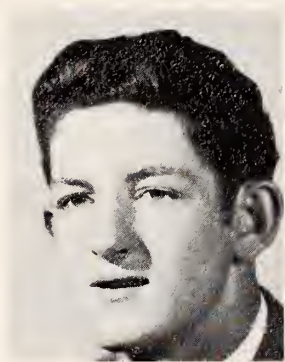
FIRST ROW: left to right: Elmer Owens, Freddy Weeks, Elvin Johnson, Captain Bobby Farmer, Harry Swicord, Bobby Smith . . . SECOND ROW: Ruffin Johnson, Sherrill Johnson, Curtiss Daughtry, Bill Starling, Bobby Wooldridge . . . THIRD ROW: Fred Hill, Gerald Johnson, Harold Moore, Watt Huntley, Dennis Whitley, Coach Roy Brown.



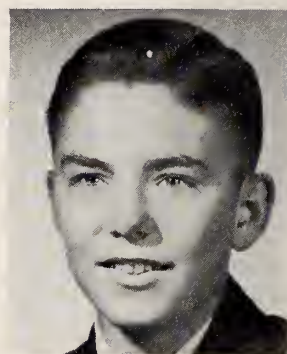
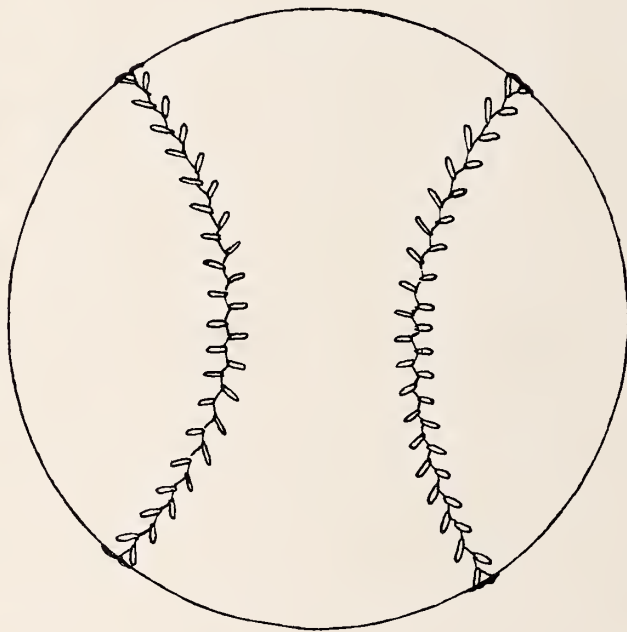
BASEBALL LETTER MEN



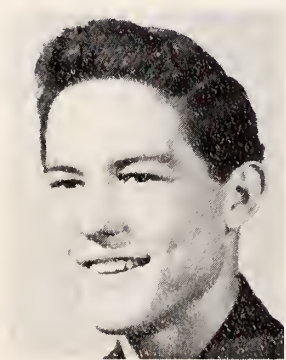
ELVIN JOHNSON
Captain



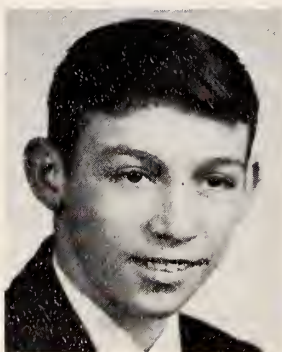
SHERRILL JOHNSON



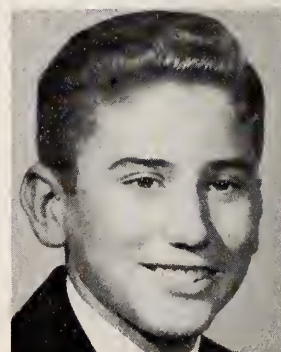
BOBBY FARMER



FREDDY WEEKS



HAROLD MOORE



AUSTIN STEVENS

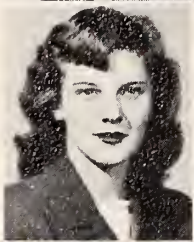
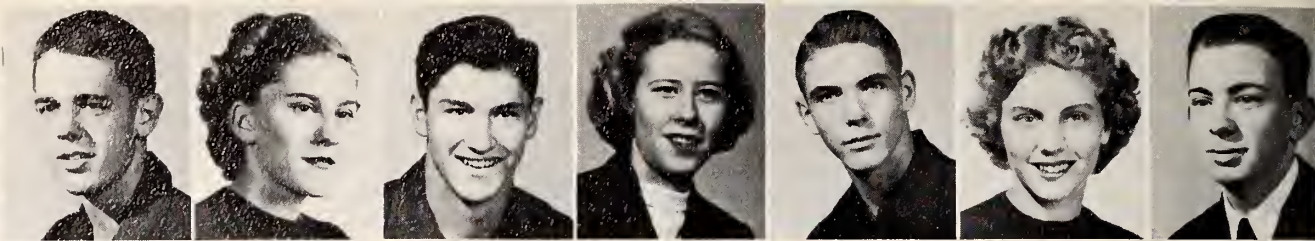
Our Cheer Leaders



ELLA ANN LEE
FAYE ABELL
HORTENSE WIGGS, Chief
NAN WILLIAMS
EDITH ROSE



M O N O G R A M C L U B

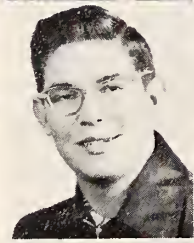
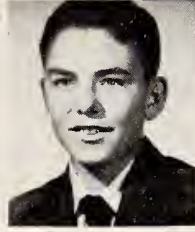
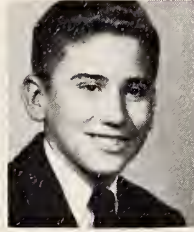


President

Vice-President

Secretary

Sargeant At Arms

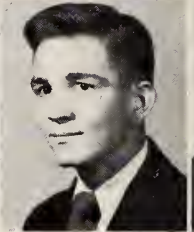
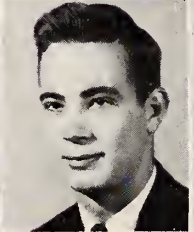
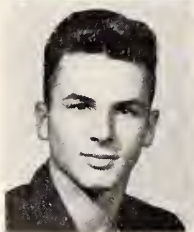


Austin
Stevens

Bobby
Farmer

Julia
Allen

Bruce
Wilkins



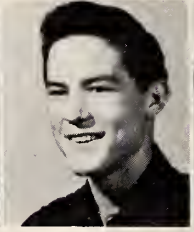
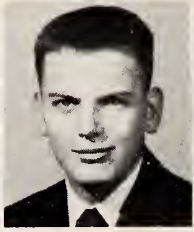
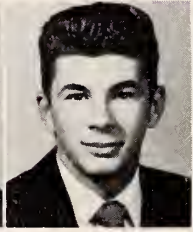
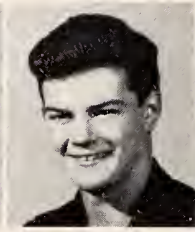
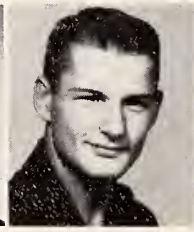
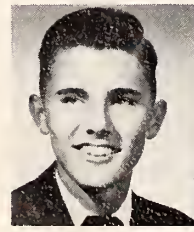
Faye
Abell



Edith
Rose



Nan
Williams



FIRST ROW: left to right: Jimmy Cheatham, Joyce Daniels, Joe Dupree, Reba Jean Flowers, Brick Grantham, Mary Edna Grimes, Elvin Johnson . . . SECOND ROW: Marian Johnson . . . THIRD ROW: J. C. Johnson . . . FOURTH ROW: Ruffin Johnson, Sherrill Johnson, Bernard Lee, Ella Ann Lee, Earl McCullers, Bill Moore, Harold Moore . . . FIFTH ROW: Elmer Owens . . . SIXTH ROW: Lawrence Parrish . . . SEVENTH ROW: Bobby Smith, Rodin Sugg, Monte Warr, Dickie Wallace, Dennis Watson, Freddy Weeks, Hortense Wiggs.

Advertisements

"Now I play a merchant's part."

The Taming of the Shrew



JOHNSON COTTON COMPANY

COMPLETE FARM & HOME SUPPLIES

FURNITURE, HARDWARE, FERTILIZERS, FARM IMPLEMENTS

JOHN DEERE TRACTORS AND EQUIPMENT

PHONE 2701

SMITHFIELD,

NORTH CAROLINA



DIAL 2095

WILLIAMS MOTOR COMPANY

BETTER BUY BUICK

116 Market Street

NEWITT P. WILLIAMS

SMITHFIELD, NORTH CAROLINA

DAY'S DRY CLEANERS

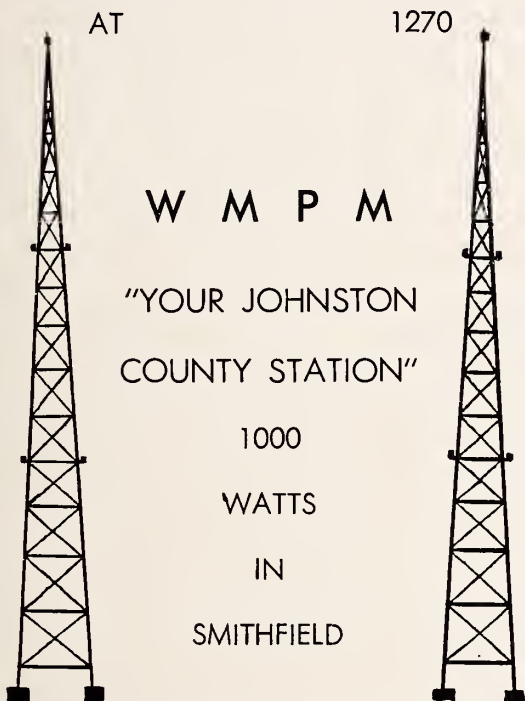
"THE KLEANERS THAT KLEAN"

Phone 2868

SMITHFIELD, NORTH CAROLINA

J. E. GREGORY AND COMPANY

CONGRATULATIONS
TO THE
CLASS OF '51



AT

1270

W M P M

"YOUR JOHNSTON
COUNTY STATION"

1000

WATTS

IN

SMITHFIELD

G R A N T H A M ' S

Outfitters for Men and Boys

For Over 50 Years

SMITHFIELD,

NORTH CAROLINA

CONGRATULATIONS TO THE SENIORS

T H E S M A R T S H O P
F O R
S M A R T F E M I N I N E A P P A R E L

M. P. SCHATZMAN
Owner

SMITHFIELD, N. C.
Phone 2433

Compliments of

LEDER BROS., INC.

FEATURING

NATIONALLY ADVERTISED

MERCHANDISE

"SHOP WITH CONFIDENCE,

WEAR WITH PRIDE"

JORDAN'S JEWELERS

Since 1898

DIAMONDS — WATCHES

SILVERWARE AND GIFTS

SMITHFIELD, NORTH CAROLINA

Telephone Selma 390

**SEL-FIELD FEED &
PRODUCE CO., INC.**

WHOLESALE FRUITS AND PRODUCE

BANANAS A SPECIALTY

Intersection of Highways 70 and 301

Compliments of

**THOMPSON'S TEXACO
SERVICE AND GRILL**

SELMA-SMITHFIELD HIGHWAY

Phone 9891

SANDWICHES OF ALL KINDS

WASHING GREASING POLISHING

Read
THE SMITHFIELD HERALD
for
Twice-a-Week
Coverage of Johnston County
News and Opinion

**SMITHFIELD OIL CO.,
INC.**

Smithfield, N. C.

FUEL OIL

GASOLINE

Compliments of
CAROLINA DRUGS

"SERVICE WITH A SMILE"

SANDWICHES

HOT COFFEE — HOT CHOCOLATE

ALL KINDS OF SODAS



**DORMAN'S SHOE
STORE**

QUALITY SHOES
FOR
ALL THE FAMILY

BATT JOHNSON'S

PIT COOKED BAR-B-QUE
DAILY

BUFFALO ROAD SMITHFIELD

STUDEBAKER

BUIE MOTORS, INC.

"YOUR FRIENDLY
STUDEBAKER DEALER"

Phone 2779

SMITHFIELD, NORTH CAROLINA

Compliments of

H O W E L L T H E A T R E S

GOOD LUCK TO THE CLASS OF '51

H. P. HOWELL, Owner

COMPLIMENTS

WALLACE GUANO COMPANY

AND

WALLACE WAREHOUSE

SMITHFIELD,

NORTH CAROLINA

HEAVENER

AND

WALLACE

IMPLEMENT COMPANY

Allis-Chalmers Farm Machinery

SMITHFIELD,

NORTH CAROLINA

Compliments of

SMITHFIELD FRUIT CO.

"A STORE AT YOUR DOOR"

Wholesale Candies

Tobaccos, Gums, Novelties

Jobbers Over 25 Years

Owned and Operated by Ziady Family

Compliments of

F. C. X. STORES

BEST WISHES TO THE
SENIOR CLASS OF 1951

SMITHFIELD,

NORTH CAROLINA

CAFE ROYALL

HOME OF SOUTHERN COOKING

Steaks — Chicken — Chops

Delicious Sandwiches

Always A Friendly Welcome

SMITHFIELD,

NORTH CAROLINA

SMITHFIELD MULE COMPANY

Livestock

Avery and Oliver Tractors and

Farm Machinery

Clean Used Cars

"We Trade For Anything That
Walks or Rolls"

Compliments of

B. AND R. WILSON, INC.

YOUR FORD DEALER

SMITHFIELD, NORTH CAROLINA

SUPERIOR DAIRY

Ice Cream — Milk Products

GRADE A MILK

Pasteurized and Homogenized

SMITHFIELD, NORTH CAROLINA

JOHNSTON COUNTY PRODUCE MARKET

BUYERS AND SELLERS OF
ALL KINDS PRODUCE

Dial 2307

SMITHFIELD, NORTH CAROLINA

Compliments of

GARDNER - CREECH OIL CO.



Your Friendly Mobilgas Distributor



LUMBER
SASH — DOORS
BUILDING MATERIALS
MILLWORK

●
GUY C. LEE MFG. CO.

Dial 2010



To My Customers
and You Who May
Become My Customers
Thank You

J. H. WIGGS

THE ROYSTER MAN

Smithfield Phone 2639

P. O. Box 525

SMITHFIELD HOG
MARKET



WE BUY HOGS EVERY DAY

Dial 3131 or 3132

SMITHFIELD, NORTH CAROLINA

GARDNER MOTOR CO.

DODGE

PLYMOUTH

DODGE TRUCKS

SMITHFIELD,

NORTH CAROLINA

HOOD BROS. DRUG
STORE

JOHNSTON COUNTY FAMILY
DRUGGISTS FOR OVER 60 YEARS

FARMER'S HARDWARE

DUO-THERM OIL HEATERS

AND

BENJAMIN MOORE PAINTS



CONGRATULATIONS TO THE
SENIOR CLASS OF '51

SMITHFIELD,

NORTH CAROLINA

JOHNSON'S ESSO SERVICE

ESSO STANDARD PRODUCTS

PHONE 9921

SMITHFIELD, NORTH CAROLINA

R I V E R S I D E
B R I C K C O .

"Build With Brick for Permanency"

JAMES R. POOL, Owner

Phone 3456

SMITHFIELD, NORTH CAROLINA

Congratulations Graduates!

WILSON LIVESTOCK CO.

THORNHILL WAGONS

John A. McKay Farm Implements

SMITHFIELD, NORTH CAROLINA

**WHITLEY BROTHERS
WHOLESALE CO.**

Your Home-County Wholesaler

**MOZINGO'S AUTO
TRIM SHOP**

Doors Covered, Convertible Tops
Tailored Seat Covers
ANY AUTOMOBILE UPHOLSTERY
Dial 2208

**TURNAGE & TALTON
SUPER MARKET**

WE DELIVER

Phone 3106

SMITHFIELD, NORTH CAROLINA

Congratulations

**CAROLINA WHOLESALE
GROCERY CO.**

COMPLETE LINE OF GROCERIES
PAPER MATERIALS

L. H. SASSER TELEPHONE 2859

FOR QUICK AND DEPENDABLE SERVICE

CALL

RIVERSIDE CAB COMPANY

PHONE 2151

W. M. CREECH, Owner

ALL PASSENGERS INSURED

COURTEOUS DRIVERS

BEST WISHES SENIORS OF '51

**J. S. OGBURN &
SON'S GIN**

CLEVELAND ROAD

HOWARD'S CLEANERS

FOR BETTER CLEANING

For Pick-Up or Delivery

Phone 2615

LITTLE'S PONTIAC CO.

SALES

SERVICE

Phone 2366

SMITHFIELD,

NORTH CAROLINA

**BARNES FURNITURE
COMPANY**

COMPLETE HOME FURNISHINGS

WILLIAM BARNES, Owner

Phone 3356

FOUR OAKS

Compliments of

AUTOMOTIVE PARTS COMPANY

CONGRATULATIONS TO THE CLASS OF '51

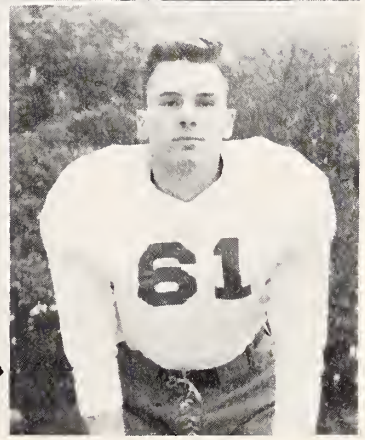
SMITHFIELD,

NORTH CAROLINA



 **MONKEY**

**M
A
N
I
A
C
S**



ROGMON OIL CO.

Best Wishes to the Class of '51

SMITHFIELD, NORTH CAROLINA

Graduate to Greater Savings

At Your Friendly

PENDER STORE

SMITHFIELD, NORTH CAROLINA

Compliments of

FIRST-CITIZENS BANK AND TRUST CO.

SMITHFIELD,

NORTH CAROLINA

Established 1898

MEMBER FEDERAL DEPOSIT INSURANCE CORPORATION

Compliments of

**AUSTIN OGBURN
COTTON COMPANY, Inc.**

Your Friendly Cotton Buyer

Congratulations to the Class of '51

ARMOUR FERTILIZER

MELVIN LASSITER

FOUR OAKS

Best Wishes Seniors of '51

CREECH'S STORE

ANGIER HIGHWAY

WOODALL'S VULCANIZING SHOP

E. L. WOODALL, Owner

Phone 3491

IGNITION SERVICE

RECAPPING AUTO LITE BATTERIES

ELECTRICAL CONTRACTOR

ELECTRIC PUMP SERVICE

MYERS WATER SYSTEM

SERVICE & SALES

R. H. LASSITER

FOUR OAKS, NORTH CAROLINA

WALLACE'S STAR DINER

Best Wishes Seniors of '51

HOLT LAKE ROAD

Sinclair

Petroleum

Products

MARVIN E. TAYLOR, Distributor

SMITHFIELD,

NORTH CAROLINA

COMPLIMENTS OF

S. J. N O R E C K

Distributor of Pure Oil Products

"BE SURE WITH PURE"

SMITHFIELD,

ZEBULON,

NORTH CAROLINA

CONGRATULATIONS TO

THE CLASS OF 1951

THE JEWEL BOX

SMITHFIELD,

NORTH CAROLINA

CONGRATULATIONS

TO THE
CLASS OF '51

**BAROODY'S FRIENDLY
PLACE**

**J O H N S O N ' S
LAUNDRY AND DRY
CLEANERS**

Smithfield's Only SANITONE Cleaners

Phone 2305

SMITHFIELD,

NORTH CAROLINA

TALTON, INC.

FURNITURE
AND
APPLIANCES

Phone 3444
SMITHFIELD, NORTH CAROLINA

COMPLIMENTS

C. E. BINGHAM

Compliments of

THE LADIES SHOP

SMITHFIELD, NORTH CAROLINA

INSURANCE

REAL ESTATE

ROBERTS & WELLONS, INC.

"A COMPLETE FARM SUPPLY STORE"

*CASE TRACTORS

*NEW HOLLAND HAY BALER

*FLORENCE MAYO TOBACCO CURER

*DU PONT PAINTS

BRIDGE STREET

SMITHFIELD, NORTH CAROLINA

Best Wishes Seniors!

**U N D E R W O O D
F U N E R A L H O M E**

Compliments of

**E F I R D ' S D E P A R T M E N T
S T O R E**

"Correct" Merchandise at Low Prices

SMITHFIELD, NORTH CAROLINA

**H I L L ' S G R O C E R Y
A N D M A R K E T**

Groceries — Meats — Ice Cream

Congratulations Seniors

SMITHFIELD, NORTH CAROLINA

CONGRATULATIONS

TO THE

CLASS OF '51

U P C H U R C H P H A R M A C Y

Compliments of

**B O Y E T T E E L E C T R I C
C O M P A N Y**

SMITHFIELD, NORTH CAROLINA

Compliments

H O Y T ' S F L O W E R S H O P

COMPLETE FLORAL SERVICE

SMITHFIELD, NORTH CAROLINA

CONGRATULATIONS

TO THE CLASS OF '51

PIPPIN MOTOR
Inc.

SALES

OLDSMOBILE

SERVICE

"WE WILL BE HERE TOMORROW TO BACK

UP WHAT WE SAY TODAY"

SMITHFIELD,

NORTH CAROLINA

W. T. DANCE CO.

Sundial Shoes for the Family

SMITHFIELD, NORTH CAROLINA

GOOD LUCK SENIORS!

COMPLIMENTS

**WILSON CHEVROLET
CO.**

SALES

SERVICE

SMITHFIELD,

NORTH CAROLINA

Phone 2129

Phone 2128

Come to

THE PICKWICK

For Good Recreation

At Your Leisure Hours

SMITHFIELD, NORTH CAROLINA

**JORDAN & HOLT
HARDWARE, Inc.**

HARDWARE FOR THE FARM AND HOME

Telephone 2620

SMITHFIELD,

NORTH CAROLINA



D. H. DAVIS

PLUMBING AND HEATING

Congratulations to the
Graduating Class of '51

Phone 2527

SMITHFIELD, NORTH CAROLINA

CITY FOOD MARKET

QUALITY MEATS AND GROCERIES

We Deliver

Phone 2415

Congratulations Seniors

J. & G. MOTOR CO.

Smithfield-Selma Hiway

Henry J

Kaiser-Frazier, Henry J, and Willis

SALES & SERVICE

FLOWERS DRIVE-IN

PIT COOKED BAR-B-Q

STEAKS

SANDWICHES

COURTEOUS CURB SERVICE

6 Miles East of Clayton

Compliments of

**WESTERN AUTO
ASSOCIATE STORE**

Alfred H. Paddison, Manager

SMITHFIELD, NORTH CAROLINA

JOHNSON'S FLORIST

Since 1919

FLOWERS FOR ALL OCCASIONS

Phone 2630

SMITHFIELD, NORTH CAROLINA

Compliments of

**OVERBY'S FUNERAL
HOME**

AMBULANCE

Phone 2202

SMITHFIELD, NORTH CAROLINA

HOOK'S STUDIO

Take Mother and Dad With You When

You go away to School

SMITHFIELD, NORTH CAROLINA

Congratulations Seniors!

PEOPLE'S SHOE SHOP

SMITHFIELD, NORTH CAROLINA

WALTZ COURT CAFE

FRIED CHICKEN HOT BAR-B-CUE

OUR SPECIALTY

SMITHFIELD - SELMA HIGHWAY

STRICKLAND BROTHERS LUMBER CO., INC.

ROUGH AND DRESSED LUMBER

PAINT — BUILDERS SUPPLIES — HARDWARE — DOORS

Phone 3247

SMITHFIELD,

NORTH CAROLINA

**CAROLINA MOTOR
STORES**

Congratulations to the Class of '51

SMITHFIELD, NORTH CAROLINA

**ATLAS JOHNSON'S
GROCERY STORE**

"WE DELIVER"

Phone 2747

PRODUCE — MEATS — GROCERIES

SMITHFIELD, NORTH CAROLINA

HUGH AUSTIN'S

MEN'S AND BOYS' STORE

"A Trial Is All We Ask"

**ROSE'S 5-10-25 CENT
STORE**

Complete Line of School Supplies

SMITHFIELD, NORTH CAROLINA

COMPLIMENTS

**OF A
FRIEND**

COMPLIMENTS OF

(BILL)

(CLYDE)

HOOKS & LAYNE

Distributor

TEXACO AND FIRESTONE PRODUCTS

SMITHFIELD, N. C.

PHONE 2424

W C K B

"Where Carolina Keeps Building"

780 ON YOUR RADIO DIAL

DUNN

SMITHFIELD

Drink COCA-COLA IN BOTTLES



THE CAPITAL COCA-COLA BOTTLING CO.

RALEIGH,

NORTH CAROLINA



"He was not of an age, but for all time!"

Ben Jonson



920 5

* Shield : senior cla>igh School
SMITHFIELD es10154986



3 8950 99016939 5

RNC
373.756
S
1951

Smithfield High
School.
The shield. *ger*

