



the SHIELD 1953

TURLINGTON INSTITUTE.

Last Annual Commencement of this School—Splendid Exercises—Large Attendance.

The last annual commencement of Turlington Institute will long be remembered as one of the best and most pleasant in many respects yet held. The old students here to witness the close of the last term of this school which has been such a power for good throughout Eastern Carolina.

Closing Exercises.

The following invitation has been issued:
The teachers and students of Turlington Graded School request your presence at the closing exercises, May 25th to 27th, 1904.

The programme is as follows:
Wednesday, May 25, 8:30 p. m. musical recital.
Thursday, May 26, 8:30 p. m. exercises by 1st to 9th grades, inclusive.
Friday, May 17, 10:30 a. m. 10th grade exercises.
3:30 p. m. alumni address, H. P. Stevens.
8:30 p. m. contest in declamation and recitation, reading honor rolls, awarding prizes.

The alumni and alumnae of Turlington Institute are earnestly requested to be present at all the exercises, and especially do we desire your presence at the meeting Thursday afternoon.

Graded School for Smithfield.

The school committee of this district, Messrs. E. W. Pou, T. R. Hood and Jas. W. Wellons, have purchased Turlington Institute and propose to convert it into a graded school. The school building will be strengthened, painted and otherwise improved, preparatory to the opening of the first session next fall. It is the intention of the committee to make the Smithfield Graded school second to no graded school in the State and with such progressive and public-spirited citizens at its head we are assured of success. While it is to be a graded school the truest sense of the word grading pupils will not be denied admission provided they are in either of the ten 'regular' grades. While many of us regret to see the old "Turlington Institute" become its successor "The Smithfield Graded School," and that it may be the great good in this community, its predecessor



Honor Roll.

The following students of Turlington Graded School have been in attendance every day during the month of November, and have made an average grade of 95 per cent on daily grades and on examinations and are thereby entitled to have their names placed on the Honor Roll:

Tenth Grade—Ada Bares, Rena Bingham, Bettie Cobb, Ella Myatt, O. R. Rand, Jr., W. E. Yelverton.

Ninth Grade—Bessie Coats, Vara Edwards, Eric Ellington, Cornelia Sanders, Leon Stevens.

Eighth Grade—Hallie Hood, Mattie Hudson, Ida Galloway, Lucy Lassiter, Grechen McCullers, Lettie Parish, Mildred Sanders, Anna Underwood, Pearl Whitley.



SCHOOL BOND ELECTION

Prof. Turlington Writes About the Old School Building and the Cost of It. He Urges the Need of a New Building.

An election has been called for May 16, 1911, to give the citizens of the Smithfield Graded School District an opportunity to vote for a bond issue to secure funds for the erection in Smithfield of an up-to-date brick school house, a building that will be the pride of the district and town.

The Old Building.
It may be thought by some that the old building is good enough. Some may dislike for it to go from that I would regret to see the old building torn down from sentiment. That old building is dear to me. It grates upon me to hear it spoken of in words of disgust by those who know nothing of its cost. I love the old building for what it has cost me. It has cost me many an hour of anxiety, many an hour of worry, many an hour of sleeplessness. It is a costly building.

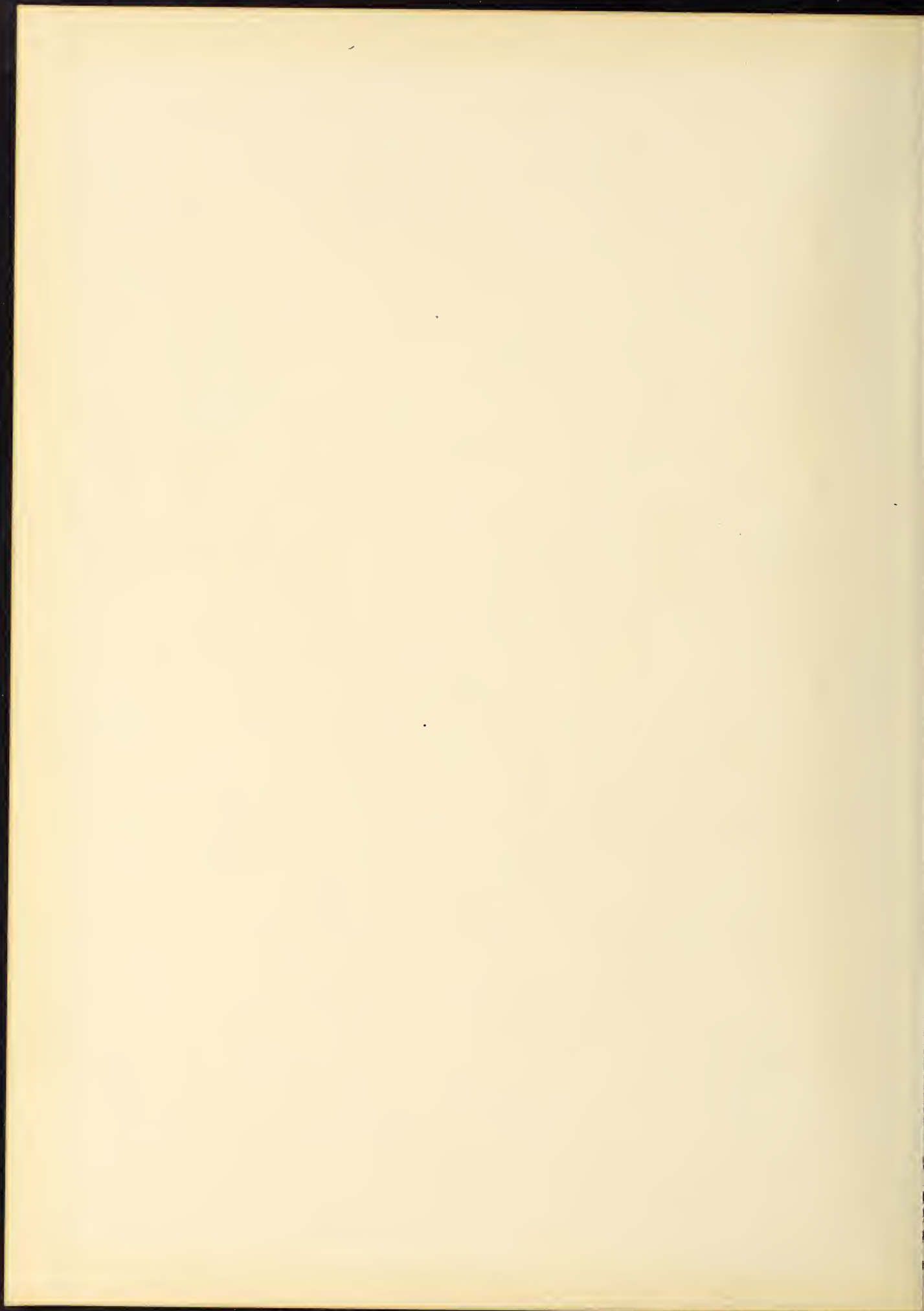
When it was put up just twenty years ago this summer, it was the best, most commodious, most stately school building within twenty-five miles of Smithfield, nearer than Wilson, Goldsboro or Raleigh. It was the pride of the town and of a large part of the County. Many of the people here referred to it as the "college." Then Smithfield had 550 people, white and black. It had been but two years since the town was burned out almost "root and branch," as to the business and Turlington Institute was known as the most important institution in town. The school then known as "Turlington Institute" was about to be burned out almost "root and branch," as to the business and Turlington Institute was known as the most important institution in town. Next week I shall write something about the bond issue.

IRA T. TURLINGTON.

TURLINGTON GRADED SCHOOL

FINE OPENING MONDAY WITH ABOUT 250 PRESENT.

On Monday morning, August 14th, Turlington Graded School opened the session of 1911-1912. In spite of the fact that the weather is oppressively warm, patrons showed their interest and co-operation in sending their boys and girls very first day of school. Long fore time for the "silence" the bright smiling faces of the children were to be seen here and about the campus and in the ing. Happy, indeed, was the school-mates and teachers.



THE

S

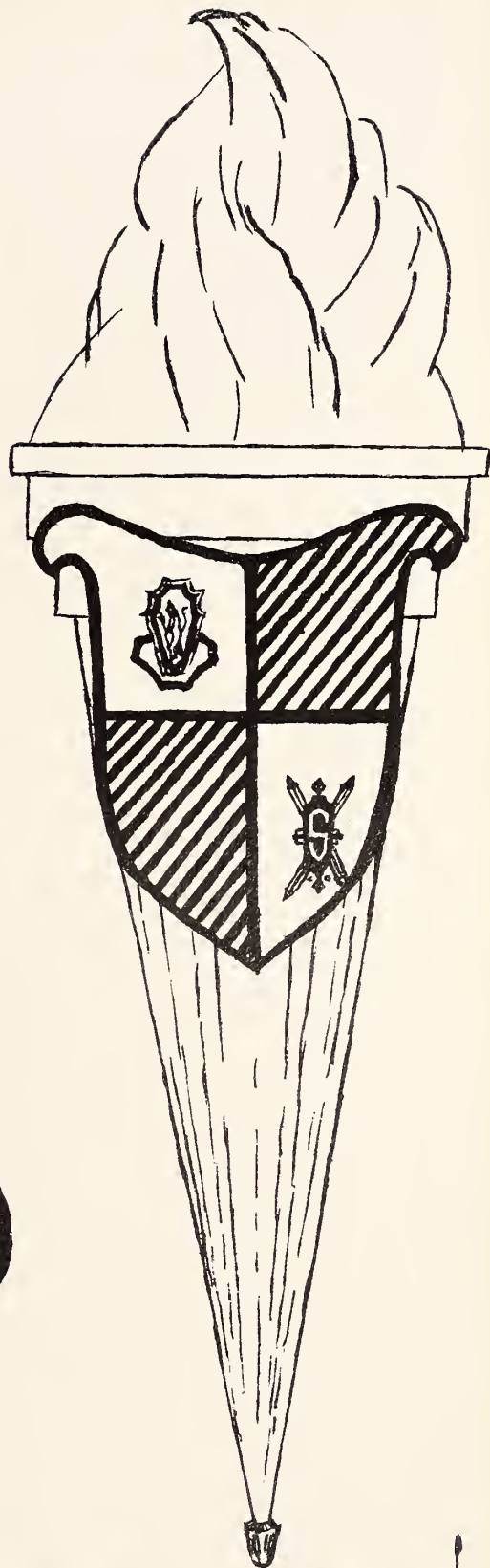
R

I

E

A

D



Published by

THE SENIOR CLASS

of

SMITHFIELD HIGH SCHOOL

Smithfield, N. C.

1953

CURTISS DAUGHTRY Editor-in-Chief

DOROTHY JOHNSON Assistant Editor

Hooks Studio Photography

PRESENTS

OUR FIFTY YEARS

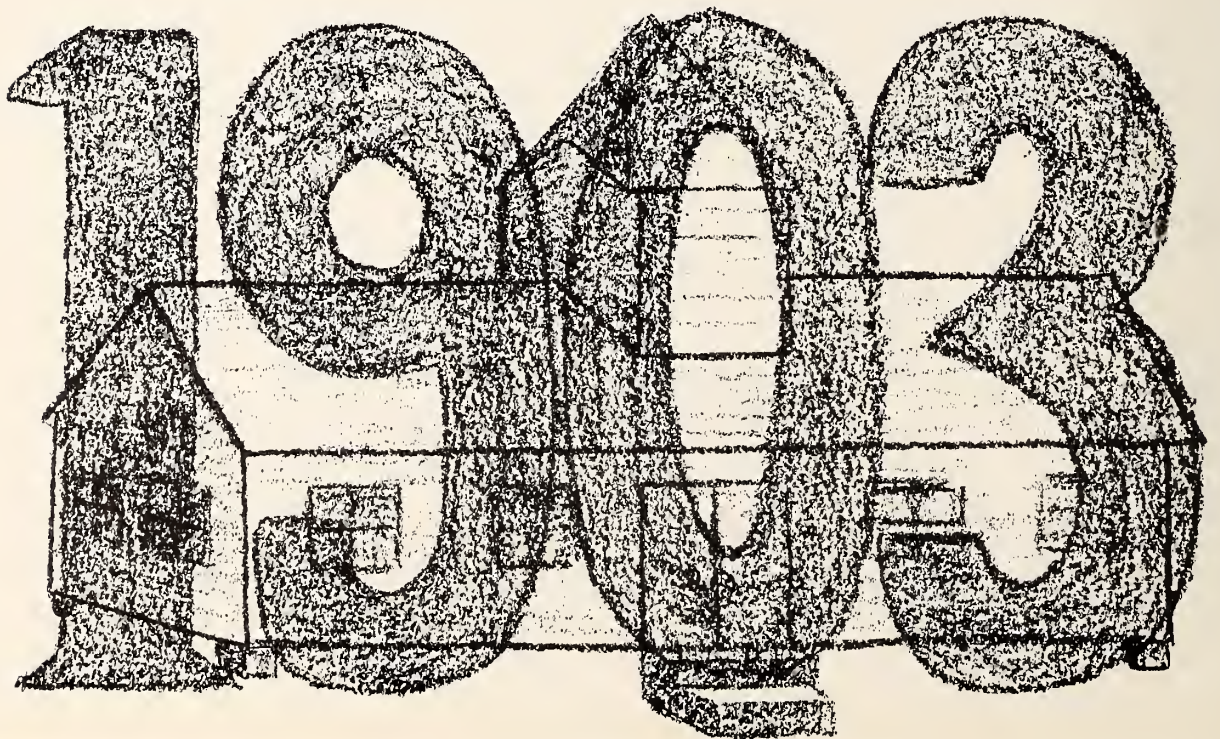
Today, we as seniors are proud of our school, but how often do we think back through the years of all the planning and work that went into making it what it is today. The real beginning of our school was a small two-room building on the East side of First Street near the present site of the Primitive Baptist Church. At that time the school was known as Smithfield Collegiate Institute. It was here, in 1886, that Prof. Ira T. Turlington, who became Superintendent of Johnston County Schools in 1884, united with Prof. J. L. Davis and began to write the early chapters in the history of Smithfield School.

In 1891 Prof. Turlington founded Turlington Institute and erected what was then termed "a large commodious wooden building consisting of four classrooms and an auditorium." Here began 20 years of concentrated effort on the part of Prof. Turlington and his wife, Hortense Rose Turlington, whose abilities in her field of English and related subjects distinguished her as a great pioneer spirit in the field of education.

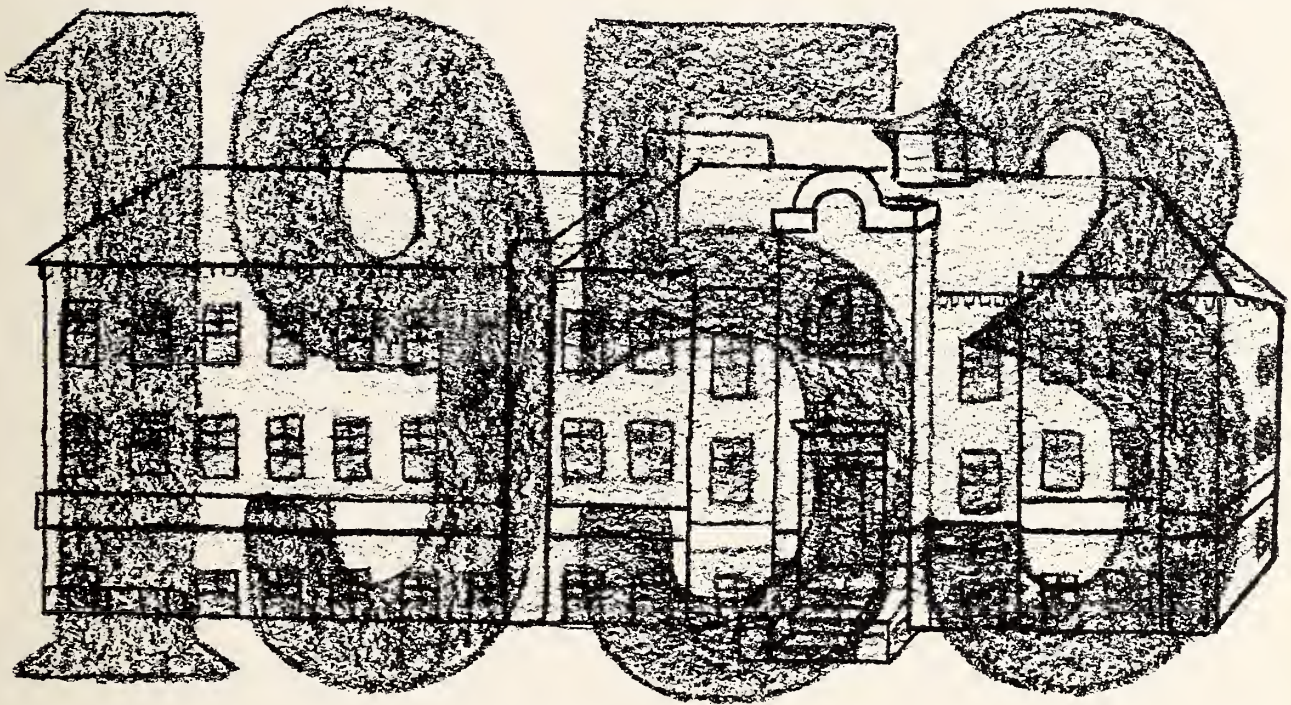
Twelve years later, in 1903, the onrushing 20th century wrought the first change. The Smithfield School District Committee, E. W. Pou, T. R. Hood and James W. Wellons, purchased Turlington Institute and began preparations for a graded school. Prof. R. A. Merritt served as Superintendent of Turlington Graded School from 1903 until 1906. In 1906 Mr. Turlington resigned as County Superintendent of Schools and resumed charge of the graded school. By the time he left in 1911 enrollment had climbed to 237 and the physical plant had expanded to a seven-room building.

In 1911 Adolph Vermont was elected Superintendent of Smithfield Graded School. Under Mr. Vermont's administration the 11th grade was added and in 1911 the first class completing this grade was graduated. There were seven members. Also in 1911 a petition for bonds was granted in order to erect a modern brick building. Construction was begun in 1911 and completed in 1912. This building comprises part of the present high school structure.

H. B. Marrow succeeded Mr. Vermont in 1917. During the four years of Mr. Marrow's superintendency the number of students increased so rapidly that a new building was necessary to afford them proper training. Bonds were issued in 1921. Mr. Marrow became County Superintendent in this same year and Thomas H. Franks was elected his successor. In 1922 the present elementary building was completed. It was also during this period that the county began to bring in, by busses, children from the rural districts. N. C. Shuford was elected Superintendent of Smithfield School in 1925. The school surrendered its special charter on July 1, 1927 and became a part of the county system. Principal Nathan Womack took over in 1931 and served as administrator for two years.



OF PROGRESS



The present principal, A. G. Glenn, came to lead the Smithfield School in 1933. Enrollment that year was 1255 with 31 teachers. Two decades have since passed—years filled with many additions to the curriculum—a period marked by building expansion to meet the needs of a growing Smithfield.

In 1937 home economics was put into the curriculum, and for the first time a full-time public school music and glee club director was employed. A regular elementary librarian was secured in 1943, a year which saw the ninth month added by the state. The following year the 12th grade was instituted by the state. Physical education became a part of the school's program in 1947, and in 1951 a band director was added to the music department.

The physical plant began to expand in 1948 with the addition of a central heating plant. In this same year a communications and public address system was installed, further adding to efficiency of operation. The completion of a new high school wing in 1949 gave us not only additional classrooms, but also a modern cafeteria with a seating capacity of 300, a large library, a science laboratory, a commercial department and rest rooms. The most recent addition to the school plant is an eight-room annex to the elementary building completed this spring—the latest in primary school architecture. Present enrollment of Smithfield School is 1600 with a faculty of 54 members, including three piano teachers.

Our school has grown through the years. As our community has expanded classrooms have been added to take care of increased enrollment. The faculty has been strengthened by the addition of selected personnel in new fields, to meet the ever broadening demands of an ever awakening public.

But it is not for this journey with progress alone that we are most proud. Rather it is the realization that Smithfield School was founded on the fundamental truths of education. Scholarship and academic achievement, along with cultural pursuits, have been at all times foremost in the program of our community's school. Intellectual development has characterized the lives of the hundreds of seniors who have gone before us.

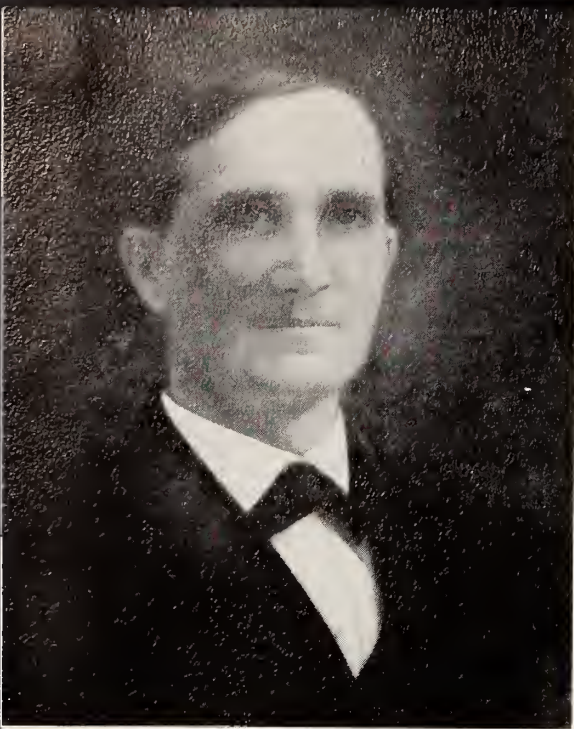
Our graduates have become prominent in the fields of education, religion, law, medicine, dentistry, pharmacy, optometry, journalism, engineering, and the business, industrial, and farming world. Standing high among them are Rhodes Scholars Col. Oscar Rand (1903) and Edgar Turlington (1911).

But of equal stature are those who, influenced by their training in Smithfield School and pointed along the path by competent leaders, have made it their responsibility to see that Smithfield School continues to be a guiding light in its community; that its program of leadership and scholarship hold true to the heritage of the past.

For that we are proud and humbly grateful. May our class hold high their banner of achievement.

IN APP

IRA THOMAS TURLINGTON (1859 - 1918)



Ira Thomas Turlington

An opportunity to pay tribute to the memory of Professor Ira T. Turlington is welcome indeed. Much time has elapsed since I last saw him, and more since I sat in his classroom. Yet the impressions of him formed long ago have but little dimmed with the passing years.

Moving to Smithfield in boyhood, I was soon enrolled in Turlington Institute and for several years was in almost daily contact with Professor Turlington. I learned to like him for his fairness, to esteem him for his kindness, to respect him for his firmness, and to admire him for his ability and integrity.

By precept and example he sought to inculcate high ideals in the young people under his charge. His influence endures in the lives of those whom he taught, and his community and state are richer because of his life and work.

Colonel Oscar R. Rand, U.S.A., Retired.
Washington, D. C.
(Member first graduating class of
Smithfield Graded School)

Oscar R. Rand

IRA THOMAS TURLINGTON

I saw him first at Turlington Institute in 1901, when I was a boy of five and he was a man of forty. I saw him last in 1911 on the platform of Turlington Graded School in the closing chapel exercises of the year. I grew up under his influence in the school and on the school grounds, and studied under his teaching in the eighth grade Latin class. I have forgotten the Latin, but not the man who taught it, nor the personality, character, and painstaking thoroughness which came to his students through the interstices of Latin grammar.

His name was a household word in my family, in the town of Smithfield and the county of Johnston, and in the surrounding territory in eastern North Carolina from which his students came. His life outlived his body, as succeeding teachers continued his schooling principles, as school boards settled many a problem of educational policy by recalling what Ira Turlington had said, as his students named their children for him a generation after he had gone with a silent prayer that they might grow up in his image and likeness.

He was born in 1859 and grew up in the Pleasant Hill community in Johnston County in the days of Civil War and reconstruction, went to the University of North Carolina in 1879, graduated in 1883, went back home to plow his own life into the lives of his fellow citizens in the belief that men and women can not only lift themselves by their own bootstraps but they can not lift themselves in any other way; and at the end of a lifetime looked back upon his pioneering labors with the heart lifting assurance that a prophet is not always without honor in his own country and among his own people.

If Aycock, Alderman, McIver, and Joyner at the turn of the century could go forward in a state-wide program of education for all the children of all the people, it was because they were standing on the shoulders of men like Ira Turlington who for a generation had planted their lives in a thousand communities throughout the land and laid the foundations of life more abundant in North Carolina.

INSTITUTE OF GOVERNMENT
The University of North Carolina
Chapel Hill
Albert Coates, Director

Albert Coates

RECIATION

HENRY BURWELL MARROW

The class of 1953 should be commended for setting down in black and white, before it is gone and forgotten, the history of the first half century of public schools in Smithfield.

My class was enrolled in 1912 and graduated in 1923, so the half dozen of us who stayed on the treadmill for the full cycle had contact with one of the five decades now being chronicled. We were the first class to begin our schooling in the new brick building that was erected on the site of the wooden monstrosity which had housed Turlington Institute. As a matter of fact, at the time of our matriculation the new building had not been entirely finished and for a few initial weeks we wrestled with our ABC's in a second-floor room above a grocery store on the north side of Market Street. Eleven years later we were the first class to be graduated from the high school building.

While these two firsts do not particularly burden us with fame they do show that our class was to a degree a link between the old and the new in the educational life of Smithfield. When we were first graders people were still coming to town once a year, in huge numbers, mainly by horse and buggy, to decorate the graves of the Confederate dead. And when we graduated our valedictorian was quoting a World War I poem beginning, "In Flanders fields..."

All this is put down here not to suggest that we were anything extraordinary but rather to indicate which was our era. That is necessary in order to come to the point I wish to make—simply, that in our times, that transitional decade between the old and the new, the one man most responsible for educational progress in Smithfield was Henry B. Marrow.

I doubt that this statement will be challenged by anyone who was familiar with conditions in the Smithfield School when Mr. Marrow arrived around 1916 and when he moved on to head the county schools around 1922. If anything, my statement is too obvious. Somewhere in this volume there is, perhaps, a detailed record of the advances made by the schools under Mr. Marrow. However, records rarely convey the intangibles. Call it spirit, tone or mood, there was a considerable change under Mr. Marrow.

When a long heat spell is broken the weather records show that at such and such an hour the mercury dropped so many degrees. But what the persons on the spot at the time recall, the persons who had waited and waited and waited for relief to come, is that a cool refreshing breeze swept over the land. Educationally, Henry B. Marrow was such a breeze. The years dim our memory of precisely how many degrees the educational mercury changed, but we do vividly recall how he invigorated us all.

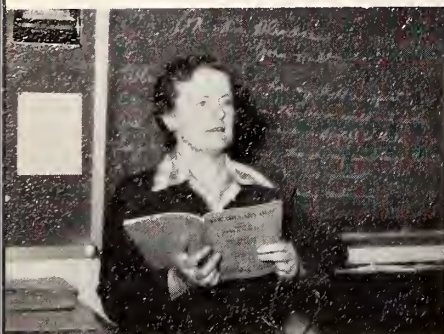
Henry Burwell Marrow



DON WHARTON
24 Gramercy Park
New York

Don Wharton

HISTORIANS OF OUR TIME



MRS. A. G. GLENN
English, Speech



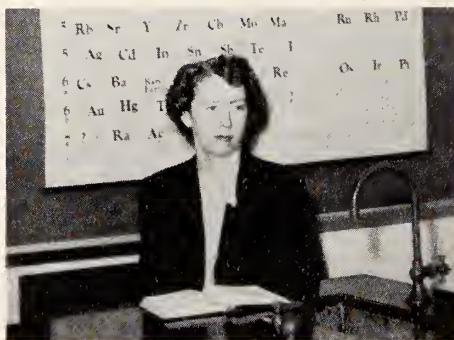
MRS. MARY SPANGOS
English, French



MR. A. G. GLENN
Principal



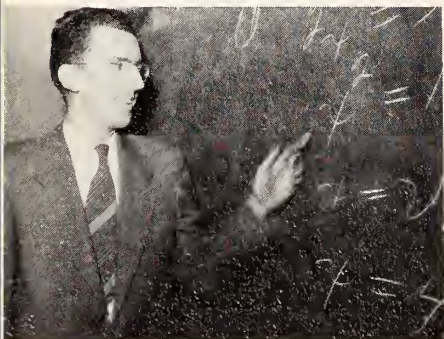
MR. ROY J. BROWN
History, Coach



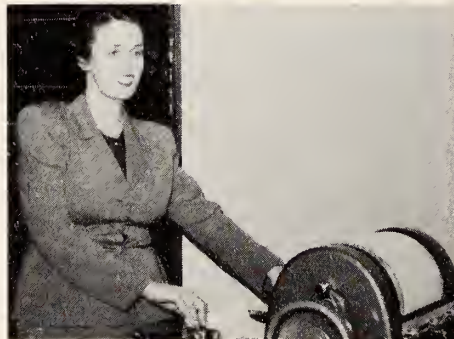
MISS MARY TAYLOR
Science



MRS. MILDRED BELL
Librarian, English



MR. OSCAR BRANNAN
Algebra



MRS. ELIZABETH LIDE
Commercial



MRS. RAMONA CASH
Home Economics



MISS RUBY LANGFORD
Mathematics, Geography



MISS INEZ WANNAMAKER
Latin, English



MISS JANE LEWIS
English, History

S E N I O R S

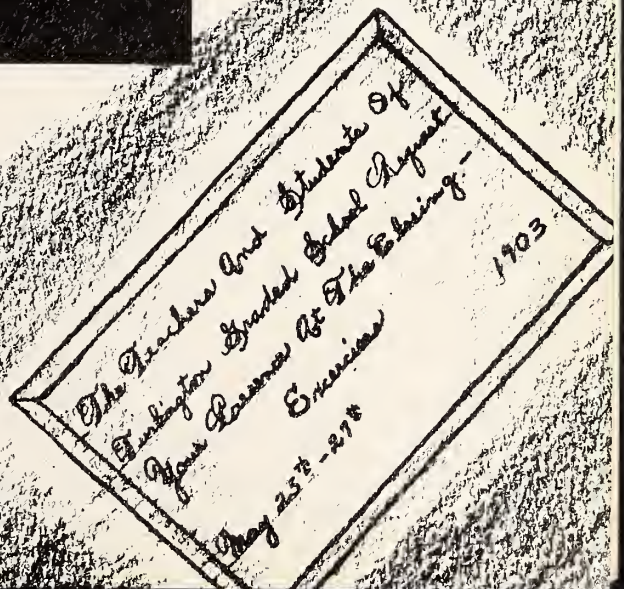


BILL STARLING, President

MARY EDNA GRIMES, Vice-President

JO ANN JOHNSON, Secretary

BETTY DAVIS, Treasurer



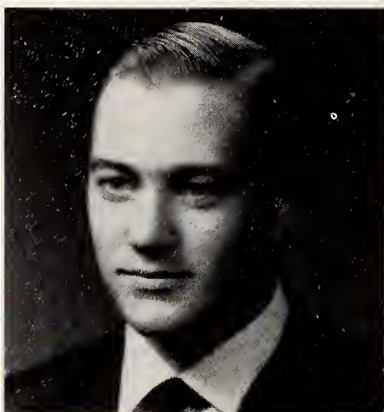
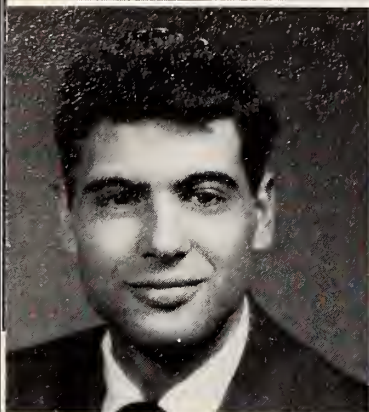


SENIORS

MYRA BARBOUR

*"She speaks a kind word to everyone
And really does have lots of fun."*

Selmo High School 1, 2; Commercial Club 3; Jr. Play Ticket Committee 3; Decorating Committee Jr.-Sr. 3; Basketball 3, 4; Handicraft Club 4; Chairman Cop and Gown Committee 4.



EDWARD AMEN BAROODY

"A merry heart doeth good like a medicine."

Career Club 1; Spartsmonship Brotherhood Club 2; Jr.-Sr. Waiter 2; Etiquette Club, President 3; "The Little Dog Laughed" 3; Journalism Club 3, Hobby Club, President 4; Play Committee 4.

WILBERT WORTH BLACKMAN

"Much wisdom often goes with fewest words."

Spartsmanship Bratherhood Club 1; Wildlife Club 2; Self-Improvement Club 3; Marshal 3; Football 3, 4; Farum Club, Reporter 4; Editorial Staff "The Shield" 4.

BETTY LOUISE BRASWELL

"Silence accomplishes much that noise cannot."

Newport News High School 1; Etiquette Club 2; Commercial Club 3, 4; Cap and Gown Committee 4.



ALICE RUTH BYRD

*"To make the world a friendly place,
She shows to it a friendly face."*

Library Club 1; Journalism Club 2; Photography Club 3; Menu Committee Jr.-Sr. 3; Marshal 3; Handicraft Club, Vice-President 4; Invitation Committee 4, "High Times" Typist 4.

JERRY D. CLIFTON

"Men of few words are the best men."

Cleveland High School 1, 2; 4-H Club 3; Baseball 3; Jr.-Sr. Planning Committee 4; Glee Club 4; Cop and Gown Committee 4; Commercial Club, Vice-President 4; Monogram Club 4.



BARBARA REE COCKRELL

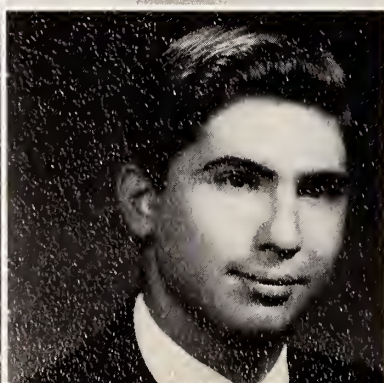
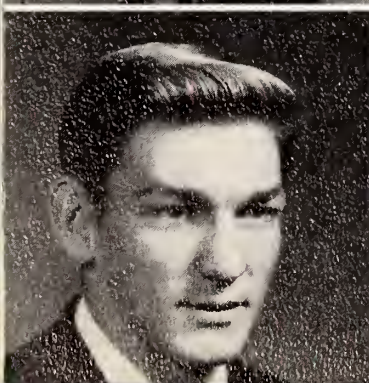
"Very little is needed to make a happy life."

4-H Club 1; Career Club 2; Needlecraft Club 3; Menu Committee Jr.-Sr. 3; Dramotic Club 4; Invitation Committee 4.

CURTISS WILSON DAUGHTRY

*"Always jolly and carefree
Life may be dull but never he."*

Journalism Club 1, 2; Glee Club 1; Jr.-Sr. Waiter 2; Band 1, 2, 3, 4; Football 1, 2, 3, 4; Basketball 2, 3, 4; Baseball 3, 4; Marshal 3; "The Little Dog Laughed" 3; Art Editor "High Times" 3; Giffarion Jr.-Sr. 3; Monogram Club 3, 4; Music Club 3, 4; Social Committee 4; Editor-in-Chief "The Shield" 4.



YARTAN AMBAR DAVIDIAN, JR.

*"Others share with thee knowledge,
but Art, O Man, is thine alone."*

Journalism Club 1, 2; Band 1, 2, 3, 4; Art Editor "High Times" 3; "The Little Dog Laughed" 3; Marshal 3; Giffarion Jr.-Sr. 3; Music Club 3, President 4; Art Editor "The Shield" 4; School Photographer 4; Social Committee 4.

SENIORS

BETTY FAY DAVIS

"None so knowing as she."

4-H Club 1; Journalism Club 2; Art Club 3; Winner French I State Contest 3; Menu Committee Jr.-Sr. 3; Class Treasurer 4; "High Times" Exchange Editor 4; Ring Committee 4.

JEAN CLAIR DAY

"Fair to look upon but better to know."

Hobby Club 1; Art Club 2, 3; Jr.-Sr. Waitress 2; Glee Club 1, 2, 3; Decaroting Committee Jr.-Sr. 3; Make-up Committee Jr. Play 3; Dromotics Club, Secretary-Treasurer 4; Advertising Staff "The Shield" 4; Ring Committee 4.

JACKIE VIOLEIGH ENNIS

*"A friendly girl in every way,
Who makes the most of every day."*

Hobby Club 1; Coreer Club 2; Art Club 3; Chairmon Menu Committee Jr.-Sr. 3; Senior Ploy Committee 4; Advertising Staff "The Shield" 4.

MARY EDNA GRIMES

*"Her beauty makes this vault a feasting presence
full of light"*

Class President 1; Hobby Club, Vice-President 1; Class Treasurer 2; Jr.-Sr. Waitress 2; Glee Club 1, 2, 3, President 4; Basketball 1, 2, 3, Coptoin 4; Jaurnolism Club 2, Vice-President 3, President 4; Class Secretary 3; "The Little Dog Loughed" 3; Manogram Club 2, Secretary 3, President 4; Morshol 3; "High Times" Staff 3, 4; Class Vice-President 4; Editariol Staff "The Shield" 4.

GAIL MARIE HATHAWAY

"'Tis good to live and learn."

Hobby Club, Reporter 1; Art Club 2, 3; Chairman Table Arrangement Committee Jr.-Sr. 3; Advertising Committee "The Little Dog Loughed" 3; Commercial Club, Secretary-Treasurer 4; Business Staff "The Shield" 4; Moscat Committee 4.

WALTER JONES HUNTLEY III

"A noble man is led far by woman's gentle words."

Jaurnolism Club 1, Secretary 2; Jr.-Sr. Woiter 2; Band 1, 2, Publicity Chairmon 3, President 4; Bond Clinic 3; Marshol 3; "The Little Dog Loughed" 3; Ring Cammittee 4; Business Staff "The Shield" 4.

JUNIUS CARNEGIE JOHNSON

*"Always a dependable worker,
He could inspire any shirker."*

Spatsmanship Bratherhaad Club 1; Manager Football Team 1; Manager Baseball Team 1; Managram Club 1, 2, 3, 4; Jaurnolism Club 2; Self-Improvement Club 3; Pragrom Cammittee Jr.-Sr. 3; Cammerical Club, Program Chairman 4; Invitation Committee 4; Business Staff "The Shield" 4.

DOROTHY JEAN JOHNSON

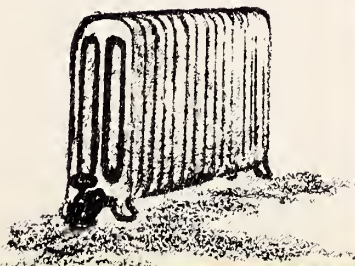
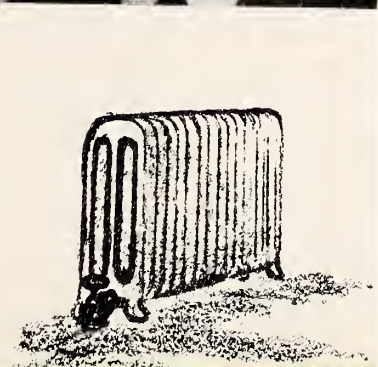
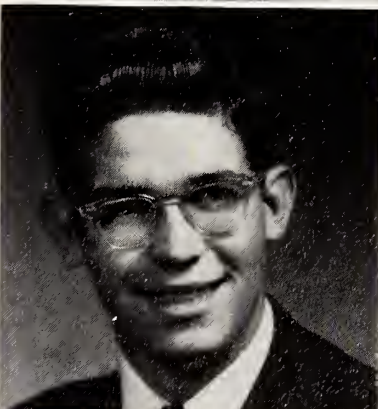
*"With the mind of a scholar, the touch of an artist,
She doesn't lack much of being the smartest."*

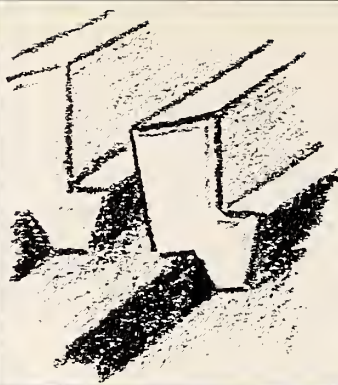
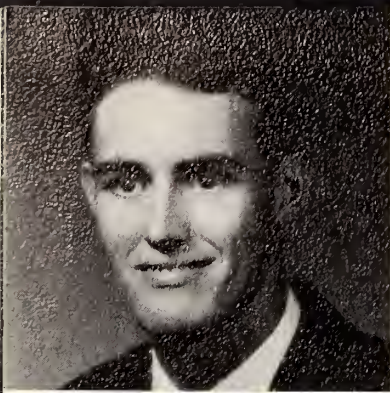
Library Club 1; Monoger Magazine Campaign 2; Jaurnolism Club 2, 3, 4; Glee Club 1, 2, 3, 4; "The Little Dog Loughed" 3; Choirmon Decaroting Committee Jr.-Sr. 3; Morshal 3; Art Editar "High Times" 3, 4; Chairman Social Committee 4; Assistant Editor "The Shield" 4.

JO ANN JACQUELIN JOHNSON

*"Brunette, petite, pretty, and sweet
She isn't likely to be beat."*

Librory Club, Vice-President 1; Etiquette Club 2; Needlecroft Club 3; Jr.-Sr. Place Cord Committee 3; Jr. Play Ticket Committee 3; Class Secretary 4; Moscaff Committee 4; Hondicraft Club, Reporter 4; "High Times" Staff 3, 4.



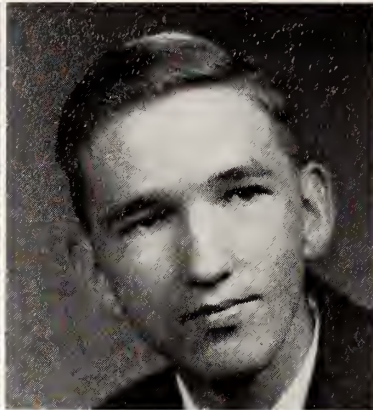


SENIORS

RALPH NATHAN JOHNSON

"A man in earnest finds means."

Sportsmanship Brotherhood Club 1, Art Club 2, Glee Club 2; Bond 1, 2, 3, 4; Music Club 3, "The Little Dog Loughed" 3; Monogram Club 3, 4; Basketball 3, 4; Baseball 3, 4; Chairman Ploy Committee 4; Hobby Club, Treasurer 4; Editoriol Stoff "The Shield" 4.



ROBERT RAY JOHNSON

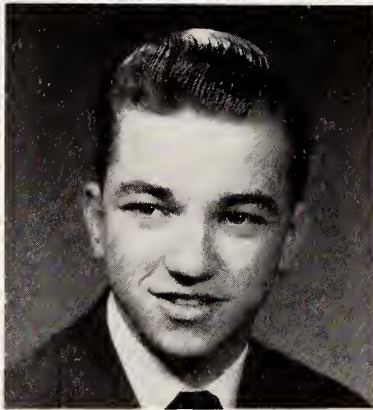
"Just the art of being kind is all this sad world needs."

Sportsmanship Brotherhood Club 1, Commercial Club 2, 4, 4-H Club 3; Decoroting Committee Jr.-Sr. 3; Jr. Ploy Committee 3; Cop and Gown Committee 4.

BRUCE DELANO JONES

"All his life seemed to be all in the word 'Music'."

Closs President 1, Sportsmanship Club 1; Journolism Club 2, Drum Major 2, 3; Music Club 3; "The Little Dog Loughed" 3; Decorating Committee Jr.-Sr. 3; Morshol 3; Ring Committee 4; Commercial Club, Reporter 4; "High Times" Stoff 3, 4; Glee Club 1, 2, 3, 4.



SHIRLEY MAE JONES

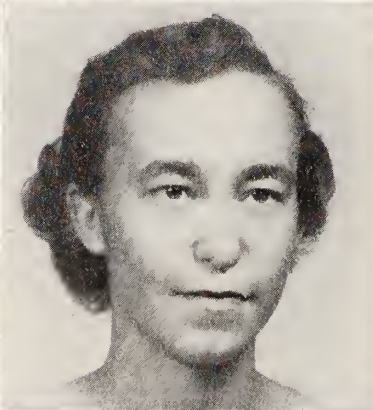
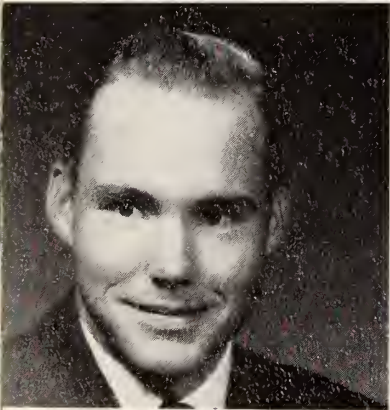
"As merry as the day is long."

Hobby Club 1; Glee Club 1, 2, 3, 4; Journalism Club 2, Reporter 4; Art Club 3; Decoroting Committee Jr.-Sr. 3; Cheerleader 3, Chief 4; Monogram Club 3, 4; Sr. Ploy Committee 4.

HAROLD IRVING LANGDON

"Seek to be good, but aim to be great."

4-H Club 1, Reporter 2, Vice-President ond Recreational Leader 3, President ond Recreational Leader 4; Bond 1, 2, 3, 4; Decoroting Committee Jr.-Sr. 3; Social Committee 4.



WALTER HAROLD LANGDON

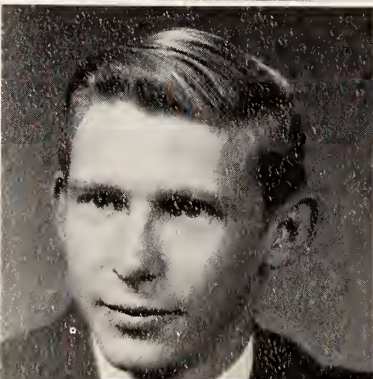
"When he thinks, he must speak."

4-H Club 1, 3, 4; Etiquette Club 2; Ploy Committee 4; Bus Driver 4.

ALICE MOZELLE LEE

"Our life is what our thoughts make it"

Hobby Club 1, Needlecroft Club 2, 3; Chairmon Program Committee Jr.-Sr. 3, Dromatics Club 4; Invitation Committee 4.



BARBARA WORTH LEE

*"To say well is good,
But to do well is better."*

Home Economics Club, Reporter 1, Secretary 2; Mogozone Contest Winner 2; Jr.-Sr. Waitress 2; "The Little Dog Loughed" 3; Morshol 3; Dote Committee Jr.-Sr. 3; "High Times" Stoff 3, 4; Glee Club 4; Handicroft Club, President 4; Cheerleader 4; Moscot Committee 4; Monogram Club 4.

RUPERT BERNARD LEE, JR.

"We cannot all be masters."

Sportsmanship Brotherhood Club 1; Bosketball Monoger 1; Etiquette Club 2; Commercial Club 3; Ploy Committee 3; Planning Committee Jr.-Sr. 3; Hobby Club 4; Cop ond Gown Committee 4; Monogram Club 2, 3, 4.

SENIORS

LUCILE LEE

*"So earnest in her work and fun
We know not half the work she's done."*

Library Club 1; Career Club 2; Art Club 3; Menu Committee Jr.-Sr. 3; Dramatics Club 4; Invitation Committee 4.

SHIRLEY MASSENGILL

"The way to have friends is to be one."

Home Economics Club 1; Needlecraft Club 2; Commercial Club 3; Place Card Committee Jr.-Sr. 3; "The Little Dag Laughed" 3; Handicraft Club 4; Ring Committee 4.

GEORGE JOHN MEYER, JR.

"Leave silence to saints, I am but human."

Long Branch Junior High School, Long Branch, N. J., 1; Model Airplane Club 2, 3; Football 2, 4; "The Little Dag Laughed" 3; Decorating Committee Jr.-Sr. 3; Baseball 3, 4; Monogram Club 3, 4; Mascot Committee 4.

HAROLD HOOKS MOORE

"He'll make the majors!"

Sportsmanship Brotherhood Club 1; Journalism Club 2; Self-Improvement Club 3; Forum Club, Vice-President 4; Monogram Club 1, 2, 3, 4; Baseball 1, 2, 3, Captain 4; Basketball 2, 3, Captain 4; Football 3, 4; Marshal 3; Chairman Ring Committee 4; Editorial Staff "The Shield" 4.

MARY REICH MOORE

*"She's little but she's wise;
She's a terror for her size."*

Hobby Club 1; Glee Club 1, 2, 3, 4; Journalism Club 2, 4; Music Club 3; Chairman Jr. Play Committee 3; Decorating Committee Jr.-Sr. 3; Ring Committee 4.

MARGIE LEE MORGAN

*"She has that gift of gifts,
That of making friends."*

4-H Club 1; Needlecraft Club 2; "The Little Dag Laughed" 3; Home Economics Club, Vice-President 3; Band 3; Business Staff "The Shield" 4; Dramatics Club 4; Mascot Committee 4.

DAISY DEAN NEIGHBOURS

*"The Rose has but a summer-reign,
The Daisy never dies."*

Library Club 1; Journalism Club 2, 3; Glee Club 1, 2, 3, 4; Marshal 3; "The Little Dag Laughed" 3; "High Times" Staff 3, 4; Commercial Club, President 4; Editorial Staff "The Shield" 4; Ring Committee 4.

MARGARET LEE OVERBEE

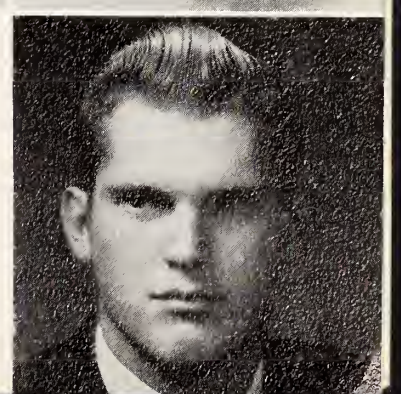
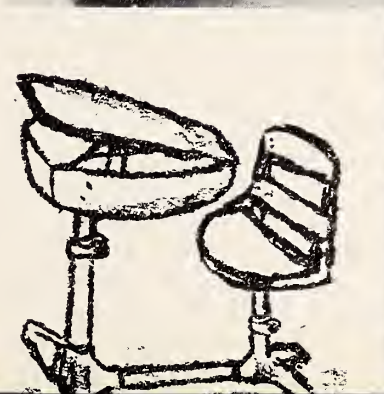
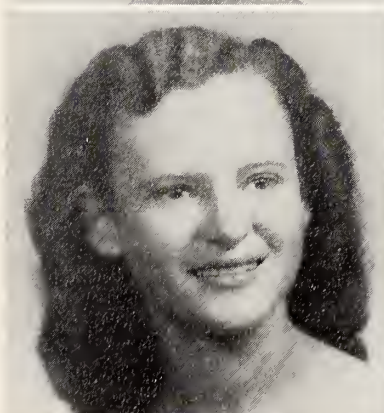
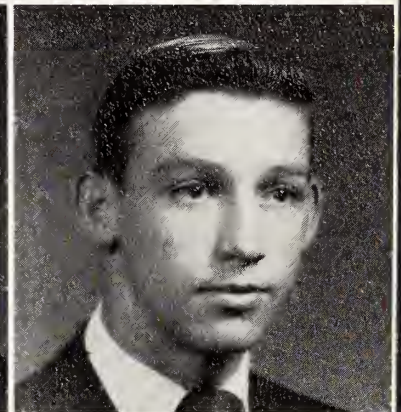
"Life is what we make it."

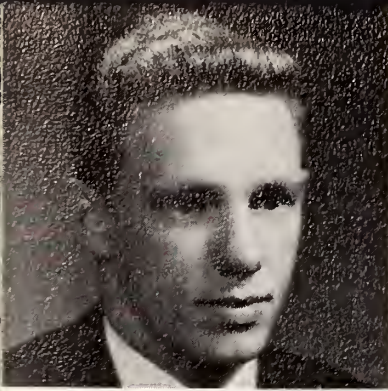
Library Club 1; Etiquette Club 2; Commercial Club 3, 4; Cap and Gown Committee 4.

ELMER LEON OWENS

*"Athletic, friendly, and kind,
Another like him you'll never find."*

Sportsmanship Brotherhood Club 1; Etiquette Club 2; Jr.-Sr. Waiter 2; Commercial Club, Treasurer 3; Decorating Committee Jr.-Sr. 3; Football 1, 2, 3, Co-Captain 4; Basketball 2, 3, 4; Baseball 3, 4; Glee Club 2, 4; Monogram Club 2, 3, 4; Mascot Committee 4; Forum Club, President 4.





SENIORS

EDWARD SIMPSON PADDISON

"All the world loves a lover."

Carlisle Military School 1, Class President 2; Model Airplane Club 2; Jr.-Sr. Waiter 2; Art Club, President 3; Dramatics Club, President 4; Football 2, 3, 4; Manogram Club 3, 4.

LULA FRANCES PEEDIN

*"There are some defeats
More triumphant than victories."*

Library Club 1, President 4; Commercial Club 2; Basketball 1, 2, 3, 4; Home Economics Club, Treasurer 3; Entertainment Committee Jr.-Sr. 3; Manogram Club 3, 4; Ring Committee 4; Business Staff "The Shield" 4.

OSCAR ALLEN SANDERS

"Silence never yet betrayed anyone."

4-H Club 1, 3, 4; Sports Club 2; Table Service Committee Jr.-Sr. 3; Mascot Committee 4; Art Editor "High Times" 4.

MARGARET STUART SANDERS

*"A willing heart, attractive grace,
A charming girl with a dimpled face."*

Home Economics Club 1; Art Club, Secretary 2; Magazine Contest Winner 2; Glee Club 1, 2, 3, Secretary 4; "The Little Dog Laughed" 3; Marshal 3; Dance Committee Jr.-Sr. 3; Journalism Club 3, 4; Basketball 3, 4; Mascot Committee 4; Business Staff "The Shield" 4; Manogram Club 4.

MARY ELLINGTON SMITHWICK

"If she says she will, you may depend upon it."

Class Secretary 1, 2; Home Economics Club, Vice-President 1; Vice-President Art Club 2, 3; "The Little Dog Laughed" 3; Chairman Dance Committee Jr.-Sr. 3; Marshal 3; Journalism Club, Secretary 4; "High Times" Staff 4; Art Editor "The Shield" 4; Chairman Mascot Committee 4; Cheerleader 3, 4; Manogram Club 3, 4; Glee Club 1, 2, 3, Publicity Chairman 4.

WILLIAM GRAY STARLING

"A leader, but more than that, a friend."

Class President 1, 2, 3, 4; Sportsmanship Brotherhood Club 1; Journalism Club 2; Jr.-Sr. Waiter 2; Band 1, 2, 3, 4; Music Club 3, 4; "The Little Dog Laughed" 3; Chief Marshal 3; Manogram Club 2, 3, 4; Basketball 3, 4; Football 2, 3, Co-Captain 4; Business Manager "The Shield" 4; Winner Wake Forest Honor Scholarship 4.

JANICE LOUISE STEPHENSON

*"May she always be the same,
Changing nothing but her name."*

Library Club, Treasurer 1; Etiquette Club 2; 4-H Club 3; Entertainment Committee Jr.-Sr. 3; "High Times" Typist 3, 4; Ring Committee 4; Commercial Club 4.

JO EVELYN UNDERWOOD

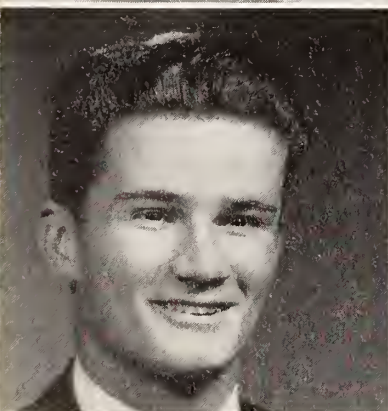
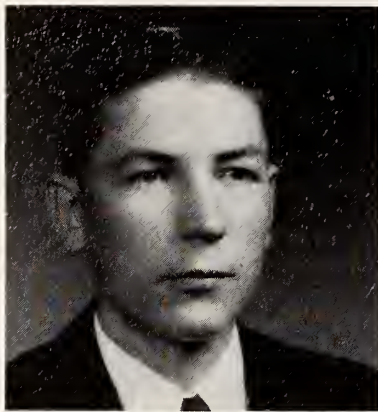
*"She is like an April shower —
Full of fun and lots of laughter."*

Hobby Club 1; Art Club 2; Music Club 3; Glee Club 1, 2; Band, Librarian 3, 4; Invitational Committee Jr.-Sr. 3; Assistant Director "The Little Dog Laughed" 3; Ring Committee 4; Business Staff "The Shield" 4.

PATSY JANE VINSON

*"Quiet, gentle, and refined,
Always thoughtful, and very kind."*

Hobby Club 1; Etiquette Club 2; Program and Invitational Committee Jr.-Sr. 3; Commercial Club 3, 4; "High Times" Typist 3, 4; Invitational Committee 4.



SENIORS

ELINOR LUCILE WALLACE

"Little in size, but so friendly and wise."

Home Economics Club, Vice-President 1; Journalism, Reporter 2; 3, Vice-President 4; Glee Club 1, 2, 3, Vice-President 4; Jr.-Sr. Waitress 2; Magazine Contest Winner 2; Majorette 2, 3, 4; Chairman Entertainment Committee Jr.-Sr. 3; "The Little Dag Laughed" 3; Marshal 3, "High Times" Staff 3, Editor 4, Editorial Staff "The Shield" 4.

NELL ROSE WALLACE

"In every activity you can depend upon her to do her part well."

Journalism Club 1, 2, Program Chairman 3, 4; Jr.-Sr. Waitress 2; World Peace Speaking Award 2, Magazine Contest Winner 2; "The Little Dag Laughed" 3; Marshal 3, "High Times" Staff 3; Entertainment Committee Jr.-Sr. 3; Majorette 1, 2, 3, 4; Glee Club 2, 3, 4, Advertising Manager "The Shield" 4.

PEGGY JOYCE WHITEHURST

"A smile is the whisper of a laugh."

Library Club 1; Journalism Club 2; Glee Club 2; Commercial Club 3; Decorating Committee Jr.-Sr. 3; Handicraft Club 4; Cap and Gown Committee 4.

DENNIS MARSHALL WHITLEY

"A silent address is the genuine eloquence of sincerity."

4-H Club 1; Model Airplane Club 2, 3; Basketball 1, 2; Football 1, 2; Decorating Committee Jr.-Sr. 3; Social Committee 4; Hobby Club, Vice-President 4.

FRANCES LAVERNE WHITLEY

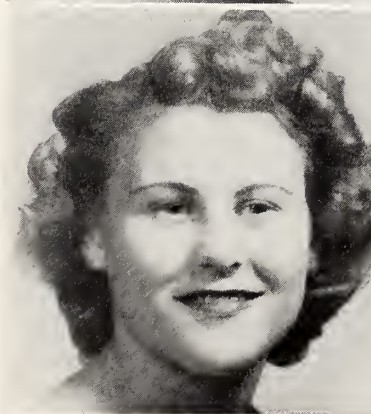
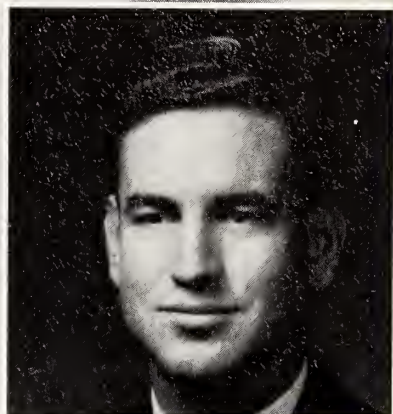
"You never can imagine what she has on her mind, 'Cause she's the timid quiet kind."

Library Club 1; Etiquette Club 2; Ticket Committee Jr. Play 3; 4-H Club 3; Handicraft Club 4; Play Committee 4.

REBECCA ANN WHITLEY

*"She certainly has a winning way
She's always something nice to say."*

4-H Club 1; Needlecraft Club 2; Photography Club 3; Faad Committee Jr.-Sr. 3; Ticket Committee Jr. Play 3; Play Committee 3, 4; "High Times" Typist 3, 4; Commercial Club 4; Business Staff "The Shield" 4.



MASCOTS

DEBRA
LAWSON

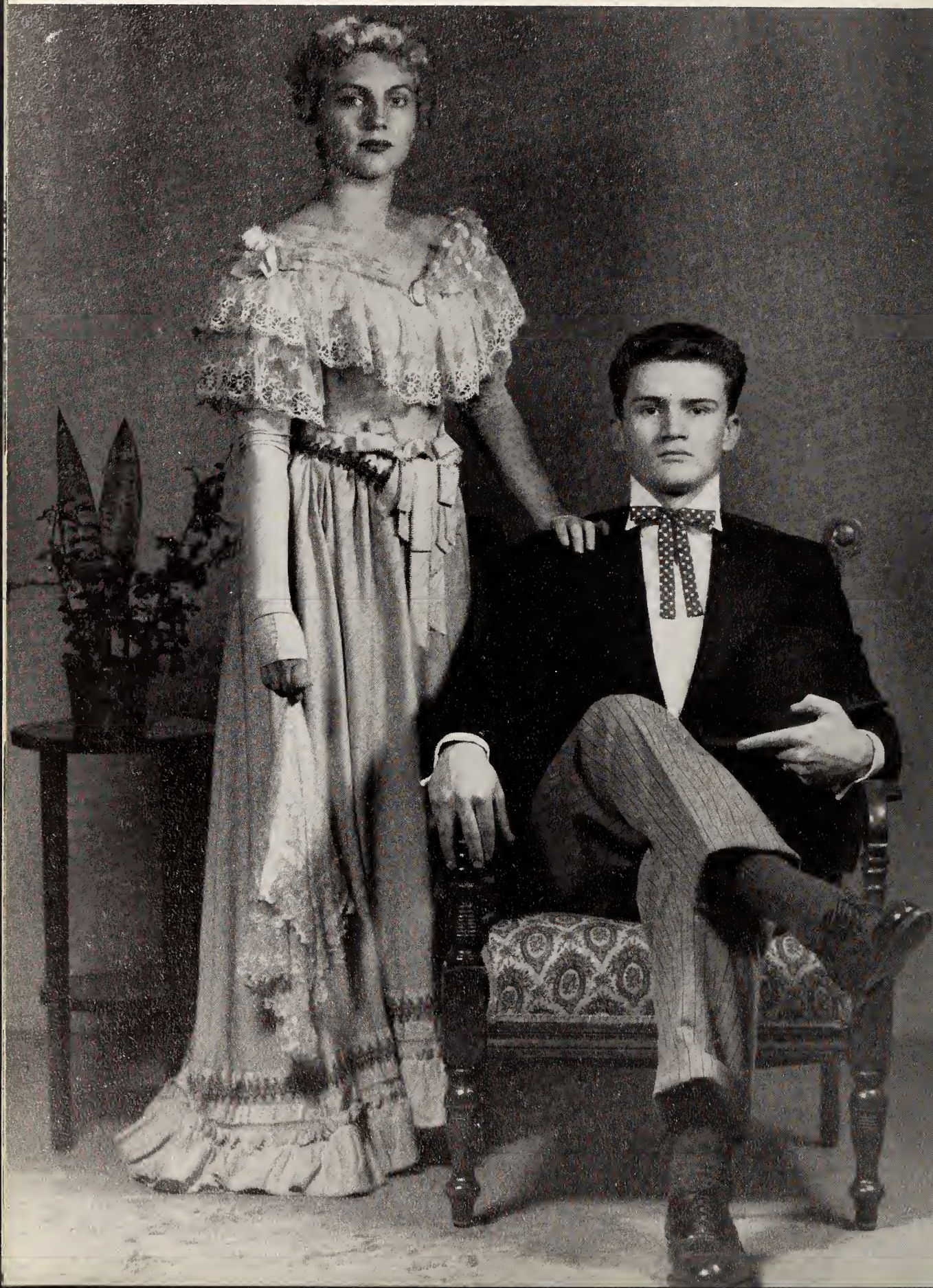
JOHN
BOYETTE



Mary Edna
Grimes

BEST ALL AROUND

Bill
Starling





*Dorothy
Johnson*

MOST INTELLECTUAL

*Wilbert
Blackman*

*Nell Rose
Wallace*

MOST POPULAR

*Harold
Langdon*





*Jean
Day*

BEST LOOKING

*Dennis
Whitley*

*Elinor
Wallace*

MOST ACCOMMODATING

*Vartan
Davidian*





*Harold
Moore*

MOST ATHLETIC

*Frances
Peedin*

*Barbara
Lee*

MOST AMBITIOUS

*Bruce
Jones*

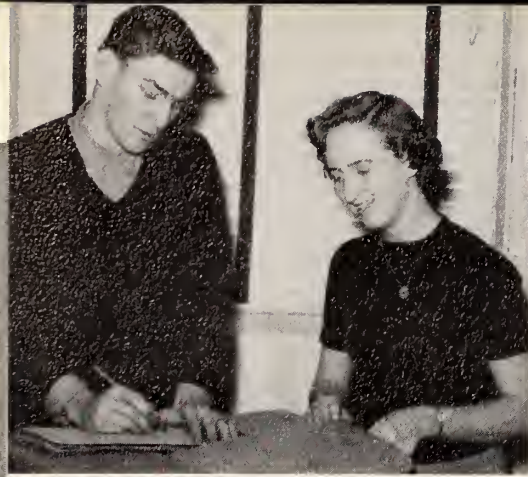




*Eddie
Baroody*

WITTIEST

*Jo Evelyn
Underwood*



EDITORIAL



STAFF



Curtiss Daughtry, Editor-in-Chief, breathes a sigh of relief as he writes the final message to Paragon Press. Dorothy Johnson, Assistant Editor, waits to help tie the package for mailing.

Mary Smithwick says to Art Co-Editor Vartan Davidian, "Why didn't we ask Mr. Blackwell about this drawing?"

We are proud to present this 1953 "Shield." Our book represents the half-century growth of the Smithfield Graded School that has made our Alma Mater what she is — growth brought about by countless people, organizations, and experiences.

... EDITOR



Snapshot Editors Mary Edna Grimes (left) and Elinor Wallace (right) find it easy to make these pictures fit. They just crop 'em off.

THE SHI



COPY EDITORS

Copy Editors Dennis Whitley, Daisy Neighbors, and Wilbert Blackman proof-read the copy as Harold Moore and Ralph Johnson pound away on those typewriters.



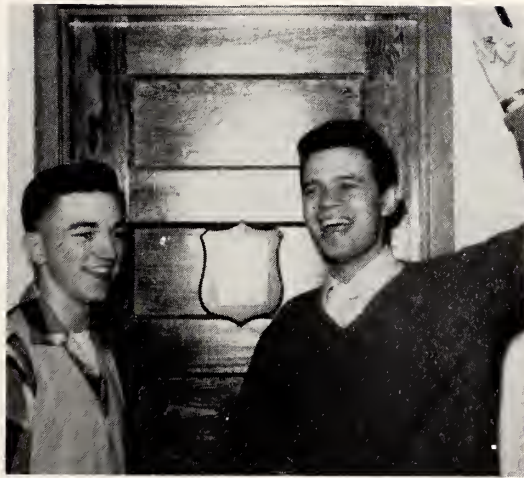
Advertising Manager Nell Rose Wallace and Business Manager Bill Starling smile when the budget balances.



STAFF



Mrs. A. G. Glenn, Adviser to "The Shield" does careful checking on the final dummy copy.



High Salesmen Harold Langdon and Watt Huntley (right) did a remarkable job in soliciting advertising.

Our book symbolizes all those boundless aspirations and laborious undertakings which had their beginnings fifty years ago. It is a token of our appreciation of our school heritage.

... EDITOR

ELD

1953



ADVERTISING STAFF

The campaign is on as the Advertising Staff organizes for soliciting ads. Standing, left to right: Gail Hathaway, Rebecca Whitley, Margie Morgan, Peggy Sanders, and Jean Day. Seated, left to right: Jackie Ennis, Jo Evelyn Underwood, J. C. Johnson, and Frances Peedin (standing).



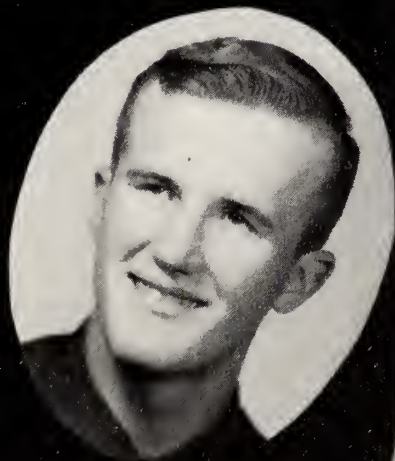
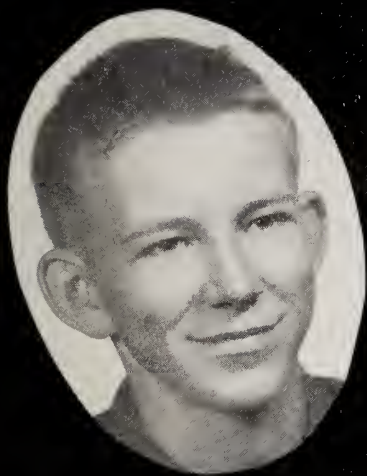
The Edwin Smith Pou Award was started in 1919 by Congressman Edward W. Pou in memory of his son, Edwin Smith Pou, who died in the discharge of his duty in France, on October 28, 1918.

Until 1931, the Award was in the form of a medal. It was changed at this time to a \$50.00 cash Award. In 1937, it was changed back to a medal.

Until 1933, the Award was given to the member of the graduating class who had made the highest scholastic average during the four years of high school work. At this time, a change was made to the effect that the Award would be made to the most outstanding member of the graduating class. In determining the winner, scholarship, leadership, personality, attitude, and interest in the extra-curricular activities of the school were to be the chief qualities to be considered.

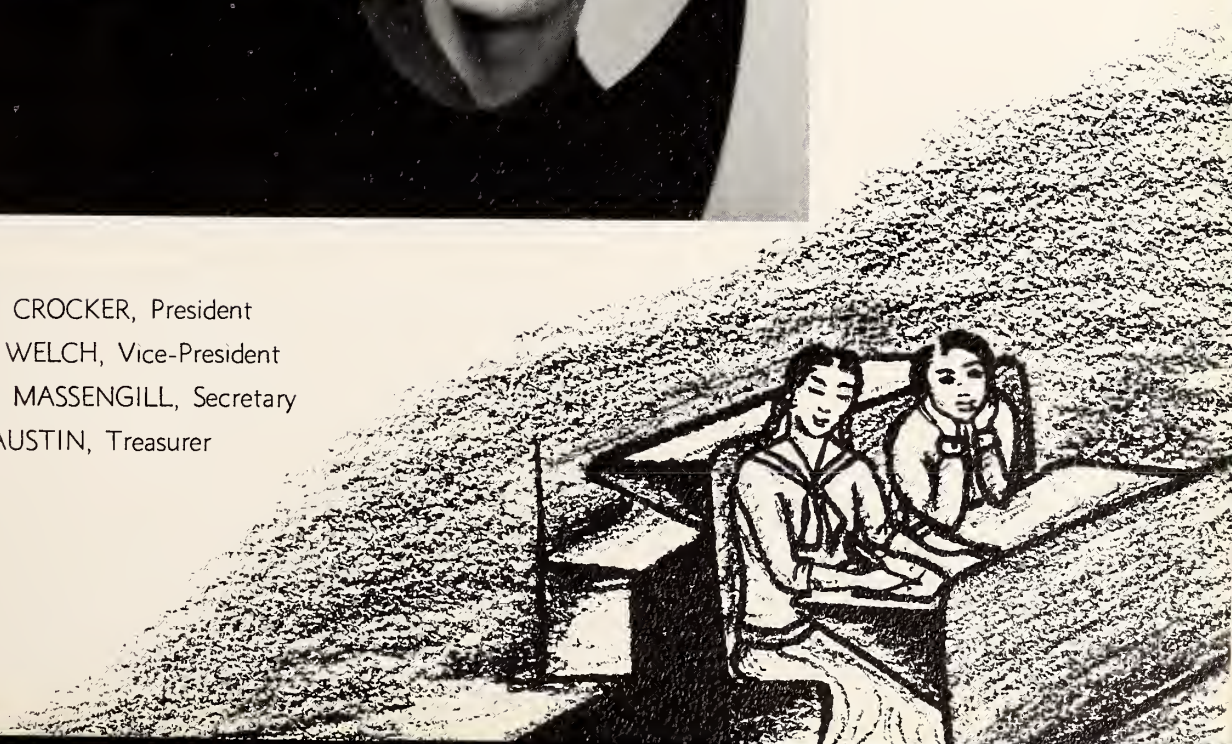
The winners of the Award to date are as follows:

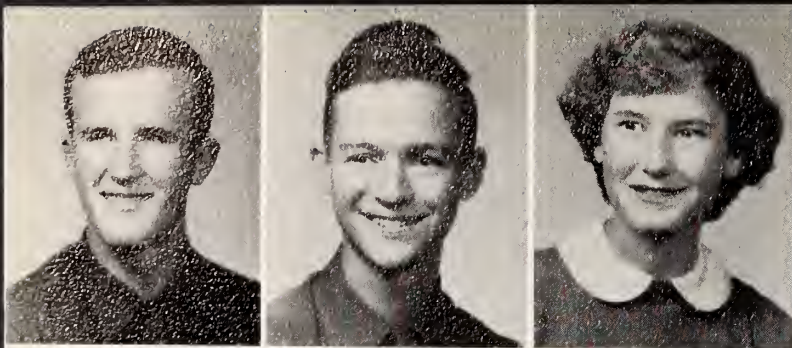
1919.....	Rachel Jordan	1936.....	Eloise Parrish
1920.....	Solon Cotton	1937.....	Jane Parker
1921.....	Benton Wharton	1938.....	St. Clair Pugh
1922.....	Edward Patterson	1939.....	Phyllis Parker
1923.....	Donnell Wharton	1940.....	Carolyn Lore
1924.....	Gilmer Wharton	1941.....	Dan Parker
1925.....	Worth Boyette	1942.....	Ann Noble
1926.....	Ellen Patterson	1943.....	Mary Elizabeth Thomas
1927.....	Cora Creech	1944.....	Ruth Muriel Lassiter
1928.....	John Arthur Wallace	1945..	(No graduating class—12th grade added)
1929.....	Daisy Young	1946.....	Wallace Ashley, Jr.
1930.....	Isabel Morgan	1947.....	Daniel Britt
1931.....	Margaret Edmundson	1948.....	Bobby Pool
1932.....	Lucile Batts and Julia Zaidy (tied)	1949.....	Betty Sugg
1933.....	Mary Smith	1950.....	Lu Long Ogburn
1934.....	Mary Medlin	1951.....	Julia Allen
1935.....	Doris Coltrane	1952.....	Ella Ann Lee



J U N I O R S

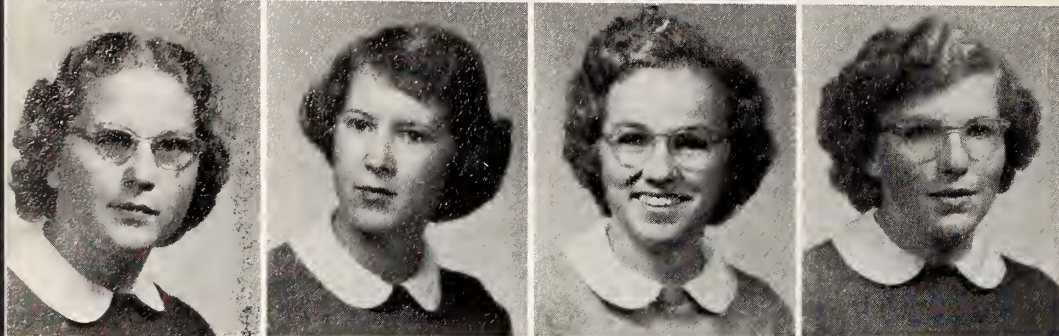
KENNETH CROCKER, President
BARBARA WELCH, Vice-President
CAROLYN MASSENGILL, Secretary
GEORGE AUSTIN, Treasurer



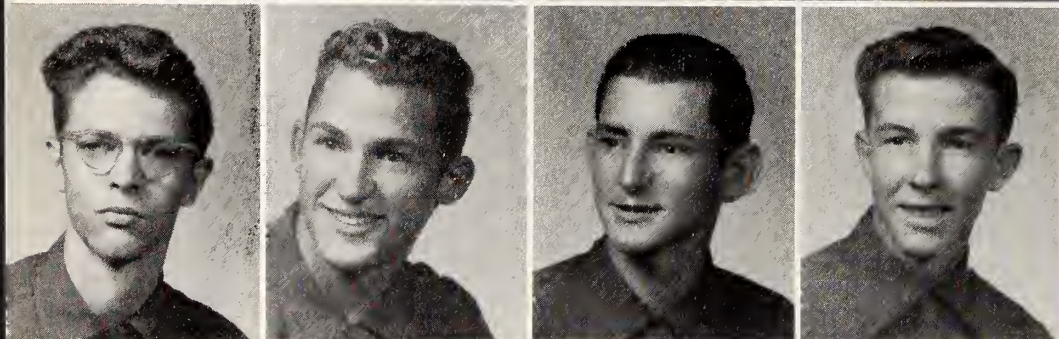


JUNIORS

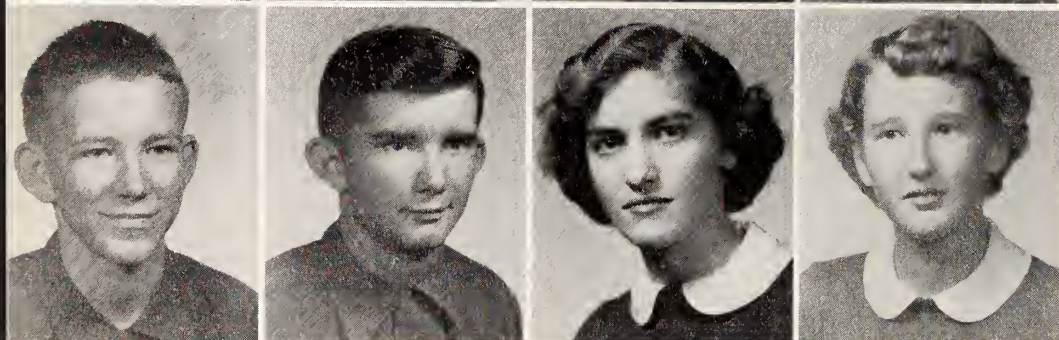
George Austin
Bobby Baggett
Shirley Baker



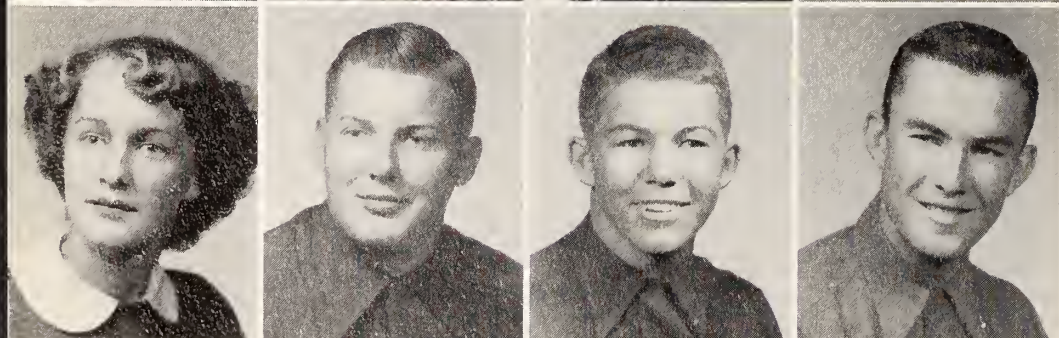
Geraldine Barbour
Jean Barbour
Letha Barbour
Gwyndoline Batten



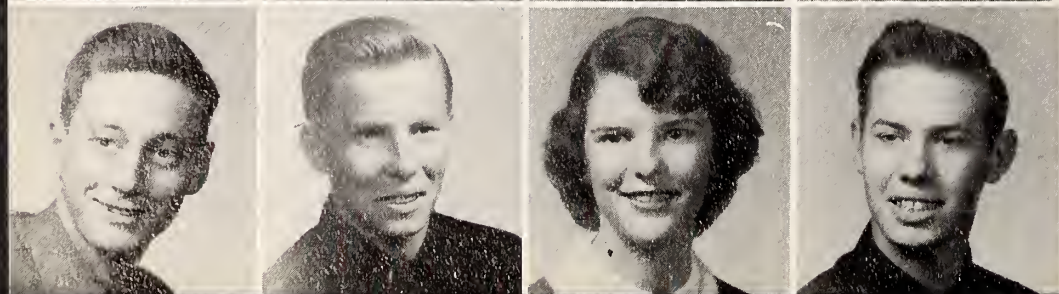
Freddy Blackman
Spencer Braswell
Cecil Capps
Wade Creech



Kenneth Crocker
Frank Daughtry
Faye Davis
Alice Dickens



Mae Dixon
Bobby Godwin
Joe Grantham
Tommy Hayes



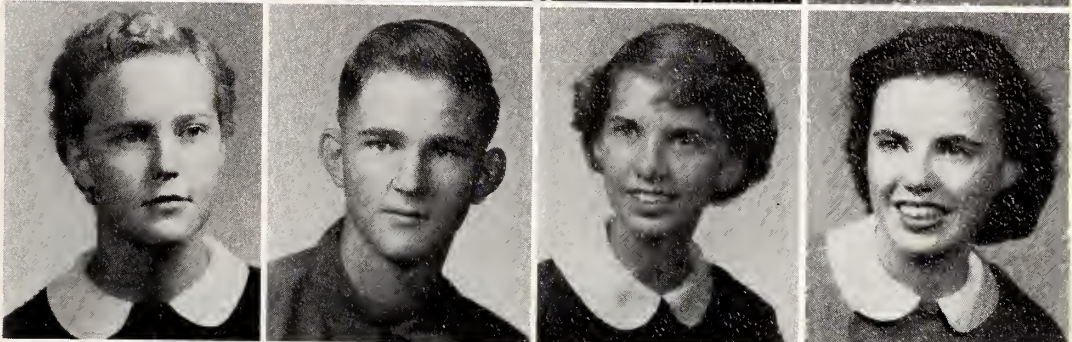
Bobby Hill
Gene Hill
Sarah Hill
William Huntley

JUNIORS

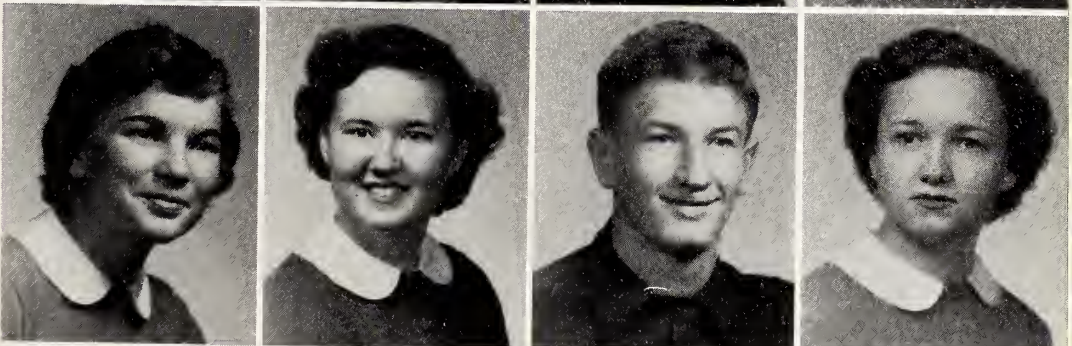
Bette Johnson
 Norman Johnson
 Peggy Johnson
 Phyllis Johnson



Eva King
 Earl Langdon
 Ann Lee
 Nancy Lee



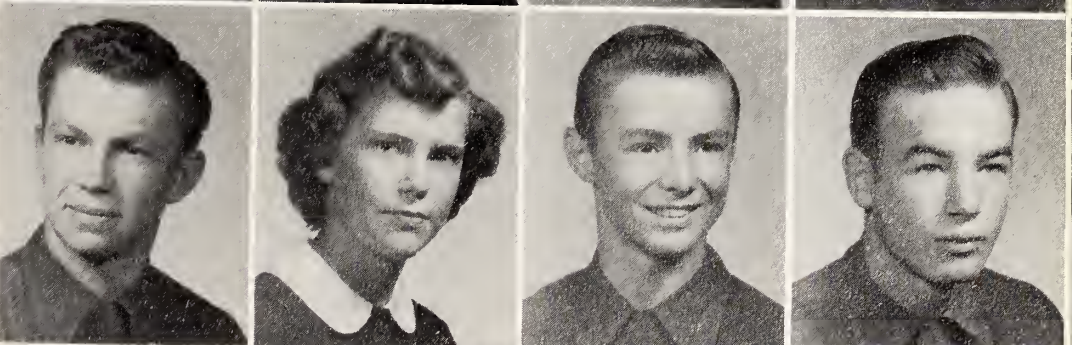
Mary Catherine Liverman
 Carolyn Massengill
 Bill Massey
 Vera Matthews



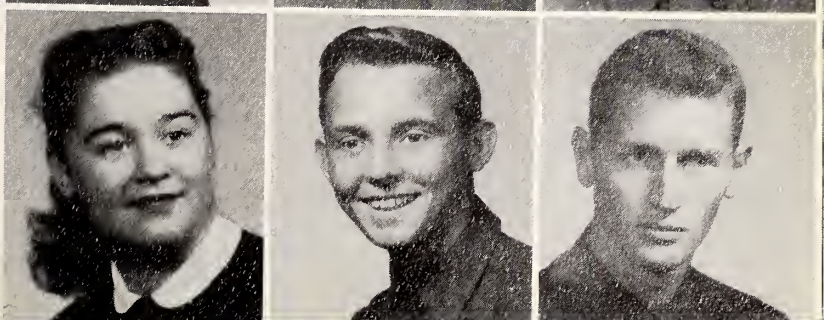
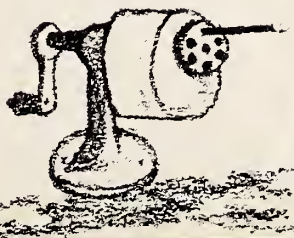
Barbara Moore
 Lillian Narron
 Caroline Osborne
 Shelva Parrish



Eugene Pittman
 Elizabeth Putnam
 James Roberts
 Eugene Snead



Anna Stanley
 Carter Stephenson
 Harold Stephenson



JUNIORS

Burton Stevens
Joyce Stevens
Robert Strickland

Russell Thompson
Lola Twigg
Rivers Upchurch

Dennis Wallace
Mike Wallace
Patricia Ward

Sherward Ward
Barbara Welch
Rudy West

Nancy Whitley



SOPHOMORES



FRESHMEN

SOPHOMORES

MISS LANGFORD'S HOMEROOM: FIRST ROW, left to right: Marvin Bryant, Marie Blackman, Louise Cockrell, Lawanda Langley, Snerry Creech, Melva Ruth Beasley, Mary Ethel Barnes, Charles Edwards; SECOND ROW: James Whitehurst, Sherrill Peterson, Margie Beasley, Jo Ann Coats, Genevieve McLamb, Jo Ann Kadford, Larry Moseley, Jack Davis; THIRD ROW: Miss Langford, Billy Ray Ailen, Pershing Braswell, Harold Underwood, John Hill, Jackie Bryant, Jerry Joe Stephenson, Pete Peterson; ABSENT: Sherwood Cook, Bobbie Lynn Beasley.



MISS TAYLOR'S HOMEROOM: FIRST ROW, left to right: Wynona Smith, Linda Lee, Dorothy Parker, Charlotte Edwards, Bettie Sue Hamilton, Janet Wall, Mildred Woodard, Joyce King Strickland, Edna Rose Greene; SECOND ROW: Glenda Davis, Rachel Stevens, Patricia Nichols, Nell Hooks, Dorothy Morgan, Jennie Blow Layne, Brenda Register, Mary Simmons, Shirley Price, Teresa Upchurch; THIRD ROW: Miss Taylor, M. T. Baggett, Lehman Barnes, Monty Montgomery, Aaron Johnson, Fred Hoyt, John Twisdale, Frank Skinner, Steve Upton; ABSENT: Jean Corbett.



SOPHOMORES

MRS. LIDE'S HOMEROOM: FIRST ROW, left to right: C. L. Gurganus, Joyce Dupree, Lillian Wallace, Minnie Ann Pilkington, Janice Ford, Sarah Warr, Mary Lou Holmes, Jimmy Moore; SECOND ROW: Arthur Sellers, Rex Langston, Barbara West, Doris Stanley, Doris Jones, Owen Phillips, Ray Hill; THIRD ROW: Mrs. Lide, David Parker, Eugene Whitley, Billy Haire, Bobby Matthews, Leon Warren, Joseph Stephenson, Adolph Langston; ABSENT: Lottie Holley, Gerald Jones



FRESHMEN

MISS WANNAMAKER'S HOMEROOM: FIRST ROW, left to right: Helen Hood Baker, Sarah Elizabeth Blackman, Betty Jo Watson; Elizabeth Ann Turner, Beverly Whitehurst, Doris Jean Davis, Mary Louise Mohr, Sharon Daughtry, Pat Lewis, Margaret Ann Sanders; Miss Wannamaker; SECOND ROW: Joe Frank O'burn, Tony Capps, Marie Davis, Jane Twisdale, Ann Rackley, Patricia Ann Stephenson, Faye Hardee, Louise Stevens, Miriam Humphrey, Billy Blackmon, Johnny Wallace; THIRD ROW: Harold Lee, Bryan Hill, Bill Holland, Joe Durwood Creech, Harold King, Virgil Early, Dennis Wiggs, Noble Capps, Charles Heavener; ABSENT: Douglas Brantley, Gayle Brown.



FRESHMEN

MR. BROWN'S HOMEROOM: FIRST ROW, left to right: Jean Edwards, Cecilia Lee, Myrna Bridgers, Flora Radford, Charles Anderson, Larry Wheeler, George Stephenson, H. B. Strickland; SECOND ROW: Elmarie Johnson, Evelyn Overby, Gladys Coats, Edna Ruth McLamb, Ella Mae Vinson, Dorothy Eason, Carris Edwards, John Langston, Clifton Faircloth; THIRD ROW: Jimmy Vinson, James Radford, Marvin Taylor, Ronald Coe, Jimmy Stallings, Bobby Stanley, R.H. Lassiter, P. E. Jones, Lawrence Langdon, Billy Capps, Ernest Gurley, Mr. Brown; ABSENT: Marvin Ennis, Margie Owen.



MR. BRANNAN'S HOMEROOM: FIRST ROW, left to right: Gene Twisdale, Rose Peterson, Sandra Crumpler, Miriam Stevenson, Faye Toler, Margaret Lee Austin, Sonja Johnson, Clifton Johnson, Laverle Lee, Margie Faircloth, Margie Adams; SECOND ROW: Glenn Langdon, Bob Johnson, Bobby Stevenson, Edwin Norris, Ben Daughtry, Bobby Coe; THIRD ROW: John Talton, Donald Johnson, Bobby Creech, Frederick Toole, Shirley Woodard, Dora Baker, Faye Cockrell, R. E. Penny, Barbara Ann Davis, Nelda Godwin, Sandra Ward, Peggy Parker, Rebecca Byrd, Bill Jones, Mr. Brannan.



A
C
T
I
V
I
T
I
E
S



*"Good schools are usually the
result of much sacrifice on the
part of some person or persons..."*

PROFESSOR IRA T. TURLINGTON



JUNIOR - SENIOR BANQUET

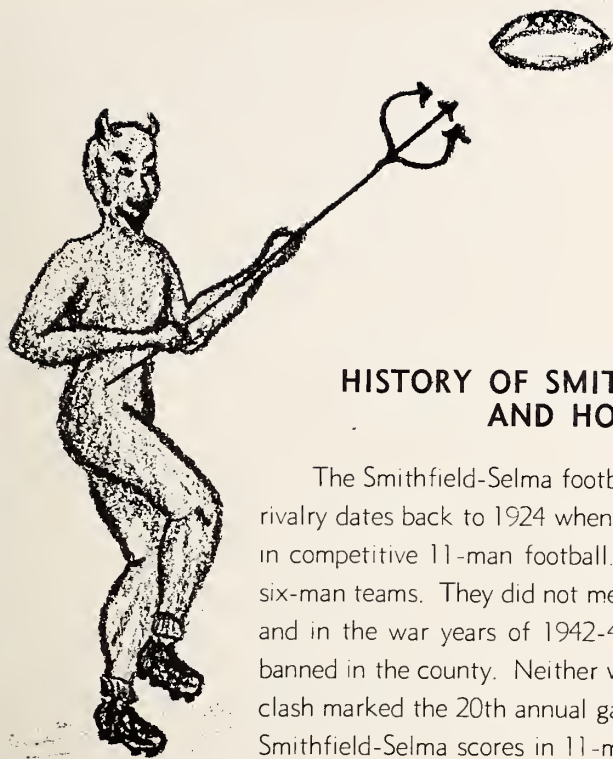


WE DINED . . .

WE DRAMATIZED . . .

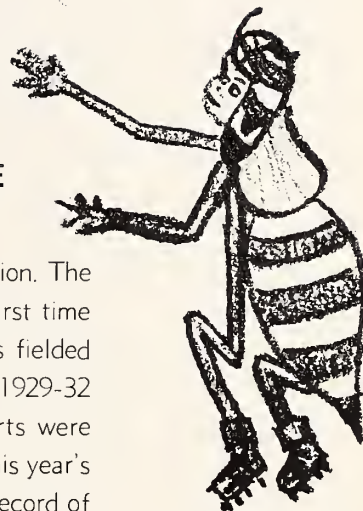


WE DANCED . . .



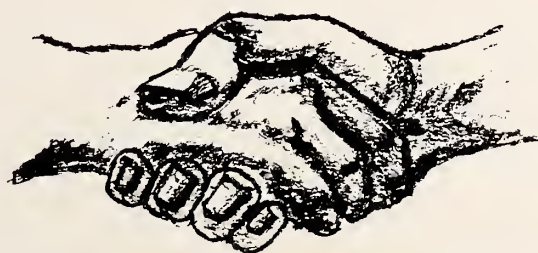
HISTORY OF SMITHFIELD-SELMA GAME AND HOMECOMING

The Smithfield-Selma football game has become a tradition. The rivalry dates back to 1924 when the two teams met for the first time in competitive 11-man football. During 1940-41 the schools fielded six-man teams. They did not meet in the depression years of 1929-32 and in the war years of 1942-44 when inter-scholastic sports were banned in the county. Neither was there a game in 1925. This year's clash marked the 20th annual game. Below is the complete record of Smithfield-Selma scores in 11-man football:



	SMITHFIELD	SELMA		SMITHFIELD	SELMA
1924	21	0	1939	25	0
1926	19	0	1940	15	0
1927	18	6	1945	14	6
1928	35	0	1946	14	13
1933	28	7	1947	0	31
1934	13	14	1948	6	19
1935	34	0	1949	26	20
1936	39	0	1950	0	51
1937	19	0	1951	31	13
1938	6	0	1952	13	18

For several years the game has been played on Thanksgiving in the Legion Park. It was the Class of 1947 who conceived the idea of Homecoming at this time. Under the leadership of Ann Finch and John Marshall Sasser the seniors acted as official hosts. A pep rally was held on Wednesday evening before the game. Skits, stunts, and novelty numbers along with dancing were planned for Thanksgiving evening with high school classes and alumni participating. It was this year that the Selma Football Team and Senior Class were invited as guests. In 1948 Faye Lee worked with the senior class in planning the affair. The program in 1949 was under the direction of Frankie Finch. It was during this year that the Thanksgiving Morning parade was begun. For the next two years the activities remained practically the same under the leadership of Martha Osborne and Ella Ann Lee. The following pages carry snatches of this year's Homecoming. . . .



PARADE

Cars line up for 10 o'clock parade on Thanksgiving Morning (upper right). Prize winning car decorated by Ann Lee and Alice Dickens (right). Sophomores and freshman boys (below) do their part in making the parade a success. Pep rally in Court House Square (lower right) after parade climaxes in morning program.

PLANNING

Mrs. A. G. Glenn, senior class sponsor, and Dorothy Johnson, Chairman Homecoming Activities, make plans for annual Thanksgiving events.

CHAPEL PROGRAM

Wednesday's Chapel marks the beginning. Juniors George Willis Austin and Bobby Baggett (upper left) give clever radio skit. Cheer leaders (lower left) take part in program too.

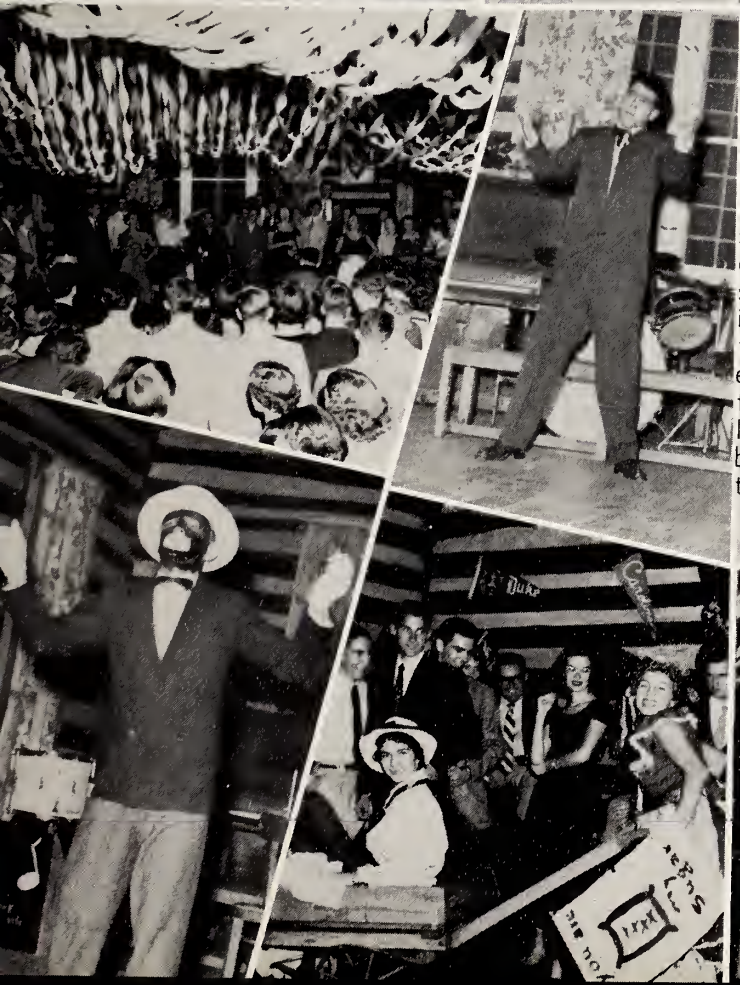
THE GAME

(Left to Right) Red Devils seem confident as they leave gymnasium for Legion Park. Opposing Yellow Jackets score first touchdown. Smithfield spectators look worried. George Meyer runs over for a Smithfield touchdown. Selma stopped momentarily by Red Devils. Students selling souvenirs as the game gets underway.



SENIORS DECORATE

Creative hands go into action as seniors put final touches on Legion Hut for Homecoming Dance. (Lower Left) Miniature football field with players in position serves as centerpiece for refreshment table. (Right) Mary Smithwick and Dorothy Johnson complete mantel and piano decorations.



DANCE AND FLOOR SHOW

Saddened hearts over loss of Thanksgiving game become lighter as high school classes and college groups present sparkling skits in early evening's entertainment. Late evening finds dance floor crowded with loyal couples who are bound by a strong tie to their Alma Mater.

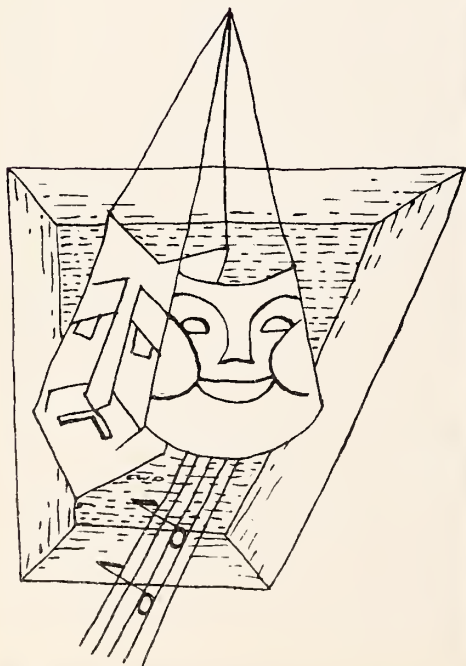


"FOREVER ALBERT," Senior Play, 1952

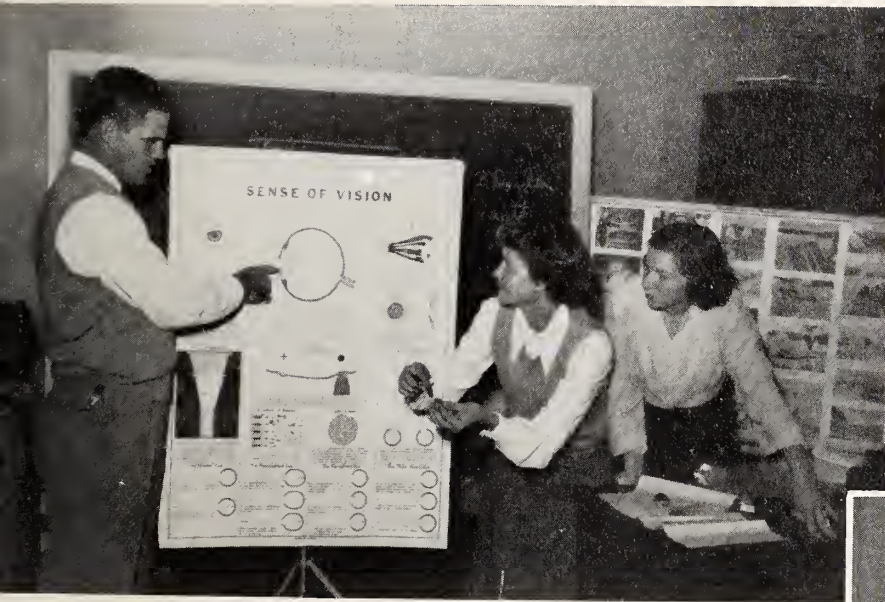


DRAMATIC PRODUCTIONS

"ONE FOOT IN HEAVEN," Junior Play 1953



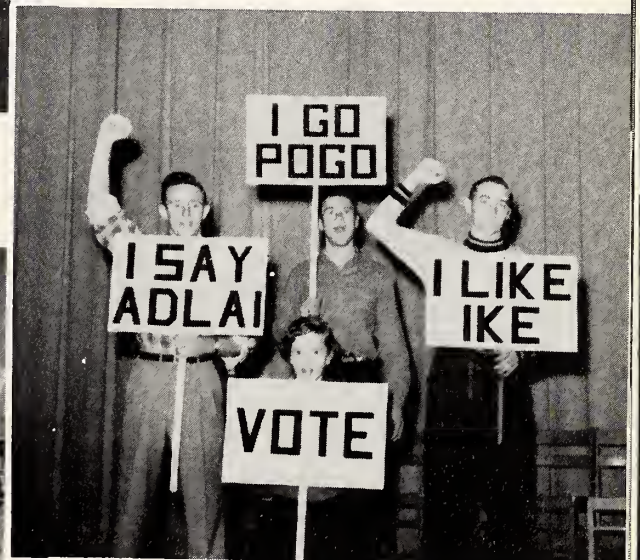
PRINCIPLES AND PRACTICE



LEFT: In dissecting a cow's eye Coach Brown's Health Class learns more about the human eye.

BELOW: Students go all out for their candidates in November election.

BELOW: Freshman boys discuss current topics in civics class.



BELOW: Joe Grantham reports on classic in Junior English Class during Book Week.



LEFT: "With a Song in My Heart" Harold Moore appears on Senior Chapel Program.

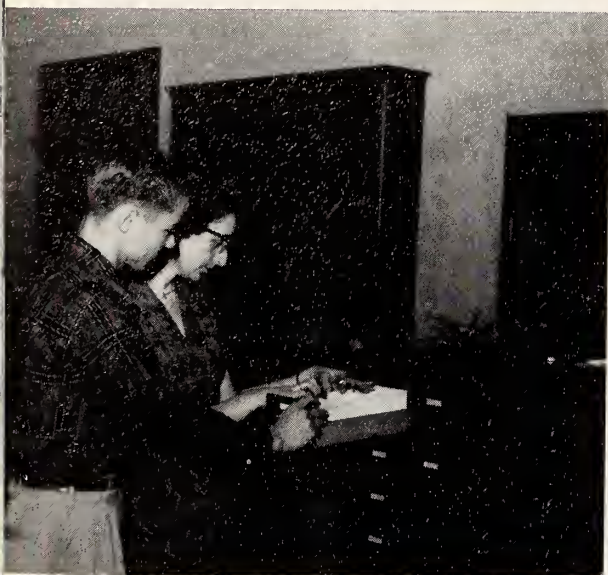




LEFT: Another grave senior problem—choosing mascots



RIGHT: Mathematics can be perplexing but not to these apt freshmen.



LEFT: Mrs. Mildred Bell, librarian, shows James Roberts how to use Card Catalog



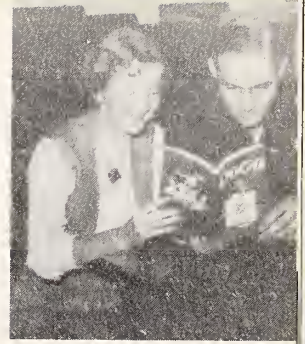
RIGHT: Receiving class rings is just one of the "big moments" in a senior's life.



LEFT: Mrs. James Crayton, cafeteria manager, and her competent staff are ready to serve a turkey plate to 900 hungry students.



RIGHT: Seniors in S.H.S. develop a wide reading range.



LEFT: "Yes, it's going to be a date frock," says Mrs. Ramona Cash, home ec. teacher, to Joyce King Strickland and Edna Rose Greene as she examines pattern.

RIGHT: Curtiss Daughtry and Bill Starling discover chemistry experiments can be fun, but oh, those lab checks that follow.



LEFT: William Huntley gets comfortable to work on that Shakespeare research paper.

RIGHT: Senior Bruce Jones finds Principal A. G. Glenn eager to help him choose his college courses—at Carolina.



F R A N C A I S



ABOVE LEFT: Mrs. Sphangos' seniors study French Phonetics through records of native speeches and (below) dramatize through the use of puppets a French story.

RIGHT: First year French students preparing an imaginary trip to Paris.



Time out for dreaming. . . .

NOTEWORTHY ARTISTS



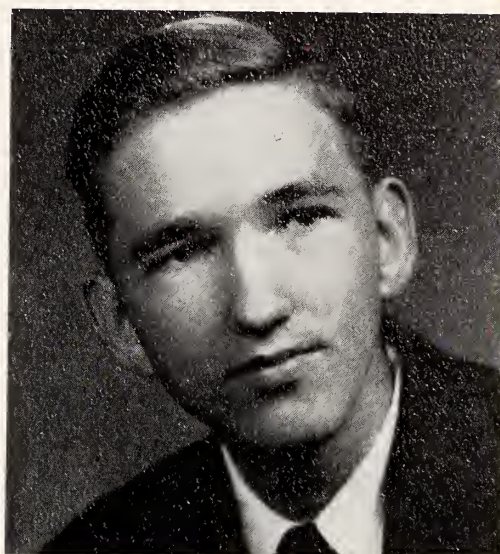
MISS FLORA CANADAY
Piano Instructor

MISS ELLEN MATTHEWS
Piano Instructor



BRUCE JONES

Superior rating in piano 1951 and 1952 N. C. Federation of Music Clubs Festival; Capital District Chairman of Junior Music Clubs from October 1951 to October 1953; elected State Vice-President Junior Music Clubs at State Convention May 1952; original compositions in piano.



MARY SMITHWICK

Winner State Honors National Piano Auditions 1949 and 1950; Excellent rating 1950, Superior rating 1951 and 1952 N. C. Federation of Music Clubs Festival; President Hunter Johnson Club 1952, 1953; Page District Convention Music Club, October 1952.



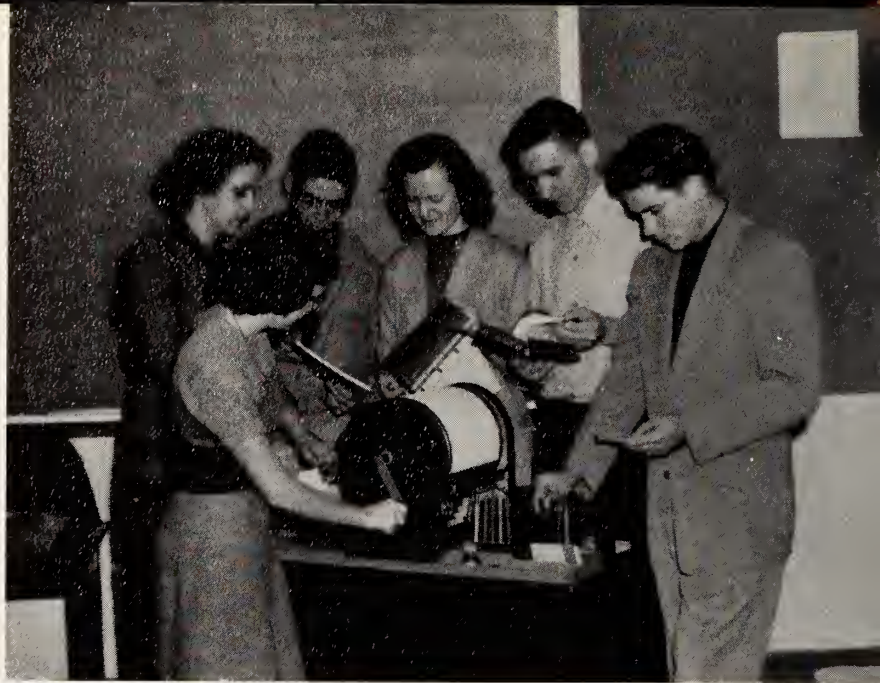
MUSIC CLUB

Band Director Lee Rogers takes time out to discuss a difficult number with (left) George Austin, Barbara Welch, Sandra Crumpler, and Vartan Davidian. Other members of the club are: Margaret Austin, M. T. Baggett, Bobby Baggett, Shirley Baker, Lehman Barnes, Gwyn Batten, Freddy Blackman, Curtiss Daughtry, Ben Daughtry, Barbara Davis, Marie Davis, Virgil Early, C. L. Gurganus, Bryan Hill, Ray Hill, Watt Huntley, Don Johnson, Billy Jones, Glenn Langdon, Bobby Matthews, Monty Montgomery, Edwin Norris, Joe Frank Ogburn, Sherrill Peterson, Bill Starling, Robert Strickland, Jo Evelyn Underwood, Johnny Wallace, Sherwood Ward, Rudy West, and Dennis Wiggs.



COMMERCIAL CLUB

Adviser Mrs. Lide (left) says "All of you must learn to cut a stencil properly and use the mimeograph machine." Gail Hathaway turns the crank as J. C. Johnson, Daisy Neighbors, Bruce Jones, and Jerry Clifton master other techniques. Other members of the club are: Betty Braswell, Bobby Godwin, Robert Johnson, Genevieve McLamb, Margaret Overbee, Janice Stephenson, Russell Thompson, Patsy Vinson, Dennis Wallace, Eugene Whitley, and Rebecca Whitley.



HANDICRAFT CLUB

Miss Mary Taylor, adviser (center), is apparently pleased with the finished product of these students. (Left) Alice Ruth Byrd, Barbara Lee, Ella Mae Vinson, and Jo Ann Johnson examine some of the finished products. Other members of the club are: Myra Barbour, Myrna Bridgers, Cecilia Lee, Shirley Massengill, Edna Ruth McLamb, Margie Owen, and Laverne Whitley.

LIBRARY CLUB

Attractive bulletin boards add to a library. Jerry Joe Stephenson (seated) cuts out letters for a book display. Assisting him are Joyce Dupree (right), Letha Barbour, Mrs. Mildred Bell, Librarian, and Frances Peedin. Other members of the club are: Jackie Bryant, Marvin Bryant, Louise Cockrell, Janice Ford, and Sarah Warr.





JOURNALISM CLUB

One of the projects of the Journalism Club is compiling a scrapbook of the year's school activities. President Mary Edna Grimes and Vice-President Elinor Wallace (seated) discuss a new project for the club. Ann Lee and Mary Smithwick (right) find the old scrapbooks most amusing. Peggy Sanders, this year's scrapbook editor, and Shirley Jones (left) are serious about selection of new material. Other members of the club are: Jo Ann Coats, Sherrie Creech, Dorothy Johnson, Nancie Lee, Mary Catherine Liverman, Mary Reich Moore, Brenda Register and Nell Rose Wallace.

FORUM CLUB

Vice-President Harold Moore leads group discussion as President Elmer Owens, Advisor Roy Brown, Secretary and Treasurer Carter Stephenson, and reporter Wilbert Blackman eagerly await to voice their opinions. Other members of the club are: Billy Ray Allen, Charles Anderson, Billy Blackman, Ronald Coe, Marvin Ennis, Bobby Hill, Buddy Hill, Pete Johnson, George Meyer, Eugene Snead, Jimmy Vinson.



HOME ECONOMICS CLUB

"Cooking is really fun" says Pat Lewis as she peeps into the boiling pot. Sarah Elizabeth Blackman (left) is doubtful about this new recipe. Helen Hood Baker and Sandra Ward (right) are dubious too. Miriam Stephenson checks on her oven dish. Mrs. Ramona Cash, advisor (right), enjoys the situation thoroughly. Other members in the club are: Margie Adams, Dora Baker, Gayle Brown, Rebecca Byrd, Gladys Coats, Faye Cockrell, Sharon Daughtry, Doris Jean Davis, Dorothy Eason, Carrie Edwards, Jean Edwards, Margie Faircloth, Nelda Godwin, Faye Hardee, Mary Lou Holmes, Miriam Humphrey, Sonja Johnson, Laverle Lee, Evelyn Overby, Peggy Parker, Rose Peterson, Ann Rackley, Flora Radford, Margaret Sanders, Alice Stephenson, Faye Toler.



DRAMATICS CLUB

(Right) Mrs. Mary Tom Sphangos, director, discusses costuming with Jean Day. Burton Stevens says to Pres. Ed Paddison, "The play's the thing". Student director directs scene from "In Dixon's Kitchen." Rivers Upchurch, kneeling to Caroline Osborne, as actor Joe Grantham (standing) plays his part too. The other members of the club are: Geraldine Barbour, Wade Creech, Kenneth Crocker, Barbara Cockrell, Betty Davis, Faye Davis, Alice Dickens, Mae Dixon, Jackie Ennis, Gene Hill, William Huntley, Bette Johnson, Peggy Johnson, Phyllis Johnson, Eva King, Alice Lee, Lucile Lee, Carolyn Massengill, Vera Matthews, Margie Morgan, Lillian Narron, Elizabeth Putnam, Lola Twigg.



MONOPOLY CLUB

Monopoly Club adviser Miss Jane Lewis (standing) works out program with officers. (Left) Vice-Pres. Jean Barbour, Sec.-Treas. Pat Ward, Pres. Marie Blackman, and Reporter Barbara West. Other members of the club are: Mary Ethel Barnes, Bobbie Lynn Beasley, Glenda Davis, Betty Sue Hamilton, Lossie Holley, Lawanda Langley, Jennie Blow Layne, Dorothy Morgan, Dorothy Parker, Shelva Parrish, Minnie Anne Pilkington, Jo Anne Radford, Anna Stanley, Lillian Wallace, Shirley Woodard.

4-H CLUB

Proper lighting seems to be the theme here where these boys and girls learn how to construct good reading lamps themselves. (Left) Mrs. Edwin Coats, adviser, Sarah Hill, Frank Daughtry, Shirley Price, Joyce Stevens, Spencer Braswell, President Harold Langdon, Glenn Maxwell, adviser, and Cecil Capps. Other members of the club are: Margie Beasley, Pershing Braswell, Noble Capps, Sherwood Cook, Jack Davis, Ernest Gurley, Elmarie Johnson, Norman Johnson, Jewel King, Earl Langdon, Walter Langdon, John Langston, R. H. Lassiter, Bill Massey, Allen Sanders, Jimmy Stallings, Bobby Stevens, George Stevens, Louise Stevens, Rachael Stevens, H. B. Strickland, Fred Toole, Jane Twisdale, John Twisdale, Janet Wall, Nancy Whitley.





HOBBY CLUB

"Making model planes requires skill," says President Eddie Baroody, "and this is why I take pride in the Hobby Club." (Left) Dennis Whitley, Adviser Oscar Brannan, President Eddie Baroody, Frank Skinner, Harold Stephenson, and Ralph Johnson (seated). Other members of the club are: Bobby Coe, Fred Hoyt, Aaron Johnson, Bob Johnson, Donald Johnson, Bernard Lee, R. E. Penny, James Roberts, John Talton, Marvin Taylor, Gene Twisdale, Steve Upton, Mike Wallace.

HOBBY CLUB

Miss Ruby Langford, adviser (right), gets fun out of working with this interested group of boys on various hobbies. (Left) Adolph Langston, Harold Lee, Bobby Stanley, Owen Phillips. Other members are: Charles Edwards, Clifton Faircloth, Billy Haire, Raymond Jackson, Pete Jones, Rex Langston, Jimmy Moore, Larry Moseley, David Parker, Pete Peterson, Arthur Sellers, Joseph Stephenson, Leon Warren, Larry Wheeler, Harold Underwood, Jimmy Whitehurst.



DRAMATICS CLUB

Miss Inez Wannamaker, director, watches her students apply make-up before presenting a one act play. (Left) Mary Louise Mohr, Elizabeth Ann Turner, Teresa Upchurch, Joe Durwood Creech, Bill Holland, Charles Heavener, Hal King, Wynona Smith, and Charlotte Edwards. Other members of the club are: Ruth Beasley, Tony Capps, Jean Corbett, Edna Rose Greene, Nell Hooks, Linda Lee, Pat Nichols, Mary Simmons, Pat Stephenson, Joyce King Strickland, Betty Jo Watson, Beverly Whitehurst, Mildred Woodard.





MAJORETTES: Barbara Welch, Caroline Osborne, Mae Dixon, Nell Rose Wallace and Elinor Wallace.

DIRECTOR: Lee Rogers

BAND



FIRST ROW, Left to Right: Director Lee Rogers, Marshall Mauney, Jo Evelyn Underwood, Gwyn Batten, Shirley Baker, Marie Davis, Spencer Braswell, Dennis Wiggs, Glenn Langdon, Billy Jones, C. L. Gurganus, Mildred Woodard. SECOND ROW: Janice Edwards, Rose Peterson, Johnny Talton, Joe Frank Ogburn, Barbara Davis, Bobby Baggett, Ray Hill, Edwin Norris, Noble Capps. THIRD ROW: Sherrill Peterson, Joe Durwood Creech, Ben Daughtry, R. E. Penny, Virgil Early, Freddy Blackman, Harold Langdon, M. T. Baggett, Bill Starling. FOURTH ROW: Bobby Matthews, Watt Huntley, Frank Huntley, Cecil Capps, Sherwood Ward, George Austin, Lehman Barnes, Vartan Davidian, Curtiss Daughtry, Monty Montgomery, Robert Strickland, Donald Johnson.

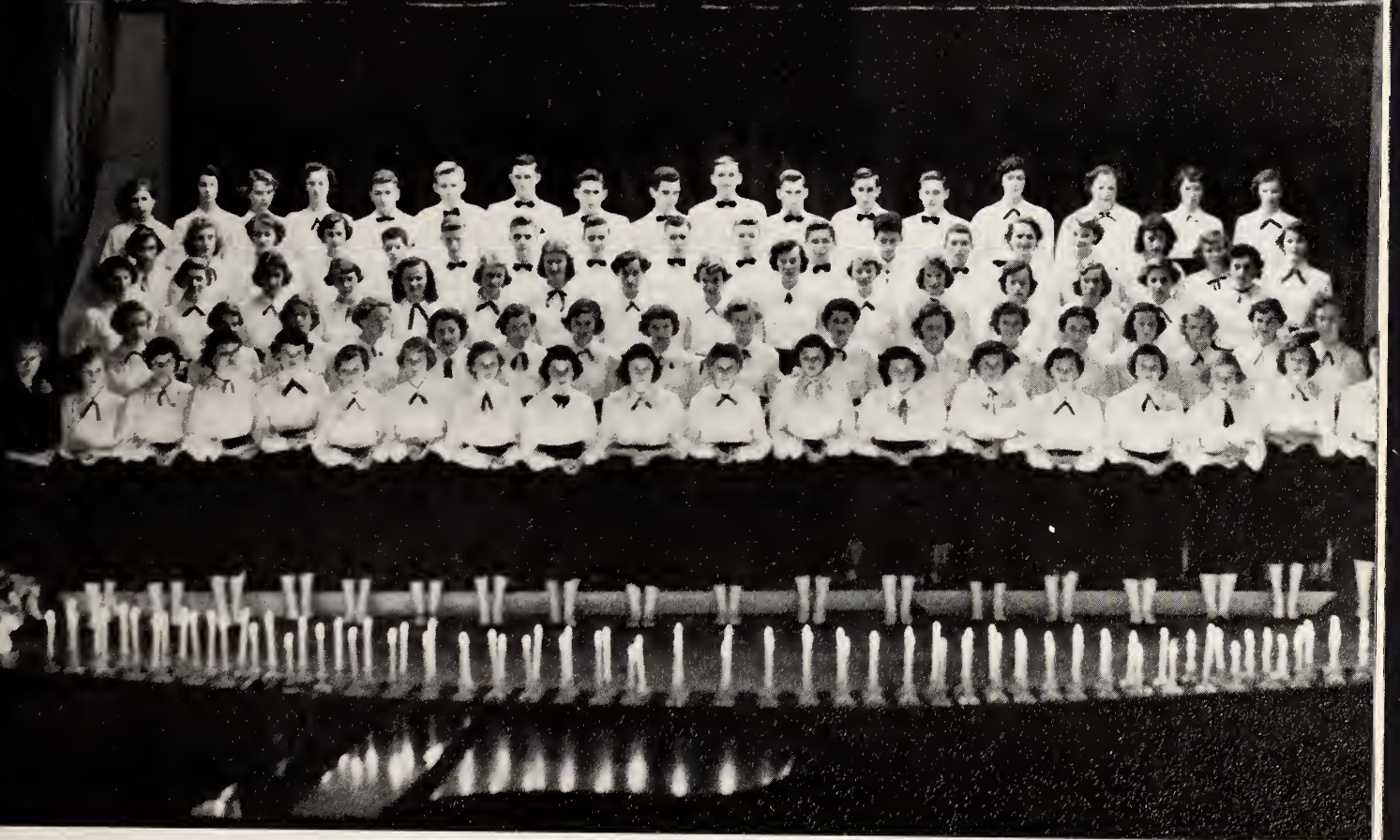


Miss Flora Parker, director.



Pianists: Carolyn Massingill, Caroline Osborne, Sara Hill, Nell Hooks, and (seated) Joyce King Strickland.

GLEE CLUB



FIRST ROW, left to right: Miss Parker, Joyce King Strickland, Jean Corbett, Mary Catherine Liverman, Charlotte Edwards, Edna Rose Greene, Betty Sue Hamilton, Mary Reich Moore, Sandra Ward, Sonja Johnson, Miriam Stephenson, Margie Faircloth, Faye Toler, Margaret Austin, Faye Hardee, Barbara Lee, Barbara Moore, Janet Wall, Carolyn Massingill; SECOND ROW: Caroline Osborne, Ann Lee, Mary Louise Mohr, Alice Dickens, Phyllis Johnson, Nelda Godwin, Jane Twisdale, Louise Stevens, Pat Stephenson, Bobbie Beasley, Teresa Upchurch, Margaret Sanders, Ann Rackley, Pat Lewis, Miriam Humphrey, Sandra Crumpler, Dorothy Johnson; THIRD ROW: Peggy Johnson, Nell Rose Wallace, Shirley Jones, Linda Lee, Daisy Neighbors, Rachel Stevens, Burton Stevens, Dorothy Morgan, Beverly Whitehurst, Mary Smithwick, Sherry Creech, Pat Nichols, Gayle Brown, Dora Baker, Betty Jo Watson, Jo Ann Coats; FOURTH ROW: Elinor Wallace, Mary Edna Grimes, Mae Dixon, Nancy Whitley, Donald Johnson, Bobby Stephenson, Harold Lee, Jimmy Moore, Bobby Godwin, Jerry Joe Stephenson, Gene Twisdale, Fred Toole, Mike Wallace, Joyce Stevens, Brenda Register, Rebecca Byrd, Shirley Woodard, Sara Hill; FIFTH ROW: Wynona Smith, Neil Hooks, Mary Simmons, Jenny Blow Layne, Bill Massey, Kenneth Crocker, Earl Langdon, Jerry Clifton, Harold Underwood, Bruce Jones, Elmer Owens, Owen Phillips, Bobby Hill, Peggy Sanders, Peggy Parker, Laverle Lee, Evelyn Overby.

HIGH TIMES



FACULTY ADVISER: Mrs. Lide . . . EDITOR: Elinor Wallace
 . . . ASSISTANT EDITOR: Ann Lee . . . FACULTY ADVISER:
 Miss Lewis



ART EDITORS: Ed Paddison, Caroline Osborne, Allen Sanders,
 Harold Stephenson, Dorothy Johnson.

ELINOR WALLACE

SIXTEENTH EDITOR OF HIGH TIMES

Elinor Wallace, 1953 editor of the High Times, marks the sixteenth editor of our school paper. Only two of these have been boys—St. Clair Pugh, the first editor and founder of the paper and Russel Jordan the fourth editor. Each editor has contributed no small part in helping preserve the history of our school. To the right is a complete list of the past editors:

- 1937-38—St. Clair Pugh
- 1938-39—Marion Grimes
- 1939-40—Carolyn Lore
- 1940-41—Russel Jordan
- 1941-42—Ann Noble
- 1942-43—Mary Elizabeth Thomas
- 1943-44—Betty Jane Parrish
- 1944-45—Leah Whitley
- 1945-46—Jean Marrow
- 1946-47—Sarah Ann Hamilton
- 1947-48—Joyce Johnson
- 1948-49—Carolyn Cheek
- 1949-50—Lu Long Ogburn
- 1950-51—Julia Allen
- 1951-52—Ella Ann Lee
- 1952-53—Elinor Wallace

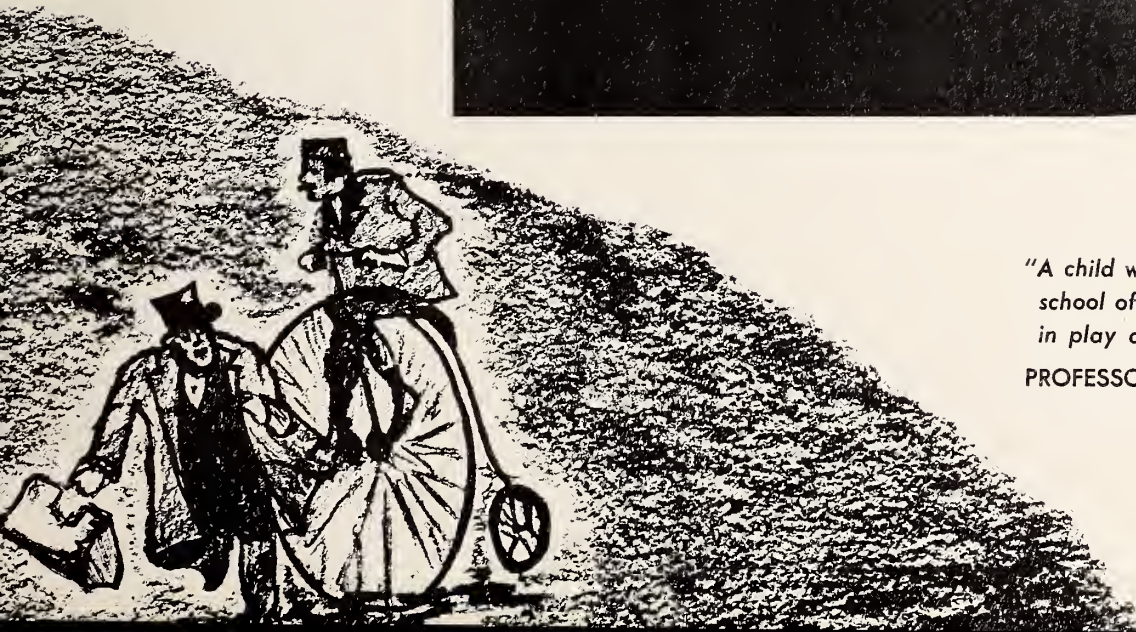
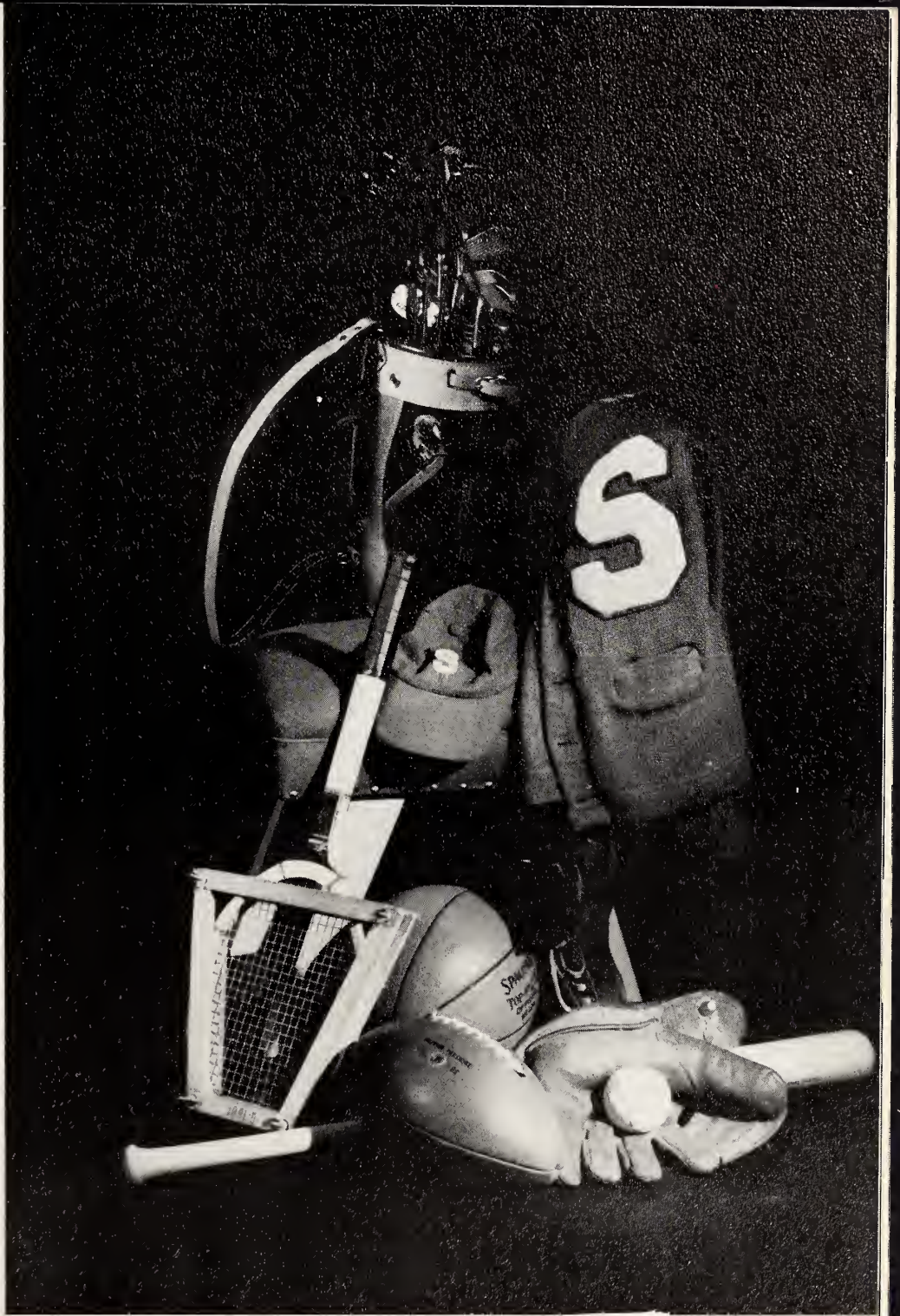


NEWS EDITORS: Barbara Moore, Bruce Jones, Mary Smithwick,
 Carolyn Massengill . . . ADVERTISING MANAGERS:
 Mary Edna Grimes, Bobby Baggett . . . SPORTS EDITOR:
 Carter Stephenson . . . EXCHANGE EDITOR: Betty Davis



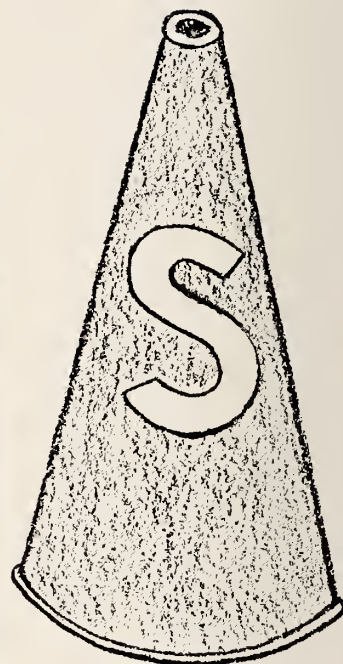
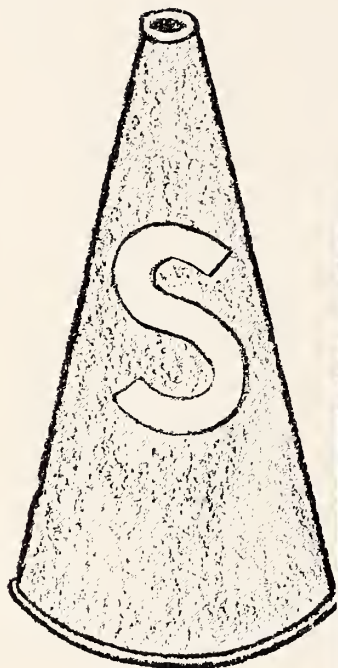
TYPISTS: Barbara Lee, Daisy Neighbors, Jo Ann Johnson,
 Alice Ruth Byrd, Gwynen Batten, Patsy Vinson, Rebecca
 Whitley, Janice Stephenson.

A
T
H
L
E
T
I
C
S



*"A child who walks a mile to
school often runs five miles
in play after he gets to school."*
PROFESSOR IRA T. TURLINGTON

OUR CHEERLEADERS

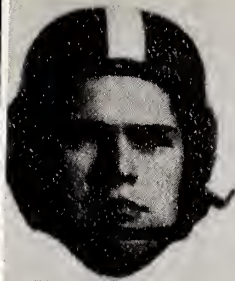


BARBARA
LEE
MARY
SMITHWICK
SHIRLEY
JONES (CHIEF)
ANN LEE
BARBARA
MOORE



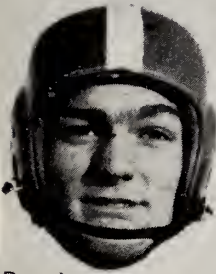
FOOT

BALL



Elmer Owens

The football team this year was made up of nine seniors, six juniors, and ten sophomores and freshmen. After playing eight games in the Class A East Central Conference the Red Devils won five games and lost three entitling them to third place in the conference. Two non-conference games were played. Both games were lost; however, our opponent Tarboro was a member of the AA Classification while Wilson was a member of the AAA Conference. Below is this year's record:



Curtiss Daughtry



George Meyer



Harold Moore



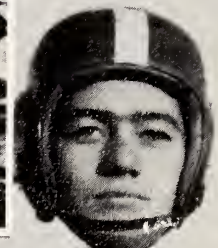
Ralph Johnson



SMITHFIELD	OPPONENTS
19.....	0 Burgaw
18.....	6 Beulaville
20.....	18 Warsaw
27.....	14 Jacksonville
7.....	13 Wilson
14.....	19 Wallace
27.....	0 La Grange
12.....	25 Tarboro
13.....	7 Mt. Olive
13.....	18 Selma



Bill Starling



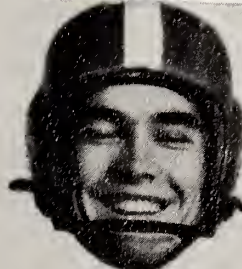
Hilbert Blackman



Joe Grantham

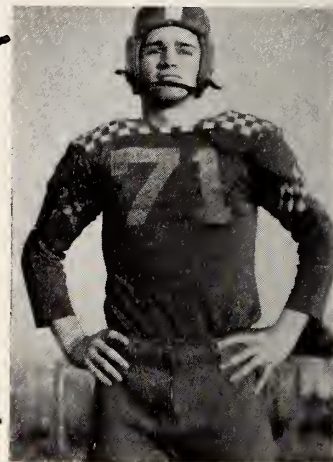


Rivers Upchurch



Tommy Hayes

FOOT

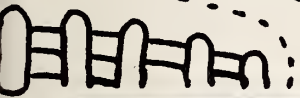


Co-Captain
Bill Starling

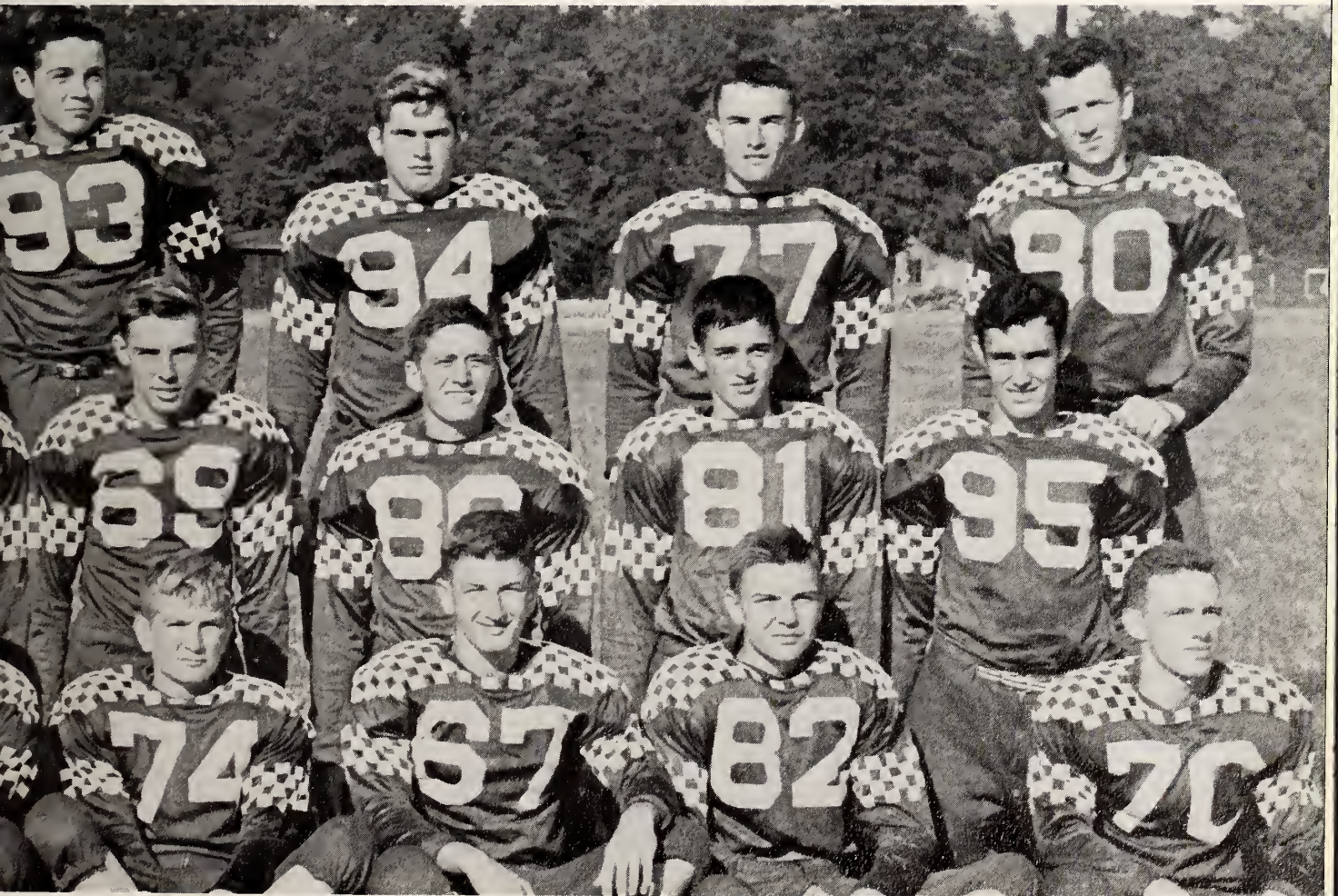


FIRST ROW, left to right: Buddy Hill, Jimmy Moore, Pete Peterson, Joe Grantham, Bill Holland, Billy Massey, Bobby Stanley, Aaron Johnson, Bobby Hill, Harold King, Ralph Johnson; THIRD ROW: Larry Tommy Hayes, Jimmy Whitehurst.

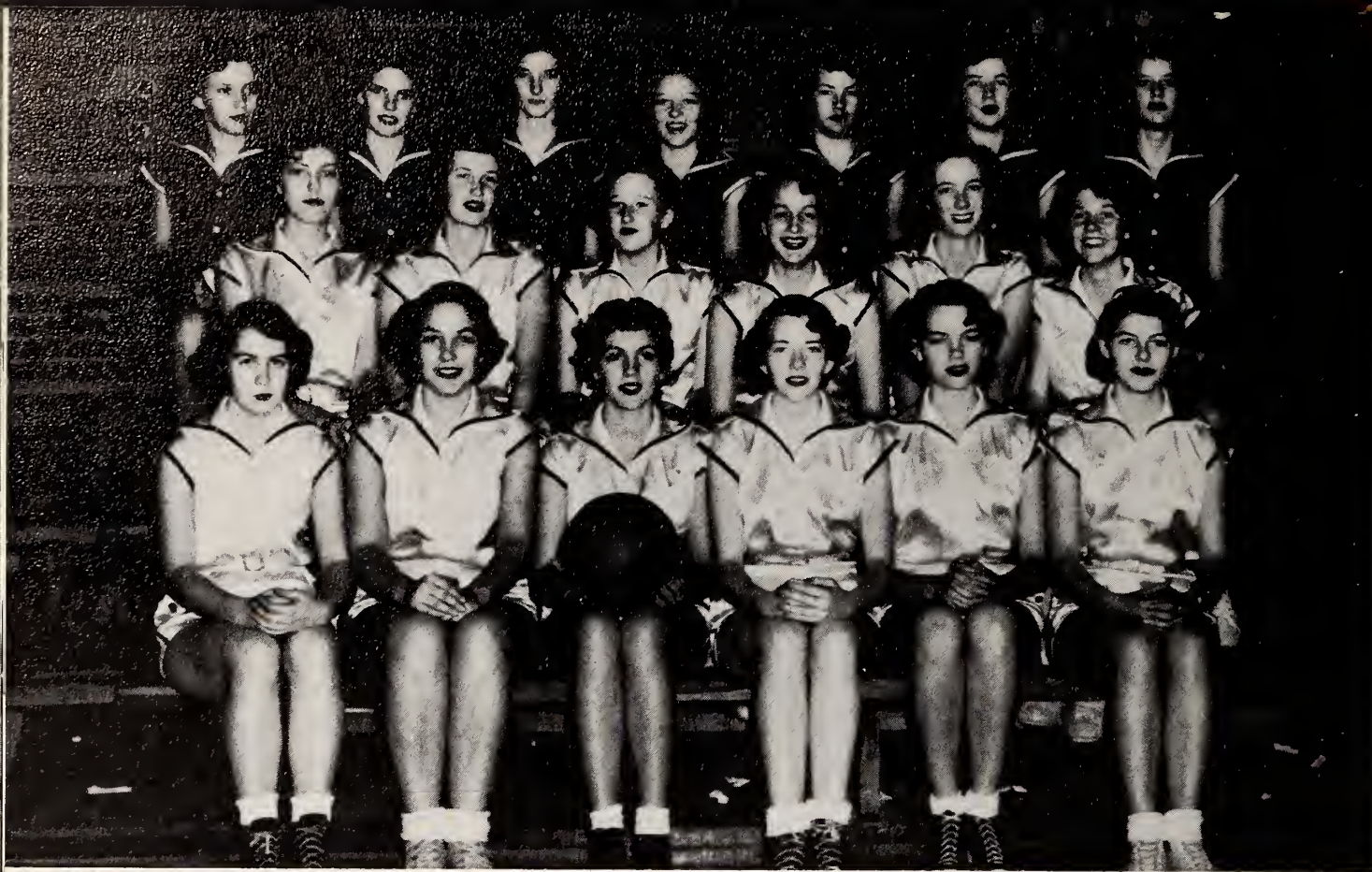
BALL



Co-Captain
Elmer Owens



Joe Durwood Creech, Ed Paddison; SECOND ROW: Wilbert Blackman, Bill Starling, Harold Moore, Moseley, George Meyer, Curtiss Daughtry, William Huntley, Rivers Upchurch, Elmer Owens.



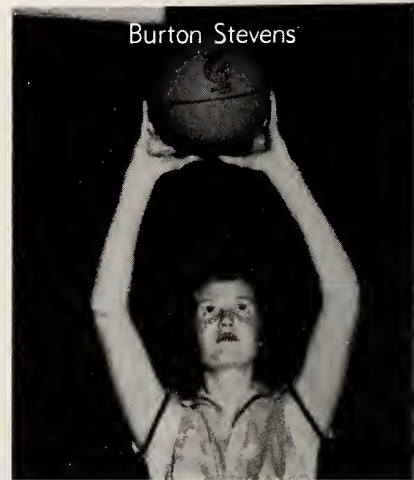
GIRLS

BASKE



Peggy Sanders

FIRST ROW, Left to Right: Frances Peedin, Myra Barbour, Mary Edna Grimes, Sherry Creech, Mary Simmons, Nell Rose Wallace. SECOND ROW: Peggy Sanders, Burton Stevens, Alice Dickens, Mae Dixon, Jenny Blow Layne, Linda Lee. THIRD ROW: Beverly Whitehurst, Shirley Price, Evelyn Overby, Sonja Johnson, Doris Stanley, Nell Hooks



Burton Stevens



Mary Edna Grimes



Mae Dixon



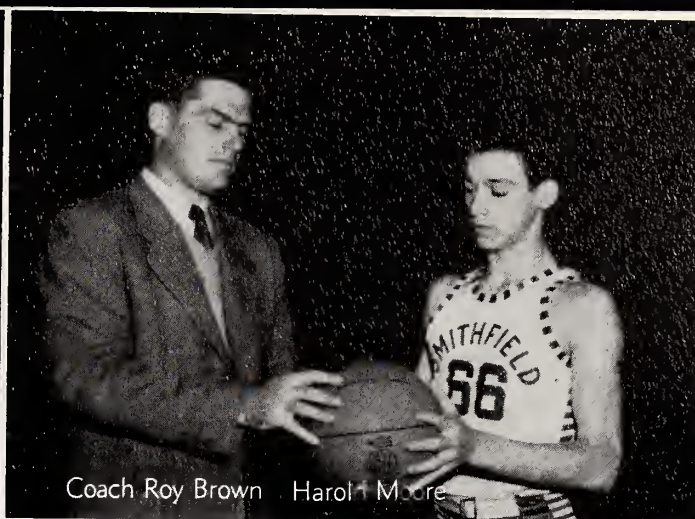
Alice Dickens



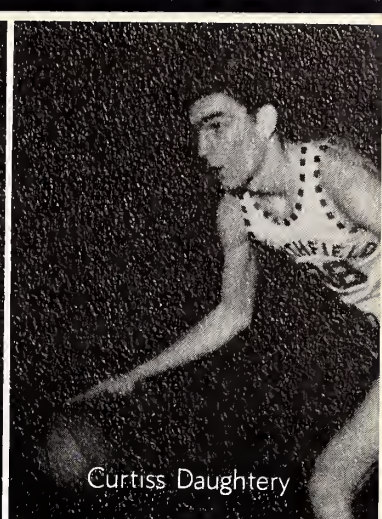
Frances Peedin



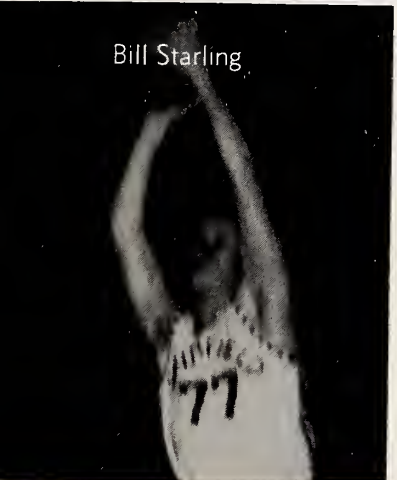
Larry Moseley



Coach Roy Brown Harold Moore

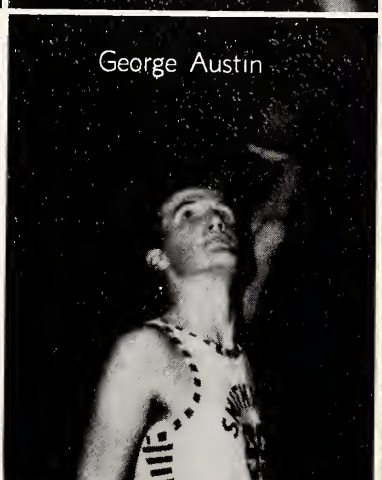


Curtiss Daughtery



Bill Starling

FIRST ROW, Left to Right: Harold Moore, Carter Stephenson, Elmer Owens, Ralph Johnson. SECOND ROW: Bill Starling, Rivers Upchurch, Hal King, Larry Moseley. THIRD ROW: Curtis Daughtery, George Austin.



George Austin

TBALL

BOYS



ATHLETIC AWARDS

HOWELL TROPHY

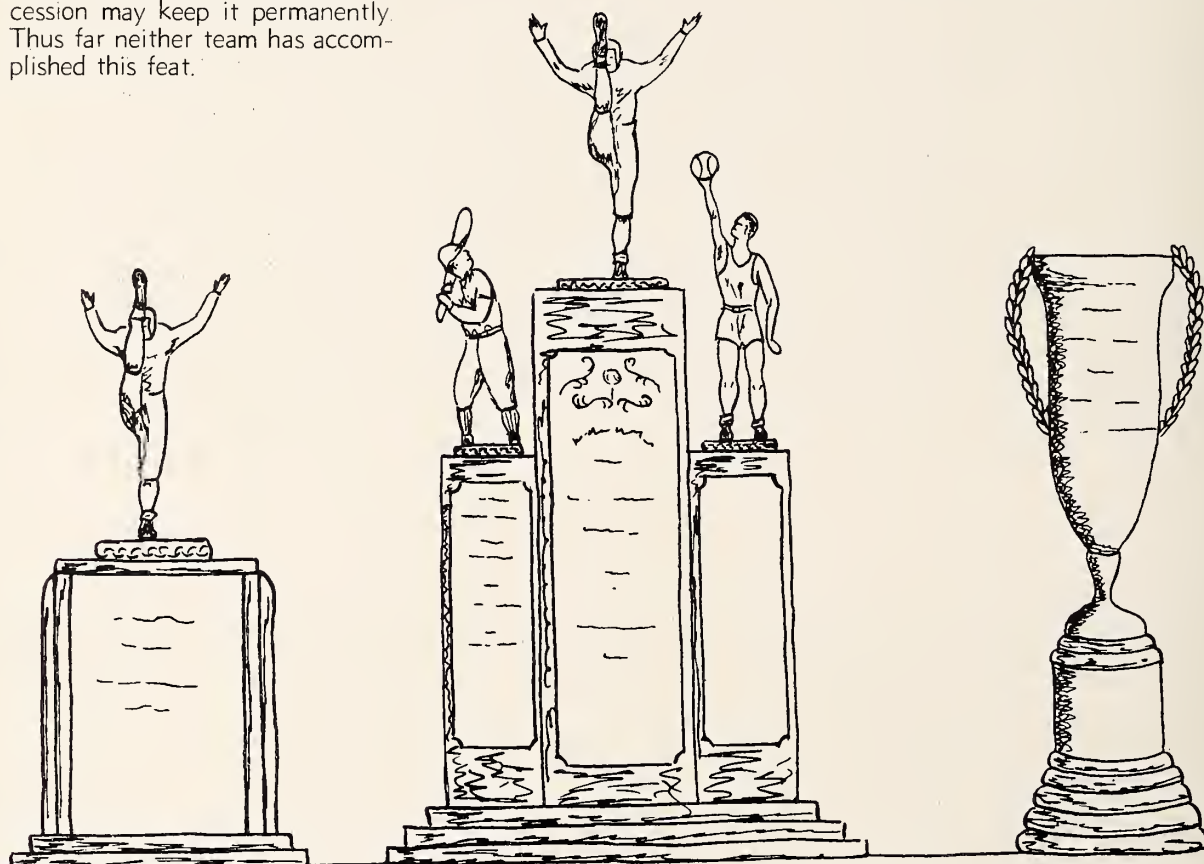
The Howell Trophy first given in 1946 by Rudolph Howell, theatre owner, is presented each year to the winner of the annual Thanksgiving Day Football Game. Rules of the award state that the team winning the trophy three years in succession may keep it permanently. Thus far neither team has accomplished this feat.

POLIAKOFF TROPHY

Beginning in 1948 Irving Poliakoff, owner of Irving's Department Store, set up the Poliakoff Trophy which is awarded to the outstanding athlete of the year.

MONOGRAM CLUB TROPHY

The Monogram Club Trophy was established in 1950, the first year of the Club's existence. The award is presented each year to the outstanding Senior Girl Basketball Forward and Guard.



Below are the winners:

	Smithfield	Selma
1946	14	13
1947	0	31
1948	6	19
1949	26	20
1950	0	51
1951	31	13
1952	13	18

Below are the winners:

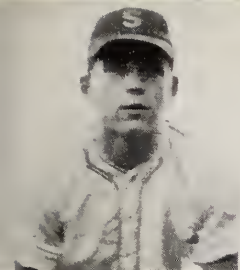
1947-1948	—Tommy Stevens
1948-1949	—Billy Lore
1949-1950	—Tommy Medlin
1950-1951	—Sherrill Johnson
1951-1952	—Joe Dupree and Freddy Weeks

Below are the winners:

BEST FORWARD	
1950	—Lu Long Ogburn
1951	—Julia Allen
BEST GUARD	
1950	—Rose Mae Holland
1952	—Frances Byrd

1952 BASEBALL

LETTERMAN



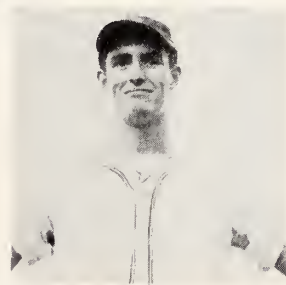
Jerry Clifton



Curtiss Daughtry



Tommy Hayes



Ralph Johnson



Harold Moore



George Meyer



Elmer Owens



Frank Skinner

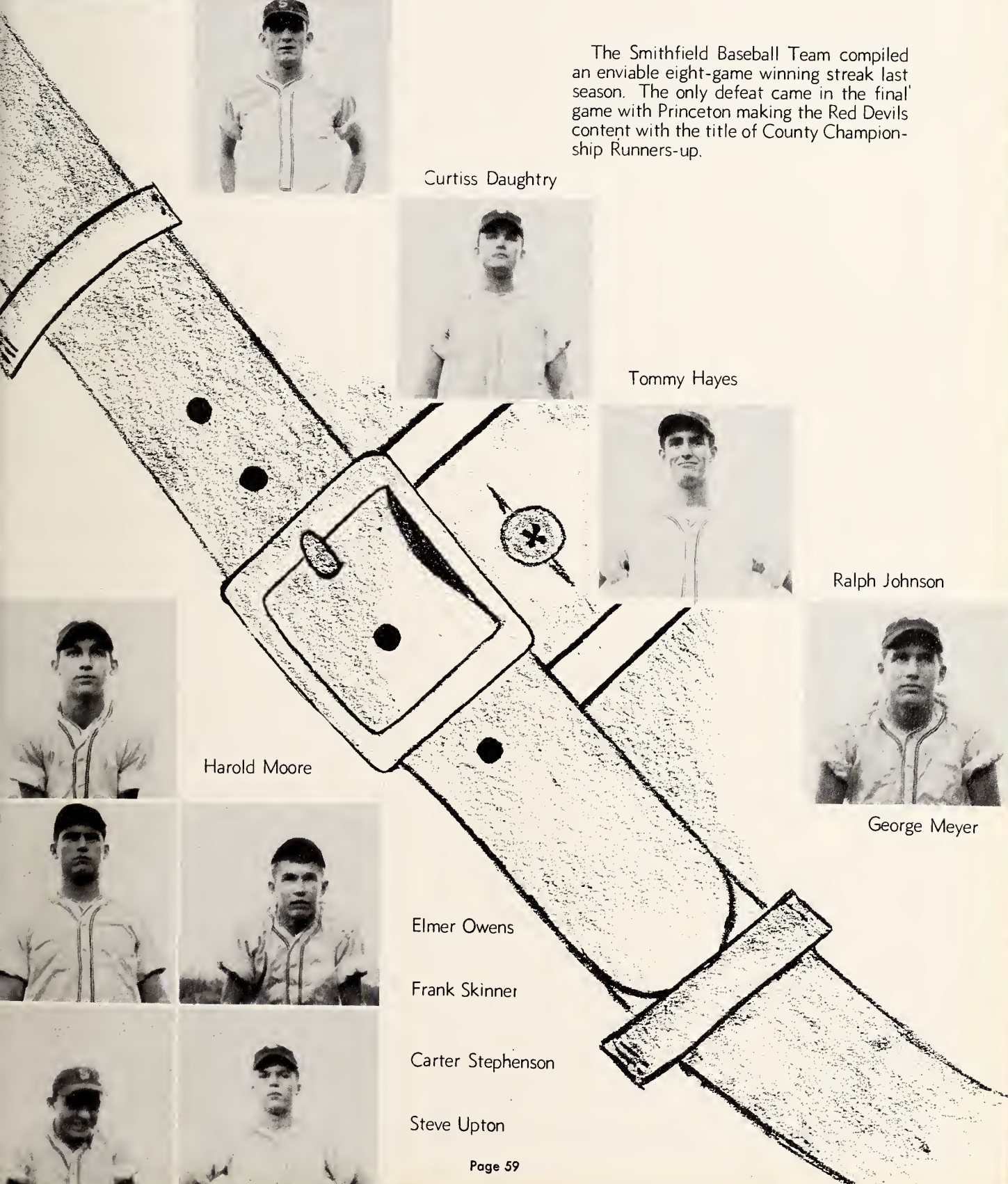


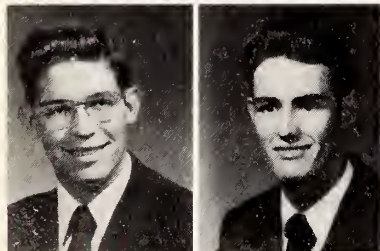
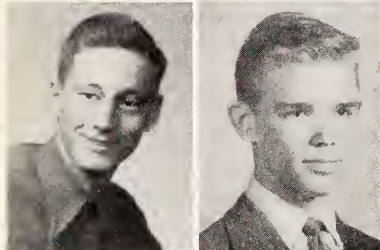
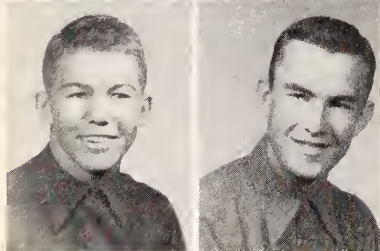
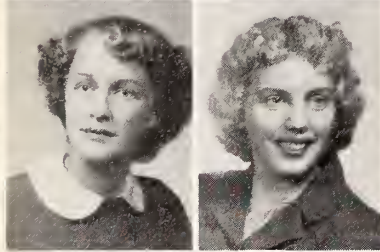
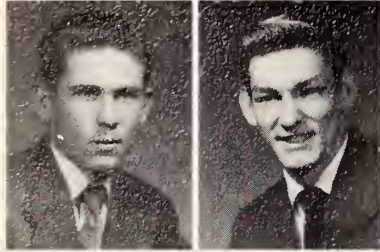
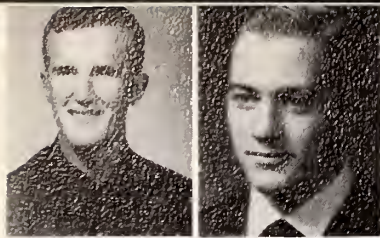
Carter Stephenson



Steve Upton

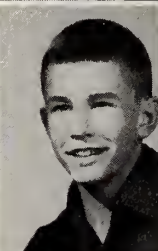
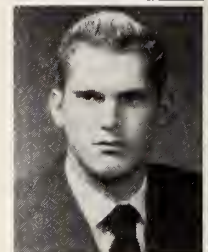
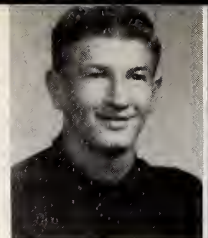
The Smithfield Baseball Team compiled an enviable eight-game winning streak last season. The only defeat came in the final game with Princeton making the Red Devils content with the title of County Championship Runners-up.





MONOGRAM

George Austin
 Wilbert Blackma
 Jerry Clifton
 Curtiss Daughtry
 Mae Dixon
 Mary Edna Grimes
 Joe Grantham
 Tommy Hayes
 Bobby Hill
 Buddy Hill
 J. C. Johnson
 Ralph Johnson
 Shirley Jones
 Ann Lee
 Barbara Lee
 Bernard Lee



CLUB

Bill Massey
 George Meyer
 Barbara Moore
 Harold Moore
 Elmer Owens
 Ed Paddison
 Frances Peedin
 Peggy Sanders
 Frank Skinner
 Mary Smithwick
 Bill Starling
 Carter Stephenson
 Burton Stevens
 Rivers Upchurch
 Steve Upton
 Nancy Whitley

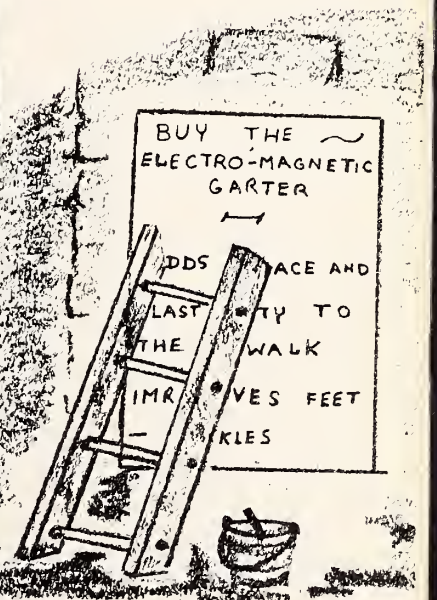
1953

A D V E R T I S E M E N T S



"The average intelligence of any community is determined largely by the character and work of the public school."

PROFESSOR IRA T. TURLINGTON



C O M P L I M E N T S

T O T H E

C L A S S O F ' 5 3



FAMILY READY-TO-WEAR
- SHOES -

SMITHFIELD, NORTH CAROLINA

DIAL 3301

HUNTLEY'S

Serving Smithfield

and Johnston County

MORE THAN 30 YEARS



DRY GOODS

SHOES

READY-TO-WEAR

STAR BRAND SHOES ARE BETTER

COMPLIMENTS TO

THE CLASS OF '53

**SMITHFIELD AUTOMOBILE
DEALERS ASSOCIATION**

SMITHFIELD, NORTH CAROLINA

BUIE MOTORS, INC.
Studebaker Cars and Trucks

GARDNER MOTOR COMPANY
Dodge and Plymouth Cars and Dodge Job-Rated Trucks

LITTLE'S PONTIAC COMPANY
Pontiac Cars and G. M. C. Trucks

PIPPIN MOTORS, INC.
Oldsmobile Cars

SMITHFIELD AUTO SALES, INC.
Kaiser-Frazer and Henry J. Cars

STANLEY MOTORS, INC.
Chrysler and Plymouth Cars

WILLIAMS MOTOR COMPANY
Buick Cars

WILSON CHEVROLET COMPANY
Chevrolet Cars and Trucks

B. AND R. WILSON, INC.
Ford Cars and Trucks

SMITH-NASH COMPANY
Nash Cars

IN SMITHFIELD
For Eighteen Years
IT'S BEEN TRIED AND TESTED

AUTOMOTIVE PARTS COMPANY

For

WHEN IN:

Replacement Parts and Service

Firestone Tires and Tubes

Batteries and Supplies

Y
O
U
R

Raleigh

JOBBERS SUPPLY COMPANY
Motor Parts and Warehouse

D
O
L
L
A
R
S

Durham

DIXIE WELDING & SUPPLY COMPANY

Henderson

SOUTHERN AUTO PARTS & APPLIANCE CO.

Goldsboro

WAYNE MOTOR PARTS
AUTO PARTS COMPANY

Clinton

DIXIE MOTOR PARTS

H
A
V
E

Kinston

WHOLESALE AUTO PARTS
SUTTON AUTO PARTS

New Bern

NEW BERN AUTO SUPPLY COMPANY

Morehead City

MOREHEAD MOTOR PARTS

M
O
R
E

Greenville

GREENVILLE MOTOR PARTS

Washington

MOTOR PARTS & EQUIPMENT COMPANY
MAYO'S AUTO PARTS — APPLIANCE CO.

V
A
L
U
E

Elizabeth City

CITY MOTOR PARTS

Wilmington

BEATY-GAINEY APPLIANCE COMPANY

Wilson

WILSON MOTOR PARTS

H
E
R
E

NOT WHAT YOU DID YESTERDAY

But WHAT YOU DO TODAY

REAPS RESULTS TOMORROW!

Compliments of



WALLACE WAREHOUSES

WALLACE GUANO CO.



THERE IS A FUTURE IN TEXTILES

Textiles is today one of our most exciting and challenging industries, producing revolutionary textile products with qualities which men have sought for centuries. Man-made fibers, new products of the chemist's test tube, have been a major contributor to this textile progress. In the past 29 years Burlington has become a leader in the development and production of beautiful, durable and high quality filament, spun and knit synthetic fabrics—as well as a leading producer of fine combed cottons. Employing 34,000 people, Burlington is today one of the world's largest producers of synthetic fabrics and is a recognized leader in the designing, development, research, merchandising and fashion fields as well as manufacturing. We believe there is a future in textiles for the young man or young woman with the willingness to learn, ability to work and the natural interest in this fascinating and competitive field.

With best wishes of SMITHFIELD PLANT, a unit of

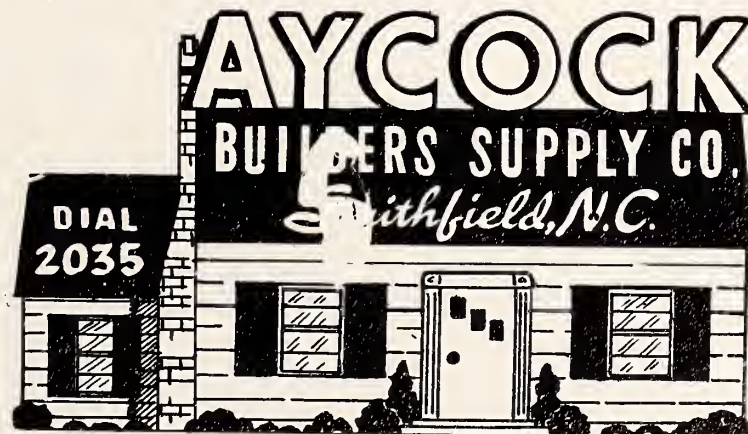
Burlington Mills 
"Woven into the Life of America"

MAKER OF WOMEN'S OUTERWEAR AND UNDERWEAR FABRICS • MEN'S WEAR FABRIC
DECORATIVE FABRICS • HOSIERY FOR MEN AND WOMEN • COTTON PIECE
GOODS AND YARNS • RIBBON • INDUSTRIAL AND TRANSPORTATION FABRICS

BEST OF LUCK

THROUGH YOUR

JOURNEY OF LIFE





ROBERTS & WELLONS, INC.

"A Complete Farm Supply Store"

FEEDS — SEEDS

EASTERN FERTILIZERS — TRACTORS & EQUIPMENT

TOBACCO CURERS — HARDWARE

DIAL 2408-2233

COMPLIMENTS OF

HOOKS & LAYNE

Distributor

TEXACO AND FIRESTONE PRODUCTS

SMITHFIELD, N. C.

PHONE 2424

Sinclair

Petroleum

Products

MARVIN E. TAYLOR, Distributor

SMITHFIELD,

NORTH CAROLINA

Compliments of

FIRST-CITIZENS BANK and TRUST CO.

SMITHFIELD,

NORTH CAROLINA

Established 1898

MEMBER FEDERAL DEPOSIT INSURANCE CORPORATION

COMPLIMENTS

The HOWELL THEATRES, Incorporated

HOWELL-VICTORY

Rudy-Selma

COUNTY & SMITHFIELD—SELMA DRIVE-INS

Good Luck To The Class of '53

A. H. JOHNSON OIL CO.

ESSO DISTRIBUTOR

KEROSENE, FUEL OIL, MOTOR OIL

DIAL 2794

SMITHFIELD, N. C.

METERED SERVICE



Smithfield Band Performs in "Santa Claus Parade" in Raleigh on the Evening of December 8

R E D



R E S T A U R A N T

STEAMED OYSTERS

AND

COMBINATION SEA FOOD

We Broil Our Steaks, Chops, and Chickens

RED APPLE TRUCK STOP

USES 500,000 CUPS OF COFFEE A YEAR

JORDAN'S JEWELERS

Since 1898

DIAMONDS — WATCHES

SILVERWARE AND GIFTS

SMITHFIELD,

NORTH CAROLINA

BEST WISHES



1270 SMITHFIELD

1000 WATTS

**BOYETTE ELECTRIC
COMPANY**

"At Your Service Electrically"

SMITHFIELD, NORTH CAROLINA

COMPLIMENTS OF

**ATLAS JOHNSON
GROCERY & MARKET**

PHONE 2747

We Deliver

SMITHFIELD, NORTH CAROLINA

JOHNSON'S FLORIST

Since 1919

FLOWERS FOR ALL OCCASIONS

Phone 2630

SMITHFIELD, NORTH CAROLINA

LEDER BROS, INC.

FEATURING

NATIONALLY ADVERTISED

MERCHANDISE

"SHOP WITH CONFIDENCE

WEAR WITH PRIDE"

SMITHFIELD, NORTH CAROLINA



YOUR LINK IN THE SOUTH'S
GREATEST CHAIN

"Correct" Merchandise
at "Low" Prices

Phone 2445

**STRICKLAND BROTHERS
LUMBER CO., INC.**

ROUGH AND DRESSED LUMBER
PAINT - BUILDERS SUPPLIES
HARDWARE - DOORS

Phone 3247

SMITHFIELD, NORTH CAROLINA

**HEAVNER
AND
WALLACE
IMPLEMENT COMPANY**

ALLIS-CHALMERS
FARM MACHINERY

SMITHFIELD, NORTH CAROLINA

CONGRATULATIONS SENIORS
FROM

CREECH'S PHARMACY

SMITHFIELD, NORTH CAROLINA

WHERE WE MEET
OUR FRIENDS

CITY FOOD MARKET

QUALITY MEATS AND GROCERIES

We Deliver

Phone 2415

Congratulations Seniors

CONGRATULATIONS SENIORS

F A Y ' S

SANDWICH COMPANY

SMITHFIELD, NORTH CAROLINA

Compliments Of

**AUSTIN OGBURN
COTTON COMPANY, Inc.**

Your Friendly Cotton Buyer

**SMITHFIELD
MULE COMPANY**

Livestock

Avery and Oliver Tractors and

Farm Machinery

Clean Used Cars

"We Trade For Anything That
Walks or Rolls"

Compliments Of

**GARDNER-CREECH
OIL COMPANY**



YOUR FRIENDLY
MOBILGAS DISTRIBUTOR

COMPLIMENTS OF

**JORDAN and HOLT
HARDWARE, INC.**

Farm and Home Hardware
Contract
Plumbing and Heating

Phone 2620

SMITHFIELD, NORTH CAROLINA

**JOHNSON
COTTON COMPANY**

Complete Farm and Home
Supplies

Furniture,

Hardware,

Fertilizers,

Farm Implements

JOHN DEERE TRACTORS
AND EQUIPMENT

Phone 2701

SMITHFIELD, NORTH CAROLINA

**UNDERWOOD
FUNERAL HOME**

SMITHFIELD, NORTH CAROLINA

FUNERAL DIRECTORS

SINCE 1897

FARMER'S HARDWARE

DUO-THERM OIL HEATERS
AND
BENJAMIN MOORE
PAINTS

Phone 2460

SMITHFIELD, NORTH CAROLINA

COMPLIMENTS OF

DAY'S DRY CLEANERS

"THE
KLEANERS
THAT
KLEAN"

Phone 2868

SMITHFIELD, NORTH CAROLINA



**J. E. WILSON
LIVESTOCK CO.**

HOGS—CATTLE—MULES

Auction Sales Every Thursday

1 P. M.

We Buy Hogs Daily

PHONE 3012 SMITHFIELD

**GUY C. LEE
MANUFACTURING CO.**

BUILDING MATERIALS

LUMBER

MILLWORK

Dial 2010

COMPLIMENTS OF

**HOLT
FARM CENTER, INC.**

Custom

GRINDING AND MIXING

Truck Lane and Brogden Road

DIAL 2043

Compliments Of

**CECIL'S
ESSO SERVICE**

Phone 3267

Washing - Waxing - Lubrication

COMPLETE ESSO PRODUCTS

Atlas Tires, Batteries and
Accessories

ROAD SERVICE

CECIL WHITEHURST, Owner

Telephone Selma 390

**SEL-FIELD FEED AND
PRODUCE CO., INC.**

WHOLESALE FRUITS
and PRODUCE
BANANA SPECIALITY

Intersection Of
Highways 70 and 301

**BRANNAN
TOURIST COURT**

Air Conditioned
DINING ROOM
WITH EXCELLENT FOOD
HOLT LAKE

Fishing-Boating-Swimming
And
Water Skiing

COMPLIMENTS OF

**VANCE'S
MOBIL SERVICE**

VANCE BRADY

PHONE
9841 or 3468

301 Truck Lane

SMITHFIELD, NORTH CAROLINA

Compliments Of

**WESTERN AUTO
ASSOCIATE STORE**

Alfred H. Paddison, Owner

SMITHFIELD, NORTH CAROLINA

HUGH AUSTIN'S

MEN'S AND BOYS' STORE

"A TRIAL IS ALL WE ASK"

Compliments Of

Jones Bros.
**FURNITURE
FOR
GRACIOUS
LIVING**

ON U. S. 301

Between

SMITHFIELD and SELMA

Graduate To Greater Food

Service

At Your Friendly



COLONIAL STORES
INCORPORATED

SMITHFIELD, NORTH CAROLINA

QUICK AND DEPENDABLE SERVICE

CALL

RIVERSIDE CAB COMPANY

ALL PASSENGERS INSURED

PHONE 2151

COURTEOUS DRIVERS

COMPLIMENTS

of

**GRANTHAM'S
NEW
BOYS' & YOUNG
MEN'S SHOP**

SMITHFIELD, NORTH CAROLINA

**IDEAL
OIL COMPANY, INC.**

Distributors of
SHELL PRODUCTS

Fuel Oil

Gasoline

B. M. Faulk, Prop.

**RIVERSIDE BRICK
AND TILE CO.**

BUILD WITH BRICK
FOR PERMANENCY

JAMES R. POOL, Owner

Phone 3456

SMITHFIELD, NORTH CAROLINA

**CAROLINA
MOTOR STORES, INC.**

Wholesale Jobbers -- Distributors

AUTOMOTIVE PARTS,
SUPPLIES & EQUIPMENT

Box 149

PHONE 3182 SMITHFIELD, N. C.

Congratulations Seniors!

PEOPLE'S SHOE SHOP

SMITHFIELD, NORTH CAROLINA

NIXON BROTHERS

TRANSFER AND PETROLEUM
CARRIERS

DIAL 2835

Compliments Of

**ALBERT'S
SERVICE STATION**

SMITHFIELD, NORTH CAROLINA

Compliments Of

PEARLE'S BEAUTY SHOP

PHONE 3309

**SMITHFIELD
HOG MARKET**

WE BUY HOGS EVERY DAY

DIAL 3131 OR 3132

SMITHFIELD, NORTH CAROLINA

Compliments Of

**OVERBY'S FUNERAL
HOME**

AMBULANCE

Phone 2202

SMITHFIELD, NORTH CAROLINA

Compliments Of

**REYNOLD'S
BEAUTY SALON**

PHONE 2480

SMITHFIELD, NORTH CAROLINA

**DELMA JOHNSON'S
STORE**

HEAVY AND FANCY GROCERIES

FRESH MEATS

POULTRY BOUGHT AND SOLD

Dial 2464-2624

SMITHFIELD, NORTH CAROLINA

Congratulations

Seniors

IRVING'S

SMITHFIELD, NORTH CAROLINA

COMPLIMENTS OF

W. T. DANCE COMPANY

SMITHFIELD, NORTH CAROLINA

**ELEANOR'S
BEAUTY SHOP**

DIAL 3055

Johnston Street

SMITHFIELD, NORTH CAROLINA

Compliments

HOYT'S FLOWER SHOP

COMPLETE FLORAL SERVICE

SMITHFIELD, NORTH CAROLINA

TALTON, INC.



G. E. APPLIANCES - FURNITURE
DIAL 3444

Compliments Of

SELLERS PRINTING CO.

Behind People's Shoe Store

SMITHFIELD, NORTH CAROLINA

**MASSEY MUTUAL
INSURANCE AGENCY**

Writes All Forms of Insurance

Hood Building: Room 35

Phone: Res. 3361; Office 2776

SMITHFIELD, NORTH CAROLINA

**DORMAN'S
SHOE STORE**

QUALITY SHOES FOR

ALL THE FAMILY

SMITHFIELD, NORTH CAROLINA

WILLARD W. STANLEY

T. W. Woods Garden Seeds

We Specialize in Insecticides and

Field Seeds

DIAL 5068

CONGRATULATIONS TO
THE CLASS OF '52

THE JEWEL BOX

SMITHFIELD, NORTH CAROLINA

**DENNING FURNITURE
COMPANY**

COMPLETE HOME FURNISHINGS

207 SOUTH THIRD STREET

SMITHFIELD, NORTH CAROLINA

PHONE 2587

Compliments Of

**PERKINS' RIVERSIDE
WAREHOUSE**

SMITHFIELD, NORTH CAROLINA

**WHITLEY BROTHERS
WHOLESALE CO.**

Your Home-County Wholesaler

LANGDON'S GROCERY

"Pleasing You Pleases Us"

General Merchandise—Home Supplies

R. F. D. No. 1 Dial 9320

SMITHFIELD, NORTH CAROLINA

**J O H N S O N ' S
LAUNDRY AND DRY
CLEANERS**

Smithfield's Only SANITONE Cleaners

Phone 2305

SMITHFIELD, NORTH CAROLINA



In the annual Kiwanis Variety Show held in Selma, Helen Haad Baker, member of the Smithfield Freshman Class was crowned "Miss Kiwanis of '52." She is shown here being crowned by Selma Mayar J. N. Wiggs as runnersup look on. They are, left to right, Pat Gregory of Bensen, Mayar Wiggs, Helen Haad Baker, H. V. Gaskill, Master of Ceremonies, and Anna Jean Meece of Wilson's Mills.

ROGMON OIL CO.

BEST WISHES
TO THE CLASS OF '53

SMITHFIELD, NORTH CAROLINA

**SMITHFIELD
OIL & GIN CO.**

PETROLEUM PRODUCTS
COTTON GINNERS

DIAL 2040

ENJOY OUR FOOD

REBEL OUTPOST

On 301—3 Miles South

SMITHFIELD, NORTH CAROLINA

STEVE'S RESTAURANT

SERVING QUALITY FOOD

At Reasonable Prices

Intersection 301-70

APPRECIATE PATRONAGE

Compliments Of

**CENTRAL CAROLINA
GAS COMPANY**

Distributors Of
Guaranteed Bottled Gas Service
Phone 2533

CAFE ROYAL

"Always A Friendly Welcome"

HOME COOKED FOOD

BILL ROYAL, Mgr.

BEST WISHES TO
GRADUATING CLASS

**HOOD BROTHERS
DRUG STORE**

Johnston County's Family Druggists
For Over 60 Years

**ROGERS
CONSTRUCTION CO.**

CONGRATULATES

THE SENIORS OF '53

HOOKS' STUDIO

OUR STUDIO IS KNOWN
BY THE COMPANY IT KEEPS

THORNTON'S LUNCH

Best in Hot-Dogs and Hamburgers
FOUR OAKS, NORTH CAROLINA

R. & B. TIRE COMPANY

Corner Dundee and Truck Lane
Phone 2127
SMITHFIELD, NORTH CAROLINA
Try Our Expert Recapping
Mohawks Go Farther

Compliments Of

OPEN AIR MARKET

SMITHFIELD, NORTH CAROLINA

Compliments of

J. E. GREGORY

SMITHFIELD, NORTH CAROLINA

UPCHURCH PHARMACY

CONGRATULATIONS

SENIORS OF '53

THE FASHION SHOP

SMART APPAREL
FOR
WOMEN AND CHILDREN
Phone 2534 · L. E. Ferrell, Owner
SMITHFIELD, NORTH CAROLINA

W. B. OLIVER & SON, INC.

Good Fertilizer
Let Us Gin and Buy Your Cotton
PHONE 400-J
PINE LEVEL, NORTH CAROLINA

**ROSE'S 5-10-25 CENT
STORE**

Complete Line of School Supplies

SMITHFIELD, NORTH CAROLINA

THE LADIES SHOP

"First to Show
the Latest"

**WOODALL'S
VULCANIZING SHOP**

E. L. WOODALL, Owner
Phone 3491

IGNITION SERVICE
RECAPPING AUTO LITE BATTERIES

**HILL'S GROCERY
AND MARKET**

Groceries — Meats — Ice Cream

Congratulations Seniors

SMITHFIELD, NORTH CAROLINA

COMPLIMENTS OF

GRANTHAM'S

"Outfitters For Men and Boys

For Over 50 Years"

BAROODY'S

NOVELTIES—EATS—MAGAZINES

"A Pleasure to Serve You"

SMITHFIELD, NORTH CAROLINA

Read

THE SMITHFIELD HERALD

for

Twice-a-Week
Coverage of Johnston County
News and Opinion



COMPLIMENTS
OF







SMITH'S ESSO

Remember Paragon » Remember Paragon » Remember Paragon

ON YOUR GRADUATION



Today  we are printers of the yearbook of your school. 

Tomorrow as you seek your future in  the professions, industry  and commerce  we  at Paragon hope to serve you with the essential Printing  and Lithography  you will need in the pursuit of your career,

Many of our best customers came to us through friendships formed around the annual planning table or from former grads like yourself who first saw our work in their annual.



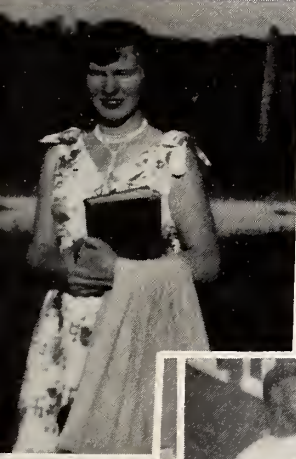
The Paragon Press

MONTGOMERY, ALABAMA

LEE H. BLACKWELL

Eastern Carolina Representative
GOLDSBORO, NORTH CAROLINA

Remember Paragon » Remember Paragon » Remember Paragon » Remember Paragon



ROUNDER

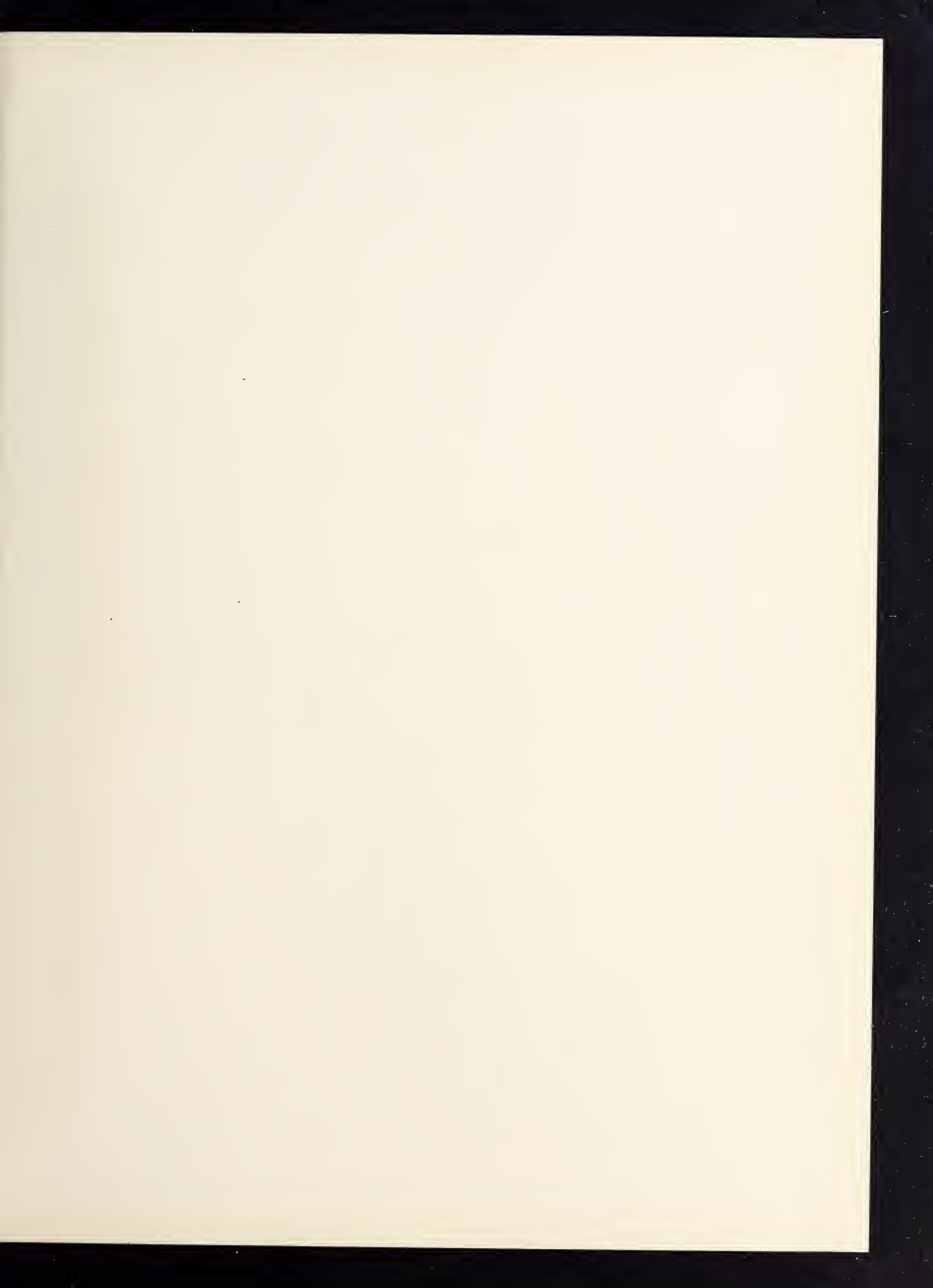


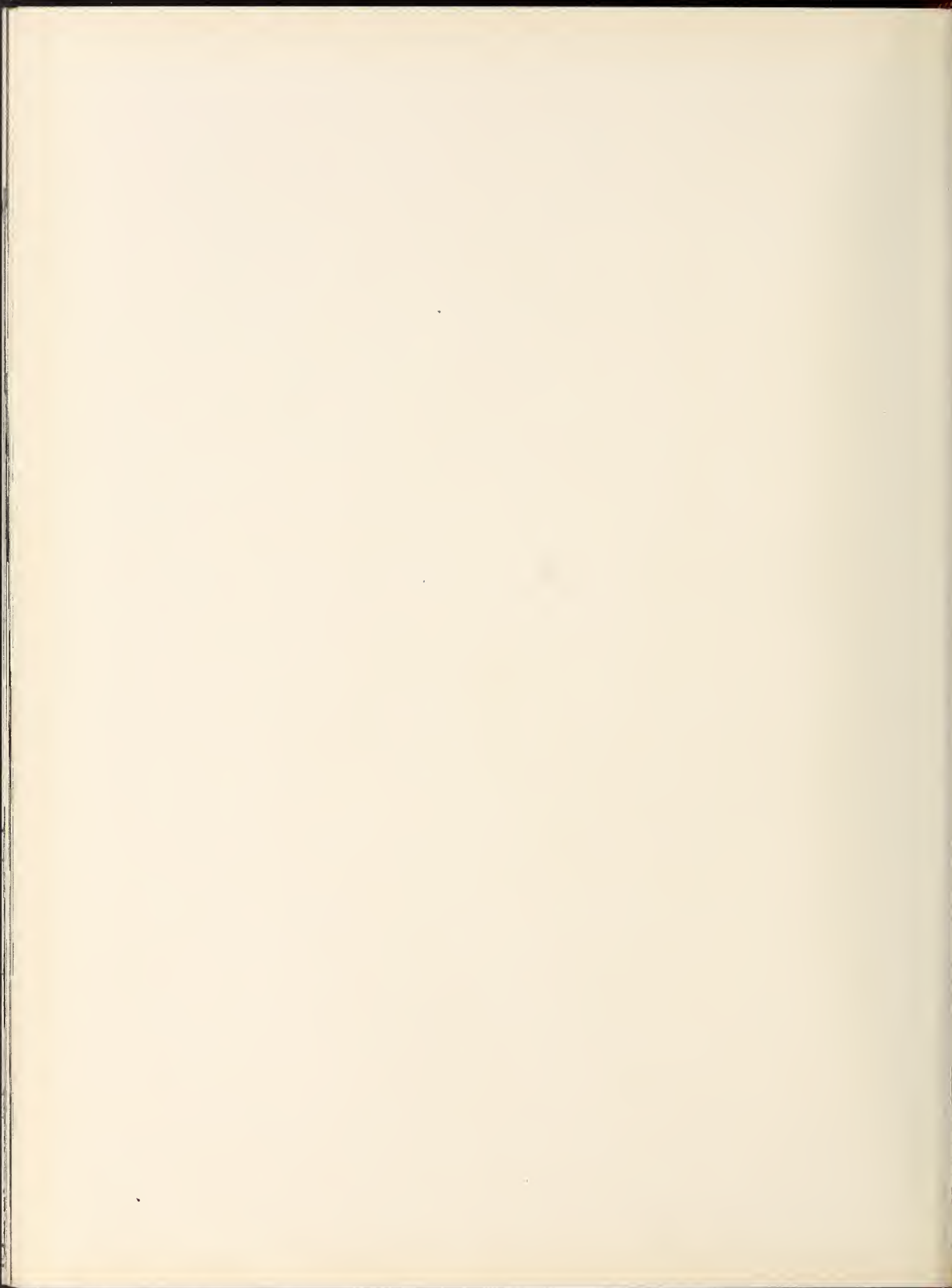
S.H.S.





Autographs







Glen Holt Wins Senior Scholarship

920-S
 *
 Shield : senior cla>igh School
 SMITHFIELD es110154995

 3 8950 99016941 1

Student For in the college
 RNC Smithfield High
 373.756 School.
 S The shield. JCR
 1953

Nancy Whitley Gets Scholarship

Harold Langdon Wins \$100 Bond

Two young Johnstons have been named national winners in 4-H Club work for 1952, marking the first time national honors have been awarded a 4-H clubster from this county.

They are Nancy Whitley of Route 3, Smithfield who will receive a \$300 college scholarship for her improved ironing project, and Harold Langdon of Route 1, Smithfield, who will be awarded a \$100 defense bond and a blue ribbon. Both 4-H members received an expense-paid trip to the National 4-H Club Congress being held in Chicago this week. Announcement of the awards was made in Chicago.

award of the spotlight in the \$1,000 scholarship was Mrs. A. G. Glenn, local English teacher who coached Holt for the contest and accompanied him to the finals in Charlotte. Holt, son of a tenant farmer, plans to use his scholarship to enter Mars Hill next fall and study accounting. Approximately 7,500 seniors competed in the contest. From this number 180 were selected on the basis of essays and answers to a safety questionnaire to compete in the forum programs. The finalists were winners in 10 weekly contests and two semi-finals broadcast over free radio stations.

1,200 Visit Smithfield School At Open House

More than 1,200 patrons of Smithfield School attending Monday night viewed the vast improvements lately in the school buildings and facilities, became acquainted with the 50-member faculty and saw first-hand the urgent need of additional classroom space.

Small groups were organized with members of the Senior Class conducting tours of the buildings.

Visited in this building which has been renovated since a classroom addition was made were a modern science laboratory, commercial department, high school library and high school and elementary classrooms.

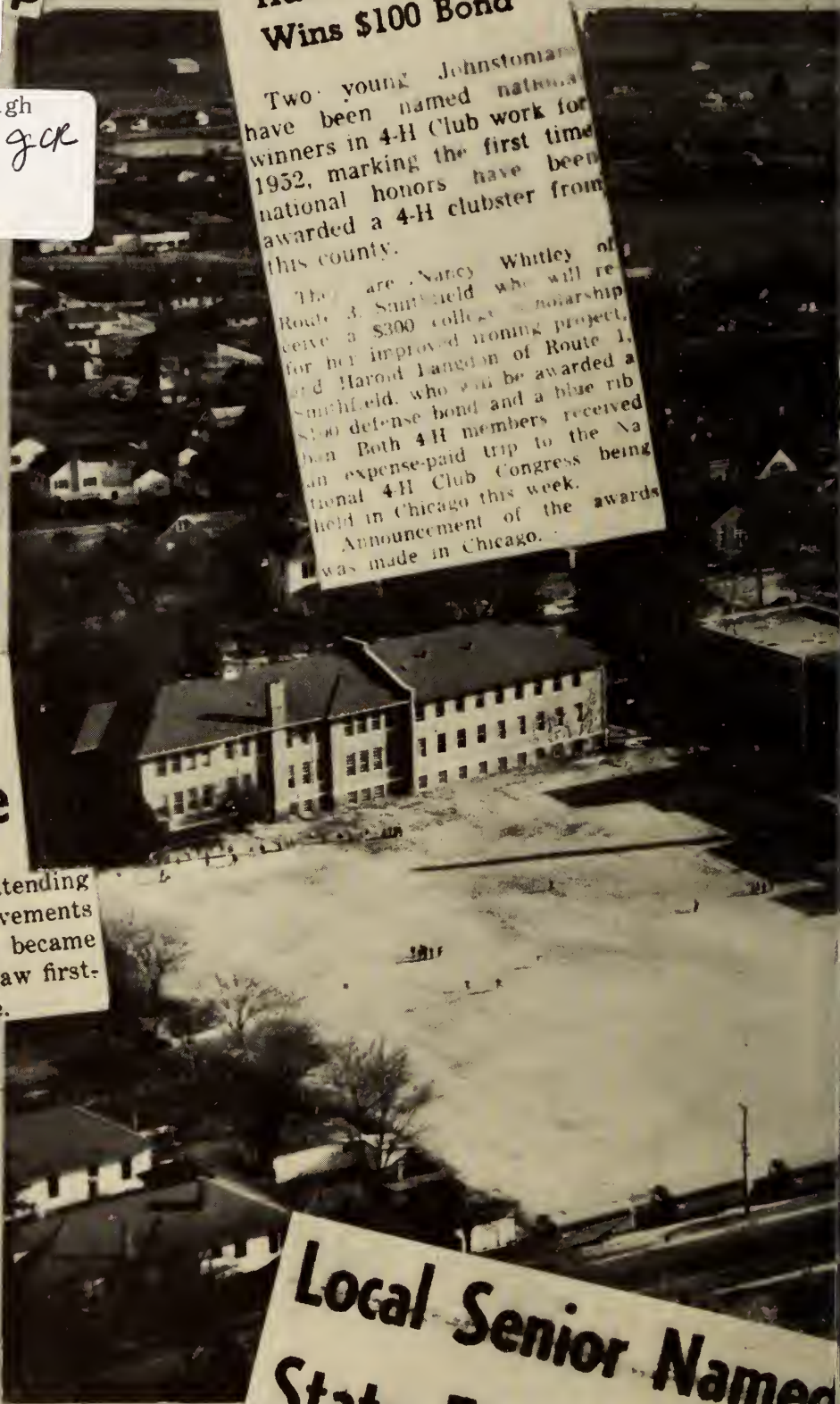
In sharp contrast to the modern classrooms in this building were three temporary classrooms which had been set up because of overcrowded conditions by erecting partitions in the study hall on the second floor and in a storage room in the basement.

Highlight of the tour was a visit to the new lunchroom which was recently finished and equipped at a cost of approximately \$30,000 in district funds.

Local Senior Named State Essay Winner

Ellen Dupree Receives Loving Care And \$50 Bond At Bonn

Ellen Dupree



State Winner

Ella Ann Lee, Smithfield, Wins Music Scholarship

Ella Ann Lee, 18-year-old daughter of Mr. and Mrs. Guy C. Lee of Smithfield, has been declared winner of the Cordelia Clay Miller scholarship of \$125 in the North-wide competition of the North Carolina Federation of Music Clubs.

Ella Ann a senior in Smithfield School, won the scholarship in the piano concerto division in competition with district winners from throughout the state. At the age of 14 she was guest pianist soloist with the Little Symphony Orchestra in the spring of 1948. The same year she was the guest soloist at the state convention of the North Carolina Federation of Music Clubs in Asheville. She has been invited to play again at the convention which meets May 3 in Wilmington.

Joe Dupree Heads All-Conference Team

Joe Dupree of Smithfield topped voting for all-conference honors in the East Central Conference this season.

Dupree, a slashing center and linebacker on the Red Devil team, was the only unanimous choice of the coaches for the all-conference squad.

Named to the honor team with Dupree were Teammates Jimmy Cheatham and Ruffin Johnson, who captured end spots, and Freddy Weeks who was placed among the backfield stars.

Smithfield Senior Wins \$3,000 Prize

Smithfield High School's John A. Allen, a senior student, has emerged from a rigid series of screening tests to win one of the much-coveted A. Gies Duke regional prize for study at Duke University beginning next fall. The scholarship award, worth a maximum of \$3,000, is the most valuable prize ever won by a Smithfield student.

