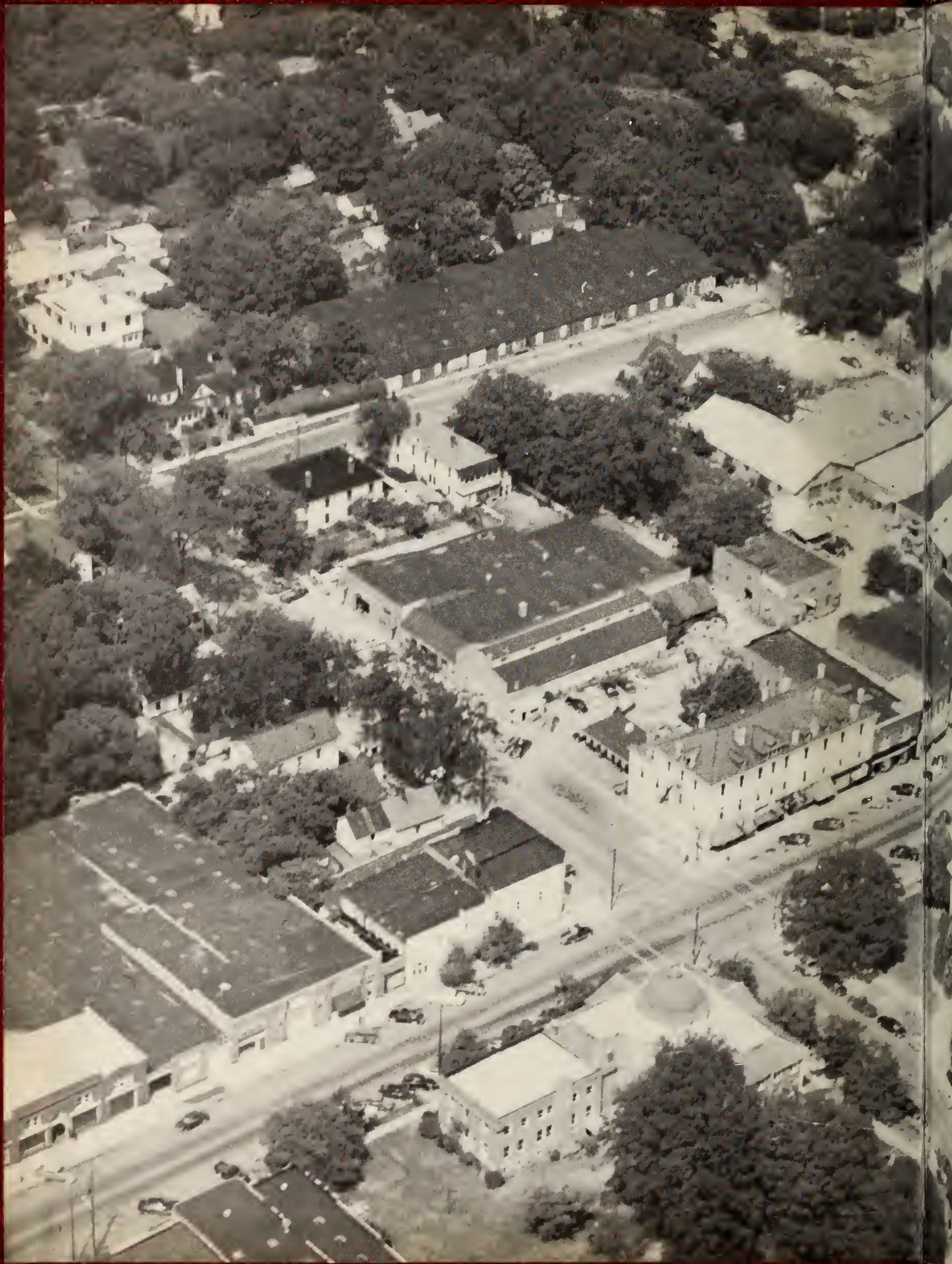


*The*

1  
9  
5  
6

*Shield*

56

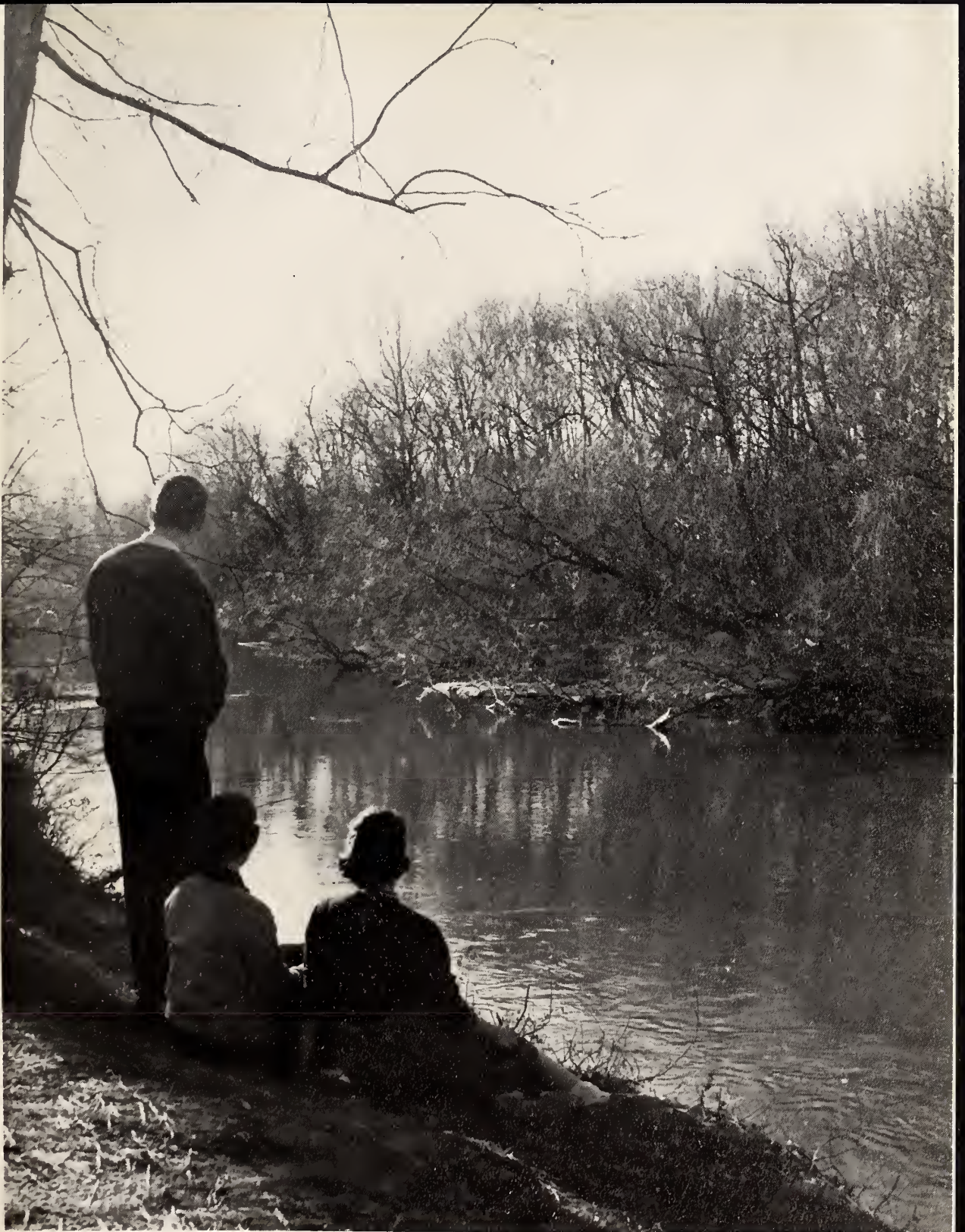




THE  
'5  
S  
H  
I  
R  
L  
H

Edito  
Assis  
Smith  
Smith

# THE '56 S H I E L D



Volume VII

Editor-In-Chief .....Louise Stevens  
Assistant Editors.....Betty Jo Watson  
Virgil Early

Smithfield High School  
Smithfield, North Carolina

# PRESENTS...



SECOND

STREET

MARKET

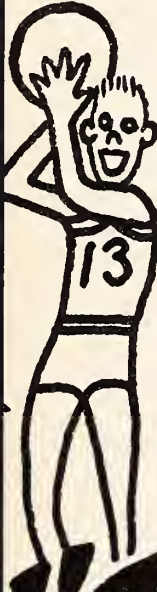
STREET

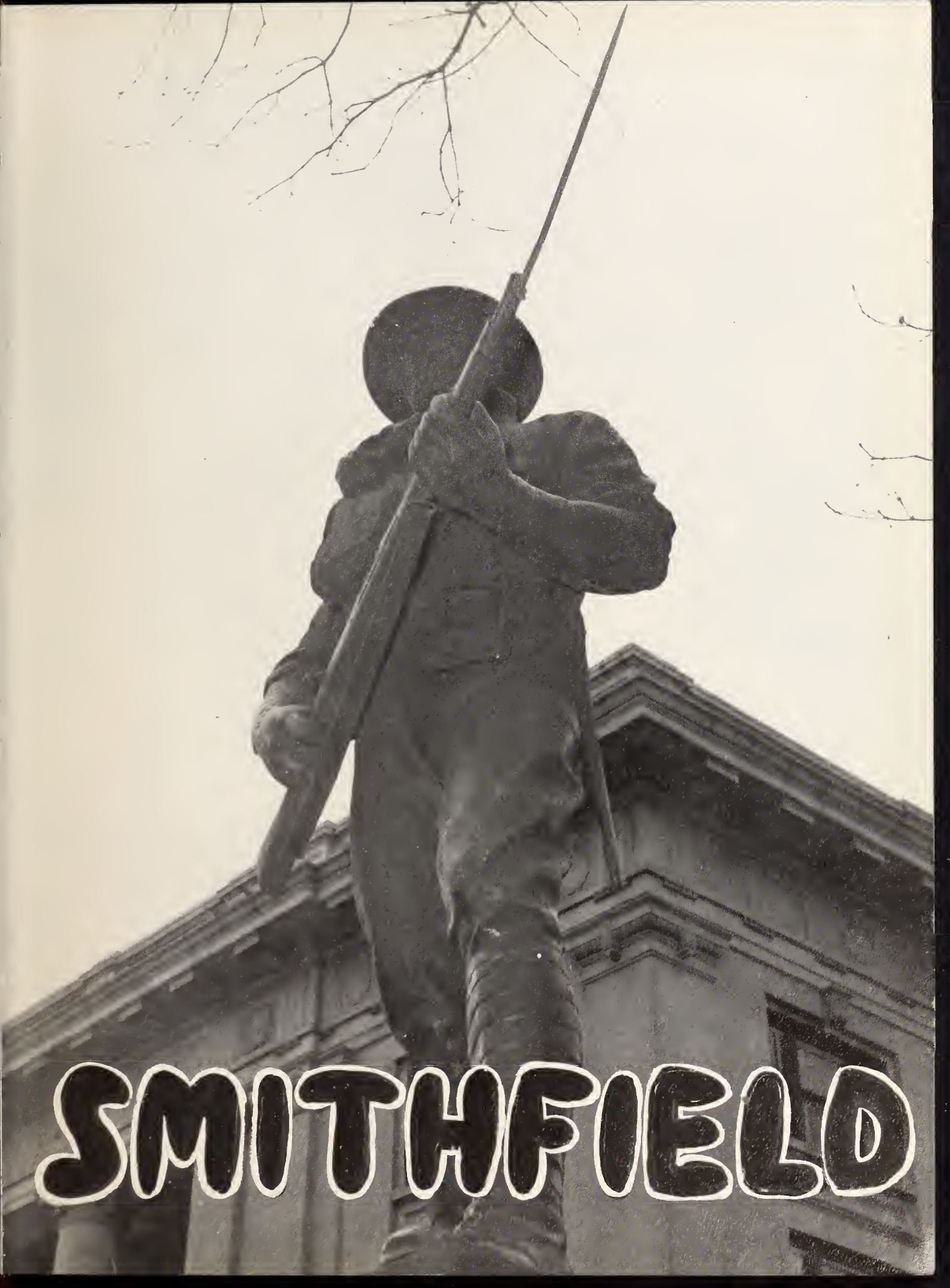
THIRD

STREET

Our

town...





# SMITHFIELD



P.T.A.  
Social in  
the school  
cafeteria

## **SMITHFIELD -- OUR TOWN AND COMMUNITY**

Ours is the largest and oldest town in Johnston County. It is the county seat and is situated 28 miles southeast of Raleigh on the Neuse River.

Pulsating . . . Throbbing . . . Vibrating . . . with the lives of 7,000 people—

The "butcher, the baker, the candlestick maker,"

The students, the teachers, the parents,

The merchants, the craftsmen, the artisans,

The doctors, the lawyers, the preachers,

The highest official, the lowliest worker,

The richest, the poorest.

There is a friendly, natural bond linking our school and community—the sharing of problems, of honors, of responsibilities—the spirit of co-operation. So it is with much pride that we dedicate the 1956 "Shield" to the people of "Our Town."



**F  
A  
C  
U  
L  
T  
Y**



**A. G. GLENN, *Príncipe***

# LANGUAGE



The study of foreign languages opens new avenues for interested students.



MRS. E. V. WILKINS, A.B.

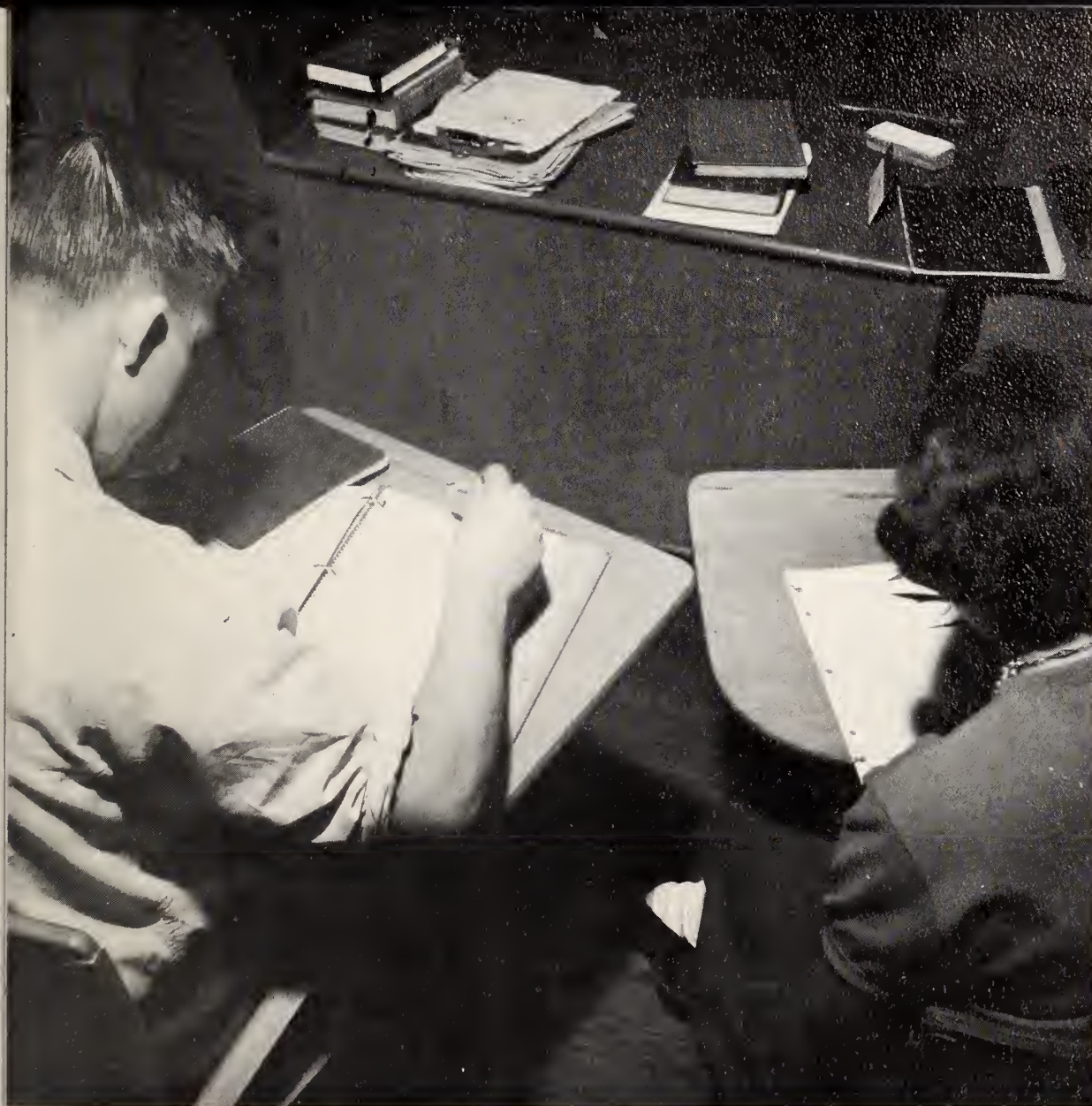
Woman's College; French, Dramatics, Adviser Junior Class, Director Junior Play.



MISS ELEANOR HERRING, A.B.

Flora MacDonald College, B.R.E. The Assembly Training School, Richmond, Va.; Latin, Librarian, Library Club, F.T.A. Sponsor.

# M A T H E M A T I C S



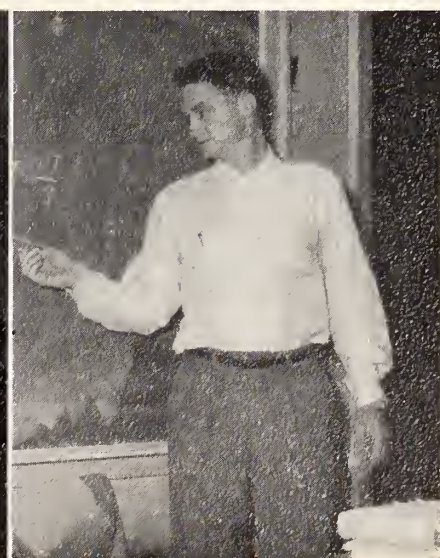
The field of mathematics teaches a person to use his mind logically. Students find much need for logic in drawing figures for geometry.

MISS RUBY LANGFORD, A.B.

Newberry College, M.A. East Carolina College; Mathematics, Adviser Sophomore Class, Sophomore Magazine Contest Sponsor, Hobby Club.

MR. HAROLD BAIN, A.B.

Atlantic Christian College, M.A. Peabody College; Mathematics, Assistant Coach, Adviser Freshman Class, Baseball.





Girls from the Home Economics class learn how to plan and serve a well balanced meal.



MRS. RAMONA CASH, B.S.

East Carolina College; Home Economics, Home Ec Club, Guidance Counselor.

## HOME ECONOMICS

MR. HUBERT HALL, B.S.

Wake Forest College; Science, Driver Training, Adviser Sophomore Class, Science Club.

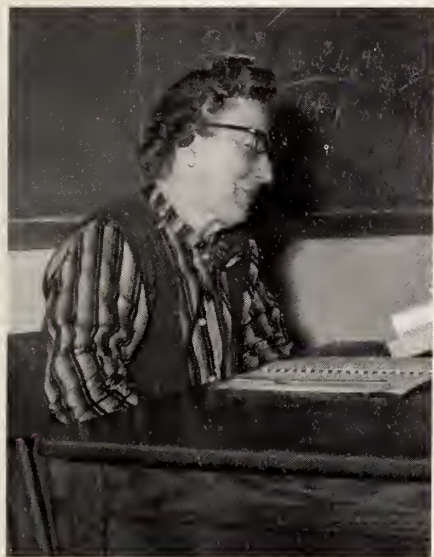


Students in science classes enjoy making experiments under Mr. Hall's watchful eyes.

## SCIENCE

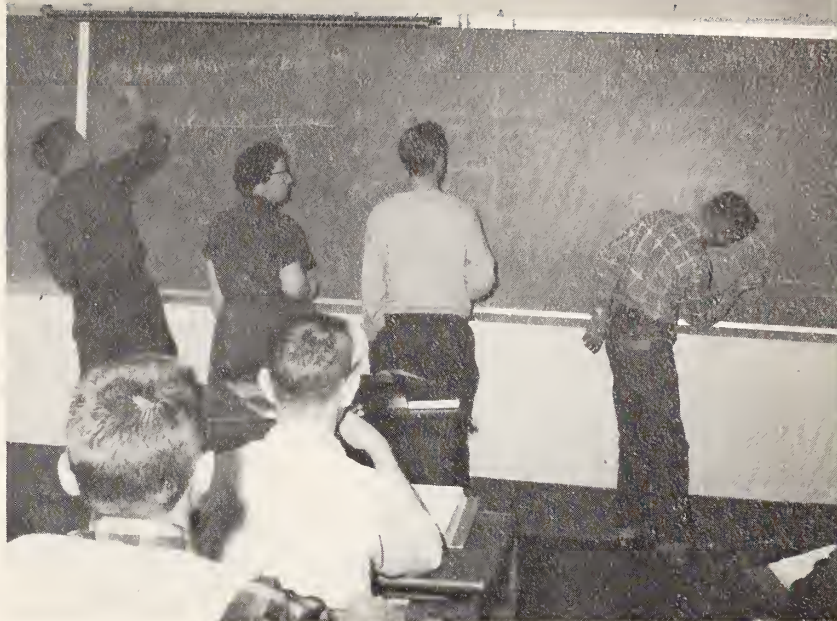


Miss Livingston teaches Freshmen the art of diagramming sentences.



MISS REBECCA LIVINGSTON, A.B.

Newberry College; Adviser Freshman Class, English, Civics, General Science, Mechanics Club



## ENGLISH

MISS FRANCES LEWIS, A.B.

East Carolina College; Commercial, Sophomore Adviser, Sophomore Magazine Contest Adviser, Sponsor "High Times," Commercial Club

## COMMERCIAL



Bookkeeping students prepare for the world of business ahead.



# LITERATURE



Literature comes to life as students dramatize favorite scenes. From the sleep walk scene in Macbeth Lady Macbeth declares, "All the perfumes of Arabia will not sweeten this little hand."



MISS MARGARET WAYNE, A.B.

Flora MacDonald College, Graduate work University of N. C.; English, Adviser Junior Class, Adviser "High Times," Sponsor Journalism Club, Coach World Peace Speaking Contest.

MRS. A. G. GLENN, A.B. in English;

Mary Hardin Baylor College, Graduate work University of N. C.; English, Speech, Adviser Senior Class, Adviser "The Shield," Director Senior Play, Young Writers' Club.

# HISTORY



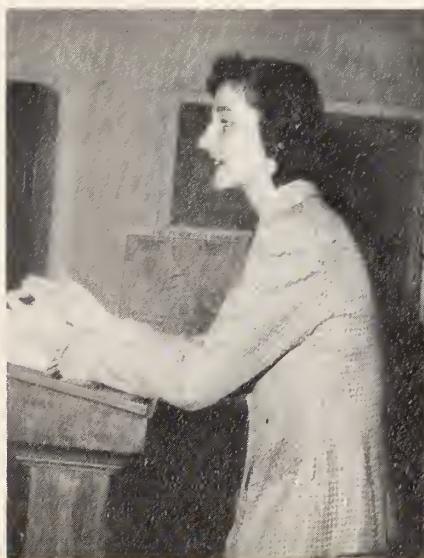
Students in history are active participants in a class discussion.

MISS PATRICIA MULLER, AB.

Woman's College; History, Adviser Junior Class, Dramatics Club.

MR. ROY J. BROWN, JR., A.B.

Atlantic Christian College; History, Physical Education, Coach, Adviser Freshman Class, Football, Basketball.





### "Teens" go Town

Students derive from Our Town—

1. Experience. Sally Ann Wood consults Herman Lawson, Managing Editor of the Smithfield Herald, on her "Teen Topics" column.
2. Recreation. Creech's Pharmacy, local teen hang out, provides enjoyment in abundance.
3. Encouragement in Developing Talents. Barbara Parrish, junior, wins annual World Peace Speaking Contest sponsored by the Smithfield Bar Association. James Weltons, local attorney, presents the award.
4. Adult Fellowship. Senior boys are guests of local Rotary Club. Rotarian Cecil Whitehurst welcomes Charles Heavner, C. L. Gurganus, Bob Johnson, and Bobby Stanley.





**S  
E  
N  
I  
O  
R  
S**



The First Citizens Bank and Trust Company of our town encourages Seniors to save for that college education.

# SENIORS

MARGIE JEAN ADAMS

*"A good face is a letter of recommendation."*

Home Economics Club 1, 2; Library Club 3, 4; Refreshment Committee, Jr.-Sr. 3; Cap and Gown Committee 4.

CHARLES EDWARD ANDERSON

*"To hurry and worry is not my creed."*

Sports Club 1; Commercial Club 2; Science Club 3, 4.

MARGARET LEE AUSTIN

*"A happy marriage is a new beginning of life."*

Music Club 1; 4-H Club 2, 3; Library Club 4; Place Card Committee, Jr.-Sr. 3; Mascot Committee 4.

HELEN HOOD BAKER

*"If beauty is eternal, she will live forever."*

Home Economics Club 1; Art Club 2; Word Study Club 3; Band Club 4; Chairman Magazine Campaign 2; Jr.-Sr. Waitress 2; Glee Club 2, 3, 4; Majorette 2, Head 3, 4; Co-Chairman Table Decoration Committee, Jr.-Sr. 3; Co-Chairman Social Committee 4; Advertising Staff "The Shield" 4.

SARA ELIZABETH BLACKMAN

*"Dependability demands respect."*

Home Economics Club, President 1; Art Club, Vice President 2; Jr.-Sr. Waitress 2; Word Study Club, Vice-President 3; "The Barretts of Wimpole Street" 3; Mantle Committee, Jr.-Sr. 3; Marshal 3; Cheerleader 3, 4; Monogram Club 3, 4; Hospitality Committee 4; Advertising Staff "The Shield" 4.

ELSIE FAYE BRASWELL

*"A good heart, benevolent feelings,  
and a balanced mind."*

Princeton High School 1; Handicraft Club 2; Library Club 3, Vice-President 4; North Carolina Library Association 3, 4; Refreshment Committee, Jr.-Sr. 3; Inviation Committee 4.

REBECCA ANN BYRD

*"Cheerful looks make every dish a feast."*

Home Economics Club 1; Dramatics Club 2, 3, 4; Glee Club 1, 2, 3, 4; Refreshment Committee, Jr.-Sr. 3; Cap and Gown Committee, Chairman 4; Advertising Staff "The Shield" 4.

ANTHONY SHERRIL CAPPS

*"Let them all call it mischief:  
when it is past and prospered 'Twill be virtue."*

Glee Club 1; Dramatics Club 1; 4-H Club 2; Wildlife Club 3; Table Committee, Jr.-Sr. 3; Marshal 3; Science Club 4; Ring Committee 4.

# SENIORS

CLAUDE NOBLE CAPPS

*"Men resemble the gods in nothing so much as in doing good to their fellow creatures."*

4-H Club 1, 2, Commercial Club 3; Science Club 4; Band 1; Theme Committee, Jr.-Sr. 3; Bus Driver 4; Invitation Committee 4.

JOE DURWARD CREECH

*"God has placed no limits to the exercise of the intellect he has given us."*

Dramatics Club 1, 3, 4; Wildlife Club 2; Football 1, 2, 3, Co-Captain 4; Band 1, 2, 3; Waiter Jr.-Sr. 2; Class President 3; Chief Marshal 3; Program and Menu Committee, Jr.-Sr. 3; Monogram Club 2, 3, 4; All Conference Football 3; Glee Club 4; Co-Chairman Hospitality Committee 4; Snapshot Editor "The Shield" 4.

SANDRA FAYE CRUMPLER

*"Her voice, the music of the spheres."*

Music Club, Reporter 1; Class Secretary 1; Treasurer 2; Art Club 2; Glee Club 1, 2, 3; Publicity Chairman 4; Dramatics Club, Secretary 3; "Barretts of Wimpole Street" Student Director 3; Theme Committee, Program Committee, Mirror Decoration Committee, Jr.-Sr. 3; Assistant Art Editor "High Times" 3; Art Editor 4; Art Editor "The Shield" 4; Social Committee 4; Journalism Club 4.

BEN PHILIP DAUGHTRY

*"The mildest manners with the bravest mind."*

Class President 1, Band 1, 2, 3, Band Club 1, Vice-President 2; Class Vice-President 2, 3; 4-H Club 3; "The Barretts of Wimpole Street" 3; Marshal 3; Assistant Bus Driver 3, 4; Table Committee, Jr.-Sr. 3; Science Club, Vice-President 4; Cap and Gown Committee 4 Chairman Ring Committee 4.

SHARON LOUISE DAUGHTRY

*"The fairer the rose, the sweeter the fragrance."*

Home Economics Club 1 Band Club, Secretary 2, 3, Historian 4; Class Treasurer 2; Band 2, 3, 4, Librarian 3; Future Teachers of America Club 3, 4; "The Barretts of Wimpole Street" 3; Program Committee, Menu Committee, Giftorian, Jr.-Sr. 3; Marshal 3; Class Secretary 4; Co-Chairman Senior Play Committee 4; Snapshot Editor "The Shield" 4.

EDNA MARIE DAVIS

*"Gentlemen prefer blondes."*

Band Club 1, Reporter 2; Dramatics Club 3, 4, Reporter 3; Band 1, 2, 3, 4; Magazine Contest Winner 2; "Barretts of Wimpole Street" 3; Junior Play Committee 3; Chairman Table Decoration Committee, Program Committee, Jr.-Sr. 3; Future Teachers of America Club 4; Social Committee 4; Advertising Staff "The Shield" 4.

JOYCE VIRGIL EARLY, JR.

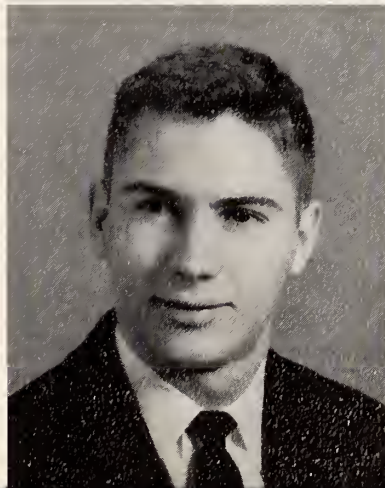
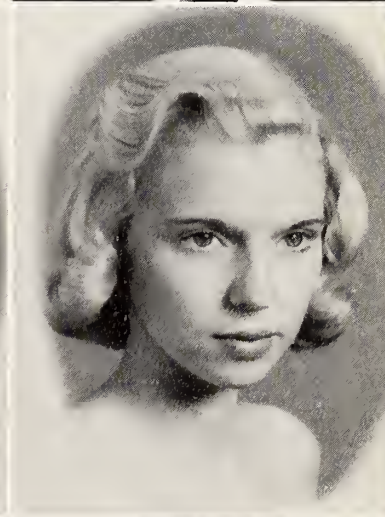
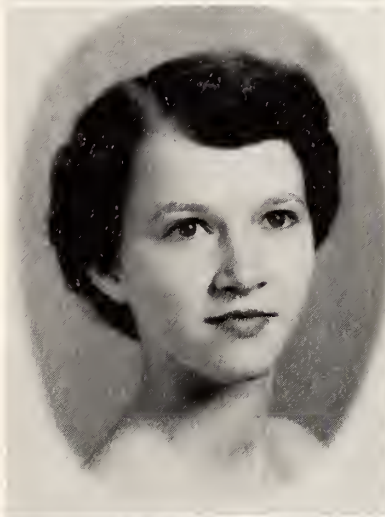
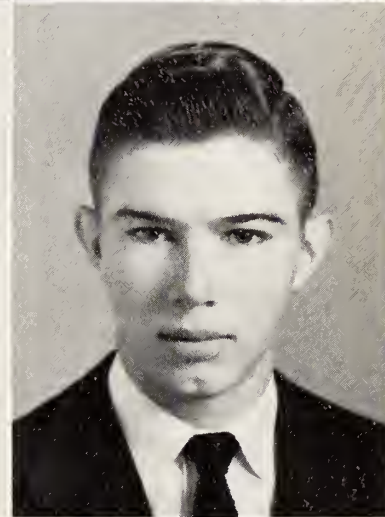
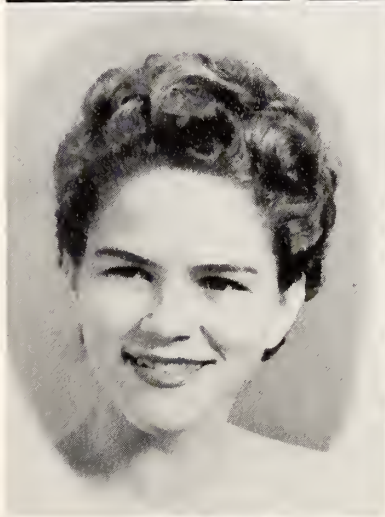
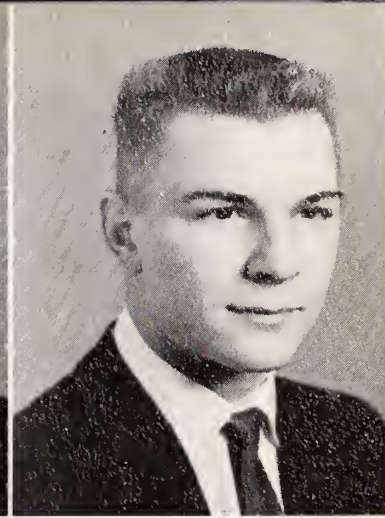
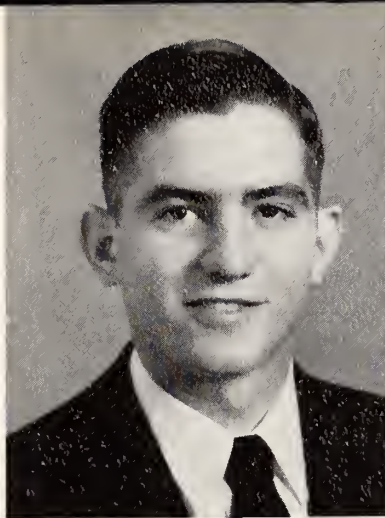
*"He can win friends and influence people."*

Baseball 1, 2, 4; Band 1, 2, 3, 4; Band Club 1, President 3, 4; Basketball 2, 3; Wildlife Club, Program Chairman 2; Football 2, 3, Co-Captain 4; Jr.-Sr. Waiter 2; Monogram Club 2, 3, 4; Program Committee, Music Committee, Jr.-Sr. 3; Marshal 3; Social Committee 4; Senior Play Committee 4; Assistant Editor "The Shield" 4.

CARRIE EDWARDS

*"In silence many virtues lie."*

Home Economics Club 1, 2; Library Club 3, 4; Refreshment Committee, Jr.-Sr. 3; Cap and Gown Committee 4.



# SENIORS

LILLIE JEAN EDWARDS

*"She's a winsome wee thing."*

Home Economics Club 1; Hobby Club 2; Library Club 3, 4; Refreshment Committee, Jr.-Sr. 3; Ring Committee 4.

LACY CLIFTON FAIRCLOTH

*"If worry is the cause of death, then Clifton will live forever."*

Hobby Club 1; Science Club 2; Wildlife Club 3, 4; Monogram Club 4; Football 2, 3; Decorating Committee, Jr.-Sr. 3; Hospitality Committee 4.

NELDA VAUSE GODWIN

*"I laugh'd till I cried."*

Glee Club 1, 2, 3, 4; Home Economics Club 1; Dramatics Club 2, 3, 4; Usher, "Barretts of Wimpole Street" 3; Foods Committee, Jr.-Sr. 3; Ring Committee 4.

CLAUDIUS LEACH GURGANUS

*"He chortled in his joy!"*

Science Club 1; Band 1, 2, 3, Publicity Manager 4; Wildlife Club, Vice-President 2; Band Club 3; Dramatics Club 4; Menu Committee, Jr.-Sr. 3; Social Committee 4.

FAYE ANN HARDEE

*"Frame your mind to mirth and merriment, which bar a thousand harms and lengthen life."*

Home Economics Club 1; Art Club 2; Journalism Club 3, 4; Glee Club 1, 2, 3, 4, Theme Committee, Program Committee, Jr.-Sr. 3; "Barretts of Wimpole Street" prompter 3; Co-Chairman Mascot Committee 4; Advertising Staff "The Shield" 4.

CHARLES OLEN HEAVNER

*"If reading maketh a full man, he will surely burst."*

Dramatics Club 1; Wildlife Club 2, 3; North Carolina Writer's Club 4; Jr.-Sr. Waiter 2; Marshal 3; "The Barretts of Wimpole Street" 3; Social Committee 4; Advertising Staff "The Shield" 4.

ZEB BRYAN HILL

*"Good humor is goodness and wisdom combined."*

Band Club 1; 4-H Club 2; Wildlife Club 3; Science Club 4; Bus Driver 3, 4; Band 1, 2, 3, 4; Marshal 3; Giftorian, Jr.-Sr. 3; Mascot Committee 4; Advertising Staff "The Shield" 4.

WILLIAM MARION HOLLAND, JR.

*"A man's own manner and character is what most becomes him."*

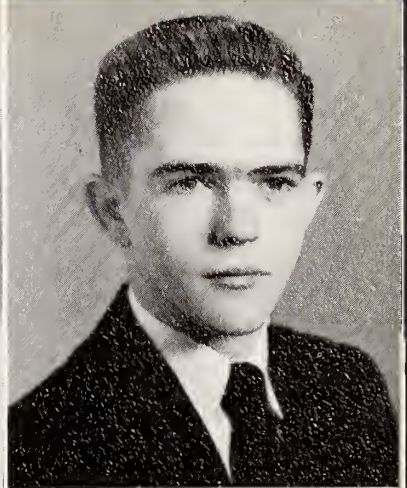
Dramatics Club, Vice-President 1; Football 1, 2, 3, 4; Baseball 2, 3, 4; Wildlife Club 2, 3; Basketball 3, 4; Program Committee, Theme Committee, Music Committee, Jr.-Sr. 3; "The Barretts of Wimpole Street" 3; Glee Club, Publicity Chairman 3; Marshal 3; Monogram Club 3, 4; North Carolina Writer's Club 4; Co-Chairman Invitation Committee 4.

# SENIORS

ALICE MIRIAM HUMPHREY

*"Not too serious, not too gay  
But a rare combination all the way."*

Home Economics Club 1; Class President 2; Art Club 2; Magazine Contest Winner 2; Glee Club 1, 2, 3, 4; Journalism Club 3, 4; Marshal 3; Place Card Committee, Jr.-Sr. 3; Future Teachers of America Club 2, 3, President 4; Invitation Committee 4; Cap and Gown Committee 4; Copy Editor "The Shield" 4; Fashion Editor "High Times" 4.



CLIFTON CARLYLE JOHNSON

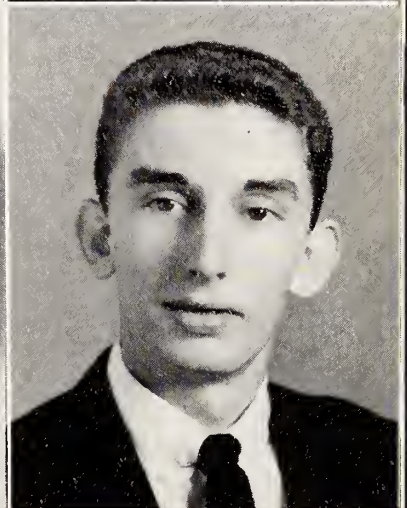
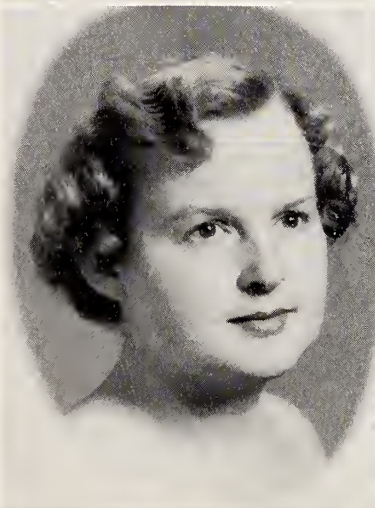
*"Don't think! You may disturb your mind."*

Hobby Club, Music Club 1; 4-H Club 2; Dramatics Club 3, 4; Social Committee 4.

ELMARIE JOHNSON

*"She has a word and a twinkling eye  
For everyone who passes by."*

4-H Club, Secretary 1; Handicraft Club 2; Library Club 3, President 4; Theme Committee, Jr.-Sr. 3; Ring Committee 4.



ROBERT REYNOLDS JOHNSON

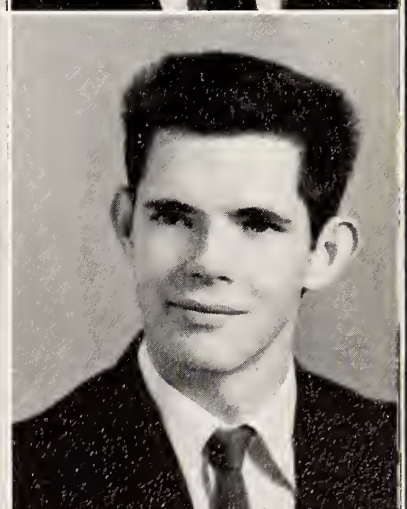
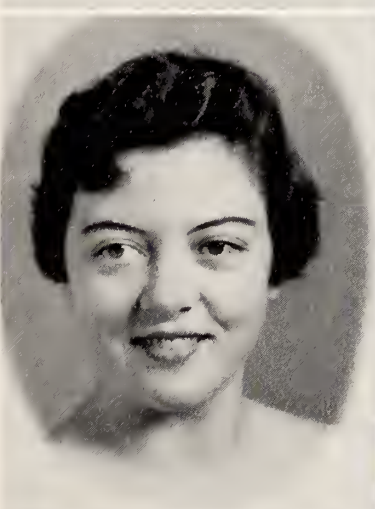
*"His word was ever ready and forth coming."*

Football Manager 1; Hobby Club 1; Wildlife Club 2, 3; Dance and Decorating Committee, Jr. Sr. 3; "The Barretts of Wimpole Street" 3; Dramatics Club 4; Social Committee 4; Advertising Staff "The Shield" 4.

SONJA FAYE JOHNSON

*"Her aim is never to offend,  
And every person is her friend."*

Home Economics Club 1; Dramatics Club 2, 3; Library Club 4; Monogram Club 3, 4; Glee Club 1, 2, 3, 4; Basketball 1, 2, 3, 4; Co-Captain 4; Dance Committee, Jr.-Sr. 3; Ring Committee 4.



WILLIAM DONALD JOHNSON

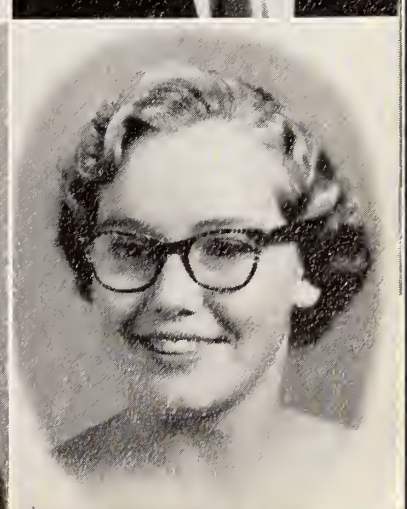
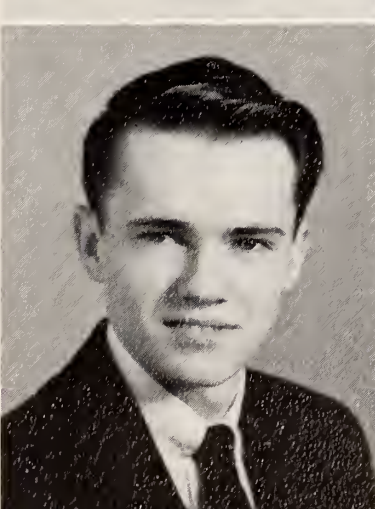
*"He works at Rose's five and ten;  
If he's late that's where he's been."*

Hobby Club 1; Science Club 2, 3, 4; Glee Club 1, 2, 3, Secretary and Treasurer 4; Table Decorating Committee, Jr.-Sr. 3; Ring Committee 4.

PRESTON ELWOOD JONES, JR.

*"On the basketball court he is smooth and fast—  
Of this boy we've not heard the last."*

Hobby Club 1; Art Club 2; Wildlife Club 3; Science Club 4; Jr.-Sr. Waiter 2; Basketball 2, 3, 4; Baseball 1, 2, 3, 4; Football 1, 2; Class Secretary 3; "Barretts of Wimpole Street" 3; Hospitality Committee 4; Monogram Club 2, 3, 4.

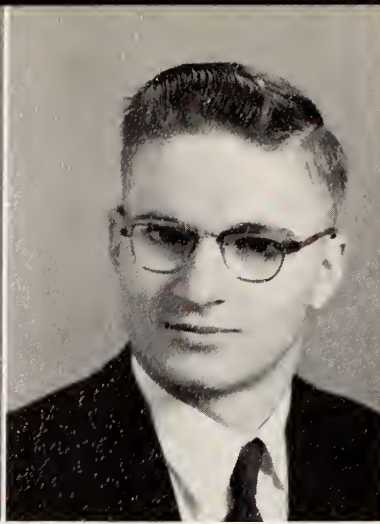
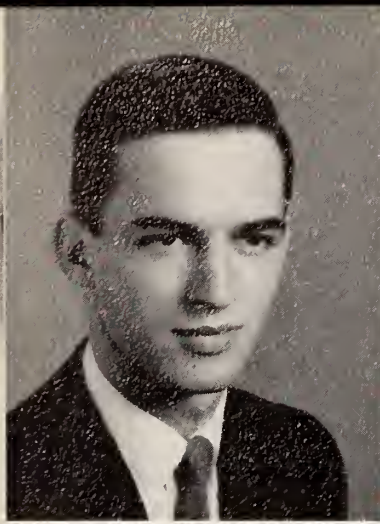


ANNE OVERTON KING

*"Always happy, always gay  
Nothing like this merry maid."*

La Plata High School, Maryland 1; Needlecraft Club 1; Art Craft Club 2; Dramatics Club 3; Library Club 4; Glee Club 2, 3, 4; Invitation Committee, Jr.-Sr. 3; Mascot Committee 4; Advertising Staff "The Shield" 4.

# SENIORS



JOHN HAROLD KING, JR.

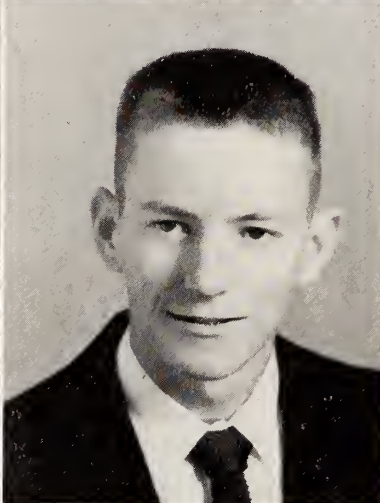
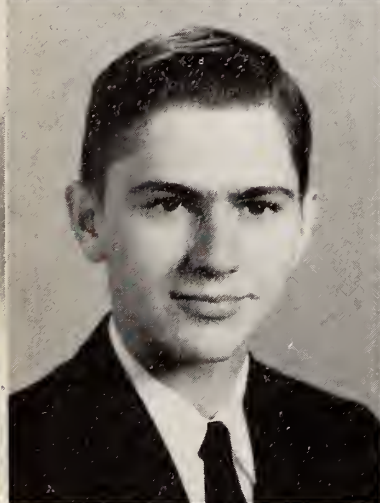
*"Athletic, friendly, and kind,  
A duplicate will be hard to find."*

Football 1, 2; Basketball 1, 2, 3, 4; Baseball 1, 2, 3, 4; Monogram Club 1, 2, 3, 4; Jr.-Sr. Waiter 2; Dramatics Club, President 1; Wildlife Club, President 2, 3; Journalism Club 4; Marshal 3; "Barretts of Wimpole Street" 3; Decorating Committee, Jr.-Sr. 3; Sports Editor "High Times" 4; Mascot Committee 4; Hospitality Committee 4.

JEWEL LAUGHLIN KING

*"A crown you are sure to wear."*

4-H Club 1, 2, 3; Science Club 4; Cap and Gown Committee 4.



CLARENCE GLENN LANGDON

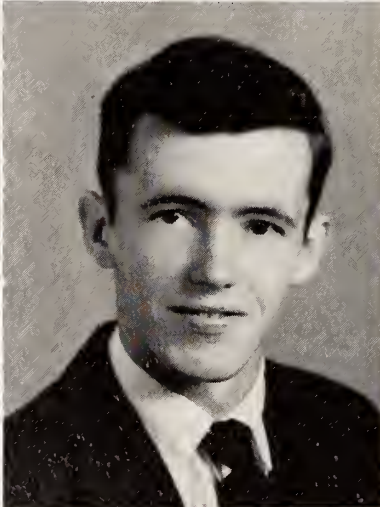
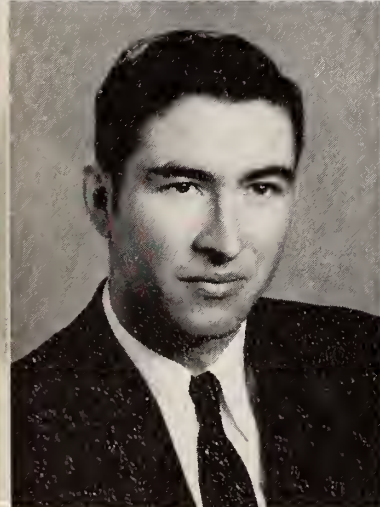
*"Integrity is the first step to true greatness."*

Band 1, 2, 3, 4; Band Club 1, 2, 3, 4; Football 4; Decorating Committee, Jr.-Sr. 3; Ring Committee 4.

JOHN CARSON LANGSTON

*"Next to faith in God, is faith in labor."*

4-H Club 1; Science Club 2, 3, 4; Decorating Committee, Jr.-Sr. 3; Invitation Committee 4; Bus Driver 4.



RALPH HUNTER LASSITER, JR.

*"Gentleness is able to accomplish what violence cannot."*

4-H Club 1, 2, 3, 4; Bus Driver 3, 4; Invitation Committee 4.

JOHN HAROLD LAUGHTER

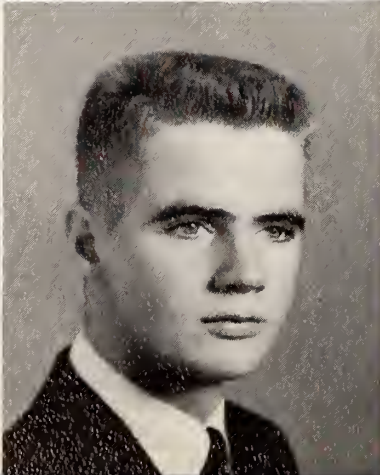
*"In scorn of nature, art gave lifeless life."*

Dunn High 1; Art Club 2; Baseball 2, 3, 4; Journalism Club 3, 4; Secretary 3; Assistant Art Editor "High Times" 3; "Barretts of Wimpole Street" 3; Mirror Committee, Entertainment Committee, Jr.-Sr. 3; Basketball 3, 4; Football 3; Social Committee 4; Art Editor "The Shield" 4.

ELSIE LAVERLE LEE

*"A horse! A horse! My kingdom for a horse."*

Home Economics Club 1; Library Club 2, 3, 4; Place Card Committee, Jr.-Sr. 3; Usher, "Barretts of Wimpole Street" 3; Invitation Committee 4; Advertising Staff "The Shield" 4.



HAROLD BRAXTON LEE

*"Men, like bullets, go farthest  
when they are smoothest."*

Hobby Club 1, President 2, 3; Glee Club, Librarian 1, 2, 3, President 4; Football 2, 3, 4; Monogram Club 4; Science Club 4; Theme Committee, Jr.-Sr. 3; Entertainment Committee, Jr.-Sr. 3; Advertising Staff "The Shield" 4.

# SENIORS

PATRICIA ANN LEWIS

*"Every virtue is more fair when it appears in a beautiful person."*

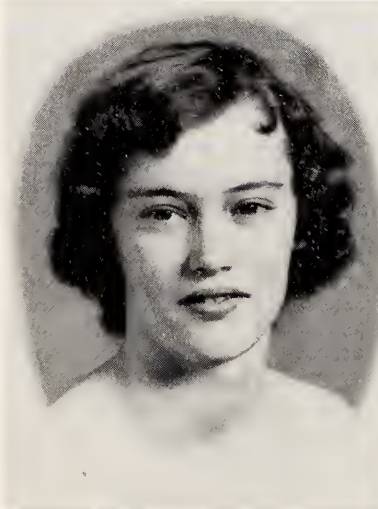
Home Economics Club, Treasurer 1; Glee Club 1, 2, 3, Accompanist 4, Art Club 2, Journalism Club 3; Science Club, Program Chairman 4; Magazine Contest Winner 2; Future Teachers of America Club 2, 3, 4, Secretary 3; "The Barretts of Wimpole Street" 3; Hunter Johnson Music Club 1, Publicity Chairman 2, Social Chairman 3, Vice-President 4; Theme Committee, Program Committee, Chairman Mantel Committee, Jr.-Sr. 3; Advertising Manager "High Times" 4; Advertising Staff "The Shield" 4.



RUDY DAVIS MANNING

*"God gave friendship to him, and he has charmed us all."*

Wakelon High School 1, 2, 3, Science Club 4; Inviation Committee 4.



EDNA RUTH McLAMB

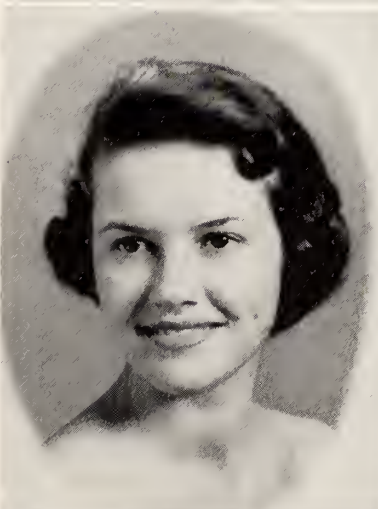
*"Modest, quiet, and demure, But very wise, you may be sure."*

Handicraft Club 1, Reporter 2; Library Club 3, 4; Inviation Committee 4.

MARY LOUISE MOHR

*"When a job's to be done she's always right there; Her energy and pep are beyond compare."*

Dramatics Club 1, 3; Art Club 2; Glee Club 1, 2, 3; Majorette 2, 3; Program Committee, Jr.-Sr. 3; North Carolina Writers Club 4; Co-Chairman Mascot Committee 4; Advertising Staff "The Shield" 4.



BARBARA LAVENIA MOORE

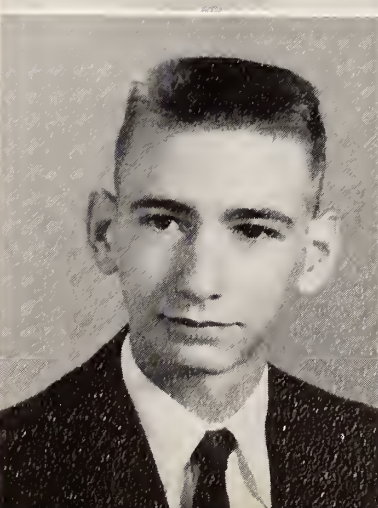
*"Thou who hast the fatal gift of beauty."*

Four Oaks High 1; Handicraft Club 2; Library Club 3, Reporter 4; North Carolina Library Association 3, 4; Decoration Committee, Jr.-Sr. 3; Ring Committee 4.

JANE CLARK NOBLIN

*"Anything done for another is done for oneself."*

Wendell High School 1, 2; Library Club 3, 4; North Carolina Library Association 3, 4; Decorating Committee, Jr.-Sr. 3; Ring Committee 4.



JOE FRANK OGBURN

*"The truest wisdom, in general, is a resolute determination."*

Band 1, 2, 3, President 4; Band Club 1, 3, 4; 4-H Club 2; "The Barretts of Wimpole Street" 3; Program Committee, Table Committee, Jr.-Sr. 3; Boy's State 3; Cap and Gown Committee 4; Invitation Committee 4.

EVELYN FAYE OVERBY

*Love is a many splendored thing."*

Basketball 1, 2, 3, Co-Captain 4; Monogram Club 1, 2, 3, 4; Home Economics Club 1; Glee Club 1, 2, 3, 4; Dramatics Club 2, 3, 4; Usher "Barretts of Wimpole Street" 3; Place Card Committee, Jr.-Sr. 3; Mascot Committee 4; Advertising Staff "The Shield" 4.

# SENIORS

MARGIE LOUISE OWEN

*"The grass stoops not, she treads on it so light."*

Handicraft Club 1; Home Economics Club 2; Library Club 3, 4; Refreshment Committee, Jr.-Sr. 3; Mascot Committee 4.

ELIZABETH ANN RACKLEY

*"Nothing is impossible to a willing heart."*

Home Economics Club 1; Journalism Club 2, Vice-President 3, 4; Glee Club 1, 2, Accompanist 3, 4; Junior Play Committee 3; Place Card Committee, Jr.-Sr. 3; Marshal 3; Girl's State 3; Hunter Johnson Music Club 1, 2, 3, Reporter 4; Future Teachers of America Club, Treasurer 4; Hospitality Committee 4; Class Treasurer 4; Copy Editor "The Shield" 4.

FLORA OLLIS RADFORD

*"The most useless day of all is that in which she has not laughed."*

Home Economics Club 1; Handicraft Club 2, Vice-President; Library Club 3; Place Card Committee, Jr.-Sr. 3; Dramatics Club 4; Hospitality Committee 4; Cheerleader 4; Monogram Club 4.

MARGARET ANN SANDERS

*"Respect is what we owe; love, what we give."*

Home Economics Club 1; Art Club 2; Journalism Club 3, 4; Glee Club 1, 2, 3, 4; Menu Committee, Jr.-Sr. 3; Ring Committee 4; News Editor "High Times" 4.

BOBBY HUNTER STANLEY

*"His simple gift of being kind is greater than all wisdom of the wise."*

Hobby Club, Treasurer 1; Magazine Contest Winner 2; Theme Committee, Jr.-Sr. 3; Marshal 3; Football 1, 2, 3; Science Club 2, 3, 4; Monogram Club 2, 3, 4; Ring Committee 4.

BOBBY TAYLOR STEPHENSON

*"A friendly boy, whom they say Will do his best at work or play."*

Class Secretary 1; Glee Club 1, 3, Reporter 4; 4-H Club 1, 2, 3, President 3, Vice-President 4; Chairman Theme Committee, Jr.-Sr. 3; Baseball 1, 2, 3, 4; "Barretts of Wimpole Street" 3; Monogram Club 4; Hospitality Committee 4.

GEORGE RAYFORD STEPHENSON

*"Deeds, not words."*

4-H Club 1, 2, 3; Science Club 4; Cap and Gown Committee 4.

MIRIAM KEARNEY STEPHENSON

*"As full of spirit as the month of May."*

Home Economics Club, Vice-President 1; Glee Club 1, 2, 3, 4; Dramatics Club 2, 3; Science Club, Secretary and Treasurer 4; Hunter Johnson Music Club, Secretary and Treasurer 4; Class President 2; Jr.-Sr. Waitress 2; Cheerleader 3, 4; Decorating Committee, Jr.-Sr. 3; Monogram Club 3, 4; Invitation Committee 4; Snapshot Editor "The Shield" 4.



# SENIORS

PATRICIA ANN STEPHENSON

*"To succeed where others have failed."*

Dramatics Club 1; Journalism Club 2, 3, 4; World Peace Speaking Contest Winner 2, County Winner 3; Marshal 3; "Barretts of Wimpole Street" 3; Glee Club 1, 2, 3, 4; Entertainment Committee, Jr.-Sr. 3; Assistant Editor "High Times" 3; Editor "High Times" 4; Future Teachers of America Club 4; Co-Chairman Senior Play Committee 4; Copy Editor "The Shield" 4.

MARY LOUISE STEVENS

*Her philosophy reflects these words:*

*"The best preparation for the future is the present well seen to, the last duty well done."*

4-H Club 1; Art Club 2; Journalism Club 3, 4; Glee Club 1, 2, Assistant Publicity Chairman 3; Entertainment Committee, Chairman Refreshment Committee, Jr.-Sr. 3; Usher "The Barretts of Wimpole Street" 3; Marshal 3; Assistant News Editor "High Times" 3; Senior Play Committee 4; Editor-In-Chief "The Shield" 4.

HOOVER BOOKER STRICKLAND

*"I can resist everything except temptation."*

4-H Club 1, 2; Science Club 3, 4; Decorating Committee, Jr.-Sr. 3; Mascot Committee 4.

MARVIN EDWARD TAYLOR, JR.

*"Don't let his silence fool you,  
He has his share of fun."*

Hobby Club 1; Science Club 2, President 4; Football 2, 3, 4; Wildlife Club 3; Mantle Decoration Committee, Jr.-Sr. 3; Marshal 3; Ring Committee 4; Monogram Club 3, 4; Snapshot Editor "The Shield" 4.

FREDERICK ROOSEVELT TOOLE

*"I believe in work, but I'm not in favor of it."*

4-H Club 1, 2; Science Club 3; Dramatics Club 4; Glee Club 1, 2, 3, 4; Baseball 2, 3, 4; Monogram Club 3, 4; Football 3, 4; Vice-President Senior Class 4; Hospitality Committee 4.

ELIZABETH ANN TURNER

*"Life without music is a mistake."*

Dramatics Club 1; Art Club 2; Glee Club Accompanist 2, 3, 4; Unusual Words Club, Reporter 3; Music Committee, Jr.-Sr. 3; Marshal 3; Co-Chairman Hospitality Committee 4; Copy Editor "The Shield" 4.

LOUIE JANE TWISDALE

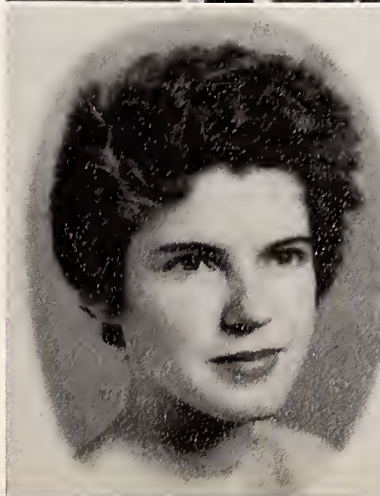
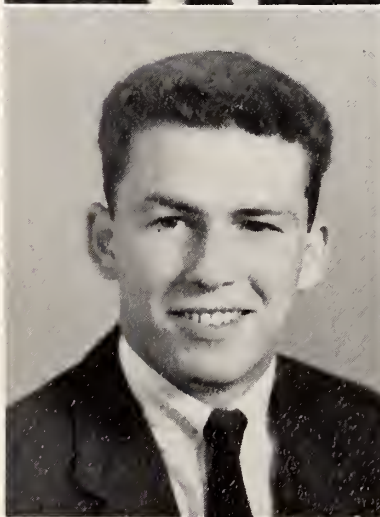
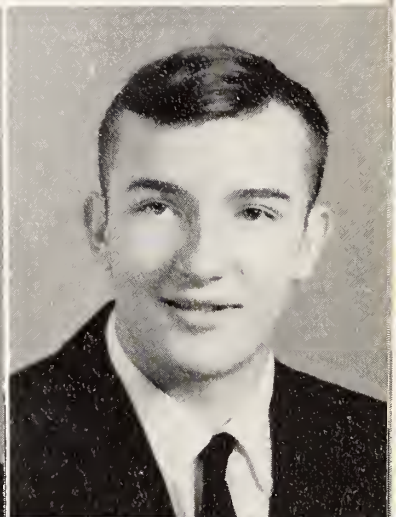
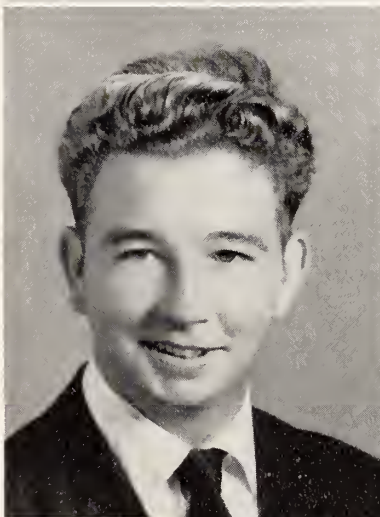
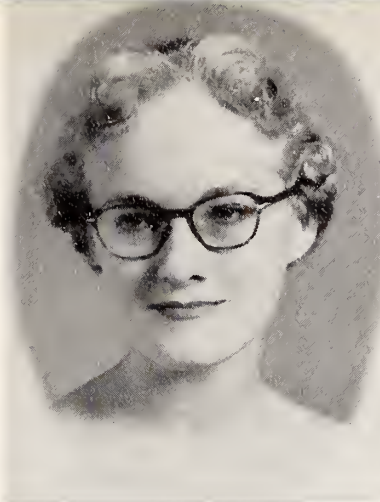
*"By the touch of her fingers you hear music."*

4-H Club 1; Glee Club Accompanist 1, 2, 3, 4, Vice-President 4; Hunter Johnson Music Club 1, 2, Secretary and Treasurer 3, President 4; Journalism Club 2, 3, President 4; Class Vice-President 2; Jr.-Sr. Waitress 2; Class Treasurer 3; Program Committee, Dance Music Committee, Jr.-Sr. 3; Marshal 3; News Editor "High Times" 3, 4; Hospitality Committee, Cap and Gown Committee 4; Future Teachers of America Club, Pianist 3, Vice-President 4; Copy Editor "The Shield" 4.

JOHN ARTHUR WALLACE, JR.

*"Every god did seem to set his seal,  
to give the world assurance of a man."*

Band 1, Secretary and Treasurer 2, 3, 4; Music Club 1, 2, Vice-President 4; Dramatics Club, Vice-President 3; "The Barretts of Wimpole Street" 3; Assistant Sports Editor "High Times" 3; Marshal 3; Class President 4; Social Committee 4; Business Manager "The Shield" 4.



# SENIORS

SANDRA LOLITA WARD

*"What's in a name? That which we call a Rose would not by any other name smell as sweet."*

Home Economics Club, Secretary 1; Library Club 2, 3; Dramatics Club 4; Glee Club 1, 2, 3, 4; Mascot Committee 4.

BETTY JOSEPHINE WATSON

*"Smooth runs the water where the brook is deep."*

Glee Club 1, 2, 3, President 4; Dramatics Club 1, Vice-President 4; Art Club 2, Jr.-Sr. Waitress 2; Journalism Club 3; Table Decoration Committee, Jr.-Sr.; Monogram Club 3, 4; Assistant Advertising Manager "High Times" 3; Marshal 3; Girl's State 3; Cheerleader 3, Head 4; Hospitality Committee 4; Assistant Editor "The Shield" 4.

LARRY RAYVON WHEELER

*"He that is of a merry heart hath a continual feast."*

Hobby Club 1; Science Club 2, 3, 4; Dance Committee, Decorating Committee, Jr.-Sr. 3; Senior Play Committee 4.

BEVERLEY JANE WHITEHURST

*"Life is dull without love."*

Dramatics Club 1; Glee Club 1, 2; Art Club 2; Word Study Club, Treasurer 3; Basketball 1, 2, 3; Jr.-Sr. Waitress 2; Class Treasurer 2; Place Card Committee, Jr.-Sr. 3; Majorette 3, 4; Monogram Club 2, 3, 4; Mascot Committee 4.

DENNIS POE WIGGS

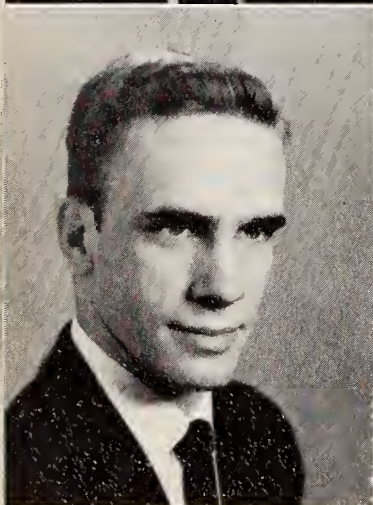
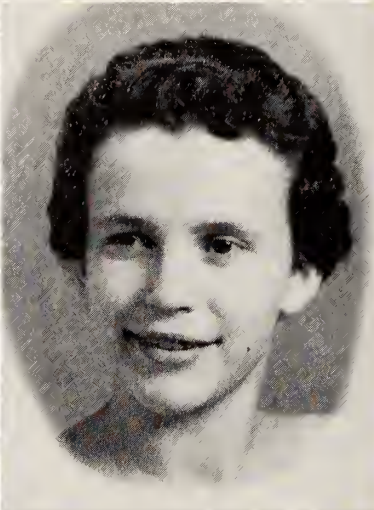
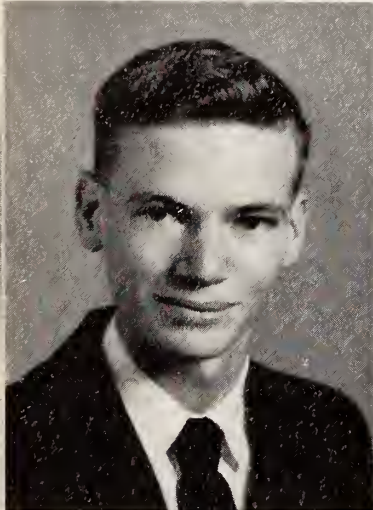
*"Ambition has no rest!"*

Band Club 1, 2, 3; Young Writers Club 4; Future Teachers of America Club 2, 4; Band 1, 2, Drum Major 3, 4; Program Committee, Jr.-Sr. 3; "Barretts of Wimpole Street" 3; Ring Committee 4; Basketball 2.

SUE ANN WOOD

*"A delicious Georgia peach."*

Vidalia Georgia 1, 2; Dramatics Club 3, President 4; Glee Club 3, Secretary and Treasurer 4; Marshal 3; Program Committee, Music Committee, Jr.-Sr. 3; Homecoming Queen 3; Co-Chairman Social Committee 4; Advertising Manager "The Shield" 4.



"All that glitters is gold" when it comes to our class rings. Left: Sue Wood, Helen Hood Baker, Pat Lewis, and Marie Davis.



**S  
U  
P  
E  
R  
L  
A  
T  
I  
V  
E  
S**



*Ann Lassiter      Jimmy Allen*

**MASCOTS**

**Best All-Around**

*Virgil Early Betty Jo Watson*





**Most Intellectual**

*Charles Heaven*      *Pat Stephenson*

**Most Popular**

*Sue Wood      C. L. Gurganus*



**Best Looking**

*Barbara Moore*      *Fred Toole*



**Most Accommodating**

*John Laughter      Sandra Crumpler*





**Most Athletic**

*Hal King Evelyn Overby*



**Most Ambitious**

*Louise Stevens      Bill Holland*

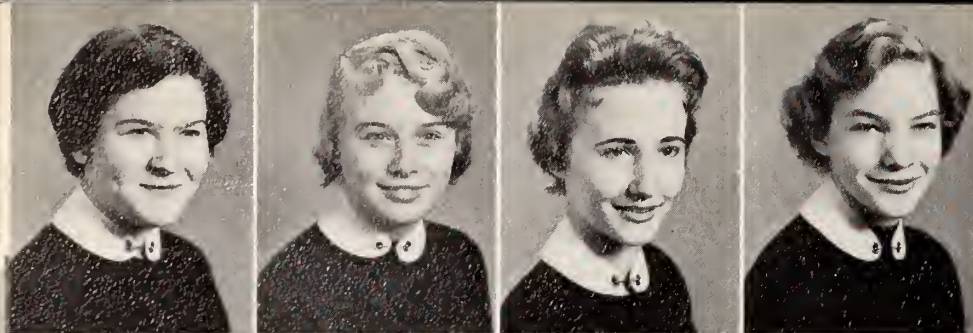


# J U N I O R S

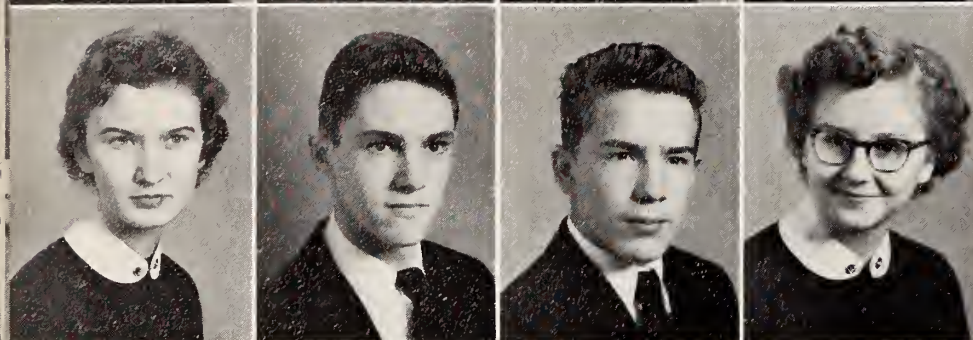


Our town's U. S. Post Office is most efficient in its service to our Juniors, whose correspondence is both business and social.

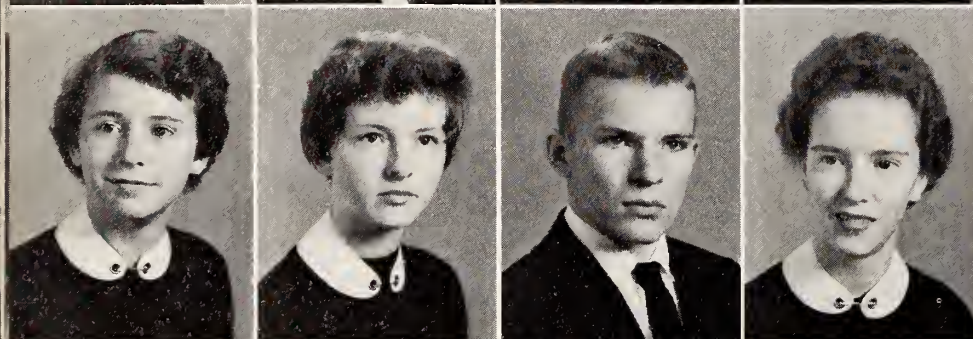
# JUNIORS



Sally Batchelor  
Betty Bingham  
Beth Boyette  
Helen Braswell



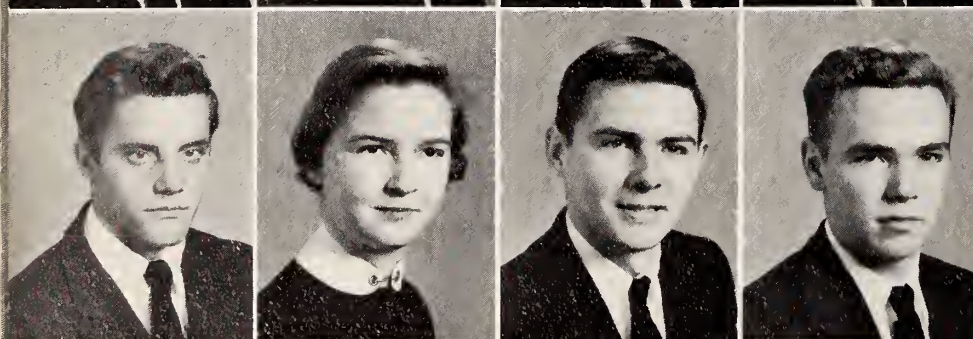
Virginia Britt  
Bobby Bryant  
J. W. Coats  
Faye Davis



Janice Edwards  
Jo Ann Edwards  
Ronald Ennis  
Pope Hardee



Edwin Hargrove  
Roy Hartley  
Wayne Hildebrand  
Dannie Hill



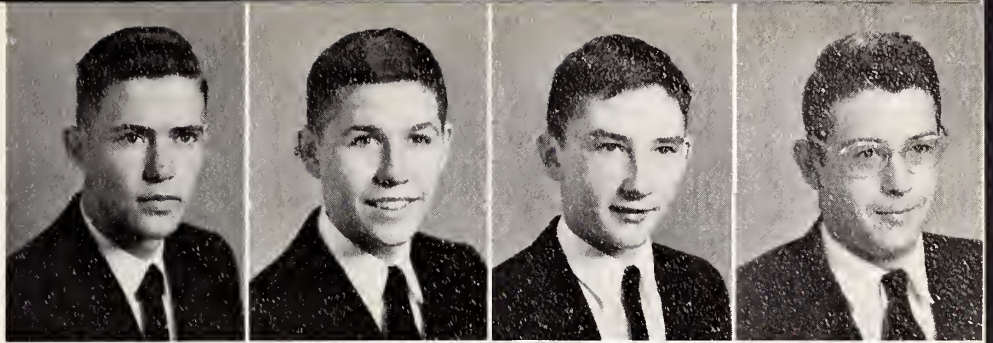
Ralph Hill  
Dessie Belle Holland  
Frank Bennett Huntley  
Donald Johnson



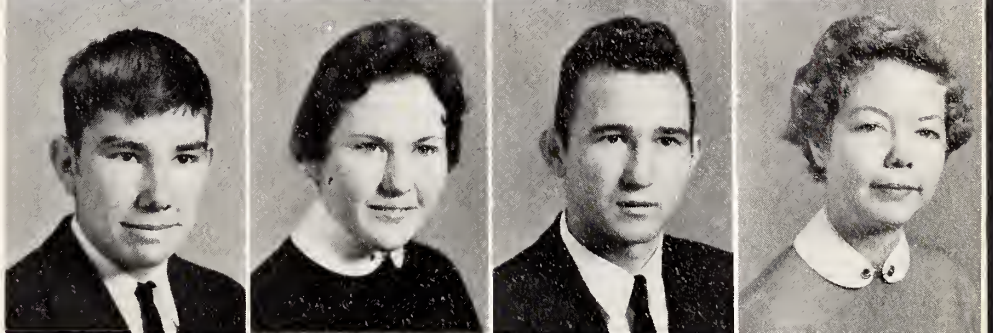
Doris Jones  
Emma Jones  
Marie Kemple  
Norma Kistler

# JUNIORS

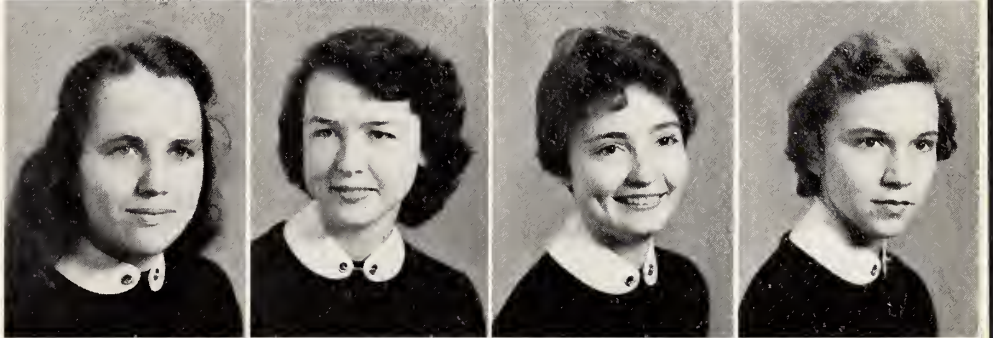
Lawrence Langdon  
Charles Lee  
Jimmy Lee  
Billy Lynch



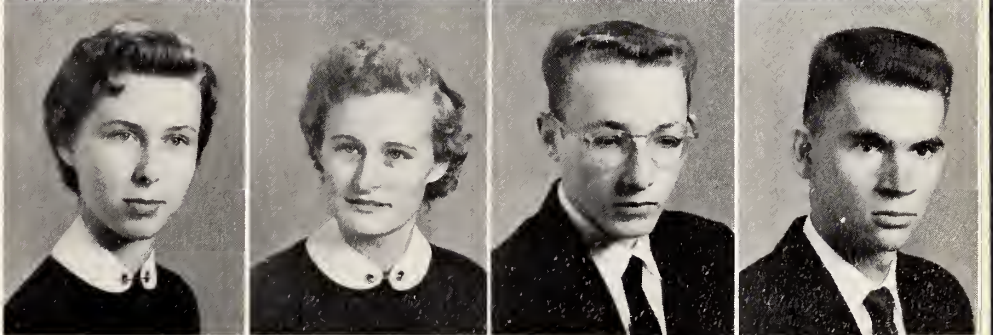
Howard Mallard  
Judith Manning  
Dalton Massengill  
Sue Massey



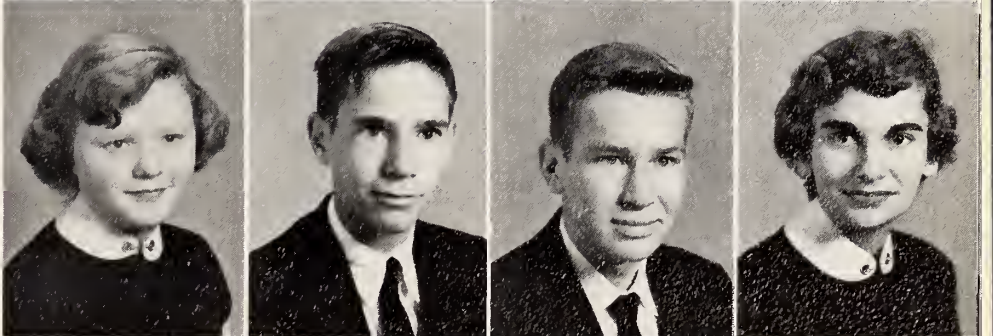
Ruby McLeod  
Louise Messer  
Nancy Poole Moore  
Caroline Padgett



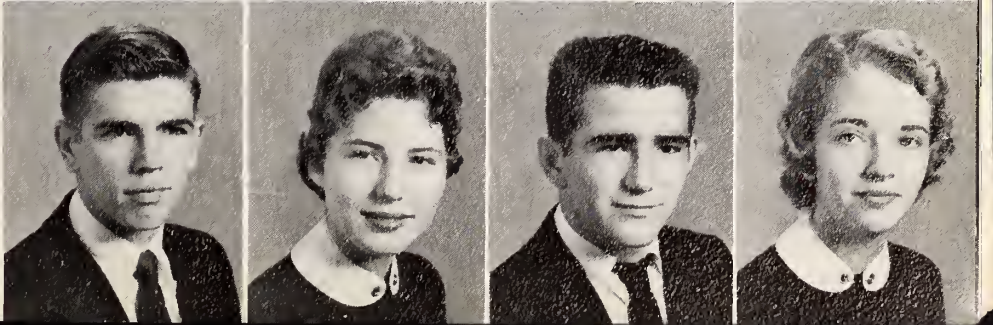
Barbara Parrish  
Marjorie Parrish  
Edward Patterson  
R. E. Penny



Annie Laura Peterson  
Nathan Peterson  
Bobby Pilkington  
Nancy Pitchi



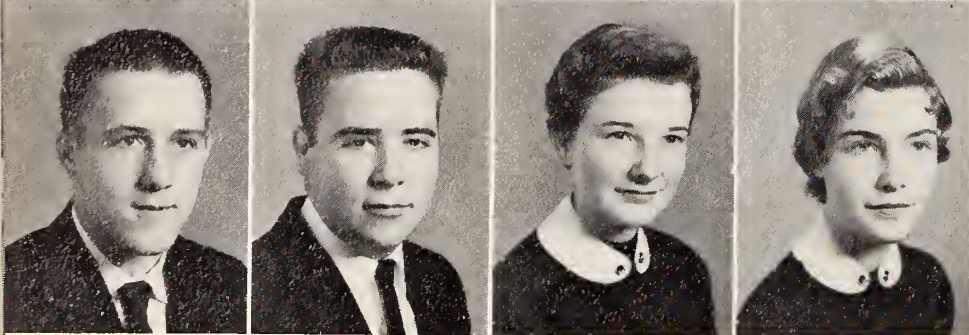
Ed Rose  
Ann Smith  
Billy Ray Stallings  
Ann Stallings



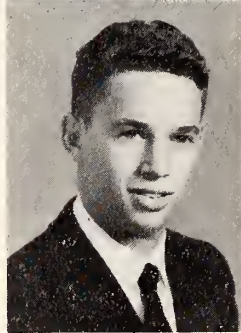
# JUNIORS



Shelton Stanley  
Janie Mae Stephenson  
Marie Stewart  
Jack Taylor



Edward Tyner  
Norman Underwood  
Janice White  
Sally Ann Wood



Harry Woodard

Juniors, Sally wood, Howard Mal-lard, Emma Jones, and Frank Hunt-ley, enjoy the social life at Jack's, the meeting place of our town.



# S O P H O M O R E S



The patrons of our town open the doors of their homes to receive Sophomores, who solicit magazine subscriptions to help finance various projects in our school.

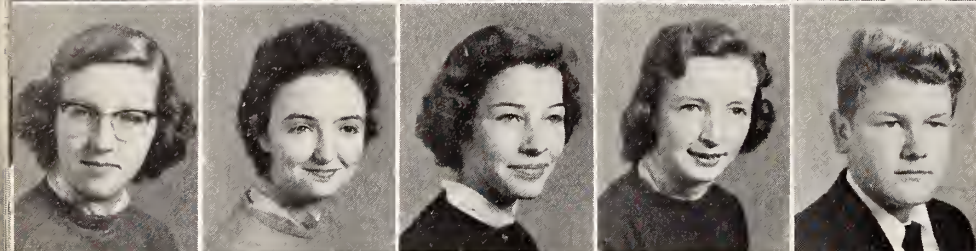
# SOPHOMORES



Margie Allen  
Melba Jane Austin  
Faye Baker  
Bobby Barbour  
Eleanor Barbour



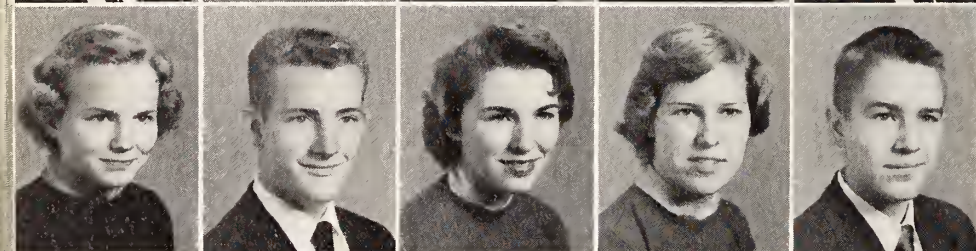
Joyce Barbour  
Tucker Barbour  
Mary Ogie Baugham  
Anne Booker  
William Brantham



Mary Jo Brown  
Barbara Ann Byrd  
Myra Byrd  
Diane Creech  
Linwood Creech



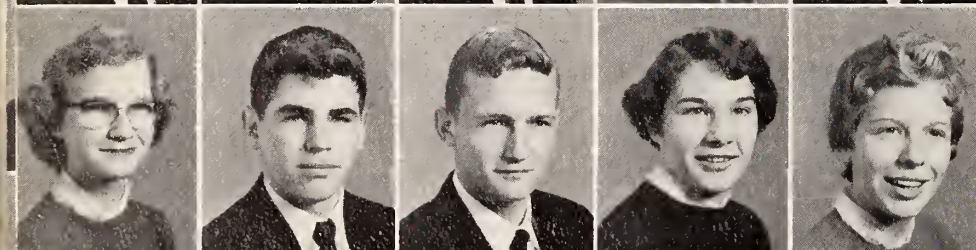
Sherwood Creech  
Susan Creech  
Jane Crocker  
Linda Culbreth  
J. A. Daughtry



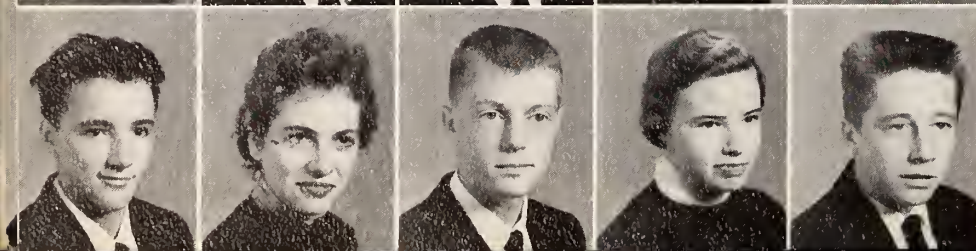
Janie Daughtry  
Roy Dixon  
Peggy Drawdy  
Catherine Dupree  
D. B. Dupree



Jimmie Eason  
Susan Eason  
Harvey Ennis  
Judith Evans  
Hubert Everett



Hilda Grey Flowers  
Thomas Gardner  
Jimmy George  
Julia Gurganus  
Ann Hamilton

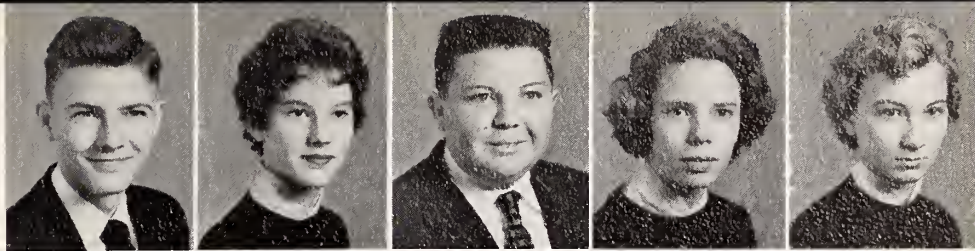


Avis Hamilton  
Glenda Hamilton  
Jerry Highsmith  
Lucy Hill  
Larry Hill

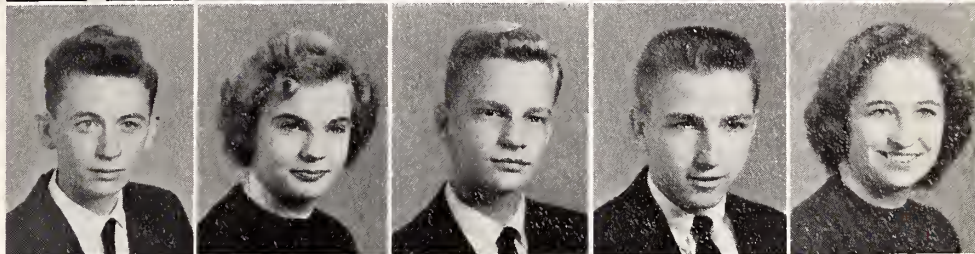


# SOPHOMORES

Douglas Hobgood  
 Julie Hooks  
 Billy Ray Jackson  
 Anesha Johnson  
 Angeline Johnson



John Johnson  
 Helen Jordan  
 Roy Land  
 Jerry Langdon  
 Shirley Lassiter



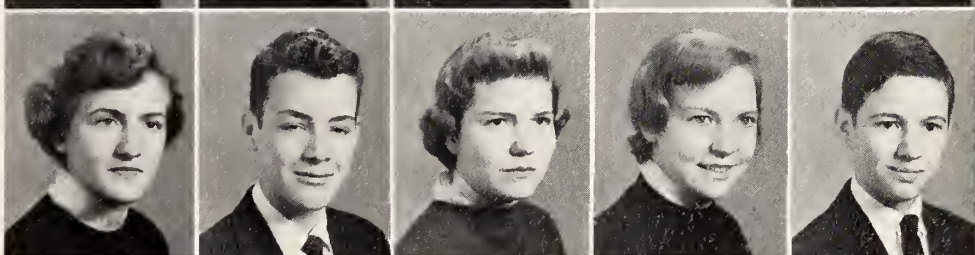
Judy Laughter  
 Frank Layne  
 Ann Lee  
 Carolyn Faye Lee  
 Katherine Lee



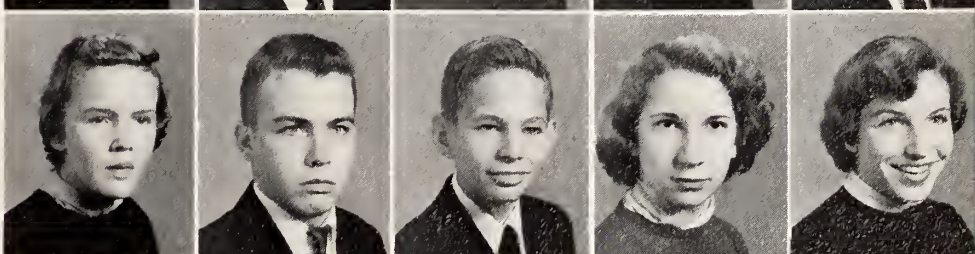
Phyllis Lee  
 Ann Mallard  
 Joyce Massengill  
 Linda Massengill  
 Betty McGowan



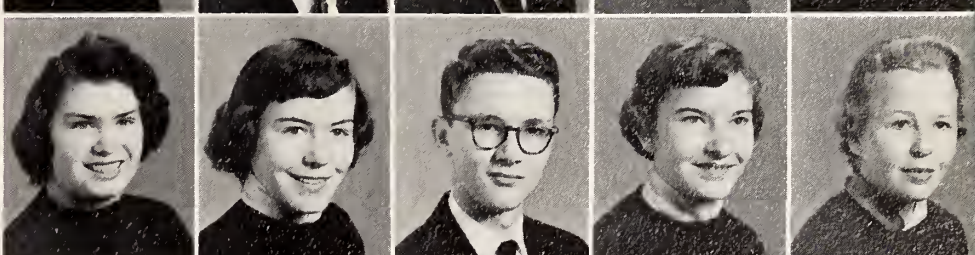
Mary Moore  
 Melzer Morgan  
 Gail Ogburn  
 Elizabeth Owen  
 George Paddison



Jean Parker  
 Alvin Peedin  
 Charlie Peterson  
 Elsie Pope  
 Sylvia Price

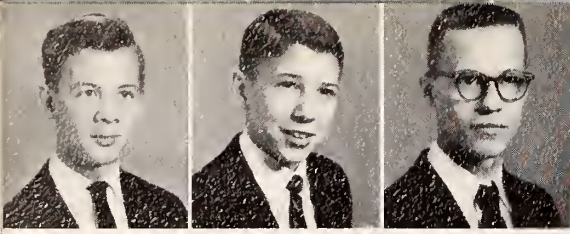


Barbara Roberts  
 Mary Ann Stallings  
 Mike Starling  
 Jean Stephenson  
 Phyllis Stephenson



Gaynell Severt  
 Winnie Underwood  
 Carolyn Watkins  
 Ray Watson  
 Ruthie Wellons





## SOPHOMORES

Edwin Williams  
Darby Wood  
Eugene Woodall

Winners of Sophomore magazine contest! Left: Melzer Morgan, third place; Gail Ogburn, first place; Ann Booker, second place.



# F R E S H M E N



The Freshman of our town are welcomed into S.H.S. by Johnny Wallace, president of the Senior Class.

# FRESHMEN

John Allen  
Melvin Anderson  
Joyce Baker  
Glenn Barbour  
Jack Barbour

Jerry Barefoot  
Grace Barnes  
Clyda Lynn Boyette  
Staton Boyette  
George Brantham

Jackie Bridges  
Jack Broadhurst  
Patricia Ann Byrd  
Glenda Byrd  
Nellie Faye Byrd

Dorothy Capps  
Judy Coats  
Leland Cockrell  
Lillian Cooke  
Nancy Dance

Alice Faye Davis  
Billy Davis  
Bobby Davis  
Clifford Davis  
Polly Davis

Emily Faulk  
Billy Fuller  
Claudette Gurley  
Lester Hales  
Wade Hamilton

Macy Hoyle  
Boyce Hudson  
Barbara Anne Johnson  
Betsy Johnson  
Buck Johnson

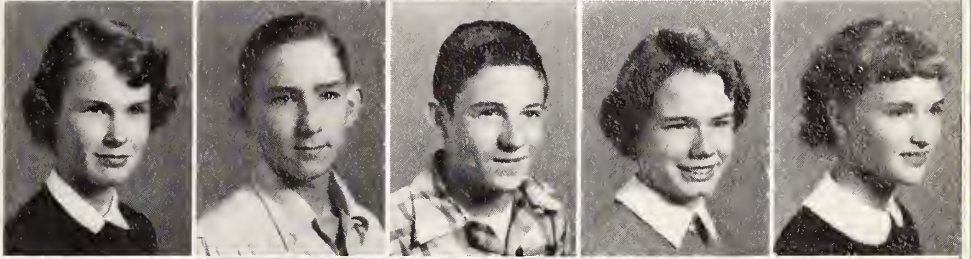
Butch Johnson  
Frances Johnson  
Genevieve Johnson  
Glenda Johnson  
Johnnie Johnson

# FRESHMEN

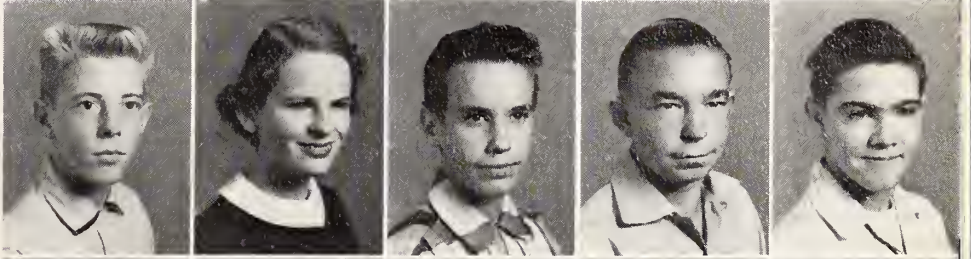
Bobby Jones  
 Ermagene Jones  
 Gwen Jones  
 Martha Jones  
 Ruthie Jones



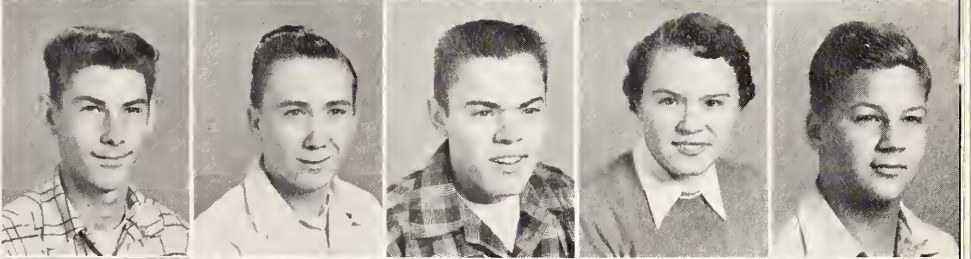
Jelynn Langdon  
 Brian Langley  
 Darrell Langston  
 Nancy Lassiter  
 Priscilla Lassiter.



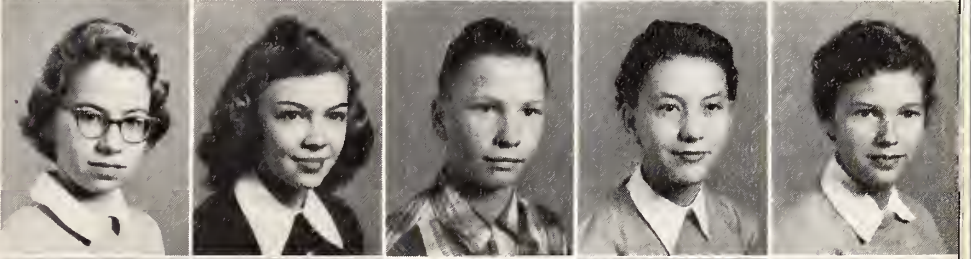
Joseph Glenn Lee  
 Mary Nell Lee  
 Tony Lee  
 Wilson Lee  
 Kenneth Leech



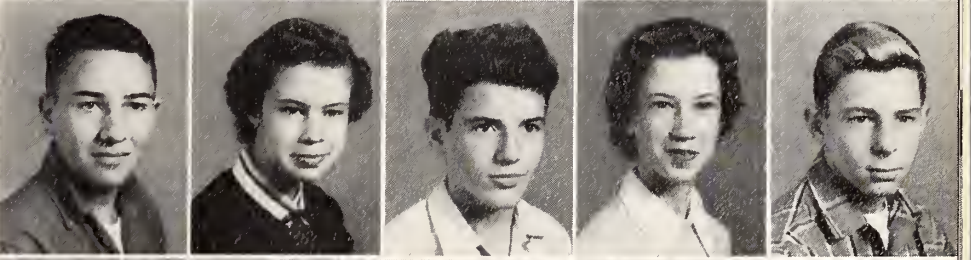
Leo Lynch  
 Landon Massengill  
 Baron Lee Matthews  
 Joyce Matthews  
 Kenneth McCormick



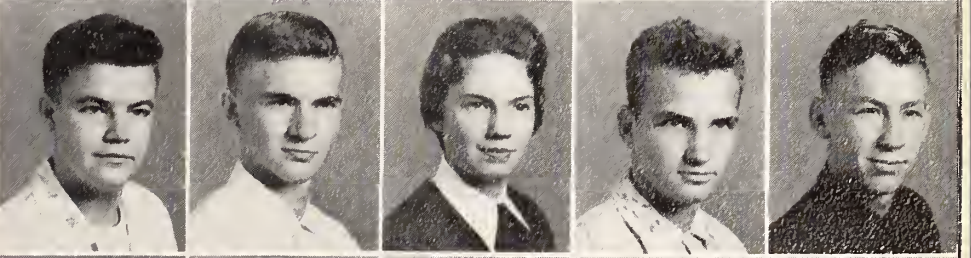
Barbara McGee  
 Eleanor Medlin  
 Thomas Melvin  
 Janice Moon  
 Carol Moore



Edward Moore  
 Patricia Moore  
 Bobby Mazingo  
 Anne Ogburn  
 Walton Parker



Donald Parrish  
 Dennis Penny  
 Patsy Pope  
 Harold Puckett  
 Douglas Putnam



Rosie Quattlebaum  
 Ronda Register  
 Douglas Shirley  
 Sashie Skinner  
 Fay Smith





## FRESHMEN

Gail Stancil  
 Betty Jean Stanley  
 Barbara Ann Stephenson  
 Becky Stephenson  
 David Stephenson

Imogene Stephenson  
 Mary Elizabeth Stephenson  
 Bill Stewart  
 Patsy Stewart  
 Joan Kaye Strickland

Danny Talton  
 Jean Thompson  
 Jack Upton  
 Barbara Upchurch  
 Mary Jo Warr

Ronald White  
 Everette Whitley  
 Jo Anne Whitley  
 Norman Whitley  
 Jo Ann Wiggs

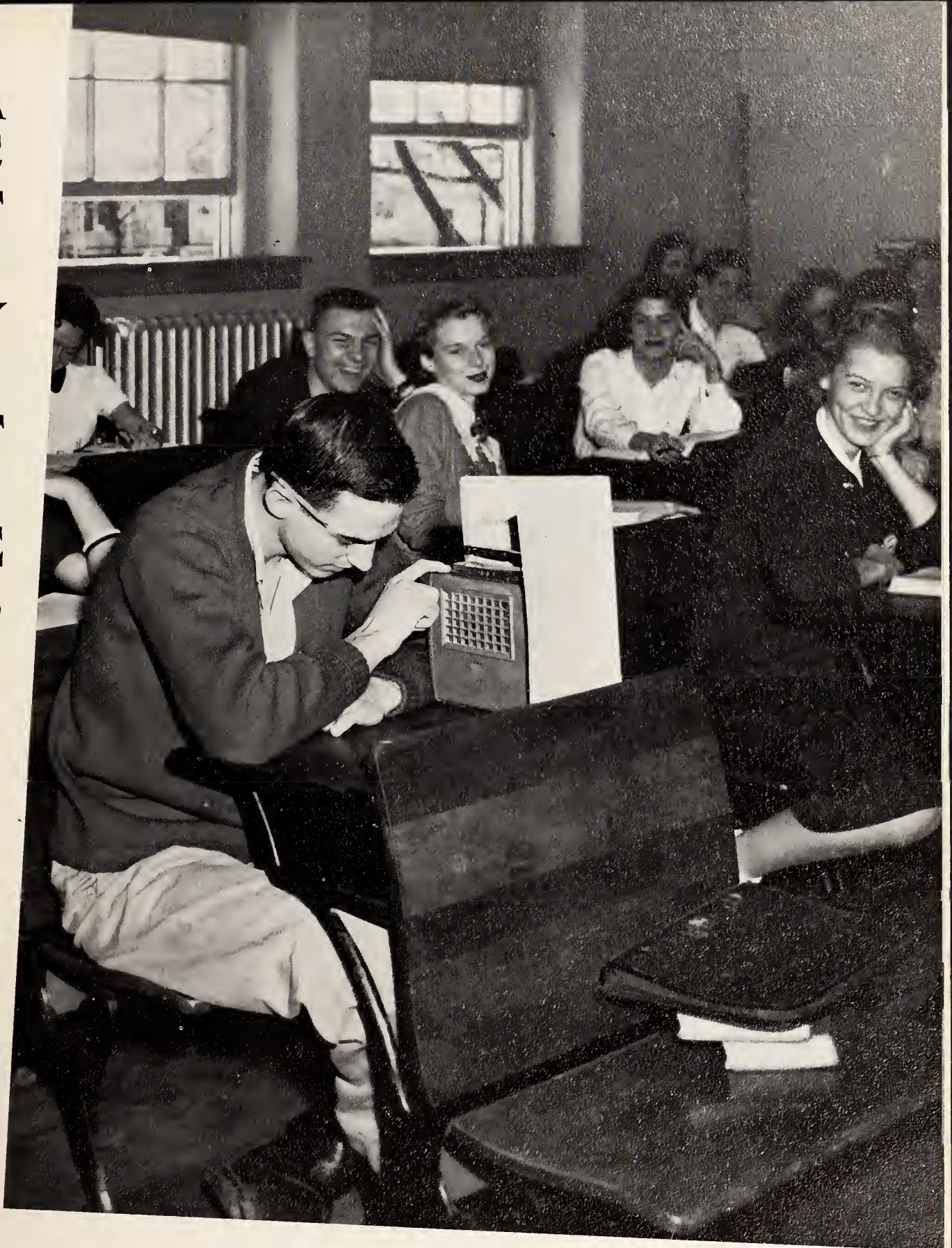
Wayne Williams  
 Charles Williams  
 Kenneth Woodard

### HEALTH IS A WORTHY INVESTMENT

Freshmen girls develop poise, grace, and a pleasing appearance through healthful exercise and time devoted to problems of personal appearance.



# ACTIVITIES



Many moments to remember are ours in S.H.S. It may be conversations in the locker rooms—Harvest Moon at the Homecoming dance—skits in chapel—Hamlet's soliloquy—hamburgers at Jack's—Band concerts—Glee Club—caps and gowns—and finally "Pomp and Circumstance."



Above: A typical family scene when the groom-to-be calls.

# **"FATHER OF THE BRIDE"**

## **1955**

### **SENIOR PLAY**



Right: Mr. Banks (M. T. Baggett) in the role of "FATHER of the Bride"—the bride, Kay Banks (Betty Sue Hamilton).



Left: Miss Massoula (Jennie Blow Layne), well known caterer, turns the household upside down in preparation for the wedding reception.



# "CHEAPER BY THE DOZEN"

1955

## JUNIOR PLAY



Left: Mr. and Mrs. Pied Piper (the Gilbreths) reminisce, decide their twelve redheads ARE cheaper by the dozen (Barbara Parrish and Jack Taylor).



Above: A lesson in motion study. Mr. Gilbreth (Jack Taylor) demonstrates his plan to Billy Ray Stallings, Edwin Hargrove, Ann Stallings, Bobby Pilkington, Jimmy Lee, and Sally Wood.

Right: It's a boy! Ann Stallings, Sally Wood, Nancy Moore FINALLY get a call while Billy Ray Stallings and Bobby Pilkington chide their sisters.





There were problems, but we learned a lot and had fun. Left: Virgil Early, assistant editor; Louise Stevens, editor-in-chief; Betty Jo Watson, assistant editor.

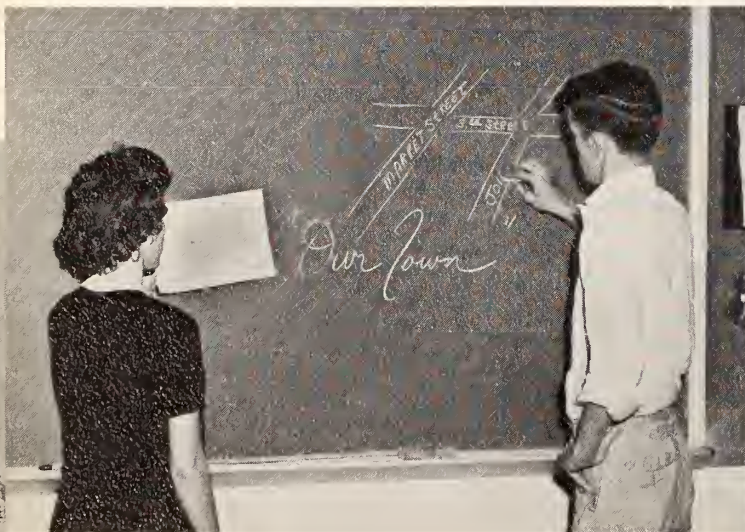
# THE SHI

## EDITORIAL

### THE SHIELD PRESERVED



## STAFF



Art editors Sandra Crumpler and John Laughter had their problems too but even they survived.



With their heads together, our snapshot editors Joe Durward Creech, Marvin Taylor, Miriam Stephenson, and Sharon Daughtry cut and fitted each picture with care.

# ELD

## 1956

### BUSINESS



## MEMORIES OF OUR TOWN

### STAFF



They gathered together in close communion and made plans to meet the budget. The advertising staff, left to right: Pat Lewis, Marie Davis, Business Manager Johnny Wallace, Harold Lee, Mary Mohr, Charles Heavner, Faye Hardee, Ann King, LaVerle Lee, Evelyn Overby, Helen Baker, Bryan Hill, Lib Blackman, and Becky Byrd.

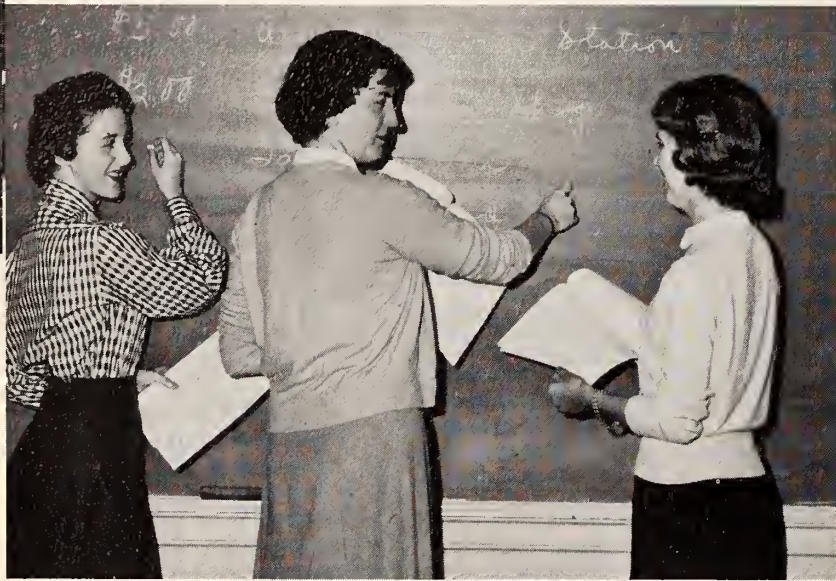


The copy editors read the proof and made corrections. Left: Ann Rackley, Jane Twisdale, Elizabeth Ann Turner, Miriam Humphrey, and Pat Stephenson.



With tired feet and aching bones high salesmen meet to check final sales. Left: Faye Hardee, Pat Lewis, Helen Hood Baker, and Charles Heavner.

# HIGH TIMES



Above: Advertising manager Pat Lewis and Miss Margaret Wayne, adviser, chalk up ad sales while assistant business manager Ann Stallings checks to make sure all are accounted for.



Above: Editor Pat Stephenson and assistant editor Barbara Parrish check over copy for the next issue of the "High Times" with Miss Lewis.



Left: Sandra Crumpler, art editor, and her assistants Sally Ann Wood and Ed Patterson prepare to cut the stencils for the ad section of the next issue.



Above: Almost ready for the press! But first news editors Margaret Sanders, Hal King, Sue Massey, Jane Twisdale, and Jack Taylor make a careful check on their copy with the aid of Mrs. Tarleton, school secretary.



# JUNIOR-SENIOR "DIXIELAND"

Giftorians Sharon Daughtry, Helen Hood Baker, and Bill Holland are ably assisted by mascots David Whitehurst and Justine Blow.



In a Dixieland setting southern belles sing "Carolina Moon."



Right: The dance began with a figure "S" and the singing of our Alma Mater.



Our cheerleaders led our team on the field, and Mayor Ben Baker crowned the homecoming queen, Betty Jo Watson. Fred Toole, her sponsor, and Coach Brown enjoyed the limelight too.



Above: Our senior quartet helped set the mood for the "Harvest Moon" ball.

Right: Selma stops halfback Virgil Early on the 30-yard line.



**SMITTFIELD O**

**"And Our**



There was dancing under autumn leaves in the glow of a harvest moon.

**COMING**



**SELMA 13  
Town Wept"**

Above: This skit was called a scene at the State Fair.

Left: There will always be "Moments to Remember."



# FUTURE LEADERS ORGANIZE...

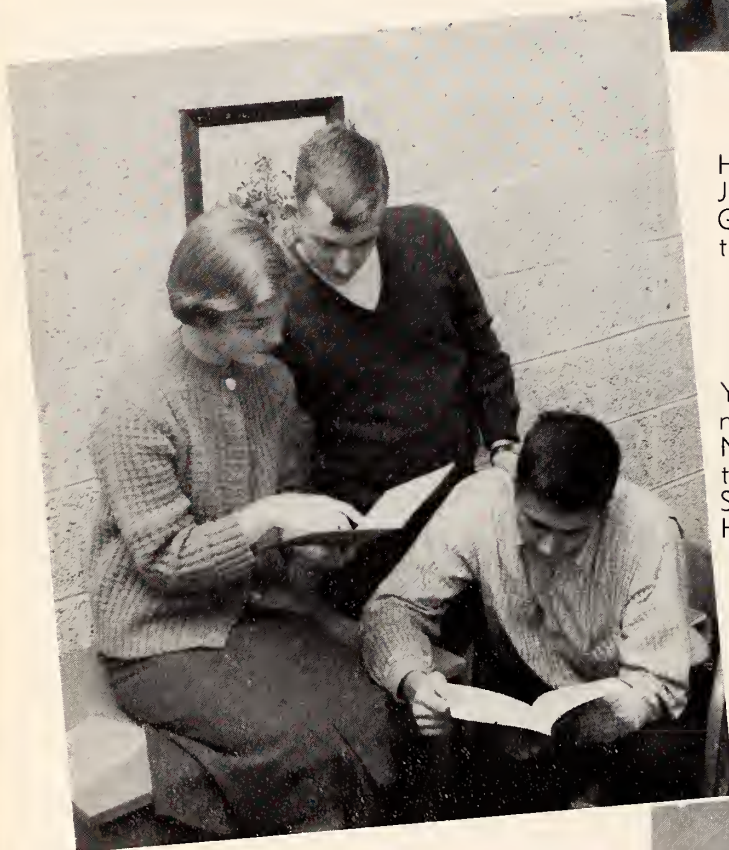


## FUTURE TEACHERS CLUB

Above: Future Teachers Miriam Humphrey and Jane Twisdale learn "Why Johnny CAN Read" from observing in Mrs. Griffin's first grade room. Miss Herring is the F.T.A. sponsor.

## N. C. YOUNG WRITERS' CLUB

Left: Members of the North Carolina Young Writers Club of S.H.S. examine the new "Student Issue" published by the North Carolina English Teachers Association. Mrs. Glenn sponsors this group. Left: Sally Ann Wood, Jack Taylor, Charles Heavner.



## BAND CLUB

Right: For musical tastes and talents students find themselves at home in the Band Club sponsored by Mr. Rogers. Here Virgil Early, Mike Starling, Sharon Daughtry, and Johnny Wallace get in on a "real gone" jam session.





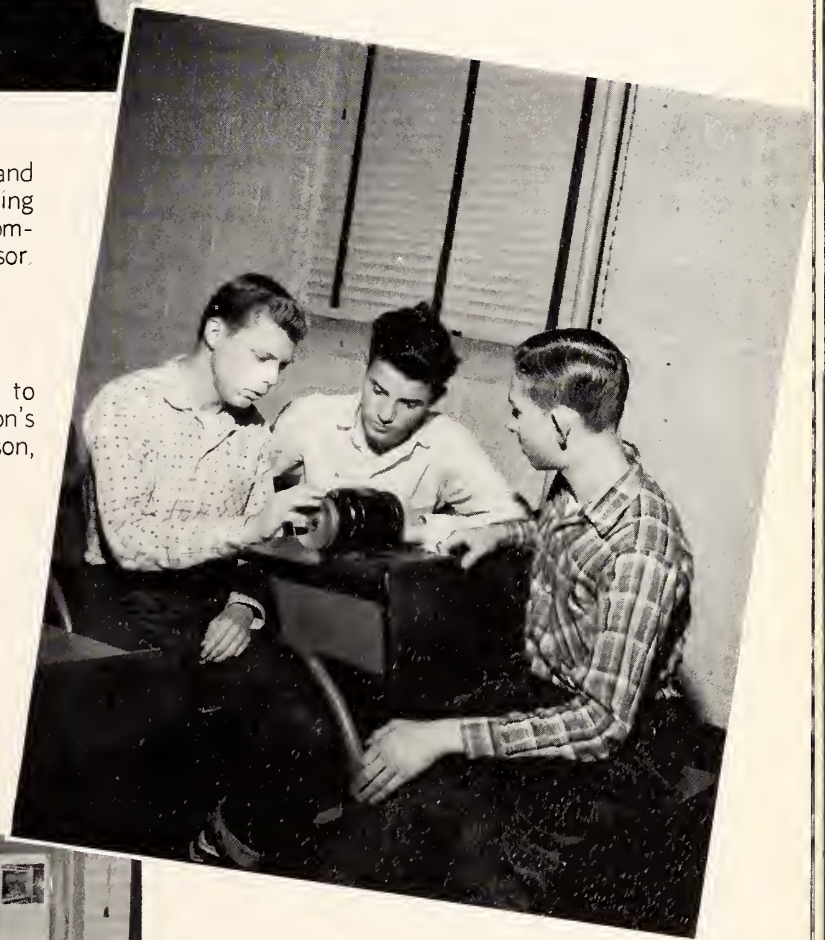


### COMMERCIAL CLUB

Above: Carolyn Lee, Janice Moon, and Joyce Matthews are proud of the Artying which they have completed in the Commercial Club. Miss Lewis is their sponsor.

### MECHANICS CLUB

Right: A motor is a simple thing to these apt mechanics in Miss Livingston's Mechanics Club. Left: David Stephenson, Bobby Mozingo, Brian Langley.



### SCIENCE CLUB

Left: Man is a complicated animal but Mr. Hall simplifies the study for Marvin Taylor, Ben Daughtry, and Miriam Stephenson in the Science Club.



# WIDE AND VARIED INTERESTS...



## 4-H CLUB

Above: Jerry Langdon, Shirley Lassiter, Bobby Stephenson, Peggy Drawdy, Billy Davis, Dennis Penny, and Lillian Cooke learn how to use a movie projector, which is only one of the projects undertaken by the 4-H Club.



## WILDLIFE CLUB

Left: "There's an art in handling a gun," says Bobby Davis as four interested observers, Charles Lee, Ronald Ennis, George Paddison, and Bobby Pilkington look on. Mr. Brown sponsors the Wildlife Club.

## HOBBY CLUB

Right: Miss Langford, sponsor of the Hobby Club, appreciates the creative effort of these would-be artists. Left: Jean Parker, Glenda Hamilton, Jimmy Eason, and Wade Hamilton.



# ...DEVELOP SELF RELIANCE

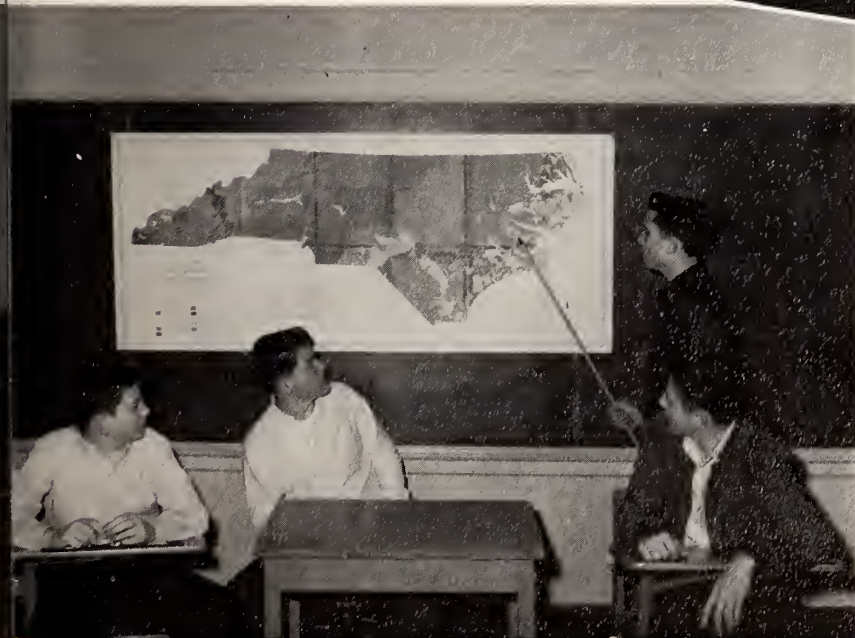


## HOME ECONOMICS CLUB

Above: Freshmen girls Anne Ogburn, Imogene Stephenson, Jo Ann Wiggs, Jean Thompson, and Patsy Stewart learn to use a pattern in the Home Economics Club sponsored by Mrs. Cash.

## DRAMATICS CLUB

Right: Aspiring young actors and actresses often show signs of great promise in the Dramatics Club sponsored by Mrs. Wilkins. Here Bob Johnson portrays Silas Marner as Nelda Godwin, Betty Jo Watson, Sue Wood, and Doris Jones look on.



## WILDLIFE CLUB

Left: Where do the game run? When is the season? These and many other matters come under the interest scope of the Wildlife Club sponsored by Mr. Bain. Left: Frank Layne, Linwood Creech, Jack Broadhurst, and Joe Reed.

# TALENTS-- DOMESTIC, DRAMATIC, AND ARTISTIC



## LIBRARY CLUB

Above: Miss Herring relies on the Library Club for many things—even spring cleaning. Here Louise Messer, Janice White, Faye Davis, Elmarie Johnson, and Jane Noblin dust library shelves.



## DRAMATICS CLUB

Left: In the classroom or on the stage drama is fun, and Judy Laughter, Tony Lee, Phyllis Lee, Winnie Underwood, and Clyda Lynn Boyette are enjoying practicing this original skit.

## JOURNALISM CLUB

Right: The past comes to life for Katherine Lee, Ann Booker, Susan Creech, and Jane Twisdale as they thumb through old scrap-books of S.H.S. compiled each year by the Journalism Club under the sponsorship of Miss Wayne.



# MUSIC MASTERS

## Develop Musical Tastes and Talents



PIANO INSTRUCTOR  
Miss Flora Canaday



GLEE CLUB DIRECTOR  
Miss Flora Parker



PIANO INSTRUCTORS  
Miss Joan Neighbors  
Miss Laura Sexton



ACCOMPANISTS: Jane Twisdale, Ann Rackley,  
Elizabeth Ann Turner, Nancy Lassiter, Gail Ogburn, Beth  
Boyetté, Clyda Lynn Boyette, Pat Lewis.

# GLEE



First Row, Left to Right: Frances Johnson, Emily Faulk, Patsy Stewart, Johnnie Johnson, Jean Thompson, Sashie Skinner. . . . Second Row: Alice Faye Davis, Jackie Bridges, Lillian Cook, Judy Coats, Becky Stephenson, Carol Moore, Priscilla Lassiter. . . . Third Row: Sally Ann Wood, Ruthie Wellons, Pope Hardee, Sandra Ward, Caroline Padgett, Mary Moore, Mary Ogie Baugham. . . . Fourth Row: Doris Jones, Sue Wood, Janice Edwards, Ann Rackley, Sonja Johnson, Melba Jane Austin, Margie Allen. . . . Fifth Row: Nelda Gowdin, Betty Joe Watson, Phylis Lee, Elizabeth Ann Turner, Peggy Drawdy, Barbara Roberts, Faye Davis, Ann Stallings. . . . Sixth Row: Anne Booker, Julie Hooks, Sylvia Price, Judy Laughter, Louise Messer, Janie Daughtry, Myra Byrd. . . . Seventh Row: Ann Mallard, Emma Jones, Jane Twisdale, Dessie Bell Holland, Billy Davis, Melvin Anderson, Jimmy Eason, Larry Hill. . . . Eighth Row: Betty McGowan, Helen Hood Baker, Harold Lee, Harvey Ennis, Howard Mallard, Joe Durwood Creech, Bobby Davis

# CLUB



First Row, Left to Right: Jo Anne Whitley, Glenda Johnson, Nancy Lassiter, Betsy Johnson, Gail Stancil, Joyce Baker, Faye Smith, Barbara McGee. . . . Second Row: Mary Jo Warr, Dorothy Capps, Janice Moon, Barbara Anne Johnson, Nancy Dance, Jelynn Langdon, Joan Kaye Strickland. . . . Third Row: Faye Baker, Anesha Johnson, Helen Braswell, Winnie Underwood, Julia Gurganus, Phyllis Stephenson. . . . Fourth Row: Miriam Humphrey, Faye Hardy, Jo Ann Edwards, Anne King, Norma Kistler, Diane Creech, Kathryn Lee, Nancy Moore. . . . Fifth Row: Sandra Crumpler, Miriam Stephenson, Angeline Johnson, Margaret Sanders, Hilda Grey Flowers, Ann Hamilton, Clyda Lynn Boyette, Pat Lewis. . . . Sixth Row: Rebecca Byrd, Pat Stephenson, Mary Ann Stallings, Susan Creech, Jane Crocker, Evelyn Overby, Gail Ogburn. . . . Seventh Row: Sherwood Creech, Alvin Peedin, Ed Moore, Tony Lee, Jerry Barefoot, Clifford Davis, Susan Eason, Beth Boyette. . . . Eighth Row: Leland Cockrell, Dennis Penny, Donald Johnson, Bobby Stephenson, Fred Toole, Virginia Britt, Mary Jo Brown, La Verle Lee.

# THE SMITHFIELD



Majorettes: Judy Coats, Ann Stallings, Emma Jones, Ann Hamilton, Jackie Bridges. First Row: Band Director Lee Rogers, Glenn Langdon, Tommy Gardner, Frank Creech, Butch Johnson, Macy Hoyle, Brack Wilson, Dennis Wiggs, Drum Major. Second Row: Melzar Morgan, Joe Ogburn, Eugene Woodall, Jimmy George, Edgar Baughn, Ed Wilkins. Third Row: Mike Starling, Virgil Early, Billy Howell, Joey Overby, Ben Baker, Sammy Simpson. Fourth Row: Bryan Hill, C. L. Gurganus, Wayne Williams, Roy Land, Barbara Parrish, Ted Jackson, Dewey Lawson. Fifth Row: Hubert Everett, Freddie Parrish, Diana Montgomery, Marc Wallace, Bobby Barbour, Charles Williams. Sixth Row: Billy Fuller, Harold Ogburn, Jean Stephenson, Jarmon Eason, Joe Glenn Lee, Staton Boyette. Seventh Row: Sharon Daughtry, Ann Morgan, Sue Massey, Lena Paddison, John Allen, Johnny Wallace. Eighth Row: Norman Whitley, Luther Lehw, Jack Upton.



# HIGH SCHOOL BAND



DIRECTOR—Lee Rogers

PRESIDENT—Joe Frank Ogburn

## MAJORETTES

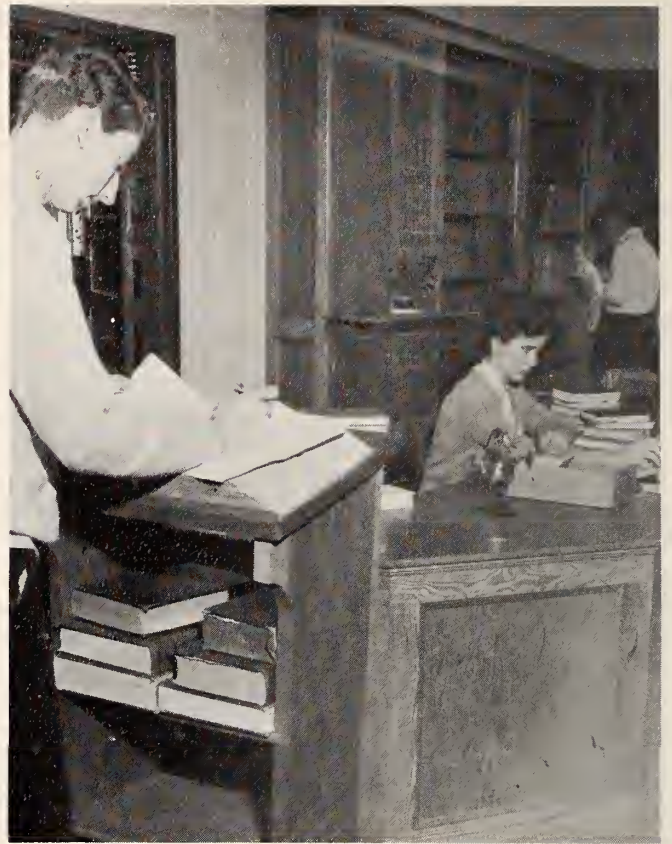
Left to Right:

Judy Coates  
Beverley Whitehurst  
Emma Jones  
Helen Hood Baker  
Ann Stallings  
Ann Hamilton  
Jackie Bridges





Seniors are always ready to help freshmen. Ben Daughtry (upper left) directs Norman Whitley, Mary Nell Lee, and Lester Hales in algebra review.



Much knowledge comes from the wise use of our library.



Seniors LaVerle Lee, Joe Frank Ogburn, and Edna Ruth McLamb exchange themes for amusing reading.



The long gray line in the cafeteria

# ATHLETICS



On the night of February 28 "We woke 'our town' and told the people" that S.H.S. had won the final game in the Johnston County Basketball Tournament against Kenly after being runners-up in '54 and '55. Above: Smithfield's Captain Hal King clips the net from Four Oaks' basket for a memento of the Red Devils' victory.

# FOOT



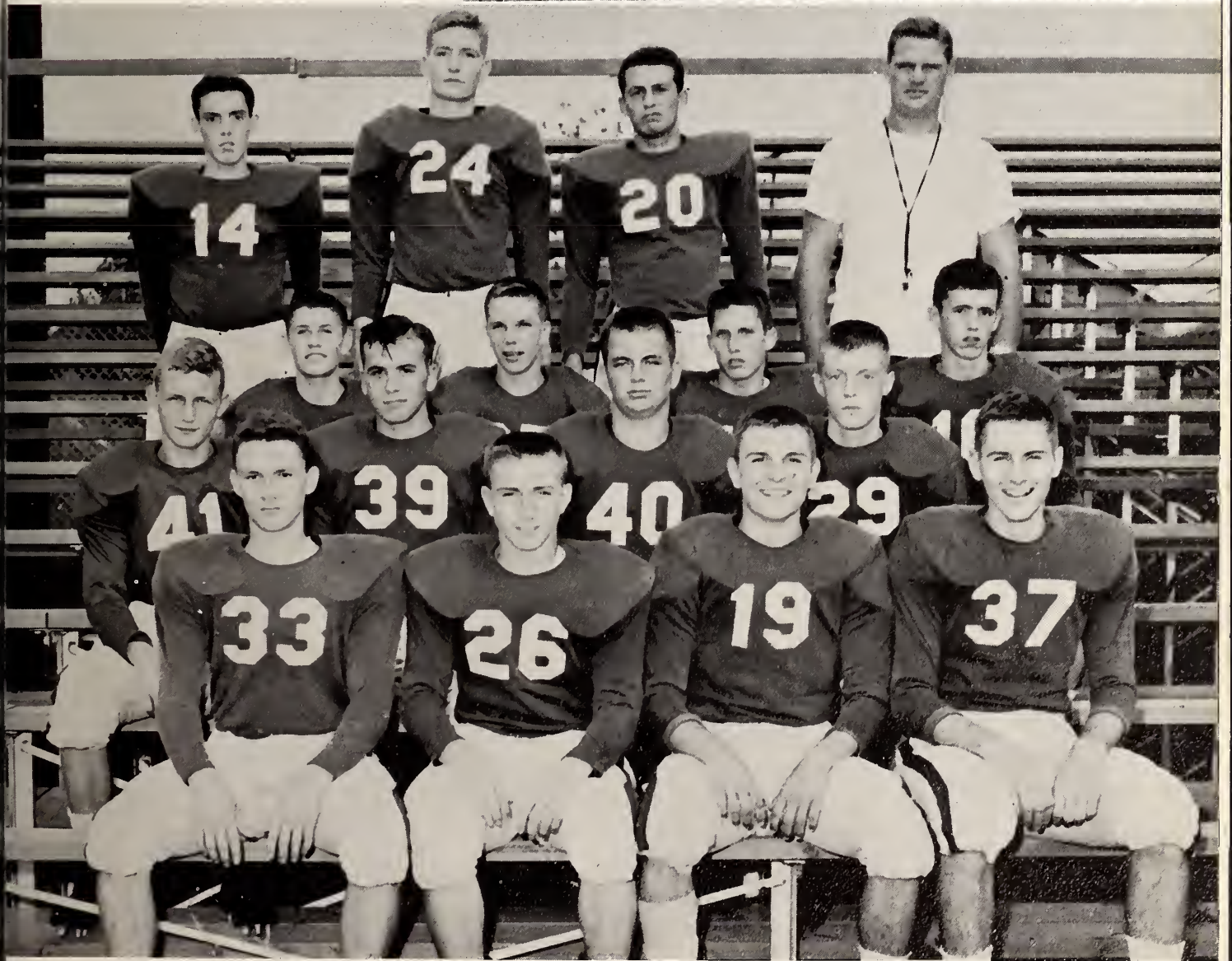
Co-Captain Virgil Early  
Coach Harold Bain



First Row, Left to Right: Jack Taylor, Tommy Gardner, Ed Rose, Harold Lee . . .  
Second Row: Danny Talton, Hubert Everett, Bobby Pilkington . . . Third Row: Edward  
Tyner, Marvin Taylor, Billy Ray Stallings, Glenn Langdon . . . Fourth Row: Assistant  
Coach Harold Bain, Ray Watson, Jimmy Lee, Ronald Ennis.

# BALL

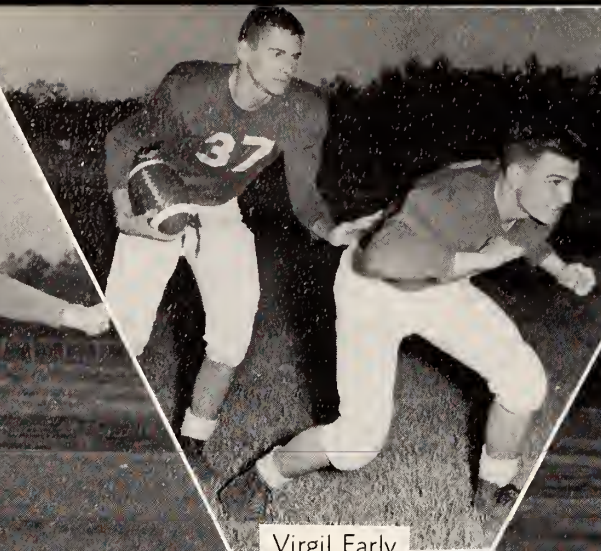
Co-Captain Joe Durward Creech  
Coach Roy Brown



First Row, Left to Right: Mike Starling, Jerry Langdon, Joe Durwood Creech, Virgil Early. . . . Second Row: Jimmy George, J. A. Daughtry, Butch Johnson, Jerry Highsmith. . . . Third Row: Charles Lee, Macy Hoyle, Jack Broadhurst, John Laughter. . . . Fourth Row: Harvey Ennis, Bill Holland, Fred Toole, Coach Roy Brown.



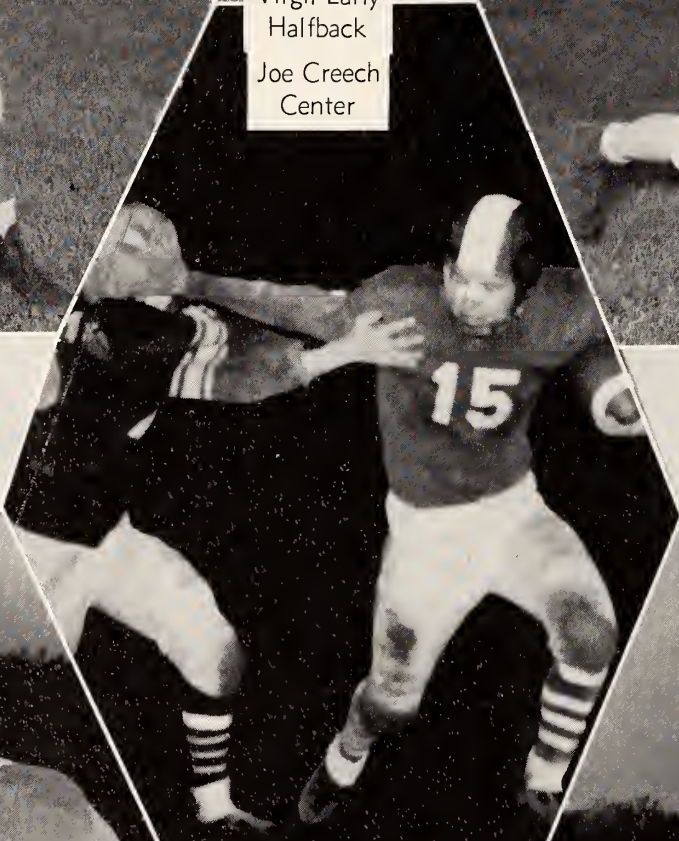
Fred Toole  
Fullback



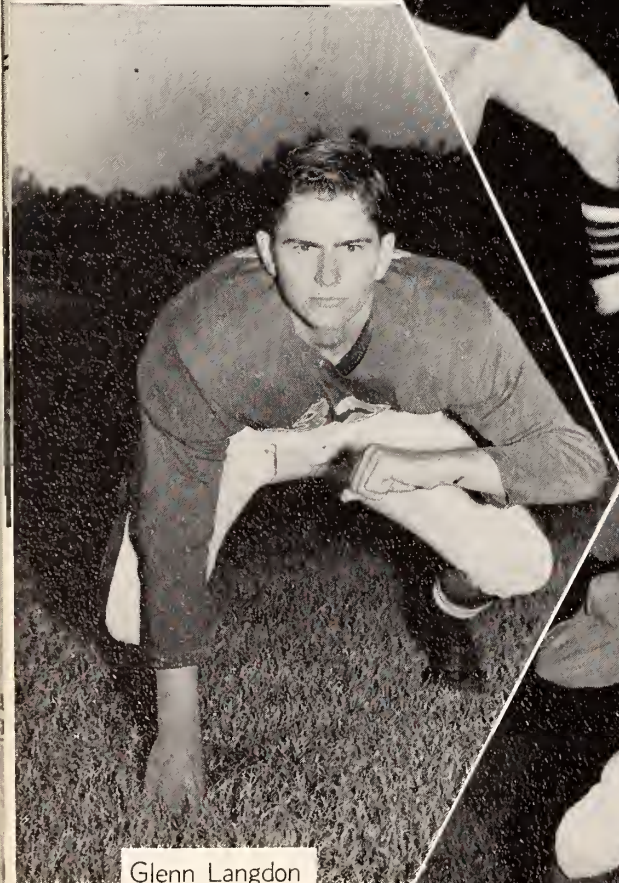
Virgil Early  
Halfback  
Joe Creech  
Center



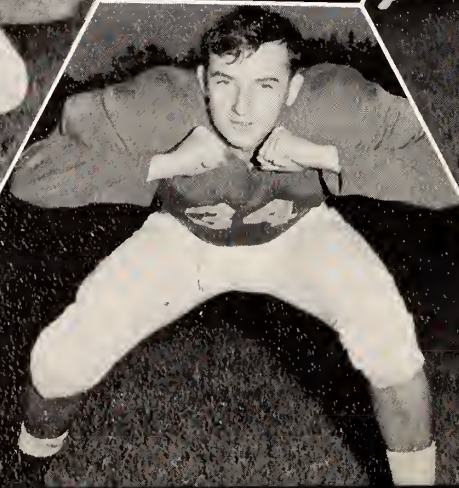
Bill Holland  
End



Marvin Taylor  
Guard

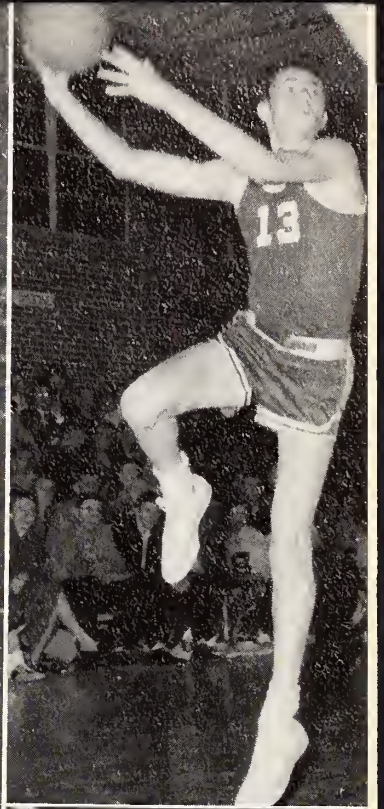
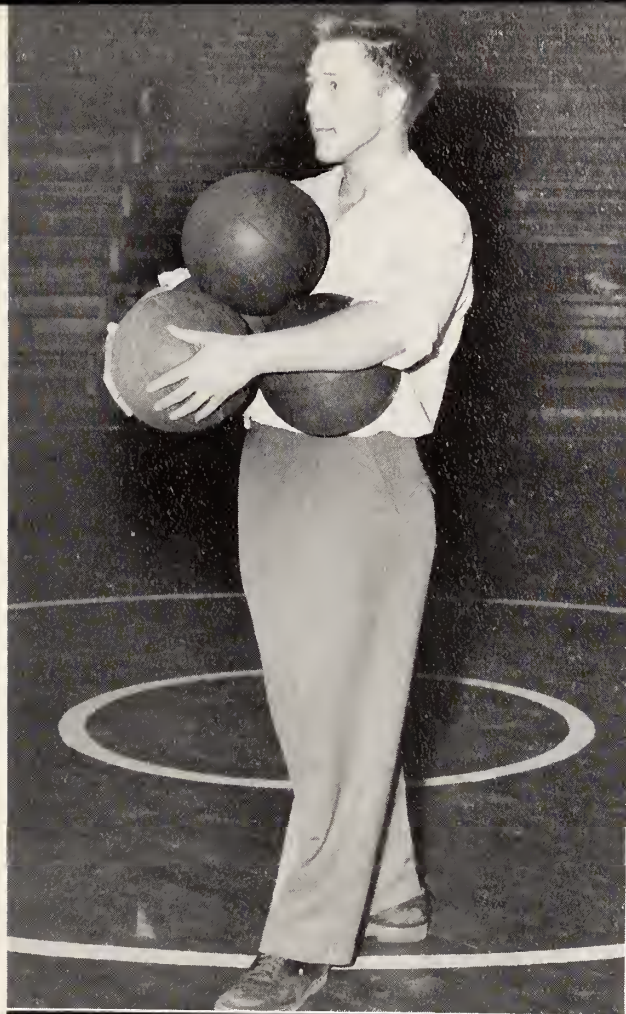


Glenn Langdon  
Tackle



Harold Lee  
Tackle

Basketball Manager,  
Edward Tyner



The big victory! Players  
lift Assistant Coach  
Harold Bain to their  
shoulders.





# BASKETBALL...





First Row, Left to Right:  
Pope Hardee  
Janice Edwards  
Evelyn Overby  
Sonja Johnson  
Katherine Lee  
Winnie Underwood

GIRLS

Second Row:  
Phyllis Lee  
Virginia Britt  
Norma Kistler  
Sashie Skinner  
Nancy Lassiter  
Ann Mallard

Third Row:  
Polly Davis  
Jean Parker  
Ann Booker  
Dessie Belle Holland  
Betty McGowan  
Sylvia Price

Janice Edwards  
All-Conference



First Row, Left to Right:  
Sherwood Creech  
Shelton Stanley  
Hal King  
P. E. Jones  
Bill Holland

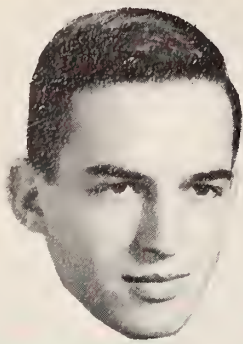
BOYS  
County Champs

Second Row:  
Darby Wood  
Charles Lee  
Mike Starling  
Jerry Langdon  
Walton Parker

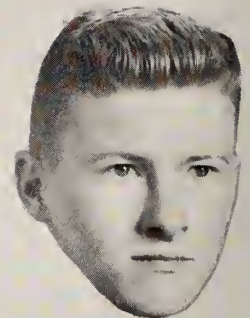
Third Row:  
Coach Harold Bain  
John Laughter  
Ronald Ennis  
Jerry Highsmith  
Coach Roy Brown

Hal King  
All-Conference





Hal King

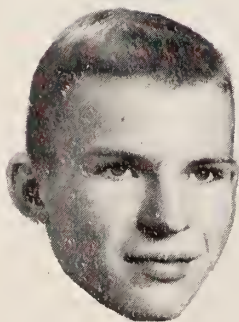


Bobby Stephenson

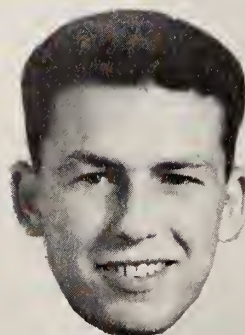


Bill Holland

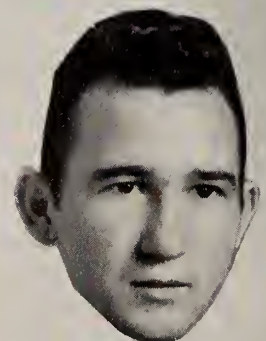
## **RETURNING BASEBALL LETTERMEN**



Ronald Ennis



Fred Toole



Dalton Massengill

# CHEERLEADERS



Lib Blackman

Doris Jones

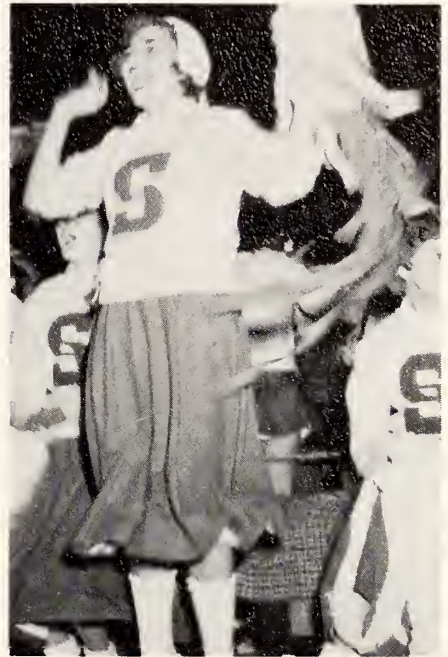
Ann Smith

Flora Radford

Miriam Stephenson

Betty Jo Watson  
(Chief)

Nancy Pitchi



# MONOGRAM



Lib Blackman	Ann Booker
Joe Durwood Creech	J. A. Daughtry
Harvey Ennis	Ronald Ennis
Jimmy George	Jerry Highsmith
Sonja Johnson	Doris Jones
Norma Kistler	Glenn Langdon
Charles Lee	Harold Lee
Evelyn Overby	Walton Parker
Flora Radford	Joe Reed
Shelton Stanley	Mike Starling
Marvin Taylor	Fred Toole

# CLUB

Virginia Britt	Jack Broadhurst
Virgil Early	Janice Edwards
Hubert Everett	Tommy Gardner
Bill Holland	Dessie Holland
P. E. Jones	Hal King
Jerry Langdon	John Laughter
Phyllis Lee	Ann Mallard
Bobby Pilkington	Nancy Pitchi
Ann Smith	Billy Ray Stallings
Miriam Stephenson	Jack Taylor
Edward Tyner	Betty Jo Watson

# 1956



#### WE ARE READY TO TAKE OUR PLACES IN OUR TOWN

Here are our seniors stepping out of high school into our town and community-Smithfield. Fortunate in having reaped the benefits of the cooperation between school and community, they are now ready to patronize and join the advertisers of this book. To you, our advertisers, we, the students of Smithfield High, say "Thank You." We hope you will profit by the ads placed in "The Shield." We appreciate your friendliness, courtesy, and helpfulness at all times.

COMPLIMENTS OF

# JORDAN & HOLT, INC.

HARDWARE

Plumbing and Heating Contractors

"IF WE SELL IT, WE SERVICE IT."

PHONE 2620

SMITHFIELD,

NORTH CAROLINA

COMPLIMENTS OF

**HOOKS and LAYNE OIL COMPANY**

DISTRIBUTOR

TEXACO PETROLEUM PRODUCTS

AND

**HOOKS and LAYNE TIRE COMPANY**

DISTRIBUTOR

FIRESTONE TIRES

BATTERIES

ACCESSORIES

SMITHFIELD,

NORTH CAROLINA

# SMITHFIELD AUTOMOBILE DEALERS ASSOCIATION

SMITHFIELD,

NORTH CAROLINA

## WILSON CHEVROLET CO.

Chevrolet Cars & Trucks

## BUIE MOTORS, INC.

Lincoln - Mercury

## GARDNER MOTOR CO.

Dodge - Plymouth

## PIPPIN MOTORS, INC.

Cadillac - Oldsmobile

## STANLEY MOTORS, INC.

Chrysler - Plymouth

## B. & R. WILSON, INC.

Ford Cars & Trucks

## WILLIAMS MOTOR CO.

Buick

## LITTLE'S PONTIAC, INC.

Pontiac



# SMITHFIELD MULE CO.

LIVESTOCK  
MINNEAPOLIS MOLINE TRACTORS  
OLIVER TRACTORS  
FARM MACHINERY  
CLEAN USED CARS

*"We trade for Anything that Walks or Rolls"*

SMITHFIELD,

NORTH CAROLINA

COMPLIMENTS OF

## WILLARD W. STANLEY

Dealer for

**T. W. WOOD & SON SEED CO.**

BULBS and PLANTS  
FEED — SEED — FERTILIZERS and INSECTICIDES

PHONE 3068

SMITHFIELD,

NORTH CAROLINA

# CREECH'S PHARMACY

PRESCRIPTION SPECIALISTS

DIAL 2131

SMITHFIELD,

NORTH CAROLINA

CONGRATULATIONS SENIORS

# LEWIS HATCHERY

*"Your Wayne Feed Dealer"*

SMITHFIELD,

NORTH CAROLINA

**G R A N T H A M ' S**  
**B O Y S ' & Y O U N G**  
**M E N ' S S H O P**

SPECIALIZING EXCLUSIVELY IN BOYS'

AND

YOUNG MEN'S CLOTHING

SMITHFIELD,

NORTH CAROLINA

COMPLIMENTS OF

**WALLACE WAREHOUSES**

**WALLACE GUANO CO.**

# ROBERTS & WELLONS, INC.

"A Complete Farm and Garden Supply Store"

FEEDS

SEEDS

EASTERN FERTILIZERS

TRACTORS and EQUIPMENT

TOBACCO CURERS

HARDWARE

Dial 2408 - 2233

## CUMBERLAND

### Dairy Products Inc.

8th Street

—

Phone 3415

SMITHFIELD,

NORTH CAROLINA

COMPLIMENTS OF

# FIRST CITIZENS BANK AND TRUST CO.

NORTH CAROLINA  
1898 — 1956

Years of Service  
Complete Banking Service  
Commercial — Saving — Trust — and Installment Loan  
Member Federal Deposit Insurance Corporation

## OPPORTUNITIES . . .

. . . in the industrial world today are unlimited. Automation, atomic energy, a rapidly increasing population—all point to a period of unprecedented growth in the industrial life of the nation.

Like many others, the textile industry is just scratching the surface of its own latter-day revolution, which began less than a quarter century ago with the introduction of man-made fibers.

Burlington Industries pioneered in production of fabrics from man-made fibers, and has today grown to be the world's largest and foremost textile concern.

For young men and women thinking in terms of a career, the textile industry today offers opportunity "without bounds" in manufacturing, merchandising, research, development and design, and many other related fields.

## The Smithfield Plant of

**Burlington Mills**   
*"Woven into the Life of America"*

**EXECUTIVE OFFICES:** Greensboro, North Carolina Burlington Mills, Pacific Mills, Burlington Hosiery Co., Peerless Woolen Mills, Burlington Decorative Fabrics Associates, Galey & Lord, Goodall Fabrics, Burlington Narrow Fabrics, National Mallinson Fabrics, Burlington Export Co., Mooresville Mills, Burlington International

BEST WISHES

# SMITHFIELD TOBACCO MARKET

FROM ALL WAREHOUSES

FARMERS

PLANTERS

WALLACE

GOLD LEAF

RIVERSIDE

IN

SMITHFIELD,

NORTH CAROLINA

# TAYLOR COAL & OIL CO.

DISTRIBUTOR

SINCLAIR GASOLINE — KEROSENE

HEATING OILS

PRESTONE ANTI - FREEZE

PHONE 2111

EAST MARKET STREET

SMITHFIELD,

NORTH CAROLINA

COMPLIMENTS  
OF  
FAY'S SANDWICH COMPANY

SMITHFIELD,

NORTH CAROLINA

HEAVNER AND OVERBY  
USED CAR COMPANY

We Specialize in Clean Used Cars

Phone 2438

SMITHFIELD,

NORTH CAROLINA

JOHNSON COTTON COMPANY

COMPLETE FARM AND HOME SUPPLIES

FURNITURE — FERTILIZER

JOHN DEERE TRACTORS

Sales and Service

Phone 2701

Smithfield, North Carolina

COMPLIMENTS  
OF  
STEVENS SAUSAGE COMPANY

PHONE 9438

SMITHFIELD,

NORTH CAROLINA

MEET THE GANG

AT

## **JACK'S DRIVE - IN**

THE SIGN



OF

SERVICE And QUALITY

SEE US FOR ALL OF  
YOUR FARM NEEDS

**JOHNSTON FCX SERVICE**

J. W. EDWARDS, Manager  
SMITHFIELD

Compliments Of

## **CECIL'S ESSO SERVICE**

Phone 3267

Washing - Waxing - Lubrication

COMPLETE ESSO PRODUCTS

Atlas Tires, Batteries and  
Accessories

ROAD SERVICE

CECIL WHITEHURST, Owner

COMPLIMENTS OF

## **HOLT FARM CENTER, INC.**

CUSTOM  
GRINDING and MIXING  
PURINA CHOWS

Truck Lane And Brogden Road

DIAL 2043



**CITY FOOD MARKET**

QUALITY MEATS AND GROCERIES

We Deliver

Phone 2415

Congratulations Seniors

C. P. BATTEN

S. E. BATTEN

SHOP WITH CONFIDENCE

AT

**LEDER BROTHERS**

AND

WEAR WITH PRIDE

The Newest and Most Complete

Department Store

**JOHNSON'S FLORIST**

Since 1919

FLOWERS FOR ALL OCCASIONS

Phone 2630

SMITHFIELD, NORTH CAROLINA

**UNDERWOOD  
FUNERAL HOME**

SMITHFIELD, NORTH CAROLINA

FUNERAL DIRECTORS

SINCE 1897



Students and teachers appreciate book covers furnished by our First Citizens Bank and Trust Co. and Carolina Packers Inc. Left: Noble Capps, Beverly Whitehurst, and Bobby Stephenson cover new literature books.



The boys' locker room between classes. Left: Ben Daughtry, Noble Capps, and Glenn Langdon.



Talented senior boys in action. Left: Johnny Wallace and Virgil Early.



"Ladies first", says courteous Dennis Wiggs to Janice White.

COMPLIMENTS OF

**J O R D A N ' S  
O P E N A I R M A R K E T**

SMITHFIELD,

NORTH CAROLINA

**SMITHFIELD OIL & GIN CO.**

PETROLEUM PRODUCTS

COTTON GINNERS

DIAL 2040

COMPLIMENTS

OF

**O. W. DUDLEY TOBACCO COMPANY**

LEAF TOBACCO

**H E A V N E R a n d W A L L A C E  
I M P L E M E N T C O M P A N Y**

SALES — SERVICE

ALLIS-CHALMERS FARM MACHINERY

SMITHFIELD,

NORTH CAROLINA

**HUGH AUSTIN'S**  
**MEN'S & BOYS' STORE**

"A TRIAL IS ALL WE ASK"

BEST WISHES



1270 SMITHFIELD

1000 WATTS

Compliments Of

**GARDNER-CREECH**  
**OIL COMPANY**



YOUR FRIENDLY  
MOBILGAS DISTRIBUTOR

**JORDAN'S JEWELERS**

Since 1898

DIAMONDS — WATCHES  
SILVERWARE AND GIFTS

SMITHFIELD, NORTH CAROLINA

**J. E. WILSON LIVESTOCK CO.**

HOGS — CATTLE — MULES  
Auction Sales Every Thursday  
1 P. M.  
We Buy Hogs Daily  
Phone 2151

SMITHFIELD,

NORTH CAROLINA

FOR QUICK AND DEPENDABLE SERVICE

CALL

**RIVERSIDE CAB COMPANY**

Phone 2151

Courteous Drivers

COMPLIMENTS

**K. R. EDWARDS CO.**

LEAF TOBACCO

**SMITHFIELD TELEVISION CENTER**

110 West Market Street — Phone 2659

Authorized Dealer For

R C A

S Y L V A N I A

**CAROLINA STA-DRI  
DISTRIBUTOR**

The Most Complete Paint Store  
In Johnston County  
We Feature a Paint  
For Every Purpose  
GIDDEN PAINT  
HANNA PAINT  
SOUTHERN COATINGS  
CONCRETE FOR CONCRETE  
On The Truck Lane  
Phone 3297

SMITHFIELD, NORTH CAROLINA

BEST WISHES

**BRIGHT LEAF  
AND  
BURLEY  
TOBACCO  
COMPANY**

Congratulations Seniors

**W. H. RACKLEY  
GROCERY and MARKET**

VEGETABLES

GROCERIES

MEATS

South Third Street

Smithfield, North Carolina

COMPLIMENTS

OF

**SMITH'S  
ESSO SERVICE**

DIAL 9921

Smithfield, North Carolina

COMPLIMENTS OF  
**JOHNSTON COUNTY  
FURNITURE  
ASSOCIATION**

Miller-Holland Furniture Company  
Rose Furniture Company  
Johnson Furniture & Appliance Company  
Benson, North Carolina  
Barnes Furniture Company  
Four Oaks, North Carolina  
Selma Furniture Company  
Economy Furniture Company  
Dunn Furniture Company  
Selma, North Carolina  
Jones Brothers Furniture Company  
Kenly, North Carolina  
Home Furniture & Appliance Company  
Denning Furniture Company  
Talton Inc.  
G. S. Tucker & Company  
Smithfield, North Carolina  
Pine Level Furniture Company  
Jones Brothers  
Pine Level, North Carolina

REFRESHMENT  
HEADQUARTERS



**Capitol Coca-Cola  
Bottling Company**

Graduate To Greater Food  
Savings  
At Your Friendly

**COLONIAL STORE**

Third Street

Smithfield, North Carolina

COMPLIMENTS OF  
**PROGRESSIVE  
STORE**

SMITHFIELD, NORTH CAROLINA

**DENNING FURNITURE  
COMPANY**

COMPLETE HOME FURNISHINGS  
WESTINGHOUSE APPLIANCES  
207 South Third Street  
SMITHFIELD, NORTH CAROLINA  
Phone 2587

Read  
**THE SMITHFIELD HERALD**

for  
Twice-a-Week  
Coverage of Johnston County  
News and Opinion

**IDEAL  
OIL COMPANY, INC.**

Distributors of  
SHELL PRODUCTS  
FUEL OIL                      GASOLINE

Compliments Of

**B. W. BOOKER**

AGENT FOR  
V-C FERTILIZERS  
SMITHFIELD,              NORTH CAROLINA

**BINGHAM and PARRISH  
INSURANCE AGENCY**

FIRE AND CASUALTY INSURANCE  
FOR  
Home—Business—Auto—Farm  
REAL ESTATE—LOANS  
SMITHFIELD,              NORTH CAROLINA

**BATT JOHNSON'S**

Barbecued Chicken and Pig  
Buffalo Road  
SMITHFIELD,              NORTH CAROLINA

Compliments Of

**AUSTIN OGBURN  
COTTON CO., INC.**

Your Friendly Cotton Buyer

**A Y C O C K**

**RULANE**  
GAS SERVICE

Smithfield-Selma Highway



## WHITLEY SPECIALTY CO.

SMITHFIELD, NORTH CAROLINA  
CANDY GUM NOTIONS DRUGS  
SCHOOL SUPPLIES

Phone 3647

You Name it—If We Haven't Got It  
We'll Get It.

HENRY H. WHITLEY, Manager

BEST WISHES TO  
GRADUATING CLASS

## HOOD BROTHERS DRUG STORE

Johnston County's Family Druggists

Since 1879

## ROSE'S 5-10-25 CENT STORE

Compete Line of School Supplies

SMITHFIELD, NORTH CAROLINA

## W. B. OLIVER & SON, INC.

Good Fertilizer

Let Us Gin and Buy your Cotton

PHONE 3124

PINE LEVEL, NORTH CAROLINA

## John Dail's Service Station



BEST WISHES TO THE SENIORS

## SELMA RADIO & MUSIC COMPANY

MAYTAG and WESTINGHOUSE  
APPLIANCES

SYLVANIA TELEVISION

We Service Everything We Sell

Norman Creech, Owner

Dial 2291 Selma, N. C.

## THE FASHION SHOP

SMART APPAREL and SHOES

For

WOMEN and CHILDREN

Phone 2534

L. E. FERRELL, Owner

SMITHFIELD, NORTH CAROLINA

## C. M. BLACKMAN INSURANCE AGENCY

FARM BUREAU MUTUAL COMPANIES

LIFE — CASUALTY — FIRE

BENSON, NORTH CAROLINA

## LAUGHTER'S GARAGE

GENERAL REPAIRS  
CARS, TRUCKS, and TRACTORS  
SMITHFIELD, NORTH CAROLINA  
PHONE 2371

## ALBERT'S SERVICE STATION

TEXACO PRODUCTS  
Across From Post Office  
SMITHFIELD, NORTH CAROLINA

## WOODALL'S VULCANIZING SHOP

E. L. WOODALL, Owner  
Phone 3491  
RECAPPING AUTO LITE BATTERIES

## ROGERS CONSTRUCTION CO.

CONGRATULATES  
The Seniors of '56

BEST OF LUCK THROUGH YOUR  
JOURNEY OF LIFE.

## AYCOCK BUILDERS SUPPLY CO.

812 South Third Street  
SMITHFIELD, NORTH CAROLINA  
Dial 2035

## STUCKEY'S CANDY SHOPPE

FINE PECAN CANDIES  
SMITHFIELD, NORTH CAROLINA

## REX SHOE SHOP And SHOE STORE

EXPERT SHOE REPAIRING  
COMPLETE LINE OF MEN  
AND BOY'S DRESS  
AND WORK SHOES  
SMITHFIELD, NORTH CAROLINA

## HILL'S GROCERY AND MARKET

Groceries — Meats — Ice Cream  
Congratulations Seniors  
SMITHFIELD, NORTH CAROLINA  
PHONE 2780

**DR. VON E. RHOADES**

CHIROPRACTOR  
735 South Third Street  
General Practice  
Phone 2247

SMITHFIELD, NORTH CAROLINA

**WILLIAMS SHOE STORE**

Women and Children's  
SHOES  
EXCLUSIVELY

SMITHFIELD, NORTH CAROLINA

BEST WISHES

**WOODARD and CREECH  
DRUG COMPANY**

Prescription Druggists  
Phone 2316  
W. GROVER CREECH - JOE A. CREECH  
SELMA, NORTH CAROLINA

FOR GOOD RECREATION

**PICKWICK**

At Your  
Leisure Hours  
SMITHFIELD, NORTH CAROLINA

ALL GOOD

**AUTOMOTIVE  
PARTS COMPANY**

AUTO ACCESSORIES  
3134 — 3135  
SMITHFIELD

**GERALD'S GRILL**

Soft Drinks — Shakes  
Short-Orders — Sandwiches  
Courteous Curb Service  
Chicken In Box  
Pecan Grove  
SMITHFIELD, NORTH CAROLINA

**J. Z. HILL  
GENERAL MERCHANDISE**

ROUTE NO. 2  
SMITHFIELD NORTH CAROLINA

**HOWELL'S  
GROCERY and MARKET**

NEXT TO JOHNSON'S LAUNDRY  
SMITHFIELD NORTH CAROLINA

**THOMPSON'S  
TEXACO SERVICE and  
RESTAURANT**

Selma—Smithfield Highway  
Washing—Greasing—Polishing  
Delicious Sandwiches  
and  
Regular Meals

**SELMA STYLE SHOP**

MISS CASSIE ABDALLA  
"Smart Stylish Styles for Ladies"  
COATS — SUITS — LINGERIE

SELMA, NORTH CAROLINA

**MARVIN'S PLACE**

GAS & OIL  
Across the River on U.S. 70  
Phone 3506

SMITHFIELD, NORTH CAROLINA

**WOODARD'S**

MEN'S WEAR  
"I Fit For Men and Boys"

SMITHFIELD, NORTH CAROLINA

SELL TOBACCO  
AND  
BUY FERTILIZER  
FROM

**FRANK L. SKINNER**

**TURNAGE and TALTON  
SUPER MARKET**

SMITHFIELD, NORTH CAROLINA

CONGRATULATIONS  
SENIORS

**UPCHURCH PHARMACY**

SMITHFIELD, NORTH CAROLINA

For the latest in hair styling try  
**PEARLE'S BEAUTY SHOP**

under new management  
**CHRISTINE CREECH—Owner**  
Operators:  
Ruby Taylor—Irene Bradberry  
Peggy Batten  
Peggy Newton and Revlon Cosmetics  
Phone 3309

**ROSE PIANO COMPANY**

HIGH GRADE PIANOS  
SHEET MUSIC                      RECORDS  
STRINGED INSTRUMENTS  
HARMONICAS, ETC.

**NIXON BROTHERS**

TRANSFER AND PETROLEUM  
CARRIERS  
DIAL 2835

**ROGER A. SMITH**

INSURANCE                      REAL ESTATE  
LOANS  
SMITHFIELD,      NORTH CAROLINA

**MASSEY MUTUAL  
INSURANCE AGENCY**

Writes All Forms of Insurance  
Hood Building: Room 35  
Phone: Res. 3361; Office 2776  
SMITHFIELD,      NORTH CAROLINA

BEST WISHES!

**DR. W. G. LEE**

CONGRATULATIONS  
to the  
Class of '56

**THE JEWEL BOX**

SMITHFIELD,      NORTH CAROLINA

**SMITHFIELD  
HOG MARKET**

WE BUY HOGS EVERY DAY  
DIAL 3131 OR 3132  
SMITHFIELD,      NORTH CAROLINA

Compliments Of  
**CENTRAL CAROLINA  
GAS COMPANY**

Distributors Of  
Guaranteed Bottled Gas Service  
Phone 2533

**SMITHFIELD BUILDERS  
SUPPLIES**

COMPLETE BUILDING SUPPLIES  
Raleigh Road  
Phone 3442

SMITHFIELD, NORTH CAROLINA

**LUBY'S  
MOBILE SERVICE**

301 Highway

SMITHFIELD, NORTH CAROLINA

**RADIO  
SALES and SERVICE**

YOUR FRIGIDAIRE DEALER  
DENTON F. LEE

SMITHFIELD, NORTH CAROLINA

**DAY'S DRY CLEANERS**

"The Kleeners That Klean"

Phone 2868

SMITHFIELD, NORTH CAROLINA

Compliments  
Of

**BOYETTE  
ELECTRIC COMPANY**

**LUBY F. ROYALL**

JEWELER

Silver—China—Crystal

Phone 2210

SMITHFIELD, NORTH CAROLINA

**JOHNSON'S LAUNDRY  
and  
DRY CLEANERS**

Smithfield's Only Sanitone Cleaners  
Phone 2305

SMITHFIELD, NORTH CAROLINA

**Pepsi-Cola Bottling Co.**  
of Selma, Inc.



Compliments  
Of  
**HOWARD'S CLEANERS**  
SMITHFIELD, NORTH CAROLINA

Best Wishes  
**SMITHFIELD  
SAND AND GRAVEL  
COMPANY**  
SMITHFIELD, NORTH CAROLINA

Compliments  
Of  
**BERNISE'S BEAUTY SHOP**  
Phone 3336 SMITHFIELD

Day Phone—3335  
Night Phone—3008  
**JORDAN MOTOR CO.**  
T. W. JORDAN  
Smithfield and Selma

FOR FINE FOODS  
EAT AT  
**NELSON'S**  
SMITHFIELD, NORTH CAROLINA

Congratulations  
**J. E. GREGORY**  
**5-10-25 CENT STORE**  
SMITHFIELD, NORTH CAROLINA

**EFIRDS DEPARTMENT  
STORE**  
"Correct Merchandise"  
At  
Low Prices  
SMITHFIELD, NORTH CAROLINA



Compliments  
Of  
**STEER INN GRILL**  
CLAYTON, NORTH CAROLINA







Remember Paragon » Remember Paragon » Remember Paragon

Remember Paragon » Remember Paragon » Remember Paragon » Remember Paragon » Remember Paragon

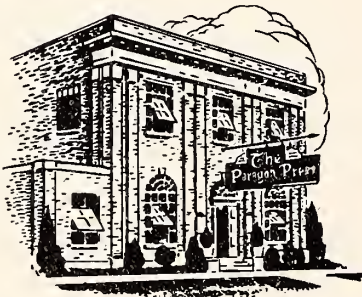
# ON YOUR GRADUATION



Today  we are printers of the yearbook of your school. 

Tomorrow as you seek your future in  the professions, industry  and commerce  we  at Paragon hope to serve you with the essential Printing  and Lithography  you will need in the pursuit of your career,

Many of our best customers came to us through friendships formed around the annual planning table or from former grads like yourself who first saw our work in their annual.

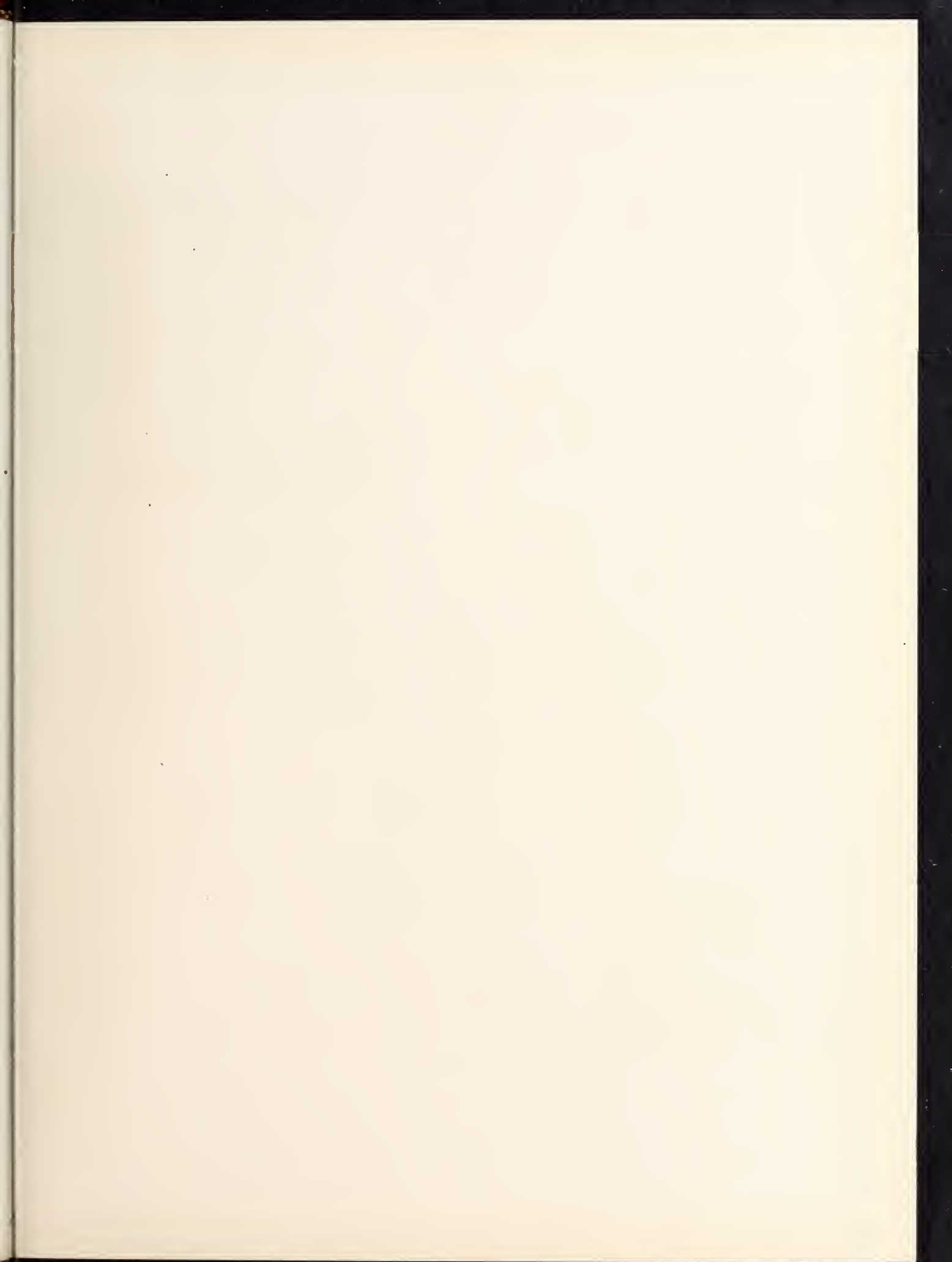


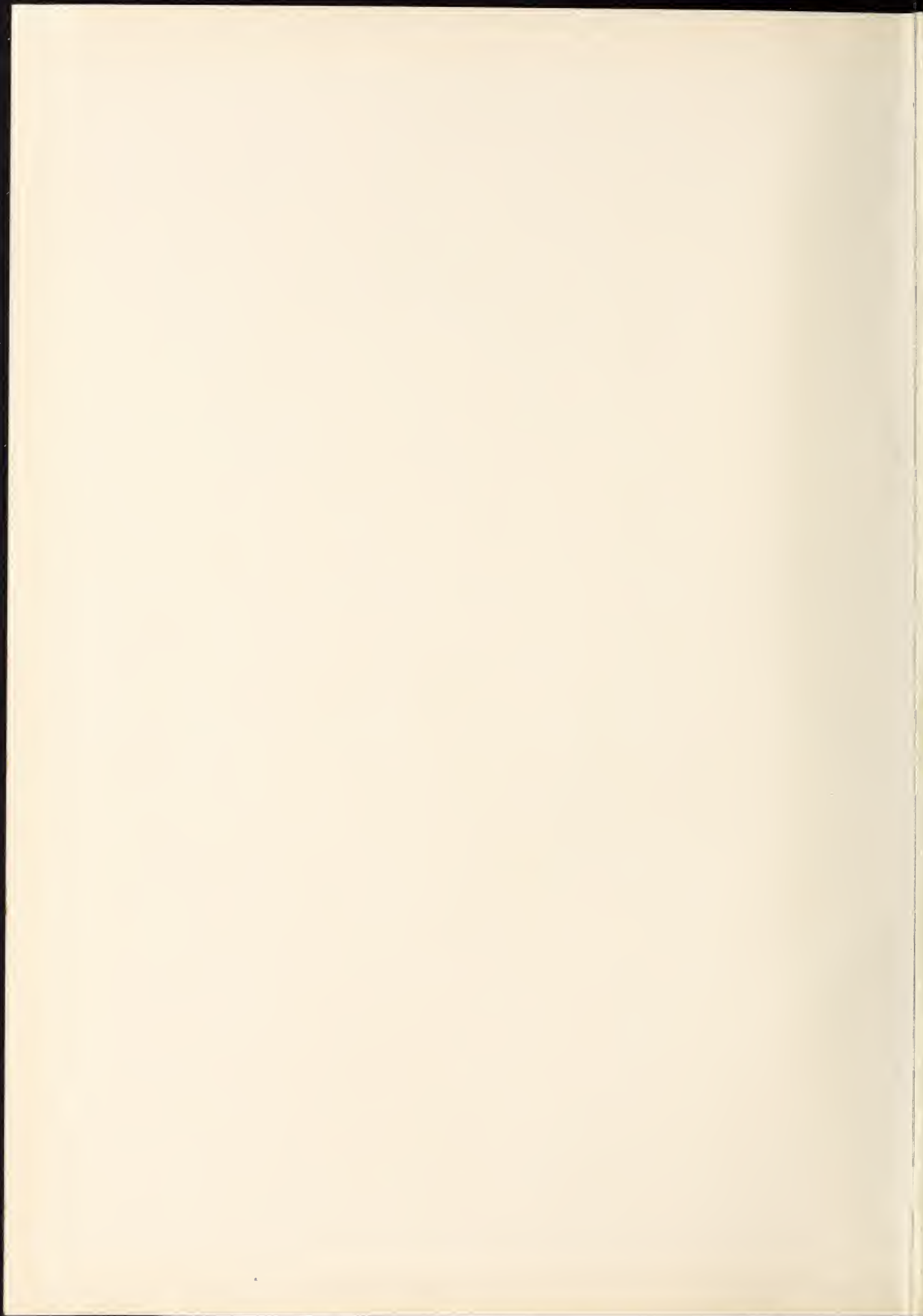
## The Paragon Press

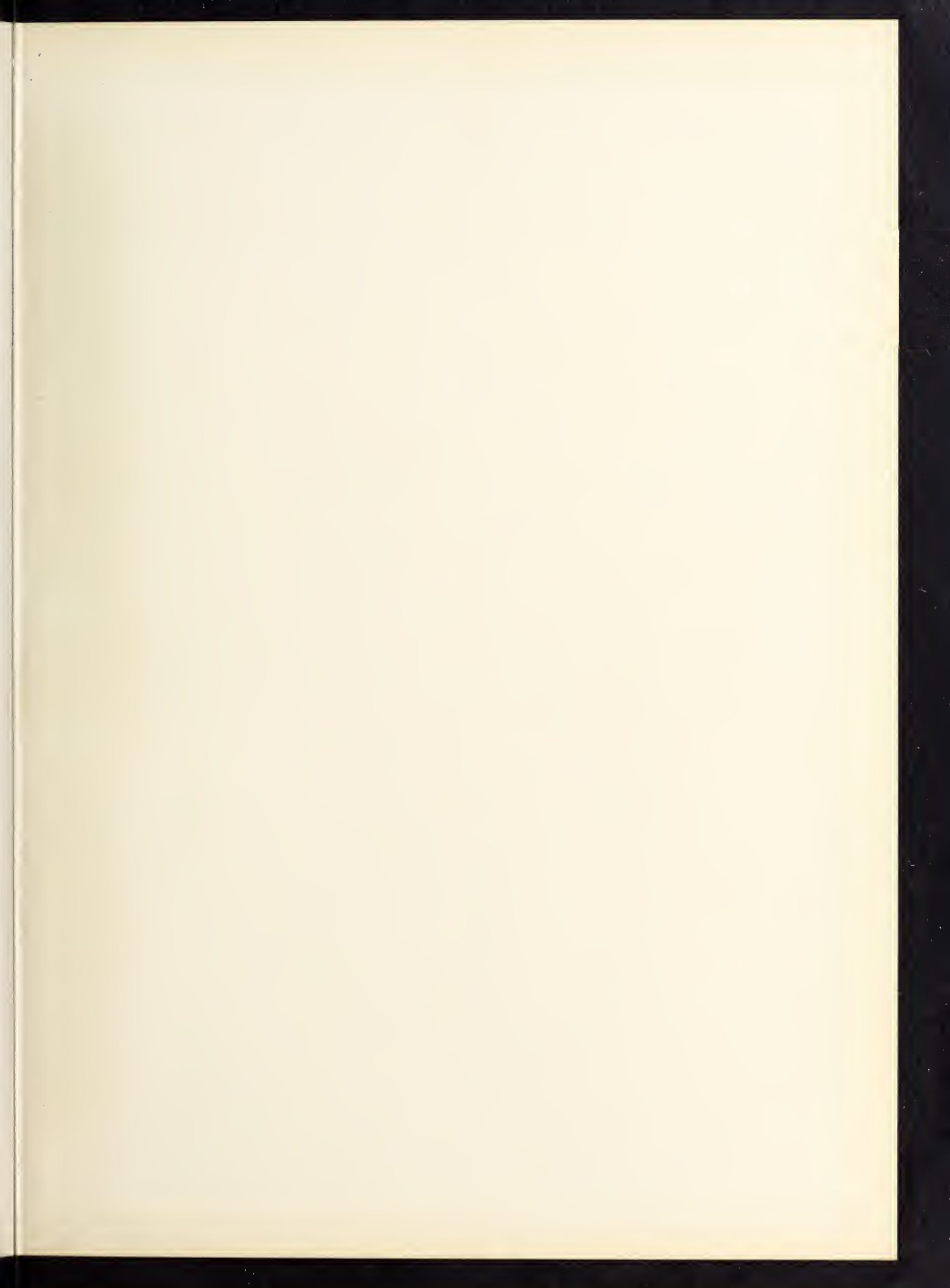
MONTGOMERY, ALABAMA

MR. LEE BLACKWELL  
P. O. BOX 541  
GOLDSBORO, NORTH CAROLINA  
PHONE 3157









920 S

\*

Shield : senior cla>>igh School

SMITHFIELD es110155001



3 8950 99016947 8

RNC  
373.756  
S  
1956

Smithfield High *gcr*  
School.  
The shield.

