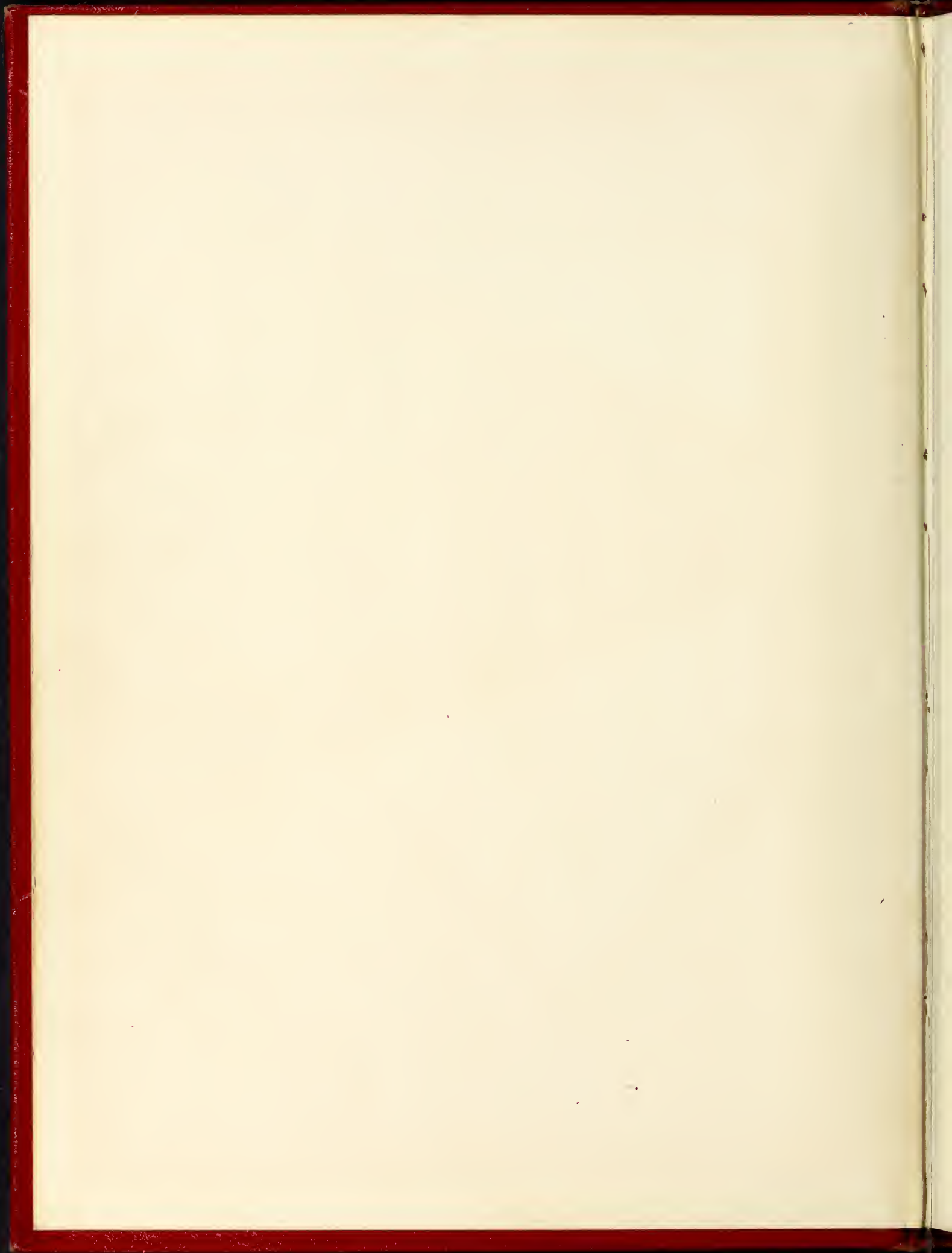
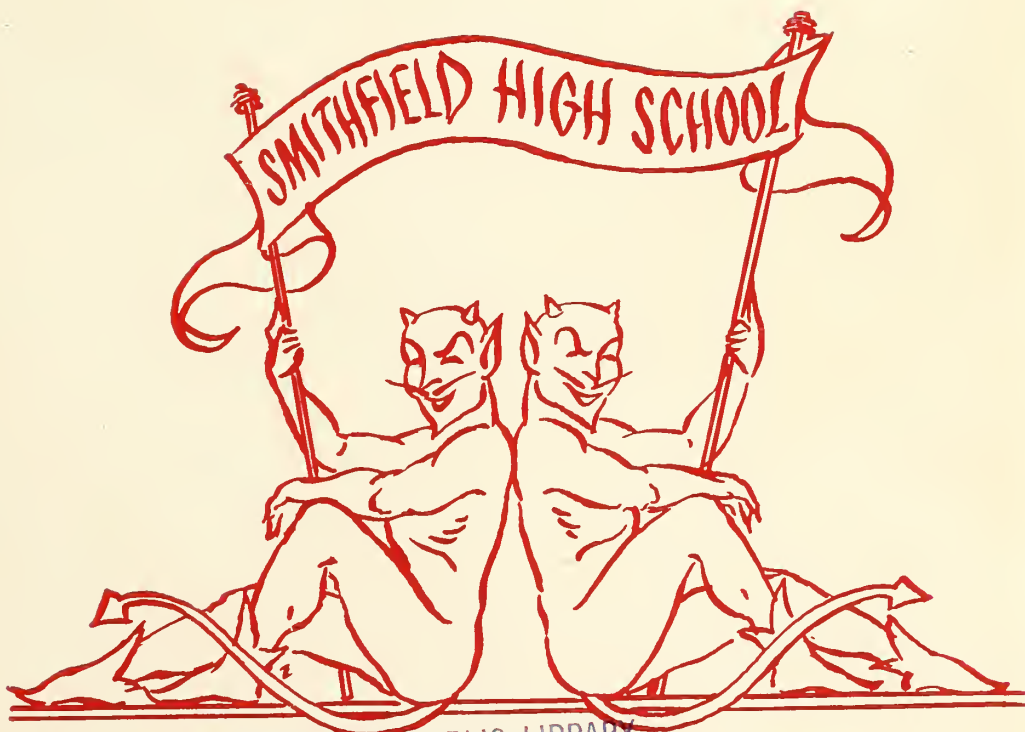




1960



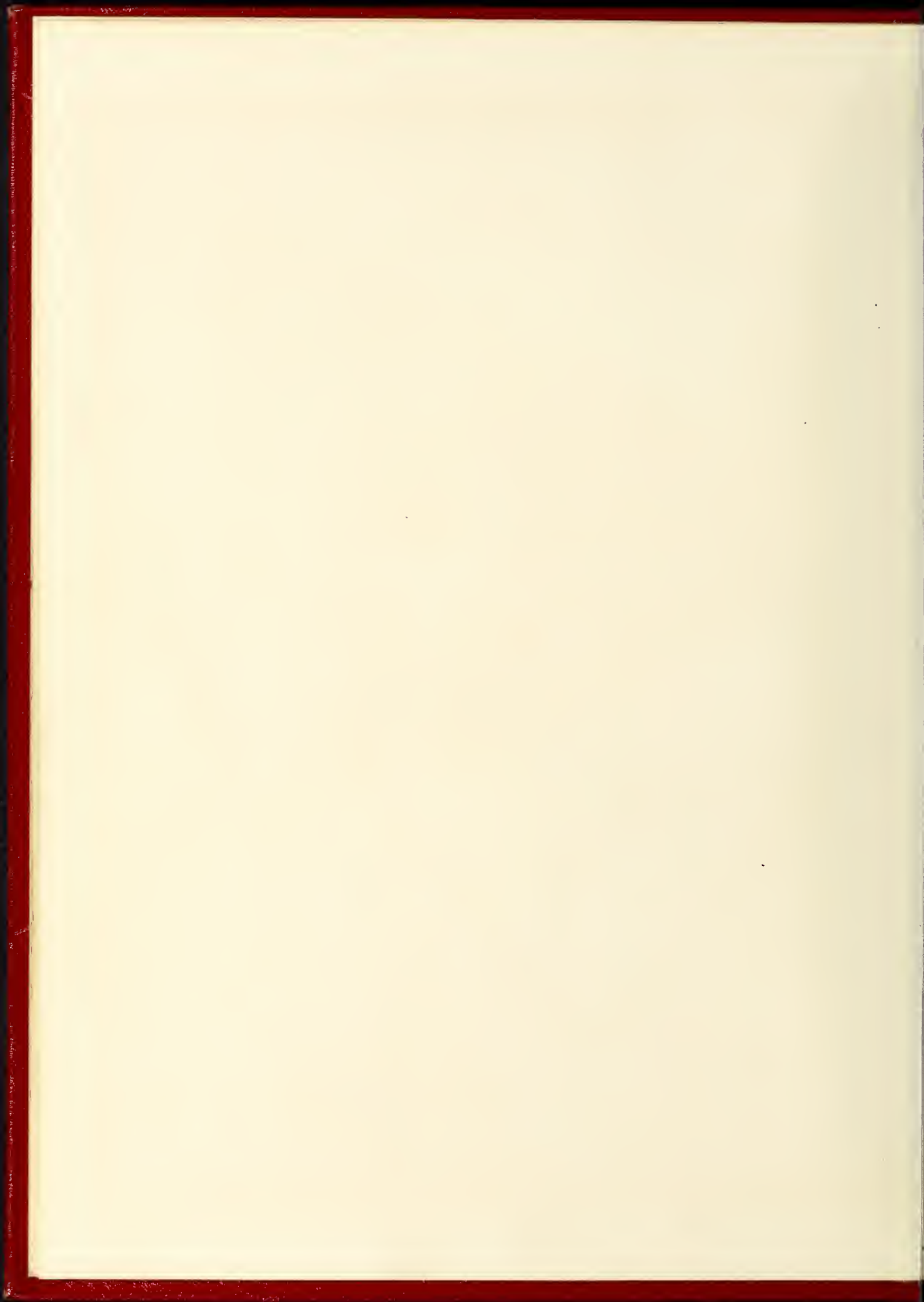




---

SMITHFIELD PUBLIC LIBRARY  
SMITHFIELD, N. C.

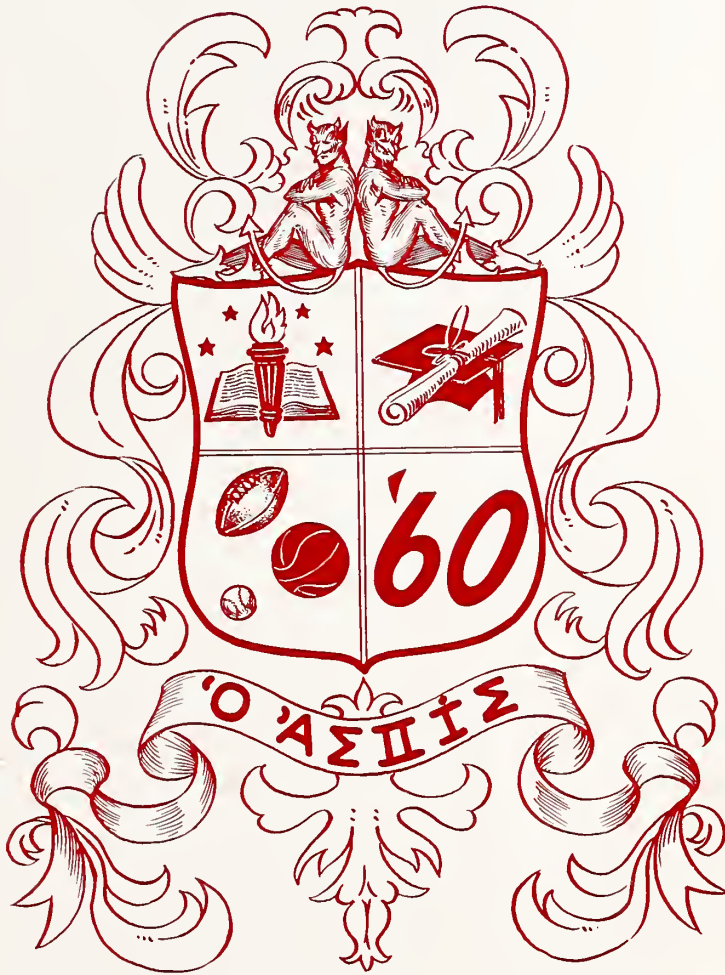
---





# SHIELD

## 1960



920  
S

VOLUME XI

Co-Editors

FREDDY PARISH

THEL HOOKS

SMITHFIELD HIGH SCHOOL  
Smithfield, North Carolina

Published by  
PARAGON PRESS

[ 1 ]

60-1579



## FOREWORD

Red and White, a symbol of the way of life at Smithfield High School, is reflected through our halls, in the classroom, on the athletic field, in the home, and at social events.

For the enrichment of generations to come, we leave behind this tangible evidence of cherished memories and happy days at S. H. S. May the Class of 1960 ever hold the banner of the Red and White high with pride and honor to our Alma Mater.

## CONTENTS

Administration

Activities

Classes

Athletics

Advertisements







DEDICATED TO . . .



MRS. E. V. WILKINS

[ 4 ]

— FOR HER LOYALTY TO SMITHFIELD  
HIGH SCHOOL,  
— FOR HER DEVOTED EFFORTS TO HELP  
ALL STUDENTS.





*Faculty*



MR. A. G. GLENN  
Principal



MRS. C. W. TARLETON  
Secretary







MRS. E. V. WILKINS  
A.B.  
Woman's College  
University of North Carolina  
Speech, English



MRS. A. G. GLENN  
A.B.  
Mary Hardin Baylor College  
English



MISS ANITA DAVIS  
A.B.  
Atlantic Christian College  
English, History



MR. JACK TEMPLE  
A.B.  
University of North Carolina  
English

It is  
book report  
time  
in Senior  
English Class.



Wanda Exum,  
chairman  
of one group,  
leads the  
discussion.



MRS. RUBY L. JULIAN  
A.B., M.A.  
East Carolina College  
Newberry College  
Algebra II



MRS. ANDREA BOYETTE  
A.B.  
Meredith College  
Geometry



MR. J. L. CREECH, JR.  
A.B.  
Atlantic Christian College  
Algebra I

From State College came three practice teachers to our Mathematics Department during the first semester. Celestina Heres taught solid geometry and business arithmetic, Julius Kimbra, algebra, and Edgar Weber, algebra. We enjoyed having them in our school and hated to see them leave.





MRS. ALICE AVERY  
A.B.  
East Carolina College  
History, Guidance

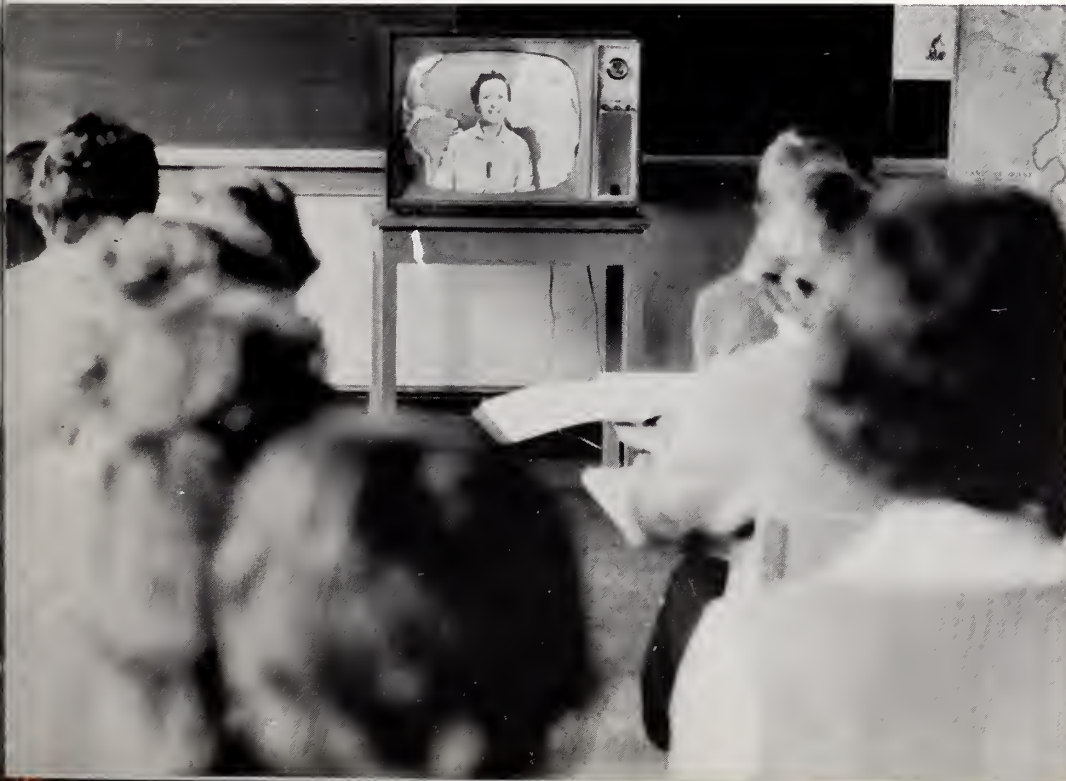


MR. ROY J. BROWN, JR.  
A.B.  
Atlantic Christian College  
Coach, Social Studies



MRS. LOIS PEELE  
A.B.  
Meredith College  
French

BELOW: This year our school has taken part in the North Carolina In-School Television Experiment. We had two television classes—U.S. History and World History—made up of juniors and seniors. The primary aims of the courses were to develop the will and ability to consider present-day problems in the light of the experience of the past; to develop a spirit of inquiry that will lead to the seeking of all available sources of information; and to acquire background for literature, art, music, travel, and intelligent conversation. The television teachers for the courses were Miss Lois Edinger and Mrs. Ruth George Dadsan and the classroom teacher was Mrs. Alice Avery.







MR. L. J. BENTON  
B.S.  
Atlantic Christian College  
Chemistry, Physics,  
Biology

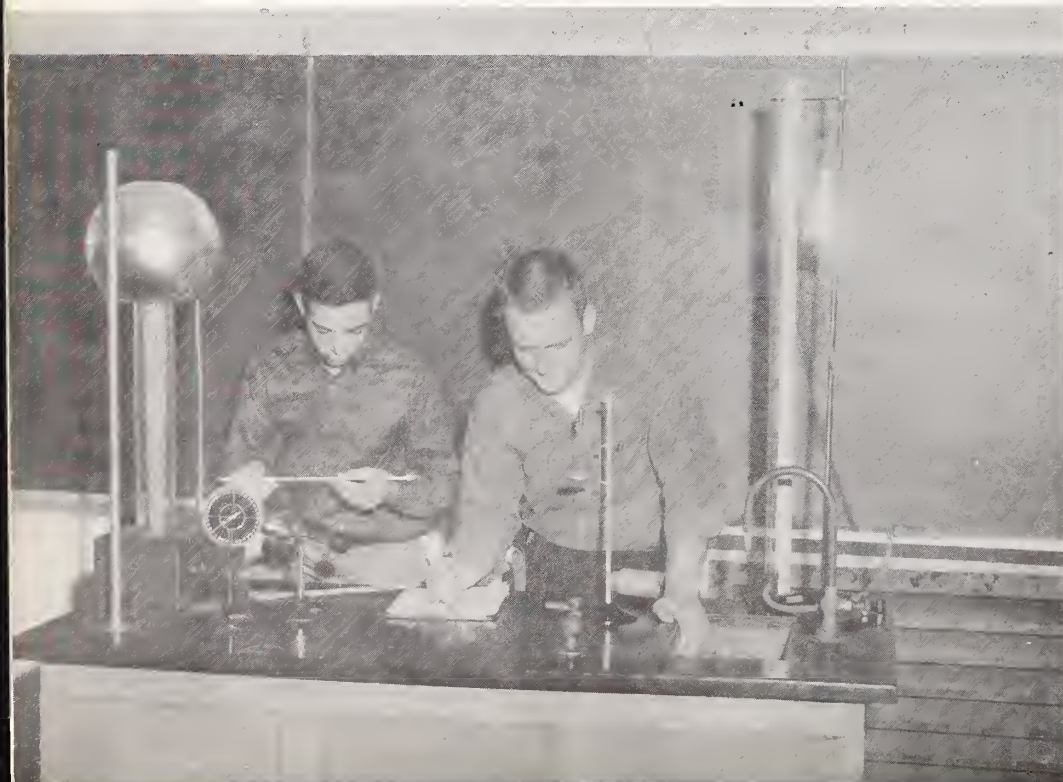


MRS. JOYCE BARBOUR  
A.B.  
Woman's College  
University of North Carolina  
General Science, Biology

MR. S. C. WOODARD  
A.B.  
University of North Carolina  
Latin, English



Physics, a new course in our science curriculum, deals with matter, electricity, and other scientific areas. Here we see Marc Wallace and Clyde Grigg conducting an experiment with some of the new lab equipment.



MR. JOHN T. MASSEY  
B.S.  
East Carolina College  
Industrial Arts,  
Mechanical Drawing

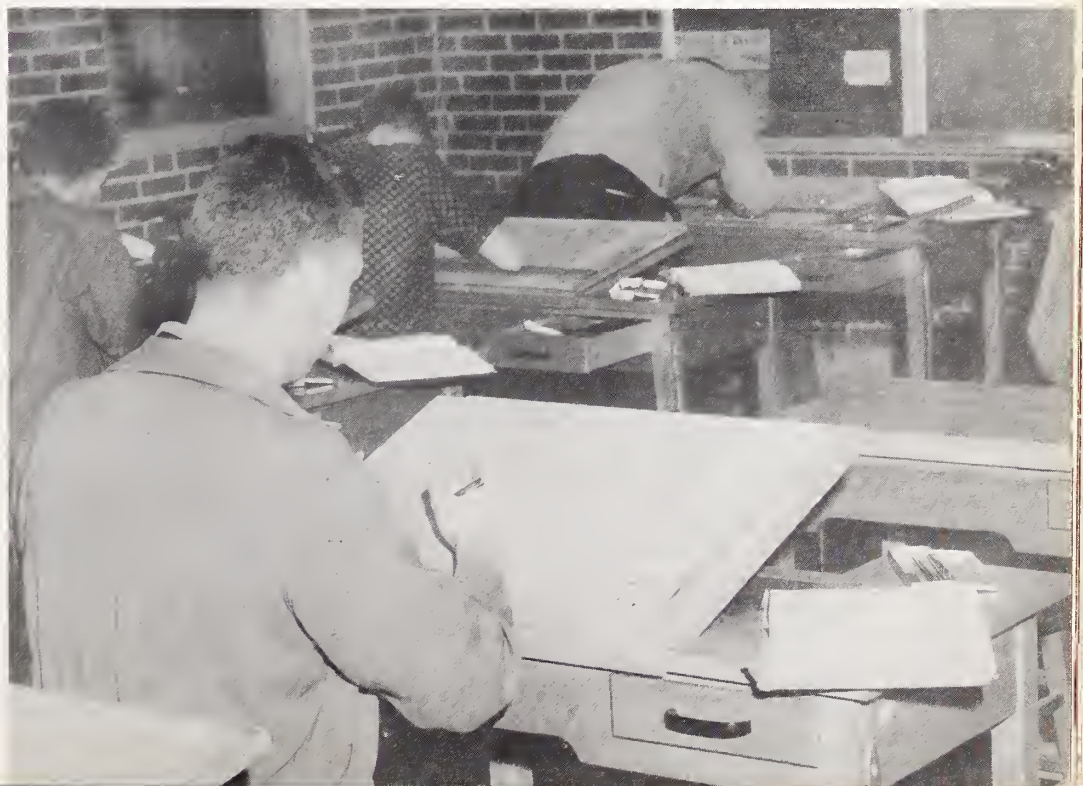


MRS. RAMONA CASH  
B.S.  
East Carolina College  
Home Economics



MRS. FRANCES L. CREECH  
A.B.  
East Carolina College  
Typing, Bookkeeping

Mechanical drawing is a subject which was added to our curriculum this year. This course is helpful in preparation for fields of engineering. Accuracy and neatness are stressed as the student studies basic structures of farm.







MRS. EDNA EARLE ADAMS  
Primary B  
East Carolina College  
Art



MISS FLORA PARKER  
B.M.  
Meredith College  
Glee Club

MRS. CHESTER PHILLIPS  
B.S.  
Bob Jones University  
Librarian



MR. LEE ROGERS  
A.B., M.A.  
East Carolina College  
Band



BELOW: Sandra Janes, Janice Blackman, and Mary Ann Davis, members of the library club, are shown binding magazines for the reference shelf. Club members, under the direction of Mrs. Phillips, are taught the basic duties of a librarian and are encouraged to help other students locate material in the library and in the reference room.







# *Activities*



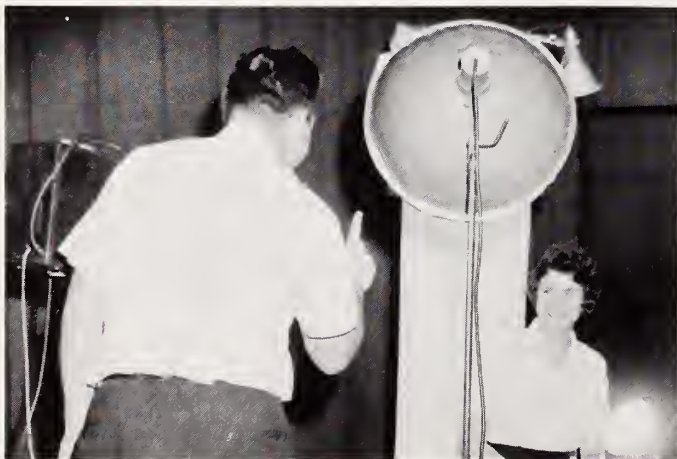
# DOINGS



. . . And there were bonfires and pep rallies  
at the Recreation Park.



Parades were part of our activity.



Mr. Gentry from School Pictures, Inc., photographed  
us all, but here it is Suson Hooks.

Decorating the cars was fun. Chief Norton  
usually led the way and sometimes we went  
as far as Selmo.





# WEDNESDAY'S CHAPEL

Sophomore Home Ec Girls . . . . .

stage Fashion Show patterned after the "Big Pay Off."



Alsey Hudson takes "Seven Little Girls" and Fred (Oscar Creech) for a ride.

Joey Overby and Margaret Cackrell, portraying Rev. and Mrs. Chester Phillips, are observed by hostess Dareann Langdan.



ABOVE: Luther Lehew and Kay Bayette pose as Coach and Mrs. Brown.

LEFT: For their "pay off" Mr. and Mrs. Glenn (Baltan Janes and Kathy Lassiter) receive this model of the latest in automotive design.



# S H S



SMITHFIELD: 33

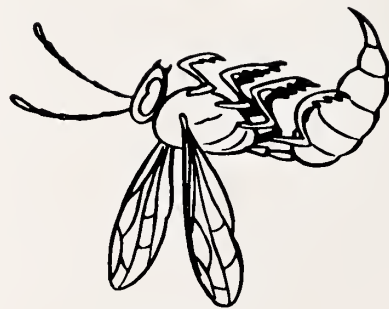


WERE: "OUT OF THIS WORLD"  
AND DEFEATED

Harvey Dupree got chapel into full swing with his radio skit. The cheerleaders led the student body in stirring yells, and the mood was set for victory.



Our student body grew and grew . . . we moved to the school gymnasium for our homecoming dance and bade farewell to the Legion Hut after eleven memorable homecomings. Boys lent a hand and girls, too, in decorating. Below: Ted Jackson, Carrall Johnson, and Edwin Price, put the final touches on the railings.



SELMA: 0



# HOMECOMING



Our football team chose Cindo Gronthom to reign over the festivities . . . she did in regal fashion. Coach Roy Brown crowns her just before the game.



"Red Devils Out of This World" was our theme. Even the program before the dance took us into the realm of space. Below: Edwin Price, Master of Ceremonies; Jerry Higgins, spaceman; and Doreann Longdon in characteristic pose.

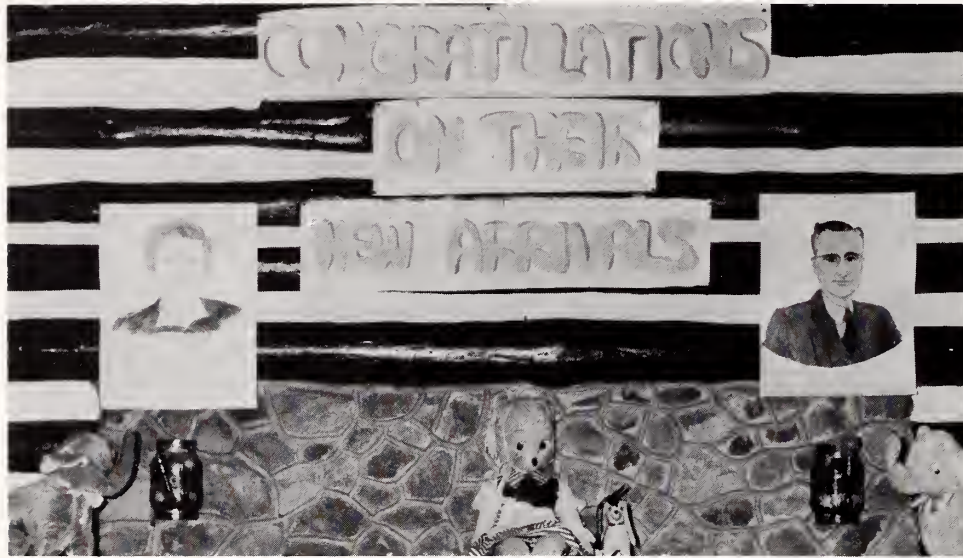
William and Warren Ragsdale in Red Devil costumes served as Mascots and rolled out the red carpet for the Queen. In her court were senior football players and their escorts: Edgar B a u g h a m — Mary Helen Ragsdale; Roy Brown III—Sharon Sutton; Wesley Coble—Sandra Dail; Preston Edwards—Lena Rose Patterson; Jimmy Ennis — Donna Ann Parker; Michael Grimes—Anne Rogers Morgan; Ted Jackson—Adalia Wiggs; David Lee—Mary Ann Honeycutt; Robin King—Betty Abell; Sammy Simpson — Sarah Broadhurst; Rex Starling — Diana Bess Montgomery. Co-captains Frank Creech and Phil Ennis did the honors for the Queen.



Keith Johnson thrills hundreds of spectators as he drives through the middle for the Red Devils' first touchdown in the 27th annual classic with Selmo Yellow Jockets.



# FRESHMEN ARE IMPORTANT TOO



Above . . . the mantel in the Legion Hut.

October was the month . . . Betty Abell and Mary Ann Honeycutt planned the Freshman Dance. . . . The theme, "Welcome to S. H. S. Nursery" was unique, we thought, and the freshmen thought so too. . . . The seniors spared no time, energy, or talent in entertainment of our new arrivals.



The Freshmen liked our art work and had fun commenting on the murals.

Then came refreshments and everybody entered into this phase of the evening's entertainment. Mothers, teachers, and students helped out at the refreshment bar.



# "GENTLEMEN PREFER BLONDES"

SENIOR PLAY 1959



Dorothy (Nancy Lassiter) is amused at Aunt Dally's (Jackie Bridges) free thinking as she expresses her views to her niece Lorelei Lee, whom gentlemen prefer (Mory Nell Lee).

Anito Loos' "Gentlemen Prefer Blondes", a delightful comedy of the Roaring 20's, was presented by twenty-seven members of the Class of '59. John Allen worked out the musical arrangement for the play, and Emily Foulk, Edward Dovidian, Dewey Lowson, and Butch Johnson made up the archestro.



Mr. Lee, Lorelei's father, (Woyné Williams), lays down the law to Henry Spofford, III, (Kenneth Woodard) in saying, "And no grandchildren of mine are going hungry."



Mrs. Spofford (Nancy Dance), very rich, is concerned about her son's morrying on extortionist. Lorelei tries to convince her of her innocence.



# "NIGHT OF JANUARY 16"

JUNIOR PLAY 1959

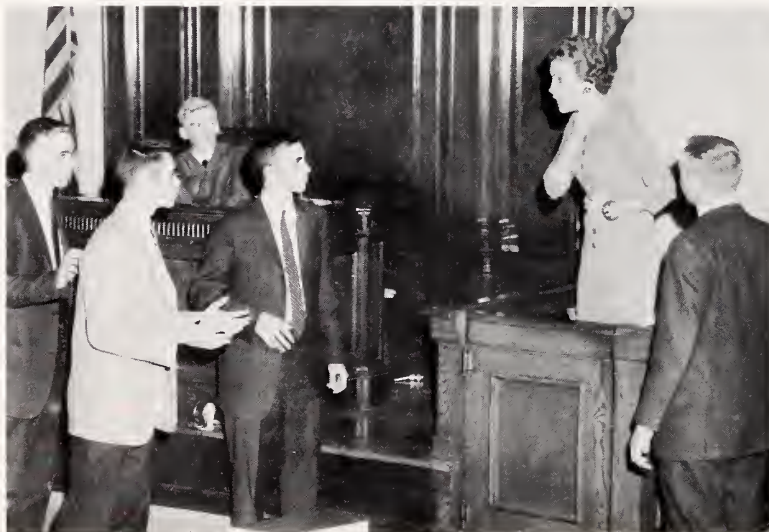


BELOW: Mrs. E. V. Wilkins directed.



ABOVE: Mrs. Faulkner (Kay Bridgers) faces Karen Andre (Penny Adams), whom she believes murdered her husband, as the attentive Judge Heath (Bab Barbour) and the court stenographer (Mary Ann Britt) watch.

Unusual and unique was the courtroom drama, "Night of January 16". The juniors created a true-to-life story of the murder of Bjorn Faulkner and gave the audience the opportunity of seeing this play in the tense atmosphere of a real courtroom — the Johnston County Courthouse. The jurors were chosen from the audience and the surprise verdict rendered was "not guilty."



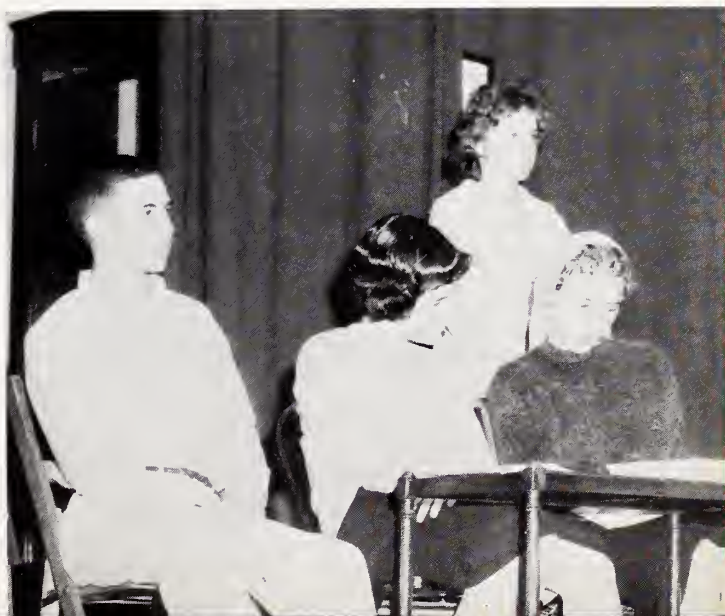
LEFT: As the two lawyers (Marc Wallace, left, and Brack Wilson) watch, Larry Regan (Ed Boyette) tells Karen that Faulkner is dead.



LEFT: Mrs. Faulkner is being questioned about her husband by her attorney (Brack Wilson) as the bailiff (Harold Ogburn) and the court policeman (Joe Whitley) assume their duties.



RIGHT: "And I'll tell you, mister!" says Magda Svenson (Beverly Collier) to the attorney for the defense (Brack Wilson).



RIGHT: As the attorney for the state (Marc Wallace) and the matron (Becky Boone) watch the rehearsal, Karen Andre (Penny Adams) is going over some difficult lines with the secretary (Margaret Lee Austin).



# JUNIOR-SENIOR 1959

For the 1959 Junior-Senior, the juniors converted the Country Club into a Mexican hacienda. They made use of the decorations, program, and refreshments to take their guests on a gay visit South of the Border. After being greeted by pospart officials, the seniors were entertained by a program of skits and music set in a Mexican mood. The seniors presented their class prophecy, their lost will and testament, and their superlatives as is traditional. A precedent was broken by the juniors when senior gifts were omitted; instead condy sombreras were given as favars. Music for the occasion was provided by the Five Joys of Raleigh as the juniors and their guests enjoyed dancing in the South of the Border setting.



ABOVE: "The Donkey Serenade" was sung by gay juniors to the frisky donkey (look closely and you'll see him!).

BELOW: Tiojuono Jail is the scene for these singing desperadoes Wesley Coble, Jerry Higgins, Bud Stollings, Frank Cræch, and Edgor Boughom.



LEFT: Who is the lovely seniorito with the sweet grin and dancing feet? Why—Betty Abell, who else?

BELOW: Dancing highlighted the evening, as we can see. The couple in the foreground is Tommy Simpson and Nancy Lassiter.





# HIGH

# T I M E S



Art Editors Carolyn Narris and Wesley Cable meet with Editor-in-Chief, Diana Bess Mantgamery, and Assistant Editor, Jane Creech, to do some planning for the next "High Times" issue.



Miss Anita Davis, one of our new teachers, is being interviewed by Olivia Edmonsan and Anne Ragers Margan, News Editors.



Phil Ennis gets a barrage of questions from Sparts Editors, S. B. McLamb and Steve Mackler.





Freddy Parrish and Thel Haaks, Jr., Co-Editors of THE SHIELD, surrounded by annuals of the past look for ideas for the present.



## SHIELD STAFF



Advertising Manager Mary Helen Ragsdale calls on Assistant Editors Margaret Rackley and Patty Hildebrand to examine the annual budget as she adds the final sales.



All indications are that the Advertising Staff had fun. Their united efforts brought willing sponsors and advertisers for the 1960 SHIELD.

# GLEE CLUB



Glee Club members line up for the Christmas Concert

With 150 members participating, the S. H. S. Glee Club continues to grow under the direction of Miss Flora Parker. For the first time this year Mr. Lee Ragers took over the training of the Ninth Grade Girls. The combined Glee Club of 200 members made an excellent appearance at the Christmas Concert. The State Music Contest in March challenges their efforts in making a superior rating.

## OFFICERS

### GIRLS' CHORUS

ADALIA WIGGS

President

MARY ANN BRITT

Vice-President

PAT WHITLEY

Secretary

ANN BATTEN

Treasurer

### BOYS' CHORUS

MAC WALLACE

President

FRANK CREECH

Vice-President

CLYDE GRIGG

Secretary and Treasurer

HERMAN CREECH

Publicity Manager



[ 25 ] Miss Parker directs during the Fourth Period





*Glee*





*Club*





*S. H. S.*





*Band*



# BAND

## OFFICERS

JARMON EASON  
President  
ANNE ROGERS MORGAN  
Vice-President  
MARC WALLACE  
Publicity Manager  
LENA ROSE PATTERSON  
Co-Librarian  
NANCY LANGDON  
Co-Librarian



The Smithfield High School Band under the direction of Lee Rogers is composed of forty-four members. This school year, 1959-60, they have participated in many parades: Fuquay Farmers' Day, Benson Mule Day, Selma Christmas Parade, and several local parades. Two highlights of the season were Band Day at Chapel Hill and a television concert in February. Performing at home football games was an activity that added much to the fans' enjoyment. There were trips to Greenville and to Boone. The District Contest, held in March, is a goal which the band members are working toward. The culmination of the year's labor and enjoyment is the annual Spring Concert.



The Woodwind Ensemble is seen getting together for an afternoon practice session.



# MAJORETTES



SUSAN JOHNSON

SYLVIA NICHOLS

EVE SUGG

MARY ANN HONEYCUTT, CHIEF

MARY HELEN RAGSDALE

SALLY HONEYCUTT

EMMA LOU GARDNER





# PIANO



ABOVE: Joon Neighbors, a graduate of Meredith College and a piano teacher in the Smithfield School, plays her own composition for piano teachers Nancy Burroughs and Floro Conodoy. Miss Neighbors won top honors this year in the first North Carolina Composers Competition sponsored by the North Carolina Federation of Music Clubs. Her winning composition was titled "Three Songs for Baritone."



LEFT: "If music be the food of love, play on" and senior Diono Bess Montgomery does just that for her teacher, Miss Floro Conodoy. Hard work and persistence has led Diono Bess to receive numerous honors. Among them are piano soloist, North Carolina Symphony; Superior rating in piano State High School Music Contest; National Honors and a Superior Plus score in National Piano Auditions; President, Hunter Johnson Music Club 1959-60. She plays clarinet in the Senior Band and will major in piano in college.



### FUTURE TEACHERS CLUB

ANN ROGERS MORGAN  
President  
MARY HELEN RAGSDALE  
Vice-President  
BETTY ABEL  
Secretary  
JOYCE ROBERTS  
Librarian  
FAYE TRIPLETTE  
Reporter  
DEANNE MOORE  
Treasurer  
KAY BRIDGERS  
Historian  
BONNIE SUE COATES  
Program Chairman  
MR. WOODARD  
Adviser



Above we see the traditional ceremony which is used for the installation of officers.



### 4-H CLUB



#### OFFICERS

EVELYN STEWART  
President  
DAVID JOHNSON  
Vice-President  
PHYLLIS HOBBS  
Secretary and Treasurer  
LARRY AUSTIN  
Reporter

Mrs. Canrad Stallings, club director, narrates an Camp Millstone, 4-H Club Camp, as slides are being shown.





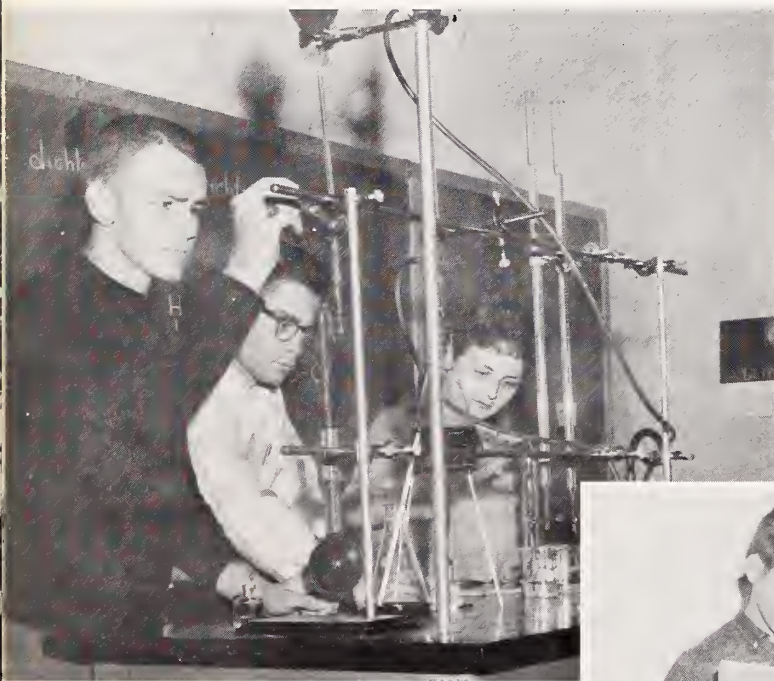
These Future Homemakers take up varied areas of interests concerning home planning. Here we see the girls receiving instruction from Mrs. A. L. Hobgood in modeling which helps poise.



## FUTURE HOMEMAKERS OF AMERICA

### OFFICERS

JUDY WILKES . . . . . President  
 EMMA LOU GARDNER . . . Vice-President  
 GRACE LANGDON . . . Secretary-Treasurer  
 KATHY McGEE . . . . . Program Chairman



## SCIENCE CLUB

Behind this maze of scientific apparatus are Oscar Creech, Frank Whitley, and Pat Whitley. In the Science Club, members make use of some of the knowledge gained from science courses and have a good time, too.

## FINE ARTS CLUB

Appreciation of fine arts such as paintings, music, prose, and poetry is stressed in the Fine Arts Club. The members also use their creativeness in writing essays, themes, and poetry. One activity to which the members look forward is a visit to the art museum in Raleigh.







*Seniors*



NANCY ELIZABETH ABELL

*"Her popularity the envy of all."*

Dramatics Club 1, Secretary 2; Journalism Club 3; F. T. A. Club 2, Secretary 4; Junior-Senior Program Committee 3; Marshal 3; Chairman Freshman Dance Committee 4; Homecoming Court 4; Advertising Staff "The Shield" 4; Glee Club 1, 2, 3, 4.



PHYLLIS ANN ADAMS

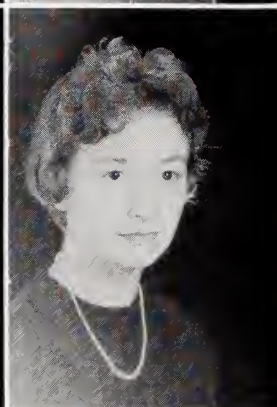
*"When in doubt, giggle!"*

Dramatics Club 1; Speech and Debate Club 2; Library Club 3; "Harvey" 3; Junior-Senior Gift Committee 3; Commercial Club 4; Invitation Committee 4.

LINDA CAROL AMMONS

*"A quiet person who has many friends."*

Dramatics Club 1; Commercial Club 2, President 3; Junior-Senior Refreshment Committee 3; Library Club 4; Invitation Committee 4.



NANCY GREY ASCUE

*"In quest of the best."*

Home Economics Club, Secretary 1; Commercial Club, President 2; Speech and Debate Club 3; Junior-Senior Invitation Committee 3; Math Club 4; Glee Club 1, 2, 3, 4; Mascot Committee 4.

EVELYN WILSON BARBOUR

*"Wit makes its own welcome, and levels all distinctions."*

Home Economics Club 1; Commercial Club 2; Social Studies Club 3; Junior-Senior Refreshment Committee 3; Library Club, Program Chairman 4; Glee Club 1, 2, 3, 4; Mascot Committee 4.



LUCINDA ANN BATTEN

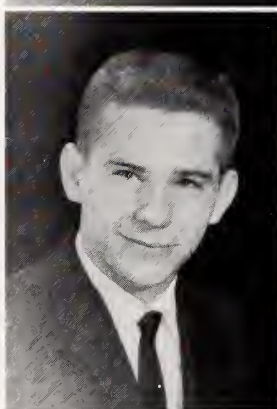
*"Versatility is the coveted gift of the gods."*

Arts and Crafts Club, Secretary 1; Fine Arts Club 2; Journalism Club 3; Marshal 3; "Harvey" 3; Junior-Senior Program Committee 3; Monogram Club 4; Ring Committee 4; Homecoming Committee 4; Basketball 2, 3, 4; Glee Club 1, 2, 3, Treasurer 4; Advertising Staff "The Shield" 4.

EDGAR LASSITER BAUGHAM

*"Why study when there is a lady's heart to win?"*

Band 1, 2; J. V. Football 1, Co-captain 2; Football 3, 4; Track 1, 2, 4; Wildlife Club 1, 2, 3; "Harvey" 3; Freshman Dance Committee 4; Monogram Club 2, 3, 4.



LANDIS ROSCOE BEASLEY

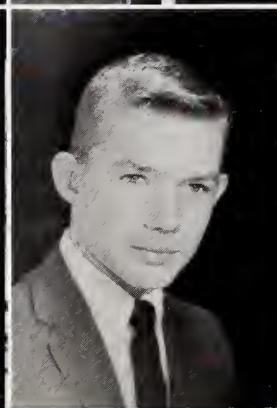
*"I'm not a surgeon, but I do a lot of cutting up."*

Wildlife Club 1, 2; J. V. Football 2; Junior-Senior Theme Committee 3; Homecoming Committee 4; Science Club 3, 4; Invitation Committee 4.

SARAH OLIVER BROADHURST

*"Great thoughts, like deeds, need no trumpet."*

Dramatics Club, President 1; Glee Club 1; F. T. A. Club 1, 2; Speech Club 2; Co-chairman, Theme, Program Committee, Junior-Senior 3; "Harvey" 3; Fine Arts Club, Vice President 3; Marshal 3; Math Club, President 4; Co-chairman Homecoming Committee 4; Advertising Staff "The Shield"; Homecoming Court 4.



ROY JENNINGS BROWN III

*"Let them call it mischief: When it is past and prospered 'twill be virtue."*

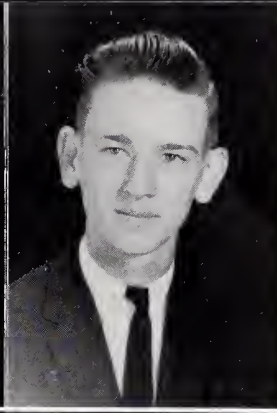
Wildlife Club 1; J. V. Football, Co-captain 1; J. V. Basketball 1, 2; Fine Arts Club 2; Industrial Arts Club, Vice President 3; Boys' State 3; Junior-Senior Gift Committee 3; Ring Committee 4; Baseball 2, 3, 4; Football 2, 3, 4; Basketball 3, 4; Monogram Club 2, 3, 4.



MARGIE ANN BRYANT

*"His praise is lost, who stays till all commend."*

Arts and Crafts Club 1; Speech Club 2; Social Studies Club 3; Junior-Senior Invitation Committee 3; Ring Committee 4; 4-H Club 4.



JAMES WOODROW BYRD

*"The man in a hurry is in a hurry to go nowhere."*

4-H Club 1; Library Club 2; Science Club 3, 4; Junior-Senior Decorating Committee 3; Invitation Committee 4.

RITA LYNETTE CAPPS

*"A maiden with soft dark eyes, like the dusk of evening skies."*

Princeton High School 1, 2; Journalism Club 3; Glee Club 3, 4; Junior-Senior Refreshment Committee 3; French Club, President 4.



CALVIN LOYD CLEARMAN

*"The provision of tomorrow belongs to tomorrow."*

Pamplico High School, Pamplico, South Carolina 1, 2; Band 3, 4; Science Club 3, 4; Junior-Senior Decorating Committee 3; Cap and Gown Committee 4.

LOIS DEANE CLEARMAN

*"Knowledge is more than equivalent to force."*

Pamplico High School, Pamplico, South Carolina 1; Homeroom Secretary 2; Junior-Senior Theme Committee 3; Junior-Senior Refreshment Committee 3; 4-H Club 2, 3, 4; Advertising Staff "The Shield" 4.



WESLEY MILTON COBLE

*"No sooner said than done—So acts your man of worth."*

J. V. Football 1; J. V. Basketball 1; Glee Club 1, 2; Fine Arts Club 2, President 3; "Harvey" 3; Class Vice President 3; Class President 4; Basketball 2, 3, 4; Track 1, 2, 3, 4; Football 2, 3, 4; All-Conference 4; Monogram Club 2, 3, 4.

HESTER MARIE COCKRELL

*"An ounce of enterprise is worth a pound of privilege."*

Home Economics Club 1; Library Club 2, 4; Commercial Club 3; Junior-Senior Gift Committee 3; Glee Club 2, 3; Cap and Gown Committee 4.



JUDY ANN COOKE

*"What wisdom can you find that is greater than kindness?"*

Homeroom Reporter 1; Junior-Senior Invitation Committee 4; Homecoming Committee 4; 4-H Club 1, 2, 3, Reporter 4; Mascot Committee 4.

LINDA JOYCE COOKE

*"Be slow to make a promise but swift to keep it."*

Debating Club 1; Arts and Crafts Club 2; Social Studies Club 3; Junior-Senior Gift Committee 3; Commercial Club, Vice President 4; Invitation Committee 4.



MARY ROSE COOKE

*"Never argue for victory but for verity."*

Dramatics Club 1; Speech and Debate Club 2, 3; Junior-Senior Gift Committee 3; "Harvey" 3; French Club 4; Glee Club 1, 2, 3, 4; Advertising Staff "The Shield" 4; Invitation Committee 4.



FRANKLIN UNDERWOOD  
CREECH

*"Few things are impossible to  
diligence and skill."*

J. V. Football 1; Dramatics Club 2; Fine Arts Club 3; Co-chairman Decorating Committee Junior-Senior 3; Freshman Dance Committee 4; Monogram Club 2, 3, 4; Glee Club 1, 2, 3, Vice President 4; Art Editor "The Shield" 4; Football 2, 3, Co-captain 4, All-Conference 4, All-Eastern 4, All-State 4, Shrine Bowl 4, East-West Shrine Bowl 4.

JERRY MAC CREECH

*"I must have liberty to roam  
where I please."*

Wildlife Club 1, 2, 3, 4; Glee Club 2; Junior-Senior Decoration Committee 3; Bus Driver 3, 4; Homecoming Committee 4.

EVA SANDRA DAIL

*"Behold the first in virtue  
as in face."*

Home Economics Club 1; Dramatics Club 2; Commercial Club, Vice President 3; Junior-Senior Invitation Committee 3; Mathematics Club 4; Homecoming Court 4; Glee Club 1, 2, 3, 4.

HARVEY DUPREE

*"A resolute man cares nothing  
about difficulties."*

Science Club 1, 3; Wildlife Club 2; Junior-Senior Theme Committee 3; Industrial Arts Club, President 4; Glee Club 1, 2, 3.

OLIVIA ROOT EDMONSON

*"Her smile is as bright as the  
new dawn of day."*

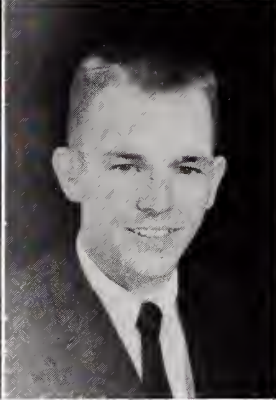
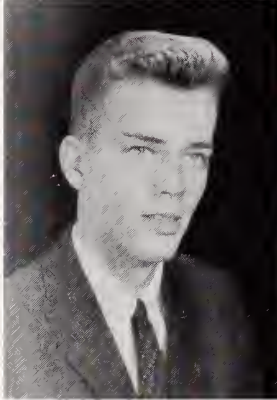
Glee Club 2, 3, Accompanist 1; Dramatics Club 1; Fine Arts Club, Reporter 2; Journalism Club 3; "Harvey" 3; Junior-Senior Theme, Program Committee 3; Marshal 3; News Editor "High Times" 4; Homecoming Committee 4; Math Club 4; "The Shield" Staff 4.



HERMAN ISAAH CREECH

*"Mischievous to the imp  
degree."*

Wildlife Club 1, 4; Industrial Arts Club 2; Science Club 3; Junior-Senior Decoration Committee 3; Homecoming Committee 4; Glee Club 1, 2, 3, Publicity Chairman 4.



OSCAR E. CREECH, JR.

*"He is a perpetual fountain  
of good sense."*

Mae Eanes Junior High School, Mobile, Alabama 1; Wildlife Club 2; Science Club 3, President 4; Junior-Senior Theme Committee 3; Track 3, 4; Monogram Club 3, 4.



BETTY CAROL DAUGHTRY

*"She herself seems made for  
merriment."*

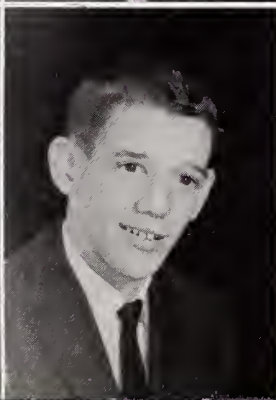
Library Club 1; 4-H Club 2; Journalism Club 3; Junior-Senior Invitation Committee 3; French Club, Vice President 4; Glee Club 2, 3, 4; Advertising Staff "The Shield" 4.



WILLIAM JARMON EASON

*"Quietness is an indication of the  
ability to think; dignity of  
intellect."*

Band Club 1, 2; Industrial Arts Club, Secretary 3; Junior-Senior Orchestra Committee 3; Marshal 3; Math Club 4; Bus Driver 3, Vice President 4; Band 1, 2, Secretary 3, President 4.



JAMES PRESTON EDWARDS

*"Work is done and must be done,  
but while I work I'll have  
my fun!"*

Wildlife Club 1, 2, 3; Football 1, 2, 3, 4; Basketball 3, 4; Track 2, 3, 4; Monogram Club 2, 3, 4; Junior-Senior Decoration Committee 3; "Harvey" 3.



CARITA FAGEN ENNIS

*"Deliberate slowly, execute promptly."*

Dramatics Club 1; Speech Club 2; Commercial Club 3; Junior-Senior Program Committee 3; "Harvey" 3; 4-H Club 4; Ring Committee 4; Glee Club 1, 2, 3, 4.



JAMES RAY ENNIS

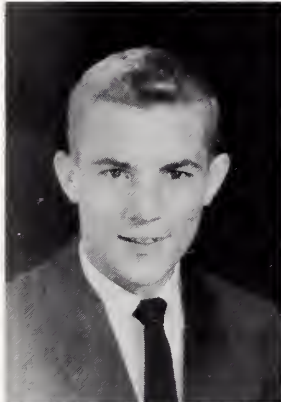
*"He who can take advice is sometimes superior to him who gives it."*

J. V. Football 1, 2; Wildlife Club 1, 2, 3; "Harvey" 3; Junior-Senior Program Committee 3; Homecoming Committee 4; Track 3, 4; Monogram Club 3, 4.

PHILIP BRUCE ENNIS

*"Let thy speech be better than silence, or be silent."*

J. V. Football, Co-captain 1; Wildlife Club 1, 2, Vice President 3; Junior-Senior Gift Committee 3; Baseball 1, 2, Co-captain 3, 4; Monogram Club 1, 2, 3; Honor Council 4; Varsity Football 2, 3, Co-captain 4; All Conference Football 3, 4; East-West Shrine Bowl.



WANDA LAVERNE EXUM

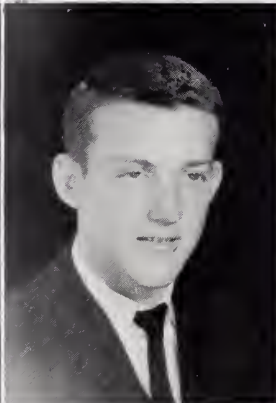
*"The great hope of society is individual character."*

Auburn High School, Auburn, Alabama 1; Dramatics Club 2; Speech Club 3; Junior-Senior Program Committee 3; "Harvey" 3; Glee Club 4.

NANCY FLOYD FORD

*"Always leave them laughing when you say goodbye."*

Home Economics Club 1; Dramatics Club 2; Glee Club 1, 2; 4-H Club 3; Junior-Senior Refreshment Committee 3; French Club 4; Homecoming Committee 4.



JAMES SOLOMON GORDON

*"We would all be idle if we would."*

Wildlife Club 1, 2, 3, 4; Glee Club 2, 3; Junior-Senior Decoration Committee 3; Bus Driver 4.

HILDA LUCINDA GRANTHAM

*"The merit of originality is not novelty; it is sincerity."*

Dramatics Club, Secretary 1, 2; F. T. A. Club 2; Glee Club 1, 2; Journalism Club 3; Junior-Senior Program Committee 3; Cheerleader 3, Chief 4; Monogram Club 3, Secretary 4; Homecoming Committee 4; Homecoming Queen 4; Advertising Staff "The Shield" 4.



CLYDE LEE GRIGG

*"Manners often make fortunes."*

Science Club 1, 2, 3, Vice President 4; Junior-Senior Theme Committee 3; "Harvey" 3; Junior Science Symposium 3; Marshal 3; Glee Club 1, 2, 3, Secretary 4.

JOHN MICHAEL GRIMES

*"No sinner but certainly no saint."*

Wildlife Club 1; J. V. Football 1; J. V. Basketball 1, 2; Science Club 2, 3; Junior-Senior Decoration Committee 3; "Harvey" 3; Marshal 3; Football 2, 3, 4; Basketball 3, 4; Track 3, 4; Monogram Club 3, 4; Co-chairman Homecoming Committee 4.



PHILLIP EDMOND GURGANUS

*"Mirth with thee I intend to live!"*

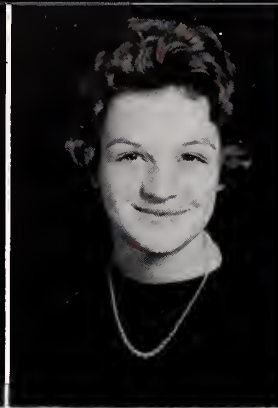
Band Club 1; J. V. Football 1, 2; J. V. Basketball 1, 2; Dramatics Club 2; Wildlife Club 3; Junior-Senior Decoration, Program Committee 3; "Harvey" 3; Science Club 4; Glee Club 1, 2, 3, 4.



FRANCES ELLEN HALL

*"An equal mixture of good humor and sensible soft melancholy."*

Arts and Crafts Club 1; Library Club 2; Social Studies Club 3; Junior-Senior Refreshment Committee 3; French Club 4; Glee Club 1, 2, 3, 4.



DELORES PUCKETT HAMILTON

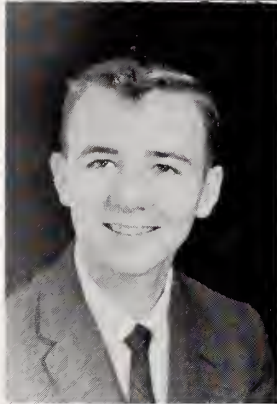
*"A cheerful life is what the muses love."*

Home Economics Club, President 1; Speech Club 2, Secretary 3; Glee Club 1, 2; Cheerleader 3; Co-chairman Junior-Senior Theme Committee 3; Junior-Senior Refreshment Committee 3; Cap and Gown Committee 4.

JERRY LYNN HIGGINS

*"I'm ready for adventure!"*

Science Club 1; Fine Arts Club 2, 3, 4; J. V. Football 2; J. V. Basketball 2; Track 1, 3; Junior-Senior Orchestra Committee 3; Sports Editor "Smithfield Herald" 3; Homecoming Committee 4.



PATRICIA ELLEN HILDEBRAND

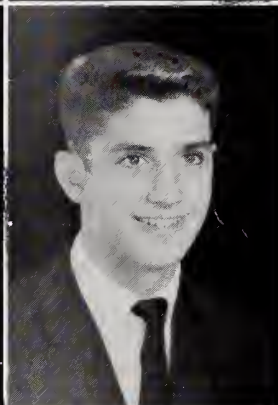
*"Witty remarks; Unlimited store; Gets in trouble; has fun galore."*

Arts and Crafts Club 1; F. T. A. 2, Co-Historian 3; Fine Arts Club 2; Journalism Club 3; Junior-Senior Decoration Committee 3; "Harvey" 3; Homecoming Committee 4; Science Club Reporter 4; Co-Assistant Editor "The Shield" 4.

MARY ANN HONEYCUTT

*"Ready to split her sides with laughing."*

Arts and Crafts Club, Vice President 1; Dramatics Club 2; F. T. A. 2; Glee Club 1, 2; Journalism Club 3; Junior-Senior Gift Committee 3; Marshal 3; Math Club, Vice President 4; Chairman Freshman Dance Committee 4; Majorette 1, 2, 3, Chief 4; Homecoming Court 4.



JONATHAN THEL HOOKS, JR.

*"Who loves not women, wine, and song remains a fool his whole life long."*

Science Club 1; J. V. Basketball 1, 2; J. V. Football 2; Industrial Arts Club 2; Wildlife Club 3; "Harvey" 3; Sports Editor "High Times" 3; Marshal 3; Junior-Senior Theme Committee 3; Basketball 3, 4; Track 3, 4; Monogram Club, President 4; Homecoming Committee 4; Co-Editor "The Shield" 4; Semi-Finalist, National Merit Scholarship Program 4.

NANCY CAROLINE HOWELL

*"True to herself, her friends, her duty."*

Dramatics Club 1, 2; F. T. A. 2; Journalism Club 3; Math Club 4; Junior-Senior Committee 3; "Harvey" 3; Freshman Dance Committee, Homecoming Committee 4; Advertising Staff "The Shield" 4; Glee Club 1, 2, 3, 4.



EDWIN AUGUSTUS JACKSON, JR.

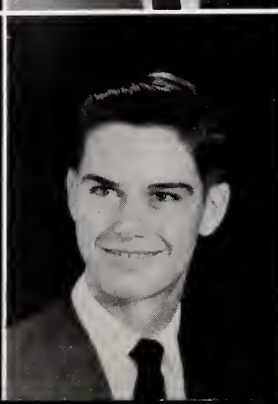
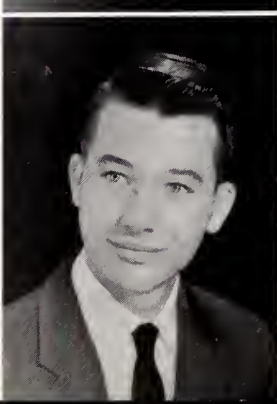
*"It isn't what you do, but what you're caught doing!"*

J. V. Football 1; J. V. Basketball 1, 2; Wildlife Club Reporter 1, 2; Industrial Arts Club, President 3; Junior-Senior Decoration Committee 3; Baseball 1, 2, 3, 4; Football 2, 3, 4; Monogram Club 2, 3, 4.

CARROLL FRED JOHNSON

*"No legacy is so rich as honesty."*

Wildlife Club 1; Glee Club 1; Industrial Arts Club 3; Commercial Club 3; Junior-Senior Decoration Committee 3; Science Club 4.



DAVID ALBERT JOHNSON

*"The man who wins is the man who works—the man who toils while the next one shirks."*

4-H Club 1, 2, President 3, Vice President 4; Junior-Senior Decoration Committee 3; Bus Driver 3, 4; Homecoming Committee 4.

FRANCES ANNETTE JOHNSON

*"She who loves to employ herself well can never want something to do."*

Home Economics Club 1; Journalism Club 2; Speech Club 3; Junior-Senior Refreshment Committee 3; Library Club, Secretary 4; Glee Club 1, 2, 3, 4.



SARA SUSAN JOHNSON

*"Among us she stands straight and tall—This girl is really on the ball."*

Arts and Crafts Club 1; Dramatics Club 2; Glee Club, Accompanist 1, 2; Science Club 3; Junior-Senior Theme Committee 3; Marshal 3; Freshman Dance Committee 4; Managram Club 3, 4; Basketball 2, 3, Co-captain 4; Majorette 1, 2, 3, 4.

BOLTON WILLIAM JONES, JR.

*"He is great who is who he is from Nature, and who never reminds us of others."*

4-H Club 1, 2, 3, 4; Class Treasurer 3; Junior-Senior Steering Committee 3; Homecoming Committee 4; Chairman Ring Committee 4; President Student Body 4.



ELIZABETH ANN JONES

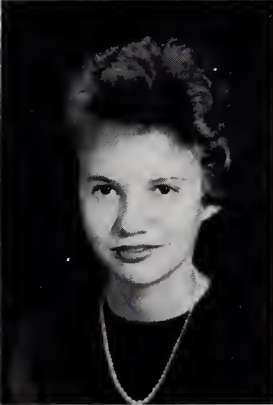
*"When hearts are true, few words will do."*

Library Club 1, 3; Commercial Club 2, Program Chairman 4; Junior-Senior Refreshment Committee 3; Invitation Committee 4.

HAZEL STANLEY JONES

*"Leave silence to the saints; after all I'm only human."*

Home Economics Club 1; Commercial Club 2, President 4; Library Club 3; Cap and Gown Committee 4.



BETTY JEAN KEENE

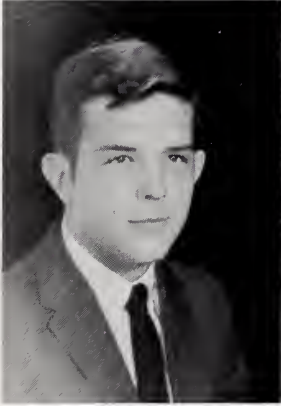
*"A little body doth often house a great soul."*

Clayton High School 1, 2, 3; Band 1; F. H. A. Club 1, 2, 3; Basketball 2; Monogram Club 2, 3; Beta Club 2, 3; Commercial Club 4.

ROBIN AYCOCK KING

*"He said little, but to the purpose."*

Wildlife Club 1, Vice President 2, President 3; J. V. Football 1; J. V. Basketball 1; Junior-Senior Decoration Committee 3; Baseball 1, 2, 3, 4; Basketball 2, 3; Football 2, 3, 4; Monogram Club 2, Honor Council 3, 4.



LENA JANET LANGLEY

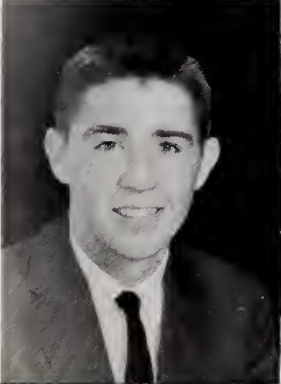
*"Reliable in all she attempts."*

Home Economics Club 1; Commercial Club 2; Journalism Club 3; Junior-Senior Refreshment Committee 3; Library Club 4.

DAVID EDWARD LEE

*"You're out of condition; what have you been doing, studying?"*

Homeroom Treasurer 1; Homeroom President 2; Wildlife Club 1, 2, 3; Baseball 1, 2, 3, 4; Basketball 1, 2, 3, 4; Football 2, 3, 4; Monogram Club 2, Vice President 3, Honor Council 4; Class Treasurer 4.



LUTHER HILL LEHEUW

*"It does a heap o' good sometimes, to go a little slow."*

Junior-Senior Orchestra Committee 3; "Harvey" 3; Ring Committee 4; Homecoming Committee 4; Band 1, 2, 3, 4; Band Club 1, 2, 3, Vice President 4.



STEPHEN BARRY MACKLER

*"The highest learning dwells in an understanding heart."*

Track 1; Band 1, 2; Band Club 1, 2; Dance Band 2; Science Club 3; Junior-Senior Theme Committee 3; Math Club 4; Freshman Dance Committee 4; Sports Editor "High Times" 4.



BRENDA FAYE MASSENGILL

*"Zounds! I wonder what fool first invented freckles."*

Dramatics Club 1; Commercial Club, Secretary-Treasurer 2, 3; Junior-Senior Refreshment Committee 3; French Club 4; Glee Club 1, 2, 3, 4.

LUTHER RILEY MASSENGILL

*"Little he says, but much he does."*

Wildlife Club 1, Secretary-Reporter 4; Industrial Arts Club, Reporter 2; Commercial Club 3; Ring Committee 4.



THOMAS RAY MELVIN

*"Every shut eye isn't asleep!"*

Wildlife Club 1, 2, 3, 4; Junior-Senior Gift Committee 3; Ring Committee 4; Cap and Gown Committee 4.

DIANA BESS MONTGOMERY

*"She moves like a goddess and looks like a queen; 'Tis beauty truly blent."*

Homeroom President 1; Dramatics Club 1; Soloist, North Carolina Little Symphony 2; Fine Arts Club 2; All-State Band 2; Magazine Sales Contest Winner 2; Journalism Club 3; Class President 3; Chief Marshal 3; Assistant Editor "High Times" 3, Editor 4; World Peace Speaking Contest Winner 3; Math Club 4; Band 1, Secretary 2, 3, 4.



VIRGINIA DEANE MOORE

*"Small stature but magnetic personality."*

Dramatics Club, Vice President 1; Fine Arts Club, Program Chairman 2; F. T. A. 2, 4; Social Studies Club, President 3; Junior-Senior Program Committee 3; Marshal 3; Chairman Homecoming Committee 4; "High Times" Staff 4; Advertising Staff "The Shield" 4; Glee Club 1, 2, 3, 4.

LARRY GLENN MOORE

*"I put all my troubles in a pocket with a hole in it!"*

Hobby Club 1; Industrial Arts Club 2; Progressive Science Club 3; Junior-Senior Program Committee 3; Baseball 3, 4; Glee Club 1, 2, 3, 4.



PATRICIA ANNE MOORE

*"There is no cosmetic for beauty like happiness."*

Home Economics Club 1; Commercial Club 2; Library Club 3, 4; Cap and Gown Committee 4.

ANNE ROGERS MORGAN

*"Little strokes fell great oaks."*

Arts and Crafts Club 1; Fine Arts Club 2; F. T. A. Club 2, President 4; Magazine Campaign Chairman 2; Journalism Club 3; "Harvey" 3; Marshal 3; Junior-Senior Decoration Committee 3; Assistant News Editor "High Times" 3, Co-News Editor 4; Homecoming Committee 4; Homecoming Court 4.



ANNIE LEE MOYE

*"By using your imagination you can have, for nothing, anything worth having."*

Home Economics Club 1; Speech Club 2; Library Club 3; Commercial Club 4; Cap and Gown Committee 4.



CAROLYN WADE NORRIS

*"Nothing great was ever achieved without enthusiasm."*

Home Economics Club 1; Library Club, Secretary 2; Glee Club 1, Journalism Club 3; French Club 4; Junior-Senior Decorating Committee 3; Homecoming Committee 4; "High Times" Art Editor 4.



PHYLLIS MARIE PACE

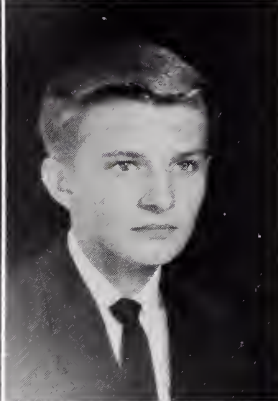
*"Mix a little folly with your serious thoughts."*

Library Club 1; 4-H Club 2; Commercial Club 3; French Club, Reporter 4; Junior-Senior Invitation Committee 3; Glee Club 1, 2, 3, 4; "The Shield" Staff 4.

DONNA ANN PARKER

*"An abridgment of all that was pleasant in woman."*

Arts and Crafts Club 1; Dramatics Club 2; Library Club 3; Junior-Senior Gift Committee 3; F. T. A. 3; Basketball 3; "Harvey" 3; Math Club 4; Freshman Dance Committee 4; Homecoming Court 4; "The Shield" Staff 4.



FREDERICK MOTEN PARRISH, JR.

*"Every man is the architect of his own future."*

Band Club 1; Science Club 2, 3; Basketball 1, 2; J. V. Football 3; Junior-Senior Decorating Committee 3; Homecoming Committee 4; Chairman Ring Committee 4; Co-Editor "The Shield" 4.

HELEN RUTH PARRISH

*"She doeth little kindnesses which most leave undone, or despise."*

Homeroom Vice President 1; Home Economics Club 1; Journalism Club 2, 3; Junior-Senior Invitation Committee 3; Library Club Vice President 4; Cap and Gown Committee 4.



LENA ROSE PATTERSON

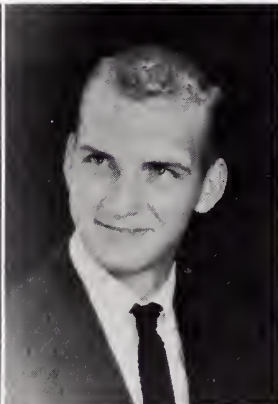
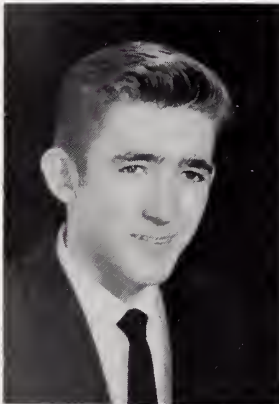
*"I try to be friends with the whole human race."*

Arts and Crafts Club 1; Fine Arts Club 2; F. T. A. 2; Homeroom Secretary 2; Journalism Club 3; Marshal 3; Band 1, 2, 3, 4; Hunter Johnson Music Club 1, 2, 3, 4; Math Club 4; Ring Committee 4; Homecoming Committee 4; Homecoming Court 4; "The Shield" Staff 4.

JESSE EDWIN PRICE

*"The Price is Right."*

Wildlife Club 1, 2, 3, 4; Junior-Senior Decorating Committee 3; Homecoming Master of Ceremonies 4; Cap and Gown Committee 4.



HAROLD GENE PUCKETT

*"We are growing serious, and let me tell you, that's the very next step to being dull."*

Track 1; Football 1, 2, 3; Baseball 1, 2, 3; Wildlife Club 1, 2, 3; Junior-Senior Decorating Committee 3; Monogram Club 1, 2, 3, 4.

ELSIE MARGARET RACKLEY

*"Originality is the true evidence of genius."*

Arts and Crafts Club President 1; F. T. A. 2; Fine Arts Club 2, President 4; Journalism Club 3; Girls' State 3; "Harvey" 3; Marshal 3; Junior-Senior Decorating Committee 3; Glee Club 1, 2, 3, 4; Homecoming Committee 4; Co-Assistant Editor "The Shield" 4.



MARY HELEN RAGSDALE

*"Enthusiasm is the life of the soul."*

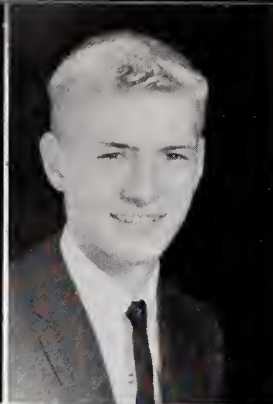
Dramatics Club 1; Band Club 2; Band 1, 2; F. T. A. 2, Vice President 4; Science Club 3; Junior-Senior Program Committee 3; Glee Club 3; Majorette 1, 2, 3, 4; Chairman Homecoming Committee 4; Homecoming Court 4; "The Shield" Staff 4.



JOYCE FAYE ROBERTS

*"A smile costs nothing but creates much."*

Home Economics Club 1; Library Club 2, 3; Junior-Senior Invitation Committee 3; F. T. A. Club, Librarian 4; Cap and Gown Committee 4.



EVANDER SAMUEL SIMPSON

*"He who blushes is not always bashful."*

Band 1; Dance Band 1; Band Club 1; Wildlife Club 2, 3; Marshal 3; Bays' State 3; Junior-Senior Decorating Committee 4; Co-chairman Homecoming Committee 4; Baseball 1, 2, 3, 4; Basketball 2, 3, 4; Football 2, All-Conference 3, All-Conference and All-Eastern 4; Monogram Club 2, Honor Council 3, Vice President 4; Morehead Scholarship County Finalist 4.

JANICE CHARLEEN SMITH

*"They that govern the most make the least noise."*

Home Economics Club 1; Commercial Club 2, 4; Library Club 3; Junior-Senior Invitation Committee 3; Cap and Gown Committee 4.



CLAUDIOUS ALBERT STALLINGS, JR.

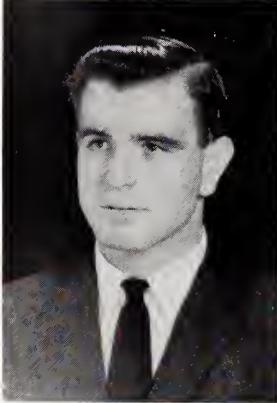
*"A man must have a certain amount of intelligent ignorance to get anywhere."*

J. V. Football 1; Band Club 1; Band 1, 2; Fine Arts Club 2, 3; Track 1, 3, 4; "Harvey" 3; Junior-Senior Gift Committee 3; Freshman Dance Committee 4; Math Club 4; Invitation Committee 4.

LEONARD REXFORD STARLING

*"I may not be handsome, but I declare I have a distinguished look."*

J. V. Football 1; Wildlife Club 1, 2, 3; Junior-Senior Decoration Committee 3; Homecoming Committee 4; Track 1, 3, 4; Football 2, 3, All-Conference 4; Monogram Club 2, 3, 4.



BARBARA ANN STEPHENSON

*"A very sweet maid of quiet ways."*

Home Economics Club 1; Glee Club 1, 2; Junior-Senior Invitation Committee 3; Bus Driver 4; Library Club 2, Secretary 3, 4; Invitation Committee 4.

EVELYN FAY STEWART

*"Humility, that low sweet root, From which all heavenly virtues shoot."*

4-H Club 1, 2, Reporter 3, President 4; Junior-Senior Invitation, Program Committee 3; "Harvey" 3; Bus Driver 4; Glee Club 1, 2, 3, 4; Mascot Committee 4.



SHARON SUE SUTTON

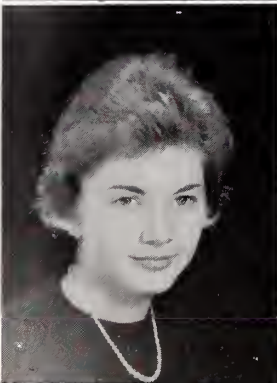
*"Silence is deep as Eternity; speech as shallow as time."*

Durham High School 1, 2; Speech Club, President 3; Glee Club 3; Junior-Senior Theme Committee 3; Junior-Senior Refreshment Committee 3; Math Club 4; Ring Committee 4; Homecoming Court 4; Class Secretary 4; Advertising Staff "The Shield" 4.

ELEANOR ELIZABETH TALTON

*"Every woman has the divine privilege of changing her mind."*

Home Economics Club 1; Speech Club 2, 3; Junior-Senior Program Committee 3; Fine Arts Club 4; Freshman Dance Committee 4; Glee Club 1, 2, 3, 4.



ALICE GERALDINE TAYLOR

*"Be always sure you're right, then go ahead."*

Home Economics Club 1; Commercial Club 2; Library Club 3, 4; Junior-Senior Refreshment Committee 3; Invitation Committee 4.

PEGGY ANN THOMAS

*"Not failure but low aim is a crime."*

Home Economics Club 1; Dramatics Club 2; Social Studies Club 3; Junior-Senior Refreshment Committee 3; French Club 4; Glee Club 1, 2, 3, 4; Mascot Committee 4.



ELLEN ANNA TYNER

*"The path of success is the path of common sense."*

Home Economics Club 1; Library Club 2, 3, 4; Junior-Senior Invitation Committee 3; "Harvey" 3; Glee Club 1, 2, 3, 4; Cap and Gown Committee 4.

JACQUELINE ELIZABETH WALL

*"Nothing astonishes men so much as common sense and plain dealing."*

Arts and Crafts Club 1; Dramatics Club 2; Social Studies Club 3; Junior-Senior Refreshment Committee, Chairmon 3; French Club 4; Glee Club 1, 2, 3, 4.



HAROLD ARTHUR WALLACE

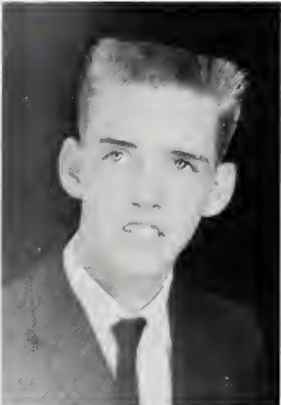
*"Everything is sweetened by risk."*

Wildlife Club 1, 2; Junior-Senior Decoration Committee 3; Homecoming Committee 4; Science Club 3, 4; Glee Club 1, 2, 3, President 4.

ARTHUR NOBLE WEST III

*"One of the greatest labor-saving inventions of today is tomorrow."*

Wildlife Club 1, 2, 3, 4. Reporter 1; Glee Club 1, 2, 3, 4; Junior-Senior Decoration Committee 3; Invitation Committee 4.



ANNA PATRICIA WHITLEY

*"Doth perfect beauty stand in need of praise at all?"*

Arts and Crafts Club 1; Dramatics Club 2; Journalism Club 3; Second Place, World Peace Speaking Contest 3; Co-Chairman Junior-Senior Decoration Committee 3; Marshal 3; Science Club, Secretary 4; Ring Committee 4; Homecoming Committee 4; Glee Club 1, 2, 3, Secretary 4; Advertising Staff "The Shield" 4.

GLEN FRANKLIN WHITLEY

*"O how full of groceries is this working day world!"*

Science Club 1; Wildlife Club 2; Industrial Arts Club, Reporter 3; Junior-Senior Decoration Committee 3; Science Club 4; Cap and Gown Committee 4.



ADALIA JEAN WIGGS

*"She who loves true honor more than fame."*

Arts and Crofts Club 1; Speech Club, Vice President 2; Science Club, Secretary 3; Junior-Senior Gift Committee 3; "Harvey" 3; Junior Class Halloween Queen 3; Math Club 4; Homecoming Court 4; Glee Club 1, 2, Treasurer 3, President 4; Invitation Committee 4.

PRISCILLA MAE WRIGHT

*"The happiness of life is made up of minute fractions."*

Home Economics Club 1; Speech and Debating Club 2; Journalism Club 3; Junior-Senior Invitation Committee 3, 4; French Club 4; Glee Club 1, 2, 3, 4.





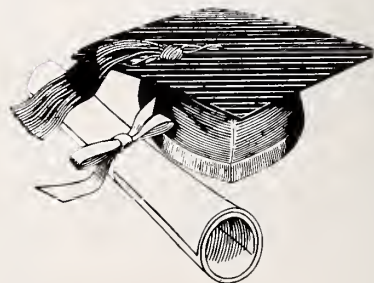


Miss Mildred Oliver, of Pine Level, presents a Bible to the Smithfield High School Student Body of chapel period in memory of Miss Eleonor Herring. Bolton Jones, a senior and President of the Student Body, accepts the gift.

RIGHT: Deonne Moore uses Tommy Simpson as a ladder while these two sock-footed seniors complete a decorating task.



BELOW: Senior, Morgoret Rackley pins a collar on junior, Vivion Johnson just before time to face the camera. Joon Denning is awaiting her turn.







MASCOTS

ELLEN BONDER

PHILLIP MURRAY

SUPERLATIVES



BEST ALL-AROUND:  
DIANA BESS MONTGOMERY  
SAMMY SIMPSON



MOST AMBITIOUS:  
PAT WHITLEY  
HARVEY DUPREE



MOST INTELLECTUAL:  
ANNE ROGERS MORGAN  
JARMON EASON



MOST ACCOMMODATING:  
MARGARET RACKLEY  
BOLTON JONES



BEST LOOKING:  
EVELYN STEWART  
THEL HOOKS



MOST POPULAR:  
CINDA GRANTHAM  
WESLEY COBLE



MOST ATHLETIC:  
SUSAN JOHNSON  
PHIL ENNIS



WITTIEST:  
PATTIE HILDEBRAND  
DAVID LEE



# WHICH COLLEGE?

# WHAT CAREER?



Mrs. Alice Avery, our Guidance Counsellor, has conference with Woodrow Byrd, senior.

## GUIDANCE PROGRAM

Through the National Defense Education Act, guidance, as a service to help boys and girls become more adjusted to their vocational, educational, and social-personal problems, offers new meaning to our school life. The efforts of our guidance program are to render services that will assist young people in meeting life situations in an intelligent and normal manner. To achieve the maximum growth and development, it is essential that a student know himself, his potentialities, and make wise decisions in planning his course of training. Our teacher-counsellor is Mrs. Alice Avery and our County Guidance Director is Miss Alyce Sumrell.





Aids to making decisions that will affect the future of many seniors and juniors are plentiful under this new program. Sandra Dail and Robin King are seen utilizing some of the college materials.



ABOVE: An attractive bulletin board helps bring the importance of choosing a career to the attention of students. Priscillo Wright is absorbing information concerning one of thousands of fields.



LEFT: Also as a part of this program the school library keeps a file of pamphlets and booklets pertaining to various careers. Thumbing through the file is Annie Moye.



## SENIOR RINGS

Senior class rings had been anxiously awaited. Soon after exams they arrived, and like golden tranquilizers they seemed to relax some of the left-over strain of exams.



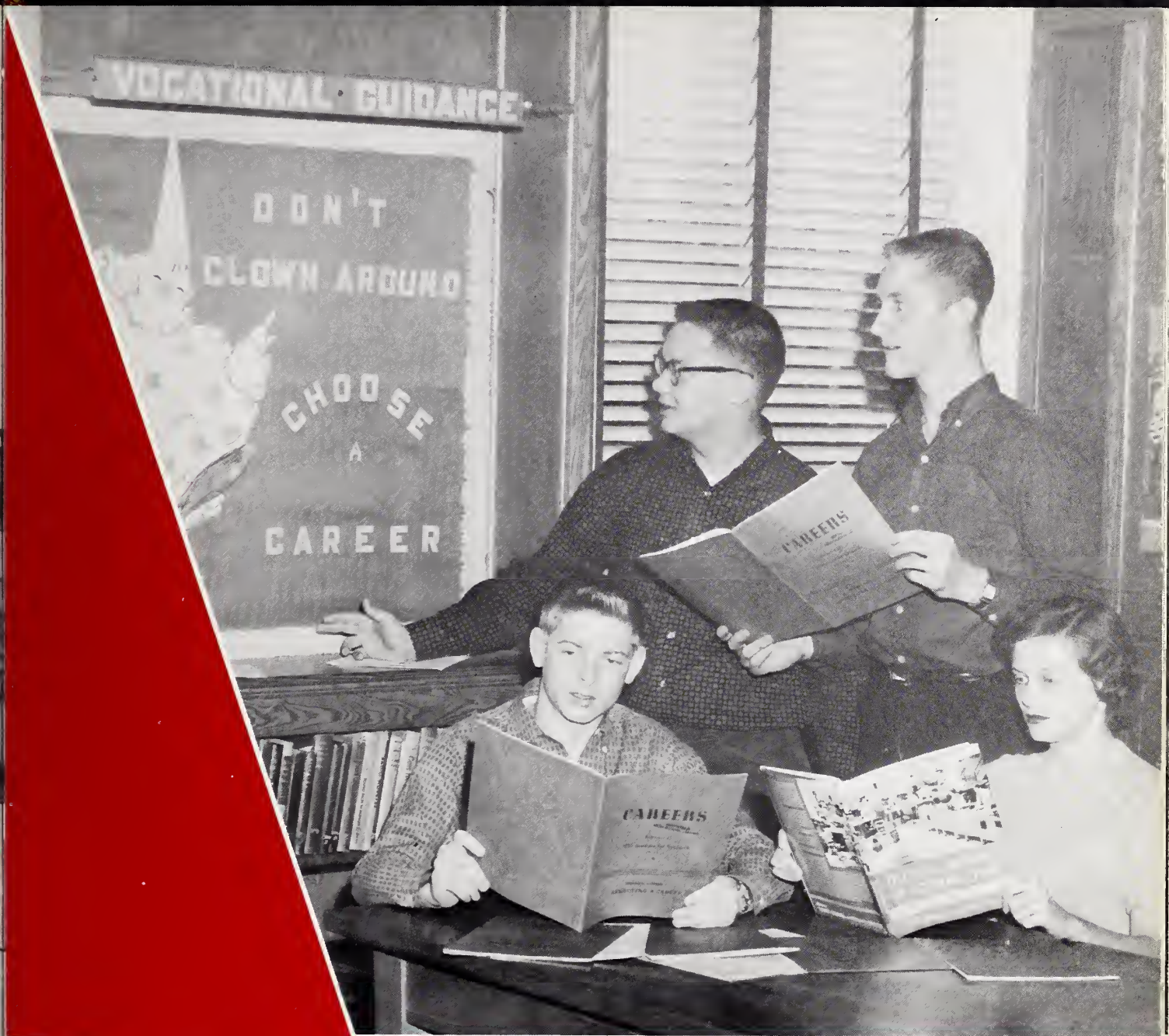
Carroll Johnson is being fitted for his ring as Edwin Price and Jerry Higgins wait patiently. Jerry's finger seems to be itching for one already.

"The day the rings come"—this enthusiastic group of seniors is admiring the newly-acquired jewelry.



Sarah Broadhurst, chosen Valentine Queen by the Monogram Club, reigned over the club's annual Valentine Dance. The festivities took place at the Legion Hut on Saturday, February 13.





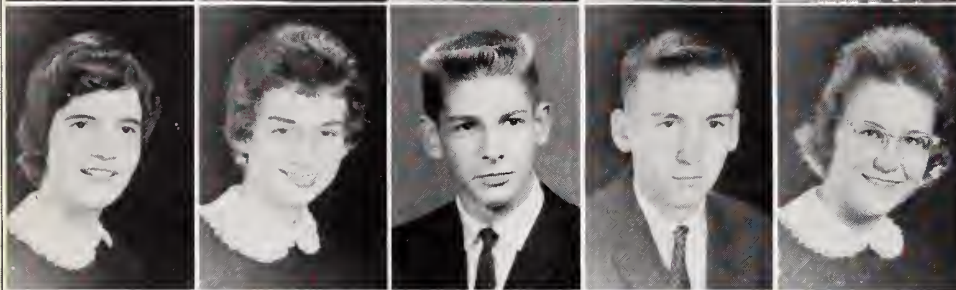
*Juniors*



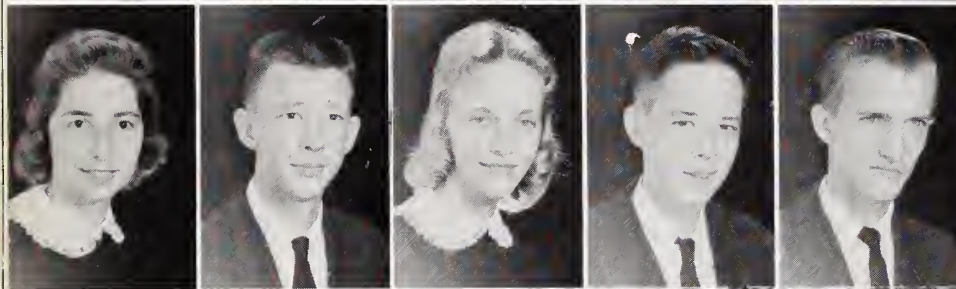
# JUNIORS



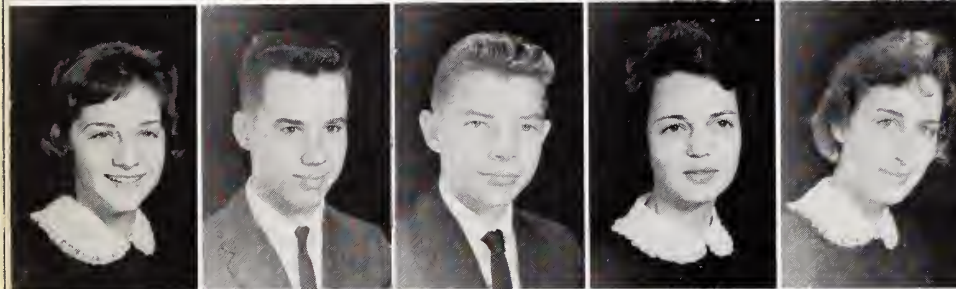
Fran Abell  
Glenda Adams  
Penny Adams  
Barbara Allen  
Larry Austin



Margaret Lee Austin  
Judy Ayscue  
Ben Baker  
Bab Barbour  
Jean Barbour



Joyce Barbour  
Larry Beasley  
Rosalyn Beaty  
Bobby Bell  
Michael Blackman



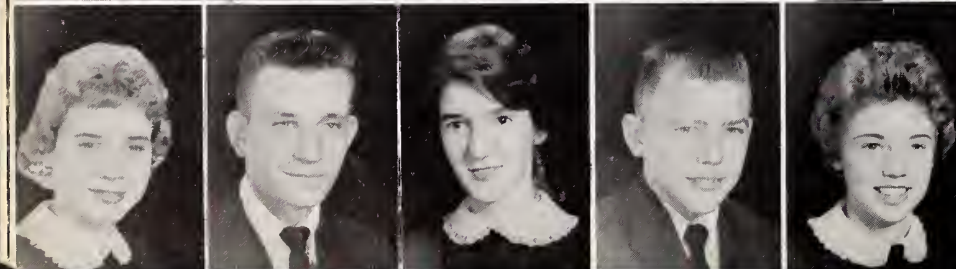
Becky Boone  
Ed Bayette  
James Braswell  
Kay Bridgers  
Willie Jean Brinkley



Mary Ann Britt  
Danette Byrd  
Betty Lau Caats  
Mary Cable  
Beverly Callier



Ozzie Caar  
Bannie Sue Creech  
Jane Creech  
Melvin Daughtry  
Vicki Daughtry



Jaan Denning  
Eugene Dixan  
Dania Driver  
Rager Easan  
Kay Faulk



# JUNIORS

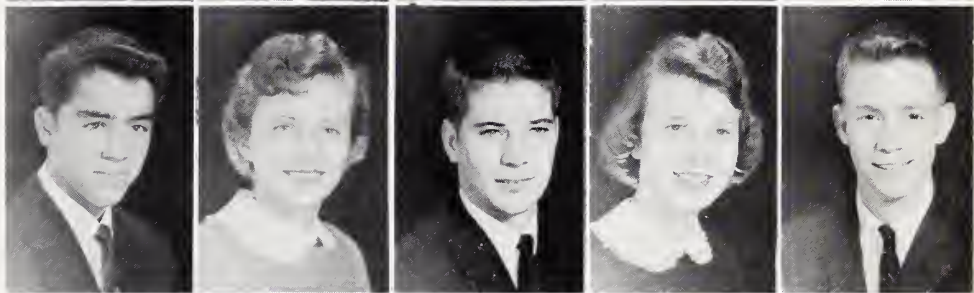
Timothy Gilmore  
 Jahny Glass  
 Blenda Gray  
 Susan Gregory  
 Cecil Heavner



Clarence Hill  
 Dan Hill  
 Glaria Hintan  
 Lib Halland  
 Billy Hawell



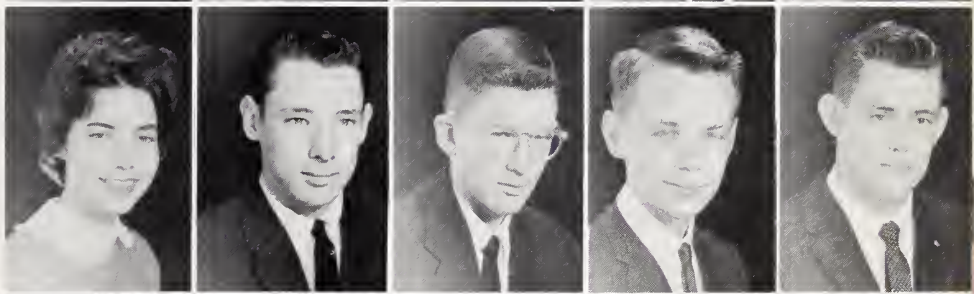
Freddy Johnsan  
 Judy Jahnsan  
 Keith Jahnsan  
 Vivian Jahnsan  
 Skipper Jahnsan



Barbara Janes  
 Marie Lamm  
 Nancy Langdon  
 Marshall Lassiter  
 Glaria Martin



Retha Ann Matthews  
 James McCawn  
 Herman McElveen  
 Gearge McFadyen  
 Jimmie McLamb



S. B. McLamb  
 Alice Maye  
 Sylvia Nichols  
 Bonnie Nartan  
 Harald Ogburn



Clarence Olive  
 Charles Parrish  
 Herbert Parrish  
 Judith Pearce  
 Gail Peedin





# JUNIORS

Wayne Phillips  
 Thomas Pilkington  
 Joyce Marie Pope  
 Bonnie Faye Powell  
 Steve Ratcliffe



Cynthia Ray  
 Margaret Reid  
 Bruce Stallings  
 Katie Lee Stonley  
 Barbara Ann Strickland



Phyllis Strickland  
 Charles Sutton  
 Peggy Sutton  
 Shirley Thompson  
 James Thornton



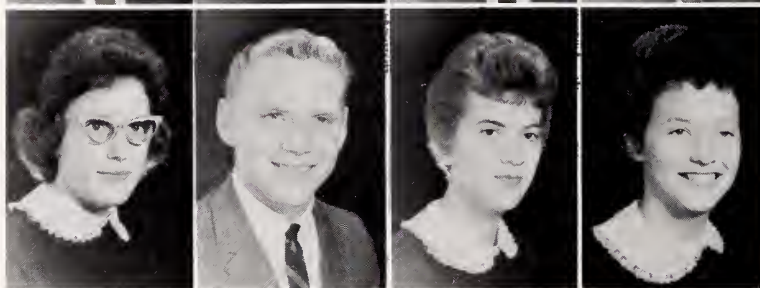
Faye Triplette  
 Thomas Toole  
 Josephine Tynor  
 Frank Vernon  
 Marc Wallice



Randy Whitehead  
 Alice Faye Whitley  
 Joe Merton Whitley  
 Ed Wilkins  
 Cynthia Williamson



Lois Williford  
 Brack Wilson  
 Glodys Fay Wilson  
 Linda Woodall







*Sophomores*



# SOPHOMORES

Lindo Alford  
Joseph Allen  
Randy Avery  
Jeonnette Boss  
Charles Borbour



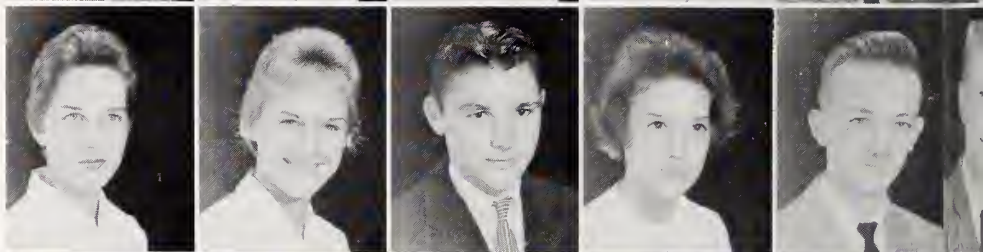
Donny Barbour  
Horold Borbour  
Jeon Barbour  
Don Barefoot  
Ton Barefoot



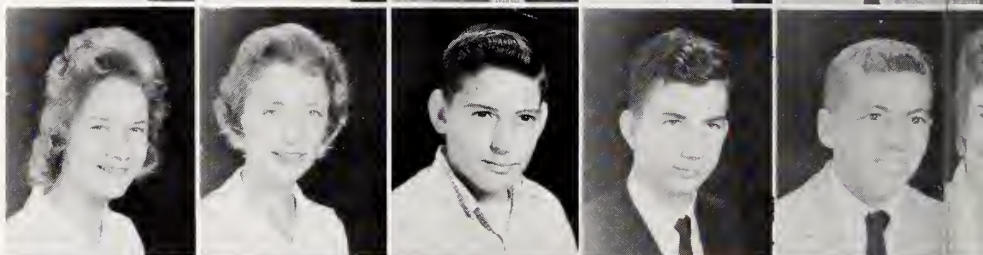
Johnnie Beasley  
Bet Booker  
Koy Boyette  
Linda Broswell  
Freddy Brink



Comille Broodhurst  
Gretchen Brown  
Jerry Bryont  
Pot Buchonon  
Donald Byrd



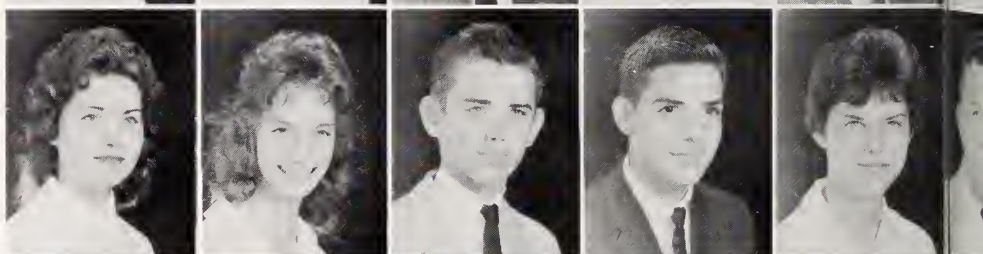
Morgoret Byrd  
Jonice Cosey  
Sherrod Copps  
Wayne Copps  
Billy Corroll



Anne Cheothom  
Marie Cleormon  
Richard Creech  
Sheilo Crumpler  
J. R. Doughtry



Edno Deese  
Kothleen Edgerton  
Horry Edwards  
Deon Ennis  
Judy Forbes



Emmo Lou Gordner  
Jerry Gilmore  
Loretto Gilmore  
Foydeon Godwin  
Johnny Groy





# SOPHOMORES

Juonito Hom  
Lindo Higgins  
Dwight Hill  
Phyllis Hobbs  
Edith Holley

Jeonne Honeycutt  
Sue Hooks  
Junior Hudson  
Alcy Hudson  
Bonnie Johnson

Earl Johnson  
Jomie Johnson  
Lorine Johnson  
Normo Jeon Johnson  
Rochel Johnson

Ronnie Johnson  
Sommy Johnson  
Sue Johnson  
Lynwood Jones  
Jonice King

Doreon Longdon  
Groce Longdon  
Corroll Longston  
Kothie Lossiter  
Dewey Lowson

Borboro Mortin  
Kothie McGee  
Elisso McGowon  
Nelson McLomb  
Betty Jeon McLeon

Dovid Messer  
Jo Ann Moore  
Tommy Moore  
Jonice Morgon  
Lolo Moe Moye

Jon Norris  
Vic Ogburn  
Joey Overby  
Foye Owen  
Louro Porker

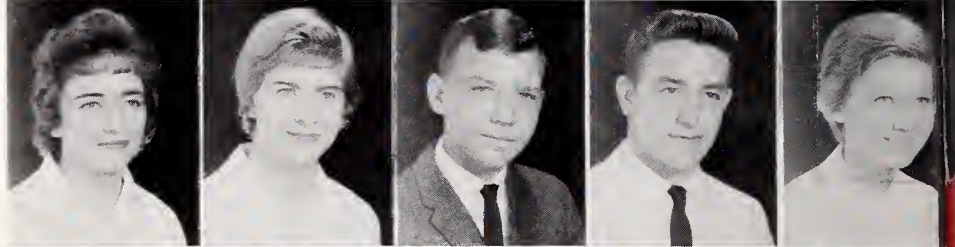


# SOPHOMORES

Jesse Parrish  
Melinda Peedin  
Jane Pilkington  
Wynana Pruitt  
David Putnam



Alice Stanley  
Brenda Stephenson  
Donald Stephenson  
J. A. Stephenson  
Eve Suggs



Bill Suttan  
Bill Taylor  
Billy Upchurch  
Danald Wallace  
Betty Ward



Watts Ward  
Billy Wellans  
Curtis Whitehurst  
Caral Ann Wickam  
Jayce Wiggs



Judy Wilkes  
Charles Wilkins  
Jeffrey Williams  
June Williford  
Ray Woadard







*Freshmen*



# FRESHMEN

Thomas Adams  
Ann Allen  
Linda Ruth Allen  
Danald Baily  
Peggy Barbaur  
Veronica Barbaur

Carolyn Beasley  
Florieta Beaty  
Ja Ann Blackmon  
Janice Blackmon  
Jane Boyette  
Ricky Bridges

Larry Bryant  
Jenette Byrd  
Linda Carol Byrd  
Linwaad Byrd  
Rachel Byrd  
Steve Byrd

Jimmy Canady  
Ray Capps  
Sandy Carrall  
Wade Clearman  
Bannie Coates  
Margaret Jo Cackrell

Dana Clark Cooper  
Jimmy Craytan  
Bubba Creech  
Imagene Creech  
Myrtle Creech  
Butch Culbreth

Jack Daughtry  
Ned Daughtry  
Ted Daughtry  
Mary Ann Davis  
Marilyn Day  
W. T. Deese

Jackie Lee Dixon  
Tyler Edmanson  
Dannie Edwards  
Patsy Edwards  
Charles Ellis  
Marie Ennis

Danny Evans  
Jimmy Ferrell  
Don Flowers  
Trudy Flowers  
Gail Faos  
Bebe Grady

Babbie Grantham  
Franklin Grimes  
Butler Hall  
Durwaad Hamiltan  
Rase Ellen Hamiltan  
Thomas Hamiltan





# FRESHMEN

Al Hardee  
Jockie Harper  
Brenda Hartley  
Jenny Hill  
Kay Hill  
Sora Nell Hill

Andy Holland  
Sallie Haneycutt  
Barbara Hudson  
Harald Jahnsen  
Jimmy Ray Jahnsen  
Peggy Johnson

Randy Jahnsen  
Rawland Jollie  
Charles Jones  
Dan Jones  
Dauglas Jones  
Glenn Janes

Kay Janes  
Melvin Jones  
Sandra Janes  
Sheila Ann Kennerson  
David Lee  
Linda Lewis

Kathryn Mallord  
Caralyn Mossengill  
Sandy Massey  
Clifton McCown  
Jahn Page McFodyen  
Billy Ray McLead

Barboro Mitchell  
Brendo Mitchell  
Jerry Mozinga  
Jennie Narton  
Jimmy Ogburn  
Telfair Ogburn

Jenny Olive  
Craig Overby  
Sallie Padgett  
Danny Peedin  
Babby Penny  
Edward Petersan

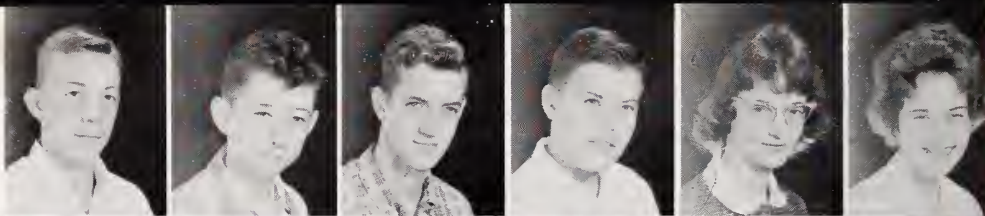
Don Phillips  
Amy Pitchi  
Louise Pope  
Daris Price  
Donald Putnam  
Robert Rabil

Douglas Roberts  
Frances Roberts  
Carolyn Rowland  
William Sellers  
Ray Speas  
Jayce Stanley

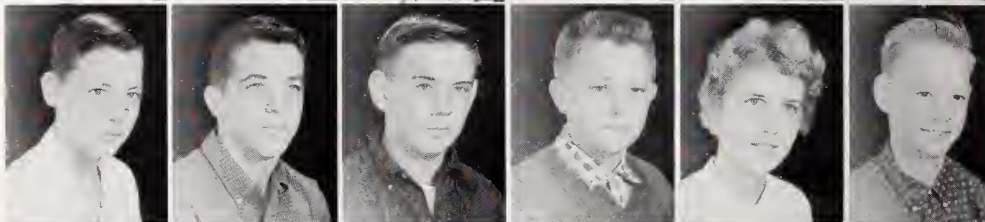


# FRESHMEN

Durwaard Stephenson  
 Larry Stephenson  
 Sherwaard Stephenson  
 David Strickland  
 Gail Strickland  
 Patsy Strickland



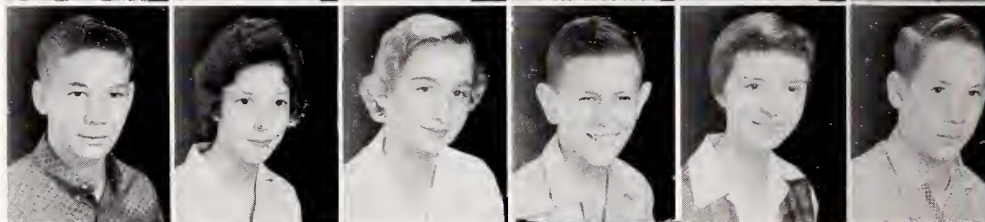
Joe Straup  
 Bill Taltan  
 William Taltan  
 Lean Tucker  
 Gayle Tyner  
 Truett Underhill



Jae Dan Underwood  
 Glenda Vernon  
 Brenda Walden  
 Mike Warren  
 Barret Warrick  
 Haward Whitley



Landis Whitley  
 Teresa Whitley  
 Kaye Willet  
 Gary Winstead  
 Eleanor Ruth Woodall  
 Alexander Yarborough



Claire Young







*Athletics*



# CHEERLEADERS



CINDA GRANTHAM  
Chief

KAY FAULK  
BONNIE NORTON  
JUDY JOHNSON

MARGARET LEE AUSTIN  
GLORIA HINTON

FRAN ABELL







*Football*



# STATE CHAMPS!

State Champions! These two words sum up the football season. Undefeated and untied in thirteen games, Coach Roy Brown's Red Devils rallied over opposition throughout the season. After opening with victories over AAA Henderson (19-0) and Benson (40-6), they then jumped into conference competition. Garner fell 14-0, while Apex in the following game was mowed down by a score of 21-6. Smithfield won its fifth straight by smothering Millbrook 27-7. At Wake Forest, the two undefeated South Central leaders and two very outstanding halfbacks, Phil Ennis and Wayne Welborn, met on the gridiron.

The rombling Red Devils edged the Bulldogs 14-6, and Ennis outshone Welborn in this important battle. A 19-0 win over Cory showed the defensive might of the Red Devils as they held the Imps to only one first down. Next Smithfield was victorious over Fuquoy 26-12. The traditional Selma game, our Homecoming, wound up the conference schedule. The entire team looked sharp as the Yellow Jackets were swatted 33-0. The regular season ended with a 14-7 win over AAA Dunn.

Greenville was the site of the first play-off game, Smithfield versus Edenton. The Red Devils scored two early touchdowns and then held on for a 12-6 decision. Wallace met the Devils at Clinton in a thrilling contest. The difference came when Sammy Simpson blocked their kick for the extra point. The final score read 7-6, S. H. S. on top! The state championship game now lay ahead of our team.

On Saturday afternoon, December 5, the Smithfield Red Devils clashed with the Boone Blue Devils at Boone. After receiving the kick-off the Blue Devils rallied to the goal with Robin King carrying over the goal line. In the third quarter Phil Ennis took a Keith Johnson pass to pay dirt for the second TD. The final score came when Johnson threw to Ennis on an 82-yard pass-run play. Smithfield had won the game 20-0 and held its first state athletic championship.



Coach Roy Brown, surrounded by co-captains Phil Ennis and Frank Creech, receives the trophy for the State AA Football Championship from Hop Perry, president of N. C. H. S. A. A.

FIRST ROW, Left to Right: Wesley Coble, Robin King, Frank Creech, Phil Ennis, Rex Stirling, Edgar Boughom, Coach Roy Brown . . . SECOND ROW: Ted Jackson, Michael Grimes, Preston Edwards, Jimmy Ennis, Sammy Simpson, David Lee, Roy Brown . . . THIRD ROW: Ben Boker, Don Barefoot, Brock Wilson, Ed Wilkins, Skipper Johnston, Ed Boyette, Howard Whitley, Jeffrey Williams . . . FOURTH ROW: Deon Ennis, Keith Johnson, Freddy Johnson, Joey Overby, Steve Rotcliffe, Tom Borfoot, Billy Wellons . . . BACK ROW: Managers Melvin Doughty and Bob Borbour.







FRONT ROW, Left to Right: Jimmy Ennis, Ted Jackson, Frank Creech, Phil Ennis, Rex Starling, David Lee, Ray Brawn, Preston Edwards . . . BEHIND: Rabin King, Wesley Cable, Michael Grimes, Sammy Simpson . . . KNEELING: Edgar Baugham. These 13 seniors certainly contributed their part to the championship squad.

Many individual honors came to our outstanding Red Devils. Seniors Phil Ennis, Frank Creech, Sammy Simpson, Wesley Coble, Rex Starling, and Junior Ed Wilkins were named All-Conference. Creech and Simpson were named All-Eastern. Creech was named All-State and selected to play in the N. C. — S.C. Shrine Bowl game. Ennis and Creech were selected to play in the East-West All-Star game and Coach Roy Brown had been selected as a coach for this game.

Caach Ray Brawn is flanked by his co-captains, Phil Ennis, left, and Frank Creech.



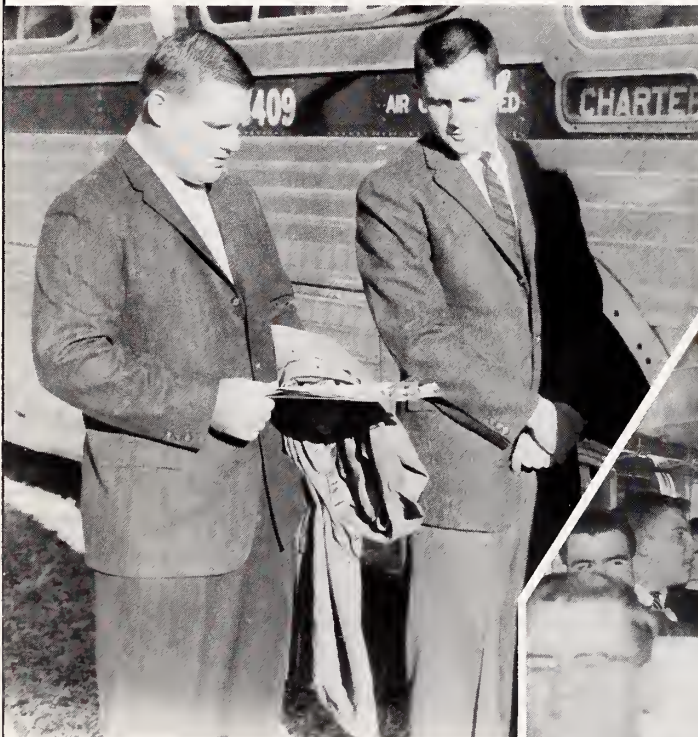
#### GAMES

S. H. S.	19	HENDERSON	0
S. H. S.	40	BENSON	6
S. H. S.	14	GARNER	0
S. H. S.	21	APEX	6
S. H. S.	27	MILLBROOK	7
S. H. S.	14	WAKE FOREST	6
S. H. S.	19	CARY	0
S. H. S.	26	FUQUAY	12
S. H. S.	33	SELMA	0
S. H. S.	14	DUNN	7
S. H. S.	12	EDENTON	6
S. H. S.	7	WALLACE	6
S. H. S.	20	BOONE	0





The Red Devils proved the adage, "Practice makes perfect," to be true by completing a perfect season of thirteen wins, no losses, and no ties.



LEFT: Coaches Brown and Jock Temple make a final check before departing for Boone.

BELOW: The Red Devils seem to be in a variety of moods and expressions before making the trip to Boone.







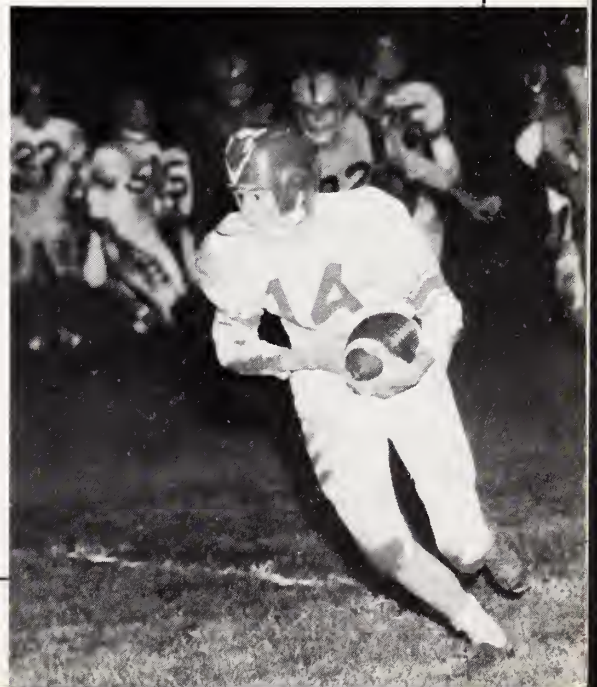
LEFT: In the game with Apex, Keith Johnson's pass to Wesley Cable (in dark jersey) seems to have missed its target.



RIGHT: After a good gain Roy Brown is brought down by two Millbraak defenders.



LEFT: Against Cary, Phil Ennis has driven through the White Imps' line.



RIGHT: Prestan Edwards is headed for pay dirt after receiving a pass in the traditional Selma game.





LEFT: The Selma defender seems to have broken up this pass play but **Sommy Simpson** holds on to the ball.

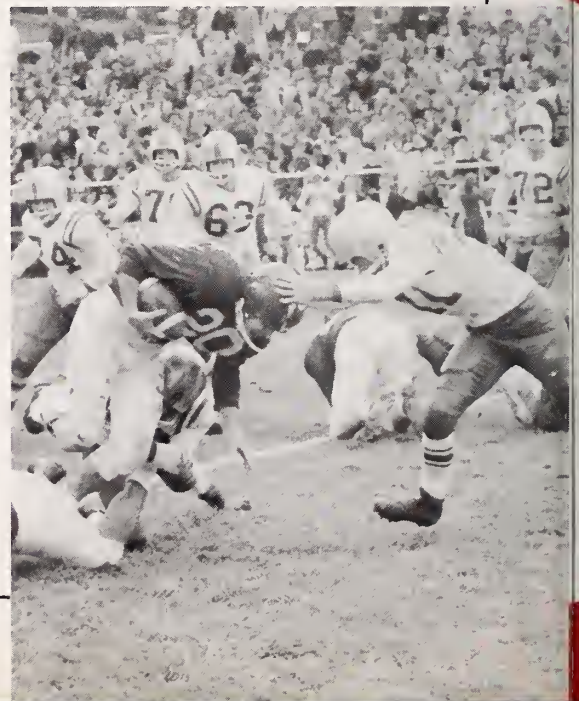


RIGHT In this shot **Phil Ennis** is carrying the ball over tackle in the play-off game with Edenton.



LEFT: **Sommy Simpson** scores the Red Devils' first TD against tough Edenton after receiving a pass.

RIGHT: In the championship game **Robin King** was a stand-out ball carrier as shown here blasting through the Boone line.







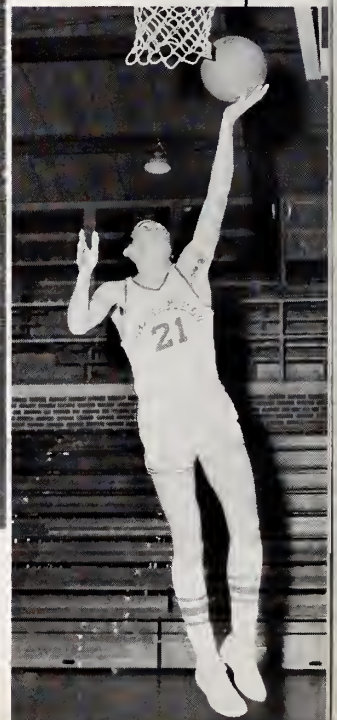
*Basketball*





FRONT ROW: Roy Brown, Sammy Simpson, David Lee, Wesley Coble. MIDDLE ROW: Jeffrey Williams, Thel Hooks, Michael Grimes, S. B. McLamb. BACK ROW: Preston Edwards, Ed Boyette, Joey Overby, Keith Johnson.

SMITHFIELD	SCORES	OPPONENTS
38	Four Oaks	62
38	Clinton	55
74	Princeton	71
41	Garner	42
54	Apex	53
48	Fuquay	47
55	Cary	58
63	Wake Forest	58
54	Millbrook	43
62	Selma	56
57	Garner	42
45	Apex	50
72	Fuquay	50
53	Cary	54
56	Selma	62
70	Millbrook	39



Sammy Simpson  
CO-CAPTAINS  
David Lee





Coach Temple has his starters huddled around him as he instructs them as to what strategy to use.

After several highly successful seasons, this year's showing may have seemed disappointing. Sammy Simpson, a returning starter, was late coming out and slow in returning to form because of a football injury. Also, in conference competition the Red Devils lost several very close games. For instance, the total margin of loss in three important games was five points.

A high spot came when our boys defeated Garner 57-42, knocking them from the unbeaten ranks. Easy victories over Fuquay 72-50 and Millbrook 70-39 were also notable accomplishments.

Coach Temple had an all-senior starting lineup consisting of David Lee, Sammy Simpson, Wesley Coble, Thel Hooks, and Roy Brown. The squad, most of which are seniors, clinched third place in the standings and ended the season with a winning record.

This year the District III AA tournament was held in Smithfield.



Everyone is after the ball. It looks as if long-armed Sammy Simpson is out-reaching them all.

Roy Brawn left them all behind on this fast break and came down the court to score.







Left . . . Sammy Simpson shoots over the head of Millbraak's ace, Garrett, to lengthen the Red Devils' lead.

Below . . . A variety of facial expressions are aimed at Roy Brown as he takes dead aim at the hoop.



Below . . . With arm raised in a hoak shot, Keith Johnson has put the ball into arbit. At least that's what it appears has happened.



The defender and David Lee seem to be only fingering the air, but David has just scored on a jump shot.







FRONT ROW: Nancy Langdon, Ann Batten, Susan Jahnsan, Mary Ann Britt. MIDDLE ROW: Lib Holland, Sue Hooks, Patsy Edwards, Phyllis Hobbs. BACK ROW: Anne Cheatham, Mary Cable, Linda Byrd, Betty Lou Coates, Penny Adams.

SCORES

SMITHFIELD

50	Four Oaks
59	Clinton
81	Princeton
49	Garner
66	Apex
58	Fuquay
58	Cary
55	Wake Forest
81	Millbrook
59	Selma
58	Garner
39	Apex
46	Fuquay
67	Cary
73	Selma
84	Millbrook

OPPONENTS

54
61
71
48
38
63
49
53
65
74
57
45
52
66
82
46



Ann Batten

CO-CAPTAINS

Susan Johnson





Smithfield's girls, inexperienced in the previous season, improved and completed a rather successful year.

Led from the beginning by the scoring of Susan Johnson and at the end by the scoring of Mary Ann Britt, they rolled over several opponents and gave undefeated Selma a close battle. Outstanding defensive play by the guards was also an important factor in gaining for the team a winning record.

With an eye to the future, it might be noted that there were only two seniors on the squad. And, in this group were a couple of hustling freshmen who looked very promising.

Coach Brown's starting lineup was dominated by juniors and consisted of Susan Johnson, Mary Ann Britt, Nancy Langdon, Betty Lou Coats, Lib Holland, and Mary Coble.

The female Red Devils at the close of the season entered the District Tournament in Selma.



Two of our guards seem to be taking it easy during a break in the action.

Mary Ann Britt, after cutting under the basket, pops the ball up for a score.

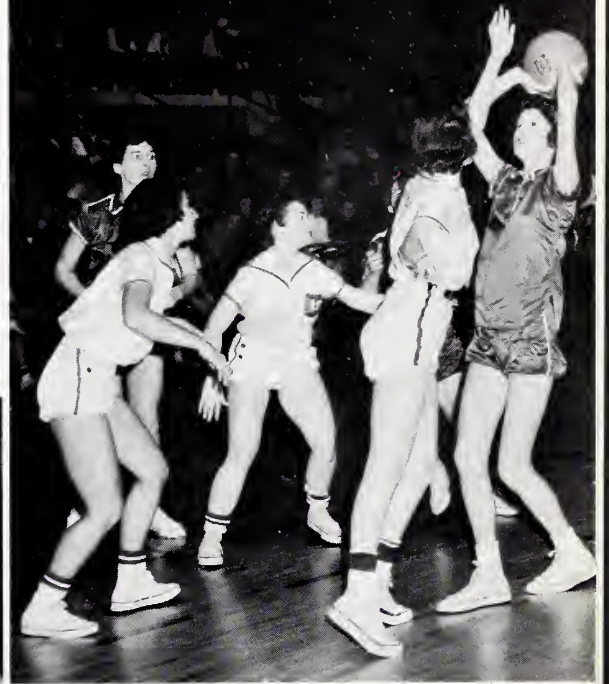


One of our tough guards, Betty Lou Coates, drives up the court with an opponent on her heels.





Right... Mary Ann Britt painfully raises the ball over her head for a shot.



Below... Breaking toward the basket, Susan Johnson is about to receive a pass from Mary Ann Britt.



A promising freshman, Patsy Edwards, holds the ball over her head as Ann Batten watches the action.

Left... Despite an all-out effort by the Millbrook defender, Sue Hooks fires the ball into the basket for two points.



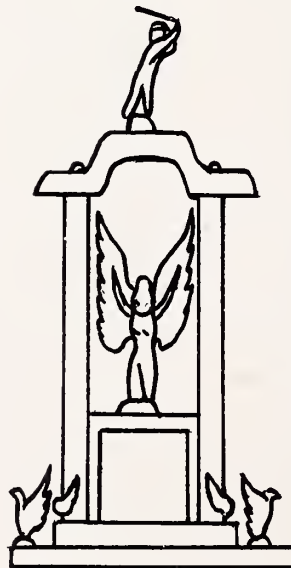




FRONT ROW: Cooch Jock Temple, Robin King, Brian Langley, Wade Hamilton, David Putnom, Ted Jackson. MIDDLE ROW: Phil Ennis, Normon Whitley, Sommy Simpson, Melvin Anderson, Roy Brown, Horry Edwards. BACK ROW: Mike Warren (bat boy), Keith Johnson, James Thornton, David Lee, Melvin Dougherty (monoger), Lin Jones (bot boy).

## BASEBALL 1959

SMITHFIELD		OPPONENTS	
SMITHFIELD	3	FUQUAY	5
SMITHFIELD	3	APEX	1
SMITHFIELD	2	SELMA	1
SMITHFIELD	13	FUQUAY	2
SMITHFIELD	11	GARNER	4
SMITHFIELD	10	APEX	4
SMITHFIELD	7	SELMA	3
		PLAY-OFFS	
SMITHFIELD	5	GARNER	3
SMITHFIELD	6	GARNER	4
SMITHFIELD	5	S. DURHAM	2
SMITHFIELD	6	S. DURHAM	9
SMITHFIELD	7	S. DURHAM	0
SMITHFIELD	4	ELIZABETH CITY	5
SMITHFIELD	0	ELIZABETH CITY	6

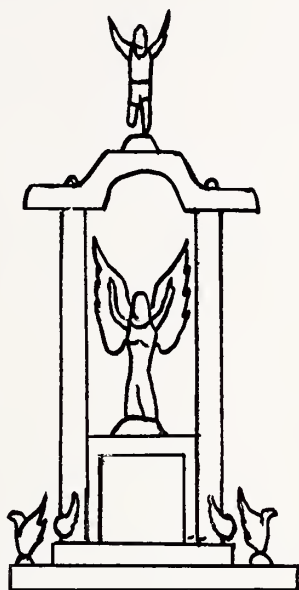


Playing in the South Central Conference for the first time, the Red Devil nine proved to be the class of the league. After successfully completing the regular schedule, they defeated Selma for Division honors, and then smothered Garner for the Conference title. Southern Durham fell prey to Smithfield in the District playoffs; however, the Devils met their match, losing to Elizabeth City in the State play-offs. Such outstanding players as Phil Ennis, Larry Moore, and David Lee are returnees for 1960.



# TRACK 1959

In this, the third official year of track competition, the Red Devils were certainly an outstanding team. Led by stars Broadhurst, Hales, and Davis, the cindermen went through the schedule undefeated. The honors as Conference and District Champions and a high standing in the Sectional Meet brought new prestige to our school. A highlight of the season was the Conference Meet in which they scored more points than the other five teams combined. Returning for 1960 are these outstanding performers: Wesley Coble, Preston Edwards, Michael Grimes, Oscar Creech, and Joey Overby.



SMITHFIELD	MEETS	
87.....	Millbrook	28
72.....	Dunn	35
	Clayton	11
101.....	Fuquay	14
61 $\frac{3}{4}$ (1st).....	Conference Meet	
27 $\frac{3}{4}$ (1st).....	District Meet	
69.....	Selma	45
8 $\frac{3}{4}$ (4th).....	Eastern Meet	
2 $\frac{1}{2}$ (12th).....	State Meet	

**KNEELING:** Herman McElveen (manager), Preston Edwards, Jimmy Ennis, Jack Braadhurst, Joe Glenn Lee, Oscar Creech. **STANDING:** Thel Haaks, Jaey Overby, Clifford Davis, Jeffrey Williams, Lester Hales, Stuart Highsmith, Michael Grimes, Wesley Cable.





# MONOGRAM CLUB

## 1960



### OFFICERS

THEL HOOKS . . . . . President  
 SAMMY SIMPSON . . . . . Vice President  
 CINDA GRANTHAM . . . . . Secretary-Treasurer

### HONOR COUNCIL

ROBIN KING                      DAVID LEE  
 SAMMY SIMPSON                BRACK WILSON  
 PHIL ENNIS                      KEITH JOHNSON



Fran Abell  
 Margaret Lee Austin  
 Ann Batten

Edgar Baugham  
 Mary Ann Britt

Roy Brown  
 Betty Lou Coates  
 Mary Coble

Wesley Coble  
 Frank Creech

Oscar Creech  
 Preston Edwards  
 Jimmy Ennis

Phil Ennis  
 Kay Faulk

Cinda Grantham  
 Michael Grimes  
 Gloria Hinton

Lib Holland  
 Sue Hooks

Thel Hooks  
 Ted Jackson  
 Judy Johnson

Keith Johnson  
 Susan Johnson

Robin King  
 Nancy Langdon  
 David Lee

Herman McElveen  
 Larry Moore

Bonnie Norton  
 Joey Overby  
 Harold Puckett

David Putnam  
 Steve Ratcliffe

Sammy Simpson  
 Rex Starling  
 James Thornton

Ed Wilkins  
 Jeffrey Williams

Brack Wilson





*Advertisements*



# SPONSORS



Dr. Watson Wharton

Delma Johnson Store

Aycock's, Incorporated

Johnston County Oil Dealers Association

Frank L. Skinner

Radio Sales and Service

Jordan and Holt, Incorporated

Cecil's Esso Servicenter

Bell's Opticians

Carolina Sta-Dri Distributors

Mrs. Eunice Norton

Smithfield Auto Dealers

Ideal Oil Company, Incorporated

Queen Upholstery Shop

Nelson's

Gene Parker

Dr. W. J. Massey, Jr.

Farmer's Hardware

Smithfield Typewriter Sales and Service

Smithfield Pharmacy

Mr. and Mrs. D. Cole Ray

Parrish Clothing Store

Mr. and Mrs. Bill Peele

Medlin Printing Company

Gregory's Five and Ten

Fuller Rice

Royall Jewelers

Wallace Welding and Machine Shop

Stephens and Congleton Hardware Company

C. W. Massey

Wallace Guano Company

Mrs. Mary H. Lehew

McLamb's Florist

Mr. and Mrs. William Ragsdale

Mr. and Mrs. Jack Jackson

Lambeth's Texaco Station



## SMITHFIELD TELEVISION CENTER

125 West Market St. Phone WE 4-2659

Authorized Dealer for

R.C.A. VICTOR TELEVISION  
MAGNAVOX HIGH FIDELITY  
MAGNAVOX STEREOPHONIC  
HIGH FIDELITY

TAKE MOTHER AND DAD  
WITH YOU WHEN YOU GO AWAY  
TO SCHOOL

## HOOKS STUDIO

Smithfield, North Carolina



MEN'S WEAR

Smithfield and Selma

## THE SMITHFIELD HERALD

"Your County Newspaper"

Published Twice a Week

## G and G GULF SERVICE



COMPLETE GULF PRODUCTS

Intersection of Truck Lane and Highway 301

Smithfield, North Carolina

## LAUGHTER'S GARAGE

GENERAL REPAIRING

Phone WE 4-2371

Truck Lane

Smithfield, North Carolina



## WHITE SWAN MOTEL RESTAURANT

Highway 301

Smithfield, North Carolina

## JACK'S FARM SUPPLY

FEED — SEED — FERTILIZER

GRAIN BUYERS

Big Planters Tobacco Warehouse

Telephone WE 4-2598



**AYCOCK  
PROPANE**  
GAS SERVICE

BOTTLE GAS SERVICE  
Phone WE 4-2272  
Smithfield-Selma Highway

CONGRATULATIONS  
to the  
CLASS OF '60

**THE JEWEL BOX**

Smithfield, North Carolina

**SMITH'S LADIES' SHOP**

"There Is No Substitute For Quality"

Smithfield, North Carolina

**W. B. OLIVER & SON, INC.**

Cotton Ginners & Merchants  
Phone WO 5-3124

**PINE LEVEL OIL MILL CO.**

M. F. G. Cotton Seed Products and  
Fertilizer Since 1902  
Phone WO 5-2152

PINE LEVEL, NORTH CAROLINA

**CAROLINA  
MOTOR STORES, INC.**

Wholesale Jobbers, Distributors  
Automotive Parts — Supplies — Equipment  
Phone WE 4-3188 Box 149  
Smithfield, North Carolina

BEST WISHES TO  
GRADUATING CLASS

**HOOD BROTHERS  
DRUG STORE**

Johnston County's Family Druggists  
Since 1879

**The Pine Level Oil Mill Co.**

Since 1902  
Cotton Seed Products and Fertilizers  
Telephone WO 5-2152  
Pine Level, North Carolina

**John Dail's Service Station**



BEST WISHES TO THE SENIORS



**WIGGS  
LAUNDRY  
AND  
DRY CLEANING**

Smithfield, North Carolina

**Leder Brothers'  
Department Stores**

Plymouth — Whiteville — Clinton — Wilson  
Goldsboro — Jacksonville — Smithfield  
Concord, N. C. — Marion, S. C. — Dunn, N. C.  
Williamston, N. C. — Rockingham, N. C.

**JACKSONVILLE DEPARTMENT STORE**

Jacksonville, N. C.

**LEDER-POTTER DEPARTMENT STORE**

Loris, S. C.

**FLEMING PHARMACY**

COMPLETE  
PRESCRIPTION SERVICE

Smithfield, North Carolina

**Smithfield Wholesale  
Builders Supply, Inc.**

"Quality Building Material"

Dial WE 4-2869

Raleigh Road P. O. Box 951  
Smithfield, North Carolina

**JOHNSON'S LAUNDRY  
AND  
DRY CLEANERS**

Smithfield's Only Sanitone Cleaners  
Phone WE 4-2305

Smithfield, North Carolina

**OVERBY FUNERAL HOMES**

Sponsors of  
**OVERBY MUTUAL BURIAL ASSOCIATION,  
INC.**

Joseph R. Overby  
Smithfield, North Carolina

HOTEL DINING ROOM

"Where Friends Meet to Eat"

**Hotel Gabriel Johnston**

Smithfield, North Carolina

Congratulations

**BOLTON'S FLOWER SHOP**

"Flowers for all occasions"

Route 1 Smithfield, N. C.



CONGRATULATIONS, SENIORS!

**PACE'S  
CONSTRUCTION COMPANY**

Smithfield, North Carolina

You **SAVE**  
When you  
Shop at~



**GREGORY'S  
DEPARTMENT  
STORE**

Smithfield, North Carolina

Compliments

**JORDAN'S  
OPEN AIR MARKET**

Smithfield, North Carolina

New Tire Mileage at HALF the Price



**SELMA TIRE &  
RECAPPING CO.**

Selma, North Carolina

P. O. Box 126

WO 5-2046



**STRICKLAND'S RECAPPING  
SERVICE, INC.**

Smithfield, North Carolina

For the Hair Style of Tomorrow  
See RUBY Today

**RUBY DAUGHTRY'S SALON**

WE 4-3663

BEST WISHES  
TO THE CLASS OF '60

**JOHNSTON COUNTY  
FROZEN FOODS, INC.**

Smithfield, North Carolina

Compliments

**SELMA RADIO SALES  
AND SERVICE**

Selma, North Carolina



## HINES TEXACO SERVICE CENTER



Firestone Tires  
and  
Accessories

Across from the Post Office

Smithfield

North Carolina

## HILL'S GROCERY & MARKET

Groceries • Meats • Ice Cream  
CONGRATULATIONS SENIORS!

Phone WE 4-2780  
Smithfield, North Carolina

## JORDAN'S JEWELERS

Quality Gifts  
— Since 1898 —

Smithfield,

North Carolina

## REX SHOE SHOP AND SHOE STORE

Expert Shoe Repairing  
Complete Line of Men's Dress  
and Work Shoes

Smithfield,

North Carolina

## TURNAGE and TALTON SUPER MARKET

Smithfield,

North Carolina

## MARVIN'S PLACE

GAS and OIL

Across the River on U.S. 70

Phone WE 4-3506

Smithfield,

North Carolina

## EVELYN'S GIFT SHOP

208 West Holt Street

Smithfield,

North Carolina

## BATT JOHNSON'S

Barbecued Chicken and Pig

Buffalo Road

SMITHFIELD,

NORTH CAROLINA



Compliments  
of  
**FAY'S SANDWICH SHOP**

Phone WE 4-2693  
Smithfield, North Carolina

Compliments of  
**HOLT FARM CENTER, INC.**

Custom  
GRINDING and MIXING  
Truck Lane and Brogden Road  
Phone WE 4-2043

**DR. VON E. RHOADES**

**CHIROPRACTORS**

SMITHFIELD, N. C.

**CITY FOOD MARKET**

**QUALITY MEATS and GROCERIES**  
We Deliver Phone WE 4-2415  
C. P. Batten — S. E. Batten

**THE FASHION SHOP**

Smart Apparel for Women and Children  
Phone WE 4-2534  
Smithfield, North Carolina

**TROT MOTEL**

Highway 301 - 70-A  
"Smithfield's Newest"

CONGRATULATIONS SENIORS!  
**RUFUS KING GROCERY**

Groceries, Drinks and Candies for  
all School Children  
Smithfield, North Carolina

BEST WISHES

**THE  
JEROLD CORPORATION**

Highway 301 South  
SMITHFIELD, N. C.



Best Wishes to the Seniors  
through the Years

Drink

COCA-COLA

Delicious and Refreshing

THE CAPITAL COCA-COLA BOTTLING CO.  
Incorporated

Highway 301 Smithfield, N. C.

King Size, Too!



L U M B E R

BUILDING MATERIALS

GUY C. LEE

MANUFACTURING

COMPANY

Smithfield, N. C.

HUGH AUSTIN'S

Men's & Boys' Store

"A Trial Is All We Ask"

Phone WE 4-3401

Smithfield, North Carolina

CONGRATULATIONS!

K. R. EDWARDS

TOBACCO COMPANY

Richmond, Virginia





# JOHNSTON COTTON COMPANY

COMPLETE FARM AND HOME SUPPLIES

FERTILIZERS

John Deere Sales and Service

Nathane Furniture and Appliances

WE 4-2701

WE 4-2421

Smithfield, North Carolina

---

## BRIGHT LEAF AND BURLEY TOBACCO CO., INC.



Smithfield, North Carolina

---

RADIO

WMPM

1270

Smithfield, North Carolina

---

## SMITHFIELD SAW AND PULPWOOD COMPANY

HOMELITE CHAIN SAWS — SAWS AND SERVICE

FORESTRY CONSULTANTS

Know Your Timber Value Before You Sell

Phone WE 4-3305



**ALBERT'S SERVICE  
STATION**

GULF  
PRODUCTS



Fifth and Market Phone WE 4-3088  
Smithfield, N. C.

COMPLIMENTS  
of

**GRANTHAM'S  
BOYS' & YOUNG  
MEN'S SHOP**

SMITHFIELD, NORTH CAROLINA

**HEAVNER AND WALLACE  
IMPLEMENT COMPANY**

**SALES and SERVICE**

Allis-Chalmers Farm Machinery

Smithfield, North Carolina

**ALLIS-CHALMERS**  
SALES AND SERVICE

Compliments Of

**GARDNER-CREECH  
OIL COMPANY**



YOUR FRIENDLY  
MOBILGAS DISTRIBUTOR



CONGRATULATIONS TO THE GRADUATING CLASS OF 1960 FROM  
MEMBER STORES OF JOHNSTON COUNTY FURNITURE ASSOCIATION

Barnes Furniture Company.....	Four Oaks, N. C.
Denning Furniture Company.....	Smithfield, N. C.
Home Furniture & Appliance Company.....	Smithfield, N. C.
Jones Brothers Furniture Company.....	Pine Level, N. C.
Miller Furniture Company.....	Benson, N. C.
Rose & Company.....	Benson, N. C.
Selma Furniture Company.....	Selma, N. C.
Talton, Inc.....	Smithfield, N. C.
G. S. Tucker & Company.....	Smithfield, N. C.
Holland Furniture Company.....	Benson, N. C.

HONEST DEALINGS IN FURNITURE

---

**SMITHFIELD OIL & GIN COMPANY**

CITIES SERVICE GASOLINE

Kerosene • Oil • Tires • Batteries

Cotton Ginners

J. MARVIN JOHNSON, President

Smithfield, North Carolina

Phone WE 4-2040

---

FARMALL TRACTORS — INTERNATIONAL TRUCKS

Cotton Ginners and Buyers of All Kinds of Farm Equipment

**FLOYD C. PRICE & SONS**

"Everything for the Farm and Home"

Dial WO 5-2311



Selma, N. C.

---

**UNDERWOOD FUNERAL HOME**

Smithfield, North Carolina



**BINGHAM and PARRISH  
INSURANCE AGENCY**

FIRE and CASUALTY INSURANCE

FOR

HOME—BUSINESS—AUTO—FARM

REAL ESTATE—LOANS

SMITHFIELD, NORTH CAROLINA

**JOHNSON'S FLORIST**

"Flowers For All Occasions"

Phone WE 4-2630

Smithfield,

North Carolina



Compliments of

**BRANNAN'S, INC.**

Operator of

HOLT LAKE MARINE SALES

HOLT LAKE NURSERY

BRANNAN COURT and RESTAURANT



Compliments of  
**HOOKS and LAYNE OIL COMPANY**

Distributor  
**TEXACO PETROLEUM PRODUCTS**

and

**HOOKS and LAYNE TIRE COMPANY**

Distributor  
**FIRESTONE TIRES • BATTERIES • ACCESSORIES**  
Smithfield, North Carolina



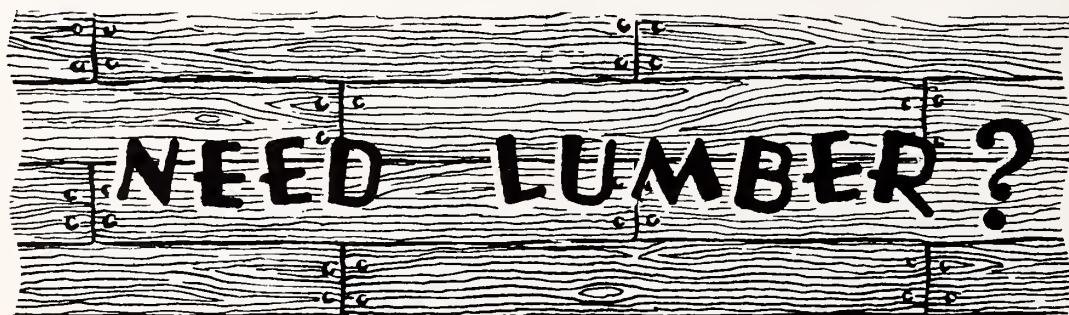
---

**ROY STRICKLAND LUMBER COMPANY**

Rough and Dressed Lumber

Phone WE 4-3247

Smithfield, North Carolina



.... Then let us fill your needs

# FIRST CITIZENS BANK AND TRUST COMPANY OF NORTH CAROLINA

60 Years of Service — 1898 - 1959

— Complete Banking Service —  
COMMERCIAL — SAVING — TRUST — INSTALLMENT LOAN

Member Federal Deposit Insurance Corporation



## TAYLOR COAL & OIL COMPANY

Distributor

\*SINCLAIR GASOLINE • KEROSENE • HEATING OILS  
PRESTONE ANTI-FREEZE

Phone WE 4-4161

East Market Street

Smithfield, North Carolina



Compliments of  
**COBLE DAIRY PRODUCTS COOPERATIVE, INC.**



YOUR LOCAL DAIRY

Smithfield, N. C.

Phone WE 4-4191

---

## **SMITHFIELD MULE CO.**

LIVESTOCK

OLIVER TRACTORS

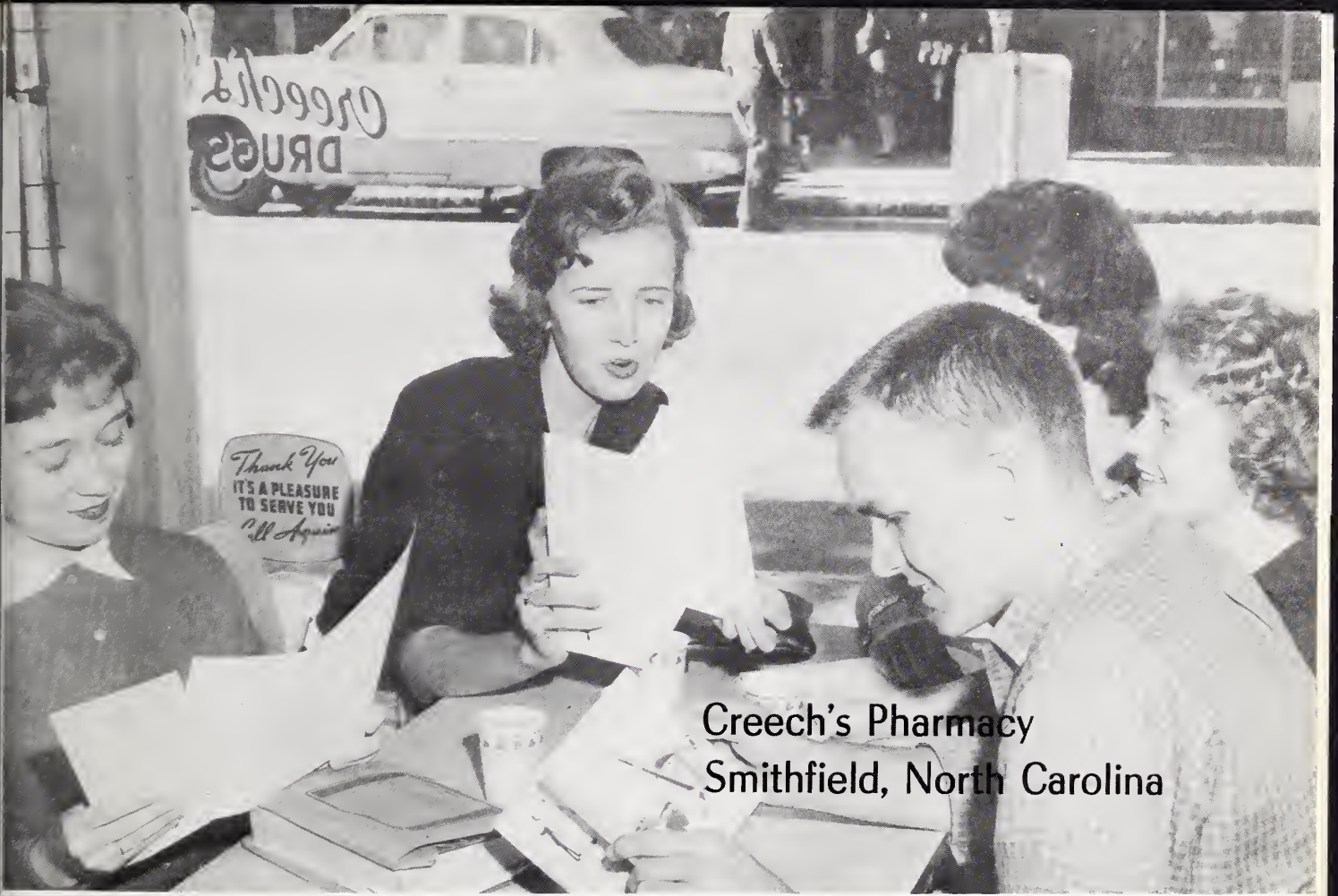
FARM MACHINERY

**CLEAN USED CARS**

**"We trade for Anything that Walks or Rolls"**

SMITHFIELD,

NORTH CAROLINA



Creech's Pharmacy  
Smithfield, North Carolina



## Guidepost to Opportunity . . .

For young people seeking careers with challenge, the textile industry — one of the nation's most important industries — offers excellent opportunities.

Let the world-famed Burlington "triangle of quality" be your guidepost to the future.

Young men and women of imagination, initiative and ability will find rewarding careers in textiles, and with Burlington, world's leading textile organization.

**SMITHFIELD SPINNING COMPANY**

a unit of

*Burlington*  
INDUSTRIES, INC.

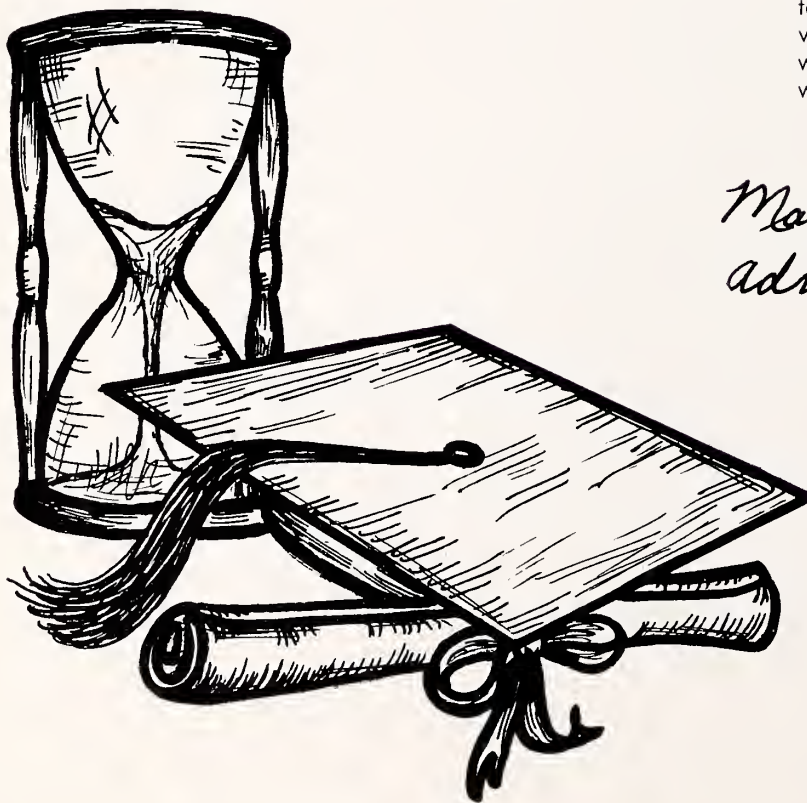


# HOWELL

VINCENT PRICE AGNES MOOREHEAD!  
THE BAT



The Smithfield High School Seniors of the class of 1960 sincerely appreciate the interest and support of our sponsors and advertisers. As they have extended their good wishes to us for the future, may we in turn wish for them great success.



*Mary Helen Bagsdale*  
Advertising Manager





Standing behind the main banquet table are the guests of honor and the principal speakers. From left to right they are Principal A. G. Glenn; Billy Hildebrand, head football coach at Wake Forest College; Bill Murray, head coach at Duke; Coach Roy Brown; Bill Jackson, of WPTF radio; Fred Gordner, President of the Boosters Club; Bill Smolz, assistant coach of N. C. State; and Jim Hickey, head coach of University of North Carolina.

## BOOSTERS CLUB BANQUET

The South Smithfield Elementary School lunchroom was the site of the First Annual Boosters Club Football Banquet, Monday, January 25. The newly organized Boosters Club held this banquet in honor of the Smithfield High School football team which won the 1959 State AA Championship. The notable guest speakers were coaches from the "Big Four" colleges.

ABOVE LEFT: Coach Roy Brown displays one of the Boosters Club jackets which were to be presented to the members of his football team.

LOWER LEFT: Frank Creech, recipient of a football scholarship to Duke University, and his mother seem to be lining things up for next year with Duke's head coach Bill Murray.







Sign of  
GOOD  
PRINTING  
and  
LITHOGRAPHY

*Producers of*

**HIGH SCHOOL AND  
COLLEGE YEARBOOKS  
MILITARY PUBLICATIONS**

Your yearbook is published only ONE time. Let Paragon produce it so that it will be a true picture of the times with pictures that sparkle — and design that enhance.

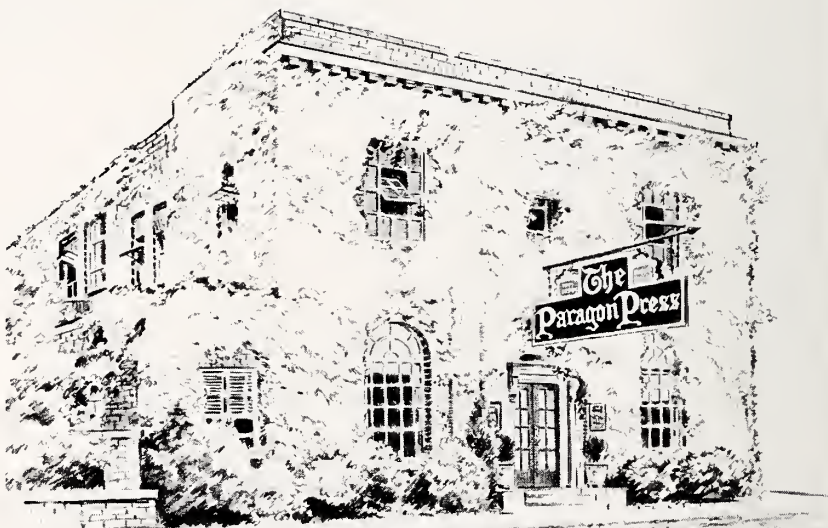
***Call the Paragon Man.***

MR. DICK SANDERS

MR. BILL BOSTAIN

P. O. Box 513

Gainesville, Florida



# The Paragon Press

*Lithographed and Letterpress Yearbooks for over 25 Years*

34 ADAMS AVENUE • MONTGOMERY, ALABAMA

*Autographs*





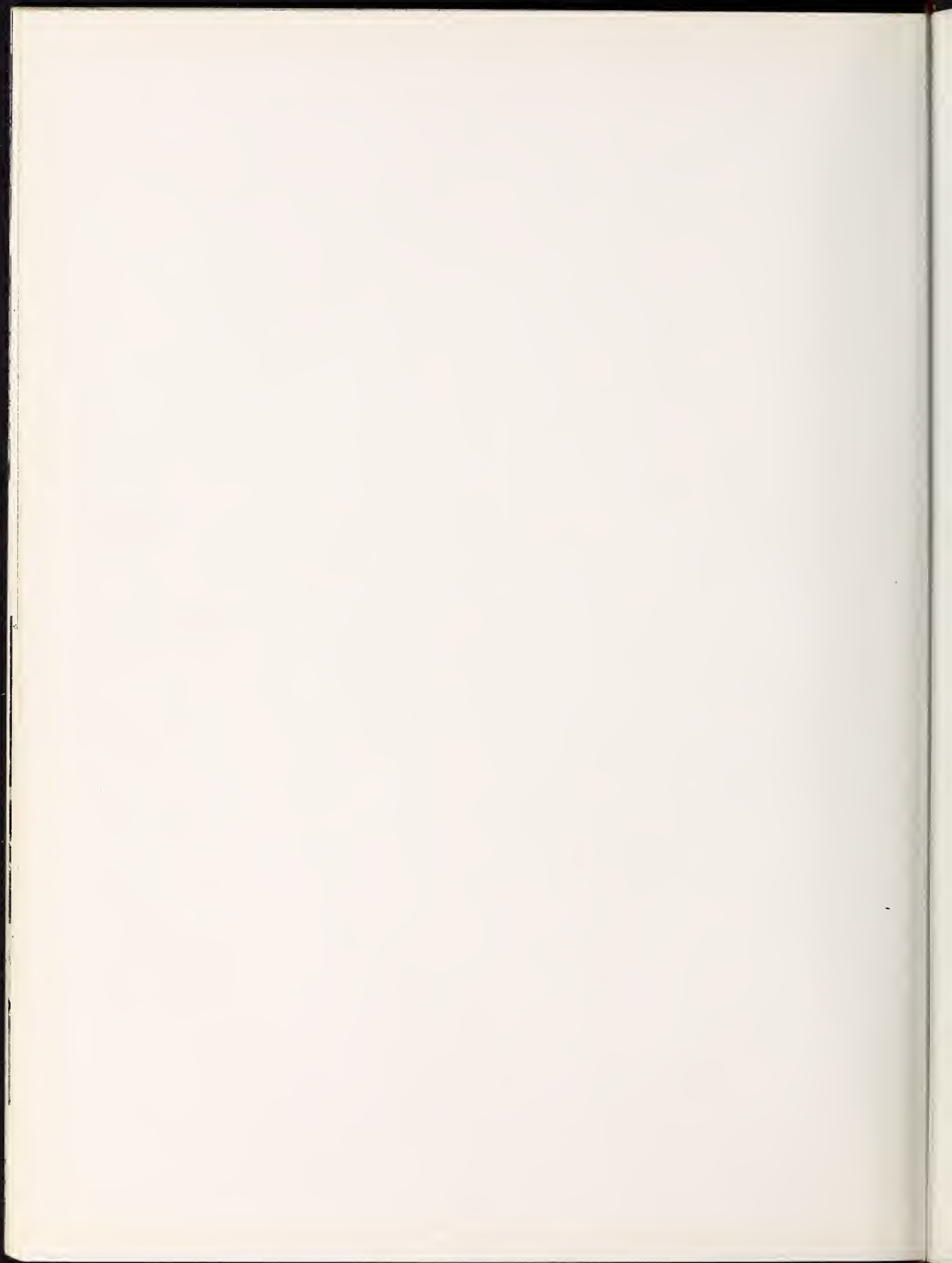








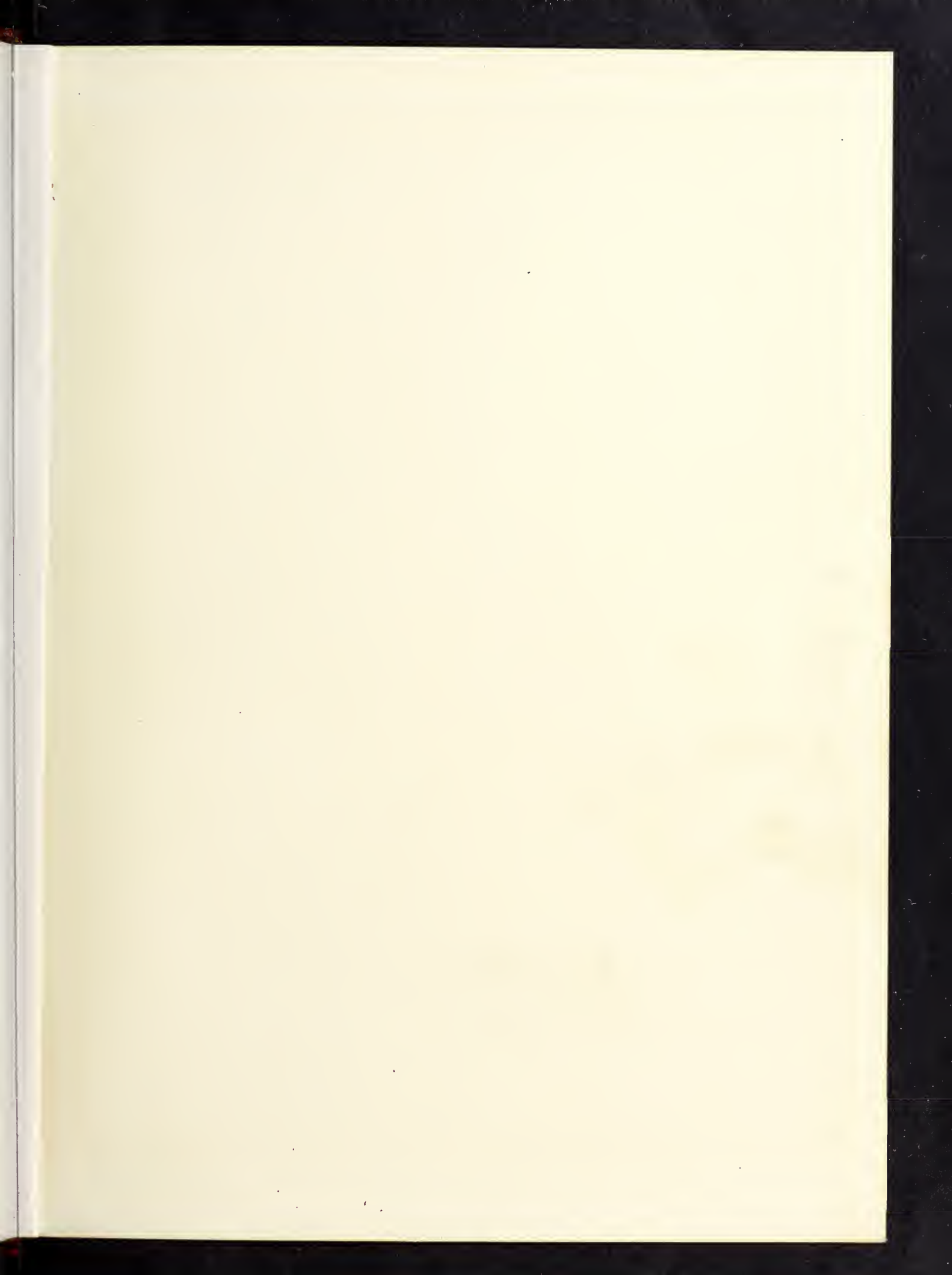














920 S

\* Shield : senior cla>>igh School  
SMITHFIELD es110155006



RNC  
373.756  
S  
1960

Smithfield High *gce*  
School.  
The shield.



920  
55



