



SHIELD

1962

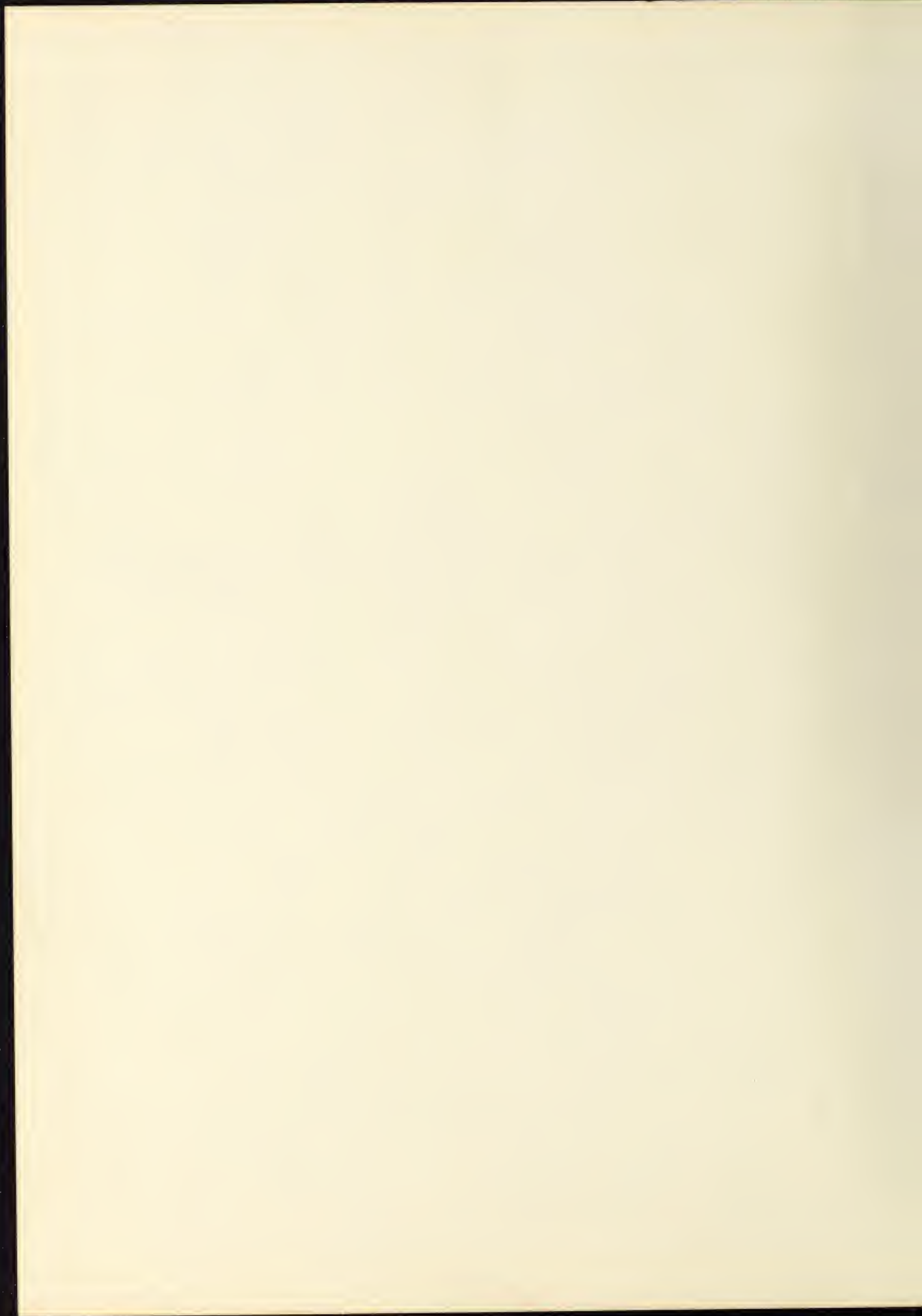
The title 'SHIELD' is presented in a large, bold, serif font, where each letter is contained within a dark rectangular frame. This entire graphic is set against a white background that resembles a film strip, complete with sprocket holes along the top and bottom edges. The film strip is curved upwards at the right end. Below the main title, the year '1962' is printed in a bold, sans-serif font on a white, curved banner that also follows the curve of the film strip.

SMITHFIELD HIGH SCHOOL



Digitized by the Internet Archive
in 2014

<https://archive.org/details/shield196213smit>





1962

The Shield

VOLUME XIII

Co-Editors

Bill Taylor Dewey Lawson

SMITHFIELD HIGH SCHOOL
Smithfield, North Carolina



Foreword

It was the year of the freshman, descending a hundred
eighty strong to congest our halls, try our patience,
and win our hearts.

It was the year of the new parking lot, when the faculty
at last found space for their cars, but there was none
left for the students.

It was a year of strange new dances—"the Twist" and "the Fly"—
a year of new cars,
and of new sophomore drivers.

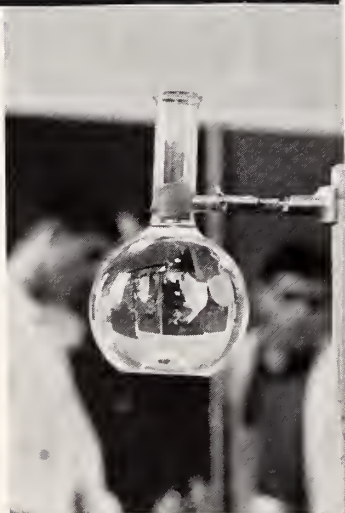
It was as always a year full of firsts for the freshmen
and lasts for the seniors.

It was a year reflected in a hundred ways on the faces
of those who knew it best . . .

the lost, dejected look of a freshman on
the first day,
the shy smile of a sophomore at the front door
of a prospective magazine customer,
the satisfaction on the face of a junior after his
first varsity game,
the mixed expression of a senior suddenly realizing
the last high school dance is over.

It was a year best remembered
through the people who made it.

It is with this in mind that we present the 1962 SHIELD.



Contents

Departments



page 7

Classes



page 17

Activities



page 47

Athletics



page 65

Advertisements



page 89

Dedication

TO MRS. ALICE AVERY

in appreciation for the ability, enthusiasm, and concern she offers each of her students.



Mrs. Avery adds color to her teaching through the use of her inexhaustible supply of interesting personal experiences.



Here, it is Kay Boyette, but almost every one makes use of Mrs. Avery's guidance counseling.



In television history even the classroom teacher must take lecture notes in order to make out those familiar 'pop' tests.

Administration

The day-to-day management of a school is a monumental task and to be done well requires the dedicated and untiring work of a fine administrator and staff. In this statement we find one of the most important keys to the continuing high calibre of education to be found in Smithfield High School.

Even in the face of the busy schedule and many extra hours required by the quality of service he gives, Mr. Glenn is never too busy to discuss an individual student's problems or aims.

A trace of cigar smoke, a jingle of keys, the sound of rapid footsteps pausing suddenly at the sight of a second-grader's tears—these will always be a part of SHS for us.



MR. A. G. GLENN
Principal



MRS. C. W. TARLETON



Mrs. Tarleton, the office's secretary, is shown here at work on some of the school's financial records and taking dictation for Mr. Glenn. Some of her other duties are operation of the mimeograph equipment and management of the office during the day when Mr. Glenn is elsewhere in the school.

In addition to the dictation of the school's correspondence, Mr. Glenn is shown at one of the office's filing cabinets where the school records of all of Smithfield's students are kept. These records are often consulted years after a student's graduation when an employer wonders about an applicant's merit.



MR. E. S. SIMPSON
Superintendent
Johnston County Public Schools



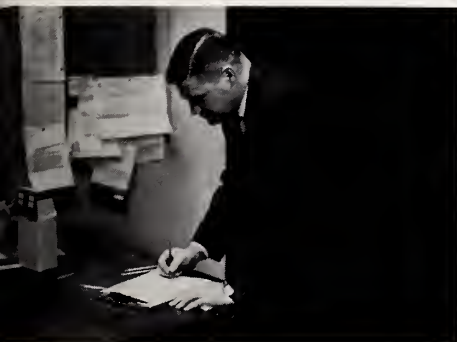
MR. JOHN A. WALLACE
Chairman, Smithfield School District Committee

Other members of the committee are Dr. W. J. Massey, vice-chairman; Dr. William Oliver, secretary; Mr. W. A. Hill; and Mr. J. Lee Ogburn.



MR. JAMES TALTON
President, Smithfield Parent-Teacher Association

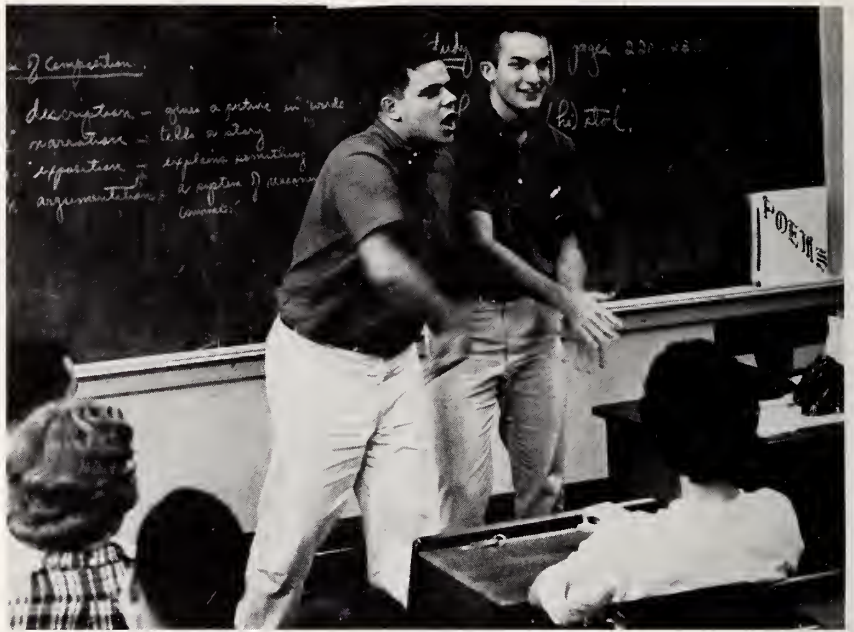
Other officers of the association are Mr. Cecil Henderson, vice-president; Mrs. Mae Ellen Snipes, secretary; and Mrs. Norwood Johnson, treasurer.



Departments



MRS. A. G. GLENN
A.B.
Mary Hardin Baylor College
English



In Mrs. Wilkins speech class, Billy Poteat and Bill Taylor compete for the majority of attention. This type of exercise helps speech students overcome some of their nervousness before an audience.

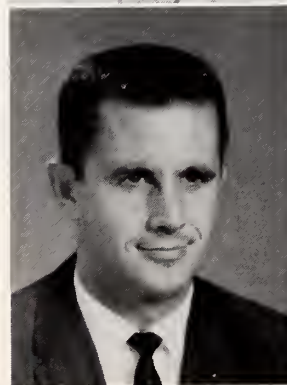
English



The perfect climax to the study of some great English work is to hear it read by a great English actor. Here Mrs. Glenn and Vic Ogburn prepare to preview a recording of such a performance.



MRS. E. V. WILKINS
A.B.
Woman's College
University of North
Carolina
Speech, English



MR. JACK TEMPLE
A.B.
University of North
Carolina
English



MRS. CHESTER PHILLIPS
B.S.
Bob Jones University
English, Civics

BELOW: There are two other people who are really members of our history faculty, although they are not at SHS in person. They are Mrs. Lucille Gregory and Miss Lola Parker. Here Mrs. Gregory teaches world history.



MRS. ALICE AVERY
A.B.
East Carolina College
History, Guidance

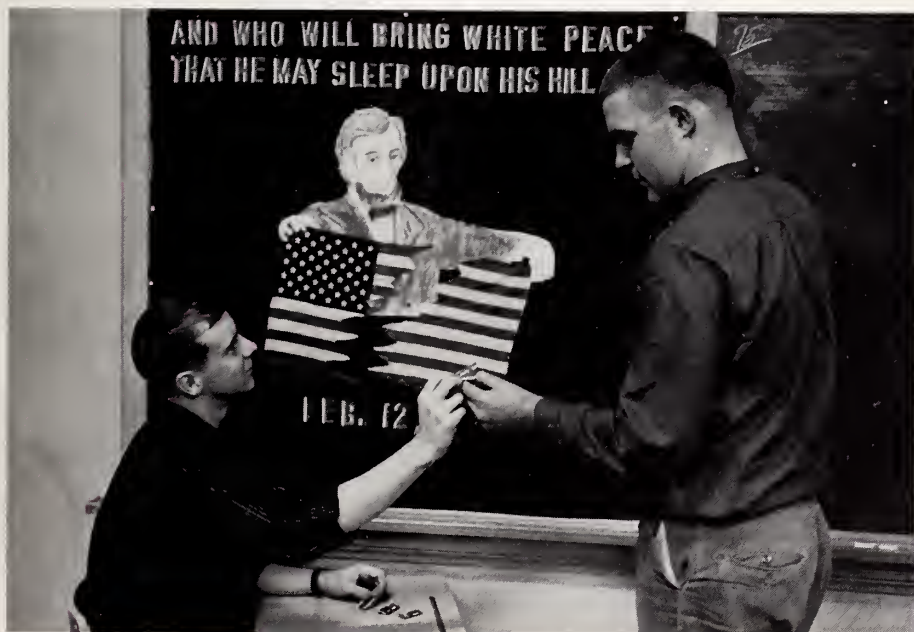


MR. JOSEPH W. CREECH
B.S.
East Carolina College
History, Math, Science



ABOVE: Occasionally a TV history lesson is interrupted to allow the students to see history in the making. On February 20, 1962, both sections of TV history were able to see the beginning of United States astronaut John Glenn's history making three-orbit flight in a Mercury capsule which he had named "Friendship-7." Each of his three orbits gave him approximately 89 minutes of space flight experience.

Social Studies

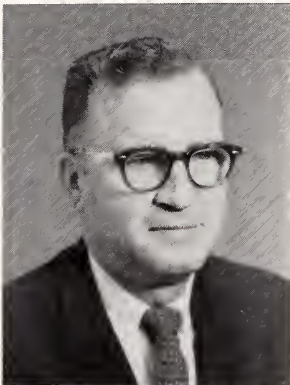


LEFT: The construction and viewing of bulletin boards is one way in which students become more conscious of history. Billy Upchurch and Dan Barefoot complete one for U. S. History.



Foreign Languages

In a second year Latin class under Mr. Woodard, Walker Wells and Lindsay Park do some work on that all-important vocabulary.



MR. S. C. WOODARD
A.B.
University of North Carolina
Latin, English



MRS. LOIS PEELE
A.B.
Meredith College
French, English



French, as a living language, is closely associated with an exciting, modern country as well as a rich history. Here Grace Langdon and Brenda Stephenson plan that 'dream' trip.

Mathematics



MRS. ANDREA BOYETTE
A.B.
Meredith College
Business Arithmetic, Geometry



MR. J. L. CREECH, JR.
A.B.
Atlantic Christian College
Algebra



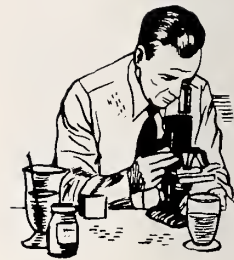
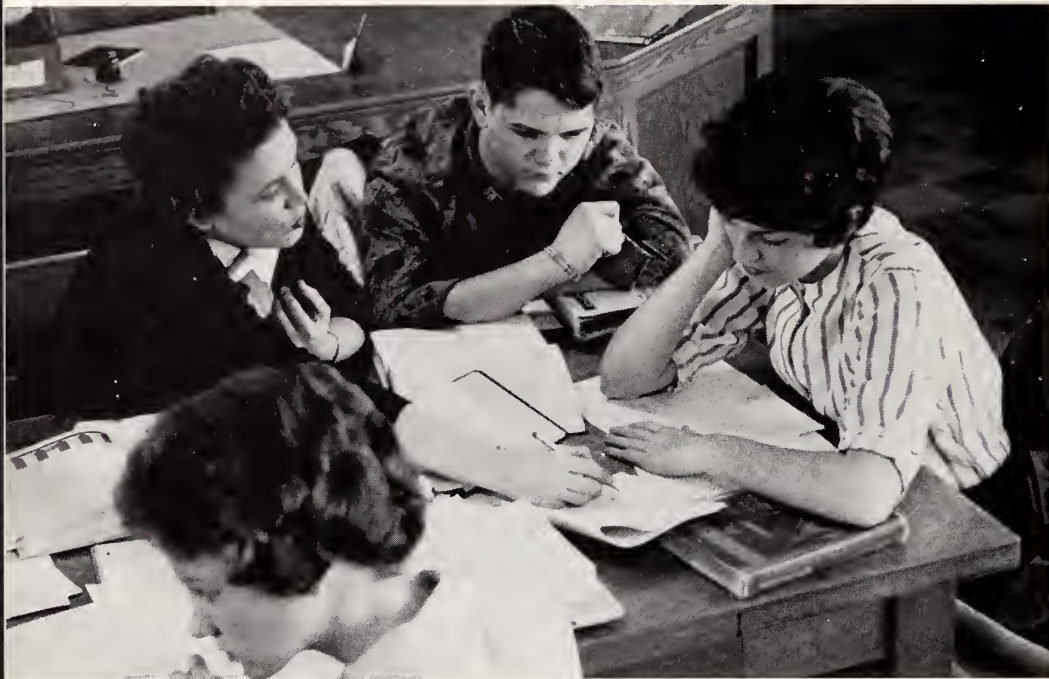
MRS. LEOLA LASSITER
A.B.
East Carolina College
Algebra, Geometry



Even beyond the direct value of its knowledge is the logic which mathematics instills in its students. Jerry Bryant reasons out the proof of a theorem in solid geometry.



This year, for the third year in a row, SHS math classes were taught for brief periods by student teachers from N. C. State College. Here we see one of them, Miss Cross, giving a test in one of her practice classes.



Mrs. Barbour is always ready to share her knowledge and interest in science with her students. Freddy Brink and Sue Hooks, deep in preparation for mid-term exams, ask her to clear up a point about their chemistry notes.

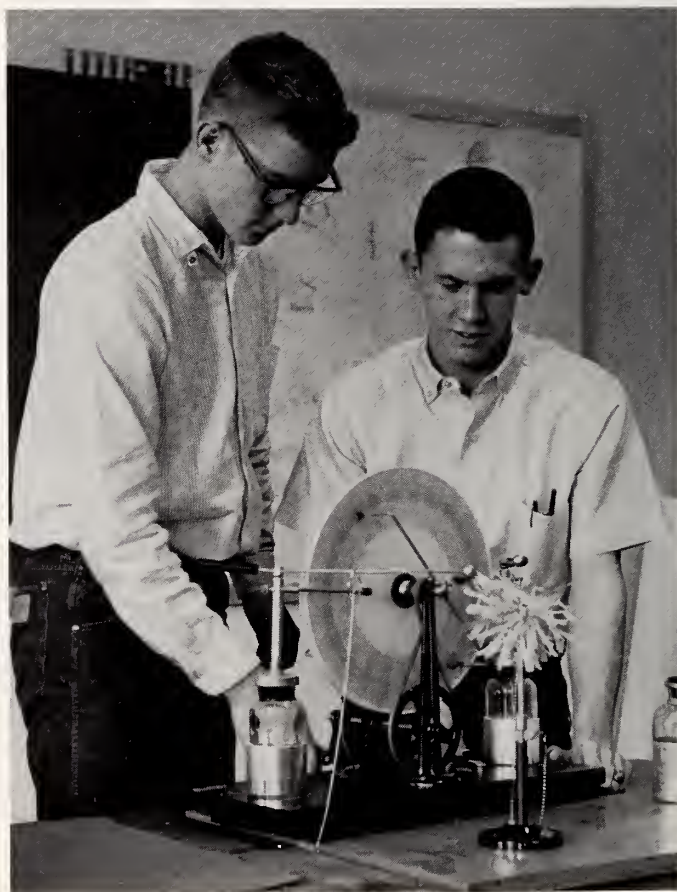
Science



MRS. JOYCE BARBOUR
A.B.
Woman's College
University of North
Carolina
Biology, Chemistry



MR. T. RUDOLPH WIGGS
A.B.
Atlantic Christian
College
General Science,
Bookkeeping Physics



Andy Holland and Skip Sykes examine a piece of physics lab apparatus, a type of generator for static electrical charges.



Last rehearsal before the contest! Miss Parker gives a number its final polishing. Officers of GIRLS' GLEE CLUB: Kathy McGee, president; Kay Boyette, vice-president; Anne Cheatham, secretary; Bet Booker, treasurer; and Kay Hill and Carol Ann Wickham, publicity. BOYS' GLEE CLUB: Vic Ogburn, president; Donald Byrd, vice-president; and Andy Holland, secretary.

Music

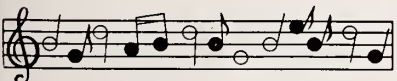


MISS FLORA PARKER
B.M.
Meredith College
Glee Club



MR. LEE ROGERS
A.B., M.A.
East Carolina College
Band, Glee Club

The band plays a chapel concert. Officers of the band this year are Joey Overby, president; Barbara Grantham, secretary-treasurer; Carolyn Lewis and Linda Allen, librarians; and Jimmy Ogburn, publicity. One of the events of the year in band was the decision to award band monogram letters on the basis of standard auditions.



Library



MISS VALERIA SHEARON
B.S.
East Carolina College
Librarian



Some of the student assistants of the school library are shown at work on the inventory and repair of some of the library's volumes: Joan Cooke, Becky Byrd, Carolyn Rowland, Judy Cockrell, Brenda Middlebrooke, Kay Massey.



Mr. Massey illustrates an industrial arts lecture through the use of special cut-away models which he prepared.

Industrial Arts Mechanical Drawing



MR. JOHN T. MASSEY
B.S.
East Carolina College
Industrial Arts, Mechanical
Drawing

RIGHT: David Putnam completes the lettering on a mechanical drawing assignment.





MRS. RUTH PETERSON
A.B.
Woman's College
University of North Carolina
Typing, Shorthand, Bookkeeping

Typing



Gayle Johnston is shown "warming up" before a speed test in typing. "They say having had piano helps!"

Home Economics



MRS. RAMONA CASH
B.S.
East Carolina College
Home Economics

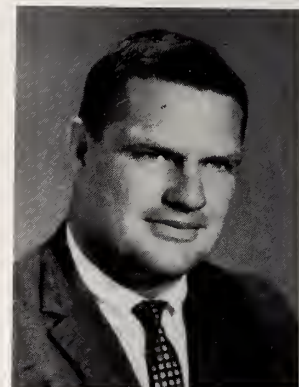


Mrs. Cash helps Carolyn Adams with a button loop on the blouse she made as a home economics project. One of the most practical and valuable courses at SHS, "home ec" is probably appreciated by as many young husbands as wives.



Health

The value of an educated mind is multiplied by its location in a sound body. Freshman health and physical education classes are an enjoyable mixture of study and play. Both of which contain lessons for the students of great value.



MR. ROY J. BROWN, JR.
A.B.
Atlantic Christian College
Physical Education, Geography



MRS. EDNA EARLE ADAMS
Primary B
East Carolina College
Art

Art class is a busy, happy place, alive with creativeness and discovery. (Clockwise, beginning upper left): Wanda Harris, Darius Rose, Sharon Eason, Brenda Sellers, Marylyn Moye, Jane Roberts, Hubert Whitley, Edgar Deese, Donald Bailey, Sandy Stallings.



Art



Seniors

LINDA FAYE ALFORD

Teens Club 1; FHA 2; Library Club 3, Presiden 4; Junior-Senior Invitation Committee 3; Halloween Queen 3; Homecoming Court 4.

JOSEPH DAVID ALLEN

Wildlife Club 1, 2, 4; Baseball 2; Industrial Arts Club, Vice-President 3.

CHARLES REX BARBOUR

Industrial Arts Club 1; Science Club 2, 3; Junior-Senior Decorating Committee 3; Fine Arts Club 4.

DANIEL ASHLEY BARBOUR

Wildlife Club 1, 2, 3, 4; Junior-Senior Decoratin Committee 3.

DAN HARDY BAREFOOT

Band Club 1; All State Band 1; Wildlife Club 2; "Line of Scrimmage" 3; Junior-Senior Decorating Committee 3; Marshal 3; Monogram Club 3, 4; Band 1, 2, 3, 4; Football 1, 2, 3, 4; Dance Band 1, 2, 3, 4; Homecoming Program Committee 4; Track 4; Davidson College Athletic Scholarship 4.

TAN SMITH BAREFOOT

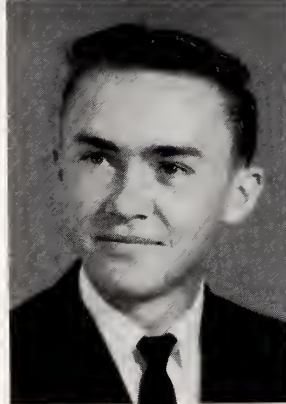
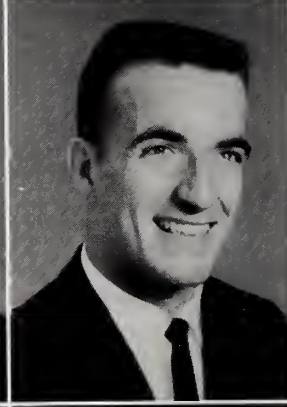
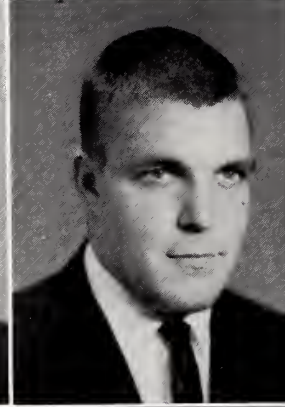
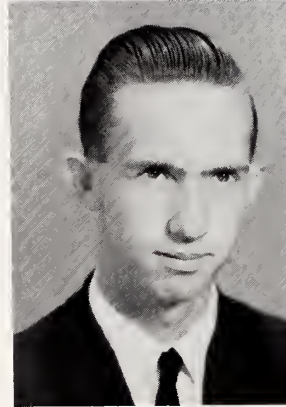
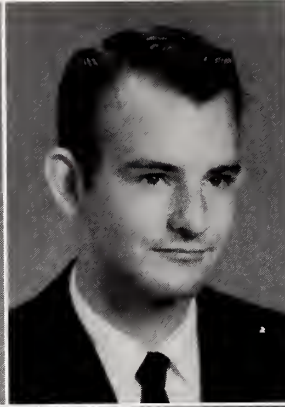
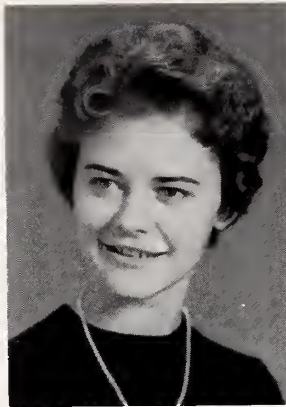
Band Club 1; Wildlife Club 2; All State Band 2; Fine Arts Club 3; Junior-Senior Decorating Committee 3; Marshal 3; JV Football 1, Co-Captain 2; Varsity Football 3, 4; Band 1, 2, 3, 4; Homecoming Committee 4; Invitation Committee 4.

JOHNNY EULAS BEASLEY

Wildlife 1, 2, 3, 4; Junior-Senior Decorating Committee 3.

MARY ELIZABETH (BET) BOOKER

Dramatics Club 1; FHA Club 2; Magazine Contest Winner 2; "Line of Scrimmage" 3; Junior-Senior Program Committee 3; Fine Arts Club 3; Basketball 1, 2, 3, 4; Monogram Club 4; Glee Club 1, 2, 3, 4; Homecoming Committee 4; Betty Crocker Homemaker Award 4.

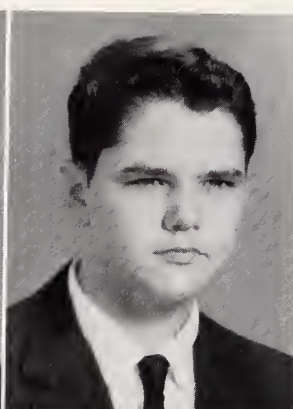


1962



CLASS OFFICERS:

- Bill Sutton, Vice-President;
- Kathy McGee, Treasurer;
- Billy Upchurch, Senior Class President;
- Linda Braswell, Secretary;
- Joey Overby, President of Student Body.



KATHERINE LEE BOYETTE

Dramatics Club, Secretary 1; FHA Club 2; Music Club, Secretary 3; Fine Arts Club, Secretary 3; Junior-Senior Invitation Committee 3; Glee Club 1, 2, 3, Accompanist and Vice-President 4; Advertising Staff "The Shield" 4; Homecoming Committee 4; Homecoming Court 4.

LINDA GREY BRASWELL

Speech Club 1; FHA Club 2; Junior-Senior Steering Committee 3; Commercial Club 3, President 4; Glee Club 1, 2, 3; Class Secretary 3, 4; Homecoming Committee 4; Mascot Committee 4.

FRED EARL BRINK, JR.

Industrial Arts Club 1, 3; Fine Arts Club 2; Football Manager 1; JV Football 2, 3; Junior-Senior Decorating Committee 3; Glee Club 1, 2, 3; Science Club, Secretary 4; Ring Committee 4; Homecoming Committee 4.

CAMILLE OLIVER BROADHURST

Dramatics Club 1; FHA Club 2; Glee Club 1, 2, 3; Junior-Senior Theme Committee 3; Monogram Club 3, 4; Cheerleader 3, Chief 4; Advertising Staff "The Shield" 4; Homecoming Committee 4; Homecoming Court 4; Invitation Committee 4.

GRETCHEN LEE BROWN

Dramatics Club 1; FHA Club 2; Fine Arts Club 3; Junior-Senior Decorating Committee 3; "Line of Scrimmage" 3; Glee Club 1, 2, 3; Basketball 3, 4; Monogram Club 4; Freshman Dance Committee 4; Advertising Staff "The Shield" 4; Homecoming Committee 4; Homecoming Queen 4.

JERRY WAYNE BRYANT

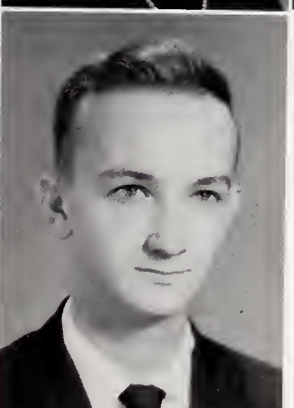
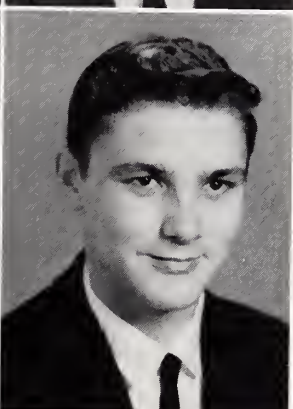
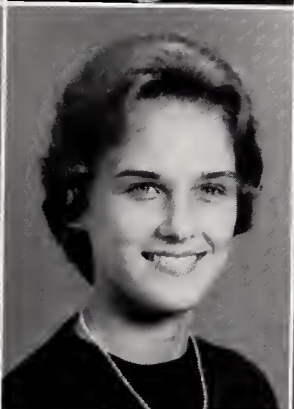
Wildlife Club 1, 2; Variety Club 3; Junior-Senior Decorating Committee 3; Baseball 3, 4; Monogram Club 4; Invitation Committee 4.

PATRICIA ANN BUCHANAN

Hobby Club 1; FHA Club 2; Glee Club 1, 2; 4-H Club 3; Junior-Senior Cover-all Committee 3; Commercial Club 4.

DONALD EARL BYRD

Wildlife Club, Reporter 1, Secretary 2, 4; Glee Club 1, 2, Secretary 3, Vice-President 4; Variety Club 3; Marshal 3; Ring Committee 4; "The Shield" Business Manager 4.



Seniors

MASCOTS

Ann Ivey Wallace
Stockton Holt





BEST ALL-AROUND

Anne Cheatham
Joey Overby

1962

MARGARET MARIE BYRD

Speech and Debating Club 1; FHA Club 2; Library Club 3; Junior-Senior Decorating Committee 3; Glee Club 1, 2, 3, 4; Commercial Club 4; Homecoming Committee 4.

KENNETH SHERROD CAPPS

Wildlife 1, 2, 4; Industrial Arts Club 3; Junior-Senior Properties Committee 3; Bus Driver 4; Homecoming Committee 4.

LUBY WAYNE CAPPS

Glee Club 1, 2; Industrial Arts Club 1, 3; Wildlife Club 2, 4; "Line of Scrimmage" Property Committee 3; Homecoming Committee 4.

BILLY WAYNE CARROLL

Glee Club 1, 2; Wildlife Club 1, 2, 4; Industrial Club 3; Football 2, 3, 4; Basketball 3, 4; Track 3, 4; Junior-Senior Properties Committee 3; Homecoming Committee 4.

ANNE WILSON CHEATHAM

Dramatics Club 1; FHA Club 2; "Line of Scrimmage" 3; Marshal 3; Basketball 1, 2, 3, 4; Monogram Club 3, 4; Junior-Senior Theme Committee 3; Glee Club 1, 2, Secretary 3, 4; Homecoming Committee 4; Co-Assistant Editor "The Shield" 4; Co-Chairman Mascot Committee 4.

RICHARD LONDON CREECH

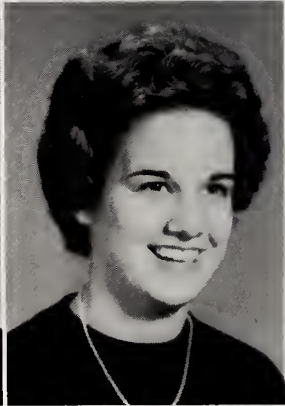
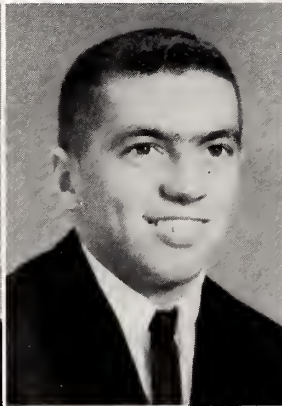
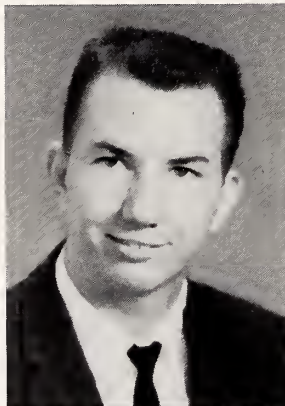
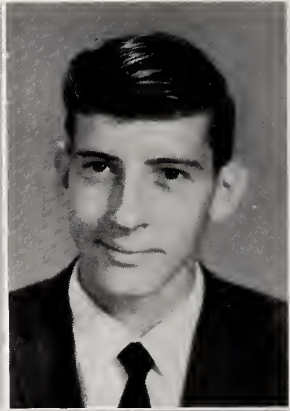
Industrial Arts Club 1, 3; Wildlife Club 2, 4; Junior-Senior Decorating Committee 3.

HELEN ELAINE CRUMPLER

Dramatics Club 1; Reynolds High School, Winston-Salem 2; Fine Arts Club 3; Monogram Club, Secretary 4; Junior-Senior Program Committee 3; "Line of Scrimmage" Student Director 3; Glee Club 1, 3; Basketball 1, 2, 3, 4; Homecoming Committee 4; Advertising Staff "The Shield" 4; Homecoming Court 4.

SHEILA FAYE CRUMPLER

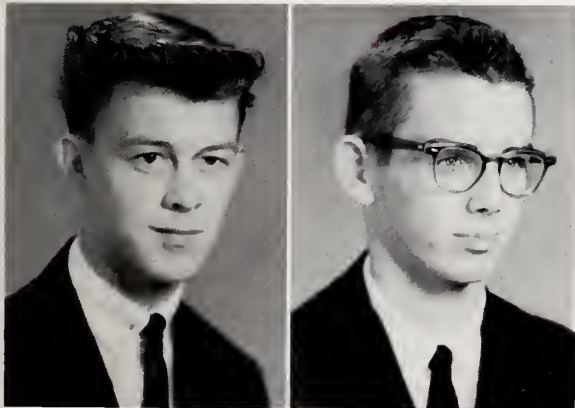
Dramatics Club 1; FHA Club 2; Commercial Club, President 3, Vice-President 4; Junior-Senior Refreshment Committee 3; "Line of Scrimmage" 3; Marshal 3; Co-Assistant Editor "The Shield" 4; Glee Club 1, 2, 3; Homecoming Court 4.



MOST AMBITIOUS
 Carol Ann Wickham
 Dan Barefoot



Seniors

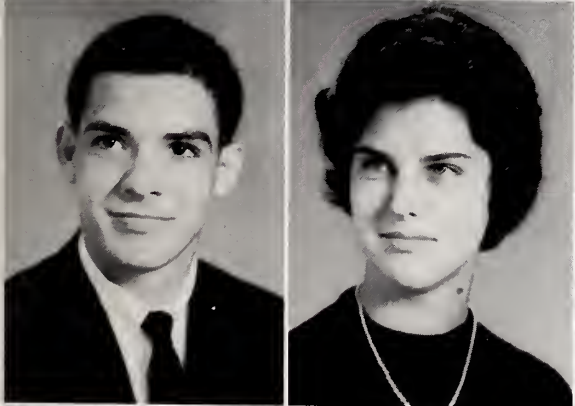


JAMES RICHARD (J.R.) DAUGHTRY, JR.

Wildlife Club 1, 2, 4; Industrial Arts Club 3; Junior-Senior Decorating Committee 3; Homecoming Committee 4.

HARRY VERNON EDWARDS, JR.

Homeroom President 1; Wildlife Club 1; Wildlife Club President 2; Football 2; Basketball 2; Junior-Senior Properties Committee 3; Monogram 3, 4; Baseball 1, 2, 3, 4.



RONNIE DEAN ENNIS

Fine Arts Club 1, Secretary 2; Glee Club 1; Monogram Club 3, 4; Junior-Senior Decorating Committee 3; "Line of Scrimmage" 3; Football 1, 2, 3, Co-Captain 4; Baseball 4.

JUDITH LUCILLE FORBES

Dramatics 1; FHA 2; Fine Arts 3, 4; Glee Club 1, 2, 3; "Line of Scrimmage" 3; Junior-Senior Refreshment Committee Chairman 3; Freshman Dance Decorating Committee 4; Homecoming Program Committee 4; Homecoming Court 4.

EMMA LOUISE GARDNER

Dramatics Club 1; Secretary; FHA Club 2, Vice-President; Band Club 3, 4; Glee Club 1, 2, 3, 4; Majorette 1, 2, 3, 4; Magazine Contest Winner 2; Junior-Senior Coverall Committee 3; Homecoming Committee 4; Co-Chairman Mascot Committee 4.

JOHN WATT GRAY, III

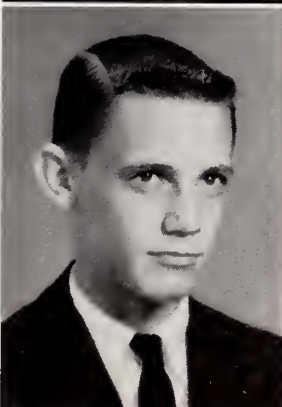
Wildlife Club 1, 2, 3, 4, Secretary 3, Vice-President 4; Junior-Senior Decorating Committee 3; Marshal 3; Bus Driver 3, 4.

LINDA FAYE HIGGINS

Dramatics Club 1; FHA Club 2; Monogram Club 3, 4; Junior-Senior Program Committee 3; "Line of Scrimmage" 3; Cheerleader 3, 4; Assistant Art Editor "High Times" 3; Art Editor 4; Freshman Dance Committee Chairman 4; Glee Club 1, 2, 3; Homecoming Court 4.

DWIGHT DALE HILL

Industrial Arts Club 1, 3; Wildlife Club 2, 4; Junior-Senior Decorating Committee 3; "Line of Scrimmage," Property Committee 3.



JEANNE MOORE HONEYCUTT

Speech Club 1; Library Assistant 2; Winner Peggy Mann Dress Revue 2; 4-H Club 3; Future Teachers' Club 4; Glee Club 1, 2, 3, 4; Junior-Senior Cover-all Committee 4; Homecoming Committee 4; Ring Committee 4; Vice-President FTA Club 4.

SUSAN PATE HOOKS

Dramatics Club 1; Peggy Mann Fashion Show 2; Monogram Club 2, 3, 4; Basketball 1, 2, 3, 4; Junior-Senior Decorating Committee 3; "Line of Scrimmage" 3; Marshal 3; Homecoming Committee 4; Glee Club 1, 2, 3; Advertising Staff "The Shield" 4; Homecoming Court 4; Invitation Committee 4.

LEON JUNIOR HUDSON

Industrial Arts Club 1; Science Club 2; Junior-Senior Program Committee 3; Marshal 3; Wildlife Club 3; Program Chairman 4; Bus Driver 4.

BONNIE JEAN JOHNSON

Speech and Debating Club 1; FHA Club 2; Library Club Vice-President 3; Junior-Senior Decorating Committee 3; Commercial Club 4; Glee Club 1, 2, 3, 4.

CHARLES EARL JOHNSON

Wildlife Club 1, 2, 3, 4; Junior-Senior Decorating Committee 3.

JAMES NORWOOD JOHNSON

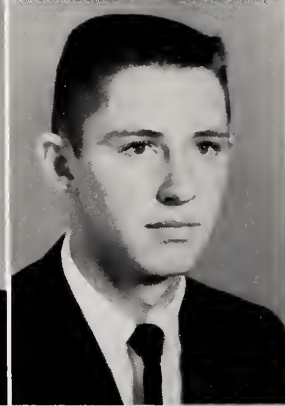
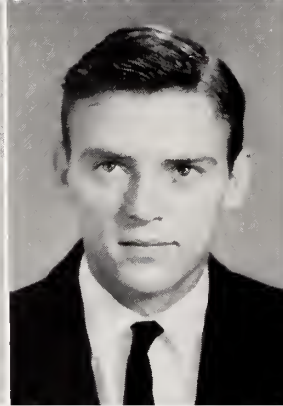
4-H Club 1, 2, Vice-President 3, 4; Glee Club 1; Basketball 1, 2, 3, 4; Junior-Senior Program Committee 3; Bus Driver 3, 4; FTA Club 4; Track 4; Library Assistant 4; Homecoming Committee 4.

DELLA LORINE JOHNSON

4-H Club 1, 2, 3; Junior-Senior Refreshment Committee 3; Commercial Club 4.

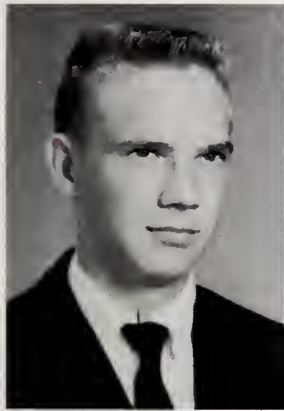
NORMA JEAN JOHNSON

Speech and Debating Club 1; 4-H Club Historian 2, Song Leader 3; "Big Pay Off" 2; Junior-Senior Decorating Committee 3; "Line of Scrimmage" 3; FTA Club 4; Glee Club 1, 2, 3, 4.



1962

MOST INTELLECTUAL
Sheila Crumpler
Dewey Lawson



RONNIE BRINT JOHNSON

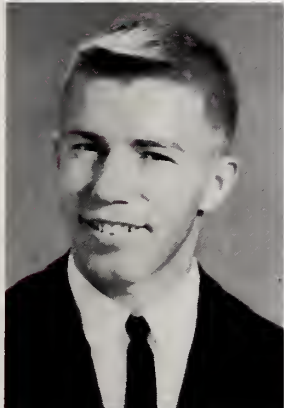
4-H Club 1; Baseball 1, 2; Basketball 1, 2; Wildlife Club 2, 4; Junior-Senior Decorating Committee 3; Glee Club 3, 4; Industrial Arts Club 3; Homecoming Decorating Committee 4; Invitation Committee 4.

SAMMY ANN JOHNSON

Hobby Club 1; Band Club 1; FHA Club 2; Commercial Club 3; Junior-Senior Refreshment Committee 3; Glee Club 2, 3, 4; Basketball 3; Monogram Club 4.

SUE HUDSON JOHNSON

Library Club 1, Assistant 2; 4-H Club 3; "Line of Scrimmage" 3; Junior-Senior Theme, Decorating Committee 3; FTA Club 4; Freshman Dance Committee 4; Homecoming Committee 4; Glee Club 1, 2, 3, 4.



LYNWOOD ALTON JONES

Wildlife Club 1, 2; Industrial Arts Club 3; Club Reporter Monogram Club 4; Baseball 2, 3, 4; Football 3, 4; Invitation Committee 4.

JANICE FAYE KING

Hobby Club President 1; FHA Club 2; Commercial Club 3; Junior-Senior Refreshment Committee 3; Library Club 4; Glee Club 1, 2, 3, 4.

GRACE ELIZABETH LANGDON

Hobby Club Secretary 1; FHA Club Secretary 2; Junior-Senior Invitation Committee 3; Commercial Club Secretary 3, 4; Glee Club 1, 2, 3, 4; Ring Committee 4.



KATHLEEN MCGUIRE LASSITER

Dramatics Club 1; FHA Club 2; Fine Arts Club 3, 4; Glee Club 1, 2, 3, 4, Accompanist; "Line of Scrimmage" 3; Junior-Senior Program Committee 3; Marshal 3; Advertising Staff "The Shield" 4; Homecoming Program Committee 4; Homecoming Court 4.

DEWEY TULL LAWSON

Basketball Scorer 1; World Peace Winner 2; Magazine Winner 2; Band 1, 2, 3, 4, Publicity 3; Band Club 1, 2, Reporter 2; Dance Band 1, 2, 3, 4; "High Times" Staff 3; Shield Photographer 1, 2, 3, 4, Editor 4; "Line of Scrimmage" 3; Marshal 3; Junior-Senior Program Chairman 3; Fine Arts Club 3, 4, President 3; Homecoming Committee 4; All State Band and Orchestra 3, 4.

Seniors

BEST LOOKING
Elaine Crumpler
Bill Sutton





MOST ACCOMODATING

Kathy McGee

Bill Taylor

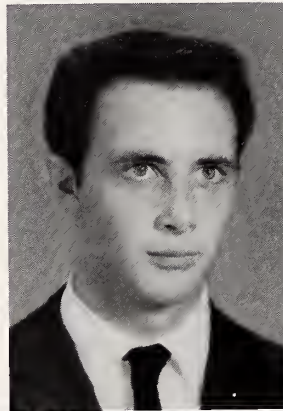
1962

DAVID WILTON LEE

Football 1; Glee Club 1; Manager Basketball 1, 2; Fine Arts Club 1, 2, 3; Basketball 2; Track 2, 3, 4; Monogram Club 4.

KATHLEEN KIRK McGEE

Dramatics Club Reporter 1; Glee Club 1, 2, 3, President 4; FHA Club Program Chairman 2; Junior-Senior Invitations Committee 3; Fine Arts Club Vice-President 3, 4; Homecoming Committee 4; Class Treasurer 4; Freshman Dance Co-Chairman 4; Homecoming Court 4.



MARY ELISSA MCGOWAN

Dramatics Club 1, President; FHA Club 2, Reporter; Monogram Club 3, 4; Cheerleader 3, 4; Junior-Senior Co-Chairman Coverall Committee 3; Peggy Mann Show Winner 3; Town and District Winner of Vogue Sewing Contest 3; Glee Club 1, 2, 3; Homecoming Committee 4; Advertising Staff of "The Shield" 4; Homecoming Court 4.

ROBERT NELSON McLAMB

Wildlife Club 1; Hobby Club 2; Industrial Arts Club 3; Junior-Senior Decorating Committee 3; Fine Arts Club 4; Ring Committee 4; Homecoming Committee 4.

BETTY JEAN McLEAN

Speech Club 1; Library Club President 2, 3, 4; Junior-Senior Refreshment Committee 3; Library Assistant 4; Homecoming Committee 4; Glee Club 1, 2, 3, 4.

BILLY RAY McLEOD

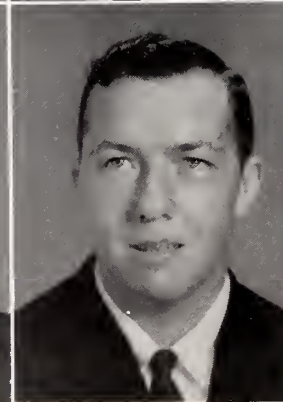
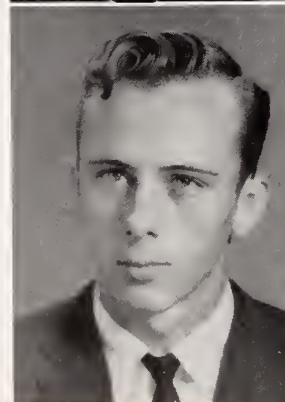
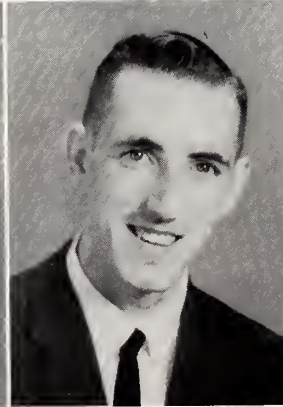
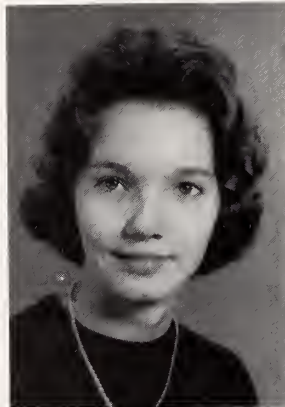
Wildlife Club 1, 2, 3; JV Football 1; Glee Club 1; Science Club 4; Homecoming Committee 4.

DAVID EARL MESSER

Wildlife Club 1, 2, 3; Junior-Senior Properties Committee 3; Mascot Committee 4.

LOLA MAE MOYE

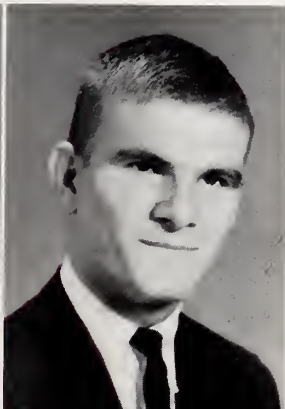
Hobby Club 1; FHA Club 2; Commercial Club 3; Junior-Senior Refreshment Committee 3; Library Club Secretary 4; Glee Club 1, 2, 3, 4.



MOST POPULAR
Camille Broadhurst
Billy Upchurch



Seniors

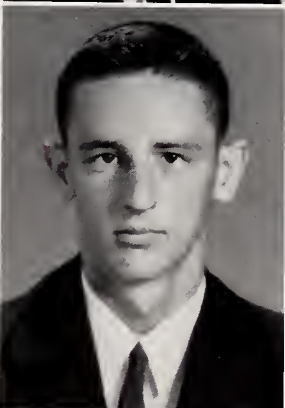


DOROTHY JEAN NORRIS

Hobby Club 1; FHA Club 2; Commercial Club 3; Junior-Senior Refreshment Committee 3; Library Club President 4; Glee Club 2, 3, 4.

JASPER VICTOR OGBURN, JR.

Wildlife Club 1, President 2; Fine Arts Club 3, President 4; Chairman Junior-Senior Decorating Committee 3; Freshman Dance Committee 4; Homecoming Committee 4.



JOSEPH RANDAL OVERBY, JR.

Band Club 1; Monogram Club 2, Honor Council 3, 4; Class President 3; "Line of Scrimmage" 3; Chief Marshal 3; Junior-Senior Steering Committee 3; Band 1, 2, 3, President 4; Football 1, 2, 3, Co-Captain 4; Basketball 1, 2, 3, 4; Track 1, 3, 4; Freshman Dance Committee 4; Homecoming Committee 4; President Student Body 4.

JESSE WILBERT PARRISH

Science Club 1; Industrial Arts Club 2, 3; Baseball 2; Junior-Senior Decorating Committee 3; Monogram Club 4; Homecoming Committee 4; Basketball 1, 2, 3, 4; Track 1, 4.

DORIS JANE PILKINGTON

Hobby Club 1; FHA Club 2; Commercial Club 3, 4; Junior-Senior Invitation Committee 3; Glee Club 3, 4.

WILLIAM LOUIS POTEAT

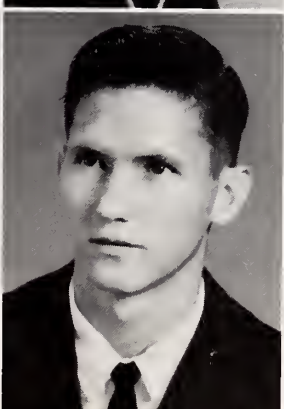
Asheville School for Boys 1, 2, 3; Monogram Club 4; Football 4, Freshman Dance Committee 4; Homecoming Committee 4.

DAVID EARL PUTNAM

Wildlife Club 1, 2; Monogram Club 3, 4; Junior-Senior Decorating Committee 3; Baseball 1, 2, 3, 4; Basketball 2, 3, 4; Football 3, 4; Mascot Committee 4.

TROY RUSSELL RAYNOR

Band Club 1, 3; Social Studies Club 2; Band 1, 2, 3; Fine Arts Club 4.



ALICE FAYE STANLEY

Hobby Club 1; Library Club 2, 3, 4; Library Assistant 3; Junior-Senior Refreshment Committee 3; Homecoming Committee 4; Glee Club 2, 3, 4.

BRENDA KAY STEPHENSON

4-H Club 1, Pianist 2; "Line of Scrimmage" 3; Junior-Senior Program Committee 3; Marshal 3; Commercial Club 3, 4; Co-Assistant Editor "The Shield" 4; Homecoming Committee 4; Glee Club 1, 2, 3, 4.

DONALD BROOKS STEPHENSON

Wildlife Club 1, 4; Industrial Arts Club 2, 3; "Line of Scrimmage" 3; Junior-Senior Decorating Committee 3; Homecoming Committee 4.

JAMES ARTHUR STEPHENSON

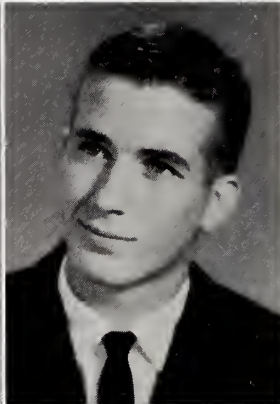
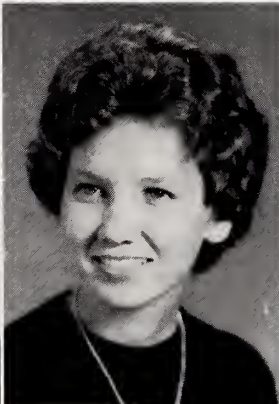
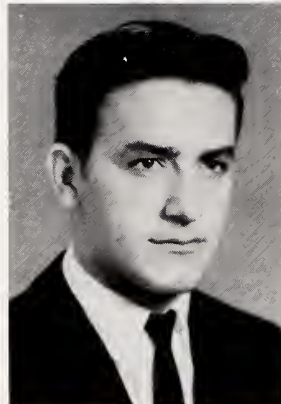
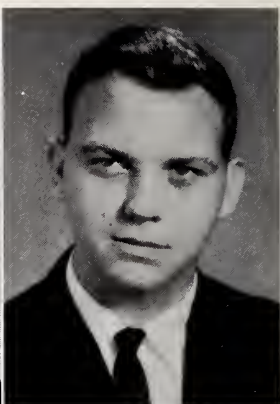
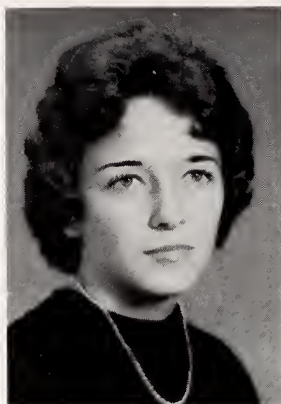
Football 2; Fine Arts Club 2, 3; Industrial Arts Club 1, 4.

EVE WHITFIELD SUGG

Dramatics Club 1; FHA Club 2; Band Club 3, Vice-President 4; Junior-Senior Inviting Committee 3; Marshal 3; Majorette 1, 2, 3, Chief 4; Glee Club 1, 2, 3, 4.

BILLY ROSE SUTTON

Wildlife Club 1; Fine Arts Club 2, 3; Junior-Senior Program Committee 3; Monogram Club 4; Class Vice-President 4; Homecoming Committee 4; Track 1, 2, 3, 4; Football 3, 4.

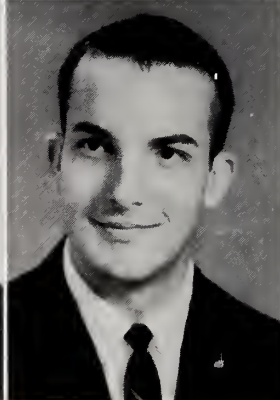
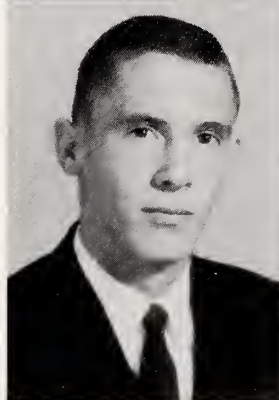


ROBERT NATHAN SYKES, JR.

Transfer from Graham High School: Arts and Crafts Club 1; JV Football 1; Home Room President 1; JV Basketball 2; Monogram Club 3, 4; Football 2, 3, 4; Basketball 3, 4; Glee Club 1, 2, 3, 4.

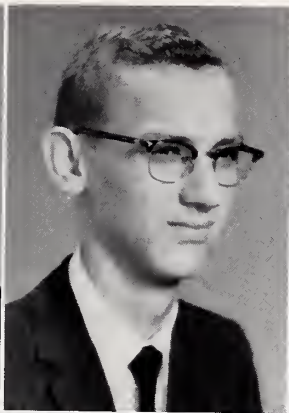
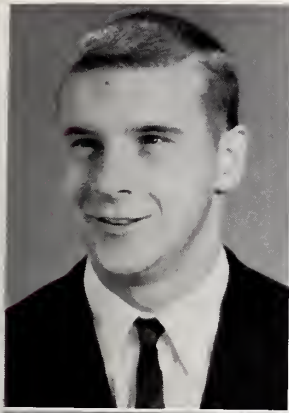
WILLIAM LAMBERT TAYLOR

Wildlife Club Secretary 1; Fine Arts Club 2, 3, 4; "Line of Scrimmage" Stage Crew 3; Junior-Senior Steering Committee 3; Marshal 3; Class Treasurer 3; Homecoming Committee 4; Co-Editor "The Shield" 4.



1962

MOST ATHLETIC
Sue Hooks
Jeffrey Williams



MALCOLM THURSTON UPCHURCH

Wildlife Club 1, Vice-President 2; JV Football 1, 2; Track 2, 3, 4; Football 3; Fine Arts Club 3; Marshal 3; "Line of Scrimmage" 3; Chairman Junior-Senior Decorating Committee 3; Monogram Club Vice-President 4; Ring Committee 4; Class President 4.

DONALD EDWARD WALLACE

Industrial Arts Club 1; Wildlife Club 2, 3; Junior-Senior Decorating Committee 3; Science Club 4.

BILLIE RUTH WARD

Hobby Club 1; Library Club 2; 4-H Club 3; Junior-Senior Refreshment Committee 3; FTA Club 4; Freshman Dance Committee 4; Homecoming Committee 4; Glee Club 1, 2, 3, 4.

WALDON WATTS WARD, JR.

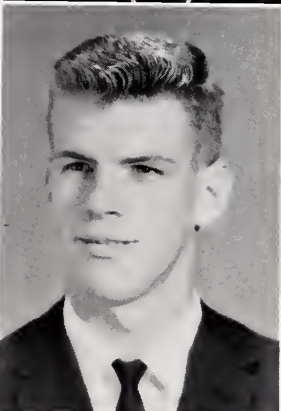
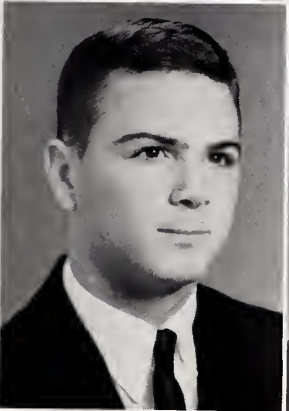
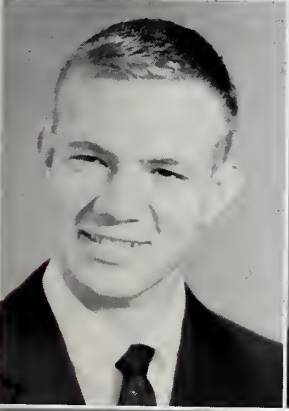
Industrial Arts Club 1, 3; Fine Arts Club 2; Basketball 1, 2; Football 1, 2, 3, 4; Junior-Senior Decorating Committee 3; Monogram Club 4; Homecoming Committee 4.

WILLIAM BRYANT WELLONS, JR.

Wildlife Club 1, 2; Fine Arts Club 3; "Line of Scrimmage" 3; Junior-Senior Decorating Committee 3; Track 3; Football 1, 2, 3, 4; Basketball 1, 2, 3, 4; Monogram Club 4; Baseball 4; Homecoming Committee 4.

CURTIS BRYANT WHITEHURST

Industrial Arts Club 1, Fine Arts Club 2, 3; Junior-Senior Properties Committee 3; Football 1, 2, 3, 4; Basketball 1, 2, 3, 4; Track 3, 4; Monogram Club 4; Mascot Committee 4.



CAROL ANN WICKHAM

Dramatics Club 1; FHA Club Reporter 2; Chairman Junior-Senior Decorating Committee 3; "Line of Scrimmage" 3; Marshal 3; Journalism Club 3, President 4; World Peace Winner 3; Music Club 1, 2, Reporter 3; Assistant Editor "High Times" 3, Editor 4; Advertising Staff "The Shield" 4; Chairman Ring Committee 4; Homecoming Committee 4.

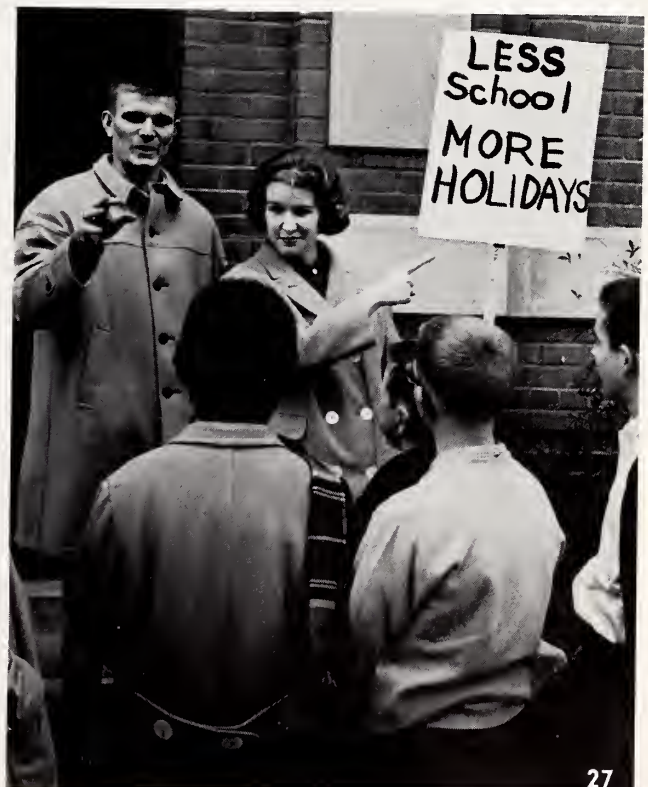
JOYCE MARIE WIGGS

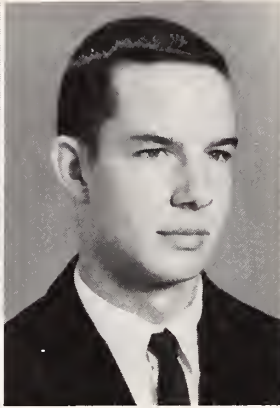
Library Club 1, 2; Library Assistant 1, 2; 4-H Club 3, 4; Junior-Senior Refreshment Committee 3; Freshman Dance Committee 4; Journalism Club 4; Homecoming Committee 4; Glee Club 1, 2, 4.



Seniors

WITTIEST
Bet Booker
Vic Ogburn



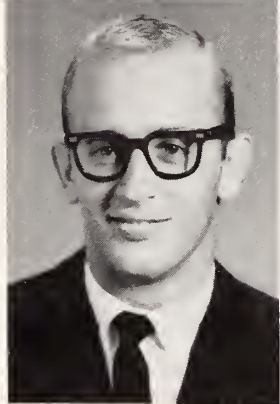


JUDITH ANN WILKES

Fine Arts Club 1; FHA Club President 2; Journalism Club 3, 4; Class Vice-President 3; Marshal 3; Junior-Senior Steering Committee 3; Mascot Committee 4.

CHARLES PUTNAM WILKINS

Wildlife Club 1; Fine Arts Club 2, 3; "Line of Scrimmage" 3; Junior-Senior Decorating Committee 3; Marshal 3; Football 1, 2, 3, 4; Basketball 1, 2, 3, 4; Monogram Club President 4; Freshman Dance Committee 4.



JEFFREY NEAL WILLIAMS

Speech Club 1; Monogram Club 2; Honor Council 3, 4; Football 1, 2, 3, 4; Basketball 1, 2, 3, 4; Track 1, 2, 4; Glee Club 1, 2, Publicity Chairman 3.

Seniors



COLLEGE DAY 1961

ABOVE: Representatives came from many North Carolina colleges and universities.

LEFT: The audience, seniors from all Johnston County high schools, enjoyed refreshments during a brief intermission.

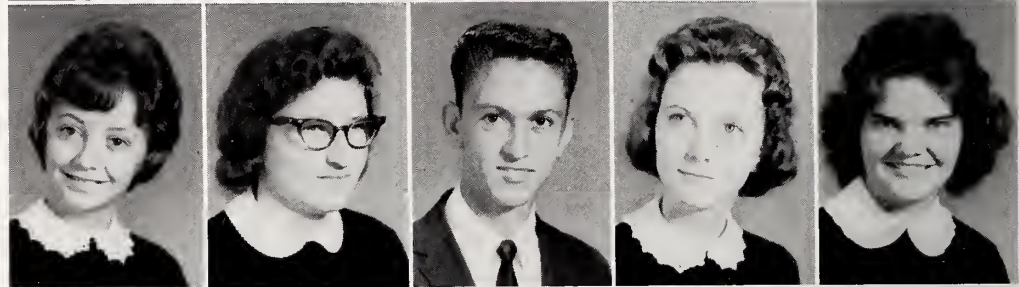


Juniors

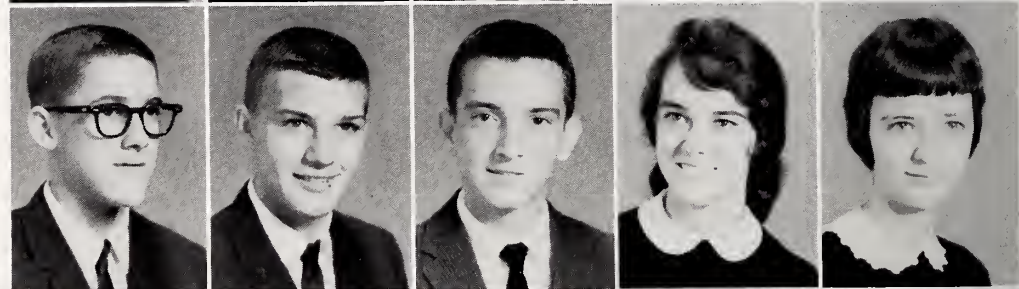
Thomas Adams
Ann Allen
Linda Ruth Aller
Donald Bailey
Jean Barbour



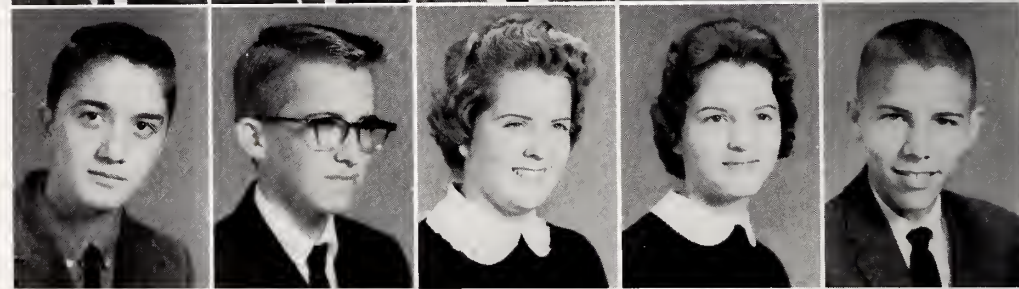
Peggy Barbour
Veronica Barbour
Earl Barnes
Jane Boyette
Diana Bridgers



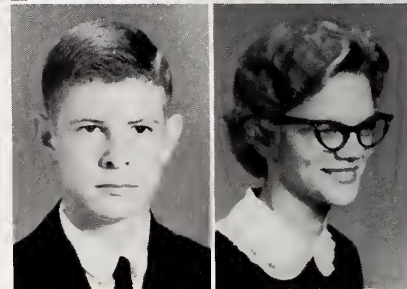
Ricky Bridges
Bill Bryan
Larry Bryant
Jennette Byrd
Linda Byrd



Linwood Byrd
Roy Capps
Sandy Carroll
Bonnie Coates
Jimmy Crayton

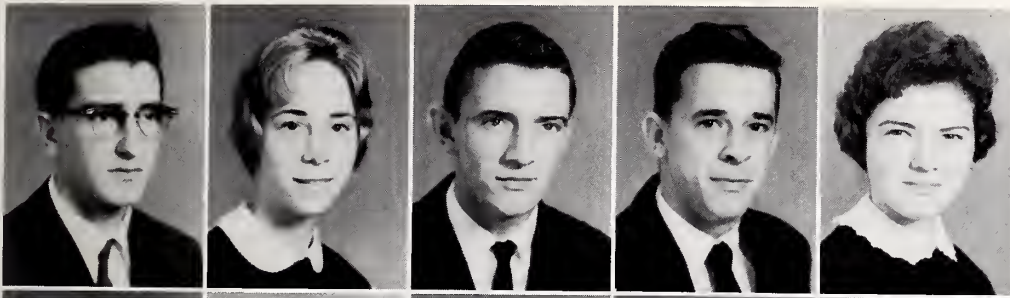


Bubba Creech
Imogene Creech

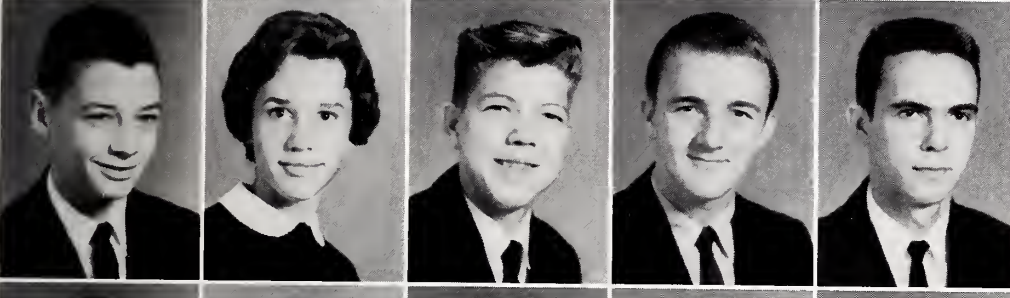


1962

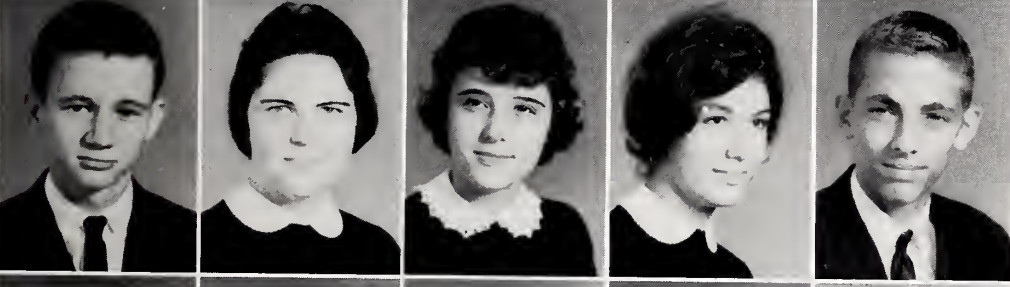
The Junior Class Officers: Andy Holland, President; Durwood Stephenson, Vice-President; Sallie Honeycutt, Secretary; Barbara Grantham, Treasurer.



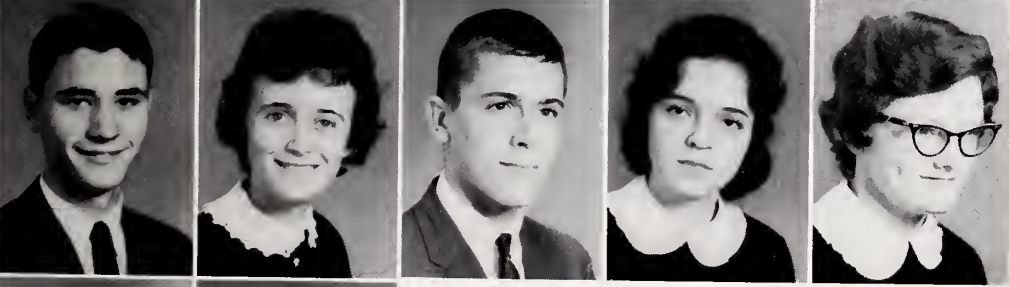
Butch Culbreth
 Carolyn Daughtry
 Jack Daughtry
 Ned Daughtry
 Marilyn Day



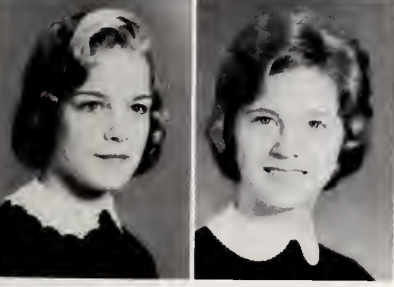
Tyler Edmonson
 Patsy Edwards
 Charles Ellis
 Danny Evans
 Jimmy Ferrell



Don Flowers
 Trudy Flowers
 Gail Foos
 Barbara Gratham
 Franklin Grimes



Durwood Hamilton
 Rose Hamilton
 Bill Harris
 Joyce Harris
 Jenny Hill



Kay Hill
 Sara Nell Hill

Juniors

"They say it will help us in college . . . if we get there."

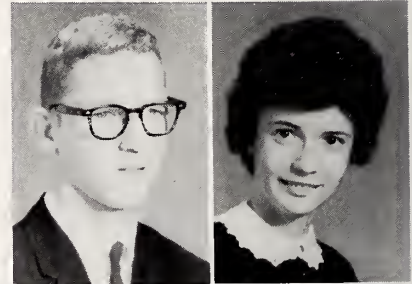




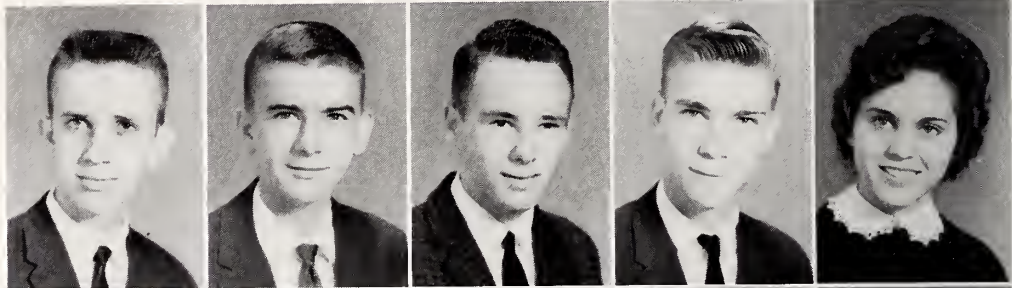
"5283" . . . All of the work in cheerleading is not before the crowd.

1962

Andy Holland
Sallie Honeycutt



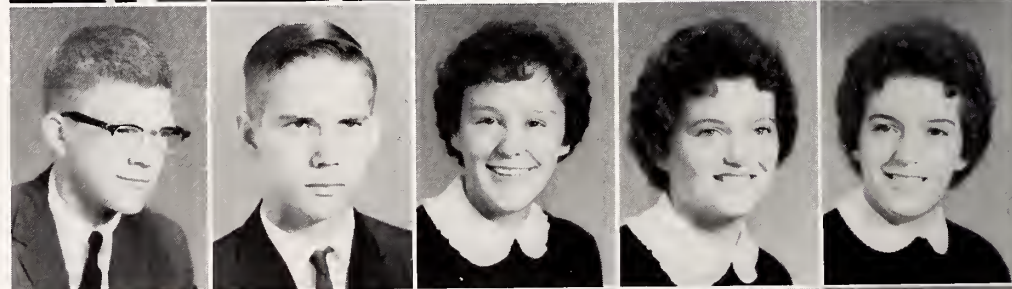
Randy Johnson
Charles Jones
Doug Jones
Glenn Jones
Kay Jones



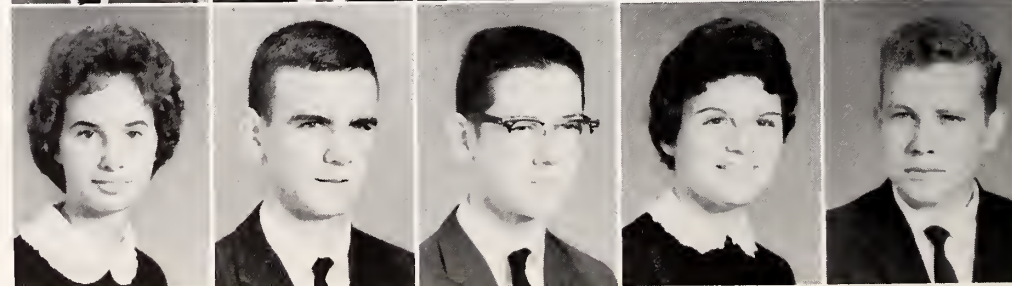
Judson Jones
Melvin Jones
Sheila Kennerson
Linda Lewis
Kathryn Mallard



Sandy Massey
John McFadyen
Billie Mintz
Barbara Mitchell
Brenda Mitchell



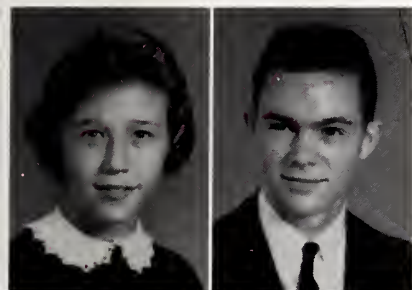
Jennie Norton
Jimmy Ogburn
Telfair Ogburn
Jenny Olive
Craig Overby



They read . . . they write . . . they speak on "The United Nations and World Peace." ". . . That succeeding generations shall be free of the scourge of war . . ."



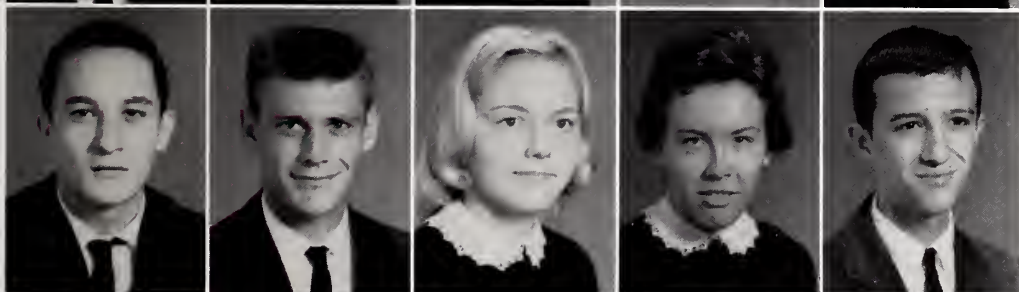
Juniors



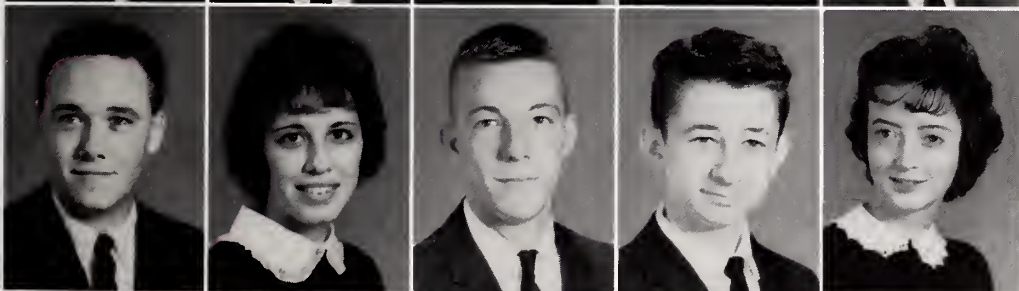
Sallie Padgett
Bobby Penny



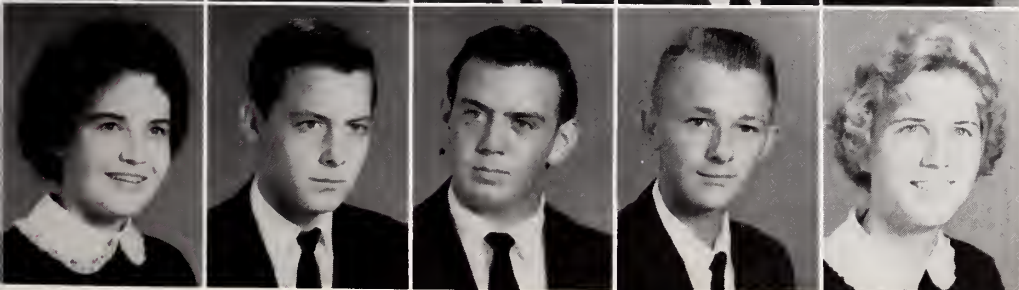
Edward Peterson
Amy Pitchi
Lea Pope
Louise Pope
Doris Price



Robert Rabil
Douglas Roberts
Frances Roberts
Carolyn Rowland
William Sellers



Ray Speas
Joyce Stanley
Durwood Stephenson
Larry Stephenson
Gail Strickland

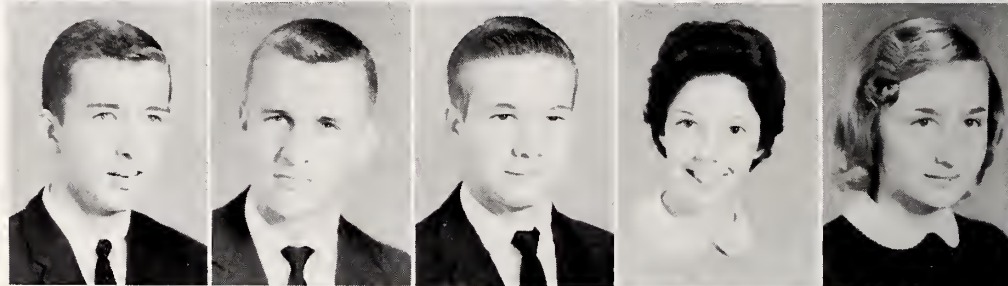


Patsy Strickland
Joe Stroup
William Talton
Leon Tucker
Gayle Tyner

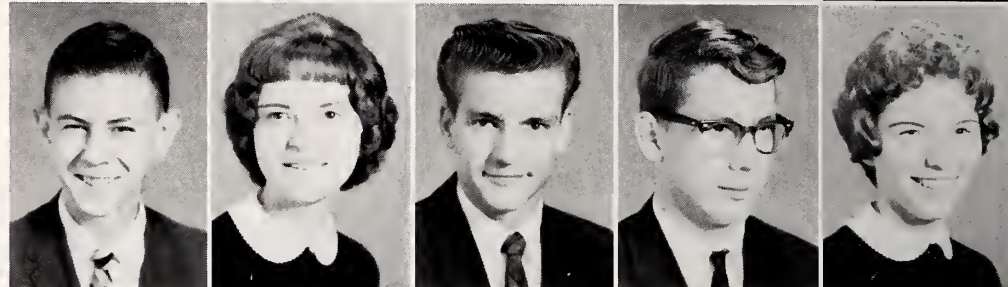
Joe Dan Underwood
 Glenda Vernon
 Brenda Waldon
 Mike Warren
 Barrett Warrick



Walker Wells
 Howard Whitley
 Landis Whitley
 Teresa Whitley
 Kay Willett



Gary Winstead
 Eleanor Woodall
 Ray Woodard
 Spike Yarborough
 Claire Young



Juniors

"Wh . . . wh . . . who are you? Go back to your teepee, Indian. No wampum here!"

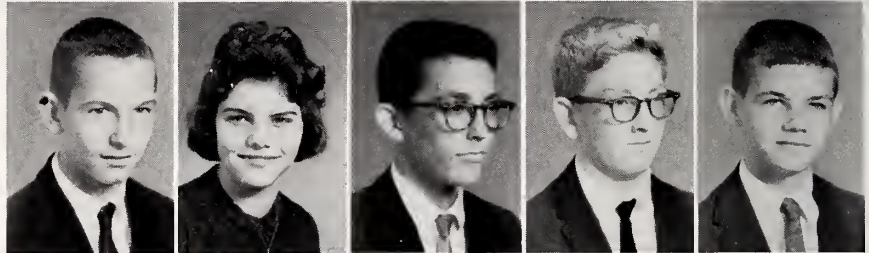


Sophomores

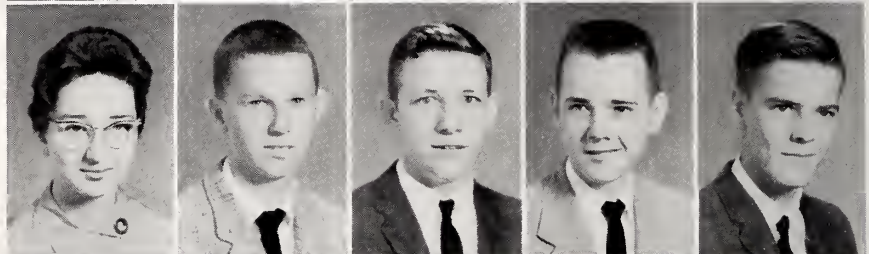
Emma Alice Avera
 Kay Ayscue
 Connie Sue Baker
 Cora Bell
 Mark Blackmon



Connie Branch
 Susie Brink
 Sidney Broadwell
 Dickie Brown
 Eric Brown



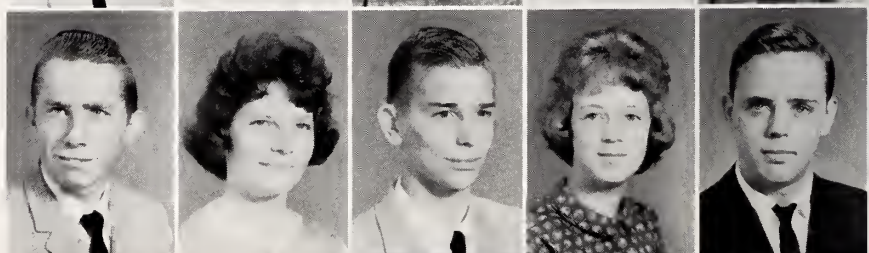
Becky Byrd
 Eddie Capps
 Jimmy Casey
 Steve Clayton
 Wade Clearman



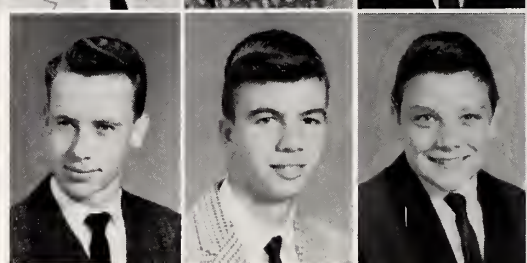
Fred Coats
 Judy Cockrell
 Joan Cooke
 Vivian Creech
 Ellen Daughtry



W. T. Deese
 Sharon Eason
 Jerry Edwards
 Diana Gilchrist
 Tuck Gray

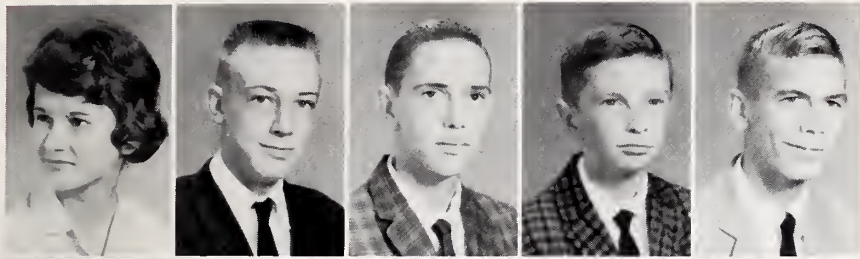


Billy Ray Gurley
 Donald Ray Hall
 Louis Hall

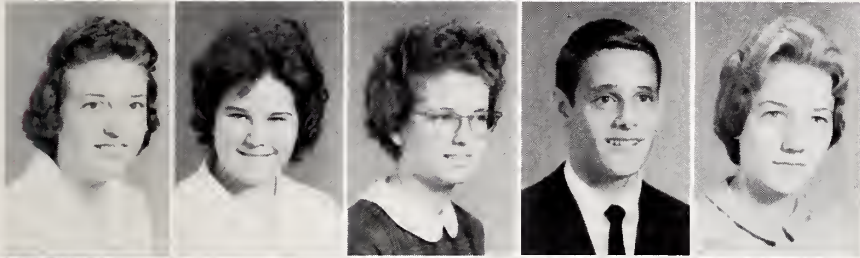


1962

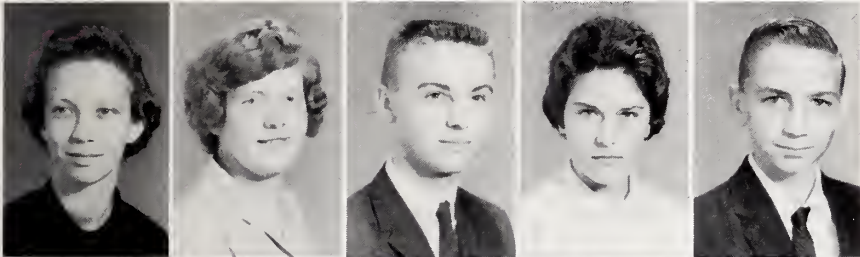
Starting the new year is a little easier, but there is always a new field to conquer . . . biology.



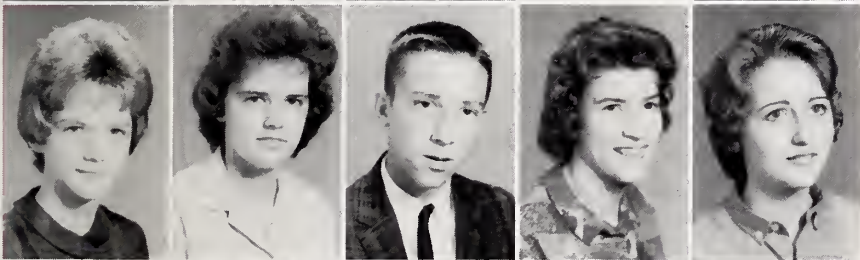
Ruth Ann Hamilton
 Thomas Hamilton
 Al Hardee
 Thad Hardee
 Billy Harrell



Brenda Hartley
 Frances Henry
 Ann Hobgood
 Bobby Hooks
 Evelyn Howell



Barbara Hudson
 Candy Jackson
 Billy Gene Johnson
 Susan Johnson
 Wayne Johnson



Gayle Johnston
 Linda-Sue Jones
 Mac Jones
 Sandra Jones
 Pam Jordan



Cheryl Kistler
 Sylvia Lassiter
 Laura Lynn Laughter
 Andrea Lee
 Carolyn Lewis



Larry Lindsey
 Kaye Massey

Sophomores

School spirit . . . a responsibility this year.

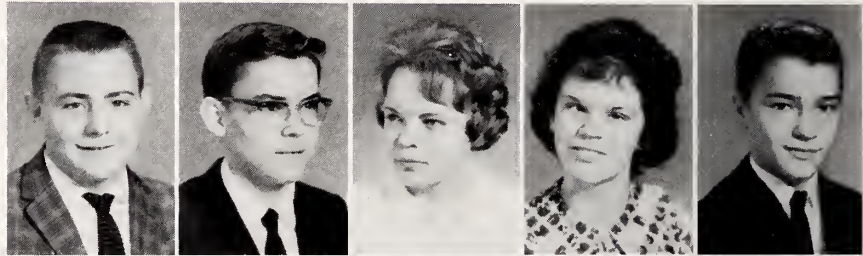




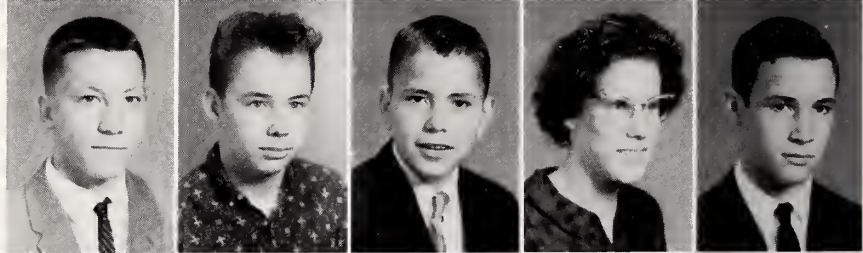
Only two pictures left and another girl in fifth period!

1962

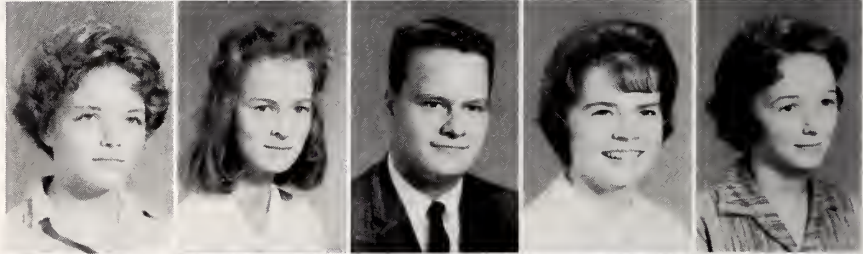
Clifton McGown
Wayne Medlin
Mary Mercer
Brenda Middlebrook
Nathan Mitchell



Charles Moon
Eugene Moore
Jesse Moore
Glenda Morgan
Ralph Morgan



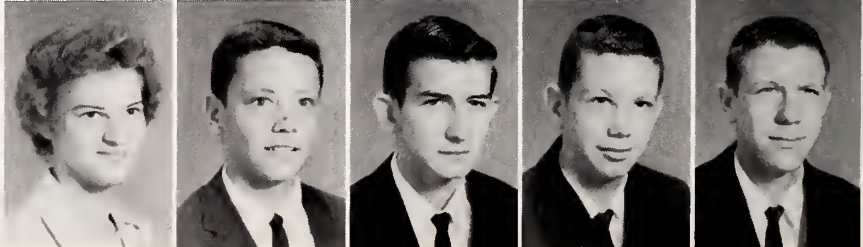
Marilyn Moye
Linda Murphy
Robert Myrick
Lindsay Park
Betty Sue Parker



Nelson Parker
Pete Parrish
Darnell Penny
Franklin Pitts
Catherine Pope

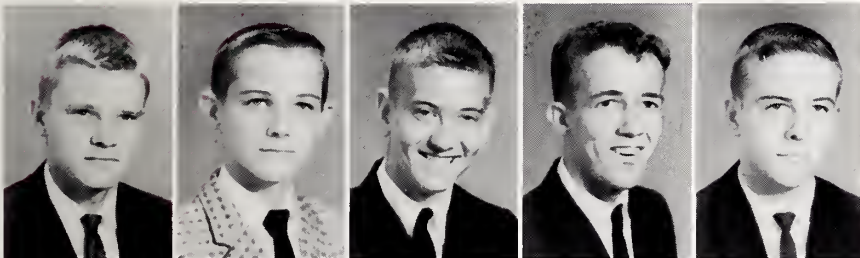


Lorene Pope
Bobby Poteat
Jerry Pounds
Shady Pridgen
Jimmy Putnam

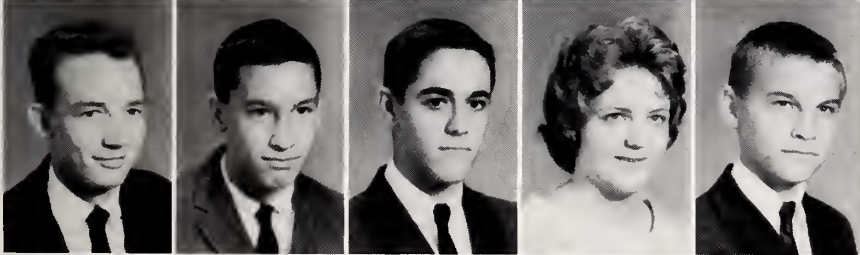


"Esquire?"

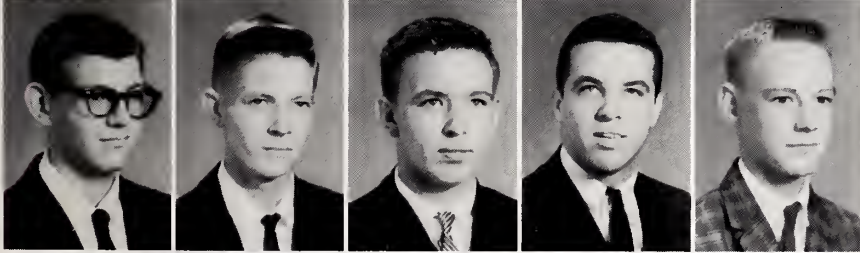
Sophomores



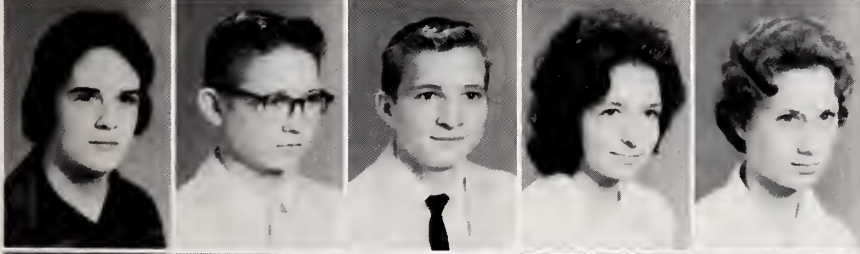
Dan Register
Ray Rose
Barry Stallings
Leonard Stallings
Millard Stallings



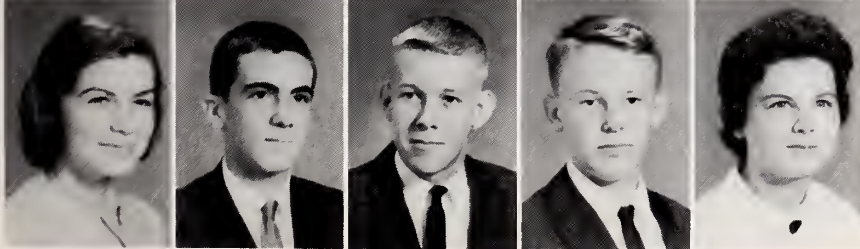
Pete Stallings
Larry Stanley
Tony Stanley
Sara Lou Stephenson
Woody Stephenson



Gary Stevens
Percy Stewart
Larry Sullivan
Bill Talton
Truett Underhill



Genia Upchurch
Larry Wadsworth
Earl Wall
Dorothy Weishaar
Sandra West



Judy Whitley
Whitty Whitley
Grover Wiggs
Robby Williams
Jenny Wilson

Guidance Program



The value any high school education has for a student is largely determined by what that student chooses to do immediately after his graduation. Should he begin his chosen career at once or will he profit by additional education or training? If he decides on more study, where should he seek it?

It is the task of the school's guidance program to help each student find for himself the best answers to these questions. The program, under the direction of Mrs. Avery here at Smithfield, helps the student by providing him with information on vocations, colleges, and professional schools. It is also possible for the student to learn more about himself, through professional interpretation of special tests, to help him in those decisions which may have a paramount influence on his future life.

We can be very proud of the guidance program at SHS. Efficient and thorough, it also maintains individual attention and personal concern for each student.

ABOVE: Mrs. Avery explains the purpose of an interest survey to Kay Boyette.



ABOVE: Harry Edwards discusses future plans in one of the guidance interviews which are available to all SHS students.

RIGHT: Mrs. Avery consults one of the department's career files. She also has access to the complete records of each student.



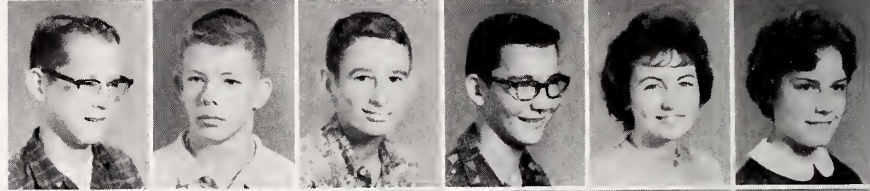


freshmen

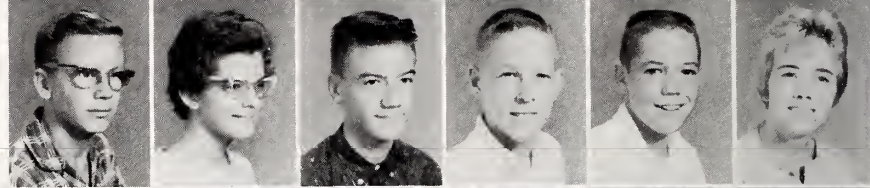
Carolyn Adams
Francis Adams
Carolyn Allen
Dan Allen
Lester Allen
Patsy Anderson



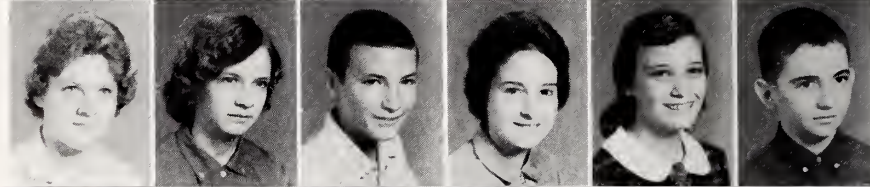
Houston Armstrong
Sam Aycok
Ken Ayscue
Butch Barbour
Trudy Barbour
Susan Barnes



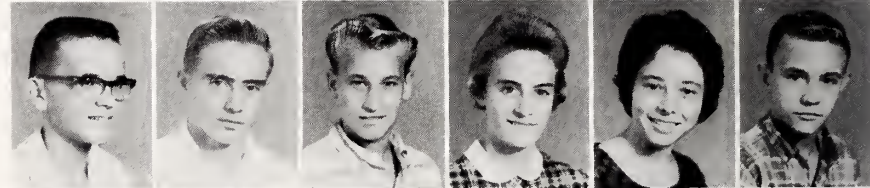
Rudolph Bass
Phyllis Batten
Billy Blackmon
Ben Booker
John Boyetté
Mary Boyette



Rose Bryan
Wilma Byrd
Eugene Caldwell
Beth Capps
Carolyn Capps
Larry Capps



Calvin Clayton
Danny Coates
Donald Coates
Helen Coates
Kaye Coates
Gary Cooke

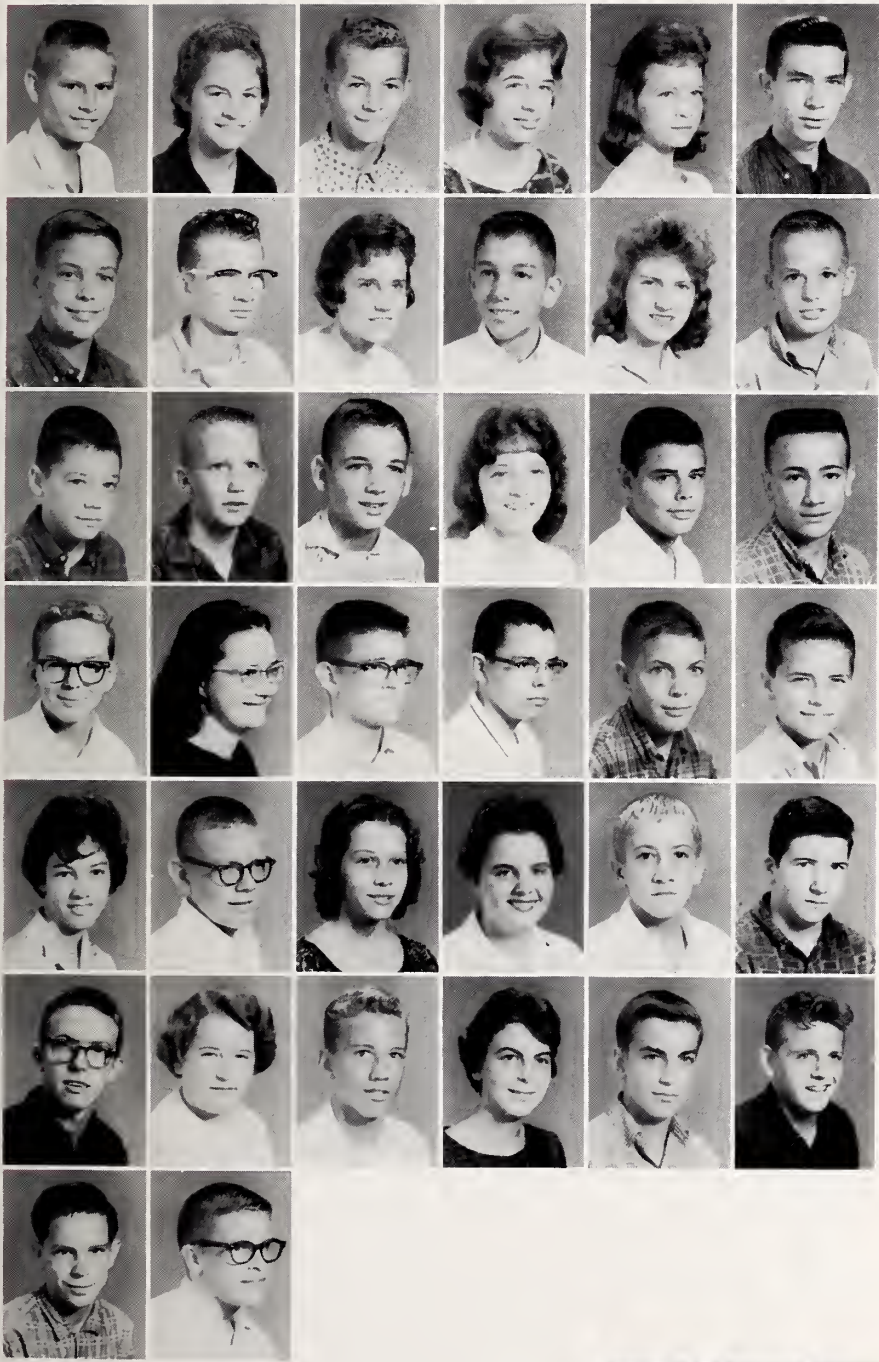


Evelyn Creech
Jeanene Creech
Nancy Creech
Steve Crumpler
Danny Daughtry
Edwin Daughtry



Ronald Daughtry
Robert Davis





Sandford Davis
Edna Pearl Deans
Robert Lee Deans
Janice Deberry
Daisy Deese
Edgar Deese

Van Denning
Graylon Dixon
Josephine Dixon
Doug Driver
Brenda Kay Eason
Danny Edgerton

Aldert Edmondson
Jimmy Edwards
Russell Edwards
Jo Ann Ellis
George Faulk
Billy Flowers

Freddie Gardner
Linda Gilmore
Carter Glass
W. A. Gower
Joby Grantham
Bobby Gurly

Joyce Hall
Charles Hamilton
Carolyn Hartley
Wanda Harris
Dan Heavner
Tommy Hilderbrand

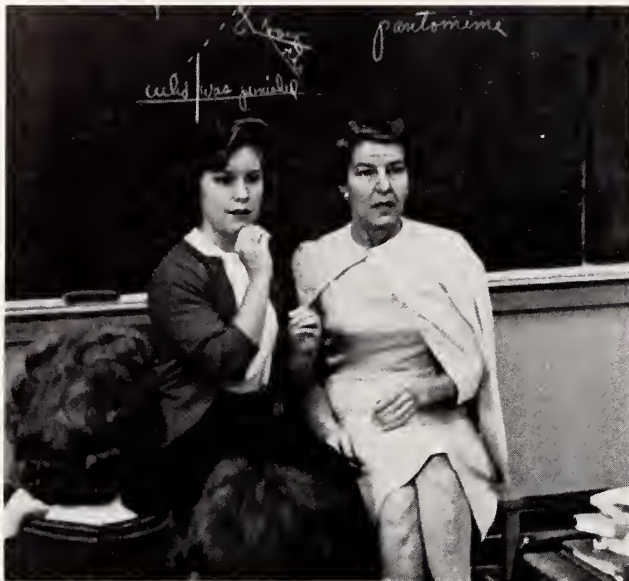
Leon Hill
Vickie Hill
Ray Hinnant
Patricia Hobbs
A. Hobgood
Freeman Holley

Melvin Holt
Buddy Hooks

Freshmen

Mr. Creech and the same old algebra books meet a new crop of "Why's."

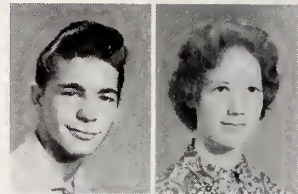




We learn to be dramatic . . .

1962

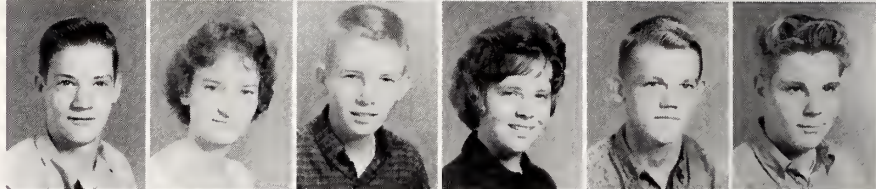
Bob Johnson
Gayle Johnson



Paul Johnson
Jimmy Johnson
Joyce Johnson
Patsy Johnson
Susie Johnson
Wayne Jones



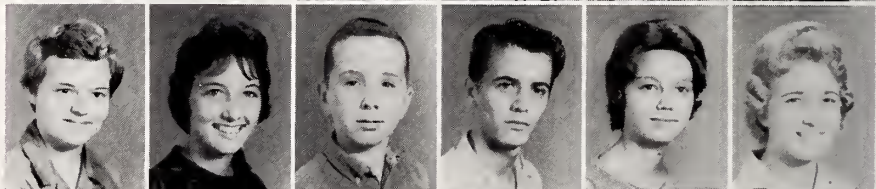
Bill Jordan
Evelyn Jordan
Joe Jordan
Kelly Knott
Dennis Lasarsky
Kerry Lassiter



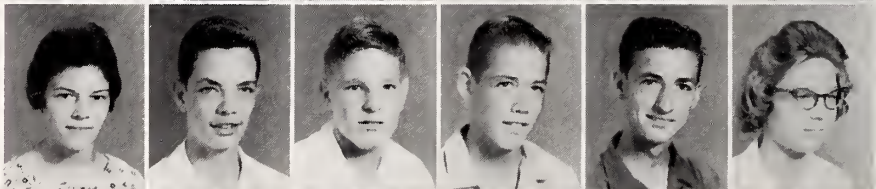
Will Lassiter
Wingate Lassiter
Jim Laughter
Janet Lee
Jean Lee
Peggy Lee



Sandra Lee
Mary Lewis
Michael Lillich
Danny Little
Dianne Massengill
Kay Massengill



Sandra Massengill
Charles Massey
Gary Mayenschein
Larry McLamb
Glenn McLemore
Brenda Medlin



Shirley Jean Medlin
Charles Mercer
Eugene Moore
Berry Moye
R. L. Norris
Beckie Norton



... and beautiful!

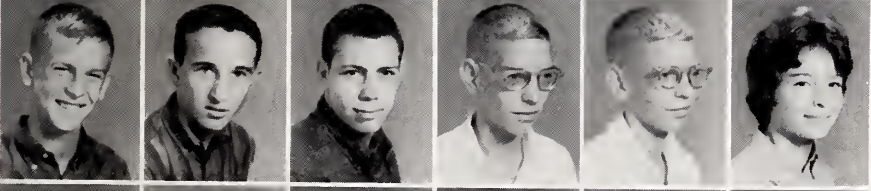
Freshmen



Bill Parrish
Linda Parrish



Linda Peedin
Carlton Pernell
Patsy Penny
Lois Peterson
Sarah Peterson
Cynthia Phillips



John Prevette
Wayne Price
Marshall Putnam
Warren Ragsdale
William Ragsdale
Anna Ratcliffe



Bobby Ray
Tony Ray
Sally Register
Jane Roberts
Jimmie Robinson
Darius Rose



Erma Royall
Richard Schmidt
Brenda Sellers
Anna Lee Shook
Tommy Smith
Barbara Snead

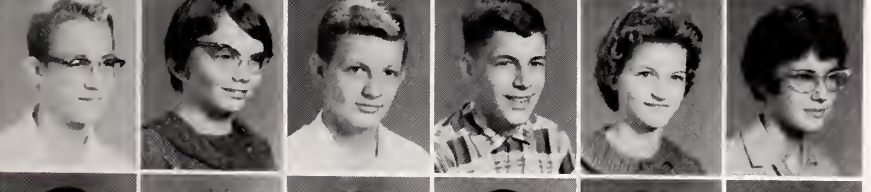
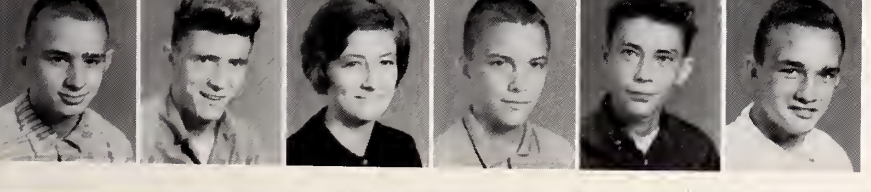


Abb Stallings
Nancy Stallings
Sandy Stallings
Donald Stearns
Peggy Stephenson
Sue Stephenson



Dennis Stewart
Erwin Stewart
Patricia Stoliker
Michael Strickland
Ronald Strickland
Rudy Strickland



Tamara Strickland
Yvonne Strickland
Linda Sullivan
Jenny Talton
Mary Lillie Talton
Joe Teague

Raeford Thompson
Rose Thompson
Bonnie Turner
Mickey Tyner
David Upton
Donald Vernon

Kathy Wall
Susan Wall
Edmund Ward
Johnny Ward
Judy Ward
Jimmie Watson

Linda Watson
Ginger Wellons
Jay Wellons
Ted Wells
Barbara Whitley
Charles Whitley

Hubert Whitley
Michael Whitley
Pam Wilkins
Ann Williams
Jan Williams
Rudy Williams

Nancy Williford
Edna Faye Wood
Larry Wood

Freshmen

We gave the hut a green glow, and broke a tradition by having fun.





Activities



Coach Roy Brown crowns another Homecoming Queen. This time it's his own daughter Gretchen, escorted by co-captain Joey Overby.



PREPARATIONS FOR SATURDAY NIGHT

ABOVE: Bill Sutton, Jamie Johnson, and Charles Wilkins secure some scenery.
 RIGHT: Bill Harris and Patsy Strickland work with Mrs. Wilkins on one of the skits.

Homecoming

Smithfield 26 Selma 0

HOMECOMING: . . . chapel . . . the game . . . the program . . .
 the dance . . .
 new frosh . . . old grads . . . gaiety . . . sentiment . . .
 the queen . . . her court . . . the victory . . .
 the people . . . the fun . . . the memory.





The armory was the scene of a real construction project Saturday morning as seniors rushed to decorate for the program and dance.

1962



THE PROGRAM. ABOVE: Joey Overby, Vic Ogburn, Bill Harris, and Andy Holland sing the opening number, the words of which were written by Linda Higgins.

LEFT: "Connie and Greer" (Kathie Lassiter and Vic Ogburn) contemplate the buying of a new car.



Junior Play 1961 "The Egg and I"

LEFT: Mrs. Wilkins, the play's Director, demonstrates the reading of a line to Barbara Grantham, Jimmy Ferrell, and Bonnie Coates in rehearsal.



LEFT: "Surely a mighty hunter like you isn't afraid of a little ole skunk!" Betty MacDonald (Patsy Strickland) teases her husband Don (Bill Harris).



BELOW: "Do you mind if I interview Primrose herself?" Reporter Grady (Bubba Creech, second from left) prepares to converse with a chicken in the presence of witnesses Anne MacDonald (Barbara Grantham), her boy friend Thad (Jimmy Ferrell), Miss Linden (Joyce Harris), and Mr. and Mrs. MacDonald.



High Times Staff

Striving to meet the demands of its readers, the HIGH TIMES staff works earnestly to publish an edition. Assisting with the many problems of collecting, copy reading, and compiling material to interest the student subscribers have been Mrs. Phillips and Mrs. Pearce, the faculty advisors. This year the staff has combined their efforts to present more interesting articles and features for the enjoyment of the students at Smithfield High.

LEFT: Mrs. Phillips, HIGH TIMES faculty advisor.

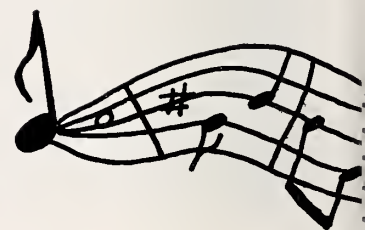


RIGHT: Editor Carol Ann Wickham and assistant editor Bonnie Coates confer on what features should be carried in the next issue.



BELOW: Sports editor Bill Harris, news editor Barbara Grantham, art editor Linda Higgins, and assistant art editor Kay Jones combine their ideas to produce the format of an upcoming number.



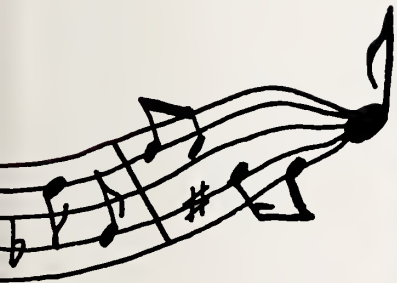


"The Sound of Music" brings to mind many things for those juniors (now seniors) who planned and carried out the 1961 Junior-Senior. Which of them will ever forget the long nights at the Little Dixie Warehouse . . . the gold paint they wore to class every morning . . . the English periods spent learning the songs . . . the constant secrecy which protected the theme for several weeks . . . the move to the armory . . . and the climax of the preparation when some of the seniors found they were "all wet" as far as finding out the theme by snooping? Above, Kathy McGee, Elissa McGowan, Kathie Lassiter, Anne Cheatham, and Bet Booker begin the long-awaited night with the theme prologue. Below, a few of those who were a part of the colorful square dance number.



-Senior

61



The program was a panorama of music from all over the world. Kathy McGee and Vic Ogburn took us to Switzerland with "I Miss My Swiss" (Left), and the chorus accompanied Joey Overby on a trip down "Old Man River" into the deep South (Below).



One of the highlights of the evening came from the Broadway play of the same name as the theme. Bet Booker teaches her "class" to sing in "Do-Re-Mi."

The Staff of the 1962



Co-Editors Bill Taylor and Dewey Lawson

In preparing the SHIELD for 1962 we have tried, as we said in the Foreword, to place special emphasis on the people who are SHS. We have changed the book in some ways from that of former years, always with the belief that a majority of you would agree with us.

We have used "filmstrip" groups of pictures to supplement the large, space-consuming ones in order to cover various areas more adequately.

The senior quotations have been eliminated this year. The reason for this is the fact that a quotation cannot be found for each person that really fits him. We feel, as do many authorities on high school annuals, that they no longer perform a necessary service.

We have greatly enjoyed editing this issue of your yearbook, a job which has been made much easier by the co-operation we have received from everyone.

So here it is—the 1962 SHIELD. If, during this school year, you have been exasperated by our constant picture taking, question asking, secrecy, and our perpetual mad rush, we are sorry. This book is our excuse.

*Dewey Lawson
Bill Taylor*



LEFT: Sports Editor Billy Upchurch and Business Manager Donald Byrd check over the yearbook's finances.



The SHIELD'S faculty advisor is Mrs. Glenn. Here she gives a page her final scrutiny before mailing it to the publisher.



The assistant editors, Anne Cheatham and Brenda Stephenson check the class pictures as Sheila Crumpler types the names on a copy sheet.



The advertising staff checks last year's ads for ideas. **STANDING:** Carol Ann Wickham, Kathie Lassiter, Camille Broadhurst, Sue Hooks, Gretchen Brown. **SEATED:** Kay Boyette, Bet Booker, Elaine Crumpler, Judy Forbes, Elissa McGowan.





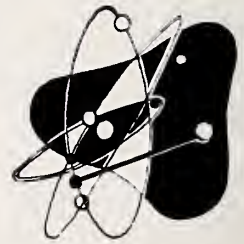
Glee Club



Clubs



1961



Smithfield High School has a large number of clubs ranging all the way from Wildlife to Fine Arts. Each of these clubs, under the sponsorship of a faculty member, elects officers and presents programs of interest to the members at each meeting.

ABOVE: Members of Mrs. Wilkins' Dramatics club learn to overcome nervousness by "forgetting themselves" before their audience. Shown reciting "Mary Had a Little Lamb" simultaneously are Anna Ratcliffe (as a 21-year-old), Nancy Stallings (as a 2-year-old), Mary Lillie Talton (while crying), and Becky Norton (while laughing).

RIGHT: Members of the Wildlife clubs enjoy a motion picture on hunting.





1962



ABOVE: Mrs. Cash's Future Homemakers of America club enjoys refreshments at the Christmas meeting. Kathy Wall and Mrs. Lois Olive serve Christmas "yule logs" and punch to the club members including Judy Whitley, Kay Jones, Ruth Ann Hamilton, Linda Peedin, Gail Tyner, Sally Register, Linda Kay Sullivan, Jeanene Creech.



LEFT: In Science Club we look over the shoulder of Dickie Brown as he gives a lab demonstration for Spike Yarborough, Millard Stallings, Thad Hardee, and Jimmy Ferrell. Standing behind them is Mr. Wiggs, the club's sponsor.

BELOW: The French Club, meeting with Mrs. Peele, devoted one session to the creating of new French bulletin boards. In the foreground, Rose Hamilton and Sallie Padgett decide on a design as Houston Armstrong, Donald Bailey, Melvin Jones, and Larry Stephenson prepare to display the latest masterpiece.



S7S

In Chapel



Chapel programs this year have included a little bit of everything. Just before Christmas the speech class presented a program designed both to entertain the student body, and to make them examine their idea of Christmas.

ABOVE: a meeting of executives in the office of J. C. Scrooge to discuss advertising for the rapidly approaching "Green Christmas". Left to right: Dewey Lawson, Dan Barefoot, Bet Booker, Joey Overby, Kathie Lassiter, Judy Forbes, Gretchen Brown, Charles Wilkins, Linda Alford, Elissa McGowan, and Billy Wellons.



LEFT: Santa (Billy Poteat) causes quite a commotion when he arrives to bring some of the faculty their Christmas gifts.

Another outstanding chapel program was the one sponsored by the monogram club just before the Homecoming game. In one of the skits Charles Wilkins and Joey Overby gravely undertake the selection of the Homecoming Queen from the many eligible senior girls including Elaine Crumpler, right, but soon find the choice easy when a more-er-persuasive candidate (played by Billy Poteat) below, explains the situation to them.



ABOVE RIGHT: Our school was honored with the visit of a great European concert pianist (played by Dewey Lawson) who performed for us such monumental works as "The Third Left Curling Paper" from Mrs. Franz Liszt's "Second Home Permanent in C Major."



Majorettes



High-stepping down the street in front of the band, decorating a car for the Homecoming parade, or ushering at the Christmas concert, the majorettes have become an increasingly important part of the SHS scene. Below: Emma Lou Gardner, Kay Willett, Eve Sugg, Peggy Barbour, Sallie Honeycutt, Frances Roberts.







Band



LEFT: Kay Boyette and Kathie Lassiter at the auditorium piano.

Kay has taken piano for ten years. She is an accompanist for the Glee Club, a Sunday School Class, the Smithfield Rotary Club. She has served as secretary of the music club and has been awarded Guild audition honors three years.

Kathie has also taken piano for ten years. She has been a student of flute and voice. She is an accompanist for the Glee Club and the Smithfield Kiwanis Club and has received Guild audition honors three years.



LEFT: Carol Ann Wickham plays a piano composition for the approval of piano department instructors Miss Flora Canaday and Miss Joan Neighbors.

Carol Ann has studied piano for seven years. She serves as organist and pianist for the local First Christian Church and as an accompanist for the Glee Club. She has been program chairman and reporter for the music club and has received Guild honors three years.

Senior Musicians



RIGHT: Dewey Lawson and Joey Overby look over their parts on a new band number.

Joey is a student of piano, trumpet, and voice. He is president of the band and has won Guild audition honors four years. He is the bugler for Camp Ridgecrest and Caswell Assembly each summer.

Dewey is a student of piano, voice, organ, timpani, percussion, conducting, and composition. He was awarded an assistantship to Transylvania Music Camp and a scholarship to the Brevard Music Festival in 1959 and again in 1961, and has for the past two years been timpanist and principal of percussion in the North Carolina All-State Band and Orchestra. He was a member of the first youth symphony ever to play a White House concert.





Athletics



FRONT ROW: Marilyn Day, Camille Broadhurst, Linda Higgins.
 SECOND ROW: Claire Young, Elissa McGowan, Jenny Norton, Sara Nell Hill.

What would a school be without school spirit, and where would school spirit be without cheerleaders? Our cheerleaders have proved themselves worthy of the honor paid them in their selection by the Monogram Club at the end of their sophomore year. Not only at games, pep rallies, or in parades, but at all times and in all places they have been fine examples of the school spirit they promote.

Cheerleaders

BELOW: The girls "Warm up" before leading the Homecoming parade in Jeffrey Williams' car.



CAMILLE BROADHURST
 Chief.





Football



FRONT ROW: Dan Barefoot, Billy Poteat, Tan Barefoot, Curtis Whitehurst, David Putnam, Watts Ward. SECOND ROW: Durwood Stephenson, Andy Holland, Mike Warren, Franklin Grimes, Jeffrey Williams. THIRD ROW: Judson Jones, Larry Lindsey, Larry Sullivan, Bill Brian, Bill Sutton, Howard Whitley. FOURTH ROW: Larry Bryant, Robert Myrick, Landis Whitley, Billy Carroll, Thomas Adams. FIFTH ROW: Lynwood Jones, Joey Overby, Vic Ogburn, Dean Ennis, Charles Wilkins, Coach Brown.

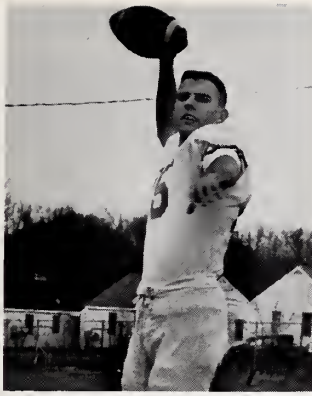
Football



GAMES

Smithfield.....26	Clinton 6
Smithfield..... 7	Cary21
Smithfield.....34	Clayton 0
Smithfield.....34	Millbrook..... 7
Smithfield.....28	Fuquay12
Smithfield.....58	Wake Forest13
Smithfield.....19	Apex 0
Smithfield.....12	Garner20
Smithfield..... 6	Benson 6
Smithfield.....26	Selma 0

LEFT: Co-Captains Joey Overby and Dean Ennis with Coach Brown.



JOEY OVERBY
Quarterback



DEAN ENNIS
Guard

Seniors



BILLY WELLONS
Halfback



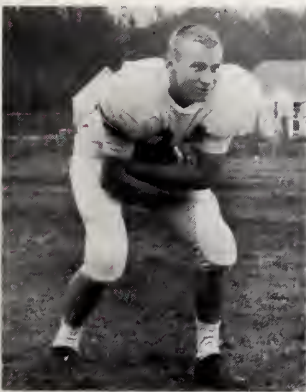
BILL SUTTON
Halfback



JEFFREY WILLIAMS
Fullback



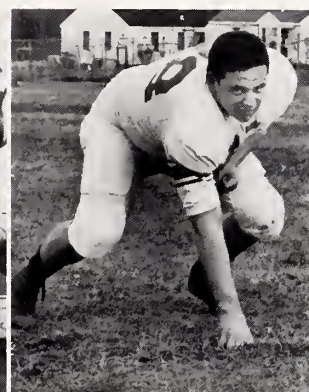
CHARLES WILKINS
Halfback



DAVID PUTNAM
Halfback



CURTIS WHITEHURST
End



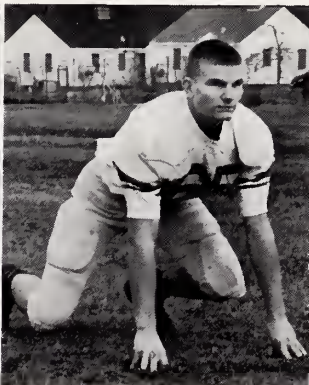
BILLY POTEAT
Tackle



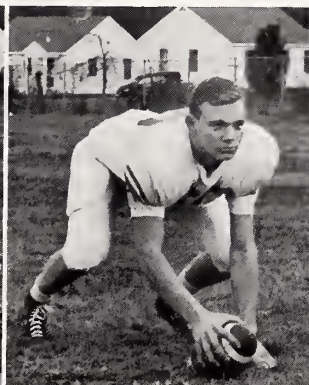
LYNWOOD JONES
End



DAN BAREFOOT
Tackle



VIC OGBURN
Guard



WATTS WARD
Center



TAN BAREFOOT
Guard



Quarterback Joey Overby (15) maneuvers in the Smithfield backfield on a key handoff for valuable yardage.

The "Headhunter", Howard Whitley (44), romps past Cary on-slaughters.



David Putnam (24) is stopped by Apex tacklers as he starts on one of his long punt returns.



Jeffrey Williams (32) looks bewildered as he is surrounded by Garner tacklers.

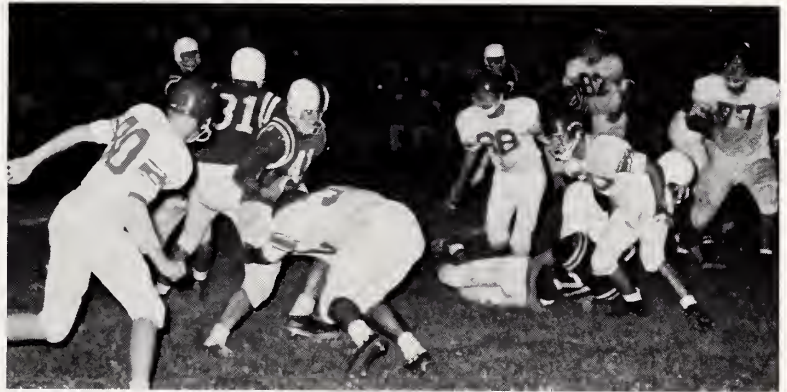




From August 15th until the end of the season many hours are spent each afternoon practicing for the next ball game.



Playing against Selma, Jeffrey Williams (32) is about to snatch one of Overby's on-the-spot passes.



Smithfield defenders stop Cary for short yardage and gain possession of the ball.



David Putnam is about to get creamed by the Garner players.



J.V. Football

LEFT: Connie Branch eludes a Dunn pass defender as he gains needed yardage through the air.

RIGHT: The Little Devil blockers lead Franklin Pitts (16) on to another Smithfield touchdown.



BELOW: With the help of Will Lassiter (28), Charles Whitley (14) attempts an end run around his would-be tacklers.



GAMES

Smithfield.....	0	Kinston	13
Smithfield.....	19	Dunn	0
Smithfield.....	0	Erwin	6
Smithfield.....	0	Charles B. Aycock.....	28
Smithfield.....	0	Goldsboro	32
Smithfield.....	32	Millbrook	0



Basketball

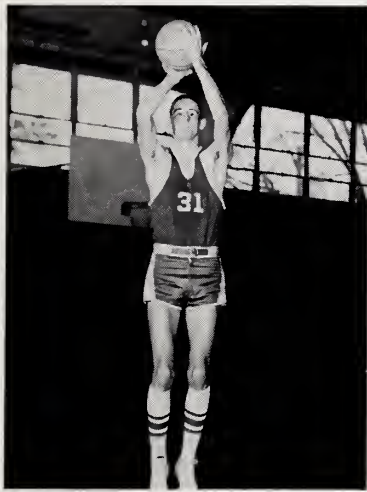


FRONT ROW: Will Lassiter, Charles Wilkins, Skip Sykes, Eric Brown, Billy Carroll.
 SECOND ROW: Jeffrey Williams, Grover Wiggs, Andy Holland, Bobby Penny.
 THIRD ROW: Joey Overby, Curtis Whitehurst, Jesse Parrish, David Putnam, Durwood Stephenson.



LEFT: Coach Temple with co-captains Joey Overby, Jesse Parrish, and Charles Wilkins.

Boys' Basketball



JESSE PARRISH
Center



JOEY OVERBY
Guard



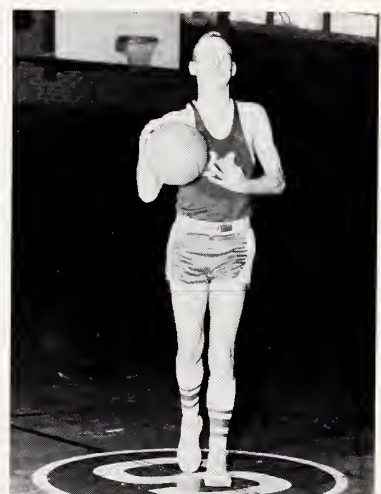
CHARLES WILKINS
Guard



JEFFREY WILLIAMS
Forward



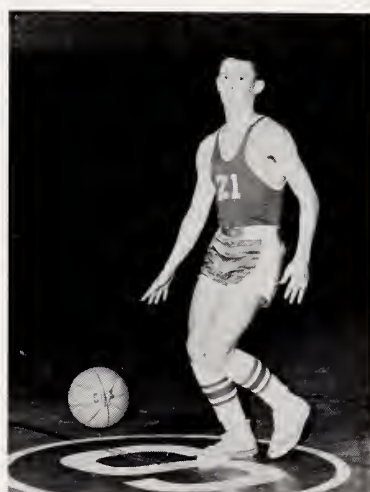
BILLY CARROLL
Forward



DAVID PUTNAM
Guard



CURTIS WHITEHURST
Center



SKIP SYKES
Guard

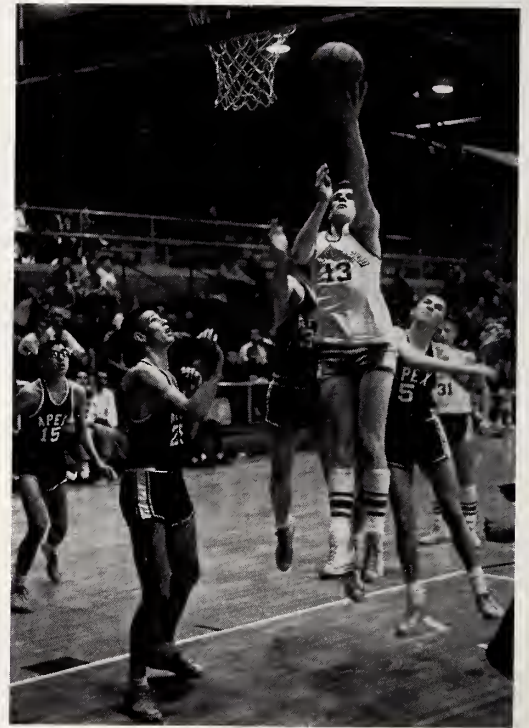
Seniors



Smithfield subs view the game with calm assurance that the outcome will be victory.



Andy Holland stumbles over two Cary players in an attempted lay-up.



Curtis Whitehurst lays in two points.



Charles Wilkins comes down with a rebound against Apex in an effort to control the ball.



Robert Myrick shoots a jump-shot in an afternoon J.V. game.



SCORES

Smithfield.....	35	Garner	59
Smithfield.....	54	Four Oaks	43
Smithfield.....	50	Clayton	73
Smithfield.....	59	Fuquay	50
Smithfield.....	63	Millbrook	26
Smithfield.....	64	Benson	37
Smithfield.....	53	Apex	35
Smithfield.....	53	Cary	47
Smithfield.....	63	Selma	53
Smithfield.....	60	Wake Forest	40
Smithfield.....	40	Garner	52
Smithfield.....	50	Clayton	58
Smithfield.....	72	Fuquay	67
Smithfield.....	66	Benson	43
Smithfield.....	65	Millbrook	52
Smithfield.....	63	Cary	58
Smithfield.....	52	Wake Forest	48



FRONT ROW: Sue Hooks, Bet Booker, Anne Cheatham, Elaine Crumpler.
 SECOND ROW: Patsy Edwards, Jenette Byrd, Linda Byrd, Lindsay Park, Cheryl Kistler.
 THIRD ROW: Helen Coates, Anna Ratcliffe, Diane Massengil, Becky Norton.



Girls' Basketball

LEFT: Co-captains Anne Cheatham and Bet Booker with Coach Brown.



BET BOOKER
Guard



ANNE CHEATHAM
Guard

Seniors



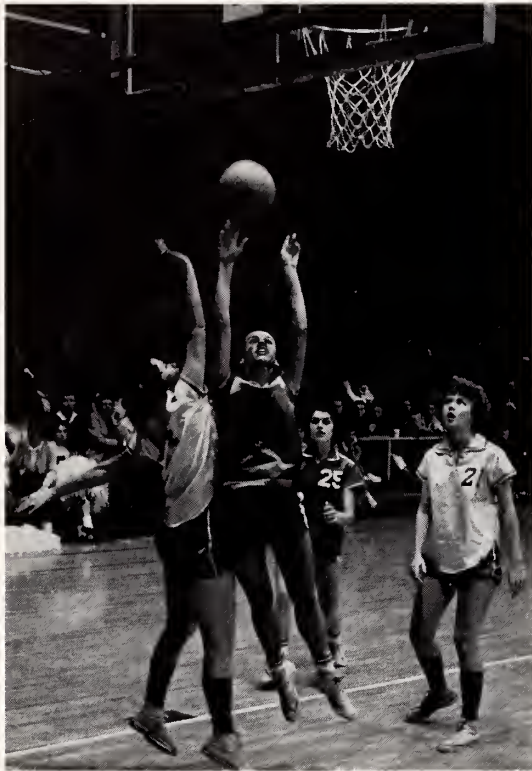
ELAINE CRUMPLER
Guard



SUE HOOKS
Forward



GRETCHEN BROWN
Guard



Patsy Edwards, guarded closely by more experienced alumnae, still manages to get off a shot.

In spite of her closed eyes, Anna Ratcliff retains the rebound, but not without a struggle.



SCORES

Smithfield.....	33	Garner	55
Smithfield.....	57	Four Oaks	35
Smithfield.....	65	Clayton	40
Smithfield.....	67	Fuquay	44
Smithfield.....	41	Millbrook	19
Smithfield.....	50	Benson	34
Smithfield.....	52	Apex	16
Smithfield.....	44	Cary	34
Smithfield.....	36	Selma	52
Smithfield.....	56	Wake Forest	36
Smithfield.....	42	Garner	56
Smithfield.....	34	Clayton	20
Smithfield.....	39	Fuquay	42
Smithfield.....	31	Benson	26
Smithfield.....	37	Millbrook	30
Smithfield.....	41	Cary	29
Smithfield.....	37	Wake Forest	26



All eyes are on the ball as Sue Hooks shoots a foul shot for Smithfield in the Apex game.



FRONT ROW: Lynwood Jones, Harry Edwards, Pete Bryant, Robert Myrick, Connie Branch, Pete Parrish, Jerry Wayne Edwards.
 SECOND ROW: Butch Eason, Howard Whitley, Frank Vernon, Durwood Stephenson, Bobby Penny, Keith Johnson, David Putnam,
 Ray Speas, Landis Whitley.

Baseball 1961

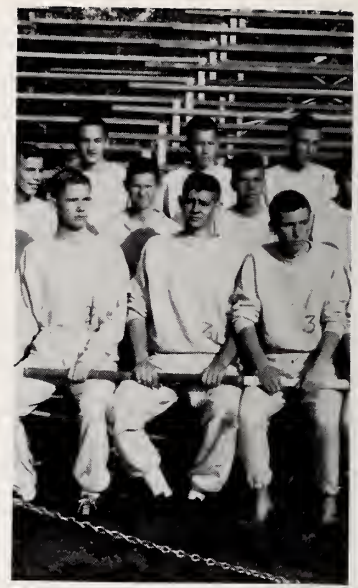


Co-captains Frank Vernon and Keith Johnson with Coach Temple.

GAMES

Smithfield.....	1	Clayton	2
Smithfield.....	4	Benson	2
Smithfield.....	0	Fuquay	15
Smithfield.....	4	Four Oaks	5
Smithfield.....	4	Clayton	1
Smithfield.....	11	Selma	3
Smithfield.....	3	Benson	7
Smithfield.....	0	Fuquay	3
Smithfield.....	10	Millbrook	12
Smithfield.....	3	Selma	4

SCORES					
Smithfield	Garner	Selma			
52 1/2	45 1/2	21			
Millbrook	Smithfield	Apex			
57 1/3	47 1/3	14 1/3			
Smithfield	Four Oaks				
78 1/2	32 1/2				
Wake Forest	Smithfield	Fuquay	Selma		
49 1/2	44 1/2	15	10		
Cary	Smithfield	Fuquay			
77 1/2	20 1/2	18			
Cary	Wake Forest	Millbrook	Smithfield	Selma	Fuquay
35 2/5	26	25 1/5	7	3	1



New sweat suits!

Track 1961

FRONT ROW: Robert Rabil, Bill Bryan, David Lee, Joey Overby, Billy Upchurch, Bill Sutton, Curtis Whitehurst.
 SECOND ROW: Billy Carroll, John McFayden, Franklin Grimes, Judson Jones, Billy Howell, Bob Barbour, Johnny Glass.
 THIRD ROW: Charles Moon, Larry Wadsworth, Franklin Pitts, Eddie Capps, Jimmy Ogburn, Donald Hall, Mac Jones, Billy Harrell.





The Monogram Club Honor Council. Coach Brown, Joey Overby, president Charles Wilkins, vice-president Billy Upchurch, secretary-treasurer Elaine Crumpler, Andy Holland, Patsy Edwards, and Jeffrey Williams.

Through the planning of social events such as Homecoming and the Twerp dance, the setting of sportsmanship standards, and the awarding of annual athletic trophies and letters, the Monogram Club has become a very important organization on the SHS scene. The benefits of its existence extend beyond its membership into the entire student body.

Monogram Club



LEFT: Monogram Club president Charles Wilkins meets with Billy Poteat, Linda Byrd, Cheryl Kistler, and Bet Booker to plan some phase of the organization's latest project—the Twerp dance.



ABOVE: Mrs. Nolia Ward, the lunchroom dietician, plans the menus, maintains the food supply, and oversees the preparation of each meal.

Lunchroom

Preparing lunch for a school full of children is a job that requires a good deal of well co-ordinated effort. Not only must the lunchroom serve the most appetizing food possible, but in addition maintain exacting cleanliness standards and insure a good nutritional balance in each meal.

RIGHT: It is Mrs. Sarah Massey who collects the lunch fee from each student who takes advantage of the school's lunch service.



BELOW: Even with the many modern kitchen machines, each piece of silver must still be dried by hand. While in the background, in keeping with the lunchroom's exacting health standards, one of the staff is cleaning a sink.



Custodians

Joe Lassiter, James Terrell, and Louise Lassiter. Custodians are an indispensable factor in any school, but at Smithfield High School they are more than that. Just as important to the students as the service they render is the warm friendship they offer.

Bus Drivers

Our bus drivers have what is probably the greatest responsibility delegated to students—that of seeing children to and from school safely each day of the year. BELOW: the senior drivers. Jamie Johnson, Dwight Hill, Leon Hudson, Johnny Gray.





elissa mc gowan



eve sugg



homecoming court



carol ann wickham



camille broadhurst

bonnie coates



judy forbes




elaine crumpler
kathie lassiter



gretchen brown

SMITHFIELD
HIGH SCHOOL



BOWLING

BOWL WHERE YOU SEE THE
MAGIC AMP TRIANGLE

SMITHFIELD LANES
SNACK BAR
16 LANES



Advertisements



Think Young
Have A Pepsi

**Pepsi-Cola Bottling Company
of Selma, Inc.**

BRIGHT LEAF AND BURLEY TOBACCO CO., INC.

Smithfield, North Carolina



HELEN'S DRIVE INN

301 Truck Lane

WE 4-4221

Home of the
Luigi-Burger



SMITHFIELD OIL & GIN CO.

Petroleum Products

Cotton Ginners

DIAL WE 4-2040

HUGH AUSTIN'S

Men's and Boys' Store

"A Trial Is All We Ask"

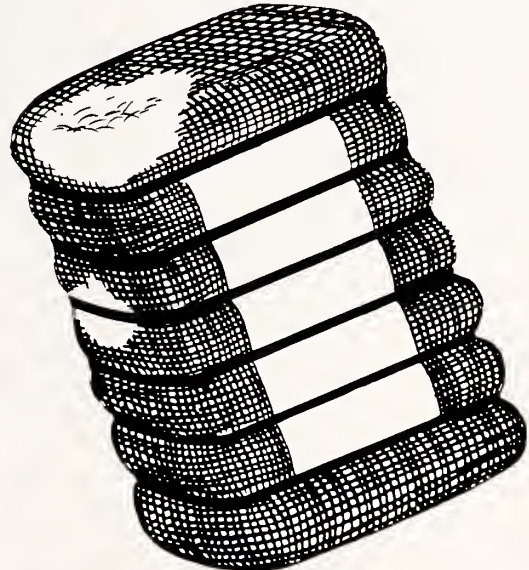
SMITHFIELD, NORTH CAROLINA

AUSTIN-OGBURN COTTON COMPANY, INCORPORATED

Smithfield, North Carolina

Your Friendly Cotton Buyer

TELEPHONE WE 4-4165



BINGHAM and PARRISH INSURANCE AGENCY

FIRE and CASUALTY INSURANCE

FOR

HOME—BUSINESS—AUTO—FARM

REAL ESTATE—LOANS

SMITHFIELD, NORTH CAROLINA

HEAVNER-WALLACE IMPLEMENT COMPANY

SALES and SERVICE

Allis-Chalmers Farm Machinery

Smithfield, North Carolina

ALLIS-CHALMERS
SALES AND SERVICE



Compliments of
HOOKS and LAYNE OIL COMPANY

Distributor
TEXACO PETROLEUM PRODUCTS

and

HOOKS and LAYNE TIRE COMPANY

Distributor
FIRESTONE TIRES • BATTERIES • ACCESSORIES

Smithfield,

North Carolina





Woodard's

MEN'S WEAR
Smithfield and Selma

John Dail's Service Station



BEST WISHES TO THE SENIORS

BEST WISHES TO
GRADUATING CLASS

**HOOD BROTHERS
DRUG STORE**

Johnston County's
Family Druggists
Since 1879

Congratulations

to the

Class of '62

THE JEWEL BOX

Smithfield,

North Carolina



MARVIN'S PLACE

Gas and Oil

Across the River
on U.S. 70

PHONE WE 4-4321

SMITHFIELD, N. C.

ADAMS'

OPEN AIR MARKET

Smithfield,

North Carolina

RICE'S PHOTO SHOP

Hobby and Photo Supplies

SMITHFIELD, N. C.

HILL'S

GROCERY & MARKET

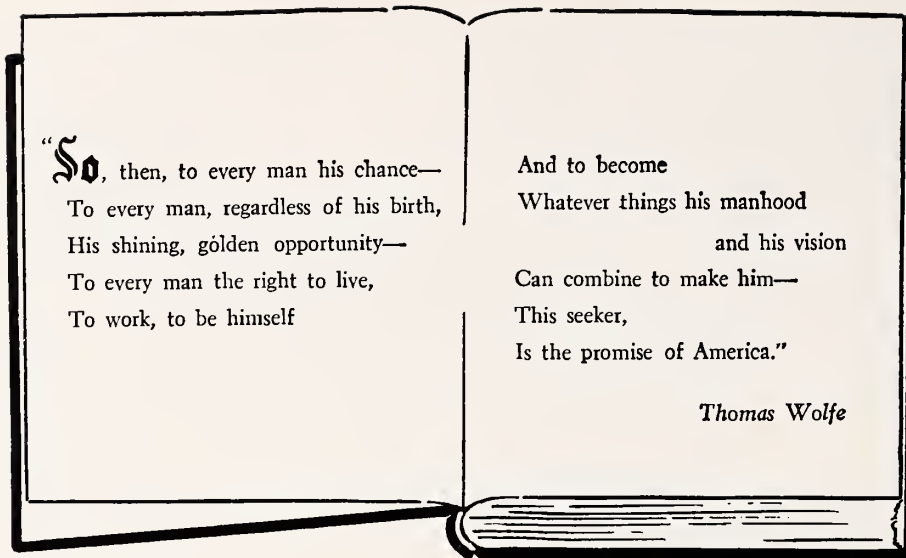
Groceries • Meats • Ice Cream

CONGRATULATIONS, SENIORS!

Phone WE 4-2780

Smithfield,

North Carolina



So, then, to every man his chance—
To every man, regardless of his birth,
His shining, golden opportunity—
To every man the right to live,
To work, to be himself

And to become
Whatever things his manhood
and his vision
Can combine to make him—
This seeker,
Is the promise of America.”

Thomas Wolfe

SMITHFIELD SPINNING COMPANY

a Unit of

Burlington INDUSTRIES, INC. 
EXECUTIVE OFFICES, GREENSBORO, N. C.

Rewarding careers are available in textiles, and with Burlington, world's leading textile organization.

FIRST CITIZENS BANK AND TRUST COMPANY OF NORTH CAROLINA

60 Years of Service — 1898 - 1959

— Complete Banking Service —
COMMERCIAL — SAVING — TRUST — INSTALLMENT LOAN

Member Federal Deposit Insurance Corporation



SELMA
RADIO & MUSIC CO.



Maytag and G. E.
Appliances

We Service What We Sell

NORMAN CREECH, Owner

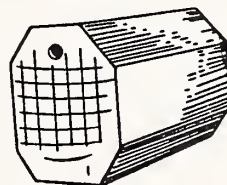
Bus. WO 5-2291

Res. WO 5-2294

SELMA, N. C.

SEPTIC TANKS

Tanks, Drain Tile, Stone
Sales — Installation



PARRISH

CONCRETE PRODUCTS

Dial WE 4-4333

Raleigh Highway

WATER EQUIPMENT COMPANY

Plumbing — Plumbing Supplies —
Water Pumps and Accessories —
Water Conditioners — Underground
Lawn Irrigation

515 Truck Lane Phone WE 4-4220

SMITHFIELD, N. C.

DAY'S DRY CLEANERS

Cash and Carry Saves You Money

The Kleeners That Kleen

South 4th St.

SMITHFIELD, N. C.



LUBY'S MOBIL SERVICE

LUBY STARLING, Owner and Mgr.

Located on 301 Truck Lane

Smithfield, North Carolina

SMITH'S LADIES' SHOP

"There Is No Substitute
for Quality"

SMITHFIELD, NORTH CAROLINA



Your



DEPENDABLE
DRUGGIST

FLEMING PHARMACY

Smithfield

North Carolina

SMITHFIELD MOTOR PARTS, INC.

Wholesale Auto Parts
and

Machine Shop Service

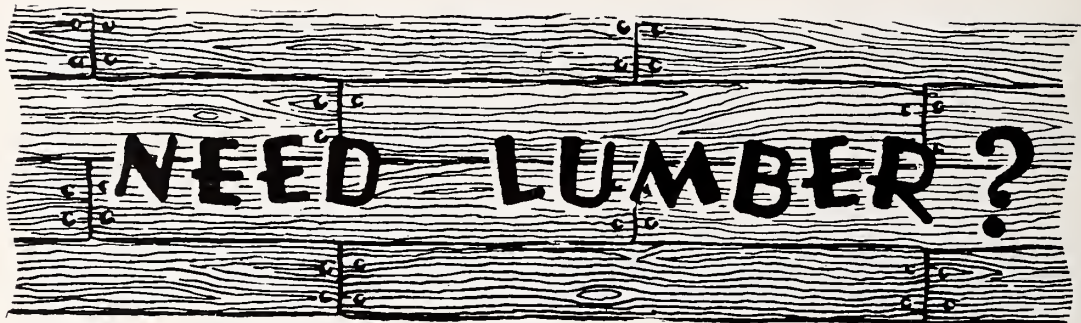
PHONE WE 4-3116

ROY STRICKLAND LUMBER COMPANY

Rough and Dressed Lumber

Phone WE 4-3247

Smithfield, North Carolina



.... Then let us fill your needs

Compliments of

COBLE DAIRY PRODUCTS COOPERATIVE, INC.



YOUR LOCAL DAIRY

Smithfield, N. C.

Phone WE 4-4191



Best Wishes
to the Class of '62
**JOHNSTON COUNTY
FROZEN FOODS, INC.**
Smithfield, North Carolina

**STEPHENS AND CONGLETON
HARDWARE**
Market Street
Smithfield, North Carolina

BATT JOHNSON'S
Barbecued Chicken and Pig
Buffalo Road
SMITHFIELD, NORTH CAROLINA

PHONE WE 4-3638

P.O. BOX 42

REUBEN L. JOHNSON
Free Lance Photographer
SMITHFIELD, N. C.
PECAN GROVE

JOHNSON COTTON COMPANY

COMPLETE FARM AND HOME SUPPLIES

FERTILIZERS

John Deere Sales and Service

Nathane Furniture and Appliances

WE 4-2701

WE 4-2421

Smithfield, North Carolina

GUY C. LEE MANUFACTURING COMPANY

LUMBER • MILL WORK • BUILDING SUPPLIES

Phone WE 4-2162

Smithfield,

North Carolina

WALLACE WELDING AND MACHINE SHOP

Electric and Acetylene Welding

Any Place Any Time

Phone

Day—WE 4-2488

Night—WE 4-2378

Raleigh

Highway

SMITHFIELD, N. C.

SMITHFIELD FURNITURE DEALER'S ASSOCIATION

SMITHFIELD, N. C.

Johnson Cotton Company

Talton, Inc.

G. S. Tucker Company

Home Furniture Company

Denning Furniture Company

Compliments
of
FAY'S SANDWICH SHOP
PHONE WE 4-2693
Smithfield, North Carolina

Compliments of
HOLT FARM CENTER, INC.
Custom
Grinding and Mixing
Truck Lane and Brogden Road
PHONE WE 4-2043

G and G GULF SERVICE



COMPLETE GULF PRODUCTS
Intersection of Truck Lane and Highway 301
Smithfield, North Carolina

THE FASHION SHOP

Smart Apparel for Women and Children
Phone WE 4-2534
Smithfield, North Carolina

JACK'S FARM SUPPLY

FEED — SEED — FERTILIZER
GRAIN BUYERS

Big Planters Tobacco Warehouse
Telephone WE 4-2598

**THE PINE LEVEL
OIL MILL CO.**

SINCE 1902

Cotton Seed Products and Fertilizers
Telephone WO 5-2152
PINE LEVEL, NORTH CAROLINA

W. B. OLIVER & SON, INC.

Cotton Ginners and Merchants

Phone WO 5-3124

PINE LEVEL OIL MILL CO.

M. F. G. Cotton Seed Products and
Fertilizer Since 1902

Phone WO 5-2152

PINE LEVEL, NORTH CAROLINA

BEST WISHES

**THE
JEROLD CORPORATION**

Highway 301 South

SMITHFIELD, N. C.

Compliments of

**GARDNER-CREECH
OIL COMPANY**



YOUR FRIENDLY
MOBILGAS DISTRIBUTOR

Compliments
of

**GRANTHAM'S
BOYS' AND YOUNG
MEN'S SHOP**

SMITHFIELD, NORTH CAROLINA

**UNDERWOOD
FUNERAL HOME**

SMITHFIELD, NORTH CAROLINA

Funeral Directors
SINCE 1897

ROBERTS AND WELLONS, INC.

Our Seed Grow—
Burpee's Seed

Mathieson Fertilizer
Hardware
Clinton, Briggs Parts and Service

COMPLETE GARDEN AND
FARM SUPPLY STORE
Phone WE 4-2408

Compliments of
**DENNING WESTBROOK
OIL CO., INC.**

Distributors of Phillips 66 Products
Highway 70 West Smithfield, N. C.
Phone WE 4-2266

SEL-FIELD TIRE SERVICE

Goodyear Tires
and
Expert Recapping
SMITHFIELD-SELMA HIGHWAY

Congratulations, Seniors!
**SMITHFIELD
LIVESTOCK EXCHANGE**
SMITHFIELD, N. C.

ROGER A. SMITH

Insurance—Loans
Real Estate
SMITHFIELD, N. C.

If you really want to be modern, cook,
heat home and water with gas.

**CENTRAL CAROLINA
GAS CO.**

Smithfield, North Carolina
PHONE WE 4-2533

**SMITHFIELD
TELEVISION CENTER**

125 W. Market St.
PHONE WE 4-2659

Authorized Zenith and
R. C. A. Dealer
Ask for Color TV
Demonstration



JOHNSON'S FLORIST

"Flowers For All Occasions"
Phone WE 4-2630

Smithfield, North Carolina

DR. VON E. RHOADES

CHIROPRACTOR

SMITHFIELD,

N. C.

Congratulations, Seniors
RUFUS KING GROCERY
Groceries, Drinks, and Candies
SMITHFIELD NORTH CAROLINA

TROT MOTEL
AAA
"Closest to Town"
SWIMMING POOL

SANITARY MARKET
BRUCE WILKINS
Market Street
Phone WE 4-3678

JORDAN & HOLT, INC.
Hardware
Plumbing and Heating Contractors
SMITHFIELD, NORTH CAROLINA

REX SHOE SHOP
and
SHOE STORE
Expert Shoe Repairing
Complete Line of Men's Dress
and Work Shoes
SMITHFIELD, NORTH CAROLINA

JOHNSON'S LAUNDRY
AND
DRY CLEANERS
Smithfield's Only Sanitone Cleaners
PHONE WE 4-2305
Smithfield, North Carolina

SMITHFIELD MULE COMPANY
CLEAN USED CARS
"We Trade for Anything That Walks or Rolls"
Smithfield North Carolina
C. O. HEAVNER, Owner

TAKE MOTHER AND DAD
WITH YOU WHEN YOU GO AWAY
TO SCHOOL

HOOKS STUDIO

Smithfield, North Carolina

OVERBY FUNERAL HOMES

Sponsors of
**OVERBY MUTUAL BURIAL ASSOCIATION,
INC.**

Joseph R. Overby
Smithfield, North Carolina

WIGGS LAUNDRY AND DRY CLEANING

Smithfield, North Carolina

THE SMITHFIELD HERALD

"Your County Newspaper"
Published Twice a Week



Best Wishes to the Seniors
**THE CAPITAL COCA-COLA
BOTTLING CO., INC.**

SMITHFIELD, N. C.

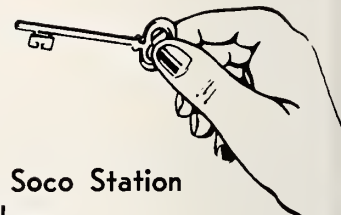
TURNAGE & TALTON SUPER MARKET

Dial 934-3106
SMITHFIELD NORTH CAROLINA





OUR SPONSORS



Skinner's Insurance and Realty
 Smithfield Dairy Center
 Strickland's Phillips 66
 Fieldcrest Mills, Inc.
 Johnston County Oil Dealers Association
 Denton F. Lee, Electronics-Appliances
 Smithfield Furniture Dealers Association
 Smithfield Pharmacy
 WMPM
 B. W. Booker
 Ideal Oil Company, Inc.
 Farmer's Hardware
 H. A. McGowan
 Dr. Rachel Jordan
 Johnson's Watch Shop

Daughtry's Soco Station
 Leder Brothers
 Luby F. Royall, Jewelers
 Turnage and Talton
 Starling's
 Gregory's Five and Ten
 Aycock's
 Albert's Service Station
 Upchurch's Pharmacy
 Parrish's Children's Store
 Smithfield Auto Dealers
 Medlin's
 Joe Grimes' Texaco
 Nelson's Restaurant
 Evelyn Johnston
 Marvin E. Taylor



JOHNSTON CO. PUBLIC LIBRARY SYSTEMS



3 8950 60806 3204

RNC
373.756
S
1962

Smithfield High *gcl*
School.
The shield.

