


SHIELD



66

SMITHFIELD PUBLIC LIBRARY
SMITHFIELD, N. C.

JOHNSTON COUNTY ROOM



Digitized by the Internet Archive
in 2014

<https://archive.org/details/shield196617smit>



1966 SHIELD

Volume XVII

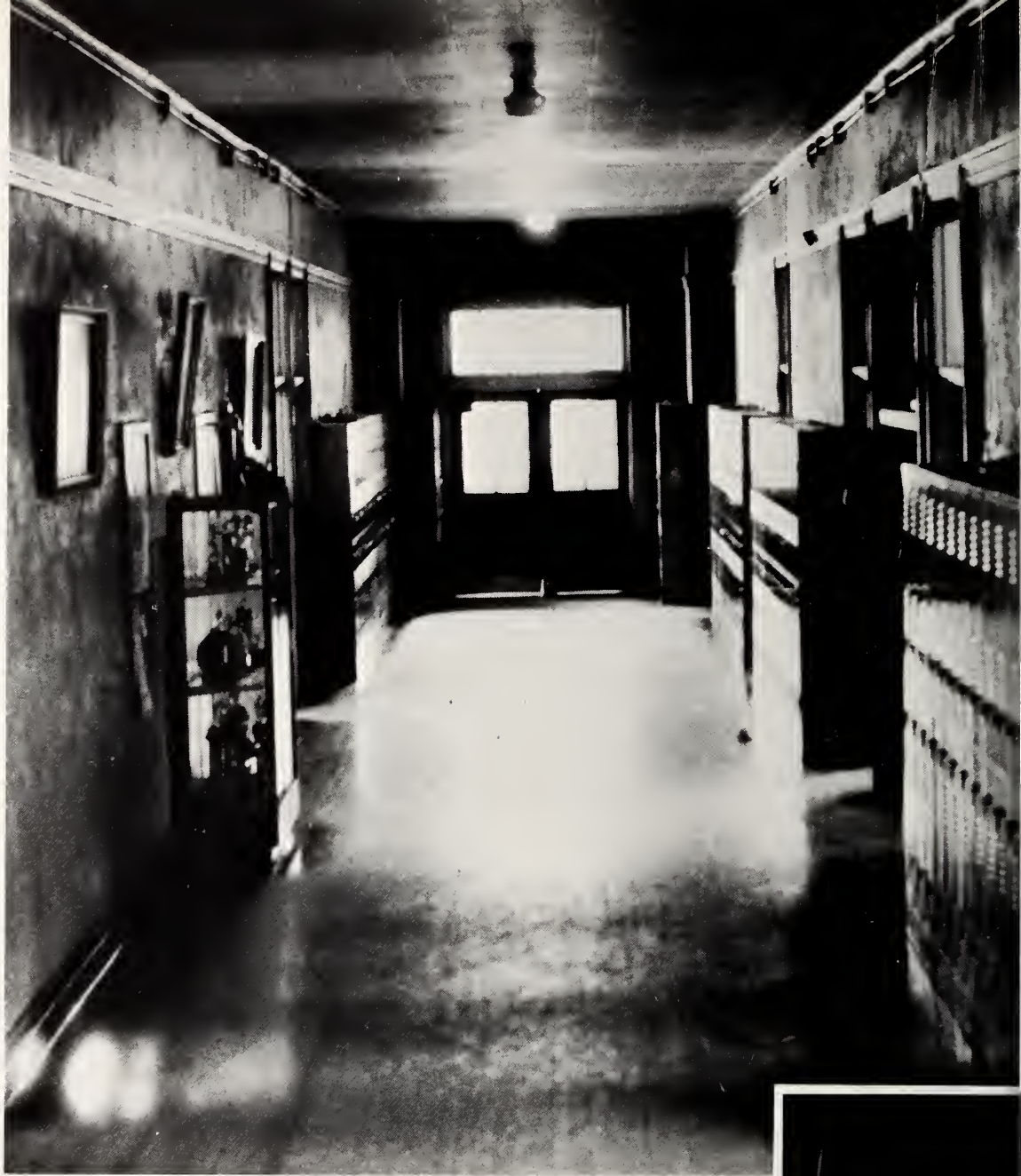
Smithfield High School

Smithfield, North Carolina

Editor-in-Chief
Billy Barnes

SMITHFIELD PUBLIC LIBRARY
SMITHFIELD, N. C.

Assistant Editor
Joan Shallcross



Foreword

Through the halls of SHS have walked thousands of students. There have been excited freshmen, jovial sophomores, dedicated juniors, and thrilled seniors. Looking down the hall, one thinks of the many times he has been jostled in the noisy throng as he crowded to the bulletin board, or balanced his books precariously in one hand as he fidgeted with his locker, or maybe dashed through the halls to a class long after the bell had rung; perchance he remembers when he slowly made his way to the principal's office with that both curious and frightened feeling that comes only when he hears his name resounding from the intercom. Yes, there are many fond memories connected with these halls and all that they represent. We now give you a review of many of these memories in this, your 1966 SHIELD.





Contents

<i>Administration and Depts.</i>	<i>7</i>
<i>Classes</i>	<i>21</i>
<i>Activities</i>	<i>69</i>
<i>Athletics</i>	<i>87</i>
<i>Student Life</i>	<i>111</i>
<i>Advertisements</i>	<i>127</i>



In Memoriam



Phyllis Susan Hall

June 26, 1948 ----- December 25, 1965

In Memoriam



Charles Jack Sanders

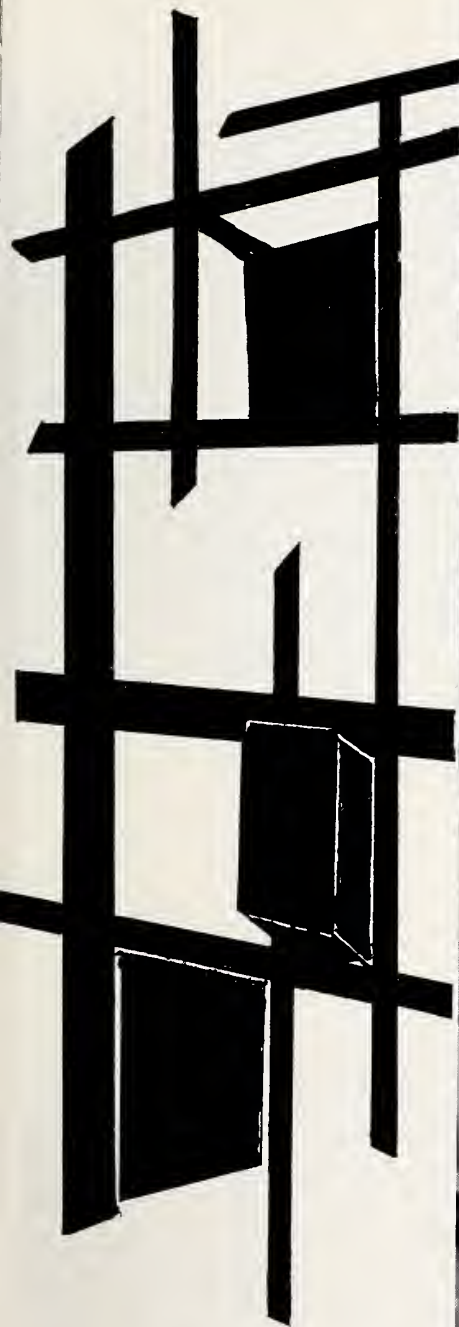
June 23, 1948 - - - - - November 26, 1965



Dedication

Throughout the years the class of 1966 will remember Mrs. Barbour, for it was through her guidance, patience, and understanding that we were able to achieve a strong foundation for our future studies. Not only did she teach us from books while we were in her class, but her influence and advice were so valuable in helping us to be people of the best character. We dedicate the 1966 SHIELD to Mrs. Joyce Barbour.





*ADMINISTRATION
AND
DEPARTMENTS*



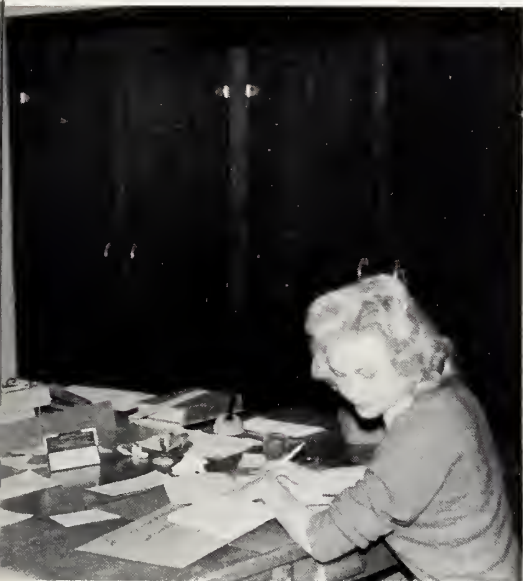
MR. BRUCE F. SLOAN, Principal

This year we welcome into our school, Mr. Bruce F. Sloan, our new principal. Mr. Sloan came to Smithfield from Oxford, North Carolina. After receiving his B.S. degree from Wake Forest College, Mr. Sloan went to East Carolina College for his Masters degree.

Throughout the year, Mr. Sloan has been seen at all school sponsored activities. His interest in school sports, has created more interest in sports for SHS Students.

Mr. Sloan is well-known for his experience, his integrity, and his leadership.





A secretary's work is never done.



MRS. JOHN T. MASSEY



MRS. C. W. TARLTON
Secretary



MRS. CARLTON DAUGHTERY
Secretary

English

The study of English is necessary for every high school student. Through our courses of American and English literature, we gain an understanding of our great heritage. The English department also offers the students an opportunity to develop speaking skills.



MRS. LEONA P. PARRISH
B. A.
Wake Forest College
English



MRS. MICKIE R. SNIPES
B. A.
Atlantic Christian College
English and Speech



MRS. JOYCE JONES
B. A.
Atlantic Christian College
English



Mrs. Parrish keeps a watchful eye on Judy Wilson as she gives her report on an English author.



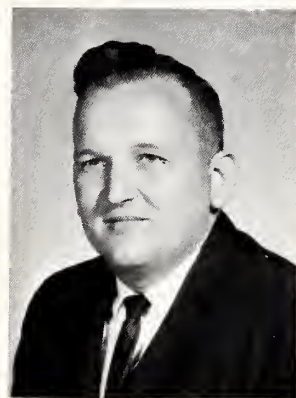
MRS. RUTH BURNETTE
B. S.
Appalachian State Teachers
College
University of North Carolina
at Greensboro
English

MRS. MARIETTA HICKMAN
B. A.
Pfeiffer College
High Point College
English



Math

Our math teachers endeavor to stimulate interest in and appreciation for mathematics as a basic tool in everyday living. They also hope to develop common sense in the students so that the students will be able to solve their own problems practically.



MR. J. L. CREECH, JR.
A. B.
Atlantic Christian College
Algebra



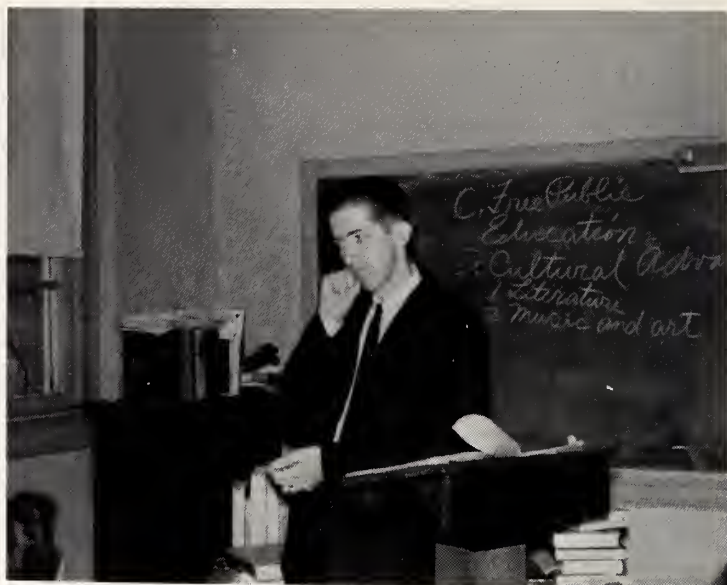
MRS. LEOLA LASSITER
A. B.
East Carolina College
Algebra and Geometry



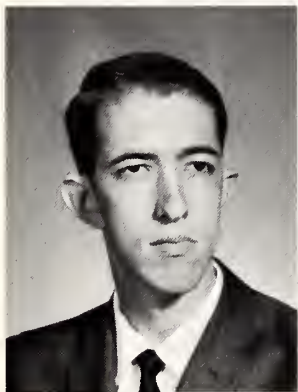
MRS. ANDREA BOYETTE
A. B.
Meredith College
Mathematics

Social Studies

The social studies courses give us the opportunity to learn about the past so that we can better prepare for the future. Our social studies department is staffed with a "crew" of well-qualified teachers who are willing to devote their time and effort to our understanding of universal problems.



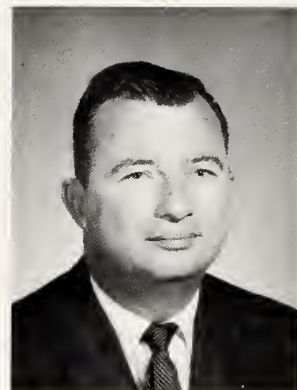
"Friday again - no Ragsdale!"



MR. JOHN W. FLOYD
B. S.
East Carolina College
History, Economics and
Sociology



MISS FAYE TURNER
A. B.
Atlantic Christian College
World History and Civics



MR. ROBERT HICKMAN
B. S., M. A.
University of Georgia
University of North Carolina
General Math, Government
Economics and Sociology



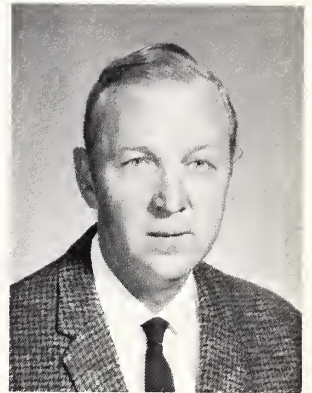
"So that's where Africa is!"

Science

It is important that we understand the factors which make up our complex society. Our science program gives us the chance to learn about plant and animal composition, electricity, the physical laws which govern our universe, and many other aspects of science. This training is an integral part of the science program at Smithfield High School.



These seniors are all wrapped up in chemistry.



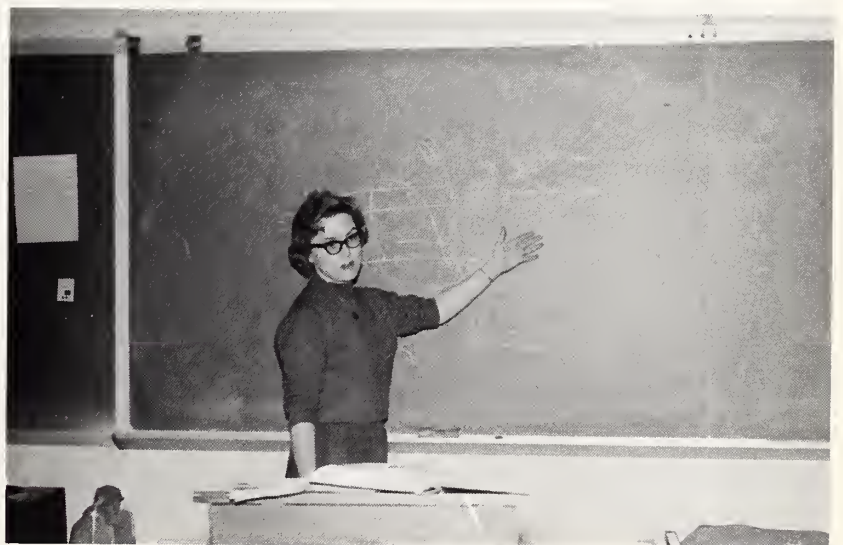
MR. VIRGIL PAYNE
B.S., M.A.
Wake Forest College
East Carolina College
Physics and Chemistry



MRS. JOYCE BARBOUR
A.B.
University of North Carolina
at Greensboro
Biology



MR. T. RUDOLPH WIGGS
A.B.
Atlantic Christian College
Earth Science, Bookkeeping
and General Science



"Behold! -- A blossom."

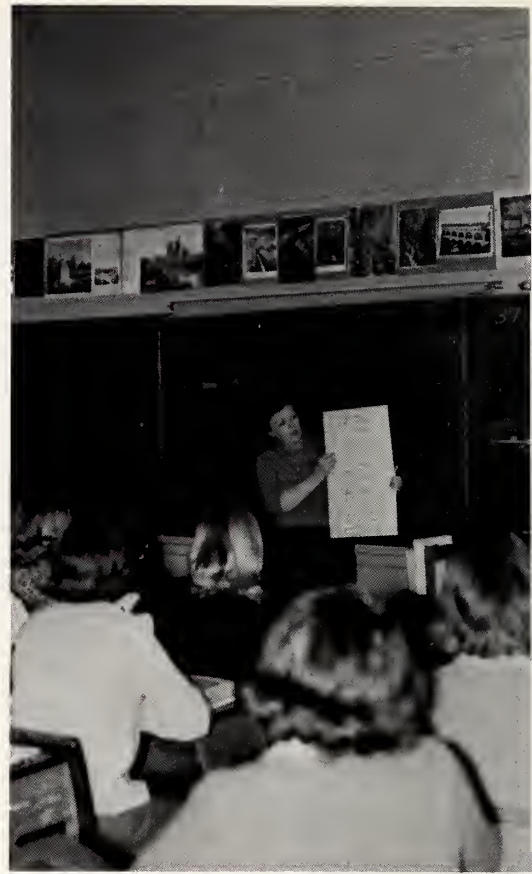
Foreign Languages

It is a known fact that the understanding of foreign countries is imperative today to secure world peace. In Mrs. Peele's French class, students have the opportunity to increase their knowledge of French customs through various classroom aids.

Being the basis of all Romance Languages, Latin holds a special place in our curriculum. In addition to teaching the Roman culture, mythology, and the language itself, Latin is a basis for English courses.



MRS. LOIS PEELE
A. B.
Meredith College
French



Mrs. Peele uses a chart to illustrate her point.



MR. S. C. WOODARD
A. B.
University of North Carolina
Latin

Mr. Woodard prepares for the day's activity.

Home Economics

Cooking and sewing are not the only skills taught in Home Economics. This course also gives girls a chance to learn how to live on a budget, to recognize dependable products, and even to study the latest fashions! High school instruction in these skills leads to an efficient performance by tomorrow's home-makers.



"But Seventeen says three inches above the knee!"



MRS. JUDY LYNCH
B.S.
East Carolina College
Home Economics



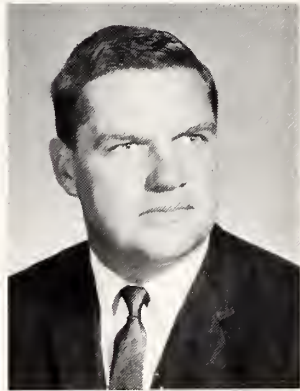
MRS. BRENDA HEARD
B.S.
East Carolina College
Home Economics



The home ec teacher is surrounded by a "Heard" of eager girls.

Health and Physical Education

Hard work is necessary to develop coordination and physical fitness. This is what Coach Brown requires and the results are good. Coordination and physical fitness are not the only objectives of our physical education program. Coach Brown also strives to instill a spirit of teamwork and sportsmanship that will be of benefit in adult life.



MR. ROY J. BROWN, JR.
A. B.
Atlantic Christian College
Geography and Physical Education



A basket--and two more points!



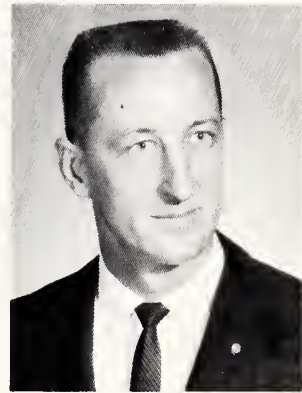
A star player in the making.

Mechanical Drawing and Industrial Arts

Mechanical drawing and industrial arts are parts of the vocational training that our school offers. Drafting and architecture make up a greater part of mechanical drawing with specialized training in engineering and industry following. Industrial arts affords the student the opportunity to gain experience in using all types of tools.



The "pro" makes it look easy.



MR. JOHN T. MASSEY
B. S.
East Carolina College
Industrial Arts and
Mechanical Drawing



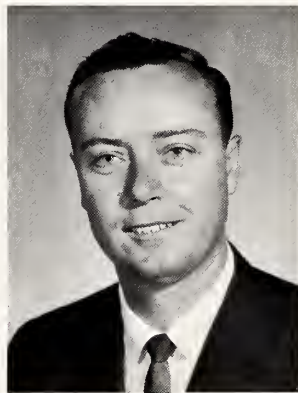
Young engineers are in the making.

Distributive Education

Distributive education is a new vocational program which began at our school this year. Students are given classroom instruction and on-the-job training. This provides our community with dedicated, well-trained, young citizens.



Bucky Weishaar gets on-the-job training.



MR. WAYNE PEED
B. S.
East Carolina College
Marketing and Distributive
Education



MRS. FRANCES CREECH
B. S.
East Carolina College
Typing and Shorthand



"Next time, try using paper."

Typing

"Watch those errors!" is a phrase often heard in the typing class. Typing, as well as other practical courses such as bookkeeping and shorthand, is taught to prepare students for possible future secretarial work.

Guidance

The new guidance room provides Smithfield students with extensive files concerning vocations and college information. Our new fulltime guidance counselor is ready to give advice whenever it is needed.



The guidance room holds the key to the futures of these three.



MRS. MARGIE HORNADAY
B.S.
University of North Carolina
at Greensboro
Guidance



MRS. VALERIA VINSON
B.S.
East Carolina College
Librarian

Library

Our library is definitely one of the school's assets. It now has over 6,000 books which are referred to for academic information as well as for pleasurable reading. Efficient service makes these books readily available.



Mrs. Vinson explains the uses of the card catalog to Steve Bryant.

Art



Mrs. Adams shares her knowledge with one of her students.

Mrs. Adams' art class is the place to go in Smithfield High School to develop basic drawing skills. The members of the class are given an opportunity to express themselves through sketching, bulletin boards, and various art contests in town. The students also develop an appreciation for the paintings of Old Masters.



MRS. EDNA EARLE ADAMS
B.S.
Atlantic Christian College
Art



MR. LEE ROGERS
B.S., M.A.
East Carolina College
Band Director and
Freshman Glee Club



MRS. JANICE M.
BROWNING
B.M.
University of North
Carolina at Greensboro
Glee Club

Music

Music is one of the enjoyable recreations at Smithfield High School. Students participate in concerts, chapel programs, and plays using song. Music stimulates the students to creative thinking and helps to fill leisure hours.

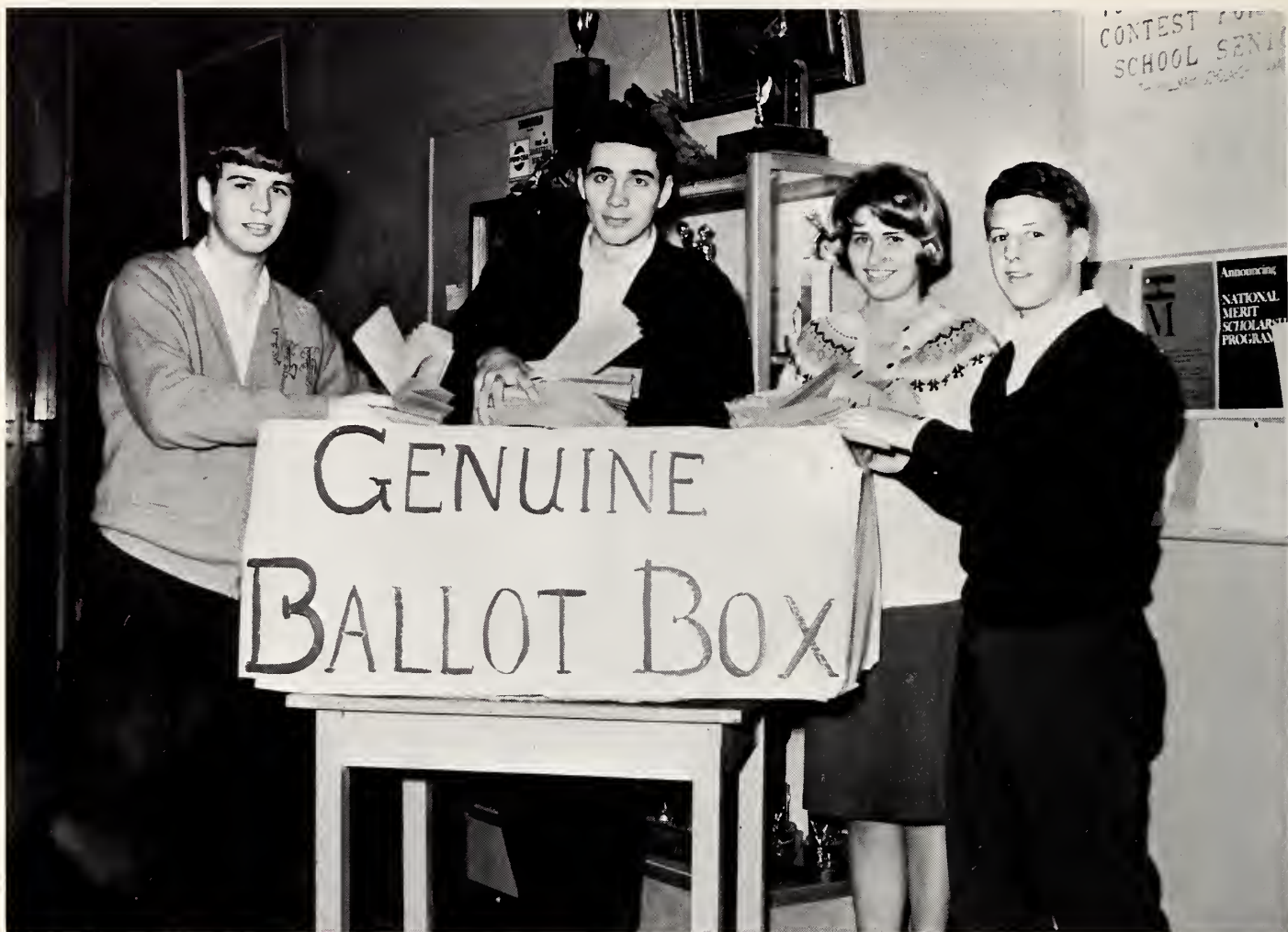


A-one and a-two and a---



CLASSES



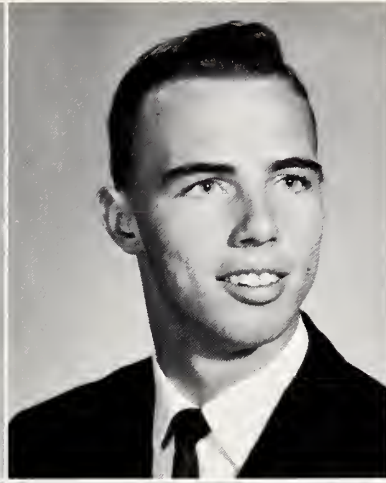


Senior officers (President, Don Westbrook; Vice President, Carroll Stephenson; Secretary, Frances Aycock; Treasurer, Jimmy Narron) are caught stuffing the ballot box.

*Class
of
1966*

Robert Jones looks on proudly as he is fitted for his class ring.





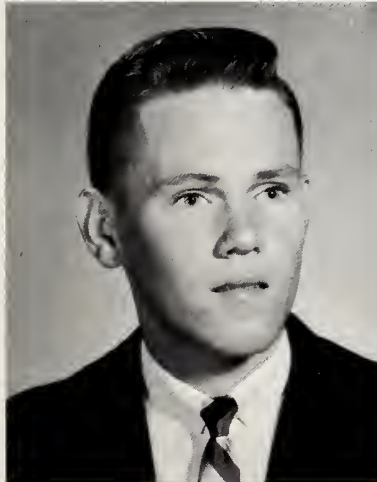
ALICE FAYE ADAMS
 Variety Club 1; Health Club 2; Journalism
 3; Band 1, 2, 3, Pep Band 4; Dance Band 4;
 Basketball 4; Bus Driver 4.

CARL WADE ADAMS
 Industrial Arts Club 1; Wildlife Club 2; Cur-
 rent Events Club 3; Distributive Education
 Club, President 4; Glee Club 1, 2, 3; Junior-
 Senior Program 3.



CAROLYN SUE ADAMS
 Journalism Club 2, 3.

ELMER VICK ADAMS, JR.
 Science Club 1, 2; Wildlife Club 3; Junior-
 Senior Decorating Committee 3; Manager -
 Baseball 3, Football 4, Track 4.



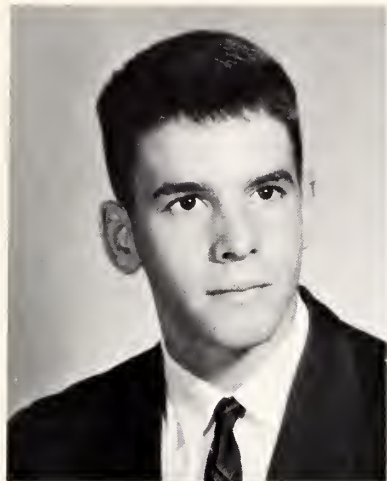
JERRY FRANKLIN ALLEN
 Wildlife Club 1, 2; Glee Club 1; Current
 Events Club, President 3; Junior-Senior
 Lighting Committee 3; Bus Driver 3, 4.

JUDY ANN ALLEN
 F. H. A. 1, 2; Library Assistant 2, 3; Library
 Club 3; Junior-Senior Decorating and Pro-
 gram Committees 3.

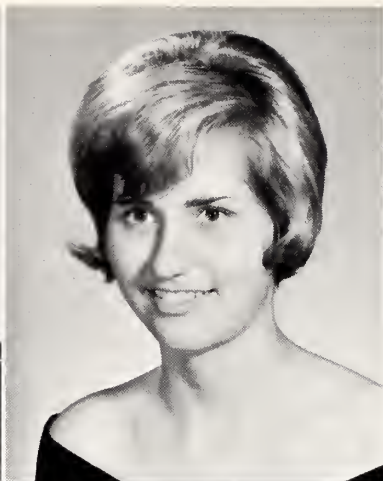


ROBERT HAROLD ALLEN
 Band Club, Secretary 1, President 2, 3; Mon-
 ogram Club 4; Band 1, 2, 3, President 4; Jun-
 ior-Senior Program Committee 3; Homecom-
 ing Dance Committee 4; All-County Band 1,
 2, 3; Tri-County Band 3; All-State Band 1, 3;
 Dance Band 1, 2, 3, 4; Dixieland Band 3, 4;
 "Annie Get Your Gun" Cast 3; Football - JV
 1, 2; Varsity 3, 4; Track 2, 3, 4.

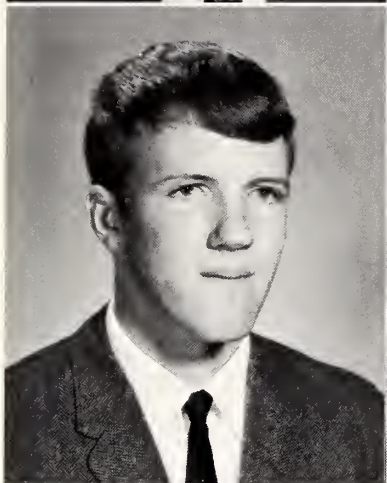
LINDA CAROL ANDERSON
 Variety Club, Secretary 1; Health Careers
 Club 2; Journalism Club, Secretary 3; Glee
 Club 1, 2, 3, 4; Junior-Senior Program Com-
 mittee 3.



SAMUEL THOMAS AVERA, JR.
Wildlife Club 1, 2; Current Events Club 3;
Junior-Senior Program Committee 3; Home-
coming Decorating Committee 4; Football
2, 3, Varsity 4.



FRANCES EVELYN AYCOCK
F.H.A. 1, Vice President 2, President 3,
N.C. State Reporter 4, District IV President
4; Glee Club, Accompanist 1, 2, 3, 4; Art 2;
Junior-Senior Program Committee 3; Home-
room Representative 4; Girls' State 3; Class
Secretary 4; Homecoming Court 4; "Annie
Get Your Gun" Cast 3.



RICHARD LEE BAGBY
Wildlife Club 1, 2; Music Club 3; Band 1, 2,
3, 4; Junior-Senior Program Committee 3;
Football - J.V. 2, Varsity 4.



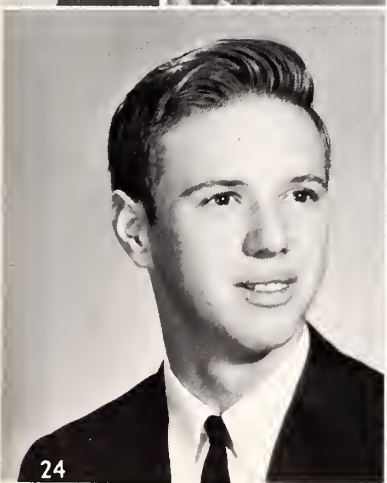
CANDACE COPELAND BAKER
Dramatics Club 1; Oral Reading Club 2;
Monogram Club 3, 4; Junior-Senior Program
Committee 3; Cheerleader 3, Head 4;
"Annie Get Your Gun" Cast 3; Marshal 3;
Homecoming Queen 4.



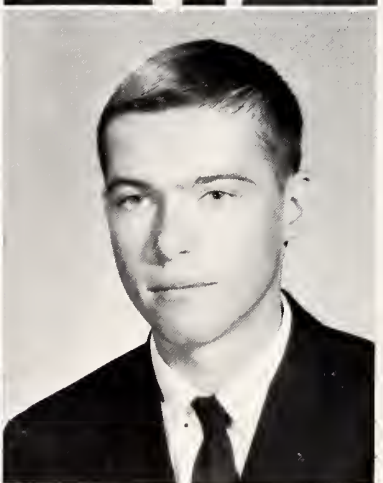
DAVID CRAIG BARBOUR
Science Club 1; Wildlife Club 2; Debating
Club, Historian 3; Glee Club 1, 2, 3, Vice
President 4, Accompanist 1, 2, 3, 4; Junior-
Senior Program, Refreshment and Decorat-
ing Committees 3; Homecoming Com-
mittee 4; High Times Staff 4.



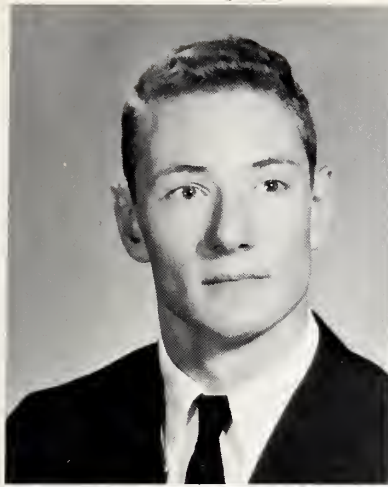
DENNIS RAY BARBOUR
Wildlife Club 1, 3; Safe Driving Club 2.



ROBERT GLENN BARBOUR, JR.
Science Club 1; Journalism Club 2, 3;
Junior-Senior Decorating Committee 3;
High Times Staff 2.



LARRY KOVLESS BAREFOOT
Wildlife Club 1; Industrial Arts Club 2, 3;
Junior-Senior Decorating Committee 3;
"Annie Get Your Gun" Cast 3; Bus Driver
3, 4.



WILLIAM ARTHUR BARNES, JR.
Wildlife Club 1, Reporter 2; Monogram Club 3, 4; Glee Club 2; Art 1, 3, 4; Junior-Senior Steering Committee 3; Chief Marshal 3; Class President 3; Annual Staff, Editor-in-Chief 4; American Legion Boys' State 3; Morehead Scholarships Nominee 4; "Annie Get Your Gun" Cast 3; Football - J. V. 2, Varsity 3, 4; Track 1, 2, 3, 4.

ROBERT WHEELER BATCHELOR
Wildlife Club 1, 3; Safe Driving Club 2; Football - J. V. 1, 2, Varsity 4.



PAMELA SUZANNE BATTEN
Dramatics Club, Vice President 1; Health Careers Club 2; Monogram Club 3, 4; Glee Club 1; Junior-Senior Program Committee 3; Homeroom Representative 4; Homecoming Court 4; Marshal 3; Cheerleader 3, 4.

MARVIN COOPER BELAND
Wildlife Club 1, 2; Current Events Club 3; Junior-Senior Decorating Committee 3.



PATRICIA GALE BENSON
Library Club 1, 2; Equestrian Club 2; Commercial Club 3; Junior-Senior Decorating Committee 3; Library Assistant 1, 2, 4.

FRANCES LAVONNE BINGHAM
F. H. A. 1; Glee Club 1; Oral Reading Club, Reporter 2; Debating Club 3; Junior-Senior Program Committee 3; Marshal 3; High Times Staff, Assistant News Editor 4; "Annie Get Your Gun" Cast 3.



MARY ELIZABETH BLANDY
F. H. A. 1, 2, Historian 3, County Treasurer 4; Glee Club 1, 2, 3, 4; Junior-Senior Program Committee 3; High Times Staff 4; Homecoming Court 4.

OLIVIA JEAN BOYETTE
Library Assistant 1, 2, 3, 4; Equestrian Club, Vice President 2; Fine Arts Club 3; Junior-Senior Decorating Committee 3.



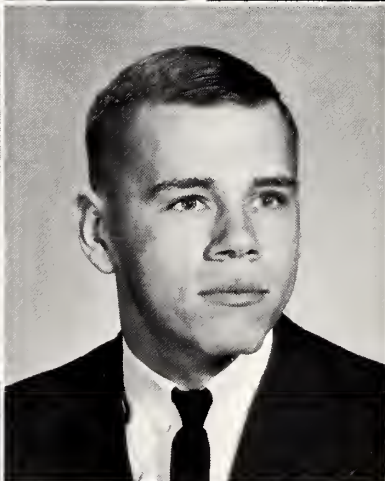
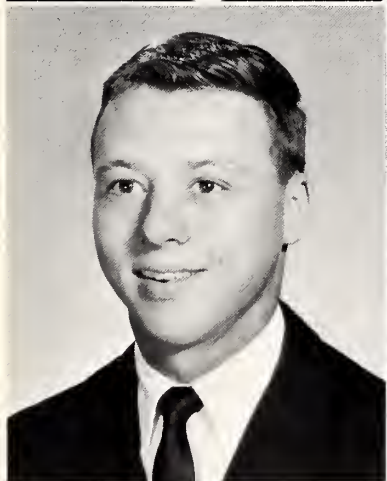
JESSIE MAE BRASWELL
Glee Club 1, 3; Library Club 1, 3; Library Assistant 1, 3; Commercial Club 2; Junior-Senior Program 3.

MARY LOIS BRYANT
Variety Club 1; Explorer's Club 2; Journalism Club 3; Glee Club 1, 2, 3; Junior-Senior Table Committee 3.



DONNA ANN BURGESS
F.H.A. 1, 2, Reporter 3, Secretary 4; Glee Club, Reporter 1, 2, Accompanist 3, 4; Junior-Senior Steering Committee 3; Marshal 3; Class Treasurer 3; Annual Staff, Organizations Editor 4; Homecoming Court 4; "Annie Get Your Gun" Cast 3.

BRENDA CAROL BYRD
F.H.A. 1; Health Careers 2; Journalism 3; Glee Club 1, 2, 3, 4; Junior-Senior Decorations Committee 3; Basketball 3, 4.



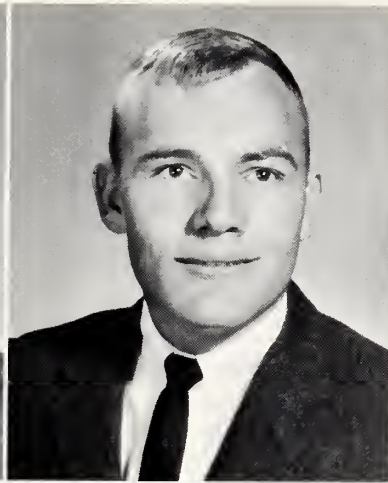
LARRY RICHARD BYRD
Glee Club 1; Wildlife Club 1, 2; Current Events Club 3; Monogram Club 4; Baseball 3, 4.

MARVIN DON CAPPS
Wildlife 1, 3; Safe Driving 2; Junior-Senior Decorating Committee 3; Homecoming Decorating Committee 4; Varsity Football Manager 1; J. V. Football 2, Varsity 3, 4.



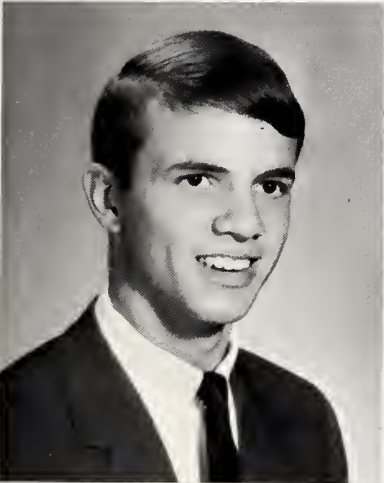
ERVIN MCKAY CARROLL, JR.
Latin Club 1; Wildlife Club, President 2, 3; Band 1, 2, 3, 4; Monogram Club 4; Junior-Senior Steering Committee 3; Class Vice President 3; Annual Staff, Photographer 4; "Annie Get Your Gun" Cast 3; J. V. Football 1, Co-Captain 2; Varsity Football 3, Co-Captain 4; Track 1, 2, 3, 4.

CHARLES PHILLIP CLIFTON
Industrial Arts Club, Vice President 1, President 2; Journalism Club 3; Junior-Senior Decorating Committee Chairman 3; "Annie Get Your Gun" Cast 3.



LARRY GENE CONGLETON
Wildlife Club 1; Safe Driving Club 2; Wild-
life Club 3.

KENNETH EARL CREECH
Science Club 1; Wildlife Club 2; Current
Events Club 3; Junior-Senior Lighting Com-
mittee 3.



JOHN ARTHUR DAIL
Band 1, 2; Latin Club 1; Band Club 2; Sci-
ence Club 3; Junior-Senior Program Com-
mittee 3; Annual Staff 4; All-County Band
1; Track 1.

GINGER HELOISE DAUGHTRY
Dramatics Club 1; Oral Reading Club, Vice
President 2; Journalism Club, Vice President
3; Glee Club 1, Accompanist 2, 3, 4; Junior-
Senior Program Committee 3; High Times
Staff 3; Annual Staff 4; "Annie Get Your
Gun" Cast 3.



LOLA HANNAH DAUGHTRY
F. H. A. 1, 2, 3; Glee Club 1, 2, 3, 4; Junior-
Senior Program and Refreshment Commit-
tees 3; Homecoming Refreshment Com-
mittee 4.

SHARON DARLENE DIXON
Transferred from Andrew Lewis High School,
Salem, Virginia 3.



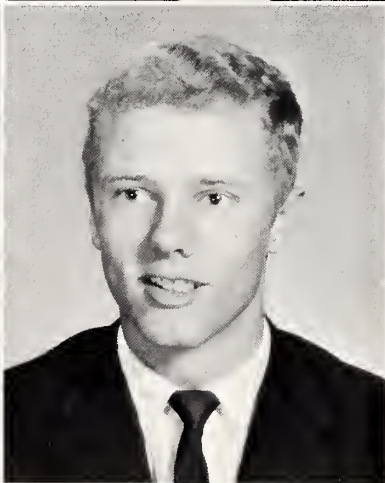
RICHARD BENNETT DUPREE
Band Club 1, 2, 3; Band 1, 2, 3, Treasurer 4,
Dance 1, 2, 3, 4, Pep 3, 4, All-County 1, 3,
Tri-County 3; Junior-Senior Program Com-
mittee 3; Track 1, 2, 4.

CHARLES FRANKLIN EDWARDS
Wildlife Club 1, 2; Monogram Club 3, 4;
Junior-Senior Decorating Committee 3;
Baseball 1, 2, 3, 4.



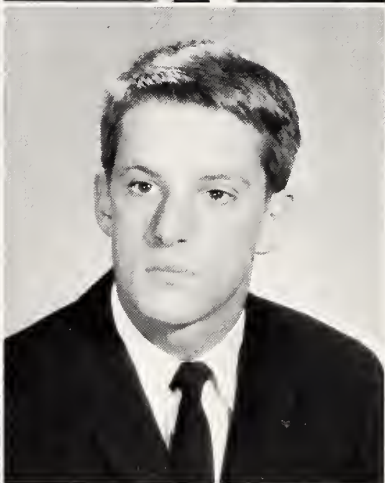
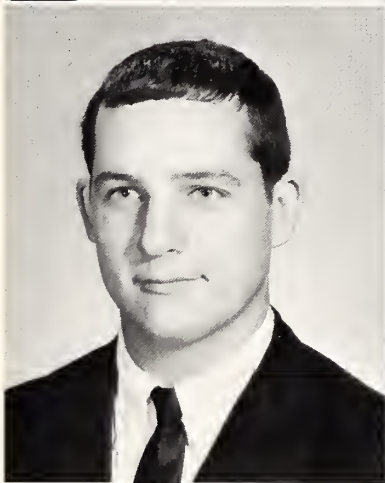
BRENDA KAY FAIRCLOTH
 Transferred from Clinton High School 2;
 Fine Arts Club 3; Junior-Senior Program
 Committee 3; Homeroom Representative 4.

VICKIE JEANETTE FERRELL
 F. T. A. 1; Home Economics Club 2;
 Journalism Club 3; Glee Club 1, 2, 3, 4;
 High Times Staff 3; "Annie Get Your Gun"
 Cast 3.



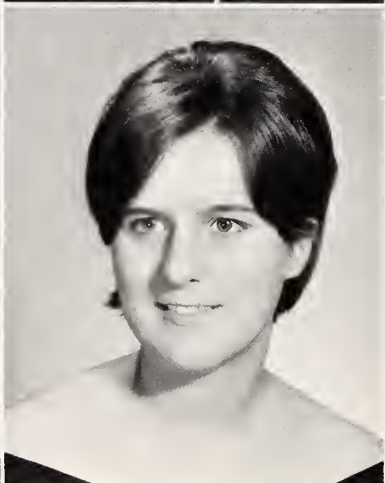
SANDRA DALE GRICE
 F. H. A. 1; Glee Club 1, 2, 3, 4; F. T. A.,
 Vice President 2; Journalism Club 3;
 Junior-Senior Decorating and Program
 Committees 3.

WARREN LOUIS GRIMES
 Latin Club 1; Wildlife Club 2; Science
 Club 3; Junior-Senior Decorating and Pro-
 gram Committees 3; Homeroom Representa-
 tive 4; J. V. Football 2, 3.



WILLIAM WATSON HALL
 Transferred from North Lenoir High School
 3; Football 4.

JAMES CECIL HENDERSON, JR.
 Latin Club 1; Wildlife Club 2; Science
 Club 3; Junior-Senior Decorating and Pro-
 gram Committees 3; Homecoming Decorat-
 ing Committee 4; "Annie Get Your Gun"
 Cast 3; Football, J. V. 2, Varsity 4.

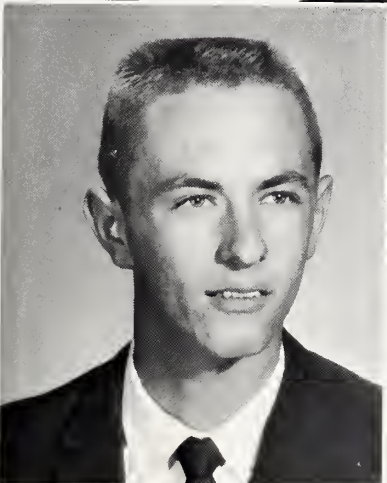


MARY KATHERINE HILDEBRAND
 Fine Arts Club, Vice President 1; F. H. A.
 2, Recreation Leader 3, Treasurer 4;
 Junior-Senior Program Committee 3; Home-
 coming Decorating Committee 4; Annual
 Staff 4; "Annie Get Your Gun" Cast 3.

IRIS FAYE HOLLAND
 Variety Club, Program Chairman 1; Health
 Careers Club 2; Journalism Club, Reporter
 3; Glee Club 1, 2, 3, 4, Treasurer 3; Junior-
 Senior Steering Committee 3; Class Secre-
 tary 3; Annual Staff, Activities Editor 4;
 Homecoming Court 4.



JON MARTIN ISLEY
 Glee Club 1; Science Club 1, 3; Wildlife Club 2; Monogram Club 4; Junior-Senior Program and Decorating Committees 3; Homecoming Dance Program and Decorating Committees 4; Magazine Sales Winner 2; Marshal 3; Annual Staff, Photographer 4; "Annie Get Your Gun," Stage Manager 3; J. V. Basketball 1, 2, Co-Captain 3; Basketball Announcer 2, 3, 4; Golf 3, 4.



ANNA KATHRYN JOHNSON
 Variety Club, President 1; Glee Club, Secretary 1; Health Careers Club, Secretary 2; Journalism Club 3; Junior-Senior Table Committee 3.

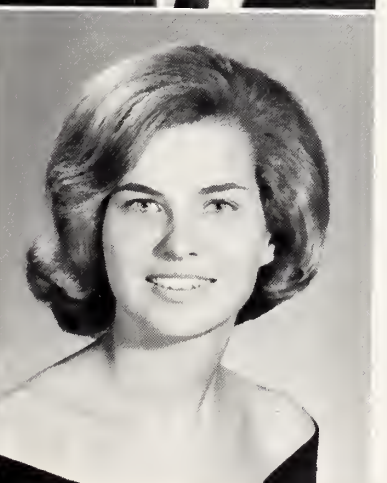
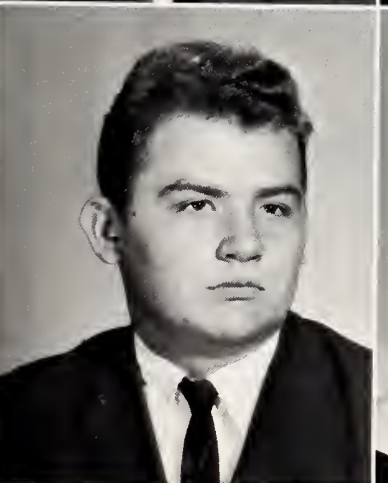
CAROLYN SUE JOHNSON
 Variety Club 1; Library Assistant 1, 2; F.H.A. 2, 3, Historian 4; Glee Club 1, 2, 3; Junior-Senior Decorating Committee 3; "Annie Get Your Gun" Cast 3.



DANIEL TERRY JOHNSON
 Wildlife Club 1, 3; Safe Driving Club 2; Junior-Senior Decorating Committee 3; Bus Driver 3, 4.

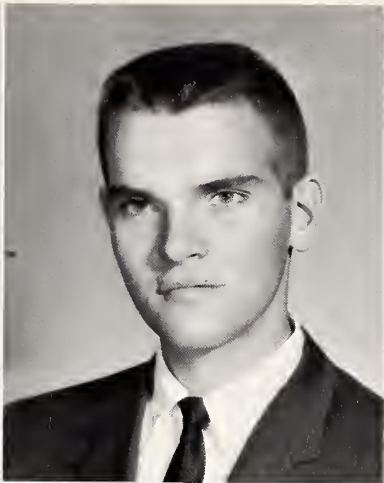
GEORGE PATTON JOHNSON
 Wildlife Club 1, 3; Equestrian Club 2; Junior-Senior Decorating Committee 3.

HUGH FLEMING JOHNSON
 Wildlife Club 1; Explorers Club 2; Current Events Club 3.



JIMMY EARL JOHNSON
 Glee Club 1; Wildlife Club 1, 2, 3; Junior-Senior Decorating Committee 3; J. V. Football 2.

KAREN FAYE JOHNSON
 Glee Club, Vice President 1; Dramatics Club 1; Oral Reading Club 2; Journalism Club 3; Junior-Senior Program 3; "Annie Get Your Gun" Cast 3; High Times Staff 3, Fashion Editor 4.



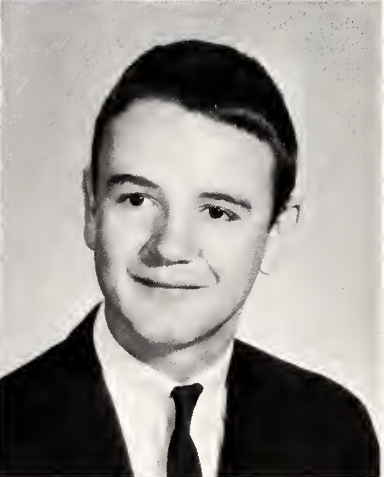
LARRY DONALD JOHNSON
Wildlife Club, Reporter 1; Safe Driving Club, President 2; Industrial Arts Club, President 3; Junior-Senior Program Committee 3.

MARVIN LEWIS JOHNSON
Wildlife Club 1, 3; Auto Safety Club 2; Junior-Senior Decorating Committee 3; J. V. Football 1, 2.



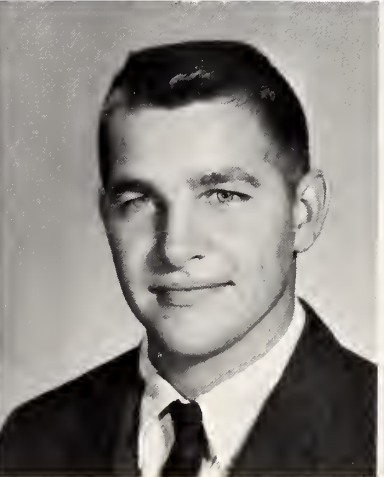
PAMELA ANNETTE JOHNSON
Variety Club, Co-Chairman 1; Health Careers Club 2; Journalism Club 3; Glee Club 1, 2, 3, 4; Junior-Senior Refreshment Committee 3.

SHIRLEY JEAN JOHNSON
Library Club 1, 2, 3; Library Assistant 1, 2, 3, 4; Glee Club 1, 2, 3; Distributive Education Club 4; Junior-Senior Decorating Committee 3; "Annie Get Your Gun" Cast 3.



JENNETTE SHERWOOD JOHNSTON
F. H. A. 1, 2, 3, Parliamentarian 4; Glee Club 1, 2, 3, 4; Junior-Senior Decorating Committee 3.

COLON THOMAS JONES
Wildlife Club 1, 2; Monogram Club 3; Distributive Education Club, Parliamentarian 1; Glee Club 1, 2, 3; Junior-Senior Decorating Committee 3; Football, J. V. 3, Varsity Manager 1, 2; Basketball, Manager 1, 2.



E. STREET JONES, III
Wildlife Club 1, 2; Monogram Club 3, 4; "Annie Get Your Gun" Cast 3; Football, J. V. 1, 2, Varsity 3; Basketball, J. V. 1, Varsity 2, 3, 4.

EARL EDWARD JONES, JR.
Wildlife Club 1, 3; Safe Drivers Club 2; Junior-Senior Decorating Committee 3; Bus Driver 4.



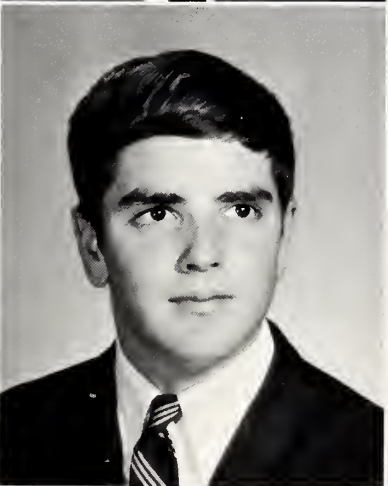
EDNA RUDEANN JONES
 Variety Club, Secretary 1; Future Teachers
 Club 2; Library Club 3; Glee Club 1, 2, 3;
 Library Assistant 3; Junior-Senior Deco-
 rating Committee 3.

JENNINGS BRYAN JONES
 Wildlife Club 1, 2, Reporter 2; Current Events
 Club 3; Glee Club 1, 2; Junior-Senior Deco-
 rating Committee 3.



JUDY ANN JONES
 Glee Club 1, 2, 3, 4; Variety Club 1; Health
 Careers Club 2; Library Club 3; Junior-
 Senior Program Committee 3; Library Assist-
 ant 3, 4.

LINWOOD JACKSON JONES
 Wildlife, Vice President 1; Safe Driving
 Club, Vice President 2; Industrial Arts Club
 3; Junior-Senior Program Committee 3; Maga-
 zine Sales Winner 3.



ROBERT ALLEN JONES
 Wildlife Club 1; Safe Driving Club, Secre-
 tary 2; Monogram Club 3, 4; Junior-Senior
 Decorating Committee 3; Homecoming
 Decorating Committee 4; J. V. Football 2,
 Varsity 3, Co-Captain 4; J. V. Basketball 1;
 Varsity 2, 3, Tri-Captain 4; Baseball 1, 2, 3,
 4.

JOHN ROBERT KELLY
 Transferred from Clinton High School 1;
 Wildlife 2; Journalism Club 3; Band 3, 4;
 High Times Staff 4; Junior-Senior Program
 Committee 3.



THERESA COLLEEN KNOTT
 Latin Club, President 1; Glee Club, Ac-
 companist 1, 3; Monogram Club 2, 3, 4;
 Junior-Senior Refreshment and Program
 Committes 3; Homecoming Dance Com-
 mittee 3; Magazine Sales Winner 2; Mar-
 shal 3; Annual Staff 4; County Winner of
 World Peace Essay and Speaking Contest 3;
 Homecoming Court 4; "Annie Get Your
 Gun" Cast 3; Scorekeeper 1, 2; Basketball
 1, 2, 3, 4.

CAROL LYNN LANCASTER
 Glee Club 1, 2, Vice President 3, Presi-
 dent 4; F.H.A. 1, 2, Treasurer 3; Library
 Assistant 3; Homecoming Court 4; Basket-
 ball 3, 4; Bus Driver 3, 4.



JOSEPH HUGHES LANSINGER, JR.
Glee Club 1; Science Club 1; Wildlife Club,
Secretary 2; Monogram Club 3, 4; Junior-
Senior Program Committee 3; Homecoming
Decorating Committee 3; Marshal 3; An-
nual Staff, Sports Editor 4; "Annie Get
Your Gun" Cast 3; Track 1, 2, 3, 4; Basket-
ball, J. V. 1, Varsity 2, 3, Tri-Captain 4,
All-Conference 2, 3, All East 3.



LINDA ANN LASSITER
Dramatics Club 1; Oral Reading Club 2;
Debating Club, Vice President 3; Glee
Club 1; Junior-Senior Program Committee
3; Annual Staff 4; Homecoming Court 4;
"Annie Get Your Gun" Cast 3.

ROBERT JOHNSON LAUGHTER
Wildlife Club, Secretary 1, President 3;
Auto-Safety Club 2; Junior-Senior Deco-
rating Committee 3.



DEBRA ANN LAWSON
Dramatics Club 1; Oral Reading Club 2;
Fine Arts Club 3; Glee Club 1; Junior-
Senior Decorating Committee 3; Annual
Staff 4; "Annie Get Your Gun" Cast 3;
Basketball, Statistician 3, 4.

JANICE GAYLE LEE
Dramatics Club, Secretary 1; Glee Club 1;
Oral Reading Club 2; Debating Club 3;
Junior-Senior Program Committee 3; Home-
coming Dance Committee 4; "Annie Get
Your Gun" Cast 3; Homecoming Court 4.



MARGARET ANN LEE
Latin Club 1; Oral Reading Club 2; De-
bating Club 3; Glee Club 1; Junior-Senior
Program Committee 3; Homecoming Court
4; "Annie Get Your Gun" Cast 3.

VIRGINIA TUCKER LYON
Latin Club 1; Glee Club 1; Oral Reading
Club 2; Debating Club 3; Junior-Senior
Program Committee 3; Homecoming Dance
Committee 4; "Annie Get Your Gun" Cast
3.

ELIZABETH ANN MANGUM
Latin Club 1; Glee Club 1; Oral Reading
Club 2; Monogram Club 3, 4; Junior-Senior
Program Committee 3; Magazine Sales
Winner 2; Homecoming Court 4; "Annie
Get Your Gun" Cast 3; Cheerleader 3, 4.

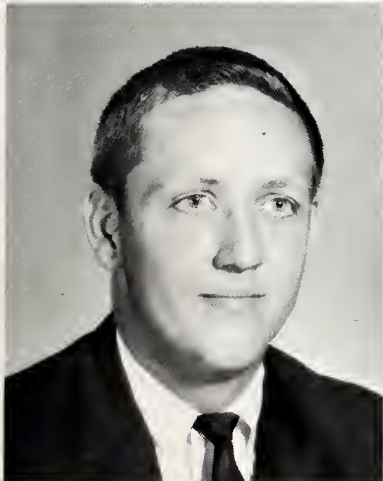


PEGGY JEAN MASSENGILL

Glee Club 1, 2, 3; Library Club 1, 2; Library Assistant 1, 2; Journalism Club 3; Junior-Senior Decorating Committee 3; Distributive Education Club 4.

JANET ELISE MONTGOMERY

Journalism Club 1; Band Club 2, 3; Band 1, 2, 3, 4; World Peace Essay and Speaking Contest 2, 3; Junior-Senior Decoration Committee 3; Annual Staff 4; "Annie Get Your Gun" Cast 3.



ALFRED RAY MOORE

Wildlife Club, Vice President 1; Auto Safety Club 2; Monogram Club 3, 4; Junior-Senior Decorating Committee 3; Football, J. V. 1, Varsity 2, 3, 4, All-Conference 4; Baseball 1, 2, 3, 4.

DONNA SUE MOORE

Library Assistant 1, 2, 3; Equestrian Club 2; Journalism 3; Distributive Education Club 4; Junior-Senior Decorating Committee 3; "Annie Get Your Gun" Cast 3.

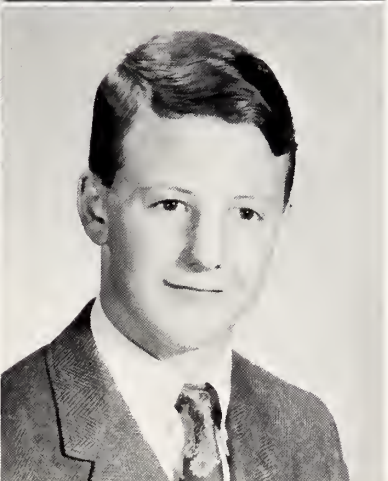


HUGH FRANKLIN MOORE

Wildlife Club 1, 2; Current Events Club 3; Monogram Club 4; Glee Club 1, 2, 3; Junior-Senior Decorating Committee 3; Football Manager 2, 3; Baseball 2, 3, 4.

BERRY THOMAS MOYE

Glee Club 1; Wildlife 1, 2, 3; Distributive Education Club 4; Junior-Senior Decorating Committee 3.



ETHEL ELAINE MURPHY

Transferred from Clayton High School 1; Glee Club 2, 3, 4; Health Careers Club 2, 3; Junior-Senior Program Committee 3; High Times Staff 4; "Annie Get Your Gun" Usher 3; Homecoming Court 4.

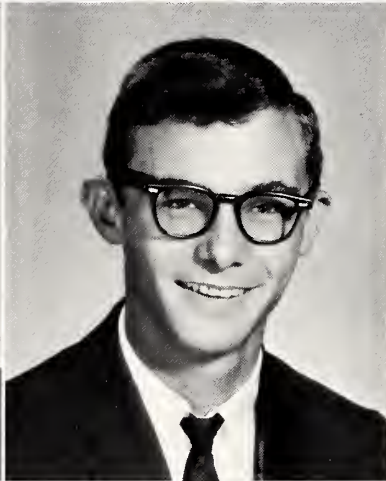
JAMES WILEY NARRON

Latin Club, Reporter 1; Wildlife Club 2; Debating Club, President 3; Band 1, 2, 3; Junior-Senior Program Committee 3; World Peace Oratorical Contest 3; Annual Staff 4; "Annie Get Your Gun" Cast 3; Class Treasurer 4.



WILLIAM RAYFORD OLIVER
 Fine Arts Club, Reporter 1; Explorers' Club
 2; Journalism Club, Secretary 3; Glee Club
 1; Junior-Senior Program Committee, Chair-
 man 3; World Peace Oratorical Contest 3;
 National Science Foundation Scholarship in
 Advanced Biology 2; High Times Staff 3,
 Editor-in-Chief 4; "Annie Get Your Gun"
 Cast 3.

JERRY DANIEL PARKER
 Wildlife Club 1, 2, Secretary 3; Junior-
 Senior Decorating Committee 3; Bus Driver
 3, 4.



PHILIP WILSON PARKER
 Transferred from Wilson's Mills 1; Wildlife
 Club 2, 3.

JAMES THOMAS PARRISH
 Transferred from Pine Level 2; Current
 Events Club 3; Homeroom Representative 4;
 Basketball, J. V. 3.



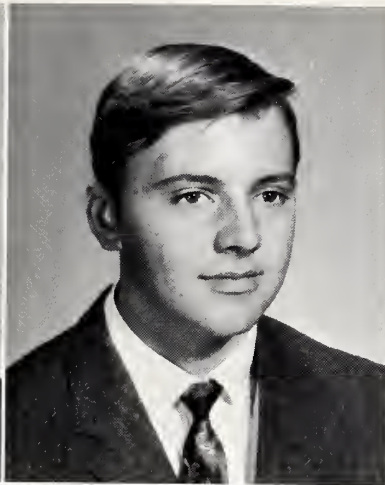
THURMAN LEE PILKINGTON, JR.
 Transferred from Cleveland High School 3.

BRENDA JANE PITTS
 Dramatics Club 1; Glee Club 1, 3; Lincoln-
 ton High School 2; Fine Arts Club 3; Junior-
 Senior Program Committee 3; Homecoming
 Dance Committee 4; "Annie Get Your Gun"
 Cast 3.



RICHARD LEE PREVETTE
 Science Club 1; Wildlife Club 2; Debating
 Club 3; Glee Club 1, 2; Junior-Senior Pro-
 gram Committee 3; "Annie Get Your Gun"
 Cast 3; Football 4; Basketball Manager 4.

WARREN GODWIN RAGSDALE
 Glee Club 1; Latin Club 1; Hobby Club 2;
 Fine Arts Club 3; Staunton Military Academy
 3; Freshman Dance Committee 3; Home-
 coming Dance Committee 3; Junior-Senior
 Decorating Committee 3; Track 1.



WILLIAM SMITH RAGSDALE III
Latin Club 1; Hobby Club 2; Fine Arts Club
3; Staunton Military Academy 3; Junior-
Senior Decorating Committee 3; Track 1,
2, 3, 4.

LARRY EDWARD RAY
Transferred from Balboa High School, Pan-
ama City, Panama 3.



LAURA SUSAN RAY
Latin Club, Vice President 1; Oral Reading
Club 2; Monogram Club 3, 4; Band 1, Li-
brarian 2, 3, Secretary 4; Junior-Senior
Invitation and Program Committees 3; Mar-
shal 3; Annual Staff 4; "Annie Get Your
Gun" Cast 3; Basketball 2, 3, Co-Captain 4.

CYNTHIA ELAINE REYNOLDS
Band Club 1; Equestrian Club 2; Health Club
3; Band 1, 2, 3, 4; Pep Band 4; Junior-Senior
Program Committee 3; "Annie Get Your
Gun" Cast 3.



JANET KAY RICHARDSON
Glee Club 1; F. T. A., Parliamentarian 1;
F. H. A. 2, Vice President 3, President 4;
Junior-Senior Program Committee 3; An-
nual Staff, Class Editor 4; "Annie Get Your
Gun" Cast 3.

DELOIS ROBERTS
Glee Club 1, 2, 3; Variety Club 1; F. T. A. 2;
Careers Club 3; Junior-Senior Decorating
Committee 3.



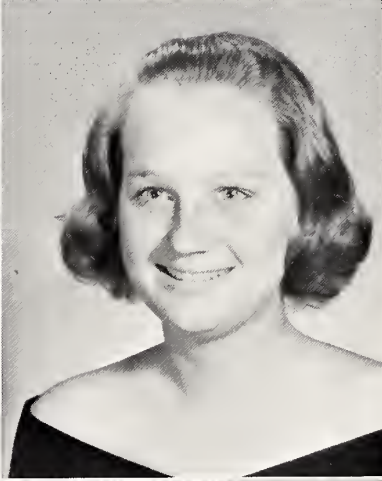
MARY ELIZABETH SANDERS
F. T. A. 1; Health Club, Reporter 2; Fine
Arts Club, Vice President 3; Junior-Senior
Program Committee 3; Library Assistant 1,
2; High Times Staff, Art Editor 4; Bus
Driver 3, 4.

MICHAEL GLEN SELLERS
Science Club 1; Wildlife Club 2; Debating
Club, Reporter 3; Glee Club 1, 2; Junior-
Senior Program Committee 3; High Times
Staff, Sports Editor 4; Junior-Senior Pro-
gram Committee 3; Track 2, 3, 4; J. V.
Football 3, Varsity Football 4; Basketball
Manager 4.



JOAN MARIE DOROTHY SHALLCROSS
 Dramatics Club 1; Oral Reading Club, President 2; Fine Arts Club, Vice President 3; Glee Club, Accompanist 3, 4; Junior-Senior Program Committee 3; Magazine Sales Winner 2; Marshal 3; Annual Staff, Assistant Editor 4; V.F.W. Essay Winner 4; "Annie Get Your Gun" Cast 3.

ROSE LEE SIENKIEWICZ
 Variety Club, Vice President 1; F. T. A., Historian 2; Journalism Club 3; Glee Club 2, 3, 4, President 1; Junior-Senior Decorating Committee 3; "Annie Get Your Gun" Cast 3.



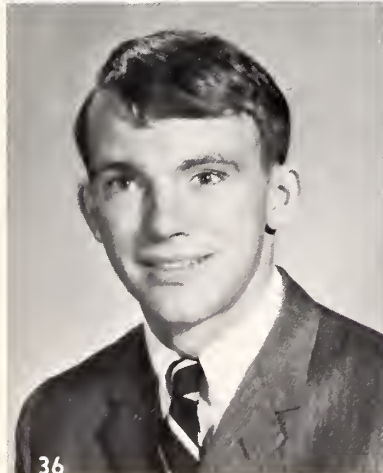
FRIEDA LOTTE SIMMONS
 Library Club 1; Equestrian Club, President 2; Fine Arts Club, Secretary 3; Junior-Senior Decorating and Program Committees 3; Library Assistant 1, 2; High Times Staff, News Editor 4; Bus Driver 3, 4.

WINEFRED ANNE SIMMONS
 Variety Club 1; Health Careers Club 2, 3; Glee Club 1, 2, 3, 4; Junior-Senior Decorating Committee 3; "Annie Get Your Gun" Usher 3.



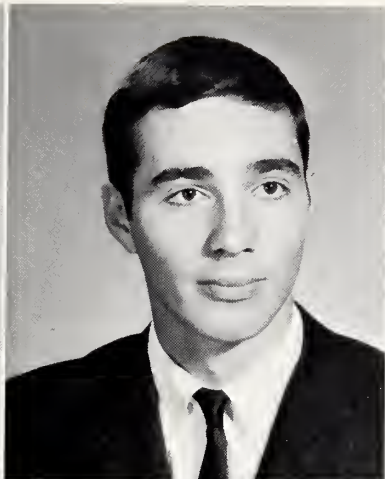
JUNE SANDERS SMITH
 Latin Club 1; Health Careers Club 2, President 3; Junior-Senior Decorating Committee 3; Basketball 4.

JIMMY JOE STALLINGS
 Industrial Arts Club, President 1; Debating Club 2, 3, President 2; Junior-Senior Decorating Committee 3; Track 1, 2, 3; Football Manager 1.



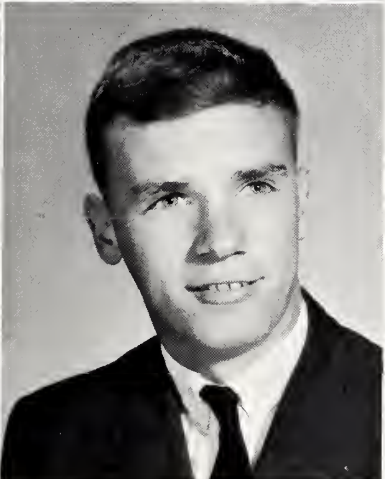
DONALD RANDOLPH STARLING
 Transferred from Pine Level High School 3.

DONALD WAYNE STEARNS
 Wildlife Club 1; Science Club 2; Fine Arts Club 3.



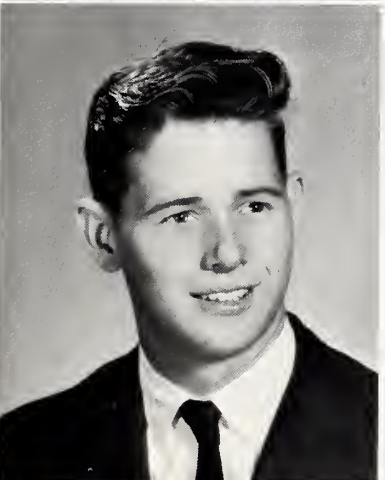
LINDA EARLE STEPHENSON
Glee Club 1, 2, 3, 4; Variety Club 1; Health
Careers Club 2; Library Club 3; Library
Assistant 3.

WILLIAM CARROLL STEPHENSON, JR.
Wildlife Club 1, 2, Secretary 2; Science
Club 3; Band 1, 2, 3, 4; Dance Band 2, 3, 4;
Junior-Senior Dance Committee 3; Annual
Staff 4; J. V. Football 1, 2, Varsity Foot-
ball 3, 4; Track 1, 2, 3, 4; Class Vice Presi-
dent 4; Boys' State 3.



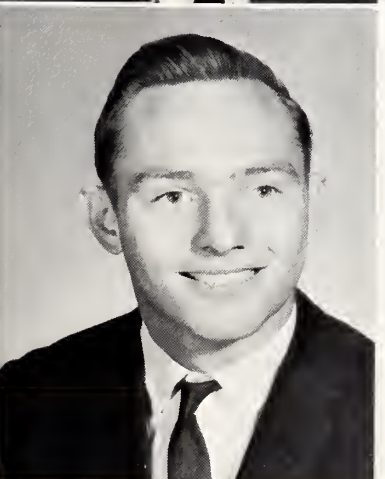
FREDERICK WILSON TARLTON
Wildlife 1, 3; Safe Drivers 2; Junior-Senior
Program Committee 3; J. V. Football 2, 3,
Varsity Football 4.

RONEY JACKSON UNDERWOOD
Science Club 1; Safe Driving Club 2;
Industrial Arts Club, Reporter 3; Junior-
Senior Program Committee 3; "Annie Get
Your Gun" Cast 3; Bus Driver 4.



BARBARA JEAN VERNON
Glee Club 1, 2, 3, 4; Variety Club 1; Health
Careers Club 2; Library Assistant 3, 4.

LINWOOD EARL WADSWORTH
Music Club 1, 2, 3; Band 1, 2, 3, 4; Dance
Band 1, 2, 3, 4; Junior-Senior Decorating
Committee 3; Track 2.



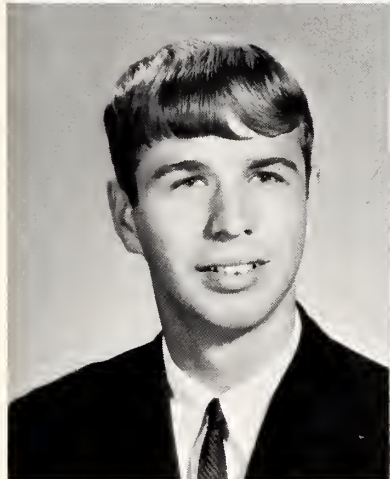
ALEC EARL WARD
Wildlife Club 1; Monogram Club 2, 3, 4;
J. V. Football 1; Baseball 1, 2, 3, 4.

OWEN DOUGLAS WARREN
Wildlife Club 1, 2; Monogram Club 3, 4;
Junior-Senior Club Decorating Committee
3; J. V. Football 1, Co-Captain 2, Var-
sity 3, 4, Honorable Mention All-Confer-
ence 4; J. V. Basketball 2, Tri-Captain 3,
Varsity 4; Baseball 2, 3, 4; Track 1.



LEO EDWARD WEISHAAR, JR.
Wildlife Club 1, 3; Safe Driving Club 2;
Junior-Senior Decorating Committee 3.

ROBERT GLENN WEST
Science Club 1; Safe Driving Club 2; Wild-
life Club 3; Junior-Senior Decorating Com-
mittee.



DONALD LEIGH WESTBROOK
Science Club 1; Wildlife Club 2; Debating
Club, Secretary 3; Band 1, 2, 3, Publicity
Manager 4; Dance Band 4; Junior-Senior Pro-
gram Committee 3; Annual Staff, Business
Manager 4; "Annie Get Your Gun" Cast 3;
Golf 3; Class President 4.

EMILY SUE WHARTON
Dramatics Club 1; Oral Reading Club 2;
Fine Arts Club 3; Monogram Club 4; Glee
Club 3, 4; Junior-Senior Program Committee
3; Magazine Sales Winner 2; Marshal 3; An-
nual Staff 4; Homecoming Court 4; "Annie
Get Your Gun" Cast 3; Basketball 3, 4.



ERNEST WILSON WHITLEY, JR.
Wildlife Club 1, Vice President 2; Science
Club 3; Monogram Club 4; Glee Club 1;
Junior-Senior Program Committee 3; J. V.
Football 2, Varsity Football 3, 4.

VICKI ELIZABETH WHITLEY
Commercial Club 1; Variety Club 2; F. T. A.
3; Glee Club 1, 2, 3, 4; Junior-Senior Table
Committee 3; "Annie Get Your Gun" Cast 3.



RONALD EVAN WHITTINGTON
Wildlife, Secretary 1; Safe Driving 2; In-
dustrial Arts Club 3; Junior-Senior Deco-
rating Committee 3; "Annie Get Your Gun"
Cast 3.

MARY LOU WICKHAM
Latin Club 1; Oral Reading Club 2; Debating
Club 3; Junior-Senior Decorating Com-
mittee 3; Library Assistant 1, 2, 3, 4; Glee
Club 1, 2, 3, 4; Art 3.



JUDY CAROLYN WILSON
 Transferred from Durham High School 2;
 Commercial Club 3; Junior-Senior Decorating
 Committee 3.

CAROLYN ROSE WOOD
 Glee Club 1, 2, 3, 4; Dramatics Club 1; Com-
 mercial Club 2; Fine Arts Club 3; Junior-
 Senior Decorating Committee 3.



DEIDRE LEE WOOD
 Transferred from Benvenue High School,
 Rocky Mount 2; Monogram Club 3, 4; Junior-
 Senior Decorating Committee 3; Marshal 3;
 Annual Staff 4; Basketball 3, 4.

KATHANN WOODALL
 Transferred from Oak Ridge High School 1;
 F. H. A. 2, 3; Glee Club 2, 3, Treasurer 4;
 Homecoming Court 4; Homeroom Representa-
 tive 4; "Annie Get Your Gun" 3.



REBECCA LEIGH WRIGHT
 Dramatics Club 1; Oral Reading Club, Sec-
 retary 2; Monogram Club 3, 4; Band 1, Sec-
 retary 2, Library Assistant 3, 4; Dance Band
 3, 4; Marshal 3; Homecoming Court 4;
 National Merit Semifinalist 4; "Annie Get
 Your Gun" 3; Junior-Senior Program 3;
 Cheerleader 3, 4.



Mr. and Miss Senior Class



Robert Jones — Carol Lancaster

Mascots



Tom Medlin, Jr. — Lanie Barry



FRANCES AYCOCK
Academic

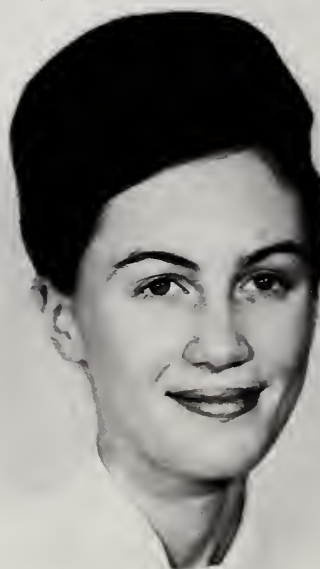


CANDY BAKER
Academic

Who's Who



BILLY BARNES
Fine Arts



PAM BATTEN
Academic



DONNA BURGESS
Academic



GINGER DAUGHTRY
Academic



FAYE HOLLAND
Academic



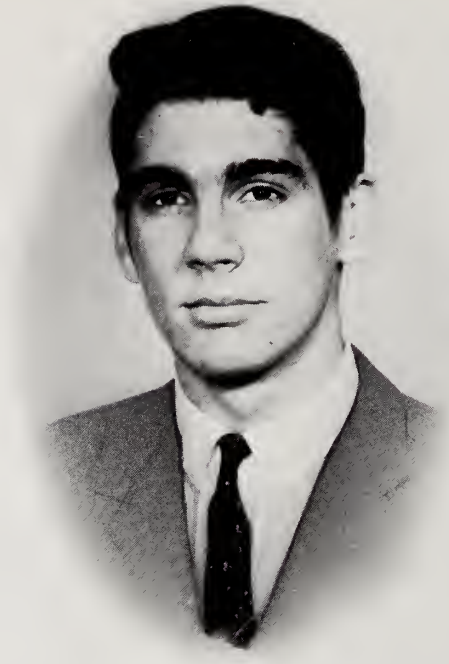
JON ISLEY
Academic



ROBERT JONES
Athletics



TERRY KNOTT
Academic
Athletics

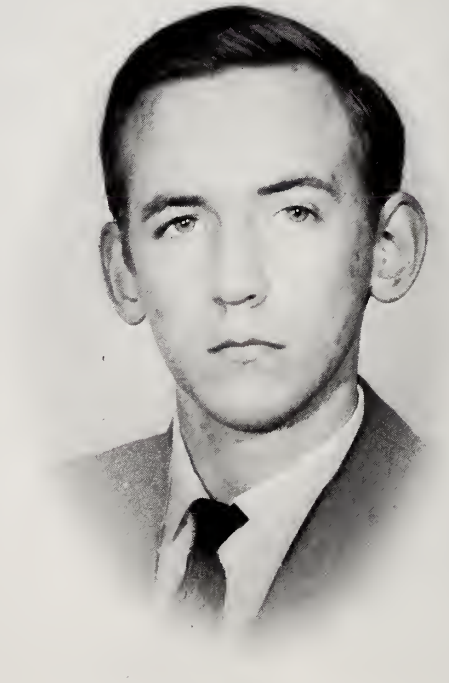


JOE LANSINGER
Academic
Athletics

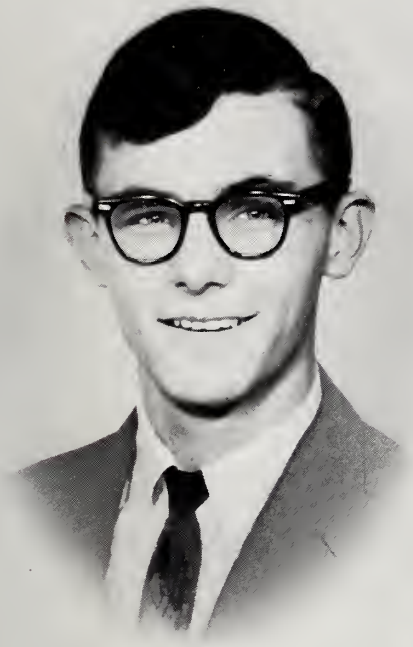
Who's Who



LIBBY MANGUM
Academic



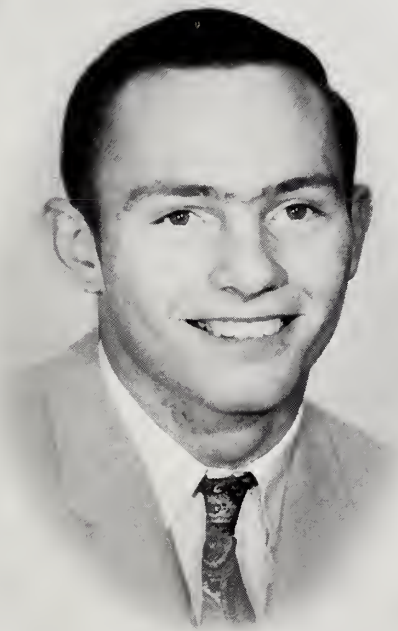
BILLY OLIVER
Fine Arts



TOMMY PARRISH
Academic



JOAN SHALLCROSS
Academic



DOUG WARREN
Athletics



DEIDRE WOOD
Academic



BECKY WRIGHT
Academic



1965 Marshals

Joe Lansinger
Laura Ray
Frances Bingham

Donna Burgess
Frances Aycock

Becky Wright

Billy Barnes, Chief
Jon Isley
Deidre Wood

Joan Shallcross
Candy Baker

Terry Knott

Emily Wharton



Rebecca Leigh Wright



Frances Evelyn Aycock

*1965 National
Merit Scholarship
Finalist
and
1966 Betty Crocker
Homemaker
of
Tomorrow*

*1965-1966 State
FHA Reporter*

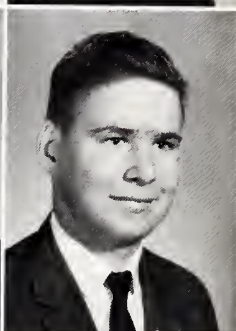
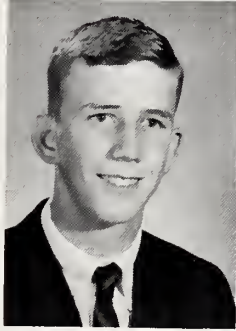
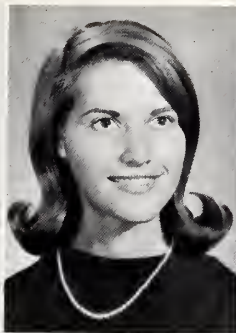


These busy bankers are really Junior Class officers. (Treasurer, Justine Blow; Secretary, Sylvia Whitley, Vice President, Joe Morgan; President, Chip Barnes.)

Class of 1967

Look silly?
Well, at least we aren't in the hall
making noise.





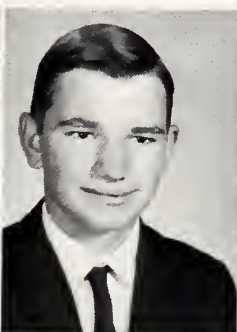
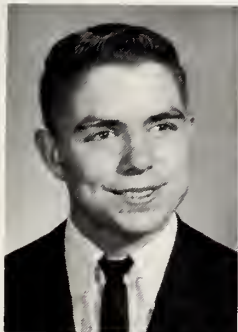
Peggy Adams
Thomas Lester Aycock

Elaine Allen
Nancy Carolyn Bagby

Sandra Lynn Allen
David Waylon Baker

Alton Ray Anderson
Freda Caroline Barbour

Fleta Mae Austin
James Leon Barbour



Jesse Leonard Barbour
Linda Diane Barbour
Roy Leon Barbour
Teresa Ann Barbour



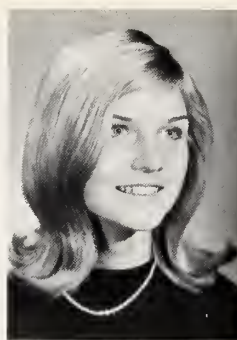
Frank Edward Barnes III
Brenda Gail Batten
Kathleen Britt Batten
Robert Joel Beland



Judith Anne Benson
Mickey Lee Black
Lou Ellen Blackman
Justine Leigh Blow



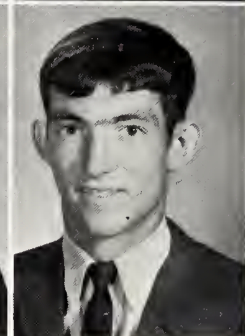
Pam Boob
 William Thaddeus Boone
 Jane Kate Brown
 Johnny Mack Brown



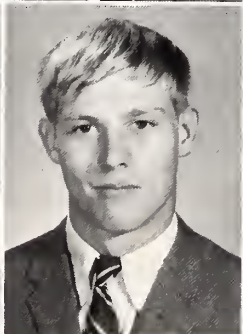
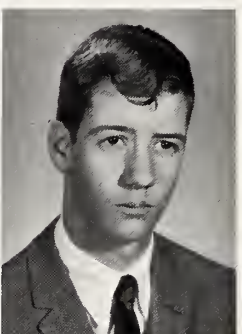
Rodin Ellis Bryan
 Rose Marie Bryant
 Diane Byrd
 Linda Paulette Caldwell



Betty Jo Capps
 Earl Capps
 Hettie Paulette Capps
 Joseph Arnold Capps, Jr.



Juniors



Patricia Gail
 Casey
 Dorothy Jean
 Davis

Lenwood Ray
 Collier, Jr.
 Larry Norwood
 Denning

Lawrence Banks
 Coor
 Dorothy LaRue
 Ellis

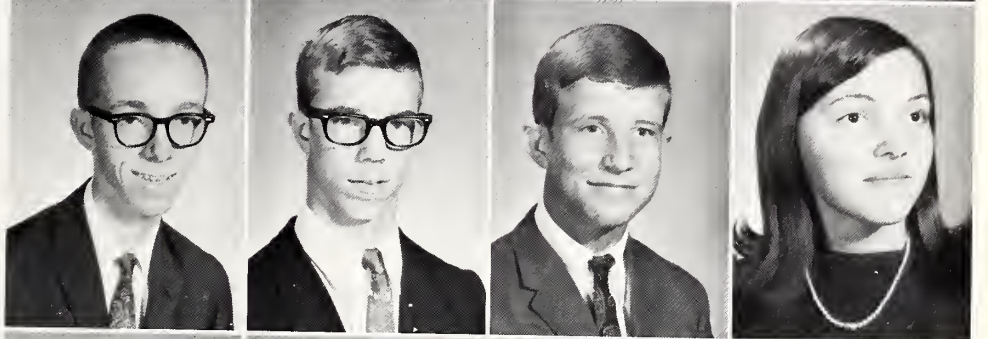
James Ransom
 Creech
 Barbara Gail
 Evans

Timothy Carr
 Daughtry
 Gwynn Yvonne
 Faircloth

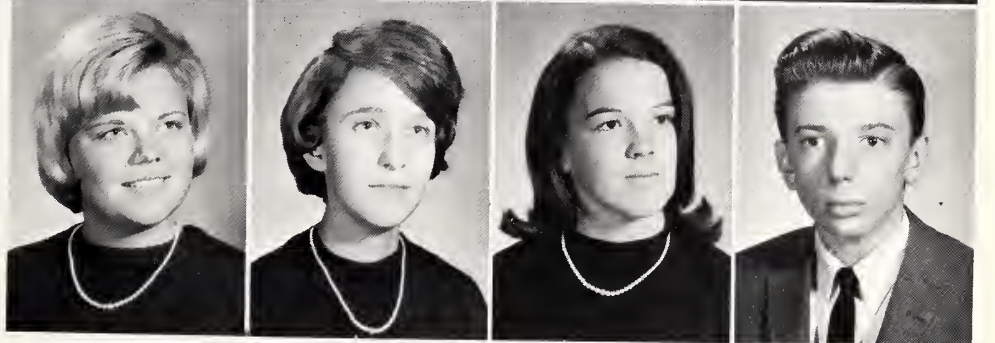
Christopher Cole Finch
 Charles Milton Fore
 Rosa Naomi Gardner
 Judy Mae Godwin



Stephen Andrew Gregory
 James Hampton Griffin, Jr.
 James Michael Grigg
 Dorothy Ruth Grimes



Sylvia Jo Hamilton
 Susan Elizabeth Hardee
 Clyda Faye Hill
 Donnie Raeford Hill, Jr.



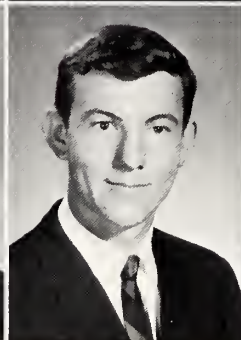
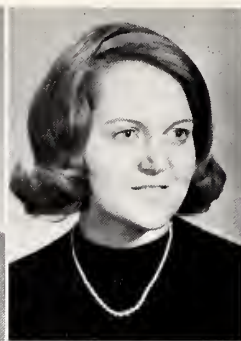
Johnny Gill
 Hobgood
 William Vernon
 Howell

Kenneth Edwards
 Hobgood
 Patricia Ann
 Hudson

Barbara Ann
 Hodge
 Brenda Gail
 Johnson

Jane Gaston
 Holt
 Nancy Beth
 Johnson

Kenneth Dickenson
 Holt
 Margaret Victoria
 Johnson



Katherine Moore
Jolliff
Katherine Lucille
Lambert

Annie Frances
Jones
Jack Adams
Lancaster

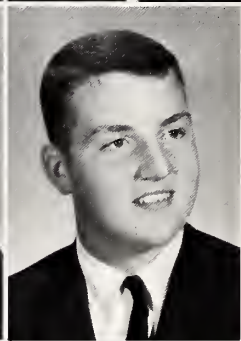
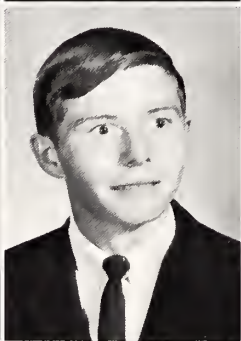
John Curtis
Jones
Phillis Carolyn
Lassiter

Linda Carol
Jones
Robert Ambross
Lee

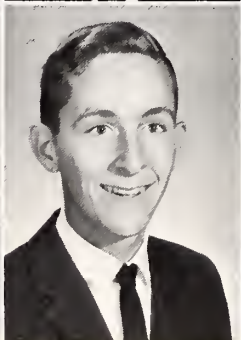
Monnie Sue
Jones
James Steven
Lee



Charles Wesley Leonard
Gloria Thaime Little
Ann Olivia Miller
Archibald Oliver McFadyen



Jane Leonora McGee
James Wilton McKenzie
Steven McLeod
Joseph Norman Morgan



Mark Lee Moyer
Larry Eugene Murphy
Dennis Victor Norris, Jr.
Hunter Eli Olive



Carlton Windsor
Overby
Britt Howell
Pope

Carol Ann
Parrish
Judith Kaye
Pounds

Linda Grey
Parrish
Lou Glenn
Powell

James Thomas
Penny
David Micheal
Prevette

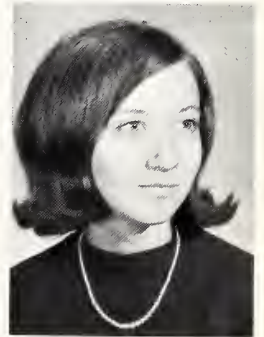
Beverly Gail
Pope
Timothy Craig
Queen

Juniors



Summit conference in the hall.

Janet Leigh
Rains



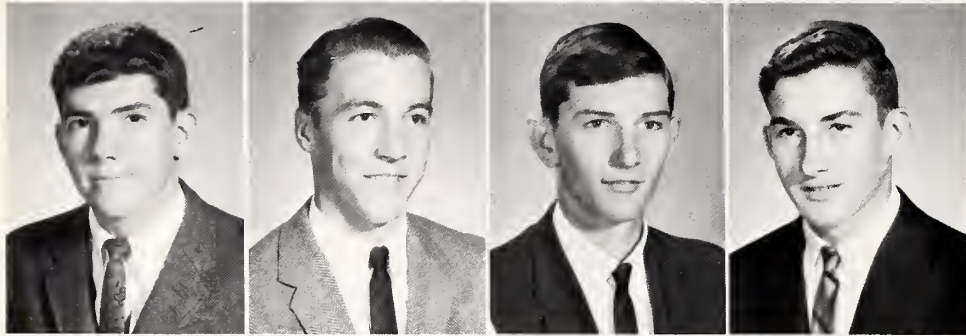
Debra Ann
Rigdon



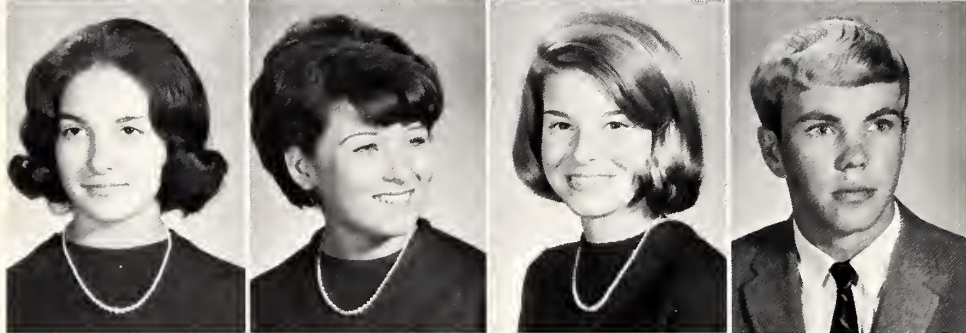
Wendy Vivian
Sanders



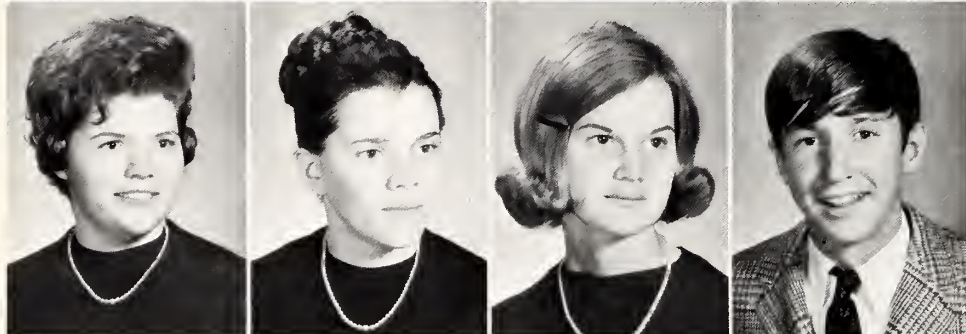
Juniors



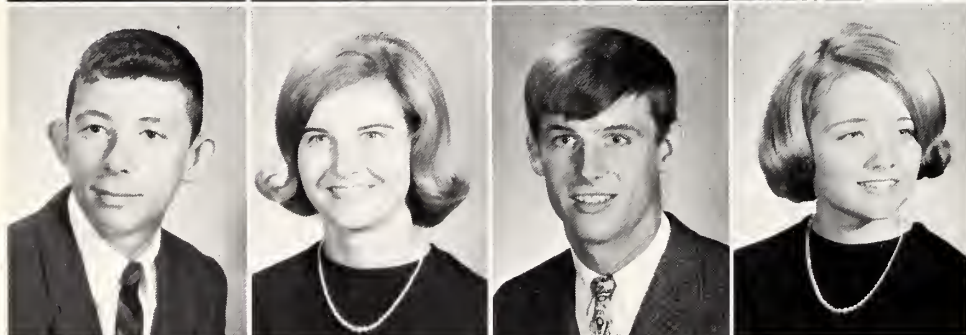
Charles Lee Schofield
Paul Wayne Scott
David Earl Simmons
Larry Ray Snipes



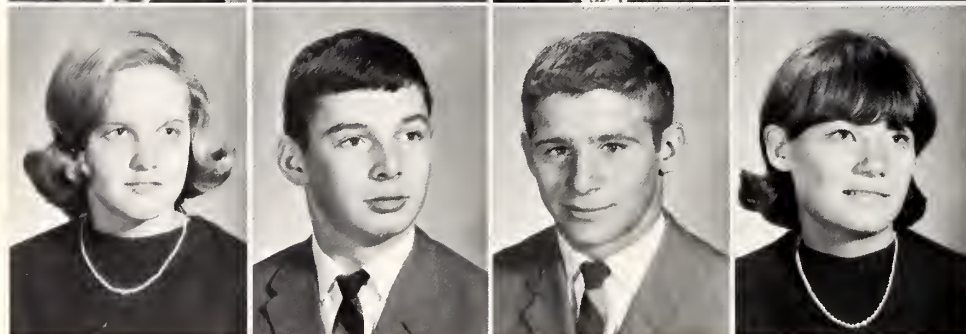
Linda Faye Snipes
Emma Jean Stallings
Brenda Suzanne Stancil
Donnie Leonard Stancil



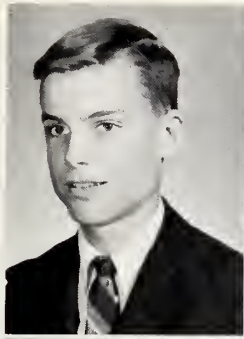
Pamela Kaye Stanley
Verni Jean Stanley
Dora Victoria Stephenson
Gilbert Dewitt Stephenson, Jr.



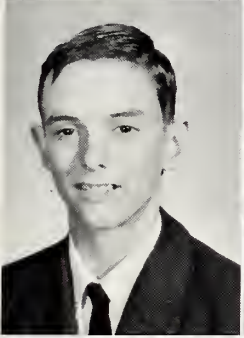
Kenneth Preston Stephenson
Sue Grayston Stephenson
William Mark Strickland
Kay Layne Sugg



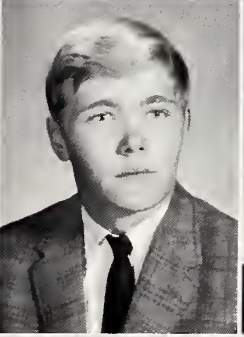
Glenda Carol Sullivan
Eddie Leon Sutton
Willie Earl Tucker
Linda Louise Turner



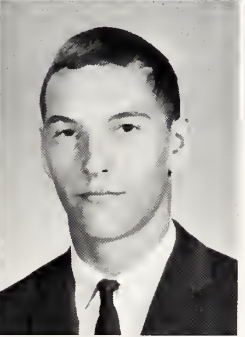
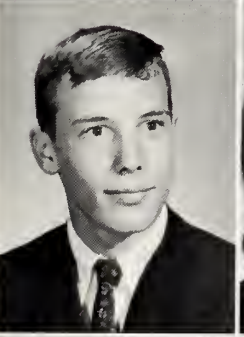
Douglas Brent Tyner
 Bobby Ray Underwood
 Kathy Anne Underwood
 Evelyn Thain Walker



Ronnie Dale Wallace
 David Keith Whitehurst
 Sylvia Gail Whitley
 Donna Ellen Williams



Janice Faye Williams
 Keith Edward Williams
 Harvey Jean Williford
 Barbara Ann Wood



Adam Heath Yarborough
 Mary Louise Yarborough
 Clark Elliot Young



Phillip Armen
 Ziady





The Sophomore officers (Treasurer, Dave Bryant; President, Denton Lee; Vice President, Ann Sloan; Secretary, Carol Grantham) wave good-bye to walking.

Class of 1968

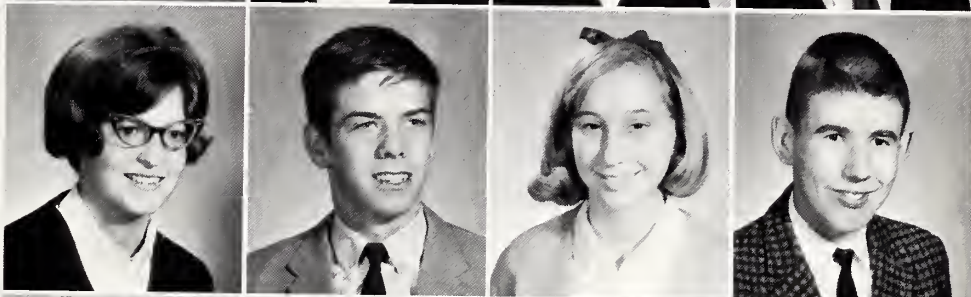
The Sophomore Magazine Sales Winners (Janet Sellers, third place; Janet Shallcross, second place; Steve Bryant, first place) tally their sales.



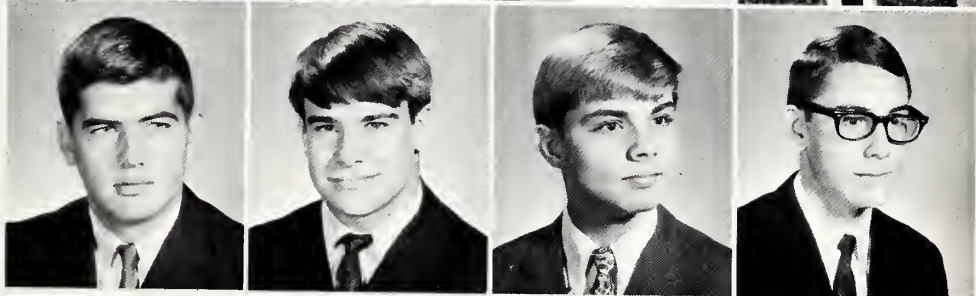
Gailya Elizabeth Adams
 Jean Hope Allen
 Judy Dale Allen
 Phillip Keith Anderson



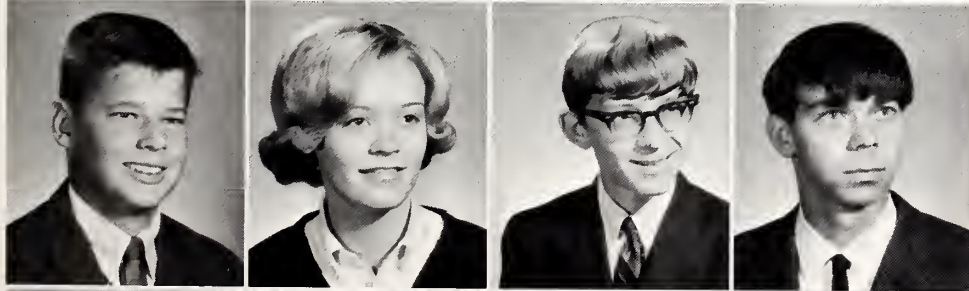
Margaret Woodville Andreaus
 Charles Southerland Avera
 Martha Ann Barbour
 Arthur Thomas Barefoot



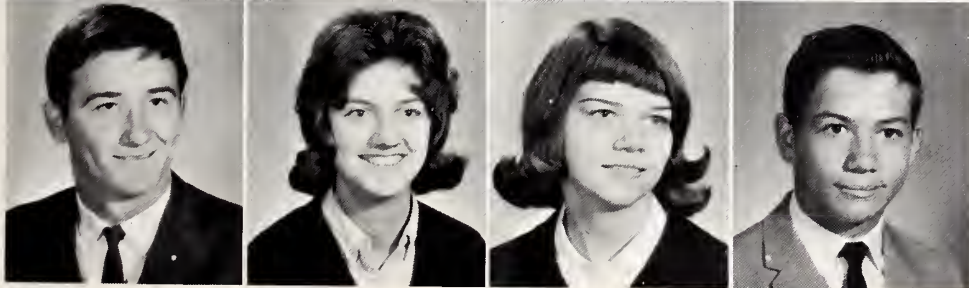
Larry Donald Barnes
 Robert Alton Benson
 Richard Earl Black
 Galen Bolin



John William Boyette
 Carol Brown
 David Allen Bryant
 John Stevenson Bryant



John Henry Bullock
 Mary Nell Burgess
 Dennis Byrd
 Donnie Dale Byrd

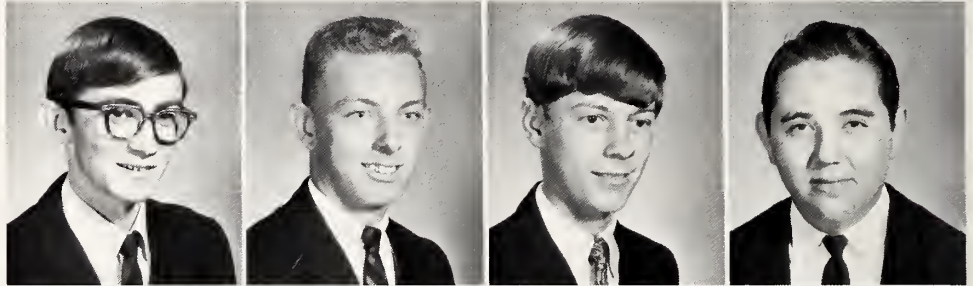


James Melvin Byrd
 Brenda Louise Capps
 Sandra Kay Capps
 Thomas Reid Capps

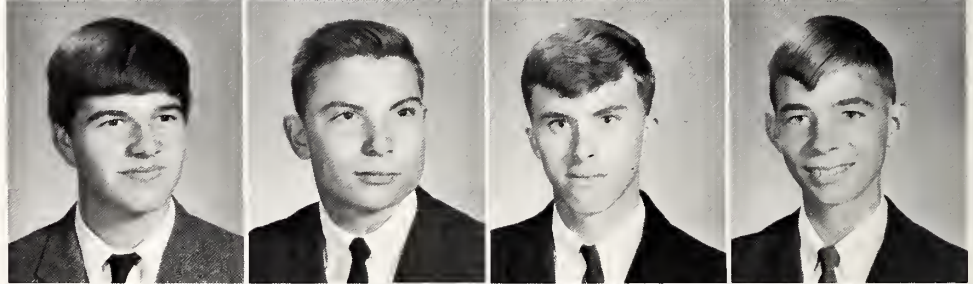


Shelley Ann Castleberry
 Sandra Elizabeth Clayton
 John Harold Creech
 John Wesley Creech

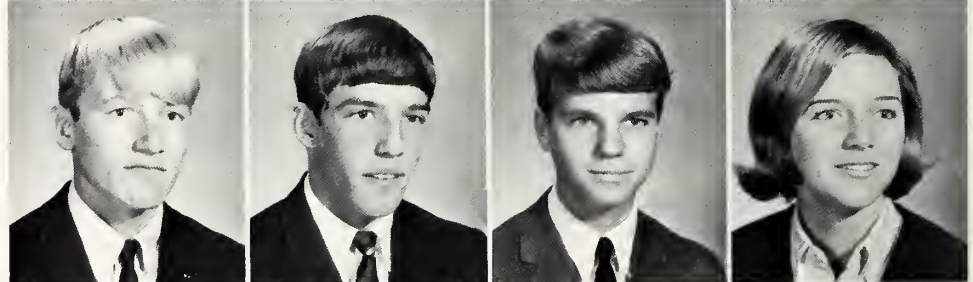
Larry Waiston Creech
 Robert Leo Creech
 James Everette Crocker, Jr.
 Glenn Harring Davis



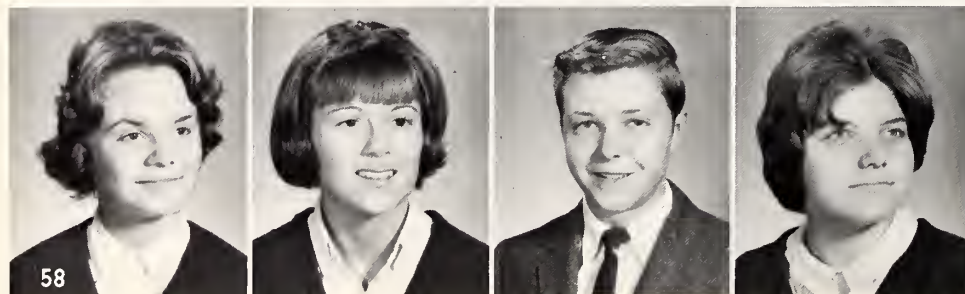
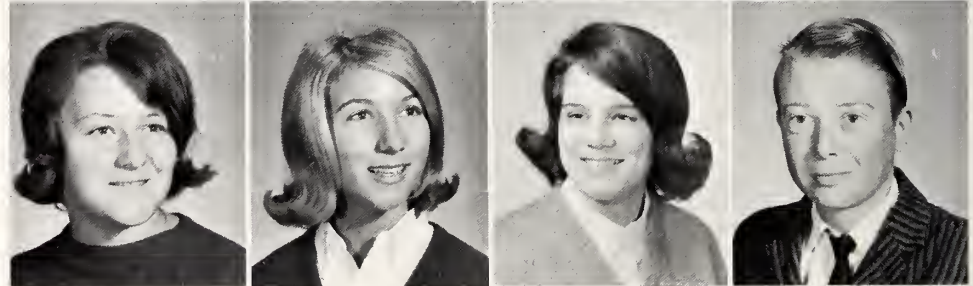
Ronald Willard Davis
 James Elmo Edwards
 Carlton Dwight Exum
 Jerry Wayne Exum



James Erwin Faircloth
 John Lindsay Ferguson
 Ernest Theodore Forbes III
 Julia Tatum Gilbert



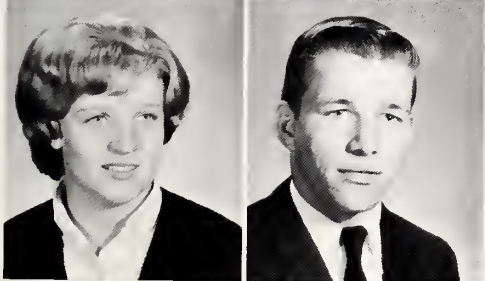
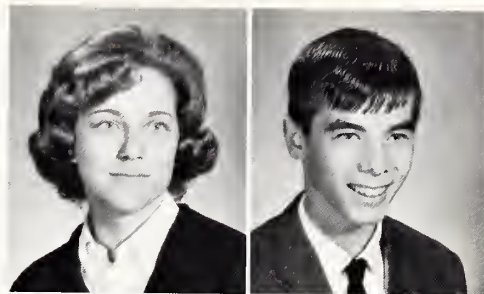
Jacqueline Dale Godwin
 Carol Richardson Grantham
 Sylvia Hall
 Freddy Wall Hamilton



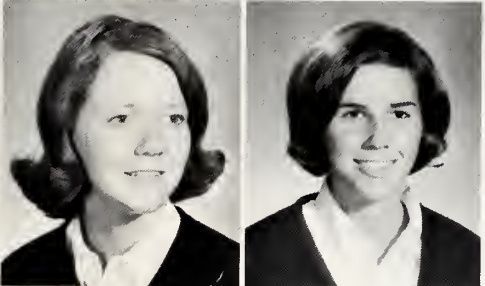
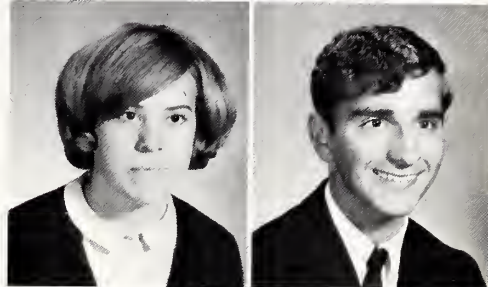
Wincey Victoria Handy
 Virginia Epps Harris
 Timothy Lee Higgins
 Debrorah Ann Hill



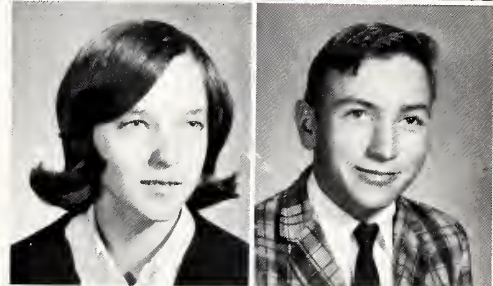
Margy Gay Hinnant
Elmona Donal Holt, Jr.
Patricia Ann Hudson
Peter Thorleif Hulth III



Rebecca Ann Jackson
William Edward Jackson
Joan Carolyn Johnson
Sherwood Tony Johnson



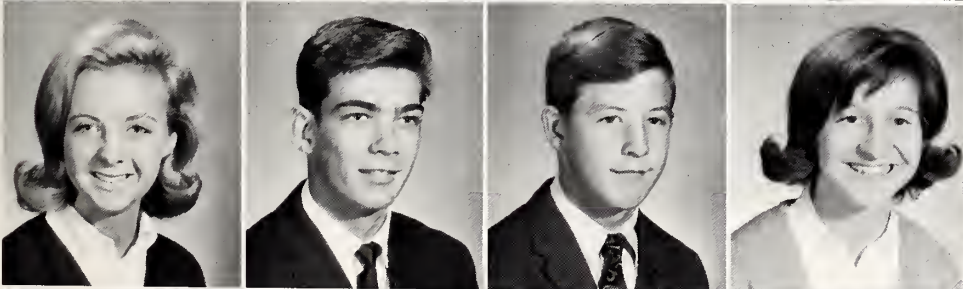
Brenda Susan Jones
Elva Susan Jones
Carol Elizabeth Kelly
Larry Michael Langdon



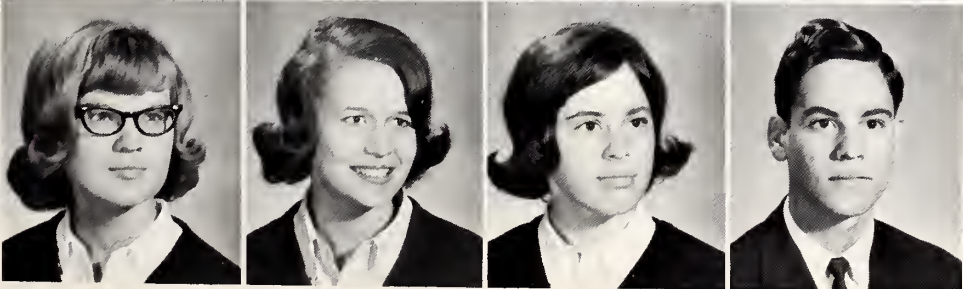
Sophomores



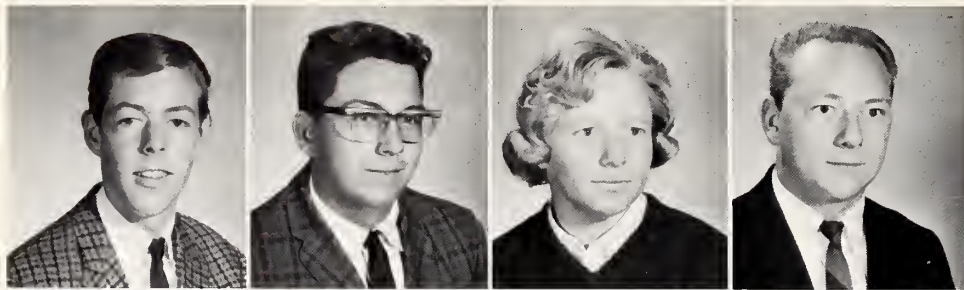
Denton Farmer Lee, Jr.
Lena Catherine Lewis
Deborah Ann Mason
Oris Edund Mathews



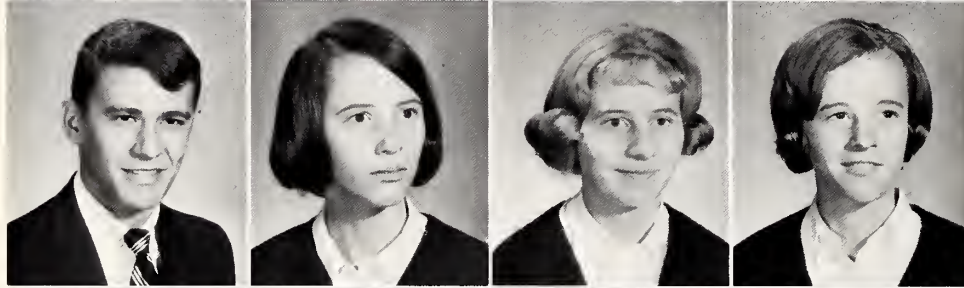
Ann Howard Mitchiner
James Chris Moore
Daniel Hardy Narron
Sandra Nordon



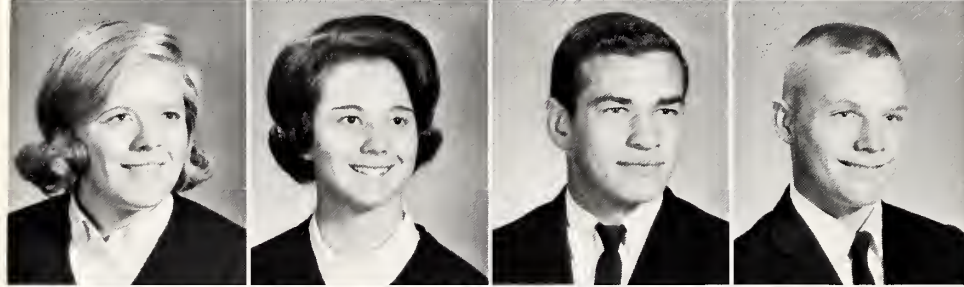
Polly Ann Pace
Janice Ruth Parker
Patricia Ann Parrish
Edwin Henry Patterson



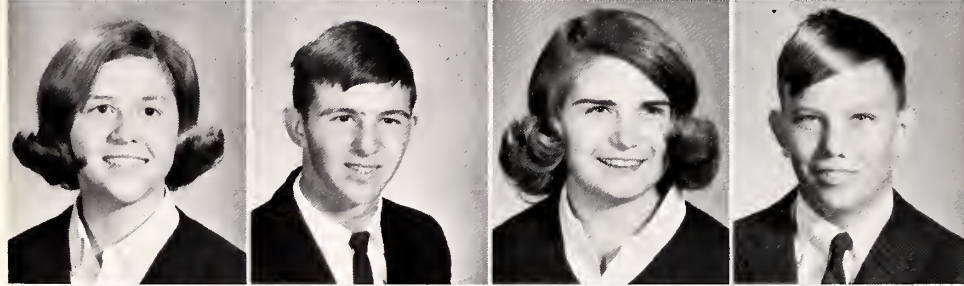
Al Peedin
Dennis Wayne Penuel
Carolyn Frances Peterson
Joseph Don Phillips



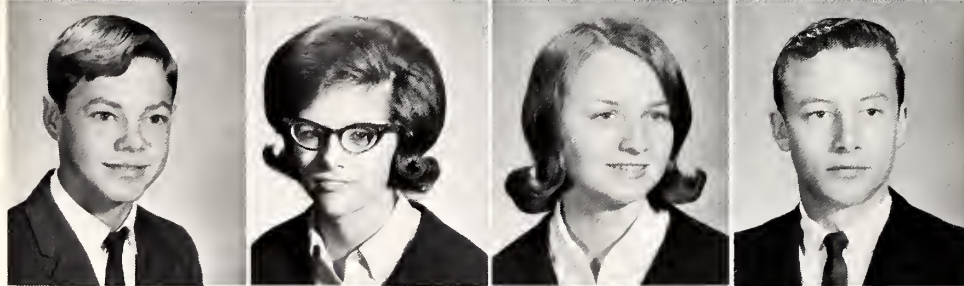
Durwood Renn Rose
Patricia Ann Sanders
Brenda Kay Scott
Janet Ruth Sellers



Janet Susan Shallcross
Vickie Ruth Sienkiewicz
Robert O'Dell Sigmon
Amos Daniel Simmons, Jr.



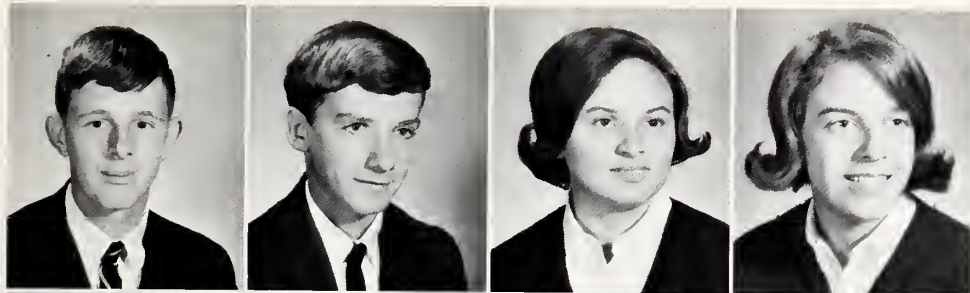
Ann Carolyn Sloan
Willie Alfred Smith
Sandra Dyanne Stallings
Thomas Lawrence Stallings



Ronnie Earl Stancel
Linda Sue Stewart
Connie Mae Strickland
Marshall Wayne Strickland



Frank Thomas Sutton
Stephanie Ray Taylor
Tommy Martin Thompson
Martha Sue Throckmorton

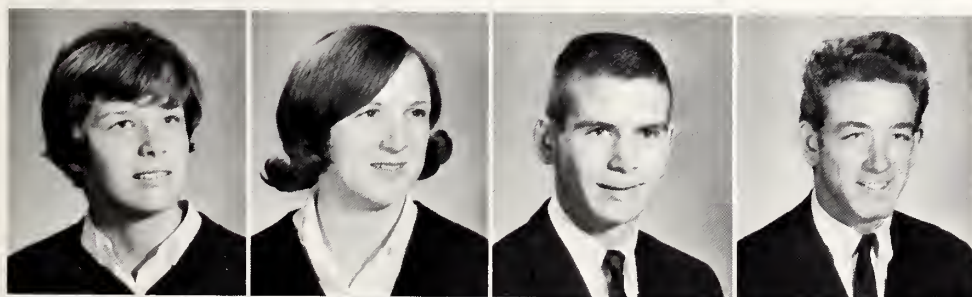


Thomas Ray Tucker
David Lee Underwood
Shelia Kay Wallace
Jennifer Duncan Watson

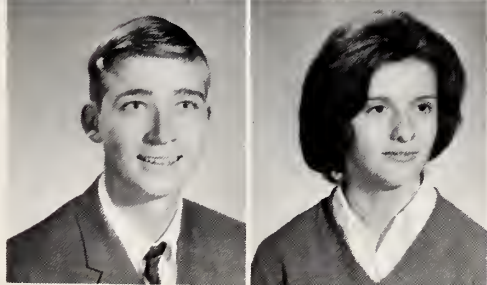


Delia Ellington Wellons
Beryl Howard Wells
Elizabeth Walker Wells
Watson Carl Wharton

Sophomores



Edith Lacy Whitley
Frances Gail Wilkes
John Alexander Wilson
Donald Ray Woodard



Stephen Clarence Woodard
Brenda Worrells

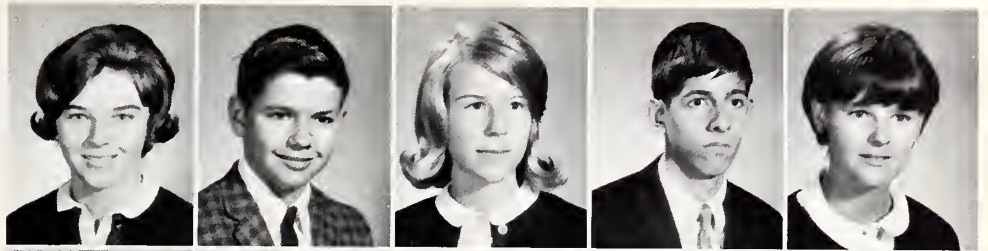


The Freshman officers (Secretary, Bob Forbes with Margaret Wellons, Treasurer, and President, Joe Austin with Vice President, Page Perkinson) swing their way into high school life.

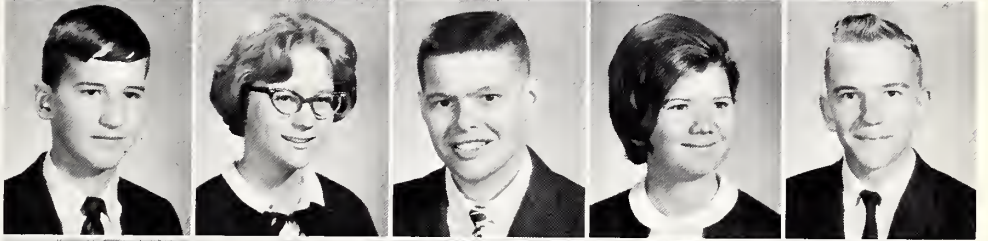
*Class
of
1969*



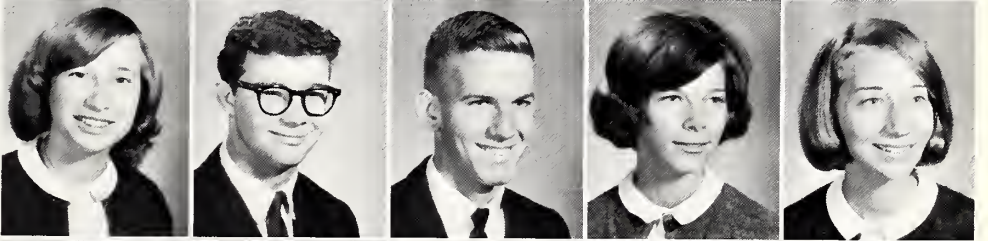
Deborah Jean Adams
 Jerry Wayne Adams
 Pamela Adams
 James Maurice Allen
 Joseph Faye Allen



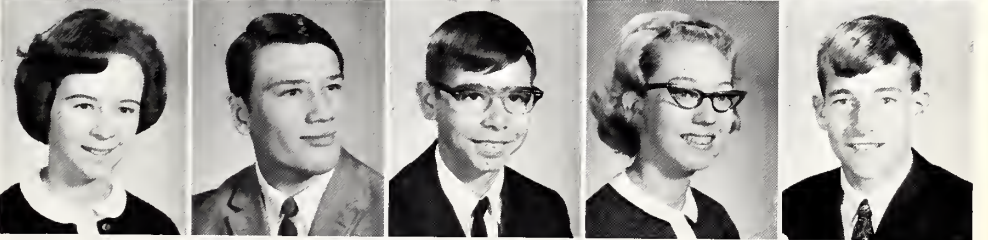
William Joseph Austin, Jr.
 Barbara Ann Baker
 Jerry Keith Ballance
 Carolyn Elaine Barbour
 Gerald Marshall Barbour



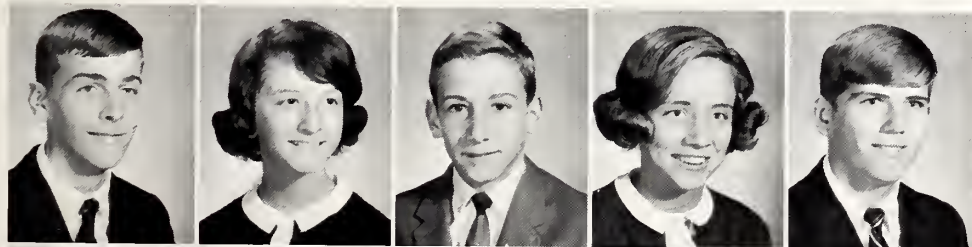
Jesse Helen Barbour
 Phillip Warren Barbour
 Ricky Barbour
 Judith Ellen Barefoot
 Bette Jeanne Barnes



Belinda Frances Beasley
 Thomas Clifton Beasley
 James Douglas Blackmon
 Janice Faye Blankenship
 Gordon Lowry Blow



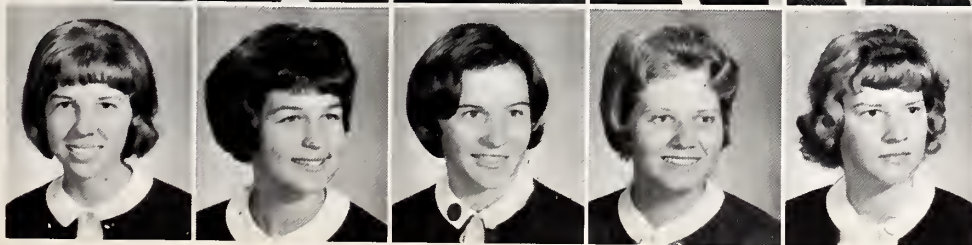
Freshmen



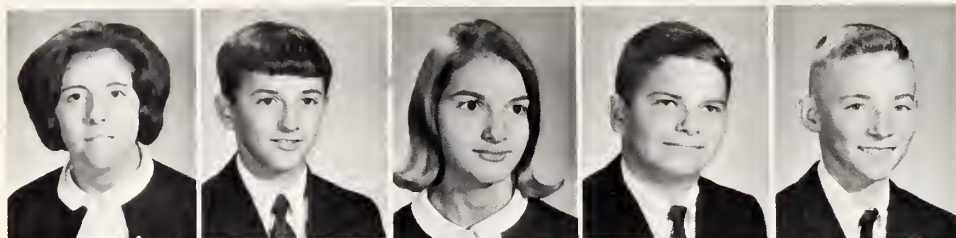
Robert Burwell Brown
 Bonnie Jean Byrd
 Sam Kay Byrd, Jr.
 Sharon Leigh Cameron
 Herbert Bradley Carroll



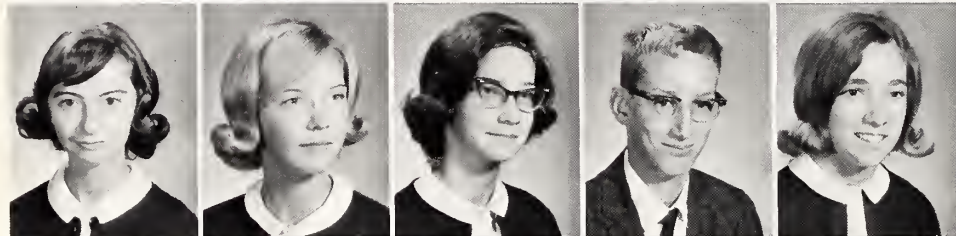
Peggy Louise Carter
 Cathy Gwyn Cobb
 Harold Steven Creech
 June Lynette Creech
 Ressie Aden Creech



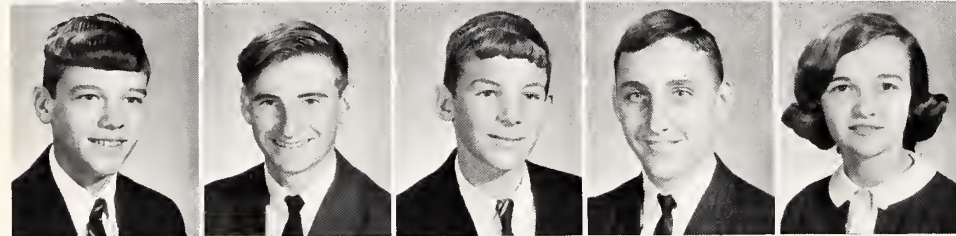
Sarah Debra Creech
 Debra Dianne Cretini
 Jane Austin Cunningham
 Deanne Daughtry
 Jennifer Faye Davis



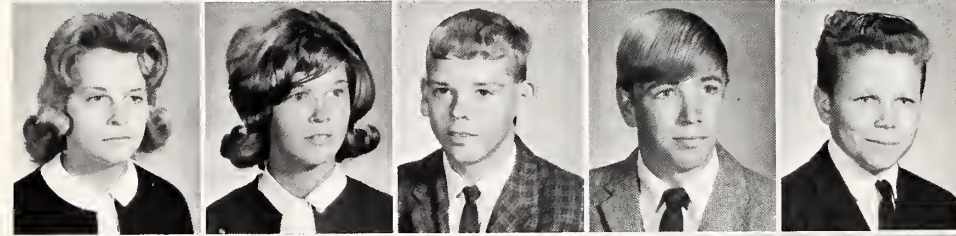
Shelby Jean Davis
John Robert Dupree
Judy Gail Eason
Warren Randolph Ellis
Craig Michael Ennis



Judy Carol Ennis
Martha Susan Exum
Janci Luann Fish
Michael Oliver Fleming
Gloria Alice Flowers



Robert Clark Forbes
Ray Delmonnte Futch
Alan Carl Gardner
James Dwight Gay
Phyllis Carol Gay



Anita Louise Gerrell
Anne Adele Gerrell
Larry Wayne Gerrell
James Wyatt Gilchrist, Jr.
Rubin Russell Gilmore



James Everette Godwin
John Edward Gregory III
Sharon Annette Gregory
Deana Jean Haas
Billy Wayne Hall



James Parron Hall
James Roscoe Hall
Dennis Dale Ham
Terrie Anne Haskill
Samuel Gray Henry



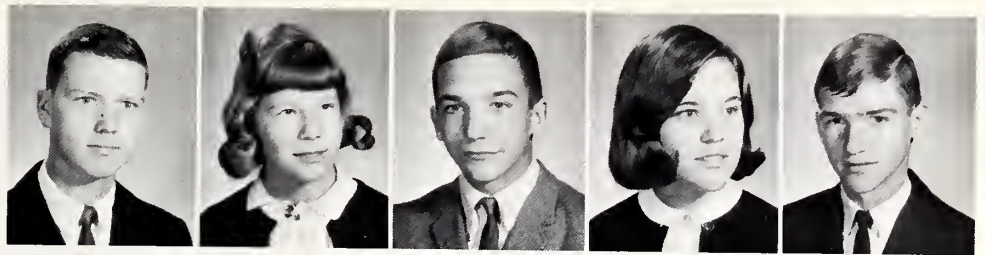
Alfred Dewayne Hill
Emily Ann Hill



Mary Frances Hill



Hugh Bryan Hobbs, Jr.
 Merita Ann Holt
 Richard Rowan Holt
 Teresa Kaye Holt
 Ronald Joe Hopkins



James Hudson
 James Easton Hudson
 Janice Sue Hughes
 Pamela Teresa Hulth
 Laura Beth Isley

Karen Arleen Jackson
 Michael Ray Johnson
 Monnie Sue Johnson
 Thomas Glenn Johnson
 Thomas Ray Johnson

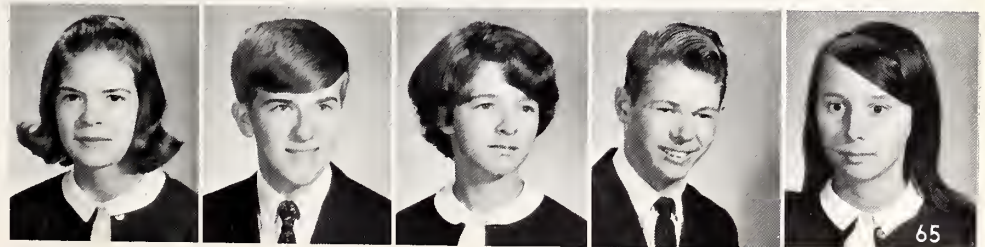
William Thomas Johnson
 Betty Catherine Jones
 Carolyn Sue Jones
 Charles Michael Jones
 Larry Smith Jones

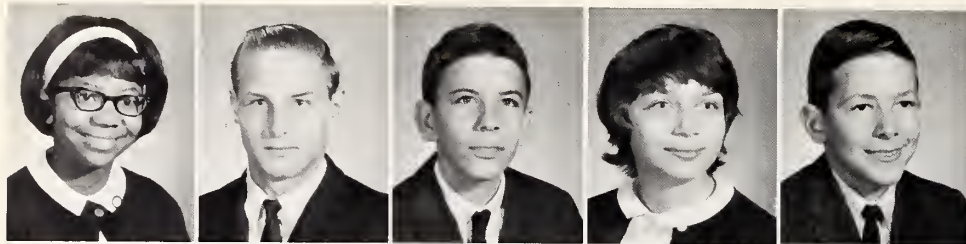
Martha Sandra Jones
 Crystal Eline Jordan
 Vernon King
 Deborah Rose Lane
 George Mack Langdon, Jr.

Thomas Harold Langdon
 Romey Kenneth Langston
 Matilda Joyce Lassiter
 James Daniel Lee, Jr.
 Patricia Ann Lee

Freshmen

Catherine Ruth Lipsak
 Stephen Robert Little
 Nancy Louise Liverman
 David Earl Massengill
 Vickie Diane Massengill



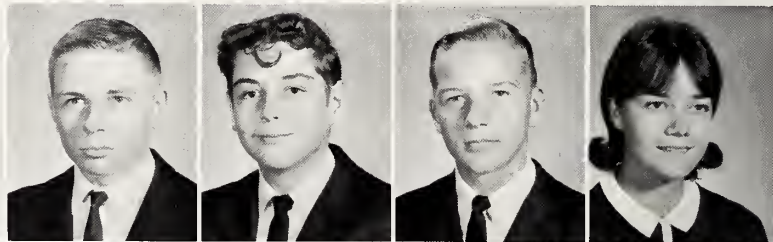


Rhonda McLean
 Preston Medlin
 Burton Thomas Monroe
 Monne Rebecca Moye
 Ronald Elbert Murphy

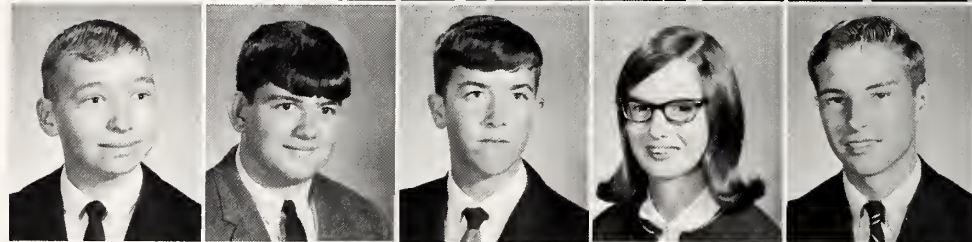


Mary Dianne Norris
 James Olive
 Rebecca Ann Overman
 Joseph Elbert Parrish, III
 Mary Susan Parrish

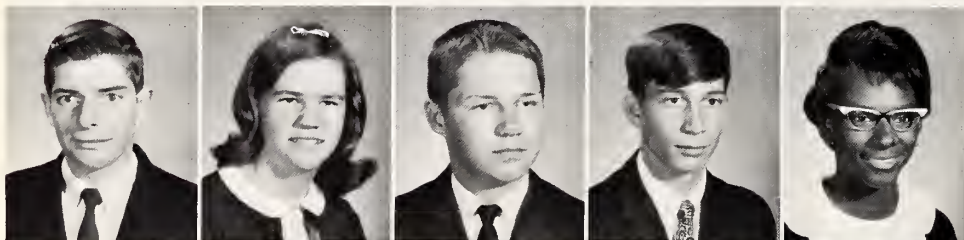
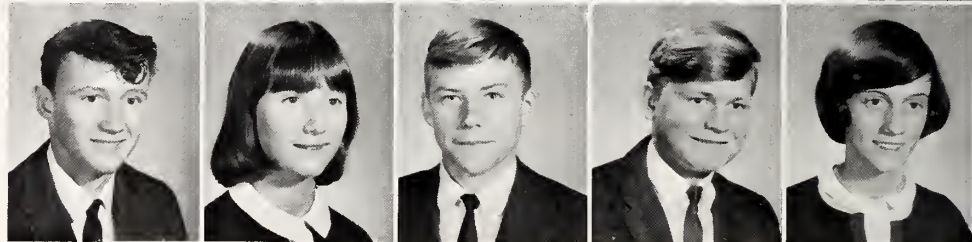
Joseph William Payne
 James Howard Peedin
 David Junior Pender
 Danny Wilson Penny
 Martha Page Perkinson



Charles Luther Pilkington
 Johnny Nelson Pitchi
 Donald Rudolph Pittman
 Evelyn Ruth Pittman
 Tony Dewayne Pope



Kenneth Gilbert Radford
 Mary Katherine Reese
 Jerry Lynn Roberts
 Terry Joe Roberts
 Virginia Ruth Sanders



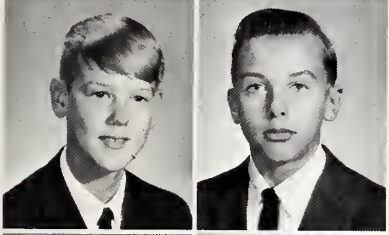
Glenn Talbot Smith
 Gloria Christine Starling
 David Lane Stearns
 Dalma Eugene Stephenson
 Jacqueline Elizabeth Stevens



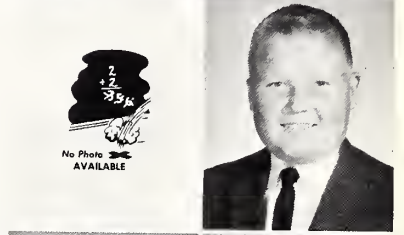
Vickie Stewart
 Nancy Nelson Stigelman
 Sally Jo Stockdale
 Larry James Strickland
 Beverly Anne Sullivan



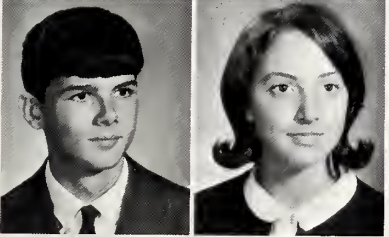
Hugh Clifton Talton
 Rebecca Ann Talton
 William Jesse Teague
 Jennifer Ann Thompson



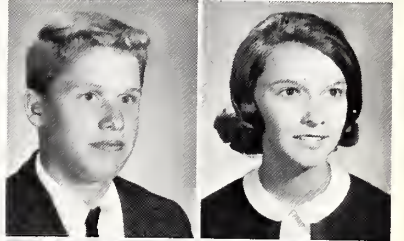
William Everett Thompson
 Jimmy Edward Thorne
 Joseph Clifton Vinson, Jr.
 Danny Charles Wadsworth



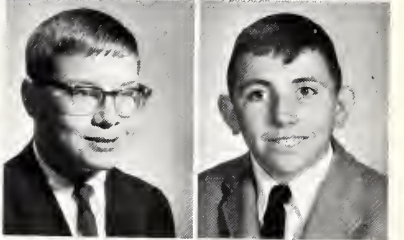
No Photo AVAILABLE



Everette Theodore Wall
 Margaret Elizabeth Wellons
 David Thurman West
 Carolyn Fay Williams



Mary Eileen Wilson
 Danny Whitfield Wood
 Thomas Carr Wright
 Ralph La Verne Young



Freshmen



Too young for some things, but old enough to "cut-up" in the library.



Smiles



SEATED: Seniors - Carroll Stephenson, Kay Faircolth, Kathann Woodall, Warren Grimes, Frances Aycock, John Kelly, Tommy Parrish, Pam Batten, not present. SECOND ROW: Burtmon Roe, Glenda Sullivan, Sue Stewart, Ginny Harris, Dee Dee Wellons, Sally Stockdale, Judy Benson, Kathy Batten, Bob Forbes, Sylvia Whitley, Chip Barnes, Justine Blow, Dewayne Hill. BACK ROW: Steve Little, Dave Bryant, Joe Austin, Diana Haas, Betty Barnes, Jenny Sanders, Larry Stallings, Meg Andreas, Don Pittman, Tony Johnson, Heath Yarborough, Ronnie Stancil.

Student Council

The Senior representatives look over the kindergarten children in their search for the 1966 Mascots.



ACTIVITIES





(ABOVE) Our little pagoda was filled with music by "The Pastels."

(BELOW) Mimi Lillich, Frances Bingham, Frieda Simmons, Candy Baker, and Becky Wright brought a taste of Western culture to the "Teahouse of the August Moon."



Junior-Senior
1965



(ABOVE) Pam Batten and Libby Mangum brought us "A Hundred Million Miracles" in song.



Buddha reigned majestically over all.



(RIGHT) This group compared life to "Chop Suey."



1965 HOMECOMING QUEEN: Miss Candy Baker

Homecoming

Court



The girls did all they could to help.

Elaine Murphy	Butch Allen
Emily Wharton	Tom Avera
Kathann Woodall	Ricky Bagby
Donna Burgess	Billy Barnes
Mary Blandy	Bob Batchelor
Carol Lancaster	Don Capps
Terry Knott	Kay Carroll
Frances Aycock	Jim Henderson
Becky Wright	Robert Jones
Candy Baker	Alfred Moore
Pam Batten	Dick Prevette
Libby Mangum	Mike Sellers
Janice Lee	Carroll Stephenson
Margaret Lee	Fred Tarlton
Faye Holland	Doug Warren
Linda Lassiter	Ernest Whitley



The light went out on my Lady Sunbeam!



"Spazmo Griswald", star Selma quarterback, eats breakfast.

1965.



(Above) "J. W. Finch" enlightens interested students.



(Left) Jack and Jill went up the hill, but where did that other girl come from?



*Homecoming
Dance*



(Above) Kay and Terry eye the yummys, while Mrs. Heard looks after the brew.



Freshmen make their debut.



Christmas



"God bless us every one."



(ABOVE) "Yes Virginia, there is a Santa Claus."





SHS



Our band is definitely one to be proud of. Its members work diligently to entertain us as often as possible, adding spirit at football and basketball games. Their enthusiasm and hard work help to make our high school days more fun.



Band



Band officers (left to right): Don Westbrook, Publicity Chairman; Ricky Dupree, Treasurer; Laura Ray, Secretary; Butch Allen, President; Shelley Castleberry, Becky Wright, Margie Hinnant, and Hope Allen, Librarians.



*Girls'
Chorus*



"Out with it, altos."



"Aaaaaaaah!"



Mixed Chorus

Now it's grab time for the old music



Sing along with Lee!

Bus Drivers — The Daring Ones



Our bus drivers truly are daring. It takes a great deal of patience, endurance, and skill to get up bright and early each morning and drive a group of lively youngsters to school. Where would our school be without their valuable services?



(FRONT ROW, left to right) Larry Barefoot, Danny Johnson, Earl Jones, Al Peeden, Joe Phillips, (BACK ROW) Carol Lancaster, Mary Sanders, Frieda Simmons, Faye Adams, Roney Underwood, Jerry Allen, and Thomas Penny.



Distributive Education



CLUB OFFICERS: Carl Adams, President; Betty Joe Capps, Secretary; Linda Caldwell, Treasurer; Tommy Jones, Parliamentarian; Brent Tyner, Vice-President (not Shown).

D. E. is a new club at SHS this year, but that doesn't mean it hasn't been active. In November, during National DECA Week, members of the Smithfield club taped a radio program, "Know Your School". They also distributed bumper stickers and put emblems in store windows. Many more activities are planned for this year and next.



Future Homemakers

FHA is an organization for girls who enjoy creative work. There are many projects throughout the year which help members to grow as future homemakers. During National FHA Week there are activities planned for each day to show our appreciation to parents, grandparents, and teachers.

F. H. A. officers must know how to explain the emblem.

Library Assistants



Our library assistants deserve praise for the many services they render. These girls are general handymen, carrying out many different duties. They process books and magazines, check out books, make attractive bulletin boards, and sometimes even help with the dusting.





Shield Staff



"Have you found KIX yet?"



Assistant Editor, Joan Shallcross, and Editor in Chief, Billy Barnes, discuss a layout.



In preparing the 1966 Shield we have attempted to condense a years life of our school into these one hundred and forty-seven pages. You will note that we have made some changes in the form and contents of this Shield from that of its predecessors.

We have eliminated the superlative section this year and have placed in its stead the SHS Who's Who. This contains those students who have distinguished themselves in the fields of academics, athletics, and fine arts.

We have greatly enjoyed editing this issue of your yearbook, a job which has been made much easier by the cooperation we have received from everyone. So here it is----the 1966 SHIELD.

*Billy Barnes
Joan Shallcross*



Mrs. Snipes had the final say on what went into the annual.



Carroll Stephenson seeks advice on a football layout.



Section Editors: (front to back) Faye Holland, Student Life; Don Westbrook, Business Manager; Janet Richardson, Classes; Donna Burgess, Activities; Joan Shallcross, Assistant Editor; Joe Lansinger, Sports; (standing) Mrs. Snipes, Faculty Advisor; Billy Barnes, Editor in Chief.



High Times Staff



Frieda Simmons, News Editor; Mary Sanders, Art Editor; Mike Sellers, Sports Editor; and Karen Johnson, Fashion Editor get their orders from the "chief".



With the help of Mrs. Burnette, faculty advisor, Billy Oliver plans the next exciting issue.



ATHLETICS





FRONT ROW: (Left to Right) Elizabeth Wright, Ruth Wallace; SECOND ROW: Ann Jones, Gail Evans, Justin Blow, Nancy Johnson; THIRD ROW: Becky Wright, Pam Batten, Candy Baker, Libby Mangum.



"Go, Devils!" bounces off the walls of the auditorium of Smithfield High School as our eight cheerleaders--Candy Baker (head), Pam Batten, Justin Blow, Gail Evans, Nancy Johnson, Ann Jones, Libby Mangum, and Becky Wright--lead the student body during pep rallies. These young people embody the spirit of our school with their enthusiasm, their yells, and their leadership of the student body during pep rallies, football games, and basketball games.

The cheerleaders' purpose is to create school spirit, loyalty, interest, and sportsmanship in school sponsored activities. Although being a cheerleader often requires after-school practice, as well as strict-disciplined summer practice, it is well worth the effort when all the students yell and the Smithfield teams go on to victory.



And there were those times when . . .

Yeah! Yeah!



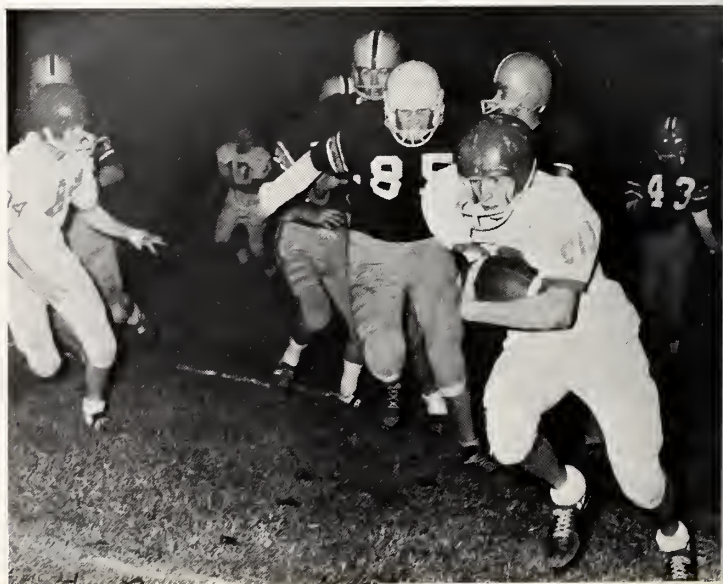
Downcast---for once!

Cheers A Go-Go!

"Little Red Rooster" sitting on a fence . . .



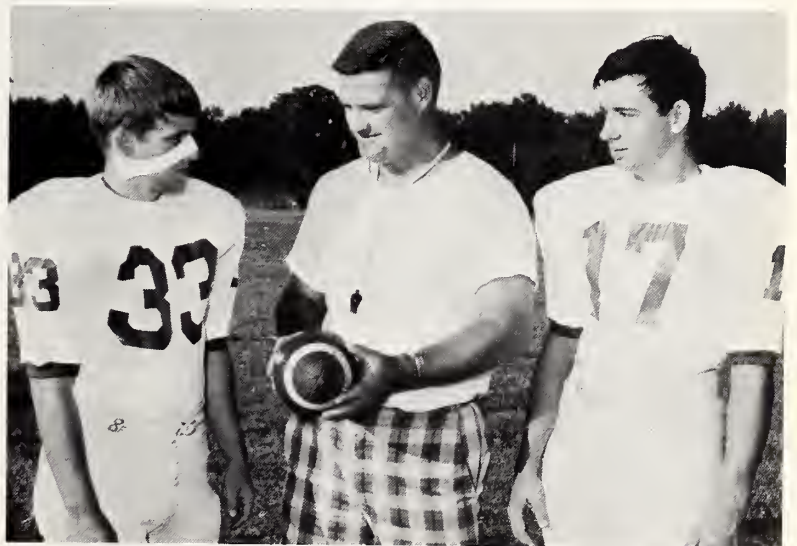
*F
o
o
t
b
a
l
l* *1
9
6
5*





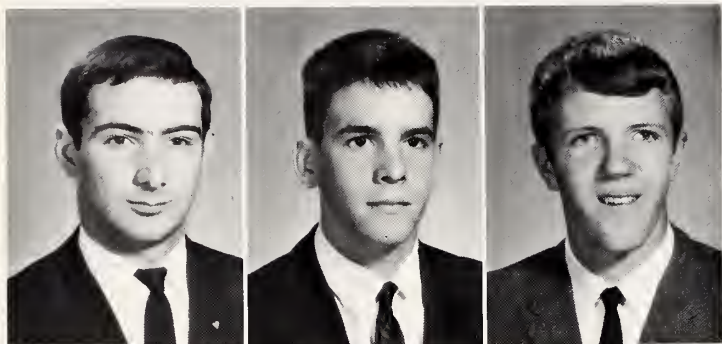
FRONT ROW: (left to right) Dick Prette, Watson Hall, Alfred Moore, Doug Warren, Robert Jones, Carroll Stephenson, Butch Allen; SECOND ROW: Chip Barnes, Tom Avera, Ernest Whitley, Billy Barnes, Ricky Bagby, Kay Carroll, Jim Henderson, Freddy Tarleton; THIRD ROW: Ronald Davis, Stephen Lee, Jack Lancaster, Don Capps, Mike Sellers, Buddy Capps, Earl Tucker; FOURTH ROW: Buck Boone, Robert Sigmon, J. L. Barbour, Bobby Benson, Bill Jackson, Steve McLeod, Bob Batchelor, Coach Bob Hickman; BACK ROW: Coach Roy Brown, Randy Creech, David Whitehurst, Carlton Overby, Hunter Olive, Mark Moye, Donnie Byrd, (manager) Vick Adams.

The scoreboard read 32-7. The Smithfield Red Devils, in their finest performance of the season, had severely stomped their age old rival, the Selma Yellow Jackets. The 1965 squad started shakily, but soon jelled into a first class outfit. At least three times during the season, Smithfield lost by a one or two point margin, when it was clearly evident to any spectator that the Devil eleven had outplayed their opponents. From the Clayton game on through the remaining season, the Red Devils provided many outstanding performances--much to the delight of their fans.



Kay Carroll Coach Brown
CO-CAPTAINS Robert Jones

Senior Squad Members

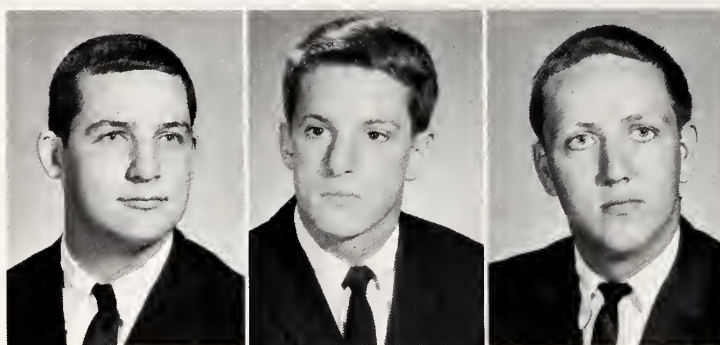


Butch Allen - Fullback
Tom Avera - Halfback
Ricky Bagby - End



Billy Barnes - Halfback
Bob Batchelor - Tackle
Don Capps - Center

Watson Hall - Tackle
Jim Henderson - End
Alfred Moore - Center



Dick Prette - Halfback
Mike Sellers - End
Carroll Stephenson - Tackle



Fred Tarleton - End
Doug Warren - Guard
Ernest Whitley - Halfback

Devil Defense:



(Above) A Selma player gets a taste of Coach Brown's "community tackling."



Don Capps and Ricky Bagby put a hex on a poor Selma player. While Hunter Olive, Mark Moye, and Jim Henderson come up to finish the job.



Carlton Overby and Bobby Benson "lower the boom" on a Selma player.



Bobby Benson is stopped after a long gain.



Robert Jones piles up yardage in the Selma game, as Jim Henderson lends his assistance.



Devil Offense:



Carlton Overby goes off right tackle, Carroll Stephenson, for a touchdown against Selma!



Kay Carroll scores against Clayton.



And there were those times---UGH!



Could Kay be saying: "Stop, let's talk things over"?



Fullback Butch Allen stretches for more yardage.

NOTICE Robert Jones: Where is he going? (Extreme left)



Scores



Many times everyday this (above) became this (below)



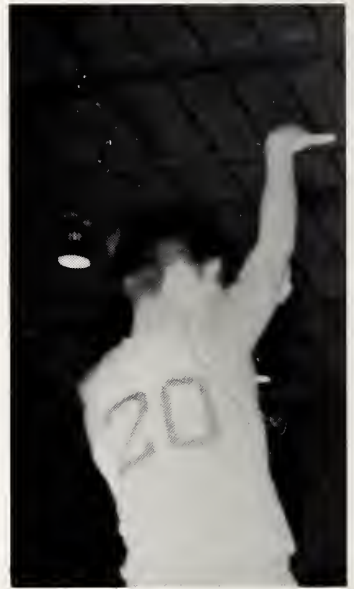
Smithfield	1	Henderson	0
Cary	28	Smithfield	0
Smithfield	21	Clayton	0
Smithfield	6	Millbrook	6
Smithfield	20	Fuquay	6
Wake Forest	7	Smithfield	6
Smithfield	0	Apex	0
Garner	14	Smithfield	12
Benson	20	Smithfield	0
Smithfield	32	Selma	7

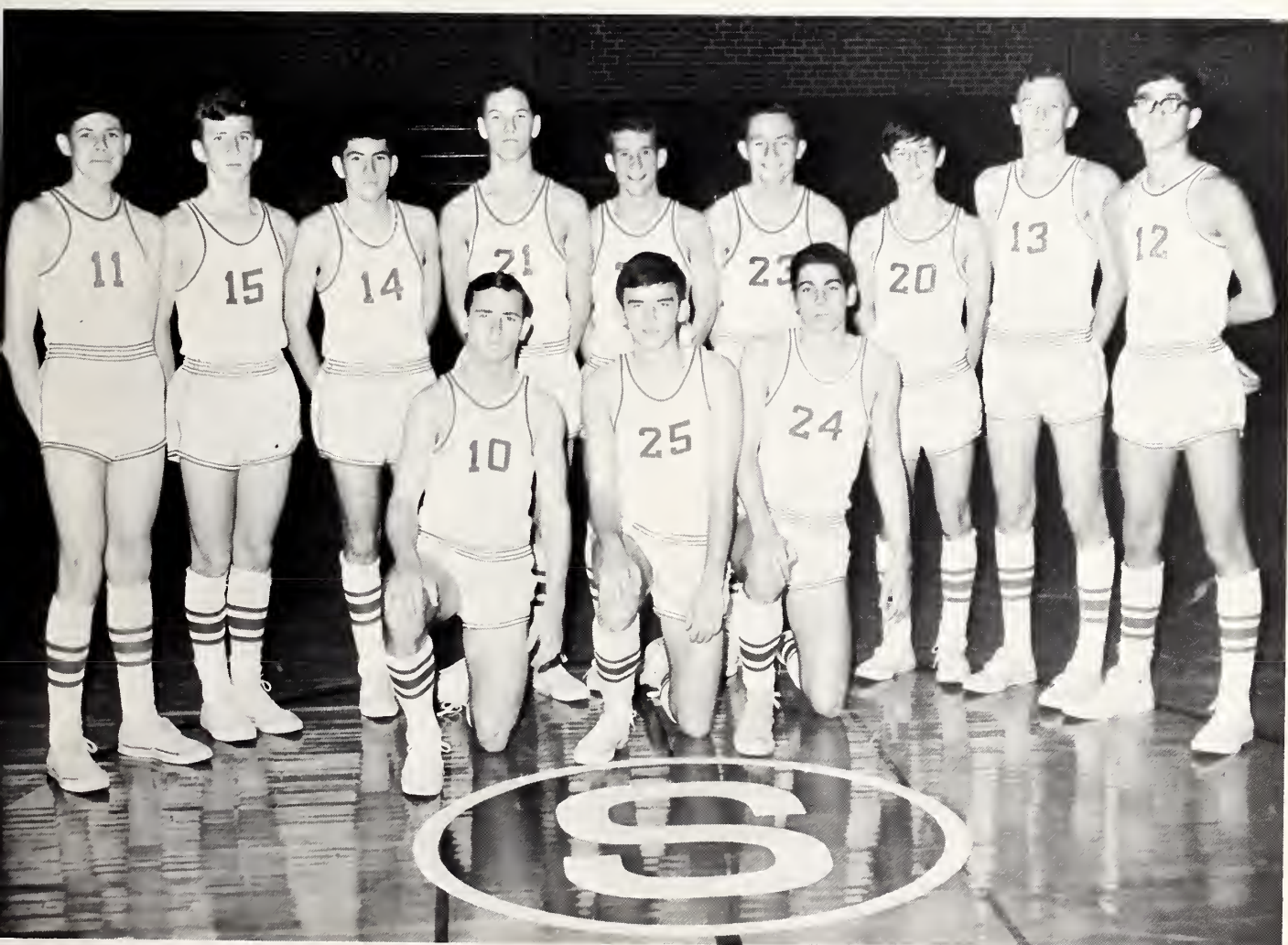
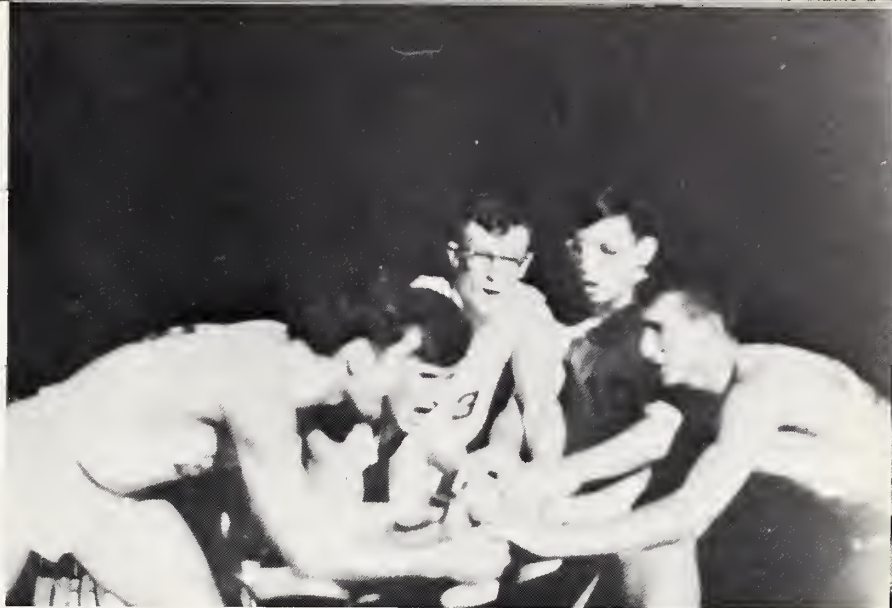
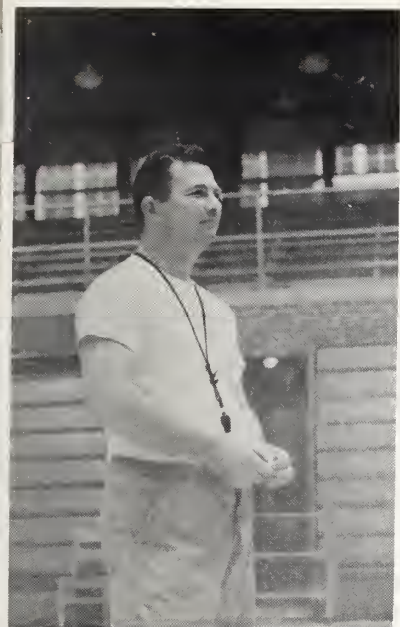
J.V. Football



FIRST ROW: (left to right) Johnny Dupree, Eddie Wall, Bill Teague, Brent Tyner, Bradley Carroll, David Prevette, Hugh Talton, Willie Smith; SECOND ROW: Timothy Wiggins, Dennis Peneal, Bryan Hobbs, Clifton Beasley, Jimmy Gilchrist, Steve Stevenson, Alan Gardner; THIRD ROW: Jimmy Faircloth, Sammy Byrd, Charles Avera, Durwood Rose, Dave Bryant, Vernon King; FOURTH ROW: Johnny Creech, Carl Wharton, Eddie Sutton, Heath Yarborough, Coach Payne.

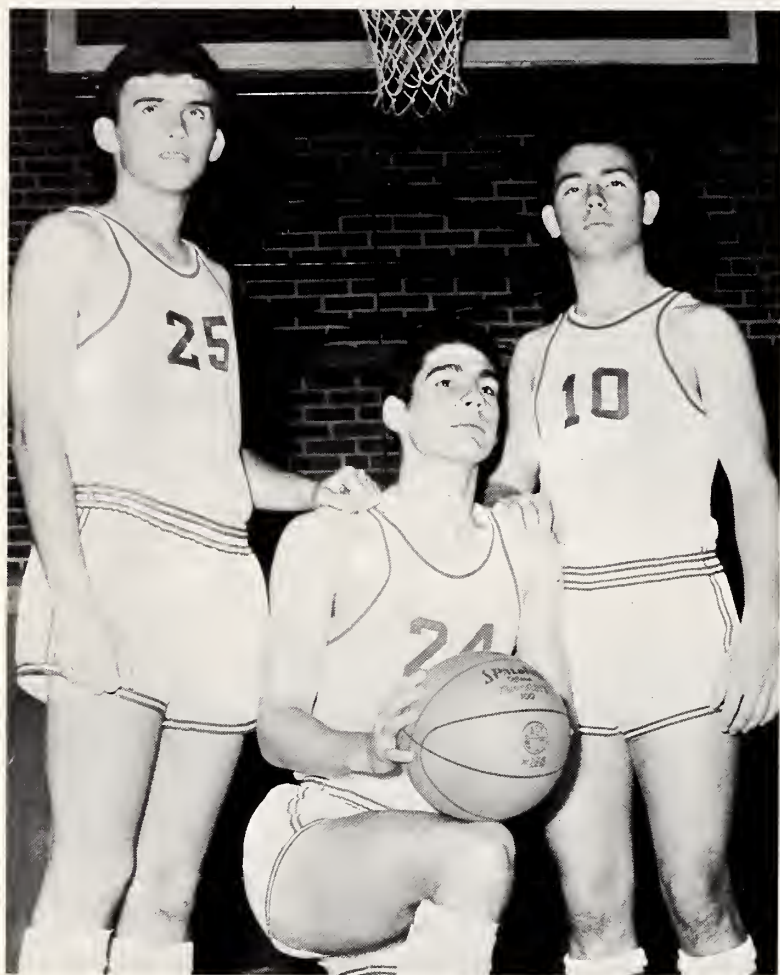
*B
a
s
k
e
t
b
a
l
l*



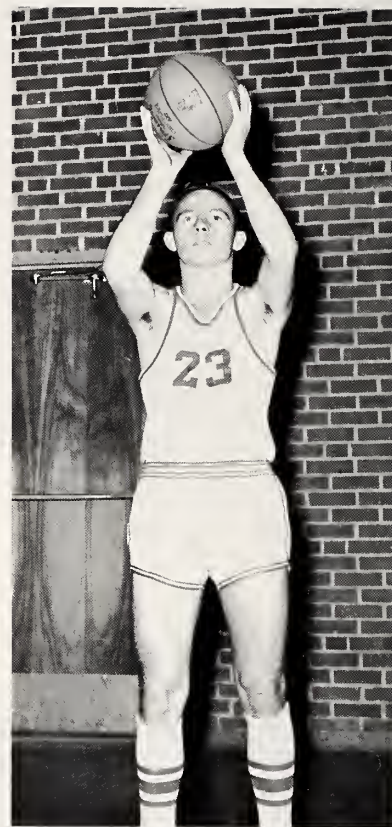


(STANDING LEFT TO RIGHT) Len Collier, Tom Aycock, Chuck Schofield, Clark Young, Carlton Overby, Doug Warren, Steve Stephenson, David Whitehurst, and Jack Lancaster. (KNEELING) Tri-Captains: Robert Jones, Skip Jones, and Joe Lansinger.

Senior Players



SMITHFIELD TRI-CAPTAINS: Skip Jones, Joe Lansinger, and Robert Jones



DOUG WARREN--Guard

Varsity Boys

The speedy 1965-66 edition of the Smithfield Red Devils ran circles around taller opponents. Under the capable leadership of new coach Bob Hickman, the Red Devils were able to make up for their inexperience by great determination and hustle. Fighting hard to win every game, this year's hoopsters rolled over 16 opponents while losing to only 4--the best record for a Smithfield basketball team since 1959. Smithfield's third place finish kept alive their hopes for a birth in the District Tournament at North Moore. After that, who knows?

Results

Smithfield	58	Four Oaks	44
Smithfield	76	Benson	62
Cary	63	Smithfield	48
Garner	80	Smithfield	65
Smithfield	76	Clayton	55
Smithfield	98	Fuquay	71
Smithfield	82	Four Oaks	61
Smithfield	77	Selma	64
Smithfield	62	Millbrook	55
Smithfield	67	Benson	60
Smithfield	78	Wake Forest	68
Smithfield	54	Apex	47
Garner	72	Smithfield	62
Smithfield	75	Selma	53
Smithfield	74	Fuquay	60
Smithfield	75	Wake Forest	63
Cary	56	Smithfield	51
Smithfield	76	Apex	45
Smithfield	85	Clayton	74
Smithfield	62	Millbrook	44



"What do you see up there, boys?"



And away they go!

(BELOW) "Could Coach Hickman be telling another personal experience?"



"Hey, that's my ball!"

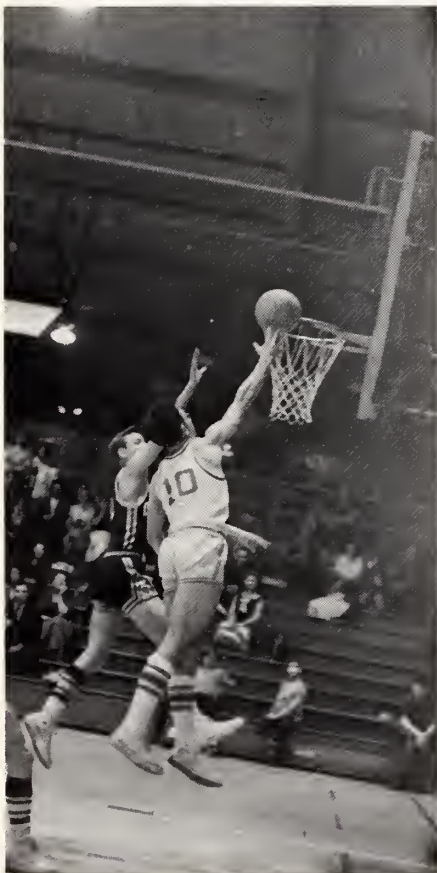




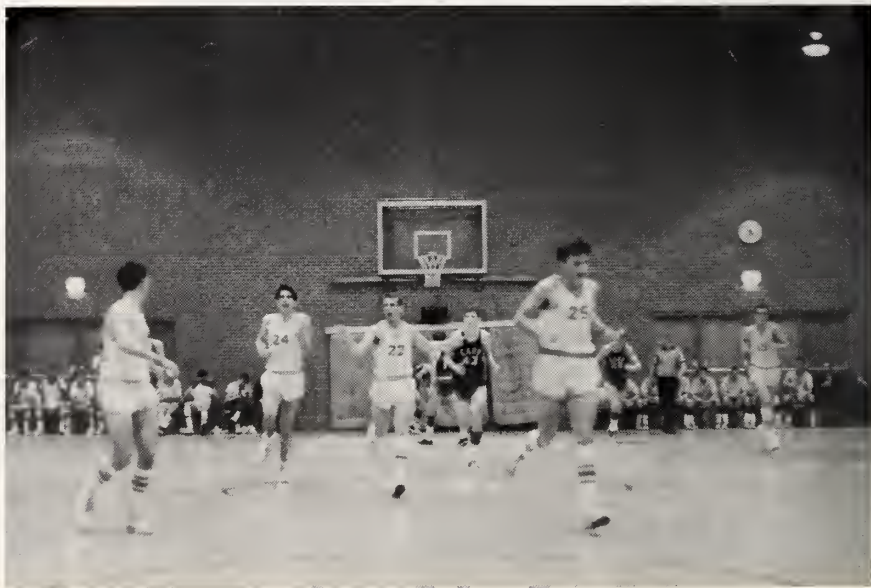
Steve Stephenson could have danced all night.



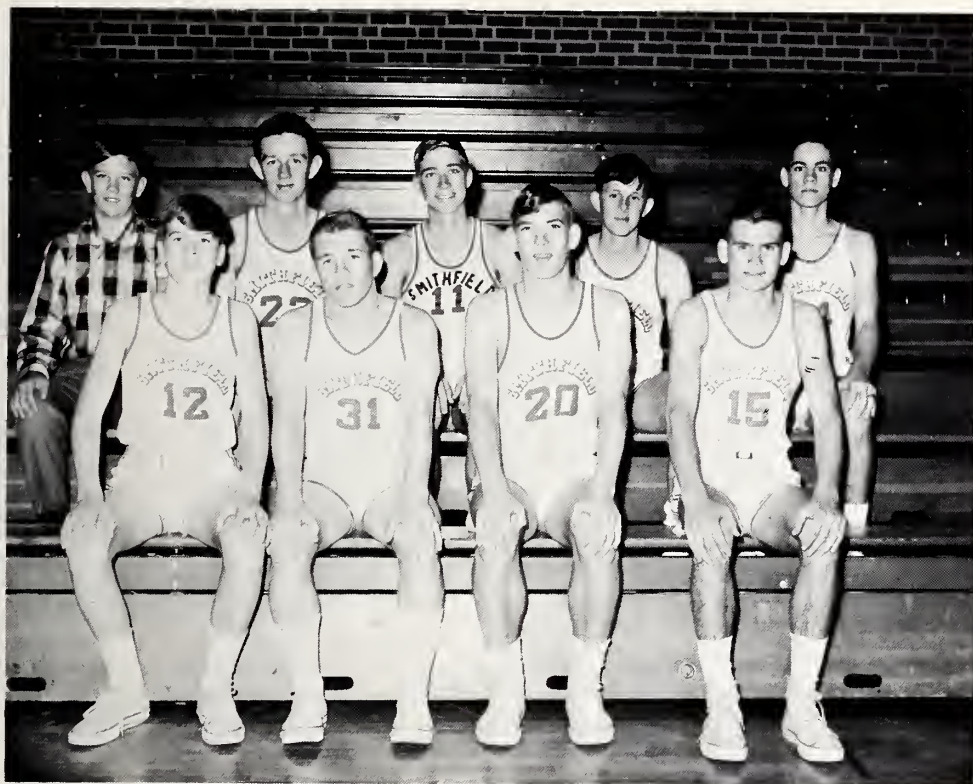
(Above) "Fall back, baby! This is two!"



Batman couldn't have done it any better.



(Below) Red Devils race down court after making still another basket.



FIRST ROW: (left to right) Denton Lee, Bill Jackson, Steve Bryant, Alex Wilson; SECOND ROW: Larry Stallings (manager), Thomas Penny, Stephen Woodard, Ray Tucker, Eddie Patterson. Absent; Kenny Stephenson, Carl Wharton.



Coach Brown

JV Basketball



Coach Payne



FIRST ROW: (left to right) Dee Dee McGee, Jane Brown, Julia Gilbert, Kathy Lewis, Jenny Watson, Kathy Batten; SECOND ROW: Page Perkinson, Gail Johnson, Edith Whitley, Diane Barbour, Janet Shallcross; THIRD ROW: Pam Adams, Bette Barnes, Rebecca Talton, Sue Jones, Laura Isley.



FRONT ROW: Terry Knott, Laura Ray, Carol Lancaster. SECOND ROW: Linda Byrd, Deidre Wood, June Smith, Emily Wharton, Faye Adams. THIRD ROW: Lou Powell, Jane Austin Cunningham, Glenda Sullivan, Janet Rains, Susan Jones. BACK ROW: Coach Virgil Payne, Beth Wells (Manager), Debra Lawson (Statistician).

Girls' Basketball

SCORES

Smithfield	21	Four Oaks	12
Smithfield	35	Benson	15
Smithfield	31	Cary	19
Smithfield	39	Garner	18
Clayton	29	Smithfield	21
Smithfield	49	Fuquay	26
Smithfield	26	Four Oaks	11
Selma	27	Smithfield	16
Smithfield	33	Millbrook	31
Smithfield	46	Benson	17
Wake Forest	35	Smithfield	32
Apex	37	Smithfield	30
Smithfield	32	Garner	22
Selma	45	Smithfield	19
Smithfield	31	Fuquay	29
Wake Forest	26	Smithfield	16
Smithfield	41	Cary	29
Clayton	29	Smithfield	22
Smithfield	30	Apex	24
Smithfield	37	Millbrook	25



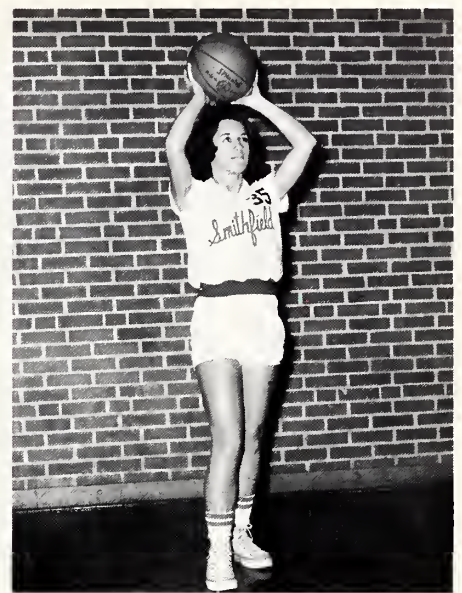
CO-CAPTAINS
Laura Ray and Carol Lancaster



DEIDRE WOOD - Forward



TERRY KNOTT - Forward



JUNE SMITH - Rover

Senior Players



FAYE ADAMS - Guard



EMILY WHARTON - Guard



BRENDA BYRD - Guard



Susan Jones plans to get that ball.



Laura and Brenda stretch to block a Selma shot.



Is Glenda getting ready for a take-off?





(Above) "Here, let me help you."



"With luck I'll make it this time."



It's called the squeeze play.



"Don't worry, we'll make it in the second half."



FIRST ROW: Earl Ward, Ricky Byrd, Steve Bryant, Billy Flowers, Bill Jordan. SECOND ROW: Charles Edwards, Bill Jackson, Frank Moore, Alfred Moore, Robert Jones. THIRD ROW: Vick Adams, Doug Warren, Charles Whitley, John Creech, Carlton Overby.

Baseball 1965

The 1965 baseball squad rolled up seven victories against one loss while winning the Southern Division Championship of the Capital Area Conference. Hard-hitting and tight-pitching were the team's trademarks. Though they were defeated two games to one by Cary during the playoffs, our team had already filled their opponents' lives with "too much Payne and too much sorrow."



TUFF, ain't he!





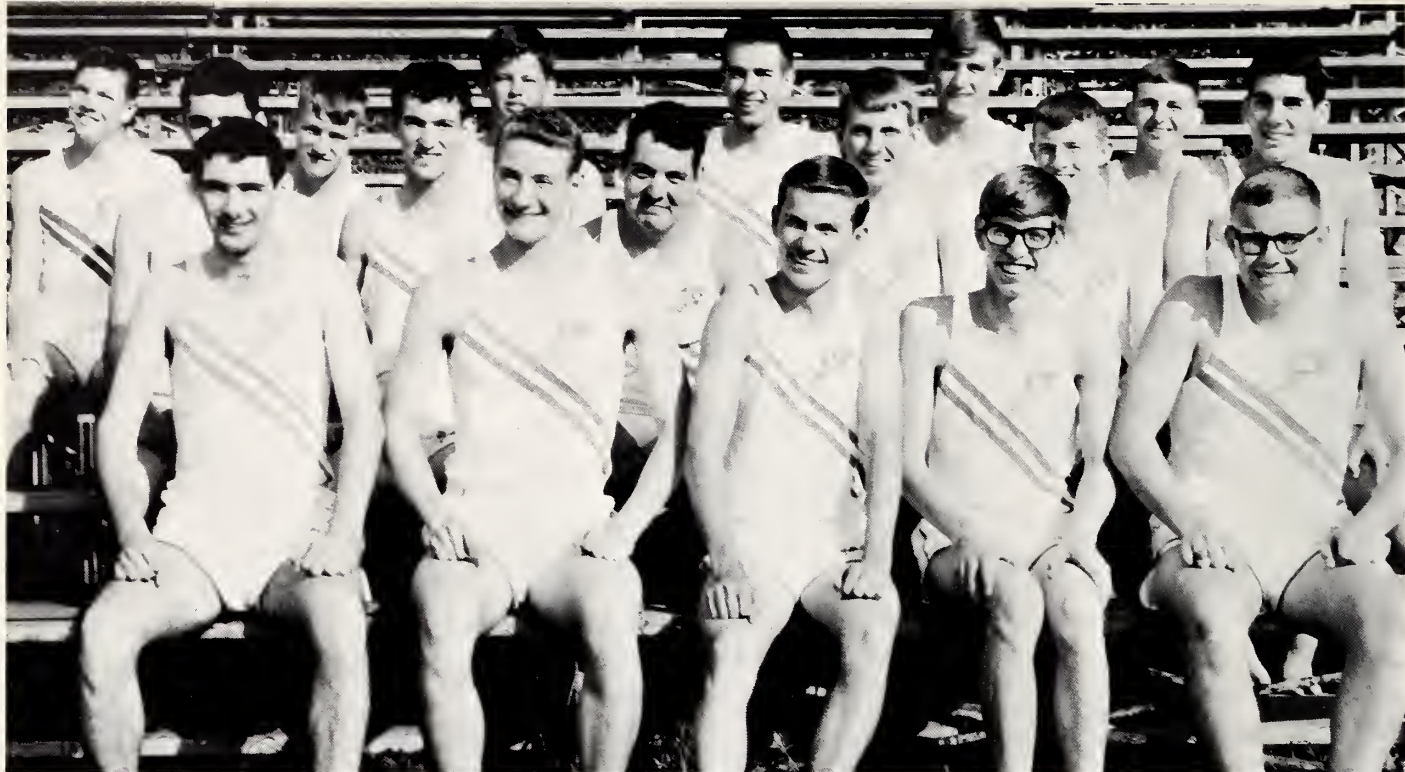
Mighty Smithfield up at bat.



Bill "Tippy Toes" Jordan bounds to first.



Earl Ward lets go a mighty throw.



FIRST ROW: Butch Allen, Billy Barnes, Archie McFadyen, William Ragsdale, Charlie Hamilton. SECOND ROW: Carroll Stephenson, Buddy Capps, Arnold Rhodes, Kay Carroll, Mike Sellers, Joe Lansinger. THIRD ROW: Carl Wharton, Jimmy Faircloth, John Bullock, Wingate Lassiter, Mike Whitley, Willy Smith.



Coach Brown starts another race.

Track 1965

The 1965 SHS cindermen have certainly lived up to the victorious tradition of our school. The team not only emerged the victor in all of the conference meets, but literally "ran away" with them. However, this is only part of our good fortune. Due to the number of freshmen on the 1965 team, Coach Brown expects to field even stronger teams in the future.



Jimmy Faircloth is up in the air over something. We hope!



(Above) Chip Barnes leads the pack in the half-mile run.



(Above) Billy Barnes oozes in for a first place in the 220 yd. dash.
(Below) Wingate Lassiter rolls in far ahead of the thundering herd.



(Above) Butch Allen "Crosses the Bar"



(Above) Joe Lansinger and Kay Carroll line up.





JON ISLEY



DÓN WESTBROOK



HEATH YARBOROUGH



CLARK YOUNG

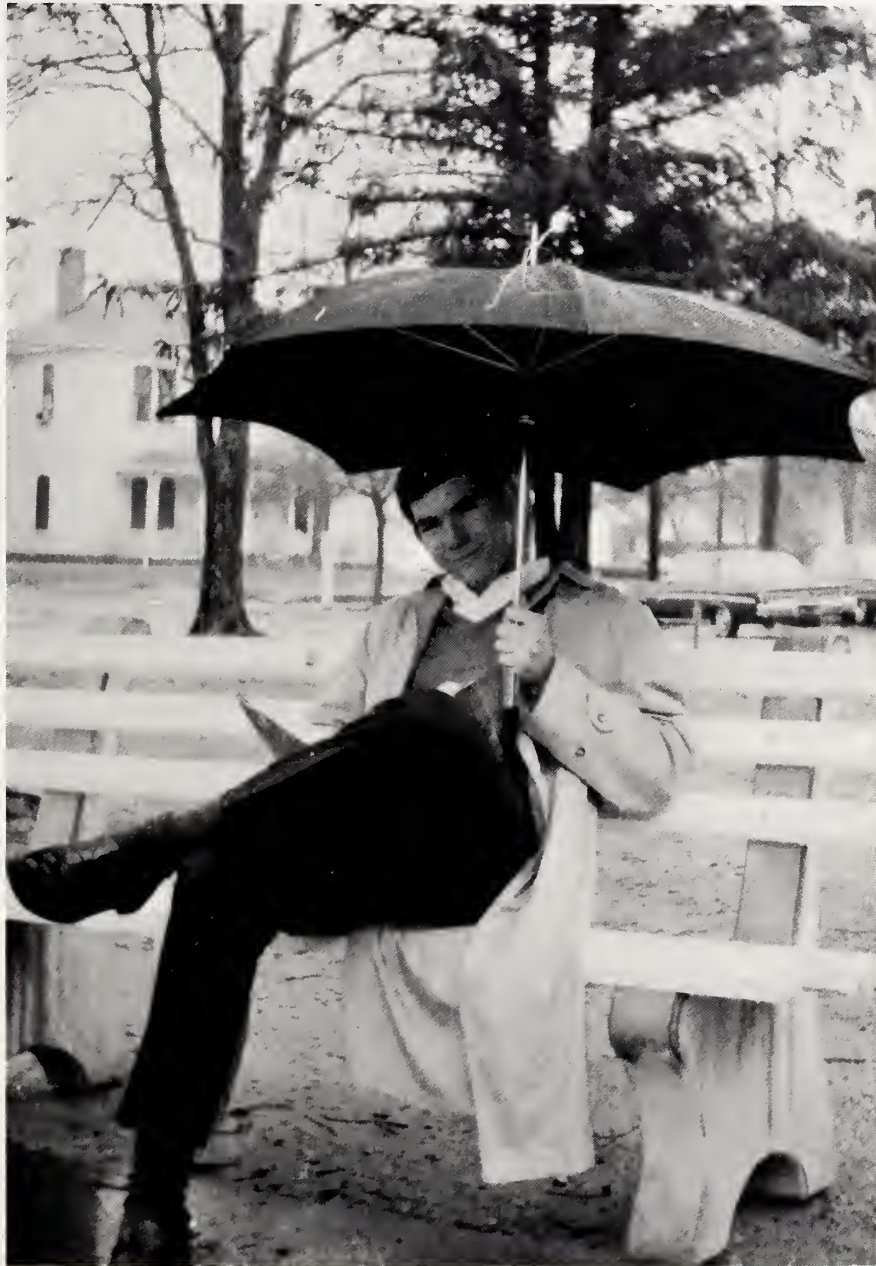
Golf

There's a first time for everything and 1965 was the first year that SHS had a golf team. In their initial season the Red Devil linksters posted a fine 4-1 record by defeating Fuquay, Millbrook, Clayton, and Garner while losing only to conference champion Wake Forest.



"If you say one more word, I'll club you."





*STUDENT
LIFE*



CUSTODIANS: Joe Lassiter, James Terrell, Lillie Mae Griffin, Louise Lassiter.

Friends of All



If the entire student body has ever had one thing in common, it would have to be our love and admiration for our custodians. We have shown Louise our report cards since the first grade; and now that our labors have come to fruit, we casually mention to Joe that we've been accepted at college. He responds with congratulations. What young man doesn't remember that familiar phrase from James, "Hello boy." Yes, they can truly be called the "Friends Of ALL."

Louise and Lillie Mae pause for a pose.



(above) Joe and James perform their daily duties.



We salute our lunchroom staff.

Under the careful and capable leadership of Mrs. Ward our lunchroom staff is second to none. Who else could do so much with so little.





Ban takes the worry out of being close.



"Censored!"

(RIGHT) "Folks, the acting's up front."



(LEFT) "That was real funny, Justine."



(LEFT) Oh, it's brew,
brew, brew . . .



(RIGHT) Try to figure this
one out.



(LEFT) " . . . And they
cheered us on to victory."



"Keep watching, I'm sure I can do it."



"Our side had 23% fewer cavities."

(RIGHT) "You heard what!"



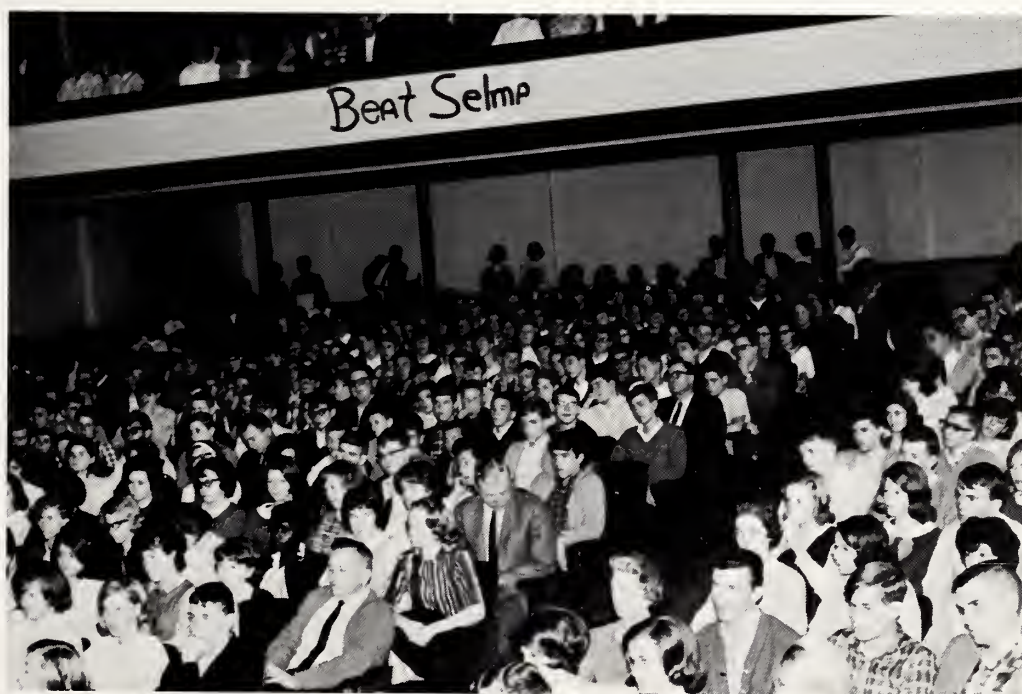
(LEFT) "You're not the only one that can take pictures, Billy."



"I dreamed I led cheers in my . . ."



These shoes were made for walking.



Homecoming Chapel---ENTRANCED student body.



"Honest officer, I try to make all my payments by the proper months."



Mrs. Lassiter broadens the students knowledge of algebra.



"Even so it was with me when I was young!"



Knitting class during chapel.



"I get so excited at ballgames!"



"Does this one really need a caption?"



Severely beaten around
the head and shoulders.



"Is there anything I can do to ease the pain?"



"Deidre, you've got to understand the way it's
done."



Rabbit Habit



(Left) "Riding along at 60 m.p.h. and you want to take my picture."



A Mouse!...A Mouse!



Of course there were some sad times when we lost.



Just sitting around doing nothing--not doing nothing--just sitting around.



"Gee, Pop, is that really so?"



SMILE! You're on "Candid Camera"!!



Is that popcorn REALLY good?



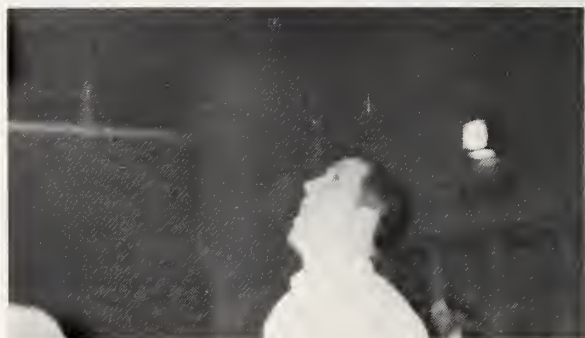
(Left) "Hey!! I caught you---- HOLDING HANDS."

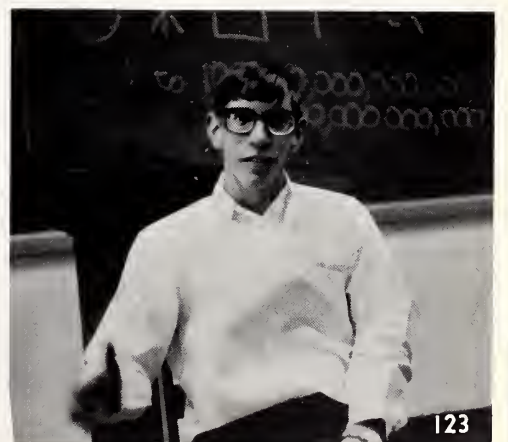
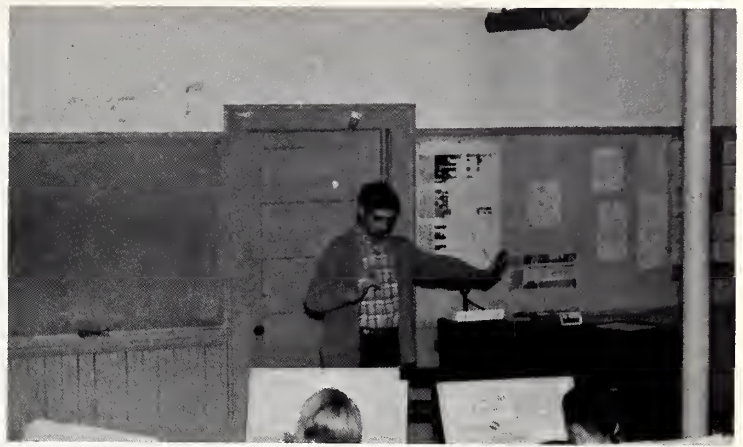


(Below) "What's SO interesting?"



Expressions







The Editor

*The Class
of 1966
in the
'Good Ole
Days'*





Back to Normal





ADVERTISEMENTS



**MITCHELL-
STEPHENSON
LTD.**

"Where Fashion Gets Its Start"
Market Plaza

Smithfield, N. C



Jones Brothers

CAROLINA'S LARGEST FURNITURE SHOWROOM -- SMITHFIELD, NORTH CAROLINA



CONGRATULATIONS

You Don't Have To Start At The Top . . .



but
it
helps!

If you're thinking about career opportunity, you might think about Burlington, the world's leading manufacturer and merchandiser of textiles for every purpose. Why not start at the top of the textile ladder? Why not investigate a "world of opportunity" at:

SMITHFIELD SPINNING CO.
a unit of

Burlington INDUSTRIES, INC.

EXECUTIVE OFFICES, GREENSBORO, N. C.



**REX SHOES
AND
SHOE REPAIRING**

Expert Shoe Repairing

Complete Line of Men's Dress
and Work Shoes

Smithfield, North Carolina

JORDAN'S JEWELERS

Since 1898

Diamonds - Watches
Silverware and Gifts

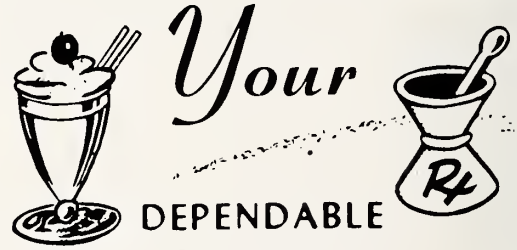
Smithfield, North Carolina

WEST SIDE GARAGE

Highway 70 - West - Phone WE 4-4408

Repair Work on All Makes and Models

GLENWOOD WOOD
MARVIN STEVENS



Your

DEPENDABLE
DRUGGIST

FLEMING PHARMACY

Smithfield, North Carolina
Opposite Courthouse



125 East Market Street
P. O. Box 687

**SMITHFIELD TELEVISION
AND MUSIC CENTER**

"The House of Musical Merchandise"
Smithfield, N. C.
RCA Authorized Dealer

STEVE C. THEMIS Phone 934-2659



131 S. 3rd St. — WE 4-2157

BATT JOHNSON'S

Barbecued Chicken, Pig, Steaks,
and Fish on Friday

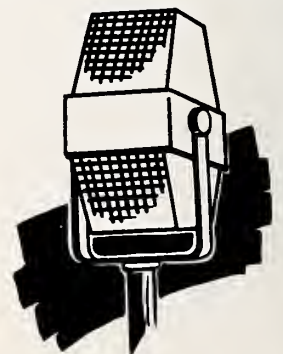
Buffalo Road

Smithfield, North Carolina

WMPM

News Radio

1270
Smithfield



BRIGHT LEAF AND BURLEY TOBACCO CO., INC.

Smithfield, North Carolina



JOHN DAIL'S SERVICE STATION AND RECAP SHOP



Goodyear Tires
Auto-Lite Batteries

Washing
Greasing

Smithfield, N. C.

Night Phone 934-8924
Day Phone WE 4-2286



HOOD'S DRUG STORE

Cor. Market and Third Sts.
Smithfield, N. C.

"Where Pharmacy Is a Profession"

JOHNSON'S WATCH SHOP

Smithfield, North Carolina

AUBON JOHNSON, Owner

Customized School Charms



G. S. TUCKER FURNITURE COMPANY, INC.

"The Peoples Choice Since 1886"

Smithfield, N. C.

117 N. Third Street Phone 934-8303

THE FRIENDLY CITY BARBER SHOP

Where you'll receive the best in
masculine grooming from your head
to your feet.

See JOHN or EDWARD for head service
and ROLAND for your shoe shine

JACK'S FARM SUPPLY

Feed - Seed - Fertilizer
Grain Buyers

Big Planters Tobacco Warehouse

Telephone WE 4-2598

TROT MOTEL AAA

U. S. 301 North and 70A
Smithfield, North Carolina

Telephone WE 4-2620

JORDAN & HOLT, INC.

Hardware

Plumbing and Heating Contractors

Smithfield, North Carolina

Telephone 934-4198

SMITHFIELD FLORIST

513 South First
Smithfield, N. C.

AUTHORIZED
Farm Equipment Dealers

B&R Wilson
Ford
Floyd C. Price & Sons

W. B. Oliver & Sons
Oliver

Johnson Cotton Co.
John Deere
Heavner-Wallace
Allis-Chalmers
Johnson Tractor &
Implement Co.
Massey-Ferguson

**DENNING
FURNITURE COMPANY**

207 South Third Street
Smithfield, N. C.

"For Quality Furniture"

**THE SMITHFIELD
HERALD**

"Your County Newspaper"

Published Twice A Week



ON TRUCK LANE

**DUPREE'S SUPER
SERVICE**

B. M. DUPREE, Owner

Gasoline Prices - Best in Town
Drinks - Candies - Groceries

Phone 934-9296
On Truck Lane Smithfield, N. C.

KENCO PRODUCTS

SMITHFIELD USED CARS

JIMMY ALLEN

Owner and Manager

WE 4-7701

South 8th Street

**ALLIS-CHALMERS
FARM MACHINERY**

HEAVNER and WALLACE

Smithfield, N. C.

**ALBERT'S SERVICE
STATION**

Gulf Products

Fifth and Market Phone WE 4-3088
Smithfield, N. C.

GARNER'S RESTAURANT

Hwy. 301 Between
Selma and Smithfield

MR. and MRS. N. T. GARNER

965-3888

SMITHFIELD DRUG CO.

Market Plaza

Telephone 934-2171

School Jewelry

"Over Thirty Years Serving Schools"

THE BARBEE AGENCY

Spring Hope, N. C.

HOLT LAKE NURSERY

301 South
Smithfield, N. C.

Ph. 934-8877

W. H. REA, Mgr.

Telephone WE 4-8647

Wholesale Only

WHITLEY SPECIALTY COMPANY

Candy . Drugs . Notions . Cigars .
Paper Items

JUNIUS PHILLIPS, Owner

Box 159

Smithfield, N. C.



WESTERN AUTO ASSOCIATE STORE

Home Owned by
STACY G. MOORE

103 S. Third St.
Smithfield, North Carolina

Phone 934-8524

HOME OIL CO.

A. G. LEE

Warm Air Heating Systems :
Tobacco Curers
Atlantic Products - Pennzoil

Box 237

Telephone WE 4-2070

Phone Day or Night
Smithfield, N. C.

CONGRATULATIONS

CLASS OF '66

Compliments of

JOHNSTON COUNTY OIL DEALERS



Woodard's

MEN'S WEAR
Smithfield and Selma

JOHNSON PAINT AND WALLPAPER STORE

"We Feature a Paint for Every Purpose"

Smithfield, N. C.

Glidden Paint
Brushes
Gleam Paints
Paint Supplies
Sta-Dri Acrylicote-Masonry Paint



TALTON, INC.

Smithfield, N. C.

Furniture Dept.
432 E. Market St.

Appliance Dept.
116 S. 3rd St.

CECIL'S



SERVICENTER

"We Put A Tiger In Your Tank!"

205 South Third Street
Smithfield, North Carolina

C. B. WHITEHURST WE 4-8267





BARNES FURNITURE

Four Oaks

North Carolina

**JORDAN MOTOR
COMPANY**

Anderson and Webb St., P. O. Box 395
Selma, North Carolina
Tel. 965-3335

Dodge



Cars . Trucks

**BURGESS MACHINE
SHOP**

Complete Machine
Shop Service

Phone 934-8028

Smithfield

North Carolina



PEPSI-COLA BOTTLING CO.

Selma, N. C.

"Think Young . . . Say Pepsi, Please!"



Compliments of

**DENNING-WESTBROOK
OIL CO. INC.**

Smithfield, N. C.

Philheat
Heating Oils
For Home and Farm

HUGH AUSTIN'S

Men's and Boys' Store

"A Trial Is All We Ask"

Smithfield

North Carolina



Best Wishes, Seniors!

From the Bank

Where They Care About You

**FIRST NATIONAL BANK
OF SMITHFIELD**



**OVERBY'S USED
CAR CO.**

GOOD CLEAN USED CARS

"We Do Our Own Financing"

Phone WE 4-2438

Smithfield

Compliments of



CASTLEBERRY'S INC.

Distributor of
GULF OIL PRODUCTS

MACHINE AND WELDING CO.

Electric Arc and Acetylene Welding

WE 4-8450

Smithfield, North Carolina

MEDICAL CENTER PHARMACY

Behind the Hospital

Phone 934-2111 Smithfield, N. C.

MARSHALL SASSER, Pharmacist

Prescriptions and Convalescent
Supplies
Revlon Cosmetics

TURNAGE AND TALTON SUPERMARKET

Smithfield, N. C.

Compliments of

LEDER-HAMILTON DEPARTMENT STORE

STEHENS AND CONGLETON HARDWARE

Congratulations to the
Class of '66

Smithfield - Selma

CITY FOOD MARKET

Quality Meats and Groceries

334 East Market Street

We Deliver Phone 934-2415

C. P. BATTEN - S. E. BATTEN

JOHNSON'S LAUNDRY AND DRY CLEANERS, INC.



Dial WE 4-2305

320 Market St.

**CREECH
DRUG CO.**

JOE and GROVER CREECH

Phone 965-2316

Selma, N. C.

"Serving the Community
For Good Health"

Congratulations
to the
Class of '66

THE JEWEL BOX

Smithfield, North Carolina

**GRANTHAM'S
CLOTHING**

For Men

For Boys

Complete Formal Rental Service

Smithfield, North Carolina

**DELMA JOHNSON'S
SELF SERVICE**

Groceries and Fresh Meats

WE 4-2464 Smithfield, N. C.

Congratulations
to
Class of '66

**IDEAL OIL COMPANY,
INC.**

SHELL PRODUCTS

---Prompt and Courteous Service---

Phone WE 4-8121

Smithfield, N. C.

Compliments
of

MAX G. CREECH

**A
HOOKS STUDIO**

Portrait Lives Forever

**AYCOCK
PROPANE**
GAS SERVICE

Smithfield-Selma Highway
P. O. Box 96
Smithfield, N. C.

Phone Day 934-2272
Night 934-8195

Compliments of
J. MARVIN JOHNSON

SMITHFIELD OIL AND GIN CO.

Petroleum Products
Cotton Ginners

ROGER A. SMITH

Insurance - Loans
Real Estate

Smithfield, N. C.

TOWN AND COUNTRY BARBER SHOP

MELVIN EDWARDS and ROY L.
WOODARD

"It pleases us to please you"

"Compliments of"

THE JEROLD CORP.

Box 708
Smithfield, North Carolina

Telephone WE 4-2113

BALDWIN'S

WE 4-8912 227 East Market

Distinctive Women's Apparel

PINE LEVEL BEAUTY BASKET

NELL TAYLOR

For Appointments
965-2302

Open Tuesday
Thru Saturday Noon

HINES SERVICE

BEN HINES

Complete Auto Service
Smithfield, N. C.

Telephone
WE 4-2090
E. Market St.
P. O. Box 213

Front End
Alignment
Wheel
Balancing



COBLE

ICE CREAM

MILK

COBLE DAIRY PRODUCTS

Creating With Milk

Smithfield, N. C.

Webster 4-4191



**THE CAPITAL COCA-COLA BOTTLING
COMPANY, INC.**

Highway 301 North

Smithfield, N. C.



SMITHFIELD LANES

"Where the Young Set Go to Bowl!"

AUSTIN-OGBURN COTTON COMPANY, INCORPORATED

Smithfield, North Carolina
Your Friendly Cotton Buyer
Telephone WE 4-4165



FIRST-
CITIZENS
BANK & TRUST
COMPANY

4% Daily Interest
on Savings
Compound 4 Times
a Year

FIRST CITIZENS BANK AND TRUST COMPANY OF NORTH CAROLINA

68 Years of Service - 1898 - 1966

- Complete Banking Service -

COMMERCIAL - SAVING

TRUST - INSTALLMENT LOAN

Member Federal Deposit Insurance
Corporation



READY MIXED CONCRETE CO.

of
Dunn and Smithfield

"certified and state approved"

HOWELL

JAMES STACY

WINTER A GO GO



HOWELL THEATER

Smithfield, N. C.



MAGIC WAND CAR WASH

Truck Lane

25¢ Coin Operated

PRESCRIPTIONS



CREECH'S PHARMACY



For the Best in School
Supplies

**MEDLIN PRINTING
COMPANY**

Smithfield N. C.

**RICH'S
DRIVE IN # 105**

Smithfield, N. C.



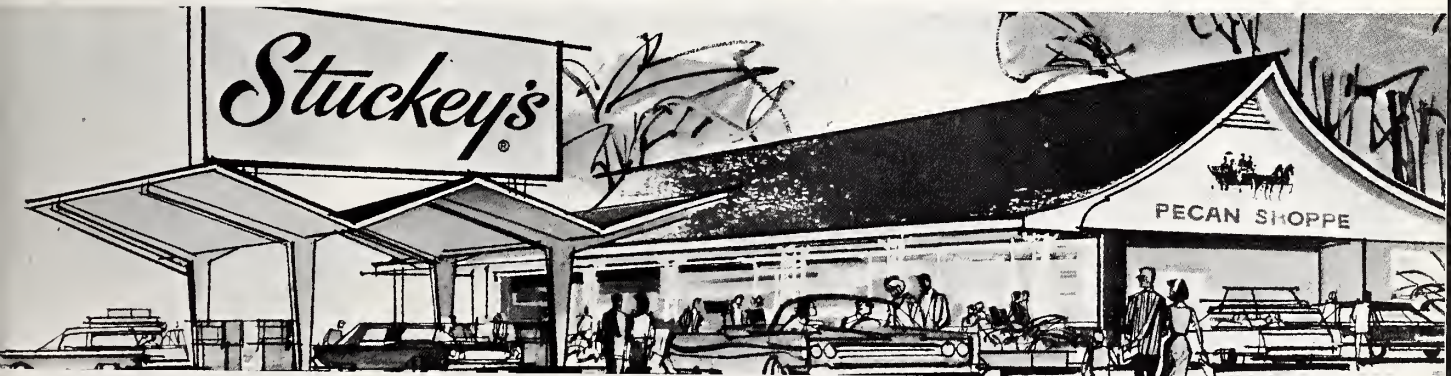
**ROY STRICKLAND
LUMBER CO.**

Lumber for All Your
Building Needs
Lumber Treated With Milbrite

Raleigh Hwy. Ph. WE 4-7119
Smithfield N. C.



Stuckey's



I-95 and 70-A Smithfield

"The South's Finest Pecan Candies"



SHALLCROSS MANUFACTURING COMPANY

Division of Cutler Hamer, Inc.

Selma, North Carolina



SPONSORS

Circle Court
Gregory 5-10-25
McLamb's Florist
Mr. Wiley Narron
Dr. Von Rhoades
Rose's Five and Ten
Smithfield Typewriter Sales and Service
W. Caroll Stephenson
Sullivan's Jewelers, Selma, N. C.
Village Store









JOHNSTON CO. PUBLIC LIBRARY SYSTEMS



3 8950 60806 3253

PUBLIC LIBRARY OF JOHNSTON COUNTY
D SMITHFIELD — SMITHFIELD, N. C.

RNC
373.756
S
1966

Smithfield High *gck*
School.
The shield.

JOHNSTON COUNTY ROOM



