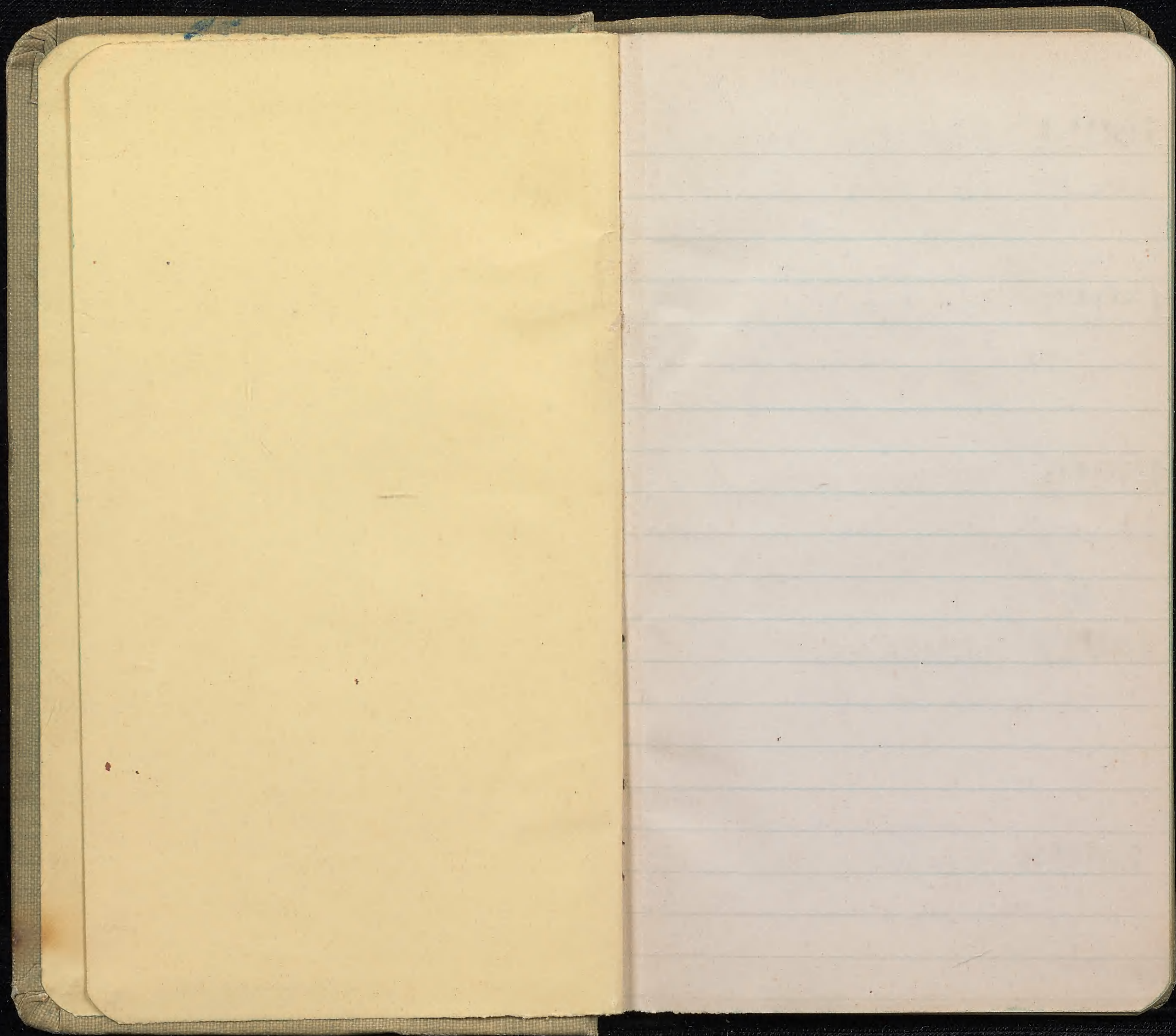


15014-15493

A.S. Hitchcock

28

HITCHCOCK.



15014 Fern

Odontoloma macraea-
num (Hook. & Arn.)
Brack.

15015 Fern

Dryopteris glabra (Brack.)
Kuntze

15016 Fern

Polypodium pseudogram-
mitis Sand

15017 Peperomia

Peperomia latifolia Mign.

15018 Fern

Polypodium sarmentaceum
Brack

Rain forest

"

" " - Air tree trunk

" "

" " Air tree trunk

15019

Fern

Hymenophyllum recurvum
Gaud

Rain forest - on trunk

15020

Fern

Polypodium spectrum
Kaulf

" " " " 15020
Callus "Potato fern"

15021

Fern

Athyrium pictetianum
(Gaud.) Presl

" " " " 15021

15022

Fern

*Elaphoglossum microde-
nium* (Fie) Moore

" " " " 15022
" " on trunk

15023

Fern

Polypodium Hillebrandi
Hook.

" " " " 15023

15024

Fern

Diplazium

Rain forest

15024

15025

Fern

Polypodium tamariscinum Kaulf

" " *Centropogon*

15026

Fern

Asplenium contiguum Kaulf

" " " *Asplenium*

15027

Fern

Elophoglossum reticulatum (Kaulf) Gaud

" " " *Elophoglossum*

15028

Fern

Ophioderma pendula (L.)

" " " *Ophioderma*

✓
15029 *Psilotum*
Psilotum complanatum
Sw.

✓
15030 *Ilex anomala*
randuicensis (Endl.)
Loes.

✓
15031 *Gonac*
Cyrtandra lysiosepala
latifolia Rock

✓
15032 *Lobelia*
Clemontia macrocarpa
Gaud.

✓
15033 *Broussaia* *pellu-*
cida Gaud.

Rain forest on bank

" " tree 15029

" " " 15031

x

" " " 15032

" " shrub 15033

15034

Compositae

X

Mud along bank

X

15035

Fern

Dryopteris undulata

(H. & A.) C. Chr.

Rain forest

15035

15036

Tree fern

Cibotium menziesii

Hook.

Common in forest
extending down the
open slope

15037

Fern

Dryopteris cyathoides

(Kauff.) Kuntze

15038

fern

Rhynchospora glauca

var. *chinensis*

Rain forest

15037

" "

15038

✓
15939

Compositae

along bank

15939

X

✓
15940

Bed

Hyllingia brevifolia
Rottb.

" "

15940

15941

Aptisurus

Rain forest

15941

✓
15942

Psilotum

Psilotum nudum (L.)

Griseb.

" " low bank

15942

✓
15943

Gouldia

" " tree

15943

15944

Fern

Polypodium lineare Thunb.

Rain forest - ~~lowland~~

15945

Fern (tree)

Sadleria cyathoides
Kaulf

Common in forest
ending down the open
slope

15946

Fern

Nephrolepis exaltata (L.)
Schott

Dry forest - ~~lowland~~

15947

Fern

Sphenomeria chinensis
(L.) Maxon

Open slope ~~lowland~~

15948

Stenotaphrum

Grassy hillside ~~lowland~~

✓
15049

Cyperus

Cyperus polystachyus
Rottb.

Grassy hillside 15049

15050

Syntherisma
pruriens

" " 15050

✓
15051

Clusia

Metrosideros collina poly-
morphe *taurici* Rock

Lower slopes 15051

15052

Jussiaea

Jussiaea suffruticosa
L.

Mud on slope 15052

15053

Peltandra
coriata

Grassy slope 15053

15054 *Paspalum*
articulatum



15055 *Crotalaria*
Crotalaria saltiana
Andr.

15056 *Cudrania*
coliculate
pubescent



15057 *Erigeron*
Senecio vulgaris

15058 *Chrysopsis*
acutata

Grassy slope 15054

Wet open slope 15055

Grassy slope 15056

" " " 15057

" " " 15058

✓
15059

Cassia

Cassia laevigata
Willd.

Open valley
shrub - weed

✓
15060

Capparis

" " "

✓
15061

Lespedeza
Desmodium triflorum
DC.

" " "

✓
15062

Triumfetta
X

Mud duto
X

✓
15063

Asclepias
Asclepias curassavica
L.

" " "

✓
15064

Sporocarpium

Wood in Valley

15065

Sporocarpium

Wood on slope

✓
15066

Gnaphalium
Gnaphalium luteo-
album f.

" " "

15067

Asplenium

Rain forest under

✓
15068

Lobelia
Trematolobelia macro-
tachys

" " "
8-5 spikes dicranical
at summit of tree (6-8 ft)

✓
1 15069

Lobelia

Phyllostegia mollis Benth

Rain forest 82151

1 15070

Flora

Asplenium acuminatum
H. & A.

" " 82152

1 15071

Flora

Asplenium acuminatum

" " 82153

✓
1 15072

Compositae

Adenostemma viscosum
Forest

" " 82154

✓
1 15073

Lobelia

Cyanea wailanensis
Rock

" " 82155

✓
15074

Lobelia

Clermontia arborescens

(Mamm.) Hb. d.

✓
E. end of Madelon

15075

✓
X

15076

✓
15077

Ocimum

✓
15078

Salvia

Salvia coccinea

Rain forest

15074

Oct. 9

Dry slope, shrub

15075

✓

Small

15076

✓

Top

15077

Amson shrub

15078

15079

Andropogon

along edge of taro field
an imperiled grass.

02051

Oct 10,

Ma Kai - Rain forest above

Kamalo - above 4000

15080

Solida

02051

Clermontia arborescens
(mann) Hbd.

15081

02051

15082

02051

15083

Rubiacae

on wet soil

02051

Nertera depressa

15084

Fern

Dryopteris rubiginosa
(Brack.) Kuntze

15085

X

15086

Viola

2 spec.
Viola robusta Hbd.

15087

Lobelia

Phyllostegia hispida
Hbd.

15088

Fern

Asplenium nitidulum
Willd.

15089

Fern

Marattia douglasii (Presl)
Baker



15090

Orchid

Siparis hawaiiensis
Mann



15091

Coprosma

Tree



15092

Alyxia olivaeformis
Gaud.

"Maile" bush to make

15093

Fern

*Polypodium hymenophyl-
loides* Kaulf.

✓
15094

Carex

Carex sandwicensis
Racke

15095

Fern

✓
Elophoglossum hirtum
(Sw.) C. Chr.

15096

Coprosoma pulvosa
Gray

✓
15097

Vaccinium

✓
Vaccinium penduliflo-
rum var. gemma-
ceum (Hbd.)

15098

✓
Astelia veratroides
Gaud.

✓
15099

X

tree

15099

✓
15100

Glex anomala f. &
sandwicensis (Endl.)
Spreng.

tree

15100

15101

Form

Dryopteris glabra (Brack.)
Kuntze

15101

✓
15102

Lolitic

Clermontia pallida
Hbd.

15102

15103

Calamagrostis

15103

15104 *Juncus*

Bey

15104

15105 *Salvinella*

Bey

15105

✓
15106 *Helioscopia*

Bey

15106

Helioscopia obtusa var.

✓
emotata Hbd.

15107 *Sapindaceae*
Sodonaea?

Shrub or small tree

15107

✓
Sodonaea stenoptera
Hbd.

15108 *Dacrydium*

In bottom of gorge

15108

Dacrydium aureum Mann

✓ Along shore at Pukoo Oct 11

15109

Morinda

Morinda citrifolia L.

15110

Echinocloa

✓
15111

Legume

Vigna lutea A. Gray

✓
15112

Scirpus

Scirpus lacustris L.

✓
15113

Cyperus

Cyperus pennisatus
Lam.

✓
15114

Prosopis

Prosopis juliflora DC.

✓
15115

Sida

Sida rhombifolia S.

✓
15116

Sesuvia

Sesuvia minor S.

Wassia columbiana

✓
15117

Argemone

Argemone mexicana S.

✓
15118

Iporroea

X

"Algoroba" "Kiawe" 20114

20115

20116

20117

20118

✓
15119

Acacia

Acacia fornesiana
Willd.

✓
15120

Solanum

Solanum rodomeum

✓
15121

Wes. Molokai - Oct. 12
Erythrina

Erythrina monosperma
Lam.

✓
15122

Four o'clock

Mirabilis jalapa L.

✓
15123

Convolvulus

Jacquemontia sandwi-
censis var. tomentosa

01121

01121

Tree - Rocky Ravine
"Wale Hill" 01121

Rocky ridge - far
from habitations 01121

Open dry ground 01121

✓
15124

Portulaca

Portulaca sp?

perhaps oluccea L.

Sand dune along
west

✓
15125

Hibiscus

Sida fallax Walp.

dillo - prostrata

✓
15126

Tribulus

Tribulus cistoides L.

dillo -

✓
15127

Convolvulus

Jacquemontia sandwicensis
var. tomentosa

dillo -

15128

Scaevola

Scaevola frutescens

Krause

dillo -

✓
15129

Heliotropium
Heliotropium anomalum
H. & A.

Sandy beach 00171

15130

Spergularis
virgules

ditto 02171

✓
15131

Compositae
Lipochaeta integrifolia
Gray

ditto 10171

✓
15132

Legume
Thephrosia piscatoria
Pons.

Open dry pond 00171

✓
15133

Hibiscus
Sida fallax Walp.

ditto 00171

✓
15134

Legume

Dolichos lablab L.

Side of rocks on
open dry ground
Vine.

✓
15135

Legume

Leprosia piscatoria
Benth.

Open dry ground

✓
15136

Talinum ?

Portulacca roborocarpa

~~This~~ was no. 14136 on Gray
label - error ?

ditto

✓
15137

Oxalis

Oxalis corniculata L.

ditto

✓
15138

Ipomoea

Ipomoea sp. ?

ditto

✓
15139

Labiata

Haplostachys grayana
Hbd.

Open dry ground

15139

✓
15140

Legume

Phaseolus semierectus L.

ditto

15140

✓
15141

Compositae

X

ditto

15141

✓
15142

Gossypium

Gossypium tomentosum
Nutt.

ditto - Shrub

fl yellow

✓
15143

Vitex trifolia
unifoliata Hbd.

Sandy beach - Kure
prostrate

15143

✓
15144

Euphorbia

Euphorbia pilulifera L.

Sandy beach 11171

15145

Panicum?

11172

✓
15146

Idiobolus

Sida cordifolia L.

Open dry ground 11173
Abundant in grazing
land of W. Molokai -
furnishes forage
delicious - but not suitable
forage

✓
15147

Waltheria

Waltheria americana L.

✓
15148

Atriplex

Atriplex sp?

11174
Planted on the pasture
lands for forage & now
spreading "Atriplex"
salt bush

✓
15149

Ambrosia
artensisifolia

X

15150

Micholoma

~~*Micholoma*~~
Mitella

✓
15151

Alpinia
- Vandy of Komuku

Metrosideros collina poly-
morphe var. *incana* Rock

15152

Lolium
multiflorum

15153

Paspalum
distachyon

Went in replacement
parture

X

Open grass land - 1200 ft
near Ranch house, secondary
naturalized - plants pale red, ^{whitish} pink
Cabra, Mt. of Lecher pine (cl. 13)
Dry woods

Grass land 3000 ft

ditto

15151

15154

Eragrostis

Open ground, near of 71
gulch

15155

Eragrostis

ditto

71

15156

*Bromus
indulcis*

Grass level - 3000 ft

71

15157

Cucurbit

On stone, - 3000 ft

71

15158

Polygonum

along small stream

Polygonum glabrum
Willd.

15159 ^o *Dactyloctenium*
glomeratum

Grass Annual - 3000 ft

✓
15160 *Plantago*
lanceolata

dille

✓
Plantago lanceolata

15161 *Verbena*
X

dille

15162 *Sporobolus*

dille

✓
15163 *Andropogon*
X

dille
X

15164 *Bougainvillea*

along trail 15164

✓
15165 *Solanum*

weed in yard 15165

Solanum pseudocapsicum

✓
15166 *Scaevola procera*
Hbd.

tree 15166

✓
15167 *Compositae*
Raillardia molokaisensis
Hbd.

scrub - 3000 ft 15167

✓
merges to *R. linearis*
Sand.

15168 *Wulfeia*
x

ditch 15168

✓
15169

Compositae

X

grass land 15169

15170

multicaulis

delb.

15170

✓
15171

Rosae

Osteomeles onthyllidi-
folia Simml.

Many shrubs 15171

✓
15172

Strouesia

tree

15172

✓
15173

Corynocarpus
laevigata (Introduced)

tree

15173

✓
15174

Viola

✓
Viola robusta Hbd.

Wet forest

15174

15175

—

Tree

15175

X

✓
15176

Phorodendron?

✓
Metrosideros collina polym.
Prostrata f. strigosa Rock

On bank in bog

15176

15177

Liliace

✓
Aetelia veratroides
Gaud.

In bog

15177

15178

Formally

✓
Schizaea robusta
Baker

Open Bog

15178

✓
15179

Viola
Viola mauiensis Mann

Open bog

10/1/51

✓
15180

Suttonia Hillebrandii
Mez. var.

tree

10/1/51

✓
15181

Moss
Rhacomitrium hypnoides (L.)
Sindler

Open bog

10/1/51

✓
15182*

Lichen
Cladonia peltata (Ach.)
Spreng.

10/1/51

✓
15183

Styphelia grayana
var. *struthioloides*
Gray

Shrub - Open bog

10/1/51

✓
15184

Plantago

X 2 spec.

15185

Lycopodium

Selaginella deflexa
Bracke

15186

Deschampsia

✓
15187

Gaccinae

✓
15188

Chia

Mitrosideros collina poly-
morpha var. prostrata
Rock

Open bog

15184

11

15185

15186

15187

15188

✓
15189

✓
Lobelia

Clermontia pallida
Hbd.

15190

✓
Fern

Polypodium tamariscinum
Kaulf

15191

✓
Rhynchospora

Rhynchospora glauca
var. chinensis

15192

✓
Carex

Carex montis Eka
Hbd.

15193

✓
Guava?
Eugenia nariiflora Benth.

Wet forest

ditto

ditto

Open bog

Wet forest

✓
15194

Sedge

Oreobolus furcatus
mam.

Open bog - near
splendid summit

15195

Panicum

ditto - ditto

✓
15196

Erythrina

Erythrina monosperma
Gaud.

Stony gulch - near
Panda house

✓
15197

Boerhaavia

Boerhaavia diffusa L.

ditto

✓
15198

Washie Canyon - Oct 15
Sida

X

1400 ft. - Kawai

X

15199

Grass

mut leaf

00191

✓
15200

Cyperus

Cyperus phloides

(Nees) H. Mann

00191

✓
15201

Trichomanes

X

tree

00191

X

✓
15202

Antidesma

X

platyphyllum

X

✓
15203

Kadua

X

00191

✓
15204

Cyrtandra

Cyrtandra Kealiae
Wauwa

✓
15205

Cyrtandra

Cyrtandra Kealiae Wauwa

✓
15206

Form

Sadleria

✓
15207

Cyrtandra

Cyrtandra wauwai C. B.

Clarke

✓
15208

Cyrtandra

Cyrtandra paludosa var.
microcarpa Wauwa

✓
✓
15209

Bobea

X

15209

15210

Bryza

15210

✓
✓
15211

Eurya

X

15211

✓
✓
15212

Scalvola

X

15212

X

15213

Fern

15213

Polypodium lineare Thunb.

✓
✓
15214

Albizia
X

11021

✓
15215

Kadua
X

11022

✓
15216

Fern

Asplenium kawaiense

(Hillebr.) W. J.
Rob.

11023

✓
15217

Fern

Isoetes

11024

✓
15218

Fern

Pteris excelsa Gand

11025

✓
15219

Pisonia

X

✓
15220

Euphorbia

X

15221

Fern

Cyrtium caryotideum
(Wall) Presl

✓
15222

Cassia
gaudichaudii

Cassia gaudichaudii
H. & A.

15223

Grass

15224

Fern

Dryopteris fuscoatra
(Hillebr.) W. J. Rob.

15225

Phyllanthus

X

X

15226

Nerandia

X

X

15227

Fern

Dryopteris decipiens (Hook.)
Sw.

15228

Lepidium

X

X

15229

Poa

Wet rocks on face
of cliff

15230

Form

Pteris cretica L.

15231

Form

Polypodium spectrum
Kaulf

15232

Cyanea

Cyanea sylvestris Heller

15233

Coprosma

x

x

✓
15234

Dioscorea

X

15235

Fern

Cyrtomium carytoides
(Wall.) Presl

15236

Fern

Asplenium kauaiense
(Hillebr.) W. J. Rolfs

✓
15237

Wren

X

✓
15238

Pilea

✓

✓
15239

Lipochacta
X

✓
15240

Coprosma
X

✓
15241

Selaginella
Selaginella menziesii Spreng.

✓
15242

Cyanea
Cyanea sp. n.

✓
15243

Cyanea
Cyanea coriacea (Gray)
Hbd.

✓
15244

Lipochaeta

X

X

✓
15245

Dolichos

Dolichos lablab

81921

✓
15246

Alysic

X

X

✓
15247

Nototrichium

X

X

15248

Fern

Dryopteris unidentata
(H. & A.) C. Chr.

81921

15249

*Chenopodium
quadratum*

15249

15250

*Chenopodium
radicatum*

15250

✓
15251

Euphorbia

15251

• X

X •

✓
15252

Sida

15252

X

X

15253

Calamagrostis

15253

✓
15254

Cladium

Cladium meyerii Drake

15254

15255

Fern

Doodya kunthiana Saced

15255

15256

Psilotum

Psilotum nudum (L.)
Grisel.

15256

15257

Lychnis
Panicum

15257

✓
15258

Lupachota

X

15258

X

✓
15259

Aplisium
hillebrandii

15259

15260

Syntherisma
hillebrandii

15260

15261

Fern

Microlepia strigosa (Thunb.)
Presl?

15261

✓
15262

Ornithoglossum

Ornithoglossum panduriforme
(Gray) Knob.

15262

✓
15263

Sporobolus

X

15263

X

✓
15264

Sponmoca

X

15264

✓
15265

Labiata

X

15265

X

✓
15266

Pipturus

X

15266

X

✓
15267

Fern

Dryopteris parasitica
(L.) Kuntze

15267

✓
15268

Fern

Microlepia strigosa
(Thunb.) Presl ?

15268

✓
✓
15269

Pisum

X

15269

X

15270

✓
Flora

Stenomeres chinensis (S.)
Maxon

15270

✓
✓
15271

Pipturus

X

15271

15272

✓
Flora

Pityrogramma

15272

✓
15273

Boehmeria

X

X

15273

15274

*Erpocentra
variolulosa*

15274

g

Kauai - Kaholuamano - Oct 19

15275

Kadua

ill

15275

Kadua

15276

*Smut on
Pellaea*

15277

Coprosma

Coprosma

15278

Coprosma

begin

Couldia

15278

✓
15279

Gouldia

Gouldia

✓
15280

Xylocma

Xylocma hawaiiense
Seem.

✓
15281

Viola

Viola chamissoniana

var. amygdaliumi Rock

✓
15282

Alala

✓
15283

Sapindus

Sapindus oahuensis
Hbd.

15284

Panicum



15285

Gahnia

Gahnia becheyii Mann.

Kahoolawe Oct. 20

15286

Discardel



15287



15288

Suttonia Knudsenii
Rock

✓
15289

X

✓
15290

X

✓
15201 *Composit*

Coreopsis cosmoides
Gray

✓
15202

X

✓
15203

Pellaea

X

15289

15290

15201

15202

15203

✓
15294

Coprosma

Coprosma

✓
15295

Coprosma
X

✓
15296

Xanthoxylum

Xanthoxylum dipetalum
var. hillebrandii
Poech.

✓
15297

Wilkesia

Wilkesia gymnoxophium
Gray

✓
15298

Richardsonia
X

✓
15299 Liliaceae

✓
15300 Lobelia Cyrtandra
Cyanoides

Cyrtandra cyanoides
Rock

15301 Agrostis
"Kamensis"

Probably
Cyanoides
✓
✓

15302 Cyanus
gayana

Cyanus gayana Rock

15303 Rubus
x

15299

15300

Among stones in stream

15301

15302

✓
15304

Xanthoxylum
humifolium

X

✓
15305

Rumex

Rumex albensens Hbd.

✓
15306

Labordia

Labordia sp.

✓
15307

Straussii

X

✓
15308

Lycopodium

Lycopodium venustum

Gaud.

15309

Poa
longiradiata

moist shady cliff

✓
15310

Cyperus

Cyperus rockii Kuhnenth.

✓
15311

Xanthoxylum

Xanthoxylum kauai-
ense Gray var.

✓
15312

Solanum

Solanum kauaiense
(Gray) Hbd.

✓
15313

Cyanea

young plant of
Cyanea leptostegia
Gray

young leaves

✓
15314

Polygonum

Polygonum glabrum
Willd.

✓

15315

Charpentiera ellip-
tica (Hbd.) Heller

✓

15316

Bigoni
Hillebrandia panduricarpa

✓

15317

Souldia
Souldia

✓

15318

Peperomia
Peperomia

✓
15319

Brossaea

Broussaisia arguta
Gaud.

✓
15320

Broussaisia

X

✓
15321

Rubus

X

✓
15322

Cassia

Cassia laevigata Willd.

✓
15323

Cheirodendron

Cheirodendron gaudichaudii Seem.

✓
15324

Cephaelis

X

✓
15325

Fern

Asplenium contiguum

Kaulf

✓
15326

Platydesma

Platydesma campan-
ulatum Mann.

✓
var.

✓
15327

Carex

Carex oahuensis

✓
forma *namata*

✓
15328

Carex

Carex sandwicensis

Boeck.

✓
15329

Rhynchospora
Rhynchospora glauca
var. chinensis

15330 ✓

Fern
Pteris cretica L.

✓
15331

Helocharis
Helocharis obtusa
var. emutata Hbd.

✓
15332

Lolium
Lolium hypoleuca Hbd.

✓
15333

Lolium (Lycium)
Mentha
Cyanea rivularis Rock

✓
15334

Kohala

✓
Phyllostegia waimaea
wauwea

15335

Perottetia sandwicensis
Gray

✓
15336

Cheirodendron

Cheirodendron platy-
phyllum Seem.

✓
15337

Fern

Pteris excelsa Saud

✓
15338

Fern

Dryopteris paleacea
(Swartz)

✓
15339

Sideroxylon
Sideroxylon sandwicense
(Gray) Benth. &

Hook.

15340

Deschampsia

✓
15341

Santalum

Santalum pyzularium?
(*S. ellipticum*) Gray

15342

—
X

✓
15343

X —

✓
15344

Platydesma

X

✓
15345

Pelea

X

✓
15346

Cepromma

X

X

✓
15347

Kadua

X

X

✓
15348

Cryptocarya

Cryptocarya mammi
Hbd.

✓
15349

Glex anomalum forma

✓
x *sandwicensis*

(Endl.) Soer.

15350

Strombosia

x

15351

✓
Fern

Athyrium poiretianum

(Gaud) Presl

15352

Scalvula

Scalvula procera Hbd.

15353

Cyanea

hirtella

Cyanea hirtella (Morr.)

Hbd.

✓
15354

Dodonaea viscosa L.

✓
15355

Solanum Kauaiense
(Gray) Hbd.

✓
15356

Charpentiera elliptica
(Hbd.) Heller

✓
15357

Vaccinium penduliflorum Gaud.

✓
15358

Straussia

✓
15359

Lobelia cyanea
leptostegia
Cyanea leptostegia A. Gray

00881

✓
15360

Cyrtandra
Cyrtandra kundsenii
Rock

00881

✓
15361

Dubautia
Dubautia plantaginea
Gaud. var. —

00881

✓
15362

Urera
Urera sandwicensis
var. *kauaiensis*
Rock

00881

✓
15363

Peperomia
Peperomia

00881

✓
15364

Pullea

X

15364

✓
15365

Pipturus

X

15365

X

✓
15366

Nerandea

X

15366

X

✓
15367

Phyllanthus

X

15367

X

✓
15368

Fern

Dryopteris kerandremiana
(Gaud.) C. Chr.

15368

✓
1 15369

*Cyanea
spathulata*

Cyanea spathulata
(Hbd.) Heller

1 15370

Film

Sadleria unisora (Baker)
W. J. Robin.

✓
1 15371

*Cyanea
communis*

Cyanea communis Poeh

✓
1 15372

Tranussia

X *Kaw...*

✓
1 15373

Ceprosma

X

00001

00001

00001

00001

00001

X



Peperomia

15374 Peperomia

15374



15375 Onoclitum

15375

X

X



15376 Phytolacca

15376

Phytolacca brachystachys



15377 Pittospora

15377

X



15378 Bohea

15378

X

X

✓
15379 *Exocarpa*

X

✓
15380 *Pelea*

X

✓
15381 *Pelea*

X

✓
15382 *Gahnia*

Gahnia beckeri
Marmor

✓
15383 *Straussia*

Straussia macrocarpa
Rock

1

15384

✓
Straussia

Straussia

✓
15385

Labordea

X

✓
15386

Dubautia

X

✓
15387

Schiedea

X

✓
15388

Coreopsis

Coreopsis cosmoides

Gray

15384

15385

15386

15387

15388

X

X

X

✓
15389

Ranunculus

X

09951

X

✓
15390

Cryptocarya

Cryptocarya mammii
Hbd.

10951

✓
15391

Pipturus

X

10951

X

✓
15392

Gonolobus

X

10951

✓
15393

Dubautia

Dubautia Knudsenii
Hbd.

10951

✓
15394

Eurya

Eurya randuicensis
Gray

✓
15395

Pilea

X

✓
15396

Stenogyne

Stenogyne purpurea
Mamm.

✓
15397

Psychotria

Psychotria hexandra
Mamm.

✓
15398

Psychotria

Psychotria hexandra
Mamm.

15394

15395

15396

15397

15398

✓
15399

Epuronia

✓
15400

Cyrtandra

Cyrtandra paludosa
var. *gayana* (Heller)

Rock

15401

Fern

Elophoglossum gorgoneum
(Kaulf.) Bracke

15402

Fern

Asplenium pavonicum
Bracke

15403

Fern

Asplenium schizophyllum
C. Chr.

✓
15404

Peperomia
Peperomia sp?

10451

15405

~~Term~~
Aepodium contiguum
Kaulf

10451

15406

~~Term~~
Elophoglossum gorgoneum
(Kaulf.) Brack

10451

✓
15407

Suttonia
Suttonia sandwicensis
var. apodocarpa

10451

✓
15408

Peperomia
Peperomia

10451

15409

Fern

Aplenium ephemeratum

Hillebr.

✓
15410

Peperomia

Peperomia

15411

Fern

Dryopteris acutidens

C. Chr.

15412

Fern

Elophoglossum aemulum

(Kaulf) Brack.

✓
15413

Peperomia

Peperomia

✓
15414

Asteria

✓
15415

Schiedea

Schiedea lychnoides Hbd.

✓
15416

Fern

Diplazium

✓
15417

Peperomia

Peperomia sp?

✓
15418

Fern

Asplenium schizophyllum
C. Chr.

15419 ✓

Fern

Polypodium pseudogrammitis Gaud.

15420 ✓

Fern

Elophoglossum waurae
(Swartz.) C. Chr.

15421 ✓

Fern

Trichomanes radicans
Sw.

✓
15422

Sakorde

✓
15423

Elaeocarpus

Elaeocarpus trifidus
H. & Arn.

✓
15424

Coprosma

Coprosma

✓
15425

Rubus

✓
15426

Peleo Labordia

✓
15427

Pelea

x

x

✓
15428

Clemontia

Clemontia gaudichaudii

Hbd.

15429

Fern

Polypodium pellucidum
Kaulf

15430

Metrosideros

Metrosideros polymorpha
var?

15431

Pelea

X *Kanariensis*

15432

Lobelia

Sobelia yuccoides Hbd.

15433

Claoxylon

Claoxylon tomentosum
(Wawra) Heller

✓
15434

Stenogyne

Stenogyne purpurea
var?

✓
15435

Gastrodium

australe ✓

15436

Panicum
nephelophyllum

get

✓
Marale - Oct. 22-24, nearly all taken

15437

Lobelia

Lobelia kauaiensis (A.

✓
Gray) Heller

15438

Smilax

Smilax sandwicensis

Kunth

Slope of hill in woods
opening in
see Cave & Summit Oct. 23

✓
✓
15439

Pelea
waialealae

Pelea waialealae Urban

✓
15440

Sycopodium

Sycopodium venustum
Gaud.

✓
15441

Gouldia

Gouldia

✓
15442

Viola
kaiensis

Viola kaiensis Gray

✓
15443

Cyathodes

Styphelia grayana var.
struthioloides

15444

Fern

Dryopteris glabra (Brack.)
Kuntze

✓
15445

✓
15446

Cyrtandra longi-
folia var. *parallela*
C.B. Clarke

✓
15447

Pelea

X

✓
15448

Orchid
Anoectochilus sandwici-
censis Sindle.

✓
15449^x

Lichen

Stereocaulon strictum (Balb.)

Nyl.

✓
15450

Lobelia

Lobelia kauaiensis var
villosa Rock

✓
15451

Lycopodium
Lycopodium serratum
Thunb.

✓
15452

Taccinum

✓
15453

Gouldia

Gouldia

✓
15454

Dubautia

Dubautia paleata

✓
multiflora Roche

15455

Dubautia

Dubautia paleata Gray

✓
15456

Melastromia

X

✓
15457

Pala

X

✓
15458

Suttonia

✓
15459

Labordia

Labordia waialealae

✓
15460

Eurya

X

✓
15461

Palaia

X

✓
15462

Dioscorea
Nardaceae

X

✓
15463

Cheirodendron

Cheirodendron platyphyl-
lum var. waialealae
Rock

etc

X

X

✓
15464

Composit

Sagenophora mauiensis
Mann.

✓
15465

Dubautia

Dubautia railardioides
Hbd.

✓
15466

Plantag

Reg

✓
15467

Plantag

Reg

✓
15468

Dubautia

Dubautia affin. *D. waialealae*
Lae Roche

Reg

✓
15469

Albizia
Metrosideros collina poly
morphea var. *prostrata*
Rock

✓
15470

Rhynchospora
Rhynchospora epicae-
formis ? Hbd.

✓
15471

Plantago

✓
15472

Drosera
Drosera longifolia L.

✓
15473

Pilea
X

Beij

80151

80151

80151

80151

80151

✓
15474

Gumiera

Gumiera petaloidea
var. kauaiensis Rock

15475

✓
Gleichenia fern

Dicranopteris owbyhem-
ria (Hook.) W. G.
Rob.

15476

✓
Dubyella

15477

✓
Bross

Broussaisia arguta Gaud.

15478

✓
Fern

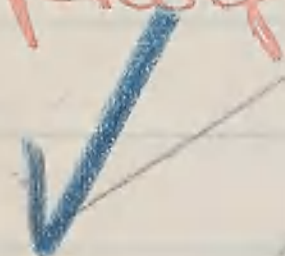
Polypodium hookeri
Bracke.

15479

Fern

Elophoglossum hirtum

(Sw.) C. Chr.

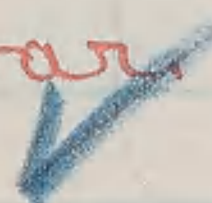


15480

Gumma

Gumma petaloidea

var. *kauaiensis* Rock

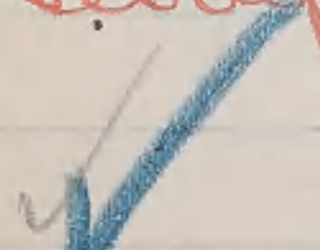


15481

Ardisia

Tetraplasandra waiakalae

Rock



15482

Lobelia

Clermontia gaudichaudii

(Gaud.) Hbd.



15483

Cyanea communis

Rock.

young plant

✓
15484

Lobelia
to kauaiensis

~~Lobelia~~ kauaiensis var.
villosa Rocke?

15485

Polypodium
tamariscinum
Kaulf.

✓
15486

Metrosideros
Waialealae

Metrosideros waialealae
Rocke

✓
15487

Coprosma montana
var. waialealae Rocke

✓
15488

Carex
montis ekeka
Carex montis ekeka Hbd.

young plant

✓
15489

✓
C

✓
15490 *Eurya randericensis* A. Gray
Pol

✓
15491

✓
15492 *Suttonia lanceolata*
(Wauwa) Rock
Mo

✓
15492 *Dubolia*
Dubautia paleata Gray

✓
15493

✓
15493 *Dubolia*
Dubautia paleata
Gray
C

6553

