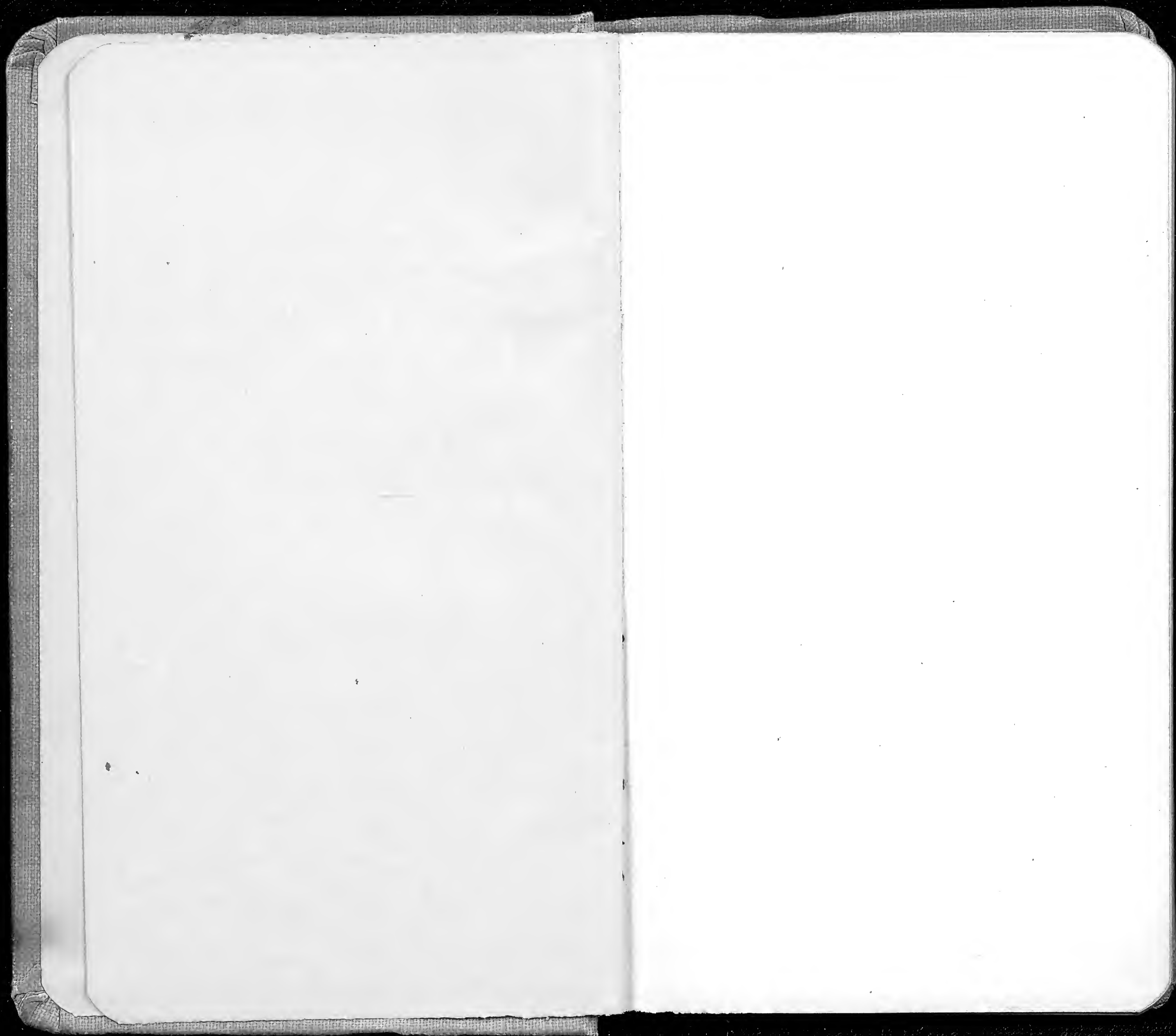


15014-15493

A.S. Hitchcock

28

HITCHCOCK.



15014

Odontoloma macraea-
num (Hook. & Arn.)
Brack.

15015

Dryopteris glabra (Brack.)
Kuntze.

15016

Polypodium pseudogram-
mitis Hand
✓

15017

Peperomia latifolia Mign.

15018

Polypodium sarmentaceum
Brack.

15019

7000

Hypolepityllum *concinnum*
Sund

Hypolepityllum concinnum

15020

7000

Polypodium spectabile
Lourf

Polypodium spectabile

15021

7000

Uchyrium poiretianum
(Saud.) Trel

Uchyrium poiretianum

15022

7000

Elaphoglossum microde-
nium (Die) Moore

Elaphoglossum microdenium

15023

9000

Polypodium hillbrandi
Hook.

Polypodium hillbrandi

15024

Diplazium

15025

Polypodium tamariscinum Kaulf

15026

Asplenium contiguum Kaulf

15027

Elophoglossum reticulatum (Kaulf) Saut

15028

Ophioderma pendula (L.)

15029 *Pipturus*
Pipturus complanatus

15029

✓
15030 *Ilex anomala*
randuicensis (Endl.)

15030

✓
✓

15031 *Cyrtandra*
Cyrtandra lysiosepala
latifolia Rock

15031

x

✓
15032 *Clematis*
Clematis macrocarpa
Saud.

15032

✓
15033 *Broussaia*
Broussaia pellucida Saud.

15033

15034

Corymbium

X

15034

15035

Dryopteris undulata
(H. & A.) C. Chr.

15035

15036

Tree fern

Cibotium menziesii
Hook.

Cibotium menziesii
Hook.

15037

Tree fern

Dryopteris cyathoides
(Kauff.) Kuntze

15037

15038

Rhynchospora glauca
var. *chinensis*

✓
15039

Crematospora

Crematospora

01051

✓
15040

S.

01052

Nyctelia brevifolia
Rollé

15041

Nyctelia

01053

✓
15042

Psilotum

Psilotum

Psilotum nudum (L.)

✓
15043

Gomphidia

Gomphidia

01054

15044

7600

Polypodium lineare Thunb.

Handwritten notes on the right page, possibly including a date or location.

15045

7600

Scleria cyathoides
Kaulf

Handwritten notes on the right page, possibly including a date or location.

15046

7600

Nephrolepis exaltata (L.)
Schott

Handwritten notes on the right page, possibly including a date or location.

15047

7600

Sphenomeria chinensis
(L.) Maxon

Handwritten notes on the right page, possibly including a date or location.

15048

3600

Handwritten notes on the right page, possibly including a date or location.

✓
15049

Cyperus polytachyus
75-76

Grassy hillside

15049

15050

Cyperus ...
...

✓
15051

Metrosideros collina poly-
morphe fauriei Rock

Grassy slope

✓
15052

Jussiaea suffruticosa
L.

Grassy slope

15053

...

Grassy slope

15053

15054

Asplenium

open slope



15055

Crotalaria

open slope

Crotalaria saltiana
Andr.

15056

Senecio

open slope

Senecio



15057

Senecio

open slope

Senecio vulgaris

15058

Senecio

open slope

✓
15059

Cassia latifolia
Willd.

from ...

✓
15060

...

...

✓
15061

Desmodium triflorum
DC.

...

✓
15062

...

...

✓
15063

Asclepias curassavica
L.

...

✓
15064

15065

✓
15066

Gnaphalium luteo-
album L.

15067

Azplonium

✓
15068

Trematolobelia macro-
tachys

[Faint handwritten notes on the right page, including "at summit of tree (6-8 ft)"]

✓
1 15069

Phyllostegia mollis (L.)

15069

1 15070

Aplenium acuminatum (L.)

15070

1 15071

Aplenium acuminatum

15071

✓
1 15072

Adenostemma viscosum (L.)

15072

✓
1 15073

Cyanea wailanensis
Rock

15073

✓
15074

Clermontia arborescens
(Marron) Hoffm

✓
15075

✓
15076

✓
15077

✓
15078

Salvia coccinea

Rain forest 1991

1991

1991

1991

1991

15079

Oct 10,

15080

Clematis arborescens
(Mamm.) H. & A.

15081

15082

15083

Nertera depressa

15079

15080

15081

15082

15083

15084

Dryopteris rubiginosa
(Bracke) Kuntze

15084

15085

✓ X

X

15085

15086

Viola robusta Hed.

15086

15087

Phyllostegia hispida
Hed.

15087

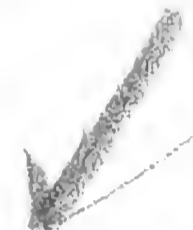
15088

Asplenium nidiculum
Hed.

15088

15089

Marattia douglasii (Presl.)
R. Br.



15090

Siparis hawaiiensis
Marian



15091

Cyperus



15092

Alyxia olivaceiformis
Edend.

15093

*Polypodium hymenophyl-
loides* Kuhn

✓
15094

Carex panduriformis
Bl. & W.

15095

✓
Elyonoglossum hirtum
C. & C. Cho.

15096

Coprosoma puberula
Gray

✓
15097

Vaccinium penduliflo-
rum var. gemma-
ceum Hbd.

15098

Astelias veratrifida
Gaud.

15094

15095

15096

15097

15098

Handwritten notes on the right page, possibly a date or location.

✓
15099

—

X

✓
15100

Olex aromata f. *a*
sandwicensis (Erdl.)
Spreng.

15101

Dryopteris glabra (Swartz)
Kuntze

✓
15102

Clermontia pallida
Hed.

15103

15099

15100

15101

15102

15103

15104

Justicia

200

1000

15105

Heliconia

1000



15106

Heliconia obtusa var.
emutata HBK

100

1000



15107

Dryas

Heliconia

1000

Dodonea stenoptera HBK

15108

Dryas

Heliconia

Dracaena aurea Lamour.

✓
15109

Morinda citrifolia L.

15110

✓
15111

Vigna luteola L.

✓
15112

Scirpus lacustris L.

✓
15113

Cyperus pennisetoides
Lam.

✓
15114

~~Prosopis juliflora~~

15115

~~Sida rhombifolia~~

✓
15116

~~Lemna minor~~
~~Wassia columbica~~

15117

~~Argemone mexicana~~

✓
15118

~~...~~
X

✓
15119

Acacia formosiana
Willd.

✓
15120

Solanum elaeagnifolium

✓
15121

Erythrina monosperma
Ham.

✓
15122

Four seeds
Mirabilis jalapa L.

✓
15123

Convolvulus
aequemontia sandwicensis
var. *tormentosa*

Rock ridge, grassy
open? I think it is

Open dry ground

✓
15124

Portulaca

Portulaca sp?

perhaps oleacea?

ditto - ditto - ditto -

✓
15125

Hibiscus

Sida fallax Walp

ditto - ditto - ditto -

✓
15126

Tribulus

Tribulus cistoides L.

ditto - ditto - ditto -

✓
15127

Convolvulus

Jacquemontia panduricem

his var. tomentosa

ditto - ditto - ditto -

✓
15128

Scaevola frutescens

Krause

ditto - ditto - ditto -

✓
15129

Heliotropium
Heliotropium anomalum
H. & A.

very low 04121

15130

perubalis
perubalis

ditto 04121

✓
15131

Compositae
Lipocharta integrifolia
C. & A.

ditto 04121

✓
15132

Thephrosia
Thephrosia piscatoria
P. & A.

fls. by point 04121

✓
15133

Sida
Sida fallax W. & A.

ditto 04121

✓
15134

Rouichya

✓
15135

Tephrosia pinnatifida

✓
15136

Portulacca subsericea

✓
This was no. 14106 on leaf
label - 10-1-53

15137

✓
Oxalis corniculata

✓
15138

Sporobolus

Allo - ...

Allo - ...

Allo

Allo

✓
15139

Haplostachys grayana
Hbd.

✓
15140

Phacelus semierectus L.

✓
15141

Corymbosus

X

✓
15142

Corymbium tomentosum

✓
15143

Vitex trifolia
unifoliata Hbd.

Copa

ella

ella

X

Shrub

at yellow

small, green - fruit

✓
15144

Euphorbia pulcherrima L.

15145

✓
15146

Sida cordifolia

✓
15147

Waltheria americana L.

✓
15148

Atriplex sp.

1073

1074

Sept. 10, 1932

found in the
salt flat near the
road

1075

Planted in the
ground in the
salt flat near the
road

✓
15149

Alnus
x *glabra* *foliata*

15150

✓
15151

Mitrosideros collina poly-
morpha, var. *incana* *Thunb.*

15152

Leucaena
monticola

15153

Paspalum
latifolium

Mitrosideros
x *collina*

Mitrosideros
collina

Mitrosideros
collina

Mitrosideros
collina

15154

15155

15156

15157

15158

Polygonum glaberrimum Willd.

Handwritten notes on the top right page, including the word "puleh" and some illegible characters.

Handwritten notes on the middle right page, including the word "Musa" and some illegible characters.

Handwritten notes on the bottom right page, including the word "Musa" and some illegible characters.

15159

✓
15160

Plantago lanceolata

✓
15161

15162

✓
15163

15164



15165 Solanum

Solanum pseudocapsicum



15166 Scavola prostrata
Hbd.



15167

Raillardia molokaiensis

Hbd.

merges to R. linearis
Laud.

15168

Melastoma

x

✓
15169

Cynopogon

X

15170

meleu cultu

✓
15171

Plant

Osteomeles orthyllidi-
✓
folia Simal.

15172

Straweria

✓
15173

Corynocarpus

laevigata (Introduced)

✓
15174

✓
Viola robusta Mill

15175

✓

15176

Metrosideros collina Polak.
prostrata f. *strigosa* Polak.

15177

Antelia menziesii
Eard.

15178

Schizaea robusta
Polak.

✓
15179

Viola mauiensis Mann

✓
15180

Suttonia Hillebrandii

May 1907

15181

Rhacomitrium hypnoides (L.)
Sindler

15182

Cladonia peltata (Ach.)
Spreng.

✓
15183

Styphelia grayana
var. *struthioloides*
Gray

✓
15184

2 spec.

✓
15185

Selaginella duffii

15186

✓
15187

✓
15188

Metrosideros collina poly-
morpha var. prostrata
Rock

✓
15189

Clematis pallida

Wald

15190

Polypodium tamariscinum

Wald

15191

Rhynchospora glauca

✓ var. *chinensis*

15192

Carex montis Eka

Wald

15193

Eugenia nanaeflora Benth.

✓
15194

Onobolus prostratus

15195

✓
15196

Erythrina monosperma

✓
15197

Boerhaavia diffusa

✓
15198

Boerhaavia diffusa

X

15194

15196

15197

15198

X

15199

✓
15200

Cyperus phaeoides
(Nees) H. Maxon

✓
15201

✓
15202

✓
15203

Kad.

X

X

X

X

X

✓
15204

Cyrtandra kealii
Wawra

✓
15205

Cyrtandra kealii Wawra

✓
15206

Sadleria

✓
15207

Cyrtandra wawra C. B.
Clarke

✓
15208

Cyrtandra paludosa var.
microcarpa Wawra

✓
15209

Forest

10051

15210

Forest

10052

✓
15211

Forest
X

10053

✓
15212

Forest
X

10054

15213

Forest

10055

Polypodium lineare Humb.

✓
15214

✓ X
15215

15216

Asplenium kawaiense
(Hillebr.) W. J.
Rob.

15217

Isoetes

15218

Pteris aquilina Swartz

✓
15219

X

✓
15220

Cyrtium
X

✓
15221

Cyrtium conyotidatum
(Wall) Fresl

✓
15222

Cassia gaudichaudii
H. & A.

15223

15224

Dryopteris furcata
Chickadee

✓
15225

X

X

✓
15226

X

X

15227

Dryopteris decipiens (Hook.)

✓
15228

X

X

15229

15230

Pteris caudata

15231

Polypodium spectabile
Walt.

✓
15232

Cyanea sylvatica H. C. C.

✓
15233

Cypripedium
+

✓
15234

Lycopodium

X

15234

15235

Asplenium

Cyrtomium carytoidesum

Walt. Presl

15235

15236

Asplenium kawaiense

✓
(Muhlbr.) W & Kuhn

15236

15237

Asplenium

X

✓
15238

Polea

✓

15237

15238

✓
15239

Leptocarpus
X

✓
15240

Cyprina
X

15241

Selaginella mangrove
Selaginella mangrove

✓
15242

Cyanea
Cyanea

✓
15243

Cyanea christina
Cyanea christina (Gray)
Hutch

✓
15244

X

X

✓
15245

Dolichor labialis

15245

✓
15246

X

X

✓
15247

Dryopteris unidentata

15247

X

X

15248

Dryopteris unidentata
(H. & A.) C. Chr.

15248

15240

Platanus
sp. ...

04951

15250

Clusia
sp. ...

04951



15251

Platanus
sp. ...

04951

X

X



15252

Clusia
sp. ...

04951

X

X

15253

Clusia
sp. ...

04951

✓
15254

Cladium nayanum

15254

15255

Doodya kunthiana

15255

15256

Ptilotum nudum

15256

15257

... ..

15257

✓
15258

X

15258

X

✓
15259

Wrightia

15260

15261

Microlepia striyosa (Blanch.)
Frax. 2

✓
15262

Ornithanthus panduriformis
(Gray) Knuth

✓
15263

X

15259

15260

15261

15262

15263

X

✓
15264

15264

✓
15265

15265

✓
15266

15266

15267

15267

Dryopteris parasitica
(L.) Kuntz

15268

15268

Microlepia strigosa
(Thunb.) Presl

✓
15269

X

✓
15270

Simmonsia chinensis (L.)
Munro

✓
15271

X

✓
15272

Pityrogramma

✓
15273

Saxifraga

X

X

X

15274

~~✓~~ Kahluanaro - Oct 19
15275 Kadua

Kadua

15276

Smil on
Dulupogen

~~✓~~
15277

Coprosma

Coprosma

~~✓~~
15278

begin

Coprosma
Cauldia

all

✓
15279

Gouldia

Gouldia

✓
15280

Xylocopa

Xylocopa hawaiiensis

✓
15281

Viola

Viola chamissoniana

var. krydosonii Rock

✓
15282

Alala

✓
15283

Sapindus

Sapindus oahuensis

Hbd.

✓
15284 *Panicum*

✓
15285 *Gahnia*
Gahnia bechayana Merr.

✓
Kauai / Kaholuamoa. Oct. 20
15286 - *Fissurula*

✓
15287 *

✓
15288 *Suttonia Knudsenii*
Boeck

✓
15289

X

✓
15290

✓
15291

Composit

Coreopsis corniculata

✓
15292

✓
15293

Pellaea

15289

15290

15291

15292

15293

✓
15294

Coprosma

Coprosma

15294

✓
15295

Coprosma
X

15295

✓
15296

Xanthoxylum

Xanthoxylum dipetalum var. *hillebrandii*

15296

✓
15297

Wilkesia

Wilkesia gymnoxiphium
Gray

15297

✓
15298

Richardsonia
X

15298

✓
15299 *Lilium*

✓
15300 *Lobelia cyrtandra*
Cyanoides
Cyrtandra cyanoides
Hook.

15301 *Aquilegia*
"Ranunculoides"

Pachylobos
✓
✓

15302 *Cyanus*
gayana
Cyanus gayana Hook.

✓
15303 *Pellaea*
+

Among stones in stream

✓
15304

Xyris
hawaiiensis

✓

X

X

15305

Rumex

Rumex albosperma HBK.

✓

15306

Labordia

Labordia sp.

✓

15307

Straussia

X

X

vic

✓

15308

Lycopodium

Lycopodium venustum

Sand.

vic

15309

Poa

terrestris

moist shady cliff

✓
15310

Cyperus

Cyperus ...

✓
15311

Xanthoxylum

Xanthoxylum kawai-ense Gray var.

✓
15312

Solanum

Solanum kawaiense

✓
15313

Cyanea

young plant
Cyanea leptostegia Gray

young leaves

✓
15314

Polygonum
Polygonum

✓

15315

*Charpentiera ellip-
tica* (H. B. K.) Willd.

✓

15316

Bryonia
Hillebrandia

✓

15317

Surdia
Surdia

✓

15318

Peperomia
Peperomia

✓
15319

Brossae

Broussaisia arguta
Gaud.

✓
15320

Brossae
X

✓
15321

Pubes
X

✓
15322

Cassia

Cassia laevigata Willd.

✓
15323

Cheirodendron

Cheirodendron gaudii
Chaudii Seem.

X

✓
15324 *Cephus*

15325 *Fern*

Asplenium

✓
15326 *Platydesma*

Platydesma campanulatum

✓
15327 *Carex*

Carex oahuensis

✓
forma nemoralis

✓
15328 *Carex*

Carex sandwicensis
Boott.

✓
15329

Rhynchospora glauca
var. *chinensis*

15330

Pteris

✓
15331

Helocharis
Helocharis obtusa
var. *enotata* Hbd.

✓
15332

Lolium
Lolium hypoleuca

✓
15333

Lolium (Lycium)
peruvianum
Cyanea rivularis

✓
15334

✓ *calicut*

Phyllostegia waimeae
waimeae

✓
15335

Perottatia sandwicensis

✓
15336

✓ *cheirodendron*

Cheirodendron platy-
phyllum

✓
15337

✓ *fern*

Pteris caudata

✓
15338

✓ *fern*

Dryopteris *pallescens*
swartzii

✓
15339

Sideroxylon

Sideroxylon sandwicense
(Gray) Benth. &

Hook.

15340

Deschampsia

✓
15341

Santalum

Santalum pygmaeum?

(Gray) Benth. & Hook.

15342

—

✓
15343

—

✓
15344

Platydesmus

x

✓
15345

Pelo

x

✓
15346

Ceprum

x

✓
15347

Kadun

x

✓
15348

Cryptocarya

Cryptocarya mammi

Mod.

x

x

✓
15349

Glycyrrhiza glabra

✓ x *radicis*
(Sondl. 1800)

15350

Glycyrrhiza

x

15351

7 cr.

Athyrium pinnatifidum

(Sondl. 1800)

15352

Scalvula

Scalvula prostrata Hed.

15353

Cyanea

hirtella

Cyanea hirtella (Moench)

Hed.

✓
15354

Gollomia

Dodonaea viscosa L.

✓
15355

Solanum

Solanum Ruscissimum

(Hb.) Hb.

✓
15356

Charpentiera

Charpentiera elliptica

(Hb.) Hb.

✓
15357

Vaccinium

Vaccinium penduli-

florum Gauch.

✓
15358

Straussia

08251

08251

08251

08251

✓
15359

Cyanea leptostegia

Cyanea leptostegia A. N. S.

✓
15360

Cyrtandra kundaeana

Cyrtandra kundaeana

✓
15361

Dubautia plantaginosa

Dubautia plantaginosa
Gaud. var.

✓
15362

Urera

Urera sandwicensis

var. *laevigata*

✓
15363

Piperonum

Piperomia

✓
15364

Pellaea

15364

✓
15365

Pipturus

X

X

15365

✓
15366

Marsilea

X

X

15366

✓
15367

Phyllanthus

X

X

15367

15368

Fern

Dryopteris kenauddremiana

(Linn.) C. Chr.

15368

✓
1 15369

Cyanea
spathulata

Cyanea spathulata

1 15370

Sadleria
unicolor

Sadleria unicolor (Baldwin)

✓
1 15371

Cyanea
horridum

Cyanea communis

✓
1 15372

Trassia

✓
1 15373

Ceprosia



Papaveraceae

1

15374

Cephaelis

15374



15375

Veronica
X

15375

X



15376

Phytolacca

Phytolacca brachystachya

15376



15377

Ptilospora
X

15377



15378

Bohea
X

15378

✓
15379

Excoecaria

X

15379

X

✓
15380

Pilea

X

15380

✓
15381

Sida

X

15381

✓
15382

Gahnia

brachylocha

Martinii

15382

✓
15383

Straussia

macrochaeta

Reichei

15383

1

✓
15384

Trichostema

serotinum

✓

15385

Saxifraga

X

✓

15386

Saxifraga

X

✓

15387

Chimaphila

X

✓

15388

Coreopsis

coreopsis comoides

Gray

15384

15385

15386

15387

15388

X

X

X

✓
15389

Homocidus

X

04751

X

✓
15390

Cryptocaryus

Cryptocarya mamoni

Hod.

04752

✓
15391

Pipturus

X

04753

X

✓
15392

Gonolobus

X

04754

✓
15393

Rubantia

Rubantia pemudromii
Hod.

04755

✓
15394

Eurya

Eurya sandwicensis

Gardner

✓
15395

Pilea

✓
15396

Stenogyne

Stenogyne purpurea

Mann

✓
15397

Psychotria

Psychotria hastata

Mann

✓
15398

Psychotria

Psychotria hexandra

Mann

✓
15399

- *Scirpus*

✓
15400

Cyrtandra

paludosa
var. *gayana* (Hillebr.)
Roxb.

15401

7. eric

Elophoglossum gorgoneum
(Kaulf.) Benth.

15402

7. eric

Aplonium palosense

15403

7. eric

Aplonium schizophyllum

✓
15404

Peperomia

Peperomia sp?

14571

15405

Peperomia

Peperomia *complanata*

14572

15406

Peperomia

Elophoglossum gorgoneum

(Chaulf. & Bracht)

14573

✓
15407

Suttonia

Suttonia sandwicensis

var. *apodocarpa*

14574

15408

Peperomia

Peperomia

14575

15409

7 cm

Aplium ephraimianum

✓
15410

Peperomia

Peperomia

15411

7 cm

Dryopteris acutidans

C. C. C.

15412

7 cm

Elophoglossum acmulum

(Kaulf) Brack

✓
15413

Peperomia

Peperomia

✓
15414

Asplenium

11171

✓
15415

Schiedea

Schiedea lychmivora (L.)

11172

15416

Lycopodium

Lycopodium

11173

✓
15417

Papaveraceae

Papaveraceae

11174

15418

Fern

Asplenium schizophyllum
C. Chr.

11175

15419 Fern

Polypodium pseudogrammitis Gaud.

01171

15420 Fern

Elaphoglossum unguiculatum
Gaud.

01172

15421 Fern

Trichomanes radicans

01173

✓
15422 Galathea

01174

✓
15423 *Elaeocarpus*

Elaeocarpus bifidus
H. & A.

01175

✓
15424

Coprosma

Coprosma

✓
15425

Rubus

✓
15426

Peleo Labordia

✓
15427

Pelea

x

✓
15428

Clematis

Clematis gaudichaudii

Wed.

15429

L. com

Polypodium polypodioides



15430

Metrosideros

Metrosideros polymorpha



15431

Pilea



X. canariensis

15432

Lobelia

Lobelia yuccoides



15433

Claoxylon

Claoxylon sementosum
(Mauria) Holtt.

✓
15434

Stenogyne

stenogyne purpurea
var?

✓
15435

Gastroidium

australe ✓

15436

Panicum

nephelophyllum

✓
15437

Lobelia

15437

Lobelia kauaiensis (a.)

✓
Gray

15438

Smilax

Smilax sandwicensis

Kunth

Slope of hill in woods
open.

Can. & Summit 2000

✓
15439

Pelea waialealae

Pelea waialealae

15440

Lycopodium

Lycopodium

✓
15441

Gonolobus

Gonolobus

✓
15442

Viola kauaiensis

Viola kauaiensis Gray

✓
15443

Cyathodes

Styphelia grayana var.
struthiolobus

15444

Dryopteris glabra (Pursh)
 M. Metzger

✓
15445

✓
15446 *Cyrtandra longi-
folia* var. *parallela*
C.B. Clarke

✓
15447

Pelican
X

✓
15448

Arnoectochilus canduini
ensis Su-
nd.

15449

Stenogaulon strictum (Bal.)

Nyl.

✓
15450

Lobelia kawaiensis var
villosa Kunz.

15451

Lycopodium
Lycopodium

✓
15452

Cecum

✓
15453

Gouldia
Gouldia

✓
15454

Qu. h. h. h.

Dubautia paleata

✓ multiflora Rocks

15455

collected

Dubautia paleata

15456

M. L. S. v. m.

X

15457

P. m.

X

15458

Sutton

✓
15459

Salicoidium

✓
15460

Euryza

X

etc

X

✓
15461

✓
15462

*Spizella
socialis*

✓
15463

Cheirodendron

*Cheirodendron platyphyl-
lum* var. *waialeale*
Noel

✓
15464 Compositae
Lagenophora munita

✓
15465 Rubiac
Dubautia naillandioides
Hbd.

✓
15466 Rubiac
Bag

✓
15467 Planting
Bag

✓
15468 Rubiac
Dubautia affinis D. viciifolia
Las Pintas
Bag

✓
15469

Metrosideros collina poly-
morphica var. *prunifolia*

✓
15470

Rhynchospora
Rhynchospora epicae-
formis + Hb. d.

✓
15471

✓
15472

Drosera longifolia L.

✓
15473

X

✓
15474

Sumnera

Sumnera petalobulva
var. *kauaiensis* Hook

15475

Dicranopteris

Dicranopteris sublytham
var. *hookeri* f.

15476

Broussaisia

✓
15477

Broussaisia

Broussaisia arguta Gaud

15478

Polypodium

Polypodium hookeri

Hook

15479 ✓ *Conium*
maculatum L.

15480 ✓ *Gunnera*
petaloides
var *kauaiensis* Rock

15481 ✓ *Ardisia*
tetraphylla (L.) Merr.

15482 ✓ *Colub*
verticillata (L.) Gaud. & H. B. K.

15483 *Cyanea* *communis*
Rock

young plants

✓
15484

Solida

Solida kauaiensis var.

villosa Torr.

15485

Polypodium tamarae Kunze

✓
15486

Metrosideros
waialealae

Metrosideros waialealae

Rocke

✓
15487

Coprosma montana

var. *waialealae* Rocke

✓
15488

Carex

montis eska

Carex montis eska Hbd.

gray place

✓
15489

X

✓
15490 *Eurya sandersonii*
R. & S. Gray

✓
15491
15 *Suttonia lanceolata*
✓ (Wauwa) R. & S. Gray

Me
15492 *Subantia paleata* Gray
✓

15493 *Subantia paleata*
Gray

6553

