

16293
15974 - ~~16453~~

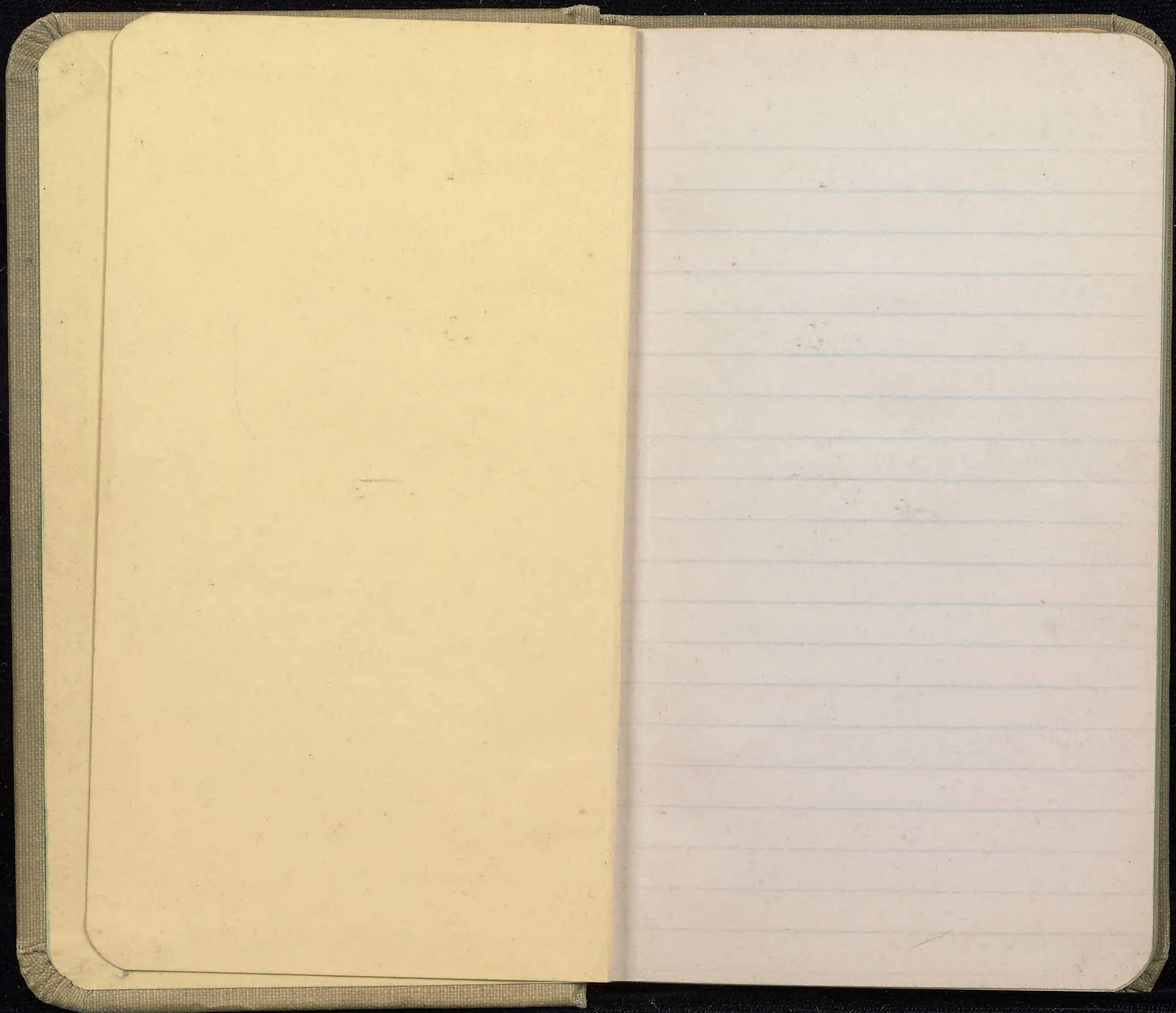
A.S. Hitchcock

1917 to 16066

1918 begins 16067

30

HITCHCOCK



Whiteface Mountain - near Lake

15974 *Agrostis*
horrida

Soil

15975 *Calamagrostis*
complanata

15976 *Danthonia*

15977 *Cinna*
latifolia

15978 *Panicum*
canadense

Placid, N.Y. Aug. 17, 1917

Summit of Whiteface
among rocks in tufts -
moss, among moss.

Along brook among rocks,
erect lax, spreading or somewhat
decumbent, blades flat, panicle
pale, whitish green, narrow but
somewhat open.

Along brook in woods in damp
soil. Blades flat not at all curly.

ditto.

Mossy place along
brook in woods.

15979

*Panicum
nervosa*

Moist place along
trail in woods

15980

*Poa
patens*

Moist opening
woods

15981

*Asperula
alpestris*

Opening in woods
Plants glaucous, awnless

15982

Asp. repens

ditto, not glaucous

15983

Asp. repens

ditto, spk awnless

all 3 forms in same
patch

15984

*Brachyelytrum
arctium*

Along trail
in woods

15985

*Bromus
ciliatus*

Opening in woods
shrub, smooth

15986

*Bromus
ciliatus*

ditto, shrub, pilose

15987

*Paricularia
melicaria*

ditto in more soil
abundant present

15988

*Calamagrostis
canadensis*

Summit of Whiteface
Culm erect, panicle nodding
purple, blades flat, wide
this is probably a *Calamagrostis*
of the Manual.

15989

*Calamagrostis
canadensis*

15990

*Bromus
inermis*

15991

Poa patens

15992

*Poa
compressa*

15993

*Agrostis
horrida*

Summit of Whiteface
open mossy place
blades narrow & panicle
smaller than 98

Along trail Lake
Placid

Summit of White face

Summit of Whiteface
apparently indigenous

Below summit of
White face along trail
in woods

15994

Torresia
alpina

sl

Lake Placid, N.Y.

15995

Agrostis
alba

15996

Panicum
capillare

15997

Panicum
subvillosum

15998

Agrostis
alba

Summit of Whiteface
in large tufts, mostly
in moss.

Aug 15, along Ry towards Seneca
valley.

Ditch hard track - growing -
at edge of water - decumbent stems
but no floating runners

Gravel along track

Open sandy ground
(cleared space by track)

Along ditch by track
running water - decumbent
stems but no floating
runners (see 15995)

15999

*Agrostis
maritima*

locality 998, the flowering
stems, Panicle contracted

16000

*Agrostis
maritima*

Same as 995 - the floating
runners - these shoots run
along the surface of the water

16001

*Agrostis
maritima*

Same as 995 - floating
runner, fl culms attached

16002

*Agrostis
maritima*

Same as 995 - floating
runner. 999-002 are
all from same patch

16003

*Agropyron
alpinum*

Sandy loam along bank
Spikes often double

16004

Panicum boreale

in grass & along
Ry

16005

Alopecurus tenuis

Slope along Ry
Common

16006

Danthonia spicata

Open ground

16007

Alopecurus nemoralis

16008

Calamagrostis canadensis

Swale
Common

16009

Agrostis vulgaris

Dry grassland
common

16010

*Panicum
Fernaldii*

Growing in shallow still
water in small house stream
runners floating, fl. stems decumbent
& ascending at end

16011

Int. M. *Agrostis maritima*

Low place, Admiralty Lodge
growing along road side in it
open, a tuft, runners prostrate-
spreading, fl. culms decumbent

16012

*Agrostis
maritima*

In same locality as 011, but
growing in grass, *Panicum* narrow
one runners, fl. culms erect

16013

*Agrostis
horrida*

Swamp of Int. M. *Agrostis*
above water line

16014

Calamagrostis canadensis

Summit of Mt. McJannet

16015

Deschampsia flexuosa

Summit of Mt. McJannet

16016

Wormia alpina

ditto

16017

Agrostis montana

On mountain at about 3000 ft

Plattsburgh - N.Y. - Aug. 22

16018

Zizania aquatica

Along shore of L. Champlain forming masses in the lake, growing in water annual, 2-3 ft high

5/

16019

Panicum
paniculatum

woods
slope of Lake
moist place at edge
of woods

16020

Agrostis
maritima

along shore

16021

Agrostis
maritima

along shore - produce
level

16022

Muhlenbergia

On rocks at foot of
slope, among, holes
of plane leaves 023

16023

Muhlenbergia
oxycarpa

dillo - around

16024

Drymonia
canadensis

along slope

16025

Sphenoplois

along slope

16026

Bromus
altatus

along slope
Panicum noddingii

16027

Homolocent
oryzoides

Wet place along
shore

16028

Burlington Vt
Echinocloa
frumentacea

Aug 23

along roadside,
Windsor, Vt.

Shelburne N.H. Aug 24

1 16029 *Panicum*
implicatum

Sandy open ground
prostrate.

" Aug 25

1 16030 *Panicum*
scitellus

Edge of woods
Panicum drooping

1 16031 *Panicum*
clandestinum

Low place in open
woody soil to be
seen here

1 16032 *Mylleukera*
foliosa

Edge of woods
in brush

1 16033 *Corynephorus*
trichosus

50

On rocks in woods
along a cliff -
Low dense bushes
cutting well at base
but somewhat taller
nodding above the blades
drooping

16034

Panicum
(*meruense*?)

moist places in
woods; stems in
distally novel

16035

Agrostis
peruviana

Moist places in
woods - large
clumps

Mt. Washington at summit -

16036

Agrostis borealis

Inkerman's Ravine, Aug. 26.

Summit Mt. Washington

16037

Poa
laxa

Summit ditto - common
in the snow. Bunches be-
tween rocks. Not found (5-6-26)
except rarely, culms ~~erect~~
culms spreading & somewhat lay

16038

Poa
(*remota*?)

In bog at level of Lake
Gulfe. Erect. only a few
specimens seen

16039 *Calamagrostis*
(*hyperborea*)

Bog, detto - rare

16040 *Poa*

Bog detto, melouan,
tall & slender

16041 *Bromus*
altissimus

Bog detto, sippes
fruit of powder.

16042 *Melica*
spicata purascens
sel

Bog detto, scattered
in the moss & low shrubs

16043 *Calamagrostis*
(*longisporia*)

Bog detto - common

16044

D. championii
atropurpurea
 set

Buy at head of
 Truckee River
 in mts along brook.

16045

Phlox
alpinum
 set

Moist slope at
 head of Truckee
 River. Dried, small
 bunches

16046

Townsendia
odorata

Moist slope Truckee
 River above tree line

16047

Agrostis
horrida
 set

Shady moist place
 below tree line. Much
 larger & laxer than the
 alpine form.

16048

Calymene
longifolia

Truckee River

Head of Lake Gulf

16049 *Agrostis*
violaceum

Westside Trail - Aug 27

16050 *Torresia*
alpina

Madison Hill near

16051 *Agrostis*
inermis

Int form but awless

16052 *Calamagrostis*
(L. canadensis)
canadensis

Alpine Meadow & Huntington

16053 *Poa*
glauca

~~Aug 25~~ Mt Wash

Boggy slope among low
shrubs and grasses. Culms
solitary or few, decumbent at
base, then erect, spike green, rarely
at all tinged with violet.

Near Mt. Clay, open
rocky moist slope
Mt Madison Aug 27
Open place along brook
near hill

along brook near that,
partial nodding, nod blocks
perpendicular, horizontal
not usually well developed

Ravin - Aug 28 Mt Wash
Bunches - among rocks in
moor place along brook below
"Rock Slide" but above timber
glacis, culms stiff

16054

Poa
glauca

Set

16055

Agrostis
borealis

16056

Agrostis
brevifolia dist
(mountain)
sp. annual

16057

Agropyron
violaceum

Set

16058

Tiwesia
borealis
dist

Set

Alpine Meadow
in wet place among
moss & lichens. Branches
loose, the culms seemingly
scattered, decumbent at base.
Huntington Ravine
among wet, above tree
line but at about lower
limit of species, more robust than
alpine form.

Huntington Ravine
moist locality, among
wets above tree line, below
"Rock slide".

ditto - in bunches among the
wets. Spots somewhat
tinged with purple.

On rocks along Huntington
Ravine trail below timber
line.

16059 *Dischampsia*
flexuosa

set

16060 *Cynna*
latifolia ~~set~~

set

16061 *Chimaphila*
peruviana ~~set~~

set

16062 *Panicum monnini?*
~~set~~

16063 *Panicum southeyanum*
Gray

3

1917

Huntington Ravine
among rocks below
Beck Slide above timber
Common.

Opening in woods
along Rammed Trail
below Huntington Ravine
Culm, few in a loose leaf Pan
nodding.

Wet in field, escaped from
cultivation, Shelburne ~~set~~

Aug 31 Shelburne NH
roadside, among low
bushes

among low shrubs
roadside

16064 *Pan tenuissimum*
Ash

④

Sandy woods

16065 *Pan implicatum*
Scribner

Sandy roadside in
woods

16066 *Muehlenbergia*

1918
June 7

same

1918
Hollywood Swamp.
Patterson Md

16067 *Sauthornia*

edge of swamp

16068 *Panicum*
laxa

edge of swamp

Gaylesville 1918
in Kansas

16069 *Spartina*
midcayana

16070 *Panicum*
tennesseense

16071 *Panicum*
scaberrimum

16072 *Elymus*
australis

16073 *Eragrostis*
pellucida

1918

Aug. 3,
Low open ground
grasses.

Low open ground

Prairie

Low prairie - speaks
end - across straight

open dry ground

16074

Elymus
virgatus

Open dry ground
spikes erect,

16075

Panicum
philadelphicum

Open ground - old
field

16076

Eragrostis
lugens

Open dry ground - per-
ennial - culms erect or
spreading

16077

Aristida
oligantha

Open dry ground

16078

Chaetochloa
geniculata

Open dry ground
perennial

16079

Paspalum
floridanum

Open dry ground

16080

Urtica
latifolia

Low woods

16081

Panicum
linearifolium

Dry oak woods
in thickets

16082

Chaetochloa
stolon

Along Bay

16083

Triodon
flava

Dry open ground

16084 Panicum
hoseii

Dry oak woods

16085 Panicum
dichotomum

Dry oak woods

16086 Elymus
canadensis X

Along bank of
river - open
spots, nodding

16087 Agrostis
peruviana

Dry oak woods

16088 Panicum
marianum

Dry oak woods

16089

Elymus
subgracilis

Dry open ground

16090

Elymus
canadensis

Dry open ground

16091

Elymus
australis

Dry open ground
large & small heads
from same patch

16092

Elymus
australis

Dry open ground

16093

Andropogon
furcatus

Dry prairie, lower sheath
woolly - many lateral
spikes - spikes several 5-7

16094

Panicum
anceps

Low moist ground

16095

Eriopogon
hypericoides

Muddy edge of
pond

16096

Paspalum
laeve angustifolium
Vasey

Low ground

16097

Panicum
tennesseense

Low ground

16098

Panicum
tennesseense

ditto

16099

Panicum
virgatum

Panicum

16100

Panicum
clandestinum

Low ground,
Buds have opened the
sheaths

16101

Panicum
sempervivum

Low ground

16102

Panicum
amburum

Open ground

16103

Panicum
malacophyllum

Dry oak woods

Set

Pine Bluff Ark

16104

Echinochloa
crus-galli
hayensis

16105

Leptochloa
filiformis

16106

Zizaniopsis
millicum

16107

Paspalum
distichum

16108

Arundo
donax

May 5

Along ditch
some plants drawn
longer among ~~but~~ the
area only a ~~few~~ ~~more~~ long
dry pond

Dry pond

Along ditch

Along ditch

16109

Colymbella
colomna

Along ditch

16110

Colymbella
crucifera

Along ditch

16111

Paspalum
distachyon

Along ditch

16112

Eragrostis
flamula

Bottom of dry pond

Set /

16113

Sporobolus
obtusirostris

Aug. 6

Along street

16114

Cirsium
canadense

Between trees of Ry track

16115

Panicum
laevigatum

Dry oak & pine woods

16116

Panicum
Lindleyi

ditto

16117

Panicum
tenuissimum

ditto

16118

Paspalum
pubescens Michx.

ditto

16119

Panicum
ovinum

ditto

16119

16120

Panicum
chrysopsoidifolium

ditto

16120

16121

Panicum
philadelphicum

ditto

16121

16122

Aristida
gracilis

old field

16122

16123

Agrostis
peruviana

ditto

16123

16124

Panicum
polyanthum

Dry oak & pine woods

16125

Panicum
anceps

ditto

16126

Casparium
laeve angustifolium

old field

16127

Panicum
indus

ditto

16128

Panicum
laevigatum

Dry oak & pine woods

16129

Panicum
microcarpon

delle

16129

16130

Panicum
stepidatum

Along small stream
Large bunch, culms
spreading!

Fort Worth Tx. Aug. 7

16131

Schedonoides
paniculata

Prarie

16132

Echinochloa
(*gelayensis?*)

Along dry stream bed

16133

Douglasia
versuta

Prarie

16134

Panicum
scribnerianum

Along dry stream bed
in prairie

16135

Panicum
capillare

ditto

16136

Panicum
fasciculatum
reticulatum

ditto

16137

Paspalum
floridanum

ditto

16138

Panicum
hollii

ditto

16139

Calamagrostis
zelandica

ditto

ll

16140

Vulpia
capitata

ditto

(plant viscid)

16141

Paspalum remotum
(*puberulum*)

ditto

16142

Panicum
tennesseense

ditto

16143

Leptochloa
filiformis

ditto.

16144 *Burdock*
deltoides ♂

ditto

16145 *Andropogon*
sachinoides
torreyanus -

ditto
common on the plain
but mostly post flower

16146 *Tridax* *albescens*

same as 1447c

16147 *Andropogon*
fenestratus

Low prairie
mostly flowers

16148 *Andropogon*
scoparius

ditto

16149

Andropogon
paniculatus

Low prostrate
not glaucous, more
glaucescent & much more
lateral spikes than 147

16150

Panicum
obtusum

Along dry run in
prostrate

Stillwater Okla. Aug 9

16151

Orizyza
obtusata

Wet along roadside
A common form with
condensed panicles
along with it are forms with open
panicles

16152

Eragrostis
caroliniana

Wet along roadside
prostrate

16153

Sporobolus
argutus

Wet along roadside
cut from summit of base
Lower panicle branches & lower
internode of axis viscid

16154

Eragrostis
prostrata

Pravni - purple

16155

Elymus
constratus ✓

Pravni - spike erect
in low ground

16156

Eragrostis
lugens

Pravni - erect, green

16157

Asperyza
smithii

Sich along Ry-dry

16158

Triodia
flava

Pravni

16159 Echinocloa
(Bidayensis?)

along ditch by Ry

16160 Imodia
~~brigo~~
laugata

Low prairie

16161 Panicum
capellani

Prairie

16162 Andropogon *Sacchar*
oides torreyanus

Prairie

16163 Panicum
scribnerianum

ditto

16164

Panicum
virgatum

Panicum
some green - some glaucous

16165

Andropogon
isoporus

Panicum

16166

Elymus
unicollis

2 culms of different
aspect but both seem
to be E. unicollis

16167

Andropogon
furcatus

Panicum
there are glaucous & green
forms.

16168

Elymus
capitatus

Panicum
heads nodding

16169

Sporobolus
complanatus

Prairie
patches mostly concealed
in low upper shrub

16170

Aristida
diversica

Open ground on
prairie

16171

Hemolobos
subulatus

Low woods

16172

Elymus
repens

ditto
Common also on prairie

16173

Muhlenbergia
subulifera

ditto

16174

Leptochloa
pliformis

Low ground along
stream

16175

Panicum
clandestinum

ditto

16176

Elymus
striatus

Low woods
near road

16177

Leptochloa
furciculata

Along ditch

16178

Tripsacloa
acuminata

Along ditch

16179

Yucca
latifolia

Low woods

16180

Clitoria
verticillata

Prairie

Amarillo, Tex. Angell
16181

Oxyria
hirsuta

Gravel along Ry track
only one specimen
seen

16182

Sporobolus
cryptandrus

Plains - common - mostly
rust patches hidden in the
white upper sheaths.

16183

Aristida
abscondens

(What I speak of as plains is
on the right of way of the Ry tracks
of Amarillo only, usually in the
cleared out scrub which is much lower
than level plains.
Gravel along Ry tracks

16184

Aristida
nugitris

Plain

16185

Scholorocarpus
paniculatus

ditto
small form

16186

Bouteloua
hirsuta

ditto

16187

Panicum
obtusum

ditto

16188

Glycyrrhiza
comadensis
(*brachystachys*)

Gravel along track
only 1 spec. seen

16189 *Aristida*
purpurea

Plains
Monty post flower - taller
& more stiffly erect than
a. longifolia

16190 *Andropogon*
viridulus

Plains - large compact
bunches, culms crowded, strictly
erect

16191 *Eragrostis*
sessilis

16192 *Bouteloua*
curtipendula

Plains

16193 *Sitona*
hirsuta

ditto

16194

Aristida

Plant

16195

Cenchrus
complanatus

Gravel along Rytrack

16196

Aristida
longicoma?

Plant
probably a *longicoma* but also
shown in 197

16197

Aristida
longicoma

Plant - common
along ditch

16198

Aristida
longicoma

16199 *Andropogon*
saccharoides Wong-pau

16200 *Chimaphila*
retayana

16201 *Echinoclele*
retayana

16202 *Crupina*
(Mexicana)

16203 ditto
Crupina
mexicana

Plain - common

In water of ditch
spikes at first appressed
later spreading

ditto, Probably
all the forms here at
Anverillo are the same
species

A weed along street
spikes at first
appressed, later spreading

ditto

to show different aspects

16204

ditto

ditto

16205

ditto

ditto

16206

Panicum
barbipulvinatum

Panicum

16207

Bulbocylis
dactyloides ♂

ditto

16208

Borsetonia
gracilis

ditto

16209

Chloris
virgata

Mud in lawn

16210

Sporobolus
cryptandrus

Mud along street
Soil moist here, peculiar
more spreading than the
plants form

16211

Limicola
zanzibarica

In water of ditch

16212

Chloris
mericallata

Plains - usually
grows in large patches
2-4 ft across

16213

Schedonarda
parviflora

Plains - common
form (see 185)

16214

Sporobolus
arvensis

16215

Aristida
parva

16216

Aristida
drummondii
(small form)

16217

Aug 12
Aristida
obtusiuscula

16218

Desmodium
truncatum
(bunchy, straggly)Plain - common
When free to develop its form,
hemispherical bunches 1-2 ft across
the straight stiff leaves pointing in all
directions from the center.Plain - large form, but
more erect than D 15.Ditch beside Ry track to
cut. Probably *A. fasciculata*.Moist place along
Ry right of way, well
at top. Southern.

16219

Panicum
halmi

Plains

1891

16220

Leptochloa
gussoneana

Ditch along street

16221

Eragrostis
 mexicana

ditto = 202*

16222

Sedalia Colo 2 1/2 miles south of
Elymus canadensis
(crushed grains)

Denver - Aug 13.
Plains

16223

Eragrostis
 mexicana

Gravel of track

16224

Muhlenbergia
wrightii

Plain

16224

16225

Aristida

Plain

16225

16226

Calamagrostis
longifolia

della

16226

16227

Aristida

della

area as tall as the long side -
stiff - as part of situation

16227

16228

Gymnos
brachystachya

della

16228

16229 *Glycyrrhiza*
brachystachya

ditto

16230 *Aristida*
zanderiana

ditto

16231 *Agropyron*
Smithii

ditto - root stocks
present

16232 *Setaria*

ditto

16233 *Poa pratensis*
maybe *P. pratensis*
fall 45 off

ditto with
Agropyron Smithii

16234

Glycyrrhiza
canadensis

Placem

16235

Stipa
veseyi

ditto

16236

Agropyron
tenerrimum

ditto

16237

Aristida
longiseta

ditto

16238

Muhlenbergia
quadrifida

ditto

Boulder Colo -

16239

Stipa
ambigua

16240

Poa
heterophylla

16241

Artemisia
griffithsii

16242

Sitacium

16243

Sporobolus
asper

Aug. 14.

Rock hill among
brush

Wet along road

Rock hill among
brush

ditto

Along road in
moist place

16244

Muehlenbergia
racemosa

Rocky hill

11271

16245

Staurion

ditto

16246

Elymus
simplex

ditto - among brush

16247

Andropogon
fructulosus

Rocky hill - lower
sandy moor.

16248

Elymus
simplex

ditto - among brush

16249

Almopsis
smithii *molle*
(pubescent)

ditto

16250

Poa
compressa

ditto

16251

Androp.
funiculata

ditto

16252

Bromus
bigysoformis

Mud along road
common on hills

16253

Celmsseta
zelayensis?

along ditch in water
around = 254

16254

Lehinacela
zelayensis?

ditto - growing
with 268

Longs Peak + vicinity Aug 16

16255

Poa intertexta

Among rocks near summit,
transverse. Probably an alpine
form of *intertexta* rather than *occidentalis*

16256

Agrostis
hircuensis

ditto

16257

Festuca brachyphylla

ditto

16258

Agropyron
Schubneri

ditto

16259

Calamagrostis
pusilliflora

Aug 17 Chocoma Lake

16260

Fern

ditto (photo)

trip

in rocks 11500 feet

16261

Fern

in rocks 11500 feet

16262

Poa *reflexa*

alpine meadows
11500 ft

16263

Poa
epithemoides

alpine rocky soil
above timber 11500 ft

16264

Poa
reflexa

Alpine meadow
11500 ft

16265

Poa reflexa

Alpine meadow
11500
longer than 264

16266

Poa
alpina

Open rocky bank
11600 ft

16267

Poa interior

Open stony soil
between rocks 11000

16268

Poa
whelanii

Open plain
meadows 10000

16269

Poa nevadensis

Open pine woods
10000

16270

*Bromus
richardsoni*

By growth in woods,
Partly downy
See Photo

16271

Poa sheldoni

Pine woods
10000

16272

*Festuca
multiflora*

Open pine woods
10000

16273

Poa grayana

Pine woods
9500

16274

Muhlenbergia
bryoides

Open woods
at Longs Peak Dam
9000

Longs Peak - Between Timber Line

16275

Poa
lettermanii

sunlight
Cabin (11000) and Summit
Aug 14

16276

Poa
lettermanii

among rocks at summit
the only vegetation.

16277

Festuca
supina

at about 13000, the
first seen on the ascent
Frequent to summit

Rocks, 13000

16278

Poa *pattersoni*

Rough soil below
"Keyhole" 12500

16279

Poa grayana

Rocky soil 12600

ditto

16280

Poa muscicola

16281

Poa grayana

ditto

16282

Poa grayana

ditto

16283

Allopecurus
griffithsii

Open dry ground
of P. J. Davis, 9000 - near
curves curvical

Long Peak area, Aug 20

16284 Embryonaria

Open dry place
Photo

16285 Juniper

ditto - Photo

16286 Poa
interna

new soil along
road - a vigorous growth

16287 Poa
interna

ditto - a typical
bunch

16288 Agropyron
heterophyllum

open dry ground
ordinary

16289

Ag. tenerum

ditto

16290

Agropyron tenerum

ditto - spike dense

16291

Agropyron
tenerum

ditto - short-awned

16292

Agropyron tenerum
(common)

ditto - long-awned
286-292 are a series
all same species from
same locality

16293

Lestuca multiflora
multiflora

two soil along
road - vigorous bunch

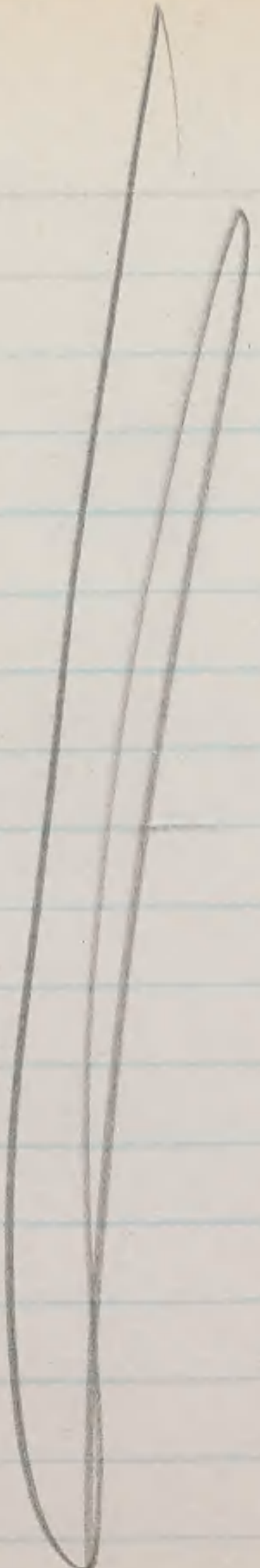
16294

16295

16296

16297

16298



Do not
use
any of
these
numbers

16299

16300

16301

16302

16303

18 16449

18 16450

18 16451

18 16452

18 16453

6553

17
30
4 2/30

