

16290  
15974 - ~~16453~~

A.S. Hitchcock

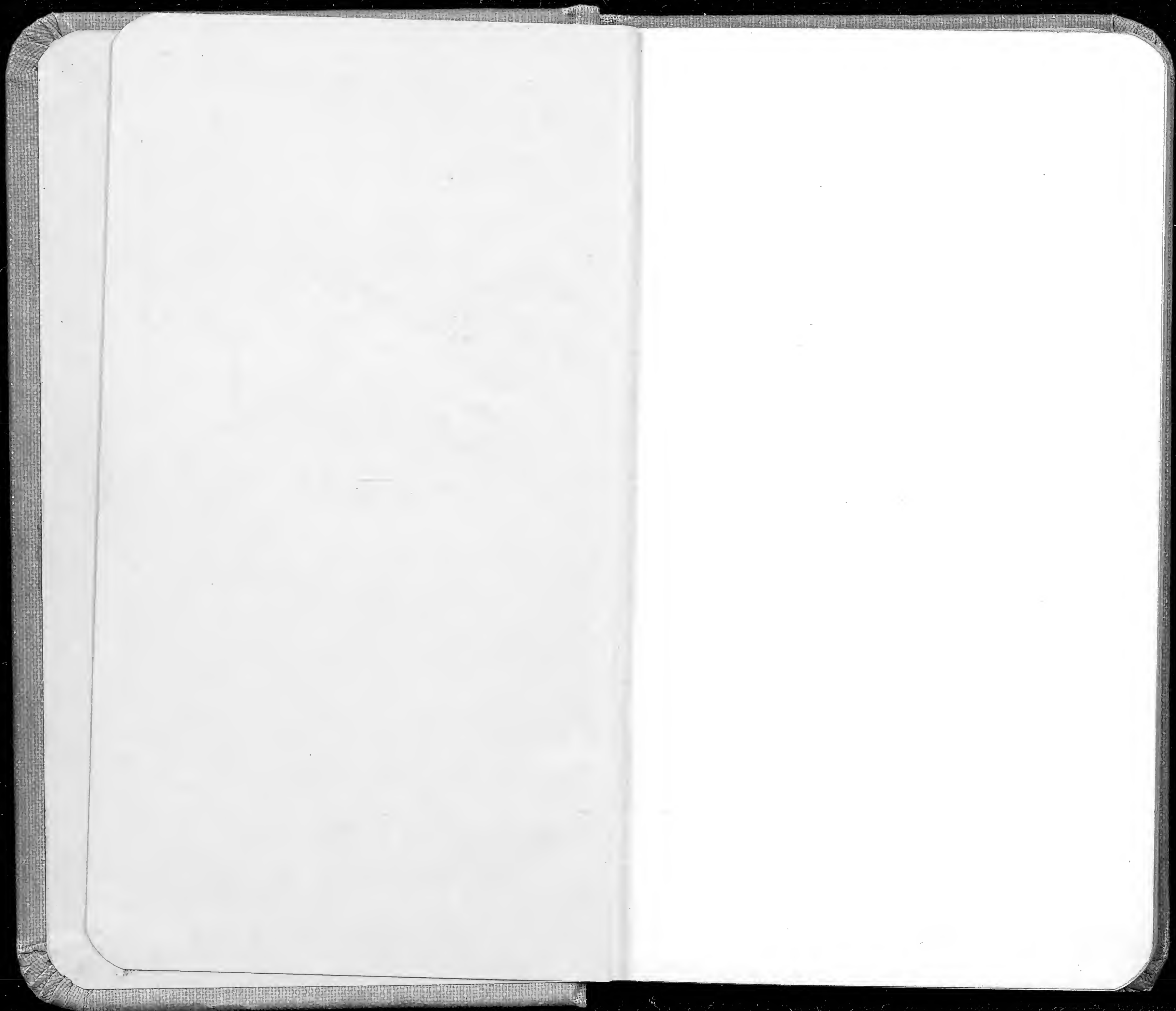
1917 to 16066

1918 begins 16067

30



HITCHCOCK.



Montana

15974 *Agrostis*

15975 *Juncus*

15976 *Danthonia*

15977 *Cyperus*

15978 *Panicum*

July 25

Summit of ...  
among rocks & logs  
found among rocks.

Also found among rocks  
rather ...  
of ...  
somewhat open

Also found in ...  
some ...

Like

Found also along  
trail in woods.



15979

*D. ...*  
*...*

*...* *...* *...*  
*...* *...*

15980

*...*  
*...*

*...* *...* *...*  
*...*

15981

*Agropyron*  
*repens*

*...* *...* *...*  
*...* *...* *...*

15982

*...* *repens*

*delle*, *...* *glauca*

15983

*...* *repens*

*delle* *...* *...*

All 3 forms in same  
patch

15984

*Trichostema  
arctium*

open field

15985

*Trichostema  
colubrinum*

open field, woods,  
shrub, timothy

15986

*Trichostema  
alatum*

open field, slopes

15987

*Panicum  
nutans*

open field, slopes  
abundant, present

15988

*Calamagrostis  
canadensis*

Summit of Mt. Mansfield  
Culm root, some woody  
purple, glabrous, flat wide  
this is probably a *Calamagrostis*  
of the *canadensis*



15989

*Agrostis*  
*peruviana*

15990

*Agrostis*  
*peruviana*

15991

*Agrostis*  
*peruviana*

15992

*Agrostis*  
*peruviana*

15993

*Agrostis*  
*peruviana*

Summit of Mt. Huayna  
open mossy place  
blanched, numerous & small  
along trail  
along trail

Summit of Mt. Huayna

Summit of Mt. Huayna  
apparently, mossy

Below summit of  
Mt. Huayna, along trail  
in woods.

15994

get

*Agave*

15995

*Agave*

15996

*Agave*

15997

*Agave*

15998

*Agave*

Journal - 1. 1950

in low soft, marshy  
country

15. 15. 1950

Sp. in wet ground -  
along water - described stem  
but not in specimens

found along track

Sp. in ground  
along water by track

Along ditch by track  
running water described  
stems but no floating  
runners (see 15995)



15999

*A. p. ...*

Same as 795 - following  
stem, found ...

16000

*A. p. ...*

Same as 795 - the following  
... along the surface of ...

16001

*A. p. ...*

Same as 795 - following  
...

16002

*A. p. ...*

Same as 795 - following  
... 999-002 are  
all from same patch

16003

*A. p. ...*

Same as 795 - following  
... Spikes often double

18004

*Agrostis*  
*peruviana*

In grassy along

18005

*A. capensis*  
*peruviana*

Slope along  
common

18006

*Dactyloctenium*  
*aegyptium*

Open ground

18007

*A. peruviana*  
*peruviana*

18008

*Calamagrostis*  
*peruviana*

Swale  
common



18009 *Agrostis*  
willow

*Agrostis*  
common

18010 *Panicum*  
~~...~~

*Panicum*  
...  
...  
...

18011  
*Agrostis*

low plain ...  
...  
...

18012 *Agrostis*  
...

...  
...  
...

18013 *Agrostis*  
...

...  
...

16014

*Lychnis viscaria*  
along road

20-120

10-15

16015

*Lychnis viscaria*  
along road

20-120 along road

16016

*Lychnis viscaria*  
along road

10

16017

*Agrostis*  
*peruviana*

along road about  
300 ft

Pittsburgh, Pa. Aug 22

16018

*Zizania*  
*aquatica*

Along shore of Thompson's  
Farmy masses in the  
lake, growing in water  
annual, 2-3 ft high

19/



16019

*Phytolacca*  
*frutescens*

covered with  
a layer of  
moss

grows in  
wood,

16020

*Phytolacca*  
*maritima*

more soil

16021

*Phytolacca*  
*maritima*

along stream - possible  
level

16022

*Phytolacca*  
*frutescens*

On rocks at foot of  
slope. growing in  
place seen in 023

16023

*Phytolacca*  
*frutescens*

dotted - crowned

16024

*Hyg. mus*  
*lucida*

along slope

16025

*Sphaerocarpha*

along slope

16026

*Promy*  
*actinella*

along slope  
faded recording

16027

*Gonolobus*  
*ovatus*

along slope  
faded

16028

Burlington Va  
*Cladonia*  
*frumentacea*

Aug 28  
along road  
Wednesday



1 16029

*Psidium*  
*sp.*

Small tree, round  
prostrate.

1 16030

*Psidium*  
*sp.*

Small tree, round  
prostrate.

1 16031

*Psidium*  
*sp.*

Small tree, round  
prostrate.

1 16032

*Mylodon*  
*foliosus*

Small tree, round  
prostrate.

1 16033

*Albizia*  
*sp.*

Small tree, round  
prostrate. In woods  
along a cliff -  
leaves dark, venoles  
clear, well at base  
but somewhat lax or  
reddish along the  
margins.

sd

18034

18035

18036

18037

Poa

laxa

18038

Poa

canadensis

Indicaria ...  
Linnæus ...

Grass ditto common  
in the corn. Bundles be-  
tween rocks not found. It  
kept very dry, but some  
culms spreading, & some  
In bog at head of Lake  
Gulf. Ind. only a few  
specimens seen



16039 *Calamagrostis*  
*Chrysochloa*

Bog, detto - rare

16040 *Poa*

Bog, detto, in comune,  
tutti i giardini

16041 *Poa*  
*trivialis*

Bog detto sopra  
tutti i giardini.

16042 *Melica*  
*spuriopurascens*  
alt.

Bog detto in colline  
in le valli e loro stadi.

16043 *Calamagrostis*  
*longistylis*

Bog detto - comune





18049

*Handwritten notes for entry 18049*

18050

*Handwritten notes for entry 18050*

18051

*Handwritten notes for entry 18051*

18052

*Handwritten notes for entry 18052*

18053

*Handwritten notes for entry 18053*

~~July 25~~ Mt Wash

*Handwritten notes on the right page, top section*

*Handwritten notes on the right page, middle section*

July 26 Mt Wash  
*Handwritten notes on the right page, bottom section*

18054

18055

18056

18057

18058

*[Faint handwritten notes on the top right page]*

*[Faint handwritten notes on the bottom right page]*

*[Faint handwritten note on the left page]*

*[Faint handwritten note on the left page]*

1917

18059

*Chamaeleon*

... ..  
... ..  
... ..

18060

*Chamaeleon*

... ..  
... ..  
... ..

18061

*Chamaeleon*  
*parvicauda*

... ..  
... ..

18062

*Parvicauda*

... ..  
... ..

18063

*Parvicauda*

... ..  
... ..



16064 *Parthenocera*

*Parthenocera*

16065 *Parthenocera*

*Parthenocera*

16066 *Parthenocera*

*Parthenocera*

---

1918 June 7

---

1918 Hollywood Riverside

16067 *Parthenocera*

edge of ...

16068 *Parthenocera*  
*laxa*

edge of ...

1918

18069

*Spartina*

*patens*

pygmaea

18070

*Panicum*

*canadense*

Low open fields

18071

*Panicum*

*scaberrimum*

Prairie

18072

*Chytis*  
*umbellata*

Low marshy fields,  
not known elsewhere

18073

*Andropogon*  
*illinoensis*

Open dry ground

16074

Urtica

Open dry ground  
spike erect

16075

Chilomenium

Open ground - old  
field

16076

Urtica  
ingens

Open dry ground - old  
annual - erect, spike  
spreading

16077

Urtica  
ingens

Open dry ground

16078

Chaetochloa  
genucula

Open dry ground  
perennial



16079

Paspalum  
glaberrimum

Sept. in grass

16080

Stenotaphrum  
secundatum

Jan. in grass

16081

Stenotaphrum  
meurionum

Sept. in grass

16082

Dactyloctenium  
aegyptium

Nov. in grass

16083

Tripsacum  
flavum

Sept. open ground

16084 Panicum  
hoseri

Dry oak woods

16085 Panicum  
hoseri

Dry oak woods

16086 Panicum  
hoseri

Close part  
open - rocky  
spiky, nodding

16087 Panicum  
hoseri

Dry oak woods

16088 Panicum  
hoseri

Dry oak woods

16089

Ulex

dry open ground

16090

Ulex

dry open ground

16091

Ulex

dry open ground  
near small house  
near same patch

16092

Ulex

dry open ground

16093

Andropogon

dry prairie, lower shrubs  
woolly - many lateral  
spikes - spikes several 7-7



16094

*Scilla*  
*maritima*

low moist ground

16095

*Scilla*  
*maritima*

marginally -

16096

*Scilla*  
*laevi angustifolia*  
Vasey

low ground

16097

*Scilla*  
*tunessense*

low ground

16098

*Scilla*  
*tunessense*

litts

18099

Parus  
parvulus

Parus

18100

Parus  
parvulus

Low ground  
Bios from open  
fields

18101

Parus  
parvulus

Low ground

18102

Parus  
parvulus

up ground

18103

Parus  
parvulus

set

Dry oak woods

Field sketch 1926

18104 *Echinochloa*  
*crispata*  
*Paysonis*

18105 *Echinochloa*  
*crispata*

18106 *Echinochloa*  
*crispata*

18107 *Paspalum*  
*crispum*

18108 *Echinochloa*  
*crispata*

Spec. 5  
Along ditch  
some plants become  
longer and more  
more or less ~~long~~  
dry pond

Dry pond

Along ditch

Along ditch



18109

Polypodium  
clavatum

Along ditch

18110

Polypodium  
virginicum

Along ditch

18111

Paspalum  
distachyon

Along ditch

18112

Cyperus  
flaccidus

bottom of dry pond

Set /

18113

Sporobolus  
heterogrammus

Aug 6

Along street

16114

*Cerchaeus*  
*subulnatus*

Between trees of R. track

16115

*Panicum*  
*laevigatum*

In oak spruce woods

16116

*Panicum*  
*Lindleyi*

ditto

16117

*Panicum*  
*tenuissimum*

ditto

16118

*Paspalum*  
*pubescens* Muhl.

ditto

18119

*Panicum  
ovinum*

ditto

18120

*Panicum  
chrysopsoidifolium*

ditto

18121

*Panicum  
philadelphicum*

ditto

18122

*Aristida  
gracilis*

All good

18123

*Aristida  
peruviana*

ditto



16124

*Polypodium  
polypodioides*

in oak - pine woods

16125

*Polypodium  
anceps*

in oak

16126

*Polypodium  
laeve angustifolium*

old field

16127

*Polypodium  
laeve*

in oak

16128

*Polypodium  
laeve*

in oak & pine woods

16129

*Microcarpon*  
microcarpon

little

16130

*Microcarpon*  
microcarpon

Along small stream  
along stream

York Mont. Twp. Aug. 7

16131

*Microcarpon*  
microcarpon

Prairie

16132

*Microcarpon*  
Microcarpon

Along dry stream bed

16133

*Microcarpon*  
microcarpon

Prairie

16134

*Panicum*  
*capillare*

Along dry stream bed  
in prairie

16135

*Panicum*  
*capillare*

ditto

16136

*Panicum*  
 *fasciculatum*  
*reticulatum*

ditto

16137

*Panicum*  
*flavescens*

ditto

16138

*Panicum*  
*holleyi*

ditto



18139

*Calamagrostis*  
*zelandica*

ditto

u

18140

*Viola*  
*canadensis*

ditto

(plant viscid)

18141

*Paspalum remotum*  
(*puberulum*)

ditto

18142

*Panicum*  
*terrestris*

ditto

18143

*Leptochloa*  
*peruviana*

ditto.

18144 *Andropogon*  
*dactyloides*

ditto

18145 *Andropogon*  
*suecicarinus*  
*torreyanus*

ditto  
Common on the plain  
but rarely past flower

18146 *Andropogon*  
*albescens*

same as 18145

18147 *Andropogon*  
*peruvianus*

Same species  
with glaucous

18148 *Andropogon*  
*scoparium*

ditto

18149

*Andropogon*  
*sp.*

low prostrate  
stems & branches  
147

18150

*Andropogon*

dry run

Millwater Okla. Aug 2

18151

*Eragrostis*  
*sp.*

Wet along roadside  
A common form with  
condensed panicle  
Lower part of panicle with open  
panicle

18152

*Eragrostis*  
*sp.*

Wet along roadside  
prostrate

18153

*Sporobolus*  
*argutus*

Wet along roadside  
cut from geniculate base  
Lower panicle branches & lower  
internode of axis raised



16154 Eragrostis  
subnuda

Pravni - purple

16155 Glycyrrhiza  
constricta

Pravni - speckled  
in low ground

16156 Eragrostis  
sp.

Pravni - med. green

16157 Agropyron  
smithii

Such along Ry - dry

16158 Tridax  
florosa

Pravni

18159 *Echinocloa*  
(*Belarus*?)

along ditch by Key

18160 *Imperata*  
~~*bracteata*~~  
*bracteata*

Low prairie

18161 *Panicum*  
*capellanum*

Prairie

18162 *Andropogon saccharatus*  
*side* *torreyanus*

side

18163 *Panicum*  
*scrubianum*

ditto

18164

Erigeron  
acris

Rever  
some green - some yellow

18165

Andropogon  
peruvianus

Rever

18166

Elymus  
capensis

2 culms of different  
height but both seem  
to be E. capensis

18167

Andropogon  
furcatus

Rever  
heads are glaucous & green  
barren.

18168

Elymus  
capensis

Rever  
heads nodding



16169

*Sporobolus*  
*complanatus*

Prostrate  
perennial, mostly unbranched  
in long tufts

16170

*Aristida*  
*argentea*

Open ground on  
prairie

16171

*Panicum*  
*virginicum*

Low woods

16172

*Elymus*  
*capensis*

ditto  
Common also on prairie

16173

*Trichlorostema*  
*subuliferum*

ditto

16174 *Leptochloa*  
pliginskii

Low ground along  
stream

16175 *Panicum*  
clavatum

ditto

16176 *Elymus*  
trialis

Low woods  
near road

16177 *Leptochloa*  
fourcoides

Along ditch

16178 *Tripsacis*  
acuminata

Along ditch

18179

Yucca  
lanceolata

Low woods

18180

Chloris  
verticillata

River

Amorpha sp. Aug.  
18181

Grass  
herb

Gravel along R. track  
only one specimen  
seen

18182

Sporobolus  
cryptandrus

Plains - common - mostly  
near ponds, especially the  
smaller ones.

18183

Aristida  
obliquata

(What I speak of is  
on the right of way of the R. track  
of Amorpha only, usually in the  
cleared soil which is much more  
in level places.  
Gravel along R. track



18184 *Aristida*  
*wrightii*

Plain

18185 *Scholorocarpus*  
*parviflorus*

ditto  
Small portion

18186 *Desfontainia*  
*musci*

ditto

18187 *Panicum*  
*obtusum*

ditto

18188 *Glycyrrhiza*  
*complanata*  
(*brachystachya*)

Gravel along track  
only 1 spec. seen

18189 *Aristida*  
serpura

Flame  
Monte, west tower - table  
& more stiffer, well than  
*a. longata*

18190 *Andropogon*  
viridifolius

Flame - large compact  
bunches, culms rounded, freely  
erect

18191 *Eragrostis*  
stricta

18192 *Bouteloua*  
curtipendula

Flame

18193 *Syntherisma*  
mydas

ditto

18194

*Aristida*

Plum

18195

*Cynobasis*  
*canadensis*

Gravel along R. track

18196

*Aristida*  
*longicauda?*

along R. track

18197

*Lidia*  
*virgata*

Plum - common  
along ditch

18198

*Lidia*  
*virgata*



16199 *drosera*  
*saccharoides* *truncatella*

16200 *Chironomus*  
*truncatella*

16201 *Echinocella*  
*truncatella*

16202 *truncatella*  
*truncatella*

16203 ditto  
*truncatella*  
*truncatella*

*truncatella*

In water of ditch  
spine at first appressed  
later spreading

ditto. Probably  
all the forms here at  
*truncatella* are the same  
species

A weed along stream  
*truncatella* at first  
appressed, later spreading

ditto

to show different aspects

16204

ditto

ditto

16205

ditto

ditto

16206

Pomarine  
harlequin

Pomarine

16207

Buller's  
duchlan ♂

ditto

16208

Bonaparte  
gull

ditto

16209

*Chloris*  
*virgata*

Mud in lawn

16210

*Sporobolus*  
*superciliatus*

Mud along street  
Soil more fertile than  
more spreading than the  
slower form

16211

*Limicola*  
*guyanaensis*

in water of ditch

16212

*Chloris*  
*verticillata*

Plants - usually  
grows in large patches  
2-4 ft across

16213

*Schedonarda*  
*paniculata*

Plants - common  
form (see 185)



16214 *Sporobolus*  
crispus

✓  
16215 *Ariza*  
canon

✓  
16216 *Arizata*  
arvancensis  
Small plant

Aug 12  
16217 *Arizata*  
arvancensis

✓  
16218 *Arizata*  
arvancensis

Small - common  
When you develop it, you  
see spherical buds, 1-2 glaucous  
in shape, they are pointing in all  
directions from the base.

Pharm. - some plants that  
were erect like D. 5.

Such as side of road in  
cut. Probably a *gibberulata* type.

More place along  
right of way, small  
at top, smooth.

18219

*Campylone  
trabum*

Plain

18220

*Leptochloa  
parviflora*

Grass along street

18221

*Eragrostis  
indica*

Field - 2025

18222

*Cyperus canadensis*  
(Cyperus, ssp.)

Sewer - Aug 13.  
Plain

18223

*Transect  
meridiana*

Gravel of track

16224

*Stachys*  
*wrightii*

Plain

16225

*Arundo*

Plain

16226

*Calamagrostis*  
*longifolia*

della

16227

*Arundo*

della  
tutte le volte che la longitudinale  
stiff - aspect of situation

16228

*Chrysopsis*  
*brachystachya*

della



16229 *Glycyrrhiza*  
*glabra*

ditto

16230 *Aristolochia*  
*peruvianum*

ditto

16231 *Urtica*  
*smithii*

ditto - root stock  
present

16232 *Setaria*  
*viridis*

ditto

16233 *Poa pratensis*  
margin. P. pratensis var  
tall & stiff  
60

ditto with  
approx. smooth

16234

*Ulex*  
*canadensis*

*Ulex*

16235

*Ulex*  
*virginicus*

*Ulex*

16236

*Ulex*  
*virginicus*

*Ulex*

16237

*Ulex*  
*virginicus*

*Ulex*

16238

*Ulex*  
*virginicus*

*Ulex*

Boulder Colo -

16239

*Stipa*  
*viridula*

Aug. 14.

Rock hill among  
brush

16240

*Poa*  
*catenata*

Wet along road

16241

*Eleocharis*  
*griffithii*

Rock hill among  
brush

16242

*Silene*

ditto

16243

*Sporobolus*  
*asper*

Along road in  
moist place



18244

*Machelocarpus*  
racemosa

Rocky hill

18245

*Sidaea*

della

18246

*Hyssopus*  
scaber

della - sunny bank

18247

*Asplenium*  
platyneuron

Rocky hill - lower  
moist woods.

18248

*Hyssopus*  
scaber

della - sunny bank

18249

*Al. n. p. s. s.*  
*Smethia molle*  
*pubescens*

ditto

18250

*P. n.*  
*coriifera*

ditto

18251

*A. n. p. s. s.*  
*juncea*

ditto

18252

*Bromus*  
*brachycaulis*

Much along road  
common on hills

18253

*Chrysanthemum*  
*pubescens?*

ditto in water  
around = 257

18254

*Relinacala*

*gibbosa*

detto - *gibbosa*  
near 3

Long feet & mainly among

18255

*Relinacala*

Among rocks near summit,  
probably an alpine  
form of more rather than *gibbosa*.

18256

*Relinacala*

*gibbosa*

detto

18257

*Festuca brachyphylla*

detto

18258

*Agropyron*  
*gibbosa*

detto



16259

*Calamagrostis*  
*pauciflorascens*

11500 11500

16260

From *... ..*

in rocks 11500 ft

16261

From

in rocks 11500 ft

16262

*Poa* *reflexa*

Alpine meadows  
11500 ft

16263

*Poa*  
*sp. ...*

Open rocky soil  
above timber 11500 ft

16264

*Poa*  
reflexa

Alpine meadow  
11500 ft

16265

*Poa reflexa*

Alpine meadow  
11500  
open rocky soil

16266

*Poa*  
spina

open rocky soil  
11500 ft

16267

*Poa nutans*

open stony soil  
between rocks 11500

16268

*Poa*  
whitlockii

Open plain  
meadows 10000

16269

Trifolium nevadense

Open pine woods  
5000

16270

Briza  
nebulosa

By growth in woods,  
partial sun

16271

Poa Sheldoni

Woods  
5000

16272

Festuca  
multiflora

Open pine woods  
5000

16273

Poa  
gracilis

Woods  
7500



16274

*Phlox*  
sp.

Long 7' tall. Between timber line

16275

*Phlox*  
sp.

16276

*Phlox*  
sp.

16277

*Phlox*  
sp.

16278

*Poa pattersonii*

*Phlox*

sure shoot  
Coburn 11000' on summit

many rocks at summit  
in soil, etc.

at about 12000 ft  
quite seen on the summit  
Frequent to summit

Rocks 13000

Rocks seen below  
Keyhole 12500

18279

*Poa grayana*  
V.V.

Rocky soil 12500

18280

*Poa repens*

ditto

18281

*Poa grayana*  
V.V.

ditto

18282

*Poa grayana*  
V.V.

ditto

18283

*Poa*  
*griffithsii*

Open dry soil  
P. 10000 - 12000 ft  
Common

Long, flat, open, Aug 20

16284 Endem. Mamm.

Open dry place  
Photo

16285 Grass

ditto - Photo

16286 Grass

new soil along  
road - a vigorous growth

16287 Grass

ditto - a typical  
bunch

16288 Acacia

open dry ground  
abundant



16289 Agropyron

dello

16290 Agropyron tenerum

dello - sp. case

16291 Agropyron  
tenerum

dello - short-stem

16292 Agropyron tenerum  
(microcarpum)

dello long-stem  
256-292 are a series  
all same spec. from  
same locality

16293 Lectuca multiflora  
multiflora

very soil along  
road - vigorous bush

16294

16295

16296

16297

16298



Do not  
use  
any of  
these  
numbers

16299

16300

16301

16302

16303



18 16449

18 16450

1 16451

1 16452

1 16453

6553

14  
130  
2  
30



