

10

10

10

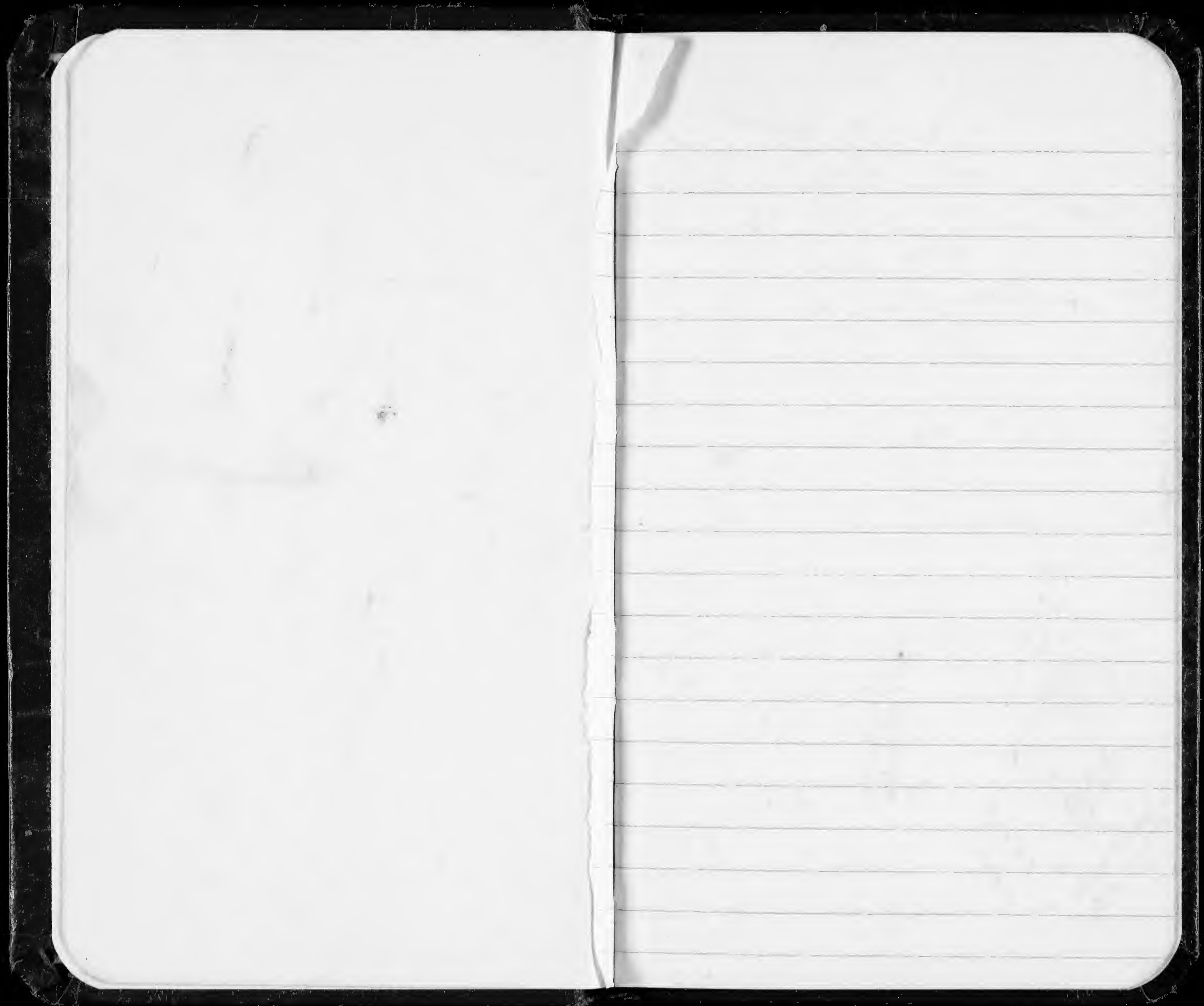
5

Memoranda

10

10

NO ADD - CBA
Done 8/19/68



18 NOV.

Howland Island

- ES16-24 BFB 2 Eggs
- 25 RTTB nothing - (#5) 1 Ad.
- 26 Abandon RTTB (#6)
- 27 Ground Litter - RTTB area
- 28 TSFB 2 Eggs
- 29 RTTB - 1 chick
- 30 RTTB Abandon #37
- 31 RTTB 1 Egg
- 32 RTTB Immature
- 33 BFB 1 Egg
- 34 BFB 2 Eggs
- 35 BFB 1 chick (marked) 1 Egg
- 36 Ground Litter Nest ^{between} Sooty - RTTB
- 37 BFA 2 Eggs
- 38 } Sooty TERN
- 39 } Colony
- 40 } Litter
- 41 }
- 42 }

84
27

60

61
30

91
94

185

26
28

54
56

84
86

160
162

188

43 }
44 } Sooty
45 } TERN
46 } Colony litter
47 }

48 BB - 2 Eggs

49 BB - 2 Eggs

50 BB - 2 Eggs

51 BB - 3 Eggs

52 BB - 2 Eggs

53 BB - 2 Eggs

54 BB - 2 Eggs

5 BB - 1 Egg

6 BB - 2 Eggs

7 BB 1 Egg / 1 chick nest

8 BB 2 Eggs - 2+ ad.

9 BB 1 small Downy Chick

60 Ground litter South Boston Area BB

61 " " " " " "

62 - BKB - 1 Egg

63 BKB - 2 Eggs

64 Ground litter 42 between ^{light} _{litter} ^{mark}

65 RFB - 1 Egg 2+ adults

66 RFB - 1 Egg

67 RFB - 1 Egg 1+ Ad.

68 Lesser colony litter

69 RFB 1 small downy chick

70 RFB 1 Egg

71 } Lesser Frigate Colony

72 } Litter

73 } Litter

74 RFB 1 Egg ~~1+ Ad~~

75 RFB 1 downy young small 1+ Ad

76 Lesser Frigate Colony Litter

77 RFB 1 small downy chick

78 RFB 1 Egg

79 } Frigate colony

80 } Litter

81 RFB / ~~EGG~~

82 } Ground litter
83 }
84 }

82 Long Crosses }
83 tribulus }
84 lighthouse }

§

6798 }
6797 } Smooth
6796 } TERN HEAD
6795 } ES 16-95

Howland Island

Remarks

- ① - Frigates nests -
- ② RFB nests -
- ③ → Look at TERNS - breeding
- ④ RFB studies → marked nests
Also could with TB
- ⑤ Litter samples - and area correlation

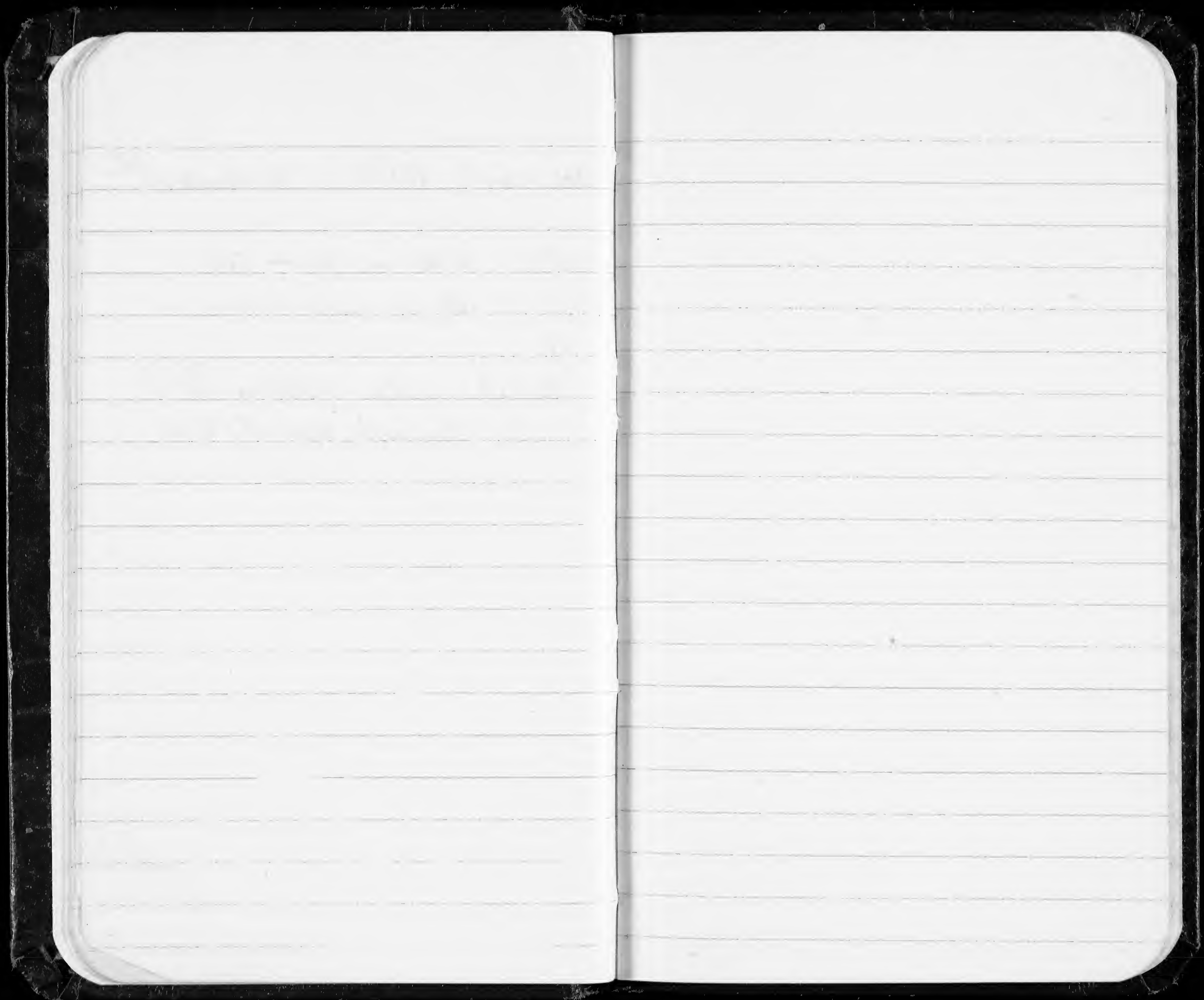
One adult BFB - 1 ~~Wing~~ ^{ad} ~~member~~

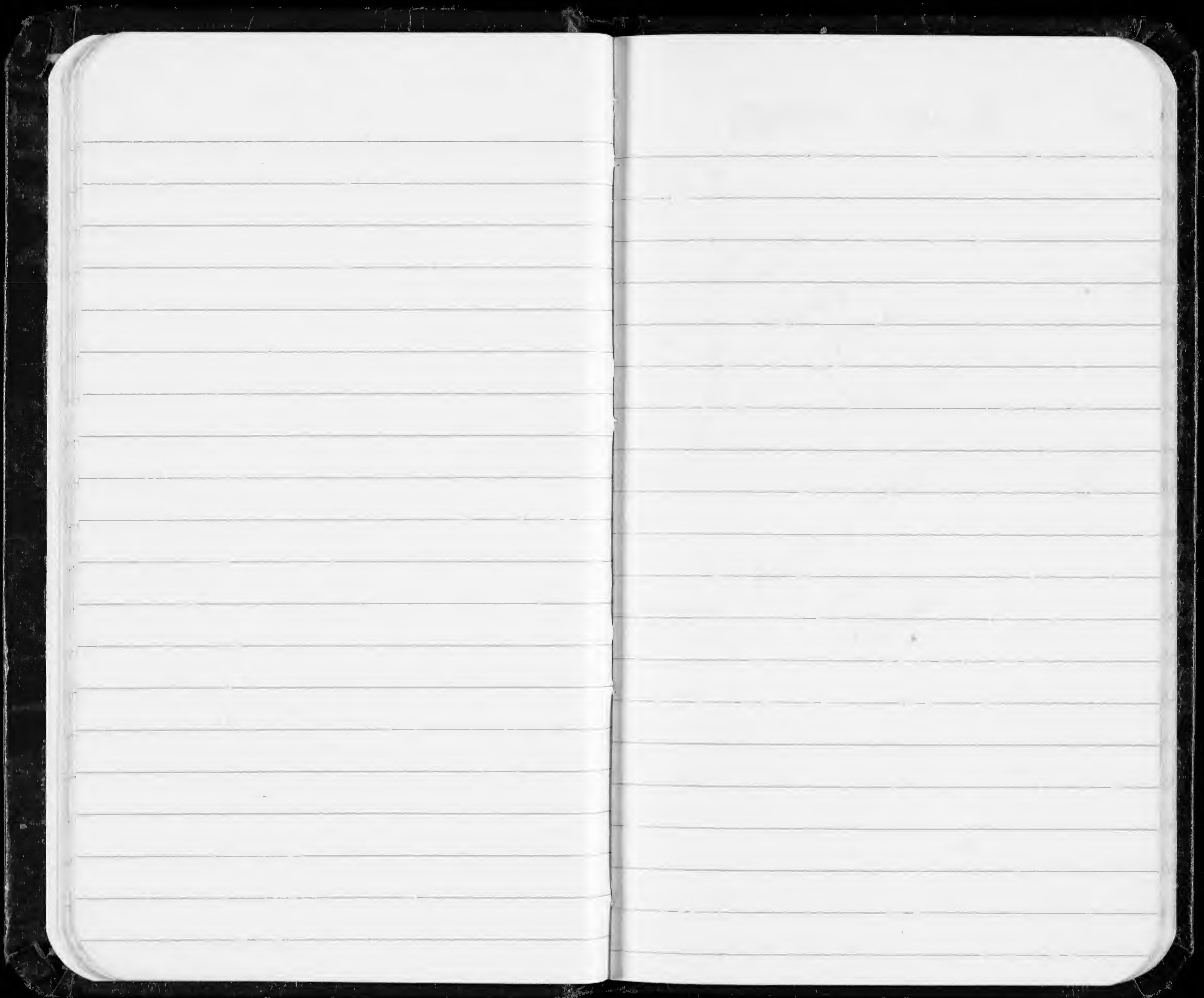
another - 2 Ad - on Top of Bill

Third - 1 Ad on Gular area

↙

noticed white bleeding BFB
on Howland Nov. 4, 1966





BAKER Island

85

86

87

88

89

90

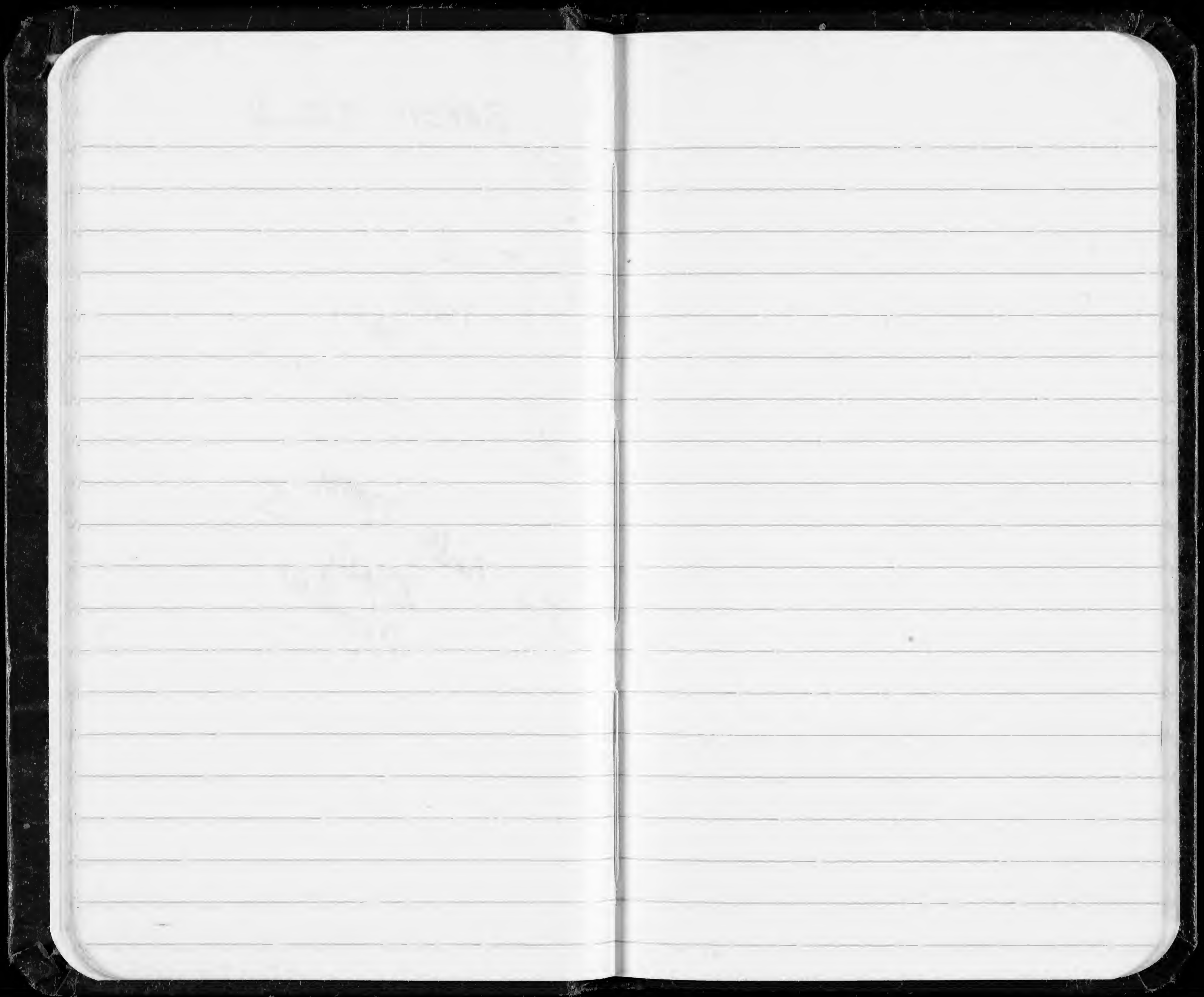
91

92

93

} all
Noddy
Terns
1 egg nests

94 - Noddy Tern
Nests
Chamber 5

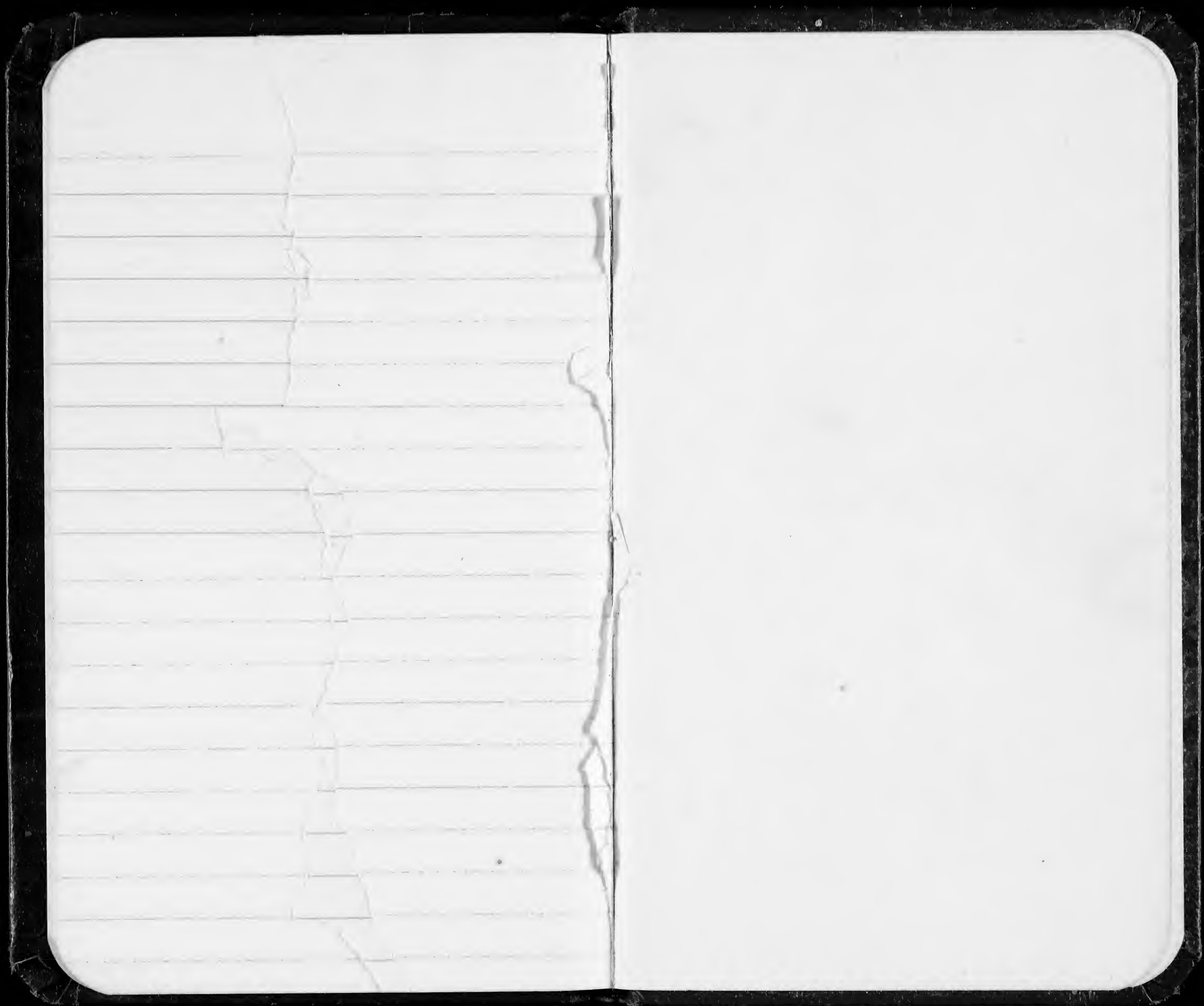




FS

FS

FS



BAB ~~III III~~

BB ~~III III~~

RFB ~~III III~~

RTTB III

GBT

CF colony litter ~~III~~

CF ←

Ground litter ~~III~~

Sooty Tern litter ~~III~~
colony ~~III~~

Miscel II

7530-222-0078
FEDERAL SUPPLY SERVICE

GPO c43-16-73124-2