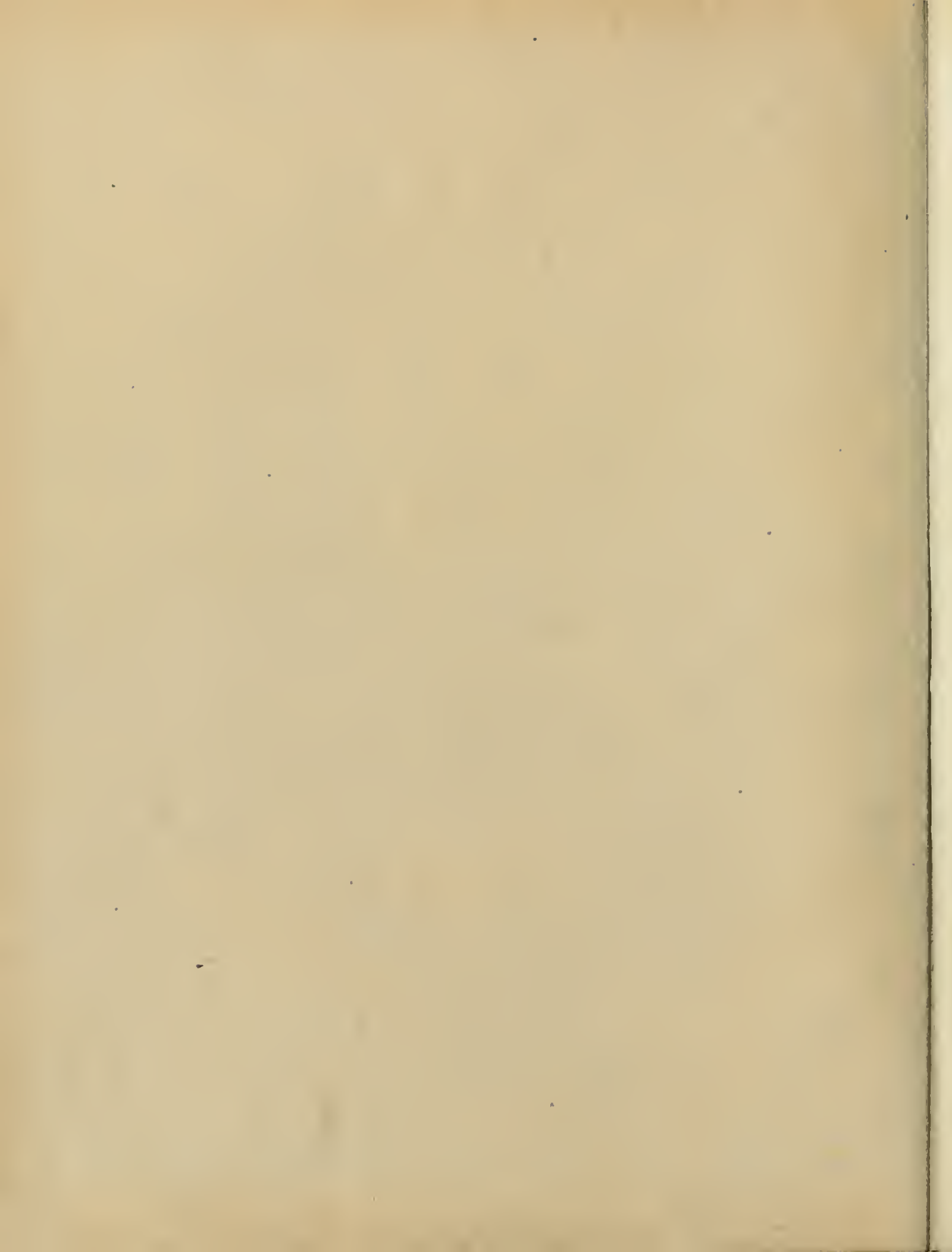
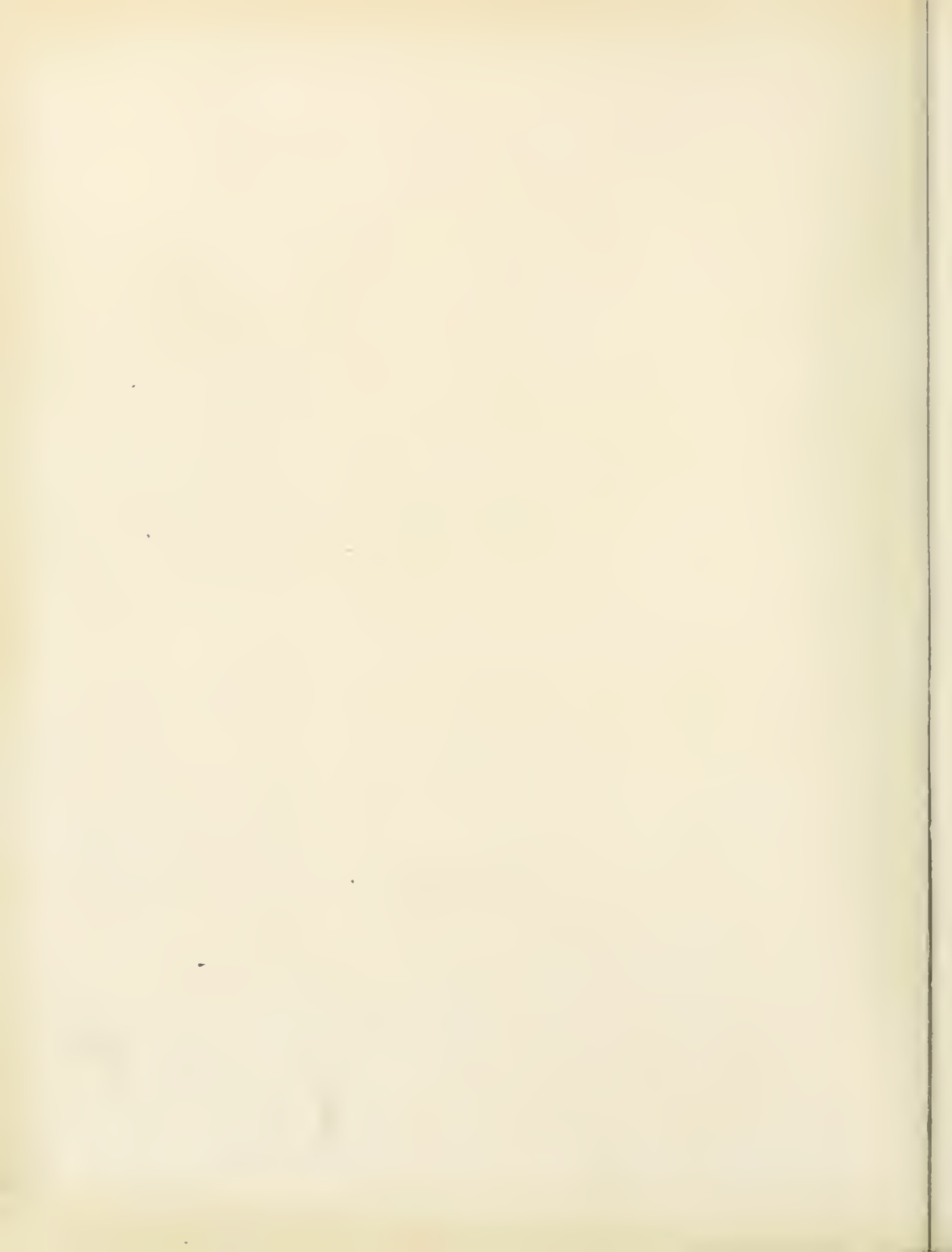




2006-01-07

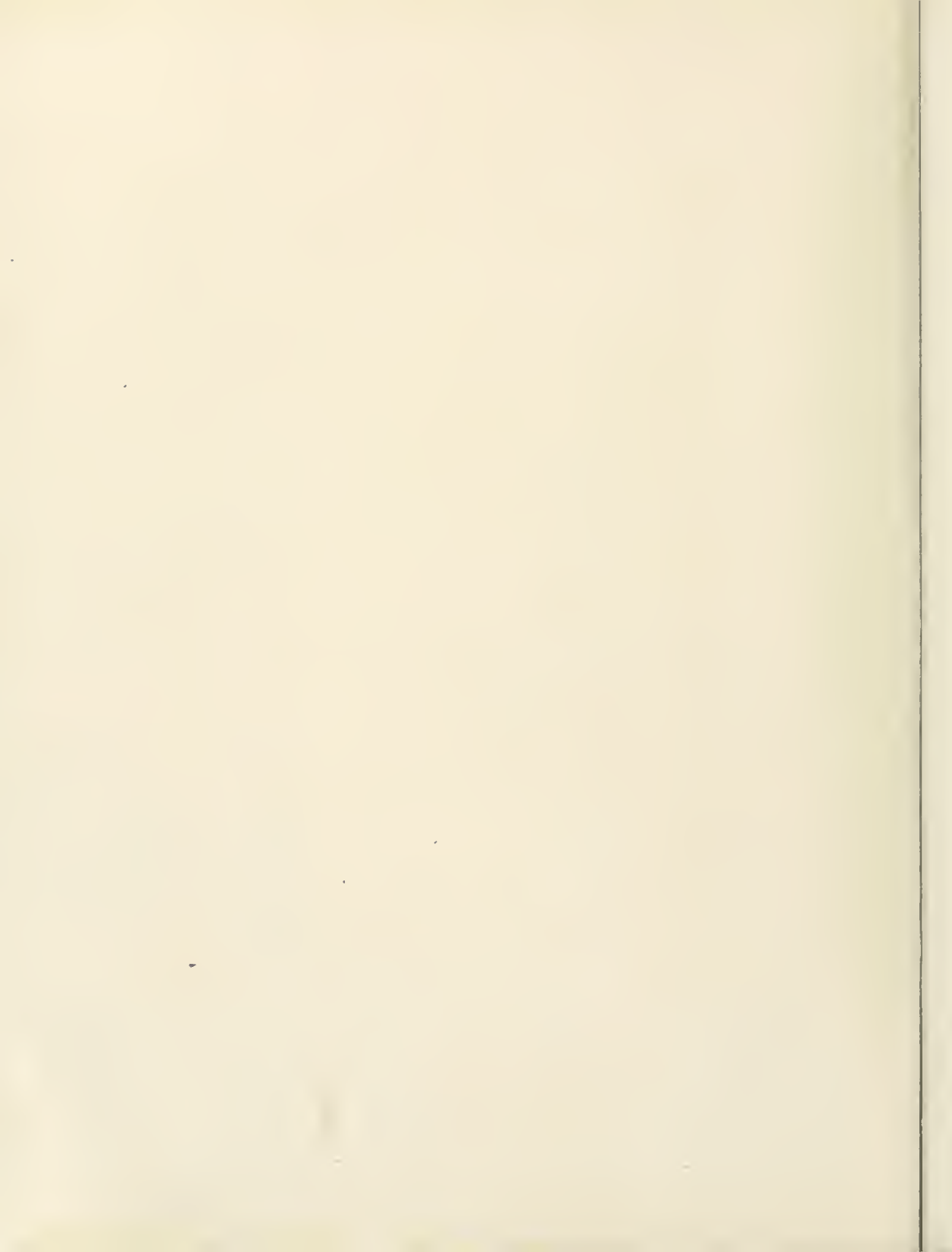








Ex-Libris





**Sights
and
Insights
1921**



	PAGE
EX LIBRIS	1
FRONTISPIECE	3
IN MEMORIAM	6
MARY STROTHER BARNES	7
FOREWORD	10
SCENES	11-16
FACULTY	18-19
DR. RONDTHALER	20
MRS. RONDTHALER	22
MISS STIPE	22
SENIOR MASCOT	24
SENIOR CLASS	25-48
SENIOR SNAPSHOTS	49-50
CLASS POEM	51
CLASS HISTORY	52-53
PROPHECY	54-58
LAST WILL AND TESTAMENT.....	59-60
BABY PICTURES	61
SENIOR MARSHALS	62
JUNIOR CLASS	64-70
SOPHOMORE CLASS	72-74
FRESHMAN CLASS	76-77
MISS HANKINS	80
MISS TEMPLE	81
MISS SMITH	82
MISS BUCKNER	83
MISS REICH	84
MISSES PARRISH AND TAYLOR.....	85
GLEE CLUB OFFICERS	86
FINE ARTS DEPARTMENT.....	88
DOMESTIC SCIENCE DEPARTMENT	90-91
BUSINESS DEPARTMENT	92-93
STUDENT GOVERNMENT OFFICERS	94

CONTENTS—Continued

	PAGE
Y. W. C. A. OFFICERS	96
SALEMITE STAFF	98
ATHLETIC ASSOCIATION OFFICERS	102
VARSITY BASKET-BALL TEAM	103-104
SENIOR TEAM	105
JUNIOR TEAM	106
SOPHOMORE TEAM	107
FRESHMAN TEAM	108
DRAMATICS	110-115
 CLUBS:	
Eastern Carolina	118
Western Carolina	119
Virginia	120
South Carolina	120
Georgia	121
Wilson, Rocky Mount Club	122
Washington, Newbern, Greenville	122
Flat	123
Fire Department	124
Scandal Club	125
Red-Headed Club	126
Tormentors	127
Red Ribbon Club	128
Bandana Club	129
Cotillion Club	130
STATISTICS	132-134
SPRING	135
SUMMER	136
AUTUMN	137
WINTER	138
RIDING	139
AFTERNOON	140
EVENING	141
SCENES	142-143
PAN-HELLENIC COUNCIL	144
 SORORITIES:	
Theta Delta Pi	146
Alpha Kappa Phi	148
Delta Sigma Delta	150
Beta Beta Phi	152
SENIOR CHART	154
MIRTH	155-160
ACADEMY, SIGHTS AND INSIGHTS	166-230
JOKES	231-234
ADS	235

In Memoriam Mary Strother Barns

To explain a girl's personality is no easy task, especially such a personality as that possessed by Mary Strother Barns. She typified the ideals of Salem, always vitally interested in every phase of its activities. Unassuming, quiet, she did her good deeds silently. Herself utterly forgotten she was ever thoughtful of others. Although her body is removed from us her spirit will ever live and be an inspiration for us to follow—the spirit of a model student and a model Christian girl. Her life can truly be called an embodiment of the Christ life ———— 8





Annual Staff

MARY SPEIGHT DARDEN	<i>Editor-in-Chief</i>
NINA SUE GILL	<i>Assistant Editor-in-Chief</i>
MARY ESTELLA WOLFF	<i>Business Manager</i>
ALICE DAVID	<i>Associate Business Manager</i>
FAY ROBERTS	<i>Advertising Editor</i>
HALLIE ROSS	} <i>Club Editors</i>
HETTIE BETHEA		
MARTHA MATHERSON	} <i>Art Editors</i>
GEORGIA RIDDLE		
EVELYN THOM	} <i>Literary Editors</i>
EFFIE LEE HARDING		
OLIVE EBORN		
MARIE EDGERTON		



THE ANNUAL STAFF



Foreword

This, the 16th volume of SIGHTS AND INSIGHTS, is issued by the editors as a word of the past collegiate year, both in Academy and College and as a passing comment on its events.

Our aim is to give as correct a picture of our life at Salem as possible. We do not call you "kind reader," nor do we apologize for this book, because we know that we have put our best efforts into its production. Members of our Class, we hope the following pages will give you pleasure and deepen your love for our Salem—the best School on earth!

EDITORS '21



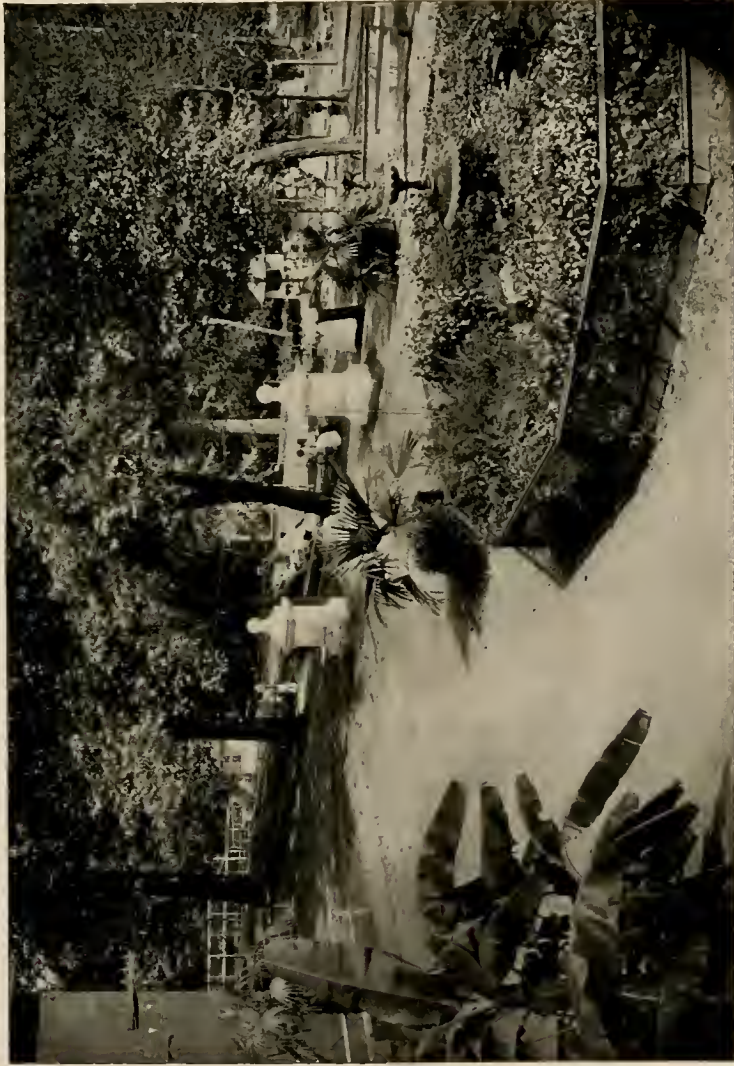
SCENES ABOUT THE CAMPUS





"She has a world of ready youth
Our minds and hearts to bless,
Spontaneous wisdom, breathed by health,
Truth breathed by cheerfulness."

—WORDSWORTH.



"Seat of my youth
When every sport could please."

—GOLDSMITH.



OFFICE BUILDING



"Earth has not anything to show more fair,
Dull would he be if some who could pass by
A sight so touching by its majesty."

—WORDSWORTH.



"Out in the stilly night,
Ere slumber's chain has bound me,
Fond memory brings the light
Of other days around me."

—MOORE.



FACULTY



Officers of Administration

HOWARD E. RONDTHALER
PRESIDENT

EDWIN J. HEATH
Secretary to the Administration

MRS. JANET S. DWIRE
Assistant Secretary

LULA MAY STIPE, A. B.
HOUSE MOTHER

ANNA G. PERRYMAN, A. B.
ACTING TREASURER

ELSA M. LICHTI

SECRETARY TO THE PRESIDENT
ROSANNAH G. BLAIR, A. B.
LIBRARIAN

MARY E. MEINUNG
LIBRARY CUSTODIAN

NELL FARRAR

ADVISER OF WOMEN

(Acting Registrar)

SARAH A. VOGLER

ASSISTANT TO THE REGISTRAR

S. F. PFOHL, M. D.

MEDICAL ADVISER

PEARL W. TURNER, R. N.

NURSE

MRS. MARY A. HAMPTON

DIETITIAN

MRS. L. H. McCULLY

DINING-ROOM SUPERVISOR

THE COLLEGE FACULTY—1920-1921

(In order of Appointment)

HOWARD E. RONDTHALER, Ph. B., B. D., A. M., D. D.
PRESIDENT

RT. REV. EDWARD RONDTHALER, D. D., LL. D.
(President 1884-1888)

BIBLICAL LITERATURE

EDWIN J. HEATH, A. B., B. D., A. M.
(Appointed 1914*)

HISTORY

MILDRED De BARRITT, A. B., A. M.
(Appointed 1918)

ENGLISH

CHARLOTTA JACKSON
(Appointed 1918)

PHYSICAL EDUCATION AND HYGIENE

GRACE E. MANSON, A. B., A. M.
(Appointed 1919)

EDUCATION AND PSYCHOLOGY

NELL FARRAR, A. B., A. M.
(Appointed 1919)

LATIN AND ECONOMICS

ETHEL L. BARTLETT, A. B.
(Appointed 1919)

SCIENCE

ELIZABETH F. FREEMAN, A. B.
(Appointed 1919)

SCIENCE

HELEN L. FARRAND, A. B.
(Appointed 1919)

FRENCH

FRANCES H. JACKSON, A. B., A. M.
(Appointed 1919)

MATHEMATICS

MARGARET De LAVOLETTE ALBRIGHT
A. B., A. M.

(Appointed 1919)

ENGLISH

EDITH MURIEL HARN, Ph. D.
(Appointed 1920)

FRENCH AND SPANISH



FACULTY OF DEPARTMENT SCHOOLS

School of Music

- | | |
|---|--|
| <p>PIANO
 H. A. SHIRLEY, <i>Dean</i>
 (Appointed 1896)
 ORGAN, HISTORY OF MUSIC,
 MUSICAL APPRECIATION
 SARAH L. VEST
 (Appointed 1880)
 PIANO
 CAROLINE E. LEINBACH
 (Appointed 1909)
 PIANO
 GRACE STARBUCK, A. B.
 (Appointed 1913)
 PIANO
 ELLEN YERRINTON
 (Appointed 1916)
 PIANO
 MARIE BRIETZ, A. B.
 (Appointed 1916)
 PIANO
 MARY FRANCES CASH
 (Appointed 1918)
 PIANO, HARMONY, COUNTERPOINT
 RUTH DUNCAN
 (Appointed 1920)
 PIANO, SIGHT SINGING
 ANNIE LOUISE SMITH
 (Appointed 1920)
 PIANO
 MARGARET MAE THOMPSON
 (Appointed 1920)
 PIANO
 NANCY HANKINS
 (Appointed 1920)
 PIANO
 ALIMAE TEMPLE
 (Appointed 1920)
 PIANO</p> | <p>MARY V. JONES
 (Appointed 1920)
 ORGAN
 VIOLIN
 SUSAN A. WEBB
 (Appointed 1918)
 VIOLIN, VIOLA, HARP
 JESSIE ELLIOTT TALMADGE
 (Appointed 1919)
 VIOLIN, VIOLONCELLO
 VOICE
 LILLIAN VINCENT BEATEY
 (Appointed 1919)
 VOICE, GLEE CLUB
 GRACE M. KEENEY
 (Appointed 1920)
 VOICE, SIGHT SINGING
 NANNA JOHNSON
 (Appointed 1920)
 VOICE
 SECRETARIES
 CARRIE VEST
 (Appointed 1890)
 MRS. CHAS. E. STEVENSON
 (Appointed 1911)
 SCHOOL OF HOME ECONOMICS
 BESSIE C. LEFTWICH
 (Appointed 1920)
 MRS. ELIZABETH O. MEINUNG
 (Appointed 1915)
 MARY ELIZABETH BUTNER
 (Appointed 1917)
 SCHOOL OF FINE ARTS
 D. MAUDE BELLIS
 (Appointed 1920)
 FINE ARTS
 SCHOOL OF BUSINESS
 OTELIA BARROW
 (Appointed 1892)
 TYPEWRITING, SHORTHAND</p> |
|---|--|



PRESIDENT HOWARD E. RONDHALER



MISS EMMA LEHMAN



BISHOP RONDTHALER

Sights and Insights



MRS. H. E. RONDTHALER
SENIOR CLASS TEACHER



MISS LULA MAE STIPE
SENIOR FRIEND



Senior



MASTER A. G. TRUELOVE, JR.
SENIOR MASCOT



A K Φ

Senior Class

COLORS :

FLOWER : American Beauty

OFFICERS

EVELYN THOM	<i>President</i>
LOIS CASH	<i>Vice-President</i>
FAY ROBERTS	<i>Second Vice-President</i>
HALLIE ROSS	<i>Secretary</i>
EFFIE LEE HARDING	<i>Treasurer</i>
MARIE EDGERTON	<i>Poet</i>
MARTHA MICHAL	<i>Historian</i>
MARY DARDEN	<i>Prophet</i>
PEARL RAY	<i>Last Will and Testament</i>

MEMBERS

HETTIE BETHEA	ARDENA MORGAN
FRANCES BUCKNER	MARTHA MICHAL
LOIS CASH	EDITH POUNDENTER
ALICE DAVID	MARY PARRISH
MARY DARDEN	GLADYS REICH
OLIVE EBORN	HALLIE ROSS
MARIE EDGERTON	EVELYN SMITH
EFFIE LEE HARDING	HELEN STREETT
LOUISE LUCKENBACH	ELVA TEMPLETON

ESTELLA WOLFF

Sights and Insights



EVELYN THOM, Θ Δ Π

CHINA GROVE, N. C.

*"Sweetly did she speak and move,
Whom to look at was to love."*

"Thom" is our President, that shows what we think of her. When there is time for study, "Thom" likes to do it, but time doesn't hang heavy here.

A most intellectual person she, and '21 is expecting great things from "Thom" in the literary world.

"Thom" takes life as it comes, easy going, but still there is her gentleness, her friendliness, her dignified, quiet manner, by which she captivates every one. A most lovable little woman!

President Senior Class, 1920-21.
 Assistant Editor-in-Chief SIGHTS AND INSIGHTS, 1916-17.
 Literary Editor SIGHTS AND INSIGHTS, 1920-21.
 Literary Editor *Salemite*, 1920-21.
 Literary Editor *Ivy*, 1919-20.
 Senior Marshal, 1916-17.
 Sub Basket-Ball Team, 1916-17, 1919-20.
 Student Government Representative, 1916-17, 1920-21.
 Y. W. C. A. Cabinet, 1916-17.
 McDowell Club, 1919-20, 1920-21.
 Glee Club, 1919-20, 1920-21.
 Dramatic Club, 1916-17.
 Cotillion Club.
 Red Ribbon Gossipers.
 Tormentors.
 Western N. C. Club.
 Cast "Lancelot and Elaine," 1919-20.
 Athletic Association, 1920-21.



Sights and Insights

HETTIE BETHEA, ΔΣΔ

DILLON, S. C.

*"O woman! lovely woman!
Angels were painted fair to look like you."*

A most versatile person is "Het"! She's the tall, dignified President of the Student Council. None of the new college girls would ever know that their Council President was a perfect "Simple Simon" last year. It's thought that "Het" missed her calling, because she's naturally a great comedian. When the dignity is left behind there is not a jollier, better fellow to be found. "Midnight oil" is her only beverage, but she dotes on it. Het's fairness, her sympathetic and considerate manner have won for her many, many loyal friends.



President Student Government Association, 1920-21.
 Secretary Student Government, 1919-20.
 Student Council Representative, 1918-19.
 Y. W. C. A., 1917-21, Cabinet, 1918-19.
 Cotillion Club, 1917-21.
 Black Sheep Club, 1918-19.
 Fire Lieutenant, 1919-20.
 Bandana Gang, 1917-21.
 McDowell Club, 1919-20.
 Dramatic Society, 1917-20.
 Panhellenic Council Representative, 1919-21.
 Baseball Team, 1918-19.
 Club Editor SIGHTS AND INSIGHTS, 1920-21.
 Senior Marshal, 1918-19.
 Athletic Association, 1917-21.
 X Y Z Club, 1917-18.

Sights and Insights



FRANCES WARFIELD BUCKNER

CLIO, S. C.

*"Her voice was ever soft, gentle and low,
An excellent thing in woman."*

"Well, I'll declare"—"Chitty" is a good one and when it comes to secrets she has us there. We are absolutely in the dark, because she will not tell who he is.

Any time during the day "Chitty" may be seen making her way to Memorial Hall. Her recital is her one aim now, and we know that if "Chitty" puts her best efforts in it that it will be wonderful. She is a hard worker, competent and thorough in everything.

Y. W. C. A. Cabinet, 1919-20.
Y. W. C. A. Vice-President, 1920-21.
McDowell Club, 1919-21.
Fire Lientenant, 1919-20.
S. C. Club, 1919-21.
Black Sheep, 1918-19.
Red Cross Chairman, 1920-21.



Sights and Insights

LOIS CASH

WINSTON-SALEM, N. C.

"A lovely lady, garmented in light from her own beauty."

We did our best to get Lois to live with us this winter but she just would not. We don't know her so well, not nearly as well as we would like to, but we do know that she has the brains and knows how to use them. Lois is easily voted the prettiest girl of our class and we are proud of her.



Second Vice-President Senior Class.
Glee Club.

Sights and Insights



ALICE DAVID

DILLON, S. C.

"She liked whatever she looked on, and her looks went far."

Alice is our vamp! She has more dates than any girl in the class. She takes in all the shows and at times some of us would like very much to be so popular.

Her Senior year has been a rather strenuous one but she has gotten through with it splendidly.

Her jolly good nature is a drawing card. Alice is one of the famous trio and she isn't satisfied unless she has Gladys and Frances right in sight.

Euterpean Literary Society, 1916-17.
Glee Club, 1917-18.
South Carolina Club, 1916-18.
McDowell Club, 1919-21.
Glee Club, 1919-21.
Fire Department, 1919-20.
South Carolina Club, 1919-21.
Y. W. C. A. Cabinet, 1919-21.
Annual Staff, 1920-21.



Sights and Insights

MARY SPEIGHT DARDEN, Θ Δ Π
WILSON, N. C.

*"Devoted, anxious, generous, void of guile,
And with her whole heart's welcome in her
smile."*

Words are inadequate for Mary Darden. You have to know her in order to appreciate her charm and the infinite variety of her character. So this is an introduction to Miss Salem Spirit. She has taken active part in every phase of our college life and has added unto herself a new accomplishment—the Annual, which speaks for itself. What we admire most of all about Mary Darden is her will power in sticking to us and keeping up her contagious spirit of life and fun, when her mind is bound to be wandering 'way down in Eastern Carolina. To one of the most popular girls who has ever been at Salem we wish the best the gods can bestow.



Editor-in-Chief SIGHTS AND INSIGHTS, 1920-21.
Y. W. C. A., 1917-21.
Y. W. C. A. Cabinet, 1919-20.
Athletic Association, 1919-21, Vice-President, 1919-20.
Basket-Ball Team, 1917-21, Captain, 1917-18.
Tormentors, 1917-21.
Red Ribbon Gossipers, 1917-21.
Wilson Club, 1920-21.
Black Sheep Club, 1918-19.
Glee Club, 1919-20.
Euterpean Literary Society, 1917-18.
Fire Lieutenant, 1919-20.
Cast "Lancelot and Elaine," 1920.
Treasurer Sophomore Class, 1919-20.
President Junior Class, 1920.
Senior Marshal, 1918-19.
Salemite Staff, 1919-21.
Senior Prophet, 1920-21.
Panhellenic Representative, 1920-21.
College Cheer Leader, 1920-21.

Sights and Insights



OLIVE EBORN

WASHINGTON, N. C.

"The mildest manners and gentlest heart."

To see Olive going quietly about her own business, you would never know that there was a bit of devilry in her. She is as bad as the rest of us and maybe worse.

Here is the rare mathematical brain! She loves math, and has nursed it for four long years, much to the horror of many of us. We predict that Bath, N. C., the historical birthplace of this young lady, will have something else to be put down in its annals when young Olive starts out into the world.

- Y. W. C. A., 1917-21.
- Athletic Association, 1917-21.
- X Y Z Club, 1917.
- Basket-Ball Team, 1919-20.
- Student Council, 1920-21.
- Walking Club, 1918-20.
- Hockey Team, 1918-19.
- McDowell Club, 1919-21.
- Eastern North Carolina Club.



Sights and Insights

MARIE BELLE EDGERTON

OAK RIDGE, N. C.

"I have an exposition of sleep come upon me."

"All aboard for Oak Ridge and all points South!" Marie comes to us from Agnes Scott and Meredith, but she likes us best, and therefore visits the place during class hours.

Marie has all the fun possible out of life, but she has learned to combine work and play so she is one of our best students. As Editor of the *Salemite*, Marie Belle proves her literary ability.

When she isn't asleep she's either studying or on her way to Oak Ridge.



Y. W. C. A., 1917-21.
Athletic Association, 1917-21.
Cotillion Club, 1919-21.
Associate Editor *Ivy*, 1919-20.
Student Government Representative, 1920-21.
Western North Carolina Club.
Editor-in-Chief *Salemite*, 1920-21.
Y. W. C. A. Cabinet, 1920-21.
Literary Editor SIGHTS AND INSIGHTS, 1921.
Class Poet, 1921.

Sights and Insights



EFFIE LEE HARDING

YADKINVILLE, N. C.

"Good nature and good sense must ever join."

Behold the wit and half of the Senior Class! If you don't want to be taken down a peg or two then don't get fresh with Effie Lee. As jumping center on the team, she's a peach; as Class Treasurer she's a peach, and we all like Effie Lee mighty well.

Her wit is unequalled, but often the other fellow gets the worst end of the bargain. She adds dignity to our Senior procession and leads it like nobody else could.

Y. W. C. A., 1917-21.
Athletic Association, 1917-21.
Basket-Ball Team, 1918-21.
Fire Lieutenant, 1919.
Track Team, 1918-21.
Hockey Team, 1918-21.
Associate Business Manager *Salemite*, 1920-21.
Senior Class Treasurer, 1921.
Captain of Senior Basket-Ball Team, 1921.
McDowell Club, 1921.
Annual Staff, 1921.
Vice-President Association, 19'0 21.
Black Sheep Club, 1918-19.
Cast, "Lancelot and Elaine," 1920.



Sights and Insights

LOUISE LUCKENBACH

WINSTON-SALEM, N. C.

"Charm strikes the sight, but merit wins the soul."

This quiet, unassuming young lady is a preacher's daughter. Now whether the old saying regarding preachers' children is true or not, we leave that up to you.

Always here ready for work, though sometimes she just can't get here for chapel. Louise is a steady, true girl and we are awfully glad that she is one of us.



X Y Z Club.

Sights and Insights



ARDENA MORGAN

WINSTON-SALEM, N. C.

*"I love tranquil solitude and such society
As is quiet, wise and good."*

Ardent is quite wise and good and we wonder at it. We wonder how this can be because the rest of us are not so.

Ardena has the poise and dignity which becomes a Senior but, sad to say, others of us do not have it. We marvel at her and hope that her influence may reach far and near.

Secretary Sophomore Class.
Basket-Ball Team, Junior Class.



Sights and Insights

MARTHA ELIZABETH MICHAL

WOODROW, N. C.

"You look wise, pray correct that error."

"Mike," the archangel!

Here is the greatest combination of brains and personality found anywhere. A most scientific sort of girl, always digging in Chemistry, Biology, Mathematics, and Physics. What kind of personality would one have without temper? Mike has enough of this to put the spice into life. Nevertheless, when we need advice we go to Mike; when there are secrets to share we go to Mike; when we need cheering up a bit, Ole Mike is always on hand. She is absolutely true blue and we count it a privilege to know her.



Council Representative, 1919-20.
Second Vice-President Student Council, 1920-21.
Basket-Ball Team, 1920-21.
Y. W. C. A., 1917-21.
Class Historian, 1920-21.
Western North Carolina Club, 1917-21.
Black Sheep Club, 1918-21.
Tormentors, 1918-21.
Red Ribbon Gossipers, 1918-21.
Cotillion Club, 1920-21.
Chairman Cut System, 1920-21.
Athletic Association, 1917-21.

Sights and Insights



EDITH POINDEXTER

WINSTON-SALEM, N. C.

"Strongest minds are often those whom the noisy world hears least."

Edith, the student historian. If she has ever failed to answer a question then Mr. Heath doesn't know it. She is the "old reliable" in all of her work. Since our Academy days Edith has been with us and she has always been a good student. One sees her driving up in her Ford in the morning and happily driving home again after her day's work is done.

X Y Z Club.



Sights and Insights

MARY PARRISH
WINSTON-SALEM, N. C.

*"Her voice was like the voice the Stars
Had when they sang together."*

'21 is truly proud of Mary, because she is the only one of us to give a voice recital. She can sing, ye gods, how she can sing!

Mary is another one of our Academy sisters and we are glad she stuck to us. Of course, Mary has never tried to bluff her way as most of us have—consequently she is thoroughly prepared in her work.



President Glee Club.
McDowell Club.

Sights and Insights



GLADYS REICH

ELKIN, N. C.

*"If music be the food of love, play on,
Give me excess of it."*

Gladys hails from Elkin. This young lady goes quietly about her own way, but it's a mighty good way.

Music is her guiding star and to hear her play one can easily recognize a young genius. Gladys is always happy, always gay, and her only trouble and worry is keeping tab on "Chitty" and Alice. She succeeds in this, however, and a more congenial three can not be found.

Y. W. C. A., 1917-21.
Athletic Association, 1917-21.
Secretary McDowell Club.
X Y Z Club.
Euterpean Literary Society, 1917-18.
Black Sheep, 1918-19.



Sights and Insights

HALLIE HAMPTON ROSS, ΔΣΔ

ASHBORO, N. C.

"In soul sincere; in action faithful; in honor clear."

Here is the class politician. She can argue with you until you have absolutely no opinion of your own. "Hamp" is a good scout, though, and always in for the fun. If it wasn't for "Hamp" we fear that Annex would be frozen up, but "Hamp" dogs poor "little Miss Anna" until we have heat morning, noon, and night. This young lady holds as many offices as the college could thrust upon her. Always dependable, always putting across what she starts to do. She is absolutely the girl with "The goods."



President Y. W. C. A., 1920-21.
Vice-President Student Government Association, 1920-21.
Student Council Representative, 1918-20.
Cotillion Club, 1917-21.
Black Sheep Club, 1918-19.
Fire Assistant Captain, 1919-20.
Bandana Gang, 1917-21.
Western North Carolina Club, 1917-21.
McDowell Club, 1919-20.
X Y Z Club, 1917-18.
Dramatic Society, 1917-20.
Panhellenic Council Representative, 1920-21.
Basket-Ball Team, 1919-21.
Secretary Senior Class, 1920-21.
Club Editor SIGHTS AND INSIGHTS, 1920-21.
Athletic Association, 1917-21.

Sights and Insights



PEARL RAY

MAKTEL, FLA.

*"A daughter of the gods,
Divinely tall
And most divinely fair."*

Good looks are a great asset to a woman's success in this world, and when one also has a wonderful voice, a promising future is bound to await her. When we can entice Pearl away from her fifty and one notebooks, we make her sing until her voice trails off into a thin falsetto.

A good old scout is Pearl, and a jolly comrade for a "Tear."

Business Manager *Salemite*, 1921.
Associate Business Manager *Ivy*, 1919-20.
Y. W. C. A., 1917-21.
Treasurer Euterpean Literary Society, 1917-18.
Glee Club, 1917-21, Treasurer, 1920-21.
Class Song Leader, 1918-19.
Writer of Last Will and Testament, 1921.
Athletic Association, 1917-21.
Cotillion Club, 1917-21.
Sub Basket-Ball Team, 1918-20.
Walking Club, 1920.
Florida Club.
Y. W. C. A. Choir.
Fire Lieutenant, 1918-19.



Sights and Insights

FAY ROBERTS

SYLACAUGA, ALA.

*"A smile for all, a greeting glad,
An amiable, jolly way she had."*

"Fairy Fay" is the girl that many of us would like to be. Even if Fay does have an ingrowing grouch against fate we can stand it. In every phase of college life Fay finds her place; from basket-ball court to the ballroom floor. Happy-go-lucky, never worried, or with never a care, Fay is a girl whom everybody likes and likes to be thrown with.



Vice-President of Junior Class, 1920.
First Vice-President Senior Class, 1920-21.
Student Council, 1920-21.
Panhellenic Representative, 1920-21.
Y. W. C. A., 1918-21, Treasurer, 1919-20, Cabinet, 1920-21.
Senior Marshal, 1919-20.
Advertising Manager Annual, 1920-21.
Basket-Ball, 1920-21.
Athletic Association, 1918-21.
Black Sheep, 1918-19.
Y. W. C. A., 1918-21.
Tormentors, 1918-21.
Red Ribbon Gossipers, 1918-21.
Lieutenant Fire Department, 1918-21.
Glee Club, 1919-20.
McDowell Club, 1919-20.
Dramatic Club, 1919-20.

Sights and Insights



EVELYN SMITH

CHERAW, S. C.

*"The soul of music slumbers in the shell
Till waked and kindled, by the master's
spell."*

When "Eveline" started out for basketball the whole class turned out to cheer. One has to really know her to appreciate this. Evelyn is musical through and through, and when not playing or listening to her "Master's voice," she is studying. In fact, she has never yet made more than A+ nor less than A on any subject. The world is to hear from our talented member. The Concert Hall is her place, and we are eager for her to reach it.

- Y. W. C. A., 1917-21.
- Y. W. C. A. Cabinet, 1920-21.
- Athletic Association, 1917-21.
- Basket-Ball Team, 1920-21.
- X Y Z Club, 1917-21.
- McDowell Club, 1919-21.
- Glee Club, 1919-21.
- South Carolina Club, 1917-21.
- Black Sheep, 1917-18.
- Euterpian Literary Society, 1917-18.



Sights and Insights

HELEN MERRYMAN STREET, B B Φ
FOREST HILL, MD.

*"Age can not wither her, nor custom stale
Her infinite variety."*

You may search in the Streets of Ascalon and Gath but you will never find another like Helen Merryman. Helen made a big jump from Baltimore to Winston-Salem. However, she brought with her certain qualities which enabled her to make the transition successfully. Even-tempered geniality, naturalness, good judgment, and a certain uniqueness of expression, together with feet which have displayed their agility in basket-ball as well as the dance. When Helen is not studying like everything, she may be found in the "Franklin" or some place "out in town."



Y. W. C. A., 1917-21.
Athletic Association, 1917-21.
President Athletic Association, 1920-21.
Basket-Ball Team, 1917-21, Captain, 1919-20.
Hesperian Society, 1917-21.
Cotillion Club, 1917-21, First Leader, 1919-20, Second Leader, 1920-21.
Secretary Junior Class, 1919-20.
Glee Club, 1919-20.
Assistant Editor SIGHTS AND INSIGHTS, 1919-20.
Panhellenic Council, 1920-21.
Red Ribbon Gossipers, 1917-21.
Tormentors, 1917-21.

Sights and Insights



MURIEL ELVA TEMPLETON

CARY, N. C.

*"How far that little candle throws its
beams!
So shines a good deed in a naughty
world."*

"Preacher"—The only living alarm clock!
Always on time to the dot. Her prompt-
ness and accuracy are habits which we all
envy. It is said "that civilized man can not
live without cooks," so one man's life will
be indebted to "Preacher."

For four years she has studied Domestic
Science, sticking to it with bulldog tenacity.
Elva Templeton, our hats are off to you,
and we wish you much joy and happiness.

Hockey Team, 1918-19.
Walking Club, Treasurer 1918-19.
McDowell Club, 1920-21.
Athletic Association, 1917-21.
Y. W. C. A., 1917-21.
Track, 1918-19.
Eastern Carolina Club, 1917-21.



Sights and Insights

MARY ESTELLA WOLFF

RURAL HALL, N. C.

*"Then she would talk—ye gods!
How she would talk!"*

"Ted" is the only original. If "Ted" doesn't like you it doesn't take you long to find it out, for you will either be told to "Step to" or "go to." We fear for Saint Peter because "Ted" may embarrass him when she appears at his gate.

"Ted" is neater than a pin and the most generous person on the place. Her whole heartedness and friendliness have captivated every one and she is loved by all of us.

A great financier, she could hold Wall Street down if necessary.



Business Manager SIGHTS AND INSIGHTS, 1920-21.
Treasurer Junior Class, 1919-20.
Red Ribbon Gossipers.
Tormentors.
Black Sheep Club, 1918-19.
Y. W. C. A., 1917-21.
Athletic Association, 1917-21.



SENIOR CLASS



SENIOR SNAPSHOTS



"O MEMORIES, O PAST THAT IS!"



Senior Class Poem

One by one the years are drifting
Down the silent stream of Time,
Never changing in their courses—
Reaching every land and clime;
Always forward, never swerving—
Would our path were half so true,
Leaving traces on the water—
Sometimes many; often few.

Looking backward over years past,
Would we wish to try once more?
No; our path is ever forward,
For the future lies before.
In the din of life's confusion,
There's a place for us to fill;
Enemies must be fought and conquered,
There are foes and battles still.

"Salem" gave us preparation
For the task that lies ahead.
Now no longer can we linger—
Put aside all doubt and dread.
Class of Twenty-one, march onward,
Tarry not nor lag behind;
Swerve not from the way before you—
Follow up the stream of Time.



Class History

- SEPTEMBER, 1910—Pearl Ray came to Salem.
 "How firm a foundation."
- SEPTEMBER, 1914—Mary Darden.
 "For who hath despised the day of small things?"

FRESHMAN YEAR, 1917-1918

- SEPTEMBER 19—'21, entered as Freshmen.
 A noble army of strong!
- OCTOBER 8—Song contest won by Freshmen.
 "Sing, ye gods! how they could sing."
- NOVEMBER 25—Thanksgiving Day, Freshmen in the finals.
 "Victory so near and yet so far."
- DECEMBER 16—Home a week early because of coal shortage.
 "Joy unspeakable."
- JANUARY 8—Return after holidays.
 "Gloom and darkness visible."
- JANUARY 22—Mid-term exams.
 "Frantic despair!"
- MAY 28—Commencement and then home.
 "Joyful expectations of exquisite bliss."

SOPHOMORE YEAR, 1918-1919

- SEPTEMBER 18—33 bold and bloody Sophs.
- OCTOBER 7—Initiation of Freshmen and a true war of wits.
- OCTOBER—Influenza quarantine, with much coughing, sneezing, and nursing of the sick.
- NOVEMBER 11—Armistice Day.
 "Ring out wild bells."
- JANUARY 15—A noted council meeting and formation of Black Sheep Club.



JUNIOR YEAR, 1919-1920

—Wedding of ex-Class President.

"For this is the way of a man with a maid."

MARCH 13—A hail storm causes trembling, terror, and dire distress.

APRIL 28—Evelyn's recital.

"Where genius burns."

MAY 7—Junior-Senior Prom.

"When dreams come true."

MAY 27—Transfer of caps and gowns.

"Pride and justifiable expansion."

SENIOR YEAR, 1920-1921

SEPTEMBER 14—First processional.

"Where newly acquired dignity struggled with self-consciousness."

NOVEMBER 3—Eva Boren's wedding.

NOVEMBER 9—Hat burning.

"How attached we were to that which perished—our frivolity."

NOVEMBER 19—Carolina Glee Club Concert.

"Take me to that land of jazz."

DECEMBER 7—Arrival of Senior rings.

"An ample reward for the hardships endured."

JANUARY 4—"Pris" Streett's wedding.

"A choice between love and knowledge."

FEBRUARY 12—Mrs. Rondthaler's dinner.

"Ever a delight to our memories."

MARCH 17—Ivy planting.

"In Memoriam."

MAY 7—Junior Senior.

*"O beautiful night,
O glorious night."*

MAY 31—Commencement.

"Joy transcendent."

Sights and Insights

Senior Class Prophecy



"Het," our prexy, went on the stage;
Therefore, her friends flew into a rage.
Her talent so great has decided her fate.
Now she's the greatest in all the state.



"Chitty" conducts a Society School,
Always hiding by the "Golden Rule."



Alice David, the dancing girl,
On her toes do twirl and twirl,
On her feet so light and airy,
Alice is just a dainty fairy.



A Theda Bara is pretty Lois Cash,
Makes our hearts go smashity smash.

Sights and Insights



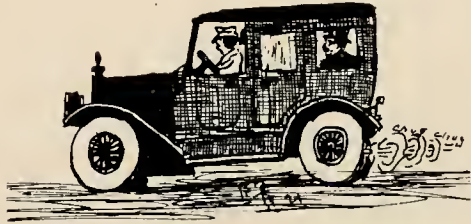
Olive and Effie, the Chorus Girls,
Set all the good men's hearts awirl.



Mary Darden is "Beef's" little wife.
She's never wanted for meat in her life.

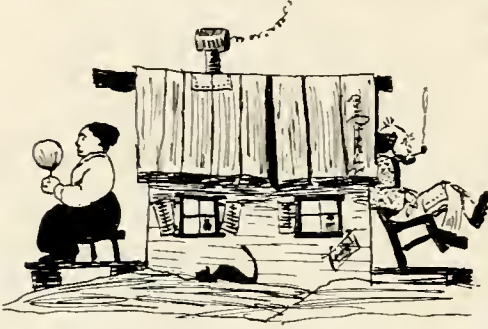


Our bakers are Ardena and Louise,
Baking anything that they please,
Their cakes, pies, and soups so hot
Are worthy of any Goody Shop.



Marie Bell has the same ole line,
Running her jitney always on time,
Running from Oak Ridge to Winston-Salem,
Seeing cute men and always hailing 'em.

Sights and Insights



Martha Michal, the President's wife—
A miserable President all his life.



Edith Poindexter, the traffic cop,
Blows her whistle and folks do hop.



Mary Parrish doth sweetly sing
Of onions and garlic 'n' everything.
Her voice is fine, great and strong,
As if to a master it did belong.



Gladys Reich, the Elkin Mayor,
Had a fight 'cause they wouldn't pay 'er.

Sights and Insights



A farmer's wife is Pearl Ray,
Consequently she is quite contented and gay.



"Hamp," the well-known Politician—
This is her whole life mission.



Evelyn Smith in the Circus went,
Now she's living under a tent.



Fay Roberts, our staid old maid,
For school teaching has been her trade;
Her ideal was never attained,
So an old maid she's always remained.

Sights and Insights



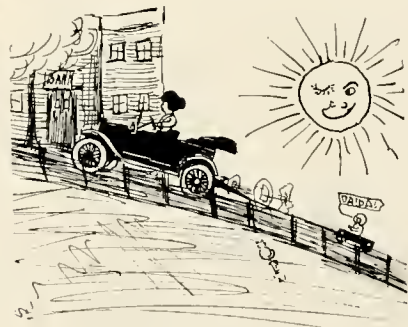
Helen Streett—the great athlete.



A little black angel is our "Preacher,"
And some day she'll be a Sunday-School
teacher.



Evelyn Thom married Billy Spach,
And her future—"Ach mein Gott!"



Ted Wolff, the banker,
Has a Ford but can not crank 'er.



The Last Will and Testament



HEREAS, we, the members of the Class of Nineteen Hundred and Twenty-one, our mental faculties activated to the highest possible degree by the noble group of experts comprising the Faculty, realizing that we are soon to leave our academic home to engage in the great battle of life in which we must contest with hard knocks, do hereby bequeath to the Class of Nineteen Hundred and Twenty-two the solemn duty and privilege of prescribing the honored traditions of our beloved and historic Salem, of keeping it in the foreground of academic achievement and fostering that intangible yet mighty force—our Salem spirit.

ARTICLE I. We do hereby renounce and declare illegal any and all wills and testaments made heretofore.

ARTICLE II. I, Hettie Bethea, will my ability to impersonate "Simple Simon" to Georgia Riddle.

ARTICLE III. I, Frances Buckner, will my faithful atomizer to the first who calls at Annex—Come early and avoid the rush.

ARTICLE IV. I, Lois Cash, will my ability to get to chapel on time to Lucia Wilkinson.

ARTICLE V. I, Mary Darden, bequeath my love of sleigh-riding with "Hindoos" to Nina Sue Gill.

ARTICLE VI. I, Alice David, leave my luxurions hair to Clara Pope.

ARTICLE VII. I, Olive Eborn, will my bewitching smile to Flora Binder.

ARTICLE VIII. I, Marie Edgerton, bequeath my daily letter to Alice Watson, hoping that she will not be stuck up with sweetness after reading said letters.

ARTICLE IX. I, Effie Lee Harding, leave my wit-and-a-half to the half-wit of the Junior Class.

ARTICLE X. I, Louise Luckenbach, will my high grades in Economics to the incoming class.

ARTICLE XI. I, Martha Michal, leave my mania for washing stray dogs to Louise Cooke.



Sights and Insights

ARTICLE XII. I, Ardena Morgan, bequeath my boldness and my ability to bluff the Faculty to Miriam Vaughn, trusting that they will be used with discretion.

ARTICLE XIII. I, Mary Parrish, leave my dear little locker in the day pupils' room and memories of happy hours in the Lunch Room to all day students.

ARTICLE XIV. I, Edith Poindexter, will my pet rats to Sarah Lingle.

ARTICLE XV. I, Pearl Ray, bequeath my thrifty habit of early rising to Gertrude Coble, trusting that she will use it with care.

ARTICLE XVI. I, Gladys Reich, leave my love for the Faculty to all who wish it.

ARTICLE XVII. I, Fay Roberts, will my antipathy for the opposite sex to Mimmie Lee Perry.

ARTICLE XVIII. I, Hallie Ross, do hereby bequeath my permanent wave to Elizabeth Alcocke.

ARTICLE XIX. I, Evelyn Smith, will to Helen Everett my boisterous hilarity to be used with the moderation said giver has shown.

ARTICLE XX. I, Helen Streett, leave my wish for a desirable man to all who want one.

ARTICLE XXI. I, Elva Templeton, bequeath my cosmetics to Margaret Hashagan, hoping said recipient will use them sparingly.

ARTICLE XXII. I, Evelyn Thom, will my numerous phone calls and dates to the incoming Senior Class.

ARTICLE XXIII. I, Ted Wolff, leave my midnight oil to the next inhabitants of Annex, hoping that it will not disturb their slumbers.

This instrument is hereby signed, sealed, and declared by the Class of Nineteen Hundred and Twenty-one, this the twenty-first day of May, Nineteen Hundred and Twenty-one, as their last Will and Testament.

PEARL RAY,
MARIE EDGERTON,
EFFIE LEE HARDING,
HALLIE ROSS,
HETTIE BETHEA.

"Where present greatness sat enthroned"



HALLIE ROSS
PRESIDENT Y. W. C. A.

MARY DARDEN
EDITOR ANNUAL
HETTIE BETHEA
PRESIDENT STUDENT COUNCIL

HELEN STREET
PRESIDENT ATHLETIC ASSOCIATION

EVELYN THOM
PRESIDENT SENIOR CLASS

MARIE EDGERTON
EDITOR "SALEMITE"



SENIOR MARSHALS

GEORGIA RIDDLE, *Chief*
NINA SUE GILL
GERTRUDE COBLE

MARY CLARK
ELIZA GASTON MOORE
FRANCES LEACH

ELIZABETH GRIFFIN
POLLY WOLFF
MARIAN PROPST



J u n i o r .



X K Δ

Junior Class

COLORS: Purple and White

FLOWER: Parma Violet

MOTTO: "Be friendly and have a high ideal"

OFFICERS

GEORGIA RIDDLE	<i>President</i>
MIRIAM VAUGHAN	<i>First Vice-President</i>
ISABEL SPEARS	<i>Second Vice-President</i>
GERTRUDE COBLE	<i>Secretary</i>
NANNIE FINCH	<i>Treasurer</i>
MILDRED PARRISH	<i>Song Leader</i>
HELEN EVERETT	<i>Cheer Leader</i>

MEMBERS

ANNIE THOMAS ARCHBELL
SARAH BOREN
GERTRUDE COBLE
LOUISE COOK
RUTH EBORN
HELEN EVERETT
MIRIAM EFIRD
NANNIE FINCH
DOROTHY GREGORY
NINA SUE GILL
ELIZABETH GILLESPIE
BLANCHE KING
SARAH LINGLE
HAZEL MORTON

MARTHA MATHESON
HATTIE MOSELEY
MILDRED PARRISH
MARY SHEPARD PARKER
SADIE PENRY
OLIVENE PORTERFIELD
ANNIE SUE ROUGHTEN
GEORGIA RIDDLE
MAGGIE MAY ROBBINS
REBA RUSS
MARGARET STEVENS
ISABEL SPEARS
MIRIAM VAUGHAN
ALICE WATSON

SARAH WATT

Sights and Insights

ANNIE THOMAS ARCHBELL, $\Lambda\Phi\Kappa$

WASHINGTON, N. C.

SARAH BOREN

POMONA, N. C.

LOUISE COOKE, $\Theta\Delta\Pi$

LOUISBURG, N. C.

GERTRUDE COBLE

BURLINGTON, N. C.

HELEN EVERETT

KNOXVILLE, TENN.



Sights and Insights



RUTH EBORN
WASHINGTON, N. C.

MIRIAM EFIRD
WINSTON-SALEM, N. C.

NANNIE FINCH
SPRING HOPE, N. C.

ELIZABETH GILLESPIE
TAZEWELL, VA.

NINA SUE GILL
MART, TEXAS

Sights and Insights

BLANCHE KING

ALBEMARLE, N. C.

SARAH LINGLE

DAVIDSON, N. C.

HATTIE MOSELEY

KINSTON, N. C.

HAZEL MORTON

SPENSER, N. C.

MARTHA MATHESON

BENNETTSVILLE, S. C.



Sights and Insights



SADIE PENRY

WINSTON-SALEM, N. C.

OLIVENE PORTERFIELD

GLADE SPRING, VA.

MARY SHEPARD PARKER

WALLACETON, VA.

MILDRED PARRISH

BEHNSON, N. C.

MAGGIE MAY ROBBINS

ROCKY MOUNT, N. C.

Sights and Insights

REBA RUSS
WINSTON-SALEM, N. C.

GEORGIA RIDDLE
MORGANTON, N. C.

ANNIE SUE ROUGHTEN
WINSTON-SALEM, N. C.

MARGARET STEVENS
WINSTON-SALEM, N. C.

ISABEL SPEARS
LILLINGTON, N. C.



Sights and Insights



MIRIAM VAUGHAN
WINSTON-SALEM, N. C.

ALICE WATSON
WILSON, N. C.

SARAH WATT, ΔΣΔ
REIDSVILLE, N. C.



Sophomore



X Σ T

Sophomore

COLORS : Black and Gold

FLOWER: Black-Eyed Susan

MOTTO: "Be liveable and have a noble purpose"

OFFICERS

ELIZA GASTON MOORE	<i>President</i>
JOSEPHINE SCHAFFNER	<i>Vice-President</i>
RACHEL JORDAN	<i>Secretary</i>
EDITH HANES	<i>Treasurer</i>
PATTIE GORDON TURNER	<i>Cheer Leader</i>

MEMBERS

VIRGINIA ARTHUR	ELIZABETH GRIFFIN	BESSIE PFOHL
DOROTHY BARGER	EUNICE GRUBBS	MABEL POLLOCK
BEULAH BARWICK	JULIA HAIRSTON	LOUISE POWERS
JULIA BETHEA	EDITH HANES	RUTH REEVES
HELEN BROWN	LOIS HAYMORE	ALICE BELLE RULFS
RUTH CANNON	HELEN HENY	RUBY SAPP
MABEL CHINNIS	ELOISE HORNER	EMILIE SNIDER
MARY CLARK	BLOSSOM HUDNELL	JOSEPHINE SCHAFFNER
ELIZABETH CONNOR	MARGARET INGRAM	JUANITA SPRINKLE
RUTH CORRELL	ROSA JAMES	FLAVELLA STOCKTON
FLORENCE CREWS	RACHEL JORDAN	KATHLEEN THOMASSON
RUTH CROWELL	DOROTHY KIRK	SALLIE TOMLINSON
MOZELLE CULLER	FRANCES LEACH	PATTIE TURNER
LUCY DAVIS	ALICE LYERLY	BLANCHE VOGLER
RAYE DAWSON	MARGARET MALONEY	LILLIAN WALL
KATHERINE DENNY	CHARLOTTE MATHEWSON	MARY WARREN
BIRDIE DRYE	ELIZA GASTON MOORE	MARGARET WHITAKER
BERNICE FOOTE	ESTELLE McCANLESS	MARY WILLIAMS
EISE GOODE	BRIGHT McKEMIE	GERTRUDE WOLFF
ALVA GOSWICK	RUBY PEARCE	DOROTHY YANCEY
QUEEN GRAEBER	AGNES PFOHL	ELIZABETH ZACHARY



SOPHOMORE CLASS



SNAPSHOTS



Freshmen



A K Σ

Freshman Class

COLORS: Red and White

FLOWER: Red Carnation

MOTTO: "Do your work joyfully"

OFFICERS

MARJORIE HUNT *President*
 ELEANOR SCHAFFNER *Vice-President*
 M. L. PYBUS *Secretary*
 ELIZABETH STROUD *Treasurer*

MEMBERS

Ella Aston
 Elizabeth Alcock
 Adelaide Armfield
 Mary Bradham
 Mildred Barnes
 Mary Lou Boone
 Charlotte Brown
 Jessamine Brown
 Eloise Bridger
 Maud Bissenger
 Flora Binder
 Mary Blythe
 Catherine Crist
 Lillie Mae Crotts
 Marian Cooper
 Florence Covington
 Bessie Chandler
 Louise Cilley
 Eloise Chesson
 Betsy Dillard
 Julia Edwards
 Carrie Floyd
 Louise Folks
 Laura Howell
 Margaret Hashagen
 Sarah Herndon
 Elaine Holleman
 Katie Holschauser
 Elizabeth Holt

Gertrude Hall
 Edith Hunt
 Marjorie Hunt
 May Hairston
 Estelle Hooks
 Ada James
 Ruth Joyner
 Dorothy Luckenbach
 Lolita Lytch
 Mildred Lyon
 Bernice Lenville
 Mary Agnes McNeeley
 Emily Moyer
 Era Mecum
 Hilda Moran
 Rachel Norton
 Jane Holden Noble
 Lois Neal
 Elizabeth Neil
 Margaret Nickolls
 Elgie Nance
 Minnie Lee Perry
 Clara Pope
 Mollie Philipps
 Marian Propst
 Mary Louise Pyhus
 Mary Pfohl
 Elizabeth Rhodes
 Elizabeth Roop
 Margaret Russell

Theodora Rodman
 Charlotte Rodman
 Nancy Reid
 Blanche Stockton
 Viola Still
 Gladys Sills
 Eleanor Schaffner
 Elizabeth Stroud
 Alice Smith
 Dorothy Sessomes
 Martha Shuford
 Evelyn Sellers
 Margaret Smith
 Hazel Stephenson
 Grace Shepard
 Dorothy Stephens
 Mary Howard Turlington
 Pauline Turner
 Helen Tesh
 Nettie Allen Thomas
 Elizabeth Tyler
 Harriett Uzzle
 Mamie West
 Elizabeth Wesley
 Lillian Watkins
 Olive Bell Williams
 Emma Lucas Ward
 Pauline Wolf
 Mamie Vest



FRESHMAN CLASS



CAMPUS SCENES

MUSIC





GRADUATING RECITAL

MISS NANCY HANKINS

ASSISTED BY

MR. FOSTER HANKINS, *Violinist*

AND

DEAN H. A. SHIRLEY, *Organist*

BEETHOVEN PROGRAM

Sonata, op. 2, No. 2

Adagio Sostenuto, Allegretto, Presto Agitato

MISS HANKINS

Romance in F

Minuet in G

Andante from Symphony

MR. HANKINS

German Dance

Rondo in G

Turkish March (arr. by Rubinstein)

MISS HANKINS

Allegro from Concerto

MR. HANKINS

Concerto, C minor (1st Movement)

MISS HANKINS

Dean Shirley at the organ.

Sights and Insights

GRADUATING PIANO RECITAL
 BY
MISS ALIMAE TEMPLE

ASSISTED BY
 MISS LILLIAN VINCENT BEATEY
Soprano
 MISS MABELLE G. BEATEY
Accompanist
 MISS SUSAN WEBB, *Violinist*
 AND
 DEAN H. A. SHIRLEY, *Organist*



PROGRAM

Prelude, op. 10.....	MacDowell
March from op. 13.....	Schumann
MISS TEMPLE	
My Mother Bids Me Bind My Hair.....	Haydn
Consecration	Manner
Lilac Tree	Gaillau
Spring Song	Weil
<i>Violin Obligato—Miss Webb</i>	
MISS LILLIAN VINCENT BEATEY	
Cracovienne Fantastique	Padrevewski
Erlkonig	Schubert-Liszt
MISS TEMPLE	
The Star	Rogers
No. John, No.....	Sharp
Flower Rain	Adams
Le Saran Rose	Ardith
MISS LILLIAN VINCENT BEATEY	
Danse Macabre	Saint-Saens
MISS TEMPLE AND DEAN SHIRLEY	

Sights and Insights



GRADUATING ORGAN RECITAL

EVELYN GERTRUDE SMITH

ASSISTED BY

MR. WILLIAM BREACH, *Boritone*

PROGRAM

<i>Bach</i>	Fantasia and Fugue in G minor
<i>Mossencot</i>	Vision Fugitive (Herodiade)
<i>T. Tertius Noble</i>	An Elizabethan Idyll
<i>Pietro A. Yon</i>	Humoresque "L'organo primitivo"
<i>R. S. Stoughton</i>	Persian Suite
	<i>a.</i> The Courts of Jamshyd
	<i>b.</i> The Garden of Iram
	<i>c.</i> Saki
<i>Leoncavallo</i>	Serenade
<i>Grant-Schaefer</i>	The Cuckoo Clock
<i>Del Riego</i>	Harmony
<i>Widor</i>	Finale from Eighth Symphony

Sights and Insights



GRADUATING PIANO RECITAL
OF

MISS FRANCES WARFIELD BUCKNER

ASSISTED BY

MISS ALIMAE TEMPLE, *Soprano*
MISS RUTH DUNCAN, *Accompanist*

AND

DEAN H. A. SHIRLEY, *Organist*

PROGRAM

Andante Spianato*Chopin*
Grand Polonaise

MISS BUCKNER

Songs

MISS TEMPLE

Scherzo*Nevin*
Romance, op. 45, No. 1.....*Grunfeld*
Concert Study*Heymann*

MISS BUCKNER

Songs

MISS TEMPLE

Concerto, Eb Major (First Movement)*Litolff*
MISS BUCKNER AND DEAN SHIRLEY

Sights and Insights



GRADUATING PIANO RECITAL
OF
MISS GLADYS REICH

ASSISTED BY

MISS NELL REICH, *Soprano*

AND

DEAN H. A. SHIRLEY, *Organist*

PROGRAM

Sonata, F Major	Mozart
Allegro	
Allegretto	
	MISS REICH
Sing, Sing, Birds on the Wing.....	Nutting
My Lovely Celia	Old English
Spring Songs	Anna Case
	MISS NELL REICH
Gonglerei	Godard
Prelude for left hand alone.....	Scriabis
Czardas	MacDowell
	MISS REICH
Two Roses	Gilbert
By the Water of Minnetonka.....	Licurance
Jewel Song from Faust	Gounod
	MISS NELL REICH
Concerto in D Minor	Mendelssohn
Allegro appassionato	
Adagio	
Finale	
	MISS REICH AND DEAN SHIRLEY



GRADUATING RECITAL

MARY ELIZABETH PARRISH, *Soprano*
 PAULINA WHARTON TAYLOR, *Violinist*

ASSISTED BY

RUTH DUNCAN AND EVELYN SMITH, *Accompanists*

PROGRAM

Romanza from Sonata in C Minor for Piano and Violin.....	Grieg
MISS SMITH	
MISS TAYLOR	
Spring Song	Franz
A Dream	Grieg
Farewell	Franz
MISS PARRISH	
Cradle Song	Brahms
Norwegian Melody	Ole Bull
Poem	Fibich
In the Canebrake	Gardner
Liebesleid	Kreisler
Goblin Dance	Eberhardt
MISS TAYLOR	
Bonjour Suzon	Pessard
"Depuis le jour" from "Louise".....	Charpentier
MISS PARRISH	
Legende	Bolm
Spanish Dance, op. 58, No. 1.....	Rehfeld
I Know Where a Garden Grows.....	Densmore
Consecration	Monney
A May Morning	Manney
MISS PARRISH	
Concerto No. 9	DeBeriat
Adagio	
Rondo	
MISS TAYLOR	
Il Bacio	Arditi
MISS PARRISH	



GLEE CLUB

MISS LILLIAN BEATEY, *Director*

MISS EVELYN SMITH, *Accompanist*

MISS PEARL RAY, *Secretary*

MISS MARY PARRISH, *President*

MISS MILDRED PARRISH, *Treasurer*



Fine Arts



ART DEPARTMENT

MISS BELLAS
LOUISE FOLKS
RACHEL JORDAN

DOROTHY STEPHENS
ELISE GOODS
GEORGIA RIDDLE
CATHERINE CRIST

LOUISE CILLEY
BILL PFOHL
ESTELLE MCCANLESS



DOMESTIC
SCIENCE



Home Economics Department

VIRGINIA ARTHUR
DOROTHY BARGER
MAUDE BISSINGER
MARY BRADHAM
MARY LOU BOONE
BESSIE CHANDLER
MARY COLEMAN
LULIE CROTTS
RUTH CROWELL
MARION COOPER
RAYE DAWSON
RUTH EBORN
JULIA EDWARDS
LOIS EFIRD
HELEN EVERETT
CARRIE FLOYD
KATHERINE GRAHAM
DOROTHY GREGORY
MARGARET HASHAGAN
BLOSSOM HUDNELL
ANNA JACKSON
ADA JAMES
FRANCES LEACH
LOUISE LUCHENBACH
MARGARET MALONEY
ARDENA MORGAN

LOIS NEAL
RUBY PEARCE
MARY PFOHL
OLIVENE PORTERFIELD
MARION PROPST
PEARL RAY
FAY ROBERTS
CHARLOTTE RODMAN
REBECCA RUSS
EVELYN SELLERS
DOROTHY SESSOMS
GRACE SHEPARD
EMILY SNIDER
ISABELLE SPEARS
JUANITA SPRINKLE
MARGARET STEVENS
BLANCHE STOCKTON
ELVA TEMPLETON
KATHLEEN THOMASON
PATTIE TURNER
BLANCHE VOGLER
LILLIAN WALL
EMMA WARD
ANNIE MAE WATRINS
MARGARET WHITAKER
ELIZABETH WESLEY

DOROTHY YANCEY



DOMESTIC SCIENCE



DOMESTIC ART



Business Department.

EFFIE LEE HARDING
LUCIA WILKERSON
FLORENCE COVINGTON
CHARLOTTE BROWN
MAMIE WEST
LOLITA LYTCH
THEODORA RODMAN
MILLICENT POOLE
SOPHIA DAVIS
EMILY LAMBERTSON
DOROTHY BROWN
CLIO BARKELEY



BUSINESS DEPARTMENT



Student Self-Government Association

HETTIE BETHEA *President*
HALLIE ROSS *First Vice-President*
MARTHA MICHAL *Second Vice-President*
MARY SHEPARD PARKER *Secretary*
SARAH BOREN *Treasurer*

REPRESENTATIVES

SENIOR

EVELYN THOM
FAY ROBERTS
OLIVE EBORN
MARIE EDGERTON

JUNIOR

NINA SUE GILL
GERTRUDE COBLE
SARAH LINGLE

SOPHOMORE

ELIZABETH ZACHARY
EDITH HANES

FRESHMAN

NANCY REID
EDITH HUNT





Y. W. C. A.

HALLIE HAMPTON ROSS	<i>President</i>
FRANCES BUCKNER	<i>Vice-President</i>
MARY SHEPARD PARKER	<i>Secretary</i>
ALICE WATSON	<i>Treasurer</i>
ELIZABETH GILLESPIE	<i>Undergraduate Representative</i>
MARIE EDGERTON	<i>Religious Meetings</i>
ELIZA GASTON MOORE	<i>World Fellowship</i>
ELIZABETH GILLESPIE	<i>Music Committee</i>
ALICE DAVID	<i>Service Committee</i>
SARAH LINGLE	<i>Room Committee</i>
ANNIE THOMAS ARCHBELL	<i>Bulletin Board</i>
ELIZABETH CONNOR	<i>Poster Committee</i>
FAY ROBERTS	<i>Social Committee</i>
LAURA HOWELL	<i>Freshman Representative</i>
MARGARET RUSSEL	<i>Freshman Representative</i>





The Salemite Staff

MARIE EDGERTON*Editor-in-Chief*
PEARL RAY*Business Manager*
ELIZABETH GILLESPIE*Assistant Business Manager*
EFFIE LEE HARDING*Assistant Business Manager*

LITERARY EDITORS

EVELYN THOM, '21
MARY DARDEN, '21
SARAH LINGLE, '22
MARY SHEPARD PARKER, '22
SARAH WATT, '22
ELIZABETH CONNOR, '23
RACHEL JORDAN, '23
ALVA GOSWICK, '23
FLORA BINDER, '24
MAUD BISSINGER, '24





THANKSGIVING MASCOTS



Athletics.



ATHLETIC ASSOCIATION

HELEN MERRIMAN STRETT, *President*
 EFFIE LEE HARDING, *Vice-President*
 NINA SUE GILL, *Secretary and Treasurer*
 MILDRED PARRISH, *Head of Basket-Ball*

NINA SUE GILL, *Head of Swimming*
 MARTHA MATHESON, *Track*
 ELIZABETH ZACHARY, *Head of Hockey*
 ELIZA GASTON MOORE, *Head of Tennis*



VARSIITY TEAM

MARtha MATHESON, *Center*
NINA SUE GILL, *Guard*

MILDRED PARRISH, *Forward*
HELEN STREETT, *Guard*

EFFIE LEE HARDING, *Center*



VARSIITY TEAM

ELIZABETH ALCOCKE, *Forward*
MAUDE BISSINGER, *Guard*

MARGARET RUSSELL, *Side Center*
ELIZABETH GRIFFIN, *Forward*
JOSEPHINE SHAFFNER, *Jumping Center*

Sights and Insights



Senior Basket-Ball Team

EFFIE LEE HARDING (Captain)	Center
HALLIE ROSS	Side Center
MARTHA MICHAL	Sub Side Center
MARY DARDEN	Forward
EVELYN SMITH	Forward
OLIVE EBORN	Sub Forward
FAY ROBERTS	Guard
HELEN STREETT	Guard

Sights and Insights



Junior Basket-Ball Team

MARTHA MATHESON	Center
GERTRUDE COBLE (Captain)	Side Center
LOUISE COOKE	Forward
MILDRED PARRISH	Forward
SARAH LINGLE	Sub Forward
MARY SHEPARD PARKER	Guard
NINA SUE GILL	Guard
HELEN EVERETT	Sub Guard



Sophomore Basket-Ball Team

JOSEPHINE SHAFFNER (Captain)Center
ELIZABETH ZACHARYSide Center
ELIZABETH GRIFFENForward
ALICE RULFSForward
JULIA HAIRSTONSub Forward
MABEL CHINNISGuard
MARY WARRENGuard
BERTIE DRYESub Guard

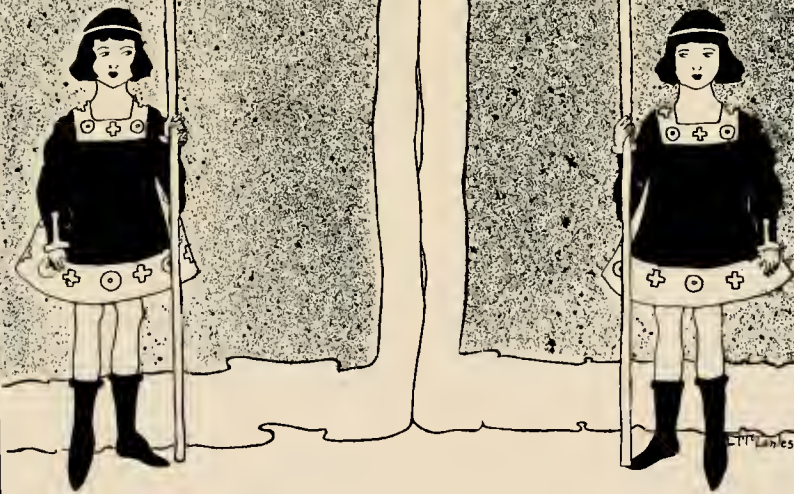
Sights and Insights



Freshman Basket-Ball Team

BESSIE CHANDLER .	Center
MARGARET RUSSELL .	Side Center
ELIZABETH ALCOCKE	Forward
BETSY HOLT (Captain)	Forward
MARGARET SMITH	Sub Forward
DOROTHY DANIELS	Guard
MAUDE BISSINGER	Guard
MARJORIE HUNT	Sub Guard

DRAMATICS





Lancelot and Elaine

PRESENTED BY THE
 JUNIOR AND SENIOR CLASSES
 OF
 SALEM COLLEGE
 UNDER DIRECTION OF
 MISS MILDRED L. DE BARRITT
 SALEM COLLEGE CAMPUS, SATURDAY, MAY 22, 1921
 PROCEEDS FOR ENDOWMENT FUND

CAST OF CHARACTERS

King Arthur	ELIZABETH BYNUM
Queen Guinevere	EVELYN THOM
Lancelot	NANCY HANKINS
Lord of Astolat	MILDRED STARK
Elaine	NANCY LEE PATTERSON
Lavaine	MARGARET FALLON
Torre	EFFIE LEE HARDING
Gawain	MARY DARDEN
Hermit	MIRIAM SPOON
Dumb Servant	ALIMAE TEMPLE

KNIGHTS

HETTIE BETHEA	PEARL RAY
MARGARET BRAWLET	MARTHA MICHAL
VIRGINIA HOLMES	DOROTHY WITT

LADIES

LOIS CASH	FRANCES ROBERTSON
LUCY ESTES	MABEL WILLIAMS
RUTH MILLS	ESTELLE WOLFF

ACT I

SCENE 1. Near the Palace of King Arthur
 SCENE 2. Before the Castle of Astolat
 SCENE 3. Before the Castle of Astolat

ACT II

SCENE 1. Poplar Grove
 SCENE 2. Near the Palace of King Arthur
 SCENE 3. Before the Castle of Astolat
 SCENE 4. Before the Castle of Astolat

ACT III

SCENE 1. Before the Castle of Astolat
 SCENE 2. Before the Castle of Astolat
 SCENE 3. Near the Palace of King Arthur

Dramatized from Tennyson's Idyll, "Lancelot and Elaine," by
 MISSES DE BARRITT, HAGAN, AND MIRIAM SPOON, '20
 Costumes designed by MISSES FREEMAN AND HELEN EVERETT, '22
 and made by the girls of Salem Academy and College

MUSIC

UNDER DIRECTION OF
 MISS SUSAN A. WEBB

ORCHESTRA

FIRST VIOLINS

MISS PAULINA TAYLOR	MISS MARY PFOHL
MISS GLADYS SILLS	MR. JAMES PIATT
MISS AGNES PFOHL	MR. GEORGE POE
MISS ESTHER EFIRD	

SECOND VIOLINS

MISS ELIZABETH McKIE
MISS ELIZABETH PARKER
MR. ARCHIBALD SPAUGH
MR. HUBERT PLASTER

VIOLA

MR. ROBERT ORMSBY

CORNET

MR. FREDERICK SPAUGH

DRUMS AND TRAPS

MR. HENRY PFOHL

FLUTE

MR. EDWARD RONDTHALER

HORN

MR. CHARLES SIEWERS

PIANO

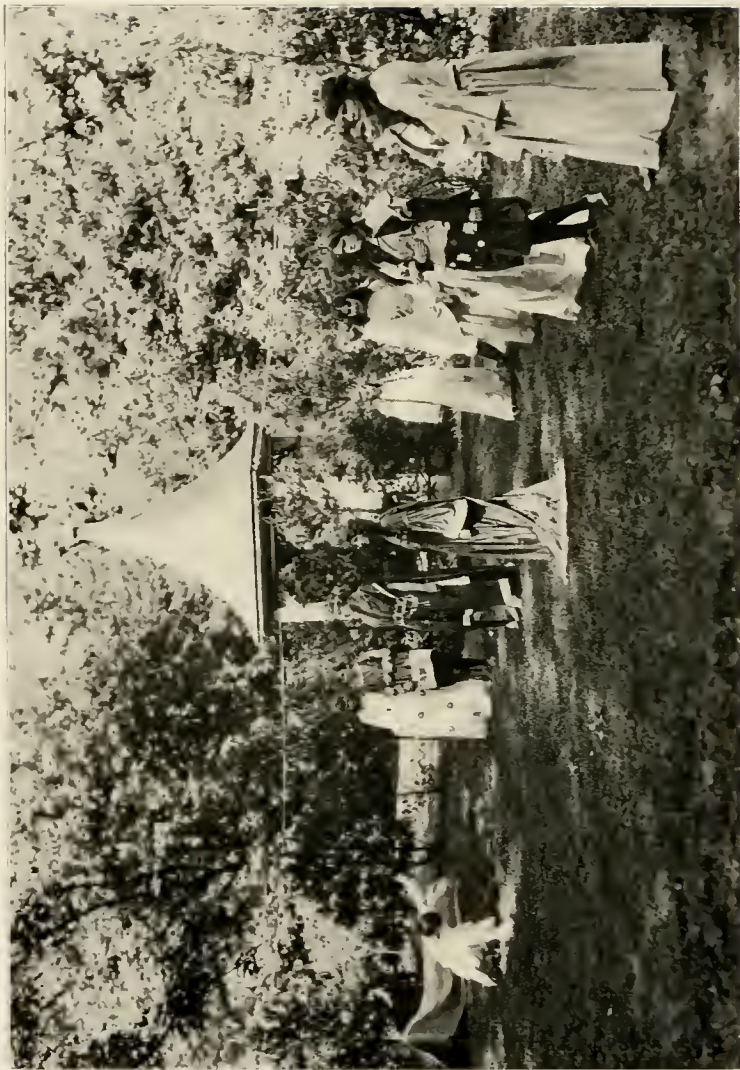
MISS ELIZABETH GILLESPIE
 MISS EVELYN SMITH

CLARINET

MR. JOSEPH PFOHL



*"Whereto the Queen agreed
With such and so unmoved a majesty
She might have seem'd her statue."*



*"Lo, Sir, our knight, thro' whom we won the day,
Hath gone sore wounded, and hath left his prize
Untaken, crying that his prize is death."*



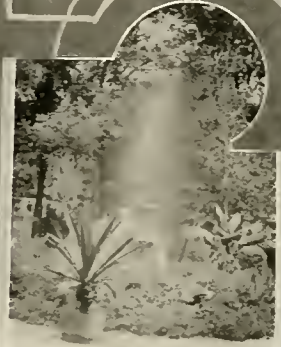
*"A thousand times farewell! We two
May meet at court hereafter! There I think
We two shall know each other."*



*"And issuing found the Lord of Astold,
With two strong sons, Sir Torre and Sir Gervain,
And close behind them, step the lily maid."*



*"Slowly past the barge
Whereon the lily maid of Astolat
Lay smiling, like a star in blackest night."*





Sights and Insights



Eastern Carolina Club

ELOISE CHESSON
KATHERINE DENNY
LOUISE YOUNG
MARY WARREN
ELIZABETH RHODES
ELOISE BRIDGER
EVELYN SELLERS
ESTELLA HOOKS
ANNIE THOMAS ARCHBELL
VIRGINIA ARTHUR

HELEN BROWN
MARY LOUISE PEARCE
MINNIE LEE PERRY
HILDA MORAN
HATTIE MOSELEY
MARY SHEPARD PARKER
HARRIET UZZLE
NANNIE FINCH
ADA BURT
MARGARET LYON

MILDRED LYON
JULIA EDWARDS
JANICE WATSON
EMILY MOYE
MARGARET HASHAGAN
ADA JAMES
EMMA LUCAS WARD
FLORENCE COVINGTON
MAMIE WEST
MABEL POLLOCK

Sights and Insights



Western North Carolina Club

GLADYS REICH	CHARLOTTE BROWN	ROSA JAMES	MARTHA MICHAL
HELEN TESH	LILLIAN WALKER	ELIZABETH ZACHARY	JUANITA SPRINKLE
EVELYN THOM	GERTRUDE HALL	MOLLIE PHILLIPPS	FRANCES ARMFIELD
ELOISE HORNER	KATIE HOLHOUSER	LOIS HAYMORE	MARY HOWARD TURLINGTON
RUTH REEVES	JESSAMINE BROWN	QUEEN GRAEBER	ELIZA GASTON MOORE
JULIA HAIRSTON	ERA MECUM	BERNICE FOOTE	DOROTHY YANCEY
SARAH BOREN	MARGARET SMITH	GEORGIA RIDDLE	MARION PROPST
ELIZABETH ARMSTRONG	SALLIE TOMLINSON	PAULINE WOLFF	BERNICE LINVILLE
EMELIE SNIDER			HALLIE ROSS

Sights and Insights



South Carolina Club

RACHEL NORTON
JULIA BETHEA
FRANCES BUCKNER
HETTIE BETHEA
ALICE DAVID
EVELYN SMITH
ANNA JACKSON
LOIS NEAL

Virginia Club

ELIZABETH GILLESPIE
MARGARET RUSSELL
BETSY DILLARD
MAY HAIRSTON
OLIVENE PORTERFIELD
ELIZABETH ROOP





GEORGIA CLUB

ALICE SMITH
DOROTHY STEPHENS
MARIAN COOPER

ELIZABETH WESSELEY

DOROTHY SESSOMS
MARY LOU BOONE
ELISE GOODE

Sights and Insights



Wilson Rocky Mount Club

MINNIE LEE PERRY
ELIZABETH CONNOR
ALICE WATSON
ELIZABETH GRIFFIN
MILDRED BARNES
RUTH JOYNER
MAGGIE MAY ROBBINS
MARY DARDEN

Newbern Washington Greenville Club

HELEN BROWN
EMILY MOYE
OLIVE EBORN
ADA JAMES
RUTH EBORN
BLOSSOM HUDNELL
MARY BRADHAM
ANNIE THOMAS ARCHBELL
CHARLOTTE RODMAN
VIRGINIA ARTHUR
THEODORA RODMAN



Sights and Insights



The Flat

OLIVENE PORTERFIELD
LOUISE COOKE
ANNIE THOMAS ARCHBELL
MILDRED PARRISH
MARTHA MATHESON
GEORGIA RIDDLE

NANNIE FINCH
HAZEL MORTON
ISABEL SPEARS
MARY SHEPARD PARKER
SARAH BOREN
BLANCHE KING

SARAH LINGLE



Fire Department

MILDRED PARRISH*Captain* ELIZABETH ZACHARY.....*Asst. Captain*

LIEUTENANTS

HAZEL MORTON	ADA JAMES	ELIZA GASTON MOORE	JULIA EDWARDS
ANNIE T. ARCHELL	RUTH REEVES	EDITH HANES	ELIZABETH GILLESPIE
ELIZABETH STROUD	RACHEL JORDAN	DOROTHY KIRK	BLANCHE KING
MARY BRADHAM	JULIA HAIRSTON	MARGARET INGRAM	NINA SUE GILL
LOIS NEAL	DOROTHY BARGER	ADA BURT	MAGGIE MAE ROBBINS
MILDRED LYON	JUANITA SPRINKLE	LOUISE PYBUS	MABEL CHINNIS
LOLITA LYTCH	EDITH HUNT	DOROTHY SESSOMS	JULIA BETHEA

Sights and Insights



Scandal Club

MARY BRADHAM
THEODORA RODMAN
BETSY DILLARD
ELIZABETH STROUD
MARY LOUISE PEARCE
MAUD BISSINGER
GRACE SHEPARD
CHARLOTTE RODMAN
MILDRED BARNS

Sights and Insights



Red Headed Club

BESSIE CHANDLER

MARTHA SHUFORD

EVELYN THOM

BLOSSOM HUDNELL

HELEN EVERETT

LOIS HAYMORE

Sights and Insights



Tormentors' Club

SARAH BOREN	JULIA BETHEA
NANNIE FINCH	HELEN STREETT
ELIZABETH ALCOCK	MILDRED PARRISH
ELOISE CHESSON	ALICE LYERLY
GERTRUDE COBLE	ELLA ASTON
MAGGIE MAY ROBBINS	MAUD BISSINGER
ISABEL SPEARS	ELIZABETH CONNOR
MARTHA MATHESON	ALICE RULFS
NINA SUE GILL	DOROTHY DANIELS
MARJORIE HUNT	
ANNIE THOMAS ARCHBELL	
ELIZA GASTON MOORE	
MARGARET RUSSELL	
EVELYN THOM	
MARTHA MICHAL	
HALLIE ROSS	

Sights and Insights



Red Ribbon Gossipers

HAZEL MORTON

MARTHA MATHESON

DOROTHY YANCEY

RUTH CROWELL

ALICE LYERLY

ALICE RULFS

ELIZA GASTON MOORE

ELIZABETH CONNOR

MILDRED PARRISH

MARY HOWARD TURLINGTON

NANNIE FINCH

CARRIE FLOYD

JULIA BETHEA

DOROTHY DANIELS

ELLA ASTON

HELEN STREETT

ELOISE CHESSON

MARGARET RUSSELL

MARY DARDEN

NINA SUE GILL

HELEN EVERETT

Sights and Insights



Bandana Club

BESSIE CHANDLER
 ISABEL SPEARS
 HELEN BROWN
 VIRGINIA ARTHUR
 MILDRED BARNES
 ANNIE T. ARCHBELL

ELIZABETH GILLESPIE
 ELIZABETH ALCOCKE
 ALICE WATSON
 EMILIE SNIDER
 ELIZABETH WESLEY
 HATTIE MOSELEY

MARJORIE HUNT
 MAGGIE MAE ROBBINS
 SARAH BOREN
 GERTRUDE COBLE
 LOUISE PYBUS
 DOROTHY BARGER

HALLIE ROSS
 HETTIE BETHEA
 EVELYN THOM
 MARTHA MICHAL
 DOROTHY STEPHENS

Coatillion Club

HELEN EVERETT *First Leader*
 HELEN STREET *Second Leader*

Elizabeth Armstrong	Bright McKemmie	Ruth Joyner
Annie T. Archbell	Mildred Parrish	Ada James
Virginia Arthur	Mary S. Parker	Mildred Barnes
Hettie Bethea	Maggie Mae Robbins	Mary Bradham
Sarah Boren	Hallie Ross	Elizabeth Wesley
Julia Bethea	Alice Rulfs	Dorothy Stephens
Helen Brown	Fay Roberts	Clara Pope
Dorothy Barger	Pearl Ray	Dorothy Sessoms
Elizabeth Connor	Isabel Spears	Marian Cooper
Louise Cooke	Emilie Snider	Elizabeth Stroud
Gertrude Coble	Evelyn Thom	Ella Aston
Ruth Crowell	Sarah Watt	Rives Hooper
Mary Clarke	Lucia Wilkinson	Maude Bissenger
Mary Darden	Dorothy Yancey	Grace Sbepard
Marie Edgerton	Margaret Russell	Louise Cilly
Carrie Floyd	Marian Propst	Betsy Dillard
Nina Sue Gill	Emma Lucas Ward	Mary Louise Pybus
Dorothy Gregory	Edith Hunt	Mary Louise Pierce
Elizabeth Griffin	Marjorie Hunt	Theodora Rodman
Elise Goode	Mary Williams	Charlotte Rodman
Blossom Hudnell	Betsy Holt	Alice Smith
Dorothy Kirk	Elizabeth Alcocke	Dorothy Daniels
Frances Leach	Martha Michal	Margaret Hashagen
Sarah Lingle	Katherine Denny	Eloise Chesson
Alice Lyerly	Emily Moye	

D. Luckenbach



Statistics



FRANCES BUCKNER
Most Dignified

MARY DARDEN
Most Popular
Cutest

PEARL RAY
Most Stylish
Most Striking

EVELYN SMITH
Most Studious

MARTHA MICHAL
Most Intellectual



MARY SHEPARD PARKER
Most Popular Junior
Most Capable

PATTIE TURNER
Liveliest

DOROTHY GREGORY
Prettiest

SARAH WATT
Most Attractive

HELEN EVERETT
Best Dancer



BETSY HOLT
Most Athletic

MILDRED BARNES
Most Winning Personality

EMILY MOYE
Daintiest

BETSY DILLARD
Most Entertaining

PUD GRIFFIN
Most Popular Sophomore

MARY BRADHAM
Most Popular Freshman



FRANCES LEACH

SPRING



RUTH CROWELL

SUMMER



LOLITA LYTCH

FALL



ALICE SMITH

WINTER



MARY CLARKE

RIDING GIRL



DOROTHY SESSOMS

AFTERNOON GIRL



LOUISE COOKE

EVENING GIRL

Sights and Insights





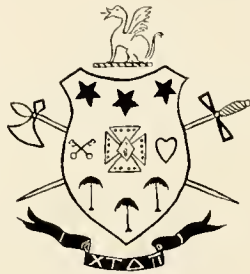


Pan-Hellenic Council

MARY DARDEN	Θ Δ Π
LOUISE COOKE	Θ Δ Π
FAY ROBERTS	A Φ Κ
RUTH CROWELL	A Φ Κ
HELEN STREETT	B Β Φ
ELIZABETH GRIFFIN	B Β Φ
HETTIE BETHEA	Δ Σ Δ
HALLIE ROSS	Δ Σ Δ



Sights and Insights



Theta Delta Pi

Established 1918

COLORS : Green and White

FLOWER : Sweet Pea

1921

MARY DARDEN
EVELYN THOM

1922

LOUISE COOKE
LUCIA WILKERSON

1923

FRANCES LEACH
ELISE GOODE
BLOSSOM HUDNELL
ELOUISE HORNER

1924

ALICE SMITH
ADA JAMES
RUTH JOYNER
EMILY MOYE
MILDRED BARNES





By the Book

Alpha Phi Kappa

Founded at Salem College 1919

COLORS : Green and White

FLOWER : White Rose

1921

FAY ROBERTS

1922

ANNIE THOMAS ARCHBELL

1923

RUTH CROWELL

ALICE RULFS

DOROTHY YANCEY

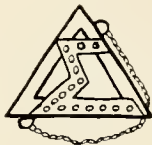
1924

MARY LOU BOONE

CHARLOTTE BROWN



Sights and Insights



Delta Sigma Delta

Founded at Salem College 1913

COLORS : Purple and White

FLOWER : Violet

CHARTER MEMBERS

KATHARINE BURT
ELIZABETH DAVIS
SARAH DOE
ELIZABETH DUNCAN
JACK GRANT
ANNIE LEE GRISSOM

FRANCES LONG
CARLOTTA NICHOLSON
MARY NICHOLSON
MILDRED OVERMAN
ISABELLE PARKER
ELLINOR RAMSAY

1921

HETTIE BETHEA

HALLIE ROSS

1922

SARAH WATT

DOROTHY GREGORY

1923

ELIZABETH ARMSTRONG
DOROTHY BARGER

EMILIE SNIDER

1924

ELIZABETH WESLEY
CHARLOTTE MATHESON
ELIZABETH HOLT

DOROTHY STEPHENS
MAUDE BISSINGER





Beta Beta Phi

Established 1911

COLORS: Red and Black

FLOWER: Red Rose

FACULTY

MISS MARGARET MAE THOMPSON

1921

HELEN STREETT

1923

MARY CLARK
ELIZABETH GRIFFIN
ELIZABETH CONNOR
ALICE LYERLY

1924

DOROTHY SESSOMS
MARION COOPER
ELIZABETH STROUD
ELLA ASTON
LOUISE CILLEY



Senior Chart

NAME	NICKNAME	FAVORITE EXPRESSION	CHIEF OCCUPATION	FAVORITE ARTICLE OF DRESS	WHERE FOUND	IDEAL
EVELYN THOM	"Thom"	"I'm dead broke!"	Billing	K 2 Frat Pin	On her way out	To make wagons
HUETTE BETHEA	"Het"	"Girls, please!"	Loating	"Kats"	Mrs. Carter's	Collecting frat pins
MARY DARDEN	"Smally"	"Mein Gott!"	Working on Annual	Safety Pins	With Alice	To be a brewer
FRANCES BUCKNER	"Chitty"	"Oh, Gee!"	Spanking the piano	Red Switch	In a hurry	Miss Yerrington
ALICE DAVID	"Topsy"	"You ole Mutt!"	Chewing gum	Black Harom Skirt	Going	To string 'em
HALLIE ROSS	"Hamp"	"Well, have mercy!"	Nursing the stove	Concealed Weapon	By the stove	To take "Ed"
PEARL RAY	"Pearly Dew Drop"	"Oh, Lord, I've lost it!"	Longing	Veil	With the Juniors	Money to burn
MARIE EDGERTON	"Ric"	"Can't hardly wait!"	Gadding about	Fancy Hose	In her bed	A society belle
GLADYS REICH	"Mutt"	"I'm worried to death!"	Looking for Alice and "Chitty"	Red Checked Dress	In Memorial Hall	To give a recital
ESTELLA WOLFF	"Ted"	"You fool!"	Drinking water	Woolen Hose	Anywhere	To educate Kural Hall
FAY ROBERTS	"Fairy Fay"	"I'm so thrilled!"	Getting engaged	Blue Bathrobe	Coming	To join the legal profession
HULEN STREETT	"Helen Merriman"	"Oh, my dear!"	Showing Vergil a big time	Lip Stick	In the Franklin	To have a desirable man
MARATHA MICHAL	"Mike"	"Horror's!"	Coaching	White Sweater	Welfares	To look after the cut system all of her life
OLIVE EBJORN	"Leah's"	"What did you say?"	Reading "Penrod"	Middy Suit	Everywhere	Pretty
EVELYN SMITH	"Evaline"	"Just can't learn it."	Burning midnight oil	Pearl Beads	At the organ	Concert player
EFFIE LEE HARDING	"Big Boy"	"Well, I'll swear!"	Laughing	Blue Suit	Sky's the limit	Miss Farrow
EVA TEMPLETON	"Preacher"	"Oh, my goodness!"	Cooking	Senior Robe	About her own business	To go to Foreign Lands



Mirth



Jokes

An Irishman coming out of ether in the ward after an operation exclaimed audibly: "Thank God! That is over!"

"Don't be too sure," said the man in the next bed: "they left a sponge in me and had to cut me open again."

And the patient on the other side said: "Why, they had to open me, too, to find one of their instruments."

Just then the surgeon who had operated on the Irishman stuck his head in the door and yelled:

"Has anybody seen my hat?"

Pat fainted.

There is a little Hindoo,
He does the best he kindoo,
He lives "out there,"
No clothes to wear,
So he makes his little skindoo.

Uncle Hiram (looking at bathtubs in a plumber's window): "Well, I swan! I've heard that these here New Yorkers are pretty nerry, but I never supposed they had the cheek to take a bath in the front window."

Major (excitedly): "General, the enemy are as thick as peas!"

General: "Shell them, you fool; shell them!"

An old negro, complaining that he had lost his dog, his employer asked him why he didn't advertise for the animal in the newspapers.

"Dat wouldn't do no good," returned the old man.

"Why not?" asked his employer.

"Well, sah, dat dog kain't read," responded the old negro.

Ella: "She has spent her life making men run errands for her."

Stella: "Well, she is pretty near the end of her male order business."



Mrs. Byers: "All of the big berries are on the top of the box, I suppose?"
Peddler: "No, mum, some of 'em's on the top of the other boxes."

Kid: "How old is that lamp, Ma?"
Ma: "Oh, about three years."
Kid: "Turn it down; it's too young to smoke."

An army mule at one of the cantonments died. The private who had charge of the last rites had to fill out the regulation form, and came across the suggestion, "Disposition of Carcass."

After a moment's thought, Sammie wrote on the blank line: "Mean and Deceitful."

A Hebrew small storekeeper, to the surprise of his brethren, suddenly decorated his window with a gorgeous new blind.

"Nice blind of yours, Isaac," quoth his neighbor.

"Yes, Aaron."

"Who paid for it, Isaac?"

"The customers paid, Aaron."

"What! The customers paid for it, Isaac?"

"Yes, Aaron. I put a leedle box on my counter, 'For the blind.' And they paid for it."

Willie: "Ma, do I have to wash my face?"

Mother: "Certainly."

Willie: "Aw, why can't I just powder it like you do yours?"

"My uncle's a funny man."

"Why?"

"He gave me a comb and told me never to part with it."

A pessimist is one who, of two evils, chooses both.

Four-year-old Charlotte was having trouble with her English, but she had entirely passed her difficulties on one point.

"I see how it is now, mother," she said the other day. "Hens set and lay; and people sit and lie, don't they, mother?"



THE BILLIONTH AND TWENTY-THIRD SLAM

The Ford is my jeopard,
I shall not want
Another.
It maketh me to lie down in damp marshes,
It disturbeth my soul.
It leadeth me into deep waters ;
It directeth me in the paths of ridicule, for its name's sake ;
It prepareth a dead stop for me in the presence of mine enemies.
Yea, though I race through the valley at thirty miles per hour,
I must sometimes slacken when going up grade.
I will fear more evil when it is with me.
It anointeth my face with oil—
Its water boileth over.
Surely to goodness, if Lizzie follows me all the days of my life,
I shall dwell in the house of the NUTS, forever.

A crabby millionaire as he climbed out of his limousine was approached by a newsboy.

"No, I don't want any paper ; get out !" he snarled.

"Well, keep your shirt on, boss," replied the newsboy. "The only difference between you and me is that you are making your second million and I am still working on my first."

Some folks are so reserved in their manners that they don't appear to have any at all.

Before taking certain steps consult a dancing master.

Little Willie was discovered by his sister industriously smashing all the eggs in the house.

"Why, Willie!" she cried aghast, "what do you mean by breaking all those eggs?"

"Well," said Willie, "I heard papa saying there was money in eggs these days and I'm trying to find it."



Hub: "It seems to me that you come to the office a good deal more than there is any occasion for."

Wife: "I can not help it, dear. Your manners in the office are so much nicer than they are at home that I really enjoy the contrast."

A woman's voice isn't necessarily heavenly because it sounds unearthly.

Once in a while the greatest truth is told by the biggest liar.

If a man calls on a woman she is pleased—either when he comes or goes.

Some time since, when little Willie returned home from school he found his fond mother waiting for him with a disturbed expression.

"Willie," said she, "did you eat any of those apples that I left in the kitchen cupboard?"

"Mamma," replied the youngster with great earnestness, "I have not touched one."

"Then," demanded the agitated parent, "how is it that I found four apple cores in your bedroom, and that there is only one apple left in the cupboard?"

"The one in the cupboard, mamma," explained Willie, looking to see if there was clear sailing to the garden gate, "is the one I didn't touch."

They were having a lesson in natural history and the teacher asked the class if any one knew what a groundhog was. Up went a small hand, waving frantically.

"Well, Johnny, tell us."

"Please, ma'am, it's a sausage," answered Johnny.

"Is your wife fond of moving pictures?"

"I should say she is. Scarcely a week goes by she doesn't make me get on the stepladder and change 'em all about."

Time is but a narrow ruffle on the edge of eternity.

A minister says the right path is too often left.



HANDLE TO-DAY FIRST

Say, what's the use of worrying about the days to come?

You may not be on earth when they arrive.

If you can handle old To-day, I say you're going some:

It's work enough for any man alive.

We worry o'er to-morrow and about the past we fret.

It's foolish, for such worry can not pay.

Now, really, you'll be happier if you can just forget

All other days and dates except To-day.

The things we fear will happen are the things that never come,

And yet they make you lose a lot of weight.

You worry and you worry till your health is on the bum,

Your constitution has to pay the freight.

The past is gone, so what's the use of letting it disturb

Your mental state and make your hair turn gray?

Hey, mister, on that worrying you'd better put a curb;

You'll do right well to handle old To-day.

Mr. Flatbush: "I've been walking the floor with that baby nearly all night; I wish I'd gone to the war now."

Mrs. Flatbush: "Why didn't you?"

Mr. Flatbush: "They said I had flat feet and couldn't walk much."

Some roses are known by the cheeks they decorate.

The dog that speaks with its tail is something of a wag.



Mother

Mother, I am here a-thinkin':
 Jest a-feelin' sort o' blue,
Half discouraged; heart a-sinkin',
 Like a heart will sometimes do.
Luck has sort o' been agin me,
 Though I've bravely hit the line,
To revive the hope that's in me,
 I'm forgettin', Mother mine.

I have put me woes behind me,
 An' I'm back there in your arms,
Snugglin' where the world can't find me,
 With its worries an' alarms;
You're a-sayin': "There, now, sonny!
 It's all right, dear, never mind!"
Life's as sweet agin as honey,
 It's no more a tough old grind.

Mother, I must quit my dreamin'
 An' get busy, after while,
But this little bit of seemin'
 That I see your lovin' smile,
Will bring back the punch you gave me,
 In life's game I'll kick a goal,
You, in mem'ry dear, can save me,
 I'll be master of my soul.

Sights and Insights

Looking Back

I'm looking back a bit to-night,
I'm dreaming of a day
When I was living on a farm—
The old home far away.
I'm painting pictures in my mind!
In one, as shadows creep,
Is mother, seated by the bed,
And rocking me to sleep.

I seem to hear her song again—
The one I liked the best,
Once more I'm in the gentle arms
That held me to her breast.
I seem to feel the motion of
Her squeaky rocking chair,
And now I'm dropping off to sleep—
A slumber free from care.

I haven't rested in her arms
For forty years or more,
I haven't heard her sing the song
I loved in days of yore.
To-night I'd give the world if she'd
Come back, as shadows creep,
And rock, in that old squeaky chair,
A tired man to sleep.





SOUTH HALL DOOR



**ACADEMY
SIGHTS
AND
INSIGHTS
1921**

N. Cawthorne—



Academic Annual Staff, 1921

EDITOR-IN-CHIEF

CHARLOTTE NORTHCUIT, '21

ASSISTANT EDITOR

EVELYN GRAHAM, '22

BUSINESS MANAGERS

ANNA ADAMS, '21

ALICE HARRIS, '22

LITERARY EDITORS

MARY PRESTOR BYNUM, '21

EVELYN MILLNER, '21

ALLENE FRAZIER, '21

MARY MCKELVIE, '21

ART EDITORS

NANNIE CAWTHORNE, '22

LENA FOUNTAIN, '23

KATHERINE PLEASANTS, '22

MILDRED COLLACOT, '21

JOKE EDITORS

DAISY DU BOSE, '21

DOROTHY SHIVERS, '23

GERTRUDE MARSH, '24

CLUB EDITORS

AGNES BARGER, '21

MARGARET FORMAN, '22

ANNA PAULINE SCHAFFNER, '23





FACULTY





Academy Faculty

EDWIN J. HEATH, B. A., B. D., M. A.
BIBLE

EMMA CARTER SMITH, A. B.
ROOM COMPANY TEACHER

MARGARET HAGAN, A. B.
ENGLISH

MABEL WILLIAMS, A. B.
ENGLISH

HELEN SCOTT, A. B.
FRENCH—HISTORY

NAN NORFLEET, A. B.
FINE ARTS

MARGUERITE DAVIS, A. B.
HISTORY—LATIN

ROSINA VANCE, B. S.
HOME ECONOMICS

MARY EFIRD, A. B.
MATHEMATICS

CARLOTTA JACKSON
PHYSICAL EDUCATION

EUNICE HUNT, A. B.
SCIENCE

SENIOR



M CollaCoTT



Senior Class

COLORS: Red and Black

FLOWER: Poppy

MOTTO: "Generous, Sincere, and Friendly"

OFFICERS

IRENE McMINN	<i>President</i>
MARION SCHALLERT	<i>Vice-President</i>
JANET SPAUGH	<i>Secretary</i>
ELIZABETH GERALD	<i>Treasurer</i>
MARY PRESTON BYNUM	<i>Poet</i>
MARY McKELVIE	<i>Historian</i>
ELIZABETH PARKER	<i>Prophet</i>
MARJORIE GARDNER	<i>Last Will and Testament</i>

MEMBERS

ANNA ATWOOD
 ANNA ADAMS
 MARY PRESTON BYNUM
 AGNES BARGER
 CATHERINE CONNOLLY
 LOUISE CAPEHART
 GLADYS CRAVER
 DOROTHY CARGILL
 ALICE COPPER
 DAISY DU BOSE
 TEMPE ELLEN
 ALLENE FRAZIER
 MARJORIE GARDNER
 ELIZABETH GERALD
 KATHERINE HARPER
 SOPHIA HALL
 LUCILLE JOHNSON
 MARY P. JACKSON

ELIZABETH LIEGT
 ALICE JOHNSON LYNCH
 RUTH MATTISON
 ELIZABETH MERRITT
 EVELYN MILLNER
 IRENE McMINN
 MARY McKELVIE
 MARGARET McLAUGHLIN
 CHARLOTTE NORTHCUTT
 MARY OGBURN
 ELIZABETH PARKER
 HENRI SINCLAIR
 MARION SCHALLERT
 IRENE SMITH
 JANET SPAUGH
 MATTIE SINK
 MARGARET WOOTEN
 BLANCHE YORK

Sights and Insights

ANNA ATWOOD

WINSTON-SALEM, N. C.

"Tom"

Athletic Association, 1917-21; Y. W. C. A., 1917-21; North Carolina Club, 1917-21.

Anna is a great talker. Even in French Class, she has proved this. Some day, no doubt, she will take her stand as a great lawyer because of her many argumentative speeches.

ANNA ADAMS

GIBSON, N. C.

"Lengthy"

Basket-Ball, 1920-21; Varsity, 1920; Athletic Association, 1920-21; Head of Tennis, 1921; Captain Basket-Ball, 1921; Annual Staff, 1921; North Carolina Club, 1920-21.

Just look at all the honors that Anna has and there will be no need for us to tell you what we think of her. She is a good all-round girl and one you can depend on.

MARY PRESTON BYNUM

GERMANTOWN, N. C.

Annual Staff, 1921; Class Poet, 1921; North Carolina Club, 1921.

With her head at Salem and her heart at Baltimore, Mary Preston, though somewhat divided against herself, stands as well as any of us. We some day expect to hear of her as a great writer, when her stories get their rightful place.



Sights and Insights



AGNES BARGER
SHAWSVILLE, VA.

"Aggie"

Vice-President Y. W. C. A., 1920; Virginia Club, 1920-21; Annual Staff, 1921.

Agnes is from Virginia, and that means a lot. She is good fun, has plenty of pep, and is always ready for anything. When once her friendship is gained that friendship lasts, and to know her is to love her.

CATHERINE CONNOLLY
WINSTON-SALEM, N. C.

"By Jingo"

Secretary, 1917-18; Secretary, 1919; Vice-President, 1920.

Here is a member of our class who is always ready to go anywhere, or everywhere, and we are more than glad to have her 'cause she is a "good sport." Aside from this she is a writer and some day will make the Class of '21 famous by her works.

LOUISE CAPEHART
RONOBEL, N. C.

North Carolina Club, 1920-21; Y. W. C. A., 1920-21.

Though voted the quietest girl in all this vast Academy last year, she will never be voted such again. Here's what one would call a complete change! She is one of our best and has the love of all who know her.

Sights and Insights

GLADYS CRAVER

WINSTON-SALEM, N. C.

Seldom does Gladys acknowledge that she has prepared a lesson, but when the time comes, she's ready with an answer. Unlike her less fortunate sisters, her curls are always in place; perhaps this accounts for her regular attendance at chapel.

DOROTHY CARGILL

AMERICUS, GA.

"Dot"

"Dot" is a continual mystery to us. Each day this little peach bloom from Georgia unfolds a petal to disclose things we never dreamed she could do—such as walking the tight rope in the circus, a difficult feat, but one that she performed with the agility of an expert.

MILDRED COLLACOT

SHREVEPORT, LA.

Athletic Association, 1917-21; Y. W. C. A., 1917-21; North Carolina Club, 1917; Stragglers' Club, 1921.

Mildred is little but loud and always makes her presence felt because of her love to argue. She would argue until the last whistle was blown, not because she wanted to prove her point, but for the mere love of it. She is sweet to every one and greatly loved by all who know her.



Sights and Insights



ALICE VIRGINIA COPPER

ANDERSON, S. C.

"Cop"—"Ginger"

Y. W. C. A., 1921; Athletic Association, 1921;
Maryland Club, 1921.

Alice is considered a joy, a real joy, to the Senior Class. She has a smile for everybody and a giggle for everybody else. Between making candy and talking about "Mike" she has little time for anything else.

DAISYE DeROSE

BEKKLEY, CAL.

Stragglers' Club, 1921; Annual Staff, 1921; Y. W.
C. A., 1921.

Daisye, as you will see by looking in statistics, is the most original girl that Salem ever had. She always has something witty to say and whenever she is around, the crowd is always laughing. Her friends are too numerous to count.

TEMPE ELLEN

ROCKY MOUNT, N. C.

"Temp"

Basket-Ball, 1921; North Carolina Club, 1921;
Bobbed-Hair Club, 1921.

Tempe's greatest delight is to talk about how wild she is and how thin she is getting, but we don't believe she is either. Third dormitory couldn't get along without her 'cause she keeps us all awake by her numerous arguments.

Sights and Insights

ALLENE FRAZIER

WINSTON-SALEM, N. C.

Annual Staff, 1921; Basket-Ball, 1919-20-21; Vice-President Athletic Association, 1920; President Athletic Association, 1921.

Whenever any pep is wanted Allene is always right there with plenty of it. Though she is very small, she certainly makes herself felt throughout Salem. In spite of her size she has been one of the best basket-ball players that Salem ever had.

ELIZABETH GERALD

TAMPA, FLA.

"Jerrel"

Cheer Leader, 1920; Treasurer, 1921; Stragglers' Club, 1921.

If we were all like "Jerrel" in History, Miss Davis could pack up and leave for a place where she is needed more. For a person whose interests are so strong for Waynesville, she does very well.

CATHERINE HARPER

WINSTON-SALEM, N. C.

"Kackie"

Behold our jolly classmate! "Kackie" has many admirable traits, but her spirit of comradeship and free-heartedness impress the most casual observer at once. All that keeps her from being perfectly happy is that she can't get the mail until after school.



Sights and Insights



SOPHIA HALL

BARBER, N. C.

Basket-Ball, 1920-21; Tennis, 1920-21; Hockey, 1920-21; North Carolina Club, 1920-21.

Though usually lost in dreams, Sophia comes to earth with a jump when there is anything to be done, and that something is done, too, without further delay. Sophia is so friendly and nice to everybody that her friends are countless. Just look in statistics if you would know what we think of her.

LUCILLE JOHNSON

CLINTON, N. C.

North Carolina Club, 1920-21; Y. W. C. A., 1920-21; Athletic Association, 1921.

We are told that Lucille is crazy about "Honey," that simply explains why she is so sticky. When she starts anything she sticks to it to the end. She has also been endowed with that wonderful gift of gab which comes in especially handy on Chemistry lab. days.

MARY PRUDEN JACKSON

SPARTANBURG, S. C.

South Carolina Club, 1921; Y. W. C. A., 1921; Athletic Association, 1921.

"Wearing all that weight of learning lightly like a flower." All pursuers of Algebraic knowledge! *Comprez-ne-vous?*

Sights and Insights

ELIZABETH LEIGHT

WALKERTOWN, N. C.

Always obliging is Elizabeth; there's nothing she wouldn't do for a friend, and every one she knows is her friend. Her mental capacity for Math almost endangers Mary Pruden's position as our infant prodigy.

ALICE JOHNSON LYNCH

GEORGETOWN, DEL.

Stragglers' Club, 1921; Y. W. C. A., 1921.

Alice is a far way from her native heath and oft-times she gets very homesick but when she hasn't the blues she is one of the cheeriest of our group, and has innumerable friends.

ELIZABETH MERRITT

ATLANTA, GA.

Basket-Ball, 1920-21; Hockey, 1920; Tennis, 1920; Georgia Club, 1920-21; Y. W. C. A., 1920-21.

"Merritt" believes in taking things slow and easy, but she always gets there some time; and everything is made a whole lot jollier by her being there. The only time she ever shows any speed is on the basket-ball court, but there she certainly shines.



Sights and Insights



EVELYN MILLNER

MORGANTON, N. C.

Annual Staff, 1921; North Carolina Club, 1921;
Y. W. C. A., 1921.

Evelyn's body is with us, but her spirit is at (or on) Blowing Rock. In spite of this, though, Evelyn is always ready to do her share in anything that the class undertakes, be that thing to make sandwiches or be an acrobat in a circus. She is full of class spirit and has plenty of pep.

IRENE McMINN

BREVARD, N. C.

Class President, 1921; North Carolina Club, 1921;
Y. W. C. A., 1921.

Irene is one of the most likable girls in our class, just good in anything. She is our President and that explains it all. Salem could not get along without Irene and Marjorie, our inseparable twins.

MARY McKELVIE

WINSTON-SALEM, N. C.

"Tookay"—"Mickey"

Vice-President, 1918; President, 1919; Senior Marshal, 1919; Annual Staff, 1921; Class Historian, 1921.

Mary is one member of our class that we could not get along without. She is always at the head of the class and always ready to help those who are not. She has endeared herself to '21 by her willingness to help with all things social or otherwise.

Sights and Insights

MARGARET McLAUGHLIN

CHARLOTTE, N. C.

"Pug"

Annual Staff, 1920; Senior Marshal, 1920; Basket Ball, 1920; North Carolina Club, 1920-21.

According to tradition, "Pug's" red hair should be a good cause for outbursts of temper but instead she has a very sweet disposition. "Pug" is full of pep and always up to something.

CHARLOTTE NORTHCUTT

MARIETTA, GA.

Editor-in-Chief of Annual, 1921; Glee Club, 1921; Georgia Club, 1921.

Very few people who can sing, play, along with other accomplishments, have coupled with them the ability to stand at the head of affairs and do them well. Charlotte has all these qualities and more.

We expect a lot of Charlotte and always get it.

MARY OGBURN

SUMMERFIELD, N. C.

Basket-Ball, 1920-21; Varsity, 1920; North Carolina Club, 1920-21; Captain Fire Department, 1921; Basket-Ball, 1919; Glee Club, 1921.

Though sometimes rather dignified, Mary is just so much fun on a spree that we don't mind if she does tell us to be quiet now and then. She has been here so long that she has become one of the Salem landmarks.



Sights and Insights



ELIZABETH PARKER

PINETOWN, N. C.

"E. P."

Basket-Ball, 1919-20-21; Varsity, 1919-20-21; Secretary Class 1919; President Class 1920; Annual Staff, 1920; Senior Marshal, 1920; Class Prophet, 1921.

With all these honors "E. P." proves herself a true girl of old Salem. She has always had plenty of class spirit and pep and can do anything to help.

HENRI SINCLAIR

WAYCROSS, GA.

"Hennie-Pennie"

Georgia Club, 1920-21; Head of Basket-Ball, 1920; Welfare Club, 1920.

Talk about pep! We'll tell the world Henri has it and she is a thorough all-round sport as well. Look in statistics and see how she stands.

MARION SCHALLERT

WINSTON-SALEM, N. C.

"Mon"

Vice-President, 1921; North Carolina Club, 1921; Bobbed-Hair Club, 1921.

Although the youngest in our class, Marion is our star. Despite this fact she is very modest and reserved and is very patient with us when we don't see things as quickly as she.

Sights and Insights

IRENE SMITH

ADVANCE, N. C.

Y. W. C. A., 1921; North Carolina Club, 1921; Athletic Association, 1921.

We defy any one to produce a jollier girl or a quicker dresser than Irene Smith. Second Extension never has a chance to get lilue with her around.

JANET SPAUGH

WINSTON-SALEM, N. C.

"Jimpsy"

Senior Marshal, 1920; Basket-Ball, 1921; Glee Club, 1921; Orchestra, 1921; Secretary Class '21.

Janet has a bright mind, a winsomeness which attracts all those who know her, and a knack for making friends. With all these traits, she is very likely to claim for herself friends anywhere and everywhere.

MATTIE SINK

WINSTON-SALEM, N. C.

"Smarty"

Mattie goes in and out with a smoothness and serenity that would make the Red Sea turn pale. She never worries about the trifles that seem to perplex her fellow comrades, but always gains the point in due time.



Sights and Insights



MARGARET WOOTEN

LA GRANGE, N. C.

Margaret and Daisye really ought to be written together for us to get the full value of them both; but with or without Daisye, Margaret is good fun and an all-round sport. Third Dormitory could never get along without her.

BLANCH YORK

SOUTHMONT, N. C.

Besides being very studious, very small in stature, and from a very small town, Blanche is widely known as a staple member of the Senior Class. She is very obliging and always ready and willing to help any one she can. She has numerous friends and she is a true friend to them all.



Class Poem

We do not envy any King,
Nor any prince, nor any sage ;
For what have they that can surpass
Our Alma Mater's heritage?
Men's cheaper glories we despise—
Our aims and Salem's are the same :
To live a high and worthy life,
To leave a true and noble name.

We will not stop, though chance may fling
Misfortune's dust into our eyes ;
Nay, this will even spur us on
Into some higher enterprise ;
And on and on, and ever on,
Until life's end we reach at length,
Upheld by Salem's high ideals,
Clothed in our Alma Mater's strength.

M. P. B., '21.



Class History



IN the fall of 1917, there entered at Salem a class possessing all the characteristics of Freshmen. A merry lot were we—free from all care. Our days were full of happy moments and even a defeated team could not daunt us.

Don't think that we didn't work, though. When a call was sent for comfort robes for the wounded soldiers, the Latin classes of the Academy readily responded. The Eighth Grade had no inactive part in the development of a huge Red Cross flag of zephyr.

We also showed our skill along literary lines. In our English course, we wrote a book entitled, "The Story of the Greeks," obtaining the material from the "Iliad." This volume, containing illustrations, was bound and presented to the library.

But we must not linger over these facts, for after a long vacation, we returned as Sophomores. We were beginning to realize that we had better think more seriously of life. With this uppermost in our minds, we settled down to work. And we did work, too, especially in making a collection of insects for our Biology class.

With the exception of one afternoon the "Social Stunts" had to be abandoned on account of the quarantine which so greatly interfered with our work.

As Juniors, we were literally as "Busy as Bees." Our buzzing continued even through French class one day, greatly to the discomfort of our teacher, who suspended our class until five o'clock that afternoon.

When the Endowment Campaign was launched, the Juniors pledged one hundred dollars toward this cause. This money was raised in many different ways. Some sold sandwiches, others polished shoes, and before long our pledge was paid.

Late in April, we entertained the Eleventh Grade at the usual Junior-Senior dance. This was really our first experience at adding our "social events" to the Society Columns, and as far as we could see it was a success.



Sights and Insights

Then, at last, we woke to find ourselves Seniors! Early in the fall, the Bishop gave us our motto, "Mi Epsilon Phi"—"Generous, Sincere and Friendly." This motto was put on our class rings, a constant reminder of our happy days at Salem.

Under the capable direction of our class teacher, we were able to give a Circus, which the dignified college publication, *The Salemite*, gave honorable mention. In this, the talents of our members were strongly displayed, and it was clearly shown that even "the wisest minds may make merry." It was hard to distinguish our stately Seniors in rollicking clowns and smiling acrobats. We will desist from any attempt to describe the monkey. We can only say, you missed a treat if you failed to see it for yourself. However, an adequate sum was realized for our treasury.

For four long years, we have worked together "in weal and woe." We have tried hard to conduct ourselves in a "dignified manner," but every now and then the mischief just would leak out. Now that we await the culmination of all our hopes, we look back upon these years—wiser, no doubt, than when we first began. We must strive to remember only the pleasant things and push forward to whatever the future may hold in store for us.

M. McK., '21.





Class Prophecy



Y work as Salem College Librarian is not without its advantages. For one thing, I would never have known where all my dear classmates are at the present moment if I had not taken this position and made it my life work.

For the last three months I have collected these bits of information that will disclose to you the whereabouts of every single member of the Class of '21.

One morning a big box of new books came and as I was unpacking them I was greatly pleased to find a book entitled "The Treachery of Man," by Evelyn Millner. I sat down to glance through it and found a sketch of her life in the front. There wasn't much, except her childhood and life at Salem, then a shadow seemed to have settled on her life, when her fiancé went back on her and she returned to her beloved Blue Ridge to write, a deep and dire man-hater.

As I looked over the morning mail, "International mail air route established between Great Britain and U. S. A. First trip taken by three dauntless young Southern women," met my eyes in big print from the *New York Times*. My heart thrilled within me to think that Alice Copper, Dorothy Cargill and Catherine Connally might be soaring over the Atlantic Ocean at that very minute.

I looked around for more news of my classmates and much to my surprise I saw: "Governor Craner awards medal to promising young woman." This promising young woman, I found as I read through the long article, was our fearless classmate, Ruth Mattison. And Governor Craner was no other than our Gladys.

For about five years I had heard nothing of Margaret Wooten until this morning in the picture section I saw a picture of her returning to Italy after a short visit to America. She had married an Italian Count. We always thought Margaret was destined to marry an Italian because of her tremendous liking for spaghetti.



Sights and Insights

My eyes wandered to the lower section of the page. There I saw Agnes Barger electioneering to hundreds of eager listeners, gazing into her animated face. And to think that my roommate should have come to this! A soap-box politician!!

In the *Missionary Survey* I saw the sad account of Sophia Hall. Sophia was administering to the heathens on the Fiji Isles, fulfilling her highest ambition, when a young Fiji became so entranced by her charms that he ate her as a token of his love.

In the *Alumni Record* I saw the addresses of Mary Pruden Jackson and Elizabeth Leight. They are very successful architects in Baltimore. Surely Miss Efrd's training was not all in vain. They are now constructing a building that is twice the height of the Woolworth Building.

Allene Frazier and Blanche York are most persuasive book agents. The library has twice as many books as usual since they have taken Salem into their territory. From them I learned the whereabouts of a few of my class. Louise Capehart is a Travelers' Aid in St. Louis. Henri Sinclair is establishing Larkin Clubs in Eastern North Carolina. Anna Atwood and Marion Schallert have a barber shop especially for ladies. They bob hair in the latest fashion.

Mrs. James Jones, formerly Mary McKelvie, came to me only yesterday to find a camp for her little daughter to go to the following summer. And in our search for a desirable one we found one at Brevard, run by Marjorie Gardner and Irene McMinn. She did not hesitate to place the responsibility of her little daughter to their charge.

Good Housekeeping for November, 1935, had two points of interest to me. The cover was a picture entitled "Eventide," posed by Katherine Harper and drawn by Mildred Collacott, and in the back was an advertisement of "Palace on the Yadkin," a very select school for young ladies, run by Miss Mary Preston Bynum. I at once wrote for a catalogue, and found that the Dean of the Music Department was Lucille Johnson, and Hester Council was head of the Violin Department; Anna Adams is teaching the very select young ladies to play basket-ball like she used to play for us in '21, and Janet Spough is keeping duty.



Sights and Insights

We always aspired high for "Pug," but her eccentric disposition got the best of her and she is now a hula hula dancer in Keith's Vaudeville circuit. Her fame which began at Salem is now spread through all the United States.

Daisye is doing what she is best fitted for—joke editor on *Life's* Staff.

I have received very few letters from any of my classmates, but this one was of great importance to me. Here is a small portion:

"I am a perfect fanatic about automobiles, but I had never exceeded the speed limit. Yesterday I drove faster than 26 miles an hour and before I realized it a cop was driving beside me and ordering me to stop. She charged me the exorbitant sum of \$10.00. I would not submit and after she (for the cop was a coppers really) had my name, number, and address, I dropped in on the firm of Gerald and Ellen to try and reduce the price. My joy was unbounded when I found these two lawyers were none other than Tempe and Elizabeth, old Salem roommates, and at the same moment I found the police to be Mattie Sink. This was indeed luck to have both the police and lawyers on my side. To them I owe my \$10.00 because they let me off free. They told me it was the only time I had ever exceeded the limit.

"Yours of '21,

"ELIZABETH MERRITT."

One of the most overwhelming surprises was to find that our frivolous classmate, Charlotte Northcutt, who always liked children better at a distance when she was at Salem, is now matron of an orphanage, beloved by all and known to them as "Mother Charlotte."

And Mary Ogburn is near, where I see her often. In Mr. Jones' old establishment Mary has the most enticing little tea shop, where the girls just sink every bit of money they possess. She simply has such good things to eat they can't resist buying.

Every member of our class seems to be receiving all the happiness due them and I would be equally as happy if my life was not worried out of me all day long by keeping squirming eighth, ninth and tenth grade girls from reading magazines in class hours because of a rule passed by the Faculty of '21.

E. W. P., '21.



Last Will and Testament

We, the Senior Class of 1921 of Salem Academy, being of sound minds and sounder bodies, being about to pass out of this sphere of education, do hereby make this our "Last Will and Testament," to be read on the thirty-first day of May, 1921:

ARTICLE I

To Miss Smith we would leave the assurance that she has made our Senior year the happiest of our school days.

ARTICLE II

To Dr. Rondthaler we will back the store of inimitable stories which he has told to us, that they may become the memories of all the Senior classes which follow us.

ARTICLE III

To Mr. Heath we leave all the Eleventh Grade aggravation of units in History, English and Latin, that he may apply them toward a Ph. D. in the three branches.

ARTICLE IV

To our Faculty we will, according to their several abilities:

- Burke's inimitable speech.
- Our French pronunciation.
- Vergil in the original.
- All the Presidents before and after the Civil War.
- Together with certain recipes and all our popular music.

ARTICLE V

To our Class Teacher, Miss Jackson, we return her excellent qualities of leadership, her invariable smile and her good disposition that she may have them for another Senior Class.



ARTICLE VI

To our marshals we leave our hearty appreciation for the beautiful decorations with which they have furnished us.

ARTICLE VII

SECTION 1. We, the Senior Class, leave our prominent position in Chapel to the day pupils of lower grades. We hope this will encourage them to attend Chapel.

SECTION 2. It is with the greatest pleasure that we leave one of our most expensive pleasures and privileges—that of going to the drug store—to the Tenth Grade.

ARTICLE VIII

SECTION 1. Charlotte Northcutt wills her heartfelt sympathy to the next Editor-in-Chief of the SIGHTS AND INSIGHTS of Salem Academy.

SECTION 2. I, Blanche Yorke, leave my love for Chemistry to any one who will buy my book and apron.

SECTION 3. To "Long Distance," Mary Pruden Jackson leaves three feet of her height.

SECTION 4. Mary Preston Bynum leaves her abundant supply of pep to Gertrude Marsh.

ARTICLE IX

We, the Senior Class, do will and bequeath our gas stove, by which our candy and curls are made, to our sister class.

ARTICLE X

SECTION 1. Cynthia Robertson bequeaths her autobiography to the next monitor who aspires to keep perfect order on Third Dormitory.

SECTION 2. Png, Agnes, Charlotte, and E. P. do will and bequeath to the next fortunate group who get their alcove, their much-trusted long distance telephone.



ARTICLE XI

SECTION 1. Henri Sinclair leaves her wonderful ability to make good grades without studying to Mary Fitzgerald.

SECTION 2. Anna Adams leaves her motto, when in English class, "Never be backward about coming forward," to Ruby Thrasher.

SECTION 3. I, Allene Frazier, leave my collection of chewing gum, to be gathered from various places, to Laura Tillet.

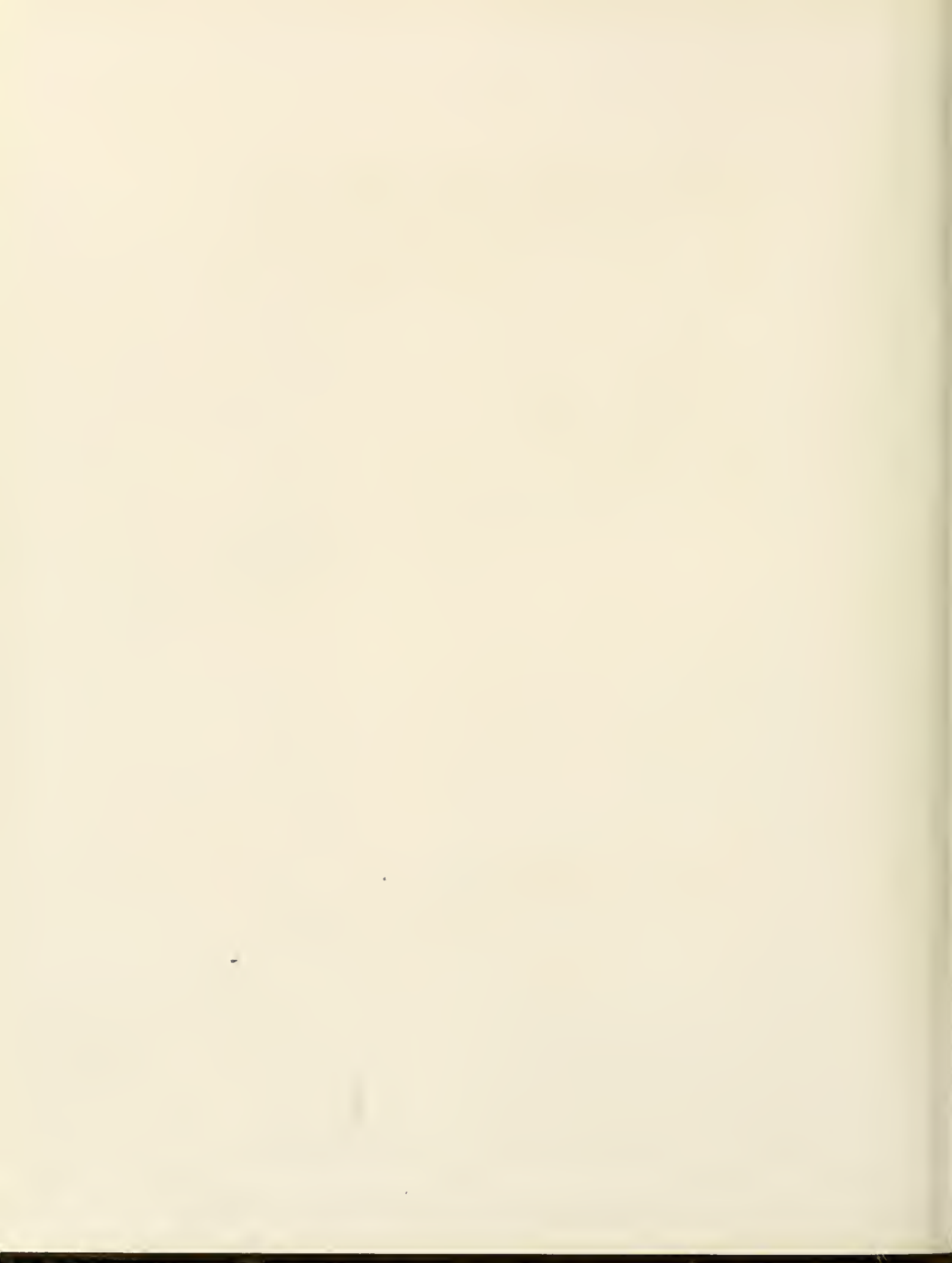
ARTICLE XII

And to Salem, we leave our gratitude for what it has done for us, and also success in the years to come.

(Signed) MARJORIE GARDNER,
Attorney-at-Law.

Witnesses:

CHARLOTTE NORTHCUTT (Editor-in-Chief).
JANET SPAUGH (Secretary).
IRENE McMINN (President).



JUNIOR





Junior Class

CLASS COLORS: Purple and White

OFFICERS

EVELYN GRAHAM *President*
SUSIE HOOPER *Secretary*
ELIZABETH FLETCHER *Vice-President*
PAULINE BOWDEN *Treasurer*

MEMBERS

EDITH ADAMS
ANNIE LOVE ALSPAUGH
CLEO BARKLEY
LOUISE BOWDEN
PAULINE BOWDEN
MADELINE BRAUN
ELLEN BRUMBY
NANNIE CAWTHORNE
EFFIE WALL COLE
MARY FITZGERALD
ELIZABETH FLETCHER
HELEN FOY
MARGARET FOREMAN
MARY AGNES FUNDERBURKE
ALICE GALLOWAY
EVELYN GRAHAM
ALICE HARRIS
MAMIE HATCHER

LUCY HARTSELL
SUSIE HOOPER
BEATRICE KATZ
EMILY LAMBERTSON
LUCY MOORE
MARY MOORE
MARGARET NOEL
KATHRYN PLEASANTS
ANNA RAIFF
FRANCES SANDERS
FRANKIE TALLY
MILDRED TATE
ETHEL THOMASSON
ELIZABETH THOMPSON
RUBY THRASHER
LAURA TILLET
ROBERTA WARREN
LENA WILLIS



JUNIOR CLASS



SNAPSHOTS

SOPHOMORE



K.M.P.



Sophomore Class

CLASS COLORS: Gold and Black

OFFICERS

MELISSA CHAMBERLAIN	<i>President</i>
ANNA PAULINE SCHAFFNER	<i>Vice-President</i>
LULA BRYANT	<i>Secretary</i>
DOROTHY SHIVERS	<i>Treasurer</i>

MEMBERS

RUTH BRENDE	MARY MOFSINGER
LULA BRYANT	MARIAN MURPHY
MARY VIRGINIA CARSON	EVELYN McDONALD
MELISSA CHAMBERLAIN	RUTH PFOHL
MARY CROUCH	MARGARET PRIDE
GRACE EATON	VIRGINIA PRIDE
IVAH FISHEL	GRACE ROSS
KATE FORRESTER	SARA SESSOMS
LENA FOUNTAIN	ANNA PAULINE SCHAFFNER
MARY HENRY	HELEN SHARPE
EMMA MEBANE HUNT	DOROTHY SHIVERS
FRANCES JEFFREYS	DOROTHY SIEWERS
MARY JONES	LOUISE SMOTHERS
ELIZABETH KOHLOSS	HELEN VERNAY
MARY MARTHA LYBROOK	ISABEL WENHOLD
BEULAH MARTIN	SENORA WILSON

IDA WITT



SOPHOMORE CLASS

FRESHMAN





Freshman Class

CLASS COLORS: Red and White

OFFICERS

ELIZABETH RONDTHALER	<i>President</i>
JULIA SANDERS	<i>Vice-President</i>
ANITA GHIGO	<i>Secretary</i>
ALBERTA POWERS	<i>Treasurer</i>

MEMBERS

MIRIAM ANDERSON
KATHERINE AYERS
MARGARET AYERS
HELEN BOARD
LILLIAN CRANFORD
AILEEN CREWS
MARY DUNSTAN
DOROTHY FRAZIER
ANITA GHIGO
ELIZABETH HARRINGTON
FAITH HAWKS
MAUDE HAWKS
RUTH HENNIS
RUTH HOLSHAUSER
GERTRUDE HOWARD
JULIA JOHNSON

HERVEY JONES
ROSALIND LANDQUIST
MARY LINVILLE
MARY LITTLE
GERTRUDE MARSH
LOIS MARSHALL
IVEZ MOSER
ALBERTA POWERS
ELIZABETH RONDTHALER
JULIA SANDERS
DOROTHY SCHALLERT
LEONE SHELTON
MILDRED SPEASE
MILDRED VOGLER
MINNIE WALKER
LUCY WILKINSON



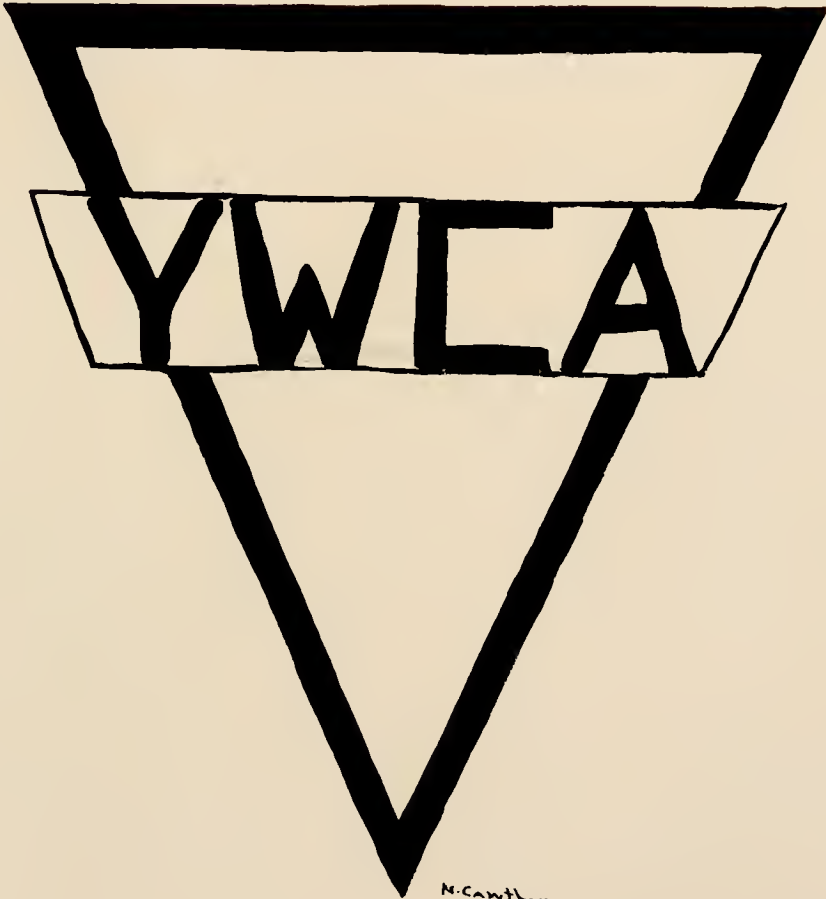
FRESHMAN CLASS

Senior Chart

NAME	APPEARANCE	HOBBY	FAVORITE ARTICLE OF DRESS	FAVORITE EXPRESSION	HIGHEST AMBITION	CHIEF OCCUPATION
ANNA ATWOOD	Astonished	Eating	Tan Sport Coat	"Gosh, I don't!"	To be a nurse	Going to Welfare's
ANNA ADAMS	Inquisitive	Talking	White Sweater	"O! my mistake!"	To pass French	Asking questions
AGNES BARGER	Neat	Cutting the fool	Frat Pin	"Mardon me, padam"	To go to the Orient	Looking for "E. P."
DOROTHY BROWN	Indifferent	Writing letters	Red Middy	"Who asked you anything?"	To be a business woman	Writing shorthand
CATHERINE CONNOLLY	Mischievous	Powdering her nose	Serge Dress	"Huh!"	To be a photog-rapher	Going up town
GLADYS CRAVER	Startled	Going to chapel	Blue Dress	"Law, I don't know"	To pass Chemistry	Curling her hair
MARY P. BYNUM	Prumpt	Log Cabin Roll	Brown Dress	"I'm thrilled to death!"	Get a letter from—	Phoning
MILDRED COLLACOT	Hurrying	Falling in love	Alabama Sweater	"Let's go"	To be an artist	Walking up Main Hall
LOUISE CAPEHART	Sleepy	Being with Grace and Tempe	Blue Serge Dress	"Aw, I don't think so"	To be wild	Writing letters
AMIE BELLE COLLINS	Lazy	English	White Tennis Pumps	"I don't give a rip!"	To go home	Wandering around
ALICE COPPER	Excited	Taking coach lesson	Brown Tam	"I'm thrilled to a peanut!"	To know Latin	Having about "Mike"
HESTER COUNCIL	Worried	Studying	Brown Sweater	"I haven't time now"	To play the violin	Telling fortunes
DAISYE DU BOSE	Smiling	Laughing	Red Colored Middies	"Oh, my soul and body!"	To graduate	Pretending to study
SOPHIA DAVIS	Calm	Getting homesick	Black Sash	"I want to go home!"	To get through school	Waiting for the mail
DOROTHY CARGILL	Small	Talking	Shirtwaist and Plaid Skirt	"Well, why?"	To live down on the farm	Playing the piano
TEMPE ELLEN	Hard-boiled	Wild wimmen	Blue Coat Suit	"Oh! you know"	To reduce	Walking over the hill
ELIZABETH GERALD	Masculine	Dancing	Tweed Coat	"N-huh!"	To live in North Carolina	Writing to —?
LUCILLE JOHNSON	Wild	Making Candy	Blue Sport Coat	"O-er"	To be a great pianist	Giggling
MARY P. JACKSON	Quiet	Working Algebra	Middy	"I reckon so"	To pass English	Studying
GRACE LYNCH	Precise	Men	Black Satin Slippers	"Lay off my hair-pins"	To change her name	Talking about Kentucky
ELIZABETH LEIGHT	Imocent	Math	Brown Spats	"Peter Rabbit"	To go home every week-end	Doing something for somebody
ALICE LYNCH	Disgusted	Getting homesick	Red Sport Coat	"I never felt so bad before"	To go home	Walking
MARJORIE GARDNER	Unsophisticated	Irene	Pink Gingham Nitie	"Ham home!"	To be different	Talking to Irene
ELIZABETH MERIETT	Babyish	Latin	Plaid Skirt	"You know"	To get through	Translating Virgil

Senior Chart

NAME	APPEARANCE	HOBBY	FAVORITE ARTICLE OF DRESS	FAVORITE EXPRESSION	HIGHEST AMBITION	CHIEF OCCUPATION
IRENE McMUNN	Questioning	Specials	Hollin Suit	"I love him to death!"	To pass Geometry	Looking for Marjorie
MARY McKELVE	Thoughtful	Sleeping	Brown Suit	"Naughty, naughty!"	To be an interior decorator	Opening her locker
KATHERINE HARPER	Attractive	Dancing	Black Sweater	"You're too good to me!"	To graduate in music	Waiting for the postman
M. McLAUGHLIN	Bored	Hula-Hula	Blue Sweater	"Good Heavens!"	To graduate	Saying she's going to study
EVELYN MILLNER	Tired	Reading	Blue Sport Skirt	"My law!"	To raise sheep	Drawing
C. NORTHCUTT	Blaze	Letter from Athens	Red Gingham	"I'll break your contract!"	To be able to sing	Working on the Annual
MARY OGBURN	Dignified	Oak Ridge	Brown Jersey	"Look a-here!"	To be a nurse	Going to Memorial Hall
ELIZABETH PARKER	Mischievous	Agnes	White Middy and Blue Skirt	"Pardon, mistake!"	To fall in love	Being with Agnes
ALLENE FRAZIER	Boyish	Basket-Ball	Middy	"Naw!"	To be a school teacher	Chewing gum
CYNTHIA ROBERTSON	Business-like	Keeping things quiet	Tortoise-Shell Glasses	"Be quiet!"	To be a business woman	Chewing gum
HENRI SINCLAIR	Striking	Specials	Red Organdy	"My Peter!"	To keep on the go	Raving
IRENE SMITH	Happy	To go	Mink Fur Piece	"I swan!"	To get a dip	Going up town
RUTH MATTISON	Mannish	Talking	Middles	"Say!"	To own a fur coat	Telling us about Wisconsin
JANET SPATUGH	Neat	Planning	Blue Coat Suit	"Great guns!"	To be a great singer	Practising
MARION SCHAMLET	Studious	Making dates	Maroon Jersey Dress	"Do you, Lovey?"	To be a pianist	Looking for Anna
MATTHE SINK	Slow	Walking	Coat Suit	"Well!"	To hold her dip	Going to Main Hall
SOPHIA HALL	Hurried	Peanuts	Brown Sport Skirt	"O, yeh!"	To stop Domestic Art	Studying after lights
MARGARET WOOTEN	Jolly	Daisyc	Brown Coat	"Come here a minute"	To get a letter	Going out for the week-end
BLANCHE YORK	Studious	Latin	Blue Middy Suit	"I don't hardly know"	To know her lessons	Studying
MILLICENT POOLE	Sophisticated	"Dilly"	Khaki Dress	"Has the mail come?"	To home Xmas	Waiting for the mail



N. Cawthorne.



Young Women's Christian Association

OFFICERS

GRACE LYNCH*President*
MARY FITZGERALD*Secretary and Treasurer*

MEMBERS

GERTRUDE HOWARD
ALBERTA POWERS
KATHERINE AYERS
SARA SESSOMS
EVELYN McDONALD
IRENE McMINN
BLANCHE YORK
SENORA WILSON
EVELYN GRAHAM
MAMIE HATCHER
RUBY THRASHER
MARY LINVILLE
FRANCES JEFFRIES
DOROTHY BROWN
IDA WITT
ELIZABETH KOHLASS
LULA BRYANT
VIRGINIA CARSON
MARY MOORE
LUCY WILKINSON
JULIA SANDERS

GRACE LYNCH
SOPHIA HALL
MARY P. BYNUM
EVELYN MILLNER
ELIZABETH MERRITT
ALICE GALLOWAY
ROBERTA WARREN
ELIZABETH RONDTHALER
EFFIE WALL COX
MARGARET AYERS
ELIZABETH LEIGHT
CHARLOTTE NORTH CUTT
NANNIE CAWTHORNE
ANNA ADAMS
KATHERINE PLEASANTS
LUCILLE JOHNSON
ALLENE FRAZIER
MELISSA CHAMBERLAIN
EMMA MEBANE HUNT
ELIZABETH PARKER
AGNES BARGER

MARGARET McLAUGHLIN



YOUNG WOMEN'S CHRISTIAN ASSOCIATION

ATHLETICS

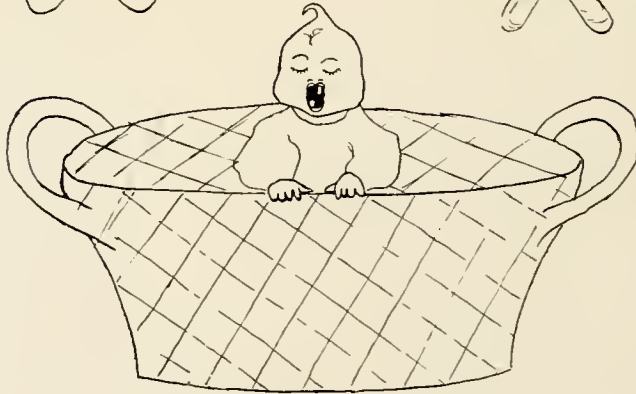
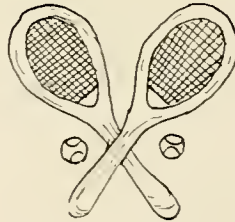
Hockey



Base ball



Tennis



Basket-ball

K.M.P.



Sights and Insights



Senior Basket-Ball Team

ANNA ADAMS (Captain)	<i>Jumping Center</i>
JANET SPAUGH	<i>Substitute</i>
ELIZABETH PARKER	<i>Guard</i>
MARGARET WOOTEN	<i>Forward</i>
ALLENE FRAZIER	<i>Forward</i>
SOPHIA HALL	<i>Guard</i>
MARY OGBURN	<i>Substitute</i>
RUTH MATTISON	<i>Substitute</i>



Junior Basket-Ball Team

MARY AGNES FUNDERBURKE (Captain)*Side Center*
 LOUISE BOWDEN*Forward*
 NANNIE CAWTHORNE*Forward*
 PAULINE BOWDEN*Guard*
 MADELINE BRAUN*Jumping Center*
 ELLEN BRUMBY*Guard*

Sights and Insights



Sophomore Basket-Ball Team

LULA BRYANT (Captain)	Forward
HELEN VERNAY	Forward
DOROTHY SIEWERS	Guard
MARY VIRGINIA CARSON	Side Center
ANNA PAULINE SCHAFFNER	Jumping Center
DOROTHY SHIVERS	Substitute
IVA FISHEL	Substitute
MARY MARTHA LYBROOK	Guard

Sights and Insights



Freshman Basket-Ball Team

DOROTHY FRAZIER (Captain)	Side Center
JULIA SANDERS	Substitute
MARY DUNSTAN	Forward
DOROTHY SCHALLERT	Forward
KATHRYN AYRES	Substitute
ELIZABETH RONDHALER	Jumping Center
MARY LINVILLE	Guard
HERVEY JONES	Substitute
HELEN BOARD	Guard

CLUBS



Georgia Club



DOROTHY CARGILL
GRACE LYNCH
ELIZABETH MERRITT
CHARLOTTE NORTHCUTT
HENRI SINCLAIR
LOUISE BOWDEN

LULA BRYANT
JULIA SANDERS
JUANITA DANIELS
MILDRED TATE
SARA SESSOMS

GEORGIA COLLEGE

Sights and Insights



Bobbed Hair Club

MARGARET McLAUGHLIN
DOROTHY BROWN
ALLENE FRAZIER
LUCILLE JOHNSON
MARION SCHALLERT
BEATRICE KATZ
ANNA ATWOOD
SARA SESSOMS
KATHERINE PLEASANTS
MARGARET CLARY
TEMPE ELLEN
JENNIE MAE HOWARD
ANNE LOVE ALSPAUGH

Sights and Insights

Panama Club



DOROTHY SHIVERS
ELLEN BRUMBY
ALBERTA POWERS



Maryland Club



BEATRICE KATZ
MADELINE BRAUN
JENNIE MAE HOWARD



Sights and Insights



Stragglers' Club

DAISY DU BOSE— <i>California</i>	VIRGINIA PRIDE— <i>Alabama</i>	IDA WITT— <i>Florida</i>
MILDRED COLLACOT— <i>Louisiana</i>	ALICE LYNCH— <i>Delaware</i>	MARGARET CLARY— <i>New York</i>
MARGARET PRIDE— <i>Alabama</i>	ELIZABETH GERALD— <i>Florida</i>	EVELYN McDONALD— <i>Tennessee</i>



Virginia Club

EMMA MEBANE HUNT

MAMIE HATCHER

GERTRUDE HOWARD

AGNES BARGER



AGNES BARGER, '21



MARGARET McLAUGHLIN, '21



ELIZABETH PARKER, '21



CHARLOTTE NORTHCUTT, '21



FRANCES SANDERS, '22



HENRI SINCLAIR, '21



DOROTHY BROWN, '21



MARY AGNES FUNDERBURKE, '22



Laura TILLET, '22



SENORA WILSON, '23



LOUISE BOWDEN, '22



ALICE HARRIS, '22



MILDRED TATE, '22

Sights and Insights



MARY BAUGHAM, '24



EMMA MEBANE HUNT, '23



MELISSA CHAMBERLAIN, '23



VIRGINIA PRIDE, '23



DOROTHY SHIVERS, '23



ELIZABETH GERALD, '21



MARGARET PRIDE, '23

Sights and Insights



ANNA ADAMS, '21



IRENE McMINN, '21



SOPHIA DAVIS, '21



MILLICENT POOLE, '21



MARJORIE GARDNER, '21



MARGARET FORMAN, '22



LUCY HARTSELL, '22



ROBERTA WARREN, '22

Statistics



Sights and Insights

Statistics



GERTRUDE MARSH
Most Popular Freshman
Jolliest
Most Pep



MARGARET FOREMAN
Most Popular Junior



IRENE McMINN
Most Popular Senior



MELISSA CHAMBERLAIN
Most Popular Sophomore



EVELYN McDONALD
Wittiest

Sights and Insights



MILLICENT POOLE
Most Talented



ALLENE FRAZIER
Best Sport
Most Athletic



LUCY HARTSELL
Neatest



SOPHIE HALL
Best All Round



ELIZABETH GERALD
Most Sincere

Sights and Insights



DAISYE DU BOSE
Most Original



ELIZABETH THOMSON
Best Dressed



HENRI SINCLAIR
Most Striking
Most Attractive



KATHERINE PLEASANTS
Cutest



DOROTHY BROWN
Most Indifferent

Sights and Insights



MARY FITZGERALD
Most Studious



EVELYN GRAHAM
Most Capable



FRANCES JEFFRIES
Daintiest



MARY BAUGHAM
Best Dancer



MARGARET PRIDE
VIRGINIA PRIDE
Prettiest





SENIOR ANNEX



M. Callahan '21



Jokes

A Literary Digest,
A Ladies' Home Journal, and
A Woman's Companion
Went to look at a *Sunset* one day;
It's all in *Life*,
And I think I'm a *Judge* of
What I say.

A Country Gentleman saw a *Photoplay*,
And it gave him a thrill
Just to sit on a sill,
And think it over a *Century* and a day.

"I am dying!" gasped the luckless woman as she poured auburn hair restorer on her faded locks.

The scene is entrancing. The memory of the beautiful Hawaiian maid will remain with us forever. The weird music and the fragrance of the native flowers captivates us. We watch the graceful Hawaiian dancer glide across the opheum stage. Every eye follows her. But wait! A groan passes through the audience. Ye Dardenella! The dancer's tights bag at the knees!

Stone: "You know Brick? Well, he can stretch a dollar until the eagle on it looks like a stork."

Mr. Heath (hurriedly sketching a map on the board): "Now, see this in your mind."

C. C.: "I can't see it."

Mr. Heath: "Of course not."

Katz: "Sing us a solo, Alice."

Alice Harris: "Sure, so low you can't hear it."



Sights and Insights

"LAPS WATER NOW"

She used to sit upon his lap,
As happy as could be,
But now it makes her seasick—
He has water on his knee.

—*Ladies' Home Journal*.

ESCAPED HIS DESERTS

"You say you served in France?" asked the restaurant proprietor, as he sampled the new cook's first soup.

"Yes, sir; officers' cook for two years and wounded twice."

"You're lucky, man; it's a wonder they didn't kill you."

—*American Legion Weekly*.

A LADY ON TOUR

"Leaving us so soon, Bridget?"

"Yes, mum; I never stay long in one place."

"I see; you're one of those cook tourists."—*Boston Transcript*.

The poor old opportunity said: "It is simply shocking,
The way that people say of me that I am always knocking."

—*Newark News*.

The sweet girl graduate dressed in white
Had countenance serene;
She stumped her toe upon a brick,
And was clad in robes unclean.

INCORRECT BUT TRUE

Charles was required to write a sentence using the word "notwithstanding." When called upon he read: "My father wore out the seat of his trousers, but not with standing."—*Literary Digest*.

A Junior: "Hello, Lis, how's everything?"

Melissa: "Oh, Charles is all right."



Sights and Insights

Lady out in town (to Salem girl): "I saw you in church yesterday. Weren't you touched by the beautiful sermons?"

Salem Girl: "No, you see I went out just before the collection was taken."

Doctor (to young man who is having his heart examined): "Your heart is at normal."

Young Man: "No, sir, it's at Salem."

Salem Girl: "See here, waiter, how did this hair get in my apple pie?"

Waiter: "I don't see how it happened, ma'am; them apples are all Baldwin's."

"If you use to could throw a dollar from Pennsylvania Square to Washington Monument, why can't you now?"

"I don't know."

"Cause you can't make a dollar go as far now as you use to could."

"Absence makes the heart grow fonder,"

Is an adage quite well known,

So further let us ponder

The absence of the chaperon.

Elizabeth Leight: "I know a woman that has two daughters and both are named after flowers—Pansy and Rose."

Daisy DuBose: "Has she any sunflowers?"

A teacher was reading to her class when she came across the word "unaware." She asked if any one knew the meaning. One little girl timidly raised her hand and gave the following: "Unaware is what you put on first and take off last."

Hotel Clerk: "With or without bath, madam?"

Small Boy: "Aw, mother, get it without a bath."

Senor Wilson: "Evelyn, what are you going to do without me after Christmas, when I'm gone?"

Evelyn (without a smile): "Do the same thing I did before you came."

"THEY KEEP ON COMING"

WELFARE'S DRUG STORE

[NEAR THE SALEM SQUARE]



HEADQUARTERS FOR
SALEM COLLEGE
GIRLS

QUICK SERVICE IN THE "LITTLE GRILL ROOM"

J. C. SPACH
Wagon Works



MANUFACTURERS

OF

The Celebrated
J. C. SPACH
WAGONS



Winston-Salem

North Carolina

W-E-A-R

HINE'S SHOES

BEST BY TEST

Elmont Theatre

LIBERTY STREET

Pep in Every Program

SHORT LIVE SUBJECTS
FOR BUSY PEOPLE

Broadway Theatre

LIBERTY STREET

The House of Big
Pictures

PERFECT PROJECTION
UNSURPASSED SERVICE
"LA FARGUE MUSIC"

Pilot Theatre

WEST FOURTH ST.

The Pick of the Pictures

THE MOST MODERN MOVIE
IN THE CAROLINAS

Auditorium

LIBERTY AND FIFTH STS.
Winston-Salem North Carolina

PRESENTING
Vaudeville, Road Attractions
and Musical Comedy

R. L. VAN DYKE, MUSICAL DIRECTOR
C. J. MCLANE, MANAGER

PHONE 596 OFFICE: PILOT THEATRE BLDG.

.....AMUZU.....

"THE PLACE YOU KNOW"

SEEBURG
PIPE
ORGAN MUSIC

AND

THE
BEST
MOTION PICTURES

WINSTON-SALEM, N. C.

The Store for

SO DA LICIOUS Ice Cream

High-Grade Toilet Articles

Whitman's Candies

ZINZENDORF PHARMACY

S. E. WELFARE

I. H. RIDER

THE STORE OF EXCELLENCE

Walk-Over Service

IS our every effort to please you, to serve you any way we can, to give you COMFORT and SERVICE with your shoes. We invite you to make this your place to buy your shoes. We will try to make you feel at home.

FULL LINE OF EVENING SLIPPERS
"HOSIERY AS YOU LIKE IT"

Walk-Over Boot Shop

109 W. FOURTH STREET
WINSTON-SALEM, N. C.

The Gift Shop

especially solicits the patronage
of the Young Ladies of

SALEM COLLEGE

when they wish High-Class Jewelry
of Exclusive Up-to-date
Design.

PEARLS
BRACELET WATCHES
JEWELRY
DIAMONDS

THE GIFT SHOP

428 N. LIBERTY STREET
WINSTON-SALEM, N. C.



THE MOTOR COMPANY

DISTRIBUTORS

HUDSON and ESSEX MOTOR CARS
BUICK MOTOR CARS

Lalley Light and Power Plants
Leader Water Systems

WINSTON-SALEM

NORTH CAROLINA



WINSTON-SALEM'S
NEWEST DEPARTMENT STORE

ANCHOR STORES COMPANY

WEST FOURTH STREET

EVERYTHING NEW and UP-TO-DATE
.....IN.....

Coatsuits, Coats, Dresses, Shirt Waists and
Skirts, Silks, Woolen, Linen and Cotton
Piece Goods, Hosiery Neck-
wear and Notions.

YOUR VISIT TO OUR STORE WILL BE
PROFITABLE AND APPRECIATED.

WE AIM TO SERVE THE PEOPLE
BEST—WE SELL FOR CASH AND
SAVE YOU MONEY.

STORES:

WINSTON-SALEM HENDERSON ROCKY MOUNT
NORTH CAROLINA

MAKE OWEN'S YOUR HEADQUARTERS

Delicious

Ice Cream, Sodas and Sundaes

STATIONERY
TOILET ARTICLES
PERFUMES

OWEN'S DRUG COMPANY

WINSTON- SALEM, N. C.

College Footwear

ASK THE GIRLS—THEY KNOW

*Folks say—
and you hear it
everywhere—*



*DOBSON-SILLS
for Shoes
"Hosiery, too"*

DOBSON-SILLS

NORTH CAROLINA'S MOST PROGRESSIVE SHOE STORES
WINSTON- SALEM AND GREENSBORO

The Universal Auto Company

MANUFACTURERS

*Automotive Storage
Battery*

DISTRIBUTORS

Paige Motor Cars and Trucks
Chevrolet Motor Cars
and Trucks

WINSTON-SALEM
N. C.

*Modish Outer-Wear for
the College Miss*

APPRECIATING the unique and discriminating wants of the College Miss, who seeks to combine virile style with a modest-price level, we are always in a position to serve the readers of this publication, to advantage.

COATS SUITS
FROCKS SKIRTS
BLOUSES WRAPS

MILWARDS
of New York

215 WEST FOURTH STREET
WINSTON-SALEM NORTH CAROLINA

ORINOCO
SUPPLY COMPANY

BUILDING
MATERIALS
OF ALL KINDS



*Mantels, Grates
Tiling*

WINSTON-SALEM, N. C.

IN WINSTON-SALEM

IT'S

The
Winston-Salem
JOURNAL

READ IT
EVERY DAY

THE CHARM OF YOUTH IS
DISPLAYED IN OUR

*Spring Wearing
Apparel*

HOW futile to attempt a description of our hundreds of frocks, coats, suits and blouses each one so different, so individual, so perfect a picture in itself. To see them is the thing—to admire them—to try them on—to own one of them—Come and see them at

SOSVIK & SOSVIK

(FOUNDED 1880)

Rosenbacher & Brothers

"Winston-Salem's Largest and Best Store"

Catering Exclusively to

WOMEN, MISSES, and CHILDREN
44 COMPLETE DEPARTMENTS 44

The "RENDEZVOUS" for the COLLEGE GIRL

Mail Orders Receive Prompt Attention

D. G. CRAVEN CO.

17 Hours From Broadway

LADIES' AND MISSES'
READY-TO-WEAR

CASH STORE

WINSTON-SALEM, N. C.

W. H. CLINARD

ARTISTIC PAINTING AND
DECORATING

A big and reliable organization
of Painters and Decorators.

128 W. FOURTH ST.

WINSTON-SALEM, N. C.

POLITE'S
ICE CREAM AND CHOICE
CONFECTIONERY



114 W. Fourth Street
WINSTON-SALEM, N. C.

