







the first two cases, the first two terms of the series are equal to the first two terms of the series.

In the third case, the first two terms of the series are equal to the first two terms of the series.

In the fourth case, the first two terms of the series are equal to the first two terms of the series.

In the fifth case, the first two terms of the series are equal to the first two terms of the series.

In the sixth case, the first two terms of the series are equal to the first two terms of the series.

In the seventh case, the first two terms of the series are equal to the first two terms of the series.

In the eighth case, the first two terms of the series are equal to the first two terms of the series.

In the ninth case, the first two terms of the series are equal to the first two terms of the series.

In the tenth case, the first two terms of the series are equal to the first two terms of the series.

In the eleventh case, the first two terms of the series are equal to the first two terms of the series.

In the twelfth case, the first two terms of the series are equal to the first two terms of the series.

In the thirteenth case, the first two terms of the series are equal to the first two terms of the series.

In the fourteenth case, the first two terms of the series are equal to the first two terms of the series.

In the fifteenth case, the first two terms of the series are equal to the first two terms of the series.

In the sixteenth case, the first two terms of the series are equal to the first two terms of the series.

In the seventeenth case, the first two terms of the series are equal to the first two terms of the series.

In the eighteenth case, the first two terms of the series are equal to the first two terms of the series.

In the nineteenth case, the first two terms of the series are equal to the first two terms of the series.

In the twentieth case, the first two terms of the series are equal to the first two terms of the series.

In the twenty-first case, the first two terms of the series are equal to the first two terms of the series.

In the twenty-second case, the first two terms of the series are equal to the first two terms of the series.

In the twenty-third case, the first two terms of the series are equal to the first two terms of the series.

In the twenty-fourth case, the first two terms of the series are equal to the first two terms of the series.

In the twenty-fifth case, the first two terms of the series are equal to the first two terms of the series.



Five birds are depicted in flight, scattered across the upper half of the page. They are rendered in a simple, dark, sketch-like style against a light, textured background. The birds are in various stages of flight, with wings spread wide, suggesting movement and freedom.

VOLUME XXXV
SALEM
WINSTON

PUBLISHED BY
COLLEGE
-SALEM, N. C.

VIRGINIA BLAND LEE
EDITOR-IN-CHIEF

ANNA LEAK SCOTT
BUSINESS MANAGER

SIGHTS AND



INSIGHTS "38"



FOREWORD

LIKE THE TIDE THAT GOES OUT
UPON THE SEA, OUR YEAR HAS
EBBED INTO THE VAST OCEAN OF
TIME. THE EYES OF SOME WILL SEE
THE RETURNING TIDE OF ANOTHER
DAY, WHILE OTHERS MUST WATCH
WITH MEMORY.





C O N T E N T S

BOOK ONE	✓	✓	✓	✓	✓	THE BOW
BOOK TWO	✓	✓	✓	✓	✓	THE MIDSHIP
BOOK THREE	✓	✓	✓	✓	✓	THE BRIDGE
BOOK FOUR	✓	✓	✓	✓	✓	THE QUARTERDECK
BOOK FIVE	✓	✓	✓	✓	✓	THE STERN

T
O ONE WHOSE
GUIDANCE HAS BEEN
A HARBOR FOR A HOST
OF FLOUNDERING SHIPS



• W E



D E D I C A T E T H I S B O O K .

BOARD OF TRUSTEES

RT. REV. J. K. PFOHL
PRESIDENT

REV. WALSER ALLEN

MR. A. H. BAHNSON

MR. ARCHIE DAVIS

MR. FRED FOGLE

MRS. JAMES A. GRAY

MR. J. B. GOSLEN

REV. F. W. GRABS

MR. T. HOLT HAYWOOD

MRS. CLARENCE LEINBACH

DR. FRED LEINBACH

MR. H. A. PFOHL

DR. S. FRED PFOHL

REV. DOUGLASS RIGHTS

MR. EMIL SHAFFNER

MRS. ROBERT SHORE

MR. RUFUS SHORE

MR. R. ARTHUR SPAUGH

REV. R. GORDON SPAUGH

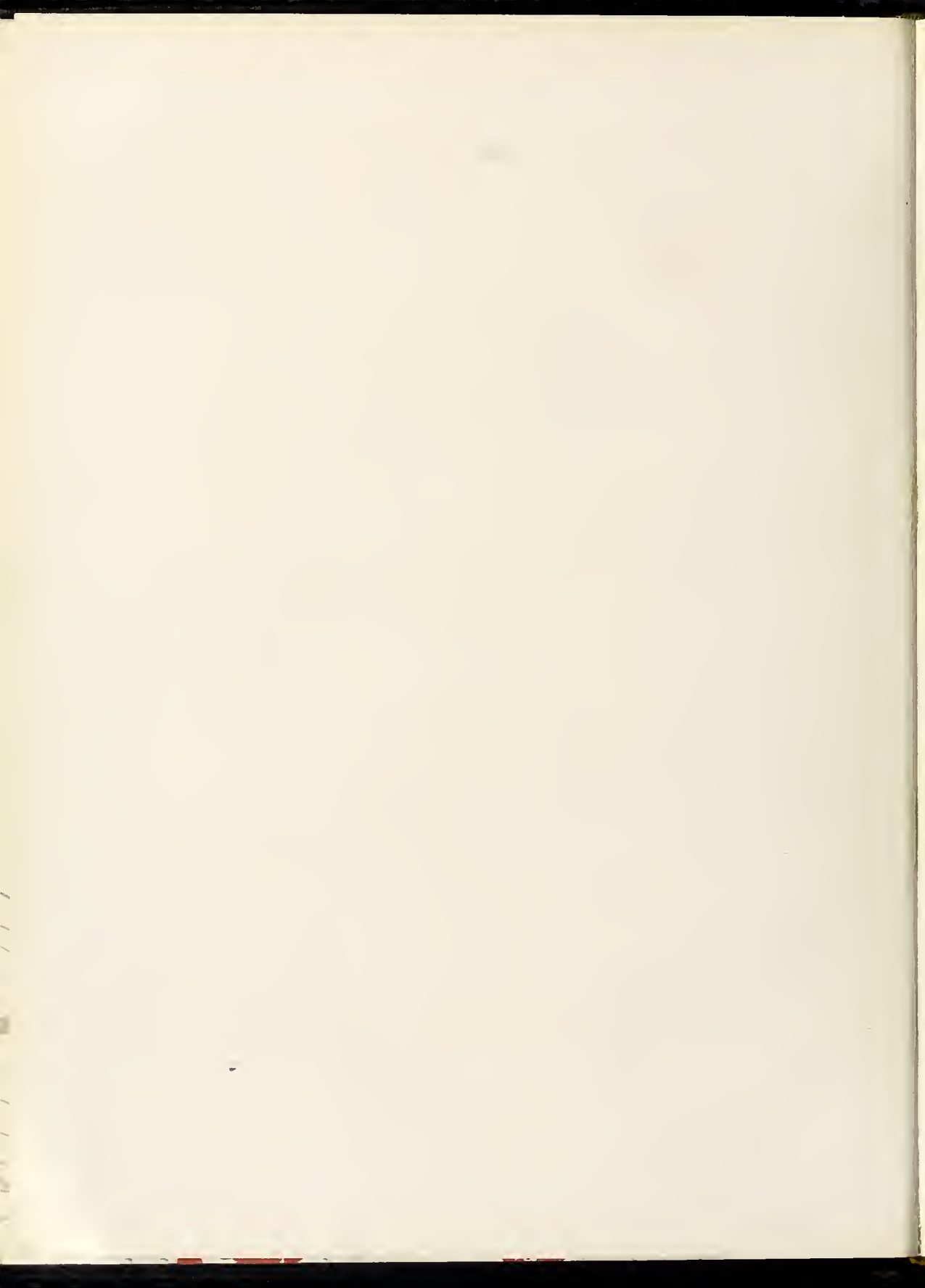
MR. C. S. STARBUCK

MR. C. G. VARDELL, JR.



T H E **B** BOOK ONE O W







Sights Ashore





PORTRAYING THE LOVELINESS OF
THE TWO DOORS OF THE HOME
MORAVIAN CHURCH • BELOW:
THE LILY POOL





OFFICE BUILDING • MAIN
HALL • SISTERS' HOUSE





THE STATELINESS OF THE ACADEMY AS SEEN FROM THE BACK CAMPUS • THE CHURCH TOWER GLORIFIED • THE LIZORA HANES BUILDING



THE PRESIDENT'S HOME



Howard E. Rondthaler

Ph.B., B.D., M.A., D.D., LL.D.

PRESIDENT OF
SALEM COLLEGE



CAPTAINS

FRANCIS C. ANSCOMBE

B.A., M.A., Ph.D., LL.D.
Head of Department of History
Professor of History and Bible

MINNIE ATKINSON

B.A., M.A.
Head of Department of Physical Education
Professor of Physical Education

CLIFFORD E. BAIR

B.Mus.
Head of Department of Voice
Professor of Voice and Choral Interpretation
Director of Choral Interpretation

MILDRED LEE BALL

B.A., M.A.
Instructor in Home Economics

OTELIA BARROW

Instructor in Business Subjects

MARION BLAIR

B.A., M.A.
Registrar
Instructor in English

AGNES BROWN

B.A.
Instructor in Sociology

JESS BYRD

B.A.
Instructor in English

ROY J. CAMPBELL

B.A., C.P.H.
Professor in Biology

MARY FRANCES CASH

B.Mus., A.A.G.O.
Instructor in Theoretical Music

EVABELLE S. COVINGTON

B.A., M.A.
Head of Department of Sociology and Economics
Professor of Sociology and Economics

CORTLANDT PRESTON CREECH

B.A.
Campus Secretary

CAPTAINS

ARLEY T. CURLEE

B.A., M.A.
Head of Department of Mathematics
Professor of Mathematics

ELOISE VAUGHN CURLEE

B.A., M.A.
Instructor in German

JOHN A. DOWNS

B.A., M.A.
Professor of Italian and French

ORA U. DOWNS

B.A., M.A.
Instructor in English

CHARLES H. HIGGINS

B.S., M.A.
Head of Department of Science
Professor of Chemistry and Geography

ELOISE WILLIS HIGGINS

B.S.
Instructor in Science

IVY HIXSON

B.A., M.A.
Instructor in Latin and History

EDWARD HOLDER

B.A., M.A.
Instructor in History

LAURIE JONES

B.A.
Instructor in Piano

MARY V. JONES

Instructor in Organ

MARJORIE KNOX

B.S.
Secretary to the President
Instructor in Bookkeeping

GRACE LAWRENCE

Dean of Residence



CAPTAINS



MARY DUNCAN McANALLY

B.S.
Assistant Librarian



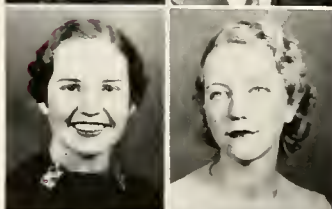
NOBLE R. McEWEN

B.A., M.A.
Head of Department of Education
Professor of Education and Psychology



MARGARET McLEAN

B.A.
Field Secretary



ELIZABETH O. MEINUNG

B.S., M.A.
Head of Department of Home Economics
Professor of Home Economics



BRONA MAE NIFONG

Assistant Secretary to the President



ALBERT W. OERTER

B.S.
Business Manager

CARLOTTA OGBURN

B.S.
Instructor in Science

KATHERINE DAVIS OGBURN

B.A.
Instructor in Art

HENRY GRADY OWENS

B.A., M.A.
Instructor in Psychology and Education

PAULINE PERRY

B.A.
Instructor in Business English, Psychology
and Sociology

MAYME PORTER

B.A., B.Mus., M.Mus.
Head of Department of Public School Music
Instructor in History of Music, Music
Appreciation and Ear Training

CAPTAINS

HAZEL HORTON READ

*Head of Department of Stringed Instruments
Professor of Violin, Viola, Violoncello
Director of Orchestra*



GRACE L. SLEWERS

B.A.
Librarian



MINNIE J. SMITH

B.A., M.A., Ph.D.
*Head of Department of Classical Languages
Professor of Latin and Greek*

JANET STIMPSON

B.A.
Instructor in Science



CARRIE MAY STOCKTON

B.A., M.A.
Instructor in Spanish

VIRGINIA THOMPSON

B.Mus.
Accompanist



SARAH TURLINGTON

B.A., M.A.
*Assistant Dean of Residence
Instructor in History*

LUCILE VEST

B.A., M.A.
Instructor in French



LUCY L. WENHOLD

B.A., M.A., Ph.D.
*Head of Department of Modern Languages
Professor of French and Spanish*

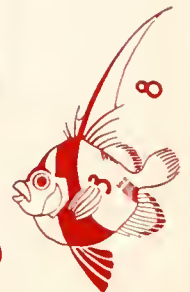
PEARL VIVIAN WILLOUGHBY

B.A., M.A., Ph.D.
*Head of Department of English
Professor of English*



ANNA WITHERS

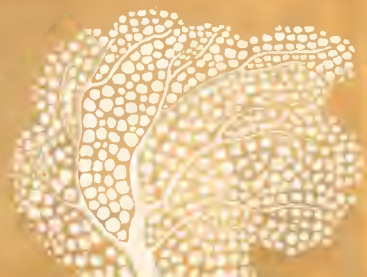
B.Mus.
*Instructor in Music Appreciation
Instructor in History of Music*







BOOK TWO
THE MIDSHIP







MRS. JOHN A. DOWNS
Advisor

Colors: Purple and White
Flower: Parma Violet
Motto: Honor, Unity, Fidelity

OFFICERS

- JANIE MCLEAN *President*
FRANCES ALEXANDER *Vice-President*
REBECCA BRAME *Secretary*
MARY MCCOLL *Treasurer*



MISS POLLY HAYWOOD
Mascot

Land Ho!



FRANCES WINGFIELD ALEXANDER

*Candidate for Bachelor of Arts
Degree*

I. R. S. Council, 2, 3, 4; Vice-President, 4;
History Club, 3, 4; Hiking Club, 2; Math-
ematics Club, 2; May Court, 3.

Soft petals of a fragrant flower sleeping
in a lotus pool.



LOIS IRENE BERKEY

RIDLEY PARK, PENNSYLVANIA

*Candidate for Bachelor of Science
Degree*

Duke University, 1, 2; May Day Commit-
tee, 3; Psychology Club, 3, 4.

Steadfast as a ship which keeps its course
—leaving behind a glow in its wake.





Laura Elizabeth Bland

Winston-Salem, North Carolina

Candidate for Bachelor of Arts Degree

Presidents' Forum, 4; SIGHTS AND INSIGHTS, Associate Editor, 3; *Salemite*, 2, 3, Music Editor, 4; May Day Committee, 2, 3, 4; May Day Pageant, 2; French Club, 1; Psychology Club, 3, 4; Pierrette Players, 4; Glee Club, 1, 2, 3, 4; Alpha Iota Pi, 1, 2, 3, President, 4; Day Student House Committee, 3; Class Honors, 1, 2, 3.

The silence that breathes a benediction upon the night, the deep melodic tone that gives the sea a voice.



Rebecca Louise Brame

Candidate for Bachelor of Arts Degree

Secretary of Class, 4; I. R. S. Council, 4; *Salemite*, 4; History Club, 2, 3, 4; Vice-President, 3; President, 4; Psychology, 2, 3, 4; Glee Club, 2; Class Basketball, 3; Class Hockey, 4.

Like a silver birch, tall and stately, that receives the brilliant rays of the sun, dissolving them into luminous shadows.



MARGARET LOVELL BRAWLEY

Candidate for Bachelor of Arts Degree

Y. W. C. A., 2; SIGHTS AND INSIGHTS, 1, 2; *Salemite*, 1, 2, 3, 4; May Day Committee, 2; French Club, 1, 2, 3, 4; Psychology Club, 2; Pierrette Players, 1, 2, 3, 4; Alpha Iota Pi, 1, 2, 3, 4; Class Basketball, 1.

The tinkling laughter of silver bells mingled with the mighty wind sweeping across the vastness of a verdant hill.



MARGARET RAGAN BRIGGS

HIGH POINT, NORTH CAROLINA

Candidate for Bachelor of Arts Degree

Class President, 3; I. R. S., 2, 3; Presidents' Forum, 3, 4; Student Government, 3; Y. W. C. A., 1, 2; SIGHTS AND INSIGHTS, 1, 2, 3; May Day Committee, 2, 3; May Day Chairman, 4; French Club, 2, 3; Hiking Club, 1, 2; Math Club, 1; Glee Club, 1, 2; Athletic Council, 1, 2, 3; Hockey Class Team, 1; Scorpions, 2, 3, 4; Senior Advisor, 3, 4; Senior Marshal (Chief), 3; Nominating Committee, 3, 4.

From daffodils and rarest rose, she takes a drop of sun-drenched dew, and in return gives back a steadfast glory.





DOROTHY CORNELIA BURNETTE

*Candidate for Bachelor of Arts
Degree*

History Club, 2, 3, 4; Psychology Club,
2, 3, 4; Riding, 1, 2, 3.

"The moon was darting through the
lattices

Its yellow light, warm as the beams of
day."

—Shelley.



VIRGINIA BOBBITT CARTER

WADESBORO, NORTH CAROLINA

*Candidate for Bachelor of Arts
Degree*

Duke University, 1, 2; *Salemite*, 3, 4;
May Day Committee, 3; History Club, 3.

Like a trim white schooner gently burrow-
ing its prow into the soft white foam of
the sea.



NAOMI CHRISTEL CATES

WINSTON-SALEM, NORTH CAROLINA

*Candidate for Bachelor of Arts
Degree*

History Club, 1, 2, 3, 4; Psychology Club,
1, 2, 3, 4; Alpha Iota Pi, 1, 2, 3, 4.

And the raven paused in its flight to rest
in quiet atop the mountain.



FRANCES HUNTER COLE

CHARLOTTE, NORTH CAROLINA

*Candidate for Bachelor of Arts
Degree*

Class Treasurer, 1; I. R. S. President, 4;
Student Government, 2; Y. W. C. A., 1;
SIGHTS AND INSIGHTS, 2; May Day Com-
mittee, 2; Psychology Club, 2; Glee Club,
1; Senior Advisor, 4; Nominating Com-
mittee, 3, 4.

The sparkling brightness of Paris lights
reflecting the quiet dignity of Sacré-Coeur
at midnight.





MARTHA JANNETTE COONS

WINSTON-SALEM, NORTH CAROLINA

Candidate for Bachelor of Arts Degree

Y. W. C. A., 1; SIGHTS AND INSIGHTS, 3; *Salemite*, 1, 2; May Day Committee, 2; German Club, 1, 2, 3, 4; Athletic Council, 4; History Club, 2, 3, 4; Psychology Club, 1, 2, 3, 4; Monogram Club, 3, 4; Volleyball Varsity, 1; Class Hockey Team, 1, 2, 3, 4; Class Basketball Team, 1, 2, 3, 4; Class Volleyball Team, 1, 2; Tennis, 1, 2, 3, 4; Athletic Council, 4.

Like a sparrow, chirping merrily, and ever flirting with the cotton clouds within its reach.



WILLENA BORING COUCH

WINSTON-SALEM, NORTH CAROLINA

Candidate for Bachelor of Music Degree

Student Government, 3, 4; May Day Committee, 2; Glee Club, 1, 2, 3; President, 4; Athletic Council, 1, 2, 3; Vice-President, 4; Monogram Club, 1, 2, 3, 4; Hockey Varsity, 1, 2, 3, 4; Basketball Varsity, 1, 3, 4; Volleyball Varsity, 1; Class Hockey Team, 1, 2, 3, 4; Class Basketball Team, 1, 2, 3, 4; Volleyball Class Team, 1, 2; Scorpions, 3, 4; Senior Advisor, 4; May Day Pageant, 1, 2, 3; Day Student House Committee, 3, 4; Tennis Champion (singles), 1, 2, 3; Chosen as best athlete.

Laurel crowns that bloom but on the brow of him whose hand can wield the sceptre of sportsmanship.



PAULINE FOWLER DANIEL

MOCKSVILLE, NORTH CAROLINA

*Candidate for Bachelor of Science in
Home Economics*

Salemite, Exchange Manager, 3; Circulation Manager, 4; May Day Committee, 2, 3, 4; Psychology Club, 1, 2, 3, 4; Home Economics Club, 2, 3; Treasurer, 1; Vice-President, 4; Science Club, 2.

The thunder shrieks to the heavens; the tree lifts up in magnitude; the mountain looks down with rugged scorn—but the bosom of earth is meek and lasting.



RUTH DICKIESON

*Candidate for Bachelor of Arts
Degree*

French Club, 1; German Club, 1, 2; Psychology Club, 2; Orchestra, 1.

The stars that glitter behind the misty coat of clouds, the flowers that slumber beneath the dusty blanket of earth—not seen, but living and dreaming.



ANNA WRAY FOGLE

Candidate for Bachelor of Arts Degree

Vice-President of Class, 1, 2; Y. W. C. A., 1, 2; *Salemite*, 1, 2, 3, 4; May Day Committee, 1, 2, 3, 4; German Club, 3, 4; History Club, 2, 3, 4; Pierette Players, 1, 2, 3, 4; President, 3; Alpha Iota Pi, 1, 2, 3, 4; Character in "The Trysting Place," "The Man in the Brown Hat," "The Purple Rim."

A gull whose sturdy wings are not afraid
to follow the celestial path that beckons
from the sun.



ADELAIDE LOUISE FRAZIER

BADIN, N. C.

Candidate for Bachelor of Arts Degree

Presidents' Forum, 4; Student Government, 2; French Club, 2, 3, 4; Psychology Club, 1, 2, 3, 4; Mathematics Club, 1, 3, 4; Secretary, 2; Athletic Council, 1, 2, 3; President, 4; Monogram Club, 1, 2, 3, 4; Hockey Varsity, 1, 2, 3, 4; Basketball Varsity, 1, 3, 4; Class Hockey Team, 1, 2, 3, 4; Class Basketball Team, 1, 2, 3, 4; Volleyball, 1, 2; Scorpions, 3, 4; Senior Advisor, 4; May Day Pageant, 2, 3; Day Student House Committee, 2, 3; Nominating Committee, 4.

The arrow that flies, the mark that is
struck, the discus that soars, the arm that
hurls—the winner and the game that was
won.



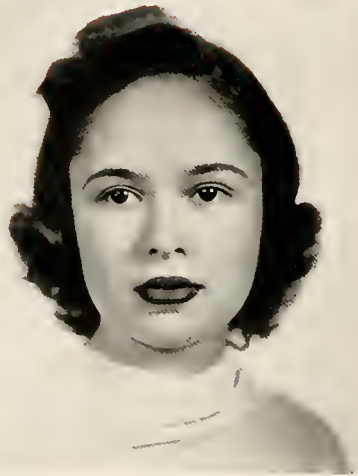
JOSEPHINE MAE GIBSON

HIGH POINT, NORTH CAROLINA

*Candidate for Bachelor of Arts
Degree*

Presidents' Forum, 4; Y. W. C. A., 1;
Salemite, 4; May Day Committee, 3; His-
tory Club, 3, 4; Psychology Club, 2, Sec-
retary, 3, President, 4; May Day Pageant,
1, 2, 3.

The buzzing bee that looks in on the
morning rose, smiles, passes into the but-
tercup, receives a kiss, and flies and whis-
pers gently to its queen.



JOSEPHINE MANIGAULT GRIBBIN

ASHEVILLE, NORTH CAROLINA

*Candidate for Bachelor of Arts
Degree*

St. Mary's School, 1, 2; Student Govern-
ment, 3, 4; SIGHTS AND INSIGHTS, 4; May
Day Vice-Chairman, 4; Hiking Club
Manager, 3; Athletic Council, 3; Senior
Advisor, 4; Scorpions, 4.

The night beneath a waning moon slum-
bered in lotus-burdened beauty, crystal
cool.





VIRGINIA MAE GRIFFIN

*Candidate for Bachelor of Arts
Degree*

A smooth and steadfast mind, dwelling in
calm thoughts and never dying hopes.



ADELAIDE LOUISE GRUNERT

*Candidate for Bachelor of Arts
Degree*

History Club, 1, 2, 3, 4; Psychology Club,
2, 3, 4; Mathematics Club, 1, 2, 3, 4;
Glee Club, 1, 2, 3, 4.

"The smiles that win, the tints that glow,
But tell of days in goodness spent,
A mind at peace with all below,
A heart whose love is innocent."
—Byron.



MEREDITH WINGFIELD HOLDERBY

BUFFALO SPRINGS, VIRGINIA

*Candidate for Bachelor of Arts
Degree*

Peace Junior College, 1, 2; History Club,
3, 4; May Court 3; Maid of Honor, 4;
Alpha Iota Pi, 3, 4; Senior Marshal, 3.

The dawn that comes like a white mirage
and drowns the world in splendor.



DOROTHY GRACE HUTAFF

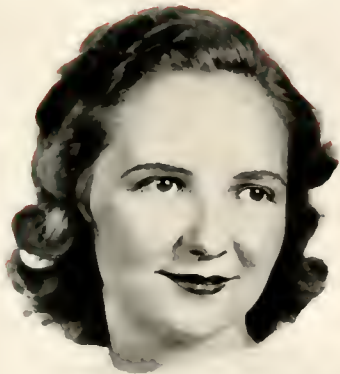
FAYETTEVILLE, NORTH CAROLINA

*Candidate for Bachelor of Science
Degree*

Class Secretary, 3; Class Treasurer, 2;
I. R. S., 4; Presidents' Forum, 4; Student
Government, 3, President, 4; May Day
Committee, 3; German Club, 2, 3, 4; Psy-
chology Club, 2, Treasurer, 3; Athletic
Council, 2, 3; Senior Advisor, 4; Scorpion,
3, 4; Science Club Executive Committee,
2; Class Hockey Team, 2, 3; Nominating
Committee, 4.

The "Wingless Victory" that possesses a
face with eyes shining with friendship and
lips smiling with wit.





MARY MARGARET JOHNSON

OLD FORT, NORTH CAROLINA

*Candidate for Bachelor of Science in
Home Economics*

May Day Committee, 3, 4; Hiking Club,
2, 3; Psychology Club, 2, 3, 4; Math-
ematics Club, 1, 2, 3, 4; Home Economics
Club, 2, 3, 4; Science Club, 2.

Slow moving in quiet precision like the
ripple of a transparent brook.



FLORENCE ELEANOR JOYNER

KERNERSVILLE, NORTH CAROLINA

*Candidate for Bachelor of Arts
Degree*

Student Government, 4; *Salemite*, 1, 2, 3,
Associate Editor, 4; May Day Committee,
3; French Club, 2, Secretary, 3; Psychol-
ogy Club, 1, 2, 3, 4; Mathematics Club, 1;
Senior Advisor, 4; Day Student House
Committee, 4; Scorpions, 4; May Day
Pageant, 1, 2, 3; Class Honors, 1, 2, 3;
Chosen as most likely to succeed.

A prism that refracts the radiance of the
muses into brilliant rays of logic.



CHARLOTTE MACOMBER KING

TAUNTON, MASSACHUSETTS

*Candidate for Bachelor of Science in
Home Economics*

Presidents' Forum, 4; Student Government, 4; Y. W. C. A., 1, 2, 3, 4; May Day Committee, 2, 3; Chairman Costume Committee, 4; Psychology Club, 2; Home Economics Club, 1, 2, 3, President, 4; Athletic Council, 2, Secretary, 3; Monogram Club, 2, 3, 4; Hockey Varsity, 2, 3; Science Club, 2; Class Hockey Team, 1, 2, 3, 4; Class Basketball Team, 1.

An eagle that soars the boundless dome
of heaven over rugged mountain and
lonely crag—alone and unafraid.



HELEN GWYNN KIRBY

*Candidate for Bachelor of Arts
Degree*

History Club, 1, 2, 3, 4; Psychology Club,
1, 2, 3, 4; Mathematics Club, 1, 2, 3, 4.

Quiet and cool even as the moss that sleeps
beside a whispering stream.



JEANETTE ELLIS KNOX

TAUNTON, MASSACHUSETTS

*Candidate for Bachelor of Arts
Degree*

Presidents' Forum, 4; Y. W. C. A., 1, 2, Secretary, 3, Vice-President, 4; SIGHTS AND INSIGHTS, 3, 4; May Day Committee, 3; Psychology Club, 2, 3, 4; Mathematics Club, 1, 2, 3, President, 4; Athletic Council, 3, 4, Treasurer, 2; Monogram Club, 2, 3, 4; Class Hockey Team, 1, 2, 3, 4; Class Basketball Team, 1, 2, 3, 4; Class Volleyball Team, 1, 2.

Trophies of sportsmanship resting beside a loving cup that spills the nectar of generosity upon the ground of friendship.



VIRGINIA BLAND LEE

KINSTON, NORTH CAROLINA

*Candidate for Bachelor of Science
Degree*

I. R. S., 2, Secretary and Treasurer, 3; Y. W. C. A., 3; SIGHTS AND INSIGHTS, Associate Editor, 3, Editor, 4; May Day Committee, 2; Hiking Club, 1, 2; Psychology Club, 4; Mathematics Club, 1, 2; Orchestra, 1, 2; Glee Club, 1, 2; May Court, 2, 3, May Queen, 4; Athletic Council, 1, 2, 3; Class Hockey Team, 4; Science Club Executive Committee, 2; Senior Advisor, 4; Senior Marshal, 2, 3; Presidents' Forum, 4; Nominating Committee, 4; Chosen as most versatile.

The halo that crowns the rainbow with beauty when the April shower has cooled the fetid brow of earth.



MARY LOUISE McCLUNG

WINSTON-SALEM, NORTH CAROLINA

*Candidate for Bachelor of Arts
Degree*

Class Vice-President, 3; Presidents' Forum, 4; Student Government, Treasurer, 3, Vice-President, 4; Y. W. C. A., 1, Treasurer, 2; SIGHTS AND INSIGHTS, 1, Associate Business Manager, 2, 3, 4; Psychology Club, 2; Mathematics Club, 1, 2, 3; May Court, 3, 4; Scorpions, 2, 3, 4; Day Student House Committee, 2, 3, President, 4; Senior Advisor, 4; May Day Pageant, 1; Senior Marshal, 3; Chapel Committee, 4; Nominating Committee, 4; Chosen as most attractive.

Quiet and lovely as a mountain tarn, moving calmly over each bit of moss, bathing each with delicious coolness.



MARY DEBORAH McCOLL

BENNETTSVILLE, SOUTH CAROLINA

*Candidate for Bachelor of Arts
Degree*

St. Mary's Junior College, 1, 2; Class Treasurer, 4; *Salemite*, Assistant Editor, 4; May Day Committee Chairman, 4; German Club, 3, 4; History Club, 3, 4; Hiking Club, 3; Athletic Council, 4; Alpha Iota Pi, 3, 4; Class Basketball Team, 3; May Day Pageant, 3; Senior Marshal, 3; Class Honors, 3.

A sail that floats out of the sunrise upon the waters of the sifted gold.





JANE DUART MACLEAN

WASHINGTON, NORTH CAROLINA

*Candidate for Bachelor of Arts
Degree*

Class President, 4; Class Secretary, 2;
I. R. S., 4; Presidents' Forum, 4; Student
Government, 1, 3, 4; History Club, 3, 4;
Psychology Club, 2; Athletic Council, 3;
Basketball Varsity, 2, 3; Class Basketball
Team, 2, 3, 4; Scorpions, 4; Nominating
Committee, 4; Chosen to be the most rep-
resentative of the college.

The utmost crag that stands upon the sum-
mit of the mountain to receive the gentle
kisses of the stars and the fragrant car-
resses of the winds,



MIRIAM ERNESTINE MARTIN

WINSTON-SALEM, NORTH CAROLINA

*Candidate for Bachelor of Arts
Degree*

Woman's College of the University of
North Carolina, 1, 2; Psychology Club, 4;
Class Hockey Team, 3; Class Basketball
Team, 3, 4.

And like Atalanta she lithely runs in
grace and loveliness.



LOIS MORGAN

SALISBURY, NORTH CAROLINA

*Candidate for Bachelor of Arts
Degree*

Lenoir-Rhyne College, 1, 2; SIGHTS AND
INSIGHTS, Photographic Editor, 4; May
Day Committee, 4; History Club, 3, 4;
Class Basketball Team, 4.

A summer landscape after sunset when
the earth is bathed by the soothing balm
of serenity.



JANE VAN HOY NADING

WINSTON-SALEM, NORTH CAROLINA

*Candidate for Bachelor of Arts
Degree*

SIGHTS AND INSIGHTS, 4; May Day Com-
mittee, 2; History Club, 2, 4; Psychology
Club, 2; Mathematics Club, 1; Monogram
Club, 4; Hockey Varsity, 2; Meredith
College, 3; Day Student House Committee,
4; Class Hockey Team, 1, 2, 4; Class
Basketball Team, 1, 2, 4.

A light and airy cloud that glides along
a tearless sky.





ANNE NISBET

WINSTON-SALEM, NORTH CAROLINA

Candidate for Bachelor of Music Degree

Y. W. C. A., 1; May Day Committee, 2, 3; Psychology Club, 2; Orchestra, 1, 2; Glee Club, 1, 2, 3, 4.

The notes of her lyre guide the wandering of Diana's chariot in its moonlit path of splendor.



MARTHA WOODRUM O'KEEFE

TAZEWELL, VIRGINIA

Candidate for Bachelor of Arts Degree

I. R. S., 4; Student Government, 1, Vice-President, 4; SIGHTS AND INSIGHTS, 3, Advertising Manager, 4; May Day Committee Chairman Tea Room, 3, Property, 4; History Club, 3, 4; Hiking Club, 2, 3; Psychology Club, 2, 3, 4; Scorpions, 3, 4; Senior Advisor, 4; May Day Pageant, 3.

A cameo chiseled delicately of purest alabaster.



MARGARET CRAMER PERCIVAL

FAYETTEVILLE, NORTH CAROLINA

*Candidate for Bachelor of Arts
Degree*

SIGHTS AND INSIGHTS, Literary Editor, 4;
Salemite, 3, 4; May Day Committee, 3, 4;
French Club, 4; Psychology Club, 3;
Mathematics Club, 1, 2; Pierrette Players
1, 2, 3, Vice-President, 4; Athletic Council,
1, 2, 3, 4; Freshman Play, 1; Second
Place Horse Show, 2; Third Place Horse
Show, 3.

. . . And in the autumn the tree fills its
arms with sunset and scatters the gold
upon the earth.



NORA ELIZABETH PIPER

BALTIMORE, MARYLAND

*Candidate for Bachelor of Science in
Home Economics*

Salemite, 3, 4; Hiking Club, 1, 2, 3, 4;
Psychology Club, 2; Home Economics
Club, 1, 2, 3, 4; Pierette Players, 3, 4;
May Day Pageant 1, 2; Science Club, 1;
Class Hockey Team, 2, 3, 4.

The wild unruliness of turbulent rapids
that rush madly to find calm at the foot
of a waterfall.





LAURA EMILY PITTS

LENOIR, NORTH CAROLINA

Candidate for Bachelor of Music Degree

Presidents' Forum, 4; Y. W. C. A., 3;
May Day Committee, 3, Chairman Music
Committee, 4; German Club, 2, Secretary
and Treasurer, 3, President, 4; Psychol-
ogy Club, 2; Pierette Players, 2, 3, 4;
Glee Club, 1, 2, 3, 4.

The chords that fall like the rapture of
the night, pervading all the world with a
vast splendor.



LOUISE BEAUCHAMP PREAS

JOHNSON CITY, TENNESSEE

*Candidate for Bachelor of Science in
Home Economics*

Agnes Scott College, 1; Y. W. C. A., 1;
SIGHTS AND INSIGHTS, Copy Editor, 4;
Salemite, 1; May Day Committee, 1, 2, 3;
Psychology Club, 4; Home Economics
Club, 1, 4, Secretary, 2, Vice-President, 3;
Pierette Players, 1, 2, Vice-President, 3.

President, 4; Presidents' Forum, 4.

The exotic perfume of a neopolitan night
blended into the wistful beauty of a silver
mist that stretches its arms to embrace
the sea.



MARIANNA REDDING

ASHEBORO, NORTH CAROLINA

*Candidate for Bachelor of Arts
Degree*

Class Secretary, 2; Class Treasurer, 3;
Student Government, 3; Y. W. C. A., 2;
SIGHTS AND INSIGHTS, 2; May Day Com-
mittee, 1, Chairman Dress Committee, 3,
Chairman Nominating Committee, 4;
French Club, 1, 2, 3; Psychology Club, 3;
Athletic Council, 2; Senior Marshal, 3;
Basketball Class Team, 1, 2.

Like an amethyst set in yellow gold, finely
cut and smartly worn.



EDITH JORDAN ROSE

ROCKY MOUNT, NORTH CAROLINA

*Candidate for Bachelor of Arts
Degree*

May Day Committee, 1, Chairman Dance
Committee, 4; French Club, 2, 3, 4; Psy-
chology Club, 2; Pierette Players, 2, 3, 4;
Glee Club, 1, 2, 3, 4.

A voice as clear as the lark's song at
dawning, resounding through the hills to
awaken the day.



ELOISE BARRY SAMPLE

TORT PIERCE, FLORIDA

*Candidate for Bachelor of Arts
Degree*



Class President, 2; Class Secretary, 1; I. R. S., 2; Presidents' Forum 2, 4; Student Government, 2, 3; SIGHTS AND INSIGHTS, 2; *Salemite*, 1, 2, 3, Editor 4; May Day Committee, 3, 4, Chairman Dance Committee, 2; History Club, 2, 3, 4; Hiking Club, 1, 2; Psychology Club, 2, 3, 4; Mathematics Club, 1, 2; Freshman Dramatic Club, 1; Monogram Club, 2, 3, 4; Hockey Varsity, 3; Basketball Varsity, 1, 3; Class Hockey Team, 1, 2, 3, 4; Class Basketball Team, 1, 2, 3, 4; Class Volleyball Team, 1, 2; Senior Advisor, 4; Senior Marshal, 1; Chapel Committee, 3; Lecture Committee, 4; Chosen as best journalist, 3.

Flitting together, sparrows play tag among leafy boughs; the gull sounds a dull love call to his mate; but the eagle stands alone upon the crag, spreads his wings, and soars into the winds.

ANNA LEAK SCOTT

WINSTON-SALEM, NORTH CAROLINA

*Candidate for Bachelor of Arts
Degree*

I. R. S., 3, 4; Y. W. C. A., 1; SIGHTS AND INSIGHTS, 2, 3, Business Manager, 4; May Day Committee, 4; Mathematics Club, 1, 2, 3; Senior Advisor, 4; Scorpions, 4; Senior Marshal, 1.

The soft, undulating murmur of a calm sea that washes the white sand with constant regularity.



VIRGINIA ERWIN SISK

FAYETTEVILLE, NORTH CAROLINA

*Candidate for Bachelor of Arts
Degree*

Student Government House President, 4;
Y. W. C. A., 4; May Day Committee, 4;
Hiking Club, 2; Psychology Club, 3, 4;
Class Hockey Team, 2, 3, 4; Senior Ad-
visor, 4.

As warm as the silken rays of an ocean
sunrise, casting about itself a glowing
depth, diffused by the mists of the dawn.



HELEN RUTH SMITH

KINGSFORT, TENNESSEE

*Candidate for Bachelor of Arts
Degree*

Salemite, 1, 2, 3; Business Manager, 4;
May Day Committee, 2, 3; History Club,
2, 3, 4; Hiking Club, 1, 2, 3, 4; Psychol-
ogy Club, 2, 3, 4; Home Economics Club,
2; May Day Pageant, 1, 2, 3; Senior
Marshal, 2.

The violet peeps shyly beneath a shelter-
ing leaf, and straightway lowers its head.





FLORENCE ELEANOR STAFFORD

Candidate for Bachelor of Science Degree

French Club, 1, 2, 3, 4; Psychology Club, 1, 2, 3, 4; Science Club, 2; May Day Pageant, 2, 3.

Like a bird that doth startle the early morn with its song.



SARAH ELIZABETH STEVENS

FAYETTEVILLE, NORTH CAROLINA

Candidate for Bachelor of Arts Degree

Presidents' Forum, 4; I. R. S., 4; Student Government, 4; Y. W. C. A., 1, 3, President, 4; SIGHTS AND INSIGHTS, 3; German Club, 2, 3, 4; Psychology Club, 2, 3, 4; Scorpions, 3, 4; Senior Advisor, 4; Nominating Committee, 4.

As calm as the gentle waters of a placid pool embibing all with its mellow quiet.



MARY DOUGLAS TINNIN

*Candidate for Bachelor of Music
Degree*

Mars Hill College, 1, 2; Glee Club, 3, 4

"A violet by a mossy stone
Half hidden from the eye!
Fair as a star, when only one
Is shining in the sky."

—Wordsworth.



MILDRED LUCILLE TROXLER

BURLINGTON, NORTH CAROLINA

*Candidate for Bachelor of Arts
Degree*

SIGHTS AND INSIGHTS, 4; *Salemite*, 3, 4;
May Day Committee, 4; History Club,
3, 4; Psychology Club, 3, 4.

The smooth graceful swiftness of a nimble
doe who bounds forward with sparkling
delight to meet her mate.



EDITH BLEVINS VOGLER

Candidate for Bachelor of Arts Degree

SIGHTS AND INSIGHTS, 1, 3, 4; May Day Committee, 4, Chairman, Dress Committee, 4; Class Basketball, 1; Class Hockey, 1, 3, 4.

When the air is filled with sunlight, timid flowers clothe themselves in beauty, and gracefully nestle against the bosom of the earth.



LEILA GILCHRIST WILLIAMS

WILMINGTON, NORTH CAROLINA

Candidate for Bachelor of Arts Degree

Class Treasurer, 3; I. R. S., 1, 4; *Salemite*, 2, 4; May Day Committee, 2, 3; French Club, 3; Psychology Club, 2; Mathematics Club, 1, 2, 3, Vice-President, 4; Pierette Players, 2, 3, Treasurer, 4; Glee Club, 1; Class Hockey Team, 2, 3, 4.

A thrush whose voice gives life to a barren heath. A tuneful echo that laughs at itself.



MARY CORNELIA WOLFE

CHARLOTTE, NORTH CAROLINA

*Candidate for Bachelor of Arts
Degree*

Y. W. C. A., 3; SIGHTS AND INSIGHTS, 2,
Art Editor, 3; *Salemite*, Sports Editor, 4;
French Club, 2, 3, 4; Psychology Club,
2, 3; May Court, 1, 2, 3, 4; Athletic
Council, 3, 4; Monogram Club, 2, 3, 4;
Hockey Varsity, 2, 3, 4; Basketball Var-
sity, 2, 3, 4; Class Hockey Team, 1, 2, 3,
4; Class Basketball Team, 1, 2, 3, 4;
Chosen as most beautiful.

Beauty like the sea at sunset when a thou-
sand fleecy clouds dance to the rippling
flutes of a lilting breeze.



MARY LORA WOODRUFF

WINSTON-SALEM, NORTH CAROLINA

*Candidate for Bachelor of Arts
Degree*

Y. W. C. A., 1; SIGHTS AND INSIGHTS, 1,
2, Class Editor, 4; May Day Committee,
2, 3; Pirette Players, 1, 2, 4, Treasurer,
3; Alpha Iota Pi, 1, 2, 3, Vice-President,
4; May Day Pageant, 1, 2, 3, 4; Cast,
"Death of the Swan," 2; Cast "Op O' Me
Thumb," 1; Class Honors, 3; Chosen for
best personality.

In the quiet, depressing stillness of jungle
midday, a parrot sweeps by like a comet
of color, and brings the stillness to life.



Alma Mater

*Strong are thy walls, oh, Salem,
Thy virgin trees stand tall,
And far athwart the sunlit hills
Their stately shadows fall.*

CHORUS

*Then sing we of Salem ever,
As proudly her name we bear,
Long may our praise re-echo,
Far may our song ring clear.*

*Firm is thy faith, oh, Salem,
Thy future service sure,
The beauty of thy heritage
Forever shall endure.*

*True is our love, oh, Salem,
Thy name we proudly own,
The joy of comradeship is here,
Thy spirit makes us one.*

SIGHTS AND INSIGHTS

SENIOR CLASS HISTORY

*"I am part of all that I have met
Yet all experience is an arch where thro'
Gleams that untravelled world, whose margin fades
Forever and ever when I move."*
—TENNYSON.

RECORDS FROM BOTTLES

LANDLUBBERS—1934, 1935

A silver-toned bell lured us in the fall of 1934 to Salem's archway of new experiences. There we met a bewildered and yet ambitious group, tearfully watching our old friends fade away but gladly lugging baggage for new girls, hunting secret passages with pals, and bunking with mates. The days were busy, for we made nervous glances at handbooks and important trips to the treasurer's office before registration or conferences.

Those first nights were gloriously filled with parties so that we almost forgot to be homesick. We laughed with the Midshipmen at their gay cabaret when a few brave girls became Mae Wests; in small groups we dined with Dr. and Mrs. Rondthaler. Then—O, Landlubbers' nightmare! The Girls—Two—Years—Before—the—Mast were "bad and bold" and tormented us at court with peanut rolling contests, the alphabet backwards, and nursery rhymes.

Where were we going in purple and white, steering through themes, labs, term papers, and tournaments? The class found its leader, Miss Mary Coleman Henderson, whose nickname, "Coco," suggested spicy far-off lands. It chose its faculty adviser, Miss Emily Mickey, whose place was later filled by Mrs. Downs. We advanced scholastically with students on the honor roll and athletically with all three cups in hockey, basketball, and tennis.

The tide went out.

TWO YEARS BEFORE THE MAST—1935, 1936

The tide came in.

Bells, soft mists, mates' faces, breezes, still nights, threatening clouds, storms, and memories drew us again to Salem's archway in 1935 for more adventures. There were rollicking good times when we became sailors and our captain, Miss Elouise Sample, ordered that the Landlubbers sing, recite, and even propose.

Some friends did not reappear. A gloom settled over us, because our president, usually with us with flower in buttonhole and smile on face, was abroad in a hospital.

New friends and the lovely redecorated Main Hall cheered us. We ventured into English Literature, accomplished more explosions in science, performed in Music Hour, and scooped, passed, served, and dived in our sports. All the cups were ours again.

Our year contrasted joviality and seriousness as we grew from childish beginners into upperclassmen. We romped at the Christmas party, the Easter egg hunt, and the May Pole dance, while yet we had poised moments when we held candles at Senior Vespers or attended our Land-ho mates at Hat Burning.

The wind blew out.

MIDSHIPMEN—1936, 1937

The wind blew in.
Memories, dreams, deep friendships, needs for leadership, intellectual eagerness, a spiritual calm, and profound calls from within gathered us under Salem's arches in 1936. Margaret Briggs stood by us as our competent guide while we learned the new duties of ushering and handing announcements to the president. Where were the shy girls of '34 now? They were the Landlubbers in the middle aisles; they were no longer we—"the big sisters." They were the guests whom we invited to a beach club party and the hostesses who stuffed us with food and "hillbilly" songs at the progressive dinner.

All fall we winked when we mentioned the hut for we knew its days were doomed. The highlights were the dedication of the modern gymnasium and the wonderful Athletic Association frolic for the whole student body. Why shouldn't we be proud to win all the cups again when athletics were greatly stressed? Our group was first to have a physical education class in the building.

In an imaginary vineyard we treated our older sisters to an afternoon and evening of fun to the tune of Freddy Johnson's orchestra. Junior-Seniors? Yes—the grand finale!

The ship sailed out.

LAND HO!—1937, 1938

The ship sailed in.

An inseparable part of us, our hearts, our minds, our very souls, called us to "stand at the portals." Salem's spirit was in us and of us. We were the leaders. Cole, Frazier, Stevens, Sample, and Lee became synonyms for the I. R. S., the Athletic Council, the Y. W. C. A., the *Salemite*, the SIGHTS AND INSIGHTS, and May Queen. Dorothy Hutaff and Janie MacLean led the student body and the class.

In between phone calls and class reports, exciting week-ends and exams, dates in Louisa Wilson Biting Building, and papers to grade, we were guests at the Presidents' dinner and the Christmas party and the hostesses at the Trustees' dinner and the practice teachers' dinner. Christmas time found us singing carols and lighting candles; springtime started us skating and teaching.

It was a year of firsts. Freshmen Orientation Week was begun with our class acting as advisers. The faculty succeeded in launching a Student Lecture Series, and friends and students contributed to the new library. We trudged in line with our load of books to help move and slipped into the reading room for the dedication.

From the whirlwind of hilarious faculty performance, "Helen and the Trojans," the Student Government prom, Junior-Seniors, teas and receptions, we found ourselves again at Salem's portals. We stooped to pass through her archways to let them fade behind, but they enveloped us. They had become parts of our lives to go forward with the class to new margins.

The ship sails on.

SALEM:

*"Thy light alone—like mists o'er mountains driven
Or music by the nightwinds sent
Through strings of some still instrument
Or moonlight on a midnight stream
Gives grace and truth to life's unquiet dream."*
—SHELLEY.

LAST WILL AND TESTAMENT

OF THE
CLASS OF '38

•

We, the self-satisfied class of nineteen hundred and thirty-eight of Salem College, being possessed of unsound minds, do hereby submit for your disapproval this, our Last Will and Testament.

Miss Berkey, our Yank from Pennsylvania, leaves her Southern drawl and nice quiet manner to Mildred Minter.

Laura Elizabeth Bland tearfully parts with her coy and naive ways in order to give Virginia Hollowell just one more chance.

"Man-Hater" Brame leaves her perfected technique of avoiding males to "Tootie" Powell.

"Charlie-Boy" Brawley leaves her renowned memory to anyone that wants it.

"Energetic" Briggsie reluctantly relinquishes her ten rules on "How to Make Friends," hoping that mama's little darlings will be the ideal freshmen.

Virginia Carter shares her ardent "Dook" spirit with Holder and Downs.

"Crissie" Cates donates her platinum blond tresses for Sunday use only to Mary Knox.

We take from Miss Coole her ultra-sophistication and Oxford spectacles so that "Baby Peggy" Bowen may blossom forth "Cole-like" next year.

Bashful Miss Coons, our tongue-tied violet, shyly bequeaths upon Helen Savage her nimble toes on the hockey field.

"Paderewsky" Campbell leaves his ambition to make hockey varsity to little John Downs.

"All-American" Couch wills her childish prattling to Virginia McNeny.

"Zephyr" Daniel bequeaths her come-hither lamps to B. Hatt.

"Phi Beta" Fogle donates her ballet routine on the basketball court to Helen McArthur.

"Weasle" Frazier, the demure Senior, bestows upon Christine Dobbins her delicate constitution.

Ruth Dickieson bequeaths her perfected system of making friends with teacher to Lib Sartin.

"Harrum-scarrum" Grunert wills her mischievous disposition and lax conduct to Mary Grier to overcome her goody-goody ways.

Mlle. Flossie Joyner leaves her swanky page-boy bob to Margaret Wilson.

"Cuddles" Gibson wills her bedroom eyes to Maud Battle.

It is with pleasure that we relieve "Droopy" Manigault Gribbin of her unique slouch so that Mary Thomas may unlap occasionally.

Miss "George Doo" Holderby regrets to announce that she must retire from the "Bull Slinging" Championship—Mary Charlotte Nelme was too much for her.

"Sweetie-Pie" Hutaff leaves her silver-toned vocal chords and trucking technique to Lib Tuten.

"Sloe-drawl" McCall leaves her booklet on "The Perfect Roommate" to "Sweet-tempered" Spence.

"Puny" Jane Nading relinquishes her "I-got-it-under-control" coiffeur to Louisa Sloan.

"Harpo" Nesbit bestows that self-confident smirk upon Mary Carr Culbreth.

Percival Cramer wills her innocent disapproval of parlor (?) puns to Jane Alice Dilling.



SIGHTS AND INSIGHTS

"Emily Post" Piper leaves her Venus de Milo "figger" (with a few additions) to Lib Hendrick.

"Chuckles" Pitts leaves her basketball ability to the Junior Team—they need it!

"B-flat" Tinnin bequeaths her "Umph" on the hockey field to the "bench-warmer" Hutchison.

Bob Troxler leaves her bottle of peroxide and that nasal contralto to Frances Watlington.

Miss "Blow-gum" Vogler wills her sassy stride and highbrow "nonchalance" to Kay Snead.

"Snoot" Williams wills her corncob voice and "Joe Collitch" coat to Louise Marion.

"Poutie" Wolfe wills her school-gal giggle to Muriel Brietz.

"Clodhopper" Woodruff bequeaths her quiet reserve and stately dignity to Anne Mewborne.

"Nightingale" Rose, our buxom lassie, bequeaths her awkward, galloping gait to Emma Brown Grantham.

"Astaire" Redding leaves her supercilious indifference to Doris Taylor.

"Varsity" Scott wills her Mae charms and come hither look to Gladys Blackwell.

"Pale-face Syske" bestows her peace pipe and corner in the G. R. to Carolyn Creson.

"Uh! Huh!" Smith wills her innocent orbs and smooth line to Sallie Emerson.

Ray Burnette bequeaths her ever increasing interest in "Light-weights" to Virginia Bruce Davis.

"Mo" O'Keeffe leaves "the things her father doesn't know" and the swanky reinforced polo coat to the maids.

Miss "Hahper's Bazaah" Alexander condescends to relinquish her title of Salem's "I date'm sweetheart" to Betty Sanford.

Lucy Preas her dewy "morning after" look to Josie Carmichael.

"Master Brain Trust" Wyatt bequeaths his "way with the women" to Shakespeare Templeton.

O. A. O. (one and only) Kirby leaves that wind-blown look to Peggy Jones.

Miss Ellie Sample leaves her affinity for ice cream to Frances Britt—she can afford to have a few extra pounds.

"Pee-Wee" Knox leaves her Arnold—that so cute man—technique to Emily Hovey.

"Honey" Johnson bequeaths her "10 Easy Lessons on A Sweet Lil' House-wife" to Eleanor Sartin.

Miss "Sassiety" McClung wills her sugary-tongue to Lizzie Trotman.

"Cleo" MacLean leaves her dent-in-the-head and fickle ways to Frances Turnage.

Coy Teenie Martin bestows her "better-to-run-with" limbs to Agnes Lee Carmichael.

We take from Ellie Stafford her Cab Calloway rhythm so that "Shine" Tyson won't let us down.

So that Sarah's slang will be immortal, "Y" Stevens wills her habit of "not counting to ten" to MacCarty.

"Giddy" Griffin leaves her title of "the nucleus in the protoplasm" of Park Hall to Alice Horsfield.

"Dormouse" Morgan, the preacher's daughter, leaves her amazing ability to appreciate Shakespeare to any Home Ec. Student who may need it.

"Dinah" Lee bequeaths her Bahnson theme song and Coan routine to Lib Dobbin.

Miss Louisa Bitting leaves Gam Bates, Howard Morris, and "the promising young lawyer" to next year's seniors.

While witnesses were away
The Testators did play.

ELOUISE SAMPLE.
LOIS MORGAN.



Class Poem

*The tow'ring clouds ascend the azure skies
To catch the ardor of the sun; and height
On height of craggy softness seems a bright
Refulgent flame that glows and dies,
But when with pallid splendor the full moon's rise
Bestows a silver shimmer on the dusky night,
There comes a marvel like a swan in flight—
A magic that the burning day denies.
Who wills to move in systematic ways
And to concern himself alone with obvious earth,
Should watch the changing skies and come to know
Our destinies as varied as the girth
Of heaven, where panoplied the stars amaze
As they in white and misty spirals glow.*

—PEGGY BRAWLEY.



SENIOR CLASS PROPHECY

Dear Diary—

To make the family seers look silly, I was determined to make the boat. And I did—in spite of Auntie, who simply had to stop by Fraulein Hutaff's kindergarten and say good-bye to "Betty-doorling!" "Betty-doorling," incidentally, will probably grow up to be the Sheila Barrett or Cramer Percival of her day. Already, she does Auntie up brownly, and I shudder to think what she must do to me—big sister!—behind my back.

Got my trunks mixed up with those of Mary Margaret Johnson and Charlotte Krog, authors of *Modern Stoves, How to Tame Them*, or *While Cookies Burn*. They are now engaged in running to earth new French recipes to lighten the labor of the American housewife.

While 1,999 of the 2,000 on board were hanging over the rail shouting unintelligible (and unintelligent) phrases at New York in general and their friends and relatives in particular, the 2,000th did a little exploring. I was stopped by the crowds surrounding the news photographers who were snapping the Europe-hound glamor girls. Meredith Holderby, Baltimore socialite, Lou Preas and Marianna Redding, buyers for Saks, on their way to the Fall openings, Frances Alexander, Bergdorf Goodman mannequin, and Virginia Lee, the beaotenos half of the famous dance team, Lee and Laurel, recently at the Rainbow Room, all made my small town heart beat a little faster.

Entertainment tonight was very informal and very good fun. Big names popped up everywhere—this boat seems to be full of 'em! Edith Rose, C. B. S. songstress, Jo Gribbin, whose "College Widow" dance has delighted audiences from Tennessee to New Hampshire, Frank Carter Campbell and Laurel Emily Pitts, famous piano team, Ann Nisbet, harpist with the Philadelphia Symphony, and Mary Woodruff, the writer, whose caustic comments on books and people appear in *Vogue*, all sang, danced, played, or talked delightfully.

WEDNESDAY.

This morning, while doing my constitutional, I was surprised to run into my old South Carolinian friend, Mary McCoil, now happily married (and blessed with twins), who introduced me to Lois Morgan, the famous psycho-analyst. Mary said that she had been properly psycho-analyzed and wanted me to talk to Miss Morgan about *my* dreams; I was interested, but a little doubtful about hauling my subconscious mind up to the pitiless light of day.

While waiting for dinner tonight I talked, or rather listened, to Margaret Briggs, who writes for the *New Yorker*. She unexpectedly confided that she had always wanted to play a minor role in one of Eddy Duchin's dreams. I think her hope has been realized, for I see where the man has gone to Connecticut for a rest cure. Great folk, these celebs!

THURSDAY.

Went swimming this morning with the nice young man I met last night. Even Auntie approves him. He pointed out the celebrities while I tried to improve my kick. Of course, he spotted Millie Troxler, "the blond bombshell of the screen," right away. (Trust a man!) We also saw Jane Nading and Ernestine Martin, the girl reporters who raced each other around the world to cover the famous Helen Kirby, pole-to-pole airplane flight. Ruth Dickieson, the authority on etiquette and author of *Gracious Living*, was living graciously and languidly at the side of the pool. The private secretary of Rothmorgan, the Goody curler king, was sun-bathing in a white bathing suit which I coveted. Her name is Mary Louise McClung, I think. My fascinating friend also introduced me to a successful-looking young lawyer and his wife, née Blevins Vogler.

We went up on deck later to watch the shuffle boarders. The Olympic team is on this boat, and I was thrilled to get a chance to see Elouise Sample, "the flashing guard" of the basketball team—as the newspapers have it, and Louise Frazier, the backstroke champion of the United States. Willena Couch, the dark horse who won the cup at Forest Hills this summer, and Martha Coons, champion hockey player, were there too, and were nearly crushed by autograph hounds!

Went to the movies this afternoon to see Leila Williams in "Idiot's Respite," a slapstick farce of the first water. Anna Wray Fogle, drama critic for the *Times*, sat behind us and commented frequently, audibly, and unfavorably. My handsome friend seems passionately interested in music; and he got very excited over the newsreel pictures of Mary Douglas Tinnin, seldom-photographed successor to George Gershwin as a composer of jazz rhapsodies. There were also pictures of Laura Bland's recent marriage, which interested me. She wrote that strange novel—sort of a psychological study—*Jane Clair*, you know. Virginia Griffin and Lois Berkey, the women scientists, were shown in their laboratory surrounded by microscopes and white mice. I had to be told about their revolutionary discoveries in chemistry. Ignoramus, that's me.

FRIDAY.

Sat at the captain's table tonight with the great and would-be great. Couldn't enjoy the Piper Pouree, named after the famous dietitian, for trying to think of something forceful and dazzling to say. Talked to Florence Joyner, head of the French department at Barnard and she informed me that they still speak French in Paris. Very discouraging! I'm dusting off my good old sign language.

Wandered into the library this morning. Miss Sarah Stevens, the librarian, suggested several new books. Rebecca Brame has written a new book on religion, which looked interesting. William Wyatt's humorous translation of Latin comedies recalled vividly my early struggles with Caesar. I heard one of them will be produced on Broadway this winter. Then I saw Peggy Brawley's *Essays in Verse* and couldn't resist it. Took it to bed with me and woke Auntie laughing out loud.

This afternoon I shopped a little. There is an attractive dress shop on board run by Virginia Carter and Anna Leak Scott. It is a branch of B. Altman. In the beauty parlor I ran into Virginia Sisk, who is on her way to London to join her husband, now in the consular service there. Also in the beauty parlor—where all paths meet!—I met Miss Frances Cole, famous woman lawyer, and her friend and personal secretary, Jean Knox. Miss Cole says, "Indubitably!" ever so often and confesses to a suppressed desire to be a pearl diver. I referred her to Miss Morgan. Also under the driers were Eleanor Stafford and Christel Cates, who are teachers in a school in Switzerland, and Louise Grunert, eminent child psychologist.

SATURDAY.

6. A.M.

Up early—couldn't sleep. The ocean is pretty rough. Thank goodness, I don't get seasick!

10 A.M.

The boat is simply wallowing. After breakfast, I reeled into the lounge, where Helen Smith and Jo Gibson, two newspaper correspondents covering the peace conference in Paris, sat putting world powers in their places. I wasn't up to that this morning. I was about to go out again, when Pauline Daniel, one of the passengers whom I met yesterday, came over to suggest a game of cards. She is a nurse, and after taking one look at my face, sent me back to my stateroom.

1 P.M.

I spoke too soon, little diary. Even my doodles are waterlogged. My activity line has reached a new low.

3 P.M.

Stewardess brought houillon. It didn't look very good.

5 P.M.

I'm just not hungry.



SENIOR
MARSHALS

MARY WORTHY SPENCE
Chief Marshal



BETTY BAHNSON
HELEN McARTHUR



PEGGY BOWEN
VIRGINIA BRUCE DAVIS



FELICIA MARTIN
MARY THOMAS





AGNES BROWN
Advisor

Colors: Black and Gold

Flower: Black-eyed Susan

Motto: True Knowledge Leads to Love and Service

OFFICERS

ANNETTE MCNEELY *President*
DOROTHY WYATT *Vice-President*
HELEN TOTTEN *Secretary*
EMMA BROWN GRANTHAM *Treasurer*

Midshipmen



SIGHTS AND INSIGHTS



GERTRUDE BAGWELL
WINSTON-SALEM, N. C.



ELIZABETH BAHNSON
WINSTON-SALEM, N. C.



MAUDE BATTLE
ROCKY MOUNT, N. C.



PEGGY BOWEN
WINSTON-SALEM, N. C.



CATHERINE BRANDON
WINSTON-SALEM, N. C.



VIRGINIA BRATTON
WINSTON-SALEM, N. C.

MARY CARLTON
RALEIGH, N. C.

MARY LEE COWPER
RALEIGH, N. C.

MARY DAVENPORT
WINSTON-SALEM, N. C.

BILLIE FULTON
GATE CITY, VA.

MIDSHIPMEN

EMMA BROWN GRANTHAM
RED SPRINGS, N. C.

GLENN GRIFFIN
ROCKY MOUNT, N. C.



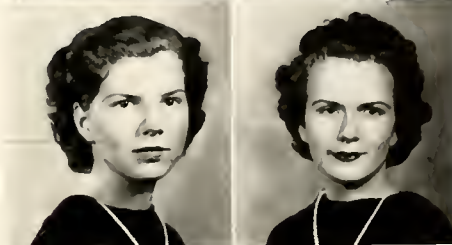
TILLIE HINES
CHARLOTTE, N. C.

ALICE HORSFIELD
PITTSBURGH, PA.



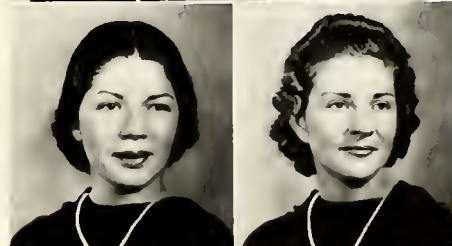
JOSEPHINE HUTCHISON
WINSTON-SALEM, N. C.

ANN JOHNSON
MAYODAN, N. C.



ELIZABETH LAMBETH
WINSTON-SALEM, N. C.

HELEN LANNING
WALLBURG, N. C.



LOUISE LAWRENCE
WINSTON-SALEM, N. C.

HELEN McARTHUR
WINSTON-SALEM, N. C.



EVELYN McCARTY
FORT PIERCE, FLA.

MIDSHIPMEN



SIGHTS AND INSIGHTS



EDITH McLEAN
LENOIR, N. C.

MARTHA McNAIR
LAURINBURG, N. C.



ANNETTE McNEELY
MOORESVILLE, N. C.

FELICIA MARTIN
MAYODAN, N. C.



ANN MILLS
HENDERSON, N. C.

MILDRED MINTER
LAURENS, S. C.



FORREST MOSBY
WAYNESBORO, VA.

CAROLINE PFOHL
WINSTON-SALEM, N. C.



MARJORIE POWELL
EDENTON, N. C.

KATE PRATT
WINSTON-SALEM, N. C.

MIDSHIPMEN

JOSEPHINE RAND
RALEIGH, N. C.

MARGARET RICKS
HANES, N. C.



MARGARET ROGERS
CHARLOTTE, N. C.

MARY LEE SALLEY
ASHEVILLE, N. C.



MARY LOUISE SIEWERS
WINSTON-SALEM, N. C.

JESSIE SKINNER
ELIZABETH CITY, N. C.



LOUISA SLOAN
WADESBORO, N. C.

KATHERINE SNEAD
GREENSBORO, N. C.



MARIAN SOSNIK
WINSTON-SALEM, N. C.

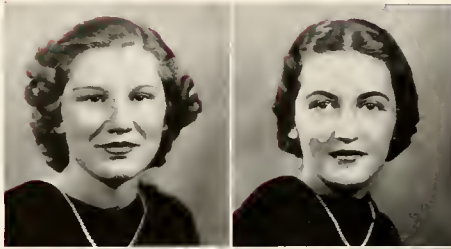
MARY WORTHY SPENCE
CARTHAGE, N. C.



MIDSHIPMEN

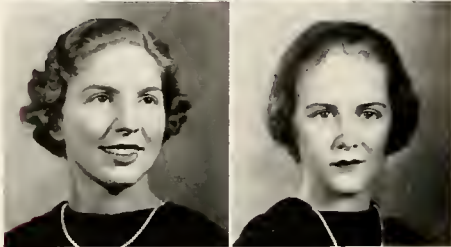


SIGHTS AND INSIGHTS



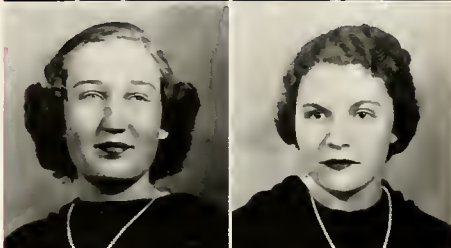
VIRGINIA TAYLOR
WINSTON-SALEM, N. C.

HANNAH TEICHMAN
WINSTON-SALEM, N. C.



MARY THOMAS
BEARDEN, TENN.

HELEN TOTTEN
ATLANTA, GA.



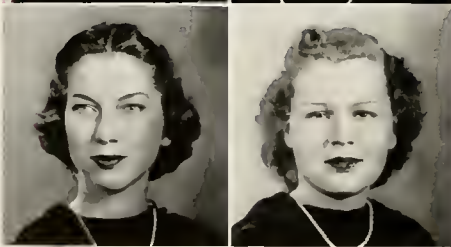
FRANCES TURNAGE
AYDEN, N. C.

FRANCES WATLINGTON
REIDSVILLE, N. C.



ANN WHALING
WINSTON-SALEM, N. C.

MARY GWYNN WILLIAMS
NORTH WILKESBORO, N. C.



MARY TURNER WILLIS
NEW BERN, N. C.

DOROTHY WYATT
WINSTON-SALEM, N. C.

MIDSHIPMEN



CORTLANDT PRESTON CREECH
Advisor

Colors: Red and White *Flower:* Red Rose
Motto: Friendly and True

OFFICERS

NANCY COURT *President*
MARGARET HOLBROOK *Vice-President*
JANE ALICE DILLING *Secretary*
VIRGINIA BREAKELL *Treasurer*

Two Years Before the Mast



SIGHTS AND INSIGHTS



GERALDINE BAYNES
WINSTON-SALEM, N. C.

JEANNE BRADSHAW
WILMINGTON, DEL.

VIRGINIA BREAKELL
ROANOKE, VA.

MURIEL BRIETZ
WINSTON-SALEM, N. C.

FRANCES BRITT
CLINTON, N. C.

SARAH BURRELL
WINSTON-SALEM, N. C.

AGNES LEE CARMICHAEL
BENNETTSVILLE, S. C.

ELIZABETH CARTER
WADESBORO, N. C.

NANCY COURT
LONG ISLAND, N. Y.

CAROLYN CRESON
AUGUSTA, GA.

VIRGINIA BRUCE DAVIS
DANVILLE, VA.

JANE ALICE DILLING
GASTONIA, N. C.

CHRISTINE DOBBINS
CAPEL HILL, N. C.

TWO YEARS BEFORE THE MAST



GRACE GILLESPIE
TAZEVELL, VA.

GERMAINE GOLD
SHELBY, N. C.

MARY GRIER
CHARLOTTE, N. C.

SARAH HARRISON
CHARLOTTE, N. C.

ELIZABETH HATT
LONGMEADOW, MASS.

ELIZABETH HENDRICKS
CLIFFSIDE, N. C.

ELLA WALKER HILL
ROANOKE, VA.

JUNE HIRE
WINSTON-SALEM, N. C.

MARGARET HOLBROOK
WINSTON-SALEM, N. C.

FRANCES HUGGINS
LEASVILLE, N. C.

LOUISE JACKSON
CLINTON, N. C.

IDA JENNINGS
THOMASVILLE, N. C.

TWO YEARS BEFORE THE MAST



SIGHTS AND INSIGHTS



FRANCES KALE
MEBANE, N. C.

JANE KIRK
WINSTON-SALEM, N. C.

FRANCES KLUTZ
SALISBURY, N. C.

VERA MAE LANNING
WALLBURG, N. C.

KATHERINE LEDBETTER
FOLKTON, N. C.

HELEN LINEBACK
WINSTON-SALEM, N. C.

JULIA McCORKLE
WINSTON-SALEM, N. C.

EVELYN MCGEE
WINSTON-SALEM, N. C.

CECELIA McKEITHAN
FAYETTEVILLE, N. C.

VIRGINIA McNENNY
DRAKES BRANCH, VA.

ANNE MEWBORNE
KINSTON, N. C.

MARGARET MORRISON
STANLEY, N. C.

TWO YEARS BEFORE THE MAST



BETTY JANE NALLEY
WINSTON-SALEM, N. C.

MABEL PITZER
WINSTON-SALEM, N. C.

MARY ELIZABETH REECE
WINSTON-SALEM, N. C.

ELIZABETH NORFLEET
ROXABEL, N. C.

CLARA POU
WINSTON-SALEM, N. C.

MARY VENABLE ROGERS
CATONSVILLE, MD.

LOUISE NORRIS
DURHAM, N. C.

JANICE RANEY
SALISBURY, N. C.

BETTY SANFORD
FARMINGTON, CONN.

MARY JO PEARSON
NORTH WILKESBORO, N. C.

MATTIE MAE REAVIS
YADKINVILLE, N. C.

HELEN SAVAGE
WILMINGTON, N. C.

TWO YEARS BEFORE THE MAST



SIGHTS AND INSIGHTS



PRATHER SISK
FAYETTEVILLE, N. C.

KATHERINE SWAIN
WINSTON-SALEM, N. C.

BETTE TILLOU
EAST AURORA, N. Y.

EVE TOMLINSON
HICKORY, N. C.

KATHRYN TROXLER
BURLINGTON, N. C.

ELIZABETH TUTEN
STATESVILLE, N. C.

MARY CATHERINE WALKER
WINSTON-SALEM, N. C.

ANN WATSON
HENDERSON, N. C.

MARGARET WILSON
RALEIGH, N. C.

ELIZABETH WINGET
ALBEMARLE, N. C.

TWO YEARS BEFORE THE MAST



MARGARET McLEAN
Adviser

Colors: Red and Black

Flower: Poppy

OFFICERS

MARGARET PATTERSON *President*
MARY BALDWIN *Vice-President*
PATTY McNEELY *Secretary*
KATHERINE KING *Treasurer*

Landlubbers



SIGHTS AND INSIGHTS



ESTHER ALEXANDER
KNOXVILLE, TENN.

MARY MARVEL CAMPBELL
WINSTON-SALEM, N. C.

RUTH CLODFELTER
WINSTON-SALEM, N. C.

MARY BALDWIN
WINSTON-SALEM, N. C.

JOSEPHINE CARMICHAEL
KNOXVILLE, TENN.

ELIZABETH CLONINGER
LENOIR, N. C.

DOROTHY BAUGHAM
WASHINGTON, N. C.

ELEANOR CARR
DURHAM, N. C.

KATHERINE COLE
DURHAM, N. C.

OLIVE BITTLE
KNOXVILLE, TENN.

CAROLYN CHERRY
PHILADELPHIA, PA.

ANN COOKE
PORTSMOUTH, VA.

GLADYS BLACKWOOD
MELVIN HILL, N. C.

RUTH CLEARY
YADKINVILLE, N. C.

ELEANOR SUE COX
WINSTON-SALEM, N. C.

NANCY CLINE
HICKORY, N. C.

L A N D L U B B E R S



MARY KERR CULBRETH
FAYETTEVILLE, N. C.

ELIZABETH DOBBIN
LEGERWOOD, N. C.

LOUISE EARLY
GALAX, VA.

MULLINS ELLERBE
WINSTON-SALEM, N. C.

SALLIE EMERSON
WINSTON-SALEM, N. C.

ELIZABETH ERWIN
LAURINBURG, N. C.

POLLY ANNE EVANS
WINSTON-SALEM, N. C.

JESSIE LOUISE EVERIDGE
WINSTON-SALEM, N. C.

MARY SUE FORREST
WINSTON-SALEM, N. C.

MARGARET B. GILLESPIE
BEARDEN, TENN.

GERALDINE GREGORY
WINSTON-SALEM, N. C.

SARAH ANN HARMEN
TAZEWELL, VA.

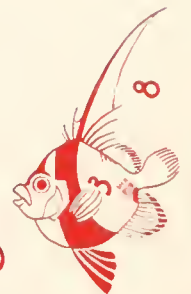
CAATHERINE HARRELL
WINSTON-SALEM, N. C.

MADLINE HAYES
WINSTON-SALEM, N. C.

FRANCES HELDRETH
TAZEWELL, VA.

ANNIE SUE HENDRIX
TOBACCOVILLE, N. C.

L A N D L U B B E R S



SIGHTS AND INSIGHTS



BEISY HILL
WINSTON-SALEM, N. C.

VIRGINIA HOLLOWELL
ELIZABETH CITY, N. C.

KATHERINE HOLMES
EDENTON, N. C.

NELL HOLT
SPARTANBURG, S. C.

EMILY HOVEY
LENOIR, N. C.

THELMA HUNTER
WINSTON-SALEM, N. C.

MARIAN JOHNSON
WINSTON-SALEM, N. C.

PEGGY JONES
CHARLOTTE, N. C.

MILDRED KELLEY
FAYETTEVILLE, N. C.

NELL KERNS
DURHAM, N. C.

ALICE KINLAW
LUMBERTON, N. C.

KATHERINE KING
LEAKESVILLE, N. C.

MARY KNOX
STATESVILLE, N. C.

RACHEL LAMBETH
CLEMMONS, N. C.

KATE LAMM
WILSON, N. C.

DORIS LANGSTON
RURAL HALL, N. C.

LILLIAN ALICE LANNING
WALLBURG, N. C.

L A N D L U B B E R S



SARAH LINN
LANDIS, N. C.

ORA HOLT LONG
BREVARD, N. C.

EMILY MCCOY
NORTH WILKESBORO, N. C.

MARGARET MCGEHEE
LYNCHBURG, VA.

MILLCENT MCKENDRY
NEW CANAAN, CONN.

PATY MCNEELY
MOORESVILLE, N. C.

MARTHA MERRITT
WINSTON-SALEM, N. C.

JOHNSIE MOORE
WINSTON-SALEM, N. C.

LENA WINSTON MORRIS
WINSTON-SALEM, N. C.

DOROTHY MULLEN
WINSTON-SALEM, N. C.

JANE NASH
NARBETH, PA.

REBECCA NIFONG
WINSTON-SALEM, N. C.

BARBARA NORMAN
PLYMOUTH, N. C.

ELIZABETH O'BRIEN
WINSTON-SALEM, N. C.

NANCY O'NEAL
WINSTON-SALEM, N. C.

LILLIAN PARKS
LONDON, ENGLAND

MARY ANN PASCIAL
WINSTON-SALEM, N. C.

L A N D L U B B E R S



SIGHTS AND INSIGHTS



EUNICE PATTEN
WILMINGTON, N. C.

MARGARET PATTERSON
CHARLOTTE, N. C.

BETSY PEERY
KINSTON, N. C.

ELSIE LOU PENNER
SHAWNEE, OKLA.

MARY LOUISE PHILLIPS
WINSTON-SALEM, N. C.

MARJORIE PORTER
WINSTON-SALEM, N. C.

HILDA MAE POWELL
STOKESDALE, N. C.

MARTHA RAWLINGS
WINSTON-SALEM, N. C.

JACQUELINE RAY
OXFORD, N. C.

LENORA RICE
LANCASTER, N. C.

JOAN ROBINSON
TOLEDO, OHIO

NAOMI ROSENBAUM
PLAINFIELD, N. J.

STELLA ROSENBLATT
BROOKLYN, N. Y.

ELEANOR SARTIN
WINSTON-SALEM, N. C.

ELIZABETH SARTIN
WINSTON-SALEM, N. C.

RUTH SCHNEDL
WEST POINT, GA.

L A N D L U B B E R S



JUNE SHELL
LENOIR, N. C.

ELIZABETH SHERMER
WINSTON-SALEM, N. C.

LUCILLE SINK
WINSTON-SALEM, N. C.

KELLEY ANNE SMITH
MONROE, N. C.

JOAN STIER
FERNANDINA, FLA.

HELENE STRAS
TAEZWELL, VA.

JULIA STUART
MONTGOMERY, ALA.

LUCILE STUBBS
LENOIR, N. C.

NANCY SUIER
WELDON, N. C.

RUTH TEMPLEMAN
WINSTON-SALEM, N. C.

MARY GREY THOMPSON
TAEZWELL, VA.

FRANKIE TYSON
GEORGETOWN, S. C.

ADA LEE UTLEY
WAKE FOREST, N. C.

LOUISE WHITE
LARAMIE, WYO.

SYBIL WIMMER
KINGSFORT, TENN.

CLARA LUCILLE WYATT
WINSTON-SALEM, N. C.

L A N D L U B B E R S



SIGHTS AND INSIGHTS



PHYLLIS BAZEMORE
WINSTON-SALEM, N. C.

HELEN CRAVER
WINSTON-SALEM, N. C.

MARY GRAHAM
GOLDSBORO, N. C.

EDITH BINDER
MOUNT AIRY, N. C.

BARBARA CROKER
WINSTON-SALEM, N. C.

ELIZABETH HAWTHORNE
THOMASVILLE, N. C.

ELLA JOYNER BRAME
NORTH WILKESBORO, N. C.

JUANITA DUNNING
WINSTON-SALEM, N. C.

PAULINE HOOTS
WINSTON-SALEM, N. C.

CAROLINE CONRAD
WINSTON-SALEM, N. C.

JULIA EVERETT
WILLIAMSTON, N. C.

ANN MARIE LOWREY
KERNERSVILLE, N. C.

P L E B E S



MARIE MARTIN
PATTERSON, N. C.

MARJORIE PETERSON
TUCSON, ARIZ.

BETTY SCOTT
GRAHAM, N. C.

SARAH BELLE MASTEN
WINSTON-SALEM, N. C.

PATTI PORTER
WASHINGTON, N. C.

ROBERTA SIDES
WINSTON-SALEM, N. C.

ELSIE MOCK
WINSTON-SALEM, N. C.

BONNIE RAY
OCALA, FLA.

MARY E. WALSTON
WINSTON-SALEM, N. C.

MARY LOUISE MOCK
WINSTON SALEM, N. C.

ELIZABETH WHITE
WINSTON-SALEM, N. C.

P L E B E S

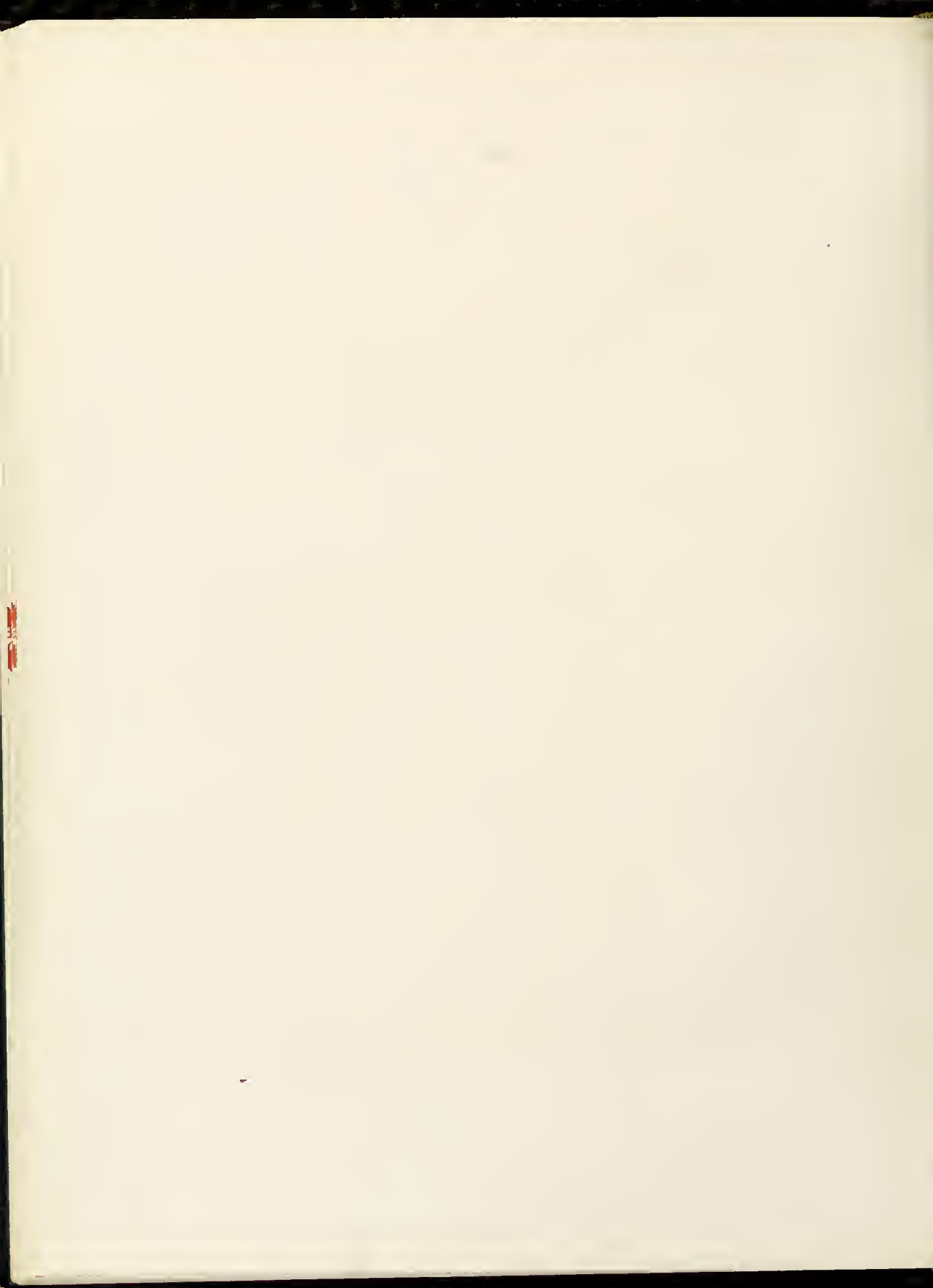






BOOK THREE
THE BRIDGE





PRESIDENT'S FORUM

DR. HOWARD E. RONDTHALER *Salem College*
 DOROTHY HUFFALL *Student Self-Govt. Assn.*
 SARAH STEVENS *Y. W. C. A.*
 FRANCES COLE *I. R. S.*
 LOUISE FRAZIER *Athletic Association*
 VIRGINIA LEE *Sights and Insights*
 ELOUISE SAMPLE *Salemite*
 JANIE McLEAN *Senior Class*
 ANNETTE McNEELY *Junior Class*
 NANCY COURT *Sophomore Class*

MARGARET PATTERSON *Freshman Class*
 WILLENA COUCH *Choral Ensemble*
 LOUISE PREAS *Pierette Players*
 FLORENCE JOYNER *Le Cercle Francais*
 LAURA EMILY PILTS *German Club*
 LAURA BLAND *Alpha Iota Club*
 CHARLOTTE KING *Home Economics Club*
 JEAN KNOX *Mathematics Club*
 JOSEPHINE GIBSON *Psychology Club*
 REBECCA BRAME *History Club*





STUDENT SELF-GOVERNMENT ASSOCIATION

OFFICERS

DOROTHY HUTAFF	President
MARTHA O'KEEFE	On-Campus Vice-President
MAUDE BATTLE	Secretary
JOSEPHINE HUTCHISON	Treasurer
MARY LOUISE McCLUNG	Off-Campus Vice-President

REPRESENTATIVES

VIRGINIA BRUCE DAVIS	CAROLINE PFOHL
VIRGINIA SISK	ANNETTE McNEELY
SARAH STEVENS	PRATHER SISK
WILLENA COUCH	SARA BURRELL
CHARLOTTE KING	ELIZABETH HATT
JANE McLEAN	NANCY COURT
FLORENCE JOYNER	LENORA RICE
JOSEPHINE GRIBBIN	MARGARET PATTERSON
PEGGY BOWEN	BETTY GILLESPIE
PEGGY ROGERS	NANCY O'NEAL

YOUNG WOMEN'S CHRISTIAN ASSOCIATION

OFFICERS

SARAH STEVENS	<i>President</i>
JEAN KNOX	<i>Vice-President</i>
ANNETTE McNEELY	<i>Secretary</i>
ELIZABETH HENDRICKS	<i>Treasurer</i>
MILDRED MINER	<i>Music</i>
MARY THOMAS	<i>Bulletin Board</i>
BETTY SANFORD	<i>Y Store</i>
HELEN SAVAGE	<i>World Fellowship</i>
SARAH BURRELL	<i>Industrial Group</i>
MARY TURNER WILLIS	<i>Publicity</i>
FRANCES WALLINGTON	<i>Freshmen Activities</i>
GERMAINE GOLD	<i>Social Group</i>
MAUDE BATTLE	<i>Finance</i>
VIRGINIA SISK	<i>Evening Watch</i>
JEAN KNOX	<i>Program</i>
CHARLOTTE KING	<i>Community Service</i>
DOROTHY HUTAF	<i>Honorary</i>



SIGHTS AND INSIGHTS



EDITORIAL STAFF

- VIRGINIA LEE *Editor-in-Chief*
- DOROTHY WYATT *Associate Editor*
- EVELYN McCARTY *Associate Editor*
- ELIZABETH TROTMAN *Literary Editor*
- CRAMER PERCIVAL *Literary Editor*
- ANN WHALING *Art Editor*
- LOIS MORGAN *Photographic Editor*
- MILDRED TROXLER *Humor Editor*
- MARY WOODRUFF *Class Editor*
- KATE PRATT *Class Editor*
- FRANCES KLUTZ *Class Editor*
- BETSY PEERY *Class Editor*
- JEAN KNOX *Copy Editor*
- MARY LIB WALSTON *Copy Editor*
- LOUISE PREAS *Copy Editor*
- MRS. CURLEE *Faculty Adviser*



OF SALEM COLLEGE



BUSINESS STAFF

- ANNA LEAKE SCOTT . . *Business Manager*
 MARY LOUISE McCLUNG . . *Asst. Bus. Mgr.*
 JOSEPHINE HUTCHISON . . *Asst. Bus. Mgr.*
 MARTHA O'KEEFFE . . *Advertising Manager*

ADVERTISING STAFF

- JANE NADING
 JOSEPHINE GRIBBIN
 BLEVINS VOGLER
 MARY LOUISE McCLUNG
 MARTHA O'KEEFFE
 CAROLINE PFHOL
 BETTY BAHNSON
 JOSEPHINE HUTCHISON
 MARGARET RICKS
 FRANCES TURNAGE
 FRANCES HUGGINS



The Salemite



ELOUISE SAMPLE
Editor

EDITORIAL STAFF

Laura Bland *Music Editor*
 Alice Horsfield *General Editor*
 Cornelia Wolfe *Sports Editor*
 Florence Joyner *Assistant Editor*
 Mary McColl *Assistant Editor*
 Maude Battle *Feature Editor*

STAFF ASSISTANTS

ANNA W. FOGLE	ELIZABETH HATT
PEGGY BRAWLEY	HELEN TOTTEN
HELEN McARTHUR	EMMA B. GRANTHAM
SARA HARRISON	MARGARET HOLBROOK
MARY LEE SALLEY	SARA BURRELL
BETTY SANFORD	HELEN SAVAGE
KATHERINE SNEAD	BETSY PEELY
FRANK CAMPBELL	

FEATURE DEPARTMENT

MARY TURNER WILLIS	JO GIBSON
MARY THOMAS	EVVELYN McCARTY
CRAMER PERCIVAL	LEILA WILLIAMS
MARY W. SPENCE	BETTY BAHNSON
TILLIE HINES	MADELINE HAYES
PEGGY ROGERS	



HELEN SMITH
Business Manager

Salem College



BUSINESS STAFF

- EOITH McLEAN *Assistant Business Manager*
 PRATHER SISK *Advertising Manager*
 PAULINE DANIEL *Circulation Manager*
 BILL FULTON *Exchange Manager*
 FRANCES WATLINGTON *Assistant Exchange Manager*
 SYBIL WIMMER *Assistant Exchange Manager*
 ELIZABETH PIPER *Asst. Circulation Manager*
 MILLCENT MCKENORIE *Asst. Circulation Manager*
 CHRISTINE DOBBINS *Asst. Circulation Manager*

ADVERTISING STAFF

- PEGGY BOWEN
 REBECCA BRAME
 VIRGINIA CARTER
 GRACE GILLESPIE
 VIRGINIA TAYLOR
 MILDRED TROXLER
 MARGARET PATTERSON
 JANE KIRK



SIGHTS AND INSIGHTS



I. R. S. COUNCIL

OFFICERS

FRANCES COLE *President*
 FRANCES ALEXANDER *Vice-President*
 MARY WORTHY SPENCE *Secretary-Treasurer*

MEMBERS

JANIE MCLEAN	MARJORIE POWELL
ANNEITE MCNEELY	BILL FULTON
NANCY COURT	ELIZABETH TROTMAN
MARGARET PATTERSON	LOUISE NORRIS
DOROTHY HUTAFF	FRANCES BRITT
SARAH STEVENS	MARTHA RAWLINGS
MARTHA O'KEEFFE	BOBBY CARR
ANNA LEAK SCOTT	FRANKIE TYSON
LEILA WILLIAMS	SUE FORREST

MAY DAY COMMITTEE CHAIRMEN

OFFICERS

MARGARET BRIGGS	<i>General Chairman</i>
JOSEPHINE GRIBBIN	<i>Vice-Chairman</i>
MARTHA O'KEEFE	<i>Properties</i>
MARY TURNER WILLIS	<i>Tea Room</i>
MARY MCCOLL	<i>Flowers</i>
MARGARET BRIGGS	<i>Pageant</i>
MARY LEE SALLEY	<i>Program</i>
EDITH ROSE	<i>Dances</i>
LAURA EMILY PITTS	<i>Music</i>
MURIEL BRIEZE	<i>Publicity</i>
BLEVINS VOGLER	<i>Dresses</i>
CHARLOTTE KING	<i>Costumes</i>
MARIANNA REDDING	<i>Nominations</i>



SIGHTS AND INSIGHTS



ALPHA IOTA PI

LAURA BLAND	<i>President</i>	HELEN McARTHUR	<i>Secretary</i>
MARY WOODRUFF	<i>Vice-President</i>	GERALDINE BAYNES	<i>Treasurer</i>



LE CERCLE FRANCAIS

FLORENCE JOYNER	<i>President</i>
---------------------------	------------------



DEUTSCHER VEREIN

Laura Emily Pitts *President*
 Emma B. Grantham *Secretary-Treasurer*



HISTORY CLUB

Rebecca Brame *President* Peggy Rogers *Secretary*
 Helen Totten *Vice-President* Grace Gillispie *Treasurer*



SIGHTS AND INSIGHTS



HIKING CLUB

ANNE MEWBORNE *Manager*



PSYCHOLOGY CLUB

JOSEPHINE GIBSON *President* MARTHA MCNAIR *Vice-President*
 PEGGY ROGERS *Secretary-Treasurer*



MATHEMATICS CLUB

JEAN KNOX	<i>President</i>	MARIHA McNAIR	<i>Secretary</i>
LEILA WILLIAMS	<i>Vice-President</i>	MARIAN SOSNIK	<i>Treasurer</i>
HELEN TOTTEN	<i>Assistant Treasurer</i>		



HOME ECONOMICS CLUB

CHARLOTTE KING	<i>President</i>	MARY THOMAS	<i>Secretary</i>
PAULINE DANIEL	<i>Vice-President</i>	VIRGINIA BREAKFILL	<i>Treasurer</i>



SIGHTS AND INSIGHTS



PIERETTE PLAYERS

LOUISE PREAS *President* CRAMER PERCIVAL *Vice-President*
LEILA WILLIAMS *Secretary-Treasurer*



DAY STUDENT HOUSE COMMITTEE



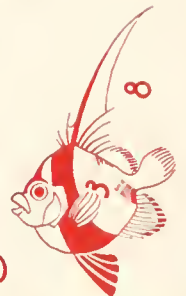
ORCHESTRA

MISS HAZEL HORTON READ *Director*
 ALBERT BLUMENFAL *Concert Master*
 SARAH LINN *Accompanist*



CHORAL ENSEMBLE

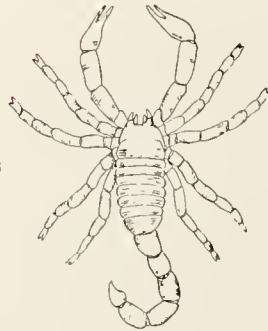
MR. CLIFFORD BAIR *Director* MILDRED MINTER . . . *Sec. and Treas.*
 WILFENA COUCH *President* EDITH MCLEAN . . . *Business Manager*
 HELEN SAVAGE *Accompanist*



ORDER OF THE SCORPION

FLORENCE JOYNER
JOSEPHINE GRIBBIN
MARGARET BRIGGS
SARAH STEVENS

MAUDE BATTLE
FELICIA MARTIN
MARY LOUISE McCLUNG
BETTY BAHNSON
ANNA LEAK SCOTT



ANNETTE McNEELY
HELEN McARTHUR
VIRGINIA BRUCE DAVIS
MARTHA O'KEEFE
LOUISE FRAZIER

JANE McLEAN
WILLENA COUCH
PEGGY BOWEN
DOROTHY HUTAFF



[101]



1 9





BOOK FOUR
THE QUARTERDECK





ATHLETIC COUNCIL

POWELL, MARTIN, ROGERS, *Treasurer*; WOLFE, BAHNSON, KIRK, COONS, DAVENPORT, BOWEN, *Secretary*; ATKINSON, *Director*; HUTCHISON, MACCARIY, FRAZIER, *President*; WILLIS, COUCH, *Vice-President*; SPENCE, SANFORD, PERCIVAL, MEWBORNE



MONOGRAM CLUB

MACCARIY, WOLFF, COONS, SAMPLE, KNOX, COUCH, HUTCHISON, FRAZIER, KING





Sample, McLean, Lee, Knox, Wolte, Nading, Williams, Frazier, Piper, King, Coons

SENIOR HOCKEY



Hise, Hendrix, Klutz, Hollowell, Court, Norris, McKeithan, Gold, Dilling, Mewborne, Harrison, Norfleet, Huggins, Wilson, Hatt, Breakell, Rogers, Hendricks, Holbrook, Pitzer, Kirk, Rav, Lowry, Sanford, Baynes

SOPHOMORE HOCKEY





Willis, Thomas, McCartv, McNeely, Skinner, Johnson, Gier, Hutchison, Davenport,
Bowen, Martin, Pfohl

JUNIOR HOCKEY



Stuart, Gillespie, Lanning, Emerson, Baldwin, Eliz, Sartin, Nash, McGehee, Langston,
Cleary, Shermer, Holt

FRESHMAN HOCKEY





COONS
 NADING
 KNOX
 KING
 FRAZIER
 WOLFE
 MACLEAN
 SAMPLE

Senior Basketball

Sophomore Basketball



DILLING
 RAY
 PITZER
 HOLBROOK
 SANFORD
 GOLD
 McKEITHAN
 LOWRY
 BAYNES
 COURT
 HARRISON
 ROGERS
 HATT
 KIRK

PROH
 SKINNER
 MARTIN
 McNEELY
 THOMAS
 WILLIS
 HUTCHISON
 McCARTY
 GRIER
 JOHNSON
 BOWEN



Junior Basketball

Freshman Basketball



KINLAW
 BALDWIN
 McGEHEE
 EARLY
 LANGSTON
 LANNING
 EMERSON
 WIMMER
 CLEARY
 ELIZ. SARTIN
 SMITH

SIGHTS AND INSIGHTS



RIDING

PERCIVAL, MCCARTY, WILLIAMS, SPENCE, KNOX, GRANTHAM, HINES



ARCHERY

MCCOLL, THOMAS, WILLIS, REDDING, CARTER



TENNIS

McNAIR, PITZER, McNFELY, PRATT, LEE, HUTCHISON, SIEWERS, MARTIN, PFOHL,
BAYNES, JOHNSON, WHITE, NADING, COONS, FRAZIER



SWIMMING

SANFORD, HAYES, HAIT, FRAZIER, McNFELY, WILLIS, POWELL, PIPER, MCKENDRY,
LEE, RAY, MCCARTY



SIGHTS AND INSIGHTS



GOLF

MCCARTY, KIRK, HUTAFF, BAHNSON



VOLLEY BALL

LOWRY, HOLLOWELL, LEE, THOMAS, PRATT, HUTCHISON, BURRELL, HOLBROOK, JOHNSON,
MARTIN, GILLESPIE, PFOHL, DAVENPORT, HAYES, SKINNER, POU, MCNAIR, PITZER, MCNEELY,
ALEXANDER, BAYNES



[113]



1

9





BOOK FIVE
THE STERN





MAY QUEEN

Virginia Bland Lee



MAID
OF HONOR



•
MEREDITH HOLDERBY
•



Mary Louise McClung



Martha Rawlings

MAY



Mary Elizabeth Walston



Peggy Jones



Bill Fulton



Cornelia Wolfe



Dorothy Wyatt



Nell Holt

COURT AT SALEM



Mildred Kelley



Frances Britt



Mary Grey Thompson



Betty Scott

SIGHTS AND INSIGHTS



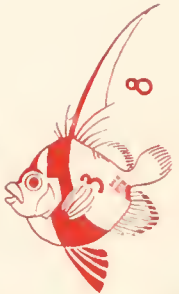
Willena Couch

WINSTON-SALEM, NORTH CAROLINA



Katherine King

LEAKSVILLE, NORTH CAROLINA



1 9

SIGHTS AND INSIGHTS



Prather Sisk

FAYETTEVILLE, NORTH CAROLINA



Helene Stras

TAZEWELL, VIRGINIA



1 9

SIGHTS  AND INSIGHTS



Frances Klutz

SALISBURY, NORTH CAROLINA



Anne Johnson

MAYODAN, NORTH CAROLINA



1 2

SIGHTS AND INSIGHTS



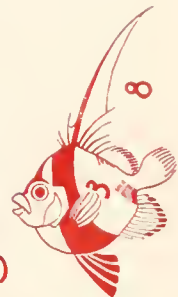
Mary Turner Willis

NEW BERN, NORTH CAROLINA



Mildred Froxler

BURLINGTON, NORTH CAROLINA



1 9



S. S. Salem

Through the Porthole

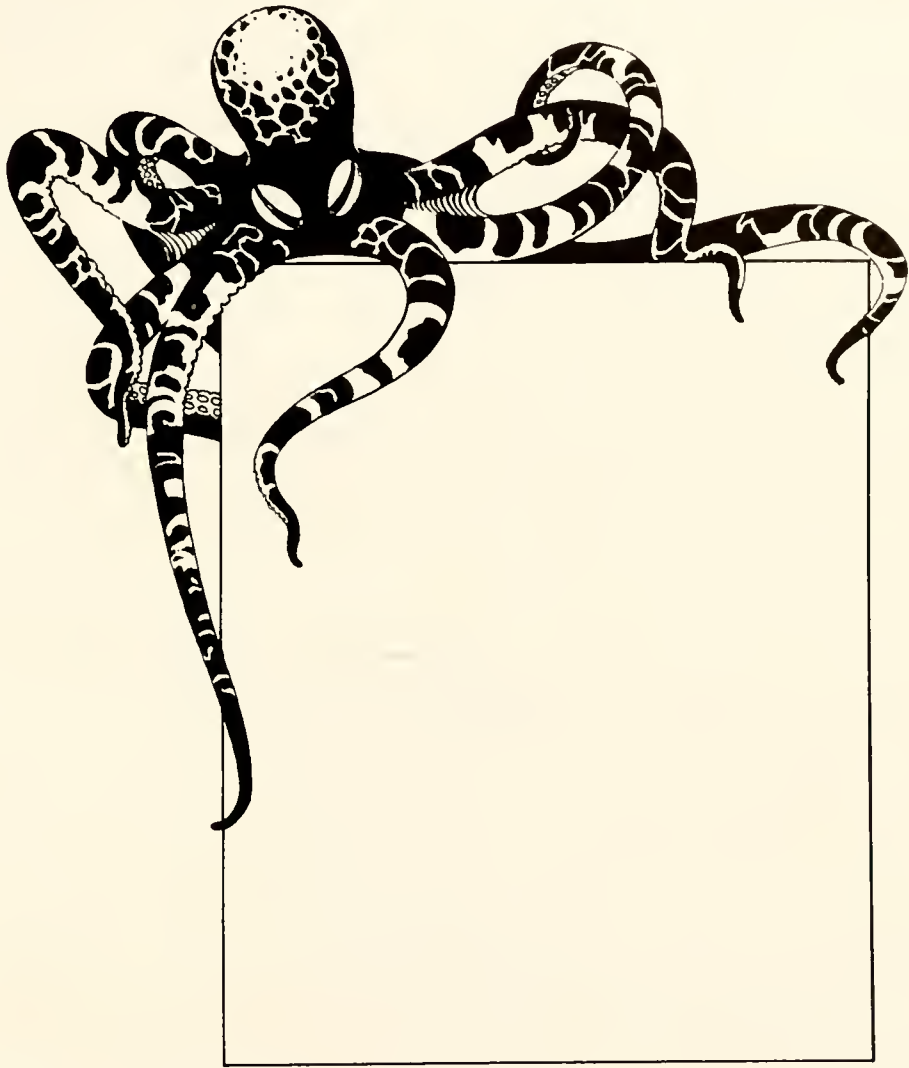


S. S. Salem



Epilogue

ONCE MORE TIME'S GALLEON
HAS DROPPED ITS ANCHOR. THE
CRUISE HAS ENDED. WE DISEM-
BARK WITH THE GEMS OF KNOWL-
EDGE, THE GOLD OF FRIENDSHIP,
THE TREASURES OF EXPERIENCE—
AND PERHAPS, THE SILENT BEAUTY
OF SADNESS.



DRAW YOUR OWN
CONCLUSIONS HERE

for Economical Transportation



MODERN CHEVROLET COMPANY

SALES AND SERVICE

148 NORTH MAIN STREET

Telephone 6144-6145

WINSTON-SALEM, NORTH CAROLINA

S. A. E. (no name mentioned): "What brand of cigarettes is that?"

Prime O.: "Baseball Special."

S. A. E.: "There isn't any such brand."

Prime O.: "Sure there is—it was a grounder and I picked it up."



SWIM SUITS
1938 MODELS

AT YOUR FAVORITE
STORE

CALL FOR
INDER A
BY NAME

Manufactured by
INDER A MILLS
COMPANY

WINSTON-SALEM, N. C.



MAKE 1938 YOUR HAPPIEST YEAR
BY BEING CONFIDENT OF

YOUR FASHION
AND STYLE

MANY DEPARTMENTS TO
MAKE YOUR SELECTIONS

THE
ANCHOR COMPANY

Shopping Center of Winston-Salem

LIGHT IS CHEAP-- SIGHT IS PRICELESS

Light costs so little today that everyone can afford good lighting. Ruined eyesight is costly in medical attention, discomfort, lost time and decreased personal efficiency. Check up on your home lighting today. We will gladly send one or more of the beautiful I. E. S. Lamps to you to try out in your home and see for yourself the wonderful change that they will make. There will be no obligation to buy whatsoever on your part.

DUKE POWER COMPANY

PHONE 7151

Dot Hutaff: "Why are term papers like prison terms?"

Grace Gillespie: "They both are just a series of sentences."

Prospective Salem Student: "Why do they have so many of those flowers around here that look like orchids?"

Miss Lawrence: "Because they are I. R. S.'s."

PARENTS AND ALUMNAE

LET THE

ROBERT E. LEE HOTEL

(WINSTON-SALEM'S FINEST)

AND ITS NEW ADDITION

**ROBERT E. LEE COFFEE
SHOP**

BE YOUR GRACIOUS HOSTS WHILE VISITING
WINSTON-SALEM

CORNER OF FIFTH AND CHERRY STREETS

DIAL 6161

STYLES FOR EVERY
OCCASION

BELK-STEVENSON CO.

LEADING DEPARTMENT
STORE

CORNER OF FIFTH AND TRADE STREETS
WINSTON-SALEM, N. C.

S. H. KRESS

AND

COMPANY

PILOT INSURANCE
AGENCY

GENERAL INSURANCE

DIAL 6123

THE IDEAL

WINSTON-SALEM'S
LEADING DEPARTMENT STORE
FOR
SALEM GIRLS

MARGARET MARIE
SHOP

205 WEST FOURTH STREET

WOMEN'S APPAREL

LINGERIE—HOSE—ACCESSORIES



DIAL 7121

A psychologist claims the lie detector will tell
people if they are really in love—and spoil all
the fun of finding out for yourself.

What do you do with a cigarette—Duck?

* * *

What do you do with a fire—Truck?

PICCADILLY GRILL

415 W. 4TH STREET

IT'S SMART

IT'S NEW

IT'S POPULAR

WINSTON-SALEM'S NEW AND MODERN
RESTAURANT
DELICATESSEN AND
SODA SHOP

DIAL 4312

ICE

ICE

J. R. THOMAS

ICE

AND

COAL

CALL 7158

COAL

COAL

SALEM COLLEGE

A Member of ~

The Association of Colleges and Secondary Schools of the
Southern States

The Association of North Carolina Colleges

The American Association of Colleges

The American Association of University Women

The National Association of Schools of Music



WINSTON-SALEM, NORTH CAROLINA

COMPLIMENTS
OF THE
STATE AND CAROLINA
THEATERS

What is that in the road—Ahead?

* * *

St. Peter: "How did you get here?"
Latest Arrival: "Flu."

Fanny Cole: "Waiter, there's a fly in my soup."
Waiter: "Well, lady, make up your mind. I
can't be bothered by rumors."

COHEN'S
READY-TO-WEAR

QUALITY AND
STYLE

WEST FOURTH STREET

N. P. STONE & CO.
WHOLESALE GROCERS

AND INSTITUTION
JOBBER'S OF

QUALITY MERCHANDISE

WINSTON-SALEM, N. C.

HANES AND COMPANY

WHOLESALE

FRUITS—PRODUCE

"If It Grows We Have It"

DIAL 2-1196

AN EXCLUSIVE WOMAN'S
WEAR ESTABLISHMENT

Catering to the young women of school
and college age, and a store that has done
much in making Winston-Salem a Woman's
Wear Trade Center for the Carolinas.

D. G. CRAVEN CO.

WEST FOURTH AT MARSHALL
WINSTON-SALEM, N. C.



WASHINGTON MILLS COMPANY

Manufacturers of

Mayo
Made from Mayo Yarn

BOYS' AND MEN'S

Combed Athletic Shirts and Shorts

AND

Children's Waist Suits

ALSO

BOYS' AND MEN'S

Medium and Heavy Weight Union Suits

Home Office: WINSTON-SALEM, N. C.

Prof.: "What's nothing?"

Stude: "It's a footless stocking without any leg,
sir."

Absent-minded salesgirl as date kisses her
goodnight: "Will that be all?"

* * *

What do you do with a match—Box?

O'HANLON'S DRUG STORE

THE STORE YOU KNOW

For Waves Becoming To You
You Should Be-Coming to Us

PHONE 7238

SALEM BEAUTY SHOPPE

522 1-2 S. Main Street

WINSTON-SALEM, N. C.

ARDEN FARM STORE

GIFT SPECIALISTS

Delicious Home-Made Jellies

Jams, Preserves, and Marmalades

In Exquisite Hand-Decorated Gift Packages
LOVELY GIFTS SUITABLE FOR EVERY OCCASION

"Opposite Salem Store"

LOVELY SHOES

FOR

LOVELY LADIES

HINES

WEST FOURTH STREET

THE
PHOTOGRAPHS

IN THIS ANNUAL
WERE MADE BY

Dunbar & Daniel
Studio

134 Fayetteville Street

Raleigh, North Carolina



FINE PORTRAITS
PROMPT SERVICE



Largest College Annual
Photographers In The South

COMPLIMENTS OF
Forsyth Motors, Inc.

Distributors of
BUICK AND PONTIAC

WHEN BETTER AUTOMOBILES ARE
TO BE HAD WE'LL HAVE THEM

Mr. McEwen to desk clerk in hotel: "There's
a rat in my room."

Desk Clerk: "Have him come down and reg-
ister."

1865

Headquarters for

1938

FINE DIAMONDS
JEWELRY
SILVERWARE OR
NOVELTIES

REPAIRING A SPECIALTY

VOGLERS JEWELERS

WEST FOURTH STREET

DIAL 2-0347

**TWIN CITY
DRY CLEANING CO.**

612 West 4th Street

PHONE

DIAL 7106

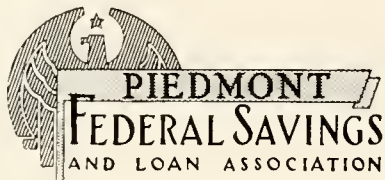
MORRIS SERVICE

LUNCHEONETTE AND
FOUNTAIN SPECIAL

"EXCLUSIVE BUT NOT EXPENSIVE"

"MY SAVINGS COME FIRST"

THAT IS THE ATTITUDE YOU MUST TAKE TO
BE REALLY SUCCESSFUL IN YOUR THRIFT. OUR
INSTITUTION RECOGNIZES THIS FACT WHEN
IT RECOMMENDS REGULARITY OF INVESTMENT



16 W. THIRD STREET

Davis
INCORPORATED

THE SIGN OF
"QUALITY MERCHANDISE
REASONABLY PRICED"



"SALEM"

IS YOUR PASSWORD FOR THE BEST
WE HAVE TO OFFER

A stitch in time saves embarrassing moments.

* * *

A miss is as good as her smile.

Moral of hum joke: He whose laugh lasts,
laughs first.

GIFTS FOR ALL OCCASIONS

**ELECTRIC SERVICE
COMPANY**

"EVERYTHING ELECTRICAL"

**BROWN-ROGERS-DIXSON
SPORTING GOODS**



"THE BEST PLACE TO GET IT"

GOOCH'S

"On the Corner But Business On
the Square"

**WE MAKE OUR OWN
ICE CREAM**

Dial 9466

WE DELIVER

Dial 6852

COMPLIMENTS OF

**SILVER'S
STORE**

TRADE AND LIBERTY STREETS



WEDGWOOD SALEM PLATES

These dinner service size plates, made in England by Wedgwood, depict eight views of the Salem Campus. They are available in five colors: green, sepia, blue, rose-pink, and mulberry. Beautiful and useful in themselves, these plates will be most valued for their associations with the happy recollections of yesteryear.

SALEM BOOK STORE

And there was a person who thought Stagnation was a country for men only.

* * *

During preparation for "He'len and the Tro-

jans" or "Paris in the Spring," our biology teacher, learning to do the "Big Apple," stated, "If it could be diagrammed and labeled I could learn it."

1889

1938

SAVINGS AND LOANS
CONTINUOUSLY
FOR 49 YEARS

**WINSTON-SALEM BUILDING
& LOAN
ASSOCIATION**

249 N. MAIN STREET

WINSTON-SALEM, N. C.

1889

1938

THE SUN PRINTING CO.

Printing and Publishing

Dial 8235

212 N. Main St.

WINSTON-SALEM, N. C.

MORRISETT CO.

THE LIVE WIRE STORE

MILLINERY, DRY GOODS

NOTIONS
READY-TO-WEAR



PIEDMONT ENGRAVING CO.
PHOTO ENGRAVERS
WINSTON-SALEM, N. C.

S. A. PFAFF

CARL PFAFF

FRED PFAFF

PFAFF'S

Incorporated

PAINTS, WALL PAPER, GLASS

Auto Glass, Window Glass, Paints, Varnishes
Tires, Tubes

219 N. Main Street

Phone 6340

SUMMIT STREET PHARMACY

INC.

Foot Summit Street Opposite Hanes Park

A FRIENDLY STORE

Where You Can Get

COMPLETE DRUG STORE SERVICE

DIAL 2-1144

WHEN YOU WANT TO

REMEMBER HIM

REMEMBER US



Smart Fashions for Men and Boys

WINSTON-SALEM, N. C.

STUDENTS, PARENTS, FACULTY

LIKE THE FRIENDLINESS
OF

WELFARE'S DRUG STORE

Mr. Sam Welfare has served Salem for a Quarter
of a Century

DIAL 6104

Rumor had it that there would be a fire drill
on a certain night. "Oh, my goodness!" wailed
Mary Turner, "I never could make a fire!"

* * *

As a man thinketh, so is he. Some are never.

Maude Battle: "I've knocked three times. I'll
have to give you a call down."

Peggy Jones: "But what must I do with it?"



UNDERWEAR

WEIGHTS, STYLES AND COLORS TO SUIT EVERY TASTE

UNION SUITS AND SHIRTS AND SHORTS

MEN AND BOYS—EVERY SEASON

•

P. H. HANES KNITTING COMPANY

WINSTON-SALEM, N. C.

MONTALDO'S

DEBUTANTE SHOP

FOR

YOUR VACATION

Sportswear
Street and Travel



DRESSES DANCE FROCKS

Sizes 9 to 20

THE PENRY- AITCHISON PRINTING CO.

118 West Third Street Winston-Salem, N. C.

WALKER'S—FLORIST FLOWERS FOR ALL OCCASIONS

CORSAGES A SPECIALTY

WE TELEGRAPH FLOWERS ANYWHERE

115 N. Popular St.

Dial 7422

WINSTON-SALEM, N. C.

First Italian Flier: "What do you think of Il Duce's son-in-law, Galeazzo Crano?"
Second Ditto: "Oh, he's a good fellow to bomb around with."

* * *

English Instructor: "Are you smoking back there, Mr. Sprat?"
Sprat: "No-o, Sir. That's just the fog I'm in."

Say it with flowers,
Say it with sweets,
Say it with kisses
Say it with eats.

Say it with jewelry,
Say it with drink,
But never, no never
Say it with ink.

DIAL 2-0653

H. W. CLODFELTER

ROOFING, FURNACE

AND

All Kinds of Sheet Metal Work

179 Brookstown Ave.

Winston-Salem, N. C.

PATRONIZE OUR ADVERTISERS

The Girl Grows Older

Cutting teeth

" up

" boys

" classes

" in (gym)

" switches

" out

My task is done, my song has ceased, my theme

Has died into an echo; it is fit

The spell should break of this protracted dream.

The torch must be extinguished which has lit

My midnight lamp—and what is writ, is writ;

Would it were worthier.

"Camels ARE JUST RIGHT!"



**COSTLIER
TOBACCOS**



*Fashion Diplomas
to Smart Salemites
Who Shop at
Sosnik's*

. . . And undergraduates take a tip from these full-fledged fashion graduates . . . You'll find it a snap to win honors in style distinction if you sign up next year for a course in clothes at Sosnik's Young Moderns' Shop. The Young Moderns' Shop has just the type clothes that "click" with young figures and young purses.

*Sosnik's
Young Moderns'
Shop*

World's Largest Publishers

THIS BOOK DESIGNED AND PRINTED BY

Benson

PRINTING COMPANY ☆ NASHVILLE

of College Annuals

