

10



X39

Mac Mac. Mar. 63

66W7

Mac

MADE IN U.S.A. U.S. PAT. NO. 3,011,354

MADE IN U.S.A. U.S. PAT. NO. 3,017,354

Mac
66 May

Mac - Mac
Mar 63

X35



5

12



X 38

Mac Mail. Mar. 63

Mac
66W7

MADE IN U.S.A. U.S. PAT. NO. 3,354,354

Fish

MAR 63

Antarctica?



Palmer Penb ⊕

37

MCDONALD

Y

31

MAR 63M

5

MADE IN U.S.A.

Feb 6 - 63 $\times \times \times$ \otimes
Fish from
Amietica over



side
Rabner's

3

MCDONALD

Y 42

5

MADE IN U.S.A.

Amphipods MacPhisto
Red. Port hookroy!
paradise obs.?



⊗

● Sand
hs peer

MADE IN U.S.A.

Mac

Mar. 63

Mac

Y41



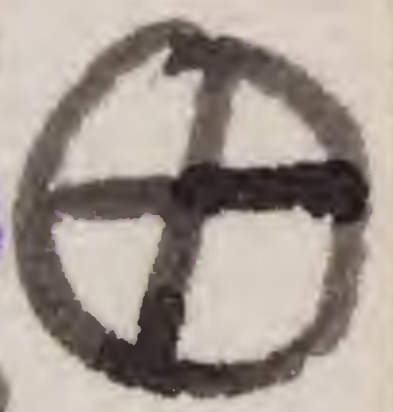
53

66W7

MADE IN U.S.A. U.S. PAT. NO. 3,013,354

Green Id. xxx
Adelphi
America Tuxen

MAR 63



Palwen Tuxen.

56
26 3

MCDONALD Y 58

2h choice 5m

MADE IN U.S.A. 95

6



Y34

Mar. 63

Mac
66W7

MADE IN U.S.A. U.S. PAT. NO. 3,013,354

Set
Serolids

MAR 63



①

34



MCDONALD

X 35

MAR 63W

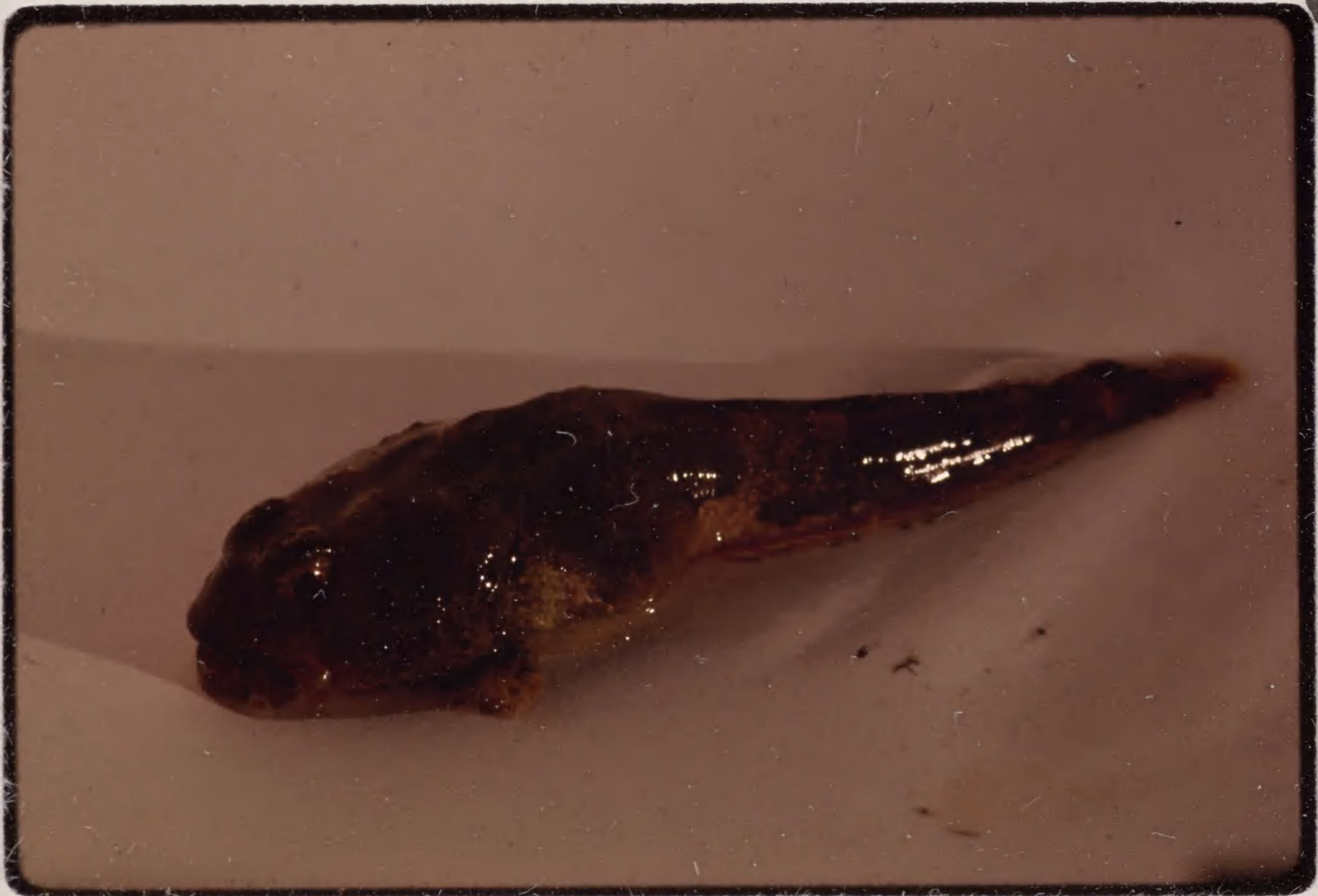
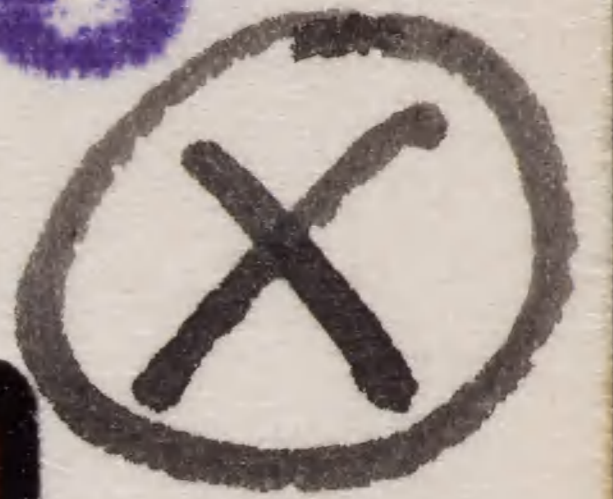
MADE IN U.S.A.

14

Fig 54
H

x x x

MAR 63



4

MCDONALD

Y 34

MAR 63

13

MADE IN U.S.A.

Gentoo's

xxx

MAR 63



27 MCDONALD

Y 33

MAR 63

29

MADE IN U.S.A.

Paradise Whr Mac Photo
Copper outcrop



?
near
Argent
Buse

Mac Photo

> Bottom <

MADE IN U. S. A.

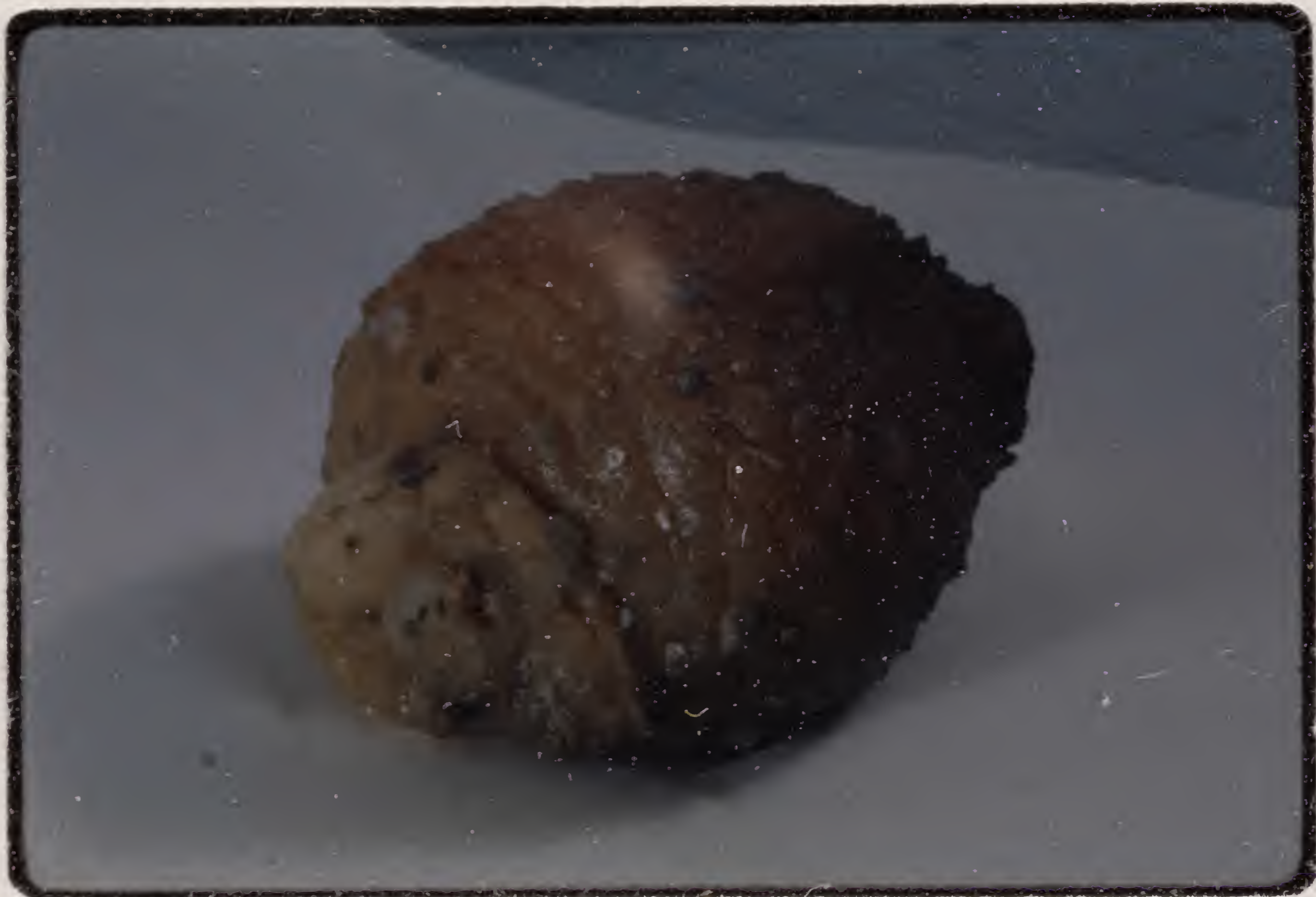


xxx

York
Abetalidian

MAR 63

⊗



22



MCDONALD

X 36

MAR 63W

13

MADE IN U.S.A.

Use with Loekro

Red amphipod

MAR 63

XX
X

Amiaetica



Debra J. Penner

20



Paradise III

Y 41

MCDONALD

MAR 63

32

MADE IN U.S.A.



13
13

E.



X 35

Mar. 63

Mac
66W7

MADE IN U.S.A. U.S. PAT. NO. 3,013,354

Fruiting mass
copy

MAR 63

①



2B



MCDONALD

X 35

MAR 63W

20

MADE IN U.S.A.

298624
Ice floes



2 Weddell Sea
191-25

MADE IN U.S.A.

3



X 38

Mac - Mag 1 Mar 63

66W7

Mac

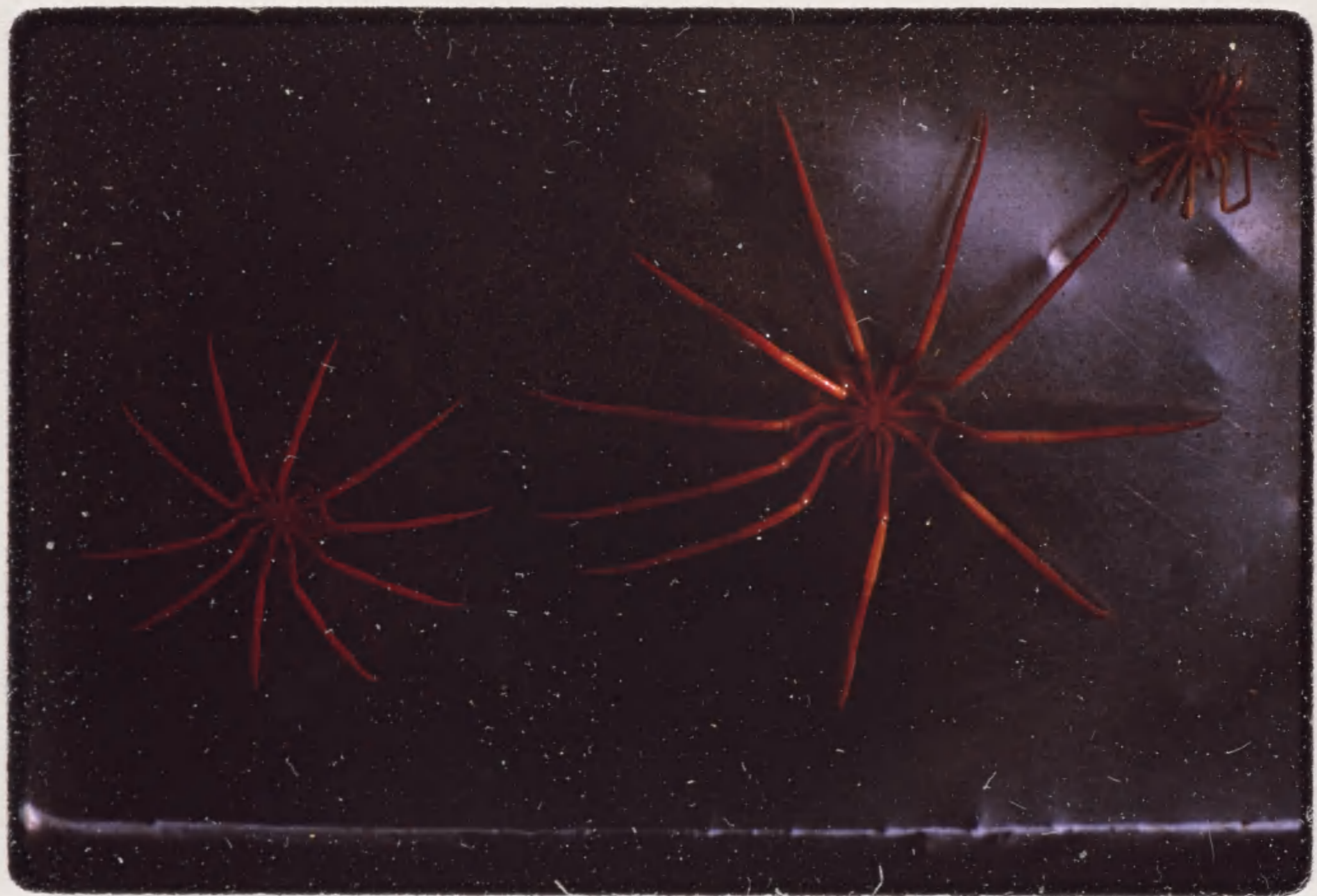
MADE IN U.S.A. U.S. PAT. NO. 3,013,354

MADE IN U.S.A. U.S. PAT. NO. 3,043,354

10 legged
pycnosonid

Mac
66W7

Mar. 63



Y46



3

MADE IN U.S.A.

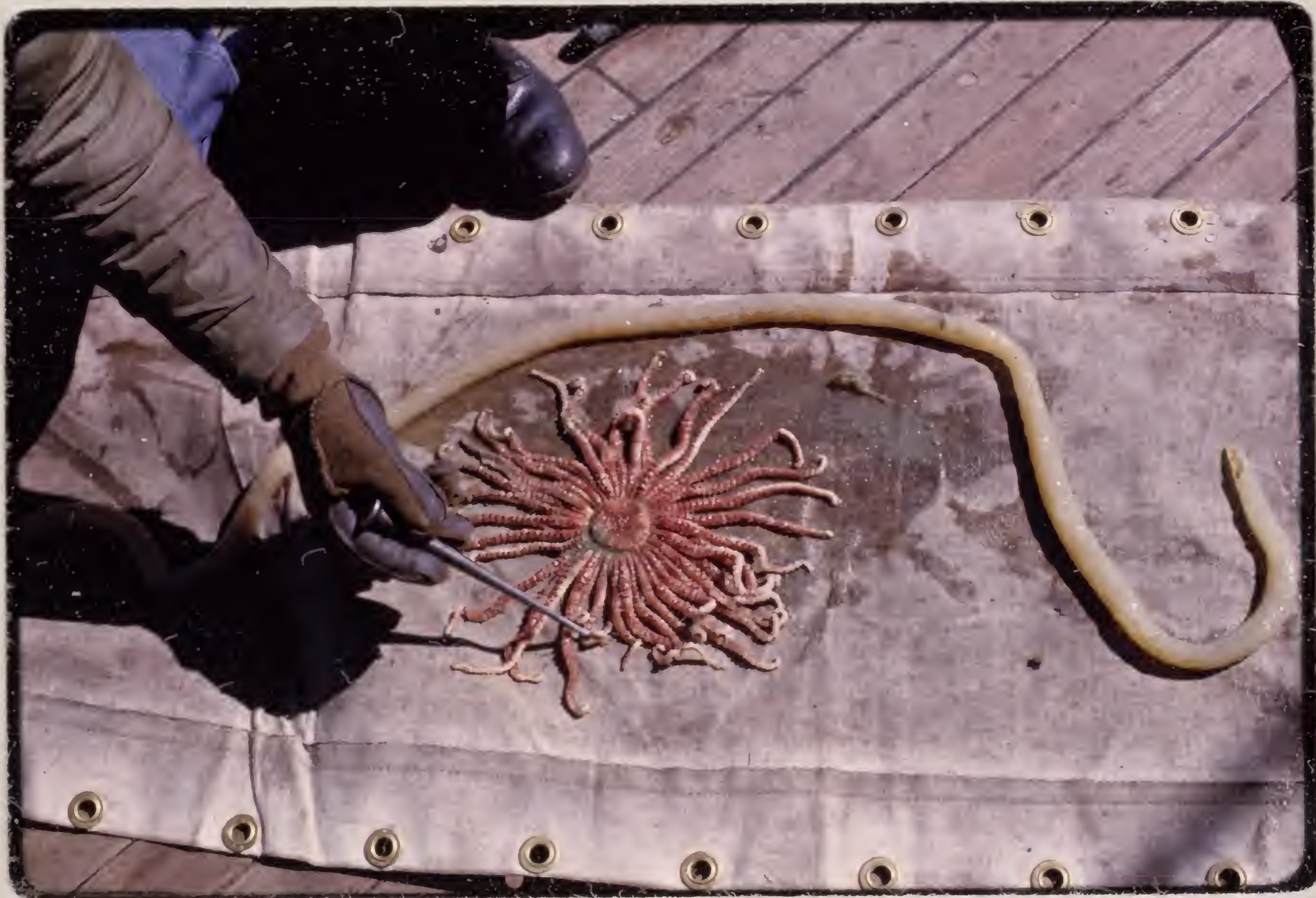


K-26689

40 99 Penguins Emp.

Lepidiasaurus
and ascidian O

MAR 63



36

Y 33

MCDONALD

MAR 63

4

MADE IN U.S.A.

16



X39

Mar 63

Mac

68W7

MADE IN U.S.A. U.S. PAT. NO. 3,132,571

Arthur H. H. W.
Skua Chicks
on Bluff (5)



#

Jan. 23/63

28

J. 25

6

23

MADE IN U.S.A.

MADE IN U.S.A.
LaBellina
and
MCDONALD

Wrappers



5515
~~5515~~
~~5515~~
Tore Ticc
xxxx
Arhive
the
ason
Id

Y 20
Y 20
M 53

2



(25) Palmer Penn.

3 2

MADE IN U.S.A.

5

MAR 63W

U.S.N. at Rist
Schmitt Louking



Rigging Janus Id.
net of sats

MAR 63

①

Tray



39

Arthur Hbr

MCDONALD

Y

30

6

MADE IN U.S.A.

Soft Spins

MacPhoto



977

B. 138

P.P.S

MADE IN U.S.A.

MADE IN U.S.A. U.S. PAT. NO. 3,073,354

B-138

plac
66W7

Mar 63

Y29



27

MADE IN U.S.A. U.S. PAT. NO. 3,333,354

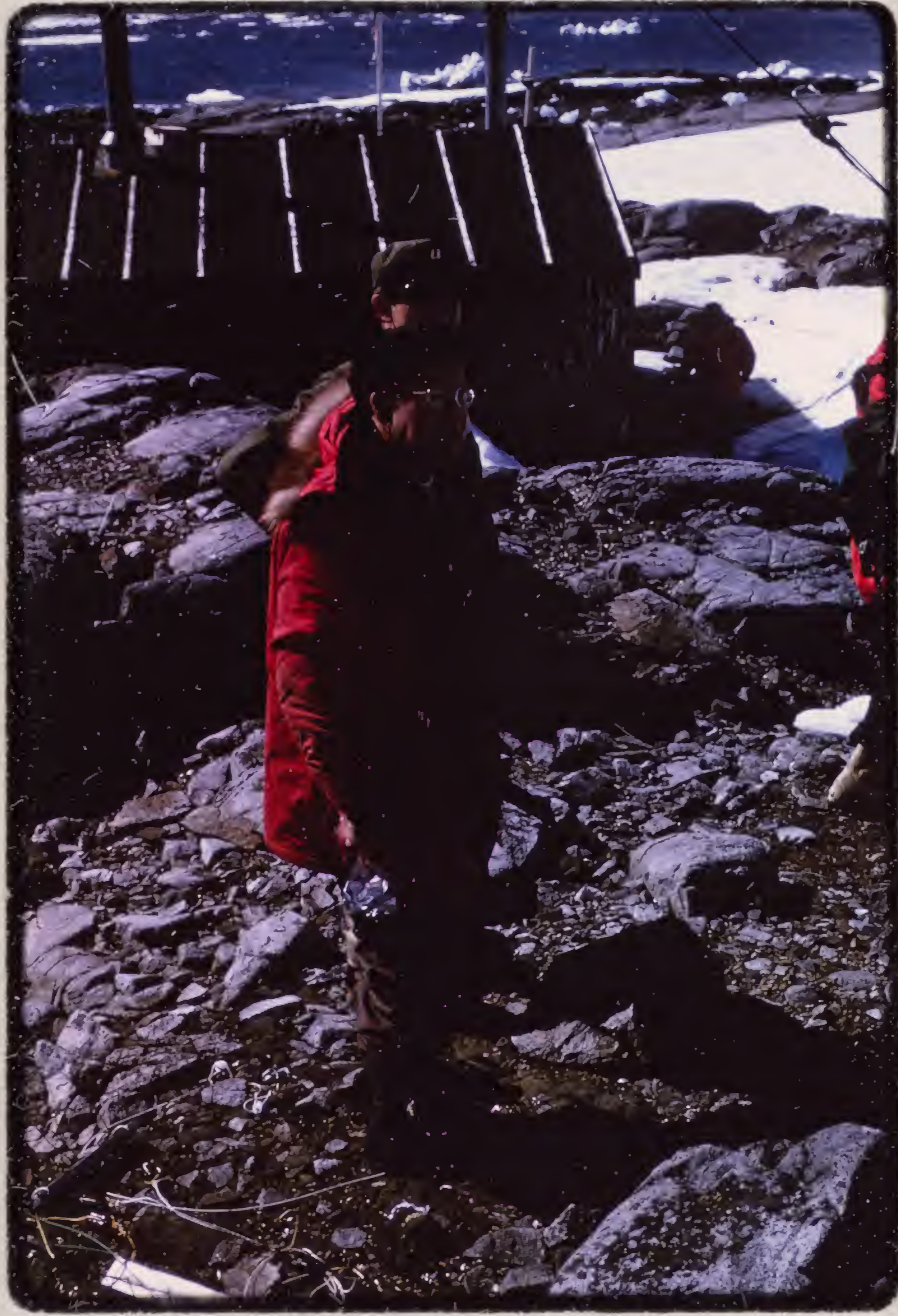
Mac

B. 138

66 W/1

Mar. 63

Y33



8

ST-81

U.S.A.



24

2

MADE IN U.S.A.

MADE IN U.S.A.

False Bay Schmitt
S1-79 Shure coll



B.138

Livingston Id
Feb. 25, 1963.
K 27745

MADE IN U.S.A.

B. 138 R 53W

MCDONALD

Y

38

43

Checking ^{ing} fish aboard



in lab.

? ⊕ ⊕

MAR 63

Picks out to save

MADE IN U.S.A. U.S. PAT. NO. 3,013,354

B. 138 66W7



M Mac
Mar. 63

Y 30

3

MADE IN U.S.A. U.S. PAT. NO. 3,013,354

35
Argentina Rd



07



Base "F"
Galindez

17
1105

MADE IN U.S.A. U.S. PAT. NO. 3,073,354

Mac
66W/1

Mar. 63

Y30



8

MADE IN U.S.A. U.S. PAT. NO. 3,013,354

66W7



M Mac
Mar.

63
Y 26
Y 46

24

Tow net Mac Photo



MADE IN U.S.A.

Ready for MacPhoto
Visitors. Berlese in
Background



3

Paradise Thr
Vidolea Base

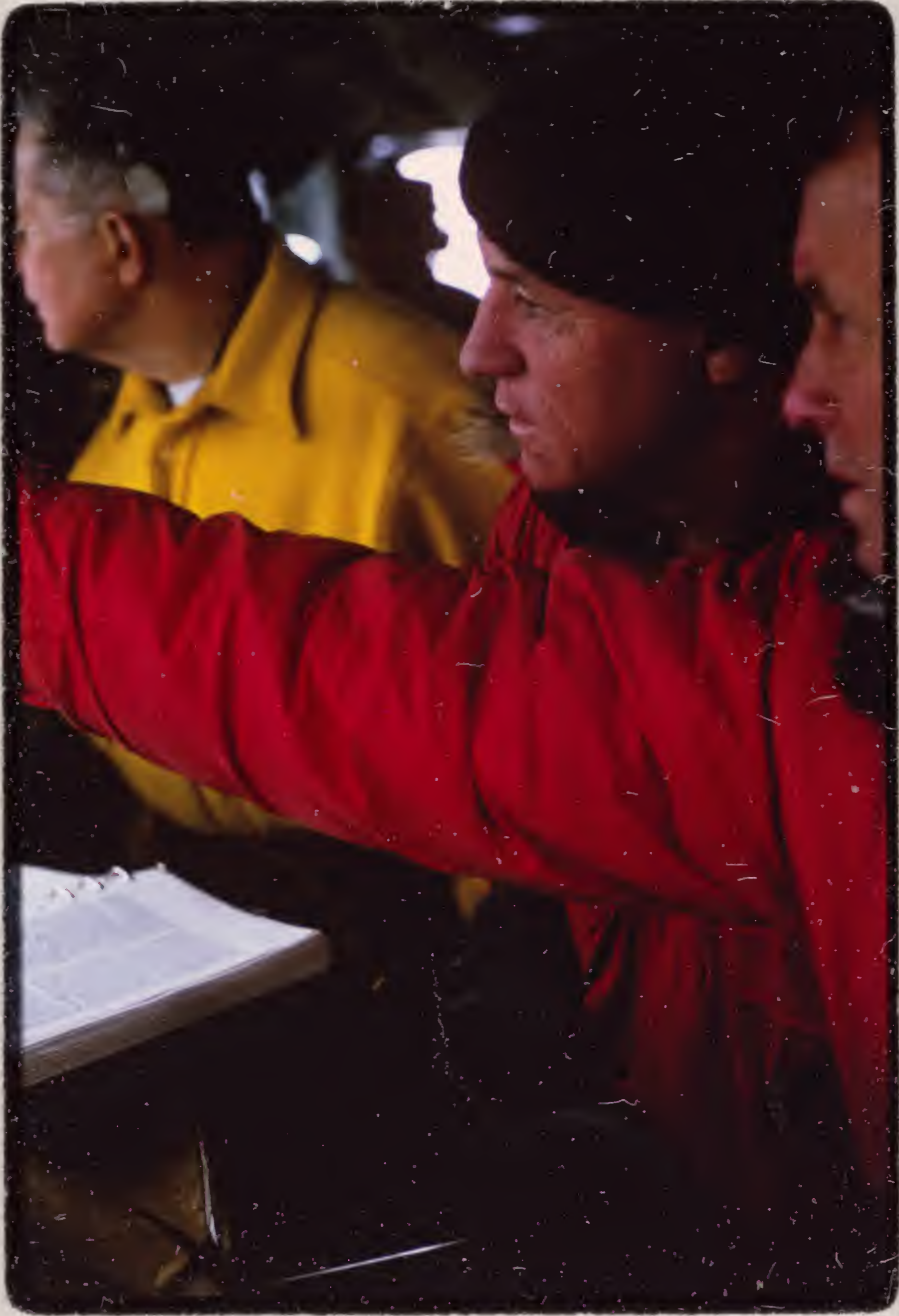
MADE IN U.S.A.

MADE IN U.S.A. U.S. PAT. NO. 3,013,554 **Mac**

66W7

Mar. 63

Shk



MADE IN U.S.A. U.S. PAT. NO. 3,044,354

Mac
66W7

Mar. 63

Y26

Bait

is
back
22



Schmitt on U.S.N
deck
with
field
glasses



B. 138

MADE IN U.S.A.
MAF 23W

MADE IN U.S.A. U.S. PAT. NO. 3,013,354

Mac
66W77

Mar 63

Y30



4

7

MADE IN U.S.A.

SL-7L Fish Bis month



K 27741

51-72

K-22875

Fish Bismouth



26-15

MADE IN U.S.A.

Inlet Arvonur Hbr

MAR 63



30 Traps

MCDONALD

3

MADE IN U.S.A.

MAR 63 W

40



MADE IN U.S.A.

MAR 63

E. MCDONALD

Y 17

30



xxx
f

Bottling
sourdish

Brish
red
star



MAR 63

Red amphipods
Put with dip net

MAR 63



19

Paradise

Y

41

MCDONALD

MAR 63

1961

30

MADE IN U.S.A.

Sunset



17

25

But fits the world 1-1

F.12

11

MAR 6 5M

MADE IN U.S.A.

Fish traps off
Lanus Tid
Arthur Hbr. (19)

39.40 - 31.00 - 34.00 day.



Jan 25/63 #

8:20-9:00

a.m.

U. 25

2/3

BB Fish

27



MADE IN U.S.A.

WB₂

18



③
M

Feb. 28, Sunrise

1963 1W

3

MADE IN U.S.A.

W.
20



2
3

Feb. 28 Sunset
1963 IW

MADE IN U.S.A.

WB

Spray hot mud
29



Feb. 28 sunset

1963

11W

7



MADE IN U.S.A.

19



Feb. 28, Sunset

1963 1W

MADE IN U.S.A.

Sunset + bird! $\frac{Bx}{16}$



Feb. 28 / Sunset
Feb. 1963 1W

MADE IN U.S.A.

81



Y41

Macc - Mal. Mar 63

Macc
56W7

MADE IN U.S.A. U.S. PAT. NO. 3,002,354

MADE IN U.S.A. U.S. PAT. NO. 3,015,554

Mac

66W7

Mar. 63

X35

3



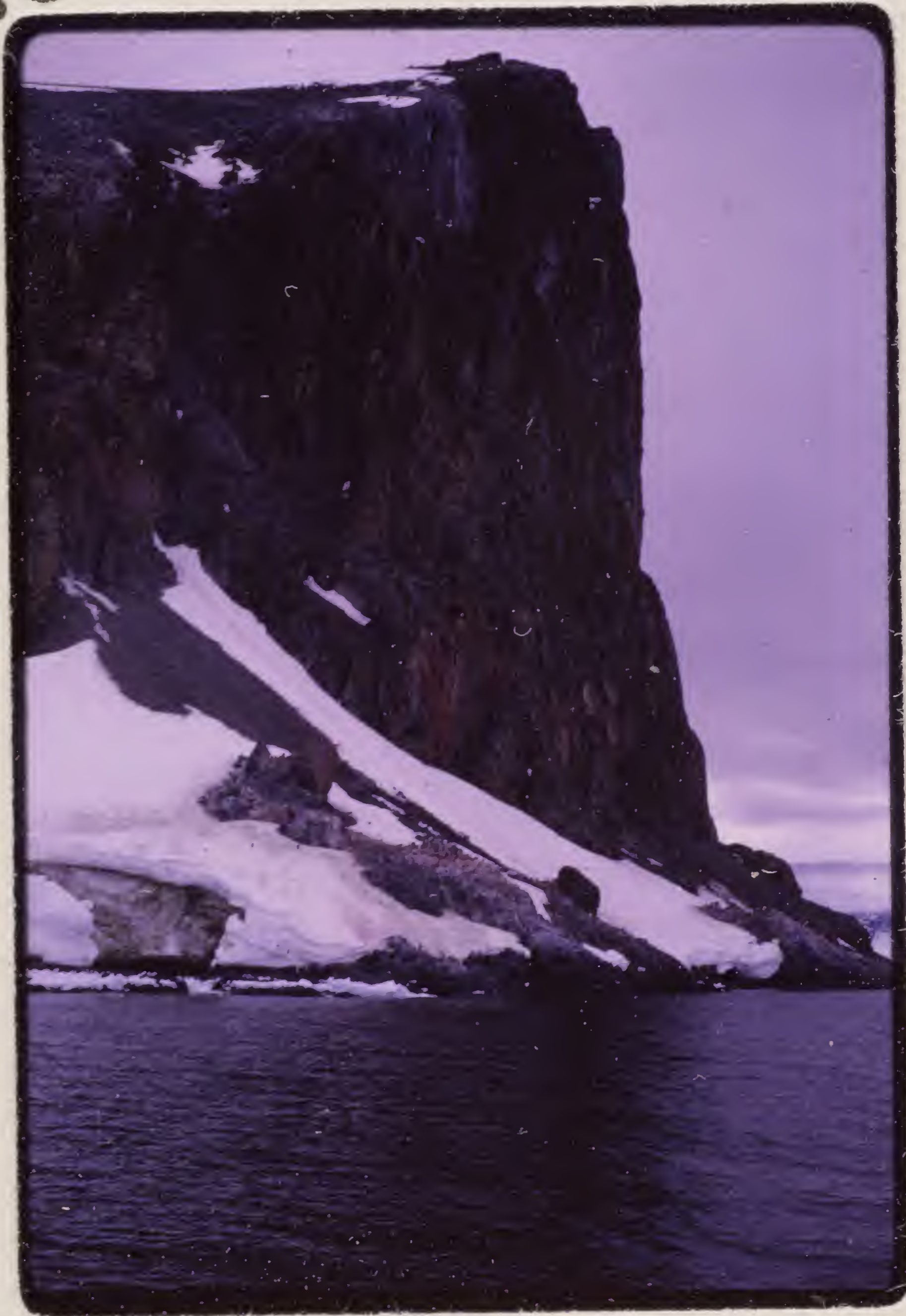
MADE IN U.S.A.

Nuna Cape Spitsot, 938
ft. Negro

938
ft.

32

~~32~~



###

Make
#61

F. J.



64

Nunatak, Negro
27 Feb. 5/63

~~Petermann~~ Idly -
Gendooas Pleneart

(28)



64

Jan. 28/63

10-11 a.m. 87° ↑

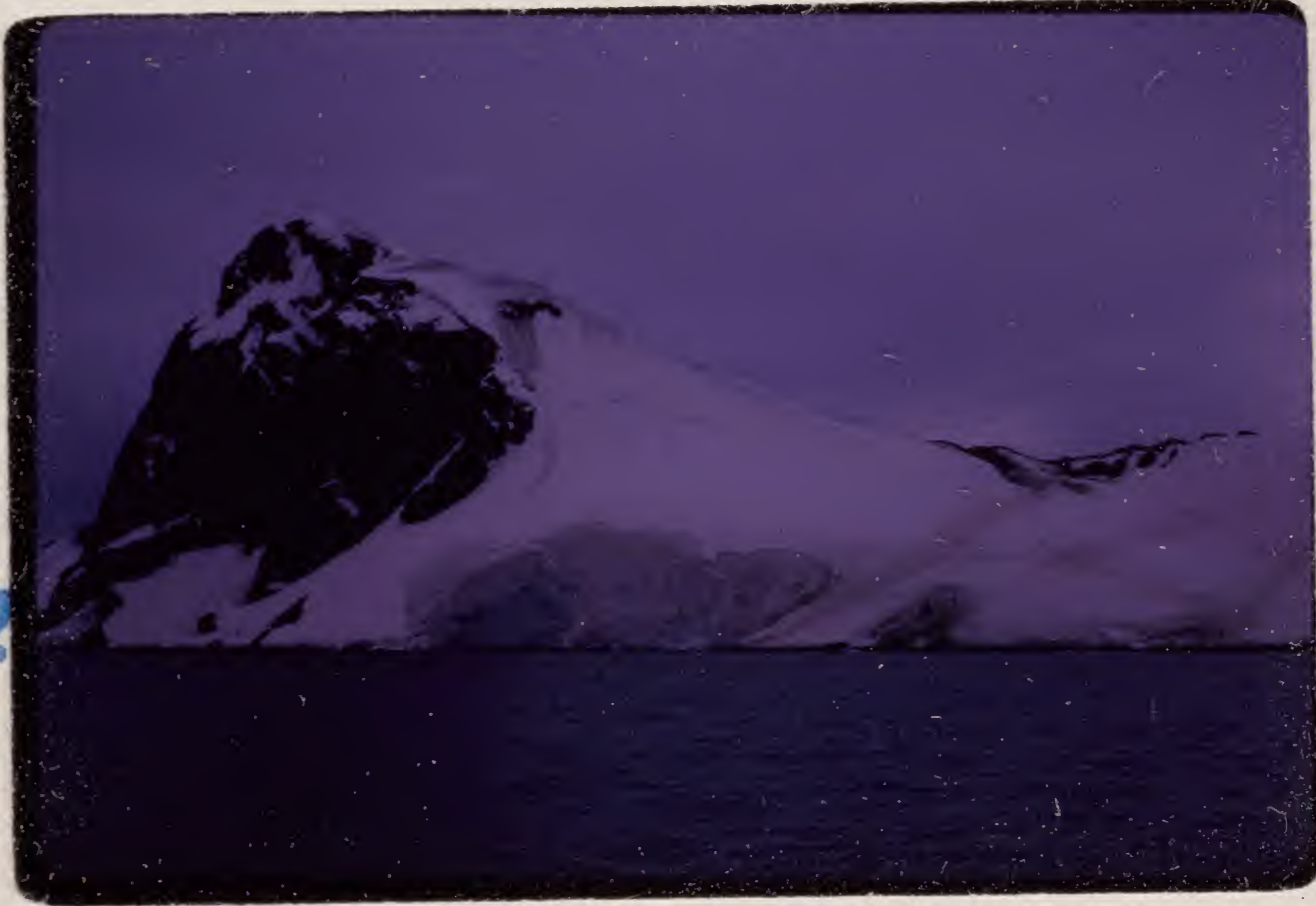


63

MADE IN U.S.A.

Cape Spizett
Penguin trails

W
⑤
up
snow



Make
62

38
Follow
#21
with
#15

Feb. 5-1963

#

14F8

28

19

MADE IN U.S.A.

5118
M

Bradley Id. Area
from air

47
3
8



Feb. 28 / 63

5:30 - 7:43
F 28 J

71

15



98

MADE IN U.S.A.

? Pteraster?

SDA ✓

MAR 63



10



MCDONALD

X

39

MAR 63W

12

MADE IN U.S.A.

Welchness.
Dundee
Skua + Youngs

13



Feb. 20/63

F24

2

MADE IN U.S.A.

Welchness
Dundee Id 16
Recreation Party



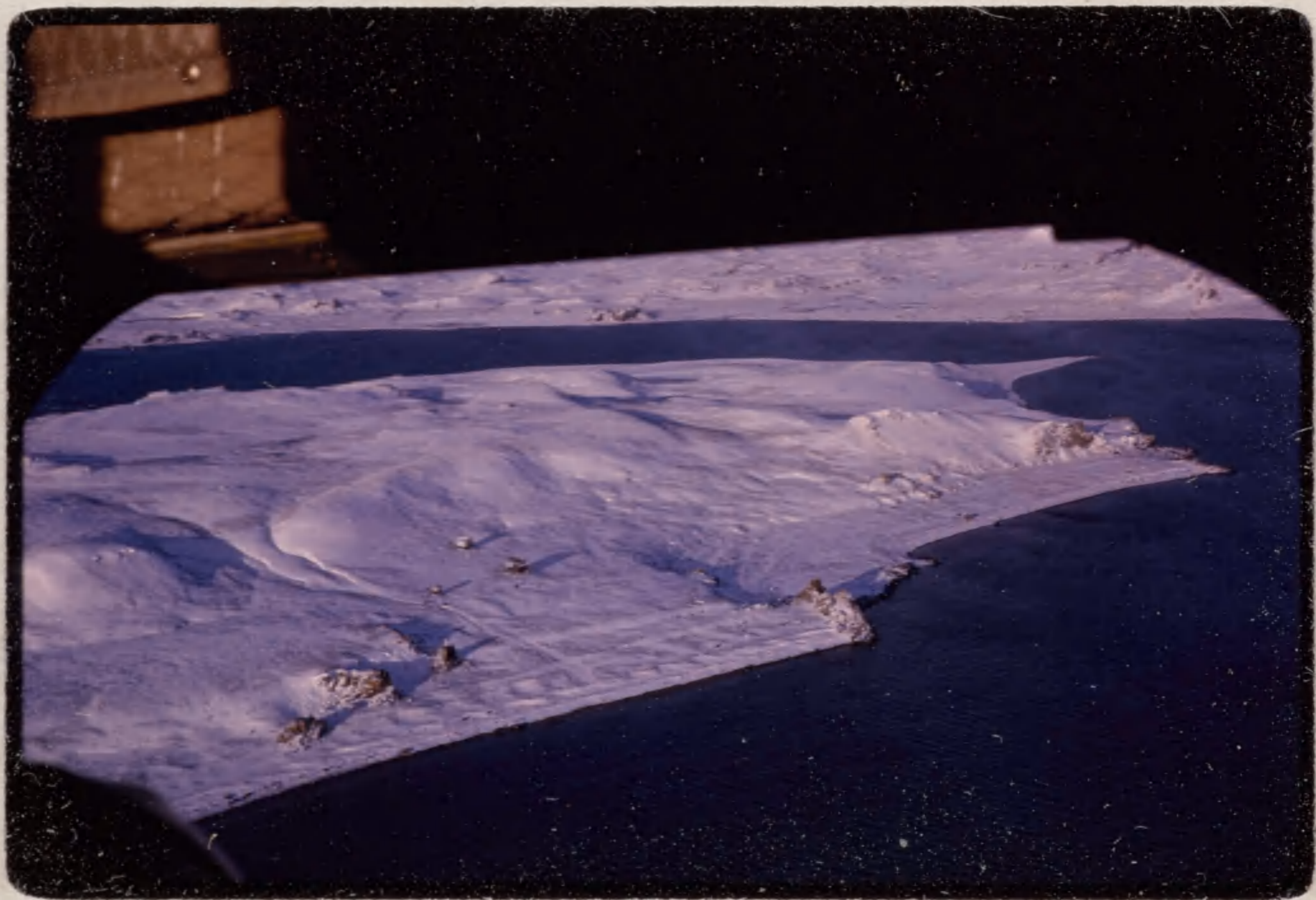
Feb. 20/63

F. 24

MADE IN U. S. A.

Ardley Id reef
+ huts from air

13



Feb. 28/63 5:30-
82 = 74m.
F28 = 20

MAR 0

81

MADE IN U.S.A.

88

Sunset on
Way to Valpo Dx



23

10 HS.

36

MAR 23

MADE IN U.S.A.

FB₃

17



④

Feb. 28, Sunset

1963

2 MI

MADE IN U.S.A.



10

at
Sun

M
H

S

H.S.

21

MADE IN U.S.A.

MAR 21



On way to Yelcho ~~AB~~

(5)



Jan. 26/63

8 p.m.

1.27

MAR 63 43

21

4

MADE IN U.S.A.

Sunset

W.D.

37



①
2

W.D.
*

F19

8

MADE IN U.S.A.

MAR 52



Sunset SC-198

~~19~~ before ①
19



Feb
28
?

near Sabverson
K-2815 Cove?

MADE IN U.S.A.

w-111

1/18/20
Seal



w-111

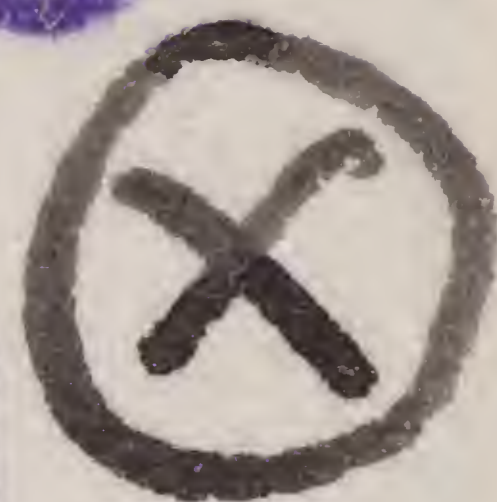
079-212119

MADE IN U.S.A.

Swan
Swim: 45, 5

Nephtyidae x+x
Polychaetes

MAR 63



MCDONALD

X 36

MAR 63W

8

MADE IN U.S.A.

Kodak

PROCESSED BY



1790-2102A15

TRANSPARENCY

KODAK EKTACHROME

51

5C-150

K-2857



~~5C-150~~
ICE MOUNTAINS

MADE IN U.S.A.

51-70

✓ 1/27740



51-70

MADE IN U.S.A.

MADE IN U.S.A.

K 26698 W-56



Adelie
Penguin

XAM-60688-R-11-65



Adelia
ross

W. 208

MADE IN U.S.A.

Pubbette
S1-77 shore coll



K 27744

Lemnaire Channel

18



17 J. 27 01 MAR 63W

MADE IN U.S.A.

Lemaire Channel

(23)



Jan. 27-28/63

J. 28

MADE IN U.S.A.

Lemaire Channel

22



MADE IN U. S. A.

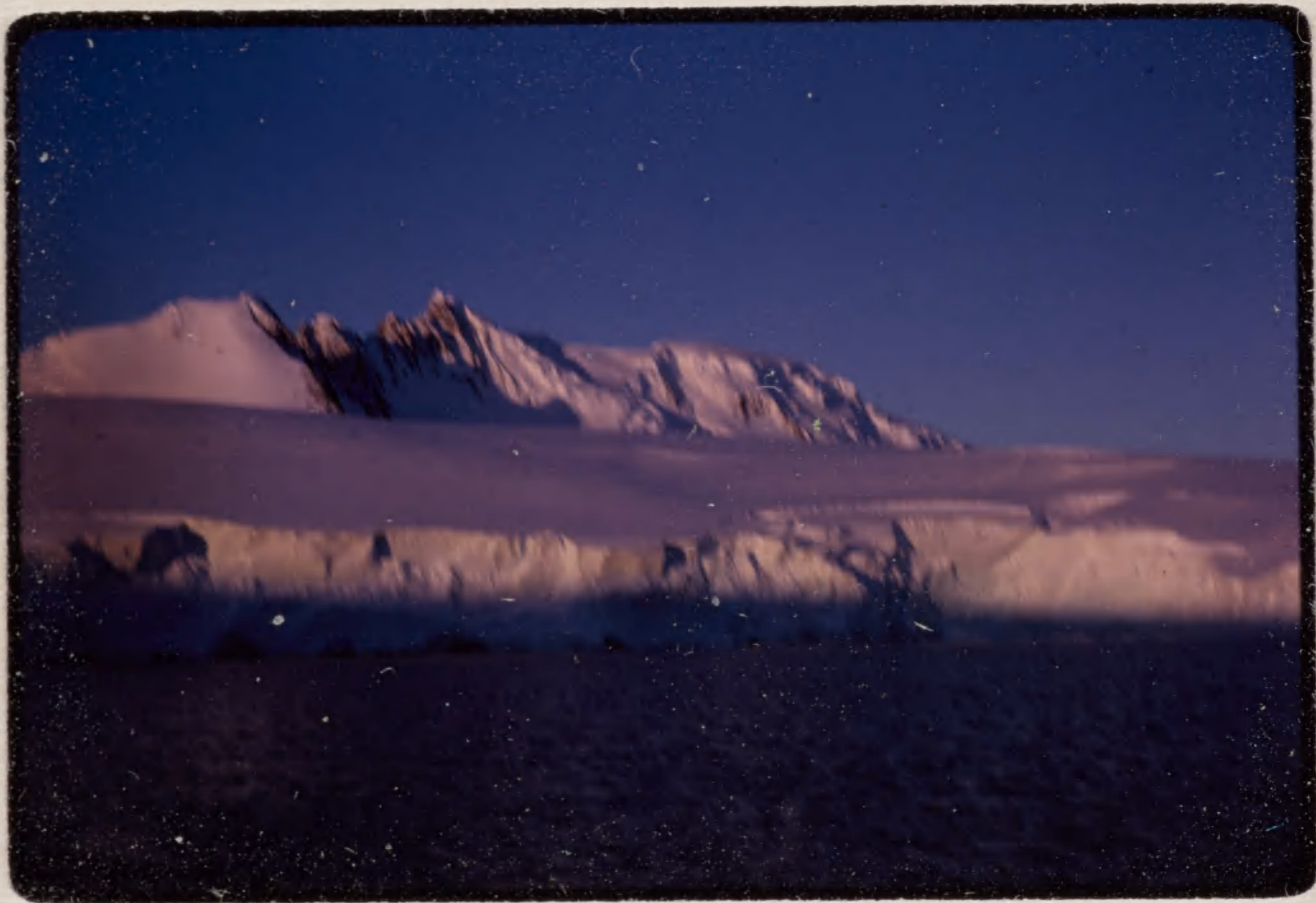
MAR 63W

21

J.27

On way to Yelcho

②



Jan 26/63 8 a.m.

Jan 27 12 p

35

MADE IN U.S.A.

Ret. from Dorian Bay
Calving Icebergs

11



Jan. 27/63

9am

No. 9J.27

J.27

#

MAR 55
MADE IN U.S.A. = N.B. discarded 10

Ret from Dorian Bay
Calvin, Ice Berg

12



Jan. 27/63 9 a.m.
J. 27 ±

MAR 63W

MADE IN U.S.A.

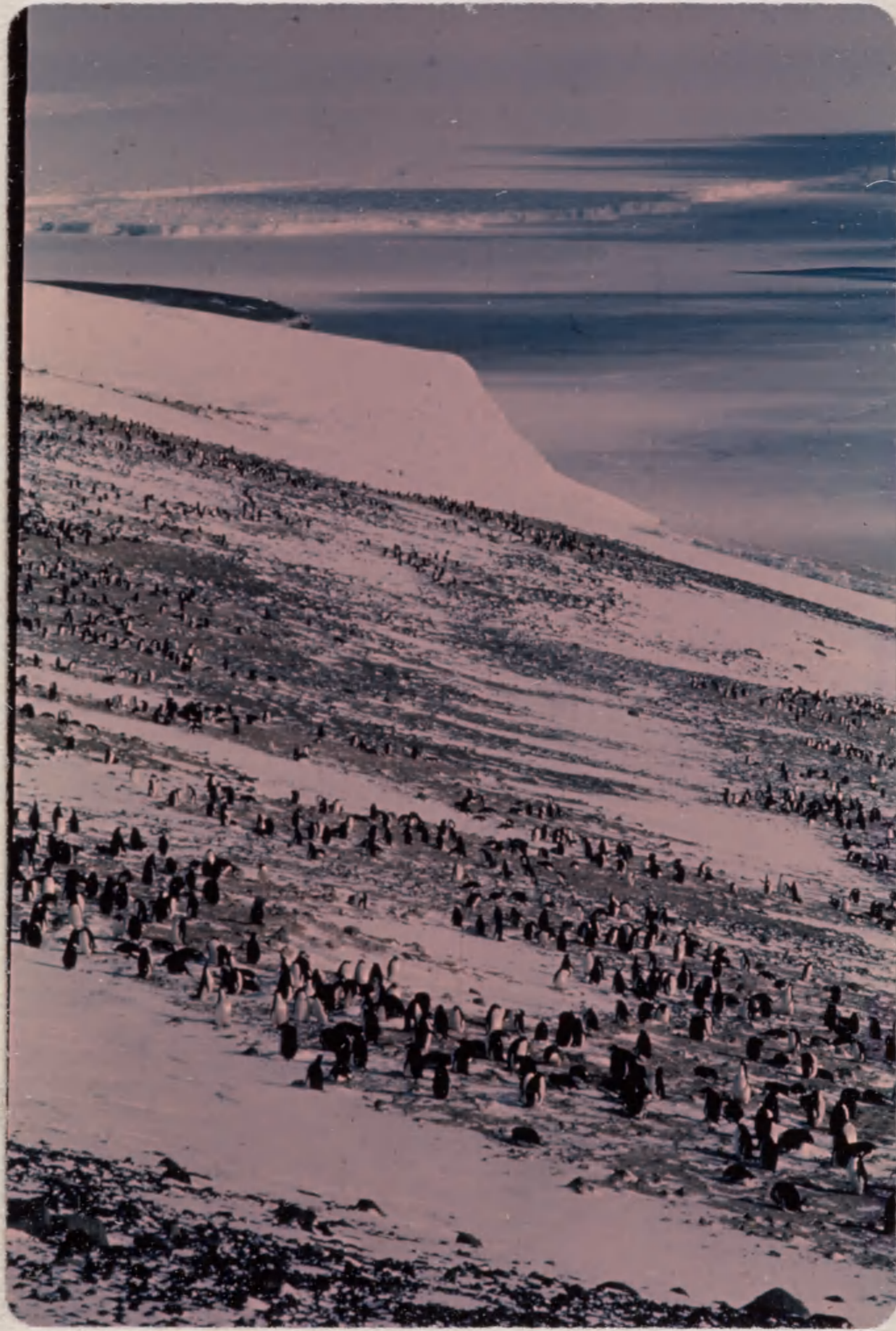
MADE IN U.S.A.

J-27 SC-199
Yelco Poo



L15# 28133

Crozier? Adelings



5C-195

Yelko d-p



MADE IN U.S.A.

K 27861



Ice floe 851-28

MADE IN U.S.A.

SC-156

27859

K



~~SC-156~~
Ice of ice

MADE IN U.S.A.

W. 166



L Birds

MADE IN U.S.A.

Poblette shore
S1-76 call



always carry bag
K 27743

MADE IN U.S.A.

91-92 Lichens
on rocks

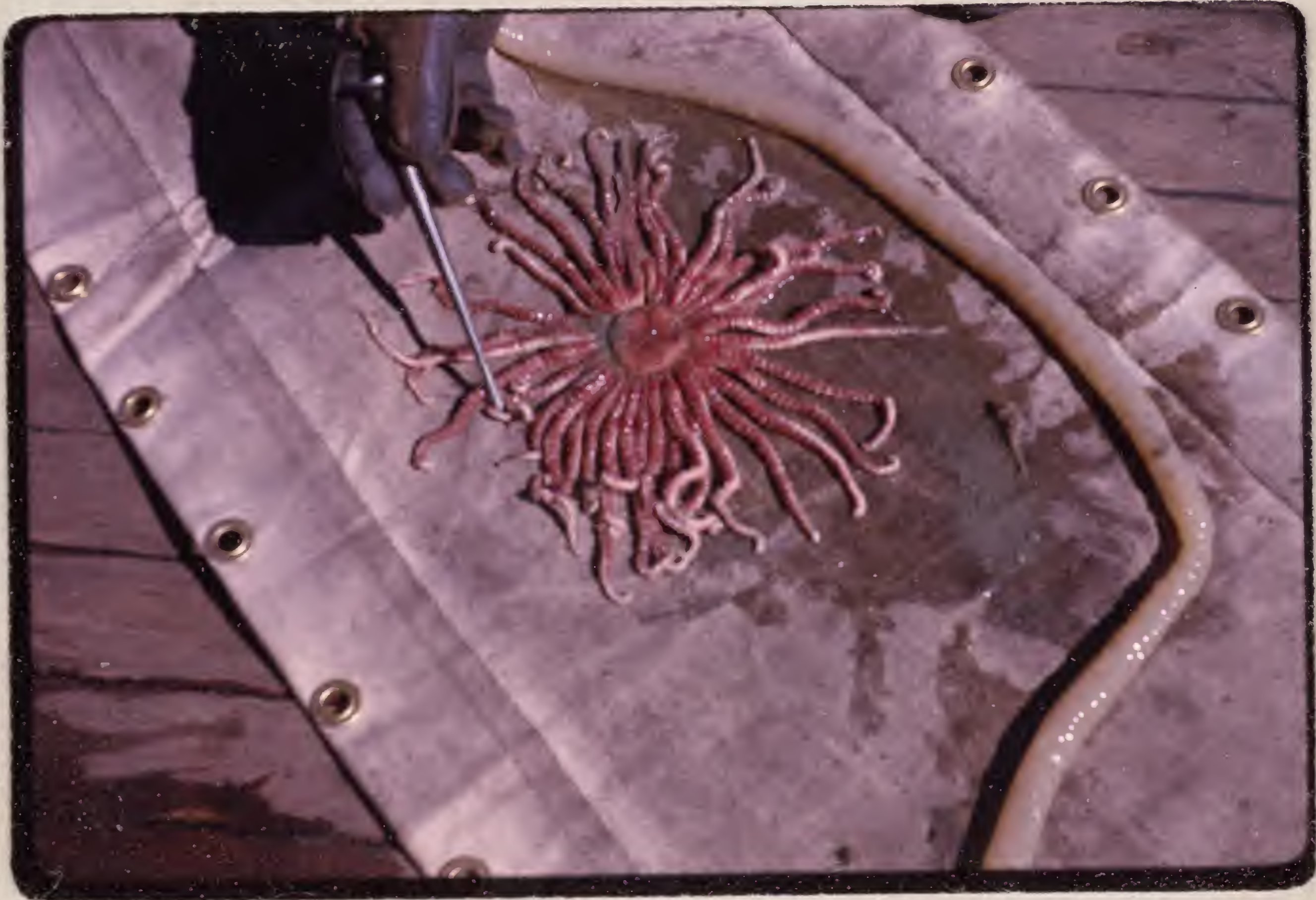


39

MADE IN U.S.A.

192 Labidiaster
annulatus.

MAR 63W



Labidiaster
annulatus

and
~~ascidian~~



MADE IN AUSTRALIA

8 CR02



Two in one

W. 179
Soal



W. 179

51-65

K2736



51-65

MADE IN U.S.A.

Rocks near Machabato
Argentine Base

Paradise



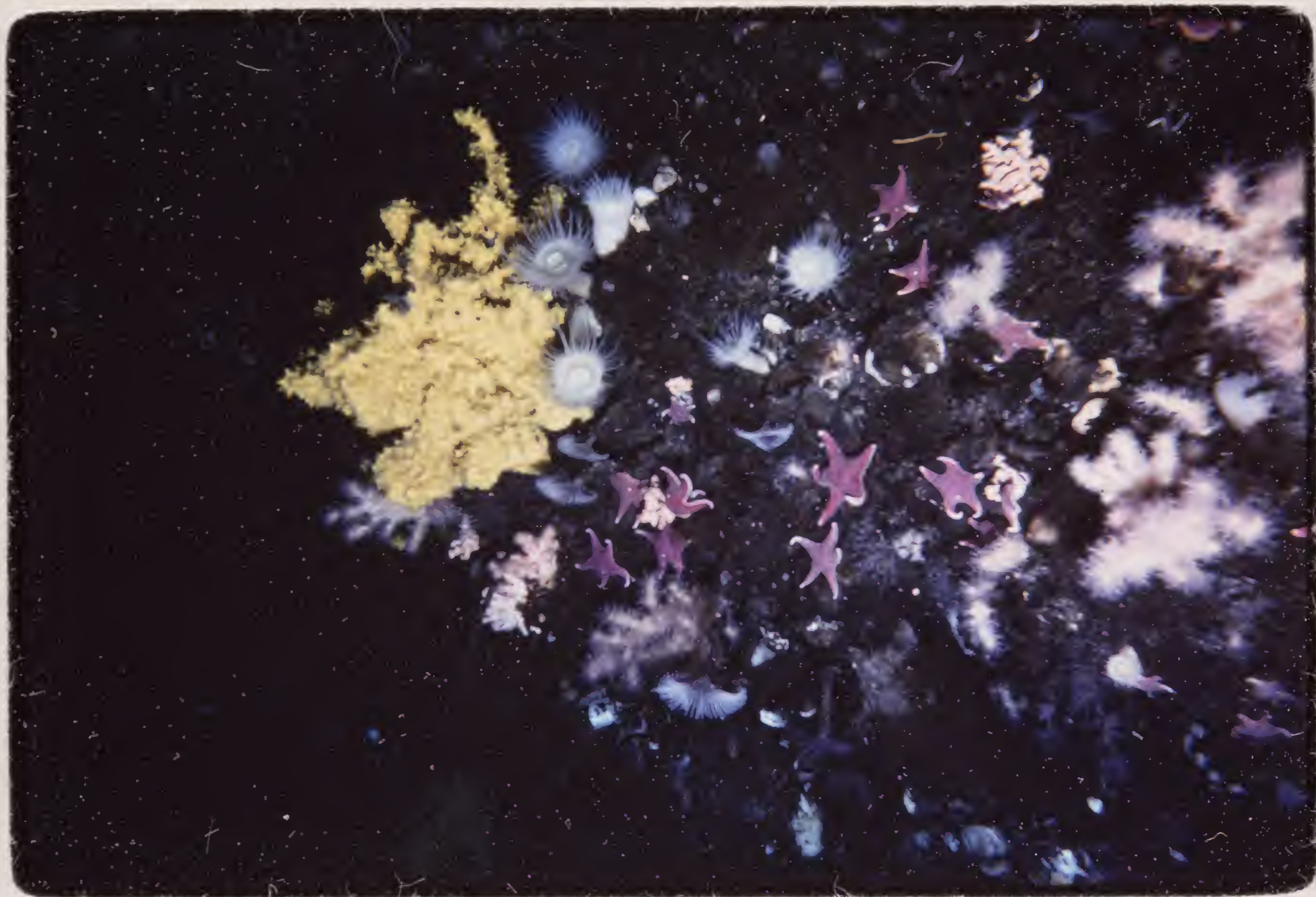
● Copper outcrop?

MADE IN U.S.A.

MADE IN U.S.A. U.S. PAT. NO. 3,613,354

Inverts 80'

WS



M. A. de Camp

Turtle Rock - Antarctica

Galindez Id ~~4B~~
S.S. Biscoe
from air

(32)



Jan. 28/63

1:30 - 2 p.m. 82 r

MADE IN U.S.A.

MADE IN U.S.A.

Cape Crozier
Bloody Petrels

W 110



black heads

Post Office ^{DB}
Movie, McMurdo

32



3a

MADE IN AUSTRALIA

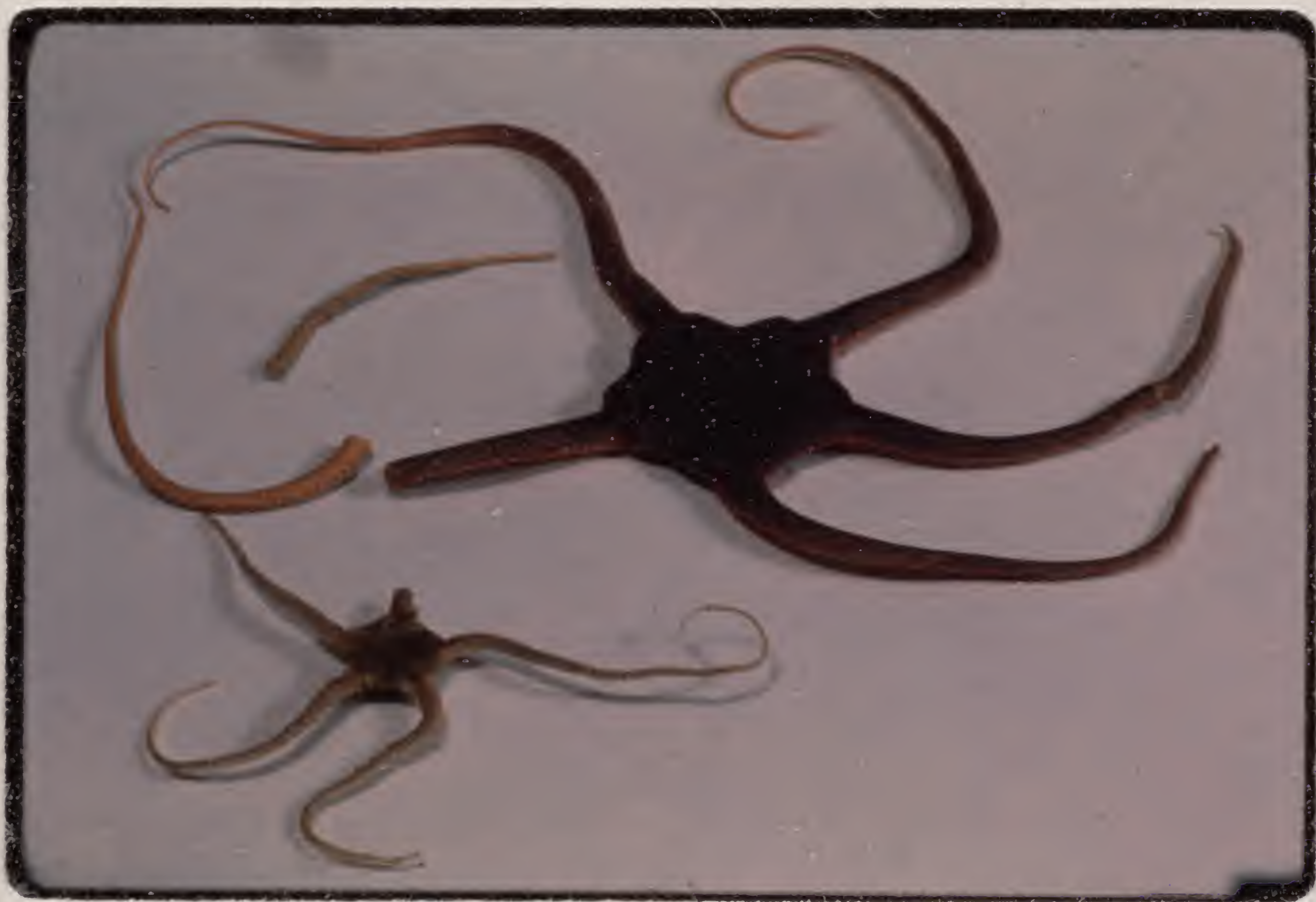
10 N/e

8

Ophiurans

MAR 63

⊗



8



MACDONALD

MAR 63W

MADE IN U.S.A.

X 38

19

?? Near James Ross I
Larsen ice shelf



AB
Air 34-25 av. 29.2
Water 34-33 av 34

Feb. 16-17/63

F 19

36

MADE IN U.S.A.

72

off ~~Admiral~~ Pt.
Base [▽]
Marsvite Bay



4.23

MADE IN U.S.A.

Cape Spitgot

WB

Highway to

31

Penguin trails

40



sad
die

Feb 5/63



Penguin trail

7

MADE IN U.S.A.

Biscoe leaving
Gulindez, in ice
field

(6)



Ca Jan 28

3/28 X

MAR 53W

MADE IN U.S.A.

Arthur Hbr.
descending hill
above ponds

W
②



Hut
Stags

#

Jan 23/63
House past left
25 J. 25
Pond



22

MADE IN U.S.A.

Deception Id
Whale factory

35



Feb. 12/63

F14

89

MADE IN U.S.A.

SI-87 MADE IN U.S.A.
Lemaire?
SI-87



50

28/35

On way Robert Bay
Cover fogged slide
on left.

8



Feb. 15 (~~16~~) '63

33

File

MADE IN U.S.A.

07

Deception Rd
Cemetery

26



Feb. 12/63
F14

2

69

MADE IN U.S.A.

Cape Spisot
Nunatak Neg

(X)
34



Feb. 5/63

F. 8

10

MADE IN U.S.A.

MADE IN U.S.A.

Deception Id
G-122



Deception Id
~~Cap~~ F 14
Ad.



Fossy, wishy ~~AB~~
Poor visibility ? 40



White
out?
.

Feb. 17/63 bid

see p. 62 lines 6 + 7

MADE IN U.S.A.

Small bear (28)
~~1500~~



6-11-19

MADE IN U.S.A.

Landing
Base V.

~~38~~

38



#

24

617

19

MADE IN U.S.A.

19

Potters Cove B-



Mar. 4 / 20
63 S-HW 12

68

MADE IN U.S.A.

MADE IN U.S.A. U.S. PAT. NO. 3,013,354

341a

Jellyfish - Periphylla
hyacinthina



CARLETON RAY

MORRISTOWN, N. J.

JAMES ST.

MICHAEL A. de CAMP

Schmitt Copy



666

801

Inverts

15

MADE IN U.S.A. U.S. PAT. NO. 3,019,354

MADE IN U.S.A. U.S. PAT. NO. 3,013,354

35mm SLIDES

Ray, Lavallee &
Weddell Seals



A. C. Sibby (C. Ray)

MADE IN U.S.A. U.S. PAT. NO. 2,013,354

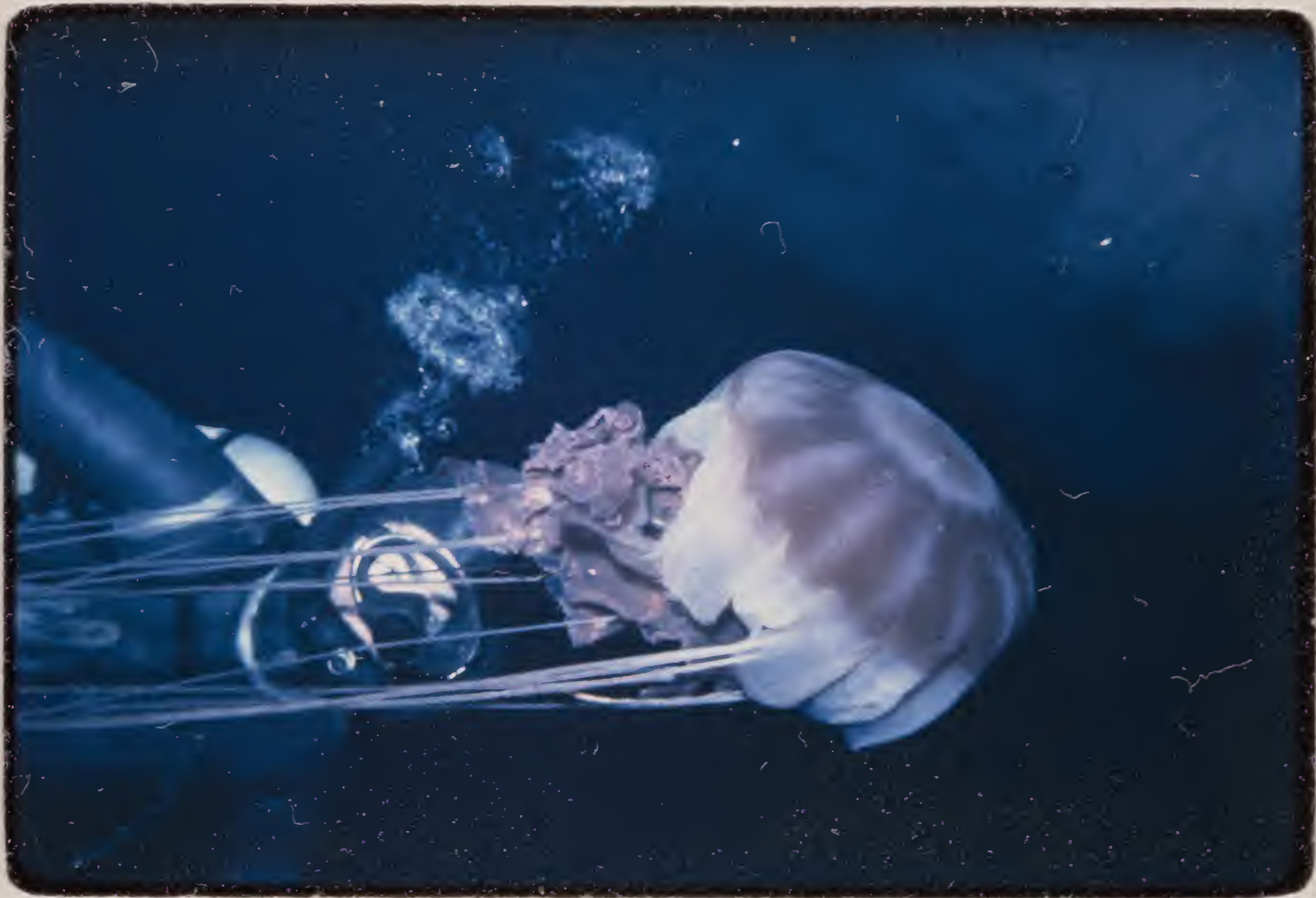
MORRISTOWN, N. J.

4

JAMES ST.

MICHAEL A. de CAMP

(C. Ray)



Schmitt's eye

large jellyfish

C. Ray +

13

MADE IN U.S.A. U.S. PAT. NO. 3,043,354

C. Ray + Jelly - Periphylla



M. A. de Camps E h 06

Turtle Rock - Antarctica

⚡



X 36

Mac-Mal. Mar. 63

Mac
66W7

MADE IN U.S.A. U.S. PAT. NO. 3,023,554

MADE IN U.S.A. U.S. PAT. NO. 3,033,254

Mac
66W7

Mac - Mal. Mar

63

X38

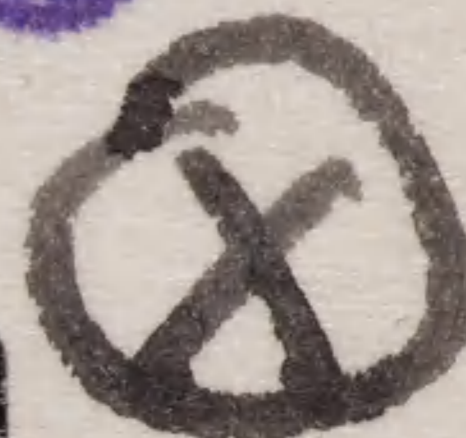


20

Ascidian of xx

MAR 63

~~Pyrosoma~~



23



X 38

MCDONALD
MAR 63W

MADE IN U.S.A.

18

MADE IN U.S.A. U.S. PAT. NO. 3,073,354

Mac63

66W7

Mac - Mal. Mar 63



X38

8

MADE IN U.S.A. U.S. PAT. NO. 3,013,384

Pyrosoma - 12" EW



CARLETON RAY

MADE IN U.S.A.

K 22396



Ophiurans
No. 22396

MADE IN U.S.A. U.S. PAT. NO. 3,013,354

10 SEP 25 W

Fish Bis mouth

57-74

20



MADE IN U.S.A. U.S. PAT. NO. 3,013,354

344

Isopod - 4"



CARLETON RAY

~~Don't~~ Fish^{XX}

belly
up.



MAR 63

MCDONALD

Y 43

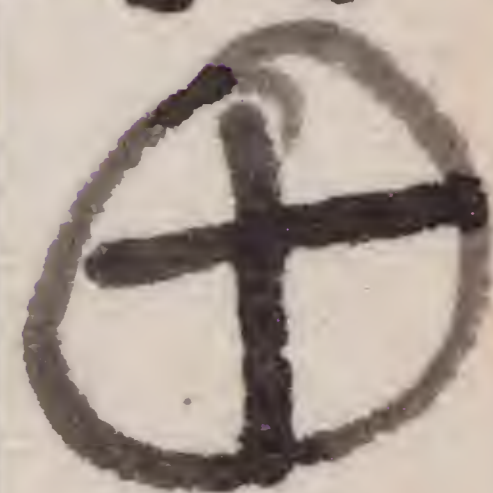
MADE IN U.S.A.

MAR 63

20



Rychogonids ~~XXXX~~
MAR 63
S. Seymour Id.



24

MCDONALD

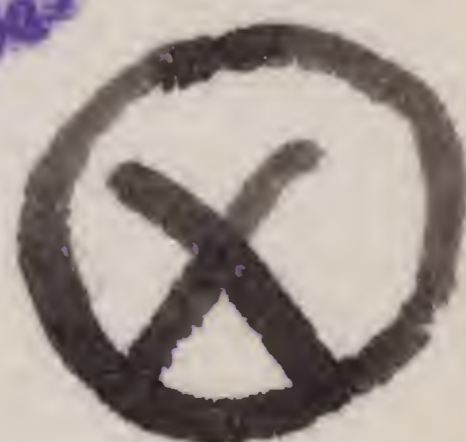
Y 46

MADE IN U.S.A.

Nephtyidae

Polychaetes xxx
on debris tube.

MAR 63



14



Y 19

36

MCDONALD

36

MADE IN U.S.A.

Schwarz sh.

MAR 63.

?

? Acanthaster?

①



MCDONALD

Y 41

MAR 63

19

MADE IN U.S.A.

Seafur chin frags
MAR 63

○



31



MCDONALD X 35

MAR 63W

18

MADE IN U.S.A.

On map.

MAR 63



33



E. MODONALD
GLYNODOW
MAR 63W

X 35

8

MADE IN U.S.A.

on Argentine Grass
Limpets

MAR 63

about
⊗
nest?
?



32

Spring Pt Y 27

MCDONALD

MAR 63W

12a
MADE IN U.S.A.

12

Brown
Amphipod

MAR 63

≡≡≡

?



①

21



X 39

MAR 63W

8

MADE IN U.S.A.

MCDONALD

Polychaetidae
"shrimps"
worms

Polychaetes^{xxx}
short worm.

MAR 63

⊗



scale worms



MCDONALD

Y 34

MAR 63

14

MADE IN U.S.A.

Criminoid. xxf

MAR 63

Star of red urchin

Diplasterias



②

7



MCDONALD

X 38

MAR 63W

? Argentine

MADE IN U.S.A.

Id. II

Chin-strap MacPherson



taken
by
at
Linn. or
Miss.
at
Linn. or
Miss.

45 (bis)



309,000
of these are
Miss.

MADE IN U.S.A.

Turtletown, Antares

D.O. Kura Lee



Weddell Seal

MADE IN U.S.A. U.S. PAT. NO. 2,143,354

Carleton Ross



Be Camp & Whittell Bay

MADE IN U.S.A. U.S. PAT. NO. 3,013,354