

FLEET

Memoranda

CANTON

~~64~~

Blue-face

A	N	I
61	2	2
85	1	3
75		2
78		
299	3	7

Brown

I	A	N
1	1	1

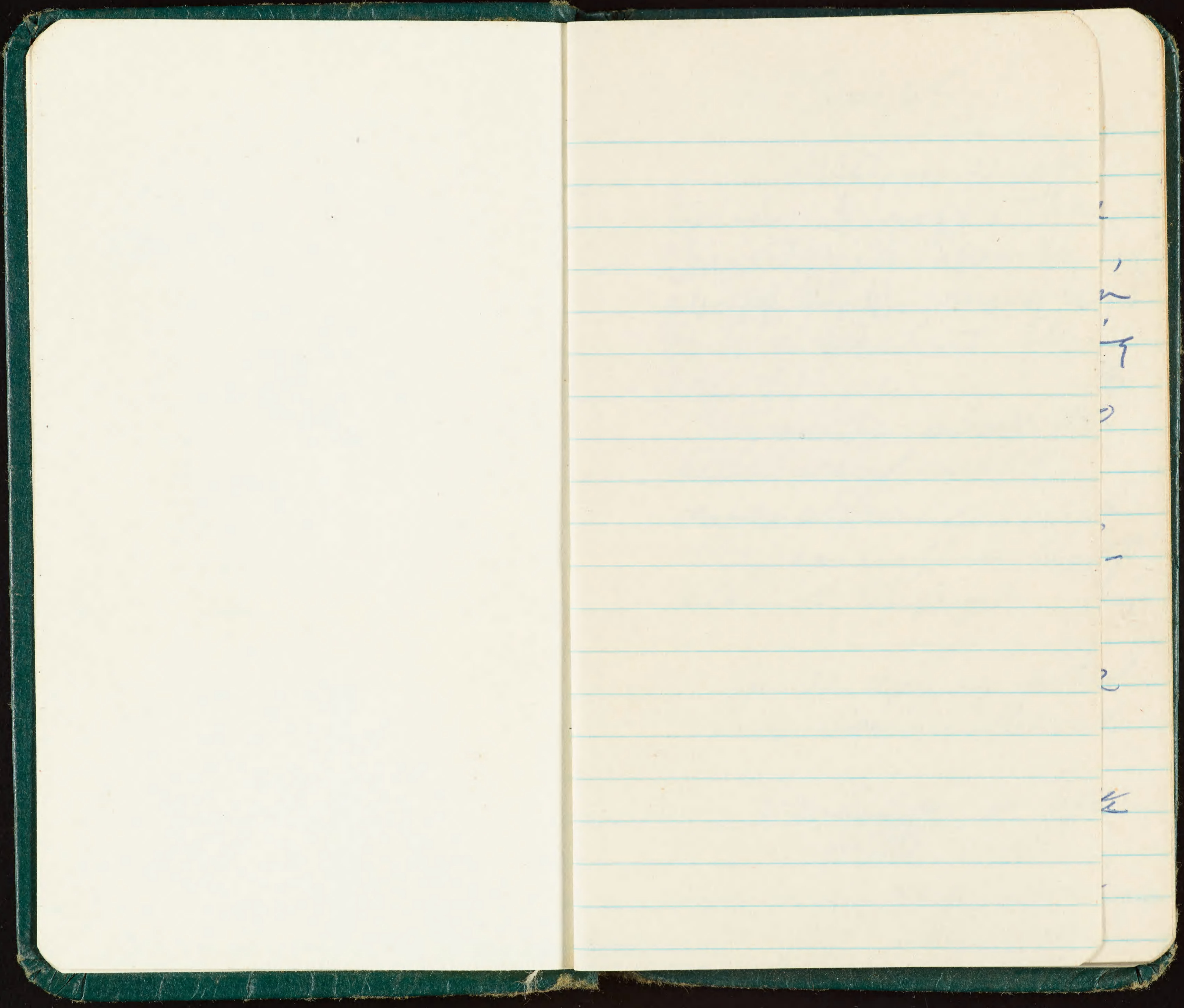
80

~~80~~

✓ADD
9/11/66 TSL

No intersexual

Done



01 June 65

1450 in W boat
towing R. raft. Three
Channel nod Span Is.,
over 19 B. many in
N., a few S. T. flying
by.

Span Is. about 20
acres, coral rubble
derived from lagoon.
Low grasses? on top -
alt 30-40' high.

Can N. appear to be
nesting. Saw 1 GBT.

Over to Span Is. after
dark, collected 5 rats,
maybe spulms? Span
& other two islets have

approx 1000 km N.
nesting on. Most of G.
some 10% of various
size, largest 1/2 grown.
About 100 pr. of
GBT OE. collected 3 GBT,
2 km N.

found 1 Aud. S.
collected - collected

1 partially albino

S.T. Saw 2 S.T.

found 3 F.T. nests

1 egg, 2 w N on

rock island near Epon.

collected 1 Ad. 1 N.

6 B. base collected

Ce. parasitic, fruit

collected birds

Tungareva

Landed thru
log. @ 1000 following
W. manager's boat
after clearance.
Stopped @ Village
& picked up native
guide. Headed S.
in log.

Saw 2 Frig. sp?
& 1 WT around ship.

Nat. say that
are birds on sand.
Large birds come
in in evening.

Saw 4 H.N.

Shot 1, 1 more frig.

HN III III I
 Frig III I
 (unk)
 Fairy T II
 W.T II

lagoon

~~Saw 3 B.T.C.~~

Saw 1 BTC

~~Counted B.T. Frig. egg
 in nest in tree 6' above
 ground.~~

Bob Lang saw 3 more
 f. Frig. prob. OE.
 (nests)

PRICE COPRA ~~###~~
 HM \$ / ton.
 So far this year
 exported 100 tons.

A.N. 2000 - about 15%
 1500 OE
 nests (3000)
 birds
 An N. 100
 nests w No E (3) ^{seen} found
 Frig, h. 70+ IN.

RFB 10

S.T. 15

F.T 100

Dave said that
his grandfather
told him that L. Frig.
used to nest on
ground near present
nesting area (~~nesting~~)
He has seen F.T.
eggs on branches.

66 Pon RW

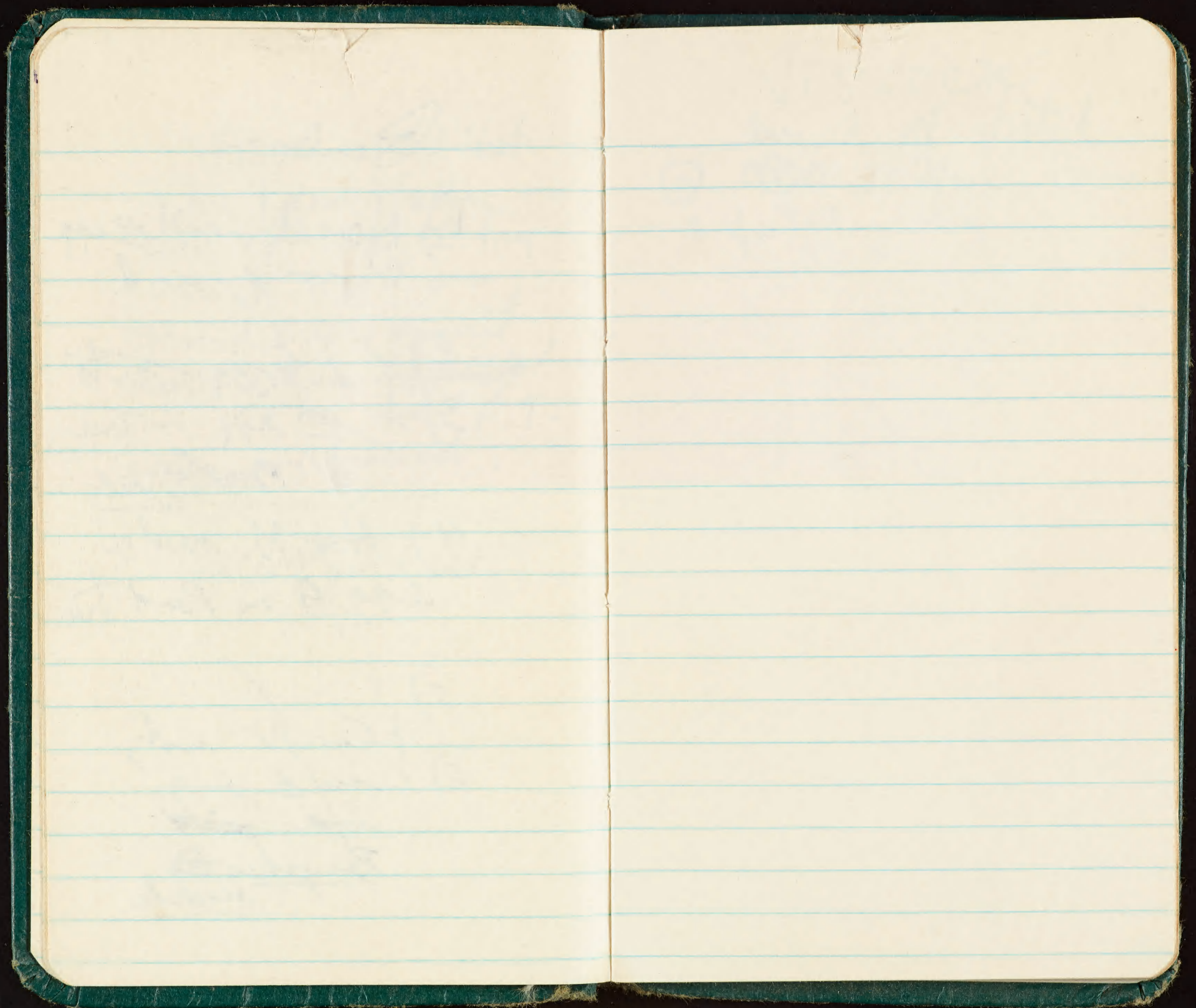
Barber

1) ~~Har. N. nest w egg
6' from ground~~

2) } ~~L. Frig. nests~~
3) } ~~w egg in tree~~
6' Pempis acidula

4) ~~Har. N. nest w
egg 8' in Pond tree~~

5) } ~~Can. N. nest,~~
6) } ~~nest on g.
with ~~egg~~~~
Pempis
acidula

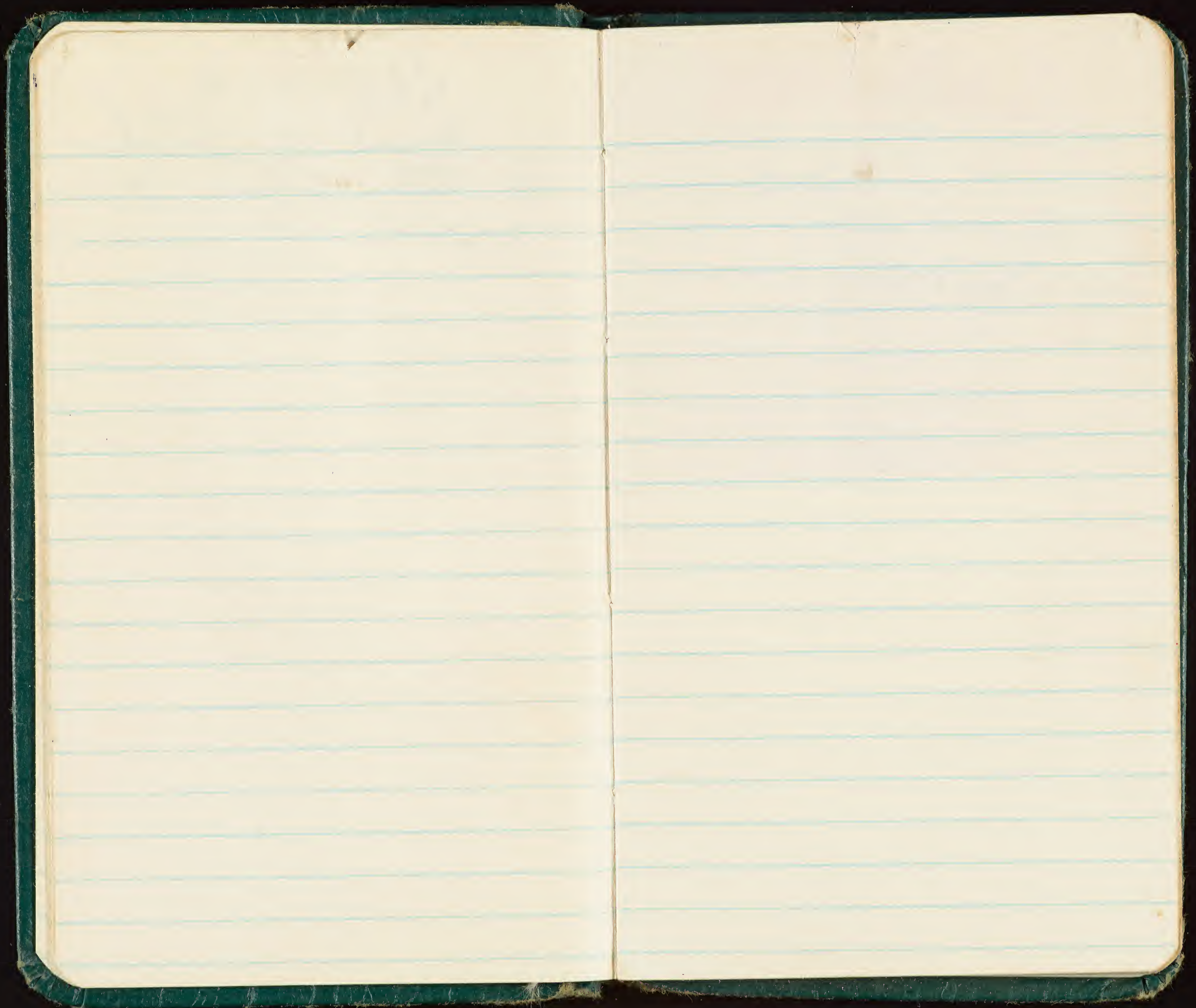


Vostock

Arrived at Vostok

@ 0800, 15 June. Gen

* fantail



Berlese

1) C. N. w egg

2) RFB nest w egg

①

1522

LARRY

257-89921 ♂ 2E

41 ♂ on N

22 ♀

42 ♂

23 ♂ 1E

43 ♂

24 ♀

44 ♀ on N

25 I

45 ♀ 2E

26 ♂ 2E

46 ♂ 2E

27 ♂ ♀ ae || ②

47 ♂ 2E

28 ♂ ♂ ae || ⑥

48 ♂

29 ♂ ♀ e || ③

49 ♀

30 ♂ ♂ ae | ①

50 ♀

31 ? ♀ n | ①

51 ♂

32 ♂ ♂ n | ①

52 ♂

33 ♂ n | -

53 ♂

34 ♀ 1E

54 ♂ 2E

35 ♂ 2E

55 ♂

36 ♀

56 ♀ 2E

37 ♂

57 ♀ 1E

38 ♂

58 ♂

39 ♀

59 ♂

40 ♂

15 JUNE 65

BBB BOB STANDED

②

587-82658 ♀

78 ♂ 2E

59 ♀

79 ♂ 1E

60 ♂

80 ♂

61 ♂ on N

81

62 ♀

82

63 ♂

83

64 I

84

65 ♀

85

66 ♂

♀ ae | 1 2

67 ♂

♂ ae || ④

68 ♂ 2E

♀ ie | ①

69 ♂

♂ ie | ①

70 ♂

♀ n | -

71 I

♂ n | ①

72 ♀ 1E

n | -

73 ♀ 2E

74 ♂

75 ♂

76 ♂

77 ♀ 2E

~~✓ADP~~

~~Returns~~

~~✓757-67904 ♂~~

~~✓757-67888 ♀c~~

~~✓737-21939 ♂c~~

~~✓737-22604 ♀c~~

~~✓757-60538 ♂c~~

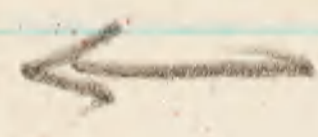
~~✓737-48497 ♂c~~

③

757-89960 ♂	80 ♀ 1E
61 ♀ 2E	81 ♂
62 ♀	82 ♂ 2E
63 I	83 ♀ 1E
64 ♂	84 ♀ 2E
65 ♂ 2E	85 ♀
66 ♂	86 ♀
67 ♂	87 ♀ 2E
68 ♂ <u>WN</u>	88 ♀ 2E
69 ♂	89 ♀ C
70 ♂	90 ♂ C
71 ♀	91 ? C
72 ♂ 2E	92 ♀ C
73 ♂	93 ♀ C
74 ♀	94 ♂ C
75 ♀	95 ♂ C
76 ♂	96 ♂ C
77 ♀ 2E	97 ♂ C
78 ♂	98 ♀ C
79 ♂	99 ♂ C
	100 ♂ C

④

587-82681 ♀ 2E
82 ♀ 2E
83 ♀
84 ♂ 2E
85 ♂
86 ♂
87 ♀
88 ♀ 1E
89 ♂
90 ♂ <u>WN</u>
91 ♂ <u>WN</u>
92 ♂ 1E
93 ♂
94 ♀ 2E
95 ♂ 2E
96 ♀
97 ♂ 2E
98 ♂ C
99 ♂ ↓
100 ♂ ↓



♀ ac II	②	♀ ac III	③
♂ ac III	⑥	♂ ac III	③
♀ ic II	②	♀ ic I	①
♂ ic	-	♂ ic I	①
♀ n	-	♀ n	-
♂ n I	①	♂ n II	②
n	-	n	-

587-82821 ♀c 41 ♀IE
 22 ♀c 42 ♀
 23 ♂c 43 ♂
 24 ♂c BB 44 ♀ 2E
 25 ♂c BB 45 ♀ Root
 26 ♂ 46 ♂ 2E
 27 ♂ 47 ♀ 2E
 28 ♂ 48 ?
 29 ♀ 49 ♀ ~~2E~~
 30 ♀ 2E 50 ♂
 31 ♀ 51 ♂
 32 ♀ 52 ♂
 33 ♂ 53 ♂
 34 + 54 ♂ IE
 35 ♀ 55 ♂ 2E
 36 I 56 ♂
 37 ♀ 57 ♂
 38 ♂ 58 ♀ IE
 39 ♂ 2E 59 ♀
 40 ♂ 2E 60 ♀ 2E

5c

P 20		(2)
P 20		(5)
P L		(2)
♂ IE		(1)
P n		
♂ n		
n		

6

61 ♂ ZE	81 ♀ ZL
62 ♀	82 ♀ ZL
63 ♂ ZL	83 ♀ ZE
64 ♂ 1E	84 ♂ ZE
65 ♀	85 ♂
66 ♂	86 BB, N
67 ♂	87 ♂
68 ♀ N	88 ♂
69 ♀	89 I
70 I	90 ♂ ZE
71 ♀	91 ♂ ZL
72 ♂ ZE	92 ♂ ZE
73 ♀	93 ♂
74 ♂ ZE	94 ♂ ZE
75 ♂	95 ♀ ZE
76 ♂ N	96 ♂
77 ♀ 1E, N	97 ♂ ZE
78 ♀	98 ♂
79 ♂	99 LOST
80 BB ♀	00 ♂ ZE

7

857	824	92 ♂
		93 ♀ ZE
		94 ♂
		95 ♂ I
		96 ♂
		97 ♀
		98 ♂
		99 ♂ ZE

Blue Booby 500 I

de ♀ - III	(4)	ze ♀ (1)
ze ♂ - III III	(11)	ze ♂ (1)
le ♀ -		le ♀
le ♂ - 1	(1)	le ♂
e+n ♀ - 1	(1)	
n ♀ - 1	(1)	
n ♂ - 1	(1)	

Page	①	②	③	④	⑤	⑥	⑦
♀ 2c	2	2	2	3	2	4	1
♂ 2c	6	2	6	3	5	11	1
♀ 1c	2	1	2	1	2	-	-
♂ 1c	1	1	-	1	1	1	-
♀ n	1	-	-	-	-	1	-
♂ n	1	1	1	2	-	1	-
♀ em	-	-	-	-	-	1	-
n	-	-	-	-	-	-	-

Tot

16

34

8

5

1

6

1

71

3

74

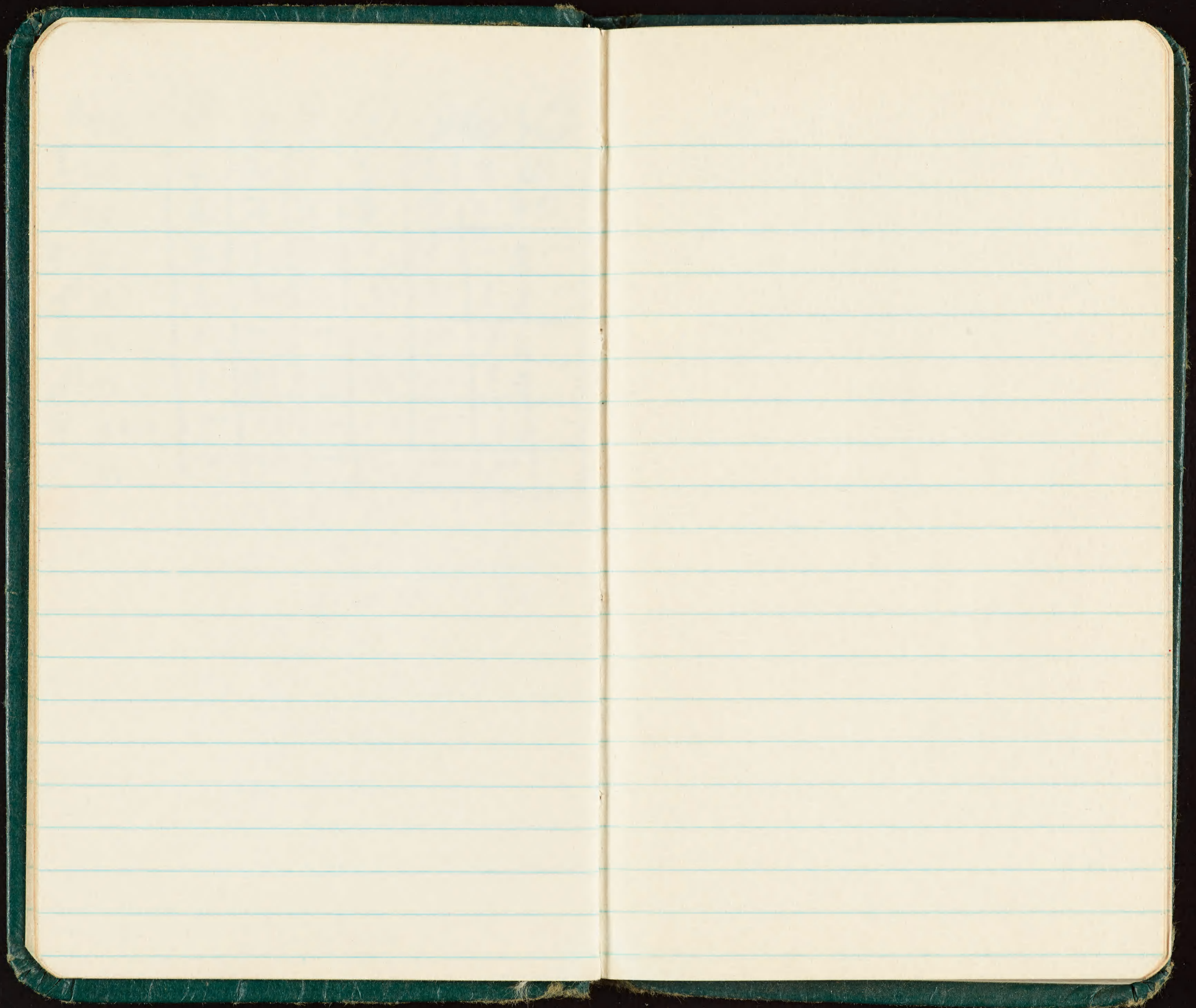
34

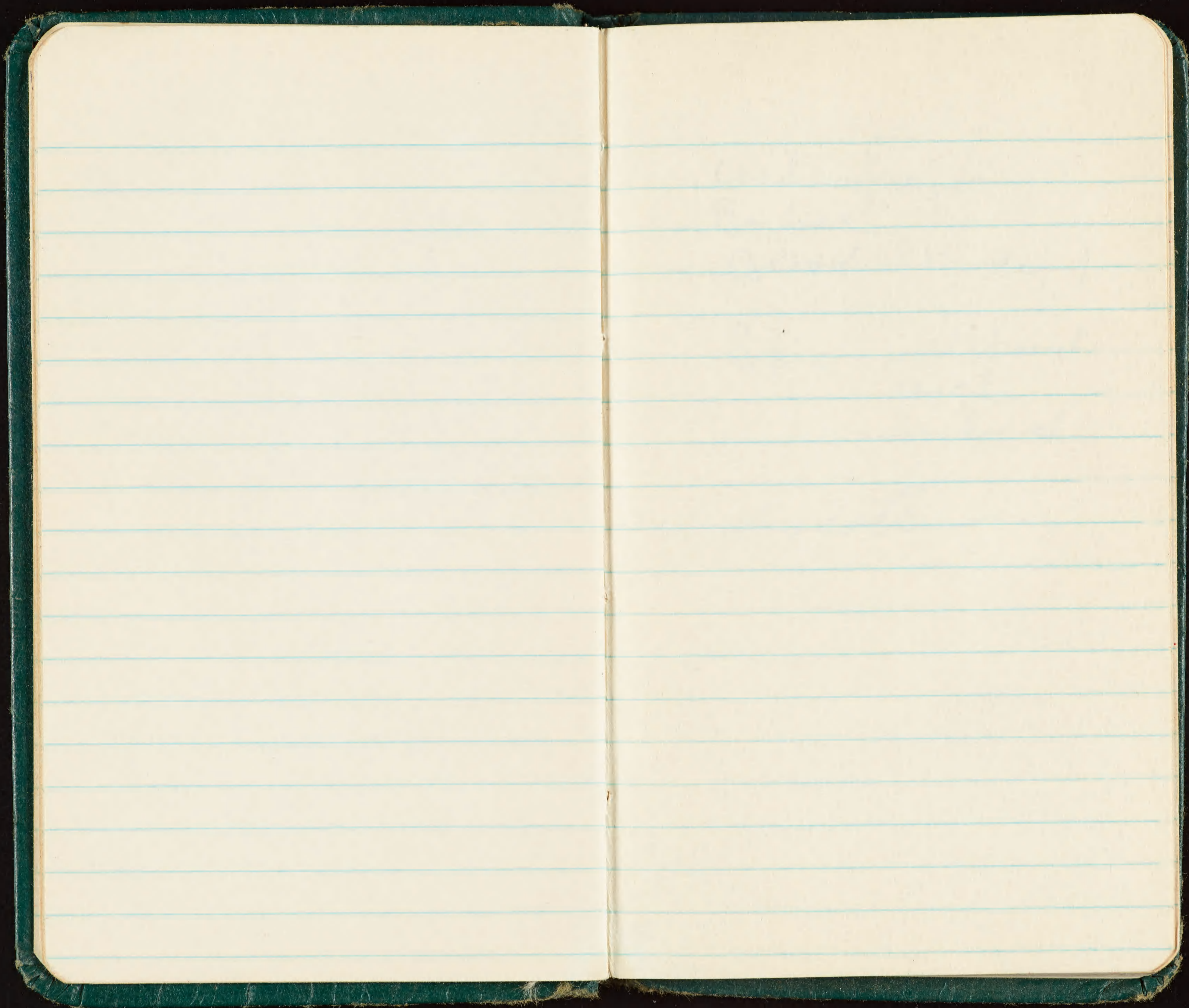
8

6

1

49





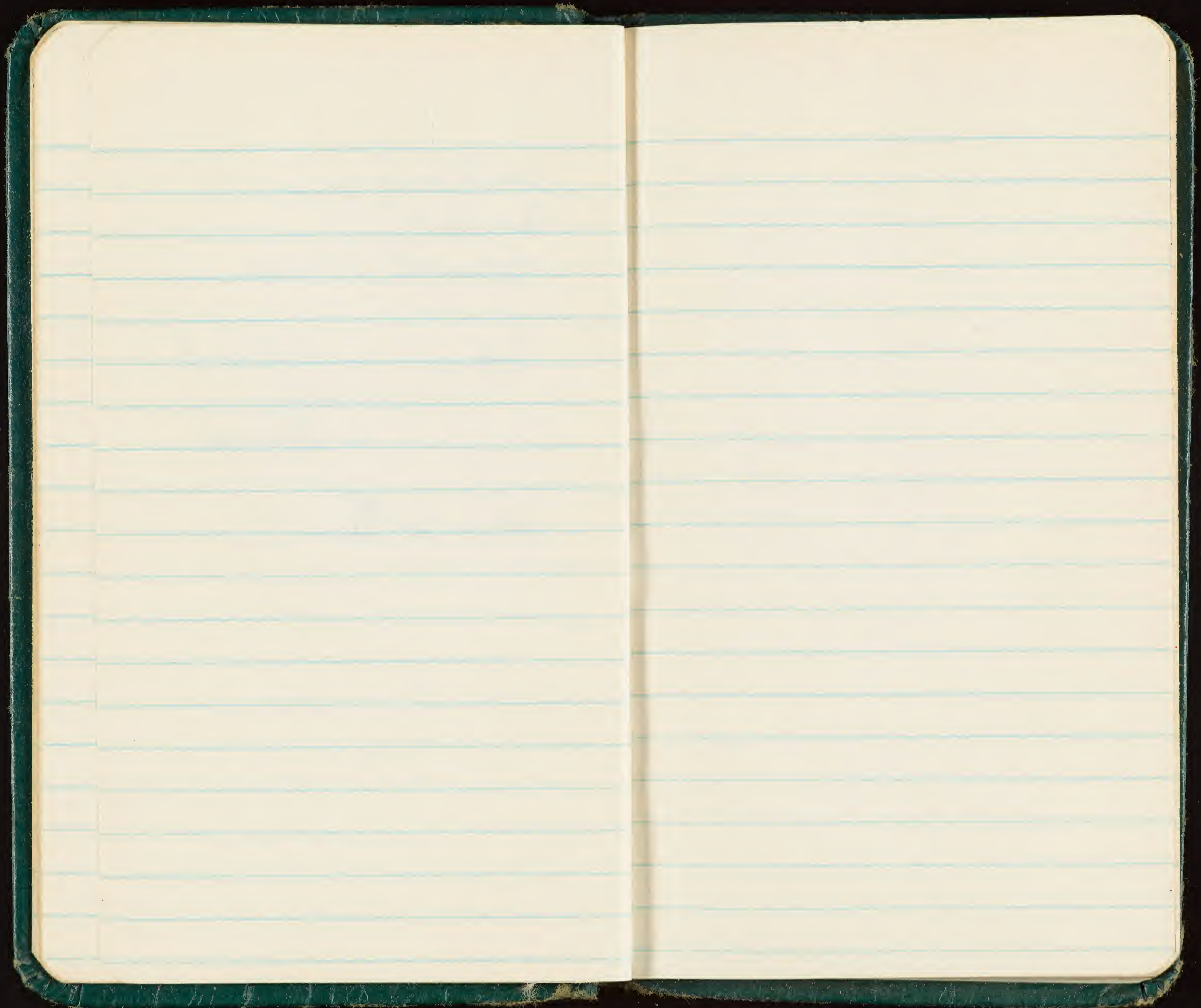
Coel in freezer

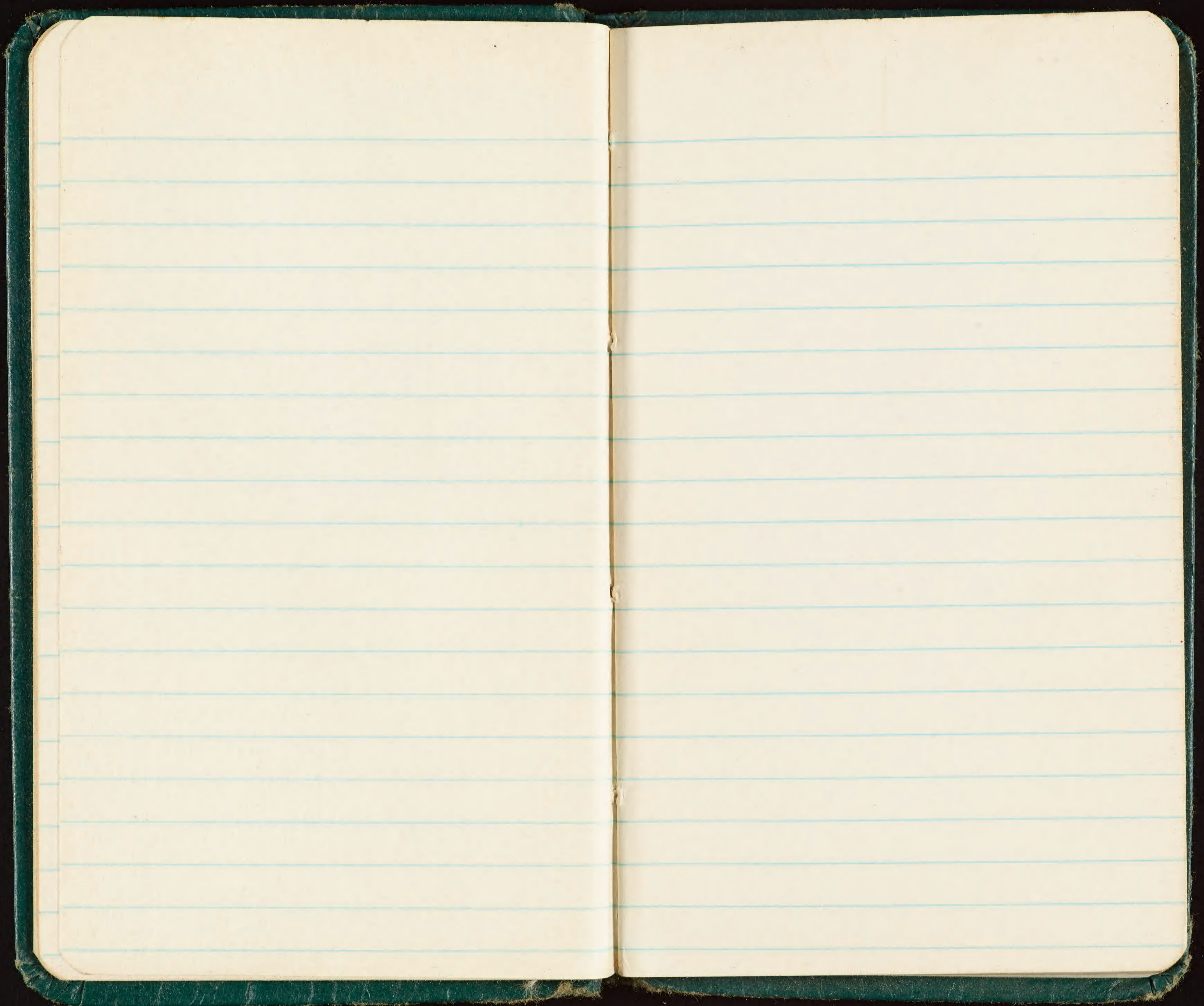
Berlese

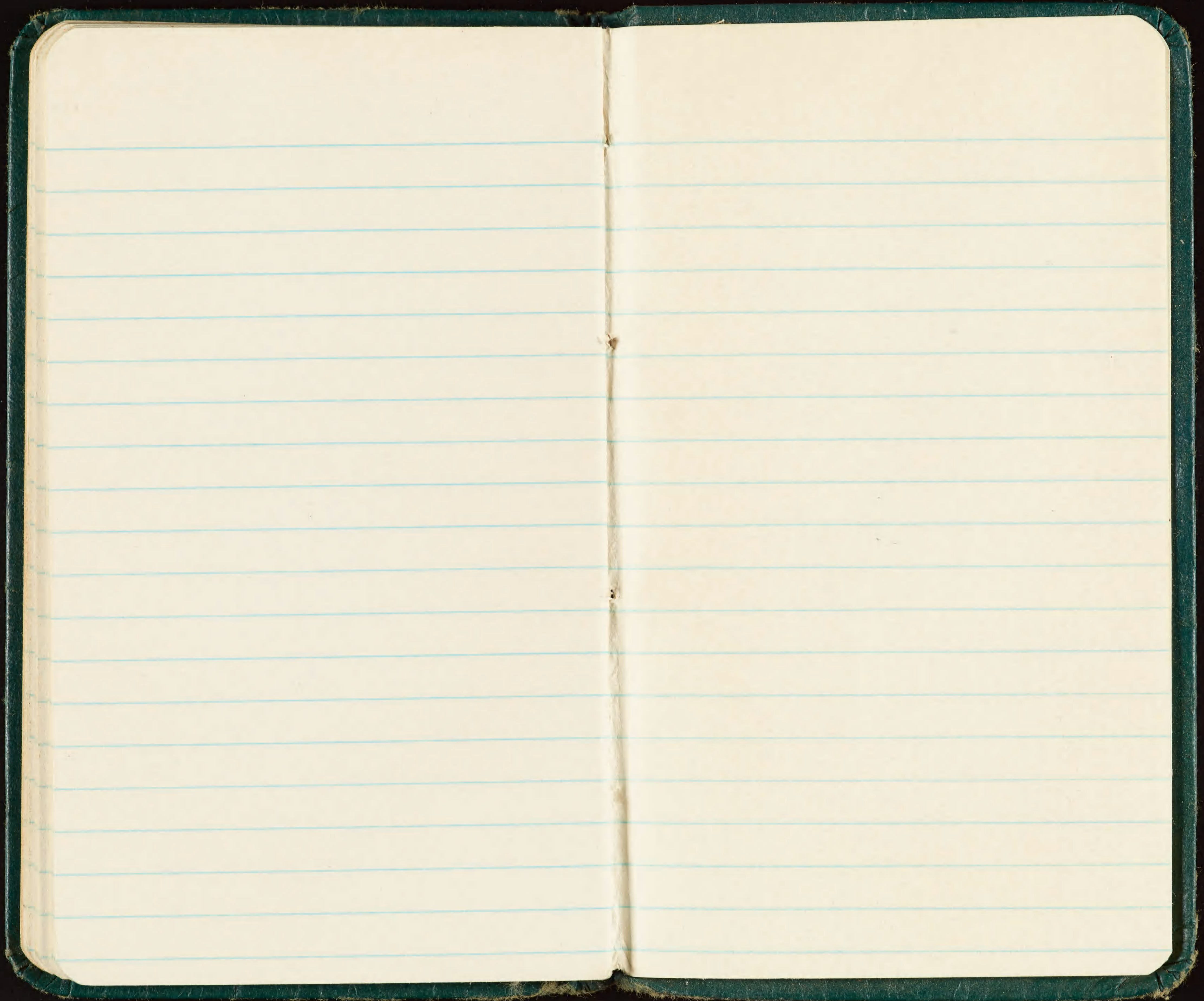
Blood (Starden)

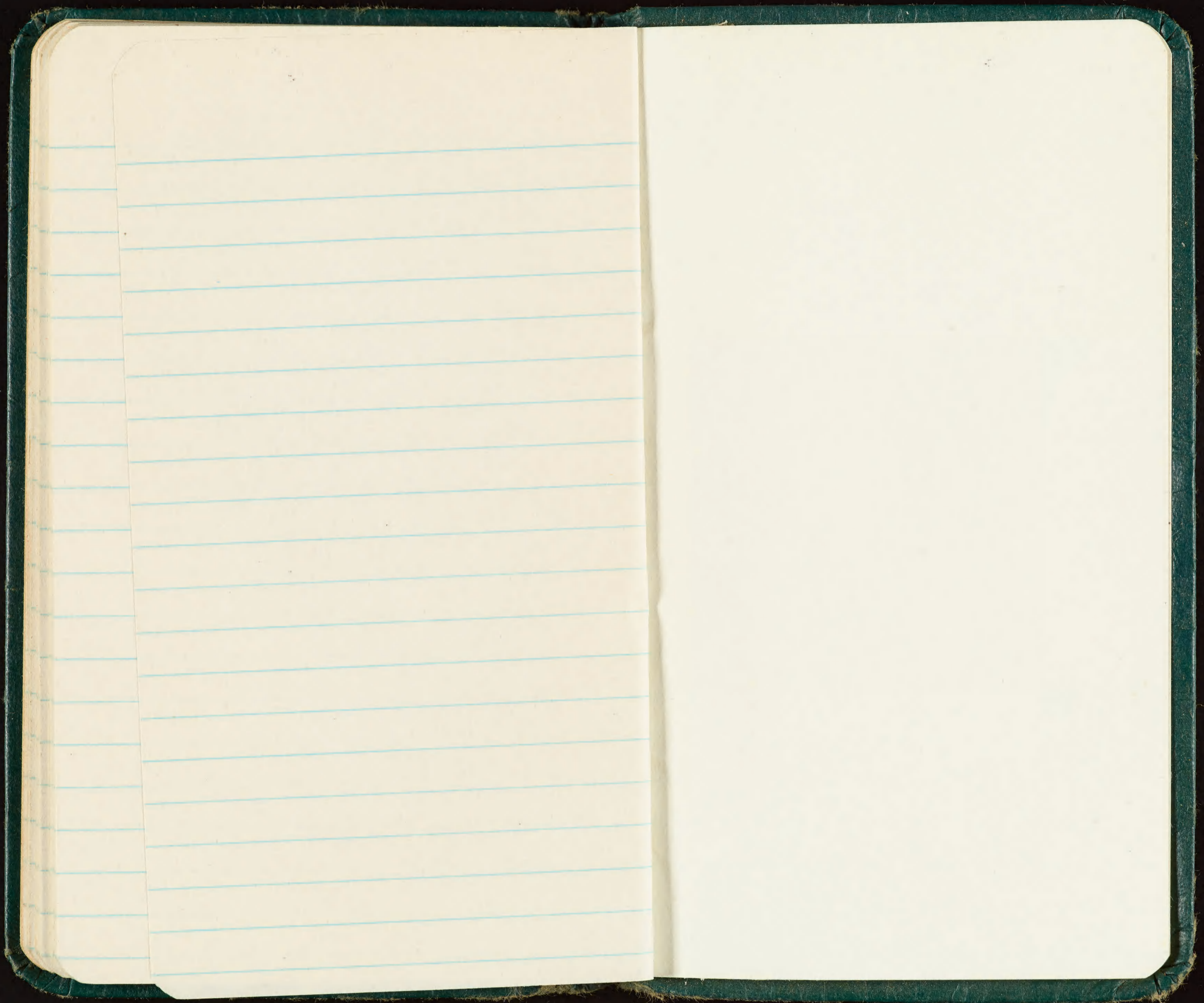
Skins well skinned
rough.
unskinned

dry cats











7530-222-0078
FEDERAL SUPPLY SERVICE

STANDEN

Memoranda

CANTON

NO APP

no interested

DONE

13 June 1965

Tongareva

0900 2 mi off shore on ship.
Tall palms.

My Camera

#5

Tongareva II

#6

Boat into Tongareva

#7

8

9

Village

10

11

12

13

23

14

Roll # 3 BW

Tonga rewa

17 } Fish Kill
18 }
19 }

20 Is. shot

21 Dry inlet

22 Vegetation

23 } Under Palm

24 } ..

25 Leper graves

Vostock

26 Beh. (west)

27 Black crust

28 Dense Possonia Forest

29 South of Beh flat BFB west

30 Canopy ^{Bi-B West} SE PT

31 Forest floor

32 Steep SE Beh

1345 leave Molokai
OT after lunch

SI Color R #3
Cans say 2 C (check)

- #7 Is. shot
#8 Vegetation
#9 Leper graves
#10 Inside of lagoon shore
11 - Fish kill area
12 " " "
13 Star fish
14 " " (half dollar) ^{scale}
15 Sib + nature in channel
16 Sib + " to bird read
17 Com Wood-Nestling Pandanus
18 " " " " "
19 No. Is. shots
20 " "
21 " "

22 Coconut crab Vostock
23 SW Bch.
24 Fish ponds
25 GF nest w/ Pisonia

- 26 *Pisonia* - Fairy Tern
 NFB Black Crust
 dead logs
- 27 Reef cut
- 28 Fish Porionig + Bot
- 29 Black Crust
- 30 } Hermit crabs.
- 31 }
- 32 Dense *Pisonia* forest
- 33 RF Red *Pisonia*
- 34 South Beach shows
 width @ 50 ft Reef
 Flats
- 35 Look south along E Beh
- 36 Central opening

- Color 3 C
- # 0 South W. Beh
- # 1 South Beh Flat BFBW
- 2 South E pt. wide Beh
 75-100 qds. Boerhaavia
 Brown + BF Booby
- 3 BF Booby Colony SE pt
- 4 " " " "
- 5 BF B Nest
- 6 Grone marker
- 7 Canopy SE pt
- 8 " " "
9. BF B Nest
- 10 Forest floor
- 11 Steep SE Beh
- 12 Forest floor
- 13 looking South along E Beh.
- 14 No pt
- 15 Coconut Crab Red
- 16 forest cover Corn Noddy nest
- 17 Central opening

Brown Bay
Imm Brown
Nest
Chick

~~|||||~~ ~~|||||~~ ~~|||||~~ ~~|||||~~ 8 13 ~~|||||~~ ~~|||||~~

(77)

Commonoddy fled as Bch

57	57	57
8	8	8
13	3	4
<u>78</u>	<u>68</u>	<u>69</u>
19	19	
<u>77</u>	72	73
82		

total of
BFB
for
2e above
~~the~~
must be
78

RBC
Dec 68

Vostoel 15 June

BFB

(19)

on 1 egg — |||
← 2 egg — ~~|||||~~ ~~|||||~~ ~~|||||~~
Small chick — ~~|||||~~
Large " — ~~|||||~~
Imm — |||

BFB banded on
eggs + chicks
in various ¹⁹⁰ books

15 June

comp near
Dec
68
by RBC

	egg	chick	ety
Standen	2 eggs on egg 1 on egg	1 on chick, 1 chick	
Rafu Lar	50 2e (34/16) 13 1e (5/8)	7 (6/1)	
Stadel	35 2e (7/28) 5 1e (2/3)	2 (1/1)	♀ ety
		n - 2	

(10)

10 of 28 with yg banded - male ety

85 of 146 with 2e banded

21 of 38 with 1e banded

117

BFB Banding

78
219
13
170

587-82613 } on egg
14 }

1

17

on chick

Bled

♀/1e = 12

♂/1e = 8 28

on egg

♀/2e = 44

45

♀

♂/2e = 41

46

F

47

F

♀/4 = 2

48

Chick

♂/4 = 7

49

M

50

F

51

M

58/110

52

M

56/110

53

m

54

M

55

M

56

F

57

M

Banded in RC

By Fleet (?)	20	12 ♂	7 ♀	1 ?
By Standen (?)	0			
By Stadel	7	5 ♂	2 ♀	

Returned in RC

By Fleet (?)	5	3 ♂	2 ♀	
		21 ♂	11 ♀	1 ?

33 of 75 in clubs handled
 27 of 75 in chev ~~not~~ banded

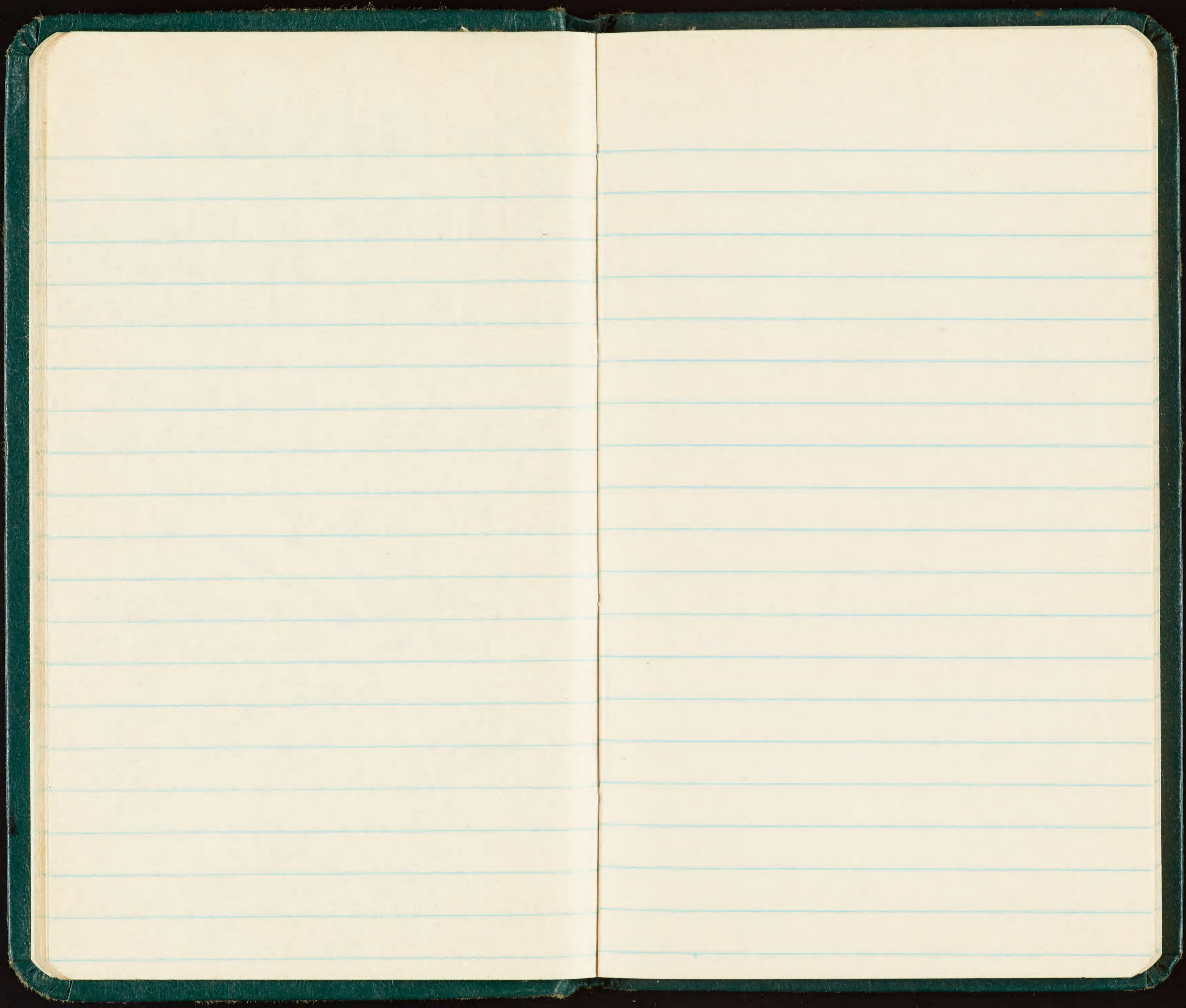
75 = club = 33
 220 = nest ~~at~~ = 117 ad bnd
 14 = imm = sev
 309
 + ab 317 ad bnd

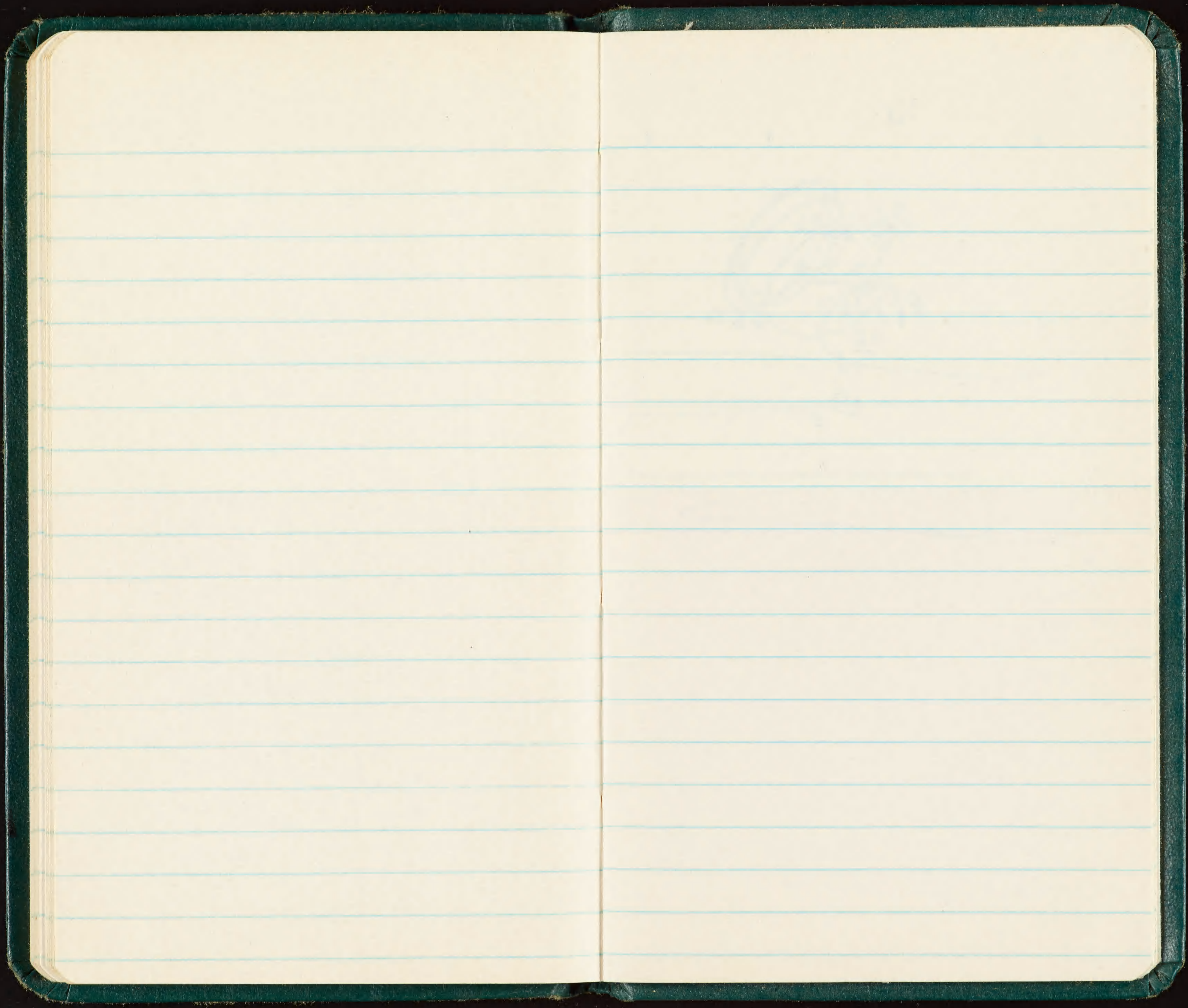
thus loose birds?
 re nesths

♂	6	3	3	12
♀	5	-	2	7
?	1	-	-	1
	12	3	5	

thus how do we
 get out
 of 450-500

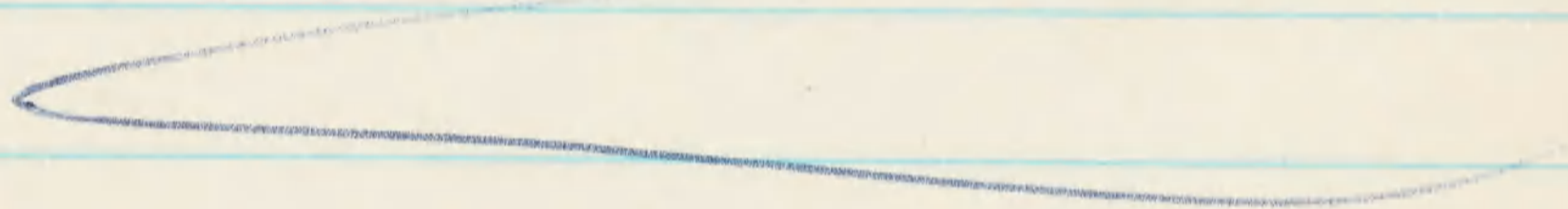
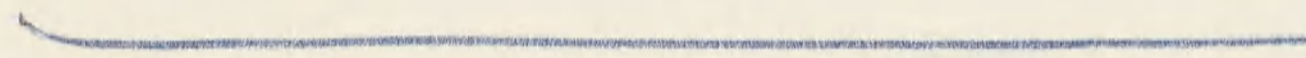
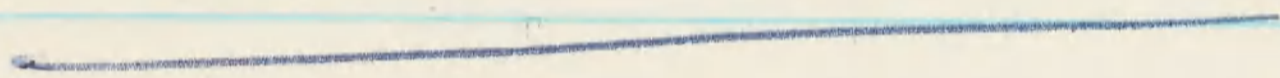
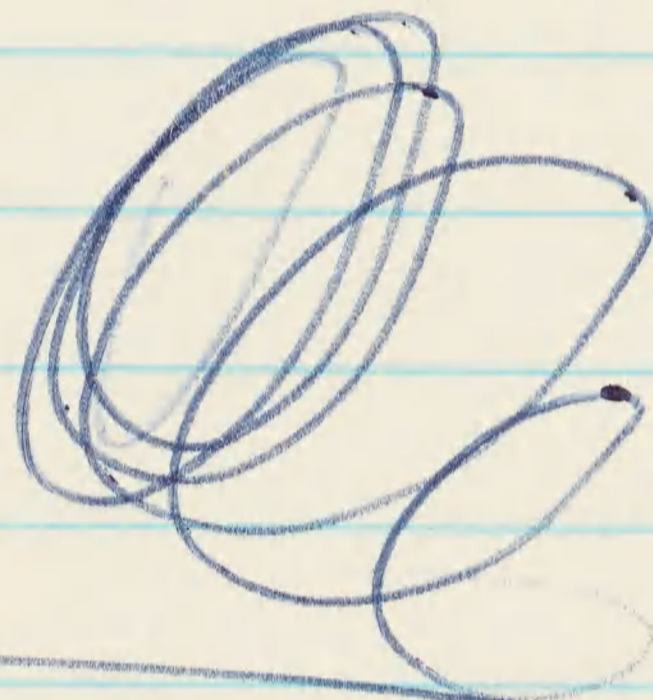
277
 19
 14
 110
 7
 117
 234 - broods
 75 - out
 309

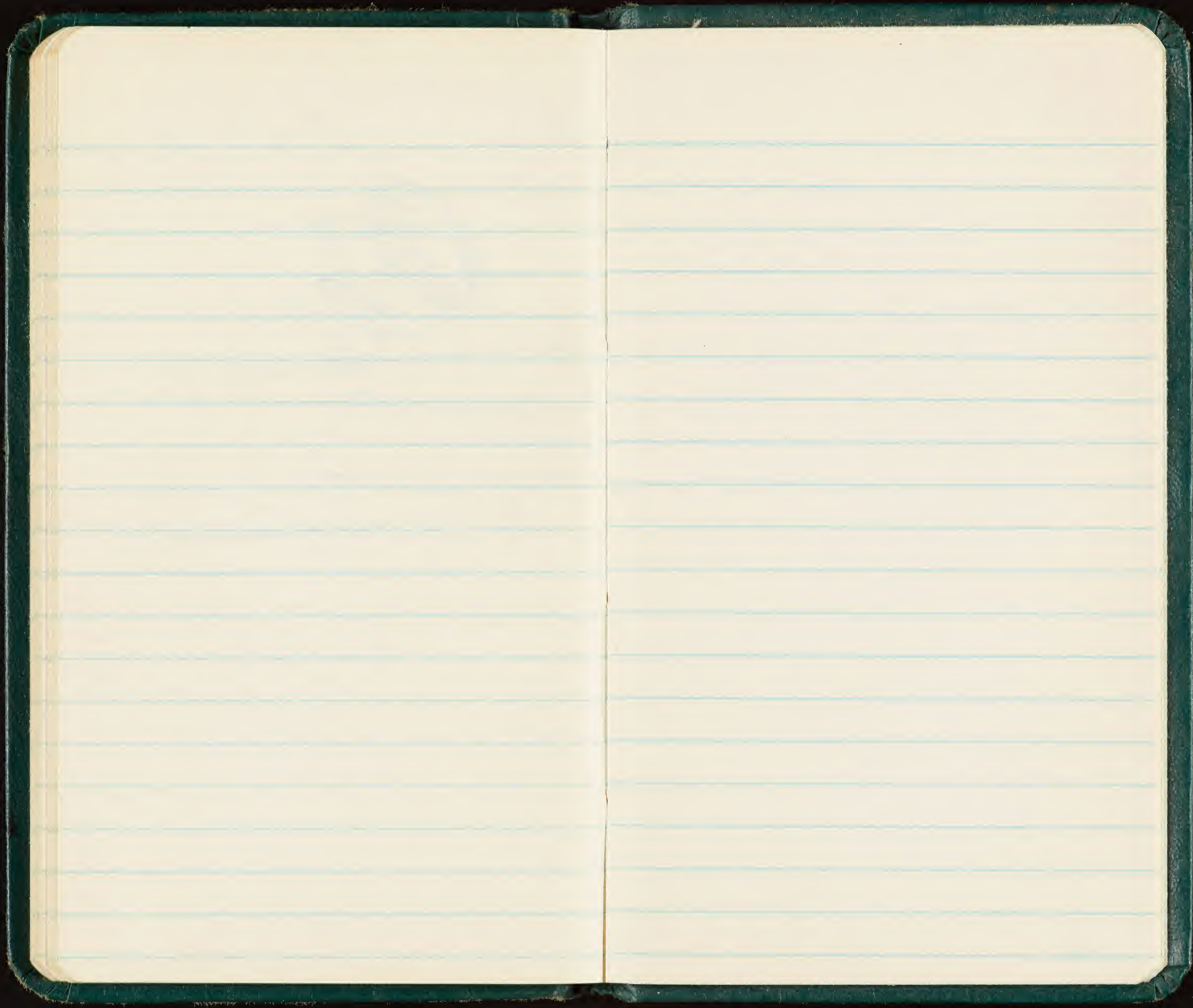


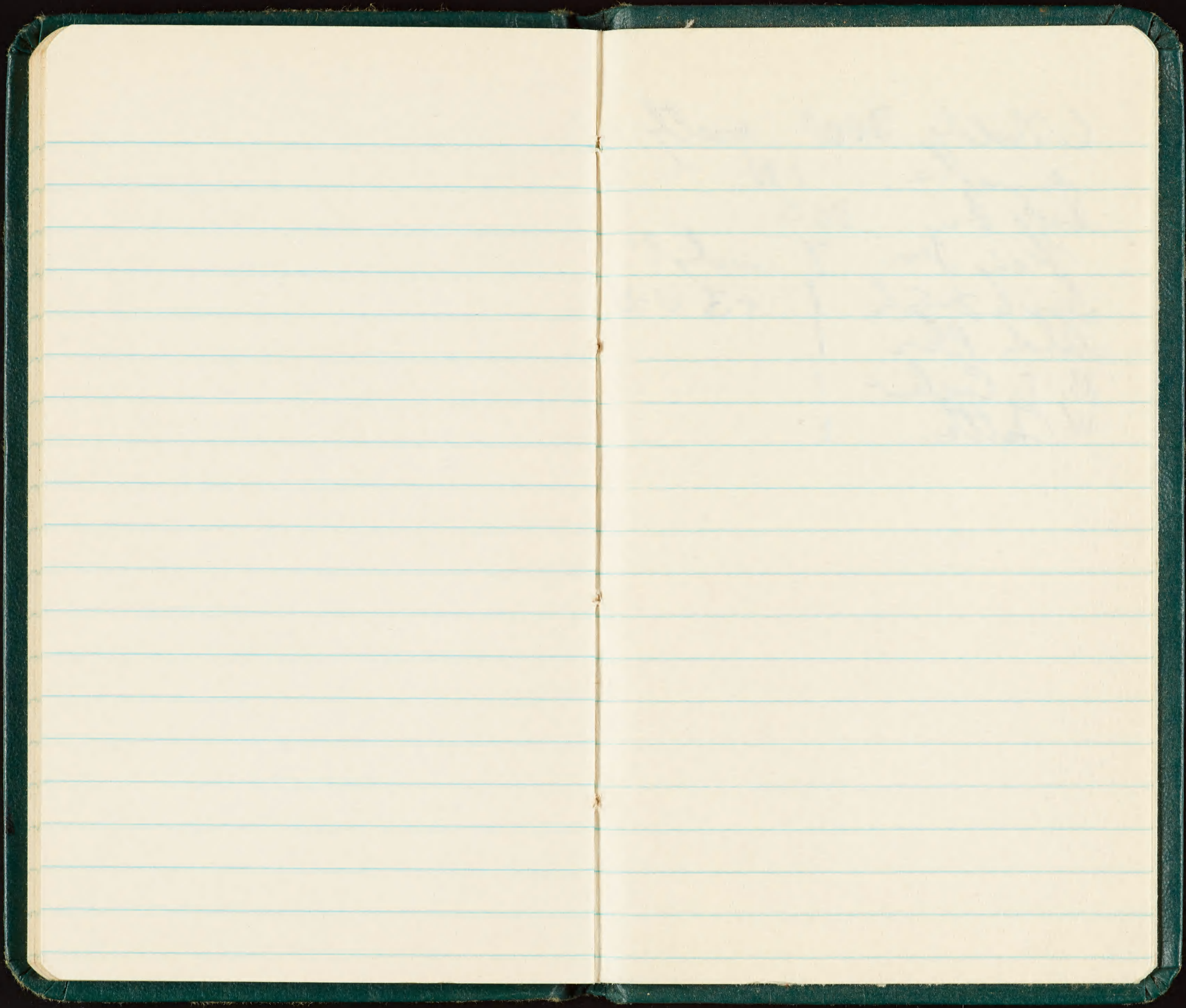


1/4

3/8 mile
220
8 | 1760 660
 16
 16
 16
 0







C Noddy 300+ mostly
immature. 1W
Sooty Tern 20±
Fairy Tern 9 mostly?
Lesser Frigate 1 + 3 U-U
Golden Plover 1
B. T. Cuckoo 1
W. Tattler 1

C Noddy 300⁺ mostly

immature. 1W

Sooty Tern 20⁺

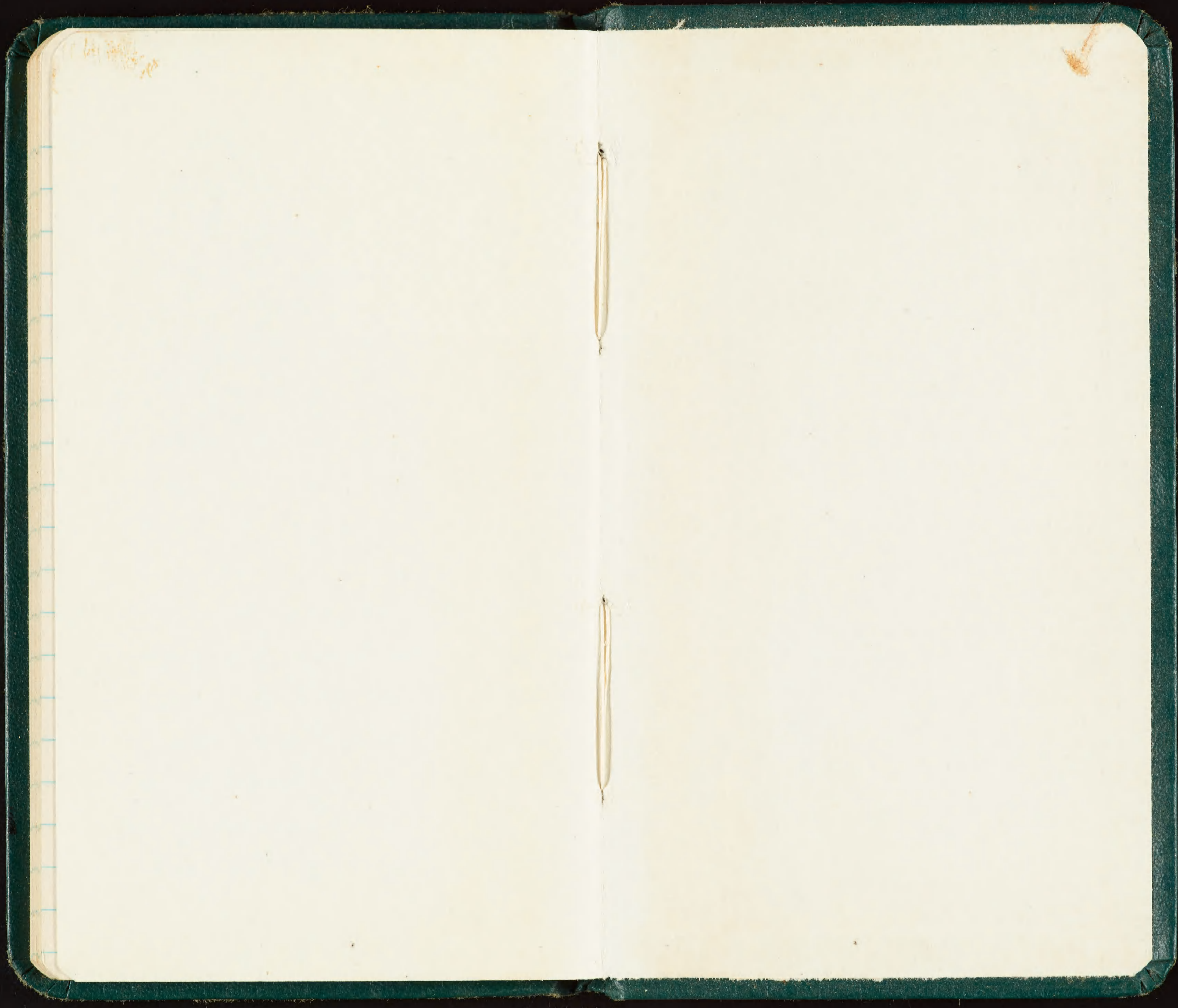
Fairy Tern 2 nesting??

Lesser Frigate 1 + 3 U-U

Alder Phoe 1

B. T. Cuckoo 1

W. Tattler 1



7530-222-0078
FEDERAL SUPPLY SERVICE

~~HULL~~

Memoranda

~~CANTON~~

~~POSTER~~

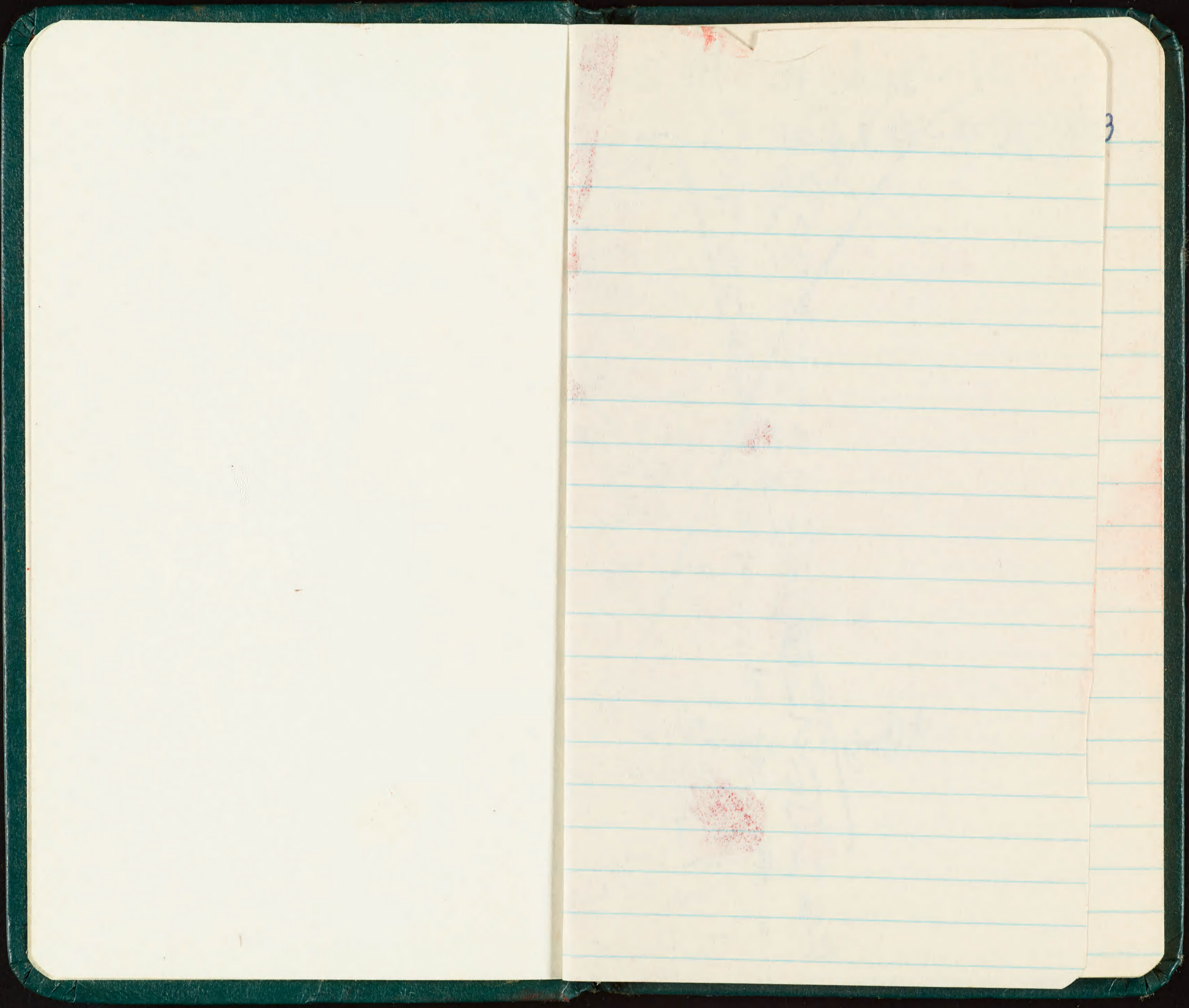
~~757-89921~~

✓ NO APP

9/11/66 TJS

No interlined

Done

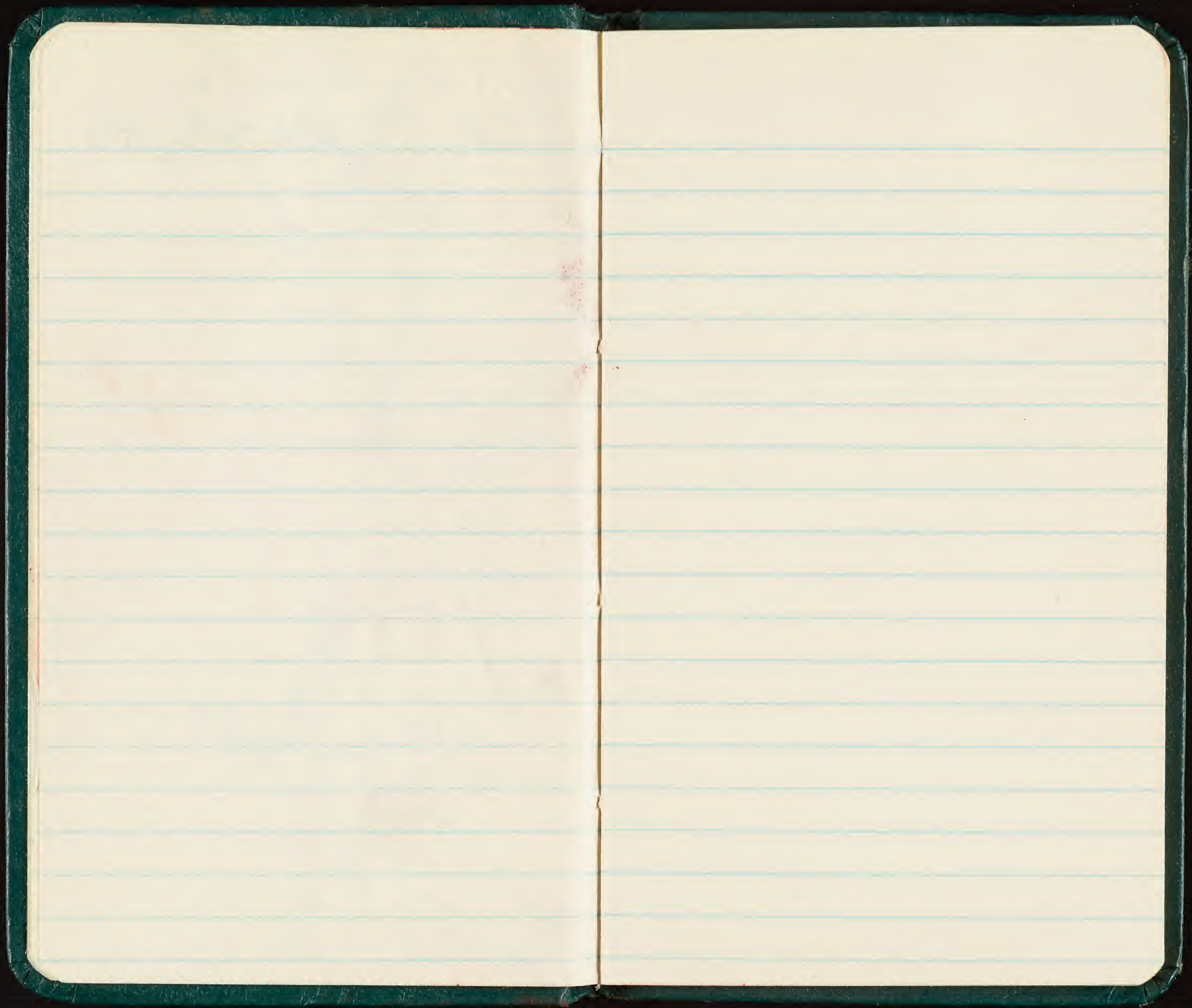


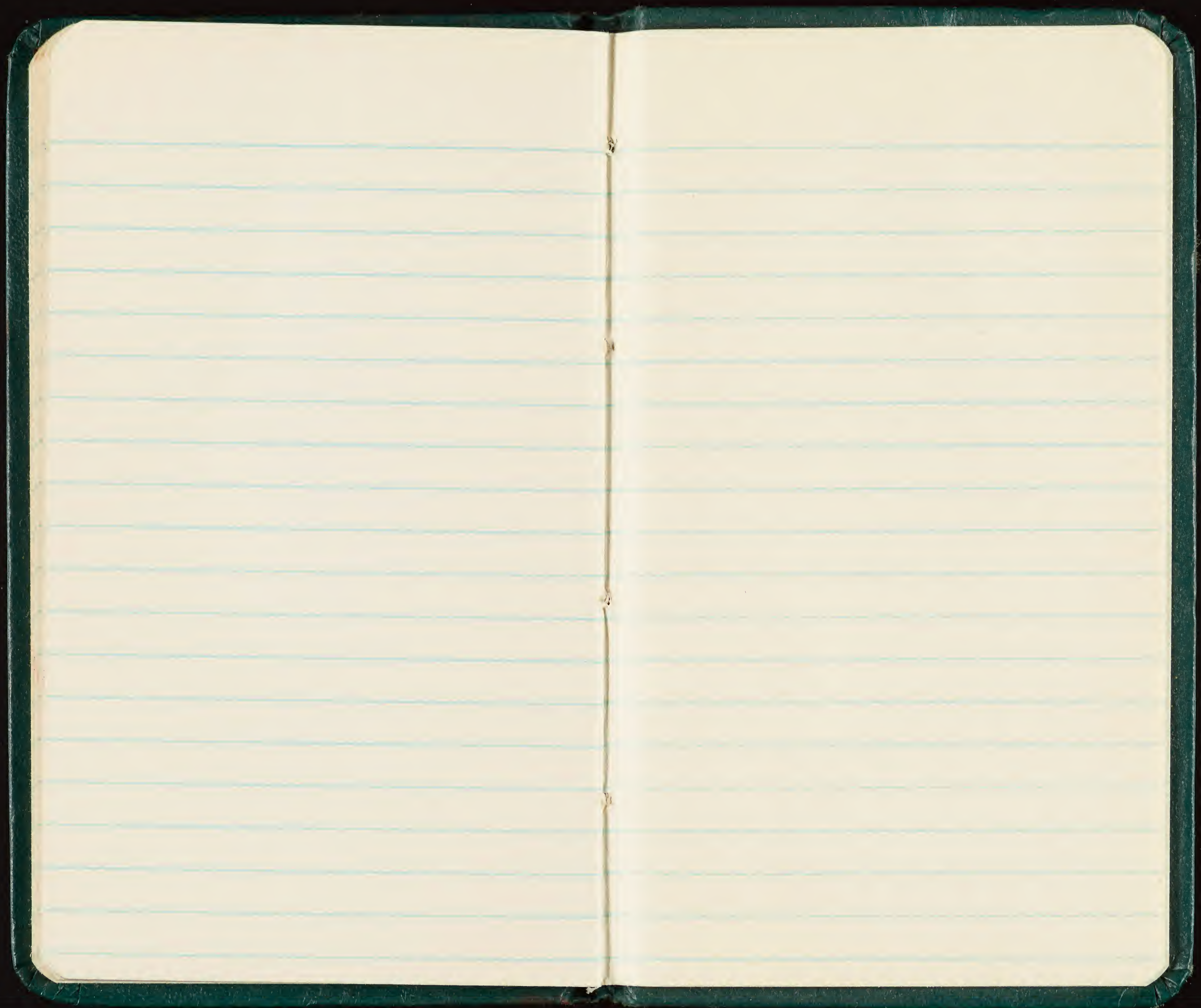
June 16 BF Body

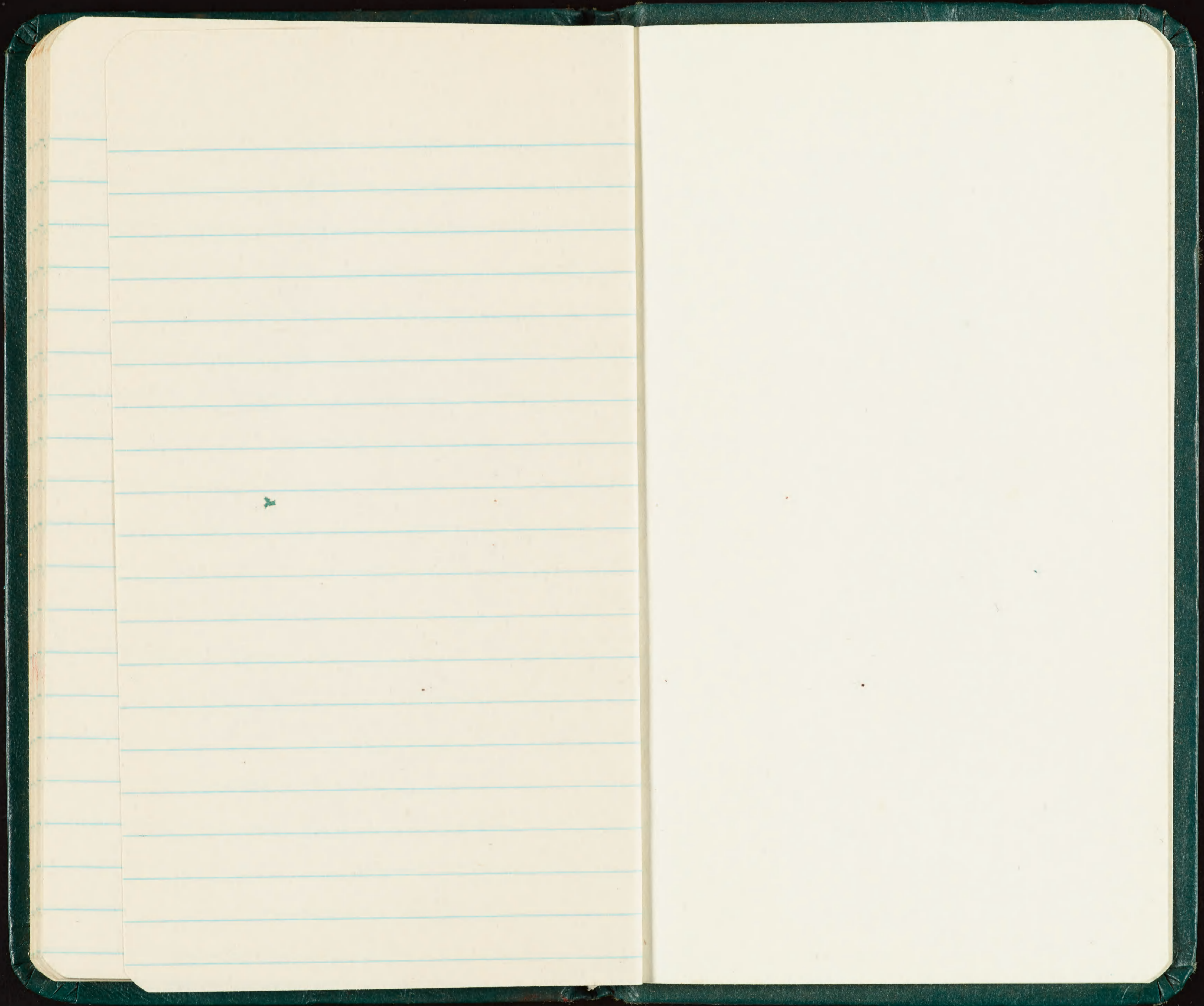
- 767-42601 ♂ June
- 02 ♀ "
- 03 ♂ "
- 04 ♂ "
- 05 ♂ "
- 06 ♂ "
- 07 ♂ on nest
- 08 ♂ on 2 egg
- 09 ♂ nest
- 10 ♀ on 2 egg
- 11 ♂ on 1 egg
- 12 ♀ on 2 egg
- 13 ♀ " "
- 14 ♂ on 2 egg
- Body 15 nestling
- 16 ♂ on 2 egg
- 17 ♀
- 18 ♀ on 1 egg
- 19 ♀ on 2 egg
- 20 ♀ on 2 egg

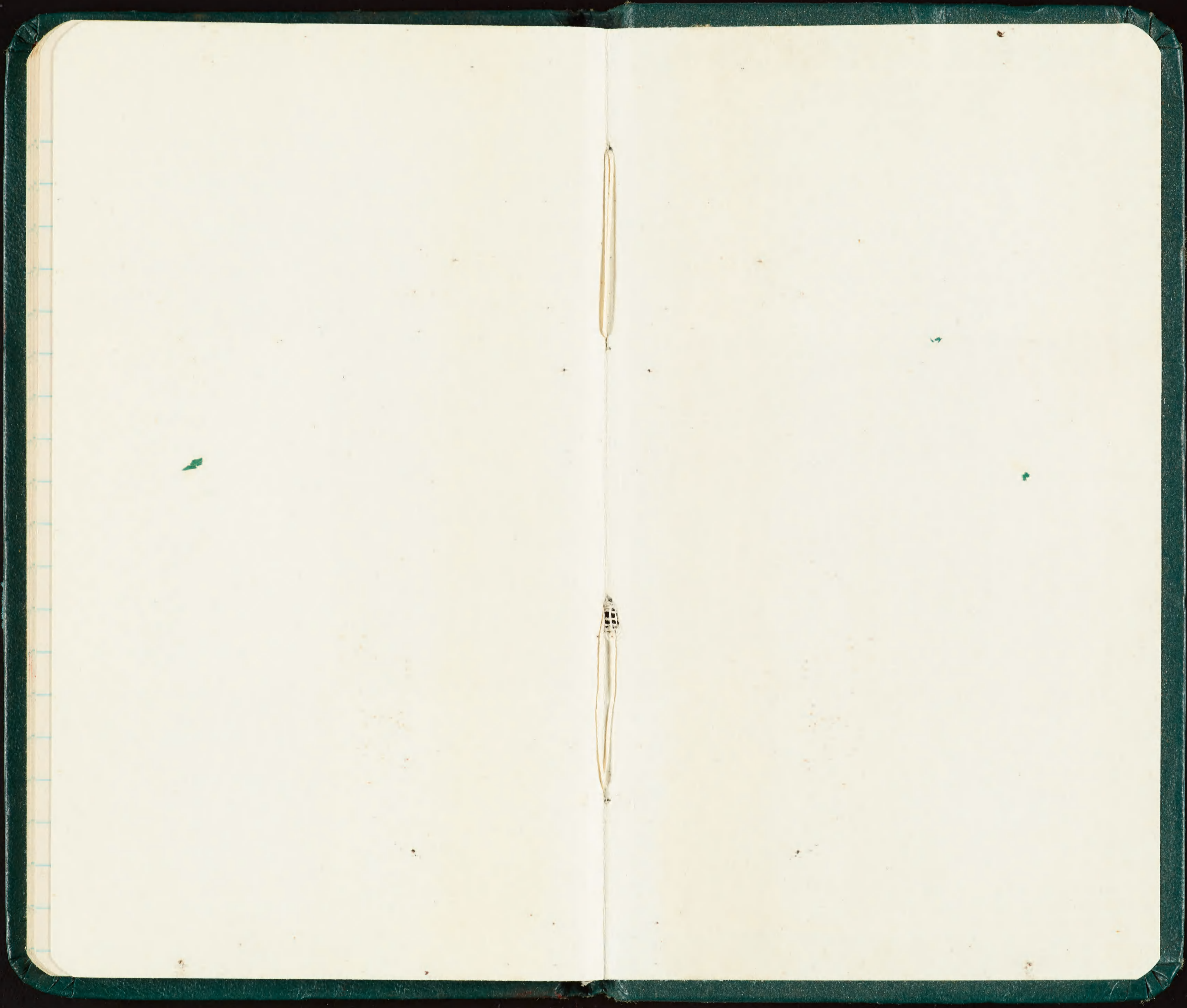
June 16

~~558-85788 Nestling BFB~~









7530-222-0078
FEDERAL SUPPLY SERVICE