

MEMORANDA

Memoranda

Howland Is., SIC # 9
October 16-19, 1965

D. ~~Winters~~

✓
~~ADP~~
ADP
CPLT

Checked against intended
files 8/18/66 ADH
Done 8/31/68

Husted
&
Crossin

Hauland ↓ 0200-16

BFB

GF

RFB

16 Sept 65

700

~~$3/1 = \frac{700}{x}$~~

~~$\frac{230}{3 \overline{) 700} } = 10$~~

Returns
RFB

VADP

BFB

- ~~747-57621~~ ✓
- ~~747-56972~~ RECOVERY ✓
- ~~737-27840~~ ✓
- ~~737-39537~~ ✓
- ~~737-28513~~ ✓
- ~~737-39560~~ ✓
- ~~558-85483~~ ✓
- ~~737-39540~~ call ✓
- ~~737-39520~~ ✓
- ~~737-28644~~ ✓
- ~~737-26788~~ ✓
- ~~737-28894~~ ✓
- ~~737-28900~~ ✓
- ~~737-39598~~ ✓
- ~~737-28896~~ ✓
- ~~737-28890~~ ✓
- ~~737-28859~~ ✓
- ~~737-53125~~ ✓
- ✓ ~~737-20410~~ Enderby

Miscellaneous
fresh
1 set, Brown Booby eggs (or other
booby) fresh sink in
sea water

Oct 16, 1965

✓ ADP

Returns

737-39992 Blue-faced Booby ✓
-39934 " ♂ ✓

Howland Is.
16 Oct, 1965
Bands

Fleet and
Maze

Blue-faced Booby

17 Oct 1965

Shorebird Count

GP

RT

WT

BTC

17 Oct 1965

Returns

Blue-faced Booby

737-39511 ♀

✓ ADP

✓

18 Oct 1965
Returns

18 Oct 1965
Bands

~~19 Oct 1965
Nest count~~

~~BFB No Ad. No eggs 1 N~~

~~BFB No Ad. No eggs 1 N~~

~~BB ♀ Ad. 1 egg 1 N~~

~~BFB No Ad. No eggs 1 N~~

~~BFB No Ad. No eggs 1 N~~

~~20 Oct 1965~~

~~Nest Count~~

~~BFB No egg~~

~~1 egg~~

~~2 eggs~~

~~1 N ~~1~~~~

19 Oct, 1965

Fleet + Maze

Returns

BFB ~~737-20827~~ ♂ ✓

Maze

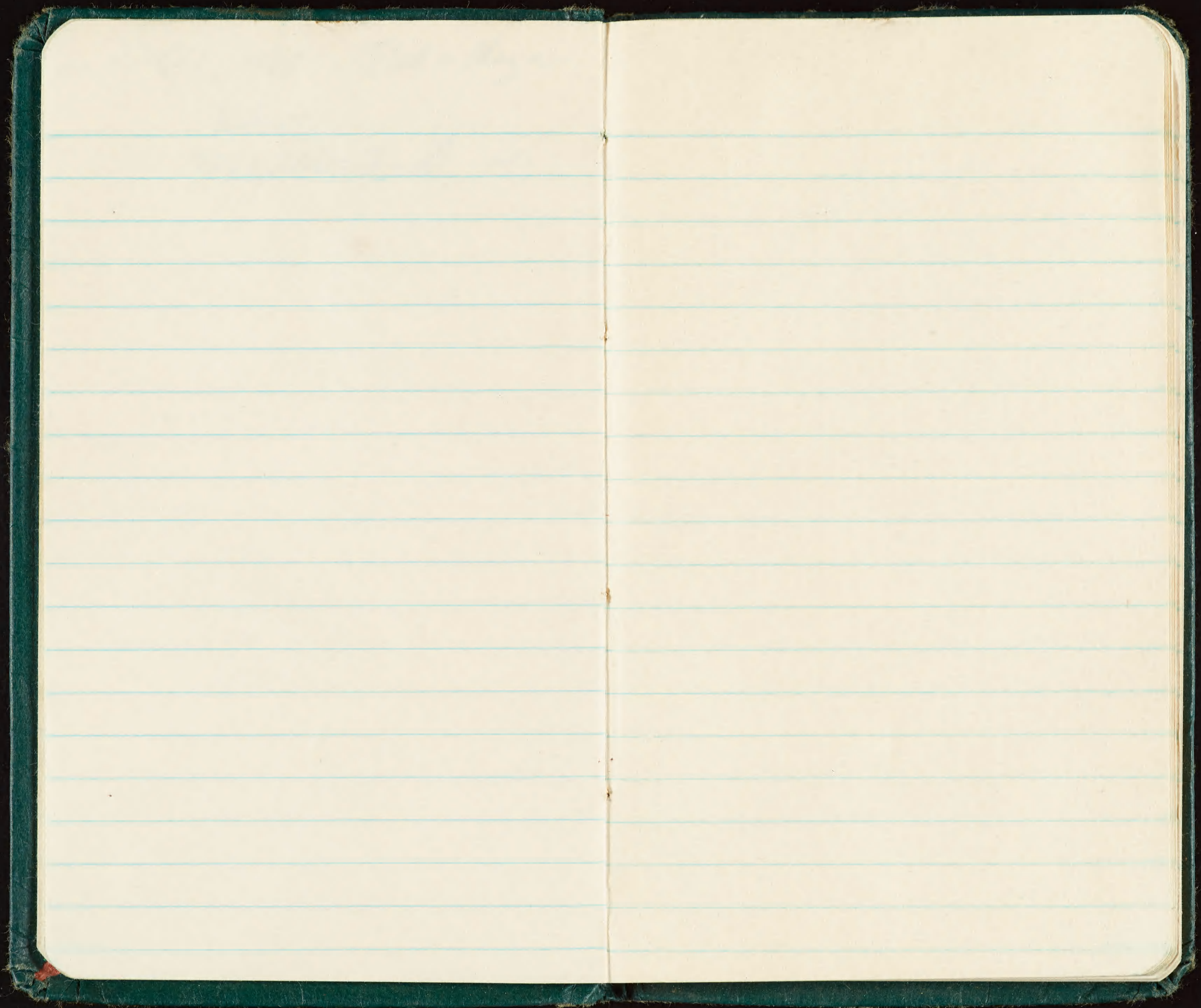
Oct, 1965

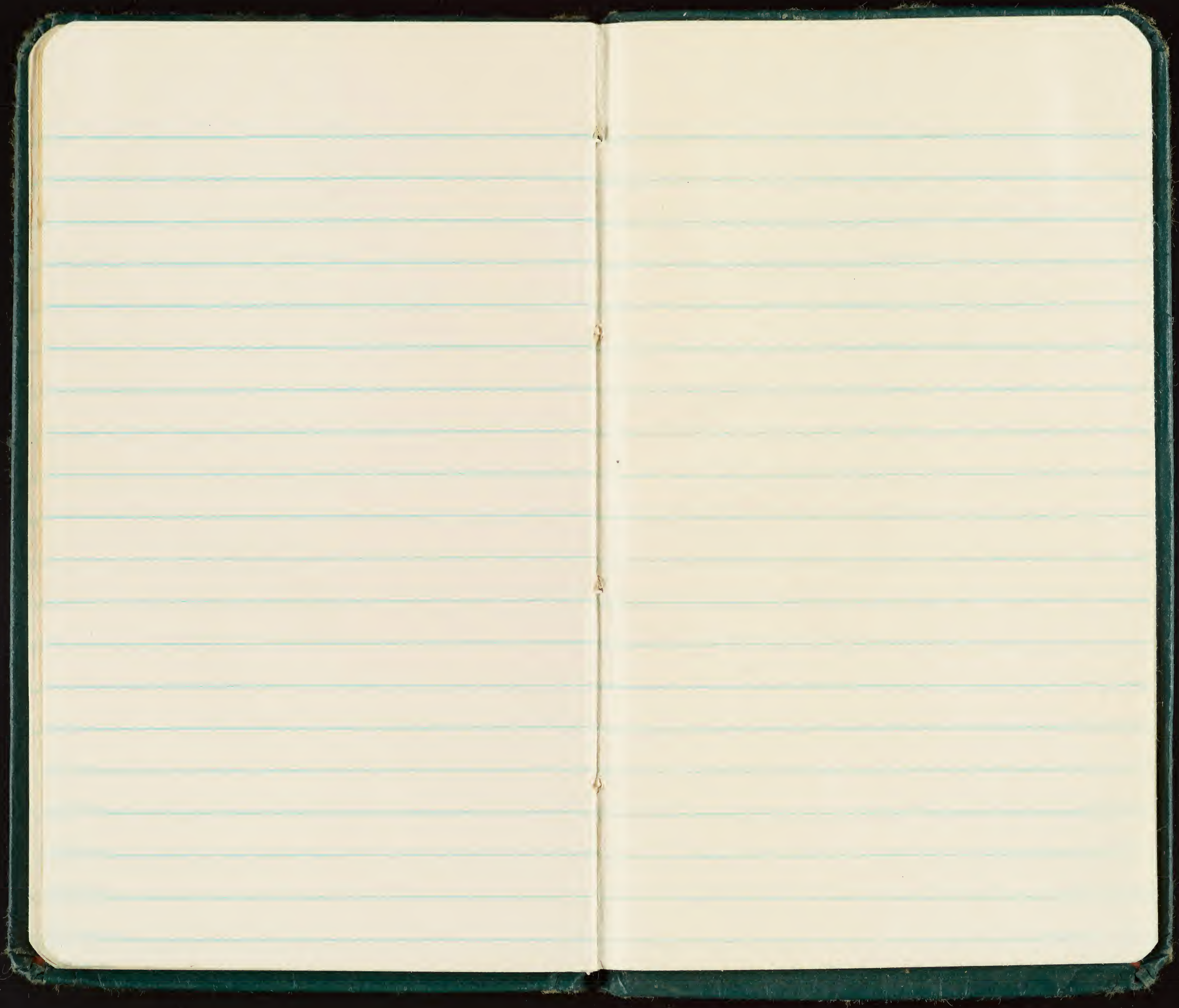
Fleet + Maze

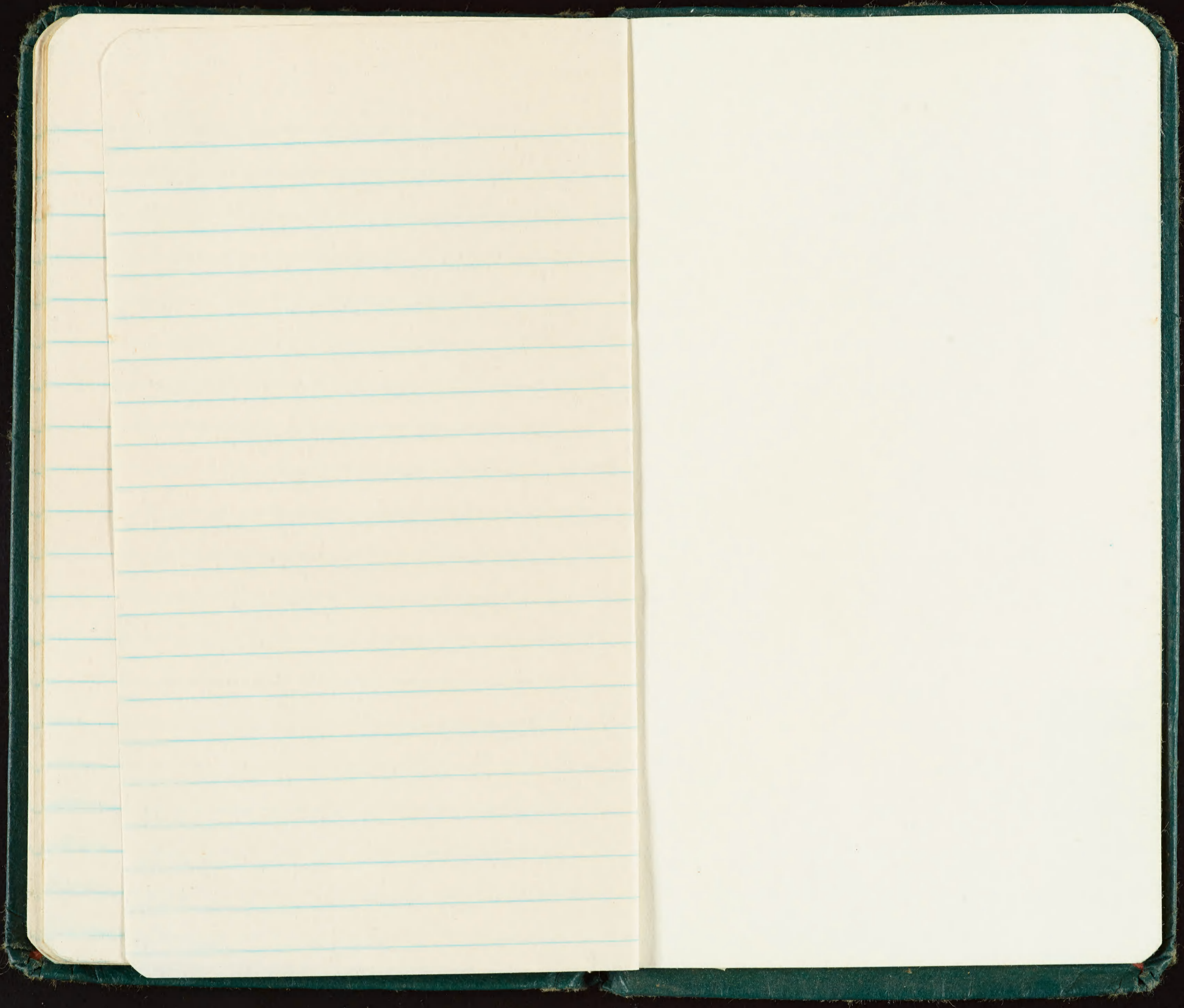
Returns

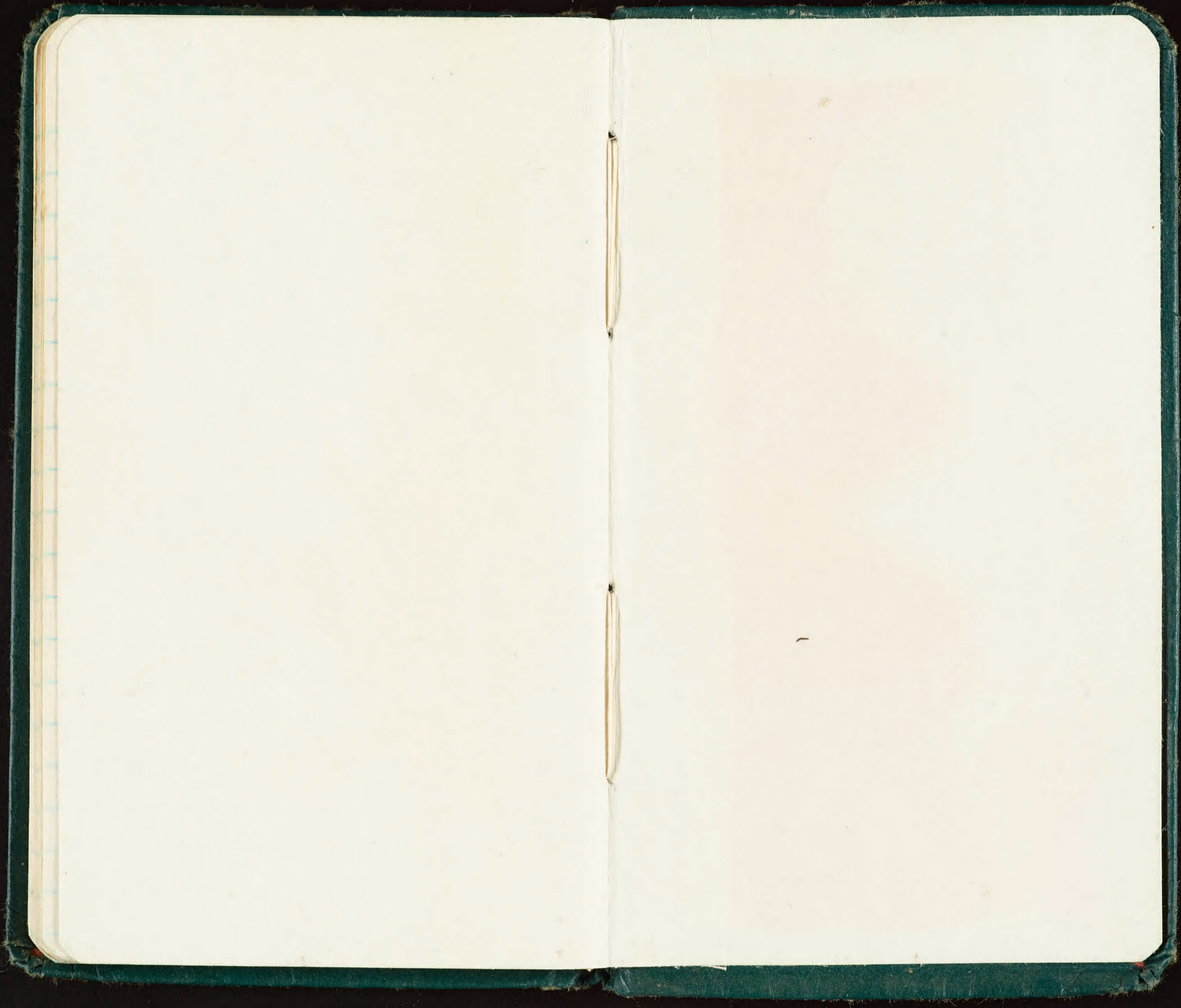
~~737-20827 ♂~~











7530-222-0078
FEDERAL SUPPLY SERVICE

Memoranda

Howland Is., SIC # 9
Sept. 16-18, 1965

SOOTY TERN BANDS USED

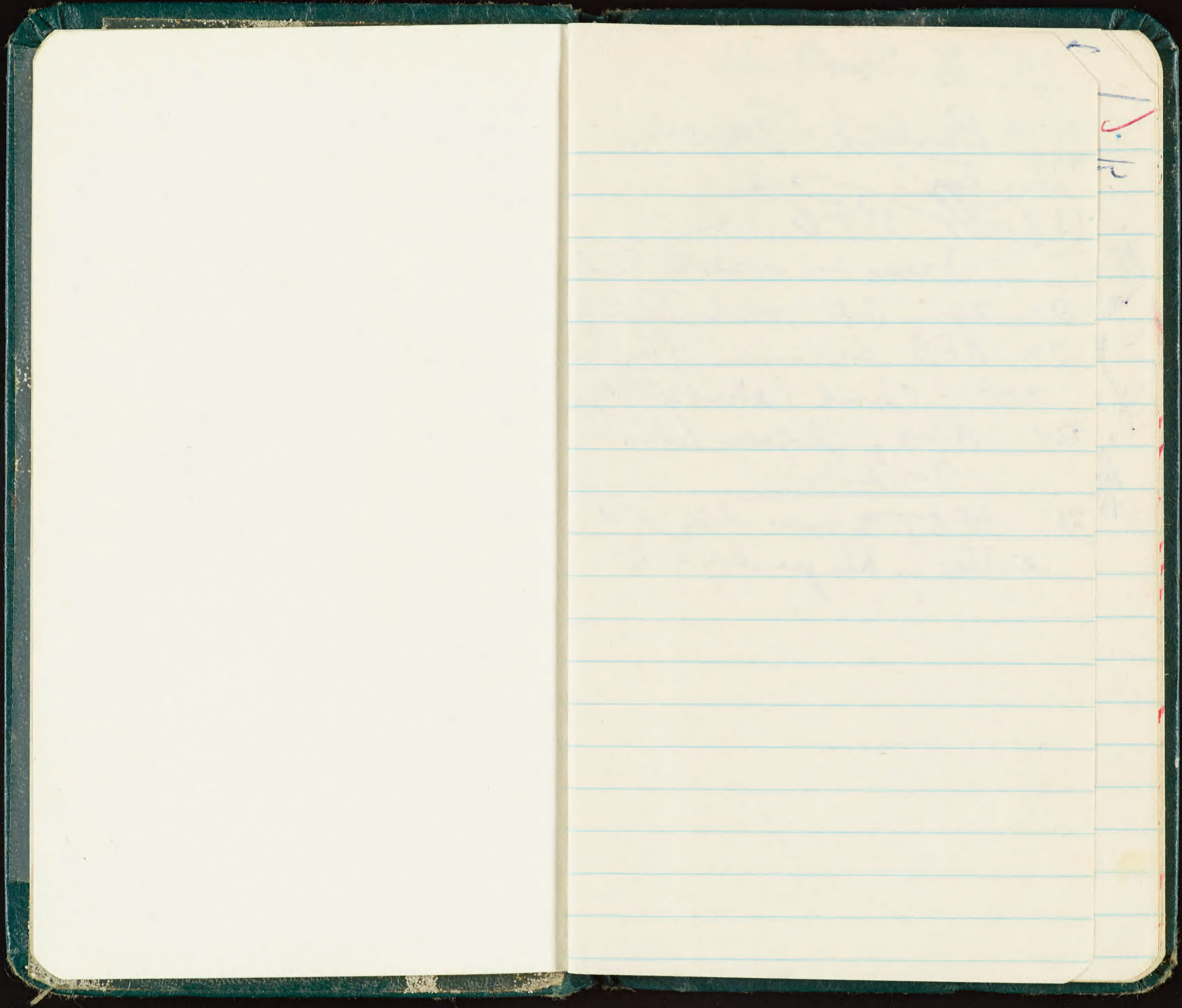
Howland I.

723-61001 - 61600
773-20001 - 20500
72064 - 74000
20716 - 20800
20990 - 30000
39501 - 40000
793-43326 - 44000
44006 - 48200
48301 - 50000
823-01901 - 02000
843-35001 - 39500
50001 - 54300
55001 - 56000
853-00001 - 00500

✓ ADP
CPH

Checked against intended
file 8/18/66 ASH.

Done 2/22/69



1. J.P.

16 Sept

Burlese Jays

(18) ^{egg} - 19 RFB in
Trees - nests (Tubular)

20-22 GF nests, Tubular

23 RFB in —, (Tub. nest)
nest - chick (about fledged)

24 BFB, $\frac{3}{4}$ grown chick in
Tubular.

25 BFB, $\frac{1}{2}$ grown chick, just
litter under pecking site

Howland 16 Sept

~~787-39658 BFB ✓
return~~

16 Sept - Nest - Ad. Counts Total

	W beach, camp 5.	E beach Spt m.
BFB Ad.	IXX XXX III	XXX III
✓ Chicks 1/2 grown	XXX XXX I	XXX
✓ Flying down	XXX XXX II	XXX
✓ Downy 1		XXX
✓ Naked (10-20)		I
Brown Booby Ad	XXX II	
Brown Flying down	I	

Crested Tern 1,
flying over reef

16 Sept. ~~Running~~

BFB 558-85779 Juu.

Night - 16th Sept
~~VADP~~

BFB Returns Bowl

737-20795	A-M	✓
-28896	(A-F)	✓
-28894	(A-M)	✓
-39598	A-M	✓
-20817	A-	✓
-28859	A-F	✓
-28516	A-M	✓
-39573	(A-M)	✓
-28864	(A-F)	✓
-39572		✓
-39586	(A-F)	✓
-49774	(A-M)	✓
-49797	(M w/c)	✓
-39592	F	✓
-53124	F	✓
-28800	M	✓
757-62856	M	✓
-49794	M	✓

(A)

ADP

Brown

~~737-49911~~ A-M ✓ OE

~~-53050~~ A-M ✓

Enderburg

~~-49399~~ A-F ✓

~~-23617~~ A-M ✓

16 Sept 1965

BFB return (cont.)

~~737-20823~~ AF ✓

~~-28521~~ P ✓

~~-53170~~ M ✓

~~-28789~~ M ✓

~~-53489~~ F ✓

~~757-62860~~ (M w/c ✓

~~737-28522~~ (F w/c ✓

~~-53378~~ (M w/c ✓

~~757-63292~~ (F w/c ✓

~~737-39805~~ M w/c ✓

~~-28860~~ F ✓

~~-27593~~ ✓

~~-39595~~ F ✓

~~-28728~~ F ✓

~~757-63232~~ M ✓

~~63325~~ (F ✓

~~737-28797~~ (M ✓

(17)

16 Sept

✓ ADP

BFB

return 3

737 - 27790	M	✓
757 - 63327	F	DE ✓
737 - 28849	F	✓
- 28874	M	✓
- 53370	F	✓
- 53298	F	✓
- 49756	M	✓
737 - 20910	check	M ✓
- 28970	A	✓
568 - 171817	Sid/A	McKean ✓
731 - 39493	♀	✓
1 - 39801	♂	✓
757 - 63333	F	✓
1 - 63165	F	✓

(49)

~~Hand~~

17 Sept

1965

Banding

568-70004

- BFB ^(S) 1/2G

05

06

07

08

Imm

6-69

3

1

1

63 banded
17 Sept.

~~587-83252~~ Imm. ~~SN BFB~~ ~~6-69~~

~~53~~

~~Imm~~

~~54~~

~~Imm~~

~~55~~

"

~~BB~~

~~56~~

~~B#B~~

~~57~~

~~58~~

~~59~~

~~60~~

~~61~~

~~62~~

~~63~~

~~64~~

~~65~~

~~66~~

~~67~~

~~68~~

~~69~~

~~70~~

~~71~~

Ad-M

N

6-69

6-69

3

3

1

1

1

1

1

1

1

1

1

3

1

Abul 17 Sept (banding)

83272 BFB N 6-69

~~73 M-M 1~~

~~74 Imm 1~~

~~75 Imm 1~~

~~76 A-M 1~~

~~77 Imm 1~~

~~78 N 1~~

~~79 ~~Imm~~ 1~~

~~80 N 3~~

81 Chick A-F 6-69

~~82 Imm 1~~

~~83 A-M 1~~

~~84 N 3~~

~~85 N 6-69~~

~~86 N 3~~

~~87 1~~

~~88 1~~

~~89 A-M 6-69~~

~~90 N 3~~

~~91 1~~

Reamer 17 Sept

~~lesser? Frig 747-59794~~

~~BFB AD 747-56972~~

~~dead while blood supply~~

Banding (cont.)

~~937-83292 BFB N-6-69~~

~~93 Imm 1~~

~~94 A-M 1~~

~~95 N 1~~

~~96 Imm 1~~

~~97 N 3~~

~~98 A-M 6-69~~

~~99 N 1~~

~~300 1 3~~

String Houlard Bands

587-83301- AM AFB

02	-	1	check
03	N	1	check
04		1	B
05		1	3
06		1	3
07		1	1
08	A-F	1	6-69
09	N	1	3

Banding

BFB

587-83310 Imm 6-69

11 club A-M

12 club A-M

13

14 club A-F

15 " A-M

16 " A-M

17 " A-M

18 BB S-F?

19 BFB Imm

20 " A-M

21 " A-F

22

23 " A-M

24

25 " A-F

26 " A-M

27

28 " A-M

29

A

Houland 18 Sept

~~568-70009~~

~~10~~

~~11~~

~~12~~

~~13~~

587-83330 BFB A 6-69

31

32

33

34

35

36

37

38

39

40

41

42

43

BB

BB

BFB

A-F

A-M

A-F

Imm

N

A-F

3

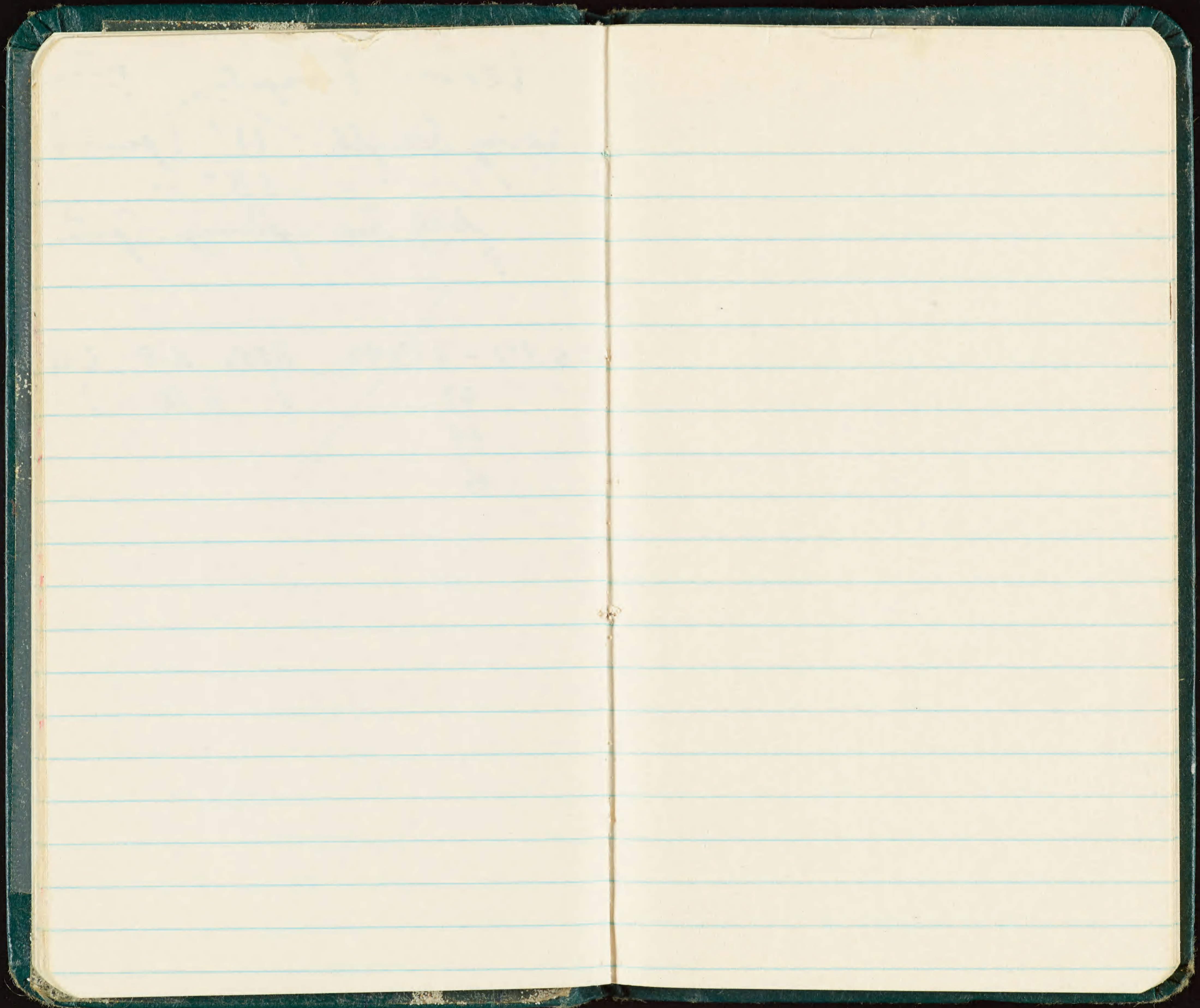
6-69

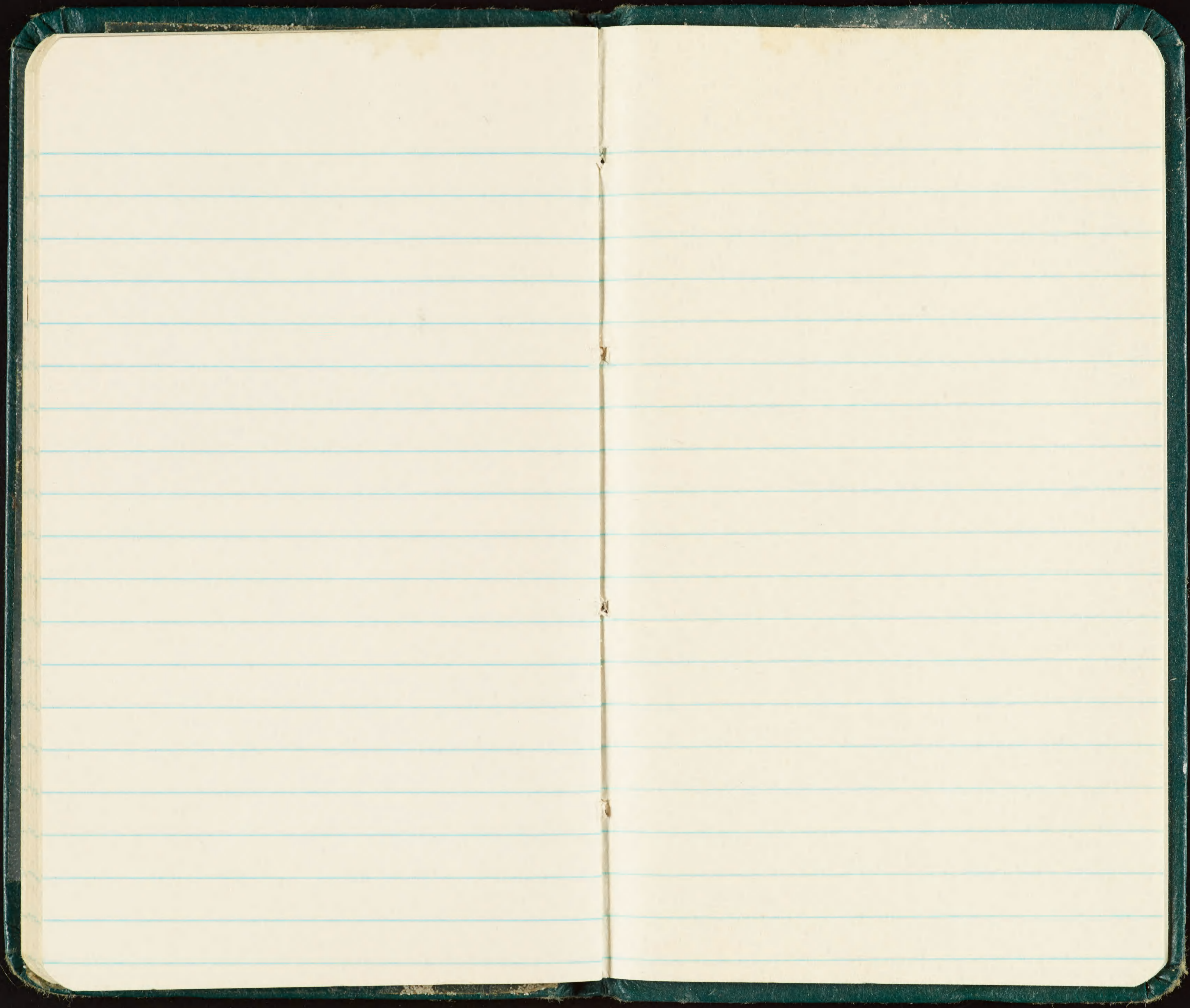
lesser Frigate ^{picture}

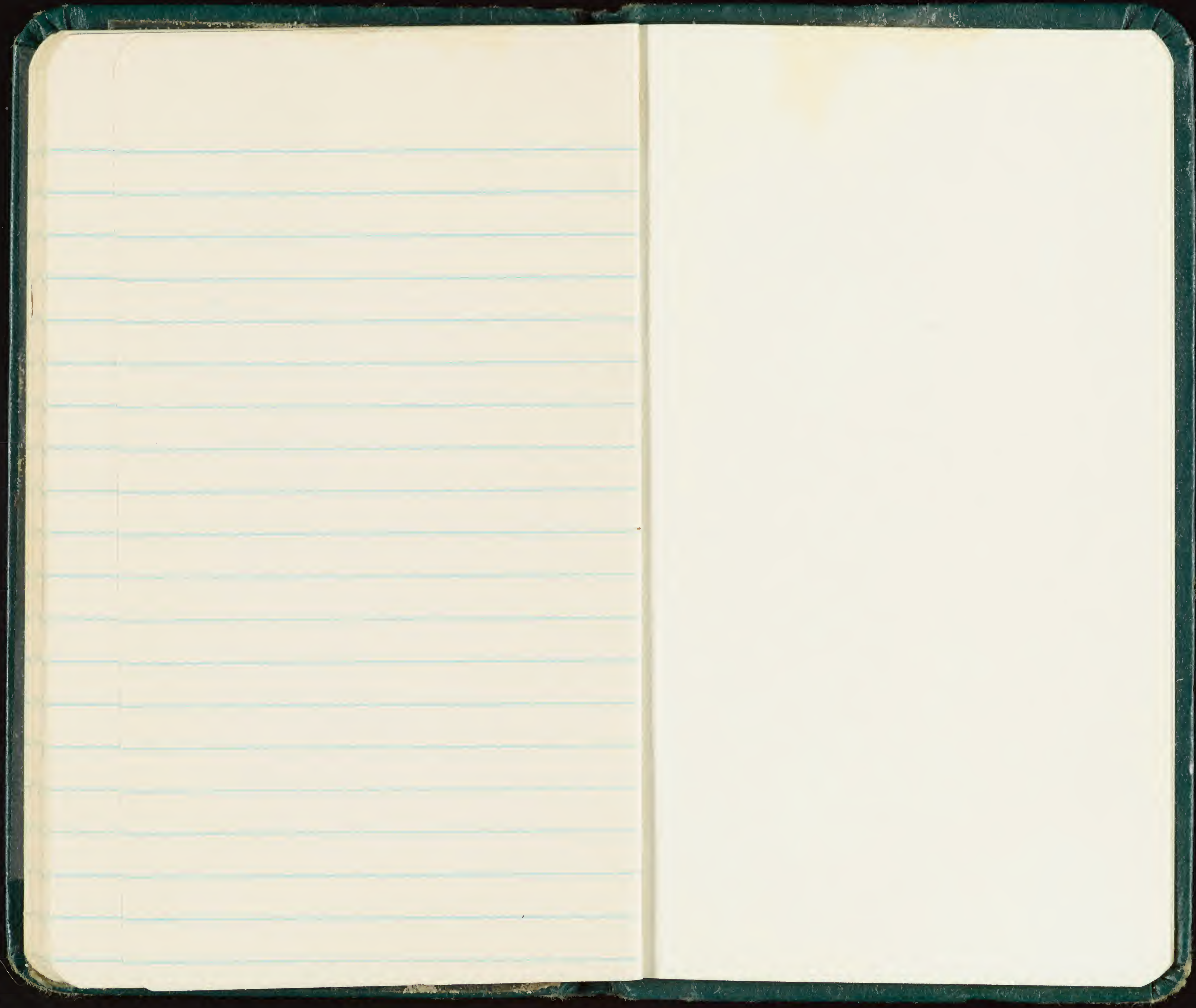
Wing length 11" (juv)
" " 18" -

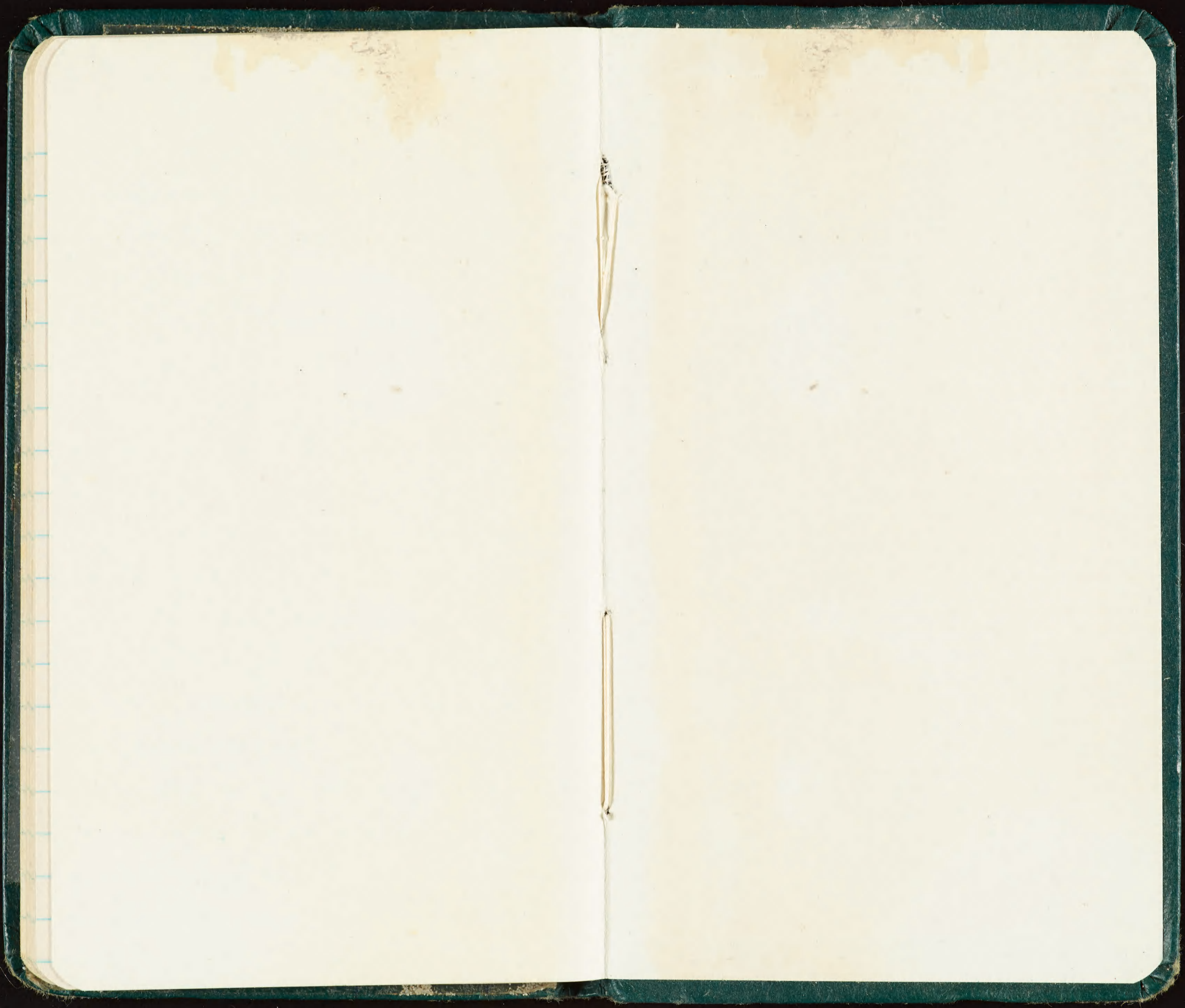
fully imm. plumage (juv)

587-83342 BFB H-F 6-69
43 / A-M)
44
45









7530-222-0078
FEDERAL SUPPLY SERVICE

Memoranda

JNOADP

Dave 8/17/68

No intertidal data
8/26/66 C.Pet

5

154
76
27
7

274

[154]

[76]

[27]

[6]

[1]

18 Oct. Shorebird count

Furnstone ~~||||~~ ~~||||~~ ~~||||~~ ~~||||~~ ~~||||~~ ~~||||~~ ~~||||~~ ~~||||~~

~~||||~~ ~~||||~~ ~~||||~~ ~~||||~~ ~~||||~~ ~~||||~~ ~~||||~~ ~~||||~~ (93)

~~||||~~ ~~||||~~ ~~||||~~ ~~||||~~ ~~||||~~ ~~||||~~

(26)

[119]

GP ~~||||~~ ~~||||~~ ~~||||~~ ~~||||~~ ~~||||~~ ~~||||~~ ~~||||~~ ~~||||~~

(28)

~~||||~~ ~~||||~~ ~~||||~~

(13)

[41]

WT ~~||||~~ ~~||||~~ ~~||||~~

(11)

[13]

||

(2)

Erbia 1

(1)

[5]

||||

(4)

BT Good

VADP

✓ BFB 14 OCT '65
~~737-28903 ♂ (AS)~~

BFB with new blue stripes

Shoebird 19 Oct

GP IIII IIII I

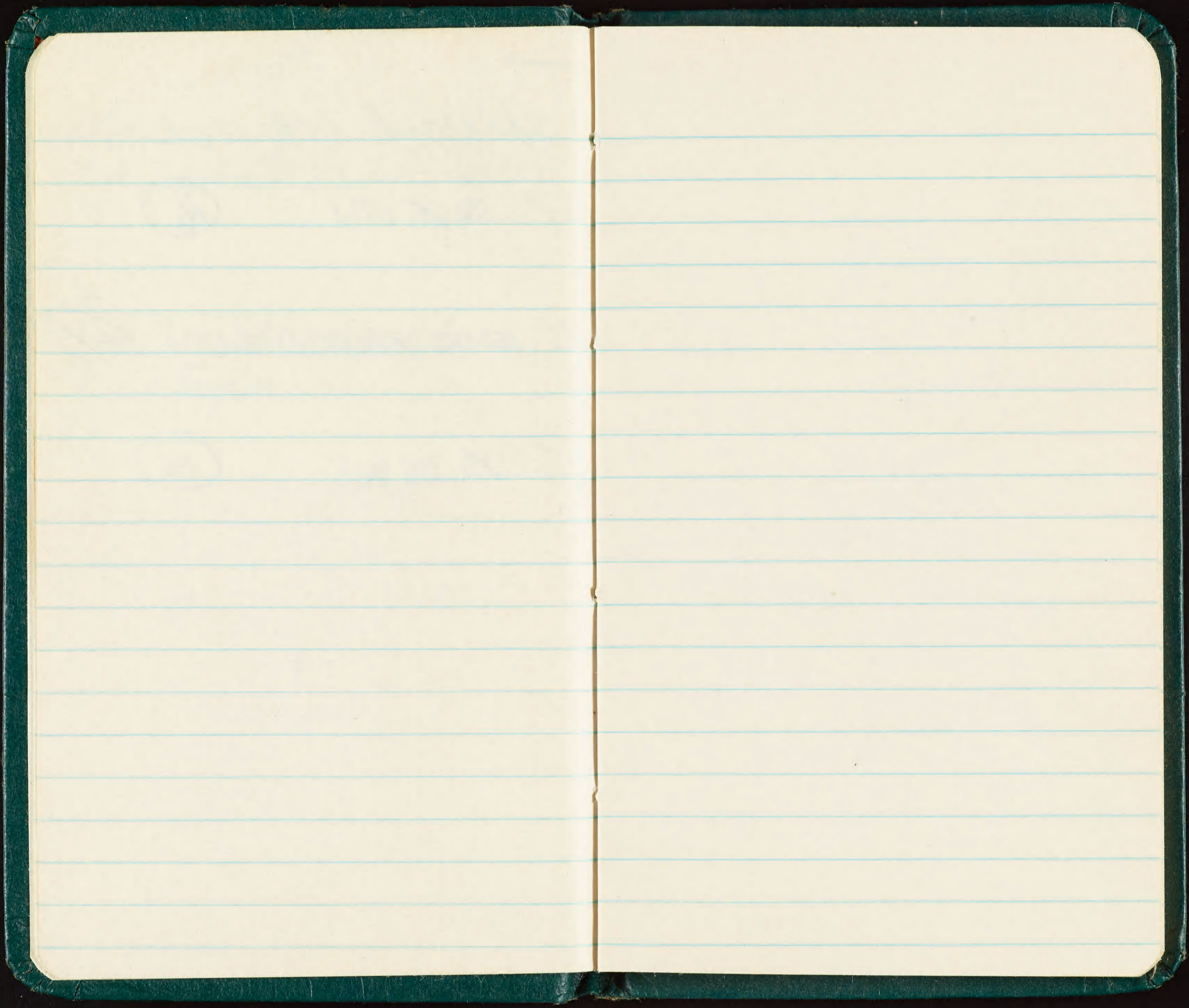
(16)

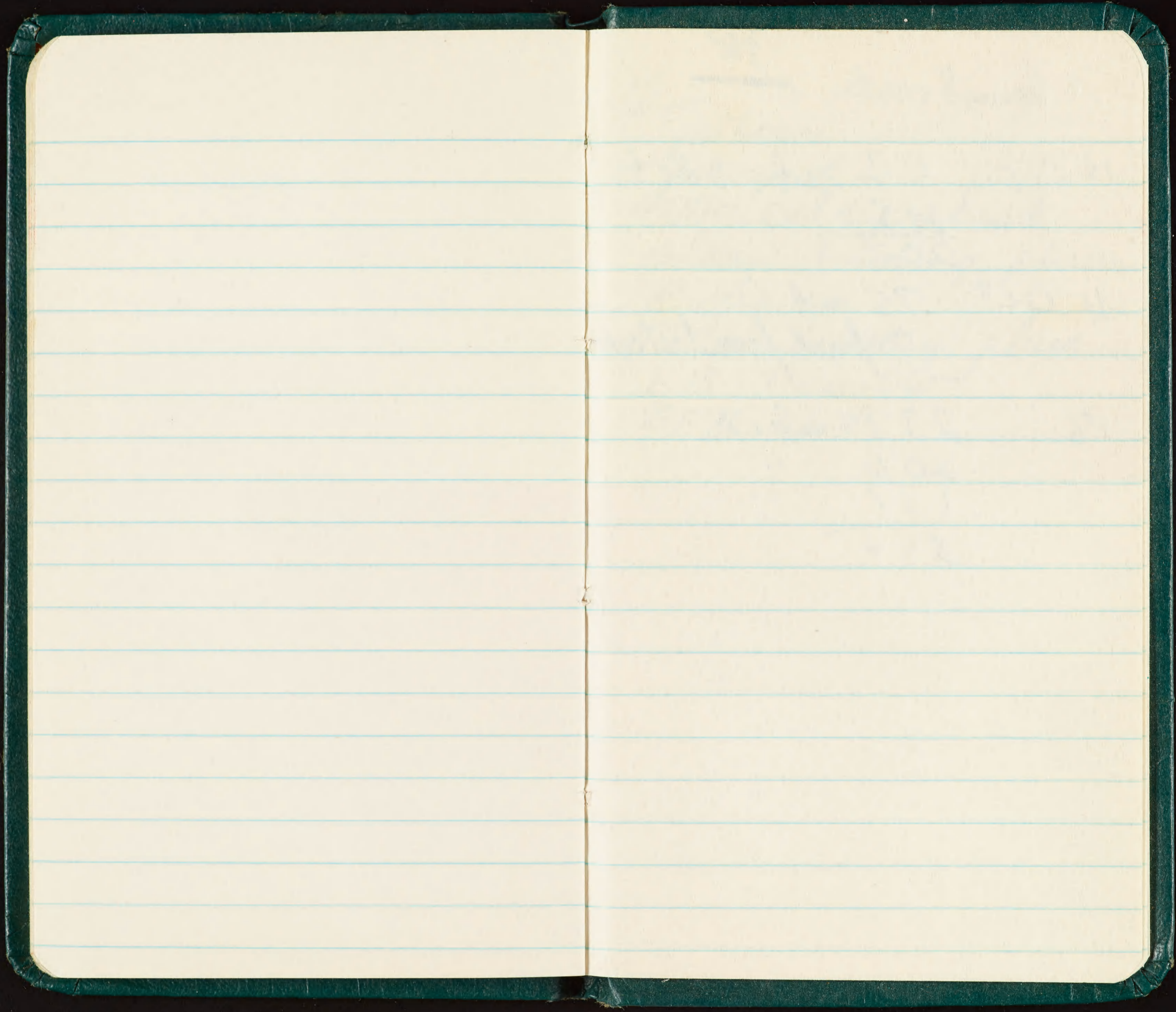
RT IIII IIII IIII IIII IIII I

(41)

WT IIII IIII I

(16)





Hermit crab

178

15 Oct. 62 red 1 det.

145
207

16 Oct 75 red
7 found from last night

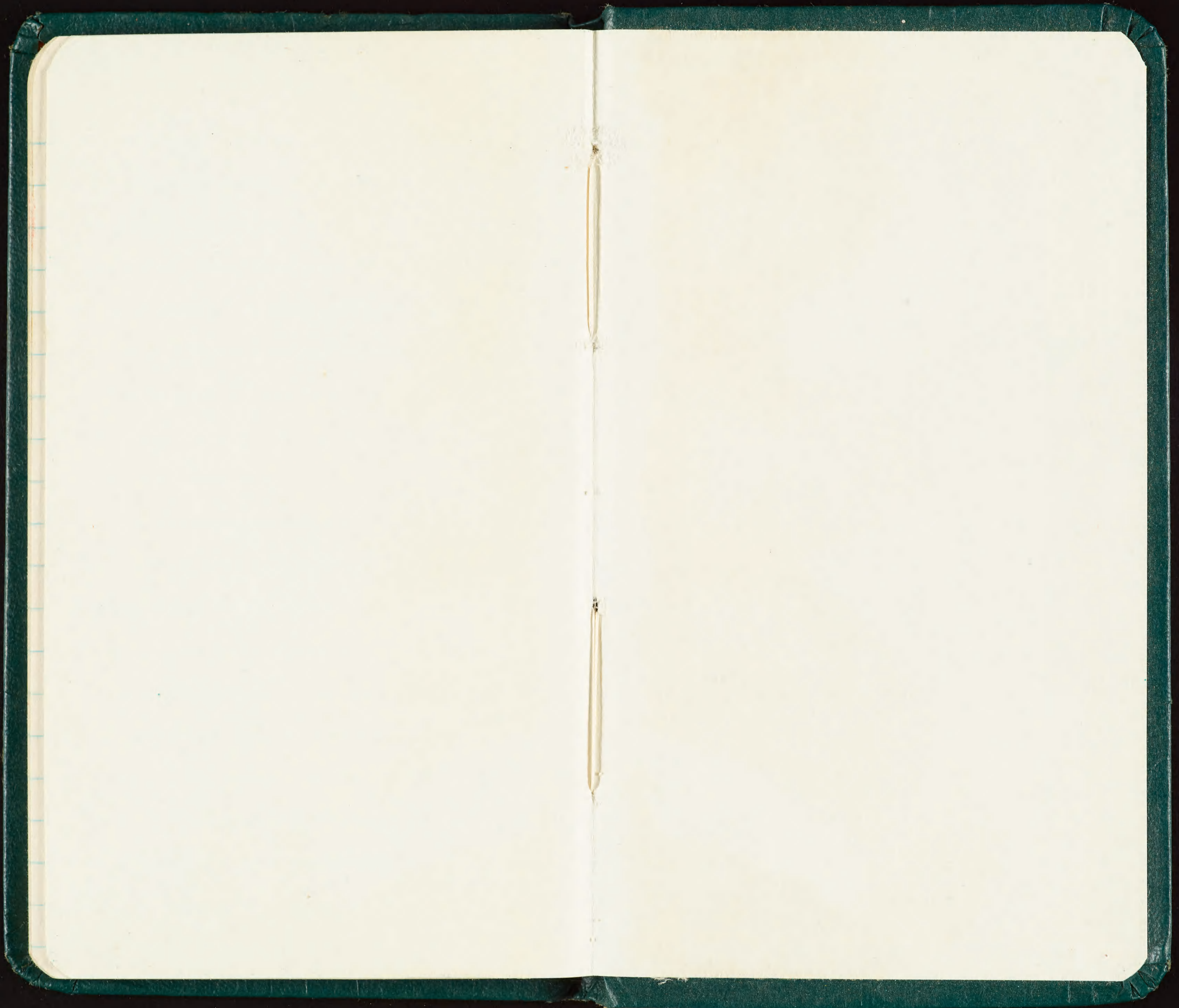
18 233 black

200 "
131 "
564

15

lighthouse
graveyard
Tattler cat rig struck
Golden breeding plum.
Crows
Tattler breeding plum.
1 B-T curlew
BFB nest.

207
52
564
653



7530-222-0078
FEDERAL SUPPLY SERVICE