

WY
Memoranda

Howland Is

Oct 1964

Merrill

WY

MERRILL

HOWLAND

ISLAND

✓ ADP
CPT

Done ~~3/8/69~~

757-63201 - 63300
625-86301 - 86400

L

7

7

4

ext

4

4

24

Howland

Oct 9

Blue faced

Eggs

Young

		Ab	Imm	
1 egg	2			1 Nest
1 nestling	1	1	1	1 imm
1 nestling	2	1	1	1 nest
1 N/A	2	1	1	2 imm
1 N/A	1	1	1	2 nest
1 N/A	1	1	1	5 imm
2 nestlings	1	1	1	1 chick 1 nestling
1 Egg	2	1	1	2 imm
2 Eggs	2	1	1	1 "
1 egg	2	1	1	1 nest
Nestling	1	1	1	2 "
2 eggs	2	1	1	1 chick
1 imm	2	1	1	3 nests
1 Nest	21 Eggs	1	1	1 "
2 eggs	total	1	1	1 chick
1 nest		1	1	1 imm
1 egg		1	1	2 N
2 "		1	1	1 imm
2		27		3 N
		total		

Blue Faces Boobies

Nest	Nest	Eggs	Eggs	Nest
1	1	2	2	1
1	1	2	2	1
1	1	2	2	2 chicks
1	1	1	2	1 chick
1	1	2	2	1 chick
1 chick	1	1	1	2
1	1	1	1+chick	1
1 chick	1	2	2	1
1	1	2	2	1 chick
1	1	2	2	1 chick
1	1 chick	2	1	1
1 chick	1	1+chick	2	1
1	1	1	2	1 chick
1	1 chick	1 egg	2	1 chick
1	1 "	1	2	1 chick
1	1	1	1	1 chick
1+chick	1	1	2	1 ch.
1	1	1	2	1
16 Nest L	18 nestless	26	32 eggs	19 Nest
4 chick	incl 2 chicks	eggs	eggs	16 chicks

Blue faces - Imm. 1964

757-63201

63202

03

→ 568-71369 - imm

04

05

06

07

08

09 - 6 eggs - 5" in
- 3 flying fish 2 imm

10

→ 568-71392 1 imm

11

1558-85233 - nest L.

243 "

12

17

13

18

14

19

15

20

16

19
18
19
56

60 young

3-2 young

♀ Tropic attacking ♂ Blue faced

Blue faced Imm

(558-85280 nest)

757-63221 - nestling

~~22~~ II

23 Imm

→ 568-72069 Imm

24 Imm

25 I |

26 I |

27 I |

~~28 I~~

Count Blue faces

Great-Frigate Count

Nest	Eggs	Eggs
1	2	1
1 chick	2	58
1	2	27
	1	86 eggs
	1	31 eggs
	2	24 eggs
	2	
	1	
	1	
	1/2	
	2	
	1	
	1	
	2	
	1	
	2	
	27 eggs	

Red soil bowl

747-59001-59100

evening 9-Oct 1964

~~Blue faced Boobies~~ **Blue faced Boobies** **VADP**

29	568-71343	Imm	Alone	✓
30	737-27610	♂	Alone	✓
29	568-71346		Alone	✓
30	737-20555	♀	+ egg	✓
31	737-27610	♂		✓
32	568-71344	Imm	Alone	✓
33	737-27713	Al ♂		✓
34	737-20517	Al ♂		✓
35	568-72079	Al ♂	Alone	✓
36	737-53329	♀	2 eggs	Alone
37	737-27615	♂		✓
38	568-71357	Imm		✓
39	737-53387	♀	Alone	✓
40	737-20707	♂		✓
41	737-27735	♀		✓
42	737-27726	♂		✓
43	757-63228	Imm		✓

Now

Blue-faced Boob **VADP** Roosting

- ✓ 737-20689 Ad ♂ with 5 others
- ✓ 20684 Ad ♀
- ✓ 687 Ad ♀
- ✓ 49531 Ad ♂ separate
- ✓ 21000 Ad ♂
- ✓ 757-62867 Ad ♀
- ✓ 62906 Ad ♂
- ✓ 737-53208 Ad ♀ Nest +
- ✓ 737-20702 Ad ♂ chick
- ✓ 53206 Ad ♀ Alone
- ✓ 568-71331 Immature
- ✓ 737-53289 Ad ♀
- ✓ 737-39641 Ad ♂ Imm
- ✓ 568-71329 Imm
- ✓ 737-53205 Ad ♂ Alone
- ✓ 737-25833 Ad ♀ + chick
- ✓ 568-72076 chick **New**
- ✓ 737-27532 Ad ♀ + male + chick
- ✓ 568-72078 **New**
- ✓ 737-25835 Ad ♂ Alone

VADP

- ✓ 568-71361 Imm Alone
- ✓ 737-39724 ♀
- ✓ 737-27720 ♂
- ~~558-85203 chick~~
- ✓ 568-71358 Imm
- ✓ 737-53233 ♂
- ✓ 757-63229 Imm **New**
- ✓ 737-53326 ♀
- ✓ 568-71374 Imm
- ✓ 737-39646 ♀
- ~~757-63202 Imm **New** Attended~~
- ✓ 568-71370 Imm
- ✓ 737-28920 ♂
- ✓ 568-71376 Imm
- ✓ 737-49522 ♀
- ✓ 737-53235 ♂
- ✓ 737-26631 ♀
- ✓ 737-26632 ♂
- ✓ 568-71378 Imm

✓ ADP

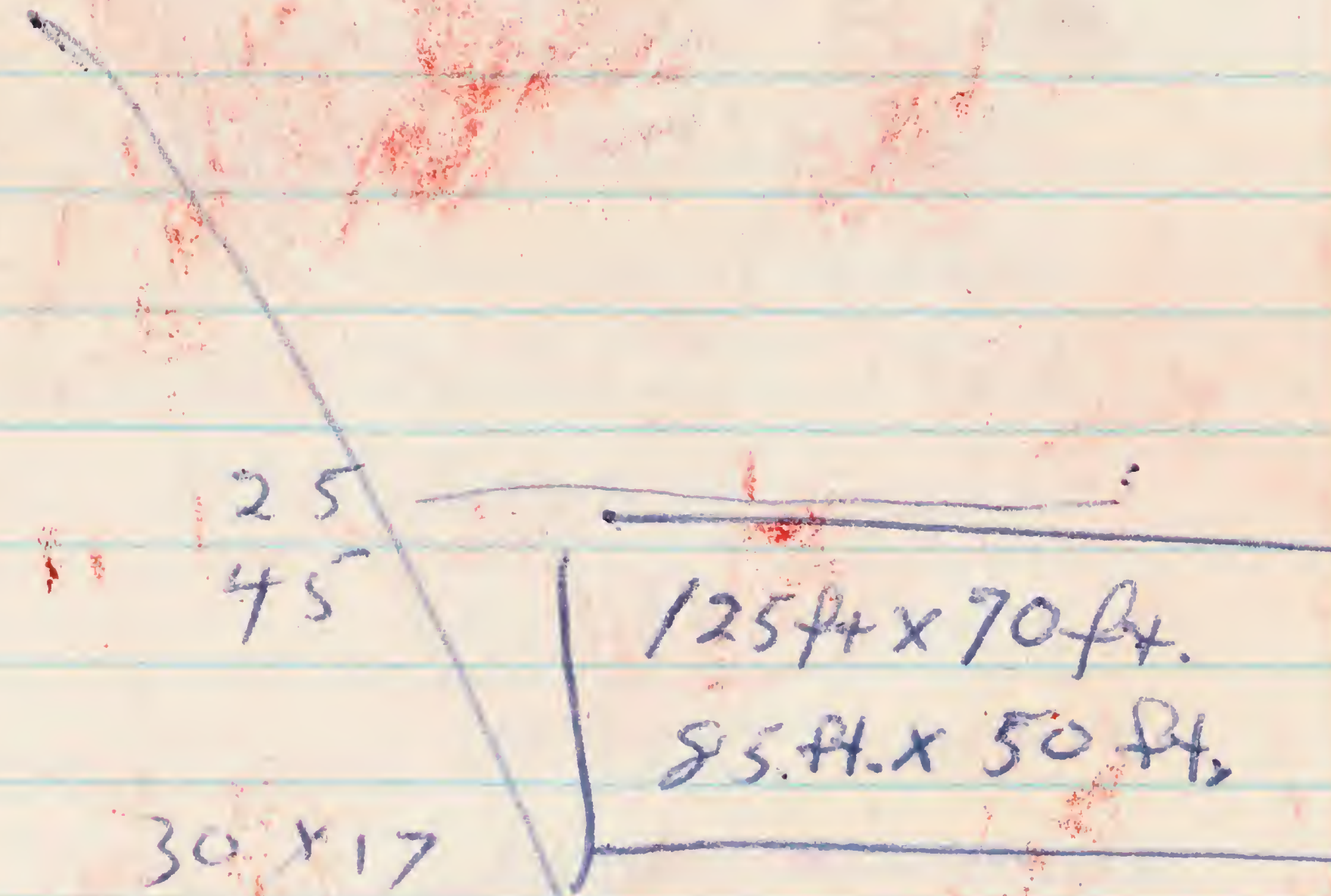
- ✓ 737-27637 ♀
- ✓ 737-26629 ♂
- ~~758-85200 chick~~
- ~~751-63707 Imm~~
- ✓ 737-27813 ♀
- ✓ 737-27737 ♂
- ✓ 568-71383 Imm
- ✓ 568-71379 Imm
- ✓ 737-26637 ♀
- ✓ 53202 ♂
- ✓ 568-71384
- ✓ 737-26645
- ✓ 737-28935 ♀ club?
- ✓ 737-53249 ♂ club?
- ~~757-63204 Imm~~ New
- ✓ 23612 ♂ club?
- ✓ 49443 ♂ club?
- ✓ 20566 ♀ club?
- ✓ 737-49856 ♂
- ✓ 25866 ♀

- ✓ 568-72087 chick
- ✓ 737-53238 ♀
- ✓ 26635 ♂
- ✓ 25870 ♀
- ✓ 25868 ♂
- ✓ 53245 ♀
- ✓ 53244 ♂
- ✓ 23589 ♂ - 2 eggs
- ✓ 737-25859 ♀
- ✓ 25855 ♂
- ~~737-63705 Imm~~ New
- ✓ 28540 ♀
- ✓ 25856 ♂
- ✓ 737-27809 ♀
- ✓ 568-72083 chick
- ✓ 737-20574 ♀
- ✓ 27541 ♀
- ✓ 25848 ♂
- ✓ 568-92065 Imm

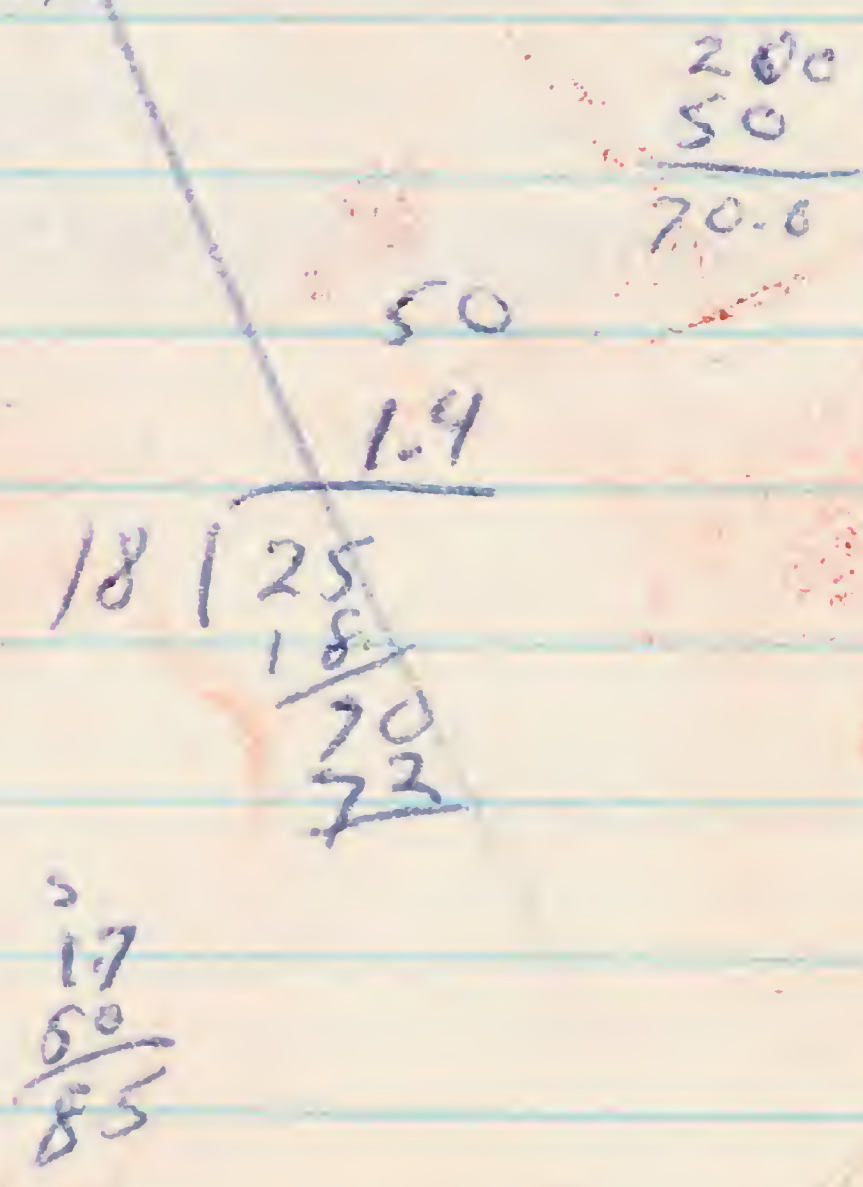
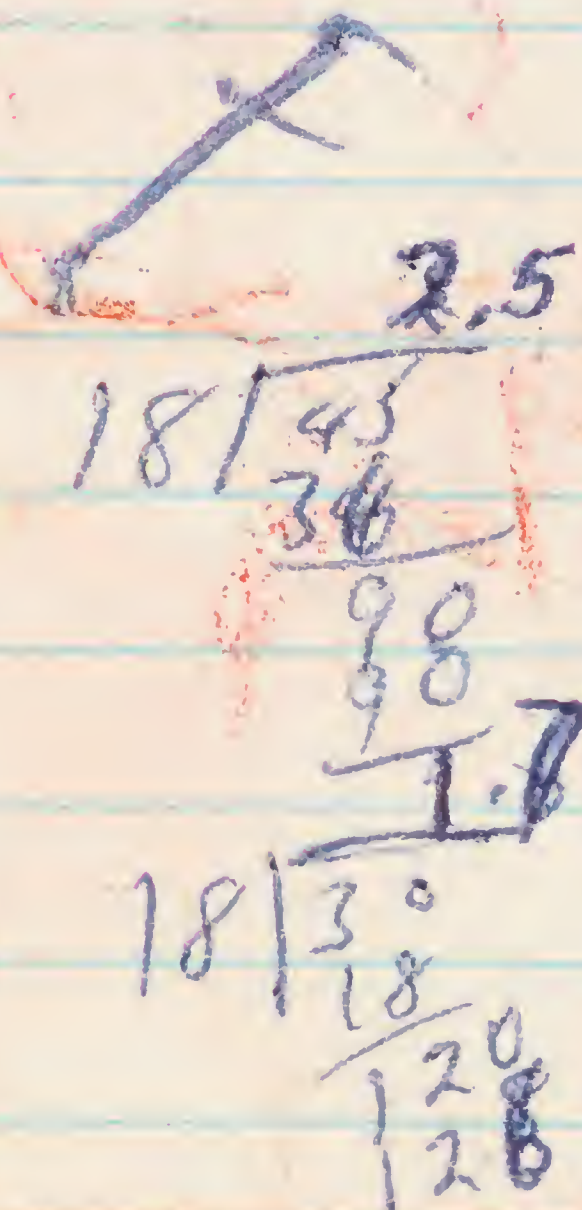
✓ ADP

- ✓ 737-27542 ♂
- ✓ -26615 ♀
- ✓ 568-72080 chick new
- ✓ 757-62871 ♂
- ✓ 737-49533 ♀
- chick (middle)
- ✓ 737-27710 ♂
(middle) chick
- ✓ 757-62736 ♀

10 October 1964
~~737-20808 BF/ST~~



18 pieces x 50 ft



Nestling Lesser Frigates

~~747-59201-59300~~

Adult Sooty Terns

773-23001-23500

23001-23100

23101-23200

23201-23300

23301-23400

23401-23500

~~23501-23600~~

~~23601-23700~~

~~23701-23800~~

~~23801-23900~~

~~23901-24000~~

11 October 1964

~~747-58401-58500~~

~~747-58401-58500~~

747-58401-58500

Lesser Frigate Nestlings

737-39596 ^{Adult + ♀} Blue face Returner

53478 Ad ♀

12 October

Sooty Tern Adults

773-26501 - 27000

~~773-27001 - 27300~~

773-27301 - 27400

773-27601 - 27700

Take out

Blood. 70 samples/line

5 bird skins.

4 frozen terns.

Count 3's - even out to 5000

773 series.

Bring in

Robins

3000 # 34

Oct 13, 1964 **ADP**

~~757-65301-65400~~
757-65253-65300

✓ ✓ RFBud 727-8651 ✓ Retax

✓ ✓ Transition Muddy Yew

682-47601 new

✓ 757-65253 RFB 09 new

✓ 737-39824 09

✓ 28827 09 PR. ✓

✓ 20836 ~~28836~~ ♀ ✓

✓ 54 09

✓ 55 ♀

✓ 56 ♀

✓ 57 ♀

✓ 58 ♀

✓ 59 09

✓ 737-5312 ♀ ✓

60 09

61 ♀

Blue face Booby

- ✓ 568-71459 Imm ✓ VADP
- ✓ 63 ~~♂~~ ♀
- ✓ 737-20896 ♂ ✓
- ✓ 737-27852 ♀ ✓
- ✓ 737-20866 ♂ ← ✓
- ✓ 64 ♀ + chick
- ✓ 737-20558 ♀ ✓ ~~Adult~~ NL
- ✓ 737-20984 ♂ ✓
- ✓ 737-27757 ♂ ✓
- ✓ 568-71474 Imm ✓
- ✓ 65 ♂ ✓
- ✓ 737-53276 ♀ ✓
- ✓ 568-71466 Imm ✓
- ✓ 66 ♀
- ✓ 757-62974 ♂ ✓
- ✓ 67 ♀
- ✓ 737-53349 ♀ ✓
- ✓ 737-20734 ♀ ✓
- ✓ 568-71457 Imm ✓
- ✓ 68 ♀

✓ VADP

- 69 ♀
- ✓ 737-39906 ♀ ✓
- ✓ 568-71448 Imm ✓
- ✓ 757-62811 ♂ ✓
- ✓ 737-50270 ♀ ✓
- 70 ♀
- 71 ♀
- ✓ 568-71452 Imm ✓
- ✓ 737-39917 ♀ ✓
- ✓ 568-71451 Imm ✓
- ✓ 568-71453 Imm ✓
- 72 ♂
- 73 ♀
- ✓ 737-26699 ♂ ✓
- ✓ 568-71433 Imm ✓
- ✓ 568-71416 Imm ✓
- ✓ 757-63034 ♀ ✓
- ✓ 737-39790 ♂ ✓
- ✓ 757-63213 Imm ✓ New
- ✓ 568-~~757~~-71442 Imm ✓

✓ ADP

✓ 737-39762 ♀ ✓

✓ 757-63115 ♀ *Imm* *Nurd*

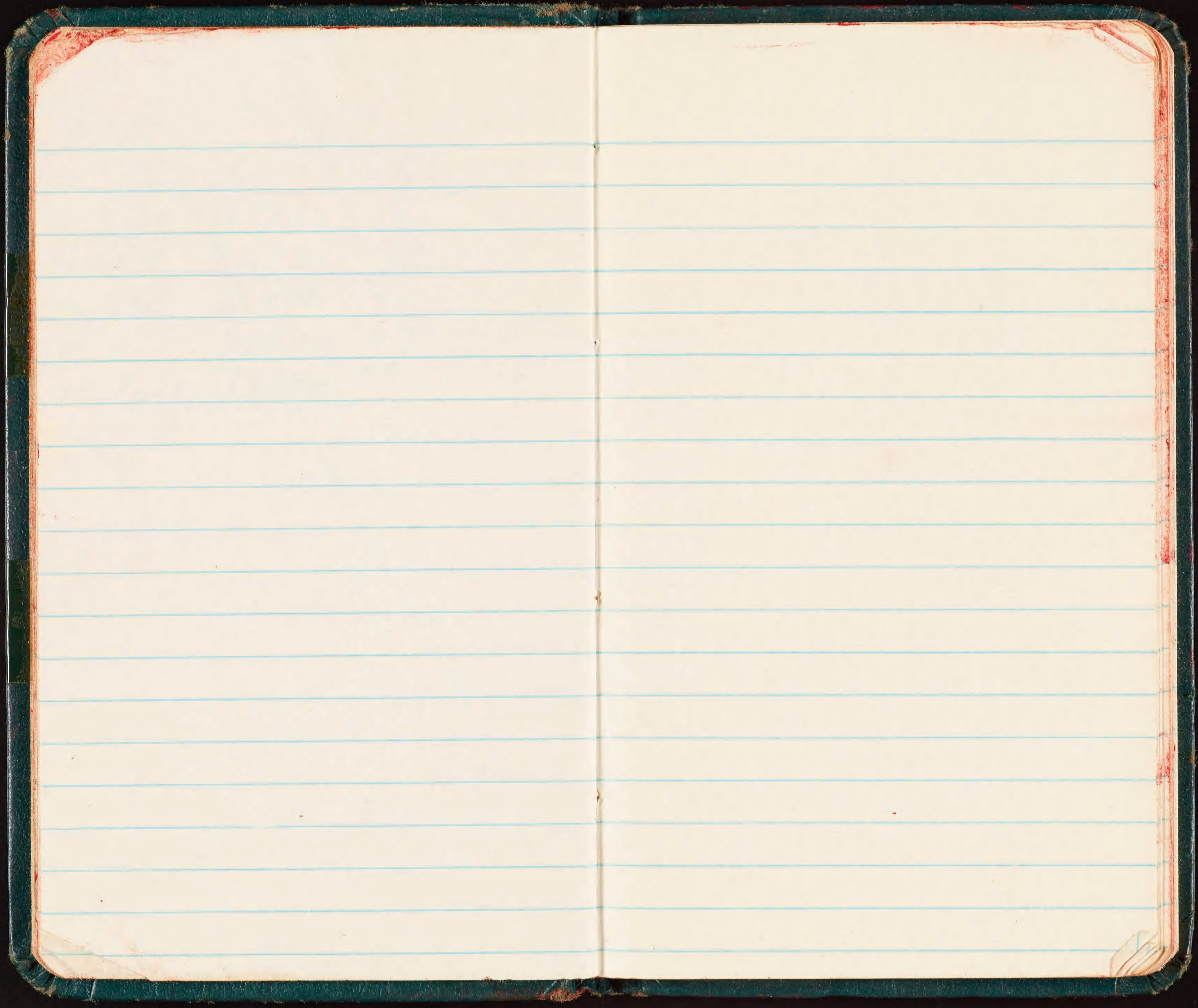
✓ 737-28725 ♀ ✓

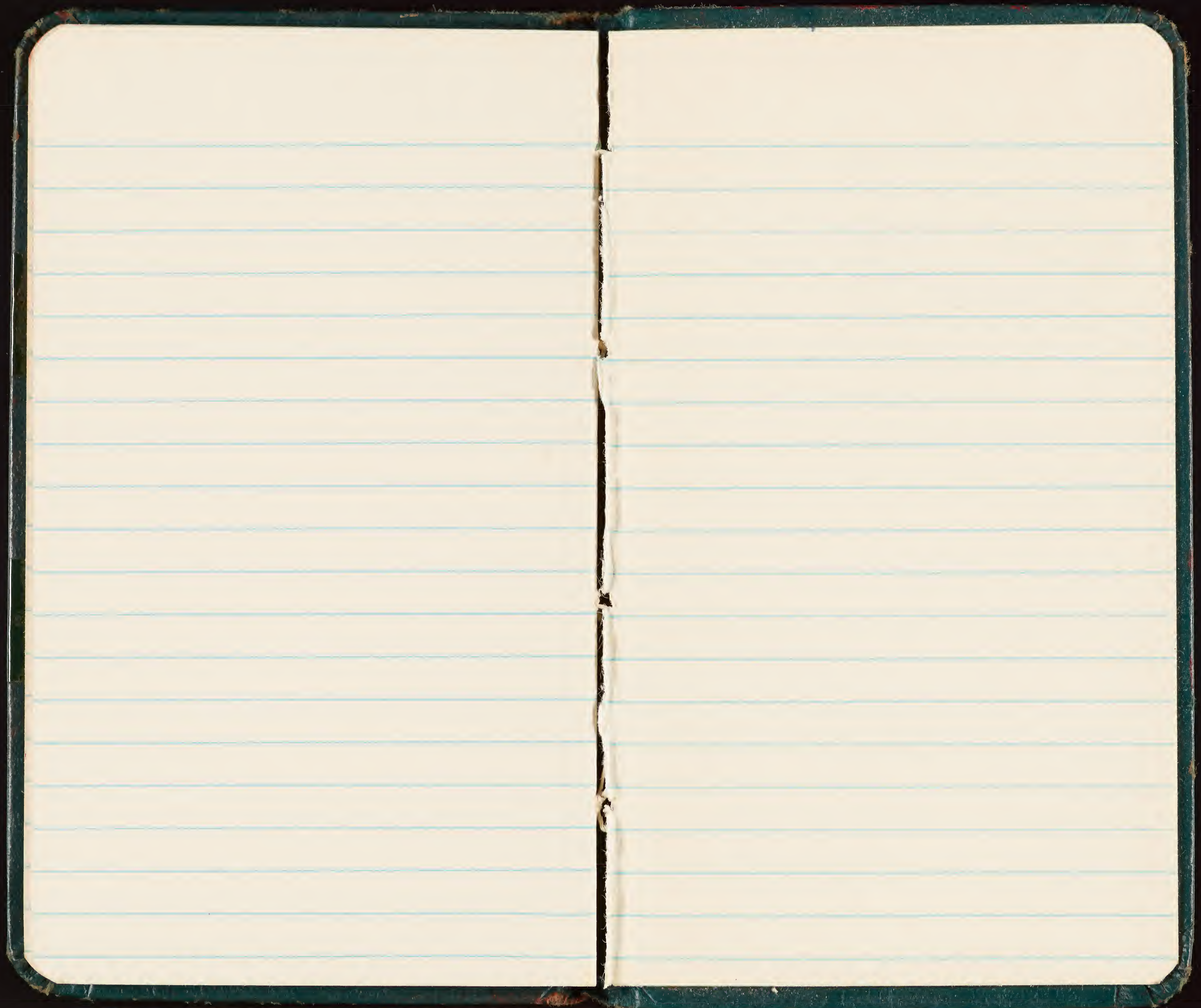
✓ 558-85230 ♀ ✓

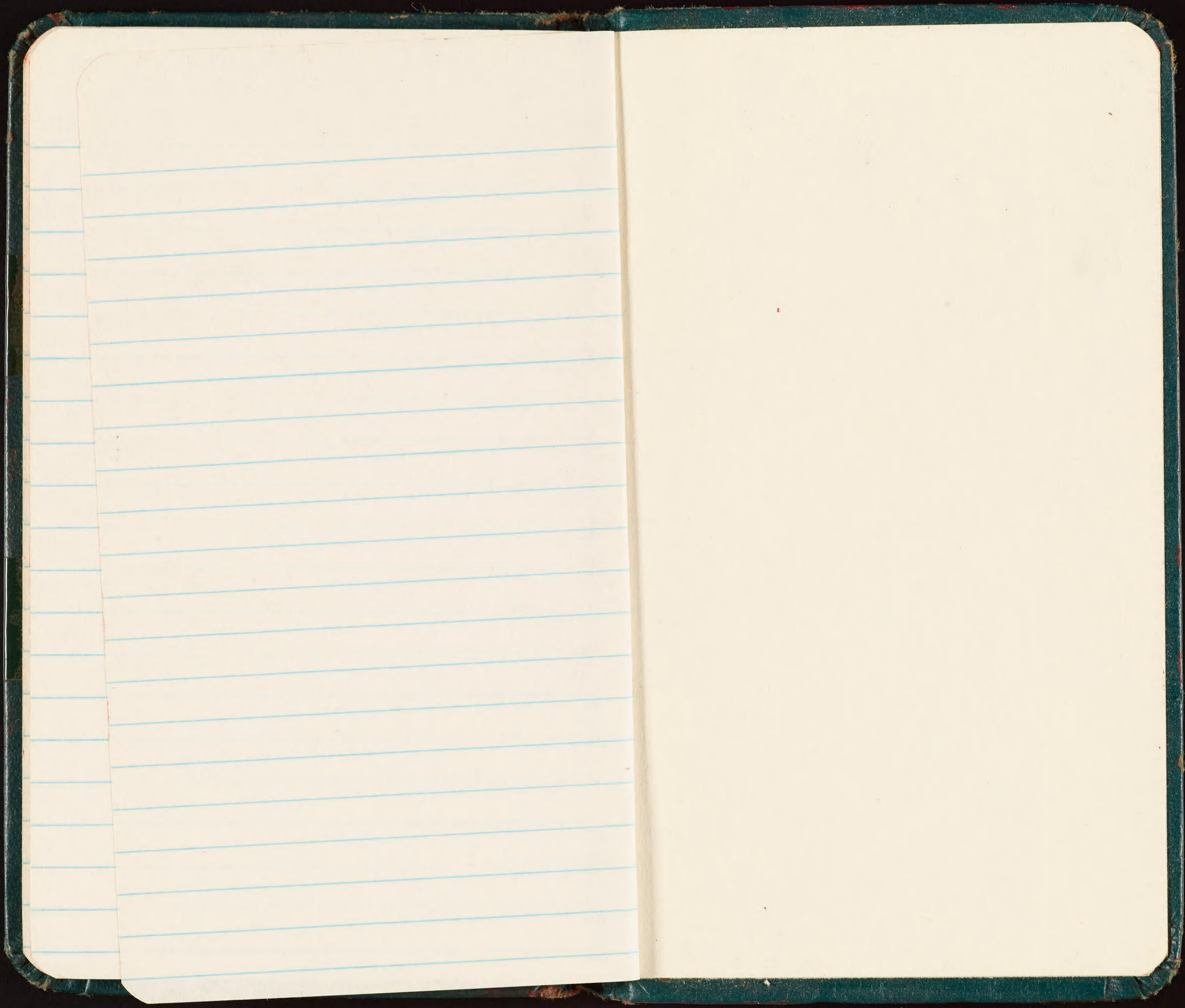
✓ 568-71406 ♀ ✓

✓ 737-26677 ♂ ✓

✓ 737-39688 ♂ ✓



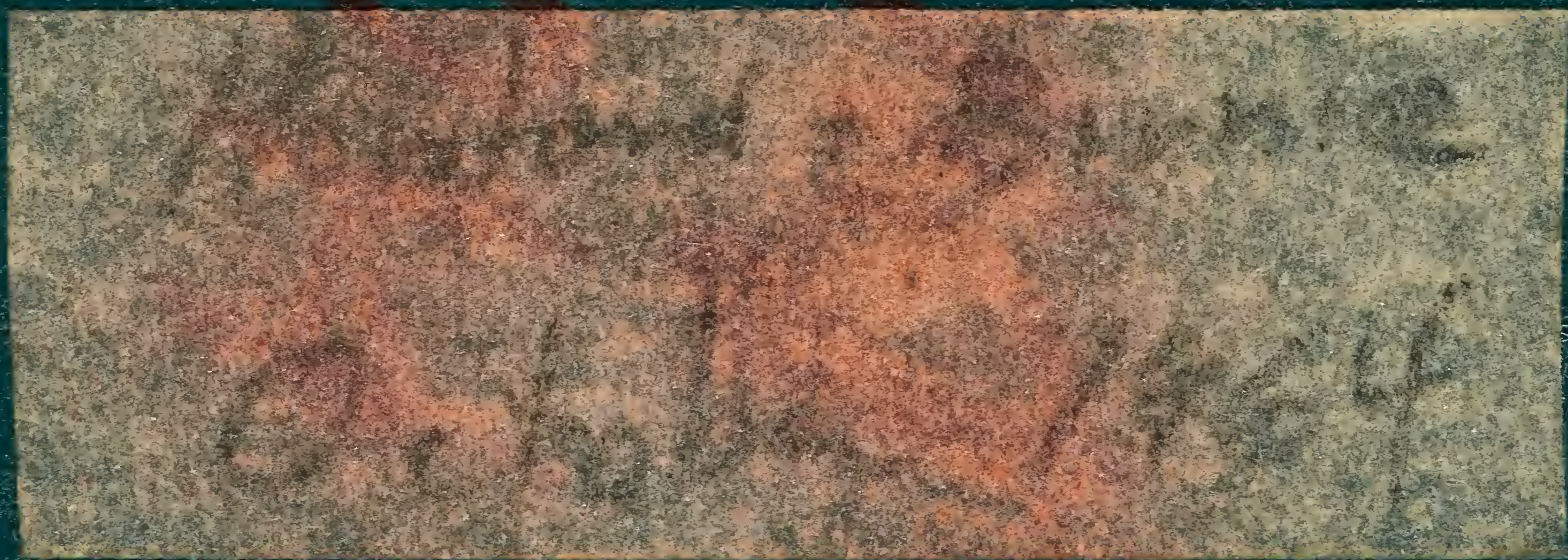






7530-222-0078
FEDERAL SUPPLY SERVICE

Memoranda



Sibley

B.F. Oct. 12

757-63499 F

1964

HOWLAND

ISLAND

Done 2/22/69

Birnie

✓ ADP CDA

Checked against intended
file 8/25/66 CDA
⊗ = previously unrecorded

Birnie done 2/22/69

8
558-72070

Howland

Oct. 9

Nest count

1964

~~Blue-faced Booby~~

~~1 egg~~

~~III~~

~~2 eggs~~

~~II~~

~~49~~

~~III~~

~~II~~

~~III~~

IIII

Black flock

2 shy half
Subunit

0

7

4

1

0

Brown 1 egg

1 egg

II

2 eggs

~~III~~

II

49

~~III~~

II VIII

large

III III

3

7

1

8

17

Blue-faced Booby
 Nestling
 558 - 72070 - 100

♂ Nestling → B.F. Booby
 on beach

nest count
 area 1 -

1 egg	1	0	6	3	10
2 egg	2	4	11	2	19
egg	11	10	30	23	74
hard egg	26	30			-56

1 egg	2	4	5	24	5	40
2 egg	7	10	5	31	14	67
egg	14	6	10	58	56	144
hard egg	-	1	5	2	73	81
egg	10	1	-	3	16	30

Brown Booby

1 egg	I
2 egg	III

268
 137
 81

Tropic Bird

egg / 3 egg / 4 egg / 17

Sooty Tern

773-21501-22000

ADP Howland
October 10

Blue-faced Booby

- ✓ 737-28506 M ✓
- ✓ 39543 F 2e195 ✓
- ✓ 39532 F } wN ✓
- ✓ 49804 M } ✓
- ✓ 568-72006 F ✓
- 757-63315 F wN ✓
- 316 M
- ✓ 568 72068 I ✓
- ✓ 737-23591 M ✓
- ✓ - 20792 F wI ✓
- ✓ 39558 F ✓
- ✓ 39504 M ✓
- ✓ 39552 M } wN ✓
- ✓ 20810 F } ✓
- ✓ 568-72015 I ✓
- ✓ 737-39537 M } wN ✓
- ✓ 39526 F } ✓
- ✓ 28514 F wI ✓

Howland
Oct. 10 VADP

Blue-faced Booby

- ✓ 737-20808 M } w I ✓
- ✓ 80782 F } ✓
- ✓ 53080 w N } ✓
- ✓ 568-72013 I } (NL) ✓
- ✓ 737-28891 M } ✓
- ✓ 737-39529 F w N ✓
- ✓ 568-72021 I ✓
- ✓ 72008 I ✓
- ✓ 317 F w N ✓
- ✓ 737-28792 M ✓
- ✓ 568-72009 I ✓
- ✓ 568-72026 I ✓
- ✓ 737 28896 F 2 eggs ✓
- ✓ 318 M } legs ✓
- ✓ 319 F } ✓
- ✓ 320 M } ✓
- ✓ 568-72023 I ✓
- ✓ 321 M ✓
- ✓ 322 F ✓

VADP

Howland I
October 10

Blue-faced Booby

- ✓ 737-20775 w N ✓
- ✓ 39569 M } w N ✓
- ✓ 20800 F } 20820? ✓
- ✓ 53111 M } ✓
- ✓ 20819 F } ✓
- ✓ 20827 M } w N ✓
- ✓ 49795 F ✓
- ✓ 49797 M } w I ✓
- ✓ 39592 F } ✓
- ✓ 568 72036 I ✓
- ✓ 737-39805 M } w N ✓
- ✓ 28860 F } ✓
- ✓ 568-72039 I ✓
- ✓ 737-53108 M } 2 eggs ✓
- ✓ 39774 F } ✓
- ✓ 28784 M 2 eggs ✓
- ✓ 53144 F w N ✓
- ✓ 323 ? ✓

Howland Island
Oct. 10

✓ADP

Brown Booby

- ✓ 737-49391 ← legg ✓
- ✓ -53073 RC ✓
- ✓ 757-68852 I ✓

Howland
Oct. 10

✓ADP

Blue-faced Booby

- ✓ 324 I
- ✓ 737-53120 M } wN ✓
- ✓ 49773 F } ✓
- ✓ 53116 M wN ✓
- ✓ 568-72049 I ✓
- ✓ 72050 I ✓
- ✓ 737-28788 F ✓
- ✓ 53491 F ✓
- ✓ 568-72057 I ✓
- ✓ 737-53119 F ✓
- ✓ 568-72055 I ✓
- ✓ 325 F 2 eggs
- ✓ 326 F wN
- ✓ 327 F legg
- ✓ 568-72051 I ✓
- ✓ 328 M wN
- ✓ 329 M } wN
- ✓ 330 F }
- ✓ 331 S

Hawland

✓ADP

Oct. 10

Blue-faced Booby

✓ 332 F RC

✓ 333 F

✓ 334 M

✓ 335 F

✓ 336 S

✓ 337 M

✓ 338 F

✓ 339 M

✓ 340 F

✓ 341 ?

✓ 342 F

✓ 343-344 F

✓ 345 S

✓ 346 F

✓ 737 38063 S

✓ 347 F

✓ 348 F

✓ 751-64459 F

✓ 737 80910 M

WN

✓ Meta

✓



Auckland
Oct. 10
Blue-face

VADP

✓ 737-39514 F RC ✓

✓ 349-351 F

✓ -20881 F

✓ 352-353 F

✓ 354 S

✓ 355 F

✓ 356 S

✓ 357 M WN

✓ 358-362 F RC

✓ 363 M

✓ 364-366 F

✓ 367 F

✓ 737-20123 M WN ✓

✓ 568-71489 I ✓

✓ 737-53089 M 20995 ✓

✓ 20028 M } WI ✓

✓ 28575 F } ✓

✓ 23557 M ✓

Howland

Oct. 10

Blue-faced Booby

✓ AD P

✓ ~~737-28837 F~~

✓ 20204 M } w I ✓

✓ 39825 F } ✓

568-71488 I ✓ ~~ERR~~

✓ ~~737-28818 F } w N ✓~~

✓ ~~20120 M } ✓~~

✓ ~~53456 M } ✓~~

✓ ~~20023 F } ✓~~

✓ ~~368 I ✓~~

✓ 20020 F } 2 eggs ✓

✓ 28679 M } ✓

✓ 39827 F } ✓

✓ 53215 RC ✓

✓ 28976 ✓

✓ 369 F

✓ 3705

✓ 371 M

✓ 27786 M ✓

Howland
Oct 10
Blue-faced Booby VADP

✓ 737-27547 F ✓ RC

✓ 757-63089 F ✓

✓ 372-314 F

✓ ~~373~~ 375 M

✓ 376 S

✓ 377 F

✓ 378 M

✓ 379 S

✓ 380 F

568-71471 ✓

✓ 381 ?

✓ 382 F

✓ 383 P

✓ 384 M

✓ 385 M

✓ 386 F

✓ 737-20523 M ✓

Howland
Oct 6 Blue-face

✓ VADP 387 S RC

✓ 388 F

✓ 389 F

✓ 390 ~~F~~ F

✓ 391 S

✓ 392 F

✓ 393 M

✓ 394 F

✓ 395 F

✓ 396 S

✓ 757-62969 S ✓

✓ 397 F

✓ 398 F

✓ 399 F

✓ 737-27890 F ✓

✓ 400 F

Howland VADP

Oct. 90

Blue face

✓ 757-634 - - RC

✓ 401 F

✓ 737-28945 F

✓ 23675 S ✓ McKean

✓ 408 F

✓ 22787 F ✓ Ender

✓ 403-411 F

✓ 412 S

✓ 413 F

✓ 414 S

✓ 415 F

✓ 416 F

✓ 417 F

✓ 418 M

✓ 419 M

✓ 420 F

✓ 737-23004 F ✓ Ender

✓ 421 S

✓ ADP

Howland
Oct. 10
Blue-faced

- ✓ 422 F RC
- ✓ 423 S
- ✓ 737-27431 F ✓ Ende *de*
- ✓ -27863 F ✓
- ✓ 424 F
- ✓ 425 S
- ✓ 426 F
- ✓ 568-71470 I ✓
- ✓ 427 F
- ✓ 428 M
- ✓ 429 M
- ✓ 430 F
- 28599 F
- ✓ 558-85066 S ✓
- ✓ 85053 S ✓
- ✓ 431 F
- ✓ 432 S
- ✓ 757-62893 ✓

✓ ADP

Howland
Oct. 10
Blue-faced Booby

- ✓ 737-39594 M ✓ RC
- ✓ 433 S
- ✓ 434 F WN
- ✓ 435 M RC
- ✓ 737-49744 F ✓ *de*
- ✓ 558-85922 S ✓ *McKen*
- ✓ 436 ?
- ✓ 437 F
- ✓ 438 M
- ✓ 439 ?
- ✓ 737-49659 F ✓
- ✓ 440 S RC
- ✓ 441-443 F
- ✓ 444 F
- ✓ 445 F
- ✓ 446 S
- ✓ 447 F - 449
- ✓ 450 S

✓ ADP Howland
Oct. 10
Blue-face

✓ 451-452 F RC

✓ 453 S

✓ 737-28600 F ✓

✓ 454 M

✓ 455 F

✓ 737-49813 S ✓

✓ 456-458 F

✓ 459 S

✓ 460 F

✓ 461 M

✓ 462 F

✓ 463-64 F

✓ 465 M

✓ 466 F

✓ 467 S

✓ 468 M

✓ 469 F

✓ 737-22459 M ✓ Enderbury

✓ ADP Howland
Oct. 10
Blue-face

✓ 53417 F ✓ RC

✓ 470-471 M

✓ 472 S

✓ 473 F

✓ 474 S

✓ 475 F

✓ 476 M

✓ 477 M

✓ 478 M

✓ 757-63716 ? ✓ Enderbury

✓ 479 M

✓ 757-63052 M ✓

✓ 480 F

✓ 62807 F ✓

✓ 481 ?

✓ 482 M

✓ 483 F

VADP

Howland
Oct 10
Blue-face

✓ 484 M RC

✓ 485 M

✓ 486 F

✓ 88804 F ✓

✓ 487 F

✓ 488 F

✓ 489 S

✓ 490 M

✓ 491 S

✓ 492 M

✓ 493 F

✓ 494 ?

✓ 737-21261 R ✓ Enderby

✓ 495 F

✓ 737-23587 M ✓

✓ 496 F

✓ 737-39630 S ✓

✓ 214845 ✓ Enderby

Howland
Oct 10

Blue-face

VADP

✓ 558 - 85002 S ✓

✓ 757 - 62724 F ✓ Enderby

Howland
Oct. 18/10
new bird
757-634
63499 F



Howland
Oct. 18
blue-face ✓ADP

✓	B7	28501	F		✓
✓		39531	F		✓
✓		20797	F		✓
✓		23579	M		✓
✓		28508	F	w I	✓
✓		20759	M		✓
✓		39520	M		✓
✓		39530	M	1 egg	✓
✓		23704	M		✓
✓		28515	F	w N	✓
✓		28900	F	w I	✓
✓		39518	M		✓
✓		39519	M	w N	✓
✓		28898	F		✓
✓	568-	72025	I		✓
✓	737-	39571	M	w I	✓
✓		20818	F		✓
✓		39515	M		✓

Oct. 12
Howland
Blue-face VADP

- ✓ 737 53113 F } wN ✓
- ✓ 49794 M } ✓
- ✓ 757-62856 ? ✓
- ✓ 737-20823 F ✓
- ✓ 568-72017 I ✓
- ✓ 737-28800 M 2 eggs ✓
- ✓ 737-39588 F } ✓
- ✓ 757-63498 M } ✓
- ✓ 737-39593 M } wN ✓
- ✓ 39583 F } ✓
- ✓ 28780 F wN ✓
- ✓ 53105 M wI ✓
- ✓ 28849 F leggy ✓
- ✓ 53394 F wN ✓
- ✓ 757-63199 M ✓
- ✓ 23584 F wN ✓
- ✓ 20265 F ✓
- ✓ 757-63200 M ✓

Howland
Oct. 12 VADP

Brown Booby

- ✓ 737-53027 A ✓
- ✓ 757-63500 I ✓
- ✓ 757-65001 A 20973 ✓
- ✓ 757-62857 I ✓ RC
- ✓ 757-65002 A ✓
- ✓ 737-53013 A ✓
- ✓ 65008 A ✓
- ✓ 65024 I ✓

40 birds on beach
in front of B-S. Bird Club

Howl
Oct 12
Blue-face

✓ 737-20762 F w N R ✓

✓ 757-65003 S RE

✓ 737-39620 S ✓

✓ 004 M

✓ 005 F

✓ 006-007 S

✓ 009 S

✓ 010-011 F

✓ 012 M

✓ 013 S

✓ 014 M

✓ 737-28549 F ✓

✓ 015-016 S

✓ 757-63066 F ✓

✓ 017-~~018~~ 019 F

✓ 020 ?

✓ 021 M

✓ 022-023 F

Howland
Oct 12

Common Noddy

✓ 773-20501-504 A

Green

Howland

Oct. 12

Blue-face

VADP

✓ 757-65025 M ✓ AC

✓ 026 F

✓ 027 F-029

✓ 737-27848 F ✓

✓ 030 S

✓ 21311 F ✓

✓ 757-62749 F ✓ Bahnd

✓ 031 F

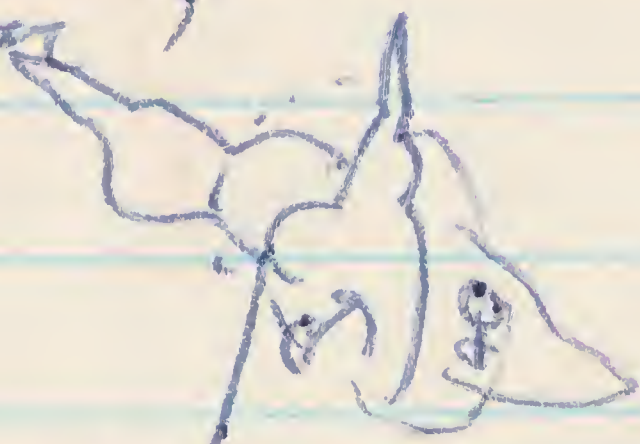
✓ 032 M

✓ 033 M

✓ 034 F

✓ 737-20013 S ✓

Sub
behind



✓ 035 M

✓ 036 F

✓ 757-63055 F

Hawland
Oct. 12

✓ At P

Blue-faced Booby

✓ 737 = 23734 ? ✓ RC

✓ 20410 F ✓ Endy^{dr}

✓ 037 M

✓ 038-039 F

✓ 040 M

✓ 26655 F ✓

✓ 041 F

✓ 49685 F ✓

✓ 042 M

✓ 53485 F ✓

✓ 043 M

✓ 20011 M } w I ✓

✓ 20654 F } ✓

✓ 044 ?

✓ 28778 M ✓

✓ 045 M RC

✓ 046-047 F

✓ 22550 F ✓ Endy^{dr}

✓ 27866 F ✓

Howland
Oct. 12

blue-face RC

- ✓ 737-53375 F ✓
- ✓ 048-049 M
- ✓ 050 M
- ✓ 051 S
- ✓ 052 F
- ✓ 49576 S ✓
- ✓ 053 S
- ✓ 49738 F ✓
- ✓ 054 F
- ✓ 568-78035 I ✓
- ✓ 737-28691 M ✓
- ✓ 29000 F ✓
- ✓ 28690 M } w I ✓
- ✓ 28697 F } ✓
- ✓ 568-71472 I ✓
- ✓ 055 M 28995
- ✓ 737-53127 M ✓

Howland

Oct. 12

Blue-faced

- ✓ 737-20899 M } wN ✓
- ✓ 20898 F } ✓
- ✓ 28680 M } ✓
- ✓ 20661 F } ✓
- ✓ 28812 M } ✓
- ✓ 39815 F } ✓
- ✓ 20593 F wI ✓
- ✓ 568-71496 I ✓
- ✓ 737-20652 F ✓
- ✓ 53087 M } ✓
- ✓ 056 F } ✓
- ✓ 49871 M ✓
- ✓ 53458 M } wI ✓
- ✓ 20106 F } ✓
- ✓ 568-71485 I ✓
- ✓ 737-28677 M wN ✓
- ✓ 28740 F ✓
- ✓ 20895 F ✓
- ✓ 20655 F ✓

Howland
Oct. 12

Blue-face

✓ADP

- ✓ 568 - 71481 I ✓
- ✓ 737 - 20681 F } w I ✓
- ✓ 20650 M } ✓
- ✓ 568 - 71468 I ✓
- ✓ 737 - 20525 F RC ✓
- ✓ 0575 ↓
- ✓ 757 - 62900 F ✓
- ✓ 737 - 20104 F } w N ✓
- ✓ 27833 M } ✓
- ✓ 20006 M 1029 ✓
- ✓ 20105 F ✓
- ✓ 27829 F } ✓
- ✓ 058 M } ✓
- ✓ 20008 w I ✓
- ✓ 059 I ✓
- ✓ 27831 F } ✓
- ✓ 20640 M } ✓
- ✓ 27896 ? RC ✓

✓ Howland
Oct. 12
Blue-face ✓ ADP

small cluster fly as
soon as lighted

2 large clats 500 each
Imm with extremely dark
Ligulate and legs

060 F

✓ 737-53790?

RC ✓

✓ 061 F

✓ 062 M

✓ 063 M

✓ 39610 F

✓ 064 M

✓ 20865 ? leg

✓ 23567 F w N

✓ 20876 M w N

✓ 20874 F

✓ 53356 F } w I

✓ 20861 M }

✓ 568-71473 I

Hawla qd

Oct. 12

Blue-face

✓ADP

✓ 737-49736 M ✓

✓ 20630 F } wI ✓

✓ 20629 M } ✓

✓ 53445 M wI ✓

✓ 20994 F ✓

✓ 20102 M ✓

✓ 568-71479 I ✓

✓ 71480 I ✓

✓ 737-20519 M ✓

✓ 20990 M ✓

✓ 20982 F } ✓

✓ 20983 M } ✓

✓ 20627 M leg ✓

✓ 20620 F ✓

✓ 20981 F } ✓

✓ 53352 M } ✓

✓ 23505 M ✓

568

✓ ~~737~~-71467 I ✓

Howland
Oct 12
Blue-face

✓ADP

- ✓ 737-53265 F } wN ✓
- ✓ 065 M } ✓
- ✓ 568-72058 I ✓
- ✓ 71476 I ✓
- ✓ 737-53255 F ✓
- ✓ 53258 F } wN ✓
- ✓ 20851 M } ✓
- ✓ 27749 M ✓
- ✓ 27754 M wI ✓
- ✓ 066 F 20995
- ✓ 27748 F ✓
- ✓ 49669 F wN ✓
- ✓ 53351 F } wN ✓
- ✓ 53348 M } ✓
- ✓ 757-63040 F ✓
- ✓ 737-49850 F wN ✓
- ✓ 53171 F RC ✓
- ✓ 21082 ?
- ✓ 068 F

Bringed

How
Oct. 12 ✓ ATP
Blue-face

✓ 757-62828		✓ R C Bahu
✓ 737-53444	F	✓
✓ 069-073	F	
✓ 757-63864	F	✓ Ende
✓ 568-71478	I	✓
✓ 074-077	F	↓
✓ 737-27424	F	✓ Ende
✓ 568-71333	I	✓
✓ 737-49502	F	✓

Oct. 13

Sooty Tern - Ad.

773 - 29001 - 100

101 - 200

201 - 300

301 - 400

401 - 500

Lesser Frigate N

747 - 57901 - 58000

59901 - 60000

Blue-faced Booby

sm. yg. III

rock - I

1 egg - ~~III~~

Brown Booby

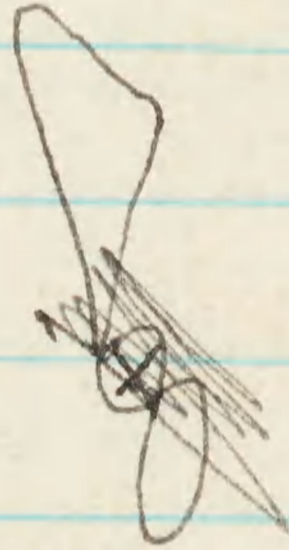
2 eggs - II

small yg - II

1 egg - I

(X)

o

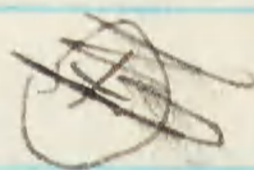


(X)

(X)

NBF

NBF



Nov. 7

Burnie ✓ ADP

Blue-face

737-26272 F } w N ✓
- 26271 MS ✓

757-66601 F - NEW-

Progs

737-22283 M } w N ✓

667-39551 F } ✓

737-23872 F ✓

-21091 M ✓

-22287 M ✓

-21177 F 1 egg ✓

-23886 M } 2 eggs ✓

-21050 F } ✓

-26416 M } 1 egg ✓

-23804 F } ✓

-21186 M w I ✓

-26419 M } w N ✓

-26422 F } ✓

667-29545 M ✓ w I ✓

Progs

✓ADP Nov. 7
~~Phoenix~~
Blue-face

Phoenix Is.

737-23893 M wI ✓
- 602 M
- 26426 F ✓
- 26205 M ✓
23070 ? ✓ Ende ⊗

page 2

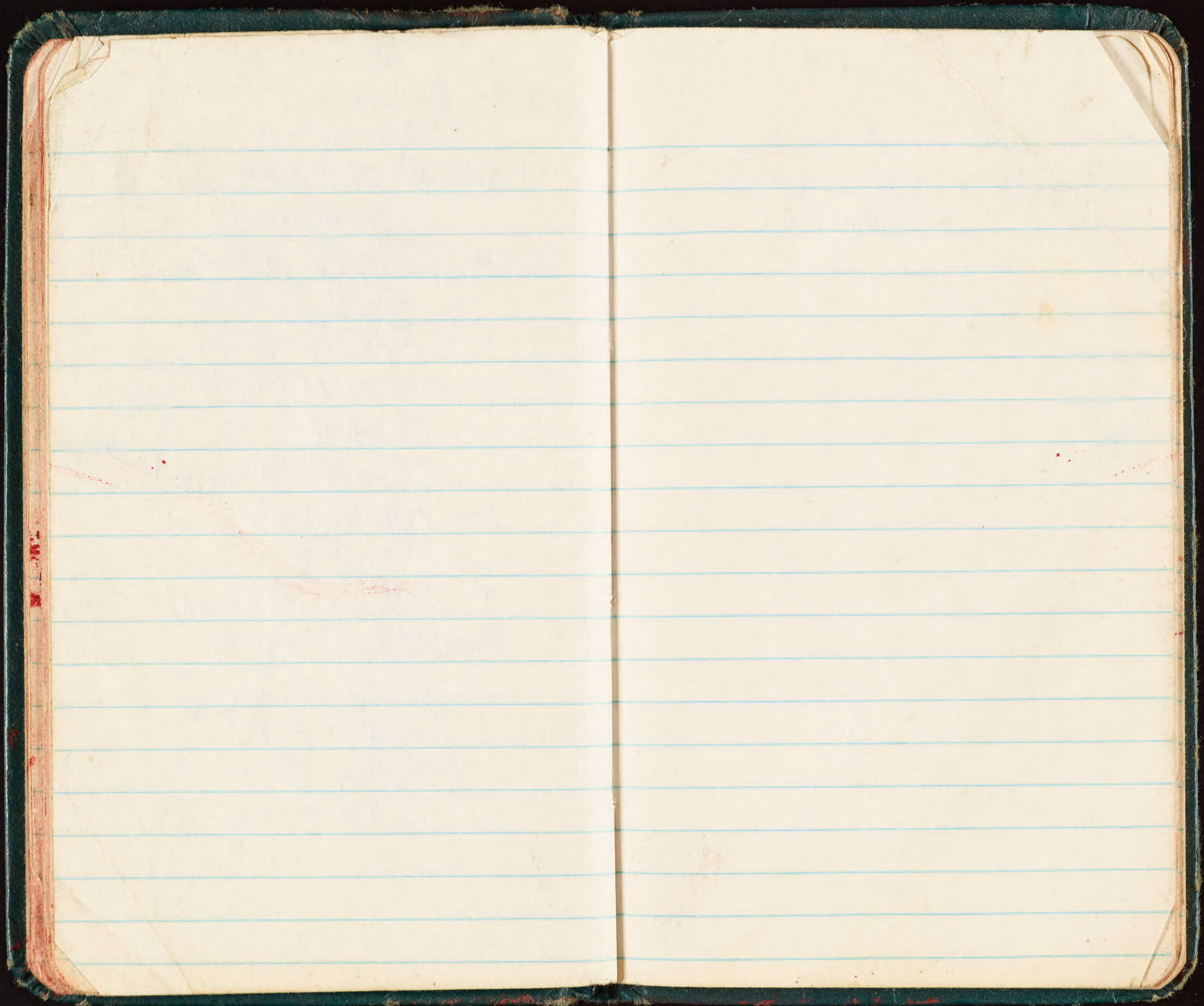
667-39542 M ✓
737-22282 F ✓
26262 M wN ✓
22294 F } leg ✓
22293 M } ✓
22277 M wI ✓

603 ♂
737-21331 horse ✓
737-22211 ♂ ✓

Nov. 7

✓ADP Birnie
Blue-face

737-50500 F ✓ Ende ⊗
604 M wI
not printed 22478 M ✓ wN Ende ⊗
605 I
22259 F
606 M } wI
607 I }
22203 M wN ✓
22244 F
608 I
22201 M wN ✓
22251 M
21107 M } wN ✓
600 F }
609 I
611 I



Birnie

Nov. 8

Fairy Tern

652-46701

Nov 9
Birnie

Noddy Tern

773 - 20510 -

529 N

550 I

598 I

592 I

599 I

from Song

629 I

638 I

627 I

670 I

658 I

669 I

665 I

~~VADP~~

Nov 9

Birnie

Blue faced

Boby

737-23870 M w I ✓

757-66588 I NEW

26315 F ✓

667-39568 F w w ✓

137-26314 M ✓

26310 F ✓

26311 M ✓

27878 M } ✓

22688 F } ✓

dr Howl

Ende ⊗

568-72166 I ✓

667-39589 M ✓

737 23880 F ✓

597 ?

598 ?

26358 F w N ✓

23855 F ✓

26348 M w I ✓

26337 M ✓

Nov-9
Birnie

Brown Booby

VADP

737-23932 }
[757-66589]

WN ✓

590 A

591 A

592 I

593 A

594 A } wI

595 I }

~~737-21235 A~~

596 A

599 A

737-21240 A ✓

[757-66635 A wN]

641 I }

642 A } wI

- 21214 A

Birnie

Nov. 9 ✓

VADP

Blue-face

737-21173 F } wI ✓

23926 M } ✓

600 ✓ I ✓

21270 F ✓ wN *Ende

20195 M ✓ wI *Ende

21057 F wI ✓

21017 F ✓

21010 M } 20195 ✓

21446 F } *Ende ✓

26485 M } ✓

26486 F } wI ✓

26481 M ✓

26400 M wN ✓

28207 F ✓ Jan ✓

26496 F ✓

20435 M ✓ Ende ✓

667-39586 M ✓

~~667~~

VADP

Nov 9

Birnie

Blue-face

fun pie
666 32 I

6 33 I

23879 F } w I ✓ ✓
26384 M } ✓ ✓

~~634 I~~

26367 M ✓ ✓

634 I

636 I

637 I

23918 M leg ✓

638-639 I

26353 M w I ✓

21078 F leg ✓ ✓

21153 M ✓ ✓

26368 F w N ✓ ✓

26361 M } w I ✓ ✓

26362 F } ✓ ✓

640 I

Nov. 9, 1964

Birnie

Noddy Tern

VADP

773 - 20801 -

753 - 69203 ✓ ✓
interisland

Nov 9
Birnie

Blue-face

757-66643-I ✓

Nov 9

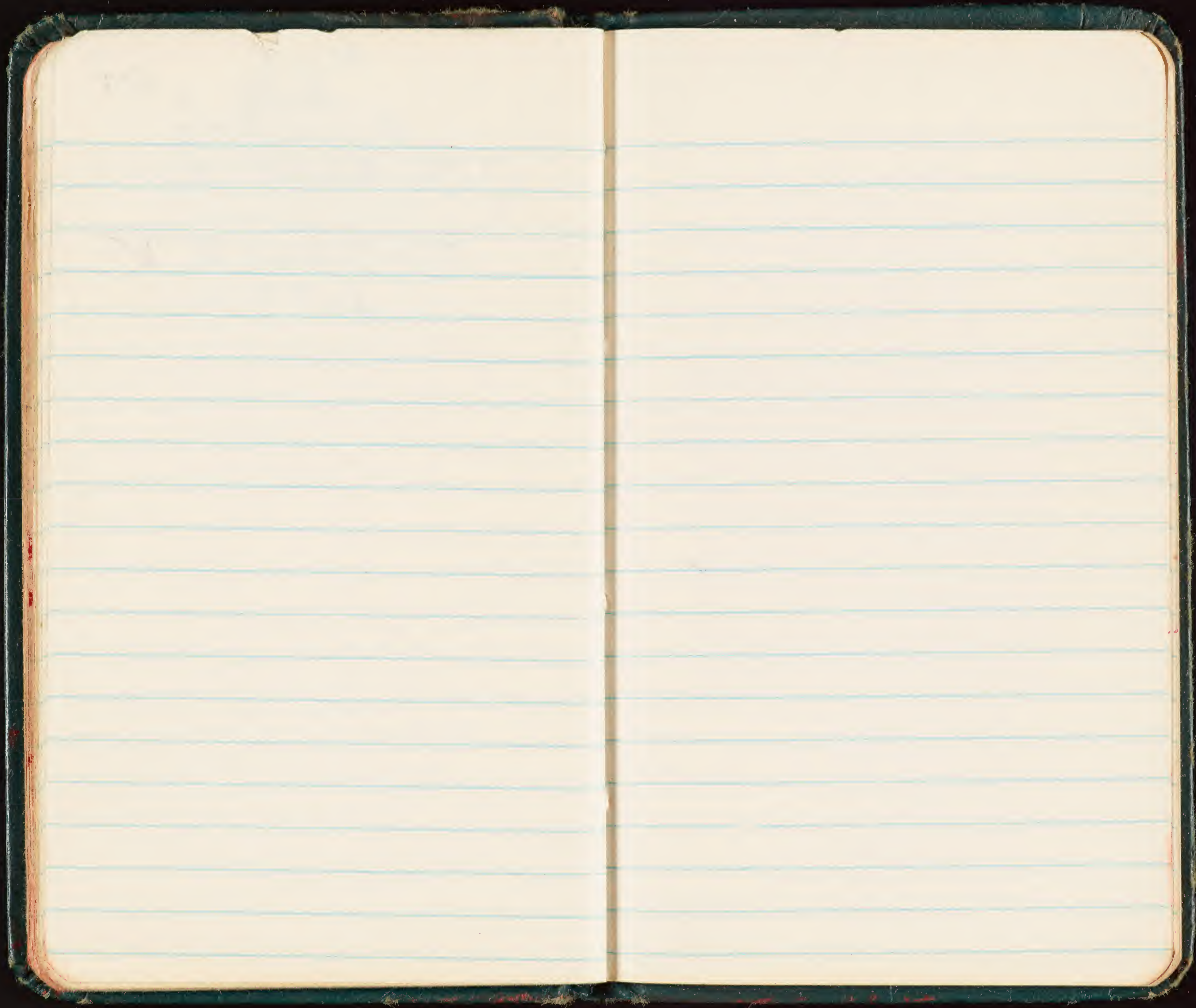
Birnie

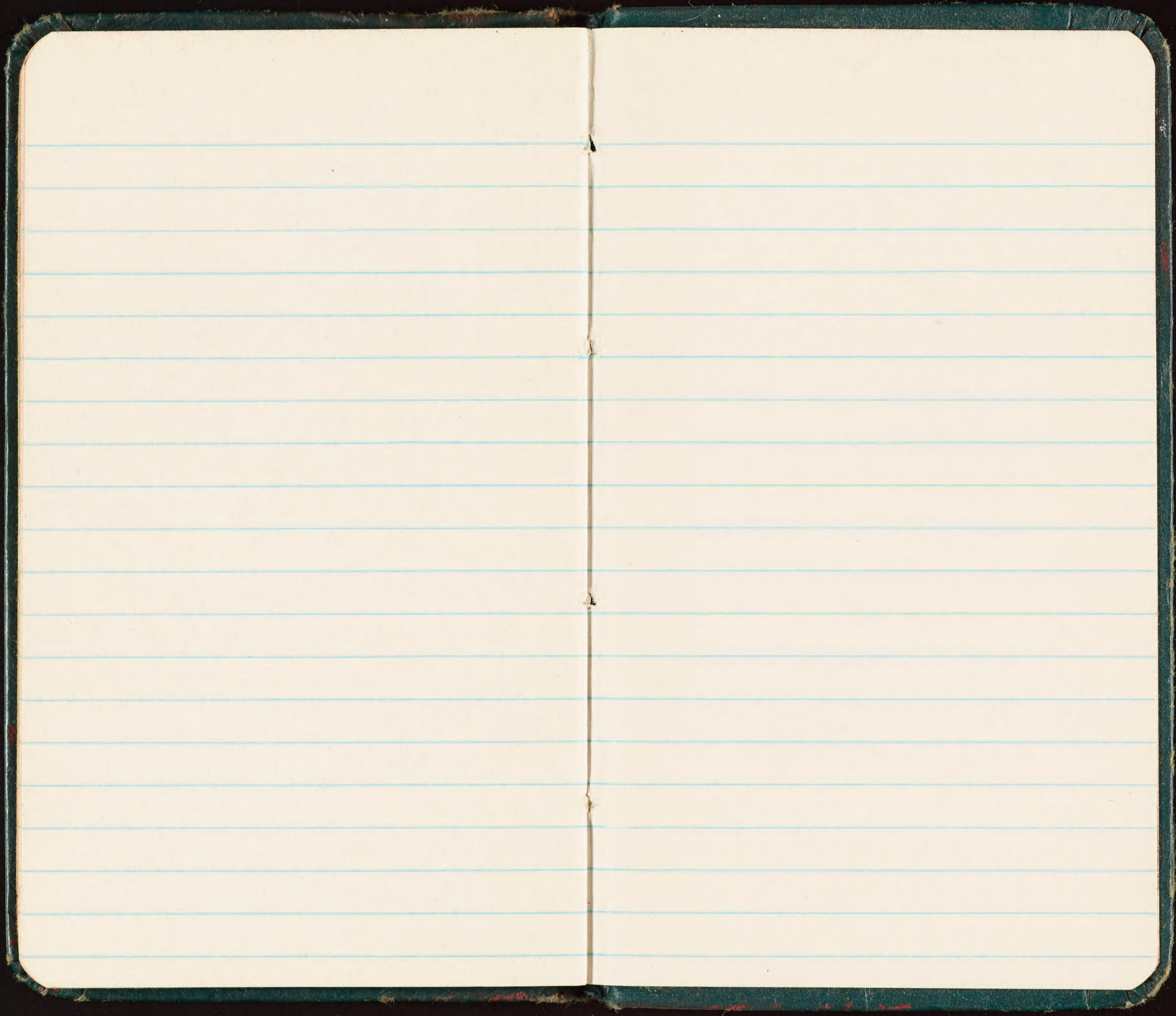
Brown Booby ✓ADP

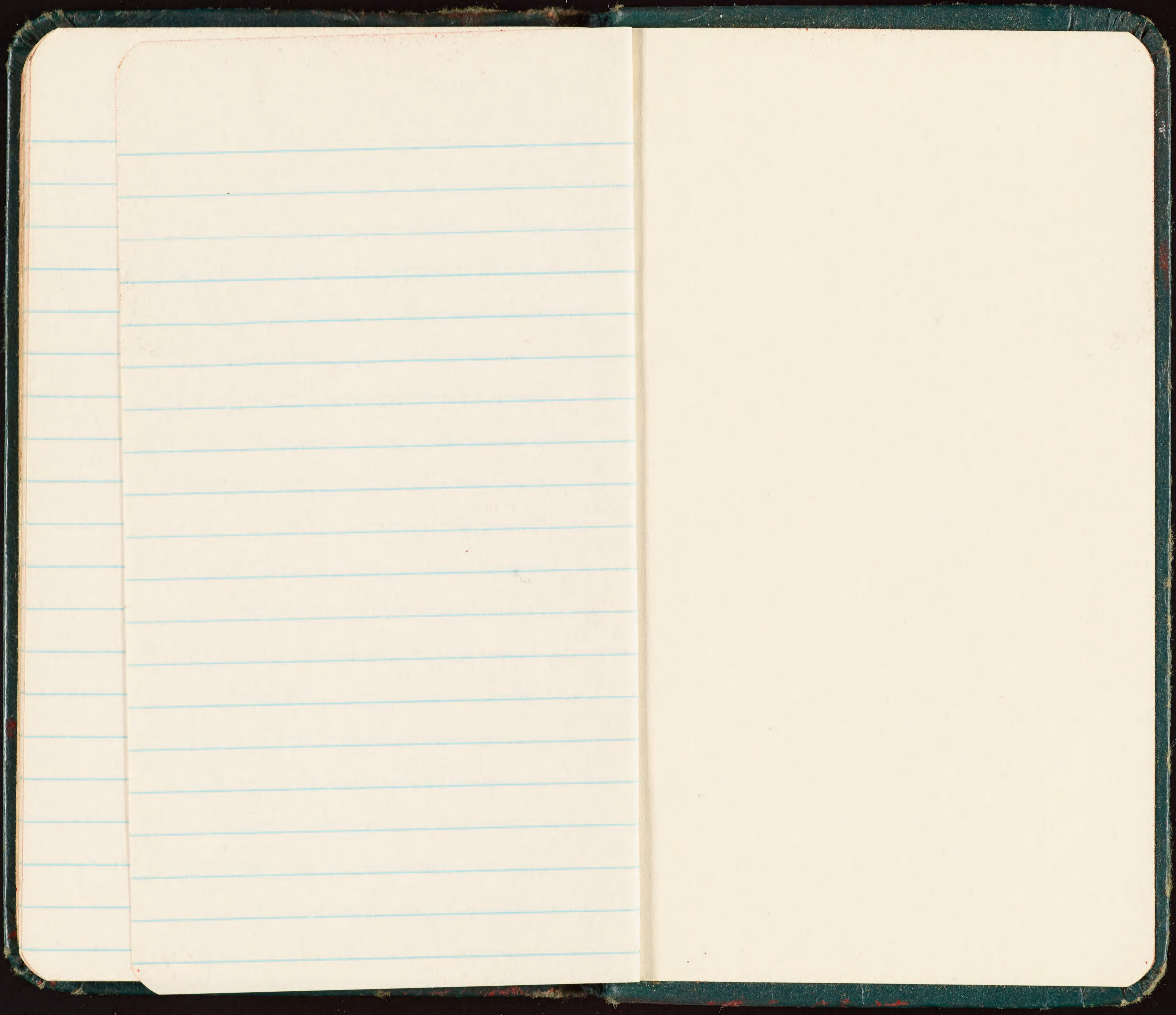
757-66644 A ✓

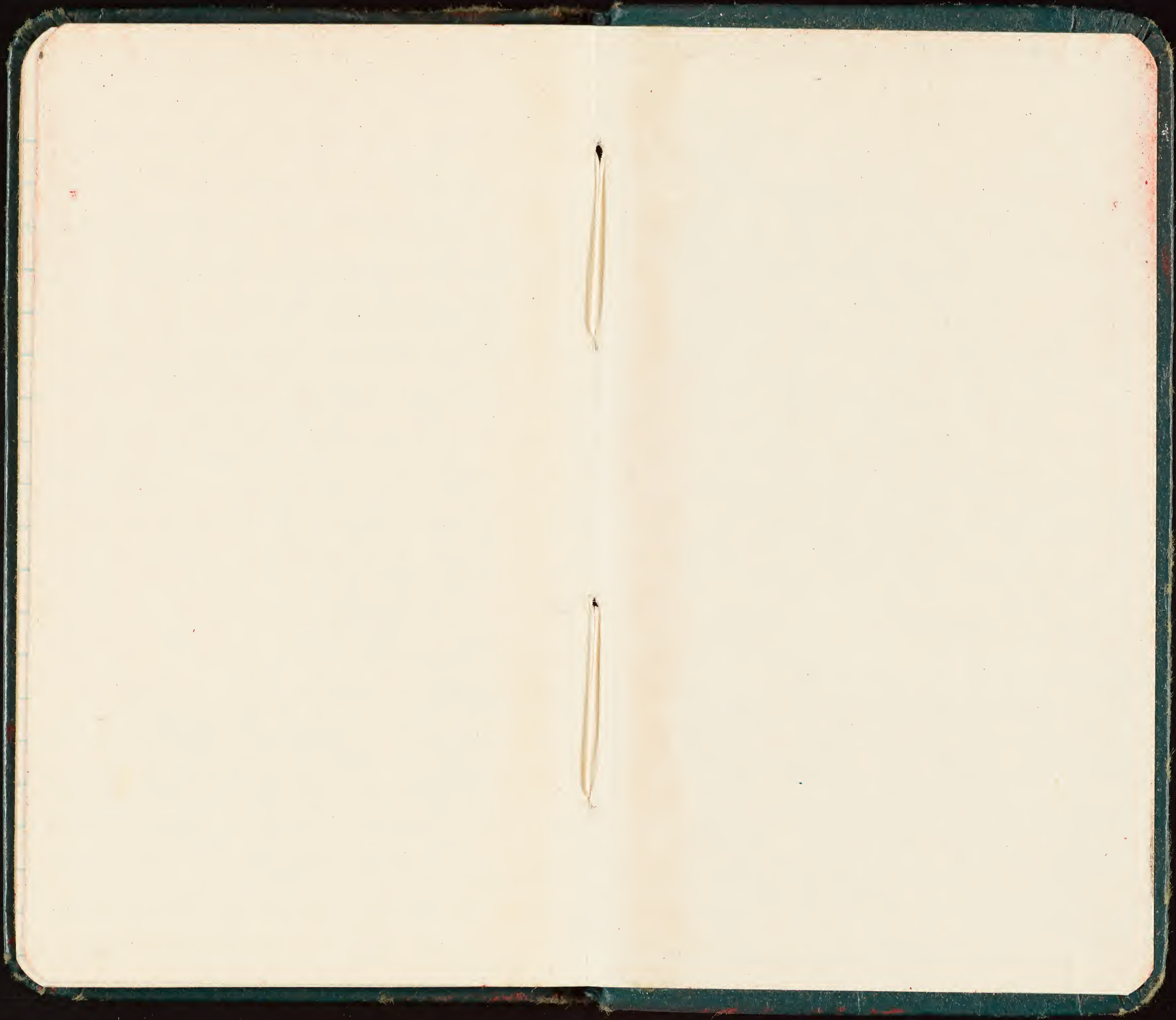
737-21208 A ✓

645 I ✓









7530-222-0078
FEDERAL SUPPLY SERVICE

Memoranda

~~MEMORANDA~~

Woodward

HOWLAND

ISLAND



Birnie



Checked against interstand
file 8/25/66 CPH
⊛ = previously unrecorded

VADP CPH

Done 8/31/68

9 Oct 1964

Bands received

Day 757-63301-400

625-86200-300

Note

773-21001-500

10 Oct 773-22501-23000

~~-24000~~

10 Oct 1964

757-63230-300

90J
Nest

4 Can Noddy
by hand

1 - with 1 egg.

2 egg 1/2 1/2.

1 egg.

1 egg.

1 nestling

1 nestling

2 eggs

1 egg - IIII

2 egg - IIIII

Nestling IIII

Howland ^{Atop}

9 Oct 1964 Blue-faced
757-633... Body

01 Inn.

02 Inn

Return 568 72048 Inn ✓

11 568-72045 Inn ✓

11 568-72042 Inn ✓

11 568-72020 Inn ✓

03 Nest

Return 568-72011 Inn ✓

Range Young IIII IIII IIII II

Small Young IIII

Egg III

II

R. young 1

9 Oct 1964 R-T Tropic

625-862.

- | | |
|-------------|----------------|
| 01 Nestling | 20 Nest |
| 02 adult | 21 Nest |
| 03 Nestling | 22 Nest. |
| 04 adult | 23 Ad |
| 05 adult | 24 Nest |
| 06 Nestling | 25 Nest |
| 07 Nestling | 26 Nest |
| 08 Ad | 27 ad |
| 09 Nest | 28 Nest |
| 10 Nest | 29 Ad together |
| 11 Nest | 30 ad under |
| 12 Nest | 31 Ad |
| 13 Ad | 32 Nest |
| 14 Nest | |
| 15 Ad | |
| 16 Nest | |
| 17 adult | |
| 18 Nest | |
| 19 Nest | |

Return

VADP

9 Oct R-T Tropicbird ✓

Ad 62585750 ✓

Ad 625-45713 egg ✓ 85713

Ad 595-64018 ✓ with #21

Ad 625-85717 ✓

Ad 625-85720 ✓

Nests 9 Oct

2 eggs

Brown Booby Howland

10 Oct

A 757-63290
91

12 Oct

757-85 ~~205~~ AF

20 AF

Net

Nestling

Light I

Dark II

Downy young III IIII

Chick II

Egg IIII

Red-foot Booby.

90 J 747-5900

06 Nest D

07 Nest L

08 Ad B. Phase no egg.
Breast band

head brown

Bl. red feet

light blue bill

white rump + Tail

U back brown

neck light

dark blue eyering

dark brown eye

wings brown up + down

09 Nest D

10 Nest Downy

11 Nest Down

12 Nest Down

13 Nest Chick ~~chick~~

14 Downy young

15 Downy young

Nest Gr. Frigate

Nest ~~|||||~~
~~|||||~~

Egg 11

~~Gr Frigate~~

~~10 Oct~~

~~747-59021-59100~~

~~Nestlings~~

~~11 Oct 1969~~

~~747-57601-3 Nest~~

Red-foot ✓ADP
9 Oct Returns
747-56965 ✓ Ad is egg
Feet - pale red
white breast sup. band
light head + shoul
dark Tail + back
black gular
eye ring sky blue
light blue faded bill
brown wings

747-56993 Imm ✓
iris gray
purple around eye + bill
Breast band
gray underneath
Charcoal (silver) top
Foot ?

747-56935 (5) Imm ✓
Breast band
light gray underneath

Red-foot ✓ADP
904 Petermann
blue ring around eye
Tannin
~~purple gular
br head
grey (Tan neck ring
br wing + back
grey tail white tips
747-56957 done ✓
Breast band
light grey breast with
feet - pinkish
dark back
white tips
wing dark grey -
secondary
iris - Tan~~

Red-foot Booby
90ct Banding 447-590.

16 Downy Young

17 "

18 "

19 Imm.

iris gray

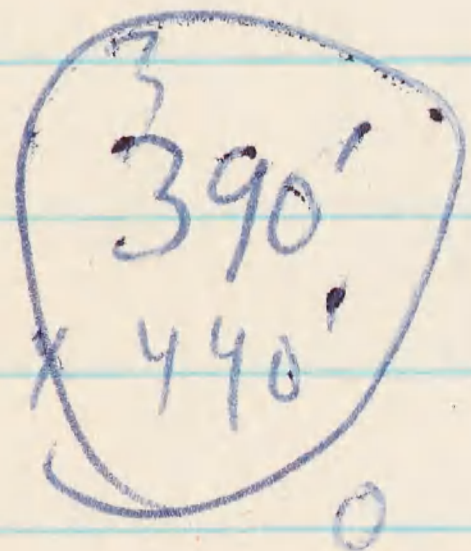
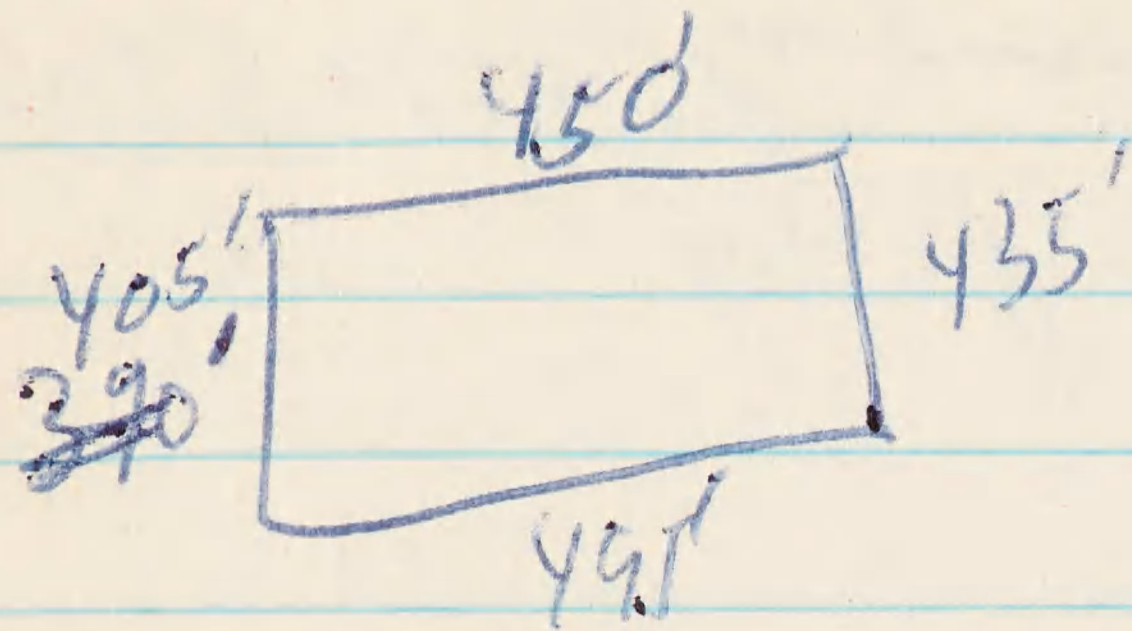
gular - purple

m. line - bluish

dark back

Tail tips white

20 Downy Young



15000
1560

171600'

135
3
905
105
3
495
145
3
435

Length

480'

480 300'

~~480~~
~~60~~
~~24000~~

480
150
24000
480
72000'

Sooty Tern

9 Oct 1964

773-21001-500 Ad

10 Oct

773-22501-23000

Netling (Local) ~~50~~

(64) Brown Booby 35+7+9+5

(12) Com Noddy 9+3

Shorebirds

10 Oct

Tattler 1+1+1+1+3+1+1+1+1
-2-1-1-2-1-1 (19)

Curdew -1+11-1 (13)

Turn. 1+10+2+1+4+3+4+1
+1+3+2+1+1+6+3+4-10-6
-3-4-1-2-1-1-2 (77)

Plover 12+2+4-1+1+4
+14+1+1-1-28-24-5-1-2
-1-1-3-2 (106)

54

52



757-63130I

Blue-faced Booby ✓ ADP

10 Oct 1964 757-632 (30)

- ✓ 30 AF w 1 egg
- R 568-72001 down ✓
- R 568-72003 down ✓
- R 568-72002 down ✓
- R 568-72016 down ✓
- R 737-28503 AF with I ✓
- R 737-49864 AF 2 eggs ✓
- R 737-20795 AM ✓
- R 737-20912 AF with nestling ✓
- 1 Nestling 757-63131
- R 737-53479 AF w Nestling ✓
- R 737-39606 AF 2 eggs ✓
- R 568-72018 down ✓
- R 737-20816 AF alone ✓
- R 737-20817 AM w I ✓
- R 568-72022 I ✓
- R 737-28893 AF with an ✓
- R 737-27801 AF alone ✓
- R 737-23615 AM with I ✓

Blue-faced Booby

ADP

10 Oct 1964

pr

- R 737-39545 AM } 1 egg ✓
- R 737-28521 AF } 1 young ✓
- R 737-20774 AM } pr ✓
- R 737-53489 AF } nest ✓
- R 568-72032 Imm ✓

✓ 31 Imm

- R 737-53124 AF 2 eggs ✓
- R 737-53104 AF Nest ✓
- R 737-39502 AM Nest ✓
- R 568-72031 Imm ✓
- R 757-62860 AM } pr ✓
- R 737 28522 AF } nest ✓
- 737 53146 AM } nest ✓
- 568-72047 Imm ✓
- 568 72024 I ✓
- 737-39806 AF ad nest ✓
- 568-72046 I ✓
- 568-72059 I ✓

32 AM legs
33 AF Q.

10 Oct Blue-faced Booby ✓ ^{Atop}

568-72053 I-C

Club 757-62944 AF ✓

34 AF Club

35 AM Club

36 AF Club

37 SA Club

38 A? Club

737-28861 AF alone ✓

39 AF Club

757-63069 AF Club ✓

40 AF Club

75763862 ~~SA~~ Club ^{End}

41 A? Club

757-63075 AM Club ✓

42 AF Club

43 SA Club

44 AM U.

45 SA U.

46 AF X

47 AF C

100 ct Blue faced Booby

- ✓ 48 AF C ✓ ASP
- ✓ 757-62924 SA ✓
- ✓ 568-72063 Im ✓
- ✓ 737-53380 AF 2 eggs ✓
- ✓ 737-28699 AF ✓
- ✓ 757-62938 AF alone ✓
- ✓ 737-53182 AM Nesting ✓
- ✓ 737-28764 AM 2 eggs ✓
- ✓ R 737-20462 AF CC. Ende ✓
- ✓ 49 A3C
- ✓ ~~757-63041~~ AFC ✓
- ✓ 757-63041 AFC ✓
- ✓ 50 AFC ✓
- ✓ 757-62783 AFC ✓
- ✓ 737-28545 AFC ✓
- ✓ 51 AM C ✓
- ✓ 52 SA C ✓
- ✓ 53 AFC ✓
- ✓ 54 AM C ✓
- ✓ 558-65063 SA ✓

10 Oct Bl-f Booby

✓ 55 SA C ✓ ADP

568-71483 Im C ✓ M

✓ 56 AFC

✓ 57 AFC

✓ 58 AFC

✓ 59 AFC

- 60 AFC

✓ 61 AFC

✓ 62 AFC

✓ 63 SAC

✓ 751-67879 SAC ✓ Phoen

✓ 64 AFC

✓ 737-28825 AFC ✓

✓ 558-85877 SAC ✓ Phoen

✓ 65 A ♂ C

✓ 66 A ♀ C

✓ 67 ♀ C

✓ 68 ♂ C

✓ 69 ♂ C

✓ 70 ♀ C

Cam Weddys

10 Oct

• Ad 773- 20 701

B-F Booby 100ct ✓ADP

71 AC

72 AC

73 AC

✓ 737-22596 A? ✓ Ender

758 850895A ✓

74 AFC

75 AFC

76 SAC

77 AFC

78 AFC

✓ 737-49848 A? ✓

79 A? C

80 AMC

81 SAC

82 AFC

83 AFC

84 AMC

✓ 737-27745 A ✓

85 A? C

86 AMC

B-F Booby 100st

~~737-53110 SA~~ ✓ADP

87 AF

88 AF

✓ 737-53110 AFC ✓

89 AF

✓ 737-20108 AM nest ✓

✓ 737 28809 AF alone ✓

n. 92 AFC

✓ 737-49657 AF ✓

n. 93 AF alone

n. 94 A? alone

95 AM club

96 AF cl.

97 SA cl

98 A? cl

✓ 737-27939 A? cl ✓

99 A?

300 SA

✓ 757-63497 AM alone ✓

✓ R 737-53476 AF ✓

B-F Booby 10 Oct VADP

RT 37-53135 AM ✓

1105 L. Frigate

977-583001-400

Near things

11 Oct B-F Booby. VADP

R 737-23608 A.M.P. ~~eg~~

Sooty Tern

11 Oct 1964

~~773-23501-600 N~~

~~773-23801-900 N~~

12 Oct

~~773-27701-800~~

773-28901-29000

773-27701-28500

Nestlings

12 Oct Bl-faced Booby
757-65200 ✓ ADP

- ✓ R 737-39534 AM 2 eggs ✓
- ✓ R 737 39550 AF ~~2 eggs~~ ✓
- ~~Repeat 737-39534 AM~~
- ✓ R 737 20786 AM ✓
- ✓ R 737-28815 AF 1 egg ✓
- ✓ 737-49802 AM alone ✓
- ✓ 737-20781 AM ✓
- ✓ 737-20829 AF ✓
- 737-23730 AF ✓
- 737-39562 AM ✓
- 737-39564 AM ✓
- 568-72027 Im ✓
- 737-27785 AF ✓
- 737-39581 AF Nest ✓
- 7-39-39567 M 1 egg ✓
- 737-39572 A? ✓
- 737-28520 AF w/ Im ✓
- 737-20822 AF 2L ✓

12 Oct B-F Booby VADP

✓ 737-39586 AF ✓
✓ 737-53400 AF } ^{Mr} chick ✓
~~737-20000 AM~~

✓ 737-39596 AF ✓
✓ 737-23602 AF w I_m ✓
✓ 757-62861 AM w Nest ✓

201 AF
202 AM with 2 EGGS

✓ 737-20830 AM } ^{Pr} with ✓
✓ 737-23606 AF } I_{mm} ✓

✓ 737-20908 AM w I ✓
✓ 737-28788 AF } ^{Pr} ✓
✓ 737-28797 AM } chick ✓

~~737-20000 AM~~
✓ 737-28866 AM 2E ✓

203 A?
204 AM Regg

✓ 737-53084 M ✓
✓ 737-53193 F } ^{Pr} ✓
✓ 56872 052 I ✓

02 1964

12

B + Booby ✓ ATP

✓ 757-62945 AM ☐ ✓

✓ 568-72029 L ☐ ✓

✓ 737-22856 SA ☐ ✓
Ed

06 F ☐ ✓
Plenty

✓ 757 62.502 AM ☐ ✓

07 F ☐

✓ 737-53498 AM ☐ ✓

08 F ☐

09 F ☐

10 SA ☐

11 SA ☐

12 F ☐

13 M ☐

14 F ☐

15 SA ☐

16 SA ☐

17 M ☐

18 F ☐

19 F ☐

2
9
2
2

12 Oct B-F Booby ✓ADP

21 F U

22 SA U

23 F U

24 M U

25 SA U

26 F U

✓ 737-62735 AF U ✓ ^{Booby}

✓ 737-28852 AM Nest ✓

28 AM U

✓ 55885012 SA U ✓

✓ 737-27927 AM ✓ ^{2E} ✓

✓ 737-28821 AF ✓

✓ 737-53159 AF ✓

✓ 231 AF 2 eggs ✓

✓ 737-28767 AM ✓

✓ 737-20124 AF ✓

✓ 737-20024 AF ✓

✓ 737-53461 AF ✓

✓ 737-28761 AF ✓

✓ 737-20027 AM ✓ ^M

12 Oct B-F Booby ^{ATP}

✓ ~~737-28994 AF } pr~~

✓ ~~737-²⁸⁷689 AM } nest~~

✓ ~~737-28675 AF ✓~~

✓ ~~37 AF alone~~

✓ ~~38 M } pr~~

✓ ~~39 F } pr~~

✓ ~~737-28810 AM } pr ✓~~

✓ ~~757 02937 AF } chicks ✓~~

✓ ~~737-28674 AM } pr ✓~~

✓ ~~737-20653 AF } Nest ✓~~

~~737-20653 AF } Nest~~

✓ ~~737-20860 AM } pr ✓~~

✓ ~~737-39833 AF } pr ✓~~

✓ ~~40 AF clut~~

✓ ~~41 BA clut~~

✓ ~~737-53364 AM } 1 Egg ✓~~

✓ ~~568-71490 I ✓~~

✓ ~~737-28805 AM } pr ✓~~

✓ ~~737-28806 AF } pr ✓~~

~~737-28806 AF } pr~~

✓ADP

12 Oct B.F. Booby

✓ 737-20007 AF } ✓

✓ 737-20886 AM } ✓

✓ 737 28939 AM } ✓

✓ 737-27869 AF } ✓

✓ 737-20639 AF } ✓

✓ 42 AM 2 EGGS

✓ 737 20877 AM } ✓

✓ 737 28914 AF } ✓

✓ 737-49831 AF } ✓

✓ 737 21690 AF } ✓

✓ 737-20623 AF } ✓

~~558-852751~~ } ✓

✓ 737-20864 AF } ✓

✓ 43 ♀ } ✓

✓ 44 ♀ } ✓

✓ 45 } ✓

✓ 737-27783 AF } ✓

✓ 737-49678 AF } ✓

✓ 737-20857 AM } ✓

✓ 737-39902 AF } ✓

12 Oct 12 B F Booby ✓ AMP

✓ 568-71462 I ✓

✓ 737-~~28~~25890 AM ✓

✓ 737-39869 AM pr ✓

✓ 737-20617 AF ✓

✓ 568 71475 I ✓

✓ 737-49676 AF pr ✓

✓ .46 AM ✓

✓ 737-27663 AM 2 Eggs ✓

✓ 737-20749 AF pr ✓

✓ 737-20750 AM chick ✓

✓ 737-27755 AF pr ✓

✓ 737-20746 AM pr ✓

✓ 568 ~~737~~-71461 I ✓

✓ 737-20747 AF with ✓

✓ 737-27752 AF ✓

✓ 737 53275 AF chick ✓

✓ 47 yr with ✓

✓ 48 yr chick ✓

~~737-20748 AF~~
~~737-20749 AF~~
~~737-20750 AF~~
~~737-20751 AF~~
~~737-20752 AF~~
~~737-20753 AF~~
~~737-20754 AF~~
~~737-20755 AF~~
~~737-20756 AF~~
~~737-20757 AF~~
~~737-20758 AF~~
~~737-20759 AF~~
~~737-20760 AF~~
~~737-20761 AF~~
~~737-20762 AF~~
~~737-20763 AF~~
~~737-20764 AF~~
~~737-20765 AF~~
~~737-20766 AF~~
~~737-20767 AF~~
~~737-20768 AF~~
~~737-20769 AF~~
~~737-20770 AF~~
~~737-20771 AF~~
~~737-20772 AF~~
~~737-20773 AF~~
~~737-20774 AF~~
~~737-20775 AF~~
~~737-20776 AF~~
~~737-20777 AF~~
~~737-20778 AF~~
~~737-20779 AF~~
~~737-20780 AF~~
~~737-20781 AF~~
~~737-20782 AF~~
~~737-20783 AF~~
~~737-20784 AF~~
~~737-20785 AF~~
~~737-20786 AF~~
~~737-20787 AF~~
~~737-20788 AF~~
~~737-20789 AF~~
~~737-20790 AF~~
~~737-20791 AF~~
~~737-20792 AF~~
~~737-20793 AF~~
~~737-20794 AF~~
~~737-20795 AF~~
~~737-20796 AF~~
~~737-20797 AF~~
~~737-20798 AF~~
~~737-20799 AF~~
~~737-20800 AF~~

12 Oct B-F Booly ^{ADP}

✓ 568-71477 In 7 together

✓ 49 AF

✓ 50 AF

✓ 737-39939 AM ✓

✓ 737-27912 AF ✓ which

✓ 737-27924 AF ✓ club ✓

✓ 757-63012 AF ✓ club ✓

✓ 737-20530 AF ✓ club ✓

✓ 737-39817 AF ✓

✓ 51 AF ✓ club

✓ 52 AF ✓ U

~~558-85270 I~~

✓ 737-28904 AF ✓

✓ 737-28526 AF ✓

Eggs III
Ry II
SY I

Nests III

Red-Tail Tropic
12 Oct 625-86200
33 ~~Nestling~~ Nestling LY
34 Adult no chick
35 Adult with LY
36 Nestling LY
NN37 Adult with egg
38 Ad with egg

Return

✓ADP

120 ~~120~~ R-T Tropic

625-85 740 Ad ✓ with chick

625 85 745 A LY ✓

New N 625-85 709 A chick ✓

625-85 732 A chick ✓

595-64 013 A young ✓

NN 595-64 020 A egg ✓

1304 R-F Booby

747-576.0

04 ~~Ad~~ -08

09 Ad on chick

10 ~~B~~

11

12 Ad (egg)

13 Ad chick

14

15

16 Ad

17 Ad

18 A

19 A

20

21

6F rigata
747-6576..

B-F Body ✓ADP

13 Oct 757-650.

✓ 737-20674 F ✓

✓ 737-20690 F ✓

✓ 737-20831 M ✓

✓ 737-53468 M ✓

✓ 737-49732 F ✓

✓ 568-72061 L ✓

✓ 737-53495 M } pr ✓ ~~scribble~~

✓ 737-28828 F } pr ✓ ~~scribble~~

✓ 568-72060 L ✓

✓ 757-62939 F ✓

✓ 737-28757 F. nestling ✓

✓ 78 F RC

✓ 79 M RC

✓ 757-63092 F RC ✓

✓ 737-28748 AP ✓

✓ 737-28759 AF ✓

✓ 737-53370 AT ✓

✓ 737-20835 F. Nestling ✓

✓ 737-28745 F ✓

Boat

✓ADP

- ✓ 737-53175 A! ✓
- ✓ 737-20914 A! ✓
- ✓ 737-28693 A! ✓
- ✓ 737-2784989 A! ✓
- ✓ 737-27769 A! ✓
- ✓ 737-49630 AFL ✓
- ✓ 757-62838 AM ✓ Baker
- ✓ 80 ML
- ✓ 81 SAC
- ✓ 737-53583 AF ← Bod number
- ✓ 737-49668 AM ✓
- ✓ 737-28998 M ✓
- ✓ 737-20018M ✓
- ✓ 737-20659F ✓
- ✓ 737-52942 AC ✓ Ender
- ✓ 82 SAC
- ✓ 83 F
- ✓ 737-20892 A } ✓
- ✓ 757 ~~737~~ 63074 M } ✓

13 Oct

✓ADP

with

✓ 737-20636 F ~~the~~ ✓

✓ 558-85100 SAC ✓

✓ 737-39679 AFC ✓

✓ 737-20885 F → Pi 2 eggs ✓

✓ nest 737-20884 M → Pi ✓

✓ 737-53187 F 2 eggs ✓

✓ 737-20638 M ✓

✓ 737-20032 A? ✓

✓ 737-23520 AF 1 egg ✓

~~737-20879 M 1 egg~~

~~737-20879 M 1 egg~~

✓ 737-20879 M → Pi ✓

✓ 184 F

✓ 737-20980 F ✓

✓ 737-23502 M 2 ✓

✓ 737-27822 M chick ✓

✓ 737-53376 F ✓

✓ 737-20969 F 2 ✓

130 d

✓ASP

- ✓ 737 53264 M. IE ✓
- ✓ 737-28605 F. ✓
- ✓ 85 M
- ✓ 737-39983 F. Nest ✓
- ✓ 568-71465 I ✓
- ✓ 737-39985 F ✓
- ✓ 737-20956 M? ✓
- ✓ 737-20959 ♀ ✓
- ✓ 737-20949 ♀ chick + egg ✓
- ✓ 568-71449 I ✓
- ✓ 737-20732 ♀ ✓
- ✓ 737-20724 A? ✓
- ✓ 957? (737) 62865 ♀ C ✓
- ✓ 737-50305 ♀ (X) ✓
- ✓ 737-37579 ♀ C ✓
- ✓ 737-27770 ♀ C ✓
- ✓ 86 ♀ C
- ✓ 737-39904 ♂ ✓
- ✓ 737-29704 ♂ ✓
- ✓ 737-37599 ♂ ✓

130A

VADP

- ✓ 737-25895 ♀ ✓
- ✓ 737-49585 A 2E ✓
- ✓ 737-49577 → 2E ✓
- ✓ 1087 ♀
- ✓ 737-39676 ♀ chick ✓
- ✓ 737-26660 A3 Yang ✓
- ✓ 737-37584 AF chick ✓
- ✓ 737-39742 M. 2E ✓
- ✓ 737-39858 M. 2E ✓
- ✓ 737-53331 ♀ E ✓
- ✓ 737-27759 ♀ ✓

Nest Count

2E 1

3E

1E

SY

LY

Birnie *New*
7 Nov Brown Booby
757-65918-

Binnie

7 Nov

R-T Tropicbird

625-870

01 W Large young

Shadbird Count

Shore

7 Nov

Sanderling - 1

Tattler - ~~1~~ 5

Birnie A-F ^{VADP} Booby

8 Nov

757-65926 Imm

✓ 737-26267 M ✓

✓ 737-26278 F ✓

✓ 737-26279 M ✓

~~667-~~ 27 I ✓

✓ 667-39555 M ✓

737 ~~66~~ 26258 F ✓

28 I ✓

✓ 737-23902 M ✓

✓ 757-63863 F ✓

Ender ^{du} ⊗ ✓ 737-20349 M ✓

✓ 737-26263 M ✓

✓ 737-26251 F ✓

29 I ✓

30 I ✓

✓ 737-22273 F ✓

737-22274 M ✓

Bennie B-f Booby VADP
8 Nov

✓ 737-26254 M ✓ pr

✓ 737-26253 F ✓ pr

✓ 667-39554 F ✓ pr

Ende (* 737-23204 M ✓ pr

31 I pr WI

32 I

✓ 737-22265 M ✓ WI

33 I

✓ 667-39544 M ✓

34 F } pr

35 I } WI

✓ 737-26206 M ✓

36 F } pr

37 I } WI

38 Q RC

How 757-63085 F ✓ RC

39 M RC

40 F RC

41 F RC

* Phelan 757-67907 F ✓ RC

Binnie ^{✓Atyp}
8 Nov B-f Booby

42? RC

43 MRC

*Ender 737-21423 F C

44 FC

45 FC

de Haul 737-23742 F C

*Ender 737-22565 F C

46? C

47? C

48? C

49 FC

*McKen 737-21573 FC

Haul Red 757-63469 FC

50 FC

51 SL

52 FC

*Phonix 757-64358 F C

53 SC

54 FC

55 FC

8 Nov
Bisnie

B-f Booby

✓ADP

56 FC

*Ender 737-49440 FC ✓

Baker 757-62758 FC ✓

57 FC

*Ender 737-22951 FC ✓

58 FC

~~59~~

59 FC

60 FC

61 MC

*Phoenix Black 757 62277 ?C ✓

*Ender 737-50464 FC

62 F

*Phoenix 757-64347 FC ✓

63 F

*Phoenix 757 64366 FC ✓

*Ender 737 50306 FC ✓

64 FC

65 FC

66 FC

Binnie
8 Nov. B-f Booby ✓ ADP

✓ 737-22263 F ✓ pr

✓ 737-26274 M ✓ WI

67 I

68 I

⊗ McKean ✓ 737-21571 M ✓

69 I

⊗ Phoenix ✓ 737 26 143 F ✓

✓ 737 26 449 F ✓

✓ 737 26 209 M } pr WI

70 I

⊗ Ender ✓ 737-20353 F pr ✓

✓ 737-26455 M 2E ✓

✓ 737-22284 M ✓

71 F

✓ 737-26456 M } pr ✓

✓ 737-26458 F } WI ✓

72 I

⊗ Ender ✓ 737-21293 F ✓

✓ 737-26462 M } pr WI ✓

73 I

Birnie
8 Nov

B-f Booby ADP

✓ 737 26461 M w I ✓
74 I ✓

✓ 737-21312 M } pr. ✓
75 F } ✓

✓ 737-26472 F } pr ✓
76 F } ✓

✓ 667 39570 M ✓

976-8 ✓ 737 26322 F w I ✓

✓ 737 26331 F } pr ✓

✓ 737 26330 M } pr ✓
77 I w I ✓

✓ 737-26320 M ✓

✓ 737-26320 F ✓

78 F 2E

✓ 737-26325 M } w L ✓

79 I ✓

✓ 737-21029 M } ✓

80 F } ✓

8 Nov
Bernie

B-f Booby ^{VADP}

✓ 737

263 ~~2648~~ F

✓ } WI

✓ 667

-39575M

81I

982

✓ 737

-23923F

✓ } WI

✓ 737

-26345M

83I

✓ 737

-26340 F

✓ } WI

✓ 737

-26342 M

84I

85I

✓ 737

-26341 M

✓ } WI

✓ 737

-26344 F

✓ 737

-26346 M

86I

✓ 737

26343 F

✓ } WI

✓ 737

-21174 M

✓ 737

-21165 F

87M

88I

✓ } WI

8 Nov B-F Booby ✓ADP

*Ender 737-21317 M 7pm
89F

*Ender 737-48299 F 7pm ✓

• 737-26350 M ✓WN

90F

91I

✓737-21162 M WN ✓

*Ender 737-23185 F 7pm ✓

✓737-26220 M ✓WN

✓737-23854 F ✓7pm

• 737-26359 M ✓WI

92I

903 ✓737 23873 M WE ✓

94M.

• 737-21163 M 7pm ✓

95F

96M

• 737-26482 F 7pm ✓WN

✓737 50211 F 7pm ✓

• 737 21022 M ✓

Birnie
8 Nov

Brown Booby

757-65976 F

82I

93 MWN

8 Nov

Return

✓ ASP

Birdie

Brown Booby

737-

21222

✓ ~~with~~

with Egg
& chick

737-

21235F

✓

8 Nov
Birnne

Bf Booby ✓ADP

... 97 F

*Ender 737-22544 M IE ✓

98 F

99 M

✓ 737-26478 M ✓

✓ 737-23898 F IE ✓

✓ 737-26231 F ✓

66000 M WI

✓ 737-26480 M ✓

✓ 737-26476 F WI ✓

*Ender 737 20341 F 2E ✓

✓ 737-21142 M ✓

✓ 737-21087 F ✓

✓ 737-26479 F ✓

✓ 737-21152 M wN ✓

✓ 737-23865 M ✓

✓ Ender 737-22523 F ✓

✓ Ender 737-22497 F ✓

8 Nov

VADP

Birnie B-f Booby

737-26493 M w N ✓

737-23864 M y ✓

737-21139 F w N ✓

737-23908 F y ✓

737-26372 M w ✓

oh McKerr 757-63962 F ✓

~~737-26495 M ✓~~

667-39588 ? ✓

737-23861 M y ✓

737-26223 F w ✓

737-26390 M y ✓

737-26393 F w ✓

oh* Ender 737-22599 F ✓

737-23922 M ✓

737-26380 F ✓

737-23862 F y ✓

737-26381 M w ✓

* Phelan 737-22030 F y ✓

737-23909 M w ✓

8 Nov

VADP

Binnie

B-f Booby

- ✓ 737-21308 F ✓
- ✓ 737-26375 M WI ✓
- ✓ 737-26374 F ✓
- ✓ 737-21157 F ✓
- ✓ 737-26399 M 2E ✓
- ✓ 737-26385 M WI ✓
- ⊛ Ender 737-21260 F 7p ✓
- ✓ 737-26489 M 2E ✓
- ✓ 737-26397 M ✓
- ✓ 737-26465 F WN ✓
- ✓ 737-21156 F WN ✓
- ✓ 737-26219 F 7p WN ✓
- ✓ 737-21086 M 7p WN ✓
- ⊛ Ender 737-20487 F ✓
- ✓ 737-26483 M ✓
- ✓ 737-26490 M ✓
- ✓ 737-21322 M E+N ✓
- ✓ 667-63957 IM 7p ✓
- ✓ 737-26473 F 7p ✓

8 Nov
Birnie Is B-f Booby ✓ ADP

• 737-21159 F ✓ pr/wN

• 737-26497 M ✓

• 737-21321 M E+NW ✓

• 737-26499 M ✓

• 737-22232 F 7M ✓

~~737-21034 F~~

• 737-21034 F } wN

⊗ Hand 737-23624 M } pr ✓

• 737-21033 F wI ✓

• 737-21048 M wI ✓

• 737-21141 M } pr ✓

⊗ Phoenix 757-62239 F wE ✓

• on Rock 737-23924 M ✓

• 737-21026 F ✓

• 667-39576 F wN ✓

• 737-26215 F ✓

• 737-21092 F ✓

? Banded or Handed on 11/10/64 ←



8 NOV

Birnie Fairy Tern

652-46717-800A

✓ADP

3 NOV
Bunde Fairy Tern Patern

- 642 04 793 A ✓ ✓
- 642-04 779 A ✓ ✓
- 642-04 798 A ✓ ✓
- 642-04 774 A ✓ ✓
- 642-04 771 A ✓ ✓
- 642-04 788 A ✓ ✓
- 642-04 772 A ✓ ✓
- 642-04 793 A ✓ ✓

8 Nov. Can. Noddy

Birnie

773

-20703-5 N ✓

OG I ✓

8 Nov

Binnie Is Com Noddy

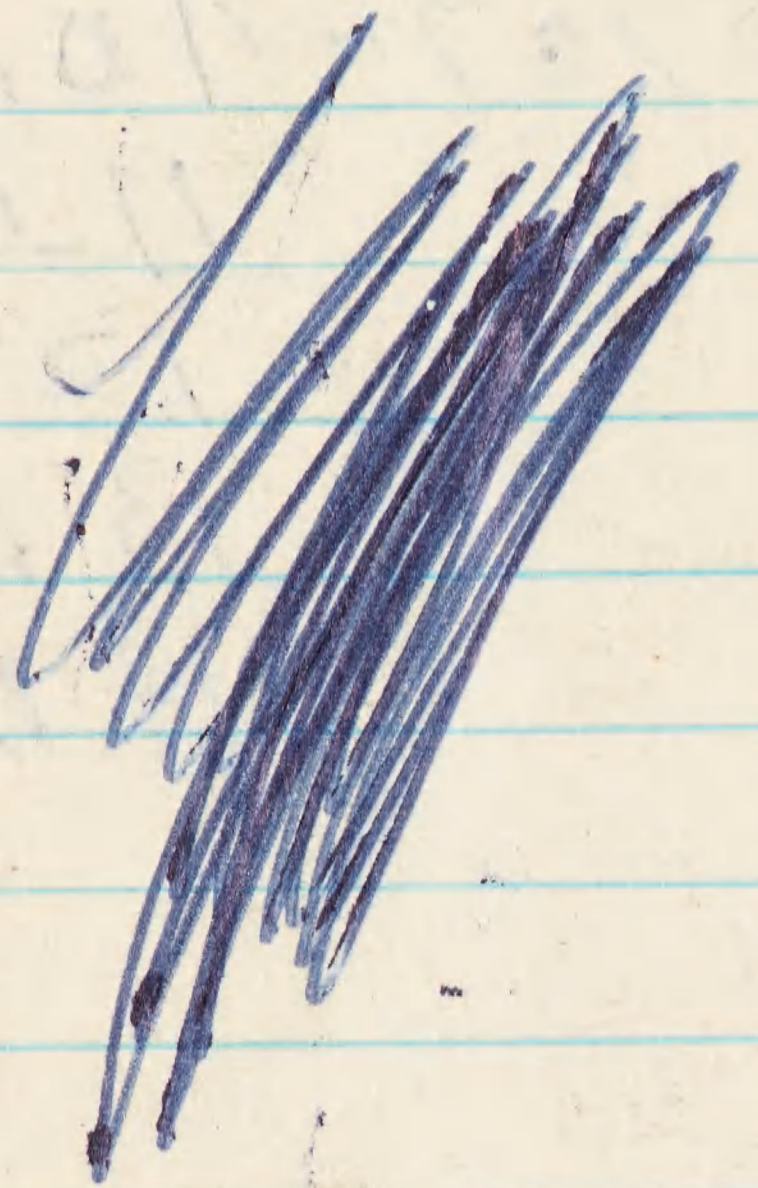
773-20707-10 N ✓

11 I ✓

12 N ✓

13 N ✓

14 N ✓



9 Nov B-F Booby ^{ADP}
Birnie Is 757-669..

✓ 737-22213 MWI ✓
• ✓ 22210 FWI ✓
• ✓ 22207 MWI ✓

01 I
02 ±

da ⊗ Ender ✓ 22513? RC ✓
• ✓ 26338? C ✓

03 FC
04? C

⊗ Phoenix 757 64396 F ✓
737 22300 M wI ✓

• ✓ 26409 M ✓
• ✓ 26413 M ✓

⊗ Ender ✓ 50308 FWI ✓
05 I ✓

06 F ✓
• ✓ 21075 F ✓

9 Nov

Birnie

B-f Booby ✓ ADP

⑧ Ende 737-21298 F ✓
07 M / pr

08 I

✓ 26268 F ✓
09 ?

10 I

✓ 26290 M ✓

✓ 26291 F ✓
12 I wt

✓ 26308 M ✓
13 M

✓ 23871 F ✓

13 M

✓ 26453 M wt ✓

14 I

✓ 26296 M ✓
15 F / 6N

✓ 26288 M wt ✓

16 I

✓ 26283 M wt ✓

✓ 26300 M wt ✓

9 Nov
Bernie

B & Beoby ✓ A9P

17 I

737-26257 M ✓
* Ender 23078 F ✓

• 22279 M ✓
• 22297 M ✓

18 I

• 26259 MWI ✓

19 I

20 M

* Ender 22610 F ✓

21 M

22 F WI

• 21198 M ✓

* McKen 23830 F WN ✓

• 23919 F ✓

• 22270 M ✓

23 I

* McKen 737- 51145 F WN ✓

• 23876 ? ✓

Voice changing
paired with female

Voice change due to ♂
few black feathers on
tail coverts + back SA

9 Nov

B-F Booby [✓]ADP

Bisnie

✓ 737-23589 M [✓]WI

✓ 667-39541 F [✓]WI
24I

• 737-22275 M [✓]

✓ -26260 F [✓]WI

25? M?

✓ 26421 F [✓]C

✓ 21199 F [✓]C

✓ 22289 M [✓]WI

✓ 667-39548 F [✓]

26 M [✓]WI

27 F [✓]WI

• ✓ 21043? [✓]WI

• ✓ 21068 M [✓]WI

• ✓ 21069 F [✓]WI

28 I [✓]WI

29 I

30 M

⊗ Ender ✓ 23082 M [✓]

9 Nov

B-F Booby ^{VADP}

B. Line

• ✓ 737-23585 F wN ✓
31?

(*) Ender ✓ 23076 F ✓ M ✓

• ✓ 26440 M ✓ W ✓

• ✓ 23805 F ✓ E ✓

(*) Ender ✓ 21452? ✓

• ✓ 26431? ✓

• ✓ 23928 F ✓ I ✓

32 I ✓

(*) Ender ✓ 757-63648 F ✓

• ✓ 737-21095 M ✓

~~21095~~

• ✓ 667-39598? ✓

(*) Ender ✓ 737-22473 F ✓

de Haul ✓ 20546? ✓

• ✓ 21064 ✓

de (*) Phoenix ✓ 28471 F ✓

(*) Ender ✓ 22469 F ✓

• ✓ 26469 F ✓ WI ✓

9 Nov
Binnie

VADP

B-F Leoby

de Haul → 37-53433 ✓ F

de Haul ve 28695 ? ✓
33 ?

35 I

36 F

⊗ Ends ✓ 22826 F ✓

⊗ Ends ✓ 23045 ? ✓

• ✓ 22246 MWI ✓

38 I

• ✓ 26240 F ✓

• ✓ 21122 M ✓

• ✓ 667-395 36 M ✓

• ✓ 667 395 35 F ✓

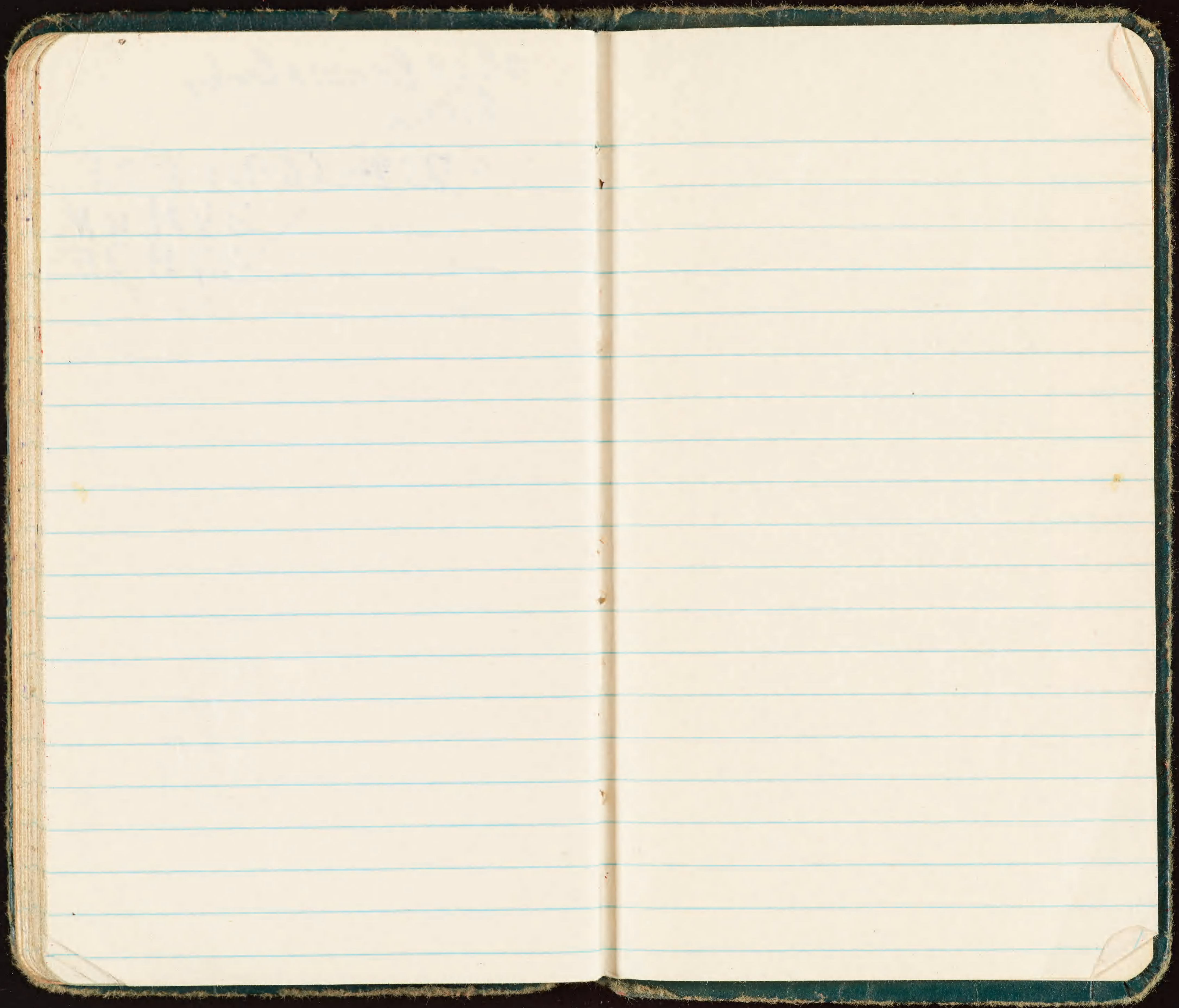
39 I

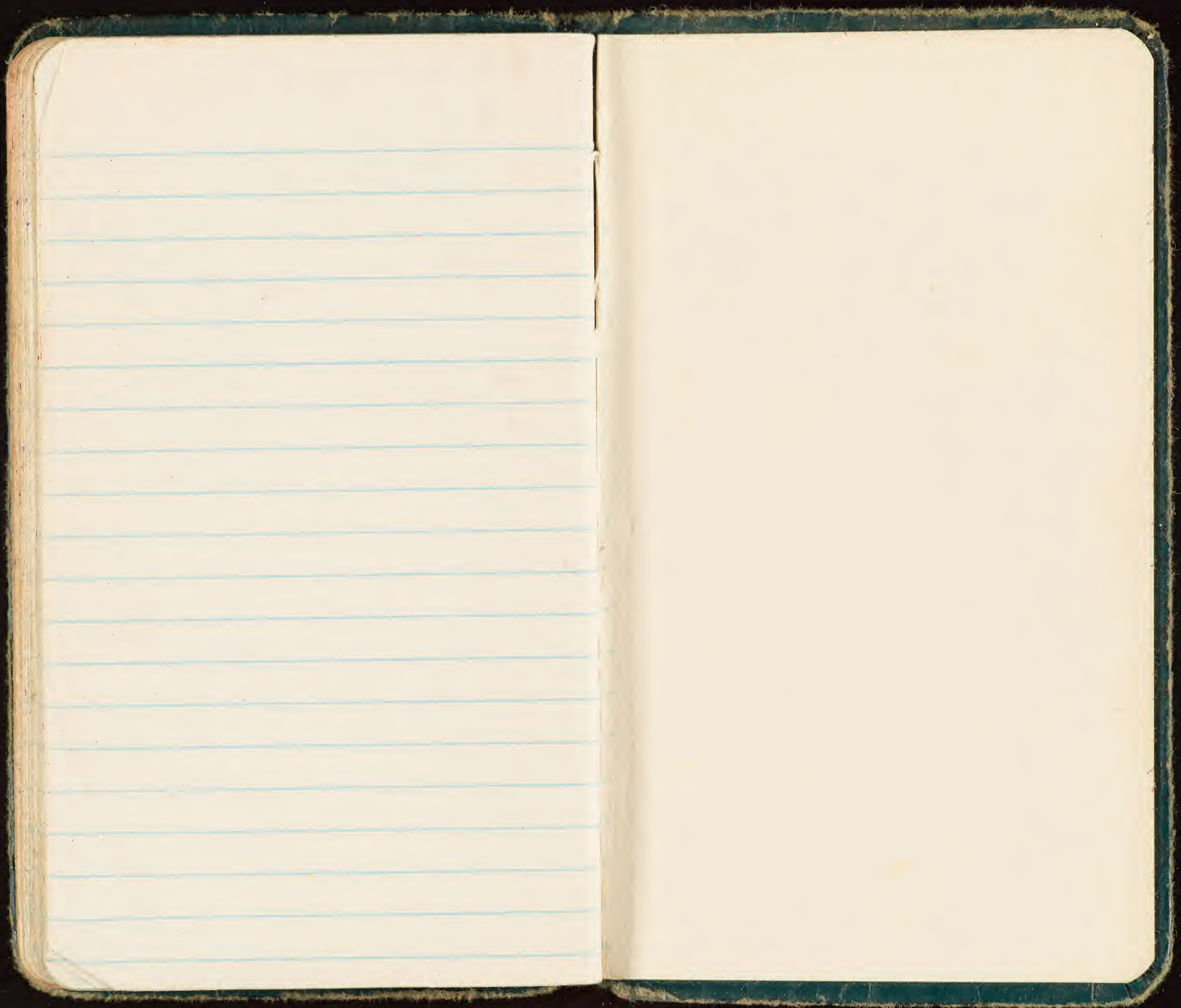
40 M

✓ 737-26299 FWI ✓

~~4 Nov Brown Booby
Birnie~~

~~✓ 757-66911 F2E
✓ 34M W N
✓ 37M 2E~~







7530-222-0078
FEDERAL SUPPLY SERVICE