

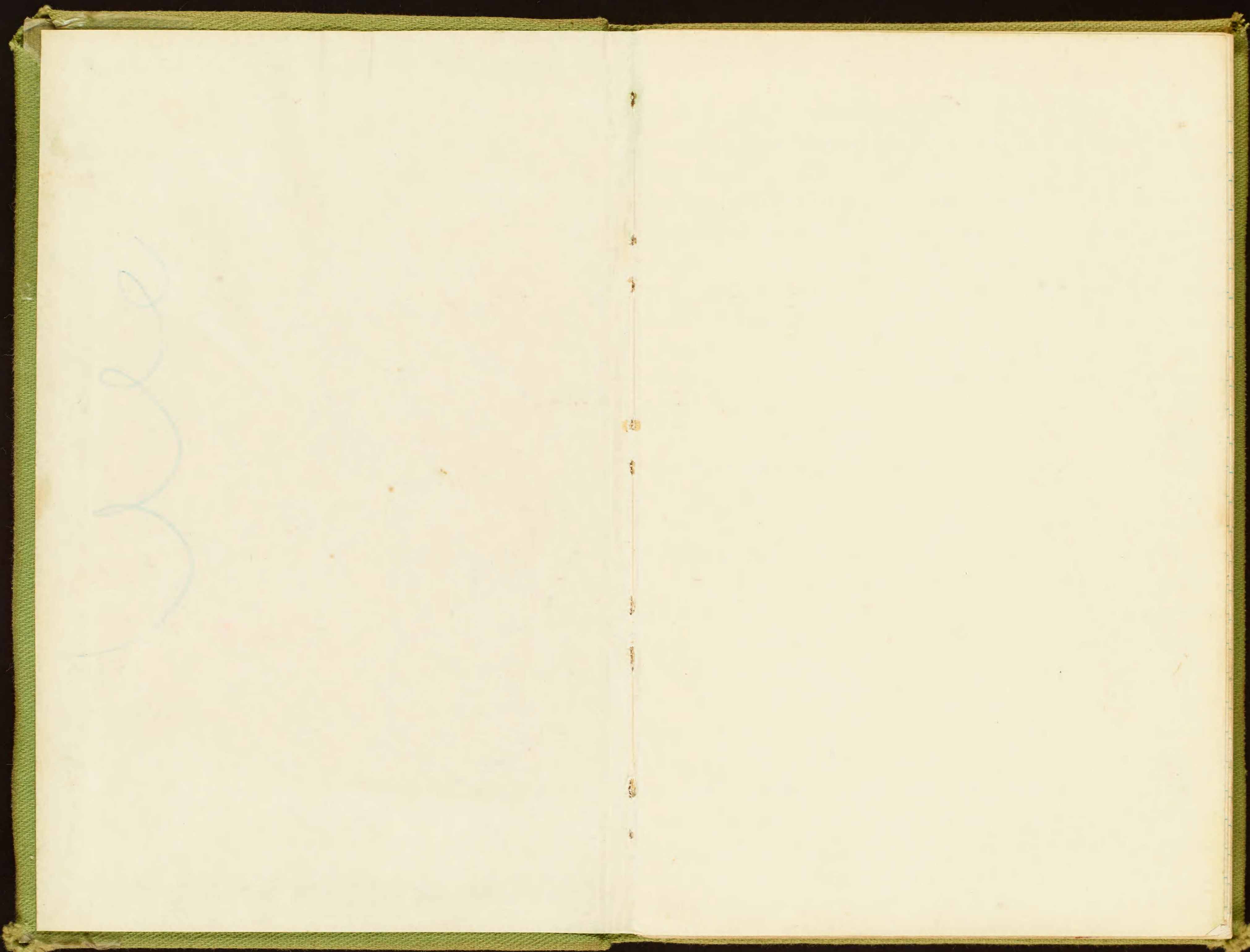
SCALE

CATALOG

SIC #9

7530-222-3521  
FEDERAL SUPPLY SERVICE

10901



Handwritten scribble in light blue ink on the left page.

variation

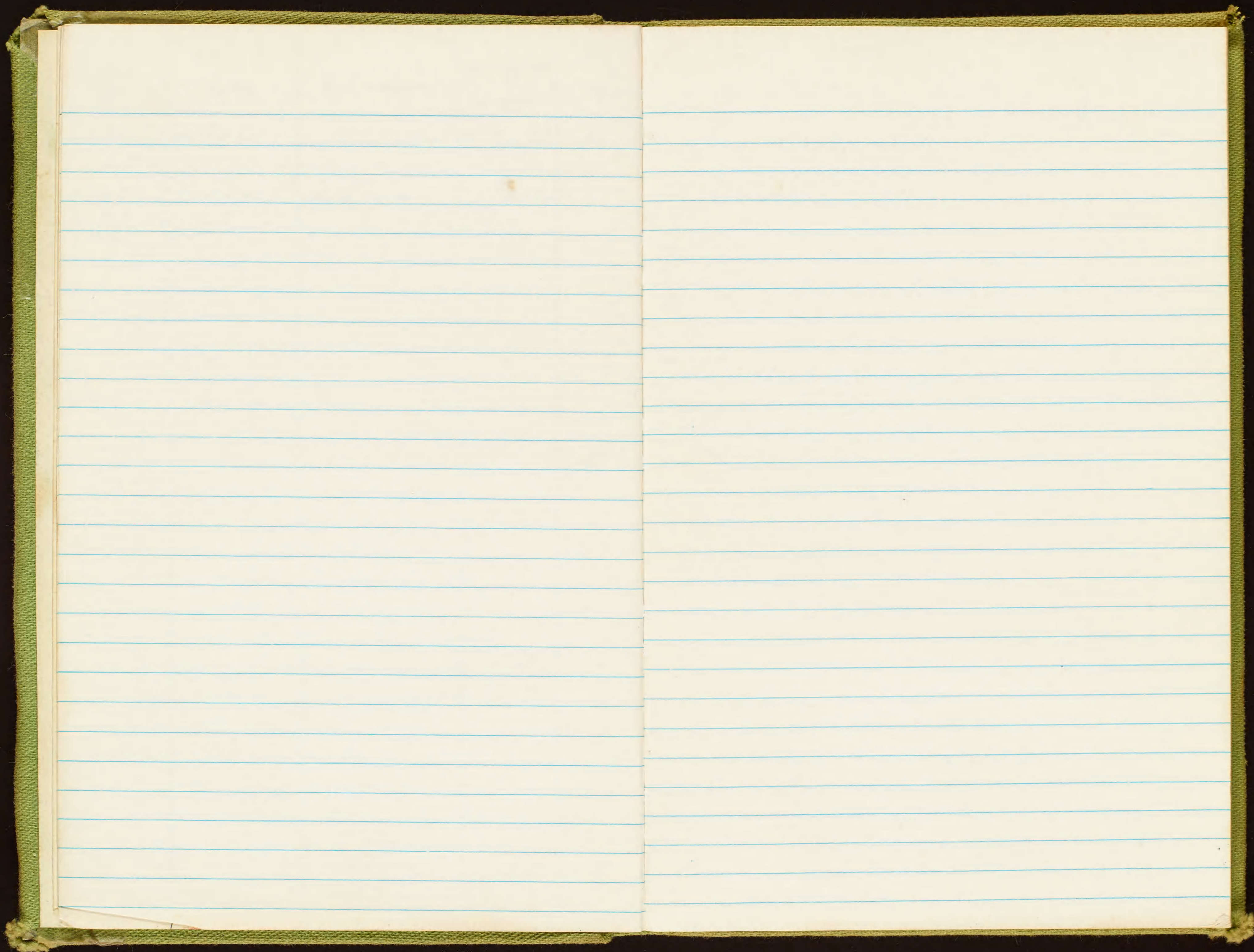
lies

11

FIELD No.	DATE	SPECIES	LOCATION	WT	DESTINATION	FIELD No.	DATE	SPECIES	LOCATION	WT	DESTINATION
S 756 S	16 Sept 1965	<del>SULA DACTYLATRA</del> <del>BOOBY</del>	Howland	1329 <del>1281</del> gms	SKIN	5783	30 Sept 1965	Puffinus lherminieri	Phoenix Island	170	Alcoholics
- 57	"	" "	"	1784 gms	SKELTON	- 84	"	" "	" "	177	"
S 58	"	ANOUS MINUTUS	"	70.2 gms	SKIN	- 85	"	" "	" "	185	"
- 59	18 Sept 1965	Sula sula	"	NR	SKEL.	- 86	"	" "	" "	178	"
S 60	22 Sept 1965	Sula sula	McKean Is.	820 gms	skin	- 87	"	" "	" "	181	"
- 61	22 Sept 1965	Erolia	McKean Is.	669 gms	skin	- 88	"	" "	" "	187	"
- 62	23 Sept 1965	Acronia interpres	"	117 gms	SKIN	- 89	"	" "	" "	196	"
- 63	"	" "	"	133 gms	"	- 90	"	" "	" "	173	"
S 64	"	Phaethon rubricauda	"	636 gms	"	- 91	"	Procelsterna cerulea	" "	46	"
S 65	"	Fregata ariel	"	762 gms	"	- 92	"	" "	" "	54	"
S 66	"	Sula dactylatra	"	1310 gms	SKIN	- 93	"	" "	" "	40	"
S 67	"	" "	"	1658 gms	"	- 94	"	" "	" "	44	"
S 68	24 SEPT 1965	Puffinus pacificus	HULL	320 after freezing	SKIN	- 95	"	" "	" "	56	"
S 69	30 SEPT. 65	HETEROSCELUS INCANUM	PHOENIX	72.6 gms	SKIN	- 96	"	" "	" "	49	"
S 70	"	EROLIA ?	"	76.0 gms	SKIN	- 97	"	" "	" "	54	"
S 71	"	SULA LEUCOGASTER	"	700 gms	SKIN	- 98	"	" "	" "	48	"
- 72	"	Puffinus pacificus	"	376 gms	Alcoholics	- 99	"	" "	" "	51	"
- 73	"	" "	"	343 gms	"	- 5800 - 5801	"	" "	" "	42 40	"
- 74	"	" "	"	365	"	- 02	"	" "	" "	40	"
- 75	"	" "	"	359	"	- 03	"	" "	" "	49	"
- 76	"	Puffinus lherminieri	"	170	"	- 04	"	" "	" "	46	"
- 77	"	" "	"	193	"	- 05	"	" "	" "	42	"
- 78	"	" "	"	170	"	S 06	"	Sula dactylatra	"	1780	SKIN
- 79	"	" "	"	174	"	S 07	20 Oct 1965	Erolia acuminata	Enderburg	44.5 g	SKIN
- 80	"	" "	"	188	"	S 08	"	" "	"	38 g	"
- 81	"	" "	"	193	"	S 09	"	Sula sula	"	870 g	"
- 82	"	" "	"	179	"	- 10	24 Sep 65	Sterna fuscata	Hull	not taken	"

Field Number	Date	Species	Location wt.	Disp of spec.	Field number	Date	Species	Location, wt.	Disposition
58115	24 Sep 65	Sterna fuscata	Hull I. uttaren	skin	5838	29 Oct. 65	Pterodroma alba	Christmas Is. 235g.	alc.
5812 <sup>s</sup>	24 Sep 65	Sterna fuscata	Hull I. uttaren	skin	- 39	29 Oct. 65	Pterodroma alba	Christmas Is. 257g.	alc.
- 13	18 SEPT. 65	EROLIA ?	BAKER IS. 40.gms	SKIN	- 40	29 Oct. 65	pterodroma alba	Christmas Is. 241g.	alc.
S 14	18 SEPT. 65	EROLIA ?	BAKER IS. 47.gms	SKIN	- 41	29 Oct. 65	Pterodroma alba	Christmas Is. 249g.	alc.
S 15	19 SEPT. 65	NUMENIUS TAHITIENSIS	BAKER IS. 438.5gms	SKIN	- 42	29 Oct. 65	Pterodroma alba	Christmas Is. 256g.	alc.
S 16	16 Sept 1965	Heterostichus incanum	Beha Is. 73.4gms	skin	- 43	29 Oct. 65	Pterodroma alba	Christmas Is. 246g.	alc.
- 17	17 SEPT 1965	STERNA FUSCATA	BAKER IS. 130.gms	SKIN	- 44	29 Oct. 65	Pterodroma alba	Christmas Is. <sup>293</sup> 264g.	alc.
S 18	19 Oct 1965	Limosa lapponica	Baker Is. 198gms	skin	- 45	29 Oct. 65	Pterodroma alba	Christmas Is. 267g.	alc.
S 19	20 Oct. 1965	Erolia acuminata	Baker I. 52 gms	skin	- 46	29 Oct. 65	Pterodroma alba	Christmas Is. 213g.	alc.
S 20	28 Oct. 1965	Vini Kuhlii <del>PARROT SP?</del>	CHRISTMAS I. 63.gms	SKIN	- 47	29 Oct. 65	Pterodroma alba	Christmas Is. 254g.	alc.
S 21	28 Oct.	Thalasseus berggii	Christmas I. 287gms	SKIN	- 48	29 Oct. 65	pterodroma alba	Christmas Is. 230g.	alc.
S 22	28 Oct 1965	Vini Kuhlii <del>PARROT SP?</del>	CHRISTMAS I. 65.6gms	SKIN	- 49	29 Oct. 65	Pterodroma alba	Christmas Is. 250g.	alc.
S 23	28 Oct 1965	GYGIS ALBA	CHRISTMAS I. 66.5gms	SKIN	- 50	29 Oct. 65	Pterodroma alba	Christmas Is. 254g.	alc.
S 24	28 Oct 1965	THALASSEUS BERGGII	CHRISTMAS I. 280gms	SKIN	- 51	29 Oct. 65	Pterodroma alba	Christmas Is. 225g.	alc.
S 25	28 Oct 1965	THALASSEUS BERGGII	CHRISTMAS I 257gms	SKIN	- 52	29 Oct. 65	Pterodroma alba	Christmas Is. 251g.	alc.
S 26	28 Oct 1965	PLUVIARIS DOMINICA	CHRISTMAS I 129gms	SKIN	- 53	29 Oct. 65	Pterodroma alba	Christmas Is. <sup>280</sup> 269g.	alc.
S 27	28 Oct 1965	PLUVIARIS DOMINICA	CHRISTMAS I 122.gms	SKIN	- 54	29 Oct. 65	Pterodroma alba	Christmas Is. 251g.	alc.
S 28	28 Oct. 1965	NUMENIUS TAHITIENSIS	CHRISTMAS I. 420gms	SKIN	- 55	29 Oct. 65	Pterodroma alba	Christmas Is. 245g.	alc.
S 29	28 Oct. 1965	NUMENIUS TAHITIENSIS	CHRISTMAS I. 449gms	SKIN	- 56	29 Oct. 65	Pterodroma alba	Christmas Is. 248g.	alc.
- 30	29 Oct. 1965	Phaethon rubricauda	Christmas Is. 506gms	skin	- 57	29 Oct. 65	Pterodroma alba	Christmas Is. 286g.	alc.
S 31	29 Oct. 1965	Sula dactylatra	Christmas Is. 1676gms	skin	- 58	29 Oct. 65	Pterodroma alba	Christmas Is. 252g.	alc.
- 32	29 Oct. 1965	Spatula clypeata	Christmas Is. 527gms	skin	- 59	29 Oct. 65	Affinis nativitatus	Christmas Is. 325g.	alc.
S 33	29 Oct. 1965	Spatula clypeata	Christmas Is. 618gms	skin	- 60	29 Oct. 65	Puffinus nativitatus	Christmas Is. 306.5g.	alc.
- 34	29 Oct. 65	Pterodroma alba	Christmas Is. 234g.	alc.	- 61	30 Oct. 65	Spatula clypeata	Christmas Is. 419gms.	skin
- 35	29 Oct. 65	Pterodroma alba	Christmas Is. 261g.	alc.	62	30 Oct 1965	Sula sula	Christmas 723g	skin
- 36	29 Oct. 65	Pterodroma alba	Christmas Is. 254g.	alc.	S 63	30 Oct. 65	Pterodroma alba	Christmas 239g	"
- 37	29 Oct. 65	Pterodroma alba	Christmas Is. 261g.	alc.	S 64	" " "	" " "	" 257g.	"

Field #	Date	Species	Location Weight	Dispos.
S 5865	30 Oct. 65	Prerodroma alba	Christians <sup>264</sup> <del>263</del>	skin
66	" "	" "	" 262g	"
S 67	29 Oct. 65	Sula Sula	" 797g	"



Institution

National Museum.

United States

Smithsonian

PACIFIC PROJECT  
196





Smithsonian

United States

National Museum.

PACIFIC PROJECT  
196

Institution

