

Historic, Archive Document

Do not assume content reflects current scientific knowledge, policies, or practices



62.61

1956

Bu

FLOWERFIELD BULB FARM

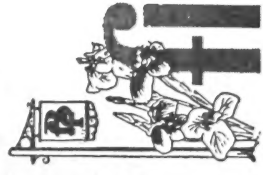
BOX 90

OYSTER BAY, LONG ISLAND, N. Y.

SPECIAL CATALOG

BULBS TO PLANT NOW

FOR INDOOR GROWING



flowerfield

Return Postage Guaranteed



Sec. 34.66, P. L. & R.
U. S. POSTAGE
PAID
OYSTER BAY, N. Y.
Permit No. 90

U. S. Dept. of Agriculture
Library
Washington 25, D. C.

FLOWERFIELD'S

SPECIAL CATALOG OF BULBS FOR INDOOR GROWING

Our Spring Planting Catalog Will Follow Shortly

Page	Species	Variety	Each	Three	Six	Doz.	Total
3	GLOXINIA,	Blanche de Meru	1.00	2.00	3.50		_____
	GLOXINIA,	Emperor Frederick	1.00	2.00	3.50		_____
	GLOXINIA,	Mont Blanc	1.00	2.00	3.50		_____
	GLOXINIA,	Princess Elizabeth	1.00	2.00	3.50		_____
	GLOXINIA,	Roi des Rouges	1.00	2.00	3.50		_____
	GLOXINIA,	Hollywood	1.00	2.00	3.50		_____
	GLOXINIA,	Unlabeled colors		1.75	3.25	7.00	_____
4	GLOXINIA	COLLECTION		2.75			_____
	CALADIUM,	Candidum	95¢	2.45		7.50	_____
	CALADIUM,	Lord Derby	95¢	2.45		7.50	_____
	CALADIUM,	Scotch Plaid	95¢	2.45		7.50	_____
	CALADIUM,	John Peed	95¢	2.45		7.50	_____
	CALADIUM,	Spotlight	95¢	2.45		7.50	_____
	CALADIUM,	Red Flare	95¢	2.45		7.50	_____
5	CALADIUM	COLLECTION		2.65			_____
	AGAPANTHUS	Orientalis	1.00				_____
6	AGAPANTHUS	Orientalis, Alba	3.00				_____
	SPREKELIA,	A. Formosissima	1.25	3.25		12.00	_____
7	AMARYLLIS,	Unlabeled colors	1.50	3.75			_____
	AMARYLLIS,	Red and Scarlet	1.75	4.50			_____
8	AMARCRINUM,	Howardii	4.75	13.00			_____
9	HAEMANTHUS,	Multiflorus	2.00	5.50			_____
	HAEMANTHUS	3 yr., Katherinae	3.00				_____
10	HAEMANTHUS	5 yr., Katherinae	6.00				_____
	ZEPHYRANTHES,	Carinata			2.00	3.50	_____
	ZEPHYRANTHES,	Candida			1.00	1.75	_____
11	ZEPHYRANTHES,	Citrina			3.50	6.50	_____
	NERINE,	Bowdeni	1.15	3.20			_____
	NERINE,	Corusca	1.25	3.50			_____
12	NERINE,	Flexuosa Alba	2.00	5.50			_____
	ISMENE,	C. Advance	85¢	2.25		7.50	_____
13	ANTHURIUM	-6-12 month old	6.50				_____
	ANTHURIUM	-12-18 month old	9.00				_____
14	ALSTROEMERIA,	Pelegrina			1.25	2.25	_____
	ALSTROEMERIA,	Pelegrina, Alba			1.50	2.75	_____
	ALSTROEMERIA,	Ligtu			1.95	3.50	_____
15	EUCHARIS,	Amazonica	1.50	3.75	7.00		_____
16	ACHIMENES,	L. Major			90¢	1.65	_____
	ACHIMENES,	L. Margarita			95¢	1.75	_____
	ACHIMENES,	hyb. Milton			1.00	1.85	_____
	ACHIMENES,	hyb. Purple King			1.00	1.85	_____
	ACHIMENES,	hyb. Meduna			1.00	1.85	_____
17	GLORIOSA,	Rothschildiana	85¢	2.50		8.50	_____
18	STRELITZIA,	10 to 24 inches high	1.25				_____
	STRELITZIA,	large 5 yr. old plants	6.50				_____
			AMOUNT ENCLOSED				_____

CUT ALONG DOTTED LINE

YOUR NAME IS ON REVERSE SIDE

SEND TO

FLOWERFIELD BULB FARM, BOX 90, OYSTER BAY, N. Y.



GLOXINIAS—SINNINGIAS

Few house plants are more attractive than the Gloxinias (Sinningias). The lovely velvety blooms nestle above the large plushy leaves on plants about 15 inches tall. Plant 1 bulb to a 6 inch pot.

BLANCHE DE MERU. *Wide border of soft rose on white throat.*

EMPEROR FREDERICK. *Bright scarlet, wavy white border. Illustrated.*

MONT BLANC. *Velvety pure white throughout.*

PRINCESS ELIZABETH. *White with blue border.*

ROI DES ROUGES. *Dark red, grandiflora type.*

HOLLYWOOD. *Enormous flowers of deep violet.*

Large top sized Bulbs, Each \$1.00. Three of one variety, \$2.00 Unlabeled, Three \$1.75, Six \$3.25.

GLOXINIA COLLECTION. *1 each of Emperor Frederick, Roi des Rouges, Hollywood. Separately packed and labeled \$2.75.*



CALADIUMS

Caladiums are grown for their "fancy" leaves which are as colorful as any flower. Individual leaves vary in size from 6 to 10 inches long; the whole plant grows to about 2 feet in height and almost as broad. Caladiums make wonderful pot plants indoors during the winter months. (Plant 1 bulb to an 8" pot).

CANDIDUM. *Large white leaves traced with green veins.*

LORD DERBY. *Delicate rose-pink, finely veined.*

SCOTCH PLAID. *Mottled light green, crimson ribs.*

JOHN PEED. *Transparent red center, green edge.*

STOPLIGHT. *Shining crimson, narrow edge of green.*

RED FLARE. *Star-like burst of rose-red on mottled straw ground.*

JUMBO BULBS. *Each 95c, Three of same variety \$2.45. Dozen of same variety \$7.50.*

1 each of CANDIDUM, LORD DERBY, JOHN PEED. 3 Bulbs, each separately labeled for \$2.65.



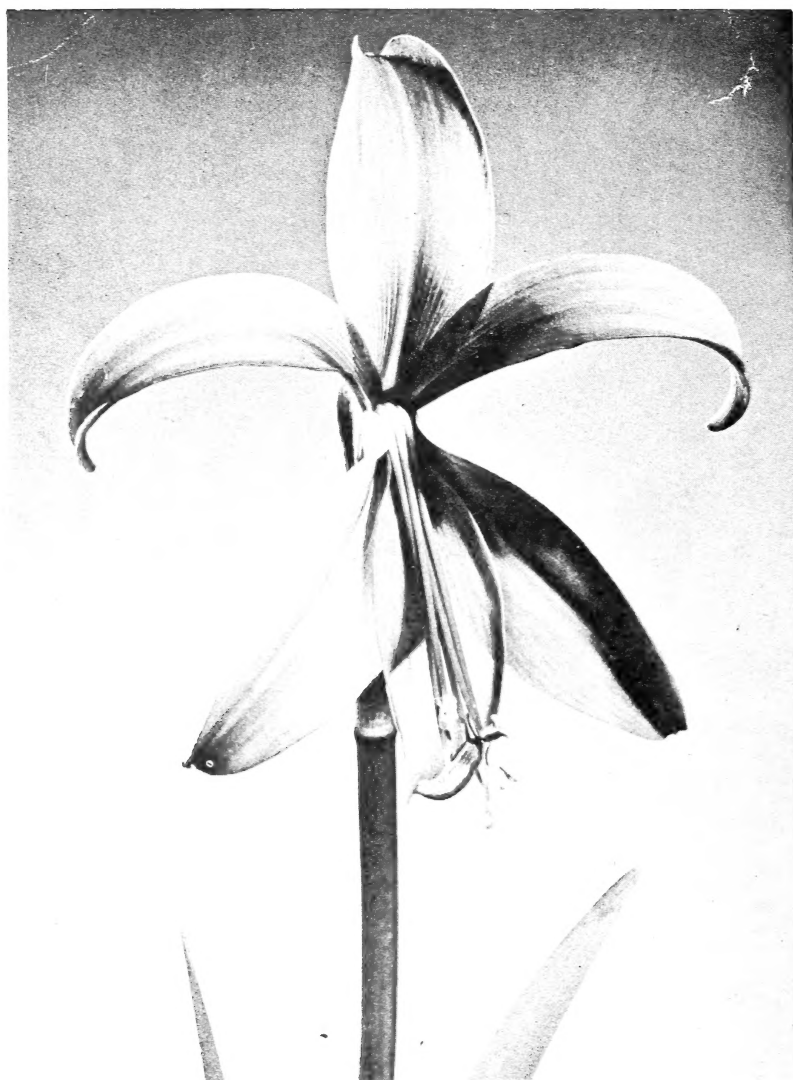
AGAPANTHUS—BLUE LILY of the NILE

Large umbels of 12 to 30 blue flowers are carried 3 feet high on wiry naked stems. A graceful mound of decorative long strap-like leaves grows at the base of the plant. Bloom commences indoors in Spring and will continue through most of the summer. When the weather warms the pots are transferred to the open in a cool shaded location.

ORIENTALIS. Deep blue flowers on plants 3 feet tall. Each \$1.00.

ORIENTALIS, ALBA. A pure white flowering form of the above. Each \$3.00.

Plant February—March in a 12 inch pot with crown near surface. Keep in cool place to start and keep soil moist during early stages of growth. Lift pot before hard frost and bring indoors and store in cellar.



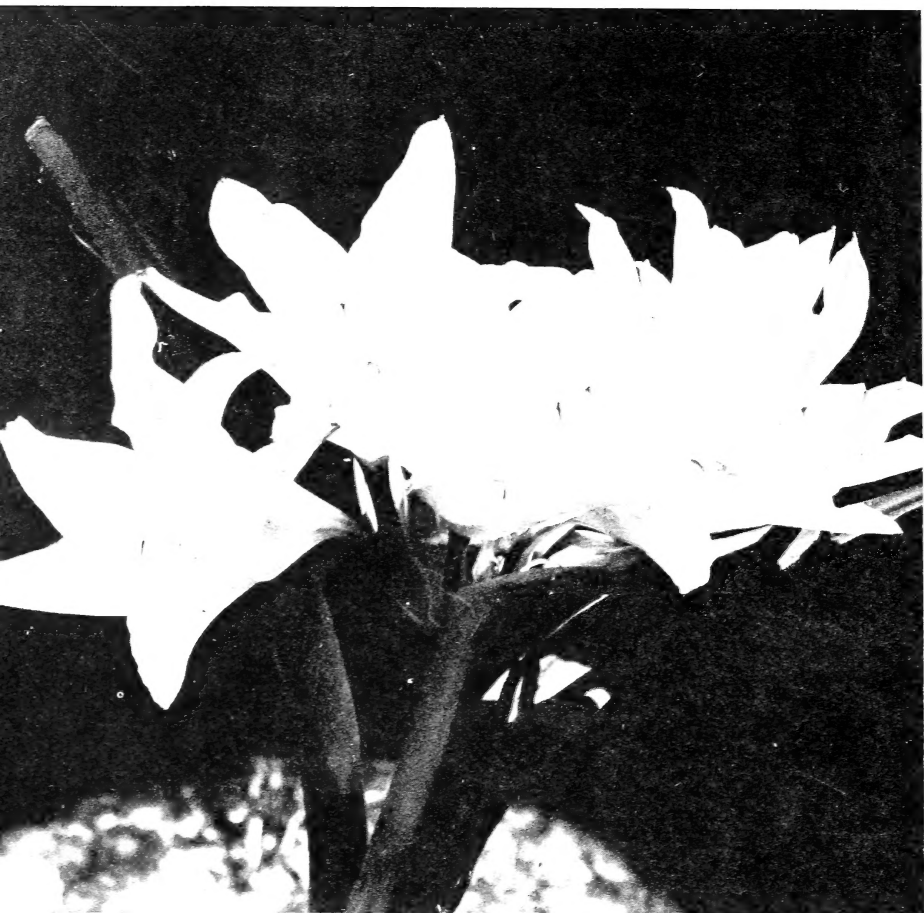
SPREKELIA—AZTEC LILY

AMARYLLIS FORMOSSIMA. A dark red star-like bloom measuring five inches in diameter is made up of six narrow reflexed petals. A fascinating and beautiful pot plant. Culture is the same as for *Amaryllis*; described elsewhere. Each \$1.25, Three \$3.25.



AMARYLLIS—HIPPEASTRUM

GIANT CALIFORNIA HYBRIDS. Trumpet shaped lily-like blooms with pointed petals, several to a stout, 2 ft. stalk. Colors range from nearly white, salmon, red and scarlet. Best for indoor pot planting for bloom in Spring, although they may also be grown outdoors in Summer. Foliage development, which occurs after flowering, is encouraged during the summer months. All large Bulbs (over 3" diam.) Unlabeled colors. Each \$1.25, Three \$3.50. Separate colors. Red and Scarlet; Each \$1.50, Three \$4.25.



AMARCRINUM—HOWARDII.

Clusters of large frosty-pink Amaryllis-like flowers are carried on strong 3 foot tall stems. A Hybrid of *Crinum Moorei* and *Amaryllis Belladonna*. Bloom occurs in September. Each \$4.00 (Postage not included; bulb weighs 2 lbs.)

Plant in January—February in an 8—12 inch pot or tub with the upper third of the bulb above the soil level. Keep in a cool 55—65 partly sunny window in winter. Sink the pot in soil to rim outdoors in shaded location during the summer. After flowering, the plant is rested in a cool basement by tapering off the water supply. Repeat each year as above. Re-pot when roots have burst the pot.



HAEMANTHUS

A South African Amaryllid the Haemanthus has huge spectacular six inch globular flower heads made up of fringed star-like blossoms each about 1 inch across. Bloom occurs in mid to late summer.

MULTIFLORUS. Large 6 inch scarlet flower heads appear before the foliage on short stout scapes about 12 or more inches in height. Illustrated above. Each \$2.00.

KATHERINAE. The most gorgeous of the Haemanthus and perhaps the most spectacular of all bulbous growing plants. The huge flower heads will measure up to 9 inches across on tall scapes two feet high. The foliage is nearly evergreen and is in growth along with the flower head. Color is bright scarlet with flame orange interior. Strong Blooming size bulbs, Each \$6.00, Three year seedlings, Each \$3.00.

Culture is similar to the Amaryllis. Plant the lower half of the bulb allowing one inch of space for soil around the bulb. Pots can be sunk to the rim in soil outdoors after the weather warms. Shade when in flower. Lift and bring indoors before frost.



ZEPHYRANTHES—FAIRY LILIES

Easily grown as house plants or in the greenhouse, the *Zephyranthes* or Fairy Lily is of the *Amaryllis* family. The flowers are about 3 inches across on stems about 1 foot tall. Plant 6 bulbs to an 8 inch pot. The blade-like leaves are evergreen. Bloom can be obtained in early summer and again in the fall by cutting back the foliage and resting the plants for 2 or 3 months.

GRANDIFLORA, Carinata. Rose colored flowers on 12 inch stems. Will re-bloom if rested. Six for \$2.00, Dozen \$3.50.

CANDIDA. White flowered, evergreen foliage. Fall flowering (hardy in some sections). Six for \$1.00, Dozen \$1.75.

CITRINA. Small bright yellow 2 inch flowers—10 inches high in summer. Six for \$3.50.



NERINE—GUERNSEY LILY

Nerines are tender fall-flowering bulbs with culture similar to the Amaryllis. Plants are started in pots indoors and are set outdoors when the weather warms. Lift the pots and bring indoors before cold weather.

BOWDENI, Pink Triumph. A lovely enfloriscence of 7 to 10 pink blossoms in a 3 inch cluster on a single scape about 18 inches high. Foliage is strap-like and appears with the flowers. Plant 3 bulbs to a 6—8 inch pot for good display. Each \$1.15, Three \$3.25.

CORUSCA, Major. Fiery orange flowers. Each \$1.25, Three \$3.50.

FLEXUOSA ALBA. Pure white flowers. Each \$2.00, Three \$5.50



ISMENE-HYMENOCALLIS

The glistening snow-white flowers are not only delightfully fragrant, they are also importantly handsome as pot plants. A member of the Amaryllis family, the Ismene is easily grown; bloom occurs within 6 to 8 weeks of planting. The beautifully formed, firm textured flowers measure about 4 inches across, are borne on stalks 2 to 2½ feet tall. The broad strap-like leaves are decorative and continue to develop throughout the summer. Plant 1 bulb to a 6" pot.

Calathina, ADVANCE. Pure white improved strain as described above. Jumbo Bulbs. Each 85c, Three \$2.25, Doz. \$7.50.



ANTHURIUM

A tropical plant requiring high night temperatures and high humidity. Best grown in a greenhouse although with care to give them the needed tropical atmosphere they can be grown indoors. The flowers resemble varnished or highly polished Calla Lilies to which they are related. The blooms last 3 months on a plant and at least 3 weeks when cut for arrangements. Plants are fertilized on occasion with liquid manure. Colors range from white, pink, rose, red and coral. Prices are quoted for mixed colors. Add 25% for specified colors. 12—18 month old plants, blooming size, up to 18 inches high, \$9.00 each. 6—12 month old plants, bloom within 3 months, 8—12 inches high, \$6.50 each.

Note: The older the plant the larger the flower.



ALSTROEMERIA—HERB LILY

Large flower heads, made up of a cluster of 2 inch tubular flowers, are carried on long leafy stems, 2½ feet tall. Bloom occurs in late Spring and early summer. An excellent and unusual cut flower.

PELEGRINA. Mauve-pink sprinkled with red-purple. 6 for \$1.25, Doz. \$2.25.

PELEGRINA ALBA. White (Lily of the Incas), extra for cutting. 6 for \$1.50, Doz. \$2.75.

LIGTU. Colors vary from pale yellow, creamy white to pink. Elegant form. 6 for \$1.95, Doz. \$3.50.

Plant 6 tubers to an 8—12 inch pot January—February. Water sparingly at first then increase as growth develops. Pots can be sunk to the rim outdoors in summer in cool shaded location. Bring pots indoors in Fall; withhold water; allow to dry off. Divide and re-pot next January—February.



EUCHARIS—AMAZON LILY

Three to five Narcissus-like flowers 4 inches across are borne on a single stem. The pure white and sweetly fragrant flowers are enhanced by the lustrous broad foliage. Height 12 inches.

EUCHARIS AMAZONICA. Each \$1.50, Three \$3.75, Six for \$7.00.

Plant 4 to 6 bulbs in Spring in an 8 inch pot for good display. Water sparingly until growth starts. Keep in a warm sunny window in winter. Shade the plant in summer. Rest bulbs after bloom by gradually diminishing water for 4 to 5 weeks. To re-start bloom increase water and add liquid fertilizer. It can be brought into flower several times a year by alternating active growth and resting periods. Re-pot only when too crowded.



ACHIMENES

Velvety flowers of jewel-like colorings are produced from early summer until fall. The plants vary from one to two feet in height and are grown from small rhizomatous tubers. The velvet-like texture of one to three inch flowers is similar to that of Gloxinia. The habit of growth in the taller growing varieties is somewhat pendant making these attractive subjects for the plant stand. However, these can be staked if upright growth is desired. Achimenes can also be grown outdoors if the potted plants are sunk to the rim in soil in a shaded location after the weather has warmed. Lift and bring indoors before frost.

LONGIFLORA MAJOR. Bright blue flowers about 3½ inches across opening flat on the long tubes. Tall growing type. Six 90c, Dozen \$1.65.

LONGIFLORA MARGARITA. Pure white flowers 2½ inches across. Bright green foliage. Six 95c, Dozen \$1.75.

hybrida, MILTON. Large strawberry red flowers with orange center and long tube. Six \$1.00, Dozen \$1.85.

hybrida, PURPLE KING. A splendid dwarf growing variety with large flat Petunia-violet flowers. Bronze foliage: early blooming. Six \$1.00, Dozen \$1.85.

hybrida, MEDUNA. Soft violet-pink, white throat, beautiful dark veined leaves. A strong grower with rigid erect stems. Flowers late. Six \$1.00, Dozen \$1.85.

Culture is similar to Tuberous Begonias or Gloxinias. Plant 6 tubers in a 6 inch bulb pan in rich soil and peat moss. Set tubers 2 inches apart and no deeper than ½ inch below the surface. Water sparingly until growth starts. Then give more water and light when the plants are about 2 inches high. Never permit them to dry out.



GLORIOSA—CLIMBING LILY

ROTHSCHILDIANA. An exotic climbing lily for either indoor forcing or for growing in a cool shaded area in the garden. Many flowers are produced on the 6 ft. tall vine (which should be trained to a support). Blooms are used for corsages. Each 85c, Three \$2.50. Plant in a six inch pot. Keep moist but not wet in a dark 65 degree atmosphere until roots have formed. Bring into light and filtered sunshine after growth is about 6 inches high.



STRELITZEA—BIRD of PARADISE

Exotic flowers of great beauty resemble brightly colored tropical birds in vivid coloring of orange and bright blue.

Grown as an interesting and decorative foliage plant as much as for the fascinating flowers when they appear.

Plants 10 to 14 inches high, Each \$1.25. Large plants that have flowered—(5 years old), \$6.50 each.

Bulb Magic in Your Window

by RUTH MARIE PETERS

\$3.95 postpaid from FLOWERFIELD

Published by M. Barrows & co., Inc.

Window gardeners everywhere will welcome this information-packed book on Indoor Bulbs. Described are 100 different kinds of bulbs to grow all year round—winter, spring, summer and fall. Here is the information needed on how to develop flowering plants grown from bulbs in the house or greenhouse. A book as delightful, as it is informative; as colorful as your own window garden can be.

Special Catalog

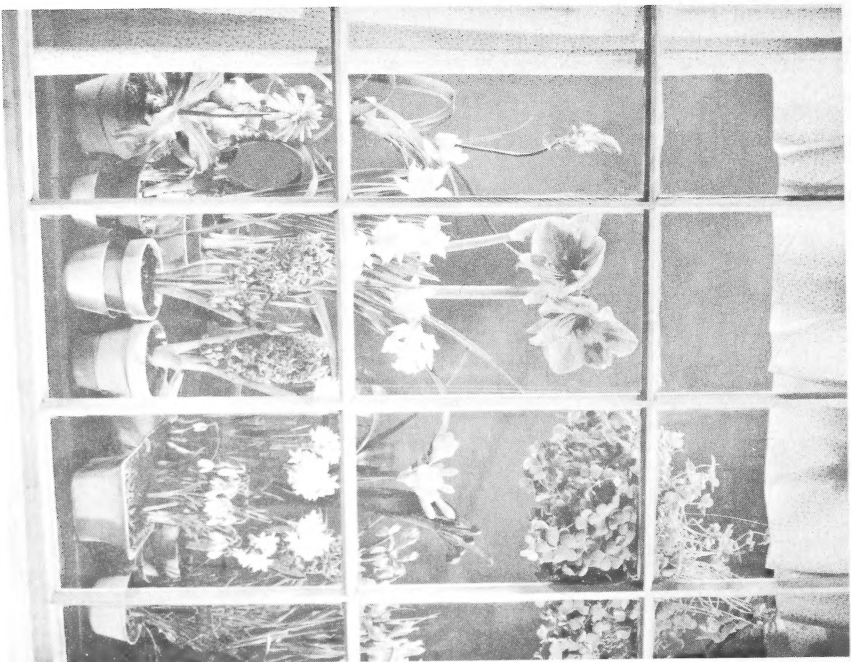
Bulbs to Plant Now-

for Winter Gardening Indoors.

Flowerfield offers sixteen fascinating species for indoor growing to be planted in January, February and March. The illustrations of these were reproduced from the above described book. These are the "tender" sorts that must be protected from cold. Originating from tropical areas, they can pervade your home with their exotic beauty.

HARDY BULBS for **INDOOR FORCING** (as well as outdoor growing) such as, **TULIPS, HYACINTHS, DAFFODILS** are listed in our **AUTUMN PLANTING CATALOG, ISSUED** in **AUGUST**.

"TENDER" SUMMER FLOWERING BULBS for **OUTDOOR GROWING** are listed in our **SPRING PLANTING CATALOG, ISSUED** in **FEBRUARY**.



GROW BULBS IN YOUR WINDOW

**Enjoy Exotic
Tropical Flowers
At Home**

FLOWERFIELD BULB FARM

BOX 90

OYSTER BAY, LONG ISLAND, N. Y.