

## **Historic, archived document**

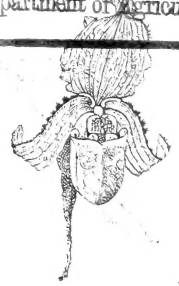
Do not assume content reflects current scientific knowledge, policies, or practices.



208 62.57

LIBRARY  
RECEIVED  
AUG 2 1923  
U. S. Department of Agriculture.

THE  
UNITED STATES  
NURSERIES.



SPECIAL IMPORT OFFER

OF

❖ BULBS ❖

PLANTS AND SEEDS.

PITCHER & MANDA,

SHORT HILLS,

New Jersey.

APRIL 15, 1892.

## PRICES

Are quoted for immediate acceptance and subject to short crops, and in many instances are certain to be lower than those quoted in Wholesale Fall Catalogues. But should any variety be quoted lower in our Fall Wholesale Catalogue, customers will receive the benefit of reduced prices.

We wish to inform Florists and Dealers that the low prices herein quoted are to induce them to place their orders with us at once. It will be profitable to buyers to secure these prices, and will enable us to determine our wants before our goods are shipped.

All imported and domestic bulbs that we offer are direct from the most reliable growers, and can be depended upon in every respect.

25 Bulbs furnished at 100 rates; 250 at 1,000 rates; 2,500 at 10,000 rates.

## TIME OF DELIVERY AND SHIPMENT.

The many kinds of bulbs herein catalogued ripen and are in condition for shipment at different seasons of the year. We give under each heading the month in which most of the leading kinds are ready, to assist customers in deciding whether their orders shall be held for one shipment or forwarded in part as the bulbs are ready for delivery.

## TERMS:

Accounts are made up monthly. Our patrons are requested to remit by checks, express, or P. O. money orders on New York Post Office, or currency in registered letters, as we cannot be responsible for money in unregistered letters. From unknown correspondents either a remittance or a reference is required with each order.

## NO CHARGES

Are made for boxes, packing or delivery to the railroad or express office. All Bulbs, Plants and Seeds are carefully packed and may be forwarded safely to any part of the globe.

# SUCCESS.

---

Just one year has elapsed since we notified our customers, and the trade in general, that we had annexed to our extensive **PLANT ESTABLISHMENT**, a **BULB AND SEED DEPARTMENT**.

The success which has followed this announcement is phenomenal, and we cannot thank our customers too much for the encouraging support afforded us. We have every reason to believe that in a very few years we will be looked upon as the main source through which these goods are procurable in this country. Having attained this important relation with many other specialties, we stand to-day and are recognized as

## HEADQUARTERS

FOR

**Orchids, Cypripediums, Hardy Perennials, Palms, Foliage Plants,  
and Chrysanthemums,**

Having the largest stock and more new varieties disseminating from this establishment than any other in this country. In really choice plants we are unequalled for number and variety, and Florists and Dealers desiring specimens, true to name and in perfect condition, can at all times of the year rely upon the goods sent out by us as full value and as they are represented.

## LILIUM HARRISII (True Bermuda Easter Lily.)

(JULY DELIVERY.)

All we wish to say in regard to our Liliium Harrisii, wherever our bulbs went last season they gave pleasing results, and when grown side by side with those of other dealers, were superior in most cases. As to size, we will ask customers and prospective buyers to **compare** them with those offered by other houses and **a marked difference will be perceptible.**

Prices: Taking into consideration the exceptional, large sizes, they will be found much more reasonable than those offered by others in the trade.

After booking orders for some months at the following prices and owing to the exceedingly large demand, our contract for several hundred thousand is becoming so considerably reduced that Florists and others wishing to take advantage of our special prices and sizes will please send their orders in at once to save disappointment. They are selling quickly and there is a likelihood of only a few being left for sale after early orders are delivered, and **prices are certain to advance.**

**25 at 100 rate; 250 at 1,000; and 2,500 at 10,000 rate.**

Sizes.		per 100.	per 1,000.	per 10,000.
4 to 5	inch bulbs	\$ 3 00	\$ 20 00	\$18 00 per 1,000
5 to 7	" "	3 50	25 00	24 00 "
6 to 7	" "	4 00	30 00	26 00 "
7 to 9	" "	5 00	47 00	45 00 "
8 to 9	" "	6 00	50 00	48 00 "
9 to 11	" "	10 00	98 00	95 00 "
10 to 11	" "	12 00	100 00	

## ROMAN HYACINTHS.

(AUGUST DELIVERY.)

**Large Roman Hyacinths** are scarce this year and purchasers would do well when comparing prices to see that sizes are stipulated as some dealers grade their goods simply in classes by numbers, viz.: "Firsts," "Seconds," etc. This is not a fair comparison as it leaves the grade open to be made up suitable to prices paid and stock on hand.

Owing to the exceedingly large demand last year, the growers of these bulbs were induced by dealers offering them good prices to sell the smaller bulbs which they usually reserve for planting, consequently, the larger and more useful Florists' size is scarce this year and far inadequate to the demand. Anticipating this scarcity of Roman Hyacinths, we made preparations for the demand by placing large contracts very early in the season, and believe that we are in a better position to-day to quote prices for these bulbs in quantity than any other house in the American trade. By observation of our sizes and fair comparison with those of other houses they will certainly be found in our favor.

But this is not an inexhaustible supply, and we strongly advise our customers to send in their orders at once if they wish to secure these sizes at these prices. Small bulbs are more plentiful, but in planting Roman Hyacinths experienced Florists know that they are not so profitable, requiring more room, considerably more trouble in handling, and do not produce such a profusion of flowers.

Prices will certainly be somewhat advanced in our wholesale Fall catalogue.

### SINGLE WHITE ROMAN HYACINTHS.

Size.	per 100.	per 1,000.	in 5 and 10,000 lots.
11 to 14 Centimeters (4 $\frac{3}{8}$ to 5 $\frac{1}{2}$ inches) in circumference, (sold ordinarily as "second size")	\$1 75	\$16 00	\$15 00
12 to 15 Centimeters (4 $\frac{3}{4}$ to 5 $\frac{7}{8}$ inches) in circumference, (sold ordinarily as "first size")	2 25	20 00	18 00
13 to 15 $\frac{1}{2}$ Centimeters (5 $\frac{1}{8}$ to 6 $\frac{1}{4}$ inches) in circumference	2 50	23 00	21 50

**ROMAN HYACINTHS—Continued.**

**COLORED ROMAN HYACINTHS.**

	per 100.	per 1,000
<b>Blue</b> , 11 to 15 Centimeters (4 $\frac{3}{8}$ to 5 $\frac{1}{8}$ inches) in circumference . . . . .	\$2 00	\$16 00
<b>Dark Rose</b> , 11 to 15 Centimeters (4 $\frac{3}{8}$ to 5 $\frac{1}{8}$ inches) in circumference . . .	2 25	17 00
<b>Light Rose</b> , 11 to 15 Centimeters (4 $\frac{3}{8}$ to 5 $\frac{1}{8}$ inches) in circumference . . .	2 50	20 00
<b>Canary Yellow</b> , 11 to 15 Centimeters (4 $\frac{3}{8}$ to 5 $\frac{1}{8}$ inches) in circumference .	5 00	45 00
<b>Double White Pearl</b> , 11 to 15 Cen. (4 $\frac{3}{8}$ to 5 $\frac{1}{8}$ inches) in circumference .	5 50	50 00
<b>Italian, White or Pink Skinned</b> , 10 to 15 Centimeters (3 $\frac{3}{8}$ to 5 $\frac{1}{8}$ inches) in circumference	2 50	20 00

**DUTCH HYACINTHS.**

(SEPTEMBER DELIVERY.)

Dutch Hyacinths this year are likely to be somewhat dearer than last. For some unaccountable reasons the reports that we are receiving from growers have a tendency to this effect, and, in consequence, the prices we quote will be in some instances, higher than those quoted by us last year, but as the crop is in such a young condition at the present time, the prices are likely to fluctuate, and should our prices on this article not be altogether in keeping with those of other responsible houses we ask the opportunity of giving revised quotations, as we are liable to receive later information that will place us in a better position than at present to quote lower prices as the season for shipment approaches.

**Mixed Unnamed Hyacinths for Bedding and Forcing.**

<b>SINGLE.</b>				<b>DOUBLE.</b>	
	per 100.	per 1,000.		per 100.	per 1,000.
Dark Red . . . . .	\$2 50	\$24 00	Dark Red . . . . .	\$2 50	\$24 00
Rose . . . . .	2 50	24 00	Rose . . . . .	2 50	24 00
Red, all shades . . . . .	2 50	24 00	Red, all shades . . . . .	2 50	24 00
White, pure . . . . .	3 00	26 00	White, pure . . . . .	3 00	26 00
White, blush and tints . . . . .	2 75	25 00	White, blush and tints . . . . .	2 75	25 00
White, all shades . . . . .	2 75	25 00	White, all shades . . . . .	2 75	25 00
Blue, dark and violet . . . . .	2 50	24 00	Blue, dark and violet . . . . .	2 50	24 00
Blue, light . . . . .	2 25	21 00	Blue, light . . . . .	2 25	21 00
Blue, all shades . . . . .	2 30	22 00	Blue, all shades . . . . .	2 30	22 00
Yellow, all shades . . . . .	2 75	25 00	Yellow, all shades . . . . .	5 00	40 00
Mixed, all colors . . . . .	2 25	21 00	Mixed, all colors . . . . .	2 25	21 00

**SINGLE AND DOUBLE NAMED HYACINTHS.**

(SEPTEMBER DELIVERY.)

The varieties mentioned below will be found best for forcing and Florist's use.

	per 100.	per 1,000.		per 100.	per 1,000.
<b>Single Red.</b>			<b>Single Blue—Continued.</b>		
Amy . . . . .	\$4 50	\$40 00	Bleu Mourant . . . . .	\$4 00	\$38 00
Robert Steiger . . . . .	4 50	40 00	King of the Blues . . . . .	8 00	75 00
Sultan's Favorite . . . . .	6 50	63 50	<b>Single Yellow.</b>		
Norma . . . . .	6 00	55 00	La Pluie d'or . . . . .	4 50	40 00
<b>Single Pure White.</b>			Herman . . . . .	4 50	40 00
Alba Superbissima . . . . .	5 50	52 50	<b>Double Red.</b>		
Grand Vedette . . . . .	6 00	57 50	Bouquet Tendre . . . . .	4 50	40 00
Baron Von Thuyll . . . . .	5 50	52 50	Czar Nicholas . . . . .	4 00	38 00
Blanchard . . . . .	6 00	57 50	<b>Double Pure White.</b>		
Grand Vainquer . . . . .	6 50	62 50	La Tour d'Auvergne . . . . .	10 00	
<b>Single Blush White.</b>			<b>Double Blush White.</b>		
Grandeur a Merveille . . . . .	5 00	45 00	Anna Marie . . . . .	6 00	57 50
Voltair . . . . .	6 00	57 50	La Virginite . . . . .	3 50	32 50
<b>Single Blue.</b>			<b>Double Blue.</b>		
Charles Dickens . . . . .	4 00	37 00	Rembrant . . . . .	5 00	47 50
Marie . . . . .	4 00	37 00	Blocksberg . . . . .	5 25	50 00
Czar Peter . . . . .	7 00	65 00	Prince of Saxe Weimar . . . . .	4 00	38 00
Baron Von Thuyll . . . . .	4 50	40 00			

## NARCISSUS.

No bulb is forced in larger quantities than the Narcissus, and nothing gives more salable flowers with so little expense. They have become more popular of late years and Florists meet with a growing demand in all sections of the country.

Owing to the severe Winter of 1890-91 in Europe, the crop of Von Sion Narcissus was seriously damaged, and in consequence the price advanced considerably. Many dealers that season were obliged to secure their stock of this important bulb from Italy and other sections of Europe not adaptable to the production of the true forcing Von Sion, and were sent Von Sion Narcissus, but not the true golden-yellow, double flower that is so necessary to the florist. We are glad to say that although we sent out last year about two-thirds of the quantity consumed, we did not receive one complaint, but many complimentary letters from our customers who, at the same time, placed orders with us for the coming season to secure the same choice class of Von Sions sent out by us last year.

### DOUBLE OR BORDER NARCISSUS.

(SEPTEMBER DELIVERY.)

#### SELECTED BULBS.

	per 1,000.	per 10,000.
Von Sion (Telamonius plenus), true double yellow, selected bulbs . . . . .	\$15 00	\$140 00
Alba Plena Odorata . . . . .	8 50	80 00
Double Incomparable . . . . .	7 00	60 00
Orange Phoenix . . . . .	21 00	

#### SINGLE.

Trumpet Major . . . . .	\$20 00	
Poeticus . . . . .	4 00	\$35 00
Poeticus Ornatus . . . . .	13 00	

### POLYANTHUS NARCISSUS.

(AUGUST DELIVERY.)

	per 1,000	
Paper White, ordinary first size . . . . .	\$ 6 00	
“ “ large, extra selected bulbs . . . . .	12 00	
“ “ Grandiflora, ordinary, first size . . . . .	9 00	
“ “ “ large, extra selected bulbs . . . . .	13 00	
Double Roman . . . . .	6 00	
“ “ extra selected bulbs . . . . .	10 00	

### CHINESE SACRED NARCISSUS.

(OCTOBER DELIVERY.)

\$6 00 per 100 . . . . . \$59 00 per 1,000.

## LILY OF THE VALLEY.

(NOVEMBER DELIVERY.)

The Pips we offer are strong, three-year-old, sand-grown, Berlin Pips. Owing to the very large contract we have placed with one of the largest growers in Germany, we are able to offer them at the following exceptionally low prices, and customers wishing to take advantage of these low prices should do so at once, as we are confident that the goods will give every satisfaction.

Per 1,000 . . . . .	\$ 9 00
Per box containing 2,500 pips . . . . .	21 00
Per four boxes containing 10,000 pips . . . . .	80 00

#### Special Prices for Larger Quantities.

Strong Clumps . . . . . \$15 00 per 100.

**TULIPS.**

(SEPTEMBER DELIVERY.)

The varieties named below are those mostly in demand by Florists and others, and are especially adapted for forcing and bedding.

**SINGLE.**

	per 100.	per 1,000.		per 100.	per 1,000.
Artus . . . . .	\$1 00	\$ 8 00	Jagd Van Delph . . . . .	\$1 25	\$15 00
Belle Alliance . . . . .	1 50	13 00	Kaiserkroon . . . . .	2 40	22 00
Bizard Verdict . . . . .	90	7 50	Pottebakker, yellow . . . . .	2 25	20 00
Canary Bird . . . . .	2 25	20 00	"    red . . . . .	2 00	18 00
Chrysolora . . . . .	2 25	20 00	"    white . . . . .	3 00	27 00
Cottage Maid . . . . .	2 40	22 00	Proserpine . . . . .	3 00	28 00
Duc Van Thol, scarlet . . . . .	90	7 00	Queen Victoria (La Reine) . . . . .	1 40	12 00
"    "    yellow . . . . .	3 00	25 00	Rosa Mundi . . . . .	2 00	17 00
"    "    white . . . . .	3 00	25 00	Rose Grisdelin . . . . .	2 25	20 00
"    "    red and yellow . . . . .	1 40	12 00	Vermilion, Brilliante . . . . .	3 00	25 00
Duchesse de Parma . . . . .	1 50	13 50	Yellow Prince . . . . .	2 25	20 00

**DOUBLE.**

	per 100.	per 1,000.		per 100.	per 1,000.
Duc Van Thol . . . . .	\$ 80	\$ 6 50	Salvator Rosa, price on application.		
La Candeur . . . . .	1 00	8 00	Tournesol, red . . . . .	\$3 00	\$17 00
Murillo . . . . .	2 60	24 00	"    yellow . . . . .	2 75	25 00
Rex Rubrorum . . . . .	1 90	16 00	Yellow Rose . . . . .	1 25	10 50

**MIXED.**

	per 100.	per 1,000.		per 100.	per 1,000.
Single, ordinary . . . . .	\$ 90	\$ 7 00	Double, ordinary . . . . .	\$ 90	\$ 7 00
"    extra fine . . . . .	1 25	10 00	"    extra fine . . . . .	1 25	10 00

**LATE MIXED FOR BEDDING.**

	per 100.	per 1,000.		per 100.	per 1,000.
Parrot, mixed . . . . .	\$ 80	\$6 00	Bybloemens . . . . .	\$1 20	\$9 00
Bizarres . . . . .	1 00	7 50	Gesneriana . . . . .	1 00	7 75

**LILIUM LONGIFLORUM.**

(AUGUST DELIVERY.)

Many Florists prefer this class in preference to *Lilium Harrisii*. Although two weeks later in flowering they make better pot-plants, being much dwarfer in habit.

Sizes.	per 100.	per 1,000.
5 to 7 inch bulbs . . . . .	\$ 4 00	\$ 35 00
7 to 9 " " . . . . .	6 00	55 00
9 to 11 " " . . . . .	15 00	120 00

**TUBEROSES.**

(NOVEMBER DELIVERY.)

Double American Pearl, 4 to 6 inches in circumference . . . . .	1 25	8 00
---	------	------

**CROCUS.**

(SEPTEMBER DELIVERY.)

**Large Selected Bulbs:**

Blue, Striped, White or Purple and all colors mixed . . . . .	20	1 50
Yellows . . . . .	25	2 00

**GLADIOLUS.**

(NOVEMBER DELIVERY.)

Colvelli Alba, The Bride . . . . .	1 00	7 00
------------------------------------	------	------



## MISCELLANEOUS BULBS.

### OTHER GOOD FLOWERING STOCK FOR FLORISTS.

	per 100.	per 1,000.
<b>Lilium Candidum</b> (August delivery), Selected large Bulbs . . . . .	\$ 3 00	\$ 25 00
<b>Lilium Auratum</b> (November delivery), Large selected Bulbs, measuring from 10 to 13 inches . . . . .	10 00	90 00
<b>Lilium Speciosum Album</b> (November delivery), Large selected Bulbs . . . . .	12 00	
<b>Lilium Speciosum Rubrum</b> (November delivery), Large selected Bulbs . . . . .	11 00	
<b>Freesia Refracta Alba</b> (July delivery).		
Extra Selected Large Bulbs . . . . .	1 00	8 00
First Size Bulbs . . . . .	80	6 00
Second Size Bulbs . . . . .	70	5 00
<b>Astilbe Japonica</b> (November delivery), Strong clumps . . . . .	5 00	45 00
<b>Jonquils</b> (August delivery).		
Single Sweet-Scented . . . . .	1 00	9 00
Campernelle . . . . .	1 00	8 00
<b>Ornithogalum Arabicum</b> , Star of Bethlehem, (August delivery) . . . . .	1 50	14 00
<b>Calla Lily</b> (September delivery).		
We have only Extra selected, large flowering bulbs . . . . .	10 00	90 00
Dwarf (The Gem) . . . . .	20 00	180 00
<b>Allium Neapolitanum</b> (August delivery) Large, pure white . . . . .	1 00	5 00
<b>Anemone Fulgens</b> , Scarlet Wind Flower, (August delivery) . . . . .	1 50	12 00

## FLORISTS' FORCING SHRUBS.

### AZALEA INDICA.

Having contracted with one of the largest European nurserymen to grow specially for us an enormous quantity of these handsome shrubs, for which there is an increasing demand each year, we are in a position to offer fine, selected, healthy stock, well set with buds, at the following prices:

	per doz.	per 100.
<b>First Size.</b> 27 to 30 inches in circumference . . . . .	\$4 00	\$30 00
<b>Second Size.</b> 35 to 45 " " . . . . .	7 00	50 00
<b>Third Size.</b> 45 to 60 " " . . . . .	10 00	75 00
<b>Fourth Size.</b> 60 to 75 " " . . . . .	12 00	95 00
<b>Extra Large Specimens</b> . . . . .	\$1.50 to \$5.00 each, according to size.	

In selecting a suitable size we would suggest that florists take a good portion of the second size, that being the best size at a low price, and will be sure to give satisfaction.

### AZALEA MOLLIS.

Fine for forcing.

	per doz.	per 100.
<b>Strong Bushes</b> . . . . .	\$6 00	\$45 00

### RHODODENDRONS.

Selected varieties for forcing.

	per doz.	per 100
<b>Strong Bushes</b> . . . . .	\$10 00	\$75 00
<b>Extra Strong Bushes</b> . . . . .	12 00	95 00

## PALM SEEDS.

We are expecting to arrive this month, a large shipment of the following varieties of important Palm Seeds, guaranteed all new from their native country, and to secure a supply, orders should be sent in at once.

	per 100.	per 1,000.	per 5,000
Araucaria Bidwillii . . . . .	\$6 00	\$55 00	
“ excelsa . . . . .	4 50	38 00	\$175 00
Areca lutescens . . . . .	90	7 50	
“ Madagascariensis . . . . .	4 00		
“ sapida . . . . .	65	4 50	
Cocos Weddelliana . . . . .	1 35	11 00	
Corypha Australia . . . . .	45	3 50	16 00
Kentia Belmoreana . . . . .	1 00	9 00	40 00
“ Canterburyana . . . . .	3 00	25 00	
“ Forsteriana . . . . .	90	8 00	35 00
Seaforthia elegans . . . . .	45	3 50	16 00

## CYCLAMEN PERSICUM GIGANTEUM.

NEW CROP OF SEED READY IN JULY.

Recently our attention was called to a very select strain of this magnificent flower; we were so impressed with it that we secured all the grower had, and offer it for sale for delivery in July.

We have every confidence in recommending this stock as it is produced from the celebrated strain of B. S. Williams, England, and parties desiring this Seed should send in their orders at once as it is limited.

**Cyclamen Persicum Giganteum Album, Rubrum, and Mixed**

\$1.25 per 100 seeds; \$12.00 per 1,000 seeds.

## SEED CONTRACTS.

As many Florists and Dealers in Seeds sell insufficient quantities to warrant their placing contracts for **Vegetable and Flower Seeds** with the large growers at this season of the year when all contracts are placed, they are obliged to pay the wholesale houses advanced prices according to the supply when purchasing at the selling season, which prices we guarantee will not be less than those contracted at.

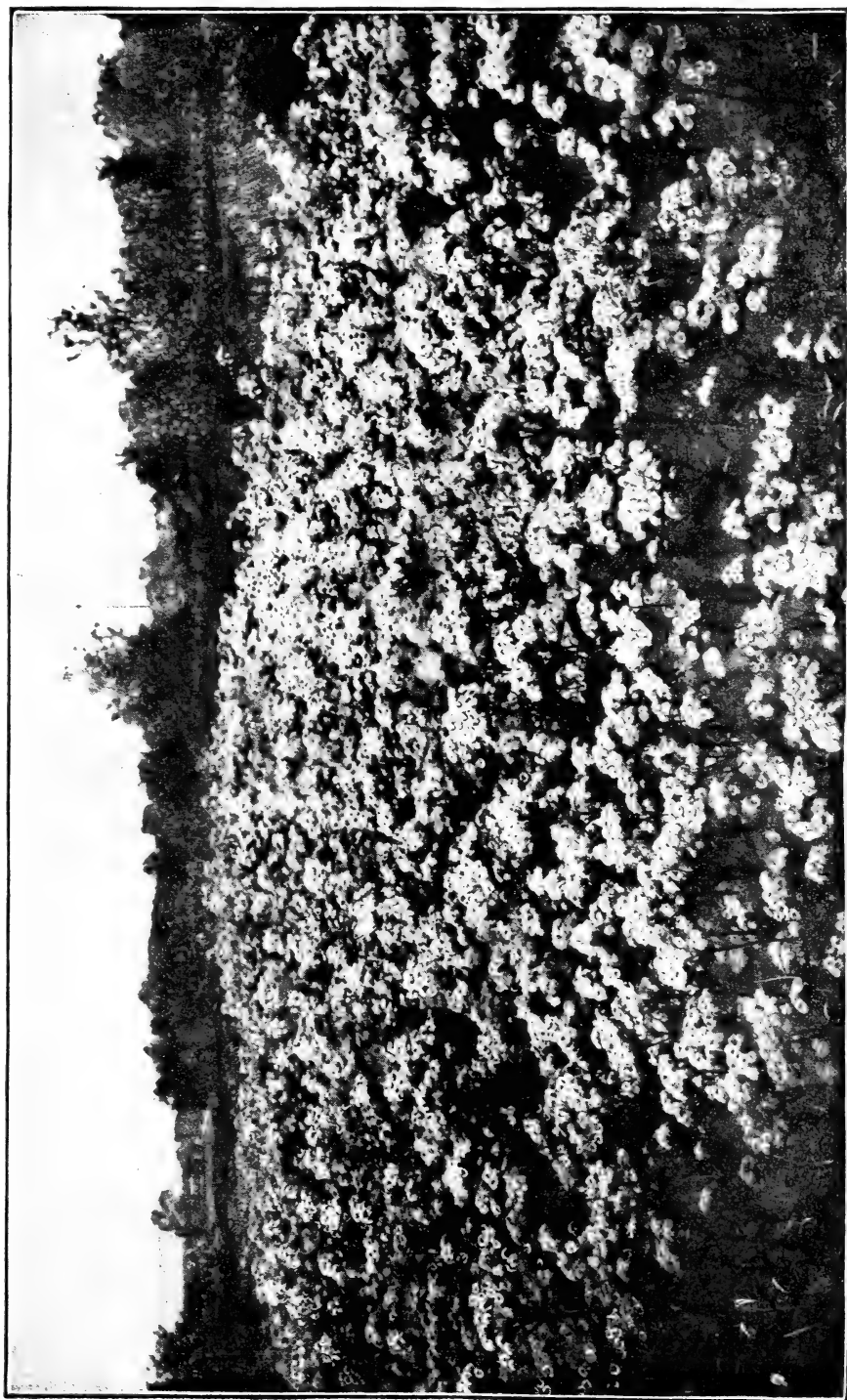
We offer this inducement:

On orders for **Vegetable Seeds and Flower Seeds** in bulk, ordered from us at this season of the year, for delivery in Fall and Winter of 1892, we will quote special low contract prices, that the dealer in Seeds may receive the same advantages in this line as offered in Bulbs. This enables us to order larger and obtain better prices from the growers, of which we give our customers the benefit, and instead of placing orders with different firms for the different crops, we can be made one centre.

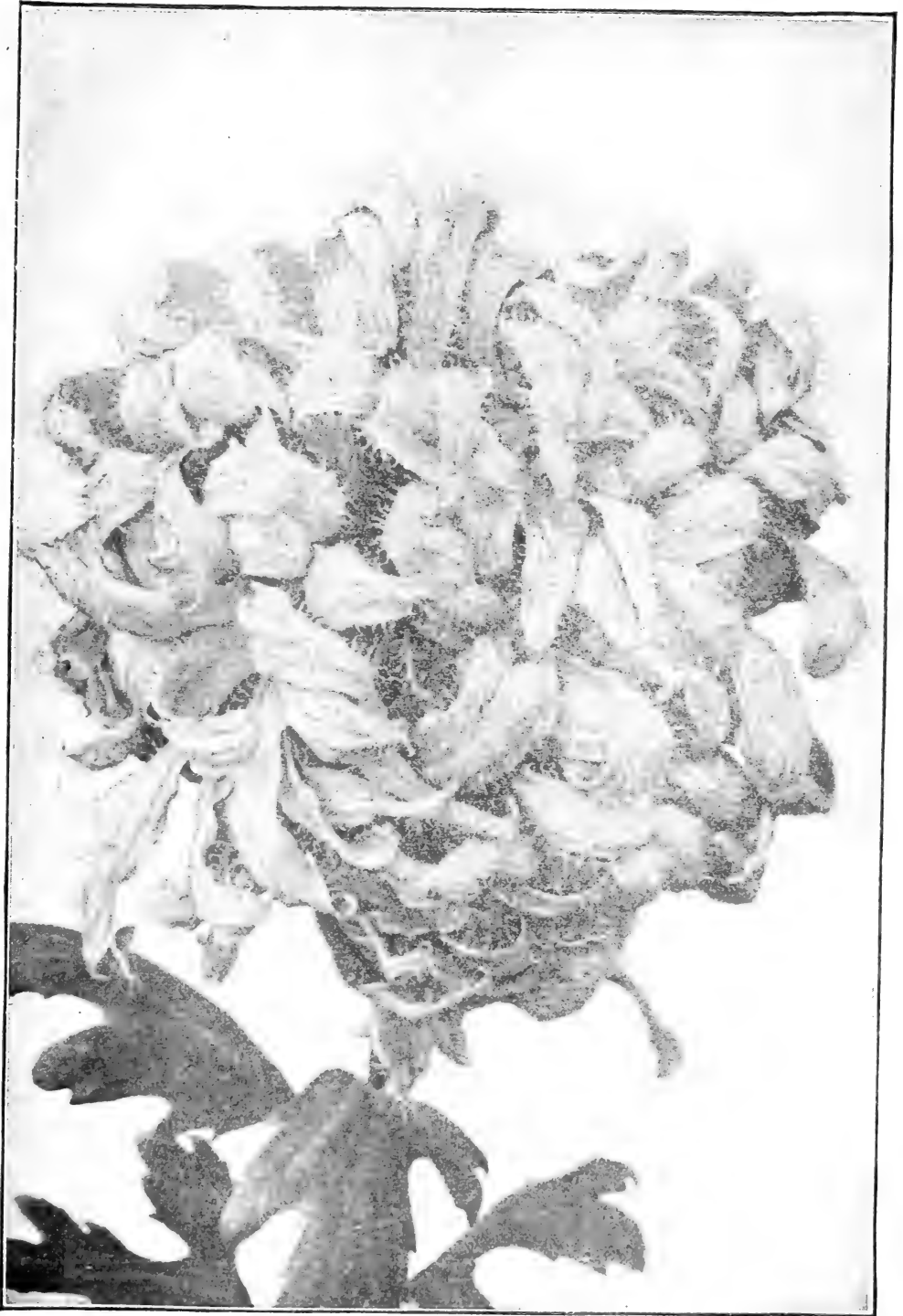
**THE SPECIAL ADVANTAGES** offered by this means are, that should the crop prove a part failure the customer gets his share, at least, of goods ordered at the prices at which the order was placed; for instance, we can book orders now for some kinds of Onion Seed at 75 cents per pound which sold this year as high as \$1.25 and never less than \$1.00 per pound. Cucumber Seed, we can book orders for all the leading kinds at 23 cents and 25 cents per pound, whereas this year it is offered at \$40.00 per 100 pounds. The same difference in price applies to all the leading Flower Seeds, and we would be pleased if parties desiring to investigate this system of booking orders a season ahead for this class of Seeds will apply for further particulars. In Peas and Beans we can offer the same inducements.

~~~~~

**When writing, enclose a list of your likely wants for estimate.**



ACHILLEA, "THE PEARL." The best Double White Hardy Plant for Florists.



W. A. MANDA—The Golden Hairy Chrysanthemum. The grandest introduction of 1892.

# CHRYSANTHEMUMS.

Chrysanthemums are as popular to-day as the rose, and no Florist should be without a good stock of this lovely fall-flowering plant. When procuring stock be sure that you get the very finest varieties, which will take no more room than the ordinary kinds and will repay you ten-fold more than the commoner sorts, as the demand is for the finest flowers only. In making your selection you cannot do better than select such varieties as

**Harry May, Mrs. E. D. Adams, Ada McVickar,**

**Mr. Hicks Arnold, Miss Bertha N. Robinson,**

**Miss Annie Manda, W. A. Manda, Mrs. W. S. Kimball,**

And a number of others that have swept all the prizes wherever exhibited, which is the most satisfactory proof of their worth. For illustration and description, see our trade catalogue for Spring, 1892. Order now before the stock is exhausted.

# HARDY PERENNIALS,

FOR IMMEDIATE PLANTING.

All shrewd Florists are aware of the usefulness of **HARDY HERBACEOUS PLANTS** for cut flower purposes.

Once planted, they grow from year to year and increase in size and beauty, no expense being connected with their cultivation, while in their proper seasons they will send up very fine blooms, which are doubly welcome at the time when the greenhouse produces very little or nothing. Therefore, any Florist with even limited land, should plant some

**Paeonies, Irises, Delphiniums, Pyrethrums,**

**Campanulas, Aquilegias, Phloxes, Primroses,**

**Poppies, Monardas, Anemones, Achillea,**

**Digitalis, Doronicums, Helianthus,**

And hundreds of others equally as useful, which will be found quoted in our wholesale catalogue at a very low figure, considering the quality of the plants.

## **ARTEMISIA PONTICA,**

Perfectly hardy, with fine silvery foliage; cannot be recommended too strongly for budding or covering dry slopes in the garden. Special price will be given for quantity of any plant.

# Palms and Foliage Plants.

This class of plants is indispensable to any Florist, either to sell or use in decorations. While there are enough small size plants to meet the demand, there is a great scarcity of large specimens, from 3 to 6 feet high. We are happy to state that we have a grand lot in the best possible condition, with pots full of roots, and ready for shipment in the early fall. Such popular kinds as

**Latania Borbonica, Areca Baueri,**

**Areca Lutescens, Kentia Forsteriana,**

**Kentia Balmoreana, Cocos Weddelliana,**

**Cycas Revoluta, Araucaria Excelsa,**

**Ficus Elastica and Pandanus Veitchii,**

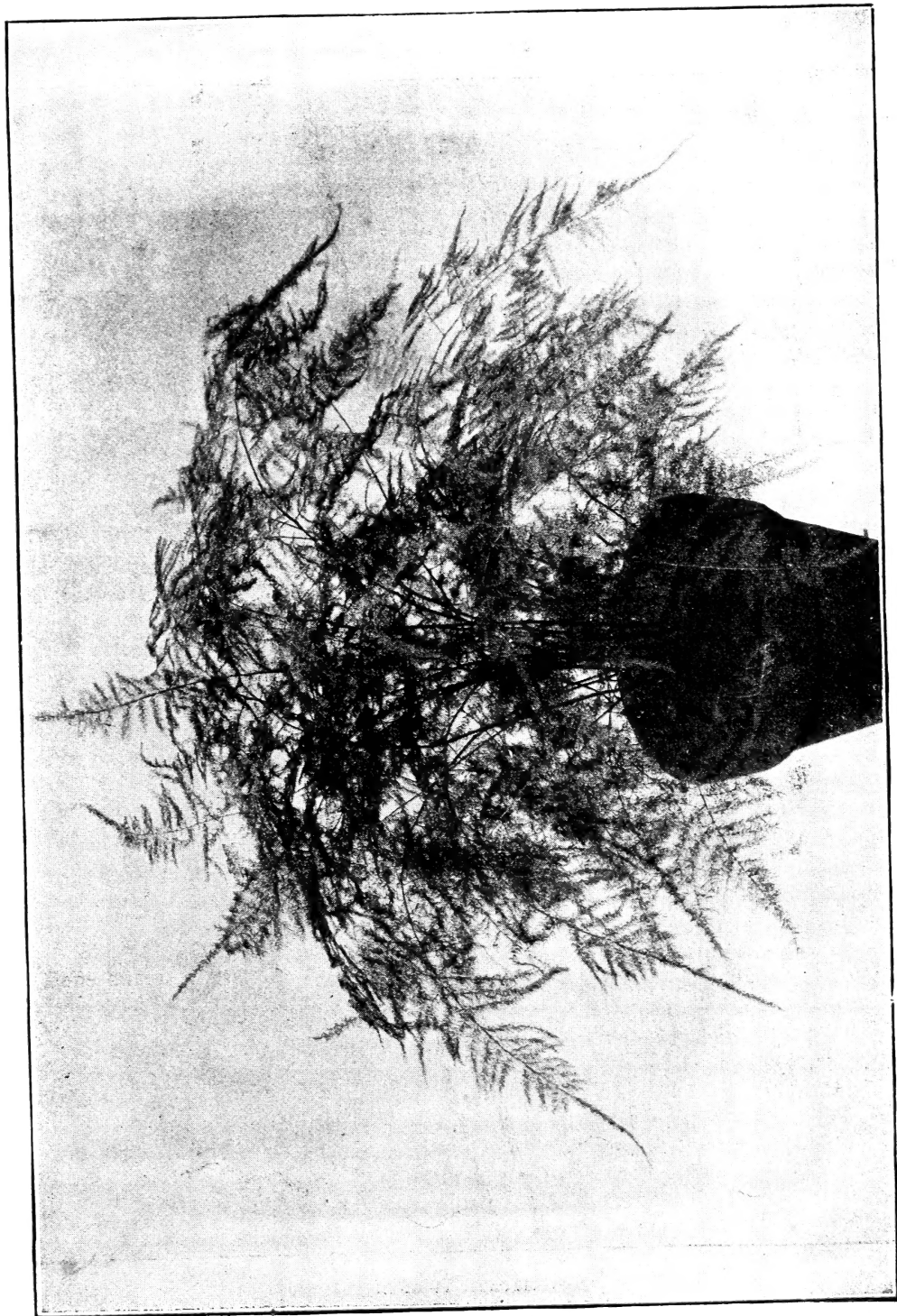
While amongst the choicer kinds we have hundreds of plants of all sizes, either as specimen or small size plants, to fill jardinières or for table decorations. As a few of the most useful, we can recommend **Aspidistra lurida variegata, Panax Victoriae, Marantas** in variety, and ferns of all kinds, of which we will be happy to give information to any applicant, and a description of which will also be found in our wholesale catalogue.

## ASPARAGUS PLUMOSUS.

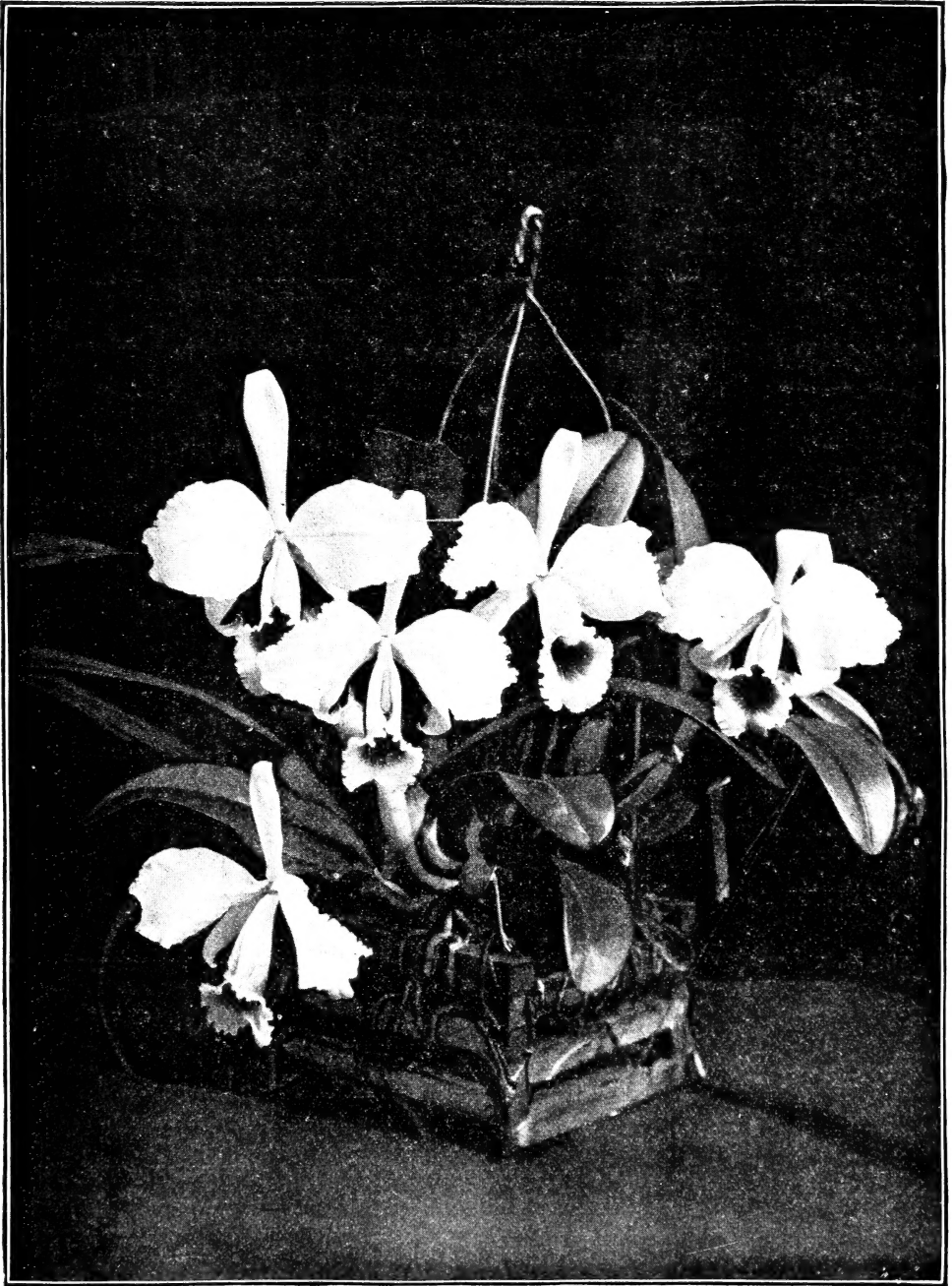
Among the decorative plants in use at present, such as Smilax, cut ferns, etc., none can compare with this grand climber in usefulness, durability and effect. It is always sought after and the demand far exceeds the supply, on account of its being a plant very difficult to propagate, although a very free grower; in fact, it is a much freer grower than Smilax. This plant can be used for any purpose, either as a decorative plant in pots, cut short, or in strings, and can be used instead of Maiden Hair Ferns. In the cut state they last over a week, perfectly fresh. In fact, it is an indispensable plant to every Florist establishment, on a small or large scale.

We were fortunate in importing a large quantity of fine, strong roots, which have been potted and are well established, and we offer them at the appended figures until the 1st of July next:

|                  | per doz. | per 100. | per 1,000. |
|------------------|----------|----------|------------|
| 3 inch pots..... | \$5 50   | \$40 00  | \$350 00   |
| 4 " ".....       | 6 50     | 50 00    | 450 00     |
| 5 " ".....       | 7 50     | 60 00    | 550 00     |
| 6 " ".....       | 8 50     | 70 00    | 650 00     |
| 7 " ".....       | 9 50     | 80 00    | 750 00     |



ASPARGUS PLUMOSUS.



CATTELYA TRIANÆ.



# ORCHIDS.

Just what we predicted! The most popular flower of the day, and to keep up with the great demand we were induced to send three collectors to South America. They have shipped us a very large consignment, which we offer now in unestablished plants.

## CATTLEYA TRIANAE.

The grandest Orchid for the Florist. The richest and most useful for cut flower purposes and for decoration as a plant. Flowering from December to April.

We offer fine plants, 7 to 9 bulbs, \$95.00 per hundred. Extra strong plants, 12 to 15 bulbs, \$165.00 per hundred. We also sell them by the case just as received, at \$48.00 per case.

SEND IN YOUR ORDERS NOW BEFORE THEY ARE ALL SOLD.

Besides this we offer fine plants of

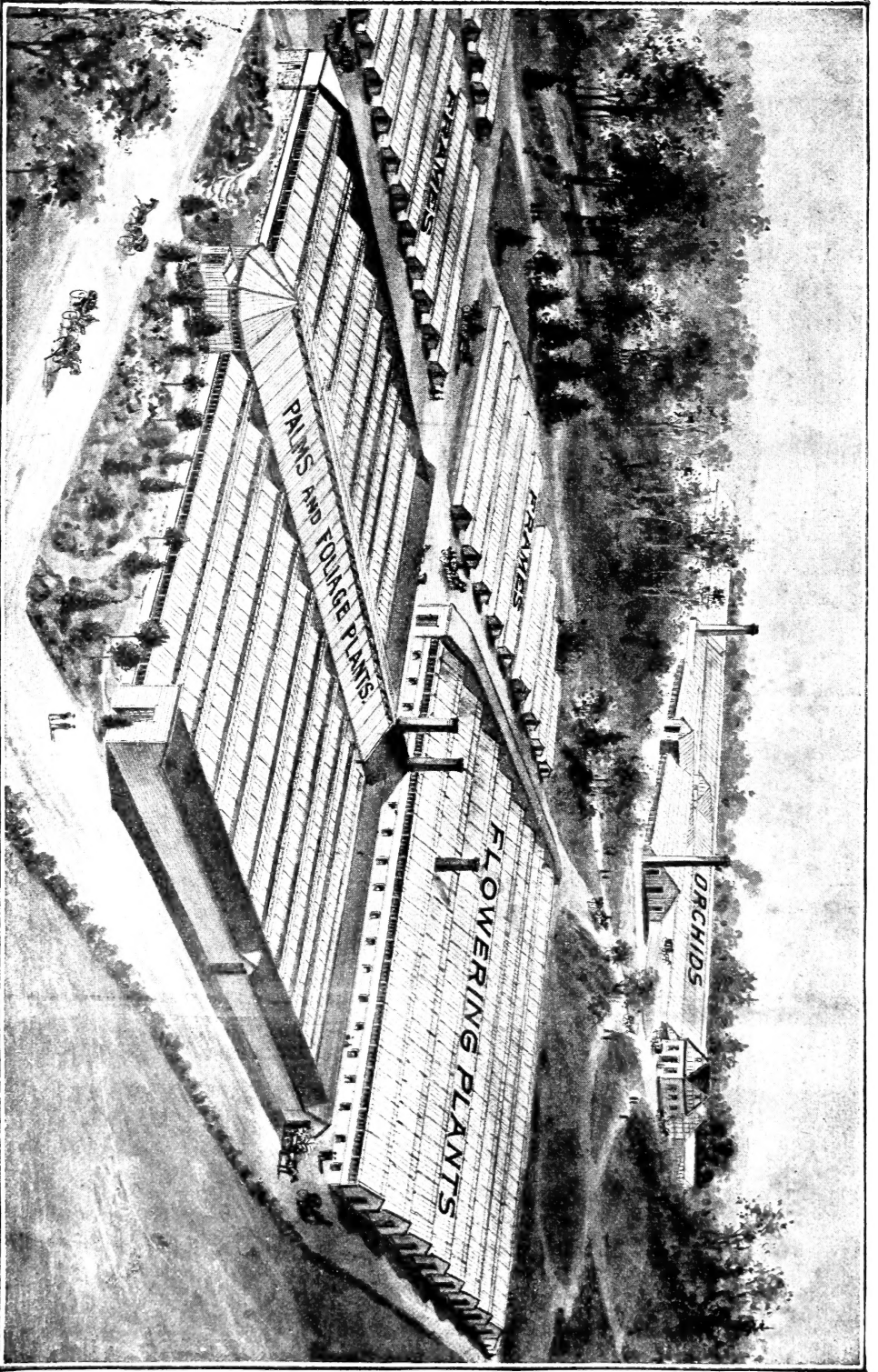
|                                                                                                                       |          |              |
|-----------------------------------------------------------------------------------------------------------------------|----------|--------------|
| <b>Cattleya Mossiae</b> , 7 to 9 bulbs.....                                                                           | \$115.00 | per hundred. |
| “ <b>Percivaliana</b> , 7 to 9 bulbs ...                                                                              | 175.00   | “ “          |
| <b>Coelogyne Cristata</b> , fine plants in 4 inch pots .....                                                          | 75.00    | “ “          |
| “ “ fine plants in 5 inch pots .....                                                                                  | 95.00    | “ “          |
| <b>Laelia Anceps</b> , fine plants on blocks, 7 to 9 bulbs, \$50.00 per hundred; 12 to 15 bulbs, \$75.00 per hundred. |          |              |

## CYPRIPEDIUMS.

The most useful class of Orchids on account of their lasting quality. We offer

|                                                                                                                                  |          |              |
|----------------------------------------------------------------------------------------------------------------------------------|----------|--------------|
| <b>Cypridium Insigne</b> , 4 inch pots, \$45.00 per hundred; 5 inch pots, \$65.00 per hundred; 6 inch pots, \$85.00 per hundred. |          |              |
| <b>Cypridium Dominicanum</b> , 4 inch pots.....                                                                                  | \$125.00 | per hundred. |
| “ <b>Harrisianum</b> , 4 inch pots .....                                                                                         | 145.00   | “ “          |
| “ <b>Villosum</b> , 4 inch pots .....                                                                                            | 125.00   | “ “          |
| “ <b>Boxallii</b> , 4 inch pots .....                                                                                            | 125.00   | “ “          |

For other kinds see our catalogue. **Profit** by this offer in ordering plants now from these low prices, which are similar to those received for cut blooms, when in flower.



Partial View of Glasshouses of the United States Nurseries at Short Hills, N. J.