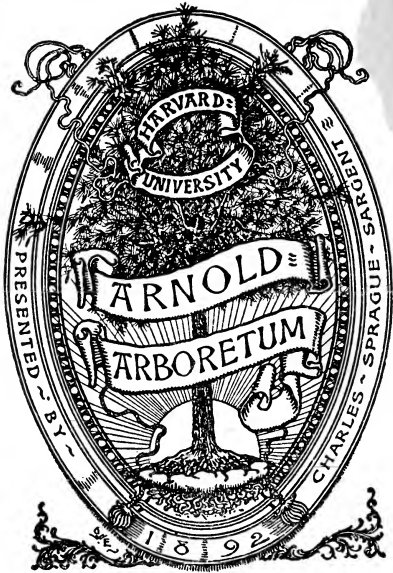


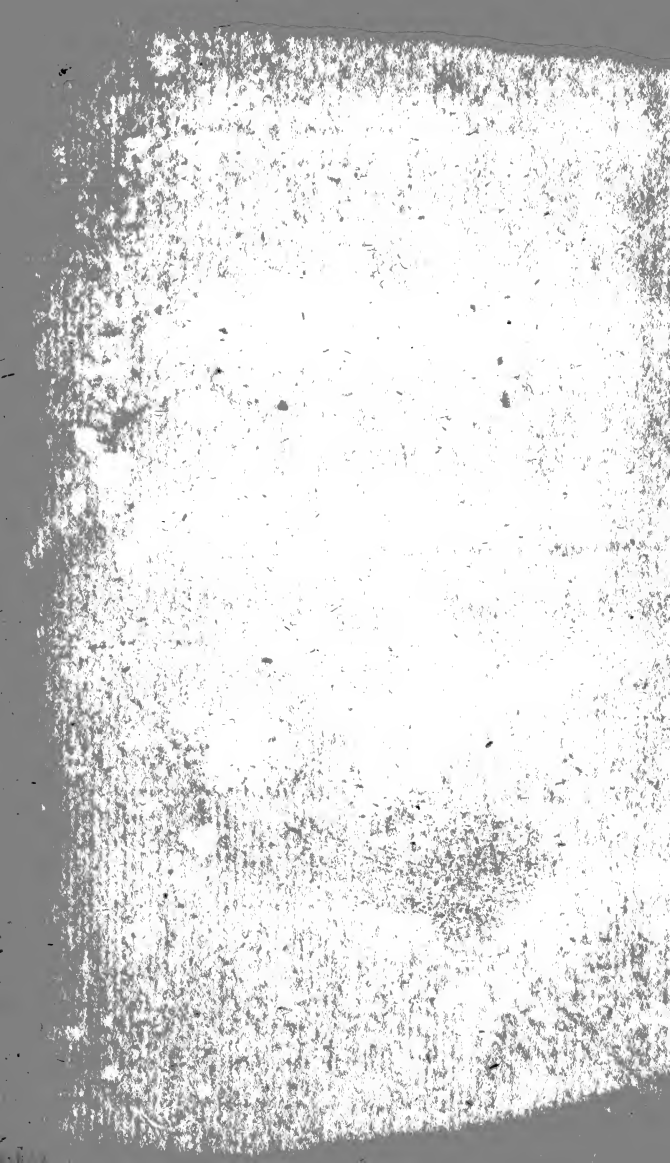


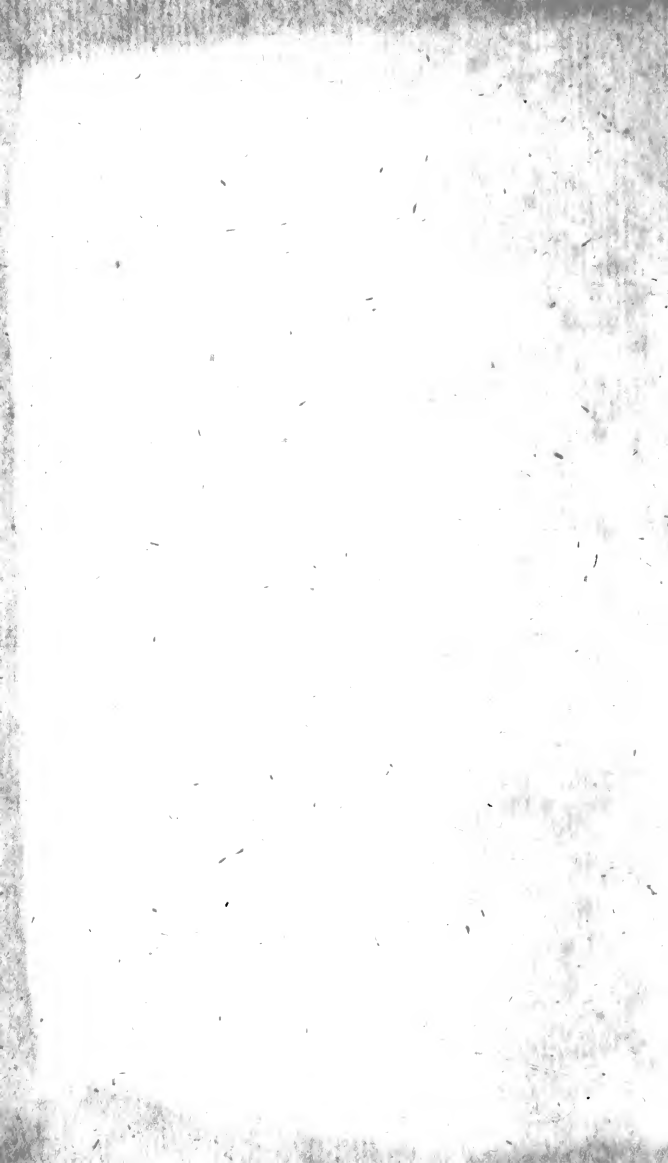
C/1
El 47
E 56





Digitized by the Internet Archive
in 2015









Agaricus ramosus cornu Reniferi referens.
Miller.

J. Tinney sculp.

Specimen Botanicum

QUO

PLANTARUM

PLURIUM RARIORUM

ANGLIÆ

INDIGENARUM

LOCI NATALES

ILLUSTRANTUR.

AUTHORE

J. BLACKSTONE, Pharm. Lond.

Estque etiam prima semper Tirocinii Medici, si quid veri hic cerno, exercitatio in hoc studio ponenda: quum maximè id ingenio humano naturale, facillimum reverà, atque conveniens prorsus sit animo graviore curâ libero.

BOERHAAVE Ind. Alt. Plant. Præfat.

LONDINI:

Typis GULIELMI FADEN.

Venale prostat apud S. BIRT, in *Ave-Maria-Lane*,
& J. WHISTON, in Vico *Fleet-Street* dicto.

MDCCLXVI.

35701

Jan. 10, 1925

RECEIVED
JAN 10 1925
LIBRARY

VIRO SPECTATISSIMO
IN
ARTE PHARMACEUTICA
CALLENTISSIMO

ROBERTO GAMON,

Magistro Dignissimo,

GULIELMO LAKE

ET

GULIELMO ELDERTON,

Custodibus Fidelissimis,

Cæterisque

CURIÆ ASSISTENTIUM,

CELEBERRIMÆ SOCIETATIS

PHARMACEUTICÆ

LONDINENSIS,

HOC

SPECIMEN

Grato vovet animo

Aug. 5,
1745

J. BLACKSTONE.

VIRO STI C...

STI C...

H

STI C...

STI C...

STI C...

STI C...

P R Æ F A T I O.

HA B E S L E C T O R B E N E V O L E opusculum *Artis* equidem, haud autem *Laboris* expers. Omnis planta solo gaudet proprio, hæc enim in palustribus & aquosis, illa in montosis & asperis reperitur; locos ergo plantarum natales penitus investigare, multorum opus erit dierum. Herbarum cujuscunque penè generis ferax est ANGLIA NOSTRA, quod a CELEBERRIMI R A I I & aliorum scriptis abunde patet; interdum verò raræ species in diversis ANGLIÆ partibus occurrunt, quarum in libris hæctenus editis vix ulla facta est mentio; idcirco non inutile fore existimavi si nonnullas haud admodum vulgares in lucem proferrem. De utilitate & S T U D I I B O T A N I C I delectatione multa CLARISSIMUS conscripsit R A I U S, cujus labores inter omnes B O T A N O P H I L O S, magni sunt pretii; ait, enim insignissimus ille Author, * *Hiscæ ego studiis & inquisitionibus memet recreo & oblecto. Quod alii venationibus, aucupiiis, confabulationibus, lusibus insumunt, illud ego Stirpibus indagandis, colendis, contemplandis impendo. Recreat & refocillat animum & quamvis laboriosum sit, illud quocunque oblectatur. Me-*

* Hist. Tom. III. Præfatio,

P R Æ F A T I O.

thodo Alphabeticâ & Synonymis plerumque Antiquis in hoc usus sum opusculo, sed inferuntur sparsim nova quod HODIERNIS inde BOTANICIS gratius fiat & utilius. Hoc Specimen utinam suos habeat usus, aliosque Botanicos studiosos ad ultiores excitet disquisitiones, plantæ enim multæ natalis quarum locus incertus videbatur, HERBARIORUM diligentiam ANGLICANAS esse demonstrantur. Sylvæ umbrosæ, montes excelsi, fertilesque valles varias præbent amœnitates ad BOTANICUM delectandum, & plantâ desideratâ inventâ, præmium laborem adimplebit. Culpis in opusculo sparsim occurrentibus LECTOR BENEVOLE, ignosce & cupidini BOTANICÆ lubens indulge; quod satis gratum Authori præmium laboris reddet. Restat denique Amicis gratias agere, quorum munere & benevolentiam permaxima hujus opusculi pars constructa est; inter quos RICHARDUM RICHARDSON Nuper de *North Bierley* in Comitatu EBORACENSI M.D. BOTANICORUM verè MÆCENATEM memorare liceat; qui multa ad Scientiam BOTANICAM augendum, & hoc opusculum ornandum liberè communicavit; & si a cæteris ulteriori opus sit auxilio, eadem hilaritate concessum fore spero.

AUTHO-

AUTHORUM Citatorum
INDEX & EXPLICATIO.

- B**ARREL *Icon.* Jacobi Barrelieri Icones Plantarum per Galliam, Hispaniam & Italiam observatarum. *Parif.* 1714. Folio.
- Boccon. *Plant. Rar. & Mus.* Pauli Boccone Plantarum rariorum *Siciliæ* Icones & descriptiones *Oxon.* 1674. Ejusdem Musæum Plantarum Rariorum. *Venet.* 1697. Quarto.
- Boerb. *Ind. Alt.* Hermani Boerhaave Index Alter Plantarum, quæ in Horto Academico *Lugduno Batavo* aluntur. *Lugd. Bat.* 1720. Quarto.
- C. B. *Pin. & Prodr.* Caspari Bauhini Pinax & Prodromus Theatri Botanici. *Basil.* 1671. Quarto.
- Cat. *Fewersb.* Catalogus Plantarum circa *Fewersham* sponte nascentium, a Joanne Bateman A. M. conscriptus. *M. S.*
- Cat. *Giff.* Joannis Jacobi Dillenii Catalogus Plantarum circa *Giffam* nascentium. *Giffæ* 1719. Octavo.
- Flor. *Pruff.* Joannis Loefelii Flora Pruffica. *Regiomont.* 1703. Quarto.
- Ger. *Emac.* Joannis Gerardi Historia Plantarum a Thoma Johnson emaculata. *Lond.* 1633. & 1636. Folio.
- Hist. *Oxon.* Historia Plantarum Oxoniensis a Roberto Morison & Jacobo Bobarto edita. *Oxonii* 1680. Folio.
- Hort. *Reg. Monspel.* Petri Magnol Hortus Regius Monspelienfis, *Monspeli* 1697. Octavo.
- Hort. *Reg. Paris.* Antonii Vallot Hortus Regius Parisiensis. *Parifis* 1665. Folio.
- J. B. Joannis Bauhini Historia Plantarum Universalis tribus Tomis comprehensa. *Ebroduni.* 1650. Folio.
- J. R. H. Josephi Pitton, Tournesfort Institutiones Rei Herbariæ. *Parif.* 1700. Quarto.
- Linn. *Hort. Cliffort.* Caroli Linnæi Hortus Cliffortianus. *Amstel.* 1737. Folio.
- *Flor. Lapp.* Ejusdem Flora Lapponica, exhibens Plantas per *Lapponiam* crescentes. *Amstel.* 1737. Octavo.
- *Flor. Suecic.* Ejusd. Flora Suecica exhibens Plantas per Regnum *Sueciæ* crescentes. *Lugd. Bat.* 1745. Octavo.
- Lobel. *Adv.* Matthiæ Lobelii Observaciones & Adversaria. *Lond.* 1605. Folio.
- *Icon.* Ejusdem Icones Plantarum. *Antw.* 1581. Quarto.
- Magnol. *Bot. Monsp.* Petri Magnol. Botanicum Monspeliense sive Plantarum circa *Monspelum* nascentium Index. *Monspel.* 1686. Octavo. *Mentz.*

AUTHORUM Citatorum, &c.

- Mentz. Pug. Icon.* Christiani Mentzelii Index Plantarum & Pugillus. *Berol.* 1696. Folio.
- Merr. Pin.* Christophori Merret Pinax Rerum Naturalium Britannicarum. *Lond.* 1667. Octavo.
- Michel. Nov. Pl. Gen.* Petri Antonii Michellii Nova Plantarum Genera. *Florentiæ* 1729. Quarto.
- Morif. Umb.* Roberti Morison Plantarum Umbelliferarum distributio nova. *Oxonii* 1672. Folio.
- Park. Joannis Parkinsoni Theatrum Botanicum.* *Lond.* 1640. Folio.
- *Parad. Terr.* Ejusdem Paradisus Terrestris. *Lond.* 1656. Folio.
- Petiv. Herb. Brit.* Jacobi Petiveri Herbarium Britannicum. *Lond.* Folio.
- Phyt. Brit.* Phytologia Britannica, natales exhibens Indigenarum Stirpium sponte emergentium. *Lond.* 1650. Oct.
- Pluk. Almag. & Phyt.* Leonardi Plukenetii Almagestum Botanicum & Phytographia. *Lond.* Fol. diverso temp. edita.
- Raii Cat. Angl.* Joannis Raii Catalogus Plantarum Angliæ. *Lond.* 1677. Octavo.
- *Fascic.* Ejusdem Fasciculus Stirpium Britannicarum. *Lond.* 1688. Octavo.
- *Cat. Cant.* Ejusdem Catalogus Plantarum circa *Cantabrigiam* nascentium. *Cantab.* 1660. Octavo.
- *Hist. Pl.* Ejusdem Historia Plantarum, *Lond.* 1686. & 1704. Folio.
- *Syn.* Ejusdem Synopsis Methodica Stirpium Britannicarum Ed. I. 1690. II. 1696. III. *Lond.* 1724. Octavo.
- Rivini. Irr. Mon. Ic.* Augusti Quirini Rivini Ordines Plantarum Flore Irregulari Monopetalo, Tetrapetalo & Pentapetalo. *Lipsiæ* 1691. & 1699. Folio.
- Rupprii Flor. Jen.* Henrici Bernhardi Rupprii Flora Jenensis. *Frankofurt.* 1726. Octavo.
- Scheuchz. Agrost.* Joannis Jacobi Scheuchzeri Agrostographia, sive Graminum Juncorum Cyperorum Cyperoidum iisque affinium Historia. *Tiguri* 1719. Quarto.
- Sibbald. Scot. Il.* Roberti Sibbaldi Scotia Illustrata, seu Prodrromus Historiæ Naturalis *Scotiæ.* *Edinb.* 1684. Fol.
- Spigel. Isag.* Andreæ Spigelii Isagoge in Rem Herbariam. *Lugd. Bat.* 1633. Duodecimo.
- Vaill. Bot. Par.* Sebastiani Vaillant Botanicon Parisiense, ou denombrement par Ordre Alphabetique des Plantes qui se trouvent aux environs de *Paris.* *Lugd. Bat. & Amstel.* 1727. Folio, Specii-

Specimen Botanicum.

A CORUS VERUS, sive CALAMUS OFFICINARUM, *Park.* 140. *C. B. Pin.* 34. Verus, officinis falso Calamus, *Ger. Em.* 62. True *Acorus*, or *sweet smelling Flag.* In the Ponds near *Harefield Church*, and at *Holford* near *Northwich, Cheshire*, plentifully. Maio Julum profert.

ACORUS VERUS JULIS TERNIS, vel QUARTERNIS ALTERNATIM, IN CAULE POSITIS. Sent to *Dr. Richardson*, of *North Bierley*, from *Holford, Cheshire*. Prioris elegans varietas.

ADIANTHUM ALBUM, sive SALVIA VITÆ, *Ger. Em.* 1144. *Ruta Muraria*, *C. B. Pin.* 356. *Filicula petræa rutæ facie*, *H. Oxon.* III. *F.* 585. *Seet.* 14. *Tab.* 5. *White Maiden-hair*, *Wall-Rue*, or *Tentwort*. On *Finchley Church*, and on a *Wall* in *Fulham Church-yard*, also on *Brent Bridge* near *Hanwell Heath, Middlesex*, plentifully.

ADIANTHUM NIGRUM, PINNULIS CICUTARIÆ DIVISURA, *D. Bobart, Raii Synop.* II. 50. 8. *Filicula Cambrobritannica*, pinnulis *Cicutariæ* divisuris donata, *H. Oxon.* III. 581. 31. *Fine-leaved black Maiden-hair*, with *Leaves divided like bastard Hemlock*. On the *Top* of *Mendip Hills, Somersetsshire*. *Mr. Hill.*

B

divided

ADIANTHUM PETRÆUM, PERPUSILLUM, ANGLICUM, FOLIIS BIFIDIS, vel TRIFIDIS, *Raii Syn.* II. 47. Radicosum humisparfum, seu filicula pellucida nostras, Coriandri foliolis mollicellis, globuliferum, *Pluk. Alm.* 10 *T.* 3. *F.* 5. In a shady Lane near *Skipton-Mallet*, *Somerset.* Mr. *Hill.*

AGARICUM GELATINOSUM, MEMBRANACEUM, AUREUM, SINUATUM ET CRISPUM. *Michel. Nov. Pl. G.* 124. *T.* 66. Agaricus membranac. sinuosus, substantia gelatinæ. *Cat. Giff.* 194. Fungus luteus Sambucino similis, colore suo manus inficiens, Genistæ vulgari spinosæ adnascens, *Merr. Pin.* 41. In some shady Lanes near *Harefield*, but not plentifully.

AGARICUS RAMOSUS CORNU RENIFERI, (POTIUS RANGIFERI) REFERENS. *D. Ph. Miller. Branched Agaric, resembling the Horn of a Rein-deer.* This elegant Species was found 1744, growing on an old Elm Stump, in a Smith's Cellar in the *Haymarket*, *London.* Vid. *Tab.* 1.

ALCHIMILLA LINARIÆ FOLIO CALYCE FLO-
RUM ALBO. *J. R. H.* 509. *Linaria montana*, flosculis albicantibus. *C. B. Pin.* 213. *Linaria adulterina*, *Ger. Em.* 555. *Bastard Toad-flax.* In montosis, sed rarius. On *Salisbury Plain* in several Places. Mr. *Henry Scot.* Junio & Julio floret.

ALCHEMILLA VULGARIS OFFIC. *C. B. Pin.* 319. Major vulgaris, *Park.* 538. Alchemilla foliis simplicibus. *Lin. Flor. Lapp.* N° 66. *Ladies Mantle.* In montosis. In *Whichwood Forest, Oxfordshire*, abundantly. Maio floret.

ALSINE PALUSTRIS, FOLIIS TENUISSIMIS, seu SAXIFRAGA PALUSTRIS ANGLICA, *Ger. Emac.* 567, 568. Palustris Ericæ folia polygonoides, articulis crebrioribus, flore albo pulchello. *Pluk. Alm.* 23. *Tab.* 7. *Fig.* 4. *English Marsh Saxifrage.* In palustribus, sed rarius. In *Cornbury Boggs, Oxfordshire*, on a Wall by the *Thames Side at Battersea*, on *Harefield Moor*, and on the Wall of *Rickmansworth Churchyard, Hertfordshire.* Julio floret.

ALSINE PUSILLA PULCHRO FLORE, FOLIO TENUISSIMO NOSTRAS, seu SAXIFRAGA PUSILLA CARYOPHYLLOIDES, FLORE ALBO PULCELLO. *Raii Syn.* II. 209. 4. Caryophylloides tenuifolia, flore albo punctato. *Pluk. Alm.* 22. *Tab.* 7. *Fig.* 3. *Small fine-leaved Mountain Chickweed, with a Milk-white Flower.* In montosis Septentrionalibus. At the Foot of *Ingleborough* towards *Skirritb.* *Mr. Thornbeck.* Junio floret.

ALSINE SPURIA PUSILLA REPENS FOLIIS SAXIFRAGÆ AURÆ. *Raii Cat. Ang.* 17. *Small round-leaved Bastard Chickweed.* In some Meadows near *Honnington, Lincolnshire.* *Mr. Hill.* Julio floret.

ALSINE TENUIFOLIA. *J. B. III. 364. Fine leaved Chickweed. In Cornbury Quarry, near Charlbury, Oxfordshire. Junio floret.*

ALTHÆA VULGARIS OFF. *Park. 303. Dioscoridis & Plinii. C. B. Pin. 315. Malva sylvestris, vel palustris, aut Ibisus. H. Oxon. II. 522. 12. Marsh-Mallow. In the Marshes about Graveney, Ore and Luddenham, near Feverisham. Cat. Feverish. I once (1737) gathered it by the Side of Chelsea Water-works. Julio & Augusto floret.*

ANTHYLLIS LEGUMINOSA VULGARIS. *Park. 1393. Loto affinis vulneraria pratensis. C. B. Pin. 332. Kidney Vetch, or Ladies Finger. In montosis cretaceis. Near Byseaing Wood. Cat. Feverish. abundantly about Gravesend and Greenhithe. Junio & Julio floret.*

APHACA. *Park. 1067. Vicia lutea, foliis Convolvuli minoris. C. B. Pin. 345. Yellow Vetchling. Inter segetes. Among the Corn, near Denham, Bucks. Mr. Hill. I found it sparingly in the Fields between Oxford and Woodstock. Julio floret.*

AQUILEGIA VULGARIS SIMPLEX. *Park. 1367. Sylvestris. C. B. Pin. 144. Columbinæ. In sylvis & dumetis. It is found about Harefield, Middlesex, sparingly, in the Coppices of Whichwood Forest, Oxfordshire, plentifully. Maio & Junio floret.*

ARISTOLOCHIA CLEMATITIS RECTA OFF. C. B. Pin. 307. Clematitis, Ger. Emac. 847. Park. 292. Climbing Birth-wort. In a wood, two Miles from Thorndon, Essex. Mr. Hill. It grows also in Cambridgeshire. Junio floret.

ASPERUGO VULGARIS. J. R. H. 135. Buglossum sylvestre caulibus procumbentibus. C. B. Pin. 257. Small wild Bugloss. In the Corn Fields near Bath. Mr. Hill. Junio & Julio floret.

ASPENIUM, five CETERACH OFFIC. J. B. III. 749. Ceterach officinarum. C. B. Pin. 354. Spleen-wort, or Milt-waste. In muris antiquis. On the Wall at Brook-House, Hackney. Dr. Wilmer. On Lenham Church, Kent. Mr. Jarvis. On an old Tomb in East Hornden Churchyard, Essex. Mr. Hill. On the North-side of Cliffe Church, below Gravesend.

ASTRAGALUS LUTEUS PERENNIS PROCUMBENS VULGARIS, five SYLVESTRIS. H. Oxon. II. 107. Glycyrrhiza sylvestris floribus luteo pallescentibus. C. B. Pin. 352. Wild Liquorice, or Liquorice Vetch. In sylvis & ad sepes. At the Bottom of Coomb-Hill near Elsborough, Bucks. Dr. Wilmer. In Charlton Wood near Woolwich, and in a Lawn near Captain Jenkinson's Lodge in Whichwood Forest. Junio floret.

ATRIPLEX ANGUSTIFOLIA MARITIMA DENTATA. Raii Hist. 193. Maritima angustifolia. C. B.

6 SPECIMEN BOTANICUM.

C. B. Pin. 120. *Prodr.* 58. *Narrow-leaved indented Sea Orache.* In palustribus maritimis. In the Marshes about *Gravesend* plentifully. Julio floret.

ATRIPLEX OLIDA OFFIC. *Ger. Emac.* 327. *Olida* sive *sylvestris foetida.* *Park.* 749. *Blitum foetidum* *Vulvaria* dictum. *Raii Syn.* III. 156. 13. *Stinking Orache.* In fimetis & locis ruderatis. 'Tis common about *London*, on *Dung-hills* and waste Places. Julio floret.

B.

BACCHARIS MONSPELIENSIS. *Ger. Emac.* 792. *Conyza major vulgaris,* *C. B. Pin.* 265. *Great Flea-bane,* or *Plowman's Spikenard.* In montosis & cretaceis. About *Dartford* and *Greenhithe, Kent*; also in *Harefield Chalk-pits.* Sub finem Julii floret.

BARBAREA MURALIS. *J. B. II.* 869. *Eryfimo* similis hirsuta planta. *Park.* 834. *Wall-Cress,* or *Tower-Mustard,* with *Daisie Leaves.* In *Ascot Field* near *Charlbury, Oxfordshire,* 1736. Maio floret.

BARDANA MINOR OFFIC. *Ger. Emac.* 809. *Lappa minor,* *Xanthium,* *Dioscoridis.* *C. B. Pin.* 198. *The Lesser Burdock.* In *Anglia* rarius occurrit. Observed by Mr. *William Watson,* a very curious Botanist, near the Foot-way
in

SPECIMEN BOTANICUM. 7

in the Field, which leads from *Goswell Street* to the *New River, Islington*. Annuæ est planta, Julio & Augusto florens.

BERBERIS DUMETORUM OFFIC. C. B. Pin. 454. Berberis, *Park*. 1559. *The Barberry* or *Pipperidge Bush*. In the Hedges about *Charlbury, Oxfordshire*, frequently. Maio floret.

BETA SYLVESTRIS MARITIMA. C. B. Pin. 118. Sylvestris spontanea marina. *Lobel. Obs.* 125. Communis seu viridis. C. B. Pin. 118. *Sea-Beet*. In palustribus maritimis. On the *Sea-Wall* near *Graveney*, third *Sluice*. *Catal. Feversh.* Æstate floret.

BISTORTA MAJOR OFFIC. *Ger. Emac.* 399. Major vulgaris. *Park*. 392. Radice minus intortâ. C. B. Pin. 192. *The greater Bistort* or *Snake-weed*. In pratis humidioribus haud autem valdè frequens. In the *Meadows* by the *River-side* about *Uxbridge* and *Rickmansworth*, also in *Battersea Meadow* near the *Thames* side. *Aprili* floret.

BISTORTA MINOR NOSTRAS. *Park*. 392. Minor. *Ger. Emac.* 399. Bistorta foliis lanceolatis. *Lin. Flor. Lapp.* No. 152. *Small Bistort* or *Snake-weed*. On *Lincoln Heath*. *Mr. Hill*. Maio floret.

BIFOLIUM MINIMUM. *J. B. III.* 534. *Ophris minima*. C. B. Pin. 87. *Prodr.* 31. *Ophris*

8 SPECIMEN BOTANICUM.

Ophris foliis cordatis. *Linn. Fl. Lapp.* N^o 316. *The least Tway-blade.* In a Ditch amongst the Heath on *Blackmoor* near *Leeds, Yorkshire.* Mr. *Dawson.* Maio floret.

BLATTARIA LUTEA FOLIO LONGO LACINIATO. *C. B. Pin.* 240. Flore luteo. *Park.* 64. *Blattaria Plinii. Ger. Emac.* 776. *Yellow Moth Mullein.* Apud nos rarius invenitur. By the Road-side near the fourteen Mile Stone between *London* and *Dartford,* 1745. About *Harefield* sparingly, 1735. Julio floret.

BRASSICA SPURIA EXILIS CAULE MAGIS FOLIOSO HIRSUTIOR. *Raii Syn,* II. 166. *Spuria exilis non laciniata hirsutior, subrotundis foliis, caule magis folioso. Pluken. Alm. p.* 70. *Tab.* 80. *fig.* 2. I have found it on some Walls about *Harefield,* and in like Places in *Oxfordshire.* Maio floret.

BUPLEURUM MINIMUM. *Park.* 578. angustissimo folio. *C. B. Pin.* 278. *Auricula leporis minima. J. B. III.* 2. 201. *The least Hares Ear.* By the Road-side near *Thorndon, Essex.* Mr. *Hill.* About *Holkham* in *Norfolk.* Mr. *H. Scott.* Julio & Augusto floret.

BUPLEURUM PERFOLIATUM ROTUNDIFOLIUM ANNUM. *J. R. H.* 310. *Perfoliata vulgarissima, sive arvensis. C. B. Pin.* 277. *Vulgaris. Park.* 580. *Thorow-Wax.* Inter segetes sed rarius. In the Corn-fields about *Sutton,*
Leather-

Leatherhead and *Epsom* plentifully; also in a Field close to the Road-side between *Stone* and *Greenhithe*, *Kent*. Julio floret.

C.

CALAMINTHA ODORIS PULEGII OFFIC. *Ger. Em.* 687: Altera odore Pulegii foliis maculosis. *Park.* 36. Pulegii odore, sive Nepeta. *C. B. Pin.* 228. *Field Calamint.* Ad vias publicas & agrorum margines reperitur. About *Charlton*, *Dartford*, and many other Places in *Kent*; also by the Road-side, between *St. Peter's* and *St. Giles's*, *Chalfont*, *Bucks*, abundantly. Julio & Augusto floret.

CALAMINTHA VULGARIS OFFIC. *Ger. Em.* 687. Vulgaris vel officinarum Germaniæ, *C. B. Pin.* 228. *Common Calamint.* Ad vias publicas, sed rarius. In *Heath-Lane* near *Dartford*, and in *Harefield* Street, but not plentifully. Julio floret.

CALTHA PALUSTRIS FLORE PLENO. *Merr. Pin.* 18. Palustris multiplex. *Ger. Emac.* 818. *Double flower'd Marsh Marigold.* Between the Sluice and the Powder mill near *Feversham*. *Catal. Feversh.* Aprili floret.

CALCEOLUS MARIÆ. *Ger. Em.* 443. Hel-
 leborine flore rotundo, seu Calceolus. *C. B. Pin.*
 187. *Cypripedium* foliis ovato lanceolatis. *Linn.*
Fl. Lapp. N° 318. *Ladies Slipper*. Angliæ sylvi-
 cola est, sed rarius occurrit. In *Friar Wood* near
Chapel le Dale, at the Foot of *Ingleborough Hill*,
 found by Mr. *Thornbeck* Surgeon at *Ingleton*,
 who likewise informs me that it has been lost in
Helk's Wood for some Years. Maio floret.

CAMPANULA ARVENSIS ERECTA, vel SPE-
 CULUM VENERIS MINUS. *Ger. Em.* 439. O-
 nobrychris arvensis, vel *Campanula arvensis e-*
recta. *C. B. Pin.* 215. *The Lesser Venus Looking-*
Glass, or *Codded Corn Violet*. Inter segetes. In
 the Corn-fields about *Verulam*, 1743. Junio
 floret.

CAMPANULA PRATENSIS FLORE CONGLO-
 MERATO. *C. B. Pin.* 94. *Trachelium minus*.
Park. 644. *Little Throat-wort*, or *Canterbury*
Bells. In montosis, solo præsertim cretaceo.
 On *Box Hill*, *Surrey*, and in the old *Chalk-pit*
 by the Road-side near *Gerard's Cross*, *Bucks*.
 Julio floret. Variat flore albo.

CARDAMINE FLORE MAJORE, ELATIOR.
J. R. H. 224. *Nasturtium aquaticum ama-*
rum. *Park.* 1239. *Bitter Cresses*. In palustri-
 bus & aquis. By the River's Side. at *Hare-*
field, and about *Uxbridge* plentifully. Aprili &
 Maio floret.

CARDAMINE IMPATIENS ALTERA HIRSI-
 TIOR. *Raii Syn. Ed. II. 171.* Nasturtium a-
 quaticum minus. *C. B. Pin. 104.* *The lesser*
bairy impatient Ladies Smock. Common by the
 Rills of Water in *Whickwood Forest, Oxfordshire* ;
 also in *Scarlet Spring* and *Gutter's Dean Wood,*
 near *Harefield.* Aprili floret.

CARDUS TOMENTOSUS, CORONA FRA-
 TRUM DICTUS. *Park. 978.* Cardus capite
 rotundo tomentoso. *C. B. Pin. 382.* Erioc-
 phalus. *Ger. Em. 1152.* *Woolly-headed Thistle.*
 In montosis, sed rarius. In several Parts of
Whickwood Forest, and about *Charlbury* plenti-
 fully. *Elegantissima est Cardui species Julio*
& Augusto florens.

CARLINA ACAULIS MINORE PURPUREO
 FLORE. *C. B. Pin. 380.* Acaulis Septentriona-
 lium. *Park. 969.* Chamelæon exiguus *Tragi.*
ŷ. B. III. 62. *Dwarf Carlina Thistle.* Locis
 montosis & siccoribus. On *Box Hill, Surrey,* and
 in *Whickwood Forest, Oxfordshire.* Julio floret.

CARYOPHYLLATA MONTANA PURPUREA?
Ger. Em. 995. Aquatica nutante flore. *C. B.*
Pin. 321. Aquatico flore rubro striato. *ŷ. B.*
II. 398. *Purple Mountain Avens, or Water*
Avens. In a Bog on a Mile this side *Chichester,*
Suffex. *Mr. Hill.* Junio & Augusto floret.

CARYOPHYLLUS LATIFOLIUS, BARBATUS, MINOR, ANNUUS, FLORE MINORE. *Raii Syn. Ed. III. 337. 4.* Pratenfis nofter major & minor. *Park. 1338.* Barbatus fylveftris. *C. B. Pin. 209.* *Deptford Pink.* Solo gaudet arenoso aut glareoso. In a little Coppice juft by the *Swallows*, between *Darking* and *Mickleham, Surrey*, and in the Fields juft above *Dartford*, on the Left Hand, plentifully. Julio floret.

CARYOPHYLLUS MINOR REPENS NOSTRAS. *Raii Syn. Ed. III. 335.* *Betonica coronaria*, five *Caryophyllata repens rubra.* *J. B. III. 228.* *Maiden Pinks.* On the Banks of *Beacon Hill* near *Feverfham, Kent.* *Cat. Feverfb.* Junio floret.

CARYOPHYLLUS SIMPLEX, FLORE MINORE, PALLIDE RUBENTE. *C. B. Pin. 208.* Sylveftris tertia flore pallido, fuave rubente. *Lob. Ic. 443.* *Common Pinks.* On a Wall at *Langley* near *Iver, Bucks.* Junio floret.

CASTANEA VULGARIS. *Park. 1400.* Sylveftris, quæ peculiariter *Castanea.* *C. B. Pin. 419.* *The Chefnut Tree.* In *Balwin Woods*, between *Dartford* and *Bexley* in *Kent*, plentifully. Aprili floret, & Autumno fructum maturat.

CAUCALIS TENUIFOLIA, FLOSCULIS SUBRUBENTIBUS. *Raii Hift. 967.* Arvenfis echinata parvo flore & fructu. *C. B. Pin. 152.* Tenuifolia

nuifolia purpurea. *Park.* 920. *Fine leaved bastard Parsley, with a small purplish Flower.* Inter segetes, sed rarius. Amongst the Corn on *Banstead Downs*, by the Road-side leading to *Darking, Surrey.* Junio floret.

CENTAURUM LUTEUM PERFOLIATUM. *C. B. Pin.* 278. *Minus, luteum & ramosum.* *Park.* 271. *Yellow Centory.* In montosis præsertim cretaceis. In *Ospringe Chalk-pits.* *Catal. Feversh.* About *Gravesend, Kent*, and in the old Chalk-pit, *Gerard's Cross, Bucks*, plentifully. Junio & Julio floret.

CENTUNCULUS. *Cat. Giff.* 161. & *App.* III. *Tab.* 5. *Alfine palustris minima, flosculis albis, fructu coriandri exiguo.* *Mentz. Pug. Icon.* *Anagallidastrum.* *Michel. Nov. Plant. Gen. pag.* 14. *Tab.* 18. On the low marshy Ground near the Paper-Mills on *Hounslow Heath.* *Mr. Watson.* Maio & Junio floret.

CERASUS AVIUM, NIGRA & RACEMOSA. *Ger. Em.* 1504. *Racemosa sylvestris fructu non eduli.* *C. B. Pin.* 451. *Padus foliis annuis.* *Linn. Flor. Lapp.* N° 198. *The wild Cluster-Cherry, or Bird's Cherry.* In the Lane going from *Temple-Mills, Hackney-Marsh,* to *Epping-Forest.* *Dr. Wilmer.* Maio floret.

CHAMÆPITYS OFFIC. *Rivin. Irr. Mon. Ic.* *Vulgaris.* *Park.* 283. *Lutea vulgaris, seu folio trifido.* *C. E. Pin.* 249. *Common Ground-*

Ground-Pine. In agris sterilioribus, sed rarius.
On *Banstead-Downs*, by the Road-side to
Darking, Surrey. Julio floret.

CHAMÆRUBUS SAXATILIS. *C. B. Pin.* 479.
Alpinus saxatilis. *Park.* 1014. Rubus caule
repente annuo, foliis ternatis. *Lin. Flor. Lapp.*
N° 206. *The Stone-bramble, or Raspis.* In
Mill-bank near Ingleton, Yorkshire. Mr. *Thorn-*
beck. Maio & Junio floret.

CHRISTOPHORIANA. *Ger. Em.* 979. Aco-
nitum racemosum, Actæa quibusdam. *J. B. III.*
660. Actæa caule inermi. *Lin. Flor. Lapp.*
N° 217. *Herb Christopher, or Bane-berries.* In
Chapel le Dale Pastures near Ingleton, Yorkshire.
Mr. *Thornbeck.* In a thick Wood two Miles
from *Thorndon, Essex.* Mr. *Hill.* Maio & Ju-
nio floret.

CIRSIUM ANGLICUM. *Ger. Emac.* 1183.
Anglicum radice Hellebori modo fibrosa, folio
longo. *J. B. II.* 45. *The English soft or gentle*
Thistle. In palustribus. In the Meadows about
Ore-Mill Pond. Catal. Feversh. On *Hounslow-*
Heath, near the End of *Tuddington Town,* spa-
ringly. It is frequent in *Cambridgeshire.* Junio
floret.

CIRSIUM BRITANNICUM CLUSII REPENS:
J. B. III. 46. Aliud Anglicum. *Park.* 961.
Carduus calyce inermi, foliis lanceolatis, margine
ciliatis.

SPECIMEN BOTANICUM. 15

ciliatis. *Lin. Flor. Lapp.* N° 292. *The great English soft or gentle Thistle, or melancholy Thistle.* In a Meadow near *Malbam Town*, in the Way from *Airton* to *Leeds*, *Yorkshire*. *Mr. Dawson.* Junio floret.

CLEMATIS DAPHNOIDES MAJOR, *C. B. Pin.* *Daphnoides latifolia*, sive *Pervinca major*. *Park.* 381. *Icon.* *Pervinca latifolia vulgaris* flore cœruleo. *J. R. H.* 119. *The greater Periwinkle.* In the Lane leading from *Battersea Meadow* to *Wandsworth*, *Surrey*. In a Meadow near *Harefield Church*. Maio & Julio floret.

CLEMATIS DAPHNOIDES MINOR. *C. B. Pin.* 301. *Vinca Pervinca minor*. *Ger. Emac.* 894. *Pervinca vulgaris angustifolia* flore, cœruleo. *J. R. H.* 120. *Periwinkle.* In *Hay's Wood* near *South-street*, *BoEton*, *Kent*. *Cat. Feversb.* In a Lane leading from *Uxbridge Moor* to *Iver Heath*, and in a little Grove near *Breakspears*, *Middlesex*, plentifully. Maio & Junio floret.

COLCHICUM COMMUNE, *C. B. Pin.* 67. *Anglicum purpureum* & *Anglicum album*. *Ger. Emac.* 157. *Meadow Saffron.* In a moist Meadow just below *Stunsfield Church*, and in several Parts of *Whickwood-Forest*, *Oxfordshire*, plentifully. Autumnno floret.

COTYLEDON MAJOR. OFFIC. *C. B. Pin.* 282: *Umbilicus Veneris vulgaris*, *Park.* 740. *Cotyledon vera radice tuberosa*. *J. B. III.* 683.
Wall

Wall Pennywort, Navel Wort, Kidney Wort. In faxis & muris antiquis sed rarius. On the Walls of *Rewly Abbey*, and on *Godstow Bridge* near *Oxford*, abundantly. Maio floret.

CRUCIATA, *Ger. Emac.* 1123. vulgaris. *Park.* 566. *Gallium latifolium*, *Cruciata* quibusdam, flore luteo, *J. B.* III. 2. 217. *Cross-wort* or *Mugweed*. Ad sepes & in vepretis sed rarius: It is found plentifully about *Charlbury*, *Oxfordshire*, and in the old Chalk Pit at *Gerard's Cross*, *Bucks*. It is lately lost in *Hampstead Church-Yard*, where it grew in *Johnson* and *Parkinson's* Time. Maio floret.

CYNOGLOSSUM MINUS FOLIO VIRENTE. *Ger. Emac.* 805. Semper virens. *C. B. Pin.* 257. *Montanum*, virenti folio, minore, flore. *J. R. H.* 140. *The lesser Green-leav'd Hounds-Tongue*. In the Hedges about *Thorndon*, *Essex*. *Mr. Hill*. Junio & Julio floret.

CYPERUS GRAMINEUS MILIACEUS. *Ger. Emac.* 30. *Pseudo-cyperus Miliaceus*. *Park.* 1171. *Gramen cyperoides Miliaceum*. *C. B. Pin.* 6. *Millet Cyperus Grass*. In a Pond on the Left Side of the Road from *London* to *Highgate*, *Middlesex*. - Near the Wilderness in *Sir Robert Jenkinson's* Garden at *Walcot*, near *Charlbury*, *Oxfordshire*.

D.

DENS LEONIS MINIMUS ASPER. *J. R. H.*
 469. Hieracium pumilum saxatile asperum præmorsâ radice. *C. B. Pin.* 128. *Prodr.* 66. *Dwarf rough Stone Hawkweed with Bitten Roots.* In the Gardens at *Breakspears* near *Harefield* and thereabouts, not uncommon. Junio floret.

DENTARIA HEPTAPHYLLOS BACCIFERA.
C. B. Pin. 322. *Bulbifera.* *Ger. Em.* 984. *Park.* 620. *Sobolifera.* *H. Oxon.* 255. *Toothwort, or Coral-wort.* In the old *Park Wood* near *Harefield* abundantly. *Parkinson* says, it has been found in the Woods about *Mayfield* in *Suffex*; but as I do not find it mentioned by any later Writer, doubt he mistook the Plant. Circa mediam Aprilis floret, & subito perit.

DENTARIA MAJOR MATTHIOLI. *Ger. Em.* 1585. Major ἀφύλλος *Orobanches* facie. *Banel. Ic.* 80. *Orobranche radice dentata major.* *C. B. Pin.* 88. *Squamaria.* *Riv. Irr. Mon. Ic.* *Tooth-wort, or Lung-wort.* In umbrosis sepium aggeribus, sed rarius. In a shady Lane leading from *Harefield Town* to the River, plentifully. Aprili floret.

DIPSACUS MINOR, five VIRGA PASTORIS.
Ger. Em. 1168. Sylvestris capitulo minore,
 vel Virga Pastoris minor. *C. B. Pin.* 385.
Small wild Teasel, or Shepherd's Road. Ad se-
 pes præsertim locis humidioribus. About *Moore-*
Hall, and in a little Coppice just below Mr.
Cooke's House at Harefield; also near *New-Cross*
Turnpike in the Road to *Chiselhurst*. Julio &
 Augusto floret.

E.

EBULUS, five SAMBUCUS HUMILIS OFFIC.
Ger. Em. 1426. Sambucus humilis, five
 Ebulus. *C. B. Pin.* 456. *Dwarf Elder, or*
Dane-wort. On *Uxbridge-Moor*, and near the
 upper Gate in *Cuper's Gardens* abundantly.
 Julio floret.

ECHINOPHORA MARITIMA SPINOSA. *J. R.*
H. 656. Crithmum maritimum spinosum. *C.*
B. Pin. 288. Maritimum spinosum, seu *Pasti-*
naca marina. *Park.* 1286. *Prickly Sampire, or*
Sea Parsnep. On the *Sea-Beach*, in the Way
 from *Feversham* to *Sea-Salter.* *Cat. Feversh.*
 Julio & Augusto floret.

ENULA CAMPANA, five HELENIUM OFFIC.
Ger. Em. 793. Helenium vulgare. *C. B. Pin.*
 276. After omnium maximus Helenium dic-
 tus.

SPECIMEN BOTANICUM. 19

tus. *J. R. H.* 483. *Elecampane*. In pratis & pascuis, sed rarius. In many marshy Grounds in *Essex*. Mr. *Watson*. In some Places about *Harefield, Middlesex*; also in the Warren at *Smith's Hall* near *Blakemoor, Essex*, sparingly. Julio floret.

EPI MEDIUM. *Ger. Em.* 480. *Park.* 1366. *Epimedium quorundam. J. B. H.* 395. *Barrenwort*. Found by that accurate Botanist Dr. *Richardson* in *Bingley Woods* six Miles from *North Bierley, Yorkshire*, and not sparingly. Junio floret.

EQUISETUM FRAGILE MAJUS SUBCINE-
REUM AQUIS IMMERSUM. *H. Oxon.* III. 621. *Tab. 4. Sect. 15. Fig. 9.* feu *Hippuris coralloi-*
des, Ger. Emac. 1115. feu *Hippuris lacustris*
foliis mansu arenosis Gesnero. Pluk. Alm. 135. *Tab. 29. Fig. 4.* In a Bog near *Cornbury Stone-*
Quarry in Whichwood Forest, Oxfordshire, and
in a Spring near *Smith's Hall, Essex*, plentifully.

EQUISETUM MINUS SUB AQUA REPENS AD
GENICULA POLYSPERMON. *D. Sherard. Raii*
Syn. II. 43. 10. I found this Plant in a Pond
by the Road-side in *Balwin Woods* near *Bexley,*
Kent, 1745.

EQUISETUM PALUSTRE BREVIORIBUS FO-
LIIS POLYSPERMON, *C. B. Pin.* 15. *Palustre*
alterum brevioribus setis. Park. 1200. *Pina-*
stella surrector. Rupp. Flor. Jenensf. 275. *Fe-*
male

20 SPECIMEN BOTANICUM.

male Horse-tail. In *Harefield River*, and a Bog on *Uxbridge Moor* plentifully.

ERUCA AQUATICA. *Ger. Emac.* 248. *Sylvestris minor*, luteo parvoque flore. *C. B. Pin.* 98. *Sisymbrium palustre repens*, *Nasturtii folio.* *J. R. H.* 226. *Water-Rocket.* In the Ditches about *Totbill-Fields, Westminster*, plentifully. Julio floret.

ERUCA MARINA. *Ger. Emac.* 248. *Martima Italica*, filiqua hastæ cuspidi simili. *C. B. Pin.* 99. *Crambe maritima*, foliis *Erucæ angustioribus*, fructu hastiformi. *J. R. H.* 212. *Sea-Rocket.* In maritimis arenosis: On the Shore in *Canvey Island, Essex.* *Mr. Hill.* Julio floret.

ERYNGIUM MARINUM OFFIC. *Park.* 986. *Ger. Emac.* 1162. *Sea Holly*, or *Eryngo.* In palustribus maritimis. On the Sea-shore between *Graveney Wall Sluice* and *Sea-Salter, Kent.* *Catal. Feversh.* In *Walney-Isle, Lancashire*, plentifully. *Mr. Thornbeck.* Julio floret.

ERYNGIUM VULGARE CAMERARII. *C. B. Pin.* 386. *Mediterraneum*, five *campestre.* *Park.* 986. *Common Eryngo.* Below *Melling, Yorkshire*, plentifully. *Mr. Thornbeck.*

F.

FERRUM EQUINUM GERMANICUM SILI-
 QUIS IN SUMMITATE. *C. B. Pin.* 391.
 Equinum comosum. *Park.* 1091. *Tufted Horse-*
shoe Vetch. In montosis & cretaceis. About
Ospringe, Kent, Catal. Feversh. Very common
 about *Gravesend.* Julio floret.

FILIPENDULA VULGARIS OFFIC. *Park.* 434.
 Vulgaris, an Molon Plinii. *C. B. Pin.* 163.
Common Dropwort. In pascuis montosis. In the
 Broom-fields about *Herne-Hill* and *Ore, Kent. Cat.*
Feversh. On *Box Hill, Surrey,* and in *Whichwood*
Forest, Oxfordshire, plentifully. Junio floret.

FILIX MAS NON RAMOSA, PINNULIS AN-
 GUSTIS RARIS PROFUNDE DENTATIS. *Ger.*
Emac. 1130. *Pluk. Alm.* 151. *Tab.* 180. *Fig.*
 4. Mollis seu glabra, vulgari mari non ramosæ
 accedens. *J. B. III.* 738. *descr.* Polypodium
 duplicato-pinnatum, pinnulis lanceolatis acutis,
 pinnatifidis. *Linn. Flor. Lapp.* N° 386. *Male*
Fern, with thin set deeply indented Leaves. In pa-
 lustribus humidis. On the long Bog at *Chisel-*
hurst, Kent, abundantly.

FILIX MAS RAMOSA PINNULIS DENTA-
 TIS. *Ger. Emac.* 1129. *Pluk. Alm.* 185. *Tab.*
 181. *Fig.* 2. *Great branched Fern, with indented*
Leaves.

Leaves. In a Bog near *Moor-Hall*, and at *Battle's Well*, *Harefield*.

FILIX PUMILA SAXATILIS ALTERA CLUSII. *Park.* 1043. Saxatilis non ramosa, nigris maculis punctata. *C. B. Pin.* 358. *Male Stone Fern.*

FILIX RAMOSA MINOR. *J. B. III.* 741. Pumila saxatilis prima Clusii. *Park.* 1043. *Dryopteris Tragi.* *Ger. Emac.* 1135. *The lesser branched Fern.*

FILIX SAXATILIS CAULE TENUI FRAGILI. *Raii Syn. Ed. II.* 50. 7. *Adiantum album*, folio Filicis. *J. B. III.* 741. *Polypodium duplicato pinnatum*, pinnis remotis, pinnulis subrotundis incis. *Linn. Fl. Lapp.* 384. *Fine cut Stone Fern*, with slender and brittle Stalks. These three Ferns were brought from *Mendip Hills* in *Somersetshire* by *Mr. Hill*, where they are sufficiently plentiful.

FILIX SAXATILIS TRAGI. *Park.* 1045. Saxatilis quinta, seu corniculata. *C. B. Pin.* 358. *Acrosticum folio lineari laciniato.* *Lin. Flor. Lapp.* N° 380. *Horned or forked Maidenhair.* On the North-side of *Boeton Church* near *Feversham* in *Kent.* *Catal. Feversh.*

FLOS ADONIS, FLORE RUBRO. *Ger. Emac.* 387. *Park Parad.* 293. *Adonis hortensis flore minore, atro-rubente.* *C. B. Pin.* 178. *Adonis Flower, red Matthes*, by some *Pheasant's Eye.*
Inter

Inter fegetes, sed rarius. In the second Field on the Right-hand before you go into *Northfleet*, *Kent*, very plentifully. Dr. *Wilmer*. Among the Corn about *Acton*, *Middlesex*. Mr. *Watson*. Julio floret.

FRANGULA, seu ALNUS NIGRA BACCIFERA OFF. *Park*. 240. *Alnus nigra baccifera*. C. B. *Pin*. 428. *Rhamnus inermis*, foliis annuis. *Linn. Flor. Lap*. N° 92. *The Black-berry bearing Alder*. In sylvis humidis, sed rarius. In *Hornsey Wood* near *Highbgate*, in *White-beath Wood* by *Harefield Common*, *Middlesex*, and in the long Bog at *Chiselmurst* plentifully. Aprili & Maio floret.

FRITILLARIA PRÆCOX PURPUREA VARIEGATA. C. B. *Pin*. 64. *Vulgaris*. *Park. Parad*. 40. *Fritillaria variegata*. *Ger. Emac*. 149. *Common Checquer'd Daffodil*, or *Fritillary*. In *Mawde Fields* near *Rislip Common*, *Middlesex*, plentifully, where they have been observed near 60 Years. The Country People call them *Snakes Heads*. Aprili floret, & citò evanescit.

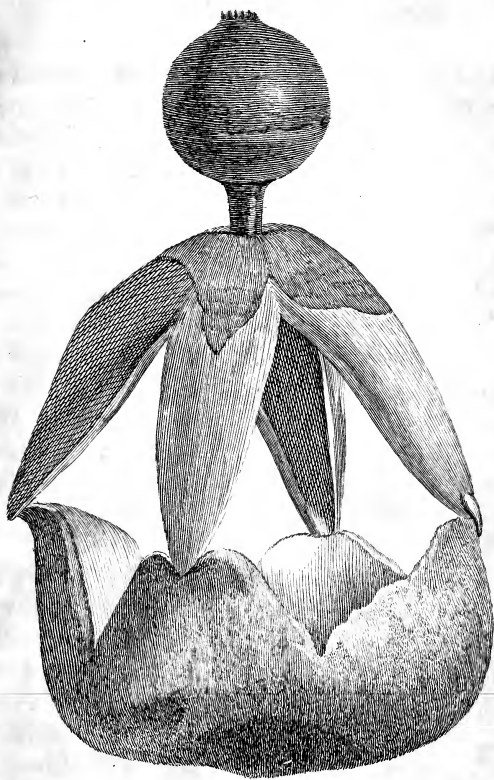
FUNGOIDES FUNGIFORME, CRISPUM, LACINIATUM ET VARIE COMPLICATUM, PEDICULO CRASSO, STRIATO, RIMOSO AC FISTULOSO. *Michel. Nov. Plant. Gen*. 204. *Tab*. 86. *Fig*. 7. *Fungus terrestris pediculo striato & cavernoso, capitello plicatili subtus plano*. *Raii Syn. Ed*. III. 8. 39. I observed this Fungus in 1739 and 40. In the little Nursery just below

low *Breakspears* near *Harefield*, *Middlesex*, and not elsewhere.

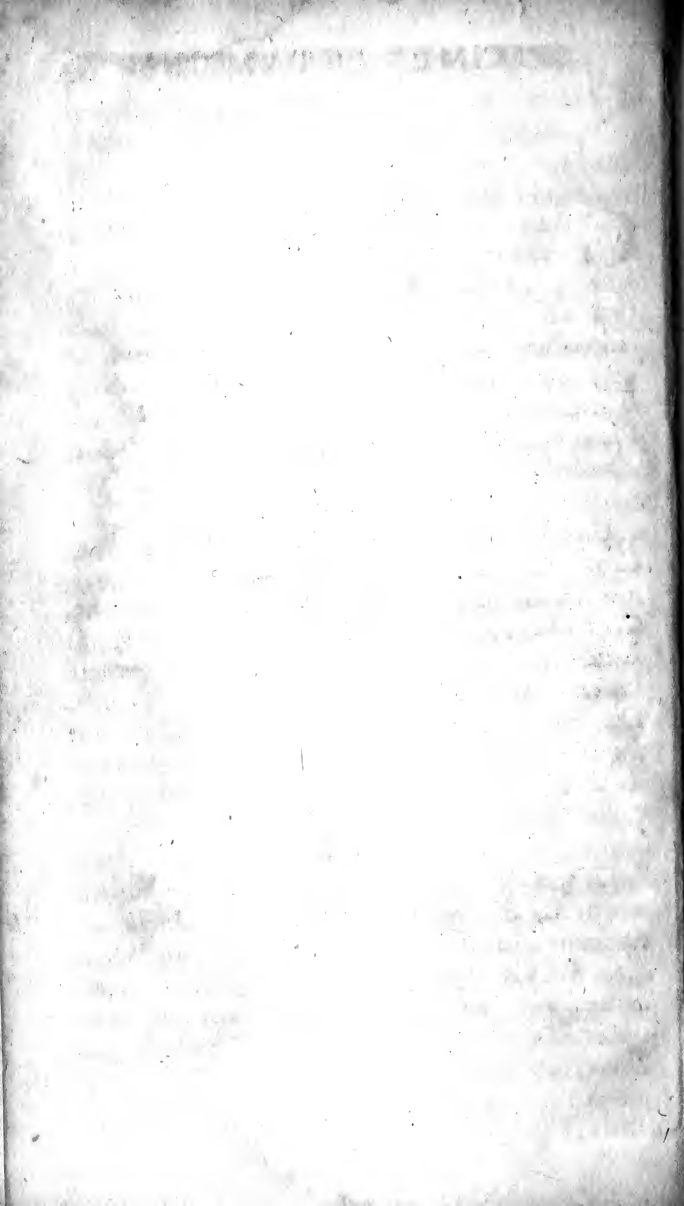
FUNGUS PULVERULENTUS TURRICULAM FORNICATAM REFERENS. *D. Rand.* Geaster *Volvæ* radiis & operculo elevatis. *D. Watson, Act. Philos.* N° 474. pag. 234. This elegant Fungus was first discovered about 14 Years since by Mr. *Francis Merrick*, (Son of Dr. *Merrick*) at *Bucklebury*, ten Miles from *Reading*, *Berks.* It has since been found about *Wickham* near *Bromley*, *Kent*, but very rarely. *Vid.* Tab. 2.

FUNGUS RAMOSUS, FLAVUS ET ALBIDUS. *J. B.* III. 387. *Coralloides* flava & albida. *J. R. H.* 564. *Branched* or *Coralline Mushroom.* Observed by Mr. *Jacques* Surgeon at *Uxbridge*, in his Garden, 1735.

FUNGUS CAMPANIFORMIS, NIGER, PARVUS, MULTA SEMINA PLANA IN SE CONTINENS. *Merr. Pin.* 41. Fungi calyciformes feminiferi. *Mentzel. Pug. Icon.* Cyathoides cyathiforme, cinereum & veluti fericeum. *Michel. Nov. Plant. Gen.* 222. *Tab.* 102. *fig.* 1. *opt.* *Seeding Cup Mushroom.* In the Fields about *Camberwell*, *Surrey*, and *Chipping-Ongar*, *Essex*, plentifully.



*Fungus pulverulentus Turriculam
fornicatum referens. D. Rand.*



G.

GALE FRUTEX ODORATUS SEPTENTRIONALIUM, ELÆAGNUS CORDO. *Æ B. I.* 2. 224. *Rhus sylvestris*, five *Myrtus Brabantica* vel *Anglica*. *Park.* 1451. *Myrica foliis lanceolatis*, fructu sicco. *Lin. Flor. Lapp.* N° 373. *Sweet Willow*, *Gaule*, *Dutch Myrtle*. Near *Whitchurch*, *Cheshire*, so plentifully, that the Place where it grows is called *Gale-Moor*. *Mr. Vernon*.

GENTIANA PALUSTRIS ANGUSTIFOLIA. *C. B. Pin.* 188. *Gentianella autumnalis Pneumonanthæ dicta*. *Park.* 406. *Pneumonanthæ*. *Ger. Emac.* 438. *Gentiana minima Matthioli*. *Barrel. Ic.* 51. 2. *Marsh Gentian*, or *Calathian Violet*. At *Tunbridge* not far from the *Wells*. *Dr. Wilmer*. It is lost between *Clapham* and *Ingleton*, *Yorkshire*, where *Mr. Newton* observed it, as *Mr. Thornbeck* informs me. *Julio & Augusto* floret.

GENTIANA PRATENSIS, FLORE LANUGINOSO. *C. B. Pin.* 188. *Gentianella fugax autumnalis elatior Centaurii minoris foliis*. *Raii Syn. Ed.* III. 275. 3. *Gentiana corolla hypocrateriformi*, tubo villis clauto, calicis foliis alternis majoribus. *Lin. Flor. Lapp.* N° 94. *Dwarf Autumnal Gentian*, or *Fellwort*. In cretaceis. At the Bottom of *Short-Hill* near *Elleborough*

26 SPECIMEN BOTANICUM.

borough, Bucks. Dr. Wilmer. In Ospringe Chalk-pits. Catal. Feversh. In Harefield Chalk-pit near the Paper-Mill; and in a very old Chalk-pit as you go from Dartford Heath to Stanbill, plentifully. Augusto floret.

GERANIUM COLUMBINUM OFFIC. *Ger. Em.* 938. *Columbinum vulgare. Park. 706. Folio malvæ rotundo. C. B. Pin. 318. Dovesfoot, or Dovesfoot Cranesbill. Ad sepes, sed non valdè frequens. On a Bank by the Road-side as you go to Canbury House from the Back of Islington. Junio & Julio floret.*

GERANIUM COLUMBINUM, DISSECTIS FOLIIS, PEDICULIS FLORUM LONGISSIMIS. *Raii Cat. Ang. 130. Columbinum foliis magis dissectis, pediculis longissimis, flore magno. Merr. Pin. 45. Jagged Dovesfoot Cranesbill, with Flowers on long Foot-stalks. In pascuis & ad sepes. In Heath-Lane near Dartford, and in the Meadows near Stone, Kent, plentifully. Julio floret.*

GERANIUM HÆMATODES. *Park. Par. 229. Sanguineum maximo flore. C. B. Pin. 318. Bloody Cranesbill. In ericetis præsertim montosis. In Friar Wood near Ingleton, also at Thwait near Clapham, Yorkshire. Mr. Thornbeck. On Lincoln-Heath. Mr. Hill. Junio & Julio floret.*

GERANIUM MONTANUM FUSCUM. C. B.
Pin. 318. Maculatum, five fuscum. *Ger. Em.*
 945. Pullo flore. *Park.* 704. *Spotted Cranes-*
bill. About *Ingleton, Yorkshire.* Mr. *Thorn-*
beck. On *Mendip Hills, Somersetsshire.* Mr.
Hill. Junio & Julio floret.

GERANIUM PUSILLUM, SUPINUM, MARI-
 TIMUM, ALTHÆÆ aut BETONICÆ FOLIO
 NOSTRAS. *Raii Syn.* II. 216. *Betonicæ folio.*
Merr. Pin. 46. *Small Sea Cranesbill.* In litto-
 ribus arenosis & glareosis invenitur. Near *Bog-*
nor Rocks, Sussex. Mr. *Hill.* Junio & Julio
 floret.

GERANIUM ROBERTIANUM, FLORE ALBO.
White flower'd Herb Robert. In a Hedge by
 the Road-side near *Rislip Town, 1735,* where
 it has continued ever since, as I observed this
 Spring 1745. *Aprili* floret.

GLAUCIUM, FLORE LUTEO. *J. R. H.* 254.
Papaver corniculatum luteum. *Park.* 261. *Cor-*
nutum flore luteo. *Ger. Emac.* 367. *Yellow horned*
Poppy. In littoribus maris arenosis. On the
 Shore near *Feversham. Cat. Feversh.* Near *Bog-*
nor Rocks, Sussex. Mr. *Hill.* Julio floret.

GNAPHALIUM AD STÆCHADEM CITRINAM
 ACCEDENS. *J. B.* III. 160. *Elichrysum syl-*
vestre latifolium, capitulis conglobatis. C. B.

28 SPECIMEN BOTANICUM.

Pin. 264. A Mile above the first of *Bognor Rocks, Suffex.* *Mr. Hill.* Julio & Augusto floret.

GNAPHALIUM ANGLICUM. *Ger. Emac.* 639. *Anglicum vulgare.* *Park.* 685. *Elichrysum spicatum.* *J. R. H.* 453. *Engliffi Cudweed,* or *long-leaved upright Cudweed.* In pascuis solo præsertim arenoso. In *Hampstead Wood,* and by the Road-side between *Highbgate* and *Muswell-Hill* *Mr. Watson.* In a shady Field near *Battle's Well* at *Harefield,* plentifully. Julio & Augusto floret.

GNAPHALIUM MONTANUM ALBUM. *Ger. Emac.* 640. *Montanum, five Pes Cati.* *Park.* 690. *Elichrysum montanum,* flore rotundiore candido. *J. R. H.* 453. *Mountain Cudweed,* or *Caisfoot.* In *Crommack Pastures, Craven;* also in the Meadows between *Leeds* and *Ledstone-Hall, Yorkshire,* plentifully. *Mr. Dawson.* Julio floret.

GRAMINIFOLIA PALUSTRIS REPENS VASCULIS GRANORUM PIPERIS ÆMULIS. *Raii Syn.* II. 281. *Pilularia palustris Juncifolia.* *Vaill. Bot. Par.* 154. *Tab.* 15. *Fig.* 6. *Gramen Piperinum.* *Merr. Pin.* 57. *Pepper-Grass.* In the boggy Grounds near the Powder-Mills on *Hounslow-Heath.* *Mr. Watson.* In *Borough-Fen* near *Peterborough.* *Mr. Hill.*

GRAMEN ARUNDINACEUM PANICULA MOLLI SPADICEA MAJUS. *C. B. Pin.* 7. *Scheuchz. Agrost.* 122. *Tab.* 5. *opt.* Gramen dumetorum panicula acerosa, femine papposo. *Raii Hist.* 1287. Arundo culmo ramoso. *Lin. Flor. Lapp.* N° 42. *Reed-Grass, or Bush-Grass, with a pappose Panicle.* I gathered this Grass (1738) in a Lane between the Grove at *Camberwell* and *Dulwich.* Julio paniculam producit.

GRAMEN AVENACEUM, LATIFOLIUM MINUS, SPARSA PANICULA. *Barrel. Icon.* 95. N° 11. Gramen avenaceum nemorense, glumis rarioribus ex fusco xerampelinis. *Raii Syn. Ed.* II. 262. Avenaceum locustis rarioribus. *C. B. Pin.* 10. *Red Oat Grass of the Woods.* In sylvis, sed rarius. In *Hornsey Wood* near *Highgate.* In the old Park-Wood at *Harefield,* and in the Lane leading from *Harefield* to *Rickmansworth,* plentifully. Sub finem Aprilis paniculam explicat.

GRAMEN AVENACEUM GLABRUM PANICULA PURPURO-ARGENTEA SPLENDEnte. *D. Doody. Raii Syn. Ed.* II. 262. 10. Avena spicis erectis, calice spicis brevioris. *Linn. Flor. Lap.* N° 31. *Oat Grass, with purplish shining or Silver Panicles.* About *Cornbury Quarry,* and several other Parts of *Whichwood Forest.* Junio paniculam explicat.

GRAMEN MONTANUM AVENACEUM, LOCUSTIS MUTICIS TUMENTIBUS PILOSUM. *Scheuchzer. Agrost. 170. Tab. 3. Fig. 16.* Gramen avenaceum, parvum, procumbens, paniculis non aristatis. *Raii Syn. Ed. III. 408. 11. Small supine Oat-grass without Awns.* In pascuis & nonnunquam in ericetis. On *Harefield Common*, and in a Field near *Battle's Well*. Maio paniculam profert.

GRAMEN CYPEROIDES MINIMUM, SEMINIBUS DEORSUM REFLEXIS PULICIFORMIBUS. *Raii Syn. Ed. II. 269. 12.* Cyperoides pulicare. *Merr. Pin. 52. Carex spica unica. Lin. Flor. Lapp. N° 339. Carex minima caulis & foliis capillaceis, capitulo singulari tenuiori, capsulis oblongis, utrinque acuminatis, & deorsum reflexis. Michel. Nov. Plant. Gen. Tab. 33. Fig. 1. Flea-Grass.* In palustribus, sed rarius. On *Harefield Moor* plentifully. Junio.

GRAMEN CYPEROIDES PALUSTRE PANICULA SPARSA. *Park. 1266.* Cyperoides panicula sparsa majus. *C. B. Pin. 6. Cyperus panicula sparsa, è spicis longioribus, tenuioribus, teretibus composita. Scheuchz. Agrost. 398. Tab. 9. Fig. 7. 8. Water, or Marsh Cyperus Grass, with a sparsed Panicle.* In the Ditch by the *Abbey Pond at Feversham, Kent. Cat. Feversh.*

SPECIMEN BOTANICUM. 31

GRAMEN DACTYLON LATIORE FOLIO. C. B. *Pin.* 8. *Ischæmon sylvestre, latiore folio. Park.* 1178. *Ischæmon vulgare. Ger. Emac.* 28. *Cocks-foot Grass.* In *Wandsworth Field* near the *Anchor Alehouse*, plentifully. 1736. Junio.

GRAMEN HIRSUTUM ELATIUS, PANICULA JUNCEA COMPACTA. *Raii Syn. Ed. II.* 263. 2. *Hirsutum capitulo globofo. C. B. Pin.* 7. *Juncoides hirsutum capitulo glomerato. Scheuchz. Agrost.* 312. *The greater hairy Grass, with a compact Rush-like Panicle.* In a Wood by the Road's side going to *Bacher-Heath* from *Harefield* Common, but not plentifully.

GRAMEN NEMOROSUM, HIRSUTUM, LATIFOLIUM, MAXIMUM. *Raii Syn. Ed. II.* 263. 4. *Gramen Luzulæ maximum. J. B.* 2. 493. *The greatest broad-leaved hairy Wood-Grass.* In *sylvis sed rarius.* In *Hornsey* and the *Oak of Honour* Wood, also about *Harefield* in several Places. *Aprili* floret.

GRAMEN JUNCEUM, CLAVATUM, MINIMUM, sive HOLOSTEUM PALUSTRE, REPENS, FOLIIS CAPITULIS ET SEMINIBUS PSYLLII. *Raii Syn. Ed. II.* 276. 7. *Juncellus capitulis Equifeti minor & fluitans. C. B. Pin.* 12. *Prodr.* 23. *Scirpus Equifeti, capitulo minori. J. R. H.* 528. *Marsh Rush-Grass, with Fleawort Heads.* In the Bogs on *Harefield* Common plentifully.

GRAMEN MYOSUROIDES MINUS, SPICA BREVIORE, ARISTIS RECURVIS. *D. Dale. Raii Syn. III. 397. 2. Gramen spica gracili aristis brevibus recurvis. Raii Syn. Ed. I. 184. The lesser Mouse-tail Grass, with crooked Awns. In a Field near Harefield Town plentifully. Sub finem ætatis spicam profert.*

GRAMEN MYOSUROIDES NODOSUM. *D. Sheppard. Knotty rooted Mouse-tail Grass. In the first Field next the Road before you go into Northfleet. Dr. Wilmer.*

GRAMEN PANICEUM SPICA SIMPLICI, LÆVI. *Raii Hist. 1261. Syn. Ed. II. 249. Panicum sylvestre spica simplici. Park. 1154. Vulgare spica simplici molliori. J. R. H. 515. Panic Grass, with a single smooth Ear. In arvis sed rarius. I found this Grass in several Parts of Wandsworth Field, 1736. Junio spicam producit.*

GRAMEN SPARTEUM JUNCIFOLIUM. *C. B. Pin. 5. Spartum nostras parvum Lobelio, Ger. Emac. 43. Nardus spica lineari. Linn. Flor. Lapp. N° 40. Small Mattweed. In ericetis præsertim solo spongioso. On Dartford Heath, Kent, and Harefield Common, Middlesex, plentifully. Aprili floret.*

GRAMEN SEROTINUM ARVENSE, SPICA LAXA PYRAMIDALI. *Raii Hist. 1288. Serotinum arvense panicula contractiore pyramidali. Raii*

Raii Syn. Ed. II. 259. 20. Panicum serotinum arvense, spica pyramidata. J. R. H. 515. Late flowering Corn-Grass, with a pyramidal Panicle. Inter segetes, sed rarius. In the Corn-fields about Thorndon, Essex. Mr. Hill. Sub finem æstatis paniculam profert.

GRATIOLA ANGUSTIFOLIA. *Ger. Emac. 581. Hyssopifolia. C. B. Pin. 218. Salicaria Hyssopi, folio latiore & angustiore. J. R. H. 253. Polygonum aquaticum majus. Barrel. Ic. 773. 1. Pag. 52. N° 540. Grass-Poly, Small Hedge-Hyssop. In aquis & ubi per hyemem aquæ stagnarunt, sed rarius. In the Ditches near Feversham Abbey Pond. Catal. Feversh. In a marshy Field by the Road between Lalam and Stanes, Middlesex. Mr. Nichols. Julio & Augusto floret.*

H.

HEDERA TERRESTRIS, FLORE CARNEO:
Ground-Ivy, with a flesh-coloured Flower.
 This elegant Variety of the common Ground-Ivy was given me by the ingenious and worthy Professor of Botany at Oxford, Dr. Dillenius, who observed it near Eynsham Abbey in that County, 1737. Aprili floret.

HELIANthemum vulgare, FLORE LUTEO.
J. B. II. 15. Vulgare. Park. 656. Chamæcistus vulgaris, flore luteo. C. B. Pin. 465. Dwarf Cistus, or little Sun-flower. In montosis
 F solo

34 SPECIMEN BOTANICUM.

folo præfertim cretaceo. On the Ruins of *Verulam* near St. *Albans*, also about *Northfleet* and *Greenhithe* plentifully. Junio floret.

HELLEBORASTER MAXIMUS. *Ger. Emac.* 976. Maximus, seu Confiligo. *Park.* 212. Helleborus niger foetidus, Enneaphyllon Plinii. *C. B. Pin.* 185. *Great Bastard black Hellebore*, or *Bears-foot*, *Setter-wort*. Among the Cliffs between *Northfleet* and *Gravesend* plentifully. Dr. *Wilmer* and Mr. *Watson*. Primo vere floret.

HELLERORINE FLORE ALBO, vel DAMASONIUM MONTANUM LATIFOLIUM. *C. B. Pin.* 187. Elleborine minor flore albo. *Park.* 218. Damasonium Alpinum, seu Elleborine floribus albis. *J. B. III.* 516. *White-flower'd Bastard Hellebore*. In sylvis, sed rarius. Julio floret.

HELLEBORINE LATIFOLIA, FLORE ALBO CLAUSO. *Raii Syn. Ed. II.* 242. 4. *Broad-leaved Bastard Hellebore*, with a shut Flower. This and the last I found plentifully in a Beech-Wood just below the Duke of *Bedford's* Seat at *Cheyneis*, *Bucks*, and am convinced that they are the same Plant. Julio floret.

HELLEBORINE ALTERA, ATRO RUBENTE FLORE. *C. B. Pin.* 186. Elleborine flore atro rubente. *Park.* 218. *Bastard Hellebore*, with a blackish Flower. In sylvis & montosis septentrionalibus. In *Friar Wood* and *Millbank*

bank near *Ingleton*. Mr. *Thornbeck*. In the Woods near *Ospringe, Kent*. *Catal. Feversh.* Junio & Julio floret.

HELLEBORINE LATIFOLIA MONTANA. *C. B. Pin.* 186. Elleborine flore viridante. *Park.* 218. Elleborine *Dodonæi*. *J. B.* III. 516. *The most common Bastard Hellebore*. In *sylvis*. In shady Places near *Ingleton* and *Clapham, Yorkshire*. Mr. *Thornbeck*. With the last. *Catal. Feversh.* Near Sir *John Tyrrell's* great Fish-pond at *Heron House* near *Thorndon, Essex*. Mr. *Hill*. Junio floret.

HELLEBORINE PALUSTRIS NOSTRAS. *Raii Syn. Ed.* II. 242. 6. *Marsh Hellebore*. In palustribus & aquosis. On *Hinton* and *Teversham* Moors near *Cambridge*. Dr. *Tb. Manningham*. Near *Skipton-Mallett, Somersetshire*. Mr. *Hill*. Junio floret.

HELLEBORUS NIGER HORTENSIS, FLORE VIRIDI. *C. B. Pin.* 185. Helleboraster minor, flore viridante. *Park.* 212. Elleborus niger vulgaris, flore viridi vel herbaceo, radice diuturna. *J. B.* III. 636. *Bear's-foot, or wild black Hellebore*. On a Bank-side in *Kiddal-Lane* near *Leeds, Yorkshire*. Mr. *Dawson*. In the Woods near *Denham, Bucks*. Mr. *Hill*. Primo vere floret.

HERBA PARIS OFFIC. *Ger. Emac.* 405. *Park.* 390. Solanum quadrifolium bacciferum. *C. B. Pin.* 167. Paris foliis quaternis. *Linn.*
F 2 Flor.

Flor. Lapp. N° 155. *Herb Paris, True-love, or One-berry.* In fylvis umbrosis, haud autem admodum frequens. In a Chalk-pit in a Wood near *Little-Miffenden Church, Bucks.* *Dr. Wilmer.* In *Weetwood* three Miles from *Leeds*, and *Haflewood* near *Sir Walter Vavasor's, Yorkshire*, abundantly. *Mr. Dawson.* About the middle of *Byseing Wood. Catal. Feversh.* In the *Old Park, Hanging-Wood*, and elsewhere, near *Harefield*, plentifully. Aprili floret. Invenitur quandoque hexaphyllos, sed rarius, pentaphyllos frequens. Memorat *Clariff. Linnæus (Flor. Lapp. 117. N° 115.)* hanc plantam duplici dosi idem præstare quod *Ipecacuanha* in excitando vomitu. Tentatu certè dignum est.

HERNIARIA OFFIC. *Ger. Emac.* 569. *Millegrana major*, sive *Herniaria vulgaris.* *Park.* 446. *Polygonum minus*, seu *Millegrana major.* *C. B. Pin.* 281. *Rupture-wort.* On the sandy Shores near *Portsmouth, Hants.* *Mr. Hill.* Junio floret.

HIERACIUM FOLIIS CICHOREI SYLVESTRIS VILLOSIS ODORE CASTOREI. *Magnol. Bot. Monsp.* 129. *Hieracium amygdalas amaras olens*, seu odore *Apuli suave-rubentis.* *H. Reg. Par. J. R. H.* 469. *Cichorei vel potius Stæbes folio hirsutum.* *Raii Cat. Cant. Small rough Succory-leaved Hawkweed.* In pascuis ficcioribus aut glareosis. On *Bansted-Downs* by the Side of the Road to *Darking, Surrey*; also in *Northfleet Chalk-pits, Kent.* Junio & Julio floret.

HIERACIUM MINIMUM CLUSII, HYOSERIS TABERNÆMONTANI ET GERARDI. *Park.* 791. *Ic.* 792. 9. *descr.* Hieracium minus, folio subrotundo. *C. B. Pin.* 127. *Lampfana minor aphylocaulos. Vaill. Bot. Paris* 113. *Small Swine's Succory, or Hawkweed.* Inter fetetes & locis arenosis. In a Sand-pit on the Right-hand going to the Duke of *Argyle's* House at *Petersham, Surrey.* *Dr. Wilmer.* In the common Corn-field at *Walthamstow, Essex.* *Mr. Watson.* In *Tuddington* Field near *Hampton-Court.* Maio & Junio floret.

HIERACIUM MURORUM, FOLIO PILOSIS-SIMO. 129. *Murorum Bauhini, quod est pulmonaria Gallica Lobelii. Park.* 801. Hieracium caule ramofo, foliis ovatis dentatis. *Linn. Flor. Lapp.* 284. *French or Golden Lungwort.* In muris antiquis & aggeribus umbrosis, sed rarius. On the Walls of the Abbey-Church at *St. Albans*; also on a Wall against *Hillingdon* Church by the Road-side, and on the Duke of *Bedford's* Garden-Walls at *Cheyneis, Bucks.* Junio & Julio floret.

HIPPOSELINUM THEOPHRASTI, vel SMYRNIUM DIOSCORIDIS, OFFIC. *C. B. Pin.* 154. *Hipposelinum, five Smyrnum vulgare. Park.* 929. *Macerone, quibusdam Smyrnum, semine magno nigro. J. B. III. 2.* 126. *Alexanders.* In the Fields near *Cowley, Middlesex,* and about *Windsor* Castle, also at *Cliffe* below *Gravesend, Kent,*

38 SPECIMEN BOTANICUM.

Kent, and in *Spring-Gardens* at *Vaux-hall* abundantly. Maio & Junio floret.

HOLOSTEUM MINIMUM TETRAPETALON, five ALSINE TETRAPETALOS CARYOPHYLLOIDES. *Raii Cat. Ang.* Alfine verna glabra. *Magnol. Bot. Monsp.* Chamælinum gramineo feu acuto folio. *Barrel. Icon.* 1160. 2. *The least Stitchwort.* On *Hampstead Heath* and about *Highbury Hill*; also on *Harefield* and *Uxbridge Commons* abundantly. Aprili floret.

HYPERICUM ELEGANTISSIMUM, NON RAMOSUM, FOLIO LATO. *J. B.* III. 383. Afcyron, feu Hypericum bifolium, glabrum non perforatum. *C. B. Pin.* 280. Androsæmum glabrum non ramosum. *Magnol. Bot. Monsp.* *Elegant imperforate St. John's Wort.* In *Byseaing Wood.* *Cat. Feversh.* In *Charlton Wood* and *Bexley Lane, Kent.* Julio floret.

HYPERICUM MAXIMUM ANDROSÆMUM, VULGARE DICTUM. *Raii Syn.* III. 343. 6. *Siciliana*, aliis *Ciciliana* vel *Androsæmum.* *J. B.* III. 384. *Androsæmum maximum frutescens.* *C. B. Pin.* 280. *Tutsan, or Park-Leaves.* In dumetis & ad sepas, sed rarius. In a Thicket near *Harefield Church*, and at *Baker Heath* near *Harefield*; also by the Side of the Road from *Highbury* to *Muswell-Hill*, 1745. Julio floret.

HYPERICUM MINUS SUPINUM, vel SUPINUM GLABRUM. *C. B. Pin.* 279. *Minus supinum.* *Park.* 572. *Minimum supinum.* *J. B.* III.

III. 384. *The least trailing St. John's Wort.* In arenosis, sterilioribus & ericetis. On *Blackbeath* by the Road to *Charlton* plentifully. Julio floret.

HYPERICUM PALUSTRE, SUPINUM, TOMENTOSUM. *J. R. H.* 255. *Hypericum Afcyrum*, supinum, villosum, dictum. *C. B. Pin.* 280. *Afcyron supinum* *ελωδες* *Clusii*. *Ger. Em.* 542. *Marsh St Peter's Wort*, with hoary *Leaves*. In palustribus solo putrido aut spongioso, sed rarius. On the Bogs by *Cæsar's Camp* near *Bromley, Kent*. *Mr. Watson*. On the great Bog on *Hampstead Heath*, and on *Iver Heath* near *Uxbridge*, plentifully. Julio floret.

HYPERICUM PULCHRUM TRAGI. *J. B.* III. 383. *Quintum*, seu pulchrum *Tragi*. *Ger. Em.* 540. *Minus erectum*. *C. B. Pin.* 279. *Small upright St. John's Wort*. In ericetis & dumetis. In the Woods about *Hampstead* and *Highbwood Hill*; also in the *Old Park* and other Woods near *Harefield*, plentifully. Julio floret.

HYPOPITYS LUTEA. *Cat. Giff.* 99. *Orobanchoides nostras* flore oblongo flavescente. *Vaill. Bot. Paris* 155. *Orobanche Hypopitys*. *C. B. Pin.* 88. *Prod.* 31. *Orobanche Verbasculi* odore. *D. Plot. Raii Hist.* 1229. *Bird's Nest smelling like Primrose Roots*. In fylvis, sed rarius. In a Wood near *Maidstone, Kent*. *Mr. Jarvis*.

I.

IRIS FOETIDISSIMA, seu XYRIS, OFFIC. *J.*
R. H. 360. Xyris, seu Spatula foetida.
Park. 256. Gladiolus foetidus. *C. B. Pin.* 30.
Stinking Gladdon, or *Gladwyn*. Ad sepes & in
 dumetis haud autem frequens. In the Hedges
 by the Road-side between *St. Albans* and *Dun-*
stable, and near *Oxford Castle*. Julio & Au-
 gusto floret.

JUNCUS GRAMINEUS, MINIMUS, CAPIL-
 LARI FOLIO, CAPITE SQUAMOSO. *Barr. Ic.*
 118. 2. Juncellus omnium minimus, Chamæf-
 hænos. *Lob. Adv.* 44. Scirpus foliaceus humi-
 lis. *Cat. Giff.* 158. *The least Rush of all*. In
 humidioribus glareosis. On the long Bog at
Chiselhurst, Kent, plentifully. On *Harefield*
 Moor abundantly. Julio spicam profert.

JUNCOIDES CALYCVLIS PALEACEIS, GLO-
 MERATIS, FOLIO VARIANS. *Scheuchz. Agrost.*
 330. *Tab.* 7. *Fig.* 10. Juncus parvus repens,
 capitulis foliaceis. *Vaill. Bot. Paris* 110. Gra-
 men Junceum, capsulis triangulis, cauliculis te-
 nuibus, foliis ad nodos & panicularum diva-
 ricationes prælongis. *Raii Syn. Ed. II.* 275.
Small creeping Rush, with foliaceous Heads. By
 the Ponds on *Wandsworth Common* near the
 New Church-yard.

JUNCO AFFINIS PANICULA LAXA, seu LONGIORIBUS PEDICULIS INSIDENTE. *Scheuchz. Agrost.* 350. *Juncus montanus palustris. Raii Syn. Ed. III.* 432. 7. *Oxyshænos*, five *Juncus acutus Cambro-Britannicus. Park.* 1192. *Moss-Rush, Goose-Corn.* In palustribus & Ericetis, solo præsertim putrido aut spongioso. On *Harefield Common* plentifully. Sub finem Maii paniculam explicat.

JUNIPERUS VULGARIS, BACCIS PARVIS PURPUREIS, OFFIC. ♀. B. I. 293. *Vulgaris* seu minor. *Park.* 1028. *Juniperus foliolis undique prominentibus pungentibus. Lin. Flor. Lapp. N°* 376. *The common Juniper-Tree.* In Ericetis præsertim montosis. On *Box Hill, Surrey,* and *Harefield Common* plentifully. Maio floret.

K.

KALI SPINOSUM COCHLEATUM. C. B. Pin. 289. *Tragus*, five *Tragum Matthioli. Park.* 1034. *Kali spinosum. Merr. Pinn.* In littoribus maris arenosis. Between the third Sluice and *Sea-Salter. Catal. Feversh.* Julio floret.

L.

LACTUCA SYLVESTRIS, ANGUSTO LACI-
 NIATO FOLIO. *Magnol. Bot. Monspel.*
 298. Sylvestris minima. *Raii. Catal. Cantab.*
Chondrilla viscosa humilis. Park. 783. Endivia
minor, Lactucina spinosa. Barrel. Ic. N° 1359.
The least wild Lettuce, or Dwarf Gum Succory. In
 the Marshes near *Sheerness.* Mr. *Watson.* I
 have observed it on the Banks of some Fields
 between *Pancras* and *Hampstead.* Augusto
 floret.

LACTUCA SYLVESTRIS MURORUM, FLORE
 LUTEO. *J. B. II. 1004.* *Sonchus lævis lacini-*
atus, parvis floribus. C. B. Pin. 124. Chon-
drilla Sonchi folio, flore luteo pallecente. J. R.
H. 475. Ivy-leaved Sow-Thistle, or Wall-Let-
tuce. In muris & aggeribus umbrosis. On the
 Walls of the Duke of *Bedford's* Seat at *Cheyneis,*
Bucks, and in the Lane leading from *Harefield* to
Rickmansworth plentifully. Julio floret.

LAMIUM CANNABINUM, FLORIBUS ALBIS,
 VERTICILLIS PURPURASCENTIBUS. *Dood.*
Raii. Syn. Ed. II. App. 342. White flowered
Nettle-Hemp, with Purple Whirls. On a Bank
 by the *Thames* Side in *Battersea* Field, almost
 against *Chelsea* College. Junio floret.

LAMIUM FOLIO OBLONGO LUTEUM. C. B. Pin. 231. Luteum. Ger. Em. 702. Galeopsis, five Urtica iners, flore luteo. J. B. III. 323. *Yellow Archangel*. In sylvis & dumetis. Abundantly in a little Thicket near the lower End of *Pond-Street, Hampstead*; also about *Harefield*, in the like Places. Aprili floret.

LAPATHUM PULCHRUM BONONIENSE SINUATUM. J. B. II. 988. Parisiense sinuatum. Hort. Reg. Paris. *Fiddle-Dock*. In *Feversham Church-yard*. Catal. *Feversh.* Julio floret.

LAPATHUM FOLIO ACUTO RUBENTE. C. B. Pin. 115. Sativum fanguineum. Ger. Em. 390. Sanguineum, five Sanguis Draconis, herba. J. B. II. 988. *Bloodwort*, or *Bloody Dock*. In an Orchard by the Road-side in the Lane leading from *Harefield* to *Rislip*. Julio & Augusto floret.

LATHYRUS MAJOR LATIFOLIA, FLORE MAJORE, PURPUREO SPECIOSIOR. J. B. II. 303. Major latifolius. Ger. Emac. 1229. Major perennis. Park. 1061. *Pease everlasting*. In sylvis, sed rarius. In the hollow Lane against Mr. *Hawkins's Park Pale* near *Feversham*. Catal. *Feversh.* Julio floret.

LATHYRUS ANGUSTIFOLIUS, SILIQUA HIR-
SUTA. *C. B. Pin.* 344. Lathyrus filiquâ hirsu-
tâ, *J. B. II.* 305. *Rough coddled Chickling.* Agri
Essexiensis alumna esse videtur. This I found
about 1726, in the Border of a Field between
the Road and *Munden Church*; likewise among
Bushes within the Gate leading to *Laydon-Hall*,
both in *Dengey Hundred, Essex.* Mr. *Sam. Dale.*
Vide Hort. Sicc. Nostr. Julio floret.

LATHYRUS VICIÆFORMIS, seu VICIA LA-
THYROIDES NOSTRAS. *Raii Syn. Ed. III.* 320.
Clymenum Parisiense, flore cæruleo. *J. R. H.*
396. Lathyrus foliis pinnatis, pedunculis mul-
tifloris. *Lin. Flor. Lapp. N° 371.* *Chickling*
Vetch. In a Wood near *Abingdon, Berks.* Mr.
Hawkins. Julio floret.

LEDUM PALUSTRE, NOSTRAS ARBUTI FLO-
RE. *Raii Syn. Ed. II.* 202. Cistus Ledon pa-
lustris Rosmarini folio. *Ejusd. Syn. Ed. I. Icon.*
Andromeda foliis alternis lanceolatis margine
reflexis. *Linn. Flor. Lapp. N° 163. Tab. 1.*
Fig. 2. *Marsh Cistus, or Wild Rosemary.* In
palustribus putridis, præsertim Septentrionalibus.
In *Wennington Moss* near *Ingleton.* Mr. *Daw-*
son. Near the Beginning of *Mendip Hills* from
Bath. Mr. *Hill.* Augusto floret.

LENTIBULARIA. *Rivin. Irr. Mon. Ic. opt.*
Millefolium aquaticum, flore luteo galericulato.
J. B.

ſ. B. III. 783. Paluſtre galericulatum. *Ger. Emac.* 828. *Utricularia nectario conico. Lin. Flor. Lapp.* N^o 14. *Hooded Water Millfoil.* In the great Bog on *Blackmoor* near *Leeds.* Mr. *Dawſon.* In the great Fiſh-pond at Sir *John Tyrrel's* Seat called *Heron-Gate* near *Thorndon* in *Effex.* Mr. *Hill.* Junio floret.

LENTIBULARIA MINOR. *Pet. Herb. Brit.* 36. 12. *Millefolium galericulatum paluſtre, minus flore minore. Raii Syn. Ed. II.* 279. 3. *The leſſer hooded Millfoil.* In *Uxbridge* River. Mr. *Hill.* Junio floret.

LEPIDIUM LATIFOLIUM OFFIC. *C. B. Pin.* 97. *Piperitis, ſeu Lepidium vulgare. Park.* 855. *Raphanus ſylveſtris officinarum, Lepidium Æginetæ Lobelio. Ger. Emac.* 241. *Dit-tander, or Pepperwort.* In the *Marſhes* near *Grays, Effex.* Mr. *Watſon.* Between the *King's Head* and *Stockwell* near *Feverſham. Catal. Fe-verſh.* Junio & Julio floret.

LICHEN PULMONARIUS, ſive PULMONARIA ARBOREA, OFFIC. ſ. B. III. 759. *Muſcus pulmonarius. C. B. Pin.* 361. *Lichen foliis oblongis diviſis, ſuperficie reticulata & punctata. Linn. Flor. Lapp.* N^o 444. *Lungwort, or Oak-Lungs.* On the old Trees in *Whickwood* *Forest* abundantly.

LICHEN TERRESTRIS CINEREUS, OFFIC. *Raii Cat. Angl.* 185. *Pulmonarius faxatilis digitatus*

46 SPECIMEN BOTANICUM.

digitatus major cinereus. *J. R. H.* 549. *Muscus pulmonarius Fungoides. Barrel. Ic.* 1278.

i. Lichen pulmonarius maximus è cinereo rufescens, infernè subrufus receptaculis florum rubris, plano orbiculatis. *Michel. Nov. Plant. Gen.* 84. *Tab.* 44. *Asb-coloured Ground Liverwort.* In pascuis ficcioribus & ericetis. On *Hampstead Heath* plentifully, and in many other Places about *London*.

LICHENASTRUM CAPITULIS ROTUNDIS E FOLIORUM MEDIO ENASCENTIBUS. *Raii Syn. Ed.* III. 110. 3. Lichen petræus caliculo calcato. *C. B. Pin.* 362. 6. *Marfilea major atro-virens floribus albicantibus è foliorum medio enascentibus. Michel. Nov. Plant. Gen.* 5. *Tab.* 4. *Fig.* 1. *Small Liverwort, with crumpled Leaves.* In ericetis locisque udis & umbrosis. In the Brook in *Gutter's Dean Wood*, near *Harefield Common*, plentifully. *Aprili cum capitulis floriferis inveni, 1735.*

LICHENASTRUM CAPITULIS OBLONGIS JUXTA FOLIORUM DIVISURAS ENASCENTIBUS. *Raii Syn. Ed.* III. 110. 4. An Lichen parvus erectus, foliis profundè laciniatis? *Pluk. Alm.* 216. *Tab.* 42. *Fig.* 2. In *Newell Bogs*, and many other Parts of *Whichwood Forest* plentifully, 1736.

LILIUM CONVALLIUM, OFFIC. *Ger. Emac.* 410. *Convallium album. C. B. Pin.* 304.

SPECIMEN BOTANICUM. 47

Convallaria scapo nudo. *Linn. Flor. Lapp.* N° 112. *Lilly Convalley*, or *May Lilly*. In the Coppices of *Whickwood Forest*, *Oxfordshire*, sparingly. Near *Cashioberry*, *Hertfordshire*, plentifully. Maio floret.

LIMONIUM MINUS. *J. B. III. App.* 877. *Parvum.* *Ger. Emac.* 411. *Lesser Sea Lavender*. In the Marshes below *Gravesend*. Julio floret.

LIMONIUM MINUS FLAGELLIS TORTUOSIS. *Boccon. Mus. Part. 2. Tab.* 103. Found on the Coast of *Norfolk* by *Mr. Henry Scott*.

LITHOSPERMUM MAJUS ERECTUM, OFFIC. *C. B. Pin.* 258. *Lithospermum*, seu *Milium Solis*. *J. B. III.* 590. *Vulgare minus.* *Park.* 432. *Gromwell*, or *Gromill*. In *ficcioribus* & *ad vias publicas*. In *Heath-Lane* near *Dartford*, and on the *Chalk Cliffs* between *Northfleet* and *Gravesend*. Julio floret.

LONCHITIS ASPERA MINOR. *C. B. Pin.* 359. *Aspera.* *Ger. Emac.* 1140. *Altera folio Polypodii.* *J. B. II.* 744. *Polypodium angustifolium*, folio vario. *J. R. H.* 540. *Rough Spleenwort*. In *nemorosis asperis* & *ericetis*. On *Hampstead Heath* abundantly.

LUNARIA RACEMOSA MINOR, vel VULGARIS, OFFIC. *C. B. Pin.* 354. *Osmunda foliis*

48 SPECIMEN BOTANICUM.

liis lunatis. *J. R. H.* 547. Folio pinnatifido, pinnis lunulatis. *Linn. Flor. Lapp.* N° 389. Lunaria Botrytes. *Barrel. Ic.* 252. 3. Moonwort. In pascuis montosis, sed rarius. In an upland Broomfield on the South-East of *Brook-bridge* in *Graveney*. *Catal. Feversh.* On *Lincoln Heath*. *Mr. Hill.* In several Parts of *Whickwood Forest*, *Oxfordshire*. Maio floret.

LYCHNIS SUPINA MARITIMA ERICÆ FACIE. *Raii Syn. Ed.* III. 338. 3. Erica supina maritima Anglica. *Park.* 1484. Franca maritima supina saxatilis glauca Ericoides semper virens, flore purpureo. *Michel. Nov. Plant. Gen. Tab.* 22. Polygonum fruticosum supinum Ericoides cinericeum, Thymi folio Hispanicum. *Barrel. Ic.* 714. *English low Sea Heath*. On the Coast of *Norfolk* near *Lynn*. *Mr. Scot.* Junio floret.

LYCHNIS SYLVESTRIS, FLORE ALBO MINIMO. *Raii Hist.* II. 966. Sylvestris albā spica reflexa. *Magnol. Bot. Monsp.* Sylvestris annua angustifolia, flore rubente. *Raii Cat. Anglican.* *Small Corn Champion, with a very small white Flower.* In the Corn-fields near *Colchester*, *Essex*. *Mr. Newton.* Junio & Julio floret.

LYCHNIS SYLVESTRIS QUÆ SAPONARIA VULGO, OFFIC. *J. R. H.* 36. Saponaria major lævis. *C. B. Pin.* 206. Vulgaris. *Park.* 641. *Soapwort, or Bruisewort.* On *Laindon Hills*,

Laindon Hills, Essex. Mr. Hill. In a Hedge near Uxbridge Church-yard plentifully. Julio & Augusto floret. Invenitur flore pleno, sed rarius.

LYCOPODIUM CAULE REPENTE, FOLIIS PATULIS, PEDUNCULIS SPICA GEMINA TERMINATIS. *Linn. Flor. Lapp. N° 418. Muscus clavatus, five Lycopodium. Park. 1307. Muscus squamosus vulgaris repens clavatus. J. R. H. 553. Club Moss, or Wolf's Claw. In ericetis. On Esber-Heath, Surrey. Dr. Wilmer.*

LYCOPODIUM PALUSTRE REPENS, CLAVA SINGULARI. *Vaillant Bot. Par. Tab. 16. Fig. 11. Muscus terrestris repens, clavis singularibus foliosis erectis. Raii Syn. I. 17. 3. Muscus squamosus repens, tenuissimis foliis. J. R. H. 554. Creeping Club Moss, with erect Heads. On Iver Heath near Uxbridge. Mr. Hill.*

LYSIMACHIA CÆRULEA GALERICULATA, seu GRATIOLA CÆRULEA. *C. B. Pin. 246. Cassida palustris vulgatio, flore cæruleo. J. R. H. 182. Scutellaria foliis cordato-lanceolatis crenatis. Linn. Flor. Lapp. N° 239. Hooded Willow-Herb, or Loose-Strife. In aquosis. By the Sides of the New River between Islington and Newington, and in Rosamond's Pond, St. James's Park. Junio & Julio floret.*

LYSIMACHIA GALERICULATA MINOR. *Raii Syn. Ed. II. 132. 2.* Cassida palustris minima, flore purpurascente. *J. R. H. 182.* Gratiola latifolia, seu Nostras minor. *Park. 221.* *The lesser hooded Loose-Strife.* In palustribus. In the great Bog on *Hampstead Heath*, and in the moist Parts of *Harefield Common.* Julio & Augusto floret.

LYSIMACHIA LUTEA MAJOR QUÆ DIOSCORIDIS, OFFIC. *C. B. Pin. 245.* Lutea major vulgaris. *Park. 544.* Lysimachia foliis lanceolatis, caule corymbo terminato. *Linn. Flor. Lapp. N° 81.* *Yellow Loose-Strife.* In aquosis & ad rivos. In a Pond just at the Entrance of *Putney-Heath* on the Right-hand. It is common in the Meadows about *Uxbridge Moor*, and in some Places near *Harefield.* Junio floret.

LYSIMACHIA PURPUREA TRIFOLIA, CAULE HEXAGONO. *Spigel. Isag. 49.* Salicaria trifolia caule hexagono. *J. R. H. 253.* *Three-leaved Loose-Strife, with an hexagonal Stalk.* By the Sides of the Canals at *Chelsea Water-Works.* Julio floret. An sit varietas tantum *Lysimachiae purpureae spicatae*, plurimum dubito.

LYSIMACHIA SPECIOSA QUIBUSDAM ONAGRA DICTA SILIQUOSA. *J. B. II. 906.* Chamænerion latifolium vulgare. *J. R. H. 302.* Epilobium foliis lanceolatis integerrimis. *Linn. Flor. Lapp. N° 146.* Chamænerion flore Delphinii. *Park. Par. 270.* *Rose-Bay Willow-Herb.*

In

In a Wood by Sir *John Packington's* Lodge on *Coomb-Hill* at *Ellesborough, Bucks.* Dr. *Wilmer.* Near *Marsh-Street, Walthamstow, Essex.* Mr. *Watson.* In *Charlton Forest, Sussex.* Mr. *Hill.* By the Side of a Wood about the Mid-way between *Beaconsfield* and *Uxbridge* plentifully, and by the Sand-pits on *Maize-Hill* beyond *Greenwich.* Julio & Augusto floret.

M.

MARRUBIUM ALBUM, OFFIC. *ƒ. B. III.* 516. *Rivin. Irr. Mon. Ic.* Album vulgare. *C. B. Pin. 230.* *White Hore-bound.* Locis ruderatis & ad vias publicas reperitur. On *Chiselhurst Common, Kent,* and *Uxbridge Moor,* abundantly. Junio floret.

MELAMPYRUM CRISTATUM, FLORE ALBO ET PURPUREO. *ƒ. B. III.* 440. Luteum angustifolium. *C. B. Pin. 234.* Melampyrum cristatum. *Rivin. Irr. Mon. Ic. opt.* *Crested Cow-wheat.* In fylvis præsertim *Cantabrigiensibus* & *Bedfordiensibus.* In a Field that goes off *Moreton-Green,* in the Road from *Wendover* to *Ellesborough, Bucks.* Dr. *Wilmer.* Junio & Julio floret.

MELAMPYRUM PURPURASCENTE COMA. *C. B. Pin. 234.* Triticum vaccinum. *ƒ. B. III.* 439. *Purple crested Cow-wheat.* In *Wesbam Corn-fields, Norfolk.* Mr. *Hill.* On a

Hill at *Horsley* Bath near *Beeston* Castle, *Cheshire*.
Mr. *Vernon*. Julio floret.

MENTHA CRISPA VERTICILLATA, FOLIO ROTUNDIORE. *J. B. III. 215.* Crispa verticillata. *C. B. Pin. 227.* Mentha verticillata. *Rivin. Irr. Mon. Ic. Curled Mint.* By the River-side a Mile below *Denham, Bucks.* Mr. *Hill*. By the Side of a Pond in the Lane just below *Breakspears, Middlesex,* plentifully. Augusto floret.

MENTHA ANGUSTIFOLIA, SPICATA, GLABRA, FOLIO RUGOSIORE, ODORE GRAVIORE. *Raii Syn. Ed. III. 233. 1.* Mentha spicata folio longiore, acuto, glabro, nigriore. *J. B. III. 220.* *Spear-Mint, with a rugged Leaf and stronger Scent.* Gathered by Mr. *Hill* by the Side of a Pond in a Field two Miles from *Thorn-don, Essex.* Julio floret.

MENTHA SPICIS BREVIORIBUS ET HABITIORIBUS FOLIIS MENTHÆ FUSCÆ, SAPORE FERVIDO PIPERIS. *Raii Syn. Ed. II. 124. 5.* Mentha piperata acuta. *Petiv. Herb. Br. 31. 10.* *Pepper-Mint.* By the *Beck-side* in *Water-Lane,* on the Right-hand Side of the Road from *Leeds* to *Holbeck, Yorkshire.* Julio floret.

MENTHASTRUM SPICATUM, FOLIO LONGIORE CANDICANTE, OFFIC. *J. B. III. 221.* Mentha sylvestris longiore folio. *C. B. Pin. 227.* *Long-leaved Horse Mint.* In pratis humidis,
fed

fed rarius. In the Meadows near *East Horndon, Essex.* Mr. Hill. By the River-side near *Dartford, Kent.* Julio floret.

MENTHASTRUM FOLIO RUGOSO ROTUNDIORE SPONTANEUM, FLORE SPICATO, ODORE GRAVI. *J. B. III. 219.* *Mentha sylvestris rotundiore folio. C. B. Pin. 227.* *Round-leaved wild Mint.* By the Road-side between *Thorndon* and *Canvey-Island, Essex.* Mr. Hill. In *Harefield* and *Hornsey Church-yards* plentifully. Julio floret.

MERULIUS VULGARIS ESCULENTUS. *D. Martyn. 121.* *Boletus esculentus, rugosus, fulvus. J. R. H. 561.* *Morells.* In a Wood near *Swanscomb,* and about *Stone, Kent.*

MESPILUS ALNI, FOLIO SUBTUS INCANO, ARIA THEOPHRASTI DICTA. *Raii Syn. Ed. II. 296.* *Sorbus sylvestris, Aria Theophrasti dicta. Park. 1421.* *Cratægus inermis foliis ellipticis, ferratis, transversaliter sinuatis, subtus villosis. Linn. Flor. Lapp. N° 199.* *The white Beam-Tree.* In montosis. Against the *Warren-house* on *Uxbridge Common,* and in *Harefield Chalk-pit.* Maio floret.

MILLEFOLIUM AQUATICUM PENNATUM MINUS, FOLIOLIS SINGULARIBUS, LATIUSCULIS FLOSCULIS SUBJECTIS DONATUM. *H. Oxon. III. 622. Sect. 15. Tab. 4. Fig. 7.* *Potamogeton pennis tenuissimis. Petiv. Herb. Br. 6. 6.* *The lesser feather'd Water Millfoil.* In a Gravel Pit in a Field called *Innins,* adjoining to *Harefield Common.* Maio floret.

MILLEGRANA MINIMA, seu HERNIARIA MINOR. *Park.* 447. Polygonum minimum, seu Millegrana minima. *C. B. Pin.* 282. Linokarpum Serpilli folio, multicaule & multiflorum. *Michel. Nov. Plant. Gen.* 23. *Tab.* 21. *opt.* The least Rupture-wort, or All-Seed. In Ericetis sabulosis, præsertim humidioribus. By the Ponds on *Wandsworth* Common near the Upper Church yard plentifully. Julio & Augusto floret.

MOLLUGO MONTANA ERECTA QUADRIFOLIA. *Raii Syn. Ed.* III. 224. 3. Rubia erecta quadrifolia. *J. B.* III. 2. 716. Cruciatâ glabra folio nervoso rigido minori, baccâ gemellâ ficcâ, flore lacteo. *Boerb. Ind. Alt.* 148. *Cross-wort Madder*, or *four-leaved mountainous Bastard Madder*. In montosis Septentrionalibus. At the East-end of *Malham-Tarne*, *Yorkshire*. *Mr. Thornbeck.* Junio & Julio floret.

MOSCHATELLINA FOLIIS FUMARIÆ BULBOSÆ DE QUÀ CORDUS. *J. B.* III. 206. Ranunculus nemorosus Moschatella dictus. *Park.* 326. Alabastrites, sive Dentaria minima. *Ejusd.* 621. Radix cava minima viridi flore. *Ger. Emac.* 1091. *Tubercus Moscatell*, or *Muskwood Crow-foot*. In sepibus umbrosis & vepretis solo laxo aut arenoso. In the *Old Park Wood*, and several other Places near *Harefield* abundantly; also in *Hornsey Wood*, and in a Lane near *Tottenham High-Cross*. Aprili floret.

MUSCUS ARBOREUS VULGARIS ET QUERCINUS. *Park.* 1312. Arboreus, *Ufnea Officinarum.* *C. B. Pin.* 361. Arboreus villosus. *J. B. III. Lib.* 37. 763. *Common hairy Tree-Moss.* In sylvis, sed rarius.

MUSCUS ARBOREUS NODOSUS, five GENICULATUS. *Park.* 1312. *Fig. bon.* Arboreus nodosus. *C. B. Pin.* 361. Lichen nodosus cinereus longissimus receptaculis florum rufescentibus. *Michel. Nov. Plant. Gen.* 76. *Tab.* 39. *Fig. 1.* *Knotted or Kneed Tree-Moss.*

MUSCUS AUREUS TENUISSIMUS. *Merr. Pin.* Arboreus aureus, segmentis capillaceis brevibus. *D. Doody. Raii Syn. Ed.* III. 65. 8. *Golden Tree-Moss, with short hairy Segments.* The abovementioned Mosses I brought from *Whichwood Forest, Oxfordshire*, where the two first are exceeding plentiful, the last more scarce.

MUSCUS PYXIDATUS, OFFIC. *Ger. Emac.* 1560. Lichen pyxidatus major. *J. R. H.* 549. Caule simplici, calice turbinato, margine tenui. *Linn. Flor. Lapp. N°* 428. *Cup or Calice Moss.* In ericetis & locis aridioribus frequens reperitur. On *Hampstead Heath*, and all the Garden Walls at *Breakspears*, also on *Harefield Common* plentifully.

MUSCUS JUNIPERI-FOLIUS, CAPITULO QUADRANGULO. *Vaill. Bot. Paris* 131. 15. *Tab.* 23. *Fig.* 8. Polytrichum vulgare, & majus capsula quadrangulari. *Cat. Giff.* 221. Polytrichum aureum majus. *Park.* 1052. *Great Golden Maiden-hair*, or *Goldilocks*. In ericetis solo putrido aut spongioso. On *Hampstead Heath* and *Harefield* Common plentifully.

MUSCUS ERECTUS CAPILLACEUS DENSISSIMUS GLAUCO FOLIO. *Vaill. Bot. Par.* 131. *Tab.* 26. *Fig.* 13. Trichoides montanus, albidus, fragilis. *Raii Syn. Ed.* II. 339. Muscus capillaceus fericeus Coridis facie. *J. R. H.* 552. In ericetis præsertim montosis. On *Dartford Heath*, *Kent*, and *Iver Heath* near *Uxbridge* plentifully.

MUSCUS PALUSTRIS CINEREO VIRIDIS SCAPIS LONGIS TENUIBUS FOLIOLIS BREVISSIMIS. *Raii Hist.* I. 124. Trichoides palustris erectus, coronatus, capitulis sphaericis amplioribus. *Hist. Oxon.* III. 628. *Seçt.* 15. *Tab.* 6. *Fig.* 8. *Gray Marsh Moss*. In palustribus & locis aquosis. By the Rills of Water in *Whichwood Forest*, *Oxfordshire*, and on *Iver-Heath* near *Uxbridge*.

MUSCUS PALUSTRIS ALBICANS TERRESTRI SIMILIS CAPITULIS ERECTIS BREVIBUS PEDICULIS ETIAM BREVISSIMIS INSIDENTIBUS. *Raii Syn.* II. 37. 4. Palustris in ericetis

SPECIMEN BOTANICUM. 57

tis nascens. *Vaill. Bot. Par.* 139. 24. *Tab.* 23. *Fig.* 3. *opt.* Sphagnum cauliferum & ramosum, palustre, molle, candicans, reflexis ramulis, foliolis latioribus. *Cat. Giff.* 229. *Boggy Earth-Moss.* In Ericetis præsertim udis aut paludosis. On *Harefield* Common and the Bogs on *Hampstead Heath.*

MUSCUS AQUATICUS VITICULIS LONGIS, MINUS RAMOSIS LUCIDIS, FOLIIS ACUTIS TRIANGULARIBUS CINCTIS. *Hist. Oxon.* III. 626. *Seet.* 15. *Tab.* 6. *Fig.* 32. Triangularis aquaticus. *Cat. Cant. App.* Fontinalis major foliis triangularibus complicatis capitulis in foliorum alis sessilibus. *Raii Syn. Ed.* III. 79. *Triangular Water-Moss.* In fluviis & aquis stagnantibus. In *Harefield* River plentifully.

MYOSOTIS SCORPIOIDES LATIFOLIA HIR-SUTA. *Merr. Pin.* 60. *Broad leaved Mouse-Ear Scorpion-Grass.* In *Gutter's Dean Wood* and the *Old Park* near *Harefield*, but not plentifully: *Aprili* floret.

MYOSUROS. *J. B.* III. 512. *Holosteo* affinis, *Cauda Muris.* *C. B. Pin.* 190. *Ranunculus* gramineo folio, flore caudato, seminibus in capitulum spicatum congestis. *J. R. H.* 295. In pascuis, ad vias, & inter segetes, sed rarius. In a Lane that goes from *Copenhagen-House* to *Kentish Town.* *Dr. Wilmer.* Near *Marybone Park*, and in the Meadows behind

58 SPECIMEN BOTANICUM.

Kentish Town Chapel, plentifully. *Aprili* floret.

N.

NARCISSUS PALLIDUS CIRCULO LUTEO. *C. B. Pin.* Medio luteus vulgaris. *Park. Parad.* 74. *Ger. Emac.* 124. Albidus medio luteus, cum aliquot floribus. *J. B. II.* 604. *Common pale Daffodil*, or *Primrose Peerless*. In some Clofes at *Bellow-Hill* near *Whitechurch*, *Cheshire*. *Mr. Vernon*. In several Places near *Harefield*. *Aprili* floret.

NARCISSUS SYLVESTRIS PALLIDUS CALYCE LUTEO. *C. B. Pin.* 52. Pseudo-narcissus Anglicus. *Ger. Emac.* 138. *Bulbocodium vulgatus*. *J. B. II.* 593. *Wild English Daffodil*. With the last.

NASTURTIIUM PETRÆUM FOLIIS BURSÆ PASTORIS. *C. B. Pin.* 104. *Bursa pastoris* minor. *Park.* 866. Minor foliis alatis, costæ mediæ è regione adhærentibus uno impari extremum claudente. *H. Oxon. II.* 305. *The lesser Shepherd's Purse*, or *Rock-Cress*. Locis arenosis gaudet. On *Putney Heath*, *Surrey*, and in a *Gravel-Pit* about a *Quarter* of a *Mile* on the *Left-Hand* from *Great Ilford*, *Essex*, plentifully. *Mai*o floret.

SPECIMEN BOTANICUM. 59

NASTURTIUM SYLVESTRE, OSYRIDIS FOLIO CAPSULIS MINIMIS. *H. Oxon.* II. 301. Sylvestre Ofyridis folio. *C. B. Pin.* 105. *Thlaspi angustifolium*, Fuchsi, *Nasturtium sylvestre*. *J. B.* II. 914. *Narrow-leaved wild Cress*. Near *South Benfleet, Essex*. *Mr. Hill.* Junio floret.

NEPETA MAJOR VULGARIS, OFFIC. *Park.* 38. *Felina*, seu *Cataria*. *Ger. Emac.* 782. *Cataria vulgaris* & *major*. *C. B. Pin.* 228. *Nep*, or *Cat-Mint*. In a Meadow near *Harefield Mill*, and about *Moor-Hall*, also by the Road-side between *St. Peter's* and *Giles's Chalfont, Bucks*, abundantly. Junio & Julio floret.

NISSOLIA VULGARIS TOURNEFORTII, QUÆ CATANANCE LEGUMINOSA QUORUNDAM. *J. B.* II. 309. *Lathyrus angustifolius erectus* folio singulari sine capreolis. *D. Nissolle. Hort. Reg. Monspel.* 112. *Ervum sylvestre*. *Ger. Emac.* 1249. *Lathyrus sylvestris minor*. *C. B. Pin.* 344. *Crimson Grass Vetch*. In agrorum marginibus, & inter vepres. Near the Well in *Walthamstow Corn-field, Essex*. *Mr. Watson*. In a Gravel Pit near *Stockwell, Surrey*. *Mr. Hurlock* By the Side of a Wood behind the *Green Man* at *Muswell-Hill* near *Highgate*, and in a Meadow near *Tottenham High-Cross*, plentifully; also in a Meadow near *Harefield Church*. Maio floret.

NUMMULARIA MINOR, FLORE PURPURASCENTE. *Ger. Emac.* 630. *Rubra*. *J. B.* III.

60 SPECIMEN BOTANICUM.

371. *Lyfimachia humifusa*, folio rotundiore, flore purpurascente. *J. R. H.* 141. *Nummularia* flore purpurascente. *C. B. Prodr.* 136. *Purple-flowered Money-wort*. In palustribus & Ericetis. On *Hampstead* and *Chiselhurst* Bogs, and on *Harefield Moor* abundantly. Junio & Julio floret.

NYMPHÆA ALBA MAJOR VULGARIS. *Park.* 1251. *Alba*. *Ger. Emac.* 819. *Leuconymphæa*. *Boerb. Ind. Alt.* 281. *Nymphæa* calice tetraphyllo, corolla multiplici. *Linn. Flor. Lapp.* N° 219. *White Water-Lilly*. In fluviis & stagnis majoribus haud autem frequens. In the *Castle-Ditch* and the *River Rodon* at *Chipping-Ongar, Essex*, in the little Rivulet at *Brent-Bridge* in *Uxbridge Road*, in *Windsor-Lake, Uxbridge Moor*, and in *Harefield River* plentifully. Julio floret.

NYMPHÆA MAJOR LUTEA. *C. B. Pin.* 193. *Lutea*. *Ger. Emac.* 819. *Nymphæa* calice magno pentaphyllo. *Lin. Flor. Lapp.* N° 218. *Yellow Water-Lilly*. Cum priore. Eodem tempore floret.

NYMPHÆA LUTEA MINOR FLORE FIMBRIATO. *J. B.* II. 772. *Nymphoides* aquis innatans. *J. R. H.* 153. *The lesser yellow Water Lilly, with a fringed Flower*. In fluviis fed rarius. In the *River Thames* just above *Kingston-Bridge, Surrey*, abundantly. Junio & Julio floret. O.

O.

OENANTHE AQUATICA TRIFLORA CAULIBUS FISTULOSIS. *H. Oxon.* III. 289. *Seet.* 9. *Tab.* 7. *Fig.* 8. *Aquatica minor, item Oenanthe Juncoides minima. Park.* 895. 1233. *The lesser Water Dropwort.* In aquosis & ad fluviorum ripas. In the Ditches near *Ham-Abbey, Essex,* in the Ponds on *Wandswoth Common* near the New Church-yard, *Surrey,* and in *Harefield River* near the *Paper-Mill* plentifully. Junio & Julio floret.

OENANTHE STAPHYLINI FOLIO ALIQUATENUS ACCEDENS. *J. B.* III. 2. 191. *Aquatica Pimpinellæ Saxifragæ divisura nostras. Pluk. Alm. Tab.* 49. *Fig.* 4. *Oenanthe Pastinacæ sylvestris folio, femine Atriplicis. C. B. Pin.* 162. *Water Dropwort, with Leaves divided like Burnet Saxifrage.* Gathered by Mr. Hill in *Bulwan-Fen, Essex.* Julio floret.

ONOBRYCHIS MAJOR SILICULIS ECHINATIS, CRISTATIS IN SPICA DIGESTIS. *H. Oxon.* II. 131. *Foliis Viciæ fructu echinato major. C. B. Pin.* 350. *Polygalon Gesneri. J. B.* II. 335. *Medic Vetchling, or Cocks-Head, commonly but falsely called Saint-Foin.* In cretaceis. About

62 SPECIMEN BOTANICUM.

bout *Gravesend* and *Greenhithe* plentifully, also near *Harefield*. Maio & Junio floret.

OPHIOGLOSSUM LATIFOLIUM VULGARE,
OFFIC. *Barrel. Ic.* 252. *Ophioglossum. Ger. Emac.* 404. *Primum seu vulgatum. C. B. Pin.* 354. *Ophioglossum, seu Lingua Serpentina. Park.* 506. *Adder's Tongue.* In pascuis & pratis humidis. Very plentifully in a Meadow just beyond *Cowley Church, Middlesex.* Dr. *Wilmer.* In the Pasture Grounds between *Ospringe* and *Ore, Kent. Catal. Ferversh.* In *Battersea Field, Surrey,* and the moist Meadows near *Harefield* abundantly. Maio mense linguam profert. Variat magnitudine, & bilingue & trilingue nonnunquam reperitur, sed rarius.

OPHRIS PALUSTRIS RADICE REPENTE.
J. R. H. 437. *Orchis bifolia minor palustris. Pluken. Alm.* 270. *Tab.* 247. *Fig.* 2. *Bifolium palustre. Park.* 505. *Marsh Tway-blade.* In palustribus & ericetis. On *Hinton-Moor, Cambridgeshire.* Dr. *Th. Manningham.* Maio & Junio floret.

ORCHIS ABORTIVA RUFa, sive NIDUS AVIS. *Park.* 1361. *Satyrium abortivum, sive Nidus avis. Ger. Emac.* 228. *Orobanche affinis Nidus avis. J. B. II.* 782. *Mishapen Orchis, or Birds-Nest.* In sylvis & opacis, sed rarius. I once found this Plant (1735) in *White-Heath*

SPECIMEN BOTANICUM. 63

Heath-Wood near *Harefield*, but never since.
Maio floret.

ORCHIS ANTHROPOPHORA OREADES FÆMINA. *Park.* 1348. Flore nudi hominis effigiem representans fœmina. *C. B. Pin.* 82. Anthrophora Lusitanica flore parvo herbacei coloris cum limbo purpurascente. *J. R. H.* 43^o. *Vaill. Bot. Par.* 147. 6. *Man Orchis, with a ferrugineous and sometimes a green Flower.* In cretaceis. In *Boeton* Church-yard, and in a Chalk-pit on the Left-hand as you go from thence to *Brenley*. *Catal. Feversh.* On both Sides the Road on the chalky Banks between *Dartford* and *Greenstreet Green*. *Mr. Watson.* On *Gravesend* Chalk-Cliffs plentifully. Maio floret.

ORCHIS BARBATA ODORE HIRCI BREVIORE LATIOREQUE FOLIO. *C. B. Pin.* 82. Orchis barbata foetida. *J. B. II.* 756. *Tragorchis maxima* & *Tragorchis vulgaris*. *Park.* 1348. *The Lizard Flower, or Great Goat-stones.* In pascuis ficcioribus & cretaceis, sed rarius. By the Road-side between *Crayford* and *Dartford*, near the fourteen Mile Stone, in *Heath-Lane*, as you go from *Lowfield* in *Dartford* to the *Heath*; also beyond *Dartford Brent* toward *Greenstreet-Green*, and in a great old Chalk-pit as you go from *Dartford Heath* to *Stanbill* abundantly, as I observed this Year (1745) in Company with
Mr.

64 SPECIMEN BOTANICUM.

Mr. *Jarvis*, an eminent Surgeon and curious Botanist at *Dartford*. Junio floret.

ORCHIS LATIFOLIA HIANTE CUCULLO MAJOR. *J. R. H.* 432. *Cynosorchis latifolia minor. Park.* 1344. *Orchis galea & alis ferè cinereis. J. B. II.* 757. *Orchis flore Simiam referens, flore purpureo. C. B. Pin.* 82. *The Man Orchis.* In cretaceis. In the old Chalk-pit near the *Paper-Mill* at *Harefield* plentifully. Maio & Junio floret.

ORCHIS MAGNA LATIS FOLIIS GALEA FUSCA vel NIGRICANTE. *J. B. II.* 759. *Broad-leaved Man Orchis.* With the last.

ORCHIS FUCUM REFERENS MAJOR FOLIOLIS SUPERIORIBUS, CANDIDIS & PURPURASCENTIBUS. *C. B. Pin.* 83. *Fuciflora galea & alis purpurascens. J. B. II.* 766. *Orchis Sphegodes, sive fucum referens. Park.* 1350. *The common Humble Bee Satyrion, or Bee-flower.* In pascuis ficcioribus præsertim cretaceis. In *Boston Church-yard. Catal. Feversh.* On *Trunbill-Downs* near *Dartford.* Mr. *Jarvis.* In the old Chalk-pit near *Harefield-Mill, Middlesex,* and at *Gerard's Cross, Bucks.* Sub finem Maii floret.

ORCHIS FUCUM REFERENS, COLORE RUBIGINOSO. *C. B. Pin.* 83. *Orchis, sive Testiculus Sphegodes hirsuto flore. J. B. II.* 767.
Testiculus

SPECIMEN BOTANICUM. 65

Testiculus vulpinus major Sphegodes. *Ger. Emac.*
212. *Humble-Bee Satyrion, with green Wings.*
In pascuis solo cretaceo, sed rarius. On the
chalky Grounds near *Stunsfield, Oxfordshire.*
Aprili & Maio floret.

ORCHIS MYODES, FLORE GRANDIUSCULO.
f. B. II. 768. *Myodes major. Park. 1351.*
Myodes altera, folio læviore & flore grandius-
culo. Lob. Icon. 183. Muscam referens major.
C. B. Pin. 82. The greater Fly Orchis. In
Charlton Forest, Sussex. Mr. Hill. Junio floret.

ORCHIS MUSCÆ CORPUS REFERENS MI-
NOR, vel GALEA ET ALIS HERBIDIS. *C. B.*
Pin. 83. Myodes minor. Park. 1352. Myo-
des prima floribus Muscam exprimens. Lob. Icon.
181. The common Fly Orchis. In pascuis cre-
taceis & sylvis, sed rarius. In Boston Church-
yard. Catal. Feversh. In a Beech-wood just be-
low Cheyneis Church, Bucks, and in Harefield
Chalk-pit near the Paper Mill, sparingly. Maio
& Junio floret.

ORCHIS ODORATA MOSCHATA, sive Mo-
NORCHIS. *C. B. Pin. 84. Pusilla odorata.*
Park. 1354. Herminium radice globosa. Linn.
Flor. Lapp. N° 317. Monorchis montana mi-
nima, flore obsoleto vix conspicuo. Michel.
Nov. Plant. Gen. 30. Tab. 26. The yellow
sweet or Musk Orchis. In pascuis ficcioribus,
præsertim cretaceis. In a Chalk-pit by the Road-
side at Gerard's Cross, Bucks, plentifully. Ju-
nio floret.

ORCHIS, five CYNOSORCHIS MINOR PAN-
NONICA. *Ger. Emac.* 207. *Cynosorchis mili-*
taris, pratensis, humilior. C. B. Pin. 81. *Or-*
chis militaris, pratensis, humilior. J. R. H.
432. *Little purple-flowered Orchis.* In creta-
ceis. In the Chalk-pit near *Harefield Paper-*
Mill, but very rarely. Maio floret.

ORCHIS PALMATA MINOR, FLORE LUTEO-
VIRIDI. *Raii Syn. Ed. II.* 239. 18. *Palmata*
flore galericulato dilute viridi. Flor. Pruss. 182.
Serapias Batrachites altera. Ger. Emac. 224.
Satyrium foliis oblongis caulinis. Linn. Flor. Lapp.
N° 313. *Hand Orchis with a green Flower, by*
some called the Frog-Orchis. In pascuis ficcioribus.
In *Ospringe Chalk-pits. Cat. Feversh.* In *Broad-*
oaks Meadows near Thaxted, Essex. Mr. *Hurlock.*
Sub finem Maii floret.

ORCHIS PURPUREA SPICA CONGESTA PY-
RAMIDALI. *Raii Syn. Ed. II.* 236. *Parvo flore*
rubro five Phæniceo. J. B. II. 764. *Militaris*
montana spica rubente conglomerata. J. R. H. 432.
Purple late-flowering Orchis. In pascuis ficcioribus
& cretaceis. In a Meadow against Mr. *Drake's*
Garden at Shardelois near Agmondesham, Bucks.
Dr. Wilmer. In several Places near *Dartford,*
Kent, and in *Harefield Chalk-pit.* Junio floret.

ORCHIS SPIRALIS, ALBA, ODORATA. *J.*
B. II. 769. *Triorchis alba odorata minor atque*
etiam major. C. B. Pin. 84. *Orchiastrum au-*
tumnale, pratense, spirale, album, odoratum.
Michel.

SPECIMEN BOTANICUM. 67

Michel. Nov. Plant. Gen. 30. Tab. 26. Triple Ladies Traces. In pascuis ficcioribus. In the New Field near *Ledstone-Hall*, not far from *Leeds, Yorkshire.* Mr. *Dawson.* Autumnno floret.

ORNITHOGALUM LUTEUM. *C. B. Pin. 71.* Bulbus sylvestris Fuchsi flore luteo, sive Ornithogalum luteum. *J. B. II. 623.* Luteum, seu Cepe agraria. *Ger. Emac. 165.* *Yellow Star of Bethlehem.* In the Meadows near *Godalmin, Surrey.* Mr. *Hill.* In a Close near *Willow-Moor* at *Bellow-Hill, Cheshire.* Mr. *Vernon.* Aprili & Maio floret.

ORNITHOGALUM VULGARE, ET VERIUS, ET MAJUS, ET MINUS. *J. B. II. 630.* Vulgare. *Park. Par. 136.* Umbellatum, medium, angustifolium. *C. B. Pin. 70.* *Common Star of Bethlehem.* In the *New Field* near *Ledstone-Hall.* Mr. *Dawson.* Aprili & Maio floret.

ORNITHOPODIUM RADICE TUBERCULIS NODOSA. *C. B. Pin. 350.* Radice nodosa. *Park. 1093.* Ornithopodium flore flavescente, & tuberosum Dalechampii. *J. B. II. 350 & 351.* *Birds-foot.* In arenosis & locis glareosis haud infrequens. In the *Broom-fields* near *Hern-Hill* and *Shottenton Wind-mill.* *Cat. Feversh.* On *Hampstead Heath* plentifully. Maio & Junio floret. Variat magnitudine, unde Majus & Minus à Veteribus denominatum esse suspicor.

68 SPECIMEN BOTANICUM.

OROBANCHE MAJOR GARYOPHYLLUM O-
LENS. *C. B. Pin.* 87. Rapum genistæ, sive
Orobanche. *Ger. Emac.* 1311. Orobanche flore
majore. *J. B. II.* 780. *Broom-Rape.* Ad ra-
dices Genistæ, & nonnunquam inter segetes.
At the Entrance of *Iver Heath* from *Denham,*
Bucks; also in the Corn between *Epsom* and
Leatherhead, Surrey. Maio & Junio floret.

OSMUNDA REGALIS, sive FILIX FLORIDA,
Offic. Park. 1038. Filix ramosa, non dentata,
florida. *C. B. Pin.* 357. Osmunda vulgaris &
palustris. *J. R. H.* 547. Filix floribus insignis.
J. B. III. 736. *Water Fern,* or *flowering Fern,*
or *Osmund Royal.* In palustribus putridis & syl-
vis humidis, sed rarius. By the Side of a Cop-
pice at *Weybridge, Surrey.* Dr. *Wilmer.* In
the marshy Meadows near *North-Cray, Kent.*
Mr. *Jarvis.* On *Gale-Moor* near *Whitchurch,*
Cheshire, plentifully. Mr. *Vernon.* Junio & Julio
floret.

OXYCOCCUS, seu VACCINIA PALUSTRIS.
J. B. I. 525. Vitis Idæa palustris. *C. B. Pin.*
471. Vaccinium ramis filiformibus repentibus,
foliis ovatis perennantibus. *Linn. Flor. Lapp.* N^o
145. *Marsh Whortle-berries,* *Moss-berries,* or
Moor-berries. In palustribus putridis & aquosis.
On the Bogs in *Blackmoor* near *Leeds, Yorkshire.*
Mr. *Dawson.* In *Gale-Moor* near *Whitchurch,*
and several other Places near *Bellow-Hill, Che-*
shire, plentifully. Mr. *Vernon.* Junio & Julio
floret.

P.

PARNASSIA VULGARIS ET PALUSTRIS.
 ꝑ. R. H. 246. Gramen Parnassi, flore albo simplici. C. B. Pin. 309. Pyrola rotundifolia nostras flore unico ampliore. *Hist. Oxon.* III. 505. *Set.* 12. *Tab.* 10. *Fig.* 3. Gramen Parnassi Dodonæo quibusdam Hepaticus Flos. ꝑ. B. III. 537. *Grass of Parnassus.* In palustribus, sed rarius. In a boggy Field near *Caisshoberry Park, Hertfordshire.* Dr. *Wilmer.* In a marshy Meadow between *High-Ongar* and *Chipping-Ongar*, also in the like Places near *Harefield-Mill*, plentifully. Augusto floret.

PEDICULARIS PALUSTRIS RUBRA ELATIOR.
Raii Syn. Ed. II. 162. Pediculariæ campestris prior species *Tragi.* *Raii Syn. Ed.* III. 284. *Great Marsh Red Rattle*, or *Louse-wort.* In palustribus & aquosis. In *Battersea Meadows* near the Mill, and about *Harefield* abundantly. Maio floret. Variat flore albo.

PENTAPHYLLUM, vel potius HEPTAPHYLLUM, FLORE RUBRO: ꝑ. B. II. 256. Pentaphylloides palustre rubrum. ꝑ. R. H. 298. *Comarum.* *Linn. Flor. Lapp.* N° 214. *Quinquefolium palustre rubrum.* C. B. Pin. 326. *Purple Marsh Cinquefoil.* In palustribus putridis, sed rarius.

70 SPECIMEN BOTANICUM.

rarius. On *Wennington Moss* and other Places near *Ingleton, Yorkshire*. Mr. *Thornbeck*. In several Meadows about *Bellow-Hill, Cheshire*. Mr. *Vernon*. It thrives very well on the Head of the lesser Bog on *Hampstead Heath*, where it was planted some Years ago by Mr. *Rand*. Junio & Julio floret.

PENTAPHYLLUM ERECTUM FOLIIS PROFUNDE SECTIS SUBTUS ARGENTEIS, FLORE LUTEO. *J. B. II. 398*. Quinquefolium Tormentillæ facie. *Ger. Emac. 988*. *Potentilla foliis quinatis incisif, caule adfurgente. Linn. Flor. Lapp. N° 212*. *Tormentil Cinquefoil*. In pascuis arenosis aut glareosis. On *Blackbeath* in the Road to *Charlton, Kent*, and a Field near *Harefield Common, Middlesex*. Julio floret.

PERICLYMENUM FOLIIS QUERCINIS. *Merr. Pin. 92*. Caprifolium non perfoliatum foliis sinuosis. *J. R. H. 608*. *Honey-suckle with sinuated Leaves*. In *White-beath Wood* near *Harefield Common*, plentifully. Maio & Junio floret.

PERSICARIA PUSILLA REPENS. *Ger. Emac. 446*. *Persicaria minor. C. B. Pin. 101*. *Small creeping Arsmart*. In pascuis humidis. In the Meadows just beyond *Peterborough House, Westminster*, and in *Totbill Fields*. Junio & Julio floret.

PETASITES VULGARIS, RUBENS, ROTUNDIORI FOLIO, OFFIC. *J. B. III. 566.* Major & vulgaris. *C. B. Pin. 197.* *Butter-Burr, Pestilent Wort*, by some *Lagwort*. In palustribus & ad fluviorum ripas. In *Battersea Field* by the *Thames Side*, also about *Chelsea Waterworks*. By the River-side near *Harefield-Mill* abundantly. Hujus Plantæ radix sudorem insigniter promovet tam in pulvere quam in decocto sumpta, & ob virtutes eximias in variis morbis, CONTRAYERVA ANGLICANA merito dici possit. Martio floret.

PETASITES MAJOR, FLORIBUS PEDICULIS LONGIS INSIDENTIBUS. *Raii Syn. Ed. III. 179.* *Great Butter-Burr with Flowers on long Foot-Stalks.* Observed by Mr. *Hill* near *Loughborough, Leicestershire.* Martio floret.

PEUCEDANUM VULGARE, OFFIC. *Park. 880:* Germanicum. *C. B. Pin. 149.* Minus Germanicum. *J. B. III. 2.'36.* Feniculum porcinum. *Lobel. Ic. 781.* *Hogs Fennel, Sulphur-wort, Harestrong.* In palustribus maritimis haud autem frequens. On the Sea-wall leading from *Feversham* to *Thorne*, abundantly. *Cat. Feversh.* Julio floret.

PHALANGIUM PALUSTRE ANGLICUM IRIDIS FOLIO. *J. R. H. 368.* *Asphodelus Lancastriæ verus.* *Ger. Emac. 96.* Luteus *Acorifolius palustris Anglicus Lobelii.* *J. B. II. 633.* Anthericum scapo folioloso laxè spicato, filamentis villosis.

72 SPECIMEN BOTANICUM.

villosis. *Linn. Flor. Lapp.* N° 136. *Lancashire Asphodel*, or *Bastard Asphodel*. In palustribus putridis & aquosis. In the Bogs near *Cæsar's Camp* at *Bromley, Kent*. *Mr. Watson*. Junio & Julio floret.

PHELLANDRIUM, vel CICUTARIA AQUATICA QUORUNDAM, OFFIC. *J. B. III.* 2. 183. *Cicutaria palustris tenuifolia*. *Park.* 933. *Water Hemlock*. In aquis stagnantibus præsertim cænosis, & rivis pigrioribus. In the Ponds at the Entrance of *Hornsey Wood*, and the Ditches in the *Isle of Dogs*. *Mr. Hurlock*. In *Harefield River* plentifully. Julio floret.

PHYLLITIS POLYSCHIDES. *J. B. III.* 757. *Multifida*. *Ger. Emac.* 1138. *Lingua Cervina multifido folio*. *C. B. Pin.* 353. *Jagged or finger'd Harts-Tongue*. On *Beeston Castle Walls, Cheshire*. *Mr. Vernon*.

PHYLLITIS, sive LINGUA CERVINA VULGI, OFFIC. *J. B. III.* 756. *Phyllitis, seu Lingua Cervina vulgaris*. *Park.* 1046. *Harts-Tongue*. In umbrosis & muris antiquis. In several Lanes near *Chipping-Ongar, Essex*; in the *Place Orchard* at *Harefield, Middlesex*. I also observed it some time since in a shady Ditch on *Hampstead Heath*.

PIMPINELLA SAXIFRAGA MAJOR UMBELLA CANDIDA, OFFIC. *C. B. Pin.* 159. Major
Germa-

Germanica foliis altius incis. *Barrel. Icon.* 243.
 Pimpinella Saxifraga. *Ger. Emac.* 1044. *Great Burnet Saxifrage.* In sylvis, sed rarius. In a Hedge by the Side of the Road between *Wimbledon* and *Martin, Surrey.* Mr. *Watson.* Julio floret.

PIMPINELLA SAXIFRAGA HIRCINA MINOR FOLIIS SANGUISORBÆ. *J. B. III.* 2. 111. Et hircina minima, Pimpinella crispa *Tragi. Ejusd.* 114. Saxifraga major altera & minor. *C. B. Pin.* 159. 160. Tragofelinum alterum majus & minus. *J. R. H.* 309. *The lesser round-leaved Burnet Saxifrage, also small Burnet Saxifrage with divided Leaves.* In pratis & pascuis. In the Meadows about *Highbate* and *Hampstead* abundantly. Augusto & Septembri floret.

PIMPINELLA SANGUISORBA MAJOR. *C. B. Pin.* 160. Pimpinella spica brevi rubra. *Moris Umb.* 57. Sanguisorba major flore spadiceo. *J. B. III.* 2. 120. Major vulgaris. *Park.* 582. *Great Burnet.* In palustribus & pratis humidis. In *Spelsbury* Field near the Church, and in *Ascot* Field near *Whichwood Forest Gate, Oxfordshire,* plentifully. Junio & Julio floret.

PIMPINELLA VULGARIS MINOR. *Park.* 582. Septima seu hirsuta & octava, seu minor lævis. *C. B. Pin.* 160. Minor. *J. B. III.* 2. 113. Hortensis. *Ger. Emac.* 1045. *Small Burnet.* In pascuis montosis & ficcioribus solo præsertim
 L cretaceo.

74 SPECIMEN BOTANICUM.

cretaceo. In *Greenhithe* Chalk-pits, *Kent*, and on *Box-Hill*, *Surrey*; also in *Harefield* Chalk-pits, and the *Beech-Woods* in the Road from thence to *Chalfont*, *St. Peter's*, *Bucks*, plentifully. Junio floret.

PINGUICULA, seu SANICULA EBORACENSIS. *Park*. 532. *Sanicula montana* flore calcari donato. *C. B. Pin.* 243. *Pinguicula nectario cylindraco longitudine petali.* *Linn. Flor. Lapp.* N° 11. *Butterwort*, or *Yorkshire Sanicle.* In palustribus & uliginosis, sed rarius. In a Bog near *Addle-Dam*, three Miles from *Leeds*, *Yorkshire.* *Mr. Dawson.* In *Feverham Mere.* *Catal. Feversh.* On *Willowmoor Common* near *Whitchurch*, *Cheshire*, so plentifully that it covers two or three Acres of Ground. *Mr. Vernon.* Junio floret.

PLANTAGO AQUATICA MINIMA CLUSII. *Park*. 1244. *Plantaginella palustris.* *C. B. Pin.* 190. *Limofella.* *Lin. Flor. Lapp.* N° 249. *Menyanthoides palustris.* *Vaill. Bot. Par.* 126. *Alfine palustris repens*, foliis lanceolatis, floribus albis perexiguis. *Pluk. Phyt. Tab.* 74. *Fig.* 4. *opt.* *The least Water-Plantain.* In palustribus, & ubi per hyemem aquæ stagnarunt, sed rarius. By the Sides of the *Warren-Pond* at *Breakspears* near *Harefield*, and in Bogs on the *Common* there plentifully. Julio floret.

PLANTAGO AQUATICA ANGUSTIFOLIA
 POLONICA CORVINI. *Barrel. Ic.* 1157. *A-*
quatica humilis angustifolia. J. B. III. 2. 788.
Aquatica minor. Park. 1245. *Alisma angusti-*
folium umbellatum, capitulis rotundis. D. Mar-
tyn. *Ranunculus palustris Plantaginis folio an-*
guftiore. J. R. H. 292. *The lesser Water-Plan-*
tain. In aquosis, sed rarius. I have observed it
 on the Banks of the upper Pond near Mr. *Ashby's*
 Brick-kiln at *Harefield*, plentifully, and in no
 other Place thereabouts, nor near *London*. Junio
 & Julio floret.

PLANTAGO AQUATICA MINOR, RANUN-
 CULI FLAMMEI MAJORIS FOLIO NOSTRAS.
Pluk. Amalth. 175. *The lesser Water-Plantain*
with great Spear-wort Leaves. In *Wennington-*
Moss near *Ingleton, Yorkshire.* Mr. *Thornbeck.*
 In the Bogs on *Iver-Heath* near *Uxbridge.* Mr.
Hill. Junio & Julio floret.

PLANTAGO AQUATICA STELLATA. C. B.
Pin. 190. *Damasonium stellatum Dalecham-*
pii. J. B. III. 2. 789. *Plantago aquatica mi-*
nor stellata. Ger. Emac. 417. *Aquatica minor*
muricata. Park. 1245. *Star-headed Water-*
Plantain. In aquis stagnantibus, sed haud fre-
 quens. In the Ponds on *Wandsworth Common*,
 near the upper Church-yard, and in a little Bog
 on *Harefield Common.* Julio & Augusto floret.

76 SPECIMEN BOTANICUM.

PLANTAGO PALUSTRIS GRAMINEO FOLIO
 MONANTHOS PARISIENSIS. *J. R. H.* 128.
 Gramen Junceum, five Holosteum minimum
 palustre, capitulis quatuor longissimis staminibus
 donatis. *Raii Syn. Ed. II.* 276. 8. *Pluk. Alm.*
 180. *Tab. 35. Fig. 2. opt.* Plantago scapo u-
 nifloro. *Linn. Flor. Lapp. N° 64.* *The smallest*
Marsh Plantain. In some of the Bogs on *Hare-*
field Common plentifully. Julio floret.

PLANTAGO FOLIIS LACINIATIS, CORONO-
 PUS-DICTA, OFFIC. *Raii, Syn. Ed. III.* 315.
 Coronopus vulgaris, five Cornu Cervinum. *Park.*
 502. Coronopus, seu Cornu Cervinum, vulgo
 spica Plantaginis. *J. B. III.* 509. *Bucksborn*
Plantain. In arenosis & Ericetis. On *Hamp-*
stead Heath and *Uxbridge Common* plentifully.
 Julio floret.

PLANTAGO CORONOPUS DICTA FOLIIS
 HIRSUTIORIBUS MAGIS LACINIATIS CAPITU-
 LIS BREVIBUS LAXIS. *Bucks-born Plantain,*
with more hairy and deeply laciniated Leaves and
short lax Heads. Found by Mr. *Hurlöck* in a
 Field on the Left-hand between *Dartford* and
Greenhithe, Kent, where it covered a large Piece
 of Ground. It is remarkably different from the
 CORONOPUS VULGARIS. Julio floret.

POLYGALA MYRTIFOLIA PALUSTRIS, HU-
 MILIS ET RAMOSIOR. *Raii Syn. Ed. III.* 287.
Small myrtle-leaved branched Marsh Milk-wort.

In

SPECIMEN BOTANICUM. 77

In palustribus. In some boggy Meadows near *Highbwood-Hill* beyond *Hendon*, *Middlesex*. Maio & Junio floret.

Radix *Sennekka* cujus virtutes à Clar. Doctore *Tennent* fatis enarrantur, est *Polygalæ Virginianæ* species. *Polygalæ nostratis* radix gustum ei haud multo dissimilem præbet, virtutes itaque *Sennekkæ* minori gradu possidere videtur.

POLYGONATUM, VULGO SIGILLUM SALOMONIS, OFFIC. *ŷ. B. III. 529.* Vulgare. *Park. 696.* Latifolium vulgare. *C. B. Pin. 303.* *Solomon's Seal.* In sylvis, sed rarius. In the Beech-Woods about *High-Wickham*, *Bucks.* *Mr. Hill.* Maio & Junio floret.

POLYGONATUM FLORIBUS EX SINGULARIBUS PEDICULIS. *ŷ. B. III. 529.* Majus flore majore. *Park. 696.* Latifolium flore albo majore odorato. *Barrel. Icon. 711. 1.* Bacca nigra simplici & flore unico umbriato & viridi. *Merr. Pin. Sweet smelling Solomon's Seal, with Flowers on single Foot-stalks.* In montosis Septentrionalibus. About *Austwick* and *Clapham* near *Ingleton*, *Yorkshire.* Maio & Junio floret.

POLYGONUM MARITIMUM LATIFOLIUM. *C. B. Pin. 281.* Marinum. *ŷ. B. III. 376.* Marinum majus. *Park. 444.* Marinum majus incanum. *Barrel. Icon. 560.* *Great Sea Knot-Grass.* In littoribus arenosis. At *Cullercoats* near *Tinmouth*, *Northumberland.* *Mr. Thornbeck.* Julio & Augusto floret.

POLY-

78 SPECIMEN BOTANICUM.

POLYPODIUM CAMBROBRITANNICUM PIN-
NULIS AD MARGINES LACINIATIS. *Raii Hist.*
137. Filix amplissima lobis foliorum laciniatis.
Pluk. Alm. 153. *Tab.* 30. *Fig.* 1. *Lacinated*
Polypody of Wales. In a steep Lane near *Men-*
dip Hills, Somersetsbire. *Mr. Hill.* In hortis
satum valde luxuriat.

PTARMICA VULGARIS FOLIO LONGO SER-
RATO, FLORE ALBO, OFFIC. *J. B.* III. 147.
Ptarmica. *Ger. Emac.* 606. *Dracunculus pra-*
tensis ferrato folio. *C. B. Pin.* 98. *Sneeze-wort*
or Bastard Pellitory, by some Goose-Tongue, from
the Shape of the Leaves. In palustribus & pra-
tis humidioribus. In a Field near *Highbate,*
plentifully, and other Places near *London.* Ju-
lio floret.

PULEGIUM VULGARE, OFFIC. *Park.* 29.
Regium. *Ger. Emac.* 671. *Latifolium.* *C. B.*
Pin. 222. *Mentha aquatica, seu Pulegium vul-*
gare. *J. R. H.* 189. *Penny-Royal, or Pudding-*
Grass. In palustribus & aquosis ubi per hye-
mem aquæ stagnarunt. By the Side of the
Road near the Ponds on *Wandsworth Common,*
and in several Parts of *Harefield Common* plen-
tifully. Julio & Augusto floret.

PULSATILLA FOLIO CRASSIORE ET MAJORE
FLORE. *C. B. Pin.* 177. *Purpurea cæruleave.*
J. B. 409. *Folio crassiore, flore majore dilu-*
tiore. *Hist. Oxon.* II. 428. *Pasque Flower.* In
pascuis

SPECIMEN BOTANICUM. 79

paucis ficioribus & montosis, sed rarius. In *Kippax Town* Close, and near *Ledsbam Church*, *Yorkshire*. Mr. Dawson. On *Lincoln Heath*. Mr. Hill. In several Parts of *Cornbury Park* near *Charlbury*. *Oxfordshire*. Aprili floret.

PYROLA ROTUNDIFOLIA MAJOR, OFFIC. *C. B. Pin.* 191. Nostras vulgaris. *Park.* 508. *Pyrola staminibus & pistillis declinatis.* *Linn. Flor. Lapp.* N° 169. *Common Winter-Green.* In Septentrionalibus Angliæ locis reperitur; in Meridionalibus rarius occurrit. In *Black-Fen-Woods* and *Weetwood*, not far from *Leeds*, *Yorkshire*, plentifully. Mr. Dawson. In *Charlton Forest*, *Suffex*. Mr. Hill. Junio & Julio floret.

R.

RANUNCULUS LONGIFOLIUS PALUSTRIS MAJOR. *C. B. Pin.* 180. Flammeus major. *Ger. Emac.* 961. Folio longo maximus *Lingua Plinii.* *J. B. III.* 865. *Great Spearwort.* In palustribus & aquosis. In the Bogs on *Iver-Heath* near *Uxbridge*. Maio floret.

RANUNCULUS FLAMMEUS MINOR, ITEM FLAMMEUS SERRATUS. *Ger. Emac.* 961. 962. Longifolius aliis Flammula. *J. B. III.* 864. *Ranunculus foliis ovato-oblongis integerrimis caule præcumbente.* *Linn. Flor. Lapp.* N° 235.
The

80 SPECIMEN BOTANICUM.

The lesser Spearwort. Ad aggeres fossarum, in pratis umbrosis & palustribus. On *Wandsworth Common, Hampstead Heath*, and about *Harefield* plentifully. Maio floret.

RANUNCULUS MONTANUS ACONITI FOLIO FLORE GLOBOSO. *C. B. Pin.* 182. Globosus. *Park. Per.* 218. Flore globofo quibusdam *Trollius Flos.* *J. B. III.* 419. *Helleborus niger*, *Ranunculi folio*, flore globofo luteo majore. *J. R. H.* 272. Caule simplici flore pedunculato. *Linn. Flor. Lapp.* N^o 226. *The Globe-Flower* or *Locker-Gowdons*. In pratis montosis præsertim Septentrionalibus. In *Friar-Wood* and *Scar-Close* below *Ingleton*, towards *Chapel le Dale, Yorkshire*. *Mr. Thornbeck*. Maio & Junio floret.

RANUNCULUS HIRSUTUS ANNUUS FLORE MINIMO. *Raii Syn. Ed. II.* 135. Hirsutus annuus folio *Geranii Columbini*. *Merr. Pin.* 102: *Arvensis annuus hirsutus flore omnium minimo luteo.* *Hist. Oxon. II.* 440. *Seçt. 4. Tab. 28. Fig. 21. Field Crowfoot, with a very small Flower.* Ad vias & semitas. About *Hackney*, and in several Places near *Harefield*. Maio & Junio floret.

RANUNCULUS FOLIO OBLONGO, SPICA ORBICULARI. *C. B. Pin.* 92. Corniculatus montanus. *Ger. Emac.* 455. *Alopecuroides orbiculatus.* *Park.* 648. Corniculatus, cæruleus, montanus,

montanus major & minor Italicus. *Barrel. Icon.* 525 & 526. *Horned Rampions, with a round Head or Spike of Flowers.* In pascuis solo præfertim cretaceo. On *Beacon-Hill* near *Feversham, Kent. Catal. Feversh.* In many Places near *Sutton* and *Darking, Surrey.* Julio floret.

RAPUNCULUS ESCULENTUS VULGARIS. *Park.* 648. *Vulgaris Campanulatus.* *J. B.* II. 795. *Campanula radice esculenta, flore cæruleo.* *Hort. Lugd. Bat.* *Rapunculus esculentus.* *C. B. Pin.* 92. *Rampions.* In arvis requietis, & ad sepes. In the Lane that leads from *Dartford Heath* to *Bexley, Kent,* plentifully. Julio floret.

RAPUNCULUS SCABIOSÆ CAPITULO CÆRULEO. *C. B. Pin.* 92. *Scabiosa minima hirsuta.* *Ger. Emac.* 723. *Globularis quam Ovinam vocant.* *J. B.* III. 12. *Jasione foliis lineari-lanceolatis obsoletè ferratis.* *Linn. Hort. Cliffort.* 426. *Hairy Sheeps Scabious, or rather Rampions with Scabious Heads.* In pascuis sterilibus & arenosis. *Mr. Thornbeck,* an eminent Surgeon and curious Botanist, informs me, that this Plant (*which is not very scarce in these Parts*) is only found by the Road-side as you go from *Ingleton, Yorksbire,* to *Kirkby-Lonsdale, Westmoreland,* just at the Division of the Counties of *York* and *Lancaster.* In a Field in *Bexley-Lane, Kent,* and by the Road-side between *Denham* and *Iver-Heath, Bucks.* Junio floret.

82 SPECIMEN BOTANICUM.

RESEDA CRISPA GALLICA. *Boccon. Plant. Rar.* 76. *French curled base Rocket.* In steri-
 lioribus præsertim solo cretaceo. In the Fields
 near *High-Wickham, Bucks.* Mr. Hill. On the
 Walls of *Tilbury Fort, Essex,* and in several Places
 near *Gravesend* plentifully. Julio floret.

**RHAMNOIDES FRUCTIFERA, FOLIIS SALICIS
 BACCIS LEVITER FLAVESCENTIBUS.** *J. R. H. Coroll.* 53. *Rhamnus Salicis folio angusto,*
fructu flavescente. C. B. Pin. 477. *Rhamnus,*
vel Oleaster Germanicus. J. B. I. 2. 33. *Hip-*
pophæ. Linn. Flor. Lapp. N° 372. *Sallow-*
Thorn, or Sea Buckthorn. In arenosis maritimis
 sed rarius. It is found near *Canvey Island, Essex,*
 and in a Salt-Marsh two Miles from *Sheerness,*
Kent, sparingly. Mr. Hill. Junio floret.

RHAMNUS CATHARTICUS, OFFIC. C. B.
Pin. 478. *Solutivus. Ger. Emac.* 1337. *So-*
lutivus, sive Spina infectoria vulgaris. Park. 243.
Buckthorn, or Common Purging Thorn. In sylvis
 & sepibus, sed rarius. In the Hedges near
Shottenton-Hill. Catal. Feversh. In some Places
 near *Harefield* sparingly. In the Hedges between
Uxbridge and *Beaconsfield* plentifully. Maio floret.

RIBES ALPINUS DULCIS. *J. B. II.* 98.
Grossularia vulgaris fructu dulci. C. B. Pin.
 455. *Ribes inerme floribus planiusculis ra-*
cemis erectis. Linn. Hort. Cliffort. 82. *Sweet*
Mountain Currants. In montosis præsertim
 Sep-

SPECIMEN BOTANICUM. 83

Septentrionalibus. Near the *Hot-Well* at *Bristol*.
Mr. *Hill*. Martio floret.

RIBES NIGRUM VULGO DICTUM, FOLIO
OLENTE, OFFIC. *ŷ. B. II.* 98. Fructu nigro.
Park. 1562. *Grossularia non spinosa*, fructu
nigro. *C. B. Pin.* 455. *Black Currants*, *Squi-*
nancy Berries. In a Meadow just below *Break-*
spears, near *Harefield*, plentifully. Maio floret.
In Angina Specificum habetur.

RIBES VULGARIS, FRUCTU RUBRO, OFFIC.
Ger. Emac. 1593. *Vulgaris acidus ruber. ŷ.*
B. II. 97. *Grossularia sylvestris rubra. C. B.*
Pin. 455. *Red Currants*. I have found it
sparingly in some Coppices near *Harefield*. A-
prili floret.

ROSA CIPHIANA, seu ROSA PIMPINELLÆ,
FOLIIS MINOR NOSTRAS, FLORE ELEGANTER
VARIEGATO. *Scot. Illustr. Part. 2. Fol.* 46.
Rosa Pimpinella minor Scotica, floribus ex albo
& carneo eleganter variegatis. *Pluk. Alm.* 322.
The Ciphian or lesser Burnet Rose, with an ele-
gantly variegated Flower. Found by Mr. *Hill*
in a Lane descending from *Mendip Hills* towards
Skipton-Mallet, *Somersetshire*, abundantly. Ju-
nio & Julio floret.

ROSA PUMILA SPINOSISSIMA, FOLIIS PIM-
PINELLÆ GLABRIS, FLORE ALBO. *ŷ. B. II.*
40. *Campestris spinosissima* flore albo odoro.

84 SPECIMEN BOTANICUM.

C. B. Pin. 483. Pimpinella, five Pomifera minor. *Park.* 1018. *The Burnet-Rose.* In Ericetis & locis arenosis. On *Putney Heath*, and about *Wimbledon, Surrey*; also in *Tuddington Field* near *Hampton-Court*, plentifully. Junio & Julio floret.

ROS SOLIS, FOLIO OBLONGO. *C. B. Pin.* 357. Solis sylvestris longifolius. *Park.* 1052. Major seu longifolius. *Barrel. Icon.* 251. 2. Drosera scapis radicatis, foliis oblongis. *Linn. Flor. Lapp.* N° 110. *Long-leaved Rosa Solis*, or *Sun-Dew.* In palustribus putridis. In the Bogs on *Iver-Heath* near *Uxbridge*, sparingly. Junio & Julio floret.

ROS SOLIS, FOLIO ROTUNDO, OFFIC. *C. B. Pin.* 357. Major. *Park.* 1052. Minor, seu rotundifolius. *Barrel. Icon.* 251. 1. Drosera scapis radicatis, foliis orbiculatis. *Linn. Flor. Lapp.* N° 109. *Round-leaved Rosa-Solis*, or *Sun-Dew.* In palustribus putridis & locis aquis inter muscos. With the last also on *Hampstead Heath*, and at *Battle's-Well* near *Harefield*, plentifully. Junio & Julio floret.

Memorat *Clarissimus Johnsonus* in *Gerardum*, pag. 1557. Aquam hujus Plantæ alembico vitreo distillatam aureum præbere colorem, & argentum immersum eodem colore inficere. De partis prioris hujus experimenti veritate expertus loquor, posterioris vero experimentum faciendo spes fefellit.

RUBEOLA VULGARIS QUADRIFOLIA LÆVIS FLORIBUS PURPURASCENTIBUS. *J. R. H.* 130. *Rubia Cynanchica. J. B. III. 723.* *Asperula repens Gesneri, seu Saxifraga altera Cæfalpini. Park. 453.* *Asperula foliis quaternis linearibus floribus trifidis. Linn. Flor. Suecic. N° 115. Squinancy Wort.* In sterilioribus Soli expositis præsertim cretaceis. In *Ospringe Chalk-pits. Catal. Feversh.* About *Sutton* and on *Box-Hill, Surrey*; also on the *Chalk-Cliffs*, about *Greenbithe*, and *Northfleet*, abundantly. Junio & Julio floret.

RUBUS IDÆUS SPINOSUS FRUCTU RUBRO, OFFIC. *J. B. II. 59.* *Idæus spinosus. C. B. Pin. 479.* *Rubus caule erecto hispido foliis ternatis. Linn. Flor. Lapp. N° 204.* *The Raspberry Bush, Framboise, or Hind-Berry.* In montosis Wallicis & Septentrionalibus haud infrequens; in Meridionalibus rarius. In a Lane near *Mr. Austin's Farm on Harefield-Moor* sparingly. Maio floret.

RUSCUS MYRTIFOLIUS ACULEATUS, OFFIC. *J. R. H. 79.* *Ruscus. J. B. I. 579.* *Ruscus sive Bruscus. Ger. Emac. 907.* *Knee-Holm, or Butchers-Broom.* In dumetis & ad sepes haud autem frequens. In *Perry-Wood* near *Feversham. Catal. Feversh.* In some Thickets about *Harefield*, and *Bacher-Heath*, but not plentifully. Primo vere floret.

S.

SABINA SEPTENTRIONALIUM QUÆ JUNIPERUS ALPINA. *J. B. I.* 302. Juniperus minor montana folio latiore fructuque longiore. *C. B. Pin.* 489. Alpina major. *Ger. Emac.* 1372. *Mountain Dwarf Juniper.* In montosis Septentrionalibus. In a mountainous Meadow called *Moughton*, two Miles from *Austwick*, a little Town near *Ingleton*, *Yorkshire*. *Mr. Thornbeck.* Maio & Junio floret.

SAGITTA AQUATICA MAJOR ET MINOR. *C. B. Pin.* 194. Sagittaria major & minor. *Ger. Emac.* 416. Ranunculus palustris folio sagittato maximo & minori. *J. R. H.* 292. Sagittaria foliis sagittatis. *Linn. Flor. Lapp.* N^o 344. *The greater and lesser Arrow-head.* In aquosis haud infrequens. In the Ditches in *Tutbill-Fields*, *Westminster*. Maio & Junio floret.

SALIX FLORE LAUREO, seu LATO GLABRO ODORATO. *Merr. Pin.* 108. Salix Pentandra. *Linn. Flor. Lapp.* N^o 370. *Bay-leaved sweet Willow.* In Salicetis, sed rarius. I have observed it amongst the Willows near *Mr. Ashby's Brick-kiln at Harefield*, sparingly.

SALIX PUMILA LINIFOLIA INCANA. C. B. Pin. 474. Chamæitea, seu Salix pumila. Ger. Emac. 1391. Pumila angustifolia prona parte cinerea. J. B. I. 213. *Common creeping Dwarf-Willow.* In ericetis præsertim solo putrido aut spongioso, reperitur etiam in montosis. On *Hampstead Heath*, and near the Bogs on *Haresfield Common*, plentifully. Vere Julos profert.

SALIX PUMILA FOLIO ROTUNDO. J. B. I. 2. 217. Foliis integris ovatis subtus reticulatis. Linn. Flor. Lapp. N^o 359. *Round-leav'd mountainous Dwarf-Willow.* In montosis Septentrionalibus & Cambricis. At the Top of *Ingleborough Hill*, near *Foal-foot*. Mr. *Thornbeck*.

SAMBUCUS LACINIATO FOLIO. C. B. Pin. 456. Laciniata. J. B. I. 549. *Elder with lacinated Leaves.* It is found about *Charlbury* in *Oxfordshire*, and called there *Feather'd Elder*. Junio floret.

SAMOLUS VALERANDI. J. B. III. 791. Anagallis aquatica folio rotundo non crenato. C. B. Pin. 252. aquatica rotundifolia. Ger. Emac. 620. Aquatica tertia lobelii folio subrotundo non crenato. Park. 1237. *Round-leav'd Water Pimpernel.* In palustribus & locis aquosis. On a little Bog two Miles from *East Horndon Church*, *Essex*. Mr. *Hill*. In the Marshes near *Woolwich* plentifully. Junio floret.

88 SPECIMEN BOTANICUM.

SANICULA SIVE DIAPENSIA. *Offic. Ger. Emac.* 948. Mas Fuchii sive Diapensia. *J. B. III.* 2. 639. Vulgaris seu Diapensia. *Park.* 532. Sanicula foliis radicalibus simplicibus, flosculis omnibus sessilibus. *Lin. Flor. Suecic.* N^o 222. *Sanicle.* In sylvis & sepibus. It grows abundantly in the Woods about *Harefield*, but is not very common about *London*. I have gathered it in the Woods at *Highwood Hill*, beyond *Hendon*, *Middlesex*. Maio floret.

SAXIFRAGA ALBA RADICE GRANULOSA. *Offic. J. B. III.* 706. Saxifraga alba. *Ger. Emac.* 841. Sedum foliis subrotundis crenatis, radice granulosa Saxifraga alba dictum. *Raii Syn. Ed.* II. 213. 3. *White Saxifrage.* In pascuis & sepium aggeribus. In a moist Meadow, near *Moor-ball*, *Harefield*, sparingly; about *Rickmansworth*, *Hertfordshire*; and in *Peckham Field*, *Surrey*, plentifully. Maio floret.

SAXIFRAGA ALBA FLORE PLENO. *Merr. Pin.* *Double-flowered White Saxifrage.* It is found in the same Place as mentioned by *Dr. Merrett*; also in the Pastures towards *Bleamoor*, in a Place called *Sleights*. *Mr. Thornbeck.* Hortorum elegans est ornamentum. Maio & Junio floret.

SAXIFRAGA ALPINA, ANGUSTO FOLIO, FLORE LUTEO GUTTATO. *Raii Syn. Ed.* III. 533. Sedum minus Alpinum luteum nostras. *Ejusd. Syn. Ed.* II. 212. 3. Alpinum floribus luteis

SPECIMEN BOTANICUM. 89

luteis maculosis. *C. B. Pin.* 284. *Saxifraga* foliis subulatis sparsis. *Linn. Flor. Lapp.* N° 178. *Small yellow Mountain Sengreen.* In saxosis aut locis petrosis præsertim Septentrionali Angliæ parte haud infrequens. On *Beeston Castle*, and on a high Hill in *Wyrswall Town* near *Malpas, Cheshire*, plentifully. Julio floret.

SAXIFRAGA MUSCOSA, TRIFIDO FOLIO. *J. R. H.* 252. *Sedum Alpinum trifido folio.* *C. B. Pin.* 284. Sedis affinis *Trifulca Alpina*, flore albo. *J. B.* III. 696. *Small Mountain Sengreen, with jagged Leaves.* In montosis Septentrionalibus. In *Dale Pastures* near *Ingleton.* *Mr. Thornbeck.* Julio floret.

SAXIFRAGA AUREA DODONÆI. *J. B.* III. 707. *Rotundifolia aurea.* *C. B. Pin.* 309. *Chrysofplenium* foliis amplioribus auriculatis. *J. R. H.* 146. *Golden Saxifrage.* Ad rivulos & in aggeribus fossarum solo præsertim putrido aut muscoso. In *Charlton Wood* near *Woolwich, Kent.* *Mr. Hurlock.* On the North-side of *Inglebrough Hill.* *Mr. Thornbeck.* By the Side of a Ditch in a Meadow just below *Coney's Farm* at *Harefield*, plentifully. Martio & Aprili floret.

SAXIFRAGA AUREA FOLIIS PEDICULIS OBLONGIS INSIDENTIBUS. *Raii Syn. Ed.* III. 158. 2. *Chrysofplenium* foliis pediculis oblongis insidentibus. *J. R. H.* 146. *Golden Saxifrage,*

90 SPECIMEN BOTANICUM.

with Leaves standing on long Foot-stalks. Cum priore cujus varietas esse videtur.

SCABIOSA CAPITULO GLOBOSO MAJOR ET MINOR. *C. B. Pin.* 270. Minor vulgaris. *J. B. III.* 3. Minor Campestris. *Park.* 484. *The lesser Field Scabious.* In pascuis ficcioribus & montosis. On the chalky Grounds about *Greenbithe* and *Northfleet*, *Kent*, plentifully. Junio & Julio floret.

SCABIOSA RADICE SUCCISA FLORE GLOBOSO, OFFIC. *Raii Syn. Ed.* III. 191. 3. Succisa, five *Morsus Diaboli*. *J. B. III.* 11. *Morsus Diaboli vulgaris flore purpureo.* *Park.* 491. *Devil's-bit.* In pratis haud infrequens. In the Meadows about *Highgate* and *Hampstead* abundantly. Augusto & Septembri floret. Variat flore carneo & interdum albo. Hæc Planta pro SCABIOSA MAJORI VULGARI in OFFICINIS quotidie usurpatur.

SCIRPUS MONTANUS CAPITULO BREVIORI, *J. R. H.* 528. *Scheuchz. Agrost.* 363. *Tab.* 7. *Fig.* 18. *Juncus parvus palustris cum parvis capitulis Equifeti.* *Raii Syn. Ed.* II. 274. 15. *Montanus parvus cum parvis capitulis luteis.* *J. B. II.* 523. *Scirpus folio culmi unico.* *Linn. Flor. Lapp.* N° 20. *Dwarf Marsh-Rush with small Aglet Heads.* In Ericetis præsertim palustribus aut aquosis. On *Harefield-Moor* plentifully. Sub finem Maii cum capitulis inveni.

SCRO-

SCROPHULARIA MAJOR CAULIBUS FOLIIS ET FLORIBUS VIRIDIBUS. *D. Bobart. Raii Syn. Ed. III: 283. Figwort with green Leaves and Flowers.* I have observed this Plant in the shady Woods between *Harefield* and *Chalfont, St. Peter's*, but not plentifully. Its Leaves are of a pale Green, and the whole Plant is much smaller than the *common Figwort*. Julio & Augusto floret.

SEDUM MINUS FOLIO LONGIUSCULO TERETI FLORE ALBO, OFFIC. *J. B. III. 690. Teretifolium album. C. B. Pin. 283. Vermicularis flore albo. Park. 733. Descr. & Vermicularis, seu Crassula minor vulgaris. Ejusd. 734. Icon. White-flowered Stone-Crop, with round-pointed Leaves.* In veteribus muris & tectis. On a Wall just beyond the Chapel at *Kentish Town*, abundantly. Junio & Julio floret.

SERPYLLUM VULGARE HIRSUTUM. *Raii Syn. Ed. III. 231. 6. Hoary wild Thyme.* In sterilioribus Soli expositis. On *Oliver's Mount* in *Uxbridge-Moor* plentifully. Maio & Junio floret.

SIUM ARVENSE, sive SEGETUM. *J. R. H. 308. Selinum Sii foliis. Ger. Emac. 1018. Selinum Segetale. Park. 932. Sium terrestre umbellis rarioribus. Hist. Oxon. III. 283. Hcne-*
N 2
wort,

92 SPECIMEN BOTANICUM.

wort, or *Corn-Parsley*. Inter fegetes sæpius reperitur, nonnunquam ad vias & semitas. In a Field near *Northfleet*, *Kent*, plentifully, 1740; also in the Brick-field adjoining to *Tyburn Turnpike*, 1744. Julio floret.

SIUM ALTERUM OLUSATRI FACIE. *Ger. Emac.* 256. Aquaticum foliis multifidis longis ferratis. *Hist. Oxon.* III. 283. Majus alterum angustifolium. *Park.* 1241. *Cicuta aquatica* Gesneri. *J. B.* III. 2. 175. *Long-leaved Water Hemlock*. Ad margines stagnorum majorum, & in palustribus. Gathered once by Dr. *Wilmer* in one of the Ponds near the Road at *Hayes*, three Miles from *Uxbridge*. In some boggy Grounds near *Skipton-Mallet*, *Somersetshire*. Mr. *Hill*. Julio & Augusto floret.

SIUM DIOSCORIDIS, seu PASTINACA AQUATICA MAJOR. *Park.* 1240. Majus latifolium. *Ger. Emac.* 256. Latifolium foliis variis. *Merr. Pin.* *Great Water Parsnep*. Ad ripas fluviorum præsertim majorum & in ipsis aquis. In several Parts of *Harefield River*. Julio floret.

SIUM MINIMUM UMBELLATUM FOLIIS VARIIS. *Pluk. Alm.* 348. *Tab.* 61. *Fig.* 3. Pusillum foliis variis. *Phyt. Brit.* Minimum. *Raii Hist.* 444. Minimum foliis imis ferulaceis, & aquaticum pumilum foliis infernè fæniculaceis, supernè lobatis. *Hist. Oxon.* III. 283.

Seç.

Seet. 9. *Tab.* 5. *Fig.* 5. *The least Water Parsnep.* In palustribus & aquosis. In the boggy Places on *Harefield Common*, plentifully. Maio floret.

SOLANUM LETHALE. *Ger. Emac.* 340. *Melanocerasos.* *C. B. Pin.* 166. *Belladonna majoribus foliis & floribus.* *J. R. H.* 77. *Vaill. Bot. Paris.* 20. *Solanum manicum multis, seu Bella Donna.* *J. B. III.* 611. *Deadly Nightshade, or Dwale.* Among the Box going down to *Darking, Surrey*, plentifully. *Dr. Wilmer.* In *Preston Church-yard* near *Feversham.* *Catal. Feversh.* By the Road-side under the Park-Wall between *Temsford-Mills* and *Welwyn, Hertfordshire.* *Mr. Watson.* In a shady Gravel Pit near the *Old Park Wood* at *Harefield*, and in the Gardens at *Moor-Park* near *Rickmansworth*, plentifully. Maio floret.

SORBUS SYLVESTRIS PINNATIS ANGUSTIORIBUS FOLIIS, UNDIQUE GLABRIS, FRUCTU PARVO MINIATO. *Pluk. Alm.* 355. *Sylvestris foliis domesticæ similis.* *C. B. Pin.* 415. *Sylvestris, sive Fraxinus Bubula.* *Ger. Emac.* 1473. *Ornus, sive Fraxinus sylvestris.* *Park.* 1419. *The wild Ash or Quicken-Tree.* In montosis præfertim Septentrionalibus. In the mountainous Meadows near *Whitchurch, Cheshire.* *Mr. Vernon.* It is also found in *Hampstead Woods.* Maio & Junio floret.

SPARGANIUM MINIMUM. *J. B. II. 541. Park. 1205. The least Bur-reed.* In Stagnis & Rivulis, sed rarius. It is found in the standing Waters about *Hinton*, and *Feversham Moors*, *Cambridgeshire*. *Dr. Thomas Manningham.*

SPERGULA PURPUREA. *J. B. III. 722. Alfine Spargulæ facie minor, seu Spargula minor flore subcæruleo. C. B. Pin. 251. Prodr. 119. 9. Descr. Spurrey.* In arenosis haud infrequens. In *Hyde-Park*, and on *Hampstead Heath*, plentifully. *Junio* floret.

SPHONDYLIIUM VULGARE, FOLIIS ACUTE INCISIS. *Barrel. Icon. 56. Sphondylium montanum minus angustifolium, tenuiter laciniatum & hirsutum minus foliis tenuiter laciniatis, femine lato. Pluk. Alm. 355. Tab. 63. Fig. 3. Majus aliud laciniatis foliis. Park. 953. Cum foliis angustioribus. C. B. Pin. 157. Prodr. 83. Jagged Cow Parsnep.* In several Places near *Harefield*. *Julio* floret.

SPONGIA RAMOSA FLUVIATILIS. *Raii Fascic. Pl. 20. Hist. I. 81. Spongia ramis teretibus obtusis. Linn. Flor. Lapp. N° 535. Branched River Sponge.* Sent to me by my late worthy Friend *Mr. Newton*, a very curious Botanist and eminent Apothecary at *Colchester*, who gathered it about *Mersey-Island* not far from thence.

SPECIMEN BOTANICUM. 95

A præcedente omnino differre videtur Spongia fluviatilis anfractuosa perfragilis ramosissima nostras. *Pluk. Alm.* 356. Nostra enim quamvis perquam ramosa, ne vix fragilis sit.

STACHYS FOLIO DENSIORE CANDICANTE SERRATO ET ACUTO MAJOR. *Hist. Oxon.* III. 381. *Stachys Fuchii.* *J. B.* III. 319. Major Germanica. *C. B. Pin.* 236. *Base Horebound.* Ad sepes & in dumetis, sed rarius. In the Lane leading from *Whichwood Forest* to *Charlbury, Oxfordshire*, plentifully; also in some of the Coppices of *Whichwood Forest*. Junio floret.

STATICE MONTANA MINOR. *J. R. H.* 341. *Caryophyllus montanus minor.* *C. B. Pin.* 211. *Caryophylleus flos aphylocaulos, vel Junceus minor.* *J. B.* III. 336. *Thrift* or *Sea Gilly-Flower.* In palustribus maritimis. In the Marshes between *Gravesend* and *Clyffe, Kent*, plentifully. Junio & Julio floret.

STRATIOTES FOLIIS ALOES SEMINE LONGO. *Gundelsh.* Sive *Militaris Aizoides.* *Park.* 1249. *Aloe palustris.* *C. B. Pin.* 286. *Aloides.* *Boerb. Ind.* II. 132. *Water Aloe,* or *Fresh Water Soldier.* In many Places near *Cambridge.* *Dr. Thomas Manningham.* Junio floret.

SYMPHYTUM MAJUS, FLORE PURPUREO. *Park.* 523. *Consolida major flore purpureo.*
Ger.

Ger. Emac. 806. *Great Comfrey with Purple Flowers.* I found it plentifully near the Turnpike at *Wheatly-Bridge, Oxfordshire, 1736.* Maio & Junio floret.

T.

TANACETUM VULGARE LUTEUM, OFFIC.
C. B. Pin. 132. Vulgare flore luteo.
J. B. III. 131. Tanacetum foliis pinnatis planis, pinnis ferratis. *Linn. Flor. Lapp.* N° 295. *Common Tansy.* Ad vias & agrorum margines præsertim in montosis. In the Meadows about *Bellow-Hill* near *Whitchurch, Cheshire,* abundantly. *Mr. Vernon.* In a Meadow near *Harefield Church,* and several other Places. Julio floret.

THALICTRUM MINUS, seu RUTÆ PRATENSIS GENUS MINUS SEMINE STRIATO. *J. B. III.* 487. *Minus.* *C. B. Pin.* 337. Caule folioso æquali foliolis caulinis acutis panicula simplici floribus nutantibus. *Linn. Flor. Suecic.* N° 454. *The lesser Meadow-Rue.* In pascuis montosis & cretaceis. In *Mill-Bank* and *Friar-Wood* near *Ingleton, Yorkshire.* *Mr. Thornbeck.* Julio & Augusto floret.

THLASPI ARVENSE SILIQUIS LATIS, OFFIC.
C. B. Pin. 105. *Dioscoridis.* *Ger. Emac.* 262. *Thlaspi* siliquis orbiculatis foliis oblongis glabris. *Linn. Flor. Lapp.* N° 251. *Treacle-Mustard,*
Penny-

SPECIMEN BOTANICUM. 97.

Penny-Cress. Inter segetes, sed rarius. In a Corn-field on the West-side of *Chalfont*, St. Peter's, Bucks, plentifully. Mr. *Watson*. About *Chipping-Norton* and *Charlbury*, Oxfordshire, it is very common. I have also seen it about *Ongar* and *Chelmsford* in *Essex*. Julio floret.

THLASPI FOLIIS GLOBULARIÆ. *J. B. II.* 926. Montanum *Glasti folio minus*. *Park.* 842. *C. B. Pin.* 106. *Thlaspeos albi supini*, varietas. *Ger. Emac.* 268. *Treacle Mustard* with Leaves like *Globularia*. At a Place called *Coppermine* on the Left-hand as you go from *Settle* to *Malham*, Yorkshire. Mr. *Thornbeck*. Maio & Junio floret.

TITHYMALUS ARVENSIS LATIFOLIUS GERMANICUS. *C. B. Pin.* 291. *Platyphylus Fuchii*. *J. B. III.* 670. *Tithymalus segetum longifolius*. *Raii Cat. Cant. App.* *Broad and long-leaved Corn-Spurge*. Inter segetes sed rarius. In the Corn-fields between *Harefield Common* and *Battle's-Well*, plentifully. Junio floret.

TITHYMALUS MINIMUS ANGUSTIFOLIUS ANNUUS. *J. B. III.* 664. *Esula exigua Tragi*. *Ger. Emac.* 503. *Tithymalus seu Esula exigua*. *C. B. Pin.* 291. *Tithymalus Leptophyllos*. *Park.* 193. *Dwarf Spurge*, or *small annual Spurge*. Inter segetes haud infrequens. In the Corn-fields at *Stone* near *Dartford*, Kent,

98 SPECIMEN BOTANICUM.

and in many Places about *Harefield*. Julio floret.

TRAGOPOGON PURPUREO-CÆRULEUM PORRI FOLIO QUOD ARTIFI VULGO. *C. B. Pin.* 274. Purpureum. *Ger. Emac.* 735. Flore purpureo. *J. B. II.* 1059. *Purple-flowered Goats-Beard*. In Anglia reperitur, sed rarius. In *Thorn Hop-Garden* near *Feversham*. *Catal. Feversh.* In the Marshes near *Long-Reach* below *Woolwich*. Mr. *Jarvis*. In some Meadows near *Edmonton*. Mr. *Hurlock*. Maio & Junio floret.

TRICHOMANES, sive POLYTRICHUM, OFFIC. *C. B. Pin.* 356. Mas. *Ger. Emac.* 1146. *Asplenium pinnatum*, pinnis subrotundis crenatis. *Linn. Flor. Lapp.* N^o 388. *English Black Maiden-hair*. In aggeribus umbrosis & muris antiquis. On the Walls of *Chelsea-College* next the *Thames*. Mr. *Nicholls*. On *Stone-Church* near *Dartford, Kent*. In a shady Lane between *Ongar* and *Kelvedon, Essex*. In the Orchard at *Harefield-Place* plentifully.

TRIFOLIUM LUTEUM LUPULINUM MINIMUM. *Hist. Oxon.* II. 142. *J. R. H.* 404. *Trifolium pratense*, *Lupulinum annuum*, luteum omnium minimum, foliis cordatis, siliculis compressis monospermis. *Michel. Nov. Plant. Gen.* 29. 8. *The least Hop-Trefoil*. On *Harefield Common* plentifully. Maio & Junio floret.

TRI-

TRIFOLIUM PRATENSE HIRSUTUM MAJUS
 FLORE ALBO-SULPHUREO, seu ὠχρολεύκω.
Raii Syn. Ed. II. 193. 3. Lagopoides annuum
 hirsutum, pallidè luteum seu ochroleucum. *Hist.*
Oxon. II. 141. Montanum majus, flore albo
 sulphureo. *Merr. Pin. The great white or yellowish Meadow Trefoil.* In pascuis ficcioribus &
 dumetis. In a Close by Sir *John Tyrrell's* great
 Fish-pond at *Heron-Gate* near *Thorndon, Essex.*
 Maio & Junio floret.

TRIFOLIUM CUM GLOMERULIS AD CAULIUM NODOS ROTUNDIS. *Raii Syn. Ed. II. 194. 9.* Nodiflorum vel juxta folia floridum. *Phyt. Prit. Arvense supinum verticillatum. Barrel. Icon. 882. Knotted Trefoil with round Heads.* In arenosis aut locis glareosis, sed rarius. It grows on *Crumb's-Hill* at *Greenwich*, under the *Park-Wall.* Maio & Junio floret.

TRIFOLIUM FLOSCULIS ALBIS IN GLOMERULIS OBLONGIS ASPERIS, CAULICULIS PROXIME ADNATIS. *Raii Syn. Ed. II. 194. 10.* Minus villosum purpureum capite parvo echinato. *Barrel. Icon. 869. Cujus caules ex geniculis glomerulos oblongos proferunt. J. B. II. 3. 378. Knotted Trefoil with oblong Heads.* In pascuis solo cretaceo. In *Broadoaks Meadows*, near *Saffron-Walden, Essex.* *Mr. Hurlock.* Maio & Junio floret.

TRIFOLIUM PARVUM HIRSUTUM, FLORIBUS PARVIS DILUTE PURPUREIS IN GLOMERULIS MOLLIORIBUS ET OBLONGIS, SEMINE MAGNO. *Raii Syn. Ed. III. 329. 9.* Capitulis ovatis, sessilibus lateralibus, calycibus subrotundis, villosis striatis. *Linn. Flor. Suecic. N° 614.* *Knotted Trefoil with softer Heads and large Seed.* In pascuis sterilioribus. On *Laindon-Hills, Essex.* *Mr. Hill.* I once gathered it on a Bank in the first Field from *Southampton-Row*, in the Road to *Hampstead.* On *Oliver's Mount* in *Uxbridge Moor*, plentifully. Junio floret.

TRIFOLIUM PALUSTRE, OFFIC. *J. B. II. 389.* Paludosum. *Ger. Emac. 1194.* *Menyanthes palustre triphyllum latifolium & angustifolium. J. R. H. 117.* Foliis ternatis. *Linn. Flor. Lapp. N° 80.* *Marsb Trefoil, Buck-Beans, or Bog-Beans.* In palustribus & aquosis. In the Bogs on *Hampstead Heath*, in *Battersea-Field* by the *Thames* Side, and in *Harefield Moor* plentifully. Maio floret.

TRIFOLIUM PUMILUM SUPINUM FLOSCULIS LONGIS ALBIS. *Phyt. Brit. Parvum Monspellanum album cum paucis floribus. J. B. II. 380.* *Pratense supinum καθῶλεψ*, seu capite humi merso. *Barrel. Icon. 881.* Subterraneum seu folliculos sub terram condens. *Magnol. Bot. Monsp.* *Dwarf Trefoil with long white Flowers.* Locis arenosis aut glareosis gaudet. On

SPECIMEN BOTANICUM. 101

On *Harefield* and *Uxbridge Commons* plentifully.
Maio floret.

TRIFOLIUM STELLATUM GLABRUM. *Ger. Emac.* 1208. *Descr.* Dipfaci capitulis quorundam. *Raii Syn. Ed. III.* 329. *Smooth Star-beaded Trefoil*, or *Teasel-beaded Trefoil*. In palustribus maritimis. On the Shore in *Canvey-Island, Essex*, plentifully. *Mr. Hill.* Junio floret.

TURRITIS FOLIIS INFERIORIBUS CICHORACEIS RELIQUIS PERFOLIATÆ. *J. R. H. R.* 224. *Brassica sylvestris foliis circa radicem cichoraceis.* *C. B. Pin.* 109. *Sylvestris foliis circa radicem cichoraceis, asperis caulibus autem adhærentibus planis, seu glabris.* *Hist. Oxon. II.* *Tower-Mustard with the lower Leaves like Succory, the rest like Thorow-wax.* Frequent in *Surrey* and *Kent*, in Pits and uncultivated Places. *Mr. Watson.* It is likewise found about *Colchester*, from whence it was sent me by *Mr. Newton.* Junio floret.

TURRITIS VULGATIOR. *J. B. II.* 836. *Brassica sylvestris foliis angustioribus integris & hispidis.* *C. B. Pin. Ed. I.* 112. *Tower-Mustard.* On a large Brick-wall as you go into *Lewisham-Town, Kent*, on the Right-hand. *Dr. Wilmer.* In the Lane between *Charlton* and *Woolwich.* *Mr. Nicholls.* Maio & Junio floret.

V.

VALERIANA SYLVESTRIS MAJOR MONTANA. *C. B. Pin.* 164. Sylvestris foliis angustioribus. *Moris. Umbell.* 50, 51. Folio angustiore. *Rivin. Irr. Mon. Great wild Mountain Valerian.* In pascuis montosis & sylvis. In several Parts of *Whickwood Forest*, and in *Ditchley Woods* near *Charlbury, Oxfordshire*, plentifully. Maio floret.

Hæc *Valerianæ* species ab aliis facilè palmam proripit, acris enim & aromatica est, cum palustris vapida & fætida evadit. Gratum præbet remedium in affectibus *cephalicis* aut *nervosis*, & cuiusvis menstruo adaptatur.

VERBASCUM FLORE ALBO PARVO. *J. B.* III. 273. *Lychnitis* flore albo parvo. *C. B. Pin.* 240. Mas foliis longioribus. *Park.* 60. *White-flower'd Mullein.* Ad vias in agro *Cantiano* frequens. By the Road-side between *Greenwich* and *Charlton*, about *Shooters-Hill*, and on *Chiselhurst Common*. Junio & Julio floret.

VERBASCUM NIGRUM FLORE PARVO APICIBUS PURPUREIS. *J. B.* 873. Nigrum flore ex luteo purpurascente. *C. B. Pin.* 240. Nigrum *salvifolium* luteo flore. *Lob. Adv.* 241. 466. Foliis ovatis crenatis subtus tomentosis, caule angulato. *Linn. Flor. Suecic.* N^o 188. Sage-

SPECIMEN BOTANICUM. 103

Sage-leaved black Mullein. In pascuis & ad vias. In the Chalk-fields not far from *Ospringe Church, Kent.* *Catal. Feversh.* In a Field just at the Entrance of *Battersea-Town*, abundantly. By the Road-side in many Places between *Shooters-Hill* and *Dartford*. It is also found about *Harefield*, but not very common. Junio & Julio floret.

VERONICA TEUCRII FOLIO. *J. R. H.* 145. *Veronica Chamædryoides*, foliis pediculis oblongis infidentibus. *Raii Syn. Ed. II.* 179. 12. *Chamædrii spuria affinis rotundifolia scutellata.* *C. B. Pin.* 249. *Wild Germander with Leaves standing on long Foot-stalks.* In sylvis & ad sepes solo præsertim humido. In the *Old Park-Wood* and the *Grove-Wood* near *Harefield*. Maio floret.

VIBURNUM. *Park.* 1448. *Lantana*, five *Viburnum.* *Ger. Emac.* 1460. *Lantana vulgò* aliis *Viburnum.* *J. B. I.* 557. *The pliant Mealy Tree, or Wayfaring Tree.* In sepibus solo præsertim cretaceo. In several Places between *Northfleet* and *Gravesend*, and about *Dartford*. Maio floret.

VIOLA CANINA MINOR. *D. Dubois. Raii Syn. Ed. III.* 364. 5. *Canina minor calcari floris lutescente.* *Nobis. The lesser Dog's Violet.* In ericetis. On *Harefield* and *Uxbridge Commons* plentifully. Aprili & Maio floret.

VIOLA

VIOLA PALUSTRIS ROTUNDIFOLIA GLABRA. *D. Plot. Raii Syn. Ed. III. 364. 6.* Foliis subrotundis cordatis, pedunculis radicatis. *Linn. Flor. Lapp. N° 278. Smooth round-leaved Marsh Violet.* In palustribus & locis muscosis humidis. In a Bog near *Liphook, Hampshire.* Mr. Hill. Junio floret.

VIOLA MARTIA MAJOR HIRSUTA INODORA. *D. Plot. Viola Trachelii folio vulgo. Raii Syn. Ed. III. 365. 8.* Foliis Trachelii ferotina hirsuta radice lignosa. *Merr. Pin. Viola acaulis foliis cordatis hispidis. Linn. Flor. Suecic. N° 718. Violet with Throatwort Leaves.* By the Sides of the *Old Park Wood*, and in *Harefield Chalk-pit.* Aprili floret.

VIOLA TRICOLOR, OFFIC. *Ger. Emac. 854. Tricolor hortensis repens. C. B. Pin. 199. Jacea Tricolor, sive Trinitatis flos. J. B. III. 546. Viola tricolor hortensis, violacea, alba, lutea, incisifoliis. Barrel. Icon. 696. Pansies, or Hearts-Ease, vulgò Three Faces under a Hood.* In a Meadow near *Hampton-Court* plentifully. Junio floret.

VIRGA AUREA VULGARIS, OFFIC. *Park. 542. Aurea vulgaris latifolia. J. B. II. 1062. Aurea quarta sive angustifolia minus ferrata. C. B. Pin. 268. Golden Rod.* In sylvis & erice-
there-

SPECIMEN BOTANICUM. 105

tis. On *Hampstead Heath*, and the Woods thereabouts plentifully. Julio & Augusto floret.

VIRGA AUREA MAXIMA RADICE REPENTE. *D. Bobart. Raii Syn. Ed. II. 81.* Aurea angustifolia ferrata, sive *Solidago Saracenicæ*. *J. B. II. 1063.* Aurea maxima radice repente sive *Doria major repens.* *Hist. Oxon. III. 123.* *Broad-leaved indented Golden Rod.* In the Meadows near *Ingleton, Yorkshire.* *Mr. Thornbeck.* Julio & Augusto floret.

VITIS IDÆA FOLIIS OBLONGIS CRENATIS FRUCTU NIGRICANTE. *C. B. Pin. 470.* *Vaccinia nigra.* *Ger. Emac. 1415.* *Vaccinium caule angulato, foliis ferratis annuis.* *Linn. Flor. Lapp. N° 143.* *Black Whorts, or Whortle-Berries, or Bill-Berries.* In sylvis humidis & Ericetis solum præsertim spongioso aut putrido. On *Hampstead Heath* and in *Cane-Wood*, also on *Iver-Heath* near *Uxbridge*, plentifully. Aprili floret.

VITIS IDÆA SEMPER VIRENS FRUCTU RUBRO. *J. B. I. 522.* *Idæa foliis subrotundis non crenatis, baccis rubris.* *C. B. Pin. 470.* *Vaccinium foliis perennantibus verticaliter ovatis.* *Linn. Flor. Lapp. N° 144.* *Red Whorts, or Whortle-Berries.* In sylvis & Ericetis præsertim montosis: In *Golden Wood* towards the North-end, abundantly. *Catal. Feversh.* It is

106 SPECIMEN BOTANICUM.

common on the Moors in *Cheshire*. Mr. *Vernon*.
Maio floret.

URTICA PILULIFERA FOLIO PROFUNDIUS
URTICÆ MAJORIS IN MODUM SERRATO,
SEMINE MAGNO LINI, OFFIC. *Raii Syn. Ed.*
III. 140. 3. *Urtica Romana. Park. 440. Ro-*
mana, seu mas cum globulis. J. B. III. 445.
Common Roman Nettle. In several Parts of *Can-*
vey Island, Essex. Mr. *Hill.* Junio floret.

F I N I S.



THE UNIVERSITY OF CHICAGO

Department of the History of Art and Architecture
Chicago, Illinois

LETTER FROM THE DIRECTOR OF THE
MUSEUM OF ART AND ARCHITECTURE
TO THE CHAIRMAN OF THE BOARD OF TRUSTEES
OF THE UNIVERSITY OF CHICAGO
RE: THE PROPOSED RELOCATION OF THE
MUSEUM OF ART AND ARCHITECTURE
TO THE NEW CAMPUS

THE UNIVERSITY OF CHICAGO
MUSEUM OF ART AND ARCHITECTURE



893

L8

2

