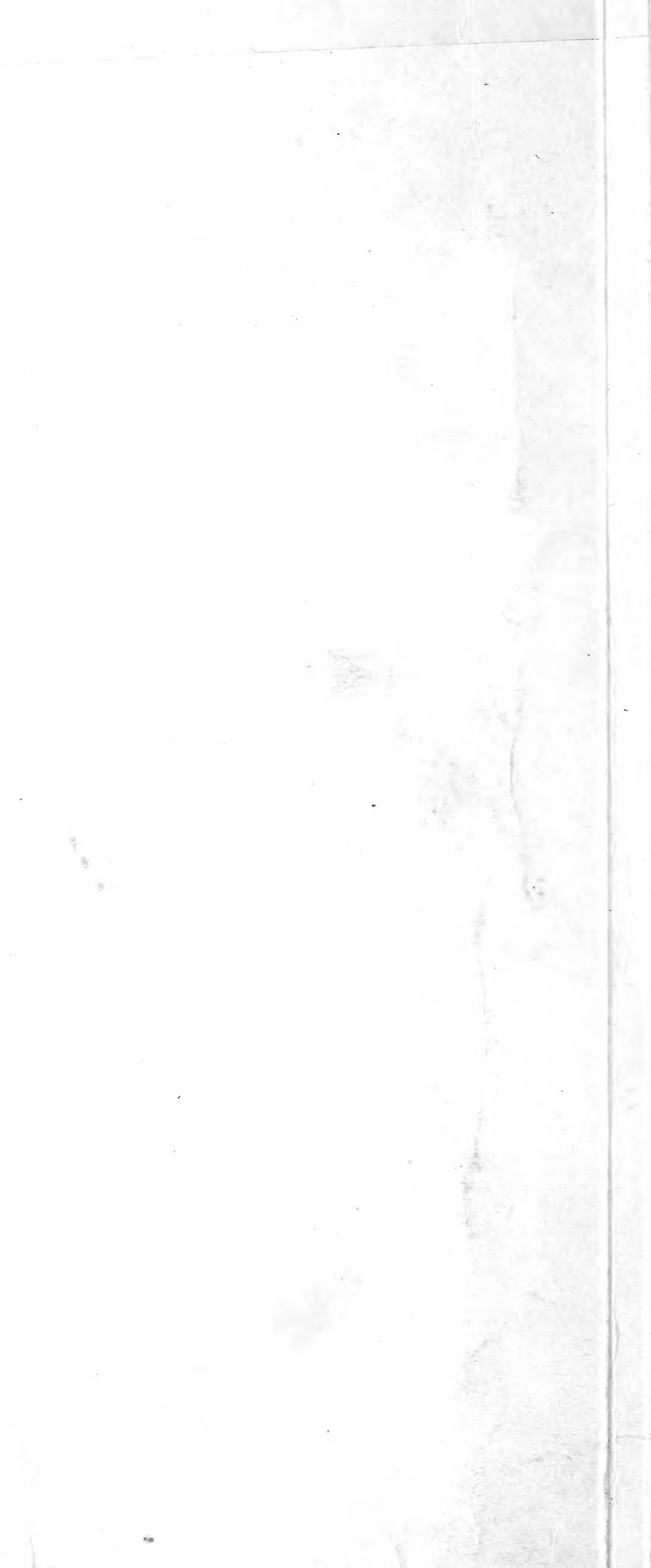


## Historic, archived document

Do not assume content reflects current scientific knowledge, policies, or practices.





---

---

**SPRING  
TRADE LIST**

1935

---

---

***Lovett's***  
***NURSERY, Inc.***  
***Little Silver,***  
***N.J.***

---

---

---

# INTRODUCTION

## ● *Spring Trade List, 1935*

We are peculiarly fortunate in having two distinctly different locations for our Nursery Stock. Different soil, and different climate conditions are essential for first rate products. We have found, for instance, that our Roses and our Azaleas grow much better in the soil of Southern Delaware, whereas most of our shade trees and deciduous shrubs thrive to greater advantage at Little Silver, New Jersey, which is our shipping point for all material. Hence, we are growing all of our stock in the ideal spot for its best development. This is the reason for the unequalled quality of our Nursery ware which we are still offering at the amazingly low prices you will find quoted herein.

LOVETT'S NURSERY, Inc.

---



AUTUMN

## Hardy Field Grown ROSES

Strictly No. 1 grade plants, Eastern grown, and budded on *Rosa multiflora japonica* (unless noted otherwise).

Our list of Hybrid Tea Roses has been greatly reduced this year. We can see no advantage in growing a tremendous assortment of varieties, knowing, as we do, that there are only a few sorts of each color which may be depended on to give satisfactory results in the varied soils and climates of our great country.

All our Roses are properly pruned and ready for planting before being packed and shipped to our patrons. Do not request untrimmed Roses as we cannot supply same, all of our Roses having been carefully pruned by experts during the Winter months.

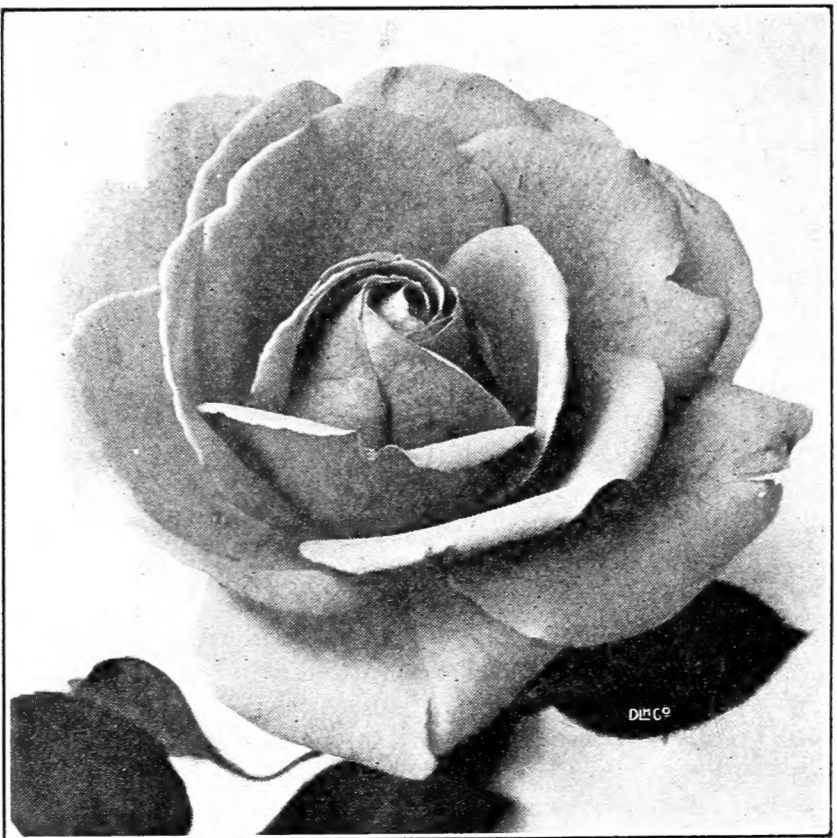
## Everblooming Roses Hybrid Teas

	10	100
<b>AUTUMN.</b> Gorgeous flowers which blend together the Autumnal shades of russet brown, bronzy red and rich yellow. Splendid for cutting. ....	\$3.50	\$30.00
<b>Charles K. Douglas.</b> Countless large flowers of a light crimson scarlet which does not fade. ....	3.00	25.00
<b>Chas. P. Kilham.</b> Bright orange pink with fiery center; very double. ....	3.50	30.00
<b>Dame Edith Helen.</b> Shapely buds and high centered pink blooms of perfect shape. ....	3.00	25.00
<b>Duchess of Luxembourg.</b> Large and very double flowers of a rich golden yellow. ....	3.00	25.00
<b>Etoile de France.</b> Popular, with long, dark crimson blooms; very fragrant. ....	3.00	25.00
<b>Frank W. Dunlop.</b> Many deep rose-pink blooms. ....	3.00	25.00

# LOVETT'S SPRING TRADE LIST, 1935

## EVERBLOOMING ROSES—Continued

<b>Gruss an Teplitz.</b> Crimson maroon flowers in great abundance throughout the entire season.....	10	100
	\$3.00	\$25.00
<b>Ivy May.</b> Shapely in both bud and flower are these rose-pink blooms, which are edged and suffused with gold.....	3.00	25.00
<b>Joyous Cavalier.</b> Brilliant scarlet; large, double.....	3.50	30.00
<b>Kaiserin Auguste Viktoria.</b> Most popular of all the White Hybrid Tea Roses.....	3.50	30.00
<b>Konigin Louise.</b> Bud and flower extremely large; white, very lasting.....	3.50	30.00
<b>LADY ASHTOWN.</b> Exquisitely pointed flowers of glossy, deep pink with golden underglow. Especially good as a cut flower in corsage or bouquet.....	3.00	25.00
<b>Lord Charlemont.</b> Bright flowers of deep scarlet crimson.....	3.50	30.00
<b>MISS ROWENA THOM.</b> Huge, flaming, rosy mauve flowers, center old gold. Continuous bloomer.....	3.00	25.00
<b>MEVR. G. A. VAN ROSSEM.</b> Brownish yellow flowers, shaded with copper pink; a popular novelty.....	3.50	30.00
<b>Mrs. W. E. Nickerson.</b> Yellow-to-salmon, veined with golden pink.....	3.00	25.00
<b>Norman Lambert.</b> Lasting flowers of a deep salmon-orange.....	3.50	30.00
<b>PRESIDENT HERBERT HOOVER.</b> An outstanding novelty of maroon, orange and gold; a perfect Rose for the florist or the home garden.....	3.50	30.00
<b>Radiance.</b> Most popular of all Roses, with its bright pink, huge blooms by the score; fragrant, foliage splendid.....	3.00	25.00
<b>Rapture.</b> Rich, clear pink Roses. Quite similar to the older variety, Mme. Butterfly, but of better color, and also a better grower.....	3.00	25.00



MISS ROWENA THOM



SYRACUSE

EVERBLOOMING ROSES—Continued

<b>Red Radiance.</b> Bright, rosy red sport of Radiance, and like its sire in blooming qualities, foliage and fragrance.....	10	100
	\$3.00	\$25.00
<b>Souv. de Claudius Pernet.</b> Very free bloomer, early and late, of the purest yellow known.....	3.00	25.00
<b>Souv. de Georges Pernet.</b> Beautiful rose, with brick-red buds opening to huge flowers of a pleasing orange-pink.....	3.00	25.00
<b>Syracuse.</b> A new Rose, outstanding in the brilliance of its bright crimson hue. Blooms hold their color and shapeliness when cut.	4.00	35.00
<b>TALISMAN.</b> Brilliant buds, red on outer side of petals and gold on inner side, turn to well shaped blooms, scarlet orange and rich yellow.....	3.00	25.00
<b>Wilhelm Kordes.</b> A floral sunset of golden fawn and orange pink; intensely fragrant..	3.50	30.00
<b>Willowmere.</b> Rich pink rose, perfect for bedding, and suffused with a radiant glow.	3.00	25.00

## Hybrid Perpetual and Miscellaneous Roses

Budded on Rosa Multiflora Japonica

Prices refer to No. 1 grade plants

<b>Frau Karl Druschki.</b> Best of all white flowering Roses. Very hardy and free blooming.....	10	100
	\$2.50	\$22.00
<b>Magna Charta.</b> Huge blooms of bright pink, overlaid with carmine, very double, full and lasting.....	2.50	22.00
<b>Marshall P. Wilder.</b> Large, double, full, bright scarlet crimson flowers.....	2.50	22.00
<b>Soleil d'Or.</b> Orange yellow to ruddy gold, shaded with Nasturtium red.....	3.00	25.00



CLIMBING ROSE ALIDA LOVETT

## Climbing Roses

Budded on *Rosa Multiflora Japonica* except as noted  
No. 1 grade plants

- |  |        |         |
|--|--------|---------|
| <b>Alberic Barbier.</b> Many fragrant, creamy white flowers, shaded yellow at their centers.   | 10     | 100     |
|  | \$2.50 | \$20.00 |
| <b>ALIDA LOVETT.</b> The best pink Climber. An extra strong sort, originated by the late Dr. Van Fleet, producing bright, shell pink flowers, tinted sulphur yellow at base, and of Hybrid Tea shape and size. | 2.50   | 20.00   |
| <b>American Pillar.</b> Large, single, brilliant crimson-pink flowers with white centers and golden stamens.   | 2.00   | 15.00   |
| <b>Aviateur Bleriot.</b> Orange-pink buds turn to pale yellow blooms.  | 2.50   | 20.00   |
| <b>BESS LOVETT.</b> The best red Climber. A Van Fleet introduction with cup-shaped light crimson blooms, full and large, in long-stemmed clusters.   | 2.50   | 20.00   |
| <b>CLIMBING AMERICAN BEAUTY.</b> One of the most popular of all climbing Roses, producing brilliant carmine flowers; the most beautiful in shape of any climber.   | 2.50   | 20.00   |
| <b>Crimson Rambler.</b> Large, pyramidal clusters of bright crimson flowers in great profusion.  | 2.00   | 15.00   |
| <b>Dorothy Perkins</b> (On own roots). Very popular, with beautiful miniature shell-pink flowers in pendulous sprays.  | 2.00   | 15.00   |
| <b>Dr. Huey.</b> Semi-double, large flowers of crimson maroon, shaded black, borne in many clusters on a hardy plant.  | 2.50   | 20.00   |
| <b>Dr. W. Van Fleet.</b> The most popular climber of its color, with pale pink buds and flowers for over three weeks in the Summer.  | 2.50   | 20.00   |
| <b>EMILY GRAY.</b> This popular variety bears semi-double flowers of a bright buff color with amber yellow at the base of each petal.  | 3.00   | 25.00   |
| <b>Ernst Grandpierre.</b> Fragrant salmon-yellow buds turn to large creamy blooms.   | 2.50   | 20.00   |
| <b>Eugene Jacquet.</b> Fragrant, very lasting, cherry carmine-red in clusters.   | 2.50   | 20.00   |



# LOVETT'S SPRING TRADE LIST, 1935

## CLIMBING ROSES—Continued

<b>Excelsa</b> (On own roots). Large and profuse clusters of scarlet-crimson blooms on a vigorous plant.....	10	100
	\$2.00	\$15.00
<b>Flower of Fairfield.</b> An everblooming crimson Rambler of the hardiest constitution..	2.50	20.00
<b>Gardenia.</b> Pretty buds of nankeen yellow on long stems make this the most popular climber of its color.....	2.00	15.00
<b>Jacotte.</b> Bears clusters of large semi-double orange-yellow flowers tinted reddish copper. Not absolutely hardy north of Trenton, N. J.....	3.50	30.00
<b>Lady Gay</b> (On own roots). Soft cherry-pink Roses with crinkled petals in large, loose clusters.....	2.00	15.00
<b>Marie Gouchault.</b> Brilliant clear red passing to salmon rose; of Dorothy Perkins type.	2.50	20.00
<b>MARY LOVETT.</b> Third of the Van Fleet Lovett Sisters Climbers and the best white of all. Sweet-scented and free blooming, borne on long, strong stems.....	2.50	20.00
<b>Mme. Gregoire Staechelin</b> (Spanish Beauty). Bears quantities of opalescent pink flowers, overlaid with carmine in June.....	3.00	25.00
<b>PAUL'S SCARLET.</b> Fiery scarlet flowers of excellent shape, borne in small trusses....	2.50	20.00
<b>Phyllis Bide.</b> An everblooming variety which produces myriads of gold and pink Roses throughout the entire season.....	3.00	25.00
<b>Primrose.</b> Bright, primrose yellow flowers borne several together on a long stem....	2.50	20.00
<b>Roserie.</b> Velvety Tyrian pink, white base, gets darker with age, and darker veining.	2.50	20.00
<b>Silver Moon.</b> Long, creamy buds turn to huge, saucer-shaped flowers in small sprays.	2.50	20.00
<b>The Beacon.</b> Fiery red with white eye....	2.50	20.00
<b>White Dorothy Perkins</b> (On own roots). A pure white form of the popular "Dorothy" and even stronger in growth.....	2.00	15.00
<b>Wichuraiana</b> (On own roots). A perfect trailer with single white flowers which have prominent golden yellow stamens and are delightfully fragrant.....	2.50	20.00

## Polyantha Roses

### (BABY RAMBLER)

#### Budded on Rosa Multiflora Japonica

No. 1 grade plants

<b>Gloria Mundi.</b> Striking and beautiful with its large clusters of orange-scarlet flowers.	10	100
	\$2.50	\$22.00
<b>Golden Salmon.</b> Large orange flowers grace this vigorous plant in huge trusses..	2.50	22.00
<b>Ideal.</b> Dark velvety crimson blooms in the greatest profusion throughout the season.....	2.50	22.00
<b>Triomphe Orleanais.</b> Semi-double, cherry-red, borne in large clusters on long, strong stems.....	2.50	22.00

# HARDY SHRUBS

All of our shrubs are graded up to and above the standards adopted by the American Association of Nurserymen. They are grown in wide rows, with plenty of space between each plant, so that they can develop into sturdy, bushy specimens.

## Special Shrub Offer

This may be your last chance to take advantage of the phenomenal bargains we are listing below. Our shrub collections have met with such unanimous approval that we are again offering them to our patrons at **rock-bottom prices**. These shrubs are all **two years old or older**, and can thus be depended upon for quick and satisfactory results. Rare and choice varieties will be included in your collection—you need not fear for our selection of sorts, and all will be correctly labeled.

- 50 Assorted Shrubs, our choice of varieties, at ..... 10c. each
- 100 Assorted Shrubs, our choice of varieties, at ..... 9c. each
- 500 Assorted Shrubs, our choice of varieties, at ..... 8c. each
- 1000 Assorted Shrubs, our choice of varieties, at ..... 7½c. each

Kindly state when making out your order, whether you would prefer a majority of tall growing shrubs, dwarf shrubs, or medium growing sorts. If no advice is given us, you will receive a collection of assorted kinds.

<b>ABELIA grandiflora</b> (Glossy Abelia).	10	100
2 to 3 ft., B&B.....	\$4.50	\$40.00
3 to 4 ft., B&B.....	6.00	50.00
<b>ACANTHOPANAX pentaphyllum</b> (Five-leaf Aralia).		
3 to 4 ft.....	2.00	15.00
4 to 5 ft.....	2.50	20.00
5 to 6 ft.....	3.00	25.00
<b>ACER palmatum</b> (Japanese Green-leaf Maple).		
3 to 4 ft.....	15.00	.....
4 to 5 ft.....	25.00	.....
5 to 6 ft.....	35.00	.....
6 to 8 ft.....	55.00	.....
<b>A. palmatum atropurpureum</b> (Japanese Bloodleaf Maple).		
15 to 18 in., B&B.....	8.50	75.00
18 to 24 in., B&B.....	12.50	100.00
2 to 3 ft., B&B.....	20.00	175.00
3 to 4 ft., B&B.....	40.00	.....
<b>AMYGDALUS nana</b> (Double Pinkflowering Almond).		
18 to 24 in.....	3.00	25.00
2 to 3 ft.....	4.00	35.00
<b>ARONIA arbutifolia</b> (Red Chokeberry)		
1½ to 2 ft.....	2.50	20.00
2 to 3 ft.....	3.50	30.00
<b>A. melanocarpa</b> (Black Chokeberry).		
1½ to 2 ft.....	2.20	18.00
2 to 3 ft.....	3.00	25.00



AZALEA HINODEGIRI (RED JAPANESE AZALEA)

HARDY SHRUBS—*Continued*

## Azaleas

We are one of the world's largest growers of these magnificent shrubs. Better Azaleas are not available anywhere at any price.

<b>Azalea amoena</b> (Amoena Azalea). This popular plant bears conspicuous flowers of a purplish red in April and May. Evergreen, with rich bronze green tinge in Winter.	10	100
10 to 12 in., B&B.....	\$6.00	\$55.00
12 to 15 in., B&B.....	7.50	70.00
15 to 18 in., B&B.....	10.00	90.00
18 to 24 in., B&B.....	15.00	140.00
<b>A. amoena coccinea</b> (Red Amoena Azalea). The flowers produced by this comparatively new variety are almost as intense a red as those produced by <i>A. hinodegiri</i> .		
8 to 10 in. spread, B&B.....	7.50	65.00
10 to 12 in. spread, B&B.....	9.00	80.00
12 to 15 in. spread, B&B.....	13.50	120.00
<b>A. calendulacea</b> (Flame Azalea). Burnt orange flowers appear on this native Azalea even before the foliage.		
18 to 24 in., B&B.....	15.00	.....
2 to 3 ft., B&B.....	20.00	.....
3 to 4 ft., B&B.....	30.00	.....
<b>A. hinodegiri</b> (Red Japanese Azalea). Undoubtedly the most popular of all evergreen Azaleas, with large, bright scarlet flowers gracing its rounded foliage in late Spring.		
8 to 10 in., B&B.....	6.00	50.00
10 to 12 in., B&B.....	8.00	70.00
12 to 15 in., B&B.....	10.00	90.00
15 to 18 in., B&B.....	15.00	135.00
18 to 21 in., B&B.....	22.50	200.00
21 to 24 in., B&B.....	32.50	300.00
24 to 30 in., B&B.....	40.00	375.00

# LOVETT'S SPRING TRADE LIST, 1935

## HARDY SHRUBS—Continued

### AZALEAS—Continued

<b>A. hinamoyo.</b> Beautiful shade of soft pink.	10	100
8 to 10 in., B&B.....	\$7.00	\$60.00
10 to 12 in., B&B.....	8.50	75.00
12 to 15 in., B&B.....	12.50	100.00
15 to 18 in., B&B.....	15.00	140.00
<b>A. indica alba</b> (Snow Azalea). Evergreen, with large white flowers produced freely. Blooms with Azalea hinodegiri and forms a striking contrast when planted with it.		
12 to 15 in., B&B.....	13.50	125.00
15 to 18 in., B&B.....	16.50	150.00
18 to 24 in., B&B.....	19.00	175.00
<b>A. J. T. Lovett.</b> Rich carmine-lake flowers appear on the evergreen leaves of this beautiful spreading Azalea in late June and July, after all the other Azaleas have had their day.		
15 to 18 in. spread, B&B.....	27.50	.....
18 to 24 in. spread, B&B.....	40.00	.....
<b>A. kaempferi</b> (Torch Azalea). 4 to 5 ft. Good in semi-shade, with beautiful flowers ranging from orange red to salmon pink. A very hardy sort.		
12 to 15 in., B&B.....	12.00	100.00
15 to 18 in., B&B.....	15.00	125.00
18 to 24 in., B&B.....	20.00	175.00
2 to 3 ft., B&B.....	25.00	225.00
<b>A. kurume, Flame.</b> Brilliant red with coppery suffusion. Extra early.		
15 to 18 in., B&B.....	15.00	125.00
18 to 24 in., B&B.....	20.00	175.00
<b>A. kurume, Sweetbriar.</b> Beautiful clear pink.		
10 to 12 in., B&B.....	8.50	75.00
12 to 15 in., B&B.....	12.50	100.00
<b>A. ledifolia magnifica.</b> A very strong growing variety, with large blush or white flowers, with minute chocolate dots at base of lower petals.		
15 to 18 in., B&B.....	15.00	125.00
18 to 24 in., B&B.....	17.50	150.00
<b>A. macrantha</b> (Red Salmon Azalea). Large salmon red flowers. A compact, flat, rapid growing variety. Very hardy. Especially valuable because of its late blooming qualities, coming into flower approximately a month or six weeks after most other varieties.		
12 to 15 in. spread, B&B.....	11.00	90.00
15 to 18 in. spread, B&B.....	17.50	150.00
18 to 24 in. spread, B&B.....	27.50	250.00
24 to 30 in. spread, B&B.....	32.50	300.00
<b>A. maxwelli.</b> Large, single, carmine red flowers, 2 in. in diameter. Very hardy.		
10 to 12 in., B&B.....	9.00	.....
12 to 15 in., B&B.....	12.00	100.00
<b>A. mollis</b> (Chinese Azalea). In May and June this showy plant produces large, brilliant flowers in attractive shades of red and orange. One of the most striking of all Azaleas. For best results, plant in full sunlight.		
10 to 12 in., B&B.....	8.00	70.00
12 to 15 in., B&B.....	11.00	90.00
15 to 18 in., B&B.....	15.00	135.00
18 to 24 in., B&B.....	19.00	.....

# LOVETT'S SPRING TRADE LIST, 1935

## HARDY SHRUBS—Continued

### AZALEAS—Continued

**A. yodogawa** (Yodogawa Azalea). One of the hardiest of all Azaleas, producing a great mass of double rosy lilac blooms in May. Semi-evergreen and very conspicuous.

	10	100
12 to 15 in., B&B.....	\$12.50	\$110.00
15 to 18 in., B&B.....	16.00	140.00
18 to 24 in., B&B.....	20.00	185.00
2 to 2½ ft., B&B.....	25.00	235.00
2½ to 3 ft., B&B.....	30.00	275.00

**BENZOIN aestivale** (**Lindera**) (Spicebush).

3 to 4 ft.....	3.00	25.00
4 to 5 ft.....	4.00	35.00
5 to 6 ft.....	6.00	50.00

## Berberis (BARBERRY)

**BERBERIS thunbergi** (Japanese Barberry). All are 3 yr. transplanted, extra bushy plants.

	10	100	1000
9 to 12 in., bushy, transpl. plants.	\$0.60	\$4.00	\$30.00
12 to 18 in., bushy, transpl. plants.	.70	5.00	40.00
18 to 24 in., bushy, transpl. plants.	1.00	7.50	60.00
2 to 2½ ft., bushy, transpl. plants.	1.50	12.50	100.00
5 yr. old, 18 to 24 in. clumps.....	2.00	17.50	150.00
5 yr. old, 2 to 3 ft. clumps.....	2.75	25.00	....

### JAPANESE BARBERRY SEEDLINGS

(2 years and 3 years old)

Our 2-year-old and 3-year-old *Berberis thunbergi* seedlings should not be confused with the thin, light grade plants that are being offered by various competing growers, these seedlings of ours carrying splendid root systems and stocky tops, the upper grades being quite similar to transplanted plants, though, of course, they do not carry so many branches as do our heavy, transplanted plants. Having a large supply of 2-year and 3-year-old seedlings, we feel justified in offering them at the following attractive prices:

	1000	10,000	}	per 1000
3 to 6 in.....	\$6.00	\$5.00		
6 to 9 in.....	9.00	7.50		
9 to 12 in., well branched.	15.00	12.50		
12 to 18 in., well branched.	20.00	17.50		
18 to 24 in., well branched.	30.00	27.50		



ONE OF OUR FIELDS OF BERBERIS THUNBERGI  
Note Root System and Splendid Top Growth

# LOVETT'S SPRING TRADE LIST, 1935

## HARDY SHRUBS—Continued

### BERBERIS—Continued

**B. thunbergi atropurpurea** (Redleaf Japanese Barberry). Our plants of this dazzling variety carry the most brilliant red foliage of any Redleaf Barberries that have ever been brought to our attention.

Bushy, transplanted plants.	10	100
9 to 12 in.....	\$0.60	\$5.00
12 to 15 in.....	.90	7.00
15 to 18 in.....	1.00	8.00
18 to 24 in.....	1.40	12.00
2 to 2½ ft.....	2.00	17.50
2½ to 3 ft.....	2.75	25.00

**B. thunbergi minor** (Box Barberry).

Bushy, transpl. plants, 6 to 9 in.....	.90	7.50
Bushy, transpl. plants, 9 to 12 in.....	1.10	9.00
Bushy transpl. plants, 12 to 15 in.....	1.50	13.50
Bushy, transpl. plants, 15 to 18 in.....	2.00	17.50
Bushy, transpl. plants, 18 to 24 in.....	2.50	22.50

**BUDDLEIA farquhari** (Farquhar Butterflybush).

Extra strong, 2 yr. plants.....	1.60	14.00
---------------------------------	------	-------

**B. magnifica** (Oxeye Butterflybush).

Extra strong, 2 yr. plants.....	1.60	14.00
---------------------------------	------	-------

**BUXUS suffruticosa** (True Dwarf Box).

If better Suffruticosa Boxwood than that which we grow is available anywhere, we would surely like to see it!

3 to 4 in., stocky, dug with bare roots.	1.00	7.50
4 to 6 in., stocky, dug with bare roots.	1.25	10.00
6 to 8 in., stocky, dug with bare roots.	2.25	20.00
8 to 10 in., extra stocky, B&B.....	5.50	45.00
10 to 12 in., extra stocky, B&B.....	8.00	70.00
12 to 15 in., extra stocky, B&B.....	10.00	90.00

**CALYCANTHUS floridus** (Sweetshrub).

15 to 18 in.....	.90	7.00
18 to 24 in.....	1.10	9.00
2 to 3 ft.....	1.50	13.50



**BUXUS SUFFRUTICOSA (TRUE DWARF BOX)**  
(Note the sturdiness of these plants)

# LOVETT'S SPRING TRADE LIST, 1935

## HARDY SHRUBS—Continued

<b>CERCIS canadensis</b>	10	100
2 to 3 ft.....	\$2.50	.....
3 to 4 ft.....	3.50	.....
<b>CLETHRA alnifolia</b> (Summersweet).		
18 to 24 in.....	2.00	\$17.50
2 to 3 ft.....	3.00	25.00
<b>CORNUS alba</b> (Redbranched Dogwood)		
18 to 24 in.....	1.00	8.00
2 to 3 ft.....	1.20	10.00
3 to 4 ft.....	1.80	15.00
<b>C. mas.</b> (Cornelian Cherry).		
2 to 3 ft.....	3.50	30.00
3 to 4 ft.....	4.00	35.00
4 to 5 ft.....	6.00	50.00
5 to 6 ft.....	9.00	75.00
<b>C. paniculata</b> (Gray Dogwood).		
2 to 3 ft.....	2.00	17.50
3 to 4 ft.....	3.00	27.50
4 to 5 ft.....	3.75	35.00
<b>C. stolonifera lutea</b> (Goldentwig Dogwood).		
18 to 24 in.....	1.20	10.00
2 to 3 ft.....	1.80	15.00
<b>COTONEASTER horizontalis</b> (Rock Cotoneaster).		
15 to 18 in., B&B.....	9.00	75.00
18 to 24 in., B&B.....	11.00	90.00
<b>CYDONIA japonica</b> (Flowering Quince).		
Large, showy scarlet flowers in late Spring.		
15 to 18 in.....	.90	7.50
18 to 24 in.....	1.25	10.00
2 to 3 ft.....	1.75	15.00
<b>DAPHNE cneorum</b> (Rose Daphne). A per- fect evergreen dwarf for the rockery, with fragrant and beautiful pink flowers in Spring and Fall. Has become in great demand for forcing under glass.		
Bushy, 6 to 9 in., B&B.....	4.50	35.00
Bushy, 9 to 12 in., B&B.....	6.00	50.00
Bushy, 12 to 15 in., B&B.....	9.00	75.00
<b>DESMODIUM penduliflorum</b> (Bushclover).		
2 yrs., extra fine.....	2.00	15.00
3 yrs., heavy.....	2.50	20.00
<b>DEUTZIA gracilis</b> (Slender Deutzia).		
9 to 12 in.....	.80	6.00
12 to 15 in.....	1.20	10.00
15 to 18 in.....	1.50	12.50
18 to 24 in.....	1.75	15.00
<b>D. lemoinei</b> (Lemoine Deutzia).		
18 to 24 in.....	1.20	10.00
2 to 2½ ft.....	1.50	12.50
2½ to 3 ft.....	1.75	15.00
<b>D. Pride of Rochester.</b>		
2 to 3 ft.....	1.10	9.00
3 to 4 ft.....	1.50	13.50
4 to 5 ft.....	2.00	17.50
<b>D. scabra crenata florepleno</b> (Double Pink Deutzia).		
2 to 3 ft.....	1.10	9.00
3 to 4 ft.....	1.50	13.50
4 to 5 ft.....	2.00	17.50
<b>EUONYMUS alatus</b> (Winged Euonymus).		
Bright red berries on a background of warm rose-colored foliage in Autumn.		
2 to 3 ft.....	2.00	17.80
3 to 4 ft.....	3.00	25.00
4 to 5 ft.....	3.50	30.00

# LOVETT'S SPRING TRADE LIST, 1935

## HARDY SHRUBS—Continued

<b>EXOCHORDA grandiflora</b> (Pearlbush).	10	100
3 to 4 ft.....	\$2.00	\$17.50
4 to 5 ft.....	2.50	22.50
5 to 6 ft.....	3.00	....
6 to 7 ft.....	4.50	....
<b>FORSYTHIA intermedia spectabilis</b> (Showy Border Forsythia).		
2 to 3 ft.....	1.50	12.00
3 to 4 ft.....	1.80	15.00
4 to 5 ft.....	2.50	20.00
<b>F. suspensa</b> (Weeping Forsythia).		
2 to 3 ft.....	1.50	12.50
3 to 4 ft.....	1.80	16.00
<b>F. suspensa fortunei</b> (Fortune Forsythia).		
2 to 3 ft.....	1.20	10.00
3 to 4 ft.....	1.60	14.00
4 to 5 ft.....	2.00	18.00
<b>F. suspensa variegata</b> (Goldblotch Forsythia).		
2 to 3 ft.....	2.00	16.00
3 to 4 ft.....	2.50	20.00
4 to 5 ft.....	3.00	25.00
<b>HAMAMELIS virginica</b> (Witch-hazel).		
18 to 24 in.....	2.00	17.50
2 to 3 ft.....	3.00	27.50
<b>HIBISCUS syriacus</b> (Althaea).		
Boule de Feu (Double red).		
Jeanne d'Arc (Double white).		
2 to 3 ft.....	1.10	9.00
3 to 4 ft.....	1.50	14.00
4 to 5 ft.....	2.00	18.00
<b>H. variegata.</b>		
2 to 3 ft.....	2.00	....
3 to 4 ft.....	3.00	....
Tree Form. Splendid specimens, assorted varieties, with heavy, 5 yr. heads, 3 to 4 ft. stems.....	7.00	60.00
<b>HYDRANGEA arborescens grandiflora</b> (Snowhill Hydrangea).		
18 to 24 in.....	1.50	12.00
2 to 3 ft.....	1.80	16.00
<b>H. paniculata grandiflora</b> (Peegee Hydrangea).		
15 to 18 in.....	1.00	8.00
18 to 24 in.....	1.50	12.00
2 to 3 ft.....	1.80	16.00
<b>H. paniculata grandiflora.</b> Standard form.		
3 to 4 ft.....	4.00	35.00
<b>HYPERICUM aureum.</b>		
18 to 24 in.....	2.00	17.50
2 to 3 ft.....	2.50	....
<b>ILEX crenata</b> (Japanese Holly).		
15 to 18 in., B&B.....	12.50	100.00
18 to 24 in., B&B.....	15.00	125.00
<b>KALMIA latifolia</b> (Mountain-laurel).		
Collected clumps, 15 to 18 in., B&B.....	7.50	65.00
Collected clumps, 18 to 24 in., B&B.....	10.00	85.00
Collected clumps, 2 to 3 ft., B&B.....	14.00	125.00
<b>KOLKWITZIA amabilis</b> (Beautybush).		
2 to 3 ft.....	2.50	20.00
3 to 4 ft.....	3.50	30.00
<b>LEUCOTHOE catesbaei</b> (Drooping Leucothoe).		
9 to 12 in., B&B.....	5.00	40.00
12 to 15 in., B&B.....	6.00	50.00
15 to 18 in., B&B.....	8.50	75.00
18 to 24 in., B&B.....	10.00	90.00
24 to 30 in., B&B.....	12.50	....



HARDY SHRUBS—Continued

LESPEDEZA bicolor (Bushclover). See  
 "Desmodium penduliflorum."

Ligustrum (Privet)

(The Best Plant for Hedges)

Ligustrum, or Privet, is the supreme favorite for hedge work, due to its supremacy in hardiness, beauty and adaptability. Our sales of these well known plants approximate six million every year, larger than those of any other nurserymen. Our reputation for splendid stock at low prices is responsible for our handling so great a quantity of these hedge plants.

**LIGUSTRUM amurense** (Amur River North Privet). Best hedge plant for severe climate. Handsome olive-green foliage.

	10	100	1000
3 yr. old, 12 to 18 in.....	\$0.70	\$5.00	.....
3 yr. old, 18 to 24 in.....	.80	6.00	.....
3 yr. old, 2 to 3 ft.....	1.00	7.50	.....
6 yr. old, extra bushy, 12 to 18 in.	1.00	8.00	.....
6 yr. old, extra bushy, 18 to 24 in.	1.25	10.00	.....
6 yr. old, extra bushy, 2 to 3 ft.	1.50	12.50	.....
6 yr. old, extra bushy, 3 to 4 ft.	2.00	17.50	.....

**L. ibolium** (Ibolium Privet). The beauty of California Privet, and the hardiness of Ibotia, combine to make this an ideal hedge plant.

2 yr. old, 18 to 24 in.....	.80	6.00	\$45.00
2 yr. old, 2 to 3 ft.....	1.00	7.50	60.00

**L. ovalifolium** (California Privet). Though we are growing this most popular hedge plant economically, our stock is all bushy, sturdy and of the highest quality in every way.

2 yr., lining out grade.....	.20	1.00	7.50
2 yr., extra bushy, 9 to 12 in....	.25	1.50	10.00
2 yr., extra bushy, 12 to 18 in....	.35	2.00	17.50
2 yr., extra bushy, 18 to 24 in....	.40	2.50	22.50
2 yr., extra bushy, 2 to 3 ft....	.60	4.00	35.00
6 yr., very heavy, 4 to 5 ft., magnificent specimens.....	6.00	50.00	.....
6 yr., very heavy, 5 to 6 ft., magnificent specimens.....	9.00	75.00	.....
6 yr., very heavy, 6 to 8 ft., magnificent specimens.....	12.50	100.00	.....



ONE OF OUR FIELDS OF CALIFORNIA PRIVET

# LOVETT'S SPRING TRADE LIST, 1935

## HARDY SHRUBS—Continued

### LIGUSTRUM—Continued

<b>L. ovalifolium aureum</b> (Golden Privet).	10	100	1000
12 to 18 in.....	\$1.00	\$8.00	.....
18 to 24 in.....	1.50	12.50	.....
2 to 3 ft.....	2.50	20.00	.....
<b>L. regelianum</b> (Regel Privet).			
18 to 24 in.....	1.50	12.00	.....
2 to 3 ft.....	2.00	16.00	.....
3 to 4 ft.....	2.50	.....	.....

## Globe or Ball Privet, also Pyramids

We take the greatest care to insure our patrons of receiving splendid, compact plants of this sort. They are sheared carefully at least four times each season and the quality of their foliage resembles that of Boxwood.

<b>Globe, or Ball California Privet</b>	10	100
9 to 12 in.....	\$3.50	\$30.00
12 to 18 in.....	4.50	35.00
18 to 24 in.....	6.00	50.00
2 to 2½ ft.....	8.50	75.00
<b>Pyramids (California Privet)</b>		
2 to 2½ ft.....	9.00	70.00
2½ to 3 ft.....	12.50	100.00
3 to 4 ft.....	15.00	125.00
4 to 5 ft.....	20.00	175.00

<b>LONICERA fragrantissima</b> (Winter Honeysuckle).		
2 to 3 ft.....	2.00	15.00
3 to 4 ft.....	2.50	20.00

<b>L. morrowi</b> (Morrow Honeysuckle).		
2 to 3 ft.....	1.25	10.00
3 to 4 ft.....	2.00	15.00

<b>L. tatarica rosea</b> (Rosy Tatarian Honeysuckle).		
2 to 3 ft.....	1.25	10.00
3 to 4 ft.....	1.75	15.00
4 to 5 ft.....	2.50	20.00

<b>PHILADELPHUS coronarius</b> (Sweet Mockorange).		
2 to 3 ft.....	1.50	12.00
3 to 4 ft.....	1.75	15.00

<b>P. coronarius aurea</b> (Goldenleaf Mockorange).		
9 to 12 in.....	.80	6.00
12 to 15 in.....	1.00	7.50
15 to 18 in.....	1.25	10.00
18 to 24 in.....	1.50	.....

<b>P. coronarius grandiflora</b> (Big Mockorange).		
2 to 3 ft.....	1.25	10.00
3 to 4 ft.....	1.75	15.00
4 to 5 ft.....	2.50	20.00

<b>P. virginialis</b> (Virginal Mockorange).		
18 to 24 in.....	1.50	12.00
2 to 3 ft.....	2.00	16.00
3 to 4 ft.....	2.50	20.00
4 to 5 ft.....	3.00	.....

<b>PIERIS japonica</b> (Japanese Andromeda).		
12 to 15 in., B&B.....	10.00	.....
15 to 18 in., B&B.....	15.00	.....
18 to 24 in., B&B.....	20.00	.....

# LOVETT'S SPRING TRADE LIST, 1935

## HARDY SHRUBS—Continued

<b>PRUNUS pissardi</b> (Purpleleaf Plum).	10	100
3 to 4 ft.....	\$3.00	\$25.00
4 to 5 ft.....	4.00	35.00
5 to 6 ft.....	5.00	.....
<b>triloba</b> (Double-flowered Plum).		
2 to 3 ft.....	3.00	25.00
3 to 4 ft.....	4.00	35.00
<b>RHODODENDRON HYBRIDS.</b> The complete color range of the Rhododendron family is represented in our splendid collection of hybrid plants.		
9 to 12 in., mixed colors.....	9.00	75.00
12 to 15 in., mixed colors.....	12.50	110.00
15 to 18 in., mixed colors.....	16.00	135.00
18 to 24 in., mixed colors.....	20.00	175.00
<b>R. maximum</b> (Rosebay Rhododendron).		
Collected plants, 18 to 24 in.....	12.50	100.00
Collected plants, 2 to 3 ft.....	18.50	175.00
Collected plants, 3 to 4 ft.....	26.00	250.00
Collected plants, 4 to 5 ft.....	36.00	350.00
<b>RHUS cotinus</b> (Smoketree).		
2 to 3 ft.....	3.00	25.00
3 to 4 ft.....	4.00	35.00
4 to 5 ft.....	5.00	45.00
5 to 6 ft.....	6.00	.....
<b>ROSA blanda</b>		
2 to 3 ft.....	3.50	30.00
3 to 4 ft.....	4.00	35.00
<b>R. rubiginosa</b>		
2 to 3 ft.....	2.50	20.00
3 to 4 ft.....	3.00	25.00
<b>R. rubrifolia</b> (Redleaf Rose).		
18 to 24 in.....	1.75	15.00
2 to 3 ft.....	2.50	20.00
<b>R. rugosa</b> (Rugosa Rose).		
12 to 18 in.....	.80	6.00
18 to 24 in.....	1.00	8.00
2 to 3 ft.....	1.50	12.50
3 to 4 ft.....	2.50	20.00



PHILADELPHUS VIRGINALIS (VIRGINAL MOCKORANGE)

# LOVETT'S SPRING TRADE LIST, 1935

## HARDY SHRUBS—Continued

### ROSA—Continued

<b>R. rugosa Blanc Double De Coubert.</b>	10	100
15 to 18 in.....	\$1.75	\$15.00
18 to 24 in.....	2.00	17.50
2 to 3 ft.....	2.50	22.00

### ROSA RUGOSA, 2 YR. SEEDLINGS

These seedlings are so very strong that they should produce good, salable material in a year.

Extra strong, from 10 to 18 in. high:

\$3.00 per 100, \$25.00 per 1000

<b>R. setigera (Prairie Rose).</b>	10	100
2 to 3 ft.....	\$2.50	\$20.00
3 to 4 ft.....	3.00	25.00

### SALIX caprea (Pussy Willow).

2 to 3 ft.....	1.50	12.00
3 to 4 ft.....	2.00	16.00
4 to 5 ft.....	2.50	22.00

### SPIRAEA Anthony Waterer (Waterer Spirea).

9 to 12 in.....	.60	5.00
12 to 15 in.....	.90	7.00
15 to 18 in.....	1.20	10.00
18 to 24 in.....	1.60	14.00
2 to 2½ ft.....	2.00	17.50

### S. arguta (Garland Spirea).

3 to 4 ft., extra heavy.....	1.80	15.00
4 to 5 ft., extra heavy.....	2.50	20.00

### S. billiardi (Billiard Spirea).

2 to 3 ft.....	1.20	10.00
3 to 4 ft.....	1.60	14.00
4 to 5 ft.....	2.00	17.50

### S. callosa alba (White Japanese Spirea).

15 to 18 in.....	1.20	10.00
18 to 24 in.....	1.50	12.50
2 to 3 ft.....	2.00	17.50

### S. froebeli (Froebel Spirea).

15 to 18 in.....	.90	7.00
18 to 24 in.....	1.25	10.00
2 to 2½ ft.....	1.60	14.00
2½ to 3 ft.....	2.00	18.00

### S. prunifolia florepleno (Bridalwreath).

2 to 3 ft.....	1.60	14.00
----------------	------	-------

### S. thunbergi (Thunberg Spirea).

12 to 18 in.....	.90	7.00
------------------	-----	------

### S. trichocarpa (Korean Spirea).

18 to 24 in.....	1.50	12.00
2 to 3 ft.....	2.00	15.00
3 to 4 ft.....	2.50	20.00

### S. vanhouttei (Vanhoutte Spirea).

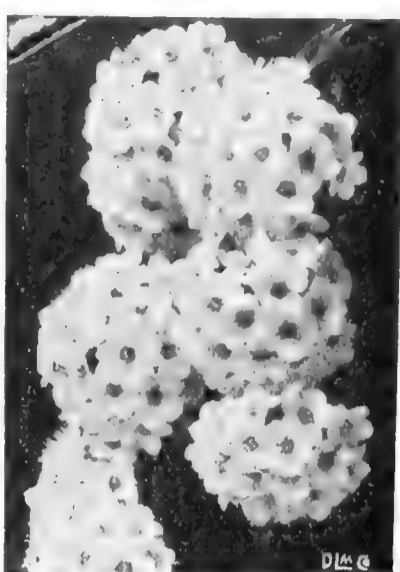
18 to 24 in.....	10	100	1000
2 to 3 ft.....	\$0.75	\$5.00	\$35.00
3 to 4 ft.....	1.00	8.00	60.00
3 to 4 ft.....	1.25	10.00	.....

**STEPHANANDRA flexuosa** (Cutleaf Stephanandra). Of graceful, compact habit, with handsome foliage that turns to a purplish red in Autumn. Tiny white flowers in short panicles in June.

18 to 24 in.....	10	100
2 to 3 ft.....	\$1.00	\$8.00
3 to 4 ft.....	1.50	12.00
3 to 4 ft.....	2.20	18.00
4 to 5 ft.....	3.00	25.00



**SPIRAEA ANTHONY WATERER**  
(See Page 16)



**SPIRAEA VANHOUTTEI**  
(See Page 16)

HARDY SHRUBS—Continued

<b>SYMPHORICARPOS racemosus</b> (Snow-berry).	10	100
18 to 24 in.....	\$0.90	\$7.00
2 to 3 ft.....	1.25	10.00
<b>S. vulgaris</b> (Coralberry).		
12 to 18 in.....	.70	5.00
18 to 24 in.....	.90	7.00
2 to 3 ft.....	1.20	10.00
<b>SYRINGA chinensis</b> (Chinese Lilac).		
2 to 3 ft.....	1.80	15.00
3 to 4 ft.....	2.50	20.00
<b>S. persica</b> (Persian Lilac).		
2 to 3 ft.....	2.00	17.50
3 to 4 ft.....	2.50	22.50
4 to 5 ft.....	3.50	32.50
<b>S. villosa</b> (Late Lilac).		
18 to 24 in.....	1.00	8.00
2 to 3 ft.....	1.50	12.50
3 to 4 ft.....	2.50	.....
<b>S. vulgaris</b> (Purple Lilac). Our plants of these dependable old favorites are the finest we've ever grown.		
18 to 24 in.....	1.00	7.00
2 to 3 ft.....	1.20	9.00
3 to 4 ft.....	2.00	15.00
4 to 5 ft.....	2.50	20.00
5 to 6 ft.....	3.50	30.00
<b>S. vulgaris alba</b> (White Lilac).		
18 to 24 in.....	1.50	12.50
2 to 3 ft.....	2.00	17.50
3 to 4 ft.....	3.00	25.00
4 to 5 ft.....	3.50	30.00
5 to 6 ft.....	5.00	45.00
<b>S. (Named Sorts).</b>		
<b>Charles the Tenth.</b> Single. Large purple-red.		
<b>Le Gaulois.</b> Double red.		
<b>Marie Legraye.</b> Single. Pure ivory white.		
<b>Michel Buchner.</b> Double. Clear lilac blooms.		
<b>Pascal.</b> Single, with violet hued flowers.		
18 to 24 in.....	2.50	20.00
2 to 3 ft.....	3.50	30.00
3 to 4 ft.....	4.50	40.00
<b>TAMARIX africana</b> (African Tamarix).		
2 to 3 ft., stocky.....	1.50	12.00
3 to 4 ft., stocky.....	2.00	15.00

# LOVETT'S SPRING TRADE LIST, 1935

## HARDY SHRUBS—Continued

<b>VIBURNUM americanum</b> (American Cranberrybush).	10	100
2 to 3 ft.....	\$2.00	\$15.00
3 to 4 ft.....	2.50	20.00
4 to 5 ft.....	3.50	.....
<b>V. carlesi</b> (Fragrant Viburnum).		
15 to 18 in.....	5.00	40.00
18 to 24 in.....	7.00	60.00
2 to 2½ ft.....	9.00	.....
<b>V. dentatum</b> (Arrowwood).		
18 to 24 in.....	1.25	10.00
2 to 3 ft.....	1.60	13.50
3 to 4 ft.....	2.50	22.50
<b>V. lentago</b> (Nannyberry).		
2 to 3 ft.....	2.00	17.50
3 to 4 ft.....	3.00	25.00
4 to 5 ft.....	4.00	35.00
<b>V. opulus</b> (European Cranberry).		
2 to 3 ft.....	1.60	13.50
3 to 4 ft.....	2.50	22.50
4 to 5 ft.....	3.50	30.00
<b>V. opulus sterile</b> (Snowball).		
2 to 3 ft.....	1.50	12.50
3 to 4 ft.....	1.80	15.00
4 to 5 ft.....	2.80	25.00
5 to 6 ft.....	4.00	35.00
<b>V. plicatum</b> (Japanese Snowball).		
2 to 3 ft.....	2.50	20.00
3 to 4 ft.....	3.50	30.00
<b>V. rhytidophyllum</b> (Leatherleaf Viburnum).		
2 to 2½ ft., B&B.....	12.50	.....
2½ to 3 ft., B&B.....	17.50	.....
<b>VITEX agnus-castus</b> (Lilac Chastetree).		
2 to 3 ft.....	2.50	20.00
3 to 4 ft.....	3.00	25.00
<b>WEIGELA amabilis</b> (Rose Weigela).		
18 to 24 in.....	1.10	9.00
2 to 3 ft.....	1.50	.....
3 to 4 ft.....	2.00	.....
<b>W. candida</b> (Snow Weigela).		
2 to 3 ft.....	1.25	10.00
3 to 4 ft.....	1.75	15.00
4 to 5 ft.....	2.50	22.50
5 to 6 ft.....	3.50	30.00
<b>W. "Eva Rathke"</b>		
15 to 18 in.....	2.00	15.00
18 to 24 in.....	2.50	20.00
2 to 3 ft.....	3.00	25.00
<b>W. nana variegata</b> (Variegated Weigela).		
2 to 3 ft.....	2.00	15.00
3 to 4 ft.....	2.50	20.00
4 to 5 ft.....	3.50	30.00
<b>W. steltzneri</b> .		
18 to 24 in.....	1.20	10.00
2 to 3 ft.....	1.75	15.00
<b>YUCCA filamentosa</b> (Spanish-bayonet).		
Strong, 2 yr. plants.....	.80	6.00
4 yr. large clumps.....	1.50	12.50
<b>Y. filamentosa variegata</b> (Variegated Yucca). Evergreen, with lily-like creamy white flowers in June, and leaves broadly margined yellow, assuming a purple tint in Winter.		
Selected, 2 yr.....	2.00	15.00
Extra choice, 3 yr.....	3.00	25.00
Large clumps.....	4.00	35.00



ACER PLATANOIDES (NORWAY MAPLE)

## Deciduous Trees

We have a splendid assortment of Shade and Flowering Trees. All have been given plenty of space to insure good "tops" and have been transplanted frequently, so that they carry a mass of fibrous roots.

Please note that when less than 5 trees of a grade are ordered, our price per tree will be 10 per cent above our printed price per tree (our 10 rate).

<b>ACER dasycarpum</b> (Silver Maple).	10	100
8 to 10 ft., 1 to 1½ in. cal.....	\$5.00	\$45.00
10 to 12 ft., 1½ to 2 in. cal.....	10.00	85.00
12 to 15 ft., 2 to 2½ in. cal.....	17.50	150.00
12 to 15 ft., 2½ to 3 in. cal.....	22.50	200.00
<b>A. dasycarpum wieri</b> (Wier Maple).		
10 to 12 ft., 1¾ to 2 in. cal.....	15.00	125.00
12 to 15 ft., 2 to 2½ in. cal.....	20.00	175.00
12 to 15 ft., 2½ to 3 in. cal.....	25.00	225.00
<b>A. negundo</b> (Boxelder).		
10 to 12 ft., 1½ to 2 in. cal.....	10.00	.....
12 to 15 ft., 2 to 2½ in. cal.....	15.00	.....
<b>A. platanoides</b> (Norway Maple). Our specimens of this most popular street tree are of the highest quality. Even the larger sizes transplant well and are tolerant of city conditions.		
8 to 10 ft., 1¼ to 1½ in. cal.....	10.00	90.00
10 to 12 ft., 1½ to 1¾ in. cal.....	13.00	115.00
10 to 12 ft., 1¾ to 2 in. cal.....	18.00	165.00
12 to 14 ft., 2 to 2½ in. cal.....	23.50	210.00
12 to 14 ft., 2½ to 3 in. cal.....	32.50	300.00
14 to 16 ft., 3 to 4 in. cal.....	50.00	450.00
14 to 16 ft., 4 to 5 in. cal.....	75.00	.....
<b>A. platanoides globosum</b> (Globe Maple). Beautiful, large specimens, with 12 yr. old heads.		
6 to 7 ft. stems.....	75.00	.....
<b>A. platanoides schwedleri</b> (Schwedler Maple).		
8 to 10 ft., 1¼ to 1½ in. cal.....	17.50	150.00
10 to 12 ft., 1½ to 1¾ in. cal.....	22.50	200.00
10 to 12 ft., 1¾ to 2 in. cal.....	27.50	.....
12 to 15 ft., 2 to 2½ in. cal.....	35.00	.....

# LOVETT'S SPRING TRADE LIST, 1935

## DECIDUOUS TREES—Continued

### ACER—Continued

<b>A. saccharum</b> (Sugar Maple).	10	100
8 to 10 ft., 1¼ to 1½ in. cal.....	\$12.50	.....
10 to 12 ft., 1½ to 1¾ in. cal.....	17.50	\$150.00
10 to 12 ft., 1¾ to 2 in. cal.....	22.50	200.00
12 to 14 ft., 2 to 2½ in. cal.....	30.00	275.00
14 to 18 ft., 2½ to 3 in. cal.....	40.00	375.00
14 to 18 ft., 3 to 4 in. cal.....	60.00	.....

### AESCULUS hippocastanum (Horsechestnut).

5 to 6 ft. ....	8.00	.....
6 to 8 ft. ....	12.50	.....
8 to 10 ft. ....	17.50	.....

### A. hippocastanum carnea (Red Horsechestnut).

8 to 10 ft. ....	30.00	.....
------------------	-------	-------

### BETULA alba (European White Birch).

12 to 15 ft., 2½ to 3 in. cal.....	30.00	.....
12 to 15 ft., 3 to 4 in. cal.....	45.00	.....
15 to 20 ft., 4 to 5 in. cal.....	60.00	.....

### B. alba laciniata (Cutleaf Weeping Birch).

15 to 18 ft., 2 to 2½ in. cal.....	25.00	.....
15 to 18 ft., 2½ to 3 in. cal.....	35.00	.....

### B. papyrifera (Canoe Birch).

12 to 15 ft., 2 to 2½ in. cal.....	25.00	.....
15 to 18 ft., 2½ to 3 in. cal.....	30.00	.....
15 to 18 ft., 3 to 4 in. cal.....	40.00	.....



CATALPA BUNGEI  
(UMBRELLA-TREE)

### CATALPA bungei (Umbrella - tree).

5 to 6 ft. stems, 3 yr. heads... ..	9.00	75.00
5 to 6 ft. stems, 4 yr. heads... ..	12.50	100.00

### CELTIS occidentalis (Hackberry).

6 to 8 ft. ....	9.00	.....
8 to 10 ft. ....	12.50	.....

### CERASUS. See Prunus.

### CERCIDIPHYLLUM japonicum (Katsura Tree).

5 to 6 ft. ....	12.50	.....
6 to 8 ft. ....	17.50	.....

### CORNUS florida (Flowering Dogwood).

4 to 5 ft. ....	5.00	45.00
5 to 6 ft. ....	8.00	70.00
6 to 8 ft. ....	13.50	120.00
8 to 10 ft. ....	21.00	190.00
10 to 12 ft. ....	32.50	300.00

### C. florida rubra (Pinkflowering Dogwood).

Our trees, even in the smaller grades, are bushy and attractive, with masses of pink flowers in late Spring.

2 to 3 ft., (not B&B).....	7.50	60.00
3 to 4 ft., B&B.....	12.50	100.00
4 to 5 ft., B&B.....	17.50	150.00

### C. kousa (Kousa Dogwood).

2 to 3 ft. ....	3.50	30.00
3 to 4 ft. ....	5.50	45.00
4 to 5 ft. ....	7.50	65.00
5 to 6 ft. ....	10.00	90.00



# LOVETT'S SPRING TRADE LIST, 1935

## DECIDUOUS TREES—Continued

<b>CRATAEGUS oxyacantha pauli</b> (Paul's Scarlet Hawthorn).	10	100
4 to 5 ft. ....	\$10.00	\$90.00
5 to 6 ft. ....	13.50	120.00
6 to 8 ft. ....	20.00	175.00
<b>C. Double White and Double Pink.</b>		
4 to 5 ft. ....	10.00	.....
<b>FAGUS sylvatica purpurea riversi</b> (Rivers Purple Beech).		
2 to 3 ft. B&B. ....	25.00	.....
3 to 4 ft., B&B. ....	35.00	.....
<b>FRAXINUS americana</b> (White Ash).		
10 to 12 ft., 1½ to 2 in. cal. ....	16.50	.....
12 to 15 ft., 2 to 2½ in. cal. ....	25.00	.....
12 to 15 ft., 2½ to 3 in. cal. ....	30.00	.....
<b>GINKGO biloba</b> (Maidenhair Tree).		
6 to 8 ft. ....	17.50	.....
8 to 10 ft. ....	22.50	.....
<b>LARIX leptolepis</b> (Japanese Larch).		
8 to 10 ft., B&B. ....	30.00	.....
10 to 12 ft., B&B. ....	40.00	.....
<b>MAGNOLIA kobus</b> (Kobus Magnolia).		
3 to 4 ft., B&B. ....	15.00	.....
4 to 5 ft., B&B. ....	25.00	.....
5 to 6 ft., B&B. ....	40.00	.....
<b>M. soulangeana</b> (Saucer Magnolia).		
2 to 3 ft., B&B. ....	15.00	125.00
3 to 4 ft., B&B. ....	20.00	175.00
4 to 5 ft., B&B. ....	32.50	300.00
5 to 6 ft., B&B. ....	50.00	.....
<b>MALUS eleyi</b> (Redleaved Crab).		
5 to 6 ft. ....	10.00	80.00
6 to 8 ft. ....	12.50	100.00
8 to 10 ft. ....	15.00	125.00
<b>M. ioensis plena</b> (Bechtel Crab).		
2 to 3 ft. ....	2.50	22.50
3 to 4 ft., well headed. ....	4.00	35.00
4 to 5 ft., well headed. ....	7.00	60.00
<b>M. scheideckeri</b> (Scheidecker Crab).		
4 to 5 ft. ....	6.00	.....
<b>MORUS alba pendula</b> (Teas Weeping Mulberry).		
2 yr. heads, 5 to 6 ft. ....	10.00	.....
3 yr. heads, 5 to 6 ft. ....	12.50	.....
5 yr. heads, heavy specimens. ....	20.00	.....
<b>PLATANUS orientalis</b> (Oriental Plane).		
1¼ to 1½ in. cal. ....	9.00	80.00
1½ to 1¾ in. cal. ....	12.50	110.00
1¾ to 2 in. cal. ....	20.00	175.00
2 to 2½ in. cal. ....	25.00	225.00
2½ to 3 in. cal. ....	30.00	275.00
3 to 3½ in. cal. ....	40.00	.....
<b>POPULUS monilifera</b> (Carolina Poplar).		
12 to 15 ft., 2 to 2½ in. cal. ....	15.00	.....
<b>P. nigra italica</b> (Lombardy Poplar).		
6 to 8 ft. ....	3.00	25.00
8 to 10 ft. ....	4.50	40.00
10 to 12 ft. ....	6.50	60.00
<b>PRUNUS kanzan</b>		
4 to 5 ft., with branched heads. ....	8.00	70.00
5 to 6 ft., with branched heads. ....	10.00	90.00
6 to 8 ft., with branched heads. ....	12.50	110.00
<b>P. subhirtella pendula</b> (Weeping Japan Cherry).		
Good 2 yr. heads, 5 to 6 ft. stems. ....	17.50	150.00

# LOVETT'S SPRING TRADE LIST, 1935

## DECIDUOUS TREES—Continued

<b>QUERCUS coccinea</b> (Scarlet Oak).	10	100
6 to 8 ft.....	\$15.00	\$135.00
8 to 10 ft.....	25.00	.....
<b>Q. palustris</b> (Pin Oak). An easily transplanted street tree, long lived, and carrying a most symmetrical head.		
8 to 10 ft., 1¼ to 1½ in. cal.....	15.00	135.00
10 to 12 ft., 1½ to 1¾ in. cal.....	20.00	175.00
10 to 12 ft., 1¾ to 2 in. cal.....	27.50	250.00
12 to 15 ft., 2 to 2½ in. cal.....	32.50	300.00
<b>Q. rubra</b> (Red Oak).		
6 to 8 ft.....	17.50	150.00
8 to 10 ft.....	25.00	225.00
<b>SORBUS aucuparia</b> (European Mountain-ash)		
6 to 8 ft.....	7.00	.....
8 to 10 ft.....	9.00	.....
10 to 12 ft.....	12.00	.....
<b>ULMUS americana</b> (American Elm).		
1¼ to 1½ in. cal.....	8.00	70.00
1½ to 2 in. cal.....	10.00	90.00
2 to 2½ in. cal.....	17.50	150.00
2½ to 3 in. cal.....	25.00	.....
<b>U. americana Moline</b> (Moline Elm). Remarkably rapid in growth and carrying handsome large foliage of a rich green. Compact and upright in habit.		
10 to 12 ft., 1¼ to 1½ in. cal.....	10.00	90.00
12 to 15 ft., 1½ to 2 in. cal.....	15.00	140.00
15 to 18 ft., 2 to 2½ in. cal.....	22.50	200.00
15 to 18 ft., 2½ to 3 in. cal.....	32.50	300.00
<b>U. pumila</b> (Siberian or Chinese Elm). The most rapidly growing tree we know. Tall, graceful, beautiful, hardy, and succeeding in any soil, this magnificent variety has taken the country by storm.		
2 to 3 ft.....	1.75	15.00
3 to 4 ft.....	2.50	20.00
4 to 5 ft.....	3.50	25.00
5 to 6 ft.....	5.00	40.00
6 to 8 ft.....	6.00	50.00
8 to 10 ft.....	8.50	75.00
1¼ to 1½ in. cal.....	12.00	100.00
1½ to 2 in. cal.....	17.50	150.00
2 to 2½ in. cal.....	25.00	225.00
2½ to 3 in. cal.....	35.00	325.00



ULMUS AMERICANA MOLINE (MOLINE ELM)



BIOTA AUREA NANA (BERCKMANS GOLDEN ARBORVITAE)

## Evergreen Trees

All of our Evergreens have been grown and graded under standards adopted by the American Association of Nurserymen. In addition to this, they have been sheared and transplanted frequently, assuring them of an exceedingly high average in quality.

All prices of Evergreens quoted in this trade list refer not only to extra choice plants, but also cover the cost of digging the stock with balls of earth encased in burlap.

<b>ABIES concolor</b> (White Fir).	10	100
18 to 24 in.....	\$12.50	\$110.00
2 to 2½ ft.....	17.50	150.00
2½ to 3 ft.....	22.50	200.00
3 to 4 ft.....	30.00	.....
4 to 5 ft.....	45.00	.....
5 to 6 ft.....	60.00	.....
6 to 8 ft.....	75.00	.....
<b>A. veitchi</b> (Veitch Fir).		
4 to 5 ft.....	40.00	.....
5 to 6 ft.....	60.00	.....
6 to 8 ft.....	75.00	.....
<b>BIOTA aurea conspicua</b> (Goldspire Arborvitae).		
18 to 24 in.....	6.00	50.00
2 to 2½ ft.....	11.50	100.00
2½ to 3 ft.....	17.50	150.00
<b>B. aurea nana</b> (Berckmans Golden Arborvitae). One of our specialties. Good as an edging plant for larger evergreens, and desirable in a mixed planting, we consider these warm, golden ovals to be among the best of all dwarf evergreens.		
6 to 9 in.....	3.00	27.50
9 to 12 in.....	4.50	40.00
12 to 15 in.....	7.00	60.00
15 to 18 in.....	7.50	65.00
18 to 21 in.....	10.00	90.00
21 to 24 in.....	14.00	125.00
2 to 2½ ft.....	20.00	175.00
<b>B. elegantissima</b> (Yellow Column Arborvitae).		
18 to 24 in.....	6.00	50.00
2 to 2½ ft.....	10.00	85.00

# LOVETT'S SPRING TRADE LIST, 1935

## EVERGREEN TREES—Continued

### BIOTA—Continued

<b>B. orientalis</b> (Oriental Arborvitae).	10	100
8 to 10 ft.....	\$45.00	.....
<b>B. rollinson's Golden</b> (Rollinson's Arborvitae).		
5 to 6 ft.....	45.00	.....
6 to 8 ft.....	60.00	.....

### CHAMAECYPARIS. See under Retinospora.

**CRYPTOMERIA lobbi compacta** (Cave Cryptomeria) We cannot emphasize too strongly the high quality of our Cryptomeria this season.

4 to 5 ft.....	25.00	.....
5 to 6 ft.....	35.00	.....
6 to 7 ft.....	45.00	\$425.00
7 to 8 ft.....	62.50	600.00
8 to 10 ft.....	82.50	800.00
10 to 12 ft.....	100.00	.....
12 to 15 ft.....	125.00	.....

### JUNIPERUS chinensis alba variegata (Whiteleaf Chinese Juniper).

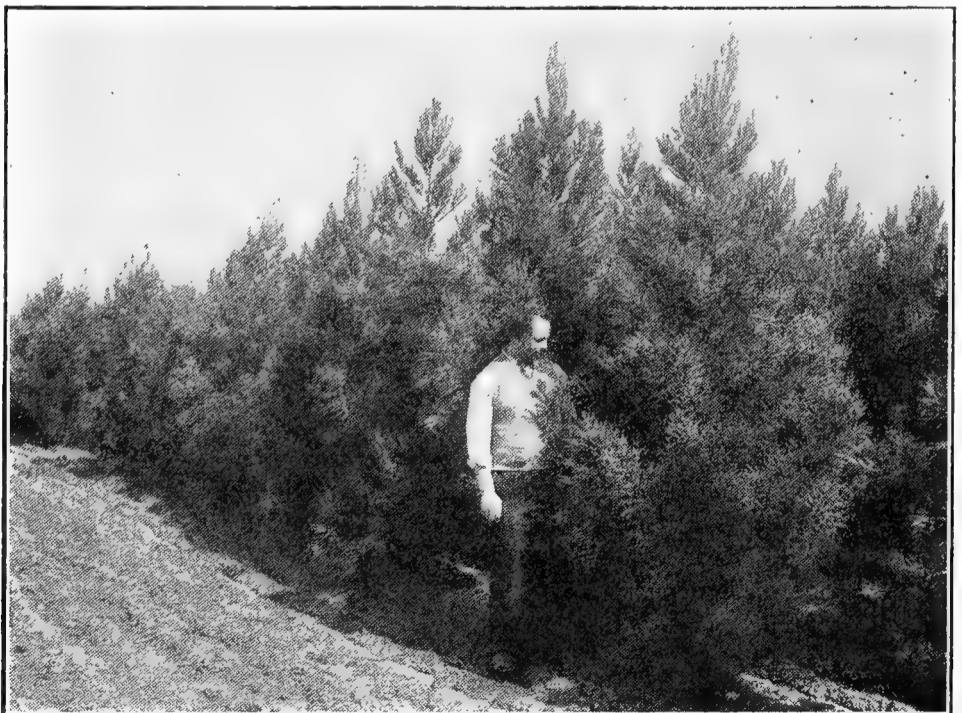
12 to 15 in.....	5.50	45.00
15 to 18 in.....	6.50	55.00
18 to 24 in.....	7.50	.....
2 to 2½ ft.....	10.00	.....
2½ to 3 ft.....	12.50	.....
3 to 3½ ft.....	15.00	.....
3½ to 4 ft.....	20.00	.....

### J. chinensis columnaris glauca (Columnar Chinese Juniper).

2½ to 3 ft.....	12.50	100.00
3 to 4 ft.....	16.50	150.00
4 to 5 ft.....	21.50	200.00
5 to 6 ft.....	29.00	275.00
6 to 8 ft.....	39.00	375.00
8 to 10 ft.....	57.50	.....
10 to 12 ft.....	75.00	.....

### J. chinensis columnaris viridis (Green Column Juniper).

2½ to 3 ft.....	12.50	100.00
3 to 4 ft.....	16.50	150.00
4 to 5 ft.....	21.50	200.00
5 to 6 ft.....	29.00	275.00
6 to 8 ft.....	39.00	375.00



CRYPTOMERIA LOBBI COMPACTA (CAVE CRYPTOMERIA)



JUNIPERUS CHINENSIS COLUMNARIS GLAUCA  
(COLUMNAR CHINESE JUNIPER)

**JUNIPER**—Continued

<b>J. chinensis fortunei</b> (Fortune Juniper)	10	100
4 to 5 ft.....	\$25.00	.....
5 to 6 ft.....	35.00	.....
<b>J. chinensis japonica</b> (Japanese Juniper).		
12 to 15 in.....	5.50	\$50.00
15 to 18 in.....	7.50	65.00
18 to 24 in.....	9.00	80.00
2 to 2½ ft.....	14.00	115.00
<b>J. chinensis oblongo</b>		
3 to 4 ft.....	15.00	.....
4 to 5 ft.....	20.00	.....
5 to 6 ft.....	30.00	.....
<b>J. chinensis pfitzeriana</b> (Pfitzer Juniper).		
15 to 18 in. spread.....	6.00	50.00
18 to 24 in. spread.....	7.00	60.00
2 to 2½ ft. spread.....	9.00	80.00
2½ to 3 ft. spread.....	13.50	125.00
3 to 4 ft. spread.....	20.00	175.00
4 to 5 ft. spread.....	35.00	.....
5 to 6 ft. spread.....	55.00	.....
6 to 8 ft. spread.....	75.00	.....
<b>J. communis aurea</b> (Golden Juniper).		
15 to 18 in. spread.....	6.00	50.00
18 to 24 in. spread.....	8.50	75.00
2 to 2½ ft. spread.....	12.50	110.00
2½ to 3 ft. spread.....	15.00	135.00
3 to 4 ft. spread.....	25.00	.....
<b>J. communis canadensis</b> (Canada Juniper).		
2½ to 3 ft. spread.....	12.50	.....
3 to 4 ft. spread.....	17.50	.....
4 to 5 ft. spread.....	25.00	.....
<b>J. communis hibernica</b> (Irish Juniper).		
18 to 24 in.....	4.50	35.00
2 to 2½ ft.....	6.00	50.00
2½ to 3 ft.....	8.50	75.00
3 to 4 ft.....	15.00	125.00
4 to 5 ft.....	20.00	.....
<b>J. communis hibernica kiyonoi</b> (Kiyono Juniper). A very narrow, compact form of Irish Juniper.		
2 to 3 ft.....	12.50	100.00
3 to 4 ft.....	20.00	175.00

# LOVETT'S SPRING TRADE LIST, 1935

## EVERGREEN TREES—Continued

JUNIPER—Continued	10	100
<b>J. communis suecica</b> (Swedish Juniper).		
15 to 18 in.....	\$5.00	\$40.00
18 to 24 in.....	6.00	50.00
2 to 3 ft.....	7.50	65.00
<b>J. excelsa stricta</b> (Spiny Greek Juniper).		
We have a splendid supply of these lovely and popular formal plants this season. Gray green, stiff foliage, erect and very compact.		
9 to 12 in.....	4.00	30.00
12 to 15 in.....	5.00	40.00
15 to 18 in.....	6.50	55.00
18 to 24 in.....	9.00	75.00
24 to 30 in.....	12.50	100.00
30 to 36 in.....	17.50	150.00
3 to 3½ ft.....	25.00	.....
3½ to 4 ft.....	30.00	.....
4 to 5 ft.....	40.00	.....
<b>J. sabina</b> (Savin Juniper).		
15 to 18 in.....	6.00	50.00
18 to 24 in.....	8.50	75.00
2 to 2½ ft.....	12.50	110.00
2½ to 3 ft.....	15.00	.....
3 to 4 ft.....	25.00	.....
<b>J. squamata meyeri</b> (Meyer Juniper).		
12 to 15 in.....	5.00	40.00
15 to 18 in.....	6.50	55.00
18 to 24 in.....	9.00	80.00
2 to 2½ ft.....	15.00	125.00
2½ to 3 ft.....	20.00	175.00
3 to 3½ ft.....	25.00	225.00
3½ to 4 ft.....	30.00	.....
<b>J. virginiana</b> (Redcedar).		
4 to 5 ft.....	22.50	.....
5 to 6 ft.....	32.50	.....
6 to 8 ft.....	42.50	400.00
<b>J. virginiana burki</b> (Burk Redcedar).		
2 to 2½ ft.....	12.00	100.00
2½ to 3 ft.....	14.50	125.00
3 to 4 ft.....	17.50	150.00
<b>J. virginiana elegantissima</b>		
2 to 2½ ft.....	12.50	.....
2½ to 3 ft.....	17.50	.....
3 to 4 ft.....	25.00	.....
<b>J. virginiana glauca</b> (Silver Redcedar).		
2 to 2½ ft.....	12.00	100.00
2½ to 3 ft.....	14.50	125.00
3 to 4 ft.....	17.50	150.00
4 to 5 ft.....	25.00	.....
5 to 6 ft.....	35.00	.....
6 to 8 ft.....	45.00	.....
<b>PICEA canadensis (alba)</b> (White Spruce).		
18 to 24 in.....	6.00	45.00
2 to 3 ft.....	10.00	75.00
3 to 4 ft.....	15.00	125.00
4 to 5 ft.....	20.00	.....
5 to 6 ft.....	30.00	.....
<b>P. canadensis albertiana</b> (Black Hills Spruce).		
18 to 24 in.....	6.00	50.00
2 to 3 ft.....	8.50	.....
<b>P. engelmanni</b> (Engelmann's Spruce).		
18 to 24 in.....	15.00	.....
2 to 2½ ft.....	25.00	.....
2½ to 3 ft.....	35.00	.....
3 to 4 ft.....	45.00	.....



KOSTER BLUE SPRUCE  
(Treeform Japanese Yew in Background)

EVERGREEN TREES—Continued

PICEA—Continued

<b>P. excelsa</b> (Norway Spruce).	10	100
15 to 18 in.....	\$3.50	\$30.00
18 to 24 in.....	4.50	40.00
2 to 3 ft.....	6.00	50.00
3 to 4 ft.....	10.00	90.00
4 to 5 ft.....	17.50	.....
5 to 6 ft.....	25.00	.....
<b>P. pungens</b> (Colorado Spruce).		
15 to 18 in.....	4.50	35.00
18 to 24 in.....	6.00	50.00
2 to 2½ ft.....	10.00	75.00
2½ to 3 ft.....	12.50	100.00
3 to 4 ft.....	17.50	150.00
4 to 5 ft.....	27.50	250.00
5 to 6 ft.....	42.50	400.00
6 to 8 ft.....	60.00	550.00
8 to 10 ft.....	80.00	.....
<b>P. pungens glauca</b> (Blue Colorado Spruce).		
15 to 18 in.....	7.50	65.00
18 to 24 in.....	10.00	90.00
2 to 2½ ft.....	17.50	150.00
2½ to 3 ft.....	22.50	200.00
3 to 4 ft.....	32.50	300.00
4 to 5 ft.....	50.00	.....
5 to 6 ft.....	75.00	.....
6 to 8 ft.....	95.00	.....
<b>P. pungens kosteri</b> (Koster Blue Spruce).		
15 to 18 in.....	17.50	150.00
18 to 24 in.....	27.50	250.00
2 to 2½ ft.....	35.00	325.00
2½ to 3 ft.....	42.50	400.00
3 to 3½ ft.....	52.50	500.00
3½ to 4 ft.....	62.50	600.00
4 to 5 ft.....	90.00	.....
5 to 6 ft.....	120.00	.....
6 to 7 ft.....	150.00	.....
<b>PINUS austriaca</b> (Austrian Pine).		
2 to 2½ ft.....	7.00	60.00
2½ to 3 ft.....	8.50	75.00
3 to 4 ft.....	15.00	125.00
4 to 5 ft.....	25.00	225.00
5 to 6 ft.....	37.50	350.00
6 to 8 ft.....	50.00	475.00
8 to 10 ft.....	75.00	725.00

# LOVETT'S SPRING TRADE LIST, 1935

## EVERGREEN TREES—Continued

### PINUS—Continued

<b>P. densiflora</b> (Japanese Red Pine).	10	100
2 to 3 ft.....	\$7.00	\$60.00
3 to 4 ft.....	10.00	90.00
4 to 5 ft.....	17.50	150.00
5 to 6 ft.....	25.00	225.00
6 to 8 ft.....	37.50	350.00
<b>P. montana mughus</b> (Mugho Pine).		
9 to 12 in. spread.....	4.00	35.00
12 to 15 in. spread.....	5.00	45.00
15 to 18 in. spread.....	7.50	65.00
18 to 24 in. spread.....	10.00	85.00
2 to 2½ ft. spread.....	15.00	125.00
2½ to 3 ft. spread.....	20.00	175.00
3 to 4 ft. spread.....	30.00	275.00
<b>P. resinosa</b> (Red Pine).		
3 to 4 ft.....	15.00	135.00
4 to 5 ft.....	22.50	200.00
5 to 6 ft.....	32.50	300.00
6 to 8 ft.....	42.50	400.00
<b>P. sylvestris</b> (Scotch Pine).		
18 to 24 in.....	5.00	40.00
2 to 3 ft.....	6.00	50.00
3 to 4 ft.....	10.00	90.00
4 to 5 ft.....	17.50	150.00
5 to 6 ft.....	25.00	.....
6 to 8 ft.....	40.00	.....
8 to 10 ft.....	60.00	.....
<b>P. tanyosho</b> (Japanese Table Pine).		
2 to 3 ft.....	30.00	.....
3 to 4 ft.....	40.00	.....
<b>PSEUDOTSUGA douglasi</b> (Douglas-fir).		
18 to 24 in.....	6.00	50.00
2 to 3 ft.....	10.00	75.00
3 to 4 ft.....	15.00	125.00
4 to 5 ft.....	20.00	.. . .
<b>RETINOSPORA filifera</b> (Thread Cypress).		
18 to 24 in.....	6.00	50.00
2 to 2½ ft.....	7.50	65.00
2½ to 3 ft.....	11.50	100.00
3 to 4 ft.....	17.50	150.00
4 to 5 ft.....	27.50	250.00
5 to 6 ft.....	35.00	.....
6 to 8 ft.....	50.00	.....
<b>R. filifera aurea</b> (Goldenthrad Cypress).		
15 to 18 in.....	10.00	.....
18 to 24 in.....	12.50	.....
2 to 2½ ft.....	17.50	.....
2½ to 3 ft.....	22.50	.....
3 to 4 ft.....	30.00	.....
4 to 5 ft.....	40.00	.....
5 to 6 ft.....	55.00	.....
<b>R. obtusa compacta</b> (Football Cypress).		
18 to 24 in.....	9.00	75.00
2 to 2½ ft.....	12.50	110.00
2½ to 3 ft.....	18.00	165.00
<b>R. obtusa crippsi</b> (Cripps Golden Cypress).		
15 to 18 in.....	9.00	75.00
18 to 24 in.....	13.00	115.00
2 to 2½ ft.....	16.00	145.00
2½ to 3 ft.....	21.00	190.00
3 to 4 ft.....	27.50	250.00





RETINOSPORA OBTUSA CRIPPSI (CRIPPS GOLDEN CYPRESS)  
(See opposite page)

EVERGREEN TREES—Continued

RETINOSPORA—Continued

<b>R. obtusa gracilis</b> (Slender Hinoki Cypress).	10	100
2½ to 3 ft.....	\$20.00	.....
3 to 4 ft.....	30.00	.....
4 to 5 ft.....	40.00	.....
5 to 6 ft.....	60.00	.....
6 to 7 ft.....	75.00	.....
<b>R. obtusa magnifica.</b>		
2 to 3 ft.....	15.00	.....
3 to 4 ft.....	20.00	\$175.00
4 to 5 ft.....	25.00	225.00
5 to 6 ft.....	35.00	325.00
6 to 8 ft.....	55.00	.....
<b>R. obtusa nana</b> (Dwarf Hinoki Cypress).		
6 to 9 in.....	8.50	75.00
9 to 12 in.....	11.50	100.00
12 to 15 in.....	17.50	150.00
15 to 18 in.....	25.00	225.00
<b>R. pisifera</b> (Sawara Cypress).		
18 to 24 in.....	5.50	45.00
2 to 2½ ft.....	7.50	65.00
2½ to 3 ft.....	10.00	85.00
3 to 4 ft.....	12.50	110.00
4 to 5 ft.....	17.50	160.00
5 to 6 ft.....	25.00	250.00
6 to 8 ft.....	40.00	.....
<b>R. pisifera aurea</b> (Golden Sawara Cypress).		
18 to 24 in.....	5.50	45.00
2 to 2½ ft.....	7.50	65.00
2½ to 3 ft.....	10.00	85.00
3 to 4 ft.....	12.50	.....
4 to 5 ft.....	17.50	.....
5 to 6 ft.....	25.00	.....
6 to 8 ft.....	40.00	.....
8 to 10 ft.....	60.00	.....

# LOVETT'S SPRING TRADE LIST, 1935



RETINOSPORA PLUMOSA AUREA LOVETTI (GOLDDUST CYPRESS)

## EVERGREEN TREES—Continued

### RETINOSPORA—Continued

<b>R. plumosa (Plume Cypress).</b>	10	100
12 to 18 in.....	\$4.00	\$30.00
18 to 24 in.....	5.00	40.00
2 to 2½ ft.....	6.50	55.00
2½ to 3 ft.....	7.50	65.00
3 to 4 ft.....	11.00	95.00
4 to 5 ft.....	17.50	150.00
5 to 6 ft.....	25.00	225.00
6 to 8 ft.....	40.00	.....
8 to 10 ft.....	60.00	.....
<b>R. plumosa aurea (Goldenplume Cypress).</b>		
15 to 18 in.....	4.50	35.00
18 to 24 in.....	5.50	45.00
2 to 2½ ft.....	7.50	65.00
2½ to 3 ft.....	10.00	85.00
3 to 4 ft.....	12.50	115.00
4 to 5 ft.....	24.00	225.00
5 to 6 ft.....	35.00	325.00
6 to 8 ft.....	45.00	.....
8 to 10 ft.....	65.00	.....
<b>R. plumosa aurea lovetti (Golddust Cypress).</b> A compact sort which appears to carry a sheen of pure gold dust on its foliage. Worthy of featuring in your catalog.		
12 to 18 in.....	6.00	50.00
18 to 24 in.....	7.50	65.00
2 to 2½ ft.....	11.00	100.00
2½ to 3 ft.....	15.00	.....
3 to 3½ ft.....	20.00	.....
<b>R. plumosa lutescens (Dwarf Yellowplume Cypress).</b>		
9 to 12 in.....	4.00	30.00
12 to 15 in.....	5.00	40.00
15 to 18 in.....	7.00	60.00
18 to 24 in.....	11.00	100.00
2 to 2½ ft.....	13.50	125.00
2½ to 3 ft.....	20.00	.....
3 to 4 ft.....	25.00	.....
<b>R. squarrosa veitchi (Moss Cypress).</b>		
9 to 12 in.....	4.50	35.00
12 to 18 in.....	5.50	45.00
18 to 24 in.....	6.50	55.00
2 to 2½ ft.....	9.50	85.00
2½ to 3 ft.....	13.50	.....
3 to 4 ft.....	17.50	.....

# LOVETT'S SPRING TRADE LIST, 1935

## EVERGREEN TREES—Continued

<b>TAXUS baccata repandens</b> (Spreading English Yew).	10	100
15 to 18 in. spread.....	\$8.00	.....
18 to 24 in. spread.....	10.00	.....
2 to 2½ ft. spread.....	17.50	.....
2½ to 3 ft. spread.....	25.00	.....
<b>T. cuspidata</b> (Japanese Yew). Slow growing and most enduring, this spreading and bushy Yew is invaluable for foundation planting or as a hedge. Rich, blackish-green foliage.		
15 to 18 in. spread.....	7.00	\$60.00
18 to 24 in. spread.....	9.00	80.00
2 to 2½ ft. spread.....	15.00	125.00
2½ to 3 ft. spread.....	20.00	175.00
3 to 4 ft. spread.....	35.00	325.00
4 to 5 ft. spread.....	65.00	625.00
5 to 6 ft. spread.....	90.00	850.00
6 to 8 ft. spread.....	125.00	.....
<b>T. cuspidata brevifolia nana</b> (Dwarf Japanese Yew).		
9 to 12 in.....	6.00	50.00
12 to 15 in.....	9.00	80.00
15 to 18 in.....	12.50	115.00
18 to 24 in.....	17.50	.....
<b>T. cuspidata capitata</b> (Treeform Japanese Yew). A hardy, symmetrical pyramid, with brilliant scarlet berries conspicuous against its black green foliage.		
18 to 24 in.....	10.00	90.00
2 to 2½ ft.....	12.50	115.00
2½ to 3 ft.....	20.00	175.00
3 to 3½ ft.....	27.50	250.00
3½ to 4 ft.....	32.50	300.00
4 to 5 ft.....	37.50	.....
<b>T. media hicksi</b> (Hicks Yew).		
18 to 24 in.....	14.00	125.00
2 to 2½ ft.....	20.00	175.00
2½ to 3 ft.....	35.00	325.00
3 to 3½ ft.....	52.50	500.00
3½ to 4 ft.....	70.00	.....
4 to 5 ft.....	90.00	.....
<b>THUJA occidentalis</b> (American Arborvitae). Nice sheared specimens.		
18 to 24 in.....	3.50	25.00
2 to 2½ ft.....	4.50	35.00
2½ to 3 ft.....	6.00	50.00
3 to 4 ft.....	7.50	65.00
4 to 5 ft.....	12.00	100.00
5 to 6 ft.....	17.50	150.00
6 to 8 ft.....	27.50	250.00
8 to 10 ft.....	42.50	400.00
10 to 12 ft.....	60.00	.....
<b>T. occidentalis compacta</b> (Parsons Arborvitae).		
9 to 12 in.....	4.00	30.00
12 to 15 in.....	5.00	40.00
15 to 18 in.....	6.00	50.00
18 to 24 in.....	7.50	65.00
2 to 2½ ft.....	10.00	.....
2½ to 3 ft.....	12.50	.....
<b>T. occidentalis douglasi aurea</b> (Douglas Golden Arborvitae).		
5 to 6 ft.....	20.00	.....
6 to 8 ft.....	32.50	.....

# LOVETT'S SPRING TRADE LIST, 1935

## EVERGREEN TREES—Continued

### THUJA—Continued

<b>T. occidentalis elegantissima</b> (Yellow Column Arborvitae).	10	100
18 to 24 in.....	\$4.00	\$35.00
2 to 2½ ft.....	5.50	45.00
2½ to 3 ft.....	8.00	70.00
3 to 4 ft.....	10.00	90.00
4 to 5 ft.....	12.50	110.00
5 to 6 ft.....	17.50	.....
6 to 8 ft.....	27.50	.....
<b>T. occidentalis globosa</b> (Globe Arborvitae).		
9 to 12 in.....	4.00	30.00
12 to 15 in.....	5.00	40.00
15 to 18 in.....	6.00	50.00
18 to 24 in.....	7.50	65.00
<b>T. occidentalis hoveyi</b> (Hovey Arborvitae).		
15 to 18 in.....	5.00	.....
18 to 24 in.....	7.50	.....
2 to 2½ ft.....	10.00	.....
<b>T. occidentalis, "Little Gem."</b>		
9 to 12 in.....	6.00	50.00
12 to 15 in.....	7.00	60.00
15 to 18 in.....	8.50	75.00
18 to 24 in.....	11.50	100.00
<b>T. occidentalis lutea</b> (George Peabody Arborvitae).		
2 to 2½ ft.....	7.00	60.00
2½ to 3 ft.....	10.00	90.00
3 to 4 ft.....	12.50	110.00
4 to 5 ft.....	15.00	125.00
5 to 6 ft.....	22.50	200.00
6 to 8 ft.....	35.00	.....
<b>T. occidentalis plicata</b> (Moss Arborvitae).		
18 to 24 in.....	5.00	40.00
2 to 3 ft.....	7.00	60.00
3 to 4 ft.....	10.00	.....
<b>T. occidentalis pumila.</b>		
15 to 18 in.....	6.00	50.00
18 to 24 in.....	7.50	70.00
<b>T. occidentalis pyramidalis</b> (Pyramidal Arborvitae). We have long specialized in the production of this popular evergreen, so that you cannot be disappointed in our gorgeous trees.		
18 to 24 in.....	4.00	30.00
2 to 2½ ft.....	6.00	50.00
2½ to 3 ft.....	8.00	70.00
3 to 4 ft.....	9.50	85.00
4 to 5 ft.....	13.00	115.00
5 to 6 ft.....	19.00	175.00
6 to 8 ft.....	27.50	250.00
8 to 10 ft.....	40.00	.....
<b>T. occidentalis rosenthali</b> (Rosenthal Arborvitae). 8 to 10 ft. Grows slowly into a dense column of lustrous, dark green foliage, with growths ending in a little whitish ball.		
18 to 24 in.....	6.00	50.00
2 to 2½ ft.....	7.50	65.00
2½ to 3 ft.....	10.00	90.00
3 to 3½ ft.....	12.50	110.00
3½ to 4 ft.....	15.00	135.00
4 to 5 ft.....	20.00	180.00
5 to 6 ft.....	30.00	280.00
6 to 7 ft.....	40.00	.....



A BLOCK OF THUJA OCCIDENTALIS PYRAMIDALIS  
(PYRAMIDAL ARBORVITAE) (See page 32)

EVERGREEN TREES—Continued

THUJA—Continued

<b>T. occidentalis spiralis</b> (Spiral Arborvitae).	10	100
3 to 4 ft.....	\$16.50	\$150.00
4 to 5 ft.....	22.50	200.00
5 to 6 ft.....	32.50	300.00
6 to 8 ft.....	45.00	425.00
<b>T. occidentalis vervaeneana</b> (Vervaene Arborvitae).		
18 to 24 in.....	4.50	35.00
2 to 2½ ft.....	6.00	50.00
2½ to 3 ft.....	7.50	65.00
3 to 4 ft.....	9.00	80.00
4 to 5 ft.....	12.50	115.00
5 to 6 ft.....	17.50	165.00
6 to 8 ft.....	27.50	265.00
<b>T. occidentalis wareana</b> (Ware, or Siberian Arborvitae).		
15 to 18 in.....	3.50	30.00
18 to 24 in.....	5.00	40.00
2 to 2½ ft.....	6.00	50.00
2½ to 3 ft.....	8.00	70.00
3 to 4 ft.....	10.00	90.00
4 to 5 ft.....	15.00	135.00
<b>T. occidentalis woodwardi</b> (Woodward Arborvitae).		
12 to 15 in.....	4.50	35.00
15 to 18 in.....	5.50	45.00
18 to 24 in.....	7.50	65.00
<b>T. orientalis.</b> See "Biota."		
<b>TSUGA canadensis</b> (Canada Hemlock).		
A rapid grower, and very hardy; with rich, deep green foliage, softly pendulous. Good alike for a hedge or an informal planting.		
15 to 18 in.....	5.00	40.00
18 to 24 in.....	6.00	50.00
2 to 2½ ft.....	8.00	70.00
2½ to 3 ft.....	11.00	100.00
3 to 4 ft.....	17.50	150.00
4 to 5 ft.....	27.50	250.00
5 to 6 ft.....	37.50	350.00



TSUGA CANADENSIS PENDULA (SARGENT WEEPING HEMLOCK)

EVERGREEN TREES—Continued

TSUGA—Continued

<b>T. canadensis pendula</b> (Sargent Weeping Hemlock).	10	100
15 to 18 in. spread.....	\$15.00	.....
18 to 24 in. spread.....	25.00	.....
2 to 2½ ft. spread.....	37.50	.....
2½ to 3 ft. spread.....	45.00	.....
3 to 4 ft., heavy specimens.....	75.00	.....
4 to 5 ft., heavy specimens.....	100.00	.....
<b>T. caroliniana</b> (Carolina Hemlock).		
4 to 5 ft. ....	50.00	.....
5 to 6 ft. ....	65.00	.....
6 to 7 ft. ....	80.00	.....

## Vines

<b>AKEBIA quinata</b> (Fiveleaf Akebia).	10	100
2 yrs. ....	\$1.60	\$14.00
<b>AMPELOPSIS quinquefolia</b> (Virginia Creeper).		
2 yrs. ....	1.60	14.00
<b>A. quinquefolia engelmanni</b> (Engelmann Creeper).		
3 yrs. ....	1.80	.....
<b>A. veitchi</b> ( <i>tricuspidata</i> ) (Boston Ivy, Japanese Creeper). Our plants of this beautiful and popular sort have been sprayed weekly and are all very healthy specimens. They carry many more "leaders" than do most Boston Ivy plants of their age, having been cut back carefully last Spring.		
3 yrs., 12 to 18 in. ....	1.20	10.00
3 yrs., 18 to 24 in. ....	1.50	12.00
3 yrs., 2 to 3 ft. ....	2.00	17.50
<b>BIGNONIA radicans</b> (Trumpet creeper).		
2 yrs. ....	1.25	10.00
3 yrs. ....	1.75	12.00
<b>CELASTRUS orbiculatus</b> (Oriental Bittersweet).		
2 yrs. ....	1.60	14.00
3 yrs. ....	2.20	18.00



LONICERA HALLIANA (HALL JAPANESE HONEYSUCKLE)

VINES—Continued

<b>CLEMATIS paniculata</b> (Sweet Autumn Clematis).	10	100
2 yrs., selected.....	\$2.00	\$15.00
<b>EUONYMUS radicans vegetus</b> (Bigleaf Wintercreeper).		
9 to 12 in., stocky.....	2.50	20.00
12 to 18 in., stocky.....	3.00	25.00
18 to 24 in., stocky.....	4.00	35.00
<b>HEDERA helix</b> (English Ivy).		
Evergreen, from 3 in. pots.....	2.00	16.00
<b>JASMINUM nudiflorum</b> (Winter Jasmine).		
12 to 18 in.....	2.00	18.00
<b>LONICERA halliana</b> (Hall Japan Honeysuckle).		
2 yrs., selected.....	1.20	10.00
3 yrs., extra heavy.....	2.00	15.00
<b>L. sempervirens</b> (Scarlet Trumpet Honeysuckle).		
2 yrs., selected.....	1.60	13.50
<b>LYCIUM barbarum</b> (Barbary Matrimony-vine).		
2 to 3 ft.....	1.25	10.00
3 to 4 ft.....	1.60	14.00
<b>POLYGONUM auberti</b> (Silver Lace Vine).		
2 yrs., selected.....	3.00	25.00
<b>PUERARIA thunbergiana</b> (Kudzu-vine).		
2 yrs., selected.....	1.00	8.00
3 yrs., heavy.....	1.50	12.00
<b>VINCA minor</b> (Periwinkle).		
From 3 in. pots.....	1.25	10.00
<b>WISTERIA sinensis</b> (Chinese Wisteria).		
2 yrs., selected (grown from cuttings)...	2.50	20.00
3 yrs., extra large (grown from cuttings).	3.00	25.00
3 yrs., selected (grown from seed).....	1.50	10.00

# Hardy Perennial Plants

The attractive prices quoted in this Trade List refer in all instances to sturdy, field grown plants (unless stated otherwise), such as can be depended upon to produce quick and most satisfactory results.

## REAL BARGAIN!

We are pleased to offer Perennials once more in splendid assortment at the following unprecedented low prices:

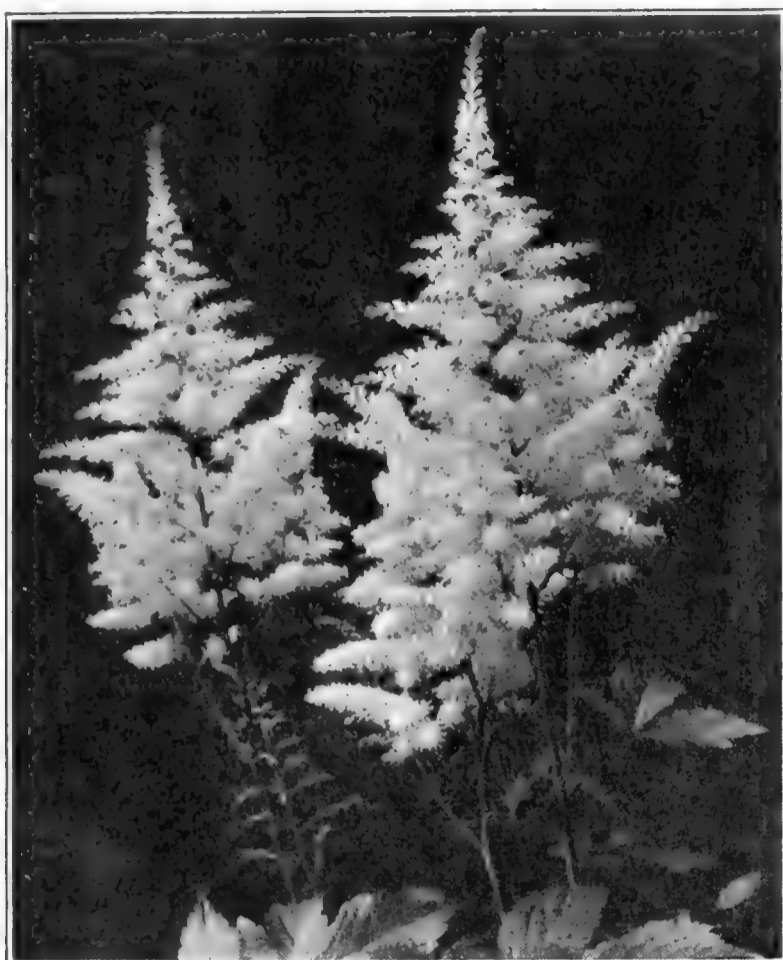
- 100 Hardy Perennial Plants (choice of varieties left to us) for ..\$4.50**  
**500 Hardy Perennial Plants (choice of varieties left to us) for ..20.00**  
**1000 or more Hardy Perennial Plants (choice of varieties left to us) for .....3½c. each**

All are strong, field grown plants,  
(Propelry labeled)

Take advantage of these offers—they are undoubtedly the most attractive that we have ever made in over half a century of the nursery business.

	10	100
<b>ACHILLEA filipendulina</b> .....	\$0.90	\$7.00
ptarmica, Boule de Neige.....	.90	7.00
<b>ACONITUM fischeri</b> .....	1.20	10.00
sparksii.....	1.00	8.00
<b>AJUGA reptans</b> .....	1.00	8.00
<b>ALYSSUM saxatile compactum</b> .....	.90	7.00
<b>ANCHUSA italica, Dropmore</b> .....	.80	6.00
italica, Opal.....	1.20	10.00
myosotidiflora.....	1.20	10.00
<b>ANEMONE hupehensis</b> .....	1.20	10.00
<b>ANEMONE japonica</b> (Japanese Wind- flowers).		
Alba.....	1.20	10.00
Queen Charlotte.....	1.20	10.00
Whirlwind.....	1.20	10.00
<b>ANTHEMIS tinctoria</b> .....	.80	6.00
tinctoria, Perry's Variety.....	1.00	8.00
<b>AQUILEGIA canadensis</b> .....	.90	7.00
chrysantha.....	.90	7.00
caerulea.....	1.10	9.00
Mrs. Scott Elliott's Choice Long- spurred Hybrids.....	1.10	9.00
<b>ARABIS alpina</b> .....	.80	6.00
<b>ARMERIA formosa</b> (pink).....	1.00	8.00
maritima lauchiana.....	1.00	8.00
<b>ARTEMISIA lactiflora</b> .....	.90	7.00
Silver King.....	1.00	8.00
stelleriana.....	1.00	8.00
<b>ASCLEPIAS tuberosa</b> .....	.90	7.00
<b>ASPHODELUS luteus</b> .....	1.20	9.00





ASTILBE, PEACH BLOSSOM

HARDY PERENNIAL PLANTS—Continued

	10	100
<b>ASTER alpinus superbus, Goliath</b> .....	\$1.10	\$9.00
Anita Ballard.....	1.10	9.00
Blue Beard.....	1.10	9.00
Blue Gem.....	1.20	10.00
Feltham Blue.....	1.10	9.00
Louvain.....	1.10	9.00
Mons.....	1.20	10.00
Perry White.....	1.10	9.00
St. Egwin.....	1.20	10.00
Tataricus.....	.90	7.00
White Queen.....	1.00	8.00
<b>ASTILBE, Peach Blossom</b> .....	1.20	10.00
Salmon Queen.....	2.50	20.00
Moerheimi.....	2.50	20.00
Queen Alexandria.....	2.00	17.50
<b>BAPTISIA australis</b> .....	.90	7.00
<b>BOCCONIA cordata</b> .....	1.00	8.00
<b>BOLTONIA latisquama</b> .....	1.00	8.00
<b>CALAMINTHA alpina</b> .....	1.00	8.00
<b>CAMPANULA carpatica</b> .....	1.00	8.00
calycanthera. Pink, white and blue....	.80	6.00
medium (Canterbury-bells). Pink, white, blue and mixed.....	.80	6.00
persicifolia.....	1.00	8.00
<b>CATANANCHE caerulea</b> .....	1.20	10.00
<b>CENTAUREA macrocephala</b> .....	1.00	8.00
montana.....	.80	6.00
<b>CERASTIUM biebersteini</b> .....	.90	7.00
<b>CHRYSANTHEMUM arcticum</b> (Arctic Daisy). Large snow-white bloom.....	.90	7.00
<b>coreanum</b> (Korean Chrysanthemum). A profusion of claret pink flowers, centered golden, in late Autumn.....	1.00	8.00
<b>maximum</b> (Shasta Daisy). In June and July come the myriads of flowers which resemble field Daisies seen through a powerful magnifying glass.....	.80	6.00

# LOVETT'S SPRING TRADE LIST, 1935

## HARDY PERENNIAL PLANTS—Continued

<b>CHRYSANTHEMUMS, Hardy Varieties:</b>	10	100
Alice Howell. Large, single, orange yellow.	\$0.90	\$7.00
Beaumont Red. Large, deep mauve red; striking and beautiful.	.90	7.00
Cometo. Large, dark Rose, shaded magenta.	.90	7.00
Ethel. Pompon; deep crimson bronze.	.90	7.00
Excelsior. Aster type; bright yellow.	1.00	8.00
Field of Snow. White button, pinkish tinge.	.90	7.00
Frances Whittlesey. Large, dark copper-red flowers. New.	1.00	8.00
Jean Treadway. Many blooms of a deep rosy pink. One of the finest large-flowered varieties.	1.20	10.00
Mrs. Calvin Coolidge. Single; brilliant crimson.	.90	7.00
Mrs. L. Birchard. Pompon; shell pink.	.90	7.00
Norine. Button; yellow.	.90	7.00
October Girl. Double; pale mauve flowers.	.90	7.00
Old Homestead. Large, bright rose pink.	.90	7.00
Pink Dandy. Large; brilliant pink Pompon.	.90	7.00
Ruth Cummings. Decorative; reddish bronze.	.90	7.00
Skibo. Pompon; pure yellow.	.90	7.00
Victory. Large; white, and very desirable.	.90	7.00
Yellow Normandie. Decorative; bronzy yellow.	.90	7.00
<b>CONVALLARIA majalis (Lily-of-the-valley)</b>		
Extra selected clumps.	2.00	17.50
<b>COREOPSIS grandiflora florepleno.</b>	.90	7.00
lanceolata.	.70	5.00
<b>DAISY, Shasta.</b> See <i>Chrysanthemum maximum</i> .		
<b>DELPHINIUM belladonna.</b>	1.00	8.00
Bellamosum.	1.00	8.00
hybridum.	1.00	8.00
sinensis.	1.00	8.00
Wrexham Hybrids.	1.20	10.00
<b>DIANTHUS Abbotsford.</b>	1.20	10.00
deltoides.	1.00	8.00
Improved Crimson King. From 2 in. pots.	1.20	10.00
latifolius, Beatrix.	1.50	12.00
latifolius, Furst Bismarck.	1.20	10.00
plumarius florepleno.	.90	7.00
semperflorens.	1.00	8.00
Grenadin Pinks. Pink, red, and white.	.90	7.00
barbatus (Sweet-william). Pink, red, and white.	.80	6.00
<b>DICENTRA eximia.</b>	1.50	12.00
spectabilis, selected 2 yr. roots.	2.00	15.00
<b>DICTAMNUS fraxinella rubra.</b>	1.50	12.00
<b>DIGITALIS gloxiniaeflora. Pink, Purple, White and Mixed.</b>	1.00	8.00
<b>ERIGERON speciosus.</b>	1.00	8.00
<b>ERYNGIUM amethystinum.</b>	1.20	10.00
<b>EUPATORIUM ageratoides.</b>	1.20	10.00
coelestinum.	1.00	8.00
<b>EUPHORBIA myrsinites.</b>	1.20	10.00
polychroma.	1.80	15.00
<b>FUNKIA caerulea.</b>	1.20	10.00
lancifolia undulata variegata.	1.00	8.00
marginata alba.	1.20	10.00
sieboldiana.	1.00	8.00
subcordata grandiflora.	1.20	10.00

# LOVETT'S SPRING TRADE LIST, 1935

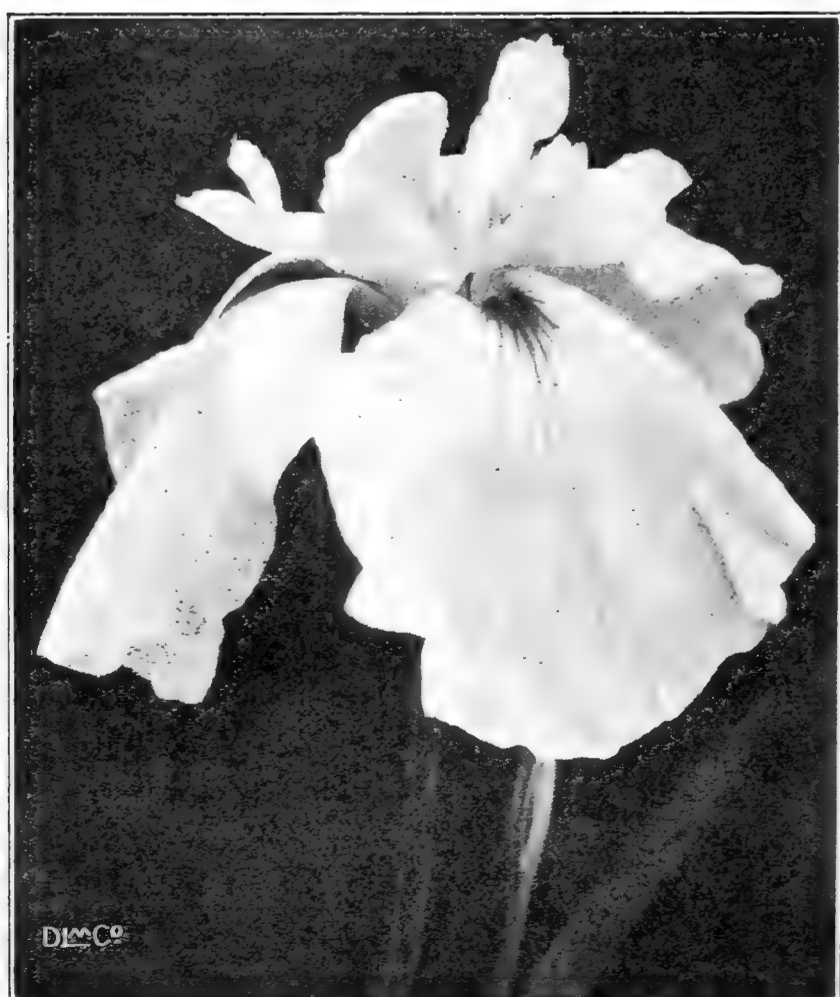
## HARDY PERENNIAL PLANTS—Continued

	10	100
<b>GAILLARDIA grandiflora</b> .....	\$0.90	\$7.00
Portola Hybrids.....	1.20	10.00
<b>GRASSES, ORNAMENTAL.</b>		
<i>Eulalia gracillima</i> .....	1.00	8.00
<i>Eulalia japonica</i> .....	1.00	8.00
<i>Eulalia japonica variegata</i> .....	1.00	8.00
<i>Eulalia japonica zebrina</i> .....	1.20	10.00
<i>Festuca glauca</i> .....	1.20	10.00
<i>Pennisetum japonicum</i> .....	1.00	8.00
<i>Phalaris arundinacea picta</i> .....	1.00	8.00
<b>GYPSOPHILA paniculata</b> .....	.80	6.00
<b>HELENIUM autumnale superbum</b> .....	1.00	8.00
Riverton Gem.....	2.00	17.50
<b>HELIANTHEMUM croceum</b> .....	1.00	8.00
<b>HELIANTHUS, Miss Mellish</b> .....	1.00	8.00
<i>mollis</i> .....	1.00	8.00
<i>multiflorus grandiplenus (Soleil d'Or)</i> .....	1.20	10.00
<i>sparcifolius</i> .....	1.00	8.00
<b>HELIOPSIS pitcheriana</b> .....	.80	6.00
<i>scabra excelsa</i> .....	1.00	8.00
<b>HEMEROCALLIS dumortieri</b> .....	1.00	8.00
Kwanso.....	1.00	8.00
<b>LOVETT'S LEMON.</b> Largest lemon colored variety of which we have any knowledge. Gorgeous beyond words.....	2.00	15.00
<b>LOVETT'S ORANGE.</b> A tall growing sort, with extra large orange flowers, bright and beautiful for the garden....	2.00	15.00
Orangeman.....	1.20	10.00
<i>thunbergi</i> .....	1.00	8.00
<b>HEUCHERA sanguinea</b> .....	1.50	12.00
<b>HIBISCUS, Meehan's Mallow Marvels.</b>		
Mixed colors.....	.70	5.00
<b>HOLLYHOCKS, Double. Pink, Red, Salmon, White, Yellow, and Mixed..</b>	.80	6.00
<b>HYPERICUM ascyron</b> .....	1.50	.....
<b>IBERIS sempervirens</b> .....	1.20	10.00
<b>IRIS germanica (German Iris).</b>		
S—Stands, or upright petals; F—Falls, or drooping petals.		
<b>Ab-del-Kader.</b> S., smoked yellow; F., yellow, veined plum.....	.70	5.00
<b>Charles Dickens.</b> S., light violet; F., indigo with white at base.....	.70	5.00
<b>Count St. Clair.</b> S., white; F., deep violet, margined white.....	1.00	8.00
<b>Darius.</b> S., lemon yellow; F., light yellow, marbled a rosy lilac.....	.70	5.00
<b>Donna Maria.</b> S., azure; F., indigo, with veined white base.....	.70	5.00
<b>Florentina alba.</b> S. and F., porcelain to white; early blooming; large flowers...	1.00	8.00
<b>Gracchus.</b> S., lemon; F., delicate yellow, striped wine red.....	.70	5.00
<b>H. Cramer.</b> S., celestial blue; F., a shade darker.....	.70	5.00
<b>Iris King.</b> S., clear lemon yellow; F., rich maroon, bordered yellow.....	1.00	8.00
<b>Pallida Dalmatica (Dalmatica).</b> S., light lavender; F., deeper lavender with blue shadings. Very fragrant.....	1.00	8.00
<b>Pauline.</b> S., bright blue; F., darker blue.	.70	5.00
<b>P. Bernot.</b> S., golden; F., light yellow and white, densely veined wine red.....	.70	5.00

# LOVETT'S SPRING TRADE LIST, 1935

## HARDY PERENNIAL PLANTS—Continued

<b>IRIS germanica</b> —Continued	10	100
<b>Pecutem.</b> S. and F., white; distinctly penciled lilac toward outer edges.....	\$0.70	\$5.00
<b>President Thiers.</b> S., mauve, brown base; F., purple, brown and white base.....	.70	5.00
<b>Queen of May.</b> S., bright rosy lilac; F., darker.....	.70	5.00
<b>Rebecca.</b> S., golden; F., mahogany.....	.70	5.00
<b>IRIS germanica.</b> Mixed..Per 1000	\$20.00, .40	3.00
<b>IRIS kaempferi</b> (Japanese Iris).		
<b>Eleanor Parry.</b> Double claret red flamed with white and blue.....	1.50	12.00
<b>Gold Bound.</b> Double white.....	1.20	10.00
<b>Peacock.</b> Double; purple.....	1.20	10.00
<b>Purple and Gold.</b> Violet purple, showy golden throat. Double.....	1.20	10.00
<b>Pyramid.</b> Double; indigo blue.....	1.50	12.00
<b>Stella.</b> Single; violet, veined white.....	1.20	10.00
<b>IRIS kaempferi Mixed</b> (Japanese Iris). A superb combination of the finest blood in the Iris family.....	.80	6.00
<b>IRIS pseudacorus</b> (Yellowflag Iris). Tall, with golden yellow flowers in June.....	1.00	8.00
<b>IRIS pumila, Mixed.</b> The colors range through the various shades of blue and yellow.....	1.00	8.00
<b>IRIS sibirica</b> (Siberian Iris).		
<b>Blue King.</b> Large, rich blue flowers.....	.90	7.00
<b>Snow Queen.</b> Snowy white, shapely flowers.....	1.00	8.00
<b>LATHYRUS</b> (Hardy Sweet Pea).		
<b>Mary Lovett.</b> .....	1.20	.....
<b>White Pearl.</b> .....	1.00	.....
<b>LIATRIS pycnostachya.</b> .....	.90	7.00



JAPANESE IRIS, "GOLD BOUND"

# LOVETT'S SPRING TRADE LIST, 1935

## HARDY PERENNIAL PLANTS—Continued

	10	100
<b>LILIUM auratum</b> .....	\$2.50	\$20.00
<b>henryi</b> .....	2.50	20.00
<b>regale</b> .....	2.00	15.00
<b>speciosum album</b> .....	2.50	20.00
<b>speciosum magnificum</b> .....	2.50	20.00
<b>tigrinum florepleno</b> .....	1.80	15.00
<b>LINUM perenne (Blue)</b> .....	.80	6.00
<b>perenne (white)</b> .....	.80	6.00
<b>LOBELIA cardinalis</b> .....	1.00	8.00
<b>LUPINUS polyphyllus</b> .....	1.00	8.00
<b>polyphyllus albus</b> .....	1.20	10.00
<b>polyphyllus moerheimi</b> .....	1.00	8.00
<b>LYCHNIS chalcedonica</b> .....	.80	6.00
<b>LYSIMACHIA clethroides</b> .....	1.00	8.00
<b>LYTHRUM roseum superbum</b> .....	1.00	8.00
<b>MONARDA didyma splendens</b> .....	1.20	10.00
<b>MYOSOTIS palustris semperflorens</b> ....	.90	7.00
<b>OENOTHERA pilgrimi</b> .....	1.00	8.00
<b>PACHYSANDRA terminalis</b> .....		
Per 1000, \$60.00,	.90	7.00
<b>PAPAVER nudicaule</b> .....	1.00	8.00
<b>orientale</b> .....	1.00	8.00
<b>PARDANTHUS sinensis</b> .....	1.00	8.00
<b>PENTSTEMON torreyi</b> .....	1.00	8.00
<b>digitalis</b> .....	1.00	8.00
<b>PEONIES.</b> Take advantage of our low prices to give your best customer a Peony garden that will make him the envy of his neighbor.		
<b>Albert Crousse.</b> Light rose pink; late...	2.00	15.00
<b>Avalanche.</b> Blush white; late.....	2.00	15.00
<b>Candidissima.</b> Creamy white guard petals, inner ones sulphur yellow.....	2.00	15.00
<b>Couronne d'Or.</b> Large white; late.....	2.00	15.00
<b>Duchess de Nemours.</b> White, light yellow center; early.....	1.50	12.00
<b>Edulis superba.</b> Mauve pink, silvery reflex; early.....	1.50	12.00
<b>Eugene Verdier.</b> Light Hydrangea pink. Midseason.....	2.00	15.00
<b>Felix Crousse.</b> Brilliant crimson; late mid-season.....	2.00	15.00
<b>Festiva Maxima.</b> White, flecked crimson; early.....	1.50	12.00
<b>Floral Treasure.</b> Pale lilac rose; fragrant.	1.50	12.00
<b>James Kelway.</b> Pale pink, slight yellow tint at center; early midseason.....	2.50	20.00
<b>La Perle.</b> Light old rose pink; midseason.	2.00	15.00
<b>La Tendresse.</b> Lovely white flowers..	2.00	15.00
<b>La Tulipe.</b> Flat white blooms, flecked crimson inside.....	2.00	15.00
<b>Lora Dexheimer.</b> Large flowers, bright dark red.....	3.00	25.00
<b>Marechal MacMahon.</b> Late flower, of a deep, vinous red.....	2.50	20.00
<b>Marie Jacquin.</b> Pink, turning white, large and floriferous. Midseason.....	2.50	20.00
<b>Marie Lemoine.</b> Very late. Sulphur white, shaded chamois.....	2.00	15.00
<b>Mme. de Verneville.</b> White, blush white center, crimson marks on tips of several petals. Early.....	2.00	15.00

# LOVETT'S SPRING TRADE LIST, 1935

## HARDY PERENNIAL PLANTS—Continued

### PEONIES—Continued

<b>Marguerite Gerard.</b> Pale Hydrangea pink; midseason.....	10	100	\$2.00	\$15.00
<b>Modeste Guerin.</b> Dark rose pink; early.	2.00	15.00		
<b>Mons. Dupont.</b> White, yellow glow at center; late midseason.....	2.00	15.00		
<b>Octavie Demay.</b> Light, double old rose pink. Early.....	2.00	15.00		
<b>Pottsi.</b> Early, with fragrant, rich crimson flowers.....	2.50	20.00		
<b>Richardson's Rubra Superba.</b> Deep carmine crimson. Large, very fragrant blooms, late in the season.....	2.50	20.00		
<b>Rose Here.</b> Dark rose red striped white; late.....	2.00	15.00		
<b>Suzette.</b> Clear rose pink, deeper at center; midseason.....	3.00	25.00		
<b>Triomphe de l'Exposition de Lille.</b> Pale Hydrangea pink flecked with violet rose.	2.00	15.00		
<b>umbellata rosea.</b> Violet rose, center amber white; very early.....	2.00	15.00		
<b>PEONIES, Mixed.</b> A superb mixture of the best varieties.....	1.50	10.00		
<b>PHLOX.</b> Our Phloxes are all well rooted, field grown plants.				
<b>Africa.</b> Carmine with blood red eye.....	1.00	8.00		
<b>Albion.</b> White with pink eye.....	.90	7.00		
<b>Athis.</b> Old favorite, with deep, clear salmon blooms.....	.90	7.00		
<b>B. Compte.</b> Tall, with rich amaranth flowers, very brilliant.....	.90	7.00		
<b>Beacon.</b> Brilliant cherry red.....	1.20	10.00		
<b>Eclairer.</b> Bright rosy carmine.....	.80	6.00		
<b>Elizabeth Campbell.</b> Light salmon.....	2.00	15.00		
<b>Enchantress.</b> Salmon pink with dark pink eye.....	1.00	8.00		
<b>Europa.</b> White, with large crimson carmine eye.....	1.00	8.00		
<b>Fiance.</b> Beautiful waxy white blooms... ..	1.00	8.00		
<b>Firebrand.</b> Cerise, vermilion and orange.	1.20	10.00		
<b>Gefion.</b> Beautiful large pink.....	1.00	8.00		
<b>Gen. Von Heutz.</b> Huge salmon red flowers, centered white.....	.90	7.00		
<b>H. O. Wijers.</b> Bright pink center, white edges.....	1.00	8.00		
<b>Independence.</b> .....	1.00	8.00		
<b>Iris.</b> Light purple.....	.80	6.00		
<b>Jannice Attur.</b> .....	1.00	8.00		
<b>Jean d'Arc.</b> .....	1.00	8.00		
<b>L'Esperance.</b> Lavender pink, white center	.80	6.00		
<b>Miss Lingard.</b> White, faint lavender eye; early.....	1.00	8.00		
<b>Mme. Paul Dutrie.</b> Soft pink, suffused white.....	.90	7.00		
<b>Mrs. Chas. Dorr.</b> Beautiful lavender....	.80	6.00		
<b>Mrs. Jenkins.</b> .....	1.00	8.00		
<b>Mrs. Verboom.</b> Early, with rose pink flower.....	1.20	10.00		
<b>Rijnstroom.</b> Bright rose pink.....	.90	7.00		
<b>R. P. Struthers.</b> Rosy carmine blooms, overlaid with orange scarlet.....	1.00	8.00		
<b>Thor.</b> Deep salmon pink.....	.90	7.00		
<b>Von Lassburg.</b> Pure white, large trusses in abundance.....	.90	7.00		
<b>PHLOX subulata</b> (Moss Phlox).				
<b>alba, lilacina and rosea.</b> .....	.90	7.00		
<b>PHYSALIS francheti.</b> .....	.90	7.00		

# LOVETT'S SPRING TRADE LIST, 1935

## HARDY PERENNIAL PLANTS—Continued

	10	100
PHYSOSTEGIA virginiana.....	\$0.80	\$6.00
"Vivid".....	.90	7.00
<b>HARDY PINKS and GRENADIN PINKS.</b>		
See Dianthus.		
PLATYCODON mariesi.....	1.00	8.00
PLUMBAGO larpentae.....	1.20	10.00
PRIMULA veris Hybrids. A splendid strain, including shades of violet, orange, salmon, and red. Mixed colors.....	1.50	12.00
PYRETHRUM roseum hybridum.....	.90	7.00
RUDBECKIA laciniata florepleno.....	.80	6.00
purpurea.....	.80	6.00
subtomentosa.....	.80	6.00
SALVIA azurea grandiflora.....	.80	6.00
pratensis.....	.90	7.00
pitcheri.....	1.00	8.00
SANTOLINA incana.....	1.00	8.00
SCABIOSA caucasica.....	1.20	10.00
SEDUM acre. From 2-in. pots.....	.80	6.00
album. From 2-in. pots.....	.80	6.00
dasyphyllum. Blush pink flowers in May and June. From 2-in. pots.....	.80	6.00
kamtschaticum. From 2-in. pots.....	.90	7.00
reflexum. From 2-in. pots.....	.80	6.00
sarmentosum. From 2-in. pots.....	.80	6.00
sexangulare. From 2-in. pots.....	.80	6.00
sieboldi. From 2-in. pots.....	1.20	10.00
spectabilis, "Brilliant".....	1.20	10.00
spurium coccineum. From 2-in. pots...	.80	6.00
stoloniferum. From 2-in. pots.....	.80	6.00
stoloniferum coccineum. From 2-in. pots	.80	6.00
SEMPERVIVUM alberti.....	.90	7.00
arachnoideum.....	.90	7.00
atlanticum.....	.90	7.00
doellianum.....	.90	7.00
globiferum.....	.90	7.00
tectorum.....	.90	7.00
SPIRAEA palmata elegans.....	1.50	12.00
STACHYS lanata.....	.90	7.00
STATICE latifolia.....	1.00	8.00
STOKESIA laevis.....	1.00	8.00
THERMOPSIS caroliniana.....	1.20	10.00
THYMUS serpyllum coccineum. From 2-in. pots.....	1.00	8.00
TRITOMA "Express".....	1.00	8.00
TUNICA saxifraga.....	1.00	8.00
VALERIANA coccinea (Centranthus ruber). officinalis.....	.90	7.00
officinalis.....	.90	7.00
VERBASCUM olympicum.....	1.20	10.00
VERONICA amethystina.....	1.20	10.00
longifolia subsessilis (Clump Speedwell). A scarce variety, which bears long, com- pact spikes of deep blue flowers in late Summer.....	1.20	10.00
spicata.....	.90	7.00
VIOLA, Double Russian.....	1.20	10.00
Gov. Herrick.....	.90	7.00
Jersey Gem.....	1.00	8.00
Rosina.....	1.20	10.00
Purple Glory.....	1.50	12.00

# Fruit Trees

## Apples

Standard, 2 years old, sturdy trees in the following varieties:

Arkansas Black	Ortley		
Baldwin	Red Astrachan		
Banana	Rhode Island Greening		
Delicious	Rome Beauty		
Fameuse	Stayman		
Gravenstein	Spitzenberg		
Grimes Golden	Summer Rambo		
Maiden Blush	Wagener		
McIntosh	Winesap		
Newtown	Wealthy		
Northern Spy	Yellow Transparent		
	York Imperial		

		10	100
First-class trees.....		\$4.50	\$40.00

## Crabapples

Hyslop	Transcendent		
		10	100
First-class trees.....		\$4.50	\$40.00

## Pears

Anjou	Douglas		
Bartlett	Duchesse d'Angouleme		
Beurre Bosc	Kieffer		
	Seckel		

		10	100
First-class trees.....		\$4.00	\$35.00

## Sweet Cherries

Black Tartarian	Napoleon		
Governor Wood	Schmidt's Bigarreau		
Lambert	Yellow Spanish		

		10	100
First-class trees.....		\$4.50	\$40.00

## Sour Cherries

Early Richmond	Montmorency		
		10	100
First-class trees.....		\$3.50	\$30.00

## Peaches

Belle (Belle of Georgia)	Golden Jubilee		
Carman	Hiley		
Champion	J. H. Hale		
Early Crawford	Late Crawford		
(Crawford's Early)	(Crawford's Late)		
Elberta	Rochester		

		10	100
Bright trees, 9/16 in. and up.....		\$2.50	\$22.00
Bright trees, 7/16 in. to 9/16 in.....		2.20	18.00
Bright trees, 5/16 in. to 7/16 in.....		2.00	14.00



# LOVETT'S SPRING TRADE LIST, 1935

## FRUIT TREES—Continued

### Plums

Abundance	Green Gage	Reine Claude	
Bradshaw	Jap. Gold	Shippers' Pride	
Burbank	Lombard	Shropshire	
	Red June	10	100
First-class trees.....		\$4.50	\$40.00

### Quinces

Champion	Orange	10	100
First-class trees.....		\$6.00	\$50.00

## Small Fruits

### Raspberries

We offer Strong, Heavy, Transplanted Plants, marked Tr.; Strong Tip Plants, marked S. T.; and Selected Suckers, marked S. S. Our Raspberry plants have all been carefully examined and found to be free of mosaic.

	10	100	1000
Black Beauty (S.T.).....	\$0.60	\$4.00	.....
Chief (S.S.).....	.60	4.00	.....
Chief (Tr.).....	.80	6.00	.....
Columbian (S.T.).....	.60	4.00	.....
Columbian (Tr.).....	.80	6.00	.....
Cumberland (S.T.).....	.50	3.00	\$20.00
Cumberland (Tr.).....	.70	5.00	.....
Cuthbert (S.S.).....	.40	2.50	.....
Cuthbert (Tr.).....	.70	5.00	.....
Kansas (S.T.).....	.50	3.00	.....
Kansas (Tr.).....	.70	5.00	.....
King (S.S.).....	.50	3.00	25.00
King (Tr.).....	.70	5.00	.....
La France (S.S.).....	2.00	15.00	.....
La France (Tr.).....	3.00	25.00	.....
Latham (S.S.).....	.50	3.00	25.00
Latham (Tr.).....	.60	4.00	.....
Newburgh (S.S.).....	.80	6.00	.....
Newburgh (Tr.).....	1.25	10.00	.....
New Logan (S. T.).....	.50	3.00	.....
St. Regis (S.S.).....	.40	2.00	15.00
St. Regis (Tr.).....	.60	4.00	30.00

### Blackberries

All are selected root-cutting plants.	10	100
Blowers.....	\$0.40	\$2.00
Eldorado.....	.40	2.00
Joy.....	.60	4.00
Macatawa.....	.50	3.00
Mt. Pocono.....	.80	6.00
Taylor.....	.40	2.00
Ward.....	.40	2.00

### Currants

All strong, 2 year, No. 1 plants.	10	100
Cherry.....	\$1.25	\$10.00
Fay's Prolific.....	1.25	10.00
Perfection.....	1.50	12.00
White Grape.....	1.25	10.00

### Dewberries

	10	100	1000
Lucretia. Strong, 1 yr. old.....	\$0.35	\$2.00	\$15.00
Young. Strong, 1 yr. old.....	.50	3.50	.....



GRAPES, WORDEN

SMALL FRUITS—Continued

**Gooseberries**

	10	100
Downing. 2 year, No. 1 plants.....	\$1.25	\$10.00
Oregon Champion. 2 year, No. 1 plants..	2.00	15.00

**Grapes**

Our Grapes are exceptionally fine in both "root" and "top." They could not well be better.

	10	100
Brighton. 2 yr., No. 1.....	\$1.50	\$12.00
Caco. 2 yr., medium.....	2.00	15.00
2 yr., No. 1.....	2.50	20.00
Catawba. 2 yr., No. 1.....	2.00	15.00
Champagne. 2 yr., No. 1.....	2.50	20.00
Concord. 2 yr., No. 1.....	1.00	8.00
Delaware. 2 yr., No. 1.....	2.00	15.00
Diamond. 2 yr., No. 1.....	1.50	12.00
Green Mountain. 2 yr., No. 1.....	2.50	20.00
Moore's Early. 2 yr., No. 1.....	1.50	12.00
Niagara. 2 yr., No. 1.....	1.50	12.00
Worden. 2 yr., No. 1.....	1 20	10.00

**Garden Roots**

<b>ASPARAGUS.</b> We invite special attention to our large and splendid supply of Asparagus roots. We have specialized in growing one variety— <b>Washington</b> —because of its decided points of superiority over the old varieties. A fine, heavy producer, does not rust, of highest quality and commands top prices.	10	100	1000
<b>Washington, 1 yr.</b> .....	\$0.60	\$5.00	
2 yrs.....	.90	7.50	
3 yrs., extra heavy.....	1.25	10.00	
<b>CHIVES.</b> Medium size clumps.....	\$1.00	8.00	....
<b>HORSERADISH.</b> Sets.....	.40	2.00	15.00
<b>LAVENDER.</b> Field grown.....	1.50	12.00	....
<b>SPEARMINT</b> .....	1.00	8.00	....
<b>PEPPERMINT</b> .....	1.25	10.00	....
<b>RHUBARB.</b> Selected roots.....	.80	6.00	50.00
<b>SAGE, Holt's Mammoth.</b> Clumps.	1.25	10.00	75.00
<b>THYME.</b> Clumps.....	1.50	12.00	....

## Strawberries (Layers)

Orders calling for Strawberry plants (layers) will be shipped from our Delaware Nurseries. We have this season much the largest supply of Strawberries that we have ever had at any one time.

All varieties offered have "perfect flowers."

65c. per 100, \$4.00 per 1000, except as noted

Less than 500 of a variety at the 100 rate; 500 or more at the 1000 rate

**Aroma.** Late. Large, round, glossy red berries. Very productive.

**Bellmar.** Midseason. Vigorous grower. Produces heavy yield.

**Blakemore.** Very early.

**Bubach.** Midseason. Big, red berries.

**Big Joe.** Late.

**Big Late.** Very late. Big, shapely berries. Delicious.

**Brandywine.** Midseason.

**Chesapeake.** Late. 75c. per 100, \$4.50 per 1000.

**Cooper.** Early. Large berries of high quality.

**Corsican.** Midseason. Large. A good, all-around sort.

**Campbell's Early.** Very early. Beautiful big berries.

**Dorsett.** Recent introduction which is destined to lead the commercial field as an early berry. Large, firm, and of perfect quality. \$1.00 per 100, \$6.00 per 1000.

**Early Jersey Giant.** Extra early.

**Fairfax.** Early to midseason. Another recent introduction. Rich flavor, large and very firm. \$1.00 per 100, \$6.00 per 1000.

**Gandy.** Late.

**Glen Mary.** Midseason.

**Howard No. 17.** Early.

**Heflin Early.** Very early. Good for table or nearby markets.

**Klondyke.** Early. Dark red, mild and delicious berries.

**Lupton.** Late. 75c. per 100, \$4.50 per 1000.

**Marshall.** Midseason. 75c. per 100, \$4.50 per 1000.

**Missionary.** Early to midseason. Large, firm berries. Matures early.

**New York.** Midseason. 75c. per 100, \$4.50 per 1000.

**Nick Ohmer.** Medium late. Handsome, glossy red globes with bright green caps.

**Premier.** Early.

**Ridgley.** Early. Excellent shipper with large, firm fruit.

**Sample.** Late. Large and firm, excellent above the Carolinas.

**Senator Dunlap.** Midseason.

**Success.** Early.

**Tennessee.** Midseason. Large, bright red, firm berries. Heavy crops.

**Uncle Jim.** Midseason. Large. A good, all-around sort.

**Warfield.** Early. Grand old variety with firm fruit. Good shipper.

**Washington.** Late. Recent introduction. Firm, delicious fruit.

**William Belt.** Midseason.

## Everbearing Strawberries (Layers)

**Progressive.** Popular, with two large crops, one in June and a second which lasts throughout the Fall. \$1.00 per 100, \$7.00 per 1000.

**Mastodon.** "The Wonderberry." Largest, most delicious and heaviest yielding of all Everbearing sorts. Firm in texture. Good shipper. \$1.25 per 100, \$8.00 per 1000.



STRAWBERRY PLANT, POT-GROWN

## Pot-grown Strawberry Plants

Pot-grown Strawberries are the specialty of our nursery. These plants are all well rooted, and may be set out much later in the season than layer Strawberries, with no danger of loss.

For descriptions of varieties, see **Strawberries** (Layers).  
**25 or more of a variety will be supplied at the 100 rate**

We make no charge for packing pot-grown Strawberry plants.

All varieties offered have "perfect flowers."

**All of the following pot-grown plants, 60c. per doz.,  
\$4.00 per 100, except where noted**

**Chesapeake.** 65c. per doz., \$4.50 per 100.

**Dorsett.** \$1.00 per doz., \$6.00 per 100.

**Early Jersey Giant.** 75c. per doz., \$5.00 per 100.

**Fairfax.** \$1.00 per doz., \$6.00 per 100.

**Joe (Big Joe).**

**Marshall.**

**New York.**

**Premier.**

## Fall-Bearing or Everbearing Strawberries

Upon moist, fertile land our pot-grown plants of the Fall bearing varieties produce sweet, ripe berries in a few weeks from the time they are planted.

**Progressive.** \$1.00 per doz., \$6.00 per 100.

**Mastodon.** \$1.25 per doz., \$8.00 per 100.

---

# Terms and Conditions of Sale

**SPECIAL NOTICE**—We exercise the greatest care to keep our stock clean and true to name. Should any be otherwise, we will return the money paid or replace it with other stock, but beyond this we are not liable for damage. A sure indication of the purity of our stock is that our customers continue to deal with us year after year. A Certificate of Inspection is attached to each shipment.

**PRICES**—This Trade List applies only to orders placed by nurserymen, florists, or dealers. Items offered in our Retail Catalog, but not offered in this Trade List, will be supplied to the Trade at a discount of 20 per cent. from the each, dozen, and 100 rates quoted in our Retail Catalog. Not less than 5 of a variety will be supplied at the 10 rate, not less than 50 of a variety at the 100 rate, and not less than 500 of a variety at the 1000 rate.

**PACKING**—All goods are carefully packed in boxes or bales, for which we charge the cost of material only. Please make it clear in your order whether goods are to be shipped by freight or express, and name route. After delivery to forwarders, all articles travel at the risk of the purchaser, and if loss or delay occurs, the forwarders alone are responsible. We deliver all goods to the express or freight depot at Little Silver or Red Bank without cartage charges. When ordering stock shipped by express C. O. D., please remit one-quarter the amount of the purchase price.

**CLAIMS**—If claims are made upon receipt of goods they will be carefully and cheerfully examined and adjusted. Any claims made 15 days after receipt of goods will not be entertained.

**TERMS**—We offer the usual terms to those of known responsibility, but must have satisfactory business references from others, or cash with order. Please use printed stationery or enclose business card.

Location of

## Lovett's Nursery, Inc.

World's Largest Grower of Privet

**LOVETT'S NURSERY, Inc.** is located one mile from Little Silver depot, two miles from Red Bank, forty miles from New York City, and five miles from Long Branch. To reach it from **New York City**, take the Central Railroad of New Jersey (foot of Liberty Street, or 23rd Street), or the Pennsylvania Railroad (Cortlandt Street, or 33rd Street and 7th Avenue). From **Philadelphia**, take the Pennsylvania Railroad (Broad and Market Streets), or the Philadelphia and Reading Railroad (Bound Brook Route). In all cases get tickets to **Little Silver**.

Telephone No. 2200 Red Bank

