

Historic, archived document

Do not assume content reflects current scientific knowledge, policies, or practices.

"The BLACK ROSE

Nigrette
PATENT APPLIED FOR



LAST summer, when the newspapers shouted from coast to coast that a Black Rose was blooming in the great Rosarium at Sangerhausen, I was on my way into Germany.

I saw the famous Rose. It really was far the darkest maroon Rose I'd ever seen, and under certain conditions so deeply colored that anyone would call it "black." The plants and blooms were of moderate size. It was free-flowering and exquisitely fragrant.

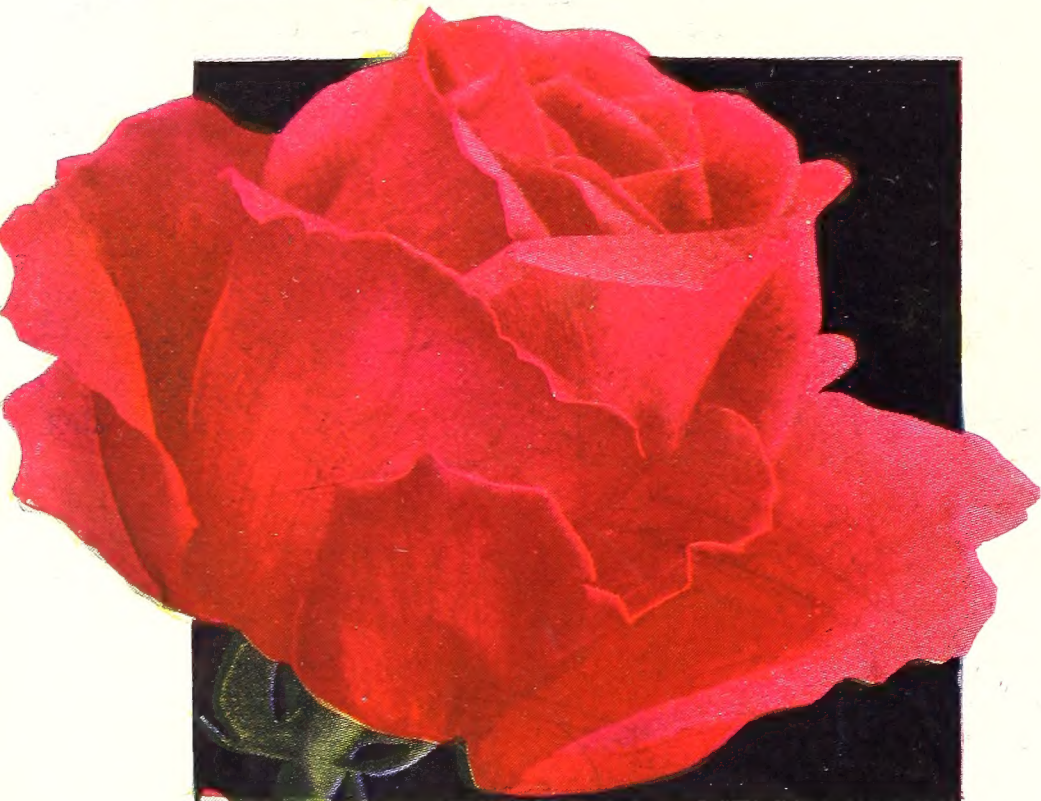
Novelty Star Roses

For 1934

★**LUIS BRINAS.** H.T. (Pedro Dot, 1934.) Orange-copper. See in color on front cover. Plant Patent applied for. The first bloom we saw of this beauty from Spain pleased us greatly, and now, after two years of study, we believe it is one of the finest novelties we have ever introduced.

Fine pointed buds of orange-copper open slowly, the petals curling back, making a starry flower with a high center. The flower lasts a long time in this condition and gradually a lovely shade of pink overspreads the copper and orange, making a new rose-color. When fully open, the color is soft old-rose, flushed with gold, with an extra-heavy gold flush on the lower part of the petals; over all this is an opalescent luster which changes the color-shades in different lights. There is not a jarring note in the entire color-range from bud to faded bloom. It has a mild, distinctive fragrance which is delightfully clean and fresh.

The plant is vigorous, upright in form, with bronzy new foliage. Gold Medal, Bagatelle, 1932; First Class Certificate, National Rose Society Trial-Grounds, 1932; Gold Medal, Saverne, 1933. \$1.50 each.



★Mrs. J. D. Eisele. \$1.50 each

37 YEARS GROWING ROSES

This firm, incorporated in 1897, is known throughout America as "Star Rose-Growers." It was founded by the very men, Alfred F. Conard and Antoine Wintzer, who had earlier {1868} pioneered here at West Grove in establishing America's first Rose-growing business. It is a bit difficult to realize that more than a full third of a century has passed during which we have steadily aimed to produce and distribute "The Best Roses for America." In our years of world-wide search for the best of the new Roses, we have won the record among Americans as having most frequently been represented at the Concours de Bagatelle, Paris, where Rose-hybridizers from a dozen different nations annually meet to select the cream from that famous international competition. The Bagatelle 25th Anniversary Medal was sent to us as an award for our frequent presence and participation. Each trip to Europe has been marked by visits to shows, to hybridizers, and to every reachable source of supply for Europe's best in new Roses.

It is because of those repeated visits and intimate contacts, both abroad and at home, that we are able, in 1934, to offer Star Rose patrons the valuable novelties shown here and on the following pages.

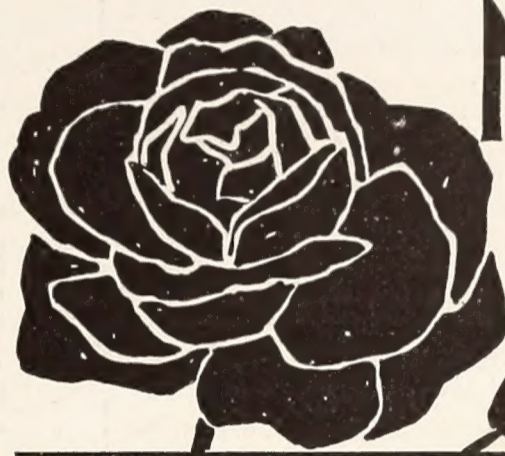
★**MRS. J. D. EISELE.** H.T. Plant Patent No. 67. Cherry-rose. See illustration. This splendid Rose was originated by Fred Howard, who gave us such famous Roses as Los Angeles, Miss Rowena Thom, and Mrs. E. P. Thom. Its parents are McGredy's Scarlet and Premier. The cherry-red buds open slowly to a spirally formed, high-centered flower of the same color. As it is very double, having nearly one hundred petals, it lasts a long time as a cut-flower. It has wonderful fragrance, defined by a perfumery expert as real Rose perfume. Strong in growth and free in bloom. Gold Medal, Atlantic City, 1932; Gold Medal, New York City, 1933; Gold Medal, Philadelphia, 1933. \$1.50 each.

of Sangerhausen"

Quickly the contract was made for us to distribute this remarkable Rose in America.

The demand will be enormous. Special propagating facilities have been employed. Cash orders will be booked, to be filled in rotation. To insure Fall (1934) delivery, send order and remittance at once. Later orders will be filled in Spring, 1935. Price, \$2.50 each.

Robert Pyle
PRESIDENT



Nigrette

PATENT APPLIED FOR

SOME OF THE WORLD'S FINEST ROSES

you will find in this little book. They were grown in the heavy clay soil right here at West Grove. Budded on seedlings of Japanese Multiflora, these Star Roses have a mass of fibrous roots. They will live longer, produce more and better flowers, we believe, than if on any other stock now in use. Dormant plants will be shipped as long as such may be safely planted (say till mid-April), after which potted plants will be sent. These will transplant easily, however late, and if shaded for a week or so will go right on growing and blooming as if never disturbed.

THE STAR ★ TRADE-MARK

To protect you from the cheap "hit or miss" plants, often claimed to be "just as good," every Star Rose plant carries a durable celluloid Star Tag which should not be removed.

On its face is the true name of the Rose you have ordered, correctly spelled. On the reverse is our guarantee to you. The Star label is the hall-mark of Rose quality.

Star Roses Are Guaranteed

We guarantee every Star Rose to bloom at the first blooming period after purchase, failing which, we will replace the Rose or refund its cost.

Quantity Prices for Star Roses

15% Discount on 12 to 24 Roses

20% Discount on 25 or More Roses

Add up your order according to Catalog prices and deduct from the total the discount to which you are entitled. Thus 75-ct. Roses, when 12 or more are ordered, cost only 63 $\frac{3}{4}$ cts. each; 25 or more cost only 60 cts. each.

Above discounts are allowed on Roses only.

✎ Discounts Are Not Allowed
on Special Offers

★CATALONIA. H.T. (Pedro Dot, 1933.) A new color in Roses. The buds are deep rich carmine stained with orange and open to a fifty-petaled flower of vivid velvety orange-scarlet with a rich, fruity fragrance. Stock limited. Gold Medal, Barcelona, 1931; First Class Certificate, National Rose Society Trial-Grounds, 1931. \$2 each.

★CONDESA DE SÁSTAGO. H.T. (Pedro Dot, 1932.) Copper and yellow. See illustration below. This Spanish novelty is the first double Rose to carry the vivid coloring of the brilliant species Rose, Austrian Copper. The bud, which is almost round, looks for all the world like a ball of gold with brilliant red stripes when it is ready to unfold, and as the flower expands the line of burning copper widens so that the half-opened flower just about takes one's breath away. Unlike many high-colored Roses, this one is richly fragrant, having an alluring, spicy scent. The plant is unusually strong and upright in growth with foliage well up on the flower-stem. A sensational novelty. Second Class Certificate, National Rose Society Trial-Grounds, 1931; First Certificate, Bagatelle, 1932. \$1.50 each.



★Condesa de Sástago. \$1.50 each

Novelty Star Roses for 1934

★**COUNTESS VANDAL.** H.T. Plant Patent No. 38. See in color below. An upright-growing, vigorous Rose with rich-colored, attractive, disease-resistant foliage. The perfumed, perfectly formed blooms, which come from long, tapering buds, are a blending of copper, salmon, and gold in color, and they are produced almost continuously on long, erect, rigid stems. **\$1.50 each.**

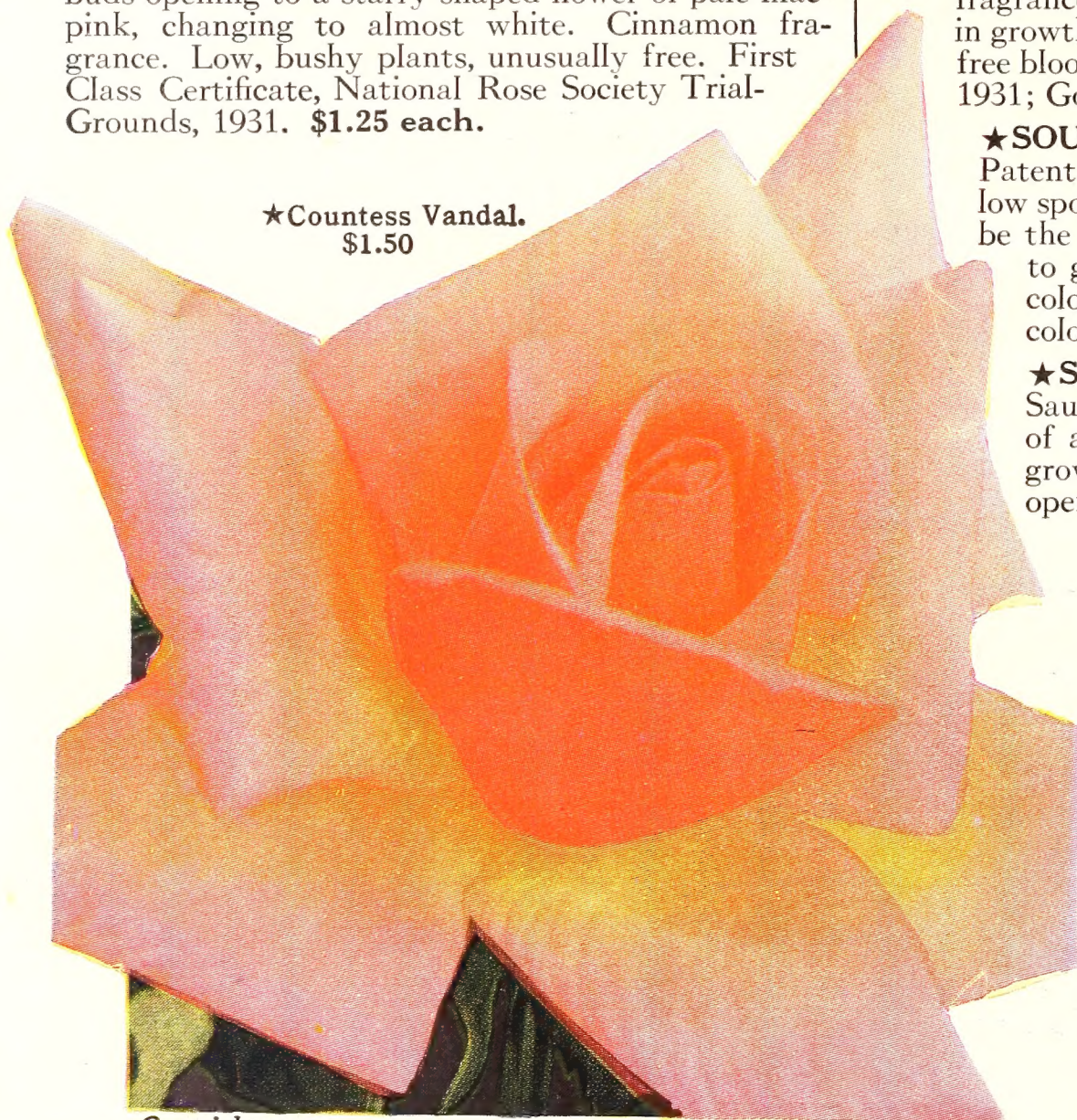
★**GERTRUD HUCK.** H.T. (Arno Huck, 1932.) Multicolored. A highly colored sport of the lovely Wilhelm Kordes. Bright cochineal-carmine predominates over tints and shades of orange-yellow and buff. Moderate growth; blooms of perfect form come freely in June and again in fall. **\$1.25 each.**

★**HENRY PAUTHIER.** H.T. (Jos. Sauvageot, 1933.) A decorative Rose with wonderful fragrance. The vivid red, semi-double flowers with wavy petals give the open bloom a delightfully informal appearance. Almost as free in bloom as a Polyantha, for the first burst of bloom literally hides the plant, making a striking garden picture. In a group planting it is unexcelled for bright, cheery mass display. The perfume is that of the old Centifolia Rose, which once enjoyed will never be forgotten. Strong, bushy growth. Certificate, Contest for Most Beautiful Rose of France, Lyon, 1932. **\$1.25 each.**

★**JOHANNISZAUBER.** H.T. Blood-red. Medium-sized blooms of nice form, very double but not too compact, very lasting, velvety blood-red, not fading or burning, borne on long, strong stems. The plants are low in growth and free in bloom. Fine for cutting. **\$1.50 each.**

★**LEAGUE OF NATIONS.** H.T. Buff and copper buds opening to a starry shaped flower of pale lilac-pink, changing to almost white. Cinnamon fragrance. Low, bushy plants, unusually free. First Class Certificate, National Rose Society Trial-Grounds, 1931. **\$1.25 each.**

★Countess Vandal.
\$1.50



Copyright 1932

★**LENI NEUSS.** H.T. Pink. One of the longest buds in existence, deep pink with an orange flush to the base, opens to mammoth, loose flowers of Radiance color—deep pink outside and pale pink inside. Cinnamon scent. **\$1.50 each.**

★**MARY HART.** H.T. Maroon-red. Plant Patent No. 8. The bud of this widely advertised sport of the famous Talisman Rose is maroon-red, and it opens to a well-formed, fragrant bloom of velvety red—a shade of red unique among Roses. **\$1.50 each.**

★**NICOLE.** H.T. (J. Gaujard, 1931.) Ecu. A notable addition to the fragrant, everblooming, light yellow class. Buds are long, tapered, and richly colored with copper at the base, lightening to ecru or hemp color at the tips. **\$1.50 each.**

★**OSWALD SIEPER.** H.T. (M. Krause, 1933.) White. We think this is the finest white Hybrid Tea Rose to date. It has nicely formed buds of pale cream which open to big, loose, double flowers of creamy white. Rich Tea fragrance. First Class Certificate, National Rose Society Trial-Grounds, 1932; Certificate of Merit, Sangerhausen, 1932. **\$1 each.**

★**PEDRO VEYRAT.** H.T. (Pedro Dot, 1932.) We are dizzy trying to accurately describe this novelty. One day we find the buds white with a touch of orange-carmine at the base; the next time we visit the fields the buds are carmine and apricot with an orange flush. The open flowers carry the same colors as the buds, but all eventually turn white. It has rich fruit fragrance. **\$1.25 each.**

★**SILVIA LEYVA.** H.T. (Pedro Dot, 1933.) A medium-sized flower of coppery orange-rose changing to old-rose when entirely open, fully double, and with the fragrance of a ripe apple. The plants are upright in growth, with red canes and red thorns. Quite free blooming. First Class Certificate, Bagatelle, 1931; Gold Medal, Saverne, 1931. **\$1.25 each.**

★**SOUVENIR.** H.T. Golden yellow. Plant Patent No. 25. There have been scores of yellow sports of Talisman, but Souvenir seems to be the popular one. Deep golden buds open to golden yellow blooms which hold their color. It is Talisman in everything but color. **\$1 each.**

★**SOUV. DE J. B. WEIBEL.** H.T. (Jos. Sauvageot, 1933.) A regular old whoozer of a flower—one of the largest Roses we grow. Splendid, long buds of Tyrian-rose open to 5-inch blooms of the same shade, which is in that zone between deep pink and light red. There is an opalescent sheen to the petals which is quite different. Fruity fragrance. Unusually strong branching plants with bronzy foliage. Fine for exhibition or to crow about to your friends. **\$1.25 each.**

★**THOMAS A. EDISON.** H.T. Two-toned pink. A big, clean, sparkling pink Rose which thrives on heat. The hotter the weather the more beautiful the flowers. There are two shades of pink, a lovely pale silvery pink on one side of the petals and just clean pink on the other side. It is a big flower on a big, strong plant. A great Rose named for a great man. **\$1 each.**

Novelty Star Roses for 1934

★**DUQUESA DE PENARANDA.** H.T. (Pedro Dot, 1931.) Coppery apricot. See illustration. The autumn flowers of this glorious Rose are just about as beautiful as it is possible for a Rose to be. Great tan buds open slowly to finely formed flowers 4 inches in diameter of a luscious cinnamon-peach shade which words do not truly describe, and this rich color lasts. It is sweetly perfumed. The summer bloom is lighter in color but it is a great Rose at all times. The plants are of medium height, with soft, pale green foliage. Gold Medal of the King, Barcelona, 1929; Second Class Certificate, National Rose Society Trial-Grounds, 1931; Certificate of Merit, Ontario Rose Test-Garden, 1933. **\$1.50 each.**



★**Duquesa de Penaranda.**
\$1.50 each

*A Star Tag
on a Rose is
a Mark of
Distinction*



★**President
Plumecocq.**
\$1 each

★**PRESIDENT PLUME-COCQ.** H.T. (J. Gaujard, 1931.) Coppery buff. See illustration. Coppery yellow, ovoid buds open to large, cupped blooms of coppery buff, with an overflow of deep salmon. An upright grower, producing quantities of long-lasting, fragrant flowers. **\$1 each.**

★**FEDERICO CASAS.** H.T. (Pedro Dot, 1931.) Coppery orange. See illustration. This gay Rose seems to have captured the brilliant colors that we associate with sunny Spain, where it was originated. The big, semi-double flowers are a lovely blend of copper and orange and are pleasingly fragrant. From June until well into October this Rose produces a continuous succession of bloom, bright and pleasing always, but the colors are particularly sparkling during the cool fall days.

The vigorous plants have light green foliage and are upright in growth habit, holding their striking blooms erect on good cutting stems.

In our fields it has proved one of the most popular with visitors and we believe it one of the most desirable of the modern "fancy" colored Roses.

Certificate of Merit, Bagatelle, 1929; Gold Medal, Saverne, 1929; First Class Certificate, National Rose Society Trial-Grounds, 1930. **\$1 each.**



★**Federico Casas.** A lovely cut-flower. \$1 ea.

Deduct { 15% on 12 or More Roses [See Details]
20% on 25 or More Roses [on Page 3]

★**STAR GUIDE TO GOOD ROSES**



★**Ami Quinard.** Darkest of the reds. \$1 each

Everblooming Star Roses

STANDARD VARIETIES

On pages 6 to 14 we offer the Roses which have stood the test of time, have proved worthy under many different conditions, from Maine to California, and are safe for the veriest novice to try; they are the backbone of every Rose-garden.

The list comprises the best of the better-known monthly-blooming Hybrid Teas, all the self colors and the entire scope of color combinations. In form they range from those with single blooms of five petals, like Dainty Bess, to those so double they never show their centers.

The descriptions are our own, written from the Roses as they grow and bloom here at West Grove, in southeastern Pennsylvania.

These selected, field-grown Star Roses can be successfully grown by anyone who will follow the clear, concise planting and cultural directions which accompany every Star Rose order. Every plant is guaranteed to bloom, so you can confidently order what you want without fear of failure.

★**ABOL.** H.T. White. This is one of the most deliciously fragrant Roses. The full blooms are snow-white, and in form and substance they remind one of a water-lily. \$1 each.

★**AMI L. CRETTE.** H.T. (C. Chambard, 1931.) Oriental red. Strong plants with extra quantities of large flowers of Oriental red with a golden base to the petals. Although they turn to old-rose and then to pale pink, the newly opened flowers are startling in their brilliancy. 75 cts. each.

★**AMI QUINARD.** H.T. (C. Mallerin, 1930.) Black-lustered red. See illustration. Blackish buds open to semi-double flowers of velvety crimson-maroon with a soft black luster; instead of fading, the petals get darker as the bloom ages. It has splendid old-Rose fragrance. Strong, upright plant, almost matching the Radiances for vigor. This Rose is improving, for it has several more petals than when first introduced. First Class Certificate, Bagatelle, 1930; Certificate of Merit, Barcelona, 1930. \$1 each.

★**AMULETT.** H.T. Velvety crimson. Early flowers are deep red, but in the fall they come into their own, with fully double blooms of deep velvety crimson, almost maroon. At all times there is present that glorious old-time Rose fragrance. A choice Rose for cutting. This Rose was awarded First Prize at the German Rose Society show, 1931, and received the First Class Premium, the highest distinction, at Sangerhausen, Germany, 1931. \$1 each.

★**ANGELE PERNET.** H.T. Orange. There are not many of the enchanting, orange blooms but each one is a gem laden with perfume. 75 cts. each.

★**ANNIE BRANDT.** H.T. (C. Mallerin, 1932.) Multicolored. Tinted buds, opening to good-sized flowers of salmon-flesh and lemon, with a peculiar scent. Gold Medal, Saverne, 1932; First Class Certificate, National Rose Society, 1931; First Class Certificate, Contest for Most Beautiful Rose of France, Lyon, 1932. \$1 each.

★**ARIEL.** H.T. Orange-flame. A large flower of orange-flame and yellow which has held its own for several years. The plants are vigorous and healthy and produce a large number of attractive flowers. It is very fragrant. 75 cts. each.

★**AUTUMN.** H.T. See opposite page.

★**BETTY UPRICHARD.** H.T. See opposite page.

★**CAYETANA STUART.** H.T. (Pedro Dot, 1931.) Sunflower-yellow. Big, conical buds of greenish yellow open to mammoth blooms of sunflower-yellow. A wonderful exhibition flower. Winner of the Gold Medal for new Foreign Roses at Bagatelle in 1930. \$1 each.

★**CHARLES K. DOUGLAS.** H.T. Scarlet-crimson. A standard red variety. Big, bushy plants with good foliage. Produces bloom after bloom of large size, semi-double, bright red, lightening a little with age. Slightly fragrant. Successful everywhere. 75 cts. each.

★**CHARLES P. KILHAM.** H.T. See opposite page.

★**COLETTE CLEMENT.** H.T. (C. Mallerin, 1932.) Coppery rose. Not entirely single but almost so. A Rose for brightening garden-beds as it is so free in bloom and vigorous in growth. 75 cts. each.

★**DAINTY BESS.** H.T. Rose-pink. Large, single blooms, 3 to 4 inches across, come in clusters. The edges of the petals are so ruffled that the open flower appears more square than round. Their soft rose-pink color is enhanced by the large cluster of stamens on wine-red filaments. One of the daintiest Roses grown. 75 cts. each.

★**DAME EDITH HELEN.** H.T. Paul-Neyron-pink. A full, big Rose of a solid Paul-Neyron-pink, with the true old-time Rose perfume. A favorite exhibition variety all over the world. 75 cts. each.

★**DIANE DE BROGLIE.** H.T. (C. Chambard, 1929.) Geranium-pink. Brilliant pink, with center petals flushed orange from an orange base. Three-inch flowers on strong, upright pedicels. It lasts long and is delightfully perfumed. \$1 each.

★**DIRECTOR RUBIO.** H.T. Shown in color, page 9.

★**DUCHESS OF WELLINGTON.** H.T. Yellow. Extra long-pointed buds of golden orange open to large, loose flowers of saffron with the delicious fragrance of the old Tea Roses. Big, bushy plant with healthy foliage. 75 cts. each.

★**EDEL.** H.T. White. The large, globular buds contain nearly 100 petals and are liable to ball in damp weather, but in warm, dry weather they open to magnificent exhibition blooms. Sweetly fragrant. An irresistible Rose when it is happy. 75 cts. each.

★**EDITH NELLIE PERKINS.** H.T. See in color, page 10.

★**EDITOR McFARLAND.** H.T. See in color, page 13.

★**E. G. HILL.** H.T. See in color, page 11.



★Autumn. \$1 each

Everblooming Star Roses (continued)

★Autumn H.T. (Multicolored)

The richest colored flower among the "fancy" Roses. See illustration. Its short buds are deep burnt-orange, almost brown, and open to medium-sized, very double blooms of the same color, stained and splashed with red, orange, and various shades of pink—a regular rainbow.

It fades somewhat lighter with age but is always striking. The color mixtures of the various blooms vary so much that a bouquet of Autumn Roses is a real picture of autumn's glorious colors. **\$1 each.**

★Betty Uprichard H.T.

Carmine and salmon. See illustration. Carmine buds open to good-sized blooms of salmon, suffused with orange on the inside, and with coppery carmine on the outside of the petals. The petals have great substance and the flowers last long without fading. Spicy fragrance. One of the standard varieties that succeeds almost anywhere, and as the salmon-colored, open blooms are produced almost continuously, this Rose recommends itself to those who enjoy soft shades. **75 cts. each.**



★Betty Uprichard.
75 cts. each

Order No. 12299

June 15, 1933

I have never seen more beautiful Roses. It is impossible to believe that they were set out only last fall. The plants are sending out innumerable strong shoots, and the flowers are exquisite in color and form.—Mrs. F. J., Annisquam, Gloucester, Mass.



★Charles P. Kilham. 75 cts. each

★Charles P. Kilham H.T.

Coral-red and orange. See illustration. One of the best garden Roses in existence. While the plants are only average in height, they produce perfect flowers on long cutting stems. The long-pointed buds open to fully double, finely formed flowers of coral-red with an orange base, a color combination which causes this Rose to stand out even when among newer highly colored varieties. Slightly fragrant. Healthy, free-blooming, and so thoroughly dependable it should be in every garden. **75 cts. each.**

HOW PLANTS FROM THIS YEAR'S CROP LOOKED TO ONE PURCHASER

November 16, 1933

You will find enclosed our check for \$360 in payment of your invoice of the 8th inst. To say that we are well pleased with the Rose plants shipped would be expressing our feelings mildly. They were the *finest looking plants we have ever had the privilege of looking on.* We thank you for the excellent arrangement in packing and the good service in general given our order.—C. W. R., Marietta, Ohio.

Deduct { 15% on 12 or More Roses [See Details]
20% on 25 or More Roses [on Page 3]

★STAR GUIDE TO GOOD ROSES

Everblooming Star Roses, continued

★Golden Gleam H.T.

Vivid yellow. See illustration below. The more we see of this lovely Rose, the more we like it. The nicely formed buds are pure yellow with carmine stains, and open to large blooms of clear daffodil-yellow, holding their color longer than most. It has the sweetest honey-like fragrance of any Rose we know. The plant is only moderate in growth and the stems are therefore not as long as we could wish, but where short-stemmed flowers can be used, it is perfect. The flowers are produced in endless succession. **75 cts. each.**



★Golden Gleam. 75 cts. each



★Mrs. G. A. van Rossem. 75 cts. each

★Mrs. G. A. van Rossem H.T.

Red-orange. See illustration. A spectacular Rose which shows best in the half-open bud stage when it is of the deepest red-orange, almost brownish, with deeply impressed maroon veins. Toward the end the color tones to old-rose. The rich coloring with the unusually heavy veining makes this one of the most interesting Roses we grow. It is strongly and deliciously perfumed. This is a splendid outdoor Rose for cutting. Cut before the buds open. One bloom will perfume a room. **75 cts. each.**

671 ROSES FROM 28 STAR PLANTS THE FIRST SEASON

Order No. 15434-33 October 23, 1933

Before placing my order, I wish to let you know how pleased I was with my Roses which I planted last fall. From June 15 to the present day, I had 671 Roses from 28 bushes and they were all beauties. And there are still buds on many of the bushes.—Mrs. C. M. S., Mt. Vernon, N. Y.

★Etoile de Hollande H.T.

Crimson. See illustration. Universally recognized as the world's finest red Rose. The half-opened flower is perfect in form and develops into one of the most beautiful things in the world—a great big, artistically loose flower of brilliant scarlet-crimson, with that delicious fragrance we know as old-Rose perfume. A strong plant with very large, leathery foliage produces these wonderful Roses. **75 cts. each.**



★Etoile de Hollande. 75 cts. each

THE CONARD-PYLE CO.

★Star Rose Growers

West Grove, Pa.

Everblooming Star Roses, continued

★**E. J. LUDDING.** H.T. (Van Rossem, 1931.) Carmine-pink. The large, fully double flowers are carmine-pink, overspread with an orange flush, long lasting, and borne singly on good stems. An ideal Rose for cutting. Tea fragrance. First Class Certificate (the highest award) of the Royal Horticultural Society of the Netherlands, and Gold Medal of Nos Jungunt Rosæ, 1930. **\$1 each.**

★**ELIZABETH OF YORK.** H.T. Cerise-pink. Long-pointed buds of deep cerise-pink open to beautiful flowers of iridescent cerise-pink, with a suffusion of yellow; only semi-double but very desirable. Vigorous growth. **75 cts. each.**

★**ETOILE DE FEU.** H.T. Flame-color. The name "Star of Fire" is very appropriate for this flaming Rose. Its globular buds of glowing flame gradually open to flat blooms of coral-pink and glowing reddish salmon, with myriads of short center petals. Especially fine in hot sunshine. **75 cts. each.**

★**ETOILE DE HOLLANDE.** H.T. See in color, page 8.

★**FRAU DR. SCHRICKER.** H.Ben. Carmine-pink. Symmetrical, bushy plants 18 to 24 inches tall, which bloom all the time. The flowers remind one of the old *Hermosa* but are of better form and clearer carmine-pink color. **75 cts. each.**

★**GOLDEN DAWN.** H.T. (Grant, 1929.) Pale yellow. Lovely bronzy foliage, almost immune to disease, bushy, low-growing plants, and the wonderful rich Tea fragrance all denote its Tea ancestry. Large, globular buds, pale yellow with old-rose markings, open to fully double blooms of soft lemon-yellow which are beautiful until they fall apart. It is rarely out of bloom. **\$1 each.**

★**GOLDEN GLEAM.** H.T. See in color, page 8.

★**GRENOBLE.** H.T. See in color, page 14.

★**GRUSS AN AACHEN.** Ben.-Bour. White to carmine. A dependable continuous-blooming bedding or border variety. Blooms are large and delightfully colored in the fall. **75 cts. each.**

★**GRUSS AN TEPLITZ.** H.Ben. Deep crimson. Noted for its pervasive fragrance that is especially delightful. The color is very rich crimson, changing to bright scarlet, shading to velvety fiery red. Makes grand plants for a continuous-blooming hedge. **75 cts. each.**

★**HAWLMARK CRIMSON.** H.T. Crimson-maroon. A very popular, semi-single Rose of deep crimson and maroon, with blackish shadings, like a piece of dark velvet. Strong perfume. **75 cts. each.**

★**IMPERIAL POTENTATE.** H.T. Pink. An American Rose which has made good everywhere. Large size, faultless form, and a clear self-color combine to make it one of the best pink Roses for exhibition or cut-flowers for the home. Medium growth and very free in bloom. **75 cts. each.**

★**JOYOUS CAVALIER.** H.T. Scarlet-crimson. Both in big, bushy plant and in red, new foliage, this resembles the well-known *Gruss an Teplitz*. The semi-double blooms, which are produced as freely, are a jolly red that does not blue. **75 cts. each.**

★**JULES GAUJARD.** H.T. Orange-rose. Introduced as an improved *Souv. de Georges Pernet*, it is much the same size as that variety but is of different color. The cochineal-crimson buds open to orange-rose blooms of loose form, intensely fragrant. Medium growth; good foliage. **75 cts. each.**

★**JULIEN POTIN.** H.T. Golden yellow. In long-pointed form and rich coloring this is the aristocrat of pure yellow Roses. The pointed, clear yellow buds open to splendid golden yellow blooms which hold their color well. The finest yellow for exhibition, for it keeps a long time when cut. **\$1 each.**

★**KAISERIN AUGUSTE VIKTORIA.** H.T. Cream-white. Although introduced over forty years ago, this is still the standard by which white Roses are judged. Of splendid form, with petals of great substance, it is a perfect cut-flower, and its perfume is exquisite. **75 cts. each.**

★**KARDINAL PIFFL.** H.T. Orange-pink. One of the most satisfactory garden Roses we have ever grown. Plants of average growth and with good foliage simply bloom all the time. Ovoid buds of orange-pink, with a golden base, open to fully double flowers of the same lovely shades, which do not fade. Delicious fragrance. Gold Medal, *Bagatelle*, 1926. **75 cts. each.**

★**KÖNIGIN CAROLA.** H.T. Silver-pink. We have looked at the dear old Queen a good many times when hunting for varieties to discard to make room for novelties, but she is too perfect in form and silvery beauty to lose. The big satiny silver-pink flowers are freely produced on vigorous plants. Continuously satisfactory. **75 cts. each.**

★**DIRECTOR RUBIÓ.** H.T. (Pedro Dot, 1929.) Cochineal-pink. See illustration. One of the most striking Roses we have ever grown, and produces the largest Rose-blooms we have ever seen—one great flower measured 7½ inches in diameter.

The color is cochineal-pink according to *Ridgway's Color Chart*, but that does not describe the brilliance and beauty of the flower at all stages, from the mammoth, long-pointed bud to the loose, ruffled, open flower, and it doesn't fade. The plant is hardly of average height, but is extra-sturdy, like a low-growing Hybrid Perpetual, and the flowers are held rigidly erect on stout stems. Mild fragrance. A Rose-bed planted entirely with this variety is a brilliant and attractive feature in the garden. Gold Medal, *Saverne*, 1928. **\$1 each.**

★**Director RubiÓ.**
\$1 each



Deduct { 15% on 12 or More Roses [See Details]
20% on 25 or More Roses [on Page 3]

★**STAR GUIDE TO GOOD ROSES**

Everblooming Star Roses, continued



★Mrs. Pierre S. du Pont. \$1 each

★**MME. CLARA D'ARCIS.** H.T. (J. Gaujard, 1931.) Carmine-pink. An aristocratic, brilliant pink bloom with petals prettily veined with deep carmine and of perfect, high-centered form. An ideal show Rose and a long-lasting cut-flower for the house, which is another way of saying the flower has great substance. **\$1 each.**

★**MME. LOUISE TREMEAU.** H.T. (C. Mallerin, 1931.) Hermosa-pink. Genteel Hermosa-pink is the predominant color in this semi-double flower, with a heart of vivid yellow, enriched with golden stamens. A choice, free-blooming Rose to brighten the shrubbery border. First Class Certificate, Lyonnaise Horticultural Society, 1929. **75 cts. each.**

★**MRS. PIERRE S. DU PONT.** H.T. (C. Mallerin, 1929.) Golden yellow. See illustration. Winner of more gold medals for outdoor blooms than any other Rose ever grown. The bud is long-pointed, rich reddish gold, almost orange in the depths of the petals, and holds its color well to the end. Foliage is very ornamental, healthy, and extremely disease-resistant. Plants are only medium height. This is the most continuous-blooming yellow Hybrid Tea. We recommend Mrs. Pierre S. du Pont as the best all-round yellow garden Rose.

Gold Medals: Société Nationale d'Horticulture de France, 1927; Saverne, 1927; Lyon, 1928; Rhone, 1928; Bagatelle, 1929; Harding \$100 Prize, 1928; Certificate, Pedralbes, 1929. **\$1 each.**

★**LADY ALICE STANLEY.** H.T. Flesh-pink. One of the oldest Roses now grown, but it is still one of the best. Color is flesh-pink, lightened with rich coral on the reverse of the petals. **75 cts. each.**

★**LADY ASHTOWN.** H.T. Pink. Another continuously satisfactory old Rose. The large, long-pointed buds open to brilliant, shining pink blooms with a golden underglow. Borne singly, they are fine for cutting and last well. **75 cts. each.**

★**LADY FORTEVIOT.** H.T. Apricot. The color is golden yellow, deepening to apricot, much like Angèle Pernet, but the plant is stronger and more free with its beautiful fragrant flowers. **\$1 each.**

★**LEONARD BARRON.** H.T. See in color, page 11.

★**LI BURES.** H.T. (Pedro Dot, 1929) Multicolored. Maroon-orange and yellow at first, it changes to purple-crimson, then to old-rose with a yellow suffusion, the most startling combination of colors ever produced. Rich fragrance, medium growth, and very free. A few plants of this with the flowers in different stages of development are a veritable rainbow, as rarely will two blooms show the same colors at the same time. Gold Medal, Saverne, 1926. **75 cts. each.**

★**EDITH NELLIE PERKINS.** H.T. Salmon-pink. See illustration. Long-pointed buds of cream, orange, and rosy carmine open to perfectly formed, high-centered flowers. The inside of the petals is pale salmon overspread with a golden flush; the outside rosy carmine, with gold flush covering the lower half of the petals. It is sweetly scented. The perfect flowers and healthy, bronze foliage on tall, bushy plants make this one of the choicest of all Roses. A very free-blooming Hybrid Tea. Visitors to our fields invariably either order it or tell us it is already one of their favorites. **75 cts. each.**



★Edith Nellie Perkins. 75 cts. each

THE CONARD-PYLE CO.

★**Star Rose Growers**

West Grove, Pa.

★**LEONARD BARRON.** H.T. Salmon, pink and buff. See illustration. Introduced by The Conard-Pyle Company, West Grove, Pa., having been hybridized here by J. H. Nicolas. The forerunner of a new strain of Roses, the grandchild of Rosa Nutkana, the wild Rose of Alaska, and the old Hybrid Perpetual, Paul Neyron. The ruggedness of these ancestors is somewhat modernized by an infusion of the delicate beauty of Souv. de Mme. Boulet. The plant of Leonard Barron is sturdy—it has to be, to hold up the mammoth blooms, 5 inches or over in diameter, and with myriads of petals, making it one of the largest and fullest Roses grown. The color is salmon, buff, and shell-pink, well blended. Its fragrance has been defined both as red cedar and red raspberry; at any rate, it is distinctly different. A wonderful bloomer. Allow the great flowers to open on the plant before cutting, as the buds will not open in water. Awarded 1932 David Fuerstenberg Prize (\$100) by American Rose Society; Gold Medal, Saverne, 1932; Certificate of Merit, Portland, 1932. **\$1 each.**

★**MAGDALENA DE NUBIOLA.** H.T. (Pedro Dot, 1932.) Pink. Semi-double blooms of flesh-pink and salmon, its heavy petals making it last longer than most semi-double flowers. Fragrant. **\$1 each.**

★**MARGARET McGREDY.** H.T. Orange-scarlet. One of the most satisfactory garden Roses in existence, and rapidly being recognized as such. The strong, bushy plants bloom continuously. Healthy, attractive foliage. Large, ovoid buds open to fully double blooms of large size, scarlet overlaid with orange—a beautiful shade which changes with age to carmine-rose; they come on strong stems. **75 cts. each.**

★**MARGUERITE CHAMBARD.** H.T. Geranium-red. Bud is long pointed and opens to a very large, richly perfumed flower of geranium-red color heavily shaded with vermilion. **\$1 each.**

★**MARI DOT.** H.T. (Pedro Dot, 1927.) Apricot. Rich Chinese orange in bud, opening to a double flower of deep apricot which finally fades to soft old-rose-pink, a delightful flower in every stage from the beautiful bud until the petals fall. Delicious fruity fragrance. Gold Medals, Saverne, 1925, and Barcelona, 1927; Certificate at Bagatelle, 1927. **75 cts. each.**



★**E. G. Hill.** Noted for form and fragrance. **75 cts. each**



★**Leonard Barron.**
\$1 ea.

★**McGREDY'S SCARLET.** H.T. Red. A splendid garden Rose which is under a handicap because it is misnamed. The finely formed bud is dull red and opens slowly into a magnificent, very large bloom of just "red," which lasts a long time. If a partly opened flower is pulled apart, the inside of the petals will be found to be brilliant scarlet; possibly in a moist climate it would be scarlet outside, too. Slight Tea scent. **75 cts. each.**

★**MISS ROWENA THOM.** H.T. See in color, page 14.

★**E. G. HILL.** H.T. Crimson. See illustration. After a lifetime of producing new Roses, Mr. Hill thought enough of this beauty to permit it to be named for himself. The flowers are large, full, fragrant, brilliant crimson, and splendid for cutting. Vigorous plants very busily engaged in producing their perfectly formed fragrant flowers. A splendid red Rose both in the garden and under glass. **75 cts. each.**

Order No. 14952 May 25, 1933
Gentlemen: Within the last month my gardens were open for the pilgrimage of the Garden Clubs of Virginia and there were several thousand visitors. I thought it would please you to know that the Roses which I bought from you last year created a great sensation. I felt very proud to have the opportunity of giving so many people so much happiness.—H. N. B., White Marsh, Va.

Deduct { 15% on 12 or More Roses [See Details]
 { 20% on 25 or More Roses [on Page 3]

★**STAR GUIDE TO GOOD ROSES**

Everblooming Star Roses, continued

★**MRS. AARON WARD.** H.T. Yellow. An old Rose which is always in demand. Buff buds open to fully double flowers of yellow and pink. The plants are dwarf and are very free with their lovely blooms. Fine to cut and an ideal boutonniere Rose. **75 cts. each.**

★**MRS. CHARLES BELL.** H.T. Shell-pink Radiance. A superb sport of the famous Radiance and equal in every respect but distinct in color. The shell-pink diffused with salmon gives it a pearl opalescence. This exquisite shade has never been matched in any of the new Roses. **75 cts. each.**

★**MRS. E. P. THOM.** H.T. Yellow. A medium-sized, double Rose of clear canary-yellow, with better form than most yellows. It is a strong-growing plant. Considered one of the best yellows by many experienced rosarians. **75 cts. each.**

★**MRS. G. A. VAN ROSSEM.** H.T. See in color, page 8.

★**MRS. HENRY MORSE.** H.T. See in color below.

★**MRS. PIERRE S. DU PONT.** H.T. See in color, page 10.

★**MRS. WARREN E. LENON.** H.T. Pink. Just another deep pink Rose until you hold it to your nose. It is one of the most fragrant of all Roses, with that haunting quality known as "old-Rose fragrance." Blooms come singly on nice cutting stems. **75 cts. each.**

★**NATIONAL FLOWER GUILD.** H.T. (C. Mallerin, 1930.) Crimson. Great big, bushy plants with large drooping foliage and large, bright red flowers with 40 petals. A modern Rose in every way, blooming all the time. First Class Certificate of Merit, Lyonnaise Horticultural Society, 1929; Silver-Gilt Medal, Rhone Horticultural Society, 1929. **75 cts. each.**

★**NUNTIUS PACELLI.** H.T. White. Cream-colored buds open to deliciously fragrant flowers of creamy white which soon turn pure white. We can supply potted plants only, after April 10. **75 cts. each.**

★**OLYMPIAD (Mme. Raymond Gaujard).** H.T. Crimson. The bud of this Rose is coppery red, tinged with fire-red. It is one of the most beautiful Roses of recent years. The blooms are large, fully double, pure crimson, with a golden base to the petals which lights up the entire flower. **\$1 each.**



★Mrs. Henry Morse.
75 cts. each

★**PALOMO FALCO.** H.T. (Pedro Dot, 1930.) Coppery pink. Lovely coppery orange buds, opening to very double blooms of rich pinkish apricot, lighter at edges of petals. Low, sprawling plants with attractive dark foliage. Mild Tea fragrance. **75 cts. each.**

★**PARDINAS BONET.** H.T. (Pedro Dot, 1931.) Pink and orange. Large, semi-double, cupped blooms of pinkish orange; peculiar fragrance. The water-lily-like flowers are artistic and delightful. **75 cts. each.**

★**PORTADOWN.** H.T. Crimson. A rich deep crimson Rose with a velvety sheen, for garden, bedding, and exhibition. The bloom is very large, double, and keeps well when cut. **\$1 each.**

★**PRESIDENT DEVILLE.** H.T. Carmine-pink. The finest boutonniere Rose we grow. The long-pointed buds are so tight that the outer petals can be stripped off when the flower is half blown, and still leave a perfect bud for the lapel. Always blooming. **\$1 each.**

★**PRESIDENT HOOVER.** H.T. See opposite page.

★**PRINCESS ELIZABETH OF GREECE.** H.T. Copper. An erect-growing Rose. The handsome bud is burnt-orange color, slowly evolving to a large, coppery colored bloom. **75 cts. each.**

★**RADIANCE.** H.T. Rose-pink. The most universally popular Rose in America. Radiance has become the standard by which new Roses are measured. Two-toned pink, cupped flowers are produced in endless succession on fool-proof plants. **75 cts. each.**

★**RAPTURE.** H.T. Pink and yellow. Originated as a florists' Rose, this deep pink sport of Mme. Butterfly has made good in the garden. It is a perfect cut-flower, coming on long stems which are almost thornless. Plants of average growth. Its few thorns make it easy to arrange in vases. **75 cts. each.**

★**RED RADIANCE.** H.T. Cerise-red. A sport of Radiance, it has the same form, habit of growth, fragrance, and healthy foliage. The difference is in the cerise-red color and the fact that it does not bloom quite so freely as Radiance. **75 cts. each.**

★**REV. F. PAGE-ROBERTS.** H.T. Carmine and yellow. The shapely buds are Indian yellow, washed with deep carmine which spreads as the buds unfurl. Fragrant blooms come singly on long, strong stems, making it ideal for cutting. Needs pruning back to 2 inches in the spring to do its best. **\$1 each.**

★**MRS. HENRY MORSE.** H.T. Two-tone pink. See illustration. One of the most popular of all pink Roses. The buds are perfect in form, long, artistically shaped, of a rich carmine-pink, and open to a high-pointed, two-toned, pink flower of great beauty. There is an underlying yellow glow which brings out the fine shades. Moderate fragrance. Mrs. Henry Morse is a reliable exhibition Rose capable of winning coveted blue ribbons. A garden Rose which produces cut-flowers of high quality. Moderate growth. **75 cts. each.**

Everblooming Star Roses, continued

★**RICHARDSON WRIGHT.** H.T. (J. H. Nicolas; The Conard-Pyle Company, 1932.) Pearl-pink. The color is iridescent pearl-pink, with a golden flush on the lower part of the petals. It is fully double, and the blooms usually come singly on a stem. Noted for its delicious fragrance. Silver Medal, Saverne, 1932. **\$1 each.**

★**SŒUR THERESE (Sister Therese).** H.T. (F. Gillot, 1931.) Yellow. Its long-pointed buds are chrome-yellow, heavily marked with carmine; the open flower is rich daffodil-yellow and holds its color well. Sweetbriar fragrance. The blooms come freely on splendid cutting stems. Silver-Gilt Medal, Valenciennes, 1930; Certificate, Contest for Most Beautiful Rose of France, Lyon, 1932; Silver Medal, Portland, 1932. **\$1 each.**



★**President Hoover**
 ↳
 75 cts. each

★**PRESIDENT HOOVER.** H.T. Multicolored. See illustration. An American Rose which is proving itself one of the finest garden Roses in existence. The plant is very tall, with good foliage, and produces its beautiful flowers singly on long stems—a cutting Rose par excellence. The shapely buds open to high-centered flowers of scarlet, yellow, cerise-pink, and flame which last well. It is richly perfumed. Belongs in every garden. **75 cts. each.**

★**SOUV. D'ALEXANDRE BERNAIX.** H.T. Dark crimson. One of the best dark red Roses we have. Large, cupped blooms, full to the center, of crimson, shaded velvety purple. Splendid perfume and fine lasting qualities are two of its virtues. A low-growing, symmetrical plant. **\$1 each**



★**Talisman.**
 75 cts. each

★**TALISMAN.** H.T. Multicolored. See illustration. At its gayest it is a glorious combination of orange, yellow, and rose-red. It is one of the finest of all garden Roses for cutting. The fragrant flowers are much more highly colored in autumn, at which time they beat the finest florists' blooms. **75 cts. each.**

★**EDITOR McFARLAND.** H.T. (C. Mallerin, 1931.) Brilliant pink. See illustration. Some of America's best Rose experts emphatically state that this is the finest deep pink garden Rose in the world today. The perfectly formed flowers are produced through all the growing season and are of a clear, brilliant, unfading pink. As a cut-flower it retains its form and lasts longer than any Rose we know. In the Rose-fields the past summer blooms were frequently found having stems 18 to 24 inches in length. The plants are vigorous and have healthy, normal green foliage. We believe that Editor McFarland will soon be the standard by which new pink Roses will be judged. First Class Certificate of Merit, Lyonnaise Horticultural Society, 1929; Gold Medal, Contest for the Most Beautiful Rose of France, Lyon, 1932; Certificate of Merit, Portland, 1932. **\$1 each.**



★**Editor McFarland.** \$1 each

Deduct { 15% on 12 or More Roses [See Details] }
 { 20% on 25 or More Roses [on Page 3] }

★**STAR GUIDE TO GOOD ROSES**

Everblooming Star Roses

(continued)

★**SOUV. DE CLAUDIUS PERNET.** H.T. Sunflower-yellow. Very large and full. A great Rose to grow for exhibition blooms, and the standard yellow both in gardens and under glass. **75 cts. each.**

★**SPLENDOR.** H.T. (J. Sauvageot, 1933.) Multicolored. A Talisman type of flower on strong plants with attractive foliage. Light brown, carmine, orange, and violet all have a part in its color. When fully open the violet and orange shades predominate. Spicy fragrance. Very different. **75 cts. each.**

★**SUNNY SOUTH.** H.T. Clear pink. A wonderful new Rose from Australia, growing 4 to 5 feet, with healthy foliage and large, semi-double flowers of fresh blush-pink flushed carmine, yellow at the base. Slightly fragrant. It is the freshest, cleanest pink Rose we have ever seen and the flowers come on stems from 2 to 3 feet long. Entirely distinct. **75 cts. each.**

★**SUPERB.** H.T. Silvery pink. Large, pointed buds of silvery pink open to very large blooms of the same soft shade. It resembles the Thomas A. Edison Rose but blooms earlier and the color is a much lighter pink. **75 cts. each.**

★**SYRACUSE.** H.T. (C. Mallerin, 1930.) Crimson. Tight crimson buds with large, firm center cone and wavy petals. The open bloom is very double and the outer petals recurve. Blooms last unusually long. Heat does not bother this Rose and it should do well in the South where so many reds burn. **75 cts. each.**

★**TALISMAN.** H.T. See in color, page 13.

★**WESTFIELD STAR.** H.T. White. A white sport of Ophelia, with all of Ophelia's good qualities. Fine form, fragrant, and a good keeper, the finest blooms coming in the fall. It has few thorns. One of the best of the small list of whites. **75 cts. each.**



★Miss Rowena Thom. 75 cts. each

★**MISS ROWENA THOM.** H.T. Rose-pink. See illustration. Two of the world's most popular Roses, Radiance and Los Angeles, combined to produce this tom-boy of the garden. One of the strongest growers among the Hybrid Teas, it produces quantities of finely formed, deliciously fragrant, rose-pink blooms 5 to 6 inches in diameter. The color is not dull, as there is a yellow base to the petals which lights up the whole flower. With poor culture the stems cannot hold the flowers upright, but if the plants are well fed and watered, every bloom will be an exhibition one. **75 cts. each.**

★**VILLE DE PARIS.** H.T. Buttercup-yellow. The pointed bud has a broad base and opens to a fairly large bloom. Gold Medal, Bagatelle, 1925. **75 cts. each.**

★**WILLOWMERE.** H.T. Pink. Salmon-pink flushed with gold. Named by Pernet for the estate of his friend, Admiral Ward, this lovely Rose has been popular for years. The large flowers are salmon-pink flushed with gold. The plants are bushy and free blooming but the foliage needs careful protection. **75 cts. each.**

★**GRENOBLE.** H.T. (C. Mallerin, 1931.) Scarlet-crimson. See illustration. The citizens of Grenoble, France, thought enough of this red Rose to ask the originator, Charles Mallerin, to name it for their city. The plant is very vigorous and the blooms come on unusually long stems, making it one of the best garden Roses for cutting. The buds are crimson, but the open flower is brilliant red, almost scarlet, and a bed of Grenoble stands out like a fire. It is fully double and of large size. Easily one of the best reds. Gold Medal, Saverne, 1930; Certificate of Merit, National Horticultural Society of France, 1931; Bronze Medal, Portland, 1932. **\$1 each.**



★Grenoble. A noble Rose. \$1 each

THE CONARD - PYLE CO.

★ Star Rose Growers

West Grove, Pa.

**STAR ★ ★ ★
SETS GIVE**

Finest Bloom at Less Cost

Every Rose on this page guaranteed to bloom within 12 weeks from date of planting

REAL money saving is accomplished and the labor and worry of trying to decide what is best is eliminated when you order one or more of the Star ★ Rose collections offered on this page. The selection of varieties was made with one main thought in mind, to provide Rose plants that produce the utmost in both quality and quantity of flowers, for prize-winning blooms can be expected only from plants that are equipped with strong constitutions so they can continue all season at their job of producing Roses without becoming exhausted. There are many varieties of Roses that will produce only 2 or 3 good blooms in a season and these have no place in these collections.

We have specialized in Roses for 37 years. We are veterans in the game and unreservedly recommend each and every Rose offered on this page.

★ ★ ★

10 Novelty Roses \$10.00
Delivery Prepaid until April 10
(At single rate, value \$12.00)

To the many people who have gained experience in Rose-growing from planting the old standbys and who now have confidence that any Star Roses can be grown successfully, this set of Novelty varieties will give spice and added enjoyment in their Rose-gardens. Every Star Rose is guaranteed to grow and bloom or money is refunded, so you run no risk. All are prize-winners. Page

- ★ *Condesa de Sastago*. Copper and yellow. \$1.50 .. 3
- ★ *Duquesa de Penaranda*. Copper-apricot. \$1.50 .. 5
- ★ *Editor McFarland*. Unfading pink. \$1. 13
- ★ *Federico Casas*. Coppery orange. \$1. 5
- ★ *Grenoble*. Scarlet-crimson; very double. \$1. 14
- ★ *Oswald Sieper*. Splendid white. \$1. 4
- ★ *President Plumecocq*. Coppery yellow. \$1. 5
- ★ *Silvia Leyva*. Coppery rose. \$1.25. 4
- ★ *Souv. de J. B. Weibel*. Tyrian-rose. \$1.25. 4
- ★ *Souv. de Mme. C. Chambard*. Coral-pink. \$1.50. .. 32

10 Selected Novelty Star Roses \$10.00
delivery prepaid till April 10, for
ASK FOR OFFER 15b

★ ★ ★

EXTRAORDINARY VALUE

12 Pleasant Surprise Collection \$6.00

No other purchase in the Rose World, that we know, will bring you higher value in bloom than here offered. Not only will you get plants of true Star Rose Quality—not only will the cost be about one-half the “price each” rate—but in the selection will be a fair proportion of those fascinating Novelties or debutantes which are bound to be highly valued as soon as their prize-winning qualities become better known.

12 When Choice of Kinds is Left to Us, Everblooming Star Roses, delivery prepaid until April 10, for only \$6.00
ASK FOR OFFER 15c

★ ★ ★

Our Most Popular Collections

12 Star Dozen Roses \$8.50
Delivery Prepaid until April 10
These 12 Roses amount to \$10.75
if bought separately
All are shown in natural colors in this catalog

You have here the hardiest, healthiest, most free-blooming twelve Roses, each one distinctly different, and from these Roses the veriest amateur is assured of at least 250 choice blooms during the coming season from plants set out this spring. They are inherently strong plants, properly grown and ready to flourish in their new homes. Page

- ★ *Autumn*. Multicolored. \$1. 7
- ★ *Director Rubio*. Cochineal-pink. \$1. 9
- ★ *Editor McFarland*. Unfading pink. \$1. 13
- ★ *Etoile de Hollande*. Crimson. 75 cts. 8
- ★ *Federico Casas*. Coppery orange. \$1. 5
- ★ *Golden Gleam*. Vivid yellow. 75 cts. 8
- ★ *Grenoble*. Scarlet-crimson. \$1. 14
- ★ *Leonard Barron*. Salmon and copper. \$1. 11
- ★ *Miss Rowena Thom*. Deep rose-pink. 75 cts. 14
- ★ *Mrs. G. A. van Rossem*. Red-orange. 75 cts. ... 8
- ★ *Mrs. Henry Morse*. Two-tone pink. 75 cts. 12
- ★ *Mrs. Pierre S. du Pont*. Golden yellow. \$1. 10

12 Everblooming Roses, Star Dozen \$8.50
delivery prepaid until April 10, for
ASK FOR OFFER 15

★ ★ ★

25 THE Star Twenty-five \$17.00
Delivery Prepaid until April 10
Add the Roses below to the Star Dozen.
The 25 at single rate amount to \$21.75

These 25 selected, everblooming Roses include 5 shades of Red, 8 shades of Pink, 8 Tinted, 3 shades of Yellow and 1 White. Page

- ★ *Ami Quinard*. Black-lustered red. \$1. 6
- ★ *Charles P. Kilham*. Coral-red and orange. 75c. .. 7
- ★ *Edith Nellie Perkins*. Salmon-pink. 75 cts. 10
- ★ *E. G. Hill*. Brilliant crimson. 75 cts. 11
- ★ *E. J. Ludding*. Carmine-pink. \$1. 9
- ★ *Etoile de Feu*. Flame-color. 75 cts. 9
- ★ *Margaret McGredy*. Orange-scarlet. 75 cts. 11
- ★ *McGredy's Scarlet*. A gorgeous red. 75 cts. 11
- ★ *Kaiserin Auguste Viktoria*. White. 75 cts. 9
- ★ *President Hoover*. Multicolored. 75 cts. 13
- ★ *President Plumecocq*. Copper-yellow. \$1. 5
- ★ *Souv. d'Alexandre Bernaix*. Crimson. \$1. 13
- ★ *Thomas A. Edison*. Two-tone pink. \$1. 4

25 THE STAR TWENTY-FIVE \$17.00
delivery prepaid until April 10, for
ASK FOR OFFER 15a

➡ No further discount from “Special Offer” prices on this page



★Eblouissant (Brilliance). An impressive, continuous bloomer



★Gloria Mundi. Makes solid beds of vivid orange-scarlet. Glows like a beacon



★Chatillon. The supreme pink Polyantha



★Mlle. Cecile Brunner (Sweetheart)

CONTINUOUS BLOOMING POLYANTHA ROSES

Hardy as oaks. Bloom as freely as geraniums.

Price 75 cts. each, 25 for \$15, 100 for \$60

For specimen plants or beds of brilliant beauty from June until hard frost, or for edging driveways, or making bright spots of color at the edge of a shrub border, these Roses are unequaled by any other flowering plant.

★ **CHATILLON.** ● Clear pink. See illustration. The loveliest variety for massing in solid beds or borders. The clear pink flowers come continuously like huge heads of phlox.

★ **DISTINCTION.** ● (Turbat, 1927.) Paul-Neyron-pink. Use this variety for color along your evergreen border.

★ **EBOUISSANT.** ● Crimson. See illustration. A lovely edging plant. Like crimson velvet. Grows only about 9 inches and blooms continuously.

★ **ELLEN POULSEN.** Rose-pink. Makes great clusters of large-sized, well-formed, bright rose-pink flowers.

★ **ELSE POULSEN.** Rose-pink. Makes a beautiful, continuous blooming, 4-foot hedge. Straight, upright growth. Blooms 2 inches across, single, rose-pink.

★ **GLORIA MUNDI.** See illustration. Orange-scarlet. More showy than geraniums and it is oak-hardy.

★ **IDEAL.** Garnet. Ideal indeed for a bed or border.

★ **KIRSTEN POULSEN.** Vivid rose-scarlet. For an ideally lovely, continuous blooming, 4-foot hedge of crimson flowers, like Flanders poppies.

★ **LAFAYETTE.** ● Cerise. Makes a gorgeous show all season. The blooms are long-lasting when cut.

★ **MILLE. CECILE BRUNNER.** See illustration. Seashell-pink. The "Sweetheart" Rose. Makes sprays of rosy pink "baby" buds that open to seashell-pink.

★ **MRS. R. M. FINCH.** Bright rose-pink. Flowers of bright rose-pink come in branching fragrant clusters.

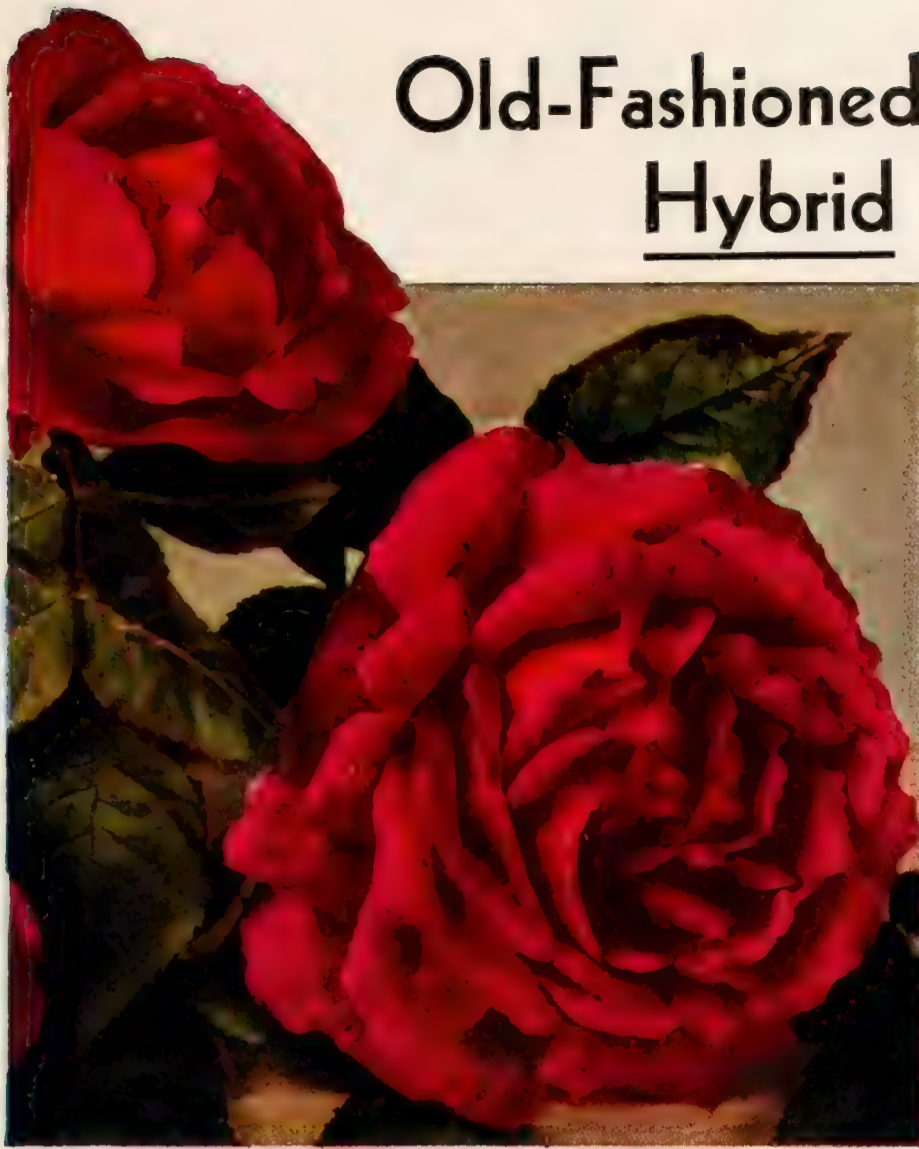
★ **PAUL GRAMPEL.** ● Vivid orange-scarlet. A counterpart of Gloria Mundi but more double and taller in growth. Bush will grow to 3 feet in height and spread. Makes a lovely, brilliant specimen plant.

★ **SALMON SPRAY.** ● Salmon. A distinct salmon color. Large flowers, continuously in bloom on upright 3-foot plants. Makes an attractive low hedge.

6 One each of the six marked ●, Chatillon, Distinction, Eblouissant, Lafayette, Paul Grampel, and Salmon Spray **\$3.85**

ASK FOR OFFER 16

Old-Fashioned, Oak-Hardy, Fragrant Hybrid Perpetual Roses



A typical Hybrid Perpetual heavily laden with fragrance

These large flowered beauties bring back rich memories of old-fashioned gardens and are noted for extreme hardiness. They grow 3 to 10 feet in height. Some bloom only once but many repeat.

- ★ **DRUSCHKI RUBRA.** ● Dark crimson. Dark crimson, lightening to scarlet around the edges of the petals. Delicious "American Beauty" fragrance. \$1 each.
- ★ **FELBERG'S ROSA DRUSCHKI.** ● *New.* Rich pink. A pink "Druschki" is a valuable acquisition. Resembles Frau Karl Druschki in everything but color, which is a rich shade of pink. \$1.50 each.
- ★ **FRAU KARL DRUSCHKI.** ● Snow-white. The most famous white Rose in existence. So beautiful that its lack of fragrance is not noticed. 75 cts. each.
- ★ **HARMONY.** ● (J. H. Nicolas; introduced by The Conard-Pyle Company, Fall, 1933.) Salmon-pink. A new type of H.P. of strong growth which makes a splendid short pillar. Salmon-pink flowers with a golden center. Rare "old-Rose" perfume. Beautiful Hybrid Tea flowers on Hybrid Perpetual plants. Blooms over a long period in early summer. \$1.50 each.
- ★ **JOHN RUSSELL.** ● Scarlet. Large, perfect blooms of bright scarlet, heavily shaded with maroon. 75 cts. each.
- ★ **LOUISE CRETTE.** ● Snow-white with a creamy center. It is mildly fragrant. 75 cts. each.
- ★ **MME. ALBERT BARBIER.** ● Tawny yellow. The most continuous-blooming H.P. Color is apricot-yellow and pinkish white. \$1 each.
- ★ **PRESIDENT BRIAND.** ● Bright pink. Noted for big "peony" blooms. The bright pink flower has a salmon suffusion, and is long lasting. Vigorous. 75 cts. each.

★ **STAMMLER.** *New.* (M. Tantau; introduced by The Conard-Pyle Company, 1932.) Pink. An everblooming Hybrid Perpetual with slightly cupped, fully double pink flowers having pleasing perfume. Different. \$1.50 each.

★ **URDH.** *New.* (M. Tantau; introduced by The Conard-Pyle Company, 1933.) Old-rose. Very double, medium-sized blooms of lovely old-rose are freely produced throughout the season. The rich, old-time perfume is unforgettable. \$1.50 each.

OFFER 17 } Above 2 Most Fragrant Novelties \$2.50
from M. Tantau

★ **REMBRANDT.** ● Creamy pink. A Druschki progeny. The blooms are a luscious creamy pink, beautifully formed and enormous in size. \$1 each.

★ **S. M. GUSTAV V.** ● Neyron-pink. The bloom, of large size and double, beautifully imbricated, is solid Neyron-pink and sweetly perfumed. 75 cts. each.

★ **ULRICH BRUNNER.** ● Cherry-red. Buried in June beneath big, fragrant blooms. 75 cts. each.

5 One each of Harmony (the newest H.P.), Frau Karl Druschki, Druschki Rubra, Felberg's Rosa Druschki, and Rembrandt, the five marked ● for \$4.75

ASK FOR OFFER 17a

Rugosa Roses Very Hardy. Excellent for Shrubs, Flowering Hedges, Embankments, Etc. Always Reliable

★ **DR. ECKENER.** H. Rugosa. *New.* Clear pink. Entirely different from any other Rose. Large, cupped blooms are an enchanting fresh pink with the base of the petals deep golden yellow. Delightfully perfumed. Grows about 4 feet high and blooms intermittently all season. \$1 each.

★ **F. J. GROOTENDORST.** Small, bright crimson flowers, like baby carnations, come in brilliant clusters. Grows to 3½ or 4 feet and blooms continuously. An ideal flowering hedge-plant. Winter-hardy everywhere. 75 cts. each, 25 for \$15.

★ **ROSE A PARFUM DE L'HAY.** H. Rugosa. An abundant producer of deep crimson, double flowers, rich in fragrance. 75 cts. each.

★ **RUSKIN.** H. Rugosa. Large, double, deep crimson flowers of about 50 petals, with rich fragrance. One of the most beautiful of the Shrub Rugosas. 75 cts. each.

★ **SARAH VAN FLEET.** H. Rugosa. Produces quantities of fragrant, cupped blooms of Hermosa-pink, with deeper pink inside. Large shrub, 7 feet tall and as much through. Blooms intermittently all season. 75 cts. each.

★ **TURKES RUGOSA.** A bud marked with Indian yellow at the base, turning silvery pink in the large, full bloom. Fragrant. 75 cts. each.

★ **VANGUARD.** H. Rugosa. Orange-salmon and copper. Very vigorous, and will make a large shrub or pillar with 8- to 10-foot canes. Its foliage is large, dark green, and very beautifully varnished. Large, double, fragrant flowers. This extremely hardy Rose is strongly recommended for northern climates. A beautiful, decorative plant, even when not in bloom. \$1.50 each.



★ **Max Graf.** The most satisfactory pink Rose for embankments

★ **MAX GRAF.** H. Rugosa. An ideal trailing Rose for retaining embankments, covering them with handsome crinkled foliage that is persistent well into winter. Enchanting every spring, this lovely green ground-cover becomes decorated with large, single, apple-blossom-pink flowers. Plant 2 or 3 feet apart. 75 cts. each, 12 for \$7, 100 for \$50.

Deduct { 15% on 12 or More Roses [See Details] on Page 3 }
 { 20% on 25 or More Roses

★ **STAR GUIDE TO GOOD ROSES**

Makes a lovely informal hedge



★Rosa Hugonis, "The Golden Rose of China"

★ROSA HUGONIS, "The Golden Rose of China."

Species. See illustration. The aristocrat of hardy flowering hedge plants. The extreme hardiness of this "Golden Rose of China," its habit of blooming early in May, and the long wands of fairy-like blossoms, all go to make Hugonis one of the most valued shrub Roses. The graceful, arching branches are completely covered with bloom to the very tips in early May. This beautiful shrub Rose, with its dainty foliage and graceful growth, makes a distinctive and almost impenetrable hedge. Plant 15 inches apart. Requires no attention, and blooms best when planted in unfertilized soil. 75 cts. each, 6 for \$3.75. Write for quantity prices.

Species and Old-Fashioned Roses

HYBRID SWEETBRIARS. Single-flowered shrub Roses. Foliage pungent with spicy fragrance.

★Lady Penzance. Soft copper color. 75 cts. each.

★Lord Penzance. Fawn, delicately tinted. 75c. each.

★Rose Bradwardine. Rose-pink, single flowers with old-fashioned charm. 75 cts. each.

★SCHOENER'S NUTKANA. (Nutmaka × Paul Neyron.) Rose-pink. Excellent for mass planting. 75c. each.

★XANTHINA. *Species.* Bright yellow, 2-inch, double flowers. Growth and foliage like Hugonis. \$1 each.

★YORK AND LANCASTER. *Damask.* Striped red and white, but occasionally all red. An old-fashioned Rose first known in 1551 and named for the War of the Roses—the Yorkists wore white Roses, the Lancastrians red, and this Rose symbolizes the union of the two factions. 75 cts. each.



Rosa Rouletti. Bud is a little larger than a grain of wheat

ROSA ROULETTI. Miniature Rose.

SEE ILLUSTRATION ABOVE; ALSO PAGE 23

Probably one of the old Lawranceana Roses popular a century or more ago. After being lost to cultivation for many years, a plant was found growing in an Alpine window-garden by M. Correvon, the French rock-garden authority, just a few years ago. It is rapidly attaining popularity as a rock-garden "gem" and as an edging plant in front of Rose-beds. See edging illustration, page 23. The plant grows about 6 inches tall in bushy form, is healthy and hardy and blooms from early summer until frost. The tiny, rose-pink, quite double flowers are less than an inch in diameter. A real little treasure. 3-inch pot-plants, 75 cts. each; 4-inch pot-plants, \$1.25 each.

★POMPON DE ST. FRANCOIS. A dwarf Rose of unknown parentage, probably a Gallica. The 12-inch plants are very bushy, with tiny white flowers that bloom profusely in June. 75 cts. each.

★GOLDEN MOSS. *H. Moss.* (P. Dot, 1932.) Buff-yellow. See illustration. Here is one of the rarest Rose-treats of all time—a yellow Moss Rose, the first one ever produced. Fat pinkish buds open a rich golden buff with a pinkish tint and age to cream-white. The flowers are about 3 inches in diameter, fully double, and twice fragrant—the corolla has a delicious Rose perfume which is almost hidden under the pungent scent of the mossy calyx. Can be used as a pillar (mature plants will make 8-foot canes), or if trimmed will make a shapely bush, 4 feet high and as much through. \$1.50 each.



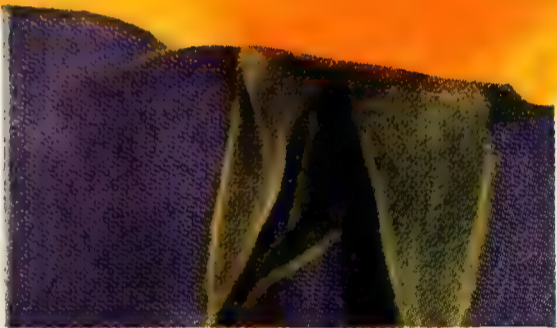
★Golden Moss. New. \$1.50 each

Novelty

Plant Patent
No. 28



★Golden
Climber
(Mrs. Arthur
Curtiss
James)
Copyright 1933



★**NEW DAWN.** Plant Patent No. 1. Pillar. Early and everblooming. Pale pink. An everblooming sport of Dr. W. Van Fleet, the world's favorite Climbing Rose which received the first patent ever granted to a plant. If you like Dr. W. Van Fleet, you will like New Dawn, for they are identical in flower, but New Dawn doesn't stop blooming after a few weeks. It makes a fine display in early summer and then keeps right on producing blooms until frost finally stops it. Dainty, pale pink, fragrant Roses on long stems for cutting. Although an offspring of the famous Dr. W. Van Fleet, the growth is not as vigorous as that of its parent, for New Dawn spends its energy in producing blooms all the time; therefore, do not look for a growth of more than 10 feet. **\$1.50 each.**

This is
★New Dawn

Plant Patent
No. 1



Copyright 1933

Hardy Climbers

3 NEW PATENTED ROSES

★**GOLDEN CLIMBER** (Mrs. Arthur Curtiss James). (Brownell, 1933.) Plant Patent No. 28. C. Early. Something we have longed for—a yellow Climbing Rose which will stand zero temperatures.

Perfectly formed buds of rich gold marked with orange-scarlet, open to large, semi-double blooms the color of pure gold, and fade very little. The open flower shows a mass of pale yellow stamens which add to its beauty. It is delightfully fragrant. Coming singly on 15- to 18-inch stems, Golden Climber makes a

perfect cut-flower which lasts well. It blooms over a long period in early summer and mature plants produce quite a number of flowers again in late summer and autumn. The plants are vigorous and have handsome foliage. **\$2 each.**

★Blaze.
Plant Patent
No. 10



Copyright 1932

★**BLAZE.** Plant Patent No. 10. Pillar. Everblooming. Scarlet. See illustration. This scarlet everblooming pillar Rose is in great demand. It grows to about 10 feet in height. Similar to Paul's Scarlet Climber except that Blaze continues to bloom all season until hard frost. Do not expect Blaze to bloom much until it has had at least one year's hardened growth on which to produce its bloom-spurs. Blaze and New Dawn are the leaders in the longed-for new class of Everblooming Hardy Climbing Roses. **\$2 each.**

Deduct { 15% on 12 or More Roses [See Details] }
 { 20% on 25 or More Roses [on Page 3.] }

CLIMBING ROSES

These vigorous-growing Roses are especially valuable for the great quantity of bloom produced at one time. One of the Ramblers, Bloomfield Courage, or a free-blooming, large-flowered Climber like Mme. Grégoire Staechelin (see inside back cover), is a glorious sight when in full bloom. Some of the Climbing Hybrid Teas (see opposite page) bloom quite freely early in the season and produce a few flowers off and on until frost; they are best used as pillars.

The letters after the names indicate the type of growth: R., Ramblers. These Roses should have the canes that have flowered cut back to the ground soon after they finish blooming. The vigorous new growths (from the base) should be trained again on the support. C., Climbers. Vigorous varieties that make massive canes. They keep on climbing. Prune only dead wood and surplus growth. P., Pillar. Roses that grow only 8 to 10 feet. G., Ground-covers. To cover banks, etc. Cl.H.T., Climbing Hybrid Teas. Cl.H.P., Climbing Hybrid Perpetuals.



★A bud of Apeles Mestres



★ **AMERICAN PILLAR.** C. Midseason. Pink. The single flowers come in immense heads of 25 to 40 blooms, on rigid, 18-inch stems, each head making a perfect bouquet of varying shades of charming pink, with a white center to each bloom and gleaming golden anthers. Lasts a week when cut. Slight fragrance. **75 cts. each.**

★ **APELES MESTRES.** Cl.H.P. Midseason. (Pedro Dot, 1931.) See illustration. Can you imagine a fully double, clear yellow Rose, as large as a saucer, blooming way over your head on a climbing plant? Sounds like the fish that got away, but it is a true description of this new Climbing Rose. No wonder customers who bought our first plants have been winning prizes at the shows. The flowers on the original plants in our test-garden average 5 inches in diameter when fully open. They are full to the center, with some 50 parchment-like petals of clear yellow, making a long-lasting flower, slightly fragrant. The plants make canes 10 to 12 feet tall, and while not free flowering, every bud opens to a perfect exhibition bloom. **\$1.50 each.**

★ **ALBERTINE.** C. Midseason. See illustration below. Large, loose flowers of pink and apricot evolve from vermilion buds; the attractive blooms are mildly fragrant. Strong plants with red canes and large, shiny leaves. **75 cts. each.**

★ **BLAZE.** See description and illustration, page 19.

★ **BLOOMFIELD COURAGE.** R. Midseason. Rich crimson. Artistic, wavy, single blooms float like myriads of crimson butterflies over the almost thornless, vigorous-growing plant. Beautiful for fences. **75 cts. each.**

★ **BREEZE HILL.** C. Midseason. Pink and fawn. A vigorous grower with light green foliage. The pink and fawn blooms are very large, fully double to the center, and sweetly fragrant. **75 cts. each.**

★ **DR. W. VAN FLEET.** C. Very early. Shell-pink. For over 20 years this was the leading light pink Climbing Rose, and where lovely shiny foliage and vigorous growth are desired it is still unsurpassed. One matured plant will cover the side of a one-car garage. **75 cts. each.**

★ **EMILY GRAY.** C. Early. Clear yellow, well-formed flowers. The glossy foliage looks varnished. A vigorous grower. **75 cts. each.**

★ **GARDENIA.** C. Early. Yellow. A vigorous-growing Climber with willowy canes and almost evergreen foliage that remains on the plant well into the winter. A splendid cut-flower as the bright yellow buds open to creamy white flowers of fine form. Because of the beauty of the buds and the hardiness of the plants, Gardenia has long been in the front rank of Climbing Roses. **75 cts. each.**

★ **GOLDEN CLIMBER.** See description and illustration on page 19.

★ **MME. GREGOIRE STAECHELIN (Spanish Beauty).** See description and illustration on inside back cover page.

★ **NEW DAWN (Everblooming Dr. W. Van Fleet).** See description and illustration on page 19.

20 Other Well-known Climbers

All are desirable; some most valuable

Star-size plants, price (except otherwise noted)
75 cts. each or any 10 for \$6.50

Climbing American Beauty	Evangeline	Milano
Chaplin's Pink Climber	Excelsa	Papa Gouchault
Christine Wright	Glenn Dale	Silver Moon
Coralie	Hiawatha	Solarium
Daydream. \$1	Ile de France	Sunday Best. \$1
Dorothy Perkins	Kathleen Harrop	White Dorothy Perkins
	Mme. Sancy de Parabere	Zephyrine Drouhin

★Albertine

THE CONARD-PYLE CO.

★ Star Rose Growers

West Grove, Pa.



★ Jacotte. Very fragrant

★ **ROSELLA.** P. Everblooming. Vivid scarlet. Early and repeats throughout summer and fall. Single blooms of vivid velvety scarlet, with golden centers, come singly and in clusters. Makes 6- to 8-foot growth. It blazes like a red light in our trial-garden where it has proved to be perfectly hardy. **75 cts. each.**

★ **THE BEACON.** C. Midseason. This is a vermilion-red American Pillar. It glows like a beacon among other Roses. **75 cts. each.**

★ **WICHURAIANA.** G. Late. White. Grows flat and is fine for embankments. **75 cts. each.**

★ **MARY WALLACE.** C. Early. See illustration. Brilliant pink, large, shapely blooms almost cover the vigorous-growing plant. **75 cts. each.**

rosette-shaped flowers, borne several together, are clear primrose-yellow and never fade white. A real treasure. **75 cts. each.**

★ **JACOTTE.** C. Midseason. Orange-apricot. See illustration. A beautiful Climber which is deservedly popular. The flowers are a rich shade of orange-apricot, with coppery red tints and are fragrant. Open blooms are 3 inches or more in diameter. Beautiful shiny dark green foliage, cut like holly leaves. This Rose should be protected the first winter or two north of here. The flowers are much more beautiful than our illustration. **\$1 each.**

★ **PAUL'S LEMON PILLAR.** P. Midseason. Lemon-yellow buds open to immense flowers of the same color, which eventually turn white—every one a perfect exhibition bloom. **\$1 each.**

★ **PAUL'S SCARLET CLIMBER.** P. Midseason. Makes great bouquets of vivid scarlet blooms. **75 cts. each.**

★ **PENELOPE.** H.Musk. Pillar. Saffron. Grows to about 8 feet. A free-blooming Rose best treated as a pillar or spread against a fence. The pink and saffron flowers come in clusters of from 3 to 30. It makes a great show in autumn. Musk fragrance. **\$1.50 each.**

★ **PRIMROSE.** C. Midseason. This was the first reasonably hardy, yellow Climber which held its color. Typical, shiny Wichuriana foliage makes the plant attractive quite aside from the bloom. The



★ Mary Wallace

12 Repeat-blooming Climbers

Not as hardy here as the other Climbing Roses, but they can be easily wintered with proper protection from sun and wind. They increase in bloom as the plants mature and make hard wood.

★ **ALLEN CHANDLER.** Cl.H.T. P. Crimson. A wonderful show during its first blooming period in June, and produces some fine blooms later. Leathery, glossy, disease-resistant foliage. **\$1 each.**

★ **BLOOMFIELD EXQUISITE.** Cl.H.T. P. Early. Large, clear pink blooms, fragrant and lasting. A vigorous grower. **\$1 each.**

★ **CLIMBING LADY ASHTOWN.** Cl.H.T. P. Large, brilliant pink blooms of perfect form. Borne throughout the season. **\$1 each.**

★ **CLIMBING MRS. HENRY MORSE.** Cl.H.T. P. Blooms of two-tone pink. A lovely Pillar Rose. **\$1 each.**

★ **CLIMBING RED RADIANCE.** Cl.H.T. P. Large cerise-red blooms decorate the plant all season. **\$1 each.**

★ **CLIMBING SOUV. DE CLAUDIUS PERNET.** Cl.H.T. P. Immense blooms of sunflower-yellow. **\$1 each.**

★ **CLIMBING TALISMAN.** Cl.H.T. P. Multicolored. Free bloomer when plant is matured. **\$1 each.**

★ **MERMAID.** P. Immense, single blooms of sulphur-yellow, 4 inches across. A consistent everbloomer. **\$1.50 each.**

★ **NORA CUNINGHAM.** Cl.H.T. P. Early. Rose-pink. Large, semi-double, cupped blooms of rose-pink with light center; fragrant. Strong, climbing growth. **\$1 each.**

★ **SCORCHER.** Cl.H.T. P. Early. Scarlet. Four-inch, semi-double, ruffled flowers of crimson-scarlet. The September bloom of Scorchers in our test-garden was very striking last fall. It is fragrant, too. **\$1 each.**

★ **SOUV. DE CLAUDIUS DENOYEL.** Cl.H.T. P. Crimson. Blooms are perfect and repeat until frost. Delightfully fragrant. **\$1 each.**

★ **VICOMTESSE PIERRE DU FOU.** Cl.H.T. P. Cerise and orange. The most free-blooming Rose in this class when the plants mature. Does best after the second year. **\$1 each.**

★ **ROYAL SCARLET HYBRID.** See illustration. C. Early. Crimson-scarlet. A progeny of Paul's Scarlet Climber, but two weeks earlier and a little stronger grower. The *deep crimson* flowers come in clusters and show masses of golden stamens. It is a beautiful Rose which blooms over a long period and makes a lovely companion for Paul's Scarlet Climber. **\$1 each.**



★ Royal Scarlet Hybrid

Deduct { 15% on 12 or More Roses [See Details]
20% on 25 or More Roses [on Page 3]

★ STAR GUIDE TO GOOD ROSES

Ask Us to Plan the "Layout" for Your Rose-Beds



You can have a show like this from June till frost from two sets of the "Star 25." See page 15.

EXPERIENCE is a great teacher. For thirty-seven years we've "learned by doing." It has become a genuine pleasure to use the experience thus gained in service for our clients. Of course, you'll enjoy making your own plans, but when you have something especially large or important, remember that we make no charge for giving advice or suggestions, or even for helping you to plan your entire layout. We cooperate with Landscape Architects in the selection and arrangement of Roses.

We know so well the behavior of different Roses, height of growth, color-tones that go together or do not, that we can help both the Landscape Architect and you to get better harmony and a happy effect. Careful planning brings its own reward.

If you desire professional advice for renovating an old garden, or regarding the planning, planting, culture, or care of a new one, perhaps you will write to us. You may even wish us to arrange for a special visit. **We plan and plant new Rose-gardens.**

"HOW TO GROW ROSES" NEW. 17th Edition. Enlarged and entirely rewritten

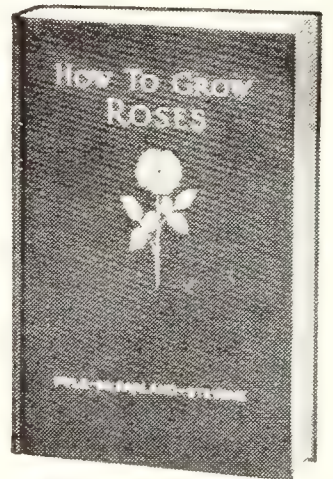
By ROBERT PYLE, Past President American Rose Society. DR. J. HORACE MCFARLAND, Editor for American Rose Society. G. A. STEVENS, Secretary American Rose Society

These three prominent American rosarians have combined their life-long experiences in Rose-growing to produce this latest and most practical Rose book.

210 pages; 32 illustrations in natural colors of many of the most beautiful Roses; 30 photographic reproductions of Roses and Rose-gardens; numerous line drawings to illustrate the text.

Questions forever arise about Rose-gardening that need an immediate answer. How and when should my Roses be planted? What is the best way to prepare the soil? What fertilizers should I use? Drainage? How far back should I prune my everblooming Roses? What about the climbers? How should I treat my Rose bushes for mildew, black-spot, rose-bugs, etc.? These are but a few of the everyday questions that often must be answered at once—somehow.

"How to Grow Roses" solves this problem completely for it contains up-to-the-minute information on every phase of Rose-growing. Every effort has been made to adapt this volume to serve those who want to know *how to grow Roses*.



"How to Grow Roses" Cloth bound. \$2 Ppd.

"**CLIMBING ROSES**" is the new 1933 companion book to "How to Grow Roses." It is quite as complete and beautiful, with its 64 illustrations in color and black. Written by G. A. Stevens, it tells, in plain words, what Climbing Roses are, and how to get the most out of them. \$2 postpaid. You need both books.

STANDARD or TREE ROSES

Tree Roses can be planted in beds with your other Roses, as they occupy little ground-space, and they add greatly to the beauty of any Rose-garden. Our plants are budded on 3½-foot stems, and will bloom all summer and until frost with the regular bush Hybrid Teas. Tree Roses give an added look of distinction to any garden.

These 6 Everblooming Hybrid Teas in Tree Form, \$15

- ★ **Betty Uprichard.** Carmine and salmon. Carmine buds open to blooms of salmon, suffused with orange.
- ★ **Etoile de Hollande.** H.T. Crimson. The most satisfactory Rose in this color.
- ★ **Mrs. E. P. Thom.** H.T. Clear canary-yellow.
- ★ **Radiance.** H.T. Two-tone pink. Always in bloom.
- ★ **Red Radiance.** H.T. Cerise-red. This makes a magnificent Tree Rose.
- ★ **Talisman.** H.T. Multicolored. A glorious combination of orange and rose-red. Always changing.

Price \$3 each; any 6 for \$15. By Exp. only, not prepaid

TREE PEONIES Aristocrats of the Garden

3 marked ● for \$30

Tree Peonies grow 3 to 6 feet high and produce their huge, almost incredible, satiny blooms weeks ahead of the Herbaceous Peonies. Order early. *Plant before April 1.*

Beaute de Tokio. The huge, satiny flowers are brilliant purple, semi-double. 3-yr. plants, \$7.50 each.

● **Jeanne d'Arc.** Glistening rose-pink, fully double, and exquisitely shaped. 4-yr. plants, \$10 each.

● **Josephine Seneclauze.** Midseason. Clear shell-pink flowers of many petals. 4-yr. plants, \$10 each.

Mme. Stuart Low. Huge, double flowers of deep rose-pink. 4-yr. plants, \$10 each.

Regina Belgica. Light pink flowers with a mass of golden feathery stamens. 4-yr. plants, \$10 each.

● **Souv. de Maxime Cornu.** Fully double. Glowing yellow, shaded with orange and salmon. 4-yr. plants, \$15 each.

Zenobia. A fine dark purple-red or maroon variety. Darkest of all. 3-yr. plants, \$25 each.

THE CONARD-PYLE CO.

★ Star Rose Growers

West Grove, Pa.

Hardy Edging and Hedge Plants Also Flowering Shrubs and Vines

True Dwarf English Boxwood

Buxus sempervirens suffruticosa

This is the true Dwarf Box. Border your rose-beds, garden paths, and entrance walks with this dwarf, spicy, evergreen shrub—the most beautiful formal edging plant known. Landscape gardeners, with their keen perception of what makes a garden picture, use Boxwood extensively when planting flower-gardens. *Our plants are grown in space in which to grow so they are bushy and symmetrical.* 4 to 6-in., 10 for \$2, 100 for \$18; 6 to 8-in., 10 for \$3, 100 for \$25. Delivery not prepaid. Write for prices on larger quantities or larger sizes.

Box Barberry for Edging

For formally edging rose-beds in northern states where the English Boxwood is not hardy. 2-yr. size, 100 for \$12, 1000 for \$100; 3-yr. size, 100 for \$20, 1000 for \$175. Delivery not prepaid.

SAVE FUTURE EXPENSE

Plant a Hedge. Fences Need Repair

Berberis Thunbergi (Japanese Barberry)

12 to 15-in., 10 for \$2, 100 for \$15; 15 to 18-in., 10 for \$2.50, 100 for \$20. Delivery not prepaid.



Red-leaved Barberry

See above illustration

To make an unusual colorful hedge. The foliage is dark, bronzy red, like a red Japanese maple. 12 to 15-inch, 10 for \$2, 100 for \$15; 15 to 18-in., 10 for \$2.50, 100 for \$20. Delivery not prepaid.

3 New Barberries for specimens

4-in. pot-plants, \$1 each, postpaid

- B. *Chenaulti*. Very glossy foliage. Evergreen.
- B. *Julianæ*. (Wintergreen Barberry). Evergreen.
- B. *verruculosa*. Small, glossy and evergreen. Dwarf grower. A really lovely plant.



True Dwarf Evergreen English Boxwood for edging walks

Dormant, Ornamental Flowering Shrubs

Flowering Shrubs add to the value of a property as soon as they are planted. Lack of space in our Catalog prevents descriptions of the kinds listed below. We have 40,000 Shrubs of our own growing. The following reduced prices offer exceptional values. Further information on request.

PRICES (unless otherwise noted): 2-yr., any 3 for \$1, prepaid; any 25 for \$4.75, not prepaid. 3-yr., any 3 for \$1.50, prepaid; any 25 for \$6, not prepaid.

Buddleia magnifica (Everblooming Butterfly Bush).

B., *Ile de France*. *New*. Flowers rich purple.

Callicarpa purpurea (Beauty Fruit).

Calycanthus floridus (Sweet Shrub).

Caryopteris incana (Blue Spirea).

Cercis japonica (Chinese Redbud).

Deutzia (5 kinds) *crenata magnifica*, *Gracilis*, *Lemoinei*, *Lemoinei compacta*, and *Rosea eximia*.

Forsythia spectabilis (Golden Bell).

Hibiscus syriacus (Althea or Rose-of-Sharon) (4 varieties): *Banner*, *Double Pink*, *Jeanne d'Arc*, and *William R. Smith*.

Hydrangea paniculata grandiflora and *Arborescens*.

Kolkwitzia amabilis (Beauty Bush).

Lonicera (Bush Honeysuckle) *Morrowi* and *Tatarica alba*.

Philadelphus (Mock Orange). The best is the everblooming *Virginal*. We have 16 other varieties.

Spiræa, *Anthony Waterer* (Red Spirea) and *Vanhouttei*, *Prunifolia*, and *Thunbergi*.

Symphoricarpos racemosus (Snowberry).

Syringa persica (Persian Lilac).

Viburnum Carlesi (Fragrant Viburnum). Fragrant flowers. One of the rarest and most delightful of all shrubs. 1 to 1½-ft., \$1.50 each; 2½ to 3-ft., \$2.50 each.

V. plicatum (Japanese Snowball).

Weigela, *Eva Rathke* and *Rosea*.

See prices above (unless otherwise noted).

Ornamental Vines

PRICES: Field-grown, dormant plants, 2-yr. size, 35 cts. each; any 6 for \$1.50. 3-yr., 50 cts. each; any 6 for \$2.25. Delivery prepaid.

Akebia quinata.

Ampelopsis quinquefolia (Virginia Creeper).

Celastrus scandens (Bittersweet).

Clematis paniculata.

Honeysuckle, Chinese.

H., *Aureo-reticulata* (Golden-leaved Honeysuckle).

Silver Lace Vine. Grows 15 feet in a season.

Wisteria magnifica. Lavender-blue.

W., *Chinese White*. Panicles of silvery white.



Rosa Rouletti. The newest, daintiest, dwarf-growing, healthy, continuous blooming plant for edging beds, walks, bird-baths, etc. See illustration of the plant on page 18. \$15 for 25, \$60 per 100

Hardy Perennial Plants

Our list of Perennials is not long but consists of things we know are good. They have proved hardy here without protection, but it is always well to provide a light covering in winter after the ground freezes.

As most Perennials are not effective unless at least three are planted together, we have made the prices for three's and dozens.

PRICES: All Perennials, unless otherwise noted, are 3 for 75 cts., 12 for \$2.50
DELIVERY PREPAID

ASTER FRIKARTI, Wonder of Staefa. A new Hybrid Aster originated by M. Frikart, of Staefa, Switzerland. We consider it one of the finest perennials introduced to gardens in recent years. The bushy plants, which grow about 2 feet tall and more in diameter, have proved hardy with sub-zero temperatures. The sky-blue or pale violet-blue flowers are from 2½ to 3 inches in diameter, single, with 35 to 50 narrow petals, and deliciously fragrant. They last a long time on the plant and coming on long stems, are wonderful cut-flowers. A single plant will produce hundreds of lovely, long-stemmed blooms. Bloom starts early in summer and keeps up continuously until frost. **50 cts. each, 3 for \$1.35, 12 for \$5.**

Natural
Size

Long lasting
when
cut



Aster Frikarti, Wonder of Staefa. 50 cts.

ASTER alpinus. A dwarf Aster suitable for edging or rock-garden use. Its enormous lavender-blue daisies have a dazzling yellow center and come on stems about 12 inches high. It blooms in June and subsides into a nice tuft of foliage. **3 for 75 cts.**

Brilliant, Bountiful, Hardy Chrysanthemums

Order the Entire Set of 35 Varieties for \$7.50, postpaid. Ask for OFFER 24

Nature's parting gift to the autumn garden, and among the finest of all flowers for cutting as well as garden decoration.

A few varieties start blooming in August, but most of them begin their gorgeous display in the fall, after most garden flowers have quit for the year. They will stand a lot of cold; light frosts do them little harm. It takes a real hard freeze to put them to sleep.

They are easy to grow, thriving in any ordinary soil, are little affected by disease or insects, and a thin covering of some light material is all the winter protection they need.

We have a splendid collection of these lovely flowers, and the following list contains several of the finest varieties in cultivation. To make bushy plants, keep pinched back until late in July.

Four types, Decorative, Single, Pompon, and Button, are represented. Plant any time after frost danger is past. The dates given after the name of each variety are the average blooming-dates here at West Grove. The average height of growth is also given as a help to enable you to arrange your planting.

PRICES: When 3 of a 30-ct. variety are ordered, the price is 3 for 75 cts., or 12 for \$2.50, postpaid



Early Bronze. Beats "Jack Frost" by more than a month

BARBARA CUMMING. *Decorative.* August 20. 2 feet. The best of the early, large-flowered yellows, 3 inches or over in diameter. Light bronze when first opening, turning to rich, pure yellow. **30 cts. each.**

BONNIBELL. *Pompon.* October 10. 18 inches. Rich bronze-color. Splendid plant with good foliage. Unusually free in bloom. **30 cts. each.**

BRIGHT EYES. *Button.* October 20. 18 inches. Blush-white, with a dark center. One of the prettiest of the button type. **30 cts. each.**

CHAMPAIGN. *Decorative.* October 15. 2 feet. Large, wine-red flowers. Very attractive. **30 cts. each.**

CRIMSON SPLENDOR. *New.* See illustration on opposite page. *Single.* October 1. 2 feet. A magnificent variety producing masses of rich crimson-maroon flowers shaded with garnet and with an attractive yellow center button. The 4-inch flowers are delightfully informal. **40 cts. each, 3 for \$1.**

DAYBREAK. *Single.* October 10. 2 feet. A lovely shade of shell-pink, much like Seashell and Mrs. W. E. Buckingham. It has a delicious, sweet perfume. **30 cts. each.**

DAZZLER. *Single.* October 10. 2 feet. Large, single blooms of dazzling red, with backs of petals deep yellow which give "life" to the flower. Well named. This is the finest single red we have been able to find. **30 cts. each.**

DONALD WELLS. *Single.* September 1. 2 feet. A splendid, pure white Chrysanthemum with about three rows of petals. An English variety. **30 cts. each.**

EARLY BRONZE. See illustration. *Pompon.* Late August. 2 feet. One of the earliest and finest of all hardy "Mums." The 1½-inch flowers appear early, and the compact plants are one mass of bloom until killed by heavy frost. The color is a light bronze which fades but little. **30 cts. each.**

FRANCES WHITTLESEY. *Decorative.* October 1. 18 inches. Rich bronze and garnet—perfect fall colors. The flowers will stand more frost than most varieties. **30 cts. each.**



Crimson Splendor. New. 40 cts. each, 3 for \$1



Jean Treadway. 40 cts. each, 3 for \$1

Brilliant, Bountiful, Hardy Chrysanthemums, continued

GEORGE HEUSTER. *Decorative.* October 15. 18 inches. Large, shaggy flower of light bronze; very artistic. **30 cts. each.**

GRENADIER. *Single.* October 10. 30 inches. Flowers 3 to 3½ inches in diameter, of bright chestnut-red, with gold-backed petals. **40 cts. each, 3 for \$1.**

JEAN CUMMING. *Decorative.* September 15. 2 feet. Large flowers of purest white, with a very soft yellow and blush shading at the center when first open. We think this the finest white of this type. **30 cts. each.**

JEAN TREADWAY. See illustration. *Decorative.* October 1. 2 feet. When first open, the deep rose-pink center is surrounded by the clearest sparkling pink imaginable, changing to soft pink shading to white with age. **40 cts. each, 3 for \$1.**

LA GARONNE. *Decorative.* October 15. 2 feet. Three-inch, incurved, shaggy flowers of wine and gold. A popular variety. **30 cts. each.**

LITTLE BARBEE. *Button.* October 15. 18 inches. The best of the brownish red Buttons. **30 cts. each.**

MAY ELLEN. *Anemone.* September 15. 18 inches. The only Anemone Chrysanthemum we have been able to find with any great garden value. The pink flowers turn cream-white, the two colors making an attractive combination; large yellow anemone center. **30 cts. each.**

METZI. *Button.* October 15. 18 inches. Attractive little flowers of rich yellow with a reddish center. **30 cts. each.**

MRS. MAX BEHR. *Decorative.* October 15. 2 feet. Medium-sized, single flowers of red and orange. Most spectacular. **30 cts. each.**

OCTOBER DAWN. *Decorative.* October 5. 2 feet. Beautiful soft daybreak-pink without contrasting tints. One of the most desirable for cutting. **30 cts. each.**

PROVENCE. *Decorative.* October 1. 18 inches. A blend of soft pink and yellow. **30 cts. each.**

QUAKER LADY. *Decorative Pompon.* October 15. 15 inches. An interesting little flower of light bronze, with a chestnut center. Plant has different gray foliage. **30 cts. each.**

R. MARION HATTON. *Decorative Pompon.* September 25. 3 feet. Two-inch flowers of clear canary-yellow, produced in surprising quantities. Stands a lot of frost. The best small yellow. **30 cts. each.**

RUTH HATTON. *Decorative Pompon.* October 1. 3 feet. This is the most prolific bloomer in the Chrysanthemum family. Plants produce myriads of lovely 2-inch flowers of clear ivory-white, having a lemon-yellow tint in the center when first opening. **30 cts. each.**

RUTH CUMMING. *Decorative.* October 10. 2 feet. The lovely blooms of rich terra-cotta bronze are particularly appropriate in the fall. **30 cts. each.**

SEPTEMBER QUEEN. *Decorative.* September 15. 18 inches. Large, shaggy white flowers almost cover the low plants from the middle of September until hard frost. **30 cts. each.**

SILVER BALL. *Pompon.* October 15. 2 feet. A beautiful flower of silvery white, almost ball-shaped. **30 cts. each.**

SONOMA. *Decorative.* October 10. 2 feet. Large flowers of bronzy chestnut, with a golden reverse. **30 cts. each.**

VIVID. *Decorative.* October 1. 2½ feet. Big, shaggy flowers the color of an American Beauty rose. **30 cts. each.**

YELLOW GEM. *Large Button or small Pompon.* October 10. 18 inches. Compact blooms less than an inch in diameter, bright canary-yellow without shading. Although a little larger than most Buttons, it is valuable for its earliness. **30 cts. each.**

ZORA. *Pompon.* October 15. 2 feet. A striking little flower of deep yellow, with a red center and red tips showing on the petals as it expands. **30 cts. each.**

Chrysanthemum Species

ARCTICUM. September, October. 12 to 18 inches. The Arctic Daisy is a splendid rock-garden plant as well as a fall decoration for the front of the border. **30 cts. each.**

KOREANUM (Korean Daisy). October. 2 to 4 feet. A very hardy, recently introduced species from Korea. The 3-inch Daisies are pure white with a golden center when first opening, the rays turning pink as the flower matures. Needs a dry location in light soil. **30 cts. each.**

MAXIMUM (Double Shasta Daisy), Diener's Giant Double. July to September. 18 inches. Long-stemmed, very double flowers, like a shaggy Aster. A splendid novelty, and one of the finest white flowers for cutting. **40 cts. each, 3 for \$1, 12 for \$3.**

MORIFOLIUM. One of the ancestors of all Chrysanthemums, and one of the daintiest flowers in the fall garden. Low plants, with healthy, attractive foliage, send up big, branching bloom-shoots which are literally covered during September and October with masses of single pink flowers less than an inch in diameter. As a cut-flower it is airily graceful as well as unusually beautiful. Not hardy north, but worth treating as an annual where greenhouses or deep frames are not available. **40 cts. each, 3 for \$1.**

OFFER 25. 4 New Hardy Chrysanthemums—Early Bronze, Crimson Splendor, Jean Treadway, and R. Marion Hatton—for \$1.25, postpaid

5 { One each of these 5 vivid-colored, early-blooming varieties—Barbara Cumming, Dazzler, Frances Whittlesey, Grenadier, and Vivid—a brilliant array. } **\$1.25**
ASK FOR OFFER 25a

12 { One each of Barbara Cumming, Crimson Splendor, Dazzler, Donald Wells, Early Bronze, Frances Whittlesey, Grenadier, Jean Treadway, R. Marion Hatton, Ruth Cumming, Ruth Hatton, and Vivid. } **\$3**
ASK FOR OFFER 25b

Blackmore & Langdon's,
Wrexham, and Everblooming

DELPHINIUMS



© These magnificent Hybrid Delphiniums bloom a second time

BLACKMORE & LANGDON HYBRIDS. After years of testing many of the famous strains of Delphinium, we have finally settled down to Blackmore & Langdon's. In our home-garden and in the nursery fields they have proved strong, healthy plants with long spikes of flowers, so beautiful that adequate description requires more adjectives than we know. From single to double, from deep violet down to the palest lavender, with all the tints imaginable modifying these colors, every flower has a lovely "bee" and many flowers are deliciously fragrant.

Plants cut back after the first bloom have produced wonderful spikes again in September, in some cases as fine as the early ones.

We do not save seed but buy it direct from Blackmore & Langdon each year, so that quality will be maintained. We have a block of these Delphiniums at our Wayside Salesroom at Jennersville, on U. S. Route No. 1, where, in season, passers-by can stop and select

the plants they want while they are in bloom. They are so entrancingly beautiful that the attendants would rather sell anything else—they actually hate to see the plants taken away. **50 cts. each, 12 for \$5.**

WREXHAM STRAIN. The Hollyhock type, with its long, tapering spikes of extra-large flowers in a wide range of shades. Named varieties of this strain sell for several dollars each, but we believe that these seedlings will produce as desirable flowers as the named varieties. **50 cts. each, 12 for \$5.**

BELLADONNA (Everblooming Hardy Larkspur). The most continuous blooming Delphinium and the best for cutting, as each plant has many branches. Clear, turquoise-blue flowers are freely produced. 3 to 4 feet. June to October. **30 cts. each, 3 for 75 cts.**

BELLAMOSUM. Everblooming. The dark blue form of Belladonna. 3 to 4 feet. June to October. **30 cts. each, 3 for 75 cts.**

THE CONARD-PYLE CO.

★ Star Rose Growers

West Grove, Pa.

Glowing, Fragrant, Hardy Phlox, Etc.

One each of the entire set of 20 varieties for \$6, postpaid. ASK FOR OFFER 27

Phlox are the backbone of the perennial garden. The stately Decussata hybrids with their great heads of bloom make a glorious show from early summer until mid-autumn. For real effect use several plants of a variety. Some of the novelties are really wonderful.

Do not allow the tall Phlox to go to seed or you will be kept busy pulling up seedlings. Below are included several of the finest American and European novelties in addition to the always wanted kinds in the standard varieties. All we offer are dependably good.

● **Attraction.** *New.* Large flowers of scarlet-orange with a carmine-red eye. Strong, healthy plants. 2 to 3 feet. 50 cts. each, 12 for \$5.

● **Border Gem.** *New.* One of the strongest growers, making heavy stems bearing large trusses of fine deep violet-blue flowers. 50 cts. each, 12 for \$5.

★ **Beacon.** Brilliant cherry-red. Very late. One of the best of this color. 3 feet. 30 cts. each, 12 for \$2.50.

● **Brilliant.** *New.* Shining scarlet with a darker eye. A startling novelty. Large trusses, freely produced. 50 cts. each, 12 for \$5.

● **Caroline Vandenberg.** *New.* Very lovely lavender-blue flowers in splendid heads. The individual flowers are larger than usual. 35 cts. each, 12 for \$3.50.

★ **Champs Elysees.** Large trusses of dark purple. A standard variety. 30 cts. each, 12 for \$2.50.

● **E. I. Farrington.** *New.* A lovely Phlox named for the editor of *Horticulture*. Erect, vigorous growth. Bright salmon-pink, shading to soft pink. Excellent for cutting. 50 cts. each, 12 for \$5.

● **Europa.** White with a red eye, the white becoming tinted with age. A strong grower of medium height. 30 cts. each, 12 for \$2.50.

● **Frau Anton Buchner.** Late. An extra-good white of medium height. The largest truss and individual flower. 30 cts. each, 12 for \$2.50.

● **General Petain.** *New.* Wine-red. Medium height; splendid bloomer. 50 cts. each, 12 for \$5.

● **H. B. May.** *New.* Late. This we consider the finest true pink Phlox. A healthy grower of medium height,

producing enormous trusses of extra-large individual flowers. 50 cts. each, 12 for \$5.

● **Lucas Schwinghammer.** *New.* The carmine-red flower, with its blood-red eye, attracts everybody's attention from afar. Strong, healthy grower and very free flowering. 50 cts. each, 12 for \$5.

★ **Miss Lingard.** This is of the Suffruticosa type and blooms a month earlier than the Decussata Phlox. Attractive plants with shiny foliage bloom from June until frost. White with a pink tint in center. The best early white. 30 cts. each, 12 for \$2.50.

★ **Mrs. Jenkins.** A pure white late Phlox of medium height. Healthy plants; very free. An old variety but still one of the best. 30 cts. each, 12 for \$2.50.

★ **Prof. Schliemann.** Charming lavender variety. A lovely, artistic color. 30 cts. each, 12 for \$2.50.

● **Prof. Went.** An attractive shade of amaranth. Medium growth. 30 cts. each, 12 for \$2.50.

★ **Rijnstroom.** Rose-pink flowers on a strong, branchy plant. A standard variety. 30 cts. each, 12 for \$2.50.

★ **Saladin.** *New.* Brilliant orange-scarlet—the most vivid Phlox color known. Strong plants producing large trusses. Heavy petals which hold their color. 35 cts. each, 12 for \$3.50.

● **Smiles.** *New.* Lilac-pink with darker eye. Large flowers in enormous trusses. Different. 50 cts. each, 12 for \$5.

★ **Thor.** An old variety still in great demand. Salmon-pink, with a brilliant eye. Medium grower and a wonderful bloomer. Splendid. 30 cts. each, 12 for \$2.50.

OFFER 27a. One each of the 8 Phlox marked ★ for \$1.75, postpaid.

OFFER 27b. One each of the 7 new Phlox marked ● for \$2.50, postpaid.



The pink Phlox above is Rijnstroom



Hardy Phlox make a long-flowering, brilliant, fragrant border

LAVANDULA vera (Lavender). One of the best-beloved plants of every old garden. There is something restful about the gray-green, aromatic foliage, and the fragrant flowers are not only a delight in the garden, but when dried and laid away retain their perfume for a long, long time. We have the true old-fashioned Lavender. Fashion experts say Lavender is again the mode. 35 cts. each, 3 for 90 cts.

IRIS, The Allies. *New.* The forerunner of a new race of fall-blooming Bearded Irises. Satiny black buds open to very lovely flowers with lilac standards, flushed with light brown; falls mottled brownish yellow, shading to purplish maroon at the edges of the petals. 75 cts. each.

● **Iris pumila.** Grows only 4 to 6 inches tall. Purple flowers freely produced in April and May. 3 for 75 cts.

Hardy Perennial Plants, continued

As most Perennials are not effective unless at least three are planted together, we have made the prices for threes and dozens.

PRICES: All Perennials, unless otherwise noted, are 3 for 75 cts., 12 for \$2.50. Delivery prepaid

AQUILEGIA (Columbine). See illustration. Three species and three of the world's finest strains. They grow 2 to 3 feet tall and all bloom in May and June.

A., Breeze Hill Hybrids. A strain originated at the famous Breeze Hill Gardens of Dr. McFarland at Harrisburg, Pa. Uncommon art shades; extra-long spurs.

A. cærulea. The lovely, blue, long-spurred Columbine of the Rocky Mountains. Our seed comes from Colorado.

A. canadensis. The dainty red and yellow wild Columbine of the eastern states. Likes poor soil and either sun or shade.

A. chrysantha. A golden yellow, long-spurred native of Arizona and New Mexico. Fragrant. Blooms all summer.

A., Dobbies' Imperial Hybrids. Prize-winning strain from Scotland, the result of many years of selection and reselection. Has long spurs, fine form, and shades not found in other strains.

A., Mrs. Scott Elliott's Hybrids. A world-famous strain, long spurred, with a range of brilliant colors.

CAMPANULA Medium (Canterbury Bell). 2 to 3 feet. June, July. Beautiful, upturned bells of Pink, White, Mauve, and Blue are borne on erect plants. A biennial but indispensable. *Mixed colors only.*

C. Medium calycanthema. 2 to 3 feet. June, July. The Cup-and-Saucer Canterbury Bells, with saucer-shaped collars. Beautiful. *Mixed colors only.*

C. persicifolia (Peach Bells). 2 to 3 feet. June, July. Lovely, cup-shaped, blue bells of large size. A fine border plant.

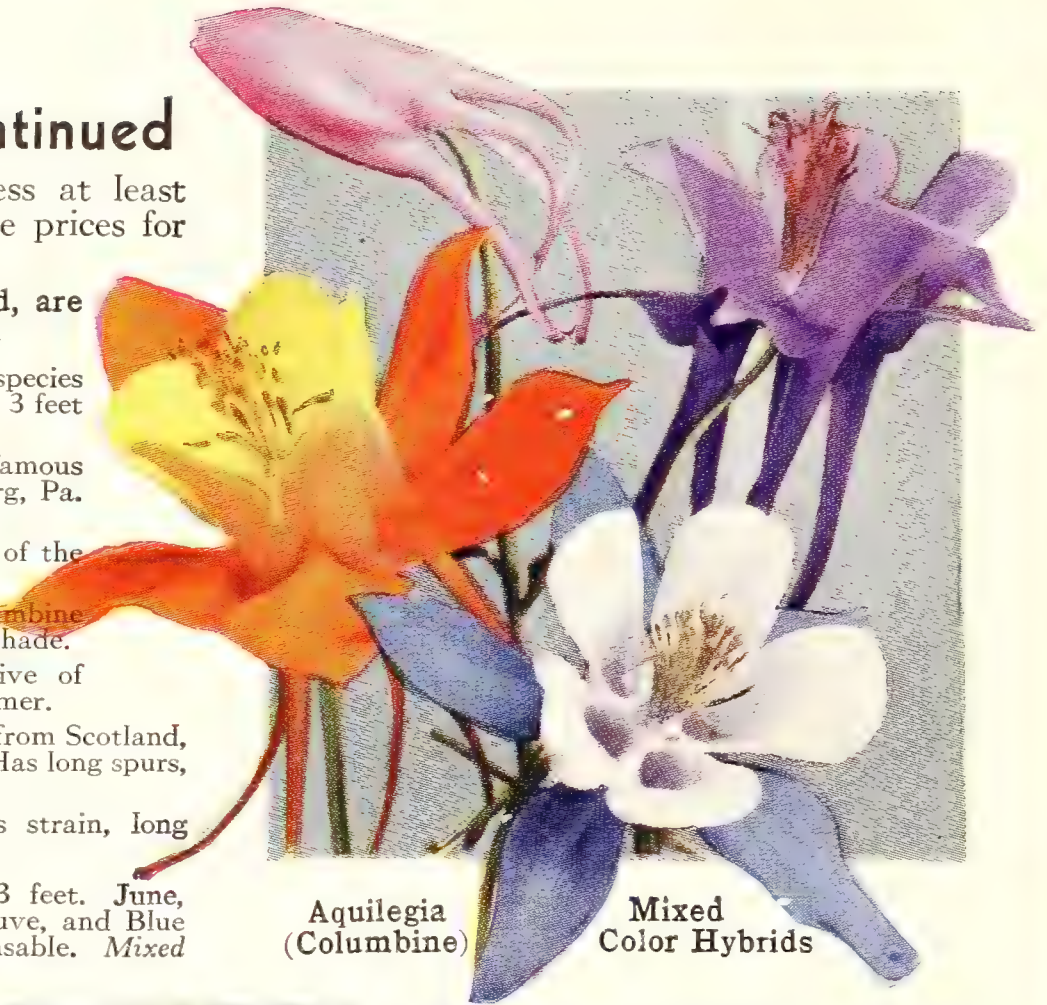
C. persicifolia alba. A white variety of the above.

DICENTRA spectabilis (Bleeding Heart). Beautiful, heart-shaped, deep pink flowers with white tips hang in drooping racemes. This plant likes partial shade. 50 cts. each.

DIGITALIS (Foxglove), The Shirley. 5 to 6 feet. June, July. A biennial that is grouped with the perennials as it renews itself from self-sown seed. This is one of the few flowers that do well in a shady place. The Shirley is a splendid strain, with unusually long spikes of bloom, white to rose, with chocolate and maroon spots. *Mixed colors only.*



Viola, Jersey Gem. Continuous bloom. For edging walks or beds



Aquilegia (Columbine)

Mixed Color Hybrids



Campanula

GAILLARDIA grandiflora (Blanket Flower). 18 inches. One of the most brilliant perennials. Large, long-stemmed daisy-like flowers of yellow and orange-red. A long-lasting cut-flower. Blooms continuously from June to November.

MENTHA Requieni. A minute, creeping herb from the Island of Corsica, and a gem for the rockery, the wall-garden or for planting between stepping-stones. It has tiny, light green foliage which spreads slowly, forming a splendid close mat and giving off a delightful strong peppermint scent when stepped on or rubbed. The little blossoms are deep mauve or light purple and are very pretty against the light green foliage. 35 cts. each, 3 for \$1.

PACHYSANDRA terminalis (Japanese Spurge). 8 inches. A popular ground-cover for shady places. Planted 6 to 8 inches apart, the plants will soon meet and make a perfect cover. 12 for \$1.50, 100 for \$10.

PENTSTEMON barbatus Torreyi. 3 feet. July, August. Long spikes of scarlet, tubular flowers. One of the staple border plants. Always good.

PHYSOSTEGIA virginiana, Vivid. 18 inches. July, August. Deep pink flowers long-lasting when cut. A dwarfier, more brilliant variety than the type.

PLATYCODON grandiflorum (Chinese Balloon Flower). 2 feet. July to October. Balloon-shaped buds open to large, blue, bell-shaped flowers, freely produced.

PYRETHRUM hybridum. 2 feet. May, June. Long-stemmed, daisy-like flowers, lasting long when cut. The colors range from white, through various shades of pink and red to deep crimson. *Mixed colors only.*

P. hybridum, Double. 2 feet. June, July. Selected doubles of the favorite Persian Daisy. The plants are all grown from divisions and will all be double, some frilled, others very compact. Colors range from ruby-red through rose to delicate pink and creamy white. Long stems; perfect cut-flowers. *Mixed colors only.* 40 cts. each, 3 for \$1.

TRITOMA or Red-hot Poker (Kniphofia), Pfitzeriana. 2½ feet. August to frost. The most free-flowering of the Red-hot Pokers, and the showiest. Makes a stunning show in the garden and is a striking cut-flower. Must be well mulched in winter, or the roots can be lifted and stored in the cellar.

VIOLA, Apricot. 6 inches. May to October. Rich apricot-yellow flowers, freely produced. Keep them cut and the plants will bloom all summer.

V., Jersey Gem. 6 inches. Everblooming. *Makes a perfect edging plant for beds and borders.* Compact grower, and if faded flowers are kept cut will bloom all the time. Pure violet-blue, fragrant blooms on 6-inch stems. 3 for 75 cts., 12 for \$2, 100 for \$15.

V., Little Gem. *New.* 4 inches. Everblooming. A miniature Jersey Gem, identical except that the plants are more compact and the flowers are about half the size. 3 for \$1, 12 for \$3.

V., Purple Glory. *New.* 6 inches. Everblooming. Rounded flowers of rich purple as large as ordinary pansies are produced continuously. Fine for cutting. 3 for \$1, 12 for \$3.

V. tricolor (Johnny-Jump-Up). 6 inches. Everblooming. So many have asked for these that we just had to list them. Indispensable in an old-fashioned garden.

VIOLET, Princess of Wales. 6 inches. April to June. Delightfully fragrant, long-stemmed purple Violets for cutting.

CANNAS

For All-Summer Brilliant
Lawn Displays

*Robust, healthy,
easiest-grown.
Continue blooming
until frost*

Cannas are almost indispensable where a display of vivid color is needed. They bloom abundantly and unceasingly during hot summer months when other bright flowers may be wilting, and continue until cut down by hard frost. No other flower of like value grows more easily, gives more bloom, and requires less care.

Thousands of visitors to Washington are impressed with the beauty of the public grounds, on which great beds of Cannas are planted annually to add a touch of gaiety to the spacious lawns such as no other summer-flowering plant could produce. The beds of Cannas give continuous, brilliant bloom all summer and until cut down by frost.

Plant 18 inches apart, in deep, loamy soil which has first been enriched with cow-manure, or shredded cattle manure which can be purchased at any seed supply store. First-class garden soil will do. Cannas are heavy feeders, and new bloom-stalks are constantly growing, each one producing a great head, and sometimes three heads of blooms.

Canna
Mrs. Pierre
S. du Pont.
The Queen
of the
bright pink
varieties.

Above head
of bloom is
about half
natural size.

Price
75 cts. each,
6 for \$3.75
postpaid



Here Are Twelve of the Choicest Shades in Free-Blooming Cannas

AMERICAN BEAUTY. 5 ft. A velvety oriental carmine or translucent cerise. Unusually attractive, with its immense flowers of tropical magnificence. 25 cts. each, postpaid.

ANTOINE WINTZER. 5 ft. The most gorgeous, dazzling crimson color yet produced in Cannas. Named in honor of the late Vice-President of our firm, the greatest Canna hybridist this country has ever known. 50 cts. each, postpaid.

CITY OF PORTLAND. 3½ ft. Grows a nice height for a small bed. Color glowing salmon-pink. A profuse bloomer. Flowers come in dense heads. 25 cts. each, postpaid.

FLAG OF TRUCE. 4 ft. A large, cream-white Canna with faint pink dots on each petal. It has the effect of white in a planting. 25 cts. each, postpaid.

GOLDEN WEDDING. 3 ft. The finest and most brilliant dwarf yellow Canna ever grown. The flowers are very large and stand well above the foliage. 50 cts. each, postpaid.

HOLLYWOOD. 4 ft. Color is orange-pink shading out to salmon-orange at the tips of the petals, and the throat is clear begonia-rose. 35 cts. each, postpaid.

● **KING MIDAS.** 5 ft. Firm flowers of glittering gamboge-yellow that withstand rain and hot sunshine in a truly remarkable way. 35 cts. each, postpaid.

● **MRS. HERBERT HOOVER.** 4 ft. Immense, firm-petaled flowers of luscious watermelon-pink on erect, strong stems, carrying from ten to fifteen blooms on each head. 50 cts. each, postpaid.

● **MRS. PIERRE S. DU PONT.** 4 ft. See illustration. For sheer beauty, we have yet to find the equal of this Canna. Continues producing new bloom-stalks with their marvelous heads of salmon-pink bloom from June till frost comes. 75 cts. each, 6 for \$3.75, postpaid.

● **PALM BEACH.** 3½ to 4 ft. Broad, long-petaled flowers of maize-yellow, with a faint blush of pearly pink, really like a lovely orchid. 25 cts. each, postpaid.

● **RAZZLE DAZZLE.** 4 ft. Crimson-maroon, each petal edged with brilliant yellow, makes a dazzling effect. 35 cts. each, postpaid.

● **THE PRESIDENT.** 4 ft. Rich, glowing scarlet. Like the Mrs. Pierre S. du Pont Canna, this is a Conard-Pyle introduction and for 14 years it has continued to be recognized as finest of the reds in the Canna kingdom. 25 cts. each, 10 for \$2, postpaid.

12

The entire set of 12 Conard-Pyle Cannas, as named above. All originated and introduced here. Every one a leader in its class, ppd.

\$4

ASK FOR OFFER 29a

5

Distinctly different top-notch Cannas marked —King Midas, Mrs. Pierre S. du Pont, Palm Beach, Razzle Dazzle, and The President, ppd.

\$1.75

ASK FOR OFFER 29

1934 Summer-Flowering Plants

★ STAR GUIDE TO GOOD ROSES

General and Rose Index, Spring 1934

General Index		Page		Page		Page			
Akebia	23	Red-leaved Barberry	23	Edith Nellie Perkins	10	Magdalena de Nubiola	11	Cl. Red Radiance	21
Altheas	23	Regal Lily	30	Editor McFarland	13	Margaret McGredy	11	Rembrandt	17
Ampelopsis	23	ROSES	1-21	E. G. Hill	11	Marguerite Cham-bard	11	Rev. F. Page-Roberts	12
Aquilegias	28	Rose of Sharon	23	E. J. Ludding	9	Mari Dot	11	Richardson Wright	13
Asters	24	Shasta Daisy		Elizabeth of York	9	Mary Hart	4	Rose a Parfum de l'Hay	17
Balloon Flower	28	(Double)	25	Ellen Poulsen	16	Mary Wallace	21	Rose Bradwardine	18
Barberry	23	Silver Lace Vine	23	Else Poulsen	16	Max Graf	17	Rosella	21
Beauty Bush	23	Snowball (Japanese)	23	Emily Gray	20	McGredy's Scarlet	11	Rouletti	18, 23
Beauty Fruit	23	Snowberry	23	Etoile de Feu	9	Mermaid	21	Royal Scarlet Hybrid	21
Berberis	23	Spireas	23	Etoile de Hollande	8	Milano	20	Ruskin	17
Bittersweet	23	Sweet Autumn Clematis	23	Evangeline	20	Miss Rowena Thom	14	Salmon Spray	16
Blanket Flower	28	Sweet Shrub	23	Excelsa	20	Mrs. Aaron Ward	12	Sarah Van Fleet	17
Bleeding-Heart	28	Sweet Violet	28	Federico Casas	5	Mrs. Arthur Curtiss James	19	Schoener's Nutkana	18
Blue Spirea	23	Symphoricarpos	23	Felberg's Rosa Druschki	17	Mrs. Charles Bell	12	Scorcher	21
Books	22	Syringa	23	F. J. Grootendorst	17	Mrs. E. P. Thom	12	Silver Moon	20
Box Barberry	23	Tree Peonies	22	Frau Dr. Schricker	9	Mrs. G. A. van Rossem	8	Silvia Leyva	4
Boxwood	23	Tritoma	28	Frau Karl Druschki	17	Cl. Mrs. H. Morse	21	S. M. Gustav V	17
Buddleia	23	Viburnums	23	Gardenia	20	Mrs. J. D. Eisele	2	Soeur Therese	13
Bush Honeysuckle	23	Vines	23	Gertrud Huck	4	Mrs. Pierre S. du Pont	10	Solarium	20
Butterfly Bush	23	Viola	28	Glenn Dale	20	Mrs. R. M. Finch	16	Souvenir	4
Buxus	23	Violet	28	Gloria Mundi	16	Mrs. Warren E. Lenon	12	Souv. d'Alexandre Bernaix	13
Callicarpa	23	Virginia Creeper	23	Golden Climber	19	National Flower Guild	12	Souv. de Claudius Denoyel	21
Calycanthus	23	Weigelas	23	Golden Dawn	9	New Dawn	19	Souv. de Claudius Pernet	14
Campanula	28	Wisterias	23	Golden Gleam	8	Nicole	4	Souv. de J. B. Weibel	4
Cannas	29			Golden Moss	18	Nigrette	2	Souv. de Mme. C. Chambard	Back cov.
Canterbury Bells	28			Grenoble	14	Nora Cuningham	21	Spanish Beauty	31
Caryopteris	23			Gruss an Aachen	9	Nuntius Pacelli	12	Splendor	14
Celastrus	23			Gruss an Teplitz	9	Olympiad	12	Stammler	17
Cercis	23			Harmony	17	Oswald Sieper	4	Sunday Best	20
Chinese Redbud	23			Hawlmarm Crimson	9	Paloma Falco	12	Sunny South	14
Chrysanthemums	24, 25			Henry Pauthier	4	Papa Gouchault	20	Superb	14
Clematis	23			Hiawatha	20	Pardinas Bonet	12	Syracuse	14
"Climbing Roses"	22			Hugonis	18	Paul Grampel	16	Talisman	13
Columbines	28			Ideal	16	Paul's Lemon Pillar	21	Climbing Talisman	21
Daisies	25			Ile de France	20	Paul's Scarlet Cl.	21	The Beacon	21
Delphiniums	26			Imperial Potentate	9	Pedro Veyrat	4	Thomas A. Edison	4
Deutzias	23			Jacotte	21	Penelope	21	Tree Roses	22
Dicentra	28			Johanniszauber	4	Pompon de St. Francois	18	Turkes Rugosa	17
Digitalis	28			John Russell	17	Portadown	12	Ulrich Brunner	17
Forsythia	23			Joyous Cavalier	9	President Briand	17	Urdh	17
Foxglove	28			Jules Gaujard	9	President Deville	12	Vanguard	17
Gaillardia	28			Julien Potin	9	President Hoover	13	Vicomtesse Pierre du Fou	21
Golden Bells	23			Kaiserin Auguste Viktoria	9	President Plumecocq	5	Ville de Paris	14
Hibiscus	23			Kardinal Piffel	9	Primrose	21	Westfield Star	14
Honeysuckles	23			Kathleen Harrop	20	Princess Elizabeth of Greece	12	White Dorothy	20
"How to Grow Roses"	22			Kirsten Poulsen	16	Radiance	12	Wichuraiana	21
Hydrangeas	23			Konigin Carola	9	Rapture	12	Willowmere	14
Iris	27			Lady Alice Stanley	10	Red Radiance	12	Xanthina	18
Ivies	23			Lady Ashtown	10			York and Lancaster	18
Japanese Snowball	23			Cl. Lady Ashtown	21			Zephirine Drouhin	20
Japanese Spurge	28			Lady Forteviot	10				
Kniphofia	28			Lady Penzance	18				
Kolkwitzia	23			Lafayette	16				
Larkspurs	26			League of Nations	4				
Lavandula	27			Leni Neuss	4				
Lavender	27			Leonard Barron	11				
Lilac	23			Li Bures	10				
Lilium	30			Lord Penzance	18				
Lonicera	23			Louise Crette	17				
Mentha Requiemi	28			Luis Brinas	2				
Mock Orange	23			Mlle. Cecile Brunner	16				
Pachysandra	28			Mme. Albert Barbier	17				
Peach Bells	28			Mme. Clara d'Arcis	10				
Pentstemon	28			Mme. Gregoire Staechelin	31				
Philadelphus	23			Mme. Louise Tremreau	10				
Phlox	27			Mme. Sancy de Parabere	20				
Physostegia	28			Mme. Van de Voorde	10				
Platycodon	28								
Pyrethrum	28								
Redbud	23								
Red-Hot Poker	28								

Rose Index

Abol	6
Albertine	20
Allen Chandler	21
Cl. American Beauty	20
American Pillar	20
Ami L. Crette	6
Ami Quinard	6
Amulett	6
Angèle Pernet	6
Annie Brandt	6
Apeles Mestres	20
Ariel	6
Autumn	7
Betty Uprichard	7
Blaze	19
Bloomfield Courage	20
Bloomfield Exquisite	21
Breeze Hill	20
Catalonia	3
Cayetana Stuart	6
Chaplin's Pink Cl.	20
Charles K. Douglas	6
Charles P. Kilham	7
Chatillon	16
Christine Wright	20
Colette Clement	6
Condesa de Sastago	3
Coralie	20
Countess Vandal	4
Dainty Bess	6
Dame Edith Helen	6
Daydream	20
Diane de Broglie	6
Director Rubio	9
Distinction	16
Dorothy Perkins	20
Dr. Eckener	17
Dr. W. Van Fleet	20
Druschki Rubra	17
Duchess of Wellington	6
Duquesa de Penaranda	5
Eblouissant	16
Edel	6

TRI-GEN. A new, all-purpose spray

Kill aphids or plant-lice and also leaf-eating insects; is also a control for fungous diseases like mildew and black-spot on all kinds of plants. This preparation consists of Aphistrogen, Insectrogen, and Fungtrogen.

Tri-ogen comes in highly concentrated form in three sizes: **Size A, makes 15 quarts, \$1.50.** **Size C, makes 32 gallons, \$5.** **Size D, for large estates, makes 128 gallons, \$20.** By express only. Not mailable.



THE REGAL LILY (Lilium Regale)

Plant in clumps of 6 or more

Our illustration truly represents the glorious show the Regal Lily will make when planted in groups. No flower surpasses it in magnificence. It grows anywhere, in any soil, in sand or clay, in good loam or even in gravelly soil, *provided only* that the location is not too wet and not too shaded. The beautiful blooms come in June, often six or more on a stalk about 4 feet high. It is a vigorous grower with wiry stems. The flowers are deliciously fragrant and the petals pearly white inside, with a canary-yellow throat, the outside wine-color, yellow, and white beautifully blended. Plant 4 to 5 inches deep, in groups among perennials or along the edge of a shrub border. **Price, 3 for 65 cts.; 12 for \$2; 100 for \$15, postpaid.**

PHOTOGRAPHED AT STAR ★ ROSE-GARDENS



★ SPANISH BEAUTY • MME. GREGOIRE STAECHELIN

(Pedro Dot, 1928.) A plant of this "Queen of the Climbing Roses" in full bloom is one of the most beautiful sights we have ever seen. Long-pointed buds of crimson open to great urn-shaped flowers of iridescent pearl-pink, with splashes of ruby-carmine on the outside of the petals. These deliciously fragrant blooms are produced so lavishly that they almost hide the plant, and coming as they do on long stems (12 to 18 inches), they are perfect for cutting. The long bloom-period does not finish "Staechelins" work, however, as each flower is followed by the largest Rose seed-pods we know; they are as large as small pears and after coloring are wonderfully decorative. Perfectly hardy in exposed positions here at West Grove.

Pedro Dot sent us this Rose from Spain, and we are proud to have been the introducers.

\$1 EACH, 3 FOR \$2.50, DELIVERED



★**SOUV. DE MME. C. CHAMBARD** "THE MOST BEAUTIFUL ROSE OF FRANCE FOR 1932"

There just does not seem to be the right kind of words in the dictionary to describe this lovely Rose.

It was chosen as the most beautiful Rose of France in 1932, and no wonder, for from the time the bud begins to unfurl until several days later when the petals fall to the ground, it is an ever-changing picture of entrancing beauty. The buds are large, long-pointed, and coral in color; they slowly unfold to a coral-pink flower developing a satiny peach tint and sheen which is about the loveliest finish we have ever seen on a Rose petal.

Its fragrance is simply delicious, so that we have not only one of the most beautiful Roses in the world but one of the sweetest. It has strong, upright growth, above average height, with healthy foliage and is free in bloom.

Gold Medal, Saverne, 1930; Certificate of Merit, Bagatelle, 1931; Gold Medal, Lyon, 1932. **\$1.50 each.**

THE CONARD-PYLE CO. • STAR ★ ROSE GROWERS • WEST GROVE, PENNA.