

Historic, archived document

Do not assume content reflects current scientific knowledge, policies, or practices.



62.73



STAR ROSES

FALL
1941

Fall Planting

★ M. S.
Hershey
©
C.-P.Co.

We advocate fall planting for our patrons living in the temperate zone; for others we will gladly enter orders for shipment at the appropriate season. Roses freshly dug from our fields here in late October are in ideal condition for immediate transplanting. Such prompt replanting, with a 6 to 8-inch mound of soil to protect the stems of each plant from frost, gives rich promise for a happy get-away to growth in the spring.

STAR ROSE GUARANTEE

We guarantee every Star Rose to bloom the first blooming period after purchase; failing which we will replace or refund its cost. It pays to get plants direct from where they are grown.

STAR ROSE TRADE-MARK



This is a durable, celluloid, star-shaped tag bearing the name of the Rose on back. Insist on having the Star Trade-Mark on every Rose plant you purchase.

★ **M. S. HERSHEY.** H.T. (Coddington.) Plant Pat. 427. Crimson-scarlet. Erect-growing plants with large, dark green foliage are crowned throughout the growing season with superb crimson-scarlet blooms. We have supplied over 1000 plants of this Rose for the great Hershey Rose-garden. **\$1.25 each; 3 for \$3.15.***

THE FRONT COVER ROSE

★ **KORONET.** H.T. (Mallerin, 1941.) Prop. rights reserved. Yellow. Graceful, long-shaped buds of lemon shaded with orange open to lovely 5-inch blooms that look like soft feathers artistically ruffled. The opening buds show glowing hearts of Chinese gold reminding one of a luscious "Dee-Licious" canteloupe. The outer petals are deep primrose color veiled with orange. Cinnamon fragrance. **\$1.50 each; 3 for \$3.75.***

QUANTITY PRICES

On Patented Roses marked † and on Rose Collections there is no further discount.

The total number of all the Roses you order will determine which price you use for the Roses with price marked.*

On Roses with "each" price marked * you are entitled to rates as follows!

Less than 12	12 to 24	25 or more
A	B	C
75c.	70c.	65c.
85c.	75c.	70c.
\$1.00	90c.	85c.
1.25	\$1.10	\$1.00
1.50	1.30	1.20

Above prices do not apply to Patented Roses marked †.

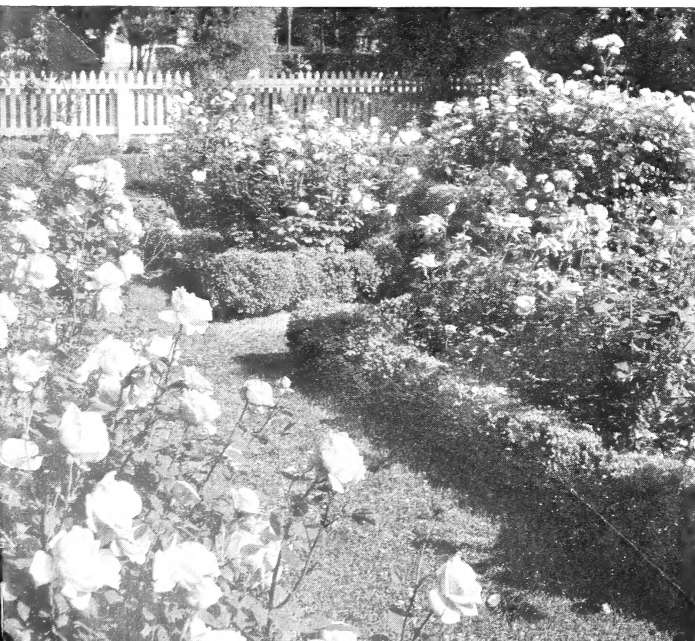
If your entire order is for Less than 12 Roses, use prices in column A for Roses marked †. 12 to 24 Roses, use prices in column B for Roses marked †. 25 or more Roses, use prices in column C for Roses marked †.

If you send too much cash, we will include extra value, or, if requested, refund amount overpaid.

Fall Prices Include Free Delivery

Copyright, 1941, by the Conard-Pyle Co.

Star Roses in a garden in Norfolk, Va.



★ Rose Novelties 1941

★ **BLANCHE MALLERIN.** H.T. (Mallerin, 1941.) Propagation rights reserved. White. "I think Blanche Mallerin is about the best white Rose I have seen in years." This comment, from one of the keenest judges of Roses we know, agreed with our own judgment when we decided to offer this variety as an improvement over existing white Roses. This new, fragrant Rose is clear white with blooms so perfect they look artificial and seem to be modeled in white wax. The buds are streamlined and come on erect, wiry stems. **\$1.50 each; 3 for \$3.75. †**

★ **GOOD NEWS.** See illustration. H.T. (Meiland, 1940.) Plant Pat. 426. Coppery pink. This Rose is rapidly forging ahead to take first place in its class and color. At the June Rose show of the Reading Rose Society the 9 points scored by Good News enabled the exhibitor to win the Sweepstakes Prize and the coveted and very valuable Nicholson Bowl. Buds of deep coppery pink open to 60-petaled, fragrant blooms with coppery center, toning to shell-pink on the outer petals. The plants are noted for vigorous growth and continuous bloom. **\$1.50 each; 3 for \$3.75. †**

★ Good
News
© C.-P.Co.

DISTINGUISHED VISITORS

Visitors to Star Rose-Gardens are always welcome. We are most delighted to have them come when Roses are at their best, both spring and fall. It is gratifying to feel that there is an increased interest in both standard and novelty varieties, not only of Roses, but of other Shrubs and Perennials, including one of the best collections of Chrysanthemums in the East. At times there are occasions of especial interest. For example, when we pay our rent of one Red Rose, required in the deed to our property, or when we had the honor of entertaining with Her Royal Party, Charlotte, the Grand Duchess of Luxembourg, the only crowned head of Europe who is at present a refugee in this country. Her Royal Highness came from Montreal and was accompanied by the Minister of Luxembourg from Washington, D. C., and other official representatives. They were received by representatives of eminent horticultural societies in the East, and served to commemorate the introduction into America of the Rose, Grande Duchesse Charlotte, originated by one of her subjects in Luxembourg, and to be sold by us, fall 1942.

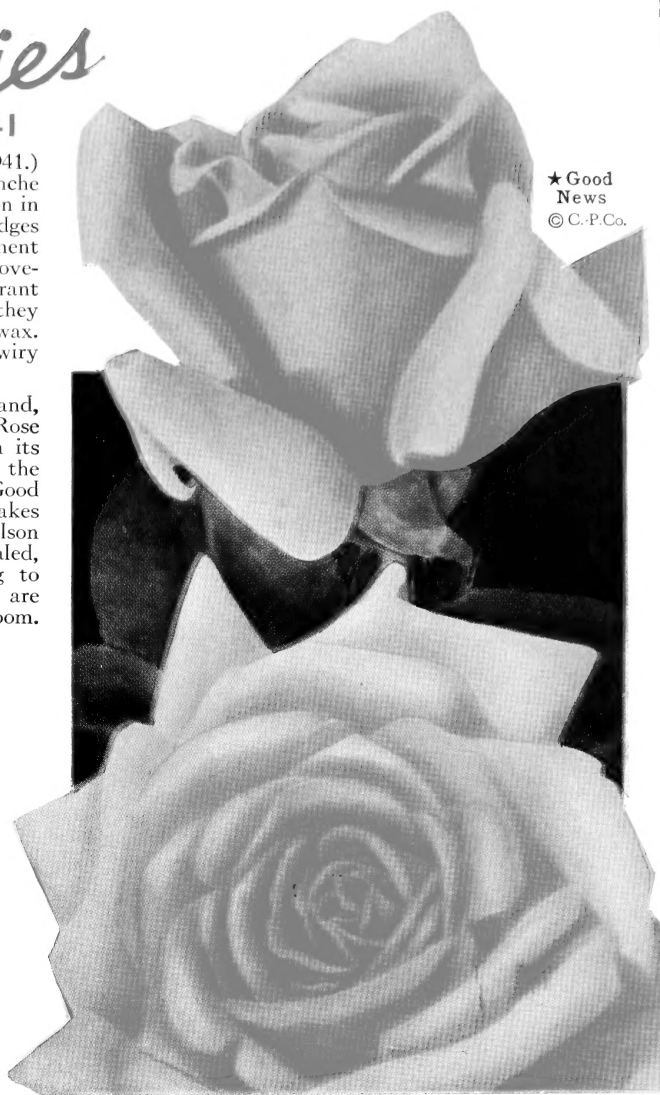
Make your plans to visit Star Rose-Gardens on U. S. Highway Route No. 1; 40 miles from Philadelphia; 60 miles from Baltimore.

ROSE MAGAZINE FREE

We send you cultural directions, also to each 1941 customer will be sent, if requested, the current issue of our little magazine, "Success with Roses," or for a year, free on request with orders of \$5 or more. Each issue will tell what to do in your garden. It is illustrated and full of entertaining stories about new Roses, Rose people, Rose events, etc. You are kept up-to-date in all the activities of the modern Rose world. This is a service much appreciated by our thousands of customers.

The Conard-Pyle Co., West Grove, Pa.

Robert Pyle
President



H. R. H. Charlotte, Grand Duchess of Luxembourg and Robert Pyle




NOVELTIES



★ Dicksons Red

①

★ **BLANCHE MALLERIN.** HT. *New, Fall 1941.* See page 3.

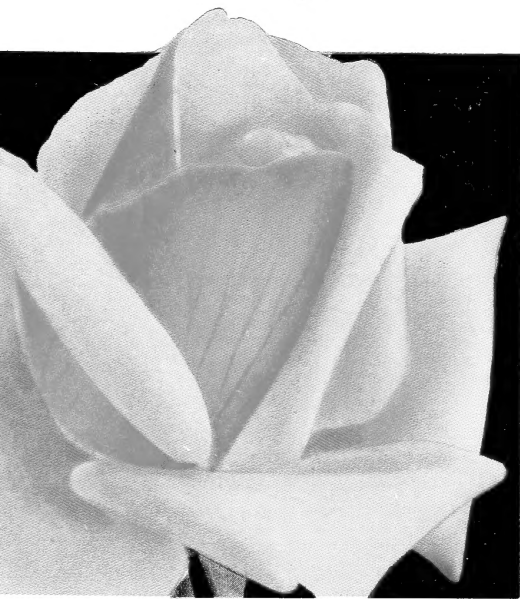
★ **CHARLOTTE ARMSTRONG.** Page 5.  H.T. (Armstrong, 1940.) Plant Pat. 455. Cerise to spectrum-red. Large, beautifully formed, high-centered blooms open from extra-long, slender, blood-red buds. Won highest score in fourteen official test-gardens of All-America Rose Selections. **\$1.50 each; 3 for \$3.75.**+

★ **DICKSONS RED.**  ① H.T. (Dickson.) Plant Pat. 376. Scarlet. This truly thrilling red Rose is like a "stop" light, especially to the men who visit our gardens, for the scintillating scarlet color keeps glowing until the petals fall. Perfect form, free bloom and fragrant. An All-America Rose Selection. **\$1 each; 3 for \$2.50.**+

★ **DR. KIRK.** ④ H.T. (Mallerin.) Burnished flame-scarlet. Magnificent, vivid-colored, heavy-textured blooms come singly on long bronzy stems and last for days when cut. Long buds of deep carmine-scarlet open to large, spicily fragrant, beautifully formed flowers of burnished flame-scarlet, a color that simply glows. This is one of the outstanding and loveliest varieties in our garden. **\$1.25 each.***

★ **GOLDEN STATE.** ③ H.T. (Meiland.) Plant Pat. 303. Golden yellow. The long-stemmed, full-petaled blooms make splendid cut-flowers and come with remarkable freedom throughout the growing season. This Rose was chosen by Rose experts as the theme Rose for the 1939 California Exposition. A tall-growing golden yellow variety with faint clove fragrance. **\$1 each; 3 for \$2.50.**+

★ **GOOD NEWS.** H.T. Coppery pink. See page 3.



★ President Macia ② Desc. page 6

4 NOVELTY ROSES \$4.25	
Value \$5.50	
★ Blanche Mallerin. White.....	\$1.50 3
★ Dr. Kirk. Flame-scarlet.....	\$1.25 4
★ Home Sweet Home. Pink.....	\$1.50 5
★ President Macia. Two-tone.....	\$1.25 4, 6
ASK FOR OFFER F4	

*See Quantity Prices, page 2
+No further discount



★ Golden State ③ ©C.-P.Co.



★ Dr. Kirk ④

NOVELTIES

★ **HECTOR DEANE.** ③ H.T. (McGredy.) Plant Pat. 361. Strawberry-pink. This Irish Rose from the world-famous McGredy firm takes a prominent place among the most fragrant Hybrid Teas. One bloom will permeate a room with old-Rose perfume. The interesting flowers open from long-pointed crimson buds to a rich strawberry-pink color—unusual and different. Prolific in bloom on tall, stately plants with dark, leathery foliage. **\$1.25 each; 3 for \$3.15.** †

★ **HOME SWEET HOME.** ① H.T. (Wood & Ingram.) Glowing pink. Large flowers of an enchanting, refreshing glowing pink, each petal delicately edged with silvery pink. The blooms keep coming all season and are long-lasting when cut. This Rose takes us back to the lovable old-fashioned form, clear unstained color and intense true Rose fragrance that thrilled our hearts in the peaceful Rose-gardens of our grandmothers. **\$1.50 each.***

★ **KORONET.** H.T. *New, Fall, 1941.* See front cover. Description page 2.

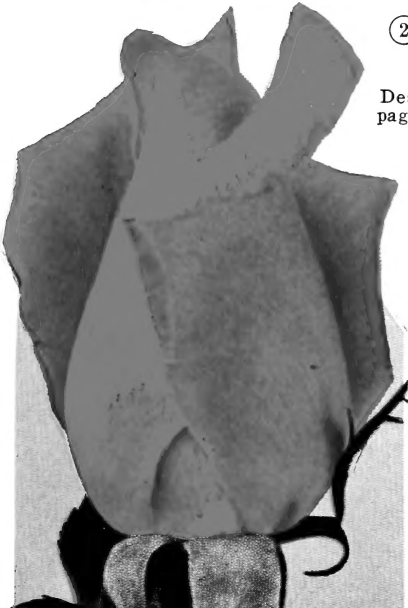
★ **MME. CHARLES MALLERIN.** Page 7. ① H.T. (Mallerin.) Plant Pat. 409. Orange-flame. An outstanding sensation, with flowers that stand erect on extra-strong stems well above the large, abundant, dark green foliage. One of the earliest Roses to bloom. It recovers from the first bloom-cycle and is flowering again when many other Hybrid Teas are just forming buds. The color of the open flowers is orange, overlaid with flame, unmatched by any other Rose, and these blooms come from big buds of deep glowing orange. Slightly fragrant. You can measure the merit of this beauty by noting its name. When the first thrilling blooms appeared on the first imported plants we readily saw why the leading Rose hybridizer of France selected this Rose as the one, of all his numerous triumphs throughout the years, to name in honor of his wife. A magnet to the visitors to our gardens. **\$1.50 each; 3 for \$3.75.** †

*See Quantity Prices, page 2
†No further discount

★ **Charlotte Armstrong**

②

Desc.
page 4



★ **Home Sweet Home** ①

“While I am very much an amateur and still in the Primer grade, I am full of imagination and application—never tire of looking at and almost embracing Conard-Pyle’s (finest of all) Roses. It may interest you to know that our friend, Mr. D., to whom I sent a bunch of Roses last week, said definitely and without equivocation, that those were the best-looking Roses he ever saw.”—Mr. M. J., New Orleans, La. *April 19, 1941*

★ **Hector Deane** ③

©





NOVELTIES

★**MME. HENRI GUILLOT.** ① H.T. (Mallerin.) Plant Pat. 337. Watermelon-pink. Any Rose that can stir up such comments from *connoisseurs* as "one of the outstanding Roses of the century"—"sensational in every way"—"the most startling Rose in my garden"—"it rates 110 per cent delectable" etc., is a variety you can depend on to give delightful thrills. The unique and lovely urn-shaped buds, the glowing watermelon-pink color in the camellia-shaped blooms, and the large, glistening, waxy foliage combine to make this an aristocrat among Roses. **\$1.25 each; 3 for \$3.15.†**

★**MAJORCA.** H.T. (P. Dot.) Tyrian-rose. This glorious Rose from sunny Spain was named for the fertile island in the Mediterranean Sea that is noted for producing flowers of marvelous color. It has a vivid, shimmering Tyrian-rose or fuchsia-red color that apparently only Dame Nature can produce for we cannot find its counterpart in any guide-book of colors. We've had flowers on well-matured plants measuring 6 inches across when fully open. These astonishing blooms come singly on firm, upright stems. **\$1.25 each.***

★**MRS. OLIVER AMES.** H.T. (Verschuren, 1941.) Plant Pat. app. for. Lemon-yellow, long-pointed buds on strong stems open to 60-petaled, lemon-yellow blooms with rich Maréchal Niel fragrance. **\$1 each; 3 for \$2.50.†**

"I suppose everyone in business gets more complaints than they do compliments, but I want to take this opportunity to tell you that out of 27 Rose bushes I have gotten from you, with the exception of one, each of them have come out fine and have the most vigorous, healthy appearance of any Rose plants I have ever seen."
—A. B. S., Arlington, Va. *May 12, 1941*



© C.-P. Co.

★ Mme. Henri Guillot ①

★**M. S. HERSHEY.** H.T. Plant Pat. 427. Crimson-scarlet. See page 2.

★**ORANGE NASSAU.** H.T. (Verschuren.) Plant Pat. 350. Two-toned salmon-orange. Long-pointed buds unfurl to a perfect pattern. Inside yellow, outside orange, edged pink. Plants healthy but not vigorous. Well-deserved *Gold Medal won in Holland 1938.* **\$1 each; 3 for \$2.50.†**

★**PINK PRINCESS.** H.T. (Brownell.) Plant Pat. 459. Deep rose-pink. This Rose resembles Radiance in vigorous growth and is claimed "notably hardy." The fragrant flowers are large, double, high-centered and are deep rose-pink toned with yellow. **\$1.50 each; 3 for \$3.75.†**

★**POINSETTIA.** H.T. ② (Howard & Smith.) Plant Pat. app. for. Scarlet. You will be charmed with this beauty, with its lovely, well-formed, long buds and richly colored flowers of poinsettia-scarlet, which suggested the name. The large, brilliant blooms are slightly fragrant and come freely on erect, healthy plants. The following extracts from Rose connoisseurs' confirm our experience with this Rose: "Greatest Rose thrill of the season"—"petals like frosted scarlet velvet"—"went to town in 1940." **\$1 each; 3 for \$2.50.†**

★**PRESIDENT MACIA.** Page 4. ② H.T. (M. Leenders.) Two-tone pink. A notably vigorous plant, well furnished with an abundance of healthy leathery foliage. The firm, long-pointed carmine tinted buds open to great, full-petaled, fragrant blooms with the inside of the petals flesh-pink. The flowers are fine for exhibition. **\$1.25 each.***

*See Quantity Prices, page 2
†No further discount

★ Poinsettia

②



NOVELTIES

★**RAMON BACH.** See below. ② H.T. (P. Dot.) Plant Pat. 366. Apricot-buff. Here you have one of the soft pastel shades so greatly admired, a color that will not conflict with any other Rose in your garden. The large, artistic blooms are called "Masterpieces" by ardent Rose lovers who have grown this Rose to make it produce exhibition blooms such as we have here in our Rose-fields and test-gardens. This unusually large, full-petaled Rose, with agreeable fruit-like fragrance, comes singly and stands erect on strong, straight stems. The opening blooms show a lovely apricot-buff on the back of the petals with a touch of salmon-pink on the inside, the combination making a soft apricot-buff with a luminous glow. **\$1 each; 3 for \$2.50. †**

★**SERENE.** H.T. (Mallerin.) White. Beautiful, long, tapering buds of Countess Vandal form are a light buff color that becomes white as the petals roll back and reveal a large, informal, tea-scented, open bloom of shining silvery white. **\$1.25 each.***

★**SILVER JUBILEE.** H.T. (Dickson.) Yellow. Great 50-petaled blooms of clear, deep, sulphur-yellow come from large, beautifully formed, golden yellow buds with outside petals brushed carmine. **\$1.50 each.***

★**VILLE DE NANCY.** H.T. (J. Reuter-Gillot.) Pink. Long, tapering pink buds, shaded with gold, open to 40-petaled blooms. The center of the flower is a glowing gold that tones to deep pink with silvery pink outside petals. This vigorous-growing, free-blooming Rose is a splendid addition to the pink Hybrid Teas. **\$1 each.***

★**Ramon Bach**

②

©
C.-P.Co.



①
Desc. page 5



©C.-P.Co.

May 20, 1941
"You will be happy to know that all of the Roses received by me came through in good shape, as usual, and all of them are growing nicely and should be in bloom in another couple of weeks. I always feel safe in placing my orders with your company and do not hesitate for one minute to recommend you to many of my friends."—Mr. G. J. N., Davenport, Iowa.

May 14, 1941
"There are cheaper Roses but we know of no way of getting so much for the money as in Star Roses. The amazing vigor and general sturdy size and quality we find makes Star Roses far preferable to the same amount invested in cheaper Roses. So we may not be able to own so many Stars but we will have more and finer blooms."—H. E. T., Ripley, Ohio.

9 NOVELTY ROSES \$9.75
Value \$11.50

- ★ **Charlotte Armstrong.** H.T. Each Plant Pat. 455. Cerise to spectrum-red. Desc. page 4. **\$1 50**
- ★ **Dicksons Red.** H.T. Plant Pat. 376. Thrilling scarlet. Desc. page 4. **1 00**
- ★ **Golden State.** H.T. Plant Pat. 303. Golden yellow. Desc. page 4. **1 00**
- ★ **Good News.** H.T. Plant Pat. 426. Coppery pink. Desc. page 3. **1 50**
- ★ **Koronet.** H.T. Prop. rights resd. See front cover. Desc. page 2. **1 50**
- ★ **Mme. Charles Mallerin.** H.T. Plant Pat. 409. See illustration above. Desc. page 5. **1 50**
- ★ **Mme. Henri Guillot.** H.T. Plant Pat. 337. Watermelon-pink. Desc. page 6. **1 25**
- ★ **M. S. Hershey.** H.T. Plant Pat. 427. Crimson-scarlet. Desc. page 2. **1 25**
- ★ **Ramon Bach.** Plant Pat. 366. Apricot-buff. Desc. above. **1 00**

ASK FOR OFFER F7

*See Quantity Prices, page 2
†No further discount

EVERBLOOMING

65 Standard Varieties

These Roses represent kinds that for years have given undeviating satisfaction to both amateurs and professional Rose-growers from Maine to California.

Included you will find such notables as Crimson Glory, Mme. Joseph Perraud, Mrs. Pierre S. du Pont, etc., which were sensational novelties when introduced.

A glance through the following list will show that we grow and offer only those kinds that we can guarantee without hesitation. Many varieties have been dropped because they do not measure up to Star Rose quality.

For those who are making their first timorous attempt at growing Roses, we suggest a start with the unequaled "Star Dozen" (see pages 12-13) or any of the special collections of kinds carefully chosen for good values and pleasing range in colors.

Plant in the fall. The roots will become established during the winter. Growth will start at the first sign of spring and assure earlier and better blooms.

★**AMI QUINARD.** H.T. Black-lustered red. From dainty buds of deep maroon, ideal for boutonnières, a beautiful urn-shaped flower unfolds, with damask fragrance. The petals are like shining crimson velvet enriched with a blackish sheen. Open blooms are semi-double and show a center of golden anthers in rich contrast to the dark, velvety petals. Very free in bloom. **85 cts. each.***

★**ANGELS MATEU.** (3) H.T. Plant Pat. 174. Orange-rose. Here is one of the most charming of the Everblooming Roses with a color that is really enchanting—a luscious orange-rose, distinct from all others. The flowers with their delicious red-raspberry fragrance are large, full-petaled, and make splendid exhibition blooms. We get glowing reports of the beauty of this Rose from all over the U. S. A. **\$1 each; 3 for \$2.50.***

★**AUTUMN.** H.T. Multicolored. The straight buds of deep burnt-orange open to 3-inch flowers of the same burnt-orange stained and splashed with red, orange, and various shades of pink. **85 cts. each.***

★**BETTER TIMES.** H.T. Plant Pat. 23. Cerise-red. The brilliant cerise flowers are large, double, and delicately fragrant. They come singly on long, strong stems and are ideal for cutting as they are notably long lasting and easy to arrange, for the stems are practically thornless. This is one of the most popular cut-flower Roses ever grown. **\$1 each; 3 for \$2.50.***

★**BETTY UPRICHARD.** (2) H.T. Carmine and salmon. Buds are medium-sized, long-pointed and open to large, semi-double flowers. The unmatched color of this Rose has kept it in demand for 19 years. Its spicy blooms are large; the outside of the petals is deep carmine, the inside silvery salmon. **85 cts. each.***

★**BRAZIER.** Page 9. (3) H.T. Flame-scarlet. In a parade of vivid-colored Hybrid Tea Roses, Brazier would probably be chosen for drum-major, at least that would be our suggestion, after comparing a bloom with all the other red Roses in our display garden. The scintillating flame-scarlet color suggests a glowing bowl of fire as the blooms come freely on plants that are well furnished with lovely foliage. The pointed buds are burnt-orange and open to a glowing scarlet that would be outstanding in any garden. The blooms are better and retain their flashy color longer if planted in partial shade. **85 cts. each.***

★**CATHRINE KORDES.** H.T. Carmine-scarlet. This magnificent, full-petaled Rose, with rich bronzy foliage, has large, well-formed flowers of glowing carmine-scarlet that come singly on erect, strong stems. Visitors to our Rose-fields are always attracted by its vigorous growth and glowing beauty. We heartily recommend it. **\$1 each.***

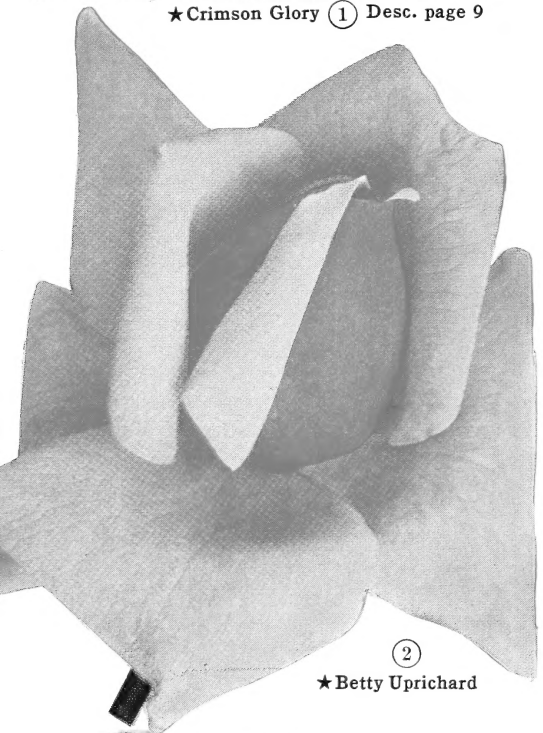
★**CHARLES K. DOUGLAS.** H.T. Scarlet-crimson. Lustrous scarlet-crimson flowers, 4 inches in diameter, gracefully loose in form, are freely produced on big, bushy plants which are easy to grow. A most popular red Rose for landscape gardeners who know its dependable qualities in hardiness and brilliant, free bloom. **85 cts. each.***

*See Quantity Prices, page 2

‡No further discount



★Crimson Glory (1) Desc. page 9



(2) ★Betty Uprichard

© C.-P. Co.



★Angels Mateu (3)

STAR ROSES

★ **CHRISTOPHER STONE.** Page 12. ① H.T. Scarlet-crimson. The first blooms are a glowing, vivid scarlet, lightly veiled with crimson. In the fall it almost doubles its petals and the color is deep crimson with velvety, blackish shadings. This Rose, which won a \$1000 prize for its intense Damask fragrance, is one of the earliest to bloom. It is notably free flowering and is rated among the most reliable and satisfactory red Hybrid Teas. (See "Star Dozen," page 12.) **\$1 each.***

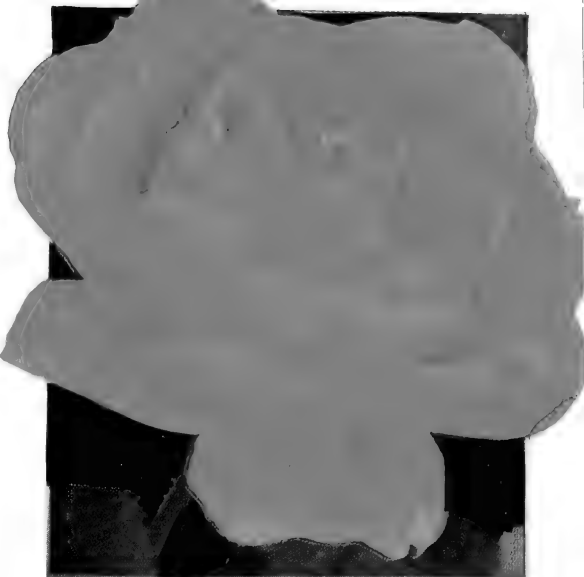
★ **CONDESA DE SASTAGO.** ① H.T. Bicolor. In a report published by the American Rose Society, this Rose rated as one of the best ten introduced in the last ten years. The majority of visitors to our gardens and Rose-fields are enthusiastically in favor of it and we agree with them. While the buds lack streamlined form, their buttercup-yellow color, tinted with carmine, is attractive and the large, deliciously fragrant, long-lasting open blooms of raspberry-red to deep pink are charming. They come continuously on very vigorous healthy plants. **85 cts. each.***

★ **COUNTESS VANDAL.** ② H.T. Plant Pat. 38. Copper and salmon. This is a real Rose aristocrat, erect in growth, graceful in form, tastefully colored and bountiful in bloom. A winsome Rose from the first tints of color on the long, tapering buds until the flower opens and ages and the petals fall. The buds are orange-copper and open to perfumed, exquisitely formed blooms of copper, salmon and gold. These flowers are splendid for cutting. **\$1 each; 3 for \$2.50. †**

★ **CRIMSON GLORY.** Page 8. ① H.T. Plant Pat. 105. Deep crimson. No more fitting and descriptive name was ever given any Rose, for the color is true crimson and it is a "glory" Rose, glorious in its perfect form, its size and its fragrance. Here are a few extracts from reports to the American Rose Society from Michigan to California: Mich., "Absolutely tops in red Roses." N. Y., "Probably the best in its color." Iowa, "The most beautiful crimson Rose." Md., "The top of the red Roses." Calif., "The finest red Rose ever seen or grown." **\$1 each; 3 for \$2.50. †**

★ **DAINTY BESS.** Page 10. ① H.T. Blush-pink. Dainty indeed in form, color and delicate, wild-rose fragrance. However, the greatest charm of this Rose is the mass of long, wine-red filaments which contrast so artistically with the soft blush-pink petals. One visitor remarked that the filaments in the heart of this Rose "reminded her of the long, dark eyelashes on a dainty French doll." This is the most popular five-petaled variety and has no rival. **\$1 each.***

★ **DOROTHY JAMES.** Page 12. ③ H.T. Chamois-pink. We are proud of the record this beauty consistently makes in our gardens here and will continue to make in yours. This two-tone Rose opens from an ovoid bud of carmine-rose to a great 50-petaled bloom of soft chamois-pink. A dependable all-summer bloomer. The plants are furnished with disease-resistant, holly-like foliage. (See "Star Dozen," page 12.) **\$1.25 each.***



★ **Condesa de Sastago** ①



★ **Countess Vandal** ②

★ **Brazier** ③
Desc. page 8



BEGINNERS' SET 6 for \$3.95

There is no risk of disappointment from any of these famous Roses. They are all easy to grow, they all bloom profusely, even with a minimum of care and we heartily recommend this set for beginners.

	Each	Page
★ Condesa de Sastago. Bicolor.....	85 cts.	9
★ Charles K. Douglas. Scarlet-crimson.....	85 cts.	8
★ Golden Dawn. Light yellow.....	85 cts.	10
★ Miss Rowena Thom. Rose-pink....	85 cts.	14
★ Sœur Therese. Buttercup-yellow....	\$1.00	16
★ Talisman. Multicolored.....	85 cts.	16

VALUE \$5.25

ASK FOR OFFER F9

*See Quantity Prices, page 2

†No further discount



★ **Dainty Bess** ① Desc. page 9

★ **DUQUESA DE PENARANDA.** ② H.T. Copper-apricot. This beauty from southern Spain first draws attention with its lovely long-pointed buds of apricot-orange which open to charming blooms of coppery apricot. You would want this Rose even if only a few blooms were produced in a season, but you will surely want it when you learn that it had won a gold medal before we introduced it, for "the most outstanding, continuous-blooming new Rose." **85 cts. each.***

★ **ECLIPSE.** ③ H.T. Plant Pat. 172. Golden yellow. Splendid every way. The plants grow erect and are clothed with large, olive-green foliage topped with beautiful golden yellow flowers that come singly. The chief merit of Eclipse comes in the long, tapering buds that are unmatched in form by any other yellow Rose. The fully opened blooms have a heart of glowing gold enriched by deep gold anthers on carmine filaments. **\$1 each; 3 for \$2.50.†**

★ **EDITOR McFARLAND.** Page 13. ⑥ H.T. Deep pink. One notable feature of this perfectly formed flower is its ability to hold its form and color for days when cut. Greatly valued on account of its lovely form and rich pink self color. Beautifully modeled, long, firm buds open to deep pink flowers with delightful fragrance. It blooms so freely on long, erect stems that it is grown outdoors in quantities in Europe for sale in the flower markets. This Rose ranks among the very best in the deep pinks. (See "Star Dozen," page 12.) **85 cts. each.***

★ **ETERNAL YOUTH.** Page 11. ① H.T. Plant Pat. 332. Clear pink. The charm of glowing, healthy youth is reflected in the color of this Rose. The exquisitely formed clear pink blooms are at times suffused with salmon and they stand firm and erect, with the poise of aristocrats. Delightfully different from other pink Hybrid Teas. The exquisite form, joyous pink color and sweet old-fashioned Rose fragrance have won many prizes for this Rose at flower shows. **\$1.25 each; 3 for \$3.15.†**

★ **ETOILE DE HOLLANDE.** Page 11. ② H.T. Crimson. This Rose is nearly faultless and it charms continuously with its delightful color, its form, long cutting stems, vigorous, healthy growth, and the intense true Rose perfume. When introduced in 1919 it created a sensation in the Rose world and ever since has held a foremost place as one of the finest, richly fragrant everblooming red Roses ever produced. (See "Star Dozen," page 12.) **85 cts. each.***



★ Eclipse ③



★ Duquesa de Penaranda ②

★ **GIRONA.** Page 15. ① H.T. Multi-colored. Lovely buds of Turkey-red and golden yellow, on 12 to 18-inch stems, open to blooms of 20 to 30 petals. The outside row of petals becomes light Tyrian rose and makes a lovely collar for the inner petals of soft golden yellow—a charming color combination. The petals are heavy textured and the blooms are President Herbert Hoover type, with alluring, rich, attar-of-rose fragrance. This beauty has been referred to as "the Rainbow Rose" for it presents so many colors in its different stages of development. (See "Star Dozen," page 12.) **\$1 each.***

★ **GLOAMING.** Page 11. ③ H.T. Plant Pat. 137. Fawn-orange. A novel-colored Rose that is particularly lovely in the half-opened bud stage when the color is fawn-orange. The open blooms are an unusual shade of pink, overlaid with salmon. They make delightful cut-flowers. **\$1 each; 3 for \$2.50.†**

★ **GOLDEN DAWN.** H.T. Light yellow. A magnificent Rose for those who want large, full-petaled blooms that are borne almost continuously on vigorous, supremely healthy plants. The great, Tea-scented, light yellow blooms, which become deeper yellow in the fall, come on plants that are furnished with lovely, glossy, disease-resistant, holly-like foliage. A superb variety that comes near to perfection. **85 cts. each.***

★ **GOLDEN SASTAGO.** Page 14. (3) H.T. Buttercup-yellow. Another great Everblooming Rose from Spain, a sister of the lovely Radio. Both are sports of the great Condesa de Sastago, and all are noted for splendid robust growth, remarkable freedom of bloom, and rich Rose fragrance. Early in the season you may find coppery sunset tints on Golden Sastago, but they disappear later and leave a clear, gleaming yellow, deliciously fragrant flower. A continuous joy to the amateur gardener. (See "Star Dozen," page 12.) **\$1 each.***

★ **GRENOBLE.** Page 14. (2) H.T. Scarlet-crimson. Large, full-petaled blooms of scarlet-crimson, veiled with a sunshiny orange glow, make this flower brilliant and noticeable among all other red Roses. The blooms come singly on strong, erect stems making this one of the best red Roses for cutting. **85 cts. each.***

★ **IMPERIAL POTENTATE.** H.T. Deep pink. This is indeed an imperial pink Rose in every way. The charming buds are beautifully modeled and open to 50-petaled blooms of deep, shining pink. The fragrant flowers come so profusely that they make a great show in the garden. **85 cts. each.***



★ **Etoile de Hollande** (2) Desc. page 10

★ **JOANNA HILL.** Page 14. (1) H.T. Yellow. This perfectly formed Rose makes long, attractive buds of orange-yellow that open to large, double flowers with an orange center, paling to cream-color at the edges of the petals. **85 cts. each.***

★ **KAISERIN AUGUSTE VIKTORIA.** H.T. Cream-white. Long, shapely buds open to full-petaled cream-white flowers with a slight lemon tint in the center. When fully open the delightfully scented blooms are cream-white. **85 cts. each.***

5 Premier Roses \$4.17

Every one a winner in its color class Each Page

★ Better Times. Plant Pat. 23. Cerise-red.....	\$1.00	8
★ Crimson Glory. Plant Pat. 105. Deep crimson.....	1.00	9
★ Eclipse. Plant Pat. 172. Golden yellow.....	1.00	10
★ Luis Brinas. Plant Pat. 102. Orange-copper.....	1.00	11
★ Warrawee. Plant Pat. 140. Shell-pink.....	1.00	17

ASK FOR OFFER F11

*See Quantity Prices, page 2
 † No further discount

Star Rose-Growers ★ West Grove, Pa.



© ★ **Eternal Youth** (1) Desc. page 10

★ **KOROVO.** H.T. Peach-blossom-pink. Long-pointed, slender buds of rich coral-pink open to long-lasting, delightfully fragrant, 50-petaled blooms of appealing peach-blossom-pink. The golden stamens on wine-red filaments add to the beauty of this flower. Etoile de Hollande is the mother of this Rose from which it derives its beauty of form, fragrance and freedom of bloom. **\$1 each.***

★ **LADY ASHTOWN.** H.T. Pink. A much-admired, 37-year-old Rose whose large, long-pointed buds open to perfect carmine-pink blooms with a golden under-glow. On June 23, 1941, Dr. M— wrote to us "One plant of Lady Ashtown had 99 good blooms by actual count during the first cycle." **85 cts. each.***

★ **LADY LEONFIELD.** H.T. White. One of the choicest, long-lasting Roses with rich, penetrating Rose fragrance. The firm petaled, beautifully formed, long buds of light sulphur-yellow open to creamy white and finish pure white. **\$1 each.***

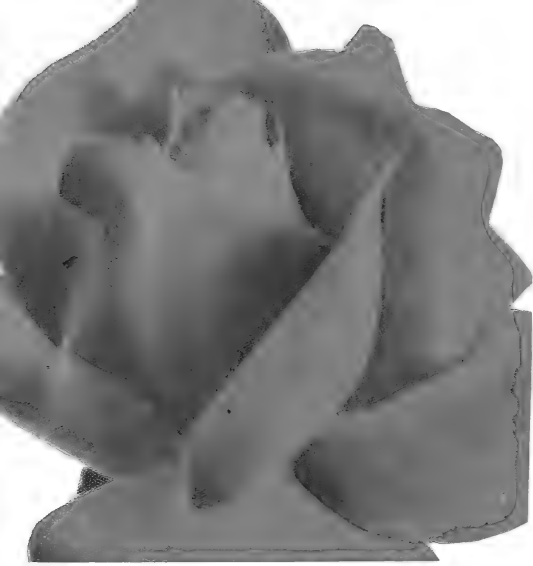
★ **LUIS BRINAS.** H.T. Plant Pat. 102. Orange-copper. Fine pointed buds of orange-copper open slowly, the petals curling back, making a starry flower with a high center. It is fully double, with 40 to 45 petals, and when entirely open the color is soft old-rose, flushed with gold. Delightfully fragrant and almost continuous in bloom. **\$1 each; 3 for \$2.50.†**

★ **LUNA.** H.T. Moonlight-yellow. The long, delicate yellow buds open to large, delightfully fragrant blooms of moonlight-yellow which age to soft cream-white, and the petals hold their shape for days. **\$1 each.***

★ **MME. BUTTERFLY.** H.T. Pink and gold. Beautifully modeled flowers of tender pink, salmon, cream and gold. Highly scented and long lasting. The blooms are superb in June and during the cool fall months. **85 cts. each.***

★ **Gloaming** (3) Desc. page 10





★ Christopher Stone. H.T. (1) Desc. page 9



© C.-P. Co. ★ Radio. H.T. (2) Desc. page 15



★ Dorothy James. H.T. (3) Desc. page 9

STAR



All Illustrated (4 on other p.)

\$11.80 Value

EXCEL FOR VIGOROUS H.

This New Star Dozen is the result of the combination of all the Roses in our test-gardens and Rose-fields. It is the choice of customers from Maine to California who write and order.

With such a background you can be assured that this Dozen contains two-tone and yellow Everblooming Roses suitable for all climates.

Our foremost thought when selecting this collection was to include Roses that can take lots of punishment from neglect, but if properly planted they will still produce exciting blooms and prove that present-day Roses can be successfully grown by the most inexperienced gardener if he has only a small piece of ground in a city yard where the sun will shine four hours a day, either morning or evening.

These are the Roses we recommend to gardeners who are exacting employers want blooms and accept no excuses.

This is an exclusive Star Dozen and we are really proud of it. You can safely depend on at least 50 vase-length blooms each from these 12 Roses next season and the following year.

THE STAR DOZEN

- ① ★ Christopher Stone. Scarlet-crimson. . . . \$1.
- ② ★ Radio. Plant Pat. 197. Yellow and carmine. \$1.
- ③ ★ Dorothy James. Chamois-pink. . . . \$1.
- ④ ★ Faience. Two-tone pink and yellow. . . . \$1.
- ⑤ ★ Sœur Therese. Buttercup-yellow. . . . \$1.
- ⑥ ★ Editor McFarland. Deep pink. . . . 85 ct.
- ⑦ ★ Mme. Cochet-Cochet. Plant Pat. 129. Coppery pink. . . . \$1.
- ⑧ ★ Rouge Mallerin. Scarlet. . . . \$1.
- ★ Etoile de Hollande. Crimson. (See cut p. 11.) 85 ct.
- ★ Girona. Multicolored. (See cut p. 15.) . . . \$1.
- ★ Golden Sastago. Yellow. (See cut p. 14.) . . . \$1.
- ★ Mrs. P. S. du Pont. Golden yellow. (See cut p. 16.) . . . 85 ct.

ABOVE STAR DOZEN \$8.90
ASK FOR OFFER F12



★ Faience. H.T. (4) Desc. page 10

DOZEN

s)
 r \$8.90. You save \$2.90
 HY GROWTH AND FREEDOM OF BLOOM

gment of experienced experts who are in almost daily contact with
 tion, when selecting the Star Dozen we review the experiences of
 how different Roses perform.
 lite dozen contains the top-ranking varieties in shades of red, pink,
 wing and producing superb blooms anywhere in U. S. A.

THE "STAR 25"

Here's an all-time high in value, as carefully selected
 as the "Star Dozen." You save \$6.85.

These 25 can be planted 15 inches apart in a bed 11 feet
 long by 4 feet wide. Plant 3 rows with 9 in the center row.

If all the blooms on these 25 Roses are cut for indoor
 enjoyment, you should have enough flowers for at least
 150 vases of 6 Roses each the first season, at a cost of
 2 cts. per bloom and have your plants for years to come.

Add these 13 to the Star Dozen

	Each	Desc. Page
★ Brazier. Flame-scarlet.....	.85 cts.	8
★ Cathrine Kordes. Carmine-scarlet.....	\$1.00	8
★ Condesa de Sastago. Bicolor.....	.85 cts.	9
★ Dr. Kirk. <i>New.</i> Flame-scarlet.....	\$1.25	4
★ Golden Dawn. Light yellow.....	.85 cts.	10
★ Home Sweet Home. <i>New.</i> Glowing pink.....	\$1.50	5
★ Imperial Potentate. Deep pink.....	.85 cts.	11
★ Luna. Moonlight-yellow.....	\$1.00	11
★ Mme. Joseph Perraud. Buff.....	\$1.00	14
★ Mrs. Sam McGredy. Scarlet-orange.....	\$1.00	14
★ Poinsettia. <i>New.</i> Poinsettia-scarlet.....	\$1.00	6
★ Snowbird. Snow-white.....	\$1.00	16
★ Talisman. Multicolored.....	.85 cts.	16

"STAR 25" (Value \$24.80) **\$17.95**
 ASK FOR OFFER F12a



★ Editor McFarland. H.T. (6) Desc. page 10



★ Mme. Cochet-Cochet. H.T. Desc. p. 14



★ Soeur Therese. H.T. (5) Desc. page 16



★ Rouge Mallerin. H.T. (8) Desc. page 16





★ Christopher Stone. H.T. (1) Desc. page 9



STAR DOZEN

All Illustrated (4 on other pages)

\$11.80 Value for \$8.90. You save \$2.90

EXCEL FOR VIGOROUS HEALTHY GROWTH AND FREEDOM OF BLOOM

This New Star Dozen is the result of the combined judgment of experienced experts who are in almost daily contact with all the Roses in our test-gardens and Rose-fields. In addition, when selecting the Star Dozen we review the experiences of customers from Maine to California who write and tell us how different Roses perform.

With such a background you can be assured that this elite dozen contains the top-ranking varieties in shades of red, pink, two-tone and yellow Everblooming Roses suitable for growing and producing superb blooms anywhere in U. S. A.

Our foremost thought when selecting this collection was to include Roses that can take lots of punishment from neglect, but if properly planted they will still produce exciting blooms and prove that present-day Roses can be successfully grown by the most inexperienced gardener, even if he has only a small piece of ground in a city yard where the sun will shine four hours a day, either morning or evening. These are the Roses we recommend to gardeners whose exacting employers want blooms and accept no excuses.

This is an exclusive Star Dozen and we are really proud of it. You can safely depend on at least 50 vases of 6 blooms each from these 12 Roses next season and have your plants for years to come.



© C.-P. Co. ★ Radio. H.T. (2) Desc. page 15

THE STAR DOZEN

	See full descriptions on page	
★ Christopher Stone. Scarlet-crimson...	\$1.00	9
★ Radio. Plant Pat. 197. Yellow and carmine.	\$1.00	15
★ Dorothy James. Chamois-pink.	\$1.25	9
★ Faience. Two-tone pink and yellow.	\$1.00	10
★ Soeur Therese. Buttercup-yellow.	\$1.00	16
★ Editor McFarland. Deep pink.	85 cts.	10
★ Mme. Cochet-Cochet. Plant Pat. 129. Coppery pink.	\$1.00	14
★ Rouge Mallerin. Scarlet.	\$1.00	16
★ Etoile de Hollande. Crimson. (See cut p. 11.)	85 cts.	10
★ Girona. Multicolored. (See cut p. 15.)	\$1.00	10
★ Golden Sastago. Yellow. (See cut p. 14.)	\$1.00	11
★ Mrs. P. S. du Pont. Golden yellow. (See cut p. 16.)	85 cts.	14

ABOVE STAR DOZEN **\$8.90**
ASK FOR OFFER F12

THE "STAR 25"

Here's an all-time high in value, as carefully selected as the "Star Dozen." You save \$6.85.

These 25 can be planted 15 inches apart in a bed 11 feet long by 4 feet wide. Plant 3 rows with 9 in the center row.

If all the blooms on these 25 Roses are cut for indoor enjoyment, you should have enough flowers for at least 150 vases of 6 Roses each the first season, at a cost of 2 cts. per bloom and have your plants for years to come.

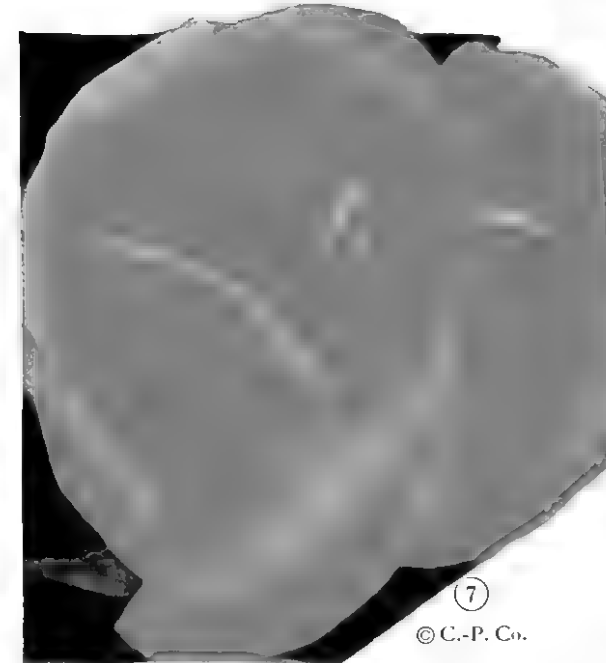
Add these 13 to the Star Dozen

	Each	Desc. Page
★ Brazier. Flame-scarlet.	85 cts.	8
★ Cathrine Kordes. Carmine-scarlet.	\$1.00	8
★ Condesa de Sastago. Bicolor.	85 cts.	9
★ Dr. Kirk. New. Flame-scarlet.	\$1.25	4
★ Golden Dawn. Light yellow.	85 cts.	10
★ Home Sweet Home. New. Glowing pink.	\$1.50	5
★ Imperial Potentate. Deep pink.	85 cts.	11
★ Luna. Moonlight-yellow.	\$1.00	11
★ Mme. Joseph Perraud. Buff.	\$1.00	14
★ Mrs. Sam McGredy. Scarlet-orange.	\$1.00	14
★ Poinsettia. New. Poinsettia-scarlet.	\$1.00	6
★ Snowbird. Snow-white.	\$1.00	16
★ Talisman. Multicolored.	85 cts.	16

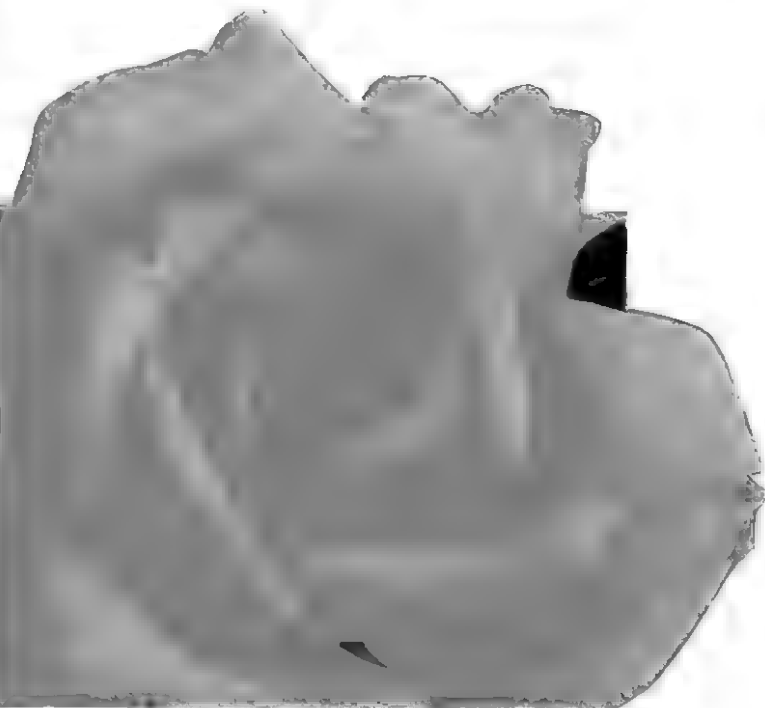
"STAR 25" (Value \$24.80) **\$17.95**
ASK FOR OFFER F12a



★ Editor McFarland. H.T. (6) Desc. page 10



★ Mme. Cochet-Cochet. H.T. Desc. p. 14



★ Dorothy James. H.T. (3) Desc. page 9



★ Faience. H.T. (4) Desc. page 10



★ Soeur Therese. H.T. (5) Desc. page 16



★ Rouge Mallerin. H.T. (8) Desc. page 16

★ **MME. COCHET-COCHET.** Page 13. ⑦ H.T. Plant Pat. 129. Coppery pink. From the time of its introduction in 1934 this lovely Rose has been a continuous success. The long, pointed buds of coppery pink open to large, semi-double, artistic flowers that simply glow with a mass of golden anthers that reflect a golden shade on the inside petals, the whole effect being a coppery pink. Rich, honey-like fragrance. (See "Star Dozen," page 12.) **\$1 each; 3 for \$2.50.†**

★ **MME. JOSEPH PERRAUD.** Page 15. ② H.T. Buff. A Rose of unusual charm both in bud and open bloom. The long, pointed, opening buds have delightful glowing yellow sunset shades which change to nasturtium-buff as the fragrant flowers slowly unfold. This is one of the most enchanting Roses we know in the lovely pastel shades. **\$1 each.***

★ **MME. JULES BOUCHE.** H.T. White. Erect in growth and persistent in bloom. The large, beautifully formed buds are creamy white and open with a dainty flush of pink in the center of the flower, but this flush disappears. The sweet-scented white blooms come freely and singly on vigorous plants. **85 cts. each.***

★ **MARGARET McGREDY.** H.T. Orange-scarlet. Here we have a continuously satisfactory, large, full-petaled Everblooming Rose. The buoyantly vigorous growth insures a constant production of buds and blooms from early in June until hard frost. Color is a scintillating orange-scarlet which ages to a pleasing carmine-rose. It has lovely Rose fragrance. **85c. each.***

★ **McGREDY'S SUNSET.** Page 15. ③ H.T. Plant Pat. 317. Yellow. Large blooms of gleaming yellow, penciled and veiled with carmine, make a beautiful flower with Tea fragrance. **\$1.25 each; 3 for \$3.15.†**

★ **McGREDY'S TRIUMPH.** H.T. Plant Pat. 190. Orange-cerise. Immense blooms of orange-cerise come singly and erect on strong stems. **\$1 ea.; 3 for \$2.50.†**

★ Golden Sastago ③



★ Grenoble ②
Desc. page 11

Desc.
page 11

★ **MRS. E. P. THOM.** H.T. Yellow. Buds are long-pointed and open to well-formed blooms of clear yellow without any carmine markings such as most yellow Roses have. Among the best of the clear yellow everblooming varieties, both for bedding and for cut-flowers. **85 cts. each.***

★ **MRS. PIERRE S. DU PONT.** Page 16. ③ H.T. Golden yellow. This is the most universally satisfactory of all golden yellow everblooming Roses for it produces more blooms per plant every season than any other Rose in this color. The plants are low-growing, sturdy and are noted for their glossy green, healthy foliage. The long-shaped buds are deep golden yellow and are continuously produced from June until hard frost. This Rose was unanimously and enthusiastically voted into the famous "Star Dozen." (See page 12.) **85 cts. each.***

★ **MRS. SAM McGREDY.** Page 16. ④ H.T. Scarlet-orange. Perfectly modeled flowers with Sweetbriar fragrance and rich coloring of scarlet and orange are borne erect on beautiful plants with bronzy stems and shiny, bronzy foliage that keep the plant attractive even when not in bloom. Long-lasting when cut. **\$1 each.***

★ **PRESIDENT HERBERT HOOVER.** H.T. Multicolored. The large, beautifully modeled, delightfully fragrant blooms of scarlet, yellow, cerise and flame colors, which come singly on erect, firm stems, make this one of the most popular Roses in recent years. Its tall-growing plant blooms freely and the lovely flowers last for days when cut. **85 cts. each.***



★ Joanna Hill ① Desc. page 11

★ **MISS AMERICA.** H.T. Plant Pat. 264. Flesh-pink. Here is a Rose for those who favor big peony-like flowers, for in comparison with most other Hybrid Teas the 60-petaled blooms of Miss America are really gigantic. Color is coppery pink in the center of the flower and graduates to flesh-pink on the outside petals. **85 cts. each; 3 for \$2.15.†**

★ **MISS ROWENA THOM.** H.T. Rose-pink. Long-pointed buds open to enormous flowers, often measuring 6 inches across. The blooms come almost as freely as Radiance and are fine for cutting. Delightful fragrance. **85 cts. each.***

★ **MRS. CHARLES BELL.** H.T. Shell-pink Radiance. This Rose matches the famous Radiance in type of flower, strong growth, and freedom of bloom but no other Rose matches it in lovely color which is clear shell-pink, without shading. Delightful true Rose fragrance. **85 cts. each.***



★ Girona ① Desc. page 10

★ **RADIANCE.** H.T. Rose-pink. Largest selling Rose in the U. S. A. and there's a reason, for it is continuous in bloom, from June until frost. Add to this a plant unsurpassed by any in healthy, vigorous growth, and you have a Rose that can be successfully grown by anyone. The two-toned pink, cupped flowers have a pungent, true Rose fragrance. **85 cts. each.***

★ **RADIANT BEAUTY.** H.T. Plant Pat. 97. Crimson. Large, full-petaled cerise-crimson blooms, borne singly on strong stems. Slightly fragrant and very lasting. **\$1 each; 3 for \$2.50.†**

★ **R E D RADIANCE.** H.T. Cerise-red. A sport of Radiance, it has the same form, habit of growth, fragrance, and healthy foliage. The difference is in the color which is a clear, even shade of cerise-red. **85 cts. each.***



★ Mme. Joseph Perraud ② Desc. page 14

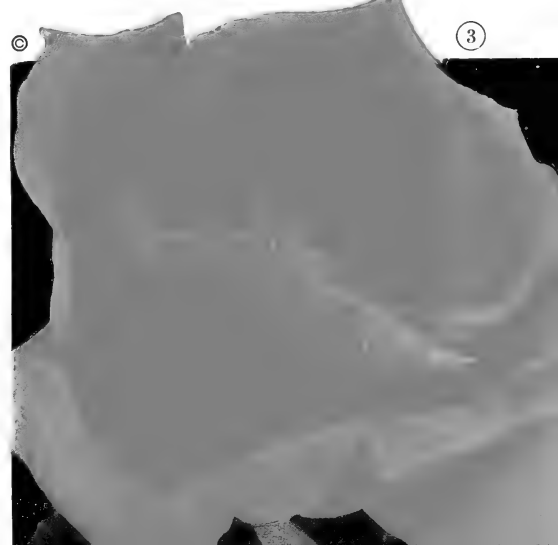
★ **RADIO.** Page 12. ② H.T. Plant Pat. 197. Yellow and carmine. This two-colored Rose is one of the most appealingly lovely varieties produced by Pedro Dot. The ground-color is always a clear, shimmering, primuline yellow, and the charm of Radio consists in the carmine stripes and marks never being the same on any two flowers, thus lending an endless pleasure throughout the growing season in noting, each time a flower unfolds, what kind of artistic markings Dame Nature has selected. Radio provides more continued delighted interest than any other Rose. Its delicious fragrance is an addition to its other charms. (See "Star Dozen," page 12.) **\$1 each; 3 for \$2.50.†**

★ **R. M. S. QUEEN MARY.** Page 16. ① H.T. Plant Pat. 249. Salmon-pink. The form, color and fragrance of this Queen of Flowers are all alluring. Long buds open to firm-petaled, long-lasting flowers of salmon-pink, suffused with orange, and are produced all season. **\$1 each; 3 for \$2.50.†**

★ **ROCHEFORT.** Page 16. ② H.T. Plant Pat. 191. Orange-old-rose. The color is really unique and the firm-textured, delightfully fragrant flowers come erect on strong stems well above the lovely glossy foliage throughout the entire season. **\$1 each; 3 for \$2.50.†**

★ **ROME GLORY.** Page 17. ① H.T. Plant Pat. 304. Cerise-red. For nearly half a century the Rose American Beauty was the favorite red for florists to grow, but it has at last been superseded by Rome Glory. You can grow your own and confidently depend on 25 or more inspiring blooms the first season and have your plants to bloom for years to come. This tall-growing variety holds its noble buds and mammoth, long-lasting blooms erect on long, strong stems. **\$1.25 each; 3 for \$3.15.†**

★ McGredy's Sunset. Desc. page 14



9 Top-Quality Roses \$7.60

VALUE \$9.10

Read descriptions and you will understand why we call these Roses "tops."

	Desc.	Each	Page
★ Angels Mateu.	Plant Pat. 174. Orange-rose	\$1.00	8
★ Better Times.	Plant Pat. 23. Cerise-red	\$1.00	8
★ Countess Vandal.	Plant Pat. 38. Copper and salmon	\$1.00	9
★ Dicksons Red.	Plant Pat. 376. Scarlet	\$1.00	4
★ Eclipse.	Plant Pat. 172. Yellow	\$1.00	10
★ Eternal Youth.	Plant Pat. 332. Clear pink	\$1.25	10
★ Ramon Bach.	Plant Pat. 366. Apricot-buff	\$1.00	7
★ Rochefort.	Plant Pat. 191. Orange-old-rose	\$1.00	15
★ Texas Centennial.	Plant Pat. 162. Blood-red	85 cts.	17

ASK FOR OFFER F15

*See Quantity Prices, page 2
†No further discount



★R. M. S. Queen Mary (1) Desc. page 15



© C.-P.Co. ★Rochefort (2) Desc. page 15



★Mrs. Pierre S. du Pont (3) Desc. page 14

★**ROUGE MALLERIN.** Page 13. (8) Scarlet. The alluring damask fragrance is but one of the excellent qualities of this favorite of the famous Rose hybridizer, Charles Mallerin. This great, everblooming red Rose does not blue. The pointed buds of brilliant red open to 3½-inch blooms of glowing scarlet, the deep pile on the petals making them look like rich scarlet velvet. The blooms are scarlet in June but become almost maroon in the Fall, with blackish shadings that make this one of the most desirable red Roses. (See "Star Dozen," page 12.) \$1 each.*

★**SIGNORA.** H.T. Plant Pat. 201. Bi-color. This beautiful Rose of President Herbert Hoover type has been warmly praised from Maine to California on account of its prolific bloom on vigorous, branching, tall-growing plants and fine foliage. The long-tapering buds of brownish orange are followed by great blooms of mandarin orange and salmon. \$1 each; 3 for \$2.50.†

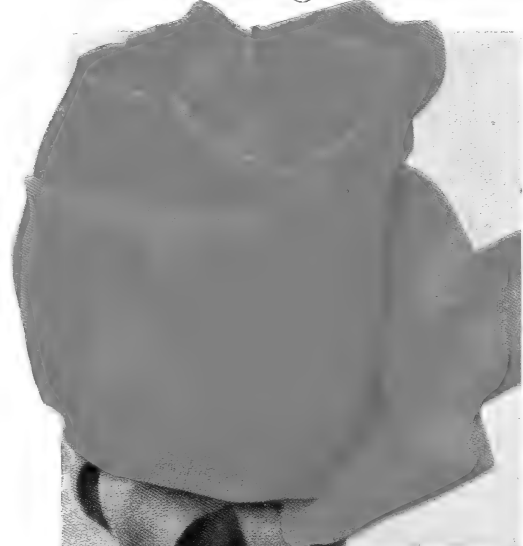
★**SNOWBIRD.** H.T. White. Many white Roses are white only when full blown but here is one that is snow white from the bud until the petals fall. For bedding it is unsurpassed for it is very prolific and makes a great show all season. The fragrant, pure white flowers are perfectly formed, full petaled and are often 4 inches across. They come singly and also in clusters on neat, compact, healthy plants. \$1 each.*

★**SOEUR THERESE.** H.T. Page 13. (5) Buttercup-yellow. This is the most astonishing variety in the yellow class for it blooms in candelabras (not clusters) of from 5 to 15 flowers, forming on top of sturdy canes that hold the blooms erect. Each flower is fine for cutting as it comes on a wiry stem from 6 to 8 inches in length. Each perfectly formed, long pointed yellow bud is richly marked with carmine but the open blooms are clear yellow. One established plant will sometimes bear 40 or more blooms at one time. (See "Star Dozen," page 12.) \$1 each.*

★**STERLING.** Page 17. (2) H.T. Plant Pat. 21. Pink. Bright pink flowers of splendid form come singly on vigorous-growing plants. Sterling was first grown as a Rose for greenhouse culture but proved so excellent when tested outdoors that it now ranks as one of the best in the deep pink Hybrid Teas. This consistent prize-winner at Rose shows throughout the U. S. A. is an exquisitely modeled variety with intense, true Rose fragrance. The beautiful blooms come singly on strong, erect stems. \$1 each; 3 for \$2.50.†

★**TALISMAN.** Page 17. (3) Multicolored. No Rose ever produced created more of a sensation than Talisman, and many people have predicted its popularity would soon pass, but our own yearly sales show that this is not so, for it is still one of the most popular in its color class. The chalice-like form is most attractive and the blooms open freely in all kinds of weather. At its gayest it is a glorious combination of orange, yellow and rose-red. It will have occasional imperfect blooms but still remains one of the finest of all garden Roses for cutting as the blooms are long-lasting and come singly on strong, erect stems. The fragrant flowers are much more highly colored in autumn. 85 cts. each.*

★Mrs. Sam McGredy (4) Desc. page 14

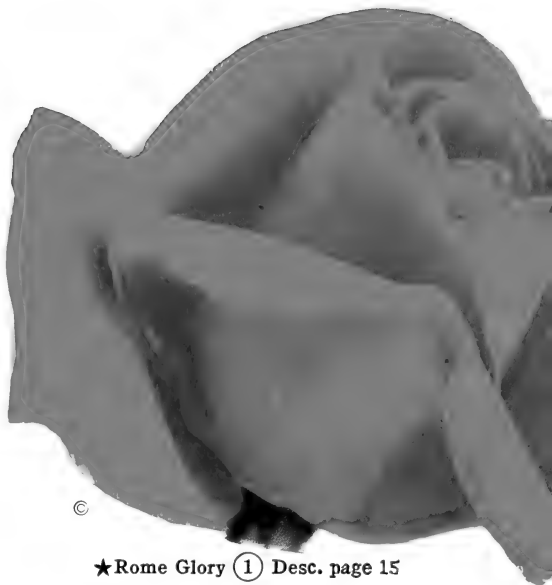


★**TEXAS CENTENNIAL.** H.T. Plant Pat. 162. Blood-red. This richly fragrant blood-red variety is a sport of the great President Herbert Hoover Rose and has all the good qualities of its parent, vigorous, healthy growth and perfectly formed flowers that are notably fine for cutting. *West-Grove-grown plants. 85 cts. each; 3 for \$2.15.* †

★**WARRAWEE.** ④ H.T. Plant Pat. 140. Shell-pink. The charming, shell-pink flowers are large, beautifully modeled and delightfully fragrant. Vigorous-growing, upright plants are noted for free bloom and large, dark green, disease-resistant foliage. Warrawee is a priceless variety to lovers of delicate colors. *\$1 each; 3 for \$2.50.* †

★**WHITE BRIARCLIFF.** H.T. Plant Pat. 108. Clear snowy white. Charming, exquisitely formed, richly fragrant flowers come from beautiful stream-lined buds and are produced almost continuously. *\$1 each; 3 for \$2.50.* †

★**WILL ROGERS.** H.T. Plant Pat. 256. Crimson-maroon. If given partial shade this Rose will prove delightful in any climate from Maine to California. The plants are vigorous in growth and produce quantities of full-petaled crimson-maroon flowers with blackish shadings. Rich damask fragrance. *\$1 each; 3 for \$2.70.* †



★Rome Glory ① Desc. page 15

"HOW TO GROW ROSES" *18th Edition entirely revised*

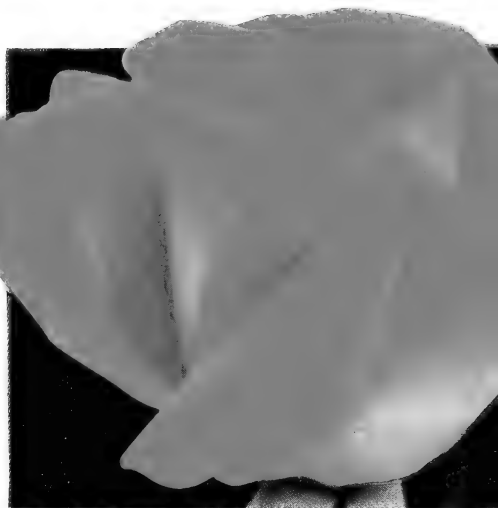
By **J. Horace McFarland, L.H.D., and Robert Pyle**

192 pages; cloth bound, 32 pages in natural color

That "two heads are better than one" has been amply proved by this book, for the authors combined their knowledge, acquired by several decades of practical Rose-growing, and by interesting, thrilling text and over 50 pen-and-ink sketches tell and show how to plant, prune, spray, tie, cut and other necessary little things to do to insure Rose success. "How to Grow Roses" provides both pleasure and profit for everyone who loves Roses.

The most dependable reference book on Rose-growing for those who wish to have something to turn to at once for sound, practical advice when Rose problems arise.

Price, \$1.10, postpaid (formerly \$2), or, with a \$10 order, only 60 cts., postpaid



★Sterling ② Desc. page 16

5 FAVORITE ROSES \$3.45

VALUE \$4.40. YOU SAVE 95 cts.

These Roses will be favorites of yours for they grow with such vigor and bloom so profusely you can have flowers to cut almost daily from June until frost. Each Page

- ★**Imperial Potentate.** Deep pink..... 85 cts. 11
- ★**Lady Ashtown.** Carmine-pink..... 85 cts. 11
- ★**Luna.** Moonlight-yellow..... \$1.00 11
- ★**Margaret McGredy.** Orange-scarlet... 85 cts. 14
- ★**Mrs. E. P. Thom.** Clear yellow..... 85 cts. 14

ASK FOR OFFER F17

★Warrawee

④



★Talisman. ③ Desc. page 16



★ Paul's Scarlet Climber

①

Desc. page 19



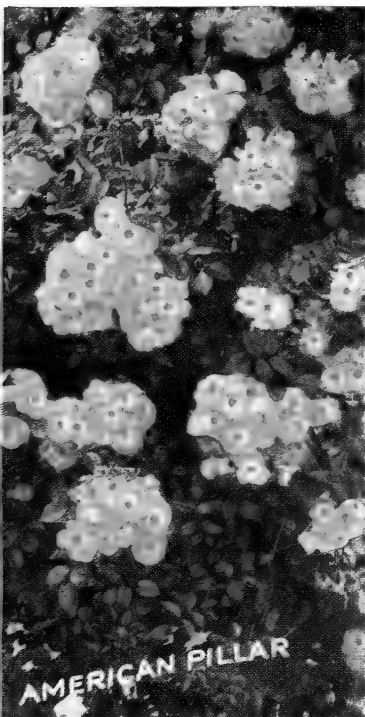
©

★ Golden Climber ②

HARDY CLIMBING ROSES

With Hardy Climbing Roses abundantly in bloom, you can add inexpensive yet delicious delights to your June Flower Show. Train them on arches, arbors, pergolas, fences, or trellises and you can count on more bloom per ground space occupied than from any other hardy, high-class flowering plant. The Pillar Roses, which grow 6 to 8 feet, make delightful color accents when trained upon stakes in different locations selected in a garden or anywhere on one's grounds. Half a dozen plants of Flash, gleaming for weeks on your property, would give daily thrills of delight and be a neighborhood sensation.

The letter after the names indicates the type of growth: C., Climbers, vigorous varieties that make massive canes and climb many feet. Pillar Roses grow only 6 to 8 feet.



③

★ **AMERICAN PILLAR.** ③ C. Midseason. Pink. The most spectacular and pleasing Rose of this type. The fragrant flowers are single but come in immense heads of from 20 to 40, each head held erect on a straight, stiff stem. Unequaled for mass decorations. **85 cts. each.***

★ **CLIMBING AMERICAN BEAUTY.** C. Very early. Light crimson or deep rose-pink flowers decorate the plant from base to top. **85 cts. each.***

★ **DOUBLOONS.** Page 19. ④ C. Midseason. Plant Pat. 152. Yellow. Well-formed buds open to large, firm-textured blooms of saffron-yellow. **\$1 each; 3 for \$2.50.†**

★ **DR. HUEY.** Pillar. Midseason. Deep crimson-maroon. The darkest color of any Climbing Rose on the market. Grows 8 to 10 feet. **\$1 each.***

★ **DR. W. VAN FLEET.** C. Early. Flesh-pink. Has the same bloom and foliage as the Everblooming New Dawn (see illustration, opposite page) but so vigorous in growth it will cover the side of a garage. **85 cts. each.***

★ **ELEGANCE.** C. Early. Propagation rights reserved. Yellow. Buds are long, and open to large, well-modeled, spectrum-yellow flowers. **\$1 each; 3 for \$2.50. †**

★ **FLASH.** ④ Pillar. Plant Pat. 396. Vivid orange-scarlet. The most vividly colored Pillar Rose in existence. The lovely buds are yellow with a scarlet suffusion; they open to gleaming orange-scarlet blooms with the centers richly furnished with golden anthers. Blooms both singly and in clusters in a setting of olive-green foliage. Grows 6 to 8 feet. *Gold Medal, Rome, 1930.* An "All-America Rose Selection." **\$1 each; 3 for \$2.50. †**

★ **GOLDEN CLIMBER (Mrs. Arthur Curtiss James).** ② C. Early. Plant Pat. 28. Clear golden yellow. The most thrilling of all yellow climbing Roses, for each flower is like a beautifully modeled Hybrid Tea Rose. **\$1 each; 3 for \$2.50. †**

© C. P. Co.

★ Flash

④

3 New Climbing Roses \$3

★ **Flash.** Plant Pat. 396. Vivid orange-scarlet..... **\$1.00**

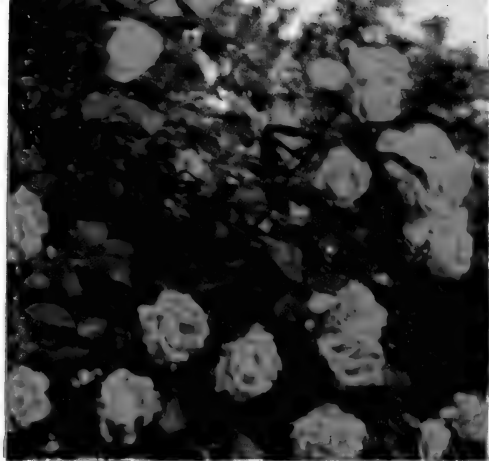
★ **Golden Climber.** Plant Pat. 28. Yellow..... **\$1.00**

★ **New Dawn.** Plant Pat. 1. Pale pink..... **\$1.50**

(Value \$3.50)

Ask for Offer F18

*See Quantity Prices, page 2
†No further discount



© ★ **Blaze.** Ablaze with scarlet bloom ①



★ **Spanish Beauty** ②

★ **JACOTTE.** C. Midseason. Apricot-orange, with tints of copper-red. Holly-like foliage. **\$1 each.***

★ **JUNE MORN.** Pillar. Early. *New.* Red and gold. Plant Pat. 375. Large, fully double flowers of red and gold. In favorable seasons it is reported to bloom again in the fall. **\$1.25 each; 3 for \$3.15.†**

★ **MARY WALLACE.** C. Early and very hardy. Large flowers of brilliant warm pink. **85 cts. each.***

★ **PAUL'S SCARLET CLIMBER.** Page 18. ① Pillar. Midseason. The most popular clear scarlet Climbing Rose yet grown. **85 cts. each.***

★ **SILVER MOON.** C. Midseason. Primrose buds open to large, white cupped flowers. **85 cts. each.***

★ **VIRGINIA.** Pillar. Midseason. Scarlet-rose. Enormous flowers of scarlet-rose or flame color. **\$1 each.***

★ **SPANISH BEAUTY** (*Mme. Gregoire Staebelin*).

② C. Early. Pearl-pink. This is considered the most queenly of all Climbing Roses, and rightly so, for the long-pointed, crimson buds which come in profusion, open to deliciously perfumed, urn-shaped pearl-pink blooms on 12 to 15-inch stems, suitable for cutting. **85 cts. each.***

FOR ABUNDANT BLOOM

3 Great Climbing Roses \$2.95

★ Blaze. The repeat-blooming Paul's Scarlet Climber.....	\$1.00
★ Doublons. The new yellow.....	\$1.00
★ New Dawn. Flesh-pink. Blooms all summer.....	\$1.50

ASK FOR OFFER F19

REPEAT-BLOOMING CLIMBERS

★ **NEW DAWN** (*Everblooming Dr. W. Van Fleet*). ③ C. Plant Pat. 1. Gold Medal of A. R. S. for "best hardy *EVERBLOOMING Climbing Rose produced anywhere in the world.*" Bears dainty, pale pink, fragrant Roses all season. **\$1.50 each; 3 for \$3.75.†**

★ **BLAZE.** ① Pillar. Plant Pat. 10. Scarlet. The repeat-blooming Paul's Scarlet Climber. **\$1 each; 3 for \$2.50.†**

★ **CLIMBING DAINTY BESS.** Pillar. Large, 5-petaled blooms of blush-pink. See illustration, page 10. **\$1 each.***

★ **CLIMBING MRS. P. S. DU PONT.** C.H.T. Golden yellow. Free in bloom. **\$1 each.***

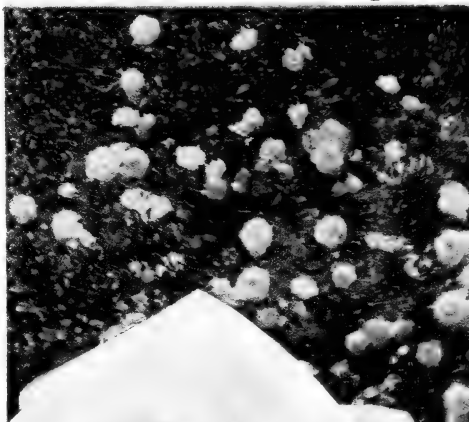
★ **MERMAID.** Pillar. Large, single, sulphur-yellow flowers with a heavy mass of golden anthers. **\$1 each.***

★ **PROSPERITY.** Pillar. White. Continuous in bloom, **\$1 each.***

★ **SOUV. DE CLAUDIUS DENOYEL.** Pillar. Crimson blooms with damask fragrance. **\$1 each.***

★ **CLIMBING TALISMAN.** Multi-colored. **\$1 each.***

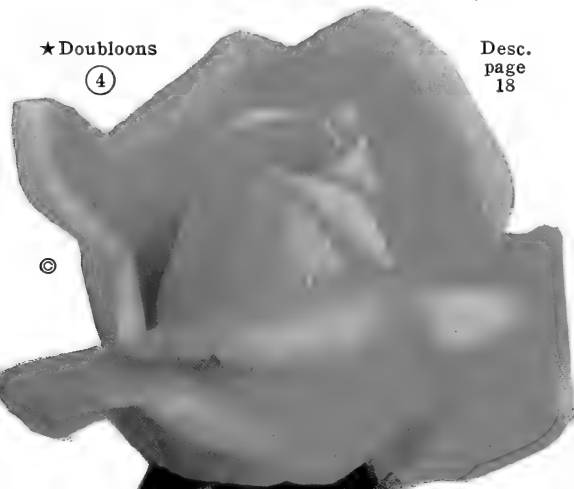
★ **New Dawn.** Bloom and bush ③



★ **Doublons**

④

Desc.
page
18





Gypsophila, Rosy Veil

CHOICE PERENNIALS

GYPHOPHILA (Baby's Breath), Rosy Veil. Quite hardy. Foamy heads of delicate, dainty baby blooms come in profusion on wiry, slender stalks during early summer. Ideal for mixing with larger flowers to make lovely bouquets. **3 for 85 cts., postpaid.**

BEST TWO EVERBLOOMING GAILLARDIAS

For brilliant bloom from June until frost these Gaillardias are real treasures. They bloom unceasingly and even dry weather does not stop them. **40 cts. each; 3 for 95 cts.; 6 for \$1.79, postpaid.**

BARNES RUBY. Ruby-red, long-lasting flowers.

MR. SHERBROOK. Golden yellow with lighter center.

Three each Barnes Ruby and Mr. Sherbrook for \$1.79, postpaid.

ASK FOR OFFER F20

CHEERFUL HARDY PHLOX

ALL POSTPAID

These ten varieties have been selected as the best of the 41 kinds growing in our fields. Plant plenty of Phlox to add gay colors to your garden. For 3

- Africa.** ● Carmine-red with red eye. **85 cts.**
- Augusta.** Plant Pat. 252. Cherry-red. **\$1.50**
- Caroline Vandenburg.** ● Lavender. **85 cts.**
- Columbia.** Plant Pat. 118. Cameo-pink. **\$1.10**
- Harvest Fire.** ● See illustration. Salmon. **\$1.10**
- Miss Lingard.** ● Everblooming white. **85 cts.**
- P. D. Williams.** ● Apple-blossom-pink. **\$1.10**
- Rosea Superba.** Light salmon. **85 cts.**
- Rosenkavalier.** ● Rose-red. **85 cts.**
- Thor.** Popular variety. Salmon. **85 cts.**

OFFER F20a. One each above 10 Phlox **\$2.95** ppd.
OFFER F20b. One each the six marked ● **\$1.75** ppd.

DELPHINIUMS Garden Aristocrats

BLACK & LANGDON HYBRIDS. In form they range from single to double. In colors from deep violet down to the palest lavender, with all the tints imaginable modifying these colors; every flower has a lovely "bee" and many are deliciously fragrant. Plants cut back after the first bloom have produced wonderful spikes again in September. **50 cts. each; 3 for \$1.35; 12 for \$5, postpaid.**

GIANT PACIFIC HYBRIDS. Strong, wiry stems bearing spikes 3 to 5 feet high made up of large, individual flowers often 2 to 3 inches across. Various shades of blue make this one of the most striking strains of Delphinium. **50 cts. each; 3 for \$1.35; 12 for \$5, postpaid.**

WREXHAM STRAIN. The Hollyhock type, with its long, tapering spikes of extra-large flowers in a wide range of shades. **3 for 75 cts.; 12 for \$2.50, ppd.**

BELLADONNA (Everblooming Hardy Larkspur). The most continuous-blooming light blue Delphinium. **3 for 75 cts.; 12 for \$2.50, postpaid.**

BELLAMOSUM. Everblooming. The dark blue form of Belladonna. 3 to 4 feet. **3 for 75 cts.; 12 for \$2.50, postpaid.**

12 DELPHINIUMS \$3.65 POST-PAID

Including 2 Blackmore & Langdon, 2 Wrexham, 2 Giant Pacific Hybrids, 3 Belladonna, 3 Bellamosum.

ASK FOR OFFER F20c

THE REGAL LILY

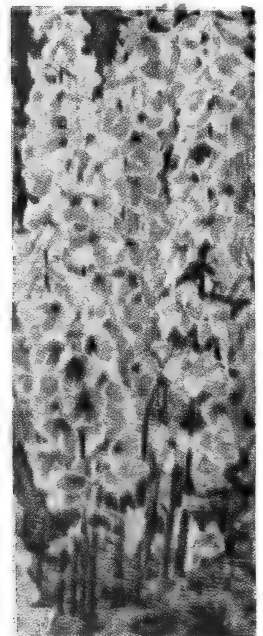
For stately magnificence, wealth of bloom, grace and beauty, this Lily is truly regal in every way. It grows anywhere, in any soil, provided only that the location is not too wet or too shaded. From bulbs planted about 8 inches deep this fall, erect, wiry stems, well clothed with foliage, will appear next spring, to be crowned in June with a wealth of long-lasting flowers, rich in fragrance and glorious in form and color. The Regal Lily is so easy to grow it should be in every garden. **Large bulbs, 3 for 55 cts.; 12 for \$1.85; 100 for \$13.50, postpaid.**



Gaillardias, Barnes Ruby and Mr. Sherbrook



New Phlox, Harvest Fire



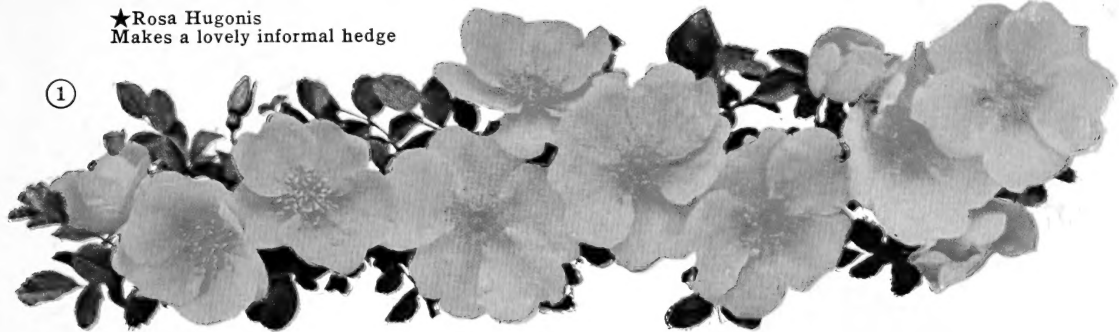
Delphiniums Blackmore & Langdon



Regal Lilies

★Rosa Hugonis
Makes a lovely informal hedge

①



Seven Hybrid Perpetuals

- ★**DRUSCHKI RUBRA.** Dark crimson. Fragrant. **85 cts. each.***
- ★**FRAU KARL DRUSCHKI.** The premier white Rose for form, size and repeat bloom, but it has no fragrance. **85 cts. each.***
- ★**GENERAL JACQUEMINOT.** Clear red. The "Jack" Rose. **85 cts.***
- ★**HENRY NEVARD.** Crimson-scarlet. Unusually fragrant. Repeats in the fall. **85 cts. each.***
- ★**MRS. JOHN LAING.** Lovely light pink. **85 cts. each.***
- ★**ULRICH BRUNNER.** Cherry-red. Very prolific. **85 cts. each.***
- ★**URDH.** Old-rose. Deliciously fragrant. **85 cts. each.***

7 The above Oak-hardy Hybrid Perpetuals. Value \$5.95 **\$4.65**
ASK FOR OFFER F21

Two Old Moss Roses (Do not prune)

- ★**COMTESSE DE MURINAIS.** White. Beautifully mossed. **85 cts. ea.***
- ★**CRESTED MOSS (CHAPEAU DE NAPOLEON).** Rosy pink buds heavily crested with moss. **85 cts. each.***

OFFER F21a. The 2 Moss Roses for **\$1.50**

Five Hybrid Rugosa Roses

- ★**AGNES.** Coppery yellow buds which open to flowers of pale amber color. Growth 6 to 8 ft. **\$1 each.***
- ★**BLANC DOUBLE DE COUBERT.** Pure white. **85 cts. each.***
- ★**DR. ECKENER.** Clear pink, with rich yellow base to the petals. Delightfully perfumed. **\$1 each.***
- ★**F. J. GROOTENDORST.** ③ Small, bright crimson flowers, like baby carnations. Grows to 3½ to 4 feet. Continuous-flowering. **85 cts. each.***
- ★**VANGUARD.** Orange-salmon with coppery tints. **\$1 each.***

Offer F21b. 1 each Crested Moss, Agnes, Hugonis, Harison's Yellow and Martha Lambert. **\$3.45**

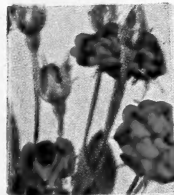
Four Shrub Roses

Very hardy and suitable for park planting or around the home as decorative specimen plants. Allow about 4-foot planting space for these Roses.

- ★**MARTHA LAMBERT.** Vivid scarlet. This Everblooming Shrub Rose outshines all others of this type for use as brilliant specimens on your lawn or in the shrub border. It produces heads of intense scarlet, small, single blooms, like brilliant phlox, from June until frost, in open clusters of from 5 to 40 flowers on erect plants that grow here to 3 feet high and the same across. A superb Rose for spacing along drives. **\$1 each.***
- ★**MABELLE STEARNS.** Plant Pat. 297. Fully double, medium-sized pink blooms cover the bush. Spreading growth. **\$2 each; 3 for \$5.†**
- ★**HARISON'S YELLOW.** Well-known bright yellow shrub Rose. **85 cts.***
- ★**YORK AND LANCASTER.** Damask. Striped red and white, but occasionally all red. **\$1 each.***

Four Miniature Roses (All Hardy)

These 4 dainty jewels were sensational when shown in the great flower shows at Philadelphia, Boston, Seattle, Portland, and Houston, Texas. For indoor use grow in a conservatory or cover with a glass bowl as they will not thrive in a dry atmosphere. For outside, north of Washington, we advise spring planting.



★Midget

3-IN. POT-GROWN PLANTS, POSTPAID

- ★**BABY GOLD STAR.** Plant Pat. 407. Golden yellow streamlined buds and dainty blooms. **75 cts. each; 3 for \$1.88.†**
- ★**MIDGET.** Plant Pat. 466. Rose-red. Very diminutive and fully double. **\$1 each; 3 for \$2.50.†**
- ★**PIXIE.** Plant Pat. 408. The world's tiniest double white Rose. It shows pink shadings in cool weather. **75 cts. each; 3 for \$1.88.†**
- ★**TOM THUMB.** Plant Pat. 169. Pointed crimson buds open to single crimson blooms with a white center. **75 cts. each; 3 for \$1.88.†**

4 One each Baby Gold Star, Midget, Pixie and Tom Thumb (Value \$3.25) **ASK FOR OFFER F21c \$2.75** POST-PAID

★**ROSA ROULETTI.** The small, rose-pink, double flowers are about an inch in diameter. Pot-plants **50 cts. each; 3 for \$1.25, postpaid.**

★**ROSA HUGONIS, "The Golden Rose of China."** Species. ① The aristocrat of hardy flowering shrubs. The extreme hardiness of this lovely "Golden Rose of China," its habit of blooming early in May, and the long wands of fairy-like blossoms, all go to make Hugonis one of the most valued shrub Roses. The graceful, arching branches are completely covered with bloom to the very tips in early May. This beautiful shrub Rose, with its dainty acacia-like foliage and graceful growth, makes a distinctive and almost impenetrable hedge. Plant 15 inches apart for a hedge, but if used as specimen shrubs plant 6 feet apart to allow for proper development. Requires no attention, and blooms best when planted in good unfertilized soil. **85 cts. each.* 50 or more at 60 cts. each.†**



★ Max Graf. For terraces ②

Two Roses for Retaining Terraces

★**MAX GRAF.** ② See illustration. An ideal trailing Rose. Large, single, apple-blossom-pink flowers. Plant alternately with Wichuraiana and have a mass of pink blooms early in June followed later by the white of Wichuraiana. **85 cts. each.* 12 for \$7.50; 25 for \$12.50.†**

★**WICHURAIANA.** Grows horizontally. The canes root wherever they touch soft soil. Small, glossy foliage. Flowers white followed by vivid red berries. **85 cts. each.* 12 for \$7.50; 25 for \$12.50.†**

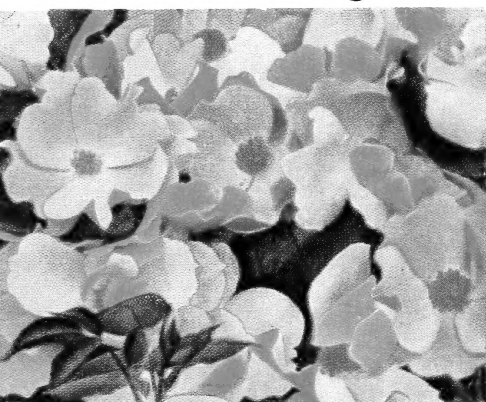


★ F. J. Grootendorst For hedges ③

Sensational



© ★ World's Fair (1)



© ★ Betty Prior (2)

© C.-P. CO. ★ Topaz (3)



Just think, Roses in brilliant, continuous bloom for 5 months in the year! This is like a Rose-lover's dream, but it actually is a dream come true, for these oak-hardy Floribunda Roses, the result of years of infinite patience of Rose hybridizers, are sturdy, healthy plants that bloom continuously from June until hard frost. They are invaluable for inviting, brilliant beds along driveways or to use in beds in place of geraniums or annuals, for once planted you have them for years to come. They make lovely effects when planted in groups of 6 or more of a kind.

You get 25% discount from single rate when 25 or more of one kind of Floribundas on this page are ordered.

★ **ANNE POULSEN.** Plant Pat. 182. Scarlet. Fragrant, semi-double, scarlet blooms with a vivid overcast of crimson. Noted for early and continuous bloom. **75 cts. each; 3 for \$1.90.†**

★ **BETTY PRIOR.** (2) Plant Pat. 340. Pink. Exquisite single blooms like pink dogwood are borne profusely throughout the season. **75 cts. each; 3 for \$1.90.†**

★ **DISTINCTION.** This is a most striking clear pink Floribunda. Large flowers of brilliant pink that hold their color well. Makes uniform growth. **85 cts. each.***

★ **DONALD PRIOR.** Plant Pat. 377. Scarlet. Color is scarlet veiled with crimson. **75 cts. each; 3 for \$1.90.†**

3 SAMPLE FLORIBUNDAS \$2.30

One each Anne Poulsen, Permanent Wave and the new Poulsen's Copper. (Value \$2.75)

ASK FOR OFFER F22

★ **GRUSS AN AACHEN.** Page 23. (3) White to carmine. Lovely 60-petaled white blooms take on delightful carmine tints in cool weather. A large-flowered, full-petaled Floribunda. **85 cts. ea.***

★ **PERMANENT WAVE.** (4) Plant Pat. 107. Deep rose-pink, wavy-petaled blooms come in lovely bouquets. Noted for lovely foliage. **75 cts. each; 3 for \$1.90.†**

★ **POULSEN'S COPPER.** Page 23. (4) Plant Pat. 446. Copper and pink. Stocky, bushy plants produce wave after wave of double, high-centered, 2½-inch coppery blooms that age to dainty charming pink with orange reverse. **\$1.25 each; 3 for \$3.15.†**

★ **POULSEN'S YELLOW.** Page 23. (1) Yellow. The first true yellow Floribunda. Flowers of clear yellow come in brilliant masses from dainty carmine-tinted buds. They make a charming effect on the lawn or in combination with snowy linen and silver on a dining table. **\$1 each.***

★ **SUMMER SNOW.** Plant Pat. 416. Medium-sized white blooms completely cover the dwarf plants. **75 cts. each; 3 for \$1.90.†**

★ **WORLD'S FAIR.** (1) Plant Pat. 362. Crimson. Large, honey-scented blooms of dark velvety crimson. A 1940 All-America Rose Selection in the Floribunda Class. **\$1 each; 3 for \$2.50.†**



5 Floribunda \$3.75 Set

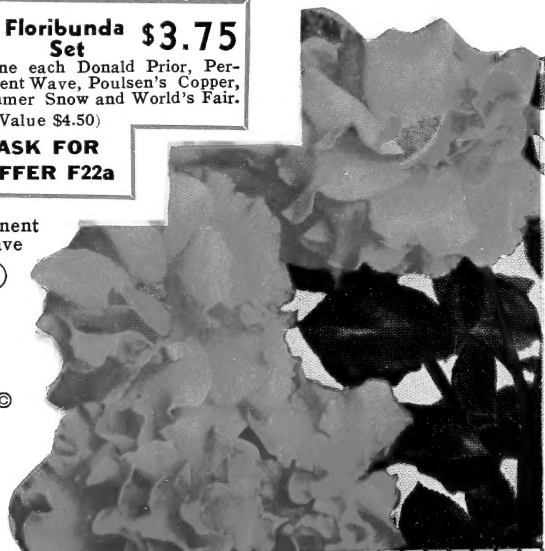
One each Donald Prior, Permanent Wave, Poulsen's Copper, Summer Snow and World's Fair. (Value \$4.50)

ASK FOR OFFER F22a

★ Permanent Wave

(4)

©



Floribundas

4 BACK-COVER FLORIBUNDAS

Quantity prices on these 4 varieties: 12 for \$9; 25 for \$17.50

★ **DAINTY MAID.** Wild-Rose pink. This exquisite Rose is all that the name implies for the wavy-petaled blooms of wild-rose pink are as dainty and attractive as a Quaker maid. The delicate wild-rose fragrance adds to their charm. The plants grow to 3½ feet. **\$1 each.***

★ **BOUQUET.** Rose-pink. Flowers that look like camellias come in clouds of brilliant rose-pink. When cut, each branching cluster makes a long-lasting bouquet. **\$1 each.***

★ **D. T. POULSEN IMPROVED.** Vivid cherry-red. Clusters of vivid cherry-red, perfectly formed, cupped blooms about 2 inches across, make a sheet of attractive color. **\$1 each.***

★ **LITTLE MISS MUFFET.** Coral-pink. Flowers open from buds of ox-blood-red, with deep shadings, to 20-petaled blooms of soft coral-pink. The blooms are 3 inches across. **\$1 each.***



© C.-P. Co. ★ Poulsen's Yellow (1) Desc. page 22

5 NEW FLORIBUNDAS \$3.95

All shown in color (Value \$5)

How these new Roses do bloom! They are an unceasing joy from early in June until hard frost. One each Poulsen's Yellow and the 4 on back cover, Dainty Maid, Bouquet, D. T. Poulsen Improved and Little Miss Muffet.

ASK FOR OFFER F23

OAK-HARDY POLYANTHA ROSES

Polyantha Roses have small flowers that come in sprays and clusters.

★ **THE FAIRY.** *New.* Flowers like dainty rosettes of seashell-pink come in attractive bouquets. Grows to 3 ft. **\$1.25 each.***

★ **CHATILLON.** ● (2) Clear pink flowers come like huge heads of phlox. The ace of the pink Polyantas for mass planting. **85 cts. each.***

★ **GLORIA MUNDI.** ● Orange-scarlet. A flamboyant flaming color. Makes brilliant specimen plants. **85 cts. each.***

★ **IDEAL.** ● Garnet. One of the finest of the brilliant dark red Polyantas. Growth about 2 feet. **85 cts. each.***

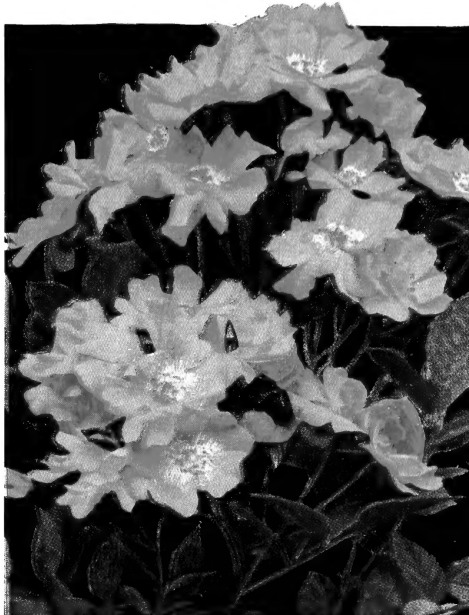
★ **Mlle. CECILE BRUNNER.** Seashell-pink. The "Sweet-heart" Rose. Makes sprays instead of clusters of rosy pink "baby" buds that open to seashell-pink. Delightful fragrance. **85 cts.***

★ **ORANGE TRIUMPH.** ● Well-formed, fully double sparkling flowers of scarlet-orange that look like brilliant rosettes. **85 cts.***

★ **TOPAZ.** Page 22. (3) Plant Pat. 300. Golden Sweetheart. Sprays of exquisitely formed yellow buds open to starry blooms. **85 cts. each; 3 for \$2.15.†**

4 One each of the 4 Polyantha Roses marked ●. Value \$3.40 for . . . \$2.65 Ask for Offer F23a

©C.-P.Co. ★ Poulsen's Copper (4) Desc. page 22

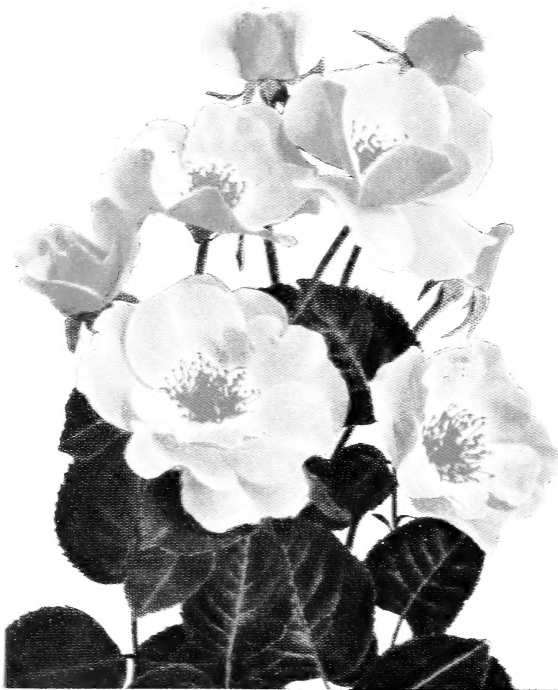


★ Chatillon (2)

★ Gruss an Aachen (3) Desc. page 22



FOUR *New Floribunda* ROSES



★ **Dainty Maid.** This stately beauty grows to 3½ feet and makes lovely specimen plants or an exquisite background for other Floribundas. \$1.00 each*; 12 for \$9.00; 25 for \$17.50.✻



★ **Bouquet.** Noted for the masses of flowers produced. They almost cover the plants with clouds of camellia-like blooms. Unsurpassed for bedding. \$1.00 each*; 12 for \$9.00; 25 for \$17.50.✻

FLORIBUNDA COLLECTION

ONE EACH OF THESE FOUR continuous-blooming Roses \$3.45

ASK FOR OFFER F24



★ **D. T. Poulsen Improved.** Beautiful cupped blooms in masses all season. \$1.00 each*; 12 for \$9.00; 25 for \$17.50.✻



★ **Little Miss Muffet.** Flowers 3 inches across of exquisite form and charming color. \$1.00 each*; 12 for \$9.00; 25 for \$17.50.✻