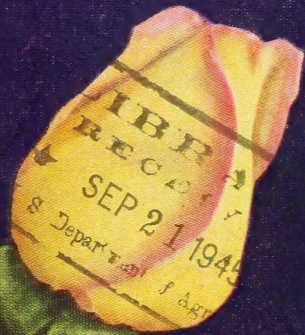


Historic, archived document

Do not assume content reflects current scientific knowledge, policies, or practices.

62.73

Conard-Pyle Co.
West Grove, Pa.



PEACE

PLANT PAT.
No. 591



© 1945 THE CONARD-PYLE CO.

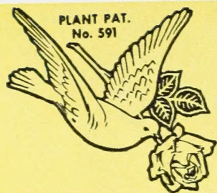


STAR ROSES *Fall* 1945

PEACE—A Star Rose

(MME. A. MEILLAND)

Introduced by The Conard-Pyle Co.
West Grove, Pa.



Plants
\$2.50 each
3 for \$6.25



↑ Wonder and Delight at seeing PEACE for the first time: Mr. Billy House, star comedian of radio and stage; Miss Audrey Long, RKO star; and Mr. Norvell Gillespie of the NBC Garden-For-Victory program.

← Miss Dorothy van Barneveld of Puente, California, trains the DOVE OF PEACE for its part in the ceremony of the christening of the new Rose PEACE.

American Rose Society Sponsors the Christening of the Rose PEACE

As timely as sunrise it was, and as colorful, too. Forever historic were the events commemorated by the naming of this amazing Rose.

Long-hoped-for peace in Europe dawned with the fall of Berlin. In immediate sequence, the American Rose Society, represented by Dr. W. W. Horsley of Lovell, Wyoming, was sponsor for the christening of this Rose at the annual show of the Pacific Rose Society, near the Rose Bowl in Pasadena, California. Under these high auspices Miss Jinx Falkenberg, famous Columbia star, with a drop of precious attar of Roses, christened the first blooms of spring of this Rose, original plants of which had been spirited to America from burning Europe. She named it "Peace." Then to make more vivid the symbol of this blessing to mankind, all eyes present and a dozen cameras, moving-picture and otherwise, followed her motions as she released a white dove that gently poised a moment on her fingertips and then winged its way across the blue California sky—

*The Dove of Peace bringing
The Rose Peace to mankind everywhere.*



For the Joy of Mankind!

On V-E Day in San Francisco

Commemorating V-E Day at the United Nations Conference in San Francisco, there was presented as from the American Rose Society, separately to each leader of every one of the 49 delegations, a bloom of the Peace Rose, with a card reading "We hope the Peace Rose will influence men's thoughts for everlasting World Peace."


Many replied. The Deputy Prime Minister of Australia wrote: "I hope that the people of the world will cultivate the Peace Rose in profusion and let it be a constant reminder of the goal for which we are unitedly striving."

Christened in the cause of peace when Berlin fell; greeted with acclaim by world leaders in San Francisco while every continent was yet vibrant with the echoes of V-E Day; considered a worthy memento of the United Nations Conference by its Chairman, E. A. Steettinius, Jr., who will plant it at his home in Virginia—

Here is a Rose always to be remembered for its intimate identification with one of the greatest moments in world history.

★PEACE—All-America Rose Selection

See Front Cover Page

 (Mme. A. Meilland). H.T. Plant Pat. 591. Peace is not a colorless Rose of dead white, but it is vivid with the colors of the dawn as of a new era. It is rich and vital. The buds are golden yellow, each petal edged with pink that seems to deepen as the flower slowly opens. The shades of color vary but are always beautiful, and the change is an enchanting thing to watch as the buds open and the gold changes to ivory or alabaster-white while the pink blush spreads and deepens along the edge of every petal.

Peace has well been likened to a rainbow, for it has that same sort of shimmering iridescence. Though the very double bloom is unusually large, long-lasting, and constantly fresh-looking, its effect is always that of delicate and almost ethereal loveliness.

There is nothing delicate-looking about the plant, however. It is the crowning miracle of the Peace Rose that the whole plant is as superior as the bloom. The strong, straight stems lift the flowers proudly above the mass of vigorous, shining, disease-resistant foliage. In glorious succession, the high-centered blooms hold their form and freshness an unbelievable time, either as a cut-flower or on the bush and, at times, the fragrance is strong and luscious. Throughout its All-America Rose Selections tests it continually received the highest ratings that any Rose had ever attained. See prices below.

What Rose Experts Say of PEACE

"The Peace Rose is the most glorious thing I ever saw in my life," was the comment of David B. Watson of Detroit, Mich., a District Councilor of the American Rose Society. Mrs. Harriett Risley Foote wrote from her famous Rose-garden at Marblehead, Mass., "They are magnificent in every way. It is truly a royal Rose, and well deserves the name of 'Peace'. I certainly cannot praise it too highly, also the growth and the foliage have been very fine."

"This Rose is a masterpiece, and a dream of beauty. It has grown unusually well and has been continuously in bloom, with substantial, healthy foliage." This was from Miss Evelyn Collins Hill, Chief Rosarian of the Garden Club of Virginia.

Dr. J. Horace McFarland, beloved President Emeritus of the American Rose Society, wrote, "Peace Rose is unique in bud, bloom and spread. It pleases, surprises, and contents the gardener who stays with it. I have greatly enjoyed not only its astonishing flowers but the substantial foliage that puts under the blooms a real foundation. Peace is with us to stay."

PRICES 2-yr.-old **\$2.50** 3 **\$6.25**
Postpaid Field Plants **each** **for**

Introduced by The Conard-Pyle Co.



© C.P. CO.

★**CITY OF YORK**. Climber. (Tantau.) Plant Pat. Pending. A new white climber with distinctive qualities which will make it a most welcome addition to its class. It is hardy and very strong-growing; able to cover a large area. The beautiful foliage, small, abundant, clean and shining, fairly sparkles in the sunlight. In May and June it is an almost solid mass of bloom, from its very tip right down to the ground. The pointed buds, shading from buff-yellow to pale cream, open to 3-inch, semi-double to double flowers of creamy white, whose delightful fragrance envelops the whole plant. **\$1.50 ea.; 3 for \$3.75.**

Let this CATALOG be your



This catalog has the honor of making the premier announcement of the introducers of the Peace Rose in America, "the Rose of a generation," the greatest Rose in the career of the famous young originator Francis Meilland of Lyons, France, where the Rose is called "Mme. A. Meilland."

We suggest autumn orders to insure delivery. The same holds true of all orders. Autumn is a good time for planting, except in severe climates. Throughout America, Roses continue in excessive demand in the face of limited supply.

Prices are subject to change December 15, 1945, for two-year, number 1, field-grown Roses delivered free in U.S.A. by Express or Parcel Post.

Any orders for spring will need to be accepted subject to possible cancellation after fall orders are filled.

Please see further urgent information, page 23.



© C.-P. CO.



★Horace McFarland ①

★**HORACE MCFARLAND.** H.T. ① (Mallerin.)

Introduced by The Conard-Pyle Co. Plant Pat. pending. A Rose of beautiful exhibition form and glorious color. Deep apricot-colored buds open a rich buff-salmon which changes slowly to a pleasing coral-pink. The flowers are large, of 40 to 45 petals which are also large, firm and long lasting. Strong stems hold the long, tapered buds firmly upright, well above the leathery foliage, making it an excellent variety for cutting. Plant of medium height; flowers spicily fragrant. \$2 ea.; 3 for \$5.

★**GRANDE DUCHESSE CHARLOTTE.** ②

H.T. (Ketten.) Plant Pat. pending. This Rose aristocrat provides a new shade of red, such as may be seen in old tapestry, a color not known in any other Rose. The beautiful, long, streamlined buds are a burnt-carmine color and open to firm petaled blooms which do not fade but gradually change to a lovely begonia-rose. When unfolding, the 25 petals recurve and make a delightfully informal, artistic flower with a hint of carnation fragrance. The plant is a tall, upright grower and the foliage shows good resistance to disease; the blooms come singly on long stems which are fine for cutting. Visitors are drawn to this Rose immediately from the other side of the garden by its unusual, beautiful color. \$1.50 ea.; 3 for \$3.75.

THE CONARD-PYLE CO.

WHAT DOES THIS MEAN?

It means that here is a sign which takes much of the gamble and guesswork out of buying new Roses.

It means that no longer do you need to take one man's or one firm's say-so about the fine qualities of a new Rose.

It means cooperation rather than competition among the leading Rose-growers.



It means that before new Roses are introduced they are sent to official and authentic test-gardens located in different sections of the United States, undergo a two-year official test under the supervision of the best American judges available at each garden (14 in number), located in different climatic sections. From this gruelling test where each Rose is repeatedly and carefully scored, only those having the highest ratings are selected for final award. No contestant can vote on his own entries.

Runners-up which fail to win an award may have great merit. They may deserve to be and often are introduced by one or more firms. Varieties receiving the coveted award are usually offered by all firms interested.

The above statement was printed in our 1944 Spring Catalog. It holds good today except that A.A.R.S. has become even more reliably established, with eighteen test gardens and eighteen reliable judges. Even higher standards of excellence are required. Hence, for a Rose to be chosen an All-America Rose Selection is today a higher honor than ever.

An even higher honor is conferred when a variety is the only Rose chosen for the year and also has attained the highest score ever reached in the entire history of the A.A.R.S. This double distinction of superior A.A.R.S. honor has been won by the Rose "Peace," the only 1946 A.A.R.S. Award Winner. (See front cover.)

Other A.A.R.S. awards of previous years are as follows:

 ROSES 1940	 ROSES 1944
Page	Page
★California. H.T. 9	★Fred Edmunds. H.T. 6
★Dicksons Red. H.T. 10,11	(Regional Award)
	★Lowell Thomas. H.T. 5
1941	★Mme. Chiang Kai-shek. H.T. 7
★Charlotte Armstrong. H.T. 6,8	★Mme. Marie Curie. H.T. 7
1942	1945
★Heart's Desire. H.T. 7	★Floradora. Flori. 24
1943	★Horace McFarland. H.T. 4
★Grande Duchesse Charlotte. H.T. 4	★Katherine T. Marshall. H.T. 7,8
★Mary Margaret McBride. H.T. 5	★Mirandy. H.T. 5

© C.-P. CO.



②

★Grande Duchesse Charlotte

to GOOD ROSES 1945



★ **LOWELL THOMAS.** H.T. ② (Mallerin.)
 AARS Plant Pat. 595. The vibrant lemon-chrome color, vigorous growth and general air of optimism about this glorious new Rose make it suitable to bear the name "Lowell Thomas," and we hereby nominate this thrilling yellow variety as "America's News Voice of the Garden," for as each summer morning breaks you can easily fancy this beauty cheerfully and heartily proclaiming to all the other flowers, "Good morning, everybody!"

The 25-petaled blooms open from beautiful buds and have a high-cupped center, with the petals rolling outward, making magnificent, glowing flowers, over 4 inches across when fully open. They have a slight tea fragrance. The plants are sturdily upright in growth and the rich yellow blooms, on strong, erect stems, have a perfect foil in the large, lustrous green foliage. \$2 ea.; 3 for \$5.



★ Lowell Thomas ② © C.-P. CO.



★ Mirandy

①

★ **MIRANDY.** H.T. ① (Armstrong, 1945.) Plant Pat. 632. The first-place winner in the 2-year AARS All-America Rose Competition for 1945. The illustration shows the superb form and glamorous coloring of this great new Rose which does not have to struggle for top place; it starts there and is destined to be a most popular crimson Hybrid Tea Rose for years to come.

Mirandy has a splendid plant habit, the bush growing erect and symmetrical. It is clothed to the base with broad, olive-green, heavy-textured foliage.

The huge, 50-petaled, deep crimson flowers open slowly from exquisitely modeled, ovoid buds, often long-pointed, and filled with rich, penetrating Damask fragrance. In hot, moist atmospheric conditions the aging flowers turn to a pleasing, popular Dubonnet wine color.

In our Rose-fields this marvelous Rose blooms continuously from early in June throughout the hot summer months and was blooming last year when stopped by hard frost. \$2 ea.; 3 for \$5.

★ **MARY MARGARET McBRIDE.** H.T. ③ (J. H. Nicolas.) Plant Pat. 537. This lovely AARS flower is the most alluring, shining, rose-pink variety of recent years. The long, firm buds have a yellow base and open slowly to large 45-petaled blooms with a luscious, glowing rose-pink color. The petals stay upright and hide the center of the flower but the edges recurve gracefully to add to the charm of this Rose. Plants are notably vigorous in growth and have large, leathery foliage. Grows to a height of about 30 inches with the fragrant flowers coming on long, strong stems. \$1.50 ea.; 3 for \$3.75.



★ Mary Margaret McBride ③

5 AARS NOVELTIES \$7.75 (VALUE \$9)

All in color on these two pages

- ★ **Grande Duchesse Charlotte.** Plant Pat. Each pending..... \$1.50
- ★ **Horace McFarland.** Plant Pat. pending..... 2.00
- ★ **Lowell Thomas.** Plant Pat. 595..... 2.00
- ★ **Mary Margaret McBride.** Plant Pat. 537... 1.50
- ★ **Mirandy.** Plant Pat. 632..... 2.00

ASK FOR OFFER 105

Star Rose-Growers ★ West Grove, Pa.



©
C. P.
CO.

★Crimson King ①

CREAM OF

★**CRIMSON KING.** H.T. ① (Kordes.) Plant Pat. pending. This is a worthy addition to the list of best red Hybrid Teas, very fragrant and a deep, brilliant crimson. It combines the best characteristics of its two notable parents, Crimson Glory and Kardinal. The blooms keep repeating all summer, and in the fall they are especially fine as they mature and open slowly with deep, blackish shadings on the firm petals. When cut in the opening bud stage they last for a long time indoors and will fill a room with their delightful Damask Rose fragrance. A new thrill for the lover of red Roses. \$1.50 ea.; 3 for \$3.75.

★**DON ROSE.** H.T. (Mallerin.) One of the newest Roses, which has not yet become well known but deserves to be. We have received many enthusiastic comments from those who have tried it. Beautiful tapered buds of coral-apricot open to shapely blooms shading from coral-pink to silvery salmon, and produced in unusual abundance. The foliage is also remarkably good—leathery, bluish green and disease-resistant. \$1.25 ea.; 3 for \$3.15.

★**FANTASTIQUE.** Page 8. ③ (F. Meiland.) Plant Pat. 574. "A Floribundish Hybrid Tea" with a distinct charm. It is an early and bountiful bloomer, with 3½-inch flowers daintily colored like a Picotee tulip. The base color is light maize-yellow with the edge of each petal feathered with carmine. Sweet clover fragrance. Growth about 20 inches. \$1.50 ea.; 3 for \$3.75.

★**FRED EDMUNDS.** H.T. (Mallerin.) Plant Pat. pending. Winner of 1944 All-America Regional Award. Burnt-orange buds open to glorious, 25-petaled blooms of vivid, glowing coppery orange color which slowly changes to soft apricot. Rich fruity fragrance. Holly-like, very shiny foliage. This is one of the loveliest novelties in many years. \$2 ea.; 3 for \$5.

★**GOLDEN HARVEST.** H.T. (Mallerin.) Plant Pat. pending. We recommend this new, fragrant, clear golden yellow Rose. Won the Sweepstakes Prize as the finest Rose displayed at the 1944 great Portland Flower Show. \$1.50 ea.; 3 for \$3.75.

★**BLANCHE MALLERIN.** H.T. (Mallerin.) Plant Pat. 594. This is that rare beauty, a pure white, fragrant Hybrid Tea Rose. The petals of the beautifully modeled blooms are as white as alabaster, with a live, satiny sheen, as appealing as an Easter lily, with the advantage that the Rose blooms for five months of the year. The streamlined buds come erect on healthy, upright plants. These long buds open to beautifully formed, cup-shaped blooms 3½ to 4 inches across. We have yet to find a white Rose to equal Blanche Mallerin in artistic beauty. Lovely for cutting. \$1.50 ea.; 3 for \$3.75.

★**BOUDOIR.** H.T. Page 7. ① (F. Meiland.) An unusual, two-toned flower, large and very full, with a strikingly luxurious look. The novel coloring is a rich, radiant Tyrian-rose on the inside of the petals and velvety creamy white on the reverse. The great, fragrant blooms come on rigid, upright stems. A decided novelty that makes a sensational showing anywhere. \$1.50 ea.; 3 for \$3.75.

★**BRIGHT WINGS.** H.T. (Mallerin.) This is a Rose which glows with color—a rosy burnt-orange that makes one think of burnished copper. The firm, scalloped petals arch back as the flower ages, shining like the wings of some brilliant tropical butterfly. The open blooms are large, 4 to 5 inches across, but are never heavy looking. \$1.50 ea.; 3 for \$3.75.

★**CHARLOTTE ARMSTRONG.** H.T. Page 8. ① (Armstrong.) Plant Pat. 455. A charming Rose aristocrat which had top scores in official test gardens of All-America Rose Selections during its testing period. The bloom and the plant are among the very best. Long, slender, rose-red buds open to extra-large blooms of deep glowing rose. A Rose which is always beautiful and does well in all parts of the country. Vigorous, disease-resistant and free-blooming. \$1.50 ea.; 3 for \$3.75.

★**KORONET.** H.T. ② (Mallerin.) Plant Pat. 596. From graceful, long-pointed, lemon-yellow buds, shaded with orange, appear lovely, 5-inch, intense yellow flowers of cactus form, much admired by Rose connoisseurs. The flowers come on erect stems suitable for cutting and have an unusual cinnamon fragrance. It always attracts much attention in a garden, and a vase of Koronet with snowy linen and silver on a dining-room table is most delightful. \$1.50 ea.; 3 for \$3.75.



© C. P. CO.

★Koronet ②

Rose Index, Page 23



THE NOVELTIES

★**GOOD NEWS.** H.T. ② (Meiland.) Plant Pat. 426. Buds of deep coppery pink open slowly to great 60-petaled blooms with a glowing, coppery center, toning to shell-pink on the outer petals. Rich tea fragrance. A vigorous, healthy plant almost continuous in bloom. We receive most enthusiastic reports about Good News. An excellent, general purpose Rose. \$1.50 ea.; 3 for \$3.75.

★**HEART'S DESIRE.** H.T. (Howard & Smith.) Plant Pat. 501. Beautiful form and heavy petalage distinguish this rich scarlet Rose. Great, streamlined buds come on erect stems, making an excellent flower for cutting. Delightful fragrance adds to its perfection; it is so fragrant that a small bouquet will fill a good-sized room with its perfume. \$1.50 ea.; 3 for \$3.75.



★Good News ②

© C.-P. CO.

© C.-P. CO. Desc. page 6

①

★Boudoir



★**HIGHLAND PARK.** H.T. ③ (Mallerin.) The Chief Rosarian of the Men's Garden Clubs of America chose this Rose to be named for Highland Park, Ill., and to be a feature of the new "Gardeners' Memorial" Rose-garden there. That in itself denotes the quality of this beautiful salmon-pink variety which produces its fine blooms on vigorous, healthy plants. A really choice Rose for those who appreciate delicate colors and full-petaled varieties. \$1.50 ea.; 3 for \$3.75.

★**HOME SWEET HOME.** H.T. (Wood & Ingram.) Large flowers of an enchanting, refreshing glowing pink, each petal delicately edged with silvery pink. The full-petaled blooms of peony form thrill you with their intense, true Rose fragrance. \$1.50 ea.; 3 for \$3.75.

THE CONARD-PYLE CO.

"I have been buying roses from your company for a good many years, as I have had three different rose-gardens, and I have always found your roses better stock than I could get from any other source. A Seattle friend ordered some of your roses upon my recommendation. He tells me the same thing, that your roses are better, and from now on all of his roses will be ordered from your company."

May 21, 1945

Miss G. E. L., Peshastin, Wash.

Rose Index, Page 23

Star Rose-Growers ★ West Grove, Pa.

★**KATHERINE T. MARSHALL.** H.T. Page 8. ② Plant Pat. 607. Named to honor Mrs. Marshall, wife of America's great General George T. Marshall. This splendid, sparkling, warm pink Rose comes on magnificent, erect-growing, very hardy plants with profuse, dark green foliage. The large, cupped flowers have heavy petals that resist summer sun and have fruity fragrance. Growth and foliage are equal to the renowned Radiance and the beautiful blooms come freely on long stems for cutting. \$2 ea.; 3 for \$5.

★**MME. CHIANG KAI-SHEK.** H.T. (Howard & Smith.) Plant Pat. pending. Large, pointed, ivory buds open to 4½-inch spiral flowers of canary-yellow tint with creamy outer petals. The magnificent 35-petaled flowers come freely on vigorous, upright plants with heavy, bronzy canes and when fully open have an attractive mass of rich golden anthers on filaments which match the petals. \$2 ea.; 3 for \$5.

★**MME. MARIE CURIE.** H.T. (Gaujard.) Plant Pat. pending. Buds of bright, clear, daffodil-yellow, open glowing chrome-yellow and come freely on upright, vigorous plants. The 25-petaled, sweetly fragrant flowers age to rich cream before the petals fall. \$1.50 ea.; 3 for \$3.75.

★Highland Park ③

© C.-P. CO.





★Charlotte
Armstrong.

①

Desc. page 6.

★**MARK SULLIVAN.** H.T. Page 12. ⑥ (Mallerin.) Plant Pat. 599. This is one of the most spectacular of the newly developed multicolors. It is excellent for adding rich splashes of color to your garden. A very abundant bloomer of erect growth, bushy and vigorous. Tall growing, with many heavy, sturdy canes. The blooms show a remarkable blending of color tones, rich gold heavily veined and shaded with deep rose-pink and cerise, 4 to 4½ inches across, with rich honey fragrance. Foliage leathery and glossy. (See Star Dozen, page 12.) \$1.25 ea.; 3 for \$3.15.

★**MRS. PAUL R. BOSLEY.** H.T. (Bosley.) Plant Pat. 441. An unusually large number of fine new yellow Roses have been introduced recently. Among them, Mrs. Paul R. Bosley should not be overlooked. An exhibition type, with high-centered blooms held firm and erect above the dark, leathery foliage. Fragrant. This is a clear yellow sport of the magnificent and well-known Rose, Mme. Joseph Perraud. \$2 ea.; 3 for \$5.



★Katherine
T. Marshall.

②

Desc.
page 7.

©



STAR GUIDE

FALL

★**NARZISSE.** H.T. (Krause.) Plant Pat. pending. This is the most superb maize-yellow variety that has yet appeared. The blooms are a marvel for size and come from big, streamlined buds of apricot-yellow which open to massive flowers of maize-yellow. Sturdy, tall growing plants with large, glossy foliage produce these great blooms. A prize-winning exhibition Rose. \$1.50 ea.; 3 for \$3.75.

© C.-P. CO.



★Fantastique. ③ Desc. page 6.

★**PEACHBLOW.** H.T. (Coddington.) The beautifully modeled, sweetly fragrant, 20-petaled blooms of peach-pink have a golden base and the petals are flushed and veined with rose-pink. An exquisite cut-flower, persistent in bloom, long-lasting on the bush and when cut. \$1.25 ea.; 3 for \$3.15.

4 NOVELTY ROSES \$5.25

(Value \$6)

	Each	Page
★Crimson King. Plant Pat. pending.....	\$1.50	6
★Blanche Mallerin. Plant Pat. 594.....	1.50	6
★Narzisse. Plant Pat. pending.....	1.50	8
★Boudoir.....	1.50	6,7

Fine range of color: dark red, pure white, a golden yellow and a striking rose and white bicolor. A set of Roses which will bring new life to a Rose planting.

ASK FOR OFFER 108

The same high quality plants are sent when filling orders for all special offers as in orders for individual varieties.

Rose Index, Page 23



The Everblooming Hybrid Tea Roses listed on the following pages, if planted in soil that will grow good vegetables, are kinds that the most timid amateur can confidently plant this fall and then rest assured that these Roses will produce blooms next year, and for years to come, to match the forms shown in the illustrations and far surpass these pictures in size and gorgeous colors.

We realize the difficulty amateurs often have in selecting; so throughout the following pages we recommend a number of collections at reduced prices, the most famous of which, and justly so, is the Star Dozen offered on page 12.

These Roses are an investment in pleasure that will pay big dividends year after year in colorful, fragrant flowers to enjoy in your garden and also provide blooms for more intimate indoor enjoyment.

Order your plants now for delivery early in November as soon as they are matured in our Rose-fields and in best condition to transplant.



★California ②

★**AMI QUINARD.** H.T. Black-lustered red. From dainty buds of deep maroon, ideal for boutonnieres, a beautiful urn-shaped flower unfolds, with Damask fragrance. The petals are like shining crimson velvet enriched with a blackish sheen. A center of golden anthers is in rich contrast to the dark, velvety petals. Fragrant and very free in bloom. \$1.10 ea.; 3 for \$2.75.

★**CALIFORNIA.** H.T. ② (Howard & Smith.) Plant Pat. 449. The color is a glorious shade of ruddy orange toned with saffron-yellow with the exterior of the broad, firm petals overlaid with saffron-rose. Buds are long and pointed; flowers are enormous in size, reaching a diameter of 5 to 6 inches. Growth vigorous, with healthy, glossy green foliage. \$1.50 ea.; 3 for \$3.75.

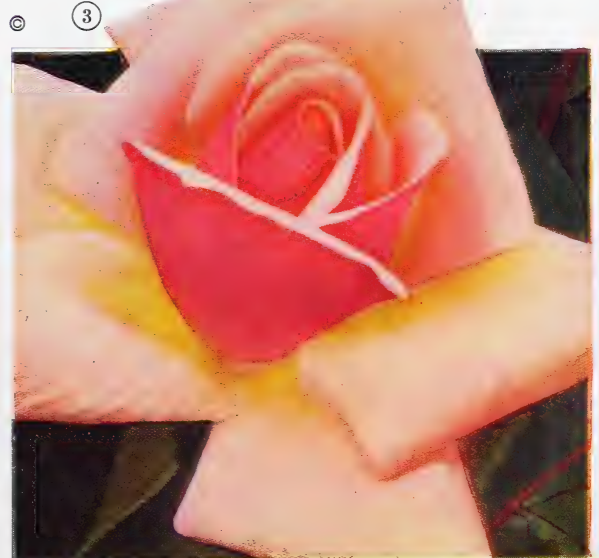
★**CATHRINE KORDES.** H.T. Carmine-scarlet. This magnificent, full-petaled Rose, with rich bronzy foliage, has large, well-formed flowers of glowing carmine-scarlet that come singly on erect, strong stems. Visitors to our Rose-fields, are always attracted by its glowing beauty. \$1.10 ea.; 3 for \$2.75.

★**CHRISTOPHER STONE.** H.T. Page 12. ③ Scarlet-crimson. A real treasure for any garden. Notable for alluring Damask fragrance and almost continuous bloom. Color is vivid scarlet in June which becomes deep crimson with velvety, blackish shadings in the fall. (See Star Dozen, page 12.) \$1.10 ea.; 3 for \$2.75.

★**CONDESA DE SASTAGO.** H.T. ① Bicolor. Delightfully fragrant flowers of yellow and raspberry-red are produced profusely on vigorous, healthy plants. Ranks very high in preference list of experienced amateurs. \$1.10 ea.; 3 for \$2.75.

★**COUNTESS VANDAL.** H.T. ③ Plant Pat. 38. Noted for the long, tapering, streamlined buds of orange-copper that open to perfumed blooms of copper, salmon and gold. \$1.25 ea.; 3 for \$3.15.

★Countess Vandal



© C.-P. CO.

★Condesa de Sastago ①

★**ANGELS MATEU.** H.T. Page 12. ② Plant Pat. 174. Orange-rose. Here is one of the most charming of the Everblooming Roses with a color that is really enchanting—a luscious orange-rose, distinct from all others. The flowers with their delicious red-raspberry fragrance are unusually large; they are full-petaled and make fine exhibition blooms. (See Star Dozen, page 12.) \$1.25 ea.; 3 for \$3.15.

★**BETTER TIMES.** H.T. Plant Pat. 23. Rose-red. The brilliant rose-red flowers are large, double, and delicately fragrant. They come singly on long, strong stems and are ideal for cutting. \$1.25 ea.; 3 for \$3.15.

★**BETTY UPRICHARD.** H.T. Carmine and salmon. Buds are medium-sized, long-pointed and open to large, semi-double flowers. Its spicy blooms are large; the outside of the petals is deep carmine, inside silvery salmon. \$1.10 ea.; 3 for \$2.75.



EVERBLOOMING



★Crimson Glory ①

★**CRIMSON GLORY.** H.T. ① Plant Pat. 105. Deep crimson. A "glory" Rose, glorious in its perfect form, its size and its fragrance. Among all the other red Roses, Crimson Glory is easily recognized by its large buds of typical urn-shape which open into full, well-formed delightfully fragrant blooms of a deep vivid crimson, shaded ox-blood-red and finished with a velvety nap. Still "Tops" in red. \$1.50 ea.; 3 for \$3.75.

★**DAINTY BESS.** H.T. Blush-pink. Dainty indeed in form, color and delicate, wild-rose fragrance. However, the greatest charm of this Rose is the mass of long, wine-red filaments which contrast so artistically with the soft blush-pink petals. Single. It has no rival. \$1.10 ea.; 3 for \$2.75.

★**DICKSONS RED.** H.T. Page 11. ① Plant Pat. 376. Scarlet. Noted for large, magnificently formed, glowing scarlet, delightfully fragrant blooms that hold their color in the hottest sun. This is one of the finest of the newer Hybrid Teas and an All-America Rose Selection. \$1.25 ea.; 3 for \$3.15.

★**DOROTHY JAMES.** H.T. Chamois-pink. This large-flowered two-tone Rose opens from an ovoid bud of carmine-rose to a great 50-petaled bloom of soft chamois-pink. A dependable all-summer bloomer. The plants are furnished with disease-resistant, holly-like foliage. \$1.10 ea.; 3 for \$2.75.

★**DR. KIRK.** H.T. ② Scarlet. Magnificent, heavy-textured blooms of burnished flame-scarlet come singly on long, bronzy stems. The large, spicily fragrant flowers last well when cut. \$1.25 ea.; 3 for \$3.15.

★Dr. Kirk

②



★**DUQUESA DE PENARANDA.** H.T. Copper-apricot. Long-pointed buds of apricot-orange open to sweetly perfumed, artistic blooms of soft coppery apricot. The color becomes richer in the fall—a luscious cinnamon-peach shade—but it is lovely throughout the entire season and noted for almost continuous bloom. No wonder it has remained one of the constantly popular Roses for many years. \$1.10 ea.; 3 for \$2.75.

★**ECLIPSE.** H.T. ③ Plant Pat. 172. Golden yellow. Distinctly different from any other Rose, with "super-streamlined" buds which often exceed 2 inches in length, ornamented with narrow, branching sepals which contrast harmoniously with the gold of the petals. It is most prolific, the beautiful tapering buds coming in quantities on rigid, upright stems on a vigorous plant with disease-resistant foliage. \$1.25 ea.; 3 for \$3.15.

★Eclipse ③



★**EDITOR McFARLAND.** H.T. Page 17. ① Deep pink. Vigorous, healthy, upright plants are freely furnished with beautifully modeled buds and fragrant blooms of deep pink on strong, wiry stems. The flowers keep their form and color for days when cut. \$1.10 ea.; 3 for \$2.75.

★**ETERNAL YOUTH.** H.T. Plant Pat. 332. Clear pink. You will be enchanted with the fresh youthful beauty of this Rose. The exquisitely formed clear pink blooms are at times suffused with salmon and they stand firm and erect, with the poise of aristocrats, which they really are in the Rose world. \$1.25 ea.; 3 for \$3.15.

★**ETOILE DE HOLLANDE.** H.T. Page 16. ② Crimson. This Rose charms continuously with its delightful crimson color, its form, long cutting stems, vigorous, healthy growth, and intense true Rose perfume. One of the finest, richly fragrant everblooming red Roses. \$1.10 ea.; 3 for \$2.75.

THE CONARD-PYLE CO.

"I want to add a word of appreciation for the very nice treatment regarding the Christmas gift rose bushes I ordered from you. The bushes were lovely and each recipient was delighted. They were such grand strong plants. I always feel safe sending you an order for you are so dependable. Thank you."

April 14, 1945

Mrs. G. N., Tyrone, Pa.

Rose Index, Page 23

THE CONARD-PYLE CO.



STAR ROSES

★**FAIENCE.** H.T. ② Two-tone peach-pink and yellow. Beautifully modeled buds of yellow, lightly brushed with carmine, open to 50-petaled blooms with rich yellow base that shades gradually to peach-pink at the tips. A most satisfactory Rose the entire growing season for it blooms so freely and the beautifully tinted flowers last long on the bush or when cut. **\$1.10 ea.; 3 for \$2.75.**

★**GIRONA.** H.T. Page 16. ① Multicolored. Lovely buds of Turkey-red and golden yellow, on 12 to 18-inch stems, open to blooms of 20 to 30 petals. The outside row of petals becomes light Tyrian-rose and makes a lovely collar for the inner petals of soft golden yellow—a charming color combination. Alluring, rich, attar-of-rose fragrance. **\$1.10 ea.; 3 for \$2.75.**

★**GLOAMING.** H.T. Plant Pat. 137. Fawn-orange. A novel-colored Rose that is particularly lovely in the half-opened bud stage when the color is fawn-orange. The open blooms are an unusual shade of pink, overlaid with salmon. **\$1.25 ea.; 3 for \$3.15.**



①
★Dicksons
Red

①
Desc.
page 10

★**GOLDEN DAWN.** H.T. Maize-yellow. Magnificent, large, full-petaled, tea-scented, maize-yellow blooms are borne almost continuously on plants furnished with lovely, glossy, disease-resistant, holly-like foliage. Highest ranking Rose (listed in Class AA rating of H.T.'s) in 1945 American Rose Society Annual. **\$1.10 ea.; 3 for \$2.75.**

★**GOLDEN SASTAGO.** H.T. Buttercup-yellow. A sport of the great Condesa de Sastago. This clear, gleaming yellow, deliciously fragrant flower is a continuous joy to the amateur gardener. Of fine, upright form, it is noted for robust growth and freedom of bloom. **\$1.10 ea.; 3 for \$2.75.**

★**IMPERIAL POTENTATE.** H.T. Deep pink. This is indeed an imperial pink Rose in every way. The charming buds are beautifully modeled and open to 50-petaled blooms of deep, shining pink, slightly lighter on reverse of petals. The fragrant flowers come profusely and last long when cut. **\$1.10 ea.; 3 for \$2.75.**

★**JOANNA HILL.** H.T. Yellow. Attractive buds of orange-yellow open to large, double flowers with an orange center, paling to cream-color at the edges of the petals. **\$1.10 ea.; 3 for \$2.75.**

Rose Index, Page 23



②
★Faience

★**KAISERIN AUGUSTE VIKTORIA.** H.T. Cream-white. Long, shapely buds open to delightfully scented, full-petaled, cream-white flowers with a slight lemon tint in the center. **\$1.10 ea.; 3 for \$2.75.**

★**LADY ASHTOWN.** H.T. Carmine-pink. A much-admired old Rose whose large, long-pointed buds open to carmine-pink blooms with a golden underglow. **\$1.10 ea.; 3 for \$2.75.**

★**LUNA.** H.T. Moonlight-yellow. The long, delicate yellow buds open to large, delightfully fragrant blooms of moonlight-yellow which age to soft cream-white. **\$1.10 ea.; 3 for \$2.75.**

★**MARGARET McGREDY.** H.T. This Rose makes a constant succession of buds and blooms all the growing season. Color is orange-scarlet which ages to carmine-rose. It has lovely Rose fragrance. **\$1.10 ea.; 3 for \$2.75.**

★**McGREDY'S SUNSET.** H.T. Plant Pat. 317. Yellow. A Rose of unusual charm. The full-petaled, fragrant flowers of clear, sunny yellow are penciled with carmine and come freely on vigorous, branching plants. **\$1.25 ea.; 3 for \$3.15.**

★**MISS ROWENA THOM.** H.T. ③ Rose-pink. This Rose has the healthy, vigorous growth of Radiance, which was one of its parents, and it is notably free in bloom. The long-pointed buds open to enormous, delightfully fragrant, rose-pink blooms which often measure 5 inches across and are fine for cutting. **\$1.10 ea.; 3 for \$2.75.**

★Miss Rowena Thom



③

★Texas Centennial

①



★Mrs. Pierre S. du Pont

④



★Angels Mateu

②



★Christopher Stone

③





★Poinsettia

⑦



★Mme. Cochet-Cochet

⑤



★Sœur Therese

⑧

STAR DOZEN

★ Rose Bed ★

In this set we take pride in including only vigorous, easy-to-grow varieties which are free in bloom, with flowers of high quality and attractive colors in good assortment. If space is limited, the 12 can be well grown in an area as small as 3' x 4', though they can well be spread to fill a bed of about 3' x 10' or 4½' x 7'. One who had never before grown roses could have a whole, showy Rose garden next summer by using three or four sets; or border a path with two sets, using one on each side.

ASK FOR OFFER 112

★ Angels Mateu. ② Desc. Plant Pat. 174. Orange- Each rose..... \$1.25 page 9	★ Mark Sullivan. ⑥ Desc. Plant Pat. 599. Multi- Each color..... \$1.25 page 8
★ Christopher Stone. ③ Scarlet-crimson... 1.10 9	★ Mrs. Pierre S. du Pont. ④ Golden Yellow... 1.10 14
★ Dr. Kirk. Flame- scarlet..... 1.25 10	★ Poinsettia. ⑦ Scar- let-red..... 1.10 14
★ Faience. Two-tone. Pink and yellow... 1.10 11	★ Ramon Bach. Plant Pat. 366. Apricot... 1.10 15
★ Good News. Plant Pat. 426. Shell-pink... 1.50 7	★ Soeur Therese. ⑧ Buttercup-yellow... 1.10 16
★ Mme. Cochet-Co- chet. ⑤ Plant Pat. 129. Coppery pink... 1.25 14	★ Texas Centennial. ① Plant Pat. 162. Rich red..... 1.10 16

The Star Dozen \$12.50 Value \$14.20

⑥

★Mark Sullivan



EVERBLOOMING



© C.-P. CO.

★Mme. Henri Guillot ①



★Mme. Joseph Perraud. ③

★**MME. BUTTERFLY.** H.T. Pink and gold. A steady bloomer with beautifully modeled flowers of tender pink, salmon, cream and gold. Highly scented and long-lasting. The blooms are superb in June and during the fall months. \$1.10 ea.; 3 for \$2.75.

★**MME. CHARLES MALLERIN.** H.T. (Mallerin.) Plant Pat. 409. Orange-flame. An outstanding sensation, with flowers that stand erect on extra-strong stems well above the large, abundant, dark green foliage. One of the earliest Roses to bloom. It recovers from the first bloom-cycle and is flowering again when many other Hybrid Teas are just forming buds. The color of the open flowers is orange, overlaid with flame, unmatched by any other Rose, and these blooms come from big buds of deep glowing orange. \$1.50 ea.; 3 for \$3.75.

★**MME. COCHET-COCHET.** H.T. Page 13. ⑤ Plant Pat. 129. Coppery pink. From the time of its introduction this lovely Rose has been a continuous success. The long, pointed buds of coppery pink open to large, semi-double, artistic flowers that simply glow with a mass of golden anthers that reflect a golden shade on the inside petals, the whole effect being a coppery pink. Rich honey-like fragrance. (See Star Dozen, page 13.) \$1.25 ea.; 3 for \$3.15.

★Mrs. E. P. Thom

②

★**MME. JOSEPH PERRAUD.** H.T. ③ Buff. The long, pointed opening buds have delightful glowing yellow sunset shades which change to nasturtium-buff as the fragrant flowers slowly unfold. \$1.10 ea.; 3 for \$2.75.

★**MME. JULES BOUCHE.** H.T. White. Large, beautifully formed buds of creamy white open with a dainty flush of pink in the center of the flower. Sweet-scented. Vigorous plants. \$1.10 ea.; 3 for \$2.75.

★**MRS. E. P. THOM.** H.T. ② Buds are long-pointed and open to well-formed blooms of clear yellow without any carmine markings. Among the best of the clear yellow everblooming varieties. \$1.10 ea.; 3 for \$2.75.

★**MRS. PIERRE S. DU PONT.** H.T. Page 12. ④ Golden yellow. This is the most universally satisfactory of all golden yellow everblooming Roses for it produces more blooms per plant every season than any other Rose in this color. (See Star Dozen, page 12.) \$1.10 ea.; 3 for \$2.75.

★**MRS. SAM MCGREDY.** H.T. Page 15. ② Scarlet-orange. Perfectly modeled flowers with Sweetbriar fragrance and rich coloring of scarlet and orange are usually borne singly and erect on beautiful plants with bronzy stems and shiny bronzy foliage. \$1.10 ea.; 3 for \$2.75.

★**POINSETTIA.** H.T. Page 13. ⑦ Scarlet. Lovely well-formed, long buds and vividly colored flowers of poinsettia-scarlet, which suggested the name. The large, brilliant blooms are slightly fragrant and come freely on erect, healthy plants. (See Star Dozen, page 13.) \$1.10 ea.; 3 for \$2.75.

★**PRESIDENT HERBERT HOOVER.** H.T. Multi-colored. The large, beautifully modeled, delightfully fragrant blooms of scarlet, yellow, cerise and flame colors, come singly on erect, firm stems. One of the grandest Roses for cutting. Tall, vigorous plants. \$1.10 ea.; 3 for \$2.75.



STAR ROSES

★**PRESIDENT MACIA.** H.T. Two-tone pink. A notably vigorous plant, well furnished with an abundance of healthy, leathery foliage. The firm, long-pointed carmine tinted buds open to great, full-petaled, fragrant blooms with the inside of the petals flesh-pink. **\$1.25 ea.; 3 for \$3.15.**

★**RADIANCE.** H.T. Rose-pink. The two-toned pink, cupped flowers have a pungent, true Rose fragrance. In continuous demand on account of its vigorous healthy growth and remarkable freedom of bloom. **\$1.10 ea.; 3 for \$2.75.**

★**RAMON BACH.** H.T. (3) Plant Pat. 366. Apricot-buff. The flowers of this variety are unusually large and full-petaled—a very double bloom. These come singly on strong, straight stems and have an agreeable, fruity fragrance. The opening blooms show a lovely apricot-buff on the back of the petals with a touch of salmon-pink on the inside, the combination making a soft amber-yellow with a luminous glow. This is a tall growing variety and especially good for making a mass display in the garden. The flowers hold their color and are attractive even after they have opened to their fullest. **\$1.10 ea.; 3 for \$2.75.**



★Mrs. Sam McGredy (2) Desc. page 14



★Red Radiance (1)

★**RED RADIANCE.** H.T. (1) Cerise-red. A sport of Radiance, it has the same form, habit of growth, fragrance, and healthy foliage. The difference is in the color, which is an even shade of cerise-red. **\$1.10 ea.; 3 for \$2.75.**

★**R. M. S. QUEEN MARY.** H.T. Plant Pat. 249. Salmon-pink. The form, color and fragrance are all alluring. Long buds open to firm-petaled flowers of salmon-pink. **\$1.25 ea.; 3 for \$3.15.**

★**ROME GLORY.** H.T. Plant Pat. 304. Rose-red. This tall-growing variety holds its noble buds and mammoth, long-lasting fragrant blooms erect on long, strong stems. **\$1.50 ea.; 3 for \$3.75.**

★**ROUGE MALLERIN.** H.T. Scarlet. The alluring Damask fragrance is but one of the excellent qualities of this favorite. The pointed buds of brilliant red open to 3½-inch blooms of glowing scarlet. **\$1.10 ea.; 3 for \$2.75.**

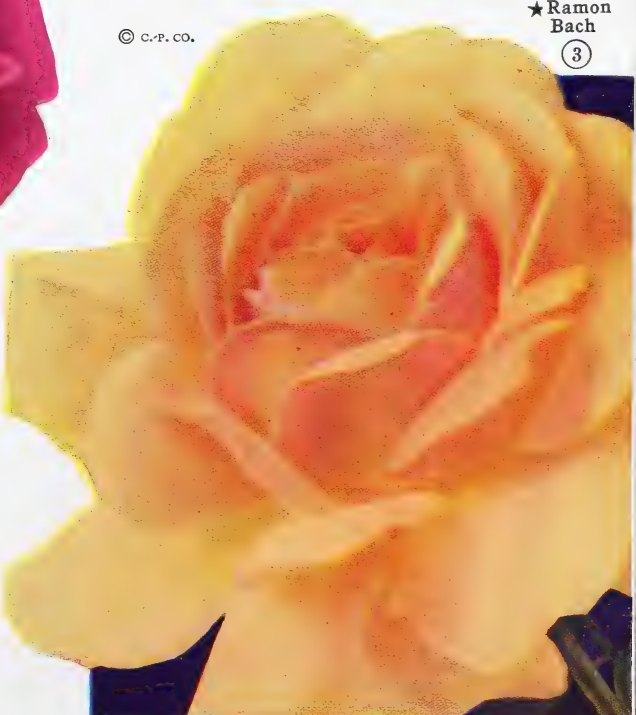
8 OLD FAVORITES \$7.65
(Value \$8.80) sent postpaid

	Each	Page
★ Ami Quinard. The darkest of the reds.	\$1.10	9
★ Betty Uprichard. Carmine and salmon.	1.10	9
★ Condesa de Sastago. Brilliant contrasting shades of yellow and raspberry-red.	1.10	9
★ Poinsettia. Poinsettia-scarlet.	1.10	13-14
★ Mrs. E. P. Thom. Clear, true yellow.	1.10	14
★ President Hoover. Multicolor blending of scarlet, yellow, cerise and flame colors.	1.10	14
★ Red Radiance. Cherry-red, with all the virtues of Radiance, from which it comes.	1.10	15
★ Talisman. Multicolor: orange, yellow and rose-red.	1.10	16

An excellent assortment for starting a Rose planting or extending an established garden. These are all well-loved varieties which have proved their lasting worth in gardens all over the country.

ASK FOR OFFER 115

© C.-P. CO.



★Ramon Bach (3)



①

★Girona
Desc.
page
11

EVERBLOOMING STAR ROSES

★**THE DOCTOR.** H.T. Satiny pink. The buds are long and pointed, expanding to enormous flowers when fully open. One of the most fragrant of pink Roses, its exquisite scent is so intense it can be detected many feet away. Of fine form, the color is a uniform silvery pink in both bud and open flower. Constantly growing in favor as it becomes better known. Not so prolific as some other varieties, but the blooms it has more than compensate Rose-growers who enjoy extra quality. Was the Sweepstakes winner at the great Portland Rose Show, fall of 1943. \$1.10 ea.; 3 for \$2.75.

★**WARRAWEE.** H.T. Plant Pat. 140. Shell-pink. Named for the place of its origin in Australia. Long, pointed, salmon-pink buds open to 4-inch or larger flowers of beautiful shell-pink. Spicy clove-pink fragrance. Has all the vigor and freedom of bloom of Radiance. Flower double and high-centered, bud long-pointed. \$1.25 ea.; 3 for \$3.15.

★**WHITE BRIARCLIFF.** H.T. ③ Plant Pat. 108. An ideal white Rose for the garden and for cutting. The exquisite, long, streamlined buds are continuously produced in great quantities. Fully double and pure white in both bud and open flower. \$1.25 ea.; 3 for \$3.15.



★**SIGNORA.** H.T. Plant Pat. 201. Bicolor. Long, tapering buds of brownish orange are followed by great blooms of mandarin orange and salmon. Warmly praised from Maine to California. \$1.25 ea.; 3 for \$3.15.

★**SNOWBIRD.** H.T. White. Snow-white from the bud until the petals fall. For bedding it is unsurpassed. The fragrant, pure white flowers are perfectly formed, full-petaled, and are often 4 inches across. Snowbird tops the list of all white Roses in the table of rating for Class AA varieties of H.T.'s, as published in the American Rose Society's 1945 Annual. \$1.10 ea.; 3 for \$2.75.

★**SOEUR THERESE.** H.T. Page 13. ⑧ Buttercup-yellow. This is the most astonishing variety in the yellow class, for it blooms in candelabras (not clusters) of from 5 to 15 flowers, forming on top of sturdy canes that hold the blooms erect. Each flower is fine for cutting as it comes on a wiry stem from 6 to 8 inches in length. Each perfectly formed, long-pointed yellow bud is richly marked with carmine but the open blooms are clear yellow. (See Star Dozen, page 13.) \$1.10 ea.; 3 for \$2.75.

★**TALISMAN.** H.T. Multicolored. Free in bloom. At its gayest it is a glorious combination of orange, yellow, and rose-red. It is one of the finest of all garden Roses for cutting. \$1.10 ea.; 3 for \$2.75.

★**TEXAS CENTENNIAL.** H.T. Page 12. ① Plant Pat. 162. Blood-red. This richly fragrant, blood-red variety is a sport of the great President Hoover Rose, and has all the good qualities of its parent. The tall plants are remarkably free in bloom with flowers that come on erect, firm stems and are notably fine and long-lasting when cut. \$1.10 ea.; 3 for \$2.75.



©

★White Briarcliff ③



★Etoile de Hollande

②

Desc.
page
10

5 SUPERB CUTTING ROSES (Value \$5.95) **\$5.25**

	Each	Page
★ Dicksons Red. Plant Pat. 376. Large, glowing scarlet, fragrant.....	\$1.25	10,11
★ Eclipse. Plant Pat. 172. Distinctive, streamlined yellow.....	1.25	10
★ Ramon Bach. Plant Pat. 366. Unusually large, full-petaled, apricot.....	1.10	15
★ Texas Centennial. Plant Pat. 162. Richly fragrant, clear red.....	1.10	12,16
★ White Briarcliff. Plant Pat. 108. Beautifully formed white.....	1.25	16

ASK FOR OFFER 116

Rose Index, Page 23



3 FINE ROSES \$2.75		
	Each	Page
★Poinsettia. Rich red.	\$1.10	13,14
★Girona. Brilliant yellow and rose.	1.10	11,16
★Editor McFarland. Deep pink (see below) ..	1.10	10,17
ASK FOR OFFER 117		



Desc.
page 10

★Editor McFarland. H.T. ①

HYBRID PERPETUALS

★**FRAU KARL DRUSCHKI.** The world-renowned snow-white Hybrid Perpetual Rose that repeats its blooms throughout the growing season. Not fragrant, but unsurpassed in form and size. \$1.10 ea.; 3 for \$2.75.

★**HENRY NEVARD.** This delightfully fragrant, deep crimson Hybrid Perpetual Rose repeats its glowing blooms in the fall. \$1.10 ea.; 3 for \$2.75.

MINIATURE ROSES. Hardy

3-in. Pot-Grown Plants, Postpaid

For indoor winter flowering, plants should be rested outdoors until after January 1, then brought in, repotted in fresh soil and placed in a sunny window where they will bloom in a few weeks. We can supply rested plants any time after January 1, for indoor flowering. They will not thrive in a dry atmosphere. For outside, north of Washington, D. C., we advise spring planting.

★**PIXIE.** Plant Pat. 408. The world's tiniest double white Rose. It shows pink shadings in cool weather. 75 cts. ea.; 3 for \$1.88.

★**ROSA ROULETTI.** Small, rose-pink, double flowers are about an inch in diameter. Pot-plants. 50 cts. ea.; 3 for \$1.25.

6 MINIATURE ROSES \$2.95	
(Value \$3.13) Postpaid	
3 each of PIXIE and ROSA ROULETTI	
ASK FOR OFFER 117a	

Rose Index, Page 23

★Rosa Hugonis.
Makes a lovely informal hedge ②



VERY HARDY SPECIES ROSE

★**HUGONIS (The Golden Rose of China).** ② Beautiful plants, 6 feet in height and spread, are covered to the tips of the graceful drooping canes with brilliant yellow, single blooms in early May. This beautiful shrub Rose, with its dainty acacia-like foliage and graceful growth, makes a distinctive and almost impenetrable hedge. Plant 6 feet apart to allow for proper development. Requires no attention and blooms best when planted in good unfertilized soil. \$1.10 ea.; 3 for \$2.75.

★**MAX GRAF.** A very hardy trailing Rose for embankments. The large, clear pink, single blooms come profusely and make a lovely show in June. \$1.10 ea.; 3 for \$2.75.

★**THE FAIRY.** Rosettes of seashell-pink. A low, spreading everblooming bush with shiny foliage. Like an everblooming dwarf Dorothy Perkins. \$1.25 ea.; 3 for \$3.15.

★Star Roses as Christmas Gifts

Order Star Roses for your flower-loving friends. They make a lovely, lasting and appreciated Christmas gift.

1. At Christmas time the friends for whom you order Roses will receive from us an attractive Christmas card announcing your gift. We will mail the card to arrive at the proper time.

2. On the card we write your name as donor, also the names of the Roses ordered and the time in the spring when the plants will be forwarded. Some may have to go North, South or to the Central States. We attend to the shipping time. Full planting and cultural directions go with each order.

3. Be sure to give full names and addresses to which the Roses are to be forwarded. Please print names and addresses plainly to avoid any chance of error in shipping.

4. Order Christmas gifts with your own order. It is advisable to send each order on a separate sheet.

5. By ordering Star Roses for Christmas gifts you avoid the tiresome annoyance of pushing through Christmas shopping crowds and have the satisfaction of knowing your present will be joyfully received, even if it is duplicated by someone else. There is always room for more Roses in a flower-lover's garden.

© ★Dr. J. H. Nicolas. Pillar. ③ See page 21



Flourishing

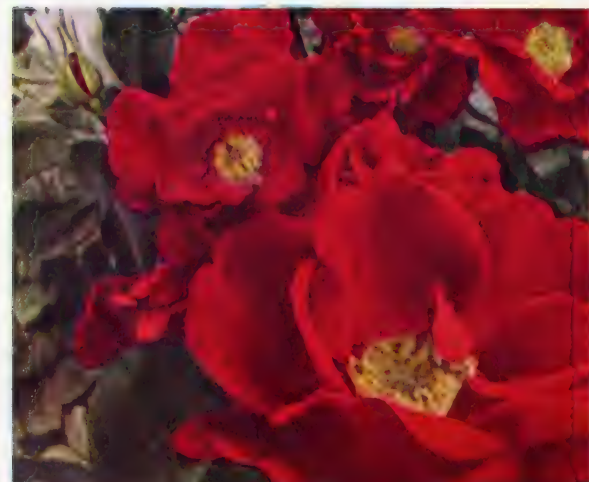


© **★Betty Prior (1)**



© C.-P. CO. **★Bouquet (2)**

© **★Donald Prior (3)**



Here are the Roses built to produce right from the start. *How* they grow, *how* they bloom!! Nothing daunts them; they are oak-hardy, so winter winds and icy cold are taken in their stride. They will endure hardship and keep on blooming more certainly than any other class.

Floribunda plants are upright in growth, they are remarkably free from disease. They will stand more punishment from neglect than other Roses and still keep their chins up. The word "defeat" is not in their dictionary.

Plant these Roses where they can be enjoyed for 5 months in the year, along driveways, around swimming-pools, bird-baths, porches or wherever color in *mass effects* is desired throughout the growing season.

These Roses are an evolution unthought of by old-time rosarians but they are here now, for *you*. Once planted you can depend on having these beauties to enjoy for years to come.

We Prepay Delivery on Roses Delivered This Fall

★BETTY PRIOR. (1) Plant Pat. 340. Large branching clusters of single blooms resembling red dogwood in shape, size and color. The plants are abundantly branched and continuous in bloom. Growth 3½ ft. \$1.10 ea.; 3 for \$2.75.

★BOUQUET. (2) Clouds of brilliant rose-red blooms that look like camellias almost hide the foliage. Each branching cluster makes a long-lasting bouquet. Very effective in mass plantings. Growth 2 to 2½ feet. \$1.10 ea.; 3 for \$2.75; 12 for \$10.

★DONALD PRIOR. (3) Plant Pat. 377. This sparkling red, 12-petaled variety is a beautiful mate for Betty Prior for both grow to about 3½ feet and have large, shiny foliage. \$1.10 ea.; 3 for \$2.75.

★FLORADORA. For illustration and description see back cover page. \$1.50 ea.; 3 for \$3.75.

★GRUSS AN AACHEN. The plants of this old favorite are almost smothered with bloom the entire growing season. Big, 60-petaled flowers of creamy white become exquisitely tinted with carmine in the fall. Height 18 to 36 inches. \$1.10 ea.; 3 for \$2.75.

★KRONPRINSESSE INGRID. Page 19. (4) This large-flowered variety is very showy with its two-tone flowers of pomegranate-red and rose-pink. It blooms consistently all season on neat, symmetrical plants. Growth 2 to 2½ feet. An entire bed of this lovely Rose, planted 15 inches apart, will rival a bed of annual flowers with its large, glowing blooms and when planted will last for years. \$1.10 ea.; 3 for \$2.75.

4 SAMPLE FLORIBUNDAS \$3.65

(Value \$4.40)

One each of Bouquet, Kronprinsesse Ingrid, Koralle and Poulsen's Yellow

We ship the same quality plants in all group offers as are sent on individual orders.

ASK FOR OFFER 118

© C.-P. CO. **★Poulsen's Yellow. (4)** Desc. page 19.



Floribundas

★**KORALLE.** ① Impressively lovely, wavy-petaled, rose-red, semi-double blooms come in masses on erect-growing plants about 2 feet in height. **\$1.10 ea.; 3 for \$2.75.**

★**LITTLE MISS MUFFETT.** Unusually charming flowers like 20-petaled, coral-pink camellias are borne continuously in open, branching heads of 5 to 10 blooms on sturdy, healthy plants. Growth 2 feet. **\$1.10 ea.; 3 for \$2.75.**

★**PERMANENT WAVE.** ③ Plant Pat. 107. Wavy-petaled blooms of rich rose-pink come in clusters of 6 or more from unique, bronzy, cochineal-carmine buds. Growth 2 to 2½ feet. **\$1.10 ea.; 3 for \$2.75.**



© C. P. CO.

★Koralle ①

5 POPULAR FLORIBUNDAS \$4.85

(Value \$5.80)

One each Pinocchio, Plant Pat. 484; Red Ripples, Plant Pat. pending (see back cover page for these two); Betty Prior, Plant Pat. 340; Donald Prior, Plant Pat. 377; and Permanent Wave, Plant Pat. 107.

5 Fine Varieties ASK FOR OFFER 119

★**PINOCCHIO.** Plant Pat. 484. For illustration and description see back cover page. **\$1.25 ea.; 3 for \$3.15.**

★**POULSEN'S COPPER.** ② Plant Pat. 446. A lovely new color for the Floribunda class. Coppery-colored blooms age to a charming pink with orange reverse but never lose their charm. Height 2 to 2½ ft. One of the earliest to come into bloom in the spring. **\$1.10 ea.; 3 for \$2.75.**

★**POULSEN'S YELLOW.** Page 18. ④ The rare true yellow Floribunda. Dainty, carmine-tinted buds and flowers of clear yellow come in lovely, open sprays. Lovely, too, for cutting for indoor decorations. Height 2 to 2½ ft. **\$1.10 ea.; 3 for \$2.75; 12 for \$10.**

★**RED RIPPLES.** Plant Pat. pending. For illustration and description see back cover page. **\$1.25 ea.; 3 for \$3.15.**

★**SUMMER SNOW.** Plant Pat. 416. You need a good white to complete a planting of Floribundas, and here it is. Hardy, dwarf plants that become almost covered with snow-white blooms. 2 ft. **\$1.25 ea.; 3 for \$3.15.**

★**THE FAIRY.** For description see page 17. **\$1.25 ea.; 3 for \$3.15.**

★**WORLD'S FAIR.** Plant Pat. 362. The best known of all the larger-flowered Floribundas. Large, delightfully fragrant, velvety crimson flowers are freely produced all season on 2 to 2½-foot plants. **\$1.10 ea.; 3 for \$2.75.**

★**TOPAZ.** Polyantha. Plant Pat. 300. Dainty yellow buds and sulphur-yellow, starry blooms. Low, spreading growth, height 12 to 15 inches. **\$1.25 ea.; 3 for \$3.15.**



© C. P. CO.

★Poulsen's Copper ②

©

★Permanent Wave ③

★Kronprinzesse
Ingrid.
Desc. page 18.

© C. P. CO.

④



HARDY CLIMBING ROSES

TO SKYLINE YOUR PROPERTY

Hardy Climbing Roses provide more blooms for the ground space occupied than any other high-class flowering plant. When the flowers are gone the lovely foliage remains on the arches, arbors, trellises, fences, or wherever the plants are grown.

The letter after the names indicates the type of growth: C., Climbers, vigorous varieties that make massive canes and climb many feet; P., Pillar Roses grow only 6 to 8 feet.

★**MARY WALLACE.** C. Early and very hardy. Vigorous plants are covered with large, glowing rose-pink flowers, a perfectly glorious show in June and in favorable seasons has some repeat blooms in the fall. \$1.10 ea.; 3 for \$2.75.

★**PAUL'S SCARLET CLIMBER.** P. ② Midseason. Vivid scarlet and marvelously attractive when in full bloom. A row of Paul's Scarlet on a fence is breath-taking in beauty and the colorful show keeps up for weeks. In favorable seasons this Rose repeats in the fall. \$1.10 ea.; 3 for \$2.75.

★**SILVER MOON.** C. Midseason. Great silvery white, semi-double blooms with center of glowing, golden stamens and a foil of dark leathery foliage on canes that will grow to 12 feet in a season. \$1.10 ea.; 3 for \$2.75.

PRUNING

Do not expect hardy Climbing Roses to bloom the first year. All on this page generally require a full growing season after planting before they bloom. Do not prune away any of the first year's growth as this is blooming wood for following years. None of the Climbers listed on these two pages require pruning except as later required for thinning, shaping and keeping within bounds.

★**SPANISH BEAUTY (Mme. Gregoire Staechelein).** C. Early. This "Queen of the pink Climbing Roses" when in bloom is a thrilling sight. Long-pointed crimson buds open to great, urn-shaped flowers of iridescent pearl-pink with splashes of ruby-carmine on the outside of the petals. These flowers are delightfully fragrant; they come on 12 to 18-inch stems and are produced so lavishly they almost hide the plant. Later, they are followed by large, buff-colored seed-pods. \$1.10 ea.; 3 for \$2.75.



★**Doubloons**



★**Paul's Scarlet Climber**

★**CLIMBING AMERICAN BEAUTY.** C. Very early. Large, sweet-scented, light crimson or deep rose-pink flowers decorate the plant from base to top. You can cut quantities of the long-stemmed blooms for indoors without spoiling the beauty of the plant. \$1.10 ea.; 3 for \$2.75.

★**AMERICAN PILLAR.** C. Midseason. The most spectacular and pleasing Rose of this type. The fragrant flowers are single but come in immense heads of from 20 to 40, each head held erect on a long straight, stiff stem. Unequaled for mass decorations. \$1.10 ea.; 3 for \$2.75.

★**CITY OF YORK.** New white Climber. Plant Pat. pending. For description and illustration see page 3. \$1.50 ea.; 3 for \$3.75.

★**DOUBLOONS.** C. ① Plant Pat. 152. Early. Here is a gloriously lovely Climbing yellow Rose, noted for hardiness and vigorous, healthy growth and furnished with dark green, leathery foliage. It is recognized as a splendid all-purpose variety in this saffron-yellow color class. The shapely buds open to large, firm-textured blooms of saffron-yellow with clean, spicy fragrance. The blooms keep coming for a long time on canes that grow 10 to 12 feet. \$1.50 ea.; 3 for \$3.75.

★**DR. W. VAN FLEET.** C. Early. Has the same bloom and foliage as the Eyeblooming New Dawn (see page 21). So vigorous in growth that it will cover the side of a garage. \$1.10 ea.; 3 for \$2.75.

★**FLASH.** P. Plant Pat. 396. Early. The lovely buds are yellow with a scarlet suffusion; they open to gleaming orange-scarlet blooms in a setting of large, shining, olive-green foliage. Grows 6 to 8 feet. \$1.10 ea.; 3 for \$2.75.



3 FOR BUSHES OF BLOOM \$3.25

(Value \$3.70)

One each Climbing American Beauty, Paul's Scarlet Climber and City of York, Plant Pat. pending (see page 3)

ASK FOR OFFER 120a

★**GOLDEN CLIMBER (Mrs. Arthur Curtiss James).** C. ③ Plant Pat. 28. Early. Something we have longed for—a yellow Climbing Rose which will stand zero temperatures. Perfectly formed buds of rich gold marked with orange-scarlet, open to large, semi-double blooms the color of pure gold, and fade very little. The open flower shows a mass of pale yellow stamens which add to its beauty. It is delightfully fragrant. Coming singly on 15- to 18-inch stems, Golden Climber makes a perfect cut-flower which lasts well. \$1.50 ea.; 3 for \$3.75.

★**JACOTTE.** C. Page 21. ③ Early. Orange-apricot. A beautiful Climber which is deservedly popular. The flowers are a rich shade of orange-apricot with coppery red tints and are very fragrant. Open blooms are 3 inches or more in diameter. Shiny dark green, holly-like foliage. \$1.10 ea.; 3 for \$2.75.

4 GREAT CLIMBERS \$5.25

(Value \$6.00)

One each New Dawn, Plant Pat. 1; Golden Climber, Plant Pat. 28; Dr. J. H. Nicolas, Plant Pat. 457; and Blaze, Plant Pat. 10.

ASK FOR OFFER 120



★**Golden Climber (Mrs. Arthur Curtiss James)** ③

REPEAT-BLOOMING CLIMBING ROSES



No more waiting from June until June for blooms on your Climbing Roses for we now have repeat-blooming varieties that bloom profusely in June and keep flowering monthly until frost, though not as freely as in June.

These Roses have come through many winters successfully in our gardens and we heartily recommend them. Farther North, plant the hardiest: New Dawn, Blaze and Prosperity. The others should be planted in a more sheltered place if possible and given winter protection for two years until well-matured hard wood has formed, when less protection will be needed.

The kinds marked "Pillar" grow to a height of about 8 feet in normal soils and locations and are not as heavy in growth as the regular Climbing Roses. Pillar Roses make a beautiful show when planted against a heavy pole and the canes trained around it as they grow.

★**BLAZE**. P. ① Plant Pat. 10. Scarlet-crimson. This brilliant red Rose resembles Paul's Scarlet Climber in growth and bloom. It makes a gorgeous show for weeks in June. Under favorable conditions it often repeats in the fall. Quite hardy. \$1.50 ea.; 3 for \$3.75.



© ★Blaze. Ablaze with scarlet blooms ①



★Jacotte
③
Desc.
page 20

★**DR. J. H. NICOLAS**. P. Page 17. ③ Plant Pat. 457. This modern, very double, large-flowered pillar Rose, which grows 6 to 9 feet in a season, is sensational in the quantities of beautiful, fragrant, rose-pink flowers produced each year. The super-sized, 50-petaled blooms are like large Hybrid Teas and when they are spent just pinch them off and new flowers will form, but not as profusely as in June. \$1.50 ea.; 3 for \$3.75.

★**MERMAID**. C. Immense, single blooms of sulphur-yellow with a glorified center showing a heavy, shaggy mass of rich golden anthers. \$1.25 ea.; 3 for \$3.15.

★**CLIMBING MRS. PIERRE S. DU PONT**. P. Golden yellow. Beautiful Hybrid Tea blooms. \$1.25 ea.; 3 for \$3.15.

★**NEW DAWN** ((Everblooming Dr. W. Van Fleet). C. ② Plant Pat. 1. Blush-pink. Awarded the first plant patent and the Bloomfield Gold Medal by the American Rose Society for "the best hardy Everblooming Climbing Rose ever produced anywhere in the world." This record remains unchallenged.

We have a specimen plant in our display garden with 12 to 15-foot canes, well clothed with rich green foliage, that year after year in June provides masses of lovely, pale pink, fragrant blooms, like Tea Roses, on long cutting stems, and repeats its bloom until hard frost. In normal seasons we have blooms on this plant in November.

Beautify your garage with Roses from June until frost. Use New Dawn on arches, arbors, fences and trellises. \$1.50 ea.; 3 for \$3.75.

★**PROSPERITY**. P. White. A lovely, fragrant, oak-hardy Rose for pillars or low fences, as it grows only about 7 feet. The well-formed flowers are full-petaled and come in great clusters all the growing season. Color is white with a dainty pink flush in the center. The hardiest, most continuous-blooming Pillar Rose. \$1.25 ea.; 3 for \$3.15.

★**CLIMBING TALISMAN**. P. A sport of the famous Talisman Rose with multicolored blooms. \$1.25 ea.; 3 for \$3.15.

3 Color Contrast Climbers \$3.95
(Value \$4.50)
One each Blaze, Plant Pat. 10; New Dawn, Plant Pat. 1; and Doubleblooms, Plant Pat. 152.
ASK FOR OFFER 121



★New Dawn blooms fr. a June until frost ②

Hardy Perennials

All prices include delivery prepaid



Phlox, Augusta

PHLOX For bloom next summer when other perennial flowers are scarce, plant hardy Phlox this fall.

6 POPULAR PHLOX 40 cts. each; 3 of a variety for \$1.10

Europa. White with carmine eye. Richly fragrant.

George Stipp. Lovely salmon with bright crimson eye.

Miss Lingard. Pearly white; tall. June to October.

Painted Lady. Silvery pink with cherry eye.

Starlight. Star shaped; violet to lilac, white center.

Thor. Deep salmon-pink with carmine-pink shading. Tall.

OFFER 122. 6 for \$2 (1 each of above 6 varieties)

2 EXTRA-FINE PHLOX 60 cts. each; 3 of a variety for \$1.50

Augusta. Plant Pat. 252. Unfading, brilliant cherry-red, intense and sparkling.

Columbia. Plant Pat. 118. Cameo-pink with faint blue shading at center. The "perpetual flowering" Phlox.

OFFER 122a. 6 for \$2.95 (3 each Columbia and Augusta)

8 NEWER PHLOX

50 cts. each; 3 of a variety for \$1.35

American Beauty. Clear, deep pink. Large flowers on strong, healthy plants.

Aurora. Light salmon-pink with rays of white in each floret.

Apollo. Deep rose-red.

Border Queen. Large, broad clusters of rich watermelon-pink. Plant rather dwarf and spreading.

Flash. Crimson with orange-scarlet center. A lovely new variety.

Mary Louise. The largest clear white.

Pink Charm. Bright, clear pink with scarlet sheen. Medium height; many flower stems.

Salmon Beauty. Clear salmon-pink with white eye. Outstanding.

OFFER 122b. 1 each of above 8 for \$3.50

16 PHLOX 1 each of all listed **OFFER 122c** \$6.25

AQUILEGIA (Columbine) Long-Spurred Hybrids. Gay and showy blooms in May and June; 2 to 3 feet high. They thrive in sun or shade. **3 for \$1.10.**

COREOPSIS, Golden Shower. Masses of clear golden yellow, unfading blooms, distinctly different from the common Coreopsis. The star-like flowers are only an inch and a half in diameter and come from June until frost on beautiful, erect plants. The height is about 24 inches. **50 cts. ea.; 3 for \$1.25.**

GYP SOPHILA (Baby's Breath), Rosy Veil. A low-growing, double, pink variety of this dainty flower. Established plants reach 2 feet height; long blooming season, summer and fall. Ideal for adding to bouquets. **50 cts. ea.; 3 for \$1.25.**

DELPHINIUMS GARDEN ARISTOCRATS

BLACKMORE & LANGDON HYBRIDS. These range from single to fully double, and from deep violet to palest lavender and with lovely intermediate shades. Flowers large, spikes tall, strong and graceful. **50 cts. ea.; 3 for \$1.35.**

GIANT PACIFIC HYBRIDS. Individual flowers often 2 to 3 inches across. Various shades of blue make this one of the most striking strains of Delphinium. **50 cts. ea.; 3 for \$1.35.**

BELLADONNA (Everblooming Hardy Larkspur). The most continuous-blooming light blue Delphinium. 3 to 4 ft. **3 for \$1.**

BELLAMOSUM. Everblooming. The dark blue form of Belladonna. 3 to 4 ft. **3 for \$1.**

OFFER 122d. 1 each, above 4 Delphiniums for \$1.60

OFFER 122e. 3 each, above 4 Delphiniums, 12 in all, for \$4.25

OFFER 122f. 3 each Belladonna and Bellamosum, 6 in all, for \$1.85



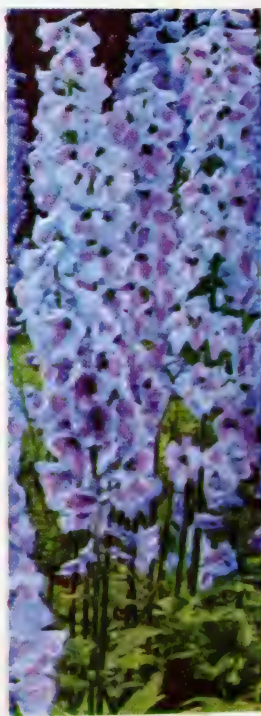
Aquilegia (Columbine)



© New Coreopsis, Golden Shower



Gypsophila, Rosy Veil



Delphiniums Blackmore & Langdon

ROSE INDEX

American Beauty, Climbing	Page 20
American Pillar	20
Ami Quinard	9
Angels Mateu	9,12
Better Times	9
Betty Prior	18
Betty Uppichard	9
Blanche Mallerin	6
Blaze	21
Boudoir	6,7
Bouquet	18
Bright Wings	6
California	9
Cathrine Kordes	9
Charlotte Armstrong	6,8
Christopher Stone	9,12
City of York, Climber	3
Climbing American Beauty	20
Condesa de Sastago	9
Countess Vandal	9
Crimson Glory	10
Crimson King	6
Dainty Bess	10
Dicksons Red	10,11
Donald Prior	18
Don Rose	6
Dorothy James	10
Doublions	20
Dr. J. H. Nicolas	17,21
Dr. Kirk	10
Dr. W. Van Fleet	20
Duquesa de Penaranda	10
Eclipse	10
Editor McFarland	10,17
Eternal Youth	10
Etoile de Hollande	10,16
Faience	11
Fantastique	6,8
Flash	20
Floradora	24
Frau Karl Druschki	17
Fred Edmunds	6
Girona	11,16
Gloaming	11
Golden Climber	20
Golden Dawn	11
Golden Harvest	6
Golden Sastago	11
Good News	7
Grande Duchesse Charlotte	4
Gross an Aachen	18
Heart's Desire	7
Henry Nevard	17
Highland Park	7
Home Sweet Home	7
Horace McFarland	4
Hugonis	17
Imperial Potentate	11
Jacotte	20,21
Joanna Hill	11
Kaiserin Auguste Viktoria	11
Katherine T. Marshall	7,8
Koralle	19
Koronet	6
Kronprinzessin Ingrid	18,19
Lady Ashtown	11
Little Miss Muffett	19
Lowell Thomas	5
Luna	11
Mme. Butterfly	14
Mme. Charles Mallerin	14
Mme. Chiang Kai-shek	7
Mme. Cochet-Cochet	12,14
Mme. Henri Guillot	14
Mme. Joseph Perraud	14
Mme. Jules Bouche	14
Mme. Marie Curie	7
Margaret McGredy	11
Mark Sullivan	8,12
Mary Margaret McBride	5
Mary Wallace	20
Max Graf	17
McGredy's Sunset	11
Mermaid	21
Miniatures	17
Mirandy	5
Miss Rowena Thom	11
Mrs. E. P. Thom	14
Mrs. Paul R. Bosley	8
Mrs. P. S. du Pont	12,14
Mrs. P. S. du Pont, Climber	21
Mrs. Sam McGredy	14,15
Narzisse	8
New Dawn	21

5,000 Apologies

To Our Patient and Understanding Friends:

We think of you as such—for so many wrote that they realized the war-time stresses and strain under which we were working, with some of our people doing as much each as might be expected ordinarily from double the number, for our staff was practically stripped of its strongest, middle-aged men. Workers who have been with us 30, 35, and 40 years continued on. We've had many severe losses in our personnel, but we've also had most loyal assistance, in many cases by home-makers who continue to provide a woman's indispensable giving of herself at home before and after office hours.

Our deepest regret and chagrin comes from having allowed our long-time friends, who know our record for satisfactory replies to all their demands, to have found that, even here, in 1945 spring we were slow in answering some letters. We failed to send always what was ordered, because we were sold out, and after too long a wait sent a refund.

We expect this year to do better. We have about a normal supply of Roses of our own growing and expect to be able to fill all fall orders. We cannot predict the spring. We've reorganized our staff, replenished stock, and are ready to do our best to meet a heavier demand.

When you order from this catalog, you will be ordering from a firm with a nearly fifty-year record as Rose Specialists.

Our Roses are No. 1-, 2-year-old field plants on Multiflora Japonica roots and mostly West Grove grown.

All prices include delivery charges which we prepay. Prices and group offers in this catalog apply only until Dec. 15, 1945.

THE CONARD-PYLE CO.

Robert Pyle
President



STAR ROSE TRADE-MARK

This is a durable, celluloid, star-shaped tag bearing the name of the Rose on back. You have the satisfaction of always knowing a Star Rose by name when it blooms. Insist on having the Star Rose Trade-Mark on every Rose plant you purchase.

Star Rose Guarantee

We guarantee every Star Rose to bloom the first blooming period after purchase; failing which we will replace the plant or refund its cost.

Paul's Scarlet Climber	Page 20
Peace	1-3
Peachblow	8
Permanent Wave	19
Pinocchio	24
Pixie	17
Poinsettia	13,14
Poulsen's Copper	19
Poulsen's Yellow	18,19
President Hoover	14
President Macia	15
Prosperity	21
Radiance	15
Ramon Bach	15
Red Radiance	15
Red Ripples	24
R.M.S. Queen Mary	15
Rome Glory	15
Rouge Mallerin	15
Rouletti	17
Signora	16
Silver Moon	20
Snowbird	16
Sœur Therese	13,16
Spanish Beauty	20
Summer Snow	19
Talisman	16
Talisman, Climber	21
Texas Centennial	12,16
The Doctor	16
The Fairy	17
Topaz	19
Warrawee	16
White Briarcliff	16
World's Fair	19

"HOW TO GROW ROSES"

19th Edition, New Illustrations

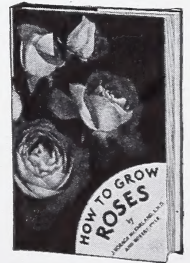
By Robert Pyle and J. Horace McFarland, L.H.D.

192 pages; cloth bound

32 pages in natural colors

The most dependable reference book on Rose-growing for those who wish to have something to turn to at once for sound, practical advice when Rose problems arise.

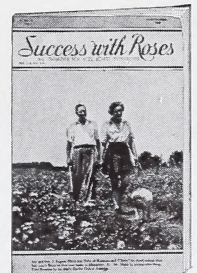
Price, \$2, postpaid or, with a \$10 order, only \$1.20, postpaid.



ROSE MAGAZINE

25 cts. for 4 issues

"Success With Roses" is freely illustrated and full of entertaining news of Roses, Rose people, and Rose events. Normally it is issued March, April, May, and October. Single copies free on request; 25 cts. for four issues.



THREE CHOICE NEW . . . FLORIBUNDA ROSES



© C.-P. CO.

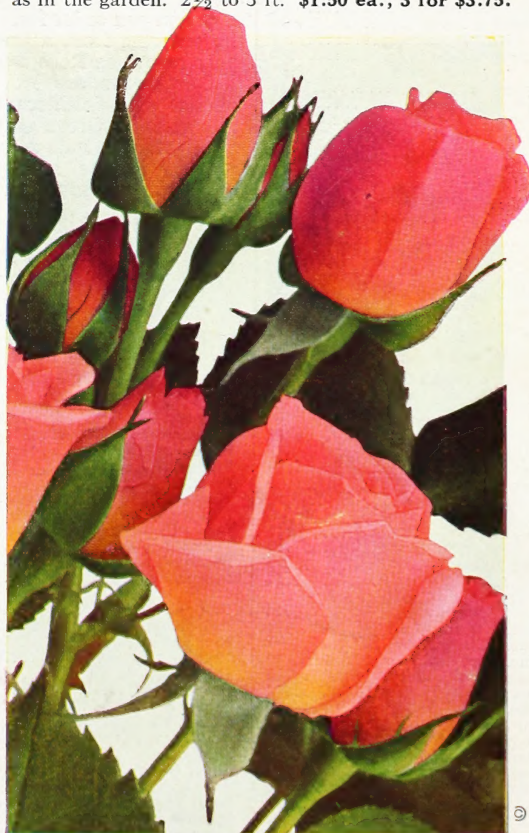
PRIZE SET OF THESE THREE

For quantities of charming flowers year after year, continuous bloom in your garden and a constant source of cut-flowers in three different, attractive colors order these.

3 Choice New Floribunda Roses **\$3.50**
ASK FOR OFFER 124

© C.-P. CO.

★**FLORADORA.** Plant Pat. Pending. The gayest Floribunda of them all. It is spectacular, constantly in bloom and an entirely new shade in Roses—a brilliant cinnabar-red, as arresting under artificial light as in the garden. 2½ to 3 ft. \$1.50 ea.; 3 for \$3.75.



©

★**PINOCCHIO.** Plant Pat. 484. Pointed buds of salmon-pink flushed gold open to full-petaled blooms of soft, clear pink. Continuous bloom on shapely, free-branching plants with ample, dark green foliage. Excellent as a border plant. The dainty blooms, coming in sprays, are charming as cut-flowers. 20 to 24 inches. \$1.25 ea.; 3 for \$3.15.



★**RED RIPPLES.** Plant Pat. Pending. A clear, true red, both buds and blooms. Masses of bloom, spring, summer and fall, on the healthiest and sturdiest of plants. 3 to 4 ft. \$1.25 ea.; 3 for \$3.15.

THE CONARD-PYLE CO. **ROBERT PYLE** President **West Grove, Pa.**

