

## Historic, archived document

Do not assume content reflects current scientific knowledge, policies, or practices.





COPYRIGHT 1936, BY THE CONARD-PYLE CO. ✓

SEE DESCRIPTION Page 2

# STAR ROSES

SPRING 1936 ✓

THE CONARD-PYLE CO.

Robert Pyle, Pres.

West Grove, Pa.

Mme. Cochet-Cochet  
Guaranteed to bloom  
Patent 129



# HERE IS YOUR STAR GUIDE TO GOOD ROSES

**STAR ROSE GUARANTEE.** We guarantee every Star Rose to bloom the first blooming period after purchase; failing which we will replace the plant or refund its cost. The guarantee does not make the Roses bloom; it is the quality of the plants which makes our guarantee safe.

**FREE WITH EVERY ORDER.** We not only send you cultural directions that will make Rose-growing easy but also to each 1936 customer will be sent, if requested, the current issue of a little magazine, "**Success with Roses**" and **Rose News**. Each issue will tell what to do in your garden. It is illustrated and full of entertaining true stories about our new Roses, Rose people, Rose events, etc. We travel far and wide to find and inspect new Roses. We test them here before offering them to you and we are constantly in touch with Rose experts in every Rose nation. In "Success with Roses" and Rose News you, too, will enjoy these experiences.

For quite complete information, read our book "**HOW TO GROW ROSES,**" over 200 pages. (See details, page 30.)



Our **TRADE-MARK.** As a merit-mark of Quality, significant of the national recognition of Roses of such distinction, the **Star Rose Trade-Mark** was registered with the United States Government. Wired fast to every Star Rose is this Trade-Mark, a durable, celluloid, Star-shaped tag bearing the name of the Rose on the back. That tag is your insurance certificate, a token which comes direct to you from this firm of 38 years' standing. We supply the

Roses and we guarantee your success.

**VISIT STAR ROSE-GARDENS.** West Grove is on U. S. Highway No. 1, 40 miles from Philadelphia, 60 miles from Baltimore, 10 miles south of the Lincoln Highway at Coatesville. 150,000 Roses will be in bloom for you all summer and fall. (Red Rose Inn is right alongside Star Rose Gardens.) Come any hour, any day. Visitors always welcome!

*Robert Pyle*  
President

## ★ Mme. Cochet-Cochet H.T.

(See Front Cover)

(C. Mallerin, 1934.) Plant Patent No. 129. Coppery pink. This winner of the 1932 Bagatelle Gold Medal is one of the loveliest of the new Roses, the flowers reminding us of the beautiful, but hard to grow, Los Angeles. Long-pointed buds of coppery pink, flushed orange, open to 4½-inch flowers of splendid form, of the same color as the bud except that the orange softens to gold. The petals vary from 20 to 40, and when open they disclose a mass of golden stamens. As the flower ages the color changes to soft satiny pink with attractive tints but does not lose any of its loveliness and is unusually clear and refreshing at all times. Sweet honey-like fragrance. The plants are tall, with good foliage. This is one of the most free-blooming Roses we grow. Experts judging this Novelty in our fields without exception have shown great enthusiasm. **\$1.50 each; 3 for \$3.75.**

*No further discount on this patented Rose*

## ★ Tom Thumb (Certificate of Merit American Rose Society) →→→

("Peon" by J. de Vink.) Plant Patent applied for. Introduced in America by The Conard-Pyle Co. "A red Rose-bud the size of a grain of wheat, a bloom that can open inside a thimble, and a young plant you could cover with a coffee cup"—that, in a "nut-shell," is Tom Thumb.

One of our friends wished us to name it "Little Red Riding Hood" because of the charming color of the little flowers. Another urged that we call it "Mickey Mouse"; to be sure its pea-green leaves are no larger than mouse ears, but since famous Tom Thumb was a perfect specimen of manhood in miniature, that name best fits this charming little Rose.

The color of the bud is deep crimson which grows slightly lighter as the bloom opens, and then you discover a bonnie bright eye in the heart of each flower, which is formed by a touch of white at the base of each one of its twelve or fifteen petals.

"Tom Thumb" is as sturdy as he is little; as hardy as most rugged Roses. Try planting several in your rock-garden, or make a group of them among your perennials or as a border to your pool or to your Rose-bed. Tom Thumb will thrive, will bloom and bloom and bloom all season through, and then come bravely through a winter of many degrees below zero in the open, and be right there to greet you when the tulips bloom.

He even responds to window-sill care, and for cottage, apartment, or palace, will win his way as a favorite. Our friends declare that he is a bewitchingly fascinating "Little Prince of a Rose." **Ideal for children,** too.

Pot-plants (ready in April). **\$1 each; 12 for \$10, postpaid.**

*No further discount on this Rose*



The Tom Thumb Rose

©CIA A 193320<sup>2</sup>

JAN 14 1936

★Senora Gari



★**SENORA GARI.** H.T. (P. Dot, 1934.) Orange. See illustration. Lovely orange buds open to 4-inch flowers of buff-apricot, a new Rose shade. There is just a hint of a pinkish tint on the petals when the bloom is fully open. It is a true self-color as the inside and the reverse of the petals are of the same luscious tint. It changes color in different ways: sometimes the outside petals change first, while on other blooms one-half of the flower will change, leaving the other half the original color. The second stage is a Quaker grayish shade in perfect harmony with the buff-apricot, and when all of the petals have made the change, the flower is as attractive as when first open. An exquisite Rose at every stage. 30 petals and a rich, fruity fragrance. **\$1.50 each.\***

★**ROUGE MALLERIN.** H.T. See illustration. (C. Mallerin, 1934.) Scarlet. At last we have a new red Rose which does not blue. Pointed buds of brilliant red open to 3½-inch blooms of glowing scarlet, the deep pile on the petals making them look for all the world like pieces of rich scarlet velvet. If ever a Rose glowed, this one does—a vase of newly opened blooms in a sunny window looks like a vase of flame. As the flower ages, the scarlet softens a little, the fire smoulders, an opalescent sheen overspreads the petals, and we have a new Rose which is different but every bit as beautiful as the newly opened bloom of yesterday. It is a full Rose and a well-built flower with some 40 to 45 perfectly imbricated petals so that when fully open the center is higher than the outer rim. Of course, it is fragrant—fragrant with that rich old Damask perfume that all red Roses should have. Rouge Mallerin has a real plant, vigorous and upright, with lovely bronze young foliage which is a healthy green when mature, and the plants are very free with their wonderful flowers, even in the really trying days of midsummer. We think a lot of this Rose. Gold Medal, Saverne, 1932; Fourth Certificate, Lyon, 1934; First-Class Certificate, N. R. S., Haywards Heath, 1934. **\$2 each.\***

## Quantity Prices

for Star Roses pages 1 to 23  
except where otherwise specified

\*15% Discount on 12 to 24 Roses  
20% Discount on 25 or More Roses

Add up your order according to "each" prices and deduct from the total the discount to which you are entitled. Thus 75-ct. Roses, when 12 or more are ordered, cost only 63¾ cts. each; 25 or more cost only 60 cts. each.

Above discounts are allowed on Roses only

✎ Discounts Are Not Allowed on Special Offers  
nor on some patented varieties so marked

## 1936 Star Novelties

Amazing progress is being made these years by Rose hybridizers on both sides of the Atlantic.

Progressive Rose firms are keen to keep watch for each new sort as it appears. Rose specialists like ourselves often enjoy the advantage of previous observation two or more years in advance of introduction. Thus can we the more safely recommend from the many new ones introduced only those we select as worthy to wear the Star.

Over a quarter century ago, we started selling **Star Roses** under that name—the only branded Roses in all Rosedom. That was our earnest of superior varieties, grown under most careful supervision and **guaranteed to grow and bloom.** Since then we have never deviated from our high endeavor.

The Star Brand is for you assurance of obtaining our sturdy, well-rooted, 2-year-old field-grown plants.



★Rouge Mallerin. \$2 each\*

### \* QUANTITY DISCOUNTS

Deduct { 15% on 12 or More Roses  
20% on 25 or More Roses

See exceptions at top of this page

★ THE CONARD-PYLE CO. ★  
 STAR ROSE GROWERS . . . West Grove, Pa.



© ★Alezane. Plant Patent No. 116. \$1.50 each

★**ALEZANE.** H.T. (L. Pahissa, 1934.) See illustration. Plant Patent No. 116. Bud urn-shaped, large, reddish brown; flowers cupped, opening to sorrel, unfurling from sorrel to rich apricot, and reverse of petals sorrel veined with yellow. Petals not affected by hot or wet weather. Growth very vigorous, upright, branching. Dark green foliage. (From introducer's description.) **\$1.50 each; 3 for \$3.75.**

*No further discount on this patented Rose*

★**AMELIA EARHART.** H.T. (Louis Reymond, 1932.) Plant Patent No. 63. Yellow. Flowers very full, graduating from a deep yellow center to an outer collarette of large cream petals with a blush overtone; extremely fragrant. Leathery dark green foliage. (From introducer's description.) **\$1.50 each; 3 for \$3.75.**

*No further discount on this patented Rose*

★**ANNIE DUPEYRAT.** H.T. (C. Mallerin, 1935.) Old-rose. A new variety from France which is distinctly different from any Rose now in commerce. Large peach-pink buds open to 4½-inch flowers of deep old-rose with an orange base and a silvery edge to the petals—a very beautiful combination. It is very double, having 70 to 80 petals; the inner ones crimp and fold, giving the bloom the substantial appearance of some of the nicer of the old Hybrid Perpetuals. It has a "different" fruity fragrance. Plants strong and bushy with light green foliage. Certificate, Lyon, 1933. **\$1.50 each.\***

## Everblooming Novelties

★**ANGELS MATEU.** H.T. (P. Dot, 1934.) Plant Patent applied for. Orange-rose. Winner of the Foreign Gold Medal at Bagatelle in 1934. Was given 88 points at the International Rose Test-Garden, Portland, Ore., 1935. A splendid Rose in a new Rose color. Dot calls it "coral, extra." To us it is a fine deep shade of old-rose lightly flushed with orange, and the petals have an iridescent sheen. Its flowers are large—5 inches or more in diameter—with at least 50 petals and an artistic loose form. The delicious fragrance of ripe blackberries adds to its desirability. **\$2 each.\***

★**CARRIE JACOBS BOND.** H.T. Plant Patent applied for. (Howard & Smith, 1935.) Deep rose. A magnificent, full-petaled flower of deep rose color, enhanced with a coral sheen. The form is ideal and the great blooms come singly on stiff, upright canes, making this a fine Rose for cutting. Moderately fragrant. Named in honor of the author of the song "The End of a Perfect Day." **\$1.50 each; 3 for \$3.75.**

*No further discount on this Rose*

★**CARILLON.** H.T. (J. H. Nicolas, 1935.) See illustration below. Plant Patent No. 136. Coral and orange. A bedding Rose of great activity, giving at all times a note of cheer in the garden. Its long-pointed buds are orange-scarlet, contrasting pleasingly with the green sepals. The half-open bloom is a deep coral, overcast with orange, and the full bloom is large (4 inches in diameter), the inner petals being irregular but artistically arranged. The bush is branchy so that when planted in mass the whole bed is blanketed with glossy foliage upon which rest the many blooms. In our trial-garden, Carillon bloomed continuously on symmetrical plants. A truly colorful bedding variety. **\$1.50 each; 3 for \$3.75.**

*No further discount on this patented Rose*

A bed of Carillon will give you continuous enjoyment from June until hard frost.



© ★Carillon. Plant Patent No. 136. \$1.50 each

**5 PATENTED ROSES \$6.25**  
 (Value \$7.50)

All are shown in natural colors

- ★**Feu Pernet-Ducher.** Pat. No. 103. The most superb, tall-growing, everblooming yellow Rose we have ever grown. See back cover page. . . . . **\$1.50**
- ★**Better Times.** Pat. No. 23. The superb cerise-red cut-flower. See page 5. . . . . **1.50**
- ★**Carillon.** Pat. No. 136. Deep coral, overcast with orange. See illustration. . . . . **1.50**
- ★**Mme. Cochet-Cochet.** Pat. No. 129. Coppery pink, flushed with orange. See front cover. . . . . **1.50**
- ★**Warrawee.** Pat. No. 140. Shell-pink. See page 6. . . . . **1.50**

**ASK FOR OFFER NO. 4**

## ★STAR GUIDE TO GOOD ROSES

# Everblooming Novelties

★**FEU PERNET-DUCHER.** H.T. See back cover.

★**GLOWING SUNSET (Wilhelm Breder).** H.T. (W. Kordes Sons, 1934.) Plant Patent No. 104. Yellow and pink. A glorious new Hybrid Tea Rose of a most exceptional color combination and petal formation. Its long-pointed buds open to fully double flowers of most artistic form, with the inner petals lengthened and twisted in the bizarre manner of a choice cactus dahlia. The color is an indescribable combination of orange-yellow and rose-pink. When cut, the blooms keep in perfect condition for several days. They have an alluring fragrance. A free and continuous bloomer. (From introducer's description.) **\$1.50 each; 3 for \$3.75.**

*No further discount on this patented Rose*

★**HINRICH GAEDE.** H.T. (W. Kordes Sons, 1931.) Multicolored. Long-pointed, shapely bud of nasturtium-red color. Kaleidoscopic flowers—rich luminous vermilion, shaded golden yellow. Fruity fragrance. **\$1.50 each.\***



★**Condesa de Sastago.** \$1.25 each\*

★**CONDESA DE SASTAGO.** H.T. (P. Dot, 1932.) See illustration above. Copper and yellow. This Spanish novelty is the first double Rose to carry the vivid colors of the brilliant species Rose, Austrian Copper. The bud is like a ball of gold, with brilliant red stripes. When fully open, the Austrian Copper colors—fiery copper on the inside of the petals and rich gold on the reverse—make a breath-taking contrast. Alluring raspberry fragrance. 50 petals. This Rose was chosen "Queen of the Show" at the annual Rose Show of the Charleston (W. Va.) Rose Society, May 26, 1933. First Certificate, Bagatelle, 1932; Silver Medal, International Rose Test-Garden, Portland, Ore., 1934; Gold Medal, International Rose Test-Garden, Rome, 1934. **\$1.25 each.\***



© ★**Better Times.** Plant Pat. 23  
\$1.50 each

★**BETTER TIMES.** H.T. Plant Patent No. 23. See illustration. Cerise-red. The brilliant cerise flowers are large, double, and delicately fragrant. Being produced on long, strong, almost thornless stems, they are excellent for cutting. Foliage is leathery and dark green. A very free, full bloomer. (From introducer's description.) Better Times is probably the leading florists' Rose of today. It is really a cerise Columbia with the same growth and habits as its illustrious ancestor. **\$1.50 each; 3 for \$3.75.**

*No further discount on this patented Rose*

★**LUCIA ZULOAGA.** H.T. (P. Dot, 1934.) Brownish scarlet. A new Rose color with a golden undertone and an iridescence that changes the shades every time the flower moves. Dot calls it "intensive lacquer red." There are but 15 of these glorious petals but the flowers are 4 inches or over in diameter. It has a rich perfume. **\$1.25 each.\***

★**LITTLE BEAUTY.** H.T. See illustration. (Howard & Smith, 1934.) Deep pink. A splendid Rose for garden decoration, combining a mass color effect with quantities of blooms borne in a continuous succession throughout the season. (From introducer's description.) **\$1 each.\***



©

★**Little Beauty.**  
\$1 each\*  
Plant Pat. 149

## \* QUANTITY DISCOUNTS

Deduct { 15% on 12 or More Roses [See Exceptions]  
20% on 25 or More Roses [on Page 3]

★ THE CONARD-PYLE CO. ★  
STAR ROSE GROWERS . . . West Grove, Pa.

## Everblooming Novelties

★**LUCY NICOLAS.** H.T. (C. Mallerin, 1935.) Golden copper. Another large Rose of that gold and copper mixture so popular today. Lovely, orange-copper, ovoid buds open to 4½-inch flowers of satiny golden copper which, when open, give it a richness that makes it even more beautiful than in the bud form. The petalage varies from 30 to 60. Very sweet honey-like scent. **\$1.50 each.\***

★**LUIS BRINAS.** H.T. (P. Dot, 1934.) Plant Patent No. 102. Orange-copper. Fine pointed buds of orange-copper open slowly, the petals curling back, making a starry flower with a high center. It is fully double, with 40 to 45 petals, and when entirely open the color is soft old-rose, flushed with gold. It has a distinctive fragrance which is delightful. Has won Gold Medal and highest awards from French and English Rose Societies. Gold Medal, Portland, Ore., 1935. **\$1.50 each.\***

★**MME. EMILE DALOZ.** H.T. (H. Sauvageot, 1934.) Satiny pink. In these days when most of the new Roses are of some brilliant color, or striking combination of gay colors, it is refreshing to find among the novelties a true self-color. This great big, loose flower looks more like a peony than a Rose. The flowers are 4½ to 5 inches in diameter, with 30 to 40 petals, and are clean satiny pink. Delightful fragrance. **\$1.25 each.\***

★**MME. JOSEPH PERRAUD.** H.T. (J. Gaujard, 1934.) H.T. Multicolored. Winner of the Bagatelle Gold Medal, 1934, and awarded the honor at Lyon, France, of being "The most beautiful Rose in France for the year 1934." The long, slender, and pointed nasturtium-orange buds open to sweetly fragrant flowers of nasturtium-buff. **\$3 each.\***

★**MME. PIERRE KOECHLIN.** H.T. (J. Sauvageot, 1935.) Salmon. One thing about Sauvageot's Roses is that they are "different," and this new Rose is no exception. The buds are ovoid and of a peculiar shade of pale yellowish salmon. The expanding flowers are perfectly imbricated and develop into a slightly cupped bloom of soft satiny salmon-pink, a wonderfully pleasing shade not found in any other Rose today. It has the delightful Centifolia fragrance. Gold Medal, Saverne, 1932. **\$1.50 each.\***

★**NIGRETTE.** See back cover.

★**CRIMSON GLORY.** H.T. Plant Patent No. 105. Deep crimson. A beautifully modeled Rose. It is a vigorous grower, producing a great abundance of superb blooms. They are immense in the fall. The plant is of spreading habit, so desirable for garden planting. Its large buds are of typical urn-shape. They open into full, well-formed, delightfully fragrant blooms of a deep vivid crimson, shaded ox-blood-red and finished with a soft velvety nap. Silver Medal, International Flower Show, New York, Spring 1934. (From introducer's description.) See illustration. **\$1.25 each.\***

### \* QUANTITY DISCOUNTS

Deduct { 15% on 12 or More Roses [See Exceptions]  
          { 20% on 25 or More Roses [ on Page 3 ]



★Warrawee. Plant Patent No. 140. \$1.50 each

★**WARRAWEE.** H.T. (Mrs. H. C. Fitzhardinge, Australia, 1934.) Plant Patent No. 140. We have long wanted a better light pink Rose of good form for cutting. Here it is, all the way from Australia. Long-pointed, salmon-pink buds open to 4-inch, or larger, flowers of exquisite shell-pink with a slightly darker reverse. There are about 25 petals, and the bloom, when fully open, looks like a glorified Mme. Butterfly. It has the delightful spicy fragrance of the old clove pinks. The plant has all the health, vigor, and freedom of bloom of Radiance. **\$1.50 each; 3 for \$3.75.** No further discount on this patented Rose



★Crimson Glory. Plant Patent No. 105. \$1.25 each\*



# Everblooming Novelties

★**DUQUESA DE PENARANDA.** H.T. (P. Dot, 1931.) See illustration. Copper-apricot. This glorious Rose produces two distinct types of flowers: During the summer the pointed buds are a blend of apricot-orange and dark pink, opening to splendid blooms of coppery apricot. In the autumn great brownish buds open slowly to finely formed flowers of a luscious cinnamon-peach color, truly enchanting to visitors to our test-gardens who delight in the new art shades. It is sweetly perfumed. 30 petals. Gold Medal of the King, Barcelona, 1929, for the most outstanding, continuous blooming new Rose in the gardens of the late king; Certificate of Merit, Ontario Rose Test-Garden, 1933; Gold Medal, International Rose Test-Garden, Portland, Ore., 1934. **\$1.25 each.\***

★**RHEINGOLD.** H.T. Plant Patent No. 138. Golden yellow. This lovely novelty is a descendant of the greatest of all yellow Roses, glorious old Maréchal Niel. Its blooms are large (4 inches or more in diameter), fully double, and are a beautiful shade of soft golden yellow. The long-lasting flowers are fragrant, of course (all of the Maréchal's children are), and are freely produced. **\$1.50 each; 3 for \$3.75.**

*No further discount on this patented Rose*

★**ROCHFORT.** H.T. (Mallerin, 1936.) Patent pending. Orange old-rose. The progeny of two of the finest everblooming Roses of today, Mrs. Pierre S. du Pont, the supreme golden yellow Rose, and Charles P. Kilham, the well-known coral-red variety which produces such perfect blooms. From such comes this beauty with coloring hard to describe. It is somewhere between crushed-strawberry heavily flushed with orange and orange old-rose. Delightful fragrance. **\$2 each.\***

★**YVONNE MILLOT.** H.T. (Mallerin, 1935.) Apricot. Long-pointed buds of pinkish apricot open to 4-inch, artistically loose flowers of soft apricot or pinkish cream, a wonderfully pleasing shade. The large outer petals curl at the tips and the center petals are long and narrow. Rich fruity fragrance. Certificates, Lyon and Bagatelle, 1934; Gold Medal, Saverne, 1934. **\$1.50 each.\***

## 9 STAR PRIZE WINNERS

Here are nine of the finest, field-tested, recent introductions offered at an attractive group price—Roses that we are confident are capable of winning prizes for you in the novelty class at your local flower shows this year.

- ★**Catalonia.** Vivid orange-scarlet. See illustration opposite →→→ **\$1.50**
- ★**Crimson Glory.** Plant Patent No. 105. Deep crimson. Makes great exhibition blooms. See page 6. **1.25**
- ★**Rouge Mallerin.** Scarlet. See page 3. **2.00**
- ★**Little Beauty.** Brilliant pink. A new type. Known in the West as "Crown of Jewels." See page 5. **1.00**
- ★**Mme. Emile Daloz.** Satiny pink. Immense peony-like blooms. See page 6. **1.25**
- ★**Annie Dupeyrat.** Deep old-rose, with an orange base. See page 4. **1.50**
- ★**Condesa de Sastago.** Copper and yellow. Vigorous in growth and free in bloom. See page 5. **1.25**
- ★**Duquesa de Penaranda.** Apricot to cinnamon. See illustration above. **1.25**
- ★**Senora Gari.** Orange and buff. See page 3. **1.50**

**9 Above Roses to Win Prizes for You \$9.85**  
(Value \$12.50) for

**ASK FOR OFFER NO. 7**



★  
**Duquesa de Penaranda.**  
**\$1.25 each\***

★**TEXAS CENTENNIAL.** H.T. (Dixie Rose Nursery, 1935.) Plant Patent pending. A sport of President Herbert Hoover. Bud is long-pointed, opening into a large, moderately fragrant flower carried on a long, strong stem. The color of the open flower is nopal-red, with a dainty shade of gold; the center of the flower is a lighter red, toning to dark pink as the bloom ages. **\$1 each.\***

★**CATALONIA.** H.T. (P. Dot, 1933.) Vermilion. See illustration below. A new color in Roses. The buds are deep rich carmine stained with orange and open to a 50-petaled flower of velvety orange-scarlet, vermilion, cochineal-red, or something like that; anyway, the color is the most vivid we have ever seen in a Rose. Rich fragrance. Gold Medal, Barcelona, 1931; First-Class Certificate, National Rose Society Trial-Grounds, 1931. **\$1.50 each.\***



★**Catalonia.** **\$1.50 each\***

# 73 Standard Varieties

## Everblooming Star Roses

We guarantee these Roses to bloom within 12 weeks from planting or refund their cost

These selected field-grown Star Roses can be successfully grown by anyone who will follow the clear, concise planting and cultural directions which accompany every Star Rose order. Every plant is guaranteed to bloom, so you can confidently order what you want without fear of failure.

The list comprises the best of the better-known monthly-blooming Hybrid Teas, all the self colors and the entire scope of color combinations. In form they range from those with single blooms of five petals, like Dainty Bess, to those so double they never show their centers.

The descriptions are written from the Roses' as they grow and bloom here in our Rose-fields, our display garden, and our test-garden at West Grove, in southeastern Pennsylvania, so you know what to look for in Star Roses when they bloom in your garden. Star Roses have an unusually fine start in life as they are budded on the famous, vigorous-rooted Japanese Multiflora understocks which years of trial have proved the best of all understocks to insure the finest blooms. It pays to order early.

★**ALICE STERN.** H.T. Creamy white. Long-pointed buds and finely formed flowers of creamy white with a slight salmon tint on the center petals. It has about 50 petals and is sweetly fragrant. Strong plants with heavy bronzy foliage. **\$1 each.\***

★**ANGELE PERNET.** H.T. Orange. Lovely cupped blooms of brownish orange, edged with chrome-yellow. **75 cts. each.\***

★**ARIEL.** H.T. Orange-flame. The buds are orange and develop into orange-pink blooms that age to lighter pink. Fragrance like hothouse violets. **75 cts. each.\***

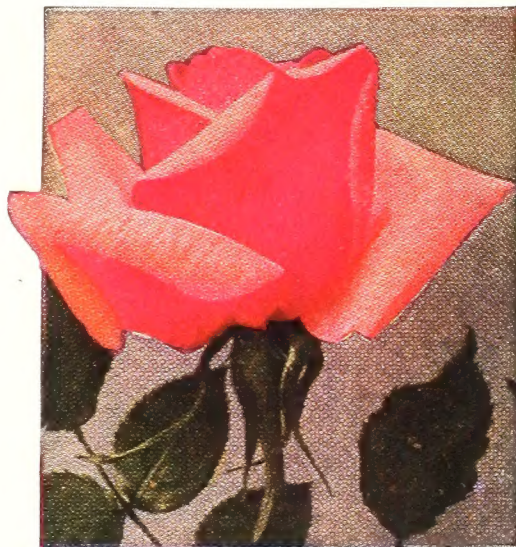
This makes a superb cut-flower



★Countess Vandal. Plant Patent No. 38. \$1 each



★Ami Quinard. Black-lustered red. \$1 each\*



★Betty Uprichard. 75 cts. each\*

★**AMI QUINARD.** H.T. See illustration. Black-lustered red. An unceasing delight to visitors to our gardens last summer. Blackish buds open to semi-

double flowers of velvety crimson-maroon with a soft black luster; instead of fading, the petals get darker as the bloom ages. It has splendid old-rose fragrance. Strong, upright plant, almost matching the Radiance for vigor. This Rose is improving, for it has several more petals than when first introduced and we now consider it one of our best. First-Class Certificate, Bagatelle; Certificate of Merit, Barcelona. **\$1 each.\***

★**BETTY UPRICHARD.** H.T. Carmine and salmon. See illustration. Carmine buds open to good-sized blooms of salmon, suffused with orange on the inside and with coppery carmine on the outside. The large, graceful petals have great substance and the flowers last long without fading. Spicy fragrance. This Rose is recommended

to those who enjoy soft shades. **75 cts. each.\***

★**AUTUMN.** H.T. A rainbow of autumn's glorious colors is what this splendid Rose produces during the growing season. The straight buds of deep burnt-orange open to 3-inch flowers of the same burnt-orange stained and splashed with red, orange, and various shades of pink. It never loses that "richness," even when the petals are ready to fall. It has 25 to 30 petals and is fragrant. The plants are upright, with large, leathery, very dark green foliage. The blooms are long-lasting when cut. **90 cts. each.\***

★**BARBARA ROBINSON.** H.T. White. Lovely buds opening to 3-inch flowers of creamy white. It has 40 to 50 petals and is fragrant. Very free blooming. Low growing but extra good. **\$1 each.\***

★**COUNTESS VANDAL.** H.T. See illustration. Copper and salmon. Plant Patent No. 38. This lovely aristocrat has proved herself beyond competition from any other Rose of this type and coloring, now that she has adjusted herself to our American climate. An upright-growing, vigorous Rose with rich-colored, attractive, disease-resistant foliage. The perfumed, perfectly formed blooms, which come from long, tapering buds, are a blending of copper, salmon, and gold in color, and they are produced almost continuously on long, erect, rigid stems. **\$1 each; 3 for \$2.50.**

*No further discount on this patented Rose*

Order No. 20737.

November 7, 1935.

"I have ordered Star Roses for about ten years and have always found them to be among the very best and entirely satisfactory."  
B. L., Norman, Oklahoma.

## ★STAR GUIDE TO GOOD ROSES

## Everblooming Star Roses

★**Director Rubio**  
\$1 each\*  
Gigantic blooms



*No other  
Rose like  
this in form  
or color.*

★**CATHRINE KORDES.** H.T. Carmine-scarlet. Long, perfectly formed, blood-red buds open to magnificent 4-inch flowers of glowing carmine-scarlet. **\$1 each.\***

★**CHARLES P. KILHAM.** H.T. Coral-red and orange. The plants produce perfect flowers on long cutting stems. The long-pointed buds open to fully double, finely formed flowers of coral-red with an orange base, a color combination which causes this Rose to stand out even when among newer higher colored varieties. Slightly fragrant. **75 cts. each.\***

★**DAINTY BESS.** H.T. Rose-pink. Large, single blooms, 3 to 4 inches across, come in clusters. The edges of the petals are so ruffled that the open flower appears more square than round. Their soft rose-pink color is enhanced by the large cluster of stamens on wine-red filaments like the eyelashes on a big doll. Popular. **75 cts. each.\***

★**ETOILE DE FEU.** H.T. Flame color. The name "Star of Fire" is very appropriate for this flaming Rose. The globular buds of glowing flame gradually open to flat blooms of coral-pink and glowing reddish salmon, with myriads of short center petals. Especially fine in hot sunshine. **75 cts. each.\***

★**GOLDEN GLEAM.** H.T. Vivid yellow. The nicely formed buds are pure yellow with carmine stains, and open to large blooms of clear daffodil-yellow, holding their color longer than most. Sweet honey-like fragrance. **75 cts. each.\***

★**DIRECTOR RUBIO.** H.T. Cochineal-pink. See illustration. One of the most striking Roses we have ever grown, and the largest Rose blooms we have ever seen. One flower we grew measured 7½ inches in diameter; you can imagine the size of the buds. The color is cochineal-pink according to Ridgway's Color Chart, but that does not describe the brilliance and beauty of the flower at all stages from the mammoth long-pointed bud to the loose, ruffled, open flower, which doesn't fade. The plant is hardly of average height but sturdy, and flowers are held rigidly erect on stout stems. Mild fragrance. Gold Medal, Saverne. **\$1 each.\***



★**Duchess of Wellington**  
75 cts. each\*

★**DUCHESS OF WELLINGTON.** H.T. See illustration. Yellow. Extra long-pointed buds of golden orange open to large, loose flowers of saffron with the delicious fragrance of the old Tea Roses. It has 17 petals. Big, bushy plant with healthy foliage. One of the most popular of all yellow Roses. It is continuously in bloom from June until frost. **75 cts. each.\***

Order No. 2442-35.

The Roses I ordered from you last year were 100 per cent good and did unusually well in this climate. There were many beautiful blooms and I am looking forward to more this year.—MRS. A. O. H., Aurora, Colo.

★**E. G. HILL.** H.T. Crimson. See illustration. The flowers are large, full, brilliant crimson, and as they come singly on strong, erect stems, are splendid for cutting. Vigorous plants are very busily engaged in continuously producing their 50-petaled, perfectly formed fragrant flowers. A standard red Rose both in the garden and under glass. The intense, enthralling real Rose fragrance is one of the delightful characteristics of this enchanting red Rose. Plant a dozen and have plenty for cutting. **75 cts. each.\***



★**E. G. Hill.** Noted for form and fragrance. 75 cts. each\*

### 10 ROSES for Cutting \$6.50

Single Rate Value, \$7.75

The following 10 Everblooming Roses are notably good for cutting, as their blooms come singly on firm, erect stems. All are distinctly different and nine are shown in color in this catalog. One customer's record averaged over 60 blooms per plant on these varieties. We cannot guarantee this for you but we know your lovely blooms will cost you little more than one cent each.

Edith Nellie Perkins	Lady Ashtown
E. G. Hill	McGredy's Scarlet
Etoile de Hollande	Mme. Butterfly
Joanna Hill	Mrs. Pierre S. du Pont
Kaiserin Auguste Viktoria	President Herbert Hoover

**ASK FOR OFFER No. 9**

### \* QUANTITY DISCOUNTS

Deduct { 15% on 12 or More Roses [See Exceptions]  
          { 20% on 25 or More Roses [ on Page 3 ]

See Rose Index, page 30

★ THE CONARD-PYLE CO. ★  
STAR ROSE GROWERS . . . West Grove, Pa.

★**GOLDEN DAWN.** H.T. Pale yellow. This lovely Australian is one of the finest garden Roses in existence. Large, globular buds, straw-yellow with old-rose markings, open to high-centered blooms of soft lemon-yellow with 50 to 60 petals. There is some variation in the color and at times we would call it moonlight-yellow. Occasional flowers will be much deeper, really quite golden, and late bloom in cool weather often carries a pink tint; however, they are all distinctly beautiful. The flowers are long lasting and are fragrant with the real Tea scent. The plants are of only medium height but are very bushy, having more spread than height, and are clothed to the ground with beautiful bronzy foliage which is almost immune to disease, being, we believe, the healthiest of all the Hybrid Teas. It is a continuous bloomer, producing quantities of exhibition flowers all season. **\$1 each.\***

★**GRENOBLE.** H.T. Glowing scarlet-crimson. The citizens of Grenoble, France, thought enough of this red Rose to ask the originator, Charles Mallerin, to name it for their city. The plant is very vigorous and the blooms come on unusually long stems, making it one of the best garden Roses for cutting. The buds are crimson but the open flower is brilliant red, almost scarlet, and a bed of Grenoble stands out like a fire. It is fully double and of large size. Easily one of the best reds. Gold Medal, Sav-erne, 1930; Certificate of Merit, National Horticultural Society of France, 1931; Bronze Medal, Portland, 1932. **\$1 each.\***

★**MRS. AARON WARD.** H.T. Yellow. An old Rose which is always in demand. Buff buds open to fully double flowers of yellow and pink. The plants are dwarf and are very free with their lovely blooms. Fine to cut and an ideal boutonniere Rose. **75 cts. each.\***

Order No. 20791-35. *November 7, 1935.*  
You may be interested to know that this Spring I won the challenge cup put up by The Syracuse Rose Society and with your Roses. I now have only about 12 bushes in the garden that are not Conard-Pyle bushes. —A. H. MacA., Syracuse, N. Y.



★Edith Nellie Perkins. 75 cts. each\*



★Mrs. Aaron Ward. 75c. ea.\*

★**EDITH NELLIE PERKINS.** H.T. Salmon-pink. See illustration. This is one of the finest Roses of this color we have ever grown. It is one of the first to bloom, the flowers are perfect in form, enchantingly beautiful in coloring, and they are generously produced on strong, healthy plants. Long-pointed buds of cream, orange, and rosy carmine open to high-centered, pale salmon flowers, heavily overspread with gold on the inside of the petals, while the reverse is rosy carmine with the gold extending half-way up on the carmine. For both beauty and abundance of bloom, some prefer Edith Nellie Perkins above the highly prized and higher priced Countess Vandal. It is so beautiful that we almost forgot to say that it is also fragrant. **75 cts. each.\***

★**GRUSS AN TEPLITZ.** H.Ben. Deep crimson. Noted for its pervasive fragrance that is especially delightful. The flowers come in clusters, each one perfect, but on slender stems. Rich crimson, changing to bright scarlet, shading to velvety fiery red. Use this Rose for a truly hardy continuous-flowering, fragrant, 4 to 5-foot hedge. **75 cts. each.\***

★**EDITOR MCFARLAND.** H.T. See illustration. Another year of critical observation of this Rose, added to the favorable comments of visitors to our gardens and Rose-fields, convinces us that this is the finest deep pink garden Rose in the world today. The firm-textured, perfectly formed flowers are produced through all the growing season and are of a clear, brilliant pink. They come on nice long cutting stems, are fragrant, and as cut-flowers retain their form and last longer than any Rose we know. The plants are vigorous and have healthy, normal green foliage. We believe that Editor McFarland will soon be the standard by which new pink Roses will be judged. Plant a bed of this superb pink Rose and you will have prize-winning blooms to exhibit at your local flower show and have flowers for cutting all season until hard frost. First-Class Certificate of Merit, Lyonnaise Horticultural Society, 1929; Gold Medal, Contest for the Most Beautiful Rose of France, Lyon, 1932; Certificate of Merit, Portland, 1932. **\$1 each.\***



★Editor McFarland. \$1 each\*

★STAR GUIDE TO GOOD ROSES

## Everblooming Star Roses

★**ETOILE DE HOLLANDE.** H.T. Crimson. See illustration. The name means "Star of Holland" and this Rose, introduced 32 years ago, could just as aptly have been named "Etoile de Universe," for it is the most universally beloved, everblooming crimson Rose. It is as nearly faultless as any Rose can be, and it charms continuously with its delightful color, its form, long cutting stems, vigorous, healthy growth, and, most interesting of all, its intense true Rose perfume. For unceasing, all-summer delight, plant an entire bed of Etoile de Hollande. **75 cts. each.\***

★**GRUSS AN AACHEN.** Ben.-Bour. White to carmine. A dependable continuous-blooming bedding or border variety. While on short stems and not good for cutting, the large, fully double flowers of flesh-pink, salmon, and yellow are a continuous delight in the garden. Has 80 petals and is mildly fragrant. **75 cts. each.\***

★**HEINRICH WENDLAND.** H.T. (W. Kordes Sons, 1930.) Reddish copper. Large, very double (70 petals) flowers of reddish copper with an orange flush over all; backs of the petals are rich orange. It has a rich, syrupy fragrance. Blooms come singly on strong, upright plants with shiny, leathery foliage. **\$1 each.\***

★**JULIEN POTIN.** H.T. Golden yellow. In long-pointed form and rich coloring this is the aristocrat of pure yellow Roses. Of medium to large size, the pointed, clear yellow buds open to splendid golden yellow blooms which hold their color well. The finest yellow for exhibition. Fragrant flowers are quite freely produced on upright plants. **90 cts. each.\***

★**KAISERIN AUGUSTE VIKTORIA.** H.T. See illustration. Cream-white. Long, shapely buds open to a full-petaled, cream-white, deliciously scented flower with gracefully recurved petals. A choice Rose for cutting as the blooms come singly on firm, upright stems. **75 cts. each.\***



75 cts.\*  
★Etoile de Hollande

### STAR FRAGRANT SET

When you can depend on exhilarating fragrance in addition to delightful colors and fine flowers for cutting, it adds immeasurably to the value of a Rose. In form, color, perfume, no two of these are alike.

Condesa de Sasago  
Duchess of Wellington  
E. G. Hill  
Etoile de Hollande  
Miss Rowena Thom  
President Herbert Hoover  
Rev. F. Page-Roberts

**7** Above Roses, selected for fragrance and continuous bloom **\$5.20**  
**ASK FOR OFFER No. 11**



★Kaiserin Auguste Viktoria.  
75 cts. each\*

Order No. 18102. *September 20, 1935.*

I wish I had room for a hundred of your "Star Rose Bushes" instead of the 45 which our limited space now permits.

Need I say more to show how highly the Rose bushes you send out are esteemed.—T. R. A., Mt. Airy, Philadelphia, Pa.

★**FEDERICO CASAS.** H.T. See illustration. This gay Rose has been very popular with visitors, and we believe is one of the most desirable of the modern "fancy" Roses, as it is simply illuminated with the brilliant colors that we associate with sunny Spain. The big, nearly double (25-petaled) flowers are a lovely blend of copper and orange and are pleasantly fragrant. They are continuously produced, and, like most of the high-colored Roses, are especially brilliant in the cool days of autumn. The vigorous plants have strong, thorny canes holding each flower erect on good cutting stems. The foliage is an attractive shade of light green. **\$1 each.\***



★Federico Casas. A lovely cut-flower. \$1 ea.\*

### \* QUANTITY DISCOUNTS

Deduct { 15% on 12 or More Roses [ See Exceptions ]  
20% on 25 or More Roses [ on Page 3 ]

★ THE CONARD-PYLE CO. ★  
STAR ROSE GROWERS . . . West Grove, Pa.



★ Joanna Hill. 75 cts. each\*

★**JOANNA HILL.** H.T. See illustration. Yellow. This perfectly formed Rose makes long, shapely buds of orange-yellow that open to large, double flowers with an orange center, paling to cream-color at the edges of the petals. One of the finest Roses for cutting. It does not bloom as freely as some but every flower is a gem. A popular florists' Rose. **75 cts. each.\***

★**KARDINAL PIFFL.** H.T. Orange-pink. One of the most satisfactory garden Roses we have ever grown. Plants simply bloom all the time. Ovoid buds of orange-pink, with a golden base, open to fully double flowers of the same lovely shades. Delicious fragrance. **75 cts. each.\***

★**LADY ALICE STANLEY.** H.T. Flesh-pink. One of the oldest Hybrid Tea Roses now grown, but it is still one of the best. Color is flesh-pink, lightened with rich coral on the reverse of the petals and a suspicion of salmon in the center of the bloom. **75 cts. each.\***

★**LENI NEUSS.** H.T. Pink. Buds are deep pink with an orange flush to the base. Mammoth, loose flowers of Radiance color—deep pink outside and pale pink inside. 25 petals. Cinnamon scent. **\$1.25 each.\***

★**LEONARD BARRON.** H.T. Salmon and copper. Introduced by The Conard-Pyle Co. The forerunner of a new strain of Roses. The blooms, 5 inches or over in diameter, and with myriads of petals, make this one of the largest and fullest everblooming Roses grown. The color is salmon, copper, and shell-pink, well blended. Its fragrance has been defined as red cedar. A wonderful bloomer. Allow the great flowers to open on the plant before cutting, as the buds will not open in water. **\$1 each.\***

★**LUNA.** H.T. Ivory-white. Beautiful, long, cream-colored buds open to 4-inch flowers of rich cream with pale saffron-yellow tints in the center, changing to ivory-white when fully open. Richly perfumed. Strong growth and free flowering. A well-named Rose. **\$1 each.\***

★**MME. JULES BOUCHE.** H.T. Nicely formed white buds show a slight blush in the center as the bloom opens. Fragrant. An old, but popular variety. 30 petals. **75 cts. each.\***



★ Lady Ashtown. 75 cts. each\*

★**LADY ASHTOWN.** H.T. See illustration. Pink. Another continuously satisfactory old Rose. The large, long-pointed buds open to perfect carmine-pink blooms with a golden underglow. Borne singly on long stems, they are fine for cutting and last well in the house. For over 30 years Lady Ashtown has been unsurpassed in its class and color, both for bedding and cutting. **75 cts. each.\***

★**MME. BUTTERFLY.** H.T. See illustration. Pink and gold. A steady bloomer with beautifully modeled flowers of tender pink, salmon, cream and gold. Highly scented and long lasting. During hot, dry weather the blooms open too quickly, but in the fall the flow-



★ Mme. Butterfly. 75 cts. ea.\*

ers, on strong, sturdy stems, are simply superb. A favorite florists' Rose as well as a fine garden variety. **75 cts. each.\***

★**MARGARET MCGREDY.** H.T. Orange-scarlet. See illustration. We have yet to find a more continuously satisfactory, large, full-petaled Everblooming Rose than Margaret McGredy. The olive-green, leathery foliage is disease-resistant and the buoyantly vigorous growth insures a constant production of buds and blooms from early in June until hard frost. In the newly opened flower the color is a scintillating orange-scarlet which ages to a pleasing carmine-rose. The symmetrical growth, rich dark foliage, and continuous bloom place this Rose in the front rank of the brilliantly colored, full-flowered bedding varieties. It has pleasing Rose fragrance. This glorious variety is conspicuously popular, every year, in our display Rose-garden of over 1200 Roses. **75 cts. each.\***



★ Margaret McGredy. 75 cts. each\*

★ STAR GUIDE TO GOOD ROSES

# Everblooming Star Roses

★**MRS. PIERRE S. DU PONT.** H.T. Golden yellow. See illustration. This is the ace of the golden yellow Everblooming Roses. Winner of more Gold Medals for outdoor blooms than any other Rose ever grown. The bud is long-pointed, rich reddish gold, almost orange in the depths of the petals, and holds its color well to the end. Foliage is very ornamental, healthy, and extremely disease-resistant. This is the most continuous-blooming yellow Hybrid Tea. It has the fragrance of well-made Rose pot pourri. The plants are low-growing and it does not seem possible that they could produce so many blooms. We recommend Mrs. Pierre S. du Pont as the best all-round yellow garden Rose, both for bedding and for cutting, as the long, rich golden yellow buds are absolutely perfect. 40 petals. Gold Medals: Société Nationale d'Horticulture de France, 1927; Saverne 1927; Lyon, 1928; Rhone, 1928; Bagatelle, 1929; Harding \$100 Prize, 1928; Certificate, Pedralbes, 1929. **\$1 each.\***

To encourage planting solid beds of this splendid Rose we make a special quantity price,  
**12 Mrs. Pierre S. du Pont for \$8.90**  
**ASK FOR OFFER NO. 13**



★Mrs. Pierre S. du Pont. The Supreme Yellow. \$1 each\*

## 12 Everblooming Roses \$6

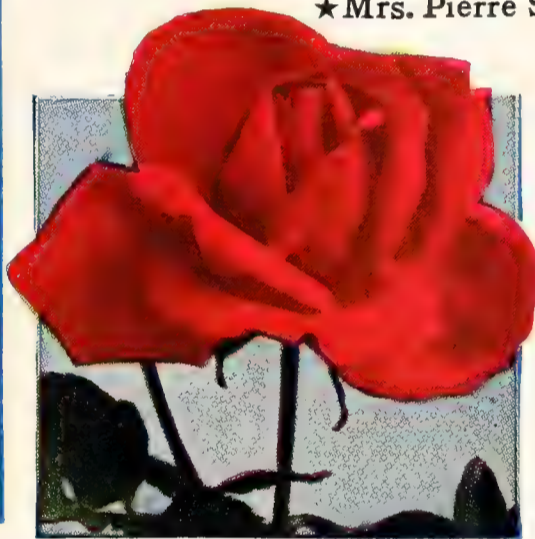
There is no way for us to know what Roses our customers will select, so each year we have a surplus of some choice everblooming kinds. From these, which always include some of the finest varieties, we will make a selection for you. All will be different and each Rose will be correctly labeled with our durable, celluloid star tag and guaranteed. You run no risk.

### ASK FOR OFFER NO. 13a

12 Hybrid Tea Roses, our selection, \$6  
 24 Hybrid Tea Roses, our selection, \$12  
 48 Hybrid Tea Roses, our selection, \$24

*We cannot furnish less than 12 at this price*

"Have bought your Star Roses for 9 years. My Rose-garden is 100 per cent Star Roses."  
 —J. I. VAN V.,  
 Winona, Minn.



★Chas. K. Douglas. 75 cts. ea.\*

★**MME. ALBERT BARBIER.** H.T. Tawny yellow. Exquisite tints of fawn-yellow and white, with just a suggestion of pink, give the blooms a pearly look. A beautiful full-petaled Rose. The plant is stiffly upright, very thorny and produces abundantly throughout the entire season. The beautiful blooms when cut will last for several days. **75 cts. each.\***

★**CHARLES K. DOUGLAS.** H.T. See illustration. Scarlet-crimson. A red Rose we all want. Lustrous scarlet-crimson flowers, 4 inches in diameter, gracefully loose in form, are freely produced on big, bushy plants which are easy to grow. It has 25 to 30 petals, the center ones occasionally showing a white line, and is slightly fragrant. Here's an

unassuming but thoroughgoing old retainer that goes quietly on producing lovely brilliant blooms that are the delight of landscape gardeners who depend on Charles K. Douglas for continuous vivid color in the gardens they design. **75 cts. each.\***

★**MARY HART.** H.T. Maroon-red. Plant Patent No. 8. This is a worthy red sport of the great Talisman Rose. Like its parent it is upright in growth and blooms freely. The bud of this widely advertised variety is maroon-red, and it opens to a well-formed, fragrant bloom of rich red with a velvety pile on the petals—a shade of red unique among Roses. **\$1 each; 3 for \$2.50.**

*No further discount on this patented Rose*

★**MISS ROWENA THOM.** H.T. Rose-pink. See illustration. One of the strongest growers among the Hybrid Teas as Radiance is one of its parents. It produces quantities of finely formed, deliciously fragrant, rose-pink blooms 5 to 6 inches in diameter. There is a yellow base to the petals which lights up the whole flower. If the plants are well fed and watered, every bloom will be an exhibition one. 30 petals. Here is a Rose for those who enjoy growing and showing mammoth-sized blooms. **75 cts. each.\***



★Miss Rowena Thom. 75 cts. each\*

## \* QUANTITY DISCOUNTS

Deduct { 15% on 12 or more Roses [ See Exceptions ]  
 { 20% on 25 or more Roses [ on Page 3 ]

★ THE CONARD-PYLE CO. ★  
STAR ROSE GROWERS . . . West Grove, Pa.



★Mrs. G. A. van Rossem. 75 cts. each\*

★**MRS. G. A. VAN ROSSEM.** H.T. Red-orange. See illustration. A spectacular Rose which shows best in the half-open bud stage when it is of the deepest red-orange, almost brownish, with deeply impressed maroon veins. Toward the end the color tones to old-rose. The rich coloring with the unusually heavy veining makes this one of the most interesting Roses we grow. It is strongly and deliciously perfumed. **75 cts. each.\***

★**MRS. SAM MCGREDY.** H.T. Scarlet-orange. A beautiful new Rose, good enough for the McGredys to name for *present head* of the family. It is already one of the most popular Roses in England. Coppery scarlet-orange flowers, flushed dull red and of fine form, make this a Rose to rave about. It is double, with 30 to 40 petals, and richly fragrant. Bushy plants with red canes, red thorns, and beautiful reddish bronze foliage. Both plant and flower are very distinct. **\$1 each.\***

★**NATIONAL FLOWER GUILD.** H.T. Crimson. Great big bushy plants with large, drooping foliage and 5-inch, bright red flowers with 40 petals. A modern Rose in every way, that keeps blooming in our Rose-garden during hot summer days when practically all other Roses are resting after their big June effort. Certificate of Merit, International Rose Test-Garden, Portland, Ore., 1934. **75 cts. each.\***

★**NUNTIUS PACELLI.** H.T. White. Cream-colored buds open to deliciously fragrant flowers of creamy white which soon turn pure white. It is fully double, but opens well at all times. The plants are unusually free in bloom. 60 petals. **75 cts. each.\***

★**OSWALD SIEPER.** H.T. (M. Krause, 1933.) White. One of the finest white Hybrid Tea Roses. It has nicely formed buds of pale cream which open to big, loose, double flowers of creamy white. Rich Tea fragrance. On account of its large size and faultless form we consider it the finest white garden Rose for exhibition as well as for cut-flowers for the house. **\$1 each.\***

★**PRESIDENT HERBERT HOOVER.** H.T. Multicolored. See illustration. An American Rose which is proving itself one of the finest garden Roses in existence. The plant is very tall, with good foliage, and produces its beautiful fragrant flowers singly on long stems, a cutting Rose par excellence. The shapely buds open to high-centered flowers of scarlet-yellow, cerise-pink, and flame which last well. **75 cts. each.\***



★Mrs. Henry Morse. 75 cts. ea.\*

★**MAX KRAUSE.** H.T. Yellow. Flower is very large, extremely double and high centered. It is unusually lasting when cut. Color an orange tint passing to yellow. **\$1 each.\***

★**MCGREDY'S SCARLET.** H.T. Red. The finely formed bud is dull red and opens slowly into a magnificent, very large bloom of just "red," which lasts a long time. If a partly opened flower is pulled apart, the inside of the petals will be found to be brilliant scarlet; possibly in a moist climate it would be scarlet outside, too; in fact, last fall, after a wet summer, they were really scarlet here. Slight Tea scent. A splendid Rose for cutting as the perfectly formed flowers have about 30 petals and come on long stems. Any McGredy Rose is a good Rose. **75 cts. each.\***

★**MRS. DUNLOP BEST.** H.T. Apricot. Pointed buds open to rich, reddish apricot flowers, different from any Rose we know. It has rich Tea fragrance. **75 cts. each.\***

★**MRS. E. P. THOM.** H.T. Yellow. A medium-sized, double Rose of clear canary-yellow. An American Rose which has reached the front row by sheer merit and is considered one of the best yellows by many experienced rosarians both for bedding and for cut-flowers, as the blooms are held erect on strong stems. **75 cts. each.\***

★**MRS. HERBERT STEVENS.** T. White. The finely formed blooms have pale lemon tints in the center when first opening but are pure white when fully open. 35 to 40 petals. Rich old Tea fragrance. **\$1 each.\***

★**MRS. HENRY MORSE.** H.T. See illustration. Two-tone pink. One of the most popular of all the pink Roses. The buds are perfect in form, long, very artistically formed, of a rich carmine-pink, and open to a high-pointed, two-toned, pink flower of great beauty. The outside of the petals is a clean, lustrous "pink," while the inside is pinkish flesh with a lovely sheen. It has 30 petals and a fine Tea fragrance. One of the most perfect Roses for cutting. **75 cts. each.\***



★President Herbert Hoover. 75 cts. each\*

This grand Rose is becoming as popular as Radiance and has all the good qualities of Radiance to recommend it.



## Everblooming Star Roses



★**REV. F. PAGE-ROBERTS.** H.T. Carmine and yellow. The shapely buds are Indian yellow, washed with deep carmine which spreads as the buds unfurl. Fragrant blooms come singly on long, strong stems making it ideal for cutting. Needs pruning back to 2 inches in the spring to do its best. A wonderfully

★Rev. F. Page-Roberts. 75 cts.\*

attractive Rose which has the scent of a ripe apple. Popular everywhere. **75 cts. each.\***

★**SIR HENRY SEGRAVE.** H.T. Lemon-yellow. Perfectly formed buds of lemon-yellow open to spiral flowers of the same soft shade, and, to be consistent, it has a decided lemon fragrance. Fully double, with about 50 petals, the blooms come singly on long stems. **\$1 each.\***

★**PINK PEARL.** H.T. Pink. The finest garden Rose of the Columbia type. Fully double, medium-sized flowers of interesting pink, with wonderfully sweet fragrance, are freely produced all season. One of the best light pink garden Roses grown. 70 petals. **\$1 each.\***

★**PORTADOWN FRAGRANCE.** H.T. Peach-pink flowers with a distinctive fragrance unlike any other Rose. **\$1 each.\***

★**PRESIDENT PLUMECOCQ.** H.T. Coppery buff. Coppery yellow, ovoid buds open to large, cupped blooms of coppery buff with an overflow of deep salmon. An upright grower, producing quantities of long-lasting, fragrant flowers, with 30 petals or more, throughout the entire season. The coppery buff of this lovely variety will never clash with any other color. Plant is strong and upright in growth. Certificate of Merit, International Rose Test-Garden, Portland, Ore., 1934. **\$1 each.\***

★**RAPTURE.** H.T. Pink and yellow. A sport of Mme. Butterfly. Very like the parent plant. (See Mme. Butterfly, page 12.) **75 cts. each.\***

★**RICHARDSON WRIGHT.** H.T. Pearl-pink. The color is iridescent pearl-pink. Noted for its delicious fragrance. Silver Medal, Saverne, 1932. **75 cts. each.\***

## THE 3 GREAT RADIANCE ROSES FOR \$2

For Healthy, Vigorous Growth, Continuous Bloom, and Real Rose Fragrance



★Radiance. 75 cts.\*



★Red Radiance. 75 cts.\*



★Mrs. Charles Bell. 75 cts.\*

These three Radiance Roses go serenely on their way regardless of weather or other conditions. They just grow and keep you always happy with their never-failing bloom from early June until Jack Frost gets really frosty. No experience is necessary in growing this group.

★Radiance. Two-tone pink...75c. } OFFER No. 15  
 ★Red Radiance. Cerise-red...75c. } 3 for \$2  
 ★Mrs. Charles Bell. Shell-pink.75c. }

★**RADIANCE.** H.T. See illustration. Rose-pink. The most universally popular Rose in America. Two-toned pink, cupped flowers are produced in endless succession on foolproof plants. Pungent, true Rose fragrance. 25 petals. **75 cts. each.\***

★**RED RADIANCE.** H.T. See illustration. Cerise-red. A sport of Radiance, it has the same form, habit of growth, fragrance, and healthy foliage. The difference is in the cerise-red color. 25 to 30 petals. **75 cts. each.\***

★**SŒUR THERESE (Sister Therese).** H.T. Yellow. Long-pointed buds of chrome-yellow, heavily marked with carmine; the open flowers are rich daffodil-yellow and hold their color well. Sweetbriar fragrance. The blooms come freely on splendid cutting stems. You can always recognize this Rose from its habit of forming sturdy, 3-foot, upright canes which are topped by a "lighted" candelabra of 5 or more brilliant yellow blooms. **\$1 each.\***

★**SOUV. D'ALEXANDRE BERNAIX.** H.T. Crimson. Large cupped blooms full to the center, of crimson, shaded velvety maroon. Splendid perfume and fine lasting qualities are two of its virtues. A low-growing, symmetrical plant. 60 petals. **\$1 each.\***

★**MRS. CHARLES BELL.** H.T. See illustration. Shell-pink Radiance. Shell-pink-salmon of the clearest, cleanest tint imaginable. This exquisite shade has never been matched in any of the new Roses. Delicious true Rose fragrance. 25 to 30 petals. **75 cts. each.\***

★**SOUV. DE CLAUDIUS PERNET.** H.T. See illustration. Sunflower-yellow. Very large and full. A great Rose to grow for exhibition blooms, and a standard yellow both in gardens and under glass. Sometimes the outer petals are white and occasionally it shows a black center when fully open, but when it is right, it is perfect. Has the typical Pernet scent. 30 petals. **75 cts. each.\***

Order 2277-35

October 11, 1935  
 I won all but one of the prizes on Roses at our flower show at Ashland, Kentucky, and mostly with Roses I purchased from you.  
 E. A., Ceredo, W. Va.



★Souv. de Claudius Pernet. 75c.\*

### \* QUANTITY DISCOUNTS

Deduct { 15% on 12 or More Roses [See Exceptions]  
 { 20% on 25 or More Roses [ on Page 3 ]

SEE ROSE INDEX  
 PAGE 30

★ THE CONARD-PYLE CO. ★  
STAR ROSE GROWERS . . . West Grove, Pa.

## Everblooming Star Roses

★**THOMAS A. EDISON.** H.T. Two-toned pink. A big, clean, sparkling pink Rose which thrives on heat; the hotter the weather, the more beautiful the flowers. The blooms are large, fully double, fragrant, and there are two shades of pink concerned, a lovely pale silvery pink on one side of the petals and just clean pink on the other side. It is a big flower on a big strong plant. A great Rose named for a great man. **75 cts. each.\***

★**WHITE ENSIGN.** H.T. Creamy white. Cream-colored buds of fine form open to 3-inch flowers of creamy white, maturing pure white; rich tea fragrance. It is fully double, with 75 petals. Vigorous, branching plants with splendid foliage. **75 cts. each.\***

★**SOUV. DE MME. C. CHAMBARD.** H.T. (C. Chambard, 1931.) See illustration. Coral-pink. Chosen the most beautiful Rose of France for 1932. The buds are large, long-pointed, coral in color, and slowly unfold to a coral-pink flower developing a satiny peach tint and sheen which is about the loveliest finish we have ever seen on a Rose petal. Its fragrance is simply delicious so that we have not only one of the most beautiful Roses but one of the sweetest. The plant is free in bloom. Its long stems and perfect form make it a splendid cut-flower. 35 to 40 petals. Mrs. John Laing is the mother of this Rose, so, being half Hybrid Perpetual, it is hardier than most Hybrid Teas. Certificate of Merit, Bagatelle, 1931; Gold Medal, Lyon, 1932; Bronze Medal, Portland, Ore., 1932. **\$1.25 each.\***



★Talisman. 75 cts. each\*

the blooms are apt to be off color and of poor form, but simply pinch them off and your fall crop will be that much better. **75 cts. each.\***

★**VILLE DE PARIS.** H.T. Buttercup-yellow. See illustration. This medal-winning Rose boasts the honor of being named for the City of Paris over 77 competitors from 11 countries, when at the same time it won the Bagatelle Gold Medal. This is one of the loveliest of the clear yellow Roses without any other color markings. **75 cts. each.\***

★**TALISMAN.** H.T. Multicolored. See illustration. At its gayest it is a glorious combination of orange, yellow, and rose-red. It is one of the finest of all garden Roses for cutting. The fragrant flowers are much more highly colored in autumn, at which time they simply eclipse the finest florists' blooms. During hot weather

## 5 Everblooming Hybrid Teas in Standard or Tree Roses

Tree Roses can be planted in beds with your other Roses, as they occupy little ground-space, and they add greatly to the beauty of any Rose-garden. Our plants are budded on 3½-foot stems, and will bloom all summer and until frost with the regular bush Hybrid Teas. Tree Roses give an added look of distinction to any garden. Stock is limited this year, so order early.

- ★**Betty Uprichard.** H.T. Carmine and salmon. Flowers last long.
- ★**Etoile de Hollande.** H.T. Crimson. The finest crimson Tree Rose.
- ★**Mme. Edouard Herriot.** H.T. Coral-red, changing to rose-pink.
- ★**Souv. de Claudius Pernet.** H.T. Sunflower-yellow.
- ★**Talisman.** H.T. Multicolored. A combination of orange and rose-red. Always changing.

PRICE: \$3.50 each; 6 for \$18. No further discount. By Express only, delivery not prepaid.

### \* QUANTITY DISCOUNTS

Deduct { 15% on 12 or More Roses [See Exceptions]  
20% on 25 or More Roses [ on Page 3 ]



★Souv. de Mme. C. Chambard. \$1.25 each\*

# THE STAR DOZEN

12 Everblooming  
Roses

PICKED TO PRODUCE

For \$8.50

the FINEST BLOOMS at LEAST COST

Guaranteed  
to  
Bloom

The "STAR DOZEN" has been our prize collection for over a quarter century. The first twelve Roses under this name were sent out in 1909. During the succeeding years, as new and better Roses were produced by hybridizers all over the world, we eliminated varieties one by one as they were superseded by superior sorts, until now not one of the original "Dozen" is left in this collection. Instead, this 1936 Star Dozen comprises twelve of the sturdiest-growing, healthiest, and most free-blooming of the modern Roses. Ten originated in Europe, one, Golden Dawn, came from Australia, and another, President Herbert Hoover, was produced in the United States and, happily, it is one of the grandest Everblooming Roses ever originated anywhere.

So much for the history of the Star Dozen. Your interest lies in the fact that here are waiting for you 12 Roses that we, with 38 years' experience, have chosen as the very best 12 varieties available for beauty of flower, for healthiness, hardiness, and freedom of bloom, while at the same time including 3 shades of red, 2 shades of pink, 3 lovely tinted varieties, 3 shades of yellow, and one splendid white. Eight of these are shown in natural colors and all are fully described in this Catalog.

Plant the Star Dozen this spring and you will have hundreds of blooms to cut all summer and until frost. We guarantee every one of these Roses to bloom within 12 weeks from date of planting.

	Page
★ <b>Editor McFarland.</b> Deep pink. \$1.....	10
★ <b>E. G. Hill.</b> Brilliant crimson. 75 cts.....	9
★ <b>Etoile de Hollande.</b> Crimson. 75 cts.....	11
★ <b>Golden Dawn.</b> Pale yellow. \$1.....	10
★ <b>Luis Brinas.</b> Orange-copper. \$1.50.....	6
★ <b>Margaret McGredy.</b> Orange-scarlet. 75c..	12
★ <b>Mrs. G. A. van Rossem.</b> Red-orange. 75c.	14
★ <b>Mrs. Pierre S. du Pont.</b> Golden yellow. \$1.	13
★ <b>Nuntius Pacelli.</b> Pure white. 75 cts.....	14
★ <b>Pres. Herbert Hoover.</b> Multicolored. 75c..	14
★ <b>Sœur Therese.</b> Chrome-yellow. \$1.....	15
★ <b>Souv. de Mme. C. Chambard.</b> Beautiful coral-pink. \$1.25.....	16

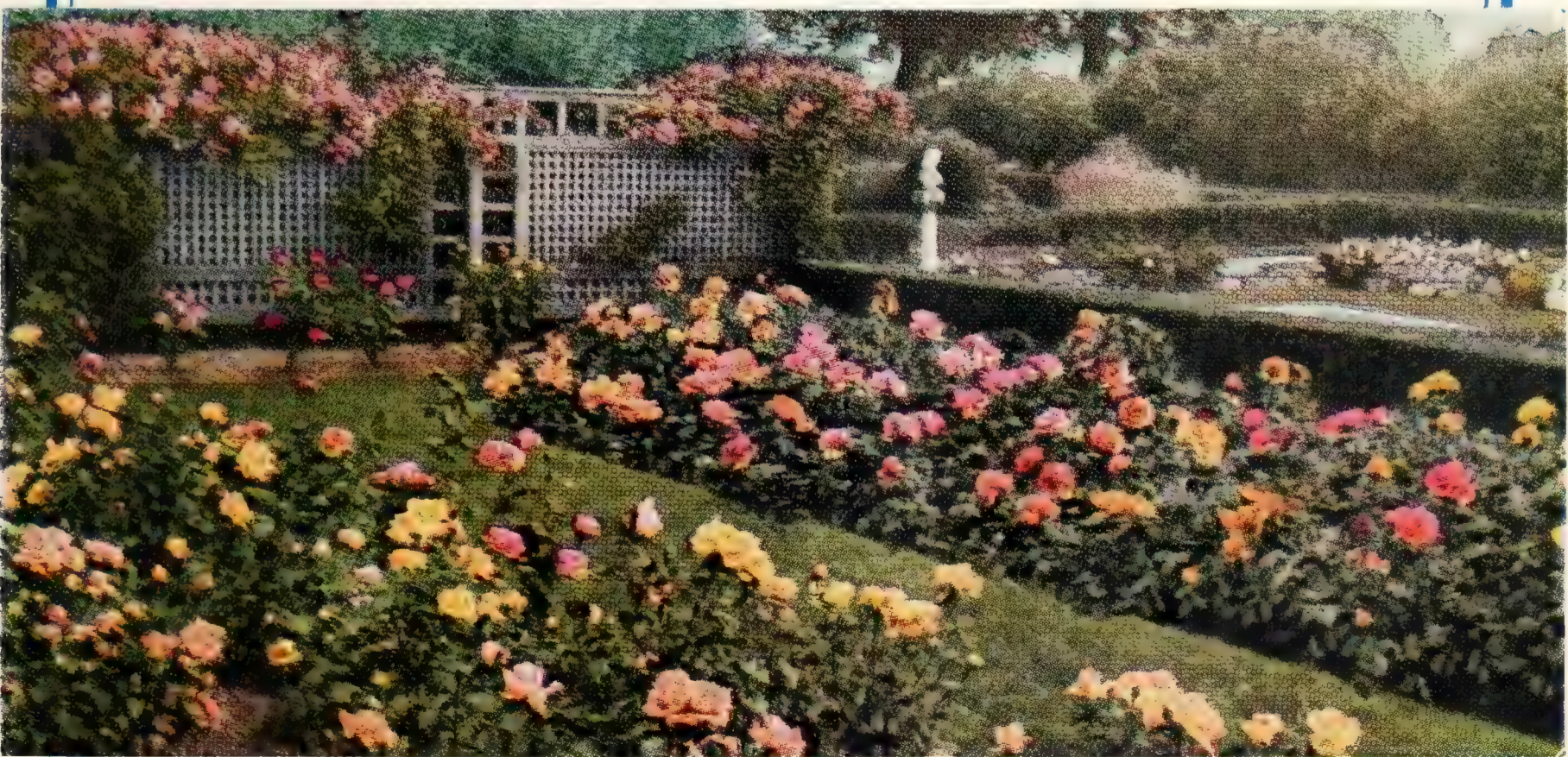
## THE STAR 25 SET

Add the 13 named below to the Star Dozen and you have 25 high-quality everblooming Roses to give you blooms from June until frost. Included are 6 shades of red, 6 shades of pink, 6 tinted, 5 shades of yellow, and 2 white.

	Page
★ <b>Autumn.</b> Multicolored. 90 cts.....	8
★ <b>Betty Uprichard.</b> Salmon. 75 cts.....	8
★ <b>Catalonia.</b> Orange-scarlet. \$1.50.....	7
★ <b>Charles P. Kilham.</b> Coral and orange. 75c.	9
★ <b>Condesa de Sastago.</b> Copper-yellow. \$1.25.....	5
★ <b>Duchess of Wellington.</b> Yellow. 75 cts..	9
★ <b>Julien Potin.</b> Golden yellow. 90 cts....	11
★ <b>Kaiserin Aug. Viktoria.</b> Cream. 75 cts..	11
★ <b>Lady Ashtown.</b> Brilliant pink. 75 cts... 12	
★ <b>McGredy's Scarlet.</b> Red. 75 cts.....	14
★ <b>Miss Rowena Thom.</b> Rose-pink. 75 cts.. 13	
★ <b>Thomas A. Edison.</b> Two-toned pink. 75c.. 16	
★ <b>Souv. d'Alex. Bernaix.</b> Crimson. \$1..... 15	

The Star Doz. OFFER 17. (Value \$11.25) \$8.50

The Star 25. OFFER 17a (Value \$22.80) for \$17



You can have a display as shown in these beds from June till frost from two sets of the "Star 25"

Send us the outlines of your Rose-beds and we will be glad to help you select varieties and plan the arrangement of colors, heights, etc. We will be pleased to give you the benefit of our experience if you will write us about your Rose problems. We know so well the behavior of different Roses, height of growth, and color-tones that go together or do not, that we are called upon by Landscape Architects to get the best harmony and a happy effect. Careful planning brings its own reward.

★ THE CONARD-PYLE CO. ★

STAR ROSE GROWERS . . . West Grove, Pa.



★Eblouissant (Brilliancy). An impressive, continuous bloomer. 75 cts. each\*



★Gloria Mundi. Makes beds of vivid orange-scarlet. Glows like a beacon. 75 cts. each\*



★Chatillon. The supreme pink Polyantha. A superb Rose for edging driveways. 75 cts. each\*



★Mlle. Cecile Brunner (Sweetheart). 75 cts. each\*

## CONTINUOUS BLOOMING POLYANTHA ROSES

Hardy as Oaks. Bloom as freely as geraniums

Price, for all 75-ct. varieties, 25 for \$15; 100 for \$60  
No further discount from above quantity prices

For specimen plants or beds of brilliant beauty from June until hard frost, or for edging driveways, or making bright spots of color at the edge of a shrub border, these Roses are unequalled by any other flowering plant.

★**CHATILLON.** ● Clear pink. See illustration. A fine variety for massing in solid beds or borders. The clear pink flowers come continuously like huge heads of phlox. Largely used for bordering driveways. **75 cts. each.\***

★**DISTINCTION.** Paul-Neyron-pink. Makes uniform growth, about 18 inches with us. Large flowers of brilliant pink that hold their color well. **75 cts. each.\***

★**EBLOUISSANT.** ● See illustration. Dainty, perfectly formed, miniature, double flowers like little rosettes, open to attractive cactus form with quilled petals. The blooms are continuously produced on symmetrical plants, with lustrous green foliage, and rarely over 10 inches high. **75 cts. each.\***

★**ELLEN POULSEN.** ● Bright cherry-pink. Upright plants, growth about 2 feet. Medium size, full flowers. Very free blooming. **75 cts. each.\***

★**ETOILE LUISANTE.** Rose and coppery red. A small, but double, high-centered flower. **\$1 each.\***

★**GLORIA MUNDI.** ● Orange-scarlet. See illustration. A flaming color unmatched in any other class of Roses. Plant this variety where you would plant brilliant geraniums, and once planted you have it always. **75 cts. each.\***

★**IDEAL.** ● Garnet. One of the finest of the dark red Polyantas. Plants are about 2 feet high, bushy, and always in bloom. **75 cts. each.\***

★**JOHANNA TANTAU.** Cream-white. Sprawly plants freely produce perfect, little Roses of white with a hint of pink. Pure white when fully open. Very fragrant. **\$1 each.\***

★**MILLE. CECILE BRUNNER.** ● See illustration. Seashell-pink. The "Sweetheart" Rose. Makes sprays of rosy pink "baby" buds that open to seashell-pink. **75 cts. each.\***

★**MRS. R. M. FINCH.** Bright rose-pink. Flowers come in branching, fragrant clusters. Growth about 3 feet. Fine for mass planting. **75 cts. each.\***

★**PERMANENT WAVE.** Plant Patent No. 107. Deep rose-pink. A most attractive flower, distinctly different from any other Rose. The single blooms are 3 inches across and come in bouquets of six or more on a stem. Color is deep rose-pink. Each broad, firm petal is beautifully waved, thus inspiring the name "Permanent Wave." **\$1.50 each; 3 for \$3.75.**

*No further discount on this patented Rose*

6 ● One each of the six Polyantha Roses marked  
●, Chatillon, Eblouissant, Ellen Poulsen, Gloria  
Mundi, Ideal, and Mlle. Cecile Brunner, for **\$3.85**  
**ASK FOR OFFER NO. 18**

★ STAR GUIDE TO GOOD ROSES

# Hardy Climbing Roses

These vigorous-growing Roses are especially valuable for the great quantity of bloom produced at one time. Use these abundant-bloom Climbers on fences, arches, arbors, tree-stumps, and pergolas. Anyone with even a small space in a sunny location can have one or more Climbers blooming in the most delightful way by planting them at 8-foot uprights and tying the canes as they grow.

The letters after the names indicate the type of growth: R., Ramblers. These Roses should have the canes that have flowered cut back to the ground soon after they finish blooming. The vigorous new growths (from the base) should be trained again on the support. C., Climbers. Vigorous varieties that make massive canes. They keep on climbing. Prune only dead wood and surplus growth. P., Pillar. Roses that grow only 8 to 10 feet. Cl.H.T., Climbing Hybrid Teas. Cl.H.P., Climbing Hybrid Perpetuals.

★ **ALBERTINE.** C. Midseason. Coppery pink. Double flowers with large petals, coppery chamois inside, reverse bright salmon, turning to coppery pink. **75 cts. each.\***

★ **CLIMBING AMERICAN BEAUTY.** C. Very early. Large, sweet-scented, light crimson or deep rose-pink flowers, fine for cutting. **75 cts. each.\***

★ **BREEZE HILL.** C. Late. Extra-large, fully double blooms of pink with fawn suffusion. **75 cts. each.\***

★ **DOUBLOONS.** C. Plant Patent pending. First of Horvath's new strain. Ovoid buds open to large, cupped blooms of deep saffron-yellow and gold. Handsome foliage. Vigorous and hardy. **\$1.50 each; 3 for \$3.75.**

*No further discount on this Rose*

★ **DR. W. VAN FLEET.** C. Early. Flesh-pink. Has the same bloom and foliage as New Dawn but so vigorous in growth it will cover the side of a garage. Blooms profusely in June. **75 cts. each.\***

★ **EASLEA'S GOLDEN RAMBLER.** C. (W. Easlea & Sons. Introduced in U. S. A., 1935.) Plant Patent No. 114. Yellow. Large, full flowers, long-lasting and intensely fragrant. The buds are lemon-chrome, washed with maddery orange, passing to deep canary-yellow when the bloom opens; outside petals trimmed with crimson-orange. Vigorous and a profuse bloomer in June. (From introducer's description.) Gold Medal, N. R. S., 1932; Award of Merit, R. H. S., 1932; Cory Cup, N. R. S., 1932, for the best new Climbing Rose of the year in England. No other Climber abroad in recent years has received so many high awards. **\$1.50 each.\***

Plant Patent  
No. 1



© 1933

\$1.50 each

★ **New Dawn.** Blooms all summer

★ **NEW DAWN.** P. See illustration. Plant Patent No. 1. Awarded 1935 Bloomfield Gold Medal by American Rose Society for "best hardy EVER-BLOOMING Climbing Rose produced anywhere in the world." Bears in repetition until frost dainty, pale pink, fragrant Roses on long stems for cutting. Growth less exuberant but otherwise like Dr. W. Van Fleet. **\$1.50 each; 3 for \$3.75.**  
*No further discount on this patented Rose*



★ **Paul's Scarlet Climber.** 75 cts.\*

★ **BLAZE.** Plant Patent No. 10. Pillar. Scarlet. The introducers who supply us with the plants claim this to be a repeat-blooming Paul's Scarlet Climber. In our experience some plants have re-bloomed and some have not. We expect these to be more uniformly satisfactory. **\$1.25 each; 3 for \$3.15.**  
*No further discount on this patented Rose*

★ **PAUL'S SCARLET CLIMBER.** P. See illustration. Midseason. The most vivid scarlet Climbing Rose yet grown. Its flowers come in large, open cluster-heads, with from 5 to 15 blooms, on strong stems. The color is well retained till the petals fall. **75 cts. each.\***

★ **GOLDEN CLIMBER (Mrs. Arthur Curtiss James).** C. Plant Pat. No. 28. Golden yellow. The Hybrid-Tea-flowered Climber. It is very hardy, long-lasting, and blooms are generally solitary on stems often 18 inches or longer. Gold Medals: Massachusetts Horticultural Society and American Rose Society; Certificate of Merit, National Rose Society of England. Canes which are trained somewhat horizontally are apt to bloom more than if erect. **\$1.50 each; 3 for \$3.75.**  
*No further discount on this patented Rose*

★ **Golden Climber.**  
**\$1.50 each**

© 1933

## \* QUANTITY DISCOUNTS

Deduct { 15% on 12 or More Roses [See Exceptions]  
20% on 25 or More Roses [ on Page 3 ]

# HARDY CLIMBING ROSES

★**APELES MESTRES.** Cl.H.P. Midseason. Clear yellow. The flowers average as large as a saucer when open. They are full to the center, with some 50 parchment-like petals of clear yellow, making a long-lasting flower, slightly fragrant. While not free flowering, every bud opens to a perfect exhibition bloom. Best used as a pillar or spread on a fence. Dr. J. Horace McFarland on page 177 in the 1934 American Rose Annual says of Apeles Mestres, "There is no other hardy climbing Rose which can compare with it in sheer opulence." **\$1 each.\***

★**DOROTHY PERKINS.** R. Late. Pink. That most renowned pink Rambler Rose. Prune the flowering canes to the ground as soon as the flowers are gone. The new canes from the base of the plant will bloom the next year. **75 cts. each.\***

★**DR. HUEY.** P. Midseason. The darkest colored Climbing Rose—deep crimson-maroon which does not fade. **75 cts. each.\***

★**EMILY GRAY.** C. Early. A fragrant Rose which opens truly yellow, changing to ecru. Blooms borne in small bouquets. The glossy holly-like foliage is a most attractive feature of this plant. **75 cts. each.\***



★Primrose. 75 cts. each\*

★**PRIMROSE.** See illustration. C. Midseason. The rosette-shaped flowers, borne several together, are clear primrose-yellow and never fade white. A real treasure. **75 cts. each.\***

★**GARDENIA.** C. Early. Yellow. Of rampantly vigorous growth and splendid foliage. Bright yellow buds open to creamy white flowers, delightfully fragrant. Blooms better on old wood. **75 cts. each.\***

★**KITTY KININMONTH.** C. Early. Glowing pink. Flowers are extra large, semi-double, of cupped form. Deep, glowing pink, almost fadeless. A vigorous, unusually free grower. **\$1 each.\***

★**PAUL'S LEMON PILLAR.** P. Midseason. Lemon-yellow. The blooms are immense, every one perfect in form and held upright on a firm stem. Excellent. **\$1 each.\***

★**ROYAL SCARLET HYBRID.** C. Early. Crimson-scarlet. A progeny of Paul's Scarlet Climber, but two weeks earlier and a little stronger grower. The deep crimson flowers come in clusters and show masses of golden stamens. **\$1 each.\***

★**SHENANDOAH.** 1935. *New.* Introduction by The Conard-Pyle Co. P. Early. Crimson. A cross of Schoener's Nutkana and Etoile de Hollande, by J. H. Nicolas, which produces flowers like Etoile de Hollande on a hardy plant. The 4-inch blooms have 17 petals. Deep crimson, with real old-Rose perfume. It has 10-foot canes and healthy foliage. Blooms here the last of May. **\$1.50 each.\***

★**SILVER MOON.** C. Midseason. Creamy white. Primrose buds open to large, semi-double, clematis-like creamy white flowers with golden anthers. **75 cts. each.\***

★**WICHURAIANA.** G. Very late. The artistic single white flowers with golden anthers are followed by masses of vivid scarlet berries that glisten through the dense mat of almost evergreen foliage. Its greatest use is for retaining embankments from washing as it "creeps" and the canes take root wherever they touch the soil, thus making a solid mat. An extremely attractive ground-cover. Plant 4 feet apart. **75 cts. each.\*** (Write for quantity prices.)

★**JACOTTE.** See illustration. C. Midseason. Orange-apricot. The flowers are a rich shade of orange-apricot, with coppery red tints, and are fragrant. The plant has glossy, holly-like foliage that makes it attractive even when not in bloom. One of the loveliest of the Climbers. **75 cts.\***

★**STAR GUIDE TO GOOD ROSES**



★Coralie. 75 cts. each\*

★**CORALIE.** See illustration. C. Early. Orange-salmon. Coral buds opening orange-salmon, aging soft pink. **75 cts. each.\***

## COVER YOUR GARAGE WITH HARDY CLIMBING ROSES

With rapid-growing Hardy Climbing Roses you can speedily cover the back and sides of your garage at small expense. One side or the back of the building may face north, but the Hardy Climbing Roses grow even with a northern exposure, and the foliage alone will add attractiveness to an otherwise bare wall.

The following five Roses are vigorous in growth and free in bloom.

1 **Dr. W. Van Fleet,** to cover the back of the garage. **75 cts. each.**

The four below are for the two sides of the building.

1 **Mary Wallace.** **75 cts. each.**

1 **Paul's Scarlet Climber.** **75c. ea.**

1 **Jacotte.** **75 cts. each.**

1 **Spanish Beauty.** **\$1 each.**

5 The above Hardy Climbing Roses for **\$3.15**

**ASK FOR OFFER 20**



★Jacotte. 75 cts. each\*



★Spanish Beauty (Mme. Gregoire Staechelin). \$1 each\*

★**SPANISH BEAUTY** (Mme. Gregoire Staechelin). See illustration. (Pedro Dot, 1928.) C. Pearl-pink. Early. A plant of this "Queen of the Climbing Roses" in full bloom is one of the most beautiful sights we have ever seen. Long-pointed buds of crimson open to great, urn-shaped flowers of iridescent pearl-pink, with splashes of ruby-carmine on the outside of the petals. These deliciously fragrant blooms are produced so lavishly that they almost hide the plant, and coming as they do on long stems (12 to 18 inches), they are perfect for cutting. **\$1 each.\***

★**AMERICAN PILLAR.** See illustration. C. Pink. Midseason. A world favorite. For mass decorations, this delicately scented Rose is a marvel, for it lasts long when cut. The single flowers come in immense heads of 25 to 40 blooms, each head making a perfect bouquet of varying shades of charming pink, with a white center to each bloom and long golden anthers. The most spectacular and most admired Rose of this type, with large, waxy foliage. **75 cts. each.\***

★**MARY WALLACE.** See illustration. C. Early. Rose-pink. Long buds and charming large flowers of a brilliant warm pink color. Makes a fine pillar Rose. This is considered one of the best Roses produced by the late Dr. W. Van Fleet. Mrs. Van Fleet says her plant always blooms again in the fall. **75 cts. each.\***

**OFFER 21. 3** One each of the above spectacular Roses **\$2.15**

## Repeat-Blooming Climbers

While not so hardy as other Climbers, these Roses are easily wintered at West Grove with proper protection from sun and wind. They increase in bloom as the plants get older and make hard wood.

For the hardy repeat-blooming Climbers *Blaze* and *New Dawn*, see page 19

★ **CLIMBING ROBINOW.** *New.* (Peter Lambert, 1934.) P. Creamy white flowers tinted pink, resembling *Ophelia*. Growth about 6 feet. **\$1.50 each.\***

★ **CLIMBING TALISMAN.** P. Multicolored. A really lovely Climber. **\$1 each.\***

★ **MERMAID.** P. Immense, single flowers of sulphur-yellow, 4 to 5 inches across, come on vigorous plants that make a growth of 6 to 9 feet in a season. Lustrous, deep green foliage. Blooms are more profuse in autumn than in midsummer. **\$1.50 each.\***

★ **ROSELLA.** P. Grows 6 feet. Vivid scarlet with golden center. Single. Most brilliant of all. **75 cts. each.\***

★ **SCORCHER.** P. Crimson-scarlet. **\$1 each.\***

★ **SOUV. DE CLAUDIUS DENOYEL.** P. Crimson. **\$1 ea.\***

★ **VICOMTESSE PIERRE DU FOU.** P. Dark pink with orange base. An exquisite Rose. **\$1 each.\***

★ **ZEPHIRINE DROUHIN.** C. Early. Rose-pink. **\$1 each.\***



★American Pillar  
75 cts. each\*



★Mary Wallace  
75 cts. each\*

### \* QUANTITY DISCOUNTS

Deduct { 15% on 12 or More Roses [See Exceptions] }  
          { 20% on 25 or More Roses [on Page 3] }

Makes a lovely informal hedge



★Rosa Hugonis, "The Golden Rose of China." 75 cts.\*

★**ROSA HUGONIS, "The Golden Rose of China."**

Species. See illustration. The aristocrat of hardy flowering shrubs. The extreme hardiness of this lovely "Golden Rose of China," its habit of blooming early in May, and the long wands of fairy-like blossoms, all go to make Hugonis one of the most valued shrub Roses. The graceful, arching branches are completely covered with bloom to the very tips in early May. This beautiful shrub Rose, with its dainty foliage and graceful growth, makes a distinctive and almost impenetrable hedge. Plant 15 inches apart. Requires no attention, and blooms best when planted in good unfertilized soil. **75 cts. each.\*** Write for quantity prices.

**Species and Old-Fashioned Roses**

★**AUSTRIAN COPPER.** Copper-red and golden yellow. The delight of landscape architects for flashing color in a shrub border. The single blooms, coppery red on the inside and vivid yellow on the outside of the petals, give the effect of a bush covered with brilliant butterflies. Do not prune this exquisite shrub Rose. **75 cts. each.\***

★**HARISON'S YELLOW.** Bright yellow. The well-known bright yellow Rose that was seen in so many old American dooryards. A lovely shrub which is loaded with double, fragrant, yellow blooms in May. **75 cts. each.\***

★**SWEETBRIAR.** Pink. Small, single, pink blooms on a strong-growing plant that is valued for the spicy fragrance of its foliage. **75 cts. each.\***

★**YORK AND LANCASTER.** Damask. Striped red and white, but occasionally all red. First known in 1551 and named after the War of the Roses—the Yorkists wore white Roses, the Lancastrians red, and this Rose symbolized the union of the two factions. **\$1 each.\***



★Rosa Rouletti. Bud is a little larger than a grain of wheat

Knoxville, Tenn., November 11, 1935.

For some time I have felt that no man should love and enjoy anything as much as I have the little rose (Rouletti) you sent me some time ago. The one at home is in a pot out on the porch and it has bloomed and bloomed. It being next to my heart, I am today giving it to a mother who has just lost her daughter, and I hope she appreciates it.—DR. E. A.

★**ROSA ROULETTI. Miniature Rose**

A rock-garden "gem" and also a gem of an edging plant. It grows about 6 inches tall in bushy form, is healthy and hardy and blooms continuously. The tiny, rose-pink, quite double flowers are less than an inch in diameter. **3-inch pot-plants, 50 cts. each; 25 for \$10.**

See also "Tom Thumb." Page 2

**Charming Moss Roses—Very Hardy**

★**GOLDEN MOSS.** H.Moss. (P. Dot, 1932.)

Buff-yellow. See illustration. Moss Roses have been garden favorites for centuries. There have been white, pink, and light red varieties but never before has there been a yellow one. Pinkish buds open to golden buff with a pink tint and age to cream-white. The corolla has a delicious Rose perfume which is almost hidden under the pungent scent of the mossy calyx. **\$1 each.\***

★**COMTESSE DE MURINAIS.** Light pink. Bud well mossed; flowers light pink. **75 cts. each.\***

★**CRESTED MOSS.** Deep pink. **75 cts. each.\***

★**HENRI MARTIN.** Crimson. Flower medium size. **75 cts. each.\***

**OFFER 22.** One each of the 4 Moss Roses, \$2.70.

★**STAR GUIDE TO GOOD ROSES**



★Golden Moss. Grows to 6 ft. \$1 each\*



## Old-Fashioned, Oak-Hardy Hybrid Perpetual Roses

These large-flowered beauties bring back rich memories of old-fashioned gardens and are noted for extreme hardiness. They grow 3 to 10 feet in height. Some repeat.

★**FELBERG'S ROSA DRUSCHKI.** *New.* Rich pink. A pink "Druschki." Resembles Frau Karl Druschki in everything but color. 35 petals. **\$1 each.\***

★**FRAU KARL DRUSCHKI.** ● Snow-white, with long buds that are shaded pink and open to immense, perfectly double flowers often 4 inches across. Blooms occasionally all summer and until frost. Scentless. **75 cts. each.\***

★**GENERAL JACQUEMINOT.** ● Clear red. The standard red for years, and the color is just as bright today as it was seventy years ago. **75 cts. each.\***

★**GLOIRE DE CHEDANE-GUINOISSEAU.** Vermilion-crimson. Large blooms, perfectly formed, and deliciously fragrant. Color is vermilion-crimson, turning to pure crimson-red. **75 cts. each.\***

★**HARMONY.** ● (J. H. Nicolas; introduced by The Conard-Pyle Company, 1933.) Salmon-pink. Flowers are salmon-pink with a golden center. Rare "old Rose" perfume. Beautiful Hybrid Tea flowers on H. P. plants. **\$1.50 each.\***

★**HENRY NEVARD.** ● See illustration. A crimson-scarlet, ovoid bud that becomes an extremely double bloom of old-fashioned form. Unusually fragrant. **75 cts. each.\***

★**MRS. JOHN LAING.** ● Solid pink. Full, fragrant flowers of cup-like form. **75 cts. each.\***

★**PAUL NEYRON.** Clear pink. Mammoth blooms of clear pink, shading to rose-pink. **75 cts. each.\***

★**PRINCE CAMILLE DE ROHAN.** Velvety crimson-maroon. An old, fragrant Rose desirable for its dusky beauty. **75 cts. each.\***

★**SYMPHONY.** *New* 1935. Plant Patent No. 79. Pale rose. Makes perfect exhibition blooms of giant size. An everblooming Pink Frau Karl Druschki. **\$1.50 each.\***

★**ULRICH BRUNNER.** ● Cherry-red. One of the most extravagantly blooming Roses of this class. **75 cts. each.\***

★**URDH.** *New.* Old-rose. Very double, medium-sized flowers of lovely old-rose are produced all season. Rich, old-time perfume. **\$1 each.\***

**6 Hybrid Perpetual Roses, marked ● \$4.45**  
**ASK FOR OFFER No. 23**



★**Henry Nevard.** Repeats in the fall. **75 cts. each\***



★**Vanguard**  
**\$1 each\***

## Hybrid Rugosa Roses

These Make Oak-Hardy Flowering Shrubs

★**VANGUARD.** Hybrid Rugosa. Orange-salmon and copper. See illustration. Makes a large shrub with 8- to 10-foot canes. Its foliage looks beautifully varnished. Large, fragrant flowers of orange-salmon with copper tints. On Oct. 29, 1934, the American Rose Society awarded this Rose the Fuerstenberg Prize for a deserving new Rose suitable for the American climate. **\$1 each.\***

★**AGNES.** Coppery yellow buds open to double, fragrant flowers of amber. **\$1 each.\***

★**DR. ECKENER.** Clear pink. The large, cupped blooms are an enchanting fresh pink with the base of the petals deep golden yellow. Delightfully perfumed. **\$1 each.\***

★**ROSE A PARFUM DE L'HAY.** Produces deep crimson, double flowers, rich in fragrance. **75 cts. each.\***

★**RUGOSA MAGNIFICA.** Makes 6-foot symmetrical everblooming bushes with fragrant crimson blooms. **\$1 each.\***

### \* QUANTITY DISCOUNTS

Deduct { 15% on 12 or More Roses [See Exceptions on Page 3]  
20% on 25 or More Roses



★**Max Graf**  
For embankments

★**MAX GRAF.** An ideal trailing Rose for retaining embankments. Its large, single, apple-blossom-pink flowers are enchantingly lovely in the spring. Plant 2 to 3 feet apart. **75 cts. each.\***

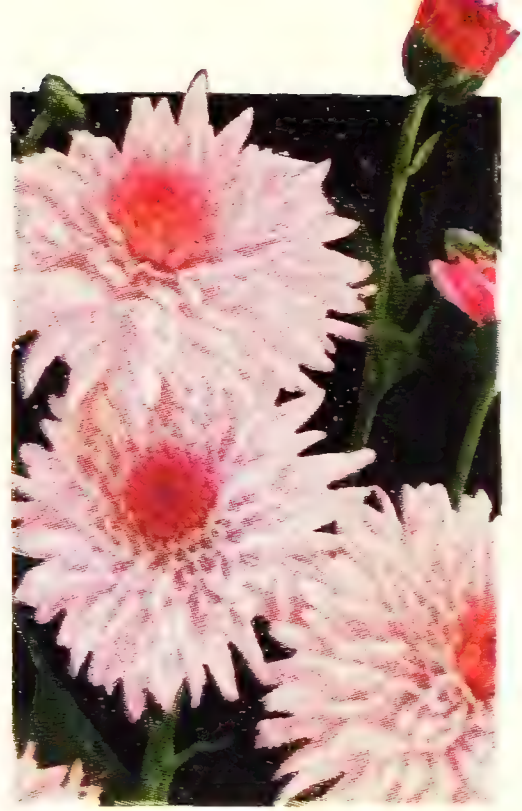
★**F. J. GROOTENDORST.** Small, bright crimson flowers, like baby carnations, in brilliant clusters. Grows to 3½ to 4 feet and blooms all season. A spectacular everblooming hedge-plant. **75 cts. each.\***



Ruth Hatton. 30 cts.



Crimson Splendor. 30 cts.



Jean Treadway. 30 cts.

## Brilliant Hardy Chrysanthemums

For a gay and glorious display in your garden this fall, plant Hardy Chrysanthemums in May or early June. Your flower money will bring an abundant harvest of vividly colored beauties. We supply potted plants with the soil on the roots; they make splendid branching growth and grow quickly into fine symmetrical plants with quantities of bloom the first season. So prolific in bloom are these Chrysan-

themums that quantities of the brightly colored, deliciously pungent flowers can be used for indoor enjoyment without visibly affecting the outdoor display of color in the garden.

**CULTURE.**—All you need is ordinary good garden soil. The only special care they need is to keep them pinched back to 1 foot in height until the middle of July and water them during dry weather.

**PRICES** { 30-ct. kinds are 3 for 75 cts.; 12 for \$2.50  
50-ct. kinds are 3 for \$1.35; 12 for \$5.00 } **POSTPAID**

**36 Vivid Gay-Colored Chrysanthemums \$8.95**

The entire Collection on pages 24 and 25

Bushels of blooms to cut from late August until hard frost. Value \$12.40 for \$8.95, postpaid.

ASK FOR OFFER 24

### 4 C.-P. Novelties for 1936

A Feast of Color, spread out like a hundred Turkish rugs on a big lawn, was our display of Chrysanthemums last autumn. Visitors, sometimes 500 a day, revelled and rejoiced in this operatic scene of riotous color-notes created by our Hybrids. From these we picked, and now introduce, the four following favorites:

**HIAWATHA.** *New. Decorative Pompon.* September 30. 2 feet. Fully double blooms of cinnamon color with a glow in the heart of each flower like a spotlight focused on it. A lovely art shade. **50 cts. each.**

**MANITOU.** *New. Decorative.* October 5. 2 feet. An unusually large bloom of Decorative form. Color vivid yellow right down to the center, even in its later wide-open stage. **50 cts. each.**

**MINNEHAHA.** *New. Button.* October 10. 2 feet. Fully double and only 1½ inches across. Garnet-bronze enriched with an overflow of velvety crimson. The most effective dark-colored Button. **50 cts. each.**

**NOKOMIS.** *New. Decorative Pompon.* October 5. 2 feet. Full, ball-shaped flowers, 2½ inches across, deep lavender with every petal tipped light lavender, which gives a dainty, airy effect. Unusually long-lasting when cut. **50 cts. each.**

**OFFER 24a.** 1 each of above 4 Novelties **\$1.90 POST-PAID**

### 4 Novelties of 1935

**AUTUMN.** *Single.* (C.-P. Co., 1935.) October 1. 2 feet. Real autumn colors—orange, bronze, and brick-dust all have a part in the coloring of this gay flower. A large orange cushion has a place in the picture. The 2½-inch flowers have 3 or 4 rows of petals and a sweet Chrysanthemum scent. **40 cts. each.**

**MARY JANE.** *Decorative.* (C.-P. Co., 1935.) October 1. 18 inches. An exquisite soft pink flower over 4 inches in diameter. It opens flat and has an informal appearance, caused by the edges of the petals being partly folded. **40 cts. each.**

**MISS PRIM.** *Decorative-Pompon.* (C.-P. Co., 1935.) October 10. 18 inches. Ecru is the nearest we can come to the color of this exquisite flower in Ridgway's Color Chart. It is different and one of the daintiest Chrysanthemums we have ever seen. The flowers are about 2½ inches in diameter and have a delicious sweet scent. Very free blooming. **40 cts. each.**

**TOPSY.** *Decorative.* (C.-P. Co., 1935.) October 1. 18 inches. The 3-inch flowers are the deepest, richest glittering gold we have ever seen in a Chrysanthemum. Has a shaggy appearance caused by the outer rows of petals being slightly curled. Blooms freely on low-branching plants with healthy foliage. **40 cts. each.**

**OFFER 24b.** The 8 newest Chrysanthemums for 1935 and 1936, as described above, for **\$3 POST-PAID**

### 28 Standard Varieties

ALL CHRYSANTHEMUM PRICES ARE POSTPAID

**AMELIA.** *Pompon. New.* September 10. 15 inches. Mound-like plants wider than they are tall, so covered with bloom that the plants are hidden. Its 2-inch, flat, lavender-pink flowers are creamy white, with pink tints. **30 cts. each.**

**BARBARA CUMMING.** *Decorative.* August 30. 2 feet. The best of the early, large-flowered yellows, 3 inches or over in diameter, light bronze when first opening, turning to rich, pure yellow. **30 cts. each.**

**CRIMSON SPLENDOR.** *Single.* See illustration. October 1. 2 feet. A magnificent variety. Rich crimson-maroon flowers shaded with garnet and with an attractive yellow center button. The 4-inch flowers are delightfully informal. **30 cts. each.**

**DAZZLER.** *Single.* October 10. 2 feet. Large, single blooms of dazzling red, with backs of petals deep yellow, which give "life" to the flower. Well named. **30 cts. each.**

**DONALD WELLS.** *Single.* September 1. 2 feet. A splendid, glistening white Chrysanthemum with about three rows of petals. **30 cts. each.**

**ERMALINDA.** *Pompon.* October 16. 3 feet. Perfectly formed pompons of light violet—an attractive shade. Unusually fine for cutting. **30 cts. each.**

THE CONARD-PYLE CO.

★Star Rose Growers

West Grove, Pa.

# Brilliant Hardy Chrysanthemums, continued

The new winter-proof Korean Hybrids are offered on inside back cover

8

8 distinctly different Hardy Chrysanthemums—Dazzler, Early Bronze, Frances Whittlesey, Jane Saunders, October Dawn, R. Marion Hatton, Ruth Hatton, and Vivid (value \$2.50) postpaid for

\$1.90

ASK FOR OFFER 25

**EARLY BRONZE.** *Pompon.* See illustration. Late August. 2 feet. One of the earliest and finest of all hardy "Mums." The 1½-inch flowers appear early, and the compact plants are one mass of bloom until killed by heavy frost. Its color is a light bronze which fades but little. **30 cts. each.**

**FRANCES WHITTLESEY.** *Decorative.* See illustration. October 1. 18 inches. Rich bronze and garnet—perfect fall colors. The flowers will stand more frost than most varieties. **30 cts. each.**

**FUJIYAMA.** *Novelty.* October 15. 2 feet. An odd variety which is quite popular. Its 4- to 5-inch flowers of pale pink have the petals quilled except on the ends which open out, making a spoon-shaped appearance. **40 cts. each.**

**GRANNY SCOVILL.** *Decorative. New.* October 10. 18 inches. The flowers are over 4 inches in diameter, of a warm coral-bronze, a new shade; they open flat and have shaggy edges. Needs extra winter care. **40 cts. each.**

**GRENADIER.** *Single.* October 10. 30 inches. Flowers 3 to 3½ inches in diameter, bright chestnut-red with gold-backed petals. **30 cts. each.**

**JANE SAUNDERS.** *Pompon.* October 20. 3 feet. The 3-inch, bronzy orange pompons come in compact clusters on strong, long stems. Perfect for cutting. **40 cts. each.**

**JEAN CUMMING.** *Decorative.* September 15. 2 feet. Large flowers of purest white, with a very soft yellow and blush shading at the center when first open. We think this the finest white of this type. **30 cts. each.**

**JEAN TREADWAY.** *Decorative.* See illustration. October 1. 2 feet. When first open the deep rose-pink center is surrounded by the clearest sparkling pink imaginable, changing to soft pink shading to white with age. **30 cts. each.**

**JEWEL.** *Pompon.* October 5. 2 feet. Flowers 1½ inches across, of violet-mauve color with a steely glint. It is the most perfectly formed pompon we have seen and was in great demand by visitors to our fields when the Chrysanthemums were blooming. The flowers come in compact clusters and are long-lasting when cut. **40 cts. each.**

**MORIFOLIUM.** One of the ancestors of all Chrysanthemums, and one of the daintiest flowers in the fall garden. Low plants, with healthy, attractive foliage, send up big, branching bloom-shoots which are literally covered during September and October with masses of single pink flowers less than an inch in diameter. As a cut-flower it is airily graceful as well as unusually beautiful. **30 cts. each.**

**OCTOBER DAWN.** *Decorative.* October 5. 2 feet. Beautiful soft daybreak-pink, without contrasting tints. Makes exquisite bouquets. **30 cts. each.**

**R. MARION HATTON.** *Decorative Pompon.* See illustration. September 25. 3 feet. Its 2-inch flowers of clear canary-yellow are produced in surprising quantities. The best small yellow. **30 cts. each.**

**RUTH CUMMING.** *Decorative.* October 10. 2 feet. Lovely blooms of rich terra-cotta-bronze. One of the loveliest in this color. **30 cts. each.**

**RUTH HATTON.** *Decorative Pompon.* See illustration. October 1. 3 feet. The most prolific-blooming Chrysanthemum. Plants produce myriads of lovely 2-inch flowers of clear ivory-white, having a lemon-yellow tint in the center when first opening. **30 cts. each.**

**SEPTEMBER QUEEN.** *Decorative.* September 15. 18 inches. Large, shaggy white flowers almost cover the low plants from the middle of September until hard frost. **30 cts. each.**

**VIVID.** *Decorative.* October 1. 2½ feet. Big, shaggy flowers the color of an American Beauty rose. A totally different Chrysanthemum color. **30 cts. each.**

## 6 BUTTON CHRYSANTHEMUMS

Delightful miniature flowers that come in masses. The "Buttons" are the latest to bloom. Be sure to have some to finish up your autumn flower display. They are very long-lasting when cut.

**BRIGHT EYES.** *Button.* October 20. 18 inches. Blush-white, with a dark red center. One of the prettiest of the button type. **30 cts. each.**

**ETHEL.** *Button.* October 15. 18 inches. A lovely, bright red, miniature pompon. Flowers are about 1 inch in diameter. **30 cts. each.**

**NUGGETS.** *Button.* October 18. 2 feet. Deep yellow. 1-inch flowers. Probably the best pure yellow Button. **30 cts. each.**

**PINK DOT.** *Pompon.* October 15. 3 feet. The 2-inch pompons of pale pinkish straw-color have wine-colored centers. **30 cts. each.**

**WEE DOT.** *Button.* October 18. 15 inches. The half-inch brown buttons have a silvery dot in the center. The smallest Chrysanthemum we have seen. **30 cts. ea.**

**YELLOW GEM.** *Large Button or Small Pompon.* October 10. 18 inches. Compact blooms, less than an inch in diameter, of bright canary-yellow without shading. **30 cts. each.**

OFFER 25a. The 6 "Buttons" for \$1.50, postpaid

12

All of the 6 shown in color on pages 24 and 25, Ruth Hatton, Crimson Splendor, Jean Treadway, Early Bronze, R. Marion Hatton, and Frances Whittlesey. Also Dazzler, Fujiyama, Grenadier, Jane Saunders, Jean Cumming, and Ruth Cumming (value \$3.80) postpaid for

\$3

ASK FOR OFFER 25b



Early Bronze. The ace of early Chrysanthemums. Blooms come in almost unbelievable quantities. 30 cts.



R. Marion Hatton. Considered the most prolific-blooming clear yellow. 30 cts.



Frances Whittlesey. 30 cts.

# Hardy Asters



Aster Frikarti. New. Less than natural size

## ASTER FRIKARTI

(Wonder of Staefa) Illustrated above

A new Hybrid Aster originated by M. Frikart, of Staefa, Switzerland. One of the finest perennials introduced in recent years. The bushy plants, which grow about 2 feet tall and more in diameter, have proved hardy with sub-zero temperatures. The sky-blue or pale violet-blue flowers are from 2½ to 3 inches in diameter, single, with 35 to 50 narrow petals, and deliciously fragrant. They last a long time on the plant and are wonderful cut-flowers. Just visualize hundreds of long-stemmed blooms, lighter blue and more perfect than our illustration, on one plant, and you will realize why almost everyone who sees this wonderful new Aster wants it in his own garden. Bloom starts early in summer and keeps up continuously until frost. **50 cts. each; 3 for \$1.35; 12 for \$5.**

## New Dwarf Hardy Asters



Lady Henry Maddocks. Grows 7 in. high

**Lady Henry Maddocks.** See illustration. Sept., Oct. 7 in. Pale pink.

**Marjorie.** Mid-Oct. 9 in. Bright rose.

**Nancy.** September and early October. 9 in. Flesh-pink.

**Ronald.** Early October. 12 in. Bright lilac-pink.

**Victor.** Early. Mid-Sept. For rock-gardens. 6 in. Very dwarf. Clear lavender.

**6 THE SIX NEW DWARF ASTERS NAMED ABOVE** **\$1.90**  
To provide different heights, colors and times of bloom. Postpaid, for  
**ASK FOR OFFER 26**

# DELPHINIUMS

## Blackmore & Langdon Hybrids

See illustration below

After years of testing many famous strains of Delphinium, we have finally settled down to Blackmore & Langdon's, and get fresh seed each year, to maintain highest quality. They have proved strong, healthy plants with long spikes of flowers, so beautiful that adequate description requires more adjectives than we know. From single to double, from deep violet down to the palest lavender, with all the tints imaginable modifying these colors; every flower has a lovely "bee" and many are deliciously fragrant.

Plants cut back after the first bloom have produced wonderful spikes again in September. Get acquainted with these in your own garden and you will share our enthusiasm. **50 cts. each; 3 for \$1.35; 12 for \$5, postpaid.**

**WREXHAM STRAIN.** The Hollyhock type, with its long, tapering spikes of extra-large flowers in a wide range of shades. Named varieties of this strain sell for several dollars each, but we believe that these seedlings will produce as desirable flowers as the named varieties. **50 cts. each; 3 for \$1.35; 12 for \$5, postpaid.**

**BELLADONNA (Everblooming Hardy Larkspur).** The most continuous blooming Delphinium and the best for cutting, as each plant has many branches. Clear turquoise-blue flowers are freely produced. 3 to 4 feet. June to October. Charming when arranged in vases with Chatillon Roses. **30 cts. each; 3 for 75 cts.; 12 for \$2.50, postpaid.**

**BELLAMOSUM.** Everblooming. The dark blue form of Belladonna. 3 to 4 feet. June to October. **30 cts. each; 3 for 75 cts.; 12 for \$2.50, postpaid.**

**12 Delphiniums \$3.85**  
Postpaid. Including

3 Blackmore & Langdon Hybrids  
3 Wrexham 3 Belladonna  
3 Bellamosum

Make quantities of bloom

**ASK FOR OFFER 26a**



Delphiniums, Blackmore & Langdon Hybrids



Hardy Phlox make brilliant, fragrant borders

★ **Attraction.** *New.* Midseason. 2½ ft. Brilliant scarlet-orange with carmine eye. Unusually large flowers. 40 cts. each.

● **Beacon.** Late. 3 ft. Brilliant cherry-red. One of the best in this color. A splendid variety. 30 cts. each.

★ **Border Gem.** *New.* Late. 3 ft. Vigorous grower. Great trusses of violet-blue flowers. The finest tall "blue." 50 cts. each.

★ **Brilliant.** *New.* Late. 3 ft. Shining scarlet with a darker eye. Extra fragrant. Plants branching. 50 cts. each.

● **Caroline Vandenberg.** Midseason. 2½ ft. Lovely lavender-blue flowers. Sweet scented. 50 cts. each.

● **Champs Elysees.** Midseason. 2½ ft. Large trusses of purple flowers with golden anthers. 30 cts. each.

★ **E. I. Farrington.** *New.* Early. 2 ft. Beautiful bright salmon-pink, shading to soft pink. Delicious fragrance. 40 cts. each.

● **Europa.** Midseason. 3 ft. White with a carmine eye. Delightfully sweet. A charming standard variety. 30 cts. each.

● **Frau Anton Buchner.** Late. 2½ ft. Medium-sized white flowers come in enormous heads. Spicy fragrance. 30 cts. each.

● **General Petain.** *New.* Late. 2 ft. Wine-red flowers of medium size in splendid trusses. 50 cts. each.

★ **H. B. May.** *New.* Late. 2 ft. The finest true pink Phlox. Extra-large flowers. 50 cts. each.

● **Miss Lingard.** Everblooming. 2½ ft. White. Blooms from June until frost. 30 cts. each.

● **Mrs. Jenkins.** Late. 3 ft. Pure white. One of the best standard varieties. 30 cts. each.

● **Painted Lady.** Midseason. 2½ ft. Large trusses of silver-pink flowers having salmon shadings and cherry-eyes. 30 cts. each.

★ **Pink Beauty** (Miss Verboom). *New.* Everblooming. A pink-tinted Miss Lingard. 40 cts. each.

● **Prof. Schliemann.** Late. 3 ft. Charming light lavender color. Lovely in masses. 30 cts. each.

★ **Prof. Went.** Midseason. 18 in. Light purple. Good for front of borders on account of low growth. Really effective with other colors. 50 cts. each.

● **Rijnstroom.** Midseason. 2½ ft. Large flowers of rose-pink in great trusses. 30 cts. each.

● **Saladin.** *New.* Midseason. 2½ ft. Orange-scarlet. The most vivid color in Phlox. 50 cts. each.

★ **Salmon Glow.** Early. 2½ ft. A new variety, lively flame-pink in color, with salmon shades, softened with lilac and white tints at the center. Very free in bloom. 50 cts. each.

● **Smiles.** *New.* Late. 2½ ft. Large, carmine-pink flowers with a dark eye. 50 cts. each.

● **Thor.** Midseason. 2½ ft. A standard salmon-pink with bright eye. 30 cts. each.

# HARDY PHLOX

For delightful, brilliant borders of mass color, combined with a delicious perfume all their own, no other hardy garden flowers can compare with the gay-colored, charmingly fragrant Phlox. Enjoy them to the full on a warm, quiet summer evening before sundown, when the colors are softened and the pervasive fragrance brings sweet memories of lovely old-fashioned gardens.

These lovely hybrids with their great heads of bloom make a glorious show from early summer until mid-autumn. For real effect use several plants of a variety.

Below are included **our choice** of the latest American and European novelties, in addition to the always-wanted kinds in the older, better-known varieties. All we offer are dependably good.

**PRICES:** 30-cent varieties, 3 for 75 cts.; 12 for \$2.50 } Post-paid  
40-cent varieties, 3 for \$1; 12 for \$3.75 }  
50-cent varieties, 3 for \$1.35; 12 for \$5.00 }

## THE ENTIRE COLLECTION ON THIS PAGE

**23** All these lovely fragrant Phlox, including shades of red, pink, lavender, and white for **\$7.45**

**ASK FOR OFFER No. 27**

## NEW PHLOX, COLUMBIA

*Plant Patent No. 118*

See illustration below

A glorious Phlox in every way. One of the keenest garden critics in this country says, "It is the finest Phlox produced in 20 years." It has splendid, vigorous growth and the foliage seems immune from mildew and fungous diseases. The color is cameo-pink, with a faint blue eye, and the massive heads of bloom are held erect on strong stems. **50 cts. each; 3 for \$1.35; 12 for \$5, postpaid.**



New Phlox, Columbia. Plant Patent No. 118

**OFFER 27a.** One each of the 8 New Phlox marked ★ for \$3.15, postpaid.

**OFFER 27b.** One each of the 8 Phlox marked ● for \$1.75, postpaid.



Aquilegia (Columbine)



Viola, Jersey Gem



Pyrethrum hybridum

# Hardy Perennials

PRICES: All Perennials, unless otherwise noted, are 3 for 75 cts.; 12 for \$2.50; 100 for \$18.50, delivery prepaid.

**AQUILEGIA (Columbine).** See illustration. They grow 2 to 3 feet tall and all bloom in May and June. Thrive in sun or shade.

● **A., Breeze Hill Hybrids.** Originated at the famous Breeze Hill Gardens of Dr. McFarland at Harrisburg, Pa. Uncommon art shades; extra-long spurs.

**A. canadensis.** The dainty red and yellow wild Columbine of the eastern states.

**A. chrysantha.** A golden yellow, long-spurred native of Arizona. Everblooming.

**A., Hensal (Harebell).** Very prolific. Deep violet-blue flowers with short spurs.

● **BEGONIA Evansiana.** Hardy. August. Beautiful metallic green foliage with crimson on the underside. Makes masses of delicate coral-pink blooms. Do not plant in open sun.

● **CAMPANULA Medium (Canterbury Bell).** Biennial. See illustration. 2 to 3 feet. June, July. Beautiful, upturned bells of Pink, White, Mauve, and Blue are borne on erect plants. *Mixed colors only.*

**C. persicifolia (Peach Bells).** 2 to 3 feet. June, July. Lovely, cup-shaped, blue bells of large size.

**C. persicifolia alba.** 2 to 3 ft. June, July. White, cup-shaped bells.

● **DICENTRA spectabilis (Bleeding-Heart).** Heart-shaped, deep pink flowers with white tips hang in drooping racemes. 50 cts. each; 3 for \$1.35; 12 for \$5, postpaid.

● **DIGITALIS (Foxglove), The Shirley.** See illustration. 5 to 6 feet. June, July. A biennial that reseeds itself. Does well in shade. Unusually long spikes of bloom, white to rose, with chocolate and maroon spots. 3 for 65 cts.; 12 for \$2. *Mixed colors only.*

● **GYPSOPHILA repens Bodgeri (Baby's Breath).** *New.* Dwarf, double flowering and early blooming. Makes clouds of minute white flowers from July till frost. Beautiful for bouquets. 50 cts. each; 3 for \$1.35.

● **LAVANDULA vera (Lavender).** Lovely, gray, aromatic foliage and fragrant flowers. One of the best beloved plants in old gardens.

**PACHYSANDRA terminalis (Japanese Spurge).** 8 inches. A popular ground-cover for shady places. Planted 6 to 8 inches apart, the plants will soon meet and make a perfect cover. 12 for \$1.50; 100 for \$10, postpaid.

● **PLATYCODON grandiflorum (Chinese Balloon Flower).** 2 feet. July to October. Balloon-shaped buds open to large, blue, bell-shaped flowers, freely produced.

**P. grandiflorum album.** Pure white, bell-shaped flowers.

● **PYRETHRUM hybridum.** See illustration. 2 feet. May, June. Long-stemmed, daisy-like flowers, lasting long when cut. The colors range from white, through various shades of pink and red to deep crimson. *Mixed colors only.*

● **STOKESIA cyanea (Cornflower Aster).** Large, Aster-like blooms of China blue that come in September.

● **TRITOMA or Red-Hot Poker (Kniphofia), Pfitzeriana.** See illustration. 2½ feet. August to frost. Makes a stunning show in the garden and is a striking cut-flower.

**VIOLA, Apricot.** 6 inches. May to October. Rich apricot-yellow flowers, freely produced. Keep them cut and they bloom all summer.

**V., Arkwright Ruby.** 6 in. May to October. Rich rosy crimson with terra-cotta shadings. A truly delightful color.

● **V., Jersey Gem.** See illustration. 6 inches. Everblooming. *Makes a perfect edging plant for beds and borders.* If faded flowers are kept cut will bloom all the time. Pure violet-blue, fragrant blooms on 6-inch stems. In full bloom in our fields November 20, 1934. 3 for 75 cts.; 12 for \$2; 100 for \$15, delivered.

**V. tricolor.** The ever-popular Johnny-jump-up. Lovely in perennial borders or odd nooks around the garden. 3 for 65 cts.; 12 for \$1.50.

● **VIOLET, Princess of Wales.** 6 inches. April to June. Delightfully fragrant, long-stemmed purple Violets for cutting.



Digitalis (Foxglove)



Campanula Medium



Tritoma (Red-Hot Poker)

36 Three each of above Perennials marked ● (36 in all) postpaid for \$6.40  
ASK FOR OFFER 28

# CANNAS

## For All-Summer Brilliant Lawn Displays

Cannas are almost indispensable where a display of vivid color is needed. They bloom abundantly and unceasingly during hot summer months when other bright flowers may be wilting, and continue until cut down by hard frost. Plant 18 inches apart.

● **AMERICAN BEAUTY. 5 ft.** Immense flowers of Oriental carmine or translucent cerise. 3 for 65 cts., postpaid.

● **GOLDEN WEDDING. 3 ft.** The largest-flowered dwarf bright yellow. 50 cts. each; 3 for \$1.35, postpaid.

● **HOLLYWOOD. 4 ft.** Orange-pink, shading to salmon-orange. 3 for 90 cts., postpaid.

● **KING MIDAS. 5 ft.** A real aristocrat. Glittering yellow. 3 for 90 cts., postpaid.

● **MRS. A. F. CONARD. 4 ft.** Glowing salmon-pink. 3 for 90 cts., postpaid.

● **MRS. HERBERT HOOVER. 4 ft.** Immense flowers of watermelon-pink. 3 for 90 cts., postpaid.

● **PALM BEACH. 3½ to 4 ft.** Maize-yellow and pearl-pink. 3 for 65 cts., ppd.

● **RAZZLE DAZZLE. 4 ft.** Crimson-maroon, petals edged with yellow. 3 for 90 cts., ppd.

● **ROSAMOND COLES. 5 ft.** Reddish orange edged with golden yellow. 3 for 65 cts., postpaid.

● **THE AMBASSADOR. 4 ft.** Large cherry-red flowers. Bronzy foliage. 3 for 90 cts., postpaid.

● **THE PRESIDENT. 4 ft.** Rich, glowing scarlet blooms with firm petals come in immense heads. Like the Mrs. Pierre S. du Pont Canna, this is a Conard-Pyle introduction and for 15 years it has continued to be recognized as the finest red Canna ever produced. 25 cts. each; 10 for \$2, postpaid.



Mrs. Pierre S. du Pont. The Queen of the bright pink Cannas

This head of bloom is about half natural size. 75 cts. each; 6 for \$3.75, postpaid



● **MRS. PIERRE S. DU PONT. 4 ft.** See illustration. For sheer beauty, we have yet to find the equal of this Canna. Continues producing new bloom-stalks with their marvelous heads of salmon-pink bloom from June till frost comes. Plant 6 or more for finest effect. 75 cts. each; 6 for \$3.75, postpaid.

**6** Distinctly different Cannas marked ●—Mrs. P. S. du Pont, American Beauty, King Midas, Palm Beach, Razzle Dazzle, and The President, ppd. **\$1.95**  
ASK FOR OFFER 29

**12** The set of 12 Conard-Pyle Cannas, as named above. Every one a leader in its color class, postpaid for **\$3.65**  
ASK FOR OFFER 29a

## Evergreen English Boxwood

*Buxus sempervirens suffruticosa*

Loveliest, Most Permanent Edging Plant

(Field-plants here last winter withstood 10° below zero)

This is the true Dwarf Box and should not be confused with the fast-growing, tall American Boxwood (*Buxus sempervirens*). Border your rose-beds, garden paths, and entrance walks with this dwarf, spicy, evergreen shrub—the most beautiful formal edging plant known.

Our plants are given space in which to grow so they are bushy and symmetrical.

● A single sample plant to show quality will be sent for 25 cts., postpaid

4 to 6-in., \$2 for 10; \$18 per 100

6 to 8-in., \$3 for 10; \$25 per 100

Delivery not prepaid. Write for prices on larger quantities or larger sizes.



True Dwarf Evergreen English Boxwood for edging walks

# General and Rose Index, Spring 1936

## General Index

	Page
Aquilegias, 4 kinds.....	28
Asters, 7 kinds.....	26
Baby's Breath.....	28
Balloon Flower.....	28
Begonia, Hardy.....	28
Bleeding-Heart.....	28
Books.....	30
Boxwood.....	29
Buxus.....	29
Campanula, 3 kinds.....	28
Cannas, 12 kinds.....	29
Canterbury Bells.....	28
Chrysanthemums, Hardy, 42 varieties.....	24, 25, 31
Climbing Roses.....	19-21
Columbines.....	28
Cornflower Aster.....	28
Daisies.....	28
Delphiniums.....	26
Dicentra.....	28
Digitalis.....	28
Discounts.....	3
Foxglove.....	28
Guarantee.....	2
Gypsophila.....	28
"How to Grow Roses".....	30
Japanese Spurge.....	28
Johnny-jump-up.....	28
Kniphofia.....	28
Larkspurs.....	26
Lavandula.....	28
Lavender.....	28
Lily, Regal.....	30
Pachysandra.....	28
Phlox, 23 varieties.....	27
Platycodon, 2 varieties.....	28
Pyrethrum.....	28
Quantity Rates on Roses.....	3
Red-Hot Poker.....	28
Regal Lily.....	30
ROSES.....	1-23, 32
Stokesia.....	28
Trade-Mark.....	2
Tritoma.....	28
Violas, 4 kinds.....	28
Violet.....	28

## Rose Index

Agnes.....	23
Albertine.....	19
Alezane.....	4
Alice Stern.....	8
Amelia Earhart.....	4
American Beauty, Cl.....	19
American Pillar.....	21
Ami Quinard.....	8
Angele Pernet.....	8
Angels Mateu.....	4
Annie Dupeyrat.....	4
Apeles Mestres.....	20
Ariel.....	8
Austrian Copper.....	22
Autumn.....	8
Barbara Robinson.....	8
Better Times.....	5
Betty Uprichard.....	8
Blaze.....	19
Breeze Hill.....	19
Carillon.....	4
Carrie Jacobs Bond.....	4
Catalonia.....	7
Cathrine Kordes.....	9
Charles K. Douglas.....	13
Charles P. Kilham.....	9
Chatillon.....	18

	Page
Climbing American Beauty.....	19
Climbing Robinow.....	21
Climbing Talisman.....	21
Comtesse de Murinais.....	22
Condesa de Sastago.....	5
Coralie.....	20
Countess Vandal.....	8
Crested Moss.....	22
Crimson Glory.....	6
Dainty Bess.....	9
Director Rubio.....	9
Distinction.....	18
Dorothy Perkins.....	20
Doubletons.....	19
Dr. Eckener.....	23
Dr. Huey.....	20
Dr. W. Van Fleet.....	19
Duchess of Wellington.....	9
Duquesa de Penaranda.....	7
Easlea's Golden Rambler.....	19
Eblouissant.....	18
Edith Nellie Perkins.....	10
Editor McFarland.....	10
E. G. Hill.....	9
Ellen Poulsen.....	18
Emily Gray.....	20
Etoile de Feu.....	9
Etoile de Hollande.....	11
Etoile Luisante.....	18
Federico Casas.....	11
Felberg's Rosa Druschki.....	23
Feu Pernet-Ducher.....	32
F. J. Grootendorst.....	23
Frau Karl Druschki.....	23
Gardenia.....	20
General Jacqueminot.....	23
Gloire de Chedane - Guin- oiseau.....	23
Gloria Mundi.....	18
Glowing Sunset.....	5
Golden Climber.....	19
Golden Dawn.....	10
Golden Gleam.....	9
Golden Moss.....	22
Grenoble.....	10
Gruss an Aachen.....	11
Gruss an Teplitz.....	10
Harison's Yellow.....	22
Harmony.....	23
Heinrich Wendland.....	11
Henri Martin.....	22
Henry Nevard.....	23
Hinrich Gaede.....	5
Hugonis.....	22
Ideal.....	18
Jacotte.....	20
Joanna Hill.....	12
Johanna Tantau.....	18
Julien Potin.....	11
Kaiserin Auguste Viktoria.....	11
Kardinal Piffel.....	12
Kitty Kininmonth.....	20
Lady Alice Stanley.....	12
Lady Ashtown.....	12
Leni Neuss.....	12
Leonard Barron.....	12
Little Beauty.....	5
Lucia Zuloaga.....	5
Lucy Nicolas.....	6
Luis Brinas.....	6
Luna.....	12
Mme. Albert Barbier.....	13
Mme. Butterfly.....	12
Mme. Cochet-Cochet.....	2
Mme. Emile Daloz.....	6
Mme. Gregoire Staechelin.....	21
Mme. Joseph Perraud.....	6

	Page
Mme. Jules Bouche.....	12
Mme. Pierre Koechlin.....	6
Mlle. Cecile Brunner.....	18
Margaret McGredy.....	12
Mary Hart.....	13
Mary Wallace.....	21
Max Graf.....	23
Max Krause.....	14
McGredy's Scarlet.....	14
Mermaid.....	21
Miss Rowena Thom.....	13
Mrs. Aaron Ward.....	10
Mrs. Arthur Curtiss James.....	19
Mrs. Charles Bell.....	15
Mrs. Dunlop Best.....	14
Mrs. E. P. Thom.....	14
Mrs. G. A. van Rossem.....	14
Mrs. Henry Morse.....	14
Mrs. Herbert Stevens.....	14
Mrs. John Laing.....	23
Mrs. Pierre S. du Pont.....	13
Mrs. R. M. Finch.....	18
Mrs. Sam McGredy.....	14
National Flower Guild.....	14
New Dawn.....	19
Nigrette.....	32
Nuntius Pacelli.....	14
Oswald Sieper.....	14
Paul Neyron.....	23
Paul's Lemon Pillar.....	20
Paul's Scarlet Climber.....	19
Permanent Wave.....	18
Pink Pearl.....	15
Portadown Fragrance.....	15
President Herbert Hoover.....	14
President Plumecocq.....	15
Primrose.....	20
Prince Camille de Rohan.....	23
Radiance.....	15
Rapture.....	15
Red Radiance.....	15
Rev. F. Page-Roberts.....	15

	Page
Rheingold.....	7
Richardson Wright.....	15
Rocheport.....	7
Rose a Parfum de l'Hay.....	23
Rosella.....	21
Rouge Mallerin.....	3
Rouletti.....	22
Royal Scarlet Hybrid.....	20
Rugosa Magnifica.....	23
Scorcher.....	21
Senora Gari.....	3
Shenandoah.....	20
Silver Moon.....	20
Sir Henry Segrave.....	15
Soeur Therese.....	15
Souv. d'Alexandre Bernaix.....	15
Souv. de Claudius Denoyel.....	21
Souv. de Claudius Pernet.....	15
Souv. de Mme. C. Cham- bard.....	16
Spanish Beauty.....	21
Sweetbriar.....	22
Sweetheart.....	18
Symphony.....	23
Talisman.....	16
Climbing Talisman.....	21
Texas Centennial.....	7
Thomas A. Edison.....	16
Tom Thumb.....	2
Tree Roses.....	16
Ulrich Brunner.....	23
Urdh.....	23
Vanguard.....	23
Ville de Paris.....	16
Viscountess Pierre du Fou.....	21
Warawee.....	6
White Ensign.....	16
Wichuraiana.....	20
Wilhelm Breder.....	5
York and Lancaster.....	22
Yvonne Millot.....	7
Zepherine Drouhin.....	21

## "How to Grow Roses"

By ROBERT PYLE, Past President American Rose Society. DR. J. HORACE MCFARLAND, Editor for American Rose Society. G. A. STEVENS, formerly Secretary of American Rose Society.

These three prominent American rosarians combined their life-long experiences in Rose-growing to produce this latest and most practical Rose book.

210 pages; 32 illustrations in natural colors. 30 photographic reproductions of Roses and Rose-gardens; numerous line drawings. \$2, postpaid.

"Climbing Roses." By G. A. Stevens. 64 illustrations. \$2, postpaid.

### TRI-OGEN. The all-purpose spray Highly concentrated

A proved control for mildew and black-spot on Roses, and all kinds of plants. Also destroys aphids or plant-lice (green-fly), and leaf-eating insects.

A. Small Kit. Protects 12 to 20 Roses for a season. \$1 50

C. Large Kit. Protects 100 to 160 Roses for a season. 6 00

D. Estate Kit. Protects 400 to 600 Roses for a season. 20 00

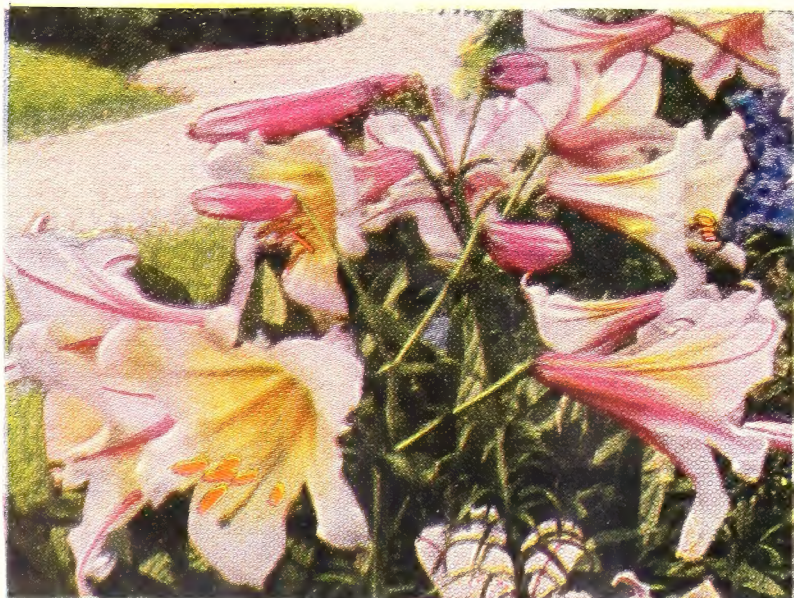
By express only, delivery not prepaid—not mailable

Star Rose Dust and Stimulant, see yellow insert

## THE REGAL LILY (Lilium Regale)

Plant in clumps of 6 or more

Our illustration truly represents the glorious show the Regal Lily will make when planted in groups. No flower surpasses it in magnificence. It grows anywhere, in any soil, in sand or clay, in good loam or even in gravelly soil, *provided only* that the location is not too wet and not too shaded. The beautiful blooms come in June, often six or more on a stalk about 4 feet high. It is a vigorous grower with wiry stems. The flowers are deliciously fragrant and the petals pearly white inside, with a canary-yellow throat, the outside wine-color, yellow, and white beautifully blended. Plant 6 to 8 inches deep, in groups among perennials or along the edge of a shrub border. **Price, 3 for 65 cts.; 12 for \$2; 100 for \$15, postpaid.**





# ENCHANTING KOREAN HYBRID CHRYSANTHEMUMS



1 APOLLO

2 CERES

3 MERCURY

4 DIANA

5 MARS

6 DAPHNE

These exquisite, artistic Korean Hybrids have created a furore among lovers of colorful flowers. They bloom so abundantly that quantities can be cut for indoor decoration without apparently reducing the garden display. Blooms come profusely in late September and early October, weeks ahead of hard frost, and make a charming show in the fall garden. They are distinctly different, grow 2 to 2½ feet high, and add colors and shades new to Chrysanthemums. Most of them have a delightful sweet fragrance in addition to the pungent Chrysanthemum scent. They furnish that "something different" so desired for cutting.

PRICE (Postpaid): 35 cts. each; any 12 for \$3.50

OFFER 31. The Set of 6 "Greek God varieties" as shown above, for \$1.85, postpaid  
 OFFER 31a. Three of each, that is three complete sets (18 in all), for \$5.10, postpaid

# ★ Feu Pernet-Ducher H.T.

(C. MALLERIN, 1934)

*Plant Patent No. 103*

Gold Medal, 1935, Barcelona, Spain and Lyon, France. Also scored 88 points at International Test-Garden, Portland, Oregon.

Yellow. One of the most beautiful Roses we have ever seen. Creamy buds, heavily marked with carmine, slowly open to spiral flowers of rich yellow, growing lighter toward the edges, with the edges lightly flushed with pink. The autumn flowers are much darker, being a rich golden yellow shading lighter at the edges, occasional flowers having a decided pink tinge. The outside or first petals are sometimes almost pure white, forming a chaste covering for the glorious expanding bloom. Although fully double, with 80 to 100 tissue-like petals, it has opened perfectly in all kinds of weather. Tall, bushy plants bloom continuously from June until frost, with the heaviest bloom and most beautiful flowers in early autumn. Delightfully fragrant. **\$1.50 each; 3 for \$3.75.**

*No further discount on this patented Rose*



© 1934

The darkest colored ever-blooming Rose



# ★ Nigrette H.T.

“The Black Rose of Sangerhausen.” (M. Krause, 1934.) Plant Patent No. 87. Blackish maroon. The almost black buds open to fragrant, dark maroon blooms which in their deepest shades give the impression of black velvet. The color varies violently with the season and weather from light crimson to deepest maroon. With us the flowers are at their best and darkest after the beginning of the cool nights of early autumn. Many summer visitors here ordered this Rose when they saw it in bloom. **\$2 each; 3 for \$5.**

*No further discount on this patented Rose*

© 1934