

## Historic, archived document

Do not assume content reflects current scientific knowledge, policies, or practices.



# Star Roses

SPRING 1961

*The Conard Pyle Co.  
West Grove, Pa.*

LIBRARY  
RECEIVED  
★ JAN 24 1961 ★  
U. S. Department of Agriculture

Hybrid Tea Rose  
*Invitation*  
Plant Pat. App. For

Growers of Quality Roses Since 1897

THE CONARD-PYLE CO., WEST GROVE, PA.



## Beautiful **NEW** VASSAR CENTENNIAL

Named to Commemorate the  
100th Anniversary of famed  
Vassar College

H.T. (McIlland.) Plant Pat. App. For. This fine rose was selected by a committee from Vassar College and named Vassar Centennial. It is a worthy choice, as you will in all likelihood agree yourself when you see Vassar Centennial in your garden. It has the richness of apricot tones as well as the lovely, delicate shades of pastel peach; and in all stages of its development, from the solid bud to the large open bloom, its beauty is fetching. The open flower with its 30 to 40 large, gracefully curling petals is a good 5 to 6 inches across. It emerges from a shapely bud which is pointed. The plant carries such buds and flowers profusely—one to the stem, which makes this rose ideal for cutting. The bush grows superbly, reaching middle height the first year and thereafter inclining to tallness. Its foliage is good and the canes and stems are strong. Vassar Centennial is truly a splendid exhibition-type rose—a fragrant rose which will delight everyone who grows it. \$3 ea.; 3 or more, \$2.65 ea.

**EVERY STAR ROSE IS A  
HIGH QUALITY PLANT**

★SUSPENSE

©

©

★VASSAR CENTENNIAL

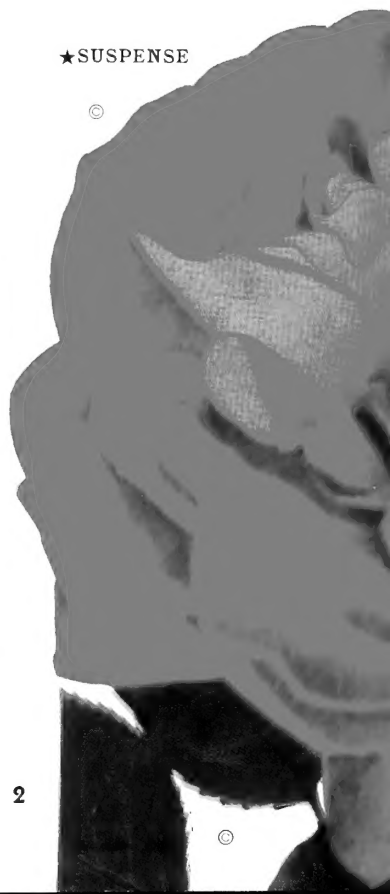
## *Invitation*

**The Rose on Our Cover  
NEW! Captivating! Lovely!**

H.T. (Swim & Weeks.) Plant Pat. App. For. We are especially happy this year to have for you such a fine collection of new roses—outstanding roses in a wide color range. Among them, the gorgeous newcomer, Invitation, holds the glamour spot on our cover by virtue of its unusual appeal to both the expert and the amateur rose grower. We feel that this great rose is destined to reach the heights of rose fame, and (perhaps more important than that) a firm place in the hearts of rose lovers everywhere. Invitation has a rare combination of good qualities . . . most unusual beauty of color, a rich salmon-orange which is exceptionally rare in modern roses . . . excellent form in bud and bloom . . . prettily proportioned bush whose enormous vigor provides many branches decked out with fine, semi-glossed foliage . . . flowers which come one or two to the medium long stems and in sufficient quantity to give you many wonderful bouquets . . . and far from least, a strong, intense and thoroughly delightful fragrance. The flower is substantial, having 25 to 35 thick petals and reaching almost 5 inches across. The plant grows upright to medium height and is beautifully compact and bushy. Its sturdiness of character seems to defy casual treatment . . . it will grow for anybody. Tested and proved from coast to coast, Invitation has been received with high enthusiasm. You, too, will love it. \$3 ea.; 3 or more, \$2.65 ea.

2

©



## SIMONE—Finest NEW unfading Lavender rose!

H.T. (Mallerin.) Plant Pat. 1847. Here's the rose with that continental charm—an intriguing kind of personality from France whose magnetism is felt the moment you meet. Simone (pronounced See-mun) is exquisitely colored with Nature's brush in the most attractive shades of lilac and lavender—unfading colors which hold their clear beauty during the season. Such beauty is yours to enjoy in the king-size package, for Simone's tremendous, 6-inch blossoms are made up of from 50 to 65 large, substantial petals. These form a double, high-centered, fascinatingly fragrant (light but definite and delectable) flower which curls outward in an almost voluptuous display of loveliness. Such magnificent flowers come singly on the stem. They are held strongly, but are so large that when heavy with rain they will bow their heads a bit. The plant grows to middle height and has fine, glossy foliage and bushy habit. Truly sensational! \$3 ea.; 3 or more, \$2.65 ea.

★STAR Roses is the trade-mark  
of the Conard-Pyle Co.  
registered in the  
U. S. Patent Office.

It's safe and easy  
to order by mail  
from Star Roses



©

★SIMONE

## SUSPENSE! COLORFUL NEW THRILLER!

H.T. (Meilland.) Plant Pat. 1944. What a terrific rose this is! Big! Bouncy! Beautiful! A blockbuster for size—a bi-color with all the marvelous beauty of lively, flashing red on one side of the petals and rich yellow on the other. Probably no other color combination is as exciting as red and yellow. Certainly no other rose exhibits these colors as excitingly as Suspense does. Imagine the effect as the huge, yellow bud opens to reveal the glory of the 55 to 60 brilliant red petals. First you have yellow—then yellow and red are seen together—then another magical change to all red in the fully matured, 6-inch-wide flower! This bloom is magnificent enough to make you think of flower show prizes. The plant which bears them is, like the bloom, something special . . . tall growing, strong, good looking. Its thick canes hold the proud flowers high; its branches hold a wealth of good, dark green foliage. The general impression is one of beauty and quality. If you'd like to have a garden thrill unlike any you've experienced before . . . if you'd like to enjoy what is certain to be one of the very great roses of the '60's, be sure to plant Suspense this spring. \$3 ea.; 3 or more, \$2.65 ea.

### 4 Wonderful Colors

- ★FASCINATING (p. 4)
- ★PEACE (p. 6)
- ★PINK PEACE (p. 5)
- ★SUSPENSE

Save \$1.55

Only **\$9.95**

ORDER OFFER 3

### 4 Exciting New Roses

- ★INVITATION (cover)
- ★SIMONE
- ★VASSAR CENTENNIAL
- ★SUSPENSE

Save \$1.40

Only **\$10.60**

ORDER OFFER 3A



**FASCINATING**  
**NEW Color Marvel!**

H.T. (Gladys Fisher.) Plant Pat. 1945. Here is another highly colorful rose creation from the skilled hand of America's foremost lady hybridizer. Fascinating comes by its name honestly . . . its wonderful blended crimson and empire yellow having a magnetic fascination for everybody with an eye for the beautiful. In the spring and fall when the nights are a bit cool, the colors are exceptionally sharp, and at all times their beauty is surprisingly steadfast. The bud is long and pointed; the high-centered flower is shapely and nearly 5 inches across. Thick, leathery, satin-soft petals, 25 of them, provide substance as well as quality. Fascinating blooms freely and continuously, usually with one flower to the stem, often with more. The plant is upright and bushy with large, glossy leaves and grows to middle height. Oh, yes! Fascinating is nicely fragrant in the tea rose manner. \$3 ea.; 3 or more, \$2.65 ea.

★FASCINATING



**GOLDEN GIRL—Best yellow yet!**

Grandiflora. (Meiland.) Plant Pat. 1912. Until one knows Golden Girl, one does not fully realize what an outstanding yellow rose is like. It has great freedom of bloom and growth, excellent substance and color, a notable touch of fine perfume—solid virtues which make it the most satisfactory of all yellows, in our considered opinion. Golden Girl blooms and blooms and blooms, each flower being a fine 4 to 4½-inch beauty with 45 petals. Imagine the brilliance of the husky bush loaded with such blooms. They open from nicely shaped, pointed buds—clusters of them. The plant is upright, bushy and well branched . . . a vigorous grower which seems to delight in going all out to please. It grows tallish and with those brilliant yellow flowers attracts the eye and pleases it, no matter where you plant it in the garden. There is no doubt in our mind that in Golden Girl America's rose lovers have finally found what they have long wished for . . . a really fine yellow rose. \$3 ea.; 3 or more, \$2.65 ea.

★GOLDEN GIRL

**4 DELIGHTFUL ROSES**

- ★FASCINATING
- ★GOLDEN GIRL
- ★PINK PEACE
- ★WHITE KNIGHT

Save \$1.40 **Only \$10.60**

ORDER OFFER 4



**3 GREAT ONES**

- ★PEACE (p. 6)
- ★PINK PEACE
- ★WHITE KNIGHT

Save \$1

**Only \$7.50**

ORDER OFFER 4A

# BEAUTY AT ITS GLORIOUS BEST!

## PINK PEACE

Winner of Hearts and Gold Medals!

H.T. (Meiland.) Plant Pat. 1759. In its brief history as one of "the best roses for America," Pink Peace has been something of a real sensation. As measured by the demand for it, this rose is close to the top in popularity. Why? Numerous reasons, among them the great appeal of the giant, solid pink blooms—the enormous vigor of the plant—delightful fragrance—and unfading color. The high, all-around quality of Pink Peace has won for it top awards in the rose competitions in Rome, Geneva, Madrid, Lyons and Paris. Pink Peace flowers come continuously . . . each a 60 to 65-petaled marvel . . . on a tall, upright, exceedingly strong-growing plant with fine foliage. A truly great rose. \$3 ea.; 3 or more, \$2.65 ea.



This sign denotes All-America Award Winners throughout this catalog.

IT'S BEST TO BUY DIRECT FROM THE GROWER

★ PINK PEACE

©



## WHITE KNIGHT

World's finest white rose!



(Message.) H.T. (Meiland.) Plant Pat. 1359. *The only white Hybrid Tea rose ever to have won the All-America title.* White Knight is high quality all the way through. Pure, non-fading color, exquisite form of bud and bloom, exceptional lasting ability in the garden and in the house—these virtues mark the champion. Long stems make good cutting. The plant is vigorous and blooms continuously. Every garden simply *must* have at least one white rose for color accent and contrast. White Knight is far and away the best! \$3 ea.; 3 or more, \$2.65 ea.

©



©  
★ROYAL  
VELVET

**The Rich Red . . .**  
**ROYAL VELVET**

H.T. (Meiland.) Plant Pat. 1911. Enormous blooms magnificently formed in ruby-red make this one of the most eye-filling roses imaginable . . . and one of the richest. Each flower seems to be made of red velvet, the 55 to 65 large petals being thick and substantial. The color neither fades nor "blues," remaining true throughout. The vigorous plant, which is a tall one, produces the enormous flowers freely. They are held on strong canes, and are given a fine contrasting background by the deep green foliage. A very pretty sight in the garden! Royal Velvet blooms are so large and solid that they will sometimes tilt forward, especially when rain-heavy. They're as impressive as fire-engine headlights! This is a mighty fine big red rose. You ought to try it! \$2.50 ea.; 3 or more, \$2.20 ea.

**PEACE**

**The World's Most-Talked-About Rose**



H.T. (Meiland.) Plant Pat. 591. If you have this rose in your garden, you understand why people talk so much about it. If you don't have it, you're missing something really worthwhile in life and you ought to correct the

situation at once. This is the rose that means most to most gardeners everywhere—the rose that has won more honors than any other—the rose that has been rated highest of all by the experts—the rose with the romantic history. The first Peace rose in America, you know, was created here at West Grove from budwood which was smuggled out of France just ahead of the invading Nazis. Since then, millions have been grown, and people in every state and in many foreign countries own them and love them. Peace deserves all of its acclaim . . . it is big, its coloring is beautiful, its form and proportion are excellent, it is the strongest and most vigorous of roses, its foliage is truly magnificent. There is literally nothing else like it or nearly like it in the world of roses. With so much in its favor, is it any wonder that the world has made Peace its all-time favorite? If you have one now, why not increase your pleasure and order one or more additional? If you do not yet know the pleasure of owning a Peace rose, "get with it" now! \$2.50 ea.; 3 or more, \$2.20 ea.

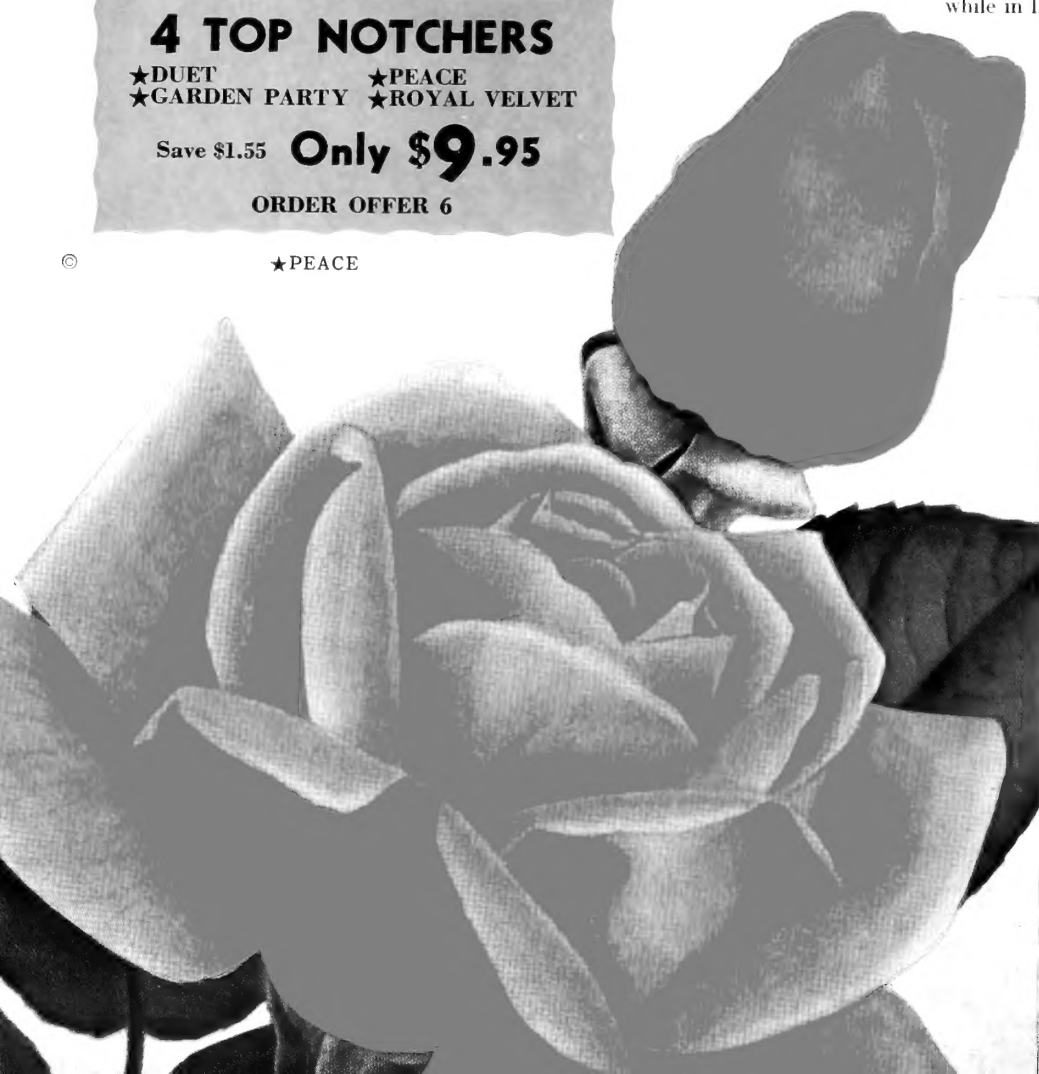
**4 TOP NOTCHERS**

- ★DUET                      ★PEACE
- ★GARDEN PARTY      ★ROYAL VELVET

Save \$1.55    **Only \$9.95**

**ORDER OFFER 6**

©                      ★PEACE








★GARDEN PARTY

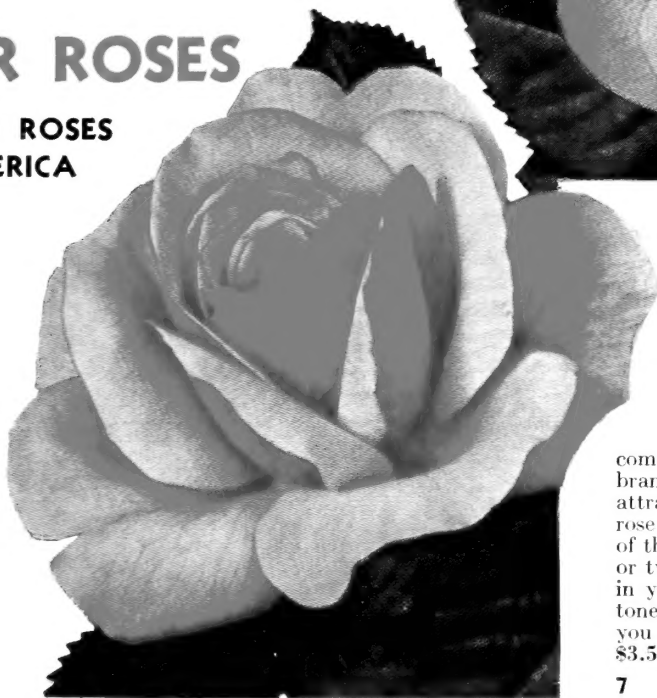
## GARDEN PARTY *All-America for 1960*

 H.T. (Swim.) Plant Pat. 1814. This offspring of the great Peace rose and Charlotte Armstrong lives up to its heritage by taking, as its parents did, an All-America award. It's a fine rose by any standard . . . big, finely sculptured . . . a dream combination of ivory, cream and appleblossom-pink beauty. Its 25 to 30 enormous flaring petals are the essence of grace. They form flowers that come in rapid succession on a tall, vigorous, strong plant. The bud, like the blossom, is beautiful—full and rich looking. Topping off Garden Party's virtues, apart from a light touch of fragrance, is the foliage, which is handsome indeed. All-in-all, here is a most desirable new rose with great appeal and solid character, one which would make a happy addition to your garden. \$3 ea.; 3 or more, \$2.65 ea.

## STAR ROSES


THE BEST ROSES  
FOR AMERICA

The  
**CONARD-  
PYLE  
CO.**  
West Grove,  
Penna.



★DUET

## DUET *All-America for 1961*

 H.T. (Swim.) Plant Pat. 1903. This new bi-color rates its All-America distinction in every way! The soft salmon-pink petals with the rich crimson reverses are beautiful. Duet keeps its lovely tones in all weather and through the life of the flower. Well-formed buds open to 30-petaled, middle-size blooms which come in great abundance on the vigorous, free-branching plant. Foliage is large, plentiful and attractive. With long stems, Duet is an ideal rose for cutting, and you'll want to take many of the lovely blooms into the house. Try a Duet or two this spring for an unusual touch of color in your garden, for the beauty of the fine two-toned flowers, for satisfaction of knowing that you have an outstanding new rose to enjoy. \$3.50 ea.; 3 or more, \$3.10 ea.



STAR ROSES  
PLANTING  
GUIDE  
**FREE**  
with every  
order



# IF IT'S A STAR ROSE IT'S A QUALITY PLANT

## TORCH SONG . . .

### *Full of Fire*

H.T. (Meiland.) Plant Pat. 1760. The incredibly rich, smoky flame of Torch Song's color constantly amazes people when they first see it in the garden. The picture gives you only a hint of its brilliance—and no hint at all of the inner vitality of this rose which seems to make it glow. The rich vermilion buds open to stunning orange-red blooms which draw and hold the eye irresistibly. Such blooms come in plenty on the bush, and each of them has from 35 to 45 loosely curling petals which are very appealing. Torch Song has excellent vigor and the plant grows to medium height in good style. Another nice thing about Torch Song is that the flowers come individually on long stems—and that means wonderful cutting and plenty of beauty for your home. \$2.50 ea.; 3 or more, \$2.20 ea.

©

★CONFIDENCE



©

★TORCH SONG

## 5 Outstanding Personalities

- ★CONFIDENCE
- ★SUNLIGHT
- ★TAPESTRY
- ★THE ALAMO
- ★TORCH SONG

Save \$1.80

Only **\$11.95**

ORDER OFFER 8

## SUNLIGHT . . . *Brightness itself*

H.T. (Meiland.) Plant Pat. 1576. One of the best and most satisfactory yellow roses to come along in years, Sunlight offers the home gardener many good qualities and lots of satisfaction. The bud is an intriguing combination of Chinese yellow lightly washed with mandarin red. As it opens to the full bloom it becomes pure sunshine—a lovely clear, solid gold color that's as bright as a newly minted gold piece. The plant is tall and well proportioned and produces blooms in abundance. Sometimes there is one to the stem, sometimes as many as three. Each flower has from 43 to 48 petals. Sunlight is a vigorous grower and has fine foliage. There is a light, appealing fragrance also. You won't have difficulty falling in love with Sunlight. \$2.50 ea.; 3 or more, \$2.20.

★SUNLIGHT

©



★TAPESTRY

**3 Delightful Colors**

★CONFIDENCE      ★SUNLIGHT  
★TORCH SONG

Value \$7.50      **Only \$6.60**

ORDER OFFER 9

**TAPESTRY — *A Work of Art***

H.T. (Fisher.) Plant Pat. 1812. Another of Gladys Fisher's highly colorful roses—this one mingling flame, yellow and copper tones in a gay display of exciting colors. No two blooms alike. Many large, 35 to 40-petaled flowers. Nicely fragrant. The bush is low growing and vigorous. You'll want it in the front row where everybody can see it. \$2.75 ea.; 3 or more, \$2.40 ea.

**CONFIDENCE — *Loveliness in a Rose***

H.T. (Meilland.) Plant Pat. 1192. Beautiful soft peach and pink blend famous for beauty and form. Here is real rose magnificence! The plant is tall, upright, well proportioned. Blooms come on good cutting stems and every one is a delightfully fragrant marvel. Perhaps you'll want to exhibit Confidence at rose shows. Many gardeners do. \$2.50 ea.; 3 or more, \$2.20 ea.

**THE ALAMO — *Beautiful, Long Lasting***

H.T. (Meilland.) Plant Pat. 1689. It's a pity we don't have a lifesize picture of The Alamo (this one is much reduced). Then you would see how big and solid it really is. You'll have to imagine a huge, many-petaled (often as many as 100), rich red rose which is so long lasting that the flowers seem to be artificial. These blooms come freely on a compact, vigorous, bushy plant which has fine foliage. Texture of the flowers is like velvet. The cardinal red of the flower—the amazing vigor of the bush—the big, solid blooms make The Alamo very desirable. \$3.50 ea.; 3 or more, \$3.10 ea.

★THE ALAMO



★CHRYSLER  
IMPERIAL

★GRAND'MERE JENNY. H.T. (Meiland.) Plant Pat. 1148. A lovely rose with the beauty of pink, peach and yellow tones blended into the well-formed bud and bloom. The full open blossom emerges from a very fine bud. A good 4½ inches across, it is composed of 25 to 30 very graceful petals. Lots of flowers come on the upright, middle-height bush. They make good cutting. \$2 ea.; 3 or more, \$1.75 ea.

★PENNSYLVANIAN. H.T. (Ohlhus.) Plant Pat. 936. Here is an excellent rose of great beauty and character which many people would love if they could only see it in real life. The flower is large. An apricot-orange kind of rich, tawny color makes it exciting, and a delightful fragrance distinguishes it. Buds are long and pointed. The plant is upright and vigorous and produces many flowers. \$2 ea.; 3 or more, \$1.75 ea.

★HELEN TRAUBEL. H.T. (Swim.) Plant Pat. 1028. There is sheer beauty in the lovely form and pink and apricot color of Helen Traubel. The 27 large petals form a big rose with a high center, and the plant produces them vigorously and plentifully. Long canes hold them upright for good cutting. One of the most loved of roses, this beauty is always a best seller . . . one you ought to have in your own rose collection. Being an All-America winner, its overall quality can be taken for granted . . . bud, bloom and plant are all outstanding. \$2.75 ea.; 3 or more, \$2.40 ea.



★HELEN  
TRAUBEL



## YOU CAN ORDER IN COMPLETE

★CHRYSLER IMPERIAL. H.T. (Lammerts.) Plant Pat. 1167. The high reputation of Chrysler Imperial is based on many exceptional qualities, among them gorgeous, deep red color . . . great size and solidity . . . excellent form of both bud and bloom . . . and sturdiness of the vigorous plant. The enormous bloom is a beauty with 40 to 50 large petals. The middle-height plant bears such blooms one to a stem, and each of them is as fragrant as you would like it to be. Any wonder that Chrysler Imperial is so popular as a rose to cut for the house? Every garden deserves the beauty of one or two of these. \$2.50 ea.; 3 or more, \$2.20 ea.

NONE  
FINER  
ANYWHERE

### The 5 in Color

- ★CHRYSLER IMPERIAL
- ★HELEN TRAUBEL
- ★LADY ELGIN
- ★PERFECTA
- ★PRESIDENT EISENHOWER

Save \$1.60

Only **\$11.90**

ORDER OFFER 10

# STAR ROSES

## CONFIDENCE



★**PERFECTA**. H.T. (Kordes.) Plant Pat. 1604. Very interesting, isn't it? And how delightful! The cream and rose-red blending of beauty which makes this fine rose unusual and appealing has been totally irresistible to hosts of gardeners. They simply had to have it. The blooms are big and high centered, and they come on long stems for perfect cutting. A good-looking, superbly vigorous bush, which has rich, heavy foliage, bears the blooms with pride. A delicate and highly pleasing kind of perfume adds to Perfecta's charm. A top rose in Europe—a comer here. \$3.50 ea.; 3 or more, \$3.10 ea.

**Every STAR ROSE  
Is Guaranteed to Bloom**

©

★**PERFECTA**

★**LADY ELGIN**. H.T. (Meiland.) Plant Pat. 1469. This orange beauty, perhaps the best in this dazzling red-gold color, entered the garden scene several years ago and immediately made a hit with America's gardeners. Reasons? A glittering kind of rose beauty—huge, handsome flowers with up to 18 large, firm petals—long stems—beautiful bud and bloom form—sturdy bush which grows upright, tall and vigorously—lustrous foliage—and fragrance which is light but distinctive. All these fine virtues, taken together, make Lady Elgin the heart-winner it is. We include it in both the offers on these two pages because to do so is like adding frosting to the cake. \$2.50 ea.; 3 or more, \$2.20 ea.

★**LADY ELGIN**

©

★**PRESIDENT EISENHOWER**. H.T. (Hill.) Plant Pat. 1217. Richly attractive blooms of bright red, each with 35 to 40 velvet-textured petals, come on sturdy, upright canes. These flowers are 5 inches across and there is one to the stem. The color is uniform, unfading. You get them continuously and freely. The bush is heavy caned and grows to 2½ to 3 feet tall. The foliage is leathery. Still another good quality is the fragrance, which is of the old-rose type—strong and very sweet. Oh, yes! President Eisenhower's brilliance of color is long lasting. \$2.25 ea.; 3 or more, \$2 ea.

★**PRESIDENT EISENHOWER**

©



### 3 Magnificent Roses

- ★**CHRYSLER IMPERIAL**
- ★**LADY ELGIN**
- ★**PERFECTA**

Value \$8.50

**Only \$7.50**

**ORDER OFFER 11**

★CHRYSLER IMPERIAL  
See page 10



★INVITATION. See cover and page 2

©  
DON'T  
MISS  
THIS  
SPECIAL OFFER

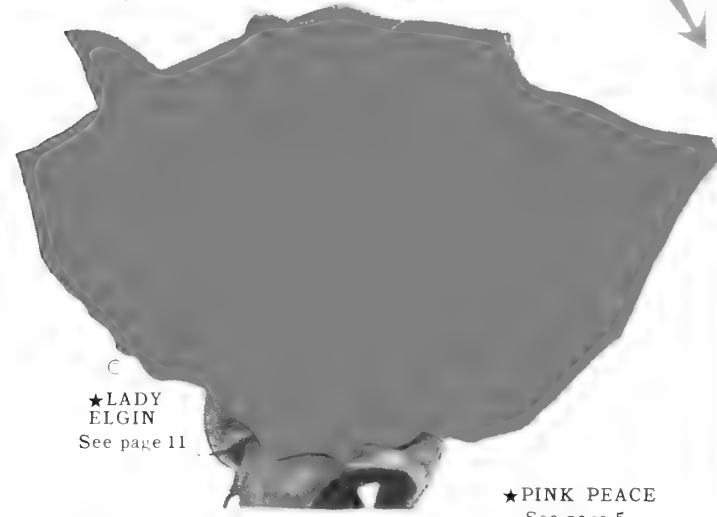
**9 of the V**  
**Only**

**ALL SHOWN  
ON THESE TWO PAGES**

*Including the NEW Suspense and Invitation*

Only **\$19.95** Save **\$4.80**  
ORDER OFFER 12

We make this offer to you with the sincere conviction that it is the best available anywhere . . . from the point of view both of the price and of the roses included! Each is totally different in color from the rest—all are outstanding in quality—all are beautiful. You will certainly enjoy them for many years . . . and you'll like the solid saving right now!



©  
★LADY  
ELGIN  
See page 11

★PINK PEACE  
See page 5



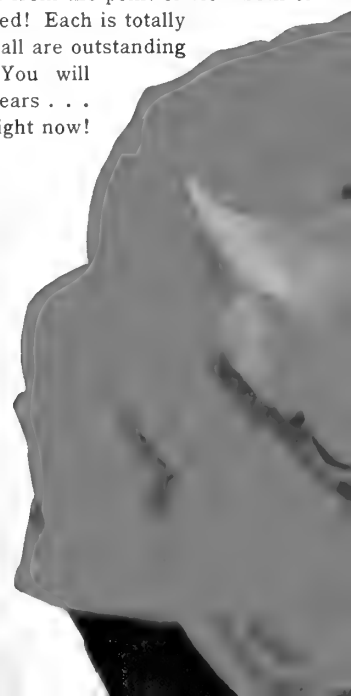
**5  
OF THE BEST**

- ★CHRYSLER IMPERIAL
- ★INVITATION
- ★PEACE
- ★PINK PEACE
- ★SUSPENSE

Save \$1.65

Only **\$12.35**

ORDER OFFER 12A



# 4 of the Best

- ★CONFIDENCE
- ★LADY ELGIN
- ★TAPESTRY
- ★WHITE KNIGHT

Save \$1.30

Only **\$9.45**

ORDER OFFER 13

No matter which offer you choose, you save money.

World's Best Roses  
**\$19.95**



★TAPESTRY

See page 9



© ★WHITE KNIGHT. See page 5



★SUSPENSE  
See page 3

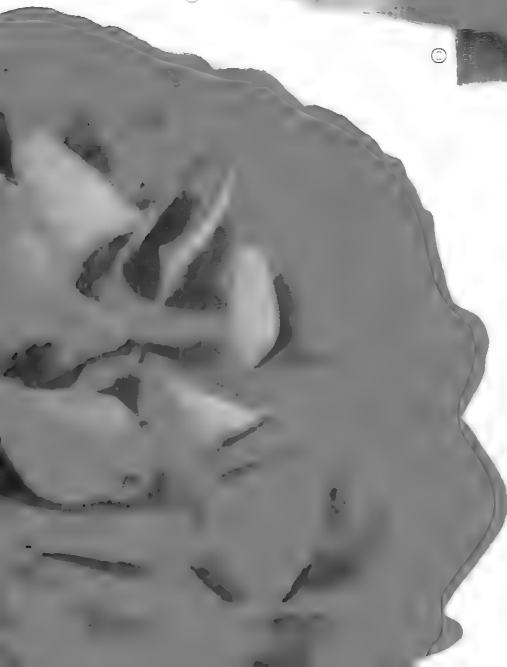
©

©

★CONFIDENCE  
See page 9

★PEACE  
See page 6

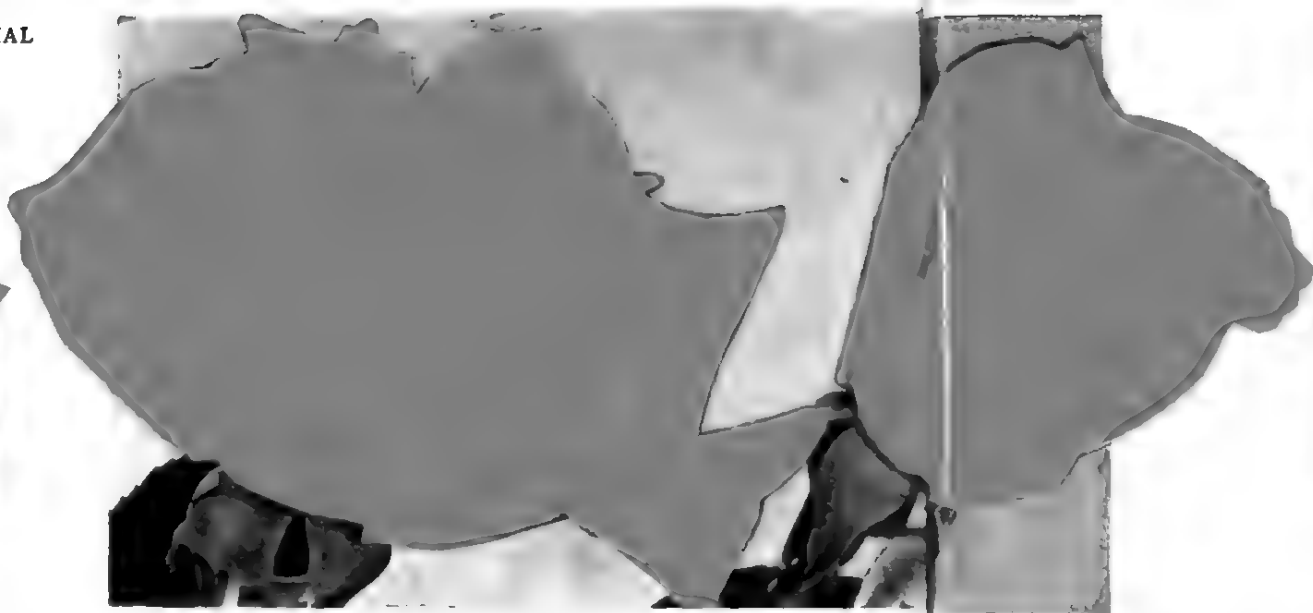
©







★CHRYSLER IMPERIAL  
See page 10



★INVITATION. See cover and page 2

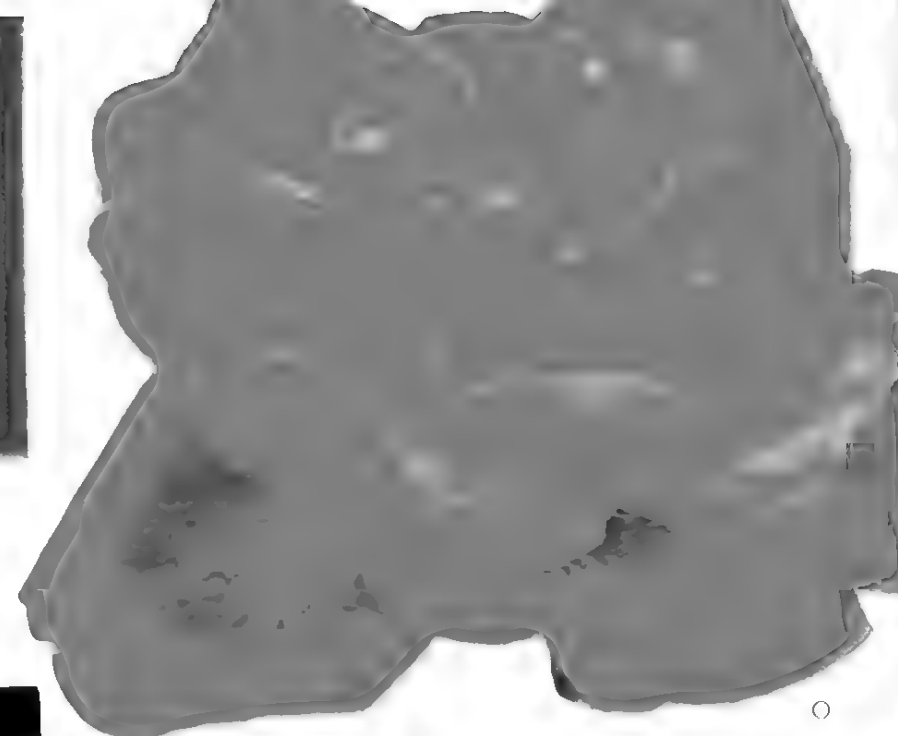
### 4 of the Best

- ★CONFIDENCE
- ★LADY ELGIN
- ★TAPESTRY
- ★WHITE KNIGHT

Save \$1.30

Only **\$9.45**

ORDER OFFER 13

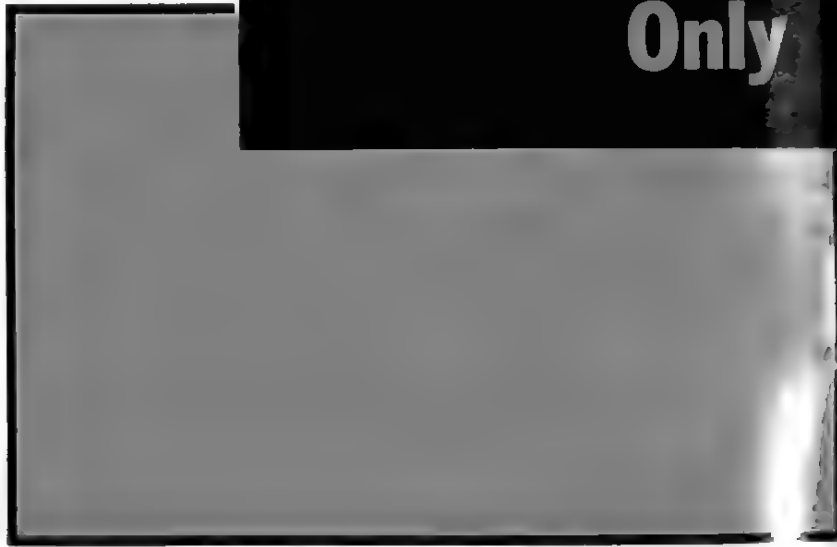


★TAPESTRY See page 9

No matter which offer you choose, you save money.

DON'T MISS THIS SPECIAL OFFER

## 9 of the World's Best Roses Only **\$19.95**



We make this offer to you with the sincere conviction that it is the best available anywhere . . . from the point of view both of the price and of the roses included! Each is totally different in color from the rest—all are outstanding in quality—all are beautiful. You will certainly enjoy them for many years . . . and you'll like the solid saving right now!

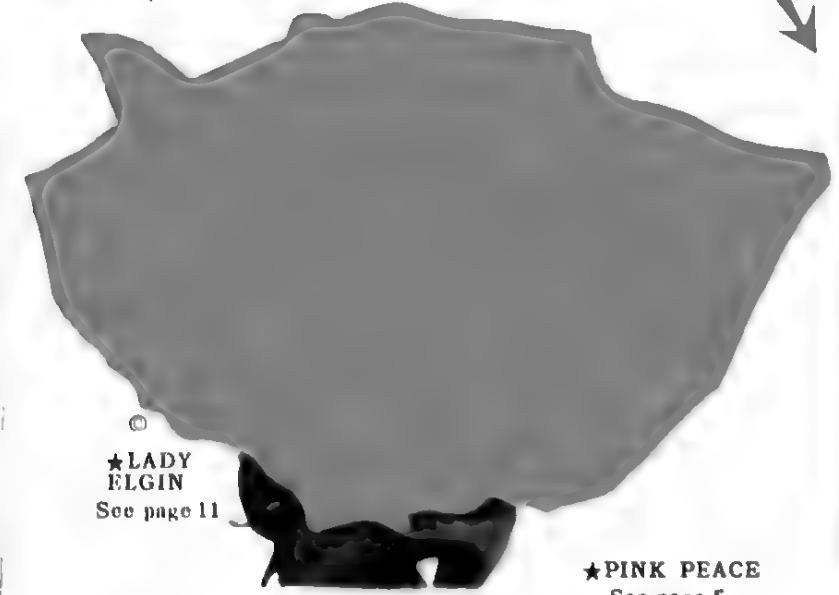
### 5 OF THE BEST

- ★CHRYSLER IMPERIAL
- ★INVITATION
- ★PEACE
- ★PINK PEACE
- ★SUSPENSE

Save \$1.65

Only **\$12.35**

ORDER OFFER 12A



★LADY ELGIN  
See page 11

★PINK PEACE  
See page 5

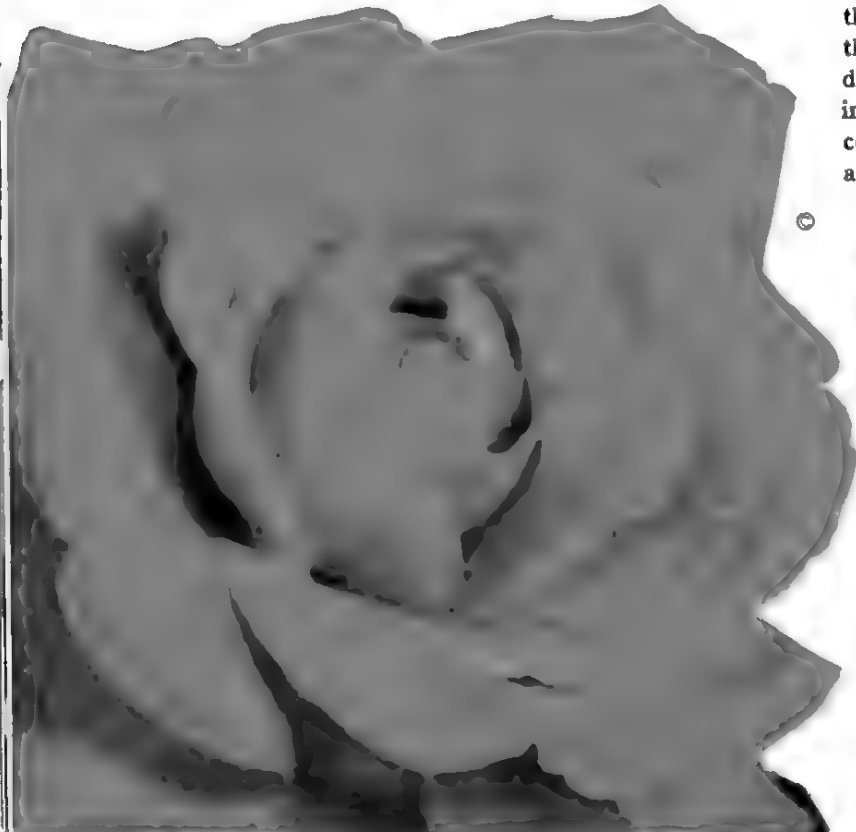
★SUSPENSE  
See page 3



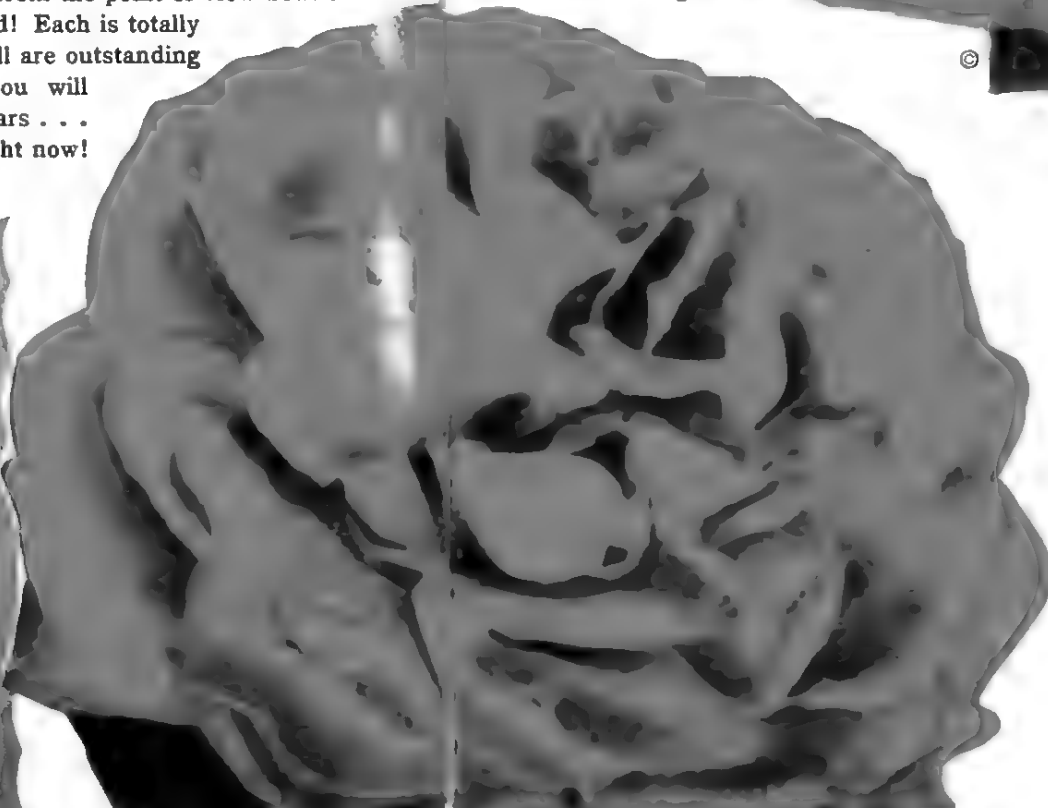
★CONFIDENCE  
See page 9



★WHITE KNIGHT. See page 5




★PEACE  
See page 6



★**MOJAVE**. H.T. (Swim.) Plant Pat. 1176. When Mr. Swim originated this flaming beauty, he gave rose lovers everywhere one of the most excitingly colorful roses ever created! Appropriately named, it holds much of the incredibly rich color cast by the desert sunset. Coppery red blooms are high centered. Opening from long, graceful buds, they give you marvelous color all the way. The plant is tall, has beautiful foliage and plenty of vigor. A pleasant fragrance rounds out the richness of Mojave's personality. This one is, of course, an All-America winner—a distinction it deserves. \$2.75 ea.; 3 or more, \$2.10 ea.

★**LOVE SONG**. H.T. (Fisher.) Plant Pat. 1360. This is the bi-color which has made garden page news because of the huge blossom (as many as 100 petals) and the magnificent coloring . . . watermelon-pink on one side of the petals and clear, shining yellow on the other. Truly wonderful! It's a very double rose which is produced freely by the vigorous, sturdy bush. The handsome bud is, as you can see, pretty special. As to the foliage—a rose like this just had to have a waxy quality in the leaves to add to its richness. Fragrance? Yes, indeed! Love Song has it—and you will love it. \$2.50 ea.; 3 or more, \$2.20 ea.

 This sign denotes All-America Award Winners throughout this catalog.

# ALL BEAUTIFUL

★**BLANCHE MALLERIN**. H.T. (Mallerin.) Plant Pat. 594. In our opinion which could, of course, be prejudiced, this white Hybrid Tea rose ranks near the top among the world's white roses. Its all-around qualities are many. Its reputation and reliability are known everywhere. Blanche Mallerin is noted for long, shapely buds and substantial blooms. The flower has from 35 to 40 petals, is beautifully high centered in form and opens in the most graceful manner. The bush provides the blooms in profusion, and coming one to the stem they make excellent cutting. The plant is sturdy, upright and reaches middle height. There is a pleasing perfume which you will like. When one counts all these qualities, one has to come to the realization that Blanche Mallerin deserves the place it holds in the estimation of so many, many people. \$2 ea.; 3 or more, \$1.75 ea.

★**MOJAVE**

★**LOVE SONG**

Buy your Roses direct from the grower. None better.



## 3 BEAUTS

- ★**LOVE SONG**
- ★**MIRANDY**
- ★**MOJAVE**

Value \$7.50

**Only \$6.60**

ORDER OFFER 14

# - ALL WORTHWHILE



★BLANCHE MALLERIN

Star Rose quality is almost legendary in America. This and our long-established policy of fair dealing with every customer and of giving satisfaction have earned for us many cherished friends. We feel that you, too, will be a friend when once you try Star Roses.



© ★NEW YORKER

★NEW YORKER, H.T. Plant Pat. 823. Bright and sparkling, this gay red rose is just about as exciting as the city it's named for . . . and much more beautiful. Its blooms are big—eye-filling—a focal point in any garden. You'll get many of these rich blooms from the vigorous bush; and you'll cut them for the house because the stems are just right. New Yorker is a reliable performer—so good, in fact, that it will do well even in semi-shade. New Yorker's fragrance is an asset which it shares with you any time you are near. We show you a bouquet here to give you an idea of its cutting value. Unfortunately, though, the picture does not do justice either to New Yorker's bright, rich color nor to its good rose form. \$2.50 ea.; 3 or more, \$2.20 ea.

★MIRANDY, H.T. (Lammerts.) Plant Pat. 632. Big, wine-red beauty noted for strong fragrance. Wonderful form of the high-centered bloom and the gorgeous color have made it famous. The plant gives you flowers like this steadily and vigorously. An All-America winner whose splendid reputation you can count on! \$2.25 ea.; 3 or more, \$2 ea.

★TIFFANY, H.T. (Lindquist.) Plant Pat. 1304. Splendid form of both bud and bloom and exquisite pink and pale gold color make this All-America a raving beauty. Strong stems hold the 30 to 40-petaled flowers, which come in quantity. The plant is tall (3 to 4 feet), is loaded with good foliage and is vigorous. A most attractive rose that will make you happy. \$2.75 ea.; 3 or more, \$2.40 ea.

Star Roses—top quality for more than half a century. You can rely on them.

**5 TOP ROSES**

- ★BLANCHE MALLERIN
- ★LOVE SONG
- ★MIRANDY
- ★MOJAVE
- ★TIFFANY

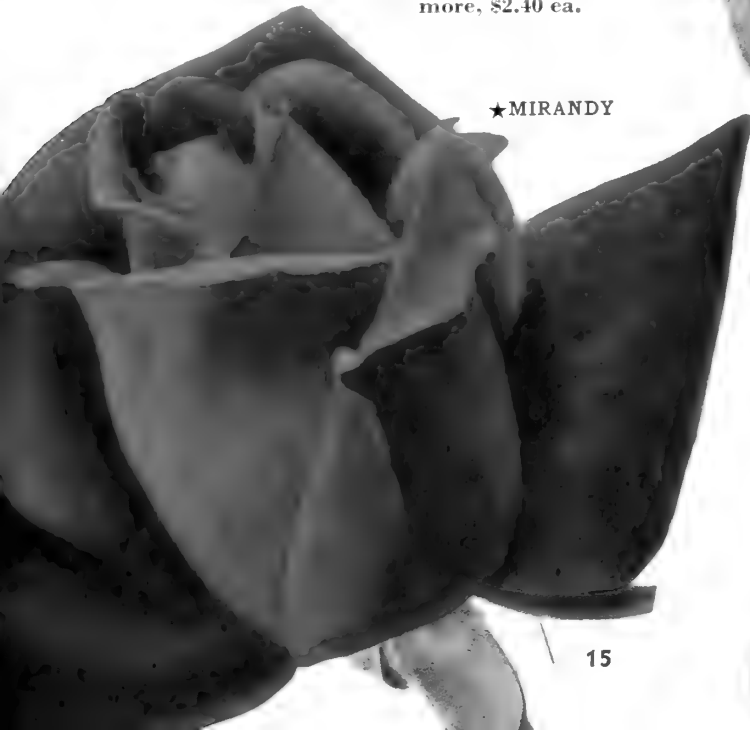
Save \$1.50

**Only \$10.75**

ORDER OFFER 15



★TIFFANY



★MIRANDY





© ★SUZON LOTTHE

★SUZON LOTTHE. H.T. (Meiland.) Plant Pat. 934. A large rose made up of from 55 to 90 petals, this beauty in pearl-pink sheens is a favorite with thousands—and with plenty of reasons. Its size, excellent form and dream-world color speak for themselves in the picture. But the plant has fine qualities, too, which you should know about. It is heavy caned, vigorous and substantial. The strong stems carry the huge flowers easily, and the good foliage adds its richness to the total picture. The fragrance is marvelous! \$2 ea.; 3 or more, \$1.75 ea.

★SYMPHONIE. H.T. (Meiland.) Plant Pat. 958. King-size blooms in glowing, rich pink—a very lively color—come in succession on a big, sturdy plant. Buds are substantial, too. The 25 to 35 huge, flaring petals curl outward. Symphonie is perfumed in the most pleasing way. This rose is a Gold Medal winner in England—a favorite everywhere. \$2 ea.; 3 or more, \$1.75 ea.



★SYMPHONIE

### Pink, Yellow and Red

- ★DR. DEBAT
- ★LOWELL THOMAS
- ★NOCTURNE

Value \$6.75

Only \$5.95

ORDER OFFER 16

★MRS. P. S. DU PONT. H.T. Golden yellow with well-formed buds and nice, fragrant flowers. Plenty of them on a bushy plant. One of the better, older yellow roses—rich and charming. \$1.50 ea.; 3 or more, \$1.30 ea.

★ANGELS MATEU. H.T. Lively orangey rose color in bud and bloom. Shapely form and old-fashioned fragrance. The plant is vigorous and has good foliage. This is a very worthwhile favorite. \$1.75 ea.; 3 or more, \$1.55 ea.

★KAISERIN AUGUSTE VIKTORIA. H.T. Another "classic"—this time in white, a sort of cream-white with pale lemon center. Long, shapely buds and delightful scent distinguish this "oldie." \$1.50 ea.; 3 or more, \$1.30 ea.

★TALISMAN. H.T. Rich, colorful rose and orange combination. We still carry it because people who know it ask for it. In the heat of summer, it's a bit floppy—otherwise good. \$1.50 ea.; 3 or more, \$1.30 ea.

★BETTY UPRICHARD. H.T. Big blooms of pearl-pink. Long, pointed buds. Nice, spicy perfume. Much in demand over the years and still good. Fine, all-around character in this one. \$1.50 ea.; 3 or more, \$1.30 ea.

★TEXAS CENTENNIAL. H.T. Brilliant red opening bud, glowing salmon-pink in the open flower. Many of them on strong, upright stems. Tall, nicely formed bush. Good performer. \$1.50 ea.; 3 or more, \$1.30 ea.

★THE DOCTOR. H.T. Satin pink rose with long, pointed buds and large flowers. Fine, fresh, old-fashioned fragrance. The non-fading color is really very appealing. \$1.75 ea.; 3 or more, \$1.55 ea.

© ★LOWELL THOMAS



★**GOOD NEWS**. H.T. Lovely, coppery pink buds open into peach-toned blooms. Beautiful, substantial flowers. Clusters of them on a vigorous plant. This fine old favorite is nicely fragrant. \$2 ea.; 3 or more, \$1.75 ea.

★**SHOW GIRL**. H.T. Plant Pat. 646. A luminous, dark pink rose with wonderful, long, shapely buds and exhibition-type blooms. Wins many prizes at rose shows. Long stems hold the fine blooms. Naturally, great for cutting. Does well anywhere. A reliable performer to be depended on for plenty of satisfaction. This one has never worn out its popularity. \$2.25 ea.; 3 or more, \$2 ea.

★**LOWELL THOMAS**. H.T. (Mallerin.) Plant Pat. 595. All-America quality all the way—a splendid yellow rose admired for rich, unfading color. Nicely modeled, 4-inch blooms come on a vigorous, upright, substantial plant with strong stems. The deep color is very attractive and brightly cheerful. Lowell Thomas has retained its popularity for many years . . . and is still today a very fine rose in this color. \$2.25 ea.; 3 or more, \$2 ea.

★**NOCTURNE**. H.T. (Swim.) Plant Pat. 713. Very deep, rich red blooms open from long, pointed buds in a gorgeous display of beauty. The color holds even in summer heat. The plant grows tall in a fine rugged manner, and performs well everywhere. You'll like Nocturne, too, for the fine quality of its fragrance—very rich. Nocturne is an All-America winner of great distinction. You'll enjoy having it. \$2.25 ea.; 3 or more, \$2 ea.



★**NOCTURNE**

★**SUTTER'S GOLD**. H.T. (Swim.) Plant Pat. 885. Another All-America winner—another beautiful and famous rose. Gold touched with flushes of pink or vermilion and copper, it blooms freely and has almost thornless stems. Tall, well-proportioned bush. Bright, glossy leaves. Rich, intense, pleasing fragrance. Known everywhere, loved everywhere. You won't regret trying Sutter's Gold this spring. \$2.25 ea.; 3 or more, \$2 ea.



©

★**DR. DEBAT**

★**DR. DEBAT**. H.T. (Meilland.) Plant Pat. 961. Clear pink, 5 to 6-inch flowers, each with 30 large petals, are truly lovely and impressive. These are exhibition-type blooms—beauties which have taken many a prize. Plenty of them come on the plant, borne by strong canes in the proudest manner. Dr. Debat stands tall in the garden and grows vigorously. For size, color and form in this color, you will look far to find a better rose, or one which will please you more. \$2.25 ea.; 3 or more, \$2 ea.

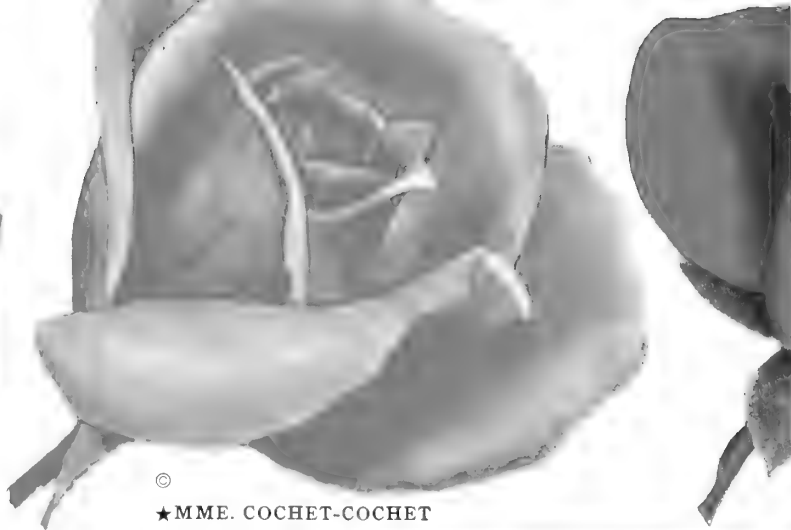
**3**  
**Lovely Colors**  
★**SUTTER'S GOLD**  
★**SUZON LOTTHE**  
★**SYMPHONIE**  
Value \$6.25  
**Only \$5.50**  
ORDER OFFER 17

★**SUTTER'S GOLD**

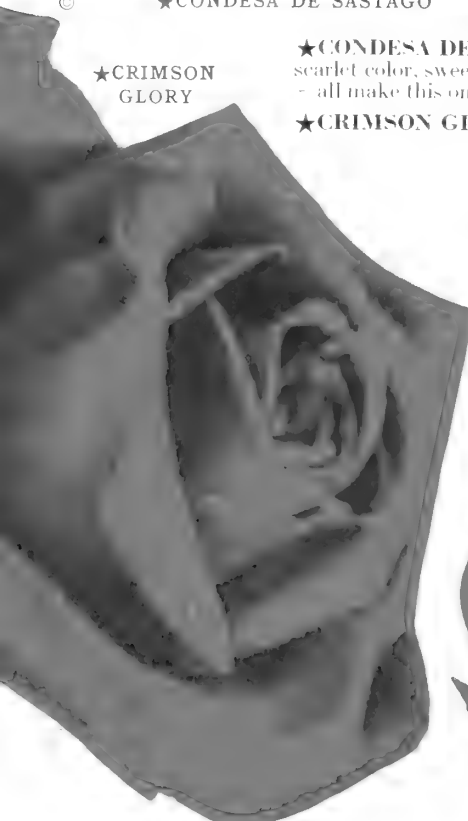




© ★CONDESA DE SASTAGO



© ★MME. COCHET-COCHET

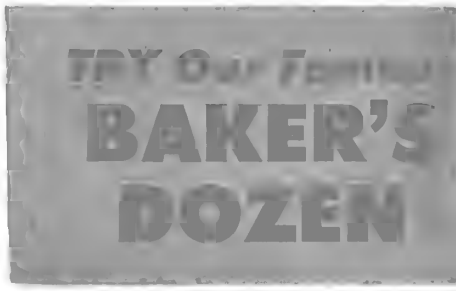


★CRIMSON GLORY

★CONDESA DE SASTAGO. H.T. Bright yellow and rosy scarlet color, sweet fragrance, plenty of blooms, vigorous plant - all make this one desirable. \$1.50 ea.; 3 or more, \$1.30 ea.

★CRIMSON GLORY. H.T. Very good deep crimson with fine form and fragrance. Free-blooming plant. Low growing. An outstanding and famous older rose that's always worth having. \$1.75 ea.; 3 or more, \$1.55 ea.

★MME. COCHET-COCHET. H.T. Lovely salmon-pink. Excellent form. Honey-like fragrance. Tall, free-blooming bush. A Bagatelle Gold Medal Winner in France . . . a great favorite here. \$1.75 ea.; 3 or more, \$1.55 ea.



© ★ECLIPSE

**BEGINNER'S Special Six**

- ★CHRISTOPHER STONE
- ★CRIMSON GLORY
- ★ECLIPSE
- ★MME. COCHET-COCHET
- ★RADIANCE
- ★SOEUR THERESE

**Only \$8.55**

Save \$1.20  
ORDER OFFER 18

★DUQUESA DE PENARANDA

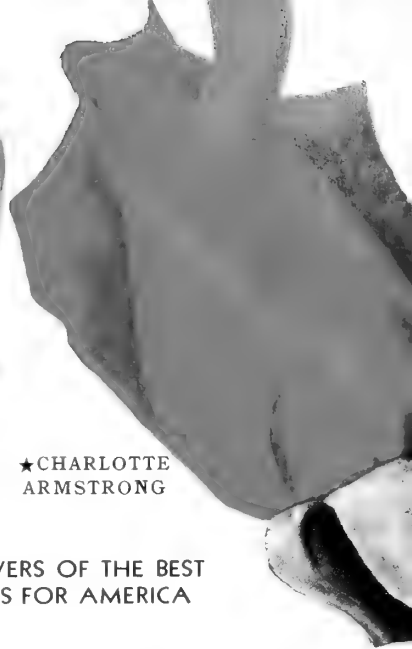
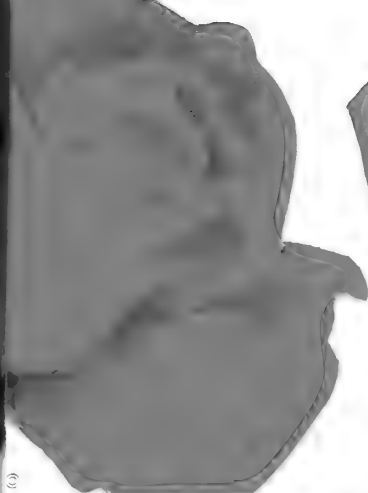
EVERY STAR ROSE IS GUARANTEED



★ECLIPSE. H.T. Pure gold "classic" rose famed for long, pointed, tapering buds. Large, bright flowers come in great profusion on a vigorous plant. Very good. \$1.75 ea.; 3 or more, \$1.55 ea.

★DUQUESA DE PENARANDA. H.T. Copper-apricot or deep peach flowers of solid substance come freely on handsome, upright plant. Deserves a place in any collection of old favorites. \$1.50 ea.; 3 or more, \$1.30 ea.

★CHRISTOPHER STONE. H.T. Very good, rich scarlet-crimson rose. Good-sized flowers come continuously on a good plant. Attractive perfume. Very dependable. Count on it for great satisfaction. \$1.50 ea.; 3 or more, \$1.30 ea.



© ★MME. HENRI GUILLOT

© ★PRESIDENT HERBERT HOOVER

★CHARLOTTE ARMSTRONG

All these Fine Roses Plus **GOOD NEWS**  
12 in all (See page 17)  
Value \$21.00  
Only \$17.95

GROWERS OF THE BEST  
ROSES FOR AMERICA

★RADIANCE



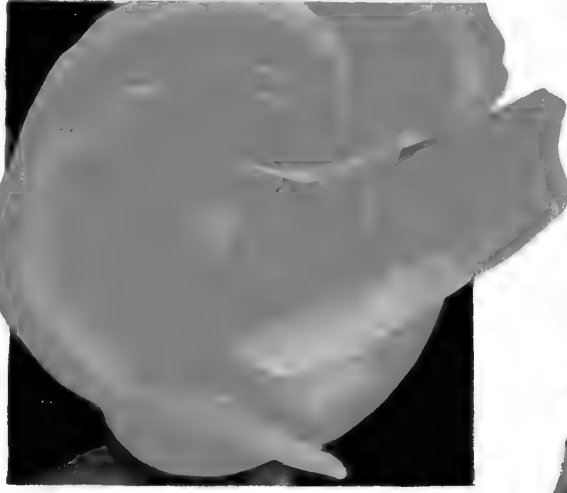
★MME. HENRI GUILLOT. H.T. A humdinger in rose-flame. Lovely color, enticing fragrance, rich foliage—all make this one worth having. Long a well-known, much-loved older rose. \$1.75 ea.; 3 or more, \$1.55 ea.

★CHARLOTTE ARMSTRONG. H.T. Famous All-America winner with long, slender buds and well-formed, open flowers in wonderful rose-red. Vigorous plant. Many flowers. Long stems. \$2 ea.; 3 or more, \$1.75 ea.

★PRES. HERBERT HOOVER. H.T. Scarlet, cerise, flame and yellow colors in exciting combination. Large flowers carried on erect stems. Tall plant. Reliable performer. Fragrant. \$1.50 ea.; 3 or more, \$1.30 ea.

★RADIANCE. H.T. Many big blooms in cameo-pink are produced by an outstanding plant. Lovely color, lovely form, inviting perfume—all make Radiance a delight. Ranks high with rose lovers. \$1.50 ea.; 3 or more, \$1.30 ea.

★SOEUR THERESE. H.T. Buttercup-yellow beauty. Lovely form. Flowers come in clusters or candelabras on sturdy canes. Dependable. Many people ask for this old-timer still. They know it's good. \$1.50 ea.; 3 or more, \$1.30 ea.



★ETOILE DE HOLLANDE



★CHRISTOPHER STONE



© ★SOEUR THERESE

★ETOILE DE HOLLANDE. H.T. Solid crimson beauty with excellent bud and bloom form, long cutting stems and a rich perfume. Outstanding dependability. Well known, well liked over the years. \$1.50 ea.; 3 or more, \$1.30 ea.



**ROSES**  
Like These  
*are hard to beat*



© **★POLKA NEW!**

**★CIRCUS**



© **★LAVENDER GIRL**

### *The Fabulous Lavender Girl!*

(Meiland.) Plant Pat. 1672. The most intriguing color imaginable is yours to enjoy in the gorgeous, rich-toned Lavender Girl. Unlike others, this one holds true even in summer heat! Ruby-red buds open to lovely rich lavender. Well-formed blooms of 35 to 42 heavy-textured petals come on a low, bushy plant. 3½-inch flowers are magnificent! Long stems make good cutting, and there's a nice fragrance. One of the most unusual roses ever developed! \$5 ea.; 3 or more, \$1.25 ea.

### **Gay and Colorful POLKA**

(Meiland.) Plant Pat. 1939. Here's a new and wonderful many-flowered rose of a color that has not been seen before in its classification . . . a rich pink that glows with vitality. Polka is also larger than most Floribundas, its blooms reaching to 3½ inches across. This fine color plus the extra size are in combination very impressive, appealing to the eye and the spirit as well. You can imagine how glorious the plant is covered with many, many of these splendid blooms of 40 to 45 petals. They come in clusters, each flower being high centered and double. Another point of distinction—Polka reblooms easily, always has flowers. The plant is strong growing, broad and compact. A pleasant Tea-rose kind of fragrance is a further charm which makes this sprightly newcomer more desirable still. Very worthwhile. \$2.50 ea.; 3 or more, \$2.20 ea.; 25 or more, \$2 ea.

**★CIRCUS.** Plant Pat. 1382. Mixture of red, yellow, pink and orange—a highly colorful rose of All-America distinction. The 10-petaled blooms have good form and come in plenty on an upright plant. Medium height. \$2.50 ea.; 3 or more, \$2.20 ea.; 25 or more, \$2 ea.

**★FRENHAM.** Fine, deep crimson color—nicely shaped bud and bloom. Vigorous plant provides continuous supply. Reaches 3 feet and makes good, bushy appearance. American Rose Society Gold Medal winner. \$1.75 ea.; 2 or more, \$1.55 ea.; 25 or more, \$1.40 ea.

**★FLORADORA.** Beautiful geranium-red All-America winner (not pictured), whose 50-petaled flowers come on upright, 3-foot plants. You will have lots of them and they will last long. People still remember this one and ask for it. \$1.50 ea.; 3 or more, \$1.30 ea.; 25 or more, \$1.20 ea.

## **4 WONDERS**

- ★FIRE KING
- ★GOLD CUP
- ★IVORY FASHION
- ★POLKA

Save \$1.15

**Only \$8.35**

ORDER OFFER 20



**★FIRE KING**  
See back cover for full picture and description





# How Gardening Helps To Build Character

WEST GROVE, PENNSYLVANIA

Spring, 1961



*Dear Friend:*

In these days of tension and complexities, the pressures of life tend very often to disturb seriously, if not entirely destroy, one's peace of mind. Many people think it necessary to resort to artificial tranquilizers in order to help them to stay on an even keel—a method, I would say, which runs a very poor second to the

most salutary tranquilizer of them all, a *natural* tranquilizer called GARDENING.

It seems to me that when one works in his garden, he develops a deeper understanding of what life is all about, what his place in it is, and how to adjust to it for greatest personal satisfaction. Under his hands and before his eyes, he sees the miracle of life itself—a performance in which he has a major part, for it is he who helps the plant to grow and flourish. In doing so, the man or woman who "garden" comes to have a fuller appreciation of the ways of Nature, and accordingly of Life. He finds that cares drop away—that problems fall into proper perspective—that relative values assume their correct meanings.

The gardener finds, too, that while his mind is getting a measure of contentment, his body also is reaping a benefit. Gardening requires the physical exercise of muscles . . . a kind of activity which, although not hard to do, keeps one in healthy trim.

I find it easy to agree with those who say that gardening makes for character-building, and that children whose parents are gardeners, and who, themselves, are exposed to gardening, are not likely to be found among the ranks of juvenile delinquents. Even more, I would venture the thought that such children are on the way to becoming true philosophers . . . a happy breed.

With best wishes for your gardening pleasure, I am

Sincerely,



NONE FINER ANYWHERE

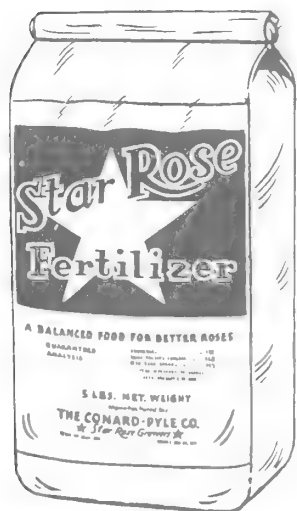
*S. B. Hutton*  
President

THE CONARD-PYLE CO.

P. S. We are happy this spring to be able to offer you eight new Star Roses, an exceptional and colorful group. Suspense, Invitation, Fascinating, Vassar Centennial and Simone are Hybrid Teas; Polka is a Floribunda; and Pixie Rose and Pixie Gold are Miniatures. They are worth your earnest consideration.

# DO IT RIGHT WITH . . . . STAR ROSE

## YOU CAN RELY ON THE STAR ROSE BRAND OF GARDEN MATERIALS



Our Star Rose Dust and Spray formulas are as modern as 1961 itself! We've made them more effective than ever as protective materials for the garden by including N-Trichloromethylthiophthalimide (Phaltan®), the best material known today for the purpose. This with other special ingredients gives you a dust and a spray unsurpassed for the protection of roses and other plants. We use the same formulas in our rose fields.

### ★ STAR ROSE FERTILIZER

You get a bag of quality when you buy this balanced plant food . . . a rose fertilizer developed out of long experience in knowing what roses like. Contains organic and inorganic material, available nitrogen, phosphorus and potash in 7-7-7 analysis, as well as important minor minerals. We believe this fertilizer is better for roses, mums and other flowers, lawns, vegetable gardens and wherever you need to give plants a balanced diet. Use it when you plant your roses and for regular feeding thereafter. Star Rose Fertilizer

has proved its worth to expert and amateur alike. 5 lbs. \$1.25; 10 lbs. \$2.25; 25 lbs. \$3.95, ppd.

**OFFER 41:** 1 Hudson Admiral Duster (see next page) and 4 lbs. Star Rose Dust, ppd. **\$8.75**

**OFFER 41A:** 1 Critic Sprayer (see next page) and 1 lb. Star Rose Spray, ppd. . . . . **\$5.75**

**OFFER 41B:** 1 Booster Sprayer (see next page) and 4 lbs. Star Rose Spray, for large gardens, ppd. . . . . **\$22.95**

### NEW STAR ROSE DUST

Protects against most insects and diseases. Use it thinly for greatest protection, safety and economy all season. Now contains Phaltan®, Kelthane, Methoxychlor and Lindane. We use it, and we know it's good! You can rely on it. Lb. \$1.95; 4 lbs. \$5.95; 25-lb. can \$29.95, ppd.

### NEW STAR ROSE SPRAY

This new do-it-all spray contains the same new and highly effective ingredients as Star Rose Dust. One pound makes 10 gallons of solution. Gives you the most complete plant protection possible in a single spray. Economical, easy and safe to use. Includes both fungicides and insecticides. Fully proved right here at Star Roses. Lb. \$3.65; 4 lbs. \$11.95, ppd.



### TO DUST—OR SPRAY? That is The Question!

It's really six of one and half a dozen of the other. Both give effective protection. Dusting is quicker because you can keep your duster full for ready use after a rain. Spraying, on the other hand, is a bit more economical of materials because none of it blows away, and you can put it just where you want it. Many people use both, keeping a duster handy for the quick application, and the sprayer for the more leisurely and perhaps the more thorough application. Personal preference will dictate your choice, but in either case, your roses will be well protected with Star Rose Dust or Star Rose Spray. Remember that it isn't necessary to deluge your plants; a little goes a long way—whether you dust or spray.

### SPEED FEED WITH ★ STAR ROSE GROW

Do your plants need quick nourishment? Give them a taste of this fast-acting soluble fertilizer which is instantly available for their needs. It's ideal as a starter solution in transplanting. Use it also for leaf feeding of roses . . . especially to perk up old starved plants. Essential minerals and chelated iron have been added to a basic formula which includes nitrogen 15%, available phosphoric acid 30%, and potash 15%, to give you a life-saving, pep-feed material that's effective in a hurry. 2 to 4 teaspoonfuls make a gallon of solution. Can't be beat! Lb. \$1.25, ppd.



**THE STAR ROSE LABEL IS YOUR ASSURANCE OF HIGHEST QUALITY**

# Quality GARDEN SUPPLIES



## ORDER THIS USEFUL BOOK

The Editors of *Flower Grower Magazine* who prepared this handy book have really packed into its 146 pages the kind of useful information that really helps the home rose gardener. They have illustrated it with more than 200 photos and sketches many of which are pictures of actual rose gardens or designs for new ones. Many "How to" articles are included

also. They supply information on soil preparation, insect control, tools and techniques, garden design. A "Question and Answer" section in itself is almost worth the small cost of the book. Size: 6½ inches by 9¼. Price 75c, ppd.



## PROFESSIONAL PRUNER

The kind the experts use—the right tool for the job. Cuts clean because it's made of the finest drop-forged steel—with hone-edged blades that keep their cutting ability for a long time. Easy hand grip; adjustable nut for perfect alignment. A really solid, rugged, long-lasting pruning instrument. \$3.50, ppd.

*This is a must for every gardener!*

## NEW! PLAS-TIES

Here is the newest, and we think best, plant tie made today. It's waterproof—strong—easy to use—and re-usable. Each package contains 60 7-inch Plas-Ties; the popular spool or roll holds 50 feet (you cut the length you want). Prices: 7-inch package, 29c; 50-foot roll, 69c, ppd.



OFFER 42: 3 7-inch packages of Plas-Ties. 80c ppd.

OFFER 42A: 3 50-foot rolls. \$1.95 ppd.

## HANDY WIRE LABEL STAKES



Made just for us, these wire label stakes are just the thing you need to identify your roses. Stick them into the ground beside your plants, and suspend the name tag from them. Sturdy, 18-inch, galvanized wire for long-lasting use. Keep your rose beds neat and prevent loss of name tag. The low cost to you of these label stakes makes them a practical necessity. Can be used, of course, to identify all other plants in your garden. A very useful item. 35c per doz.; 120 (10 doz.) only \$3, ppd. Note: the Star Rose Tags are provided with your Star Rose plants.

*Be sure to order these durable stakes!*

## BOOSTER COMPRESSION TANK SPRAYER

Big capacity 4 gallon, galvanized steel sprayer with welded seams and Saf-T-Lok seal handles any home garden spraying job with ease. Brass pump and spray tube. Throw a solid stream into a tree or fog your roses with simple exchange of spray discs. Takes any spraying material. Lasts years with reasonable care. A sturdy bit of equipment that's an excellent buy in the medium priced field. \$11.75, ppd.



## HUDSON ADMIRAL DUSTER



A duster that costs little but does a good, efficient job. Even flow of dust particles through nozzle in this improved model. Plunger is self-lubricating, easy working. Long extension tube with swivel head carries dust where you want it—high up, low down, on top and underneath. Easily loaded through large fill opening. \$2.95, ppd.

## HUDSON CRITIC SPRAYER

This sprayer is all right for the gardener with only a few roses to care for—but over the long run and for more efficiency and durability we recommend the Booster Compression Tank Sprayer above. The Critic is handy, though. Has brass screw cap and plastic syphon tube with glass jar to hold spray. Brass nozzle. Continuous action pump. \$2.95, ppd.

## GOAT SKIN GARDEN GLOVES

Wonderful for garden work. Soft, durable leather protects hands against thorns and rough handling. Not bulky! Sizes for women, small, medium, large; for men, medium and large. \$1.65 per pair; 3 pairs \$4.45, ppd. State size wanted.



## FLORALIFE

Now more effective than ever! Makes cut flowers last twice as long in the vase! Five new chemicals in new formula work wonders. One can of Floralife powder makes 100 quarts of solution—enough for plenty of cut-flower bouquets. \$3, ppd.



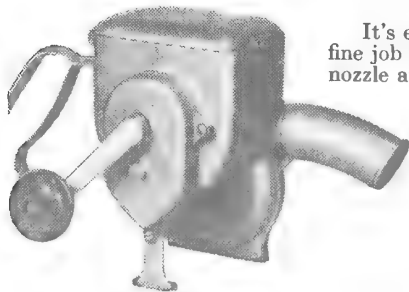
## PHALTAN® FOR BLACKSPOT

This is the new blackspot control that everybody's talking about. 6-ounce can makes 30 gallons of spray. 75% wettable powder. Very effective. \$1.98, ppd.

## ACTI-DIONE FOR MILDEW

New formula. Controls mildew effectively. 5-ounce package makes 10 gallons of spray. \$1.95, ppd.

# NEW ROTARY DUSTER . . . Handiest, Easiest-to-Use We've Ever Seen!



It's easy to get enthusiastic about this little gem of a duster because it does such a fine job so quickly, so easily, so efficiently! You just lift the lid, fill with dust, aim the nozzle and turn the smooth-working handle. One filling with Star Rose Dust will care for 50 or more rose plants. The stream of dust will reach plants as far away from you as 8 feet. Before listing this item in our catalog, we had our own gardeners try it. They liked it so much, they didn't want to give it up! Here are some of the reasons why they think it's so terrific for you—the home rose gardener. **It's light in weight.** Made of aluminum, it weighs only a fraction more than one pound. Compare this with your present duster. **IT'S STRONG.** Built so well and of strong material, this mighty mite is designed to last a lifetime. **It's easy to handle.** The comfortable pistol grip and the light weight let you do your dusting more easily than ever. The handle turns smoothly and with little effort on your part because of the powerful gears which do the work. **It's convenient.** No other duster that we know of is as handy as this one—to fill it is simple and quick—nothing to unscrew. It is always ready—and able—to do its job. When you think that this duster is built to last, and that it is so easy and efficient to use, you wish someone had told you about it before. Here's your chance to own one now. Only \$8.95, ppd.

**OFFER 43:** Rotary Duster and 4 pounds of Star Rose Dust  
**PLUS** 15-inch aluminum nozzle extension  
**FREE** (worth 75c)  
**ONLY \$13.45** ppd.

## NEW PLANTS from Star Roses for 1961

The fascination of things new leads us all to fresh interests in life, and adds to the wealth of everyday living. In the wonderful world of plants, new varieties help to stimulate in us a better realization of Nature's dominion and how it can make our lives happier. As we see a new plant for the first time, we cannot help but wonder at the infinite variety of plant life and beauty. Here at Star Roses, we are always excited when we can provide for our customers new kinds of Roses, Mums or other plants. We work to that end in the realization that service to you includes a progressive attitude. Our own pleasure is,

of course, two-fold; for we enjoy first the discovery and testing of the new varieties (we search the world for them), and secondly, the introduction of them for your consideration and pleasure. When you agree with us that a new plant is truly worth the introduction, then our sense of accomplishment and contribution makes us feel good. This is one of the rewards of working with plants. Below we are really happy to list our new offerings for 1961 gardens. Elsewhere in this catalog, all these new plants are pictured and described. Here, we merely bring them to your notice.

### NEW STAR ROSES

- ★**INVITATION.** Gorgeous salmon-orange Hybrid Tea from the expert hands of Herbert Swim and O. L. Weeks. See it on our cover and page 2.
- ★**VASSAR CENTENNIAL.** A Meilland Hybrid Tea in beautiful peach tones. Named to commemorate the 100th anniversary of famed Vassar College. See it on page 2.
- ★**SIMONE.** Unquestionably the finest lilac-lavender rose in the whole world. Another beauty from France—this time from Mallerin. See it on page 3.
- ★**SUSPENSE.** Marvelous, big bi-color—rich red on one side and chamois-yellow on the other. A truly wonderful Hybrid Tea from Meilland. See it on page 3.
- ★**POLKA.** A most unusual, lively pink Floribunda. Large flowers, excellent form. A very fine new rose from Meilland. See it on page 20.
- ★**FASCINATING.** Crimson and yellow blend that's highly colorful and totally intriguing. Its originator is Gladys Fisher. See it on page 4.
- ★**PIXIE GOLD.** A completely entrancing new Miniature Rose in soft yellow. See it on page 31.
- ★**PIXIE ROSE.** Lovely rose coloring in a Miniature Rose with dainty form. See it on page 30.

### THE NEW MUMS

- The winners for 1961 in the All-America Mum competition are exceptionally fine in every way; and together with those which took honors last year and the year before offer you an outstanding collection of beautiful colors for fall appreciation in your garden. All are shown and described on pages 36 and 37.
- ★**HER MAJESTY.** All-America for '61. Pure white with cream center. See it on page 36.
- ★**APRICOT SHEEN.** All-America for '61. Rich, glowing apricot beauty in a compact plant. See it on page 36.
- ★**BINGO.** All-America for '61. Rich, intense red with orange tones. See it on page 36.
- AUTUMN LEAVES, GOLDEN ARROW and HIGH NOON** are new additions this year to our list of wonderful **HARVEST GIANT MUMS.** Unfortunately, we do not yet have color pictures. Descriptions and pictures of our other **HARVEST GIANTS** are on page 38. Be sure to see them!

*Don't miss these wonderful new plants!*

**THE CONARD-PYLE CO.**  
 West Grove, Penna.

**YOUR  
 ATTENTION  
 PLEASE!**

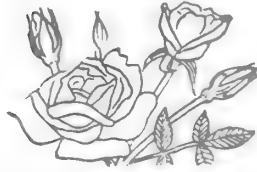
Would you like to do a favor for a friend? Give us his name and address. It may be that he would like to have one of our catalogs. We will gladly send one. On the flap of the return envelope at the center of this catalog, there is a space provided for your convenience. We thank you for your kindness.

## HYBRID TEAS



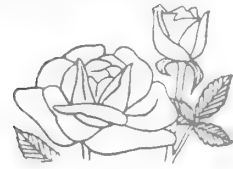
This is the kind of rose many people refer to as a "monthly" rose because it has flowers every month in season. It's also the kind you see in florists' shops . . . large, shapely buds and blooms on long stems. It is the standby—the favorite kind—in the garden.

## FLORIBUNDAS



With this type of rose, you get many flowers usually in clusters. They are smaller than the H. T. but give more color especially when several are planted together. They make fine hedging and border plants, and when massed are strikingly colorful all season.

## GRANDIFLORAS



This relatively new class combines the size and flower form of the H. T. and the abundance of flowers of the Floribunda. They are vigorous growers and are usually big, tall plants . . . 3 to 5 feet. Often flowers come in clusters on stems which can be cut.

## There are 6 different types of everblooming Star Roses

### CLIMBERS

Climbers throw out long shoots or canes which can be trained over trellises or other supports. Some kinds always have flowers; others repeat their blooming. All when flowering provide magnificent masses of color. Some have Hybrid Tea-like flowers, large and well formed. Use them as screens and for backgrounds. Many provide good cut blooms.



### MINIATURE ROSES



These are like the big roses in all respects except in size. Flowers are about an inch across, and grow on plants from 8 inches to 12 inches high. They're hardy and do well outdoors. Under proper conditions, they can be grown indoors, too. Good for borders, edging, miniature gardens, flower boxes. Blooms make fine corsages, place decorations and personal adornment.

### TREE ROSES



Free-blooming, bushy heads of Tree Roses grow on trunks 3 feet or so above the ground. The flower is that of whatever variety is budded to the trunk root system, making infinite possibilities. They make fine accent or background plants. The trunk itself is strong and straight and about an inch in diameter.

## GENERAL INDEX

	Page
Chrysanthemums . . .	36-39
Delphiniums . . . . .	33
Other Perennials . . . .	34,35
<b>Roses</b>	
Climbers . . . . .	23-25
Floribundas . . . . .	20-22,40
Grandifloras . . . . .	26,27
Hybrid Teas . . . . .	1-19
Miniatures . . . . .	30,31
Miniature Tree Roses .	30
Other Roses . . . . .	28,29
Tree Roses . . . . .	32
Shasta Daisies . . . . .	35
Supplies . . . . .	See insert

## ROSE INDEX

	Page
Angels Mateu . . . . .	16
Baby Gold Star . . . . .	31
Betty Uprichard . . . . .	16
Blanche Mallerin . . . . .	14
Blaze . . . . .	25
Blossomtime . . . . .	24
Bo-Peep . . . . .	31
Carrousel . . . . .	26
Charlotte Armstrong . . . . .	19
Christopher Stone . . . . .	18
Chrysler Imperial . . . . .	10,12
Cinderella . . . . .	31

	Page
Circus . . . . .	20,29
Cl. Crimson Glory . . . . .	25
Cl. Peace . . . . .	25
Condessa de Sagato . . . . .	18
Confidence . . . . .	9,13
Coral Dawn . . . . .	23
Crimson Glory . . . . .	18
<b>Dr. Debat . . . . .</b>	<b>17</b>
Duet . . . . .	7
Duquesa de Penaranda . . . . .	18
<b>Eclipse . . . . .</b>	<b>18</b>
Etoile de Hollande . . . . .	19
<b>Fantan . . . . .</b>	<b>32</b>
Fascinating . . . . .	4
Fashion . . . . .	21
Fire King . . . . .	29,40
Floradora . . . . .	20
Frau Karl Druschki . . . . .	29
Frensham . . . . .	20
Fusilier . . . . .	21
<b>Garden Party . . . . .</b>	<b>7</b>
Gladiator . . . . .	23
Gold Cup . . . . .	21
Golden Girl . . . . .	4,27
Golden Showers . . . . .	23
Golden Wings . . . . .	29
Goldilocks . . . . .	22
Good News . . . . .	17
Grand'mere Jenny . . . . .	10
<b>Helen Traubel . . . . .</b>	<b>10</b>
Hybrid 311 . . . . .	28

	Page
Invitation . . . . .	2,12
Irene of Denmark . . . . .	22
Ivory Fashion . . . . .	21
<b>Kaiserin Auguste-Viktoria .</b>	<b>16</b>
<b>Lady Elgin . . . . .</b>	<b>11,12</b>
Lavender Girl . . . . .	20
Love Song . . . . .	14
Lowell Thomas . . . . .	17
<b>Mme. Cochet-Cochet . . . . .</b>	<b>18</b>
Mme. Henri Guillot . . . . .	19
Max Graf . . . . .	29
Midget . . . . .	31
Mirandy . . . . .	15
Mojave . . . . .	14
Montezuma . . . . .	27
Morning Dawn . . . . .	23
Mrs. Pierre S. du Pont . . . . .	16
<b>New Dawn . . . . .</b>	<b>25</b>
New Yorker . . . . .	15
Nocturne . . . . .	17
<b>Paul's Scarlet Climber . . . . .</b>	<b>24</b>
Peace . . . . .	6,13
Pennsylvanian . . . . .	10
Perfecta . . . . .	11
Pink Parfait . . . . .	26
Pink Peace . . . . .	5,12
Pinocchio . . . . .	21
Pixie . . . . .	31
Pixie Gold . . . . .	31
Pixie Rose . . . . .	31
Polka . . . . .	20
President Eisenhower . . . . .	11
Pres. Herbert Hoover . . . . .	19
<b>Queen Elizabeth . . . . .</b>	<b>26</b>

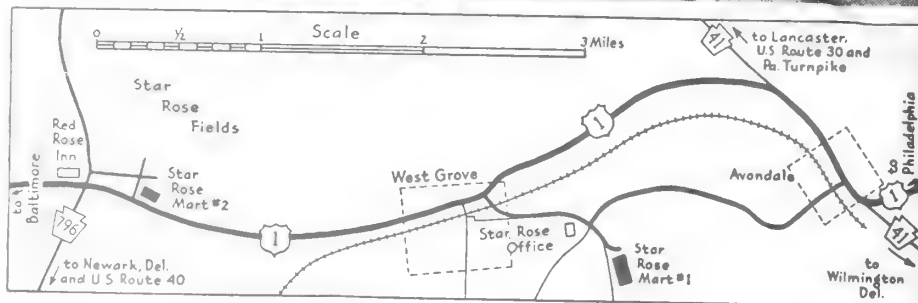
	Page
Radiance . . . . .	19
Red Empress . . . . .	24
Red Favorite . . . . .	22
Red Imp . . . . .	31
Robin . . . . .	31
Robin Hood . . . . .	28
Royal Velvet . . . . .	6
<b>Sarabande . . . . .</b>	<b>21</b>
Show Girl . . . . .	17
Simone . . . . .	3
Soeur Therese . . . . .	19
Spartan . . . . .	22
Spectacular . . . . .	24
Starfire . . . . .	27
Sumatra . . . . .	22
Sunlight . . . . .	8
Suspense . . . . .	3,13
Sutter's Gold . . . . .	17
Suzon Lotthe . . . . .	16
Sweet Fairy . . . . .	31
Symphonie . . . . .	16
<b>Talisman . . . . .</b>	<b>16</b>
Tapestry . . . . .	9,13
Texas Centennial . . . . .	16
The Alamo . . . . .	9
The Doctor . . . . .	16
The Fairy . . . . .	28
The Sweetheart Rose . . . . .	29
Tiffany . . . . .	15
Tinker Bell . . . . .	31
Torch Song . . . . .	8
<b>Vassar Centennial . . . . .</b>	<b>2</b>
Vogue . . . . .	22
<b>White Bouquet . . . . .</b>	<b>22</b>
White Dawn . . . . .	24
White Knight . . . . .	5,13

# You're Welcome to Visit Our Rose Fields and Garden Marts

From July to October at West Grove, thousands of people visit our rose fields . . . a breathtaking sight worth coming miles to see. Millions of rose blooms present the most colorful picture imaginable, and the formal rose garden and the famous Living Catalog of Star Roses offer their share of beauty, too. You are cordially invited to come and enjoy this beauty. Walk or drive through the fields; picnic in our attractive grove; take back with you memories of a rewarding day.



Our Garden Marts are located as follows: **GARDEN MART No. 1** is one mile off U. S. Route 1 at West Grove (at our greenhouses). Come here to buy plants for all spring planting. Open 10 A.M. to 6 P.M. Sunday and every day during spring planting season; other seasons, 10 A.M. to 4 P.M.



**GARDEN MART No. 2** is on U. S. Route 1, 3 miles southwest of West Grove. Come here to see the roses in bloom. Open from late spring to mid-fall, 10 A.M. to 6 P.M. daily.

## JOIN THE AMERICAN ROSE SOCIETY

or give a membership for a gift. This lively society is the largest single-flower society in America and gives its members many benefits, including a monthly magazine and a 250-page, illustrated Annual. Send us \$5.50 for a year's membership and we will see that you are enrolled.



that tells you at a glance just how deep the bulb should be for best results. We have prepared this Planting Guide as a service to our customers. You will find it useful.

## FREE PLANTING GUIDE WITH EVERY ORDER!

Our new 16-page booklet is a helpful and simple guide to Rose planting and culture—a handy and practical aid that gives the answers you're looking for. It describes and pictures the 10 easy steps to successful Rose growing, from unpacking the Roses to enjoying them in your garden. Contains information on pruning, spraying, dusting. Also gives you facts about planting and growing perennials. You will find a very helpful planting depth diagram for fall bulbs

## WHAT THIS SIGN MEANS



This mark indicates an "All-America Rose Selections" winner: the most valued award a Rose can receive in America. Roses entered in the All-America contest are grown in test plots located in all different climatic regions and judged for two years before introduction. Standards for awards are terrifically high, and you can trust these winners to do especially well in all respects and in all areas.

## NOTE ON HANDLING CHARGE

Our handling charge of 50c applies to any order which totals less than \$10.00.

It applies also to any part of an order which is shipped to a different address at your request, or to the same address at a different time, if that part amounts to less than \$10.00.



## CATALOG NOTES

Please note that all "3-for" and group offer prices apply **ONLY** when plants are shipped together to one address. In the group offers, we reserve the right to substitute when necessary with kinds of equal or greater value. Substitutions are made only with other good, catalog varieties, so you run no risk and are sure to get more than your money's worth every time. Orders received before varieties are sold out will, of course, get the kinds listed in the offer. We cannot make changes in special offers on request. Please do not ask it.

Roses in this catalog are classed as of medium height in American Rose Society lists, unless otherwise mentioned.

Blooming dates for Chrysanthemums, and other data, in this catalog are based on experience at West Grove, in southern Pennsylvania. Mums bloom earlier in the north, since length of daylight is their controlling factor; Roses and most other plants start blooming earlier in the south.

## POTTED ROSES READY MAY 6

Potted Roses may be picked up at our Garden Marts any time after May 6th. Prices are slightly higher than for dormant Roses, which are available prior to that time. We do not ship Potted Roses and no offers, combinations or quantity prices are given.

**PRICES IN THIS CATALOG apply until the end of Spring Planting Season. No C.O.D.'s PLEASE ADD 50c HANDLING CHARGE IF ORDER IS LESS THAN \$10.**

# STAR ROSES ORDER SHEET - SPRING 1961 ★

## The Conard-Pyle Co., West Grove, Pa.

TERMS: Please send payment with order or before shipment. No C.O.D.'s. TEL.: Underhill 9-2426

Orders accepted subject to stock unsold. Prices are for dormant Roses, Spring 1961, 2-year, field-grown, guaranteed to bloom. NOTE: All "3-for" and "gro-3" offer prices apply ONLY when plants are shipped together to one address. "3-for" prices apply to 3 of one variety only. We pay delivery in the U. S. A. on all Roses, if order is received by April 10, 1961. Please add 50c handling charge if order is less than \$10. (See explanatory note on opposite page. Plants will be shipped at proper time for planting in your locality.

Date \_\_\_\_\_ AMOUNT ENCLOSED \$ \_\_\_\_\_

NOTE: If a plant you order is already sold out, we will select for you a similar variety of equal or greater value, if such is available. If you do not wish this service, mark X here

Please print or write your name and address very plainly. Be sure to give Post Office.

(ALL MEMBERS OF SAME HOUSEHOLD. PLEASE ORDER UNDER SAME NAME)

NAME \_\_\_\_\_

P.O. BOX OR \_\_\_\_\_

STREET \_\_\_\_\_ RFD \_\_\_\_\_ COUNTY \_\_\_\_\_

POST OFFICE \_\_\_\_\_ CITY ZONE \_\_\_\_\_ STATE \_\_\_\_\_

EXPRESS ADDRESS (IF DIFFERENT FROM P.O.) \_\_\_\_\_

Quan.	HYBRID TEAS	Each	3 For	Total	Quan.	HYBRID TEAS	Each	3 For	Total	Quan.	MISCELLANEOUS ROSES	Each	3 For	Total
.....	Angels Mateu .....	\$1.75	\$4.65		.....	Suspense .....	\$3.00	\$7.95		.....	Frau Karl Druschki .....	\$1.50	\$3.90	
.....	Betty Upchurch .....	1.50	3.90		.....	Sutter's Gold .....	2.25	6.00		.....	Golden Wings .....	2.50	6.60	
.....	Blanche Mallerin .....	2.00	5.25		.....	Suzon Lotthe .....	2.00	5.25		.....	Hybrid 311 See p. 28			
.....	Charlotte Armstrong .....	2.00	5.25		.....	Symphonie .....	2.00	5.25		.....	Max Graf .....	1.50	3.90	
.....	Christopher Stone .....	1.50	3.90		.....	Talisman .....	1.50	3.90		.....	Robin Hood Seep. 28			
.....	Chrysler Impenal .....	2.50	6.60		.....	Tapestry .....	2.75	7.20		.....	The Fairy .....	1.75	4.65	
.....	Condesa de Sagato .....	1.50	3.90		.....	Texas Centennial .....	1.50	3.90		<b>CLIMBING ROSES</b>				
.....	Confidence .....	2.50	6.60		.....	The Alamo .....	3.50	9.30						
.....	Crimson Glory .....	1.75	4.65		.....	The Doctor .....	1.75	4.65		.....	Blaze .....	\$1.50	\$3.90	
.....	Dr. Debat .....	2.25	6.00		.....	Tiffany .....	2.75	7.20		.....	Blossomtime .....	2.50	6.60	
.....	Duet .....	3.50	9.30		.....	Torch Song .....	2.50	6.60		.....	Cl. Crimson Glory .....	2.50	6.60	
.....	Duq. de Penaranda .....	1.50	3.90		.....	Vassar Centennial .....	3.00	7.95		.....	Cl. Peace .....	2.50	6.60	
.....	Eclipse .....	1.75	4.65		.....	White Knight .....	3.00	7.95		.....	Coral Dawn .....	2.75	7.20	
.....	Etoile de Hollande .....	1.50	3.90		<b>FLORIBUNDA ROSES</b>					.....	Gladiator .....	2.75	7.20	
.....	Fantan .....	3.00	7.95							.....	Circus .....	\$2.50	\$6.60	
.....	Fascinating .....	3.00	7.95		.....	Fashion .....	2.00	5.25		.....	Morning Dawn .....	2.50	6.60	
.....	Garden Party .....	3.00	7.95		.....	Fire King .....	2.50	6.60		.....	New Dawn .....	1.75	4.65	
.....	Good News .....	2.00	5.25		.....	Floradora .....	1.50	3.90		.....	Paul's Scarlet Cl. ....	1.50	3.90	
.....	Grand'mere Jenny .....	2.00	5.25		.....	Frensham .....	1.75	4.65		.....	Red Empress .....	2.50	6.60	
.....	Helen Traubel .....	2.75	7.20		.....	Fusilier .....	2.00	5.25		.....	Spectacular .....	2.50	6.60	
.....	Invitation .....	3.00	7.95		.....	Gold Cup .....	2.00	5.25		.....	White Dawn .....	1.75	4.65	
.....	Kaiserin A. Viktona .....	1.50	3.90		<b>MINIATURE ROSES</b>					.....	Baby Gold Star .....	\$1.50	\$3.90	
.....	Lady Elgin .....	2.50	6.60							.....	Goldilocks .....	1.75	4.65	
.....	Love Song .....	2.50	6.60		.....	Irene of Denmark .....	1.75	4.65		.....	Cinderella .....	1.50	3.90	
.....	Lowell Thomas .....	2.25	6.00		.....	Ivory Fashion .....	2.50	6.60		.....	Midget .....	1.25	3.30	
.....	Mme Cochet-Cochet .....	1.75	4.65		.....	Lavender Girl .....	5.00	12.75		.....	Pixie .....	1.25	3.30	
.....	Mme. Henri Guillot .....	1.75	4.65		.....	Pinocchio .....	1.75	4.65		.....	Pixie Gold .....	2.00	5.25	
.....	Mirandy .....	2.25	6.00		.....	Polka .....	2.50	6.60		.....	Pixie Rose .....	2.00	5.25	
.....	Mojave .....	2.75	7.20		.....	Red Favorite .....	1.75	4.65		.....	Red Imp .....	1.50	3.90	
.....	Mrs. P. S. du Pont .....	1.50	3.90		.....	Sarabande .....	2.50	6.60		.....	Robin .....	1.25	3.30	
.....	New Yorker .....	2.50	6.60		.....	Spartan .....	2.50	6.60		.....	Sweet Fairy .....	1.25	3.30	
.....	Nocturne .....	2.25	6.00		.....	Sumatra .....	2.00	5.25		.....	Tinker Bell .....	1.25	3.30	
.....	Peace .....	2.50	6.60		<b>GRANDIFLORA ROSES</b>					<b>COLUMN TOTAL \$</b>				
.....	Pennsylvanian .....	2.00	5.25											
.....	Perfecta .....	3.50	9.30		.....	Golden Girl .....	3.00	7.95		From Column 2				
.....	Pink Peace .....	3.00	7.95		.....	Montezuma .....	2.75	7.20						AMOUNT FORWARD \$
.....	Pres. Eisenhower .....	2.25	6.00		.....	Pink Parfait .....	3.50	9.30						
.....	Pres. Herbert Hoover .....	1.50	3.90		.....	Queen Elizabeth .....	2.50	6.60						
.....	Radiance .....	1.50	3.90		.....	Starfire .....	3.00	7.95						
.....	Royal Velvet .....	2.50	6.60		<b>Column Total \$</b>									
.....	Show Girl .....	2.25	6.00							<b>Column Total \$</b>				
.....	Simone .....	3.00	7.95		<b>Column Total \$</b>									
.....	Soeur Therese .....	1.50	3.90							<b>Column Total \$</b>				
.....	Sunlight .....	2.50	6.60		<b>Column Total \$</b>									

**MINIATURE TREE ROSES**

Quan.	Each	3 For	Total
.....	Baby Gold Star.....	\$3.50	\$8.85
.....	Cinderella.....	3.50	8.85
.....	Midget.....	3.50	8.85
.....	Red Imp.....	3.50	8.85
.....	Robin.....	3.50	8.85
.....	Sweet Fairy.....	3.50	8.85
.....	Tinker Bell.....	3.50	8.85

**TREE ROSES 1 For 2 For**

.....	Specify Choice.....	\$5.75	\$10.70
-------	---------------------	--------	---------

**SPECIAL ROSE OFFERS**

Quan.	Offer	Each	Total
.....	3	3.95	
.....	3A	10.00	
.....	4	10.00	
.....	4A	7.50	
.....	6	7.95	
.....	8	11.95	
.....	9	6.00	
.....	10	1.90	
.....	11	7.50	
.....	12	7.50	
.....	12A	12.35	
.....	13	9.45	
.....	14	7.50	
.....	15	7.50	
.....	16	7.95	
.....	17	7.50	
.....	19	8.55	
.....	19	7.95	
.....	20	8.95	
.....	21	7.90	
.....	22	8.40	
.....	22A	5.80	
.....	23	6.80	
.....	23A	6.95	
.....	24	6.60	
.....	25	6.90	
.....	26	14.75	
.....	27	7.80	
.....	30	5.65	
.....	30A	4.80	
.....	31	7.95	
.....	31A	14.20	
.....	40	10.85	

**CHRYSANTHEMUMS**

Each	3 For	Total
.....	Ambassador.....	\$0.75 \$2.00
.....	Apache.....	.75 2.00
.....	Apricot Sheen.....	1.00 2.75
.....	Autumn Leaves.....	1.00 2.75
.....	Betty.....	.75 2.00
.....	Birge.....	1.00 2.75
.....	Burgundy.....	.75 2.00
.....	Burning Bronze.....	1.00 2.75
.....	Carnival.....	.75 2.00
.....	Crimson Lady.....	1.00 2.75
.....	Emperor.....	1.00 2.75
.....	Fleur.....	1.00 2.75

COLUMN TOTAL \$

**CHRYSANTHEMUMS**

Quan.	Each	3 For	Total
.....	Flamboyant.....	\$0.75 \$2.00	
.....	Full Moon.....	1.00 2.75	
.....	Girl Friend.....	1.00 2.75	
.....	Golden Arrow.....	1.00 2.75	
.....	Headliner.....	1.00 2.75	
.....	Her Majesty.....	1.00 2.75	
.....	High Noon.....	1.00 2.75	
.....	Indian Summer.....	1.00 2.75	
.....	King's Ransom.....	.75 2.00	
.....	Lavender Lady.....	.75 2.00	
.....	Major Edward Bowes.....	.75 2.00	
.....	Mardi Gras.....	1.00 2.75	
.....	Mrs. H. E. Kidder.....	.75 2.00	
.....	Pink Cherub.....	1.00 2.75	
.....	Pink Chief.....	.75 2.00	
.....	Rose Spoon.....	.75 2.00	
.....	September Song.....	1.00 2.75	
.....	Showpiece.....	1.00 2.75	
.....	White Spoon.....	.75 2.00	
.....	Yellow Spinnaker.....	.75 2.00	

**CHRYSANTHEMUMS Special Offers**

Quan.	Offer	Each	Total
.....	36	\$2.75	
.....	37	10.95	
.....	37A	4.60	
.....	38	5.80	
.....	38A	2.75	
.....	38B	2.00	
.....	38C	2.75	
.....	39	4.80	

**OTHER PERENNIALS**

Each	3 For	Total
.....	Aster, Frikarti.....	\$0.65 \$1.75
.....	Baby's Breath.....	.65 1.75
.....	Candytuft.....	.65 1.75
.....	Carnation	
.....	Sweet Memory.....	.75 2.00
.....	June Carmine.....	.75 2.00
.....	Purple Unique.....	.75 2.00
.....	Wallace Red.....	.75 2.00
.....	Calamagrostis.....	.75 2.00
.....	Delphinium (see p. 33 for prices)	
.....	Antirrhinum	
.....	Bluebird.....	
.....	Blue Jay.....	
.....	Galathea	
.....	Guinevere.....	
.....	King Arthur.....	
.....	Summer Skies	
.....	Lilies (See p. 34 for prices)	
.....	Regale.....	
.....	Royal Gold.....	
.....	Rubrum	
.....	Lythrum.....	.65 1.75
.....	Phlox, Bluette.....	.65 1.75
.....	Charles Curtis.....	.65 1.75
.....	Daily Sketch.....	.65 1.75
.....	Elizabeth Arden.....	.65 1.75
.....	Flash.....	.65 1.75

COLUMN TOTAL \$

**OTHER PERENNIALS**

Quan.	Phlox, continued	Each	3 For	Total
.....	Salmon Beauty.....	\$0.65	\$1.75	
.....	Sir John Falstaff.....	.65	1.75	
.....	Starlight.....	.65	1.75	
.....	Thor.....	.65	1.75	
.....	White Admiral.....	.65	1.75	
.....	Shasta Daisy			
.....	Esther Reed.....	.75	2.00	
.....	Horace Reed.....	1.00	2.75	
.....	Maconi.....	.75	2.00	
.....	Moonlight.....	1.00	2.75	

**SPECIAL PERENNIAL OFFERS**

Quan.	Offer	Each	Total
.....	33	\$2.95	
.....	33A	4.95	
.....	33B	7.85	
.....	34	1.95	
.....	34A	5.45	
.....	34B	13.95	
.....	35	2.95	
.....	35A	2.45	
.....	35B	4.95	

**SUPPLIES**

Quan.	Offer	Each	Total
.....	Lb. Star Rose Dust.....	\$1.95	
.....	4 lbs. Star Rose Dust.....	5.95	
.....	25 lbs. Star Rose Dust.....	29.95	
.....	Offer 41.....	8.75	
.....	Offer 41A.....	5.75	
.....	Lb. Star Rose Spray.....	3.65	
.....	4 lbs. Star Rose Spray.....	11.95	
.....	Offer 41B.....	22.95	
.....	5 lbs. Star Fertilizer.....	1.25	
.....	10 lbs. Star Fertilizer.....	2.25	
.....	25 lbs. Star Fertilizer.....	3.95	
.....	Lb. Star Rose Grow.....	1.25	
.....	Admiral Duster.....	2.95	
.....	New Rotary Duster.....	8.95	
.....	Compression Tank Sprayer.....	11.75	
.....	Critic Hand Sprayer.....	2.95	
.....	Pruner.....	3.50	
.....	Book, Beautiful Roses.....	.75	
.....	Gloves, Men's.....	1.65	
.....	Gloves, Women's.....	1.65	
.....	3 pr. Gloves.....	4.45	
.....	Men's		
.....	Women's		
.....	Plas-Ties (7 inch).....	1.29	
.....	Plas-Ties (50 ft. roll).....	.69	
.....	Offer 42.....	.80	
.....	Offer 42A.....	1.95	
.....	Offer 43.....	13.45	
.....	Floralife.....	3.00	
.....	Doz. Wire Label Stakes.....	.35	
.....	10 doz. Label Stakes.....	3.00	
.....	Phaltan®.....	1.98	
.....	Acti-Dione.....	1.95	

**COLUMN TOTAL \$**

FROM COL. 1

FROM COL. 2

**TOTAL FROM OTHER SIDE**

Add 50c handling charge

if order is under \$10

Add 4% Sales Tax for Penn-

sylvania Delivery

TOTAL ENCLOSED \$

**ORDER EARLY**

**YOUR PLANTS WILL BE RESERVED AND SHIPPED AT PROPER PLANTING TIME FOR YOUR LOCALITY**





© ★SARABANDE

*All-America winner for 1960*

Star Everblooming Floribunda Roses give you great quantities of colorful flowers all during the season. They make wonderful low hedges or borders. As such or when planted in groups of three or more, the color effect is marvelous. You will want to cut armloads of them for the house.

★**SARABANDE**. (Meiland.) Plant Pat. 1761. Winner of 7 top international rose awards, this is the most brilliant red in any garden! Cluster of flowers always on the bush. Low, compact, vigorous bush with dense foliage. Long-lasting flowers. A world beater! \$2.50 ea.; 3 or more, \$2.20 ea.; 25 or more, \$2 ea.

★**GOLD CUP**. Plant Pat. 1683. Beautiful, unfading yellow All-America winner. Clusters of nicely formed, 3-inch flowers. Vigorous plant reaches 2½ feet. A nice fragrance goes with this one. Renews itself easily from strong basal shoots. A finer rose in every way. \$2 ea.; 3 or more, \$1.75 ea.; 25 or more, \$1.60 ea.

★**FUSILIER**. Plant Pat. 1709. Another All-America winner—an orange-red with ruffled petal edges. Most unusual. Clusters of 3 to 3½-inch flowers on a fine, middle-height plant. You get a glowing mass of color with this one. \$2 ea.; 3 or more, \$1.75 ea.; 25 or more, \$1.60 ea.

★**PINOCCHIO**. "Sweetheart" type in form, with lovely pink blooms of 30 petals. Low-growing plant produces them all the time. These clear-toned flowers have long been a favorite. \$1.75 ea.; 3 or more, \$1.55 ea.; 25 or more, \$1.40 ea.

★**FASHION**. Plant Pat. 789. Very popular coral-peach with excellent form and tremendous appeal. Bush grows to 3 feet and has good foliage. An All-America winner, of course! Lots of flowers. \$2 ea.; 3 or more, \$1.75 ea.; 25 or more, \$1.60 ea.

★**IVORY FASHION**. Plant Pat. 1688. All-America for 1959, with long, slender buds and 4-inch flowers—5 to 10 of them to the cane. The 2½-foot plant has fine foliage. The blooms are fragrant. Very worthwhile and a fine accent rose with other colors. \$2.50 ea.; 3 or more, \$2.20 ea.; 25 or more, \$2 ea.

© ★IVORY FASHION



## STAR ROSES

The best roses for America since 1897

★GOLD CUP



## 4 ALL-AMERICAS

★CIRCUS

★GOLD CUP

★FASHION

★SARABANDE

Save \$1.10

Only **\$7.90**

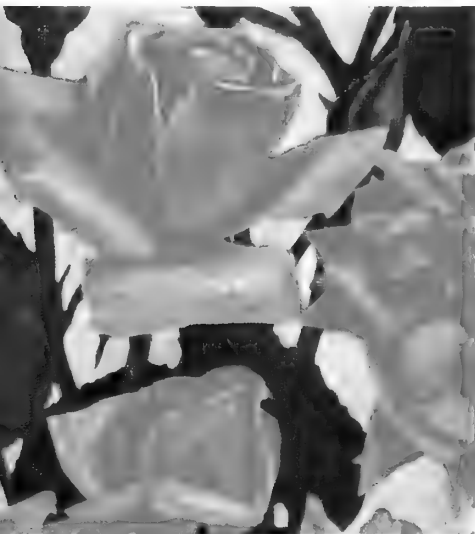
ORDER OFFER 21

★FASHION





★IRENE OF DENMARK



★GOLDILOCKS

## More Colorful Stars

★IRENE OF DENMARK. Plant Pat. 889. Many clear, frosty white flowers come on a vigorous plant. The flower is fragrant, about 3 inches across and has 40 petals. The bush is upright and bushy, with nice foliage. Has a fine reputation. \$1.75 ea.; 3 or more, \$1.55 ea.; 25 or more, \$1.40 ea.

★WHITE BOUQUET. Plant Pat. 1415. An All-America winner with clusters of large white flowers produced on a 2-foot plant. Makes a dandy border planting. Bud and bloom nicely formed. Graceful, vigorous plant. Flowers nearly 4 inches across. \$2.50 ea.; 3 or more, \$2.20 ea.; 25 or more, \$2 ea.

## 4 BIG NAMES

- ★GOLDILOCKS
- ★IRENE OF DENMARK
- ★RED FAVORITE
- ★VOGUE

Value \$7.25

**Only \$6.40**

ORDER OFFER 22



★SUMATRA

★GOLDILOCKS. Plant Pat. 672. Fine, 3-inch flowers of bright, solid gold come continuously on bushy, 2½-foot plant. Dense foliage adds to attractiveness. One of the better, older yellows. \$1.75 ea.; 3 or more, \$1.55 ea.; 25 or more, \$1.40 ea.

★RED FAVORITE. Plant Pat. 1189. Long-lasting blooms of deep red are always on the bush plentifully. Strong, vigorous, 3-foot bush has glossy foliage. Fragrant flowers. \$1.75 ea.; 3 or more, \$1.55 ea.; 25 or more, \$1.40 ea.

★VOGUE. Plant Pat. 926. Soft coral-red All-America winner of a few years back. Buds and blooms nicely shaped. Large flowers come in masses on vigorous plant—and they're fragrant, too! This rose has very great appeal. \$2 ea.; 3 or more, \$1.75 ea.; 25 or more, \$1.60 ea.

★SUMATRA. Plant Pat. 1572. Traffic-light red beauty! It stops you—holds your eye. Large flowers come profusely on a vigorous, good-looking, middle-height plant. Lively green foliage, excellent growth habit. \$2 ea.; 3 or more, \$1.75 ea.; 25 or more, \$1.60 ea.

★SPARTAN. Plant Pat. 1357. Rosy scarlet buds open to coral blooms of 3 to 3½ inches. Excellent form. Clusters of them all season. Strong, vigorous, hardy plant. Blooms are heavy petaled and nicely fragrant. A splendid rose. \$2.50 ea.; 3 or more, \$2.20 ea.; 25 or more, \$2 ea.

★SPARTAN

## 3 GOOD ROSES

- ★GOLDILOCKS
- ★SPARTAN
- ★SUMATRA

Value \$6.25

**Only \$5.50**

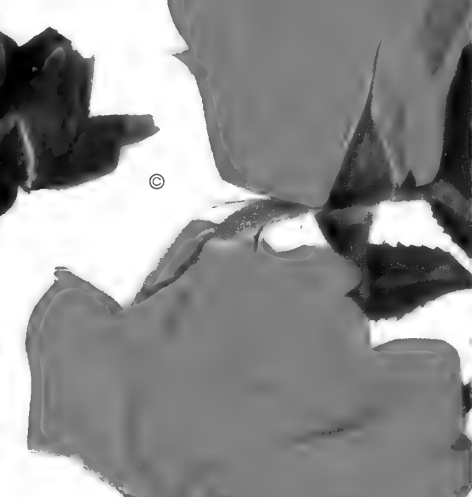
ORDER OFFER 22A



★VOGUE



★RED FAVORITE





★GOLDEN SHOWERS

## CURTAINS OF COLOR WITH STAR EVERBLOOMING CLIMBING ROSES

Star Everblooming Climbers make the showiest exhibition of rose beauty imaginable . . . cascades of color wherever you want it. They give you thousands of blooms to decorate the landscape and to beautify your home. They have a very practical purpose, too, in that they make wonderful screens to hide a bare garage wall or an unsightly background. Use them to advantage and you will be rewarded year after year. They need some kind of support, such as a wall, fence, post or trellis. Remove spent blooms for more bloom. Prune them to keep them in bounds or to remove dead wood; but don't prune away first-year canes because Climbers produce flowers on old wood. Choose from these fine varieties . . . all very good.

★**GOLDEN SHOWERS.** (Everblooming.) Plant Pat. 1557. Big, 5-inch, daffodil-yellow flowers load this All-America winner all season. Very strong bush grows fast. Can be used as shrub as well as a Climber. Fine foliage. \$2.75 ea.; 3 or more, \$2.40 ea.

★**GLADIATOR.** (Everblooming.) Plant Pat. 1521. Bright red, double blooms come on tall canes all season long. Flowers are big, beautiful and fragrant. The plant is substantial and has good foliage. Its vigor is outstanding. The picture fails to do it justice. \$2.75 ea.; 3 or more, \$2.40 ea.

★**MORNING DAWN.** (Everblooming.) Plant Pat. 1417. The loveliest of soft pink flowers grace this fine Climber. As much as 5 inches across, they come plentifully on a vigorous plant. Beautiful form, fine fragrance and long stems . . . these make good cutting. \$2.50 ea.; 3 or more, \$2.20 ea.

★**CORAL DAWN.** (Everblooming.) Plant Pat. 1417. Clusters of 3 to 20 coral-pink blooms cover the bush. Dainty, pointed buds open to 4½-inch blooms. The foliage is lustrous; the plant, vigorous. In every way, a very good Climber. You'll enjoy having it. \$2.75 ea.; 3 or more, \$2.40 ea.

### 3 Lovely Colors

- ★GOLDEN SHOWERS
  - ★MORNING DAWN
  - ★RED EMPRESS (p. 24)
- Value \$7.75

**Only \$6.80**

ORDER OFFER 23

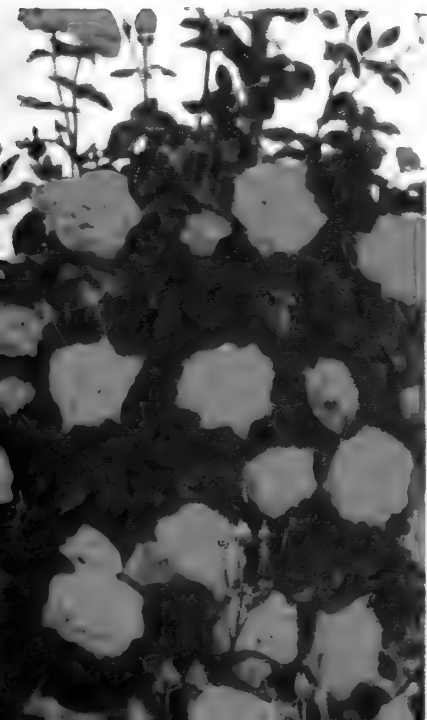
### 3 Climbing Beauties

- ★CL. PEACE (p. 25)
  - ★CORAL DAWN
  - ★GLADIATOR
- Value \$8.00

**Only \$6.95**

ORDER OFFER 23A

© ★GLADIATOR



© ★MORNING DAWN



© ★CORAL DAWN



You get a lot for your money

★**BLOSSOMTIME.** (Everblooming.) Plant Pat. 1210. Beautiful, isn't it? Strong-growing pink Climber with excellent form of bud and bloom and real substance. You get a profusion of these delightful flowers to enjoy—and each of them is deliciously fragrant. The plant is hardy and has fine foliage. Needs little care. \$2.50 ea.; 3 or more, \$2.20 ea.

**STAR ROSE GUARANTEE**

We guarantee every Star Rose to bloom the first natural blooming period after purchase; failing which we will replace the plant or refund its cost.

★**PAUL'S SCARLET CLIMBER.** Blazing clusters of unfading scarlet blooms load the plant in June, giving a mass of brilliant color to the garden scene. This one has been a favorite for many years and is much in demand still. You see its bright flowers just about everywhere you go. \$1.50 ea.; 3 or more, \$1.30 ea.

★**WHITE DAWN.** (Repeat Blooming.) The best white Climber, it has large, flowers plentifully in the spring and again in the fall. Strong, vigorous grower with rapidly growing

canes. Has a great reputation for dependability. The fine white flowers look just great against a red brick house or in front of evergreens. \$1.75 ea.; 3 or more, \$1.55 ea.

★BLOSSOMTIME

★RED EMPRESS

★**RED EMPRESS.** (Everblooming.) Plant Pat. 1573. A breath-taking beauty! Rich red flowers come in profusion, affording a brilliant display of red-rose beauty at its best. Blooms are big, Hybrid Tea-like in form and thoroughly appealing. Their fragrance is notable—you'll like it. The plant is sturdily handsome, well foliaged and vigorous. Red Empress provides excellent cut flowers, more than you'll ever want. One of the best of today's Climbers. \$2.50 ea.; 3 or more, \$2.20 ea.

★**SPECTACULAR.** (Everblooming.) Plant Pat. 1116. Scarlet buds open brilliantly to orange-red blooms—one of the most vivid displays in any garden. The 10-foot canes are loaded with such blooms, which come 3 and 1 to the stem. Glossy foliage adds to the beauty of this eye-popping Climber. Try Spectacular on a trellis, pole, fence or wall and see for yourself how spectacular it really is! You'll not be disappointed. \$2.50 ea.; 3 or more, \$2.20 ea.

★SPECTACULAR

★CL. PEACE

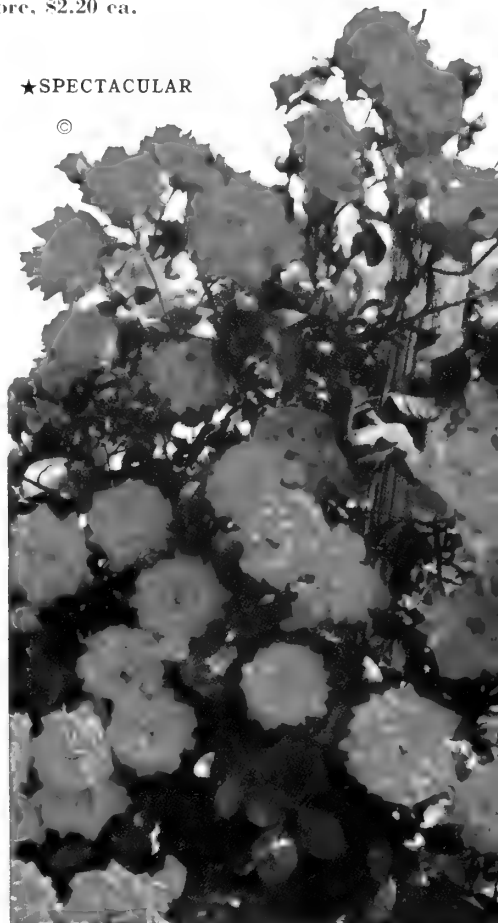
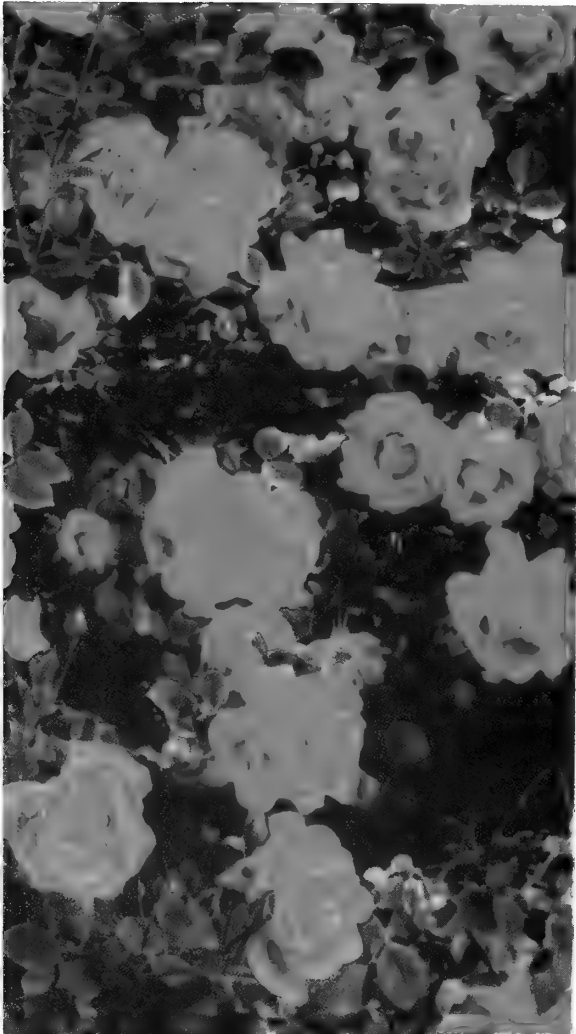
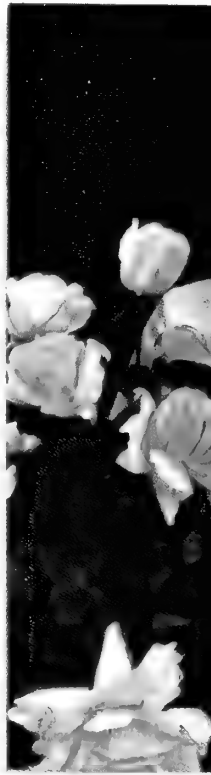
**3 Top Climbers**

- ★BLOSSOMTIME
- ★CL. CRIMSON GLORY
- ★SPECTACULAR

Value \$7.50

Only \$6.60

ORDER OFFER 24



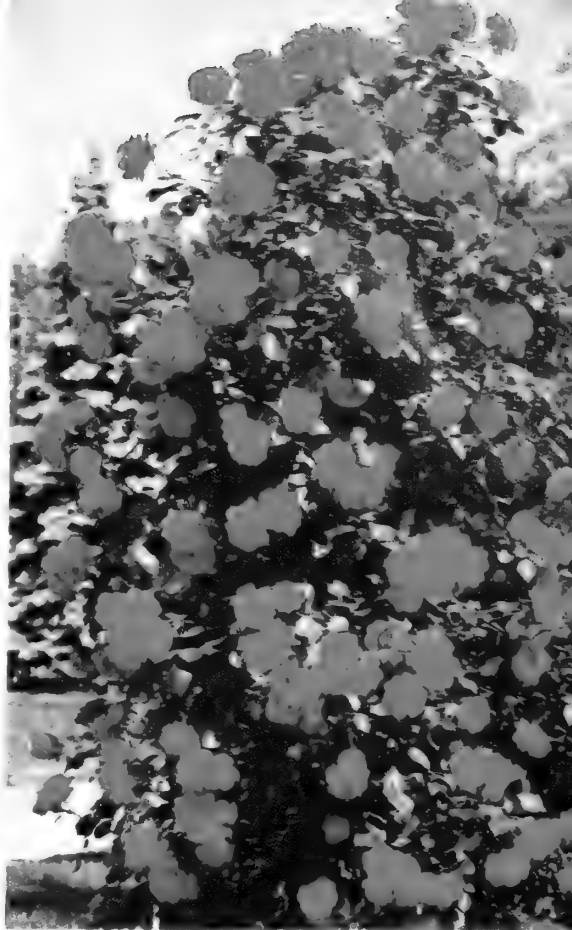
# with these STAR CLIMBERS



★**BLAZE**. Improved. (Repeat Blooming.) Whole masses of bright red flowers in June, another great show in fall, and some flowers in between. Hardy, vigorous bush with long, pliant canes grows like mad. Easily trained. \$1.50 ea.; 3 or more, \$1.30 ea.

★**CL. PEACE**. (Repeat Blooming. Plant Pat. 932.) Same big, yellow and pink-tinged bloom as the Hybrid Tea. You get them on a very strong, vigorous, long-caned bush. Produces more and more flowers as the bush ages. Give it plenty of room to grow in. Ultra beautiful and very much in demand. \$2.50 ea.; 3 or more, \$2.20 ea.

★**CL. CRIMSON GLORY**. (Repeat Blooming.) Plant Pat. 736. Huge, rich, fragrant, deep crimson rose just like the famous Hybrid Tea. The climbing bush bears them plentifully. Blooms are really marvelous—so big, well formed and perfumed. You'll cut many of them and you'll love every one. \$2.50 ea.; 3 or more, \$2.20 ea.



© ★BLAZE



## STAR ROSE TRADEMARK

This Star tag is attached to all of our roses. It identifies the rose on one side and us on the other. It serves as your assurance of quality.

© ★CL. CRIMSON GLORY



★**NEW DAWN** (Everblooming Dr. Van Fleet). Famous blush-pink rose in the loveliest of soft shades, and with the most charming of fragrances—that's New Dawn, a favorite for years. Long 12 to 15-foot canes cover a large area quickly. Over the long season, you'll have many of these flowers in your house where they'll add to the graciousness of living. Well worthwhile. \$1.75 ea.; 3 or more, \$1.55 ea.

## 3 FAVORITES

★CL. CRIMSON GLORY

★CL. PEACE

★CORAL DAWN (p. 23)

Value \$7.75

Only \$6.80

ORDER OFFER 25

QUALITY... ALWAYS

© ★NEW DAWN

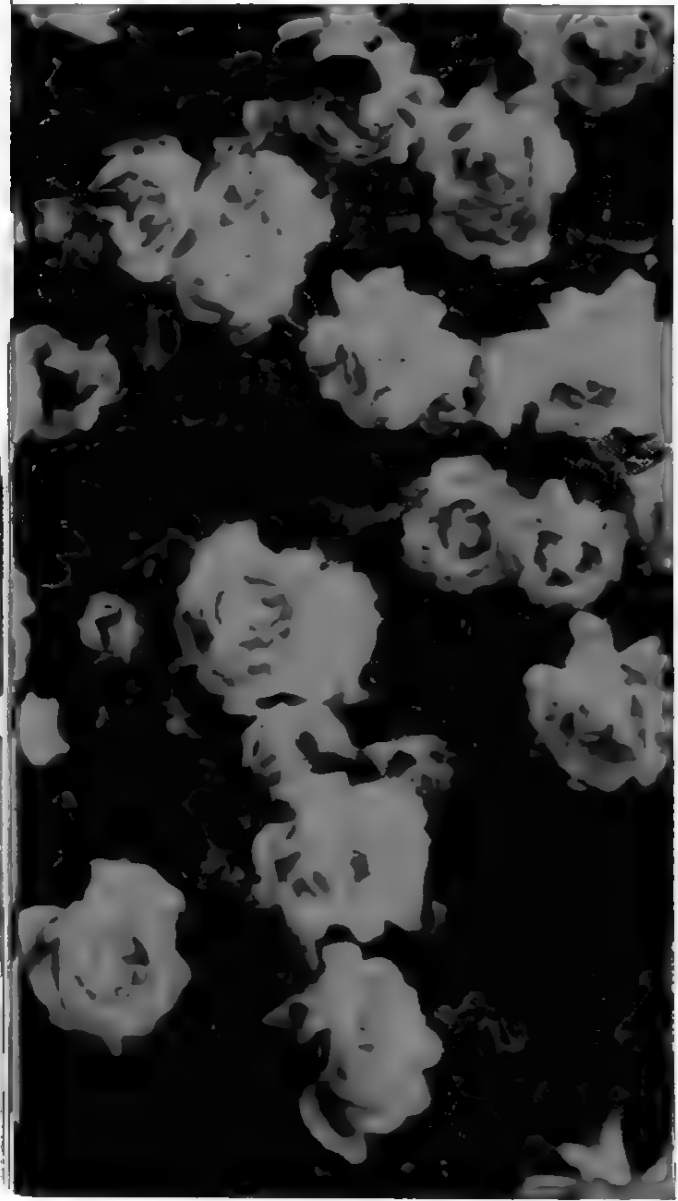




You get a lot for your money with these **STAR CLIMBERS**



★BLOSSOMTIME



★RED EMPRESS

★**BLOSSOMTIME.** (Everblooming.) Plant Pat. 1240. Beautiful, isn't it? Strong-growing pink Climber with excellent form of bud and bloom and real substance. You get a profusion of these delightful flowers to enjoy—and each of them is deliciously fragrant. The plant is hardy and has fine foliage. Needs little care. \$2.50 ea.; 3 or more, \$2.20 ea.

**STAR ROSE GUARANTEE**

We guarantee every Star Rose to bloom the first natural blooming period after purchase; failing which we will replace the plant or refund its cost.

★**PAUL'S SCARLET CLIMBER.** Blazing clusters of unfading scarlet blooms load the plant in June, giving a mass of brilliant color to the garden scene. This one has been a favorite for many years and is much in demand still. You see its bright flowers just about everywhere you go. \$1.50 ea.; 3 or more, \$1.30 ea.

★**WHITE DAWN.** (Repeat Blooming.) The best white Climber, it has large, flowers plentifully in the spring and again in the fall. Strong, vigorous grower with rapidly growing canes. Has a great reputation for dependability. The fine white flowers look just great against a red brick house or in front of evergreens. \$1.75 ea.; 3 or more, \$1.55 ea.

★**RED EMPRESS.** (Everblooming.) Plant Pat. 1573. A breath-taking beauty! Rich red flowers come in profusion, affording a brilliant display of red-rose beauty at its best. Blooms are big, Hybrid Tea-like in form and thoroughly appealing. Their fragrance is notable—you'll like it. The plant is sturdily handsome, well foliaged and vigorous. Red Empress provides excellent cut flowers, more than you'll ever want. One of the best of today's Climbers. \$2.50 ea.; 3 or more, \$2.20 ea.

★**SPECTACULAR.** (Everblooming.) Plant Pat. 1416. Scarlet buds open brilliantly to orange-red blooms—one of the most vivid displays in any garden. The 10-foot canes are loaded with such blooms, which come 3 and 4 to the stem. Glossy foliage adds to the beauty of this eye-popping Climber. Try Spectacular on a trellis, pole, fence or wall and see for yourself how spectacular it really is! You'll not be disappointed. \$2.50 ea.; 3 or more, \$2.20 ea.

5 Top Climber

★BLOSSOMTIME  
★CL. CRIMSON GLORY  
★SPECTACULAR

Value \$7.50

ORDER OFFER 24



★CL. PEACE



**STAR ROSE TRADEMARK**

This Star tag is attached to all of our roses. It identifies the rose on one side and us on the other. It serves as your assurance of quality.



★CL. CRIMSON GLORY



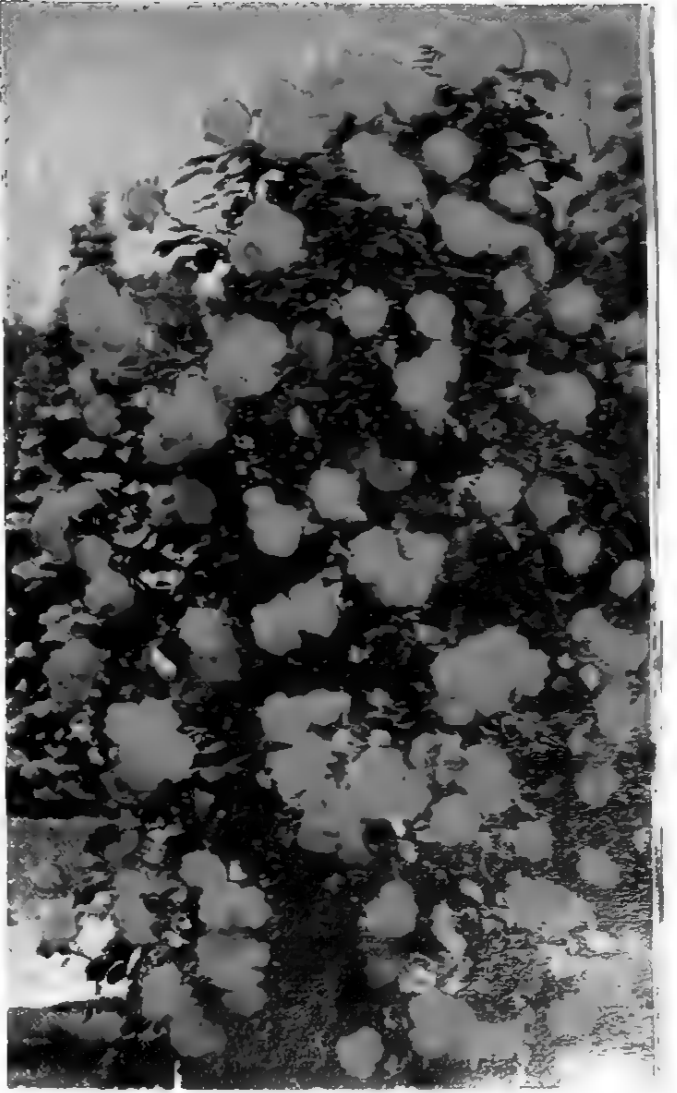
★SPECTACULAR



★**BLAZE, Improved.** (Repeat Blooming.) Whole masses of bright red flowers in June, another great show in fall, and some flowers in between. Hardy, vigorous bush with long, pliant canes grows like mad. Easily trained. \$1.50 ea.; 3 or more, \$1.30 ea.

★**CL. PEACE.** (Repeat Blooming.) Plant Pat. 932. Same big, yellow and pink-tinged bloom as the Hybrid Tea. You get them on a very strong, vigorous, long-caned bush. Produces more and more flowers as the bush ages. Give it plenty of room to grow in. Ultra beautiful and very much in demand. \$2.50 ea.; 3 or more, \$2.20 ea.

★**CL. CRIMSON GLORY.** (Repeat Blooming.) Plant Pat. 736. Huge, rich, fragrant, deep crimson rose just like the famous Hybrid Tea. The climbing bush bears them plentifully. Blooms are really marvelous—so big, well formed and perfumed. You'll cut many of them and you'll love every one. \$2.50 ea.; 3 or more, \$2.20 ea.



★BLAZE

★**NEW DAWN** (Everblooming Dr. Van Fleet). Famous blush-pink rose in the loveliest of soft shades, and with the most charming of fragrances—that's New Dawn, a favorite for years. Long 12 to 15-foot canes cover a large area quickly. Over the long season, you'll have many of these flowers in your house where they'll add to the graciousness of living. Well worthwhile. \$1.75 ea.; 3 or more, \$1.55 ea.

**QUALITY . . . ALWAYS**

★NEW DAWN



3 for \$5.00

★CL. CRIMSON GLORY

★BLOSSOMTIME

★RED EMPRESS

★SPECTACULAR

★NEW DAWN

Only \$1.55 ea.

ORDER OFFER 24

# STAR GRANDIFLORAS . . . *Trey*

★**PINK PARFAIT.** (Swim.)

Plant Pat. 1904. A wonderful newcomer to our list of Grandiflora roses. Pink Parfait exhibits a marvelous blending of pinks, the buds ranging from pale dawn-pink to rich apple-blossom-pink, the opening flower showing an ivory-pink, and the open bloom varying from delicate pink shades to rich rosy pink. In all stages, it is completely beautiful. Buds, of which there are often 100 on the bush at once, are shapely; and the flowers are graceful and high centered. Neat bush, handsome foliage, nice fragrance. \$3.50 ea.; 3 or more, \$3.10 ea.



**NEW!**



★**PINK PARFAIT**  
All-America  
winner for 1961

## ALL 6 IN COLOR

- ★CARROUSEL
- ★GOLDEN GIRL
- ★MONTEZUMA
- ★PINK PARFAIT
- ★QUEEN ELIZABETH
- ★STARFIRE

Save \$2.00

Only **\$14.75**

ORDER OFFER 26

★**QUEEN ELIZABETH.** (Lammerts.)

Plant Pat. 1259. Beautiful, clear pink, solid from bud to bloom. Candelabras of them come on 6 to 12-inch stems for good cutting. Vigorous plant grows 4 feet tall and has excellent foliage. The flowers are superbly formed and thoroughly delightful. This is the first Grandiflora to win an All-America award. It has since then won a great many friends as well as flower-show ribbons, because it is a real beauty. \$2.50 ea.; 3 or more, \$2.20 ea.



★**QUEEN ELIZABETH**

★**CARROUSEL.** Plant Pat. 1066. Garnet-red is an exciting color wherever you find it, but in Carrousel it seems to be at its most interesting because it has a vibrant, lively sheen whose beauty is hard to resist. The blooms are big and come individually as well as in candelabras. The 3-foot plant bears them profusely. Growing sturdily and in good bushy style, the plant is solid looking. You'll enjoy having such a colorful and substantial rose as this one in your garden. A good contrast with the other Grandifloras. \$2 ea.; 3 or more, \$1.75 ea.

★**CARROUSEL**





# These Big Beauties!

Because some of you may not know what a Grandiflora rose is, and the difference between it and a Hybrid Tea or a Floribunda, it is in order to describe this relatively new classification of roses here. A Grandiflora combines some of the qualities or characteristics of both the Hybrid Tea and the Floribunda. It has, for instance, the larger flower size and the form of the Hybrid Tea, and at the same time the Floribunda characteristic of producing flowers in great numbers, often in clusters or in candelabras (that is, with several blooms to the stem). In addition to this, the Grandiflora usually inclines to tallness, and is, therefore, a fine rose for the back row or by itself or with other Grandifloras. The varieties we grow and list here are in our opinion the best of those so far developed—as to color, growing characteristics and general quality. They will give to the gardener a great wealth of flowers and many years of gardening satisfaction. We recommend them highly.



★MONTEZUMA



## STAR ROSES

The  
CONARD-PYLE CO.  
West Grove, Penna.

### 3 FINE COLORS

- ★CARROUSEL
- ★GOLDEN GIRL
- ★PINK PARFAIT

Value \$8.50

Only **\$7.50**

ORDER OFFER 27

★STARFIRE

©

★GOLDEN GIRL

★**GOLDEN GIRL.** (Meiland.) Plant Pat. 1912. See page 4 of this catalog for a complete word and picture description of this splendid yellow Grandiflora—new only a year ago and, in our opinion, the best in its class. In its brief existence, Golden Girl has found and established a firm place for itself in the affections of gardeners. In addition, this rose in our fields has claimed the praise of expert rose growers who visit us here at West Grove. Many of them have wanted to grow it for their own customers. \$3 ea.; 3 or more, \$2.65 ea.

★**MONTEZUMA.** Plant Pat. 1383. The brilliance of this rosy salmon beauty in real life must be seen to be fully realized. Large, 40-petaled flowers come on long, strong stems—each bloom high centered and beautifully formed. You will get many of them on the fine, vigorous plant, which grows to from 3 to 5 feet in height. Here is rose splendor of a high order. You will enjoy Montezuma, without a doubt. \$2.75 ea.; 3 or more, \$2.40 ea.

★**STARFIRE.** (Lammerts.) Plant Pat. 1742. A currant-red beauty with far higher appeal than its picture might indicate. It won the All-America award in 1959, its list of virtues including an impressive plant which grows tall and is loaded with wonderfully bright blooms. These come in clusters as well as singly on the stem. Glossy, bronze-green leaves add richness to the plant. Those dazzling flowers are larger than they appear to be here. They're really sparkling—filling the eye with an exciting kind of rose beauty. Very worth having. \$3 ea.; 3 or more, \$2.65 ea.



# THE STORY OF

★**THE FAIRY.** This is an everblooming shrub rose which makes a perfect 4-foot hedge. It also grows 4 feet across, so that you have a dense, medium-high mass of beautiful pink flowers and fine small foliage from spring to frost. Needs no special care, no special soil. Very vigorous and hardy. Flowers make good cutting. This one is also an outstanding beauty as a shrub. \$1.75 ea.; 3 or more, \$1.55 ea.; 25 or more, \$1.40 ea.

★**HYBRID 311.** Grows quickly into a dense "fence" when planted 18 to 24 inches apart. It reaches up to 5 feet in height. It is loaded with clusters of vivid red flowers almost continuously, spring to frost (see picture). Bushy, upright plant has handsome foliage. Easy to keep in bounds. Does not sprawl like farm-type rose hedge. Color holds bright and lively. 5 for \$3.95; 10 for \$6.95; 25 for \$15.95; 50 for \$28.95; 100 for \$49.95.



★THE FAIRY



★HYBRID 311

A good deal has been printed in the public press in the past few years about Hedge Roses, much of it, in our opinion, leaving something to be desired where useful information for the average homeowner is wanted. Our concern here is to explain Hedge or Shrub Roses so that you can decide wisely when you choose a Hedge Rose for the purpose you have in mind.

The common Multiflora hedge rose is ideal for the farmer who needs a tall, thick, natural barrier to fence a pasture with, or to serve as a method of preventing soil erosion. Such a rose fence is useful, too, to attract and keep birds in the area. This kind of hedging grows fast, is very dense and sprawling in character, and for this reason, of course, needs far more room than anyone but the farmer has. It is in flower only two or three weeks in a season. Do not use it around the usual suburban home; it is not suitable.

Another rose widely advertised for rose hedges in recent years is an old variety called Ragged Robin and renamed Red Robin. While better than Multiflora, this, too, has serious defects. It is fairly tall and somewhat ungainly, and often the leaves are mainly at the top of the plant, leaving a bare area below. However, it is disease resistant, everblooming, fairly hardy and vigorous.

Incidentally, both the hedge rose and the shrub rose have the same characteristics and, in general, are interchangeable. Both uses require that the plants be vigorous growers and have great disease resistance, a long flowering season, balanced growth habit, attractive foliage and an overall ability to thrive with minimum care. An old rose particularly suitable for shrub use is Hugonis, but we do not recommend it because it blooms only once, in the spring. For many years, we have been searching for good hedge and shrub roses, and we are pleased to make recommendations on the basis of our experience.

Bear in mind that any hedge is actually a series of individual plants. Roses compose a hedge when planted in a row, but when planted alone or in groups they serve as admirable flowering shrubs—an added asset which the old farm-type rose hedging does not have. This is because these types grow with excellent proportion and symmetry. They can, therefore, serve your need for a hedge, a grouping or an individual shrub.

We specifically recommend for your consideration three roses for hedge use which we believe to be ideal for the average home gardener. All three are pictured and described on this page. Each of them—The Fairy, Hybrid 311 and Robin Hood—has special qualities as to color and growth habit that will help you to decide which to plant where, according to the need you have for them. All will give you satisfaction as hedges or as shrubs.

Finally, we believe that you should give consideration, too, to another kind of rose for its particular ability to serve in hedging . . . the Floribundas. On the next page, we outline their special qualities for this purpose and detail the facts about two of them, Fire King and Circus, each of which offers you unique characteristics.

★**ROBIN HOOD.** Like Hybrid 311, Robin Hood is just perfect as a hedge rose. Grows densely and compactly, and can be maintained at any desired height above 3 feet. The flowers are cherry-red, covering each plant in spring and always having flowers in summer and fall. Healthy, deep green foliage. Plant in any soil. Proved hardy to below zero temperature. Do not confuse the name with Ragged Robin, another hedge rose. 5 for \$3.95; 10 for \$6.95; 25 for \$15.95; 50 for \$28.95; 100 for \$49.95.

A MAGNIFICENT HEDGE OF ROBIN HOOD



# EDGE ROSES

## Many-Flowered Everblooming Garden Roses Make Ideal Low Hedges, Too!

Many a home gardener has learned to his pleasure that some Floribunda roses can be used to provide very satisfactory low hedges. Perhaps their best use is as borders for walks or as low barriers to define or outline any given garden or lawn area. Their habit of growth is upright and bushy, they are well foliaged, they are vigorous, and they bloom as a rule in clusters, thus offering many flowers, which means masses of beautiful color. Such flowers, when all of the same variety, display a striking note which is hard to equal in any other way. These Floribunda roses make ideal hedges where no great height is wanted, as it would be along property lines. Reaching from 2 to 3 feet or so, they serve best not as actual physical barriers but as mental deterrents to children and others who, without them, might walk or cut across where you do not want people to go. Depending on your

purposes, then, it might be wise to consider everblooming Floribundas when you are thinking of hedge roses. There are two among them, for instance, which we recommend in particular because of their outstanding ability to deliver plenty of color as well as bushiness, both of which you would surely want in any low hedge you plant. These are Fire King and Circus, which are pictured below. (See back cover and page 20 also for Fire King and Circus respectively.) Other good ones are Frensham, Red Favorite, Polka, Irene of Denmark and for a beautiful low hedge, Sarabande.



★FIRE KING

★**FIRE KING.** Plant Pat. 1758. Brilliant vermilion blooms of excellent form and substance are exceptionally long lasting. Bush grows upright, has rich foliage and is vigorous. Excellent for medium-height hedge. \$2.50 ea.; 3 or more, \$2.20 ea.; 25 or more, \$2 ea.

★**CIRCUS.** Plant Pat. 1382. Colorful mixture of red, yellow, pink and orange in flowers that come in plenty on upright, sturdy, medium-height plant. Makes a very gay and unusual hedge. \$2.50 ea.; 3 or more, \$2.20 ea.; 25 or more, \$2 ea.



★CIRCUS



★GOLDEN WINGS

★**MAX GRAF.** Large, single, rich pink blooms and good green foliage provide a hardy ground cover for sunny banks. \$1.50 ea.; 3 or more, \$1.30 ea.

★**FRAU KARL DRUSCHKI.** Remarkable for its snow-white, repeat-blooming flowers. Huge, well-formed plant and blooms. Has blooms all season. \$1.50 ea.; 3 or more, \$1.30 ea.



★MAX GRAF

## SOME Special Roses

★**GOLDEN WINGS.** Plant Pat. 1419. This rose can be used either as a hedge plant or as a fine decorative shrub. It produces many flowers in continuous, free-blooming style. Immensely vigorous and hardy. Needs no spraying. Grows to 4 feet and has a wealth of good foliage. It's an outstanding plant in every way and makes a substantial, handsome appearance. \$2.50 ea.; 3 or more, \$2.20 ea.



★SWEETHEART

★**SWEETHEART ROSE** (Cecile Brunner). Famous old variety to which other roses are likened when referred to as "sweetheart" type roses. Long buds. Small double flowers are pink on a yellow ground. Fragrant. Free blooming. Low-growing, shrub-like bush. \$1.75 ea.; 3 or more, \$1.55 ea.; 25 or more, \$1.40 ea.



© ★CINDERELLA



© ★RED IMP



© ★SWEET FAIRY



© ★PIXIE ROSE

© ★MIDGET

**4 FINEST**

★BO-PEEP	★PIXIE GOLD
★CINDERELLA	★RED IMP

Value \$6.50 **Only \$5.65**

ORDER OFFER 30

EVERETT

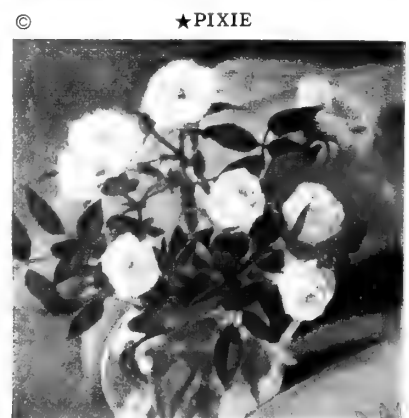
*Star Rose*

*Enjoy them from*

Here is our collection of Miniature Roses. We believe them to be the best to be had anywhere. As the original introducers of these wonderful plants in America, we have had long experience with them. They grow 8 to 12 inches high and are just as hardy in the garden as other roses. Their flowers are about as big as a nickel—the thorns, leaves, stems and buds are in proportion. Miniatures make wonderful borders. Use them in rock gardens, too. The lovely blooms make delightful bouquets and corsages. Pixie Rose and Pixie Gold are new introductions this year. Try them!

### Fascinating Star Miniature Tree Roses

Of all the plants in the garden, these are among the most unusual, interesting and beautiful. They are exceptionally worthwhile. Introduced only a few seasons ago, they have become popular with those who know them. The trunk is only a foot high. It holds the tree-like branches, foliage and blooms in nice, well-formed, symmetrical style. The flowers are just like those of the Miniature Roses shown on these two pages. In the picture below, you can see the relative sizes of the Miniature Tree, the Miniature Rose and the garden glove and shears. The Miniature Tree Rose illustrated is **Midget**. The other kinds available for spring planting are **Baby Gold Star, Cinderella, Red Imp, Robin, Sweet Fairy and Tinker Bell**, all of which are pictured as Miniature Roses. All grow just like Midget. These seven varieties give you a fine color range to select from. Please order them by name, and give an alternate choice because supplies of these fascinating Miniature Tree Roses are somewhat limited. You'll be very pleased with your choices . . . they're so decorative, so beautiful, so different. As accent plants in your garden, they are unbeatable; and they will not fail to draw admiring comment from all who see them. You will be able to cut many blooms from your Miniature Tree Roses during the season for bouquets, corsages and table decoration. Like all Star Roses, these plants are guaranteed to bloom. \$3.50 ea.; 3 or more, in assorted varieties, \$2.95 ea.



© ★PIXIE

**3 NEWEST**

★CINDERELLA
★PIXIE GOLD
★PIXIE ROSE

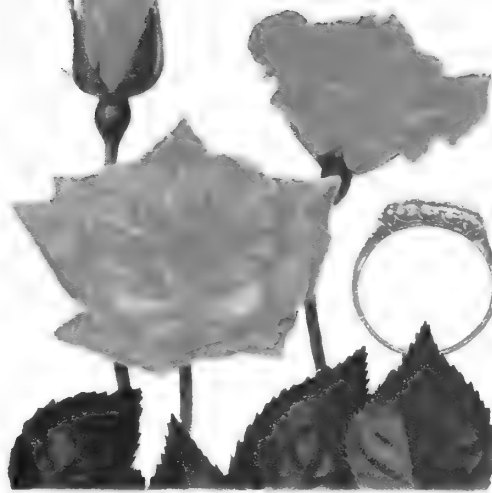
Value \$5.50

**Only \$4.80**

ORDER OFFER 30A



★MIDGET



★BABY GOLD STAR



★TINKER BELL

COMING  
*Miniatures*  
*Coming to Frost*

**7 FAVORITES**  
 ★BABY GOLD STAR ★BO-PEEP  
 ★MIDGET ★PIXIE ★ROBIN  
 ★SWEET FAIRY ★TINKER BELL  
 Value \$9.25 **Only \$7.95**  
 ORDER OFFER 31

★**PIXIE ROSE.** Plant Pat. App. For. Here is a brand-new beauty with excellent rose form and lovely rose coloring. Note the blooms' postage-stamp size! Wonderful foliage, good plant habit. A touch of fragrance, too! This is a real charmer that you will love.

★**CINDERELLA.** Plant Pat. 1051. Dainty white touched with pink. 40 to 60 petals. Well-formed, 1-inch blossom. Long, pointed leaves. A little jewel that's a favorite.

★**RED IMP.** Plant Pat. 1032. Another great favorite! Popular, deep, unfading crimson with excellent bud and flower form. Up to 60 petals. The best in this color, without a doubt. Tops in every way.

★**SWEET FAIRY.** Plant Pat. 748. Rich pink in the bud to apple-blossom in the open flower. 1-inch blooms. Delightful fragrance. As charming as its name implies!

★**MIDGET.** Deep rose blooms, 3/4 inch across, open from grain-of-wheat-size buds. Perfect in all details. Light fragrance. Note this one as a Miniature Tree Rose.

★ROBIN



★**BABY GOLD STAR.** Slightly larger than the other Miniatures . . . a golden beauty that's very popular. Buds and flowers nicely formed. Note comparison to finger ring.

★**TINKER BELL.** Plant Pat. 1293. Bright pink with up to 65 petals. Long-lasting flowers about 1 1/4 inches across. Excellent flower form. It's a real delight!

★**PIXIE GOLD.** Plant Pat. App. For. The second of our new Miniatures for this year, this one is a lovely soft yellow in color. Its form is very good. Beautiful buds open to truly delightful flowers. A much-needed new yellow Miniature.

★**BO-PEEP.** Plant Pat. 976. Dainty, double blooms of arbutus-pink make Bo-Peep the fascinating personality everybody loves. Color and form are delightful. You can have wonderful bouquets with this one.

★**ROBIN.** Plant Pat. 1663. One of the newer Miniatures in deep red touched with lighter tones. 60 or more quilled petals open from fine, urn-shaped buds. The blooms are 1 1/4 inches across;

★**PIXIE.** This is the smallest, fully double white Miniature. Perfect, 3/4-inch flowers are gem-like in their quality, entrancing in their beauty. This one is needed in every collection of the other colors for its ability to accent them.



★PIXIE GOLD

**PRICES FOR MINIATURES**  
 PIXIE GOLD and PIXIE ROSE  
 \$2 ea.; 3 or more same variety,  
 \$1.75 ea.; 10 or more, \$1.55 ea.  
 RED IMP, BABY GOLD STAR,  
 BO-PEEP and CINDERELLA - \$1.50  
 ea.; 3 or more, \$1.30 ea.; 10 or more,  
 \$1.15 ea. ALL OTHERS - \$1.25 ea.;  
 3 or more, \$1.10 ea.; 10 or more, \$1  
 ea.

★BO-PEEP



**ALL 11 STAR ROSE  
 MINIATURES**

Save \$2.05  
**Only \$14.20**  
 ORDER OFFER 31A





© ★CINDERELLA



© ★RED IMP



© ★SWEET FAIRY



© ★MIDGET



© ★BABY GOLD STAR



© ★TINKER BELL



© ★PIXIE ROSE

© ★MIDGET

NEW!



### Fascinating Star Miniature Tree Roses

Of all the plants in the garden, these are among the most unusual, interesting and beautiful. They are exceptionally worthwhile. Introduced only a few seasons ago, they have become popular with those who know them. The trunk is only a foot high. It holds the tree-like branches, foliage and blooms in nice, well-formed, symmetrical style. The flowers are just like those of the Miniature Roses shown on these two pages. In the picture below, you can see the relative sizes of the Miniature Tree, the Miniature Rose and the garden glove and shears. The Miniature Tree Rose illustrated is Midget. The other kinds available for spring planting are Baby Gold Star, Cinderella, Red Imp, Robin, Sweet Fairy and Tinker Bell, all of which are pictured as Miniature Roses. All grow just like Midget. These seven varieties give you a fine color range to select from. Please order them by name, and give an alternate choice because supplies of these fascinating Miniature Tree Roses are somewhat limited. You'll be very pleased with your choices. . . they're so decorative, so beautiful, so different. As accent plants in your garden, they are unbeatable; and they will not fail to draw admiring comment from all who see them. You will be able to cut many blooms from your Miniature Tree Roses during the season for bouquets, corsages and table decoration. Like all Star Roses, these plants are guaranteed to bloom. \$3.50 ea.; 3 or more, in assorted varieties, \$2.95 ea.

**4 FINEST**  
 ★BO-PEEP      ★PIXIE GOLD  
 ★CINDERELLA   ★RED IMP  
 Value \$6.50    **Only \$5.65**  
 ORDER OFFER 30

EVERBL  
*Star Rose*  
Enjoy them from

BOOMING  
*Miniatures*  
Spring to Frost

**7 FAVORITES**  
 ★BABY GOLD STAR   ★BO-PEEP  
 ★MIDGET   ★PIXIE   ★ROBIN  
 ★SWEET FAIRY   ★TINKER BELL  
 Value \$9.25    **Only \$7.95**  
 ORDER OFFER 31

★PIXIE ROSE. Plant Pat. App. For. Here is a brand-new beauty with excellent rose form and lovely rose coloring. Note the blooms' postage-stamp size! Wonderful foliage, good plant habit. A touch of fragrance, too! This is a real charmer that you will love.

★CINDERELLA. Plant Pat. 1051. Dainty white touched with pink. 40 to 60 petals. Well-formed, 1-inch blossom. Long, pointed leaves. A little jewel that's a favorite.

★RED IMP. Plant Pat. 1032. Another great favorite! Popular, deep, unfading crimson with excellent bud and flower form. Up to 60 petals. The best in this color, without a doubt. Tops in every way.

★SWEET FAIRY. Plant Pat. 748. Rich pink in the bud to apple-blossom in the open flower. 1-inch blooms. Delightful fragrance. As charming as its name implies!

★MIDGET. Deep rose blooms, 3/4 inch across, open from grain-of-wheat-size buds. Perfect in all details. Light fragrance. Note this one as a Miniature Tree Rose.

© ★ROBIN



★BABY GOLD STAR. Slightly larger than the other Miniatures . . . a golden beauty that's very popular. Buds and flowers nicely formed. Note comparison to finger ring.

★TINKER BELL. Plant Pat. 1293. Bright pink with up to 65 petals. Long-lasting flowers about 1 1/4 inches across. Excellent flower form. It's a real delight!

★PIXIE GOLD. Plant Pat. App. For. The second of our new Miniatures for this year, this one is a lovely soft yellow in color. Its form is very good. Beautiful buds open to truly delightful flowers. A much-needed new yellow Miniature.

★BO-PEEP. Plant Pat. 976. Dainty, double blooms of arbutus-pink make Bo-Peep the fascinating personality everybody loves. Color and form are delightful. You can have wonderful bouquets with this one.

★ROBIN. Plant Pat. 1663. One of the newer Miniatures in deep red touched with lighter tones. 60 or more quilled petals open from fine, urn-shaped buds. The blooms are 1 1/4 inches across:

★PIXIE. This is the smallest, fully double white Miniature. Perfect, 3/4-inch flowers are gem-like in their quality, entrancing in their beauty. This one is needed in every collection of the other colors for its ability to accent them.



© ★PIXIE GOLD

#### PRICES FOR MINIATURES

PIXIE GOLD and PIXIE ROSE - \$2 ea.; 3 or more same variety, \$1.75 ea.; 10 or more, \$1.55 ea.  
RED IMP, BABY GOLD STAR, BO-PEEP and CINDERELLA - \$1.50 ea.; 3 or more, \$1.30 ea.; 10 or more, \$1.15 ea. ALL OTHERS - \$1.25 ea.; 3 or more, \$1.10 ea.; 10 or more, \$1 ea.

© ★BO-PEEP



**3 NEWEST**  
 ★CINDERELLA  
 ★PIXIE GOLD  
 ★PIXIE ROSE  
 Value \$5.50    **Only \$4.80**  
 ORDER OFFER 30A

© ★PIXIE



**ALL 11 STAR ROSE MINIATURES**  
 Save \$2.05  
**Only \$14.20**  
 ORDER OFFER 31A

For people who appreciate  
unusual rose colors . . .

## Fantan

H.T. (Meiland.) Plant Pat. 1913. It is amazing that so many people appreciate the different kind of beauty which belongs to Fantan. To them it is an extraordinary rose and they love it. Its color is a soft, yet lively tan with rich overtones which include a rosy quality. However you see it, is there any doubt about its exotic kind of beauty? Its almost South Sea Island tan richness? Whether or not this is the rose for you, can you pass it by without comment one way or the other? Fantan's flowers are cupped in form and have 40 to 50 petals making up a good, 3½-inch beauty. Adding asset to asset—Fantan is fragrant to a pleasant degree and its plant provides the flowers plentifully. Growing to medium height with good vigor, it presents a shapely appearance. Fantan will reward anyone who shows an interest in it. \$3 ea.; 3 or more, \$2.65 ea.



★FANTAN

### AVAILABLE TREE ROSE VARIETIES

CHRISTOPHER STONE  
CONFIDENCE  
GARDEN PARTY  
LADY ELGIN  
PINK PEACE  
WHITE KNIGHT  
GOLDEN GIRL  
PINK PARFAIT  
LAVENDER GIRL  
BLAZE

CHRYSLER IMPERIAL  
CRIMSON GLORY  
HELEN TRAUBEL  
PEACE  
TAPESTRY  
DUET  
MONTEZUMA  
FIRE KING  
SARABANDE  
RED EMPRESS

★PEACE



### SOMETHING SPECIAL

### FOR THE GARDEN

*Magnificent*

STAR  
TREE  
ROSES

If you have never had a Star Tree Rose, you have missed a rewarding garden experience; but you can make up for it this spring by planting one or more of these great beauties. The one illustrated is Peace, a mighty good one to start with. Our collection this year is an especially fine one. Our Tree Roses have very sturdy heads which grow on strong, 3-foot trunks. The flowers, you know, of any variety you select are exactly the same as those which grow as garden roses. The difference is simply in the trunk, which holds the bush or head 3 feet above the ground, thus providing a most interesting, beautiful and unusual high note for your garden. Because there is a possibility that we may run short of a variety in which you are interested, it would be best to name an alternate choice for each of your first selections. Star Tree Roses are carefully packed and shipped to your door with all charges prepaid. If you are familiar with the kinds listed above, you can readily imagine how gorgeous they are, and what a striking appearance they will make in your garden. The illustration gives you a fair idea of the wonderful effect they create. Try them this spring! \$5.75 for one; \$10.70 for any two; \$19.95 for any four; \$4.95 each for five or more.

**All Star Roses are Guaranteed to Bloom**



# STAR DELPHINIUMS

*They're Marvelous!*

Like nothing else in the garden world!

Star Delphiniums are great, 6-foot-tall beauties with a very special reason why they're the best you can get. Because we send you young plants from pots which transplant better than older plants from the field, they give you better bloom and last longer in your garden. Plant them in April or May and you'll have magnificent blooms in July and August this year, and still better ones next summer. These pictures show types of coloring rather than exact color, for the range of shades in each series varies with the plant. When you

see the wonderful spikes of bloom produced by these outstanding Pacific Hybrids, you will appreciate more than ever the marvels of Nature. The flower spike is 2 to 3 feet long and stands on a strong stem that's equally long. Each spike is composed of many, many florets or individual flowers. A garden bed of Star Delphiniums is one of the most entrancing sights imaginable. The varieties we list are, we believe, the best to be had anywhere.

3 of one variety, \$1.50; 6 for \$2.75; 12 for \$4.95; 24 for \$8.95. For Mixture, see offers.

## PACIFIC HYBRIDS

**ASTOLAT SERIES.** Beautiful colors range from pale blush through shades of lilac-pink to deep raspberry-rose. Each floret has white to brown and black "bees." The effect is stunning!

**BLUEBIRD SERIES.** The richest shades of blue with white "bees" and long spikes with big florets. The sight of 6-foot spikes in these glorious colors is remarkably rewarding. Completely captivating.

**SUMMER SKIES SERIES.** The blue of summer skies with white "bees" like fleecy clouds. These shades and tones are the loveliest and best in the light blues. Very strong branching habit.

**KING ARTHUR SERIES.** Velvet-textured royal purple florets with white "bees" make a gorgeous show of richness. Long, graceful spikes excellent for cut-flower purposes. This is flower royalty!

**GALAHAD SERIES.** The purity of white on white—pure white florets with white "bees"—makes this one a wonder. Heavy, glistening petals make large, stunning flowers. It is a superb beauty!

**BLUE JAY SERIES.** This is a clear blue, with medium to dark shades and black "bees" to give it that rich, rich look. Note the picture. Imagine this lively, intense coloring in tall, fat spikes! Exciting!

**GUINEVERE SERIES.** Pink-lavender with white "bees" is a combination making one of the most interesting of Delphinium colors. The florets are large and the whole bloom has an out-of-this-world quality that's irresistible.

**4 EACH OF ALL 3 IN COLOR**

Astolat Blue Jay Summer Skies

**Only \$4.95**

ORDER OFFER 33A

**3 EACH OF ALL 7**

**21 Delphiniums**

**Only \$7.85**

ORDER OFFER 33B



ASTOLAT

SUMMER SKIES



**1 each of all 7  
DELPHINIUMS**

**Only \$2.95**

ORDER OFFER 33



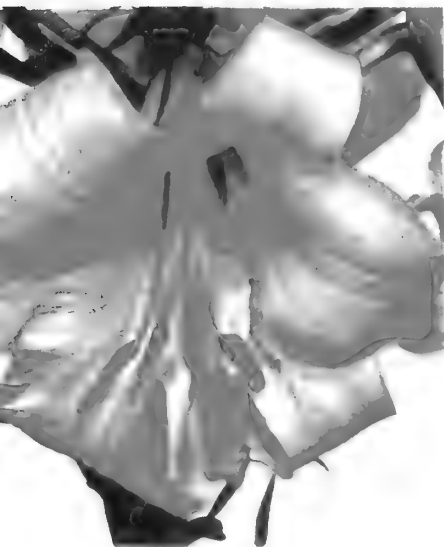
BLUE JAY

1 Each All 3 Lilies \$1.95

ORDER OFFER 31

3 Each All 3 Lilies \$5.45

ORDER OFFER 31A



LILY, ROYAL GOLD



LILY, RUBRUM



LILY, REGALE

Enjoy the Beauty and Perfume of LILIES



LYTHRUM

**LYTHRUM, Morden's Gleam.** Gleaming pink and rose with darker shadings. Blooms continuously on 2 1/2-foot spikes. Does well in sun or part shade. 65c ea.; 3 for \$1.75.

**CANDYTUFT (Iberis, Snowflake).** Compact, large-flowered plant with white flowers, evergreen foliage. 65c ea.; 3 for \$1.75.

**ASTER FRIKARTI.** Beautiful blooms from July to frost. 2-foot plant, wiry stems. Good cutting for the house. Very interesting and colorful. 65c ea.; 3 for \$1.75.



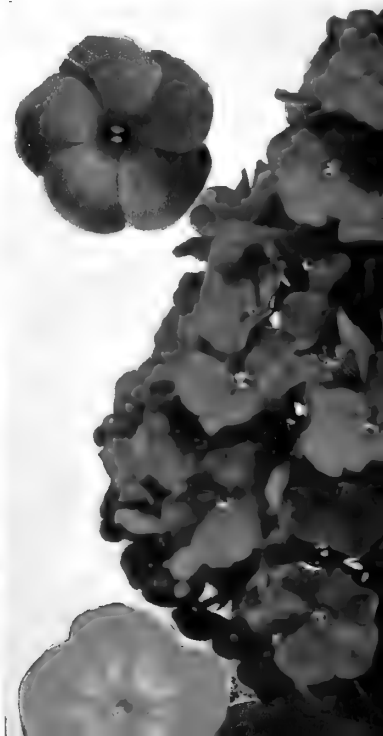
CANDYTUFT

**ROYAL GOLD.** Magnificent, early-flowering, easy-to-grow hybrid. Tall, free flowering. Beautiful! \$1 ea.; 2 for \$1.85.

**RUBRUM.** Lovely, soft carmine-pink. Tall, fragrant and completely captivating. Blooms in August and September. 65c ea.; 2 for \$1.

**REGALE.** Fragrant, hardy, long-lived. Many flowers to the stem. Tall. One of the finest and best known. 65c ea.; 2 for \$1.

COLORFU



All 20 pictured these 2 pages

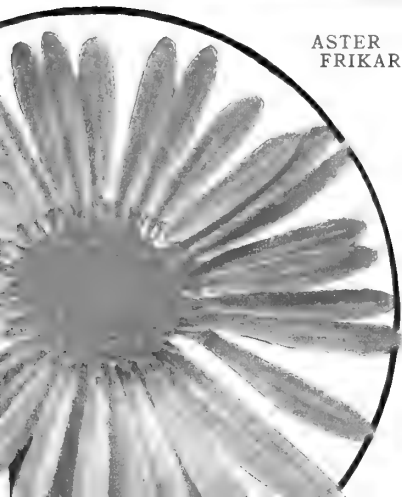
Only \$13.95

ORDER OFFER 34B

GIANT COLUMBINE

(Aquilegia, McKana's Giant). Long-spurred, 4-inch flowers come on graceful, 2-foot stems in May and June. Mixed colors of blue, pink, maroon, purple, red, yellow or combinations. A fascinating plant. 75c ea.; 3 for \$2.

GIANT COLUMBINE (AQUILEGIA)



ASTER FRIKARTI





MOONLIGHT



HORACE READ



MARCONI

ESTHER READ

**SHASTA DAISIES**

**MOONLIGHT.** Large, pure white blooms with golden centers. Long stemmed. \$1 ea.; 3 for \$2.75.

**HORACE READ.** Big, double blooms in pure white. Tall, erect stems. Gorgeous! \$1 ea.; 3 for \$2.75.

**MARCONI.** Many fine shaggy white flowers. Grows to 3 feet. 75c ea.; 3 for \$2.

**ESTHER READ.** Broad outer petals, compact center. Blooms all summer. 75c ea.; 3 for \$2.



BABY'S BREATH,  
ROSY VEIL

**BABY'S BREATH (Gypsophila, Rosy Veil).** Dainty, delicate pink flowers. 1 to 2-foot plant. 65c ea.; 3 for \$1.75.

**CARNATIONS**

75c ea.;

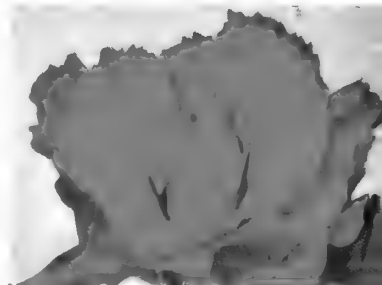
3 of one variety, \$2

**WALLACE RED.** Fragrant, bright red. Vigorous. Middle height. Good stems.

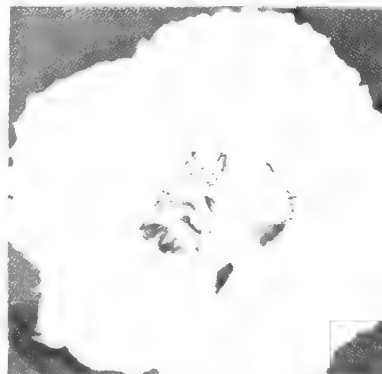
**SWEET MEMORY.** White touched with crimson at center. Large and sweet scented.

**PURPLE UNIQUE.** Violet-purple with fringed petals. Many flowers. Dainty.

**JUNE CARMINE.** Carmine-pink blooms on 12 to 15-inch stems. June to September.



CARNATION, WALLACE RED



CARNATION, SWEET MEMORY

**ALL 4 CARNATIONS**  
**\$2.45**  
 ORDER OFFER 35A

CARNATION, JUNE CARMINE

PHLOX



**Beautiful Easy-Growing PHLOX**

Use Phlox to put summer color in your garden the easy way. Summer heat brings out the best in these wonderfully colored flowers, and gives you masses of fragrant bloom. The plants are sturdy, hardy, trouble-free. They make splendid borders as well as fine accent plants.

- BLUETTE.** Best blue. Beautiful.
- CHARLES CURTIS.** Mandarin-red.
- DAILY SKETCH.** Salmon-pink.
- ELIZABETH ARDEN.** Clear, soft pink.
- FLASH.** Crimson-carmine.
- SALMON BEAUTY.** Salmon-red.
- SIR JOHN FALSTAFF.** Huge pink.
- STARLIGHT.** Blue with white eye.
- THOR.** White with red touches.
- WHITE ADMIRAL.** Large, pure white.

**ALL PHLOX**  
 65c ea. ;  
 3 of one variety,  
**\$1.75**

**All 10 PHLOX Only \$4.95**  
 Value \$6.50  
 ORDER OFFER 35B





1 Each All 3 Lilies \$1.95

ORDER OFFER 31

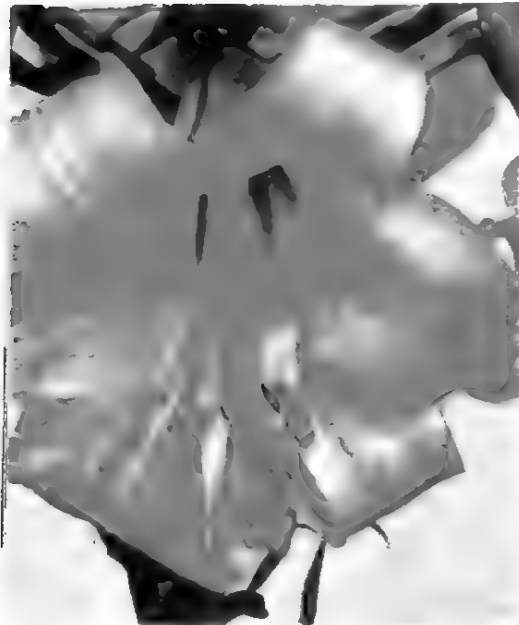
3 Each All 3 Lilies \$5.45

ORDER OFFER 31A

# PERENNIALS

All 4 Shastas--Only \$2.95

ORDER OFFER 35



LILY, ROYAL GOLD



LILY, RUBRUM



LILY, REGALE



MOONLIGHT



HORACE READ



MARCONI ESTHER READ

## Enjoy the Beauty and Perfume of LILIES



LYTHRUM

**LYTHRUM.** Morden's Gleam. Gleaming pink and rose with darker shadings. Blooms continuously on 2½-foot spikes. Does well in sun or part shade. 65c ea.; 3 for \$1.75.

**CANDYTUFT** (Iberis, Snowflake). Compact, large-flowered plant with white flowers, evergreen foliage. 65c ea.; 3 for \$1.75.

**ASTER FRIKARTI.** Beautiful blooms from July to frost. 2-foot plant, wiry stems. Good cutting for the house. Very interesting and colorful. 65c ea.; 3 for \$1.75.



CANDYTUFT

### GIANT COLUMBINE

(Aquilegia, McKana's Giant). Long-spurred, 4-inch flowers come on graceful, 2-foot stems in May and June. Mixed colors of blue, pink, maroon, purple, red, yellow or combinations. A fascinating plant. 75c ea.; 3 for \$2.



GIANT COLUMBINE (AQUILEGIA)

**ROYAL GOLD.** Magnificent, early-flowering, easy-to-grow hybrid. Tall, free flowering. Beautiful! \$1 ea.; 2 for \$1.85.

**RUBRUM.** Lovely, soft carmine-pink. Tall, fragrant and completely captivating. Blooms in August and September. 65c ea.; 2 for \$1.

**REGALE.** Fragrant, hardy, long-lived. Many flowers to the stem. Tall. One of the finest and best known. 65c ea.; 2 for \$1.

### SHASTA DAISIES

**MOONLIGHT.** Large, pure white blooms with golden centers. Long stemmed. \$1 ea.; 3 for \$2.75.

**HORACE READ.** Big, double blooms in pure white. Tall, erect stems. Gorgeous! \$1 ea.; 3 for \$2.75.

**MARCONI.** Many fine shaggy white flowers. Grows to 3 feet. 75c ea.; 3 for \$2.

**ESTHER READ.** Broad outer petals, compact center. Blooms all summer. 75c ea.; 3 for \$2.



BABY'S BREATH, ROSY VEIL

**BABY'S BREATH** (Gypsophila, Rosy Veil). Dainty, delicate pink flowers. 1 to 2-foot plant. 65c ea.; 3 for \$1.75.

### CARNATIONS

75c ea.;

3 of one variety, \$2

**WALLACE RED.** Fragrant, bright red. Vigorous. Middle height. Good stems.

**SWEET MEMORY.** White touched with crimson at center. Large and sweet scented.

**PURPLE UNIQUE.** Violet-purple with fringed petals. Many flowers. Dainty.

**JUNE CARMINE.** Carmine-pink blooms on 12 to 15-inch stems. June to September.



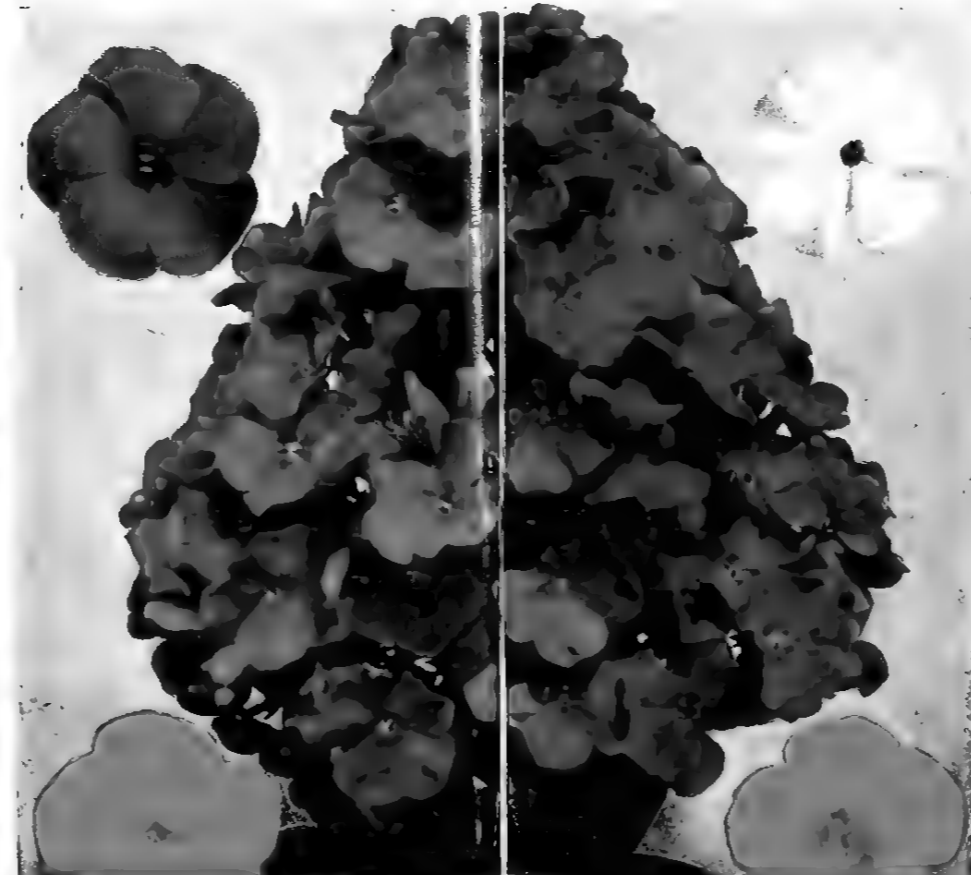
CARNATION, WALL



CARNATION, SWEET MEMORY

CARNATION, JUNE CARMINE

### COLORFUL PHLOX



### Beautiful Easy-Growing PHLOX

Use Phlox to put summer color in your garden the easy way. Summer heat brings out the best in these wonderfully colored flowers, and gives you masses of fragrant bloom. The plants are sturdy, hardy, trouble-free. They make splendid borders as well as fine accent plants.

- BLUETTE.** Best blue. Beautiful.
- CHARLES CURTIS.** Mandarin-red.
- DAILY SKETCH.** Salmon-pink.
- ELIZABETH ARDEN.** Clear, soft pink.
- FLASH.** Crimson-carmine.
- SALMON BEAUTY.** Salmon-red.
- SIR JOHN FALSTAFF.** Huge pink.
- STARLIGHT.** Blue with white eye.
- THOR.** White with red touches.
- WHITE ADMIRAL.** Large, pure white.

### ALL PHLOX

65c ea.;  
3 of one variety,  
\$1.75

All 10 PHLOX Only \$4.95

Value \$6.50

ORDER OFFER 35B

All 20 pictured these 2 pages

Only \$13.95

ORDER OFFER 34B



ASTER FRIKARTI



SHOWPIECE



GIRL FRIEND



CRIMSON LADY



**NEW!**  
HER MAJESTY

**CHOOSE FROM THESE**  
*Superb All-America*

Here are 12 winners of the prized All-America Mum award, including the three champions for 1961—HER MAJESTY, APRICOT SHEEN and BINGO. All have won the top Mum award after rigorous competition with many entries. This speaks for their quality and for the fact that they will do well in your garden. They give you a splendid assortment of colors to choose from, and if you plant them this spring your garden in late summer and the fall will be the envy of the neighborhood.

**ALL MUMS ON THESE TWO PAGES, \$1 ea.; 3 of same variety, \$2.75**

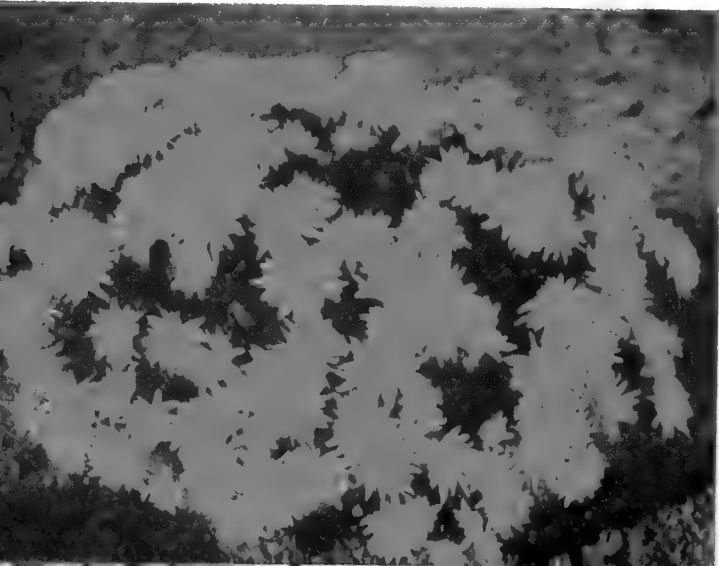
**HER MAJESTY.** Plant Pat. App. For. Shapely, 3-inch blooms of pure white with cream centers load the bush in early October. You'll cut beautiful sprays from the strong, 28-inch-tall plant, every one a display of ivory-white delight for your home. In the garden, Her Majesty will reign supreme—a regally erect plant rich in long-stemmed beauty. What a fine white accent plant for other fall Mums!

**APRICOT SHEEN.** Plant Pat. App. For. Imagine a fine, healthy mound (see picture) not more than 15 inches high composed of dozens and dozens of gorgeous apricot flowers—each a richly colorful beauty 3 inches across! That is Apricot Sheen! The plant is vigorous, grows anywhere and delivers its long-lasting flowers over a long season . . . from September 1 through October. You'll love the richness of coloring—just right for the fall garden!

**BINGO.** Plant Pat. App. For. Like Apricot Sheen, Bingo presents a highly colorful mound of flowers for your enjoyment, this time a rich, intense, deep red with orangey tones. Growing 15 to 18 inches high, the plant produces its flowers and makes a striking garden display from the latter part of September right up to frost. The color at the season's end is just as intense as at the beginning. Very dependable and easy to grow.

**ALL 3 NEW WINNERS**  
APRICOT SHEEN HER MAJESTY BINGO  
ORDER OFFER 36 **Only \$2.75**

APRICOT SHEEN **NEW!**



BINGO **NEW!**

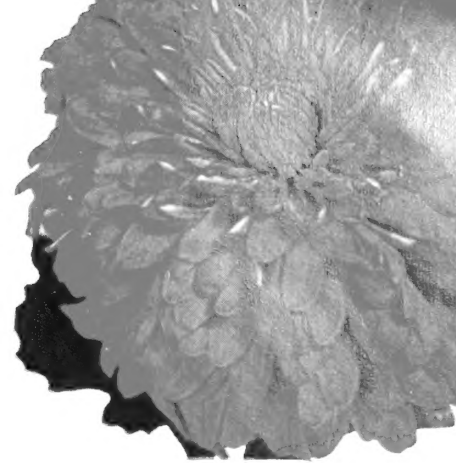




FLAIR

THEY'RE ALWAYS  
*Cheaper  
by the  
dozen!*

PRETTIER, TOO!



BURNING BRONZE

# MUM WINNERS

NONE GENUINE  
WITHOUT  
THIS TAG

All 12 All-America Winners  
ALL ON THESE TWO PAGES  
Value \$12.00  
ORDER OFFER 37 Only \$10-95



HEADLINER

**SHOWPIECE.** Plant Pat. 1876. Royal rose with silver-mist highlights. Large, full flowers on 2-foot stems. Unusual!

**GIRL FIREND.** Plant Pat. 1791. Changes from shell-pink to coral-rose. Loaded with 3 1/2-inch blooms on 28-inch stems. From mid-September on.

**CRIMSON LADY.** Plant Pat. 1875. Brilliant red flowers on 16-inch bush that's compact and shapely. Firm, neat-looking flowers. A beauty.

**FLAIR.** Plant Pat. 1874. Lively, rich, fetching shade of lavender won't fade. 3 1/2-inch flowers. Plant 18 inches high, 30 inches across.

**BURNING BRONZE.** Plant Pat. 1877. Tangerine, bronze and orange medley. Neat, 2 1/2-inch flowers on 2 1/2-foot bush. Great for bouquets.

**HEADLINER.** Plant Pat. App. For. Walnut-coral blooms provided generously. Grows to 2 feet. Most unusual color—a real delight.

**MARDI GRAS.** Plant Pat. App. For. Big 4 to 4 1/2-inch blooms of strong reddish hues turning to tones of bronze and yellow. Early September on. Low growing.

**PINK CHERUB.** Plant Pat. App. For. A neat treat! Small 1 to 1 1/2-inch flowers in wonderful pink. Masses of them on short, strong stems. Blooms from early September.

**EMPEROR.** Plant Pat. 1733. A blaze of yellow light. Big, double blooms cover medium-height plant. A magnificent dazzler! Wonderful cutting.

## Try These 5 Winners

APRICOT SHEEN BINGO  
EMPEROR GIRL FRIEND  
SHOWPIECE

Only \$4.60

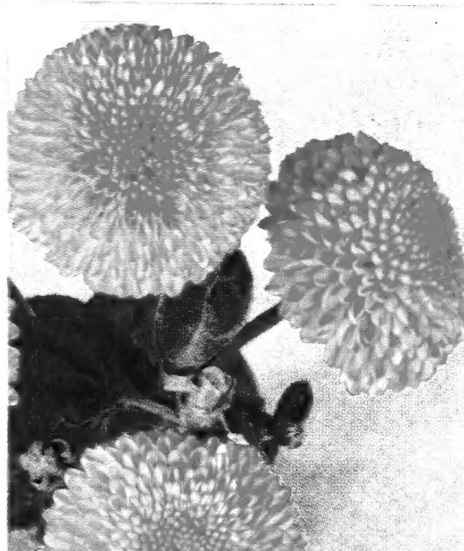
ORDER OFFER 37A

PINK CHERUB

MARDI GRAS



EMPEROR





INDIAN SUMMER



FULL MOON

### FANCY FOOTBALL MUMS

Grow them in your own garden successfully with just a little care. You'd usually buy these at the greenhouse or florist's . . . the big Mums you see at football games.

**MAJOR EDWARD BOWES.** Richest of rose-pinks with outstanding form.

**MRS. H. E. KIDDER.** Big, beautiful ball of yellow gold. Wonderful!

**PINK CHIEF.** Gorgeous rosy pink. Huge bloom. Perfect form. A delight!

**AMBASSADOR.** The all-white Football Mum. Tremendous—pure—perfect.

# NEW! Harvest Giant Mums

Here is a new race of Football Mums especially created for garden growing. They're exceptionally big, with flowers often reaching 7½ inches across! You don't need a greenhouse to grow them. It is important, however, to pinch off the first buds in order to grow the biggest blooms. Very strong growers—no special care needed. Plant this spring for wonderful fall flowers. Be among the first in your neighborhood to have these wonders! (Plant Patents have been applied for.)

**AUTUMN LEAVES.** Extra-large flower in gorgeous bronze. Very finely produced by fine plant. A knockout!

**GOLDEN ARROW.** Big golden beauty with strong, heavy stem. Blooms in the football season. A dream!

**HIGH NOON.** Pure cream with a dash of butter in the center. Many flowers. Early bloomer. Intriguing!

**INDIAN SUMMER.** Outstanding bright reddish bronze beauty. Huge 7-inch flowers. Blooms mid-September on. Rich!

**SEPTEMBER SONG.** Compact, bushy plant bears 5-inch flowers in rose-pink. Blooms early. Sensational!

**FULL MOON.** 6½-inch white blooms with yellow-tinged centers. At least one plant needed in every garden. Beautiful!

\$1 ea.; 3 for \$2.75 (same variety)

ALL 6  
HARVEST GIANTS  
FOR \$5.50

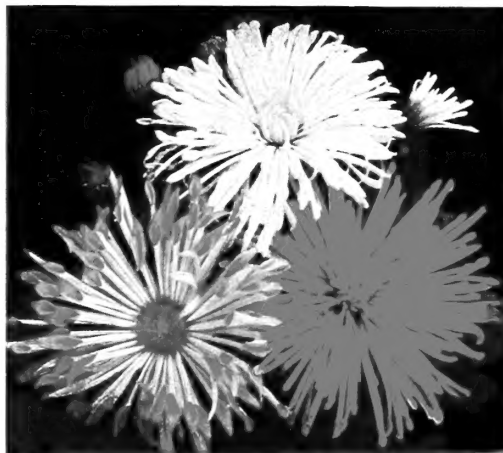
ORDER OFFER 38

3 IN COLOR  
FOR \$2.75

ORDER OFFER 38A



SEPTEMBER SONG



### Exotic SPOON MUMS

**ROSE SPOON.** Rose tipped pink. Quilled petals.

**WHITE SPOON.** All white with icicle petals.

**YELLOW SPOON.** Clear, crisp yellow. Many quills.

ALL 3 SPOONS  
JUST \$2.00

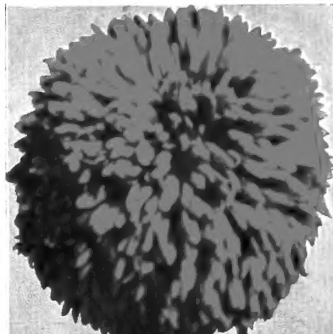
ORDER OFFER 38B

ALL 4  
FOOTBALL  
MUMS

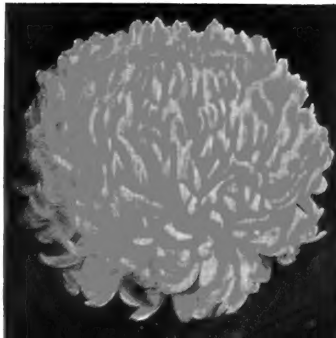
Only  
\$2.75

ORDER OFFER 38C

MAJOR BOWES



MRS. H. E. KIDDER



PINK CHIEF



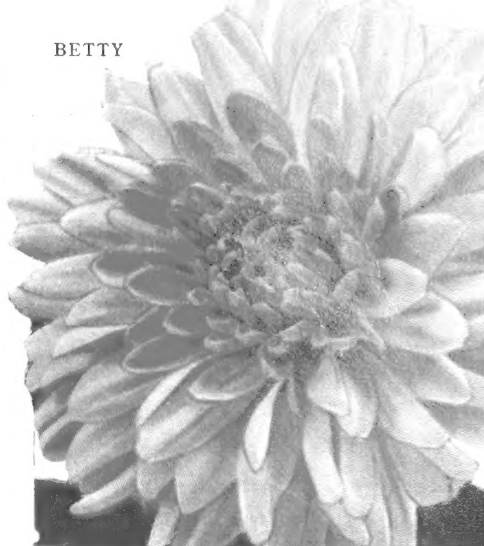




BURGUNDY



CARNIVAL



BETTY



LAVENDER LADY

## Large-Flowered MUMS for Masses of Bloom

Wonderful cutting with these big, solid blooms. 4 to 4½-inch flowers produced in masses on vigorous plants. You must plant them this spring to have wonderful fall colors. The seven on this page are outstanding kinds.

**BETTY.** A favorite for a long time. Outer petals of fine, clear pink frame a darker center. Hardy, long-lasting blooms.

**CARNIVAL.** Vivid burnt-orange bloom that's big and double. Plenty of bright flowers with this one. Gay and exciting.

**BURGUNDY.** Deep wine-red. Broad, flat petals. A splendid rich and rare beauty that's very fine. You'll love it!

**LAVENDER LADY.** Delicate lavender, with good form and lots of flowers. A delightful beauty.

**FLAMBOYANT.** Fascinating blend of orange, yellow and copper-red that sparkles with richness. Hard to resist.

**KING'S RANSOM.** Large, fully double blooms of solid gold are brightly appealing. A fat butterball—solid gold, each one.

**APACHE.** Gorgeous desert-red flowers are large and double. Long, slim petals. Many, many flowers on the vigorous bush.

## PRICES

ALL MUMS ON THESE TWO PAGES

75c ea.; 3 of one variety, \$2

EXCEPT THE HARVEST GIANTS

**All 7 Large-Flowered MUMS  
ON THIS PAGE**

ORDER  
OFFER 39 **Only \$4.50**

FLAMBOYANT



KING'S  
RANSOM



APACHE

# Fire King... All-America Winner for 1960



★**FIRE KING.** Floribunda. (Meiland.) Plant Pat. 1758. Our enthusiasm for this rose is so strong that we have once more given it the honored spot on our back cover. Its qualities are many . . . first, it is brilliantly colored in eye-dazzling vermilion . . . second, it is beautifully formed . . . third, it is extremely long lasting on the bush or in the vase . . . fourth, the bush grows tall and is shapely and vigorous. In short, Fire King has everything! The color is truly marvelous. The blooms come in clusters, each flower a good 3 inches across and composed of 45 to 50 petals. What a sight they make! The bush is upright and has rich foliage. It makes an ideal, middle-height garden hedge. You'll cut many a gorgeous bouquet from Fire King in the course of the long flowering season. Is it any wonder that Fire King is an All-America champion? \$2.50 ea.; 3 or more, \$2.20 ea.; 25 or more, \$2 ea.



## 5 BEAUTIES

- ★**FIRE KING**
- ★**GOLD CUP** (p. 21)
- ★**IVORY FASHION** (p. 21)
- ★**POLKA** (p. 20)
- ★**SARABANDE** (p. 21)

Save  
\$1.45 **Only \$10.55**

ORDER OFFER 40

Here is our new catalog for Spring, 1961. We present in its pages what we believe to be the finest collection of Roses, Chrysanthemums and perennials we've ever had in our 64-year history. We urge you to give them consideration, for we know as growers that there is high quality in each of our plants, and that you will be delighted with them. Your satisfaction is important to us. Without it, we could not have grown and prospered over the years. Now, in 1961, we look forward either to making your acquaintance or to renewing it. You can order in confidence, for your trust is never misplaced when you deal with Star Roses. We wish you a pleasant and rewarding garden season.

GROWERS OF THE BEST  
ROSES FOR AMERICA

THE CONARD-PYLE CO.  
WEST GROVE, PENNA.  
TEL. UNDERHILL 9-2426

GROWERS OF FAMOUS STAR ROSES