

Historic, archived document

Do not assume content reflects current scientific knowledge, policies, or practices.

Steckler Seed Co., Inc.

"SEEDS FOR THE SOUTH"

New Orleans, Louisiana

512-516 Gravier Street

FALL 1931

LIBRARY RECEIVED
★ JUL 17 1931 ★
U. S. Department of Agriculture.
Phone RAYmond 4641

TO OUR FRIENDS AND CUSTOMERS:

Special list of seeds.

The STECKLER SEED COMPANY, Inc., closes a successful year due to patronage accorded us by customers in appreciation of our untiring efforts to maintain the high standard of quality established for STECKLER'S SEEDS generations ago.

Our customers have secured value for their money and know it, but we do want to thank them for the wonderful support they have given us. Such patronage urges us to further efforts.

STECKLER SEED CO., Inc.

ALL PRICES SUBJECT TO CHANGE WITHOUT NOTICE

THE POSTAGE TO FOREIGN COUNTRIES must be added to the cost of the goods selected in this price list, or the order will be reduced to allow for the postage. These rules will also apply to orders from the United States where no postage allowance is made for mailing, or we will send by express.

CENTRAL AND SOUTH AMERICA: Limit Weight, 20 lbs. Postage Rate, 14c per pound.

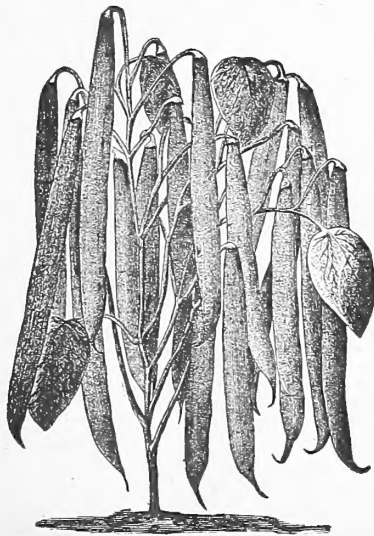
PANAMA: Limit Weight, 50 lbs. Postage Rate, 12c per pound.

CUBA: Limit Weight, 22 pounds. Postage Rate, 14c per pound.

CANAL ZONE: Limit Weight, 50 lbs. Postage Rate, 12c per pound.

MEXICO: Limit Weight, 20 lbs. Postage Rate, 13c per pound plus surcharges, 5c.

Steckler Seed Co., Inc., give no warranty, express or implied, as to description, quality, productiveness or any other matter of any seeds, bulbs, plants or trees they send out, and will not be responsible for the crop.



STECKLER'S GARDEN BEANS

DWARF OR BUSH-GREEN PODDED

	Postpaid		Not Prepaid	
	Lb.	5 lbs.	15 lbs.	60 lbs.
(10c packets)			Peck	Bu.
Black Valentine	35c	\$1.25	\$2.50	\$ 8.50
Burpee's Stringless	35c	1.35	2.65	9.00
Giant Stringless	35c	1.35	2.65	9.00
Hopkins Imp. Red Val.	35c	1.25	2.50	8.50
Longfellow or French Market	35c	1.25	2.50	8.50
Red Kidney	35c	1.25	2.50	8.50
Bountiful	40c	1.50	2.80	10.50

POLE OR RUNNING GREEN PODDED

	Postpaid		Not Prepaid	
	Lb.	5 lbs.	15 lbs.	60 lbs.
(10c packets)			Peck	Bu.
Black Valentine	40c	\$1.75	\$3.00	\$10.80
Imp. Ky. Wonder or Old Homestead	40c	1.75	3.00	10.50
Striped Creaseback	40c	1.75	3.00	11.00
White Cornfield	40c	1.50	3.00	10.50
White Creaseback	40c	1.50	3.00	10.50

BUSH LIMA BEANS

	Postpaid		Not Prepaid	
	Lb.	5 lbs.	15 lbs.	60 lbs.
(10c packets)			Peck	Bu.
Fordhook	50c	\$2.00		
Henderson's	35c	1.25	\$3.00	\$10.50
Steckler's New Calico Bush Butter	35c	1.25	3.00	10.50
Burpee's Imp. Bush	40c	1.75	4.00	12.50

POLE LIMA BEANS

	Postpaid		Not Prepaid	
	Lb.	5 lbs.	15 lbs.	60 lbs.
(10c packets)			Peck	Bu.
Carolina or Sewee	35c	\$1.25	\$3.00	\$10.50
Southern Willow Leaved Butter		Sold Out		
Spotted butter	45c	1.80	3.25	12.00

BUSH WAX BEANS

	Postpaid		Not Prepaid	
	Lb.	5 lbs.	15 lbs.	60 lbs.
(10c packets)			Peck	Bu.
Currie's Rust Proof	35c	\$1.25	\$3.00	\$10.50
Davis White Kidney Wax	35c	1.25	3.00	10.50
Pencil Pod Wax	35c	1.25	2.50	8.50
Round Pod Kidney	35c	1.25	2.50	8.50
Wardwell's Kidney	35c	1.25	3.00	10.50
Imp. Stringless Kidney Wax	35c	1.25	3.00	10.50
Surecrop Wax	35c	1.25	3.00	10.50

POLE WAX BEANS

Early Golden Cluster—Pkt. 10c; lb. 45c; 5 lbs. \$1.95, postpaid.

WINDSOR BEANS

Italian or English—Pkt. 10c; lb. 45c; 5 lbs. \$1.75, postpaid; peck \$3.25; bushel \$12.00, not prepaid.

STECKLER'S GARDEN BEETS

	Oz.	Postpaid		
		¼ lb.	lb.	5 lbs.
(5c packets)				
Chicago Early Blood Turnip	\$.10	\$.25	\$.75	\$3.00
Crosby's Early Egyptian	.10	.25	.75	3.00
Detroit Dark Red	.10	.25	.75	3.00
Swiss Chard (Lucullus)	.10	.25	.75	3.00
Swiss Chard or Perpetual Spinach	.10	.25	.75	3.00
Early Wonder	.10	.25	.75	3.00
Early Model	.10	.25	.75	3.00
Fireball	.10	.25	.75	3.00

STECKLER'S STOCK BEETS

Long Red Mangel—Pkt. 5c; oz. 10c; ¼ lb. 25c; lb. 60c; 5 lbs. \$2.50, postpaid.
White French Sugar—Pkt. 5c; oz. 10c; ¼ lb. 25c; lb. 60c; 5 lbs. \$2.50, postpaid.

STECKLER'S BROCCOLI

(10c packets)
Early Large White French—Oz. 45c; ¼ lb. \$1.50; lb. \$5.00, postpaid.
Italian Green Sprouting Calabrese or Broccoli—Oz. 50c; ¼ lb. \$1.90; lb. \$7.00, postpaid.

STECKLER'S BRUSSELS SPROUTS

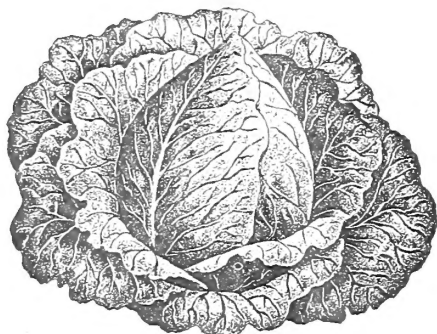
(5c packets)
Oz. 25c; ¼ lb. 60c; lb. \$2.25, postpaid.

WRITE FOR PRICES IN QUANTITY LOTS AND STATE QUANTITY WANTED.

VEGETABLE SEEDS FOR FALL PLANTING

OUR SEEDS ARE TESTED AND CAREFULLY SELECTED.

STECKLER'S CABBAGE

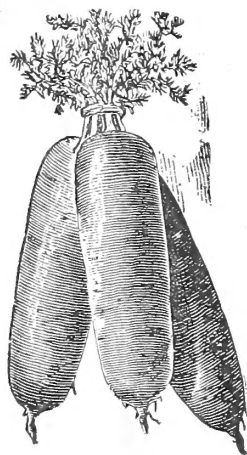


CHARLESTON WAKEFIELD

(5c packets)	Oz.	Postpaid ¼ lb.	lb.
All Head Early	.20	.60	\$1.75
Chinese Pe Tsai, Imported	.20	.60	2.00
Copenhagen Market	.25	.75	2.50
Superior Large Late Flat Dutch	.30	1.00	3.00
Early Drumhead Savoy	.20	.60	1.75
Danish Ball Head, Short Stem	.30	.90	2.75
Mammoth Red Rock	.25	.75	2.50
Sel. Ea. Jersey Wakefield	.20	.60	2.00
Steckler's Golden Acre	.40	1.25	4.00
Steckler's Special Charleston Wakefield	.20	.60	2.00
Steckler's Special Succession	.20	.60	1.75
Stein's Early Flat Dutch	.20	.60	1.75
Surehead	.20	.60	1.75
St. Louis Late Market	.25	.75	2.25
Glory of Enkhuizen	.25	.75	2.00

STECKLER'S CARROTS

(5c packets)	Oz.	Postpaid ¼ lb.	lb.	5 lbs.
Danver's	.15	.25	.80	\$3.75
Early Half Long				
Chantenay	.15	.25	.80	3.75
Imp. Long				
Orange	.15	.25	.75	3.00
Large White				
Belgian	.15	.25	.75	3.00
Oxheart or				
Guerrande	.15	.25	.80	3.75



STECKLER'S CAULIFLOWER

(10c packets)

Early Italian Giant—Oz. 75c; ¼ lb. \$2.25; lb. \$7.00, postpaid.
Large Algiers—Oz. 75c; ¼ lb. \$2.50; lb. \$9.00, postpaid.
Late Italian Giant—Oz. 75c; ¼ lb. \$2.25; lb. \$7.00, postpaid.
Steckler's Extra Early Snowball—Pkt. 15c; oz. \$1.40; ¼ lb. \$4.50; lb. \$15.00, postpaid.

STECKLER'S CELERY

(10c packets)

	Oz.	Postpaid ¼ lb.	lb.
Celeriac, Turnip Rooted	.25	.75	\$2.50
Giant Pascal	.25	.75	2.50
Golden Self Blanching	.75	2.25	7.00
Golden Plume Celery	.75	2.25	7.00

STECKLER'S CHERVIL

(10c packets)

	Oz.	Postpaid ¼ lb.	lb.
Chervil, Curled	.20	.60	\$2.00

STECKLER'S COLLARDS

(5c packets)

	Oz.	Postpaid ¼ lb.	lb.
Georgia or Southern	.10	.20	.60

CORN SALAD

Pkt. 10c; Oz. 15c; ¼ lb. 50c; lb. \$1.50, postpaid.

Prices now lowest in years:

This Fall we bring to our customers the same high quality of seeds at greatly reduced prices. In fact, the prices are the lowest in many years and greatly add to the economy of raising your own garden.

STECKLER'S CUCUMBERS



(5c packets)	Oz.	Postpaid ¼ lb.	lb.
Davis Perfect	.15	.40	\$1.25
Early Fortune	.15	.40	1.25
Henderson's Perfect White			
Spine	.15	.40	1.25
Japanese Climbing	.20	.40	1.35
Steckler's Improved Long			
Green	.15	.40	1.25
West India Gherkin	.20	.60	2.00

STECKLER'S CRESS

(10c packets)	Oz.	Postpaid ¼ lb.	lb.
Broad Leaved	.25	.60	\$2.00
Water Cress	.40	1.25	4.00

STECKLER'S EGG PLANTS

(10c packets)	Oz.	Postpaid ¼ lb.	lb.
Black Beauty	.40	\$1.25	\$4.00
Steckler's Large Purple or New Orleans Market	.40	1.25	4.00
Improved New York Spineless	.40	1.25	4.00
Steckler's High Bush	.40	1.25	4.00

STECKLER'S ENDIVE

(5c packets)	Oz.	Postpaid ¼ lb.	lb.
Broad Leaved or Batavian			
Escarolle	.15	.35	\$1.00
Italian Red Ribbed	.15	.35	1.00

STECKLER'S FENNEL

(10c packets)	Oz.	Postpaid ¼ lb.	lb.
Italian or Florence	.15	.30	\$1.00

STECKLER'S KALE OR BORECOLE

(5c packets)

Siberian—Oz. 15c; ¼ lb. 30c; lb. \$1.00, postpaid.

STECKLER'S KOHLRABI

(5c packets)

Early White Vienna—Oz. 20c; ¼ lb. 60c; lb. \$2.00, postpaid.

STECKLER'S LEEK

(10c packets)

Large London Flag—Oz. 25c; ¼ lb. 60c; lb. \$2.00, postpaid.
Large Rouen—Oz. 25c; ¼ lb. 60c; lb. \$2.00, postpaid.

STECKLER'S LETTUCE

(5c packets)

	Oz.	Postpaid ¼ lb.	lb.
Grand Rapids	.20	.50	\$1.50
Improved Iceberg	.20	.60	1.75
Improved Royal Cabbage	.20	.50	1.50
Large Salamander	.20	.50	1.50
Paris White Cos	.20	.50	1.50
Steckler's New York or Wonderful Cabbage	.25	.50	1.50
Steckler's Selected Big Boston	.20	.50	1.50
Chicken Lettuce	.20	.50	1.50

STECKLER'S MUSTARD

(5c packets)

	Oz.	Postpaid ¼ lb.	lb.
Chinese Large Cabbage Leaved	.10	.20	.60
Giant Southern Curled	.10	.20	.60
White or Yellow London	.10	.20	.60

Japanese Mustard Spinach—Often called Tendergreen. Can be sown nearly every month in the year in the South. Easy to grow and ready for market in 25 to 30 days. Requires 3 to 5 pounds to the acre and planted in rows 2 to 3 feet apart. Withstands the extreme summer heat and is resistant to cold weather. Leaves are large, oblong and dark green in color with small center rib. Cooked same as Spinach, Turnip or Mustard Greens. Price: Pkt. 10c; oz. 15c; ¼ lb. 25c; lb. 80c, postpaid.

STECKLER'S OKRA

(5c packets)

	Oz.	Postpaid ¼ lb.	lb.
Dwarf Green Prolific	.10	.20	.60
French Market Dwarf Prolific	.10	.20	.60
Tall Growing	.10	.20	.60
White Velvet	.15	.25	.75

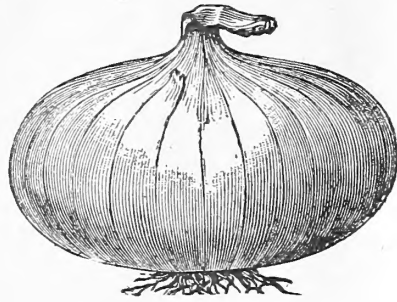
NOTE: Our Flower and Vegetable Seeds are sold in 10c packets; 3 for 25c; 12 for \$1.00, except where noted.

WRITE FOR PRICES IN QUANTITY LOTS AND STATE QUANTITY WANTED.

ITS THE SEED THAT GROWS THAT MAKES THE CROP

OUR SEEDS ARE TESTED AND CAREFULLY SELECTED.

STECKLER'S ONIONS



STECKLER'S RED CREOLE

(10c packets)	Oz.	Postpaid 1/4 lb.	lb.
Crystal Wax Bermuda	\$.30	\$.90	\$2.75
Danver's Yellow Globe	.20	.60	2.00
Steckler's Red Creole	.25	.65	2.25
Red Wethersfield	.20	.60	2.00
Yellow Bermuda	.25	.75	2.50
Yellow Prizetaker	.20	.60	2.00

STECKLER'S ONION SETS

	Postpaid	Lb.	3 lbs.
Red Wethersfield	\$.35		\$.90
White Silverskin	.35		.90
Yellow Danvers	.35		.90

Write for Prices in Larger Quantities

STECKLER'S PARSLEY

(5c packets)	Oz.	Postpaid 1/4 lb.	lb.
Double Curled	\$.15	\$.25	\$.75
Plain Leaved	.15	.25	.75

STECKLER'S PARSNIPS

(5c packets)	Oz.	Postpaid 1/4 lb.	lb.
Hollow Crown or Sugar	\$.15	\$.25	\$.85

STECKLER'S GARDEN PEAS

Wrinkled Varieties

(10c packets)	Lb.	5 lbs.	Postpaid Peck	Not Prepaid Bu.
American Wonder	\$.35	\$1.50	\$2.50	\$ 9.00
Carter's Imp. Telephone	.35	1.50	2.50	9.00
Daisy or Dwarf Telephone	.40	1.75	2.75	10.00
Gradus or Prosperity	.35	1.50	2.50	9.00
Thos. Laxton	.35	1.50	2.50	9.00
World's Record	.35	1.50	2.50	9.00

Smooth Varieties

(10c packets)	Lb.	5 lbs.	Postpaid Peck	Not Prepaid Bu.
Early Alaska	\$.35	\$1.50	\$2.50	\$ 8.25
Early Washington	.35	1.50	2.25	8.25
Extra Early First and Best	.35	1.50	2.25	8.25
Melting Sugar	.40	1.65	2.75	10.00

STECKLER'S PEPPERS

(10c packets)	Oz.	Postpaid 1/4 lb.	lb.
Bird's Eye (in pod)	\$.50	\$1.75	\$5.50
Chinese Giant	.40	1.25	4.50
Steckler's Tabasco	.35	1.00	3.50
Long Red Cayenne	.30	.90	3.25
Ruby King	.35	1.00	3.50
Steckler's Royal King	.35	1.00	3.50
World Beater	.35	1.00	3.50
Ruby Giant	.35	1.00	3.50
California Wonder	.50	1.75	6.00

STECKLER'S RADISHES

(5c packets)	Oz.	Postpaid 1/4 lb.	5 lbs.
Brightest Scarlet or Three-fourths Long	10c 25c 75c	\$3.00	
Chinese Rose	10c 25c 75c	3.00	
Cooper's Sparkler Turnip White Tip	10c 25c 75c	3.00	
Crimson Giant	10c 25c 75c	3.00	
Turnip	10c 25c 75c	3.00	
Early Deep Scarlet	10c 25c 75c	3.00	
Turnip	10c 25c 75c	3.00	
Early Long Scarlet	10c 25c 75c	3.00	
Short Top Imp.	10c 25c 75c	3.00	
French Breakfast	10c 25c 75c	3.00	
White Icicle	10c 25c 75c	3.00	
Scarlet Half Long	10c 25c 75c	3.00	
French	10c 25c 75c	3.00	
Black Spanish	10c 25c 75c	3.00	



STECKLER'S ROQUETTE OR ROCKET SALAD

(10c packets)

Roquette—Oz. 20c; 1/4 lb. 60c; lb. \$2.00, postpaid.

STECKLER'S WHITE SHALLOTS

Planted August to March. For home consumption and Northern markets. About 6 bushels per acre in 4-foot rows.

The quantity to be expected from an acre, if planted in field culture, 4-foot rows, would be from 50 to 60 barrels, but if planted, as is done near New Orleans, in 2-foot rows, 100 to 125 barrels, if planted in August and September. If planted later, they do not multiply so well. Quart 25c; gallon 75c, postpaid. Write for quantity prices.

STECKLER'S SALSIFY OR OYSTER PLANT

(10c packets)

Sandwich Island—Oz. 20c; 1/4 lb. 60c; lb. \$2.25, postpaid.

STECKLER'S SPINACH

(5c packets)	Oz.	1/4 lb.	Postpaid lb.	5 lbs.
Broad Leaved Flanders	\$.10	\$.15	\$.40	\$1.50
King of Denmark	.10	.15	.40	1.50
New Zealand	.10	.25	.75	2.50
Nobel Giant Leaved Spinach	.10	.15	.45	1.75
Bloomsdale Savoy (blight resistant)	.10	.15	.40	1.50

(Write for prices in quantity lots)

STECKLER'S SORREL

Broadleaved—Pkt. 10c; oz. 20c; 1/4 lb. 60c, postpaid.

STECKLER'S SQUASH

(5c packets)	Oz.	1/4 lb.	Postpaid lb.	5 lbs.
Early White Bush or Patty Pan	\$.10	\$.25	\$.75	\$3.00
Long Yellow or Summer Crookneck	.15	.40	1.00	4.50
Mammoth Chili	.20	.50	1.50	6.50
Cocozelle or Italian Green Striped	.15	.40	1.25	5.00
Golden Custard	.15	.40	1.25	5.00

STECKLER'S TOMATOES

(10c packets)	Oz.	1/4 lb.	Postpaid lb.	5 lbs.
Louisiana Red	\$.40	\$1.25	\$4.50	
Dwarf Champion	.40	1.25	4.00	
Early Detroit	.40	1.00	3.75	
Greater Baltimore	.35	.90	3.00	
Gulf State Market	.40	1.25	4.00	
June Pink	.40	1.25	4.00	
Livingston's Globe	.40	1.25	4.25	
Norton Wilt Resistant	.40	1.35	4.00	
Ponderosa Crimson	.50	1.75	6.00	
Red Rock	.35	1.00	3.00	
Sparks Earliana	.30	.90	3.00	
Steckler's New Stone	.20	.75	2.75	
Marglobe	.50	1.50	5.00	
Louisiana Pink	.40	1.25	4.50	

STECKLER'S TURNIPS

(5c packets)	Oz.	1/4 lb.	Postpaid lb.	5 lbs.
Amber Globe	\$.10	\$.20	\$.50	\$2.00
Early Purple Top Strap-leaved	.10	.20	.50	2.00
Ex. Ea. Purple Top Milan	.15	.25	.75	3.00
Ex. Ea. White Egg	.10	.20	.50	2.00
Imp. Purple T. Rutabaga	.10	.20	.50	2.00
Long Cow Horn	.10	.20	.50	2.00
Matchless Purple T. W. Globe	.10	.20	.50	2.00
Purple Top Yellow Aberdeen	.10	.20	.50	2.00
Seven Top	.10	.20	.50	2.00
Steckler's Japanese (Shogain)	.15	.30	.90	4.00

HOW TO PLANT

A WINTER LAWN

The summer grass should be mowed closely, then winter rye grass seed broadcasted over the surface, covering from 1/2 to 1 inch with a good light soil and kept moist. If no good soil available, we recommend the use of granulated Peat Moss.

VEGETABLE PLANTS

CABBAGE PLANTS—November to May 1st

	Postpaid.	Per 100	Per 1000
Early Jersey Wakefield	\$.50	\$3.00	
Large Charleston Wakefield	.50	3.00	
Early Flat Dutch	.50	3.00	
Succession	.50	3.00	
Copenhagen	.50	3.00	

All other plants ready from October to May 1st

	Postpaid.	Per 100	Per 1000
Lettuce	\$.60	\$3.50	
Onion Plants—Red Creole	.60	3.50	
Onion Plants—Crystal Wax and Yellow Bermuda	.50	1.75	
Beet Plants	.50	3.00	

Due to conditions of delay in transit, transportation of all plants sent at purchaser's risk. Write for quantity prices.

(No C. O. D. shipments of plants.)

The wise farmer today is raising his own food and a vegetable garden helps solve a large part of that problem. Now, is also the time to build up your chicken flocks. Baby Chicks of Steckler's best breeds will do it at small costs. Here again Steckler offers you the best for less.

WRITE FOR PRICES IN QUANTITY LOTS AND STATE QUANTITY WANTED.

STECKLER'S FIELD SEEDS BRINGS RESULTS

OUR SEEDS ARE TESTED AND CAREFULLY SELECTED.

STECKLER'S FIELD SEEDS

CLOVERS

	Postpaid.	1 lb.	5 lbs.
Matchless Alfalfa Clover (30 lbs. per acre).....	\$.40		\$1.75
Hairy Peruvian Alfalfa (30 lbs. per acre).....	.40		1.75
Red (12 lbs. per acre).....	.40		1.75
White Dutch (8 lbs. per acre).....	.50		2.50
Yellow Blossom Sweet (20 lbs. per acre) (Melelotus Indica).....	.30		1.25
Japan Clover or Lespedeza (25 lbs. per acre).....	.35		1.50
White Blossom Sweet Clover (20 lbs. per acre) (Melelotus Alba).....	.35		1.50

GRASS SEED

	Postpaid.	1 lb.	5 lbs.
Red Top.....	\$.40		\$1.75
Sudan.....	.30		1.25
Bermuda Grass.....	.50		2.25
Carpet Grass.....	.50		2.25
Johnson Grass.....	.35		1.25
Sunny South.....	.40		1.75

STECKLER'S OATS

Texas Red Rust Proof—Peck 50c; bu. \$1.35; 5 bu. sack, \$6.25, not prepaid.

STECKLER'S RAPE

Dwarf Essex Rape—Lb. 30c; 10 lbs. \$1.25, postpaid.

STECKLER'S FIELD RYE

Rosen—Lb. 25c, postpaid; half bu. 28 lbs. \$1.85; bushel 56 lbs. \$3.50, not prepaid.
Southern Grown Rye—Lb. 25c, postpaid; half bu. 28 lbs. \$1.85; bushel 56 lbs. \$3.50, not prepaid.

STECKLER'S WHEAT

Red May—Lb. 25c, postpaid; peck 15 lbs. \$1.40; 60 lbs. bu. \$4.25, not prepaid.

STECKLER'S HAIRY, WINTER OR SAND VETCH

Hairy, Winter or Sand—Lb. 30c; 10 lbs. \$2.50, postpaid.

STECKLER'S BARLEY (SOUTHERN GROWN)

Southern Barley—Lb. 25c; 5 lbs. \$1.00, postpaid.

Domestic Italian Rye Grass—Grown in the United States from the Imported Italian and English. Used extensively today in America for Lawns, Golf Courses, Meadows and Pastures and is claimed to be harder than the Imported varieties. Slightly darker and stays green longer in the early summer. Requires 300 pounds to the acre on Lawns and Golf Courses and 40 to 50 pounds for pastures. Price: 1 lb. 25c; 5 lbs. \$1.00, postpaid. Write for prices on larger quantities.

Austrian Winter Peas—A new winter legume, resembles an early table or English Pea in size of seed, a heavy yielder, can be grazed and will put on a good second growth with better stooing out. Makes splendid hay, excellent for turning under, a fine winter crop and soil improver. Planted from September to March. Pkt. 10c; 1b. 25c; 5 lbs. \$1.00, postpaid. Write for prices on larger quantities.

STECKLER'S FLOWERING BULBS



Name	Color	Ht.	Planting Time	Ea.	Postpaid Doz.	100
Amaryllis Johnsonii.....	Red, White Striped.....	2 ft.	September to March.....	\$.40	\$4.00	
Callas, Aethiopica.....	White.....	30 in.	September to March.....	.25	2.50	
Callas, Elliottiana.....	Yellow.....	30 in.	September to March.....	.35	3.50	
Crocus.....	Mixed.....	6 in.	September to February.....	.05	.35	\$ 2.75
Easter or Bermuda Lily.....	White.....	3 ft.	September to April.....	.25	2.50	
Freesias (Purity) Refracta.....	White.....	1 ft.	September to February.....	.05	.55	3.50
Hyacinths (Bedding)—						
La. Victorie.....	Red.....	1 ft.	September to February.....	.13	1.35	10.00
Gertrude.....	Pink.....	1 ft.	September to February.....	.13	1.35	10.00
Queen of the Blues.....	Blue (Light).....	1 ft.	September to February.....	.13	1.35	10.00
Grand Maitre.....	Blue (Dark).....	1 ft.	September to February.....	.13	1.35	10.00
L'Innocence.....	White.....	1 ft.	September to February.....	.13	1.35	10.00
Sir Walker Mansfield.....	Purple.....	1 ft.	September to February.....	.13	1.35	10.00
City of Haarlem.....	Canary Yellow.....	1 ft.	September to February.....	.13	1.35	10.00
Roman Hyacinths.....	White.....	1 ft.	September to February.....	.17	1.90	15.00
Narcissus, Von Sion.....	Yellow.....	15 in.	September to February.....	.15	1.60	12.00
Narcissus, Paper Whites.....	Pure White.....	15 in.	September to February.....	.07	.70	5.00
Jonquils.....	Yellow.....	15 in.	September to February.....	.10	1.00	8.00
Iris, Spanish.....	15 in.	September to February.....	.08	.75	6.00
Tulip, Darwin Mixture.....	Mixed.....	1 ft.	September to March.....	.05	.50	3.00

Collection of Hyacinth Bulbs---8 Bulbs---1 of each variety listed in catalogue. Price **85c** Post-paid

STECKLER'S FLOWER SEEDS

ALTHEA Rosea—Hollyhock. October till April. Very hardy; 4 to 6 feet high. Pkt. 10c; ½ oz. 50c.

ALYSSUM—Little Gem. Sweet Alyssum. Free flowering; six inches high; white flowers; very fragrant. October till April. Pkt. 10c; ½ oz. 35c.

AMARANTHUS Caudatus—Love Lies Bleeding. Long racemes with blood red flowers. Very graceful; three feet high. April till August. Pkt. 10c; ½ oz. 20c.

ANTIRRHINUM Majus—Snapdragon. Choice mixed. Showy plant of various colors. About two feet high. Sow from October till March. Pkt. 10c; ½ oz. 65c.

BELLIS PERENNIS—English Daisy. Finest double mixed variety; four inches high. October till January. Pkt. 10c; ½ oz. \$1.25.

CALENDULA—The Ball. It has fine stems, immense double flowers of brilliant glisteny orange. A great favorite. Planted October to March. Grow 1½ ft. high. Pkt. 10c; ½ oz. 65c.

CALENDULA—Orange King. Outer petals are slightly imbricated, while those of the center are curved like those of a peony. Color glowing orange. Planted October to March, grows 1¼ ft. high. Pkt. 10c; ½ oz. 30c.

CALENDULA—"Sensation." Vigorous growth, flowers borne on stout stems, blooms are flat, brilliant orange with a scarlet sheen and full yellow center. Planted October to March. Pkt. 25c.

Flowers will brighten the home. A well-kept flower garden costs little but adds much to the appearance of the place and brings colorful cheerfulness so needed in these depressing times.

CALENDULA—Lemon Queen. Sulphur yellow, a very fine double blooming calendula and planted extensively. Planted October to March. Pkt. 10c; ½ oz. 30c.

CARNATION, Dianthus Caryophyllus Margaritae Robustus—Fl. pl. Semi High Double Margaret Carnation. Dwarfish habit, grows from 12 to 15 inches high. The flowers are much variegated, occasionally producing yellow ones. October to April. Pkt. 10c; ½ oz. \$1.10.

CYNOGLOSSUM AMABLE—(Chinese Forget-Me-Not). A lovely plant producing sprays of brilliant blue Forget-Me-Not like flowers. Grows easily and blooms for a long season. 18 to 24 inches high. 10c per packet; ½ oz. 60c.

DELPHINIUM—Rocket Larkspur. Mixed colors; very showy; two and a half feet. Pkt. 10c; ½ oz. 30c.

Note: None of the Delphiniums or Larkspurs transplant well and are better sown at once where they are intended to remain.

IBERIS Amara—White Candytuft. Can be sown at different times to have a succession of flowers. Hyacinth flowered. One foot high. October to April. Pkt. 10c; ½ oz. 45c.

LARKSPUR—Dark blue. Annual, long erect spikes of dark blue, beautiful blossoms. 15c per package; ½ oz. 50c.

LARKSPUR—Bright Carmine. Long erect spikes of fiery carmine flowers, very lovely and effective. 15c per package; ½ oz. 50c.

LARKSPUR—Apple Blossom. Very attractive spikes of pink blooms. 15c per package; ½ oz. 50c.

LOBELIA, Erium—Lobelia. A very graceful plant with white and blue flowers. Half foot. October till March. Pkt. 10c; ¼ oz. 50c.

WRITE FOR PRICES IN QUANTITY LOTS AND STATE QUANTITY WANTED.

BUY THE "BEST" FOR "LESS" AT STECKLER'S

OUR SEEDS ARE TESTED AND CAREFULLY SELECTED.

LUPINS—Mixed. Free flowering, easily grown annual, with long graceful spikes of rich and various colored pea shaped flowers, valuable for mixed borders, beds and for cutting; prefers a little shade. Planted from November to April, grows 1½ feet high. Pkt. 10c; ½ oz. 35c.

LUPINS—White. Same as above but pure white flowers. Pkt. 10c; ½ oz. 35c.

LUPINS—Blue. Same as above but blue flowers. Pkt. 10c; ½ oz. 35c.

MATHIOLA Annua—Ten weeks stocks. Mixed. Large flowers of all colors, from white to dark blue or crimson. Should be sown in pots or pans, and when large enough transplant into rich soil. One and a quarter feet. October till March. Pkt. 10c; ¼ oz. 70c.

NASTURTIUM—Dwarf Mixed. Blossoms red, yellow and salmon, used with leaves as salad. Seed pods while young and succulent picked and used as capers. February to April, and November and December. Pkt. 10c; oz. 15c; ¼ lb. 50c; lb. \$1.50.

NASTURTIUM—Tall Mixed. Same as above, makes an excellent screen for unsightly places. February to April and November and December. Pkt. 10c; oz. 15c; ¼ lb. 50c; lb. \$1.50.

PANSY, Large Trimardeau—Mixed. This is the largest variety in cultivation, the flowers are well formed, generally three-spotted, quite distinct; the plants grow compact. October to March. Pkt. 10c; ½ oz. \$1.00.

PANSY, Roggli's Gt. Mixed—A very early variety of finest and rarest flowers and coloring. Very large blooms and is planted from October to March; grows about 8 inches high. Pkt. 35c.

PAPAVER, Ranunculus Flowered Poppy—Double fringed flowers, very showy. Cannot be transplanted. Two feet high. October till May. Pkt. 10c; ¼ oz. 65c.

PETUNIA Hybrida—Petunia. Mixed. Splendid mixed hybrid varieties. Plants are of spreading habit; about one foot high. October till May. Pkt. 10c; ½ oz. 70c.

PETUNIA, Rosy Morn—A very pleasing clear pink with a broad white throat. A splendid sort for porch boxes, pots and beds. Planted October to April, grows 1 foot. Pkt. 10c; ¼ oz. 75c.

PETUNIA—Giants of California Mixed. Very large flowers and colors embrace every conceivable shade. Extensively planted. Planted Oct. to May. 25c per packet.

PETUNIA, Theodosia—Enormous single ruffled flowers of a beautiful shade of rose pink, with golden yellow veined center. Very popular. Planted Oct. to May. 35c per packet.

PHLOX, Drummondii Grandiflora Alba—Pure white, some with purple or violet eyes. December till April. Pkt. 10c; ½ oz. \$1.30.

PHLOX, Drummondii. Mixed. Their various colors and length of flowering, with easy culture, make them a favorite with every one. One foot high. December till April. Pkt. 10c; ½ oz. \$1.00.

PHLOX—Fiery scarlet; easy culture and a favorite. One foot high. Planted December to April. 15c per packet; ½ oz. \$1.30.

PHLOX—Flesh Pink. Same as above, but a beautiful shade of pink. Planted December to April. 15c per packet; ½ oz. \$1.30.

PINKS, Dianthus Barbatus—Sweet William. Their beautiful colors make them very showy. Should be sown early, otherwise they will not flower the first Spring; one and a half feet high. October till April. Pkt. 10c; ½ oz. 50c.

PINKS, Dianthus Chinensis—Chinese Pink. Single. A beautiful class of annuals of various colors which flower very profusely in early Spring and Summer; one foot high. October till April. Pkt. 10c; ½ oz. 35c.

PINKS, Dianthus Heddeggii—Japan Pink. Double. This is the most showy of any of the annual pinks. The flowers are very large and of brilliant colors; one foot high. October till April. Pkt. 10c; ½ oz. 40c.

POPPY—Rosy Morn. Pink, very showy, single blossoms; annual, 2 to 3 feet high. 15c per pkt.; ½ oz. 60c.

POPPY—Flanders Field, very showy. Double red blossoms; annual, 2 to 3 ft. high. Pkt. 10c; ½ oz. 30c.

POPPY, Somniferum or Carnation Poppy—Double flowering poppy. Different colors; very showy. October till May. Pkt. 10c; ½ oz. 40c.

SHASTA DAISY—This is an absolute perpetual bloomer throughout the whole year wherever it has a chance. Oct. till April. Pkt. 10c; ½ oz. \$1.50.

SHIRLEY POPPIES—Single Mixed. A very beautiful selection of Ranunculus-flowered Poppy. The range of colors extending from pure white through the most delicate shades of pale pink, rose and carmine to crimson, while edged, shaded and striped. Semi-double. October till May. Pkt. 10c; ½ oz. 40c.

SNAPDRAGON—Crimson King. Rich crimson, semi-tall sort, 18 to 20 inches tall. Very good for bedding. Planted October to March. 15c per packet; ½ oz. 60c.

SNAPDRAGON—Golden Queen. A very fine variety of giant yellow blooms, growing 24 to 36 inches high. Planted October to March. 15c per packet; ½ oz. 90c.

SNAPDRAGON—The Rose. Rose Pink blooms, giant flowered, grows 32 inches high. Planted October to March. 15c per packet; ½ oz. 80c.

SNAPDRAGON—Queen Victoria. Pure snow-white blooms. Tall, large flowering, 24 to 36 inches high. Planted October to March. 15c per packet; ½ oz. 75c.

STECKLER'S GIANT ZINNIA—Double. This Zinnia is without doubt the largest and finest thus far introduced. It is a cross between the Elegans Pumila, fl. pl., and the Elegans Grandiflora Robusta varieties. The flowers measure from tip to tip fully 6½ inches; half early; semi-high and perfectly double. Each packet contains a fine selection of beautiful colors. February to Sept. Pkt. 10c; ½ oz. 60c; oz. \$1.00.

Collection of Snapdragons—
Four packets. One each of Crimson Queen, Golden King, The Rose, and Queen Victoria. Price, 50c postpaid.

STECKLER'S DOUBLE DAHLIA FLOWERED ZINNIA—Mixed. A very fine Dahlia like flower, double, of finest blooms. Planted February to September. Pkt. 25c; ½ oz. 60c.

STECKLER'S GIANT PINK ZINNIA—Planted February to September. Pkt. 10c; ½ oz. 60c.

STECKLER'S GIANT PURPLE ZINNIA—Planted February to September. Pkt. 10c; ½ oz. 60c.

STECKLER'S GIANT RED ZINNIA—Largest and finest yet introduced, semi-high, perfectly double red blooms. Planted February to September. Pkt. 10c; ½ oz. 60c.

STECKLER'S GIANT YELLOW ZINNIA—Planted February to August. Pkt. 10c; ½ oz. 60c.

STECKLER'S GIANT WHITE ZINNIA—Planted February to September. Pkt. 10c; ½ oz. 60c.

STOCKS—Early Giant Improved Bismarck Mixed. An extra fine early blooming mixed stock of branching habits, producing double flowers, splendid for cutting. Planted October to March. 25c per packet; ¼ oz. \$1.00.

SWEET PEAS, EARLY SPENCER—Planted from October to March: Blue Bird, rich indigo blue; Columbia, best pink and white; Aviator, dazzling crimson scarlet; Heather Bell, beautiful mauve lavender; Hercules, giant rose pink; Mrs. Kerr, large orange salmon; Snowstorm, pure white; Meadow Lark, rich cream; Amethyst, royal purple; Congo, velvety maroon. Prices: Pkt. 10c; oz. 55c; ¼ lb. \$1.75; lb. \$6.00.

SWEET PEAS—Spencer's Extra Early Choice Mixed or Christmas Mixed. A very fine mixture of the very best varieties. Pkt. 10c; oz. 50c; ¼ lb. \$1.25; lb. \$4.00.

SWEET PEAS—Spencer's Late Flowering Mixed. A very fine mixture. Pkt. 10c; oz. 25c; ¼ lb. 75c; lb. \$2.50.

Collection of Spencer's Sweet Peas—
Ten packets—one packet of each variety. Price, 70c postpaid.

TAGETES Erecta—African or Tall Growing Marigold. Very showy annual for borders with bright yellow flowers. Two and a half feet high, February to March; October to December. Pkt. 10c; ½ oz. 35c.

TAGETES PATULA—French or Dwarf Marigold. Covered with yellow and brown flowers. One and a half feet high. January to April. Pkt. 10c; ½ oz. 35c.

TORENIA FOURNIERI—Lovely blue flowers with three large spots of darkest blue and a bright yellow throat. Blooms during summer and fall and makes fine beds and borders. Pkt. 15c; ¼ oz. \$1.35.

UMBELLATA ROSA—Purple Candytuft. One foot. October till April. Pkt. 10c; ½ oz. 45c.

ZINNIA, Lilliput Mixed—A well balanced mixture. Planted February to September. Pkt. 10c; ½ oz. 50c.

DAHLIA FLOWERED ZINNIA, Exquisite—Perfectly symmetrical flowers of lovely rose pink shade, a very fine variety. Pkt. 25c; ¼ oz. 85c.

DAHLIA FLOWERED ZINNIA, Dream—A fine shade of deep lavender, large and of best quality. Pkt. 25c; ¼ oz. 85c.

DAHLIA FLOWERED ZINNIA, Canary Bird—Primrose yellow making a very fine showing in a garden. Pkt. 25c; ¼ oz. 85c.

DAHLIA FLOWERED ZINNIA, Crimson Monarch—Well formed rich crimson scarlet blooms. Pkt. 25c; ¼ oz. 85c.

DAHLIA FLOWERED ZINNIA, Oriole—Orange and gold blooms. Pkt. 25c; ¼ oz. 80c.

NOVELTIES

NASTURTIUM BODGERI, Flore Pleno—A double sweet scented Nasturtium, golden yellow blooms with stiff, long stems. This is a distinct and new variety of Nasturtiums and being offered for the first time. Price, 50c per packet.

LARKSPUR, Miss California—Double stock flowered, rich deep pink on salmon ground, very long stems and exceptionally long row of flowers. Price, 50c per packet.

TREES AND VINES

Fruit and Nut Trees, Grapes

ORDERS BOOKED FOR DECEMBER AND JANUARY DELIVERY

APRICOT TREES

Four to five feet, \$1.00 each; \$10.00 per dozen.

APPLE TREES

Delicious, Ben Davis, Early Harvest—4 to 5 ft., 75c each; \$7.50 per dozen.

FIG TREES

Brunswick or Madonna—4 to 5 ft., 75c each; \$7.50 per dozen.
Lemon or May—3 to 4 ft., 65c each; \$6.50 per dozen.
Celeste—2 to 3 ft., 50c each; \$5.50 per dozen. 4 to 5 ft., 75c each; \$7.50 per dozen.
Japanese or Violet—3 to 4 ft., \$1.00 each; \$10.00 per dozen.

KUMQUAT TREES

2 ft., 75c each; \$7.50 per dozen.

ORANGE TREES

Grape Fruit (Duncan), Satsuma, Louisiana Sweet—3 to 4 ft., 85c each; \$8.50 per dozen. Larger sizes (balled) \$2.00 and \$2.50 each.

PEACH TREES

J. H. Hale, Elberta, Honey, Chinese Climb, Mayflower, Crawford's Early, Stonewall Jackson, Bell of Georgia—4 to 5 ft., 75c each; \$7.50 per dozen.

WRITE FOR PRICES IN QUANTITY LOTS AND STATE QUANTITY WANTED.

PLANT STECKLER'S SEEDS, IT PAYS

OUR SEEDS ARE TESTED AND CAREFULLY SELECTED.

PEAR TREES

Bartlett, Keiffer's Hybrid, Magnolia and LeConte—4 to 5 ft., 85c each; \$8.50 per dozen.

PLUM TREES

Abundance, Kelsey's Japan, Ogan, Burbank and Satsuma or Blood—4 to 5 ft., 85c each; \$8.50 per dozen.

JAPAN PERSIMMONS

3 to 4 ft., 75c each; \$7.50 per dozen.

POMEGRANATES

Spanish Ruby—3 to 4 ft., \$1.00 each; \$10.00 per dozen.

GRAPES

White Niagara, Scuppernon, Campbell Early, Concord and Herbe-mont (McKee)—50c each; \$5.00 per dozen.

QUINCE TREES

Meech's Prolific—3 to 4 ft., \$1.00 each; \$10.00 per dozen.

MULBERRY TREES

Hicks—5 to 6 ft., \$1.00 each; \$10.00 per dozen.

PECANS

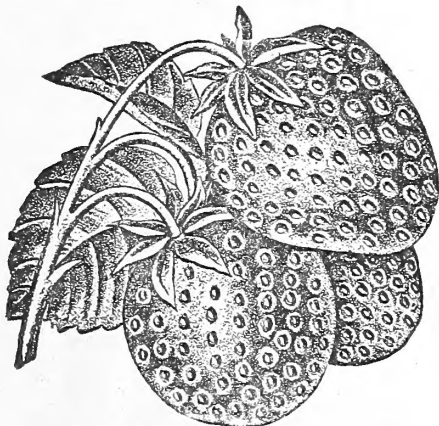
A Real Money Crop

Stuart, Van Deman, Success, Frotscher's Eggshell and Schley.

	Each	Per 10	Per 100
4 to 5 ft.	\$1.20	\$11.00	\$100.00
5 to 6 ft.	1.35	13.00	120.00
6 to 7 ft.	1.50	14.00	135.00
7 to 8 ft.	2.00	18.00	200.00
8 to 9 ft.	2.50	24.00	275.00
9 to 10 ft.	3.50	35.00	

STECKLER'S STRAWBERRY PLANTS

Ready About October 10th



Missionary-Klondyke		Aroma, Lady Thompson	
25 plants.....	\$.50 Postpaid	25 plants.....	\$.60 Postpaid
50 plants.....	.80 Postpaid	50 plants.....	.80 Postpaid
100 plants.....	1.35 Postpaid	100 plants.....	1.40 Postpaid
1000 plants.....	6.00 Not prepaid	1000 plants.....	6.00 Not prepaid
Everbearing, Progressive			
25 plants.....	\$.85 Postpaid	100 plants.....	\$2.25 Postpaid
50 plants.....	1.35 Postpaid	1000 plants.....	12.00 Not prepaid

STECKLER'S INSECTICIDES

APHINE—Spray for green, black and white fly, red spider, thrip, mealy bug, white and brown scale. Prices: 25c per ¼ pint; 40c per ½ pint; 65c per pint; \$1.00 per quart; \$3.00 per gallon, not mailable.

BLACK LEAF 40—Spray for aphid, thrip, red spiders and numerous plant lice and bugs. Prices: 35c per oz. bottle; \$1.00 per 5 oz. bottle; \$2.50 per 1 lb. tin; \$11.85 per 10 lb. tin, not mailable.

DEERISOL—Used for red spiders, thrip, soft bodied sucking insects, plant lice, etc. Very satisfactory spray. Prices: 1 oz. bottle, 35c; ½ lb. bottle, \$1.25; 1 lb. can, \$2.25; 2 lb. can, \$3.25; 10 lb. can, \$12.00, not prepaid.

EVERGREEN—Non-poisonous insecticide—Kills most plant insects, including lice, mealy beetles, cabbage worms, mealy bugs, mites, etc. Is non-poisonous to man, animals, birds; it kills only insects. Economical, one oz. bottle makes 6 gallons of effective spray, will not destroy fertility of the soil. Pleasant to use, easy to mix, won't gum sprayers, won't corrode metal or rubber. Keeps its strength indefinitely. Prices: 1 oz. bottle, 35c; 6 oz. bottle, \$1.00; 16 oz. bottle \$2.00; 32 oz. tin, \$3.50; gallon, \$13.00, not prepaid.

ARSENATE OF LEAD—Used for all leaf eating insects. Use either dry or made into a solution. Prices: 40c per lb.; \$1.25 per 4 lb. package; \$5.00 per 25 lb. package, not mailable.

ROSES

CLIMBING ROSES

American Beauty (Red); Mal Maison (Flesh Color); Reine Marie Henrietta (Cherry Red); Marshall Neil (Yellow); Colombia (Red); Paul Neyron (Pink); Rene D'Or (Buff); Silver Moon (White); two year old plant, \$1.25 each, postpaid. Grafted Marshall Neils at \$1.75 each, postpaid.

BUSH ROSES

Helen Gould (Crimson); Mamman Cochet (Pink); Mamman Cochet (White); Marie Van Houtte (Yellow); Duchess de Brabant (Pink); Bessie Brown (White); Radiance (Pink); Radiance (Red); Mrs. Benj. R. Cant (Pink); Wm. R. Smith (Creamy White); Etoile de France (Red); Alexander Hill Gray (Yellow); Louise Phillippe (Red). Two year old plants, 75c each, postpaid; \$7.50 per dozen, not prepaid.

SPAGNUM MOSS—Best grade clean moss. Price, 35c per lb., postpaid; bale, \$3.50, not prepaid.

We also handle a full line of Flowering Plants, Shrubbery and Evergreens. Write for our attractive prices.

To Grow Azaleas Successfully—

If your soil is not acid or sour you cannot grow Azaleas properly. Aluminum Sulphur can be used to change your soil to an acid reaction and should be broadcasted over the surface at the rate of 1 to 2 pounds to each square yard of ground area. Imported Granulated Peat Moss should also be used in connection with Azaleas in order to make the soil spongy.

ALUMINUM SULPHATE—1 lb. 25c; 6 lbs. \$1.00; 10 lbs. \$1.50, postpaid

PEAT MOSS—18 lb. carton \$1.50, postpaid. Bale, approximately 140 lbs. \$3.50 each; 10 bale lots at \$3.25 per bale, not prepaid.

PANSY PLANTS—Our Pansy Plants are grown from the highest grade of imported seed and grown by a pansy specialist. Large flowering and contains many rare and beautiful colors not generally obtainable. Plant a bed of Pansies from December to March, they begin to bloom immediately. Price: 30c per dozen, postpaid; \$1.75 per 100, postpaid.

STIMUPLANT Makes a WONDER GARDEN

Small size (30 tablets).....	\$.25 Postpaid
Medium size (100 tablets).....	.75 Postpaid
Large size (1000 tablets).....	3.50 Postpaid

ARMOUR'S VERT

The special plant food for lawns, gardens, flowers, trees and shrubs. It supplies the plant food elements so vital to proper growth, health and maturity. Economical, clean, odorless. Price, 100 lb. bags, \$5.00; 50 lb. bag, \$3.00; 25 lb. bag, \$1.75; 5 lb. canister with sifter top, 50c.



STECKLER'S HIGH BRED BABY CHICKS

100% LIVE DELIVERY GUARANTEED

Prices Are Postpaid

We guarantee 100% live delivery of baby chicks by prepaid parcel post. Our chicks are carefully selected stock—no culls. No order by mail for less than 25 chicks. Our chicks are shipped in good, strong, perfectly ventilated chick boxes. We begin to make shipments from September to the first part of November and then again after December 1st until June 1st, inclusive.

Name	25	50	100
S. C. White Leghorns.....	\$3.00	\$5.50	\$10.00
Barred Plymouth Rocks.....	3.50	6.50	12.00
S. C. Rhode Island Reds.....	3.50	6.50	12.00
White Plymouth Rocks.....	3.50	6.50	12.00
White Wyandottes.....	3.75	7.25	14.00
Silver Wyandottes.....	3.75	7.25	14.00

CONKEY'S CELEBRATED POULTRY REMEDIES

Old Reliable Powder—25c and 50c, postpaid.
 Conkey's Salvo—25c, postpaid.
 Conkey's Diatex—25c and 50c, postpaid.
 Conkey's Balm—50c, postpaid.
 Scaly Leg Remedy—25c, postpaid.
 Lice Powder—15 oz. 40c; 48 oz. 85c, postpaid.
 Head Lice Ointment—2½ oz. 25c, postpaid.
 Poultry Worm Remedy—25c, postpaid.
 Y-O—1 lb. pkg. 55c, postpaid.
 By Express, not prepaid:
 Nox-I-Cide, pint 50c; 1 quart 80c; ½ gallon \$1.30; 1 gallon \$2.00.
 Fly Knocker—1 quart 60c; ½ gallon 90c; 1 gallon \$1.50.

SPRAYERS

Hudson Continuous Sprayers—75c each or 85c postpaid.
 Hudson Midget Sprayers—30c each or 40c postpaid.
 Hudson Dust Gun—45c each or 55c postpaid.
 Hudson Junior Sprayers—2 gal. cap., \$5.00 each, not prepaid.
 Hudson Favorite Sprayers—3 gal. cap., \$6.50 each, not prepaid.
 Steckler's Faultless Sprayers—75c each or 85c postpaid.

for Better Flowers

feed them this complete,
balanced diet



12 Oz. package, 10c; 5 lb. package, 50c; 25 lbs., \$1.75; 50 lbs., \$3.00; 100 lbs., \$5.00.

WRITE FOR PRICES IN QUANTITY LOTS AND STATE QUANTITY WANTED.

