

Historic, archived document

Do not assume content reflects current scientific knowledge, policies, or practices.

1233

STECKLER *The South's Best* SEEDS

SUMMER AND FALL, 1936



Nobel Giant Spinach

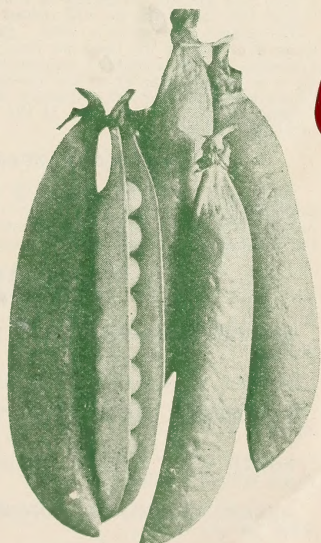


Self Blanching Celery

**Collection of 4 MAMMOTH PKTS.
on this cover 20c Postpaid**



Early Flat Dutch Cabbage



Extra Early First and Best Peas

Steckler's

512 Gravier St.

Phone RAYmond 4641

NEW ORLEANS, LOUISIANA

Cable Address: : Steckler's, New Orleans

Selected Tested Seeds

STECKLER'S SEEDS are the result of years of careful seed breeding. Extensive trials of our seeds are conducted for the purpose of determining their purity and adaptability. We also maintain a modern well equipped seed testing laboratory. No effort or expense is spared in furnishing our thousands of loyal and satisfied customers with the highest quality seeds.

\$1.00 Buys \$1.25 Worth

SAVE IN YOUR SEED BUYING

If your order for garden and flower seeds in packets and ounces amounts to \$1.00, you can select 25c worth of packets and ounces extra, free of charge.

If your order is for more than \$1.00 in packets and ounces, you can have in addition one-fourth more in packets and ounces than the quantity you order at no cost for the extra quantity.

This offer applies to orders for packets and ounces only. It does not apply to orders for quarter-pounds and larger sizes, nor to onion sets, bulbs, field seeds, poultry supplies, insecticides, tools, etc.

To get the benefit of this offer, cash must accompany the order. It does not apply to credit orders, nor does it apply to the total amount remitted for two or more orders sent in during the season.

SATISFACTION GUARANTEED ...or Your Money Refunded

All seeds listed in this catalog are sold subject to meeting YOUR APPROVAL on arrival. You have the privilege of examining them and if you do not find them exactly as represented you are not obligated to keep them. You MUST be absolutely satisfied, or you may return the seed, and we will refund every cent of your money including the freight.

We cannot guarantee a crop. Success with the crop is contingent on numerous conditions over which we have no control. With respect to this point, all our seeds are sold according to the standard non-warranty of the American Seed Trade, as follows: "Steckler's Seed Company gives no warranty, express or implied, as to description, quality, productiveness, or any other matter of any seeds, bulbs, or plants it sells, and will not be responsible for the crop." If the goods are not accepted on these terms, they are to be returned at once.

ALL PRICES SUBJECT TO CHANGE WITHOUT NOTICE

THE POSTAGE TO FOREIGN COUNTRIES must be added to the cost of the goods selected in this price list, or the order will be reduced to allow for the postage. These rules will also apply to orders from the United States where no postage allowance is made for mailing, or we will send by express.

PLEASE TAKE NOTE OF NEW FOREIGN PARCEL POST RATES

BRITISH HONDURAS, CUBA, NICARAGUA. Potage Rate 14c per lb. Limit Weight 22 lbs.

HAITI. Postage Rate 14c per lb. Limit Weight 44 lbs.

VENEZUELA, UNION OF SOUTH AFRICA. Postage Rate 14c per lb. Limit Weight 11 lbs.

SOUTH WEST AFRICA. Postage Rate 14c per lb.; plus 12c per lb. Transit Charge. Limit Weight 11 lbs.

ARGENTINA, BRAZIL, COLOMBIA, COSTA RICA, REP. OF HONDURAS. Postage Rate 14c per lb.

BOLIVIA. Postage Rate 14c per lb., plus 20c per pound transit charge. Limit Weight 22 lbs.

DOMINICAN REPUBLIC. Postage Rate 14c per lb. Limit Weight 33 lbs.

ECUADOR, GUATEMALA, MEXICO, PERU, EL SALVADOR. Postage Rate 14c lb. Limit Weight 44 lbs.

PANAMA, CANAL ZONE. Postage Rate 14c lb. Limit Weight 50 lbs.

NOTICE!

WE WILL GLADLY ACCEPT AT FULL VALUE ORDERS OR COUPONS ISSUED BY THE U. S. GOVERNMENT AND STATE RELIEF AGENCIES FOR SEEDS.

Stringless beans are best for "Snaps"

STECKLER'S GARDEN BEANS

Culture. Plant up to Sept. 20th. Sow 1½ to 2 inches deep, 3 to 4 inches apart, in rows 2½ to 3 feet apart. Cultivate often until plants bloom. Picking often insures longer bearing. Two pounds will plant 100 feet of row, 60 lbs. (bushel) to the acre.

SNAP BEANS, DWARF OR BUSH GREEN PODDED BEANS

Height of bush 15 to 25 inches. All varieties marketed as green beans except Red Kidney which are left to mature.

	Postpaid		Not Prepaid	
	Lb.	5 lbs.	15 lbs.	60 lbs.
(10c packets)			Peck	Bu.
Black Valentine	\$.30	\$.95	\$1.75	\$6.00
Burpee's Stringless30	.95	1.75	6.00
Giant Stringless30	.95	1.90	7.00
Hopkins Imp. Red Val.....	.30	.95	1.80	6.50
Longfellow or French Market.....	.30	.95	1.75	6.00
Red Kidney30	.95	1.90	7.00
Bountiful30	.95	1.90	7.00
Asgrow Black Valentine Stringless	.30	.95	1.95	7.30

BUSH WAX BEANS

	Postpaid		Not Prepaid	
	Lb.	5 lbs.	15 lbs.	60 lbs.
(10c packets)			Peck	Bu.
Jurrie's Rust Proof.....	\$.30	\$.95	\$1.90	\$7.00
Davis White Kidney Wax.....	.30	.95	1.90	7.00
Pencil Pod Wax.....	.30	.95	1.80	6.50
Wardwell's Kidney30	.95	1.80	6.50
Imp. Stringless Kidney Wax.....	.30	.95	1.80	6.50
Surecrop Wax30	.95	2.00	7.50

BUSH LIMA BEANS

	Postpaid		Not Prepaid	
	Lb.	5 lbs.	15 lbs.	60 lbs.
(10c packets)			Peck	Bu.
Fordhook	\$.35	\$1.15	\$2.65	\$9.60
Henderson's30	.95	1.75	6.25
Steckler's New Calico Bush Butter or Jackson Wonder.....	.30	.95	2.00	7.50
Burpee Imp. Bush.....	.30	.95	2.25	8.50

SNAP BEANS—POLE OR RUNNING

	Postpaid		Not Prepaid	
	Lb.	5 lbs.	15 lbs.	60 lbs.
(10c packets)			Peck	Bu.
Black Valentine	\$.30	\$.95	\$1.90	\$7.00
Imp. Ky. Wonder or Old Homestead	.30	.95	1.75	6.00
Striped Creaseback30	.95	1.80	6.50
White Cornfield30	.95	1.85	6.50
White Creaseback30	.95	1.80	6.50
Card Long40	.95	1.80	6.50
deal Market30	.95	1.90	7.00

POLE LIMA BEANS

	Postpaid		Not Prepaid	
	Lb.	5 lbs.	15 lbs.	60 lbs.
(10c packets)			Peck	Bu.
Carolina or Sewee.....	\$.30	\$.95	\$1.80	\$6.50
Southern Willow Leaved Butter.....	.30	.95	2.25	8.00
Spotted Butter or Florida Pole.....	.30	.95	2.00	7.50
Large White Lima.....	.30	.95	2.15	7.90

POLE WAX BEANS

Early Golden Cluster—Pkt. 10c; lb. 30c; 5 lbs. 95c, postpaid. Not prepaid, peck \$2.25; bu. \$8.50.

WINDSOR BEANS

Italian or English—Long variety. Edible condition 75 days. Plant two beans every 6 inches and 2½ feet between rows. Strong upright grower and withstands low temperature. Planted during October and November. Ready to pick during April and May.

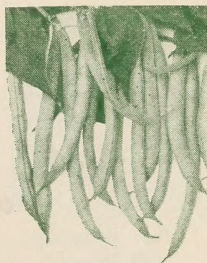
Italian or English—Pkt. 10c; lb. 35c; 5 lbs. \$1.40, postpaid. Not prepaid, peck \$2.60; bu. \$9.50.



Bountiful



Giant Stringless



Surecrop Wax



Henderson Bush Lima



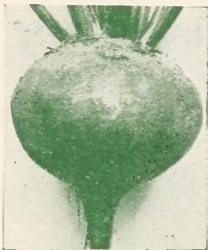
Striped Creaseback

Write for Prices in Quantity Lots—State Quantity Wanted

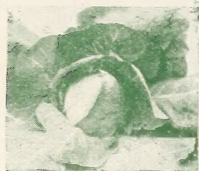
Pure-bred Cabbage



Detroit Dark Red



Crosby's Egyptian



Chas. Wakefield



Steins Early Flat Dutch



Early Jersey Wakefield



Wisconsin All Season

STECKLER'S GARDEN BEETS

Culture. Planted from July to October. Rows 18 to 24 inches apart. Rich sandy loam is preferable, but well fertilized soil will produce fine beets. One ounce to 50 feet of row, 5 to 6 pounds per acre.

	Oz.	Postpaid		
		¼ lb.	Lb.	5 lbs.
Chicago Early Blood Turnip.....	\$.10	\$.20	\$.65	\$3.00
Crosby's Early Egyptian.....	.10	.20	.65	3.00
Detroit Dark Red.....	.10	.20	.65	3.00
Swiss Chard or Perpetual Spinach.....	.10	.15	.50	2.20
Early Wonder.....	.10	.20	.65	3.00
Fireball.....	.10	.20	.65	3.00

STECKLER'S STOCK BEETS

	Oz.	Postpaid		
		¼ lb.	Lb.	5 lbs.
(5c packets)				
Long Red Mangel.....	\$.05	\$.15	\$.45	\$1.65
White French Sugar.....	.05	.15	.45	1.65

STECKLER'S BROCCOLI

	Oz.	Postpaid		
		¼ lb.	Lb.	5 lbs.
(10c packets)				
Early Large White French.....	\$.40	\$1.25	\$4.00	
Italian Green Sprouting Calabrese.....	.20	.65	2.20	\$9.85

STECKLER'S CABBAGE

Culture. Plantings begin in July and continued all through the fall months for a winter crop. When plants are 4 to 6 inches high transplant. Set the early varieties 18 inches apart in rows 2½ to 3 feet apart and the late varieties 2 feet apart in 3½ to 4 foot rows. 1 ounce of seed will produce 1500 plants; ½ pound to the acre.

	Oz.	Postpaid		
		¼ lb.	Lb.	5 lbs.
(5c packets)				
All Head Early.....	\$.20	\$.40	\$1.10	\$4.75
Chinese Pe Tsai, Imported.....	.20	.50	1.50	
Copenhagen Market.....	.20	.45	1.25	5.00
Superior Large Late Flat Dutch.....	.25	.65	1.75	7.50
Early Drumhead Savoy.....	.25	.65	1.75	7.50
Danish Ballhead Short Stem.....	.25	.65	1.75	7.50
Mammoth Red Root.....	.25	.65	1.75	7.50
Sel. Early Jersey Wakefield.....	.20	.45	1.30	5.50
Steckler's Golden Acre.....	.25	.65	1.75	7.50
Steckler's Special Chas. Wakefield.....	.20	.45	1.25	5.00
Steckler's Special Succession.....	.20	.45	1.25	5.00
Stein's Early Flat Dutch.....	.20	.40	1.10	4.75
Surehead.....	.20	.40	1.10	4.75
St. Louis Late Market.....	.20	.50	1.50	7.00
Glory of Enkhuizen.....	.20	.40	1.10	
Wisconsin All Season Yellow Resistant.....	.30	.75	2.50	12.00
Marion Market (Resistant Copenhagen).....	.30	.80	2.75	13.05
Original Louisiana or Louisiana Copenhagen.....	.30	.75	2.50	11.90

FROSTPROOF CABBAGE PLANTS

These are strong, open field-grown plants. We ship millions of these frostproof plants direct from our growing stations year after year to satisfied and loyal customers. If you have not tried them, plan to do so this year.

Be sure to mention shipping date on your order. We will ship as near that date as weather at growing station permits. Shipments start about November 1. No order filled for less than 100 plants of the same variety.

Varieties: Charleston Wakefield, Copenhagen Market, Stein's Early Flat Dutch.

Postpaid Prices

100 plants.....	50c	500 plants.....	\$1.50
1000 plants.....	\$2.50		

Express Collect Prices

F.O.B. Grower's Station:	1000 plants.....	\$1.50	
	Shipping Weight 8 lbs.		
2000 plants.....	\$2.50	5000 plants.....	\$5.95
Shipping Weight 10 lbs.		Standard Crate. Shpg. Wt. 35 lbs.	

STECKLER'S COLLARDS

Culture. Planted during July to September. An old standby for the South. One ounce will sow 200 feet of row; 6 ounces per acre.

	Oz.	Postpaid		
		¼ lb.	Lb.	5 lbs.
(5c packets)				
Georgia or Southern.....	\$.10	\$.15	\$.50	\$1.90
Cabbage Collards.....	.10	.15	.50	

Write for Prices in Quantity Lots—State Quantity Wanted

one of our Specialties

STECKLER'S BRUSSEL SPROUTS

Culture. Planted July to September. 5 ounces per acre.

(5c packets)	Oz.	¼ lb.	Lb.	5 lbs.
Brussel Sprouts	\$.25	\$.65	\$2.00	\$8.80

STECKLER'S CARROTS

Culture. Plant during July, August and September. Ground should be well broken, prepared and rich to allow the plant to penetrate. One ounce will sow 100 feet of row, 3 to 4 pounds per acre.

(5c packets)	Oz.	¼ lb.	Lb.	5 lbs.
Danver's	\$.10	\$.20	\$.65	\$2.45
Early Half Long Chantenay	.10	.20	.65	2.45
Imp. Long Orange	.10	.20	.60	2.25
Large White Belgian	.10	.20	.60	2.25
Oxheart or Guerande	.10	.20	.65	2.45

STECKLER'S CRESS

(10c packets)	Oz.	¼ lb.	Lb.	5 lbs.
Broad Leaved	\$.20	\$.40	\$1.40	
Water Cress	.40	1.00	3.25	

STECKLER'S EGG PLANTS

Planted June to August.

(10c packets)	Oz.	¼ lb.	Lb.	5 lbs.
Black Beauty	\$.40	\$1.20	\$4.00	\$19.20
Steckler's Large Purple or New Orleans Market	.40	1.20	4.00	19.20
Imp. New York Spineless	.40	1.20	4.00	19.20
Steckler's High Bush	.40	1.20	4.00	19.20

STECKLER'S CARDOON

(10c packets)	Oz.	¼ lb.	Lb.	5 lbs.
Cardoon	\$.40	\$1.00	\$3.50	

STECKLER'S CHICORY

(10c packets)	Oz.	¼ lb.	Lb.	5 lbs.
Chicory or Witloof	\$.25	\$.65	\$2.00	

STECKLER'S ENDIVE

Planted September and October.

(5c packets)	Oz.	¼ lb.	Lb.	5 lbs.
Broad Leaved or Batavian	\$.10	\$.25	\$.80	\$3.00
Escarolle	.10	.25	.80	3.00
Italian Red Ribbed	.10	.25	.80	3.00
Full Heart Batavian	.10	.25	.80	3.00

STECKLER'S CUCUMBERS

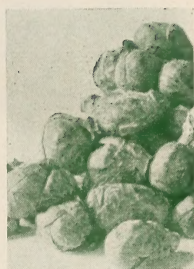
Planted July to August.

(5c packets)	Oz.	¼ lb.	Lb.	5 lbs.
Davis Perfect	\$.15	\$.40	\$1.25	\$5.50
Early Fortune	.15	.35	1.10	4.85
Henderson's Perfect White Spine	.15	.40	1.25	5.50
Japanese Climbing	.15	.40	1.25	5.50
Steckler's Imp. Long Green	.25	.50	1.50	6.60
West India Gherkin	.25	.50	1.50	6.60
Staysgreen	.15	.35	1.10	4.85
Snow's or Heinz Pickling	.15	.35	1.10	4.85

STECKLER'S CAULIFLOWER

Culture. Planted July, August and September. Requires rich soil and an abundance of moisture. Cultivated same as cabbage. Heads must be protected from sun to get the white head. One ounce will produce 2000 plants; ½ pound per acre.

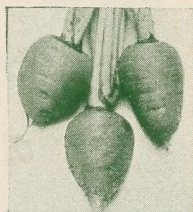
(10c packets)	Oz.	¼ lb.	Lb.	5 lbs.
Early Italian Giant	\$.50	\$1.75	\$5.90	
Late Italian Giant	.50	1.75	5.90	
Large Algiers	.50	1.75	5.90	
Steckler's Extra Early Snowball	1.10	3.75	14.00	



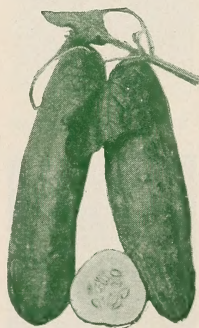
Brussels Sprouts



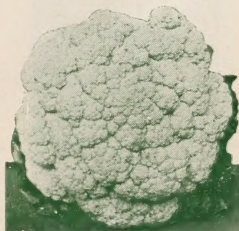
Long Orange



Oxheart



Davis Perfect Cucumbers



Snowball Cauliflower

Plant Plenty of Vegetable

STECKLER'S CORN SALAD

Culture. Planted during August and September. A hardy winter salad. 2 ounces will plant 100 feet of drill.

(10c packets)	Oz.	¼ lb.	Lb.	5 lbs.
Corn Salad15	.45	\$1.25	

STECKLER'S CELERY

Planted June to September.

(10c packets)	Oz.	¼ lb.	Lb.	5 lbs.
Celeriac Turnip Rooted.....	.25	\$.65	\$2.10	
Giant Pascal25	.75	2.50	
Golden Self Blanching.....	.40	1.25	4.00	
Golden Plume40	1.45	5.00	
Soup or Cutting.....	.25	.65	2.10	

STECKLER'S CHERVIL

Planted October and November.

(10c packets)	Oz.	¼ lb.	Lb.	5 lbs.
Chervil Curled25	\$.65	\$2.00	

STECKLER'S FENNEL

Planted October and November.

(10c packets)	Oz.	¼ lb.	Lb.	5 lbs.
Italian or Florence.....	.15	\$.30	\$1.00	\$3.75

STECKLER'S KALE OR BORECOLE

Planted August and September.

(5c packets)	Oz.	¼ lb.	Lb.	5 lbs.
Siberian Curled10	\$.15	\$.50	\$1.90

STECKLER'S KOHLRABI

Planted August and September.

(10c packets)	Oz.	¼ lb.	Lb.	5 lbs.
Early White Vienna.....	.20	\$.50	\$1.50	\$6.00

STECKLER'S LEEK

Planted October and November.

(10c packets)	Oz.	¼ lb.	Lb.	5 lbs.
Large London Flag.....	.20	\$.60	\$1.75	\$7.70
Large Rouen20	.60	1.75	7.70

STECKLER'S LETTUCE

Culture. Planted from September throughout the fall. Requires rich soil, plenty of moisture. When leaves are 2 to 3 inches long, transplant in rows 15 to 18 inches apart and 8 to 10 inches apart in the row. One ounce will sow 150 feet, 2 to 3 pounds per acre.

(5c packets)	Oz.	¼ lb.	Lb.	5 lbs.
Grand Rapids15	\$.30	\$.80	\$3.25
Improved Iceberg15	.30	.95	3.75
Improved Royal Cabbage.....	.15	.30	.80	3.25
Large Salamander15	.30	.80	3.25
Paris White Cos15	.30	.80	3.25
New York or Wonderful Cabbage	.20	.35	1.10	5.00
Steckler's Selected Big Boston.....	.15	.30	.80	3.25
Chicken Lettuce15	.25	.75	3.25

STECKLER'S MUSTARD

Planted September to December.

(5c packets)	Oz.	¼ lb.	Lb.	5 lbs.
Chinese Large Cabbage Leaved.....	.10	\$.15	\$.45	\$1.70
Giant Southern Curled.....	.10	.15	.45	1.70
White or Yellow London.....	.10	.15	.45	1.70
Florida Broad Leaf.....	.10	.15	.45	1.70
Japanese Mustard Spinach.....	.10	.15	.45	1.70
Giant Southern Curled Long				

Standing

Standing10	.15	.45	1.70
----------------	-----	-----	-----	------

Japanese Mustard Spinach—Often called Tendergreen. Can be sown nearly every month in the year in the South. Easy to grow and ready for market in 25 to 30 days. Requires 3 to 5 pounds to the acre and planted in rows 2 to 3 feet apart. Withstands the extreme summer heat and is resistant to cold weather. Leaves are large, oblong and dark green in color with small center rib. Cooked same as Spinach, Turnip or Mustard Greens. Price: Pkt. 5c; oz. 10c; ¼ lb. 15c; lb. 45c, postpaid.

STECKLER'S OKRA

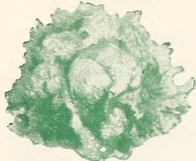
Planted July and August.

(5c packets)	Oz.	¼ lb.	Lb.	5 lbs.
Dwarf Green Prolific.....	.10	\$.15	\$.30	\$1.20
French Market Dwarf Prolific.....	.10	.15	.30	1.20
Tall Growing or Perkins Mammoth	.10	.15	.30	1.20
White Velvet10	.15	.30	1.20

Write for Prices in Quantity Lots—State Quantity Wanted



Giant Pascal



Iceberg Lettuce



Big Boston Lettuce



London Flag Leek

To Eat Fresh and to Can

STECKLER'S ONIONS

(10c packets)	Oz.	Postpaid		
		¼ lb.	Lb.	5 lbs.
Crystal Wax Bermuda (Teneriffe Grown)	.25	.75	\$2.75	\$12.50
Yellow Bermuda (Teneriffe Grown)	.25	.75	2.50	11.90
Danvers Yellow Globe	.25	.65	2.10	10.00
Steckler's Red Creole	.25	.65	2.00	9.50
Red Wethersfield	.25	.65	2.10	10.00
Yellow Prizetaker	.25	.65	2.10	10.00
Riverside Sweet Spanish (Yellow)	.25	.70	2.25	10.70

BERMUDA ONION PLANTS

Sturdy, healthy plants ready to ship about November 1st. Grow onions this easy way. You can get a much earlier crop of fully matured onions, or early green onions. Yellow Bermuda and Crystal Wax only.

Postpaid—100 for 50c; 500 for \$1.50; 1000 for \$2.25. Express Collect prices—6000 plants, (1 crate) \$4.50. **NO PLANTS SHIPPED C.O.D.**

STECKLER'S ONION SETS

		Postpaid	
		Lb.	3 lbs.
Red Wethersfield	.25	.60	
White Silverskin	.25	.60	
Yellow Danvers	.25	.60	

Write for prices on larger quantities.

STECKLER'S PARSLEY

Planted August to October.

(5c packets)	Oz.	Postpaid		
		¼ lb.	Lb.	5 lbs.
Double Curled	.10	.15	.45	\$1.80
Plain Leaved	.10	.15	.45	1.80

STECKLER'S PARSNIPS

Planted September to November.

(10c packets)	Oz.	Postpaid		
		¼ lb.	Lb.	5 lbs.
Hollow Crown or Sugar	.15	.25	.70	\$2.65

STECKLER'S GARDEN PEAS

Culture. Planted from August to December. Sow in double rows and the vines will support each other. Rows should be 2½ to 4 feet apart, and seed planted 1½ to 2 inches deep, 6 to 8 inches apart. One pound will plant 50 feet of row; 1½ bu. per acre.

Wrinkled Varieties

(10c packets)	Lb.	Postpaid		Not prepaid	
		5 lbs.	Peck	Bu.	
American Wonder	.30	\$1.10	\$2.00	\$7.20	
Carter's Imp. Telephone	.30	1.00	1.90	6.75	
Daisy or Dwarf Telephone	.30	1.10	2.00	7.20	
Gradus or Prosperity	.30	1.00	1.90	6.75	
Thos. Laxton	.30	1.00	1.90	6.75	
Little Marvel	.30	1.10	2.00	7.25	

Smooth Varieties

Early Alaska	.30	1.00	1.80	6.50
Early Washington	.30	1.00	1.80	6.50
Extra Early First and Best	.30	1.00	1.80	6.50
Melting Sugar	.30	1.00	2.25	9.00
Large White Marrowfat	.30	.95	1.75	6.10

STECKLER'S PEPPERS

Planted July and August.

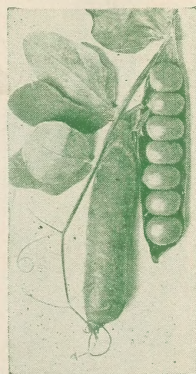
(10c packets)	Oz.	Postpaid		
		¼ lb.	Lb.	5 lbs.
Bird's Eye (in pod) (hot)	.40	\$1.30	\$4.50	
Chinese Giant (sweet)	.40	1.20	4.00	\$19.50
Steckler's Tobasco (hot)	.30	.90	3.00	14.25
Long Red Cayenne (hot)	.30	.90	3.00	14.25
Ruby King (sweet)	.30	.75	2.50	10.50
Steckler's Royal King (sweet)	.30	.75	2.50	10.50
World Beater (sweet)	.30	.75	2.50	10.50
Ruby Giant (sweet)	.30	.90	3.00	14.25
California Wonder (sweet)	.40	1.25	4.25	20.00



Danvers Yellow Globe Onion



Little Marvel



American Wonder



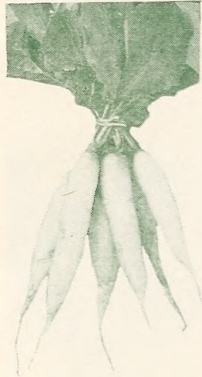
Ruby King Pepper

Descriptive Catalog on Request.

Spinach and Squash



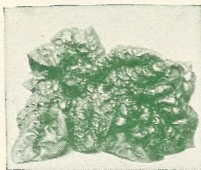
French Breakfast



Icicle Radishes



Salsify



Flanders Spinach



Summer Crookneck

STECKLER'S RADISHES

Plant in August and September.

(5c packets)	Oz.	Postpaid ¼ lb.	Lb.	5 lbs.
Brightest Scarlet or Three Quarter Long	\$.10	\$.15	\$.45	\$1.85
Chinese Rose	.10	.20	.50	2.20
Cooper's Sparkler Turnip White Tip	.10	.15	.45	1.85
Crimson Giant Turnip	.10	.15	.45	1.85
Early Deep Scarlet Turnip	.10	.15	.45	1.85
Early Long Scarlet Short Top Imp.	.10	.15	.45	1.85
French Breakfast	.10	.15	.45	1.85
White Icicle	.10	.15	.45	1.85
Scarlet Half Long French	.10	.15	.45	1.85
Black Spanish	.10	.20	.50	2.20

STECKLER'S ROQUETTE OR ROCKET SALAD

(10c packets)	Oz.	Postpaid ¼ lb.	Lb.	5 lbs.
Roquette or Rocket Salad	\$.20	\$.60	\$1.75	

STECKLER'S WHITE SHALLOTS

Planted August to March. For home consumption and Northern markets. About 6 bushels per acre in 4-foot rows. The quantity to be expected from an acre, if planted in field culture, 4-foot rows, would be from 50 to 60 barrels, but if planted, as is done near New Orleans, in 2-foot rows, 100 to 125 barrels, if planted in August and September. If planted later, they do not multiply so well.

	Postpaid 1 lb.	3 lbs.	10 lbs.	Not Prepaid 25 lbs.	100 lbs.
Long White Shallots	\$.25	\$.60	\$1.00	\$2.25	\$7.50

STECKLER'S SALSIFY OR OYSTER PLANT

Planted July to November.

(10c packets)	Oz.	¼ lb.	Lb.
Sandwich Island	\$.20	\$.60	\$2.00

STECKLER'S SPINACH

Culture. Planted from September to March in rows 16 to 20 inches apart, covering seed one inch deep. When leaves are 1 inch wide, thin to 6 to 8 inches apart in the row. Requires rich soil and cool weather. One ounce will sow 100 feet of row; 8 to 10 pounds per acre.

(5c packets)	Oz.	Postpaid ¼ lb.	Lb.	5 lbs.	10 lbs.	25 lbs.	100 lbs.
Broad Leaved							
Flanders	\$.10	\$.15	\$.35	\$1.50	\$1.90	\$4.40	\$16.10
King of Denmark	.10	.15	.40	1.75	2.00		
New Zealand	.15	.20	.55	2.25			
Nobel Giant Leaved	.10	.15	.35	1.50	2.10	4.65	17.00
Bloomsdale Savoy	.10	.15	.35	1.50	2.10	4.65	17.00

STECKLER'S SORREL

Planted September to December.

(10c packets)	Oz.	¼ lb.	Lb.
Broad Leaved	\$.20	\$.60	\$1.75

STECKLER'S SQUASH

Planted August to November.

(5c packets)	Oz.	Postpaid ¼ lb.	Lb.	5 lbs.
Early White Bush or Patty Pan	\$.10	\$.25	\$.70	\$3.00
Long Yellow or Summer Crookneck	.10	.25	.70	3.00
Cocozelle or Italian Green Striped	.15	.30	.90	4.00
Zucchini	.15	.30	.90	4.00

PREMIUM SEEDS

We want you to select your own Premium Seeds, packets of any vegetable or flower seeds you desire, to the amount your order entitles you. See our most liberal offer on the front of this book. You get more real value.

Write for quantity prices.

Are High in Vitamins

STECKLER'S TOMATOES

Culture. Planted during July and August. Soil should be well broken and fertilized. Rows should be 4 to 5 feet apart and the plants set about 3 feet apart in the row or 2 feet if staked. One ounce will produce 1500 plants, 4 to 6 ounces will furnish sufficient plants for an acre.

(10c packets)	Oz.	Postpaid		
		¼ lb.	Lb.	5 lbs.
Louisiana Red35	\$1.10	\$3.75	\$17.50
Early Detroit35	1.10	3.75	17.50
Greater Baltimore30	.95	3.25	15.00
Gulf States Market.....	.30	.95	3.25	15.00
June Pink35	1.00	3.50	16.25
Livingston's Globe25	.85	2.75	12.50
Norton Wilt Resistant.....	.30	.90	2.90	13.80
Ponderosa Crimson40	1.45	5.00	
Red Rock25	.75	2.50	11.90
Spark's Earliana25	.70	2.25	10.50
Steckler's New Stone.....	.20	.60	1.80	7.00
Marglobe30	.95	3.25	15.00
Louisiana Pink35	1.10	3.75	17.50
Red Oxheart60	2.20	7.50	
Break O' Day.....	.35	1.10	3.75	17.50
Marglobe Certified40	1.20	4.00	19.20



Louisiana Pink



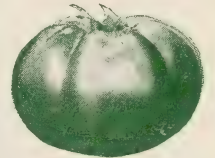
Oxheart

FALL GARDEN COLLECTION

10 Full size packages... 40c

In order to meet the demands for a collection to fit the needs of the average small family, with a fair sized garden plot, we offer the finest seed, at this reduced price because of the quantity. No substitution will be allowed.

1 pkt. Louisiana Red Creole Onion, 1 pkt. Stein's Early Flat Dutch Cabbage, 1 pkt. Danver's Half Long Carrot, 1 pkt. Iceberg Lettuce, 1 pkt. Florida Broad Leaf Mustard, 1 pkt. Half Long French Radish, 1 pkt. Flanders Spinach, 1 pkt. Purple Top Globe Turnip, 1 pkt. Southern Collards, 1 pkt. Crosby's Egyptian Beet.



Marglobe

STECKLER'S TURNIPS

Culture. Sow from July to October for fall and winter, in rows 18 inches apart. Plants should be thinned to 4 to 5 inches apart. Can also be sown broadcast. One ounce will sow 200 feet of row; 2 pounds per acre, or if broadcast 4 to 5 pounds per acre.

(5c packets)	Oz.	¼ lb.	Lb.	5 lbs.
Amber Globe10	\$.15	\$.45	\$1.60
Early Purple Top Strap-leaved.....	.10	.15	.45	1.60
Extra Early Purple Top Milan.....	.15	.20	.60	2.50
Extra Early White Egg.....	.10	.15	.45	1.60
Imp. Purple Top Rutabaga.....	.10	.15	.45	1.60
Long Cow Horn.....	.10	.15	.45	1.60
Purple Top White Globe.....	.10	.15	.45	1.60
Purple Top Yellow Aberdeen.....	.10	.15	.45	1.60
Seven Top10	.15	.45	1.60
Steckler's Japanese (Shogoin)10	.15	.45	1.60



Purple Top White Globe Turnip

STECKLER'S BIG 7 TURNIP COLLECTION NOW 25 CENTS

Most popular of all vegetable collections, Steckler's "Big 7" gives each family a full supply of early, medium and late turnips. For 25 cents we will send you, postpaid, one ounce each of Extra Early White Egg, Purple or Red Top Strap Leaf, Early White Flat Dutch, Purple or Red Top Globe, Yellow or Amber Globe, Japanese Shogoin and Seven Top Turnips. No other varieties will be sold at this price and no changes allowed.

7 Ounces, 7 Varieties, 25c—¼ Lb. of Each, 85c



Amber Globe Turnip

DESCRIPTIVE CATALOGUE ON REQUEST.

They Make Poor Land GOOD ... Good Land Better

FIELD SEEDS



Austrian Winter Peas

AUSTRIAN WINTER PEAS—This is a wonderful winter cover and forage crop. Plant in September or October, when the ground is not in use, and it can be plowed under early in the spring, before time to plant spring crops. Will keep the land from washing and packing and at the same time furnish much valuable fertilizer. If desired the crop can be cut and fed. Sow in September and October, broadcast 30 pounds per acre. 1 lb. 20c; 3 lbs. 45c, postpaid. 10 lbs. 80c; 25 lbs. \$1.50; 100 lbs. \$5.00, not prepaid.

HAIRY WINTER VETCH—The hardiest vetch; fine for hay, grazing and improving land. Grows on all soils, and surprisingly well on poor, thin land, and it will stand extremes of drought, heat and cold. It is to be sown in the fall in September and October. It never winter kills. Sow 20 pounds to the acre. Lb. 30c; 3 lbs. 75c, postpaid. 10 lbs. \$1.25; 25 lbs. \$2.85; 100 lbs. \$10.25, not prepaid.

SWEET CLOVER OR MELILOTUS—Also known as Bokhara Clover. As a land-builder it has few equals. It is fine for raising bees and to build up your poor land. Sow 12 pounds per acre in February planting. Lb. 30c; 3 lbs. 85c, postpaid. Write for prices on larger quantities.

YELLOW BLOSSOM SWEET CLOVER—The Yellow Blossom type is very similar to that of the White Blossom. For those who wish to use Sweet Clover for pasture, hay and bee purposes, we would advise the use of the Yellow Blossom type. Lb. 25c; 3 lbs. 65c, postpaid. Write for prices on larger quantities.

HAIRY PERUVIAN ALFALFA—Gives you more cuttings of hay than other types. After each cutting it recovers quickly, giving additional cuttings over other sorts. Wonderful for the Gulf States. Prices: Lb. 35c; 3 lbs. \$1.00, postpaid. 10 lbs. \$1.80; 25 lbs. \$4.00; 100 lbs. \$15.00, not prepaid.

RED CLOVER—Sow in the fall or spring. 12 to 15 lbs. to the acre. Largely used in combination with other grasses and clovers for permanent pastures. Prices: Lb. 35c; 3 lbs. \$1.00, postpaid. Write for prices on larger quantities.

WHITE DUTCH CLOVER—This clover does well in the Central South. Most all permanent lawn and pasture mixtures should have some White Clover. By itself it makes good grazing for cattle and sheep. Lb. 40c; 3 lbs. \$1.10, postpaid. 10 lbs. \$2.78; 25 lbs. \$6.00; 100 lbs. \$23.00, not prepaid.

ALSIKE CLOVER—Also called Swedish Clover. Best clover for wet lands. Lb. 40c; 3 lbs. \$1.05, postpaid. Write for prices on larger quantities.

RYE GRASS—American grown. This domestic seed is heavy, plump, high grade and is thoroughly satisfactory. Makes excellent winter grass following Bermuda in the South and makes heavy hay crops on rich land. See back cover for lawn purposes. Lb. 25c; 5 lbs. 75c, postpaid. 10 lbs. 80c; 25 lbs. \$1.60; 100 lbs. \$5.50, not prepaid.

FANCY BERMUDA—Most valuable grass for the South. Grows on all kinds, from heaviest clay to the lightest sand and furnishes abundant pasturage. Bermuda withstands drought and scorching summer sun. Sow 5 to 10 pounds per acre (2 pounds per 1,000 sq. ft. for lawns), March 1 to September 1 in lower South. Seed will not germinate in cold ground. 20 to 30 days to germinate. Lb. 45c; 5 lbs. \$1.90, postpaid. 10 lbs. \$2.85; 25 lbs. \$6.50; 100 lbs. \$25.25, not prepaid.

HULLED BERMUDA—Germinates in a week with proper moisture conditions, almost as quick as Rye Grass. Lb. 60c; 5 lbs. \$2.50, postpaid. 10 lbs. \$4.30; 25 lbs. \$10.25; 100 lbs. \$40.00, not prepaid.

CARPET GRASS—Carpet Grass is one of the most valuable pasture grasses for the lower South. It grows on poor sandy soils better than Bermuda and does well on most any soil with a fair amount of moisture. Lb. 30c; 3 lbs. 75c, postpaid. 10 lbs. \$1.60; 25 lbs. \$3.50; 100 lbs. \$13.00, not prepaid.

STECKLER'S FIELD RYE (Abruzzi)—Lb. 20c, postpaid; peck 70c; bu. 56 lbs. \$2.25, not prepaid.

STECKLER'S WHEAT (Red May)—Lb. 20c, postpaid; peck 15 lbs. 70c; 60 lbs. bu. \$2.25, not prepaid.

RED-TOP OR HERD'S GRASS—This grass makes excellent pasturage and a good crop of fine quality hay. Lb. 35c; 5 lbs. \$1.50, postpaid. Write for prices on larger quantities.

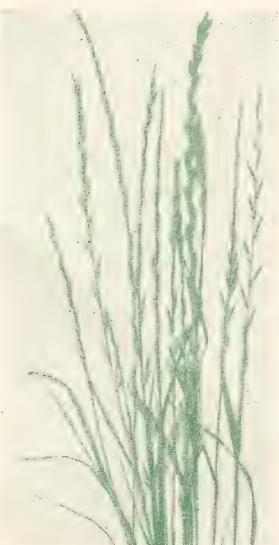
STECKLER'S BARLEY (Southern Grown)—Lb. 20c; 5 lbs. 90c, postpaid. Write for quantity prices.

OATS (Texas Red Rust Proof)—Peck 35c; bu. 90c; 5 bu. sack \$4.50, not prepaid.

STECKLER'S RAPE (Dwarf Essex)—Lb. 25c; 5 lbs. \$1.00, postpaid. Write for quantity prices.



Sweet Clover



Rye Grass

Plant Fruit Trees

Grape Vines, Budded Fruit and Nut Trees

Orders taken for December, January and February delivery. Recommend shipments by express.

FINE APPLES—Apples are fast increasing in favor here in the South and every home orchard should have several varieties for a full season's supply.

Early Red Bird, Early Harvest, and Delicious—3 to 4 ft. 75c each; \$7.50 per dozen.

APRICOT—Fruit of the Apricot is similar in shape to the Peach, except that it is not downy and is almost perfectly smooth. 3 to 4 ft. 90c each; \$9.00 per dozen.

CHERRY—Well known favorite—Early Richmond. 3 to 4 ft. \$1.00 each; \$9.00 per dozen.

FIGS—Plant figs where they will not be disturbed and in rich soil, heavily manured.

Brunswick or Madonna—4 to 5 ft. 75c each; \$7.50 per dozen.

Lemon or May—3 to 4 ft. 65c each; \$6.50 per dozen.

Celeste—2 to 3 ft. 50c each; \$5.50 per dozen. 4 to 5 ft. 75c each; \$7.50 per dozen.

Japanese or Violet—3 to 4 ft. \$1.00 each; \$10.00 dozen.

MULBERRIES—They form economic food for poultry and swine and to keep birds away from other fruit. 4 to 5 ft. \$1.75 each; \$7.50 per dozen.

ORANGE TREES—In planting an orange grove, it is poor business to plant cheap trees. Orange trees to prove vigorous and prolific should have large, well formed root systems and strong, clean, healthy tops one or two years old. Our trees are grown on loose sandy loam lands, which permits the root systems to develop properly.

Louisiana Sweet, Washington Navel, Mandarin, Satsuma and Duncan Grape Fruits—3 to 4 ft. 85c each; \$8.50 per dozen.

KUMQUATS—The smallest of the citrus fruits. 3 to 4 ft. 85c each; \$8.50 per dozen.

PEACHES—The most popular fruit tree planted in the South and by far the most satisfactory and easiest grown. No orchard is complete without several popular peaches. Belle of Georgia, Chinese Cling, Elberta, J. H. Hale, Crawford's Early, Honey, Mayflower and Stonewall Jackson—3 to 4 ft. 65c each; \$6.50 per dozen.

PEARS—Favorites of any home orchard where a variety of fruits is desired. From the small sugar, juicy varieties to the large hard-cooking kind, our soils are adapted to their culture. The "Pineapple" variety is practically blight proof and is well adapted for growing in blight regions. Lecote, Bartlett, Magnolia, Kieffer's, Pineapple or Sand Pears—4 to 5 ft. 85c each; \$8.50 per dozen.

POMEGRANATE—Spanish Ruby—Fruit very large. 3 to 4 ft. \$1.00 each; \$10.00 per dozen.

PERSIMMONS (Tane-Nashi) (Japanese)—Large, smooth, conical, orange to bright red and of highest quality. Vigorous and productive. 3 to 4 ft. 75c each; \$7.50 dozen.

PLUMS—Wide choice in following varieties: Abundance, Kelsey's Japan, Ogan, Burbank and Satsuma or Blood—4 to 5 ft. 75c each; \$7.50 per dozen.

QUINCE—Not difficult to grow and have an abundance of fruit. Always a paying crop. 3 to 4 ft. \$1.00 each; \$10.00 per dozen.

PECANS—In deep alluvial soils 70 feet apart each way, requiring 9 trees to an acre. In sandy, poor soils, 50 feet apart each way, requiring 17 trees to an acre. Our trees are very fine and true to kind and variety.

A Real Money Crop

Stuart, Van Deman, Success, Frotscher's Eggshell, Schley

	Each	Per 10	Per 100
4 to 5 ft.....	\$1.00	\$ 8.50	\$ 75.00
5 to 6 ft.....	1.10	9.50	85.00
6 to 7 ft.....	1.50	12.00	100.00
7 to 8 ft.....	2.00	18.00	
8 to 9 ft.....	2.50	24.00	
9 to 10 ft.....	3.50	32.50	

FINEST GRAPES—FOR ALL PURPOSES—White Niagara, Scuppernon, Campbell Early, Concord and Herbemont (McKee)—50c each; \$5.00 per dozen.

STECKLER'S STRAWBERRY PLANTS

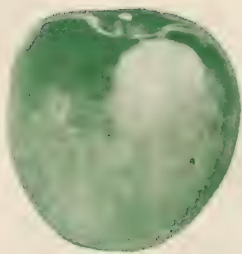
Ready October 10th

Missionary, Klondyke, Aroma, Lady Thompson

No. of Plants	25	50	100	1000
Prepaid	\$.50	\$.85	\$1.25	
Not Prepaid				\$3.50

Everbearing Progressive

Prepaid	.85	1.35	2.25	
Not Prepaid				12.00



Ben Davis Apple



Elberta Peach



Bartlett Pears



Quince



Strawberry

Plant This Year a Steckler

Prize Winning Flower Seeds

Loads of Beautiful Flowers

Flower seeds are something that everyone is interested in because hidden within their tiny coats are the qualities which, after they sprout, and grow, and flower, reveal colorings and characteristics almost unbelievable.

Nothing will give you so many blooms for such a long time as these annuals.

There is no excuse for your not having some flowers around your house when it just takes a few packets of seed, sunshine and rain to have them in all their beauty.

Our seeds are tested and sent to you in big full-measure packets. The instructions are on every packet for planting each kind of seed.

ALYSSUM (Madwort)—Splendid little annual for edging and bedding. It is easy to grow and starts to bloom a few weeks after planting. Sow July-November. Height 6 to 9 inches.

Little Gem—Dwarf, compact grower thickly covered with small white flowers. Pkt. 10c; ½ oz. 30c; oz. 50c.

Lilac Queen—Similar to Little Gem, but carries an abundance of delicate, lilac-colored blooms. Pkt. 10c; ½ oz. 40c; oz. 75c.

ANTIRRHINUM (Snapdragon)—For exquisite beauty few flowers equal the modern Snapdragons. They make glorious mased beds and borders, and are extremely well adapted for cutting. Sow August-November. Height 2 to 3 feet.

Crimson King—Rich crimson, semi-tall sort. Very good for bedding. Pkt. 15c; oz. 80c.

Golden Queen—A very fine variety of giant yellow blooms. Pkt. 15c; oz. 80c.

The Rose—Rose pink blooms, giant flowered. Pkt. 15c; oz. \$1.60.

Queen Victoria—Pure snow-white blooms. Tall, large flowering. Pkt. 15c; oz. 80c.

Choice Mixed—Showy plant of various colors. Pkt. 10c; oz. 80c.

AQUILEGIA (Columbine)—Long-spurred Hybrids Mixed. For graceful growth and refined beauty, few perennials rival the Aquilegia with their odd-shaped flowers in delightful pastel shades and combinations. Prefer partly shaded location. Sow during October-November. Height 2½ feet. Pkt. 15c; oz. \$2.25.

BALSAM (Lady-Slipper)—Greatly improved strain, with large, waxy, camellia-like blooms in soft and brilliant shades and combinations. Sow the seed during July and August in a well-drained soil. Delight in a sunny location. Height 2 feet.

Mixed—Improved. Camellia-flowered. Very double and beautiful colors. Pkt. 10c; oz. 40c.

Camellia Flora Alba—Pure white flowers, used for bouquets. Pkt. 10c; oz. 70c.

CACALIA (Tassel Flower)—A very nice annual of easy culture with tassel shaped flowers. Blooms from June to September, very fine for borders. Golden yellow and scarlet mixed. Pkt. 10c; oz. 75c.

CALENDULA (Pot Marigold)—One of our most desirable fall flowers. They are of easy culture, very prolific bloomers, and produce a splendid effect in beds and massed borders. Highly prized as cut flowers. Sow August-October. Height 1 to 1½ feet.

Radio—Distinct from any other Calendula. The petals are large and double flowers instead of being flat, forming almost a globe shaped flower. It is rich golden orange in color, blooms freely. Pkt. 10c; oz. 50c.

The Ball—It has fine stems, immense double flowers of brilliant glistening orange. A great favorite. Pkt. 10c; oz. 50c.

Orange King—Outer petals are slightly imbricated, while those of the center are curved like those of a peony. Color glowing orange. Pkt. 10c; oz. 20c.

Sensation—Vigorous growth, flowers borne on stout stems, blooms are flat, brilliant orange with a scarlet sheen and full yellow center. Pkt. 10c; oz. 50c.

Lemon Queen—Sulphur yellow, a very fine double blooming calendula and planted extensively. Pkt. 10c; oz. 20c.

Chrysantha—Large double buttercup yellow flowers, flowers incurved, extremely popular. Pkt. 10c; oz. 50c.

Orange Shaggy—New orange colored Calendula, grows 18 inches high. Pkt. 10c; oz. \$1.25.

CALLOPSIS—A lovely and graceful annual for beds and borders. The small, daisy-like flowers, in striking shades of crimson, orange, and gold, carried on thin, wiry stems, serve as a fairy crown on the bushy plants. Succeed in almost any location. Height 1½ feet. Sow July-October. Pkt. 10c; oz. 50c.

COREOPSIS LANCEOLATA—Large flowered, golden yellow, splendid cut flowers. Pkt. 10c; oz. 60c.



Hollyhock



Calendula, Chrysantha



Lupin

WRITE FOR PRICES ON QUANTITY LOTS.

Garden Beautiful"

CANDYTUFT—These delightful annuals may be grown with splendid success in fall. They furnish your beds and borders with masses of colors, and are highly prized for cutting. Sow September-November. Height 1 foot.

Coronaria—Hyacinth flowered white. A very fine variety.

Pkt. 10c; oz. 60c.

Umbellata—White. Pkt. 10c; oz. 50c.

Umbellata—Lavender. Pkt. 10c; oz. 50c.

Umbellata—Crimson. Pkt. 10c; oz. 50c.

Umbellata—Rose Cardinal. Pkt. 10c; oz. 75c.

Umbellata—Purple. Pkt. 10c; oz. 50c.

Mixed All Colors—Pkt. 10c; oz. 40c.

CANTERBURY BELLS—These old-fashioned favorites are much admired for their beautiful, large, bell-shaped flowers in shades of white, rose, and blue. Very showy in mixed borders. Sow during October-November. Height 2 feet.

Single Annual Mixed—Pkt. 10c; oz. 35c.

CARNATION—Few flowers surpass in beauty of form or delicious fragrance the richly hued Carnation. Easily grown from seed, and will produce fine, large blooms if planted in good, rich, well-cultivated soil. Sow during October-November. Height 15 inches.

Dianthus Caryophyllus Margaritae Robustus—Fl. pl. Semi High Double Margaret Carnation. Dwarfish habit. The flowers are much variegated, occasionally producing yellow ones. Pkt. 10c; oz. 75c.

COSMOS—Delightful annuals with ornamental, feathery, fresh green foliage and large, artistic flowers produced freely throughout the season. Effective as a background for borders and excellent for cutting. Sow during August and September. Height 4 feet.

Bipinnata Hybrida—White, yellow and mixed. A very showy annual similar in shape to the Bright Eye Daisy or Coreopsis, but taller and more brilliant in color. Oz. 50c.

Early Double—Forms a perfect bush, bearing attractive double flowers of good size on long stems, making a wonderful cut flower. Oz. \$2.00.

Early Klondyke Orange Flare—Long stemmed bright orange blooms. Early and long blooming. Pkt. 25c.

CYNOGLOSSUM (Amabile)—Also called the "Chinese Forget-Me-Not." A splendid annual of upright bushy growth, producing small single flowers resembling very much a Forget-Me-Not in shape and color.

Blue—A lively plant producing sprays of brilliant blue Forget-Me-Not-like flowers. Grows easily and blooms for a long season. 18 to 24 inches high. Pkt. 10c; oz. 40c.

Pink—Similar to above, but bearing lovely pink blossoms. Pkt. 15c; 1 oz. 75c.

CORNFLOWER (Ragged Robin)—Old fashioned garden favorite. Show to best advantages when massed.

Single Mixed—Pkt. 10c; oz. 50c.

Double Mixed—Pkt. 10c; oz. 50c.

BELLIS PERENNIS—Finest double mixed variety; 4 inches high. October till January. Pkt. 10c; oz. \$1.25.

DAISY SHASTA (Alaska)—Highly improved strain with very large and broad overlapping petals of the purest white color. Pkt. 10c; ½ oz. 80c.

DIANTHUS or PINKS—This group embraces some of our most beautiful and best-loved flowers for bedding and borders. They are unsurpassed for striking colors and profuse blooming. The fragrant, often delicately fringed flowers are of fine velvety texture. Do best in a sunny location. Sow July-November. Height 1 foot.

Chinensis—Chinese Pink. Single. A beautiful class of annuals of various colors which flower very profusely in early Spring and Summer. Pkt. 10c; ½ oz. 20c.

Heddewigii—Japan pink. Double. This is the most showy of any of the annual pinks. The flowers are very large and of brilliant colors. Pkt. 10c; ½ oz. 30c.

GAILLARDIA (Blanket Flower)—Mixed. Planted in early spring and will continue to bloom from early summer to November, excellent for beds, borders or for cutting. Pkt. 10c; oz. \$1.00.

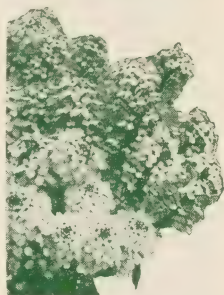
GERBERA (Transvaal Daisy)—Hybrids. Dainty plants with graceful, elegant, marguerite like flowers in delightful shades of red, cerise, salmon, orange, yellow, and white, carried on long, slender stems. Furnish artistic material for indoor decoration. Start seed in flats during September, October, and November. Height 15 inches. Succeeds well in the South. Pkt. 10c; 100 seeds 75c.

GLOBE AMARANTH (Bachelor's Button)—A distinct and showy everlasting flower with pretty, small, clover-like blossoms in purplish red, pink, and white shades. Splendid for massing in beds and borders. Delightful cut-flower. Sow July and August. Height 2 feet. Pkt. 10c; oz. 35c.

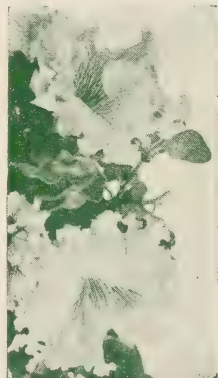
Separate Colors—Red, Pink, White. Pkt. 10c; oz. 40c.



Larkspur



Candytuft



Petunias
Giants of California



Double Nasturtium

Petunias Are Indispensable

GYPSOPHILA (Baby's Breath)—Easy to grow annuals of extremely delicate and fairy-like growth. Greatly admired for their myriads of small, dainty, star-shaped blooms, forming a charming misty effect. Fine bed and border plants, and indispensable for combining with other cut-flowers. Sow during September, October and November. Height 1½ feet. White—Pure white, of easy growth, several sowings should be made during the season to keep up the supply. Pkt. 10c; oz. 30c.

Pink—A very soft pink. Pkt. 10c; oz. 40c.

HOLLYHOCK—This dignified and stately perennial adorns many a well-planned garden. Its giant, majestic stalks are richly set with large, conspicuous, single and double blooms against an ample background of decorative green foliage. Unequaled as a background for other flowers, planting among shrubbery, or against houses, fences, or the like. Sow during October-November. Height 5 to 7 feet. Mixed Annual—Pkt. 10c; oz. 50c.

LARKSPURS (Annual Delphiniums)—With their finely cut foliage and tall, graceful, floral spikes of double blossoms. Larkspurs provide beautiful, stately backgrounds for mixed borders, and are also wonderful for planting in large, solid beds. They furnish striking and charming material for cutting. Thrive well in almost any well-drained soil but prefer a sunny location. Sow during October-November for early spring blooming.

Double Stock-flowered (Height 3½ feet)

White—Double showy white flowers, borne on long stems. Pkt. 10c; oz. 50c.

Dark Blue—Annual, long erect spikes of dark blue, beautiful blossoms. Pkt. 10c; oz. 50c.

Bright Carmine—Long erect spikes of fiery carmine flowers, very lovely and effective. Pkt. 10c; oz. 50c.

Apple Blossom—Very attractive spikes in pink blossoms. Pkt. 10c; oz. 50c.

Miss California—Double stock flowered, rich deep pink on salmon ground, very long stems and exceptionally long row of flowers. Pkt. 15c.

Rocket—Mixed colors; very showy. Pkt. 10c; oz. 50c.

Note: None of the Delphiniums or Larkspurs transplant well and are better sown at once where they are intended to remain.

LOBELIA (Erinum)—Lobelia. A very graceful plant with white and blue flowers. Half foot. October till March. Pkt. 10c; ½ oz. 90c.

LUPINS—Few flowers give such a glorious display in the garden as Lupins. They are very prolific bloomers and carry graceful, long-stemmed, pea-shaped flower-spikes in delightful shades of white, rose, and blue. Sow September, October and November. Height 1½ feet.

Mixed—Free flowering, easily grown annual, with long graceful spikes of rich and various colored pea shaped flowers, valuable for mixed borders, beds and for cutting; prefers a little shade. Pkt. 10c; oz. 25c.

White—Same as above but pure white flowers. Pkt. 10c; oz. 30c.

Blue—Same as above but blue flowers. Pkt. 10c; oz. 30c.

Roseus—Rose colored flowers, long stems. Pkt. 15c oz. 50c.

MARIGOLD—These well-known, hardy, free-flowering annuals enjoy a well-deserved popularity. The African group averages 3 feet in height and has uniformly large, densely double flowers in yellow and orange shades. The French type is dwarf in growth, more bushy, and with striped flowers in yellow and bronze shades. Both are excellent for beds and borders and bloom profusely. Sow July to October.

Tagetes Erecta—African or Tall Growing Marigold. Very showy annual for borders with bright yellow flowers. Two and a half feet high. Pkt. 10c; oz. 35c.

Tagetes Patula—French or Dwarf Marigold. Covered with yellow and brown flowers. One and a half feet high. Pkt. 10c; oz. 35c.

Dixie Sunshine—Sensationally new and fascinating, large ball-shaped flowers composed of dozens of tiny five petaled florets, gracefully interlocking, daintily fringed in effect. Brilliant golden yellow. Pkt. 25c.

Tall African All Double Yellow—Exactly the same as the Tall African Marigold in size, but a lovely yellow color. Pkt. 15c; oz. \$1.20.

Tall African All Double Orange—Exactly like the tall African Marigold in size, but a deep orange color. Pkt. 15c; oz. \$1.20.

Guinea Gold—A distinct type growing 2 to 2½ feet tall, brilliant orange flushed with gold, an early blooming sort, loosely ruffled flowers. Pkt. 10c; oz. 60c.

Yellow Supreme—Fluffy well rounded blooms with frilled petals of rich lemon yellow. Unsurpassed as a cut flower. Holds its freshness for a week to 10 days. Vigorous growing and free branching with foliage which is practically free from that objectionable Marigold odor. Pkt. 10c; oz. \$1.00.



Poppies, Shirley



Shasta Daisy



Dianthus

READ SPECIAL OFFER ON PAGE 2.

Modern Garden Beauty

NASTURTIUM—Unequaled for easy culture, brilliancy of blooms, and general excellence. Sow during months of September and October.

Dwarf Mixed—Blossoms red, yellow and salmon, used with leaves as salad. Seed pods white young and succulent picked and used as capers. Pkt. 5c; oz. 10c; ¼ lb. 20c; lb. 60c.

Tall Mixed—Same as above, makes an excellent screen for unsightly places. Pkt. 5c; oz. 10c; ¼ lb. 20c; lb. 60c.

Golden Gleam—A double sweet scented Nasturtium, golden yellow blooms with stiff, long stems. This is a distinct and new variety of Nasturtiums and being offered for the first time. Pkt. 10c; oz. 15c; ¼ lb. 40c.

Double Gleam Hybrids—A wide assortment of colors, sweet scented foliage fresh green. Pkt. 10c; oz. 15c; ¼ lb. 40c.

Double Scarlet Gleam—Flowers are fiery orange scarlet and almost three inches across and are uniformly well formed. Pkt. 15c; oz. 20c; ¼ lb. 50c.

Dwarf Double Golden Globe—A new variety, double yellow. Pkt. 10c; oz. 20c.

HEMOPHILLIA INSIGNIS—Blue. Makes a very effective front row to bed or border, also popular for pots. December to April. Pkt. 10c; oz. 45c.

GIANT PANSY—The exquisite beauty of the Pansies is well known to every lover of flowers. They are dwarf, compact growers with large, conspicuous blooms of velvety texture in an unusual, striking range of colors and combinations. One of the finest plants for beds and borders; also delightful for indoor decoration in low bowls.

Culture: Sow early in protected sandy and well-drained seed-beds. Cover lightly and keep soil uniformly moist. Thin the young seedlings to enable the remainder to get a strong, bushy growth. Transplant 8 inches apart. Grow well in any good rich garden soil but prefer an open sunny location.

Large Trimardeau—Mixed. This is the largest variety in cultivation, the flowers are well formed, generally three-spotted, quite distinct; the plants grow compact. October to March. Pkt. 10c; ½ oz. 80c.

Rogli's Gt.—Mixed. A very early variety of finest and rarest flowers and coloring. Very large blooms and is planted from October to March; grows about 8 inches high. Pkt. 20c.

PANSY PLANTS—Ready October 1.

Giant Swiss Mixed—A super strain with gigantic blooms in unusual rich and beautiful color combinations. Strong plants from seedbed. Postpaid: 100 for \$1.39; 1,000 for \$11.50.

PETUNIA—For freedom of bloom, variety of color and effectiveness, these annuals have no equal. Extremely hardy, unaffected by heat, drought, or rain. Planted extensively for bedding, bordering and give an excellent display in porch and window boxes. Sow from July to October. Height 1 to 2 feet.

Dainty Lady—Single Fringed. An entirely new color in Petunias. A delicate golden yellow color. Plants are compact, semi-dwarf and free. Pkt. 75c.

Hybrida—Mixed. Splendid mixed hybrid varieties. Plants are of spreading habit; about one foot high. Pkt. 10c; oz. 75c.

Rosy Morn—A very pleasing clear pink with a broad white throat. A splendid sort for porch boxes, pots and beds. Grows 1 foot. Pkt. 15c; oz. \$1.85.

Giants of California—Mixed. Very large flower and colors embrace every conceivable shade. Extensively planted. Pkt. 25c.

Theodosia—Enormous single ruffled flowers of a beautiful shade of rose pink, with golden yellow veined center. Very popular. Pkt. 35c.

Rose of Heaven—Rich, brilliant and effective rose color. Pkt. 10c; oz. \$1.75.

Balcony—Mixed. Single large flowering, makes an effective display over a long season. Pkt. 25c; ¼ oz. \$1.00.

PHLOX—These marvelous annuals flourish in all their glory throughout the late summer and fall. The long-stemmed clusters of showy, round flowers are unsurpassed for their wide range of colors and beautiful shades. Particularly attractive in massed beds. Sow July to October.

Perennial Mixed—A mixture from a celebrated collection. Seed slow in germinating. Pkt. 20c.

Drummondii Grandiflora Alba—Pure white, some with purple or violet eyes. Pkt. 10c; oz. \$1.25.

Drummondii—Mixed. Their various colors and length of flowering, with easy culture, make them a favorite with everyone. One foot high. April. Pkt. 10c; oz. \$1.25.

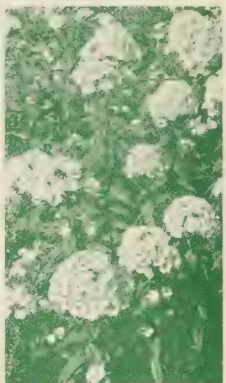
Fiery Scarlet—Easy culture and a favorite. One foot high. Pkt. 15c; ½ oz. \$1.30.

Flesh Pink—Same as above, but a beautiful shade of pink. Pkt. 15c; ½ oz. \$1.30.

Star Mixed—Dwarf-habit, attractive star shaped flowers; a novel variety. Pkt. 10c; oz. \$1.25.



Double African Marigold



Drummondii
Phlox

EXTRAVALUE

4

TEN CENT

PACKAGES

Your Selection

25¢



Snapdragon

WRITE FOR PRICES ON QUANTITY LOTS.

Enjoy Magnificent Sweet



Shirley Temple



Sweet William

PYRETHRUM (Golden Feather)—Ornamental, golden-leaved annuals for borders and edging. Dwarf bushy growers, with finely cut foliage. Sow August to November. Height 1 foot. Pkt. 10c; oz. 50c.

POPPY—Especially desirable for massing in beds.
Rosy Morn—Pink, very showy, single blossoms; annual, 2 to 3 feet high. Pkt. 10c; ½ oz. 40c.

Flanders Field—Very showy. Double red blossoms; annual, 2 to 3 feet high. Pkt. 10c; oz. 45c.

Sonniferum or Carnation Poppy—Double flowering. Different colors; very showy. October till May. Pkt. 10c; oz. 45c.

Shirley—Single Mixed. The range of colors extending from pure white through the most delicate shades of pale pink, rose and carmine to crimson, white edged, shaded and striped. Pkt. 10c; oz. 30c.

Double Shirley Mixed—Mixed. A very fine mixture of white, pink and old rose shades, desirable. Pkt. 10c; oz. 40c.

Double Shirley, Deep Red—Beautiful double satiny flowers of red, extremely popular. Pkt. 10c; oz. 60c.

Double Pink—Beautiful satiny pink blooms, extremely popular. Pkt. 10c; oz. 65c.

California Poppy—Single. A very free flowering plant, good for masses. Does not transplant well. One foot high. Yellow color. Pkt. 10c; oz. 40c.

SALVIA (Scarlet Sage)—Well known decorative bedding plants.

Can be grown as an annual as it flowers freely from seed the first year. Two to three feet high. February to April. Pkt. 10c; oz. \$1.75.

Bonfire—Dazzling scarlet. Dwarf, compact grower. Height 1½ feet. Pkt. 15c; ¼ oz. 60c.

Harbinger—The finest and most striking of all bedding Salvias. The plants are of symmetrical, dwarf, and compact growth and are covered with a blazing scarlet blanket of flowers. Height 1 foot. Pkt. 25c; ¼ oz. \$1.50.

Blue Beard, Blue Bedder—Wonderful, clear, dark blue flowers on long, wiry stems. Plant compact, with closely set branches. Fine for borders. Height 3 feet. Pkt. 15c; ¼ oz. \$1.00.

SOLANUM (Jerusalem Cherry)—Ornamental plant with attractive berries. Useful pot plant for winter decorations. November to February. Pkt. 20c.

STOCKS—By virtue of their delightful fragrance, brilliancy and diversity of colors, profusion and duration of blooms, Stocks deserve a place in every garden. Particularly showy massed in beds. Sow September to November for early spring blooming.

Large-Flowering Ten Weeks—Fine dwarf compact growers. Height 1 foot.

Canary Yellow, Blue Dark, Rose Pink, Scarlet—Pkt. 10c; ¼ oz. 70c; ½ oz. \$1.25.

Mixed Colors—Pkt. 10c; ¼ oz. 25c; ½ oz. 45c.

Double Giant Imperial Bismarck—Early-flowering Stocks of branching habit. Fine cut-flowers. Height 2 feet.

Canary Yellow, Old Rose, Fiery Red, Silvery Lilac—Pkt. 15c; ¼ oz. \$1.00.

Mixed Colors—Pkt. 15c; ¼ oz. 95c.

SWEET PEAS—The range of color, combined with the exquisite beauty of form of the flowers and the gracefulness of the long stems, makes this the most popular of our annual flowers.
Early-Flowering Spencer—These magnificent Sweet Peas are ideal for late fall and winter blooming in the Lower South. Plant during August, September, and October.

	Pkt.	Oz.	¼ lb.	Lb.
Blue Bird—Rich indigo blue.....	.10	\$.30	\$1.00	\$3.60
Columbia—Best Pink and White.....	.10	.30	1.00	3.60
Flamingo—Orange Salmon.....	.10	.30	1.00	3.00
Glitters—Brilliant Cerise.....	.10	.30	1.00	3.60
Heather Bell—Mauve lavender.....	.10	.30	1.00	3.60
Meadow Lark—Cream.....	.10	.30	1.00	3.60
Snowstorm—Pure White.....	.10	.30	1.00	3.60
Zvolanek's Pink—Rich Pink.....	.10	.30	1.00	3.60
Zvolanek's Rose—Rose Pink.....	.10	.30	1.00	3.60
Grenadier—Dazzling Scarlet.....	.10	.45	1.50	4.50
Shirley Temple (New)—Delightful Soft Rose Pink.....	.10	.45	1.50	4.50

Spencer's Extra Early Christmas Flowering Mixed .10 .20 .65 2.00

LATE SPENCER (Orchid-Flowered)—Hardy, vigorous growers, seldom winter-killed in the South. Sow during October and November and they will commence blooming in March.

	Pkt.	Oz.	¼ lb.	Lb.
Avalanche—Glistening White.....	\$.10	\$.15	\$.50	\$1.60
Beauty—Blush Pink.....	.10	.15	.50	1.60
Flaming June—Scarlet Cerise.....	.10	.15	.50	1.50
Magnet—Bright Cream Pink.....	.10	.15	.50	1.50
Scintillant—Rose Cerise.....	.10	.15	.50	1.60
Late Spencer or Orchid-flowered Mixture—Unsurpassed for richness and brilliancy.....	.10	.15	.40	1.25

DESCRIPTIVE CATALOGUE ON REQUEST.

INOCULATE ALL LEGUMES WITH
NITRAGIN
 The Original Legume Inoculator

EXTRA VALUE
4
TEN CENT
PACKAGES
 Your Selection
25¢

Peas in your Flower Garden



Tithonia Speciosa



Zinnias



Vigoro

Inoculate Sweet Peas with Nitragin . . . 10c Garden size will inoculate 1 ounce.

DWARF SWEET PEA MIXTURE—A dwarf grower with large, waved flowers. Very popular bedder. Height 1 foot. Pkt. 10c; oz. 25c; ¼ lb. 90c; lb. \$3.25.

SWEET WILLIAM (Dianthus Barbatus)—Free-flowering, hardy biennial for early spring blooming. It is an upright, branching grower, producing large, round, extremely showy clusters of blooms. Sweetly fragrant. Sow September to November. Height 1½ feet.
Annual Mixed—Pkt. 10c; oz. 75c.

CORENA Fournieri—Lovely blue flowers with three large spots of darkest blue and a bright yellow throat. Blooms during summer and fall and makes fine beds and borders. Pkt. 15c; ¼ oz. \$1.35.

TITHONIA (Mexican Sunflower) (Golden Flower of the Incas)—Large, single flowers, orange vermilion color and especially desirable for planting among shrubbery. February to March. Pkt. 10c; oz. \$1.00.

VIOLA CORNUTA (Tufted Pansies)—Mixed Colors. Produces beautiful, pansy-like blossoms. Ideal for edging or for planting in rock-gardens. Sow August to November. Height 6 inches. Pkt. 15c; ¼ oz. 60c.

MAMMOTH VERBENAS—Free-flowering, graceful annuals of spreading growth, with somber, dark green foliage covered with glorious, large, umbrella-shaped trusses of single flowers in a delightful range of soft and brilliant colors. Magnificent bedding plants. Sow July to October. Height 1 foot.

White—Pure white verbenas of more or less fragrance. One and a half feet high. Pkt. 10c; oz. \$1.00.

Hybrida—Hybridized Verbena. Their long flowering and great diversity of color makes them valuable for every garden however small. All colors mixed. One and a half feet high. Pkt. 10c; oz. 75c.

Scarlet—Brilliant scarlet-red flowers of great size, flowers freely during summer. Pkt. 10c; oz. \$1.00.

Striped Italian—These are beautiful striped kinds of colors with large eyes. Pkt. 10c; oz. 90c.

Beauty of Oxford Hybrids—Colors shade from clear rose pink to rose red. Bright and Vivid. Pkt. 20c; ¼ oz. \$1.25.

VINCA—Free-flowering bedding plants of sturdy, bushy growth, with luxuriant, dark green, glossy leaves and large, single, round, five-petaled flowers in pink and white shades. Sow July to August. Height 2 feet.

Pure White—Pkt. 10c; oz. 90c.

Rosea—Rose Pink—Pkt. 10c; oz. 90c.

Mixed—Pkt. 10c; oz. 90c.

ZINNIAS—Zinnias, in varied forms and colors, today claim a prominent place among the preferred annual garden flowers. For fall blooming, sow during July, August and September. In 6 to 7 weeks the plants will begin to bloom; the flowers increase in size and beauty of color as the plants mature. They delight in a sunny location provided with rich soil and abundant moisture.

Giant Dahlia-flowered—Resemble the decorative dahlia because of their unusual depth, open and graceful growth, and curled petals.

Canary Bird—Primrose-yellow.

Crimson Monarch—Crimson-red.

Dream—Distinct deep lavender.

Exquisite—Light rose, darker center.

Oriole—Bright orange and gold.

Polar Bear—Large; pure white.

Prices on above: Pkt. 10c; ½ oz. 65c; oz. \$1.10.

Mixed—A very fine Dahlia-like flower, double, of finest blooms. Pkt. 10c; ½ oz. 60c; oz. \$1.00.

California Giants—The enormous flowers are flat and of symmetrical form.

Orange King—Orange scarlet.

Rose Queen—Striking bright rose.

Scarlet Gem—Deep scarlet.

Orange Queen—Golden orange.

Purity—Best white.

Prices on above: Pkt. 10c; ½ oz. 50c; oz. 90c.

California Giants Mixture—Every color available is represented. Pkt. 10c; ½ oz. 45c; oz. 80c.

Lilliput Zinnias—Elegant, small-flowering type with attractive, round, almost globular-shaped blooms resembling the pompon dahlias. Very prolific bloomer.

Canary—Yellow.

Scarlet Gem—Deep scarlet.

Orange—Golden Orange.

Pink—Deep flesh pink.

Prices on above: Pkt. 10c; ½ oz. 60c; oz. \$1.10.

Mixed Colors—Pkt. 10c; ¼ oz. 30c; ½ oz. 50c.

Fantasy Finest Mixed—Delicate lacy petaled flowers, rounded, medium sized with a wide range of beautiful colors, a really beautiful variety. Pkt. 25c.

Create Outdoor Beauty for

AMARYLLIS (Giant-Flowered)—New Hybrids. See illustration.) This selection of giant bloomers in wonderfully varied and brilliant colorings has been made from thousands of seedlings produced from hand hybridized flowers by an expert grower. This giant flowered strain is a mixture with the colors ranging from the darkest red through striped and light shades. Each 35c; 12 for \$3.50, postpaid.

CALLA LILIES—Highly decorative pot-plants with large, showy, funnel-shaped flowers.

Godfrey's Everblooming—Best pearl-white Calla Lily for amateurs. It is easily grown, and blooms most prolifically. Strong roots. Each 20c; 6 for 95c; 12 for \$1.70; 100 for \$12.00, postpaid.

Elliotiana—Extremely showy, with large, lustrous, golden yellow flowers, contrasting beautifully with the dark green leaves profusely spotted silvery white. Each 27c; 6 for \$1.45; 12 for \$2.65, postpaid.

CHINESE SACRED LILY (Joss Flower or Flower of the Gods)—Valued for its abundance of bloom and marvelously rapid growth. The flowers are white with a yellow cup in the center and very fragrant. Each 10c; 6 for 45c; dozen, 85c.

CREOLE EASTER LILY—This majestic and charming Lily is a product of Louisiana, and is the finest of all Easter Lilies. It is a strong grower, with extra-heavy stems and attractive, dark green foliage. The gigantic, pure white flowers are of unusually heavy texture. Bulbs may be planted during the months of October, November and December. Well-grown plants produce 15 to 20 snowy white blooms to the stalk. Large bulbs: Each 15c; 6 for 85c; 12 for \$1.60; 100 for \$12.00.

Mammoth bulbs: Each 20c; 6 for \$1.00; 12 for \$1.85; 100 for \$14.00.

CROCUS—Our mixtures are made of good sized bulbs of named sorts and are very satisfactory for outdoor planting and excellent for rock gardens.

Blue and Purple Mixture—35c doz., \$2.75 per 100.

All White—35c doz., \$2.75 per 100.

Striped Mixture—35c doz., \$2.75 per 100.

Mixed, all colors—35c doz., \$2.50 per 100.

HYACINTHS—The brightest spring flowers! Their beauty, fragrance, and adaptability to many kinds of culture have established them as prime favorites. They succeed well in the house and garden, adorning both with the brilliant colors and delicious fragrance of their showy flowers.

Culture. Hyacinth bulbs do best in a rich, light, sandy loam with proper drainage. We advise against the use of fresh manure. November and December are our most successful planting months. For outdoor planting, set bulbs 6 to 8 inches apart each way. Cover with 4 inches of soil. Hyacinths are also fine for growing indoors during the winter in pots or pans or in special glasses filled with water.

Dutch Hyacinths

	Each	Postpaid		
		6	12	100
LaVictoria—Bright red	.10	\$.55	\$1.00	\$8.00
Gertrude—Rosy pink	.10	.55	1.00	8.00
Queen of the Blues—Light blue	.10	.55	1.00	8.00
Grand Maitre—Dark blue	.10	.55	1.00	8.00
Sir William Mansfield—Purple	.10	.55	1.00	8.00
City of Haarlem—Canary Yellow	.10	.55	1.00	8.00

Roman Hyacinths

White—Pure white	.10	.50	.95
Rose—Light rose	.10	.50	.95
Red—Deep red	.10	.50	.95
Blue—Lovely blue	.10	.50	.95

FREESIAS—Beautiful clusters of fragrant white flowers, popular for pot culture, flowering in winter and spring. Readily forced. Plant four to six in a pot, giving plenty of water and cool location.

	6	12	100
Purity Refracta—Pure white	\$.20	\$.35	\$2.25
Rainbow Mixed—Lovely mixture	.25	.40	2.80

GRAPE HYACINTHS—Charming dwarf plants producing hyacinth-like heads of droopy bell-shaped flowers. Do well in any garden soil with proper drainage. Admirably adapted for naturalizing.

Heavenly Blue—Largest and finest blue. 6 for 15c; 12 for 25c; 100 for \$1.75.

IRIS—There is no trick to growing Iris. They do extremely well in any location, whether it be in full sun or semi-shade, and do well in any garden soil, and do not need any amount of attention.

Spanish Iris

		Postpaid		
		6	12	100
Cajamus—Canary yellow	\$.25	\$.35	\$.60	\$4.50
King of Blues—Purple blue	.25	.35	.50	3.00
Prince Henry—Bronze	.25	.35	.50	3.00
British Queen—White	.25	.35	.50	3.00

Bone Meal best fertilizer for bulbs.



Amaryllis



Freesia



Hyacinths

our Home Plant Bulbs

Beautiful German Iris

	3	6	12
Ambassadeur —Lavender, falls purple.....	\$.25	\$.40	\$.75
Gold Imperial —Chrome yellow.....	.25	.40	.75
Mother of Pearl —Blush Lavender.....	.25	.40	.75
Opera —Reddish purple, falls violet.....	.25	.40	.75
Souv. de Mme Gaudichaux —Large rich velvety purple30	.50	.90
Susan Bliss —Deep rose pink.....	.25	.40	.75
White Knight —Pure white.....	.25	.40	.75

Collection of 3 of above 7 varieties—21 in all—for \$1.25

JONQUILS—Highly prized for their delightful fragrance. Splendidly adapted for planting borders and for naturalizing.

	1	6	12	100
Single —Sweet scented rich yellow..	\$.08	\$.40	\$.60	\$4.50
Double —Rich yellow fragrant.....	.08	.40	.60	4.50

LILIUM CANDIDUM (Madonna Lily)—Popular old fashioned lilies with waxy white petals and heavy yellow stamens. Delightfully fragrant. Prefer sandy soil and sunny location. Each 25c; 6 for \$1.30; 12 for \$2.40.

NARCISSUS—The cheerful, bright blooms of the Daffodils or Narcissus will greet you with joy this spring. They are easily grown. Excellent for outdoors, for early spring beds, borders, and lawn, or for naturalized plots. Do well in pots or boxes in the house during the winter. Their graceful form, beautifully shaped trumpets and cups, and the long, straight stems have made them favorites for cut-flowers.

Culture. For outdoors, plant 6 to 8 inches apart at a depth of 4 to 5 inches, in deep, well-worked soil. If your soil needs enrichment. Bonemeal is an excellent and safe fertilizer to use. For home-decoration, plant three or four bulbs in each pot. They should be well watered and stored in a cool, dark place for several weeks while developing root-growth.

	1	6	12	100
Emperor —Primrose perianth, rich full yellow trumpet.....	\$.06	\$.35	\$.60	\$4.35
Empress (bicolor) — Perianth white, trumpet rich yellow.....	.06	.35	.60	4.35

Paper Whites—Pure white, fragrant beautifully formed flowers..

King Alfred —Golden yellow peri- anth and trumped, fringed.....	.10	.55	1.00	7.35
Grand Soleil d'Or —Yellow paper white10	.55	1.00	7.35

RANUNCULUS—Dwarf spring flowers deserving more extensive use. The blooms are fully double and appear in many bright colors and combinations.

	1	6	12	100
Mixed —All colors	\$.05	\$.25	\$.45	\$3.10

SNOWDROPS (Galanthus)—Everybody knows the Snowdrop, with its little white bells coming through the snow very early in the Spring. Especially attractive if planted with Scilla. Height five inches.

Pure White20	.35	1.00	\$2.00
-------------------------	-----	-----	------	--------

DARWIN TULIPS—Combine immense size with perfection of bloom. The beautifully outlined, deep, cup-shaped flowers, with petals of unusually heavy substance, are carried on stiff, erect stems, 2 or more feet high.

Culture. In the South, Tulips should not be planted until November or December, when the weather and soil are more uniformly cool.

Plant 5 to 6 inches deep, .6 inches apart. Use bonemeal as a fertilizer, two to three handfuls to a square yard, thoroughly mixed with the soil.

	3	6	12	100
Blue Aimable —Bright violet purple shaded steel blue, large.....	\$.20	\$.30	\$.50	\$3.10
Clara Butt —Salmon rosy pink.....	.20	.30	.50	3.10
Farncombe Sanders — Fiery rose scarlet with white center.....	.20	.30	.50	3.10
Pride of Haarlem —Bright rose, suffused with purple, large.....	.20	.30	.50	3.10
Prince of Netherlands —Cerise scar- let flushed salmon rose, extra large20	.30	.50	3.10
Darwin Mixed — Large blooms, superb mixture15	.25	.45	2.50

ZEPHRANTHES (Fairly or Rain Lilies)—Delightful small plants with long narrow foliage and pretty lily shaped flowers. They grow easily and in any location, but should be given plenty of water. Highly prized for edging.

	6	12	100
Ajax —Pale Yellow	\$.35	\$.65	\$5.00
White —Pure White35	.60	4.00
Pink —Beautiful Rose Pink.....	.35	.60	4.00

Pearl colored chips for growing bulbs, 20c lb.



Ambassadeur



King Alfred



Paper Whites



Tulips

Beauty of Roses Enhances Any Garden



Maman Cochet



Sunburst



Talisman



Radiance

Your choice of any varieties of Roses
39c Each
3 for \$1.00
Postpaid.

Growing the Queen of Flowers for pleasure alone, or for others, is a hobby fit for a King. Those who ride this hobby most successfully have found that to court success with Roses one must get good plants to start with and we strive to merit the approval of the most particular people to give the best Roses that can be grown. Strong two year old plants. The difference in results over other stock is much greater than the slight difference in cost. Many successful amateurs give credit to Steckler's Roses for the prizes they win.

BUSH VARIETIES

WHITE HARDY GARDEN ROSES

KAISERIN AUGUSTA VICTORIA (H. T.)—Pure white, with shadings of primrose-yellow.

WHITE MAMAN COCHET—A sport from Maman Cochet, with creamy-white flowers faintly tinged with blush.

YELLOW HARDY GARDEN ROSES

SUNBURST—The color is orange-copper or golden-orange and golden-yellow; edge of petals lighter, all intense shades, extremely brilliant in effect. It is the yellowest of all Roses in the everblooming class.

ALEXANDER HILL GRAY (T.)—Pale, lemon-yellow, deepening in the center of its perfectly formed fragrant flower. Moderate growth and bloom. One of the hardiest and most beautiful Tea Roses; best in autumn.

LADY HILLINGDON (T.)—Buds of remarkable quality and elegance, of good size, opening into handsome flowers of clear apricot yellow. Plant relatively hardy, of much vigor, and with an autumn-blooming habit.

PINK HARDY GARDEN ROSES

RADIANCE (H. T.)—Brilliant rose-pink buds, opening to well-formed shining flowers with lighter tints on the reverse of the petals; globular in shape and very fragrant. The plant makes splendid growth, has wonderful blooming qualities.

MRS. CHARLES BELL—It may be described as a shell-pink Radiance, and is a sport of that well-known Rose. It has no characteristics which make it distinct from Radiance except that it is shell pink.

MAMAN COCHET—This is the famous Pink Cochet. Light pink shaded with salmon-yellow, outer petals splashed with bright rose; extremely large and full.

ANTOINE RIVOIRE (H. T.)—Called by the trade Mrs. Taft. Rosy-flesh on yellow ground.

BRIARCLIFF (H. T.)—Bud one-third longer than Columbia, very large, long pointed flower $4\frac{1}{2}$ inches across, high center, lasting, moderate fragrance, deep rose-pink at center, passing to lighter on outer petals.

RED HARDY GARDEN ROSES

GRUSS AN TEPLITZ (H. T.)—Bright crimson, fiery-red center cup-shaped; semi-double; flowers in clusters; so free in bloom as to present a blaze of scarlet.

FRANCIS SCOTT KEY—Giant, wonderfully shaped, extremely double flowers of brilliant crimson. Especially fine in dry seasons and late in autumn.

RED RADIANCE (H. T.)—An even better Rose than its parent, Radiance, in habit, bearing big, globular flowers of deep rose-red on strong, individual canes which are freely produced all summer until frost.

E. G. HILL (H. T.)—A new Red Rose, originated by Mr. E. G. Hill. Color is a dazzling scarlet shading to deeper red. Originator claims it never turns purple. Undoubtedly a fine new red rose.

ETOILE DE FRANCE (H. T.)—Color a lovely shade of clear, red-crimson velvet; very fragrant.

TEMPLAR (H. T.)—Bud medium size; flower medium size double globular, very lasting. Vigorous, abundant and continuous bloomer. A new forcing Rose which is making its way into the garden. Clear bright red, of exceedingly double form and with fine strong stems. Few thorns. Perfumed.

AMERICAN BEAUTY—The well-known red forcing Rose

Test your soil for acidity.

Roses Over the Garden Wall

HARDY CLIMBING ROSES

CLIMBING AMERICAN BEAUTY (H. W.)—Same color, size and fragrance as American Beauty, with the addition of the climbing habit. Good foliage and better blooming qualities.

DR. W. VAN FLEET (H. W.)—Flowers when open run four inches and over in diameter. The center is built high, petals beautifully undulated and cupped. The color is a remarkable delicate shade of flesh-pink on the outer surface, deepening to rosy-flesh in the center.

MARECHAL NIEL (N.)—This is the old standby yellow Rose in the South, where it is hardy; indeed it will bloom in any garden. Immense deep golden-yellow flowers with the deepest, richest tea fragrance of all Roses.

PAUL'S SCARLET CLIMBER (H. W.)—Vivid scarlet, shaded crimson, makes a brilliant display for a long period of time in the garden. A wonderful climbing Rose.

CLIMBING RED RADIANCE (Cl. H. T.)—Exactly like the bush variety of the same name except that it is of climbing habit.

CLIMBING WHITE AMERICAN BEAUTY (H. W.)—A hardy disease-resistant variety; vigorous growth and great freedom of bloom.

TRI-COLORED ROSES (Bush)

PRESIDENT HOOVER (H. T.)—The Rose of wonderful colors. It is remarkable for its vigorous growth and beautiful colorings. A blend of orange and pink, varying in tone from coppery-red in the bud, to glowing orange-yellow at the base of the petals, suffused with vivid rose pink.

TALISMAN—It is a combination of shadings of gold, apricot, yellow, deep pink and old rose. The bud is long, well formed and develops into full double flowers. The plant is a strong grower, with glossy green foliage and free flowering.



Paul's Scarlet Climber

FERTILIZERS AND PLANT FOODS

VIGORO—A complete plant food. Recommended highly for lawns, gardens, flowers, shrubbery, and trees. Clean, odorless, and easy to apply. 5 lbs. 45c; 10 lbs. 85c; 25 lbs. \$1.50; 50 lbs. \$2.50. Quantity prices freight paid: 100 lbs. \$4.00; 2,000 lbs. (ton) \$80.00.

SHEEP MANURE (Wizard Brand)—Pulverized. Natural concentrated weedless manure. Supplies humus and plant-food to the soil. 2 lbs. 19c; 5 lbs. 35c; 10 lbs. 50c; 25 lbs. 80c; 50 lbs. \$1.25; 100 lbs. \$2.25; 500 lbs. \$10.95; 2000 lbs. (ton) \$43.50.

SULPHATE OF AMMONIA—Used extensively to make soils avid and used as a top dressing for lawns after being mixed thoroughly with sand and soil. 5 lbs. 50c; 10 lbs. 75c; 25 lbs. \$1.25; 50 lbs. \$1.50; 100 lbs. \$2.25.

MANGANESE SULPHATE—1 lb. 25c; 10 lbs. \$2.00, not prepaid.

NITRATE OF SODA—Provides nitrogen in a form that is immediately available to plants. For forcing vegetables, flowers, fruit, etc. Use with care. 500 lbs. per acre. For liquid fertilizer use one ounce to a gallon of water. 10 lbs. 50c; 25 lbs. \$1.00; 50 lbs. \$1.50; 100 lbs. \$2.50.

COTTON SEED MEAL—Used principally for truck farms and lawns. Rich in nitrogen and potash. 10 lbs. 50c; 25 lbs. \$1.00, not prepaid.

STECKLER'S LAWN AND GARDEN FERTILIZER—A very fine general fertilizer for strawberries, vegetables, flowers, etc. 10 lbs. 50c; 25 lbs. \$1.00; 50 lbs. \$1.50; 100 lbs. \$2.50.

ACID PHOSPHATE 16%—Beneficial to all crops. Apply 300 to 500 lbs. per acre. 10 lbs. 30c; 25 lbs. 50c; 50 lbs. 95c; 100 lbs. \$1.75.

ALUMINUM SULPHATE—Used to change your soil to acid reaction and broadcasted over surface at rate of 1 to 2 pounds to each square yard of ground. Use Aluminum Sulphate for Azaleas to make them beautiful. 1 lb. 10c; 25 lbs. \$1.00; 50 lbs. \$1.50; 100 lbs. \$2.50.

STIMUPLANT
Makes a
WONDER GARDEN

Small size (30 tablets).....\$.25 Postpaid.
Medium size (100 tablets)..... .75 Postpaid.
Large size (1000 tablets)..... 3.50 Postpaid.

PEAT MOSS—You, too, can have a beautiful lawn and garden if you use Emblem Protected Peat Moss, nature's finest soil conditioner. This miracle maker of humus puts millions of tiny soil sponges to work, providing soft, loose, fertile soil that allows air circulation and the penetration of the sun's rays. It stores plant food that would otherwise be washed away and wasted. 20 bu. bale \$2.25; 10 bale lots at \$2.10 per bale.

Two Grades.

SERVALL

Coarse and Fine.

Mulch instead of cultivate. Save labor, save watering, save money. SERVALL fertilizes the soil, does not clog the cultivating tools, insures your garden against droughts of summer and freezes of winter. Makes dry sandy soil hold water and fertilizer like a sponge, loosens tough clay soil. Does not burn. Use Servall—sturdier plants—more flowers. 100 lb. bale \$1.00; 5 bales \$4.50.

Lamotte Soil Testers, \$2.25, postpaid.



STECKLER'S INSECTICIDES ARE THE BEST

ACME GARDEN GUARD—A garden insecticide and fungicide for use as a dust. No water, no mixing, no muss.

For use on cabbage, cauliflower, tomato plants, melon vines, currants and gooseberries and other vegetables, flowers and shrubs of many kinds. Price: 1 lb. sifter-carton 40c; 4 lb. bag 95c.

ACME PARIS GREEN—A rich, emerald color and of fine, fluffy physical character. Containing 55% arsenious oxide, it will give quickest control where extreme measures are necessary.

For use on potatoes, cotton, tobacco, also to mix with Arsenate of Lead for fruit tree spraying where quick results are necessary. Price: ¼ lb. 25c; 1 lb. 50c; 5 lbs. \$2.00.

ACME ALL-ROUND SPRAY—Acme All-Round Spray was made principally for people unfamiliar with insect problems. This spray will give complete protection for shrubs, flowers, vegetable gardens and roses. It contains nicotine sulphate 40% for controlling sucking insects; Arsenate of Lead to destroy chewing insects and Bordeaux Mixture to prevent blight and fungous diseases. ¼ lb. carton 40c; 1 lb. carton \$1.00, not prepaid.

ACME APHIS SPRAY—An improved nicotine spray combining a soft fish oil soap with Black Leaf 40, suitable for the control of all kinds of aphids (plant lice), thrip, leaf hopper and many more hardy insects infesting rose bushes, flowers, shrubs, vines, bushes and trees. Mixes easily with any kind of water. Complete directions found with every package. Price: 3 oz. collapsible tube 35c.



BLACK LEAF "40"—Excellent for killing plant lice. 1 oz. bottle 35c; 5 oz. bottle \$1.00; 1 lb. \$2.25; 2 lbs. \$3.25; 5 lbs. \$5.85; 10 lbs. \$10.60.

RED ARROW GARDEN SPRAY—Kills many varieties of both sucking and chewing insects on vegetables, flowers, fruits. Red Arrow is a highly concentrated pyrethrum extract, containing soap. Non-poisonous. Use as directed. Will not injure foliage. Oz. 35c; 5 oz. \$1.00.

APHINE—Spray for green, black and white fly, red spider, thrip, mealy bug, white and brown scale. Prices: 25c per ¼ pint; 40c per ½ pint; 65c per pint; \$1.00 per quart; \$3.00 per gallon, not mailable.

ACME LIME SULPHUR—A standard 33° Beaume lime and sulphur converted into a dry powder but having all the effectiveness of the liquid product when dissolved in water.

For use in dormant spraying against scale, peach blight, leaf curl and twig borer. Summer spraying against scab, soot, blotch, red spider and mite. Mailable. Price: 35c lb.; 5 lbs. \$1.50.

DUSTING SULPHUR—10c per lb.; 3 lbs. for 25c. Write for prices on larger quantities.

NEW EVERGREEN SPRAY—New, simplified insect control—kills both chewing and sucking insects. Deadly pyrethrum content; harmless to plants, men, and animals. Easy to use. Leaves no poisonous residue. Oz. 35c; 6 ozs. \$1.00; 16 ozs. \$2.00; gal. \$11.00, postpaid. Freight paid, 5 gals. \$45.00.

ELECTRIC SPRAY, WETTABLE SULPHUR—Rust mite, red spiders, black spots and fungous diseases. Full directions on package. 4 lb. pkg. 60c, postpaid.

ACME BAIT-M—An effective insecticide bait which will throw a ring of protection around shrubs, flowers and plants in garden and lawn.

For use against snails, cutworms, sowbugs, grasshoppers, and many other insects which migrate along the ground. Price: 1 lb. 40c; 3 lbs. 85c, not prepaid.

ACME ARSENATE OF LEAD—The most favored arsenical insecticide found on the American market. It is safest to use on tender foliage and sticks well on the leaves. Recommended for fruit trees, vegetables, bushes and tobacco. Can be used as dust or spray. Price: ½ lb. 20c; 1 lb. 35c; 4 lbs. 85c.

ACME BORDEAUX MIXTURE—Prevents large losses caused by blight, rot, mildew, scab, anthracnose and certain other fungous diseases. It stimulates plant growth and greatly increases the harvest. Almost every kind of vegetable, fruit and shrub can be greatly improved by the early use of Bordeaux Mixture. Price: 1 lb. 35c; 4 lbs. 85c.

FISH OIL SOAP—Destroys lice on house plants, mealy bugs, scale on palms and San Jose scale. Lb. 40c; 5 lbs. \$1.50, not prepaid.

TOBACCO DUST—If dusted on the foliage it destroys rose lice, cabbage and turnip fleas. Lb. 20c; 2 lbs. 35c; 10 lbs. \$1.25; 50 lbs. \$2.00, not prepaid.

TOBACCO STEMS—Boil down to strong solution or strew around plant root for leaf eating insects, aphids, etc. Prices: 25c per lb., postpaid; \$2.50 per bale (about 100 lbs.), not prepaid.

CALCIUM ARSENATE—Used for boll weevil in cotton. ½ lb. 15c; 1 lb. 25c; 4 lbs. 55c, postpaid; 100 lbs. \$10.50, not prepaid.

VOLCK—Recommended for plants of all kinds for the destruction of scale insects. White fly, red spider, and other insects. Highly recommended for insects on citrus fruits of all kinds. Prices: ½ pint, 35c; quart 80c; gallon \$2.00, not mailable.

HAMMOND'S SLUG SHOT—Destroys bugs, insects and worms. Prices: 35c per lb.; \$1.00 per 5 lbs., postpaid; \$1.75 per 10 lbs.; \$4.00 per 25 lbs.; \$7.50 per 50 lbs., not prepaid. Slug shot dusters, ½ gallon, 60c, postpaid.

POMO-GREEN with Nicotine—Control diseases, leaf eating insects, aphid, etc., with one material. This can be either dusted or sprayed on. 1 lb. can 75c, postpaid; 5 lbs. \$3.00.

SNAROL—An insecticide bait to combat snails, cutworms, sow bugs and grasshoppers. Price: 1½ lbs. 35c; 4 lbs. 85c.

INSECT-O-GUN—The Ideal Sprayer

By simply using the water pressure in a garden hose you can now effectively spray your flowers, shrubs, and trees with the same efficient results secured by power spraying methods. The Insect-O-Gun is strongly built of heavy, durable, non-rusting die metal, and will last a lifetime. Any standard pint mason jar can be used with the unit. Boxed completely, including jar and full instructions ready to attach to garden hose for instant use. 3 gal. cap. \$3.75; 6 gal. cap. \$4.75, not prepaid.

When purchasing Azaleas and Camellias, write for our prices.



A FEW OF OUR GARDEN SUPPLIES

Descriptive Catalogue on Request

BROWN'S OPEN HED—

New type, compressed air sprayer with electrically welded tank. New simplified cam locking device and large open head for easy filling and cleaning. Completely equipped with 20-inch extension rod and new swivel non-clog nozzle. 4 Gallon Tank: Galvanized, \$5.60; 3 Gallon Tank: Galvanized \$4.50, postpaid.

BROWN'S CRYSTAL DUSTER—

Glass jar container. Capacity, 1 quart. Large discharge tube and fan-shaped spreader nozzle, \$1.25 postpaid.

MAJOR—Excellent hand duster equipped with two 12-inch extensions. Especially efficient. \$1.25 postpaid.



JUNIOR PERFECTION—A strongly constructed compressed-air sprayer of smaller size (capacity 2½ gallons). Ideal for the home garden. Complete with 12-inch extension. Copper tank, \$6.85; galvanized tank, \$4.50, postpaid.

HUDSON CONTINUOUS SPRAYER—75c, postpaid.

HUDSON MISTY SPRAYER—Universal favorite for use about house, garden, yard, poultry house, etc. Equipped with drip cup and guard. Quart tank. Prices: 45c each postpaid.

HUDSON MIDGET SPRAYER—¾ pint. Pump passes through tank, insuring rigidity. A very popular number. Price: 30c each postpaid.

CADET—A favored small duster for household use. 60c postpaid.



INOCULATOR PRICES

When Ordering, Always Specify Name of Seed

Alfalfa, all Clovers

Size	Retail
½ bu. ea.	\$.35
1 bu. ea.60
2½ bu. ea.	1.25

Vetch, Austrian Peas, Canadian Peas, Beans

Size	Retail
½ bu. ea.	\$.30
1 bu. ea.45
*1½ bu. ea.70
5 bu. ea.	\$2.00
**"100 lb. size." Packed only for Vetch and Peas.	

LESPEDEZA Unhulled or Hulled

Size	Retail
1 bu. ea.	\$.35
2 bu. ea.60
5 bu. ea.	1.25

Soy Beans, Cow Peas, Lima Beans

Size	Retail
1 bu. ea.	\$.35
2 bu. ea.60
5 bu. ea.	1.25
10 bu. ea.	2.00
*25 bu. ea.	3.75
**"25 bu. size." Packed only for Soy Beans, Cow Peas.	

Garden Size **NITRAGIN** for Garden Peas, Beans, Sweet Peas, Lima Beans and Lupines
Inoculates from 1 oz. to 8 lbs. seed.
Retail Price. 25c each



RAFFIA—Its principal use is for tying vines, flowers, asparagus and celery bunches and for grafting. Natural color is a light straw. 1 lb. 40c; 5 lbs. \$1.75, postpaid. 10 lb. lots and over at 30c, not postpaid.

National Eezy Wear Garden Gloves



All leather, dirt proof, for men and women. Per pair, 75c.



SHEARS

German No. 84, 8 in., postpaid.....	\$2.50
Ladies No. 81, 6 in., postpaid.....	2.10
Wiss No. 209, 9 in., postpaid.....	1.75
Wiss No. 109, 9 in., postpaid.....	3.30
Wiss No. 309, 9 in., postpaid.....	2.50
Wiss Orange Clippers, No. C1, postpaid	1.35
Water's Tree Pruner, 8 ft., not postp'd	3.50
Water's Tree Pruner, 10 ft., not postp'd	4.00
Hedge Shears, 8 in., not postpaid.....	3.00
Hedge Shears, 10 in., not postpaid.....	4.00

SEEDERS

CYCLONE—Easily adjusted. Sows any seed. \$2.25 postpaid.

CAHOON—For broadcasting alfalfa, grains, etc. Bag and hopper holds about 22 quarts of seed. \$4.65 postpaid.

Steckler's Day Old Chicks



We guarantee 100 per cent live chicks. We can furnish most all breeds. Write for prices. Last season we sold over 150,000 chicks to satisfied customers.



"DOGZOFF"

If you are bothered with dogs, cats or rabbits, "Dogzoff" is the spray you need. It is a most efficient animal repellent and one spraying will last from three to four weeks. Not poisonous to plants and will not injure animals. Not offensive to humans. Its use is guaranteed to keep these animals from any place where they are not wanted.

"Dogzoff" is applied with any small insect sprayer and one application does the work. "Dogzoff" will save its cost many times over around the garden and home. Season's supply, 60c postpaid.

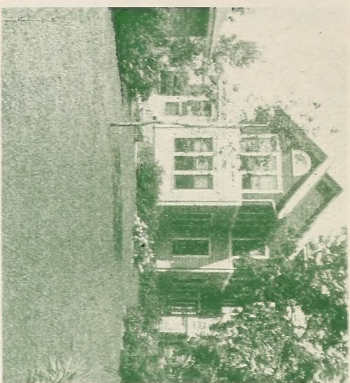
PEERLESS GLAZING POINT—The most durable, reliable and cheapest in the market. Made of steel wire, two points, they never bend in the middle when driven or work out by wear. Sold in boxes of 1,000 which will glaze 500 lights of glass. \$1.00 per 1,000, postpaid.

We carry a full line of Poultry Supplies. Write for prices, stating your needs.

Large handlers of Pets and Pet Supplies.

Wallace-Homestead Company, Horticultural Printers, Des Moines, Iowa

STECKLER SEED COMPANY, Inc.
512 Gravier St.
New Orleans, La.



The Lawn

**INSIST UPON STECKLER'S
WINTER LAWN GRASS**

A good lawn is unquestionably the most beautiful and valuable feature of the home grounds. Nothing can impart the same density or appearance of refinement than a well-made and well-kept lawn. It also increases the value of the property. It should be borne in mind when making a lawn, that the cost of the seed represents a lawn, that the best seed should be purchased at all times in order to have the best appearing lawn.

We are one of the largest handlers of Italian Winter Rye Grass seed in the South. Planted October to February, one pound to 100 square feet. We shall be glad to give you the correct amount of seed needed if you will give us the dimensions of your lawn.

ITALIAN RYE GRASS—Lb. 25c; 5 lbs., 75c; postpaid. 10 lbs., 80c; 25 lbs., \$1.60; 100 lbs., \$5.50.

HOW TO PLANT A WINTER LAWN

Mow the summer grass closely, then broadcast the winter grass evenly over the surface covering from $\frac{1}{2}$ to 1 inch with a soil mixture and keep moist. We recommend a soil mixed with fine Peat Moss and Vigoro—it is weed free.

BETTER SEED MEANS BETTER GARDENS

Sec. 562, P. L. & R.

U. S. Postage

PAID

New Orleans, La.

Permit No. 157

Miss Newman

U. S. Dept. of Agri.,
Bureau of Plant Industry,
Washington, D. C.