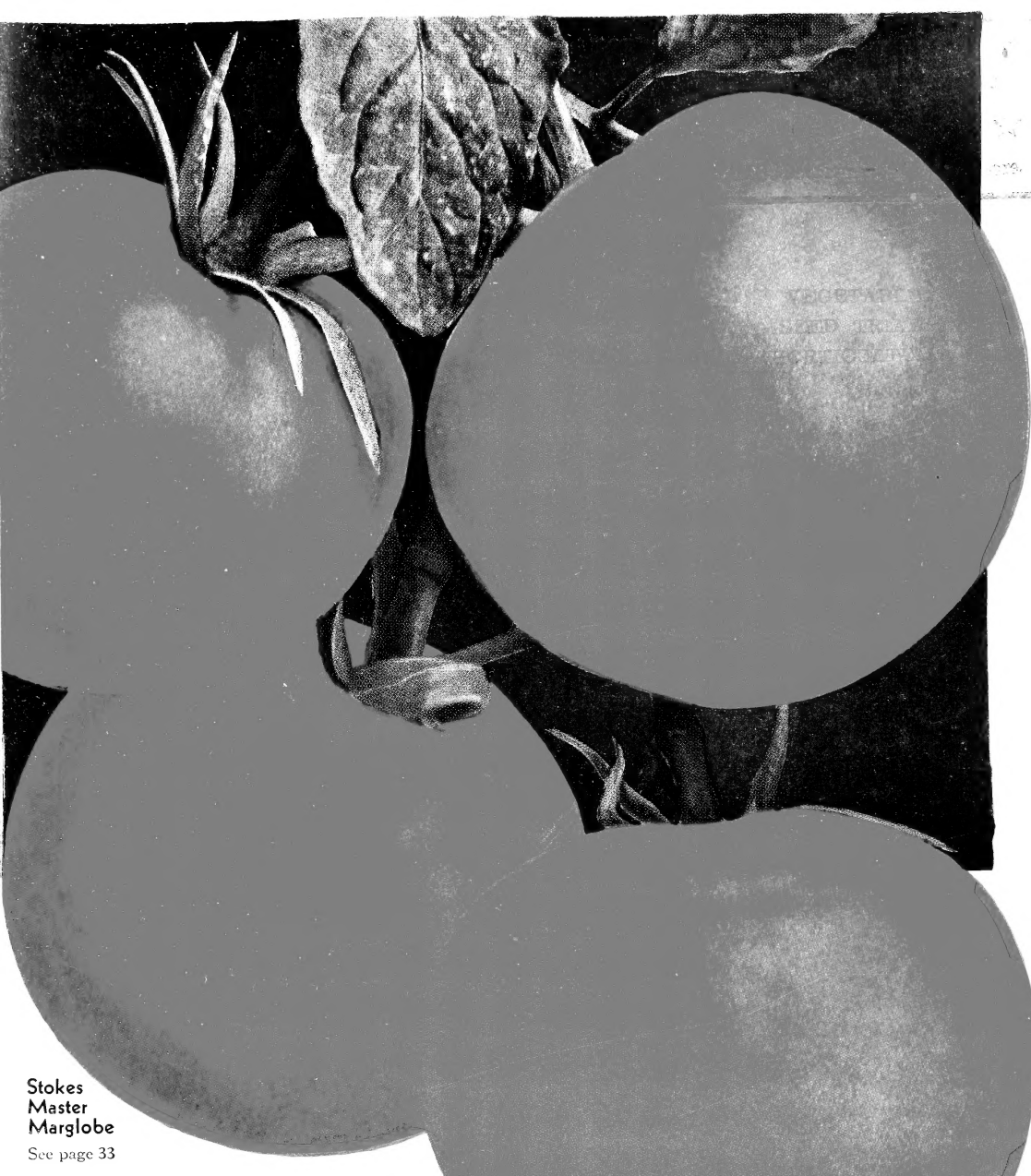


Historic, archived document

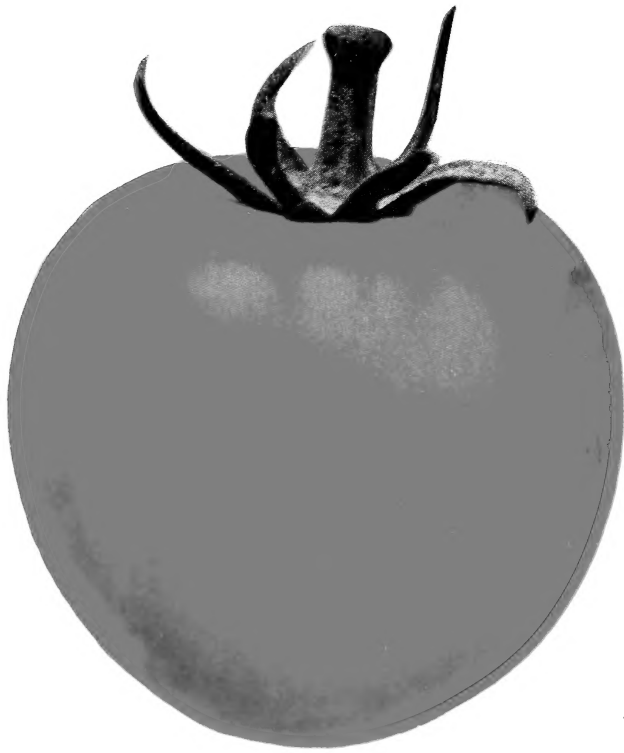
Do not assume content reflects current scientific knowledge, policies, or practices



Stokes
Master
Marglobe
See page 33

STOKES
SEEDS
for Quality

◆ 1935 ◆



GREENHOUSE MASTER MARGLOBE

(Forcing Strain)

ONE of the important requirements of a greenhouse Tomato is that it should not be too large. When the housewife pays 25 cents a pound for Tomatoes she instinctively wants her purchase to go as far as possible. If she can get three or four Tomatoes for her 25 cents she feels well repaid. She will feel especially well repaid if she purchases a highly flavored, fully ripened, and absolutely coreless Tomato.

Greenhouse Master Marglobe is the result of several years' selection, and the seed we offer has been grown and saved at our Moorestown Proving-Grounds. We look on it as one of the most dependable and most uniform stocks for production under glass that have ever been offered. We

are confident that with proper cultural care this Tomato will yield a large and profitable crop.

Greenhouse Master Marglobe will average $5\frac{1}{2}$ ounces in weight. It is a very prolific bearer, so that it is not unusual that 10 to 12 pounds of fruit be taken per plant. Blossom-end scar is completely eliminated. We recommend that the plant be pruned for two-way runners and that the plants be set at a distance of 18 inches apart. For high production, for extreme uniformity, and for choice table quality, Greenhouse Master Marglobe is enthusiastically offered.

Price, Postpaid: Pkt. \$1; $\frac{1}{2}$ oz. \$3; oz. \$5



Stokes' Tomatoes growing under glass at Fairbanks, Alaska, July, 1933. They produced 10 pounds per plant, a significant yield for a point 110 miles below the Arctic Circle

Yes, We Are Nearly Surrounded by Tomatoes



IN FACT, from the appearance of this Catalog, you may get the impression that we are turning a distinct scarlet. Part of this may be traced to the force of tradition (Atlantic Standard, Sparks' Earliana, Stokes Bonny Best, and Master Marglobe), but it is not out of the past that we are receiving all of our inspiration, for right now we are working on some new developments which we expect to offer with great enthusiasm in less than a year's time.

It is true that this Catalog presents many other well-remembered stocks—Viking Golden Acre Cabbage, Imperial Black Beauty Eggplant, Stokes Vanguard Corn, Long-standing White Boston Lettuce, etc. These, again, are presented to you with our strongest endorsement.

Perhaps the outstanding offering of this Catalog will be found on the following page. We there give you a list of hardy, southern-grown vegetable plants produced from precisely the same seed as is offered in this Catalog. Last season we brought some eighteen million plants north, mainly from our own acreage along the seacoast of North Carolina. Altogether over 300 acres of plants are being produced from our pedigreed stocks this year. These will be hardy, field-grown stock, well rooted and well hardened. Our packing is done with great care, with ample quantities of sphagnum moss being used, so that losses in transportation are reduced to a minimum. These plants are grown for market gardeners and truckers. One thousand plants of any one variety is the minimum we offer. The schedule of varieties, prices, and shipping dates will be found on turning the page. Separate order sheets are furnished, one for plant orders and one for seed orders.

We respectfully solicit your business for both seeds and plants of the Stokes Standard.

Faithfully yours,

FRANCIS C. STOKES

FRANCIS C. STOKES & CO., Inc.

P. O. Box 923, Philadelphia, Pa.

WOODBURY, N. J.

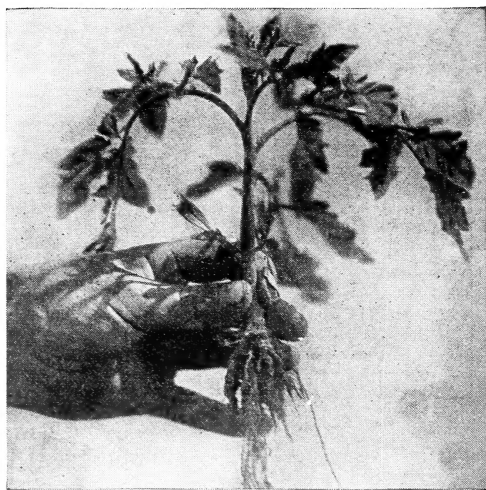
SANFORD, FLA.

CORPUS CHRISTI, TEXAS

WESLACO, TEXAS



Stokes Master Marglobe Tomato plants being harvested at our plant farm in Cartaret County, North Carolina, April 5, 1934



Our customers can positively depend upon the pedigree of our hardy, field-grown plants. This Golden Acre Cabbage and Stokes Master Marglobe Tomato are produced from identically the same stocks as are offered in this Catalog

Schedule of Prices for Our Hardy, Field-Grown Plants Produced from Stokes Seeds

| | Approximate Shipping Season | Price per 1,000 | |
|---|--------------------------------|-------------------------|-------------------------|
| | | f. o. b. N. C. Point | f. o. b. N. J. Point |
| BROCCOLI: Christmas Calabrese..... | March 20 to May 15 | \$1 30 | \$1 50 |
| CABBAGE: Golden Acre. Copenhagen Market. Early Jersey Wakefield. Charleston Wakefield. } | March 20 to May 15 | 1 30 | 1 50 |
| CAULIFLOWER: Snowball, T. M. No. 3..... | April 1 to May 15 | 2 80 | 3 00 |
| EGGPLANT: Imperial Black Beauty..... | May 10 to June 20 | 2 80 | 3 00 |
| PEPPER: World Beater. California Wonder. } | May 10 to June 20 | 2 80 | 3 00 |
| TOMATO: Lange's Earliana. Bonny Best. Pritchard. Stokes Master Marglobe. Greater Baltimore. } | May 1 to June 10 | 2 20 | 2 50 |

Please note that the above f.o.b. New Jersey point quotation is printed for the benefit of our New Jersey customers only. Obviously, direct shipments from our North Carolina plant farm greatly facilitate deliveries to localities outside the State of New Jersey. Please use special order sheet for plants when ordering from this page.

✎ No orders will be accepted for less than 1,000 plants of any one variety



Our North Carolina-grown cabbage plants are ready for shipment April 1

THIS REPORT WILL INTEREST EVERY TOMATO PRODUCER

THE following data was ably presented by Mr. Benjamin J. Roberts, Superintendent of the Dr. S. Emlen Stokes farm, Marlton, N. J., at the meeting of the New Jersey State Horticultural Society held at Haddon Hall, Atlantic City, N. J., December 5, 1934. By producing 13 tons per acre, Mr. Roberts became eligible for membership in the New Jersey Ten-Ton Canhouse Tomato Club, and in that competition was awarded first prize in the quality contest, securing the following figures on U. S. grades:

| | Per cent |
|------------------|----------|
| U. S. No. 1..... | 80 |
| U. S. No. 2..... | 19 |
| Culls..... | 1 |

Mr. Roberts was awarded the third prize in the yield contest.

This unusual record is of particular interest to us for the reason that Mr. Roberts was one of our contract growers of Stokes Master Marglobe, producing his crop from our southern-grown plants. A careful study of this report will not only indicate that Mr. Roberts is a master Tomato grower, but also that he has had very complete facilities for keeping his records. Mr. Roberts has graciously permitted the reprinting of this report.

"I sincerely wish that there were some secret connected with the success of our 1934 Tomato crop that we would at this time pass on to help other growers in 1935. There are, however, three factors that always play an important part in raising Tomatoes. The first one that I would mention is good plants. We were fortunate in getting our entire lot of plants for 16 acres in one shipment. They were southern-grown Stokes Master Marglobe, and were delivered on May 9. The plants were not only absolutely free from disease but were well hardened, with good tops and roots. We trenched these plants near a greenhouse so we could water them for two days. On the third day the roots of every plant were covered with little white fibrous roots that were ready to go to work, so we started planting in the field. They were all planted in rows 5 feet apart and 4 feet in the row. Italian labor was used for planting, putting a cup of water to every plant. It is needless to say that we received a perfect stand and would never have replanted if it had not been for some windy days later in May that broke off a few plants.

"The second important factor that I would mention is good fertilizer. We used a home mixture bought through the Moorestown Grange, which we mixed and had tested by the Experiment Station at New Brunswick, receiving an official report from the State Chemist that we had a 5-10-8 fertilizer. We used 1,000 pounds to the acre—800 pounds in the row and 200 pounds as a side-dressing after the plants had been in the field about four weeks. A heavy cover-crop of rye was plowed under also. The rows were all made up a week before planting and marked out 4 feet crossways with a 16-foot sled.

"The third factor I wish to mention is the right kind of cultivation. As soon as we had finished planting we started through the Tomatoes with two-horse riding cultivators with 1-inch teeth next to the plants and the rest 2-inch teeth going as close to the plants and as deep as we could. When we finished cultivating the 5-foot way in this manner we then crossed the rows with a one-horse cultivator once to a middle. When this was finished the plants were hoed around for the only time during the

season. We tried to cultivate the Tomatoes once a week, keeping away from them and working the soil up to them as the plants increased in size. We crossed them with the one-horse cultivator as long as we could without breaking the vines. When the vines became so large that the riding cultivators would drag them the 5-foot way, we then used the one-horse cultivator with side-plows until the rows were entirely closed with vines. Our fields were free from crab grass and weeds, and I believe it is important to have it so, as one crop in a field at a time is enough.

"The Tomatoes were sprayed only for potato bugs and the green Tomato worms, calcium arsenate being used for both.

"We picked all our crop with day labor, and this, together with the clean cultivation, which caused the fields to dry off earlier in the mornings and also made easier and more pleasant picking, together with close supervision, gave us a grade of 80 per cent U. S. No. 1, 19 per cent U. S. No. 2, and 1 per cent Culls, and a tonnage of 13 tons to the acre.

"The land used was of medium light loam, and the crop grown in 1933 was sugar corn. The stalks were plowed under and rye planted in early September.

"We keep daily time-sheets on every crop raised on the farm. The following figures are taken from our 1934 Tomato records:

COST OF GROWING THE 16 ACRES:

| | |
|--|---------|
| Use of ground..... | \$64 00 |
| Baskets..... | 51 68 |
| Preparing and cultivating ground (Also cost of plowing under 1933 stalks and planting corn crop.)..... | 349 82 |
| Fertilizer..... | 208 14 |
| Plants..... | 94 00 |
| Planting (including trenching)..... | 72 65 |
| Spraying..... | 35 90 |
| Picking (3.7 cts. per basket)..... | 390 01 |
| Hauling..... | 49 42 |
| Grading (Tomatoes sold in Philadelphia)..... | 20 68 |
| Ferriage (Tomatoes sold in Philadelphia)..... | 5 02 |

TOTAL COST.....\$1,341 34

| | |
|-------------------------------------|------------|
| Receipts from sale of Tomatoes..... | \$3,423 34 |
| Profit on the crop..... | 2,082 00 |

| | |
|-------------------------------|-----------------------|
| Cost of growing per acre..... | \$83 83 $\frac{3}{4}$ |
| Net profit per acre..... | 130 12 $\frac{1}{2}$ |

"In closing I wish to thank the Society for the Certificate of Merit received as a member of the Ten-Ton Canhouse Tomato Club, and trust that next year we may have twenty-four members instead of twelve.

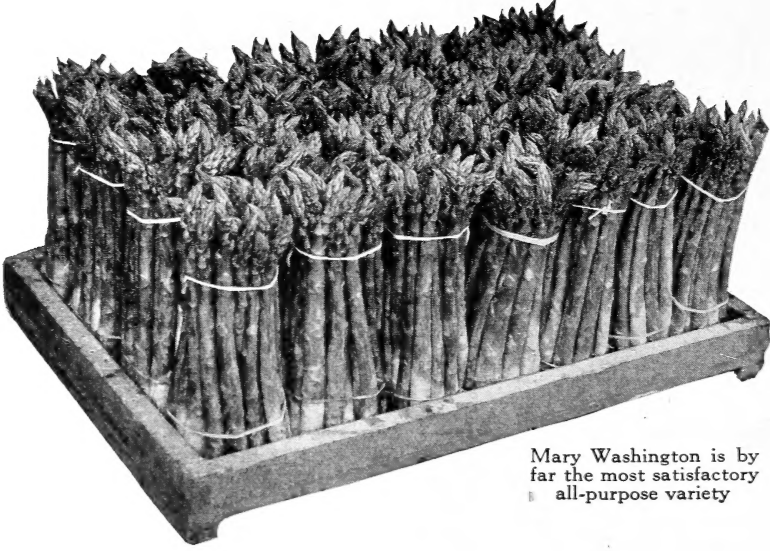
"For the beautiful gold watch and five hundred baskets, I wish to especially thank you, Mr. Hall, as President of the New Jersey Cannery Association. It was most generous of you and your Association, and we feel as if we had more than our share. I hope the prizes will be continued next year and that some other grower may stand here in my place and then know how thrilled and appreciative the winners are."

Respectfully submitted,

BENJAMIN J. ROBERTS

December 1, 1934

Marlton, New Jersey



Mary Washington is by far the most satisfactory all-purpose variety

No. 1. Mary Washington Asparagus

VERY LARGE PRODUCTIVE RUST-RESISTANT

The most profitable Asparagus

Mary Washington will produce the very highest type green Asparagus it is possible to grow. It is earlier, larger, and longer than the Washington, and for all commercial purposes it is equally rust-resistant. The tips are very tight and do not prematurely "sprangle out" or "blow," a feature which greatly increases its sales value. Asparagus with prematurely loose buds does not keep well on the market, and also loses its good flavor. This feature is later recognized by the high-branching habit of the plant after the cutting season. The natural color of Mary Washington is rich purple-green. Its length will average from 10 to 20 inches, the entire length of the stock being tender and brittle. The green shoots are very large, with a tendency to be slightly oval in the cross-section. Even when planted alongside other strains of Washington, it is very easy to identify the Mary Washington by its taller and larger shoots. Large shoots will bring double the price of the small ones. Mary Washington has the largest seed and the largest seedlings of any Asparagus known.

An Asparagus-field under proper care should be productive and profitable for from 15 to 20 years. One's original investment is of small consequence compared to the annual return. The domestic consumption of Asparagus is increasing, but we question whether it is keeping pace with the rapidly increasing acreage. It is our guess that competition in the immediate future will be keen. In this competition, the man with the quality product is the only one who is sure of his market. The race is only for the strong. We see little hope for the careless, rust-ridden grower to survive.

PRICES:

SEED. Postpaid: Pkt. 5 cts.; oz. 10 cts.; 1/4 lb. 25 cts.; lb. 80 cts.; 5 lbs. or over, 75 cts. per lb.

ROOTS. Postpaid: 50 roots \$1.25; 100 roots \$2. Not prepaid: 500 roots \$6.50; 1000 roots \$10; 5000 roots, \$8.50 per 1000. Larger quantities, write for prices.

THESE POINTS MAY HELP YOU MAKE A PROFIT WITH ASPARAGUS

1. Sandy loam makes the best Asparagus-ground.

2. Plant only pure Mary Washington.

3. Only one-year roots are recommended for transplanting. The yield for transplanted two-year roots will be scarcely 50 per cent of that of the one-year roots.

4. Never set a permanent bed on ground occupied by seedlings the year before. Likewise, seedlings should not be followed by seedlings.

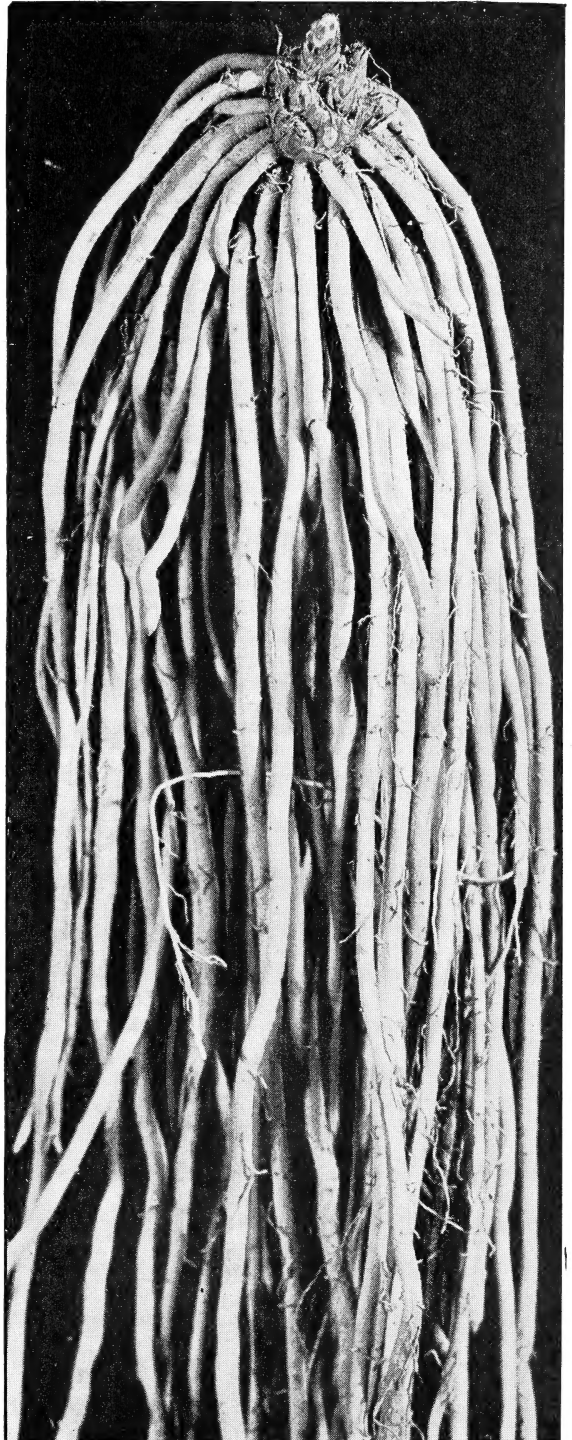
5. Applications of calcium arsenate will control the Asparagus beetle.

6. In the latitude of Philadelphia, shoots from one-year seedlings may be cut for two to three weeks the following year. It is too great a strain, however, to prolong the first-year cutting after May.

7. The wider the row, the larger the shoot, and the greater percentage of colossal grass. We recommend that rows be at least $4\frac{1}{2}$ feet apart, and that the roots be set 20 inches apart in the row, burying the crowns a foot in the ground. On this basis, 5350 roots are required per acre.

8. Asparagus rust spreads readily by wind, rain, and other natural causes. Its prevalence immediately impairs the producing strength of the field. Careful growers will never, therefore, let a badly rusted field stand near even a rust-resistant field, for it will seriously infect it.

9. In a temperature of 60 degrees or over, Asparagus begins to lose its taste and food-value within an hour after cutting. Within 24 hours, more than 50 per cent of its food-value is lost under such conditions. This information should be significant for the grower supplying a private trade. These losses are brought to a minimum by holding the Asparagus in a temperature of 40 degrees or under by icing or by refrigeration. If this is not possible, we urge quick delivery to your customer, especially as the warmer weather comes on. Asparagus should be boiled standing, the tips being out of the water but under the influence of hot steam. Be careful not to cook away all the flavor.



Our Mary Washington Roots are well grown and will give excellent field stands. A six weeks' cutting of Asparagus may be expected the second year.



Bountiful has been the most consistent money-maker in the large eastern markets

BEANS

No. 2. Bountiful

Acknowledged to be the earliest and best in quality of the strictly stringless, flat, green-podded type

Days to maturity, 48. Henderson secured this variety from D. G. Burlingame, Bean-breeder of Genesee County, New York. Abel Steele, of Ferguson, Ontario, won a \$25 premium for giving it the name Bountiful. It was said to be a selection from Long Yellow Six-Weeks. For its season it is not approached by any other variety in vigor, productivity, appearance, and quality. Although introduced 25 years ago, it is only recently that Bountiful has reached its pinnacle of popularity. Now it has forged ahead of all green-podded Beans for market use. It can be planted early or late, and because the pods remain in good condition for a long time after picking, it has become very popular as a variety to grow for shipment. Synonyms include Breck's Boston Snap, Improved Six-Weeks, and Sutton's Plentiful. Seed is fawn-color when harvested, changing to dark straw-yellow as it ages.

Price, Postpaid: $\frac{1}{4}$ lb. 10 cts.; $\frac{1}{2}$ lb. 20 cts.; lb. 35 cts.; 5 lbs. or over, 30 cts. per lb. Not Prepaid: 10 lbs. at 18 cts. per lb.; 25 lbs. at 17 cts. per lb.; 100 lbs. at 15 cts. per lb.

No. 3. Tendergreen

New. Early vine. Completely stringless. Round, green pod

Days to maturity, 53. Introduced by Henderson in 1922. Apparently the parentage is unknown. This excellent early-maturing type is becoming increasingly popular in market gardens. Plant characteristics resemble those of Full Measure in many ways, especially in size and shape of the leaflets, which are also much larger than found in other green-podded varieties. The plant will grow to a height of about 15 inches, entirely without runners, of great vigor, and will produce heavily over a short season. The long, green straight pods are round like a pencil, of high flavor and of attractive green color. Seed brownish black, mottled with light fawn.

Price, Postpaid: $\frac{1}{4}$ lb. 10 cts.; $\frac{1}{2}$ lb. 20 cts.; lb. 35 cts.; 5 lbs. or over, 30 cts. per lb. Not Prepaid: 10 lbs. at 18 cts. per lb.; 25 lbs. at 17 cts. per lb.; 100 lbs. at 15 cts. per lb.

No. 4. Giant Stringless

For 35 years the standard stringless, round, green-podded variety

Days to maturity, 53. This popular Bean was originated by N. B. Kenney & Son, Leroy, N. Y., and introduced in 1898 by Johnson & Stokes. It is said to be a selection from Black Valentine, but the precise parentage remains unknown. It could well have been of hybrid origin from any one of the many varieties developed at that time. It has the good qualities necessary for packing high-quality cut Beans and is used for canning, for shipment, and for local market production on a very large scale. The pods are larger, longer, straighter, and characteristic with inch-marks more prominent than with Burpee's Stringless Green-Pod. It is very similar in general characteristics to Full Measure. Seed light brown.

Price, Postpaid: $\frac{1}{4}$ lb. 10 cts.; $\frac{1}{2}$ lb. 20 cts.; lb. 30 cts.; 5 lbs. or over, 25 cts. per lb. Not Prepaid: 10 lbs. at 16 cts. per lb.; 25 lbs. at 15 cts. per lb.; 100 lbs. at 13 cts. per lb.



Stringless Black Valentine is one of the most delicious table varieties ever introduced

No. 5. Stringless Black Valentine

A completely stringless edition of Black Valentine and now largely replacing that variety

Days to maturity, 48. Associated Seed Growers are sponsors for this new variety which came from their breeding grounds in Idaho in 1930. It is the result of a cross between Pencil-pod Wax and Black Valentine. The improvement as here offered is due to the elimination of the stringy character of Black Valentine. In season it is the same as that variety and is well adapted for market-garden use and for early shipping. The plant is large, erect, and prolific. Its very attractive oval pods are nearly straight, dark green in color and of fine quality and delicate flavor. It can be shipped long distances. The seed is jet-black. This was originally offered as Asgrow Valentine.

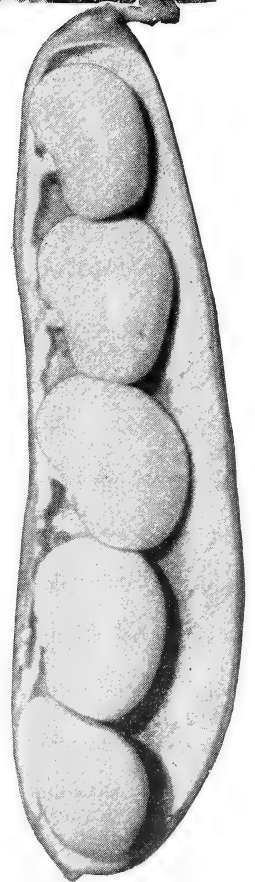
Price, Postpaid: $\frac{1}{4}$ lb. 10 cts.; $\frac{1}{2}$ lb. 20 cts.; lb. 35 cts.; 5 lbs. or over, 30 cts. per lb. Not Prepaid: 10 lbs. at 18 cts. per lb.; 25 lbs. at 17 cts. per lb.; 100 lbs. at 15 cts. per lb.

No. 6. Fordhook Bush Lima

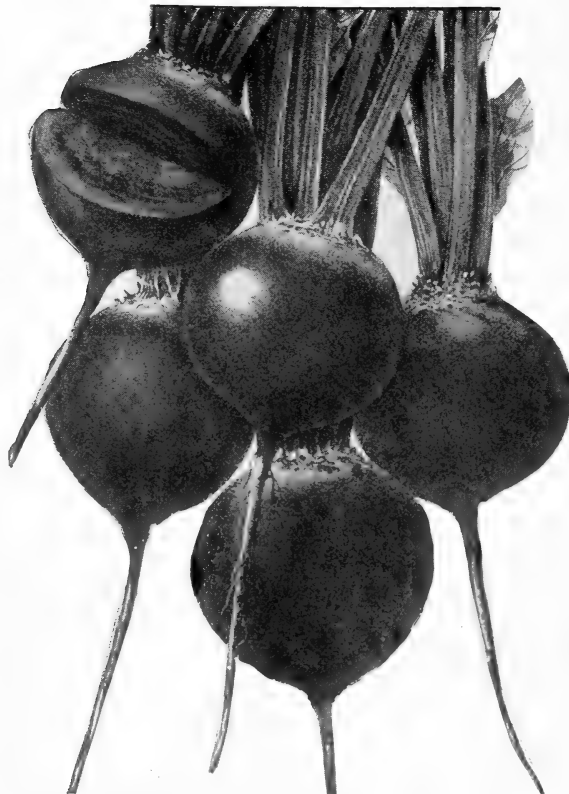
The most popular of all Dwarf Lima Beans, prolific, easily grown and usually profitable

Days to maturity, 75. This Bean was discovered by Henry Fish of Santa Barbara County, California. He found it as a single plant sport in a field of Challenger Pole Limas in 1903. The selection was later developed by Burpee who introduced it in 1907. It is generally conceded to be a heavier cropper than the Dreer Lima. This factor, together with the fact that it is comparatively free from prostrate growth, has given it an important place in the vegetable industry. It is decidedly upright and erect and is almost entirely free from the willowy runners and side branches characteristic of other varieties. The pods and seeds are inclined to be slightly larger and very plump. All of these points contribute to the prominent position now occupied by the variety. Color of seed greenish cream.

Price, Postpaid: $\frac{1}{4}$ lb. 10 cts.; $\frac{1}{2}$ lb. 20 cts.; lb. 30 cts.; 5 lbs. or over, 28 cts. per lb. Not Prepaid: 10 lbs. at 23 cts. per lb.; 25 lbs. at 20 cts. per lb.; 100 lbs. at 18 cts. per lb.



Fordhook Bush Lima, the standard of its class



Detroit Dark Red is handsome in appearance and has solid interior color

BEET

No. 7. Crosby's Egyptian

*Early. Deep. Dark interior
Restrained top-growth*

Days to maturity, 50. The late Josiah Crosby, a Boston market gardener, did the original work in developing the so-called Crosby's Improved Egyptian out of the older Egyptian. It was introduced in 1893 by Schlegle & Fottler and by Rawson. In 1897 it was offered as a novelty by Johnson & Stokes. After nearly 40 years it is still the most popular type Beet grown in the United States. The stock we offer is very similar in general growth and refinement to the original as developed by Mr. Crosby. Tops are medium in size; the root a flattened globe shape with a small tap-root. The color of the root is dark purplish red and the interior color is all that could be desired. In every way this may be looked upon as one of the highest quality stocks available.

Price, Postpaid: Pkt. 5 cts.; oz. 10 cts.;
1/4 lb. 25 cts.; lb. 80 cts.; 5 lbs. or over,
75 cts. per lb.

No. 8. Detroit Dark Red

Roots uniformly deep, globe shape. Rich black-red interior color

Days to maturity, 52. The Detroit Beet was introduced by D. M. Ferry & Co. in 1892, and after 40 years is still one of the most universally planted varieties. Our stock may be looked upon as the standard of excellence as a table Beet either for home and market garden, for shipment, or for canning. Tops uniform, small, slender, erect. Roots globe-shaped, symmetrical, with both collar and tap-root small. Interior very uniform in color. The zones are so inconspicuous that the flesh seems to be one solid ball of deep blood-red meat. It remains tender and of highest quality until roots are full grown.

Price, Postpaid: Pkt. 5 cts.; oz. 10 cts.; 1/4 lb. 30 cts.; lb. \$1; 5 lbs. or over, 90 cts. per lb.

No. 9. Little Egypt

The earliest Beet in cultivation

Days to maturity, 35. This Beet, of European origin, is an ultra-refined type of the well-known Flat Egyptian, being still earlier and with less top. Gardeners looking for a very desirable extra-early forcing Beet will do well to make a place for this variety. Reports so far received from trials in 1933 are that it gave particular satisfaction in its field. Because of the fact that it will develop a marketable root 2 weeks in advance of Crosby's Egyptian, it is of great importance to many growers. Its root is somewhat flattened. The interior color is a brilliant blood-red, like Detroit, with absolutely no zoning. Especially adapted for growing under glass.

Price, Postpaid: Pkt. 5 cts.; oz. 10 cts.; 1/4 lb. 30 cts.; lb. \$1; 5 lbs. or over, 90 cts. per lb.

CARROT

No. 10. Chantenay

The all-purpose Carrot

Days to maturity, 70. This French variety was introduced by Vilmorin Andrieux & Cie., of Paris. They named it in honor of the French town of Chantenay. It was first listed in this country by Ferry in 1889, and after 45 years still holds a place of great importance in the vegetable industry of the United States. It is much used in the home and market garden and as a bunched Carrot for shipment, although the trend of late years has been toward a longer type. Chantenay will average $5\frac{1}{2}$ inches in length and $2\frac{1}{4}$ inches thick at the top. It is stump-rooted. Color of the flesh is a deep orange.

Price, Postpaid: Pkt. 10 cts.; oz. 15 cts.; $\frac{1}{4}$ lb. 30 cts.; lb. \$1; 5 lbs. or over, 90 cts. per lb.

No. 11. Red-cored Chantenay

Flesh and core reddish orange

Days to maturity, 70. Introduced by D. M. Ferry & Co., in 1931. This is a distinct improvement over the well-known Chantenay, especially in color, texture, and quality of flesh. It has been accepted with much enthusiasm, particularly by shippers of fresh vegetables and by canners. Roots deep reddish orange, $5\frac{1}{2}$ inches long, $2\frac{1}{4}$ inches thick at the shoulder, tapered, stump-rooted. Core reddish orange, almost the same color as the flesh, and so inconspicuous as to make the term coreless seem appropriate.

Price, Postpaid: Pkt. 10 cts.; oz. 15 cts.; $\frac{1}{4}$ lb. 40 cts.; lb. \$1.25; 5 lbs. or over, \$1.10 per lb.

No. 12. Danvers Half-Long

Long, smooth, handsome root

Days to maturity, 75. A variety developed by the market gardeners in the vicinity of Danvers, Mass., and first listed by Gregory in 1877. Recently the market-trend has been toward a longer Carrot, with the result that Danvers Half-Long is a variety of great popularity in the vegetable industry. The roots are bright, deep orange, 6 to 7 inches long, uniformly tapering to a blunt end. The quality is crisp and tender.

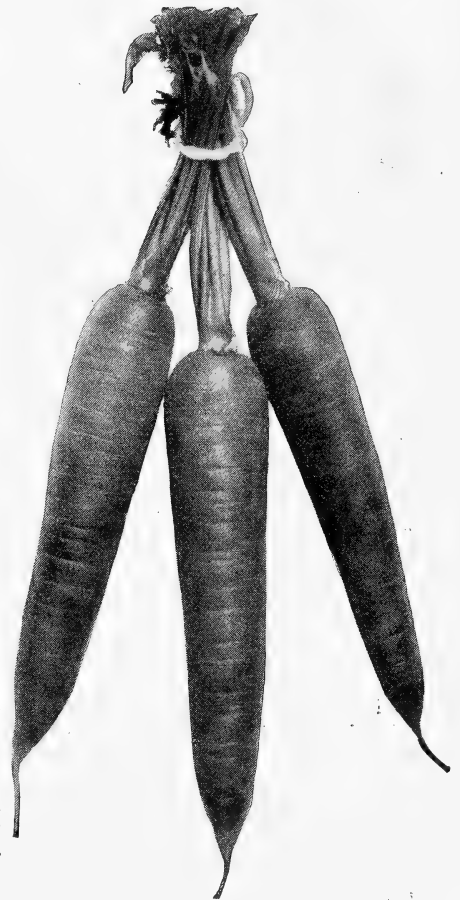
Price, Postpaid: Pkt. 10 cts.; oz. 15 cts.; $\frac{1}{4}$ lb. 30 cts.; lb. \$1; 5 lbs. or over, 90 cts. per lb.

No. 13. Imperator

Roots 8 inches long, uniformly tapering, of fine quality

Days to maturity, 77. A recent introduction by Associated Seed Growers, through whose courtesy we print this photograph. Thought to have been developed from a European variety. Growers requiring a longer Carrot than Danvers Half-Long are finding satisfaction and profit in the Imperator. A well-bred type which will average 8 inches in length. The roots have sloping shoulders, are smooth, and of a deep rich orange color. The flesh is a rich orange color, extending to the center of the root, with indistinct core; fine-grained, tender, and of high quality.

Price, Postpaid: Pkt. 10 cts.; oz. 20 cts.; $\frac{1}{4}$ lb. 45 cts.; lb. \$1.50; 5 lbs. or over, \$1.40 per lb.



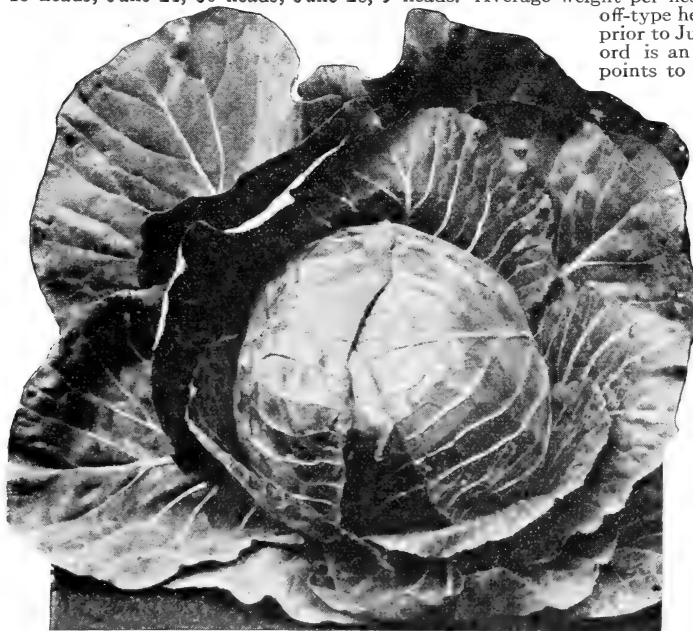
Imperator is long and of brilliant appearance

No. 14. Viking Golden Acre Cabbage

The earliest round Cabbage. Five days ahead of standard Golden Acre

Days to maturity, 85. Viking Golden Acre in 1934 will reach a full market maturity at least 5 days ahead of standard Golden Acre strains. Furthermore, owing to the great care with which this strain has been bred, between 90 and 95 per cent of the crop will all be harvested at the first cutting. This factor of uniformity is noticeable in the leaf-growth as well as in the head-formation, the whole plant being very even and restrained. In the famous Marietta (Ohio) trials, the stock which we now offer ranked first out of sixteen stocks that were under test. These test-rows (each containing 56 heads) cut as follows: June 15, 13 heads; June 21, 30 heads; June 28, 9 heads. Average weight per head was 1.66 pounds. Number of

off-type heads, zero. Percentage of harvest prior to June 22, 84.1 per cent. Such a record is an enviable one and undoubtedly points to the source of early money. We advise planting this stock 12 inches apart in the row—15-inch space often produces too large a head. Price, Postpaid: Pkt. 15 cts.; oz. 60 cts.; ¼lb. \$1.90; lb. \$7; 5 lbs. or over, \$6.75 per lb.



Viking Golden Acre is one of our five most important varieties

No. 15. Golden Acre

Maturing midway between our Viking strain and Copenhagen Market.

Days to maturity, 90. This standard strain will give a remarkable performance. The stock is produced for us by the originator of Golden Acre, Thomas Madsen. It is an extra-early Copenhagen type with small, round, solid head, maturing at the same time with Jersey Wakefield. From 80 to 85 per cent of the crop will come off at the first picking. The weight of the head will average 2½ pounds if planted 14 inches apart. Price, Postpaid: Pkt. 10 cts.; oz. 30 cts.; ¼lb. \$1; lb. \$3.50; 5 lbs. or over, \$3.25 per lb.

No. 16. Copenhagen Market

A uniform, restrained stock. The most valuable Copenhagen Market we have ever offered

Days to maturity, 95. A Cabbage of Danish origin, being a hybrid between Danish Summer Ballhead and a north European variety (perhaps Deitmarscher). Introduced by Hjalmar Hartmann & Co. in 1909 and offered to the American trade by Burpee in 1912. This stock will produce heads averaging 3½ pounds in weight. The growth is uniform and restrained. We look on this stock as being the finest Copenhagen we have ever offered. Growers should keep in mind the fact that there is a variance of at least a month in the time of maturing of various stocks of Copenhagen, so that stocks from unidentified sources are of small value. Price, Postpaid: Pkt. 10 cts.; oz. 25 cts.; ¼lb. 85 cts.; lb. \$3; 5 lbs. or over, \$2.75 per lb.

No. 17. Glory of Enkhuizen

Extra-heavy yield. Uniform shape. Blue-green color

Days to maturity, 108. A Holland Cabbage introduced by Sluis & Groot in 1896 and brought to this country shortly afterward. Growers requiring a large, round-headed Cabbage, maturing 10 days later than Copenhagen Market and weighing fully 6 pounds, will be well pleased with this strain which has been grown for us north of the parallel. Many strains of Glory are run out, leafy, and of little value. The restrained uniformity of this stock assures high production. Its distinguishing blue-green color is indicative of type purity. Price, Postpaid: Pkt. 10 cts.; oz. 25 cts.; ¼lb. 75 cts.; lb. \$2.50; 5 lbs. or over, \$2.25 per lb.

No. 18. Penn State Ballhead

Plant for increased tonnage. For better storage

Days to maturity, 130. This strain was originated by Prof. C. E. Myers, of Pennsylvania State College, and possesses distinct characteristics. It has a shorter core than the original Danish Ballhead, and the leaves that form the head are extra large, with slender midrib. The head is slightly more broad than high, and the strain is a week later in reaching full maturity than Danish Ballhead, the average weight being 6 pounds per head and the size being 6 to 7 inches in diameter. Very desirable for winter storage and manufacture of kraut. Because of the increased solidity it will keep in storage for at least six months. Price, Postpaid: Pkt. 10 cts.; oz. 25 cts.; ¼lb. 75 cts.; lb. \$2.50; 5 lbs. or over, \$2.25 per lb.

No. 19. Early Jersey Wakefield

Pointed. Extra-early. Hardy. Resists frost

Days to maturity, 90. Originally brought to America from the Island of Jersey by Francis Brill in 1871, and then introduced by Henderson. Our stock is characterized by its distinctive, smooth, blue-green leaf. It has all the elements that count for cold-resistance and unusually early maturity, being ready for cutting several days ahead of many strains of Early Jersey Wakefield. The buying public is quick to accept the fresh-cut, sweet-flavored, pointed head. Plant is compact; set 12 inches apart in the row. Head 7 inches long, 5 inches wide at the base; weight 2 pounds. Critical growers can plant this distinguished strain with confidence.

Price, Postpaid: Pkt. 10 cts.; oz. 25 cts.; $\frac{1}{4}$ lb. 75 cts.; lb. \$2.50; 5 lbs. or over, \$2.25 per lb.

No. 20. Charleston Wakefield

Pointed. Large. Heavier and one week later than Jersey.

Days to maturity, 97. This variety is the result of a selection of the larger type heads of Early Jersey Wakefield made by Francis Brill and J. M. Lupton about 1880. The product of this selection was sold to Bolgiano in 1880, who offered it as Large Wakefield. Henderson secured a stock shortly after and offered it as Charleston Wakefield, the name Charleston now being firmly adhered to throughout the trade. The general shape of the head is thicker through and not so pointed as Jersey. The stock we are offering will give a good account of itself.

Price, Postpaid: Pkt. 10 cts.; oz. 25 cts.; $\frac{1}{4}$ lb. 75 cts.; lb. \$2.50; 5 lbs. or over, \$2.25 per lb.



Our Charleston Wakefield is a very dependable Cabbage.

No. 21. Allhead Early

Standard midsummer type. Highly disease-resistant and a consistent producer

Days to maturity, 110. This variety was a selection made personally by the late W. Atlee Burpee in 1888 from a field of Henderson's Succession, which was being grown by Lupton at Mattituck, Long Island. It was named and introduced by Burpee in 1891 and has enjoyed 40 years' acceptance as one of the standard main-crop varieties. The head is rounded rather than flat, and very solid, averaging 5 pounds. Our Company sales of this variety run into thousands of pounds annually.

Price, Postpaid: Pkt. 10 cts.; oz. 25 cts.; $\frac{1}{4}$ lb. 75 cts.; lb. \$2.50; 5 lbs. or over, \$2.25 per lb.

No. 22. Drumhead Savoy

An excellent type with heavily crinkled leaves

Days to maturity, 110. This is an ancient variety of English origin. One of the first offerings in this country was by Robert Sinclair, Jr., & Co., of Baltimore, in 1839. This firm at that time offered 24 varieties of Cabbage (and no tomatoes). Drumhead Savoy is an excellent type for general use, being a good keeper. Heads are nearly round, full, and quite hard for a Cabbage of this type. The leaves are large, coarsely crinkled, and dark greenish blue. In weight the head will average 6 pounds, and it is 7 inches in diameter.

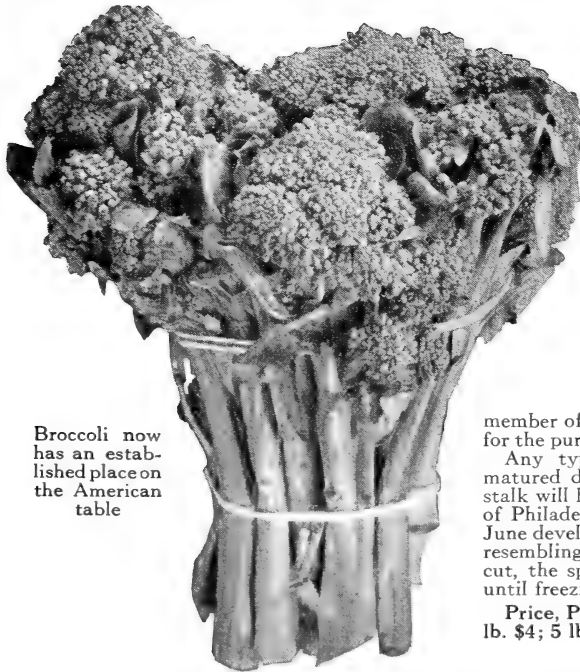
Price, Postpaid: Pkt. 10 cts.; oz. 25 cts.; $\frac{1}{4}$ lb. 75 cts.; lb. \$2.50; 5 lbs. or over, \$2.25 per lb.

No. 23. Mammoth Red Rock

The best of the American red varieties

Days to maturity, 120. The red Cabbages imported from England were grown on Long Island some time prior to their introduction by Ferry in 1889. Mammoth Red Rock is the most satisfactory of the red types for general purposes. It is long in reaching maturity, but is a splendid winter keeper. The heads average 7 inches in diameter, are round to slightly flattened globe-shape, and will weigh an average of 7 pounds. The color is a deep purplish red.

Price, Postpaid: Pkt. 10 cts.; oz. 25 cts.; $\frac{1}{4}$ lb. 75 cts.; lb. \$2.50; 5 lbs. or over, \$2.25 per lb.



Broccoli now has an established place on the American table

BROCCOLI

No. 24. Christmas Calabrese

Formerly called Glory of Calabria—the Green Sprouting Italian Broccoli

Days to maturity, 110. This aristocrat of vegetables has been grown in America for only 7 years, but in that time has attained unusual popularity. Its name is undoubtedly to be traced back to the fact that it was grown in the Province of Calabria in the far south of Italy, and of recent years shipped to the markets of Naples and Rome during the Christmas holidays. Owing to the rapid acceptance of the vegetable in the United States, a member of our firm made a special trip to Italy in 1928 for the purpose of securing a pure source of seed-supply.

Any type of Green Sprouting Broccoli must be matured during cool weather, for otherwise the seed-stalk will bolt into flower prematurely. In the latitude of Philadelphia, plants set in the field in April will in June develop a central head of bluish green flower-buds, resembling a loose head of cauliflower. After this is cut, the sprouts from the lateral branches can be cut until freezing weather.

Price, Postpaid: Pkt. 10 cts.; oz. 35 cts.; ¼lb. \$1.20; lb. \$4; 5 lbs. or over, \$3.75 per lb.

CAULIFLOWER

No. 25. Super-Snowball

Ten days earlier than Snowball. 90 per cent of crop cut at first picking

Days to maturity, 100. This variety was developed in Denmark by Thomas Madsen and introduced by him in 1927. It represents one of the best examples of plant-selection that we know. The fact that the heads will form 10 to 14 days earlier than Snowball constitutes a great advantage, for invariably the early harvest brings the high money. Super-Snowball heads more uniformly than any strain of Snowball available, 90 per cent of the plants producing excellent heads within 2 weeks of the first cutting—a remarkable showing. The plants are strong and full of vitality and develop a distinctive leaf which curls over the head as a natural protection. All in all, we consider that it is the most outstanding improvement in Cauliflower in recent years, and its general use is more extensive with each season. It is recommended for producers of either early Cauliflower or late Cauliflower.

The fact that this variety matures with such evenness may possibly work against it. If the weather and the market are both favorable at the time of ripening, all is well, but if either happens to be unfavorable it means that a large part of the crop must be disposed of in a very short time. For this reason, we advise that at least part of the crop be sown to the standard Snowball as listed below.

Price, Postpaid: Pkt. 25 cts.; ¼oz. 75 cts.; oz. \$2.50; ¼lb. \$8; lb. \$30.

No. 26. Snowball

(Stock T. M. No. 3)

A strain that has given favorable results under varying conditions of soil and climate.

Days to maturity, 110. The variety Snowball, we believe, was of Danish origin and was introduced by Henderson in 1878. This stock T. M. No. 3 was introduced by Madsen in 1918. During these 16 years it has come into wide use throughout the United States as a profitable type for main- or late-crop-production. The plants are dwarf, with short, pale leaves. Heads medium size, firm, compact, solid, pure white, and of the finest quality. They will average 6 to 7 inches in diameter. A combination of Snowball and Super-Snowball as offered by us will give outstanding results.

Price, Postpaid: Pkt. 25 cts.; ¼oz. 40 cts.; oz. \$1.40; ¼lb. \$5; lb. \$20.



We advise that you plant both Super-Snowball and Snowball

BRUSSELS SPROUTS

No. 27. Long Island Improved

Semi-dwarf. Heavy producing. Uniform

Days to maturity, 125. Brussels Sprouts, a native of the British Isles and of the Channel Coast of Europe, is a vegetable which has a limited but important place in American vegetable culture. Long Island Improved, sometimes called Half-Dwarf Improved, is highly recommended for home- and market-garden use. The plants develop to a height of about 20 inches. Their stems are thickly set with firm, cabbage-like balls $1\frac{1}{4}$ inches in diameter, which mature in succession. Market gardeners will find this an unusually dependable strain. Price, Postpaid: Pkt. 10 cts.; oz. 35 cts.; $\frac{1}{4}$ lb. \$1.20; lb. \$4; 5 lbs. or over, \$3.75 per lb.

COLLARDS

No. 28. Georgia

Days to maturity, 80. Sometimes called Southern or Creole. This vegetable develops a loose-leaved head growing about $2\frac{1}{2}$ feet in height and producing large, light green leaves on medium-long stems. A frost, if not too severe, will improve the crop. In the South the seed may be sown from January to May and from August to October. Price, Postpaid: Pkt. 5 cts.; oz. 10 cts.; $\frac{1}{4}$ lb. 20 cts.; lb. 60 cts.

DANDELION

No. 29. Arlington Thick-Leaf

Will produce large and more stocky plants

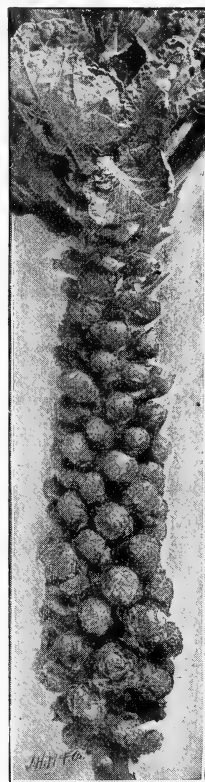
This seed is grown privately in Connecticut and will produce larger and heavier plants than the imported seed. The seed itself is heavier and of stronger germination. For the production of early greens it is necessary to sow Dandelion seed in July, allowing it to winter over, although it may also be sown in early spring. One ounce should be allowed for 100 feet of row and 6 pounds per acre. Price, Postpaid: Pkt. 10 cts.; oz. 40 cts.; $\frac{1}{4}$ lb. \$1.40; lb. \$4.50; 5 lbs. or over, \$4.25 per lb.

EGGPLANT

No. 30. Imperial Black Beauty

Rich, handsome fruits. Phomopsis Rot free. One of the most profitable strains

Days to maturity, 115. This Imperial strain of the well-known Black Beauty, a stock free from the organisms of Phomopsis Rot, is, in our opinion, the most important forward step taken in Eggplant improvement in the last decade. Most Eggplant seed is saved in areas that are badly infested with this organism, which attacks the plant in its middle growth, withers the leaves, and finally rots the fruit. In many instances the spoilage does not commence until the fruit is en route to market. Some Phomopsis Rot comes from infected soil, but unless the grower uses disease-free seed he is beaten from the start. Our Imperial strain has been grown under conditions that make us morally certain that our seed is entirely clear from the organisms of Phomopsis Rot. The height of the plant is about 18 inches, and the deep purple-black fruits are of a triangular globe shape. Price, Postpaid: Pkt. 10 cts.; oz. 35 cts.; $\frac{1}{4}$ lb. \$1.20; lb. \$4; 5 lbs. or over, \$3.75 per lb.



Brussels Sprouts

ENDIVE

No. 31. Deep-Heart Escarolle

Early. Broader leaf. Deep. Well-blanchd heart. Replaces Broad-Leaf Batavian.

Days to maturity, 100. This variety, of European origin, has been particularly successful in the Sanford (Fla.) district where Escarolle is grown for shipment on a large scale. Its outstanding characteristics are its early maturity, combined with the fact that the leaf is broad, thick, slightly wrinkled, and easily blanched. The head will grow considerably larger than most competing strains. Growers will find this to be a distinguished strain.

Price, Postpaid: Pkt. 10 cts.; oz. 25 cts.; $\frac{1}{4}$ lb. 60 cts.; lb. \$2; 5 lbs. or over, \$1.75 per lb.



Stokes Deep-Heart Escarolle on farm of Mr. W. E. Chapman, Sanford, Florida. Date, Nov. 1933

CELERY

No. 32. Golden Plume

A distinguished strain. Full-hearted, with a long rib and thick stalk



Note the length of stalk on our Golden Plume Celery

Days to maturity, 115. Stokes' Golden Plume is an accepted leader in the important Sanford (Fla.) Celery district. We know of no part of the United States where competition in strains of Celery is so keen. For that reason we take justifiable pride that our stock of Golden Plume is looked on by many of the largest growers in the district as being the most dependable and profitable Celery they are growing. The accuracy of this statement can be checked by investigation among the Sanford growers and by our own steadily advancing sales. The success of the Stokes strain has not been left to chance, but can be attributed to the infinite care taken in the seed-production. As further protection, we have conducted exhaustive proving-ground and commercial field-tests in various parts of the country. The strongest endorsement for the stock comes from the growers who have used it. It seems particularly desirable for spring planting in the South.

Our breeding-work has been done by a Celery grower of long experience. The features which have been emphasized are fullness of heart, length of rib, and thickness of stalk. All these factors contribute toward a heavy yield of large-size stalks and provide extra-good quality and appearance of the packed crate. Besides these, there is complete freedom from green-heart and sports, and due to correct methods of seed-production there is a decided freedom from seed-bolting. The vitality of the stock is attested to by the rapidity

with which the seed germinates and the seedlings start off. As one grower recently expressed it, "It looks as though every seed had produced three plants."

Price, Postpaid: Pkt. 25 cts.; oz. \$1; 1/4lb. \$3.50; lb. \$12; 5 lbs. or over, \$11 per lb.

No. 33. Golden Phenomenal

For early planting. Four inches taller than Golden Plume

Days to maturity, 115. Developed by Ferry-Morse. This variety has proved particularly adaptable to certain sections in New York. The plants are ready for use at an early date. They are full-hearted and compact, with long, edible stalks that are thick, solid, blanched readily, and are of a rich, nutty flavor. Golden Phenomenal is quite similar to Golden Plume, except that the stalks are 4 inches taller.

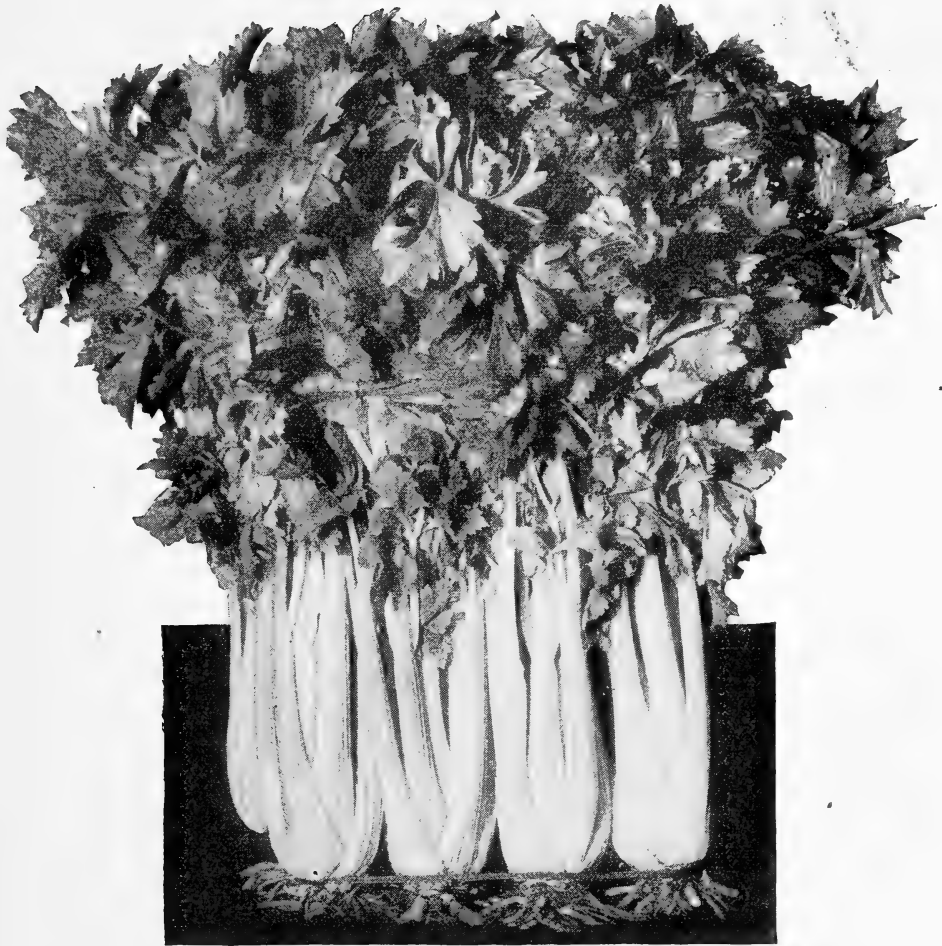
Price, Postpaid: Pkt. 25 cts.; oz. \$1.25; 1/4lb. \$4; lb. \$15.

No. 34. Salt Lake

A thick, crisp, and high-quality green Celery

Days to maturity, 130. This variety has been on the market for about 5 years and is very highly recommended for winter use and for storage. It will blanch much more readily than most green varieties, and is very thick, stringless, crisp, and of unusually good flavor. The plants grow to a good height, but not too tall, and develop a very heavy heart.

Price, Postpaid: Pkt. 15 cts.; oz. 75 cts.; 1/4lb. \$2.35; lb. \$8; 5 lbs. or over, \$7.75 per lb.



Our Golden Self-Blanching is a distinguished stock of the old original French type

No. 35. Golden Self-Blanching

A truly excellent strain of the famous Old Golden

Days to maturity, 120. Originated by Vilmorin Andrieux & Cie., of Paris, and introduced by Johnson & Stokes and by Burpee in 1884. It is now approaching nearly a half-century of usefulness and is still one of the leading varieties on the yellow Celery markets. The stock that we offer is one which has brought profit and satisfaction to our customers. Our Florida establishment, at Sanford, sells large quantities of this strain annually, and our customers come back regularly year after year. Our strain is a very pure one, being extremely vigorous and developing a large golden heart with a long, upright stalk. It is very resistant to adverse weather conditions. As is the case with all of our Celery seed, this is sold only in sealed packages. In planting your acreage of Celery this year, do not fail to include some of the Stokes strains. Although Golden Plume is a week earlier than Golden Self-Blanching, the latter will prove a better keeper—thus each has its place.

Price, Postpaid: Pkt. 15 cts.; oz. 65 cts.; 1/4 lb. \$2; lb. \$7.50; 5 lbs. or over, \$7.25 per lb.

CORN

No. 36. Stokes Vanguard

Resistant to Stewart's Disease. White. Sweet. Very early. Very productive. One of the best money-makers

Days to maturity, 70. This Corn was developed by A. L. Richie, a successful grower and Corn-breeder of Burlington County, New Jersey. Our firm had the honor of naming and introducing it in 1926, since which time it has become widely popular. The Vanguard originally was offered by Mr. Richie as Earliest Ever, but because this name was not strictly accurate, the name Vanguard was given it at the time of our introduction. Our stock is grown privately for us in the county of its origin. In the 8 years since its introduction it has brought large profit and great satisfaction to those who have grown it, for three obvious reasons: First, because of its almost complete resistance to Stewart's Disease; second, because it is the earliest large-eared Sweet Corn we know of; third, because of its delicious table quality. Comparative tests have proved it to be a week earlier than Howling Mob. It is a fixed 12-row type, developing an ear 8 inches in length. A recognized leader on the market, it is taking a large part of the early money.

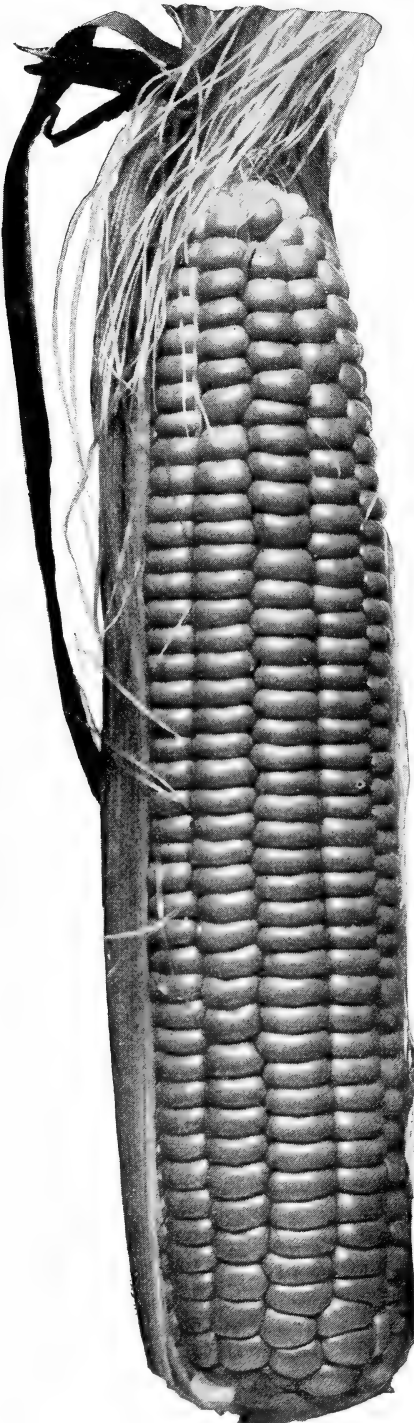
Price, Postpaid: $\frac{1}{4}$ lb. 15 cts.; $\frac{1}{2}$ lb. 25 cts.; lb. 40 cts.; 5 lbs. or over, 35 cts. per lb. Not Prepaid: 10 lbs. at 25 cts. per lb.; 25 lbs. at 22 cts. per lb.; 100 lbs. at 20 cts. per lb.

No. 37. Golden Cross Bantam

One of the new hybrids highly resistant to Stewart's Disease

Days to maturity, 80. This important introduction was developed by Prof. Glenn M. Smith and introduced jointly by the U. S. Department of Agriculture and Purdue University. It is the result of crossing Purdue 39 with Purdue 51. Besides being highly resistant to Stewart's Disease, the fact that it is an inbred hybrid has given it remarkable uniformity in both plant and ear characteristics, and also in the time of maturity. Golden Cross Bantam is slightly later and larger than Golden Bantam, being 6 feet in height, and the 10- to 14-rowed ear being 7 to 8 inches long. In color it is slightly lighter than Golden Bantam. The sturdy stalks bear exceptionally broad, dark green leaves. Golden Cross Bantam is one of the most outstanding results of the more modern breeding methods through controlled pollination. The stock offered is of the F₁ generation and therefore cannot be saved for seed, it being necessary to do the hybridizing for each crop. Our customers will undoubtedly have unusually satisfactory results with Golden Cross Bantam, and it is offered with great confidence.

Price, Postpaid: $\frac{1}{4}$ lb. 25 cts.; $\frac{1}{2}$ lb. 45 cts.; lb. 75 cts.; 5 lbs. or over, 70 cts. per lb. Not Prepaid: 10 lbs. at 60 cts. per lb.; 25 lbs. at 55 cts. per lb.; 100 lbs. and over, 50 cts. per lb.



Golden Cross Bantam. If your soil is infected with Stewart's Disease, plant Golden Cross Bantam.

No. 38. Stowell's Evergreen

We offer a special stock that is uniformly productive

Days to maturity, 95. This variety was a selection made by a Philadelphia market gardener named Stowell. It was introduced by Thorburn in 1861, and for 75 years it has been the leading favorite in the late group. Its stalks attain a height of from 8 to 10 feet. The 16-rowed ear averages $8\frac{1}{2}$ inches in length. Kernels are a clear, deep white, of medium width, sweet and tender. The ear, which is high in sugar content, holds well after reaching the market stage. Owing to the length of its season, it cannot be satisfactorily grown in the more northerly latitudes. Stowell's Evergreen is almost completely resistant to Stewart's Disease.

Price, Postpaid: $\frac{1}{4}$ lb. 15 cts.; $\frac{1}{2}$ lb. 25 cts.; lb. 40 cts.; 5 lbs. or over, 35 cts. per lb. Not Prepaid: 10 lbs. at 25 cts. per lb.; 25 lbs. at 22 cts. per lb.; 100 lbs. at 20 cts. per lb.

No. 39. Country Gentleman

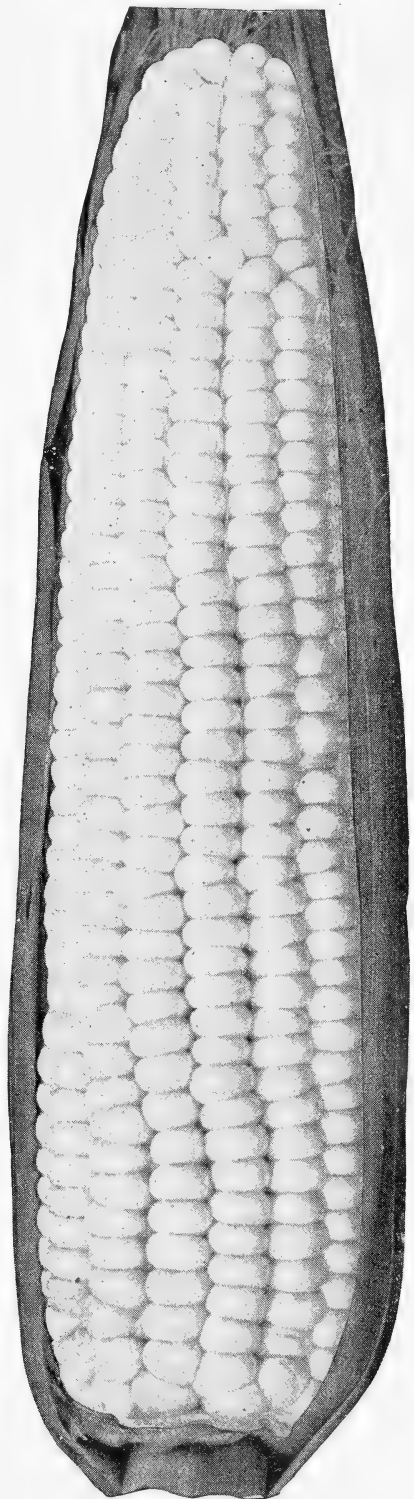
The standard late, broken-row type

Days to maturity, 90. The original broken-row Sweet Corn was Ne Plus Ultra, as introduced by Johnson & Stokes in 1885. Shoe-peg, a narrow, deep-grained Corn of the broken-row type, was a selection made near Bordentown, N. J., from Ne Plus Ultra, and introduced by Johnson & Stokes in 1890 as a distinct variety. Country Gentleman was introduced by Henderson in 1893 and appeared to be a superior selection of Shoe-peg, but the name Shoe-peg has always been more or less synonymous with Country Gentleman and is still used. In our opinion, Country Gentleman is one of the most delicious varieties of Corn available. The fact that it is not very generally used by canners and market gardeners attests to its inherent quality. The kernels are very deep, slender, sweet, with a tender hull, and always are set irregularly without row-formation. The height of the stalk averages 7 feet; the length of the ear, 7 inches.

Price, Postpaid: $\frac{1}{4}$ lb. 15 cts.; $\frac{1}{2}$ lb. 25 cts.; lb. 45 cts.; 5 lbs. or over, 40 cts. per lb. Not Prepaid: 10 lbs. at 30 cts. per lb.; 25 lbs. at 27 cts. per lb.; 100 lbs. at 25 cts. per lb.

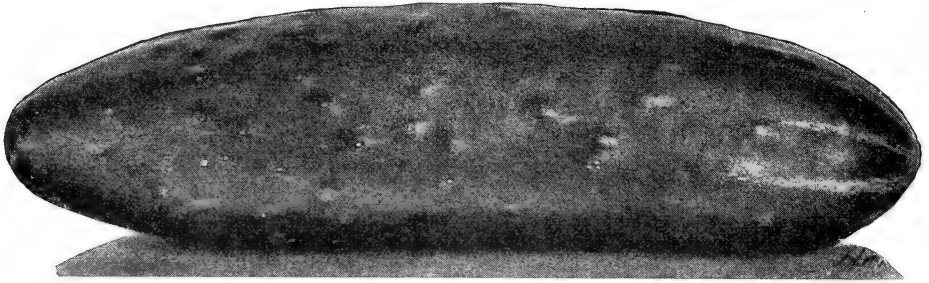
IMPORTANT NOTE ON STEWART'S DISEASE

For the past three years the losses of Sweet Corn from Stewart's Disease have been so disastrous within our general trading area that for the present, at least, we are restricting our offerings to four varieties which are very highly resistant to it. This obviously means the elimination of many varieties that held an important place with our trade. Temporarily, at least, these include the famous Golden Bantam and practically all of the early golden varieties. Stewart's Disease also accounts for our elimination of a very excellent Corn, Kingscrost Golden Bantam, which has proved almost valueless to our trade except in the northern states, including Maine, Michigan, Wisconsin, and Minnesota, where Stewart's Disease is practically unknown. It is a keen disappointment to us to have to give up that variety.



Stowell's Evergreen, the old standard

CUCUMBERS



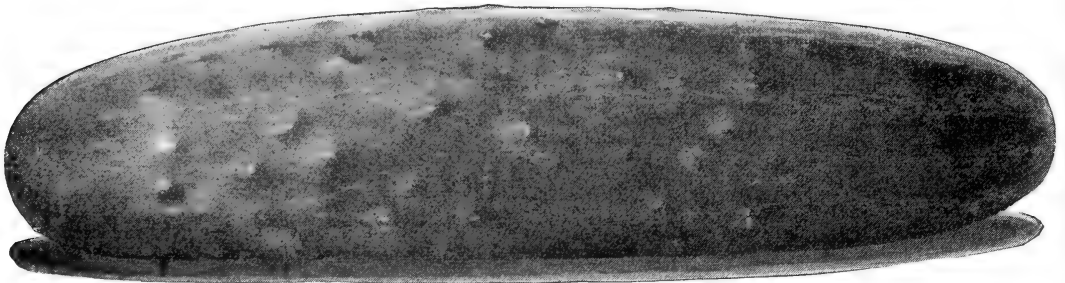
Stokes Greenpack is very early and therefore valuable in the South

No. 40. Stokes Greenpack

Early. Heavy-yielding. Color vivid dark green. Length 7 inches

Days to maturity, 60. This variety was originally introduced by Simon as the Stays Green. Stumpp & Walter at that time had a grass-seed mixture called Staigreen, and they brought legal proceedings against Simon, who changed the name to The Kirby, following that name with a subtitle, It Stays Green. This was an important variety with Simon, and he promptly started long and expensive legal proceedings with various members in the seed-trade to protect his name, with the result that the variety is now offered under various names including Greenpack, Stays Green, Black Diamond, etc. Despite all its history of nomenclature, this variety still holds a place of some prominence, especially on the Atlantic seaboard. It has been a large money-maker in South Carolina and in Florida. It is perhaps a week earlier than Early Fortune, but is an inch shorter and has been at times criticized because of that fact. On the other hand, it is a beautiful deep green color which has been responsible for its often securing a premium of from 50 cents to \$1 per package over any other variety. Our Colorado grower has done some careful work in the further development of the strain, and our seed is offered with assurance that it is the true type. Over the past 5 years we have sold the variety in large quantities.

Price, Postpaid: Pkt. 5 cts.; oz. 15 cts.; $\frac{1}{4}$ lb. 50 cts.; lb. \$1.75; 5 lbs. or over, \$1.65 per lb.



Early Fortune is well named

No. 41. Early Fortune

The best all-round shipping variety. Length 8½ inches

Days to maturity, 62. Our stock of Early Fortune is the most satisfactory shipping Cucumber under general conditions. This luxurious, green, slender, symmetrical, and slightly tapering Cucumber is now in greater demand than any other variety. Its earliness, its heavy cropping, and its beautiful appearance all have a part in placing it in the premier position. Its only weakness lies in the fact that it has a tendency to show white stripes at the blossom end and will bleach out slightly as it approaches maturity. Such adverse criticism, however, cannot be made of the variety if it is grown and picked under proper conditions.

Stokes Early Fortune is the result of an effective breeding program. It will be found distinctly superior to the average stocks of Early Fortune. The average length of the variety is 8½ inches. Experienced growers have found in our stock of Early Fortune a fine type of White-Spine Cucumber that is distinctly superior. We believe no finer stock of Early Fortune is available.

Price, Postpaid: Pkt. 5 cts.; oz. 15 cts.; $\frac{1}{4}$ lb. 50 cts.; lb. \$1.75; 5 lbs. or over, \$1.65 per lb.

No. 42. Woodruff's Hybrid or Clark's Special

Uniform. Brilliant deep green. Length 10 inches:

Days to maturity, 63. This variety, which regularly is offered under two names, is also sold under the name of Perfection.

It has been unusually successful in the Middle Atlantic States and in Erie County, New York. Its long, straight, attractive shape and very rich green color, make it an outstanding type. It will usually hold its color for at least a week after being gathered. Its extra length is usually greatly in its favor on the markets. The stock we offer will be found a very uniform one.

Price, Postpaid: Pkt.
5 cts.; oz. 15 cts.;
1/4 lb. 50 cts.;
lb. \$1.75;
5 lbs. or
over,
\$1.65
per
lb.

No. 43. Stokes Windermoor Wonder

*Handsome deep green color. Few seeds.
Length 12 inches*

Days to maturity, 70. Stokes Windermoor Wonder is, without question, the most handsome outdoor Cucumber that is being grown today. Our Company had the honor of introducing Windermoor Wonder in 1916, and in the 17 years that have followed it has been offered under many different names, the most prominent being The Vaughan and Longfellow. Out of fairness to our competitors, we want to state that at least the two above stocks were probably secured from independent sources. The fruits of Stokes Windermoor Wonder are very long and slender. Its color is uniform from end to end, and the characteristic white stripes at the blossom end are an attractive emerald-green, which definitely adds to its brilliant appearance on the market, where it invariably stands in a class of its own and brings the high money. Growers must not expect as heavy yields of Stokes Windermoor Wonder as of the shorter varieties. This factor, however, will be many times made up by the advanced sales price.

Stokes Windermoor Wonder is the result of a cross made by Mr. Vernon Sheap, in Jackson County, Michigan, between Davis Perfect and English Telegraph—the hybrid combining the important features of each. Stokes Windermoor Wonder is a very shy-seeding variety, and for this reason the price will never equal the White-Spine types. Should growing conditions be abnormal, and either weather or soil unfavorable, crooked and ill-shaped fruits will result. This is a disadvantage suffered by any extra-long variety. Stokes Windermoor Wonder averages from 10 to 12 inches.

Price, Postpaid: Pkt. 10 cts.; oz. 25 cts.; 1/4 lb. 85 cts.; lb. \$3;
5 lbs. or over, \$2.75 per lb.

Woodruff's Hybrid is one of the most profitable Cucumbers now grown.

DEEP-ROOTED EXCELLENCE

Our aim as businessmen has been to get ourselves and our product received and accepted. Our ideal as seedsmen has been to develop a deep-rooted excellence based on simplicity of effort. Our hope for the future lies in our ability to develop and maintain our restricted variety list at a level of high perfection. This Catalog is our spokesman.



Long-standing White Boston in every way lives up to its name. Especially recommended for summer culture

No. 44. Long-Standing White Boston Lettuce

Very long-standing. Resistant to wilt and tip-burn

Days to maturity, 75. Our firm had the honor of introducing this European variety in the United States in 1933. We believe it is destined for a wide and important future. Fundamentally, it is a very pure strain of the White Boston type, but its great mark of distinction is its long-standing habit of growth and its freedom from tip-burn. Any Lettuce which will stand up under the dry, burning heat of mid-July as this one does is a stock of outstanding merit. For table quality and tender sweetness, we know of no other strain that will compare with Long-standing White Boston. The color is a bright yellow-green. Our prediction is that this Lettuce will largely replace the older White Boston, for it has all of the good qualities of that variety and at the same time holds from 2 to 3 weeks longer before shooting to seed and is more resistant to wilt and tip-burn. Give it a thorough trial this year.

We must call attention to the fact that Long-standing White Boston is not successful on muck where the vegetative growth is too heavy to form a satisfactory head. This, however, is not the case on ordinary loam soils and with the usual fertility. We recommend that Long-standing White Boston be given very serious consideration by all upland market gardeners.

Price, Postpaid: Pkt. 10 cts.; oz. 25 cts.; ¼lb. 60 cts.; lb. \$2; 5 lbs. or over, \$1.85 per lb.

No. 45. White Boston

A strain that is free from the usual red tinge that develops in cool weather

Days to maturity, 75. A white-seeded variety sold originally as Unrivalled. This, for several years, was offered by us as Green-leaved Big Boston. It will hold 18 days before shooting to seed. The original of this was offered by Vilmorin Andrieux & Cie. as Sans Rival and first introduced on this continent by two Canadian firms, John A. Bruce & Co. and J. A. Simmers. The frame and head are of good size and are completely free from the brownish red tinge, even in cool weather. The heart of the variety is buttery and yellow and of excellent table quality. We particularly recommend it for growing under coldframes for early spring planting and for late fall planting.

Price, Postpaid: Pkt. 10 cts.; oz. 20 cts.; ¼lb. 45 cts.; lb. \$1.50; 5 lbs. or over, \$1.40 per lb.

No. 46. New York (Number Twelve)

Matures earlier. Better adapted to eastern climate

Days to maturity, 77. This variety will hold 24 days before shooting to seed. It comes from the European variety, Chou di Napoli, or Neapolitan, and was introduced in the United States by Henderson in 1896 under the name of New York. The synonyms Los Angeles and Wonderful have been attached to it since its introduction. In the produce trade, New York Lettuce is known as Iceberg, but this is very different from the older Iceberg, the name given by Burpee to the European variety India Head in 1894. In northern New York it is known under the name of Webb's Wonderful. It is now the most largely used Lettuce in the world. It is grown in immense quantities on the Pacific Coast and shipped to all parts of the United States in refrigerator cars.

New York is one of the largest of the heading varieties, curled and crisp, dark green and slightly curled at the edges. The No. 12 strain which we offer herewith is an early-maturing type which seems much more adapted to our eastern climate. For some years the Pacific Coast growers have apparently had a near monopoly in the production of Iceberg-type Lettuce. The prevailing cool temperatures on the coast were in their favor. The No. 12 strain has partially changed this condition. It is much less susceptible to 'tip-burn when grown in well-prepared and well-fertilized ground. It will develop solid, crisp, large-sized heads. The color is a trifle lighter than other strains of New York. It is especially adapted for maturity in the very early summer or in the late fall.

Price, Postpaid: Pkt. 10 cts.; oz. 20 cts.;
 1/4lb. 45 cts.; lb. \$1.50; 5 lbs. or over, \$1.40
 per lb.

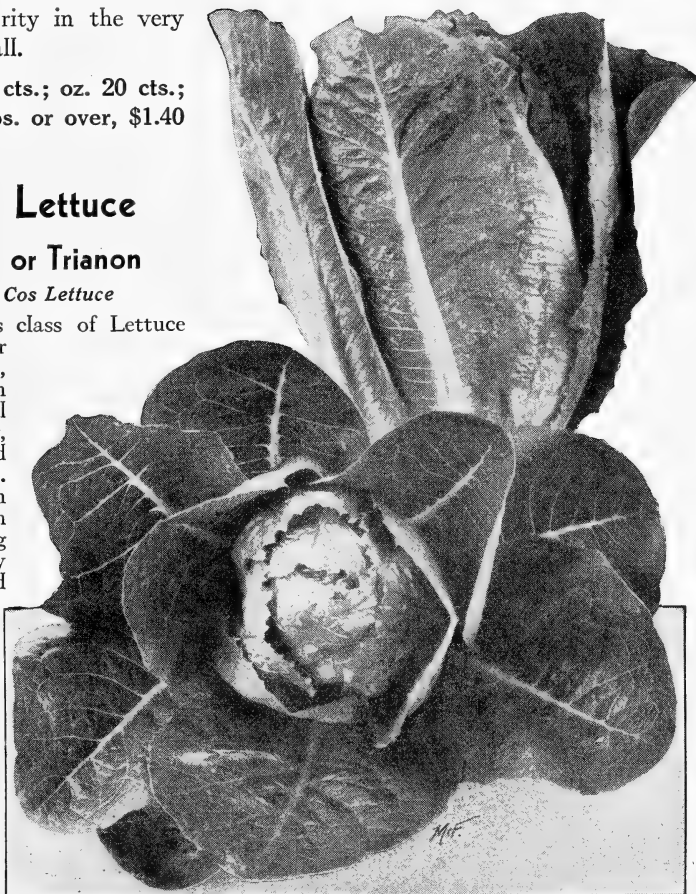
Cos or Romaine Lettuce

No. 47. White Paris or Trianon

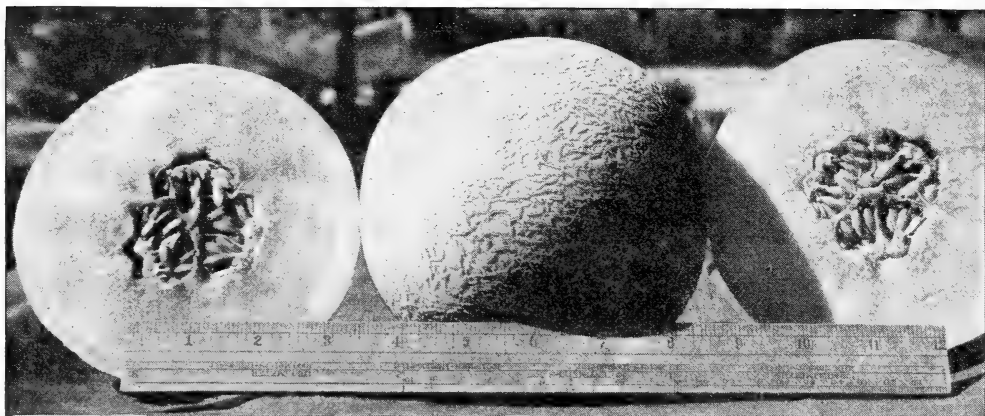
The standard self-folding Cos Lettuce

Days to maturity, 77. This class of Lettuce has been grown in America for about 150 years. Minton Collins, of Richmond, Va., offered it in 1793. White Paris is a typical Cos variety, strictly self-closing, comparatively late, and will hold 20 days before shooting to seed. The compact, blanching, firm head is round at the top, with leaves not tightly overlapping one another. In color it is a very dark green on the outside and well-blanching on the inside. The quality is excellent—hard in texture but exceedingly crisp and sweet—and it is recommended for long-distance shipments. Trianon will make a delicious Romaine salad and is a pleasing change from the soft, buttery variety. The seed is white.

Price, Postpaid: Pkt. 10
 cts.; oz. 20 cts.; 1/4lb. 45 cts.;
 lb. \$1.50; 5 lbs. or over, \$1.40
 per lb.



An excellent stock of Trianon Cos



The New Weaver Special is worthy of your consideration this year

MUSKMELON

No. 48. The Weaver Special (New)

A golden-fleshed Honey Ball. May be picked, vine-ripened, for long-distance shipments. A new and, we believe, important introduction

Days to maturity, 100. This promising new melon is the result of a sport discovered in 1929 by J. C. Fluke, Manager of C. H. Weaver & Co., in the Imperial Valley of California. After 4 years' selection and development it is now offered to our customers as a melon of great promise and one that may have a prominent influence on the Cantaloupe industry. Its peculiar golden color gives one the impression of transparency, for one can almost see the rich orange interior flesh. The outside is well netted. In contrast to other varieties, it goes through a ripening process extending 5 or 6 days after being picked on a full slip. This quality is very important, for it permits the melon to arrive in distant markets in perfect condition. If picked on a full slip and handled properly there need be no loss from soft or over-ripe fruits. Furthermore, it is found that the eating quality is better after the Cantaloupe has been picked 4 or 5 days. In size it runs to jumbo 36-pack and to 12-pack flat crates. The shape is almost round and the size is already bred to a great evenness.

The flesh of The Weaver Special is unusually thick and, as stated above, it has an unusual orange-red tint extending to the rind. It is smoother than in most Cantaloupes. Its flavor is one of its great assets. Even though of jumbo and larger size, the cavity is very small—a silver dollar will completely hide the seed in many fruits. We recommend a thorough test for The Weaver Special this year.

Price, Postpaid: Pkt. 10 cts.; oz. 25 cts.; ¼lb. 85 cts.; lb. \$3; 5 lbs. or over, \$2.75 per lb.

No. 49. Hale's Best Number 112

A far more uniform strain than the original Hale's Best

Days to maturity, 85. The Hale's Best Cantaloupe made a spectacular advent upon the Cantaloupe markets of 1924, and for a whole decade it has held an important position among the earlier varieties. We look on this as an outstanding shipping Cantaloupe. The fruits are oval, averaging 6½ inches in length and 5 inches in diameter. Its golden flesh is thick, firm, and of fine quality. One of the marked features of Hale's Best is that it maintains its fine quality after it is over-ripe and does not deteriorate in flavor as do so many Cantaloupes when over-ripe. Hale's Best also has some disease-resistant qualities. This strain No. 112 is a distinct improvement over the original stock of Hale's in uniformity and size and is recommended as a main-crop melon.

Price, Postpaid: Pkt. 5 cts.; oz. 15 cts.; ¼lb. 30 cts.; lb. \$1; 5 lbs. or over, 90 cts. per lb.

The Importance of Constant Spraying of Cantaloupe Vines

Flavor in melons is dependent on the variety that is used and the vitality and health of the vine that the melon is picked from. All of the four melons which we now offer have grown well, have a superlatively fine flavor, but none of them will be worth keeping if they are gathered from dead or partially diseased vines. The greatest factor of insurance against disease is constant spraying of the vines with Bordeaux Mixture, from the time when the plants are well started until the very end of the picking season. Our good neighbor and customer, William Madara, a Gloucester County fruit-grower who had 20 acres of Cantaloupes this last season, carried on a very complete spraying operation and did so by ingeniously rigging up a spray pump on an old Ford chassis. This was used week after week, even after the vines covered the entire field. The tires of the outfit were only partially inflated, and the loss of broken vine shoots was very immaterial compared to the protection afforded the crop.

No. 50. Hearts of Gold

Recommended for roadside market sale

Days to maturity, 85. Hearts of Gold, or Improved Hoodoo, was first developed by the late Roland Morrill, a successful Michigan melon-grower, and in the early years it was distinctly a Michigan melon. It has now found wide favor in all districts, including the famous Imperial Valley of California, from which point hundreds of carloads of Hearts of Gold are now shipped. Mr. Morrill claimed this to be the result of an accidental cross between Osage and Nettetted Gem. It combines the golden flesh of Osage with the heavy netting and thin rind of the Nettetted Gem, and it is about 25 per cent larger than the standard Rocky Ford type. In the eastern part of the country, Hearts of Gold has shown a decided resistance to rust. This fact has also been checked in our own trials. We can also say that Hearts of Gold is more hardy and withstands heavier frosts than other varieties. With proper cultivation it should maintain a picking season of from 4 to 8 weeks. Customers can be assured of the purity of our strain, all of which has been hand-cut.

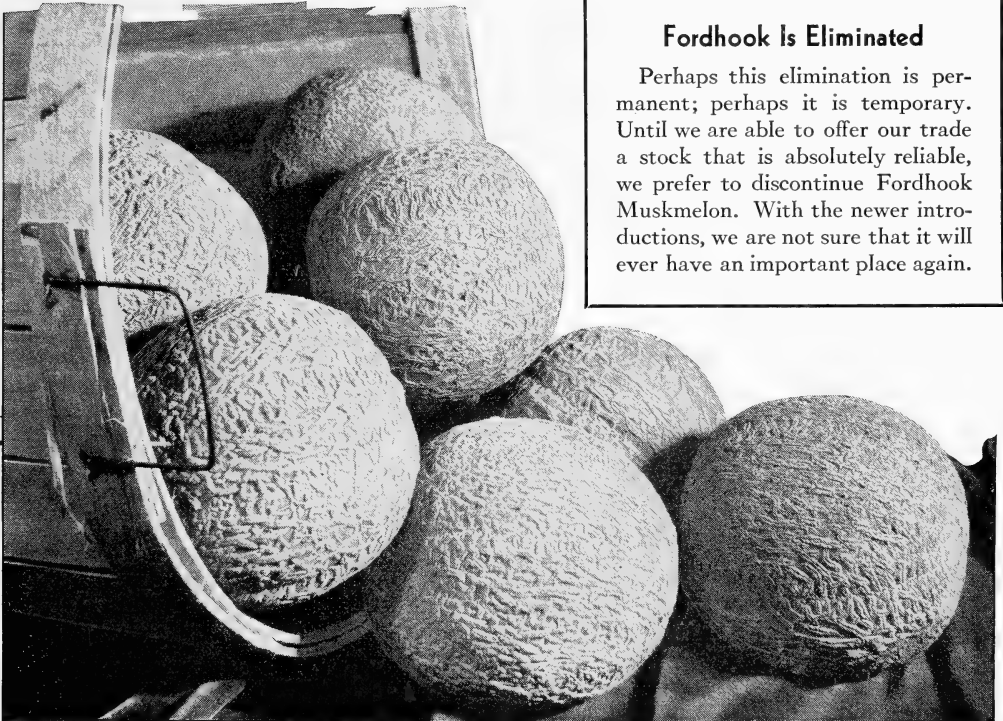
Price, Postpaid: Pkt. 5 cts.; oz. 15 cts.; $\frac{1}{4}$ lb. 30 cts.; lb. \$1; 5 lbs. or over, 90 cts. per lb.

No. 51. The Honey Rock

Early. Disease-resistant. Vigorous

Days to maturity, 80. (Also known as Sugar Rock and misnamed Wisconsin Special.) This melon is one of recent origination by George F. Trine & Sons, of Michigan. Our customers' experiences with it this past season have been extremely satisfactory. The large city markets were not fully aware of the great value of Honey Rock, but they will be fully acquainted with it before the 1934 season is well started. Those who sold Honey Rock on roadside markets experienced an almost unprecedented demand. Three stands that we know of were able to take 185 baskets at one delivery. One of our important customers, William Madara, in Gloucester County, New Jersey, netted considerably more money from 10 acres of Honey Rock than from 10 acres of Hale's Best. Honey Rock is of medium size, almost perfectly round, and heavily netted. The flesh is a deep orange color, extremely thick and of uniformly high flavor—a feature that does not hold for many varieties. The exterior color of the melon is a light green, turning when ripe to a light golden yellow. Its ripening season is slightly earlier than most strains of Hale's Best.

Price, Postpaid: Pkt. 10 cts.; oz. 20 cts.; $\frac{1}{4}$ lb. 45 cts.; lb. \$1.50; 5 lbs. or over, \$1.40 per lb.

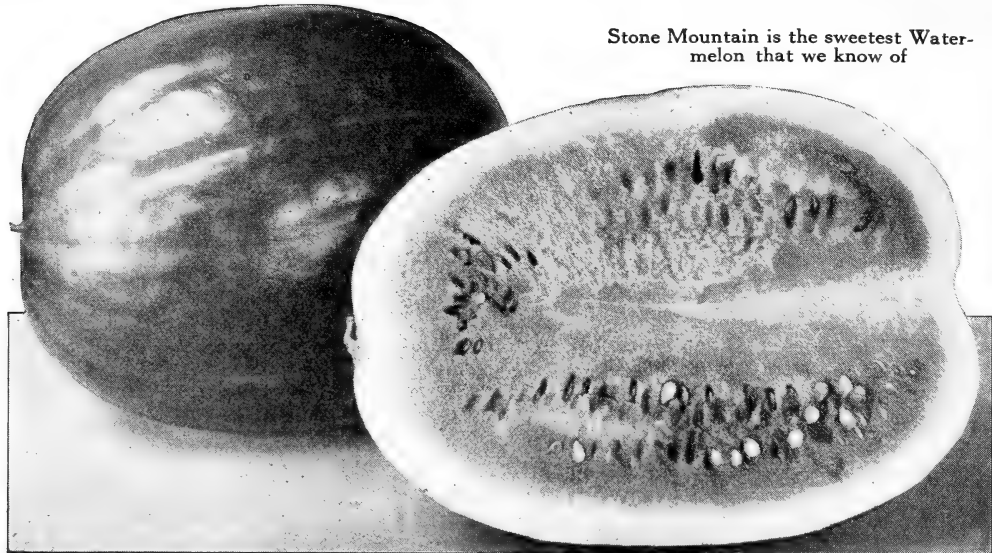


Fordhook Is Eliminated

Perhaps this elimination is permanent; perhaps it is temporary. Until we are able to offer our trade a stock that is absolutely reliable, we prefer to discontinue Fordhook Muskmelon. With the newer introductions, we are not sure that it will ever have an important place again.

The Honey Rock has already proved its worth

Stone Mountain is the sweetest Watermelon that we know of



WATERMELON

No. 52. Stone Mountain

Edible qualities and distinctly superior to any other shipping variety

Days to maturity, 90. Introduced recently by H. G. Hastings & Co. who state "with full regard for all other melons, this is the greatest Watermelon in existence." The name Dixie Belle has erroneously been given to Stone Mountain. It undoubtedly is the outstanding introduction in the last few years. Melons weighing over 50 pounds have been produced on good land. In shape, Stone Mountain is almost round. The outside color is a rich dark green, it has a medium thick rind, and the flesh is a rich scarlet. It is now being shipped long distances, although the originator did not claim this quality for it. We believe, however, it must not be piled too high in the cars. Stone Mountain does not carry more than half the seed found in other similar varieties, and the seeds are white. It is a prolific bearer and stands up under very trying conditions. Stone Mountain is offered as our No. 1 choice for 1934.

Price, Postpaid: Pkt. 5 cts.; oz. 15 cts.; ¼lb. 30 cts.; lb. \$1; 5 lbs. or over, 90 cts. per lb.

No. 53. Improved Kleckley Sweet

This is also sold under the name Wonder Melon

Days to maturity, 85. The fruits of this melon are distinctly larger than the original Kleckley, a melon introduced by Trumbell & Beebe in San Francisco in 1898. Monte Cristo is synonymous with Kleckley Sweet. Improved Kleckley Sweet is not suitable for long-distance shipment, although the rinds are much tougher and stronger than the original Kleckley. The seeds are slightly larger and are snow-white. For its size and shape we consider it to be a melon of very high quality. The flavor is extremely fine. It is regular in shape and the melons will average from 30 to 50 pounds, perhaps 10 pounds heavier than the original Kleckley. Color of the flesh is a rich bright scarlet which is sure to find an enthusiastic welcome from the consuming public. You will find our Improved Kleckley Sweet a very superior article.

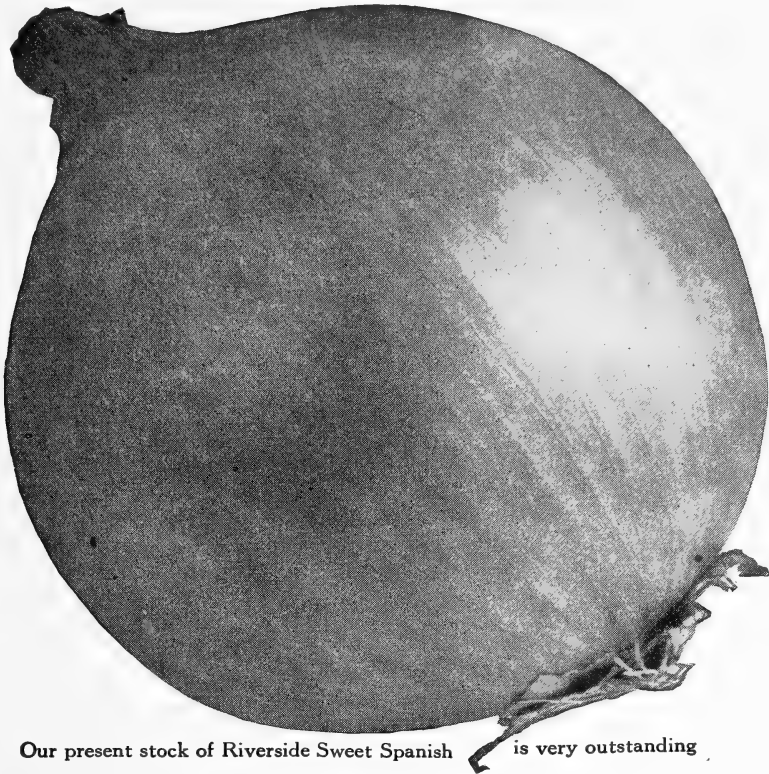
Price, Postpaid: Pkt. 5 cts.; oz. 15 cts.; ¼lb. 30 cts.; lb. \$1; 5 lbs. or over, 90 cts. per lb.

No. 54. Tom Watson

The most widely grown shipping Watermelon

Days to maturity, 90. This melon, originating in Georgia, and named for the Honorable Tom Watson, has enjoyed a quarter century of distinguished success as the outstanding Watermelon for shipment in the United States. In appearance it is similar to Improved Kleckley Sweet, it being an extra-long melon averaging from 18 to 24 inches in length and 10 inches in diameter. The average shipping weight ranges from 40 to 50 pounds. Its heavy, elastic, dark green rind withstands shipment to distant markets. The flesh is not so tender and of such high quality as Stone Mountain or Kleckley Sweet, and the variety is not recommended for home consumption. The flesh is a bright red. Seeds are brown tipped with white.

Price, Postpaid: Pkt. 5 cts.; oz. 15 cts.; ¼lb. 25 cts.; lb. 75 cts.; 5 lbs. or over, 70 cts. per lb.



Our present stock of Riverside Sweet Spanish is very outstanding

ONION

No. 55. Riverside Sweet Spanish

A privately grown stock of marked superiority

Days to maturity, 115. This increasingly popular Onion was developed by Aggeler & Musser in Riverside County, California, about 1926. It is a development of Sweet Spanish which undoubtedly is the same thing as Vilmorin's Giant Spanish, or Gibraltar, now indistinguishable from Valencia or Denia. The Riverside strain is recognized as being superior in flavor and yield, being unusually mild, and it has been known to produce crops of more than 50,000 pounds per acre. This Onion is practically the size of an orange; the color of the skin is a deep amber-orange, and the flesh is almost white. It has proved to be a very profitable shipping and fall storage Onion. Our stock has been grown privately for us in a high mountain valley of New Mexico, only the most perfect bulbs being chosen for the crop. In our entire experience we have never seen a more beautiful lot of bulbs. As compared to the original Spanish types, this Riverside stock will prove to be a much better keeper, having been selected primarily for that quality.

Price, Postpaid: Pkt. 10 cts.; oz. 35 cts.; $\frac{1}{4}$ lb. \$1.20; lb. \$4; 5 lbs. or over, \$3.75 per lb.

No. 56. Mountain Danvers

A very early-maturing, long-keeping Onion of the Yellow Danvers type

Days to maturity, 100. We first offered Mountain Danvers to our trade in 1927. Since its introduction it has made a great deal of money for our customers. It is a selection of the Yellow Globe Danvers Onions which has been carried on for several seasons in a high mountain valley on the western slope of Colorado at an elevation of 5000 feet. The fact that it will mature hard, uniform bulbs 10 days ahead of Yellow Globe Danvers is of outstanding importance to those who have at times lost part of a crop in a short season. The factor of earliness has been achieved through constant selection in a high altitude. Our strain shows a high type and color purity.

Price, Postpaid: Pkt. 10 cts.; oz. 25 cts.; $\frac{1}{4}$ lb. 85 cts.; lb. \$3; 5 lbs. or over, \$2.75 per lb.



Fennel

FENNEL, ANISE or FINOCCHIO

No. 57. Florence

A native of Italy. Plants 3 feet tall, with broad, overlapping leaves forming a bulb-like vegetable at the base of the stem. The seed is usually sown in the spring for a summer crop, in rows 16 inches apart and thinned to 5 inches apart. Fennel requires a good deal of moisture. The plant is usually eaten boiled. In flavor it somewhat resembles celery, but is far more aromatic with a delicate, sweet flavor.

Price, Postpaid: Pkt. 5 cts.; oz. 15 cts.; 1/4lb. 30 cts.; lb. \$1; 5 lbs. or over, 90 cts. per lb.

KOHLRABI

No. 58. Extra-Early White Vienna

A successful forcing type

Days to maturity, 45. This extra-early forcing strain with an unusually short top-leaf is one of European origin. It permits planting very close together and is undoubtedly the finest available strain either for forcing or for outdoor use. To insure success, sowing should be made every 10 days.

Price, Postpaid: Pkt. 10 cts.; oz. 25 cts.; 1/4lb. 85 cts.; lb. \$3; 5 lbs. or over, \$2.75 per lb.

KALE or BORECOLE

No. 59. Dwarf Blue Scotch

A special extra-curved selection

Days to maturity, 55. This special selection for blue-green color has been made for about 10 years. Its advantage over the old Dwarf Green Curled Scotch is that it will hold without yellowing for long-distance shipments, thus commanding a higher price on the market. It develops to a large size and produces a great mass of foliage. It also is highly resistant against severe winter weather. The leaves are intricately and most beautifully curled and in the spring stand for a long time before turning yellow.

Price, Postpaid: Pkt. 5 cts.; oz. 15 cts.; 1/4lb. 30 cts.; lb. \$1; 5 lbs. or over, 90 cts. per lb.

No. 60. Siberian

An extra-curved, long-standing type

Days to maturity, 65. This stock is valuable because it has been bred for the extra-curved type. It will withstand extremely low temperatures and is very slow to shoot to seed in the spring. The shape and the curling of the leaf give it the appearance of an immense ostrich feather. It retains its stiffness a long time after being cut. The color is a rich blue-green with a purple tinge.

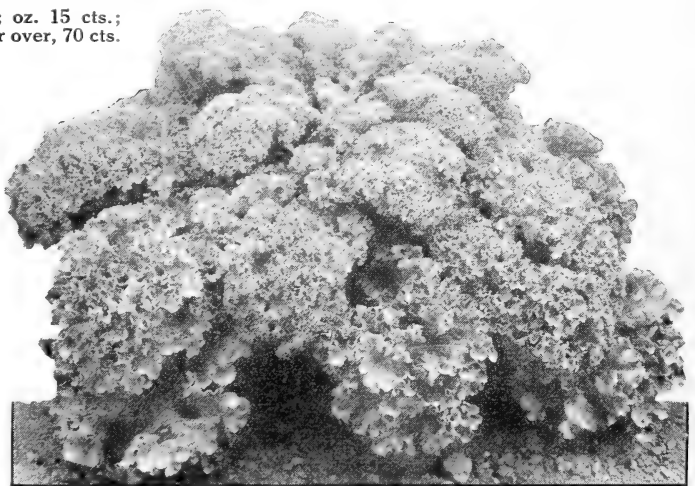
Price, Postpaid: Pkt. 5 cts.; oz. 15 cts.; 1/4lb. 25 cts.; lb. 75 cts.; 5 lbs. or over, 70 cts. per lb.

LEEK

No. 61 Monstrous Carentan

Days to maturity, 90. A very popular variety. It is about the same length as Large Rouen, but still thicker, often attaining a diameter of 3 inches and a length of 8 inches. The leaves are a very dark green. This variety is considered to be superior to the Musselburgh Leek.

Price, Postpaid: Pkt. 10 cts.; oz. 20 cts.; 1/4lb. 45 cts.; lb. \$1.50; 5 lbs. or over, \$1.40 per lb.



Dwarf Blue Scotch Kale

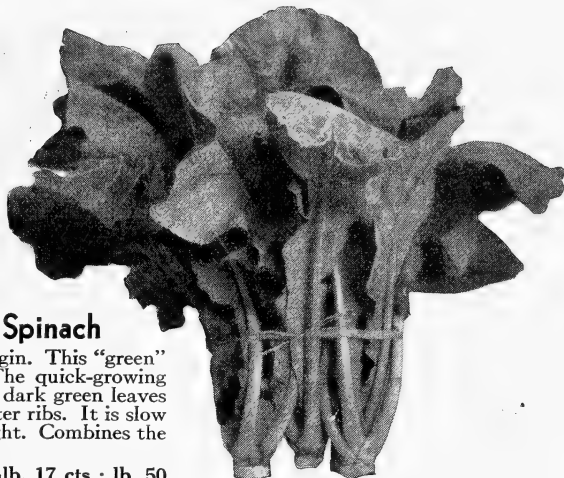
MUSTARD

No. 62. Fordhook Fancy

This variety is also known as Ostrich Plume

A handsome, upright-growing, mild variety, slow to bolt seed-stalks. Leaves bright green and plume-like, deeply fringed on the edges. Its superiority over the older Southern Giant Curled is due to its more finely cut leaf.

Price, Postpaid: Pkt. 5 cts.; oz. 10 cts.; ¼lb. 17 cts.; lb. 50 cts.; 5 lbs. or over, 45 cts. per lb.



Tendergreen

No. 63. Tendergreen or Mustard Spinach

A comparatively new variety of Oriental origin. This "green" has found a cordial welcome in the South. The quick-growing plant develops a large rosette of thick, tender, dark green leaves that are quite smooth and have light green center ribs. It is slow to shoot to seed and resistant to heat and drought. Combines the flavor of mustard and spinach.

Price, Postpaid: Pkt. 5 cts.; oz. 10 cts.; ¼lb. 17 cts.; lb. 50 cts.; 5 lbs. or over, 45 cts. per lb.

OKRA

No. 64. Perkins' Mammoth

A medium-early, productive variety. Pods a bright deep green, 7 inches in length, slender, meaty, pointed, and ribbed. This is the standard medium-early sort for general purpose.

Price, Postpaid: Pkt. 5 cts.; oz. 10 cts.; ¼lb. 17 cts.; lb. 50 cts.; 5 lbs. or over, 45 cts. per lb.

No. 65. Dwarf Long-Pod

An early, prolific type which we have recently improved at our Moorestown Proving-Grounds. The plants will average 2½ feet in height and the dark green pods 7 inches in length. It is a heavy bearer.

Price, Postpaid: Pkt. 5 cts.; oz. 10 cts.; ¼lb. 17 cts.; lb. 50 cts.; 5 lbs. or over, 45 cts. per lb.

PARSLEY

No. 66. Champion Moss Curled

An extra-triple-curved type

Days to maturity, 60. Plant very compact. Leaves very dark green and so finely cut and loosely curled to resemble tufts of moss. Aside from its value for flavoring and garnishing, the plant is decorative.

Price, Postpaid: Pkt. 5 cts.; oz. 10 cts.; ¼lb. 17 cts.; lb. 50 cts.; 5 lbs. or over, 45 cts. per lb.

No. 67. Hamburg Thick-Rooted

Days to maturity, 90. A well-developed stock forming thick, fleshy, edible roots which are extensively used as flavoring. The leaves are plain and deeply cut.

Price, Postpaid: Pkt. 5 cts.; oz. 10 cts.; ¼lb. 17 cts.; lb. 50 cts.; 5 lbs. or over, 45 cts. per lb.

PARSNIP

No. 68. All American Coreless

A distinguished strain now offered for the second year



All American Coreless Parsnips

Days to maturity, 130. This is one of the very finest stocks in cultivation. It is the result of a painstaking selection by an American market gardener. Roots average 8 to 10 inches in length and are smooth and very white. The core has been practically eliminated. This type is highly recommended.

Price, Postpaid: Pkt. 10 cts.; oz. 15 cts.; ¼lb. 40 cts.; lb. \$1.50; 5 lbs. or over, \$1.40 per lb.

PEAS

No. 69. Laxton's Progress

Excellent semi-dwarf, early variety

Days to maturity, 60. Developed and introduced by Laxton Brothers of England in 1922, it reached the United States in 1924. This Pea has the largest pod and is the most attractive of the entire Laxtonian family. It is valuable for shipment to distant markets and also for production in home and market gardens. Height of vine 18 inches. Foliage dark green and prolific. Length of pod $4\frac{1}{2}$ inches, width $\frac{1}{8}$ inch; somewhat curved, pointed, and handsome. The pods contain from 7 to 9 large Peas. The seeds are especially large, with more of the medium green than of the cream color. Laxton's Progress has had some very careful work done on it since it has been introduced into America and may now be considered one of the very top varieties in popularity for all general purposes. It may be distinguished from Peter Pan, to which it is most similar, by maturing a week earlier.

Price, Postpaid: $\frac{1}{4}$ lb. 10 cts.; $\frac{1}{2}$ lb. 20 cts.; lb. 35 cts.; 5 lbs. or over, 30 cts. per lb. Not Prepaid: 10 lbs. at 24 cts. per lb.; 25 lbs. at 22 cts. per lb.; 100 lbs. at 18 cts. per lb.

No. 70. World's Record

Slightly earlier than Gradus and with a shorter vine

Days to maturity, 55. This variety originated with Sutton prior to 1907, and is the result of a cross between Harbinger and Early Giant. It first reached the United States about 1913. World's Record is a Gradus type, but matures 4 or 5 days earlier. It is an excellent garden Pea for the early markets. The medium green vines grow to a height of 30 inches. Pods $3\frac{3}{4}$ inches long, medium green, pointed, broad, plump, containing 7 to 8 large, tender Peas of good quality. The seeds are large, cream and green, and wrinkled. World's Record is at present the leading market variety in New Jersey. Some growers have found it to be more productive and more profitable than most other varieties of recent years.

Price, Postpaid: $\frac{1}{4}$ lb. 10 cts.; $\frac{1}{2}$ lb. 20 cts.; lb. 35 cts.; 5 lbs. or over, 30 cts. per lb. Not Prepaid: 10 lbs. at 24 cts. per lb.; 25 lbs. at 22 cts. per lb.; 100 lbs. at 18 cts. per lb.

Laxton's Progress Peas

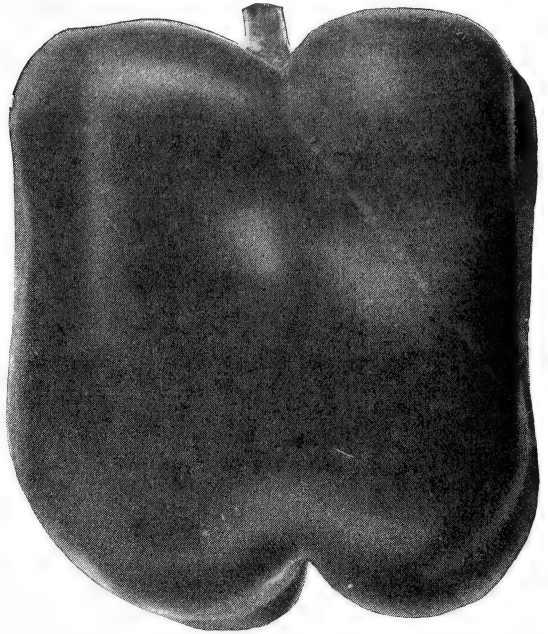
PEPPER

No. 71. California Wonder

A large, thick-walled, handsome Pepper

Days to maturity, 125. This variety had its American introduction in California about 1927 and has been very widely accepted. While not of the very earliest maturity, it nevertheless ripens within a week of Ruby King. It has set a standard of excellence in Sweet Peppers. The plant is a heavy producer, often bearing 6 to 8 large fruits at the same time. Because of the firmness of the wall, it has been widely accepted as a shipping variety. Our stock will develop a wall-thickness of from $\frac{1}{4}$ to $\frac{3}{8}$ of an inch. It packs well, the skin is smooth and glossy, and it will not wilt under long-distance handling. The fruit will average $4\frac{1}{2}$ inches in length and 4 inches in diameter; it ranges between 3 and 4 lobes. When completely ripe it will change from a deep green to a bright crimson. This is the heaviest Pepper we have ever known.

Price, Postpaid: Pkt. 15 cts.; oz. 50 cts.; $\frac{1}{4}$ lb. \$1.75; lb. \$6; 5 lbs. or over, \$5.75 per lb.



California Wonder Pepper

No. 72. World Beater

Heavy producer. Large, handsome fruit

Days to maturity, 125. World Beater is said to be a cross between Chinese Giant and Ruby King, but we are skeptical as to its origin. We think it more likely to have been merely a selection out of Ruby Giant. It was introduced by I. N. Simon & Son about 1921, and since that time it has been widely accepted in the commercial as well as in the home-garden field. It will develop a fruit 5 inches in length and $3\frac{1}{4}$ inches in diameter, sometimes 3- and sometimes 4-lobed. The flesh is mild and sweet, turning from a rich dark green to a bright crimson at maturity. It has been a very profitable Pepper to growers from New Jersey to Florida.

Price, Postpaid: Pkt. 10 cts.; oz. 30 cts.; $\frac{1}{4}$ lb. \$1; lb. \$3.50; 5 lbs. or over, \$3.25 per lb.



Ruby King Pepper

No. 73. Ruby King

A handsome, long, slender stock

Days to maturity, 120. This variety was introduced by Burpee in 1884, and for a half century it has taken an important place in the vegetable industry of the United States. The plant will grow to a height of 2 feet and is vigorous and productive. Fruits average $4\frac{1}{2}$ inches in length, $2\frac{1}{2}$ inches in diameter, and are usually 3-lobed. The flesh of the stock we offer is reasonably thick but does not approach the weight of California Wonder. It is sweet, at first a dark green, ripening to a bright scarlet.

Price, Postpaid: Pkt. 10 cts.; oz. 25 cts.; $\frac{1}{4}$ lb. 85 cts.; lb. \$3; 5 lbs. or over, \$2.75 per lb.



Early Scarlet Globe Radishes

RADISH

No. 74. Early Scarlet Globe

SHORT-TOP STRAIN

Equally valuable for outdoor culture and for forcing

Days to maturity, 23. A preponderantly large part of the commercial Radish production in the United States is now standardized on the Early Scarlet Globe type. This Radish, originally a European variety, has been refined to a high degree of perfection. Its ancestors were probably the Rond and the Ecarlate, which later became known as Vick's Scarlet Globe. The pedigree stock which we offer is all grown from stock seed which is developed from transplanted roots. When forced in the hot-house it develops a longer top. The roots are globular, very slightly elongated, averaging not over $1\frac{1}{4}$ inches in length; tap-root is slender and well defined. In color it is a uniform, brilliant scarlet. The flesh is white, crisp, and of mild flavor.

Price, Postpaid: Pkt. 5 cts.; oz. 15 cts.; $\frac{1}{4}$ lb. 25 cts.; lb. 75 cts.; 5 lbs. or over, 70 cts. per lb. Not Prepaid: 10 lbs. at 65 cts. per lb.; 100 lbs. at 55 cts. per lb.

No. 76. White Icicle

Considered by many the standard of excellence in Radishes

Days to maturity, 27. This very popular variety is looked on as decidedly the best early white Radish. The tops are restrained, the roots are long and tapered, very white throughout, very brittle, and of splendid quality until at least 5 inches long. The flavor is mild and inviting.

Price, Postpaid: Pkt. 5 cts.; oz. 15 cts.; $\frac{1}{4}$ lb. 20 cts.; lb. 60 cts.; 5 lbs. or over, 55 cts. per lb. Not Prepaid: 10 lbs. at 50 cts. per lb.; 100 lbs. at 40 cts. per lb.

No. 75. Early Scarlet Globe

MEDIUM-TOP STRAIN

Days to maturity, 24. This strain is similar to the short-top strain, except that it has been selected for longer tops, ranging from 3 to 4 inches. It is particularly recommended for outdoor culture under normal conditions. The size and quality of the root is similar to the short-top strain described opposite. Its top will develop 1 to 2 inches longer than the short-top strain, which is considered a distinct advantage under certain conditions. Each strain will give great satisfaction in its place. The season is rather short, and the Radishes must be pulled promptly after reaching maturity. The maximum size before becoming pithy is $1\frac{1}{4}$ inches in length and $\frac{3}{4}$ inch in diameter.

Price, Postpaid: Pkt. 5 cts.; oz. 15 cts.; $\frac{1}{4}$ lb. 20 cts.; lb. 60 cts.; 5 lbs. or over, 55 cts. per lb. Not Prepaid: 10 lbs. at 50 cts. per lb.; 100 lbs. at 40 cts. per lb.

No. 77. Philadelphia White Box

For forcing or for outdoor culture

Days to maturity, 28. A variety introduced by Johnson & Stokes in 1888. This popular, medium-early, round, white Radish is highly esteemed. Owing to its short top and rapid growth, it is specially suited for growing under glass, in frames or boxes, hence its name. Although usually pulled when it is about $1\frac{3}{8}$ inches in diameter, it can attain a size of $2\frac{1}{2}$ inches before becoming pithy. The flesh is very white, very crisp, fine-grained, and tender.

Price, Postpaid: Pkt. 5 cts.; oz. 15 cts.; $\frac{1}{4}$ lb. 20 cts.; lb. 60 cts.; 5 lbs. or over, 55 cts. per lb. Not Prepaid: 10 lbs. at 50 cts. per lb.; 100 lbs. at 40 cts. per lb.

PUMPKIN

No. 78. Small Sugar

Also called New England, or Boston Pie

Days to maturity, 115. A standard variety for general use, and particularly desirable for pies. It is late in maturing and very prolific. The fruits are round, flattened at the ends, with a diameter of 10 inches and a depth of 8 inches, weighing from 6 to 8 pounds. The outside color is a deep orange. Flesh is thick, sweet, of fine quality, and of an orange-yellow color. It will store exceptionally well.

Price, Postpaid: Pkt. 5 cts.; oz. 15 cts.; $\frac{1}{4}$ lb. 30 cts.; lb. \$1; 5 lbs. or over, 90 cts. per lb.

No. 79. Orange Winter Luxury

Newest development of old Winter Luxury

Days to maturity, 100. Johnson & Stokes introduced the Winter Luxury Pumpkin in 1893. The present stock of Orange Winter Luxury is a development by Gill Brothers. The fruit of Orange Winter Luxury will attain a diameter of 10 inches and a depth of 8 inches, and will weigh 8 pounds. The outside skin is covered with a slight netting. The flesh is thick, firm, and exceptionally sweet.

Price, Postpaid: Pkt. 5 cts.; oz. 15 cts.; $\frac{1}{4}$ lb. 30 cts.; lb. \$1; 5 lbs. or over, 90 cts. per lb.

SQUASH

SUMMER VARIETIES No. 80. Giant Summer Straightneck

A distinct improvement over the older Crookneck

Days to maturity, 55. This is a development out of the very old variety, Golden Summer Crookneck. The comparative straightness of the fruit is an obvious advantage, especially in packing, for it requires less space and there is less breakage. Pound for pound of fruit, we consider that there is considerable more available content for the table out of the newer variety. Those who desire the smaller and perhaps more delicate Early Summer Crookneck can always secure a Squash of that size and weight out of the Giant Summer Straightneck. The length of the latter will develop up to 20 inches if allowed full maturity, with a diameter up to 4½ inches, but it is more desirable when smaller. Color bright orange. Our strain is highly recommended. **Price, Postpaid: Pkt. 5 cts.; oz. 15 cts.; ¼lb. 30 cts.; lb. \$1; 5 lbs. or over, 90 cts. per lb.**

No. 81. Cocozelle

A true long type

Days to maturity, 65. The famous old Italian Marrow (Cocozella di Napoli). This strain is distinguished from certain other strains as being considerably longer and more slender. While it is true that this type can grow to too great a length, if gathered when from 8 to 10 inches long it makes a very handsome fruit. It is true, however, that if allowed to reach its full maturity, it will develop a Squash at least 2 feet long. It is cylindrical, straight, smooth, dark green with lighter green stripes which change to a deep yellow at maturity. The flesh is greenish white. **Price, Postpaid: Pkt. 5 cts.; oz. 15 cts.; ¼lb. 30 cts.; lb. \$1; 5 lbs. or over, 90 cts. per lb.**

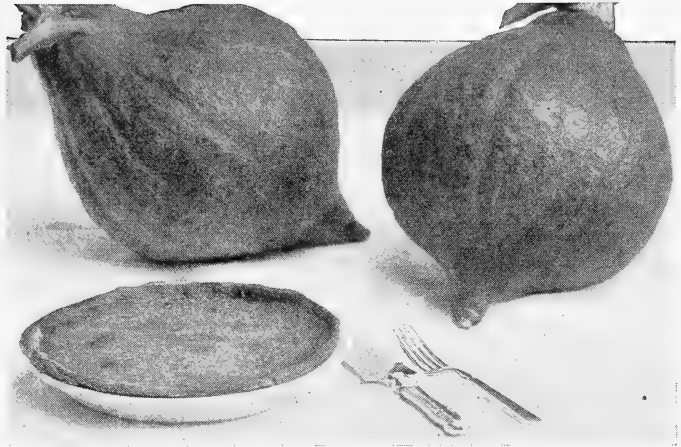
No. 82. Early White Bush

Green-tinted or Benning Strain

Days to maturity, 53. We consider this to be the best of the green-tinted varieties which, in most instances, have proved to be far better sellers than the original strain. The fruits are of a convenient size for shipping. Color is greenish white when young, creamy white when fully matured. The small, edible fruits usually find a more ready sale. In size they average 8 inches in diameter, with 3 inches thickness. The old variety used to be referred to as Patty-Pan. **Price, Postpaid: Pkt. 5 cts.; oz. 15 cts.; ¼lb. 30 cts.; lb. \$1; 5 lbs. or over, 90 cts. per lb.**



Giant Summer Straightneck Squash



Golden Delicious Squash

WINTER VARIETIES

No. 83. Golden Delicious

New. Highly desirable for home use or for canning

Days to maturity, 100. This remarkable new introduction was originated by Gill Brothers, and in the comparatively short time it has been available, it has received wide acceptance. It is the result of a cross between Boston Marrow and Delicious, retaining the brilliant red-orange color of Boston Marrow and the high flavor and texture of Delicious. The fruits are shaped like a top, being about 10 inches across at the top and 8 inches from top to point, and the average weight is about 7 pounds. The flesh is from 2 to 3 inches thick. It is particularly desired by canners because of its high starch content. **Price, Postpaid: Pkt. 5 cts.; oz. 15 cts.; ¼lb. 30 cts.; lb. \$1; 5 lbs. or over, 90 cts. per lb.**

No. 84. Table Queen

Also called Des Moines and Acorn

Days to maturity, 58. This Squash was first listed commercially by the Iowa Seed Company in 1913, but previous to that time it had been grown by Des Moines market gardeners, and there is reason for believing that it was well known to the Indians of the prairie for many generations. It is an ideal individual Squash, and one that is especially desirable for baking. The fruit is acorn-shaped, averaging 5½ inches in length and 4½ inches in diameter. The outside color is a green-black and the flesh is a light yellow. It matures early, but ships and stores well. **Price, Postpaid: Pkt. 5 cts.; oz. 15 cts.; ¼lb. 30 cts.; lb. \$1; 5 lbs. or over, 90 cts. per lb.**

No. 85. Boston Marrow

The standard commercial Squash for pies

Days to maturity, 97. This variety, a native of New England for upward of a century, remains one of the most largely planted fall and winter types of Squash. It is very largely used by pie manufacturers and by canners. It resembles Hubbard in size and shape. The fruits will average 6 to 8 pounds, having a length of 12 inches and a diameter of 9 inches. The red-orange skin is somewhat rough and quite hard. The flesh is yellow, thick, and firm. **Price, Postpaid: Pkt. 5 cts.; oz. 15 cts.; ¼lb. 25 cts.; lb. 75 cts.; 5 lbs. or over, 70 cts. per lb.**



Note the perfect savoying of the leaves in this seed-field of Bloomsdale Savoy

SPINACH

No. 86. Bloomsdale Savoy

An extra dark green strain for spring or fall production

Days to maturity, 40. Named and introduced by Landreth in 1828. The word "Bloomsdale" was added about 1874, after the variety had been greatly improved. The stock that we offer is a highly developed selection of an especially dark green strain which gives the plants a fresh appearance for a long time after being cut. Furthermore, it will stand in marketable condition for a longer time after reaching maturity than the older types of Savoy, and being just as early in maturity, it largely replaces the old stock. Plants are erect in growth, hardy, and attractive. The leaves are large, crumpled, and somewhat blistered.

Price, Postpaid: Oz. 5 cts.; $\frac{1}{4}$ lb. 15 cts.; lb. 40 cts.; 5 lbs. or over, 35 cts. per lb. Not Prepaid: 10 lbs. at 19 cts. per lb.; 25 lbs. at 18 cts. per lb.; 100 lbs. at 16 cts. per lb.

No. 88. Long-Standing Bloomsdale

A Savoy type that will hold 10 days longer before bolting

Days to maturity, 43. This valuable introduction was the product of that remarkable Holland plant-breeder, A. R. Zwaan, who has, perhaps, done more for the improvement of Spinach varieties than any other individual. Although it is slightly longer in reaching maturity—perhaps 4 or 5 days—it nevertheless closely resembles Bloomsdale Savoy, and the fact that it remains in marketable condition 10 days longer than Bloomsdale is greatly in its favor, especially in the event of an extra-large crop or an unfavorable market. Its production of larger plants, and thus more bushels per acre, also adds to its value. This very popular variety is being used in both the spring and fall. The deep glossy green leaves are intensely crumpled and blistered. Type is very uniform.

Price, Postpaid: Oz. 5 cts.; $\frac{1}{4}$ lb. 15 cts.; lb. 40 cts.; 5 lbs. or over, 35 cts. per lb. Not Prepaid: 10 lbs. at 20 cts. per lb.; 25 lbs. at 19 cts. per lb.; 100 lbs. at 17 cts. per lb.

No. 87. Virginia Blight-Resistant

Recommended for August and September planting only

Days to maturity, 40. This stock was first developed and introduced by the Virginia Truck Experiment Station. Because it is composed of 70 per cent male plants, it will quickly run to seed in warm weather, and is not recommended to be planted in the latitude of Philadelphia until after August 20. There are two outstanding advantages of Virginia Blight-resistant: First, its resistance to Spinach "yellows" or mosaic, a disease which often makes severe inroads on the fall crops, especially in certain eastern states; second, its definite resistance to low temperatures. This factor is thought to have been developed by injecting the blood of the wild Manchurian dandelion. While we discourage it for spring planting, a time when Spinach "yellows" is not severe, we very strongly recommend it for use in its special place. In appearance, it is now very similar to Bloomsdale Savoy.

Price, Postpaid: Oz. 5 cts.; $\frac{1}{4}$ lb. 15 cts.; lb. 40 cts.; 5 lbs. or over, 35 cts. per lb. Not Prepaid: 10 lbs. at 20 cts. per lb.; 25 lbs. at 19 cts. per lb.; 100 lbs. at 17 cts. per lb.

No. 89. Nobel

A long-standing Giant Thick-leaved type

Days to maturity, 45. Mr. A. R. Zwaan is also responsible for the development of this variety, the heaviest producer of the Giant Thick-leaved type. The leaves are large, very succulent, crisp, tender, of delicious flavor, and not crumpled or savoyed. This variety now supersedes all others of its class, including the Viroflay types. The long-standing feature of Nobel is also greatly in its favor. It is a popular variety with canners in many instances because of the smoothness of the leaves, making washing a much simpler operation.

Price, Postpaid: Oz. 5 cts.; $\frac{1}{4}$ lb. 15 cts.; lb. 40 cts.; 5 lbs. or over, 35 cts. per lb. Not Prepaid: 10 lbs. at 20 cts. per lb.; 25 lbs. at 19 cts. per lb.; 100 lbs. at 17 cts. per lb.



Plant 6-48, one of the staked singles in our tenth generation Master Marglobe stock in one of the breeding plots on our Moorestown Proving-Grounds. This plant may be destined to be reproduced several million times in the next three years. It bore 91 fruits.

TOMATO

No. 90. The Master Marglobe

The heaviest, most desirable, all-purpose Tomato under cultivation

See colored illustration on the outside covers of this Catalog

Days to maturity, 118. The Master Marglobe, a selection from the late Dr. F. J. Pritchard's remarkable hybrid Marglobe, was first offered to the trade in 1925. Marglobe is a cross between Livingston's Globe and Vilmorin's Marvel of the Market, and represents, perhaps, the most forward step in Tomato breeding that had been made up to that time. The Master Marglobe has been developed over a carefully planned 7-year breeding program. We aimed for, and successfully attained, a Tomato that: (1) is $\frac{1}{2}$ inch deeper, allowing for two extra slices per fruit and eliminating loss from blossom-end scar and from flats; (2) has an interior with distinctly smaller seed-cavities, heavier cross-sections, and heavier wall, resulting in far less loss by puff, and adding greatly to the brilliant appearance of the fruit when sliced; (3) will yield—we believe we are conservative in making this statement—40 per cent heavier than the original Marglobe, which in some instances has developed heavy, unproductive plants.

It is difficult for us to hold ourselves in moderation in describing The Master Marglobe. The fact that it is our most important individual item means that we give it closer attention than we give anything else we sell. In our opinion, it is the most important Tomato in the United States today, and our annual sale of thousands of pounds of seed is an indication that the Tomato producers recognize the inherent strength of the strain. Except for those customers located in the northern-tier states, The Master Marglobe will prove to be not only the most profitable Tomato, but also one of the most brilliant varieties now available anywhere.

Our entire 1933 seed-production was the product of two plants of two years ago. The New Jersey State Department of Agriculture has certified our entire acreage as to type-purity and freedom from disease. Tomato experts from all over the United States inspected our fields last summer and pronounced them to be superior to anything they had ever seen.

Price, Postpaid: Pkt. 15 cts.; oz. 75 cts.; $\frac{1}{4}$ lb. \$2.50; lb. \$8.

No. 91. Marglobe Tomato*A standard commercial strain*

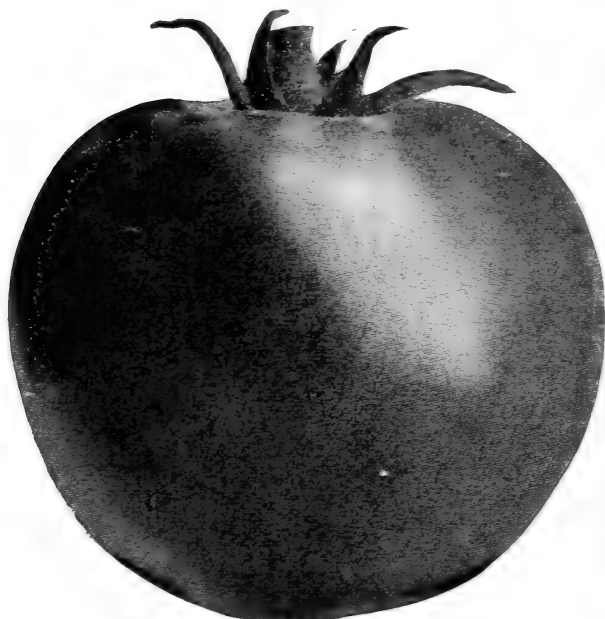
Days to maturity, 118. We quote as follows from our Catalog of 1926: "We have the great honor this year of bringing to our trade the Marglobe Tomato, a new variety which we believe is destined for great prominence within the next decade. Marglobe is another triumph for the plant-breeders. In this instance the honors go to Dr. Fred J. Pritchard of the Bureau of Plant Industry, United States Department of Agriculture. Dr. Pritchard, in his quiet, unassuming way, has accomplished very definite results in developing a wilt-resistant strain of Tomato. We believe the Marglobe to be his outstanding achievement." Seldom has a new introduction made such a deep impression as has Marglobe. In 9 short years it has gained outstanding importance among all the Tomatoes in this country. Not only is it resistant to fusarium wilt and to nailhead rust, but its other qualities are so distinguished that it is in a class of its own.

Price, Postpaid: Pkt. 10 cts.; oz. 35 cts.; 1/4lb. \$1.20; lb. \$4.

No. 92. Lange's Earliana*We have purchased the distribution rights for this valuable new strain*

Days to maturity, 107. Sparks' Earliana was introduced by Johnson & Stokes in 1900, and was spoken of at that time as the most successful novelty of the new century. About 30 years after this introduction, our neighbor, Ernest Lange, whose farm is only a few miles from the farm of Mr. George C. Sparks in Salem County, found an outstanding hill in his Earliana field. He saved the seed from it and two years later demonstrated before the farmers of southern New Jersey that he had a very superior strain of Earliana. Our firm has the honor of distributing this seed, and now, after three years, we are convinced that it is a greater money-maker than any other strain of Earliana now being grown. It is a very handsome Tomato, and the fact that the crown-set will very often produce from 10 to 20 large Tomatoes is obviously important. The plants will average better than 6 fruits on the crown-set. Plants set out the first week in May yielded the first ripe fruit on June 17, and the first fruit was placed on the market on June 22. This is an early date for Gloucester County, New Jersey. The variety has attracted wide attention among agriculturists.

Price, Postpaid: Pkt. 25 cts.; oz. \$1; 1/4lb. \$3.50; lb. \$12.

No. 93. Pritchard*The last origination of a great plant-breeder*

Pritchard, early, deep, solid and prolific

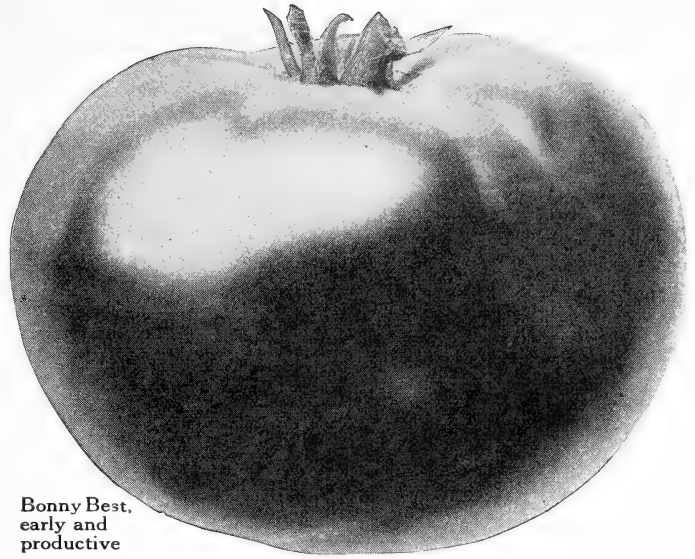
Days to maturity, 112. This Tomato, Dr. F. J. Pritchard's last origination before his untimely death, was a 1931 introduction of the United States Department of Agriculture. Its original name was Scarlet Topper but soon after Dr. Pritchard's passing, the Department officially renamed it Pritchard, an honor that was eminently deserved. It is a cross of Marglobe and Cooper's Special, with most of the quality of Marglobe, and at the same time the earliness of Bonny Best. The plant has a definite self-topping tendency. This restricted plant-growth should be counteracted by heavy applications of ammonia (fish, king crab, or tankage) in the early weeks to insure full production. With proper fertilization it is a heavily productive variety. The fruits have very much the appearance and quality of Marglobe, being large, smooth, globular, and solid, with thick walls and heavy cross-sections. It has already made an important place for itself with growers who could profit by advancing their season a week over Marglobe.

Price, Postpaid: Pkt. 10 cts.; oz. 50 cts.; 1/4lb. \$1.50; lb. \$5.

No. 94. Bonny Best

Introduced by Walter P. Stokes in 1908

Days to maturity, 112. From the Stokes Catalog of 1908 we quote as follows: "The place of honor—the first page in the book—is given this magnificent novelty now offered for the first time. . . . I predict that the Stokes Bonny Best Early (Bonny Best Early it was called then) will soon be known from one end of the land to the other as the finest shipping Tomato ever produced." That prediction, made 27 years ago, has been amply justified. Dr. Pritchard's originations, beginning in 1926, have of course limited the scope for the Bonny Best types, but they have by no means eliminated them from a place of importance in the industry. Bonny Best shares an important place with the second-early group. There are conditions under which it is still more successful than any other variety, and being one of our firm's introductions, we take particular care to see that our stock is maintained at a high standard of excellence. The color is an intense scarlet. John Baer is a similar type.



Bonny Best, early and productive

Price, Postpaid: Pkt. 10 cts.; oz. 30 cts.; 1/4lb. \$1; lb. \$3.50.

No. 95. Super-Standard Bonny Best

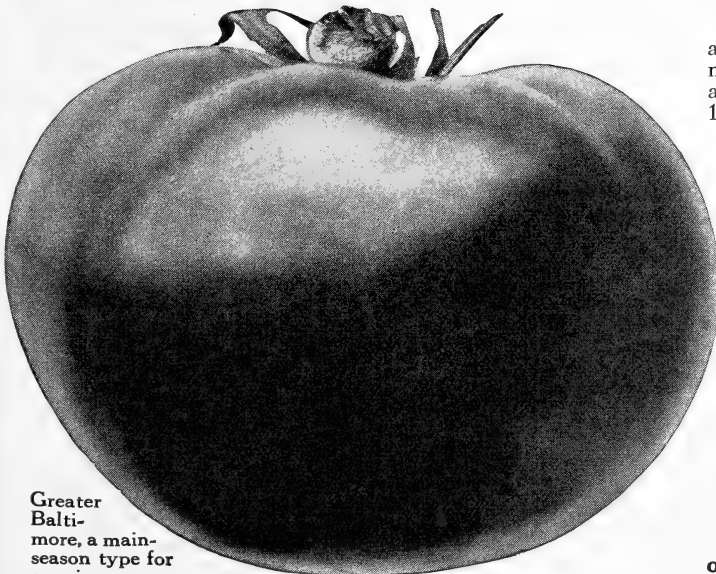
A special selection grown and saved on our Moorestown Proving-Grounds

Days to maturity, 112. We have offered this extra-quality strain of Bonny Best for 10 years, and in that time it has been the source of great profit to our customers both for hothouse and for intensive field cultivation. Anyone desiring a specially fine type of Bonny Best can plant this strain with complete assurance of satisfactory results.

Price, Postpaid: Pkt. 50 cts.; 1/2oz. \$1.25; oz. \$2; 1/4lb. \$7.50.

No. 96. Greater Baltimore

Similar to Stone. Especially valuable for canning



Greater Baltimore, a main-season type for canning

Days to maturity, 123. This is a slightly earlier and deeper Tomato than the much older Stone, as introduced by Livingston in 1889. Bolgiano, of Baltimore, introduced it under the name Greater Baltimore in 1912. In many districts this Tomato is still the standard main-crop canning variety. The plant is large and medium heavy, thus protecting the fruit, which is somewhat flattened but nevertheless of excellent quality. Greater Baltimore is not recommended as a shipping variety for the reason that the market pays the high money for the deeper fruit. It cannot be grown successfully in Maine, New York, or Michigan.

Price, Postpaid: Pkt. 10 cts.; oz. 25 cts.; 1/4lb. 85 cts.; lb. \$3.

TURNIP

No. 97. Purple-Top White Globe

The standard all-purpose fall Turnip

Days to maturity, 55. An American selection of at least a half-century's standing from a European type. This is the standard all-purpose variety used in this country. It is best suited for table use when 3 inches in diameter, a size attained within 6 to 8 weeks from planting. The tops are medium large, compact, and of a rich green. Roots are globular, smooth, bright purple above ground and pure white below. The flesh is white, firm, fine-grained, and tender when young. Purple-Top White Globe is a good keeper. It is used either for table or for stock-feeding.

Price, Postpaid: Pkt. 5 cts.; oz. 10 cts.; 1/4lb. 20 cts.; lb. 70 cts. Not Prepaid: 10 lbs. at 60 cts. per lb.; 100 lbs. at 50 cts. per lb.



Purple-Top White Globe Turnip

No. 98. Purple-Top Yellow Aberdeen

The best winter keeper

Days to maturity, 70. This Turnip is particularly recommended for storage purposes. The root will develop to 5 inches in diameter. It is of high quality, globular and slightly flattened, smooth, upper part bright purple, lower part pale yellow. The flesh is of a light yellow color, sweet and tender.

Price, Postpaid: Pkt. 5 cts.; oz. 10 cts.; 1/4lb. 20 cts.; lb. 70 cts. Not Prepaid: 10 lbs. at 60 cts. per lb.; 100 lbs. at 50 cts. per lb.

No. 99. Shogoin or Japanese Foliage

A valuable dual-purpose variety

Days to maturity, 60. An Oriental variety which has been in use in the United States for at least 5 years. In that time it has attained considerable popularity, especially in the South where greens are so highly prized. Shogoin develops large, edible, bright green leaves from 18 to 20 inches tall. The roots are semi-globular, white throughout, mild and tender. Shogoin is also valuable because of its resistance to drought and aphids.

Price, Postpaid: Pkt. 5 cts.; oz. 10 cts.; 1/4lb. 20 cts.; lb. 70 cts. Not Prepaid: 10 lbs. at 60 cts. per lb.; 100 lbs. at 50 cts. per lb.

RUTABAGA

No. 100. American Purple-Top

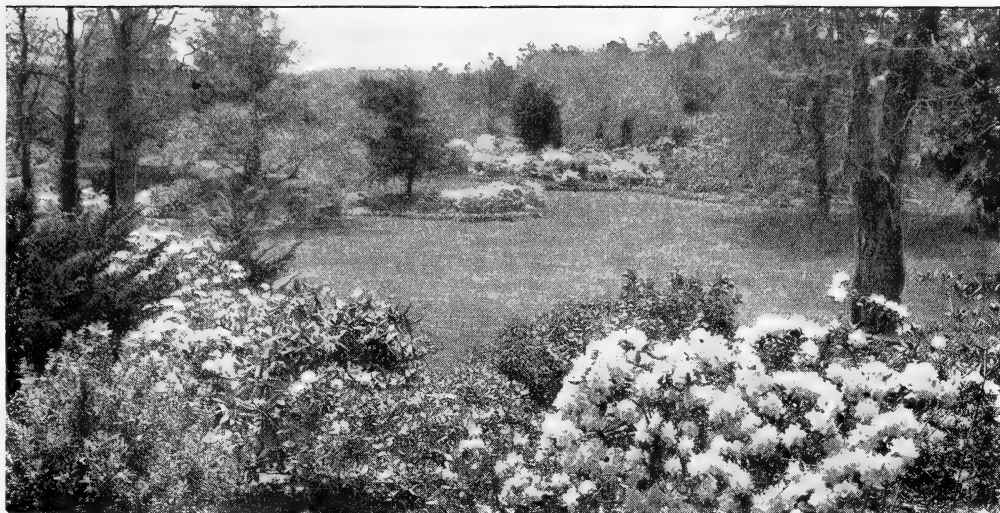
Also known as Long Island Improved

Days to maturity, 85. This standard variety is widely grown for market, for storage, and for car-lot shipment. The tops are comparatively small, the neck short. Roots are large, spherical, of a rich purple color above ground and light yellow below; tap-root is small. Flesh is yellow, fine-grained, firm, mild, and sweet. This variety will develop to a size of from 4 to 6 inches in diameter and has excellent storage qualities.

Price, Postpaid: Pkt. 5 cts.; oz. 10 cts.; 1/4lb. 20 cts.; lb. 70 cts. Not Prepaid: 10 lbs. at 60 cts. per lb.; 100 lbs. at 50 cts. per lb.



Shogoin Turnip



Stokes Lawn Grass Seed

The Stokes Standard Mixtures as offered herewith represent an honest value. The use of white clover we consider an optional matter—some prefer it and some do not. We are making no difference in the prices in our Standard Mixtures. In our opinion, Grass Seed should be purchased by the pound and not by the quart, peck, or bushel, which is always confusing and carries with it an element of mystery that is quite out of place in these times.

The Stokes Mixtures Nos. 1, 2, and 3 as offered herewith are put up according to the official recommendations of the New Jersey Agricultural Experiment Station. We believe that they are admirably suited to conditions in this area. For those wishing a fine Bent Grass lawn we offer our Bent Grass Mixture. This will make a finer lawn but requires more care. It is particularly adapted to acid soils.

Standard Mixture No. 1

Without White Clover

Kentucky Blue Grass, 55 per cent.
Red-Top, 25 per cent.
South German Bent, 10 per cent.
Rye Grass, 10 per cent.

Prices on above mixtures, Postpaid: Each, Lb. 60 cts.; 5 lbs. at 55 cts. per lb.; 20 lbs. at 50 cts. per lb.

Standard Mixture No. 2

With White Clover

Kentucky Blue Grass, 50 per cent.
Red-Top, 25 per cent.
South German Bent, 10 per cent.
Rye Grass, 10 per cent.
White Dutch Clover, 5 per cent.

Shady Lawn Mixture No. 3

Meadow Fescue, 10 per cent.
Rough-stalked Meadow, 30 per cent.
Red Fescue, 20 per cent.
South German Bent, 10 per cent.
Red-Top, 10 per cent.
Kentucky Blue Grass, 20 per cent.

Bent Grass Mixture No. 4

Rhode Island Bent Grass, 40 per cent and Kentucky Blue Grass, 60 per cent.

Prices, Postpaid: Lb. \$1; 5 lbs. at 95 cts. per lb.; 10 lbs. at 92½ cts. per lb.; 20 lbs. at 90 cts. per lb.

Kentucky Blue Grass

Fancy Quality

This seed has been thoroughly re-cleaned and weighs 21 pounds per bushel.

Prices, Postpaid: Lb. 40 cts.; 10 lbs. at 37½ cts. per lb.; 20 lbs. at 35 cts. per lb.

White Dutch Clover

This is in general use where a thick and quick growth is desired. It is particularly adapted for lawns at the seashore.

Prices, Postpaid: ¼ lb. 20 cts.; lb. 75 cts.; 5 lbs. at 70 cts. per lb.

The Making of a Lawn

Preparation. The ideal soil for a lawn is light to medium loam. This should be dug or plowed to a depth of 6 inches, all stones, coarse roots, etc., removed during the raking and leveling process. As all soils contain weed seeds, it is best that some time elapse between the preliminary preparation of the soil and the sowing of the Grass Seed. Seedsmen are often unfairly blamed in this respect.

Sowing of the Seed. A careful study of the formulas offered on this page will show the mixture that is best suited to your purpose. Grass Seed may be sown either in the spring or in the fall. Sow 6 pounds of seed for every 1000 square feet, or about 170 pounds per acre. A fine friable soil-surface is best, and an even distribution of the seed may be obtained by sowing half of the seed in a north and south direction and the remainder in an east and west direction. After sowing the seed, rake it lightly and roll down. It is well to have rolling operation go both ways also. It will require from ten days to two weeks before there is much of a showing of grass.

To Rebuild an Old Lawn. Many are not worth re-

building and had better be spaded under for a fresh start. It must be understood, however, that a poor lawn cannot be turned into a good one in a few weeks. It is a gradual process, and one which takes care. Usually, the condition of the soil is at the bottom of the difficulty, for most lawns are lacking in organic matter and plant-food. They should be top-dressed at least once a year with mushroom soil or some other well-rotted manure. The practice of an annual application of Ammonium Sulphate is a good one. Three to four pounds per 1000 square feet should be used in each application, after which there should be a thorough sprinkling. In re-seeding an old lawn it is usually best to accompany it with a top-dressing, for unless the soil is prepared for the seed, very little of it grows. We recommend the use of 4 pounds of grass seed per 1000 square feet of rebuilt lawn.

To Prevent Japanese Beetle Damage. In April or May apply Arsenate of Lead, 2 pounds for every 1000 square feet. It is best to mix this with sand. The poison, thus applied, works its way down and finally kills the grub.

STOKES FLOWER SEEDS

This Department continues to be an important part of our business. The list that we offer herewith contains some of the very finest stocks available, including many of the newest varieties. This seed may be purchased with great confidence. As is the case with our entire business, our Flower Seed Department is conducted on a very high standard, and the prices we ask have been made as low as we can make them without affecting quality. The ancient origin of each flower, where known, is given on the title line.

The following symbols with their explanatory notes will be found helpful in the general classification of our offerings.

A—*Annual*. Living only one growing season.
P—*Perennial*. Living over from year to year.
h—*bardy*. Resistant to average seasonal temperature variations.

hh—*half-bardy*. Plants which need protection against extreme low temperatures.

t—*tender*. Plants which will not stand up against extreme heat or cold.

Ageratum Mexico

505 **Blue Ball**. [hA—6in.] The bushes of this compact, ball-shaped plant are completely covered with large heads of fluffy flowers which make a mass of deep clear blue over a long season. This dwarf type is invaluable in the bed or for edging. Pkt. 10 cts.; $\frac{1}{4}$ oz. 30 cts.; oz. \$1.

Antirrhinum · Snapdragon

[hA] North America

Snapdragons are one of the most valuable flowers easily grown from seed. They are justly deserving of their popularity. The Tall varieties show to the best advantage in long borders and are well adapted for backgrounds. The Half-Dwarf varieties are suitable for bedding. For early flowering, sow seed indoors during March and transplant to the open when the weather permits, or sow outdoors early in the spring.

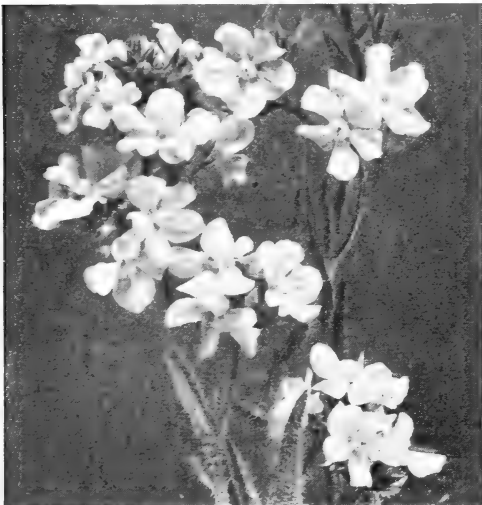
570 **Mixed Tall Giants**. Pkt. 15 cts.; $\frac{1}{4}$ oz. \$1.

540 **Mixed Half-Dwarf**. Pkt. 10 cts.; $\frac{1}{8}$ oz. 25 cts.

Anchusa

Mediterranean Region

515 **Italica**, Lissadell. [hP—4ft.] A very handsome plant with an abundance of forget-me-not-like flowers of deep gentian-blue on drooping sprays, blooming all season and late into fall. Pkt. 15 cts.; $\frac{1}{2}$ oz. 45 cts.; $\frac{1}{4}$ oz. 75 cts.



Anchusa italica

Alyssum Southern Europe

510 **Little Gem** or **Carpet of Snow**. [hA—4in.] These popular, free-flowering plants form dense masses of pure white flowers from late spring until frost. Invaluable for edging and bedding, and also in the rock-garden. Pkt. 10 cts.; $\frac{1}{4}$ oz. 20 cts.; oz. 50 cts.

511 **Saxatile compactum**. [hP—9in.] Brilliant golden yellow blossoms cover the compact plants in profusion from April to June. Fine for rockwork. Pkt. 10 cts.; $\frac{1}{4}$ oz. 40 cts.; $\frac{1}{2}$ oz. 70 cts.

Amaranthus

[hA—3ft.] Asiatic Tropics

Brilliant foliage plants much prized for their effectiveness in the formal border or bed. The brightest colors are produced in rather poor soil.

513 **Tricolor**. (Joseph's Coat.) Brilliant red, yellow, and bronze-green leaves. Pkt. 10 cts.; $\frac{1}{4}$ oz. 30 cts.

514 **Molten Fire**. Bronzy crimson foliage, terminating with tufts of brilliant poinsettia-red leaves. Pkt. 15 cts.; $\frac{1}{4}$ oz. 50 cts.

Aquilegia · Columbine

Northern Hemisphere

This favorite is among the easiest of hardy plants to grow from seed, very often blooming the first year if planted early in the spring. It will thrive in almost any condition, preferring partial shade and plenty of moisture. The variety we are offering bears large, long-spurred blossoms in a wide range of colors on long stems. No garden should be without these.

590 **Mrs. Scott Elliott's Long-spurred Hybrids**. [hP—2 $\frac{1}{2}$ ft.] Beautiful shades of blue, scarlet, rose, pink, cream, and white. Pkt. 15 cts.; $\frac{1}{8}$ oz. 35 cts.

Arctotis · Blue-eyed African Daisy

Africa

600 **Grandis**. [hA—2 $\frac{1}{2}$ ft.] This handsome, sun-loving annual of branching habit is ornamental in any garden. The large flowers are silvery white on one side and lilac-blue on the reverse. A ring of bright gold rims the steely blue center. They are excellent for cutting and may be started indoors or in the open ground. Pkt. 10 cts.; $\frac{1}{4}$ oz. 30 cts.; $\frac{1}{2}$ oz. 55 cts.; oz. 90 cts.

Armeria · Sea-Pink

Southern Europe

605 **Formosa**. [hP—12in.] Dwarf rosettes of grass-like leaves with rosy pink flowers borne on wiry stems. Excellent for edging and for rock-gardens. Pkt. 10 cts.; $\frac{1}{2}$ oz. 40 cts.

Asters [hhA] China

American-Grown Florists' Strains

Asters will make a brilliant display in the garden during the late summer and fall. We are offering below a range of varieties that differ in form and blooming season. In order to obtain the finest flowers, care should be taken that there is no check to their growth from time of starting until flowering season. If early flowers are desired, seed should be started indoors and transplanted after danger of frost has passed. For autumn flowers, seed may be sown outdoors. When long stems for cutting are desired, plants should be set not closer than 12 inches apart.

Stokes Wilt-resistant Strains. After many years' work, wilt-resistance has been developed in many of the leading varieties of Asters. These strains will produce healthier plants of sturdier substance than the old types. Wilt-resistance is not to be confused with disease-resistance as, unfortunately, there is no known way to combat other Aster diseases except by growing the plants in an enclosed space, thereby keeping the leaf-hoppers away from them. We are marking with a * all varieties on which we are offering Wilt-resistant strains.

*IMPROVED CREGO GIANT

[2ft.]

A midsummer variety. The fluffy flowers, with long, shaggy twisted petals are considered the finest of the Ostrich-Plume or Comet types. They are excellent for cutting as they will keep a long time in water.

- | | |
|----------------|------------------------|
| 620 Shell-Pink | 626 Orchid. <i>New</i> |
| 621 Azure-Blue | 623 Crimson |
| 622 Rose-Pink | 625 Dark Blue |
| 624 White | 630 Mixed |

Any of the above: Pkt. 10 cts.; 1/8oz. 25 cts.;
1/4oz. 40 cts.; oz. \$1.25

COLLECTION: One pkt. each of 6
separate colors for 50 cts.

627 **Indian Summer.** *New.* The brilliant copper-rose flowers are of true Ostrich-Plume type. Pkt. 25 cts.; 1/8oz. 40 cts.; 1/4oz. 75 cts.

685 *HEART OF FRANCE

[2ft.]

This beautiful, distinct Aster will always command admiration. It is the largest of all red Asters, opening pure deep ruby-red and darkening with age. Pkt. 15 cts.; 1/8oz. 35 cts.; 1/4oz. 65 cts.; oz. \$2.

*AMERICAN LATE BRANCHING

[2ft.]

The spreading branches of this type produce long-stemmed, chrysanthemum-shaped flowers often measuring 5 inches across. Flowers two weeks later than Crego.

- | | |
|----------------|------------------|
| 640 Azure-Blue | 644 Mary Semple. |
| 641 Crimson | Shell-pink. |
| 642 Deep Blue | 645 White |
| 643 Deep Rose | |

650 Mixture of all 6 varieties

Any of the above: Pkt. 10 cts.; 1/8oz. 25 cts.;
1/4oz. 40 cts.; oz. \$1.25

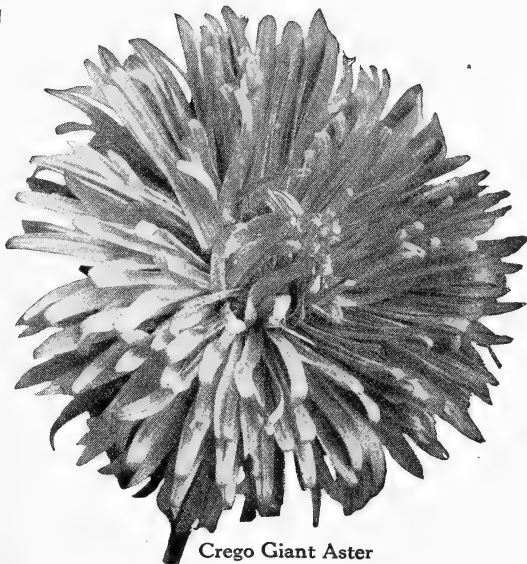
COLLECTION: One pkt. each of the 6
separate colors for 50 cts.

IMPROVED NEW GIANT CALIFORNIA SUNSHINE ASTERS

[3ft.]

This new Aster is distinctly unique and is bound to command attention everywhere. Lacy petals in lovely clear shades of pink, rose, blue, and lavender are loosely placed about a cushion-like, quilled center, sometimes yellow, sometimes white. It is difficult to describe the loveliness of this dual-tone effect. The enormous blooms, 4 to 5 inches across, are borne on long stems, making this new race valuable for cutting. The type is not yet set and will come about 50 per cent variable, with the best blooms coming late.

687 Mixed. Pkt. 25 cts.; 1/8oz. 40 cts.; 1/8oz. 75 cts.



Crego Giant Aster

Asparagus

[tA-3ft.] Old World

Because of its foliage it is often called "Asparagus Fern." Grows easily and quickly in a good sunny window. Valuable for cutting and as a pot-plant.

610 **Plumosus nanus.** The delicate foliage of this variety is highly valued by florists for cutting. Pkt. 15 cts.; 100 seeds 35 cts.; 1000 seeds \$1.50.

611 **Sprengeri.** (Emerald Feather.) Its graceful, drooping foliage makes this very desirable for hanging-baskets and cutting. May be grown outdoors during summer or indoors in winter. Pkt. 10 cts.; 100 seeds 20 cts.; 1000 seeds \$1.10.

Balsam • Lady-Slipper

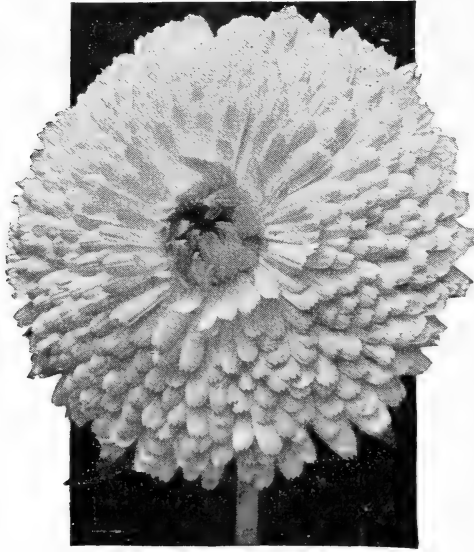
India

695 **Double Camellia-flowered, Mixed.** [hA-18in.] This lovely old-fashioned garden flower produces a gorgeous mass of brilliant colors from early summer until fall. Pkt. 10 cts.; 1/4oz. 25 cts.; oz. 75 cts.

715 Blue Lace Flower • Didiscus caerulea

[hA-2 1/2ft.] Australia

Gardeners and florists everywhere appreciate the charm of the lovely airy clusters of lavender-blue florets. Their long stems and fine keeping qualities make them invaluable for cutting. Sow the seed outdoors in a bed after the ground warms. Pkt. 10 cts.; 1/4oz. 50 cts.



Golden Radio Calendula

Bellis Perennis • English Daisy

England

710 Giant Double, Mixed. [hhP-8in.] These now rank among the most valuable plants for edging, bedding, or rock-gardens. The button-like flowers, in shades of red, rose, and white, are very attractive. This plant prefers a moist location, and, if given protection in winter, will bloom for many seasons. Pkt. 10 cts.; $\frac{1}{8}$ oz. 45 cts.

Brachycome • Swan River Daisy

Australia

720 Mixed. [hA-10in.] Dainty, cineraria-like flowers of rose, mauve, and white are borne in profusion from early spring well into summer. Excellent for small beds, edging, or pot-culture, and may be used to great advantage in the rock-garden. Pkt. 10 cts.; $\frac{1}{8}$ oz. 25 cts.; $\frac{1}{4}$ oz. 40 cts.

Buddleia**Butterfly Bush or Summer Lilac**

China

721 Variabilis Veitchiana. [hP-3 to 8 ft.] A shrub bearing long tapering lavender spikes similar to lilac. Very fragrant and blooms continuously from midsummer until frost. Protection should be given in the winter. Pkt. 10 cts.

Candytuft • Iberis

Spain

Umbellata. [hA-1ft.] This old-fashioned favorite furnishes very attractive beds and borders and is excellent for rockeries. Very easily grown and will succeed in any good garden soil. Plants should be thinned to stand not less than 6 inches apart.

747 White 749 Rose
748 Crimson 750 Lilac

755 Mixed

Any of above: Pkt. 10 cts.; $\frac{1}{4}$ oz. 20 cts.;
oz. 50 cts.

Calendula

[hA-18in.] Canary Islands to Persia

The showiness of this old favorite has few rivals in the garden or as a cut-flower. Besides its popularity in the open garden, Calendula is of great importance to florists for winter forcing.

In Calendula the plant-breeders have glorified the old-fashioned pot marigold by enlarging its size and form, and by purifying and brightening its colors. The vigor of the original has not been lost in this transition. The new varieties we offer will bloom from early summer until frost, with constantly improving size and color.

725 Ball's Orange. Giant orange-yellow blooms coming uniformly double. Much prized by florists as well as for growing outdoors. Pkt. 10 cts.; $\frac{1}{4}$ oz. 50 cts.; oz. \$1.50.

727 Lemon Queen. Fine double flowers of rich lemon-yellow. Pkt. 10 cts.; $\frac{1}{4}$ oz. 35 cts.; oz. 90 cts.

731 Golden Radio. A new development with all the characteristics of Orange Radio except that the color is a deep gold. We believe this will be a welcome addition. Pkt. 15 cts.; $\frac{1}{4}$ oz. 75 cts.; oz. \$2.50.

730 Mixed. All colors. Pkt. 10 cts.; oz. 20 cts.; $\frac{1}{4}$ lb. 60 cts.

Calliopsis

Eastern United States

738 Finest Mixed. [hA-2 $\frac{1}{2}$ ft.] An easily grown, graceful border plant producing a wealth of brilliant flowers in combinations of yellow and maroon throughout the summer. The single petals are slightly toothed. Seed should be sown where they are to bloom and thinned to stand 9 to 12 inches apart. Pkt. 10 cts.; $\frac{1}{4}$ oz. 25 cts.; oz. 55 cts.

Campanula

World-wide

734 New Annual Canterbury Bells, Mixed. [2 $\frac{1}{2}$ ft.] Since this new Canterbury Bell will bloom from seed in less than six months, it is now possible to have it in flower at almost any time of the year. The plants will average six to eight spikes of blooms in warm shades of light blue, dark blue, pink, rose, and white. This development won third place in the All-American Flower Selection. Pkt. 25 cts.; $\frac{1}{8}$ oz. 50 cts.

Carnations

[hA-20in.] Southern Europe

Everyone knows the delicious fragrance and beauty of this old favorite. It is invaluable both for greenhouse culture and in the border.

760 Marguerite, Mixed. This variety will bloom in about three months after sowing. Our fine strain produces nearly all double flowers in shades of pink, rose, white, yellow, and red. This is probably the most popular Carnation with the amateur. Pkt. 10 cts.; $\frac{1}{4}$ oz. 50 cts.; oz. \$1.50.

Clarkia

Western North America

820 Finest Double, Mixed. [hA-2 $\frac{1}{2}$ ft.] This lovely annual is quickly coming into popularity. The tall spikes, covered with enormous, double blooms set all around the stems, appear like a spray of rosettes. Our special mixture contains a complete range of the best shades of salmon, scarlet, white, and orange-scarlet. Pkt. 10 cts.; $\frac{1}{4}$ oz. 30 cts.

Celosia · Cockscomb

[hA] Southern Europe and Asia

These ornamental annuals are much prized for the brilliant mass of color their clustered blossoms make.

776 **Plumosa, Mixed.** [3ft.] The majestic grace of these Celosias will add dignity to any garden. Their numerous stately plumes, in shades of rose, crimson, red, yellow, and orange, are most effective. Pkt. 10 cts.; ¼oz. 35 cts.; oz. \$1.

777 **Cristata, Mixed.** (True Cockscomb.) [12in.] The large, crested blooms make a gorgeous showing in the garden. If dwarf growth is desired, do not crowd. Pkt. 15 cts.; ¼oz. 50 cts.; oz. \$1.50.

778 **Childsii.** (Chinese Woolflower.) [2ft.] Blossoms like balls of silky crimson wool clustered on the ends of the many branches. Pkt. 10 cts.; ¼oz. 25 cts.; oz. 75 cts.

Centaurea

[hA-2½ft.] Europe

Cyanus. These slender, branching, double Cornflowers are well deserving of the popularity they hold. Seed may be broadcast wherever the plants are to bloom, and if flowers are desired all summer, successive sowings should be made.

787 **Mixed.** Contains blue, rose, white, mauve, maroon, and rosy red.

Any of the above: Pkt. 10 cts.; ¼oz. 25 cts.; oz. 75 cts.

780 **Imperialis, Finest Mixed.** (Sweet Sultan.) The long-stemmed, gracefully fringed, sweet-scented blossoms are undoubtedly the finest of all Centaureas for cutting. Our mixture contains the finest selection of pink, lilac, purple, white, and yellow shades. Pkt. 10 cts.; ¼oz. 25 cts.; oz. 75 cts.

Coleus

Africa, India

825 **Large-leaved Bright-colored Varieties, Mixed.** [A-12in.] Our strain produces rich, velvety leaves in superb color combinations attractive for borders or bedding. Easy to start from seed if kept warm. Plantings should be made indoors in early spring. Pkt. 20 cts.; ⅓oz. 65 cts.

Cosmos

[hA] Mexico

These attractive cutting flowers, with their feathery foliage, are old favorites and are so easily grown that no garden is complete without them. They will thrive under almost all conditions but do best in the sun and in poor soil.

835 **Early-flowering Double, Mixed.** [3ft.] Beautiful shades of pink, crimson, and white. Pkt. 20 cts.; ¼oz. 60 cts.

830 **Late-flowering Giant Single, Mixed.** [4ft.] Gigantic blooms in fine shades of crimson, pink, and white. Pkt. 10 cts.; ¼oz. 25 cts.

Cynoglossum

Chinese Forget-me-not

[hA-12in.] China

840 **Amabile.** Fragrant forget-me-not-like blossoms cover the thrifty plants over a long season. This is a valuable addition to the garden border. Pkt. 10 cts.; ¼oz. 35 cts.

841 **Amabile, Pink.** *New.* This introduction is the pink counterpart of the better-known blue. Although the blossoms resemble the pink forget-me-not, their rich rosy pink color is far more striking. Pkt. 15 cts.; ¼oz. 50 cts.

Coreopsis

Eastern United States

828 **Grandiflora, Mixed.** [hP-2ft.] This perennial type of Calliopsis, with large, orange-yellow blooms, is a splendid cut-flower. Pkt. 10 cts.; ¼oz. 25 cts.; oz. 75 cts.

Delphinium

Perennial Larkspur

[hP] Europe, Asia

The charm of the Hardy Larkspur is well known for its glamorous adornment of the garden throughout summer. A good, deep, rich soil is essential to produce the finest flowers. Seed may be sown any time from spring until autumn.

860 **Belladonna Improved.** [2½ ft.] Lovely light blue, and the freest flowering of all Delphiniums. Pkt. 20 cts.; ¼oz. 75 cts.; oz. \$2.50.

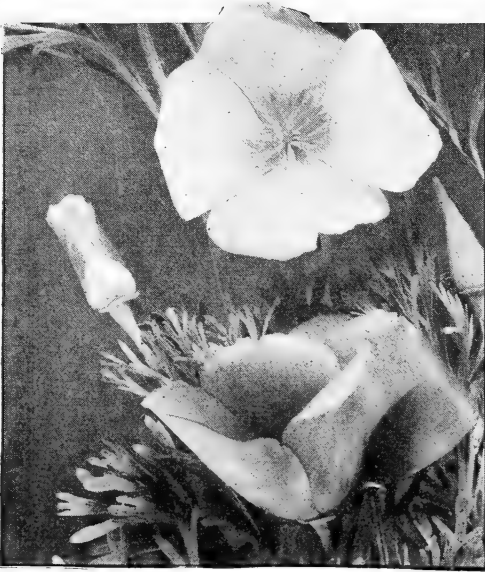
861 **Bellamosum.** [2½ft.] The dark blue form of the popular free-flowering Belladonna. Pkt. 20 cts.; ¼oz. 75 cts.; oz. \$2.50.

862 **Choicest Mixed.** [2½ft.] A good selection of single-flowered varieties. Pkt. 15 cts.; ½oz. 35 cts.; oz. \$2.

863 **NEW ANNUAL DELPHINIUM** (*D. chinense*). [2½ft.] A fine new addition, similar in color to the well-known Belladonna in the perennial Delphinium, but far surpassing it in brilliancy of color. Rich clear blue; makes an excellent cut-flower. Pkt. 35 cts.; ⅓oz. 75 cts.; ½oz. \$1.25.



Centaurea Cyanus



Eschscholtzia

Dahlia

[tP] Mexico

One of the most interesting and easy flowers to grow from seed. If sown in the hotbed or coldframe in March and April, and transplanted in May, they will begin to bloom in late August.

865 **Large-flowering Double, Mixed.** [3ft.] A variety of vivid colorings. Pkt. 15 cts.; $\frac{1}{2}$ oz. 35 cts.

Dianthus • Pink

Mediterranean Region

This distinguished group has long been a garden favorite, and the fine single and double Carnation-like flowers make excellent border and edging plants. Seed may be sown outdoors as soon as danger of frost is past.

870 **Single and Double, Mixed.** [hA-12in.] This is the old favorite garden Pink. Blooms a few weeks after planting and continues until frost. Pkt. 10 cts.; $\frac{1}{4}$ oz. 30 cts.

875 **Sweet Wivelsfield.** [hA-12in.] This new English hybrid is a cross between Allwoodi and Sweet William. The flowers are huge and of brilliant coloring. It has few rivals for range of colors. When planted outdoors in early spring it will flower from midsummer until frost. Pkt. 20 cts.; $\frac{1}{8}$ oz. 45 cts.

Digitalis • Foxglove

Europe, Western Asia

The elegance of the majestic Foxglove is never seen to better advantage than when planted against a dark background of shrubbery.

885 **Giant Shirley.** [hP-4 $\frac{1}{2}$ ft.] The finest Foxglove now offered. The stately spikes are closely set with gloxinia-like flowers in shades of rose and white, all attractively blotched and spotted with crimson, maroon, and chocolate. Pkt. 15 cts.; $\frac{1}{4}$ oz. 50 cts.

Dimorphotheca**New Golden African Daisy, Star of the Veldt**

[hA-12in.] South Africa

890 **Aurantiaca Hybrids.** Gorgeous daisies of golden yellow, salmon, sulphur, rose, and apricot which furnish a brilliant splash in the garden all summer until frost. As a bedding plant it is unusually attractive. Pkt. 10 cts.; $\frac{1}{4}$ oz. 35 cts.

Eschscholtzia**California Poppy**

California-Oregon

900 **Mixed.** [hA-1ft.] From early summer until fall this charming plant will bloom continuously and is most effective in a sunny border or bed. Many improvements have been made in this in recent years, and our mixture contains double and single types saved from all the newest and best varieties in wonderful shades of old-gold, fiery red, cream, salmon, orange, and many others. Pkt. 10 cts.; $\frac{1}{4}$ oz. 20 cts.

Euphorbia[hA-2 $\frac{1}{2}$ ft.] United States-Peru

The ornamental foliage of this plant is a welcome addition in a border or in bare spots in the garden.

909 **Variiegata.** (Snow-on-the-Mountain.) Bright green leaves which as they mature become tinged with silvery white. Pkt. 10 cts.; $\frac{1}{2}$ oz. 40 cts.

910 **Heterophylla.** (Annual Poinsettia.) Bushy plants with glossy green foliage which, about the middle of summer, turns to a beautiful orange-scarlet, resembling very much the Christmas poinsettia. Pkt. 15 cts.; $\frac{1}{8}$ oz. 30 cts.

Forget-me-not • Myosotis

[hhP-6 to 10 in.] Europe

The charm of the lovely Forget-me-not is never more appreciated than when grown in masses. Sow in a moist spot any time during spring or early summer and keep the plants protected where the winters are severe.

917 **Victoria, Indigo.** An upright plant with deep blue flowers. Pkt. 10 cts.; $\frac{1}{2}$ oz. 25 cts.

Gaillardia • Blanket Flower

Western America

The bold showiness of Gaillardia is much valued in the garden from early summer until frost. Excellent for beds and cutting.

920 **Double, Mixed.** (*G. pulchella picta* Lorenziana.) [hA-18in.] A fine selection of crimson and yellow shades. Pkt. 10 cts.; $\frac{1}{4}$ oz. 35 cts.

921 **Indian Chief.** [hA-18in.] From the large, single-flowering class we have selected this recent introduction because we know the appeal of its glittering metallic red flowers. The center is a deep mahogany-red. Pkt. 10 cts.; $\frac{1}{4}$ oz. 40 cts.

Gerbera • Transvaal Daisy

South Africa

932 **Jamesoni Hybrids, Mixed.** [tP-2ft.] Showy, daisy-like flowers with slender, pointed petals. Plants quite hardy in warm climates, but in cold climates they should be wintered over in a cold-frame. It is also quite valuable in the greenhouse. The color-range of these hybrids is quite distinct, including delectable shades of cream, yellow, orange, pink, rose, salmon, cerise, violet, and rich purple. Excellent for cutting. Pkt. 25 cts.; 100 seeds 75 cts.; 1000 seeds \$6.

Globe Amaranth • Gomphrena

Tropics

940 Mixed. [hA-18in.] Clover-headed Everlastings in shades of brilliant purplish red, violet, pink, and white. They flower from midsummer until fall and are very adaptable for garden design. Sometimes referred to as "Bachelor Buttons." Pkt. 10 cts.; ¼oz. 25 cts.

Godetia • Satin Flower Western United States

950 Mixed. [hA-12in.] This free-flowering annual, with satiny, azalea-like flowers, is deserving of more attention. It will thrive best in partial shade and poor soil and is especially adapted to the cooler sections of the country. Our mixture contains selected shades of pink, crimson, and white. Pkt. 10 cts.; ¼oz. 25 cts.

Gourds World-wide

952 Mixed. [hA-12ft.] The fruits of these interesting climbers are very ornamental and the foliage is very attractive, too. Pkt. 10 cts.; oz. 50 cts.

Gypsophila • Baby's Breath

Pyrenees to Caucasus

Mists of tiny, star-shaped florets borne in profusion on the daintiest of sprays that are indispensable for combining with bouquets of other cut-flowers.

955 *Elegans alba grandiflora*. [hA-20in.] *Paris Market Strain*. Very free-flowering; pure white Baby's Breath used extensively by florists and gardeners. For a succession, several sowings should be made during the season. Pkt. 10 cts.; oz. 25 cts.; lb. \$2.25.

Helianthemum • Sun Rose

Mediterranean Region

982 *Mutabile*. [hP-12in.] Low-growing evergreen plants with masses of bright flowers from June to September. Suitable for the rockery. Pkt. 10 cts.; ¼oz. 40 cts.

Helianthus • Sunflower North America

984 *Double Chrysanthemum-flowered*. [hA-7ft.] Large, double, golden yellow, ball-shaped flowers resembling chrysanthemums. Extra-fine seed produced on our own grounds. Sunflowers thrive best in strong sunlight and are excellent for backgrounds among shrubberies or for divisions. Pkt. 10 cts.; oz. 35 cts.

Helichrysum • Straw Flower

[hA-2½ft.] Africa, Australia

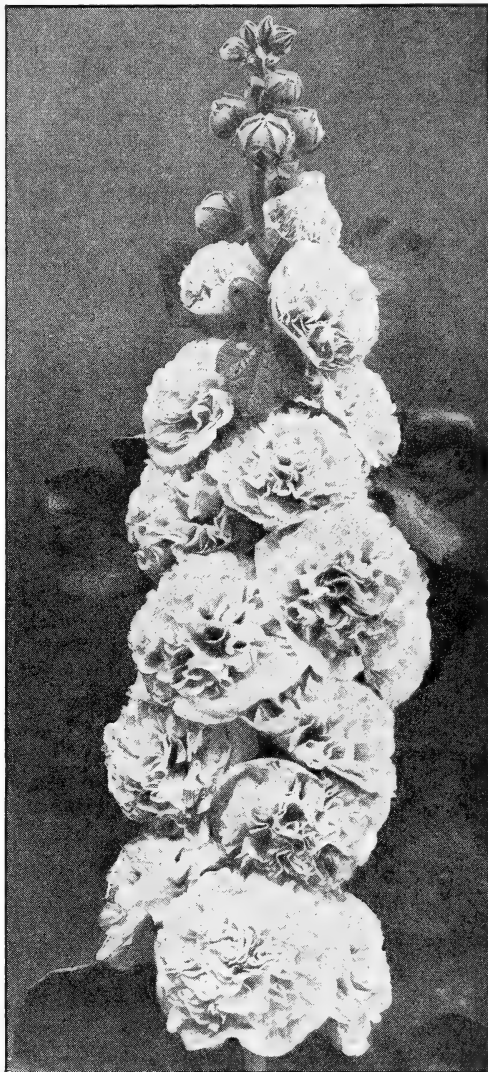
This is the finest of the Everlastings for the home-garden, and the large, double flowers, in bright glittering colors, are very attractive in beds or borders. They are especially grown to dry for winter use, and for this purpose they should be cut with the stems as long as possible and when the flower is about one-third open; strip off leaves and hang head down in a dark place until cured.

975 Mixed. Pkt. 10 cts.; ¼oz. 30 cts.

Heuchera • Coral Bells

Southwestern United States

983 *Sanguinea rosea*. [hP-12in.] The plants of this attractive little flower make compact, low-growing mats of deep green leaves from which rise graceful, slender spikes adorned with tiny, bell-like florets in shades of coral. Excellent for the rock-garden. Pkt. 15 cts.; ⅓oz. 50 cts.



Double Hollyhock

Hollyhock [hP-7ft.] China

The majestic elegance of the Hollyhock as a background in the border, as a row against a garden wall or a cottage, has few rivals. During early summer, the stately stalks are heavily set with attractive blooms in a complete range of colors varying from white to darkest red and including many lovely yellows.

990 *Double, Mixed*. Choice selection of the best colors in large, completely double flowers, closely set on very sturdy stalks. Pkt. 10 cts.; ¼oz. 45 cts.

Hunnemannia • Santa Barbara Poppy

[hA-18in.] California

1237 *Fumariæfolia*. A clear, lemon-yellow Poppy that is delightful in the border, massed in beds, or as a cut-flower. The flowers are borne on strong stems with fine, feathery, grayish green foliage. Pkt. 10 cts.; ¼oz. 25 cts.; oz. 75 cts.



Lupinus, New Hartwegii Giants

Kochia

Summer Cypress; Mexican Fire Bush
China

1005 Childsii. [hA-2½ft.] Planted in rows, these ornamental plants form a cypress-like green hedge which turns deep red in late summer. Sow thinly early in the spring where the plants are to bloom. Pkt. 10 cts.; ¼oz. 20 cts.

Lantana

Brazil

1007 Fine Mixed. [tP-2ft.] Shrubby bedding plants that bloom all summer until late autumn. In the verberna-like clusters all shades of crimson, rose, yellow, and orange appear. Pkt. 10 cts.; ½oz. 25 cts.

Larkspur

[hA-3ft.] Europe, Asia

Giant Imperial. Many improvements have been made on this old favorite in color and growth of the plant. This new type is of particular value for cutting because of its upright, base-branching habit. In the border or in shrubbery it will produce a striking effect.

1010 Blue Spire. Deep Oxford-blue. Pkt. 15 cts.; ¼oz. 40 cts.; oz. \$1.50.

1012 Carmine King. Carmine-rose. Pkt. 15 cts.; ¼oz. 40 cts.; oz. \$1.50.

1020 White Spire. Pure white. Pkt. 15 cts.; ¼oz. 40 cts.; oz. \$1.50.

1025 Mixed. Pkt. 10 cts.; ¼oz. 25 cts.; oz. 75 cts.

Lathyrus • Everlasting Sweet Pea

World-wide

1030 Mixed. [hP-7ft.] This very showy, free-flowering climber is excellent for covering stumps, fences, and the like. Our mixture contains shades of pink, white, and red. Pkt. 10 cts.; ¼oz. 25 cts.

Lavandula • Lavender

Canary Islands-India

1031 Vera. [hP-2ft.] Delicate gray foliage and lavender-blue flowers that are valued for their fragrance. Easily grown in any garden soil. This is true English Lavender. Pkt. 10 cts.; ¼oz. 20 cts.; oz. 60 cts.

Lilies [hP] World-wide

The growing of Lilies from seed is becoming more popular each year. While occasionally they flower from seed the first year, they are quite hardy and usually excellent results are obtained the second year.

1032 Regale. [3ft.] Trumpet-shaped flowers of white, tinged pink, with a canary-yellow throat; delightfully scented. Blooms outdoors in July. Native of West China. Pkt. 15 cts.; ¼oz. 50 cts.

1033 Tenuifolium. (Coral Lily.) [2ft.] One of the easiest Lilies to grow from seed, blooming the second year. The blooms are rich deep coral and are borne in profusion. Excellent for the rock-garden or for forcing. Native of Siberia. Pkt. 25 cts.; ⅓oz. 50 cts.

Linum • Flax Mediterranean Region

1045 Perenne. [hP-18in.] A delicately graceful plant with haunting blue flowers. ("Irish eyes are blue as the flax.") Try this in your rock-garden. Pkt. 10 cts.; ¼oz. 35 cts.

Lupinus • Lupin

North and South America

Hartwegii. [2ft.] These stately, easily grown plants, with their lovely pea-shaped flowers on tapering spikes, are valuable for cutting and make a glorious display all during the summer. They prefer a semi-shaded, moist location.

1060 Mixed. Pkt. 10 cts.; oz. 25 cts.

1061 Subcarnosus. (Texas Bluebonnet.) [hA-15in.] A fine, bushy plant with large deep blue flowers heavily set on small spikes. Cherished in Texas as the State Flower. Pkt. 10 cts.; oz. 30 cts.

1062 NEW HARTWEGII GIANTS, MIXED. [hA-3½ft.] Winner of fifth place in the All-American Flower Selection. This new development will produce plants about 1½ feet taller than the ordinary strain, with the spikes producing 25 to 50 more blooms. The leaves are huge and make a very handsome plant. Colors include dark blue, azure-blue, rose, and white. Pkt. 35 cts.; ¼oz. 75 cts.

Matricaria • Feverfew

Alps-Caucasus

1112 Capensis. [hA-2ft.] Bushy plants with double, button-like white flowers which grow in terminal clusters. Excellent for cutting. Blooms all summer. Pkt. 10 cts.; ¼oz. 25 cts.; oz. 75 cts.

Marvel of Peru • Four o'Clock

American Tropics

1110 Mixed. [hA-2ft.] Fine bush plants bearing an abundance of white, yellow, crimson, and violet flowers which open in late afternoon. Very effective as a hedge, in beds, borders, or in front of a porch. Pkt. 10 cts.; oz. 20 cts.

Marigold

[hA] Southern Europe and Africa

There are many uses in the garden for this old-fashioned favorite, and, late in the season, when other plants are past their prime, the rich tones of orange and yellow will add a wealth of color in a fading garden. The tall varieties are valuable in the border and the dwarfs are fine for bedding or edging. We would call particular attention to the brilliant new Guinea Gold.

1078 Tall African, Mixed. Complete mixture of large, double-flowering sorts. Pkt. 10 cts.; ¼oz. 30 cts.; oz. 90 cts.

1079 Dwarf Single, Legion of Honor. [9in.] A fine single Marigold with flowers of golden yellow marked with a blotch of velvety crimson. Pkt. 10 cts.; ¼oz. 35 cts.; oz. \$1.

1080 Dwarf Double French, Mixed. [12in.] A complete mixture of the best dwarf varieties. Pkt. 10 cts.; ¼oz. 25 cts.; oz. 75 cts.

1075 GUINEA GOLD. *New.* [2½ft.] A distinct type with semi-double, ruffled, loosely placed petals of brilliant orange. This fine development received first place in the All-American Flower Selection, and is readily being accepted all over because of its fine cutting qualities. The characteristic Marigold odor is not quite so apparent in Guinea Gold. Pkt. 10 cts.; ½oz. 25 cts.; ¼oz. 40c.; oz. \$1.25

Mignonette [hA-12in.] Northern Africa

A garden would hardly be complete without some of these fragrant flowers. Useful in combination with more showy flowers which lack fragrance.

1100 New York Market. A carefully selected strain for growing outdoors or forcing. Pkt. 15 cts.; ¼oz. 45 cts.

1105 Finest Mixed. All varieties. Pkt. 10 cts.; ¼oz. 35 cts.

Moonflowers and Morning-Glory

Tropics

1115 Moonflowers, Early-flowering Heavenly Blue. [hA-12ft.] Beautiful azure-blue flowers 5 inches across. Pkt. 15 cts.; ¼oz. 30 cts.

1120 Morning-Glories, Mixed. [hA-10ft.] Large flowers in shades of blue, red, purple, and white. Pkt. 10 cts.; oz. 20 cts.

Nasturtium [hA] Chile-Peru

Nasturtiums are among the most popular of our annuals. They have few competitors for duration of bloom, bright coloring, and attractive foliage. The dwarf varieties are excellent in beds or borders and the tall or climbing sorts are well adapted for trailing over rocks or for covering a fence or trellis.

1135 Tall, Mixed. Trailing. Pkt. 10 cts.; oz. 15 cts.; ¼lb. 40 cts.; lb. \$1.25.

1125 Dwarf, Mixed. [10in.] Pkt. 10 cts.; oz. 15 cts.; ¼lb. 40 cts.; lb. \$1.25.

1130 DOUBLE SWEET-SCENTED, GOLDEN GLEAM. *New.* This interesting development was introduced for the first time last year, and its sweep to popularity has surpassed any novelty that has been offered for many years. Previously, Double Nasturtiums have been propagated only through cuttings. This newcomer produces large, golden yellow, semi-double flowers on stiff stems 6 inches long, which hold the blossoms well above the foliage, thus adding greatly to the showiness of the plant. Its fragrance, coupled with its many and varied uses as a cut-flower, in beds, borders, or window-boxes, insure its appeal to any gardener. Pkt. 10 cts.; oz. 25 cts.; ¼lb. 75 cts.; lb. \$2.50.

Nigella • Love-in-a-Mist

[hA-15in.] Mediterranean Region

1142 Miss Jekyll. Large, cornflower-blue flowers on bushy plants, completely surrounded by misty foliage. Sometimes called "Devil-in-the-Bush." Pkt. 10 cts.; ¼oz. 20 cts.; oz. 50 cts.

Nicotiana • Flowering Tobacco

Brazil-Uruguay

1136 Affinis Hybrids. [hA-2ft.] Large, tubular flowers in brilliant shades of purple, rose, red, and white, which open at evening, sending forth a rich fragrance. Pkt. 10 cts.; ¼oz. 25 cts.

Pansies

[hA-10in.] Europe

For early spring blooming, sow seed in August and winter over in the coldframe. If sown in a carefully prepared bed in the spring, the plants will bloom in the early summer.

1145 Stokes Giant Exhibition, Mixed. A collection of the best varieties of extra-size, heavy-textured types. Our mixture contains every conceivable color combination. Pkt. 35 cts.; ¼oz. 85 cts.; oz. \$10.

Physalis Japan

1230 Francheti. (Chinese Lantern Plant.) [hP-18in.] Dense-growing ornamental plants producing brilliant orange-scarlet seed-pods which very much resemble miniature lanterns. Excellent for winter bouquets when dried. Pkt. 10 cts.; ¼oz. 50 cts.; oz. \$1.50.

Phlox Drummondii

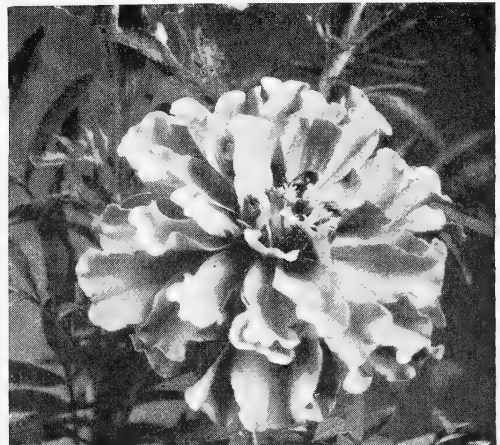
[hA-12in.] Texas

One of the most brilliant and satisfactory annuals easily grown from seed. Sown in a sunny location, the plants are a mass of bloom ten weeks after planting and bloom until frost.

| | |
|---------------------------|------------------------|
| 1221 Giant White. | 1222 Carnea. Rich pink |
| 1223 Scarlet. Bright red. | with apricot center. |
| 1224 Rose. Bright rose | 1225 Lilac. |
| with darker eye. | 1220 Giant Mixed. |

Any of the above: Pkt. 10 cts.; ¼oz. 30 cts.

COLLECTION: One pkt. each of the 5 varieties listed for 35 cts.



Guinea Gold Marigold

Petunias

[hA-12in.] Argentine

Petunias are among the most highly prized and most satisfactory summer-blooming annuals in America. For outdoor decoration it is difficult to surpass them. In window- or porch-boxes, in beds, borders, or hanging boxes, they are a solid mass of brilliant color all summer long. For early flowering in northern states it is advisable to plant indoors and transplant to the open when the weather is warm.

1185 **Ruffled Giants**. Enormous, single flowers with waved, fringed, and ruffled edges. A complete mixture of brilliant shades of rose, scarlet, lilac, purple, and many others, quite a number of which are attractively blotched and veined. Pkt. 35 cts.; $\frac{1}{2}$ oz. \$1.50; $\frac{1}{4}$ oz. \$2.25.

1190 **Dwarf Giants of California**. Immense, frilled blossoms with deep, open throats, all attractively veined. Excellent for pot-culture. Pkt. 35 cts.; $\frac{1}{4}$ oz. \$1.50.

1195 **Stokes Giant Double Fringed, Mixed**. Fully double flowers in an excellent mixture of brilliant colors saved from the finest collections. A large percentage of the flowers will come perfectly double. Pkt. 50 cts.; 3 pkts. \$1.25.

Bedding Petunias

[2ft.]

Readily grown and excellent for all purposes. Free from the magenta strains.

1170 **Balcony Blue** 1173 **Balcony Rose**
1172 **Balcony White** 1174 **Balcony Mixed**

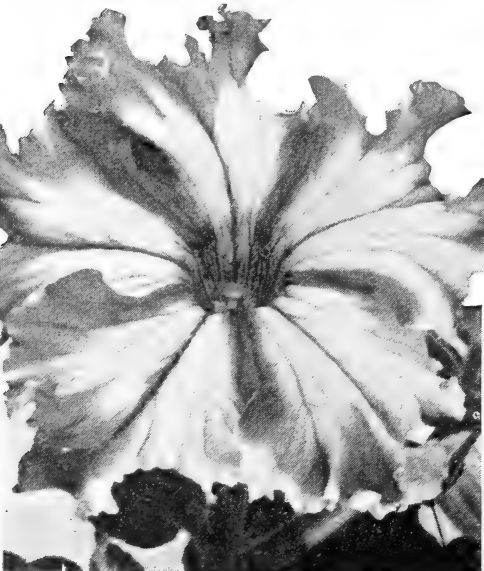
Any of the above: Pkt. 15 cts.; $\frac{1}{2}$ oz. 35 cts.

Poppy

France-Persia

1235 **Shirley, Mixed**. [hA-18in.] Silky-petaled blossoms in warm shades of apricot, pink, rose, white, and brilliant red. Sow where seed is to bloom as they do not stand transplanting. Pkt. 10 cts.; $\frac{1}{4}$ oz. 25 cts.; oz. 75 cts.

1210 **Oriental, Mixed**. [hP-21 $\frac{1}{2}$ ft.] Orange, pink, and red shades. Pkt. 10 cts.; $\frac{1}{8}$ oz. 30 cts.



Ruffled Giant Petunia

Portulaca · Sun-Plant

[hA-6in.] Tropical America

This gay little flower is truly a gem to the gardener. Broadcast in a bare, sunny spot or sown in a bed or border, a brilliant carpet of lovely shades of pink, rose, yellow, and orange will be the reward.

1240 **Double, Mixed**. Pkt. 15 cts.; $\frac{1}{2}$ oz. 35 cts.; $\frac{1}{4}$ oz. 65 cts.

1242 **Single, Mixed**. Pkt. 10 cts.; $\frac{1}{2}$ oz. 25 cts.; $\frac{1}{4}$ oz. 35 cts.

Pyrethrum · Painted Daisy

Caucasus-Persia

1260 **Single and Double, Mixed**. [hP-2ft.] Fine, upright, slender stalks bearing large, daisy-like flowers in shades of red, rose, pink, and white. It will bloom in the early spring, and, in some locations, again in the fall. Pkt. 15 cts.; $\frac{1}{2}$ oz. 40 cts.

Primula British Isles to China

1256 **Veris, Mixed**. (Cowslip.) [hP-10in.] A beautiful spring-flowering plant with giant flowers in shades of yellow, orange, and red on strong stems. Pkt. 15 cts.; $\frac{1}{3}$ oz. 45 cts.

Sanvitalia Mexico

1268 **Procumbens**. [hA-8in.] Spreading, compact plants with golden yellow flowers resembling tiny double zinnias. Blooms all summer. Valuable for covering bare spots or in the rockery. Pkt. 10 cts.; $\frac{1}{4}$ oz. 50 cts.

Salpiglossis · Painted Tongue

Chile

1280 **Large-flowering, Mixed**. [hA-2 $\frac{1}{2}$ ft.] Lily-like flowers of fine velvety texture in a magnificent range of colors. The deep throated flowers, exquisitely penciled and veined with gold and silver, are favorites for cutting. For early blooms, start indoors or in a hotbed and transplant to the open, thinning to 12 inches apart. Pkt. 10 cts.; $\frac{1}{2}$ oz. 25 cts.; $\frac{1}{4}$ oz. 40 cts.

Salvia · Sage Brazil

A favorite plant for effects in beds or borders, flowering profusely from midsummer until frost. Sow indoors in a hotbed and transplant to the open in May.

1265 **America**. [hA-15 in.] The earliest and most free-blooming of all Scarlet Sages. The growth is very compact and uniform and the flower-spikes are borne 10 inches above the foliage. The best type for florists. Pkt. 20 cts.; $\frac{1}{4}$ oz. \$1; oz. \$3.

1266 **Bonfire**. [hA-2ft.] Compact bushes with flower-spikes borne well above the leaves. Pkt. 10 cts.; $\frac{1}{4}$ oz. 65 cts.; oz. \$2.

Schizanthus · Butterfly Bush

Chile

1315 **Giant Hybrids, Mixed**. [hA-18in.] An effective plant fully covered a few weeks after planting with dainty florets like miniature orchids in lovely pastel shades. Sow seed outdoors in spring in a sunny location, and for use as pot-plants in the house, sow during the fall. Pkt. 15 cts.; $\frac{1}{2}$ oz. 35 cts.

Sedum

Europe

1318 **Acre**. [hP-3in.] Diminutive, fleshy green foliage completely carpeted with small golden yellow blossoms. For filling crevices in a wall or in the rockery it is invaluable. Pkt. 25 cts.

Scabiosa · Mourning Bride

Old World

Large-flowering Double. [hA-2½ft.] Each year the popularity of Scabiosa is increasing. The lovely, long-stemmed flowers are borne in abundance from early summer until fall, and they will be found most effective in a bed or border. Seed may be planted in the open when danger of frost is past.

- 1291 **Azure-Blue.**
 1297 **Shasta. White.**
 1296 **Rose.**
 1290 **Peach Blossom.** Soft pink.
 1298 **Yellow.**
 1292 **King of the Blacks.** Black-purple.
 1300 **Mixed.**

Any of the above: Pkt. 10 cts.; ¼oz. 30 cts.

COLLECTION: One pkt. each of the 6 named varieties for 50 cts.

Stocks, Giant Imperial

[hA-2ft.] Old World-Australia

Well-branched plants with majestic spikes of fragrant, double flowers. They are excellent either in the greenhouse or in the garden. Seed may be sown during early spring for summer and fall blooming, or in the late summer for growing in the house.

- 1339 **Lavender.** Pkt. 15 cts.; ¼oz. 50 cts.
 1342 **Old Rose.** Pkt. 25 cts.; ¼oz. 75 cts.
 1340 **Mixed.** All colors. Pkt. 10 cts.; ¼oz. 40 cts.

Sweet Peas Sicily

There are hundreds of varieties of Sweet Peas, a great many of which are practically identical with others in color, and there are still some which lack many characteristics essential to a really first-class variety. We have confined our list to the varieties which are of proved value. The Early-flowering Sweet Peas are used by florists for forcing under glass and also for growing outdoors in the southern states. The Summer-flowering Sweet Peas are for outdoor growing where the spring is cool and summer not too warm. For best results they should be planted outdoors as soon as the ground can be worked.

- 1520 **Early- or Winter-flowering Spencers, Mixture.** Pkt. 10 cts.; oz. 40 cts.; ¼lb. \$1.20; lb. \$4.
 1590 **Summer-flowering Spencers, Mixture.** Pkt. 10 cts.; oz. 25 cts.; ¼lb. 75 cts.; lb. \$2.50.

Shasta Daisy Pyrenees

850 **Alaska.** [hP-2ft.] The graceful, white flowers, measuring 5 inches across, are borne on long stems and are excellent for cutting. Pkt. 10 cts.; ½oz. 40 cts.

Solanum · Jerusalem Cherry Brazil

1319 **Cleveland Red.** [tP-1ft.] Compact, rich green foliage and a profusion of brilliant red berries. One of the best house-plants for window decoration. This strain is a very great improvement over all others, being more dwarf. Pkt. 15 cts.

Sweet William · Dianthus

Europe-Asia

- 1345 **Barbatus, Mixed.** [hP-2ft.] Probably the best known of all perennials and easily grown from seed. For best results, young plants should be started each year as they bloom more freely than old stock. Pkt. 10 cts.; ¼oz. 30 cts.
 1346 **Annual, Mixed.** [hA-12in.] A new type which blooms profusely the first year from seed. Fine color combinations. Pkt. 10 cts.; ½oz. 25 cts.; ¼oz. 40 cts.

Thunbergia · Black-eyed Susan

Africa

1350 **Mixed.** [hA] An ornamental creeper with large flowers in shades of yellow, orange, cream, and white with a jet-black eye. As a ground-cover in a sunny location or overhanging a bank, it is most effective. Pkt. 10 cts.; ½oz. 30 cts.

Tithonia Mexico**The Golden Flower of the Incas; Mexican Sunflower**

1348 **Speciosa.** [tP-5ft.] This fine plant is practically unknown to the American gardener, and we believe it will have an enthusiastic welcome from anyone who tries it. It forms a large, shrubby plant with flowers 3 to 4 inches in diameter, of dazzling orange-scarlet whose richness is difficult to describe. These fine flowers, very much resembling huge single Zinnias, are carried on stems 2 to 3 feet long and are excellent for cutting.* As a background in the border, among shrubs or as a hedge, it presents a wealth of brilliancy over a long season. Pkt. 25 cts.; 3 pkts. 50 cts.

Verbena [hA-12in.] Brazil-Argentine

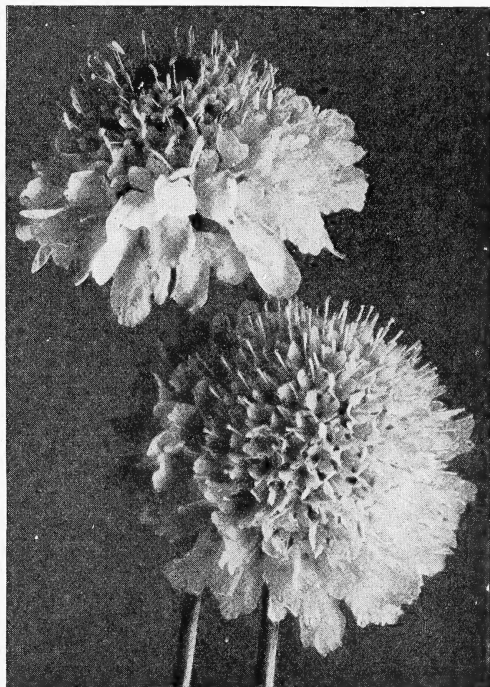
Hybrida grandiflora. The finest free-flowering strain of Verbena, producing large trusses of individual florets often equaling the size of a 50-cent piece. Very valuable for cutting and for massing effects. May be planted outdoors when the ground is warm.

1365 **Giant Mixed.** Pkt. 10 cts.; ½oz. 30 cts.

Vinca [hA-15in.] Tropics

One of our best ornamental plants for bedding and general garden effects. Glossy, green foliage. Blooms over a long season. Start in the open ground early in spring.

1380 **Mixed.** Pkt. 10 cts.; ¼oz. 45 cts.



Large-flowering Double Scabiosa

Viola • Tufted Pansy

Spain

1385 **Cornuta, Mixed.** [hP-6in.] One of the finest plants for the permanent border for the rock-garden. The flowers are not as large as pansies but make a brilliant effect, and if planted in early spring they will bloom from June till frost. Pkt. 15 cts.; $\frac{1}{2}$ oz. 40 cts.

Venidium

South Africa

1350 **Fastuosum.** [A-2 $\frac{1}{2}$ ft.] This recent introduction has received the Award of Merit in the All-American Flower Selection. Rich orange flowers, about 4 inches across, set off by a lustrous purplish black center. It is difficult to germinate until the ground is warm and a sunny, sandy location is preferable. The grayish foliage is very attractive and will be well received. Pkt. 35 cts.; 3 pkts. 90 cts.

Zinnias [hA] Mexico

Perhaps there is no other annual in America more popular or more generally satisfactory than Zinnias. They are profuse bloomers and offer a gorgeous display from late spring until frost. Plants may be started in hotbeds or window-boxes and set out when the ground warms, or they may be sown in the open after danger of severe frost has passed.

DOUBLE DAHLIA-FLOWERED[2 $\frac{1}{2}$ ft.]

Large, deep flowers, 6 inches across, with petals that stand out in dahlia fashion. Very valuable because of the great richness of color-range and showiness of flowers.

1440 **Mixture.** Petals heavily overlaid with deep gold at the base with the individual flower color carried out at the tip. Colors include the finest and most desirable shades. Pkt. 10 cts.; $\frac{1}{2}$ oz. 30 cts.; oz. \$1.

IMPROVED LILLIPUT or POMPON

[15in.]

Dwarf, compact plants with fully double flowers. Fine for cutting and bedding. They are increasing rapidly in popularity.



California Giant Zinnias

Ursinia

South Africa

1352 **Anethoides.** [hA-2ft.] Again South Africa contributes a beautiful and distinct daisy. From June to September a profusion of blooms of rich orange with a center ring which varies from ruby-red to darkest purple studded with jewel-like dots will adorn the garden and furnish cutting flowers. Sow outdoors in April. Pkt. 25 cts.; 3 pkts. 50 cts.

Wallflower

British Isles

1390 **Finest Double, Mixed.** [tP-20in.] An extremely fragrant plant with flowers in shades of lemon, orange, rose, and mulberry. In northern states, protection should be given in the winter. Wallflowers are deserving of more popularity. They are adapted to pot culture as well as outside bedding. Pkt. 15 cts.; $\frac{1}{2}$ oz. 50 cts.

IMPROVED LILLIPUT or POMPON, continued

| | |
|------------------|--------------------|
| 1465 Golden Gem | 1469 Canary-Yellow |
| 1466 Scarlet Gem | 1470 White Gem |
| 1467 Salmon-Rose | 1468 Mixed |

Any of the above: Pkt. 10 cts.; $\frac{1}{4}$ oz. 20 cts.; oz. 70 cts.

COLLECTION: One pkt. each of the 5 named varieties for 35 cts.

CALIFORNIA GIANTS[2 $\frac{1}{2}$ ft.]

Very large, flattened flowers, entirely double. A distinct departure from the objectionable conical shape of the old-type Zinnias.

| | |
|---------------------|-------------------------------|
| 1444 Orange King. | Burnt-orange. |
| 1445 Lemon Queen. | Pure canary-yellow. |
| 1446 Rose Queen. | Rose shades. |
| 1447 Scarlet Queen. | Bright scarlet. |
| 1448 Mrs. Willmott. | Soft pink. |
| 1449 Lavender. | Deep lavender, shaded purple. |

1450 Mixed.
Any of the above:
Pkt. 10 cts.; $\frac{1}{4}$ oz. 30 cts.; oz. \$1.

Elegans Pumila

Dwarf Double Zinnia; Cut-and-Come-Again
[2ft.]

A fine bedding type with fully double flowers in rich shades. Excellent for cutting.

| |
|---------------------|
| 1400 Golden Yellow. |
| 1402 Fireball. |
| 1404 Salmon-Rose. |
| 1410 Mixed. |

Any of the above:
Pkt. 10 cts.; $\frac{1}{4}$ oz. 20 cts.; oz. 60 cts.

93. THE PRITCHARD TOMATO

*So named by
the U. S. Department
of Agriculture
in honor of its originator,
the late
Dr. Fred J. Pritchard*



THE stock we herewith offer, certified by the State of New Jersey as to type-purity and freedom from disease, will prove one of outstanding merit. The original name of this stock was Scarlet Topper, but soon after Dr. Pritchard's passing the Department officially renamed it Pritchard, an honor that was eminently deserved. It is a cross of Marglobe and Cooper's Special, with most of the quality of Marglobe and at the same time the earliness of Bonny Best. The plant has a definite self-topping tendency. This restricted plant-growth should be counteracted by heavy applications of ammonia (fish, king crab, or tankage) in the early weeks to insure full production. With proper fertilization it is a heavily productive variety. The fruits have very much the appearance and quality of Marglobe, being large, smooth, globular, and solid, with thick walls and heavy cross-sectors. It has already made an important place for itself with growers who could profit by advancing their season a week over Marglobe.

Price, Postpaid: Pkt. 10 cts.; oz. 50 cts.; 1/4lb. \$1.50; lb. \$5



Stokes
Master
Marglobe
See page 33

STOKES
SEEDS
for Quality

◆ 1935 ◆