

## Historic, archived document

Do not assume content reflects current scientific knowledge, policies, or practices





# **Stokes Specials** **for 1933**



**Wholesale Price List**  
**for**  
**MARKET GARDENERS**  
**TRUCKERS AND**  
**FLORISTS**

# Planting Table for Vegetables

	Supposed Origin	Approximate No. Seeds per Ounce	Am't. Required per Acre
Asparagus	No. Europe	1,000	4 lbs.
Beans, Bush	South America	100	60 lbs.
"    Pole	Tropical America	100	30 lbs.
Beet	Egypt	1,500	6 lbs.
Broccoli	Mediterranean	14,000	2 oz.
Brussels Sprouts	Belgium	6,500	2 oz.
Cabbage	Western Europe	5,000	2 oz.
Carrot	British Isles	14,000	2½ lbs.
Cauliflower	Europe	14,000	4 oz.
Celery	Europe	100,000	4 oz.
Collards	Europe	4,500	4 oz.
Corn	Peru	125	15 lbs.
Cucumber	East Indies	1,000	2 lbs.
Eggplant	India	5,000	4 oz.
Endive	East Indies	13,500	4 lbs.
Kale	Europe	7,500	4 lbs.
Kohlrabi	Europe	7,000	4 lbs.
Leek	Switzerland	8,000	4 lbs.
Lettuce	Orient	15,000	3 lbs.
Muskmelon	India	1,200	2 lbs.
Watermelon	Africa	200	4 lbs.
Mustard	Europe	18,000	5 lbs.
Okra	Africa	400	8 lbs.
Onion	Western Asia	12,000	5 lbs.
Parsley	Mediterranean	15,000	3 lbs.
Parsnip	Europe	2,500	3 lbs.
Peas	Europe & Asia	100	90 to 150 lbs.
Pepper	Tropical America	4,000	2 lbs.
Potato	Andes Valleys		9 to 16 bu.
Pumpkin	New England	200	3 to 4 lbs.
Radish	Asia	5,000	10 to 12 lbs.
Salsify	Mediterranean	4,000	8 lbs.
Spinach	Persia	3,000	8 lbs.
Squash, Summer	New England	300	4 lbs.
"    Winter	Tropical America	100	2 lbs.
Tomato	Mexico to Peru	5,000	2 oz.
Turnip	Russia	10,000	1 to 2 lbs.

## Plants Required per Acre

1 x 1 ft.	43,560	3 x 3 ft.	4,840
2 x 2 ft.	10,890	3 x 4 ft.	3,630
3 x 2 ft.	7,260	3 x 5 ft.	2,901
4 x 2 ft.	5,445	4 x 5 ft.	2,178



## CALENDAR - 1933

### JANUARY

S	M	T	W	T	F	S
1	2	3	4	5	6	7
8	9	10	11	12	13	14
15	16	17	18	19	20	21
22	23	24	25	26	27	28
29	30	31	..	..	..	..

### APRIL

S	M	T	W	T	F	S
..	..	..	..	..	..	1
2	3	4	5	6	7	8
9	10	11	12	13	14	15
16	17	18	19	20	21	22
23	24	25	26	27	28	29
30	..	..	..	..	..	..

### JULY

S	M	T	W	T	F	S
..	..	..	..	..	..	1
2	3	4	5	6	7	8
9	10	11	12	13	14	15
16	17	18	19	20	21	22
23	24	25	26	27	28	29
30	31	..	..	..	..	..

### OCTOBER

S	M	T	W	T	F	S
1	2	3	4	5	6	7
8	9	10	11	12	13	14
15	16	17	18	19	20	21
22	23	24	25	26	27	28
29	30	31	..	..	..	..

### FEBRUARY

S	M	T	W	T	F	S
..	..	..	1	2	3	4
5	6	7	8	9	10	11
12	13	14	15	16	17	18
19	20	21	22	23	24	25
26	27	28	..	..	..	..

### MAY

S	M	T	W	T	F	S
..	1	2	3	4	5	6
7	8	9	10	11	12	13
14	15	16	17	18	19	20
21	22	23	24	25	26	27
28	29	30	31	..	..	..

### AUGUST

S	M	T	W	T	F	S
..	..	1	2	3	4	5
6	7	8	9	10	11	12
13	14	15	16	17	18	19
20	21	22	23	24	25	26
27	28	29	30	31	..	..

### NOVEMBER

S	M	T	W	T	F	S
..	..	..	1	2	3	4
5	6	7	8	9	10	11
12	13	14	15	16	17	18
19	20	21	22	23	24	25
26	27	28	29	30	..	..

### MARCH

S	M	T	W	T	F	S
..	..	..	1	2	3	4
5	6	7	8	9	10	11
12	13	14	15	16	17	18
19	20	21	22	23	24	25
26	27	28	29	30	31	..

### JUNE

S	M	T	W	T	F	S
..	..	..	..	1	2	3
4	5	6	7	8	9	10
11	12	13	14	15	16	17
18	19	20	21	22	23	24
25	26	27	28	29	30	..

### SEPTEMBER

S	M	T	W	T	F	S
..	..	..	..	1	2	..
3	4	5	6	7	8	9
10	11	12	13	14	15	16
17	18	19	20	21	22	23
24	25	26	27	28	29	30

### DECEMBER

S	M	T	W	T	F	S
..	..	..	..	..	1	2
3	4	5	6	7	8	9
10	11	12	13	14	15	16
17	18	19	20	21	22	23
24	25	26	27	28	29	30
31	..	..	..	..	..	..

# FRANCIS C. STOKES & CO., INC., SEED GROWERS

P. O. BOX 923, PHILADELPHIA, PA.

Date \_\_\_\_\_

Name \_\_\_\_\_

*Please write plainly. Ladies use prefix Miss or Mrs.*

R. D. or Street \_\_\_\_\_

Post Office \_\_\_\_\_

State \_\_\_\_\_ Express or Freight Office \_\_\_\_\_

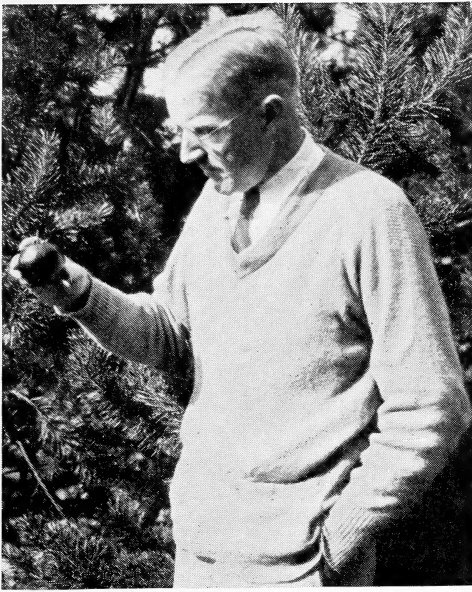
*All members of a family should order under one name*

<b>AMOUNT ENCLOSED</b>
\$ _____
<b>Please state below whether you grow veg- etables for Market.</b>

With the understanding that my money is to be returned if your seeds are not satisfactory, please ship the following items:

Quantity	VARIETY NAME OR NUMBER	Price		Quantity	VARIETY NAME OR NUMBER	Price	
		\$	cts.			\$	cts.
					Brought forward		
Amount to carry forward				Amount to carry forward			

Quantity	VARIETY NAME OR NUMBER	Price		Quantity	VARIETY NAME OR NUMBER	Price	
		\$	cts.			\$	cts
	Brought forward				Brought forward		
	Amount to carry forward				Total		



*There is Still a Place for  
Effective Craftsmanship ~*

**B**ELIEVING completely in that premise, and in order to place emphasis on it, we pass you herewith this wholesale list of Stokes 1933 Specials. Each of these strains represents original effort on a carefully developed program. They are the product of accurate and precise workmanship. They are outstanding in their class. They are offered to you ahead of the mailing of our annual seed catalog so that you may make advance plans, purchase your key varieties immediately, and be assured of your supply as needed.

In buying seed this year, keep this clearly in mind: your purchase is not merely poundage of seed, but potential truck loads of vegetables which will be sold on the most highly competitive markets you have ever known. Your product must be at least one step ahead of competing stocks, for the average of these will no doubt remain unprofitable. Special quality vegetables can only be grown from special quality seed, and such seed cannot be produced at the price of "run of the mine" stock. This advance list is your opportunity. It is sent you in the belief that you will accept it in that spirit. The race is to the strong now. A well-laid and a forehanded plan will give you a sense of security entirely unknown to the man who just muddles through.

*Francis C. Stokes*

---

Francis C. Stokes & Co., Inc., *Seed Growers*

Box 923, Philadelphia, Pa.

Corpus Christi, Texas : Sanford, Fla. : Woodbury, N. J.

*Founded 1881 as Johnson & Stokes*



## A Bid for Your Business

**W**E are eager to have more planters know the inherent goodness of Stokes Seeds and we have faith to believe that the combination of higher quality seeds at greatly reduced prices, as offered in this convenient, pocket-size catalog, will be recognized as genuine.

Everyone very rightly expects far more value per dollar now than at any time within living memory. We know of no better way of being assured of your money's worth than to buy from this catalog. We have succeeded in effecting drastic savings all along the line and these we are passing directly to our customers. Along with this price reduction (which is a genuine price reduction), we are confident that our standard of quality has never taken such a high rating as it does this year. On a platform, therefore, of better seeds for less money, we make a direct bid for your business.

## Perhaps a Pay-As-We-Go World Will Be Better

**L**ET'S not mistake matters, the good old days just aren't going to come back. But were they so good after all? Yes, we have all had to draw our belts a little tighter. We know that times are hard and that there is genuine suffering about us, but one great step we can all take in the right direction,—we can begin at once to pay as we go. We can put an end to the nagging, deviling fear that pursues us the moment we "charge it." We can make plans now to face the world with clear eyes and a clear conscience, knowing that we are in debt to no one.

We, at this office, share the opinion that easy credit has been a detriment to the seed trade as well as to the vegetable grower and florist. It has definitely contributed to over-production and it has greatly added to the difficulties of both the buyer and the seller. It is for these reasons that we are placing our business on a strictly cash policy. We have a feeling that the most important thing we can do for those who trade with us is to give our people the very highest quality seed at the very lowest figure compatible with that quality.





## **The Strength of Authentic Specifications**

**N**OW, more than ever, the buyer will make a careful appraisal of his purchase. For economy of time and space, we have made a direct effort at simplicity of description. We have tried to eliminate all ambiguous and unnecessary phrases. We have tried to make it clear that each of the strains which have received individual description in this catalog have a distinct place to fill. We have tried to describe an item with such clarity that the planter looking for the very earliest cabbage in the land, will know that Stokes' Viking Golden Acre is the cabbage to plant; or the planter who wants the deepest and most solid tomato in cultivation will know that in buying Stokes' Master Marglobe he can secure such a tomato. For the most part, the use of superlatives is taboo with this Company, for superlatives often bring overstatement and inaccuracies. Stokes customers can buy with confidence, and with the expectation that results will be as outlined.

## **Our Fresh, High-Germinating Flower Seeds**

**W**E ask that florists and gardeners pay special attention to the offerings of flower seed in this catalog. At a time when the production of potted plants is often too expensive to be profitable, we suggest that greater attention be paid to the production of cut flowers from seed. Stokes flower seeds are, for the most part, new crop. They are fresh and high-germinating and all of our stocks are tested in soil. The varieties cataloged, herewith offer a wide range of type and color and we place special emphasis on the fact that only the very finest available stocks are offered our trade. It is on the basis of the best flower seed this world affords, sold at prices as low as we can make them in consideration of the quality offered, that we solicit your flower seed business.



## ASPARAGUS

### MARY WASHINGTON

Very large. Productive. Rust-resistant.

The most profitable asparagus.

Twelve years ago our firm offered the original Washington stock. When the superiority of the Mary strain, named in honor of George Washington's mother, was established, we were among the first to offer it. Since that time we have done an increasing volume of business with large asparagus growers, and, in line with our policy of carrying only the best, we have discarded all other types. In view of the prevalence of rust, it is utter folly to plant additional acreage with the old susceptible varieties.

Price of seed: Pkt. 5c, Oz. 10c,  $\frac{1}{4}$  lb. 25c, Lb. 80c, 5 lbs. or over @ 75c per lb. Postpaid.

Price of roots, Postpaid: 50 roots, \$1.25; 100 roots, \$2.00. Not Prepaid: 500 roots, \$6.50; 1,000 roots, \$10; 5,000 roots, \$8.50 per 1,000. Larger quantities, write for prices.

---

## BEANS

### TENDERGREEN (New)

Early. Fine Flavor. Unusually Prolific.

Completely Stringless.

Days to maturity, 42. This new and delicious snapbean is a valuable acquisition. It combines unusual vigor with exceptional table quality. The long, green, straight pods are round like a pencil, of very high flavor and of attractive light green color. We believe this new variety is destined to take an important place in private and commercial bean production.

Price Postpaid:  $\frac{1}{4}$  lb. 10c,  $\frac{1}{2}$  lb. 20c, Lb. 35c, 5 lbs. @ 30c per lb. Not Prepaid: 10 lbs. @ 18c per lb., 25 lbs. @ 15c per lb., 100 lbs. @ 12c per lb.

### STRINGLESS BLACK VALENTINE

A Completely Stringless Edition of Black Valentine.

Now replacing that variety.

Days to maturity, 45. This variety has already passed the experimental stage. It is a cross between the old Black Valentine and Pencil Pod Wax. This, as its name implies, is stringless. In appearance it looks very much like the original except that the pods are perhaps slightly more curved. It will prove dependable in cold, dry or wet seasons. The bean is of delicious flavor and, in our opinion, will replace Black Valentine.

Price Postpaid:  $\frac{1}{4}$  lb. 10c,  $\frac{1}{2}$  lb. 20c, Lb. 35c, 5 lbs. @ 30c per lb. Not Prepaid: 10 lbs. @ 18c per lb., 25 lbs. @ 15c per lb., 100 lbs. @ 12c per lb.

---

Eighty-eight additional varieties of vegetables are listed on pages 22, 23 and 24 of this catalog.

---



## **BEET**



### **CROSBY SPECIAL (New)**

**Earlier. Deeper. Darker. Restrained Growth.**

Days to maturity, 45. We take particular pleasure in announcing this new strain—the result of painstaking selection. In our opinion it is the outstanding Crosby Beet. In shape it is almost round. Color is dark crimson. The tops are small, definitely indicating early maturity. Gardeners looking for an extra-fancy stock will plant this. Price: Pkt. 10c, Oz. 15c,  $\frac{1}{4}$  lb. 40c, Lb. \$1.40, 5 lbs. or over @ \$1.30 per lb. Postpaid.

### **DETROIT SPECIAL**

**Great uniformity of top, root, and interior color.**

Days to maturity, 52. This stock represents the standard of excellence in Detroit Beet for home or market garden, for shipping or for canning. Tops uniform, small, slender, erect. Roots globe-shaped, symmetrical, very dark blood red. Interior color uniformly dark red. The roots remain tender and of the highest quality until they are fully grown. Price: Pkt. 5c, Oz. 10c,  $\frac{1}{4}$  lb. 25c, Lb. 80c, 5 lbs. or over @ 75c per lb. Postpaid.

### **LITTLE EGYPT (New)**

**The earliest beet in cultivation.**

Days to maturity, 35. Gardeners looking for an extremely desirable, very early, forcing beet will do well to give this new European variety a thorough trial. This actually will develop a root two weeks in advance of either Crosby or Detroit. The root is somewhat flattened. The interior color is a brilliant blood-red. The top grows only from 6 to 10 inches. Price: Pkt. 10c, Oz. 20c,  $\frac{1}{4}$  lb. 40c, Lb. \$1.40, 5 lbs. or over @ \$1.30 per lb. Postpaid.

### **CENTURY OR WINTER KEEPER**

**A Stokes Introduction in 1913.**

Days to maturity, 60. Persistent demand warrants us in relisting this best of all winter varieties. This is the finest quality beet of our entire list. Its half-long shape has precluded it on certain markets, but where it is known it is a positive favorite. Root blood red, delicate texture even when grown over a period of three to four months. As a winter keeper it is unequalled. Top bright green, often utilized for greens. Price: Pkt. 10c, Oz. 15c,  $\frac{1}{4}$  lb. 30c, Lb. \$1.00, 5 lbs. or over @ 90c per lb. Postpaid.



## CABBAGE



### VIKING GOLDEN ACRE

The earliest round cabbage. Five days ahead of other Golden Acre Strains.

Days to maturity, 85. In repeated tests over varying parts of the United States in 1932, Stokes Viking Golden Acre again proved its right to claim first place in earliness of maturity—the most important factor to the grower who expects to get the high money in the June market.

Along with this factor of earliness goes the remarkable type uniformity, the leaf growth being even and restrained. There are many excellent stocks of Golden Acre now available, but in our opinion none of them equals Stokes Viking Golden Acre in value as a money-maker. Records over the past ten years show that there has been a reasonably strong market only for the first ten days of each seasonal cutting. It is for growers who can take advantage of such a market with a quick-maturing, round-headed cabbage that this strain has been developed. Average size of head  $2\frac{1}{2}$  lbs. We advise planting this 12 in. in the row. 14 to 15 in. often produces too large a head. This strain up until now has been called Viking Copenhagen.

Price: Pkt. 15c, Oz. 50c,  $\frac{1}{4}$  lb. \$1.75, Lb. \$6.00, 10 lbs. \$37.50. Postpaid.

### COPENHAGEN MARKET SPECIAL

Early, uniform, restrained. The very best in Copenhagen market.

Days to maturity, 95. Copenhagen Market is one of those varieties whose name in itself means little. There is a variance of at least a month in time of maturing, some stocks being large, late, and of little value. Therefore buy carefully on Copenhagen. The Stokes strain is early, maturing within ten days of Stokes Viking Golden Acre. Heads average  $3\frac{1}{2}$  lbs. in weight (one pound heavier than Viking). Growth is uniform and restrained. It is a leader in its class.

Price: Pkt. 10c, Oz. 25c,  $\frac{1}{4}$  lb. 85c, Lb. \$3.00, 10 lbs. \$27.50. Postpaid.



## **JERSEY WAKEFIELD SPECIAL**

**Extra early. Hardy. Resists frost.**

Days to maturity, 90. This stock is characterized by its distinctive, smooth, blue-green leaf. It has all the elements that count for cold resistance and unusually early maturity, being ready for cutting one week ahead of average Jersey Wakefield. The buying public is quick to accept the fresh-cut, sweet-flavored, pointed head. Plant is compact. Set 12 inches in the row. Head 7 inches long, 5 inches wide at base. Weight 2 pounds. Critical growers will do well to plant this distinguished strain. Price: Pkt. 5c, Oz. 25c,  $\frac{1}{4}$  lb. 60c, Lb. \$2.00, 10 lbs. \$18.50. Postpaid.

## **CHARLESTON WAKEFIELD SPECIAL**

**$\frac{1}{2}$  pound heavier than Jersey.**

Days to maturity, 95. This is the very finest stock of Charleston Wakefield we know of. Both Jersey and Charleston Wakefield make a bid for the early money. Make sure that you plant nothing but the very finest strains. This stock, maturing about one week after our Jersey Wakefield Special, will give excellent results.

Price: Pkt. 5c, Oz. 25c,  $\frac{1}{4}$  lb. 60c, Lb. \$2.00, 5 lbs. or over @ \$1.85 per lb. Postpaid.

## **ALLHEAD EARLY**

**Highly disease resistant. A consistent producer.**

Days to maturity, 110. This standard main-crop variety plants a large part of the Texas acreage. It will mature a week earlier than Early Flat Dutch and develops a head of more acceptable size. The head is rounded rather than flat. They are very solid, averaging 4 to 5 pounds. Our sales of this variety run into thousands of pounds annually.

Price: Pkt. 5c, Oz. 25c,  $\frac{1}{4}$  lb. 60c, Lb. \$2.00, 5 lbs. or over @ \$1.85 per lb. Postpaid.

## **GLORY OF ENKHUIZEN SPECIAL**

**Extra heavy yield. Uniform shape. Blue-green color.**

Days to maturity, 108. Growers requiring a large, round-headed cabbage, maturing ten days later than Copenhagen Market and weighing fully six pounds, will be well pleased with this strain which has been grown for us north of the parallel. Many strains of Glory are run out, leafy, and of little value. The restrained uniformity of this stock assures high production. Its distinguishing blue-green color is indicative of unusual type purity.

Price: Pkt. 5c, Oz. 25c,  $\frac{1}{4}$  lb. 60c, Lb. \$2.00, 10 lbs. \$18.50. Postpaid.

## **PENN STATE BALLHEAD**

**Plant for increased tonnage. For better storage.**

Days to maturity, 120. Records over a period of years show that this strain will surpass twenty tons per acre. This unusually high figure is due to the fact that it has been selected for hard, tight heads weighing one-third more than the usual strains of Danish Ballhead although they are the same size. The plant is short-stemmed. The head is spherical, averaging 7 inches in diameter and weighing 6 pounds or over. Because of its great solidity it will keep perfectly in storage for at least six months.

Price: Pkt. 10c, Oz. 35c,  $\frac{1}{4}$  lb. \$1.20, Lb. \$4.00, 10 lbs. \$37.50. Postpaid.



## BROCCOLI



### GLORY OF CALABRIA

Early. Self-producing. Sprouting type.

Days to maturity, 150. In six brief years Broccoli has become one of the very important green vegetables in the U. S. The Stokes strain is imported direct from the best Italian source. It has been a specialty with us since 1928 and has always given great satisfaction. To growers who are new in Broccoli, we throw out this one warning: mature it during cool weather.

Price: Pkt. 10c, Oz. 35c,  $\frac{1}{4}$  lb. \$1.20, Lb. \$4.00, 5 lbs. @ \$3.75 per lb. Postpaid.

---

## CARROT

### SPECIAL DANVERS

Longer. Smoother. Richer color.

Days to maturity, 75. We consider that this distinguished strain is the outstanding offering of the Danvers carrot. It will attain a length of between 7 and 8 inches tapering to a blunt point. When bunched it makes the most attractive carrot on the entire market, thus bringing the very best prices.

Price: Pkt. 5c, Oz. 15c,  $\frac{1}{4}$  lb. 35c, Lb. \$1.20, 5 lbs. or over @ \$1.10 per lb. Postpaid.

### RED CORED CHANTENAY

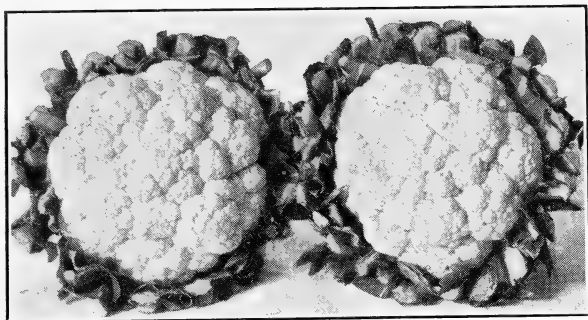
Flesh and core reddish-orange.

Days to maturity, 65. For growers having a demand for a carrot which is free from the usual pale yellow core, this carefully bred strain will give complete satisfaction. It is a distinct improvement over the well-known Chantenay. Roots average slightly over 5 inches in length and  $2\frac{1}{4}$  inches at the shoulder, tapered and stump-rooted. Flesh and core reddish orange, fine grain and tender. Of sweet, delicate flavor.

Price: Pkt. 5c, Oz. 20c,  $\frac{1}{4}$  lb. 40c, Lb. \$1.40, 5 lbs. or over @ \$1.30 per lb. Postpaid.



## CAULIFLOWER



### SUPER SNOWBALL (New)

Early. Very white. Sure-heading.

Days to maturity, 110. This variety, supplied to us directly from Denmark by the originator, will mature ten days earlier than Riverhead Snowball. It may be considered as one of the most valuable cauliflower developments in recent years. The heads will mature with great evenness ten days ahead of other Snowball strains. The quality is superb.

Price: Pkt. 25c,  $\frac{1}{4}$  ounce 75c, Ounce \$2.50,  $\frac{1}{4}$  lb. \$8.00, Lb. \$30.00. Postpaid.

### RIVERHEAD SNOWBALL

Unusually deep head. Withstands considerable frost.

Days to maturity, 120. Riverhead Snowball is a Stokes introduction of five years' standing. It is especially recommended for maturing either as an early or late sort. From the standpoint of sheer perfection Riverhead Snowball will stand in the first rank. The plant is vigorous and quick-growing. It is compact, but not too short-leaved. The head has unusual depth, is solid, evenly grained, and will blanch to a pure white.

Price: Pkt. 25c,  $\frac{1}{4}$  ounce 40c, Ounce \$1.25,  $\frac{1}{4}$  lb. \$4.00, Lb. \$15.00. Postpaid.

---

## BRUSSELS SPROUTS

### LONG ISLAND SPECIAL (New)

Semi-Dwarf. Uniform. Heavy producing.

Days to maturity, 125. We consider this to be the finest variety of its class that is now available. The compact plant will attain a height of about 20 inches. It is unusually uniform and the stem is completely covered with large, solid sprouts, averaging nearly  $1\frac{1}{2}$  inches in diameter,—maturing in succession. Market gardeners will find this an unusually true strain.

Price: Pkt. 10c, Oz. 35c,  $\frac{1}{4}$  lb. \$1.20, Lb. \$4.00, 5 lbs. or over @ \$3.75 per lb. Postpaid.

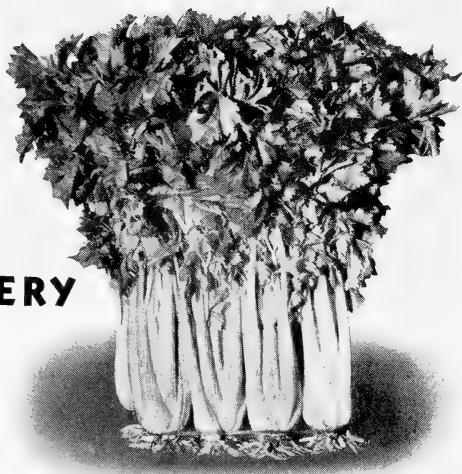
---

Eighty-eight additional varieties of vegetables are listed on pages 22, 23 and 24 of this catalog.

---



## CELERY



### GOLDEN PLUME SPECIAL

Early. Full heart. Very long rib.

Days to maturity, 115. This is one of the accepted leaders in the important Sanford, Florida, celery district. We take a pardonable pride in it as it is looked upon by the largest growers in the district as being one of the most profitable known strains. It is early in maturity, readily blanched, full hearted and compact. It is of excellent table quality. The strain is grown privately for us directly from a famous market gardener's stock.

Price: Pkt. 25c, Oz. \$1.00,  $\frac{1}{4}$  lb. \$3.50, Lb. \$12.00, 5 lbs. or over @ \$11.00 per lb. Postpaid.

### GOLDEN PHENOMENAL (New)

Four inches taller than Golden Plume.

Days to maturity, 115. This new development is fast establishing a reputation. It has proven particularly adaptable to conditions in certain sections of New York, New Jersey, and Florida. It is ready for use early. It is full-hearted and compact with long, edible stalks that are readily blanched. Price: Pkt. 25c, Oz. \$1.25,  $\frac{1}{4}$  lb. \$4.00, Lb. \$15.00. Postpaid.

### GOLDEN SELF BLANCHING

A Very Dependable Strain of Old Golden

Days to maturity, 120. Customers come back to us year after year for this excellent stock. It is a vigorous grower, developing large golden heart with long upright stalk. Celery growers can place great confidence in the purity of our strain. Price: Pkt. 15c, Oz. 65c,  $\frac{1}{4}$  lb. \$2.00, Lb. \$7.50, 5 lbs. or over @ \$7.25 per lb. Postpaid.

### SALT LAKE (New)

A New Green Celery.

Days to maturity, 130. We consider this to be an ideal celery for winter storage. The stalk is very thick, stringless, crisp and of high flavor. Salt Lake will blanch more readily than other green varieties. It will prove a highly profitable sort. Price: Pkt. 15c, Oz. 75c,  $\frac{1}{4}$  lb. \$2.35, Lb. \$8.00, 5 lbs. or over @ \$7.75 per lb. Postpaid.





## CUCUMBER



### STOKES GREENPACK

Early. Heavy yielding. Color vivid dark green.  
Length 7 inches.

Days to maturity, 60. This variety has earned high profits for growers on the Atlantic Seaboard. Its distinguishing feature is its ability to hold its luxurious deep green color until sold on northern markets. It is unquestionably the heaviest yielding of the White Spine types. In season it will mature slightly ahead of Early Fortune. Price: Pkt. 5c, Oz. 15c,  $\frac{1}{4}$  lb. 25c, Lb. 80c, 5 lbs. or over @ 75c per lb. Postpaid.

### EARLY FORTUNE

The best all-around shipping variety Length  $8\frac{1}{2}$  ins. Days to maturity, 65. When grown and picked under proper conditions the slender, symmetrical, tapering fruit of Early Fortune is remarkably attractive. This no doubt accounts for its very general popularity among large growers. The color is a very dark green and the color will be retained a long time after harvest. This special strain has been developed with great care. Price: Pkt. 5c, Oz. 15c,  $\frac{1}{4}$  lb. 25c, Lb. 80c, 5 lbs. or over @ 75c per lb. Postpaid.

### CLARK'S SPECIAL OR WOODRUFF'S HYBRID

Uniform. Brilliant deep green. Length 10 inches.

Days to maturity, 68. This variety is sometimes sold as Perfection. Unusually successful in North Carolina and in Erie County, New York. In general appearance will fit about midway between Early Fortune and Davis Perfect. In many respects, it is the very best of the white spine varieties for market and shipping,—it being slightly longer and larger than most of its contemporaries. Price: Pkt. 5c, Oz. 15c,  $\frac{1}{4}$  lb. 30c, Lb. 90c, 5 lbs. or over @ 80c per lb. Postpaid.

### WINDERMoor WONDER

Handsome deep green color. Few seeds.  
Length 12 inches.

Days to maturity, 70. For growers having level, well-prepared, heavily fertilized soil, Windermoor Wonder, a Stokes introduction in 1917, will develop the most attractive cucumber that can be grown outdoors. The usual blossom end stripes are absent. The color is a uniform vivid green. The yield is lighter than with the shorter types. Windermoor is a Davis Perfect x English Telegraph cross. Price: Pkt. 5c, Oz. 20c,  $\frac{1}{4}$  lb. 45c, Lb. \$1.60, 5 lbs. or over @ \$1.50 per lb. Postpaid.



## SWEET CORN

### KINGSCROST GOLDEN BANTAM (New)

Inbred hybrid. 10 days earlier. Complete evenness in ripening. Probably resistant to Stewart's Disease.

Days to maturity, 60. A new departure in yellow sweet corn. The hybridization of inbred strains has developed an astonishingly uniform sweet corn of the true eight-rowed Golden Bantam type, maturing ten days earlier than the original. Another result of the cross is great evenness of growth. The stalks are the same height, the ears are in the same position on the stalk and all mature at one time. The harvest is, therefore, controlled by the planting which is a great saving in labor. This new development has yet to be proven in the States afflicted with Stewart's Disease, but we offer it with the confident expectation that it will prove resistant to that scourge which is wiping out the old Golden Bantam in many areas. Kingscrost Golden Bantam is an F' hybrid and thus must be renewed each year from the original parents. This variety must not be confused with Golden Cross Bantam which is a ten-rowed type of Bantam maturing about three weeks later than Kingscrost Golden Bantam. It is the progeny of entirely different parents.

Price Postpaid:  $\frac{1}{4}$  lb. 15c,  $\frac{1}{2}$  lb. 30c, Lb. 50c, 5 lbs. @ 45c per lb. Not Prepaid: 10 lbs. @ 30c per lb., 25 lbs. @ 26c per lb., 100 lbs. @ 24c per lb.

### STOKES VANGUARD

White. Very early. Productive. Excellent Quality.

One of the best money-makers.

Days to maturity, 70. Introduced by Stokes in 1926. As its name implies, Stokes' Vanguard is a leader in the procession of white sweet corn. The stock we offer is unexcelled,—it being the result of ear-to-row selection over a period of years. Will mature seven days earlier than Howling Mob, developing marketable ears slightly over two months. Average length 8 inches. Makes fine market appearance. Table quality excellent. Originally developed by Mr. A. L. Richie, a successful New Jersey grower. This stock is still grown privately for us in its home county. It has proved enormously profitable in many areas.

Price Postpaid:  $\frac{1}{4}$  lb. 10c,  $\frac{1}{2}$  lb. 20c, Lb. 35c, 5 lbs. @ 30c per lb. Not Prepaid: 10 lbs. @ 22c per lb, 25 lbs. @ 20c per lb., 100 lbs. @ 18c per lb.

### STOWELL'S EVERGREEN SPECIAL

Uniformly productive. Handsome 16-row ear.

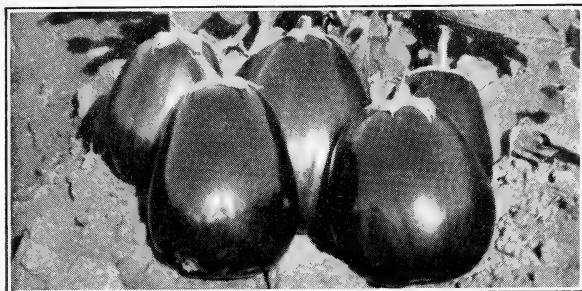
High in sugar content.

Days to maturity, 100. A privately grown Burlington County strain. The result of many years personal selection. This may be looked upon as an outstanding stock of the standard late variety. Stalks grow to a height of 7 feet. The ears are 8 inches long. Kernels very deep, white, sweet and tender. Growers who desire one of the very purest strains of Stowell's Evergreen can plant this with great confidence.

Price Postpaid:  $\frac{1}{4}$  lb. 10c,  $\frac{1}{2}$  lb. 20c, Lb. 35c, 5 lbs. @ 30c per lb. Not Prepaid: 10 lbs. @ 22c per lb, 25 lbs. @ 20c per lb., 100 lbs. @ 15c per lb.



## EGG PLANT



### IMPERIAL BLACK BEAUTY

Rich, handsome fruits. Phomopsis-free.

A very profitable strain.

Days to maturity, 115. Loss from the organisms of Phomopsis Rot has been serious in many districts. The disease sometimes comes from infected soil, but unless the grower starts with disease-free seed he takes unnecessary risk. Our Imperial strain has been grown under conditions that make us morally certain that the seed is free from these organisms. Customers in the Lower Rio Grande Valley have experienced unusual results with this excellent strain of Black Beauty.

Price: Pkt. 10c, Oz. 30c,  $\frac{1}{4}$  lb. \$1.00, Lb. \$3.50, 5 lbs. or over @ \$3.25 per lb. Postpaid.

### NEW YORK SPECIAL

Early. Heavy yielding. Black, glossy color.

Days to maturity, 125. Growers who are in search of what is probably the very finest strain of New York Improved can plant this stock with the assurance that comes with over ten years' personal selection. The conscientious work that has been done is responsible for a heavier and earlier yield and a richer and deeper color combined with a greater resistance to wilt and other diseases. The distinguished heredity of the strain will be immediately recognized by experienced growers.

Price: Pkt. 10c, Oz. 30c,  $\frac{1}{4}$  lb. \$1.00, Lb. \$3.50, 5 lbs. or over @ \$3.25 per lb. Postpaid.

---

## ESCAROLLE

### STOKES DEEPHEART

Early. Broader leaf. Deep, well-blanchd heart.

Replaces Broad Leaf Batavian

Days to maturity, 100. The brilliant appearance of this special strain of escarolle has earned a definite place for it in the important Sanford, Florida, district. The head will grow considerably larger than most competing strains. The leaf is broad, thick, slightly wrinkled, and easily blanchd. We consider this to be the very best of the broad-leaved type.

Price: Pkt. 5c, Oz. 20c,  $\frac{1}{4}$  lb. 60c, Lb. \$2.00, 5 lbs. or over @ \$1.90 per lb. Postpaid.

## LETTUCE



### LONGSTANDING WHITE BOSTON (New)

Very longstanding. Resistant to wilt and tip burn.

Days to maturity, 75. This new and distinct lettuce is destined for an important future. Fundamentally it is a very pure strain of the White Boston type, but its great mark of distinction is in its long-standing habit of growth and its freedom from tip burn. Any lettuce which will stand up under the dry, burning heat of mid-July as this one does is a stock of outstanding merit. For table quality and tender sweetness we know of no other strain that will compare with Longstanding White Boston. The color is a bright yellow-green. Our prediction is that this lettuce will largely replace the older White Boston, for it has all of the good qualities of that variety and at the same time holds from two to three weeks longer before shooting to seed and is more resistant to wilt and tip burn. Give it a thorough trial this year.

Price: Pkt. 10c, Oz. 25c,  $\frac{1}{4}$  lb. 60c, Lb. \$2.00, 5 lb. @ \$1.85. Postpaid.

### NEW YORK No. 12

Matures earlier. Better adapted to eastern climate.

Days to maturity, 90. Pacific coast growers have had a near monopoly in the production of Iceberg type lettuce. The prevailing cool temperatures there are in their favor. New York No. 12 matures earlier than the original strain and is better adapted to our eastern climate. Among other advantages it is much less susceptible to loss by Tip Burn. For these reasons growers can plant New York No. 12 in almost any locality either early in the spring or in the late summer or fall. When grown on well-prepared and well-fertilized ground it will develop solid, crisp, large size heads. The color is a trifle lighter than other strains of New York.

Price: Pkt. 5c, Oz. 20c,  $\frac{1}{4}$  lb. 45c, Lb. \$1.50, 5 lbs. or over @ \$1.40 per lb. Postpaid.

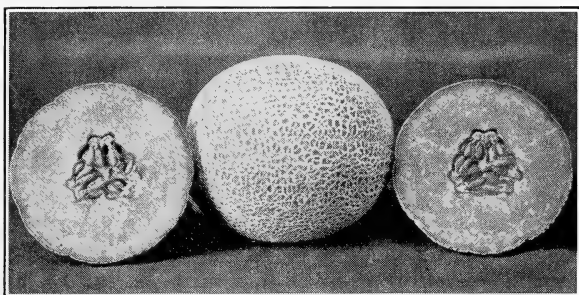
---

Eighty-eight additional varieties of vegetables are listed on pages 22, 23 and 24 of this catalog.

---



## MUSKMELON



### STOKES HALES BEST

A Very Reliable Strain.

Days to maturity, 75. There was more Hales Best planted in the U. S. than all other varieties of cantaloup combined. It is the earliest maturing melon of importance, developing fruits ten days ahead of competing sorts. It will produce, with great uniformity, melons 6 to 7 inches in length. The flesh is thick and of a deep orange color. It is as disease-resistant as any strain now in general use.

Price: Pkt. 5c, Oz. 15c,  $\frac{1}{4}$  lb. 25c, Lb. 90c, 5 lbs. or over @ 80c per lb. Postpaid.

### HEARTS OF GOLD

Recommended for roadside market sale.

Days to maturity, 85. In size this melon is about one-fourth larger than the old Rocky Ford type. It combines the golden flesh of Osage with the heavy netting and thin rind of the Netted Gem. Hearts of Gold has shown a decided resistance to rust. This stock is very highly recommended. Price: Pkt. 5c, Oz. 15c,  $\frac{1}{4}$  lb. 25c, Lb. 90c, 5 lbs. or over @ 80c per lb. Postpaid.

### HONEY ROCK (New)

Early. Extremely delicious. An outstanding introduction.

Days to maturity, 80. This very desirable new muskmelon deserves the immediate attention of all growers. It is unusually handsome in appearance, being of medium size, is round as a ball, and is covered with heavy, coarse netting. The deep orange-colored flesh is extremely thick. The high flavor is uniformly sweet, a feature which does not hold for many varieties. The exterior color of the melon is very light green, turning when ripe to a light, golden yellow. It will ripen early, and it is very productive. We predict an important future for Honey Rock.

Price: Pkt. 10c, Oz. 20c,  $\frac{1}{4}$  lb. 45c, Lb. \$1.50, 5 lbs. or over @ \$1.40 per lb. Postpaid.



## WATERMELON

### BROWN SEEDED KLONDIKE (New)

Highly Flavored. Bright Red.

Days to maturity, 90. This melon combines four important features. It is early. The flesh is of bright red color and of delicious flavor. The size averages 25 pounds. The fruit is oblong with an even dark green color. This is a particularly well-bred strain,—our seed only being saved from the most perfect melons. One feature of the dark brown seed instead of the usual white seed is that the consumer instinctively feels that when the seeds are darkened he is buying a ripe melon.

Price: Pkt. 5c, Oz. 15c,  $\frac{1}{4}$  lb. 30c, Lb. \$1.00, 5 lbs. @ 90c per lb. Postpaid.

### PRIDE OF MUSCATINE (New)

A certified wilt-resistant Kleckley.

Days to maturity, 120. Developed after five years of inbreeding a wilt-resistant strain of Kleckley Sweet in Muscatine County, Iowa. This melon is recommended to growers who have experienced losses from Fusarium Wilt. Where this disease is not known, we recommend planting the original Kleckley. Pride of Muscatine is a long, dark green melon with brown seed and bright red flesh. Price: Pkt. 10c, Oz. 25c,  $\frac{1}{4}$  lb. 60c, Lb. \$2.00, 5 lbs. or over @ \$1.85 per lb. Postpaid.

---

## ONION

### RIVERSIDE SWEET SPANISH

Spanish type. Acclimated to our conditions.

Days to maturity, 115. This onion fully equals the largest Spanish onions we have ever seen imported. They mature as early as Prizetaker and are only slightly later than Southport Yellow Globe, although they are twice the size of that variety. At this writing we have specimens in our office measuring  $4\frac{1}{2}$  inches across and weighing two pounds. The onions are almost perfect globe shape, slightly flattened at the ends, and of a clear, bright yellow color. The flesh is mild and sweet. There is no difficulty in raising this onion from seed.

Price: Pkt. 10c, Oz. 25c,  $\frac{1}{4}$  lb. 75c, Lb. \$2.50, 5 lbs. or over @ \$2.25 per lb. Postpaid.

### MOUNTAIN DANVERS

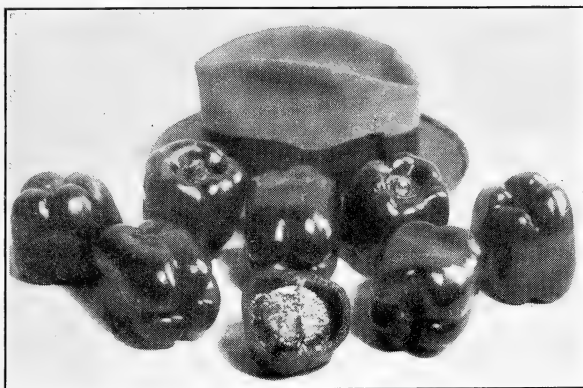
Earlier than Yellow Danvers. Excellent keeper.

Days to maturity, 100. This onion, grown privately for us at an elevation of 5000 ft. on the western slope of the Rocky Mountains, will mature a hard, uniform bulb earlier than any variety in its class. It is the best keeping onion in our entire list. The skin is slightly thicker than most varieties. Our strain will show high purity and germination. We offer it now for the seventh season. To growers who can take advantage of the early market, or to growers who have partial crop failure due to shortness of season, Stokes' Mountain Danvers will prove especially valuable.

Price: Pkt. 5c, Oz. 20c,  $\frac{1}{4}$  lb. 40c, Lb. \$1.50, 5 lbs. or over @ \$1.45 per lb. Postpaid.



## **PEPPER**



### **CALIFORNIA WONDER**

**Extremely thick walls. Skin smooth.**

Days to maturity, 130. The heaviest and among the largest of peppers. The wall ranges from one-quarter to three-eighths of an inch thick. In maturity it is slightly later than World Beater. Each plant will bear from six to eight fruits averaging over one-half pound in weight. Price: Pkt. 15c, Oz. 40c,  $\frac{1}{4}$  lb. \$1.40, Lb. \$4.50, 5 lbs. or over @ \$4.25 per lb. Postpaid.

### **RUBY KING**

**Early. Long. Brilliant.**

Days to maturity, 110. Growers who can take advantage of the early market are particularly recommended to this outstanding stock of Ruby King, a stock which is worthy of the care that has been put on it.

Price: Pkt. 10c, Oz. 25c,  $\frac{1}{4}$  lb. 85c, Lb. \$3.00, 5 lbs. or over @ \$2.75 per lb. Postpaid.

### **STOKES WORLD BEATER**

**Uniform quality. High production.**

Days to maturity, 120. This strain is the result of many years of selection for uniformity, heavy production, and brilliant market appearance. Fruits will average from five to six inches in length and three and one-half inches in diameter.

Price: Pkt. 10c, Oz. 30c,  $\frac{1}{4}$  lb. \$1.00, Lb. \$3.50, 5 lbs. or over @ \$3.25 per lb. Postpaid.

---

## **PARSNIP**

### **ALL AMERICAN CORELESS (New)**

**Roots uniform. Smooth. White. Coreless.**

Days to maturity, 130. This new selection is offered as something very superior. It is the result of painstaking selection by an American market gardener. The root is from 8 to 10 inches long, smooth, very white. The core has been practically eliminated.

Price: Pkt. 10c, Oz. 15c,  $\frac{1}{4}$  lb. 40c, Lb. \$1.50, 5 lbs. or over @ \$1.40 per lb. Postpaid.



## RADISH



### EARLY SCARLET GLOBE SPECIAL

True shape and color. Each bag greenhouse tested. Days to maturity, 25. This is an outstanding strain of what is probably the most popular radish for forcing and outdoor culture in this country. It is quick-growing with a restrained top growth. The color is a bright carmine-red without purple tinge. The shape is a perfect oval with threadlike tap root. Until they are nearly an inch in diameter the flesh is crisp and very mild. They are at their best when not quite fully grown. Our Scarlet Globe Special is a proven stock, every bag having been put through a soil test. It therefore can be planted with complete confidence.

Price Postpaid: Pkt. 5c, Oz. 10c,  $\frac{1}{4}$  lb. 20c, Lb. 60c, 5 lbs. @ 55c per lb, 25 lbs. @ 50c per lb. Not Prepaid: 50 lbs. @ 40c per lb.

---

## SQUASH

### THE STOKES COCOZELLE

Italian Vegetable Marrow.

Days to maturity, 70. This delicious summer squash is in increasing demand. The skin is a dark green, marbled with yellow and light green as it matures. Flesh is pale green, firm and tender. Price: Pkt. 5c, Oz. 15c,  $\frac{1}{4}$  lb. 30c, Lb. \$1.00, 5 lbs. or over @ 90c per lb. Postpaid.

### EARLY GOLDEN CROOKNECK

Slightly earlier than the Giant strain.

Days to maturity, 70. The best known of the older Summer Squashes. The fruits attain a length of nearly 12 inches, but are usually gathered when smaller. We offer a very desirable strain. Price: Pkt. 5c, Oz. 15c,  $\frac{1}{4}$  lb. 30c, Lb. \$1.00, 5 lbs. or over @ 90c per lb. Postpaid.

### EARLY WHITE BUSH

Early. Uniform. Productive.

Days to maturity, 60. We offer an excellent stock of the well-known White Bush. The fruits average from 8 to 10 inches in diameter, but are best for the table when served at 3 or 4 inches. Price: Pkt. 5c, Oz. 15c,  $\frac{1}{4}$  lb. 30c, Lb. \$1.00, 5 lbs. or over @ 90c per lb. Postpaid.





## SPINACH

### OLD DOMINION (New)

Blight resistant. For late fall or very early spring.

Days to maturity, 50. We are indebted to the Virginia Truck Experiment Station for this new hybrid. A Virginia Savoy x King of Denmark hybrid, it possesses the blight resistance of the former and the longstanding habit of the latter. The foliage is dark bluish-green and is evenly savoyed except at the leaf tips. The growth is compact and slightly flatter than Virginia Savoy, and it is two weeks later in shooting to seed. As it makes a slower growth in the fall than does Virginia Savoy, it is not recommended for a fall cutting. It should be sown, therefore, only in the late Fall or in the early Spring for Spring cutting. We look on this as a valuable acquisition to our list. Price Postpaid: Oz. 5c, ¼ lb. 15c, Lb. 50c, 5 lbs. @ 45c per lb. Not Prepaid: 10 lbs. @ 35c per lb, 25 lbs. @ 30c per lb, 100 lbs. @ 25c per lb.

### DARK GREEN BLOOMSDALE

Darker shading gives plants fresher appearance.

Days to maturity, 40. The rich, dark color of this new strain strongly recommends it over the standard Re-selected Bloomsdale. Although not quite so longstanding as the Longstanding Bloomsdale, it remains much longer in marketable condition than the standard Savoy type. On the other hand, it will mature just as early as the Reselected Bloomsdale.

Price Postpaid: Oz. 5c, ¼ lb. 15c, Lb. 50c, 5 lbs. @ 45c per lb. Not Prepaid: 10 lbs. @ 25c per lb., 25 lbs. @ 25c per lb., 100 lbs. @ 20c per lb.

## FORCING TOMATO

### SUPER-STANDARD BONNY BEST

A deeper, larger, and more productive Bonny.

Days to maturity, 125. We look on this strain as the highest development of the Bonny Best we have to offer. In the ten years Super-Standard Bonny Best has been offered to the public it has earned thousands of dollars for our customers. As its name implies, this Super-Standard strain is above and beyond the standard. It is recommended for both greenhouse and for intensive field cultivation. This stock will give an excellent account of itself wherever tried.

Price: Pkt. 50c, ½ oz. \$1.25, Oz. \$2.00, ¼ lb. \$7.50. Postpaid.

### LLOYD FORCING AND BLAIR FORCING

Two greenhouse tomatoes free from Fusarium Wilt.

Days to maturity, 125. These two tomatoes, released two years ago by the University of Illinois, are the results of crosses between Louisiana Pink and Grand Rapids Forcing. They are identical except that Lloyd Forcing is a scarlet tomato and Blair Forcing is a pink tomato. They are of interest to greenhouse men because of their almost complete resistance to Fusarium Wilt and because they are enormously productive under dark, mid-winter conditions. They are of no value as outdoor tomatoes due to their tendency to overproduction resulting in undersized fruits. Price: Pkt. 50c, ½ oz. \$1.25, Oz. \$2.00, ¼ lb. \$7.50. Postpaid.



## TOMATO

### STOKES MASTER MARGLOBE

Ninth generation selection for greater depth, solidity, and production.

Days to maturity, 130. We consider this to be the most profitable all-purpose tomato. This judgment is supported by customers' reports covering widely varying conditions and requirements. Six years ago we set ourselves the task of developing a deeper, more solid, and more productive Marglobe. Using Pritchard's original stock as our foundation, we have selected for these points and now offer: 1. A strain  $\frac{1}{2}$  inch deeper (eliminating loss from blossom-end scar and from flats). 2. An interior with distinctly smaller seed cavities (reducing loss by puff and adding greatly to the solid content). 3. A more open and restrained vine growth which is fully 40% more productive (many run-out stocks of Marglobe have been very unproductive).

Probably never before has there been a tomato which when sliced was so nearly solid. The grower who does not plant Stokes' Master Marglobe may find himself operating under a distinct handicap, for it is the finest appearing tomato on the market. Price: Pkt. 25c, Oz. \$1.00,  $\frac{1}{4}$  lb. \$3.00, Lb. \$10.00, 5 lbs. or over @ \$9.50 per lb. Postpaid.

### PRITCHARD

Marglobe quality with Bonny Best earliness.

Days to maturity, 120. This tomato has been generally accepted as a tomato of outstanding value for the early shipping season. Being a Marglobe x Cooper's Special hybrid, it has a definite self-topping tendency. That means restricted vine growth, which must be counteracted by heavy applications of ammonia (fish, king crab, or tankage) in the early weeks to insure full production. The fruit color is an intense scarlet both interior and exterior. The fruit structure is similar to Marglobe, having a thick wall and unusual solidity and depth.

Price: Pkt. 15c, Oz. 50c,  $\frac{1}{4}$  lb. \$1.75, Lb. \$6.00, 5 lbs. or over @ \$5.75 per lb. Postpaid.

**LANGE'S EARLIANA (New)**

Lange's, not Langdon's. Extremely early with full crown development.

Days to maturity, 110. Our neighbor, Ernest Lange, of our own Gloucester County is responsible for this valuable new acquisition. We believe it is destined to give a rebirth to the popularity of the old Sparks' Earliana as introduced by Johnson & Stokes in 1902. Besides being earlier in maturity, Lange's Earliana is enormously prolific, the crown setting itself sometimes having from ten to twenty large tomatoes. Our seed field contained literally thousands of plants with from six to twelve fruits in the crown cluster. The fork clusters were also very well developed. Furthermore, there were very few rough or flat specimens in the field, which indicates a high percentage of marketable fruit. Our seed field was set out the first week in May, and the first ripe tomato was picked June 17. The first five baskets were marketed on



June 22. Thereafter fifty to one hundred baskets were picked daily. The tomato has attracted wide attention among New Jersey agricultural officials. Mr. Lange has chosen our firm as the authorized distributor for this tomato. The seed we offer was grown by Mr. Lange and saved with our men and machinery. It can be thoroughly depended upon. Price: Pkt. 25c, Oz. \$1.00, 1/4 lb. \$3.50, Lb. \$12.00. Postpaid.

**BONNY BEST SPECIAL**

Earlier. Deeper. Heavy cropper.

Days to maturity, 120. As the introducers of this variety twenty-five years ago, we have taken a pardonable pride in helping to maintain its true worth. Many smaller and run-out strains have been offered under the name of Bonny Best. This, our Bonny Best Special, will prove to be particularly effective. It has been selected for greater depth, size and productiveness. Bonny Best Special is unexcelled as a general purpose tomato.

Price: Pkt. 15c, Oz. 45c, 1/4 lb. \$1.40, Lb. \$5.00, 5 lbs. or over @ \$4.75 per lb. Postpaid.

**GULF STATE MARKET**

Early. Globe-shaped. Solid. Ripens pink.

Days to maturity, 125. This variety has been particularly valuable to the shippers of East Texas. It will ripen slightly earlier than Livingston Globe and is of the true globe shape. The smooth, firm fruits are borne on clusters of from five to seven. The stock that we offer has had a careful breeding program behind it and will give great satisfaction. Price: Pkt. 10c, Oz. 25c, 1/4 lb. 85c, Lb. \$3.00, 5 lbs. or over @ \$2.75 per lb. Postpaid.



## OTHER VARIETIES

### BEANS, Lima

	Postpaid		Not Prepaid		
	Lb.	@	Lbs.	Lbs.	Lbs.
Fordhook Bush .....	.50	.45	.32	.28	.25
King of the Garden.....	.40	.33	.24	.22	.18

### BEANS, Dwarf

Giant Stringless .....	.30	.25	.18	.15	.10
Bountiful .....	.30	.25	.18	.15	.10
Round-Pod Kidney Wax..	.30	.25	.18	.15	.10
Sure Crop .....	.30	.25	.18	.15	.10
Dwarf Horticultural .....	.30	.25	.18	.15	.10

### BEET

	Pkt.	Oz.	Postpaid		5 Lbs.
			1/4 Lb.	Lb.	@
Crosby Egyptian .....		.10	.20	.60	.55
Mangel, Mammoth Long Red .....		.10	.17	.50	.45
Swiss Chard, Giant Lucullus		.10	.17	.50	.45

### CABBAGE

Stein's Flat Dutch.....	.05	.25	.60	2.00	1.85
Drumhead Savoy .....	.05	.25	.60	2.00	1.85
Mammoth Red Rock .....	.05	.25	.60	2.00	1.85
Danish Ballhead .....	.05	.25	.60	2.00	1.85

### CARROT

Chantenay .....	.05	.15	.30	1.00	.90
Scarlet Nantes .....	.05	.15	.30	1.00	.90

### COLLARDS

Georgia .....	.05	.10	.17	.50	.45
---------------	-----	-----	-----	-----	-----

### CORN

	Postpaid		Not Prepaid		
	Lb.	@	Lbs.	Lbs.	Lbs.
Sunny Slope Special .....	.35	.30	.25	.23	.20
Golden Bantam .....	.35	.30	.25	.20	.14
Country Gentleman .....	.35	.30	.25	.20	.14
Bantam Evergreen .....	.35	.30	.25	.20	.14

### CUCUMBER

	Pkt.	Oz.	Postpaid		5 Lbs.
			1/4 Lb.	Lb.	@
Boston Pickle .....	.05	.15	.25	.80	.75

### EGGPLANT

Florida High Bush .....	.05	.25	.85	3.00	2.75
Italian Long Purple .....	.05	.25	.85	3.00	2.75

### DANDELION

Broad Leaved .....	.05	.35	1.20	4.00	3.75
--------------------	-----	-----	------	------	------

### ENDIVE

Green Curled .....	.05	.15	.30	1.00	.90
--------------------	-----	-----	-----	------	-----

### KALE

Dwarf Curled Scotch ....	.05	.15	.25	.75	.70
--------------------------	-----	-----	-----	-----	-----

### KOHLRABI

Early White Vienna .....	.05	.20	.45	1.50	1.40
--------------------------	-----	-----	-----	------	------



# OF VEGETABLES

## FENNEL

	Pkt.	Oz.	Postpaid		5 Lbs.
			¼ Lb.	Lb.	@
Sweet Italian .....	.05	.15	.30	.90	.80

## LEEK

Carentan .....	.05	.20	.45	1.50	1.40
----------------	-----	-----	-----	------	------

## LETTUCE

White Boston .....	.05	.20	.45	1.50	1.40
Big Boston .....	.05	.15	.30	1.00	.90
Romaine or Trianon Cos..	.05	.15	.30	1.00	.90
Grand Rapids .....	.05	.15	.30	1.00	.90

## MUSKMELON

Bender's Surprise .....	.05	.15	.25	.90	.85
Hearts of Gold .....	.05	.15	.25	.90	.85
Fordhook .....	.05	.15	.25	.90	.85

## WATERMELON

Weatherford Watson .....	.05	.15	.30	1.00	.90
Stone Mountain .....	.05	.10	.20	.60	.55
Tom Watson .....	.05	.10	.20	.60	.55
Kleckley Sweet .....	.05	.10	.20	.60	.55

## MUSTARD

Southern Giant Curled ...	.05	.10	.17	.50	.45
Chinese Broad-Leaved ...	.05	.10	.17	.50	.45
Fordhook Fancy .....	.05	.10	.17	.50	.45

## OKRA

Perkin's Mammoth .....	.05	.10	.17	.50	.45
Dwarf Green Long-Pod...	.05	.10	.17	.50	.45
White Velvet .....	.05	.10	.17	.50	.45

## ONION

Early White Barletta .....	.05	.20	.45	1.50	1.40
White Portugal .....	.05	.20	.45	1.50	1.40
Yellow Bermuda .....	.05	.25	.60	2.00	1.85
Crystal Wax .....	.05	.25	.60	2.00	1.85
Ebenezer .....	.05	.20	.45	1.50	1.40

## PARSLEY

Champion Moss Curled...	.05	.10	.17	.50	.45
Hamburg Turnip-rooted ..	.05	.10	.17	.50	.45

## PEAS

	Lb.	Postpaid 5 Lbs. @	Not Prepaid		
			5 Lbs. @	10 Lbs. @	100 Lbs. @
Laxton's Progress .....	.40	.35	.25	.22	.20
Gradus .....	.40	.35	.25	.22	.20
Thomas Laxton .....	.40	.35	.25	.22	.20
Laxtonian .....	.40	.35	.25	.22	.20
Dark Telephone .....	.40	.35	.25	.22	.20



**STOKES SEEDS ARE STANDARD**

## Other Varieties of Vegetables

Continued

### PEPPER

	Pkt.	Oz.	1/4 Lb.	Lb.	5 Lbs.
Harris Early Giant .....	.05	.35	1.20	4.00	3.75
Long Thick Red .....	.05	.30	1.00	3.50	3.25

### RADISH

	Pkt.	Oz.	1/4 Lb.	Lb.	Not Prepaid 10 Lbs.	100 Lbs.
Sparkler White Tip.	.05	.15	.20	.60	.50	.40
Crimson Giant .....	.05	.15	.20	.60	.50	.40
White Icicle .....	.05	.15	.20	.60	.50	.40
Chinese Rose .....	.05	.15	.25	.75	.65	.55
White Chinese .....	.05	.15	.25	.75	.65	.55

### SPINACH

	Pkt.	Oz.	1/4 Lb.	Lb.	5 Lbs.	10 Lbs.
Reselected Bloomsdale ...	.40	.35	.19	.18	.16	.16
Long-Standing Bloomsdale	.40	.35	.19	.18	.17	.17
Virginia Savoy .....	.40	.35	.20	.19	.18	.18
Giant-Leaved Nobel .....	.40	.35	.19	.18	.17	.17
New Zealand .....	.75	.70	.60			

### SQUASH

	Pkt.	Oz.	1/4 Lb.	Lb.	5 Lbs.
Early Golden Straightneck	.05	.15	.30	1.00	.90
Boston Marrow .....	.05	.10	.20	.60	.55
Hubbard .....	.05	.15	.30	1.00	.90

### PUMPKIN

	Pkt.	Oz.	1/4 Lb.	Lb.	5 Lbs.
Connecticut Field .....	.05	.10	.20	.60	.55
Orange Winter Luxury...	.05	.15	.30	1.00	.90
Small Sugar .....	.05	.15	.30	.90	.85

### TOMATO

	Pkt.	Oz.	1/4 Lb.	Lb.	5 Lbs.
Standard Bonny Best .....	.05	.25	.85	3.00	2.75
Clark's Early .....	.05	.25	.85	3.00	2.75
Greater Baltimore .....	.05	.25	.60	2.00	1.85
Break O'Day .....	.05	.35	1.20	4.00	3.75
Standard Marglobe .....	.05	.25	.85	3.00	2.75

### TURNIP

	Pkt.	Oz.	1/4 Lb.	Lb.	Not Prepaid 10 Lbs.	100 Lbs.
Purple-Top White Globe .....	.05	.10	.15	.40	.35	.30
White Egg .....	.05	.10	.15	.40	.35	.30
Seven-Top .....	.05	.10	.15	.40	.35	.30
Japanese Foliage ...	.05	.10	.15	.40	.35	.30
Yellow Globe Ruta- baga .....	.05	.10	.15	.40	.35	.30
Yellow Aberdeen ...	.05	.10	.15	.40	.35	.30



## FLOWER SEEDS

THIS Department of our business has been greatly augmented this past season. The list that we offer herewith contains some of the very finest stocks available including most of the newest varieties. Florists and others can purchase this seed with great confidence. As is the case with our entire business, our Flower Seed Department is conducted on a very high standard and the prices we ask have been written down as close as we can make them without affecting quality.

The following symbols with their explanatory notes will be found helpful in the general classification of our offerings.

A—ANNUAL. Living only one growing season.

P—PERENNIAL. Living over from year to year.

h—HARDY. Resistant to average seasonal temperature variations.

hh—HALF HARDY. Plants which need protection against extreme low temperatures.

t—TENDER. Plants which will not stand up against extreme heat or cold.

### AGERATUM

505—BLUE BALL (hA-6 in.) Compact bushes completely covered with fluffy deep blue flowers over a long season. Pkt. 10c, 1/4 oz. 30c, Oz. \$1.00.

### ALYSSUM

	Pkt.	1/4 Oz.	Oz.
510—LITTLE GEM (hA-4 in.) Pure white .....	.10	.20	.50
511—SAXATILE COMPACTUM (P-9 in.) Golden yellow.....	.10	.25	.60

### ANCHUSA

515—ITALICA LISSADELL (P-4 ft.) Clear blue flowers on long sprays. Pkt. 15c, 1/8 oz. 30c, Oz. \$1.25.

### AQUILEGIA (P-2 1/2 ft.)

590—MRS. SCOTT ELLIOTT'S LONG SPURRED HYBRIDS. A wonderful range of colors.  
Pkt. 15c, 1/16 oz. 35c.

### ARCTOTIS (Blue Eyed African Daisy)

600—GRANDIS (hA-2 1/2 ft.) Petals of pure white faced underneath with lilac rimmed about a steely blue center. Fine for cutting.  
Pkt. 10c, 1/2 oz. 30c, Oz. 50c.

### ASPARAGUS (hhA)

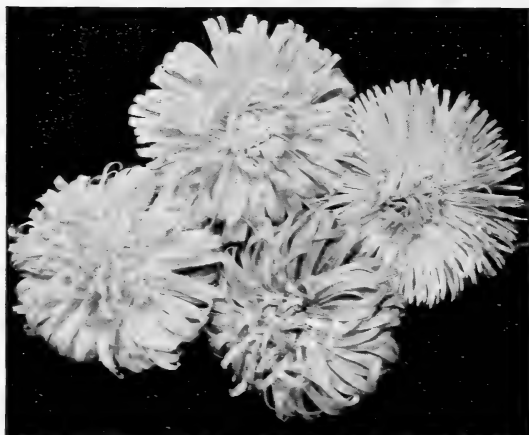
Selected stock of true greenhouse strains

610—PLUMOSUS NANUS.

Pkt. 20c, 100 seeds 35c, 1000 seeds \$1.00.

611—SPRENGERII.

Pkt. 10c, 100 seeds 20c, 1000 seeds \$1.00.



**ASTERS (hA-2½ ft.)**

Stokes Wilt-Resistant Strains.

**A**FTER many years work, wilt-resistance has been developed in many of the leading strains of Asters. These strains will produce healthier plants of sturdier substance than the old types. We are marking with an \* all varieties on which we are offering Wilt-Resistance strains.

**\*IMPROVED CREGO GIANTS** — Midsummer. Giant fluffy flowers with shaggy, twisted petals. Excellent for cutting.

- |                |                  |
|----------------|------------------|
| 620—Shell Pink | 624—White        |
| 621—Azure Blue | 623—Crimson      |
| 622—Rose Pink  | 626—Orchid (new) |
| 625—Dark Blue  | 630—Mixed        |

*Any of the above*—Pkt. 10c, ⅛ oz. 25c, ¼ oz. 40c, Oz. \$1.25.

*Collection*—Pkt. each of 6 separate colors for 50c.

**\*AMERICAN LATE BRANCHING**—Long-stemmed chrysanthemum-shaped flowers blooming two weeks later than Crego.

- |                |                                 |
|----------------|---------------------------------|
| 640—Azure Blue | 644—Mary Semple<br>(Shell Pink) |
| 641—Crimson    | 645—White                       |
| 642—Dark Blue  | 650—Mixed                       |
| 643—Deep Rose  |                                 |

*Any of the above*—Pkt. 10c, ⅛ oz. 25c, ¼ oz. 40c, Oz. \$1.25.

*Collection*—Pkt. each of 6 separate colors for 50c.

**EARLY BRANCHING OR ROYAL**—Very branching and free-flowering.

- |                 |             |
|-----------------|-------------|
| *660—Azure Blue | 663—White   |
| 661—Shell Pink  | *664—Purple |
| *662—Rose       | 665—Mixed   |

*Any of the above*—Pkt. 10c, ⅛ oz. 25c, ¼ oz. 40c, Oz. \$1.25.

**685—HEART OF FRANCE ASTER**—The largest red Aster. Opens pure deep ruby red which darkens with age.

Pkt. 15c, ⅛ oz. 35c, ¼ oz. 65c.





**CALIFORNIA GIANT ASTERS** — Magnificently curled blooms, rivaling chrysanthemums in size, borne on stems about 2 ft. long. A valuable variety for both florists and private gardeners who want the best.

- |                   |               |
|-------------------|---------------|
| 671—White         | 675—Deep Rose |
| 672—Peach Blossom | 675—Purple    |
| 673—Light Blue    | 680—Mixture   |

Any of the above—Pkt. 20c, 1/8 oz. 50c, 1/4 oz. 85c, Oz. \$2.50.

Collection—Pkt. each of 5 separate colors for 65c.

- 687—**IMPROVED NEW GIANT CALIFORNIA SUNSHINE**—Lacy petals in fine shades of pink, rose, blue and lavender about a quilled blue or yellow center. The type is not yet set and will come 50% variable, with the best blooms coming late. However, it is distinct and well worth a trial. Fine for cutting.  
Pkt. 25c, 1/16 oz. 40c, 1/8 oz. 75c.

### BALSAM (Lady Slipper)

- 695—**DOUBLE CAMELIA FLOWERED MIXED** (hA-18 in.) An old fashioned flower in brilliant colors from early Summer to late Fall.  
Pkt. 10c, 1/4 oz. 25c, Oz. 75c.

### BEGONIA (†P)

- |   | Pkt. | 1/32 Oz. |
|---|------|----------|
| 700— <b>GUSTAV KNAAKE</b> —Large salmon pink flowers .....                          | .20  | 1.50     |
| 701— <b>ALBERT MARTIN</b> —Brilliant scarlet .....                                  | .25  | 1.50     |
| 702— <b>SEMPERFLORENS MIXED</b> , 1/4 oz. \$1.00 .....                              | .15  | .25      |
| 703— <b>CHRISTMAS CHEER</b> (new) Crimson scarlet. Fine for Christmas forcing ..... | .35  | 2.50     |

### BELLIS PERENNIS

- 710—(Double English Daisy) (P-8 in.) Mixed.  
Pkt. 10c, 1/8 oz. 25c, Oz. \$1.00.

### BRACHYCOME (Swan River Daisy)

- 720—**MIXED** (hA-10 in.) Daisy-like flowers in rose, mauve and white from early Spring to Mid-Summer. Fine for beds, edgings or rockeries.  
Pkt. 10c, 1/4 oz. 30c, Oz. 75c.

### CALENDULA (hA-18 in.)

- |  | Pkt. | 1/4 Oz. | Oz.  |
|--|------|---------|------|
| 725— <b>BALL'S ORANGE</b> — Finest golden orange. Light center.. | .10  | .50     | 1.50 |
| 728— <b>BALL'S GOLD</b> — Rich deep yellow .....                 | .15  | .50     | 1.50 |
| 729— <b>CAMPFIRE</b> (Sensation) Orange with scarlet sheen....   | .15  | .50     | 1.50 |
| 730— <b>MIXED</b> —all colors 1/4 lb. 60c.                       | .10  |         | .20  |
| 726— <b>RADIO</b> —Quilled petals of deep orange. Globular ..... | .10  | .50     | 1.50 |
| 731— <b>GOLDEN RADIO</b> (new) Quilled petals of old gold....    | .25  | .75     | 2.50 |



CALCEOLARIA (†P)

722—HYBRIDA GRANDIFLORA—Choice Greenhouse Mixed. Special Pkt. \$1.00.

CALLIOPSIS

738—FINEST MIXED (hA-2½ ft.) Very free-flowering in fine combinations of yellow and garnet. Blooms all Summer and is excellent for cutting. Pkt. 10c, ¼ oz. 25c, Oz. 55c.

COREOPSIS

740—MIXED (hP-2 ft.) A perennial Calliopsis with large orange-yellow flowers. It is a splendid cut flower. Pkt. 10c, ¼ oz. 25c, Oz. 75c.

CAMPANULA

734—ANNUAL CANTERBURY BELLS, Mixed. Since this new Canterbury Bell will bloom from seed in less than six months is it now possible to have it in flower at almost any time of the year. The plant reaches a height of 2½ ft. with six or eight spikes of bloom to a plant. This mixture contains dark blue, light blue, pink, rose and white. It is a fine improvement over the biennials. Pkt. 25c, 1/16 oz. 50c.

736—CUP AND SAUCER VARIETIES MIXED (P-30 in.) The finest of all Campanulas. Pkt. 10c, ⅛ oz. 30c, ¼ oz. 50c.

CANDYTUFT

Fine for edging, bedding, rockeries and cutting

	Pkt.	Oz.	¼ lb.
745—GIANT HYACINTH FLOW- ERED (A-18 in.) . . . . .	.10	.50	1.50
750—UMBELLATA—White, Crim- son, Rose, Lilac, Mixed, Each	.10	.30	1.00

CARNATIONS

760—MARGUERITE MIXED (hA-2 ft.) Double flowers in shades of pink, rose, white, yellow and red. Blooms in three months from seed. Pkt. 15c, ¼ oz. 50c, Oz. \$1.50.

CHABAUD CARNATIONS (hA-20 in.) Fine fragrant flowers rivaling the greenhouse strains. Blooms in five months from seed.

766—Rose                      769—Yellow                      767—Scarlet  
765—White                      770—Mixed

Pkt. 15c, 1/16 oz. 25c, ¼ oz. 75c, Oz. \$2.00.

762—ENFANT DE NICE, MIXED. A new French hybrid of unusual merit. Fine shades of red, rose, salmon and white.

Pkt. 25c, 1/16 oz. 60c, ¼ oz. \$1.75.

CELOSIA

776—PLUMOSA, MIXED (hA-3 ft.) Stately plumes in shades of rose, crimson, red, yellow and orange. Pkt. 10c, ¼ oz. 35c, Oz. \$1.00.

777—CRISTATA MIXED (hA-12 in.) Large crested blooms resembling a cock's comb. Pkt. 15c, ¼ oz. 50c, Oz. \$1.50.

778—CHILDSII (Chinese Woolflower) (hA-2 ft.) Blossoms like balls of silky crimson wool. Pkt. 10c, ¼ oz. 25c, Oz. 75c.



**CENTAUREA (hA-2½ ft.)**

- 779—**CYANUS** (Bachelor Button). Double Rose. Double Blue. Double Mixed.  
Each: Pkt. 10c, Oz. 35c, ¼ lb. \$1.00.
- 780—**IMPERIALIS**, Finest Mixed (Sweet Sultan). The finest of all for cutting. This mixture includes fine shades of yellow, pink, white, lilac and many others.  
Pkt. 10c, ¼ oz. 15c, Oz. 50c.

**CHRYSANTHEMUM  
(Painted Daisy)**

- 810—**SINGLE MIXED** (hA-2 ft.) Showy cutting flowers on long stems in shades of yellow, apricot and white. Pkt. 10c, ¼ oz. 15c, Oz. 50c.

**CINERARIA HYBRIDA (†P)**

- 815—**STOKES' GIANT FLOWERING EXHIBITION**—Flowers of this special greenhouse strain often measure 4 to 5 in. A range of magnificent colors. Pkt. 50c, 3 Pkts. \$1.25.
- 816—**MULTIFLORA NANA**—Dwarf Mixed. The best dwarf strain in a fine color range. Pkt. 35c, 3 Pkts. 90c.

**CLARKIA**

- 820—**FINEST DOUBLE MIXED** (hA-2½ ft.) Tall spikes covered with rosette-like flowers in the finest shades of salmon, scarlet, white and orange. Pkt. 10c, ¼ oz. 20c, Oz. 60c.

**COLEUS**

- 825—**LARGE-LEAVED BRIGHT-COLORED VARIETIES MIXED** (A-12 in.) Rich velvety leaves in superb color combinations. Very attractive in the border or in pots for indoors. Pkt. 20c, 1/32 oz. 65c.

**COSMOS**

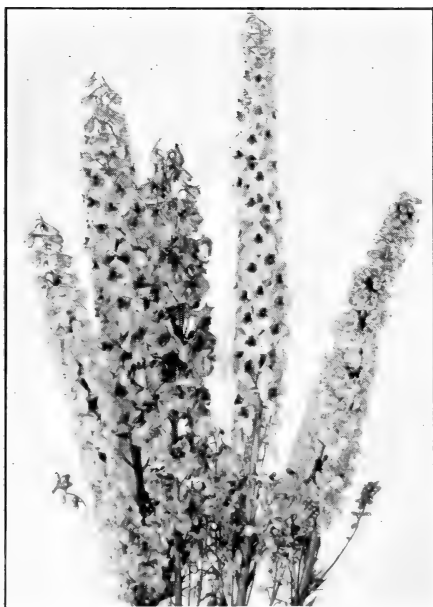
Fine cutting flowers essential to every garden. The plants do well in any sunny place and in poor soil they will bloom more profusely.

- 835—**EARLY FLOWERING DOUBLE MIXED** (hA-3 ft.) Pink, crimson and white. Pkt. 20c, ¼ oz. 60c.
- 830—**LATE FLOWERING GIANT SINGLE MIXED** (hA-4 ft.) Pkt. 10c, ¼ oz. 25c.

**CYNOGLOSSUM**

**(Chinese Forget-Me-Not) (A-18 in.)**

- |   | Pkt. | ¼ Oz. | Oz.  |
|---|------|-------|------|
| 840— <b>AMABILE</b> — Fragrant clear blue flowers ..... | .15  | .20   | .50  |
| 841— <b>AMABILE PINK</b> —Rich deep pink .....          | .15  | .45   | 1.50 |



**DELPHINIUM (Perennial Larkspur) (hP-6 ft.)**  
 Stokes' Exhibition Hybrids

Produced from the choicest named varieties from collections of the best American and English specialists. Very large and decorative specimens.

- 856—Art Shades
  - 859—Medium Blue shades
  - 858—Orchid and Light Blue shades
  - 857—Dark Blue shades
  - 855—Exhibition Mixed
- Any of the above—Pkt. 50c, 1/16 oz. \$1.00, 1/4 oz. \$3.00.*
- 860—BELLADONNA IMPROVED Pkt. 1/8 Oz. Oz.
  - Light blue free-flowering... .25 .40 2.50
  - 861—BELLAMOSUM — Dark blue
  - form of Belladonna ..... .25 .40 .2.00
  - 862—CHOICEST MIXED ..... .15 .35 1.75
  - 863—NEW ANNUAL DELPHINIUM—A fine addition, similar in color to Belladonna but far more brilliant.
  - Pkt. 35c, 1/16 oz. 75c, 1/8 oz. \$1.25.

**DAHLIAS**

- 865—LARGE FLOWERING DOUBLE MIXED (tP-3 ft.) Pkt. 15c, 1/8 oz. 35c.
- 866—EXHIBITION MIXED—A selected strain saved for us by a Dahlia specialist. Pkt. 50c, 3 Pkts. \$2.00.
- 867—COLTNESS HYBRIDS. Dwarf single Dahlias in a fine mixture of colors. Valuable for cutting and very effective when planted among shrubbery. Pkt. 25c, 1/4 oz. \$1.00.

**SHASTA DAISY**

- 850—ALASKA (hP-3 ft.) Graceful white daisies often measuring five inches across. Pkt. 10c, 1/8 oz. 25c.



**DIANTHUS (Pinks)**

- 880—PLUMARIUS SEMPERFLORENS (P-12 in.) Double, semi-double and single blooms in wide color range. Pkt. 15c, 1/8 oz. 30c, Oz. \$1.50.
- 875—SWEET WIVELSFIELD (A-12 in.) Cross between Alwoodii and Sweet William. Blooms from early summer until frost. Pkt. 20c, 1/16 oz. 35c, 1/4 oz. 75c, Oz. \$2.50.
- 870—SINGLE & DOUBLE MIXED (A-12) Pkt. 10c, 1/4 oz. 20c, Oz. 50c.
- 871—ALWOODI ALPINA (P-4 in.) New hybrid with large blooms in shades of pink, rose, white and purple. Blooms early Spring until late Fall. Pkt. 75c, 250 seeds \$1.25.

**DIDISCUS**

**Blue Lace Flower (A-2 1/2 ft.)**

- 883—Lovely lavender blue airy clusters. Pkt. 10c, 1/4 oz. 35c, Oz. \$1.00.

**DIGITALIS (Foxglove)**

- 885—GIANT SHIRLEY (hP-4 1/2 ft.) Stately spikes of gloxinia-like flowers ranging from pure white to deep rose, all attractively spotted or blotched. Pkt. 15c, 1/8 oz. 45c.

**DIMORPHOTHECA (African Daisy)**

- 890—AURANTIACA HYBRIDS (hA-15 in.) A large showy daisy in shades of salmon, sulphur, rose, apricot, white and golden yellow. Fine for cutting. Pkt. 10c, 1/4 oz. 25c, Oz. 75c.
- 891—RINGENS (hA-12 in.) A new introduction, more dwarf and free-flowering than Aurantiaca, and the large single flowers are pure white banded bright blue in the center. Pkt. 15c, 1/8 oz. 30c, 1/4 oz. 50c.

**ESCHSCHOLTZIA (California Poppy)**  
**(hA-1/2 in.)**

- 900—DOUBLE AND SINGLE MIXED. Blooms in wonderful shades of old gold, fiery red, cream, salmon and orange, flowering from early Summer until Fall. Pkt. 10c, 1/4 oz. 20c, Oz. 65c.

**EUPHORBIA**

Fine ornamental foliage valuable for garden decoration in borders or beds.

- 909—VARIEGATA (Snow-on-the-Mountain) (hA-2 ft.) Bright green leaves tinged with silvery white. Pkt. 10c, 1/2 oz. 40c.
- 910—HETEROPHYLLA (Annual Poinsettia) (hA-2 ft.) Glossy green foliage changing in late Summer to orange-scarlet. Very much resembles the Christmas Poinsettia. Pkt. 15c, 1/4 oz. 30c.

**FORGET-ME-NOT (Myosotis) (A-6-10 in.)**

	Pkt.	1/8 Oz.	Oz.
915—ROBUSTA GRANDIFLORA			
—Clear light blue .....	.10	.20	.75
916—ALPESTRIS ROSE — Bright rose .....	.10	.20	.75
917—VICTORIA INDIGO—Upright deep blue .....	.10	.30	1.25



**GAILLARDIA**

	Pkt.	¼ Oz.	Oz.
920—DOUBLE MIXED (A-18 in.)	.10	.20	.50
921—INDIAN CHIEF (A-18 in.) Fine single-flowering of metallic red with brown center....	.10	.25	.60
925—PORTOLO HYBRIDS (P-2½ ft.) 4 in. flowers of coppery scarlet tipped yellow .....	.15	.50	1.50

**GERANIUM**

935—ZONALE (tP-12 in.) A mixture of the largest and finest varieties. Pkt. 15c, ⅛ oz. 40c.

**GERBERA (Transvaal Daisy)**

932—JAMESONI HYBRIDS MIXED (tP-2 ft.) Showy daisy-like flowers with long slender petals in lovely shades of cream, yellow, orange, pink, rose, salmon, and crimson. Hardy in warm climates. Fine for the greenhouse and excellent for cutting. Pkt. 25c, 100 Seeds 40c, 1000 Seeds \$3.00.

**GLOBE AMARANTH (Gomphrena)**

940—MIXED (hA-18 in.) Clover-headed Everlastings in brilliant purplish red, violet, pink and white. Very adaptable to garden design. Pkt. 10c, ¼ oz. 25c.

**GLOXINIA**

945—GIANT MIXED (tP-10 in.) Attractive pot plants for the conservatory where heat and moisture can be regulated. Pkt. 25c, 5 Pkts. \$1.00.

**GODETIA (Satin Flower)**

950—MIXED (A-12 in.) Fine azalea-like flowers. Excellent in cool sections. Pkt. 10c, ¼ oz. 20c, Oz. 50c.

**GYPSOPHILA (Baby's Breath)**

	Pkt.	Oz.	Lb.
955—ELEGANS ALBA GRANDIFLORA (Paris Market strain.) (A-20 in.) Pure White.....	.10	.15	1.50
956—ELEGANS GRANDIFLORA ROSE .....	.10	.20	2.00
957—ELEGANS GRANDIFLORA CARMINE—Carmine rose ....	.15	.30	2.25
960—PANICULATA, Double White (hP-3 ft.) 1/16 oz. 50c.....	.20		
962—REPENS (hP-4 in.) White Fine for rock gardens, ⅛ oz. 25c .....	.15	1.25	

**HELICHRYSUM (Strawflower) (hA-2½ ft.)**

- 970—FIREBALL—Brilliant crimson.
- 971—GOLDEN BALL—Rich golden yellow.
- 972—ROSE QUEEN—Deep old rose.
- 973—VIOLET QUEEN—Intense purplish violet.
- 975—MIXED.

Pkt. 10c, ¼ oz. 25c, Oz. 75c.

Collection—One packet each of four separate colors 35c.



**HELIOTROPE**

- 985—LEMOINE'S GIANT HYBRIDS (A-2 ft.) The very finest giant strain in shades of lavender and white. Pkt. 15c, 1/8 oz. 30c, Oz. \$1.75.  
 986—REGALE MIXED. A dwarf compact type with large heads. Fine in rockeries. Pkt. 15c, 1/16 oz. 35c.

**HOLLYHOCK (P-7 ft.)**

- 990—DOUBLE MIXED—A choice selection of the best. Pkt. 10c, 1/4 oz. 30c, Oz. \$1.00.  
 991—IMPERATOR (new) Distinct. Frilled and fringed petals crested with a three inch rosette. A delightful array of colors. Pkt. 25c, 1/8 oz. 40c, Oz. \$2.00.

**IMPATIENS (t-P)**

- 1000—HOLSTI HYBRIDS. Fine pot plants. Pkt. 20c, 1/16 oz. \$1.00.

**KOCHIA (Summer Cypress) (hA-2 1/2 ft.)**

- 1005—Planted in rows these ornamental plants form a cypress-like bright green hedge which turns deep red in late Summer. Pkt. 10c, 1/4 oz. 20c, Oz. 45c.

**LANTANA**

- 1007—FINE MIXED (tP-2 ft.) Shrubby bedding plants with verbena-like clusters of florets in crimson, rose, yellow and orange shades. Pkt. 10c, 1/8 oz. 25c.

**LARKSPUR (hA-2 ft.)**

**Giant Imperial**

The finest and most desirable strain

	Pkt.	1/4 Oz.	Oz.
1010—BLUE SPIRE—Deep oxford blue .....	.15	.50	1.50
1012—CARMINE KING — Carmine rose .....	.15	.50	1.50
1016—EXQUISITE PINK IMPROVED .....	.15	.50	1.50
1018—EXQUISITE ROSE .....	.15	.50	1.50
1020—WHITE SPIRE—Pure white..	.15	.50	1.50
1025—MIXED .....	.10	.25	.75
1013—MISS CALIFORNIA (new)			
Deep pink on salmon.....	.20	.60	2.00

Collection—One packet each 6 separate colors—Value 95c, for 65c.

**LATHYRUS (Everlasting Sweet Pea)**

- 1030—MIXED (hP-7 ft.) Showy free-flowering climber in shades of pink, white and red. Pkt. 10c, 1/4 oz. 20c, Oz. 60c.

**LAVENDER (Lavandula Vera) (hP-2 ft.)**

- 1031—Delicate gray foliage and lovely dainty lavender blue flowers that are valued for their fine fragrance. Easily grown in any garden soil. Pkt. 10c, 1/4 oz. 20c, Oz. 60c.



## LILIES

Lily culture from seed has been increasing in popularity. Sometimes flowering from seed the first year, they are quite hardy and usually best results are obtained the second year.

- 1032—REGALE (hP-3 ft.) Trumpet shaped pinkish white flowers with a yellow throat. Pkt. 15c,  $\frac{1}{4}$  oz. 35c, Oz. \$1.00.
- 1033—TENUIFOLIUM (Coral Lily) (hP-24 in.) One of the earliest lilies from seed, blooming profusely the second year. Fine in rock gardens or for forcing. Pkt. 25c,  $\frac{1}{8}$  oz. 40c, Oz. \$2.00.

## LINUM (Flax)

- 1040—GRANDIFLORUM RUBRUM (Crimson Flax) (hA-18 in.) Attractive bedding plant with fine foliage and bright red flowers from early summer until Fall. Pkt. 10c,  $\frac{1}{4}$  oz. 20c, Oz. 50c.
- 1045—LINUM PERENNE (hP-18 in.) Very graceful foliage and bright blue flowers. Fine for rock gardens. Pkt. 10c,  $\frac{1}{4}$  oz. 25c, Oz. 75c.

## LOBELIA

- 1050—CRYSTAL PALACE COMPACTUM (A-4 in.) Dense foliage and deep blue flowers especially suited for low edgings, rock gardens and pot culture. Pkt. 15c,  $\frac{1}{8}$  oz. 35c, Oz. \$2.00.

## LUPINE (Hartwegi) (hA-2 ft.)

Stately spikes of pea-shaped flowers making a glorious display all Summer when planted in semi-shaded moist location.

- |                 |            |
|-----------------|------------|
| 1055—Light Blue | 1056—White |
| 1057—Rose       | 1060—Mixed |

Pkt. 10c, Oz. 25c,  $\frac{1}{4}$  lb. 75c.

- 1061—SUBCARNOSUS (Texas Bluebonnet) (hA-15 in.) Bushy plants with deep blue flowers on small spikes. Pkt. 10c, Oz. 25c,  $\frac{1}{4}$  lb. 75c.
- 1065—REGALE HYBRIDS (hP-2 $\frac{1}{2}$  ft.) An unusual array of brilliant colors in June and July. Excellent in any good garden soil. Fine for cutting. Pkt. 15c,  $\frac{1}{4}$  oz. 25c, Oz. 75c.
- 1062—LUPINE-HARTWEGI GIANTS MIXED. A decided improvement over the old Hartwegi type, producing twenty-five to fifty more blooms to the spike. They average three to four feet in height. The leaves are huge and in all it is a very handsome plant. The colors include dark blue, azure blue, rose and white. Pkt. 35c,  $\frac{1}{4}$  oz. 75c.

## MARVEL OF PERU (Four o'Clock)

- 1110—MIXED (tP-2 ft.) Bush plants bearing an abundance of white, yellow, crimson and violet flowers which open in late afternoon. Very effective as a hedge, in beds, borders, or in front of a porch. Pkt. 10c, Oz. 20c.

## MATRICARIA (Feverfew)

- 1112—CAPENSIS (hA-2 ft.) Bushy plants with double button-like white flowers growing in terminal clusters. Excellent for cutting. Blooms all summer. Pkt. 10c,  $\frac{1}{4}$  oz. 20c, Oz. 50c.





### MARIGOLD (hA)

An old-fashioned favorite which will lend a wealth of color to the garden long after other annuals are gone.

1075—GUINEA GOLD. Large semi-double, brilliant orange flowers with ruffled petals distinguish this new addition to Marigolds. The characteristic scent is not as apparent as in other Marigolds.

Pkt. 25c, 1/16 oz. 40c, 1/8 oz. 65c, Oz. \$2.50.

1074—TALL AFRICAN ORANGE PRINCE (hA-2 1/2 ft.) Ball-shaped flowers of rich orange.

Pkt. 10c, 1/4 oz. 25c, Oz. 75c.

1072—TALL AFRICAN LEMON QUEEN (hA-2 1/2 ft.) Fine lemon yellow. Pkt. 10c, 1/4 oz. 25c, Oz. 75c.

1078—TALL AFRICAN MIXED. A complete mixture of double flowering sorts. Pkt. 10c, 1/4 oz. 20c, Oz. 60c.

1081—SINGLE TALL JOSEPHINE (hA-3 ft.) Bushy plants with flowers of bright maroon edged golden yellow. Pkt. 10c, 1/4 oz. 35c, Oz. \$1.00.

1079—LEGION OF HONOR (hA-10 in.) Single flowers of golden yellow blotched velvety crimson.

Pkt. 10c, 1/4 oz. 35c, Oz. \$1.00.

1080—DWARF FRENCH DOUBLE MIXED (hA-12 in.) A complete mixture of the best dwarf double varieties. Pkt. 10c, 1/4 oz. 25c, Oz. 75c.

### MIGNONETTE (hA-12 in.)

The lovely fragrance of Mignonette is valuable in combination with showier scentless flowers.

Pkt. 1/4 Oz. Oz.

1100—NEW YORK MARKET. A select strain for outdoors or

forcing ..... .15 .45 1.50

1101—RED GOLIATH. Finest red.. .10 .45 1.50

1105—FINEST MIXED. All varieties .10 .20

### MOONFLOWERS and MORNING GLORY

1115—EARLY FLOWERING HEAVENLY BLUE MOONFLOWERS (hA-12 ft.) Beautiful azure blue flowers five inches across. Pkt. 10c, 1/4 oz. 30c.

1120—MORNING GLORIES, MIXED (hA-10 ft.) Large flowers of blue, red, purple and white.

Pkt. 10c, Oz. 20c.

### NASTURTIUM (hhA)

The dwarf varieties are excellent in beds or borders and the tall or climbing varieties are particularly adapted for trailing over rocks or for covering trellis or fences.

1130—DOUBLE GOLDEN GLEAM. This new race of Nasturtium introduced for the first time last year surpassed all expectations in popularity. The sweet-scented flowers borne on six inch stems well above the foliage form a solid mass of gold.

Pkt. 25c, Oz. 75c, 1/4 lb. \$2.50.

1135—TALL MIXED. Pkt. 10c, Oz. 15c, 1/4 lb. 40c, Lb. \$1.25.

1125—DWARF MIXED. Pkt. 10c, Oz. 15c, 1/4 lb. 40c, Lb. \$1.25.

### NIGELLA (Love-in-a-Mist) (hA-12 in.)

1140—BLUE AND WHITE MIXED. White and blue rosette-like flowers amid feathery foliage.

Pkt. 10c, 1/4 oz. 15c, Oz. 35c.

1142—MISS JEKYLL. Bushy, misty completely surrounding large cornflower, blue flowers.

Pkt. 10c, 1/4 oz. 15c, Oz. 35c.



**PANSY**  
(hP-10 in.)

1145—STOKES' GIANT EXHIBITION— A mixture of the finest varieties in a complete range of color combinations. Gigantic, heavy-textured flowers. Pkt. 35c, 1/16 oz. 25c, Oz. \$8.00.

1150—GIANT TRIMAR-DEAU—

Large flowers in a good range of colors. Pkt. 10c, 1/8 oz. 25c, Oz. \$1.25.

1146—MAPLE LEAF GIANTS. The distinction of these is in the compactness of the plant and the huge flowers. The colors range the same as the well-known Swiss Giants.

Pkt. 35c, 1/16 oz. 75c, Oz. \$8.00.

**PHLOX-DRUMMONDI**

Brilliant flowers in profusion all Summer until frost. One of the most valuable of showy annuals for bedding.

1221—Giant White

1222—Carnea—Flesh with apricot center.

1223—Scarlet.

1224—Rose—Bright with dark eye.

1225—Lilac.

1220—Giant Mixed.

Pkt. 10c, 1/8 oz. 25c, Oz. \$1.00.

**POPPY**

1235—SHIRLEY MIXED (hA-18 in.) Silky blossoms in fine shades of pink, apricot, blue and white. Sow where they are to bloom. Pkt. 10c, 1/4 oz. 25c, Oz. 75c.

1237—HUNNEMANIA (Santa Barbara Poppy) (hA-18 in.) A lovely lemon-yellow Poppy that may be used for cutting. Pkt. 10c, 1/4 oz. 25c, Oz. 75c.

1211—ORIENTALE (hP-3 ft.) Fine feathery foliage and huge scarlet flowers with black blotches. Pkt. 10c, 1/8 oz. 20c, Oz. \$1.00.

1212—ORIENTALE, PRINCESS VICTORIA (hP-3 ft.) A very beautiful salmon pink. Pkt. 15c, 1/8 oz. 40c.

1210—ORIENTALE MIXED (hP-3 ft.) Orange, pink and red shades. Pkt. 10c, 1/8 oz. 25c, Oz. \$1.00.

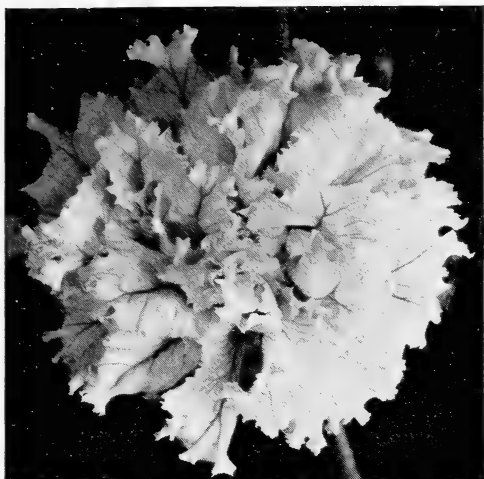
1215—ICELAND POPPIES (hP-18 in.) Improved new everblooming perennial poppies blooming a few months after seed is sown. If pods are kept picked will flower all summer. Beautiful shades of yellow, orange, salmon, rose and white. Pkt. 15c, 1/8 oz. 30c, Oz. \$1.50.

**PORTULACA (hA-6 in.)**

Gay colored, flowers all summer long, which makes a gorgeous display in beds, edges, rock gardens, etc.

1240—DOUBLE MIXED. Pkt. 15c, 1/8 oz. 30c, Oz. \$2.00.

1242—SINGLE MIXED. Pkt. 10c, 1/4 oz. 20c, Oz. 50c.



**PETUNIAS (hA)**

	Pkt. 1/32 Oz.	
1185—RUFFLED GIANTS—Huge ruffled flowers. Fine selection .....	.35	1.00
1190—DWARF GIANTS OF CALIFORNIA. Large attractively veined colors .....	.50	1.50
1195—STOKES' GIANT DOUBLE FRINGED. Large fringed double flowers. ....	.50	
1170—BALCONY BLUE .....	.15	.35
1171—BALCONY CRIMSON .....	.15	.35
1172—BALCONY WHITE .....	.15	.35
1173—BALCONY ROSE .....	.15	.35
1174—BALCONY MIXED .....	.15	.35
1155—HOWARD'S STAR IMPROVED—Crimson with white star.....	.10	.25
1160—ROSY MORN .....	.10	.25

**POTENTILLA**

1248—MIXED (hP-12 in.) Single and double flowers in orange and red shades in late Spring and early Summer. Fine in the rockery. Pkt. 15c, 1/8 oz. 40c.

**PRIMULA**

1255—OBCONICA GIANT MIXED (12 in.) Easily grown in greenhouse or a sunny window. Beautiful shades of crimson, rose and purple. Pkt. 20c, 3 Pkts. 50c.

1256—VERIS (Cowslip) (hP-15 in.) Flowers of yellow, orange and scarlet on long stems. Fine in a rock garden. Pkt. 20c, 1/32 oz. 40c.

**PHYSALIS (Chinese Lantern Plant) (hP-2 ft.)**

1230—Ornamental dense bushes with bright orange-scarlet seed pods that are cut and dried for winter use. Pkt. 10c, 1/8 oz. 20c, Oz. 75c.

**PYRETHRUM**

1260—MIXED (hP-2 ft.) Daisy-like flowers in shades of red, rose, pink and white. Flowers in early Spring and sometimes again in Fall. Pkt. 15c, 1/8 oz. 40c, Oz. \$2.00.



**SALVIA (Scarlet Sage)**

	Pkt.	1/4 Oz.	Oz.
1265—AMERICA (A-2 ft.) Best Variety. Foliage 15 in. with flower spikes 10 in. above. Uniform..	.20	1.00	3.00
1266—BONFIRE—Bushes 2 ft. high.	.10	.65	2.00
AZUREA GRANDIFLORA (hP-3 ft.) Sky-blue.			
Pkt. 15c, 1/8 oz. 30c, 1/4 oz. 55c.			

**SALPIGLOSSIS (hA-2 ft.)**

1280—LARGE FLOWERING MIXED. Beautiful penciled and marked gloxinia-like flowers in bright colors.			
Pkt. 10c, 1/4 oz. 30c, Oz. \$1.00.			

**SCABIOSA (ha-2 1/2 ft.) Mourning Bride**

	Pkt.	1/4 Oz.	Oz.
1291—AZURE BLUE .....	.10	.25	.65
1290—PEACH BLOSSOM—Pink ...	.10	.25	.65
1297—SHASTA—White .....	.10	.25	.65
1292—KING OF THE BLACKS.....	.10	.25	.65
1296—ROSE .....	.10	.25	.65
1300—MIXED—All Colors .....	.10	.20	.50
1310—GIANT HYBRIDS—(hP-3 ft.) Isaac House Strain.			
Pkt. 25c, 5 Pkts. \$1.00.			

**SCHIZANTHUS (Butterfly Bush) (hA-18 in.)**

1315—Dainty orchid-like flowers in bright colors. Suitable for bedding or for pot plants.			
Pkt. 20c, 1/4 oz. 35c, Oz. \$1.00.			

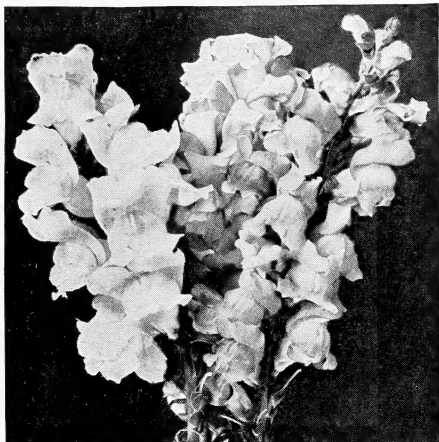
**SWEET PEAS (hA)**

**Early or Winter Flowering**

	Pkt.	Oz.	1/4 Lb.	Lb.
1500—JEANNE MAMITSCH—Rose Pink .....	.10	.40	1.25	4.00
1501—SNOWSTORM—Snowy white, white seeded .....	.10	.40	1.25	4.00
1502—BURPEE'S ORANGE — Rich deep orange .....	.10	.40	1.25	4.00
1503—GLITTERS—Orange Scarlet.	.10	.40	1.25	4.00
1504—HARMONY—Clear Lavender	.10	.40	1.25	4.00
1505—MRS. HERBERT HOOVER— Best medium blue .....	.10	.40	1.25	4.00
1506—WHITE HARMONY — Pure White, black seeded .....	.15	.50	1.60	5.50
1507—MRS. KERR — Fine orange salmon .....	.15	.50	1.50	5.00
1520—MIXED—All varieties .....	.10	.25	.75	2.50

**Summer-flowering Varieties**

1550—AVALANCHE—Pure White.	.10	.20	.50	1.75
1551—MARY PICKFORD—Creamy pink salmon .....	.10	.20	.50	1.75
1552—POWERSCOURT — The best lavender .....	.10	.20	.50	1.75
1553—PINKIE—Deep pink .....	.15	.20	.50	1.75
1554—HUNTSMAN—Scarlet .....	.10	.20	.50	1.75
1555—TOM WEBSTER—Mid-blue.	.15	.20	.50	1.75
1590—MIXTURE—All varieties ...	.10	.15	.40	1.25



**SNAPDRAGONS or ANTIRRHINUM (hhP)**

Maximum or Tall Giants (3 ft.)  
Spikes about 30 in. long

- 532—APPLE BLOSSOM—Rosy pink with white throat and yellow lip.
- 563—CANARY BIRD—Clear canary yellow with golden yellow center.
- 561—COPPER KING—Bright copper scarlet.
- 565—THE ROSE—Soft rose pink.
- 566—ORCHID—Cattleya lilac.
- 567—RUBY—Velvety ruby red.
- 570—MIXED.  
*Any of the above—Pkt. 15c, 1/8 oz. 30c, Oz. \$1.50.*  
*Collection—Six named varieties—Value 90c, for 50c.*
- 560—SALMON ROSE (new) Begonia rose shaded salmon.  
Pkt. 20c, 1/16 oz. 75c, 1/8 oz. \$1.25.
- 568—AUTUMN GLOW (new) Old rose shaded terra cotta.  
Pkt. 20c, 1/16 oz. 75c, 1/8 oz. \$1.25.

**Giant Flowered Half Dwarf**

	Pkt. 1/16 Oz. 1/4 Oz.		
535—FAWN — Delicate pink shaded gold .....	.10	.20	.65
533—HELEN—Lovely salmon....	.15	.45	1.50
*536—PHILADELPHIA PINK — Best clear pink .....	.15	.45	1.50
*530—CEYLON COURT — Clear yellow .....	.25	.55	2.00
*531—CHEVIOT MAID — Rose pink .....	.25	.55	2.00
*541—ROMAN GOLD—Old gold tipped copper .....	.25	.55	2.00
*545—JENNIE SCHNEIDER—Salmon pink .....	.25	.55	2.00
*542—HIS EXCELLENCY—Orange scarlet .....	.25	.55	2.00
*537—WHITE ROCK — Glistening white .....	.20	.50	1.75
540—MIXED—1/8 oz. 25c.....	.10		.75

All varieties marked "\*" are outstanding and especially recommended for greenhouse forcing.



### ZINNIA (hA)

#### Giant Double Dahlia Flowered (2½ ft.)

*Huge deep flowers with petals that stand out in Dahlia fashion.*

- 1425—CRIMSON MONARCH—Deep red.
- 1426—EXQUISITE—Light rose with deep rose center.
- 1427—GOLDEN YELLOW.
- 1428—DREAM—Lavender purple.
- 1429—POLAR BEAR—White.
- 1430—ORIOLE—Orange and gold bicolor.
- 1431—SCARLET FLAME—Bright Red.
- 1435—GIANT DOUBLE MIXED.

*Any of the above—Pkt. 10c, ⅛ oz. 25c, Oz. \$1.25.*

*Collection—One packet each 6 Dahlia Zinnias for 65c.*

#### Giant Mammoth (2½ ft.)

*Enormous flat flowers entirely double.*

- 1444—ORANGE KING—Burnt Orange.
- 1445—LEMON QUEEN—Pure Yellow.
- 1446—ROSE QUEEN—Rose shades.
- 1447—SCARLET QUEEN—Bright scarlet.
- 1448—MRS. WILMOTT—Soft pink.
- 1449—LAVENDER GEM—Deep lavender shaded purple.
- 1450—MIXED—All colors.

*Any of the above—Pkt. 10c, ⅛ oz. 25c, Oz. \$1.25.*

*Collection—One packet each 6 varieties listed—40c.*

#### Lilliput (15 in.)

*Dwarf, compact plants with small fully double flowers.*

*Excellent for cutting and bedding.*

- 1465—GOLDEN GEM.
- 1467—SALMON ROSE.
- 1466—SCARLET GEM.
- 1469—CANARY YELLOW
- 1468—MIXED.

*Any of the above—Pkt. 10c, ¼ oz. 25c, Oz. 75c.*

#### Elegans Pumila

*(Cut-and-Come-Again) (2 ft.) Fine bedding type with large double flowers.*

- 1400—Golden Yellow
- 1404—Salmon Rose
- 1402—Fireball
- 1410—Mixed

*Any of the above—Pkt. 10c, ¼ oz. 25c, Oz. 75c.*

**CROWN O' GOLD MIXTURE.** Petals heavily overlaid with deep gold at the base with the individual flower color carried out at the tip. Colors include the finest and most desirable shades.

*Pkt. 15c, ⅛ oz. 35c, Oz. \$2.25.*



**STATICE (A-2 ft.)**

1330—An attractive, everlasting, extensively used for cutting. Sinuata White, Rose, Blue and Mixed.  
Pkt. 10c, 1/4 oz. 20c, Oz. 40c.

**STOCKS GIANT IMPERIAL (A-2 ft.)**

The finest. Suitable for outdoors and greenhouse.

	Pkt.	1/8 Oz.	Oz.
1335—ANTIQUE COPPER — Cop- pery red .....	.20	.75	4.00
1336—ROSE—Deep Rose pink .....	.15	.50	3.00
1339—LAVENDER .....	.15	.50	3.00
1337—ROYAL PURPLE .....	.20	.75	4.00
1338—CHAMOIS — Ivory tinted old rose .....	.15	.50	3.00
1341—WHITE .....	.15	.50	3.00
1340—MIXED—all colors .....	.10	.40	2.25

**SWEET WILLIAM**

1345—MIXED (hP-2 ft.) One of the best known perennials. Easily grown. Pkt. 10c, 1/4 oz. 20c, Oz. 50c.

**WALLFLOWERS**

1390—FINEST DOUBLE MIXED (tP-20 in.) A deliciously fragrant plant with flowers in shades of lemon, orange, rose and mulberry. Pkt. 15c, 1/8 oz. 25c, 1/2 oz. 75c.

**TITHONIA (Mexican Sunflower)**

1348—SPECIOSA (tP-5 ft.) In warm climates this fine plant will be found very valuable. Brilliant orange flowers are borne on tall branching stalks and make a fine display among shrubbery or as a background. The foliage growth is similar to that of the Dahlia. Pkt. 15c, 1/4 oz. 40c.

**THUNBERGIA (Black Eyed Susan)**

1350—MIXED (tP-4 ft.) An ornamental creeper with large flowers in all shades of yellow, orange, cream and white with a jet black center.  
Pkt. 10c, 1/4 oz. 20c, Oz. 60c.

**VERBENA**

**Hybrida Grandiflora (hA-12 in.)**

Bright colored trusses with large florets which often equal the size of a 50-cent piece. Very valuable for cutting and for massing effects.

	Pkt.	1/8 Oz.
1355—Giant Blue with white eye.....	.10	.30
1356—Giant Scarlet .....	.10	.30
1357—Giant White .....	.10	.30
1359—Giant Rose with dark eye.....	.10	.30
1360—Giant violet with white eye.....	.10	.30
1358—Etna—Geranium red with yellow eye	.10	.30
1365—Giant Mixed .....	.10	.30

*Collection*—One packet each of six colors listed for 45c.

**VINCA (hA-15 in.)**

Ornamental plants with glossy leaves. Fine for bedding and other garden effects.

1378—Rose with dark eye.      1380—Mixed.  
1379—White with red eye.      Pkt. 10c, 1/4 oz. 25c, Oz. \$1.00.

**VIOLA (Tufted Pansies)**

1385—CORNUTA MIXED (hP-6 in.) If planted in Spring, will flower from June till frost.  
Pkt. 15c, 1/8 oz. 30c, Oz. \$1.25.

# All American Flower Selections

RECEIVED  
NOV 24 1975

THIS selection was made by a representative group of seedmen and commercial growers and is based on newness, merit and general popularity. The first three won the Gold Medal distinction for 1932-1933 and the following seven won the Award of Merit.

1075—**MARIGOLD, GUINEA GOLD.** Large semi-double, brilliant orange flowers with ruffled petals distinguish this new addition to Marigolds. The characteristic scent is not as apparent as in other Marigolds. Pkt. 25c, 1/16 oz. 40c, 1/8 oz. 65c.

1130—**NASTURTIUM—DOUBLE GOLDEN GLEAM.** This new race of Nasturtium introduced for the first time last year surpassed all expectations in popularity. The sweet-scented flowers borne on six inch stems well above the foliage form a solid mass of gold. Pkt. 25c, 1/2 oz. 50c.

734—**CAMPANULA—ANNUAL CANTERBURY BELLS, Mixed.** Since this new Canterbury Bell will bloom from seed in less than six months it is now possible to have it in flower at almost any time of the year. The plant reaches a height of 2 1/2 ft. with six or eight spikes of bloom to a plant. This mixture contains dark blue, light blue, pink, rose and white. It is a fine improvement over the biennials. Pkt. 25c, 1/16 oz. 50c.

1361—**VERBENA—BEAUTY OF OXFORD HYBRIDS.** Heretofore it was possible to obtain the giant Beauty of Oxford type only by cuttings. This new hybrid cross between Verbena Luminosa and Beauty of Oxford produces individual florets measuring over one inch in diameter in colors ranging from Rose Pink to Rose Red. Pkt. 50c.

1062—**LUPIN-HARTWEGI GIANTS MIXED.** A decided improvement over the old Hartwegi type, producing twenty-five to fifty more blooms to the spike. They average three to four feet in height. The leaves are huge and in all it is a very handsome plant. The colors include dark blue, azure blue, rose and white. Pkt. 35c, 1/4 oz. 75c.

1146—**PANSY-MAPLE LEAF GIANTS.** The distinction of these is in the compactness of the plant and the huge flowers. The colors range the same as the well-known Swiss Giants. Pkt. 35c, 1/16 oz. 85c, Oz. \$10.00.

863—**ANNUAL DELPHINIUM—Cambridge Blue.** This new development in the Annual Delphinium of Chinensis class is light blue, similar to the well-known perennial Belladonna Delphinium but far more brilliant. Pkt. 35c, 1/16 oz. 75c, 1/8 oz. \$1.25

**ASTERS—WILT RESISTANT.** We have offered this fine development separately under the Aster listing—Page 26. Pkt. 10c.

1362—**VERBENA—LAVENDER GLORY.** The first real lavender verbena. The individual florets will cover a half dollar and the real lavender color is accentuated with a creamy white eye. Pkt. 35c, 1/16 oz. 75c.

1350—**VENIDIUM FASTUOSUM.** A recent introduction from South Africa. Rich orange, daisy-like flowers about 4 in. across centered purple-black. Untried yet in America so its merits as a cut flower are yet to be proven. Prefers sandy, sunny places, not too hot, and is difficult to germinate until the soil is warm. Pkt. 35c, 3 Pkts. 90c.

All American Collection—One packet each of the above winners, \$2.50



## Francis C. Stokes & Co., Inc.

### Seed Growers

BOX 923 PHILADELPHIA, PA.

Corpus Christi, Texas • Sanford, Fla. • Woodbury, N. J.