

Historic, archived document

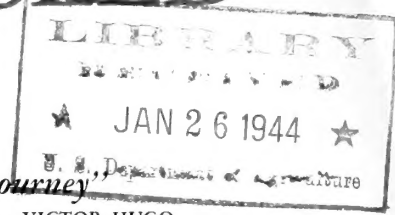
Do not assume content reflects current scientific knowledge, policies, or practices.

2.57

STOKES TOMATO SEED



FOR 1944



"We build the road, others will make the journey"

—VICTOR HUGO

Profitable Tomato production starts with Tomato Seed that carries a strong pedigree.

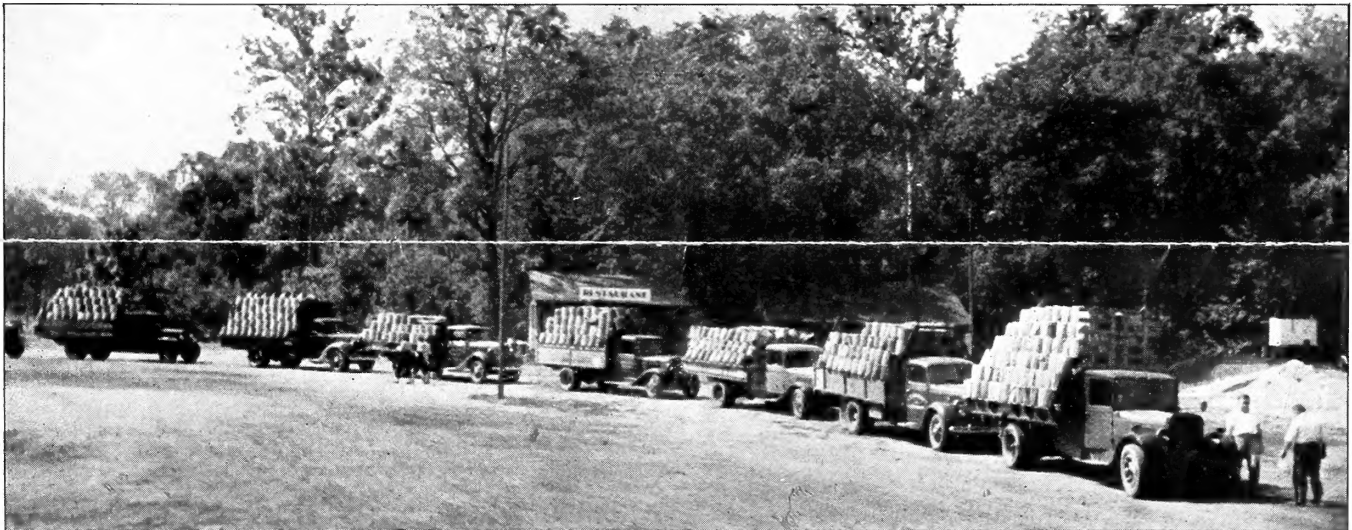
THE four Stokes strains described in this simplified war-time folder are Tomatoes of that caliber. They have been bred by a 62-year-old firm which devotes its entire effort to our country's most important vegetable. We take pardonable pride in the fact that these four Stokes strains now plant over 1/4 of the American Tomato acreage for processing and for market shipment.

The strength of these four stocks is deeply rooted in a breeding program which traces back for 20 generations. Our routine of producing two stock-seed crops per year is, we believe, unique in Tomato seed production. One of these matures in New Jersey in August; the other matures in Florida in March. Stock-maintenance and stock-improvement are carried on through single-plant selection and through hybridization. The latter has recently developed two interesting new strains which are now being perfected and which will be tested in twelve different areas in 1944.

Planters of Stokes Tomato Seed are protected by a package which is sealed with a certificate covering State Certification, seed-disinfection (New Improved Ceresan), germination and date of the germination test. As a contribution toward holding the line, the prices in this folder remain unchanged from our catalog prices of 1941, 1942 and 1943. Because of the extraordinary demands, our inventories are already heavily drawn against. We therefore suggest immediate action if you plan to use Stokes Tomato Seed in 1944.

Cordially yours,

Vincentown, N. J., December 1, 1943.



THE CERTIFIED RUTGERS LINE AT THE VINCENTOWN PLANT

FRANCIS C. STOKES, Limited

Breeders and Growers of Fine Tomato Seed

VINCENTOWN, NEW JERSEY, U. S. A.

V A L I A N T

VALIENT, a half-brother of Stokesdale, will develop a deep Marglobe-type Tomato within 3 days of the now fast-disappearing Earliana. It has a sparse, open vine and therefore will never be an all-purpose Tomato, but, in its limited field, where it can be matured without too much danger of sunburn, it is greatly prized. Valiant is distinctly a market and not a canning Tomato.

In its specialized field, Valiant has proved a great money-maker. It is four days earlier and often 2 ounces larger than Stokesdale.

Valiant, like Stokesdale, has enjoyed wide acceptance. It has proved profitable in New Jersey, in New York, in Kansas, in Colorado, and in the Rio Grande Valley of Texas. We suggest that it always be handled as an extra-early Tomato and that it be followed by a planting of Stokesdale.

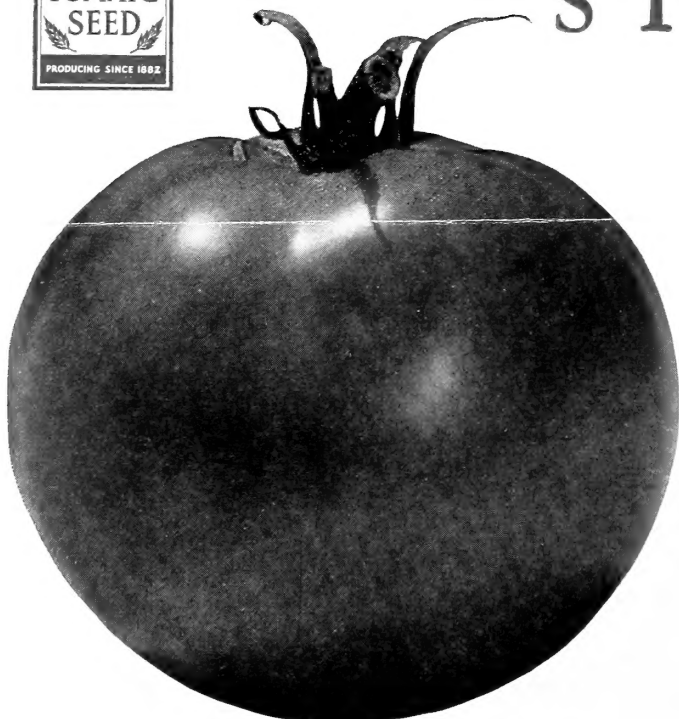
**Price, postpaid: Trade pkt. 50 cts.; oz. \$1
1/4lb. \$3; lb. \$10**



Average weight, 7 ounces. Ratio of depth to width, 88%.
Average number of fruit, 18. Days to maturity, 108.



S T O K E S D A L E



Average weight, 6 ounces. Ratio of depth to width, 90%.
Average number of fruit, 32. Days to maturity, 112.

STOKESDALE was developed by our research department on our company proving grounds in New Jersey. Grown by Stokes, and now in its twelfth generation, it has found wide acceptance under many and varying conditions.

Stokesdale is now one of the leading canning varieties of New York State. At the same time it is one of the leading shipping varieties of the Rio Grande Valley in Texas. Stokesdale has turned out unusual profits in the important green-wrap Tomato deal on the west coast of Florida. Right now it is making a real contribution to the critical food situation in the Hawaiian Islands.

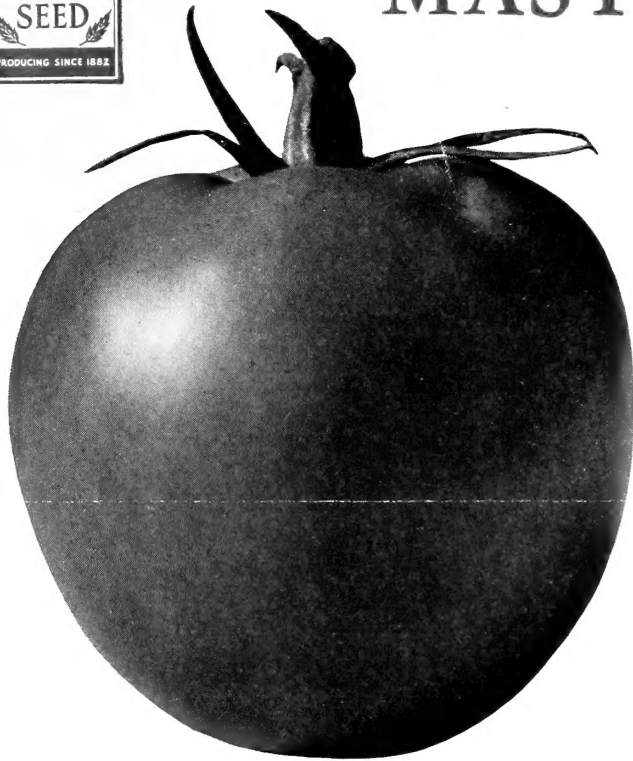
The popularity of Stokesdale has resulted from its record of heavy production per acre and its ability to mature a 6-ounce fruit one week ahead of Marglobe. Stokesdale, when on good soil, well fed and under normal conditions, will produce a magnificent crop.

**Price, postpaid: Trade pkt. 25 cts.; oz. 50 cts.
1/4lb. \$1.50 (1/4lb. is limit to any one customer)**



MASTER MARGLOBE

FSU



Average weight, 6 ounces. Ratio of depth to width, 90%.
Average number of fruit, 23. Days to maturity, 118.

IN OFFERING FSU, a new and greatly enlarged strain of Master Marglobe, we are giving the shipping trade what is perhaps the most important type improvement in a decade. Here is one item in commerce, the introduction of which does not have to be postponed until the end of the war. It is ready for you now.

Ever since 1927, Stokes Master Marglobe (now in its twentieth generation of single plant selection) has been generally acknowledged to be the most perfectly formed shipping Tomato that has been offered the green-wrap trade. It consistently develops fruit with a depth-to-width ratio in excess of 90%—an unusually high figure. This depth factor was eventually responsible for smaller fruit.

FSU is now in the F₇ generation of a U.S.D.A. × Stokes Master Marglobe cross. The fruit is approximately 25% larger than either parent, and under normal conditions will develop a high proportion of the crop in a 6 x 6 size or larger. The interior qualities, solidity, color, flavor, etc., are similar to the Master Marglobe parent. It is a dual-purpose Tomato,—equally valuable to the shipping and the canning trade.

Price, postpaid: Trade pkt. 25 cts.; oz. 50 cts.
1/4 lb. \$1.50; lb. \$5; 5 lbs. \$22.50

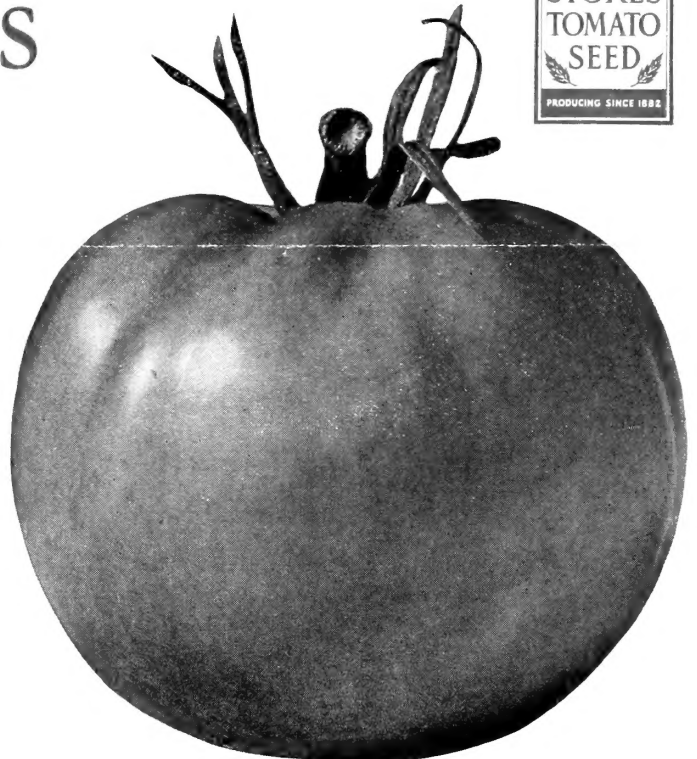
RUTGERS

RUTGERS, by a wide margin, is the most important Tomato in this or any other country. It was introduced in 1935 by Prof. L. G. Schermerhorn of the New Jersey State Experiment Station. In eight years it has spread to an enormous acreage.

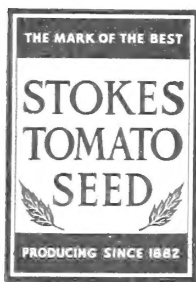
Rutgers is especially valuable to canners because of its dark red interior. They also like its vigorous vine-growth that develops a strong central stalk, which ordinarily keeps the fruit out of the mud in both fair weather and foul. The later maturing habit of Rutgers prevents its wide use in New York, Michigan and Wisconsin.

Rutgers' ability to develop fruit running from 6 to 8 ounces in size has won it a host of friends among the green-wrap shippers. Although some of our trade has found the variety too rough for satisfactory lug-box or climax basket packing, we would point out that the Stokes strain of Rutgers, which has been selected for greater depth and for smoother shoulders, has for the most part developed an excellent market Tomato. Rutgers will mature from five days to a week after Master Marglobe.

Price, postpaid: Trade pkt. 25 cts.; oz. 50 cts.
1/4 lb. \$1.50; lb. \$5; 5 lbs. \$22.50



Average weight, 8 ounces. Ratio of depth to width, 86%.
Average number of fruit, 26. Days to maturity, 123.



An Offer of Stokes Proving-Ground Stocks for Greenhouse Forcing

THESE represent our choicest selections—the de luxe Tomato seed of America. They are one generation in advance of the regular stocks offered on the two preceding pages. As such, this is the seed we recommend for greenhouse forcing and for all other intensive Tomato production where *great exactness* is called for and is expected. This seed is taken from our 1944 stock-seed bins and is therefore precisely comparable to the mother stock for Stokes 2,000 pedigreed acres in the coming year. As is the case with all other stocks offered in this folder, the price remains unchanged from last year. In fact, there has been no change in the price of our Proving-Ground Stocks for the past seven years. *For more complete variety notes refer to the preceding pages.*

PRICE, POSTPAID: Trade pkt. \$1; 1/4oz. \$1.75; 1/2oz. \$3; oz. \$5; 1/4lb. \$17.50

VALIANT

This proving-ground stock is offered for extra-early production, where every ounce of *extra* effort counts. That goes especially for growers in a position to profit from the early market. Valiant is some four days earlier than Stokesdale. It is not as perfectly formed and is not usually recommended for greenhouse production.

STOKESDALE

The perfection of form of this variety has made it especially profitable in greenhouse forcing. It will mature under glass in shorter time than Marglobe and the fruit clusters will set more readily. The average size is very desirable for a greenhouse Tomato. Stokesdale will give an outstanding performance under glass.

MASTER MARGLOBE, F S U STRAIN

This strain holds a place of importance as a forcing Tomato. It is somewhat larger and one week later than Stokesdale, and is slightly darker in color, with a thicker wall. Its perfection of form and its table qualities have long been recognized. This is a very superior hybrid stock, and is highly recommended.

RUTGERS

This is our *de luxe* stock of Rutgers and is offered to those planters who require their Tomato seed on a stock-seed basis. Generally speaking, Rutgers is not recommended for greenhouse forcing. While often on the large side it does not have the depth-to-width ratio of Stokesdale nor Master Marglobe. This is the finest stock of Rutgers we have so far offered.



Single plant election follows all hybridization effort in Tomato breeding. The stakes shown are a part of that routine here at our Summer Proving Grounds at Vincentown, N. J.

