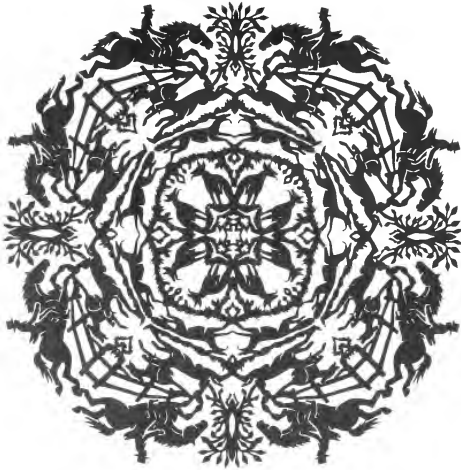

CATALOGUE OF

RIDING CLOTHES

Caldene



JOHN A. SEAVERNS

Webster Family Library of Veterinary Medicine
Cummings School of Veterinary Medicine at
Tufts University
200 Westboro Road
North Grafton, MA 01536



Stylish
**RIDING
CLOTHES**

BY CALDENE



Guarantee

Every Caldene garment is guaranteed free from any defects whatsoever in material, workmanship and finish, and should any defect become apparent inside six months from date of purchase we are prepared either to remedy this defect to the full satisfaction of the user or to make an entirely new garment free of cost or obligation.

We fully Guarantee

that this genuine guarantee protects you in every way. Not only do we guarantee perfect fit and satisfaction, but we guarantee wearing quality as well. The foregoing is subject only to fair wear and tear.

Guarantee

You have six months in which to criticise your bargain. Could anything be fairer and squarer? Full Satisfaction or Money back.

Signed

For

CALDENE CLOTHING Co. Ltd.

G. J. Utley.

MANAGING DIRECTOR





MR. GEORGE T. UTTLEY
who is responsible for the
management of the Company

A Personal Message from The Managing Director

About 30 years ago we decided to market a well cut pair of breeches tailored to the individual measurements of customers. The encouragement we then received enabled us to build up a business which, in our line, we believe is second to none in the United Kingdom. Ever since, year after year, it has been our endeavour to meet the ever growing demand for clothes for a variety of purposes at lowest prices consistent with craftsmanship of the highest order. We have developed a large department to deal with every item of wear, etc., required for hacking. Experts with years of experience are engaged in the cutting and tailoring of the smart and correct riding wear we have supplied to many thousands of satisfied customers.

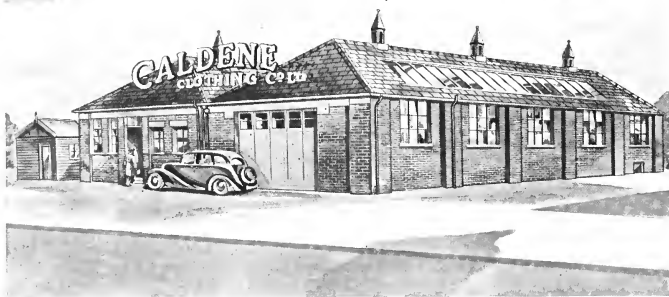
It is my sincere belief that individual attention counts for a great deal, and that is why I give my personal attention to each and every order—no matter how small. Every enquiry is welcome and I am confident that we can satisfy you in every way.

Yours sincerely,

Geo. T. Uttley.

Managing Director,
Caldene Clothing Co. Ltd.
Mytholmroyd, Halifax, Yorks.

WHERE GOOD RIDING CLOTHES ARE MADE!



The Caldene Clothing Co.'s Works

at Mytholmroyd, Yorks. (pronounced My-thom-royd) on the main road 2 miles from Hebden Bridge and 6 miles from Halifax—a modern factory with a staff of the most skilled craftsmen.

Most of our business is conducted through the post and we guarantee exact fit to the measures given. Should, however, any difficulty be encountered in obtaining correct measurements, it can be arranged for our representative to visit customers' own homes for this purpose within a reasonable radius. If any of our customers who are conveniently placed wish to visit us, to have their measures taken we shall be glad to see them for this purpose.

For very many years we have specialised in the manufacture of made to measure Breeches, Jodhpurs and Habits of the highest quality. Our workshops are complete with the latest equipment and our fitters and craftsmen have been trained in the best traditions of the trade. Thus, we offer craftsmanship of the highest order and the fine unvarying quality of Caldene cut clothes is apparent in garments at even the cheapest price. The best tributes to our Service are the continual repeat orders which reach us daily and the thousands of letters of appreciation which we have on our files.

BUSINESS HOURS—Weekdays 8 a.m. to 5-0 p.m. Saturdays 8 a.m. to 12 noon



Foreword

We take pleasure in submitting this latest edition of our style book in which will be found the most up-to-date styles of a wide range of individually tailored garments.

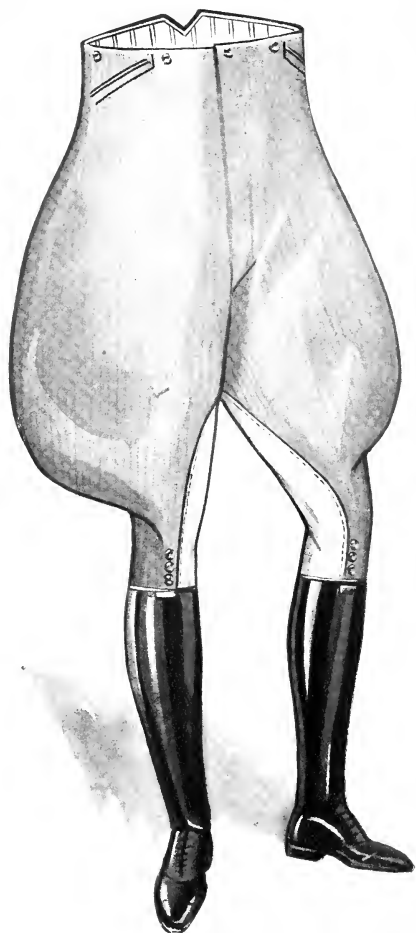
We emphasise the fact that every garment is individually tailored because each is made by our craftsmen on the premises, to customers' own requirements, and these must not be confused with factory and mass produced clothes.

We believe that amongst the varied styles in this booklet, you will find one to suit your particular taste and you can be assured of the greatest care in making, cut and fit and close attention to detail—for it is upon these essential features that the celebrated 'Caldene Master Cut' has been evolved.

So sure are we that we can please the most fastidious, in every particular, that we give a guarantee to this effect and orders are accepted on the distinct understanding that if we fail to satisfy, customers money is returned in full.

CALDENE CLOTHING CO. LTD., MYTHOLMROYD, HALIFAX
TELEPHONE CALDER VALLEY 3341 TELEGRAMS "CALDENE, HALIFAX"

OUR MOST POPULAR STYLE-



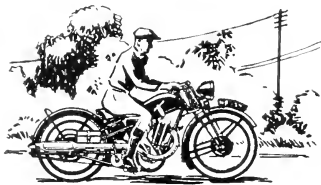
The ASCOT (Caldene Copyright)

The **ASCOT**

A well cut pair of Breeches beautifully proportioned but with plenty of fullness—a style which is greatly favoured at the moment. This style buttons at the knee or laced if desired and the illustration shows buckskin strappings which greatly enhance the appearance and take up the wear. These buckskin strappings cost 25/- extra (mock buckskin 12/6) but are well worth the small cost. Other details in this style include cross-pockets, fly front, etc. This style can be featured in any cloth from the wide range of Caldene patterns.

Important!

It is always desirable to have by you some material from which Breeches or Jodhpurs, etc., are made, for repairs which are often necessary through accidents, etc. We therefore offer a generous supply of any material for 5/- extra. Please say if you require a portion of material when placing your order



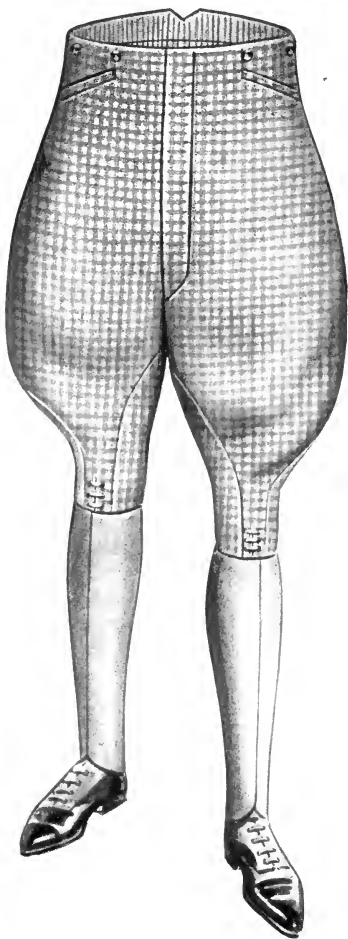
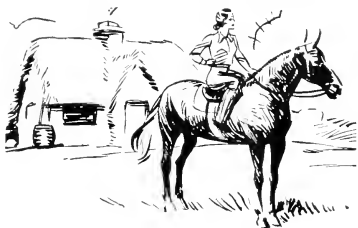
STYLISH AND COMFORTABLE

The **MANOR**

Here is a style so often specified by Landed Gentry, Gentlemen Farmers, etc., etc. A very neatly cut pair of Breeches with not so much 'flare' as the "Ascot." Features include cross-pockets, fly front and laced at the knees. Strappings which are shown in the same material of which the breeches are made, are 3/6 extra. A smart pair of Breeches which, no matter what material is chosen, will look equally well in any pattern of cloth.

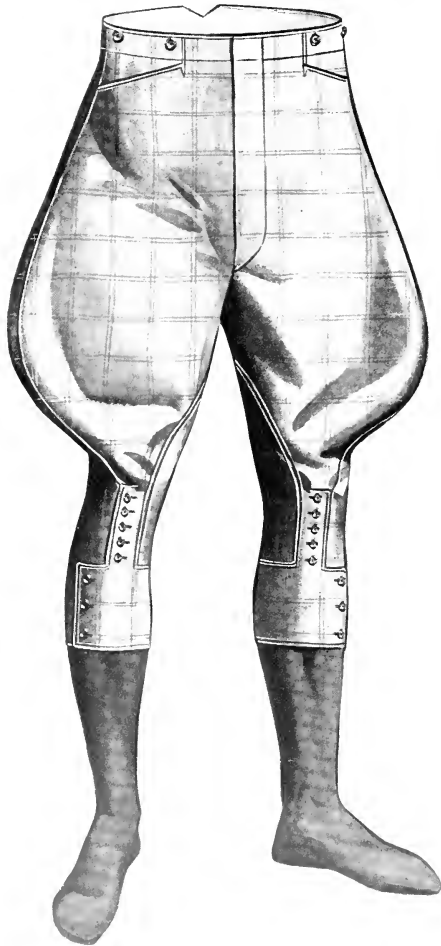
Good strong pockets are fitted from material specially woven for us to stand up to hard wear and the best trimmings are used in all Caldene breeches. The strappings, eyelet holes and buttonholes on all our garments are sewn from the finest quality of 'Reform' Sewing Silk which gives three times as much strength as when sewn with ordinary cotton thread, and there is greater elasticity too. Customers can therefore be sure of the maximum service from any garments.

PLEASE NOTE—There is no extra charge for Pantaloons. Measures can safely be taken from old garments, providing the figure has not altered since these were last worn.



The MANOR (Caldene Copyright)

SMART AND PRACTICAL



The DORSET (Caldene Copyright)

The **DORSET**

The "Dorset" is a simple yet very effective style of which it can safely be said will suit everyone, ladies or gentlemen.

The 'Dorset' style shows a well cut pair of Pantaloons with plenty of fulness, showing fly fronts, cross pockets, leg being buttoned down centre or laced if preferred, with the bottom three buttons overlapping towards the side, making them more comfortable for leggings.

Continuations of thinner materials can be used if desired.

Measures can safely be taken from old garments, providing the figure has not altered since these were last worn.

Every garment is individually cut and tailored in the style you desire by a master cutter, and **WE GUARANTEE EVERY GARMENT.**



CORRECT MILITARY STYLE

The **BLEASDALE**

A smartly cut and comfortable pair of Breeches, showing the small flap front, which is termed "Split Falls" in the trade, cross pockets and buttons at knee, which are shown down the inside of shin bone. These can also be fastened down the centre, or at the side, as one prefers.

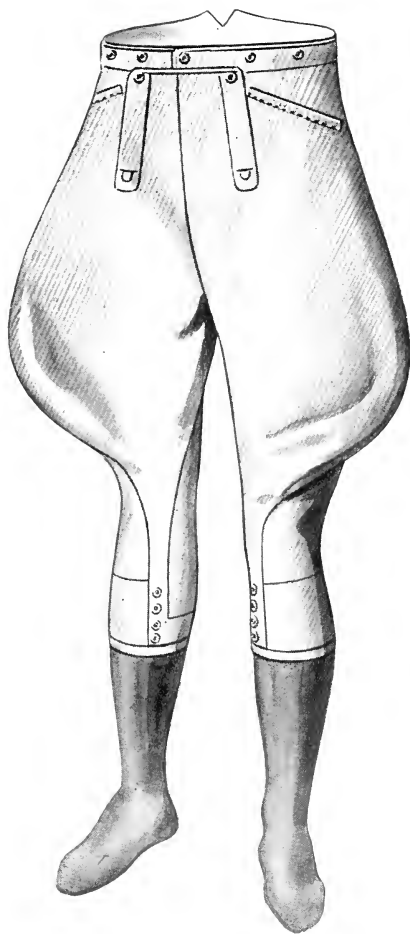
The tops of these breeches are cut with a backrise, but can also be cut straight (like flannel trousers) with belt loops if desired.

Each pair of breeches, cut by a master cutter are guaranteed, and will fit perfectly from your own measurements and, especially if you choose a serviceable whipcord, you can be sure of the maximum amount of wear.

This style can be supplied with "split fall" fronts, as shown in the illustration, or a "fly front" like the "Dorset" style.

Split Falls 2/6 extra.

Measures can safely be taken from old garments, providing the figure has not altered since these were last worn.

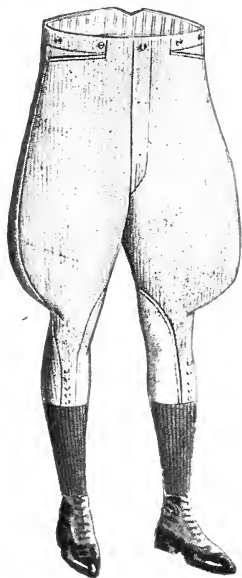


The BLEASDALE (Caldene Copyright)

SIX SPLENDID STYLES

A WIDE VARIETY

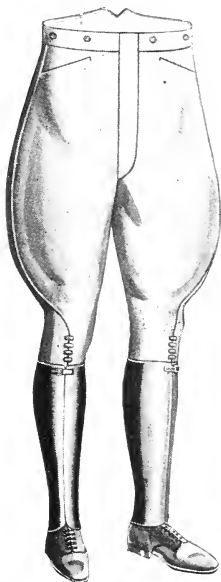
Here are illustrated six popular styles so that you can see at a glance which style will best suit your particular purpose. Each style carries the Caldene guarantee of style and fit, and the details are carried out correctly in each case. There is a wide choice of materials in the newest shades and in different weights and qualities. You will only need to see and handle these patterns to realise the splendid value which we give. Our clients often write to us and say exactly how much money they have saved in coming to us for their breeches, rather than to others with whom they had dealt hitherto.



The BELVOIR

This style looks extremely well and is very comfortable in the saddle. There is a full balloon cut on the thighs, whilst the knees are very clean.

All our Breeches include good strong pockets, the material for which is specially woven for us to stand up to hard wear



The BEDFORD

is a cut designed for comfortable working breeches and is also suitable for those to whom the wide cut does not appeal.

The MANOR

appears elsewhere in this book, but is again shown in comparison with other styles. It is a distinctive style and always looks well in any material.



The MANOR

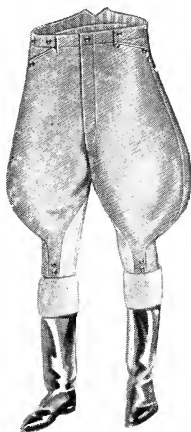
TO AID YOUR CHOICE

OF STYLES

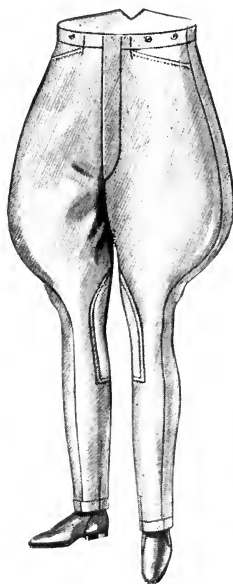
Kindly note again that all our garments are made to measure, individually from your own measurements on our own premises. This point is an important one, especially as many advertisements offering garments infer that they are made to measure, whereas your nearest measurements are chosen from a stock of nearly completed garments. All we need in order to fit you perfectly are your measures and an indication of the style you desire and your instructions as to any supplementary details, all set out clearly in our order form, together with your choice of materials, we will do the rest.

The HUNTSMAN

is one of our most popular styles. Beautifully cut and fashioned from splendid quality materials, its elegance will appeal to all wearers of this type of breeches.

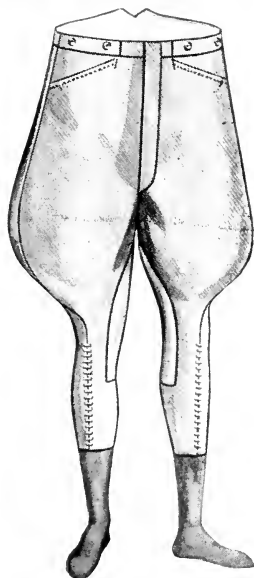


The HUNTSMAN



GENT'S JODHPUR

This style combines comfort with smartness and is cut to any desired fulness. Same materials as for ordinary breeches.



The CHESTER PANTALOONS

The only difference between breeches and pantaloons is that in the latter the legs of the breeches come well over the calf. The style shown is of pantaloons. Leg fastenings can be either laces (as illustrated) or buttons, whichever is desired.

The fastenings can be had at the side or the centre or inside shin bone as preferred.

*These illustrations
are
Caldene Copyright*

CORRECT RIDING WEAR

For LADIES and CHILDREN

Caldene cut clothes for riding give you that assurance and poise which is so essential to the full enjoyment of the pastime. You can depend on the very latest in style and cut and the closest attention to detail that is a feature of all Caldene garments for their craftsmen are always *au fait* with the latest trend of fashion. You will find that Caldene Clothes for Riding have the requisite amount of freedom to ensure comfort and yet retain the perfect fit which characterises all their productions. Just as much care and attention is given to children's clothes as their elders'. Try Caldene for the children's complete Riding Clothes as well—you will be delighted.

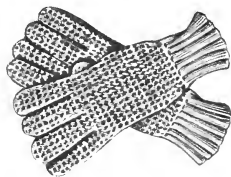


JOYCE

(Caldene Copyright)

JOAN

Ladies' & Girls' Hand Knit **STRING GLOVES** IN YELLOW AND FAWN



GENT'S SIZE price 14/6 pair

LADIES' SIZE price 12/6 pair

With slip-proof re-inforced fingers
17/6 per pair

GIRLS' SIZE price 9/3 pair

Plus 6d. postage unless ordered
with other goods.

BREECHES AND JODHPURS FOR LADIES-

Suitable for Land Girls, Forestry Work and Gardening etc. Very hardwearing.

The "ALICE" and "BRENDA"

are beautifully designed breeches and jodhpurs which afford ease and comfort. These are always made to fasten at the side unless customers desire otherwise. The illustration shows cross pockets fitted. Should, however, this style of pocket not be desired, pockets can be fitted at the side. As ladies' breeches and jodhpurs need extra cutting and tailoring, being fastened at the side, we make a slight extra charge for this. We can of course make them to fasten as men's, namely, fly fronts, etc., if desired.



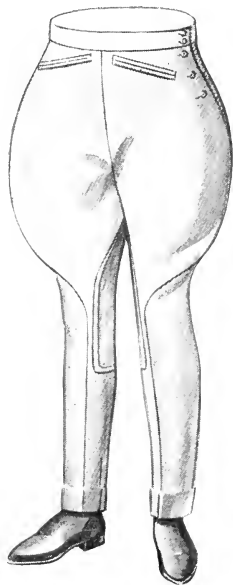
"ALICE" (Caldene Copyright)

THREE IMPORTANT POINTS

When Breeches and Jodhpurs are required for riding, we should like to stress the importance of having mock buckskin strappings fitted between the legs to grip the saddle and to prevent wear taking place. We also advise customers to have fitted to the inside of the fork a protective washleather lining. (For price see Measure Form.)

A Zipp Fastener at the ankle of the Jodhpurs not only facilitates the drawing on and off more quickly and easily, but also helps to make the garment fit neatly. Customers requiring this extra please include 4 -.

Elastic can be used instead of Zipp if required for same extra charge 4 -.



"BRENDA" (Caldene Copyright)

DISTINCTIVE ATTIRE FOR



PLUS FOURS SUIT

Beautifully tailored to your measures from West of England cloth in checks, tweeds, etc., etc., and cut to give the ease and freedom of movement which is so essential to the wearer. Please see latest patterns.

GOLF *or* WINDJAMMER BLOUSE

Smartly tailored to give comfort when golfing, cycling, etc., with zipp front and two roomy pockets with flaps, elastic waistband and windproof cuffs. In velvet cords, rainproof gabardines, etc.



LADIES AND GENTLEMEN

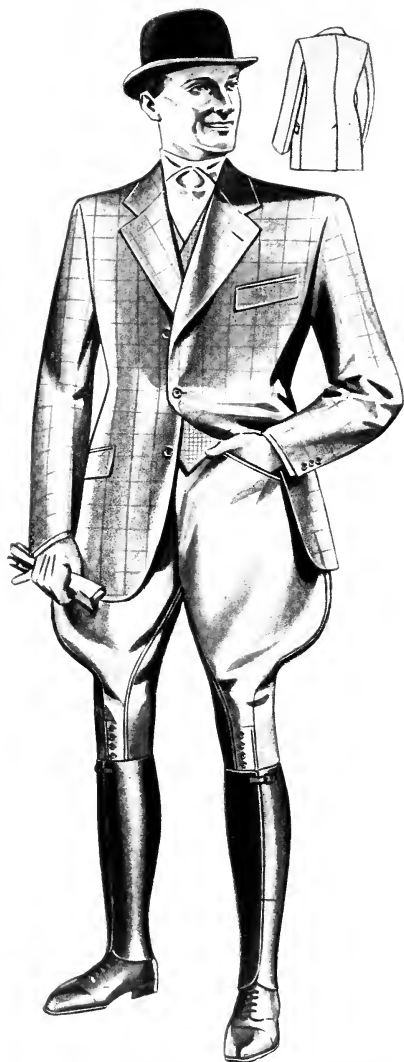
SLACKS *for* LADIES

Slacks are the new vogue for ladies ! Smartly cut and in the very latest style these garments are beautifully tailored to your own measures and hang perfectly. For ordinary wear, sportswear, gardening, housework canteen work, etc., they are much appreciated for their freedom of style. Made to your own measures, fastened at sides with waistband and two slanting pockets. If desired, zipp fasteners can be fitted instead of the usual buttons, at a cost of 2/6 for zipp at one side or 4/- for zipp at both sides. Made in Corduroys, plain greys, brown and blue and grey pinstripes, worsted, plain and blue meltons, etc.

- PERFECTLY TAILORED
- EASY TO SLIP ON
- USEFUL DEEP POCKETS
- PERFECT FIT GUARANTEED
- MADE TO YOUR MEASURES



THE "AYLESBURY"—



ONE OF OUR MOST SUCCESSFUL STYLES

This illustration shows a characteristic Caldene outfit for riding wear. The style is irreproachable and every detail of the garments is immaculate.

The "Aylesbury" has two side pockets and breast pocket with flap. The back can be made with either centre vent or two side vents.

All Caldene tailoring for men is turned out to this high standard.

This style is very suitable also for Gentlemen Farmers, Estate Managers, Game Keepers, etc., etc. Prices are very reasonable but depend upon the quality of material chosen. Clients are assured of the maximum of wear from Caldene Cut Clothes which retain their shape right to the end.

All our suits are beautifully tailored and lined with the very best art silk and are sewn with "Reform" Silk which gives the garments that lustrous finish which silk alone produces.

(Caldene Copyright)

THE "BADSWORTH"

ANOTHER *Caldene* "BEST SELLER"

The "Badsworth" style Hacking Jacket has certain minor differences from the "Aylesbury" shown on the opposite page. You will note the pocket arrangements are slightly different, the breast pocket does not have a flap and the jacket is not cut quite so long. You can just see on the illustration that the jacket has side vents, but a centre vent at the back can just as easily be made for you if you prefer it. It is our aim to give a choice of styles that will satisfy the most fastidious buyer.

Individually cut, tailored by craftsmen and offered in a wide range of hard-wearing cloth in the latest designs. By no means expensive for the quality you are getting, in fact much less in price than you could be asked elsewhere.

Naturally, our "satisfaction or money back" guarantee applies.



(Caldene Copyright)

CALDENE "MASTER CUT"

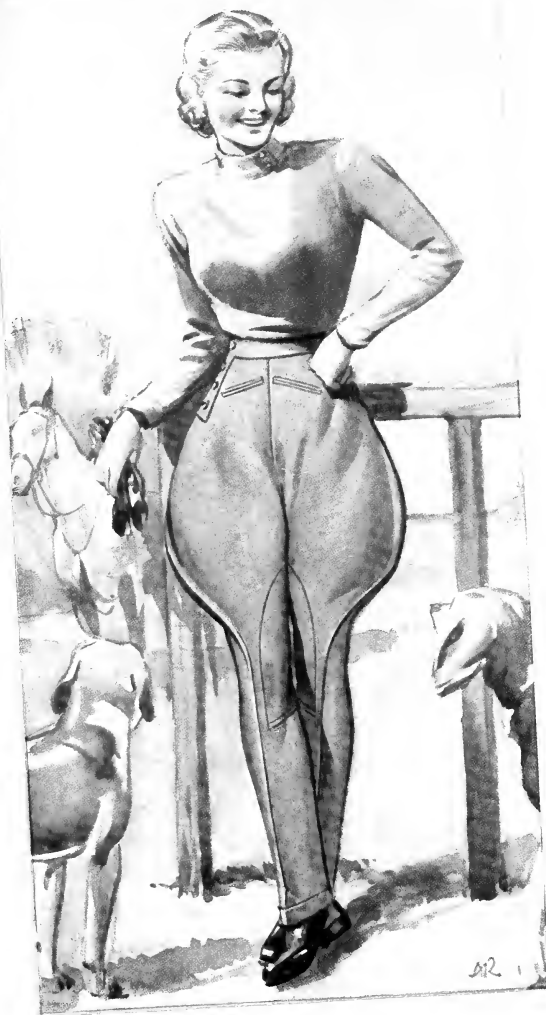
TWO VERY STYLE

The 'Doreen'

On the left hand side ("The Doreen") is illustrated Jodhpurs showing side seam which comes down the exact centre of the leg which gives a beautiful cut to the Jodhpurs. A zipp fastener placed at the bottom of the Jodhpurs (on the inside leg seam) not only facilitates drawing on and off more quickly and easily, but also helps to make the garment fit neatly. If you require this extra, please include 4/-.

THREE IMPORTANT POINTS

- 1 Measures can safely be taken from old garments providing the figure has not altered since they were last worn.
- 2 When Breeches and Jodhpurs are required for riding, we should like to stress the importance of having mock buckskin strappings fitted between the legs to grip the saddle and to prevent wear taking place.
- 3 We also advise customers to have fitted to the inside of the fork a protective wash-leather lining. (For price see Measure Form.)



DOREEN (Caldene Copyright)

Ladies' Tailoring calls for expertness in cut and finish. We possess unique facilities for producing the best fitting and stylish garments, for our cutters and finishers are men with a lifetime's training behind them.

Caldene

MYTHOL
HALIFAX

Tel. CALDER

JODHPURS ARE UNEXCELLED!

POPULAR JODHPURS !

The 'Garland'

The illustration on the right ("The Garland") depicts Ladies' Hacking Coats beautifully designed for ease and comfort, showing a nice waisted effect, which ensures smartness with the maximum of comfort. Made from materials of every variety—Checks, Herring-bones, plain and fancy designs giving a selection to suit the taste of every rider.



All Caldene Hacking Jackets are specially fitted with a button and tab so that the collar may be fastened across the throat in bad weather.



Caldene
Clothing Co. Ltd.

WIMBORNE
DORSET
ENGLAND

VALLEY 3341

GARLAND (Caldene Copyright)

Although we have mentioned it previously in this style book, we desire again to point out that all garments are made specially and individually for our clients, and to their specific measurements. We cannot supply from stock as we do not keep any such but we make garments specially to your measure in the minimum space of time.

CHILDREN'S RIDING HATS



CHILDREN'S RIDING HATS

Made from very fine quality velvet, in black or brown, and lined with art silk. Special hard top for protection. Available from stock in sizes 6 $\frac{3}{8}$, 6 $\frac{1}{2}$, 6 $\frac{5}{8}$, 6 $\frac{3}{4}$, 6 $\frac{7}{8}$, 7, 7 $\frac{1}{8}$, 7 $\frac{1}{4}$, 7 $\frac{3}{8}$.

Price £3 9s. 6d. plus 1/3 packaging and carriage.

Waterproof Covers for above 6/6 plus 6d. post

CHILDREN'S JOCKEY CAPS

Made from good quality velvet in black or brown, with art silk lining. Soft top, suitable for the young rider. All sizes available from stock. £1 16s. 6d. plus 6d. post

If size required is not known give measurement round head.

Maids', Ladies', Boys' and Gentlemen's

JODHPUR BOOTS

COLOURS TAN AND BLACK

The illustrations show the elastic-sided Jodhpur Boot and the alternative strap and buckle fastener. Both are fashioned in the very latest style with the comfortable broad fitting. Made on lasts by one of Britain's leading manufacturers, only selected fine grain good quality leather is used. These boots meet all requirements for fit, style and comfort.



Maids: sizes 11 to 3 $\frac{1}{2}$ at £3 5s.

Ladies: sizes 4 to 8 at £3 10s. 6d.

Superior quality £4 7s. 6d.

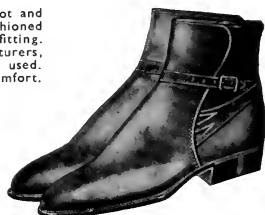
Boys: sizes 11 to 5 $\frac{1}{2}$ at £3 5s.

Gentlemen: sizes 6 to 11 at £3 15s.

All are available in half sizes. In

all cases add 1/3 for postage.

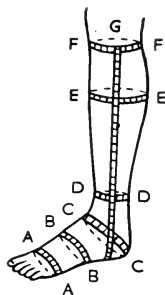
Made-to-measure 20/- extra.



Ladies' and Gentlemen's RIDING BOOTS

Caldene offer a really perfectly blocked Boot made from fine grain leather in either Black or Tan. These boots are the proud product of one of the country's foremost makers and have been fashioned on their lasts. We stock two fittings, medium and broad and we shall probably find that we can fit you perfectly from stock. If, however, we cannot fit you from stock then the boots can be specially made to your own measurements at an extra cost of 50/-. The diagram indicates how to take your own measurements. Price for either ladies' or gentlemen's: 10 guineas.

Note: always send us all the measurements shown in the diagram and state size of shoe worn.



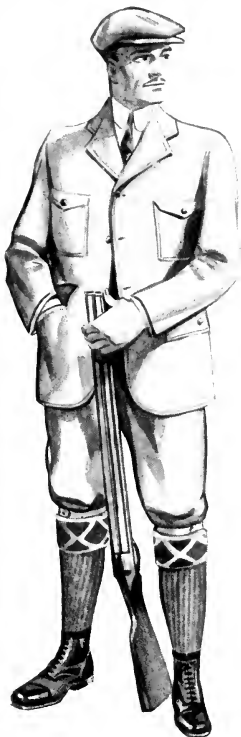
SUITS FOR FISHING AND SHOOTING

KEEPERS SUITS, ETC.

These are beautifully made suits cut on generous lines giving perfect freedom of movement for arm and body. A good choice of special quality Saddle Tweeds will be found with the breeches patterns sent out. Also we have a large selection of other patterns of Derby Tweeds, Scotch Tweeds and Yorkshire Tweeds which are admirable for these styles.

The prices for these styles are as for "Keepers" suits and plainly marked on the back of the patterns which are sent out.

The HUNTINGDON
(Caldene Copyright)



The PRESCOT (Caldene Copyright)

BOYS' CLOTHES

The prices will be found on the Pattern Cards in most cases. Where not stated the price can be roughly gauged by deducting 10% off prices for men's clothes.



The WAKEFIELD (Caldene Copyright)

BOY'S LUMBER SUITS



The
"CALMORE"

Made to measure boys' Jodhpurs are given the same individual attention as are all our other garments.

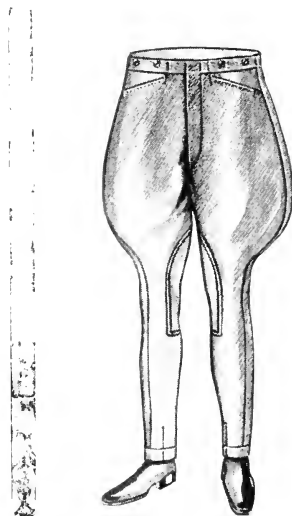
The style shows fly fronts, with cross pockets and the tops cut straight all round. Strappings between the legs are an essential extra to give added wear at this point. We make a special feature on all children's garments of leaving a liberal inlay on seams which can be let out to allow for growth. Prices of children's garments will be found on pattern cards.

BOYS' *Velveteen Cord* LUMBER SUITS

Just the thing for the healthy growing boy, will stand any amount of hard wear. Jackets are made with turn-down collar and two breast pockets. Shorts are fully lined and have an artsilk waist-band. Two slanting side pockets and belt loops.

JACKET 28 6 (Zip front instead of buttons, 5 - extra). **SHORTS 21 -**

Can be purchased as a complete suit or as separate garments. Give waist, chest (actual) and height measurements. Colours available Grey, Green, Chocolate, Tan and Navy.



BOYS' JODHPURS

HACKING JACKETS

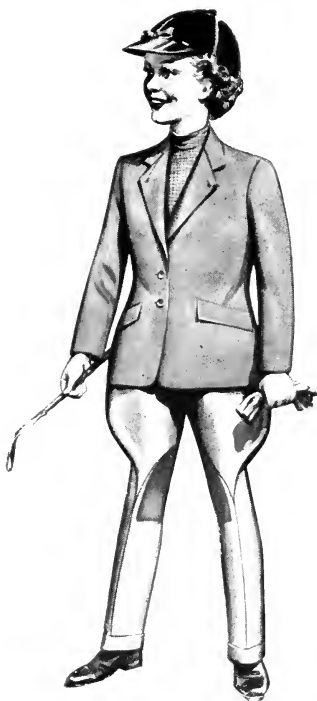
For the JUNIOR MISS and CHILDREN

Just the same care has to be taken in the making of juvenile garments as in their parents, but less material is required. Prices are given in most cases on our Pattern Cards. In any case where a price is not stated deduct 10% from the price given for the adult garment.



The BRAMHAM (Caldene Copyright)

This style is evolved for the young teenager to be just as correctly dressed as her elder sister. Many smart cloths to choose from. Details of tailoring etc., just as explained for the Ladies' Jackets on pages 24-25. Caldene excellence of tailoring, of course, in just the same way.



The ELITE (Caldene Copyright)

CORRECT STYLE AND CUT

BEAUTIFULLY CUT AND TAILORED *The Grosvenor* **LOUNGE SUIT**



A suit that has been cut by a craftsman will retain its shape and "hang" to the last. "Well cut and tailored" is Caldene's first thought in the building of a suit. Let Caldene make your next suit! You will be delighted with the smart cut and hand tailoring and the careful finish that characterises every garment. You can choose from a variety of smart and durable materials that will give the maximum of wear. Caldene's craftsmen are so experienced that they can give you perfect fit from the measurements sent.



These suits are made up in Serges, Worsteds and Tweeds and patterns will be gladly sent, with prices on application

The Modern **SPORTS COATS**

Superbly Tailored and finished.

Shaped to the Figure, but giving the maximum amount of comfort and freedom.

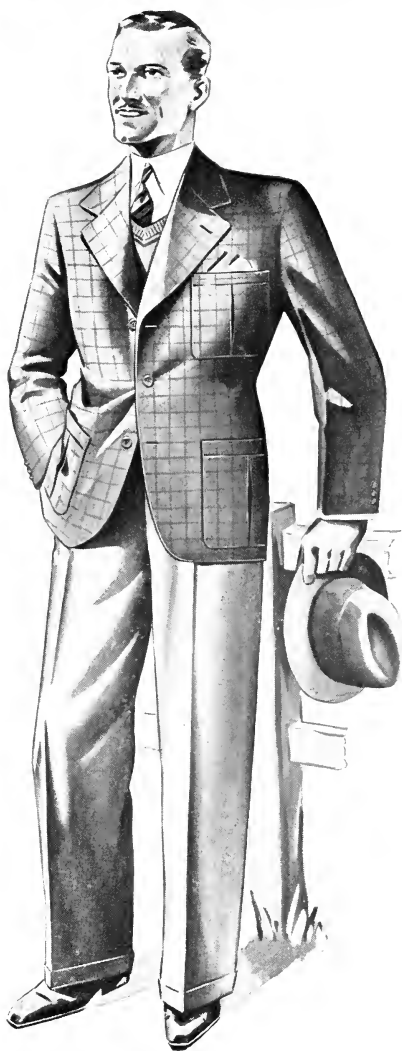
- **PERFECT FIT.**
- **NEWEST STYLES.**

Absolute Satisfaction in wear!

FLANNEL TROUSERS

Hang Beautifully and retain their shape to the end.

- Perfect waist fitting.
- Elastic Side Grips
- Extended Waistbands.
- Slanting Pockets.
- Permanent Turn-Ups.
- Made up in best quality Worsted Flannel. Shades—light grey, medium grey, also can be had in chalk stripes.



LADIES AND CHILDREN'S

The "WINDSOR" style is *chic* in the extreme. It is another example of Caldene absolutely correct riding wear. Slanting side pockets and breast pocket with flap, 3-button style, with S.B. lapels, round-cut fronts, three-quarter length. The whole cut is of comfort combined with elegance. At back, centre vent or two side vents (please state which on your order).



The KILDARE (Caldene Copyright)

Achieves that air of refinement so essential in riding wear. A smart and comfortable coat, nicely waisted, three-quarter length, with square cut fronts, nice medium roll collar, slanting pockets, and button 3. Comfortably "full" in the skirt. The back of this coat can be made with centre vent, or two side vents. Please mention this when ordering.



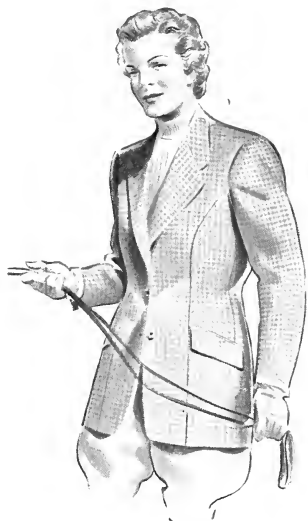
The WINDSOR" (Caldene Copyright)

RIDING HABITS - Superbly Cut

MATERIALS

A splendid range of materials suitable for the styles shown herein include Rough Tweeds, Coverts, Sports Tweeds. These Riding Habits are beautifully cut and tailored whilst the linings are made in Art Silk in many beautiful shades and sewn with "Reform" Silk, which gives the garments that lustrous finish which silk alone produces.

The "SPORTIVE" is still another attractive style offered for your choice. This style has panelled front, S.B. lapels with two slanting side pockets only. 3-button style with rounded cut fronts. Of course the same excellence of workmanship and materials.



The SPORTIVE (Caldene Copyright)



The GASTONBURY (Caldene Copyright)

A Hunting or Riding coat cut in the very latest style. Hip length, nicely waisted and plenty of skirt with fronts rounded off. Snug fitting collar with the slightly shortened lapel. Slanting side pockets (with flaps) and button four.

The back of this coat can be made with centre vent, or two side vents. Please mention which you prefer when ordering.

All these coats are fitted with neck fastening for inclement weather.

DISTINCTIVELY TAILORED SPORTS WEAR

Any garments specially tailored to your own requirements will prove to you that the cut, quality of material and finish is far superior

Measures can be safely taken from old garments providing the figure has not altered since they were last worn.



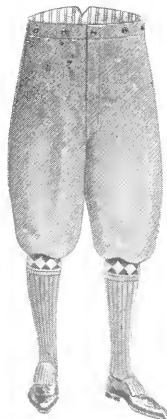
HAZLEWOOD (Caldene Copyright)



The NEW SHERWOOD (Caldene Copyright)

MOORLAND

(Caldene Copyright)



SPORTS COATS

Caldene Sports Wear stands always for perfection in tailoring quality in materials and finish, and excellence in style. Made to your own special measure. Choose your style from any one of the above designs. If you desire to have the back from one style and the front from another style, we shall be only too pleased to do this for you.

For instance you can have, say, HAZLEWOOD back with THE NEW SHERWOOD front, or any other combination you may fancy.

These sports coats are often worn with breeches for riding and hacking, etc.

The cut and style of these garments leaves nothing to be desired, and further patterns will be sent gladly on application.

IN THE VERY LATEST STYLES

to anything you can obtain ready made whilst the low prices asked will convince you of the economy of Caldene Tailoring.



The NEW ROXBURGH (Caldene Copyright)



WESSEX (Caldene Copyright)

CARE FOR YOUR CLOTHES

All tailors who are keen on their trade are still interested in the clothes they have made long after they have left their hands, and we are sure therefore that you will find the following hints worthy of your attention, which when practised, will give your clothes a greater degree of satisfaction. Caldene garments are well cut and well made and if they are well kept they will wear for a very long time.

When breeches are put on for the first time it is always a good plan to stretch them very carefully at the knees and gently to mould them with the hands to the shape of the knees. Always lace or button the breeches when they are fitted to the knees and not before.

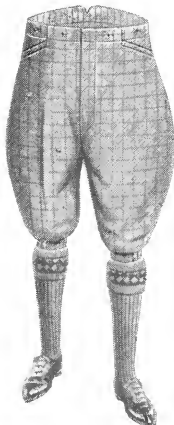
Coats should have the buttons fastened when the suit is first worn so that they get used to the contour of the body.

Trousers should be kept in their creases and carefully folded after they have been worn.

When clothes are being packed it is a good plan to place tissue paper in the jacket sleeves and in places which are likely to crease. Always keep clothes on trees or hangers.

By observing these simple rules clothes will last their longest.

CALDENE
(Caldene Copyright)



STRONG, SERVICEABLE LEGGINGS



MYTHOLME

Really good leggings, in black or tan. Made from smooth hide of high grade quality. Beautifully finished and smart in appearance, and can be bought with every confidence. Available in three alternatives fastenings. Hook and eyelet laces (as sketch), buttoned or spring fastened fronts. Faced 3 in. up inside bottoms to strengthen. Supplied to customers own special measures only.

Standard quality 77 6d. per pair

Superior quality soft hide 95 - per pair.

MYTHOLME



MOORLAND

Highest quality sheepskin leggings (tan only). Lined soft leather. Can be had with either hook and eyelet laces, spring fastened or buttoned fronts, which ever is preferred. Very smart and will last for years with reasonable care. Supplied to customers own special measures only.

Price 55/- per pair

MOORLAND



BEATALL

We strongly recommend our "Beattall" leggings for strong and serviceable wear. Supplied in black or tan highly polished leather, whole blocked spring fastened or hook and eyelet laced fronts. Faced 3 in. up inside bottoms with thin leather to strengthen.

39 6 per pair

Sizes always in stock Calf measurements 13 in. to 16 in. including half inch. Height 11 1/2 in. only. Any sizes supplied in either quality. But if we have not your size in stock, we can make to your measures at no extra cost to yourself.

BEATALL



CANVAS

A very popular line for customers requiring a durable but light weight legging, suitable for summer wear. Made from fine strong canvas in natural or khaki shades, with buttoned or spring fastened fronts. Drill lined and made to customers own special measures only.

Price 47 6 per pair

Leggings can be made from same material as breeches. Prices on application.

CANVAS



BOX CLOTH

Made from best quality box cloth in two colours, Fawn and Grey. These are a superlative legging, suitable for best wear. Available in all three fastenings. Buttoned (as sketch), hook and eyelet laced or spring fastened. Drill lined and supplied to customers own special measures only.

Price 55 - per pair

BOX CLOTH

DRILL TROUSERS

Made of good quality, light weight Satin Drill of a serviceable medium fawn shade.

These trousers are ideal wear for the warmer days. For the landworker during harvesting or hay-making, for the man who spends his summer evenings in his garden, for any man for holiday wear.

Smart in appearance they are wonderfully light and cool. Above all they are exceptionally low-priced.

Made with slanting side pockets and hip pocket; belt-loops and adjustable side straps at waist; permanent turn-ups.

Stocked in sizes: Waist—30, 32, 34, 36, 38, 40 and 42 inches; Length of leg—30 and 32 inches.

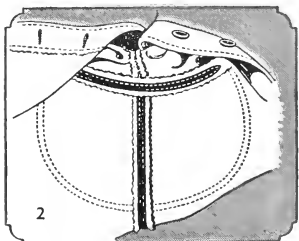
Price only 26 11 plus 1 1 postage.

These illustrations are Caldene Copyright

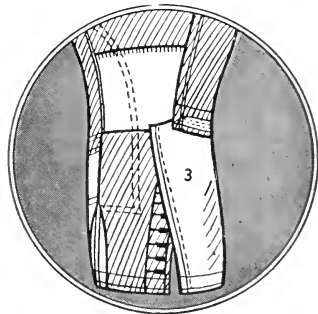
DETAILS OF THE WORKMANSHIP

To be found in every pair of . . . **CALDENE *Master Cut* BREECHES**

No. 1. This picture clearly illustrates the handmade features of Caldene Tailoring and reveals the reason why buttons cannot tear off our garments. Notice the strong fabric let into the garment along the top band, this reinforces and gives double life. The top lining is afterwards "hand-felled" into position and finished like a 12-guinea pair.



No. 2. Shows the fork—the most important part of the Breeches. The seams here are double sewn, then opened out and strong tape is sewn over again, making the fork part as firm as a rock. A fork piece is then sewn in to give a greater degree of comfort. The double dotted line shows the inside of double seat, very neat and comfortable, giving double life to the breeches, and well worth the small extra cost.



No. 3. This picture shows an extremely important detail. As you are aware, in most breeches the great trouble is bursting at knees. Here you see how Caldene has completely overcome this difficulty. Inside the knee we put a special cotton crash lining. On the sketch you can see only this inside the front, but the strengthener is continued all the way round. This cotton crash is machine tested for bursting strength up to a point impossible for anyone to exert. This is the material that takes the strain and it is next to impossible to burst our breeches at the knee.

No. 4. Sketch shows bottom part of right leg, button bottoms, also strapping at knee. Strappings double the life of breeches, and prices are very reasonable. Strappings can be (1) either self-strapping, same material as breeches (Moleskin); (2) Leather; (3) Mock Buckskin; (4) Real Buckskin. All breeches not bound at bottoms are made as sketch shows, taped inside round bottoms and double stitched. This applies to either buttoned or laced breeches.

SPECIAL NOTE. The strappings, eyelet holes and buttonholes on all our garments are sewn from the finest quality of "Reform" Sewing Silk and our best quality garments are sewn throughout with this wonderful sewing silk which makes the seams three times as strong as when sewn with ordinary cotton thread, and there is greater elasticity too. Customers can therefore be sure of the maximum service from any garment.

All breeches can be buttoned or laced at the side or centre, or inside shin bone. Simply state wants. No extra charge for this.

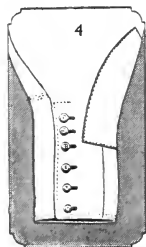




Fig. 1 shows our Head Cutter at work



Fig. 2. A corner of the cutting room



Fig. 3. A section of the machine room where garments are "made up."

In these three pages we give glimpses of our workrooms, showing how Caldene "Master Cut" garments are made. Illustration No. 1 shows our Head Cutter cutting out a garment after the individual measurements have been drafted on to the material. Another view of our Cutting Room is shown in illustration No. 2. After

the garments are cut, they are transferred to the Machine room (illustration No. 3) where Tailoresses can be seen making up the garments. All departments are designed on modern lines, being well lighted, airy and comfortable and equipped with the very best machines for every purpose. Radio is installed and other amenities to ensure comfortable working conditions for our employees. Another view of the Machine room is shown in illustration No. 4. Illustration No. 5 shows the next process in making up Caldene garments. Here



Fig. 4. A full view of the machine room showing our tailoresses at work



Fig. 5. Here skilled operatives are shown Buttonholing, Felling and Serging.



Figs. 6a and 6b. Two of our tailors at work on Riding Jackets



THE CALDENE WORKS



Fig. 7. Hand finishing plays an important part and workers are here seen busily engaged in this branch of the work

see finishers engaged on this work. The better quality garments have a considerable amount of hand stitching put into them. No. 8 shows the Steam Pressers at work. The machines they use are the very



Fig. 8. Steam pressing of garments



Fig. 9. The final check before despatch, to make sure that customers' instructions are faithfully carried out

you see operatives engaged in buttonholing, buttoning and serging. In illustrations 6a and 6b you see Tailors making up Riding Jackets. These men also hand stitch the best Buckskin Strappings on to Breeches, etc. All our garments are hand finished and in No. 7 you

latest in design and give a lovely finish to the garment. Illustration No. 9 shows the garment being finally checked up in all details before being carefully packed and despatched to your address.

TERMS *of* BUSINESS

HOW TO ORDER

When you have perused this style book, and chosen the style you require, please post to us the form giving your measurements and details of any extras or additions, and also the patterns supplied to you, together with your remittance. When returning the patterns will you kindly put a pin through the material you desire. If by any chance you do not possess patterns, these will be sent gladly by return of post.

DELIVERY

All orders receive attention the same day as received. These are dealt with in strict rotation and are usually despatched as quickly as possible.

SPECIAL STYLES

If you cannot find a suitable style from amongst those shown in this booklet, please write to us indicating your requirements.

RUSH WORK

Occasionally we are asked to fulfil an order very quickly indeed for a customer and in such exceptional circumstances we will do so with pleasure; at the same time we rely upon customers not to ask us unless the need is very pressing.

PRICES

All prices quoted are for cash.

CASH ON DELIVERY (C.O.D.)

If you desire to take advantage of this system, you simply send us your order and pay the postman when the goods are delivered to your door. The small charge which the Post Office makes for this facility is shown on your invoice and this item is included in the total amount to be found inside the parcel, you pay to the Postman.

POSTAL ORDERS AND CHEQUES

Kindly cross all cheques and postal orders and make payable to CALDENE CLOTHING CO., LTD., Mytholmroyd, Halifax. If money is sent in an envelope it should be registered.

