

Historic, archived document

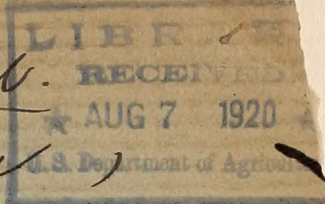
Do not assume content reflects current scientific knowledge, policies, or practices.

2.61
(Tree Fruits)

Indexed.

(Small Fruits)

Indexed.



1893

ELLWANGER

AND

BARRY'S

Supplementary

CATALOGUE

CATALOGUES.

The following Catalogues are sent, as soon as issued, to all customers whose names are on our books, and to all others who may apply:

A GENERAL CATALOGUE of Fruit and Ornamental Trees, Shrubs, Evergreens, Small Fruits, Clematis, Hardy Herbaceous Plants, Roses, Etc., (160 pages, with beautiful illuminated cover), containing brief hints on transplanting, distances for planting various trees, and other useful information, with numerous illustrations of the most popular trees, shrubs, etc.

A CATALOGUE OF POT-GROWN STRAWBERRY PLANTS AND BULBOUS FLOWER ROOTS, issued in July.

A WHOLESALE CATALOGUE OR TRADE LIST, issued semi-annually.

NOTICES OF CATALOGUE.

Read what is said of our General Catalogue:

"Far above the ordinary style of catalogue, and deserves a place in every horticultural library."—*American Agriculturist.*

"The simple and systematic arrangement adopted, and the complete index, render it a convenient work for general reference, and the many new illustrations add to its usefulness. Its botanical value, copiousness and accuracy are the result of the careful labor of the proprietors for half a century of time."—*Cultivator and Country Gentleman.*

"Not only a list of their products, but is an encyclopedia of horticulture, and worthy of a place in every reference library."—*Husbandman.*

"Contains much advice that will be found valuable not only to amateur but professional growers as well."—*Oswego Daily Times.*

"One of the most complete catalogues we have received. The information it contains renders it valuable as a work of reference."—*Florists' Exchange.*

"Admirably arranged. It is of much value, if only as a book of reference, and we regard it as the most useful and best general catalogue that has yet been issued in this country."—*Orchard and Garden.*

"One of the finest of the kind, and would be an ornament to the reading table of any farmer or gardener in the land."—*Kansas Farmer.*

"A manual and book of reference as well as catalogue."—*Michigan Farmer.*

"A valuable manual and handbook."—*New York World.*

"Invaluable to the farmer and gardener, it is also of much interest to the general reader."—*Rochester Post-Express.*

"Superior to any other nursery catalogue."—*W. T. W., London, Ont.*

"We consider it a standard work, and the best nursery catalogue published, and find it a handy reference book."—*H. E. Hooker Co., Rochester.*

"Have never seen a catalogue so admirable, clear and perfect in typography, illustrations and general 'make up.'"—*B. G. S., Cambridge, Mass.*

BARRY'S FRUIT GARDEN.

BY THE LATE P. BARRY.

A treatise intended to illustrate and explain the Physiology of Fruit Trees; the Theory and Practice of all operations connected with the Propagation, Transplanting, Pruning and Training of Orchard and Garden Trees, as Standards, Dwarfs, Pyramids, Espaliers, &c.; the laying out and arranging different kinds of Orchards and Gardens; the selection of suitable varieties for different purposes and localities Gathering and Preserving Fruits; Treatment of Diseases and Destruction of Insects Description and Use of Implements, &c., illustrated with numerous wood-cuts, representing different parts of trees, practical operations, forms of trees, designs for plantations, implements, &c. Price, post-paid, \$2 00.

A NEW EDITION OF THE ROSE.

BY THE LATE HENRY B. ELLWANGER, WITH INTRODUCTION BY GEORGE H. ELLWANGER.

NEW AND REVISED EDITION.

With the list of varieties carried out to date, and an essay on "Old and New Roses."

\$1 25 by mail, postpaid.

PRESS OPINIONS.

"A writer who has a thorough knowledge of his subject and knows how to convey it to others."—*New York Evening Post*.

"It contains most useful information, the results of the experiences and observation of many years of an enthusiastic and most successful cultivator."—*Canadian Horticulturist*.

"Ce livre nous parait être un des meilleurs qui aient été publiés jusqu' à ce jour; écrit par un rosieriste éminent toutes les questions y sont traitées à fond et en véritable connoisseur."—*Journal des Roses—France*.

"Chapters packed with practical directions and information to the amateur."—*New York Examiner*.

THE GARDEN'S STORY,

—OR—

Pleasures and Trials of an Amateur Gardener.

BY GEORGE H. ELLWANGER.

Author of "The Story of My House," "In Gold and Silver."

FIFTH EDITION.

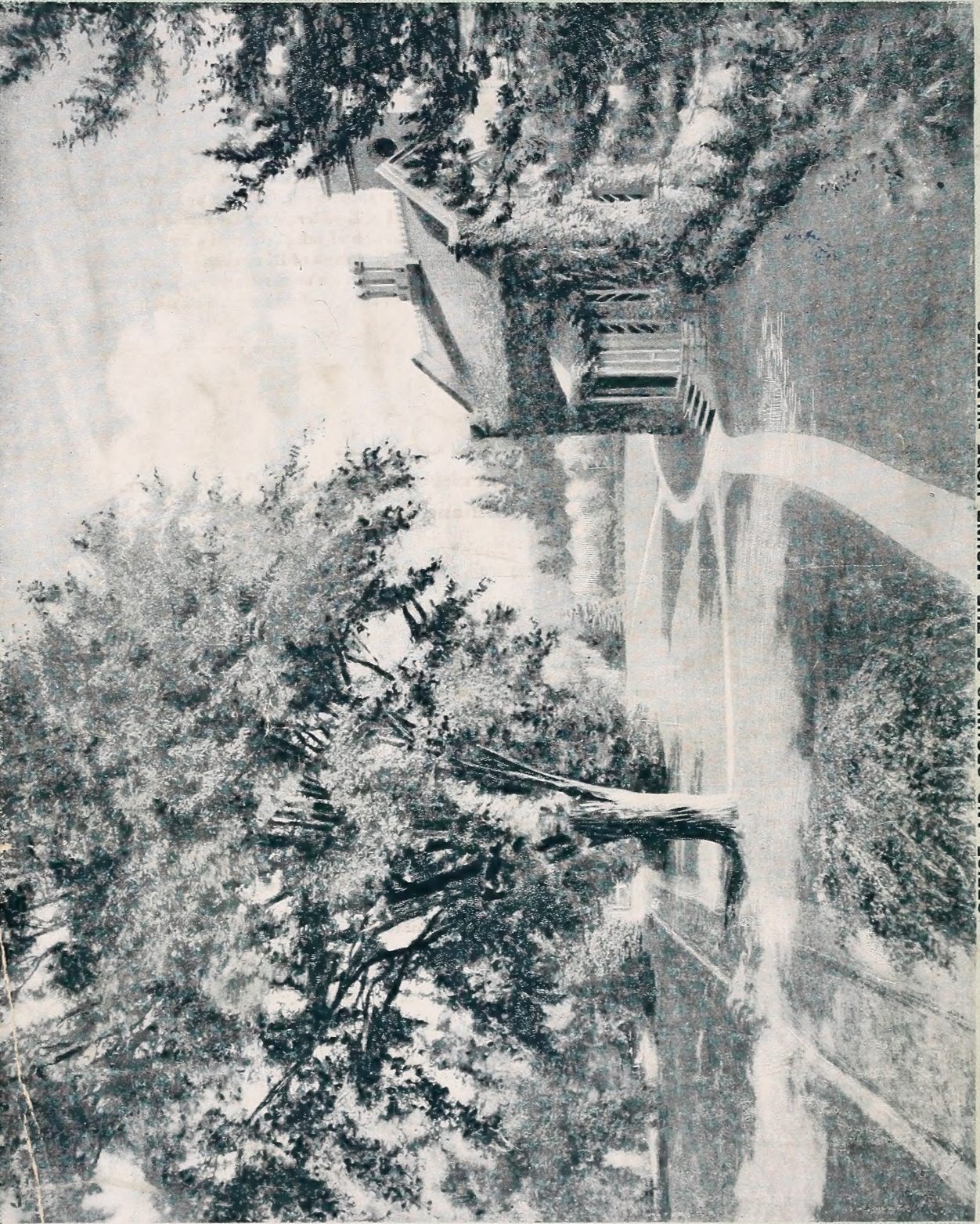
16mo., Cloth, Gilt Top. Price, postpaid, \$1.50. With Head and Tail Pieces by Rhead.

NOTICES OF THE PRESS.

"A dainty, learned, charming, and delightful book."—*New York Sun*.

"A little classic, *en masquerade*, that will be read again and again with ever-renewed delight, is "The Garden's Story."—*New Orleans Times-Democrat*.

"The author's pleasant and scholarly style clothes the bare facts of garden culture in a new manner of literary interest. . . . We heartily commend it to every lover of nature, whether he have a garden to cultivate in reality, or only in imagination."—*Country Gentleman*.



OFFICE AND GROUNDS OF THE MOUNT HOPE NURSERIES.

ESTABLISHED 1840.

SUPPLEMENTARY CATALOGUE

OF

Rare and Choice Trees

SHRUBS AND ROSES,

INCLUDING

SEVERAL VALUABLE NOVELTIES AND MANY SPECIALTIES
OF SUPERIOR MERIT.

CULTIVATED AND FOR SALE AT THE

MOUNT HOPE NURSERIES,

ROCHESTER, N. Y.

ELLWANGER & BARRY,

PROPRIETORS.



1893

POST-EXPRESS PRINTING COMPANY,
ROCHESTER, N. Y.

TIMELY SUGGESTIONS TO INTENDING PURCHASERS.

The edition of our General Catalogue, published a year ago, is so complete and we find so few changes necessary, that we have concluded not to publish a new edition this year, but to issue a Supplementary List in which a few reductions in price are noted, some novelties of conspicuous merit are mentioned prominently, and special attention is directed to many good things, not exactly new, but of such importance and value as to deserve the careful consideration of every intending purchaser.

In all of the Departments of our Nurseries we keep our collections fully up to the times by securing, at home and abroad, all that is meritorious, and by rejecting, after careful trial, whatever has proved to be unworthy of propagation and dissemination.

Our long business experience, (over fifty years) complete experiment orchard, extensive nursery grounds, and large force of skilled assistants, together with exceptional facilities for handling, packing and shipping, place us in a position to do full justice to all who favor us with their orders.

It affords us pleasure to announce that our stock for the current season is unusually large, well grown and thrifty, and assortments full and complete.

Everyone who contemplates planting, either on a large or a small scale, is requested to send for our General Catalogue, consisting of 160 pages; printed on fine paper and embellished with numerous engravings of the most popular trees, etc. It contains, besides accurate descriptions of the best varieties of fruit and ornamental trees, etc., plain and practical cultural directions, and forms a convenient handbook, which every owner of property should possess for ready reference. It will be mailed free on application.

Superintendents of Parks, Public Grounds, Cemeteries, and Landscape Gardeners will find our extensive and varied collections specially adapted to their purposes.

We grow an immense stock and will make special prices to purchasers of large quantities. Estimates of cost will be cheerfully furnished on request.

FRUITS, NEW AND OLD :—We offer for sale the most complete and varied assortment of fruits in the United States and adapted to a great variety of soils and climates. We pack in such a manner that the goods can be shipped with safety to the most distant parts of this and foreign countries.

We publish a catalogue of Pot-grown Strawberry Plants and Holland Bulbs in July, and all who desire anything in this line are requested to send for this publication when it is issued.

EARLY ORDERS.—Although this list will reach you before planting time, nevertheless, it is well to plan and prepare in advance, and as orders are filled in rotation, buyers will find it to their advantage to send in their lists as early as possible. To facilitate the preparation of orders, we enclose with this Catalogue an order sheet.

ADVICE TO CORRESPONDENTS.

[Please read before making out order.]

CORRESPONDENTS will greatly oblige by observing, as far as possible, the following regulations:

1st. All orders should be sent in as early as possible to insure prompt attention, as it is our rule to execute them in the order in which they come to hand; hence we cannot, except for extraordinary reasons, delay orders, received first, for those coming late in the season and requiring attention at once.

2d. All orders should be legibly written out on the order sheet herein enclosed; this will save us much trouble, and at the same time prevent mistakes.

3d. In ordering fruit trees, it should in all cases be stated whether *standard trees* are wanted for orchards, or *dwarfs* for gardens.

4th. Where particular varieties are ordered, and particular *ages* and *sizes of trees, kinds of stock, etc.*, it should be stated whether, and to what extent, other varieties, sizes, ages, etc., may be substituted, in case the order cannot be filled to the letter, as happens occasionally in all establishments. Our rule is not to substitute in any case without being expressly requested to do so.

5th. All trees and plants are carefully labeled and packed in the best manner for any part of the United States, Canada or Europe, for which a moderate charge is made; but no charge is made for the delivery of packages at the railroad.

6th. *It is requested that explicit directions for marking and shipping packages accompany each order.* When it is left to us to choose the mode of conveyance, we will exercise our best judgment. We pack in such a manner that fruit trees and small fruits (excepting strawberries), ornamental trees, shrubs, evergreens, and hardy border plants go safely as freight. In all cases the articles are at the risk of the purchaser after being shipped, and if delay or loss occurs, the forwarder alone must be held responsible.

7th. For shipment abroad we pack in the best manner, in close boxes. Our consignments to all parts of the world have generally been received in good condition, and parties who favor us with their orders, may rely upon the same having careful attention. Shipments of this kind can usually be made to the best advantage in the months of October and November.

8th. All orders from unknown correspondents must be accompanied with a draft on some of the principal cities, or post-office or express money order for the amount. If neither can be had, enclose currency in registered letter.

9th. Our customers are requested to notify us instantly of any errors that may be committed in filling their orders, so that we may at once make ample amends, as we desire to conduct our business in all respects satisfactorily to those who favor us with their confidence.

ARTICLES BY MAIL.

For the convenience of those who cannot be reached by railroad or express, packages of *small articles*, will be sent by mail prepaid, such articles to be charged at full retail prices.

THE PACKING SEASON.

The Spring packing and shipping season usually opens here about the 1st of April, and continues into the month of May. The planting season is not regulated by any particular month or day, nor by the state of vegetation where the planting is to be done, but by the *condition of the trees to be planted*. Hence, trees can be sent with safety from Rochester to localities several degrees South, even if they do not arrive until the ordinary transplanting season in that locality has passed. In the autumn, we usually commence digging and packing the first week in October and continue until the freezing of the ground, say middle to end of November.

For complete list of varieties send for our 160-page General Catalogue, finely illustrated with numerous half-tone and pen engravings, and with a beautiful illuminated cover—mailed free.

Descriptions of the Three Hybrid Remontant Roses Figured in Colored Plate.

FOR PRICE OF PLANTS SEE CATALOGUE.

EARL OF DUFFERIN.

One of the finest roses of recent years. Rich, brilliant, velvety crimson, shaded with dark maroon; large, full, finely formed; delightful fragrance. A vigorous grower. One of the finest dark roses. It should be in every collection.

MARSHALL P. WILDER.

Raised from *Gen. Jacqueminot*. It is of vigorous-growth, with healthy foliage; flowers large, semi-globular, full, well formed; color, beautiful cherry-carmine; very fragrant. In wood, foliage, and form of flower it resembles *Alfred Colomb*, but the seedling excels that famous variety in vigor, hardiness and freedom of bloom. It continues to bloom profusely long after the other Remontants are out of flower. In brief, it may be described as an improved *Alfred Colomb*, and as good a rose as has been raised by anyone. It is undoubtedly the finest of its color.

MRS. JOHN LAING.

A seedling from *Francois Michelin*; soft pink; large and of fine form; produced on strong stems; exceedingly fragrant; one of the most valuable varieties for forcing, and flowers continuously in the open ground. *The most beautiful Rose of recent introduction.*



COPYRIGHTED 1893
BY ELLWANGER &

- 1 MRS. JOHN LAIN
- 2 EARL OF DUFFE
- 3 MARSHALL P WIL

Ellwanger & Barry, Rochester, N.Y.

ELLWANGER & BARRY'S ORDER SHEET.

Parties in ordering will oblige us by using this Sheet.

In remitting please make allowance for Packing, and give explicit Shipping Directions.

-----¹⁸⁹-----

Gentlemen:

Enclosed find Post Office Order, amount, - - - - - \$ -----
" " Cash, " - - - - - - - - - - - - - - - - -
" " Draft, " - - - - - - - - - - - - - - - - -

For which send the following list of ----- &c., by ----- to the address of

Name ----- Post Office -----
County ----- State -----

Express Office or Railroad Station -----

No.	NAME.	PRICE.



- 1 GOLDEN OAK.
- 2 CUT-LEAVED PURPLE JAPAN MAPLE.
- 3 PURPLE LEAVED JAPAN MAPLE.
- 4 ELÆAGNUS LONGIPES.

- 5 WIER'S CUT-LEAVED MAPLE.
- 6 GOLDEN ELDER.
- 7 PRUNUS PISSARDI.
- 8 BERBERIS THUNBERGII.

Copyrighted, 1896, by
Ellwanger & Barry.

THE SET (ONE PLANT OF EACH), FOR \$7.00.
FOLIAGE OF ORNAMENTAL TREES AND SHRUBS.