

Historic, archived document

Do not assume content reflects current
scientific knowledge, policies, or practices.

62.73

卐

"THE FINEST

卐

CANNAS

IN THE WORLD"



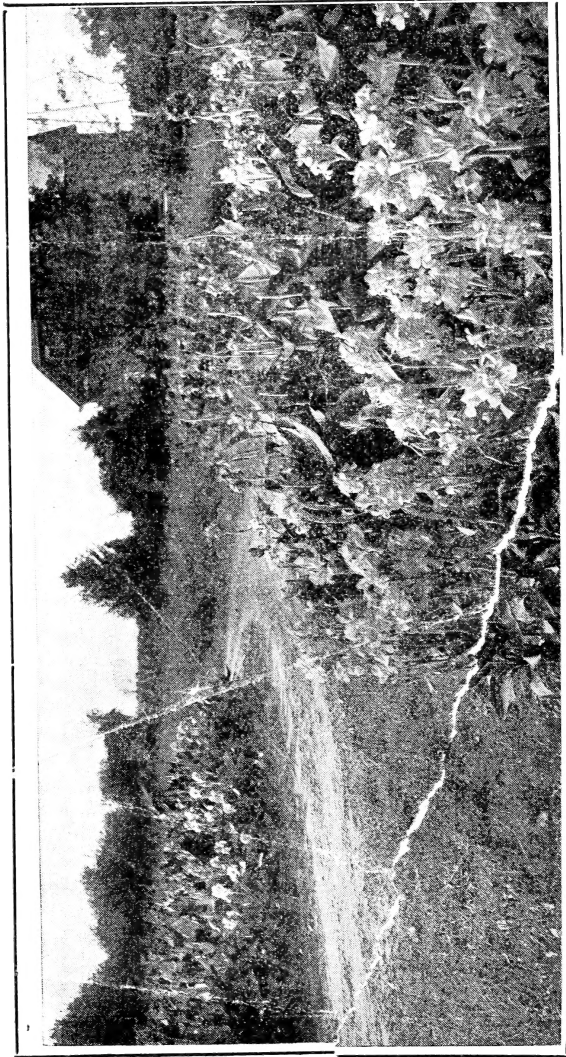
Perfection Pink Canna—Mrs. A. F. Conard

THE CONARD & JONES CO.

Canna Specialists WEST GROVE, PA.

卐

卐



CANNAS ALONG DRIVEWAY IN THE CONARD & JONES CO'S NURSERIES

CONTENTS

- I. ORIGIN AND DEVELOPMENT OF THE IMPROVED CANNA.
Pages 4 to 9.
- II. CANNA CULTURE.
Page 10.
- III. HOW TO PREPARE A CANNA BED.
Page 10.
- IV. HOW TO PLANT CANNAS.
Page 13.
- V. TREATMENT DURING DRY WEATHER.
Page 13.
- VI. STORING FOR WINTER.
Page 14.
- VII. THE CANNA AS A WINTER-BLOOMING PLANT.
Pages 14 and 15.
- VIII. NATIVE CANNA AND AN IMPROVED C. & J. SEEDLING.
Pages 16 and 17.
- IX. THE MOST DESIRABLE CANNAS LISTED AND DESCRIBED.
Pages 18 to 27.
- X. CANNAS FOR CIRCULAR BEDS.
Page 28.
- XI. HOW TO PLANT A CIRCULAR BED.
Page 28.
- XII. SCHEDULE OF CANNAS ARRANGED IN COLORS AND HEIGHTS.
Page 29.
- XIII. CANNAS FROM SEEDS.
Page 30
- XIV. AMERICA'S FOREMOST CANNA ORIGINATOR.
Back Cover.

THE CANNA

A Short Sketch of It's Origin and Development.

THE CANNA was a tropical plant indigenous to South and Central America and the West Indies. One species, *Canna Flaccida*, is a native of Florida. These wild varieties were gathered by collectors and taken to Europe, where they were grown and the flowers developed by the leading horticulturists.

The development of THE IMPROVED CANNAS, as we have them to-day, is comparatively recent. A few generations ago, the Canna or "Indian Shot Plant" as it was called (on account of its hard round seed) was principally used for decorative purposes because of its luxuriant tropical foliage, the plant growing to a height of 6 to 7 feet. While good foliage is a desirable quality, the early hybridizers devoted their attention to increasing the size of the flowers and also their range of colors.

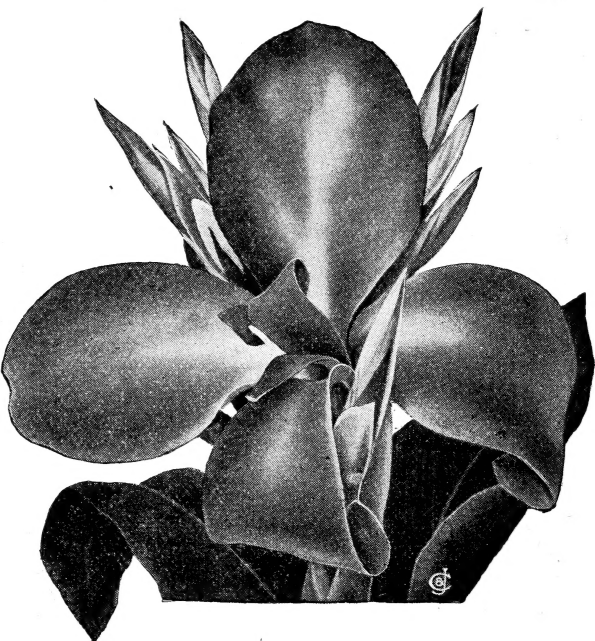
The Canna that created the greatest furore, about a quarter of a century ago, was Mme. Crozy, which was originated by Mons. Crozy of France and the introduction of this still famous, large-flowering variety was an incentive to other breeders in the horticultural world to make use of the possibilities which lay in the Canna flower. A few years later, in the early 90's, Damman of Italy sent out the wonderful orchid-flowering types of which Austria and Italia are fair representatives.

These orchid-flowering varieties produced the largest flowers in existence, but they were lacking in durability and early-flowering habits, which defect has been remedied by later introductions, including New York, Louisiana, King Humbert and



This is **Minnehaha** which we had planted at the entrance to our nurseries where the photograph was taken.

☞ *Minnehaha*—(3 to 4 ft.) Blossoms are extra large and borne in great clusters; petals are long, gracefully curved and have wavy edges. The color reminds one of a dainty transparent sea-shell, deepening through shades of gold and cream to a center of peach-blow pink. Foliage is golden bronze which harmonizes charmingly with the lovely delicate-colored flowers.



Wm. Saunders—(4 ft.) This bronze leaved beauty is a rival and superior to "King Humbert" in that it continues a blaze of beauty all Summer when "King Humbert" is "off show." The individual flowers, often 5 inches across, are bright scarlet and the flower clusters are a foot across, borne on strong branching stems about 4 feet high. Mr. Wintzer, the originator, says "of the many thousands of hybridized seedlings produced by me none approach nearer the ideal Canna than this peerless variety."

Westminster Cemetery Co., Philadelphia
Conard & Jones Co.

Gentlemen:—* * I have bought in the last 25 years a great many Cannas, and yours have undoubtedly been the finest I have ever planted.

(Signed) GEO. M. PAINTER, Supt.

(Note)—Mr. Painter was for many years Superintendent of the famous West Laurel Hill Cemetery, Philad'a.

others. On account of their robust habit of growth they are used principally for individual specimens, also for ornamental hedges to hide unsightly fences, and some of our public park gardeners and owners of fine estates use them for the centers of their immense Canna beds. Most of them are tall growers and their lovely silken, large sized flowers flutter in the breeze at a height of 6 to 7 feet. The varieties of this type, since they produce few seeds, are less numerous than the garden Cannas.

The original Cannas were mainly confined to shades of red and spotted yellows, but Canna breeders of the present day have produced as great a range of color as can be had in any one plant, from the deepest maroon, almost black, ranging through crimson and scarlet, yellows, and rich orange to pure snowy white. It is practically impossible to convey to the reader the almost numberless combinations that now exist and every taste in color (except blue) can be pleased. It is necessary to see a large mass of present day Cannas to form a true conception of their beauty and a view of them en massé, in the evening of a Summer day, just before dusk, is a sight that is simply enchanting.

The person who prefers the more delicate shades may get the Mrs. Alfred F. Conard, Venus, Hungaria and other soft pinks, and the stronger colors are represented by Beacon, Comte de Sachs, Duke of Marlborough. etc., in the reds. A few of the best yellows are Buttercup, Elizabeth Hoss, Gladiator and Director Holtze, and for orange we have California, Indiana and Wyoming. For years there were no whites, or even an approach to white, until Alsace appeared. This variety was hailed

with delight as another break in color, but it was soon superceded by Mont Blanc, which held the field undisputed for 10 years. The latest and greatest white is Blanche Wintzer, which a representative of the Florists Exchange says "is the finest white, undoubtedly, the world has ever seen."

Wonderful strides have been made in the Bronze-leaved section and the most magnificent foliaged *Canna* ever produced is "Black Beauty," which was introduced by our own Department of Agriculture at Washington, D. C., and disseminated about 18 years ago. Its flowers are insignificant but the foliage is dark, shining purple and the edges are waved and crimped in exquisite fashion. This *Canna* was used as a type and a great many of the large-flowered Bronze-leaved kinds have been produced from it as one parent. These recent crosses are especially valuable on plants which were formerly practically flowerless, for we now have the combination of bronze foliage with large flowers of enchanting loveliness.

Such contrasts as are obtained in the delicate blush-white of Minnehaha, the exquisite chrome yellow of Juanita, and the intense reds of Wm. Saunders, Conowingo and Mrs. George A. Strohle, show what has been accomplished with the Bronze-leaved *Cannas* and these are only a few in this excellent class.

The *Canna* lover has now almost unlimited material from which to draw and new developments are appearing which prove even more startling than those mentioned above. For instance, a **DOUBLE CANNA** has been produced by The Conard & Jones Co.*

*For photo and description see Florists Exchange, issue of September 28th, 1912.

THE IMPROVED CANNA stands ready to enrich your garden with a constant blaze of glory in color of your own choosing. Its greatest value, however, lies in the fact, that the improved varieties, if given rich soil and the same treatment as your garden, will keep throwing up a succession of bloom stalks all Summer long and until frost (as many as 15 to one plant) which produce two, and often three, branches of magnificent flowers of such immense size and durability that it is hard for one who has been accustomed to the old style Cannas to understand that this is only an educated relative they have been introduced to, one which withstands the trying conditions of our American climate and comes into bloom many weeks earlier than the old-fashioned varieties.

When hybridizing most flowers a gain in size or texture of the bloom often means a loss in some other direction, resulting perhaps in poor foliage or the loss of vigor. With Cannas this has not been so, for crossing the varieties has been done with such skill and care that the foliage has improved along with the flower and the vitality of THE IMPROVED CANNA equals that of its predecessor in the wild state. The special aim of the breeder has been to produce kinds that need no petting and he has been so successful in this line that the IMPROVED CANNA of today grows and produces its exquisite flowers under conditions where few other plants would thrive.

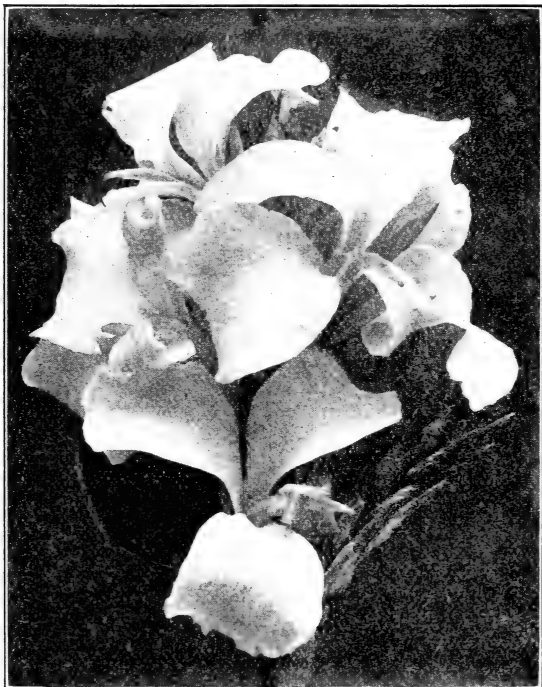
Mention should here be made of American Canna-Hybridizers who have taken up the work in a whole-hearted and enthusiastic manner and who have been careful to introduce distinct varieties only, so that fewer synonyms appear in Cannas than in almost any other flower showing such a wide range of types and colors.

Canna Culture

The month of March is the time when Canna planters, in the latitude of Philadelphia, are contemplating the arrangement of their beds and the varieties to plant. Those having Cannas in whole clumps stored under greenhouse benches or in the cellar can now start to divide them into sections of two or three eyes. These may be started in sand or moss and put in a warm place where the night temperature will average 60 to 65 degrees or more. When they have grown sprouts an inch or more in height they can be potted into 3 or 4 inch pots until they have attained from 8 to 12 inches of growth. They are then in good condition to plant in the open ground, providing the season is far enough advanced; there is nothing gained by planting too early and if the season is a late one it is advisable to re-pot your plants to prevent their becoming pot bound, as Cannas have to be kept growing vigorously to get best results from them. When the gardener considers it safe to plant Lima Beans, Corn, Tomatoes and Melons is a good time to plant Cannas. Beds that have been planted the previous fall with early spring blooming bulbs can be utilized and if good, healthy pot-grown plants are used they will give a continuous mass of foliage from June until freezing weather.

How to Prepare a Canna Bed

Spread over the surface of the bed a good coat of well-decomposed stable manure at the rate of about one wheelbarrow load to each square yard. The bed is now ready to dig and *should be dug from 16 to 18 inches or more*, the deeper the better, as a deeply dug bed will absorb more water and Cannas like plenty of moisture.

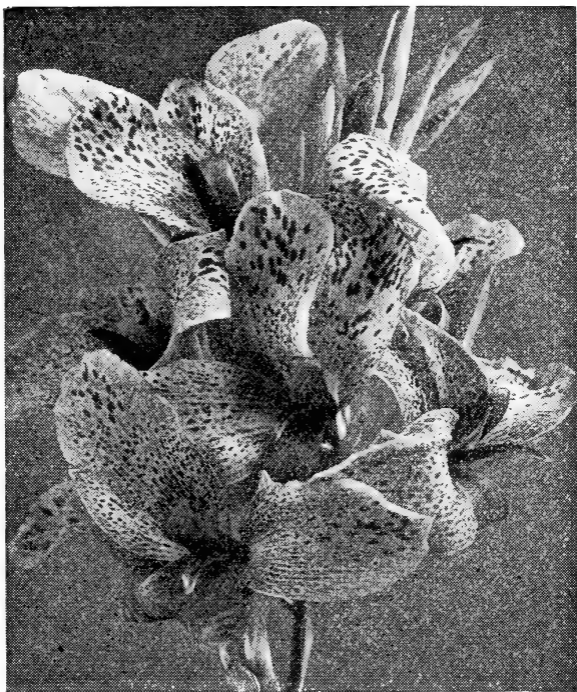


☞ **Blanche Wintzer**—(3½ ft. New 1913. One step nearer the perfect white Canna; whiter and larger than Mont Blanc, which for ten years has been the best. Mr. Wintzer looks upon "Blanche Wintzer" as one of his greatest triumphs, so exquisitely white and pure are its glistening petals. A rather dwarf grower, with green foliage, fine for bordering beds, for individual specimens, and for indoor bloom. Florists' Exchange, September 28, 1912, says, "this is the finest white Canna, undoubtedly, the world has ever seen."

11-16-12.

Last spring I bought some Cannas from you and am glad to state that they far exceeded my expectations. The blooms were the envy of the whole neighborhood and I am sure that no one else in the city has any Cannas that could compare with mine.

H. T.,
Kansas City, Mo.



♣ **Gladiator**—(5 ft.) Green foliage. Flowers intense yellow, spotted with bright red. This is one of the most remarkable varieties we ever introduced, as it seems to have all the good qualities a Canns should have.

The flowers are very firmly made, storms and hot sunshine affect them very little. They are borne on strong upright stems well above the foliage and on account of the clean, neat appearance of the plant it is attractive always.

From Fairmount Park

Gentlemen:

Philadelphia, Pa.

If we have our usual funds I shall be very glad to requisition for another order from you as our last one gave us such excellent returns on the investment.

Very truly yours,

(Signed)

OGLESBY G. PAUL,
Landscape Gardener

How to Plant

When planting dormant roots, do not set too deep, the eye should be covered with about $\frac{1}{2}$ an inch of soil when done and be sure the earth is made firm. Potted plants can be set about an inch deeper than they were when in the pots. If a thick hedge is wanted, Cannas can be planted about 12 inches apart, but to get best results it is well to plant them not less than 16 to 18 inches apart, orchid-flowering varieties generally require from 20 to 22 inches. This allows for air and sunshine and gives the roots a chance to spread. In the end more bloom will be secured than when planted too close.

During Dry Weather

As Cannas are large-leaved, rapid-growing plants they require plenty of moisture, therefore during dry weather, give your beds a good soaking in the evening, then stir the soil with a hoe the following day to keep it from forming a hard crust. To keep a Canna bed nice and clean, cut out the stalks after they are done blooming and do not allow the flowers to go to seed. Go over your bed every evening and pick off the old faded flowers. This is not such a big job as one would suppose, for a large bed can be picked over in from 10 to 15 minutes, and it is well worth the effort, as you will note on the following morning it will appear as if the hand of enchantment had passed over it by showing a multitude of clean fresh flowers that will astonish the onlooker. There is nothing in the plant line that will respond quicker and give more bloom during summer and early fall than Cannas and the longer you grow them the more you will learn to love them.

Storing for Winter

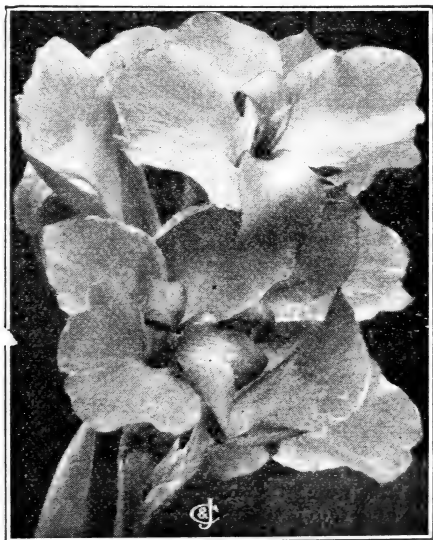
In the late Autumn when killed down by frost, cut off the tops, lift the roots, leaving the earth on, and store in a cool root-cellar. Towards Spring, when they show signs of starting, keep back as much as possible until the weather is settled and ground warm. When ready to plant, divide carefully and cut the roots up like potatoes, taking care to leave only two or three eyes to a root.

NOTE—If your Canna bed is needed for planting fall bulbs it is not necessary to wait until frost as the tops can be cut down and the roots lifted as early as the first week in October in this latitude.

The Canna as a Winter Blooming Plant For the Conservatory

Cannas have not been utilized to the extent they should be as Winter-blooming plants in private conservatories. This is rather surprising when we consider the magnificent effect a few dozen well grown Canna clumps will make when planted in 10 or 12 inch pots. For this purpose plant a batch of Cannas during the latter part of July in the garden, then early in September before frost comes, dig these clumps and pot them without disturbing their roots any more than necessary. Cut off the old bloom stalks entirely, close to the ground. It is well to cut off a few of the lower leaves also, but do not touch the new bloom stalks that are just coming into bloom. If you want to lift your clumps during a dry spell, make a trench around each clump the evening before lifting and pour in 3 or 4 gallons of water to make the earth adhere to the roots. When potted, give a good soaking and set in a shady place in the conservatory where you can spray them several times daily for about a week or

ten days. Now bring to full sunlight and if properly treated, the bloom stalks will be in flower in a few days and the plants will keep flowering all fall and winter and beat anything in flowering plants you have ever handled. Cannas treated as above are easily managed and don't be alarmed if the temperature in the house should drop to 50°, providing this does not happen too often. 62° to 65° is a good night temperature for them and 70° occasionally will not hurt, but if continued would produce too much soft growth and encourage red spider. It is well to spray the under leaves of the plants each evening to keep them healthy and prevent red spider. This is the only pest we have ever known with Cannas under glass.



Gladioflora—The "Gladiolus-flowered" Canna. See page 20

卐

LOOK AT THESE

1st the parent flower, which was commonly known as "Indian Shot", and then note one of our latest seedling Lily-Cannas with petals over 3 inches across. This remarkable result has been secured by the continuous efforts of our vice-president, Antoine Wintzer, and he has to his credit such famous varieties as Mrs. Alfred F. Conard, Olympic, Rosea Gigantea, Mont. Blanc and scores of others, all of them leaders in their class and color. The magnitude of the task, the detail and expense involved in producing Lily-Cannas such as we offer, can in a way be realized when it is known that 2700 Seedling Cannas were planted out June, 1912.



Original Native Canna

C.

Of this number, 426 were picked out, labeled and duplicate records kept of each. Out of this lot of 426 there may be

卐



TWO PICTURES

only one, or possibly six, finally chosen as superior to existing varieties and good enough to send out to Conard & Jones customers. In his 18 years of painstaking toil, Mr. Wintzer has handled



between 40,000 and 50,000 seedlings which have to be cared for Summer and Winter, and all this expense and labor has been spent to raise the C. & J. Lily-Canna to the high standing it now occupies as the finest and most satisfactory, constant and sure blooming Summer flower in existence. One of America's most prominent horticulturists says: "The Canna is likely to supercede the Geranium as a bedding plant."

& J. New Seedling Lily-Canna

introduced by The Conard & Jones Co. are indicated by a .

Varieties

A LIST OF THE MOST DESIRABLE CANNAS UP-TO-DATE VARIETIES

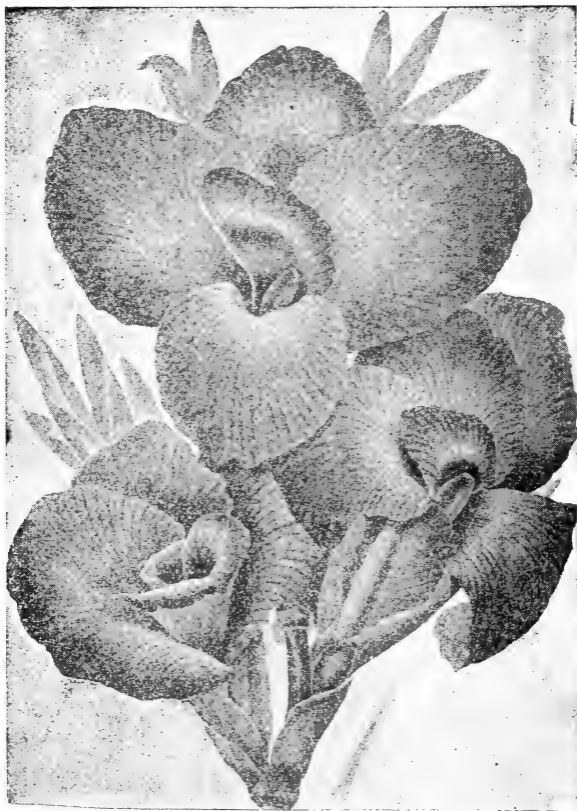
108 Varieties Alphabetically Arranged

☞ This sign indicates varieties originated and introduced by The Conard & Jones Co.

- ALLEMANIA.** (5 ft.)—Orchid flowering, green foliage. Outer petals are bright scarlet with a broad yellow border, the inside colors being scarlet and dark red, beautifully mottled and variegated.
- ALPHONSE BOUVIER.** (5 ft.)—Green foliage. Flower is bright flashing crimson, very rich.
- ☞ **ALSACE.** (4 ft.)—Green foliage. Flowers creamy white and very freely produced.
- AUSTRIA.** (5 ft.)—Orchid flowering, green foliage. Large flowers, 6 to 7 inches across; color, pure golden yellow.
- ☞ **BEACON** (4 to 4½ ft.)—Green foliage. Moderate sized flowers of very rich cardinal, which are produced in great masses. A remarkable bloomer
- ☞ **BETSY ROSS.** (3 ft.)—Green foliage. Flowers beautiful pink and borne freely on large bloom heads.
- BLACK BEAUTY.** (5 ft.)—*Bronze foliage.* This canna is grown for foliage only, which is a dark shining purple bronze with edges crimped and wavy.
- ☞ **BLACK BEAUTY IMPROVED.** (5 ft.)—*Bronze foliage.* The medium sized flowers are a brilliant red while the foliage is almost as handsome as Black Beauty.
- ☞ **BLACK PRINCE.** (5 ft.)—Green foliage *with mahogany-colored stems.* Flowers are small, but this variety is wanted on account of its color, which is an intense, deep, velvety maroon.
- ☞ **BLACK WARRIOR.** (3½ ft.)—Green foliage. A free bloomer with a very rich dark maroon flower.
- ☞ **BLANCHE WINTZER.**—New 1913. See illustration and description, page 11.
- ☞ **BRANDYWINE.** (3½ ft.)—*Bronze foliage.* Flowers are brilliant red and borne in great abundance the entire season. Splendid for mass planting.
- ☞ **BRILLIANT.** (4 ft.)—Green foliage. Pure golden yellow flowers with two curling tongue-like petals of fiery red that dart from the center.
- BURBANK.** (4½ ft.)—Orchid flowering; green foliage. Color, rich canary-yellow, the throat finely spotted crimson.
- ☞ **BUTTERCUP.** (3 ft.)—Green foliage. Flowers pure buttercup yellow, very bright. Considered the most charming yellow canna in existence.

- ❧ **CALIFORNIA.** (4 ft.)—Green foliage. Flowers are a pure, rich orange-gold, medium size and borne freely. One of the most attractive colors in Cannas.
- ❧ **CHAMELEON.** (5 ft.)—Green foliage. Flowers open a rich orange striped with red, then turn to yellow and rose-pink, while cutely curled in the center of each is a bright tongue of solid red. Very conspicuous.
- CHARLES HENDERSON.** (4 ft.)—Green foliage. Flowers deep crimson with flame-yellow throat.
- ❧ **CHAUTAUQUA.** (4 ft.)—*Bronze foliage.* Flowers are an intensely vivid, pure rich scarlet. A luxurious tropical looking Canna. Splendid for massing.
- ❧ **CHEROKEE.** (4 ft.)—Green foliage. Flowers medium size; color is an intensely deep rich maroon and the velvety blossoms are borne on large, branching trusses.
- CHICAGO.** (4½ ft.)—Green foliage. Flowers are light cherry-scarlet with a faint purplish gloss.
- ❧ **CLOTH OF GOLD.** (3 ft.)—Green foliage, striped with bronze. Flowers are orange, tinted with gold and coppery red.
- COMTE DE BOUCHARD.** (4½ ft.)—Green foliage. Flowers an intensely bright light-colored yellow dotted with red. A very striking variety, especially when planted with other colors.
- COMTE DE SACHS.** (4 ft.)—Green foliage. Flowers are clear crimson-scarlet, very bright and borne on great heads well above the foliage.
- ❧ **CONOWINGO.** (6 ft.)—*Bronze foliage.* Flowers large; color an intense deep fiery scarlet. Very free bloomer and fine for massing.
- ❧ **CORONET IMPROVED.** (3 ft.)—Green foliage. Flowers clear yellow, large and borne in long spikes. Always bright and showy.
- DAVID HARUM.** (3 ft.)—*Bronze foliage.* Flowers bright vermilion scarlet mottled dark red.
- DIRECTOR HOLTZE.** (4 ft.)—Green foliage. Flowers are a dazzling yellow with rose markings. Especially desirable where a bright sunny looking bed is wanted.
- ❧ **DR. NANSEN** (2½ ft.)—Green foliage. Considered the best dwarf yellow canna and in great demand for bordering beds of taller cannas.
- ❧ **DUKE OF MARLBORO.** (4 ft.)—Green foliage. Flowers dark, rich, velvety crimson; fine shapely flowers in large well-filled trusses. Used in great quantities by landscape architects for mass effects.
- ❧ **DUKE OF YORK.** (4½ ft.)—Green foliage. Flowers bright pink with creamy throat and yellow petals edged with gold. Exceptionally pretty.
- ❧ **EASTERN BEAUTY.** (4 ft.)—*Bronze foliage.* Flowers a charming shade of light salmon and orange.
- EGANDALE.** (4 ft.)—*Bronze foliage.* Flowers are pretty cherry-red color and borne well above the foliage.

- ❧ **ELDORADO** (3½ ft.)—Green foliage. Flowers are bright golden yellow, faintly dotted with red.
- ELIZABETH HOSS.** (3½ ft.)—Green foliage. A very attractive, medium sized flower. Color is pure yellow with bright red dots.
- ❧ **EVOLUTION.** (4 ft.)—*Bronze foliage.* Flowers rich pink with a golden tint, shading to a center of beautiful blush-pink. Most charming in effect.
- EXPRESS.** (2½ ft.)—Green foliage. Flowers bright scarlet-crimson. Excellent for bordering on account of its dwarf habit and bright color.
- ❧ **FAVORITE IMPROVED.** (4 ft.)—Green foliage. Flowers rich purplish red. Very effective and much admired when planted in masses. Useful in landscape gardening.
- FLORENCE VAUGHAN.** (3½ ft.)—Green foliage. Flowers rich golden yellow, thickly spotted with bright red.
- ❧ **GEORGE WASHINGTON.** (3½ ft.)—Green foliage. Flowers deep velvety crimson, beautifully shaded.
- ❧ **GIANT CRIMSON.** (4½ ft.)—Green foliage. Flowers very large and an attractive shade of crimson. Good for center of beds.
- ❧ **GLADIATOR**—See illustration and description page 12.
- ❧ **GLADIOFLORA.** (3½ ft.)—Green foliage. Remarkable for the unusual shape of the flowers, which look like large gladioli. Petals are rounded and so wide they overlap each other. Color is crimson, changing to carmine-rose, edged with gold. The bright, firm, well formed blooms show up attractively always. (See cut page 15.)
- GOV. ROOSEVELT.** (4 ft.)—Green foliage. A distinct variety. In some petals the coloring runs in even bands of red and yellow, other petals are entirely red and sometimes the whole flower is red. An oddity.
- ❧ **HALLEYS' COMET.** (3½ ft.)—Green foliage. Flowers firm and very large, color is a bright scarlet with a throat of pure yellow and a narrow thread of yellow all round each petal's wavy edge. An unusually fine canna, that attracts attention and admiration always.
- ❧ **HARLEQUIN.** (3 ft.)—Green foliage. Flowers are brilliant fiery red dotted and edged with a deep band of brilliant yellow.
- ❧ **HIAWATHA.** (3 ft.)—*Bronze foliage.* Flowers delicate rosy pink with border of clear cerise. Crimped petals.
- HUNGARIA.** (3½ ft.)—Green foliage. Flowers large and borne in trusses of enormous size borne well above the foliage. Color is La France pink with satiny sheen.
- INDIANA.** (6 ft.)—Green foliage. Glistening golden orange, daintily marked and striped with red. Single blossoms often 7 inches across. An orchid flowering variety.
- ITALIA.** (4 ft.)—Green foliage. Flowers are brilliant red and yellow. An orchid-flowering variety.

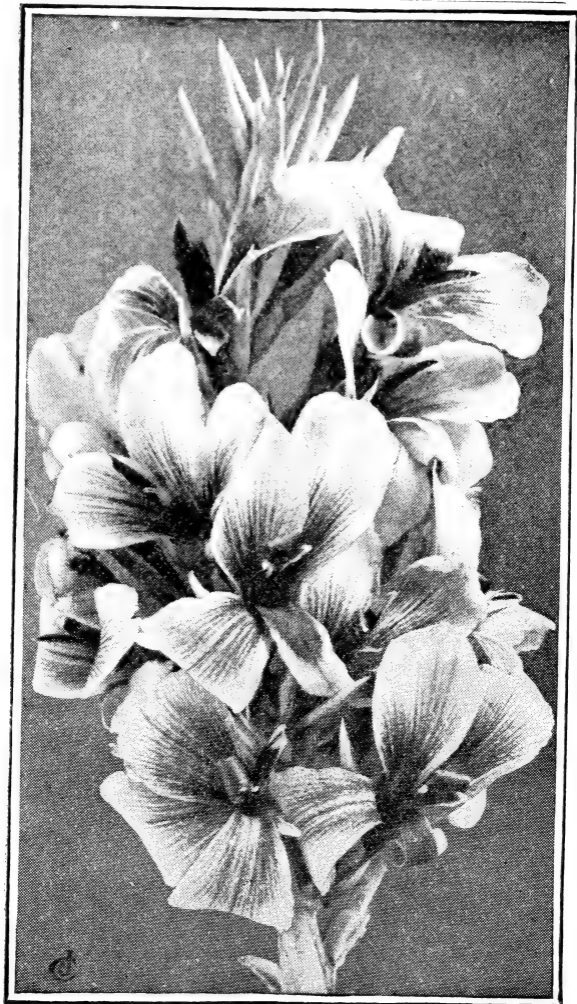


Orchid-Flowering "Louisiana" See page 23.

U. S. Dept. of Agriculture, Washington, D. C.

"These Cannas are desired for ornamenting the grounds of the Department, where many thousands of people from all parts of the United States visit each year, and they could hardly be placed in a more conspicuous place. For this reason I wish to secure the best obtainable."

Bureau of Plant Industry.



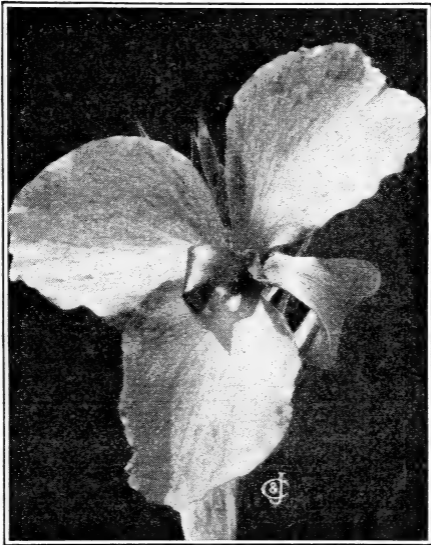
Striped Beauty

- J. D. EISELE.** (3½ ft.)—Green foliage. Flowers bright vermilion-scarlet overlaid with orange. A fine bedder.
- JEAN TISSOT.** (5 ft.)—Green foliage. Flowers brilliant vermilion with bright orange shadings.
- ☞ **JENNIE WALLS FAHNLIN.** (4½ ft.)—Green foliage. This glorious combination of pink and primrose arouses enthusiasm always on account of its dainty coloring and unique markings. The lips of the petals are flashing carmine pink, which shades towards a throat of soft primrose, delicately dappled pink. Each petal is faintly edged with gold. Effect is dainty, artistic and fascinating.
- ☞ **JUANITA.** (4 ft.)—Green foliage, edged with bronze. Flowers of rich chrome yellow harmonize beautifully with the attractive foliage. An unusual and lovely colored canna.
- ☞ **JUPITER.** (6 ft.)—Deep purple foliage. Some leaves 1 foot wide and 3 feet long. Flowers are medium size and color a very rich red.
- ☞ **KATE F. DEEMER.** (4 ft.)—Green foliage. The grand flowers open a rich, oriole-yellow, which gradually gives place to turkey-red in the center and throat of the flower, in striking contrast with the rest of the blossom, which turns almost white. The rich yellow buds on reddish brown stems, combined with the yellow and white flowers make a fascinating combination.
- KING HUMBERT** (4 ft.)—*Bronze foliage* with brownish-green stripes, large, thick and leathery. Flowers large; color, bright orange-scarlet streaked with crimson.
- LONG BRANCH.** (6 ft.)—Green foliage. Flowers magnificent vermilion scarlet with golden yellow border; throat flamed yellow.
- ☞ **LORRAINE IMPROVED.** (5 ft.)—Green foliage. Flower is a delicate rose pink distinctly bordered with cream. The lower petal is cream splashed with pink. Very attractive.
- ☞ **LOUISE.** (5 ft.)—Green foliage. Flowers are soft rose-pink delicately dappled with red. Exceptionally fine.
- ☞ **LOUISIANA.** (7 ft.)—Green foliage edged with bronze. Flowers are very large and silky, borne well above the foliage. Color is vivid scarlet. "Louisiana" is one of the finest orchid-flowering Cannas in existence. (See cut page 21.)
- ☞ **LOVELINESS.** (3 ft.)—Green foliage. The color of this exquisite Canna is most difficult to describe, but we think that "bright ruby carmine" will convey to our customers the entrancing loveliness of this most charming variety. The blooms are formed on large heads which are borne erect, and the individual flowers, with firm, well made petals, are of the new "Gladioflora" type introduced by us and illustrated on page 15. The foliage harmonizes perfectly with the beautiful flowers.

- ♪ **LURAY.** (4 ft.)—Green foliage. Flowers are clear bright pink. Excellent for massing.
- MADAME CROZY.** (2½ ft.)—Green foliage. Flowers rich orange-scarlet, edged with bright golden yellow. Very valuable for edging.
- MLLE. BERAT.** (4 ft.)—Green foliage. Flowers are charming bright pink. Splendid for massing.
- ♪ **MAID OF ORLEANS.** (4½ ft.)—Green foliage. Ground color is rich cream over which is shaded and mottled in beautiful fashion an attractive pink. The flowers are very large, and the foliage is probably the richest of any of the green leaved kinds, being a soft olive green with the edges tastefully crimped and distinctly marked with bronze.
- ♪ **MARTHA WASHINGTON.** (3 ft.)—Green foliage. Flowers bright rose-pink. Considered one of the finest in this color.
- MEPHISTO.** (3½ ft.)—Green foliage. Flowers are very dark velvety crimson. A very rich looking attractive canna.
- ♪ **METEOR (Wintzers).** (5 ft.)—Green foliage. We've had a 10 ft. bed of Meteor on our office grounds. The almost solid mass of deep dazzling crimson bloom produced is spectacular. For thirteen weeks have we watched and marvelled as each morning fresh flowers renewed the brilliant scene. Undoubtedly our best red, and one that will always be in the front rank when a bright, brilliant crimson color is desired.
- ♪ **MINNEHAHA.** (4 ft.)—(See illustration and description page 5.)
- ♪ **MONT BLANC IMPROVED.** (3½ ft.)—Green foliage. Almost pure white. This is the predecessor of "Blanche Wintzer" (introduced 1913). For 10 years it has held the field as the largest, near-white canna in existence.
- ♪ **MOUNT ETNA.** (4 ft.)—*Purple foliage.* Flowers intense, brilliant carmine, borne erect in large, bold trusses. Very effective with the rich, dark foliage.
- ♪ **MRS. ALFRED F. CONARD.** (4 ft.)—Green foliage. This has become the most popular pink canna ever introduced and it is unsurpassed for planting either singly (see illustration on front cover) or in large beds. Its exquisite salmon pink flowers are of largest size in erect and abundantly furnished heads so freely produced as to keep a superb showing for months.
- ♪ **MRS. CARL KELSEY.** (6 to 7 ft.)—Green foliage with a narrow edge of purple. Erect, full heads of enormous flowers, orange-scarlet, flaked and striped with golden yellow; petals wavy edged. We know of no other canna so marvelously marked—an ornament to any garden. Orchid-flowering.
- MRS GEORGE A. STROHLEIN.** (6 ft.)—*Bronze foliage.* Flowers are large and of unusual color, being a bright shade of amaranth-red. Good for massing.

MRS. KATE GRAY. (5 ft.)—Green foliage. Flowers rich orange scarlet finely flaked and streaked with golden yellow tints. Large orchid-flowering variety.

MUSAFOLIA. (8 ft.)—Bronze-green foliage. Grown for foliage only, which is attractive on account of its enormous Musa-like leaves, 3x5 feet, and the great height to which it grows. Symmetrical at every stage of growth.



Ω Olympic—Note immense spread of petals

Ω **NEW YORK.** (5 ft.)—Rich purple-plum colored foliage. Flowers of great size produced freely and well above the foliage. Color is almost scarlet. Very choice.

Ω **NIAGARA.** (3 ft.)—Green foliage. Flowers rich deep crimson with a wide, irregular border of deep golden yellow; the most popular variety for bordering beds of other Cannas.

Ω **OLYMPIC.** (5 ft.)—Green foliage. The color effect presented by "Olympic" is new in Cannas and most fascinating. It is a distinctly new departure, being a most captivating shade of rich orient-red with center flamed a lighter shade and dappled

- carmine. Individual blossoms are of the largest size, and the huge twenty-flowered clusters make heads that are simply immense. (See cut page 25.)
- ☞ **OTTAWA.** (6 ft.)—Green foliage. Flowers, 5 to 6 inches across, are carmine with tints of old rose and deep coral, add to this the silken sheen and you can imagine the effect a few plants will produce.
- ☞ **PANAMA.** (3 ft.)—Green foliage. The color of this splendid *Canna* is unusual, being an attractive rich orange red with a well-defined edge of bright golden yellow. The flowers are very large, the petals being almost round and as broad as they are long. One of the most striking *cannas* ever produced.
- PARTENOPE.** (5½ ft.)—Green foliage. Flowers of extra large size; the broad, wavy petals glisten like silk. Color is orange delicately streaked with scarlet tints and suffused with salmon.
- PATRIE.** (4 ft.)—Green foliage. Flowers light crimson and of large size. Good for planting either singly or in masses.
- ☞ **PENNSYLVANIA** (6 ft.)—Green foliage. Flowers immense. Pure deep scarlet. A very fine orchid-flowering variety.
- ☞ **PHILADELPHIA.** (3 ft.)—Green foliage. This is one of the most satisfactory dwarf crimson *Cannas* yet introduced.
- ☞ **PILLAR OF FIRE.** (6 to 7 ft.)—Green foliage. The giant of its class; flowers bright crimson-scarlet, borne in erect spikes like blazing torches.
- ☞ **PRESIDENT CLEVELAND.** (3 ft.)—Green foliage. Large flowers of rich, bright orange-scarlet.
- ☞ **PRESIDENT MCKINLEY.** (2½ ft.)—Green foliage. Deep rich crimson flowers, beautifully formed. A low, compact grower.
- QUEEN CHARLOTTE.** (2½ ft.)—Green foliage. Flowers rich pomegranate red, bordered with bright golden yellow.
- ☞ **QUEEN OF HOLLAND.** (3 ft.)—Green foliage, edged bronze. Flowers deep, rich orange. Very effective.
- RICHARD WALLACE.** (4 ft.)—Green foliage. Flowers large and color a pure yellow. A very fine variety for bedding.
- ROBUSTA.** (8 ft.)—Green foliage. Makes giant tropical foliage and is used for making screens and backgrounds of green. This variety is grown for foliage only.
- ☞ **ROSEA GIGANTEA.** (4 ft.)—Green foliage. A rich rose pink flower of giant size and a prodigious bloomer. The color is unusually pleasing, a very rich, yet soft rose to carmine pink, while its great elephant ear petals are made up into flower heads of such wondrous size that, when seen for the first time they invariably create a sensation. In great favor at the Nation's Capital, Washington, D.C.
- ☞ **ROSEMAWR.** (3 ft.)—Green foliage. Flowers beautiful rosy pink with a throat of gold. They are borne in large, compact trusses and are very lasting.

- ❧ **SAM TRELEASE IMPROVED** (3½ ft.)—New. Green foliage. Flower is most exquisite in color—an intense poppy red with a thread of buttercup yellow around the edge of each petal. Tips of petals are solid poppy red, which, towards the throat, gradually shades to bright yellow mottled and striped with red on the throat and tongue. Beautifully bright and very attractive.
- ❧ **SHENANDOAH**. (4 ft.)—*Bronze foliage*. Flowers waxy rose pink. Highly ornamental.
- SOUVENIR d'ANTOINE CROZY**. (3 ft.)—Green foliage. Beautiful red, bordered with golden yellow. Very popular for bordering other Canna beds
- ❧ **SPLENDOR**. (4½ ft.)—Green foliage. The most impressive quality in this Canna is the firm, well-spread-out formation of the flowers, which are an intense scarlet color and very large. It makes 2 to 3 bloom heads on each stalk, insuring flowers practically all the time, as new blooms are constantly appearing before the older flowers fade.
- ❧ **STRIPED BEAUTY**. (3 ft.)—Green foliage. Flowers are canary yellow and buff, very prettily streaked with lines of rich glowing crimson that radiate from a center of deep red. (See cut page 22.)
- TRIUMPH**. (3 ft.)—Green foliage. Flowers are a handsome shade of deep, rich crimson, held erect on fine well-built trusses and strong stems.
- ❧ **UNCLE SAM**. (6 to 7 ft.)—Green foliage. Very stately in appearance. Bears enormous bunches of brilliant orange-scarlet flowers. An extra-fine orchid-flowering variety.
- ❧ **VENUS**. (4 ft.)—Green foliage. This is one of the prettiest Cannas in existence. The flowers are a gay, rosy pink with a well-defined border of creamy yellow. Blooms all the time with heads erect and flowers bright.
- ❧ **WABASH**. (4 ft.)—The *bronze-leaved* "Rosea gigantea." Flower is unusually large, petals broad and borne in great abundance well above the magnificent foliage of deep purple-brown. Well described as "Bronze-leaved Rosea Gigantea," for this flower has the same great size and carmine pink color as that famous novelty, adding the advantage of handsome bronze foliage.
- ❧ **WAWA**. (3 ft.)—Green foliage. The color of this Canna is an indescribably lovely soft pink and the medium sized flowers are borne in great profusion on strong upright stems. This variety is very popular with visitors to our nurseries.
- ❧ **WEST GROVE**. (4½ ft.)—Green foliage. Flowers are large, well formed, and color an attractive rich coral pink.
- ❧ **WILLIAM SAUNDERS**. (See illustration and description page 6.)
- WYOMING**. (7 ft.)—*Purple foliage*. One of the most majestic Cannas. Blossoms orange-colored, true orchid-shape, with large, rounded petals that flap and flutter in the breeze like glistening silken flags.

Cannas For Circular Beds

Selected For Height and Color

Space does not permit naming more than a few choice beds here, but customers can select for themselves by using page 29 as a guide and being careful to choose the tallest growing kinds for the center of circular beds or for the back of beds along walls or fences. Years of experience have proved to us that *beds all one variety* and of medium height make the showiest effect. Try a bed of Mrs. Alfred F. Conard, Olympic, Wm. Saunders, Meteor or any of the kinds listed on page 29.

BEDS OF 3 COLORS

<i>Center</i>	<i>Middle</i>	<i>Outside</i>
Giant Crimson	Director Holtze	Souv de A Crozy
Cherokee	Buttercup	Niagara
Beacon	Brilliant	Halley's Comet
Pillar of Fire	Gladiator	Buttercup
Uncle Sam	Gladiator	Duke of Marlborough

BEDS OF 2 COLORS

<i>Center</i>	<i>Outside</i>
Meteor	Buttercup
Mrs. Alfred F. Conard	Mont Blanc
Duke of Marlborough	Florence Vaughan
Patrie	Queen of Holland
Gladiator	Triumph

How to Plant Circular Beds

Get the tallest-growing varieties in the center, and then carefully grade each succeeding circle, using dwarf kinds for the outside. Plant one Canna in center of bed, next six Cannas 18 inches apart in a circular row 18 inches from center. For each succeeding circle use six more Cannas than were used in the previous circle and make it 18 inches farther away from the center. A 7-foot bed thus planted will contain 1 Canna in the center, 6 in first circle, 12 in outside circle, all 18 inches apart and the bed when planted will have the last row 6 inches from the edge to allow proper growth or room for a border of edging plants.

The Best Cannas in Each Color Conveniently Arranged in Size

This list of Cannas offers an excellent opportunity for making showy flower beds of continuous bloom all Summer until frost in almost any size and color combination desired.

	<i>Dwarf</i> Up to 3 ft.	<i>Medium</i> 3 ft. to 4 ft.	<i>Tall</i> Over 4 feet
<i>White</i>		Blanche Wintzer Mont Blanc. Imp.	
<i>Reds</i>	Express Philadelphia Pres. McKinley Triumph	Beacon Brandywine Chautauqua Cherokee Comte de Sachs Duke of Marlboro George Washington Italia King Humbert Patrie Wm. Saunders	Conowingo Giant Crimson Jupiter Louisiana Meteor Mrs. Geo. A. Strohlein Mrs. Kate Gray New York Olympic Pennsylvania Splendor Uncle Sam
<i>Pinks</i>	Betsy Ross Hiawatha Loveliness Martha Washington Wawa	Eastern Beauty Luray Minnehaha Mrs. A. F. Conard Rosea Gigantea Venus Wabash	Lorraine Improved Louise West Grove
<i>Yellow</i>	Buttercup Director Holtze Dr. Nansen	Brilliant Kate F. Deemer	Austria
<i>Yellow and Red</i>		Elizabeth Hoss Florence Vaughn	Gladiator
<i>Orange</i>	Queen of Holland	California	Indiana Wyoming
<i>Varie-gated</i>	Halley's Comet Niagara Panama Souv de A. Crozy Striped Beauty	Gladioflora Sam Trelease, Imp	Allemania Burbank Duke of York Jennie Walls Fahnline Maid of Orleans Mrs. Carl Kelsey

From Lincoln Park, Chicago.

Messrs. Conard & Jones,

February 20th, 1913.

Gentlemen:—Please ship the following Cannas to Lincoln Park (Floral Dept.) We intend to introduce all your new Cannas to the Public in Chicago.

(Signed),

Superintendent.

C. & J. Lily-Canna Seed

It is not generally known that C.&J. Lily-Cannas can be grown from seed and bloom will be as fine as if grown from roots or plants.

We save the seed from our best Cannas each year and have them to offer to those who prefer to get their flowers in this way. In our catalog will be found an excellent assortment of seeds



picked from such famous kinds as Mrs. Alfred F. Conard, Olympic, Halleys' Comet, etc. These seeds will not all come true to the parent plant but they are sure to produce some magnificent and as yet unheard of flowers. C. & J. Canna seeds *cannot be duplicated* anywhere and we offer them from 10 cts. to \$1.00 per packet.

**Plant C. & J. Canna Seeds and Reap
Rich Rewards**

“The Admiration of the Town.”

GENTLEMEN:—The order given you for Cannas, April 29th was received in first-class condition, and the flowers are admired by everyone, and an article was published in the Port Jervis city paper stating they were the admiration of the town, and I think you will receive some orders for Cannas from neighbors.

Respectfully yours,
Geo. P. S., Port Jervis, N. Y.

Our 100 Page Catalog

Offering nearly 400 Roses, also a select assortment of Lily - Cannas, Shrubbery, Vines, Hardy Perennials, House Plants, Flower Seeds (including Cannas) Hardy Lilies and other summer-flowering bulbs will be sent

FREE ON REQUEST

The Conard & Jones Co.

WEST GROVE, PA.

Flowers and Foliage Perfect.

9-1-12.
I purchased Canna plants from you this Spring and wish you could see them now. The are certainly beautiful, some are eight and nine feet high with largest clusters of large flowers. The colors of the flowers and foliage are perfect. The bed faces Front St., and every person passing admires them and a number have come in to see them.

Mrs. H. H. Z.,
Ringtown, Pa.



ANTOINE WINTZER,
Originator of the C. & J. Improved Cannas

When the history of the American Canna comes to be written, Antoine Wintzer, Vice-President of The Conard & Jones Co., will occupy a prominent place, as through his untiring efforts the world has been made richer in beauty with flowers, in manifold shades and colors formerly unknown or even dreamt of, when he took up the improvement of the Canna.

“The greatest breeder of new American Cannas is Mr. Antoine Wintzer, who has raised nearly 40,000 crosses.”—From *Garden Magazine*, 1907.

