

## Historic, archived document

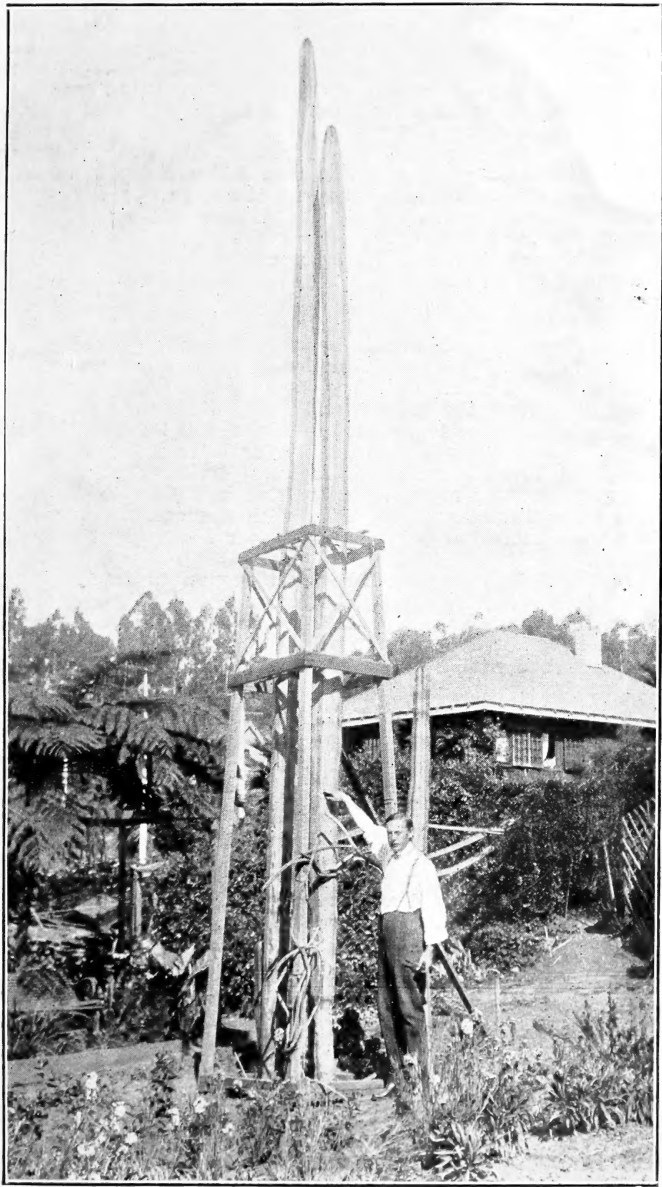
Do not assume content reflects current scientific knowledge, policies, or practices.



6259

1953?

# Theodosia B. Shepherd Co.



Cereus Gemmatus, or Organ Pipe Cactus in Our Gardens, 30 feet high

Ventura-by-the-Sea, :: California.

# Directions for Seed Sowing

The first requisite for seed beds and boxes is preparation of the soil, which should be mellow and friable, a mixture of loam, sand and thoroughly rotted manure or leaf mould. Annuals such as *Eschscholtzias*, *Poppies*, *Mignonette*, *Centaureas*, *Candytuft*, *Calliopsis*, *Zinnias*, *Marigolds*, etc., should be planted where they are to grow, and thinned out when two or three inches high, so each plant may have room to develop. *Cosmos* can be planted the same way and transplanted if too thick.

*Petunias*, *Pansies*, *Stocks*, *Asters*, *Carnations*, *Dianthus*, *Daisies*, *Browallia*, *Dahlias*, *Geraniums*, *Heliotrope* and many others are best sown in carefully prepared seed beds or cold frames, and transplanted when two or three inches high. Choose the afternoon of a cool day; have the soil moist and mellow, so that it crumbles fine in the hand. Do not allow the air to dry out the fine roots, cover them with paper or cloth, as a moment or two of exposure may cause loss. See that the soil comes in between the roots,—use the fingers for this, do not pack them down all together. It is most important that the soil should be pressed down firmly after setting out, so as to hold plants firmly in the ground, and also to keep out sun and air.

Water carefully and deep, and when the ground settles, draw dry earth over the wet ground to prevent soil from packing. The next day examine the condition of plants and if necessary press the soil down firmly with the toe, as evaporation often leaves it loose and porous. These directions apply to setting out any plants, large or small.

In California, late autumn and early winter are most favorable for sowing *Pansies*, *Poppies*, *Nasturtiums*, *Eschscholtzias*, *Stocks*, and most perennials, as they love the cool weather for developing their roots, though they may be planted at intervals, most of the year and brought on in succession. The most unfavorable time is July, August and September.

Sweet peas and all large seeds should be sown two or three inches deep, other seeds cover about their own depth. Press soil down firmly with a board. Water with a fine spray allowing it to soak in well. It is a good plan to cover seed beds with a light shading to protect them from the hot sun and drying winds until the plants are well up.

Fine seeds, like *begonias* and greenhouse plants, can be sown in cigar boxes with holes in the bottom, which cover with gravel, or broken pots for drainage. Cover with soil carefully prepared, press down level, and sow seeds on surface, sift the lightest covering of sphagnum moss over them. Water from below by holding box over a pan of water, allowing the soil to absorb it. Cover with a piece of glass and keep in the shade; transplant when second or third leaves appear where plants are to grow. Shade till well established.

*Petunia* seed, though fine, does much better if grown in seed beds in a sheltered place in the garden; they require the lightest covering possible and the watering must be done with a fine spray, so as not to dislodge the seed. Plants grown this way are much more vigorous and not apt to damp off, as those grown in boxes. A cold frame, which is a small seed bed with a frame around it, and a covering of cloth, is very suitable, where one has but a few seeds. *Petunias* transplant well when two or three inches high.

If the seeds of vines such as *Ipomea* "Heavenly Blue" and *Mina Lobata*, are planted in small pots and allowed to fill up with roots and suffer a little for fresh supplies, the plant becomes hardened, or matures more rapidly and attains the blooming season earlier.

These seeds if dropped and sprouted in hard ground in the garden, where their root room is curtailed by hardness or dryness of the soil, are sometimes found blooming when quite young which shows that starving the roots causes early maturity, which means earlier blooming.

Watch out for slugs. They are death on young vegetation, and do their mischief at night. They leave their shining trails in greenhouse and gardens. They will often destroy an entire bed of young plants in a single night, and do the most damage in late winter and spring. They are from a half inch to five and six inches long, the small ones are equally mischievous. Set traps of carrots and cabbage leaves, or any succulent vegetable, of which they are very fond; look out for them in the early morning or at night. To kill them drop them in dry salt or salt and water.

## Seeds of Begonias

Very few varieties of *begonias* give seed without being hand fertilized. Among the few, *Incarnata*, *Catalina*, *Smithii*, *Erfordia*, and the *semperflorens* types. The latter seed abundantly and are easily grown from seed; blooming with their second or third leaves.

## Hanging Baskets

We make a specialty of pretty hanging baskets from \$1.25 up to \$4 or \$5. Among the most useful of these is *Asparagus Sprengeri*, which has more power of endurance than almost any other basket plant. We have baskets of ferns, *begonias* and assorted plants, and can ship them in good condition.





# To Customers and Friends

We send you most cordial greeting and will be pleased to receive your usual orders for plants, etc. We feel sure you will be pleased with our new plants and seeds. We have enjoyed their daily companionship long enough to know their merits.

When ordering please observe carefully directions for ordering seeds and plants. Always send a second choice list, as we may be short of some varieties. Ask questions on a separate sheet of paper leaving space for answers. Enclose stamps when wishing a reply to letters.

Many of the plants offered in our catalogue are grown only in conservatories or the house in climates where winter prevails; but in Southern California, especially on the coast and a few miles back, most of the plants, bulbs and seeds we offer, can be grown in the open ground all the year. Many plants that attain great proportions in Southern California, never grow more than the height of a few feet in pots in the east. We would suggest to our Eastern customers that they give tender plants, especially begonias, the benefit of open ground culture, partial shade in summer, and before frost to cut them back a little and remove them into pots, thus insuring stronger growth for winter. Much can be learned by experimenting. When we first began to grow tender plants in California we were told they would not grow outside, but we experimented, sometimes losing them, but trying again, till we learned their requirements in this climate.

Our cuttings are taken from plants grown in the open the year round and therefore our plants are more vigorous than green house grown plants.

We supply small plants of many of the common varieties of begonias at \$1 per dozen, but we advise all customers sending from a distance to order larger plants and have them sent by express. The stems of young begonias are succulent and watery, and are easily injured and fall apart when packed in close quarters. If they are hardened and fibrous their powers of resistance to heat and cold are very great, which makes it possible to ship them as far as Europe or Asia with safety. A well established begonia will soon recuperate after a long journey even if it loses all its foliage, while a young plant would perish.

We will make special prices on large collections of begonias, cactus, etc. We are prepared to furnish fine specimen begonias of various sizes. Prices on application. We make a specialty of hanging baskets.

## Theodosia B. Shepherd Co.

---

### How Ventura is Situated

Ventura is the county seat of Ventura county with a population of 3000 inhabitants. It lies in a semicircle at the base of the foothills with the ocean directly in front. East of the town, it widens into a broad fertile valley. Its proximity to the ocean and the protection of the hills north and west, give it a warm sheltered situation, that protects it from frosts or heavy winds, and make it the most favorable place on the coast for tender plants.

It is on the main line of the coast road, between Los Angeles and Santa Barbara, the former seventy miles south, the latter, thirty miles north. Visitors at either place can visit our gardens and return the same day. Intending purchasers will be greatly assisted in making selections of plants by a visit to the gardens, where many fine specimens and varieties of all classes of plants are to be seen growing in the open air.

# Directions for Ordering

## Please Read Carefully Before Ordering

Our catalogue is free to all customers. The price is ten cents to new applicants, which will be added in seeds to the first order amounting to 25 cents.

Write name and address plainly. We sometimes receive orders with address omitted. Send money by Express, Postoffice Money Order, Bank Draft, or Registered Letter. We cannot be responsible for money lost in the mail. Stamps can be sent for small orders amounting to less than one dollar.

On seed orders customers may select seeds to the value of 20 cents additional for each one dollar of their orders.

We will send twenty 10 cent packets of seeds for \$1.25; ten 15 cent packets for \$1.25; twenty 5 cent packets for 75 cents, postpaid.

If plants or seeds arrive in bad condition, report must be made within ten days, and we will replace same; but can pay no attention to complaints made after some time has elapsed. **We will be pleased to receive expressions of satisfaction from purchasers regarding our plants and seeds.**

We fill no plant orders for less than \$1.00, unless 10 cents extra is sent for postage and packing.

Always send a second choice list, or state whether money shall be returned if we are out of varieties. We are often put to much unnecessary correspondence, and orders are delayed by failure to comply with this, our frequent request.

Express orders: All plants with soil, and larger sizes, also all heavy bulbs, and cactus, will be sent by express or freight at customer's expense.

We will send 20 cents worth of plants extra, our selection, on each dollar, where orders are sent by express.

Mail orders. We send only small plants without soil by mail postpaid.

Customers may select 10c worth of plants extra on each dollar. This premium on plants applies only to price per single plant, not on collections or plants by the dozen, or on rhubarb or cactus. When plants are sent by express we always send extras to help cover charges.

Be sure to give directions how plants shall be sent, otherwise we send by express.

We always take into consideration the cost of express and send no unnecessary weight, making charges as light as possible to customers. Express charges are generally 8c per lb., sometimes less, on packages not exceeding 4 lbs., and on larger packages it is lower, being less when sent by a through company. When packages are transferred to two or three companies charges are higher. Rates can always be learned at local express offices.

Write questions or requests for any information on a separate sheet of paper, leaving blank space for replies.

## Treatment of Plants on Arrival

Plants shipped by express or freight suffer little, if any, as the roots get disturbed but very little if taken out of pots. Some water and shade for a few days will re-establish them.

With plants received by mail more care and precaution have to be taken on arrival. On all plants to be shipped by mail the soil has to be removed from the roots in order to lessen the weight, and damp moss and paper take the place of the soil.

If the plants are the least wilted on arrival, put them in lukewarm water in a shallow pan, for about one hour, leaving the paper and moss undisturbed. This will soon restore their vitality.

In potting the plants, after removing moss and paper, use clean pots and loose, fine soil. Take pots only one size larger than the one the plant has grown in. Press the soil well down after placing the roots in a natural position, leaving half an inch empty space above the soil for the pot to receive the water. Water should be applied until it runs out at the bottom of the pot.

Keep shady and from the wind or draught for four or five days. Sprinkle the leaves every day, but take care not to wet the soil in the pot too much, which would make the roots rot.

In any case avoid extremes in watering or drying out.

If the plants are to be cultivated in pots, most of them will be ready to be shifted into larger sized pots in from two to four weeks, according to the nature of plants.

Bedding plants can be set out at once in the open ground by observing the above rules about watering and shading, provided there is no danger of frost, etc.

---

TRY OUR FINE STRAINS OF "PETUNIA" SEEDS.—THEY ARE THE BEST GROWN



# Specialties in Plants and Seeds

## Cactus Flowering Geraniums

A very unique and strikingly beautiful distinct type which, originated in England but a few years ago, at once won a place in great public favor as pot plants, for the conservatory and window boxes, for which they are unusually pleasing and attractive on account of their remarkably handsome and thrifty but dwarf growth, small foliage, and marvelous profusion of bloom.

The Cactus has by common consent been recognized as a distinctive term applied to certain types of dahlias, cinerarias, etc., but none deserve the appellation more so than the Cactus geraniums, with their admirable elegance of form, exquisite graceful narrow curled and twisted petals, similar to those of the finest grade of Cactus dahlia.

We offer the following varieties:

**J. R. Greenhill.** Pleasing shade of soft pinkish lavender.

**Fire Dragon.** Bright scarlet crimson, exceptionally striking and showy.

**Mrs. J. Brown.** Dark scarlet; dwarf grower; free bloomer.

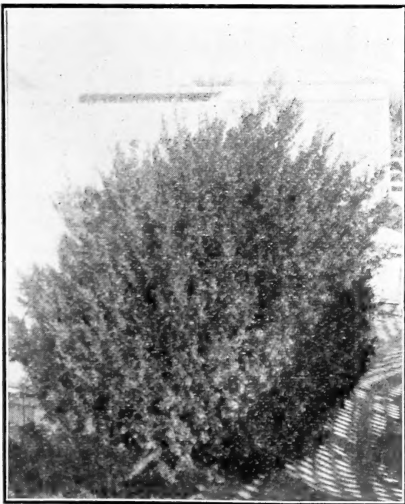
**Salmon Queen.** Delicate light salmon.

**Exquisite.** Salmon rose.

**Countess.** Dark salmon.

20 cents each; \$1.50 per dozen.

**GREVILLEA THELEMANIANA.** One has but to see this charming shrub to desire it. Nothing of like nature has been introduced in recent years. Of compact habit, deep green foliage, tipped golden green, resembling a miniature pine tree. The



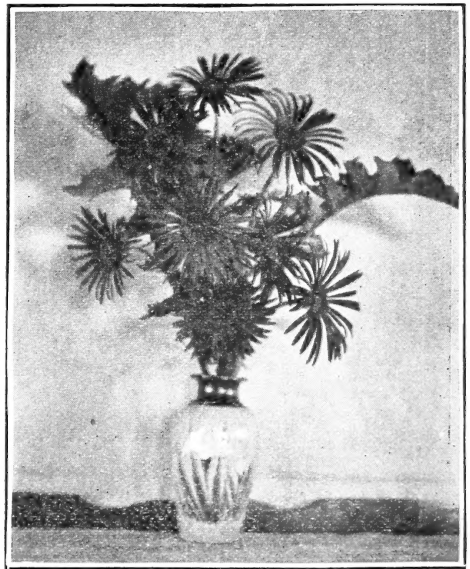
Grevillea Thelemaniana

delicate rose colored flowers tipped with green are borne on the ends of the branches in compact clusters. They are indescribably exquisite, resembling nothing so much as a bunch of rosy dew drops, 50c and 75c each.

## Gerbera Jamesoni

**GERBERA.** The Scarlet Transvaal Daisy.

The leaves are grayish green, long and ruffled at the edges and grow close to the ground in rosette-like form. The flower stems are found 15 to 18 inches long and are surrounded by splendid large brilliant scarlet daisy like flowers, four and one-half inches across. The center of the flower is bright red and



Gerbera Jamesoni, the Transvaal Daisy

is fine for cutting and keeps for two weeks in water. The plant is perennial and blooms all the year. Very scarce. Strong plants, 25 and 50c each. \$2.00 and \$4.00 per dozen. (See Cut.)

## Crimson Winter Rhubarb

We make a great specialty of this wonderful vegetable fruit. See back cover for prices, etc. Special Rhubarb pamphlet sent on application.

## Tuberous Rooted Begonia

**Martiana.** A very rare and distinct tuberous begonia from Mexico. Dormant in winter, but comes up in the spring, with beautiful glossy, round leaves, and a main stem with side branches, bearing close to the stem (like balsam or holly-hock) fine, large, clear, pink flowers. 25c.

## A Grand Begonia Novelty

**Templinii.** An exceedingly beautiful variety. In the number, richness and harmonious blending of colors it has no equal. The leaves are glossy metallic green, profusely

and irregularly blotched with various shades of creamy white and golden yellow, flushed with flesh pink, deepening toward the margin with bright crimson; under side of leaves coppery crimson. It rivals the Coleus in luster and richness of foliage. It is a splendid bedder, withstanding the varied conditions most admirably, increasing in gorgeous beauty every day. Flowers delicate rose, produced in profusion. 35 cents.

## A Rare Agave

**AGAVE ATTENUATA.** Southern Mexico. Building a slender trunk, 3 to 4 ft. high, with broad, glaucous, metallic shining leaves of soft texture, completely spineless. A striking plant, suitable also for house culture. 25c and 50c.

## Philodendron Pertusum "Monstera Deliciosa"



**Philodendron Pertusum or "Monstera Deliciosa"**

A rare aroid from Mexico, with large aerial roots that wind themselves around trees, and climb up to their tops. The leaves grow to great size—and are very peculiar and ornamental. The flower is large, thick cream colored, on the order of a calla lily—but dif-

ferently shaped—it bears a fruit resembling an ear of corn with the odor of pine apples, and is said to be prized in Mexico. It grows in sheltered places outside in Southern California. Fine for pots. We have a limited stock at from \$2.00 to \$5.00 each. (See Cut).

## Calla Lilies

**Golden Yellow Calla** (Richardia Elliotina) True. Entirely distinct and unlike all other forms of yellow Callas; it has the same habit of growth as the ordinary white variety, with flowers of same size and shape, but of a rich, clear, lustrous golden-yellow color; the foliage is dark green, with a number of translucent creamy-white spots, which add much to its beauty. It is but a few years ago that this sold at a very high price. We are now able to offer strong bulbs at 35 cents each; \$3.00 per dozen.

**Rhemanni**—(Pink)—This magnificent Calla has a flower of a rich, deep shade of pink that is perfectly exquisite. A strong, easy grower, and a free bloomer. It is one of the grandest flowering plants we have ever seen. Having grown an enormous stock, we can offer it at a very low price. Fine flowering bulbs, 20 cents each; 6 for \$1.00.

**SHASTA DAISY.** Improved. Flowers are large and graceful with three or more rows of petals, of purest glistening white. They are borne on long wiry stems, two feet in length. The flowers often measure four or more inches across. 10c each; 75c doz.

TRY OUR FINE STRAINS OF "PETUNIA"

SEEDS.—THEY ARE THE BEST GROWN

# The "Oriole" Rose (ORIGINATED BY MRS. SHEPHERD)



Mrs. Shepherd's Rose, "Oriole"

The beautiful "Oriole" is well worthy the land of its nativity, the Golden State. A fitting companion for its beautiful namesake that flits through the garden; for the gorgeous Eschscholtzia or California poppy, and the rich-hued orange of our groves. This wonderful color is seen in no other tea rose. Oriole is perfectly healthy and vigorous. The foliage is medium size, and bright green; it

sends up strong canes and bears quantities of beautiful orange buds on long pliable stems; its open roses are similar in form to the charming and graceful rose Dr. Grill. It is always in bloom and owing to this characteristic is difficult to propagate, the wood being in condition to send out fresh shoots at all seasons. Everyone is enchanted with it. 35 cents each.



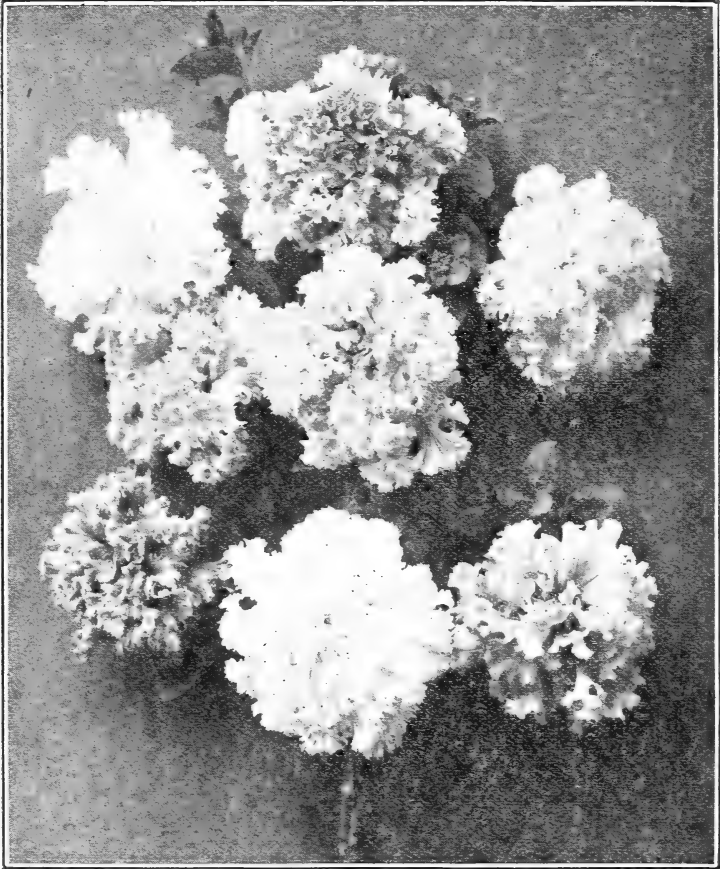
Double Marguerite "Queen Alexandra"

## New Double Marguerite "Queen Alexandra"

**NEW DOUBLE MARGUERITE** "Queen Alexandra," This new variety, introduced two years ago, has met with much favor, and we predict even greater popularity. The pure white flowers are from 2½ to 3 inches in diameter, the greater percentage coming full double. The remainder of the flowers on the same plant come semi-double and single, all of which are very handsome. (See Cut.) 15c each; \$1.50 per doz.

TRY OUR FINE STRAINS OF "PETUNIA" SEEDS.—THEY ARE THE BEST GROWN

## Mrs. Shepherd's Marvelous Double Petunias



Mrs. Shepherd's Marvelous Double Petunias

### Mrs. Shepherd's Marvelous Double Petunias

The picture gives an idea of the beauty of our strain of double petunias, the flowers of which measure 3 to 5 inches across. Colors snow-white, cream, pink, mauve, violet, lavender, handsomely veined, and variegated flowers frilled, lacinated and plain edged, exquisitely beautiful in form splendidly double, and bewildering in its many combinations of color. Pkt. 35c. (See cut.)

### Haemanthus Coccineus

(Blood Flower)

A rare bulb exquisitely beautiful when in bloom. Leaves about 2 feet long and very broad. Flowers red, 50 cents each.

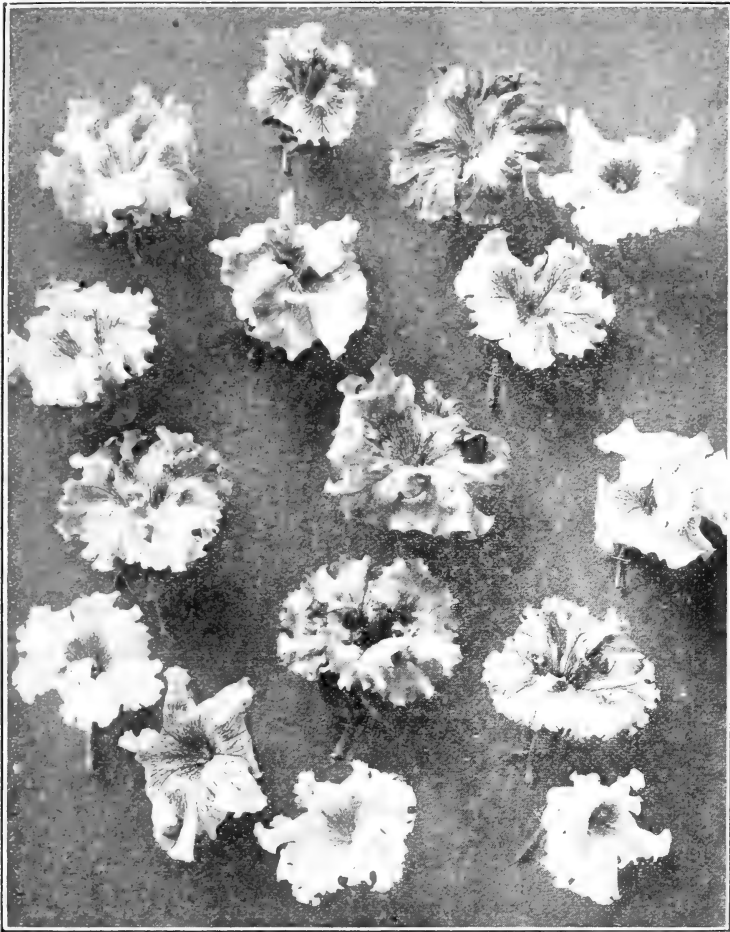
### Streptosolen Amabilis Magnifica

#### STREPTOSOLEN AMAEILIS MAGNIFICA.

One of the finest and freest-flowering pot plants in cultivation. It is not only in bloom every day in the year, but it is full of bloom all the time. The plant is entirely new and one of the easiest pot and window plants to grow that it is possible to find. It flowers from the time the plants leave the cutting bed, no matter how small. Flowers large, and of rich dark-blue color that is very attractive. It is in fact, the best, and almost the only blue-flowering pot plant that is of easy culture and continuous flowering. It is one of the finest pot plants grown. 25c.

TRY OUR FINE STRAINS OF "PETUNIA" SEEDS.—THEY ARE THE BEST GROWN

## Some Types of Single Petunias Giants of California



### Giant Petunias

**Giants of California.** No Petunias have ever been introduced that surpass the strain Giants of California in beauty, grace, splendid colors and variation. Flowers measure  $4\frac{1}{2}$  to 5 inches across, beautifully ruffled and often frilled on the edge. Color royal crimson, and wine color, exquisite shades of pink, lavender and white, veined, penciled, flushed or variegated with darker shades in splendid colors. A distinguished characteristic is the wide flaring throat netting and veined with black, dark red or yellow, which adds greatly to their beauty. The flowers in the picture were  $4\frac{1}{2}$  to 5 inches in diameter, the larger one is pink veined and netted maroon, the two lighter are white marked and prettily variegated, mauve and purple with yellow throat. 20c pkt. (See cut.)

**Fringed Hybrids.** The flowers of this type are different in form from the above but very beautiful, smaller in size and without

an open throat. Very refined in form and varied and beautiful in color, from snow-white through the shades and combinations of crimson, pink, mauve and lavender, veined and blotched; pkt. 10c.

### Two New Cannas

**Orchid Flowering "Indiana"** The foliage of this variety forms a solid mass of green 3 to 4 feet high, and above this the flower spikes shoot up to a height of 5 or 6 feet, each one bearing fine big clusters of orchid-like flowers. Color is a glistening golden orange daintily marked and striped with red. Single blossoms are often 7 inches across. Price 40 cents.

**Giant Orchid Flowering Canna "Wyoming"** A veritable giant among Cannas; producing a luxuriant growth of rich purple foliage and above this on long reed-like stems are borne great plumes of massive orange colored blossoms, true orchid-shaped with large rounded petals that flap and flutter in the breeze like glistening silken flags. Price, 40c.

TRY OUR FINE STRAINS OF "PETUNIA" SEEDS.—THEY ARE THE BEST GROWN

# General List of Tested Flower Seeds

**AGATHEA Coelestis.** Blue Daisy. A lovely perennial, bearing numerous sky blue flowers always in bloom, fine for bedding and also for pot plants. 10c pkt.

**ABUTILONS, California Bells.** This mixture is saved from choice named varieties. Flowers all colors and shades. All graceful and artistic. 10c pkt.

**AGAPANTHUS Umbellatus.** Blue African Lily. Choice mixed. 10c pkt.

**ANTIGONON Leptopus.** A magnificent climber. The flowers exquisite pink. 10c pkt.

**ALYES.** Splendid mixed. 10c.

**ARCTOTUS Grande.** A pretty marguerite-like annual. White with blue center. 10c.

**ASPARAGUS Sprengerii.** Fine for hanging baskets and for house plant. 10c.

**Decumbens.** Another very pretty filmy drooping Asparagus. 10c pkt.

**Deflexus Scandens.** A distinct and beautiful variety, fine for decoration and effective for baskets, vases or drooping over walls in courts. The stems are wiry with dainty, arching branches from which grow the pretty light green filmy leaves. 15c pkt.

**Robustus.** A new variety of climbing asparagus from Europe, of much more robust habit than plumosus. Equally fine for decoration and valuable outside. Grows very fast and tall. 10c pkt.

**Plumosus.** A charming climber with leaves that are finer than fronds of some delicate fern. A beautiful vine for the house, invaluable for bouquets and effective decoration. 15c pkt.

**ASTER, Peony Flowered Perfection.** Splendid mixed. 10c pkt.

**Giant Comet, The Bride.** Delicate Blush with tinge of mauve. **Pure White**—Very beautiful. 10c pkt.

**American Branching.** Pure white, lavender, rose, crimson, blue and purple. 10c pkt. Mixed 10c.

**ANCHUSA, Capensis.** Resembles a fine large Forget-Me-Not, but deeper and brighter blue. It is a fine continuous bloomer, especially in winter. An exquisite blue. 10c pkt.

**AUSTRALIAN PEA VINE.** A perennial Vine. Invaluable where rapid growth and a dense screen are desired. 10c pkt.

## Begonias Our Specialty

Begonias are easily grown from seed, especially the semperflorens class, which begin blooming when only two inches high. They make fine bedding plants, giving a mass of bloom the entire season. Stand the sun well, require light rich soil, and plenty of water.

**Semperflorens Hybrida.** Mixed 10c pkt.

**Rex.** Splendid mixed. 15c pkt.

**BALLOON VINE.** A graceful, pretty vine, that bears small, white flowers and inflated seed pods. For rapid growth it is unexcelled. 5c pkt.

**BELLIS Perennis Maxima.** Double daisy. **Longfellow.** Rose colored. **Snowball.** Pure White. 10c. Mixed 10c pkt. The three for 25c.

**BIGNONIA Tweediana.** A charming vine with handsome foliage and beautiful, large golden yellow flowers. 10c pkt.

**BROWALLIA, Speciosa Major.** A beautiful summer flowering plant for beds, equally valuable for pot culture in winter. Grows about one foot high; flowers from one to two inches across, color a brilliant indigo blue with white throat. 10c pkt.

**BYRONOPSIS LACENOSA.** A fine annual climber of the gourd family, with handsome lobed foliage and which bears yellow flowers and green cherry-like gourds which turn red and white. 5c pkt.

## Mrs. Shepherd's Grand Fancy Cosmos the Finest in the World

Flowers surpassingly beautiful. Immense, measuring from 3½ to 5 inches across, white, pink, mauve and crimson. Like single camellias. Crimson ones could almost be taken for single dahlias; white ones have plaited petals; plain edge in some flowers, in others pinked, toothed or fringed, beautifully overlapping.

**Giant Red, Pink and White.** Separate flowers of perfect form, great size and beauty; measuring 3½ to 5 inches across. 10c pkt.; three for 25c. Mixed 10c.

**Improved Yellow.** Flowers about two inches in diameter; the plants upright; they attain the height of two feet, and begin blooming in a few weeks after the seeds are planted, and soon form a mass of brilliant yellow that continues the entire summer. 10c pkt.

**Klondyke.** A gorgeous orange variety, with handsome foliage, more coarsely lacinated than the other sorts. The plants about four feet high, very bushy and symmetrical, and bear splendid orange colored flowers in great profusion. It is fine for pot plants, blooming when six or eight inches high. 10c pkt.

**New Marguerite.** Flowers 2½ to 3 inches across; the petals are deeply and irregularly lacinated or fringed; the flowers resemble Marguerites, but are much more esthetic and beautiful. 10c pkt.

**Rainbow.** Not to be had elsewhere. 15c pkt.

**CALLIOPSIS Lanceolata Grandiflora.** California Sunbeams. The flowers are beautifully formed, some saucer shaped, others flat, some exquisitely incurved, while others are like great buttercups. A fine perennial. 10c pkt.

**Golden Wave.** Very bushy and compact, covered with hundreds of beautiful golden flowers, with small, dark centers; annual. 5c pkt.

**"Golden Fleece."** A charming new variety with deep rich golden flowers measuring three inches across. The flowers have 14 to 16 deeply lacinated petals and five or six strap like petals around the center. Its soft fluffy appearance suggests the name "Golden Fleece." 15c pkt.

**"Rosa de Oro."** This very pretty variety bears numerous dainty golden flowers with 18 to 20 regularly toothed petals; they are prettily cupped and resemble miniature roses which gives its name "Rosa de Oro" or "Rose of Gold." Pkt. 15c.

**"CANARY BIRD" FLOWER.** A well-known climber of the nasturtium family, with small lobed light green leaves and pretty yellow flowers resembling birds with wings and tail spread. 5c pkt.

**CANNA, Good Venture Strain.** From a collection of very fine named varieties, and large seedlings of our own. Splendid mixed. 10c pkt.

**CANDYTUFT, Empress.** Pure white. 5 c pkt. Carmine, 5c pkt. Lilacina (Lilac) 5c pkt. Dark Crimson, 5c pkt.

**CANTERBURY BELLS.** Prize mixture of single and double, 10c pkt.

**CARNATION, Perpetual or Monthly.** Carnations grow to the greatest perfection in California. Fine mixed 25c pkt.

**Marguerite.** A charming strain that blooms from seed the first year. Splendid mixed. 10c pkt.

**CELOSIA, "Ostrich Feather."** One of the most beautiful and showy annuals that has been introduced for years, and that deserves all the praise that has been given it. It is exquisitely beautiful on close examination, and at a distance is a mass of brilliant color. It blooms when only 12 inches high, and in California keeps its splendor until late December. Crimson and orange color. 10c pkt.; two for 15c.

**CENTAUREA, Giant White Marguerite.**—Grows about 18 inches high; the large flowers are pure white, exquisitely lacinated and freely produced on long stems. Invaluable for cut flowers. 10c pkt.

**Imperialis.** More robust in habit, large flowers, more finely fringed; the stems are longer and the foliage lacinated. Colors, white, lavender and "Chameleon" yellow. 10c pkt. each. The three, 25c.

**Blue Bottle or Corn Flower.** A hardy annual of the easiest growth, flowers an exquisite blue; height 2 to 3 feet. Double choice mixed. 5c pkt.

**CHRYSANTHEMUMS, California Fantasies.** Saved from a most varied and beautiful collection. It will bloom the first year from seed, and is easily grown. Splendid mixed. 15c pkt.

**CINERARIA Grandiflora.** Beautiful plants

easily grown from seed. Flowers in shades of blue, magenta, purple and white. Splendid mixed. 15c pkt.

**Stellata (Star Cineraria)** A charming variety, with large spreading panicles of starry flowers in the same variety of colors as the ordinary Cineraria; the extreme grace and elegance of the plant and flowers make them wonderfully effective for the decoration of the house or conservatory, and especially so for church decoration; also useful for cutting. 10c pkt.

**CLIANTHUS Puniceus.** Foliage finely divided and the flowers hang on long thread-like stems. Flowers are large and of a most vivid scarlet in color, shaped like a parrot's beak. A perennial, climbing shrub, very showy and beautiful. 10c pkt.

**Clianthus Alba**—(White) 15c pkt.

**COBOEA SCANDENS, Mexico.** A beautiful climber of rapid growth, bearing large purple bell-shaped flowers in great profusion during the fall months; very attractive and desirable for arbors and trellises. 10c pkt.

**COLEUS.** There are few seeds more easily grown than Coleus. Splendid mixed. 10c pkt.

**Coleus, Large Leaved.** Very choice 15c pkt.

**CYCLAMEN, Giganteum.** ..Giant flowered cyclamen. Splendid flowers of great beauty. Mixed 15c pkt.

**DAHLIA, Mrs. Shepherd's Giant Cactus, "Monarch of Dahlias."** A most beautiful, deep, velvety red variety. For description see plant list. 10c pkt.

**Imperialis, The Giant "Lily Dahlia."** The most beautiful of all varieties. Blooms the first year from seed. For description see plant list. 15c pkt.

**Panicles.** See description under plants. Pkt. 15c.

**DAISY, Improved Shasta.** Flowers 3 to 3½ inches in diameter, on long slender stems. They have two rows of broad, snowy white petals that last a long time in perfection. Blooms from seed the first year. Fine for cut flowers. Hardy perennial. 10c pkt.

**DIANTHUS, Giant Flowered Japanese "Oriental Beauties."** The flowers possess that artistic charm, so noticeable in all flowers from the Flowery Kingdom. They range in color from pure white, through all shades of pink and crimson. Hardy and perpetual bloomers. 10c pkt.

**DELPHINIUM GIANT HYBRIDS.** A splendid race of delphiniums, or hardy larkspur. They attain a height of 6 to 10 feet, and give splendid spikes of very large double and semi-double flowers, from two to four or five feet of their length. Of most exquisite shades of blue; also purple, white and lavender. If cut back after blooming, they will bloom much longer. They are perennial, come up every year. Pkt. 20c.

**ERYTHRINA Cristi Galli, Coral Tree.** Attains a great size in California; the spikes of large red, pea-shaped flowers are grand. 10c pkt.

TRY OUR FINE STRAINS OF "PETUNIA" SEEDS.—THEY ARE THE BEST GROWN

**MRS. SHEPHERD'S GIANT ESCHSCHOLZIAS, Golden West.** Grand Eschscholtzias, having bright, canary yellow flowers with a huge orange blotch at the base of each petal. The flowers are from 4 to 6 inches in diameter, with very large overlapping petals, often delicately waved at the edges. They are beautifully and variously formed; some flat and wide open, some saucer-shaped; others very deep with flaring edges. 10c pkt.; three pkts. 25c.

**Hunnemania, or Bush Eschscholtzia.** (Mexican.) Pkt. 10c.

**Erecta Compacta. (Burbank)** Rose color, the petals, both inside and out, being of one color. 10c pkt.

**FERN SEED.** Choice mixed. 15c pkt.

**FUCHSIA.** Named from a beautiful collection of named sorts. Fuchsias bloom from seed in about six months or a year. Double and single, mixed. 15c pkt.

**GERANIUMS. Mrs. Shepherd's Grand Zonale, "Good Venture Strain."** The flowers are large and round, perfect form with splendid trusses, some forming balls 16 inches incircumference. Color shades of scarlet and crimson, rose pink, salmon, cream, veined pink, and pure white. Many varieties of Souvenir de Mirande type, greatly enlarged and improved, new auriole types with lovely rings and large white eyes. A finer collection has never been offered. 10c pkt.

**Double.** Choice mixed. 15 cents pkt.

**Bronze and Gold.** 10c pkt.

**Ivy Leaf.** Mixed. 15c pkt.

**Apple Scented.** 10c pkt. One packet of each sort of the above Geraniums, 50c.

**Lady Washington.** From named varieties. Mixed pkt. 25c.

**GENISTA Monosperma Pendula, Bridal Veil.** Beautiful, half hardy shrubs forming large plants with long pendulous, silvery green branches finely divided, round and bush-like which are draped most of the time their entire length with small pea-shaped flowers, borne on two little spikes from 1 to 3 inches in length. A plant three of four years from seed will cover a space from 12 to 15 feet square. 10c pkt.

**GYPSOPHILA Muralis. Pink and Elegans.** White. Dwarf annuals of compact growth. Height 1½ feet, useful for edgings. Each 5c pkt.

**Paniculata.** A graceful hardy plant, fine for bouquets; flowers in feathery white panicles; height 1½ feet. 5c pkt.

**HEUCHERIA Sanguinea.** A charming new plant that forms a low-growing rosette of pretty leaves; surmounted by slender stems crowned with a number of lovely airy coral red flowers. Beautiful for bouquets. 10c pkt.

**HELIOTROPE, Lemoines Giant Hybrids.** The flowers of these varieties are larger than the ordinary heliotrope; the foliage is also larger, and the trusses immense. often six inches across, very beautiful shades of purple. Splendid mixed. 10c pkt. **Black Heliotrope.** 10c pkt.

**IPOMEA, "Heavenly Blue."** A beautiful annual morning glory. The flowers are in large clusters, and are of that indescribable heavenly blue so rarely seen in flowers. The throat is yellow inside, spreading softly into blue. The flowers measure 4½ to 5 inches across, and about 10 o'clock in the morning no lovelier sight can be imagined than this vine; the great profusion of flowers almost rendering the foliage invisible. 10c pkt.

**Learii. "Blue Dawn" flower.** The flowers are of the most intense violet blue, with reddish purple rays, and are 4 inches across; there is nothing in color that exceeds in richness the flowers of "Ipomea Learii." A half hardy perennial. 10c pkt.

**White Tassel. "Double Morning Glory."** This might be called an "All Day Glory," as it remains open during the entire day. It is white, very double and fringed, with delicate purple marks in the center of the flower. Hardy annual. 10c pkt.

**Imperial Japanese.** Ruffled and frilled. A bewitching new class of morning glories from Japan. Beautiful colors in great variety. Hardy annual. 10c pkt.

**LATHYRUS Splendens. "Pride of California."** A splendid hardy native perennial pea with fine foliage and a profusion of large pea-shaped blossoms of a deep, rich, velvety crimson in clusters of ten or more. The buds are a charming rose-pink and the contrast of buds and blossoms is most pleasing. Always scarce. 20c pkt.

**LOBELIA Cardinalis. "The Beautiful Cardinal Flower."** Bears spikes of the most brilliant cardinal, lobelia-like flowers on long stems. The dark foliage forms a fine contrast with the gorgeous flowers. Hardy perennial. 10c pkt.

**Crystal Palace Gem Compacta.** Fine for borders; deep, beautiful blue; very dwarf. Finest mixed. 5c pkt.

**Erinus Varieties.** Choice mixed 5c pkt.

**MANDEVILLA Suaveolens Grandiflora.** Beautiful white climber, with fragrant flowers. See full description in plant list. 10c pkt.

**MARIGOLD.** The African and French Marigolds are old favorite free flowering annuals of easy culture; both are extremely effective. The former have uniformly large yellow or orange-colored flowers, and are well adapted for large beds or mixed borders; the latter are dwarfer in growth, with beautifully striped flowers, and better suited for bedding purposes, or for pot culture. They succeed best in a light soil, with full exposure to the sun.

**Double African.** Mixed 10c pkt.

**Double French, Mixed,** 10c.

**MAURANDYA Barclayana.** An old and very pretty climber, with gloxinia-shaped flowers and dainty pointed heart-shaped foliage. Choice mixed 5c pkt.

**MESEMBRYANTHEMUM.** Fine for borders, will thrive in a dry climate with very little water; easily grown from seed. Splendid mixed. 10c pkt.



**MIGNONETTE, Golden Queen.** Rich golden color. **Giant White Upright**, long spikes of white, fine for bouquets. Choice mixed. 5c pkt.

**Goliath**, 10c pkt.

**MINA LOBATA.** Showy annual climber. Pretty deeply-lobed leaves, numerous long divided spikes of blossoms, bright yellow at the base, shading into deep red buds at the end of the spike. This strong contrast of red and yellow forming masses of color, gives an effect of fiery flames. Bloom is profuse for many months. It should be started in the East early in small pots, and allowed to become pot bound, before planting outside. 10c pkt.

**MYOSOTIS. "Forget-me-not."** Large flowering. Splendid mixed. 5c pkt.

**Mrs. Shepherd's Climbing Giant Nasturtium**

The first giant Nasturtiums ever offered were originated by Mrs. Shepherd and introduced by W. Atlee Burpee, the well-known seedsmen of Philadelphia, (Sunlight, Moonlight, Caprice, Butterfly and Twilight,) which are still offered as the finest varieties in existence.

**Butterfly.** Golden yellow, with palmate flushes of terra cotta on the three lower petals, while the rich red markings on the two upper petals resemble a peacock feather. 10c pkt.

**Caprice.** A capricious variety that comes variously marked or marbled at different times, yellow overlaid with blendings of deep velvety reddish brown, and again dark marked with yellow, rarely two flowers alike. 10c pkt.

**Cream Cup.** A fitting companion to Jupiter, of which it is the counterpart, except that its color is cream, almost white. They are fine for cutting and especially effective for bowls or vases, either alone or used with golden Jupiter. 10c pkt.

**Jupiter.** This superb Nasturtium attracts instant attention by the great size and the exquisite form and rich color of the flowers. It is the largest Nasturtium that has ever yet been offered. Flowers  $3\frac{1}{4}$  to  $3\frac{1}{2}$  inches in diameter, the petals  $1\frac{1}{4}$  inches across. When the blossoms first unfold they have a most beautiful crinkled, crepe-like look, and when well opened they retain much of the crepe-like effect. The petals overlap, and the flowers are exquisitely formed. Color rich brilliant yellow. 10c pkt.

**Moonlight.** The counterpart of Sunlight, except that it is a lovely straw color. 10c pkt.

**Rivers of Gold.** Very vigorous with large golden yellow leaves, and flowers, colored with tawny and coppery shades. 10c pkt.

**Saturn.** Resembles Jupiter. Large round, smooth petals in shades of brightest tawny red, like rich velvet. 10c pkt.

**Sunlight.** A beautiful giant flowered, golden-yellow climber, that gives myriads of splendid large delicately crinkled flowers. 10c pkt.

**Twilight.** At first almost clear salmon pink overlaid with yellow, changing with age to



Mrs. Shepherd's Jupiter Nasturtium

lighter shades, pink and yellow. 10c pkt.

**Giant Climbing.** Splendid mixed. 10c pkt.

**Nasturtiums Dwarf "Gay and Festive"**

**"Tom Thumb"** A beautiful strain of Dwarf Nasturtiums. Clear golden-yellow, salmon pink, dark red, golden brown, all shades of yellow variegated with red and brown, canary color, terra cotta, orange and black, 5c pkt.

**Empress of India.** Dark foliage and deep scarlet flowers; one of the finest varieties grown. 5c pkt.

**Superb Giant Pansies**

**Giant Ruffled.** A very distinct new variety so large and full that the broad petals are ruffled, undulated and frilled. Borne on long stems high above the foliage and of such great substance as to stand heat and sun better than the older sorts; they are fine blotched and have some fine new markings and colors. Splendid mixed. 25c pkt.

**Bugnots.** Splendid blotched. A celebrated French strain of extra large size, choicest colors, and with beautiful broad blotches and delicate penciling; a very shy seeder; the ground colors are generally white or very light, bringing the elegant and distinctive markings, in strong relief. 25c pkt.

**Mammoth Butterfly.** A strain of pansy which for variety and beauty has never been excelled. Of matchless forms, colors and markings, with flowers half as large again as ordinary pansies. 25c pkt.

**Giant Trimardeau.** The largest and strongest pansies grown, with immense flowers of splendid colors. They are deep rooting and drought withstanding. 15c pkt.

Choice Mixed. 10c pkt.

## Passiflora

**Edulis.** The edible passion vine. It has pretty white flowers; the corona or fringe surrounding the center is beautifully crinkled. 20c pkt.

**Scarlet.**—The beautiful red passion vine of California. 15c pkt.

## Mrs. Shepherd's Marvelous Double Petunias

(See Page 6)

## Giant Petunias

(See Page 7)

**PHLOX Drummondii Grandflora.** For bedding and masses of color, nothing is more brilliant and effective than this showy annual. 5c pkt. Mixed.

## Gay and Festive Poppies

**Admiral**—A single peony-flowered variety of surpassing beauty, having large, smooth-edged flowers of glistening white, with a broad band of brilliant scarlet around the top. These two colors form a very striking contrast, and when planted in groups produce a magnificent effect. 15c per pkt. 2 pkts. 25c.

**Fayal.** Most beautiful and dainty of all poppies, every conceivable shade of red, pink, maroon and white, self and variegated, double and single, large and small flowers. 5c pkt.

**Fairy Blush.** A charming variety, with immense globular, perfectly double flowers, which will measure from 10 to 12 inches in circumference. The petals are elegantly fringed and pure white, except at the tips, which are a rose-cream color. The flowers at a little distance have the effect of large, white feathery balls, overcast with a rosy shade. Each plant has from 3 to 5 of these magnificent flowers open at one time, and lasting longer than any other poppy. 10c pkt.

**"Irresistible"** This grand poppy received its name because everyone who saw it, wanted it, and picked the flowers without ceremony, saying for excuse: "I had to have them, they were so beautiful." It grows 5 feet or more in height; the flowers are immense and perfectly round. Color is a beautiful light red, petals fringed. It is the most showy and beautiful double peony flowered poppy ever offered. 10c pkt.

**"Maid of the Mist."** Mrs. Shepherd's lovely single, peony-flowered, white poppy. Flowers from 7 to 9 inches across; petals very large, overlapping, daintily incurved, deeply and irregularly fringed. The ovary a beautiful, silvery, pea-green; the stamens long, with light, tan colored anthers. The flowers are borne on long stems, and instead

of looking upward, as do most poppies, turn their faces outward. The ovary, encircled with its fringe of stamens, and white, fluffy petals, suggests a pretty face looking out of the mist. 10c pkt.

**Oriental Hybrids.** Grand, hardy, perennial poppies. Flowers average 6 to 9 inches across. Are splendid pink, blotched with purple; blood red, blotched black; glowing scarlet; reddish orange; salmon, etc. Mixed 10c pkt.

**Burbank's "Santa Rosa" Strain of Shirley Poppies.** "Produced by years of rigid selection and acknowledged to be the best and most varied strain in existence; unusually large flowers, remarkably clear colors, including new striped, new salmon shades and new blush ones. Mixed 10c pkt.

**Snowdrift.** An exquisite snowy-white poppy with beautifully fringed petals. Very double. 5c pkt.

**Tulip Flowered.** A new poppy of great brilliancy and beauty, having a flower which in shade and color resembles a great flaming tulip. Its color is most intense scarlet, and it blooms at least two weeks earlier than any other poppy. 5c pkt. One pkt. each variety of poppies 50c.

**ROMNEYA, or "Matilija Poppy."** The great California Tree Poppy. One of the grandest of California native plants, with beautiful pure white crinkled petals, with a mass of elegant stamens. The flowers measure 5 to 6 inches across. It is very difficult to propagate, either from roots or seeds; but once started grows without care. It is rarely found in any nursery. Very slow to germinate. 10c pkt.

**ROSA NANA, Multiflora Perpetual "Little Midget" or "Baby Rose."**—A class of dwarf everblooming diminutive roses easily grown from seed; blooming when two or three inches high. The leaves are quite small and the little flowers are borne in large clusters, double and single, white, pink and red; one-half to one inch in diameter, and resemble fruit blossoms. Exquisitely dainty and pretty, followed by bright red hips or berries, which should be cut away if continual flowering is desired. 10c pkt.

**SCABIOSA, Pincushion Flower.** One of the handsomest summer border plants, producing very double flowers in a large variety of shades and colors; a splendid flower for table bouquets, etc. Tall mixed 5c pkt.

**SALVIA Splendens Grandiflora Pendula.** A beautiful variety that bears very long, drooping spikes of flowers; larger and handsomer than the old splendens. 10c pkt.

**Salvia Patens Blue.** (Beautiful color). 15c pkt.

**SMILAX.** This plant has beautiful, small glossy foliage. It is a rapid grower and, without exception, one of the finest climbing plants. 10c pkt.

**SNAIL VINE.** (Phaseola Caracella). 10c pkt.

TRY OUR FINE STRAINS OF "PETUNIA"

SEEDS.—THEY ARE THE BEST GROWN

**GIANT SNAPDRAGONS** (*Antirrhinum majus grandiflorum*.) The Snapdragons are now beginning to receive the attention they deserve. They are undoubtedly one of the best cut flowers, which can readily be grown from seed, while for beds, or borders they are a constant source of pleasure, being in flower all the time. They succeed best in a rather light soil, in a sunny position, and although perennial are best treated as annuals. Large flowered mixed, 10c pkt.

**STEVIA, Serrata.** Free-blooming plants, bearing a multitude of fragrant pure white flowers; suitable for summer or winter blooming; largely used for cutting. 10c pkt.

### Stocks New "Cut and Come Again"

Stocks or gilly flowers are among the old-fashioned ones of our childhood, that have never lost their charm, and are still enjoyed for their fragrance and beauty. These new ten weeks stocks are perpetual bloomers.

**Oriole**, a fine, soft, lovely yellow. **Dazzler**, a glowing crimson. **Splendor**, fine violet blue. **Winsome**, beautiful light blue.

**Princess Alice**, pure white. **Beauty of Nice**, A soft pink, will bloom all winter. **Blue Bells**, Lovely blue. **Queen Alexandra**, Delicate rosy lilac. **Rosy Morn**, Rosy flesh-colored. 10c pkt; 5 for 75c.

**Giant Perfection.** Too much cannot be said in praise of giant perfection stocks. Their growth is strong, and the magnificent spikes of very large double flowers are superb. Mixed 10c. White 10c pkt.

**STOKESIA Cyanus.** A beautiful hardy perennial with large lavender-blue, centaurea-like flowers. 10c pkt.

**STREPTOSOLEN Jamesoni.** A beautiful showy plant, with great clusters of brilliant flowers; reddish-orange at first, turning to bright yellow later. A persistent and perpetual bloomer. Easily grown from seed. Greenhouse perennial. 10c.

**SWAINSONIA Alba.** Finely divided foliage and long spikes of snow white pea-shaped blossoms; invaluable for cut flowers and most ornamental in the garden; fine for conservatory. The seeds germinate very slowly, and should be soaked before planting. 15c pkt.

### Sweet Peas in Lovely Variety

- Apple Blossom. Rose and pink; beautiful.
- Aurora Gigantic. Striped orange and white.
- Blanche Ferry. Pink and white; charming.
- Blushing Beauty. Pink, suffused with lilac.
- Celestial. Lovely azure blue.
- Countess of Radnor. Lavender.
- Daybreak. Watered scarlet, white ground.
- Double White. Beautiful, occasionally double flowers.
- Burpee's Earliest of All. Earliest sweet pea; pink and white.

- Emily Henderson. Snowy-white; early.
- Fire Fly. A deep brilliant scarlet.
- Gorgeous. Brilliant orange salmon, heavily veined in a deeper shade; very large flowers.
- Her Majesty. Large flower; bright rose carmine.
- Imperial Blue. Blue, shaded.
- Katherine Tracy. Bright pink.
- Lovely. Rose pink, extra fine.
- Mars. Bright scarlet.
- Mrs. Dugdale. Deep rose, fine for cutting.
- Prima Donna. Lovely soft pink.
- Ramona. Creamy white, splashed pale pink.
- Royal Rose. Deep crimson, rose wings.
- Sadie Burpee. Immense white.
- Salopian. Deep rich crimson red; very large and fine.
- Splendor. Superb rose, shaded crimson.
- Stella Morse. Creamy pink rosy apricot.
- Venus. Salmon-buff, shaded rose pink.
- Choice Mixed. Each of the above 5c pkt. 25c for six. 50c per doz. \$1 for the entire collection.

### New Sweet Peas

- A. J. Cook. Light rose-purple and bluish heliotrope; large flowers of Gladys Unwin form. 10c.
- Countess Spencer. The grand original from which the new Sweet Pea race has sprung. Gigantic flowers of perfect form with round open-waved standards and large wings. Coloring bright pink, slightly deepening towards the edges. 10c.
- E. J. Castle. Rich carmine-rose with darker rose veinings. A splendid addition to the Unwin class. 10c.
- Florence Morse Spencer. Giant flowered, white and blush, with pink edge. pkt. 10c.
- King Edward VII Improved Firefly). The new red which is taking precedence over all other red shades, pkt. 10c.
- Lord Nelson. An improved navy blue, the flower being larger, of finer form and of richer indigo blue; wings of toned purple. Received an award of merit from National Sweet Pea Society. 10c pkt.
- Lady Grisel Hamilton. Soft lavender, tinted with mauve. 10c pkt.
- Mrs. Geo. Higginson Jr. A clear azure blue. 10c pkt.
- Nora Unwin. A magnificent white "Gladys Unwin," immense flowers of snow-white; very free-flowering. 10c pkt.
- Primrose Spencer. A decided acquisition, being the first yellow Sweet Pea introduced of the large open waved standard, Spencer type. The color is of pronounced primrose-yellow, holding its own with any of the so-called yellows, while it surpasses all others of this color in size of flower, length of stem, vigor of growth and profusion of bloom. 15c pkt.
- One of each of the above, 75c.

TRY OUR FINE STRAINS OF "PETUNIA" SEEDS.—THEY ARE THE BEST GROWN

**TECOMA Velutina.** A splendid shrub that bears spikes of large flowering golden yellow flowers, resembling Allamandas. It far surpasses *T. Smithii* in every way. 10c pkt

**Mackennii.** A grand new climber, of rapid growth and habit. The foliage is very handsome and the long trailing branches are covered from May to October, with large spikes of exquisite pink gloxina-shaped flowers, the throat veined with darker shades of pink. A most showy, beautiful and satisfactory flower, and easily grown. 10c pkt.

**THUNBERGIA Alata.** A beautiful climber, grown as an annual in the Eastern States, but is perennial in California, growing 10

or 12 feet high. A profuse and perpetual bloomer; leaves are long heart shaped, the flowers funnel shaped, measuring 1½ inches across; colors orange, straw and white, either plain or with dark maroon throats. Mixed 5c pkt.

**VERBENA. Mammoth.** Pure white, pink and scarlet, separate. 10c pkt., two pkts., 15c. Splendid mixed. 5c pkt.

**ZINNIAS. New Curled and Crested.** The large curled and crested petals give a softness and beauty to the flowers. The form and colors are beautiful, and have none of the stiffness of the old-fashioned zinnias. 5c pkt.

## FIBROUS BEGONIAS

(See also under Specialties.)

**Invaluable for House or Conservatory, Courts and Pergolas, Brilliant for Bedding, Useful for Graceful Lines of Color.**

We wish every one who really loves flowers to become better acquainted with this charming and useful class of plants. They are easily grown and give better returns for room and care than almost any other class of plants. They will not endure frost, heavy winds or hot sun, but if planted in sheltered locations, given light, rich soil, plenty of water and partial shade, all varieties will thrive, while many will do well grown in full sunlight. We have divided them into classes, with some suggestions as to their adaptations, and hope all our customers will grow at least a few for either house or garden. The most useful for planting in all locations is the *semperflorens* class, which grow in round bunches, with many branches coming straight from the soil. They attain the height of 6 inches to 2 feet, are perpetual and brilliant bloomers, forming masses of color for months of the year. After growing up and bearing a crop of blossoms, the old stems should be cut away and the plants will spring up from the roots, blooming as they come. Plants will often continue this way, without being divided, in our climate, for three or four years, blooming all the time. Begonias are semi-succulent, which gives them great powers of endurance, so that they do not wither easily and can be transplanted without injury, and moved to other parts of the garden or to pots.

Begonias can be seen in our garden and greenhouses from 6 inches to twelve feet in height, growing at all seasons of the year, and always in bloom. When all other flowers are scarce, we always have quantities of begonias. While they are valuable for house plants and for summer bedding outside, they are simply ideal in California all the time. We would suggest to Eastern customers planting begonias outside in the summer in partially shaded places, which will give them a vigorous growth for winter if taken up with care and potted in September.

### Mrs. Shepherd's Giant Climbing Begonia "Marjorie Daw"

This superb Begonia, a cross between *Ruba* and *Glaucophylla Scandens*, is a wonderfully strong and vigorous grower, and splendid bloomer. Large, well established plants send up strong shoots 5 to 10 feet high, that branch freely, and give quantities of handsome foliage and numbers of fine flowers borne in large, drooping clusters on strong stems. The individual flowers two inches in length, are a soft, beautiful pink, very shiny and waxy. The foliage is light green, thick and leathery, and resembles that of both parents. *Marjorie Daw* is a very valuable addition to California climbing plants, being a "Native Daughter," it is well adapted to the climate and grows to perfection in sheltered places. Like all begonias, it requires a light, rich soil and plenty of water. It is valuable for cut flowers; a large specimen giving great quantities of exquisite sprays for cutting. Smallest size 15c; \$1.50 per doz. 2½ inch pots 25c; \$2.50 per doz. 4 inch pots 50c; \$4 per doz.

### MRS. SHEPHERD'S GRAND TREE BEGONIAS

Words are inadequate to describe the beauty of these splendid Begonias as they appear in our lath and greenhouses. Of the President Carnot type, but greatly superior. All have large, oblong leaves and immense panicles of very large flowers in shades of pink and red. They are tree-like, strong and robust, sending up a great number of canes to the height of 6 to 10 feet. Foliage yellowish or bronze-green, exquisitely beautiful in texture, with shining silken lustre. The difference between the various plants consists in size and shape of the leaves, and the brilliant colors with which they are at various times tinged or illuminated; they change in the different stages of growth. The shades of color are bronze, red, terra



Lath House with Mrs. Shepherd's Tree Begonias.

cotta, old rose, delicate pink, wine color, copper, yellow-feathered green, and other blendings indescribable. The underside of the leaves is a rich wine color, claret, terra cotta, and in some varieties they are charmingly flushed with these lovely colors. The leaves frequently measure 15 inches in length, by 7½ inches across. The young foliage is sometimes spotted with silver.

**Atala.** Large leaves with three rather blunt points, dotted with large and small silver spots; mulberry red underneath. Young foliage a dark bronze red. Flowers bright pink.

**Beatrice.** A stately plant, with graceful arching branches and beautiful lustrous foliage that changes in all stages of growth like autumn leaves, which are a bright terra cotta red underneath, and handsomely spotted with silver above. Flowers hang in long, drooping graceful panicles; bright scarlet with rose colored petals.

**Beauty.** Large, dark green leaves, having four points; the texture is exquisite, like changeable silk, and waved at the edges. Young foliage is old pink, veined green changing to darker colors. The handsomest begonia of all.

**Daphne.** Grows in a bushy form. The leaves are red underneath, and a light satin green above; oblong, with one long point and lightly pointed above the lobe. The young foliage is a golden copper color, veined with green. It is a splendid bloomer, being completely covered with panicles of lovely shaded pink flowers.

**Enchantress.** Very large, shining, dark green leaves with dark red edges, prettily waved; underneath rich, shining wine color. The young foliage, coppery green, shaded with terra cotta. Foliage when old, is also brilliant; it bears immense clusters of very large flowers of a beautiful rich rose color, shaded red.

**Ernani.** A tall stately plant of magnificent habit with splendid foliage. An old well established plant will throw up canes to the height of 8 feet, and form an imposing sight with its splendid leaves and grand panicles of elegant flowers hanging from long stems. The foliage is beautiful at all times.

**Flammarion.** A rich looking plant, very dark foliage. The leaves are a deep green; mulberry red underneath; the leaf stem also very dark. The dark crimson flowers are in large panicles; the plant is never without flowers.

**Fair Rosamond.** A splendid, stately begonia, that sends up strong canes to the height of 6 to 8 feet. The leaves are a lustrous, changeable bronze green above and a rich wine color underneath. They measure 15 inches in length by 7½ inches in width; oblong shape, running to one long point, with three smaller points on the upper side. The young foliage is a bright red, sometimes spotted with silver. The magnificent panicles of exquisite waxen flowers hang from long stems and are a deep rose red col-

or, shaded lighter rose. The pistillate flowers measure 2½ inches in length.

**Heart's Delight.** This lovely begonia will delight the heart of any lover of these flowers. It does not grow as tall as the others, but has satiny changeable green leaves with three points, edges delicately fluted and edged with dark red, underneath changeable reddish-green veined red. The flowers are pure coral-red, the pistillate flowers are 2 inches long and 2 inches from tip to tip across the petals.

**Ilanthe.** A very tropical looking begonia of the same type as others of this class, but having larger foliage. Leaves immense, dark red underneath, dark shining green above and closely covered with large silver dots. The large clusters of flowers are a rich, dark shining red.

**Day Dream.** The most rapid grower of all. The foliage is spotted silver; is smaller, and has sharper points than the other kinds. Magnificent for large clusters of exquisite pink flowers; makes a splendid tall large plant. We can supply these begonias from small mailing sizes to specimens in 12 inch pots. Smallest size 25c each, 5 for \$1; larger sizes, 35c, 50c, 75c, \$1 to \$15 each; by the dozen assorted, \$2.50, \$3.50, \$5, and \$7.50.

## Mrs. Shepherd's Seedlings From Pink Rubra

**Hebe.** Light green foliage. Young leaves spotted with silver. Old leaves often measure 10 inches by 4½ inches. The plant, if allowed, will grow 6 or 8 feet high. The flowers are pale pink of an exquisite melting shade, indescribably beautiful; a perfectly lovely begonia. 25 and 50c.

**Rubra "Bamboo."** The stems of this giant begonia shoot up like canes of bamboo. It has strong, rich foliage, thick and leathery. The bright, young foliage is covered with large silver spots. It bears immense panicles of bright red flowers on very long stems. 25c.

## Mrs. Shepherd's Other Seedlings

**Incarnata "California."** A seedling from "Incarnata," of much stronger habit, with leaves twice as large, and prettily waved; flowers a deeper shade and much larger, and in large panicles. A vigorous grower and always in bloom. 15c.

**Sylvia.** A very pretty seedling from Incarnata California," with a beautiful lacinated foliage and a profusion of dainty pink flowers in graceful drooping clusters. Forms a round handsome plant; always in bloom. 15c.

**Catalina.** A seedling from Digswelliana, but much handsomer. The stems are dark red, the leaves prettily fimbriated. The flowers grow in pairs larger than those of the parent plant. Color white, flushed with pink on the under side of petals. A valuable and pretty plant, sure to please. 15c.

## Mrs. Shepherd's New Bedding Begonias

### SEMPERFLORENS CLASS

**"Sea Shell."** A very pretty bedding and pot plant, grows about two feet high. The foliage is a bright shining green and the flowers pure white with a wide, bright pink margin, suggesting the delicate pink tints of a sea shell. An exquisite flower. 25c.

**"Brilliant."** Resembling Vernon, but of a more intense shade of red, foliage dark red; a fine bedding plant. 15c.

**Vernon.** Stands the hottest sun, which makes it invaluable for bedding purposes. It grows in round compact masses. The leaves are rich green, shaded with bronzed-red. The flowers are brightest red and are produced in greatest profusion. 10c, 25c. \$1.00 and \$2.50 per doz.

**"Vernon," Pink.** A lovely shade of pink, fine for house or garden. 15c to 25c each. \$1.50 to \$2.50 per doz.

**"Zella Fay."** We do not often name begonias for people, but Zella Fay is such a pretty name and Zella herself was present at the christening. As I looked at the charming new begonia and at the one for whom it was named, the name seemed so appropriate I could not resist the temptation hence the deviation. This plant bears larger clusters of flowers on longer stems than any of the others. The color is pure white in the center, with margin of rich salmon pink. Small plants 25c. Larger 50c.

**"Pink Treasure".** A seedling from Erfordia finer and larger in every way. It is very spreading in habit and forms large round masses of foliage, the long branches covered with sprays of exquisite pink flowers. Fine for vases, keeping fresh and beautiful for several days. 15c.

## GENERAL COLLECTION OF FIBROUS OR SHRUBBY BEGONIAS

No plants have more enthusiastic admirers than fibrous rooted Begonias. They consist of many classes and varieties, very diverse in flowers and foliage. A garden can be made of begonias with the addition of ferns and palms. They grow from 6 inches to 10 to 15 feet or more in height, and the always beautiful foliage measures from a half inch to 15 or 20 inches in diameter. The flowers grow in fine sprays, borne either upright or in clusters, or long drooping panicles. The colors white blush and shades of pink and red. Their habit is dwarf and dainty, gracefully lovely. They grow to the greatest perfection in California if given the proper environments. They require partial shade, a rich soil, and plenty of water. Some varieties are fine bedders and stand the sunshine well, giving thousands of flowers, and blooming without interruption for months; others require a more sheltered location, but all are more hardy than their appearance would indicate.

## New Begonias

**Paul Bruant Variegata.** A splendid novelty. The foliage is beautifully variegated, bright golden yellow and clear green. The flowers are the same exquisite shades of pink as the plain Bruant; it is equally floriferous. A superb plant. 50c.

**Luxuriant.** A beautiful begonia, having large, dark green velvety leaves, bright red underneath. The large flowers grow in fine drooping clusters and are white, tinged pink. 25c.

**Viaudi.** A cross between Pictavense and Duchartrei, but more vigorous. The leaves are large dark green, thick and velvety, dark red underneath. The creamy white flowers which rise on long stems, are adorned with bright red silken hairs, the buds resembling little balls of red chenille. 25c.

**Scandens Alba or "White Fairy."** An old begonia, but little known. We have given it the common name of White Fairy because of the fairy like appearance of the exquisite flowers. Its habit is climbing or trailing, making it invaluable for baskets. The branches are flat with shiny leaves facing one way, and the large spreading panicles of small pure white flowers, have an airy fairy-like look that is enchanting. Out side it will grow six feet high. 25c.

**Climbing White.** A strong grower, reaching the height of 5 or 6 feet if given support. It produces large clusters of pure white flowers. 25c.

**Mastodon.** A strong, splendid plant with large waxen leaves like semperflorens gigantea rosea, but producing much larger blush-white flowers, in great clusters. A most beautiful begonia, and always scarce. 50c.

## Large Leaved Varieties

A class whose natural habit is to grow prostrate with heavy stems that root along the ground, and send up branches with numerous stems, and very long stemmed leaves and flowers.

**Ricinifolia.** A fine tropical plant with large ricinus-like leaves, 12 inches or more in diameter, on long stems; deep velvety green above, and purplish red underneath. The flower stems three or four feet above the foliage bear fine large airy panicles of beautiful pale, pink flowers. The stems grow along the surface of the ground. It makes a fine pot plant, and grows very large when planted outside. Small plants 20c; large sizes 30c, 50c and \$1 each.

**Ricinifolia Maculata.** A rare variety having large deeply lobed leaves with ruffled edges. The color is a rich yellowish green, stained and veined with lighter and darker shades. The flower stems are long; the flowers in spikes, and beautiful pink, shaded light pea green; they are very pretty and will keep well; a winter bloomer. 35c.

**Ricinifolia Nigricans.** A variety with very beautiful foliage of the ricinifolia type. The

lustrous dark green lobed leaves have a greenish black tint around the lobes, pretty white flowers are shaded green; very rare and beautiful. 50c each.

**Rubella.** A very popular variety with leaves somewhat smaller than the two above. They are pallid, shining brownish green, spotted with numerous irregular dark brown spots; pale pink flowers on rather long stems. 25c and 50c each.

**Verschafeldti.** A most beautiful plant with numerous large, shining green leaves crowned by airy panicles of long stemmed pink flowers, so numerous as to give a lovely cloud-like effect. A winter bloomer. 25c to 50c each.

**Carolinifolia.** A variety seldom seen. It has massive prostrate or leaning branches, and long stemmed handsome compound leaves, composed of eight simple oval leaves with stems joined together in the center, they sometimes measure a foot across; flowers delicate blush pink in airy panicles. A grand begonia. 25c, 50c, to \$1 each.

## Bedding Varieties

**Semperflorens Type.** Double and Single. The most hardy class; will grow in sun or shade. Six inches to two feet high. They grow in round masses, stems springing directly from the ground; clusters of flowers at the axle of every leaf; more effective and brilliant than any other flowers, and lasting for months. When the old flower stems are done blooming, plants can be cut back to the ground and will immediately begin new growth and bloom. Fine also for pots and baskets. The double ones below of the semperflorens class, are of strong robust habit, and bear from every branch clusters of charming double flowers, like miniature roses. They are equally free for bedding as the single varieties, standing the sun well.

### DOUBLE

**Triomphe de Lorraine.** A profuse bloomer, flowers quite double with pretty lacinated petals; color of buds bright scarlet, changing to rosy carmine when opened. Stamens bright yellow, making a fine contrast with the red flowers. Rich dark foliage like Vernon. 15c, 25c, 50c.

**Boule de Neige.** Light green waxen foliage, and clusters of charming flowers like white roses. A perfect beauty. 25c.

**Glorie de Monet.** Double semperflorens, with handsome dark foliage and large pretty pink flowers like little roses. 15c, 25c, 50c.

### SINGLE

**Magnifica.** A charming plant from Europe, of compact habit, small, beautiful, bright red leaves and stems, and bright red flowers. An exquisitely bright little thing. It grows about twelve inches high. 25c and 50c each.

**Gracilis.** Resembling the above but with more spreading habit, small green leaves and innumerable bright pink flowers, charming. 15c and 25c.

**Erfordia.** A low growing variety of very graceful habit, with pretty shining leaves, and bearing continuously the greatest profusion of dainty pink flowers. A splendid bedder; stands the hot sun well. 10c, 25c, 50c each.

**Snow Wreath.** The same general habit as Erfordia, and equally as valuable as a bedding plant, but with snow white flowers; a charming plant. 10c, 25c, 50c each.

**Bijou, "Carpet Begonia."** Of dwarf compact habit, growing only about 8 inches high, giving charming red flowers. All the semperflorens class are very brilliant bedders, giving a mass of bright color for months. 10c, 25c. \$1 and \$2 doz.

## Small Leaved Varieties of Spreading Habit, Perpetual Bloomers, Fine Bedders

**Hybrida Multiflora.** An old but always beautiful plant, with small oval-shaped leaves, and showers of dainty drooping clusters of pink flowers. It grows very tall outside in California and is invaluable in a collection. 10c and 25c.

**Fuchsoides Coccinea.** Of the same general habit, but with larger leaves and bright scarlet drooping fuchsia like flowers. 10c and 25c.

**Foliosa.** Like the two above but with smaller leaves that are daintily crinkled at the edges. It is always covered with pretty white flowers shaded pink. 10c and 25c.

**Robusta.** A very bushy, spreading, graceful plant, with glossy foliage, and producing quantities of graceful deep pink flowers. 10c and 25c.

**Abundance.** The counterpart of Vesuve, except that the flowers are a lovely soft rose color. 10c and 25c.

**Chas. Roocker** A very fine, graceful plant with rather small shining leaves, and bearing numerous graceful, drooping clusters of bright scarlet flowers, always in bloom; very showy. 10c and 25c.

**Sandersoni.** Of the same class as the above, but growing only 18 inches high; always in bloom. Called "Coral Begonia" from its brilliant red flowers. 15c.

**Smithii or "White Gem."** Is dwarf and bushy, growing about 18 inches high. The leaves above are dark green and ruffled, underneath bronze red. The foliage and flowers are covered with minute hairs. The flowers are white inside, and pink outside; makes a fine pot plant; very pretty in baskets; invaluable bedder. 10c, and 25c; \$1 and \$2.50 per doz.

## Hybrids of the Metalica Type

**Metallica.** A beautiful old variety with oblong points, crinkled leaves shaded yellow green, covered with fine white hairs; red veins underneath covered with hairs. White flowers, covered with pink hairs on the outside, like plush. 25c.



**Pictavense.** A superb variety of easy culture; always in bloom. Leaves oblong pointed, resembling plush; shining dark green above, dark red underneath. Bears enormous clusters of long stemmed large white flowers, drooping in the most graceful manner. The buds and the outside of the flowers are covered with bright red hairs; very choice. 25c, 35c and 50c.

**Marguerite.** Leaves narrower and much smaller than any of the above; very dainty chenille-like buds; white when fully opened. 10c and 25c each.

## Begonias of Rubra Type

This class of begonias has strong, bamboo-like canes, oblong pointed, light green leaves and fine panicles of large drooping fuchsia-like flowers on long stems.

**Rubra.** A well known variety always in demand. Erect canes with light green, oblong pointed leaves and panicles, of many large drooping clusters of handsome scarlet fuchsia-like flowers. 25c each.

**Pink Rubra.** The counterpart of the above except that the flowers are pink. 25c.

**Alba Picta.** A miniature edition of Rubra, with very narrow, oblong pointed leaves ornamented with numerous silver dots. Flowers are greenish white, very numerous and drooping, giving a pretty cloud-like effect. 10c and 25c each.

**Rosea Picta.** Much like Alba Picta, except that the flowers are a little larger, and the flowers a beautiful rose-pink. A charming variety. 10c and 25c each.

**Wettsteinii.** Leaf smaller and more ornamental than Rubra, with lovely shaded coloring. The flowers are quite similar to Rubra, but a brighter shade and much more numerous. The plant more dwarf; beautiful. 15c and 25c each.

**Gloire de Lucerne.** A rare variety that is evidently a cross between Teucheri and Rubra, while the bloom is a most rosy vermilion in large clusters. The leaves are of beautiful form, broad and deeply lobed, bronze-green above and red below. The plant assumes a fine tree form. 15c, 25c and 50c each.

**Rubra Alba.** The foliage resembles Rubra, only lighter green, and the flowers are greenish white, with beautiful orange-colored pistils 25c each.

**Argentea Guttata.** One of the most easily grown and satisfactory begonias for amateurs. Strong and branching stems, and beautiful bronze-green leaves thickly spotted silver, underneath purple. Flowers are bluish-white, and always in blossom. 10c, 25c, 50c.

**Teucheri.** A very charming begonia with very dark satiny, bronze-green leaves; and bears fine clusters of beautiful large white flowers, tinged with pink. The only fine white of this class; contrasts well with the tree begonias. 25c and 50c.

## Tuberous Rooted Hybrids

**Evansiana or "Beefsteak" Begonia.** Beautiful sort with light green foliage, veined bright red underneath. It bears clusters of beautiful drooping pink flowers. It has a tuberous root and dies down every fall, and multiplies by little bulbils that form at the axils of the leaves. Dormant from November till April. 10c and 25c each; \$1 and \$2.50 doz.

**Weltoniensis.** A fine old variety with pretty satiny foliage and very abundant pretty pink flowers. 10c and 25c each.

**Weltoniensis Alba.** Resembles the above, but with light green leaves and stems; white flowers. 10c and 25c each.

**McBethii.** A very pretty variety, always in bloom, with finely cut leaves and snow-white flowers. 10c, 25c, 50c each.

## Begonias of Various Types

**Semplorens Gigantea Rosea.** A vigorous and erect grower. It has a very large flower, of a clear, cardinal red, the bud only exceeded in beauty by the open flower, which is borne on a long thick stem. The leaves are thick and glossy, and attached closely to the main stem; both leaf and stem quite upright growing, and forming a shrubby, round plant. It flowers continuously from October to May, and is withal one of the most satisfactory plants in the whole family. 25c and 50c each.

**Odorata Alba.** One of the most satisfactory begonias on the list. A strong, rapid grower with handsome oblong blunt pointed, glossy leaves, surmounted at all times by very large, airy panicles of lovely white flowers, delicately scented, like wild flowers. 10c and 25c.

**Odorata Rosea or Nitida.** Similar to the above, but with thicker and more glossy leaves. The beautiful clusters of flowers stand out above the foliage. Buds are bright pink; and the flowers are, when opened, white inside, and pink outside; always blooming. 10c and 25c.

**Gilsoni.** Large, smooth, upright growing. The leaf is sharp pointed and regularly toothed; long triangular form, very elegant. The staminate flowers are like a partially opened little shell, with the most exquisite dainty crinkled rosette in its center, forming charming double flowers. They are in clusters above the foliage; color, a delicate blush. 15c, 25c and 50c.

**Manicata Aurea.** Large glossy leaves beautifully blotched with yellow, with carmine etching on the mature leaves. Flowers delicate bluish white, on long stems. It is easily grown and is one of the finest ornamental foliage plants for the house imaginable; scarce. 25c and 50c.

**Paul Bruant.** A very handsome and easily grown plant, always in bloom. The foliage is oblong, pointed, with eight pointed lobes, and beautifully toothed, edged red. The color is soft pink, shaded green. 10c 25c and 50c each.

**Jessie.** Beautiful foliage of rich green, and is ruffled at the edges. It bears numbers of small pink flowers, so numerous at times as to give the whole plant a cloud-like appearance. 10c, 25c and 50c each.

**Compta.** A very distinct variety of tall growth, long light green leaves, and soft silvery gray lines, with ribs and veins like silver. The flowers are very small and grow above the foliage, and are snow white; exquisitely dainty. 25c each.

**Sceptra.** Beautiful foliage, deeply lobed, light green, crinkled, and spotted silver. Evidently a seedling from *Diadema*. 25c each.

**Washingtonia Rosea.** Dark green foliage covered with felt-like substance; pretty panicles of deep rose flowers. Free winter bloomer. 10c and 25c each.

**Washingtonia Alba.** Dainty panicles of pure white flowers, with fine glossy leaves; good winter bloomer. 10c and 25c each.

**Washingtoniana.** A very distinct old variety seldom seen, of very vigorous habit, attaining the height of 5 or 6 feet. The leaves are large, dark green and perfectly crinkled; the flowers are very small and are borne well above the foliage, on light airy panicles, fairy-like, delicately tinted mauve. 15c and 25c.

**Edmondsoni.** An old, but very handsome low growing plant with thick, round shining olive green leaves; dark red underneath. It sends its flowers twelve inches or more above the foliage; which are soft light pink. It blooms in the fall and winter. Very easily grown. 15c and 25c each.

**Myrabunda.** Not new, but scarce, with handsome foliage, shaped like a grape leaf and beautifully spotted with silver. A shy bloomer, but valuable for its foliage. 25c and 50c each.

**Dr. Natchtegal.** A most beautiful plant with large shining, rather crinkled glossy leaves. Sends out great spreading, graceful panicles of medium sized shaded pink flowers. A most lovely begonia—not new but rare. 25c.

## Beautiful Tuberous Begonias

A rare treat awaits those who are to see tuberous begonias in all their beauty for the first time. In six weeks after planting beautiful leaves and flowers develop together, and a shower of flowers continues till last of October. They grow equally well in pots or baskets, or in beds in sheltered locations in open ground, giving a wealth of splendid flowers from spring till late autumn, when they are dormant for about 4 months. The varieties are almost innumerable, the flowers all sizes from two to five inches in diameter, single and double, resembling hollyhocks, roses, camellias. The colors and shades are bewildering in their number and brilliancy. Red, from the deepest wine color, scarlet and crimson, terra cotta, orange scarlet, yellow and straw color; and pink and rose, some shaded and

variegated and the loveliest pure snowy white. They require equal parts of loam, sand and leaf mould, or thoroughly rotted manure. If in pots must have good drainage. If planted in beds it is well to mulch the surface of the ground to keep it from drying out. They should never be allowed to become dry, when growing.

**Single Sorts.**—White, red, yellow, pink each 15c. \$1.50 per doz. Mixed 10c each, \$1 per doz.

**Double Sorts.**—White, red, pink, yellow each 25c. \$2.50 per doz. Mixed, 20c each; \$2 per doz.

## Mrs. Shepherds Semi-Double Semperflorens Begonias

**Cherry Blossom.** Outer petals carmine crimson, inner ones pink. A beautiful dainty flower.

**Apple Blossom.** Flowers white, tinged with dainty, light pink, the inner petals lace-like and with quivering stamens, have a charming effect.

**Snowdrop.** A most dainty, soft, fluffy, white flower, with large outside petals, inner ones very narrow. A very pretty variety. 25c each; 3 for 60c.

## CHOICE COLLECTION OF REX BEGONIAS

Nature has bestowed on Rex Begonias many of her choicest gifts, uniting the radiance and brilliancy of precious jewels; the shining lustre of metals, with the beautiful colors and textures of the most costly fabrics. The leaves alone possess all these charms, while the dainty flowers add lightness and grace.

**Amythest.** Similar to *Clementina*, back of leaves an Amythest color; stem smooth. 25c.

**Closson.** The most beautiful of all. Leaves of deep purple, center and edges deep purple black band of silver magenta. 25c.

**Clementina.** Beautifully lobed leaves; upper surface beautiful bronze ornamented with large silver spots; underside bronze red, which produces a beautiful effect. 15c.

**Constance.** Broad shining, silver zone encircling a dark olive center; ground color deep green, bordered with a broad bronze margin beautifully spotted with silver. 15c.

**Gigantea.** Leaves marked like point lace, silver green, center part overlaid with a net work of spots. 25c.

**Helen Gould.** Beautiful silver leaf veined and edged red underneath, dark olive green in center, bright reddish green spotted edge. 15c.

**LeChretien.** Very distinct, center beautiful bronze purple, spotted silver band of green edged with purple. 25c.

**LeSoudsii.** One of the most beautiful. The center of the leaf is dark bronzy green; ground light yellowish-green; bordered rich

bright green, dotted with silver; edge bronze beautifully waved. The entire leaf blotched and spotted with shining silver, which gives it a rich metallic lustre. Leaves are pointed and prettily lobed. 15c and 25c.

**Marquis de Peralta.** Edged by narrow bands of silver of uniform size; this borders a bright green zone mottled in silver, which encloses the zone proper. Broad silver band about a dark-rayed center.

**Merville.** Rather small leaves; center bronze-green, splashed with minute irregular silver spots; then an irregular band of silver with soft metallic shadings fill the center of the leaf, extending to the front; and last, a band of light green, and a bronze edge, both sprinkled with silver. 25c.

**Mme. De Boucq.** Entire leaf of soft rosy-mauve color, with high, silky lustre, and occasional touches of silver.

**Queen of Hanover.** Beautiful. Leaves like velvet or plush; center dark green with broad silver band and a margin of dark green; the entire leaf is covered with fine hairs, bright red in the early stages of growth, changing to green with age.

**Queen Victoria.** A beautiful light green silvered leaf, crinkled like crepe. Small bronze-green center and delicately marked with a bronze-green margin.

**Rex.** A splendid old variety with very thick, large leaves. Ground color dark rich bronze, shaded green, with a silver center; a bright silver band.

**Roy Ford Major.** Vivid green, edge and center deeply banded with silver.

**Stella.** A beautiful new, quadri-colored Rex, with broad, shining silver zone that is veined and marked with bright, metallic bronze and violet shadings. The zone is banded with deep green, and the whole distinctly bordered with reddish bronze. One of the most attractive and beautiful of the Rex family.

**Walter Reid.** Beautifully banded with silver and dark green, stems and leaves thickly covered with bright red hairs. 25c.

Rex Begonias 15 and 25c each except where noted; \$1.50 and \$2 per doz.

## Mrs. Shepherd's Rex Begonias

**Tourmaline.** A splendid sort, with very large broad leaves, rounded high on the upper side, and blunt pointed; midribs and veins, dark rich green, changing to emerald-green; surface between veins and mid-ribs, bordered with shining silver spots. The leaf has a beautiful satiny bloom, and is lightly covered with long pale-green hairs. Stems and young growth bright red, and covered with long bright red hairs. 25c.

**Silver Cloud.** Medium sized leaves ground dark, rich green. The entire leaf is blistered and clouded with silver and dotted with silver spots on the bronze edge. 25c.

Rex Begonias do well bedded out in a shaded location, in light soil, and plenty of water at the roots.

Begonias like a compost of loam, sand and well rotted manure, in about equal parts. They will stand any ordinary soil outside, if not too stiff, but it is really necessary that they should have plenty of well rotted manure to lighten the soil to give best results.

We can supply begonias of all sizes, up as high as \$5, \$10 and \$20 for specimen plants. These are especially useful for courts verandas and pergolas.

Collections of begonias in 10, 25, 50 and 100 varieties. Special price on application.

It is advisable for patrons at a distance to buy only the stronger and higher priced plants, thereby avoiding all risk of losing their plants while in transit.

Strong plants packed under our careful supervision travel great distances with perfect safety and invariably grow and do well. The smaller sized plants can be shipped shorter distances with safety.

# General Collection of Plants

All of our plants except Ferns are raised from stock grown in the open the year round.

**AGATHEA Coelestis.** Blue Daisy. A lovely perennial, bearing numerous sky blue flowers always in bloom, fine for bedding and also for pot plants. 10c, 75c doz.

**AGATHEA COELESTIS VARIEGATA.** A beautiful, golden and green foliaged daisy with sky blue flowers; 25c.

**ABELIA RUPESTRIS.** A most useful evergreen shrub for hedge or grounds. Blooms in early winter and is covered with showers of tubular lavender flowers set in bronze bracts which last for a long time after the flowers have bloomed. 20c each.

**ABUTILONS, Enfanta Eulalie.** A beautiful pink variety with large, flaring flowers. 10c.

**Savitzii.** The most beautiful foliage plant among Abutilons. Leaves are all white, variegated with green. Grown into bushy plants that are striking and effective. 10c.

**Eclipse.** A charming, trailing variety with beautiful foliage, variegated green and yellow, and having pretty drooping flowers. 10c.

**ALOYSIA Citriodora or Lemon Verbena.** A popular old shrub with fragrant leaves which retain their odor when dried, for many years. It is a pot plant in the east, but in California grows to be a large shrub 10 or 12 ft. high. 15c.

**ASPIDISTRA, Lurida.** One of the most satisfactory plants for house decoration; the leaves start from the ground on long slender stems, from 4 to 6 inches in length, and 8 to 20 inches long, and 4 to 6 inches in width, round at the base and pointed at the ends; are thick and leath-

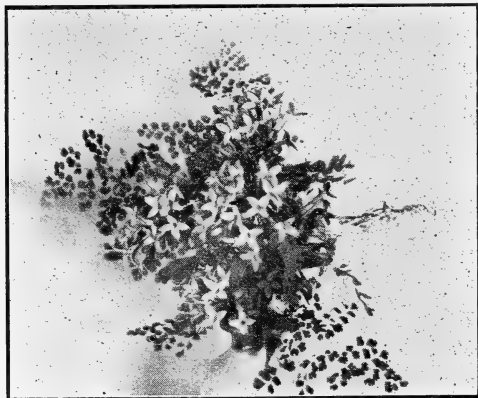
ery and a beautiful green. This plant will grow anywhere in the house, and needs very little care except to sponge the leaves occasionally, and supply it with water. Small size 25c each; larger size, 50c to \$1 each; extra large size, \$1.50 to \$2 each.

**Lurida Variegata.** Like the above, except that the leaves are beautifully striped with white. 50c each.

**ALPINIA Nutans, Shell Lily.** Sends up arching stems clothed with delightfully aromatic, rich green leaves, and terminated by racemes over 3 feet long, of brilliant, orchid like flowers, each shaped like an exquisite crinkled shell, and in color yellow, orange and white, delicately combined and strikingly contrasted. 25c each.

## Beautiful Bouvardias

These beautiful and almost perpetual blooming plants, not new, but rarely seen, should be more cultivated, especially in Southern California where they grow into



Bouvardias

small shrubs and bloom outside all winter. The flowers are in clusters.

**Garfield.** Pink, 25c.

**Elegans.** Red, 25c.

**Rosea Multiflora.** Salmon Rose, 25c.

**Humboldti,** White, 25c.

## Large Flowering Cannas

For brilliant show in the garden no plants are more effective than cannas. spikes of brilliant flowers in shades of rich red, orange and yellow. They give a mass of splendid color from April till late autumn. The flowers are very large and beautiful which makes them fine for cutting and decoration.

**Betsy Ross.** The most beautiful of pink cannas. Of moderate height, compact growth, it throws up fine trusses of flowers a delicate shade of pink. 25c each.

**Black Prince.** Dark velvety crimson-maroon. Fine large trusses and flowers; great bloomer. 15c each.

**Buttercup.** Buttercup yellow; large beautifully formed flowers in handsome trusses; a beautiful pure, bright, deep yellow Canna. 20c.

**Cherokee.** Dark maroon. Petals are two inches broad. 20c.

**Dr. Nansen.** A distinct and beautiful variety of dwarf habit, that bears large trusses of graceful pale yellow flowers. 20c each.

**Eastern Beauty.** The flowers are a charming shade of light salmon and orange that changes after two or three days to a most attractive flesh. 20c.

**Evolution.** Foliage dark, rich shaded bronze, flowers large and very graceful; color, rich golden yellow, which shades through dainty tints of canary, lemon and sulphur yellow to a center of soft blush pink. 25c each.

**Florentine.** Very large flowers frequently semi-double; an intense rich crimson color. 15c.

**Golden Beauty.** Rich bright golden yellow, with a few faint spots in the center of the flowers. Splendid spikes of bloom. Grows two feet high. 20c each.

**Lorraine.** Charming combination of colors, fine flowers of soft rose pink widely bordered with creamy white. 25c each.

**Louise.** Of large size with long petals of soft deep rose pink, dappled and streaked with red. The bloom spikes are usually large and fine, and so completely do the flowers cover the plant as to make a row or bed seem almost like a solid mass of bloom. 20c.

**Luray.** Shapely plant with fine foliage and massive heads of bold bright rose flowers. 25c.

**Madame Allemagny.** One of the best yellows with short broad petals of fine orange-yellow, spotted dark red. 15c each.

**Martha Washington.** Rose pink with splendid trusses, making a mass of color, 20c each.

**Mont Blanc.** Most magnificent white Canna yet known; foliage bright glossy green, large and handsome; a strong growing vigorous variety, producing masses of snowy white flowers that contrast beautifully with the fine shades of pink, scarlet and yellow. Price 25c.

**Niagara.** Crimson and gold. The best of the low growing variegated Cannas. Great handsome trusses, broad, thick, durable petals; color, rich, deep crimson with a wide irregular border of deep golden yellow. Height three feet. 20c each.

**Queen Charlotte.** Large scarlet flowers, deeply margined with gold. 20c.

**Queen of Holland.** Pure deep orange flowers, large and firm form, which makes a fine contrast with its handsome shaded bronze foliage. 20c.

**Shenandoah.** Foliage rich ruby red, exquisitely veined and tinted like some rare hot-house plant. It bears fine large trusses of beautiful waxy rose-pink flowers; highly ornamental. 20c. The set \$3.00.

**Giant Orchid Flowering Cannas**

**America.** The first giant flowered dark leaved canna; foliage is a fine bronze color with dark red hues shining as if varnished. The flowers are enormous, color a fine brilliant red flamed and striped. 20c to 35c each.

**Austria.** This grand mammoth canna grows 5 or 6 feet high, with leaves 15 to 18 inches long, and 8 to 10 inches broad; the flowers are 6 to 7 inches across, and borne erect in large, bold clusters; color pure deep golden yellow; truly magnificent. 15c to 25c each.

**Italia.** Equally as large and similar in every way to Austria, except color, which is pure yellow, with a broad blotch of dark, rich maroon in the center of each petal. 15c to 25c each.

**Mrs. Kate Gray.** One of the largest cannas introduced. Flowers round, clear, wine color, suffused with gold. A magnificent variety of the Orchid flowering type. 20c to 35c each.

**Pennsylvania.** A splendid new orchid flowering canna, the flowers of which often measure seven inches across, of a pure deep red color. It has splendid branching spikes of flowers, is a tremendous bloomer with good foliage and is so striking as to command instant attention. 25c to 50c. The set 75c.

**Beautiful Carnations--Old and New.**

10c each, \$1 per doz. by mail; 75c doz. by express.

**America.** Fine bright scarlet, edges slightly fringed.

**Anna H. Shaw.** A perpetual bloomer, of rapid growth, in a short time forms large strong plants, full of buds and blossoms on long stems. Flowers are of medium size, perfect in form, never bursting; white occasionally tinged in the center with delicate blush; spicy and sweet. Always in bloom.

**Beacon.** A grand orange-scarlet, originating with Peter Fisher, the originator of Mrs. Lawson and Enchantress. Early, free, continuous and an ideal grower.

**Caesar.** A fine striped variety; free flowering.

**Crusader.** Clear bright scarlet; fine bloomer.

**El Dorado.** Light yellow, edged pink; fringed.

**Empress.** Bright rich crimson; base of petals fiery-scarlet; large, perfectly double flowers, three or more inches in diameter, deeply fringed.

**Enchantress.** Color a very pleasing shade of light, pink, deepening toward the center. Size three and one-half inches and over. It does not burst and has strong, stiff stems, averaging two or three feet in length. Habit vigorous and blooms early, free and continuous.

**Estelle.** Light scarlet, beautifully formed, deeply fringed edges.

**Ethel Crocker.** Color, the most perfect shade of pink. Size of flower, three to three and a half inches in diameter. Form of flower, ideal, composed of extra heavy petals of silky texture with high, built-up center.

**Flamingo.** A phenomenal scarlet carnation. There is nothing in scarlet carnations that approaches it in size; very full and splendidly formed. A free early bloomer on long, strong, stiff stems.

**G. H. Crane.** The old-time bright scarlet; still popular.

**Governor Roosevelt.** Of vigorous growth. Flowers full with a large number of petals, regularly arranged, color deep rich brilliant scarlet shaded with maroon.

**Harry Fenn.** Color, a magnificent crimson, just the Harvard shade; very large, full symmetrical bloom, poised on an extra long, stiff, wiry stem.

**Mrs. Joost.** A magnificent large pink carnation, with very large petals and long stemmed flowers. Fine for cut flowers.

**Marion.** Clear white.

**Mermaid.** A most pleasing shade of blush-pink, very easy culture, gives fine large flowers. Fine for cut flowers.

**Olympia.** A fine flowering scarlet of large size.

**Prosperity.** An exquisite sort, most unusual in its shades. The color is white overlaid with soft pink, the latter color deepening toward the center, and paling toward the edges of the petals. Most picturesque flowers which are borne on long stems.

**Red Chief.** The best Christmas scarlet for color and productiveness. Always a sea of buds and blooms.

**Strawberry Ice.** The petals are beautiful pink from the base to the center, blending softly into a cream-white margin. Flowers large and prettily fringed; resembling the soft shades of melting strawberry ice. A fine bloomer.

**White Perfection.** Pure white; flowers large and of a pleasing clove fragrance. One of the very best white varieties grown; has long stiff stems and is a very free bloomer and splendid keeper.

**Winsor.** Most beautiful shade of clear light rose pink, a shade intermediate between Enchantress and Mrs. Lawson. Large and long stemmed.

**CHRYSANTHEMUMS**

**"The Queen of the Autumn"**

**Mrs. Shepherd's Artistic Seedlings**

**Curly Locks.** This is a darling, a perfect beauty. Semi-double, petals long, quilled, opening about an inch from the tip; inner petals incurving prettily at the tips. The color of the flowers at first a beautiful pink, delicately penciled, changing to a waxen-white in the center and shading blush to the ends of the petals. It is a fine bloomer

often commencing to flower in October and continuing to send up fine flowering shoots until the last of January; valuable for cut flowers. Can be grown ten inches across.

**Firefly.** Beautiful bronzy red with thread like petals which are lit by crossbar lines of yellow; the base of the petals yellow. Brilliant charming flower.

**Juno.** Cream white flower; very distinct in the great width of its petals, which measure nearly  $\frac{3}{4}$  of an inch across, tubular at the center they open out, curving slightly at the edges; long, pointed and curved at the tips; the lower petals reflex and curve, while the upper ones curve gracefully toward the center.

**Radiance.** When in full bloom is fairly radiant with brilliant starry blossoms. Flowers are single, with tubular petals closely set, and bright light-red around the center of about  $1\frac{1}{2}$  inches, then opening out broad, a lovely soft yellow. The contrast in color is very novel and striking, the flower being half yellow and half red.

**White Wings.** A large semi-double variety; pure waxen white, chaste and beautiful; petals at first tubular, opening flat and broad, and curling at the ends. 15c or 5 for 65c.

## General List

**Belle of Castlewood.** Rich new shell pink, fine Japanese incurved form.

**Elmer D. Smith.** A rich deep wine color, outside of petals silvery pink.

**Fidelity.** Large, beautiful pure white. Exquisite in form.

**Fishers Torch.** Deep velvety red, dark and handsome.

**Golden Plume.** Intense rich yellow like handsome plumes; a most satisfactory variety in every way.

**Lavender Queen.** Lavender pink. Very pretty.

**Louis Boehmer.** Very hairy. Shaded mauve pink.

**Improved Louis Boehmer.** Light pink sport from Louis Boehmer.

**Mlle. Marie Lieger.** French origination; deep flowers with stout heavily foliated stems. Color, a magnificent shade of pink.

**Mrs. John Ills.** One of the best white, late bloom, large double flowers.

**Norma Dee Childs.** A beautiful Chinese variety with enormous snowy white flowers.

**Omega.** Large yellow Jap.

**Peek-a-boo.** A splendid reddish-brown flower. Petals tipped yellow and very long, drooping down over the lower side of the flower, and falling from above, almost covering the eye, which looks out from the mass of petals in a way that suggests the name "Peek-a-boo." Measures 7 inches under ordinary care.

**Pres. Loubet.** This variety scored high in France and again in this country, being awarded a certificate of merit by the C. S. A. An extra large creamy white Jap, sometimes faintly tinged rose. Its growth leaves nothing to be desired.

**Petaluma.** This grand flower is a new departure, both in color and form. The petals are quilled the same size from base to tip, and are the size of a large knitting needle, and 3 inches in length. Flowers very double, and when fully developed round as a ball. Color pure nankeen yellow; old gold with age.

**President Roosevelt.** One of the grandest of all recent American-bred Chrysanthemums, being nearest perfection in all its habits. Very large, dwarf habit. Color, white ground with light shell-pink center and tips of petals, giving the entire bloom a light pink appearance.

**Robert M. Grey.** Flowers of fine form; color a rich yellowish brown shading later with yellow; very long hairs; most striking and beautiful.

**Silver Wedding.** White sport from Golden Wedding, a beautiful and striking variety.

**W. H. Buckbee.** Fine, large splendid yellow.

**Yellow Good Gracious.** A fine variety with quilled petals, irregularly incurved one of the largest flowers.

All Chrysanthemums 15c each; \$1.50 doz.

## Brilliant Coleus

For brilliancy of foliage united with the easiest culture no plant excels Coleus. They start readily from seeds or cuttings, grow rapidly and make beautiful ornaments for the house, conservatory or garden in the shortest time of almost any other plant we have; giving all the colors and shades of the rainbow. 10c each; \$1.00 per doz.

## Heavenly Blue Coleus "Blue Bells"

A fine novelty from South Africa. It grows two or three feet high and has light green fimbriated leaves and bears an abundance of lovely sky blue flowers in handsome spikes, which on old plants are sometimes over a foot long and three or four inches around. It is a lovely pot plant, blooming in December and January and grows out-of-doors in Southern California where its exquisite blue flowers are fine for cutting and showy in the garden. Nice plants 15c, and 25c.

**CORONILLA GLAUCA VARIEGATA.** Beautiful shrub with small golden and green leaves and bright yellow, pea-shaped fragrant flowers. 25c each.

## Three Rare Dahlias

(By Express Only)

**MONARCH OF DAHLIAS** It is intermediate between the double and the cactus varieties. The flowers are large, loose, very esthetic in form and measure six or more inches across; the petals are very broad; the color a deep, rich dark red, having a beautiful bloom like velvet; flowers are borne on long stems, and are fine for cutting. 20c.

**IMPERIALES.** The "Lily Dahlia." A distinct species. It attains a height of 10 to 15 feet, and produces through the months of September and October innumerable large, single, drooping, lily-like flowers of a delicate pinkish mauve color. The broad petals are four inches long, and recurve, giving a bell-like appearance. There is a maroon ring around the yellow center, and a delicate pink edge around the maroon, making a charming combination of colors. The foliage is spreading and quite large. Nothing can exceed the beauty of the fairy-like blossoms seen from a distance, as they swing and sway in the breeze. 35c and 75c each.

**NEW TREE DAHLIA.** *Pericles.* A seedling of *Imperialis*, but more vigorous and with larger, handsomer flowers. It has massive stems and beautiful arching graceful foliage, grows ten or twelve feet high and bears great spreading, graceful panicles of large pinkish-mauve flowers. The color is exquisite and the flowers of fine form. It blooms in November at the same time as the Lily dahlia and makes a fine companion to it. The two tree dahlias are a great addition to the garden, blooming at a time when other flowers are scarce, their stately beauty attracting much attention. 50c each.

**DIOSMA OR "BREATH OF HEAVEN"** The name is given from the exquisite odor of the leaves when bruised. It is fine for pots or bedding. The branches are heath like, feathery and are covered most of the year, especially in winter with innumerable small star-like white flowers. Invaluable for cut flower work, its pretty foliage and fine flowers fill in beautifully with large flowers. Hardy in California. 25c.

**ERYTHRINA CRISTA GALLI.** The beautiful Coral tree has immense spikes of very large red pea-shaped flowers. Dormant in the winter; hardy in California; in the East can be wintered in the cellar. 25c.

## Choice Decorative Ferns

**ADIANTUM Capillus Veneris.** The native maiden hair fern; form strong plants in a very short time. Every one can grow it. 10c and 25c each.

**Capillus Veneris Magnifica.** A tall extra fine variety of the above, with purplish-black stems and very handsome fronds. 25c and 50c.

**Cuneatum.** A dainty "Maiden Hair" fern, much used in cut flower work. 25c and 50c.

**Gracillimum.** A lovely maiden hair fern so fine and graceful and filmy as to be called the "Mist Fern." 50c to \$1.50.

**ASPLENIUM Berlangeri.** A very elegant fern, easily grown, forming new plants on the surface of old leaves. It makes beautiful and graceful specimens. 15c, 25c, 50c each.

**DAVALLIA Dissecta.** A beautiful fern of the "Hare's foot" class that sends up slender stemmed large triangular shaped fronds, very finely cut, and of a rich shining green. It grows rapidly and is valuable for basket or large pans. 25c, 50c to \$2 each.

**NEPHROLEPIS Piersoni.** A sport from the Boston fern and as easily grown. The fronds have a feathery plummy appearance caused by the division of the pinnae or leaves, which are subdivided into miniature fronds closely set together and overlapping. The miniature fronds are constantly developing a rich light green on the darker ground of the main fronds making a most charming contrast. A well grown plant, is graceful and beautiful beyond description. Nice plants 50c to \$1.

**Bostoniensis** or "Boston Fern." No plant is so extensively used for decoration as the Boston Fern. It differs from the old variety in having larger and broader fronds and is a fresher and brighter green. A beautiful plant for decorative purposes. 25c, 50c, 75c and \$1.

**Cordata. Compacta.** A charming dwarf variety with narrow fronds that grow from one foot to fifteen inches high; of rapid growth. 10c, 25c, \$1.

**Exaltata.** The well-known Sword Fern of the tropics with long narrow upright leaves. 25c to \$1 each.

**Tuberosa.** A beautiful variety with tubers on the roots, fronds dark shining green, the pinules closely set; the fronds are more numerous than the Boston Ferns. It makes very handsome specimens and is fine for baskets. 15c, 25c to \$1.

**Pectinata.** A dwarf variety much resembling the Boston fern. It is trailing in its habit, making it fine for baskets. 10c, 25c, 35c each.

**Nephrolepis Whitmani.** (The Improved Ostrich Plume Fern) Unquestionably the most valuable of this type, superseding *Elegantissima*. Not only is the pinnae on the individual fronds more finely divided, but the fronds are denser, broader and more graceful and the habit of the plant is more perfect. 40c and 75c.

**MICROLEPIA Hirta Cristata.** (Tassel Fern) A most useful decorative Fern, beautifully crested. 75c.

**PTERIS Argyraea.** Large bold foliage, with broad band of white through the center of each frond. 20c.

**Pteris Drinkwateri.** Ribbon like leaves 15c.

**Pteris Hastata.** Similar to *Adiantoides*, but smaller and edges crimped. 15c.

**Pteris Adiantoides.** Resembling the maiden hair but very large leaves 15c.

**Pteris Tremuja.** (Shaking fern) 15c.

The above five *Pteris* make a fine group of vigorous house ferns.

**HOLLY FERN.** (*Cyrtionium falcatum*) 25c and 50c.

**STAG HORN FERN** (*Platycerium alcicorne*)

A very remarkable and orchid-like fern, very rare, commonly called Stag Horn Fern from its resemblance to the horns of a stag. At base of fronds are ear-like leaves or sub-fronds. \$1, \$2.50, \$5 and \$7.50 each.

**Native California Fern**

**WOODWARDIA Radicans California.** A grand fern that in its native wilds sends up magnificent fronds 6 feet high and 1½ to 2 feet wide; they are a beautiful green and of firm texture, and handsomely wrinkled. It is a very beautiful fern and will be much used for decoration when its good qualities become known. The roots are quite large. 50c and 75c.

**Fuchsias or Lady's Eardrops**

15c each, \$1.50 per doz. except where noted.

**Aurora Superba.** Beautiful waxen orange scarlet flower, truly superb.

**Black Prince.** One of the best. Single flowers, with flaring funnel-like corolla; color scarlet and purple-carmine.

**Crimson Trumpets.** A tree fuchsia; seedling from "Corymbiflora," but much prettier, with large waxen flowers of a soft clear rose red. They measure three inches in length. The arrangement of the sepals and petals is especially pretty. Very easily grown and always in bloom. Their large corymbs of long flowers are very showy, and are followed by large dark berries. The foliage is large and velvety.

**Eugene Vercousin.** Double. Corolla rosy pink, shading to heliotrope; sepals rosy red. Color new and distinct.

**General Vandever.** A splendid variety, a seedling of vigorous climbing habit; with large handsome yellowish-green foliage, and immense sprays of very large single flowers; a fine purple red.

**Heron.** A splendid large single flower of fine form; corolla, rich deep purple red, sepals dark scarlet. A very popular variety.

**Joseph Rosian.** Splendid dark double scarlet and violet-purple, marked with carmine; grand bloomer.

**Miss Lucy Finnis.** White and scarlet, very double, large, full flower, fine bloomer.

**Jupiter.** Flowers of enormous size and very large rich violet-purple; double corolla often two inches and over in diameter; tube and sepals bright crimson.

**M. Alhand.** Double. Of grand habit; very large recurving sepals of bright scarlet; very large corolla of soft reddish-violet.

**Octave Feulett.** Sepals coral-red; corolla loose and flaring; color pinkish violet-mauve, veined deep rose; an exquisite sort. Very double.

**Otto.** Splendid double scarlet and white; tree-shaped; a constant bloomer; flowers rich and handsome.

**Syringiflora.** A variety of distinct habit and foliage, and very rapid growth, forms

large bushes and bears large bunches of lilac-mauve flowers, about the size of lilac blossoms and very much resembling them. They harmonize well with the brilliant magenta Bougainvillea flowers. It makes fine large bushes and is a very showy plant.

**Two Foliage Fuchsias**

**Sunray.** Of upright growth, foliage beautifully variegated white, green and pink, a lovely foliage plant, flowers single, sepals pink and corolla purple. Sunray makes an effective basket plant.

**Meteor.** A half trailing fuchsia with wonderfully beautiful foliage. The young leaves are always rich copper-red, with maroon veins, the tips of the leaves yellowish-green making a most striking contrast with the brilliant color at the stem. 25c each; the 2 for 40c.

**FARFUGIUM Grande, or Leopard Plant.** A splendid house plant easily grown. Valuable for bedding in partially shaded localities. The great round leathery leaves start from the ground on long slender stems, forming a most handsome plant. They are regularly marked with large bright yellow spots. 15c each, \$1.25 doz.

**Grande Argenteum.** An old but very rare variety; magnificent, large light green leaves beautifully variegated with white; superb pot plant. 50c.

**Genista Monosperma Pendula****New Drooping White Genista "Bridal Veil"**

**New Drooping White Genista, "Bridal Veil"**  
Everyone should have this lovely shrub, a striking ornament for the garden and a



Branch of White Genista "Bridal Veil"

TRY OUR FINE STRAINS OF "PETUNIA"

SEEDS.—THEY ARE THE BEST GROWN



beautiful greenhouse plant. The branches are valuable for decoration, and the flowers effective for evening wear. Its habit is spreading, growing ten to fifteen feet high it has no leaves, but finely divided branches, round and of a soft silvery green color. The flowers are small, white, pea-shaped, with a little flush on the petals, and are borne on little spikes from 1 to 2 inches in length alternating on opposite sides of the stems; they are very close together, sometimes 15 flowers to a spike; are exquisitely fragrant. The foliage is very effective, arranged with white carnations. A plant 3 or 4 years from seed will cover a space of 12 to 15 square feet or more. It has a cloud-like filmy effect that makes it very attractive, its long drooping branches draped with flowers resembling at a distance a soft white veil. Nothing could be more beautiful for contrast in shrubbery on large places. 25c each.

## Rare Geraniums---Large Flowering

10c each, except where noted.  
\$1.00 per doz, except where noted.  
\$.50 per hundred.  
Cuttings, 50c per dozen postpaid.

### Mrs. Shepherd's Seedlings

**Electra!** Truly this blossom is well named with its irridescence shading into intense scarlet and bold white eye, its effect is electric. We consider it the finest type of this geranium yet seen.

**Prue.** With its subdued color Prue forms the direct antithesis to Electra, though not less attractive. In color a delicate rosy pink, veined and spotted with deep rose center shading to almost white. Both have long large finely formed trusses, the individual measuring 2 inches across.

**Castenet.** Fine flowers, shaded soft magenta; two lower petals half magenta and half velvety salmon-scarlet.

**Comet.** A splendid fiery scarlet, with fine trusses on long stems, a hybrid between the zonale and ivy section. A very striking variety. A climber with the vigor of a zonale in growth.

**Faustina.** A fine cerise, with fan-shaped spots on the lower petals, of soft pink.

**Lovliness.** Fine large flowers with white center, margin daintily spashed and flecked with pure salmon, very light foliage.

**Madame Modjeska.** The flower is round. The buds are velvety orange-salmon, fully opened flowers salmon-pink; edges of petals lighter with age, two upper veined pink at center; a fine white eye, measures 2 inches across.

**The Peri.** A lovely seedling from Souv de Mirande, deeper coloring; lower petals are orange-salmon; white center over laid with rose; center white, highly flushed deep rose. Flowers 2 inches across, dwarf in habit.

**Oxnard.** A superb variety of strong robust growth, and producing splendid scarlet flowers, shaded cerise. They stand high above the foliage on long stems. The trusses are very large and the individual flowers measure over two inches across, will grow ten feet high.

**Pink Pansy.** Large flowers, resembling a pansy. Center pure white, with a circle of bright salmon pink.

**Pink Pearl.** Very large flowers; large trusses of soft pearl-pink.

**Splendor.** Rich velvety red with immense trusses of very large superb flowers. A most showy bedder.

**Surprise.** The two upper petals are blotched velvety scarlet, veined dark red; edges and three lower ones are a vivid purplish crimson. Dwarf habit.

**White Azalea.** An exquisite single variety, with large snow white flowers on long stems.

## Single Geraniums From Other Sources

**Dr. E. Hering.** A fine dwarf variety with brilliant red overlaid with scarlet.

**Kansas.** Intense orange-scarlet, petals beautifully veined with a dark color.

**LaBelle Creole.** A grand new scarlet, trusses high above the foliage. One of the best reds; a seedling originated by Mrs. Julia Hutchinson.

**Massachusetts.** Exquisite pure pink, rayed center, freely spotted.

**Minnesota.** Enormous, crinkled, Pelargonium-like blossoms of loveliest light rosy scarlet with a white eye.

**New York.** Enormous clusters; beautiful pink flowers.

**Pennsylvania.** Pure snow white; immense flowers.

**Pierre Le Brun.** Salmon red, pink and white, exquisitely blended. Flowers very large.

**Souv de Mirande.** Creamy-white center; upper petals white, edged with soft rose. Lower petals a soft salmon-rose with lighter shadings. Fine and effective for a hedge.

**E. H. Trego.** In E. H. Trego it would seem that the model of perfection in geraniums had been reached. It is one of the most beautiful shades of dazzling scarlet with an exquisite soft velvety finish on a saffron ground. The flowers are large, semi-double, and often measure two inches in diameter, produced in enormous trusses, in great profusion, the foliage is glossy green with dark zone, large and of good texture; in growth and habit it is an excellent semi-dwarf; robust and branching. An ideal pot variety.

**Virginia.** Large, extra fine salmon pink.

**Wonder.** Intense, dazzling scarlet, trusses of enormous size, 10 to 20 inches in circumference, with single florets measuring 2½ inches.

## Double Geraniums

**Crimson Velvet.** One of the best, with splendid trusses of deep rich crimson velvet flowers.

**Emanuel Arene.** Very large double florets. Pure white with broad bands of rosy-scarlet.

**Hubert Charron.** Clear white center with a broad band of reddish-carmine around each petal.

**Jean Viaud.** Semi-double. The flowers are borne in immense trusses, which completely cover the plant. The loveliest pink geranium ever offered; the flowers are very large.

**La Fraicheur.** Like a double picotee, pure white, with narrow distinct edge of rosy pink.

**La Favorite.** Pure snow white.

**Mad. Jaulin.** The finest of all the delicate pink or blush varieties; is of dwarf but robust growth, flowers of good size and very abundant. Center of flower delicate pink, outside pure white.

**Ryecroft Pride.** Double crimson, similar in color to a Meteor rose. Very large florets on long stems. Very fine color.

**J. Ricaud.** Enormous trusses, purplish-crimson of a very intense shade, center very distinctly marked white.

**Alphonse Ricard.** A strong grower, dwarf and branching, and producing flowers in great masses. Both floret and trusses are of enormous size; single or slightly doubled, and color brilliant orange-red.

**Mme. H. Tilmant.** Semi-double. White center, with broad margin of scarlet.

**Richelieu.** Extra large trusses and long stems. Color deep crimson maroon with dark center.

## Bronze, Gold and Tri-Color

**Beauty.** Coloring exquisite. Zone is marked white, green and pink, with black shadings. Irregular broad cream white margin. 20c. No cuttings.

**California.** Large, golden-yellow foliage; soft shaded chocolate zone, scarlet flowers.

**"Glints of Gold."** (Mrs. Shepherd's Seedling). Large leaves exquisitely tinged as if sunshine had passed over them leaving glints of golden light; a faint reddish zone encircles them, no two leaves alike, flowers scarlet. Stands hot sun.

**Happy Thought.** Bright green foliage; yellow center; dark band about the light zone; flowers scarlet.

**Hermione.** Light green leaves, broadly margined with white, zoned with black and pink; double red flower.

**King of Bronzes.** Broad, reddish-brown zone, center and edge of leaf yellow.

**Mrs. Parker.** Leaves deeply margined silvery white, lightly zoned black; double pink flowers.

**Mrs. Pollock.** Color of leaves bright bronzy-red; zone belted with crimson, edged golden yellow.

## Ivy Leaved Geraniums

**Col. Baden Powell.** Superb flower semi-double, soft blush, flower stems long, fine for cutting.

**Galilee.** Glowing pink, splendid trusses.

**Garden Glory.** Magnificent double scarlet flowers. Grand for bedding.

**Jeanne d'Arc.** Double, snowy white.

**L'Elegante.** Ivy shaped leaves; beautifully variegated pink and white; fine for bedding or baskets. 20c each.

**Leopard.** Flowers are 2½ inches across, semi-double, as rich and distinct as an orchid. Ground rosy pink, the upper petals blazed fiery crimson, the lower petal, feathered with rich crimson maroon blotches.

**Sweet Sixteen.** Soft shade of pink; petals have a dainty curve and airy lightness that is very attractive.

**Souv. de Chas. Turner.** Splendid deep pink flower; feathered maroon on upper petals.

**Pierre Crozy.** Bright scarlet; dwarf, compact habit. A good bedding plant where low bed is desired; appears to be a cross between an ivy and zonale.

## Sweet Scented Geraniums

**Apple.** Delightfully scented variety, grows very bushy. 10c to 20c.

**Rose Scented.** (True) 10c.

## Lady Washington Geraniums

25c each; \$2.50 per dozen.

**Adela Brandt.** Perfectly rounded but fluted flowers, forming fine trusses of a deep carmine rose-shade flushed with purple, petals of flowers beautifully edged white, also center of flower white, upper petals with crimson colored feather.

**Anita.** Flowers of enormous size. Lower petals delicate pink; upper petals veined and blotched velvety maroon.

**Anna Vidal.** An entirely distinct variety. Petals veined and blotched with maroon. All the petals shaded to rosy-pink. The whole edged with white.

**Black Prince.** One of the darkest varieties, petals undulated very dark red, blotched black; a very rich, fine sort.

**Dawn.** Delicate rosy pink; dark blotch on two upper petals. Lower petals marked with light pink.

**Dr. Andre.** Flowers similar to Nelita Kurger but with deeper shade of pink.

**Duke of Albany.** Similar type to Mme. Thiebaud. Entire flower deep velvety maroon shaded purple with white center.

**E. G. Hill.** Dazzling rosy scarlet; upper petals veined and blotched with black; center greenish white.

**Empress of Russia.** Ground color a very light lavender with almost white center; and shading to white at edges of petals; each petal with blotch of dark maroon surrounded by purplish crimson.

**Mabel.** Lovely, large, velvety pink with black blotches.

**Magnificent.** Flowers of extremely fine form; upper petals veined and marked with white; lower petals pure white.

**Mme. Thiebaud.** Large flower; rosy scarlet elegantly fluted and ruffled.

**Mrs. O. W. Childs.** Distinct new flower of remarkable freedom of bloom; dwarf, compact growth. Very large trusses of extra large beautifully rounded and at the same time fluted flowers, of a most exquisite shade of rose pink, with the remarkable absence of hardly any marking on the petals.

**Miss Leda Conard.** A handsome, frilled variety; ground color, carmine, rose; two upper petals blotched black, center white, all petals lined and feathered, rose and maroon at base, edges lighter.

**Mrs. Robert Sandiford.** This is a grand double white variety; one of the finest novelties, and always very scarce; the flowers are extra large, perfectly double, and beautifully laced and ruffled; color glistening snow-white.

**Nelita Kruger.** One of the daintiest class; lower petals suffused with pale pink, upper petals veined with rosy-maroon; fluted edges.

**Purity.** White; large flower and truss; fine constitution.

## Mrs. Shepherd's New Heliotropes



Mrs. Shepherd's New Heliotrope "Gloria"

**Gloria.** A variety of medium height, seedling from the Lemoine stock. The foliage is very rich and handsome; the flowers are in immense compact heads, and

in color are a most lovely, shaded, light purple violet, deliciously fragrant. 15c.

**Albert Deleaux.** One of the most beautiful varieties in cultivation—not Mrs. Shepherd's. The foliage is yellow, marked with green. Very large flowers of a rich deep purple. 15c.

**Egypt.** A very beautiful heliotrope with black stems and handsome crinkled foliage so dark as to be almost black. Handsome dark purple flowers. 15c.

**Pink Beauty.** A charming variety, with great masses of mauve-pink flowers, the color of Mme. Millet violet. 15c.

**Purple Giant.** One of the new giant hybrid types, and a most vigorous grower of climbing habit. It has large, handsome foliage, and bears immense trusses of rich, purple flowers. It grows so fast and blooms so profusely, that it is invaluable in the garden. 15c.

**Royal Highness.** A magnificent new climbing heliotrope of wonderfully rapid growth, forming immense plants that spread and climb to the height of 10 or 12 feet. It has splendid large trusses of rich purple flowers and is a most profuse bloomer. As a covering for walls or bay windows, or hedges, or as a pot plant it is invaluable. 15c.

**The Prize.** A splendid variety with immense heads of grand, purple flowers. 25c.

The seven for \$1.

**HIBISCUS Sinesis, Sub-violaceus.** Splendid half hardy shrub with enormous semi-double flowers, rich carmine tinted violet. 25c each.

**HYDRANGEA Magnifica.** It bears enormous heads of blossoms, often measuring 25 inches in circumference. The individual flowers are very large and beautiful shade of pink. 15c.

**Black Stemmed.** Black stems and a profusion of lovely flowers, pink at first and changing to bright blue. 25c.

**Japonica Variegata.** A handsome variety with white and green leaves, makes a fine house plant, grows large outside in partial shade. 25c.

**HYPERICUM St. John's Wort.** A beautiful ever-green shrub with large golden-yellow satiny flowers and numerous long thread-like stamens. Always in bloom. 25c.

**IMPATIENS Sultani.** A charming plant for pots or for shaded location. It belongs to the balsam family. The leaves are a light green, stems transparent; flowers single, always in bloom, salmon pink and mauve, and scarlet. 15c each.

**IRIS Stylosa Superba.** A most beautiful ever-green Iris from Greece. The leaves are long and narrow, grass like, growing in dense tufts and forming large bunches in a short time; blooms in the greatest profusion from October all through the winter. The color is exquisite violet blue, the large petals feathered black and white, lined with a velvety orange stripe through the center. The lovely flowers are fine for cutting. 15c each; \$1.00 doz.

**DWARF LANTANA "Golden Gem."** This pretty lantana grows about one foot high, forming a handsome compact bushy plant and bears clusters of bright golden-yellow flowers. 25c.

**LANTANA.** The flowers are first yellow and pink, turning to pure pink. It is of vigorous growth. 25c. each.

**LINUM Flavum.** A very beautiful perennial flax that grows 2 or 3 feet high and forms large clumps that are covered all the year with fine round, rich, golden-yellow flowers, measuring two or more inches across. Invaluable for bedding. Increases fast. 15c each. \$1.00 per doz.

**LIBONIA Floribunda.** Dwarf shrub, covered most of the year with pretty scarlet and yellow tubular flowers. 15c.

**LOTUS Pelyorinchus "Coral Gem."** Fine silvery foliage; dainty and graceful. Light and airy in habit. Coral-red flowers, two inches in length. Fine for trailing over walls and banks; lovely for hanging baskets. 15c each; \$1.50 per doz.

**MARGUERITE Mme. Gaelbert.** A splendid new Marguerite with very broad petals. Surpasses all others in size and snowy whiteness. 15c each; \$1.50 per doz.

**LOPEZIA Rosea, and LOPEZIA Alba. "Mosquito Flowers."** Pretty plants that are completely covered all the year with airy branches of pink and white flowers, resembling mosquitoes. Very useful for bouquets and valuable for bedding. 15c each.

## Pansy Plants

**PANSY PLANTS.** Assorted 25c per doz. For description see seed list.

## Petunia Plants

(Mixed Colors Only)

**PETUNIA PLANTS.** (Rooted Cuttings). Double \$1.50 per doz.; 15c each. Single, \$1 per doz.; 10c each. See description under seeds.

**PHYLLANTHUS nivosus, var. roseo-pictus.**  
**Snow Bush.** Shrub with loose rather wiry branches, somewhat zigzag. Leaves compound, mottled with white and pink. A splendid plant for low hedges, borders, etc., or as a single specimen. The coloring is very fine, especially in hot, wet, weather. 20c. each.

## Poinsettias

**Pulcherrima.** A large plant of Poinsettia in full bloom is the most gorgeous and stately object of a California garden at Xmas. Grows almost the size of a tree; ends of branches crowned with floral bracts; the most intense bright red, from 8 to 18 inches across; in great demand for Xmas decorations; fine pot plants; the beautiful bracts keep fresh and bright several weeks. 25c and 50c each.

**Double Poinsettia Rosette.** This splendid variety comes into bloom just as the single one is waning. The magnificent

flower heads consist of an inside row of long floral bracts and a closely gathered rosette-like center of lanceolate bracts 4 or 5 inches long. The color is a deeper red. It is strikingly beautiful. Poinsettia heads will keep for sometime if the stems are dipped in boiling water immediately after they are cut. 25c and 50c each.

**PLUMBAGO Capensis.** A beautiful shrub with lovely light blue flowers, always in bloom. It grows 10 to 12 feet high in California, forming immense plants. should be cut back occasionally to induce new growth. 25c each.

**Capensis Alba.** Like the above except the flowers are snowy white. Always a mass of bloom. 25c.

## Choice Roses

25c each; 5 for \$1, except when noted.

**Agrippina.** A beautiful rose of brilliant fiery red; double and sweet.

**The Bride.** Fine creamy-white, sometimes slightly tinted with rose. Blooms constantly and profusely.

**Bridesmaid.** Brilliant pink. Flowers very large, full perfect shape, fragrant and a constant bloomer.

**Cardinal.** A splendid New Hybrid Tea Rose, strong grower and free bloomer, makes large finely formed flowers, very double and full; deep dark red, center elegantly tinted with golden yellow.

**Catherine Mermet.** A splendid pink.

**Cecil Bruner.** Large flowers, borne in large clusters; rich creamy rose; a great bloomer.

**Duchess De Brabant (Tea)** Beautiful buds, deep rosy pink edged with silver; blooms quickly and constantly.

**Gainsborough.** Delicately tinted flesh, almost white and as lustrous as satin. 35c. each.

**Gloire Lyonnaise.** A cross between a tea and a hybrid perpetual. It sends up thornless canes six feet high, surmounted by superb cream-white double flowers having very large petals. Handsome leathery foliage, free from disease. If cut back branches freely. Beautiful in bud and full bloom; always long stemmed.

**Gloire de Margottin.** A dazzling red, one of the brightest colored roses in cultivation.

**La France.** One of the loveliest of all roses. Buds and flowers a grand pink.

**Pink Maman Cochet.**

**White Maman Cochet.**

**Kaiserin Augusta Victoria.** Full flowers; magnificent in bud; stems long, and bearing large handsome foliage; flowers pure white.

**Jubilee.** Bright flashing red, shading to velvety crimson, large and very beautiful.

**Madame Lambard.** Color a beautiful shade of rosy-bronze, changing to salmon, shaded with carmine, buds a deep rosy crimson.

**Marie Van Houtte.** A beautiful straw color outer petals edged with bright rose. Flowers large and very fragrant.

**Papa Gontier.** Rich rosy red, extra large buds and flowers.

**Perle des Jardins.** A most beautiful deep yellow. Perfectly double.

**Philemon Cochet T. Cream.**

**Rainbow (Tea)** A splendid new rose. The color is a lovely shade of deep coral pink, elegantly striped and mottled with intense shining crimson, finely colored at center with rich, glowing amber.

**Safrano.** A fine old rose of great value for out-door planting and house culture, highly prized for its beautiful buds and handsome flowers. Colors, bright apricot yellow, changing to orange and fawn, sometimes tinted with rose; very fragrant and a quick and constant bloomer.

**Sunset.** One of the most fragrant and beautiful roses in cultivation. Color rich coppery-yellow, clouded with dark, ruddy crimson.

**Ulrich Brunner.** We regard this as the best all round red H. P. grown. It might be called an everblooming Hybrid Perpetual. 35c.

**Viridiflora.** The wonderful Green Rose; a valuable curiosity; deep green, free bloomer.

## Shower of Pearls Rose

This rose belongs to a distinct class of tiny roses, called *Polyanthea hybrida plena*. The Cecil Brunner and others of its class are *Polyanthea* roses, but "Shower of Pearls" is a miniature rose, with small foliage rarely growing more than two feet high. It is an exquisite snow white single rose that grows in lovely sprays, with round wide open flowers like showers of pearls, over the plant. It has a most dainty delightful fragrance, reminding one of early spring flowers and is unlike any other rose ever before offered.

These miniature roses can be grown from seed and come in shades of pink and white, semi-double and single bringing many varieties; the flowers sometimes being only 1½ inches across, all charming. "Shower of Pearls" takes the lead.

## Climbing Roses

**Beauty of Glazenwood.** Commonly called "Gold of Ophir." Climbing. A combination of copper, carmine and salmon yellow.

**True Friend of Climbing Cecil Brunner.** A most exquisite new climbing rose, the counterpart of Cecil Brunner in foliage, shape and color, but a most vigorous climber and profuse bloomer. The long, graceful branches are wreathed with the charming flowers.

**Cherokee, Single.** We have a fine stock of the true variety of this most esthetic and beautiful rose. The flowers are five or more inches across, pure white and

single. It is invaluable for hedges, for covering unsightly places, for trellises or arbors. It has immense branches, resembling the trunks of small trees. The old plants bloom some all the year, but for three months in the spring, it is a sheet of white bloom. The foliage is always clean, glossy and beautiful.

**Climbing Kaiserin.** A counterpart of Kaiserin except that it is a very vigorous climber.

**Lamarque.** A splendid white climbing rose, continuous bloomer.

**Reine Marie Henriette.** A magnificent crimson climber. Flowers enormous in size, exquisitely shaped. A strong grower, constantly in bloom.

**Climbing Mad C. Testout H T Pink.**

**Wm. Allen Richardson.** Large, full flowers of coppery yellow, tinged with carmine, has a delicious fragrance and is something entirely unusual in climbing roses.

**ROMNEYA COULTERI.** (*Matilija Poppy*.) This fine perennial is of supreme and stately beauty; as an outdoor plant it may well be considered one of the best for yielding a long succession of blooms, flowering as it does, from July until November. It is of value as a cut flower, lasting well in water, and its delicate Primrose-like perfume is most acceptable in a room. The texture of the petals is extremely delicate, indeed half transparent; they never lose the crumpled folds that in the case of most poppies betoken a newly opened state. The flowers are very large, 4 to 5 inches across, pure white, with a bunch of yellow stamens resembling large white single Paeonias. Strong plants 75c and \$1 each.

**RUSSELLIA Elegantissima.** A vast improvement of the old *Russellia*. The habit is drooping, the slender branches and leaves completely hidden by hundreds of the vivid scarlet tubular flowers. It is so floriferous that tiny cuttings show more flowers than leaves. It is one of the finest and best new plants ever introduced and one that will give satisfaction to everyone. 15c.

**SALVIA Splendens grandiflora pendula.** A beautiful variety that bears very long, drooping spikes of flowers; larger and handsomer than the old specimens. 15c; \$1.50 per doz.

**SANSEVIERA Zeylanica or Zebra Plant.** If a plant is wanted to grow anywhere, in or out of the sun, to stand drought, dust, and heat, and always look fresh and healthy, order one of these Sansevieras. They are beautiful plants, splendidly adapted for the decoration of rooms and halls, for the center of vases, baskets, etc., as they stand all manner of abuse (except freezing and over watering) with impunity, even preserving their cheerful look when you have forgotten to water them for a month. 15c to 50c.

**SAXAFRAGA SARMENTOSA.** A beautiful basket plant sometimes called "The mother of Thousands" on account of the rapidity with which it increases. Beautiful for baskets. 10c; \$1 doz.

**SWAINSONIA Alba.** Finely divided foliage and long spikes of snow white pea-shaped blossoms; invaluable for cut flowers and most ornamental in the garden; fine for conservatory. 20c.

**STOKESIA CYANUS.** A most beautiful new perennial plant. A single lavender colored Aster, perpetual bloomer resembling an immense corn flower; perfectly hardy. 15c each; \$1.50 doz.

**STREPTOSOLEN Jamesoni.** A plant for show and always in bloom. No garden should be without it. At first the flowers are orange-red, changing to yellow with age, so that there are two or three shades of color on the plant at the same time. It grows very rapidly, and in the course of two or three years attains the height of 10 to 12 feet and 25 to 30 feet in cir-

cumference, and covered from base to top with great bunches of splendid flowers. A fine pct plant. 15c.

**SOLANUM Betaceum or Tomato Tree.** A fine ornamental tree; a native of South America. It bears fruit from seed the second season. A young plant set out in the spring grows 6 feet high and comes into bearing by Xmas. The foliage is large and handsome, the branches spreading. The fruit hangs in clusters below the foliage, the size of a large egg, a beautiful orange-salmon color when ripe. It has a pleasing sub-acid taste; is delicious raw, served with sugar and cream, or cooked as sauce, and for jam or jelly is very fine. It will keep for weeks, owing to a very tough skin and the solid nature of the fruit. A most beautiful plant in the garden; will not stand frost. Plants 25c.

**TRADESCANTIA Multicolor.** Its pretty striped leaves show every tint of silver, bronze-gold, pinkish-crimson, rose and gray in their markings. An extra fine basket plant. 10c each; \$1 per doz.



**Tecoma Velutina**

**TECOMA Velutina.** It is a most showy and valuable flowering shrub; far superior to *Tecoma Smithii*, in that it blooms when only 12 inches high from seed. The flowers are larger and a more beautiful color, while the plant is never out of bloom.

The flowers are like beautiful Alamandas; large, gloxinia-like, pure golden-yellow; in great splendid spikes or clusters. It grows into a good-sized small tree in California. Half hardy; easily grown from seed. 25c each.

**VARIEGATED ELDER.** A splendid variegated shrub with splendid branches and foliage beautifully marked with white and green, large clusters of fine white flowers. 25c to 50c each.

## Violets

The ground for these sweet flowers should be level, well cultivated and thoroughly mulched with rotted manure or leaf mould. The plants should be set out from 1 to 2 feet apart, 3 feet between rows. They require watering at least once a week, with an occasional sprinkling in the evening or early in the morning.

**Marie Louise Double Blue.** 5c each; 50c per doz.

**Princess of Wales.** The foliage is very handsome, the flowers are large, most exquisite and deliciously fragrant, and measure  $1\frac{1}{2}$  inches across; the color is a lovely violet blue. The stems are 8 to 10 inches long. 5c each; 50c doz; \$4 per hundred.

**Swanley White.** A pure white double violet exquisitely pretty and sweet. 5c each 50c doz.

## Rare Climbing and Trailing Plants

We make a specialty of rare and beautiful climbing plants. Many of them are hardy in the South, while some only grow in conservatories; we have endeavored to indicate their character in our descriptions.

**AMPELOPSIS Tricolor or Japanese Treasure Vine.** Perfectly hardy; fine for trellises, fences, buildings, etc. The stems of the young growth are pink and white. The foliage, which is shaped like finely cut miniature grape leaves, is prettily variegated pink, green and white. In the autumn it bears clusters of berries the size of small currants; color of these the most beautiful metallic purple. It is effective as a basket or vase plant. 25c.

**Roylei.** The old foliage is large, leathery, dark green. The new growth is a shining bright red; foliage small and hangs in long, beautiful festoons or creeps in long wreaths equally valuable and handsome. It is gorgeous in the autumn. 15c to 25c each.

**Veitchii or Boston Ivy.** Hardy in the most exposed places, attaining a height of 20 to 30 feet in 2 or 3 years; clings to stone, brick or wood with great tenacity. In summer the foliage is a rich shade of green, but in the fall it assumes the most gorgeous tints of scarlet crimson and orange. Perfectly hardy. 25c.

**ASPARAGUS Decumbens.** Another pretty, filmy, drooping Asparagus, fine for baskets. 25c to 50c; seeds, 20c.

**Deflexus Scandens.** A distinct and beautiful variety, fine for decoration and effective for baskets, vases or drooping over walls in courts. The stems are wiry with dainty, arching branches, from which grow the prettily light green filmy leaves. 50c each.

**Plumosus Nanus.** A charming dainty climber with leaves that are finer than fronds of some delicate fern. A beautiful vine for the house, for bouquets, and effective for decoration. 25c and 50c.

**Robustus.** A new variety of climbing asparagus from Europe, of much more robust habit than plumosus. Equally fine for decoration and valuable outside. Grows very fast and tall. 25c.

**Sprengeri.** One of the most valuable. It grows rapidly and forms handsome plants in a short time. The branches start from the ground and attain a length of 6 feet or more. For decorative purposes it is unequalled. One of the most effective for hanging baskets. 10c, 25c to 50c each. 75c to \$2.50 doz.

**ANTIGONON LEPTOPUS.** The Rosa de Montana of Mexico. A beautiful climber with tuberous roots; produces freely large racemes of rose-pink flowers of the most exquisite color; leaves heart-shaped. It is a magnificent vine for the South, as it can be set out in the spring and blooms long before frost. Here it seldom stops blooming; east it can be wintered in the cellar. 25c.

**BIGNONIA Alba.** A rare and beautiful vine, hardy in California with graceful foliage and bearing clusters of flaring tubular white flowers with a yellow throat. Hardy in the South, greenhouse climber North. 50c each.

**Speciosa.** Has shining green foliage and long drooping branches. The large flowers are maurandia-like, of a soft violet shade, beautifully veined with purple and black; blooms through the spring and summer; half hardy. 25c.

**Syderifolia.** Similar to Alba, with yellow flowers. Velvet texture. Vigorous grower. 50c.

**Tweediana.** One of the most beautiful climbers in existence. The old foliage is dark green, the young growth pale yellowish-green, which gives a soft, filmy look that is most enchanting. Flowers come in spring, and it continues for two or three months; they are borne in pairs, at the axils of the leaves and gem the masses of foliage which adorn the trailing branches, making an exquisite picture. They are bright canary-yellow, shaded darker in the lobes and throat. The vine clings by tiny tendrils, growing close to the surface of walls, roofs, or trees, and is beautiful to trail over the ground. 25c.

**Venusta.** Nothing can exceed the magnificence of this brilliant climber in Southern California. It is evergreen and has handsome foliage with large clusters of trumpet-shaped orange-salmon flowers at the axil of every leaf; graceful branches hang in long wreaths of blossoms, and the effect is almost barbaric in its gorgeous masses of orange and green. It blooms through the winter and the South. 35c.

All these bignonias are hardy in California and the South.

**BOUGAINVILLEA Braziliensis.** A splendid new variety, hardy and luxuriant; blooms most of the year, but is especially fine in winter. The floral bracts are one-third larger than *Sanderiana* and *Glabra*, the stems are longer, the color deeper and more intense. In two years plants attain the height of 20 feet with a corresponding spread. All bougainvilleas are exceedingly fine for conservatories. 25c.

**Glabra.** One of the most brilliant flowering climbers. The foliage is shining green, and the plant is always covered with masses of brilliant magenta-rose bracts. In Southern California it makes splendid specimens outside. Fine for greenhouses. 25c. All bougainvilleas must be sent with soil.

**Laterita.** Scarce, owing to difficulty in propagation, it was impossible to secure stock last season. We have a limited supply at present. It is a most beautiful climber, a rapid grower, and a winter bloomer. The foliage is handsome and the long branches are adorned with masses of rich, bright **TERRA COTTA RED** flowers, or bracts, that shade lighter with age, giving a charming effect. It harmonizes with other colors most beautifully and delights every one. \$1.50. Must be sent with soil.

**COBOEA SCANDENS.** Mexico... A beautiful climber of rapid growth, bearing large purple bell-shaped flowers in great profusion during the fall months; very attractive and desirable for arbors and trellises. 15c.

**CLIANTHUS Puniceus** or **Parrot's Beak.** A magnificent scandent shrub with long spreading branches and handsome light green pinnate foliage. Remarkable for its large showy flowers that are borne in axillary racemes of the most brilliant crimson scarlet, resembling a parrot's beak. It grows well outside in California. Is especially fine for planting on the wall of a conservatory. 25c each.

**Alba.** 25c.

**FICUS REPENS.** (Climbing fig.) China and Japan. A very handsome little climber; with small roundish, dark green leaves. Hardy in this state; a very attractive plant, attaching itself to walls, etc., like ivy. 20c.

### **Hoya Carnosa, the Climbing Wax Plant**

Satisfactory as an out-of-door plant in partial shade in Southern California. Luxuriant in growth, profuse in bloom, and the flowers so beautiful and unusual that all should try it who can give it room. It is not known, but has been fully tested that *Hoya Carnosa*, or climbing wax plant, will grow rapidly and most luxuriantly outside in California in sheltered locations, growing 15 to 20 feet high, giving a profusion of beautiful velvet like clusters of flowers freely for six months of the year. The inside of one of our lath houses is completely lined at end and one side with this fine climber, plant three years old. It can be trained like other

climbers. We have a fine stock.

Be sure and try it, you will be delighted. 25c each.

**Hoya Carnosa Variegated.** Same as above but variegated foliage. 35c.

**IPOMOEA. Learii** or **Blue Dawn Flower.**

The flowers are the most intense violet-blue with reddish purple rays, and are 6 inches across; there is nothing of its color that exceeds in richness the flowers of *Ipomoea*; rapid grower. 15c each; \$1.50 doz

**JASMINE POETICUM.** A rapid grower with fine glossy foliage, covered through the spring and summer with a perfect cloud of airy, starry blossoms. 25c each.

**MANDEVILLA Suaveolens Grandiflora.** A most chaste and beautiful climber and rapid grower, with handsome foliage, graceful habit, and completely covered with its large starry, snow-white flowers through the spring and summer months. The flowers are in clusters, and are delicately perfumed. Hardy in California and the South. 25c each.

**PASSIFLORA Pfordti Variegata.** A handsome golden foliage passion vine, showy and striking, even without its large, mauve, white and blue flowers. A strong, rapid grower, with large, light green leaves, profusely spotted and marked with bright golden yellow. 25c.

**Scarlet.** One of California's most brilliant climbers. It will in three years reach the top of the tallest trees, completely taking possession. With its handsome foliage and vivid scarlet flowers, it is wonderfully effective. Fine for conservatory. 25c.

**Violacea.** A desirable variety with dark purplish maroon-red flowers. 25c.

**RHYNCHOSPERMUM Jasminodis.** (Maylayan Jasmine). A climbing plant which succeeds admirably in the conservatory or window garden; grows as a pot plant and trained on a trellis, it produces during the spring months in great abundance delicate pure white flowers of entrancing perfume. 25c.

**SMILAX.** This plant has beautiful, small glossy foliage. It is a rapid grower and, without exception, one of the finest climbing plants. 10c.

**SOLANUM. Jasminoides.** Potato jasmine always acceptable because of its rapid growth, graceful habit and clusters of pretty white flowers. Showy when well grown. 15c.

**Jasminoides Variegata.** Like the above except that the foliage is beautifully variegated with white. 15c.

**Wendlandi.** Has immense panicles of large violet-blue flowers 2½ to 3 inches across. Indescribably lovely; rapid grower, of easy cultivation. 15c 25c.

**STEPHANOTIS Floribunda.** A rare old greenhouse climber, that grows outside in California. It has large, thick, dark green leaves and bears clusters of creamy white exquisitely fragrant flowers, measuring over an inch in diameter. 25c.



**TACSONIA Militaris.** A new variety with large flowers of rich shaded metallic carmine with velvety scarlet glints through the center of petals. A luxuriant climber and fine bloomer. 50c.

**Sutherlandii.** Of vigorous habit, with handsome, large, shining, three-lobed foliage; strong texture, and rich dark green. Flowers measure 4 inches across, carmine-rose shaded darker in the center, with a tiny purple fringe around the throat. A grand climber; fine for conservatory. Should be sent out with soil. 25c to \$1 each.

**TECOMA Jasminoides.** A handsome climber, and always admired. Glossy foliage and clusters of large flaring, trumpet-like flowers, white with maroon-red throat, and pink with red throat. White and pink. 25c, 50c and \$1.50.

**Jasminoides Alba.** Flowers white with pale yellow throat; larger, of heavier texture than the older varieties, and the lobes of the flower tube are full and overlap each other, giving a soft effect to its great clusters of snowy flowers that is beautiful. 50c to \$1 each.

**Mackenii Rosea.** A handsome climber from South Africa with showy foliage and magnificent racemes of large showy flowers, that resemble pink azaleas. They are old rose, pink, veined darker pink. It is vigorous to an immense size. 25c to 50c.

## Palms, Dracenas, Grasses

**Chamaerops Exceisa or Windmill Palm.** China, Japan, India, 30 feet. Leaves fan-shaped, deeply cut. This is the hardest palm we have, and, although it is not such a rapid grower as some, it is beautiful and worthy of extensive cultivation, as it is very ornamental, asymmetrical grower and has handsome palmate leaves. The trunk is slender, making it especially desirable for small places.. It makes an attractive pot plant. 15c to 25c each; larger ones, 75c; \$1.50 to \$2.50 doz.

**Erythea Edulis.** From Guadalupe Island. . . More rapid grower than the preceding, and one of the finest and hardest fan palms. Trunk slender, 30 feet and more high; leaves broad, bright green with woody petioles; blooms quite young, bearing a wonderful profusion of large round fruit turning black at maturity and edible. A very pretty house plant even when quite young. 25c and 50c each.

**Kentia Belmoreana or Curly Palm.** From Lord Howe's Island. One of the most valuable of house palms; elegant, pinnate leaves on strong stems, beautiful, even when small. 75c to \$2.

**Kentia Forsteriana or Thatch Leaf Palm.** From Lord Howe's Island. A robust growing variety; very graceful and attractive. The two palms are immensely popular for house palms, the leaves are on long slender stems that give a grace peculiarly their own. They resemble in general style, the difference in manner of growth. 75c to \$2.

**Phoenix Canariensis.** One of the most valuable and easily grown of the family. Fine for house plants, and grand for planting out, it attains immense proportions, with a massive trunk three feet in diameter, crowned with long arching pinnate fronds, 8 to 12 feet long; a superb tree. Small ones 25c; larger sizes 50c to \$5 each.

**Seaforthia Elegans.** One of the most graceful and beautiful palms for house decoration or the garden where there is no frost. It has small slender trunk surmounted by plummy arching fronds, and when mature bears from a sheath above the lower fronds which fall away, to give room to a great stem of flowers that loosen and fall like ropes of beads, the ropes or strings are creamy-pink, the buds the most exquisite shade of mauve; these develop later into bright, red seeds about the size of a small cherry, and are very ornamental, it is always blooming or seeding. The lovely colors make it very attractive. Without character 15c to 25c each; \$1.50 to \$2 doz. Strong plants, 50c to \$2 each.

**Strelitzia Reginae.** Queen plant or Bird of Paradise flower. A broad leaved lily-like plant bearing gorgeous flowers, yellow and blue in color, resembling the wing and beak of a bird. 50c, 75c, \$1 and \$1.50.

**Washingtonia Filifera or California Fan Palm.** Graceful habit and quick growth; leaves are palmated with numerous divisions and whitish filaments; most hardy of all palms; should be planted everywhere, as it does well in almost any soil. 25c to \$1.50 each.

**Washingtonia Robusta.** One of the hardest and most beautiful palms; in habit of growth resembling our well-known California Fan Palm, but more symmetrical and spreading and by far a superior palm; leaves fan-shaped, medium size; no filaments; retaining its dark green color during the winter months; stems short; thorny, of upright compact growth; should have precedence over the California Palm, and no doubt will have when its value as one of the grandest of our decorative plants is fully appreciated. 25c to \$1.50.

## Dracenas

**Indivisa.** A fine old variety for pot plants; has narrow arching leaves; extremely graceful. 50c to \$2.

## Ornamental Grasses, etc.

**ANTHERICUM, Picturatum.** A rich creamy white band  $\frac{3}{4}$  of an inch wide, runs through the center of each leaf, margined each side with deep green. Very showy and useful for house plants; of easy culture. 15c and 25c.

**CAREX Japonica Variegata.** A handsome sedge with white striped leaves, suited for pots or border. Useful for house or other decorations, lasting well. Hardy out of doors in Central New York, where it holds its foliage all winter. 15c.

Vilmorini. The new decorative grass. One of the most beautiful of all decorative grasses. Exceedingly long slender leaves, drooping gracefully like *Isolepis Gracilis*, but attain the length of five feet. Color of the foliage is glossy, gray-green. It is an easy grower and stands house culture admirably. For planting in vases or window boxes it has few equals. 10c and 25c.

**CYPERUS Alternifolius** or **Umbrella Grass.** Slender grass, surmounted by alternate leaves, so arranged as to resemble the frame of an open umbrella; beautiful and ornamental for house decoration. 15c.

**PANICUM Variegatum.** Beautiful grass of a trailing or creeping nature, valuable for hanging baskets or pot culture in either green house or window. Its slender, wiry stems grow 2 or 3 feet or more long, and are clothed their entire length with willow-shaped leaves which are distinctly and beautifully variegated with pure white, bright rose, and green. It likes a warm place, will grow in shade, forming a dense drooping mass of loveliest coloring imaginable. 10c to 25c.

**Panicum Plicatum.** Rapid growing grass ornamental, decorative and cheap, will take the place of a palm; fine for pot or vases. It has long, arching, broad leaves, regularly ridged and is very artistic and beautiful. It makes a splendid large clump in a few months. 15c, 25c and 50c each.

**PAPYRUS Antiquorum**, or **Egyptian Paper Plant.** Elegant, graceful and stately; sends up reed-like stems, which on old plants rise from 8 to 10 feet high, crowned with a tuft or long wiry grass that falls gracefully above and around the stem. 15c.

**PHORMIUM Tenax** or **Variegated New Zealand Flax.** Grand decorative plant of most stately habit. The leaves are 2 to 4 inches broad, with dark red edges, beautifully striped yellow and bluish green. They are showy pot plants, rivaling palms and dracaenas. Fine for lawns. 50c, 75c and \$1.25 each.

**Phormium Tenax.** Like the above except that the leaves are plain blue green, edged red. Very beautiful. 25c to \$1.50 each.

The above are too heavy to be sent by mail.

## Rare Bamboos

Bamboos are among our most decorative, beautiful and useful plants, for house or garden. The interest in them is increasing and on many large places fine collections are being made. They add greatly to the tropical effect of the landscape. They grow in almost any situation and after once being established require no further care. Their stems are valuable for stakes and rustic work, and pretty devices for the protection of beds can be made from them.

**B. Argentea.** A very hardy Japanese species reaching 35 to 40 feet. The under side of the leaf glaucous green; plant

forms a noble clump even at an early age. The tops spread out gracefully, like immense drooping plumes, and make considerable shade. The canes are used for fishing poles and for all sorts of manufactured articles, particularly by the Chinese and Japanese. 50c and \$1.

**B. Argentea Striata.** Exactly like the preceding except that it has variegated foliage, green and white, and is even more vigorous, the bright yellow stems often striped with green and are very beautiful. 75c to \$1.50.

**B. Aurea (Phyllostochis.)** A hardy species with underground running roots, which must be grown in masses, unless the runners are kept cut off with a spade. Light green leaves and yellow stems. Will reach a height of 8 to 12 feet. Very hardy. 25c to 50c.

**B. Arundinacea.** 12 inches. This very rare pretty bamboo has small bright yellow stems and beautiful golden and green variegated leaves. It is very handsome, fine for baskets and vases, 25c to 50c each.

**B. Dendrocalamus Strictus.** An immense bamboo of India, having solid cones. It reaches an enormous height and forms splendid clumps of great beauty. The strong, solid canes are of considerable value. It stands more cold than any tropical bamboo we know of \$1 each.

**B. Falcata.** A rather dwarf bamboo, with exquisite flat growths of tiny leaves and slender stems. It is a magnificent plant when grown, and is very hardy, standing a temperature of 10 degrees without injury. It forms a thick, fan-shaped clump never over 8 to 10 feet high. Elegant pot plant. Without doubt a most useful plant for the florist. The graceful shoots are very useful in flower work. 50c to \$1 each.

**B. Henonis (Phyllostochis.)** 15 to 18 feet high. A distinct Japanese variety of pyramidal shape. The light, stiff branches start out quite low, and are graduated to the top; leaves light green, stems heavily knotted. A stately and rare plant contrasting well with others of different habits of growth. 50c to \$1.00.

**B. Metake.** A handsome, broad-leaved, very hardy species, rarely exceeding 10 feet in height. Very suitable for pots and tubs, as an ornamental house plant. Leaves are thick and strong; very beautiful. It forms large masses, like *B. Aurea*; the canes are used for many purposes. Will grow along the southern border of the United States. Strong plants 25c, 50c to 75c.

**B. Nigra (Phyllostochis)** A fine upright variety with jet black stems, very handsome. It is used for canes. 50c, 75c and \$1.

**B. No. 11.** Very easily grown and sends out a crop of runners every year in all directions that sprout at each joint, coming up in straight lines like little squads of soldiers. It attains a height of 18 or 20 feet, has numerous dark green leaves that start out on thick branches near the ground, half pyramidal in shape; diameter of the plant is about three feet. It forms a sort of grove

or thicket and makes a fine wind-break, or beautiful screen or back ground. It gives numerous canes like fishing poles, 1½ inches in diameter. These are invaluable for the garden. We use them for plant stakes and rustic work and for little fences around beds of choice plants, to keep out pet dogs or cats. They are about two feet high, with red-wood uprights and three bamboos attached lengthwise by wires. The effect is very pretty, and the plants are safe. This bamboo is the most useful and easily grown of any variety we have. It is useful also for pot plants and will take the place of a palm. A large group is very stately and beautiful like a little forest of trees. The roots are too heavy for mailing. 25c, 50c and \$1; \$1.50 to \$2.50 doz.; small and medium, \$10 to \$20 per hundred.

**B. Verticillata.** A handsome species, standing much cold. Yellow striped stems and medium sized leaves, forming a splendid clump, with the habit of *B. Argentea*. It is a grand variety; it is especially used for forming wind-breaks, but will not do well on too dry or thirsty soils. 50c.

**B. Vulgaris.** The common spineless bamboo of Bengal. Most rapid grower, attaining the height of 70 feet and forming in two or three years a magnificent clump of 25 or more great canes that are 4 inches in diameter when mature. They can be cut in sections and used for many purposes. each \$2.

**B. Vulgaris Variegata.** The counterpart of the above and one that makes a fine contrast with it. The stems are deep rich yellow, sometimes lined with bright green, the large leaves are beautifully variegated green and bright yellow. It makes a noble clump in two or three years, is a striking contrast of color attracting immediate attention; the canes when mature, are 4 inches in diameter. \$2.50.

## Bulbs

**AGAPANTHUS, Umbellatus "The Blue African Lily."** A splendid pot plant; fine in groups. Flowers are arranged in umbels on long stems, 25 or 30 or more, forming one head. Color, exquisite light blue, shaded lighter in center. 20c.

**Umbellatus Variegata.** A more dwarf variety of the above with handsome foliage, beautifully striped green and white, white predominating. Flowers are blue like the plain variety, and contrast nicely with the foliage. A very pretty pot plant. 25c.

**Umbellatus, Double.** A very rare and beautiful variety of the African lily, with fine large umbels of double blue flowers. As it never seeds, this variety is slow to increase. 50c.

## Amaryllis

Amaryllis Bulbs are perennial and should not be moved or divided oftener than once in three or four years. They form large strong clumps that send up a great many gorgeous blossoms lasting for two or three weeks. By having a variety of amaryllis, a succession of blooms may be had from April till the last of October.

**Our Seedlings.** We make a specialty of choice Amaryllis and grow a great many hybrid seedlings every year. We have strong blooming bulbs of the Empress of India type, crosses on California hybrids which are superb. Large flaring flowers 7 or 8 inches across with broad petals, most brilliant shades of scarlet, lined, flushed and penciled, beautiful flowers with an absence of the green throat. Large selected bulbs 75c. choice mixed 25c to 50c each; \$2.50 to \$4 doz. Choice young bulbs, ½ to ¾ inch in diameter 15c each, \$1.25 doz. \$8 hundred; 50 at 100 rates. This is a fine opportunity to obtain rare bulbs at very low rates as our young seedlings are from our very choicest strain.

**Aulica or Lily of the Palace.** Summer and autumn bloomer. Broad foliage and large spreading wide open flowers of rich crimson scarlet, lined and penciled white and maroon. Blooming bulbs 25c each, \$2.50 doz.; larger bulbs 50c each; monsters 75c.

**Bella Donna, the Lovely Pink Bella Donna Lily.** One of the most satisfactory bearing on long stems clusters of 8 or 10 superb large pink, lily-like flowers. Pure pink, with a fragrance like ripe apricots, which keep for two weeks. It blooms in June and July, after the foliage dies down. Monster bulbs, 50c each; 2d size 25c; 3d size 15c; \$1.50, \$2.50 and \$4 dozen.

**Bella Donna Minor.** Like the above, only the flower stem is shorter, and the flowers have a white center; petals beautifully feathered pink; it blooms the latter part of August and September. 25c to 50c each; \$2.50 to \$4 doz.

Small Bella Donna Seedlings, 25c per doz., \$2 hundred.

**Defiance.** Immense trumpet shaped, sweet scented flowers; very broad petals, rich red, lined through the center with white penciled maroon. A grand variety that blooms at intervals through the year. Large bulbs from 35c to 50c; monster bulbs, 3 to 3¼ inches in diameter. \$1.

**Formossissima or Jacobean Lily.** A beautiful variety that blooms at intervals during the year. Brilliant scarlet, and has two upright and three drooping borders and lines; fine for pots. 10c to 25c each; \$1 and \$2.25 doz.

**CRINUMS.** Monster bulbs. \$1 each.

**CALLA LILIES.** Monster bulbs, 40 c each, \$4 doz., strong bulbs, largest size 25c each \$2.50 doz.; 2d size 15c each, \$1.50 doz., small bulbs, 50c and 75c doz. postpaid.

**FREESIAS.** Mixed, 10c doz.

**GLADIOLUS.** Mixed 40c per doz.

(Not Named)

**HEMEROCALLIS Auranticum.** A magnificent rich, fragrant, orange colored lily, with very large flowers measuring 5 or 6 inches across. Foliage handsome, a well established plant in full bloom is a beautiful sight; blooms almost perpetually. Hardy. 25c each.

**HEMEROCALLIS Kwanso, Double Flowering**  
Double variegated orange lily. A perfect

hardy variety that blooms for months during the summer and fall. It increases fast and makes very large clumps. 25c each.

**MONTBRETIAS.** 20c doz.

**NARCISSUS.** Mixed. 25c per doz.

**NERINE Sarniensis or Guernsey Lily.** Showy bulb, a native of Japan. The stamens are long, which gives a soft pretty effect. It blooms in September and October. 15c \$1.00 per doz.

**VALLOTA Purpurea or Scarborough Lily.** An evergreen bulb producing splendid spikes of brilliant large scarlet blossoms. It is one of the most showy of the *Amaryllis* family, is easily grown and blooms many times during the year. Blooms well in pots. 15c, 25c.

**WATSONIAS White Hybrids.** Flowers purest white and are produced on long branching flower stalks. Surpasses any other *Watsonias* ever grown. 25c each; \$2.00 per doz.

**ZEPHYRANTHES, Rosea.** Flowers large bright pink, lily-like, on slender stems. 5c each; 50c doz., postpaid.

**Alba.** Valuable for pots, and for open borders; is evergreen, easily grown, increases fast; a border of the large star-like white flowers in bloom is handsome. Flowers keep for a week or ten days. 25c doz., \$1.50 per hundred. Postage 5c to 10c on all large bulbs.

Yellow Callas—See Page 4.

## Rare Succulent Plants

No class of plants is more interesting than nature's carved and sculptured forms decorated in wondrous patterns and colored in rarest tints. Dainty bits of carving that have the surprising habit of bursting into charming bloom. Among the most attractive are *Echeverias*, *Sempervivums*, *Aloes*, *Rochea*, *Haworthias*, and a long list of others fresh from the studio of the Great Artist. Then their kindred the *Cactus* family, from pigmy to giant statues are ornamented with hooks and spears and spikes, pins, feathers, or hairs, as may be, and decorated with flowers so magnificent in color and size that one is lost in wonder. Nearly all the succulent plants are fine for house and conservatory, and are very effective with cacti, their distinct and original forms and showy flowers, making a fine display in the garden and adding much to the character of the collection.

## Choice Aloes

**Aloe Variegata or Pheasant Aloe.** One of the most interesting plants of this class. The leaves are spirally arranged, bright green and white, beautifully striped and marked resembling a pheasants breast. Flowers bright red always single. 10c, 15c, 25c, 35c, 50c each

**Climbing Aloe Citiris.** A handsome variety that grows rapidly. It can be trained to trellis, house, wall, or fence, or grown in pots. It has many branches, and bears its beautiful waxen tubular flowers on long slender stems. Always in bloom. 15c, to 50c. Cuts 10c.

**Striata.** A most striking variety with transparent leaves of light green, beautifully striped with yellowish-white; some times the leaves are half white and half green. It makes beautiful specimens. 25c, 35c to 50c.

**Hanburyana.** Beautiful on account of the handsome shape and coloring of the leaves and the very large spreading panicles of exquisitely colored waxen flowers. The leaves are broad, flat, blunt pointed, 4 to 5 inches across, light, bluish-green, translucent prettily marked, and have a pearly white line around the edge. The flower stem is very branching, 12 to 15 inches across when in bloom. Flowers, fine waxen, coral red, and remain in bloom several weeks. An especially beautiful ornament and fine for vases. Rare; small plants 25c to 50c.

**Mitraeformis.** A handsome variety with thick, short, fleshy leaves, decorated with short yellow thorns. It grows 2 or 3 feet high, requiring support and bears fine red flowers. 15c, 25c, 50c to \$1 each.

**CARAGUACA or Heart of Fire.** Of the Pine Apple family, on account of its aggressive qualities, would be of little interest in the garden, were it not for the marvelous transformation that it assumes during the blooming period. The leaves on old plants are 2 feet long, rigid, arching, deeply channeled, edged with shining hooks, the color light yellowish-green above, gray underneath, the plain looking plant is suddenly metamorphosed; the leaves assume a reddish tinge, and the entire center, a most intense and brilliant strawberry-red; in the center rises a creamy-pinkish stem and alternate red leaves, tipped with a bunch of brush-like flowers, cream and purplish-mauve. For a month or more the brilliant fire flames through the plant, then the illumination fades away, and the grand display is over. 25c to 50c each.

**Echeverias.** A most interesting class of plants, always rosette-like in form and variously colored and marked.

**Hoveyii or Opal Echeveria.** One of the most beautiful of this class. It is very brittle and requires much care in handling. It is exquisite in its lovely opaline coloring of milky white, opal blue and pink—either directly marked in the three colors, or beautifully striated. Always rare. 25c, 50c and \$1 each.

**Metallica.** A grand variety, with large foliage of a beautiful, pearly lavender pink color, a changeable metallic shade, that is a fine contrast to the tall spikes of the waxen red flowers, with pinkish stems. Small plants 25c each, larger plants 50c each.

**Secunda.** Low-growing, light green rosettes and pretty red flowers; fine for borders. 5c, 10c and 15c each; doz. 50c, 75c and \$1.

**Secunda Glauca.** Resembling the above but prettier; with glaucous green leaves. Flowers bright red, 5c, 10c and 20c each; 50c, 75c and \$1 doz.

**EUPHORBIAS.** Very peculiar plants; some with slender stems without leaves, some with large foliage, others as if carved out of hard wood; all very interesting.

**Grandicornis.** One of the handsomest. Looks as if carved from wood, branches angled and spined, and partly twisted. Variegated, dark and light green. Cuts 25c; small plants. 40c.

**Grantii.** Quite distinct; leaves large and handsomely variegated. It grows to be almost a tree; very stately. 25c to 50c each. Cuts, 10c.

**Splendens or Crown of Thorns.** A very interesting, thorny plant, that bears very beautiful bright scarlet flowers on slender stems. Always in bloom. Very showy in the garden. 25c each; cuts 10c.

**Candelabra.** A slender-stemmed variety of tree-like and very bushy growth. 15c to 25c each; cuttings 5c to 10c.

**Lactea.** Another beautiful plant of upright candelabra-like growth. The stems are marked diagonally with alternate bands of yellow and green and look as if carved from wood. 35c.

**Cereiformis.** Grows upright globular with regular ridges meeting at a common center and is formed like many of the upright varieties of *Cereus*. Small plants, 50c.

**Grandidentata.** Tree-like growth with triangular branches. Cuts 15c, plants 25c.

**FOURCROYA Lindenii.** This valuable plant is a most beautiful and rare variety with broad, waved, thick green leaves, margined with white and pink. It resembles the century plant in style of growth but is much more refined and graceful. It makes an effective pot plant; fine for house and conservatory, and also a very striking ornament in the garden. Small plants 25c and 50c.

**GASTERIAS.** Resembling Aloes in their leaves and habit of growth. They are very satisfactory as house plants or for bedding out in the garden; and stand moving well. Very handsome and showy, and bearing long spikes of brilliant scarlet and green waxen flowers that keep for a long time. The leaves are tongue-shaped, spotted with white or light green, or have raised spots of white. Some plants have long broad leaves, and others narrow. Three fine sorts. All are very handsome. 10c, 25c to 50c each; 50c, \$1 to \$2.50 doz.

**HAWORTHIA.** Small Agave-shaped plants. Natives of South Africa. Dainty and of perfect form. Desirable for window plants. Have delicate flowers, pink striped with green, on long wire-like stems. Need partial shade.

**H. Atrovirens.** Small pointed leaves closely spotted with raised white dots. Grows six inches tall. 25c each.

**H. Cymbiformis.** Beautiful. Thick, succulent three-sided leaves, semi-transparent. 20c to 40c.

**H. Margaritifera.** Slender light green leaves, three inches long, and closely covered with tiny raised white specks. 20c each.

**H. Rugosa.** Very dark green, nicely crinkled. 20c.

**H. Subpapillosa.** Dark green with raised white dots. A good bloomer 20c and 30c.

**H. Translucens.** A delicate succulent plant with recurving translucent leaves. 20c and 30c.

**KLEINIA Articulata or Candle Plant.** Large, round fleshy stems of a pretty frosted appearance; foliage cut like ivy, and prettily tinted purple underneath. 10c to 20c each, cuttings 5c each.

**Spiculosa.** Tall growing species, stems about 18 inches high, and not fleshy. Leaves a beautiful blue. Useful for borders of cactus beds, or for boxes or pots. Cuts, 5c, 10c, 50c 75c doz.; \$3.50, \$5 hundred. For plants one-half more.

**MESEMBRYANTHEMUMS.** From mesembria, midday, and anthemom, a flower; referring to the flowers opening on sunny days. The leaves are variable in shape, sometimes thick and fleshy, sometimes round and resembling the portulaca; frequently they are curiously formed. Flowers are white, pink, blush, rose, bronzed, crimson, magenta, and various shades of yellow, and have beautiful satin-like gloss. Measure an inch to 3 inches in diameter. They will grow in any soil, and love hot sun, are especially suited to dry places for covering hillsides, drooping over banks, or for borders, or baskets on verandas. A plant in full bloom is completely covered with flowers and perfectly dazzling.

**Aureum.** Bright golden yellow flowers 2 inches across, upright grower, compact habit. Invaluable for borders; pretty short irregular foliage.

**Auranticum.** Coppery red changing to rosy-red and orange. Flowers 1½ inches across, fine mossy foliage. A beautiful variety.

**Blandum.** Rose and blush. Flowers and foliage larger than the others. A trailer.

**Mutable.** Bronze and rose shaded flowers, perfectly dazzling, covering the entire plant like a brilliant cushion. Fine mossy foliage.

**Mutable Dark.** Darker bronze than the above.

**Pink.** Smaller flowers than Blandum.

**White.** Any of the above. 10c each \$1 per doz.; \$2.50 per hundred.

**Tigrinum.** A curious and handsome plant with arching leaves fringed at the edges with fine small teeth; they are formed like a tiger's jaw. The flowers are about two inches across, silky and a beautiful yellow. 10c and 25c.

**RHIPSALIS or Mistletoe Cactus.** . . Very peculiar plants. Some have long, fleshy, whip-like branches and white berries simi-

lar to mistletoe; some resemble mesembryanthemums, and some are mistaken for epiphyllums. The flowers are small, but produced in great abundance.. 10c.

**ROCHEA Falcata.** A most interesting plant with upright stems and broad roundish flat, bluish-green leaves that seem closely pressed against the stem. It bears large brush-like bunches of small intense scarlet flowers with bright yellow stamens that have a very pretty effect 15c, 25c, and 50c.

**SEDUM Stone Crop.** A genus of succulent annual, hardy herbaceous, perennial and evergreen plants, common to almost every country and climate. It is well adapted for rock work, for borders of beds, for baskets and vases for the house, being drought resisting and most easily grown.

**Sieboldi Variegata.** Round blue-green leaves exquisitely variegated with creamy-white. 15c to 25c each.

**Rotundifolium.** This is quite a robust sort with thick green leaves and fine airy sprays of pretty pink flowers on long stems, valuable for gardens or baskets. 10c and 25c each \$1 doz.

**Fabaria.** A beautiful sort that grows in rather compact bushy form about 8 to 10 inches high. The foliage is green beautifully variegated with white. Sometimes stems and entire branches will be white. 15c to 25c each.

**Pulchellum.** A pretty variety with narrow leaves, green and pinkish bronze, and with small pink flowers. Grows but three or four inches high. 10c.

**STAPELIA or "Starfish Cactus."** Curious plants with fleshy leaves; flowers shaped like a star fish.

**Variegata.** Flowers buff yellow, spotted maroon-red. 15c to 25c.

**Gradiflora.** Rare Variety... Large star-shaped flowers; color maroon-red; covered with long reddish hairs. 10c to 25c.

**YUCCAS.** The variegated Yuccas are effective in the garden and are a valuable addition to a cactus collection. Their peculiar stately habit, and rich contrasting colors, give a picturesque effect. They are also fine as single specimens with palms.

**Yucca Aloe Folia Variegata.** A fine sort with bright green leaves, bordered with yellow. 50c to \$1, \$2.50, \$5 each.

**Variegated Aurea.** Like the above, but with bright yellow leaves bordered green, \$1 each.

## Choice Cactus

### Rare Collection of Cereus

Our collection of Cereus embraces over fifty varieties. Most of the cereus have upright, massive column-like stems, others are serpentine or triangular, or trailing, so as to require support. They have with few exceptions, very large, showy,

flowers, generally white, cream or greenish white, often very large and beautiful.

**Alacriportanus.** Massive bluish-green stems with six deep angles, and long brown spines. Very beautiful cream white flowers. 50c to \$1 each.

**Atropurpureus.** The magnificent flowers of this variety makes it very desirable; it is a rapid grower, has long round, climbing stems with long spines and soon makes fine specimens. Color of spines very handsome; flowers creamy-white. 50c to \$1.

**Albispinus.** Small stemmed climber with numerous tufts of pure white spines. Stem reddish-brown. \$1.

**Baxanensis.** Another good cereus and a very striking plant. The stems have 3 or 4 very dark green ribs armed with short spines. Very rare \$1.

**Candicans (From La Plata.)** When young this variety resembles an Echino-cactus, being of a large globular form, and closely covered with very long golden spines. Very fine flowers. 50c, 75c to \$3.

**Chalibeus.** (Origin unknown) Spines, numerous and very black; stem, strong; color, dark bluish green, with a metallic lustre; very handsome and desirable, and also a rapid grower. \$1.50.

**Coerulescens.** (From Montevideo.) No doubt one of the neatest blue-stemmed Cereuses in our collection; making tall imposing plants, Flowers springing from the ridges, about 8 inches long, tube covered with reddish-green scales, which pass upwards into the sepals; these are spreading white, forming a spreading top not unlike a large white single camellia; superior even to Cereus Grandifolus. An excellent plant. A cheap plant at the low price of \$1.

**Colubrinus.** We have a splendid stock of all sizes of C. Colubrinus. They grow upright six to eight feet high and stems 1½ to 3 inches in diameter, having eleven shallow ribs set closely with spines at first red, afterwards turning gray. The flowers of Colubrinus have pinkish brown sepals and creamy-white, incurved petals. Cuts 5 in., 10c. Plants, 25c, 50c, 17 to \$5 each Fine specimens \$3 to \$5.

**Emoryii or Velvet Cactus.** A beautiful upright growing variety with light green stems, covered with shining transparent golden spines of various lengths. The young growth resembles the prettiest green velvet, with golden tint. It is very beautiful. The flowers are pale yellow and inconspicuous, but the plant is very handsome. 25c to 50c.

**Eriophorus.** A free night bloomer. Very strong upright green stems of a dark green color. \$1.

**Flagelliformis or Creeping Cereus.** Very slender stems, about ¼ inch in diameter, of pendulous habit, fine for grafting on C. Colubrinus; pretty in baskets. Bright rose-colored flowers, resembling the crab cactus. 15c, 25c, 50c.

**Gemmatus** or **Organ Pipe Cactus**. A most interesting variety, with very smooth stems, divided into six deep ridges by long lines of short spines, resembling beading. The flowers are small, brownish-red, one inch long, and are very close together. The beauty of the plant lies in its massive grandeur and bead-like lines of spines. It resembles, when well grown, a great organ pipe. Small plants are handsome. Our largest specimen is 30 ft. high. 15c, 25c, 50c, \$1 and \$2.50 each.

**Geometrizers**. Few *Cereus* are more striking in appearance. Its upright growth, delicate bluish color and large black spines make it very attractive. Beautiful white flowers. \$1 to \$3.

**Grandiflorus** or **Queen of Night**. This magnificent night blooming *cereus* produces large flowers nearly a foot across, the sepals dark brown outside, yellowish within, the petals pure white. A great beauty. 25c each. Cuttings 10c.

**Grandis**. This fine specimen from Brazil, having beautiful light green shining stems, three or four angles, and set with long, ivory white spines. Flowers large, pure white. \$1.

**Jamacaru**. This variety is the gem of every large collection. The color is a very light pubescent-blue. Makes large specimens. \$1.00.

**Lamprochlorus**. Bold upright growth of majestic habit, with large white flowers. \$1 to \$2.

**Martianus**. (From Brazil). One of the most distinctive; a semi-climber, branching freely stems a deep lively green, wavy tubercle-like each tubercle surmounted by 2 or 3 long spines, a profuse bloomer, the flowers a dazzling greenish white. One of the best. 50c.

**Hankeanus** (New) A bold magnificent sort of columnar *cereus*, stems bluish green, spines brown, set in nests close together, along the ridges, a fine *cereus*. \$1.50.

**Nycticalus**. A splendid night bloomer of strong growth, with square stems and very small spines. It produces very large white flowers resembling *Grandiflorus*. 25c each.

**Pasacana**. A very distinct variety of tall, strong growth, very dark green with long spines that turn downward and press closely to the plant, giving an odd appearance. \$2 to \$5.

**Paxtonianus**. Very dark, shining green stems, stately upright growth. 50c to \$2.

**Pink Night Bloomer**. Very pretty sort of which we do not know the name. The stems are sometimes square, sometimes six-angled one inch in diameter, and serpentine in habit of growth. The deep pink flowers measure about four inches across. Cuts 25c; plants 50c.

**Olfersii**. (From Brazil) A magnificent *cereus*, exceedingly stout growth, color light blue; beautiful spines, which are jet black and very long. Must be seen to be appreciated. Price \$1.

**Rostratus**. It is a strong, vigorous grower of the *Grandiflorus* type. The stems have four or five very deep angles which are orna-

mented at the eyes with handsome tubercles. The stems are a beautiful green with a shiny lustre. The flowers are large with short broad petals of a beautiful rich greenish white. Small plants 25c; second size, 50c cuttings 15c each.

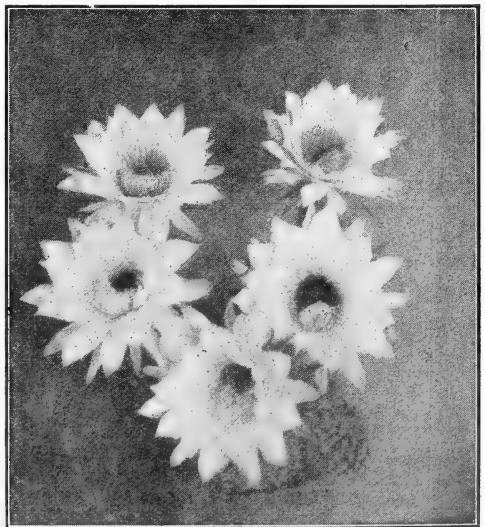
**Seidelii**. This free grower makes fine branches of a delicate bluish green. Flowers open after sunset and fade by morning and are about 8 inches long, white with green stripe down the center of petals. A fine plant. \$1 to \$2.

**Spachianus**. A stately plant growing to the height of 3 to 4 feet, and making numerous erect branches. Color light green with yellow spines. Flowers large and snow white, several rows of broad satiny petals, corolla large and flaring, outside a delicate green. Our finest *cereus*. \$1.00 to \$3.00.

**Tortuosus**. The stems of this plant are of a dark purplish-black color, spines long and dark, except on young growth, then nearly red. It has handsome large white flowers. A fine plant on account of its grotesque growth; from Buenos Ayres. Cuttings 25c. Plants 50c.

**Triangularis**. A fine night bloomer. Outside grows to immense proportions. If planted near a dwelling, the branches will flatten themselves against the side of the house, sending out long white roots on each side, which attach themselves tightly until the stems become hardened, when they loosen and hang like heavy gray strings. The flowers are superb, immense size, fine creamy-white, with magnificent clusters of silky stamens and a light yellow pistil. Blooming plants 25c, 50c, 75c and \$1 each; cuttings 15c to 25c each.

**Zaucacari**. A very handsome plant with five deep angles, and long rich, yellowish brown clusters of spines, smooth shining stems. Large white flowers 6 inches in diameter. \$1.



*Echinopsis Eyriesii*

TRY OUR FINE STRAINS OF "PETUNIA"

SEEDS.—THEY ARE THE BEST GROWN

## The Cactus for the Millions

**ECHINOPSIS MULLERI.** One of our specialties. It is free from all insect pests. It grows rapidly and lives year after year without disease, and it is the most beautiful of all the globose cactus. It blooms at intervals during the year (when large) but comes out in a perfect glory of blossom in March and April. The tube measures 6 inches in length and the semi-double flowers are 4 to 5 inches across. They are most lovely pure satin pink, the throat lined with numerous white silken stamens. For cactus beds outside in California, or pots it is one of the most easily grown and one of the most profuse bloomers. We can furnish all sizes up to large specimen plants and clusters. 10c, 15c, 25c, 50c \$1 each; 75c, \$1, \$2, \$4 doz. Special price given on large orders.

**Eyresii.** Like the above in style of plants, size and shape of flowers also in profuseness of bloom. The plants are darker green, shining, ribs more shallow and spines quite small. It bears great numbers of large chaste and beautiful white flowers, semi-double, satiny, with white fringe of stamens and pistil. These two echinopsis are the Princes of globose cactus and should be grown by every cactus lover. They are most effective for borders of cactus beds outside, and in the spring when at their best blooming period are a glorious sight. *E. Eyresii* does not increase as rapidly as *Mulleri*, and is much more rare. They are of easy culture, free from disease and insect pests. Small plants, 25c; larger 35c, 50c, \$1.

**ECHINOCEREUS Berlandieri.** A low growing recumbent plant, slender stems, four-angled, with short spines. The fragrant flowers are nearly 4 inches across, bright purple and showy. An elegant species, 25c each.

**Caespitosus.** A beautiful variety with net work of closely set silvery spines. A free large and satiny with a beautiful center and large and satiny with a beautiful center and numerous stamens. 25c, 35c and 50c each.

**E. Candicans.** The Rainbow Cactus, so called from the way in which the spines are colored in circles around the plant, shading from yellow to bright red alternately. Called *Cereus Rigidissimus* by some writers from its rigid and prim appearance. Its beauty lies not only in its bright colored spines, but in the handsome flowers also. The color of the large flower (5 to 6 inches) is an outer circle of purplish pink, shading to white, and merging into green in the center. Found in Northern Mexico, along the Arizona boundary. The supply is uncertain, but every effort is made to keep up the stock. Needs little water and very sandy soil. 50c and \$1.

**E. Dasyacanthus.** Very much like *E. Candicans* in form, only lacking the brilliant color of spines of the latter. Its bloom, which is very large, is a fine yellow, getting lighter towards the center and turning green. A

splendid plant grown with other sorts. Will stand water in summer, but wants its winters rest. 75c.

**E. Enneacanthus.** From Southern Texas and Arizona, also Northern Mexico; a variety that is not specially handsome, but is easy to care for. It is not particular as to conditions, whether dry or wet, and if rested in winter will give a fine display of pretty flowers in the spring. Cuttings, 25c.

**E. Procumbens.** Like *E. Berlandieri* in growth, but larger. Flowers purple. 25c.

**ECHINOCACTUS Crispatus.** A great favorite very numerous ribs, closely compressed and armed with good spines, the central spine flat and not much thicker than paper. Flowers vary, some being white with purple stripe and others a bright purple. Very pretty plant and a good bloomer. Price 50c and \$1.

**E. Coptonogonus.** From Northern Mexico, reaches a size of 4 inches in diameter, has twelve or fourteen sharp ridges, armed with short stout spines, mostly curving inward to the top of the plant. Spines more plentiful on some specimens than others. Flowers small, purple and white. 50c.

**Horizontalonius or "Nigger Head Cactus."** A fine Texas species. Globular, a pretty gray color, with 9 to 10 thick ridges and clusters of closely set spines, usually seven. The flowers are funnel shaped purplish pink, the sepals tipped darker purple; the stamens are very numerous. Easy to grow and a free bloomer. 25c, 50c and 75c.

**E. Longhamatus.** This is not a specially handsome plant, but well worth growing for its particularly fine flowers which are large 2 to 3 inches, and a clear lemon yellow shading to red in the center. Central spines often 6 inches long and ending in a hook that catches one's clothing in a rather friendly manner. From northern Mexico and along the Texas boundary, where it grows to a foot or more in height. 50c and \$1.

**E. Lophothele.** A most distinct style of plant, looking out of place among the Echinocacti. It has symmetrically arranged tubercles of a peculiar quadrangular shape, with long gray spines, on some specimens nearly 3 inches in length. Needs acquaintance to be appreciated, and is one of the choicest sorts. Color is light gray, flowers mostly white, and very pretty. \$1.

**E. Setispinus.** Southern Texas. A very satisfactory sort, not particularly handsome, but easily grown, and a profuse bloomer. Central spine is hooked. Flowers two and one half inches across, bright yellow with crimson center. 25c to \$1.

**Texensis.** A flat gray cushion shaped cactus. Plants vary from 3 to 12 inches across. Flowers large, yellowish rose color and beautifully fringed, followed by large bright red seed pods that remain several months. 50c and \$1.

**MAMILLARIAS.** These are beautiful little plants, the spines embracing all the colors of the rainbow, the flowers of many are generally small; the seed pods (delicate



colored berries) remain for many months making them doubly attractive. They can be grown anywhere and in any kind of soil, if the pots are well drained.

**Bicolor**—From Northern Mexico on high mountains. Very neat and compact in form, with a close network of white spines, the main centrals tipped with black. Flowers are pale rose and seed pods bright red. A fine sort. Price 40c.

**Candida**. An exceedingly beautiful plant, with a profusion of soft, delicate white spines, often assuming a decided pink shade, flowers flesh color and large. 60c to \$1.

**Decipiens**. A variety with a long pale green tubercles, tipped with a few slender spines. A fine bloomer and easily managed. 25c to 50c.

**Erecta**. Upright grower, single stems, spines, amber color; flowers yellow; one of the most showy mamillarias that we have in our collection. 50c to \$1.

**Minima**. Resembling *Stella Aurata* but of more dwarf habit and with smaller stems, which are covered with cream colored star-like spines; it also bears white flowers. 10c to 25c.

**Montana**. A hardy species, with pretty small flowers and very attractive fruit. This is an easily grown plant that will stand rough usage, and will freely produce its very large yellow flowers, lasting for several days. 25c to 50c.

**Nivea**. Most beautiful species, covered with fine white spines; rare and beautiful. Pretty flowers, followed by red berries. Rare. 25c and 50c.

**Pectinata**. Native of Southern Texas and northern part of Mexico. One of the real satisfactory kind on account of its neat form and very large and beautiful flowers. Color a clear yellow. Extra good sort and cheap. 25c to 50c.

**Pusilla**. Very dainty, with soft silvery spines 25c each.

**Stella Aurata of Golden Star**. A most beautiful variety that grows stems 2 to 4 inches in height and a half inch in diameter, branching freely and covered with spreading star-like yellow spines tipped with reddish-brown. Small white flowers. 25c to 50c each.

**Suphurea**. Fine form with rose colored flowers. 75c.

**OPUNTIA Microdasys**. The prettiest of all Opuntias with handsome, pear-shaped leaves, of a fine green, dotted with tufts of small golden spines that resemble tufts of velvet. The contrast is very beautiful, 25c, 50c and 75c each; cuttings, 15c.

**Monacantha Variegata**. A beautiful plant, the pear-shaped leaves of which are beautifully variegated white and green; young growth pink. 20c, 50c and 75c each.

## Gorgeous Phyllocactus

The most gorgeous and satisfactory of all the cactus family. A large plant will frequently carry fifty to a hundred buds

and blossoms. The leaves are flat or triangular in shape, of various shades of green, sometimes shaded with dark red. The plants attain a height of 4 to 5 feet, and from every eye of their severely plain leaves comes forth suddenly and mysteriously small buds, which develop into large flowers 5 to 8 inches across; often these flowers almost overlap each other, and they are of such brilliancy as to fairly dazzle the eyes. Some are clear scarlet and cup shaped; others are deep crimson, with throats of metallic purple and long silken stamens; either pink or white; sometimes the pollen is pink, on others white. Then there are pale yellow, pink, and cream-colored flowers, exquisitely lovely in form and color. The Phyllos begin to bloom in February, and come on during the spring and summer months the time of blooming depending upon the varieties. The secret of having blooming plants is to take cuttings from wood that has bloomed it will then flower at the proper time the next season.

**Alice Wilson**. Bright rose. 25c.

**Ackermanni**. One of the handsomest. The flowers are 6 to 8 inches across, of a rich, satiny scarlet or crimson, produced in profusion. 15c, 50c, and 75c each; cuttings 10c.

**Anguliger**. Deep notches are cut along the leaves like the teeth of a large saw. The flowers are composed of a curved tube 6 inches long, spreading out at the top to the width of 6 inches, and surrounded by a whorl of pure white petals. 20c, 50c, 75c each; cuttings 10c.

**Blindii**. Leaves bright, rich shining green, very attractive. The large flowers are a most beautiful pink. A lovely variety. Small plants. 50c.

**Bollwelleriana**. Another fine sort, with carmine scarlet flowers 5 inches in diameter. 50c.

**Conway's Giant**. Is a grand species, indeed, both in leaf and in flowers. These are of enormous size, often 2 feet in circumference, full deep scarlet, shading to purple. A well grown plant owing to its neat mass of erect branches, is really an ornament. Small plants 50c.

**Crenatus**. This species, which is a native of Honduras, rivals in size and fragrance of its blossoms, the gigantic Night-blooming Cereus. It grows to a height of about 2 feet, with round based branches, the upper portion flattened out and the margins serrated. The flower tube is 4 inches long, brownish green, and so are the sepals. Petals 4 inches long, in a whorl, stamens and pistils erect pale cream color, shading to rose. (Flowers especially valuable for cutting and placing in water. A very free bloomer. 50c.

**Feasti**. A fine grower with flat leaves with fine clusters of spines at the eyes. The flowers are exquisite of medium size, with broad, bright red petals, inner ones fine, metallic purple. Small plants 50c.

**Hookeri.** A night bloomer, of robust upright growth, having large white tubular flowers, delightfully fragrant and handsome, an extra good plant for all purposes. 50c.

**Jenkinsoni, "Case Knife Cactus"** One of the oldest varieties, with flat stems and numerous handsome scarlet flowers, about 3 or 4 inches long. It blooms when very small. 10c, 20c, 50c, 75c, to \$1 each; cuttings, 5c to 10c each.

**Kermesinus Magnus.** An imposing plant, with great thick, heavy, rich colored stems, which produce extra large deep scarlet flowers most splendid to behold; 8 to 12 inches in diameter. Small plants, 50c each; no cuttings.

**Latifrons. The Queen Cactus** is the largest of the genus 8 to 10 feet high, robust in habit, the stem 4 to 5 inches broad, flat, cre-nated, night-blooming. The flowers a beautiful creamy white; sepals and tube of a reddish hue. 25c to \$1.50 each. cutings, 5c to 20c.

**Mainwaring's Red.** A stately strong, vigorous grower, that makes an imposing plant, and produces very large, dark red, heavy flowers. 25c to 50c each.

**Mrs. Bouman.** Makes a fine large plant; with graceful slender stems. It is a most profuse bloomer, bearing many open flowers at once; which are of medium size, colored soft velvety- scarlet and of great brilliancy. 25c, 50c to \$1; cuttings 10c.

**Orange Gem.** Resembling the above but with massive foliage, that has a rich yellow tint. A grand sort. Small plants, 50c to 75c each; cuttings, 25c each.

**Phyllanthoides.** Profuse bloomer, white flowers, 25c.

**Pocockii.** A splendid variety. Stems reddish green, three angled, set with clusters of spines, cushioned with white down. Flowers have two rows of sepals, and five rows of wide petals three fourths of an inch across at widest part, delicately waved at edges. The coloring is indescribably beautiful, being rich dark red with a shiny lustre, and a broad orange red shade through the center of each petal; the inner ones are shorter than the others, all are edged and flamed with intense brilliant magenta at the base. The heart of the flowers, pale green. No words can do justice to this superb variety. Small plants, 50c to 75c.

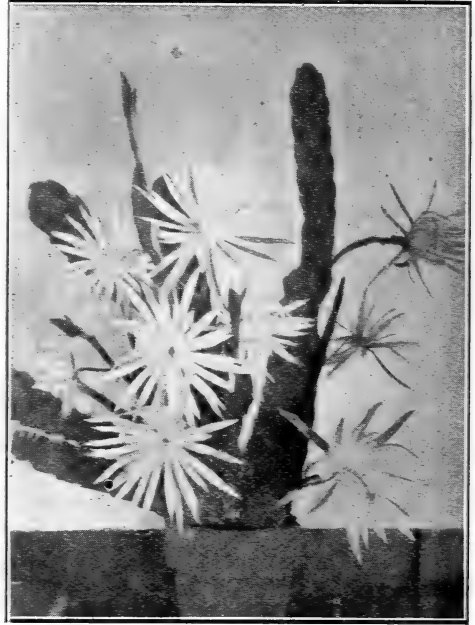
**Refulgens.** Most beautiful flaring scarlet flowers; shaded metallic purple. 50c each; cuttings, 25c.

**Speciosissimus.** Embracing all the colors of the rainbow. 25c.

**Stenopetalus, "Cactus of the Stars."** The most satisfactory and best bloomer of all. Grows rapidly and gives a profusion of star-like flowers. Petals cream, sepals brownish green, pink pistil with yellow anthers. A strong grower. 25c, 50c and \$1. Cuts, 10c.

**Tettanus.** Inside violet, outside purple; very showy and rich in appearance. 50c each.

**Wrayi.** A grand flowering sort; flowers 5 inches long by 8 inches across; brown out side, yellow within; petals yellowish white;



**Philocactus Stenopetalus, "Cactus of the Stars"**

fragrant when first open. 15c, 25c to \$1 each. Cuttings 10c.

## Christmas Cactus

**EPIPHYLLUMS of Lobster Cactus.** Called

Xmas Cactus because it always blooms through December and January, and is a charming gift for the season, being crowned with its exquisite flowers just in time for Xmas. The flowers are very numerous, and last several days. The different varieties bloom in succession from the last of September until after Easter. We have a large stock of plants of two varieties that bloom at Xmas, on roots and grafted. The grafted plants are all bushy and well grown; the taller ones are 18 inches to 2 feet high. They come into bloom about the third week in December and continue until the latter part of February. The flowers are three inches long; tube white; sepals rich coppery red; petals tipped coppery red, shading to light rose in center; edges margined deep rose; an exquisitely beautiful flower. On own roots, without soil, postpaid, 25c, 50c and 75c. Grafted, without soil, \$1. Grafted nice bushy plants, from 18 inches to 2 feet high splendid tops, \$1.50 and \$2.00 by express.

**ANHALONIUM Williamsii.** The top of the plant is round without any spines. Root long and turnip shaped; a very curious cactus and extremely attractive; flowers pale rose. "Dumpling" and "Turnip" cactus are names given to it. 25c to 50c each. **Fissuratum or Living Rock.** A wonderful

plant that appears as if carved out of stone, yet lives and blooms among the dry rocks, and so closely does it resemble the stones that it is difficult to find the plants. It requires but little water and should be grown in sandy or gravelly soil. 50c.

### Seeds of Cactus and Succulents

**CACTI FROM SEED**—It is a delight to watch their growth from the time that the seed sprouts, until it develops into a spiny ball of column, and sends out its satiny blossoms. Seeds are all sizes, from a small pea to a grain of mustard seed. Should be

planted almost on the surface in pots or cigar boxes, half filled with pot-sherds or gravel, with a couple of inches of sand, well watered and kept covered with glass. They generally sprout within ten days or a month. It is surprising to see the size of a plant that has come from a very small seed. They are beautiful little things; the most delicate colors, pale green, soft pink or pale yellow, and pure white, round or oval, and resemble precious gems. They will grow well in the sand for two or three months or until large enough to transplant well, when they should be planted in a compost of loam, sand and leaf mold mixed with broken charcoal. They must always be given good drainage. Choice mixed, 10c pkt.

### Cheap Collections. Postpaid

(UNLABELED)

No. 1 20 varieties of Cactus and Succulents.....	\$1.00
No. 2. 20 varieties of Geranium cuttings.....	.75
No. 3. 10 varieties of Geranium cuttings .....	.40
No. 4. 12 varieties of Bulbs, our selection. Including one of our seedling Amaryllis	.75
No. 5 10 varieties of Cactus and Succulents.....	.60

# THE INDEX

	Page.
Directions for Seed Sowing, cover page	2
To customers and Friends	1
How Ventura is Situated	1
Directions for ordering	2
Treatment of plants on arrival	2

	Page.
Specialties in Plants	3
Care of Pot Plants, cover page back	3
Care of Ferns, cover page back	3
Cheap Collections	45

Seeds		Plants		Seeds		Plants		Seeds		Plants	
Abelia		Rupestris	21	Daisy	9	2-4-5	Nasturtiums	11			
Abutilon	8		21	Davallia		25	Nephrolepis				25
Adiantum			25	Delphinium		9	Nerine				38
Agapanthus	8		37	Dianthus		9	Opuntia				43
Agathe	8		21	Diosma			"Oriole" New Rose				5
Aloes	8		38	Dracena		25	Palms				35
Agave	4		4	Echeveria		38	Panicum				36
Alpinia			22	Echinopsis		41-42	Pansy				30
Aloysia			21	Echinocactus		42	Papyrus				36
Amaryllis			37	Elder Variegated		33	Passiflora				34
Ampelopsis			33	Epiphyllum		44	Peas, Australian				8
Anhalonium			44	Erythra		35	Peas, Sweet				13
Anchusa	8		35	Erythrina		9	Petunia			6-7	30
Anthericum	8		33	Eschscholtzia		10	Pelargonium				28
Antigonon	8		33	Euphorbias		39	Philodendron				4
Arctotus	8		33	Farfugium		26	Phoenix				35
Asparagus	8		33	Ferns		10	Phormium				36
Aspidistra			21	Ficus Repens		34	Phlox				12
Asplenium			25	Freesia		37	Phyllanthus				30
Aster	8		8	Fuschia		10	Phyllocactus				43-44
Australian Pea Vine	8		8	Fourcroya		39	Plumbago				30
Balloon Vine	8		8	Gasteria		39	Poinsettia				30
Bamboo		36-37		Genista		10	Poppies				12
Begonias	8	4-14-21		Geranium		10	Rhipsalis				39
Begonias Rex	8		21	Gerbera		35	Rhubarb Crimson Win				ter
Bellis	8		8	Grasses		3					Back Cover
Bignonia	8		33	Gladiolus		37	Rochea				40
Boston Fern			25	Grevillea Thel		3	Romneya				12
Bougainvillea			34	Gypsophila		10	Roses				30-31
Bouvardias			22	Haemanthus		6	Russellia				31
Browallia	8		8	Haworthia		39	Rhynchopermum				34
Eryonopsis	8		8	Heliotrope		10	Salvia				12
Cactus	45		40	Heuchera		10	Sansevieria				31
Cactus Geraniums			3	Hemerocallis		27	Saxifraga				32
Calla		4-37		Hibiscus		29	Scabiosa				12
Canna	9	7-22-23		Hoya		34	Seaforthea				35
Carex			35	Hydrangea		29	Sedum				40
California Poppy	10			Hypericum		29	Shasta Daisy				9
Calliopsis	8			Impatiens		29	Smilax				12
Canary Bird Vine	9			Ipomea		10	Snail Vine				12
Candytuft	9			Iris		29	Snap Dragon				13
Canterbury Bells	9			Jasmine		34	Solanum				32-34
Carnation	9		23	Kentia		35	Stapelia				40
Caraguaca			38	Kleinia		39	Stephanotis				34
Celosia	9			Lady Washington Ger-		10	Stocks				13
Centaurea	9			anium		10	Stokesia				13
Cereus		40-41		Lantana			Strelitzia				35
Chamaerops		35		Lathyrus		10	Streptosolen				6-32
Cherokee Rose		31		Libonia		30	Stevia				13
Christmas Cactus		44		Linum		30	Swinsonia				13
Chrysanthemum	9	23-24		Lobelia		10	Sweet Peas				13
Cineraria	9		35	Lotus		30	Tacsonia				35
Clianthus	9		34	Mamillaria		43	Tecoma				32-35
Cobea	9		34	Mandevilla		10	Tradescantia				32
Coleus	9		24	Marguerite		5-30	Thunbergia				14
Cosmos	8			Marigold		10	Vallota				38
Crinum			37	Mauranda		10	Verbena				14
Cyclamen	9			Mesembryanthemums		10	Violets				33
Cyperus			36	Mignonette		11	Washingtonia				35
Dahlia	9	24-25		Mina		11	Watsonias				38
				Montbretias		38	Woodwardia				26
				Mosquito Plant		30	Yucca				40
				Myosotis		11	Zephyranthes				38
				Narcissus		38	Zinnia				14











# Care of Pot Plants: Watering, etc.

Plants in pots may be compared to caged birds, both being in unnatural conditions. Their requirements must be filled, or results will be unsatisfactory. A free bird, or a free plant, having the air, or mother earth around them, can resist winds, and dust, and dryness, and many other things that interfere with growth; but when in cages or pots, they are entirely at the mercy of those who own them. Birds generally fare better than plants, for it is not uncommon to see plants sitting in windows, and on railings of verandas, day after day, exposed to sun, winds and dryness; the pots are porous and the roots of the plants are close against the side, they soon become hard and dry and incapable of transmitting supplies to the leaves and stem. The plant itself exposed to winds and dryness, reaches a pitiable condition, and life soon becomes a matter of simple endurance, depending entirely upon its powers of resistance. The supply of water is often deficient, the dry pot absorbing a great deal, and most of the water running down on the outside of the ball, the center of the ball being dry.

Pot plants growing in exposed places should have double pots or pot covers, much injury being done by the exposure of the porous clay of the pots to drying influences. There are certain plants that can bear exposure to adverse influences, better than others. Among them are Yuccas, Aloes, Fourcroyas, Palms, Dracenas, Asparagus sprengeri and a few other plants with thick leathery leaves. Plants in pots should never be allowed to become dry. Neglect of this kind, once, may cause more damage to the roots of a plant than it can repair in a month. The ends of a root are supplied with mouths or ducts, through which they absorb moisture or nutriment. If these are destroyed by drying or decayed by over-watering, the source of supply is cut off from the plant. It has to put out new roots before it can regain its vigor. Hence the importance of care in watering.

New or dry pots should be soaked in water before potting plants, so as to fill the pores, or they will absorb moisture from the soil and dry out the roots. It is a good plan to protect potted plants with covers or set them inside of a second pot to keep plant from drying out. The roots near the sides of the pot are easily dried in sun or draught. Covers or double pots shade them. Covers can be made of rice matting, and various materials, or pot covers can be purchased ready made.

Plant rooted cuttings in 2 to 2½ inch pots, and re-pot into larger sizes as the pots fill up with roots. Small plants should never be put into large pots, but advanced as they gain size and strength. If over-potted, the soil becomes sodden before the plant grows large enough to require the room. It grows slowly and often makes a complete failure. In re-potting, turn the pot over, face down, placing the fingers across the top to hold the plant and gently tap the edge of the pot on the edge of a table or potting bench. The plant will slip out easily and their roots can be examined and plant slipped back in the pot, or potted on, as desired.

If roots have reached the outside of the ball and formed a network around it, it requires a larger pot.

## THE CARE OF FERNS

Most ferns, especially those offered in greenhouses, are shade-loving. Their native homes are in canyons, or under trees in moist places where the air is quiet, and their fronds are not disturbed. Many of them are from tropical countries and quite a number have originated in green houses, either as sports or from spores, as their seeds are called. Adiantums or maiden-hair ferns, are most difficult to manage in the house, because they will not long survive the dry air of rooms, owing to the extreme delicacy and small size of their pinnules, which are sometimes as delicate as gauze. They are sensitive to dryness of the air, though they will often do well in shaded places, in lath houses, or shady verandas, and only a few succeed with them in the house. Many other kinds are admirably adapted for house culture; among the different varieties of *Nephrolepis*, of which the Boston fern is one. The *Asplenium Belangeri*, *Woodwardia*, (a native California fern.)

Ferns should not be placed in halls, or situations exposed to draughts. They require great care in watering. People often think they have watered their plants when the water has only gone over the surface and around the sides of the pots, the center of the ball being still quite dry. This is especially the case when the pots are filled with roots. It is necessary that the ball should be thoroughly soaked. There is no regular rule as to the time for watering. Plants in vigorous growth require more frequent watering. Evaporation also, has much to do with it. On dry warm days, when evaporation is great, water may be needed twice a day, while if the air is cool and moist, two or three days might intervene without water. A healthy vigorous plant absorbs much water, while a delicate one can absorb but little. The soil should be examined always, and if dry, watered; if not refrain from watering. A dry pot if tapped, gives a hollow sound like a ripe watermelon, while one that is wet gives a dull heavy sound that indicates moisture.

When leaves shrivel and turn yellow, the soil has been too dry; if they turn yellow without shriveling, it indicates too much water has been given. In either case, the roots have been abused and lost their power of absorption.

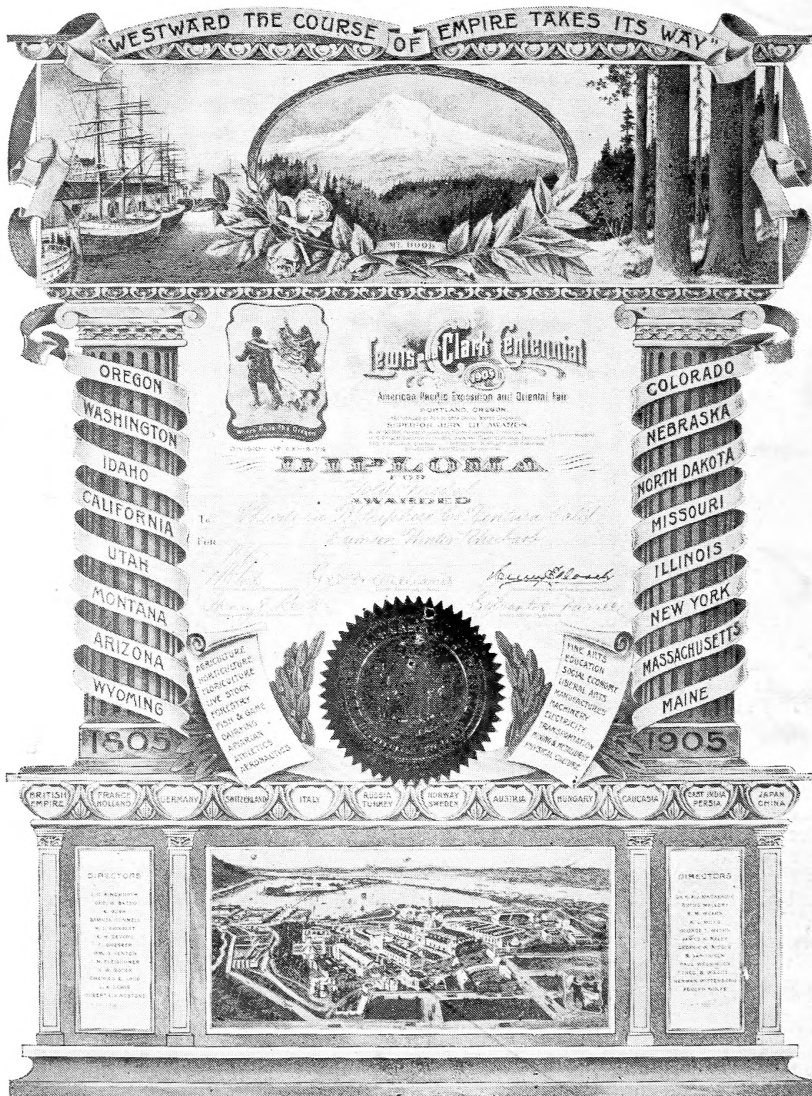
Plants which are late in blooming may often be made to give their flowers earlier by allowing them to become pot-bound, after which they can be fed with fertilizers and kept from suffering from lack of fresh soil.

The reason of this is that when the vigor of growth is checked, supplies are cut off. This induces a plant to put forth buds earlier than it would under normal conditions. Many vines or plants make very strong growth before blooming. When grown in the east it is sometimes as late as September before they give any flowers, which makes a very short blooming season, for frosts kill them, a sad disappointment to those who have watched them grow so long.

# The New Crimson Winter Rhubarb

Everbearing Crimson Winter Rhubarb. This valuable and wonderful plant was introduced by Luther Burbank, of Santa Rosa, Cal., who is known the world over as the Wizard of Horticulture, having produced more new fruits and plants than any other living man.

It has a delightful flavor, quite different from common rhubarb and an entire absence of the fibrous strings common to the old variety. It is fine grained and requires no stringing, so there is no waste. It fills a long-felt want, and gives for a comparatively low price a delightful dish when all other fruits are scarce and high priced. For sauces, pies, jelly, marmalade, fruitade, and wine, it is equally valuable.



Diploma and Gold Medal Awarded to Us for Crimson Winter Rhubarb

Strong plants, 50c each; \$2.25 per 1/2 dozen; \$4.25 per dozen; \$25 per 100; 50 at 100 rates. Medium size, 25c each; \$2.50 per dozen; \$15 per 100; 50 at 100 rates; small by mail \$1.50 dozen; \$6.00 per 100; \$40.00 per 1000. Special prices given to those who wish to grow rhubarb in large quantities for shipping. Send for special Rhubarb pamphlet.