



**Division of Coleoptera  
Department of Entomology  
U.S. National Museum**







THIRD SUPPLEMENT

TO THE

# List of Coleoptera

OF

America, North of Mexico,

BY

SAMUEL HENSHAW.

---

PHILADELPHIA :

AMERICAN ENTOMOLOGICAL SOCIETY.

1895.





THIRD SUPPLEMENT

TO THE

# List of Coleoptera

OF

America, North of Mexico,

BY

SAMUEL HENSHAW.

---

PHILADELPHIA :  
AMERICAN ENTOMOLOGICAL SOCIETY.

1895.

---

PRESS OF  
P. C. STOCKHAUSEN  
PHILADELPHIA.

---





---

#### NOTE.

The present supplement to the List of Coleoptera of America north of Mexico (Philadelphia, 1885), includes all the additions and corrections contained in the first and second supplements; also such as have been noted since May, 1889. The species are numbered continuously with the List.





# Coleoptera of North America.

## CICINDELIDÆ.

- Amblychila.** Cicindela.  
1a. Baroni *Rivers.* — bisignata *Dokh.* = 36.  
**Omus.**  
— Hornianus *W. Horn* = 7.

## CARABIDÆ.

- Cychrus.** 348 = mexicanum *Dej.*  
9240. oreophilus *Rivers.* 352 = ustulatum *Linn.*  
9241. Merkeli *Horn.* 353 } = 358.  
9242. Fuchsianus *Rivers.* 354 }  
360 = scintillans *Bates.*  
**Carabus.** 363 = Grapei *Gyll.*  
9243. granulatus *Dej.* 370 } = dentellum *Thunb.*  
9244. Hummeli *Fisch.* 372 }  
9245. nemoralis *Mull.* 392 = flavopictum *Mots.*  
**Calosoma.** 9251. lampros *Herbst.*  
9246. tepidum *Lec.* (142a) 9252. postfasciatum *Hamilton.*  
**Notiophilus.** Anillus.  
9247. aquaticus *Linn.* 9253. explanatus *Horn.*  
**Nebria.** Tachys.  
9248. parvula *Sahlb.* 451 = 841.  
9249. frigida *Sahlb.*  
**Dyschirius.** Trechus.  
224 } = æneus *Dej.* 9254. barbaræ *Horn.*  
256 }  
**Clivina.** Anophthalmus.  
267† = fossor *Linn.* 9255. Horni *Garman.*  
**Physea** Brullé. Pterostichus.  
9250. hirta *Lec.* 510 = brunneus *Dej.*  
537 = 538.  
562 = cyanicolor *Chd.*  
9256. inanis *Horn.*  
9257. caligans *Horn.*  
9258. apalachius *Horn.*  
diligendus ‡ *Lec.*

9259. *Blanchardi* Horn.  
 9260. *Johnsoni* Ulke.  
 — *pulvinatus* Hausen } = 578.  
 — *stenops* Hausen }  
 9261. *splendida* Sahlb.  
 9262. *epipleuralis* Sahlb.  
 9263. *plana* Sahlb.  
 9264. *arctica* Chd.  
 9265. *quadricollis* Mann.
- Amara.**  
 675 = 674.  
 676 = var. of 678.  
 9266. *angustata* || Sahlb.  
 9267. *Belfragei* Horn.  
 9268. *femorialis* Horn.  
 9269. *robustula* Horn  
 9270. *nupera* Horn.  
 9271. *imitatrix* Horn.
- Dicælus.**  
 — *Flohri* Bates = 713.
- Platynus.**  
 784 = *obscurus* Herbst.  
 821 = *Bogemanni* Gyll.  
 9272. *parmarginatus* Hamilton.  
 9273. *myrmecodes* Horn.  
 9274. *arizonensis* Horn.  
 9275. *languidus* Horn.  
 9276. *splendidulus* Mots.  
 9277. *Hornii* Hausen.  
 9278. *testaceonotus* Hausen.  
 9279. *cyanoipis* Bates.
- Perigona.**  
 9280. *pallipennis* Lec.
- Euphorticus.**  
 9281. *occidentalis* Horn.
- Anchonoderus.**  
 844 = *myops* Reiche.  
 9282. *apicalis* Horn.
- Galerita.**  
 850 = *mexicana* Chd.
- Lebia.**  
 9283. *testacea* Lec.  
 9284. *chloroptera* Chd.
- Apristus.**  
 9285. *subcyaneus* Horn.
- Blechrus.**  
 911 = *glabratus* Duft.
- Callida.**  
 9286. *rugicollis* Horn.
- Pentagonica.**  
 9287. *picticornis* Bates.
- Chlænus.**  
 1023 = *perplexus* Dej.  
 1033‡ = *chrysopleuralis* Chd.  
 1036 = *cæruleicollis* Chd.
- Stenocrepis** Chd.  
 9288. *chalcas* Bates.
- Anatrichis.**  
 9289. *picea* Mots.  
 9290. *oblonga* Horn.
- Oodes.**  
 1046 = *12-striatus* Chev.  
 1049 = *mexicanus* Chev.
- Discoderus.**  
 9291. *cordicollis* Horn.  
 9292. *crassicollis* Horn.
- Stenolophus.**  
 9293. *humidus* Hamilton.
- Anisodactylus.**  
 1192 = *mexicanus* Dej.  
 9294. *brevicollis* Chd.
- Pseudomorpha.**  
 9295. *cylindrica* Casey.
- DYTISCIDÆ.**
- Hydrovatus.**  
 1256 = *pustulatus* Melsh.  
 9296. *major* Sharp.
- Cœlambus.**  
 1285 = 1284.
- Deronectes.**  
 1303 = *brevis* Sturm.
- Hydroporus.**  
 9297. *fuscipennis* Schaum.  
 9298. *longicornis* Sharp.

**Agabus.**

- 1410 = 1411.  
 1431 = 1430.  
 1432 = mutus *Sharp.*  
 1446 = *Erichsoni G. & H.*  
     *phenopterus Kirby.*  
 9299. *nigripalpis Sahlb.*  
     *dissimilis || Sahlb.*  
 9300. *confinis Gyll.*  
     *ovoideus Lec.*

**Colymbetes.**

9301. *dolobratu Payk.*

**Dytiscus.**

9302. *lapponicus Gyll.*

**Thermonectes.**

9303. *peninsularis Horn.*

**Megadytes Sharp.**

9304. *fraternus Sharp.*

**Graphoderes.**

- 1499 = *cinereus Linn.*

**Cybister.**

9305. *flavocinctus Aube.*

**GYRINIDÆ.**

**Gyrinus.**

- 1526 = 1521.

9306. *opacus Sahlb.*

**HYDROPHILIDÆ.**

**Ochthebius.**

- 1572 = 1571.  
 1573 = 1576.

**Hydrophilus.**

9307. *ater Fab.*

**Tropisternus.**

- 1588 to 1595 belong here.  
 1589 = *dorsalis Brulle.*  
 9308. *apicipalpis Chev.*

**Limnebius.**

9309. *polita Casey.*  
 9310. *angustula Casey.*  
 9311. *alutacea Casey.*  
 9312. *congener Casey.*  
 9313. *coniciventrif Casey.*

**Philhydrus.**

- *cuspidatus Lec. (1649)*  
 1627 = 1628.  
 1628 = var. of 1626.  
 1635 = 1636.  
 1637 } = 1628.  
 1638 }  
 9314. *californicus Horn.*  
 9315. *Hamiltoni Horn.*

**Helochares Muls.**

- 1623 to 1639 belong here.

**Cymbiodyta Bedel.**

- 1640 to 1644 belong here.  
 9316. *fraterculus Sharp.*  
 9317. *dorsalis Mots.*  
 9318. *morata Horn.*  
 9319. *Blanchardi Horn.*

**Helocombus Horn.**

- *bifidus Lec. (1629)*

**Creniphilus Mots.**

- 1650 } = 1655.  
 1651 }  
 1654 to 1660 belong here.  
 9320. *moratus Horn.*  
 9321. *monticola Horn.*  
 9322. *degener Horn.*

**Dactylosternum.**

- *cacti Lec. (1687)*  
 9323. *advectum Horn.*

**Phænotypus Horn.**

- *palmarum Sz. (1688)*

**Cercyon.**

- 1666 } = *hæmorrhoidalis Fab.*  
 1667 }  
 1669 = *lateralis Marsh.*  
 1673 = 1678.  
 1674 = *nigriceps Marsh.*

- 1682 = 1672.  
 1683 = *granarius Er.*  
 9324. *littoralis Gyll.*  
 9325. *depressus Steph.*  
 9326. *quisquilius Linn.*  
 9327. *marinus Thoms.*  
 9328. *lateralis Marsh.*  
 9329. *indistinctus Horn.*  
 9330. *adumbratus Mann.*  
 9331. *variegatus Sharp.*  
 9332. *hæmorrhoidalis Fab.*  
 9333. *nigriceps Marsh.*  
 9334. *lugubris Payk.*  
 9335. *tristis Ill.*
9336. *floridanus Horn.*  
 9337. *granarius Er.*
- Pelosoma** Muls.  
 — *capillatum Lec. (1684)*
- Megastermum** Woll.  
 — *posticatum Mann. (1681)*  
 9338. *punctulatum Horn.*
- Pemelus** Horn.  
 — *costatus Lec. (1689)*
- Cryptopleurum.**  
 1690 = *minutum Fab.*  
 9339. *americanum Horn.*

**SILPHIDÆ.****Silpha.**

- *ænescens Casey = 1711.*

**Pinodytes.**

9340. *Hamiltoni Horn.*  
 9341. *pusio Horn.*

**SCYDMÆNIDÆ.****Brachycephsis** Brend.

- 1817 to 1822 belong here.  
 9342. *Fuchsii Brend.*

**Scydmaenus.**

- 1840|| = *Lecontei Schauff.*  
 9343. *ovithorax Brend.*  
 9344. *minimus Brend.*

**Eumicrus.**

9345. *Caseyi Brend.*

**Cholerus.**

- 1853 = 1854.

**Cephennium.**

9346. *breve Schauff.*  
 9347. *anophthalmicum Brend.*

**Euthiodes.**

9348. *lata Brend.*  
 9349. *cristata Brend.*

**Brathinus.**

9350. *californicus Hubbard.*

**PSELAPHIDÆ.****Articerus** Dahl.

- Fustiger Lec.*  
 — *Fuchsii Brend. (1864)*  
 1864a. *californicus Brend.*

**Desmia** Reit.

9351. *dispar Sharp.*

**Hamotus** Aubé.

- Cercocerus Lec.*  
 9352. *elongatus Brend.*

**Tyrus.**

- Pytna Casey.*  
 9353. *corticinus Casey*

**Ctenisis** Raffr.

9354. *dispar Sharp.*  
*Raffrayi Casey.*

**Sognorus** Reit.

- 1871 to 1874 belong here.  
 9355. *ocularis Casey.*  
 9356. *abruptus Casey.*

**Anitra** Casey.

9357. *glaberula Casey.*

**Chennium** Latr.

- Atinus Horn.*  
*Biotus Casey.*  
 9358. *fornicarium Casey.*

9359. *brevicorne* Casey.  
 — *monilicorne* Brend. (1865)
- Pselaphus.**  
 9360. *fustifer* Casey.  
 9361. *bellax* Casey.
- Valda** Casey.  
 9362. *frontalis* Casey.
- Tychus.**  
 9363. *sonomæ* Casey.  
 — *bipuncticeps* Casey = 1881.  
 9364. *microphthalmus* Brend.  
 9365. *verticalis* Casey.  
 9366. *spiculifer* Casey.
- Cylindrartus** Schauf.  
 9367. *crinifer* Casey.  
 9368. *comes* Casey.  
 9369. *ludovicianus* Brend.  
 9370. *americanus* Schauf.
- Pselaptrichus** Brend.  
 9371. *tuberculipalpus* Brend.
- Machærodes** Brend.  
 1883 = *tychoides* Brend.  
 — *carniatus* Brend. (1884)
- Anchylarthron.**  
*Verticinotus* Brend.  
 — *cornutum* Brend. (1892)  
*inornatum* Brend. (1948)
- Eutrichites.**  
 — *zonatus* Brend. (1885)  
*Zimmermanni* Lec. (1950)
- Nisaxis** Casey.  
 — *tomentosa* Aube (1947)  
*litoralis* Brend.  
 1947a. *cincinnata* Casey.  
 9372. *maritima* Casey.
- Decarthron.**  
 9373. *Brendeli* Casey.  
 9374. *discolor* Brend.  
 9375. *seriepunctatum* Brend.  
 9376. *scarificatum* Brend.  
 9377. *marinum* Brend.
- Rybasis** Saulcy.  
 1914† = *valida* Brend.  
 1915, 1916 belong here.  
 9378. *truncaticornis* Brend.  
 9379. *mystica* Casey.
- Bryaxis.**  
 9380. *perpunctata* Brend.  
 9381. *elegans* Brend.  
 9382. *labyrinthea* Casey.  
 — *intricata* Casey = 1918.  
 — *terebrata* Casey = 1918.  
 9383. *infinita* Casey.  
 9384. *loripes* Casey.  
 9385. *texana* Casey.  
 9386. *arizonæ* Casey.
- Reichenbachia** Leach.  
 1928 to 1946 belong here.  
 9387. *arthritica* Brend.  
 9388. *canadensis* Brend.  
 9389. *cylindrartus* Brend.  
 9390. *cribricollis* Brend.  
 9391. *gracilicornis* Casey.  
 9392. *furtiva* Casey.  
 9293. *inepta* Casey.  
 9294. *bicolor* Brend.  
 9395. *polita* Brend.  
 9396. *demissa* Casey.  
 9397. *informis* Casey.  
 9398. *tumidicornis* Casey.  
 9399. *tumorosa* Casey.  
 — *franciscana* Casey = 1945.  
 9400. *depressifrons* Brend.  
 — *fundata* Casey = 1941.  
 9401. *nevadensis* Casey.  
 9402. *Wickhami* Brend.  
 9403. *minuta* Brend.
- Arianops** Brend.  
*Anops* || Brend.  
*Eusanops* Casey.  
*Typhloops* Casey.  
 9404. *amblyoponica* Brend.
- Batrisus.**  
 1907 } = *striatus* Lec.  
 1912 }  
 9405. *involutus* Casey.  
 9406. *bulbifer* Casey.  
 9407. *cephalotes* Casey.  
 9408. *triangulifer* Brend.  
*spinifer* || Brend.  
 9409. *luculentus* Casey.  
 9410. *clypeonotus* Brend.  
 9411. *sinuatifrons* Brend.  
 9412. *furcatus* Brend.  
 9413. *punctifrons* Casey.

9414. *foveicornis* Casey.  
 9415. *denticauda* Casey.  
 9416. *pygidialis* Casey.  
 9417. *cicatricosus* Brend.  
 9418. *zephyrinus* Casey.  
       *mendocino* Casey.  
 9418a. *speculum* Casey.  
 9419. *occiduus* Casey.  
 9420. *monticola* Casey.  
 9421. *carolinæ* Casey.  
 9422. *cavivorus* Casey.

**Trimiopsis** Reit.

- 1964 to 1970 belong here.  
 9423. *maja* Brend.  
 9424. *laticollis* Brend.  
 9425. *thoracia* Brend.  
 9426. *gracilis* Brend.

**Actium** Casey.

- Proptectus* Raffr.  
 1960 to 1963 belong here.  
 9427. *parabolicum* Brend.  
 9428. *durum* Brend.  
 9429. *clavicorne* Makl.  
 9430. *brevipenne* Casey.  
 9431. *pacificum* Casey.  
 9432. *costale* Casey.  
 9433. *marinicum* Casey.  
 9434. *candidum* Casey.  
 9435. *testaccum* Casey.  
 9436. *robustum* Casey.  
 9437. *politum* Casey.  
 — *decipiens* Raffr. = 1693.  
 — *pallidum* Raffr. = 1693.

**Eutyphlus**.

- Nicotheus*.  
 1993 = 1994.  
 9438. *prominens* Casey.

**Bibloporus** Thoms.

*Faliscus* Casey.

**Trimioplectus** Brend.

- 1985, 1987, 1989, belong here.  
 9439. *obsoletus* Brend.  
 9440. *parabolicus* Brend.

**Euplectus**.

- Thesiastes* Casey.  
*Acolonia* Casey.  
*Oropodes* Casey.

*Ramecia* Casey.

9441. *atratus* Casey.  
 9442. *fossulatus* Brend.  
 9443. *rotundicollis* Brend.  
 9444. *planipennis* Brend.  
 9445. *iowensis* Casey.  
 9446. *californicus* Casey.  
 9447. *elongatus* Brend.  
 9448. *longissimus* Brend.  
 9449. *hudsonicus* Casey.  
 9450. *Raffrayi* Brend.  
 9451. *orbiceps* Casey.  
 9452. *dentiventris* Casey.  
 9453. *discreta* Casey.

**Rhexidius** Casey.

- Conoplectus* Brend.  
*Prorhexius* Raffr.  
 9454. *intermedius* Brend.  
 9455. *trogasteroides* Brend.  
 — *canaliculatus* Lec. (1971)  
       *sylvaticus* Raffr.  
 9456. *asperulus* Casey.  
 9457. *granulosus* Casey.

**Oropus** Casey.

- Trichonyx* † Lec.  
 9458. *cavicauda* Casey.  
 9459. *montanus* Casey.  
 9460. *abbreviatus* Casey.  
 9461. *interruptus* Casey.  
 9462. *convexus* Casey.  
 — *striatus* Lec. (1956)

**Rhexius**.

9463. *Schmitti* Brend.

**Morius** Casey.

9464. *occidens* Casey.

**Rafonus** Casey.

- *totulæ* Lec. (1953)

**Sagola**.

- Sonoma* Casey.  
 1954, 1955 belong here.  
 — *cavifrons* Casey = 1954.  
 9465. *rubida* Casey.  
 9466. *subsimplis* Casey.  
 9467. *longicollis* Casey.  
 9468. *grandiceps* Casey.  
 9469. *corticina* Casey.



**STAPHYLINIDÆ.****Falagria.**

9470. *occidua* Casey.  
 9471. *laticollis* Casey.  
 9472. *longipes* Woll.

**Aneurota** Casey.

9473. *sulcifrons* Casey.

**Echidnoglossa.**

- Colusa* Casey.  
 9474. *valida* Casey.  
 9475. *eximia* Casey.  
       *exilis* Casey.  
 9476. *brevicornis* Casey.  
 9477. *lacustris* Casey.  
 9478. *gracilis* Casey.  
 9479. *Brendeli* Casey.  
 9480. *monticola* Casey.  
 9481. *lativentris* Casey.  
 9482. *grandicollis* Casey.

**Platandria** Casey.

9483. *mormonica* Casey.

**Trichiusa** Casey.

9484. *compacta* Casey.  
 9485. *setigera* Casey.  
 9486. *pilosa* Casey.  
 9487. *robustula* Casey.  
 9488. *parvicollis* Casey.

**Thecturota** Casey.

9489. *tenuissima* Casey.  
 9490. *capito* Casey.  
 9491. *demissa* Casey.  
 9492. *exigua* Casey.

**Thectura** Thoms.

9493. *americana* Casey.

**Oligurota** Casey.

9494. *pusio* Casey.

**Pontomalota** Casey.

- *opaca* Lec. (2007)  
 9495. *californica* Casey.  
 9496. *nigriceps* Casey.

**Dinaræa** Thom.

9497. *angustula* Gyll.

**Amischa** Thom.

- *analis* Grav. (2022)  
 9498. *cavifrons* Sharp.

**Colpodota** Rey.

- *sordida* Marsh (2040)  
       *lividipennis* Mann. (2023)  
 9499. *parva* Sahlb.  
 9500. *fungi* Grav.  
 9501. *pulchra* Kraatz.

**Atheta** Thom.

- *picipennis* Mann (2027).  
 — *coriaria* Kraatz (2020).  
 9502. *divisa* Mark.  
 9503. *palustris* Kies.  
 9504. *aquatica* Thoms.  
 9505. *oraria* Kraatz.

**Aloconota** Thom.

9506. *sulcifrons* Steph.

**Liogluta** Thom.

9507. *graminicola* Grav.  
       *granulata* Mann.

**Lomechusa.**

9508. *montana* Casey.

**Callicerus.**

9509. *puberulus* Casey.

**Tarphiota** Casey.

9510. *pallidipes* Casey.

**Eurypronota** Casey.

9511. *discreta* Casey.  
 9512. *scopula* Casey.

**Colposura** Casey.

9513. *prælonga* Casey.  
 9514. *parviceps* Casey.  
 9515. *angusta* Casey.

**Gnypeta** Thoms.

9516. *atrolucens* Casey.

**Tachyusa.**

9517. *experta* Casey.  
 9518. *linearis* Casey.  
 9519. *laticeps* Casey.  
 9520. *faceta* Casey.  
 9521. *Harfordi* Casey.  
 9522. *crebrepunctata* Casey.

**Tinotus** Sharp.

9523. *caviceps* Casey.  
 9524. *imbricatus* Casey.

**Microdonia** Casey.9525. *occipitalis* Casey.**Dinocoryna** Casey.9526. *bisinuata* Casey.**Myrmedonia.***Platysa* Casey.9527. *sonomæ* Casey.9528. *caliginosa* Casey.9529. *angularis* Makl.9530. *angustula* Casey.9531. *loricata* Casey.9532. *obliqua* Casey.9533. *planifer* Casey.**Nototaphra** Casey.9534. *lauta* Casey.9535. *lugubris* Casey.**Anepsiota** Casey.9536. *quadricollis* Casey.9537. *insignis* Casey.9538. *Wickhami* Casey.**Ocyusa** Kraatz.9539. *asperula* Casey.**Phlæopora.**9540. *ferruginea* Casey.**Nasirema** Casey.9541. *humilis* Casey.9542. *parviceps* Casey.**Calodera.**9543. *attenuata* Casey.9544. *cavicola* Garman.**Ocalea.**9545. *vancouveri* Casey.**Polystoma.**9546. *arenaria* Casey.9547. *pacifica* Casey.**Baryodma** Thoms.9548. *sculptiventris* Casey.9549. *thoracica* Casey.9550. *bipartita* Casey.**Rheochara** Rey.9551. *lucifuga* Casey.**Microglossa** Kraatz.9552. *suturalis* Sahlb.**Aleochara.**9553. *graciliformis* Fauv.9554. *fuscipes* Grav.9555. *puberula* Klug.9556. *mœrens* Gyll.9557. *morion* Grav.**Maseochara.***Tithanis* Casey.— *californica* Casey = 2060.9558. *semivelutina* Solsky.9559. *opacella* Sharp.9560. *puberula* Casey.**Myrmobiota** Casey.9561. *crassicornis* Casey.**Dasyglossa.**9562. *prospera* Er.**Thiasophila.**9563. *laticollis* Casey.9564. *angustiventris* Casey.9565. *asperata* Casey.**Isoglossa** Casey.9566. *arcuata* Casey.**Oxypoda.**9567. *congruens* Casey.9568. *convergens* Casey.9569. *imprensa* Casey.9570. *nubifer* Casey.9571. *saxatilis* Casey.9572. *glenore* Casey.9573. *nigriceps* Casey.9574. *lineata* Casey.9575. *hudsonica* Casey.9576. *fustiger* Casey.9577. *californica* Casey.**Euthorax.**— *pictipennis* Kraatz (2065)**Achromota** Casey.9578. *fusiformis* Casey.**Myrmecochara.**9579. *crinita* Casey.**Autalia.**9580. *elegans* Casey.**Phytosus.**9581. *bicolor* Casey.

- Thinusa** Casey.  
9582. *maritima* Casey.
- Silusa**.  
9583. *vesperis* Casey.  
9584. *nanula* Casey.
- Placusa**.  
9585. *tacomæ* Casey.  
9586. *complanata* Er.
- Bolitochara**.  
9587. *californica* Casey.  
9588. *nigrina* Casey.  
9589. *marginella* Casey.  
9590. *gracilis* Sachse.  
9591. *picta* Fauv.  
Blanchardi Casey.
- Leptusa**.  
9592. *brevicollis* Casey.  
9593. *opaca* Casey.  
9594. *seminitens* Casey.  
9595. *hæmorrhoidalis* Heer.
- Oligota**.  
2076 = *pumilis* Kies.  
9596. *parva* Kraatz.  
9597. *pusillima* Grav.
- Asthenesita** Casey.  
9598. *pallens* Casey.
- Sipalia**.  
9599. *frontalis* Casey.
- Bryobiota** Casey.  
9600. *bicolor* Casey.
- Apheloglossa** Casey.  
9601. *rufipennis* Casey.
- Somatium** Woll.  
9602. *nugator* Casey.  
9603. *claviger* Casey.  
9604. *oviforme* Casey.
- Gyronycha** Casey.  
9605. *valens* Casey.  
9606. *texana* Casey.  
9607. *obscura* Casey.  
9608. *fuscipes* Casey.  
9609. *lineata* Casey.  
9610. *attenuata* Casey.  
9611. *pertenus* Casey.
- Bamona** Sharp.  
9612. *Falliana* Casey.
- Gyrophæna**.  
9613. *polita* Grav.  
9614. *bihamata* Thom.
- Gymnusa**.  
9615. *variegata* Kiesw.
- Heterothops**.  
9616. *occidentis* Casey.  
exilis || Casey.
- Quedius**.  
2108 = *fulvicollis* Steph.  
9617. *erythrogaster* Mann.
- Staphylinus**.  
2141. = *viridianus* Horn.  
9618. *lucanus* Horn.
- Belonuchus**.  
9619. *pollens* Sharp.  
9620. *moquinus* Casey.
- Philonthus**.  
2149 = *politus* Linn.  
2160 † = *fuscipennis* Mann.  
2163 † = *perforatus* Grav.  
2168 = *incertus* Solsky.  
2175 = *quisquiliarius* Gyll.  
9621. *picipennis* Makl.  
9622. *gopheri* Hubbard.  
9623. *stictus* Hausen.
- Bisnius** Thom.  
2241 = *procerulus* Grav.
- Cafus** Steph.  
*Bryonomus* Casey.
- Baptolinus**.  
9624. *longiceps* Fauv.  
9625. *pilicornis* Payk.
- Stenus**.  
2324 = 2322.  
2330 = 2329.  
2333 = 2332.  
2342 = *scabiosus* Casey.  
2354 = *montivagus* Er.  
2364 } = *nanus* Steph.  
2365 }  
2366. *pumilio* Er.  
2377. *humilis* Er.

- 2380 = 2347.  
 2388 = 2387.  
     *jejunus Casey* = 2386.  
 2390 = 2391.  
 2393 = *argus Grav.*  
 2396 = 2393.  
 2403 }  
 2404 } = *morio Grav.*  
 2406 }  
 2410 }  
 2411 = 2402.  
 2416 = 2412.  
 2433 = 2432.  
 2448 = 2447.  
 2449 }  
 2450 } = *tarsalis Ljungh.*  
 2456 }  
 2458 } = 2463.  
 2461 = 2460.  
 2468 = 2467.  
 2469 = 2465.  
 2471 = 2467.  
 — *sibericus Sahlb.* = 2358.

**Cryptobium.***Hesperobium Casey.***Ababactus.**9626. *pallidiceps Casey.***Lathrobium.**2512 = *terminatum Grav.*2514 = *quadratum Payk.***Trachysectus Casey.**— *confluens Say* (2560)**Calodema Casey.**

9627. *rugosa Casey.*  
 9628. *continens Casey.*  
 9629. *angulata Casey.*  
 9630. *mobile Casey.*  
 9631. *contracta Casey.*  
 9632. *luculenta Casey.*  
 9633. *reducta Casey.*  
 9634. *tantilla Casey.*

**Oligopterus Casey.**9635. *eunicollis Casey.***Medon Steph.**

9636. *sinuaticollis Casey.*  
 9637. *convergens Casey.*  
 9638. *lepida Casey.*

9639. *puberula Casey.*  
 9640. *malaca Casey.*  
 9641. *latiuscula Casey.*  
 9642. *sublesta Casey.*  
 9643. *consanguinea Casey.*  
 9644. *contigua Casey.*  
 9645. *luctuosa Casey.*  
 9646. *retrusa Casey.*  
 9647. *gregalis Casey.*  
 9648. *mimula Casey.*  
 9649. *languida Casey.*

**Megastilicus Casey.**9650. *formicarius Casey.***Platymedon Casey.**9651. *laticollis Casey.***Lithocharis.***Metaxyonycha Casey.*9652. *alutacea Casey.*9653. *quadrucollis Casey.*9654. *debilis Woll.***Lena Casey.**9655. *testacea Casey.***Aderocharis Sharp.**— *corticina Grav.* (2559)— *tabacina Casey* (2563).**Ramona Casey.**9656. *capitulum Casey.***Leptogenius Casey.**9657. *brevicornis Casey.***Scopæus.**9658. *rotundiceps Casey.*9659. *truncaticeps Casey.***Scopæodera Casey.**— *nitida Lec.* (2545)**Leptorus Casey.**

- *exiguus Er.* (2546)  
 — *picipes Casey* (2547).  
 9660. *texanus Casey.*  
 9661. *bicolor Casey.*  
 9662. *versicolor Casey.*  
 9663. *longiceps Casey.*

**Orus.**

- *punctatus Casey* (2550).  
 9664. *parallelus Casey.*

- Diaulota** Casey.  
 9665. *densissima* Casey.  
 9666. *insolita* Casey.
- Dacnochilus.**  
 2564 ‡ = *lætus* Lec.
- Amblopusa** Casey.  
 9667. *brevipes* Casey.
- Hypocyptus.**  
 9668. *læviusculus* Mann.
- Tachinus.**  
 2629 = *basalis* Er.  
 9669. *rufipes* DeGeer.  
 9670. *arcticus* Mots.
- Tachyporus.**  
 2638 = *macropterus* Steph.  
 2639 = *nitidulus* Fab.
- Conosoma.**  
 2649 = *bipustulatum* Grav.
- Boletobius.**  
 9671. *biseriatus* Mann.  
 9672. *angularis* Sachse.  
 9673. *exoletus* Er.  
 9674. *pæcilus* Mann.
- Mycetoporus.**  
 9675. *punctus* Gyll.  
 9676. *punctipennis* Scriba.  
 9677. *brunneus* Marsh.
- Habrocerus.**  
*Eumitocerus* Casey.  
 9678. *tarsalis* Casey.
- Pseudopsis.**  
 2683 = *sulcata* Newm.
- Bledius.**  
 9679. *strenuus* Casey.  
 9680. *furtivus* Casey.  
 9681. *monstratus* Casey.  
 9682. *eximius* Casey.  
 9683. *agonus* Casey.  
 9684. *ineptus* Casey.  
 9685. *lectus* Casey.  
 9668. *tenuis* Casey.  
 9687. *turgidus* Casey.  
 9688. *foraminosus* Casey.  
 9689. *gravidus* Casey.  
 9690. *assimilis* Casey.
9691. *villosus* Casey.  
 9692. *nebulosus* Casey.  
 9693. *monticola* Casey.  
 9694. *gentilis* Casey.  
 9695. *gracilis* Casey.  
 9696. *stabilis* Casey.  
 9697. *adustus* Casey.  
 9698. *languidus* Casey.  
 9699. *bicolor* Casey.  
 9700. *parvicollis* Casey.  
 9701. *honestus* Casey.  
 9702. *ignavus* Casey.  
 9703. *misellus* Casey.  
 9704. *neglectus* Casey.  
 9705. *turbulentus* Casey.  
 9706. *opacus* Block.
- Platystethus.**  
 9707. *spiculus* Er.
- Oxytelus.**  
 2753 = *laqueatus* Marsh.  
 2756 = 2757.  
 2760 = *tetracarınatus* Block.  
 9708. *munitus* Casey.  
 9709. *breviceps* Casey.  
 9710. *nimius* Casey.  
 9711. *montanus* Casey.  
 9712. *invenustus* Casey.  
 9713. *densus* Casey.  
 9714. *alpicola* Casey.  
 9715. *suspectus* Casey.  
 9716. *vegrandis* Casey.
- Haploderus.**  
 9717. *cephalotes* Casey.  
 9718. *princeps* Casey.  
 9719. *flavipennis* Casey.  
 9720. *annectens* Lec.
- Trogophlæus.**  
 — *mancus* Casey } = 2776.  
 — *spectatus* Casey }  
 2774 ‡ = *pusillus* Grav.  
 9721. *corticinus* Grav.  
       *fulvipennis* Faw.  
 9722. *anthracinus* Casey.  
 9723. *corvinus* Casey.  
 9724. *dentiger* Casey.  
 9725. *texanus* Casey.  
 9726. *armatus* Casey.  
 9727. *gilæ* Casey.

9728. *prominens* Casey.  
 9729. *pacificus* Casey.  
 9730. *arizonæ* Casey.  
 9731. *occiduus* Casey.  
 9732. *conjunctus* Casey.  
 9733. *spretus* Casey.  
 9734. *apacheanus* Casey.  
 9735. *imbellis* Casey.  
 9736. *lepidus* Casey.  
 9737. *diffusus* Casey.  
 9738. *lapsus* Casey.  
 9739. *egregius* Casey.  
 9740. *obliquus* Casey.  
 9741. *sculptilis* Casey.  
 9742. *difficilis* Casey.  
 9743. *congener* Casey.  
 9744. *agonus* Casey.  
 9745. *temporalis* Casey.  
 9746. *probus* Casey.  
 9747. *nanulus* Casey.  
 9748. *modestus* Casey.  
 9749. *pertenuis* Casey.  
 9750. *detractus* Casey.  
 9751. *indigenus* Casey.  
 9752. *graphicus* Casey.  
 9753. *ingens* Casey.  
 9754. *incertus* Casey.  
 9755. *delicatus* Casey.  
 9756. *puddicus* Casey.  
 9757. *robustus* Casey.  
 9758. *confinis* Casey.  
 9759. *pauperculus* Casey.  
 9760. *languidus* Casey.  
 9761. *bipuncticollis* Casey.  
 9762. *pallidulus* Casey.  
 9763. *debilis* Casey.  
 9764. *fallax* Casey.  
 9765. *providus* Casey.  
 9766. *inquisitus* Casey.  
 9767. *faccus* Casey.  
 9768. *confusus* Casey.  
 9769. *serupulus* Casey.  
 9770. *insolitus* Casey.  
 9771. *filum* Casey.  
 9772. *decoloratus* Casey.  
 9773. *tantillus* Casey.  
 9774. *riparius* Lac.  
 9775. *fuliginosus* Grav.  
 9776. *gracilis* Mann.

**Apocellus.**

9777. *niger* Casey.  
 9778. *cognatus* Sharp.

**Thinobius.**

9779. *pallidicornis* Casey.  
 9780. *grossulus* Casey.  
 9781. *sonomæ* Casey.  
 9782. *hesperius* Casey.  
 9783. *pygmæus* Casey.  
 9784. *pallidus* Casey.  
 9785. *gracilicornis* Casey.  
 9786. *crassicornis* Casey.  
 9787. *validus* Casey.

**Geodromicus.**

9788. *plagiatus* Fab.  
 9789. *stictus* Fauv.  
     *nigrita* † Fauv.  
 9790. *Fauveli* Casey.  
 9791. *nubilatus* Casey.  
 9792. *debilis* Casey.  
 9793. *temporalis* Casey.  
 9794. *Humboldtianus* Casey.  
 9795. *integer* Casey.

**Tilea.**

*Phlæopterus* Mots.  
 — *longipalpus* Casey = 2802.  
 9796. *rufitarsis* Casey.  
 9797. *filicornis* Casey.  
 9798. *brevipennis* Casey.  
 9799. *castanea* Casey.

**Vellica** Casey.

9800. *longipennis* Casey.

**Artochia** Casey.

9801. *productifrons* Casey.

**Unamis** Casey.

9802. *truncata* Casey.

**Tevalis** Casey.

9803. *cribratulus* Casey.

**Lesteva.**

*Pseudolesteva* Casey.

**Arpedium.**

2811a = *Gyllenhalli* Zett.  
 9804. *quadrum* Grav.  
 9805. *brachypterum* Grav.

**Amphichroum.**

*Pelecomalium* Casey.

- flavicorne *Casey* = 2813.  
 9806. binotatum *Casey*.  
 9807. pilosellum *Casey*.  
 9808. flavescens *Casey*.  
 9809. modestum *Casey*.  
       veterator *Casey*.  
 9810. crassicorne *Casey*.  
 9811. pallidum *Casey*.  
 9812. alutaceum *Casey*.
- Lathrinæum.**  
 — humerale *Casey* = 2823.  
 9813. nigropiceum *Casey*.  
 9814. reflexicolle *Casey*.  
 9815. spretum *Casey*.  
 9816. atrocephalum *Gyll*.
- Deliphrum.**  
 9817. æquicolle *Casey*.  
 9818. occiduum *Casey*.
- Olophrum.**  
 2833 = fuscum *Grav*.
- Homalium.**  
 2854 † = florale *Payk*.  
 9819. algarum *Casey*.
9820. rugipenne *Casey*.  
 9821. ater *Casey*.  
 9822. pacificum *Casey*.  
 9823. lacustre *Casey*.  
 9824. capito *Casey*.  
 9825. suffusum *Casey*.  
 9826. quadripenne *Casey*.  
 9827. caesum *Grav*.
- Anthobium.**  
 9828. nigerrimum *Casey*.  
 9829. diversicolle *Casey*.  
 9830. gilvipenne *Casey*.  
 9831. punctatum *Casey*.  
 9832. tibiale *Casey*.  
 9833. subangulatum *Casey*.  
 9834. atriventre *Casey*.  
 9835. fraternum *Casey*.
- Orobanus.**  
 — densus *Casey* = 2871.  
 9836. rufipes *Casey*.
- Protinus.**  
 9837. salebrosus *Casey*.  
 9838. brachypterus *Fab*.

**TRICHOPTERYGIDÆ.**

- Actidium.**  
 9839. rotundicolle *Casey*.  
 9840. robustulum *Casey*.  
 9841. granulorum *Casey*.  
 9842. attenuatum *Casey*.
- Ptilium.**  
 9843. sulcatum *Casey*.
- Ptenidium.**  
 2929 = pusillum *Gyll*.  
 9844. Caseianum *Matth*.
- Trichopteryx.**  
 9845. Crotchii *Matth*.
9846. grossa *Mots*.  
 9847. tesserula *Matth*.
- Smicrus.**  
 9848. americanus *Casey*.
- Ptinella.**  
 9849. nigrovittis *Lec*.
- Nephanes.**  
 9850. flaviventris *Mots*.
- Actinopteryx.**  
 9851. fucicola *Allib*.

**SCAPHIDIIDÆ.**

- Scaphidium.**  
 9852. antennatum *Reitt*.
- Cyparium.**  
 9853. substriatum *Reitt*.
- Bæocera.**  
 9854. congener *Casey*.
9855. deflexa *Casey*.  
 9856. speculifer *Casey*.  
 — apicalis *Lec*. (2979)  
 9857. robustula *Casey*.  
 9858. texana *Casey*.  
 9859. picea *Casey*.  
 9860. nana *Casey*.

**Scaphisoma.**

9861. *impunctatum* Reitt.  
 9862. *laeve* Reitt.  
 9863. *repandum* Casey.  
 9864. *evanescens* Casey.  
 9865. *rubens* Casey.  
 9866. *desertorum* Casey.

9867. *inconspicuum* Casey.  
 9868. *obesulum* Casey.  
 9869. *carolinæ* Casey.  
 9870. *arkansanum* Casey.  
 9871. *apicale* Horn.  
 9872. *peninsulare* Horn.

**PHALACRIDÆ.****Phalacrus.**

9873. *Sayi* Casey.  
 9874. *conjunctus* Casey.

**Phalacropsis** Casey.

- *dispar* Lec. (2991)

**Olibrus.**

- 2997 = *Lecontei* Casey.  
 2998 = 3002.  
 9875. *neglectus* Casey.  
 9876. *Wickhami* Casey.

**Olibroporus** Casey.

9877. *punctatus* Casey.

**Litolibrus** Sharp.

- *princeps* Sz. (3004)  
 9878. *uniformis* Casey.

**Acyломus** Sharp.

9879. *calcaratus* Casey.  
 9880. *extricatus* Casey.  
 9881. *ergoti* Casey.  
 9882. *piceus* Casey.  
 9883. *nebulosus* Casey.

**Eustilbus** Sharp.

- 3003 }  
 3006 } belong here.  
 3007 }  
 3008 }

3005 † = *apicalis* Melsh.

9884. *viduus* Casey.  
 9885. *pallidus* Casey.  
 9886. *floridanus* Casey.  
 9887. *obscurus* Casey.  
 9888. *nanulus* Casey.  
 9889. *modestus* Casey.  
 9890. *subalutaceus* Casey.  
 9891. *convergens* Casey.  
 9892. *attenuatus* Casey.  
 9893. *elongatulus* Casey.

**Litochrus.**

- 3010 = *immaculatus* Casey.  
 9894. *crucigerus* Casey.  
 9895. *aterrimus* Casey.

**Litochropus** Casey.

9896. *scalptus* Casey.

**Ochrolitus** Sharp.

- *rubens* Lec. (3001)  
 9897. *tristriatus* Casey.

**CORYLOPHIDÆ.****Arthrolips.**

- *misellum* Lec. (3019)

**Corylophodes** Matth.

- 3023, 3024, belong here.

**Aenigmaticum** Matth.

9898. *californicum* Casey.

**COCCINELLIDÆ.****Adonia.**

- 3039 = *variegata* Gœze.

**Coccinella.**

9899. *11-punctata* Linn.  
 9899a. *Menetriesi* Muls.

**Anatis.**

- 3075 = *ocellata* Linn.

**Exochomus.**

- *septentrionis* Weise = 3083.



- |                           |                                |
|---------------------------|--------------------------------|
| Thalassa Muls.            | Smilia Weise = Pentilia † Lec. |
| 9900. montezumæ Muls.     | Felschei Weise = 3092.         |
| Brachyacantha.            | Rhizobius Steph.               |
| 9901. erythrocephala Fab. | 9905. lophanthæ Blaisdell.     |
| Hyperaspis.               | toowoombæ Blackburn.           |
| — nigripennis Lec. (3165) |                                |
| 9902. festiva Muls.       | Novius Muls.                   |
| 9903. subsignata Cr.      | 9906. cardinalis Muls.         |
| 9904. floridana Muls.     |                                |

**ENDOMYCHIDÆ.**

- Epopterus Er.  
9907. partitus Gerst.

**EROTYLIDÆ.**

- |                            |                      |
|----------------------------|----------------------|
| Languria.                  | Erotylus.            |
| 9908. sanguinicollis Chev. | 9909. aspersus Gorh. |
| Acropteroxys Gorh.         |                      |
| 3209, 3209a, belong here.  |                      |

**COLYDIDÆ.**

- |                          |                           |
|--------------------------|---------------------------|
| Megataphrus Casey.       | Cerylon.                  |
| 9910. tenuicornis Casey. | 9915. californicum Casey. |
| Lasconotus.              | Lapethus Casey.           |
| 9911. pertenus Casey.    | 9916. discretus Casey.    |
| 9912. nucleatus Casey.   |                           |
| 9913. apicalis Casey.    | Botrodus Casey.           |
| 9914. concavus Casey.    | 9917. estriatus Casey.    |

**CUCUJIDÆ.**

- |                         |                          |
|-------------------------|--------------------------|
| Silvanus.               | Narthecius.              |
| 3304 = 3303.            | 9920. simulator Casey.   |
| 9918. gemellatus Duv.   | 9921. breviceps Casey.   |
| quadricollis † Lec.     |                          |
| Nausibius.              | Læmophlœus.              |
| 3308 = clavicornis Kug. | 9922. fractipennis Mots. |
| Planismus Casey.        | Dendrophagus.            |
| 9919. floridanus Casey. | 3348 = cygnæi Mann.      |

**CRYPTOPHAGIDÆ.**

- |                         |                          |
|-------------------------|--------------------------|
| Cryptophagus.           | Cœnoscelis.              |
| 9923. acutangulus Gyll. | 9925. cryptophaga Reitt. |
| 9924. lapponicus Sahlb. | Atomaria.                |
| beringensis Sahlb.      | 9926. apicalis Er.       |

**DERMESTIDÆ.****Attagenus.**9927. *varicolor* *Jayne.***Anthrenus.**3445 = *verbasci* *Linn.*3447 = *fuscus* *Latr.*9928. *castaneæ* *Melsh.***Thaumatoglossa** *Redt.**Axinocerus* *Jayne.***Orphilus.**3455 = *niger* *Rossi.*9929. *ater* *Er.***HISTERIDÆ.****Holopeta.**— *verniciis* *Casey* = 3456.— *pevalida* *Blaisdell* = 3456.9930. *neglecta* *Blaisdell.***Hister.**9931. *texanus* *Mars.*9932. *lubricans* *Casey.*— *vitreolucens* *Casey* = 3463.9933. *corrosus* *Casey.*9934. *semiruber* *Casey.*9935. *sculpticaudus* *Casey.*9936. *virginicæ* *Casey.*9937. *pluto* *Casey.*9938. *fractifrons* *Casey.*9939. *mormon* *Casey.*9940. *umbilicatus* *Casey.*9941. *hudsonicus* *Casey.*9942. *umbrosus* *Casey.*9943. *unicus* *Casey.*9944. *electus* *Casey.*9945. *oregonus* *Casey.*9946. *geometricus* *Casey.*9947. *tabellus* *Casey.***Anapleus.**— *compactus* *Casey* = 3569.**Chelyoxenus** *Hubbard.*9956. *xerobatis* *Hubbard.***Saprinus.**— *sulcatulus* *Schmidt* = 3598.9957. *obsidianus* *Casey.*9958. *suberatus* *Casey.*9959. *laramiensis* *Casey.*9960. *audax* *Casey.*9961. *profusus* *Casey.*9962. *socius* *Casey.*9963. *lentus* *Casey.*9964. *opacellus* *Casey.*9965. *cribrum* *Casey.*9966. *detractus* *Casey.*9967. *contractus* *Casey.*9968. *intritus* *Casey.*9969. *impunctellus* *Casey.*9970. *laxatus* *Casey.*9971. *propensus* *Casey.*9972. *servilis* *Casey.*9973. *opacus* *Horn.***Epiurus.**9948. *cornutus* *Casey.*9949. *subtropicus* *Casey.***Hetærius.**9950. *Hornii* *Wickham.***Onthophilus.**9951. *Soltaii* *Casey.***Dendrophilus.**9952. *californicus* *Horn.***Paromalus.**9953. *papagoanus* *Casey.*9954. *maneus* *Casey.*9955. *complexus* *Casey.***Plegaderus.**9974. *rigidus* *Casey.*9975. *cribratus* *Casey.*9976. *molestus* *Casey.***Teretrius.**9977. *levatus* *Horn.***Teretriosoma.**9978. *Hornii* *Lewis.***Bacanius.**9979. *globulinus* *Casey.*9980. *debilitans* *Casey.*9981. *acuminatus* *Casey.***Acritus.**9982. *celator* *Casey.*

**NITIDULIDÆ.****Carpophilus.**9983. *lugubris Murr.***Epuræa.**3704 = *terminalis Mann.*9984. *boreala Zett.***Haptoncus Murr.**— *luteolus Er. (3718)***Nitidula.**3719 = *bipunctata Linn.***Soronia.**9985. *Schwarzii Ulke.*9986. *substriata Hamilton.***Pallodes.**3747 = *pallidus Beauv.***Ips.**3756 = *quadriguttatus Fab.***LATRIDIIDÆ.****Dasycerus.**— *Grouvellei Belon = 3777.***Latridius.**3782 = *consimilis Mann.*9987. *productus Rosenh.***Coninomus.**3796 = *constrictus Gyll.*9988. *nodifer Westw.***Cartodera.**9989. *intermedia Belon.***Corticaria.**3797 = *pubescens Gyll.*3804 = *ferruginea Gyll.*9990. *fulva Com.*9991. *transversalis Gyll.***Melanophthalmus Mots.**3822 } = *distinguenda Com.*

3823 }

3824 = *similata Gyll.*9992. *distinguenda Com.**subangulata Mots.***TROGOSITIDÆ.****Trogosita.**9993. *Hubbardi Lev.***Peltis.**9994. *grossa Linn.*9995. *oblonga Linn.***Tenebrioides.**3843 = *americana Kirby.***Lycoptus Casey.**9996. *villosus Casey.***BYRRHIDÆ.****Byrrhus.**9997. *fasciatus Fab.*10,002. *tenuicornis Casey.*10,003. *naviculatus Casey.*10,004. *seriatus Casey.*10,005. *punctiventris Casey.***Limnichus.**9998. *obscurus Lec.*9999. *perpolitus Casey.*10,000. *olivaceus Lec.*10,001. *perforatus Casey.***Ditaphrus Casey.**10,006. *scymnoides Casey.***PARNIDÆ.****Psephenus.**10,007. *Falli Casey.*10,008. *veluticollis Casey.***Pelonomus.**10,011. *rufescens Casey.***Oberonus Casey.**10,012. *obesus Casey.***Lutrochus.**10,009. *laticeps Casey.***Narpus Casey.**10,013. *angustus Casey.***Throscinus.**10,010. *politus Casey.***Elmis.**10,014. *columbiensis Angell.*

**HETEROCERIDÆ.**

<b>Heterocerus.</b>	3967	} = 3969.
3956 = 3955.	9543	
3959 = var. of 3970.	9544	= 3965.
3961 = 3970.	10,015.	gemmatus <i>Horn.</i>
3962 = var. of 3970.	10,016.	Schwarzi <i>Horn.</i>
3963 = 3970.	—	vilis <i>Sharp</i> = 3965.
3964 = var. of 3970.	—	americanus <i>Sharp</i> = 3969.
3966 = 3969.		

**DASYLLIDÆ.**

<b>Anorus.</b>	<b>Cyphon.</b>
10,017. parvicollis <i>Horn.</i>	10,019. coarctus <i>Payk.</i>
<b>Euscaphurus</b> <i>Casey.</i>	
10,018. saltator <i>Casey.</i>	

**RHIPICERIDÆ.**

<b>Vesperoctenus</b> <i>Bates.</i>
10,020. Flohri <i>Bates.</i>

**ELATERIDÆ.**

<b>Melasis.</b>	<b>Phlegon.</b>
10,021. rufipennis <i>Horn.</i>	10,033. Ulkei <i>Horn.</i>
<b>Pœcilochrus</b> <i>Bon.</i>	<b>Lacon</b>
10,022. errans <i>Horn.</i>	10,034. illimis <i>Horn.</i>
<b>Eucnemis</b> <i>Ahrens.</i>	<b>Chalcolepidius.</b>
10,023. americana <i>Horn.</i>	— apacheanus <i>Casey</i> = 4089.
<b>Deltometopus.</b>	10,035. Behrensi <i>Cand.</i>
— rufipes <i>Melsh.</i> (4046)	<b>Alaus.</b>
<b>Dromæolus.</b>	— canadensis <i>Cand.</i> = 4094.
10,024. nitens <i>Horn.</i>	— zunianus <i>Casey</i> = 4092.
10,025. Harringtoni <i>Horn.</i>	<b>Cardiophorus.</b>
10,026. pusillus <i>Horn.</i>	4100 = 4097.
<b>Fornax.</b>	4104a = 4104.
10,027. infelix <i>Horn.</i>	4112 = 4113.
<b>Microrhagus.</b>	4117 = 4109.
10,028. audax <i>Horn.</i>	10,036. bifasciatus <i>Blanch.</i>
10,029. Bonvouloiri <i>Horn.</i>	10,037. coxalis <i>Blanch.</i>
<b>Arrhipis</b> <i>Bony.</i>	10,038. pullus <i>Blanch.</i>
10,030. Lanieri <i>Guer.</i>	10,039. gemmifer <i>Blanch.</i>
<b>Nematodes.</b>	10,040. abbreviatus <i>Blanch.</i>
10,031. pavidus <i>Horn.</i>	10,041. angustatus <i>Blanch.</i>
10,032. teres <i>Horn.</i>	10,042. nevadensis <i>Blanch.</i>
<b>Palæoxenus</b> <i>Horn.</i>	10,043. erinitus <i>Blanch.</i>
— Dohrnii <i>Horn</i> (4062).	10,044. pubescens <i>Blanch.</i>
	10,045. carbonatus <i>Blanch.</i>
	10,046. senicalus <i>Blanch.</i>

- 10,047. *dispar* Blanch.  
**Cryptohypnus.**  
 4151 = *restrictulus* Mann.  
 4156 = *exiguus* Rand.  
 4158† = *exiguus* Rand.  
 4163 = var. of *pectoralis* Say.  
 10,048. *barbatus* Sahlb.  
 10,049. *nocturnus* Esch.  
 10,049a. *lucidulus* Mann.  
 10,049b. *bicolor* Esch. (4150)  
 10,050. *delumbis* Horn.  
 10,051. *exiguus* Rand.  
 10,052. *cucullatus* Horn.  
 10,053. *Melsheimeri* Horn.  
 10,054. *caurinus* Horn.  
 10,055. *dispersus* Horn.  
 10,056. *gradarius* Horn.  
**Anthracoptyx** Horn.  
 10,057. *hiemalis* Horn.  
**Monocrepidius.**  
 ——— *peninsularis* Cand. = var. of  
 10,058. *lantus* Cand. [4185].  
**Elater.**  
 ——— *fuscatus* Melsh. = 4235.  
 ——— *semivittatus* Say = 4483.

- Megapenthes.**  
 4261 = 4262.  
**Melanotus.**  
 4318 = 4320.  
 10,059. *peninsularis* Cand.  
**Sericosomus.**  
 ——— *Behrensii* Cand. = 4420.  
**Corymbites.**  
 4428† = *sjælandicus* Mull.  
 4495 = *nigricornis* Panz.  
 4497 = 4337.  
 10,060. *sericeus* Gebl.  
 10,061. *confluens* Gebl.  
 10,062. *trunculentus* Casey.  
 10,063. *urostigma* Cand.  
 ——— *gracilis* Cand. = 4452.  
 ——— *floridanus* Cand. = var. of  
 10,064. *Weidtii* Angell. [4437].  
 10,065. *elongaticollis* Hamilton.  
 10,066. *umbricola* Mots.  
**Asaphes.**  
 10,067. *Lecontei* Cand.

**TIROSCIDÆ.**

- Pactopus.**  
 ——— *Fuchsi* Casey — 4559.

**BUPRESTIDÆ.**

- Agæocera** Waterh.  
 ——— *gentilis* Horn (4567).  
**Pœcilionta.**  
 4597 = 4594.  
**Buprestis.**  
 4610 = *aurulenta* Lim.  
 10,068. *villosa* Lec.  
**Melanophila.**  
 4619 = *acuminata* De Geer.  
**Anthaxia.**  
 4632 = 4633.  
**Chrysobothris.**  
 4637 = *multistigmata* Mann.  
 4639f = 4642.  
 4649 = 4648.  
 4653a = 4653.  
 ——— *cribraria* Mann. = 4639.  
 ——— *dissimilis* Gory = 4639.  
 ——— *posticalis* Lap. & Gory = 4647  
 ——— *subcylindrica* Mots. = 4654.  
 ——— *errans* Gory is S. Amer.  
 ——— *frontalis* Oliv. is S. Amer.  
 ——— *thoracica* Fab. is W. I.  
 10,069. *Edwardsii* Horn.  
 10,070. *axillaris* Horn.  
 10,071. *purpureovittata* Horn.  
 10,072. *speculifer* Horn  
 10,073. *viridicyanea* Horn.  
 10,074. *dolata* Horn.  
 10,075. *ludificata* Horn.  
 10,076. *caurina* Horn.  
 10,077. *Blanchardi* Horn.  
 10,078. *mali* Horn.  
 10,079. *nixa* Horn.

- 10,080. *deserta* Horn.  
 10,081. *lixa* Horn.  
 10,082. *cyanella* Horn.  
 10,083. *humilis* Horn.  
 10,084. *ærea* Chev.  
     *costifrons* Waterh.  
 10,085. *Merkelii* Horn.  
 10,086. *acutipennis* Chev.  
     *acuminata* Lec.  
 10,087. *libonoti* Horn.  
 10,088. *impressa* Fab.  
 10,089. *chalcophoroides* Horn.  
 10,090. *bicolor* Horn.  
 10,091. *scitula* Gory.  
 10,092. *lucana* Horn.  
 10,093. *prasina* Horn.
- Actenodes.**  
 10,094. *mendax* Horn.
- Belionota.**  
 10,095. *californica* Mots. = 4666.
- Glyptoscelimorpha** Horn.  
 10,096. *marmorata* Horn.
- Dystaxia.**  
 ——— *Lecontei* Thoms. = 4668.
- Polycesta.**  
 10,097. *angulosa* Duv.
- Acmaeodera.**  
 4696 = *rubronotata* Lap. & Gory.  
 4698 = *scalaris* Mann.  
 10,098. *subbalteata* Horn.  
 10,099. *scapularis* Horn.  
 10,100. *stigmata* Horn.  
 10,101. *bivulnera* Horn.  
 10,102. *maculifera* Horn.  
 10,103. *clausa* Horn.  
 10,104. *cribricollis* Horn.  
 10,105. *nebulosa* Horn.  
 10,106. *insignis* Horn.  
 10,107. *delumbis* Horn.
- Agrilus.**  
 4722 }  
 4723 } = vars. of 4720.  
 4723a }  
 4724a = *sp. vera.*  
 4724b = *sp. vera.*  
 4732 = *obsoletoguttatus* Gory.  
 4735 = *cavatus* Chev.  
 4740 = 4739.  
 4741 }  
 4743 } = 4742.  
 4744 = 4747.
- 10,108. *lateralis* Say.  
 10,109. *nigricans* Gory = *obsoletoguttatus* Gory.  
 ——— *virens* Gory = 4724.  
 10,110. *obtusus* Horn.  
 10,111. *crnicornis* Horn.  
 10,112. *masculinus* Horn.  
 10,113. *cupricollis* Gory.  
 10,114. *angelicus* Horn.  
 10,115. *audax* Horn.  
 10,116. *nevadensis* Horn.  
 10,117. *niveiventris* Horn.  
 10,118. *pensus* Horn.  
 10,119. *Blanchardi* Horn.  
 10,120. *concinus* Horn.  
 10,121. *ineptus* Horn.  
 10,122. *jacobinus* Horn.  
 10,123. *scitulus* Horn.  
 10,124. *ornatulus* Horn.  
 10,125. *ventralis* Horn.  
 10,126. *blandus* Horn.  
 10,127. *abjectus* Horn.  
 10,128. *abstersus* Horn.  
 10,129. *abductus* Horn.  
 10,130. *palmacollis* Horn.  
 10,131. *felix* Horn.  
 10,132. *impexus* Horn.  
 10,133. *abditus* Horn.  
 10,134. *sinuatus* Oliv.

**LAMPYRIDÆ.**

- Plateros.**  
 10,135. *sanguinicollis* Horn.
- Phengodes.**  
 10,136. *picicollis* Horn.
- Telephorus.**  
 10,137. *decipiens* Horn.
- Polemius.**  
 10,138. *languidus* Horn.
- Belotus.**  
 ——— *abdominalis* Lec. (4973)
- Malthodes.**  
 10,139. *ligulifer* Berg.

**MALACHIDÆ.**

- |                                |                              |
|--------------------------------|------------------------------|
| <b>Attalus.</b>                | <b>Dasytes.</b>              |
| 10,140. setosus <i>Horn.</i>   | 10,143. catalinæ <i>Lec.</i> |
| 10,141. unicolor <i>Horn.</i>  |                              |
| <b>Listrus.</b>                |                              |
| —— cruralis <i>Lec.</i> (5091) |                              |
| 10,142. punctatus <i>Mots.</i> |                              |

**CLERIDÆ.**

- |                                    |                                   |
|------------------------------------|-----------------------------------|
| <b>Cymatodera.</b>                 | <b>Hydnocera.</b>                 |
| 5147 = 5147a.                      | 10,146. omogera <i>Horn.</i>      |
| 10,144. purpuricollis <i>Horn.</i> | <b>Chariessa.</b>                 |
| <b>Trichodes.</b>                  | —— Lemberti <i>Rivers</i> = 5213. |
| 10,145. peninsularis <i>Horn.</i>  |                                   |

**PTINIDÆ.**

- |                                     |                                    |
|-------------------------------------|------------------------------------|
| <b>Gibbium.</b>                     | <b>Lasioderma.</b>                 |
| 5235 = psylloides <i>Czemp.</i>     | 5299 = testaceum <i>Duft.</i>      |
| <b>Sphæricus</b> Woll.              | <b>Hemiptychus.</b>                |
| 10,147. gibbioides <i>Boield.</i>   | —— sectans <i>Lec.</i> (5304)      |
| <b>Pitnus.</b>                      | 5305 = 5304.                       |
| 10,148. pygmaeus <i>Gorh.</i>       | 5306 = latus <i>Horn.</i>          |
| <b>Xestobium.</b>                   | 10,155. castaneus <i>Hamilton.</i> |
| 5261 = rufovillosum <i>De Geer.</i> | 10,156. estriatus <i>Horn.</i>     |
| 10,149. elegans <i>Horn.</i>        | 10,157. robustus <i>Horn.</i>      |
| <b>Ctenobium.</b>                   | <b>Cænocara.</b>                   |
| 10,150. cinereum <i>Horn.</i>       | 10,158. occidentens <i>Casey.</i>  |
| <b>Trichodesma.</b>                 | <b>Dinapate</b> <i>Horn.</i>       |
| 10,151. cristata <i>Casey.</i>      | 10,159. Wrightii <i>Horn.</i>      |
| 10,152. sellata <i>Horn.</i>        | <b>Lyctus.</b>                     |
| 10,153. sordida <i>Horn.</i>        | 10,160. carolinæ <i>Casey.</i>     |
| <b>Tripopitys.</b>                  | 10,161. californicus <i>Casey.</i> |
| 10,154. tenuilineata <i>Horn.</i>   | 10,162. curtulus <i>Casey.</i>     |

**CIOIDÆ.**

- |                                   |                                   |
|-----------------------------------|-----------------------------------|
| <b>Cis.</b>                       | <b>Rhipidandrus.</b>              |
| 10,163. tetracentrum <i>Gorh.</i> | 10,165. peninsularis <i>Horn.</i> |
| <b>Ceracis.</b>                   |                                   |
| 10,164. similis <i>Horn.</i>      |                                   |

**LUCANIDÆ.**

- |                                    |                               |
|------------------------------------|-------------------------------|
| <b>Platycerus.</b>                 | <b>Nicagus.</b>               |
| 10,166. californicus <i>Casey.</i> | belongs here.                 |
| 10,167. parvicollis <i>Casey.</i>  | <b>Neleus</b> <i>Kaup.</i>    |
| 10,168. pacificus <i>Casey.</i>    | 10,169. tascalæ <i>Perch.</i> |

## SCARABÆIDÆ.

- Canthon.**  
 10,170. humectus *Say.*  
 10,171. obliquus *Horn.*
- Copris.**  
 10,172. gopheri *Hubbard.*
- Onthophagus.**  
 10,173. polyphemus *Hubbard.*
- Oniticellus.**  
 10,174. cubiensis *Duv.*
- Aegialia.**  
 10,175. rufescens *Horn.*  
       rufa || *Lec.*  
 10,176. Blanchardi *Horn.*  
 10,177. pusillus *Horn.*  
 10,178. opifex *Horn.*
- Pæammodius.**  
 10,179. nanus *De Geer.*  
 10,180. hydropicus *Horn.*
- Pleurophorus.**  
 10,181. ventralis *Horn.*
- Rhyssenus.**  
 5484 = 5483.
- Atænius.**  
 10,182. insculptus *Horn.*  
 10,183. Lecontei *Har.*  
 10,184. texanus *Har.*  
 10,185. inops *Horn.*  
 10,186. leviventris *Horn.*  
 10,187. Wenzelii *Horn.*  
 10,188. inquisitus *Horn.*  
 10,189. strigatus *Say.*  
 10,190. cognatus *Lec.*  
 10,191. californicus *Horn.*
- Oxyomus.**  
 5506 = sylvestris *Scop.*
- Aphodius.**  
 5508 }  
 5511 } = 5510.  
 5512 }  
 5513 }  
 5522 = 5519.  
 5525 = putridus *Herbst.*  
 5551 = Haldemani *Horn.*  
 10,192. conspersus *Horn.*  
 10,193. consociatus *Horn.*
- 10,194. gentilis *Horn.*  
 10,195. decipiens *Horn.*  
 10,196. troglodytes *Hubbard.*  
 10,197. æmulus *Horn.*  
 10,198. luteolus *Horn.*  
 10,199. larreæ *Horn.*  
 10,200. parvus *Horn.*  
 10,201. luxatus *Horn.*  
 10,202. inutilis *Horn.*  
 10,203. pumilus *Horn.*  
 10,204. rufipes *Linn.*  
 10,205. depressus *Kug.*  
 10,206. nanus *Horn.*  
 10,207. acerbus *Horn.*  
 10,208. tenuistriatus *Horn.*  
 10,209. ovipennis *Horn.*
- Bradycinetus.**  
 10,210. Horni *Rivers.*
- Geotrupes.**  
 10,211. Ulkei *Blanch.*  
 10,212. Horni *Blanch.*
- Pleocomma.**  
 5607 = staff *Schauff.*  
 10,213. Rickseckeri *Horn.*  
 10,214. conjungens *Horn.*  
 10,215. Ulkei *Horn.*  
 10,216. puncticollis *Rivers.*
- Acoma Casey.**  
 10,217. brunnea *Casey.*
- Trox.**  
 5625 = insularis *Chev.*
- Oncerus.**  
 10,218. convergens *Horn.*
- Chnaunanthus.**  
 10,219. discolor *Burm.*  
 10,220. Palmeri *Horn.*
- Dichelonycha.**  
 10,221. picea *Horn.*
- Serica**  
 10,222. pilifera *Horn.*
- Plectrodes.**  
 ——— pulvereæ *Casey* = 5695.  
 ——— Harfordi *Casey.*  
 10,223. fossiger *Casey.*  
 10,224. Blaisdelli *Casey.*  
 10,225. squamosa *Casey.*



**Diplotaxis.**

10,226. *punctulata Horn.*

**Lachnosterna.**

5738 = 5737.

5743 = 5744.

5746 = 5745.

5748 = *prununculina Burm.*

5750 } = 5749.

5751 }

5753 } = *gracilis Burm.*

5754 }

5756 } = *gibbosa Burm.*

5763 }

5760 = *comans Burm.*

5764 }

5765 } = vars. of 5767.

5766 }

5768 }  
— *illicis † Burm.* = 5777.

5779 = 5777.

5784 = 5783.

5786 = *comans Burm.*

5787 = *clypeata Horn.*

5795 = 5797.

10,227. *longicornis Blanch.*

10,228. *diffinis Blanch.*

— *Fosteri Burm.* = var. of 5767.

10,229. *hamata Horn.*

10,230. *generosa Horn.*

10,231. *prætermissa Horn.*

10,232. *clemens Horn.*

10,233. *hirtiventris Horn.*

10,234. *postrema Horn.*

10,235. *inversa Horn.*

10,236. *bipartita Horn.*

10,237. *vehemens Horn.*

10,238. *arcuata Smith.*

10,239. *insperata Smith.*

10,240. *dubia Smith.*

10,241. *grandis Smith.*

10,242. *Ulkei Smith.*

10,243. *quadrata Smith.*

10,244. *politula Horn.*

10,245. *barda Horn.*

10,246. *spretta Horn.*

10,247. *nova Smith.*

10,248. *infidelis Horn.*

10,249. *luctuosa Horn.*

10,250. *scitula Horn.*

10,251. *profunda Blanch.*

10,252. *Hornii Smith.*

10,253. *biimpressa Smith.*

10,254. *longispina Smith.*

10,255. *implicita Horn.*

10,256. *innominata Smith.*

10,257. *limula Horn.*

10,258. *delata Horn.*

10,259. *æmula Horn.*

10,260. *arcta Horn.*

10,261. *vetula Horn.*

10,262. *fucata Horn.*

10,263. *exorata Horn.*

10,264. *ignava Horn.*

10,265. *inepta Horn.*

10,266. *affabilis Horn.*

10,267. *boops Horn.*

10,268. *ecostata Horn.*

10,269. *antennata Smith.*

10,270. *lenis Horn.*

10,271. *heterodoxa Horn.*

10,272. *tusa Horn.*

**Listrochela.**

10,273. *carminator Horn.*

**Polyphylla.**

— *speciosa Casey* = 5822.

— *diffracta Casey* = 5823.

**Thyce.**

*Dinacoma Casey.*

10,274. *marginata Casey.*

**Ligyris.**

10,275. *Bryanti Rivers.*

**Aphonides Rivers.**

*Anoplognathus* || Rivers.

10,276. *Dunniana Rivers.*

**Stephanucha Burm.**

10,277. *pilipennis Kraatz.*

**Cremastochilus.**

10,278. *opaculus Horn.*

## CERAMBYCIDÆ.

- Ergates.**  
 ——— neomexicanus *Casey* = 5950.
- Mallodon.**  
 10,279. molarium *Bates*.
- Prionus.**  
 ——— debilis *Casey* = 5962.
- Tragosoma.**  
 ——— spiculum *Casey* = 5967.  
 10,280. pilosicornis *Casey*.
- Tetropium.**  
 10,281. parallelum *Casey*.  
 10,282. Schwarzianum *Casey*.  
 10,283. parvulum *Casey*.
- Hylotrupes.**  
 ——— litigiosus *Casey* = 5992.
- Phymatodes.**  
 5995 = lividus *Rossi*.  
 10,284. obliquus *Casey*.  
 10,285. juglandis *Leng*.
- Malacopterus.**  
 6016 = lineatus *Guer*.
- Chrotoma** *Casey*.  
 10,286. Dumniana *Casey*.
- Eburia.**  
 10,287. conspersa *Horn*.
- Elaphidion.**  
 6063 = 6062.  
 10,288. arizonense *Casey*.  
 10,289. Levettei *Casey*.  
 10,290. mutatum *Gahan*.  
 10,291. cinereum *Oliv*.  
 10,292. lanatum *Chev*.
- Rhopalophora.**  
 ——— Meeskei *Casey* = 6103.
- Acyphoderes** *Serv*.  
 10,293. delicatus *Horn*.
- Ancylocera.**  
 ——— brevicornis *Casey* = 6108 ♀.
- Dendrobias.**  
 6119 = mandibularis *Serv*.
- Tragidion.**  
 10,294. auripenne *Casey*.
- Batyle.**  
 10,295. cylindrella *Casey*.
- Oxoplus.**  
 10,296. coccineus *Casey*.
- Crossidius.**  
 10,297. Blandi *Casey*.  
 10,298. longipeunis *Casey*.  
 10,299. crassipes *Casey*.  
 10,300. nitidicollis *Casey*.
- Sphænothecus.**  
 ——— rubeus *Casey* = 6158.  
 10,301. basalis *Horn*.
- Stenosphenus.**  
 10,302. longicollis *Casey*.
- Euryscelis** *Chev*.  
 ——— suturalis *Oliv*. (6191)
- Xylotrechus.**  
 10,303. gemellus *Casey*.
- Cyrtophorus.**  
 10,304. insinuans *Casey*.
- Euērces.**  
 10,305. exilis *Casey*.
- Agallissus.**  
 10,306. chamæropis *Horn*.
- Necydalis.**  
 10,307. barbaræ *Rivers*.
- Toxotus.**  
 6240 = trivittatus *Say*.  
 10,308. nubifer *Lec*.  
 10,309. lateralis *Casey*.
- Anthophilax.**  
 10,310. subvittata *Casey*.
- Acmæops.**  
*Thesalia* *Casey*.  
 10,311. lisa *Leng*.  
 10,312. variipes *Casey*.
- Strangalia.**  
 10,313. montana *Casey*.
- Leptura.**  
 6319 = nitens *Forst*.  
 6325 = var. of 6323.  
 6347 = 6348.  
 6365 = 6265.

- 10,314. *vexatrix* Mann.  
 10,315. *gaurotoides* Casey.  
 ——— *serpentina* Casey = 6320 ♀.  
 10,316. *Haldemani* Casey.  
 10,317. *lacustris* Casey.

**Ophistomis** Thom.

- 10,318. *laevicollis* Bates.  
 10,319. *ventralis* Horn.

**Ipochnus**.

- *subnitidus* Casey = 6368.  
 ——— *pubescens* Casey = 6368.

**Monilema**.

- *spinicollis* Casey = 6371.

**Psenocerus**.

- *tristis* Casey = 6384.

**Monohammus**.

- *obtusus* Casey = 6387.

**Ptychodes**

- *abbreviatus* Casey = 6390.

**Cænopœus**.

- 10,320. *niger* Horn.

**Liopus**.

- 10,321. *setipes* Casey.  
 10,322. *mimeticus* Casey.

**Nyssodryx** Bates.

- 10,323. *Haldemani* Lec. (6432)  
 ——— *contempta* Bates.

**Peritapnia** Horn.

- 10,324. *fabra* Horn.

**Valemus** Casey.

- 10,325. *inornatus* Casey.

**Hyperplatys**.

- 10,326. *californicus* Casey.

**Probatius** Thoms.

- 10,327. *umbratilis* Dur.

**Spalacopsis**.

- 10,328. *texana* Casey.

**Mecas**.

- 10,329. *saturnina* Lec.

**Tetraopes**.

- 6509 = *rubrocinereus* Thom.  
 10,330. *elegans* Horn.

**CHIRYSOMELIDÆ.**

**Aulacoscelis** Chev.

- 10,331. *purpurea* Horn.  
 10,332. *Hogei* Jac.

**Donacia**.

- 6225 = 6541.  
 6528 = 6527.  
 6533 } = vars. of *cineticornis* Newm.  
 6534 }  
 6537 = var. of 6536.  
 6540 = var. of 6535.  
 6542 = var. of *pusilla* Say.  
 6543 = *pusilla* Say.  
 6547 = 6546.  
 6548 = *rufa* Say.  
 — *ærea* Lac. = 6536.  
 — *assimilis* Lac.  
 — *cærulea* Oliv. } = 6526.  
 — *militaris* Lac. }  
 — *vicina* Lac. }  
 — *binodosa* Germ. }  
 — *chalcea* Lac. } = 6546.  
 — *parva* Lac. }

- *carolina* Lac. = 6529.  
 —— *fulvipes* Lac. = *pusilla* Say.  
 —— *pallipes* Lac. = 6539.

- 10,333. *florida* Leug.  
 10,334. *cineticornis* Newm.  
 —— *rufescens* Lac. = var. of 6527.  
 10,335. *pusilla* Say.  
 10,336. *rufa* Say.

**Syneta**.

- 10,337. *hamata* Horn.

**Lema**.

- 10,338. *flavida* Horn.  
 10,339. *omogera* Horn.  
 10,340. *æmula* Horn.

**Euryscopa**.

- 10,341. *Pilatei* Lac.  
 10,342. *pusilla* Horn.  
 10,343. *subtilis* Horn.

**Coscinoptera**.

- 6586 = 6588.

- 6591 = 6590.  
 10,344. *seminuda Horn.*
- Babia.**  
 10,345. *costalis Lac.*
- Saxinis.**  
 10,346. *sonorensis Jac.*  
 10,347. *propinqua Jac.*  
 10,348. *politula Horn.*  
 10,349. *speculifera Horn.*
- Ischiopachys Lac.**  
 10,350. *proteus Lac.*
- Cryptocephalus.**  
 6613 = *basalis Suffr.*  
 6615 = 6596.
- Scolochrus Suffr.**  
 6648 = *decoratus Sturm.*  
 — *equestris Oliv. (6650)*
- Pachybrachys.**  
 6665 = *pubescens Oliv.*  
 6675 = *pectoralis Melsh.*  
 — *sparsus Newm. = 6691.*
- Oomorplus Curtis.**  
 10,351. *floridanus Horn.*
- Xanthonia.**  
 — *vagans Lec. (6719)*  
 6722 = 6721.
- Fidia.**  
 6723 = 6725.  
 — *lurida Lefr. = 6725.*  
 10,352. *cana Horn.*
- Adoxus.**  
 6726 = *obscurus Linn.*
- Glyptoscelis.**  
 6737 = 6729.
- Colaspidea Lap.**  
 6734 }  
 6735 } belong here.  
 6736 }
- Myochrous.**  
 — *plagiata Melsh. = 6721.*
- Eumolpus Web.**  
 — *surinamensis Fab.*  
*robustus Horn. (6743)*
- Tymnes.**  
 10,353. *violaceus Horn.*
- Typophorus Er.**  
 — *viridicyaneus Cr. (6751)*  
 6747-6750 = *canellus Fab.*
- Metachroma.**  
 6760 = *luridum Oliv.*  
 — *cuprea Prov. = 6771.*  
 — *histrio Lefr. = 6757.*  
 10,354. *aeneicolle Horn.*  
 10,355. *longulum Horn.*  
 10,356. *aterrimum Horn.*  
 10,357. *suturale Lec.*  
 10,358. *terminale Horn.*  
 10,359. *parallelum Horn.*  
 10,360. *puncticolle Lec.*
- Graphops.**  
 10,361. *beryllinus Lec.*  
 10,362. *obscurus Lec.*  
 10,363. *varians Lec.*  
 10,364. *bicolor Lefr.*
- Chrysodina.**  
 — *ovata Say = 6772.*
- Colaspis.**  
 — *oregonensis Cr. (6746)*  
 10,365. *chrysis Oliv.*  
 10,366. *intermedia Jac.*  
 — *Crotchii Lefr. = 6774.*  
 — *flavicans Lefr. = 6774.*
- Rhabdopterus Lefr.**  
 6775 = *picipes Oliv.*
- Metaxyonycha Marshall.**  
 — *arizonæ Cr. (6776)*  
 10,367. *circumcincta Horn.*
- Colaspoides Lap.**  
 10,368. *violaceipennis Horn.*  
 10,369. *opacicolle Horn.*  
 10,370. *viridimicans Horn.*
- Notodonta Lefr.**  
 6778-6778b belong here.  
 — *strigicollis Lefr. = 6778b.*  
 10,371. *clypealis Horn.*
- Prasocuris.**  
 6783 }  
 6786 } = *vittata Oliv.*

**Doryphora.**

- 10,372. *Behrensi* *Harold*.  
10,373. *peninsularis* *Horn*.

**Plagiodera.**

- 6826 = *armoraciæ* *Linn*.

**Gastroidea.**

- 6833 = *viridula* *De Geer*.

**Gonioctena.**

- 10,374. *viminalis* *Linn*.

**Phyllodecta.**

- 10,375. *scutellaris* *Sahlb*.  
10,376. *vitellinæ* *Linn*.

**Cerotoma.**

- 6845 = *trifurcata* *Forst*.

**Phyllobrotica.**

- 10,377. *costipennis* *Horn*.  
10,378. *limbata* *Fab*.  
10,379. *vittata* *Horn*.  
10,380. *nigripes* *Horn*.

**Phyllecthrus.**

- 10,381. *parallelus* *Horn*.  
10,382. *subsulcatus* *Horn*.

**Scelolyperus.**

- 6860 } belong here.  
6863 }  
6869 }  
6866 = 6869.  
10,383. *flaviceps* *Horn*.  
10,384. *loripes* *Horn*.  
10,385. *maculicollis* *Lec*.  
10,386. *Schwarzii* *Horn*.  
10,387. *decipiens* *Horn*.

**Trachyscelidia** *Horn*.

- *bicolor* *Lec*. (6876)

**Luperodes** *Mots*.

- 6856 }  
6857 } belong here.  
6859 }  
6861 }  
6862 }  
6864 }  
6865 }  
6867 }  
6868 }  
6870 }

6871 = 6861.

- 10,388. *atriceps* *Horn*.  
10,389. *texanus* *Horn*.  
10,390. *transitus* *Horn*.  
10,391. *laticeps* *Horn*.  
10,392. *Wickhami* *Horn*.  
10,393. *torquatus* *Lec*.  
10,394. *spretus* *Horn*.  
10,395. *Morrisoni* *Jac*.

**Malacorhinus** *Jac*,

- *maculatus* *Lec*. (6873)

**Malacosoma** *Rosenh*.

- 10,396. *vittipenne* *Horn*.  
10,397. *brevicorne* *Jac*.  
10,398. *cimex* *Allard*.

**Diabrotica.**

- 10,399. *variegata* *Jac*.  
10,400. *picticornis* *Horn*.  
—— *Suffriani* *Jac*. = 6879.  
—— *Sallei* *Baly* = 6883.  
10,400½. *filicornis* *Horn*.

**Halticidea** *Horn*.

- 10,401. *placida* *Horn*.  
10,402. *modesta* *Horn*.  
10,403. *delata* *Horn*.

**Trirhabda.**

- 10,404. *geminata* *Horn*.  
10,405. *caduca* *Horn*.  
10,406. *diducta* *Horn*.

**Galerucella** *Cr*.

- 6899–6912 belong here.  
6899a } = 6899.  
6900 }  
6905 } = *nymphææ* *Linn*.  
6906 }  
6905a = 6904.  
6908 = var. of 6907.  
6912 = *luteola* *Mull*.

**Monoxia.**

- 6913 }  
6914 } = *puncticollis* *Say*.  
6915 }  
6916 } = 6917.  
6916a }  
10,407. *debilis* *Lec*.

- Triarius** Jac.  
 ——— *lividus* Lec.  
       *lurida* Lec. (6851)  
 10,408. *trivittatus* Horn.
- Galeruca**.  
 ——— *externa* Say. (6898)
- Hypolampis**.  
 6921 = 6920.  
 ——— *rugosa* Oliv. = 6920.
- Pachyonychus**.  
 ——— *paradoxus* Melsh. (6924)
- Pseudolampsis** Horn.  
 ——— *guttata* Lec. (6923)
- Hamletia**.  
 ——— *dimidiaticornis* Cr. (6926)
- Oedionychis**  
 ——— *jocosa* Har. = 6939.  
 ——— *obsidiana* Fab. = 6945.  
 10,409. *aemula* Horn.  
 10,410. *tenuilineata* Horn.  
 10,411. *Horni* Har.  
 10,412. *Ulkei* Horn.  
 10,413. *Jacobiana* Horn.  
 10,414. *flavida* Horn.
- Homophœta** Chev.  
 6927 = *abdominalis* Chev.  
 ——— *lustrans* Cr. (6929)  
 6930 = *aquinoctialis* Linn.
- Phydanis** Horn.  
 10,415. *bicolor* Horn.
- Disonycha**.  
 6917 } = vars. of 6950.  
 6947a )  
 6948 = *caroliniana* Fab.  
 6949 = *quinquevittata* Say.  
 6958 † = *xanthomekena* Dalm.  
 6958c = *mellicollis* Say.  
 10,416. *crenicollis* Say.  
 10,417. *tenuicornis* Horn.  
 10,418. *varicornis* Horn.  
 10,419. *politula* Horn.
- Hemiphrynus** Horn.  
 10,420. *intermedius* Jac.
- Haltica**.  
 6964 = 6963.  
 6967 = 6962.  
 ——— *kalmie* Melsh. = 6963.  
 ——— *nana* Cr. (6978)  
 10,421. *vicaria* Horn.  
 10,422. *amœna* Horn.  
 10,423. *marevagans* Horn.  
 10,424. *polita* Oliv.  
 10,425. *opulenta* Horn.  
 10,426. *floridana* Horn.  
 ——— *Burgessi* Cr. (6977)  
 ——— *rufa* Ill. (6959)
- Lactica**.  
 6975 = *tibialis* Oliv.  
 6976 = *iris* Oliv.
- Diphaulaca** Clark.  
 10,427. *bicolorata* Horn.
- Trichaltica** Har.  
 ——— *scabricula* Cr. (6983)
- Hemiglyptus** Horn.  
 ——— *basalis* Cr. (6984)
- Crepidodera**.  
 10,428. *longula* Horn.  
 10,429. *nitens* Horn.
- Epitrix**.  
 6986-6991 belong here.  
 10,430. *flavotestacea* Horn.
- Orthaltica**.  
 10,431. *melina* Horn.
- Leptotrix** Horn.  
 ——— *recticollis* Lec. (6994)
- Systema**.  
 7001 }  
 7001a ) } = *tæniata* Say.  
 7001b }  
 7003 }  
 7003a }  
 ——— *pallidula* Boh. = *tæniata* Say
- Dysphenges** Horn.  
 10,432. *elongatulus* Horn.
- Longitarsis**.  
 7006 = 7015.  
       *subcinctus* Har.  
 10,433. *Heliophyti* Horn.

- 10,434. *turbatus* Horn.  
 10,435. *oregonensis* Horn.  
 10,436. *tradultus* Horn.  
 10,437. *postremus* Horn.  
 10,438. *vanus* Horn.  
 10,439. *occidentalis* Horn.  
 10,440. *bicolor* Horn.  
 10,441. *montivagus* Horn.  
 10,442. *erro* Horn.  
 10,443. *pygmaeus* Horn.  
 10,444. *rufescens* Horn.  
 10,445. *insolens* Horn.  
 10,446. *perforatus* Horn.  
 10,447. *solidaginis* Horn.  
 10,448. *nitidellus* Cockerell.

**Glyptina.**

- 10,449. *bicolor* Horn.  
 10,450. *nivalis* Horn.  
 10,451. *brunnea* Horn.  
 10,452. *atriventris* Horn.

**Aphthcna.**

- *insolita* Melsh. (6992)  
 10,453. *socia* Horn.  
 10,454. *subglobosa* Mots.

**Phyllotreta.**

- 10,455. *denticornis* Horn.  
 10,456. *Ulkei* Horn.  
 10,457. *decipiens* Horn.  
 10,458. *pusilla* Horn.  
 —— *picta* Say (7019)

**Chætocnema.**

- 7037 = 7038.  
 7052 = 7053.  
 7054 = 7055.  
 —— *americana* Mots. = 7040.  
 —— *semichalcea* Melsh. = 7040.  
 10,459. *perturbata* Horn.  
 10,460. *brunnescens* Horn.  
 10,461. *æmula* Horn.  
 10,462. *opulenta* Horn.  
 10,463. *ectypa* Horn.  
 10,464. *dispar* Horn.

**Dibolia.**

- 7057 = *borealis* Chev.  
 10,465. *sinuata* Horn.  
 10,466. *libonoti* Horn.

**Psylliodes.**

- 7059 = *convexior* Lec.  
 10,467. *elegans* Horn.  
 10,468. *sublævis* Horn.

**Physonota.**

- 10,469. *alutacea* Boh.

**Cassida.**

- 7100 = *pallidula* Boh.  
 10,470. *nebulosa* Linn.

**Coptocycla.**

- 7102 = *bicolor* Fab.  
 7103 = *emarginata* Boh.  
 7104 † = *signifera* Herbst.  
 10,471. *Bonvouloiri* Boh.

**Mesomphalia.**

- 10,472. *exclamationis* Linn.

**BRUCHIDÆ.**

**Bruchus.**

- 7115 = *pisorum* Linn.  
 7117 = *chinensis* Linn.  
 7150 = *obtectus* Say.  
 —— *longiventris* Sharp = 7139.

- 10,473. *leucosomus* Sharp.  
 10,474. *julianus* Horn.

**Zabrotus.**

- 10,475. *subnitens* Horn.  
 10,476. *semicinctus* Horn.

**TENEBRIONIDÆ.**

**Edrotes.**

- 10,477. *nitidus* Casey.  
 10,478. *globosus* Casey.

**Triorophus.**

- 10,479. *Lecontei* Casey.

**Stibia.**

- 10,480. *maritima* Casey.

**Trimytis.**

- 10,481. *obtusa* Horn.

**Eurymetopon.**

- 10,482. *congener Casey.*  
 10,483. *perforatum Casey.*  
 10,484. *fusculum Casey.*  
 10,485. *cylindricum Casey.*  
 10,486. *politum Casey.*  
 10,487. *longipenne Casey.*  
 10,488. *histicum Casey.*  
 10,489. *muricatulum Casey.*  
 10,490. *discors Casey.*  
 10,491. *debile Casey.*  
 10,492. *crassulum Casey.*

**Emmenastus.**

- 10,493. *marginatus Casey.*  
 10,494. *angustus Casey.*  
 10,495. *piceus Casey.*  
 10,496. *discretus Casey.*  
 10,497. *conicollis Casey.*  
 10,498. *fallax Casey.*  
 10,499. *thoracicus Casey.*  
 10,500. *nitidus Casey.*  
 10,501. *crassicornis Casey.*  
 10,502. *coarcticollis Casey.*

**Emmenastrichus Horn.**

- 10,503. *cribratus Horn.*  
 10,504. *erosus Horn.*

**Epitragus.**

- Epitragodes Casey.*  
 10,505. *vestitus Casey.*  
 10,506. *Julichii Casey.*  
 10,507. *fusiformis Casey.*

**Chilometopon**

- 10,508. *gracilis Casey.*  
 10,509. *pallidum Casey.*

**Zopherus.**

- 10,510. *induratus Casey.*

**Usechus.**

- *nucleatus Casey = 7227.*

**Dacoderus.**

- 10,511. *levipennis Horn.*

**Aræoschizus.**

- 10,512. *simplex Casey.*  
 10,513. *fimbriatus Casey.*  
 10,514. *decipiens Horn.*

**Anepsius.**

- 10,515. *montanus Casey.*

**Centrioptera.**

- 10,516. *angularis Horn.*

**Microschata.**

- 10,517. *Championi Horn.*  
 10,518. *polita Horn.*  
 10,519. *robusta Horn.*

**Asida.**

- 7266 = 7265.  
 ——— *angustula Casey = 7271.*  
 10,520. *planata Horn.*  
 10,521. *subvittata Horn.*  
 10,522. *densicollis Horn.*  
 10,523. *inpetrata Horn.*  
 10,524. *embaphionides Horn.*  
 10,525. *Wickhami Horn.*  
 10,526. *horrida Champ.*  
 10,527. *obliterata Champ.*

**Coniontis.**

- Coniontellus Casey.*  
 10,528. *inæqualis Casey.*  
 ——— *insularis Casey = var. of 7299*  
 10,529. *punctipes Casey.*  
 10,530. *elongata Casey.*  
 10,531. *alutacea Casey.*  
 10,532. *montana Casey.*  
 10,533. *pallidicornis Casey.*  
 10,534. *genitiva Casey.*  
 10,535. *parallella Casey.*  
 10,536. *parviceps Casey.*  
 10,537. *setosus Casey.*  
 10,538. *inflatus Casey.*  
 ——— *subglaber Casey = 7300.*

**Cœlotaxis.**

- 10,539. *angustula Casey.*

**Cœlomorpha Casey.**

- 10,540. *maritima Casey.*

**Cœlus.**

- 10,541. *grossus Casey.*  
 10,542. *arenarius Casey.*

**Cyclosattus Casey.**

- 10,543. *Websteri Casey.*

**Eusattus.**

- 10,544. *sculptus Champ.*  
 10,545. *ciliatus Horn.*  
 10,546. *secutus Horn.*



**Eleodes.**

- 7359 = *Gorjyi Sol.*  
 10,547. *Rileyi Casey.*  
 10,548. *nitidus Casey.*  
 10,549. *compositus Casey.*  
 10,550. *porcatus Casey.*  
 10,551. *cuneaticollis Casey.*  
 10,552. *estriatus Casey.*  
 ——— *tarsalis Casey = 7324.*  
 10,553. *tenuipes Casey.*  
 10,554. *subcylindricus Casey.*  
 10,555. *prominens Casey.*  
 10,556. *elegans Casey.*  
 10,557. *brunnipes Casey.*  
 10,558. *interrupta Blaisdell.*  
 10,559. *Eschscholtzii Sol.*  
 10,560. *Wickhami Horn.*  
 10,561. *longipilosa Horn.*

**Embaphion.**

- 10,562. *laminatum Casey.*

**Blaps.**

- 7370 = *similis Lat.*  
 10,563. *mucronata Lat.*

**Eulabis.**

- 10,564. *crassicornis Casey.*  
 10,565. *laticornis Casey.*

**Cerenopus.**

- 10,566. *aterrimus Horn.*  
 10,567. *angustatus Horn.*

**Argoporis.**

- 10,568. *alutacea Casey.*  
 10,569. *rufipes Champ.*  
*nitida Casey.*  
 10,570. *ebenina Horn.*  
 10,571. *inconstans Horn.*

**Cratidus.**

- 10,572. *fuscipilosus Casey.*

**Alobates Mots.**

*Nyctobates.*

**Iphthimus.**

[7394.

——— *laevissimus Casey = var. of*

**Cibdelis.**

- 10,573. *laevigata Casey.*

**Tenebrio.**

*Idiobates Casey.*

**Doliema Pasc.**

- Adelina.*  
 ——— *pallida Say (7421).*  
 7422 = *plana Fab.*

**Doliopines Horn.**

- 10,574. *cucujinus Horn.*

**Mecysmus.**

- 10,575. *laticollis Casey.*  
 10,576. *tenuis Casey.*  
 10,577. *parvulus Casey.*  
 10,578. *advena Casey.*

**Trichoton Hope.**

- *sordidum Lec. (7429).*

**Blapstinus.**

- Cybotus Casey.*  
 7435 = *alutaceus Casey.*  
 10,579. *dispar Casey.*  
 10,580. *fuscus Casey.*  
 10,581. *validus Casey.*  
 10,582. *sonoræ Casey.*  
 10,583. *castaneus Casey.*  
 10,584. *histicus Casey.*  
 10,585. *oregonensis Casey.*  
 10,586. *niger Casey.*  
 10,587. *cribricollis Casey.*  
 10,588. *fuliginosus Casey.*  
 10,589. *rufipes Casey.*  
 10,590. *coronadensis Blaisdell.*  
 10,591. *crassicornis Casey.*  
 ——— *elongatus Casey = 7441.*  
 10,592. *gregalis Casey.*  
 10,593. *substriatus Champ.*  
 10,594. *lepidus Casey.*  
 10,595. *æqualis Casey.*  
 10,596. *funebri Casey.*  
 10,597. *parallus Casey.*  
 10,598. *inquisitus Casey.*  
 10,599. *intermixtus Casey.*  
 10,600. *brunneus Casey.*  
 10,601. *hesperius Casey.*  
 10,602. *hospes Casey.*  
 10,603. *arenarius Casey.*  
 10,604. *debilis Casey.*  
 10,605. *humilis Casey.*  
 10,606. *hydropicus Casey.*

**Conibius.**

- Conibiosoma Casey.*  
 ——— *guadalupensis Casey = 7447.*

- 10,607. *uniformis* Casey.  
 10,608. *crassipes* Casey.  
 10,609. *laciniatus* Casey.
- Notibius.**  
 ——— *substriatus* Casey = 7450.  
 ——— *laticeps* Casey = 7450.  
 ——— *alternatus* Casey = 7455.  
 10,610. *costipennis* Horn.  
 10,611. *reflexus* Horn.
- Ulus.**  
 10,612. *fimbriatus* Casey.  
 10,613. *maritimus* Casey.  
 10,614. *elongatulus* Casey.  
 10,615. *latus* *Blaisdell*.
- Palembus** Casey.  
 10,616. *ocularis* Casey.
- Tribolium.**  
 10,617. *confusum* *Duv.*
- Aphanotus.**  
 10,618. *parallelus* Casey.
- Alphitobius.**  
 7475 = 7476.  
 10,619. *ovatus* *Herbst.*
- Phaleria.**  
 10,620. *gracilipes* Casey.
- Diaperis.**  
 7506 = *maculata* *Oliv.*
- Arrhenoplita** Kirby.  
 ——— *ferruginea* *Lec.* (7469)  
 ——— *viridipennis* *Fab.* (7508)  
 ——— *bicornis* *Oliv.* (7509)
- Uloporus** Casey.  
 10,621. *ovalis* Casey.
- Platydema.**  
 7516 $\frac{1}{2}$  } = *subquadratum* *Mots.*  
 7517 }
- Palorus** Muls.  
 10,622. *melinus* *Herbst.*
- Eleates** Casey.  
 10,623. *occidentalis* Casey.  
 10,624. *explanatus* Casey.
- Helops.**  
*Rucs* Casey.  
 10,625. *ovipennis* Casey.  
 ——— *guadalupensis* Casey = 7563.  
 10,626. *callosa* Casey.  
 10,627. *Blaisdelli* Casey.  
 10,628. *discipula* Casey.  
 10,629. *cylindriciformis* Casey.  
 10,630. *pinguis* Horn.
- Strongylium.**  
 10,631. *atrum* *Champ.*

**ÆGIALITIDÆ.**

- Ægialites.**  
 7584 = *californicus* *Mots.* 10,632. *Fuchsii* Horn.

**CISTELIDÆ.**

- Xystropus** Sol.  
 ——— *californicus* Horn (7585). 10,633. *Lobopoda* Sol.  
 ——— *erythrocnemis* Germ. (7588)
- Phedius** Champ.  
 10,633. *opaculus* Horn. 10,638. *Lystronichus* Lat.  
 10,639. *Championi* Horn.
- Allecula.**  
 7590 = *atra* *Say.*  
 10,634. *socia* *Lec.*  
 10,635. *sordida* Horn.  
 10,636. *subcuneata* Casey.  
 10,637. *oculatifrons* Casey.
- Hymenorus.**  
 10,640. *infuscatus* Casey.  
 10,641. *picipennis* Casey.  
 10,642. *Melsheimeri* Casey.  
 ——— *obesus* Casey = 7591.

- 10,643. *difficilis Casey.*  
 10,644. *perforatus Casey.*  
 10,645. *curticollis Casey.*  
 10,646. *discrepans Casey.*  
 10,647. *grandicollis Champ.*  
 10,648. *apacheanus Casey.*  
 10,649. *exiguus Casey.*  
 10,650. *helvinus Casey.*  
 10,651. *porosicornis Casey.*  
 10,652. *intermedius Casey.*  
 10,653. *prolixus Casey.*  
 10,654. *occidentalis Champ.*  
 10,655. *planulus Horn.*  
 10,656. *spinifer Horn.*  
 10,657. *discretus Casey.*  
 10,658. *convexus Casey.*  
 10,659. *ruficollis Champ.*  
 10,660. *dissensus Casey.*  
 10,661. *seriatus Casey.*  
 10,662. *testaceus Casey.*  
 10,663. *rotundicollis Casey.*  
 10,664. *inquilinus Casey.*  
 10,665. *fuscicornis Casey.*  
 10,666. *nitidipennis Casey.*  
 10,667. *inæqualis Casey.*  
 10,668. *tenellus Casey.*  
 10,669. *sobrinus Casey.*  
 10,670. *floridanus Casey.*  
 10,671. *fuscus Casey.*  
 10,672. *macer Casey.*  
 10,673. *indutus Casey.*  
 10,674. *deplanatus Champ.*  
 10,675. *gemellus Casey.*  
 10,676. *uniseriatus Casey.*

**Mencœceus** Champ.

- 10,677. *texanus Champ.*

**Telesicles** Champ.

- 10,678. *cordatus Champ.*

**Mycetochares.**

- 10,679. *megalops Casey.*  
 10,680. *gilvipes Casey.*  
 10,681. *nigerrima Casey.*  
 10,682. *longipennis Casey.*  
 10,683. *pacifica Casey.*  
 10,684. *procera Casey.*  
 10,685. *nevadensis Casey.*  
 10,686. *crassulipes Casey.*

**Isomira.**

- 10,687. *ruficollis Hamilton.*  
 10,688. *iowensis Casey.*  
 10,689. *discolor Casey.*  
 10,690. *tenebrosa Casey.*  
 10,691. *luscitiosa Casey.*  
 10,692. *monticola Casey.*  
 10,693. *oblongula Casey.*  
 10,694. *texana Casey.*

**Cistela.**

- pulla *Melsh.* = 7607.

**Tedinus** Casey.

- 10,695. *angustus Casey.*

**Cteniopus.**

- Andrimus* Casey.  
 10,696. *brunneus Casey.*  
 10,697. *concolor Casey.*  
 10,698. *nigrescens Casey.*  
 10,699. *convergens Casey.*

**OTHNIIDÆ.**

**Othnius.**

- 10,700. *californicus Mann.* 10,701. *mexicanus Horn.*

**LAGRIIDÆ.**

**Statira.**

- 10,702. *pluripunctata Horn.* 10,703. *opacicollis Horn.*  
 10,704. *basalis Horn.*

**MONOMMIDÆ.**

**Aspathines** Champ.

- 10,705. *ovatus Champ.*

**MELANDRYIDÆ.**

- |                                   |                                      |
|-----------------------------------|--------------------------------------|
| Malldrya Horn.                    | Holostrophus Horn.                   |
| 10,706. subænca <i>Horn.</i>      | ——— impressicollis <i>Le.</i> (7682) |
| Zilora.                           | ——— bifasciatus <i>Say</i> (7680)    |
| 10,707. canadensis <i>Hausen.</i> | 10,711. discolor <i>Horn.</i>        |
| Phlæotrya Steph.                  | Orchesia.                            |
| <i>Dircæa</i> Fab.                | 10,712. ornata <i>Horn.</i>          |
| <i>Hypulus</i> Payk.              | Microscapha.                         |
| 7671 = <i>Vaudoueri Muls.</i>     | 10,713. arctica <i>Horn.</i>         |
| 10,708. bicincta <i>Horn.</i>     |                                      |
| Eustrophus.                       |                                      |
| 10,709. arizonensis <i>Horn.</i>  |                                      |
| 10,710. repandus <i>Horn.</i>     |                                      |

**PYTHIDÆ.**

- |                               |                            |
|-------------------------------|----------------------------|
| Lecontia Champ.               | Pytho.                     |
| <i>Crymodes</i>    <i>Le.</i> | 7710 = planus <i>Oliv.</i> |
| Trimitomerus Horn.            |                            |
| 10,714. Riversii <i>Horn.</i> |                            |

**OEDEMERIDÆ.**

- |                                |                   |
|--------------------------------|-------------------|
| Sisenes Champ.                 | Oxacis.           |
| 10,715. <i>Championi Horn.</i> | <i>Probosca</i> ‡ |

**MORDELLIDÆ.**

- |   |                                 |
|---|---------------------------------|
| Mordella.                               | Mordellistena.                  |
| ——— atrata <i>Melsh.</i> = 7780.        | 10,719. erratica <i>Smith.</i>  |
| ——— dimidiata <i>Melsh.</i> is European | 10,720. tarsalis <i>Smith.</i>  |
| ——— modesta <i>Melsh.</i> = 7851.       | 10,721. pratensis <i>Smith.</i> |
| ——— pubescens <i>Fab.</i> = 7851.       | 10,722. conformis <i>Smith.</i> |
| 10,716. immaculata <i>Smith.</i>        | 10,723. hirticula <i>Smith.</i> |
| 10,717. flaviventris <i>Smith.</i>      |                                 |
| 10,718. carinata <i>Smith.</i>          |                                 |

**ANTHICIDÆ.**

- |                                       |                                |
|---------------------------------------|--------------------------------|
| Xylophilus.                           | Anthicus.                      |
| 10,724. tuberculifer <i>Hamilton.</i> | 10,726. <i>Lecontei Champ.</i> |
| Notoxus.                              | 4-lunulatus ‡ <i>Le.</i>       |
| 10,725. <i>Schwarzi Horn.</i>         | 10,727. basilaris <i>Say.</i>  |

**PYROCHROIDÆ.**

- |   |                                  |
|---|----------------------------------|
| Ischalia.                                 | Pyrochroa.                       |
| 10,728. vancouverensis <i>Harrington.</i> | 10,729. fuscicollis <i>Mann.</i> |
|   | 10,730. californica <i>Horn.</i> |

**MELOIDÆ.**

**Meloe.**

8015 = *lævis* *Leach.*

**Horia.**

8020 † = *auriculata* *Champ.*

**Zonitis.**

10,731. *Dunniana* *Casey.*

10,732. *perforata* *Casey.*

**Macrobasis.**

8060 = *torsa* *Lec.*

10,733. *tenuilineata* *Horn.*

**Tetraonyx.**

10,734. *dubiosus* *Horn.*

**Epicauta.**

10,735. *Levettei* *Casey.*

10,736. *albolineata* *Sturm.*  
*duplicata* *Casey.*

10,737. *Merkeliana* *Horn.*

10,738. *heterodera* *Horn.*

10,739. *straba* *Horn.*

10,740. *nigra* *Duges.*

**Pyrota.**

10,741. *Akhurstiana* *Horn.*

10,742. *punctata* *Casey.*

—— *concinna* *Casey* = 8108.

10,743. *tenuicostatus* *Duges.*

10,744. *trochanterica* *Horn.*

**Cantharis.**

8135 || = *Ulkei* *Beaureg.*

8147 || = *Lecontei* *Heyden.*

**Calospasta.**

10,745. *histrionica* *Horn.*

10,746. *Morrisoni* *Horn.*

10,747. *decolorata* *Horn.*

—— *opaca* *Horn* (8001).

**Tegrodera.**

10,748. *latecincta* *Horn.*

**Negalius.**

10,749. *marmoratus* *Casey.*

**RHYNCHITIDÆ.**

**Auletes.**

8203 = *congruus* *Walk.*

10,750. *laticollis* *Casey.*

**Deporaus** *Sam.*

—— *glastinus* *Lec.* (8216)

**OTIORHYNCHIDÆ.**

**Epicærus.**

10,751. *texanus* *Casey.*

10,752. *sulcatus* *Casey.*

10,753. *lucanus* *Horn.*

**Stamoderes** *Casey.*

10,754. *uniformis* *Casey.*

**Ophryastes.**

10,755. *Shufeldti* *Casey.*

10,756. *sulcipennis* *Casey.*

10,757. *Wickhami* *Sharp.*

**Eupagoderes.**

10,758. *Dunnianus* *Casey.*

**Sapotes** *Casey.*

10,759. *puncticollis* *Casey.*

**Rhigopsis.**

—— *scutellata* *Casey* = 8256.

10,760. *simplex* *Horn.*

**Amotus** *Casey.*

10,761. *longisternus* *Casey.*

10,762. *gracillior* *Casey.*

**Anametis.**

8258 = *granulatus* *Say.*

**Peritaxia.**

10,763. *perforata* *Casey.*

**Amnesia.**

10,764. *granulata* *Casey.*

10,765. *tesselata* *Casey.*

10,766. *sculptilis* *Casey.*

**Nocheles.**

10,767. *vestitus* *Casey.*

- Miloderes** Casey.  
10,768. *setosus* Casey.
- Otiorhynchus**.  
8286 = *nodosus* Fab.  
8287 = *alpinus* Richter.  
9446 = *singularis* Linn.
- Sciopithes**.  
10,769. *significans* Casey.  
10,770. *brumalis* Casey.  
10,771. *arcuatus* Casey.  
10,772. *angustulus* Casey.  
10,773. *setosus* Casey.
- Stenoptochus** Casey.  
10,774. *inconstans* Casey.
- Orthoptochus** Casey.  
10,775. *squamigera* Casey.
- Peritelodes** Casey.  
10,776. *obtectus* Casey.
- Peritelinus** Casey.  
10,777. *variegatus* Casey.
- Thricolepis**.  
10,778. *seminuda* Horn.
- Geoderces**.  
10,779. *puncticollis* Casey.
- Geodercodes** Casey.  
10,780. *latipennis* Casey.  
10,781. *hispidus* Horn.
- Aragnomus**.  
10,782. *hispidulus* Casey.
- Thinoxenus**.  
10,783. *nevadensis* Casey.
- Panormus** Casey.  
10,784. *setosus* Casey.
- Elissa** Casey.  
10,785. *laticeps* Casey.  
10,786. *constricta* Casey.
- Pseudelissa** Casey.  
10,787. *cinerea* Casey.
- Phyllobius**.  
8332 = *glaucus* Scop.
- Polydrosus** Sch.  
*Cyphomimus* Horn.  
——— *dorsalis* Horn (8333).  
10,788. *peninsularis* Horn.
- Scythropus**.  
10,789. *lateralis* Casey.  
10,790. *ferrugineus* Casey.  
10,791. *cinereus* Casey.  
10,792. *crassicornis* Casey.  
10,793. *delicatulus* Horn.
- Mitostylus**.  
10,794. *gracilis* Horn.
- Sciaphilus** Steph.  
10,795. *asperatus* Bousd.
- Barypitbes**.  
10,796. *pellucidus* Boh.
- Strophosomus** Steph.  
10,797. *coryli* Fab.

### CURCULIONIDÆ.

- Sitones**.  
10,798. *extrusus* Casey.  
10,799. *variatus* Casey.  
10,800. *margaritosus* Casey.  
10,801. *procerus* Casey.  
10,802. *occidentalis* Casey.  
10,803. *eximius* Casey.  
10,804. *montanus* Casey.  
10,805. *nebulosus* Casey.  
10,806. *altermans* Casey.  
10,807. *osculans* Casey.  
10,808. *prominens* Casey.
- 10,809. *hispidiceps* Casey.  
10,810. *angustulus* Casey.  
10,811. *explicitus* Casey.  
10,812. *apacheanus* Casey.  
10,813. *sparsus* Casey.
- Apion**.  
8332 = 8369.  
8363 = 8370.  
8364 = 8378.  
8365 = 8375.  
10,814. *lividum* Smith.

**Lepyryus.**8437 = *palustris Scop.***Macrops.**

8462 = 8463.

8468 = *vittaticollis Kirby.*10,815. *indistinctus Dietz.*10,816. *cryptops Dietz.*10,817. *hyperodes Dietz.*10,818. *nevadensis Dietz.*10,819. *grypidioides Dietz.*10,820. *laramiensis Angell.*10,821. *Wickhami Dietz.*10,822. *interpunctatulus Dietz.*10,823. *Ulkei Dietz.*10,824. *dorsalis Dietz.*10,825. *tenebrosus Dietz.*10,826. *alternatus Dietz.*10,827. *montanus Dietz.*10,828. *interstitialis Dietz.*10,829. *Hornii Dietz.*10,830. *setiger Dietz.*10,831. *subcristatus Dietz.*10,832. *longulus Dietz.*10,833. *rotundicollis Dietz.*10,834. *obscurellus Dietz.*10,835. *imbellis Dietz.*10,836. *Schauppil Angell.*10,837. *hirtellus Dietz.*10,838. *echinatus Dietz.*10,839. *obtectus Dietz.*10,840. *myasellus Dietz.*10,841. *mirabilis Dietz.*10,842. *californicus Dietz.*10,843. *anthracinus Dietz.***Anchonus Sch.**9019 = *angulicollis Suff.*10,844. *floridanus Sz.***Hilipus.**8481 = *apicatus Oliv.***Hypomolyx.**8482 = *piceus De Geer.***Lixus.**10,845. *amplexus Casey.*10,846. *oregonus Casey.*10,847. *eximius Casey.*10,848. *tenellus Casey.*10,849. *pygmaeus Casey.*10,850. *soror Casey.*10,851. *laramiensis Casey.*10,852. *sobrinus Casey.*10,853. *semivittatus Casey.*10,854. *Julichi Casey.*10,855. *luculentus Casey.*10,856. *nitidulus Casey.*10,857. *obesulus Casey.*10,858. *sexualis Casey.***Dinocleus Casey.***Centrocleonus* || *Lec.*10,859. *jacobinus Casey.*10,860. *denticollis Casey.*10,861. *faretus Casey.*10,862. *saginatulus Casey.*10,863. *albovestitus Casey.*10,864. *Wickhami Casey.*10,865. *densus Casey.***Cleonus.**10,866. *grandirostris Casey.*10,867. *bicarinatus Casey.*10,868. *Lecontei Casey.*10,869. *lobigerinus Casey.*10,870. *Kirbyi Casey.*10,871. *circumductus Casey.*10,872. *subcylindricus Casey.*10,873. *graniferus Casey.***Dorytomus.**10,874. *inæqualis Casey.*10,875. *brevisetosus Casey.*10,876. *amplus Casey.*10,877. *parvicollis Casey.*10,878. *hystricula Casey.*10,879. *filiolus Casey.*10,880. *nubeculinus Casey.*10,881. *cuneatulus Casey.*10,882. *alaskanus Casey.*10,883. *marginatus Casey.*10,884. *indifferens Casey.*10,885. *vagenotatus Casey.*10,886. *fusciceps Casey.*10,887. *marmoreus Casey.***Erycus.**8542 = *æthiops Fab.*

**Pachyphanes** Dietz.

- 8547 }  
 8548 } belong here.  
 8549 }  
 10,888. *earus* Dietz.  
 10,889. *centralis* Dietz.  
 10,890. *lateralis* Dietz.  
 10,891. *lineolatus* Casey.  
 10,892. *triangularis* Dietz.

**Desmoris.**

- 8553 }  
 8558 } belong here.  
 8559 }  
 10,893. *compar* Dietz.  
 10,894. *obesus* Dietz.  
 10,895. *montanus* Dietz.  
 10,896. *pervisus* Dietz.  
 10,897. *incertus* Dietz.  
 10,898. *floridanus* Dietz.  
 10,899. *humilis* Dietz.  
 10,900. *fiducialis* Casey.

**Smicronyx.**

- 10,901. *squalidus* Casey.  
 10,902. *setulosus* Dietz.  
 10,903. *cinerascens* Dietz.  
 10,904. *morio* Dietz.  
 10,905. *tessellatus* Dietz.  
 10,906. *impressirostris* Dietz.  
 10,907. *profusus* Casey.  
 10,908. *intricatus* Casey.  
 10,909. *mucidus* Dietz.  
 10,910. *perplexus* Dietz.  
 10,911. *tardus* Dietz.  
 10,912. *sparsus* Casey.  
 10,913. *pleuralis* Casey.  
 10,914. *picipes* Dietz.  
 10,915. *rhodopus* Dietz.  
 10,916. *perpusillus* Casey.  
 10,917. *pusillus* Dietz.  
 10,918. *connivens* Casey.  
 10,919. *resplendens* Dietz.  
 10,920. *cognatus* Dietz.  
 10,921. *defricans* Casey.  
 10,922. *gibbistrotris* Casey.  
 10,923. *spretus* Dietz.  
 10,924. *scalator* Dietz.  
 10,925. *lepidus* Dietz.  
 10,926. *quadrifer* Casey.

- 10,927. *instabilis* Casey.  
 10,928. *nubilus* Casey.  
 10,929. *posticus* Dietz.  
 10,930. *fraterculus* Dietz.  
 10,931. *languidulus* Dietz.  
 10,932. *atratus* Dietz.  
 10,933. *congestus* Casey.  
 10,934. *sagittatus* Casey.  
 10,935. *sculpticollis* Casey.  
 10,936. *apionides* Casey.  
 10,937. *nebulosus* Dietz.  
 10,938. *ornatipennis* Dietz.  
 10,939. *fallax* Dietz.  
 10,940. *commixtus* Dietz.  
 10,941. *perfidus* Dietz.  
 10,942. *maculatus* Dietz.  
 10,943. *columbianus* Dietz.  
 10,944. *californicus* Dietz.  
 10,945. *launginosus* Dietz.  
 10,946. *spureus* Casey.  
 10,947. *abnormis* Dietz.  
 10,948. *vitiosus* Dietz.  
 10,949. *rufulus* Dietz.  
 10,950. *parcus* Dietz.  
 10,951. *albosynamosus* Dietz.  
 10,952. *lutulentus* Dietz.  
 10,953. *rusticus* Dietz.

**Synertha** Dietz.

- 10,954. *imbricata* Casey.  
*silaceus* Casey.  
 10,955. *Hornii* Dietz.  
 10,956. *Wickhami* Dietz.

**Promecotarsus** Casey.

- 10,957. *maritimus* Casey.  
 10,958. *densus* Casey.  
 10,959. *fumatus* Casey.

**Schizonotus** Casey.

- 10,960. *cæcus* Casey.

**Otidocephalus.**

- Oopterinus* Casey.  
 10,961. *Poeyi* Gyll.  
 10,962. *nivosus* Casey.  
 10,963. *insignis* Casey.  
 10,964. *estriatus* Casey.  
 10,965. *egregius* Casey.  
 10,966. *floridanus* Casey.  
 10,967. *speculator* Casey.  
 10,968. *ruficornis* Casey.  
 10,969. *cavirostris* Casey.



**Magdalis.**

8626 = 8625.

**Magdalinops** Dietz.10,970. *vitiipennis* Dietz.**Macrorhoptus.**10,971. *hispidus* Dietz.**Tachypterus** Dietz.—— *quadrigibbus* Say (8630).10,972. *consors* Dietz.**Cionistes** Dietz.10,973. *insolens* Dietz.**Anthonomus.***Coccotorus* Lec.—— *scutellaris* Lec. (8629)—— *hæmatopus* Boh. = 8641.10,974. *hirsutus* Brun.10,975. *leucostictus* Dietz.10,976. *Hamiltoni* Dietz.10,977. *peninsularis* Dietz.10,978. *pervilis* Dietz.10,979. *texanus* Dietz.10,980. *Julichi* Dietz.10,981. *irroratus* Dietz.10,982. *vulpinus* Dietz.10,983. *rubidus* Lec.10,984. *pomorum* Linn.10,985. *grandis* Boh.10,986. *virgo* Dietz.10,987. *Bolteri* Dietz.10,988. *rubellus* Dietz.10,989. *confusus* Dietz.10,990. *melancholicus* Dietz.10,991. *subguttatus* Dietz.—— *signatus* Say (8638).8638a. *pallidus* Dietz.10,992. *consimilis* Dietz.10,993. *vespertinus* Dietz.10,994. *concinus* Dietz.10,995. *sexguttatus* Dietz.10,996. *interstitialis* Dietz.10,997. *ebeninus* Dietz.10,998. *Dentoni* Angell.10,999. *albopilosus* Dietz.11,000. *xanthocnemus* Dietz.11,001. *æneolus* Dietz.11,002. *faber* Dietz.11,003. *effetus* Dietz.11,004. *dissimilis* Dietz.11,005. *orchestoides* Dietz.11,006. *squamulatus* Dietz.11,007. *molochinus* Dietz.11,008. *murinus* Dietz.11,009. *ochreopilosus* Dietz.11,010. *latiusculus* Dietz.11,011. *floralis* Casey.11,012. *ornatulus* Dietz.11,013. *figuratus* Dietz.11,014. *jacobinus* Dietz.11,015. *ligatus* Dietz.11,016. *lineatulus* Dietz.11,017. *heterogenus* Dietz.—— *?helvolus* Boh.**Anthonomopsis** Dietz.—— *mixtus* Lec. (8667)**Pseudanthonomus** Dietz.—— *cratægi* Walsh (8661).11,018. *validus* Dietz.11,019. *incipiens* Dietz.11,020. *seriesetosus* Dietz.11,021. *tomentosulus* Dietz.11,022. *facetus* Dietz.11,023. *longulus* Dietz.11,024. *rufulus* Dietz.11,025. *brunneus* Dietz.11,026. *parvulus* Dietz.11,027. *relictus* Dietz.**Neomastix** Dietz.11,028. *solidaginis* Dietz.11,029. *punctulatus* Dietz.**Chelonychus** Dietz.11,030. *longipes* Dietz.**Nanops** Dietz.11,031. *Schwarzii* Dietz.**Epimechus** Dietz.11,032. *mimicus* Dietz.11,033. *curvipes* Dietz.11,034. *soriculus* Dietz.11,035. *adpersus* Dietz.11,036. *nevadensis* Dietz.**Ephelops** Dietz.11,037. *triguttatus* Dietz.

**Alycodes** Dietz.11,038. *dubius* Dietz.**Elleschus**.11,039. *scanicus* Payk.11,040. *angustatus* Dietz.**Orchestes**.8679 = *salicis* Linn.11,041. *parvicollis* Lec.11,042. *armatus* Dietz.**Xanthus** Dietz.11,043. *pygmaeus* Dietz.11,044. *liliputanus* Dietz.**Eulyptus** Dietz.11,045. *testaceus* Dietz.**Proctorus** Lec.*Encatus* Lec.**Thysanocnemis**.11,046. *graphica* Casey.11,047. *squamiger* Casey.——— *horridula* Casey = 8689.**Tychius**.11,048. *soltani* Casey.11,049. *lamellosus* Casey.11,050. *prolixus* Casey.11,051. *variegatus* Casey.11,052. *simplex* Casey.11,053. *sibinioides* Casey.11,054. *mica* Casey.11,055. *subfasciatus* Casey.11,056. *hispidus* Casey.**Conotrachelus**.11,057. *compositus* Casey.11,058. *carinifer* Casey.11,059. *integer* Casey.11,060. *duplex* Casey.11,061. *rotundus* Casey.**Rhyssematus**.11,062. *ovalis* Casey.**Chaleponotus** Casey.11,063. *elusus* Casey.**Acampytus**.11,064. *echinus* Casey.**Acalles**.11,065. *profusus* Casey.11,066. *curtus* Hamilton.**Canistes** Casey.11,067. *Schusteri* Casey.**Tyloderma**.11,068. *angustula* Casey.11,069. *contusa* Casey.11,070. *rufescens* Casey.11,071. *subpubescens* Casey.**Phyrdenus**.11,072. *bullatus* Casey.**Cryptorhynchus**.11,073. *lapathi* Linn.**Zygops**.11,074. *suffusus* Casey.**Copturus**.11,075. *quadridens* Horn.**Psomus** Casey.11,076. *politus* Casey.**Centorhynchus**.11,077. *sulcicollis* Payk.11,078. *erysimi* Fab.**Phytobius**.11,079. *griseomicans* Sz.**Baris**.11,080. *ingens* Casey.11,081. *arizonica* Casey.11,082. *hispidula* Casey.11,083. *gravida* Casey.11,084. *callida* Casey.11,085. *lubrica* Casey.11,086. *soluta* Casey.11,087. *floridensis* Casey.11,088. *vespertina* Casey.11,089. *oblongula* Casey.11,090. *dilatata* Casey.11,091. *cuneipennis* Casey.

- 11,092. *aprica* Casey.  
 11,093. *dolosa* Casey.  
 11,094. *zuniana* Casey.  
 11,095. *opacula* Casey.  
 11,096. *porosicollis* Casey.  
 11,097. *punctiventris* Casey.  
 11,098. *rubripes* Casey.  
 ——— ? *californica* Boh.  
 11,099. *brunneipes* Casey.  
 11,100. *deformis* Casey.  
 11,101. *futilis* Casey.  
 11,102. *inconspicua* Casey.  
 11,103. *subsimilis* Casey.  
 11,104. *socialis* Casey.  
 11,105. *aperta* Casey.  
 11,106. *abrupta* Casey.  
 11,107. *tenuestriata* Casey.  
 11,108. *discipula* Casey.  
 11,109. *scintillans* Casey.  
 11,110. *æneomicans* Casey.  
 11,111. *hyperion* Casey.  
 11,112. *vitrea* Casey.  
 11,113. *ancilla* Casey.  
 11,114. *splendens* Casey.  
 11,115. *exigua* Casey.  
 11,116. *scolopacea* Germ.  
 11,117. *peninsulæ* Horn.

**Plesiobaris** Casey.

- 8892–8893 belong here.  
 11,118. *signatipes* Casey.  
 11,119. *æmula* Casey.  
 11,120. *disjuncta* Casey.

**Pycnobaris** Casey.

- *pruinosa* Lec. (8882)  
 11,121. *squamotecta* Casey.

**Stictobaris** Casey.

- *cribrata* Lec. (8899)  
 11,122. *pimalis* Casey.  
 11,123. *subacuta* Casey.

**Trepobaris** Casey.

- 11,124. *elongata* Casey.

**Glyptobaris** Casey.

- *rugicollis* Lec. (8900)

**Onychobaris.**

- 11,125. *corrosa* Casey.  
 11,126. *depressa* Casey.  
 11,127. *millepora* Casey.  
 11,128. *austera* Casey.  
 11,129. *insidiosa* Casey.  
 11,130. *arguta* Casey.  
 11,131. *audax* Casey.  
 11,132. *stictica* Casey.  
 11,133. *mystica* Casey.  
 11,134. *egena* Casey.  
 11,135. *ambigua* Casey.  
 11,136. *pauperella* Casey.  
 11,137. *remota* Casey.  
 11,138. *molesta* Casey.  
 11,139. *illex* Casey.  
 11,140. *diluta* Casey.  
 11,141. *porcata* Casey.

**Madarellus** Casey.

- *undulatus* Say. (8907)  
 11,142. *cuneatus* Casey.

**Aulobaris.**

- 11,143. *dux* Casey.

**Ampelogypter.**

- 11,144. *longipennis* Casey.

**Desmoglyptus** Casey.

- *crenatus* Lec. (8906)

**Pseudobaris.**

- 11,145. *luctuosa* Casey.  
 11,146. *discreta* Casey.  
 11,147. *fausta* Casey.  
 11,148. *lugubris* Casey.  
 11,149. *cælata* Casey.

**Hesperobaris** Casey.

- 11,150. *suavis* Casey.

**Microbaris** Casey.

- 11,151. *galvestonia* Casey.

**Trichobaris.**

- 11,152. *insolita* Casey.  
 11,153. *compacta* Casey.  
 11,154. *cylindrica* Casey.

## Orthoris.

11,155. *cylindrifer Casey.*

## Centrinus.

11,156. *tortuosus Casey.*11,157. *albotectus Casey.*11,158. *grisescens Casey.*11,159. *finitimus Casey.*11,160. *hospes Casey.*11,161. *clarescens Casey.*11,162. *exulans Casey.*11,163. *acuminatus Casey.*11,164. *globifer Casey.*——— *nubecula Casey = 8927.*11,165. *clientulus Casey.*11,166. *denticornis Casey.*11,167. *salebrosus Casey.*11,168. *pinguescens Casey.*11,169. *pulverulentus Casey.*

## Centrinopus Casey.

11,170. *helvinus Casey.**alternatus Casey.*

## Linonotus Casey.

11,171. *distinctus Boh.*

## Pachybaris.

11,172. *strigapunctus Hamilton.*

## Nicentrus Casey.

——— *decipiens Lec. (8932)*——— *lineicollis Boh. (8933)*——— *canus Lec. (8939)*11,173. *ingenuus Casey.*11,174. *scitulus Casey.*11,175. *effetus Casey.*11,176. *contractus Casey.*11,177. *grossulus Casey.*

## Centrinites Casey.

11,178. *strigicollis Casey.*

## Calandrinus.

11,179. *insignis Casey.*11,180. *obsoletus Casey.*

## Centrinogyna Casey.

——— *strigata Lec. (8945)*11,181. *proccera Casey.*

## Limnobaris Bedel.

8931

8934

8935

8936

8937

8941

8942

8943

8944

} belong here.

11,182. *bracata Casey.*11,183. *limbifer Casey.*11,184. *blandita Casey.*11,185. *tabida Casey.*11,186. *deplanata Casey.*11,187. *denudata Casey.*11,188. *planusecula Casey.*11,189. *oblita Casey.*11,190. *seclusa Casey.*11,191. *ebena Casey.*11,192. *puteifer Casey.*11,193. *concurrans Casey.*11,194. *fratercula Casey.*11,195. *seminitens Casey.*11,196. *nitidissima Casey.*

## Oligolochus Casey.

——— *convexus Lec. (8949)*

## Idiostethus Casey.

——— *tubulatus Say. (8910)*——— *subcalvus Lec. (8948)*11,197. *ellipsoideus Casey.*11,198. *dispersus Casey.*

## Stethobaris.

11,199. *incompta Casey.*11,200. *ovata Lec.*11,201. *congermana Cascy.*11,202. *egregia Casey.*11,203. *cicatricosa Casey.*

## Oomcrphidius Casey.

8914-8915 belong here.

## Eumononycha Casey.

11,204. *opaca Casey.*

## Catapastus Casey.

——— *conspersus Lec. (8947)*11,205. *diffusus Casey.*

**Barinus.**

- 8950 }  
 8952 } belong here.  
 8953 }  
 8955 }  
 11,206. squamolineatus *Casey.*  
 11,207. suffusus *Casey.*  
 11,208. difficilis *Casey.*  
 11,209. curticolis *Casey.*

**Barilepton.**

- 11,210. famelicum *Casey.*  
 11,211. falciger *Casey.*

**Eunyssobia Casey.**

*Euchætes* || *Lec.*

**Amercedes Casey.**

- 11,212. subulirostris *Casey.*

**Balaninus.**

- 11,213. confusor *Hamilton.*

**CALANDRIDÆ.**

**Cactophagus.**

- 11,214. subnitens *Casey.*

**Sphenophorus.**

- — fasciatus *Fab.* not N. Am.  
 11,215. minimus *Hart.*

**Calandra.**

- 11,216. linearis *Herbst.*  
 11,217. rugicollis *Casey.*

**Yuccaborus.**

- 11,218. grossus *Casey.*

**Dryophthorus.**

- 9015 † = americanus *Bedel.*

**Metopotoma Casey.**

- 11,219. repens *Casey.*

**Himatium.**

- 11,220. nigrifulum *Casey.*

**Allomimus.**

- — corticalis *Boh.* (9047)  
 11,221. politus *Casey.*

**Stenancylus Casey.**

- 11,222. colomboi *Casey.*

**Carphonotus Casey.**

- 11,223. testaceus *Casey.*

**Apotrepus Casey.**

- 11,224. densicollis *Casey.*

**Phlæophagus.**

- 11,225. spadix *Herbst.*

**Pseudopentarthrium Woll.**

- 11,226. robustum *Casey.*  
 11,227. simplex *Casey.*

**Nyssonotus Casey.**

- 11,228. seriatus *Casey.*

**Amaurorhinus.**

- Pentarthrinus Casey.*  
 11,229. parvicollis *Casey.*  
 11,230. piceus *Casey.*  
 11,231. atrolucens *Casey.*

**Rhamphocolus Casey.**

- 11,232. tenuis *Casey.*

**Rhyncolus.**

- 11,233. pallens *Casey.*  
 11,234. spretus *Casey.*  
 11,235. dilatatus *Casey.*  
 11,236. relictus *Casey.*  
 11,237. nimius *Casey.*  
 11,238. discors *Casey.*

**SCOLYTIDÆ.****Platypus.**11,239. *cylindricus Fab.***Corthylus.**11,240. *spinifer Sz.*11,241. *columbianus Hoph.***Gnathotrichus.**

9059-9061 belong here.

**Pityophthorus.**11,242. *centralis Eich.*11,243. *manzanita Sz.*11,244. *quereiperda Sz.***Xyloterus.**9093 = *lineatus Oliv.*

9096 = 9095.

**Cryphalus.**—— *jalappæ Letz. (9102)***Xyleborus.**9104 = *dispar Fab.***Coccotrypes.**11,245. *dactyliperda Fab.***Trypodendron Steph.**11,246. *vittigerum Eich.***Dryocœtes.**9116 = *autographus Ratz.*11,247. *Eichhoffi Hoph.***Xylocleptes.**11,248. *bispinus Duft.***Tomicus.**

9131 = 9101.

**Thysanœs.**11,249. *ficus Sz.***Loganius Chap.**11,250. *ficus Sz.***Bothrosternus.**11,251. *Hubbardi Sz.***Renocis Casey.**11,252. *heterodoxus Casey.***Dendroctonus.**

9182 = 9181.

9184 = 9185.

11,253. *approximatus Dietz.***Crypturgus.**9185 = *pusillus Gyll.*11,254. *alutaceus Sz.***Hylastes.**11,255. *trifolii Mull.***Hylurgops.**9199 = *glabratus Zett.***ANTHRIBIDÆ.****Anthribus.**11,256. *vagus Horn.*

## Bibliographical References.

---

- Synonymical notes.* Blanchard, Ent. Amer. 1887, v. iii, pp. 85-88; Trans. Amer. Ent. Soc. 1885, v. xii, pp. 169-172.
- “ “ Horn, Trans. Amer. Ent. Soc. 1883, v. x, pp. 3-5, Proc.; *ibid.* 1886, v. xiii, pp. 7-13, Proc.
- “ “ Schwarz, Ent. Amer. 1887, v. iii, pp. 13-14.
- Species described by Beauvois.* Ent. Amer. 1885, v. i, pp. 88-90.
- “ “ Bland. Trans. Amer. Ent. Soc., 1880, v. viii, pp. 10-12, Proc.
- “ “ Casey. Ent. Amer., 1885, v. i, pp. 108-113.
- “ “ Kirby. Can. Ent., 1876, v. viii, pp. 126-130; 150-151; 166-170; 190-193.
- “ “ LeConte, J. Trans. Amer. Ent. Soc., 1881, v. ix, pp. 271-272.
- “ “ LeConte, J. L. Trans. Am. Ent. Soc., 1881, v. ix, pp. 179-270.
- “ “ Newman. Ent. Amer. 1885, v. i, pp. 5-9; 52.
- “ “ Randall. Proc. Bost. Soc. Nat. Hist., 1875, v. xvii, pp. 373-385.
- “ “ Walker. Ann. Mag. Nat. Hist., 1870, ser. 4, v. vi, pp. 399-402.
- “ “ Ziegler. Can. Ent. 1885, v. vii, pp. 131-132.

### CICINDELIDÆ.

- Monograph.* Schaupp, Bull. Br. Ent. Soc., 1883-1884, v. vi, pp. 73-108; 121-126.
- Amblychila. Notes.* Rivers, Zool., 1893, v. iv, pp. 218-223; Horn, Ent. News, 1893, v. iv, pp. 281-283.

### CARABIDÆ.

- Anillus. Synoptic table.* Horn, Trans. Am. Ent. Soc., 1888, v. xv, pp. 26-27.
- Anophthalmus. Synoptic table.* Horn, Trans. Am. Ent. Soc., 1883, v. x, pp. 270-271.
- Pterostichus. Synoptic table (part).* Horn, Trans. Am. Ent. Soc., 1891, v. xviii, pp. 33-34.
- Amara (Triæna). Synopsis.* Horn, Trans. Am. Ent. Soc., 1892, v. xix, pp. 18-19.
- Amara (Celia). Synopsis.* Horn, Trans. Am. Ent. Soc., 1892, v. xix, pp. 19-40.
- Calathus. Synoptic table.* LeConte, Bull. Br. Ent. Soc., 1883, v. vi, p. 49.
- Perigonia. Synoptic table.* Horn, Trans. Am. Ent. Soc., 1892, v. xix, p. 44.
- Lebia. Synoptic table (part).* Horn, Trans. Am. Ent. Soc., 1885, v. xii, pp. 133-4.
- Anatrichis. Synoptic table.* Horn, Trans. Am. Ent. Soc., 1891, v. xviii, p. 36.
- Agonoderus. Synoptic table.* LeConte, Bull. Br. Ent. Soc., 1883, v. vi, pp. 53-54.
- Discoderus.* “ Horn, Bull. Br. Ent. Soc., 1883, v. vi, pp. 52-53.
- Stenolophus.* “ LeConte, Bull. Br. Ent. Soc., 1883, v. vi, pp. 13-15.
- Acupalpus.* “ LeConte, Bull. Br. Ent. Soc., 1883, v. vi, p. 15.
- Bradycellus.* “ LeConte, Bull. Br. Ent. Soc., 1883, v. vi, p. 50.

- Tachycellus.** *Synoptic table.* Horn, Bull. Br. Ent. Soc., 1883, v. vi, pp. 51-52.  
**Pseudomorpha.** " Horn, Bull. Br. Ent. Soc., 1883, v. vi, p. 16; Trans. Am. Ent. Soc., 1883, v. x, p. 273.

## HYDROPHILIDÆ.

- Note.* Horn, Can. Ent., 1885, v. xvii, pp. 137-139.  
**Ochthebius.** *Revision.* Horn, Trans. Am. Ent. Soc., 1890, v. xvii, pp. 17-26.  
**Tropisternus.** *Revision.* Sharp, Trans. Ent. Soc. Lond., 1883, pp. 91-117.  
**Limnebius (Limnocharis).** *Synopsis.* Casey, Bull. Cal. Acad. Sci., 1886, v. ii, pp. 167-171.  
**Hydrobiini.** *Revision.* Horn, Trans. Am. Ent. Soc., 1890, v. xvii, pp. 237-278.  
**Sphæridiini.** *Revision.* Horn, Trans. Am. Ent. Soc., 1890, v. xvii, pp. 279-314.

## SILPHIDÆ.

- Pinodytes.** *Synoptic table.* Horn, Trans. Am. Ent. Soc., 1892, v. xix, p. 46.

## SCYDMÆNIDÆ.

- Eumicrus.** *Synoptic table.* Casey, Cont. Col., 1884, pt. 2, p. 87.  
**Euthia.** *Synoptic table.* Brendel, Trans. Am. Ent. Soc., 1893, v. xx, p. 283.  
**Brathinus.** *Synopsis.* Hubbard, Proc. Ent. Soc. Wash., 1894, v. iii, pp. 10-12.

## PSELAPHIDÆ.

- New species.* Casey, Bull. Cal. Acad. Sci., 1887, v. ii, pp. 455-482.  
*Corrections.* Brendel, Trans. Am. Ent. Soc., 1887, v. xiv, pp. 204-208.  
*Synopsis of genera.* - Brendel, Trans. Acad. Sci. St. Louis, 1888, v. v, pp. 298-302.  
*Monograph.* Brendel and Wickham, Bull. Lab. Nat. Hist. Univ. Iowa, 1890, v. i, pp. 216-304; v. ii, pp. 1-84.  
**Sognorus.** *Synoptic table.* Casey, Ann. N. Y. Acad. Sci., 1893, v. vii, p. 501.  
**Chennium (Atinus).** *Synoptic table.* Casey, Ann. N. Y. Acad. Sci., 1893, v. vii, p. 498.  
**Pselaphus.** *Synoptic table.* Casey, Ann. N. Y. Acad. Sci., 1893, v. vii, p. 495.  
**Tychus.** *Synoptic table.* Casey, Ann. N. Y. Acad. Sci., 1893, v. vii, p. 491.  
**Cylindrarctus.** *Synoptic table.* Casey, Ann. N. Y. Acad. Sci., 1893, v. vii, p. 488.  
**Rybaxis.** *Synoptic table.* Casey, Ann. N. Y. Acad. Sci., 1893, v. vii, p. 476.  
**Bryaxis.** *Synoptic table (part).* Casey, Ann. N. Y. Acad. Sci., 1893, v. vii, p. 478; 480-481.  
**Bryaxis (Arthmius).** *Synoptic table.* Casey, Ann. N. Y. Acad. Sci., 1893, v. vii, p. 473.  
**Reichenbachia.** *Synopsis.* Casey, Bull. Cal. Acad. Sci., 1886, v. ii, pp. 186-195.  
 " *Synoptic table (part).* Casey, Ann. N. Y. Acad. Sci., 1893, v. vii, p. 486.  
**Batrisus.** *Synoptic table (part).* Casey, Ann. N. Y. Acad. Sci., 1893, v. vii, pp. 469-470.  
**Actium.** *Synoptic table.* Casey, Ann. N. Y. Acad. Sci., 1893, v. vii, pp. 463-464.  
**Eutyphlus.** *Synoptic table.* Casey, Ann. N. Y. Acad. Sci., 1893, v. vii, p. 460.  
**Biblioplectus.** *Synoptic table.* Casey, Ann. N. Y. Acad. Sci., 1893, v. vii, p. 459.  
**Trimium.** *Synopsis.* Brendel, Trans. Am. Ent. Soc., 1892, v. xix, pp. 165-168.  
**Euplectus.** *Synopsis.* Casey, Cont. Col., 1884, pt. 2, pp. 94-117.



- Euplectus (Thesiastes).** *Synoptic table.* Casey, Ann. N. Y. Acad. Sci., 1893, v. vii, p. 457.
- Euplectus (Ramecia).** *Synoptic table.* Casey, Ann. N. Y. Acad. Sci., 1893, v. vii, p. 451.
- Thesium.** *Synopsis.* Casey, Cont. Col., 1884, pt. 2, pp. 117-119.
- “ *Synoptic table.* Casey, Ann. N. Y. Acad. Sci., 1893, v. vii, p. 462.
- Rhexidius.** *Synoptic table.* Casey, Ann. N. Y. Acad. Sci., 1893, v. vii, p. 449.
- Oropus.** *Synopsis.* Casey, Bull. Cal. Acad. Sci., 1886, v. ii, pp. 196-201.
- “ *Synoptic table.* Casey, Ann. N. Y. Acad. Sci., 1893, v. vii, p. 447.
- Sagola (Sonoma).** *Synoptic table.* Casey, Ann. N. Y. Acad. Sci., 1893, v. vii, pp. 436-437.

## STAPHYLINIDÆ.

- Echidnogllossa (Colusa).** *Synopsis.* Casey, Bull. Cal. Acad. Sci., 1885, v. i, pp. 288-296.
- “ “ *Synoptic table.* Casey, Ann. N. Y. Acad. Sci., 1893, v. vii, p. 312.
- Trichiusa.** *Synopsis.* Casey, Ann. N. Y. Acad. Sci., 1893, v. vii, pp. 339-345.
- Thecturota.** *Synopsis.* Casey, Ann. N. Y. Acad. Sci., 1893, v. vii, pp. 357-360.
- Pontomalota.** *Synopsis.* Casey, Bull. Cal. Acad. Sci., 1885, v. i, pp. 296-299.
- Colposura.** *Synopsis.* Casey, Ann. N. Y. Acad. Sci., 1893, v. vii, pp. 336-339.
- Tinotus.** *Synopsis.* Casey, Ann. N. Y. Acad. Sci., 1893, v. vii, pp. 316-318.
- Myrmedonia.** *Synoptic table.* Casey, Ann. N. Y. Acad. Sci., 1893, v. vii, p. 322.
- Nototaphra.** *Synopsis.* Casey, Ann. N. Y. Acad. Sci., 1893, v. vii, pp. 327-329.
- Polystoma.** *Synoptic table.* Casey, Ann. N. Y. Acad. Sci., 1893, v. vii, p. 289.
- Thiasophila.** *Synopsis.* Casey, Ann. N. Y. Acad. Sci., 1893, v. vii, pp. 301-304.
- Oxypoda.** *Synopsis.* Casey, Ann. N. Y. Acad. Sci., 1893, v. vii, pp. 290-300.
- Bolitochara.** *Synoptic table.* Casey, Ann. N. Y. Acad. Sci., 1893, v. vii, pp. 368-9.
- Leptusa.** *Characters.* Casey, Ann. N. Y. Acad. Sci., 1893, v. vii, pp. 363-365.
- Gyronycha.** *Synopsis.* Casey, Ann. N. Y. Acad. Sci., 1893, v. vii, pp. 372-378.
- Philonthus.** *Monograph.* Horn, Trans. Am. Ent. Soc., 1884, v. xi, pp. 117-223.
- Actobius.** *Monograph.* Horn, Trans. Am. Ent. Soc., 1884, v. xi, pp. 223-234.
- Cafius.** *Monograph.* Horn, Trans. Am. Ent. Soc., 1884, v. xi, pp. 234-239.
- Dianous.** *Synopsis.* Casey, Rev. Stenini, 1884, pp. 8-12.
- Stenus.** *Synopsis.* Casey, Rev. Stenini, 1884, pp. 12-206.
- Euæsthetus.** *Synopsis.* Casey, Cont. Col., 1884, pt. 1, pp. 19-29.
- Edaphus.** *Synopsis.* Casey, Cont. Col., 1884, pt. 1, pp. 29-31.
- Cryptobium.** *Synopsis.* Horn, Trans. Am. Ent. Soc., 1885, v. xii, pp. 85-106.
- Caloderma.** *Revision.* Casey, Bull. Cal. Acad. Sci., 1886, v. ii, pp. 5-12.
- Medon (Lithocharis).** *Revision.* Casey, Bull. Cal. Ac. Sci., 1886, v. ii, pp. 14-29.
- Lithocharis (Metaxyodonta).** *Revision.* Casey, Bull. Cal. Acad. Sci., 1886, v. ii, pp. 29-32.
- Liparocephalus.** *Synoptic table.* Casey, Ann. N. Y. Acad. Sci., 1893, vii, 354.
- Diaulota.** *Synopsis.* Casey, Ann. N. Y. Acad. Sci., 1893, v. vii, pp. 354-355.
- Bledius.** *Synopsis.* Casey, Ann. N. Y. Acad. Sci., 1889, v. v, pp. 41-71.
- Oxytelus.** *Synopsis.* Casey, Ann. N. Y. Acad. Sci., 1893, v. vii, pp. 381-398.
- Haploderus.** *Synopsis.* Casey, Ann. N. Y. Acad. Sci., 1889, v. v, pp. 71-77.
- Trogophlœus.** *Revision.* Casey, Ann. N. Y. Acad. Sci., 1889, v. iv, pp. 322-333.
- Apocellus.** *Synopsis.* Casey, Cont. Col., 1884, pt. 2, pp. 153-161.
- Thinobius.** *Synopsis.* Casey, Ann. N. Y. Acad. Sci., 1889, v. v, pp. 78-89.

**Geodromicus.** *Synopsis.* Casey, Ann. N. Y. Acad. Sci., 1893, v. vii, pp. 406-412.

**Tilea.** *Synoptic table.* Casey, Ann. N. Y. Acad. Sci., 1893, v. vii, pp. 402-403.

**Amphichroum.** *Synopsis.* Casey, Bull. Cal. Acad. Sci., 1886, v. ii, pp. 235-241.

**Amphichroum (Pelecomalium).** *Synopsis.* Casey, Bull. Acad. Sci. 1886, v. ii, pp. 241-243.

“ “ *Synoptic table.* Casey, Ann. N. Y. Acad. Sci., 1893, v. vii, pp. 413-414.

**Lathrimæum.** *Synoptic table.* Casey, Ann. N. Y. Acad. Sci., 1893, v. vii, p. 416.

**Homalium.** *Synoptic table (part).* Casey, Ann. N. Y. Acad. Sci., 1893, vii, p. 424.

**Anthobium.** *Synoptic table.* Casey, Ann. N. Y. Acad. Sci., 1893, vii, pp. 426-7.

**Orobanus.** *Synopsis.* Casey, Bull. Cal. Acad. Sci., 1886, v. ii, pp. 245-248.

“ *Synoptic table.* Casey, Ann. N. Y. Acad. Sci., 1893, v. vii, pp. 405-406.

#### TRICHOPTERYGIDÆ.

*Synopsis.* Matthews, Trans. Am. Ent. Soc., 1884, v. xi, pp. 113-156.

#### SCAPHIDIIDÆ.

*Synopsis.* Casey, Ann. N. Y. Acad. Sci., 1893, v. vii, pp. 510-533.

#### PHALACRIDÆ.

*Synopsis.* Casey, Ann. N. Y. Acad. Sci., 1890, v. v, pp. 89-144.

#### COLYDIIDÆ.

**Lasconotus.** *Synoptic table.* Horn, Trans. Am. Ent. Soc., 1885, v. xii, pp. 141-142; Casey, Ann. N. Y. Acad. Sci., 1890, v. v, p. 316.

#### CUCUJIDÆ.

*Revision.* Casey, Trans. Am. Ent. Soc., 1884, v. xi, pp. 69-112.

**Narthecius.** *Synoptic table.* Casey, Ann. N. Y. Acad. Sci., 1890, v. v, pp. 322-323.

#### HISTERIDÆ.

**Hister.** *Synoptic table (part).* Casey, Ann. N. Y. Acad. Sci., 1893, v. vii, pp. 535, 541, 544-545.

**Epierus.** *Synoptic table.* Casey, Ann. N. Y. Acad. Sci., 1893, v. vii, pp. 551-552.

**Paromalus.** *Synoptic table.* Casey, Ann. N. Y. Acad. Sci., 1893, v. vii, pp. 554, 555-556.

**Anapleus.** *Notes.* Casey, Ann. N. Y. Acad. Sci., 1893, v. vii, p. 558.

**Saprinus.** *Synoptic table (part).* Casey, Ann. N. Y. Acad. Sci., 1893, v. vii, pp. 562-563.

**Plegaderus.** *Synoptic table.* Casey, Ann. N. Y. Acad. Sci., 1893, vii, pp. 575-6.

**Bacanius.** *Synoptic table.* Casey, Ann. N. Y. Acad. Sci., 1893, v. vii, pp. 559-566.

#### BYRRHIDÆ.

**Limnichus.** *Synopsis.* Casey, Ann. N. Y. Acad. Sci., 1890, v. v, pp. 145-160.

#### PARNIDÆ.

**Psephenus.** *Synoptic table.* Casey, Ann. N. Y. Acad. Sci., 1893, vii, pp. 578-9.

**Lutrochus.** *Synoptic table.* Casey, Ann. N. Y. Acad. Sci., 1893, v. vii, p. 580.

## HETEROCERIDÆ.

*Monograph.* Horn, Trans. Am. Ent. Soc., 1890, v. xvii, pp. 1-16.

## ELATERIDÆ.

- Melasis.* *Synopsis.* Horn, Trans. Am. Ent. Soc., 1886, v. xiii, pp. 6-8.  
*Tharops.* *Synopsis.* Horn, Trans. Am. Ent. Soc., 1886, v. xiii, pp. 8-9.  
*Stethon.* *Descriptions.* Horn, Trans. Am. Ent. Soc., 1886, v. xiii, pp. 12-14.  
*Deltometopus.* *Synopsis.* Horn, Trans. Am. Ent. Soc., 1886, v. xiii, pp. 15-17.  
*Dromæolus.* *Synopsis.* Horn, Trans. Am. Ent. Soc., 1886, v. xiii, pp. 17-23.  
*Fornax.* *Synopsis.* Horn, Trans. Am. Ent. Soc., 1886, v. xiii, pp. 24-28.  
*Microrhagus.* *Synopsis.* Horn, Trans. Am. Ent. Soc., 1886, v. xiii, pp. 29-37.  
*Hypocœlus.* *Synopsis.* Horn, Trans. Am. Ent. Soc., 1886, v. xiii, pp. 44-45.  
*Nematodes.* *Synopsis.* Horn, Trans. Am. Ent. Soc., 1886, v. xiii, pp. 40-44.  
*Phlegon.* *Synopsis.* Horn, Trans. Am. Ent. Soc., 1886, v. xiii, pp. 47-48.  
*Cardiophorus.* *Synopsis.* Blanchard, Tr. Am. Ent. Soc., 1889, v. xvi, pp. 1-27.  
*Horistonotus.* *Synopsis.* Horn, Trans. Am. Ent. Soc., 1884, v. xii, pp. 33-41.  
*Esthesopus.* *Synopsis.* Horn, Trans. Am. Ent. Soc., 1884, v. xii, pp. 41-44.  
*Cryptohypnus.* *Monograph.* Horn, Tr. Am. Ent. Soc., 1891, v. xviii, pp. 1-31.  
*Elater.* *Synoptic table.* LeConte, Trans. Am. Ent. Soc., 1884, v. xii, pp. 8-15.  
*Drasterius.* *Synoptic table.* LeConte, Trans. Am. Ent. Soc., 1884, v. xii, pp. 4-6.  
*Megapenthes.* *Synoptic table.* LeConte, Tr. Am. Ent. Soc., 1884, v. xii, pp. 6-8.  
*Ludius.* *Synopsis.* Horn, Trans. Am. Ent. Soc., 1884, v. xii, pp. 45-49.  
*Agriotes.* *Synoptic table.* LeConte, Tr. Am. Ent. Soc., 1884, v. xii, pp. 15-19.  
*Eniconyx.* *Synopsis.* Horn, Trans. Am. Ent. Soc., 1884, v. xii, pp. 51-52.  
*Perothops.* *Synopsis.* Horn, Trans. Am. Ent. Soc., 1886, v. xiii, pp. 53-54.  
*Cerophytum.* *Synopsis.* Horn, Trans. Am. Ent. Soc., 1886, v. xiii, pp. 50-52.

## THROSCIDÆ.

- Synopsis.* Horn, Trans. Am. Ent. Soc., 1885, v. xii, 198-208.  
*Pactopus.* *Synoptic table.* Casey, Ann. N. Y. Acad. Sci., 1893, v. vii, p. 585.

## BUPRESTIDÆ.

- Gyascutus.* *Synoptic table.* Horn, Trans. Am. Ent. Soc., 1883, v. x, p. 287.  
*Hippomelas.* *Synoptic table.* Horn, Trans. Am. Ent. Soc., 1883, v. x, p. 288.  
*Anthaxia.* *Notes.* Casey, Cont. Col., 1884, pt. 2, pp. 172-175.  
*Chrysobothris.* *Monograph.* Horn, Tr. Am. Ent. Soc., 1886, v. xiii, pp. 65-124.  
 " *Synoptic table (part).* Horn, Proc. Cal. Acad. Sci., 1894, ser. 2, v. iv, pp. 368-369.  
*Thrincopyge.* *Synoptic table.* Horn, Trans. Am. Ent. Soc., 1885, v. xii, p. 147.  
*Agriilus.* *Monograph.* Horn, Trans. Am. Ent. Soc., 1891, v. viii, pp. 277-336.

## LAMPYRIDÆ.

- Zarhipis.* *Synoptic table.* Horn, Trans. Am. Ent. Soc., 1885, v. xii, p. 148.

## CLERIDÆ.

- Trichodes.* *Notes.* Horn, Ent. News, 1891, v. ii, pp. 7-8.

## PTINIDÆ.

- Trichodesma.** *Synoptic table.* Horn, Proc. Cal. Acad. Sci., 1894, ser. 2, v. iv, pp. 388-389.
- Hemiptychus.** *Synoptic table (part).* Horn, Proc. Cal. Acad. Sci., 1894, ser. 2, v. iv, pp. 390-391.
- Lycetus.** *Synoptic table.* Casey, Ann. N. Y. Acad. Sci., 1890, v. v, pp. 324-325; *ibid.* 1891, v. vi, p. 13.

## LUCANIDÆ.

- Platycerus.** *Synoptic table.* Casey, Bull. Cal. Acad. Sci., 1885, vi, p. 332; Ann. N. Y. Acad. Sci., 1890, v. v, pp. 163-165.

## SCARABÆIDÆ.

- Canthon.** *Synopsis.* Blanchard, Trans. Am. Ent. Soc., 1885, v. xii, pp. 163-167.
- Chœridium.** *Characters.* Blanchard, Trans. Am. Ent. Soc., 1885, v. vii, p. 170.
- Phanæus.** *Synopsis.* Blanchard, Trans. Am. Ent. Soc., 1885, v. xii, pp. 167-9.
- Ægialia.** *Synopsis.* Horn, Trans. Am. Ent. Soc., 1887, v. xiv, pp. 98-105.
- Psammodius.** *Synopsis.* Horn, Trans. Am. Ent. Soc., 1887, v. xiv, pp. 92-98.
- Pleurophorus.** *Synopsis.* Horn, Trans. Am. Ent. Soc., 1887, v. xiv, pp. 90-92.
- Rhysemus.** *Synopsis.* Horn, Trans. Am. Ent. Soc., 1887, v. xiv, pp. 87-90.
- Atænius.** *Synopsis.* Horn, Trans. Am. Ent. Soc., 1887, v. xiv, pp. 65-86.
- Dialytes.** *Synopsis.* Horn, Trans. Am. Ent. Soc., 1887, v. xiv, pp. 65-67.
- Aphodius.** *Synopsis.* Horn, Trans. Am. Ent. Soc., 1887, v. xiv, pp. 2-64.
- Geotrupes.** *Synopsis.* Blanchard, Psyche, 1888, v. v, pp. 103-110.
- Glaresis.** *Descriptions.* Horn, Trans. Am. Ent. Soc., 1885, v. xii, pp. 117-118.
- Pleocomma.** *Synoptic table.* Horn, Ent. Amer., 1888, v. iii, pp. 233-235.
- “ *Review.* Horn, Trans. Am. Ent. Soc., 1888, v. xv, pp. 1-18.
- Oncerus.** *Synoptic table.* Horn, Proc. Cal. Acad. Sci., 1894, ser. 2, v. iv, p. 395.
- Chnaunanthus.** *Synoptic table.* Horn, Proc. Cal. Acad. Sci., 1894, ser. 2, v. iv, p. 394.
- Plectrodes (Thyce †).** *Synoptic table.* Casey, Ann. N. Y. Acad. Sci., 1890, v. v, p. 170.
- Lachnosterna.** *Synonymical notes.* Horn, Ent. Amer., 1887, v. iii, pp. 141-145.
- “ *Revision.* Horn, Trans. Am. Ent. Soc., 1887, xiv, pp. 209-296.
- “ *Notes.* Smith, Insect Life, 1888, v. i, pp. 180-185.
- “ *Descriptions (part).* Smith, Ent. Amer., 1889, v. v, pp. 93-99.
- Phytalus.** *Synopsis.* Horn, Trans. Am. Ent. Soc., 1885, v. xii, pp. 119-123.
- Anomala.** *Synopsis.* Horn, Trans. Am. Ent. Soc., 1884, v. xi, pp. 157-164.
- Orizabus.** *Descriptions.* Horn, Trans. Am. Ent. Soc., 1885, v. xii, pp. 124-126.
- Cremastochilus.** *Synoptic table (part).* Horn, Trans. Am. Ent. Soc., 1885, v. xii, pp. 126-128.

## CERAMBYCIDÆ.

- Synonymical Notes.* Gahan, Trans. Amer. Ent. Soc., 1888, v. xiv, pp. 299-300.
- Ergates.** *Notes.* Casey, Ann. N. Y. Acad. Sci., 1890, v. v, pp. 490-491.
- Mallodon.** *Synoptic table.* Leng, Bull. Br. Ent. Soc., 1884, v. vii, pp. 9-10.
- Derobrachus.** *Synoptic table.* Leng, Bull. Br. Ent. Soc., 1884, v. vii, p. 11.
- Prionus.** *Synoptic table.* Leng, Bull. Br. Ent. Soc., 1884, v. vii, pp. 57-59.
- Homæsthesis.** *Synoptic table.* Leng, Bull. Br. Ent. Soc., 1884, v. vii, pp. 57-59.

- Tragosoma.** *Notes.* Casey, Ann. N. Y. Acad. Sci., 1890, v. v, pp. 491-493.
- Asemum.** *Synoptic table.* Leng, Bull. Br. Ent. Soc., 1884, v. vii, pp. 62-63.
- Criocephalus.** *Synoptic table.* Leng, Bull. Br. Ent. Soc., 1884, v. vii, pp. 63-64.
- Tetropium.** *Characters.* Leng, Bull. Br. Ent. Soc., 1884, v. vii, pp. 95-96.
- “ *Synoptic table.* Casey, Ann. N. Y. Acad. Sci., 1891, v. vi, p. 23.
- Physocnemum.** *Characters.* Leng, Bull. Br. Ent. Soc., 1884, v. vii, p. 97.
- Hylotrupes.** *Synoptic table.* Leng, Bull. Br. Ent. Soc., 1884, v. vii, p. 98.
- Phymatodes.** *Synoptic table.* Leng, Bull. Br. Ent. Soc. 1884, v. vii, pp. 98-101.
- Callidium.** *Synoptic table.* Leng, Bull. Br. Ent. Soc., 1884, v. vii, pp. 112-113.
- Xylocrius.** *Synoptic table.* Leng, Bull. Br. Ent. Soc., 1884, v. vii, pp. 113-114.
- Oeme.** *Synoptic table.* Leng, Bull. Br. Ent. Soc., 1884, v. vii, p. 116.
- Achryson.** *Synoptic table.* Leng, Bull. Br. Ent. Soc., 1885, v. vii, p. 117.
- Gracilia.** *Synoptic table.* Leng, Bull. Br. Ent. Soc., 1885, v. vii, p. 118.
- Brothylus.** *Synoptic table.* Leng, Bull. Br. Ent. Soc., 1885, v. vii, p. 119.
- Eburia.** *Synoptic table.* Leng, Ent. Amer., 1885, v. i, pp. 28-29.
- Romaleum.** *Synoptic table.* Leng, Ent. Amer., 1885, v. i, pp. 29-31.
- “ *Notes.* Horn, Ent. Amer., 1885, v. i, p. 130.
- Elaphidion.** *Synoptic table.* Leng, Ent. Amer., 1885, v. i, pp. 31-34.
- Anefus.** *Synoptic table.* Leng, Ent. Amer., 1885, v. i, pp. 34-35; Horn, *ibid.* pp. 131-133.
- Compsa.** *Synoptic table.* Leng, Ent. Amer., 1885, v. i, pp. 134-135.
- Heterachthes.** *Synoptic table.* Leng, Ent. Amer., 1885, v. i, p. 135.
- Phyton.** *Characters.* Leng, Ent. Amer., 1886, v. ii, p. 28.
- Oörium.** *Synoptic table.* Leng, Ent. Amer., 1886, v. ii, p. 28.
- Hybodera.** *Synoptic table.* Leng, Ent. Amer., 1886, v. ii, pp. 28-29.
- Callimus.** *Characters.* Leng, Ent. Amer., 1886, v. ii, p. 29.
- Molorchus.** *Synoptic table.* Leng, Ent. Amer., 1886, v. ii, p. 30.
- Callimoxys.** *Synoptic table.* Leng, Ent. Amer., 1886, v. ii, pp. 29-30.
- Rhopalophora.** *Synoptic table.* Leng, Ent. Amer., 1886, v. ii, pp. 30-31; Casey, Ann. N. Y. Acad. Sci., 1891, v. vi, p. 30.
- Ancylocera.** *Synoptic table.* Casey, Ann. N. Y. Acad. Sci., 1893, vii, pp. 585-6.
- Elytroleptus.** *Synoptic table.* Leng, Ent. Amer., 1886, v. ii, pp. 31-32.
- Callichroma.** *Synoptic table.* Leng, Ent. Amer., 1886, v. ii, p. 61.
- Stenaspis.** *Characters.* Leng, Ent. Amer., 1886, v. ii, p. 62.
- Crioprosopus.** *Synoptic table.* Leng, Ent. Amer., 1886, v. ii, p. 62.
- Tragidion.** *Synoptic table.* Leng, Ent. Amer., 1886, v. ii, p. 81; Casey, Ann. N. Y. Acad. Sci., 1893, v. vii, p. 586.
- Purpuricenus.** *Synoptic table.* Leng, Ent. Amer., 1886, v. ii, pp. 81-82.
- Metaleptus.** *Synoptic table.* Leng, Ent. Amer., 1886, v. ii, p. 82.
- Æthecerus.** *Synoptic table.* Leng, Ent. Amer., 1886, v. ii, p. 82.
- Amannus.** *Synoptic table.* Leng, Ent. Amer., 1886, v. ii, p. 83.
- Batyle.** *Synoptic table.* Leng, Ent. Amer., 1886, v. ii, p. 102.
- Oxoplus.** *Synoptic table.* Horn, Trans. Am. Ent. Soc., 1885, v. xii, pp. 175-76; Leng, Ent. Amer., 1886, v. ii, pp. 162-163.
- Tylosis.** *Synoptic table.* Leng, Ent. Amer., 1886, v. ii, p. 118.
- Crossidius.** *Synoptic table.* Leng, Ent. Amer., 1886, v. ii, pp. 118-119; Casey, Ann. N. Y. Acad. Sci., 1891, v. vi, p. 31.
- Sphænothecus.** *Synoptic table.* Casey, Ann. N. Y. Acad. Sci., 1891, v. vi, p. 34.
- Stenosphenus.** *Synopsis.* Horn, Trans. Am. Ent. Soc., 1885, v. xii pp. 177-80.
- “ *Synoptic table.* Leng, Ent. Amer., 1887, v. ii, pp. 193-194.

- Cyllene. *Synoptic table.* Leng, Ent. Amer., 1887, v. ii, pp. 195-197.  
 Calloides. *Synoptic table.* Leng, Ent. Amer., 1887, v. ii, p. 197.  
 Clytus. *Synoptic table.* Leng, Ent. Amer., 1887, v. ii, p. 198.  
 Xylotrechus. *Synopsis.* Leng, Ent. Amer., 1887, v. ii, pp. 198-200; v. iii, p. 4.  
 Neoclytus. *Synopsis.* Leng, Ent. Amer., 1887, v. iii, pp. 4-8.  
 Clytanthus. *Characters.* Leng, Ent. Amer., 1887, v. iii, p. 23.  
 Cyrtophorus. *Synoptic table.* Casey, Ann. N. Y. Acad. Sci., 1893, v. vii, p. 590.  
 Eudercus. *Synopsis.* Leng, Ent. Amer., 1887, v. iii, pp. 24, 44.  
 Ipochnus. *Synoptic table.* Casey, Ann. N. Y. Acad. Sci., 1891, v. vi, pp. 44-45.  
 Monilema. *Synopsis.* Horn, Trans. Am. Ent. Soc., 1885, v. xii, pp. 180-190.  
 Psenocerus. *Notes.* Casey, Ann. N. Y. Acad. Sci., 1891, v. vi, pp. 46-47.  
 Monohammus. *Synopsis.* Horn, Trans. Am. Ent. Soc., 1885, v. xii, pp. 190-3.  
 Ptychodes. *Synoptic table.* Casey, Ann. N. Y. Acad. Sci., 1893, v. vii, p. 593.  
 Dorcaschema. *Synoptic table.* Horn, Trans. Am. Ent. Soc., 1885, v. xii, p. 194.  
 Goes. *Synoptic table.* Horn, Trans. Am. Ent. Soc., 1885, v. xii, p. 193.  
 Hyperplatys. *Synoptic table.* Casey, Ann. N. Y. Acad. Sci., 1891, vi, pp. 50-51.  
 Eupogonius. *Synoptic table.* Horn, Trans. Am. Ent. Soc., 1885, v. xii, p. 196.  
 Oncideres. *Synoptic table.* Horn, Trans. Am. Ent. Soc., 1885, v. xii, pp. 194-5.  
 Spalacopsis. *Synoptic table.* Casey, Ann. N. Y. Acad. Sci., 1891, v. vi, p. 51.  
 Dysphaga. *Synoptic table.* Horn, Trans. Am. Ent. Soc., 1885, v. xii, p. 197.

#### CHRYSOMELIDÆ.

- Donacia. *Synopsis.* Leng, Trans. Am. Ent. Soc., 1891, v. xviii, pp. 159-176.  
 Orsodacna. *Notes.* Horn, Trans. Am. Ent. Soc., 1892, v. xix, pp. 6-7.  
 Zeugophora. *Synoptic table.* Horn, Trans. Am. Ent. Soc., 1892, v. xix, p. 7.  
 Syneta. *Synopsis.* Horn, Trans. Am. Ent. Soc., 1892, v. xix, pp. 1-5.  
 Euryscopa. *Synopsis.* Horn, Trans. Am. Ent. Soc., 1892, v. xix, pp. 15-18.  
 Coscinoptera. *Synopsis.* Horn, Trans. Am. Ent. Soc., 1892, v. xix, pp. 12-15.  
 Megalostomis. *Synopsis.* Horn, Trans. Am. Ent. Soc., 1892, v. xix, pp. 10-12.  
 Saxinis. *Synopsis.* Horn, Trans. Am. Ent. Soc., 1892, v. xix, pp. 8-10.  
 Eumolpini. *Synopsis.* Horn, Trans. Am. Ent. Soc., 1892, v. xix, pp. 195-234.  
 Chrysochus. *Synoptic table.* Horn, Trans. Am. Ent. Soc., 1885, v. xii, p. 156.  
 Graphops (Scelodonta). *Synoptic table.* LeConte, Trans. Am. Ent. Soc., 1884, v. xii, pp. 26-27.  
 Galerucini. *Monograph.* Horn, Trans. Am. Ent. Soc., 1893, v. xx, pp. 57-132.  
 Halticini. *Monograph.* Horn, Trans. Am. Ent. Soc., 1889, v. xvi, pp. 163-320.  
 " *Notes.* Jacoby, Trans. Am. Ent. Soc., 1888, v. xiv, pp. 302-303; Horn, *ibid.*, pp. 303-304.  
 Luperaltica. *Synopsis.* Horn, Trans. Am. Ent. Soc., 1893, v. xx, pp. 134-136.  
 Microrhopala. *Synopsis.* Horn, Trans. Am. Ent. Soc., 1883, v. x, pp. 290-4.  
 Odontota. *Synopsis.* Horn, Trans. Am. Ent. Soc., 1883, v. x, pp. 294-298.  
 Charistena. *Synopsis.* Horn, Trans. Am. Ent. Soc., 1883, v. x, pp. 299-300.  
 Stenispa. *Synopsis.* Horn, Trans. Am. Ent. Soc., 1883, v. x, pp. 301-302.

#### BRUCHIDÆ.

- Zabrotes. *Synopsis.* Horn, Trans. Am. Ent. Soc., 1885, v. xii, 156-159.

## TENEBRIONIDÆ.

- Edrotes.** *Synoptic table.* Casey, Ann. N. Y. Acad. Sci., 1890, v. v, p. 175.
- Trimytis.** *Synoptic table.* Horn, Proc. Cal. Acad. Sci., 1894, ser. 2, v. iv, p. 412.
- Eurymetopon.** *Synopsis.* Casey, Ann. N. Y. Acad. Sci., 1890, v. v, pp. 320-347.
- Emmenastus.** *Synopsis.* Casey, Ann. N. Y. Acad. Sci., 1890, v. v, pp. 347-365.
- Emmenastrichus.** *Synoptic table.* Horn, Proc. Cal. Acad. Sci. 1894, ser. 2, v. iv, p. 413.
- Epitragus.** *Synoptic table.* Casey, Ann. N. Y. Acad. Sci., 1891, v. vi, pp. 53-54.
- Chilometopon.** *Synoptic table.* Casey, Ann. N. Y. Acad. Sci., 1890, v. v, p. 366.
- Usechus.** *Synoptic table.* Casey, Ann. N. Y. Acad. Sci., 1890, v. v, p. 176.
- Dacoderus.** *Synoptic table.* Horn, Trans. Am. Ent. Soc., 1893, v. xx, p. 139.
- Aræoschizus.** *Synoptic table.* Casey, Ann. N. Y. Acad. Sci., 1890, v, pp. 368-9.
- “ *Synopsis.* Horn, Trans. Am. Ent. Soc., 1890, v. xvii, pp. 339-343.
- Anepsius.** *Synoptic table.* Casey, Ann. N. Y. Acad. Sci., 1891, v. vi, p. 55.
- Microschatia.** *Synopsis.* Horn, Trans. Am. Ent. Soc., 1893, v. xx, pp. 140-143.
- Asida.** *Synoptic table (part).* Horn, Proc. Cal. Acad. Sci., 1894, ser. 2, iv, p. 416.
- Coniontis.** *Synopsis.* Casey, Ann. N. Y. Acad. Sci., 1890, v. v, pp. 371-390.
- Cœlotaxis.** *Synoptic table.* Casey, Ann. N. Y. Acad. Sci., 1890, v. v, p. 177.
- Cœlus.** *Synoptic table.* Casey, Ann. N. Y. Acad. Sci., 1890, v. v, p. 178.
- Eusattus.** *Synoptic table.* Horn, Trans. Am. Ent. Soc., 1883, v. x, pp. 304-305; Proc. Cal. Acad. Sci., 1894, ser. 2, v. iv, p. 423.
- Eulabis.** *Synoptic table.* Casey, Ann. N. Y. Acad. Sci., 1891, v. vi, p. 59.
- Argoporis.** *Synoptic table.* Casey, Ann. N. Y. Acad. Sci., 1890, v. v, p. 405.
- Cratidus.** *Synoptic table.* Casey, Ann. N. Y. Acad. Sci., 1890, v. v, p. 407.
- Ipthimus.** *Synoptic table.* Casey, Ann. N. Y. Acad. Sci., 1890, v. v, pp. 407-8.
- Mecysmus.** *Synopsis.* Casey, Ann. N. Y. Acad. Sci., 1890, v. v, pp. 462-467.
- Blapstinus.** *Synopsis.* Casey, Ann. N. Y. Acad. Sci., 1890, v. v, pp. 416-462.
- Conibius.** *Synopsis.* Casey, Ann. N. Y. Acad. Sci., 1890, v. v, p. 467-476.
- Notibius.** *Synopsis.* Casey, Ann. N. Y. Acad. Sci., 1890, v. v, pp. 477-481.
- Ulus.** *Synopsis.* Casey, Ann. N. Y. Acad. Sci., 1890, v. v, pp. 411-416.
- Aphanotus.** *Synoptic table.* Casey, Ann. N. Y. Acad. Sci., 1890, v. v, p. 483.
- Eleates.** *Synoptic table.* Casey, Ann. N. Y. Acad. Sci., 1890, v. v, p. 486.

## ÆGIALITIDÆ.

- Ægialites.** *Synoptic table.* Horn, Trans. Am. Ent. Soc., 1883, v. xx, p. 143.

## CISTELIDÆ.

- Synopsis.* Casey, Ann. N. Y. Acad. Sci., 1891, v. vi, pp. 69-170.
- Lystronychus.** *Synoptic table.* Horn, Proc. Cal. Acad. Sci., 1894, ser. 2, v. iv, p. 433.

## LAGRIIDÆ.

- Synopsis.* Horn, Trans. Am. Ent. Soc., 1888, v. xv, pp. 28-32.

## MELANDRYIDÆ.

- Hypulus.** *Synopsis.* Horn, Trans. Am. Ent. Soc., 1888, v. xv, pp. 39-42.
- Eustrophus.** *Synopsis.* Horn, Trans. Am. Ent. Soc., 1888, v. xv, pp. 32-35.
- Holostrophus.** *Synopsis.* Horn, Trans. Am. Ent. Soc., 1888, v. xv, pp. 36-37.
- Orchesia.** *Synopsis.* Horn, Trans. Am. Ent. Soc., 1888, v. xv, pp. 37-38.

## PYTHIDÆ.

**Pytho.** *Synopsis.* Horn, Trans. Am. Ent. Soc., 1888, v. xv, pp. 45-46.

## ANTHICIDÆ.

**Corphyra.** *Synopsis.* Horn, Trans. Am. Ent. Soc., 1883, v. x, pp. 305-310.

**Notoxus.** *Synopsis.* Horn, Trans. Am. Ent. Soc., 1883, v. x, pp. 165-174.

**Mecynotarsus.** *Synopsis.* Horn, Trans. Am. Ent. Soc., 1884, v. xi, pp. 175-76.

## PYROCHROIDÆ.

**Dendroides.** *Synopsis.* Horn, Trans. Am. Ent. Soc., 1888, v. xv, pp. 46-48.

## MELOIDÆ.

**Macrobasis.** *Synoptic table.* Horn, Trans. Am. Ent. Soc., 1885, xii, pp. 109-110.

**Tetraonyx.** *Synoptic table.* Horn, Trans. Am. Ent. Soc., 1885, v. xii, p. 116.

**Pyrota.** *Descriptions.* Horn, Trans. Am. Ent. Soc., 1885, v. xii, pp. 112-115.

“ *Synoptic table (part).* Casey, Ann. N. Y. Acad. Sci., 1891, v. vi, p. 173.

**Cantharis.** *Synoptic table (part).* Horn, Trans. Am. Ent. Soc., 1883, v. x, p. 311.

**Calospasta.** *Revision.* Horn, Proc. Am. Philos. Soc., 1891, v. xxix, pp. 99-102.

## RHIPIPHORIDÆ.

**Myodites.** *Synoptic table.* Horn, Trans. Am. Ent. Soc., 1892, v. xix, p. 48.

## OTIORHYNCHIDÆ.

**Epicærus.** *Synoptic table.* Casey, Ann. N. Y. Acad. Sci., 1888, v. iv, p. 234.

**Amotus.** *Synoptic table.* Casey, Ann. N. Y. Acad. Sci., 1888, v. iv, p. 244.

**Amnesia.** *Synoptic table (part).* Casey, Ann. N. Y. Acad. Sci., 1888, v. iv, p. 247.

**Sciopithes.** *Synoptic table (part).* Casey, Ann. N. Y. Acad. Sci., 1888, iv, p. 254.

**Elissa.** *Synoptic table.* Casey, Ann. N. Y. Acad. Sci., 1888, v. iv, p. 272.

**Scythropus.** *Synoptic table (part).* Casey, Ann. N. Y. Acad. Sci., 1888, iv, p. 275.

## CURCULIONIDÆ.

**Sitones.** *Synopsis.* Casey, Ann. N. Y. Acad. Sci., 1888, v. iv, pp. 279-296.

**Apioninæ.** *Synopsis.* Smith, Trans. Am. Ent. Soc., 1884, v. xi, pp. 41-68.

**Macrops.** *Synopsis.* Dietz, Trans. Am. Ent. Soc., 1889, v. xvi, pp. 28-54.

**Lixus.** *Synopsis.* Casey, Ann. N. Y. Acad. Sci., 1891, v. vi, pp. 194-213.

**Dinocleus.** *Synopsis.* Casey, Ann. N. Y. Acad. Sci., 1891, v. vi, pp. 176-185.

**Cleonus.** *Synoptic table.* Casey, Ann. N. Y. Acad. Sci., 1891, v. vi, pp. 186-188.

**Dorytomus.** *Synopsis.* Casey, Ann. N. Y. Acad. Sci., 1892, v. vi, pp. 360-381.

**Erirhinini (Desmori).** *Synopsis.* Dietz, Tr. Am. Ent. Soc., 1894, xxi, pp. 113-78.

**Smicronyx.** *Synopsis.* Casey, Ann. N. Y. Acad. Sci., 1892, v. vi, pp. 382-408.

**Promecotarsus.** *Synopsis.* Casey, Ann. N. Y. Acad. Sci., 1892, v. vi, pp. 408-411.

**Otidocephalus.** *Synopsis.* Casey, Ann. N. Y. Acad. Sci., 1892, v. vi, pp. 426-28.

**Anthonomini.** *Synopsis.* Dietz, Trans. Am. Ent. Soc., 1891, v. xviii, pp. 177-276.

**Thysanocnemis.** *Synoptic table.* Casey, Ann. N. Y. Acad. Sci., 1892, vi, pp. 425-6.

**Tychius.** *Synopsis.* Casey, Ann. N. Y. Acad. Sci., 1892, v. vi, pp. 411-425.

**Acamptus.** *Synoptic table.* Casey, Ann. N. Y. Acad. Sci., 1892, v. vi, p. 445.

**Tyloderma.** *Synopsis.* Casey, Ann. N. Y. Acad. Sci., 1892, v. vi, pp. 448-457.



- Phyrdenus.** *Synoptic table.* Casey, Ann. N. Y. Acad. Sci., 1892, v. vi, pp. 457-8.  
**Zygops.** *Synoptic table.* Casey, Ann. N. Y. Acad. Sci., 1892, v. vi, p. 459.  
**Barini.** *Synopsis.* Casey, Ann. N. Y. Acad. Sci., 1892, v. vi, pp. 460-684.  
**Balaninus.** *Synoptic table.* Blanchard, Bull. Br. Ent. Soc., 1884, viii, p. 106-108.

## CALANDRIDÆ.

- Cactophagus.** *Synoptic table.* Casey, Ann. N. Y. Acad. Sci., 1892, v. vi, p. 685.  
**Calandra.** *Synopsis.* Casey, Ann. N. Y. Acad. Sci., 1892, v. vi, pp. 685-687.  
**Yuccaborus.** *Synopsis.* Casey, Ann. N. Y. Acad. Sci., 1892, v. vi, pp. 687-689.  
**Himatium.** *Synoptic table.* Casey, Ann. N. Y. Acad. Sci., 1892, v. vi, p. 691.  
**Allominus.** *Synoptic table.* Casey, Ann. N. Y. Acad. Sci., 1892, v. vi, p. 693.  
**Pseudopentarthrum.** *Synopsis.* Casey, Ann. N. Y. Acad. Sci., 1892, v. vi, pp. 696-697.  
**Amaurorhinus (Pentarthrinus).** *Synopsis.* Casey, Ann. N. Y. Acad. Sci., 1892, v. vi, pp. 698-701.

## SCOLYTIDÆ.

- Notes.* Schwarz, Ent. Amer., 1886, v. ii, pp. 40-42: 54-56.  
**Corthylus.** *Synoptic table.* Schwarz, Proc. Ent. Soc. Wash., 1891, v. ii, p. 115.  
**Dendroctonus.** *Synopsis.* Dietz, Trans. Am. Ent. Soc., 1890, v. xvii, pp. 27-32.

## ERRATA.

- Page 4, col. 2, line 5, *for* Megasternum *read* Megasternum.  
 " 9, No. 9608, *for* fuscipes *read* fusciceps.  
 " 10, col. 1, line 33, *for* Calodema *read* Caloderma.  
 " col. 2, line 17, *for* Metaxyonycha *read* Metaxyodonta.  
 " 19, col. 1, line 32, *for* Pœcilionta *read* Pœcilonota.  
 " No. 10,058 = 4488.  
 " line 30, *for* Tripopitys *read* Trypopitys.  
 " 23, col. 2, line 26, *for* Listrochela *read* Listrochelus.  
 " 25, col. 2, line 9, *for* Valemus *read* Valenus.  
 " 26, col. 2, line 39, *for* Notodonta *read* Nodonota.  
 " 27, col. 1, line 33, *for* Trachyscelidia *read* Trachyscelida.  
 " 30, No. 10,497, *for* conicollis *read* conicicollis.  
 " 31. No. 10,560 = 10,559.  
 " No. 10,597, *for* parallus *read* parallelus.  
 " 38, No. 10,951, *for* albosynamosus *read* albosquamosus.  
 " 39, No. 10,970, *for* vittipennis *read* vittipennis.  
 " 40, No. 11,048, *for* soltani *read* Soltani.  
 " col. 2, line 23, *for* Centorhynchus *read* Ceutorhynchus.  
 " 43, col. 2, line 12 *for* Pseudopentarthrium *read* Pseudopentarthrum.



# INDEX.

- Ababactus, 10.  
 Acalles, 40.  
 Acamptus, 40, 54.  
 Achromota, 8.  
 Achryson, 51.  
 Acmaeodera, 20.  
 Acmaeops, 24.  
*Acoloniu*, 6.  
 Acoma, 22.  
 Acritus, 16.  
 Acropteroxys, 15.  
 Actenodes, 20.  
 Actidium, 13.  
 Actinopteryx, 13.  
 Actium, 6, 46.  
 Actobius, 47.  
 Acupalpus, 45.  
 Aeylomis, 14.  
 Acyphoderes, 24.  
*Adelina*, 31.  
 Aderocharis, 10.  
 Adonia, 14.  
 Adoxus, 26.  
 Ægialia, 22, 50.  
 Ægialites, 32, 53.  
 ÆGIALITIDÆ, 32, 53.  
 Ænigmaticum, 14.  
 Æthecerus, 51.  
 Agabus, 3.  
 Agæocera, 19.  
 Agallissus, 24.  
 Agonoderus, 45.  
 Agrilus, 20, 49.  
 Agriotes, 49.  
 Alaus, 18.  
 Aleochara, 8.  
 Allecula, 32.  
 Allomimus, 43, 55.  
 Alobates, 31.  
 Aloconota, 7.  
 Alphitobius, 32.  
 Alycodes, 40.  
 Amannus, 51.  
 Amara, 2, 45.  
 Amaurorhinus, 43, 55.  
 Amblopusa, 11.  
 Amblychila, 1, 45.  
 Mercedes, 43.  
 Amischa, 7.  
 Amnesia, 35, 54.  
 Amotus, 35, 54.  
 Ampelogypter, 41  
 Amphichroum, 12, 48.  
 Anametis, 35.  
 Anæpleus, 15, 48.  
 Anatis, 14.  
 Anatrachis, 2, 45.  
 Anchonoderus, 2.  
 Anchonus, 37.  
 Anchylarthron, 5.  
 Ancylocera, 24, 51.  
*Andrinus*, 33.  
 Aneflus, 51.  
 Anepsiota, 8.  
 Anepsius, 30, 53.  
 Aneurota, 7.  
 Anillus, 1, 45.  
 Anisodactylus, 2.  
 Anitra, 4.  
 Anomala, 50.  
 Anophthalmus, 1, 45.  
*Anoplognathus*, 23.  
*Anops*, 5  
 Anorus, 18.  
 Anthaxia, 19, 49.  
 ANTHICIDÆ, 34, 54.  
 Anthicus, 34.  
 Anthobium, 13, 48.  
 Anthonomopsis, 39.  
 Anthonomini, 54.  
 Anthonomus, 39.  
 Anthophilax, 24.  
 Anthracopteryx, 19.  
 Anthrenus, 16.  
 ANTHRIBIDÆ, 44.  
 Anthribus, 44.  
 Aphanotus, 32, 53.  
 Apheloglossa, 9.  
 Aphodius, 22, 50.  
 Aphonides, 23.  
 Aphthona, 29.  
 Apion, 36.  
 Apioninae, 54.  
 Apocellus, 12, 47.  
 Apotrepus, 43.  
 Apristus, 2.  
 Areochizus, 30, 53.  
 Aragnomus, 36.  
 Argoporis, 31, 53.  
 Arianops, 5.  
 Arpedium, 12.  
 Arrhenoplita, 32.  
 Arrhipis, 18  
 Arthrolips, 14.  
 Articerus, 4.  
 Artochia, 12.  
 Asaphes, 19.  
 Asemum, 51.  
 Asida, 30, 53.  
 Aspathines, 33.  
 Asthenesita, 9.  
 Attenius, 22, 50.  
 Atheta, 7.  
*Atinus*, 4.  
 Atomaria, 15.  
 Attagenus, 16.  
 Attalus, 21.  
 Aulacoscelis, 25.  
 Auletetes, 35.  
 Aulobaris, 41.  
 Autalia, 8.  
*Azinocerus*, 16.  
 Babia, 26.  
 Bacanius, 16, 48.  
 Beocera, 13.  
 Balaninus, 43, 55.  
 Bamona, 9.  
 Baptoleus, 9.  
 Barilepton, 43.  
 Barini, 55.  
 Barinus, 43.  
 Baris, 40.  
 Baryodma, 8.  
 Barypithes, 36.  
 Batrisus, 5, 46.  
 Batyle, 24, 51.  
 Belionota, 20.  
 Belonucius, 9.  
 Belotus, 20.  
 Bembidium, 1.  
 Biblioplectus, 46.  
 Biblioporus, 6.  
*Biotus*, 4.  
 Bisnius, 9.  
 Blaps, 31.  
 Blapstinus, 31, 53.  
 Blechrus, 2.  
 Bledius, 11, 47.  
 Boletobius, 11.  
 Bolitochara, 9, 47.  
 Bothrosternus, 44  
 Botrodus, 15.

- Brachyacantha, 15.  
 Brachycephus, 4.  
 Bradycellus, 45.  
 Bradycinetus, 22.  
 Brathinus, 4, 46.  
 Brothylus, 51.  
 BRUCHIDÆ, 29, 52.  
 Bruchus, 29.  
 Bryaxis, 5, 46.  
 Bryobiota, 9.  
*Bryonomus*, 9.  
 BUPRESTIDÆ, 19, 49.  
 Buprestis, 19.  
 BYRRHIDÆ, 17, 48.  
 Byrrhus, 17.  
  
 Cactophagus, 43, 55.  
 Cænocara, 21.  
 Cænus, 9, 47.  
 Calandra, 43, 55.  
 CALANDRIDÆ, 43, 55.  
 Calandrinus, 42.  
 Calathus, 45.  
 Callicerus, 7.  
 Callichroma, 51.  
 Callida, 2.  
 Callidium, 51.  
 Callimoxys, 51.  
 Callimus, 51.  
 Calloides, 52.  
 Calodera, 8.  
 Caloderma, 10, 47.  
 Calosoma, 1.  
 Calospasta, 35, 54.  
 Canistes, 40.  
 Cantharis, 35, 54.  
 Canthon, 22, 50.  
 CARABIDÆ, 1, 45.  
 Carabus, 1.  
 Cardiophorus, 18, 49.  
 Carphonotus, 43.  
 Carophilus, 17.  
 Cartodera, 17.  
 Cassida, 29.  
 Catapastus, 42.  
 Centrinites, 42.  
 Centrinogyna, 42.  
 Centrinopus, 42.  
 Centrinus, 42.  
 Centrioptera, 30.  
*Centrocleonus*, 37.  
 Cephennium, 4.  
 Ceracis, 21.  
 CERAMBYCIDÆ, 24, 50.  
*Cercocerus*, 4.  
 Cereyon, 3.  
 Cerenopus, 31.  
 Cerophytum, 49.  
 Cerotoma, 27.  
 Cerylon, 15.  
 Ceutorhynchus, 40.  
 Chaetocnema, 29.  
 Chalcolepidius, 18.  
 Chaleponotus, 40.  
  
 Chariessa, 21.  
 Charistena, 52.  
 Chelonychus, 39.  
 Chelyoxenus, 16.  
 Chemnum, 4, 46.  
 Chilometopon, 30, 53.  
 Chlenius, 2.  
 Chnaunanthus, 22, 50.  
 Chœridium, 50.  
 Cholerus, 4.  
 Chrotoma, 24.  
 Chrysobothris, 19, 49.  
 Chrysochus, 52.  
 Chrysodina, 26.  
 CHRYSOMELIDÆ, 25, 52.  
 Cibdelis, 31.  
 Cicindela, 1.  
 CICINDELIDÆ, 1, 45.  
 CIOIDÆ, 21.  
 Cionistes, 39.  
 Cis, 21.  
 Cistela, 33.  
 CISTELIDÆ, 32, 53.  
 Cleonus, 37, 54.  
 CLERIDÆ, 21, 49.  
 Clivina, 1.  
 Clytanthus, 52.  
 Clytus, 52.  
 Coccinella, 14.  
 COCCINELLIDÆ, 14.  
*Cocctorus*, 39.  
 Coccotrypes, 44.  
 Celambus, 2.  
 Cœlomorpha, 30.  
 Cœlotaxis, 30, 53.  
 Cœlus, 30, 53.  
 Cœnopœus, 25.  
 Cœnoscelis, 15.  
 Colaspidea, 26.  
 Colaspis, 26.  
 Colaspoides, 26.  
 Colpodota, 7.  
 Colposura, 7, 47.  
 COLYDIDÆ, 15, 48.  
 Colymbetes, 3.  
*Colusa*, 7.  
 Compsa, 51.  
*Conibiosoma*, 31.  
 Conibius, 31, 53.  
 Coninomus, 17.  
*Coniontellus*, 30.  
 Coniontis, 30, 53.  
*Conoplectus*, 6.  
 Conosoma, 11.  
 Conotrachelus, 40.  
 Copris, 22.  
 Coptocycla, 29.  
 Copturus, 40.  
 Corphyra, 54.  
 Cortihylus, 44, 55.  
 Corticaria, 17.  
 CORYLOPHIDÆ, 14.  
 Corylophodes, 14.  
 Corymbites, 19.  
  
 Coscinoptera, 25, 52.  
 Cratidus, 31, 53.  
 Cremastochilus, 23, 50.  
 Creniphilus, 3.  
 Crepidodera, 28.  
 Criocephalus, 51.  
 Crioprosopus, 51.  
 Crossidius, 24, 51.  
*Crynodes*, 34.  
 Cryphalus, 44.  
 Cryptobium, 10, 47.  
 Cryptoecephalus, 26.  
 Cryptohypnus, 19, 49.  
 CRYPTOPHAGIDÆ, 15.  
 Cryptophagus, 15.  
 Cryptopleurum, 4.  
 Cryptorhynchus, 40.  
 Crypturus, 44.  
 Cteniopus, 33.  
 Ctenisis, 4.  
 Ctenobium, 21.  
 CUCUJIDÆ, 15, 48.  
 CURCULIONIDÆ, 36, 54.  
 Cybister, 3.  
*Cybotus*, 31.  
 Cyehrus, 1.  
 Cymosattus, 30.  
 Cyindractus, 5, 46.  
 Cyllene, 52.  
 Cymatodera, 21.  
 Cymbiodyta, 3.  
 Cyparium, 13.  
*Cyphomimus*, 36.  
 Cyphon, 18.  
 Cyrtophorus, 24, 52.  
  
 Dacnochilus, 11.  
 Dacoderus, 30, 53.  
 Dactylosternum, 3.  
 DASYLLIDÆ, 18.  
 Dasyceus, 17.  
 Dasyglossa, 8.  
 Dasytes, 21.  
 Decarthron, 5.  
 Deliphrum, 13.  
 Deltometopus, 18, 49.  
 Dendrobias, 24.  
 Dendroctonus, 44, 55.  
 Dendroides, 54.  
 Dendrophagus, 15.  
 Dendrophilus, 16.  
 Deporaus, 35.  
 DERMESTIDÆ, 16.  
 Derobraehus, 50.  
 Deronectes, 2.  
 Desmia, 4.  
 Desmoglyptus, 41.  
 Desmoris, 38.  
 Diabrotica, 27.  
 Dialytes, 50.  
 Dianous, 47.  
 Diaperis, 32.  
 Dialota, 11, 47.  
 Dibolia, 29.

- Dicelus, 2.  
 Dichelonycha, 22.  
*Dinacoma*, 23.  
 Dinapate, 21.  
 Dinaraea, 7.  
 Dinocleus, 37, 54.  
 Dinocoryna, 8.  
 Diphaulaca, 28.  
 Diplotaxis, 23.  
*Dircæa*, 34.  
 Discoderus, 2, 45.  
 Disonycha, 28.  
 Ditaphrus, 17.  
 Doliema, 31.  
 Donacia, 25, 52.  
 Doliopines, 31.  
 Dorcaschema, 52.  
 Doryphora, 27.  
 Dorytomus, 37, 54.  
 Drasterius, 49.  
 Dromæolus 18, 49.  
 Dryocætes, 44.  
 Dryophthorus, 43.  
 Dyschirius, 1.  
 Dysphaga, 52.  
 Dysphenges, 28.  
 Dystaxia, 20.  
 DYSTISCIDÆ, 2.  
 Dytiscus, 3.  
  
 Eburia, 24, 51.  
 Echidnoglousa, 7, 47.  
 Edrotes, 29, 53.  
 Elaphidion, 24, 51.  
 Edaphus, 47.  
 Elater, 19, 49.  
 ELATERIDÆ, 18, 49.  
 Eleates, 32, 53.  
 Eleodes, 31.  
 Elissa, 36, 54.  
 Elleschus, 40.  
 Elmis, 17.  
 Elytroleptus, 51.  
 Embaphion, 31.  
 Emmenastrichus, 30, 53.  
 Emmenastus, 30, 53.  
*Encalus*, 40.  
 ENDOMYCHIDÆ, 15.  
 Eniconyx, 49.  
 Ephelops, 39.  
 Epicærus, 35, 54.  
 Epicauta, 35.  
 Epierus, 16, 48.  
 Epimechus, 39.  
*Epitragodes*, 30.  
 Epitragus, 30, 53.  
 Epitrix, 28.  
 Epopterus, 15.  
 Epurea, 17.  
 Ergates, 24, 50.  
 Erirhinini, 54.  
 EROTYLIDÆ, 15.  
 Erotylus, 15.  
 Eryceus, 37.  
  
 Esthesopus, 49.  
 Euæsthetus, 47.  
*Euchætes*, 43.  
 Eucnemis, 18.  
 Euderes, 24, 52.  
 Eulabis, 31, 53.  
 Eulyptus, 40.  
 Eumicrus, 4, 46.  
*Eumitocerus*, 11.  
 Eumolpini, 52.  
 Eumolpus, 26.  
 Eumononycha, 42.  
 Eunyssobia, 43.  
 Eupagoderes, 35.  
 Euphorticus, 2.  
 Euplectus, 6, 46, 47.  
 Eupogonius, 52.  
 Eurymetopon, 30, 53.  
 Eurypronota, 7.  
 Euryseelus, 24.  
 Euryseopa, 25, 52.  
*Eusanops*, 5.  
 Eusattus, 30, 53.  
 Euscaphurus, 18.  
 Eustilbus, 14.  
 Eustrophus, 34, 53.  
 Euthia, 46.  
 Euthiodes, 4.  
 Euthorax, 8.  
 Eutrichites, 5.  
 Eutyphlus, 6, 46.  
 Exochomus, 14.  
  
 Falagria, 7.  
*Faliscus*, 6.  
 Fidia, 26.  
 Fornax, 18, 49.  
*Fustiger*, 4.  
  
 Galerita, 2.  
 Galeruca, 28.  
 Galerucella, 27.  
 Galerucini, 52.  
 Gastroidea, 27.  
 Geoderces, 36.  
 Geodercodes, 36.  
 Geodromicus, 12, 48.  
 Geotrupes, 22, 50.  
 Gibbium, 21.  
 Glaresis, 50.  
 Glyptina, 29.  
 Glyptobaris, 41.  
 Glyptoscelimorpha, 20.  
 Glyptoscelis, 26.  
 Gnathotrichus, 44.  
 Gnypeta, 7.  
 Goes, 52.  
 Goniocæna, 27.  
 Gracilia, 51.  
 Graphoderes, 3.  
 Graphops, 26, 52.  
 Gyasutus, 49.  
 Gymnusa, 9.  
 GYRINIDÆ, 3.  
  
 Gyrimus, 3.  
 Gyronycha, 9, 47.  
 Gyrophæna, 9.  
  
 Habrocerus, 11.  
 Haltica, 28.  
 Halticidea, 27.  
 Halticini, 52.  
 Hamletia, 28.  
 Hamotus, 4.  
 Haploderus, 11, 47.  
 Haptoncus, 17.  
 Helochares, 3.  
 Helocombus, 3.  
 Helops, 32.  
 Hemiglyptus, 28.  
 Hemiphrymus, 28.  
 Hemiptychus, 21, 50.  
 Hesperobaris, 41.  
*Hesperobium*, 10.  
 Heterius, 16.  
 Heterachthes, 51.  
 HETEROCERIDÆ, 18, 49.  
 Heterocerus, 18.  
 Heterothops, 9.  
 Hilipus, 37.  
 Himatium, 43, 55.  
 Hippomelas, 49.  
 Hister, 16, 48.  
 HISTERIDÆ, 16, 48.  
 Hololepta, 16.  
 Holostrophus, 34, 53.  
 Homæsthesis, 50.  
 Homalium, 13, 48.  
 Homophæta, 28.  
 Horia, 35.  
 Horistonotus, 49.  
 Hybodera, 51.  
 Hydrocera, 21.  
 Hydrobiini, 46.  
 HYDROPHILIDÆ, 3, 46.  
 Hydrophilus, 3.  
 Hydroporus, 2.  
 Hydrovatus, 2.  
 Hylastes, 44.  
 Hylotrupes, 24, 51.  
 Hylurgops, 44.  
 Hymenorus, 32.  
 Hyperaspis, 15.  
 Hyperplatys, 25, 52.  
 Hypocælus, 49.  
 Hypocryptus, 11.  
 Hypolampis, 28.  
 Hypomolyx, 37.  
*Hypulus*, 34, 53.  
  
*Idiobates*, 31.  
 Idiostethus, 42.  
 Iphthimus, 31, 53.  
 Ipocheus, 25, 52.  
 Ips, 17.  
 Ischalia, 34.  
 Ischiopachys, 26.  
 Isoglossa, 8.

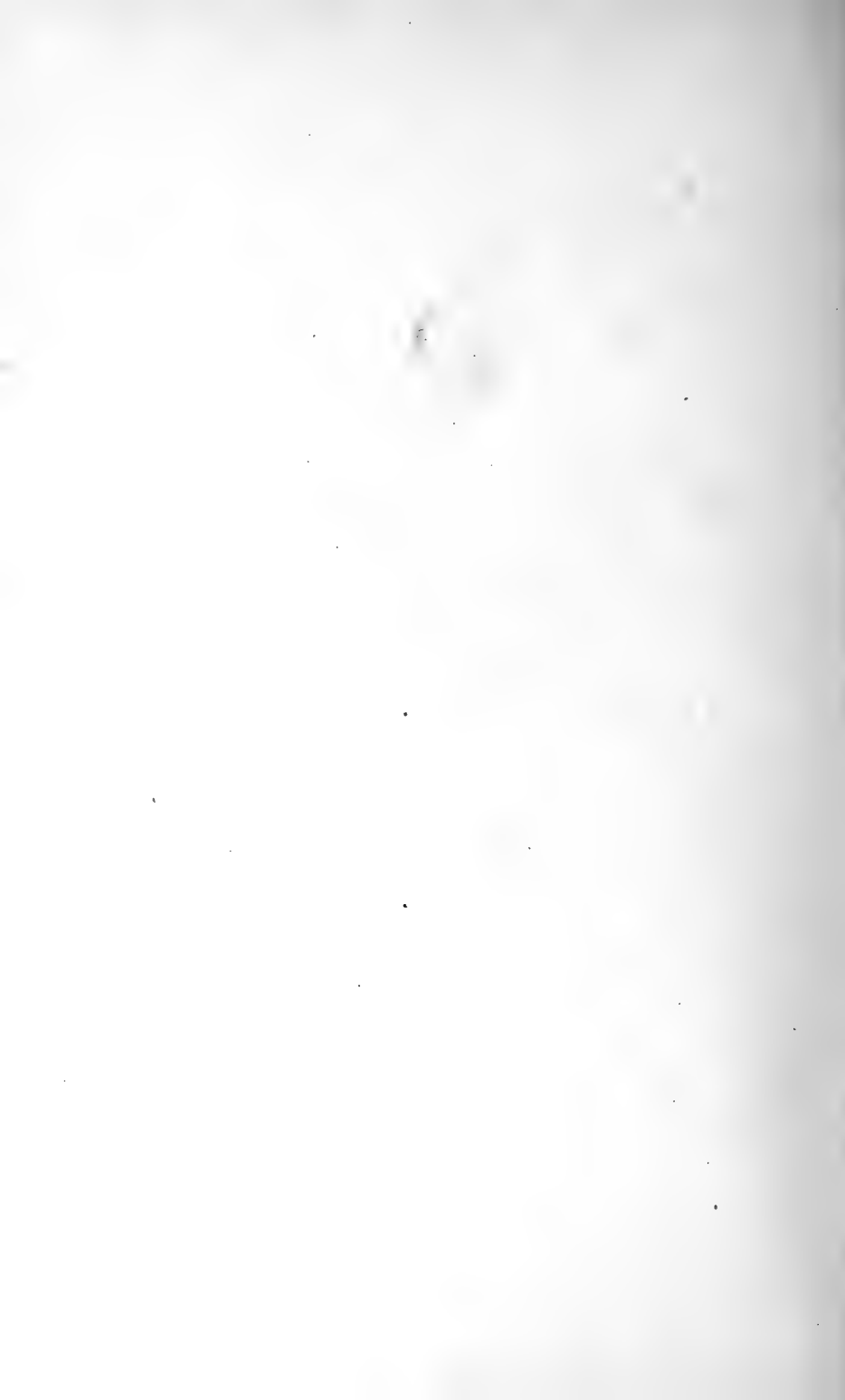
- Isomira, 33.  
 Lachnosterna, 23, 50.  
 Lacon, 18.  
 Lactica, 28.  
 Læmophilæus, 15.  
 LAGRIDÆ, 33, 53.  
 LAMPYRIDÆ, 20, 49.  
 Languria, 15.  
 Lapethus, 15.  
 Lasconotus, 15, 48.  
 Lasioderma, 21.  
 Lathrimæum, 13, 48.  
 Lathrobium, 10.  
 LATRIDIDÆ, 17.  
 Lathridius, 17.  
 Lebia, 2, 45.  
 Lecontia, 34.  
 Lena, 10.  
 Lema, 25.  
 Leptogenius, 10.  
 Leptorus, 10.  
 Leptotrix, 28.  
 Leptura, 24.  
 Leptusa, 9, 47.  
 Lepyrus, 37.  
 Lesteva, 12.  
 Ligyrus, 23.  
 Limnebius, 3, 46.  
 Linnichus, 17, 48.  
 Linnobaris, 42.  
 Linonotus, 12.  
 Liogluta, 7.  
 Liopus, 25.  
 Liparocephalus, 47.  
 Listrocheilus, 23.  
 Listrus, 21.  
 Lithocharis, 10, 47.  
 Litochropus, 14.  
 Litochrus, 14.  
 Litolibrus, 14.  
 Lixus, 37, 54.  
 Lobopoda, 32.  
 Loganus, 44.  
 Lomechusa, 7.  
 Longitarsus, 28.  
 LUCANIDÆ, 21, 50.  
 Ludius, 49.  
 Luperaltica, 52.  
 Luperodes, 27.  
 Lutrochus, 17, 48.  
 Lycoptus, 17.  
 Lyctus, 21, 50.  
 Lystronichus, 32, 53.  
 Machærodes, 5.  
 Macrobasis, 35, 54.  
 Macrops, 37, 54.  
 Macrorhoptus, 39.  
 Madarellus, 41.  
 Magdalinops, 39.  
 Magdalis, 39.  
 MALACIDÆ, 21.  
 Malacopterus, 24.  
 Malacorhinus, 27.  
 Malacosoma, 27.  
 Mallodon, 24, 50.  
 Mallodrya, 34.  
 Malthodes, 20.  
 Maseochara, 8.  
 Mecas, 25.  
 Mecysmus, 31, 53.  
 Mecynotarsus, 54.  
 Medon, 10, 47.  
 Megadytes, 3.  
 Megalostomis, 52.  
 Megapenthes, 19, 49.  
 Megastificus, 10.  
 Megasternum, 4.  
 Megataphrus, 15.  
 MELANDRYIDÆ, 34, 53  
 Melanophila, 19.  
 Melanophthalmus, 17.  
 Melanotus, 19.  
 Melasis, 18, 49.  
 Meloe, 35.  
 MELOIDÆ, 35, 54.  
 Menœceus, 33.  
 Mesomphalia, 29.  
 Metachroma, 26.  
 Metaleptus, 51.  
 Metaxyodonta, 47.  
 Metaxyonycha, 10, 26.  
 Metopotoma, 43.  
 Microbaris, 41.  
 Microdonia, 8.  
 Microglossa, 8.  
 Microrhagus, 18, 49.  
 Microrhopala, 52.  
 Microscapha, 34.  
 Microschatia, 30, 53.  
 Miloderes, 36.  
 Mitostylus, 36.  
 Molochus, 51.  
 Monilema, 25, 52.  
 Monocrepidius, 19.  
 Monohammus, 25, 52.  
 MONOMMIDÆ, 33.  
 Monoxia, 27.  
 Mordella, 34.  
 MORDELLIDÆ, 34.  
 Mordellistena, 34.  
 Morius, 6.  
 Mycetocharis, 33.  
 Mycetoporus, 11.  
 Myochrous, 26.  
 Myodites, 54.  
 Myrmecochara, 8.  
 Myrmedonia, 8, 47.  
 Myrmobiota, 8.  
 Nanops, 39.  
 Narpus, 17.  
 Narthecius, 15, 48.  
 Nasirema, 8.  
 Nausibius, 15.  
 Nebria, 1.  
 Necydalis, 24.  
 Negalius, 35.  
 Neleus, 21.  
 Nematodes, 18, 49.  
 Neoclytus, 52.  
 Neomastix, 39.  
 Nephanes, 13.  
 Nicagus, 21.  
 Nicentrus, 42.  
*Nicotheus*, 6.  
 Nisaxis, 5.  
 Nitidula, 17.  
 NITIDULIDÆ, 17.  
 Nocheles, 35.  
 Notibius, 32, 53.  
 Notiophilus, 1.  
 Noctonota, 26.  
 Nototaphra, 8, 47.  
 Notoxus, 34, 54.  
 Novius, 15.  
*Nyctobates*, 31.  
 Nyssodrys, 25.  
 Nyssonotus, 43.  
 Oberonus, 17.  
 Obrium, 51.  
 Ocalea, 8.  
 Ochrolitus, 14.  
 Ochthebius, 3, 46.  
 Ocyusa, 8.  
 Odontota, 52.  
 OEDMERIDÆ, 34.  
 Oedionychis, 28.  
 Oeme, 51.  
 Olibroporus, 14.  
 Olibrus, 14.  
 Oligolochus, 42.  
 Oligopterus, 10.  
 Oligota, 9.  
 Oligurota, 7.  
 Olophrum, 13.  
 Omus, 1.  
 Oncerus, 22, 50.  
 Oncideres, 52.  
 Oniticellus, 22.  
 Onthophagus, 22.  
 Onthophilus, 16.  
 Onychobaris, 41.  
 Oodes, 2.  
 Oomorphidius, 42.  
 Oomorphus, 26.  
*Oopterinus*, 38.  
 Ophistomis, 25.  
 Ophryastes, 35.  
 Orechesia, 34, 53.  
 Orehestes, 40.  
 Orizabus, 50.  
 Orobanus, 13, 48.  
*Oropodes*, 6.  
 Oropus, 6, 47.  
 Orphilus, 16.  
 Orsodaena, 52.  
 Orthaltica, 28.  
 Orthoptochus, 36.  
 Orthoris, 42.

- Orus, 10.  
 OTHNIDÆ, 33.  
 Othnius, 33.  
 Otidocephalus, 38, 54.  
 OTIORHYNCHIDÆ, 35, 54.  
 Otiorhynchus, 36.  
 Oxacis, 34.  
 Oxoplus, 24, 51.  
 Oxyomus, 22.  
 Oxyopoda, 8, 47.  
 Oxytelus, 11, 47.  
  
 Pachybaris, 42.  
 Pachybrachys, 26.  
 Pachyonychus, 28.  
 Pachyphanes, 38.  
 Pactopus, 19, 49.  
 Paleoxenes, 18.  
 Palembus, 32.  
 Pallodes, 17.  
 Palorus, 32.  
 Panormus, 36.  
 PARNIDÆ, 17, 48.  
 Paromalus, 16, 48.  
*Pelecomalium*, 12.  
 Pelonomus, 17.  
 Pelosoma, 4.  
 Peltis, 17.  
 Pemelus, 4.  
 Pentagonica, 2.  
*Pentarthrus*, 43.  
 Pentilia, 15.  
 Perigona, 2, 45.  
 Peritapnia, 25.  
 Peritaxia, 35.  
 Peritelinus, 36.  
 Peritelodes, 36.  
 Perothops, 49.  
 Phaenotypus, 3.  
 PHALACRIDÆ, 14, 48.  
 Phalacropsis, 14.  
 Phalacrus, 14.  
 Phaleria, 32.  
 Phaneus, 50.  
 Phediug, 32.  
 Phengodes, 20.  
 Philhydrus, 3.  
 Philonthus, 9, 47.  
 Phlegon, 18, 49.  
 Phlœrophagus, 43.  
 Phlœopora, 8.  
*Phlœopterus*, 12.  
 Phlœotrypa, 34.  
 Phydanis, 28.  
 Phyllecthrus, 27.  
 Phyllobius, 36.  
 Phyllobrotica, 27.  
 Phyllopecta, 27.  
 Phyllotreta, 29.  
 Phymatodes, 24, 51.  
 Phyrdenus, 40, 55.  
 Physea, 1.  
 Physocnemum, 51.  
 Physonota, 29.  
  
 Phytalus, 50.  
 Phytobius, 40.  
 Phytou, 51.  
 Phytosus, 8.  
 Pinodytes, 4, 46.  
 Pitnus, 21.  
 Pityophthorus, 44.  
 Placusa, 9.  
 Plagiodera, 27.  
 Planismus, 15.  
 Platandria, 7.  
 Plateros, 20.  
 Platycerus, 21, 50.  
 Platydema, 32.  
 Platymedon, 10.  
 Platynus, 2.  
 Platypus, 44.  
 Platystethus, 11.  
*Platysa*, 8.  
 Plectrodes, 22, 50.  
 Plegaderus, 16, 48.  
 Pleocoma, 22, 50.  
 Plesiobaris, 41.  
 Pleurophorus, 22, 50.  
 Pœcilonota, 19.  
 Pœcilochrus, 18.  
 Polemius, 20.  
 Polycesta, 20.  
 Polyphylla, 23.  
 Polystoma, 8, 47.  
 Pontomalota, 7, 47.  
 Prasocuris, 26.  
 Prionus, 24, 50.  
 Probatius, 25.  
*Probosca*, 34.  
 Proctorus, 40.  
 Promecotarsus, 38, 54.  
*Proptectus*, 6.  
 Protinus, 13.  
*Prorexius*, 6.  
 Psammodius, 22, 50.  
 PSELAPHIDÆ, 4, 46.  
 Pselaphus, 5, 46.  
 Pselaptrichus, 5.  
 Psenocerus, 25, 52.  
 Psephenus, 17, 48.  
 Pseudanthonomus, 39.  
 Pseudelissa, 36.  
 Pseudobaris, 41.  
 Pseudolampsis, 28.  
*Pseudolesteva*, 12.  
 Pseudomorpha, 2, 46.  
 Pseudopentarthrum, 43.  
 Pseudopsis, 11. [55].  
 Psomus, 40.  
 Psylliodes, 29.  
 Ptenidium, 13.  
 Pterostichus, 1, 45.  
 Ptilium, 13.  
 Ptinella, 13.  
 PTINIDÆ, 21, 50.  
 Pitnus, 21.  
 Ptychodes, 25, 52.  
 Purpuricenusa, 51.  
  
 Pycnobaris, 41.  
 Pyrochroa, 34.  
 PYROCHROIDÆ, 34, 54.  
 Pyrota, 35, 54.  
 PYTHIDÆ, 34, 54.  
 Pytho, 34, 54.  
*Pytnu*, 4.  
  
 Quedius, 9.  
  
 Rafonus, 6.  
*Ramecia*, 6.  
 Ramona, 10.  
 Reichenbachia, 5, 46.  
 Renocis, 44.  
 Rhabdopterus, 26.  
 Rhamphocolus, 43.  
 Rheochara, 8.  
 Rhexidius, 6, 47.  
 Rhexius, 6.  
 Rhigopsis, 35.  
 RHIPICERIDÆ, 18.  
 Rhipicandrus, 21.  
 RHIPIPHORIDÆ, 54.  
 Rhizobius, 15.  
 Rhopalophora, 24, 51.  
 RHYNCHITIDÆ, 35.  
 Rhyncolus, 43.  
 Rhyssematus, 40.  
 Rhyssemus, 22, 50.  
 Romaleum, 51.  
*Rues*, 32.  
 Rybaxis, 5, 46.  
  
 Sagola, 6, 47.  
 Sapotes, 35.  
 Saprinus, 16, 48.  
 Saxinis, 26, 52.  
 SCAPHIDIIDÆ, 13, 48.  
 Scaphidium, 13.  
 Scaphisoma, 14.  
 SCARABÆIDÆ, 22, 50.  
 Scelolyperus, 27.  
 Schizonotus, 38.  
 Sciaphilus, 36.  
 Sciophites, 36, 54.  
 Scolochrus, 26.  
 SCOLYTIDÆ, 44, 55.  
*Scydmaenus*, 4.  
 Seythropus, 36, 54.  
 Serica, 22.  
 Sericosomus, 19.  
 Silpha, 4.  
 SILPHIDÆ, 4, 46.  
 Silusa, 9.  
 Silvanus, 15.  
 Sipalia, 9.  
 Sisenus, 34.  
 Sitones, 36, 54.  
 Smicronyx, 38, 54.  
 Smicrus, 13.

- Smilia, 15.  
 Sognorus, 4, 46.  
 Somatium, 9.  
*Sonoma*, 6.  
 Soronia, 17.  
 Spalacopsis, 25, 52.  
 Sphænothecus, 24, 51.  
 Sphæricus, 21.  
 Sphæridiini, 46.  
 Sphenophorus, 43.  
 Stamoderes, 35.  
 STAPHYLINIDÆ, 7, 47.  
 Staphylinus, 9.  
 Statira, 33.  
 Stenaspis, 51.  
 Stenispis, 52.  
 Stenocephalus, 2.  
 Stenolophus, 2, 45.  
 Stenoptochus, 36.  
 Stenosphenus, 24, 51.  
 Stenus, 9, 47.  
 Stephanucha, 23.  
 Stethobaris, 42.  
 Stethon, 49.  
 Stibia, 29.  
 Stictobaris, 41.  
 Strangalia, 24.  
 Strongylium, 32.  
 Strophosomus, 36.  
 Synertha, 38.  
 Syneta, 25, 52.  
 Systena, 28.  
  
 Tachinus, 11.  
 Tachycellus, 46.  
 Tachyporus, 11.  
 Tachypterus, 39.  
 Tachys, 1.  
 Tachyusa, 7.  
 Tarphiota, 7.  
 Tedinus, 33.  
 Tegrodera, 35.  
 Telephorus, 20.  
 Telesicles, 33.  
 Tenebrio, 31.  
 Tenebrioides, 17.  
 TENEBRIONIDÆ, 29, 53.  
 Teretriosoma, 16.  
 Teretrius, 16.  
 Tetraonyx, 35, 54.  
  
 Tetraopes, 25.  
 Tetropium, 24, 51.  
 Tevales, 12.  
 Thalassa, 15.  
 Tharops, 49.  
 Thaumaloglossa, 16.  
 Thectura, 7.  
 Thecturota, 7, 47.  
 Thermonectes, 3.  
*Thesalia*, 24.  
*Thesiastes*, 6.  
 Thesium, 47.  
 Thiasophila, 8, 47.  
 Thinobius, 12, 47.  
 Thinoxenus, 36.  
 Thinusa, 9.  
 Thricolepis, 36.  
 Thrincopyge, 49.  
 THROSCIDÆ, 19, 49.  
 Throscinus, 17.  
 Thyce, 23.  
 Thysanocnemis, 40, 54.  
 Thysanœs, 44.  
 Tilea, 12, 48.  
 Tinotus, 7, 47.  
*Tithanis*, 8.  
 Tomicus, 44.  
 Toxotus, 24.  
 Trachyscelida, 27.  
 Trachysectus, 10.  
 Tragidion, 24, 51.  
 Tragosoma, 24, 51.  
 Trechus, 1.  
 Trepobaris, 41.  
 Triarius, 28.  
 Tribolium, 32.  
 Trichaltica, 28.  
 Trichiusa, 7, 47.  
 Trichobaris, 41.  
 Trichodes, 21, 49.  
 Trichodesma, 21, 50.  
*Trichonyx*, 6. [48.  
 TRICHOPTERYGIDÆ, 13.  
 Trichopteryx, 13.  
 Trichoton, 31.  
 Trimioplectus, 6.  
 Trimiopsis, 6.  
 Trimitomerus, 34.  
 Trimum, 46.  
 Trimytis, 29, 53.  
  
 Triorophus, 29.  
 Trirhabda, 27.  
 Trogophilœus, 11, 47.  
 Trogosita, 17.  
 TROGOSITIDÆ, 17.  
 Tropisternus, 3, 46.  
 Trox, 22.  
 Trypodendron, 44.  
 Tychius, 40, 54.  
 Tychus, 5, 46.  
 Tyloclerida, 40, 54.  
 Tymnes, 26.  
*Typhlops*, 5.  
 Typophorus, 26.  
 Trypopytus, 21.  
 Tylosis, 51.  
 Tyrus, 4.  
  
 Uloporus, 32.  
 Ulu, 32, 53.  
 Unamis, 12.  
 Usechus, 30, 53.  
  
 Valda, 5.  
 Valenus, 25.  
 Vellica, 12.  
*Verticinetus*, 5.  
 Vesperoctenus, 18.  
  
 Xanthonia, 26.  
 Xanthus, 40.  
 Xestobium, 21.  
 Xyleborus, 44.  
 Xylocleptes, 44.  
 Xylocrius, 51.  
 Xylophilus, 34.  
 Xyloterus, 44.  
 Xylotrechus, 24, 52.  
 Xystropus, 32.  
  
 Yuccaborus, 43, 55.  
  
 Zabrotes, 29, 52.  
 Zarhipis, 49.  
 Zeugophora, 52.  
 Zilora, 34.  
 Zonitis, 35.  
 Zopherus, 30.  
 Zygops, 40, 55.







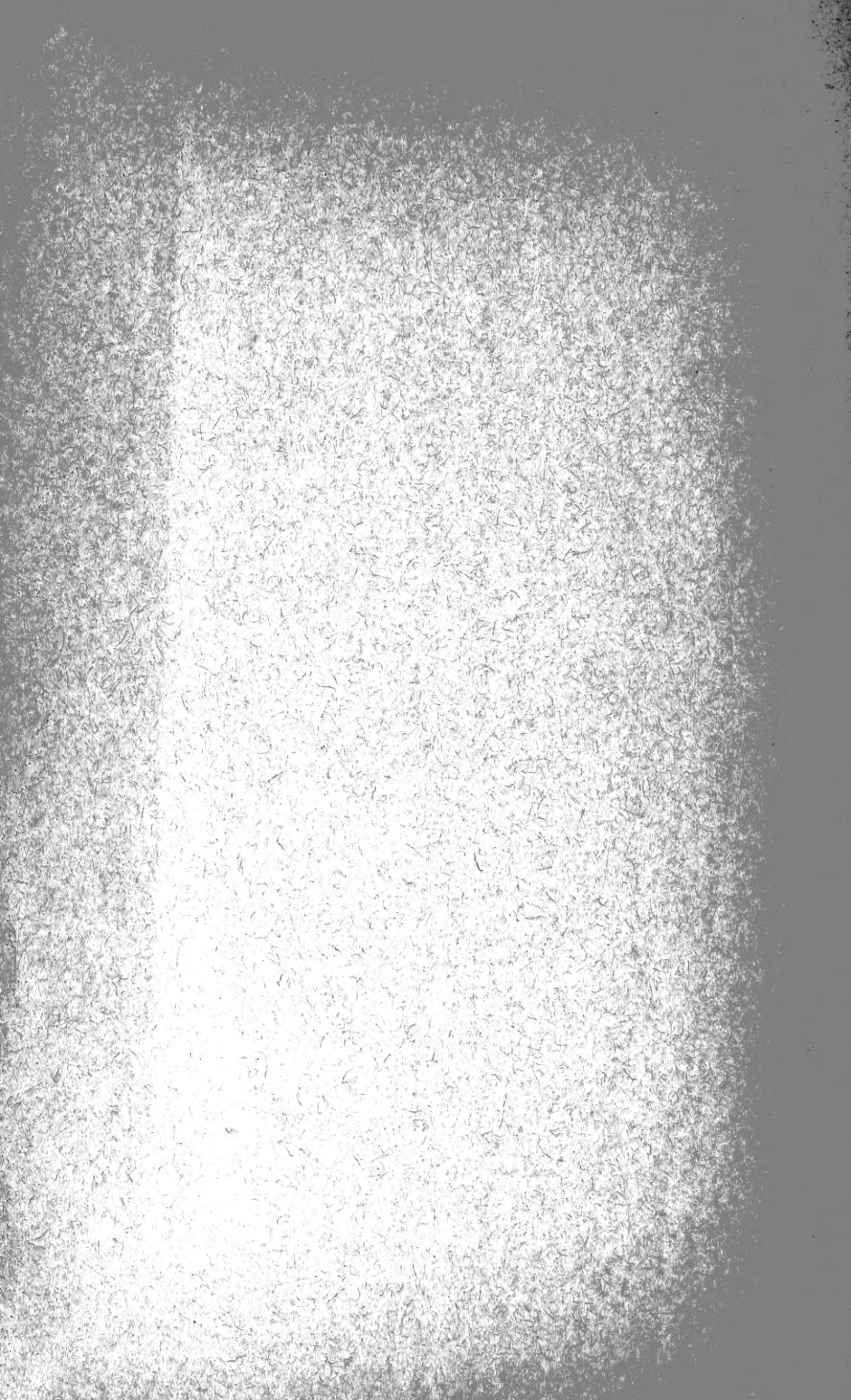














QL577 H52 c.4 Ent.

AUTHOR

Henshaw, Samuel

TITLE List of the coleoptera of America, north of Mexico

