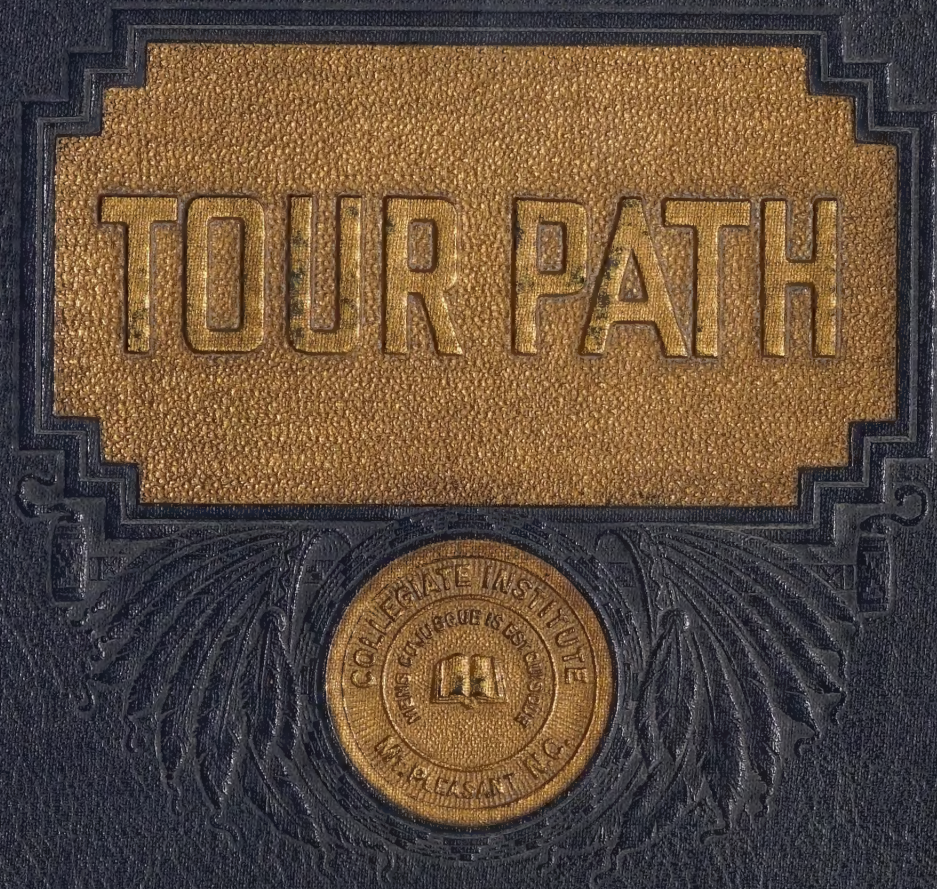


# TOUR PATH



1925

















Digitized by the Internet Archive  
in 2021 with funding from  
North Carolina Digital Heritage Center

<https://archive.org/details/tourpath192500coll>











PRESS OF  
THE OBSERVER PRINTING HOUSE, INC.  
CHARLOTTE, N. C.



The TOUR PATH

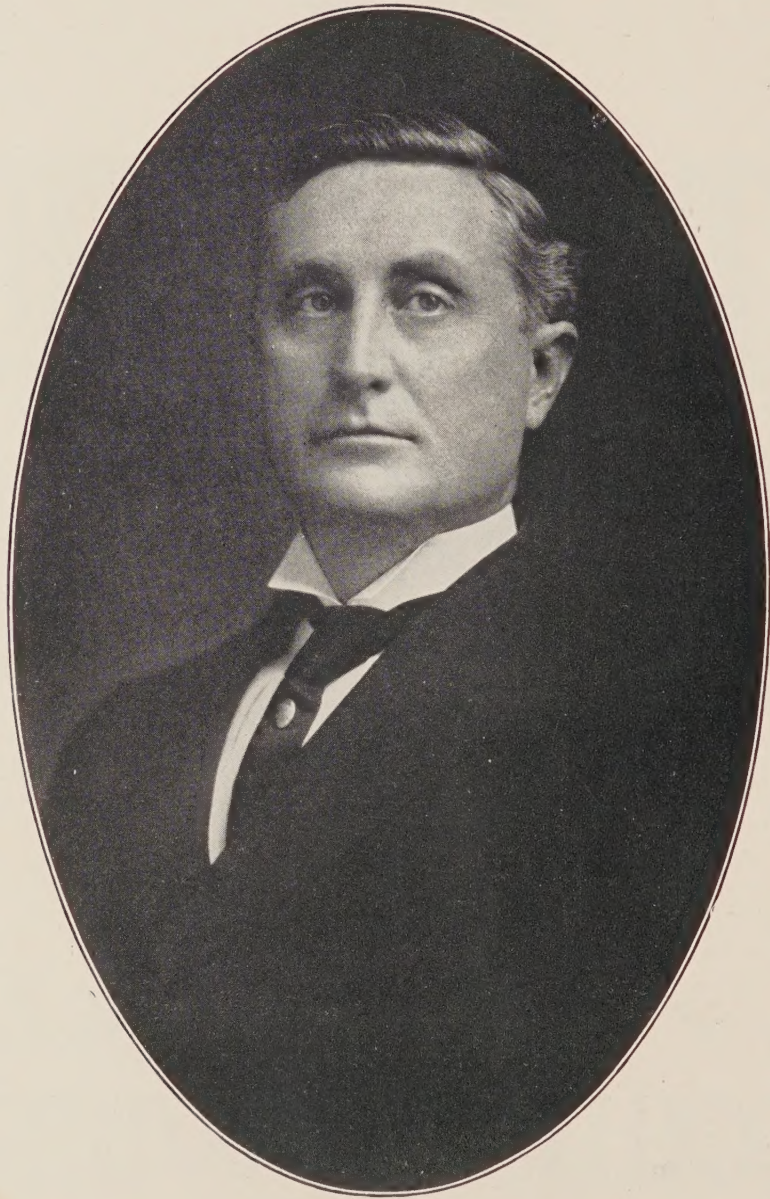
THE  
TOUR PATH  
1925



*Published by the*  
SENIOR CLASS  
COLLEGIATE INSTITUTE  
MOUNT PLEASANT N.C.







COLONEL G. F. McALLISTER



# DEDICATION



*To a man whose daily toils are directed to a service  
that tends to raise the plane of civilization:*

*To a man whose high ideals have been proved worthy  
of repetition by other men:*

*To a man who has given his all to the cause of edu-  
cation:*

*To COLONEL G. F. McALLISTER we reverently dedi-  
cate this,*

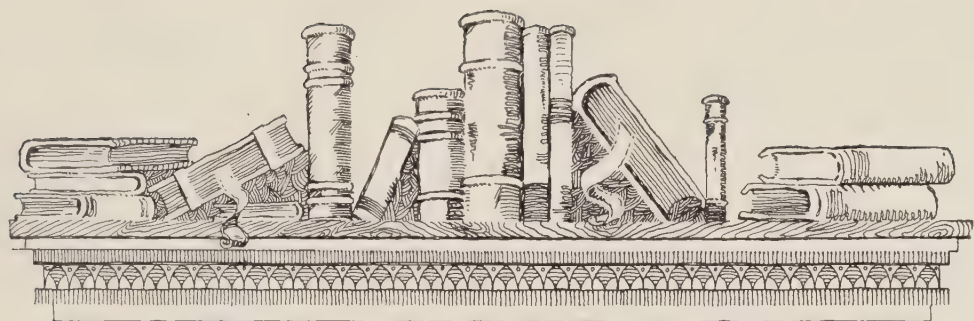
THE 1925 TOUR PATH



# FOREWORD

*I*T has been said that "To err is human"; inasmuch as we, the editors of THE 1925 TOUR PATH, are human, be lenient with your, no doubt, just criticisms of this book. It has been our aim in editing this book to leave with the students a lasting memory of all that is characteristic of student life on the "Hill." Whether we have succeeded in attaining our aim rests with each individual to decide for himself.





ORDER OF BOOKS

*The Faculty*

*The Classes*

*Military*

*Athletics*

*Activities*

*Humor*







A.R. Reitzel  
ASSO. EDITOR



C.P. MacLaughlin  
Editor-in-Chief



W.C. Thomas  
ASSO. EDITOR

# TOUR-PATH

## STAFF

1925



R.V. Goodman  
BUSINESS MGR.



S.R. McEachern  
ASST. EDITOR IN CHIEF



C.K. Walters  
CIRCULATION MGR.



# The TOUR PATH

1925

## STAFF

C. P. MacLAUGHLIN  
*Editor-in-Chief*

S. R. McEACHERN  
*Assistant Editor-in-Chief*

R. V. GOODMAN  
*Business Manager*

A. R. REITZEL  
*Associate Editor*

W. C. THOMAS  
*Associate Editor*

C. K. WALTERS  
*Circulation Manager*







MAIN BUILDING



## THE SPIRIT OF M. P. C. I.



THE growth of M. P. C. I., although hampered by the need of added facilities, has been remarkable. From the very first she has pushed forward through the rough channels of school existence, brought upon her by the need of certain, additional facilities, but with a spirit which is so characteristic of a forward determination she has attained a phenomenal success.

From a certain viewpoint one might think that this is due to leadership. This might be true to a certain extent, but it is more wholly due to that determination of faculty and students working in harmony, which we must call the "Spirit of M. P. C. I." Go on the campus, go in any classroom, go in any one of the Society Halls, go to any activity of the students; in fact, visit any place on the campus at any time, then you will be impressed by what we call the "Spirit of M. P. C. I."

This spirit is not something which succeeding classes carry away, it will stay with "Old C. I." forever. We can't describe it. We do not even know one figure of speech by which we can make it more clear to you. All that we can say is that there is an indescribable fellowship, determination and will among the faculty and students of M. P. C. I. which is appreciated by every one who comes in contact with the school.





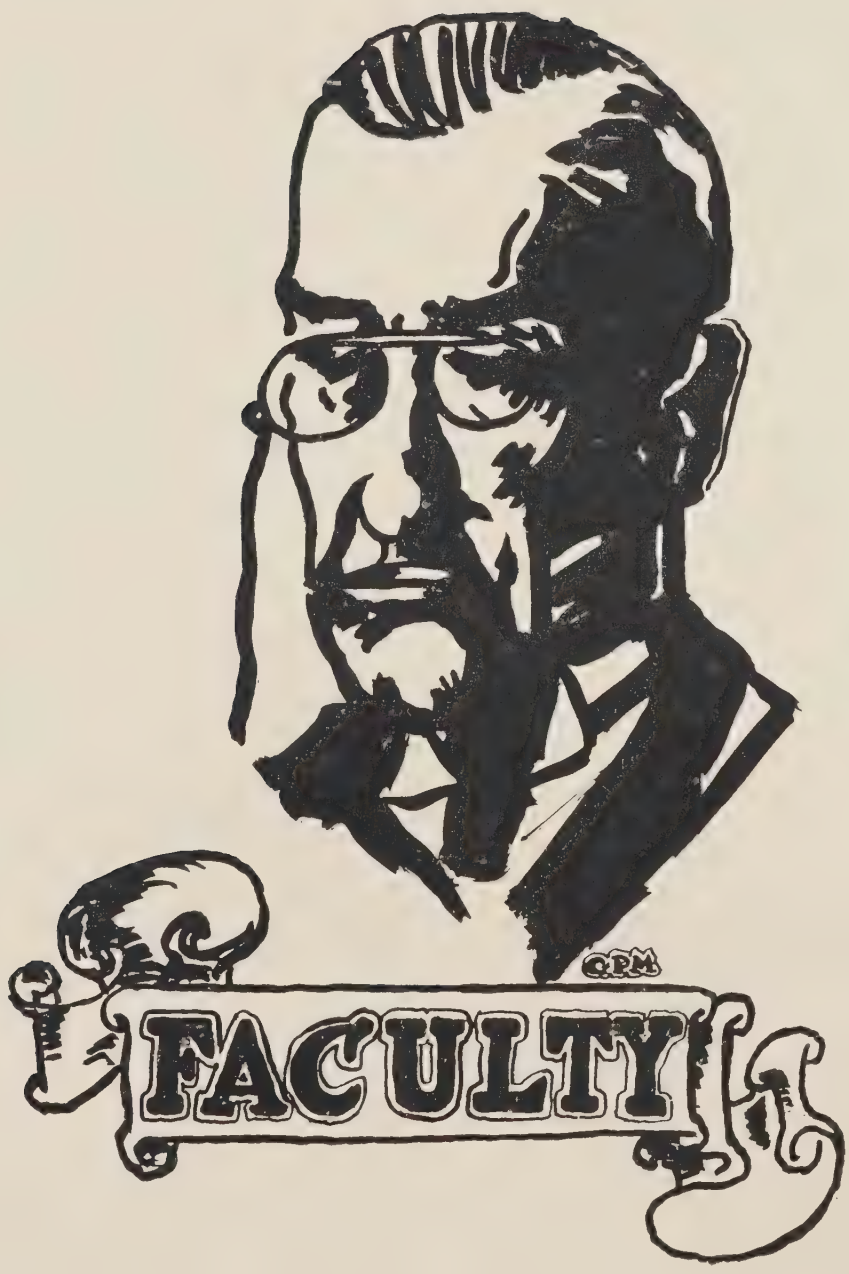
## ALMA MATER

There's a place we all love, with affection true,  
And we'll tell you of it now ;  
Why it holds our love, why we'd fight for it,  
To have it win somehow.  
It stands on a hill high o'er a town  
Midst trees majestic all around.  
It's our Alma Mater of which we sing,  
Let us make her praises ring.

Then up with M. P. C. I., down with all mighty foes,  
We know it can be done, and do it—sure we will !  
And when at last we win, all her sons we'll gather in  
And cheer and shout day in and out  
For old M. P. C. I.

We love it deeper as each year rolls by,  
Time endears it more and more ;  
It's because of the spirit that lives on "The Hill,"  
The spirit of "the boys" of yore.  
Travel where we may, travel where we will,  
The C. I. spirit follows us still ;  
It moulds our lives from day to day,  
And helps us on our way.









THE FACULTY

## FACULTY

G. F. McALLISTER, A.B., M.A.

*Principal and Professor of Mathematics and Physics*

A.B., North Carolina College, 1897; M.A., Newberry College, 1908; Student at the University of North Carolina, 1904; Principal, Preparatory Department, North Carolina College, 1897-1901; Co-Principal, the Collegiate Institute, 1902-1908; Present position since 1908.

J. H. McDANIEL, A.B.

*Assistant Commandant and Professor of English*

Graduate of the Collegiate Institute, 1918; A.B., Whittensburg College, 1923; Mt. Pleasant Graded School, 1919-20; Instructor, M. P. C. I., 1920-21.

ROBERT CRAIG GLENN, A.B., M.A.

*Professor of Greek and History*

A.B., Lenoir College, 1907; M.A., University of North Carolina, 1914; M.A., Columbia University, 1916; Public School Work, North Carolina, 1907-10; Professor of Latin and History, Green Brier Military Institute, Lewisburg, Va., 1910-12; Professor of Ancient and Modern Languages, Tupelo Military Institute, Tupelo, Miss., 1912-14; Professor Latin and Spanish, Carlisle Military School, Bamberg, S. C., 1923-24.

H. R. MIDDLESWORTH, A.B.

*Professor of Bible and Latin*

Yeagertown High School, Yeagertown, Pa.; Susquehanna University, A.B., 1924; Instructor, Derry District School, Pa., 1920-21.

D. JACK GORE, B.S. IN E. E.

*Instructor in Preparatory Branches*

Collegiate Institute; B.S. in E.E., Georgia School of Technology.

W. W. CONE, B.S.

*Commandant and Professor of French and Science*

B.S., The Citadel, 1924; Present Position Since 1924.





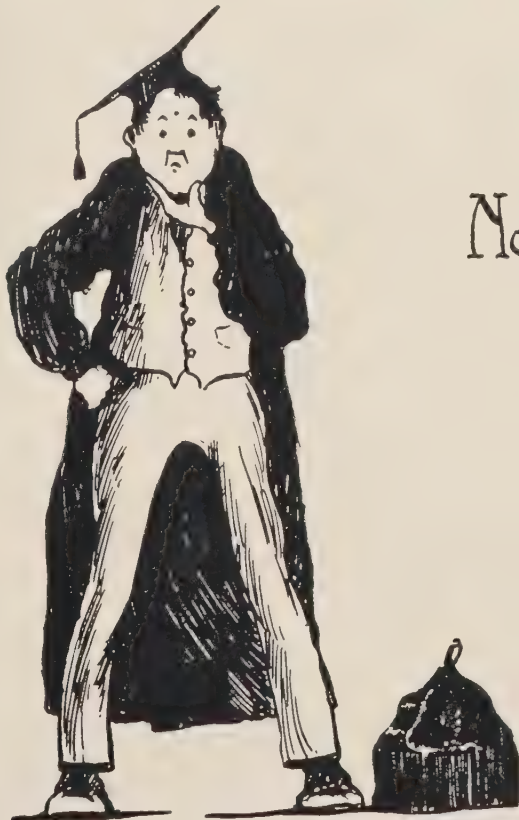


CLASSES





# SENIORS



Now WHAT?



## SENIOR CLASS

### OFFICERS

S. R. McEACHERN .....	<i>President</i>
A. R. REITZEL .....	<i>Vice-President</i>
R. B. BENNETT .....	<i>Secretary and Treasurer</i>



### MEMBERS

W. THOMAS BALLARD .....	Ansonville, N. C.
R. B. BENNETT, JR. ....	Charleston, S. C.
MARVIN A. BOGER .....	Mt. Pleasant, N. C.
HOWARD B. CLINE .....	Salisbury, N. C.
BERNARD W. CRUSE .....	Detroit, Mich.
MARVIN B. DRY .....	Mt. Pleasant, N. C.
C. GLENN FARMER .....	Faith, N. C.
RICHARD B. GILES .....	Albemarle, N. C.
REE V. GOODMAN .....	Salisbury, N. C.
CLYDE R. GRIFFIN .....	Charleston, S. C.
JOHN M. HAHN .....	Mt. Pleasant, N. C.
W. RUDOLPH LINGLE .....	Mooresville, N. C.
ALEXANDER H. MACLAUGHLIN .....	Pittsburgh, Pa.
CHARLES P. MACLAUGHLIN .....	Pittsburgh, Pa.
R. BROWN McALLISTER .....	Mt. Pleasant, N. C.
S. RUTLEDGE McEACHERN .....	Concord, N. C.
W. THOMAS MOCK .....	Advance, N. C.
MURRAY L. PENINGER .....	Misenheimer, N. C.
A. RAY REITZEL .....	Liberty, N. C.
W. CARR THOMAS .....	Granite Quarry, N. C.
CHARLES K. WALTERS .....	Cooleemee, N. C.
A. KENNETH WEISNER .....	Winston-Salem, N. C.
R. VANN WHELESS .....	Ansonville, N. C.



WILLIAM THOMAS BALLARD  
ANSONVILLE, N. C.

*"Slim Jim"*

Corporal Company "A," '25; Gerhardt Literary Society, '24, '25; Y. M. C. A.

Age 20 Years



Tom, with the "million dollar" smile. How we all envy that smile. He is a quiet, happy, unassuming sort of fellow much admired by his classmates. We feel sure that his hearty laugh will win him a myriad of friends next year. Luck to you, old man.

RICHARD BOWIE BENNETT, JR.  
CHARLESTON, S. C.

*"R. B."*

Corporal Company "B," '23; First Sergeant, '24; First Lieutenant, '25; Y. M. C. A., '22, '23, '24, '25; Preparatorian Literary Society, '22, '23; Gerhardt Literary Society, '24, '25; Treasurer Senior Class.

Age 16 Years



"R. B." is one of our most popular boys. He is always ready to do anything for class or school. The real genius of "R. B." lies on the drill field, he being one of the best-drilled men in school. During his stay at the Institute "R. B." has made many friends throughout the school.





MARVIN ADAM BOGER  
MT. PLEASANT, N. C.

*"Happy"*

Gerhardt Literary Society.

Age 19 Years



Marvin, our "happy boy," comes from town. Having spent all his life in the largest town in North Carolina without a railroad, we admire his ambitious spirit, a spirit which will gain him honors some day.

HOWARD BOSTIAN CLINE  
SALISBURY, N. C.

*"Crip"*

Preparatorian Literary Society, '23; Gerhardt Literary Society, '24, '25; Tennis Club; Corporal Company "A," '24; Second Lieutenant, '25.

Age 19 Years



Howard is the little wit of our class. Many times has he tantalized Captain Holman with satiric retorts. We hope to see you practice medicine and of course make a sweeping success.



BERNARD WILLIAM CRUSE

DETROIT, MICHIGAN

*"Detroit"*

Gerhardt Literary Society, '24, '25; Gerhardt Public Program, '25; Y. M. C. A.; Company "B."

Age 20 Years

MARVIN BANKS DRY

GOLD HILL, N. C.

*"Mutt"*

Preparatorian Literary Society, '23; Gerhardt Literary Society, '24, '25; Gerhardt Public Program, '25; Company "A."

Age 19 Years



Bernard is from Michigan, traveling to all parts of the United States he finally landed in Detroit. His idea is to get a Ford and rattle himself through every school. We trust that it will be of use to him when he completes "medicine at Roanoke."



Marvin is one of our most studious boys. In class he is always the "shining light." We wish him the same success at Georgia Tech.





CHARLIE GLENN FARMER  
FAITH, N. C.

*"Agricola"*

Gerhardt Literary Society; Corporal Company "A," '24; First Lieutenant and Adjutant attached to the Staff, '25; Y. M. C. A.; Baseball, '24, '25.

Age 18 Years

RICHARD BYNUM GILES  
ALBEMARLE, N. C.

*"Dick"*

Gerhardt Literary Society; Tennis Club; Private and Bugler, '22; Corporal and Bugler, '23; Sergeant and Bugler, '24; Second Lieutenant attached to the Staff and Bugler, '25; Glee Club, '25; Y. M. C. A.

Age 20 Years



*"Agricola"* claims as his home, Faith, a town of great piety. But be not deceived, the environment has not made itself felt on this individual. He is a devotee of the great American pastime—baseball.

*"Dick,"* our Staff Bugler, is a merry little fellow. He bugles for mess, for church, and for dress, and at the end of the day bugles us to rest. Dick never fails to talk on any subject whether he knows anything about it or not. Carolina will be fortunate to have such a merry little fellow as Dick next year.



REE VELT GOODMAN  
SALISBURY, N. C.  
*"Pleas"*

Ludwig Literary Society, '24, '25; Ludwig Public Program, '24, '25; Commencement Debate, '24; Commencement Drama, '24, '25; Calhoun Debating Club, '24, '25; Manager Football, '25; Sergeant "B" Company, '25; Business Manager Glee Club, '25; Business Manager TOUR PATH, '25; Y. M. C. A., '24, '25; Chief Marshal Commencement, '25.

Age 18 Years

Hats off to *Pleas*! He has been one of the mainstays of our class. A little unsettled at first, 'tis true, but he has finally been convinced that "the Hill" is the most beloved spot in the State. His pleasing personality has won him many friends at the Institute. Deeds and not words seem to be his motto. Success can not help but be his in any walk of life.

CLYDE RIDDICK GRIFFIN  
CHARLESTON, S. C.

*"Snicklefrits"*

Preparatorian Literary Society, '22, '23; Gerhardt Literary Society, '24, '25; Sergeant Company "A," '24; Second Lieutenant Company "A," '25.

Age 21 Years

\*\*\*

We envy Clyde because he is from "The City by the Sea." This is not the only reason we envy him, for, without a doubt, he is Col. McAlister's favorite on math. Clyde has made a success at the Institute; we wish him the same success in future life.





JOHN MARVIN HAHN  
MT. PLEASANT, N. C.

*"Bud"*

Ludwig Literary Society, '24, '25.

Age 20 Years

WILLIAM RUDOLPH LINGLE  
MOORESVILLE, N. C.

*"Rud"*

Ludwig Literary Society, '24, '25; Private  
Company "B," '24, '25; Basketball, '24, '25;  
Y. M. C. A., '24, '25.

Age 18 Years



John, the "slim boy," as he comes to school from day to day, never lingers on the way. We admire his pleasing look and attitude. We hope to hear of his success when he becomes a teacher.

Rudolph is one of the most witty persons in our class, always laughing and "pulling off" bright ejaculations. Nevertheless he insists that all work and no play causes a conjection of the mind. "Sem bound" is his motto.



ALEXANDER HENRY MACLAUGHLIN  
PITTSBURGH, PA.

"Lex"

Gerhardt Literary Society, '24, '25; Y. M. C. A., '24, '25; Football, '24, '25; Quartette, '24, '25; Sergeant Company "B," '25; Commencement Drama, '24, '25.

Age 19 Years



Here's our puzzle. How he has become so great, the class as a whole hardly knows. He has won many friends and honors while here in school. *Lex* is always jolly and ready to work. He has also made his mark in athletics, especially football. "*Lex*," we wish you success.

CHARLES PHILLIPS MACLAUGHLIN  
PITTSBURGH, PA.

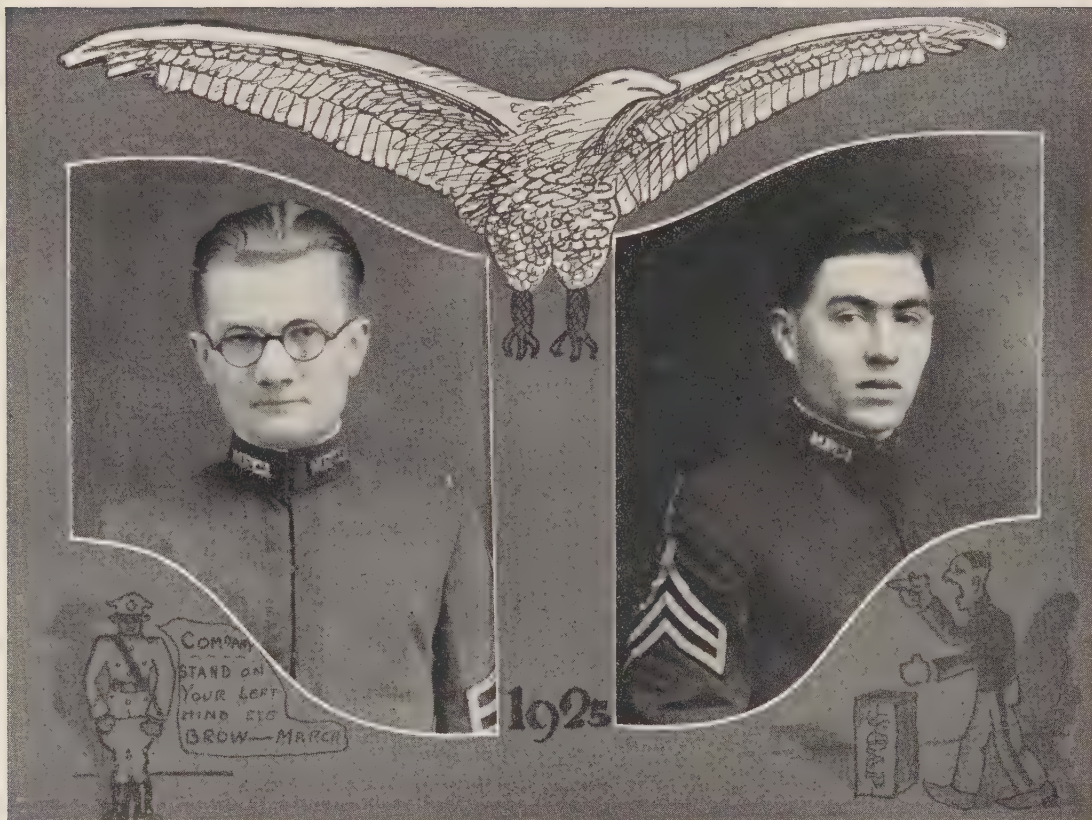
"Chuck"

Ludwig Literary Society, '24, '25; Ludwig Public Program, '24, '25; Captain Football, '24, '25; Basketball, '24, '25; Sergeant Company "A," '25; Quartette, '24, '25; President Glee Club, '25; President Junior Class; Commencement Drama, '24; Student Editor *Institute News*, '25; Editor-in-Chief TOUR PATH, '25.

Age 21 Years

Ah! from the State of Penn and from the city of Pitt came Charles our Editor-in-Chief. A business-like fellow and a man of art. We know Susquehanna will give him a "stellar role," just as M. P. C. I. has done. He has a wonderful personality, and has won for himself a place in every heart at "Mount."





ROBERT BROWN McALLISTER  
MT. PLEASANT, N. C.

"Shorty"

Preparatorian Literary Society, '21, '22, '23, '24; Ludwig Literary Society, '25; Corporal Company "A," '23; Sergeant, '24; Captain Company "B," '25; Y. M. C. A., '21, '22, '23, '24, '25.

Age 18 Years



All hail to the noble captain of "B" Company. *Brown*, although small of stature, has a heart of gold. He is a real good fellow and has made countless friends throughout his stay here. Good luck to you *Brown*, may you win as many honors at Citadel as you have at M. P. C. I.

SLEIMAN RUTLEDGE McEACHERN  
CONCORD, N. C.

"Pap"

Preparatorian Literary Society, '22, '23; Gerhardt Literary Society, '24, '25; Gerhardt Public Program, '24, '25; Commencement Debate, '24; Assistant Editor-in-Chief TOUR PATH '25; President Senior Class; Corporal Company "A," '23; Sergeant, '24; First Lieutenant, '25.

Age 22 Years



"*Pap*" is another one of those good-hearted Cabarrus boys, a hard worker and a brilliant student. As our class president he has guided us with a fatherly care. We wish him great success at Duke, and may his high ambition, to be "a Statesman and Scholar," be realized.



W. THOMAS MOCK  
ADVANCE, N. C.

*"Tommy"*

Prep. I, '22, '23; Corporal, '22, '23; Gerhardt Literary Society, '24, '25; Football, '25; Basketball, '25; Baseball, '24, '25; Sergeant Company "B," '24; Second Lieutenant, '25.

MURRAY L. PENINGER, JR.  
MT. PLEASANT, N. C.

*"Rooster"*

Preparatorian Literary Society, '22, '23; Ludwig Literary Society, '24, '25; Ludwig Public Program, '24, '25; Corporal Company "B," '22, '23, '24; Second Lieutenant, '25; Y. M. C. A., '22, '23, '24, '25.

Age 17 Years



*Tommy*, the "Tarzan" of our class, fits well into all activities at the Institute. He likes to play checkers to such an extent, that, it is rumored he will leave an open challenge to all comers when he departs from the Institute.



Here is the baby of our class, young and small but not in his books. He is a diligent seeker after knowledge.





ARTHUR RAY REITZEL  
LIBERTY, N. C.

"Doc"

Glee Club, '22, '23; Calhoun Debating Club, '24, '25; Ludwig Literary Society, '23, '24, '25; Corporal Company "A," '23; Sergeant, '24; Second Lieutenant and Assistant Adjutant, '25; Associate Editor TOUR PATH, '25.

Age 22 Years



*Doc*, the "grand old man" of our class, goes about his work with a vim that makes one marvel. Ray has no time for nonsense but believes heartily in thorough preparation for all work.

WALTER CARR THOMAS  
GRANITE QUARRY, N. C.

"Lefty"

Preparatorian Literary Society, '22, '23; Gerhardt Literary Society, '24, '25; Football, '24, '25; Baseball, '22, '23, '24, '25; Calhoun Debating Club, '24, '25; Sergeant Company "A," '23; First Lieutenant, '24; Captain, '25; Associate Editor TOUR PATH, '25.

Age 19 Years



Carr, you are from the town of granite, perhaps you can tell us the road to "Beulah Land." Probably he will tell us some day because his ambition is to be a lecturer. Aye! go ahead "*Lefty*."



CHARLES K. WALTERS  
COOLEEMEE, N. C.

"Red"

Prep. II, '22, '23; Gerhardt Literary Society, '24, '25; Football, '24, '25; Glee Club, '23, '24, '25; Y. M. C. A., '23, '24, '25; Sergeant Company "A," '25.  
Age 20 Years

ALBERT KENNETH WEISNER  
WINSTON-SALEM, N. C.

"Tony"

Prep. I, '22, '23; Ludwig Literary Society, '24, '25; Football, '24, '25; Sergeant Company "B," '25; Y. M. C. A., '23, '24, '25.  
Age 22 Years



*Red* isn't so romantic but he likes old maids. The pleasing look on his face tells us that he has many friends. Our hearts go with him to Davidson, where he will make a success similar to the one he has made at M. P. C. I.

From the great "Twin-City" came this young giant. "*Tony*" is at his best when thundering his way down the football field or barking commands on the drill field. "*Tony's*" room is the rendezvous for all "fun-loving" fellows.





RICHARD VANN WHELESS  
ANSONVILLE, N. C.

"Pud"

Y. M. C. A., '24, '25; Company "A";  
Ludwig Literary Society, '24, '25.

Age 21 Years



Vann, old sport, we admire your pluck and quietness. These are two qualities which usually don't mix. But, Vann is a good mixer, consequently he is one of the best-liked fellows in school.

I. PHILLIP SPACE  
SOUTH SEA ISLES

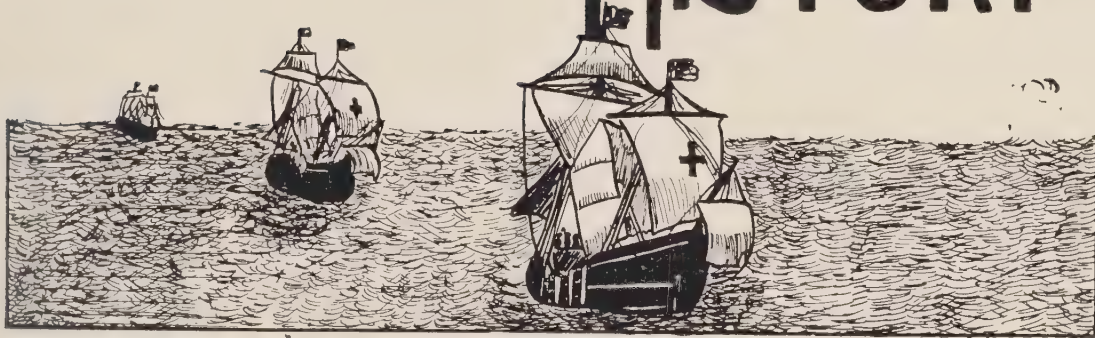
Age.....

Class President, '22, '23, '24, '25; Assistant Professor, Bible, Math., "Dago," History, Latin, Greek, French, Hebrew, and Domestic Science; Editor, Mt. Pleasant "Back-Fire"; Janitor, Barracks No. 3; Chief Custodian, Garbage Can; Grand Klucker of the Kluck-Kluck-Kluck; Game Warden, Barracks No. 1; Section Marcher of Drug Store Formation, '19.



Old "Phil," the only living rival of the Ancient Mariner, has become a permanent fixture at the Institute. "Phil" has been with us so long that he is afraid to throw stones up on the campus for fear of hitting some of his children. His motto has been, throughout his stay here, "Students may come and students may go but I stay on forever." Although we say it with a trembling voice, "Phil" we wish you luck.

# HISTORY



## THE SENIOR CLASS

*We arrived in September, cold with fear,  
To take our place in the ranks.  
A bugle note sounds shrill and clear,  
A sure signal for freshmen pranks.*

The Freshman Class of 1922 was very large and inexperienced. The habits and regulations of the school were new and unfamiliar to us. Nevertheless, we acquitted ourselves well.



*We arrived in September, cold with fear,  
Because of the work ahead.  
Sophs, 'tis true, should laugh and leer  
At books and Profs, 'tis said.*

We returned to "Mount" this year with a new vim and spirit because we were Sophs and just one step ahead of our former self. We were proud to be Corporals, in fact we almost admired ourselves. Our names were not on the penalty list so much this year as they were on it last year, but regardless of our station, we reaped our part of the spoils. During this year various members of our class failed on one or more subjects. This fact, together with the fact that several of our number dropped out of school, presented us a very hard problem in our Junior year.



*We arrived in September, cold with fear,  
For year's "conditions" stare,  
At the haughty Junior who falls in the rear,  
A burden he must bear.*

We might well call our Junior year the most fruitful year of all. This year we had the largest single class in the history of the school. We fared well in our studies, athletics, and campus life. Our size and success is largely due to a number of high school graduates who joined us at the beginning of this session. The annual debates and activities of the Junior Class proved to be features of the whole year.



*We arrived in September, cold with fear,  
Greater responsibilities to carry,  
Records and problems, Seniors to clear,  
Men, to no longer tarry.*

This year finds our class smaller than last year because a number of our classmates have joined the ranks of other colleges. We pushed with self-reliance all through this last year to gain our highest ambition at M. P. C. I., namely, to possess a diploma. When we come to this point of our stay at M. P. C. I., we realize what the school has done for us and how lenient the professors have been with us. We remember the trials and joys which we have passed through, and shudder at the thought of leaving old "Mount" forever.



## SENIOR SUPERLATIVES

(As elected by the Senior Class)

C. P. MacLAUGHLIN .....	<i>Most Popular</i>
A. R. REITZEL .....	<i>Best Student</i>
C. P. MacLAUGHLIN .....	<i>Most All-Around</i>
W. T. MOCK .....	<i>Best Athlete</i>
A. R. REITZEL .....	<i>Quietest</i>
W. R. LINGLE .....	<i>Loudest</i>
C. P. MacLAUGHLIN .....	<i>Best-Looking</i>
C. R. GRIFFIN .....	<i>The "Sheik"</i>
H. B. CLINE .....	<i>Worst Student</i>
W. T. BALLARD .....	<i>Most Girl-Shy</i>
H. B. CLINE .....	<i>Wittiest</i>
W. R. LINGLE .....	<i>Silliest</i>
M. L. PENINGER .....	<i>Best-Natured</i>
R. V. GOODMAN .....	<i>Best "Egg"</i>



## SENIOR CLASS POEM

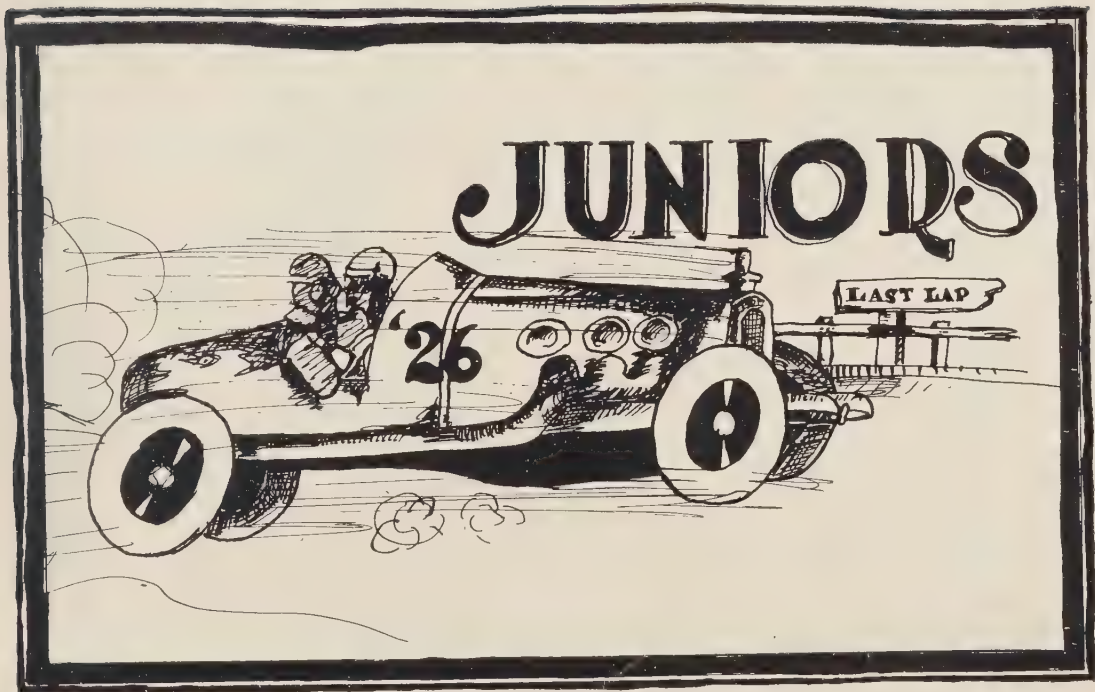
I stood beside a garden wall,  
Where myriad flowers bloom;  
Into my soul the blossoms all  
Instilled their sweet perfume.

And while I stood in rapture held,  
Yea, ere I felt aware,  
A sense of calmness o'er me fell  
Which banished every care.

The flower garden seemed to me  
A symbol of God's powers;  
A promise that my life might be  
As worthy as this class of ours.

And when years have come and gone,  
We'll wander back again  
To old M. P. C. I., our home,  
Where pleasures banish all pain.

—A. R. R., '25.





## JUNIOR CLASS

### OFFICERS

PAUL G. STONER .....*President*  
WYATT McSWAIN .....*Vice-President*  
WALTER N. YOUNT .....*Secretary and Treasurer*



### MEMBERS

M. W. COPELAND	D. J. LITTLE
F. A. COUNTS	S. L. PETREE
P. M. CHRISTENBURY	R. A. REINHARDT
R. E. DAVIS	G. R. SCOTT
W. L. EZZELL	W. J. SWICEGOOD
L. W. GRIGGS	C. F. THOMASON
W. T. GARIBALDI	R. W. TAYLOR
FRANK JAMES	R. H. TAYLOR
K. S. KLUTTZ	T. S. WALL, JR.
H. T. LAMOTTE	C. W. WARLICK

C. E. YORKE



THE JUNIOR CLASS



## THE JUNIORS



JUNIORS! Admired by the Freshmen, envied by the Sophomores, respected by the Seniors. Yes! That's who we are. We are now sailing through our third year with flying colors, those same colors which were chosen by us in our Freshman year. Our flower, the White Rose, and our motto, "Aiming Higher," although not remembered by many of us, are the same as when we entered the Institute.

We have taken a great deal of interest in the activities in and around the school, being represented on the varsity football, basketball and baseball teams. And not to be left out or forgotten, we have been fully represented at all social functions. We haven't done anything as yet to startle M. P. C. I. or alarm the Seniors, but there is still plenty of time to make them aware of our existence. The crowning glory of this year, was the long looked for banquet.

# SOPHUS





## SOPHOMORE CLASS

### OFFICERS

F. A. MOSER ..... *President*  
T. E. HINSON ..... *Vice-President*  
L. B. HAHN ..... *Secretary and Treasurer*



### MEMBERS

A. B. BAILES	W. A. LIPPARD
L. B. BAILES	J. D. SUTHER
P. B. CLINE	W. C. SMITH
F. L. CAUGHMAN	S. B. STEWART
S. M. CHRISTENBURY	B. J. THOMPSON
S. A. GROVENSTEIN	J. H. TAYLOR
R. E. GREENE	C. L. TREXLER
FRED KILLINGER	C. H. WEISER
C. R. LITTLE	M. C. WATTS



THE SOPHOMORE CLASS



## SOPHOMORES



NOT much honor and dignity is to be expected by the Sophomores at M. P. C. I., in fact we sometimes come to the conclusion that we don't deserve any, due to the fact that we are just in the third lap of the race. We have had many discouraging events within our class, as is the general rule in almost any class. We have the respect of the Sub-Freshmen and Freshmen but there are still two classes that are higher than we are, so our course as a class has its "ups" and "downs" just as any other class must have. However we have one consolation, that is, we have done excellent work in the class-room. We have a hope for still better work next year.

# FRESHMEN





## FRESHMAN CLASS

### OFFICERS

C. A. HONEYCUTT .....*President*  
H. H. SLOOPE .....*Vice-President*  
R. P. HARTSELL .....*Secretary and Treasurer*



### MEMBERS

C. N. ALEXANDER	A. E. HENDLEY
G. L. BARRIER	C. W. HURLOCKER
H. D. BARRINGER	P. H. LIPE
J. H. BOLTON	H. C. McALLISTER
F. G. COX	J. T. NICHOLSON
V. E. DRY	E. H. O'BRIEN
H. H. FOIL	S. H. PAYNE
C. A. GROOVER	J. D. RHYNE
T. E. GADDY	G. A. KEPHART
E. L. GANTT	T. R. SHUFORD
C. G. HAHN	R. B. SULLIVAN
J. S. HARTSELL	S. M. STIREWALT
C. W. HERRIN	W. A. SHULENBERGER
L. C. HIPPI	A. H. WHITE
A. L. HORNE	H. H. WATTS



THE FRESHMAN CLASS



## FRESHMAN THOUGHTS



WHEN we came to M. P. C. I. we were jubilant and gay, we left school exulting, imagining ourselves in a military school with all the soldier-boy play. What times we had! What queer lessons! What hard rules! We would study incomprehensible algebra and Latin; all this, together with military.

Ignorant as Sub-Freshmen were, we've gotten knock and pain. Of course by now we are Freshmen, and Freshmen are "supposed to know a few things," for experience teaches where nothing else will. We still know what it is to be "Fresh," however we have learned to love and know the Institute just as much as anyone else.

Last September when we entered school we were just a little irritated by the fact that "Fresh" was still to be prefixed to our class name. However our hopes were brightened when several of our number received military appointments in the Cadet Corp. Carl Honeycutt helped us along, in spirit, by winning the Declaimers' Medal. We have enjoyed our Literary Society work, we have made good grades. . . . Well, we are going to deserve the name of Sophomore next year.

# SUB-FRESH



C. P. MacLaughlin Jr.  
25



## SUB-FRESHMAN CLASS



C. D. ALLMAN

B. A. AREY

W. S. AGEE

S. M. ARMFIELD

A. L. BARRINGER

H. W. BARRINGER

J. H. BENNETT

H. G. COX

GORDON CURRIE

L. J. DIXON

H. L. FAGGART

H. L. FISHER

A. B. FISHER

J. A. FOWLER

ELTON GAMMAGE

MYRON GOODMAN

R. D. HAMMILL

R. O. HELMS

N. L. HILL

HARRY HIGGINS

C. K. HOLLER

W. A. KLUTTZ

H. M. LIPE

J. D. MAY

H. L. MORETZ

V. L. PETREA

G. R. PETREA

A. D. ROYAL

P. B. SMITH

J. R. VAUGHAN

A. B. WYLIE



SUB-FRESHMAN CLASS



Brown McAllister  
*'Most Popular Cadet'*  
As Voted by  
The Students & M.A.S.



Miss Grace Klutzig  
*'Most Popular Girl'*  
As Voted by  
The Students & M.P.C.I.





# Military



CDMAC '23

## MILITARY REVIEW



THE military department at M. P. C. I. is a very important feature. Although carried on in somewhat of a modified form, it affords valuable training for young men, especially is this true of those young men who come from the city and who need physical development. Military training is beneficial not only as a physical builder but also as a mind trainer. It causes men to think, to concentrate, and to learn to act in a systematic manner and to act promptly.

At M. P. C. I. the cadet corps is divided into two companies, "A" and "B." Each year three competitive drills are held, one each term. To the company winning the highest number of points, a beautiful silver trophy cup is awarded. This feature causes much enthusiasm, interest, and friendly rivalry among the cadets. Last year Captain Harward led Company "B" to an overwhelming victory over Company "A."

Another important military feature that arouses spirit and interest among the cadets is that each year a gold medal is awarded to the cadet who proves to be the best drilled in the manual of arms. Last year Cadet Private J. A. Kern proved himself able to handle a rifle better than any other Cadet, thus he carried off the medal.

Military training has proved itself to be a valuable asset to M. P. C. I. It develops that spirit of loyalty, of patriotism, and of enthusiasm and interest which is so characteristic of M. P. C. I.







## MILITARY STAFF



MAJOR WILLIAM W. CONE ..... *Commandant of Cadets*  
 CADET CAPTAIN W. C. THOMAS ..... *Battalion Commander*  
 LIEUT. C. G. FARMER ..... *First Lieutenant and Adjutant*  
 LIEUT. A. R. REITZEL..... *Second Lieutenant and Assistant Adjutant*  
 LIEUT. M. L. PENINGER..... *Second Lieutenant and Ordnance Officer*  
 LIEUT. R. B. GILES..... *Lieutenant Bugler Attached to Staff*





## COMPANY "A"

### COMMISSIONED OFFICERS

W. C. THOMAS ..... *Captain*  
 S. R. McEACHERN ..... *First Lieutenant*  
 H. B. CLINE ..... *Second Lieutenant*  
 C. R. GRIFFIN ..... *Second Lieutenant*

### NON-COMMISSIONED OFFICERS

C. K. WALTERS ..... *First Sergeant*  
 F. A. MOSER ..... *Sergeant*      M. C. WATTS ..... *Sergeant*  
 C. L. TREXLER ..... *Sergeant*      C. P. MacLAUGHLIN ..... *Sergeant*

### CORPORALS

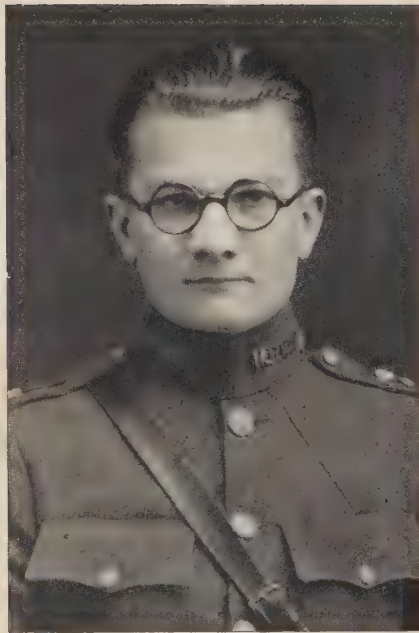
W. T. BALLARD                      \* J. H. BOLTON                      WYATT McSWAIN  
 M. B. DRY                              R. P. HARTSELL                      WALTER YOUNT

### PRIVATES

AGEE	GANTT	PREVO
ALEXANDER	GROOVER	RHYNE
ARMFIELD	GOODMAN, M.	STIREWALT
COPELAND	HORNE	SHUFORD
CHRISTENBURY	HILL	SWICEGOOD
CRUSE	KLUTTZ	SCOTT
FAGGART	LIPPARD	TAYLOR, R.
FOWLER	MAY	TAYLOR, J.
GAMMAGE	NICHOLSON	WHELESS



COMPANY "A"



## COMPANY "B"

### COMMISSIONED OFFICERS

R. B. McALLISTER .....*Captain*  
 R. B. BENNETT .....*First Lieutenant*  
 W. T. Mock .....*Second Lieutenant*

### NON-COMMISSIONED OFFICERS

A. K. WEISNER .....*First Sergeant*  
 R. V. GOODMAN .....*Sergeant*  
 P. G. STONER .....*Sergeant*  
 A. H. MacLAUGHLIN .....*Sergeant*

### CORPORALS

J. D. SUTHER  
 J. H. BENNETT

H. H. WATTS  
 H. T. LaMOTTE

W. A. SHULENBERGER  
 H. H. SLOOPE

### PRIVATEES

BAILLES, A.  
 BAILLES, L.  
 CAUGHMAN  
 COUNTZ  
 COX  
 CURRIE  
 EZZELL  
 GADDY  
 GRIGGS  
 GROVENSTEIN

HOLLER  
 HIGGINS  
 KEPHART  
 KILLINGER  
 LITTLE, C.  
 LITTLE, D.  
 LINGLE  
 MORETZ  
 PAYNE  
 ROYAL

SMITH  
 SULLIVAN  
 STEWART  
 TAYLOR, W.  
 VAUGHAN  
 WHITLEY  
 WILEY  
 WALL  
 WHITE  
 YORK





COMPANY "B"



BATTALION

## WONDERFUL WOMEN

Oh, Woman's the greatest of all contradiction;  
She's an angel in truth, a demon in fiction;  
She is afraid of a cockroach, she'll scream at a mouse,  
But she'll tackle a husband as big as a house.

She'll take him for better, she'll take him for worse,  
She'll split his head open and then be his nurse,  
Then when he is well and can get out of bed,  
She'll pick up the teapot and throw at his head.

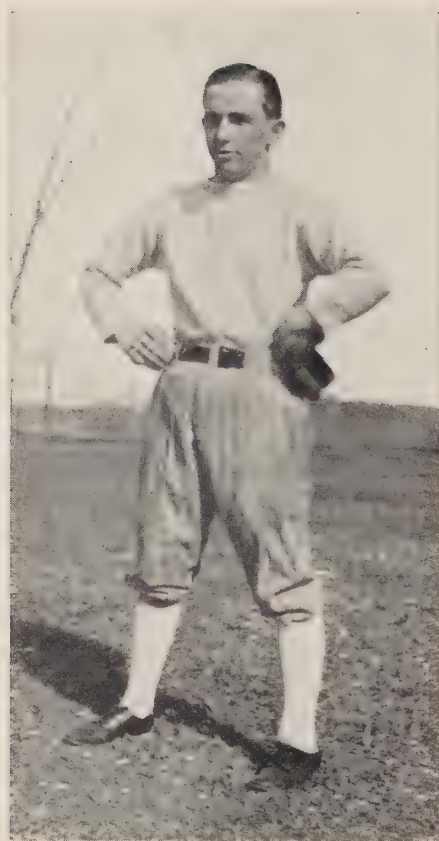
She's faithful, deceitful, keen-sighted and blind,  
She's crafty, she's simple, she's crude and she's kind,  
She'll lift a man up, and throw a man down,  
She'll call him her king, and make him her clown.

You think she is this, and find she is that,  
She'll play like a kitten and bite like a cat;  
In the morning she will, in the evening she won't;  
You're always expecting she does, but she don't.









## COACH CONE

**O**NCE more The Citadel has opened her doors and sent forth into the world a man worthy of her name. A man with the "Bulldog" determination. It was such a man that came to us this fall in the person of Major W. W. Cone. Major Cone has had entire charge of Athletics at M. P. C. I. this year and he has performed this task in such a capable manner that even the most critical have been compelled to say, "Well done." On the football field his indomitable spirit and dynamic energy was transferred, it seems, to the men who were under his instruction. The result of this transfusion was a winning football team. The basketball season was somewhat disastrous, yet Coach Cone was not to blame. The material with which he had to work was most disheartening. His work with the baseball team this spring has been remarkable. All in all Major Cone is the type of a man who could raise the plane of Athletics in any school.





# FOOTBALL

## REVIEW OF SEASON



ALTHOUGH football at M. P. C. I. is still in its infancy, it has established a reputation of which no one can rightly be ashamed. This year's aggregation played seven games, four of which found the "Red Devils," as they were popularly called, trailing the banners of their opponents in the dust. The two defeats suffered came in the early part of the season. The first was due, perhaps, to insufficient practice while the second defeat, on the following Saturday, is accounted for on the grounds that the best team won.

The team which represented M. P. C. I. in the majority of the games was big and aggressive but lacked the punch and drive which is so essential. This defect was remedied, to a certain extent, after the Oak Ridge game by converting linemen into backs and backs into linemen.

The Rockingham game was played on a muddy, water soaked, field by a M. P. C. I. team that had been together a little over one week. The State High School champions, however, were given a hard fight and it was only after brilliant runs by Boyer and Hiner that they were able to emerge on the long end of a 12 to 0 score. The team was not at all disheartened after this defeat but journeyed to Oak Ridge to play the State Prep School champions. Throughout the first half of this game M. P. C. I. doggedly fought off the repeated drives of the "Ridgers." During the second half, however, M. P. C. I. weakened and allowed 26 points to be scored against her. Next on schedule the "Red Devils" met the highly touted Davidson Athletic Club which boasted of a galaxy of former college stars. The result was a tie score. This game marked the end of defeat for M. P. C. I. In due order the "Red Devils" romped down the field in the four succeeding games to well-earned victories and to the close of a most successful season.

### SCHEDULE

M. P. C. I.....	0	Rockingham H. S. ....	12
M. P. C. I.....	0	Oak Ridge Institute .....	24
M. P. C. I.....	0	Davidson Athletic Club .....	0
M. P. C. I.....	24	Charlotte University School .....	0
M. P. C. I.....	12	High Point College .....	6
M. P. C. I.....	7	Wingate College .....	0
M. P. C. I.....	13	High Point College ..	6
M. P. C. I.....	56	Opponents .....	48

M. W. COPELAND, *Fullback*

From South Carolina came a chap with football sense and a Herculean physique. "Cope" was tried at guard but when the smoke of the general shake-up of the team had cleared away he found himself at fullback. He is a hard man to stop when once started.



JOBIE GOODMAN, *Halfback*

Jobie, during this, his second year of football, established an enviable reputation for himself. He is perhaps the surest handler of passes and punts on the squad. Height, speed and plenty of nerve are a few of the things that Jobie possessed and incidentally these qualifications are very essential to the make-up of a real football player.

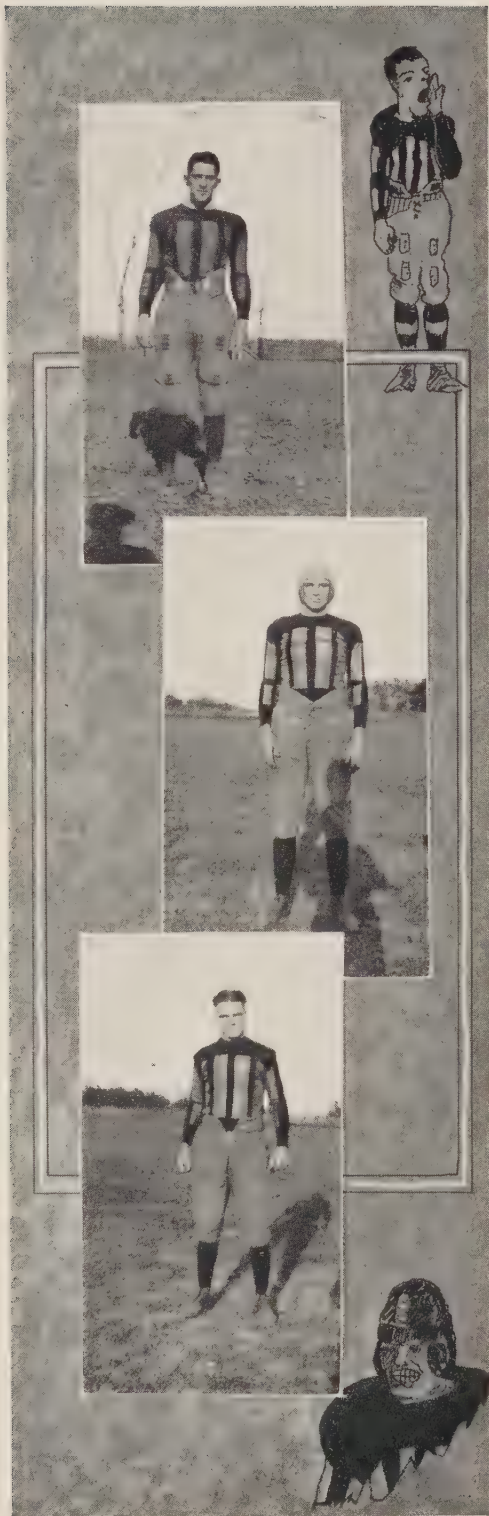


W. C. SMITH, *Halfback*

All Smith's are fast judging from the two that represented M. P. C. I. this year. "Little" Smith, as he is commonly called, was a clever broken field runner. His fierce tackling and "never-say-die" spirit made him one of the mainstays of this year's team. Curtis was one of the few experienced men who entered last fall. With two more years ahead of him he looks like the future star of M. P. C. I.







C. P. MacLAUGHLIN, *Quarterback*

"Chuck," our captain, led the team through a most successful season. His line plunging and off-tackle running made him a dependable man in the back-field. He was always in the thickest of the fight, encouraging his men to "go-get-'em." This fighting spirit won him a place on the "all-State" Prep school team. "Chuck" has been a faithful servant in all branches of athletics and we regret to lose him this year.



W. T. Mock, *End*

This season saw a new fellow inducted into the ranks of football. "Tommy" played his first football in the High Point College game. His ability to tear down interference, snatch passes, and never failing quickness to get down the field on punts ranks him with the best.



W. C. THOMAS, *Tackle*

Powerful and steady as a rock wall, "Lefty" stood the whole season. Not once did his side of the line sway on his account. "Lefty" has made varsity football for two years and not once has he been out of the game. He has played the entire period of every game for two years, thus making for himself a record which is hard to equal.

C. K. WALTERS, *Guard*

"Fight," it has been said, is a characteristic of "Red-heads." "Red" is no exception. Throughout the entire season "Red" lived up to this time honored characteristic. He played his man well, making an ideal running mate for Hinson. He will be lost to next year's team and his absence will be felt a great deal.



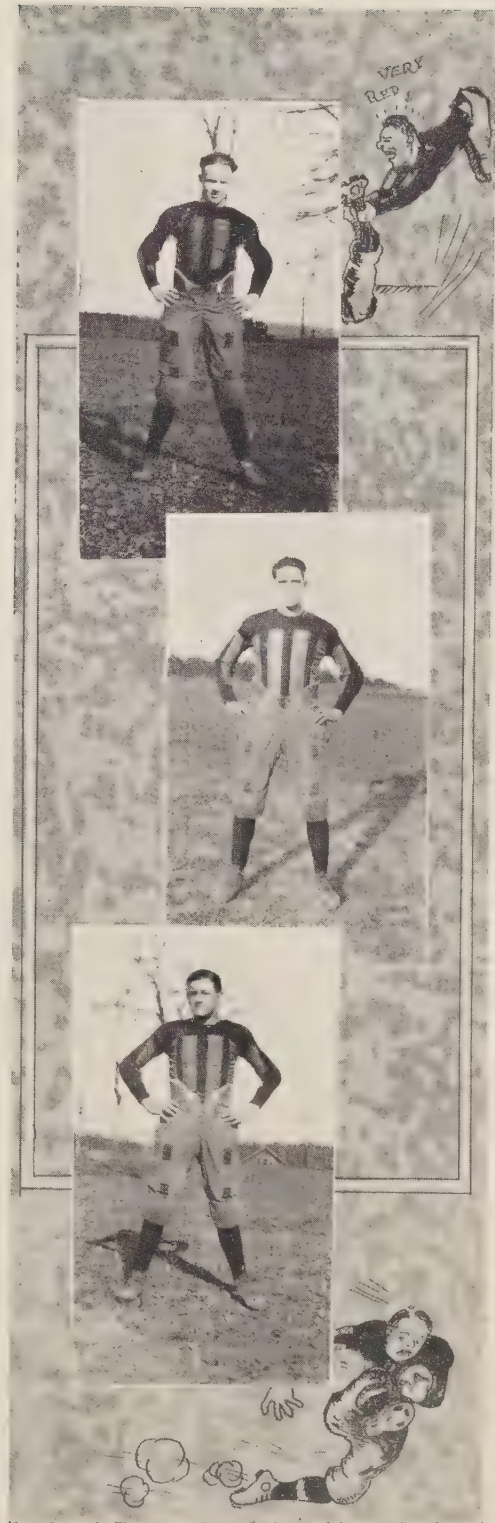
A. H. MacLAUGHLIN, *Center*

"Lex," another "all-State" man, is a big rangy chap and makes an ideal pivot man. He was the mainstay of the line throughout the season. A hard-worker, a fighter, a punter and a real football player is sufficient to describe "Lex." He was one of the few lettermen on this year's team and we hate to lose him next year.

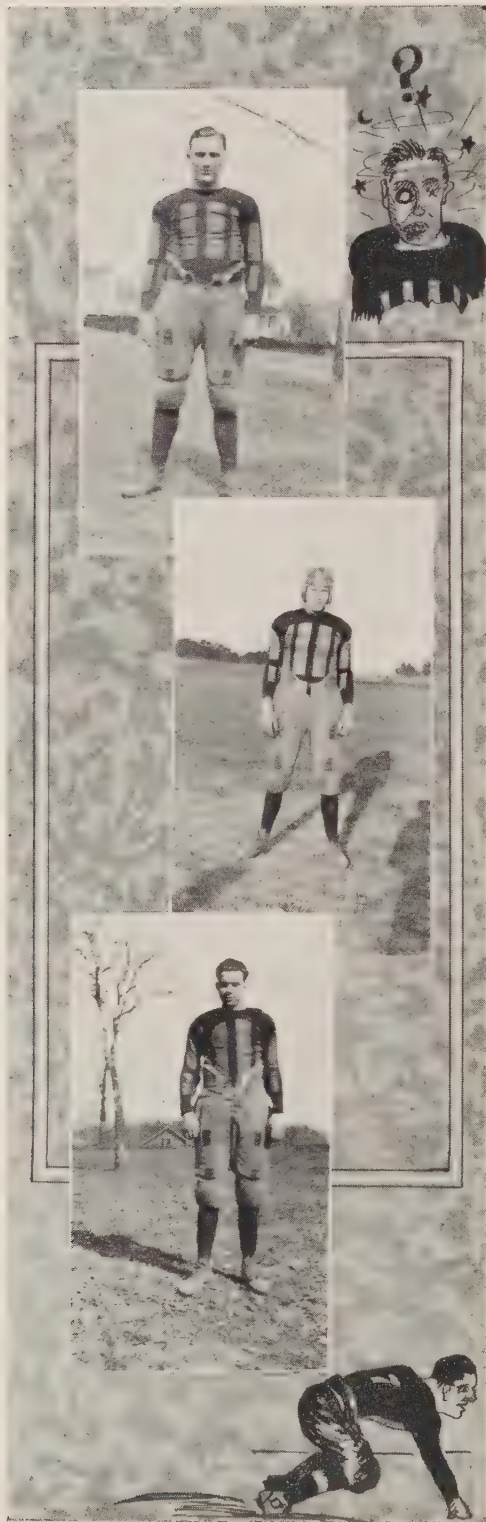


T. E. HINSON

A tower of strength in the line who never gave an inch without a fight. "Teddy" was noted for breaking through the line, tackling men and smearing plays. To gain over him seemed almost impossible. From all appearances "Ted" will be the mainstay of next year's line.







A. K. WEISNER, *Tackle*

This husky individual is none other than "Tony," the "big boy" of our line. Tony was a tower of strength on the defense. He was at his best in the Davidson A. C. game, smearing the opponent's plays before they could get started. This is Tony's last year but we know that he will make someone hustle next year wherever he may go.



JOE SMITH, *End*

Football prospects were brightened a great deal by Joe's belated arrival on the campus this fall. Joe played a consistent game at end after he was shifted from backfield. A deadly tackler, and a sure receiver of passes, made Joe a valuable terminal man.



H. T. LAMOTTE, *End*

This plucky little end sprang into fame in the Wingate game. In the closing minutes of the play he intercepted a forward pass and "wiggled" through the entire Wingate team for 30 yards and a touchdown.



A. B. BAILES, *Center*

A fighter and a hard worker is Boyce. These qualities have made him valuable to this year's outfit. "Sajor" has two more years here, consequently a great deal is to be expected of him.



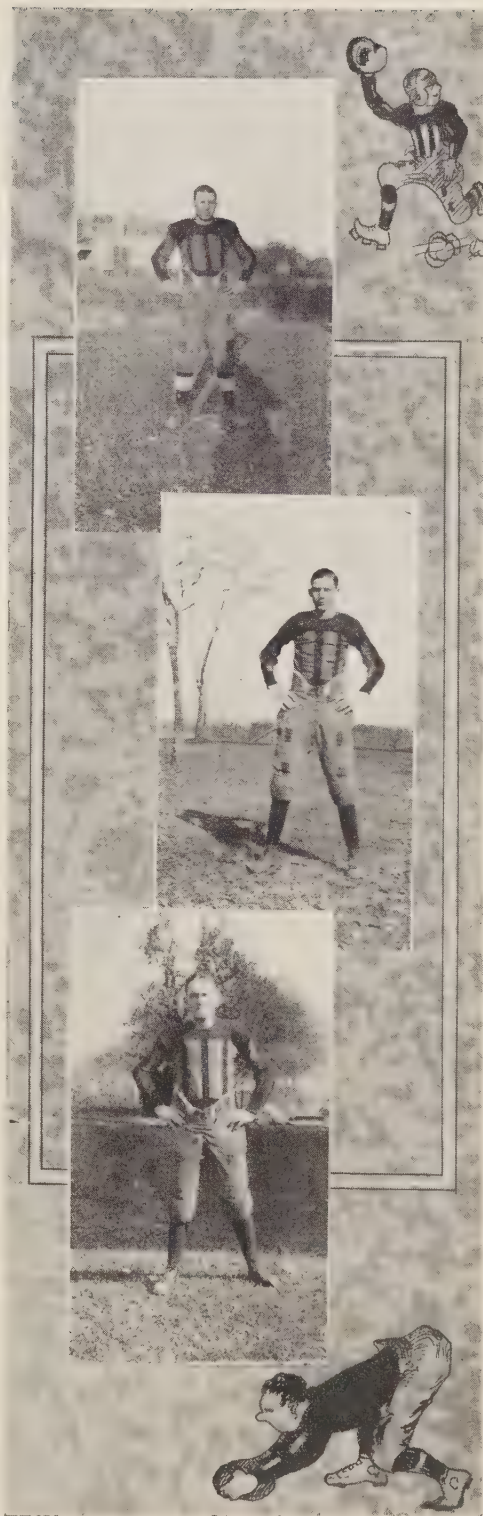
W. S. AGEE, *Halfback*

At the beginning of the football season, Agee was one of the men who loomed up as a strong halfback. In all probability this would have proved true had it not been for injuries received during a practice game at the very first of the season. He is a fast and dependable man in the backfield and should prove a great help to next year's squad.



R. E. GREENE, *End*

"Chick's" make-up is "Ben Turpin" style, but this gave him an advantage, for the opposition were unable to tell where he was looking. He is an aggressive, scrappy end and should push somebody hard next year.



# FOOTBALL STATISTICS

## VARSAITY

Name	Position	Weight	Height	Age	Class
J. N. Smith	Left End	178	5 ft. 11 in.	22	Senior
A. K. Weisner	Left Tackle	193	6 ft.	22	Senior
T. E. Hinson	Left Guard	176	5 ft. 10 in.	18	Sophomore
A. H. MacLaughlin	Center	191	6 ft. 1 in.	19	Senior
C. K. Walters	Right Guard	190	5 ft. 10 in.	20	Senior
W. C. Thomas	Right Tackle	172	5 ft. 9 in.	21	Senior
W. T. Mock	Right End	184	6 ft. 2 in.	18	Senior
C. P. MacLaughlin (Capt.)	Quarterback	178	5 ft. 10 in.	21	Senior
Jobe Goodman	Left Half	160	6 ft.	21	Senior
W. C. Smith	Right Half	145	5 ft. 11 in.	16	Sophomore
M. W. Copeland	Full	188	6 ft.	18	Junior

## SUBSTITUTES

H. T. LaMotte	End	129	5 ft. 8 in.	17	Junior
S. Agee	Halfback	167	6 ft. 1 in.	16	Freshman
R. E. Green	End	144	5 ft. 9 in.	19	Sophomore
A. B. Bailes	Center	176	5 ft. 8 in.	20	Sophomore
L. B. Bailes	Guard	172	5 ft. 8 in.	21	Sophomore
W. T. Garibaldi	End	154	6 ft. 1 in.	18	Junior
S. Stirewalt	Guard	193	5 ft. 9 in.	17	Sophomore
R. O. Helms	Guard	192	5 ft. 10 in.	21	Freshman
J. H. Bennette	Tackle	174	6 ft.	17	Sub-Freshman





## BASKETBALL TEAM

SWICEGOOD .....	<i>Forward</i>
LINGLE .....	<i>Forward</i>
MOCK .....	<i>Center</i>
MACLAUGHLIN .....	<i>Guard</i>
WALL .....	<i>Guard</i>

### SUBSTITUTES

LAMOTTE .....	<i>Forward</i>
THOMAS .....	<i>Guard</i>
STONER .....	<i>Guard</i>
COPELAND .....	<i>Center</i>



### SCHEDULE

Mount Pleasant Collegiate Institute  
vs.  
Southmont

Mount Pleasant Collegiate Institute  
vs.  
Tyro

Mount Pleasant Collegiate Institute  
vs.  
Churchland

Mount Pleasant Collegiate Institute  
vs.  
Oak Ridge

Mount Pleasant Collegiate Institute  
vs.  
Salisbury High School

Mount Pleasant Collegiate Institute  
vs.  
Carolina Freshmen

Mount Pleasant Collegiate Institute  
vs.  
Greensboro "Y"



VARSITY BASKETBALL, SOU. MD.

## BASKETBALL



N years past the Institute has put out basketball teams which have be-spoken for the Institute high honor and praise. Last year the team romped to victory after victory, thus completing a most successful season. With this fact in mind and with all but three of the Varsity squad back this season, the outcome of this year's schedule seemed even brighter than last year's. But as fate would have it, it seemed that every material force worked against us. First of all we were handicapped by a late start and the lack of a suitable indoor court. Next, two of last year's stars, "Chuck" MacLaughlin, Guard, and "Jobie" Goodman, Center, were ruled off the team on account of certain handicaps.

The schedule consisted of seven games, although losing most of these, a hard fight was put up at all times. Probably the hardest fought game of the whole season was with Carolina Freshmen. The Cadets put up a wonderful fight and for a time it seemed that victory was ours. However, Carolina, with her superior team work, good shooting, and greater height in the end nosed out to victory.

When we look at the scores we are prone to think that the season was a failure, but when we consider the circumstances which the team labored under and also the fact that a number of promising candidates for the team next year were discovered, we are just a bit inclined to believe that the season was not such a bad failure after all.





# BASE-BALL



C.P. MacLaughlin Jr  
'25

## BASEBALL—1925

KLUTTZ, *First Base*  
 AGEE, *Second Base*  
 CLINE, *Third Base*  
 WATTS, M., *Shortstop (Captain)*  
 ALLMAN, *Rightfield*  
 MOCK, *Centerfield*  
 TREXLER, *Leftfield*

WATTS, H., *Catcher*  
 THOMAS, *Pitcher*  
 THOMASON, *Pitcher*  
 RHYNE, *Pitcher*  
 WHITE, *Pitcher*  
 SMITH, *Pitcher*  
 HIPPI, *Second Base*

FARMER, *Utility*

### BASEBALL SCHEDULE '25

MARCH 17	
M. P. C. I.....	8 Rockwell ..... 3
MARCH 20	
M. P. C. I.....	7 Spencer ..... 3
MARCH 24	
M. P. C. I.....	16 Mt. Pleasant "All Stars" ..... 6
MARCH 25	
M. P. C. I.....	6 Gastonia H. S. .... 7
MARCH 26	
M. P. C. I.....	4 Shelby H. S. .... 6
MARCH 27	
M. P. C. I.....	5 Shelby H. S. .... 0
APRIL 1	
M. P. C. I.....	18 Kannapolis H. S. .... 8
APRIL 4	
M. P. C. I.....	12 Booster Club of Spencer, N. C. .... 3
APRIL 7	
M. P. C. I.....	18 Rockingham H. S. .... 8
APRIL 17	
M. P. C. I.....	Rain Rutherford College ..... Rain
APRIL 18	
M. P. C. I.....	2 Lenoir-Rhyne College ..... 12
APRIL 15	
M. P. C. I.....	Open .....
APRIL 21	
M. P. C. I.....	4 Wingate College ..... 5
APRIL 23	
M. P. C. I.....	Rain Weaver College ..... Rain
APRIL 28	
M. P. C. I.....	Rain Rutherford College ..... Rain
MAY 1	
M. P. C. I.....	8 N. C. State College Freshmen..... 2
MAY 2	
M. P. C. I.....	Oak Ridge Institute .....
MAY 5	
M. P. C. I.....	Open .....
MAY 7	
M. P. C. I.....	N. C. State College Freshmen .....
MAY 9	
M. P. C. I.....	Raeford "G" Battery .....
MAY 16	
M. P. C. I.....	High Point College .....
MAY 23	
M. P. C. I.....	Open .....



VARSITY BASEBALL SQUAD



## BASEBALL



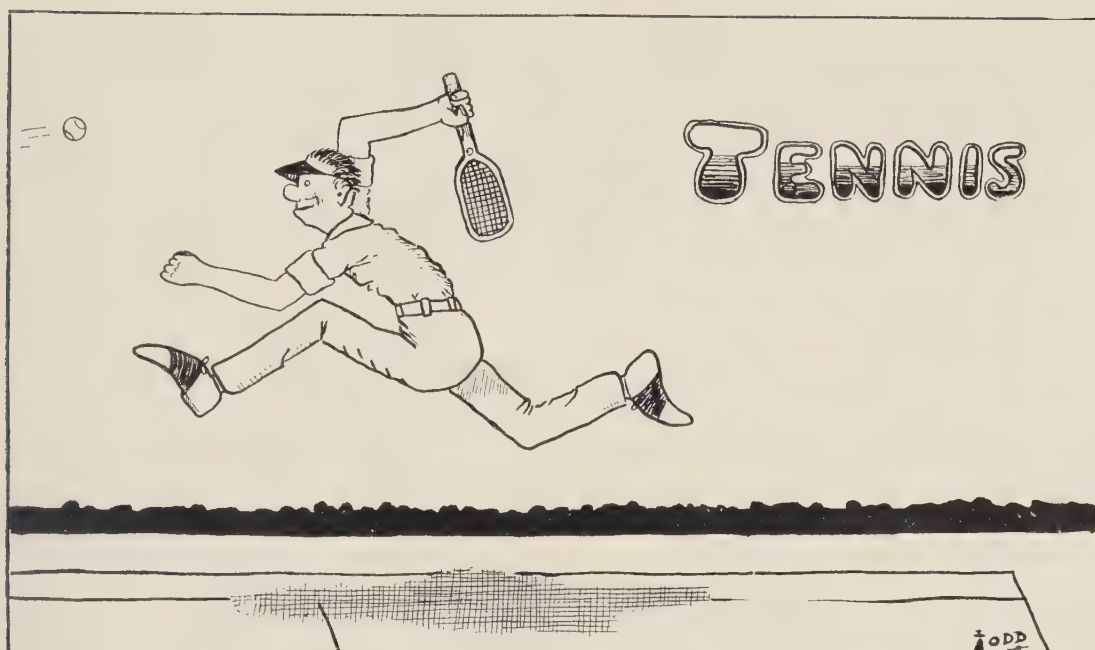
THE baseball outlook was exceedingly black at the outset of the season with but three men back from last year's team. Coach Cone, however, was greatly encouraged by the showing of the new men and an impressive schedule was arranged. The 1925 aggregation developed into one of the hardest hitting teams since the days of Smithdeal and Watts.

To "Dude" Allman and the "Watts boys" must go the honor of being the hardest hitters on the squad. The Watts boys should, perhaps, have a share in the just praise which is prevalent about the campus. A great deal of the team's success is due to our popular Captain and Shortstop, "Guber" Watts, he building up a winning combination from the material that was available.

While it is true that the team was on the short end of some games that seemed hard to lose yet it is also true that they won some brilliant victories.

M. C. Watts, Thomas, and Thomason did the bulk of the hurling this season.

We had a fast, snappy infield and a dependable, steady outfield. The pitchers showed plenty of "stuff" in the pinches but the team seemed to lack the consistency which is so necessary for a winning team.



## TENNIS, 1925

H. R. MIDDLESWORTH ..... *Coach*

R. B. GILES ..... *Captain*

✦

### THE TEAM

WILEY  
GILES

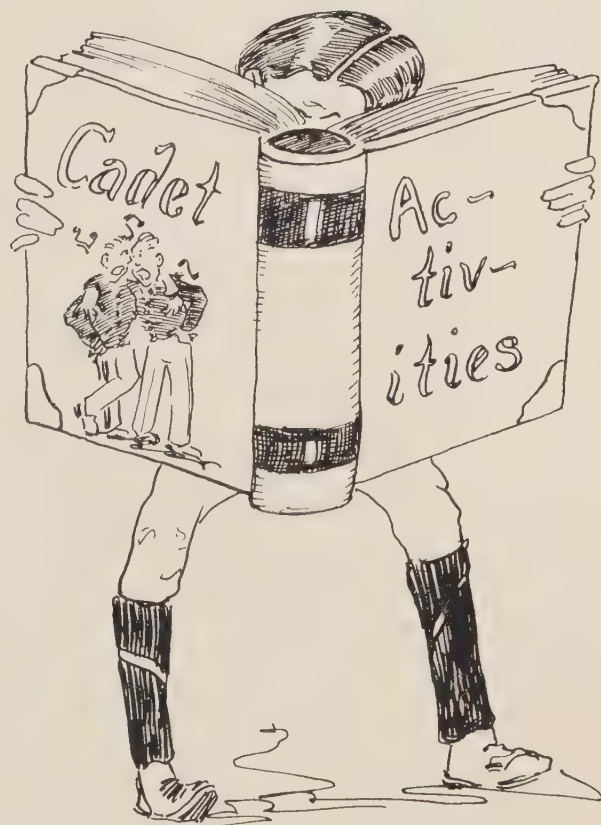
CLINE  
ALEXANDER

In response to the call for tennis candidates a goodly number of budding "Tildens" presented themselves. The schedule played, while not imposing, has started a sport which should create a great deal of interest in the years to come.





# Activities



J.J. Sigwald



# Y.M.C.A.





# Y. M. C. A.

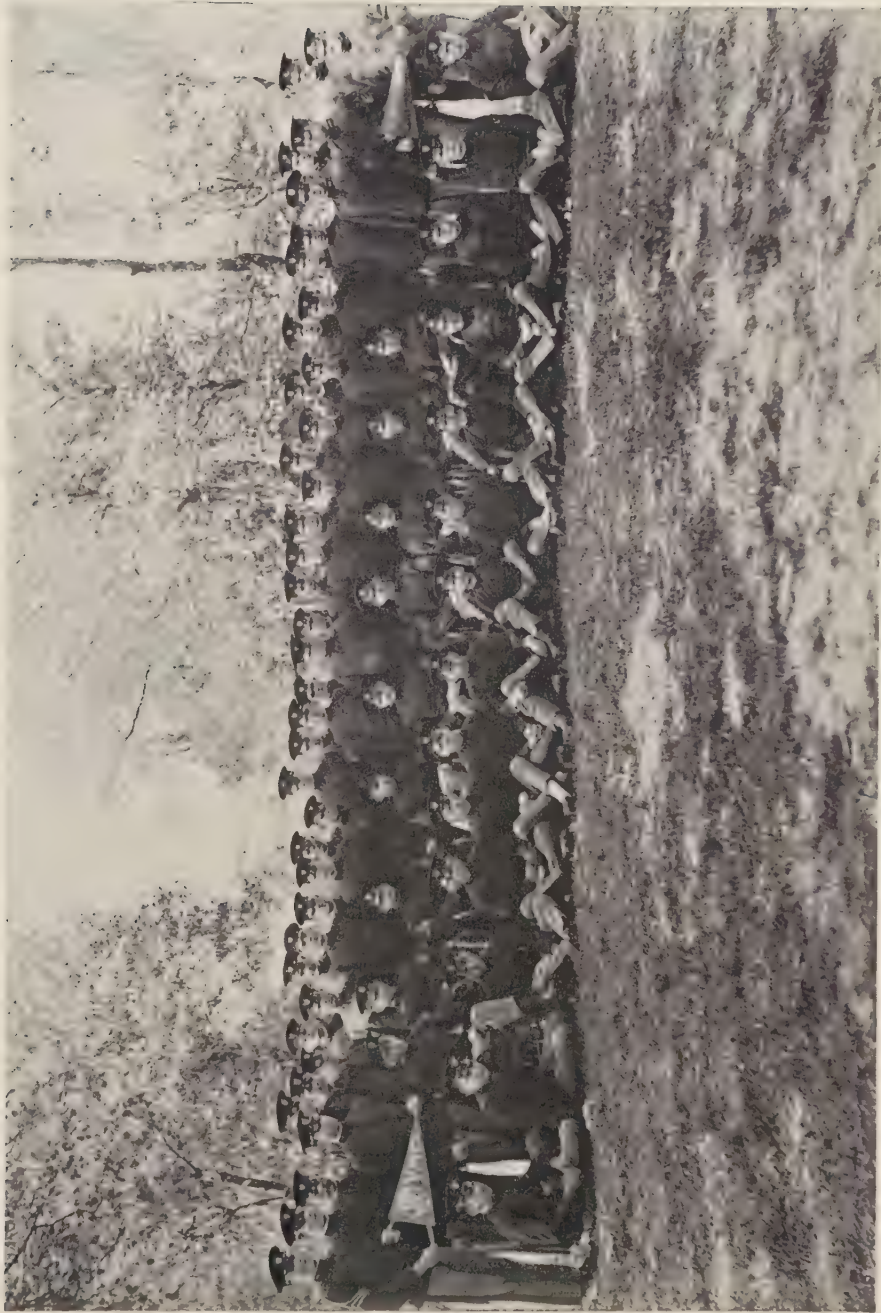
## OFFICERS

CAPT. H. R. MIDDLESWORTH .....	<i>Faculty Advisor</i>
C. R. BARRINGER .....	<i>President</i>
R. B. McALLISTER .....	<i>Vice-President</i>
C. A. HONEYCUTT .....	<i>Secretary and Treasurer</i>



## MEMBERS

C. N. ALEXANDER	W. A. LIPPARD
J. H. BOLTON	C. R. LITTLE
T. L. CAUGHMAN	C. P. MacLAUGHLIN
P. B. CLINE	A. H. MacLAUGHLIN
P. M. CHRISTENBURY	J. G. MAY
D. O. COPPAGE	WYATT McSWAIN
F. A. COUNTZ	W. T. MOCK
F. G. COX	F. A. MOSER
B. W. CRUSE	H. F. MORETZ
GORDON CURRIE	J. T. NICHOLSON
R. E. DAVIS	S. H. PAYNE
C. G. FARMER	M. L. PENINGER
E. A. GAMMAGE	W. J. PREVO
E. L. GANTT	A. R. REITZEL
R. V. GOODMAN	A. D. ROYAL
M. A. GOODMAN	H. H. SLOOPE
L. W. GRIGGS	W. C. SMITH
S. A. GROVENSTEIN	P. G. STONER
R. E. GREENE	G. R. SCOTT
L. B. HAHN	R. B. SULLIVAN
R. D. HAMMILL	J. H. TAYLOR
R. P. HARTSELL	W. C. THOMAS
A. E. HENLEY	C. F. THOMASON
C. K. HOLLER	T. S. WALL
A. B. HORTON	C. K. WALTERS
A. L. HORNE	A. K. WEISNER
N. L. HILL	R. V. WHELESS
G. A. KEPHART	A. C. WHITLEY
J. F. KILLINGER	L. B. WILEY
W. H. KLUTZ	C. E. YORKE
W. R. LINGLE	W. N. YOUNT



STUDENT Y. M. C. A. GROUP

## THE Y. M. C. A. AT THE INSTITUTE



REALIZING the importance of spiritual as well as physical and mental development, the Young Men's Christian Association has taken upon itself part of that duty at the Collegiate Institute. It will be remembered by every student that early in the fall, when they first arrived at the Institute, the Y. M. C. A. began its work of making life here on the campus just a bit more pleasant, more interesting, and more enjoyable. Under the influence of the "Y" many of the fellows were made to feel the value of, and enjoy to a great extent, life at the Institute, especially the social side.

Not so very long after the session had started, the "Y" issued its Bible study books. Interesting programs were always rendered in the Y. M. C. A. study classes, especially when Louis Griggs would become enthusiastic over some timely topic. Before the end of the session, the effect and influence of these Bible study classes became quite apparent among the students. As some eminent divine has said, "It makes them appreciate life and the things of life."

The Y. M. C. A. approaches the student at the Institute from two angles, namely, devotional and social. Although the devotional side is by far the more apparent, the social side is equally as interesting. From the hands of the Y. M. C. A., the students have enjoyed three receptions this year. Of course the Y. M. C. A. would have been helpless in entertaining the Cadets without the necessary assistance of the fair students of M. A. S., but as it was, the "Y" had plenty of help.





# SOCIETIES



# THE LUDWIG LITERARY SOCIETY

## OFFICERS

C. P. MACLAUGHLIN .....	<i>President</i>
A. R. REITZEL .....	<i>Vice-President</i>
M. L. PENINGER .....	<i>Secretary</i>
CAPT. J. H. MCDANIEL .....	<i>Faculty Advisor</i>



## MEMBERS

COPELAND	MCALLISTER, R.
CHRISTENBURY	REINHARDT
DAVIS	SCOTT
EZZELL	SLOOPE
GARIBALDI	SWICEGOOD
GOODMAN, R.	TAYLOR, W.
GREENE	TAYLOR, J.
HINSON	TAYLOR, R.
HAHN, J.	THOMASON
HAHN, L.	TREXLER
LINGLE	WALL
LITTLE, D.	WHELESS
MOSER	WEISNER
YORKE	



LUDWIG LITERARY SOCIETY



# LUDWIG LITERARY SOCIETY

## PUBLIC PROGRAMME

DECEMBER 19, 1924



### INVOCATION

PRESIDENT'S ADDRESS ..... C. P. MACLAUGHLIN, JR.

DECLAMATION ..... L. B. HAHN

### DEBATE

QUERY:—Resolved, That North Carolina should adopt the recommendations of the State Ship and Water Transportation Commission for the establishment of Port Terminals.

#### AFFIRMATIVE

G. R. SCOTT  
T. S. WALL, JR.

#### NEGATIVE

R. V. GOODMAN  
M. L. PENINGER, JR.

### DECISION OF JUDGES

### MARSHALS

A. R. REITZEL, *Chief*

R. B. McALLISTER

T. E. HINSON

W. J. SWICEGOOD

W. T. GARIBALDI

R. E. GREENE

H. H. SLOOPE



C.P. MacLaughlin



R.V. Goodman



G.R. Scott



25



M.B. Dry



L.B. Aahn

# GERHARDT LITERARY SOCIETY

## OFFICERS

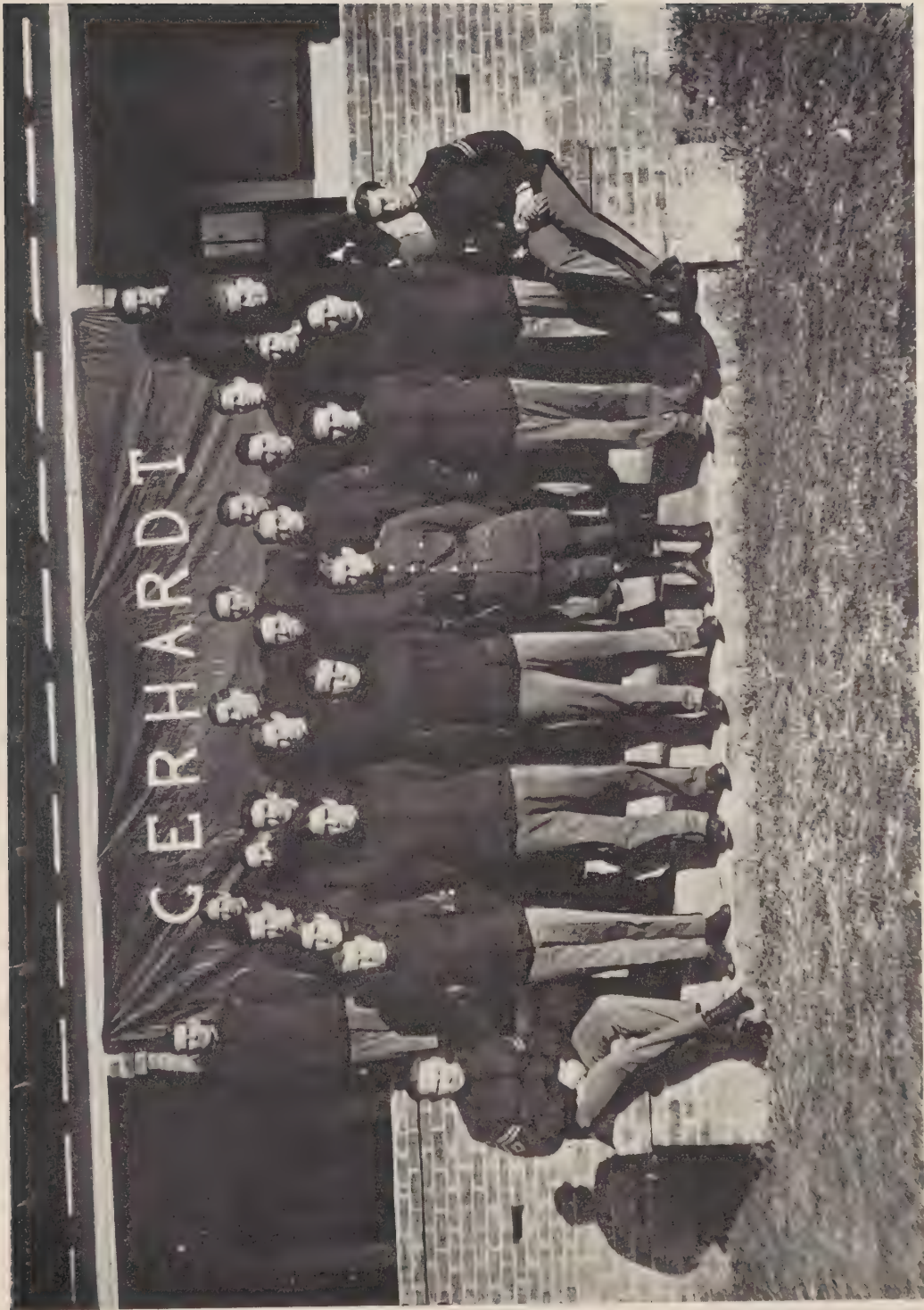
S. R. McEACHERN .....	<i>President</i>
WYATT McSWAIN .....	<i>Vice-President</i>
W. N. YOUNT .....	<i>Secretary</i>
H. R. MIDDLESWORTH .....	<i>Faculty Advisor</i>



## MEMBERS

BALLARD	GRIFFIN
BARRINGER, C.	GILES
BOGER	GOODMAN, J.
BENNETT, R.	LAMOTTE
CRUSE	MACLAUGHLIN, A.
CLINE, H.	MOCK
CLINE, P.	PETREE, S.
COUNTZ	STONER
COCHRAN	THOMAS
CHRISTENBURY, S.	WATTS, H.
DRY, M.	WALTERS
FARMER	WISER
GRIGGS	WARLICK





GERHARDT LITERARY SOCIETY

# GERHARDT LITERARY SOCIETY

## PUBLIC PROGRAMME

FEBRUARY 20, 1925



### INVOCATION

PRESIDENT'S ADDRESS ..... C. G. FARMER

DECLAMATION ..... P. G. STONER

### DEBATE

QUERY:—Resolved, That the Ku Klux Klan as an organization is more detrimental than beneficial to the country.

#### AFFIRMATIVE

M. B. DRY

B. W. CRUSE

#### NEGATIVE

S. R. McEACHERN

W. C. THOMAS

### DECISION OF JUDGES

### MARSHALS

R. B. BENNETT, JR., *Chief*

W. T. BALLARD

M. A. BOGER

W. T. MOCK

C. R. GRIFFIN

H. B. CLINE

WYATT McSWAIN



C.G. Farmer

W.C. Thomas

S.D. McEachern



B.W. Cruse

M.L. Pennington

P.G. Stoner



# PREPARATORIAN LITERARY SOCIETY No. 1

## OFFICERS

J. F. KILLINGER .....	<i>President</i>
W. H. KLUTTZ .....	<i>Vice-President</i>
C. R. LITTLE .....	<i>Secretary</i>
D. JACK GORE .....	<i>Faculty Advisor</i>



## MEMBERS

ALEXANDER	HARTSELL, R.
AREY	HAMMILL
ARMPFIELD	HENLEY
BAILES, L.	HIGGINS
BARRINGER, H.	HIPP
BARRINGER, A.	HURLOCKER
BENNETT, J.	KEPHART
BOLTON	LIPE, P.
COX, H.	MCALLISTER, H.
CURRIE	MORETZ
DRY, V.	SHULENBERGER
FINNA	SHUFORD
FISHER, A.	SMITH, P.
FOWLER	STREWALT
GOODMAN, M.	WYLIE
GROOVER	WHITLEY



PREPARATORIAN LITERARY SOCIETY No. 1

## PREPARATORIAN LITERARY SOCIETY No. 2

### OFFICERS

C. A. HONEYCUTT .....	<i>President</i>
S. A. GROVENSTEIN .....	<i>Vice-President</i>
A. L. HORNE .....	<i>Secretary</i>
MAJOR GLENN .....	<i>Faculty Advisor</i>



### MEMBERS

AGEE	HILL
BAILES, A.	HARTSELL, J.
BARRINGER, H.	HAHN, C.
BARRIER, G.	LIFE
BURWELL	LIPPARD
CATES	MAY
CAUGHMAN	PAYNE
COPPAGE	PETREA, G.
COX, F.	PETREA, V.
FAGGART	PREVO
FISHER, H.	RHYNE
FOIL, H.	SMITH
GAMMAGE	SULLIVAN
GADDY	SUTHER
GANTT	THOMPSON
HOLLER	VAUGHAN
HERRIN	WATTS, H.

WHITE





PREPARATORIAN LITERARY SOCIETY No. 2



## CALHOUN DEBATING CLUB

A CLUB DEVOTED TO ELOQUENCE OF SPEECH



### MEMBERS

R. V. GOODMAN

C. P. MACLAUGHLIN

S. R. McEACHERN

W. C. THOMAS

A. R. REITZEL

P. G. STONER



# GLEE CLUB





# GLEE CLUB

H. R. MIDDLESWORTH .....*Director*



## OFFICERS

C. P. MACLAUGHLIN .....*President*

A. H. MACLAUGHLIN .....*Vice-President*

R. V. GOODMAN .....*Business Manager*

C. K. WALTERS .....*Assistant Business Manager*

S. L. PETREE .....*Treasurer*



## FIRST TENORS

R. V. GOODMAN

C. K. WALTERS

T. E. HINSON

F. A. MOSER

R. B. GILES

## FIRST BASSES

S. STIREWALT

C. P. MACLAUGHLIN

T. S. WALL

V. L. PETREA

W. J. SWICEGOOD

## SECOND TENORS

C. E. YORKE

T. E. GADDY

L. W. GRIGGS

C. R. LITTLE

S. L. PETREA

## SECOND BASSES

A. H. MACLAUGHLIN

WALTER YOUNT

G. R. SCOTT

C. H. WISER

R. P. HARTSELL



THE GLEE CLUB

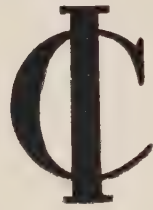


"VARSITY" QUARTETTE





# Wearers of the



## FOOTBALL

MACLAUGHLIN, A.  
MACLAUGHLIN, C.  
WEISNER  
THOMAS  
WALTERS  
MOCK  
SMITH, J.  
SMITH, W.

COPELAND  
LAMOTTE  
GOODMAN, J.  
GOODMAN, R.  
HINSON  
GREENE  
AGEE  
REINHARDT

## BASKETBALL

LINGLE  
SWICEGOOD  
MACLAUGHLIN, A.  
MOCK

WALL  
STONER  
LAMOTTE  
SCOTT

THOMAS

## BASEBALL

WATTS, M.  
WATTS, H.  
AGEE  
HIPPI  
MOCK  
TREXLER

ALLMAN  
KLUTZ  
CLINE  
FARMER  
THOMAS  
RHYNE







Miss Elizabeth  
Dight  
Mt Pleasant N.C.  
Sponsor  
Military Staff.

Miss Deulah  
Disher  
Concord, N.C.  
Sponsor  
"A"  
Co.



Miss Mabel McAllister  
Mt. Pleasant, N.C.  
Sponsor "B" Co.



Miss Pauline Fisher  
Mt. Pleasant, N.C.  
Sponsor  
Gerhardt Literary  
Society.



Miss Mildred  
Barrier  
Mt. Pleasant, N.C.  
Sponsor  
Ludwig  
Literary  
Society.







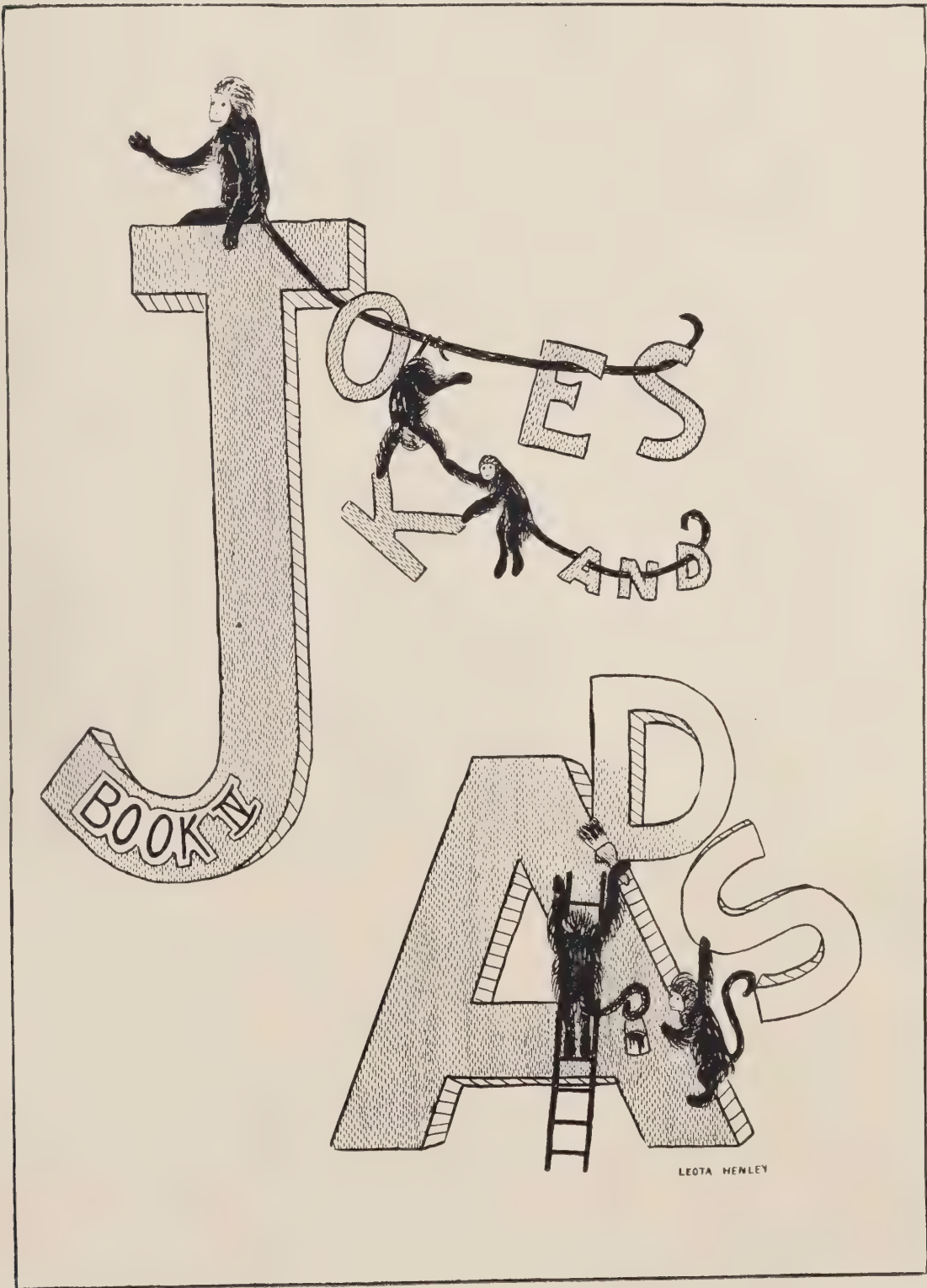
Miss Ruth Bost  
Concord, N.C.  
Sponsor -  
The Annual.



Miss Alma Tucker  
Mt Pleasant, N.C.  
Sponsor -  
Calhoun Debating  
Club.







It is rumored that Col. McAllister has consented to grant May a two weeks leave of absence just before the spring holidays in order that he may be back on time next September 15.

❖❖❖

"LIB" HEDRICK: "Does 'Little' Smith play on the varsity team?"

ALMA TUCKER: "No! he plays on the regular team."

❖❖❖

"CHUCK": "May I have permission to expectorate, Lieutenant?"

LIEUT. BENNETT: "Yes."

"CHUCK": "Thanks! I did. I just wanted to know if it was all right."

❖❖❖

## HOUDINNI

COL. McALLISTER (on Trig. class): "Now, boys, watch me while I go through this Trig. problem."

❖❖❖

The Cadet Corps has been almost convinced that Major Cone has "Bright's Disease."

❖❖❖

The cross-word puzzle mania has almost solved the problem Captain Mc-Daniels has of finding a way to spend spare time.

❖❖❖

On this Trigonometry class I sit,  
Gawd! how I want to spit,  
But I must swaller if I can,  
This tobacco like a man.

❖❖❖

CAPT. GORE: "When I comprehend my greatness, I catch myself shaking my own hand."

❖❖❖

FIRST CADET: "I hear that 'Tony' Weisner was arrested in Concord last night."

SECOND CADET: "What for?"

FIRST CADET: "Smoking a sewer pipe."

❖❖❖

A recent visitor to the Institute, while talking to a student, said:  
"I saw your police force down street. He looked very prosperous."

❖❖❖

General orders to the Business Manager while trying to get ads:  
"Get out and stay out!"

❖❖❖

B. McALLISTER: "This picture of me looks like an ape."  
. . . . . : "Sorry, but you should have thought of that before you had it taken."

❖❖❖

## PHYSICALLY SPEAKING

The faculty may have a good line but we know of at least one member who was "floored" in an argument.—*Exchange*.



---

PATRONIZE OUR  
ADVERTISERS

---

*They Made this Book Possible*

---





Compliments of

**The Goodman Lumber Co.**

**Salisbury, N. C.**



*“Service and Quality”—The Secret of  
Our Success*

**MAY SUCCESS BE YOURS**

## MONT AMOENA SEMINARY IS AN ACCREDITED SCHOOL

---

### *Has Done Wonderful Work in Completing the Education for Many of State's Finest Women*

Are you looking for an A1 fitting school with a wholesome Christian atmosphere? Mont Amoena Seminary, Mount Pleasant, N. C., is founded upon the principle that Christian training is fundamental in education. Its atmosphere is deeply religious and open to all Protestant creeds.

Are you contemplating fitting yourself for entrance into an A1 college? Mont Amoena will prepare you for entrance without examination.

Would you like to make piano, or voice, or both, special subjects? You will find advantages here equal to any in fitting schools. Our piano contests at the Greensboro state contest won high praise, and the quartet trained by our music department won the loving cup. We have fine advantages in voice as well as in piano.

Do you desire to fit yourself as a stenographer, typist, book-keeper or office secretary? Mont Amoena offers these advantages under the protecting care of a Christian institution, in a cheerful and helpful atmosphere.

Do you want the fundamentals in education and music which will fit you for a successful life? Mont Amoena has exactly what you need.

Are you seeking a trustworthy school for your daughter? Let us tell you why you should send her to Mont Amoena.

# WILLIAM C. ROWLAND

Incorporated

1024 Race Street

PHILADELPHIA, PA.



UNIFORMS, SUPPLIES, EQUIPMENT  
PRESENTATION SABRES, etc.

*Uniform Men of Mount Pleasant  
Collegiate Institute*



THE CONCORD DAILY TRIBUNE

J. B. SHERRILL

Publisher and Owner

EVERY DAY EXCEPT SUNDAY

ASSOCIATED PRESS AND N. E. A. SERVICE

---

THE CONCORD TIMES

J. B. SHERRILL

Publisher and Owner

PUBLISHED SEMI-WEEKLY

TWO DOLLARS A YEAR

A. W. MOOSE COMPANY

*THE REXALL STORE*



PHARMACEUTICALS, TOILET ARTICLES, KODAKS  
KODAK FILMS, KODAK FINISHING  
STATIONERY



WHITMAN'S AND HOLLINGSWORTH'S CANDIES

GET IT AT  
Ritchie Hardware  
Company



*"Your Hardware  
Store"*



CONCORD, N. C.



*The Pastor and Lutheran  
Mission Churches of  
Randolph County send  
greetings and best  
wishes for the continued  
success of the Institute  
and her Student Activ-  
ities.*

REV. B. A. BARRINGER.



**BELK BROS. CO.**

CHARLOTTE, N. C.

We Cordially Invite the Mt. Pleasant Collegiate Institute Boys  
And Faculty to Come and Trade With Us

COLLEGIATE CLOTHES

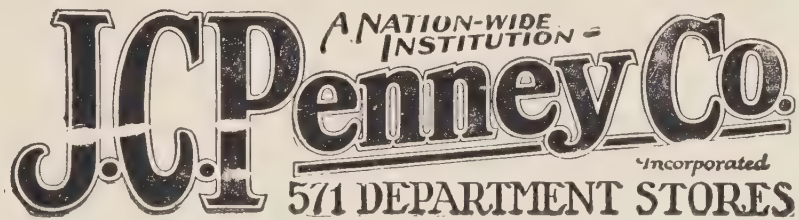
—STYLE PLUS CLOTHES

COLLEGIATE FURNISHINGS

—SHOES, HATS, ETC.

We Will Welcome You Whether You Buy or Not

**BELK BROS. CO.**



*World's Largest Chain Department Store  
Organization*

*Reliable Quality Goods Always  
At Lower Prices*

50-54 SOUTH UNION STREET

CONCORD, N. C.

WE SPECIALIZE IN FANCY GROCERIES  
FOR  
PARTIES, RECEPTIONS AND BANQUETS

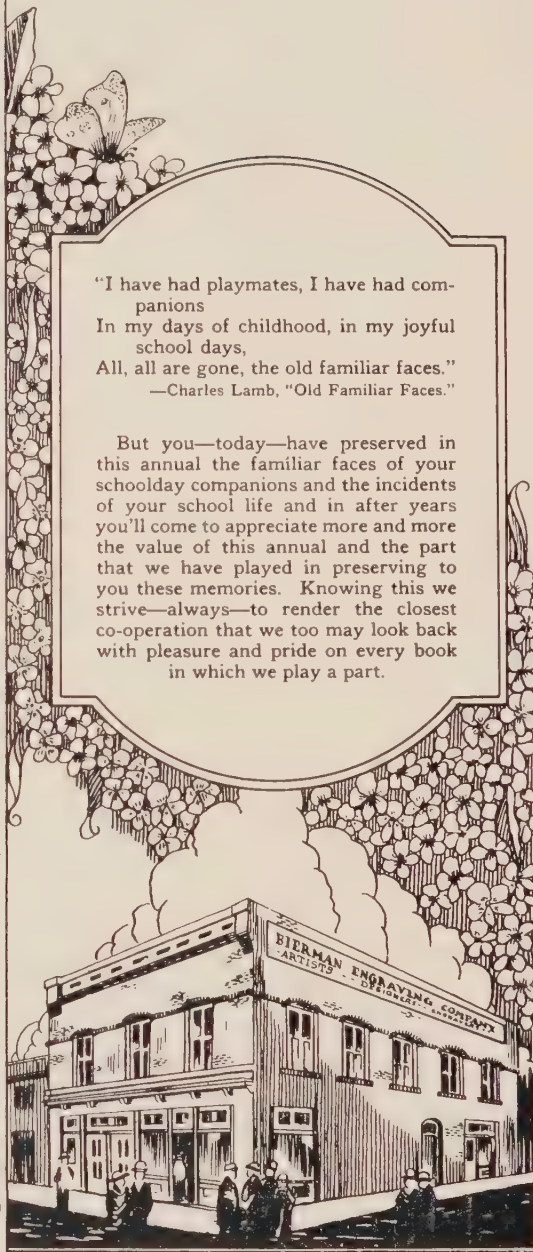
"Anything Good to Eat"

PHONES 21 AND 421

QUALITY

DOVE-BOST CO.  
CONCORD, N. C.





"I have had playmates, I have had companions  
 In my days of childhood, in my joyful  
 school days,  
 All, all are gone, the old familiar faces."  
 —Charles Lamb, "Old Familiar Faces."

But you—today—have preserved in this annual the familiar faces of your schoolday companions and the incidents of your school life and in after years you'll come to appreciate more and more the value of this annual and the part that we have played in preserving to you these memories. Knowing this we strive—always—to render the closest co-operation that we too may look back with pleasure and pride on every book in which we play a part.

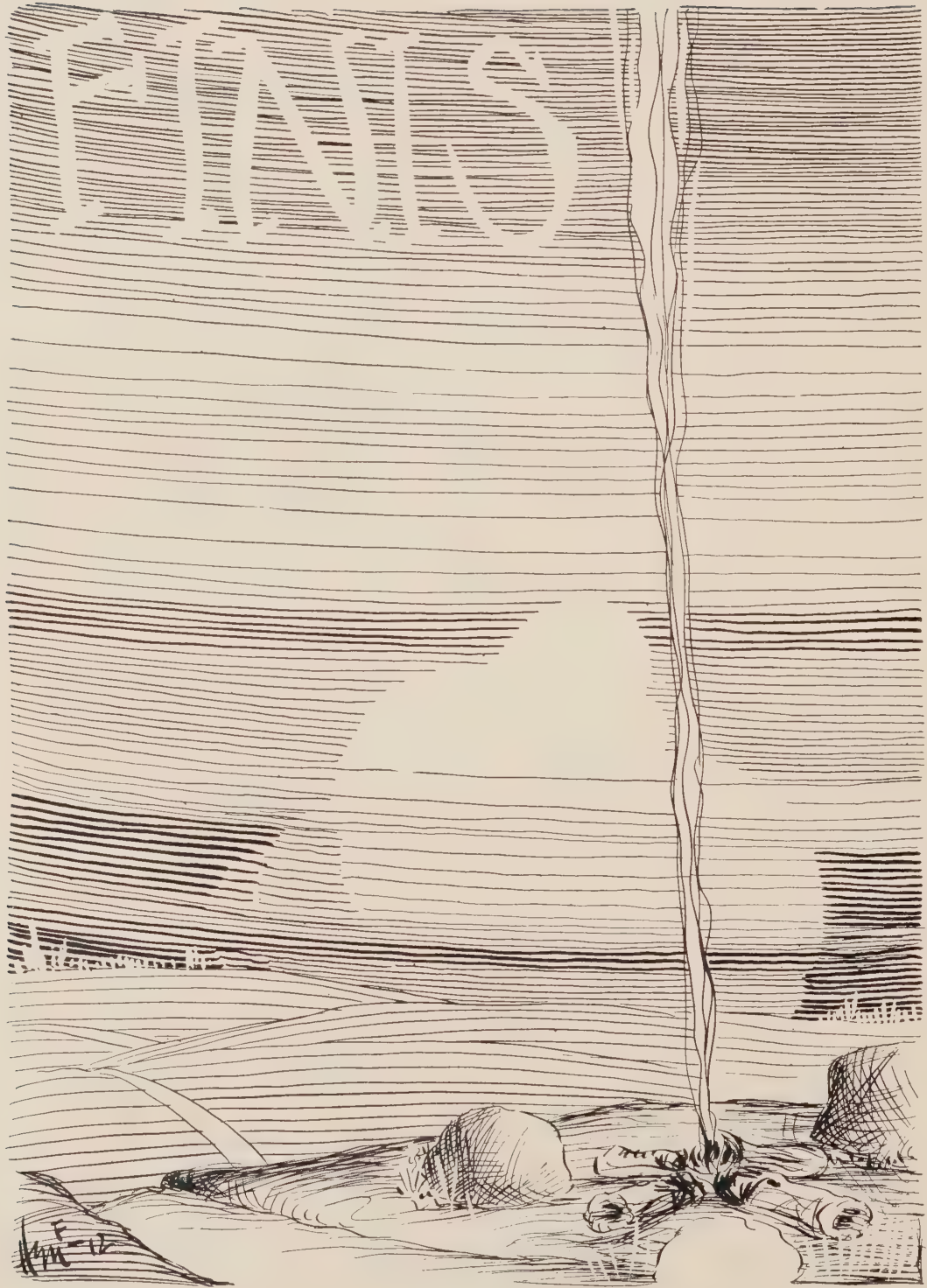
**BIERMAN ENGRAVING COMPANY**  
**ANNUAL ARTISTS AND ENGRAVERS**  
**CHURCH & 4<sup>th</sup> STS CHARLOTTE, NORTH CAROLINA**

# P R O O F

**I**T was no accident that the Observer Printing House, Inc., was awarded first prize for quality and third prize for production in a contest conducted by the Miller Saw Trimmer Co. (Manufacturers of Printing Machinery), of Pittsburg, Pa., and participated in by over 2,000 printing establishments in the United States and Canada, but a natural sequence to the policy of this house, "Quality First: Then Production." ¶ This Annual illustrates the quality of the everyday output of our organization, which includes men who are experts in the selection and arrangement of type faces, borders and ornaments, the blending of colors and mixing of inks, thereby enabling us to produce color and halftone printing de luxe. ¶ Our organization is always at your disposal, endeavoring at all times to render an "Efficient and Intelligent Service." ¶ Correspondence Invited.

THE  
OBSERVER PRINTING HOUSE  
INCORPORATED  
CHARLOTTE, N. C.

NOTE: *Some of the Annuals produced by us this year were for Schools who have given us their contracts for three to eight successive years.*





















68B