

Historic, archived document

Do not assume content reflects current scientific knowledge, policies, or practices.



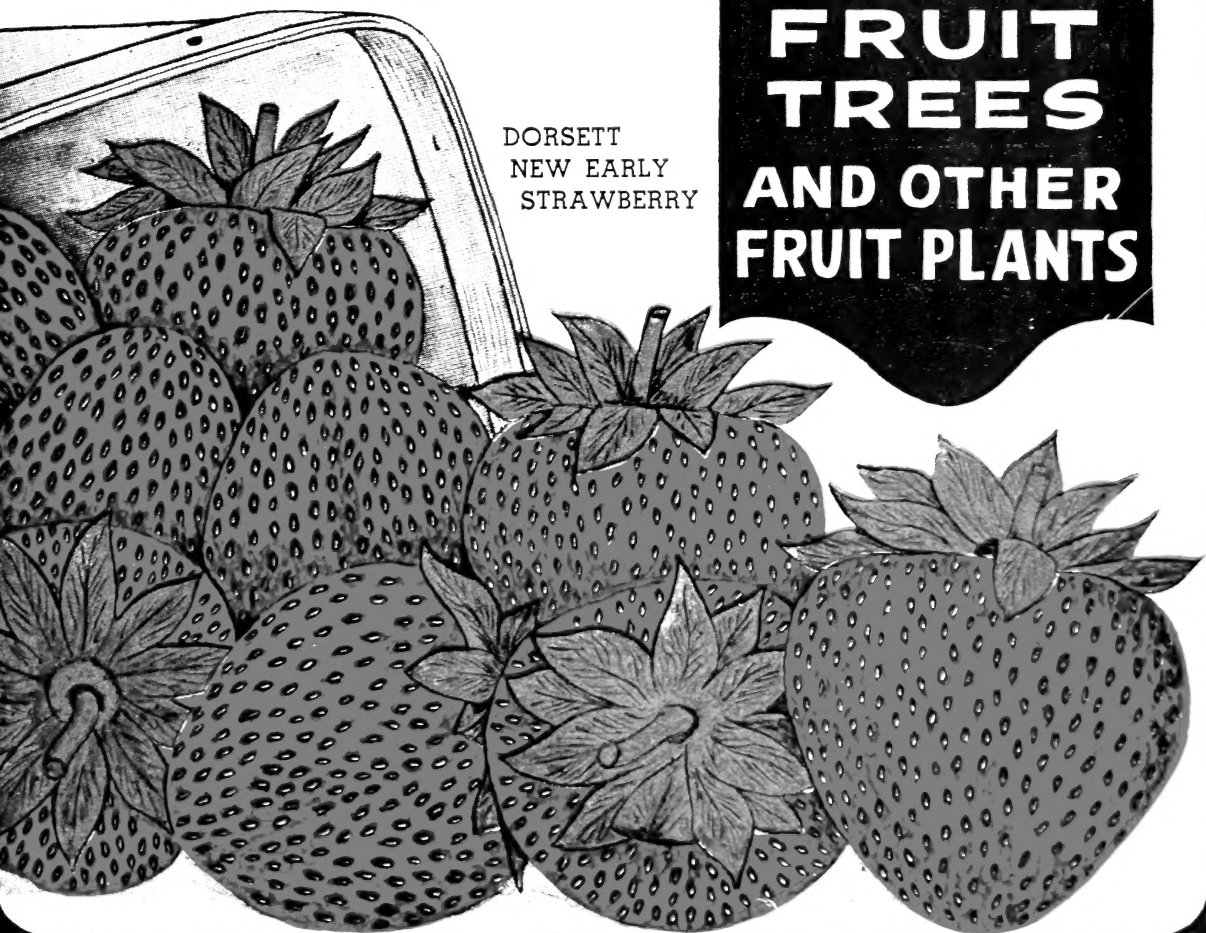
TOWNSEND'S



1936 CATALOG OF STRAWBERRY PLANTS

**FRUIT
TREES
AND OTHER
FRUIT PLANTS**

DORSETT
NEW EARLY
STRAWBERRY



**E.W. TOWNSEND & SONS
SALISBURY, MARYLAND**

His Work Lives After Him

E. W. Townsend Senior, member and founder of E. W. Townsend & Sons, passed away February 9th, 1935. Most of his life he rendered a highly specialized and useful service in the developing of new varieties and improving strains of plants that would be more productive and yield greater profits to the fruit growers throughout the country. His work lives after him in the thousands of satisfied customers wherever berries are grown.

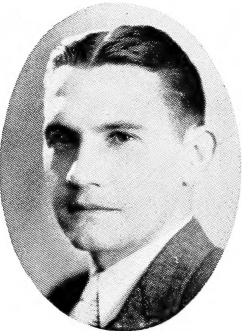
His slogan, "Make Every Customer a Personal Friend," and his high ideas which governed this business, will be faithfully followed by his sons, E. W. Townsend, Jr. and L. S. Townsend, who were closely associated with their father for many years in the development of E. W. Townsend & Sons as the world's largest growers of strawberry plants, and will endeavor to maintain the high standards of Quality and Square Dealing that he treasured so highly.



E. W. TOWNSEND, SR.
 Founder
 E. W. Townsend & Sons
 Nurseries



E. W. TOWNSEND, JR.
 President
 E. W. Townsend Sons



L. SHERMAN TOWNSEND
 Production and Packing
 Manager

*"A friendly word
 to our folks"*

Dear Friends:

Gladly and freely we offer our heartfelt thanks to our 1935 customers and friends, whose cooperation and efforts to serve them to the best of our ability resulted in a gratifying increase in our volume of business during the past year.

Our slogan has always been "Make every customer a personal friend" and is the best recipe that we know of for continued success. So you may be sure that the 1936 policy of this nursery will continue unchanged--to keep our friends and make many new ones by giving them the best service, the finest strain of plants obtainable, and to maintain the lowest price possible, so that they will be assured of a good profit on the bumper crop our plants will produce.

The wise man forgets today's market prices and plans carefully to take advantage of tomorrow's rising market. Those who provide for a bumper crop in 1936 and '37 will be well repaid for the investment they make today. Strawberry and other berry prices will go up and the man who plans for it will reap a fine reward.

As in the past, you will find all of our varieties are up-to-date and every new variety that we offer you will be up to the Townsend "Approved" standard and worthy of your earnest consideration. We offer nothing which has not been tried and tested in a most exacting manner to prove its quality and profit-making possibilities. Order from this catalogue with the fullest of confidence that whatever selection you make, it will be good. The accompanying reports from leading growers in widely separated sections are well worth reading.

With our large stock of "selected strain" plants of "approved varieties" we are prepared to serve you better than ever before, to furnish you with the finest plants money can buy, and to do everything in our power towards making 1936 and '37 successful years for you as a berry grower.

Sincerely yours,

President, E. W. Townsend Sons.

©CIA A 197994

E. W. TOWNSEND & SONS
 PACKING HOUSE

To furnish our customers with the best of service, we have just completed a new addition to our packing house. We are now in a position to serve you better than ever

Townsend's TRUE BLUE PLANTS

are the American
Standard of Quality

*Beware of
Substitutions*



THIS TRADE MARK IS YOUR PROTECTION FOR TRUE TO NAME QUALITY PLANTS

Townsend's name for the past thirty-five years has represented all that is best in berry growing and has become the byword for true-to-name quality plants the country over. Many attempts have been made to sell inferior plants to the unsuspecting buyer at lower prices than our catalogue list price and represent the plants as being products of the Townsend's Nurseries.

To protect our customers against such practice we adopted two years ago the policy of carefully marking every bundle of plants shipped out from our nurseries by placing our trademark on the label. This is our customers' insurance against any one who by such unfair means are trying to capitalize on the Townsend name. When you see this trademark you can rest assured that you are getting true-to-name plants, and Townsend's Quality.

Every bundle of Plants sent out by Townsend's is labeled true-to-name and carries our Trade Mark

MONEY-MAKING OPPORTUNITIES GROWING STRAWBERRIES

There are big profits in growing strawberries. The first step is to secure healthy, vigorous plants with yielding qualities bred into them. Plants that will produce uniform berries of the highest quality; berries that will bring the top price on any market. The local and distant markets are usually well supplied with small, undersize berries during harvest season, bringing the price down on this class of berries to an unprofitable basis, while the same markets are glad to get berries of superior quality, and perfectly willing to pay a premium price for them. Our customers often write us that their berries have been topping the market from three to five cents per quart, this extra price being a very good profit and one that no grower of strawberries can afford to pass up.

SATISFIED CUSTOMERS

Thousands of our customers have grown up with us. They started in a small way just as we did. Following our advice and instructions, they have made more money year after year in growing strawberries and other small fruit than any other crop. These thousands of old customers have sent to us tens of thousands of new customers. In this way TOWNSEND'S NURSERIES have grown until today we are the largest growers and shippers of Strawberry Plants in the world. We enjoy the full confidence of the Strawberry growers throughout the country. We are mighty proud of our business and just as proud of our long list of faithful customers who have contributed their share in building our business to its present standing. For this faithfulness we are giving to each of them the best that is within our power in trying each year to grow plants that will please them better and to give the best service at our command.

LET US HELP YOU GET STARTED

Our instructions are easily followed; simple enough for the average 10-year-old boy to understand. To those of our friends with little or no experience in this profitable strawberry field we are most happy to take up your problems and give you the benefit of the information that we have gained through the years we have been in the small fruit plant business. We also issue a complete culture guide on small fruit growing. This booklet is free for the asking.

WHEN YOU BUY TOWNSEND'S PLANTS

You purchase thirty-five years of practical growing experience and plant breeding with them. Plants that are full of vitality and will increase your yields as they are doing for thousands of our customers thruout the country. Mr. G. G. Adams, South Orrington, Maine, writes us: "Picked 8,200 quarts berries from two-thirds of an acre." F. D. Rogers, Corydon, Pa., averaged 11,700 quarts off an acre. S. Hartman, of Virginia, picked 11,520 quarts from an acre. There is no secret in making yields of this kind. You will find that Townsend's Selected Strain of approved varieties will increase your yields also.



THE TOWNSEND FOUR-POINT GUARANTEE and What It Means to You

QUALITY

The good name of this firm and good will of its customers have been built and preserved by always handling nothing but the highest grade stocks available. Every plant we ship is the best we can produce.

TRUTH

Old customers know that they will always get the variety they order. They have faith in us and we will not break it.

HEALTH

Every plant we ship is healthy, thrifty, and free from all injurious diseases. Diseased plants will produce dividends for neither you nor us.

PRODUCTIVENESS

Every plant that goes into our propagation fields is selected for its heavy fruiting crowns. In this manner we keep our stock bred up in productiveness and vitality. They are carefully packed so that when they reach you they will grow strongly and produce as you have the right to expect from Townsend's plants.

We Replace Free Any Stock Received by You That Does Not Meet These High Standards.



Plant Selection and Its Importance

PLANT SELECTION does not differ from the breeding of horses, cows and other animals in the matter of keeping up the "Strain" and improving it. Townsend's have always taken pride in the "Strain" of plants offered their customers. Our thirty-five years of experience in the growing and propagation of small fruit plants has given us valuable information that could have been obtained only through constant contact with our propagating fields throughout the years we have grown plants. Every Townsend plant is an offspring of a selected plant that has special merits back of it. We go into our fields each year with experienced men under personal supervision of one of the Townsends and personally select plants that are to be used for mother plants. Plants are chosen that show outstanding vigor and productiveness, and to the greatest degree exhibit the true characteristics of the variety. These selected breeding plants are then reset into a plot where they are grown until the following spring. During this period of growth numerous strong healthy runner plants are produced. These plants are then taken up during the spring at proper planting time and set in large acreages on our farms where they are grown for our many customers throughout the country.

WE do not stop here, but go on year after year selecting this stock and keeping our strain up to the nearest to perfection that thirty-five years in small fruit plant breeding has taught us. Our many customers benefit by the selected strain in larger yields and better quality fruit.

What It Means to Have a Plant of Strong Crown Development

Recent research has shown that 80% of the fruit stems on strawberry plants are formed in the crown of the plant from September to November of the season before blossoms appear. It is, therefore, important to set nothing but well developed plants for your fruiting beds; plants that will have sufficient vigor to send out strong crowned runner plants in which these fruit buds are formed. This governs the yield of berries you will get the following spring after setting.

With Townsend's selected strain of plants you are assured of a well developed fruiting bed that will yield far above the average plants offered, when grown under normal conditions. Many thousands of our customers know this to be true and write us convincing letters about their heavy yields obtained from our plants.

2,500 Quarts or 10,000 Quarts to the Acre—Which Yield Do You Prefer?

The fact is that the average yield of strawberries, taking the country over, is less than 2500 quarts per acre (according to government figures). This low yield will barely pay cost of growing strawberries, while a yield of 5,000 to 14,000 quarts per acre will usually net from \$500 to \$1400. This is a very good profit even at the lower figure, and much more than is being made on the average truck crop. Many of Townsend's customers report yields of 10,000 to 14,000 quarts per acre and seldom report less than 5,000. This is convincing proof that the Townsend's strain of plants have much higher average yields per acre than just ordinary plants.



Selecting Planting Stock for propagating purposes to meet the increased demand for Townsend's Selected Strain Plants.

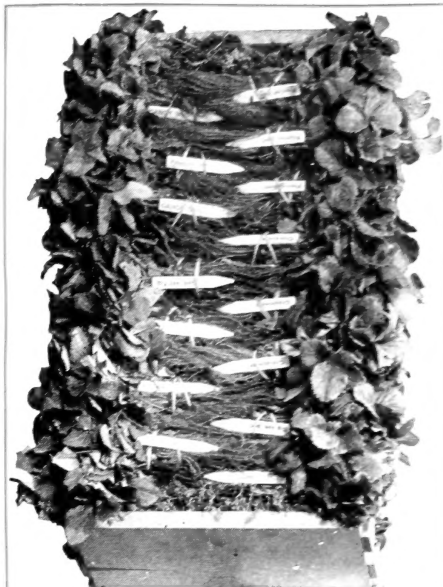
Some Of The Reasons WHY Townsend's Plants Are Preferred By Successful Berry Growers

The Townsend's Plant Farms consist of more than 2000 acres of rich loam soil; that is ideal for growing Strawberry Plants and other berry plants. It has always been a known fact that the best plants are grown on New Ground Soil and Premium Prices are usually asked by other Nurserymen for such plants. We grow annually 350 acres of Strawberry Plants on such soil; and thousands of dollars are spent each year in clearing new ground to grow these fine plants. We invite you to visit us and see for yourself one of the largest plantings of New Ground plants in the country. Hundreds of customers visit us each year and place their order promptly after seeing such a vast planting of husky plants. Orders for more than three million plants were placed personally by representatives of large berry associations in New York; Conn.; Illinois and Penna. after a visit to our farms last year.

We do not get as many plants to the acre as plantings on old fields. But as one sales manager from a large fruit tree nursery in the East put it. Every plant is a specimen and one that will please the customer. A visit with us will convince you that Townsend's are growing the best plants that money can buy and at the same time keeping the price in line with the quality.

OUR PACKING METHOD

All plants packed at Townsend's are placed in small well ventilated crates; light and durable. Between each layer of plants we apply a portion of damp sphagnum moss, which is very fine and light. This moss is used to preserve moisture around plant roots and keep them cool while in transit. No matter where you live, we insure our customers in getting their plants in a fresh growing condition.



Each and every bundle Townsend's Plants labeled true to name and carries our Trade Mark

Every precaution is used in digging and packing plants to see that they reach our customers properly labeled and True to Name. For this reason we spend thousands of dollars each year in placing on each and every bundle, plants tied at our packing house, the correct label of the variety ordered. Our Trade Mark appears on each and every label which is a guarantee that these plants are Townsend's selected strain and True to Name.

Clean Trimming of Plants Makes Easy Setting

Plants received from the Nurseries well trimmed, not only saves customers time when setting, but transportation as well. You are not paying Extra Express or Postage for excessive decayed foliage which you usually find when not properly trimmed, and very often a loss in plants by this excessive foliage heating in transit causing bud decay or dried roots. This is an important part played by our experienced plant diggers each year in cleaning all plants thoroughly to help our customers further in making big yields of quality fruit without additional cost.

Fibrous Rooted Plants

The Townsend's Plant Farms consist of 2,000 acres of ideal soil for the growing of fibrous rooted plants. Practically all of our plants are grown in New Ground where the roots obtain the benefit of this open soil. This fibrous root system is an important factor in getting 100% stand of plants, and the yields that you should expect. You will find Townsend's plants with an ideal root system.



Fibrous Rooted Strawberry Plant Properly Trimmed



Every Precaution Is Taken at DIGGING TIME

We take no chances or guess work on your order. The above picture shows a basket of well cleaned plants being properly labeled in the field before it goes to our grading house, where experienced graders, who know the standards of Townsend's Quality Plants, grade and tie these plants 26 to a bundle, placing correspondent label as on basket in each bundle.

Prompt Service — Quick Deliveries (THIS MEANS SOMETHING TO YOU)

We have one of the largest digging capacities on the Shore and unless weather conditions are so that we can not dig at all, you can rest assured that your order will be taken care of promptly no matter how large or small it is. We are on the job 24 hours a day, throughout the shipping season. If you are not acquainted with Townsend's Service, give us a trial this year.



Our daily digging capacity One and A Half Million plants

AN IMPORTANT MESSAGE for the Commercial Grower



Since the beginning of our career as nurserymen, the Townsend nursery has been intensely interested not only in producing and handling the best strains and varieties of strawberry plants available, but also in offering to farmers and growers in different sections of the country those varieties which would be best adapted to that particular section and which demonstrated the best money-making possibilities for the local grower.

With that end in view, we have not only conducted extensive testing and proving grounds at the nursery, but have tried our best to keep an accurate account record of the adaptabilities of the different varieties as reported to us by our customers, and various state experimental stations whom we are closely connected with. This record has proven invaluable to us and to our customers in the various territories who wished to be sure, before buying, that the varieties they selected were particularly adapted to local conditions.

The varieties mentioned in this catalog, and recommended for the various territories, are the result of this painstaking research on the part of ourselves and our old customers. Further definite information is available at this office and we will be glad to furnish it to you upon request.

Many varieties offered by us for particular localities will do equally well in other localities, but close adherence to the data in this catalog and to such data as we will furnish upon request will distinctly minimize the possibility for error in selecting new varieties for your main crop plantings.

We are proud of this service, know you will appreciate it, and trust that you make use of it whenever necessary.



Strawberry Testing Grounds on our farms where several hundred varieties are being grown.

Proper Time to Set Strawberry Plants—Other Berry Plants

We have been recommending the Early Spring setting of Strawberry Plants and other berry plants for over a quarter of a century, and this recommendation has led our customers to make bigger profits from their berries than most any advice we could have ever given them with the possible exception of obtaining better quality plants and better varieties. Fall setting is practiced in several of the Northern States, but not highly recommended outside the Southern States.

Planting Dates for Different Sections

New England States, April and Early May; N. Y., N. J., Penna., Del., Md., Ohio, Indiana, Illinois, Mich., Tenn., Ky., West Va., D. C., late March or as early in April as possible; Southern States, February and March; all other states in Early April. Give your plants time to establish themselves in the soil while it is cool and before the hot suns start. Plow your land early and be ready to set at the first sign of spring.

Territorial Adaptability of Townsend's Varieties

Variety	Approved for	Season
Beaver	Western and Mid-Western States.....	Extra Early
Blakemore	Western and Southern States, Md., Del., N. J., Pa., W. Va., Ohio.....	Extra Early
Cooper	All Northern States.....	Early
Fairfax	Eastern States including Ind., Ohio, Mich., Ill., and W. Va.....	Early
Dorsett	All Strawberry sections except far South.....	Early
Klondyke	Southern States.....	Early
Premier	All sections except extreme South.....	Early
Bellmar	Southern States.....	Early
Townsend Missionary	Florida, N. C., Virginia, Maryland.....	Early
Howard's Supreme	All Strawberry sections except far South.....	Early
Aberdeen	N. J., Pa., Ohio and other Northern States.....	Med. Early
Catskill	All States east of Miss. River except far South.....	Med. Early
Senator Dunlap	Western and Mid-Western States.....	Med. Early
Dr. Burrill	Middle West.....	Med. Early
Big Joe	All Strawberry sections except extreme South.....	Med. Early
Jupiter	All Strawberry sections except extreme South.....	Med. Early
Ford	All sections except far South.....	Late
Lupton	New Jersey, Ohio, Penna., New York, Conn.....	Late
Chesapeake	Northern States including W. Va., Ohio, Ill., Ind., Mich.....	Late
Wm. Belt	N. Y., Pa., and other States north of Mason-Dixon Line.....	Late
World's Wonder	Maine, Vt., N. H., Northern N. Y.....	Late
Brandywine	California and Florida.....	Late
Town King	All Strawberry sections with exception extreme South.....	Late
Townsend's Big Late	All sections east of Miss. River except far South.....	Late
Aroma	Tenn., Ky., Ind., Ill., Eastern Kans., Ark., Mich., Mo., all Northern States.....	Late
Gandy	All Strawberry sections except extreme South.....	Extra Late
XTRALATE (New)	Being tested in all leading berry sections.....	Extra Late
Mastodon Everbearing	All Strawberry sections except Florida.....	Early summer
Gem Everbearing	All Strawberry sections except Florida.....	Extra Late
Luckystrike Everbearing	All Strawberry sections except Florida.....	'til frost 1st year set.

VALUE-QUALITY

Satisfied Customers

Value cannot be measured by price alone. If quality is lacking, value is destroyed. But when you are offered the combination of low prices and high quality, only then does the value of that product exist.



Townsend's Plants are known the country over as one of the heaviest yielding strains grown

12,600 QUARTS FROM AN ACRE

Bristol County, Mass.
Enclosed please find order, making a total of 6,200 plants. The plants purchased from you before for just an acre picked 12,600 quarts.
CLIFFORD G. CHACE.

13,940 QUARTS PER ACRE

Somerset County, Pa.
Enclosed find order more strawberry plants. I picked at the rate of 13,940 quarts per acre. County agent said, "They were the finest plants he had ever seen." Bought many plants, but none ever compare or do so well as your plants.
GLENN A. SADLER.

GETTING GOOD YIELD

Orleans County, N. Y.
In April, 1934, we set 5,000 Townsend's Premier. We have already picked over 4,000 quarts and are not near through yet. We are well pleased with Townsend's plants.
FRANK M. SNYDER.

TOWNSEND'S PLANTS AND QUALITY ARE KNOWN THE COUNTRY OVER

Suffolk County, Mass.
Through Mr. Carter, of New Hampshire, I have heard of your successful Strawberry plants. Enclosed you will please find check for Garden Collection.
JULIA M. AUSTIN.

DEPENDS ON TOWNSEND'S

Adams County, Pa.
Plants arrived today, opened them up and they are in perfect condition. We can always depend on you for plants that will grow. When better plants are to be had, Townsend's will have them. Enclosed order for more Fairfax.
STRALEY BROS.

PLANTS ARRIVED IN PERFECT CONDITION, 100% LIVED

Wheeling County, W. Va.
Order of plants arrived in "perfect" condition. All plants living 100%, very satisfactory.
EARL B. CLARK.

FEELS THAT HE MADE GOOD START

Greene County, Ohio.
Plants you shipped me were very fine stock. Glad I bought my plants from Townsend. Feel that I have made a good start.
J. B. LANE.

WE ARE PACKING CONFIDENCE IN EVERY BUNDLE PLANTS SENT OUT

For more than thirty-five years the Townsend's Nurseries have been run on a square deal plan. We have tried to pack *confidence* and *value* into every package of plants that we have ever sent out.

We realized in the beginning that first we must gain your confidence, and in order to hold it we must give you the same square deal every time you come to us with your order.

WE NEVER SACRIFICED QUALITY TO MAKE A LOW PRICE

Every Townsend plant has all the quality built into it that such an organization knows how to build. We contribute this quality, together with our fair and courteous treatment of every customer to our success. Mass production and low prices without quality may go for a time, but no lasting trade can be built on any product except where Quality is present. Our motto has always been to grow the best quality plants possible, and to make the lowest possible price.

THINKS TOWNSEND'S PLANTS JUST FINE

Grafton County, N. H.
Several years ago I bought my first plants from you, and if you will look up your records you will find that I have been ordering regularly ever since, as they are just fine. No one could ask for better quality.
W. A. WATERMAN.

TOWNSEND'S PLANTS GIVE BETTER SATISFACTION

Miami County, Ohio.
I am sending you an order for 8500 plants. We received plants from you two years ago and they were just fine. Premier variety brings best results in this part of the country and your plants have given us better satisfaction.
A. J. JOHNSTON.

5000 PLANTS SET—PICKED 8200 QUARTS BERRIES

Penobscot County, Maine.
Enclose check as payment on my order of Premier plants. The 5000 plants we bought of you last year picked 8200 quarts. There is no other variety for us but your Premier plants. With very many thanks for your courtesy to us and fair business dealings.
G. J. ADAMS.



The foundation for your success in berry growing starts at the nursery

DORSETT



A Profitable NEW EARLY Strawberry

This berry gives us more food for genuine enthusiasm than any variety we can remember, and we do not hesitate to recommend it as being the biggest source of profit the strawberry grower can hope to obtain at the present writing. Dorsett topped New York City markets this year bringing fancy prices throughout the season. You cannot afford to neglect planting Dorsett this year.



Section of a 50 acre field of Dorsett where your plants will be dug this year

**MAKE a Place for DORSETT
Strawberries in Your 1936 Planting
Program—It's a Sure Money Maker**

Color—Rich bright red. Retains color long time after picked.

Size—Fully as large as Chesapeake or Towing.

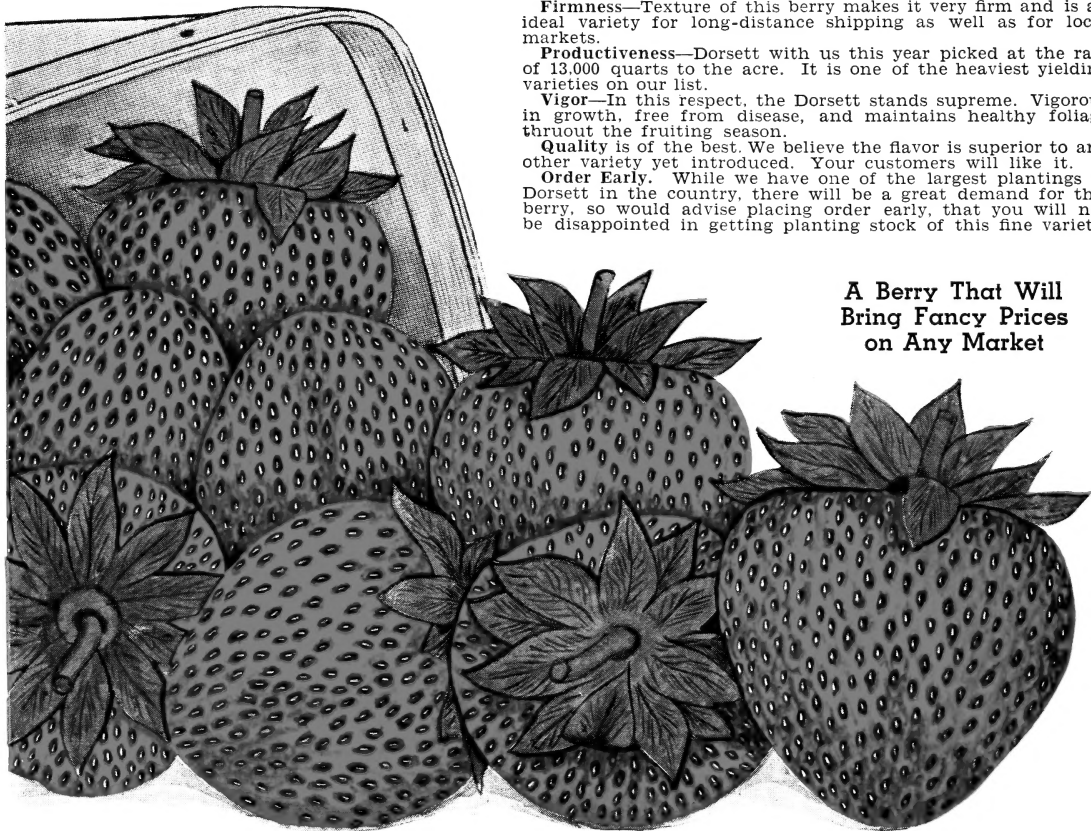
Firmness—Texture of this berry makes it very firm and is an ideal variety for long-distance shipping as well as for local markets.

Productiveness—Dorsett with us this year picked at the rate of 13,000 quarts to the acre. It is one of the heaviest yielding varieties on our list.

Vigor—In this respect, the Dorsett stands supreme. Vigorous in growth, free from disease, and maintains healthy foliage thruout the fruiting season.

Quality is of the best. We believe the flavor is superior to any other variety yet introduced. Your customers will like it.

Order Early. While we have one of the largest plantings of Dorsett in the country, there will be a great demand for this berry, so would advise placing order early, that you will not be disappointed in getting planting stock of this fine variety.



**A Berry That Will
Bring Fancy Prices
on Any Market**



PREMIER

(HOWARD-17)

The Most Widely Planted Early Strawberry Ever Introduced

No variety ever introduced to the public has received as much praise as the *Premier*. No variety has ever been grown in such quantity in so many sections of the country and no variety has made anything like as much money for the growers. And while there are now being introduced some marvelous varieties, which are almost sure to take the place of *Premier*, it is going to be a hard parting between growers and their old friend *Premier*.

PREMIER has paid off thousands of old mortgages, purchased and paid for new homes, new barns and automobiles and the many other needy things too numerous to mention. And we predict that it will be grown in a large way for a great many years to come. Since the introduction of premier we have made this grand variety our specialty. And the growers have become to recognize Townsend's as headquarters for *True To Name Premier* plants. We have shipped them to more than fifty thousand customers, and over and over year after year these customers come back for more. While *Premier* is too well known by the leading growers to need a description; however for the benefit of the new beginner we will say that *Premier* and *Howard-17* are one and the same variety. The variety was originated by Mr. Everett C. Howard of Belchertown, Mass., and in many sections has become known by the name as *Howard-17*.

Color—Medium red and very attractive with the green cap which shows off the berry to advantage when placed in package.

Size—Under favorable growing conditions the berries will run large to extra large and very uniform.

Firmness—Premier can be classed as a long distance shipper where trucks are used. For the market gardener its firmness will be found to be very satisfactory.

Vigor—Foliage very strong and healthy. Will grow well on any good, rich garden soil in practically all sections of the country.

Quality—Stands out as one of the best flavored berries grown.

Season of Ripening—In the North, Premier is one of the first berries to ripen. It can be put on the market from a week to 10 days ahead of the midseason varieties.

Frost Resistance—This is an outstanding point in favor of Premier, as we have never known a crop of Premier to be injured seriously by late frost. You can count on Premier being a sure cropper. When you plant Premier you plant frost protection also.

Mr. R. B. Archer is one of the leading Strawberry Growers in Jefferson County, New York, and is harvesting bumper crops of fine berries from *Townsend's Selected Plants of Approved Varieties*.

LEADING BERRY GROWER USING TOWNSEND'S PREMIER

Suffolk County, N. Y.
The sixty thousand Premier sent me this year received in fine shape and doing well. We give a good deal of credit for our success with strawberries to your plants.
E. VAN BRUNT.

A Field of
TOWNSEND'S PREMIER
is an
Absolute Guarantee
of
sure future profits for you

Comes back with another Premier order

Oswego County, N. Y.

The 8000 strawberry plants received Monday in good shape. Inclosed check covers another order for Premier. Thanking you for the good plants you shipped us, we are
Sincerely yours, W. C. HEDGER & SON.



A fine field of Premier and Aberdeen grown by R. B. Archer, Jefferson County, N. Y.



Your order for Fairfax will be filled from this field, which is one of the largest plantings of Fairfax in the Country. A fine husky bunch of New Ground Plants

FAIRFAX—A Leader

The Fairfax is coming into general favor with the commercial growers, because of its somewhat tough skin texture and unusual shipping qualities. Our own experience with the Fairfax since introduction and the general acceptance of the commercial growers, who have purchased plants from us, carries our approval on Fairfax as a really worth while early variety that will make good profits for you.

Season of Ripening—Fairfax ripens about the same time as Premier and Dorsett, in some few sections two or three days later.

Quality is an outstanding point with Fairfax as it has a wonderful flavor which makes it ideal for Commercial marketing or home consumption. It is without question one of the finest eating berries on the market.

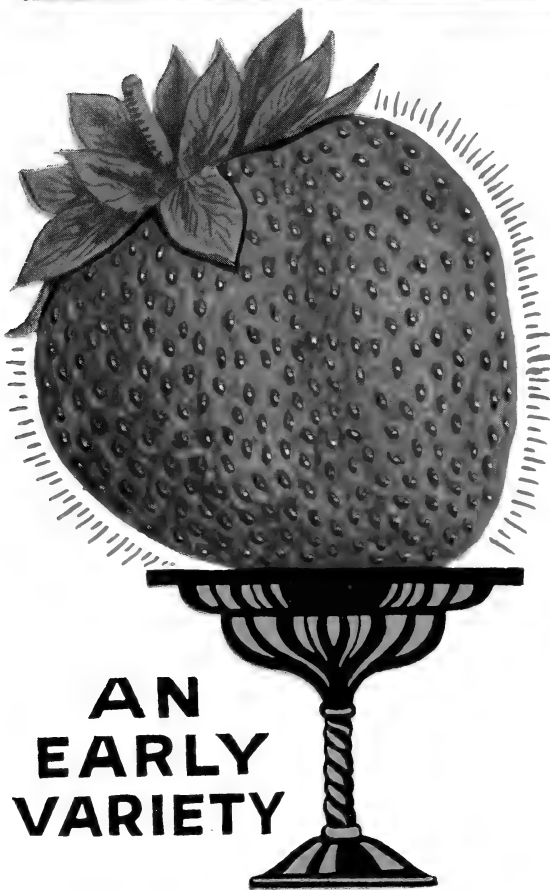
Production—The yield of Fairfax compares favorably with Dorsett and Premier. It probably might not set as much fruit as the Premier; however, it makes up in yields with the size, as our berries of Fairfax last year run large from the early pickings to the last while Premier usually gets smaller towards the last pickings. It seems to stand up well in dry weather as good as Premier, but not quite as frost resistant as this variety.

Vigorous Grower—The growth of Fairfax is all that any one could ask for, it usually having a long root system and feeding habit. The foliage is a dark green of strong growth, protecting the berries from hot suns during harvest. You can bank on Fairfax making a good fruiting bed under ordinary growing conditions.

Size of Fruit—The fruit is large to extra large in size and being very uniform, making it an attractive berry when placed on the market.

Color—Fairfax is rich red in color, resembling the well known Chesapeake and Townking. After picking it turns dark to a certain extent. This does not mar the qualities of Fairfax as the texture is such as to make it a good keeper after picked from the vines.

We advise any one who is interested in a large, fancy, early berry, to try Fairfax this year along with some of the New Dorsett.



AN EARLY VARIETY

You Can Depend on Varieties Recommended by Townsend's

Berks County, Pa.
Aug. 6th, 1935.

Certainly appreciate the advice you gave me personally at the Harrisburg Farm show; when you advised me to set Fairfax and Dorsett for early berries. The sixteen thousand plants purchased from you did even more than you told me or I had hoped for. They were the talk of the county. After all expenses were paid I had \$837.00 profit. It certainly helped me a lot; will be with you again next year.

FRANK R. FLETCHER.

Pleased With Fairfax Results

Clearmont County, Ohio.

Please accept our thanks for recommending Fairfax to us last year. The results has been splendid. We have never grown a finer lot of berries. They certainly are wonders.

J. B. SHOWALTER.

His Premier and Fairfax Pleased Him

Oswego, New York.

Purchased six thousand each of Premier and Fairfax plants from you last year. They arrived in fine shape and grew rapidly after setting. It certainly is a pleasure to do business with a concern like yours; and know where to get good plants when in need of stock; you can bank on your business from now on.

EDWARD BECKS.

Local Market Takes All His Fairfax

Cheshire County, N. H.

The Fairfax plants purchased from you last year certainly produced a remarkable crop; I never saw finer berries; our local market purchased them all at an attractive price thruout the season. Yours for more Fairfax.

RALPH C. YOUNG.

For Your Early Strawberry Garden

Be the first in your neighborhood to have large delicious strawberries; order one of these gardens today at special prices.

50 Dorsett
50 Fairfax
50 Premier

150 Plants All for **\$1.00**
2 Gardens as Above for **\$1.75**

HOWARD'S SUPREME

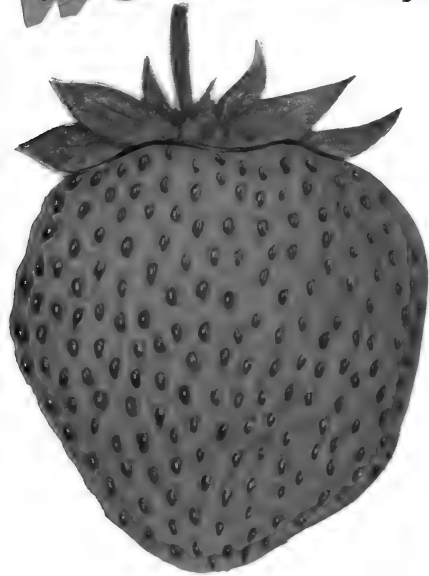
Big DEEP RED Early Variety

Vigorous Grower, Good Plant Maker, Heavy Producer

Howard's Supreme was originated by A. B. Howard Sons, Belchertown, Mass., who also originated the Premier (Howard-17). Since introduction by E. W. Townsend Sons in 1931, it has been an outstanding money making variety in most of the large berry growing sections and especially in the Northern states.

Howard's Supreme ripens about the same time as Premier. The quality of the fruit is of the best, being sweet and having very little acid. In yield it outranks any variety on our list, producing at the Connecticut Agricultural Experimental Station Farms, Mount Carmel, Conn., Spring 1932, at the rate of 15,110 quarts per acre. The fruit is exceptionally large and of dark red, very firm, sweet and a good shipper. Fruits over a long season, fully as long as Premier. Howard's Supreme being an imperfect flowering variety and a heavy producer, should be well pol- lenized by planting with equal rows (2 rows each) such varieties as Premier, Aberdeen, Fairfax or Dorsett.

Plant as many Howard Supreme as you can buy. You simply can't go wrong with this wonderful, dividend-producing berry.

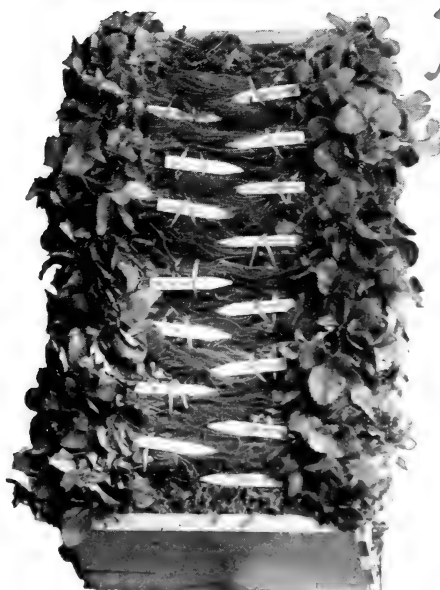


Howard Supreme
PATENTED
July 25th, 1933
 Plant Patent
 No. 71

E. W. TOWNSEND SONS
 Sole Distributors



HOME OF HOWARD'S SUPREME AND PREMIER (HOWARD-17)
 This Photo taken on the farm of A. B. Howard Sons, Belchertown, Mass., while harvesting their crop of Supreme and Premier



Every Bundle Surplus Plants Labelled and Are of Approved Varieties

Here's Real Value
IN SURPLUS STRAWBERRY PLANTS

During our day's digging of strawberry plants we usually run over on some varieties we have dug to fill orders, and, as we do not ship anything but fresh dug stock, carrying no plants over from one day to the next, we use these plants to fill surplus plant orders. Customers who are not particular about varieties, will find these plants a real bargain. as every plant is strictly fresh dug, labelled and true to name. Please do not ask for any particular variety when ordering these plants. At the prices we are offering them, it would be impossible to comply with this request.

Surplus Strawberry Plant Prices
 1000 Plants \$2.75 per 1000
 5000 Plants 2.50 per 1000
 See Price List on Page 38 for Complete Surplus Plant Prices



SENATOR DUNLAP (Dr. Burrill)

Medium Early

The Senator Dunlap is one of the leading varieties for the Western States. We grow hundreds of thousands New Ground Dunlap annually to supply our Western trade, who demand Townsend's Strain of Dunlap. It is an old variety which we have specialized in for years, and one that seems to have no equal in the Western States. Trial tests at our Nurseries have shown that Senator Dunlap and Dr. Burrill are one and the same variety. Therefore we are listing it as Senator Dunlap, which is the original name for this fine berry.

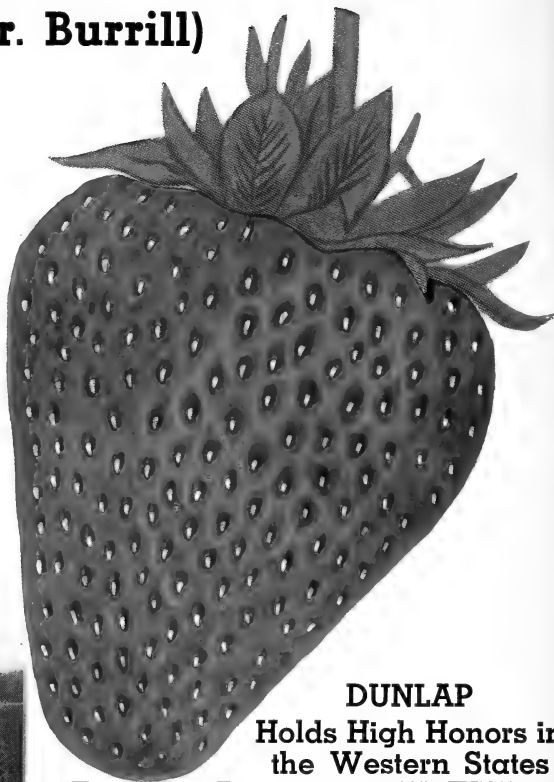
Vigorous Grower—Dunlap has a deep feeding habit and will withstand considerable amount of dry weather; more so than any other variety. For this reason it is well adapted to the Western States. It usually makes a good fruit bed under unfavorable growing conditions.

Fruit is of good size and a beautiful bright red color, with plenty of gloss and very firm. It is a splendid shipper and of excellent quality when grown in the regions adapted to it.

Productiveness—The Western Growers find Senator Dunlap to be an exceptionally heavy yielder on their soils, as it sets fruit very heavy and when properly fertilized matures practically a 100% crop of fancy fruit.



We have grown a fine stock of Sen. Dunlap for our Western customers this year. The above photo shows a portion of our 10 acre field where your plants will be dug this year



DUNLAP
Holds High Honors in
the Western States

Plants always come thru in fine shape

Lancaster County, Nebraska.

The strawberry plants purchased from you last year withstood the severe drought and made nice rows of plants across my patch. Your plants always come thru in fine shape in spite of the distance.

GAIL F. HOLLEY.

Other Early Varieties of Strawberries Having Special Merits

BEAVER (Early). A cross of the Dr. Burrill and Premier. Our Western customers reporting it to be in many ways superior to Dr. Burrill and Premier. The fruit is large, bright red, of very firm texture and an ideal variety for long shipment. We have approximately 50,000 plants to offer our customers who are interested in Beaver. We recommend it for the Western and Northwestern States.

BELLMAR (Early). We recommend Bellmar for the Southern States, including Texas, Missouri, Kansas, Colorado and Nebraska. It ranks high as an early berry because of its handsome appearance and heavy crop-producing possibilities in dry regions.

KLONDYKE (Early). A Strong hardy grower especially adapted to North Carolina, South Carolina, Southern Illinois, Tennessee and Missouri. Fruit medium to large in size. A bright rich, red berry; very round, firm and an excellent shipper. Klondyke is one of the oldest varieties on our list.

COOPER (Medium Early). A berry of very large size; coarse in texture, running very uneven in shape. Does well in Michigan, Wisconsin, Indiana and Western New York. Our supply of Cooper is limited.



A field of healthy growing plants being grown by C. C. Foster, Meigs County, Ohio

Meigs County, Ohio.

I am more than pleased with the growth of my Premier plants purchased from you. These plants went thru one of the worst droughts we ever had in this section of the country. I enclose photo of our field during growing season.

C. C. FOSTER.

Crawford County, Kansas.

Plants were received in fine shape. We are well pleased. You may look for more orders from us.

GAIL F. HOLLEY.

Blakemore Extra Early

THE IDEAL
COMMERCIAL
BERRY

REMOVES
ALL
SHIPPING
WORRIES



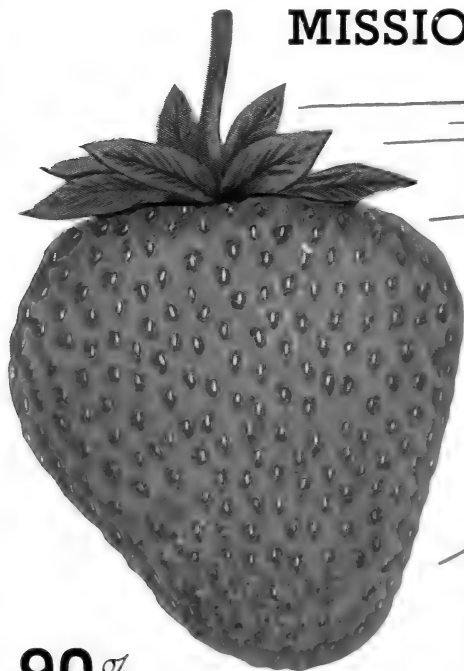
BLAKEMORE. This fine Extra Early variety was originated by the U. S. Department of Agriculture. It was a scientific cross between Premier and Townsend's Missionary. While it is classed with the same season of ripening as Missionary and Premier, we find it ripens about four days ahead of these varieties. In plant growth it is a strong, hardy grower; makes plenty of fruiting plants with very little attention. It does not require any particular type of soil to give a very productive crop. This is due to the fact that its parentage, Missionary, is a deep feeder and a very good yielding variety, and would produce fine results on sandy soils or heavy muck loam.

Blakemore is more of a Southern variety, it having been found that best results have been obtained south of New York than in the Northern and New England

States. We recommend Blakemore for New Jersey, Delaware, Maryland, Ohio, West Virginia, Kentucky, Indiana, Illinois, and all Southern States with exception of Florida. It has been tried out in Florida and will not compare in yields or size of fruit with Townsend's Missionary.

Blakemore has wonderful shipping qualities, carries well on long-distance hauls and will withstand heavy rains while ripening on vines, with very little loss of fruit. It produces 80% of its crop within one week after first picking, making it a very valuable variety for large Growers who wish to hit the early berry market in large quantities. The fruit is medium to large, running uniform in size, and has a very sprightly flavor that makes it a very good canning or preserving berry. Since introduction Blakemore has become the leading canning variety in North Carolina, Virginia, Maryland and Delaware.

MISSIONARY (Early)



the
**LEADING
Southern
VARIETY**

"Townsend's Nurseries"
The Home of Missionary;
Introduced by Townsend's
26 Years Ago, and Still Going Strong

90%

of the Total Berry Acreage
in Florida Is Missionary

The fact that, during the past 26 years, the Townsend nurseries have shipped over 100,000,000 Missionary plants into the State of Florida alone is proof in itself that, for a main southern crop the Missionary is unexcelled. Because of our method of "up-breeding" (continually improving on this old variety), the Townsend standard for this variety has been continually raised so that today southern planters acknowledge that our strain is the most productive and the surest to produce consistently large profits of any Missionary plants sold. They do not gamble, but stick to us and are well repaid for their confidence in our product.

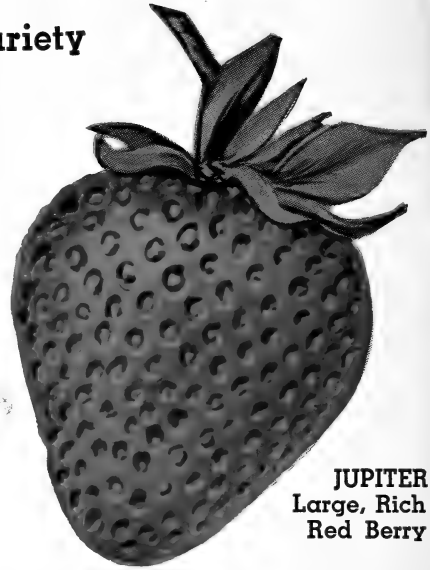
Buy Townsend's Selected Missionary plants for southern planting!

Recommended for States of Fla., Ga., N. C., Tenn., S. C., Texas



Medium Early Variety

This grand variety is being grown extensively thruout the leading strawberry sections of the country. Many fine reports that our customers have sent us bears out our statement that Jupiter will become one of the leading midseason varieties and a sure money maker. One customer in Nebraska writes us: "Jupiter withstood the severe drought in fine shape." A customer from Scott County, Iowa, advises us: "Jupiter loaded with berries this year, excellent quality and size." Mr. Woodward of Fairfax County, Va.: "Jupiter came up to everything you said about them." If you are



JUPITER
Large, Rich
Red Berry

in doubt about a midseason variety to plant, give Jupiter a trial this year.

Color—Glistening red, very prominent seed, heavy green cap.

Quality is in keeping with the leading varieties, very solid, making it a good shipper, keeping for a long time after picked.

Size—Jupiter is classed as one of the largest midseason varieties on the market, comparing favorably with Chesapeake, Town King, and Dorsett—a berry that the fancy trade will take at a good price.

Productiveness—As Jupiter is a vigorous grower, setting a nice fruiting bed on ordinary soil with extra strong crowns, it can be assured that Jupiter will produce a nice crop of berries.

Every Jupiter Plant sold with our liberal guarantee that they prove as described by us in every way or your money refunded.

Other Medium Early Varieties

BEAUTY was originated in Michigan. Seems to be a strong, robust plant, producing attractive light, glossy red, uniform color fruit; moderately firm in texture. With us *Beauty* is an excellent producer. We recommend *BEAUTY* for TRIAL.

GIBSON. Extremely productive variety, though too soft a texture to carry well on long-distant hauls. It is well adapted to all types of soil, easy to grow, and can be used to advantage in the garden or for roadside sales, as flavor is very good.

MARSHALL is an old favorite with berry growers in the Northern States. Fruit is large to extra large in size, and will take the eye of the Fancy Trade. We are listing this variety for the convenience of our customers who wish to obtain Marshall in small lots.

SHARPLESS is another old favorite. Fruit is very sweet and a heavy producer. A fine variety to grow where your trade demands an extra sweet berry. It is easy to grow, being a good plant maker and not particular to the type of soil it grows in.



A Strawberry garden like the above is a sure profit maker

We Enjoy the Full Confidence of the Leading Berry Growers Throughout the Country

No business can succeed unless its customers have faith in the product offered them. We appreciate receiving from our friends and customers letters like the following, and we will continue to send out plants that will merit such confidence as shown in these letters.

Lehigh County, Pa.
Your nurseries having been recommended to me by Mr. Arthur Dennis, I am interested in planting Strawberries, etc.

MISS BESSIE KENNEDY.

Worcester County, Mass.
Order of Raspberry plants received all OK. Send one of your catalogs to — I told him you were the ones to buy from.

JOSEPH STEBBINS.

Washington County, Vermont.
Your firm has been recommended to me as a reliable nursery to get Strawberry plants. Enclosed check for 2,000 Howard's Supreme and 2,000 Premier.

ANGUS J. SMITH.

Washington, R. I.
A friend let me have your catalog and told me how satisfied he was with your plants. Please find check enclosed.

ALBERT LUSSIER.

Butler County, Ohio.
Please send catalog. Your firm has been recommended to me very highly. I want to set some plants.

E. F. CURRY.

Hamilton County, Ohio.
Please send catalog. A friend tells me he gets good plants only from you.

J. H. WASHBURN.

Erie County, N. Y.
Sunday I saw the Strawberry plants you sent to Mr. Ballard. Enclosed find check for 2,000 Premier. Ship Parcel Post.

MR. GEORGE FIESLE.

Northampton County, Pa.
Enclosed find photo of our strawberry plot. The plants came thru in fine shape and grew off rapidly. They sure have the pep back of them. I look for a bumper crop of berries next spring. Wishing you every success, I remain

Sincerely yours,

WM. RICHTER.



Mr. Wm. Richter, of Northampton County, Pa., is well pleased with the results of Townsend's plants

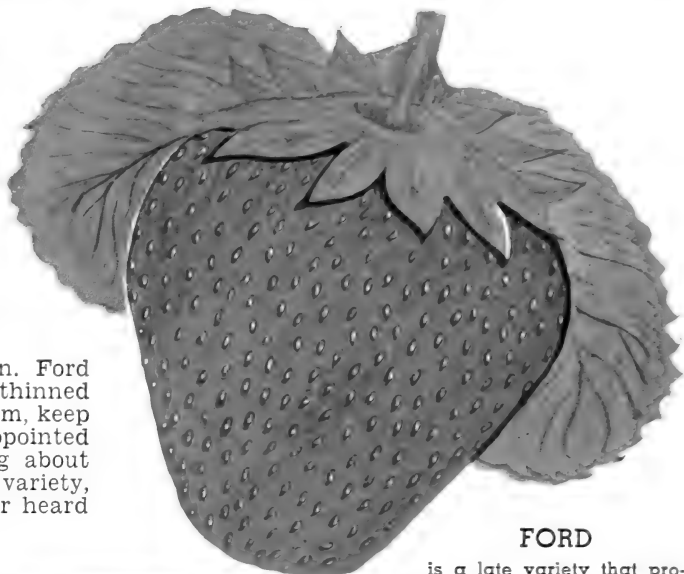
Plant

No Rust
Blemish
Here

FORD

A Townsend's Introduction That
Has Stood the Test of Years

FORD. like Premier is frost resistant and has made hundreds of our customers big money when other late varieties were killed by frost. Ford is a strong, hardy plant grower on all soils. Fruit very large, firm and of good quality; ranks with the very best in production. Ford will make too many plants if not kept thinned out. When set in the matted row system, keep it thinned out and you will not be disappointed in this grand variety. Another thing about Ford, in all our years of growing this variety, we have yet to see any signs of rust or heard of a crop failure.



FORD

is a late variety that produces when other varieties fail. We heartily recommend it for a late berry.



A field of Ford as above pictured is like having money in the bank

We hope you will enjoy our catalogue also and that we may have your order this year.

Indianapolis, Ind.

Received your catalogue. I get a kick out of it, for you boys come nearer telling the truth about plants than any one I know of. Enclosing a check for 5,000 Mastodon Strawberry plants. Your system of shipping has the world beat.

THEY HEWES.

Our packing assures safe arrival

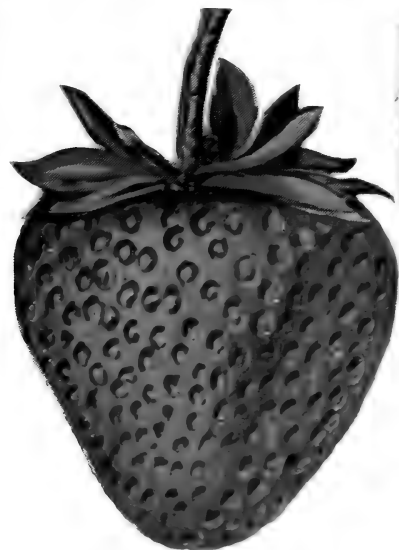
Kane County, Ill.

Plants arrived here in excellent condition. Will say that I would not hesitate to order plants from you regardless of the distance. Never had such nice strong, healthy plants as we received from Townsend's.

W. S. WEIGLETMAN.

TOWNSEND'S Trio Group Offer

50	Plants each variety on this page.....	\$1.25
100	Plants Each variety.....	\$2.20



BIG LATE

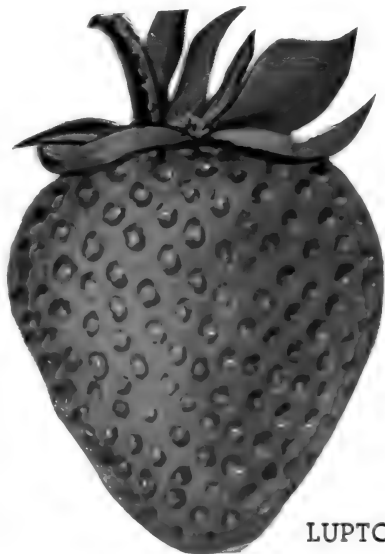
Excellent for Dessert Qualities

A Townsend introduction, known as the Aristocrat, for the dessert qualities found in this berry. Proven a good money maker for the market gardener, as it is a heavy producer on most any ordinary soils. Fruit medium to large; bright, glossy red. Fruit stems hold the berries well up off the ground.

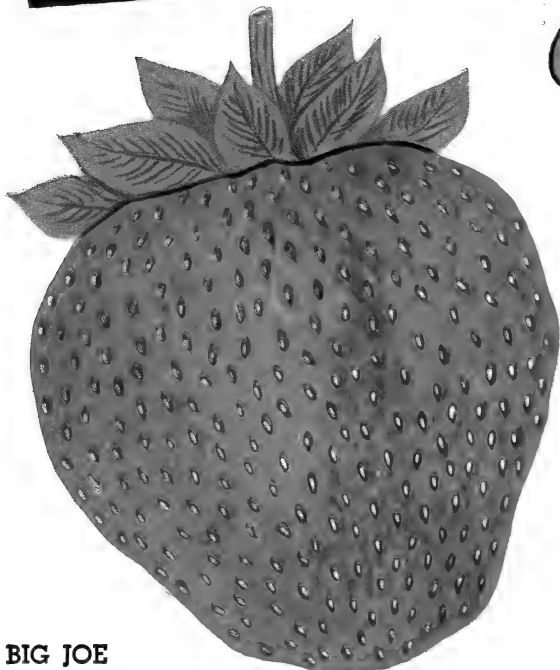
LUPTON

A Favorite Late Variety for
New Jersey and Penn.

Originated in New Jersey and widely grown in that state, where it seems to be at its best. We can also recommend it for Ohio, New York, West Virginia and Pennsylvania. Berries are large, attractive in appearance and an excellent shipper. Under tests while up with the average late berry, it was not as good a producer as TownKing or Chesapeake. Because of its large size and attractive color it always demands top prices. If you have trade wanting berries of fancy appearance Lupton will serve you well, although the eating quality is not as good as some of the other late varieties.



LUPTON

BIG**Joe!**
MIDSEASON TO LATE
Large Fancy Berry**BIG JOE**

A Popular Midseason to Late Variety
Approved for All States Except Far South

ABERDEEN

(Midseason to Late)

A big money maker for the market gardener. One of the most productive varieties, being excelled only by Howard Supreme in this respect. Fruit averages large thruout the season, color a bright shiny red; berries mostly a top shape; has a beautiful double green calyx that adds materially to its beauty. In plant growth it stands among the very best, and will make a fine matted row on any ordinary soil. There is not a blemish of rust or disease that shows at any time. Aberdeen has been fruited for several years by many of the large growers in Pennsylvania, New Jersey, Ohio and other Northern states, and has proved a money maker. We cannot recommend it for the Southern states, as the texture is too soft for long-distance hauls, but anyone within a few hundred miles of market can afford to plant Aberdeen. Some of the leading horticulturists in Pennsylvania rank Aberdeen ahead of all other varieties, giving the Premier second place. We have planted a very large acreage for plants and we are in a position to take care of your orders at a most reasonable price.

ABERDEEN HIS LEADING VARIETY

DEAR SIR: Carlisle, Pa., Feb. 16.
Aberdeen was my leading variety this past year. I sold all my berries at 25c a quart. It is not only a heavy yielder, but has the size and good eating quality. I find that strawberries are one of the best paying crops I can grow, and want to plant more when I can buy some more land.
HARRY C. CRAMER.

ABERDEEN HEAVY FRUITER IN NEW HAMPSHIRE

DEAR SIR: Contoock, N. H., April 29th.
The Aberdeen plants you sent me and which fruited last year were the heaviest yielders I have ever grown; I never saw berries piled up so on the vines. I have more to fruit this year.
H. B. EATON.

Approved for New Jersey, Pennsylvania, Ohio, West Virginia, Illinois, Indiana, New York and New England States

As a money-maker I know of no variety in the midseason to late class that will surpass the Joe. In productiveness it is almost by itself. In size and beauty it is all any one could desire. There is nothing but good qualities about the Joe. In plant growth Joe makes a strong, clean plant. Sets just enough plants for a good matted row, showing up well on most all types of soils, and is at its best on clay or springy loam soil.

Joe is giving satisfaction thruout the leading Strawberry sections of the country, and if you are looking for a real fancy berry for commercial purposes or fancy home trade you can not afford to miss planting Joe. We have listed Joe in our catalogue for the past twenty years, and it is very seldom that we ever hear any one speak unfavorably of Big Joe. With us here it ranks with the best.

Some of the Outstanding Good Points About Big Joe

Size—Large to extra large.

Color—Rich red; very attractive.

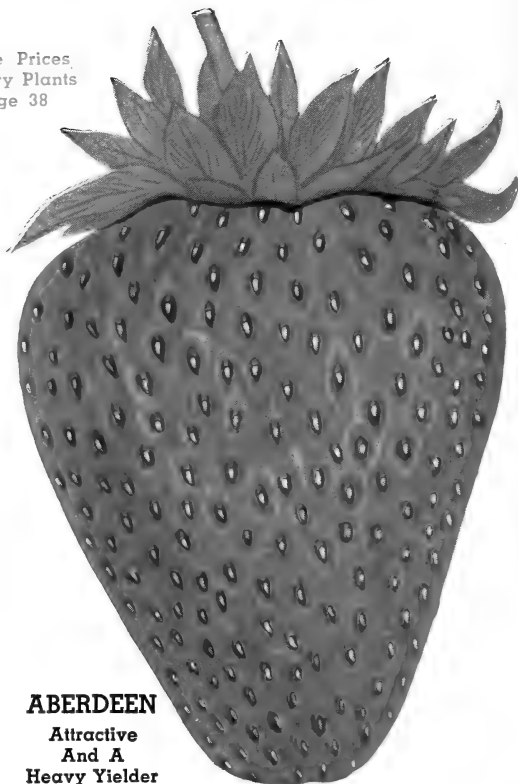
Quality—Ranks with the best.

Firmness—Firm enough to be classed as a long-distance shipper.

Productiveness—Very few varieties its equal.

Vigor—Makes plenty plants for fruiting bed on ordinary soil.

Complete Prices
Strawberry Plants
on page 38

**ABERDEEN**

Attractive
And A
Heavy Yielder

2 BIG MONEY MAKERS

AROMA

A Fancy Late Variety for the North and Central States

The Townsend selective and restrictive method of improving strawberry qualities has scored another signal success in producing "Blue Blood" strain of the Aroma variety, which offers the grower quality and productiveness far in advance of any others to be purchased in the Country.

The dollar you invest in Townsend's selective strain Aromas will work harder and produce greater dividends than any other investment you may make in late varieties.

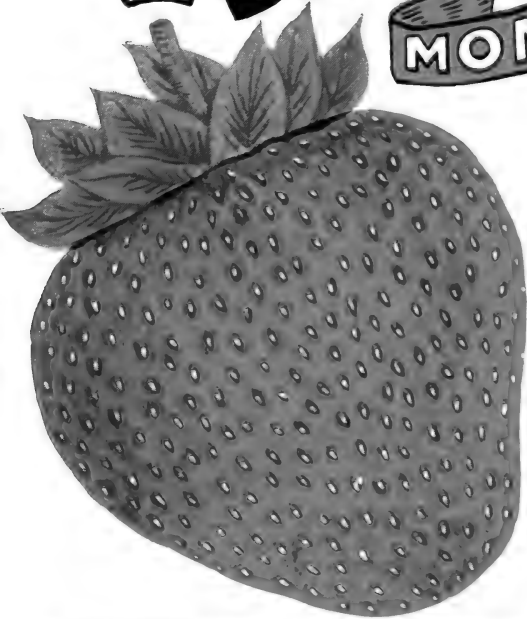
Large Associations in the Southern and Middle Western States where Aroma is a leader have discovered by test that the Townsend's strain of Aroma strawberry is far superior in quality and production to locally developed plants. As a result they have been purchasing our plants in ever-increasing quantities for their main plantings.

Aroma has been grown for the past 25 years and is known thruout the leading berry sections of the Country. For the beginner who is not familiar with its habits, we offer the following description:

Fruit—A bright sparkling red, slightly conical in shape, with large green cap. The texture is of the best, making it one of the best shipping berries on our list.

Productiveness—The yields of Aroma is well above the average. It is not a rare thing for our customers to report yields of 10,000 quarts to the acre.

If you have not grown Townsend's Strain of Aroma place your order this year with us. You will not be disappointed.



A fine field Catskill and Aroma to fill your order from

CATSKILL

(Midseason Variety)

Recommended for All States East of Mississippi River Except Far South

We have been growing Catskill in our test plot since 1932. This variety was originated at the New York State Agricultural College at Geneva and introduced by the New York State Fruit Testing Corporation Association. With us it is a very good plant maker, having an abundance of root system which would show inclination to produce quality fruit in dry weather or on sandy loam soil.

Fruit is bright rich, red color similar to Big Joe. The cap stands up well off the berry, making it have a very attractive appearance.

Quality—The flavor is of excellent quality, comparing favorably with the leaders. It can be classed as a long-distance shipper, its texture being favorable with Big Joe and Dorsett and other commercial varieties.

Productiveness—There were very few varieties in our test plots this year that equalled Catskill in production, and we are of the opinion that the Northern market gardeners will find Catskill to be up with the best. There are very few good midseason varieties on the market suitable for the Northern States, and if you are having trouble getting one suitable for your soil, try Catskill. We have a fine stock of plants of this variety, as shown in the above photo, and will be glad to book your order reserving plants for you until proper shipping date.



THIS VARIETY STANDS AT THE TOP OF THE LIST AS THE MOST PERFECT LATE STRAWBERRY

TOWNKING



You can buy Townking from Townsend's Nurseries only. We guarantee that Townking will please you or money will be refunded.

TOWNKING stands at the top of the list as the most perfect late strawberry; Townking is a strong healthy grower; producing a good fruiting bed on the average soil. It is well adapted to heavy clay soils as well as low springy types. In production it ranks with the very best late varieties, in fact for several years in various test plots throughout the country, it has outyielded such varieties as Chesapeake, Gandy, Lupton, and Wm. Belt, about two to one in color, shape, size, beauty and firmness. It is simply in a class by itself. The flavor is very mild; so mild in fact that any person can eat them from the vines; where an acid berry is objectionable. It has been truthfully described by one of our customers as the **New Late Berry without a fault.**

From a small beginning only a few years ago; and without any extensive advertising; Townking has become the leading late strawberry in most strawberry sections of the country; being widely planted from coast to coast.

If you are not already growing Townking we ask that you give it a trial this year. Knowing as much as we do about this berry; we are of the honest opinion that it will please you and make a nice profit for you.

SOME OF THE OUTSTANDING POINTS OF TOWNKING

Color.—Bright rich red. **Firmness.**—A good shipper for long distant markets; stands up well after picking. **Quality.**—Far superior to the Lupton and Gandy; your customers will like it. **Productiveness.**—Makes good fruiting beds on ordinary soils; sets heavy in fruit and when properly fertilized will outyield all other late varieties. **Growth.**—We have never yet to see a field of Townking plants with any signs of blight or rust on it; will stand up well in extremely northern climates. **Size of berries** are large to extra large making a fancy pack that will bring top prices.

New York State.

GENTLEMEN:-

Please send catalogue listing Townking. I have seen this berry growing here, and without doubt it is the finest late berry I have ever seen. My neighbor picked better than 7000 quarts per acre, outyielding the well known Chesapeake.

WM. BRANT.

Greensburg, Penn.

GENTLEMEN:-

We have been growing your Townking and our customers are so tickled with them that we have discarded all other late varieties. The berries are simply beautiful, far surpassing the other late kinds on our soil.

MR. & MRS. A. K. McCLINTOCK.

OUR CUSTOMERS RECOMMEND TOWNKING AS THE BEST LATE VARIETY. WE RECOMMEND IT

COMPLETE PRICES OF TOWNKING
Will be found on page 38

Comparing Townking with Lupton

Annual Strawberry Report from Allegheny County Agriculture Extension Association of Pennsylvania.

The Lupton, Townking and Mayqueen are similar in most respects and each produce enormously large berries. Lupton is a poor plant maker which probably accounts for its standing, as it is the lowest of the three in production. Townking surpassed Big Joe, Chesapeake, and Lupton in yield. Recommends Townking and Mayqueen for exceptionally large berries.

Varieties tested and yield from twenty-five feet of row

Aberdeen .28½ Qts.	Premier .14¼ Qts.
Ford .14 "	Big Joe .5¼ "
Wm. Belt .14 "	McAlpine .17¼ "
Chesapeake 6¼ "	Townking 7 "
Lupton ... 5 "	Mayqueen 11 "

Fleetwood, Penna.

Lupton good plant maker, large size, shy yielder, poor quality. Townking good plant maker, large size, good yielder, good quality and good shipper. Two distinct varieties.

ROBERT G. YORGEY,
Oneida County, N. Y.

GENTLEMEN:-

One row of Townking picked as many berries as two rows Lupton, and no comparison in size or quality. I have been growing Townking now for several years.

J. W. BEAN.

Fancy Market Berry

A Favorite in New York
And Pennsylvania



WILLIAM BELT (Late Variety)

The Fancy Trade Demands Berries Like Wm. Belt—It's An Old Favorite

The Wm. Belt is grown largely in New York and Pennsylvania for fancy trade. It is in demand on account of its large size, good eating qualities and fine appearance, making it a favorite with both grower and consumer.

WM. BELT is very productive, producing a good crop of fancy berries on just ordinary soils. It is not new by any means. We have been growing Wm. Belt for the past 25 years and it is just one of the varieties that has come to stay. About the only fault we can

WE HAVE
ONLY
240,000
TO SELL

Place your
orders for
this variety
early.

find with Wm. Belt is the fact that it is subject to rust on low, springy soils; therefore would advise planting this variety on upland type or on heavy clay soils. It stands at the top of the list as a late money making berry and is highly prized by the market gardeners that cater to the fancy trade. Wm. Belt and Townking are two good late varieties to cater to. We have only a limited supply of Wm. Belt, so would advise placing order early that we may reserve your plants and ship at proper planting time.

WORLD'S WONDER

(Late)

The Largest Berry
Grown

The greatest thing about World's Wonder is its size. We know of no other berry that will equal it in this respect. It is without a doubt the largest berry grown. We have picked these berries on our test plots, where nine berries filled a quart. Quality good; moderately firm and fairly productive. Suitable for home use or nearby market, where the size counts. Our supply of this variety is limited, so if you are in need of a fancy large berry order early.

Other Popular Late Varieties

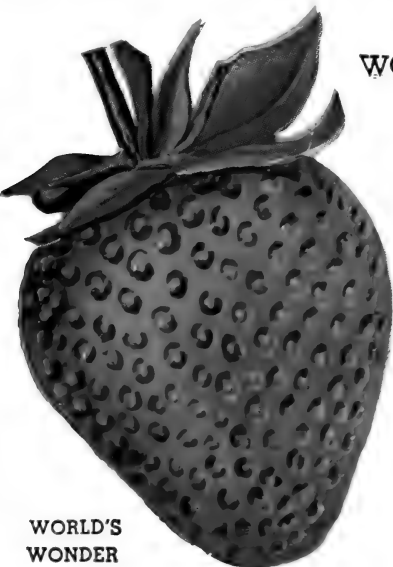
BRANDYWINE is an old-time favorite, being grown in New York State, California and Florida at the present time. Berries large, dark red and a heavy producer of high quality fruit. It is subject to rust at fruiting time and should not be planted on low soils.

PEARL (very late). The season of Pearl is very late and there is very little danger of late frosts getting any of the blossoms or berries. It makes plants freely and produces an exceptionally fine quality berry of good size. Pearl does best on springy type or heavy clay soils. If you want a berry to extend your fruiting season another week, then set pearl.

(Pearl is one of the very latest strawberries grown.)

SAMPLE is fast giving way to other late varieties. For a long time before Townking or Chesapeake introduction it was in great demand as a late berry. Fruit is very firm, bright red in color and very productive. We grow sufficient stock each year to take care of our old customers who wish to order Sample of the best strain.

WORLD'S
WONDER



Two BLUE-BLOODS of the Strawberry World

We are describing and listing on this page two extra late strawberries. The many demands each year by our customers, who were looking for a heavy producing variety of very late season ripening, caused us to make restrictive plant selection on the Gandy variety, to build it into such a berry, and at the same time seek to find a new one. We have accomplished this in our Xtralate variety, which is a new seedling that we have been testing for the past five years in our trial grounds. We are well pleased with the results of these two varieties, and we are passing them along to our customers as two of the best extra late varieties on the market.



Fancy Late Berries always bring top prices

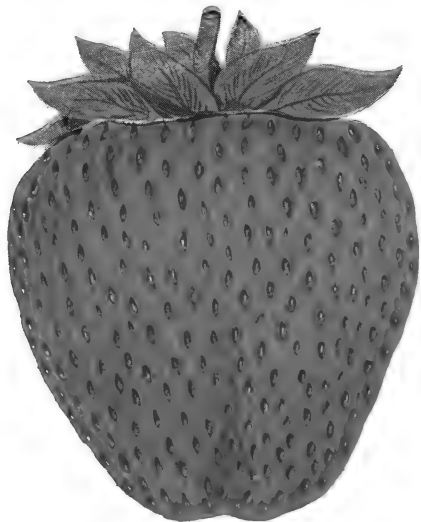
GANDY

(Extra Late Variety)

GANDY originated in New Jersey under the name Gandy-Prize, and has been grown successfully in practically all berry growing sections in the Central West and all Northern States. By selective methods we have built up the original strain of Gandy and succeeded in getting yields practically double that of a few years ago.

GANDY should be grown on rich, damp soil for best results, although we have noticed excellent results obtained in this section when grown on rather stiff clay. The Gandy is a good strong grower, sending out numerous plants to make a good fruiting bed without restriction. The foliage stands up well on the beds and protects the fruit from hot suns during harvest time.

The fruit of Gandy is of excellent quality, a good shipper, large to extra large, of a very bright red, with large dark green caps. One of the outstanding points of Gandy is its season of ripening, it being very late and one of the last berries to ripen, coming into bearing about two weeks after the first picking of Premier and Dorsett. It is an excellent commercial variety where a very late variety to extend the berry season is wanted.



Gandy

XTRALATE

TRADE-MARK REG.

Complete Prices
Strawberry Plants
on page 38

The Berry That the Strawberry World Has Been Waiting for

In offering Xtralate for the first time this year, after having grown it in our testing grounds for the past five years, we are of the honest opinion that we are offering to the Strawberry World the latest ripening Strawberry on the market today. We want you to try Xtralate this year if you are in need of an attractive late variety. Purchase it with the full understanding that if it is not all that we represent it to your money will be returned to you.

One of our customers from Long Island, New York, visited us this year to see it at fruiting time. His remark was this: "Well, Townsend, you told me you had a new late one, but this caps all I have ever seen or heard tell of in a late strawberry." The vines were loaded with plenty of green berries and blossoms, and practically all the late varieties were off the market here before Xtralate started.

The berries are medium to large, having a double green cap. Quality is of the best. In plant growth it is vigorous, making good beds without any trouble. It is an imperfect flowering variety and very easily pollinated with any of the late sorts, as it seems to set blossoms all at one time. Xtralate will extend your berry season fully seven to ten days longer.

Our Plant supply of Xtralate is limited this year, so order early!



The New
Xtralate
Berry



WHY It Dominates the Late Varieties

- | | |
|---|---|
| <p>A—Sure Cropper.</p> <p>B—Bright rich red color.</p> <p>C—Doesn't discolor after picking and retains bright red color for several days.</p> <p>D—Average size, 20 to 30 berries to a quart.</p> | <p>E—Exceptionally late and a good shipper.</p> <p>F—Doesn't come into bearing until all the early varieties are practically through and extends berry season fully two weeks.</p> <p>G—Distinctly a high quality berry, which brings top market price.</p> |
|---|---|

TOWNSEND'S ARE HEADQUARTERS FOR CHESAPEAKE

To meet the increased demand of our customers, we have again made larger plantings of this fine late variety, and it is one of the largest acreage we have ever grown.

STRONG FIBEROUS ROOTS—PERFECT SPECIMENS

Practically all our Chesapeakes are grown in new ground soil, and I never saw finer and healthier plants; every row seems to be perfect. The long bright fibrous root system and the sturdiness of these plants are sure to take hold quickly in new locations.

CHESAPEAKE DEMAND HEAVIER EACH YEAR

Each year we find the larger commercial growers are steadily increasing their plantings of Chesapeake, due to the profitable returns they have made previously. While our stock of Chesapeake is one of the largest in the country, the heavy demand on our stock each year is such that we advise our friends to place their orders as early as possible—it's your assurance of 1936 plantings. We will be glad to reserve plants for you and make shipment on any specified date.

Just one of the many testimonials acclaiming the merits of Chesapeake Strawberries.

Niagara County,
New York.

Dear Sirs:

Have been handling strawberries for the past 50 years—and no man can raise better plants than the 30,000 Chesapeake you shipped me. Please accept my thanks for the fine plants and good treatment received from you. My friends will give you some nice orders next year, as they all admired my plants.

I remain yours,
R. H. YOUNG.

The BIG
Commercial
Strawberry

Approved
for the

NORTHERN
STATES

An excellent
late berry

WE SELL
MILLIONS
ANNUALLY



BIG PROFITS

GROWING

FALL BEARING

STRAWBERRIES

PICK BERRIES 10 WEEKS AFTER SETTING

The Fallbearing or Everbearing varieties of strawberries are gaining in popularity throughout the country. They are no more trouble to grow and produce a good crop of berries than any other standard varieties. You cultivate and pick berries all summer and fall, the first year plants are set and another full crop in June at regular strawberry time. Hundreds of our women customers are planting them in their gardens, growing sufficient fruit to furnish the table with strawberries throughout the summer and fall; quite a few of them report almost unbelievable profits from small plantings. The Fallbearing have also found a spot in the hearts of the market gardeners, who find a ready sale on nearby markets and local trade, also lending attractiveness to their roadside markets during the late summer and fall months, where they bring a fancy price.

On our farms we grow several acres for market each year and have found them to be one of the most profitable crops that we can grow. As I write here, November 7th, we just received a telegram from our New York representative wiring us that our Gem and Mastodon berries sold for 22c a pint, which we consider an exceptionally fine price and one that most any grower of strawberries can make a handsome profit at.

Customers write us that our True Blue Mastodon averaged over one quart to every plant set, while others write that they made as high as \$450.00 from just one everbearing garden. Another party writes that they made \$150.00 from 1000 plants. Therefore we can safely say that if you want to make some ready cash, grow these Big Red Fallbearing Berries and we know that you will not be disappointed with the results obtained from Townsend's Selected Strain. We have a fine bunch of "Husky Plants" to fill your orders with this year. Let us preserve some of these plants for you and make shipment at proper planting time, which is early spring.

Keep in mind that all varieties of Strawberries are not Fallbearing. The Mastodon, Gem, Lucky Strike, and Aldrich, which we list in our catalogue, are true Fallbearing sorts and are the ones that you should plant for your Fall crop.

Our customers are making big profits on Townsend's "selected strain" Fallbearing strawberries. Write for free culture guide on growing Fallbearing berries, a copy will be immediately mailed you.



MASTODON
One of the Largest
Fallbearing Varieties

"True Blue" MASTODON Plants

MASTODON (Fallbearing) is one of the largest Fallbearing Strawberries. Attractive in size and color with a nice large green cap, bringing top prices on the Fall market. It is also noted for producing an abundance of fruit again during the early summer harvest along with other June fruiting varieties. This variety should be grown by all who are interested in Everbearing Strawberries. Growers who purchased our Mastodon plants in small lots of a few hundred, years ago, are now purchasing in lots of several thousand. Some customers who have their roadside markets grow several acres each year, and buy our plants every year to reset a new bed. We have a fine crop of Mastodon plants this year, but possibly not enough to go around, and we advise our customers to get their orders in early if they want to be sure of getting Townsend's Selected strain of Mastodon.

See Next Page for Other Leading Varieties
Fallbearing Strawberries

Genuine only when this label is attached

TOWNSEND'S MASTODON

It's your assurance of being True to Name

Our plants are Guaranteed
Return label to us if you find anything wrong with the plants or count

The New Everbearing GEM



GEM FALLBEARING. This variety was introduced by Mr. Frank Kiplinger of Michigan. After talking with Mr. Kiplinger personally, he was so enthused about the Gem Fallbearing that we purchased planting stock of this variety in sufficient quantity to take care of our customers' orders this year.

With us Gem gives every promise of being an outstanding, Fallbearing variety. Fruit is large to extra large, very bright red in color; very firm, holding up well after picking. In plant growth Gem is all any one could desire, having a wonderful feeding habit with its long, fibrous root system extending deep into the ground, protecting any serious damage to the fruit during dry weather.

GEM starts fruiting very early in the summer of first year set and continues with a consistent supply of berries thruout the summer and fall months until hard freezes stop it. I examined plants of Gem today, November 7th, and found plenty of large, green berries and blossoms in our trial plots. We heartily recommend Gem as an outstanding everbearing that will give you satisfaction. We will be glad to reserve your Gem plants for you, shipping at proper planting time in the Spring.

LUCKYSTRIKE was introduced by Townsend's in the Spring of 1916. It is known as the aristocrat of the Fallbearing family. As there is no everbearing variety that can touch it in quality, and has always been a favorite with growers thruout the Country, Mr. Theo. Hewes of Indiana writes us that he considers Luckystrike the best Fallbearing, while Wm. Geise of New Jersey plants it exclusively. The fruit is a bright red, oval in shape, with a large green cap. Very solid and a good shipper. We recommend Luckystrike Fallbearing for its quality of fruit, size and beauty, as well as productiveness.

ALDRICH. This variety was originated by Mr. L. Aldrich, Putnam, Conn. The writer personally visited Mr. Aldrich and saw this variety in fruiting several years ago. It certainly appealed to me, and I purchased sufficient plants for trial. After testing this berry we saw the great possibilities of Aldrich for the Northern growers as a good Fallbearing. We certainly recommend giving Aldrich a trial if interested in Fallbearing varieties. Flavor is ideal, berries large to extra large, growth very vigorous.

Townsend's Big Cropping Fall Bearing Gardens



SMALL BACK YARD FALL BEARING GARDEN

50 Mastodon
50 Gem
100 Plants **Only**

\$1.00

LARGE BACK YARD FALL BEARING GARDEN

Will furnish plenty of delicious berries for a large family.

100 Mastodon
100 Gem
200 Plants **For**

\$1.85

BIG PROFIT MAKING FALL BEARING GARDEN

500 Mastodon
250 Gem
250 Aldrich
1000 Plants **Only**

\$8.00 VALUE

\$6.45

Grow a Townsend's Strawberry Garden this year. It's fun and profitable

STRAWBERRY CULTURE DIRECTIONS



Just right



Too deep



Too shallow

PLANT SELECTION. Perhaps the most important task of all is the correct selection of varieties for the particular territory in which they are to be planted. A careful study of the variety recommendations in this catalog, and personal communication with the Townsend Nurseries will eliminate the possibility of the buyer purchasing varieties which have not the greatest profit-making possibilities in his territory.

SOIL PREPARATION. In the first place, be sure that the land is reasonably fertile and as nearly as possible free of weeds and grass. Plow the land to be used carefully in the fall (this is much preferable to spring plowing) and spread a liberal coat of barnyard manure over the plot during the winter or early spring. Potato fields, tomato or cow-pea plots, or any site where the land has been enriched by growing truck crops makes an ideal plot for the strawberry patch.

If manure is not available, broadcast a heavy application of commercial fertilizer over the plot just before the plants are set in the spring. (Two or three weeks in advance is just about right). Sheep manure or a mixture of 1500 pounds of tankage and 500 lbs. of acid phosphate is good, distributed at the rate of 1000 lbs. per acre. Raw bone meal will not injure the plant roots and is the only fertilizer recommended for use directly under the plants.

The soil should be worked up into as good condition as possible before setting the plants. If the ground is manured, drag the soil level, marking the rows with a light marker, setting the plants on the side of the mark, using the same side of the mark on each row for equal width.

CARE OF PLANTS ON ARRIVAL. Townsend's plants come to you properly cleaned and bunched ready to set.

If the roots are too long to set in a stony soil, clip off a portion of them cleanly.

If the plants are received before the soil is ready, open the boxes and take the plants out, dampen the roots up to the string, redampen the moss and repack in the same box, place in a cool cellar and the plants, if still dormant, will keep from 7 to 10 days without injury. Heeling in is permissible, if done by an experienced man but it is slow and tedious and the tops and crowns may get wet. The first method is best.

SETTING THE PLANTS. For large plantings, a horse drawn transplanter is good to use if a good operator is available. For small plots, or in stumpy new land, the garden trowel is best to use. On stony soils use a spade. Set the plant roots straight down without crowding and pack the earth firmly around them.

PLANTING DISTANCE FOR MATTED ROW SYSTEM. Generally, the matted row system is considered the best and most practical. Plant rows $3\frac{1}{2}$ to $4\frac{1}{2}$ feet apart, depending on varieties used. A matted row should be 3 feet wide when the plants are laid by, and sufficient room should be left for the pickers. Keep the space between the rows cultivated as long as the runner plants form. Plants should be set 15 to 24 inches apart. Good, rank growing varieties like the Premier, Aberdeen, Blakemore, Dunlap, Howard Supreme and Jupiter should be set 24 inches apart in the row, with rows 4 feet apart.

EVERBEARING IN HILL SYSTEM. The hill system is the only way to grow everbearing strawberries successfully. Keep the runner plants cut off, not allowing more than five or six well-spaced runner plants to form. This produces large, vigorous plants, each plant often yielding a quart of berries during the summer and fall. Space these rows 30 inches apart to allow for horse cultivation. The two rows in the bed are spaced 12 inches apart, and the plants set 18 inches apart down the rows. With this spacing, 16,000 plants will set an acre. Such spacing allows room to work with a hoe around the plants at all times. Plant food can easily be applied as the cultivation continues through the summer months. Feeding the plants while they are fruiting is easily done without injury by broadcasting fertilizer or chicken manure around the plants. Cultivation is easy, as such spacing affords sufficient room around the plants to keep down all grass and properly mulch by shallow working with the hoe during dry weather.

CULTIVATING. Tillage in newly set strawberry fields should be thorough in the early part of the season,

in order to preserve moisture so that plants can become established thoroughly in the soil and later in the season to conserve moisture so that the plants can develop runners. Weeds and grass should be kept out of the fields at all times, as they will take the moisture needed by the strawberry plants. Most successful growers use the cultivator as often as once each week throughout the first growing season, and during periods of drought even more frequently. Hoeing should be done as often as it is found necessary to clean out all weeds and grass. Cultivating should be shallow near the plants, both because of the danger of loosening them in the soil and because if too deep the roots near the surface will be broken. The teeth on each side of the cultivator should be shortened, so they will not stir the soil near the row to a depth of more than 1 or 2 inches, as many kinds of weeds continue to grow in late autumn and start to grow in early spring. We advise working the plants until hard frosts occur. The field will then be free from weeds, and in the following year very few will have time to grow before the harvest season.

ONE OF THE SECRETS IN GROWING STRAWBERRIES

While there should be no secrets in the growing of Strawberries when every grower is exchanging ideas with his neighbors, there seems to be one point that has not been given enough publicity by the neighbor, journals and nurserymen. With the majority of the plant growers in the North it has always been a practice to hold off setting plants until all frosts and freezing is over. On low springy type soils this probably is a logical practice. However, on land with a good drainage and which dries out early in the spring this practice should not be followed. Strawberry plants, when properly grown and hardened, will stand considerable cold weather after setting. Heavy frosts will not hurt them at all and it takes a rather hard freeze to do any damage at all. Any snows after setting is of more benefit to the plants than harm. I can remember some few years back when plants shipped to growers up on the Hudson in New York were never wanted before April the 25th. One day a customer from that vicinity came down to our Nurseries and we were telling him about how hardy our plants were and what they could stand. He seemed interested in this idea of early setting and told us to ship his order out April the first, that year. We did so. The next year he did not come down. However, he sent us an order just the same, instructing us to make shipment March the 15th, stating that he had exceptionally fine results from his early planting the previous year. Of course, we thought this just a little too early, and told him that we would make the shipment on March the 25th and that he could have them ready to set out by April the 1st. This year we received another order from him and he is still setting Townsend plants and setting early.

No doubt a considerable number of growers have taken our advice and are setting early. Others will try it this year and within a few years it will be no secret; as the neighbor will then have the opportunity of telling his next door neighbor just how important it is to set plants early, which will give the plants plenty of time to get their roots growing properly before the hot sun and dry weather starts. It is also a great advantage to the market gardener in getting his stock of plants in the ground early, giving him much more time to devote to the rush spring work.

NUMBER PLANTS REQUIRED TO SET AN ACRE

	Number Plants	Plant Spacing
Strawberries, Field Culture	8000	$3\frac{1}{2} \times 1\frac{1}{2}$
Strawberries, Garden Culture		$2\frac{1}{2} \times 1\frac{1}{2}$
Everbearing Strawberries, Field	8000	$3\frac{1}{2} \times 1\frac{1}{2}$
Everbearing Strawberries, Garden		$1\frac{1}{2} \times 1$
Everbearing, Double Row Hill System.....	16000	$2\frac{1}{2} \times 1\frac{1}{2} \times 12$
Blackberries	1700	8×3
Red Raspberries, Hedge Row	2400	6×3
Red Raspberries, Hill System	1800	5×5
Black Raspberries	1700	$7 \times 3\frac{1}{2}$
Dewberries, Solid Rows	2400	6×3
Grapes	490	9×10
Asparagus	3200	7×2

Complete Culture Guide on Small Fruits Will Be Sent Free to Anyone Requesting This Booklet



You can get a lot of fun out of a small strawberry planting

ALL SEASON GARDEN

Will furnish the average family with rich red delicious berries from early in season to late fall.

- 25 Premier Early
- 25 Big Joe
- 25 Chesapeake
- 50 Gem Everbearing

125 Plants
Only **\$1.00**

Cat. Value \$1.45



No matter where you live there is a Townsend's strawberry garden suitable for your section

TOWNSEND'S OWN CHOICE GARDEN

No matter what state you live in we will select varieties that will please you.

- 100 Best Extra Early
- 100 Best Early
- 100 Best Midseason
- 100 Best Late
- 100 Best Very Late

500 Plants
Only **\$2.65**

Cat. Value \$4.80

HOME GROWN STRAWBERRIES

Have a Strawberry Patch This year—
It's Fun and Profitable

Little is required to raise big red delicious berries from Townsend's plants. With the small outlay in cost of a garden collection on this page; it will reward you with an abundance of fresh fruit during the whole fruiting season. Order a garden collection this year at these low prices.

Culture Guide Sent FREE
With Every Order

A GARDEN OF BIG BERRIES

This garden will yield extra large berries from early to late, and plenty of them.

- 100 Dorsett
- 100 Premier
- 100 Big Joe
- 100 Chesapeake

400 Plants
Only **\$2.00**

Cat. Value \$2.75

SPECIAL TEST GARDEN

Four of the greatest yielding early fruiting varieties ever introduced.

- 250 Fairfax
- 250 Dorsett
- 250 Aberdeen
- 250 Premier

1000 Plants
Only **\$5.00**

Cat. Value \$5.75



Let the children have all the strawberries they can eat



Plenty of fresh berries direct from the vines at a very small cost

A FAVORITE GARDEN COLLECTION

These varieties are noted for their heavy yields of quality berries.

- 100 Dorsett
- 100 Fairfax
- 100 Big Joe
- 100 Xtralate
- 100 Gem (Fall bearing)

500 Plants
Only **\$3.95**

Cat. Value \$6.30



Geo. Miller and his brother Jr. of Mt. Pleasant, Pa., in their Townsend's strawberry garden

SPARE TIME GARDEN

With a little attention any one can realize a nice profit from this garden.

- 200 Premier
- 200 Fairfax
- 200 Dorsett
- 200 Town King
- 100 Xtralate

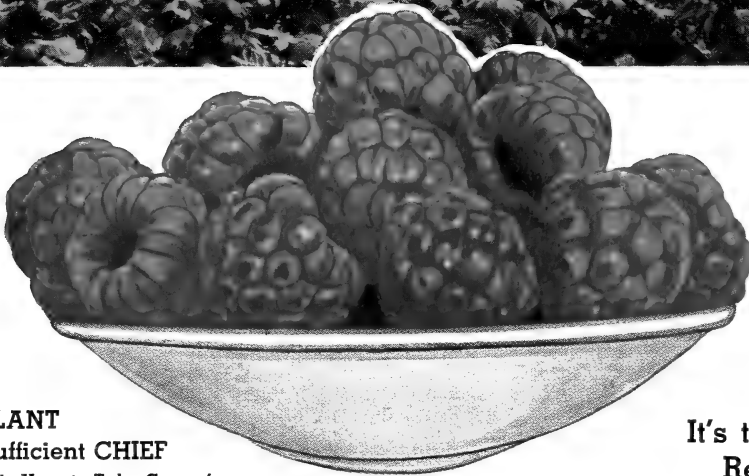
900 Plants
Only **\$4.85**

Cat. Value \$7.60

CHIEF *the Earliest Raspberry of them all*



L. S. Townsend inspecting a section of a 35-acre planting of Red Raspberry plants, where your orders will be filled from this year



CHIEF

Is Ready
for Market
When Prices
Are Highest

It's the Earliest of All
Red Raspberries

PLANT Sufficient CHIEF

This Year to Take Care of
Your Early Market. It Will Pay You

Townsend's Raspberry Plantings
Are Grown for Plants Only

Contrary to the common policy of digging small plants from the middle of the rows and leaving the best canes in the field for fruiting purposes. Our policy is to dig the entire field, thus giving you the best, strongest and most vigorous plants.

Selected 10 years ago from a planting of 4000 Latham Seedlings, the Minnesota State Breeding Farm has given to the berry growers of America the famous Latham's only rival "Chief."

Chief has turned out to be by far the finest early Red for general planting. The fruit is not quite as large as the Latham, but is bright red, very firm and an unusual heavy yielder. The Chief is practically immune from mosaic and mildew and is very hardy. With the excellent keeping and shipping qualities of the "Chief," the brilliancy of color and flavor appeal, makes it stand out as a money making variety for the commercial grower and market gardener, as well as a fine early variety for the back yard garden.

Complete Prices of Raspberry Plants on Page 39

NEWBURG RED RASPBERRY

A NEW LATE RASPBERRY OF OUTSTANDING MERITS

Newburg has gained popularity in a very short time since its introduction. Newburg was originated by the New York State Agricultural Experimentation Station, and is one of the most promising Red Raspberries in their State collection.

The fruit is firm, does not crumble, and of large size. It is rich red, very

attractive, and in keeping and shipping qualities it is of the best. Plants are perfectly hardy and very productive, making it an outstanding variety for the Northern states. Our supply of Newburg is limited and certainly would advise our customers to place order early if in need of a late all around red raspberry.

We Can
Recommend
NEWBURG
for the Northern
States, As It Is A
Vigorous Grower,
Hardy and
Productive

The Largest Size and Heaviest Yielding Raspberry **Latham**



Townsend's Redpath Strain Latham are hardy and vigorous growers. Photo Latham field 2 months after setting.

LATHAM A SURE MONEY MAKER

There are two **BIG** reasons why Townsend's Selected Strain Latham plants mean the surest road to bigger raspberry profits. The first is, there is no finer looking red raspberry on the market. The second is, of all the raspberry varieties, the Latham produces more berries to the acre and does so with the least amount of care, of any variety we have ever known.

Without question and from any viewpoint, it is the **KING** of them all. Big, Luscious, an irresistible appetizing red, it meets with instant favor on the table. Producing more than \$1,000 per acre in commercial plantings and possessing extreme hardiness as well as splendid shipping qualities, it measures up to the wise grower's every requirement. Whether you raise the Latham to sell, or to serve, you are certain to meet with satisfying success.

The Latham has been put to every known test. It has proved under identical conditions in competition with practically all leading varieties of raspberries. In every instance it has outdistanced the field both in yield and net profit per acre.

Furthermore to clinch its standing as the undisputed leader of the field, Townsend's Selected Strain Latham comes to you Mosaic free. This disease which so often means lost profit and constant annoyance becomes a thing of the past when you buy our Latham plants.

IMPORTANT! NOTE! Our Latham ARE the Redpath Strain. Officially Latham and Redpath are considered one and the same variety. Notwithstanding this conclusion, many well informed practical fruit growers are still of the opinion that the Redpath is a superior strain of the Latham. **OUR LATHAM are the REDPATH STRAIN**—hence planters are doubly assured of getting dependable stock when they order our Latham—(Redpath Strain).

Don't overlook
this big value
**RED RASPBERRY
OFFER**

25 **NEW CHIEF**, 1 year size.
25 **LATHAM**, 1 year size.
50 Select Plants **\$1.45**
Special Price

50 **SELECT LATHAM**.
50 **SELECT CHIEF**.
100 Plants **\$2.15**
Special Price

1000 Select Plants
ONLY
\$14.85

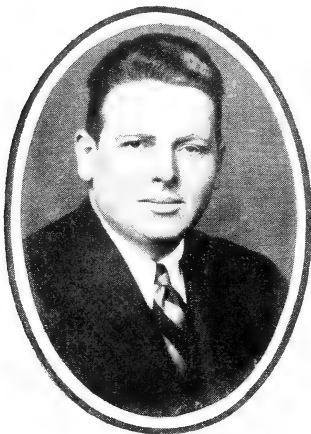
5430 Qts. Per Acre
In Official Test
Conn. Agric.
College



\$432.00
from 500 Plants
was made by
E. Echombs of Ill.

N. Smailes
of West Va.
picked 5300 quarts
from an acre
1 year after setting

We Ask for Your Order This Year Fully Confident That We Can Please You



MAX M. KERCHER
Supt. of Raspberry Propagation

BLACK RASPBERRIES

TOWNSEND'S
CERTIFIED
RASPBERRY PLANTS
YOUR
PROTECTION

With our thirty-five years experience in small fruit plant propagating we realize that the only sure method of producing high yielding Black Raspberry plants for our customers was to select proper soils and climatic conditions adapted to the habits of the Black Raspberry. With this end in view we sent our field men to locate such a spot in the country that would be most ideal for producing the best Black Raspberry plants possible to grow. After considerable time spent in checking temperatures and soil conditions, we succeeded in establishing our plantings which will furnish us with our source of supply. We were also very fortunate in securing the service of a Black Raspberry expert, Mr. Max M. Kercher, B.S.A., Purdue University, to supervise our growing stock and propagation of plants. With his careful supervision and knowledge of these plants we are offering to our customers this year a selective strain of Black Raspberry plants, which we feel mighty proud of and stock that we feel sure will please you.

Good yields and excellent profits are a sure thing for the grower who invests in a patch of Townsend's Black Raspberries, because we leave no stone unturned to grow plants that are worthy of the Townsend reputation for excellence. Because of this conscientious, thorough method of disease prevention, you are assured that such stock as you purchase from us will, with normal care, produce as high as 3,200 to 6,000 pints per acre, where other plants which have not had such intense care may yield only 800 to 1,600 pints per acre. A Black Raspberry plant is good for years. Be sure that you set only the best stock obtainable. The cost of plants is only a small part of your investment.

The varieties we are growing this year are all leaders in their respective section of the country, and we solicit your order, confident that we are giving to our customers the best Black Raspberry plants possible to grow, and one of the greatest bargains that we have ever offered.

We have a complete Culture Guide on Black Raspberry growing. A copy will be sent to you free on request.

NEW LOGAN is an outstanding new Black Raspberry variety. Probably its two most noteworthy characteristics are that it ripens about a week earlier than the Cumberland and is very resistant to virus diseases. The berries are of good size and quality, vigorous growers and very productive; is a favorite in the Central States as well as the North. If you desire an early variety, Logan is one of the best.

PLUM FARMER is considered by large growers to be the best early black cap variety for New York, Pennsylvania, and the New England States. Strong, vigorous, upright grower and very productive. Fruit is medium to large and of good quality, being very juicy. Ripens its fruit very fast; consequently, the bulk of the crop is off in four or five pickings.

QUILLEN. This fine late variety was introduced just a few years ago. It grows well in the Northern States and is a leader in the Northwest. Fruit is of excellent flavor, being large to extra large in size. Vigorous grower and very productive. For a late variety we know of no Raspberry any better than Quillen.

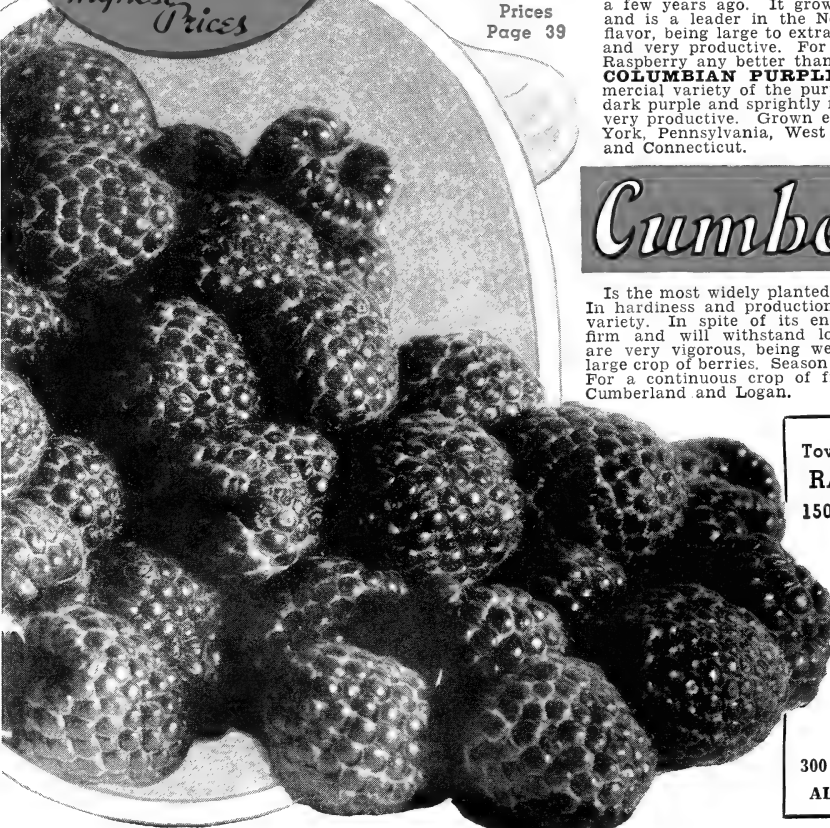
COLUMBIAN PURPLE. This is the leading commercial variety of the purple type. Berries are firm of a dark purple and sprightly flavor. is a vigorous grower and very productive. Grown extensively in the states of New York, Pennsylvania, West Virginia, Ohio, Massachusetts and Connecticut.

Raspberry
Prices
Page 39

*The Best
Market and Canning
Black Cap*

CUMBERLAND

*Super Quality
demands
Highest
Prices*



Cumberland

Is the most widely planted Black Raspberry grown today. In hardiness and production it is unexcelled by any other variety. In spite of its enormous size the fruit is very firm and will withstand long-distance shipping. Bushes are very vigorous, being well adapted to supporting their large crop of berries. Season of ripening—midseason to late. For a continuous crop of fruit over a long period, plant Cumberland and Logan.

Townsend's Heavy Yielding RASPBERRY GARDEN

150 Plants—Six Best Varieties

- 25 Cumberland Black
- 25 New Logan Black
- 25 Plum Farmer Black
- 25 New Chief Red
- 25 Latham Red
- 25 St. Regis Evbg. Red

150 Plants
Catalog
Value
\$4.70

All for
\$3.60

2 COLLECTIONS ABOVE

300 Plants for only **\$7.00**

ALL SELECT NO. 1 STOCK

FOR QUICK RESULTS

SET Townsend's BEARING-AGE Berry Plants.

Pick Fruit the First Year

Bearing Age Red Raspberry plants are selected one-year stock when transplanted into our Nursery rows in the Spring. They are grown a full year under ideal conditions, as our 20 acres of Irrigation system is used practically exclusively for the production of these plants. Plenty of humus is added in the soil each Spring before setting. Careful pruning is made throught the season that a well-balanced plant can be offered our customers. These plants are tied into bundles full length of canes, as shown in picture on this page. They are carefully wrapped to protect all wood, that they will reach our customers in perfect condition. While the cost of the plants is somewhat higher than our One Year Selected stock, however, sufficient fruit can be picked from these plants the first year to more than pay for the difference in price.



FOR THE HOME GARDEN OR MARKET GARDENER

Anyone who wishes to get early returns from their garden cannot afford to pass up this particular size plant. We have customers each year who place their orders with us, advising that they have just moved into a new home and there are no small fruits planted, and they are anxious to get some fruit this year. This can be done by planting our Bearing Age Stock, which we offer in Raspberries, Blackberries, Grapes, Dewberries, and with a planting of the Everbearing Strawberries. A full season is saved, and our customers enjoy plenty of fruit on their table in a short time, just as though there was a well-established small fruit garden on the property before he moved in.

Market gardeners who cater to the roadside trade often have calls, I am sure, for Raspberries and other small fruits. It is good business to keep on hand what his customers call for. By taking advantage of our Bearing Age Plants he is soon in a position to offer these small fruits, even though he did not set them out the year previous. For a quick turn-over on your money there is nothing in the small fruit line any better.

SUPPLY OF BEARING AGE STOCK LIMITED

While we try to grow enough Bearing Age Plants to furnish all our customers, the increased demand on them this Fall has cut short our supply. Therefore, we certainly would advise placing order as soon as possible if you are thinking of ordering this particular stock, for we honestly feel sure that we will be sold out on them early in the season.

PRICES BEARING AGE PLANTS

BEARING AGE RED RASPBERRY PLANTS

	12 Plants	25 Plants	50 Plants	100 Plants	200 Plants
CHIEF	\$1.20	\$1.90	\$3.00	\$5.00	\$9.10
LATHAM	1.15	1.85	2.95	4.85	8.75
ST. REGIS, EVERBEARING	1.20	1.90	3.00	5.00	9.10
KATHERINE, EVERBEARING	1.30	2.00	3.25	5.60	10.25

BEARING AGE BLACK AND PURPLE RASPBERRY PLANTS

CUMBERLAND	1.20	1.90	3.10	5.20	9.45
LOGAN	1.40	2.20	3.60	5.85	10.75
PLUM FARMER	1.20	1.90	3.10	5.20	9.45
COLUMBIAN PURPLE	1.40	2.20	3.60	5.85	10.75
QUILLEN	1.40	2.20	3.60	5.85	10.75

BEARING AGE BLACKBERRY PLANTS

ALFRED	1.30	2.00	3.00	5.50	10.00
EARLY HARVEST	1.00	1.50	2.40	4.00	7.50
ELDORADO	1.00	1.60	2.60	4.50	8.25
ROBINSON EVERBEARING	1.30	2.00	3.00	5.50	10.00
RUSSELL	1.00	1.50	2.40	4.00	7.50
YOUNG BERRY DEWBERRY	1.30	2.00	3.00	5.50	10.00
LUCRETIA	1.00	1.50	2.40	4.00	7.50

FRUITING AGE GRAPES

	each	3	6	12	25
CONCORD—Blue	\$0.25	\$0.65	\$0.95	\$1.45	\$2.35
CATAWBA—Red	.30	.75	1.45	2.15	3.75
DELAWARE—Red	.35	1.05	1.80	3.45	6.75
IVES—Red	.30	.75	1.45	2.15	3.75
MOORE'S EARLY—Black	.30	.75	1.05	1.50	2.70
NIAGARA—White	.30	.75	1.05	1.50	2.70
WORDEN—BLACK	.30	.75	1.05	1.50	2.70

NEWER VARIETIES FRUITING AGE GRAPES

CACO—Red	.50	1.35	2.55	4.75	9.15
CHAMPAGNE—Amber	.45	1.10	1.85	3.50	6.60
FREDONIA—Black	.50	1.35	2.55	4.75	9.15
ONTARIO—White	.50	1.35	2.55	4.75	9.15
PORTLAND—White	.45	1.10	1.85	3.50	6.60
SHERIDAN—Blue Black	.50	1.35	2.55	4.75	9.15

Customers wanting any plants on this page sent Parcel Post prepaid, use Postal Rates at bottom of page 39

BEARING AGE GRAPE COLLECTION

- 1 New Champagne. Amber.
- 1 New Caco. Red.
- 1 New Portland. White.
- 1 New Sheridan. Black.
- 1 New Fredonia. Black.
- 1 New Ontario. White.
- 1 Concord. Standard Black.
- 1 Moore's Early. Black.

8 Vines All for

\$2.60

BEARING AGE RASPBERRY COLLECTION

- 12 New Chief. Red.
- 12 Heavy Yielding Latham. Red.
- 12 Cumberland. Black.
- 12 New Logan. Black.
- 12 St. Regis, Everbearing. Red.

60 Plants Special Price

\$28.50

TOWNSEND'S SPECIAL BEARING AGE BLACKBERRY OFFER

- 12 Robinson.
- 12 Eldorado.
- 12 Alfred.
- 12 Early Harvest.
- 12 Youngberry.
- 12 Lucretia.

72 Plants for

\$26.00

TOWNSEND'S HARDY GRAPE VINES APPROVED VARIETIES



Mr. W. G. McAllister of New York State has complete charge of selecting our Grape cuttings from True To Name bearing vineyards in New York State. Mr. McAllister surely knows his Grapes, and we are glad to add this well-known authority on grapes to our Staff, knowing that our customers will benefit by his experience. This is just another step taken by Townsend's in growing for our customers the best there is to be had.

CONCORD

CONCORD. The Concord is the most extensively planted black grape. Bunches are very compact and of excellent quality. Concord is perfectly hardy in the extreme North and very productive. The season of ripening is midseason to late. You will find Concord one of the best all around grape varieties that you can grow. As a commercial variety Concord stands out supreme. For the home there is no better black grape grown. Townsend's hardy grown Concord will give you excellent results.

Nowhere in the country is the climate and soils more favorable for the growing of selected Grape Vines than here on the Eastern Shore of Maryland. We have a full eight months in which to grow our vines and mature them. Our soils are such that all Grape Vines have an abundance of fibrous roots and extra large buds. Our customers tell us that the size of our 2 year old canes and the root system of our plants are superior to any they have ever purchased.

Plenty of humus is added to our soil where we grow our Grape Vines. Nothing is spared in the way of cultivation and fertilizer to produce a vine that will be healthy and strong rooted; a vine that will grow off quickly for our customers and produce the desired growth the first year set.

We Offer Selected Stock Both In One and Two Year Grade

CATAWBA. Late ripening Grape. Large, firm and very sweet; fruit of copper red color, produced in large compact bunches.

DELAWARE. The standard of excellence—ripens early, juicy and sweet berries of amber color, vines hardy and productive.

IVES. This is one of the outstanding wine grapes. Color bright red, close set on the bunches, rather a heavy producer. Planted heavily before prohibition for the wineries. Now there is not enough stock to go around. We would advise the planting of this fine variety to a large extent for steady income.

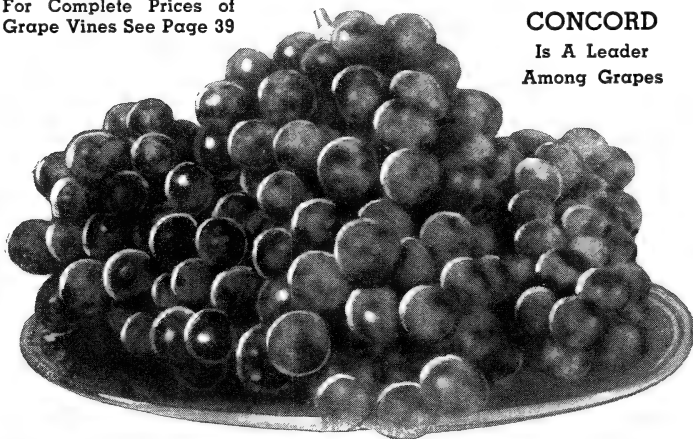
MOORE'S EARLY. A seedling of Concord, ripens two weeks earlier, producing large black fruit of excellent quality. One of the best black grapes.

NIAGARA. One of the largest white grapes. Handsome compact bunches, delicious flavor. A strong grower ripening with Concord.

WORDEN. Very popular bluish black, ripens two weeks earlier than Concord. Large compact bunches, excellent flavor and hardy grower.

For Complete Prices of
Grape Vines See Page 39

CONCORD
Is A Leader
Among Grapes



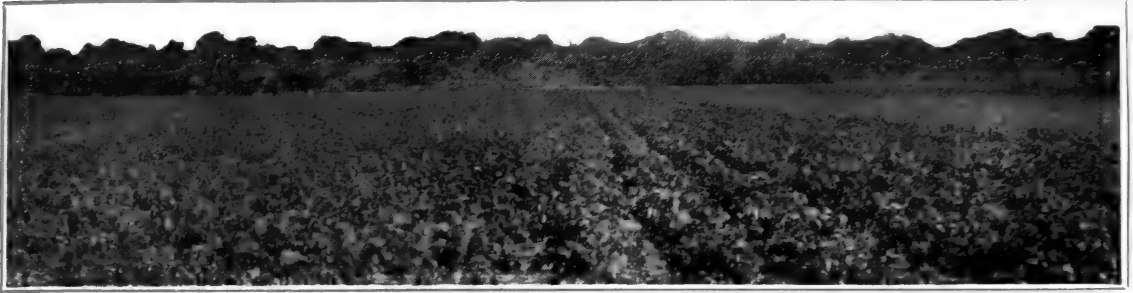
Townsend's Hardy Grape Vines Are Carefully Grown for YOU

The field of Grape Vines shown here is being grown on the Townsend's Farms where one of the largest plantings in the East is made. Careful inspection throughout the growing season and constant cultivation combined with soil and proper plant food throughout the growing season, maintains for our customers a well balanced vine that the Townsends are pleased to pass along to them as the very best money can purchase. We ask everyone interested in grapes to give our vines a trial this year. We guarantee to please you.

Complete Culture Guide On Grape Growing
Will Be Gladly Sent You Free On Request



20 acre block of 1 year grape vines



View above shows two million thrifty grape vines growing on our farms. Photo taken October 15th, 1935

Cash in on the profits of Grapes—Every farm, village, and suburban home will benefit by planting grapes this year. Townsend's Maryland grown strain are weather-hardened and grown on the soils that have made Maryland famous for fruit plants all over the Country. The following varieties are all new ones that have been tested for their dependable performance both in the home garden and commercial plantings. You will find in these varieties fruit of the highest quality, and showing outstanding supremacy over most of the varieties now being offered on the market.

NEWER VARIETIES OF GRAPES

CACO. This new red Grape is giving promise of becoming the leading red variety. On our farms this year, it was an outstanding variety, both as to flavor and size of fruit, holding fruit well after ripening.

CHAMPAGNE. A delicious white Grape, turning to amber when fully ripe; extremely large and juicy. Never before have we seen as large compact bunches of grapes as this variety produces. Strong, sturdy grower. Don't fail to get some of this variety; you will be delighted with them.

FREDONIA. Originated in New York State Agricultural Experiment station. Black, ripens very early; berries large, juice and sweet; borne in large, compact clusters; bunches are compact and very attractive.

ONTARIO. White. Follows Portland very closely in ripening. An excellent blending of acid and sugar, hence the taste is sprightly and yet sweet. Vines strong, vigorous growers and very productive. Another of New York State Agricultural Station's originations.

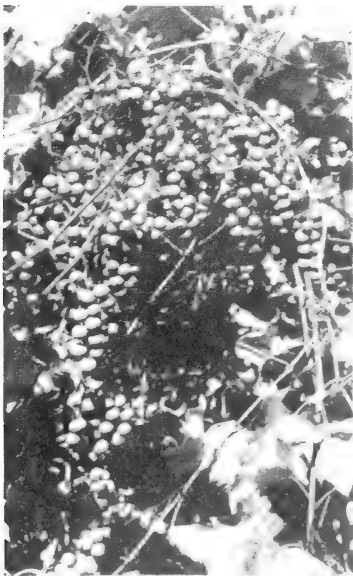
PORTLAND. New white Grape developed by New York State Experiment Station. Ripens earlier than any other known Grape. Berries large and have that beautiful yellow color like the Niagara. Contains so much sugar that it can be eaten long before it is fully ripe.

SHERIDAN is the most promising new Grape for commercial growers to compete with California vineyards. It is a late bluish black Grape, large and more attractive than Concord, and is superior in keeping qualities. Fruit is produced in large handsome clusters and many of them on each vine. We recommend this Grape to all our customers in the Middle Atlantic States.



SHERIDAN
Will Please You

Complete
Grape Prices
Will be Found
on Page 39



CHAMPAGNE
Never Fails to Give A
Good Crop

Special **GRAPE** *Offers*
BIG VALUE OFFER | BIG VALUE OFFER

No. 1
All Select 2 Year Vines

- 1 Fredonia, Black
- 1 Caco, Red
- 1 Champagne, Amber
- 1 Moore's Early, Black
- 1 Niagara, White
- 1 Catawba, Red
- 1 Worden, Black
- 1 Concord, Black

8 Vines **\$1.35**
Special Price, ONLY
Catalogue Value \$1.96

No. 2
All Select 2 Year Vines

- 2 Champagne, Amber
- 2 Caco, Red
- 2 Fredonia, Black
- 2 Ontario, White
- 2 Portland, White
- 2 Sheridan, Black
- 2 Concord, Black
- 2 Moore's Early, Black
- 2 Catawba, Red

18 Vines **\$2.65**
Special Price, ONLY
Catalogue Value \$5.12

Robinson

The New Everbearing Blackberry

This new Everbearing Blackberry has proved to be a profitable fall cropping variety as well as producing a fine crop of extra large solid berries along with the other well-known blackberry varieties that produce their crop only in the early summer months. This variety has been tested in several states and is not in the experimental stage, having passed the test of a profitable variety for the market gardener fruit grower as well as home gardeners. It takes no more attention for them than the ordinary Blackberry, and is sure to be of great benefit throught the coming years to the fruit grower who is catering to the roadside markets.

EARLY HARVEST is one of the earliest Blackberry varieties to ripen and most productive of the early sorts. If you are looking for a very early blackberry then plant Early Harvest of Townsend's Selective Strain. Fruit is very firm, medium large and a vigorous grower. Our stock is grown from root cuttings only.

Eldorado

ELDORADO is the most widely planted Blackberry on the Market; it does well in the Extreme North on account of its hardiness where some of the other varieties winter kills if not properly protected. Eldorado is of fine quality; berries are glossy black and with very little core. For making jellies, jams and pies it is unexcelled, having a very rich flavor. We only offer stock grown from rooted cuttings, as we consider them far superior to sucker plants. You can depend on Townsend's Eldorado to give you satisfaction as a Midseason to Late Variety.

New ALFRED Blackberry

Large, Very Sweet and a Heavy Producer

Alfred is grown throught the Northwestern states. Also is heavily planted in Ohio, West Virginia, Indiana, Illinois, New York and Pennsylvania. It is of recent introduction. Mid-season fruiting; extremely large; practically free from seeds and coreless. Very sweet and juicy. For a midseason variety we recommend Alfred.



ALFRED is Very Sweet and Juicy

ROBINSON
Is One of the Largest
Blackberries Grown



Prices of Blackberry
Plants on page 39

CURRENTS

Approved Varieties

Prices: 25c each; 6 to 10, 20c each; 50 to 100, 15c each

CHERRY. Large berries on short clusters; a robust, fruitful variety. The vigorous, stocky bushes produce large quantities of bright red fruit with thin skins and remarkably fine flavor.

RED CROSS. Large, red, fine. Very productive and of extra high quality. Rich, mild, sub-acid.

WILDER. Bunch and berries very large, bright, attractive red color, even when dead ripe. Flavor not too acid and fruit continues on bush for quite a period.

PERFECTION. Beautiful, bright red, holding its large size to end of bunch. Easy to pick—a superior bearer—less acid and of better quality than any other large currant.

WHITE GRAPE. Very large, yellowish white. Mild acid flavor. Extremely valuable for table use.

GOOSEBERRIES

Prices unless otherwise noted: Each 25c; 6 to 10, 22c each; 11 to 50, 20c each

DOWNING. Large, handsome, pale green; of splendid quality for both cooking and table use. The plant is strong and usually free from mildew.

RED JACKET. This is the most free from mildew of all the leading varieties. The fruit is large, smooth, pale red in color, fine flavored, and is produced in great abundance.

FOORMAN. Largest, healthiest and most vigorous grower. Fruit large, red, very attractive; exceedingly productive. Price each 30c.

SPECIAL OFFER

4 Currants and 4 Gooseberries your choice

\$1.40

EVERBEARING RED RASPBERRIES

The
Quickest and
Longest Crop Producers
of the Raspberry Family



Grow Everbearing Raspberries

Raspberries that bear their first crop WITHIN 80 DAYS AFTER PLANTING should be planted by every commercial producer and in every home garden for immediate results and for their high fruit-producing qualities.

Where the grower can get this ideal combination of high-class berries, quick results on his initial investment, and marketable fruit throughout the season, the everbearing varieties are indispensable.

The home garden particularly is not complete without such of these varieties as will provide the home with fresh fruit the first season and from early until late during succeeding season's growth.

KATHERINE (Everbearing Red). Recently introduced. The best Red Everbearing Raspberry that we have ever grown. Like its parents it is a persistent producer from early Spring to late Fall. Berries being very large and of firm quality with excellent flavor.

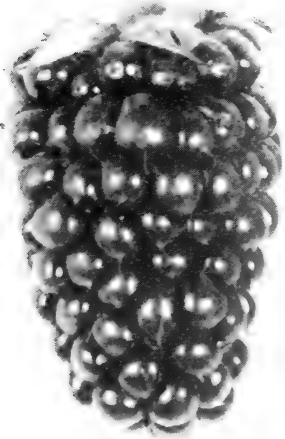
ST. REGIS (Everbearing Red). This variety is grown extensively by large fruit growers and market gardeners, producing a good crop within 80 days after setting. Medium to large, season of ripening early. It succeeds on all soils light or heavy. Canes absolutely hardy, producing large quantities of delicious fruit. A valuable variety for market or home garden.

For Complete Prices of Raspberry Plants, See Page 39

NEW
VARIETIES

DEWBERRIES

FOR HOME OR
MARKET



BOYSENBERRY (Dewberry)

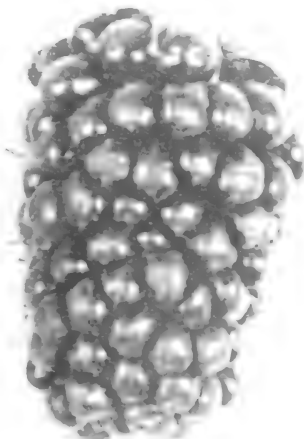
BOYSENBERRY. The New Boysenberry was originated in California just a few years ago. It is gaining in popularity each year, and in a few years we look for it to replace all other varieties of dewberries. The stock is yet limited and we are fortunate enough in getting a few thousand plants for our customers this year. You will agree with us in saying they are the finest berries you have ever tasted, either fresh, canned, in jams, jellies, or pies. Fruit exceptionally large and vines vigorous, hardy, and productive.

The public is just beginning to realize the great value of the Dewberry both for commercial profit and home use. Their large size and sweet flavor make them unexcelled as a table berry. The dewberry is of the Blackberry family and one planting is good for several years. They can be planted on any type soil. We recommend setting them along side the fence or boundary line in the garden. They take up very little space and a real source of pleasure and profit. The following varieties are the leaders in the Dewberry field:

LUCRETIA. A very hardy variety of the Dewberry, largely planted in the North on account of its hardiness and in the South for its long-distance shipping qualities. The fruit is large and firm, excellent for making jams and jellies.

YOUNGBERRY. This dwarf trailing form of the dewberry is highly prized by growers wherever it is known, because of the enormous size of the fruit and fine eating qualities, combined with its great productivity of the plant and the high prices the crop commands on the open market.

Every dollar which you invest in this plant will return big dividends. A yield of 8,000 quarts per acre is not unusual for the Youngberry. For the home garden we do not know of a Dewberry that will afford as much real pleasure from a small investment as this variety. The fruit can be eaten direct from the vines or placed on the table without an addition of sugar. Every home should have sufficient Youngberry plants to enjoy this great fruit.



YOUNGBERRY (Dewberry)

DEWBERRY OFFER

12 plants each variety Dewberries listed on this page.

36 Plants in All For \$2.65



APPLE TREES



Here are a fine lot of heavy bearers selected by Townsend. They are the choicest; for cooking and eating. You will find several late winter keeping varieties; giving you a good supply of ripened fruit for the long winter months. The same quality is in the making of our Apple trees; as in our Strawberry Plants; we guarantee satisfaction.

PRICES:

	1-9	10-49	50-299
5-6 Ft. Fancy	\$0.75	\$0.70	\$0.65
4-5 Ft. Selects	.65	.60	.55

BALDWIN. Winter. Large, deep red, good keeper. Nov.

EARLY McINTOSH. Highest quality for home and market. Beautiful bright red in color.



TWO IMPROVED VARIETIES

RED DELICIOUS. This is a large apple with a surface almost covered with a brilliant dark red, blending to golden yellow at the blossom end. The tree is hardy, healthy and vigorous and bears regular annual crops. The flesh is fine grained, crisp and melting, juicy, delightfully aromatic, moderately sub-acid to give a pleasing flavor. Quality very good to best. Keeping qualities good. No addition in price.

NEW CORTLAND. Cortland Apples, says Professor U. P. Hedrick, of New York State Agricultural Experiment station, cannot be surpassed by apples grown anywhere in the world, and apple growers in New York and New England have an opportunity to specialize in a distinctive fruit that will bring renown and profit to the industry of the region. Ripens in late fall. Flesh white, fine grained and larger than the McIntosh, aromatic flavor, making it fine for a dessert apple. No addition in price.

GRIMES GOLDEN. Late fall. Best yellow fall apple. Firm, fine grained, juicy, with mild pleasant flavor.

JONATHAN. Late fall. Young and heavy bearer. Attractive red, highly colored and flavored. Flesh white, tender, juicy and rich.

McINTOSH. Late fall. An outstanding apple for Commercial Growers. A bright red, spicy flavor, fine eating and keeps well.

ROME BEAUTY. Winter. Large yellow shaded red stripes, juicy, tender and sub-acid.

STAYMAN'S WINESAP. Late fall. Excellent for eating and market. Dark red, tinged yellow, with rich and satisfying flavor.

WEALTHY. Early fall. Large, round fruit, with dark red markings. Flesh white, tender and sub-acid.

WILLIAMS EARLY RED. Fall. Very beautiful bright red, fine for dessert. Mild flavor. Early and reliable.

WINTER BANANA. Early winter. Fancy market and late apple. Flesh lemon yellow with bright red cheek. Rich banana flavor.

YELLOW TRANSPARENT. Early summer. Best yellow early, fruit good size, waxy yellow skin, flesh white, mild and juicy.

YORK IMPERIAL. Winter. Medium uniform size and usually oblique shape. Skin green or yellowish shaded with crimson, mild sub-acid flavor.

TOWNSEND'S Big Bargain Apple Offers

1 Big 5-6 Ft. Tree, each variety.	All Red Varieties, three early—three late
New Cortland	1 Select 4-5 Ft. Tree, each variety
Yellow Transparent	Stayman Winesap
Winter Banana	Red Delicious
Grimes Golden	Baldwin
Red Delicious	Early McIntosh
McIntosh	Wealthy
6 Trees in All For	Wm. Ey. Red
\$3.45	6 Trees All For
	\$2.85

With the above offers—six fine grape vines will also be included absolutely free.



Free!
6
Grape Vines

VALUE \$1.36

As a special introductory offer we will give free with each fruit tree collection listed in this catalogue, six selected grape vines, as follows:

- 2 Concord (Blue)
- 2 Catawba (Red)
- 2 Niagara (White)

Take advantage of this wonderful offer by placing your order at once.

proven character, and performance. To develop such a tree we start you right by making selection of our Buds and Grafts from Bearing Trees that show every indication of true type and production qualities. Back of each tree sold by Townsend's is experienced men who know proper budding and grafting methods to insure strong body growth, and an abundance of root system which is necessary to get prompt growth on your trees after planting.

	PRICES	1-9	10-49	50-300
Large Selected 5-6 Ft.		\$1.50	\$4.45	\$40
Extra Planters Grade 4-5 Ft.45	.40	.35
Select 2-3 Ft.40	.35	.30

BELLE OF GEORGIA. Ripens 1st to 15th of August. Large white fleshed with pink cheek; excellent flavor, rapid grower, very productive.

CARMAN. Ripens about the middle of July. Skin pale yellow, with a slight blush. One of the best early market peaches, very hardy, a good Northern variety.

CHAMPION. Ripens about July 20th. A very profitable commercial variety, noted for its regularity of bearing; skin rich cream white, with red cheek. Large in size and grown extensively by the Western Growers.

CRAWFORD. Early. Ripens in early July. Large yellow peach with deep red cheek, flesh very yellow and juicy, of the freestone type.

PEACH TREES

Our Nurseries are located in the most favorable section of the country for growing Peach Trees. Soil and climatic conditions are ideal for producing a good fibrous root system, straight bodies, and well balanced tops. Better fruit can only be produced from better trees correctly fertilized, pruned and cultivated. Back of these trees must be parent trees of



Golden Jubilee Peach

Today's outstanding early yellow freestone.

- * Ripens four weeks before Elberta.
- * Very hardy. Buds resist winter freezes.
- * High quality. Grand luscious-golden yellow flesh.
- * Blossoms are self-fertile.

CRAWFORD. Late. Ripens after Elberta; a freestone variety of high quality. Flesh deep yellow. Skin yellow with a broad dark red cheek.

CUMBERLAND. Extra large peach. Vigorous grower, hardy as the Carman, ripens a few days ahead of Carman. Above medium in size, attractive in color and shape. good in quality.

ELBERTA. Ripens about middle August. A valuable variety for home or commercial purpose. Fruit very large, flesh very yellow, skin yellow with rich red cheek, extremely highly flavored and of the freestone type.

EARLY ELBERTA. Ripens about a week earlier than Elberta. Fruit large, yellow with brilliant shade of red.

HALE HAVEN is a new early variety and extremely hardy in the North. Fruit is a large yellow with thick flesh. Quality is of the best. We recommend Hale Haven to our Northern customers.

J. H. HALE. One of the best sorts for the market or home. Fruit is large, round and excellent quality. Skin and flesh very yellow, flavor sweet, ripens a little before Elberta.

ROCHESTER is a very early peach, ripens a little ahead of the Elberta. Flesh yellow, fine flavor, being very sweet, freestone and good size.

ROBERTA. Yellow freestone; ripening ten days after Elberta. Fruit growers are much enthused over the Roberta as it ripens at a time when prices are usually high. Fruit attractive and good quality.

SHIPPERS LATE RED. Promising new, late, yellow peach, with attractive red blush. Extra hardy, good cropper, trees fruiting very young.

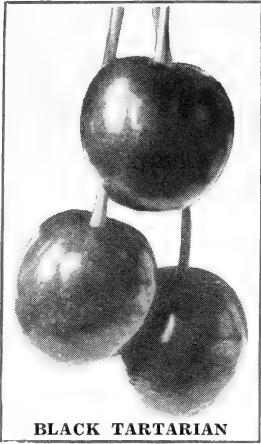


SOUTH HAVEN PEACH

- * A big yellow golden color with red cheek.
- * Immense productiveness.
- * Fruit farmers are now planting whole orchards of this wonder peach.
- * Ripens 14-20 days earlier than Elberta.
- * Trees hardy, quick growing, young bearing.
- * Combines all the good qualities of the famous Elberta.

Townsend's Deluxe Peach Offers

Early Bearing Offer	Full Season Collection
All Extra Planters Grade	Large Select 5-6 ft. Trees
1 Crawford Early	1 Belle Georgia
1 Early Elberta	1 Early Crawford
1 Carman	1 Late Crawford
1 Rochester	1 South Haven
1 Golden Jubilee	1 Golden Jubilee
1 Champion	1 Elberta
These 6 Fine Varieties	Six Valuable Trees
ALL FOR	ALL FOR
\$1.95	\$2.25



BLACK TARTARIAN

CHERRY TREES

TOWNSENDS HEAVY BEARING VARIETIES

PRICES (All strong 2 yr. Size)

	1-9	10-49	50-299
4-5 Feet Selects	\$0.85	\$0.75	\$0.70
3-4 Feet Medium80	.70	.65

SWEET CHERRIES

BLACK TARTARIAN. Makes a beautiful erect growth; a heavy bearer. Ripens in late June and July. Fruit is purplish in color, rich and juicy.

GOVERNOR WOOD. A healthy grower and abundant bearer. Large, yellow fruit, covered with bright red. Ripens middle of June.

NAPOLEON. Deep yellow tinged with red.

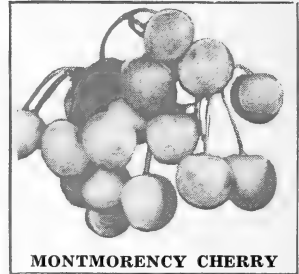
YELLOW SPANISH. Ripens end of June. Fine for canning. Fruit large, with golden coloring tinted with crimson.

SOUR CHERRIES

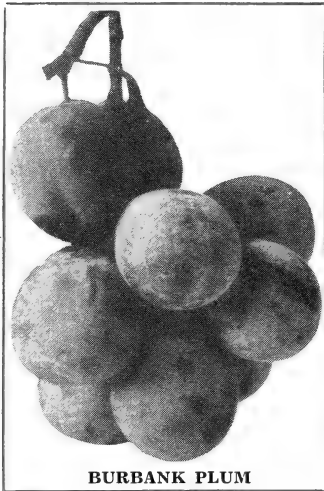
EARLY RICHMOND. June. Sour red, the earliest of Sour Cherries. Fruit round, skin thin, rather tough and easily separated from the pulp and requires small amount of sugar when canning.

ENGLISH MORELLO. Late July and early August. The only real late Cherry. Tree grows quite small and of dwarf habit. Fruit good size, nearly black.

MONTMORENCY. Large. Late June. A commercial variety in popular demand. Tree bears young, within 2 years after planting. Fruit of good size. Bright, clear red.



MONTMORENCY CHERRY



BURBANK PLUM

SPECIAL PLUM AND CHERRY OFFER

<p style="text-align: center;">OFFER #1</p> <p>1 Abundance 1 Burbank 1 Green Gage 1 Three Select Plum Trees</p>	<p style="text-align: center;">OFFER #2</p> <p>1 each, Montmorency, Black Tartarian, Gov. Wood, Early Richmond Four Select Trees Only</p>
\$2.30	\$2.95

You also get 6 grape vines, value \$1.36, free with above offer

PLUMS

Here are the best Plums—hardy, heavy bearers. Always plant several varieties together so that they can cross-pollinize. They will bear much better.

ABUNDANCE. (Japanese). Skin pinkish red, changing to dark red. Ripens late Aug. or early Sept. Fruit medium size, roundish; flesh yellow, tender and sweet.

ITALIAN PRUNE. A fine prune suitable for drying. Color a dark purple of delicious quality.

SHROPSHIRE DAMSON. Skin purplish black; flesh golden yellow, juicy, firm and tender. Every home ought to have a tree or two.

PLUM PRICES

	1-9	10-49	50-299
5-6 Ft. Selects	\$0.90	\$0.85	\$0.80
4-5 Ft. Medium85	.80	.75

2 OUTSTANDING PLUMS

BURBANK. A triumph of the genius of "The Master Horticulturist." Remarkably successful all over the country. It seems to succeed in any soil. Fruit large, dark red or purplish with thin lilac bloom. Flesh amber yellow with rich sugary flavor. It's a dandy.

GERMAN PRUNE. Excellent for drying, preserving or dessert. Large fine fruit that is firm, sweet and delicious. We have nothing to offer that will take its place. Every home should have a few trees; the fruit will carry you through the winter season.

SPECIAL OFFER

1 large Selected trees 5-6 ft.
2 Burbank and 2
German Prune all for **\$2.45**
6 grape vines included free.
Value \$1.36 with this offer

PEAR TREES

PRICES

Strong 2 yr. Heavy Rooted Stock

	1-9	10-49	50-299
Large Selected 5-6 Ft.	\$0.90	\$0.85	\$0.80
Choice Medium Grade 4-5 Ft.80	.75	.70

PEAR OFFER

Choice Medium Grade
all strong 4-5 ft. trees

- 1 New Douglas
- 1 Bartlett
- 1 Anjou
- 1 Kieffer
- 1 Duchess

All 5 Trees **\$3.15**
FOR

You also get with our compliments 6 grape vines free. Value \$1.36

ANJOU. A heavy yielding late variety, good keeper, very juicy and fine flavor.

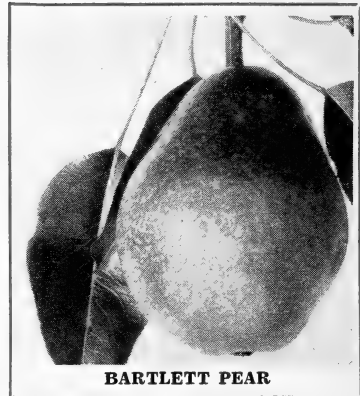
BARTLETT. One of the finest dessert and eating Pears. Heavy producer. Golden yellow with red cheek.

CLAPP'S FAVORITE. Large pale yellow with red cheek. Tree hardy and does well every where. Fruit fine grained, sweet and highly flavored.

DUCHESS (d'Angouleme). Excellent keeper, bright yellow, juicy.

KIEFFER. The Old reliable canning Pear. Fruit is large, yellow, and of fine quality. Tree hardy and bears very late. Sure cropper and does well every where.

NEW DOUGLAS. A new variety that is blight proof, and resistant to cold, does well in all soils and localities. A beautiful large smooth pear, golden yellow color, flecked with russet, sweet, melting and juicy. At no additional price.



BARTLETT PEAR



30 Acre field of Selected Asparagus roots growing on our Farm

ASPARAGUS

Our Asparagus Roots Are Grown From the Highest Grade Seed

The roots that Townsend's offer their customers are produced from seed that often cost us \$6.00 per pound, which is thirty times higher than Asparagus seed that we can buy on the market. We do not hesitate to say that seed grown from these selected seed will in every case produce larger yields, heavier bunches, and will actually sell on the city markets or to canneries from two to three times the price of the ordinary Asparagus grown from low vitality roots. It has been the opinion of growers that the amount of manure furnished the Asparagus fields that were old enough to cut governed the size of the Asparagus and quality. While this is an important factor in getting a good grade of grass as we all know, it has been proven time and time again that roots grown from a selected seed, known for its strong vitality in producing a like Asparagus will increase more than double the Asparagus cut per acre, with the same amount of manure as Asparagus grown from ordinary roots. We are giving you the facts as we have seen them and ask you, does it pay to set anything but the best roots? We are only growing two varieties of Asparagus, as they are the leaders in the Asparagus varieties, and we know they will please our customers and furnish them with Asparagus of the highest quality and plenty of it.

MARTHA WASHINGTON. A selected strain from the Washington variety, much heavier stock and a greater producer than the original Washington variety, practically blight resistant.

PEDIGREED WASHINGTON. This new variety is the first results of a blister proof campaign for the eradication of Asparagus rust. It is vigorous and high yielding Asparagus. The tips are of uniform size with good tight buds of bluish purple. Makes an attractive appearance when bunched; tender and delicious.

ASPARAGUS PRICES	25	50	100	250	1000
1 Year	\$0.40	\$0.65	\$1.00	\$2.00	\$6.00
2 Year55	.85	1.20	2.35	7.50
3 Year	1.00	1.50	2.00	4.00	12.00

500 Plants at the 1000 Rate
(Write for special prices on lots of 3000 or more.)

Asparagus Roots by Parcel Post add 8c each 25 Roots to cover Postage.

RHUBARB

Market Gardeners and Commercial Growers know the value of clear pink rhubarb as being in greater demand and bringing higher prices than any other color rhubarb. The rhubarb roots that we are offering this year are grown from selective pink stock. This is to insure our customers of getting as near 100% pink stock as it is possible to grow with very little effort in their part.

McDONALD. A new early producing Rhubarb of exceptionally fine quality, originated in Canada, a true pink variety, and a good forcer. Price 30c each

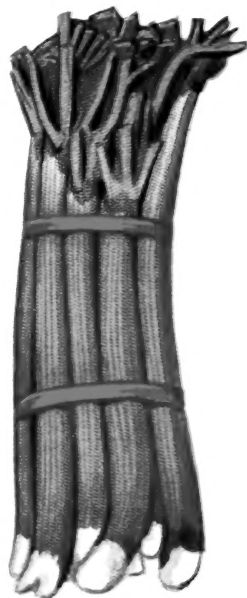
MYATTS LINNAEUS. Produces large, tender stalks, flavor sprightly fine for pies and sauce.

QUEEN. Extra strong grower, extremely large stalks, color dark pink, a good commercial variety.

RHUBARB PRICES—ABOVE VARIETIES	25 Roots	50 Roots	100 Roots	400
Each	\$0.10	.55	1.00	\$1.50
655	1.00	2.00	2.50
1285	1.50	3.00	4.00

Rhubarb by parcel post add 3c each root to cover postage.

Write for Our Free Folder on Growing Rhubarb



Pink Rhubarb brings top prices at any market



Above field: Maryland Golden averaged 415 bushels U. S. No. 1 to the Acre

MARYLAND GOLDEN SWEET POTATOES

We are again offering to our customers thru this small space in our catalogue one of the outstanding sweet potatoes on the market—Maryland Golden. As stated in our last year's catalogue, this variety of potatoes was just what the country has been looking for and, from the reports received by our customers this year, who ordered Maryland Golden from us, and the market reports throughout the country, we are entirely convinced that there is not a sweet potato on the market today that has the money making possibilities for the commercial grower as well as the satisfaction obtained by the small growers for table use, as the Maryland Golden. The demand far exceeds the supply and we look for it to remain so for a good many years. Be the first in your community to grow this wonderful potato and benefit by the profits you will receive from them.

The color is all that the name implies—a deep, rich, golden yellow with a slight pinkish cast, holding its color perfectly when cooked. It is not of the dry type like Little Stem Jersey or of

the wet type like the Nancy Halls or Yams, only slightly moist at any state of maturity. It produces a crop very early, therefore, is one of the best varieties for our Northern customers to grow where early maturing varieties are a necessity.

We want to tell you more about this variety; however, space will not permit it here. Therefore, we have printed an illustrated folder on Maryland Golden which will be sent to you free on request.

We offer you Maryland Golden plants and certified seed stock at prices shown on the right. Let us reserve your supply early this year as last year found us sold out long before the season was over.

Ruffsdale, Penna.
The 400 sweet potato plants did far better than I expected; from the 100 plants, we dug 27 bushels fancy sweet potatoes. I expect to keep on growing them as I was well pleased with the results.

ALVIA SMITH.

Prices of
MARYLAND GOLDEN
Sweet Potato Plants
Ready After May the 15th

100 Plants	\$0.75
250 Plants	1.00
500 Plants	1.75
1000 Plants	3.00

CERTIFIED SEED STOCK
For Growers who wish to grow their own plants, we offer this stock. Delivery anytime from our storage house.
\$2.25 Per Bushel
Write for special prices on lots of 10 bushels or more.

TOWNSEND'S

WORLD'S LARGEST GROWERS
OF STRAWBERRY PLANTS

TRUE TO NAME
PLANTS

1936 PRICES STRAWBERRY PLANTS

GUARANTEED
SATISFACTION

All prices quoted below are F.O.B. Salisbury, Maryland, and in effect from January the 1st until June 1st, 1936. Customers ordering plants sent Parcel Post prepaid, see Parcel Post Rates on page 39. We ship a limited number of strawberry plants in late summer and fall. Customers wanting plants for planting at that time, ask for our Special Late Summer and Fall Price List. All plants are tied 25 to bundle. No less than 25 plants of variety sold.

Description of varieties
will be found
on page

	25 Plants	50 Plants	100 Plants	200 Plants	300 Plants	400 Plants	1000 Plants	3000 Plants	4000 Plants	5000 Plants
EARLY VARIETIES										
16 ABERDEEN	\$0.25	\$0.40	\$0.60	\$1.00	\$1.35	\$1.60	\$3.50	\$10.00	\$13.00	\$15.00
12 Beaver	.25	.40	.65	1.10	1.50	1.80	4.00	11.55	14.80	17.50
12 Bellmar	.25	.40	.65	1.10	1.50	1.80	4.00	10.75	14.10	17.50
13 BLAKEMORE	.25	.40	.60	1.00	1.35	1.60	3.50	10.00	12.80	15.00
8 DORSETT	.30	.45	.70	1.20	1.65	2.00	4.50	12.30	16.20	20.00
10 FAIRFAX	.30	.45	.75	1.30	1.80	2.20	5.00	13.80	18.20	22.50
9 HOWARD SUPREME (Imp.)	.40	.55	1.10	1.80	2.40	3.00	7.00	20.55	27.00	32.50
11 Howard 17	.25	.40	.65	1.10	1.50	1.80	4.00	11.40	14.40	17.50
12 Klondyke	.25	.40	.60	1.00	1.35	1.60	3.50	10.00	13.00	15.00
13 Missionary	.25	.40	.60	1.00	1.35	1.60	3.50	10.00	13.00	15.00
9 PREMIER	.25	.40	.65	1.10	1.50	1.80	4.00	11.40	14.40	17.50
MEDIUM EARLY TO LATE										
14 Beauty	.30	.40	.65	1.10	1.50	1.80	4.00	10.75	14.10	17.50
16 BIG JOE	.30	.40	.65	1.10	1.50	1.80	4.00	11.40	14.40	17.50
17 CATSKILL	.30	.45	.75	1.30	1.80	2.20	5.00	13.75	18.20	22.50
12 Cooper	.30	.45	.70	1.20	1.65	2.00	4.50	12.25	16.20	20.00
12 DR. BURRILL	.25	.40	.60	1.00	1.25	1.30	3.00	7.75	10.20	12.50
14 Gibson	.25	.40	.60	1.00	1.35	1.60	3.50	10.00	13.00	15.00
14 JUPITER (Patented)	.40	.55	1.10	1.80	2.40	3.00	7.00	20.55	27.00	32.50
14 Marshall	.40	.65	1.20	1.95	2.45	3.15	7.50	Stock Limited		
12 SENATOR DUNLAP	.25	.40	.60	1.00	1.25	1.30	3.00	7.75	10.20	12.50
14 Sharpless	.50	.75	1.25	2.10	3.00	3.80	9.00	Stock Limited		
LATE TO VERY LATE										
17 AROMA	.30	.40	.65	1.10	1.50	1.80	4.00	10.80	14.20	17.50
19 Brandywine	.30	.45	.75	1.30	1.80	2.20	5.00	14.70	19.20	23.75
13 Townsend's Big Late (Imp.)	.30	.40	.65	1.10	1.50	1.80	4.00	11.55	15.00	17.50
21 CHESAPEAKE	.30	.45	.75	1.30	1.80	2.20	5.00	13.80	18.20	22.50
13 FORD	.30	.40	.65	1.10	1.50	1.80	4.00	11.55	15.00	17.50
20 GANDY	.25	.40	.65	1.10	1.50	1.80	4.00	10.75	14.10	17.50
15 Lupton	.30	.40	.65	1.10	1.50	1.80	4.00	11.40	14.40	17.50
19 Pearl	.30	.45	.70	1.20	1.65	2.00	4.50	Stock Limited		
19 Sample (Imp.)	.30	.40	.65	1.10	1.50	1.80	4.00	11.55	15.00	17.50
18 "TOWNKING"	.25	.40	.60	1.00	1.35	1.60	3.75	10.95	14.20	17.50
19 WM. BELT	.30	.40	.65	1.10	1.50	1.80	4.00	10.75	14.10	17.50
19 World's Wonder	.50	.75	1.25	2.10	3.00	3.80	9.00	Stock Limited		
20 "XTRALATE" (Imp.)	.20	1.80	3.00	4.90	6.80	8.70	20.00	Stock Limited		
11 SURPLUS PLANTS	Not less than 1000 Surplus Plants sold						2.75	7.75	10.25	12.50
FALL BEARING STRAWBERRIES										
23 Aldrich	.50	.75	1.25	2.10	3.00	3.80	9.00	Stock Limited		
23 GEM	.40	.65	1.20	1.95	2.45	3.15	7.00	18.60	24.40	30.00
23 Luckystrike	.35	.55	1.10	1.80	2.40	3.00	7.00	18.50	24.25	30.00
22 MASTODON	.35	.55	1.10	1.80	2.40	3.00	7.00	18.60	24.40	30.00

500 plants sold at the 1000 rate.

(Orders calling for large quantities, write for special prices)

*Varieties marked (Imp) are imperfect flowering and must be set with perfect flowering varieties of same season; at least one row perfect flowering to every three rows imperfect flowering. All varieties not marked are perfect flowering and need no other varieties to fruit with them.

NEW LOWER EXPRESS RATES ON STRAWBERRY PLANTS SHIPPED FROM SALISBURY, MARYLAND. This new rate will mean a saving to our customers of approximately 40% in transportation cost. Due to this extremely low rate and quick deliveries, we can recommend express shipments on all orders of 500 plants or more.

WE WILL BE GLAD TO QUOTE SPECIAL PREPAID PRICES. Any customer who wants to know the exact cost of plants laid down to their nearest express office, just write and tell us how many plants of each variety you will need, giving nearest express office, and we will be glad to forward by return mail exact cost of plants, including all transportation to your express office.

**Certified
PLANTS**

**PRICE LIST
OF**

**Approved
VARIETIES**

Fall Delivery
After November 1st

**RASPBERRIES—BLACKBERRIES
DEWBERRIES—GRAPES**

Spring Delivery
January until June 15th

All prices quoted below are F.O.B. Salisbury, Maryland, and in effect from January 1st until June 15th. Customers ordering plants sent PARCEL POST, PREPAID, see PARCEL POST RATES at bottom of page. Fall shipping season opens November 1st on all stock listed on this page. Write for our LATE FALL PRICE LIST if you anticipate Fall setting.

Description of varieties
will be found
on page

RED RASPBERRY PLANTS

For prices on bearing age plants, see page 29

	12	25	50	100	200	300	400	500	1000
	Plants	Plants	Plants	Plants	Plants	Plants	Plants	Plants	Plants
26 CHIEF , Select 1-yr. No. 1.....	\$0.45	\$0.80	\$1.40	\$2.50	\$4.45	\$5.95	\$7.10	\$7.90	\$14.85
27 LATHAM , Select 1-yr. No. 1.....	.45	.80	1.40	2.50	4.45	5.95	7.10	7.90	14.85
33 KATHERINE , (Evgb.) Select 1-yr. No. 1.....	.70	1.25	2.20	3.95	6.70	8.95	10.60	11.75	22.50
33 St. Regis , (Evgb.) Select 1-yr. No. 1.....	.50	.85	1.50	2.65	4.75	6.40	7.60	8.50	16.00
26 NEWBURGH , Select 1-yr. No. 1.....	.85	1.50	2.65	4.70	8.40	11.20	13.30	14.85	28.75

BLACK RASPBERRY PLANTS

For prices on bearing age plants, see page 29

	12	25	50	100	200	300	400	500	1000
	Plants	Plants	Plants	Plants	Plants	Plants	Plants	Plants	Plants
28 CUMBERLAND , Select 1-yr. No. 1 Tips.....	.45	.75	1.35	2.40	4.25	5.65	6.70	7.50	13.95
28 LOGAN , Select 1-yr. No. 1 Tips.....	.40	.75	1.35	2.45	4.35	5.85	6.85	7.95	14.95
28 PLUM FARMER , Select 1-yr. No. 1 Tips.....	.40	.75	1.35	2.45	4.35	5.85	6.85	7.95	14.95
28 QUILLEN , Select 1-yr. No. 1 Tips.....	.60	1.05	1.80	3.20	5.10	6.80	8.10	9.00	17.00

PURPLE RASPBERRY PLANTS

For prices on bearing age plants, see page 29

	12	25	50	100	200	300	400	500	1000
	Plants	Plants	Plants	Plants	Plants	Plants	Plants	Plants	Plants
28 Columbian Purple , Select 1-yr. No. 1.....	.70	1.25	2.20	3.95	6.70	8.95	10.60	11.75	22.50

BLACKBERRY PLANTS

All Blackberry plants grown from root cuttings. For prices on bearing age plants, see page 29

	12	25	50	100	200	300	400	500	1000
	Plants	Plants	Plants	Plants	Plants	Plants	Plants	Plants	Plants
32 ALFRED , Select 1-yr. No. 1.....	.60	1.05	1.85	3.35	5.95	7.95	9.45	10.50	20.00
32 EARLY HARVEST , Select 1-yr. No. 1.....	.50	.85	1.55	2.75	4.95	6.60	7.85	8.75	16.50
32 ELDORADO , Select 1-yr. No. 1.....	.45	.85	1.50	2.70	4.80	6.40	7.65	8.50	15.95
32 ROBINSON , Everbearing Select 1-yr. No. 1.....	.70	1.25	2.20	3.95	6.70	8.95	10.60	11.75	22.50

DEWBERRIES

For prices on bearing age plants, see page 29

	12	25	50	100	200	300	400	500	1000
	Plants	Plants	Plants	Plants	Plants	Plants	Plants	Plants	Plants
33 YOUNGBERRY , (New) Select 1-yr. No. 1 Tips	.95	1.45	2.35	3.60	6.25	8.65	10.90	13.00	25.00
33 Lucretia , Select 1-yr. No. 1 Tips.....	.45	.85	1.50	2.70	4.80	6.40	7.65	8.50	15.95
33 BOYSENBERRY , Select 1-yr. No. 1 Tips.....	each 25	Six 1.25	Twelve 2.15	Stock Limited					

GRAPES

For prices on bearing age grape vines, see page 29

	3	6	12	25	50	100	200	300	400	500	1000
	Each Vines	Vines	Vines	Vines	Vines	Vines	Vines	Vines	Vines	Vines	Vines
30 CONCORD , 1-yr. No. 1.....	\$0.11	\$0.30	\$0.55	\$0.80	\$1.35	\$2.15	\$3.85	\$6.45	\$8.75	\$10.55	\$12.50
30 CONCORD , 2-yr. No. 1.....	.18	.45	.65	.95	1.55	2.75	4.45	8.45	11.75	14.15	17.50
30 CATAWBA , 1-yr. No. 1.....	.16	.45	.85	1.20	1.95	3.45	5.95	10.85	15.75	19.95	23.00
30 CATAWBA , 2-yr. No. 1.....	.18	.50	.95	1.45	2.50	3.95	6.85	12.95	18.75	24.50	30.50
30 DELAWARE , 2-yr. No. 1.....	.25	.70	1.20	2.30	4.50	8.00	15.00	Stock Limited			
30 IVES , 2-yr. No. 1.....	.18	.50	.95	1.45	2.50	3.95	6.85	12.95	18.75	24.50	30.50
30 MOORE'S EARLY , 1-yr. No. 1.....	.16	.40	.60	.95	1.60	2.65	4.85	8.45	11.75	14.55	17.50
30 MOORE'S EARLY , 2-yr. No. 1.....	.20	.50	.70	1.00	1.80	3.25	5.45	10.45	14.75	18.55	22.50
30 NIAGARA , 1-yr. No. 1.....	.16	.40	.60	.95	1.60	2.65	4.85	8.45	11.75	14.55	17.50
30 NIAGARA , 2-yr. No. 1.....	.20	.50	.70	1.00	1.80	3.25	5.45	10.45	14.75	18.55	22.50
30 WORDEN , 1-yr. No. 1.....	.16	.40	.60	.95	1.60	2.65	4.85	8.45	11.75	14.55	17.50
30 WORDEN , 2-yr. No. 1.....	.20	.50	.70	1.00	1.80	3.25	5.45	10.45	14.75	18.55	22.50

GRAPES NEWER VARIETIES

For prices on bearing age grape vines, see page 29

	3	6	12	25	50	100	200	300	400	500	1000
	Each Vines	Vines	Vines	Vines	Vines	Vines	Vines	Vines	Vines	Vines	Vines
31 CACO , 2-yr. No. 1.....	.35	.90	1.70	3.15	6.10	11.75	22.60	Take advantage of these new low prices on Grape Vines. Your order will be filled from one of the largest plantings in the country			
31 Champagne , 2-yr. No. 1.....	.30	.75	1.25	2.35	4.40	8.30	15.60				
31 FREDONIA , 2-yr. No. 1.....	.35	.90	1.70	3.15	6.10	11.75	22.60				
31 ONTARIO , 2-yr. No. 1.....	.35	.90	1.70	3.15	6.10	11.75	22.60				
31 FORTLAND , 2-yr. No. 1.....	.30	.75	1.25	2.35	4.40	8.30	15.60				
31 SHERIDAN , 2-yr. No. 1.....	.35	.90	1.70	3.15	6.10	11.75	22.60				

Prices on other nursery stock offered and not listed on pages 38 and 39 will be found on following pages: Gooseberry and Currant prices, page 32. Apple tree prices, page 34. Peach tree prices, page 35. Cherry, Plum and Pear tree prices, page 36. Asparagus, Rhubarb and Sweet Potato Plants, page 37.

Customers Ordering Plants By Mail, Use Following Tables for Correct Postage

Be sure to include sufficient postage for your order if plants are to be sent Prepaid. We will return every penny due you if you send too much. If insufficient postage is sent, we will credit amount paid and send balance C.O.D.

Parcel Post Rates on Strawberry and Potato Plants

	Zones 1-2	Zone 3	Zone 4	Zone 5	Zone 6	Zone 7	Zone 8
100 Plants	\$1.10	\$1.14	\$1.21	\$1.28	\$1.35	\$1.43	\$1.50
200 "	.13	.20	.33	.46	.59	.73	.86
300 "	.16	.26	.45	.64	.83	1.03	1.22
400 "	.21	.36	.65	.94	1.23	1.53	1.82
500 "	.26	.46	.85	1.24	1.63	2.03	2.42
600 "	.20	.52	.97	1.42	1.88	2.33	2.78
700 "	.31	.56	1.05	1.54	2.03	2.53	3.02
800 "	.36	.66	1.25	1.84	2.44	3.03	3.62
900 "	.38	.70	1.33	1.96	2.59	3.23	3.86
1000 "	.41	.76	1.45	2.14	2.84	3.53	4.22
2000 "	.56	1.06					

On all orders of 500 or more Strawberry plants or Sweet Potato plants, the rate is cheaper by Express after the second zone.

Parcel Post Rates on Grape Vines, Raspberries, Blackberries, Currants, Gooseberries, and Dewberries

	Zones 1-2	Zone 3	Zone 4	Zone 5	Zone 6	Zone 7	Zone 8
1 to 2 Plants	\$0.08	\$0.09	\$0.10	\$0.11	\$0.12	\$0.14	\$0.15
3 to 6 "	.13	.17	.24	.33	.40	.50	.59
7 to 12 "	.14	.19	.28	.38	.47	.59	.70
13 to 20 "	.15	.21	.31	.43	.54	.68	.81
21 to 25 "	.16	.23	.35	.49	.61	.77	.92
26 to 35 "	.23	.35	.56	.80	1.03	1.31	1.58
36 to 50 "	.23	.53	.87	1.28	1.66	2.12	2.57
51 to 75 "	.35	.57	.94	1.39	1.80	2.30	2.79
76 to 100 "	.40	.67	1.12	1.65	2.15	2.75	3.34

On all orders of 100 plants or more of Cane Stock items listed above, the rate is cheaper by Express after the second zone.

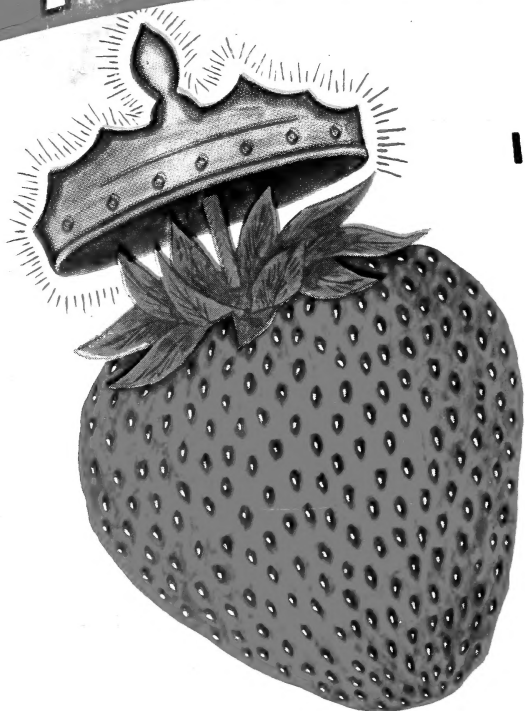
THE ABOVE PARCEL POST PRICES INSURE ALL SHIPMENTS

FRUIT TREE SHIPMENTS. Owing to height and size of our Fruit Trees, we advise express or freight shipments.

TOWN

KING

**WHY TOWN KING
IS THE OUTSTANDING
LATE BERRY!**



1. Makes good fruiting beds on most any soils; easy to grow.
2. Fruit is bright rich red; large and attractive.
3. Produces immense crop of berries late in the season.
4. Fine keeping variety; excellent shipper.
5. A profitable late berry both for commercial and home growing.

TOWNSEND'S
Double Yield
MASTODON
Fruits 90 DAYS
AFTER SET



E. W. TOWNSEND & SONS
SALISBURY, MARYLAND.