

## Historic, archived document

Do not assume content reflects current scientific knowledge, policies, or practices.



62.37 Index \*



# TOWNSEND'S

LIBRARY  
 RECEIVED  
 ★ MAR 14 1952 ★  
 U. S. Department of Agriculture

**1952**  
**SPRING CATALOG**  
*of*  
**SELECTED FRUITS**

**ROSES—HEDGES**  
**LIVING FENCES**  
**SHADE TREES**  
**FLOWERING BULBS**

***TOWN KING***

WORLD'S LARGEST, BEST FLAVORED, MOST BEAUTIFUL STRAWBERRY. FINE FOR FREEZING and CANNING—TOPS FOR DESSERTS. NOW IT IS "EASY TO GROW" JUMBO SIZE BERRIES WITH TOWN KING. (See page 17 for complete description.)

Prices: 25 for \$1.40; 100 for \$3.55; 250 for \$7.15; 500 for \$11.25; 1,000 Plants for \$15.95.



**FREE CULTURE DIRECTIONS**  
**WITH EVERY ORDER**

*Townsend Nurseries, Inc.*  
 PLANT FARMS

**SALISBURY, MARYLAND**

*Newest of the Everbearers!*

## SUPERFECTION

Here's a top variety of Everbearing that merits your attention! Plant this newest of the Everbearers in April and May and you'll be eating delicious berries about sixty days later. Get three big crops in 18 months! Holds its color well, retains its flavor, impresses all with its delicacy fresh, canned or frozen. Order now, as supplies are limited . . . be among the very first in your locality to grow this Everbearing leader.

25 Plants, \$1.90  
50 Plants, \$3.15



**EASY TO GROW!**

Our select strain plants PLUS our culture directions make strawberry culture easy!

See Complete Price List on Page 69

**PICK YOUR OWN STRAWBERRIES 10 WEEKS AFTER SETTING**

**Get 3 Full Crops in 18 MONTHS!**

If you grow for commercial purposes you'll be dollars ahead with Everbearing Varieties. If you grow in your home garden for your own table consumption you'll be delighted with the plentiful supply. See descriptions of other Everbearing Strawberries on page 23. **FREE Culture Directions with Every Order.**



**FAMOUS**

# Streamliner

**EVERBEARER**

Our biggest selling Everbearer. Yields extra sweet, beautiful red berries in early mid-summer, 10 weeks after planting, and continues to frost! Our select strain of this popular berry evokes praise from coast to coast. Order early.

NEW 25 PLANTS ONLY \$1.90  
LOW 50 PLANTS ONLY 3.15  
PRICES! 100 PLANTS ONLY 5.00

See Complete Price List on Page 69.



**Townsend's Select Strain  
Plants Are PROTECTED  
By This Trade-Mark**

*Certified For Quality and Productivity*



Townsend's plants are famous for their heavy crowns and fibrous root systems . . . the results of our breeding methods.

**T**OWNSEND Nurseries, Inc. is the old original Townsend establishment, which business has been active for 50 years, and are the world's largest growers-shippers of berry plants. Every shipment carries our Triple Inspection Certificate.

You take no risk when you mail your order to Townsend Nurseries, Inc. "Our Trade Mark and broad Guarantee protects you."

● **TRUTH**

The good name of this firm and good will of its customers have been built and preserved by always handling nothing but the highest grade stocks available. Every plant or tree is the best that can be produced.

● **QUALITY**

Old customers know that they will always get the variety they order. They have faith in us and we will not break it.

● **HEALTH**

Every plant we ship is healthy, thrifty, and free from all injurious disease. Diseased plants will produce dividends for neither you nor us.

● **PRODUCTIVITY**

Every plant that goes into our propagation fields is selected for its heavy fruiting crowns. In this manner our stock is kept on its high level, in both productivity and vitality. All plants are carefully packed so that you receive them in condition to grow strongly and to produce as you have the right to expect from plants bearing the original Townsend Trade Mark. Any stock received by you that does not meet these high standards will be replaced free. It is also understood and agreed that in no case will we be liable for any sum larger than the purchase price.

**We Pack Goodwill in Every Bundle of Plants We Ship!**

For almost half a century the name of Townsend has been synonymous with "square deal" value and top quality in the nursery business. We have tried to pack confidence into every package of plants that we have ever sent out. As an indication of the effectiveness of this extended practice, a good will, unparalleled in its extent, has been established almost from the very beginning. In order to hold this enviable position, Townsend must continue giving the same "square deal" every time you come to us with your order.



\* In no case will we be liable for any amount larger than the purchase price.

**OUR GUARANTEE**

Every plant shipped by Townsends' is guaranteed to be strictly first class, true-to-name, free from all injurious diseases, and carefully packed to reach you in a good growing condition. Any stock that proves otherwise we will replace free of charge.\*

**TOWNSEND NURSERIES  
INC.  
Salisbury Maryland**



*Candid*

# CAMERA HIGHLIGHTS

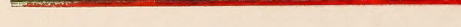
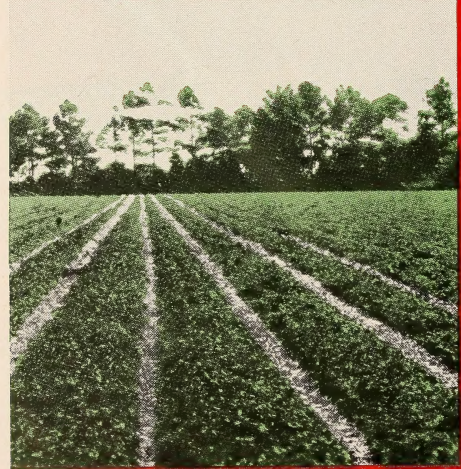
WHERE OVER 45,000,000 ROSES AND BERRY PLANTS ARE SHIPPED ANNUALLY



Propagating Field of Certified Cumberland



Our Digging Capacity is 1,500,000 Plants Daily



## ROSES MULTIFLORA

For

### Living Fences

Over 2,500,000 Jumbo Plants In This Field.

Note: Vigorous Growth On Canes and Height of 24 to 36 inches.

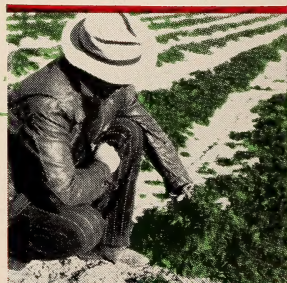


Part of 65-Acre Field of Select Strain Premier Strawberry Plants



*You must be completely satisfied!*

**MILLIONS**  
of Disease-Free  
True-to-Name Berries  
Grown on Our Own  
Plant Farms.



Our Research Department is always on the lookout for Extra Heavy Crowned Plants



**SAVE  
MONEY**Buy *All*  
Your Garden Needs  
From**TOWNSEND NURSERIES****THE WORLD'S LARGEST**

Growers and Shippers of

**STRAWBERRY PLANTS!**

**W**HEN you purchase Townsend Nursery Products you are assured that you too will receive nothing but selected plants, that are disease-free and just waiting to demonstrate the vigorous, healthy and vitalized growing properties that over 50 years of growing experience can produce.

Tens of thousands of satisfied customers enable us to operate one of the largest growing and shipping nurseries in the world. We, in turn, endeavor each year to show our appreciation of the confidence entrusted in us by selling only plants that are authentically true-to-name and reflect our reputation by being the "best that money can buy". Streams of letters from satisfied customers continuously praise the "hardiness, superior size and tremendous results in general" from our Select-Strains Of Approved Varieties. After you plant Townsend Nursery Products—you too will have increased yields—of better size, to both market and show.

### **We Will Help You Get Started**

Since our Nursery Stock is really our recommendation, thus the standard bearer of the business—we are definitely interested in the results that you get with our Products. We want to have you satisfied perfectly—as we have hundreds of thousands of our other good customers—so if you have any problems—kindly allow us to make them ours, by just writing our Service Department.

Full Culture Directions Are Mailed Free With Each Order—Pertaining To Every Single Item Listed In Our Catalog. We sincerely believe that these easy to read growing instructions will help anyone to grow prize products, from Townsend Select-Strains

### **WE NEVER SACRIFICE QUALITY FOR PRICE!**

Every plant that has ever left our establishment, regardless of price, has been a true representation of the unequalled quality literally built into Townsend plants. Townsend's lasting trade, a tribute to our policy of fair and courteous treatment, was built up through the years by consistent shipping of quality plants at the lowest possible prices despite the ever changing trend of the times. We have tried to pack both confidence and value into every package that we have ever sent out, thus assuring you of a square deal every time.

Free Culture Directions with Every Order

### ● **Our Packing Method**

When you order your plants from us, you are assured of receiving your order in a fresh, growing condition. The management of Townsend Nurseries has not spared any expense on research work pertaining to the shipping of perishable plants. Our NEW MODERN PACKING HOUSE, with CONTROLLED STORAGE assures our customers beyond any doubt that our plants are kept fresh, from the hour they come from the fields, until they are pre-cooled just before being delivered to the transportation companies enroute to you. Plants are packed into light (but desirable) packages and ventilated crates. A portion of fine, cool damp sphagnum moss is placed around all the roots, to preserve the moisture, and to keep the plants perfectly cool while in-transit.

### ● **Fibrous Roots**

The fibrous root system is an important factor in getting a 100% stand after setting. To grow such a plant, proper soils and plant food must be used such as that on our plant farms. Our fifty years of experience in growing berry plants has given us valuable information on growing a properly balanced plant—one that will grow and produce the yields you have a right to expect.

### ● **Prompt Service Quick Deliveries**

One and a half million plants a day . . . that's our daily digging capacity! Weather permitting, our large crew is on the job 24 hours a day throughout the shipping season. This immense productive capacity is your guarantee of prompt attention and shipment of your order, regardless of size. A trial this year will convince you that with us, SERVICE is much more than just a word.

### ● **Clean Trimming of Plants Makes Easy Setting**

Plants received from the nurseries well trimmed, not only save customers time when setting, but also saves them extra transportation charges that must be paid for excessive decayed foliage on improperly trimmed plants. There is very often the added loss of the plants themselves, caused by the heating of this foliage in transit, which in turn, causes bud decay or dried roots. This thorough cleaning of all plants is an important part played by our experienced plant diggers each year, and helps our customers to get big yields of quality fruit.



MILLIONS OF SELECTED  
STRAIN PREMIER ARE  
GROWN ANNUALLY AT  
OUR PLANT FARMS



Still the Greatest  
Commercial Early  
Berry of Them All

# PREMIER

**NOW--ONLY \$12.95 per 1000 in 5000 Lots**

NEW  
LOW  
PRICES  
ON  
PAGE 69

HEAVY YIELDS  
GOOD GROWTH  
FROM TOWNSEND'S  
SELECT STRAIN PREMIER and  
TOWN KING strawberry plants  
"AT NO EXTRA COST"

Lancaster Co., Pa.  
Nov. 6th, 1950

Gentlemen:

Please book my order for 50,000  
SELECT STRAIN PREMIER and  
TOWN KING strawberry plants, for  
1951 Spring Planting.

To visit your nurseries is an inspira-  
tion. To believe that anyone could see  
at one glance over 100 acres of straw-  
berries in one field, and every plant a  
husky specimen.

Your plants outyield all others,  
from your stock we get yields of over  
16,000 quarts per acre.

Sincerely  
M.O.S.

**T**HE Premier strawberry is still the queen, and retains its popu-  
larity with thousands of individual growers because it put a big  
crop of fine appearing berries on the market first every time, and  
does it under climatic conditions that often kill other varieties.  
No other variety can supplant Premier for all around superiority.  
Superiority as a money maker. Superiority inasmuch as Premier  
eliminates crop failure, and by fruiting and ripening days and  
often a week earlier, Premier never fails to command—and get—  
the highest price. Premier has everything that its name implies,  
and by our select strain method of growing, we have maintained  
all of the high qualities that made Premier the immediate sen-  
sation of the strawberry world when it was first introduced, and  
has kept it there ever since.

**Our Strain of PREMIER is True-to-Name, Double Inspected, State Certified!**

Every bundle of Townsend's Premier has been double inspected and  
certified by the Maryland State Dept. of Entomology. Our strain of  
Premier is direct from the original planting and has been consistently  
bred each year for heavier yields. Our new ground planting of Premier

is one of the largest in the country—the quality has never been better.  
If you are seeking heavier yielding crops of large fine fruit, plant  
Townsend's original strain of HEAVY YIELDING PREMIER. We will  
reserve plants for you, digging and shipping whenever you are ready.

**COLOR**—An attractive, bright,  
scarlet red, capped by a colorful  
green calyx that serves to accen-  
tuate the berries' color when  
eyed by prospective buyers.

**SIZE**—Uniformly large, and under  
favorable growing conditions, the  
berries run to extra large sizes,  
holding up well throughout the  
entire ripening season and up  
until the last picking.

**FIRMNESS**—Classed as a long  
distance shipper where trucks are

employed, Premier is ideal for  
the market gardener because of  
its lasting firmness.

**VIGOR**—Premier is a strong  
healthy grower, making a good  
fruiting bed on a wide range of  
soils and climatic conditions.

**QUALITY**—A constant demand  
over a period of years serves to  
rank Premier among the fore-  
most for flavor and quality. Rec-  
ommended for home use, local  
sales or commercial markets.

**SEASON OF RIPENING**—Premier  
berries are among the first vari-  
eties to ripen, and comes on the  
market when other strawberries  
are practically non-existent or in  
their earliest stages.

**FROST RESISTANT**—Premier is  
practically immune to late spring  
frosts. This is due to the peculiar  
plant growth which it makes, al-  
most completely hiding the blos-  
som and protecting it from severe  
cold.



# INDEX TO YOUR TOWNSEND CATALOG

Apples -----	30 - 31
Apricots -----	34
Asparagus -----	26
Bearing Age Plants -----	61
Blackberries -----	60 - 68
Blueberries -----	24 - 25
Boysenberries -----	59 - 68
Bush Cherries -----	27
Cannas -----	29
Cherries -----	35
Chestnuts -----	52
Cushion Mums -----	28
Dwarf Fruit Trees -----	54
Evergreens -----	58
Figs -----	27
Filberts -----	53
Flowering Trees -----	55
Gladiolus -----	29
Grapes -----	50 - 51 - 68
Hardy Mums -----	28
Hedges and Vines -----	57
Horse Radish -----	14
Jumbo Fruit Trees -----	36 - 37
Lawn Grass Seed -----	26
Living Fence -----	70-71
Peaches -----	32 - 33 - 55
Pears -----	34
Pecans -----	53
Plums -----	34
Raspberries -----	27, 62, 63, 64, 65, 68
Raspberry Prices -----	68
Rhubarb -----	14
<b>R O S E S :</b>	
Hybrid Teas 38, 39, 40, 41, 42, 43, 44, 45, 48, and 49.	
Climbers -----	46
Floribundas -----	47
Rose Multiflora -----	70 - 71
Shade Trees -----	56
<b>Strawberries:</b>	
Early Varieties 6, 7, 10, 11, 15, 16, 69	
Mid Season -----	7, 8, 12, 13, 15, 69
Late to Very Late -----	9, 14, 17, 69
Everbearing -----	2, 23, 69
Garden Offers -----	20, 21, 22
Strawberry Prices -----	69
Vegetable Plants -----	66 - 67
Youngberry -----	59 - 68
Walnuts -----	53

**GROWERS AND SHIPPERS OF THE  
'WORLD'S FINEST NURSERY STOCK**

# A Few Suggestions To Follow Which Will Assist Us In Better Servicing Your Orders

★ In order to give our customers the best of service, we suggest that you print or write your name and address clearly, giving street number or R.D., so that your order will not be delayed when it reaches destination.

## How To Remit

★ Money order, Check, Registered Letter. Do not send loose currency. Shipments will be sent C. O. D. on request when one-fourth deposit accompanies order.

## Order Early

★ To avoid the usual rush at shipping time, place your order now, as it enables us to save for you the varieties ordered and you are assured of getting varieties wanted. WE WILL SHIP AT YOUR PROPER PLANTING TIME.

## Changes In Your Order

★ Our shipping department is handling thousands of orders from early February until the end of May. At that time your order may not be filed where we can lay hands on it quickly. So please don't ask for changes or cancellations at the last minute. We may not be able to find your order in time to do what you ask.

## Claims

★ All shipments are carefully packed so as to reach destination in good planting condition. If your order is delayed in transit, carefully examine the plants before accepting them from the carrier, having notation made on delivery receipt, of condition of plants when accepted. Promptly return this receipt to us and we will replace damaged items free of charge. All complaints other than livability must be made within 5 days from receipt of order or they will not be entertained. Complaints, if any, on livability must be made by July 1st, which stock will be replaced the following planting season without any charge to our customers.

FLASH! OVER 8,000,000 PLANTS SOLD IN 1951

# BLAKEMORE

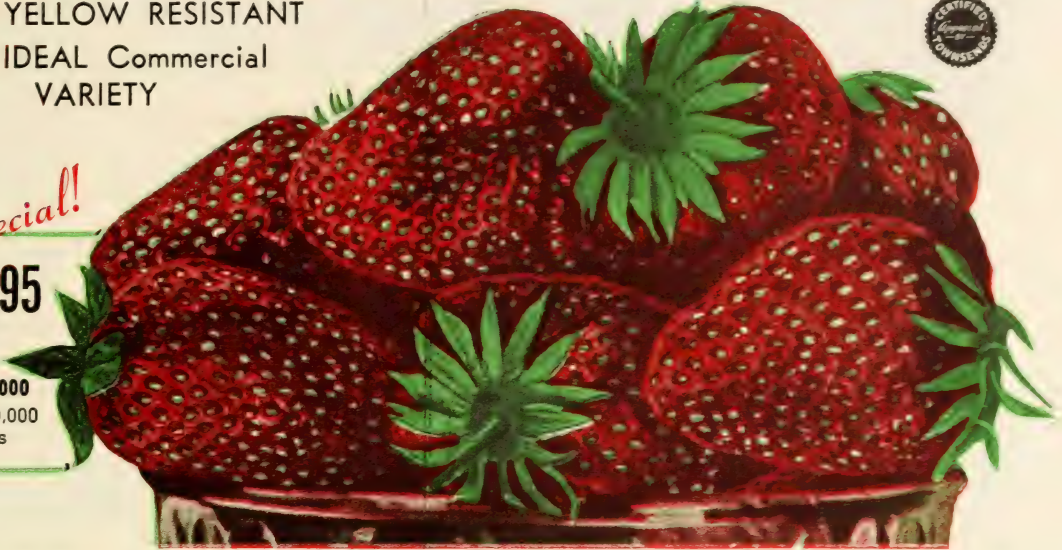
- YELLOW RESISTANT
- IDEAL Commercial VARIETY



Special!

\$8.95

per 1000  
in 10,000  
lots



**O**RIGINATED several years ago by the U. S. Department of Agriculture, this hardy strain has achieved remarkable popularity in states south of the Mason-Dixon line and as far north as Pennsylvania and the Ohio Valley. For an early, solid production that will be both economical and profitable, the Blakemore should be your outstanding choice. It is so sturdy that it will withstand heavy rains with small loss of fruit, so enduring that heavy plant growth can be accomplished in practically any soil, and vigorous enough to withstand more abuse and neglect in growth, picking or shipping than any other variety. The fact that the new yellow resistant Blakemore is held in high esteem is unquestionable. The sensational evidence is in the survey that revealed twice as

many acres are planted in Blakemore than any other variety. As a matter of fact, 25% of all commercial strawberry acreages are planted in Blakemore.

As a scientific cross between Premier and Townsend's Missionary, its sizing is from medium to large fruit. Its yield is abundant. The fact that 80% of its crop is produced one week after the first picking makes it invaluable to producers of large quantities for the extra-early market.

The perfect commercial berry, it's tops in choice by canners and preservers. Because of its firmness, Blakemore can withstand long distance hauls and maintain its robust appearance.

We reserve plants on order and ship when you are ready to set—so order . . . NOW.

# ROBINSON

(SCARLET BEAUTY)

**A** large scarlet beauty strawberry that has earned much popularity wherever the PREMIER variety has been grown commercially. Vigorous grower, of large healthy plants and foliage. Berries are glossy and solid red in color; conical shaped, very firm. A top class variety for both Commercial and Home growers. Be sure to order a few thousand Robinson for Spring planting.

- Ripens Early Mid-Season
- A Heavy Cropper
- Excellent for Shipping
- Tops for Canning and Freezing
- Giant and Uniform Size
- Delicious Flavor



New Low Prices  
on Page 69



# Sparkle

**New**

*Truly Magnificent!*

DELICIOUS ● ATTRACTIVE

**Mid-Season Berry**  
*For Home and Market*

DEVELOPED BY THE NEW JERSEY  
AGRICULTURAL STATION

★ BRED FOR HEAVY YIELDS!

★ IMMUNE FROM DISEASE!

**QUALITY**—Berries firm, flavor is rich, beautiful sparkling appearance.

**PRODUCTIVITY**—One of the largest producers in the strawberry field, Sparkle ranks with Premier-Temple and Catskill.

**SIZE**—On fertile soil with plenty of moisture, Sparkle is larger than Catskill. Average conditions the variety is somewhat smaller, and the grower should not let the fruiting bed make too heavy of a matted row of plants where larger berries are wanted.

**DISEASE RESISTANT**—Sparkle is immune to red stele root disease with which some soils are plagued. Truly a variety for Ohio, New York State and some parts of New England where this red stele disease has been found. Sparkle will grow and produce where other varieties fail.



Townsend experienced labor hand dig and clean 350,000 Sparkle plants a day for your orders.

**I**N OUR 1948 Catalog we stated that SPARKLE was in its infancy—now we can state definitely that this is quickly developing as one of America's outstanding varieties. Sparkle has captured the praise of large strawberry growers, particularly in such states as New York, New England States, New Jersey, Pennsylvania, Ohio, and West Virginia. Sparkle has been used with great success in certain parts of these states where Catskill does not produce sufficient fruiting beds for a large commercial crop of mid-season berries. Sparkle is a beautiful growing plant, making a fine fruiting bed on almost any type of soil. Be sure to include some Sparkle plants in your 1952 settings.

PRICE LIST ON PAGE 69

Townsend's *Select Strain*  
Plants are TRUE-TO-NAME

**Satisfaction Guaranteed**





# XTRALATE


- ✓ EXTRA GOOD
- ✓ LATEST FRUITING



NO OTHER STANDARD VARIETY IS AS LATE AS

## XTRALATE


- COLOR—Rich, Bright Red
- SIZE—Large to Extra-Large
- QUALITY—The Very Best



Especially developed by Townsend to meet the great demand for a truly later than late berry. Xtralate not only fruits later than any known existing strawberry, but has proven itself to be one of the heaviest yielding and hardiest varieties on the market. For added profits, we strongly urge the planting of this variety. Thousands of planters have been amazed at the sight of this plant laden with fruit when all other varieties are through—why not you.

**Townsend Nurseries research and select strain systems of propagation annually develop plants and trees that produce extra large yields of delicious, taste-tingling fruit —**

### Our Loss is Your Gain--Here's Real Value In **SURPLUS STRAWBERRY PLANTS**



As is the case in any other business where large quantities of diversified types (or varieties) of products are concerned, naturally a slight overage or surplus is realized. Since our business policy does not allow us to carry plants that have already been dug over to the next day, we must dispose of this surplus. We therefore, are in a position to make this potential loss of ours your gain. The grower who is not especially particular about varieties can buy these plants at a sensational and tremendous saving. Every plant is freshly dug, labeled, and true to name. Because of these low prices, we regret that we cannot assume any responsibility for variety selection—please do not ask for particular varieties.

1000  
Plants **\$9.00**

5000  
Plants **\$8.00** Per  
1000

EVERY BUNDLE LABELED  
AND OF APPROVED VARIETIES



# Dorsett

A 38 Acre Block of New Ground  
Grown Select Strain Dorsett  
Grown by L. Sherman Townsend

## A PROFITABLE NEW *Early* STRAWBERRY

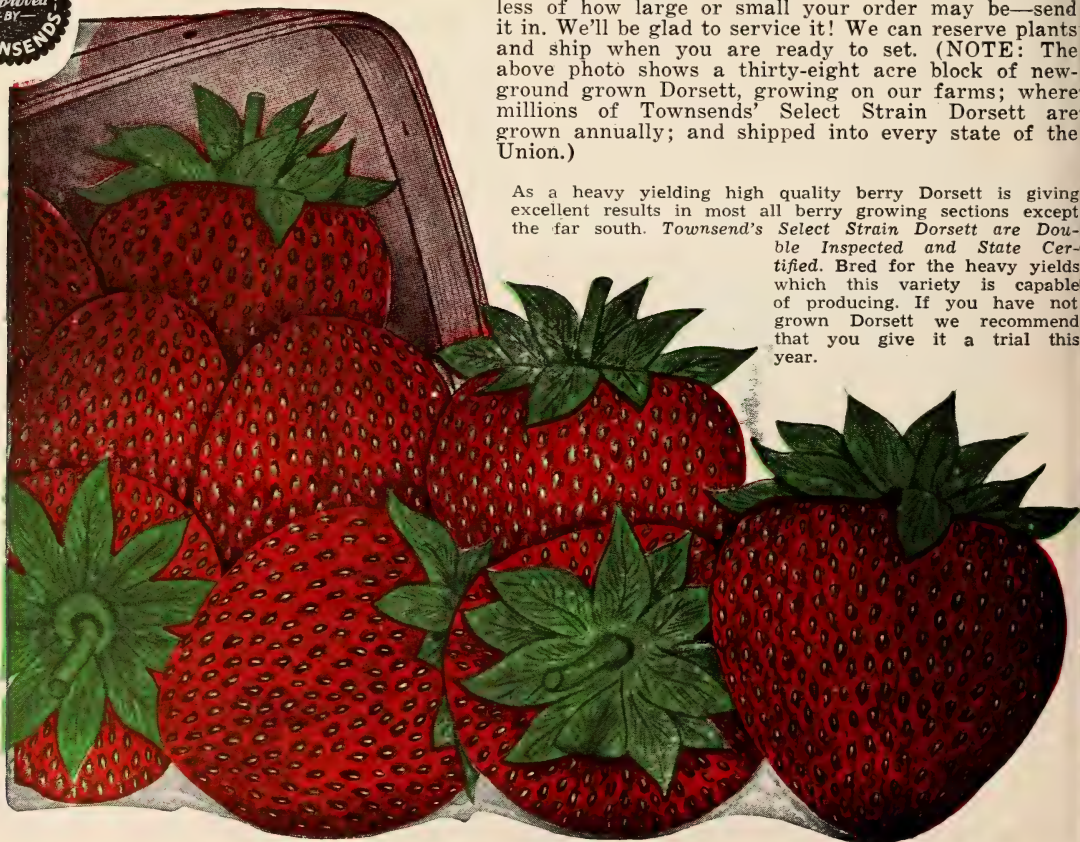
Although the Dorsett was introduced only a few years ago—after its development from a cross of Royal Sovereign X Premier (Howard 17) by the U. S. Dept. of Agriculture—it has been widely planted in practically every berry growing section of the country.

PRICES OF DORSETT  
PLANTS ON PAGE 69



Its ready adaptability to almost any type of soil and climatic conditions; its quick, easy growth; its heavy yielding qualities make Dorsett a popular favorite everywhere. Dorsett strawberries are firm and attractive; and carry well even on long distance hauls. Therefore, we sincerely urge you to try Dorsett. You'll find it one of the best money-making early berries it is possible to grow. Each year finds a greater demand for Dorsett, and each year we grow one of the largest plantings in the country. Regardless of how large or small your order may be—send it in. We'll be glad to service it! We can reserve plants and ship when you are ready to set. (NOTE: The above photo shows a thirty-eight acre block of new-ground grown Dorsett, growing on our farms; where millions of Townsends' Select Strain Dorsett are grown annually; and shipped into every state of the Union.)

As a heavy yielding high quality berry Dorsett is giving excellent results in most all berry growing sections except the far south. *Townsend's Select Strain Dorsett are Double Inspected and State Certified.* Bred for the heavy yields which this variety is capable of producing. If you have not grown Dorsett we recommend that you give it a trial this year.





A large acreage of Certified Fairfax developed under the personal supervision of Mr. L. Sherman Townsend

# FAIRFAX

PRICE LIST ON PAGE 69

Famous for Heavy Yields in the *Early Market*

**YOU** can tell the worthiness of any variety by its continued popularity. Sensational rise in sales of Fairfax has served as a barometer-like indication of the admirable results enjoyed by growers of this fine berry. Much of this success is undoubtedly due to the rugged hardiness of Fairfax. Even during seasons of drought, this variety will continue to thrive and produce money-making crops when other strawberries fail to survive. Leading all others in firmness, Fairfax is ideally equipped by nature for shipment to any part of the country, and its honey-sweet flavor has earned Fairfax the reputation of being "the most deliciously flavored of them all." Behind our recommendation of this variety lies years of careful plant selection that makes this variety more than equal to any berry for commercial planting. Devote a goodly portion of your acreage to Fairfax, thus insuring yourself a good crop of desirable strawberries regardless of weather conditions.

**T**OWNSEND'S Select Strain Fairfax are Double Inspected and State Certified to be true to name, and recognized by leading growers as the heaviest yielding strain grown. Let us reserve some of these plants for you. We will ship whenever you are ready to plant.

## FAIRFAX is Superior Because . . .

**QUALITY** is so outstanding that Fairfax leaves nothing to be desired.

**FIRMNESS** plus is the word for Fairfax. Ideal for commercial marketing.

**FLAVOR** that is truly delicious. The finest eating berry on the market.

**PRODUCTIVITY** that more than compares with such popular beauties as Dorsett and Premier.

**SIZE** of fruit is very large and very uniform. Brings "top dollar" on any market.

**VIGOROUS** in its growing habits. Fairfax is noted for its abundantly flourishing foliage and hardy root system. The long and fibrous characteristics of its root system accounts for the amazing growth of Fairfax even under drought conditions.



### SPECIAL ASSORTMENT

For Your Early Berry Garden

Be the first in your neighborhood to have large delicious strawberries; order one of these gardens today at special prices.

50 Sparkle, 50 Fairfax, 50 Premier —150 Plants All for	<div style="font-size: 2em; font-weight: bold; color: red;">\$3.95</div> Cat. Value \$6.20	2 GARDENS for	<div style="font-size: 2em; font-weight: bold; color: red;">\$6.45</div> Cat. Value \$9.75
--	--	------------------	--

# Catskill

## The KING OF MID-SEASON STRAWBERRIES

- FROST RESISTANT
- SUPER CROPPER

**C**ATSKILL—The sugar flavored strawberry proclaimed as the heaviest yielding mid-season variety. The rise in popularity of this highly productive berry has been nothing short of phenomenal. Its fame with growers as a “super cropper,” and its large, bright, shiny red fruit, has established for Catskill the highest record among all marketable, mid-season berries.

Its adaptability to a wide range of soils and climatic conditions has served to further make it an all around favorite. While our strain of Catskill is direct from the originators at Geneva, New York, we have, through careful plant selection, produced a strain that is considered by some of the largest growers in the country to be far superior in vigorous growing habits and heavier yielding qualities than any other strain of this same variety. In recommending this variety, we do not hesitate in assuring you that our strain of Catskill is one that is certain to prove more than satisfactory.

Millions of Select Strain  
Catskill, All Double Inspected,  
Await Your Order

To insure the filling of your order and to meet the increased demands for Townsend's Select Strain Catskill, we have once more increased our acreage. Our plants look fine and healthy, and are amply demonstrating Catskill's lush growing characteristics with abundant heavy crowns and hardy, fibrous roots. To get the pick of the crop—order early.

ONLY **\$12.95** Per 1000

(In 5000 Lots)

SEE COMPLETE  
PRICE LIST

ON PAGE 69



Champion on 3 Counts  
● SIZE  
● YIELD  
● PROFITS

## Superlative for Canning and Freezing

**RICH COLOR**—Bright, shiny red, similar to Big Joe. A double cap of green and its size and coloring make an attractive looking appearance when offered to the buyer.

**SIZE**—The extra large size of Catskill, from a commercial grower's standpoint, is undoubtedly its greatest attribute. This fact makes Catskill a more than outstanding value, and causes it to demand higher prices at market time. Catskill keeps its size well until the last fruit is harvested.

**QUALITY**—Its very fine texture, and its ability in holding up well after picking, makes this variety an admirably suited berry for long distance shipping—a fact that is appreciated by berry growers. On a par with such outstanding berries as Premier, Dorsett, Fairfax, Chesapeake and Big Joe, the flavor of Catskill makes it a much-in-demand commercial value.

**PRODUCTIVITY**—Big profits in every state east of the Mississippi—and in several states west, have lent substantial support to the general enthusiasm voiced by growers of this prolific variety. Due to results realized in our own test plots, we heartily agree with these growers that Catskill is the heaviest producing mid-season variety ever grown. We cannot see how any grower can fail to make big profits. Nothing short of an outright calamity can keep Catskill from coming through with bumper crops.



PROFITS IN EXCESS OF \$2500.00 PER ACRE IN 1950 AMAZE MANY GROWERS

# NEW TEMPLE



ONLY

**\$12.95** Per  
1000

In 5000 Lots

SEE PRICE LIST  
ON PAGE 69

## A GROWING FAVORITE with Commercial Growers BECAUSE IT'S A

**S**EVERAL years ago, the northern half of this country found itself locked in the throes of a very serious plant disease. This disease, known as the Red-Steele root rot, played havoc with the then growing strawberry crops, and as a result, acre after acre of plants were destroyed. With the help of Professor C. E. Temple, of the University of Maryland, a new variety of strawberry plants evolved from the cross-breeding of plants that were the most resistant to the disease. This work has been carried on cooperatively by the University of Maryland and the U. S. Department of Agriculture, whose efforts finally produced this grand, disease resistant variety. As an acknowledgment for his part in the producing of this berry, the new variety bears his name—Temple.

- DEEP FEEDER
- DROUGHT STRAIN
- GOOD PLANT MAKER
- HEAVY YIELDER

## BRED FOR HEAVY YIELDS ● IMMUNE FROM DISEASE

**Quality**—Peerless and unsurpassed by any variety on our lists. An attractive looking deep red with excellent keeping qualities. Firm and admirably suited for shipment.

**Size**—Noted for its extra large fruit that is further accentuated by a rich looking dark green calyx. It is generally referred to as one of the most attractive looking of all strawberries.

**Production**—Being the result of a cross between Aberdeen and Fairfax, both of which are outstanding for their growing habits, Temple therefore naturally possesses the vigor and vitality of its parents. Its foliage is a beautiful dark green and is resistant to leaf spot. The new Temple can be classed as a free plant maker and is an extra heavy yielding variety coming into fruit about the same time as Dorsett, and a far better shipper than Dorsett. Thus, we conclude that with commercial growers, the new Temple will eventually take the place of Dorsett.

"WE ASSURE YOU THAT IT WAS OUR PLEASURE—TO RECOMMEND TEMPLE"

Delaware Co., O

Mr. L. Sherman Townsend  
Townsend Nurseries, Inc.

Dear Sir:

You were correct about the TEMPLE berry for our locality. Our 1947-48 crops were bigger than ever off of Temple, than when we grew other varieties years ago. We have disease in our soil, where other old varieties fail to grow. You certainly kept us in the berry business when you recommended TEMPLE.

Look for many orders from this section next year. It's a pleasure to recommend You, and your plants.

Yours very truly, F. L. Voss



FIELD SELECT STRAIN STRAWBERRY PLANTS GROWN BY L. SHERMAN TOWNSEND



# FAIRPEAKE

TOPS IN FLAVOR

LARGE IN SIZE

**E**VERY home garden as well as farm should have Fairpeake strawberries growing. A cross of the top flavor berry Fairfax and Chesapeake, an old favorite late variety, we believe that Fairpeake has taken the place of Chesapeake as a top quality late variety, for most growers. We recommend Fairpeake for a new top quality strawberry.

**VIGOR**—Strong vigorous grower producing big plants, with large leaves.

**SIZE**—VERY, VERY LARGE BERRIES, that are beauties.

**QUALITY**—Tops in flavor, produces more than Chesapeake.

**FIRMNESS**—Good shipper, sound berry. Like moist soil.



## Townsend's Select Strain

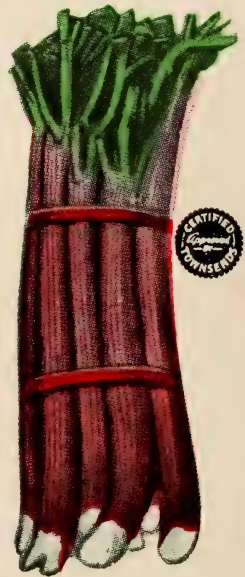
# RHUBARB

● **MCDONALD**—You'll want some of this new, early producing, red, sweet rhubarb. Originated in Canada, McDonald outyields most other varieties. Milder to the taste, McDonald produces stalks two feet tall that are red all the way down.

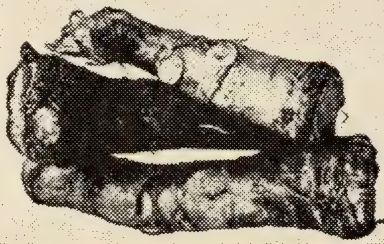
● **CANADA RED**—This colorful rhubarb, a cherry red along the entire length of the stalk, was originated in Canada, and the stalks are so tender that they need no peeling when cooked. The stalks are extra large and less acid and better flavored than most varieties.

● **MYATTS LINNAEUS**—An early variety possessing a tangy flavor making it admirably suited for pies and sauce. Produces big crops of large tender stalks.

**RHUBARB PRICES**  
**MCDONALD AND CANADA**  
 RED: Each 60c; 3 for \$1.65;  
 6 for \$3.00; 12 for \$5.75;  
 25 or more for only 45c each.  
**MYATTS LINNAEUS AND**  
 QUEEN: Each 30c; 6 for  
 \$1.65; 12 for \$3.00; 25  
 for \$5.75; 50 for \$9.95; 100  
 for \$19.50; 500 or more 13c  
 each.



● **QUEEN**—Vigorous grower. Produces extremely large stalks of high quality. A really tremendous commercial variety.



Townsend's

## HORSE RADISH

Set it Once—Thrives for Years

Now it is possible to grow your own "fresh horseradish" in your back yard. Once planted will last for years, giving you a continuous supply, for your table as well as to your friends. Just plant the roots in any garden soil and after the first year's growth you can cut off a few roots from each plant then grind them up, for your home product.

Home grown Bohemian horseradish is superior, because it is fresh and pure. Set the roots about 6 inches apart, maintains beautiful bluff foliage.

Place your order today—we will ship at the proper planting time.

**PRICES**—6 for 49c; 12 for 79c; 25 for \$1.39; 50 for \$2.48; 100 for \$4.44; 200 for \$7.49; 500 for \$16.98; 1000 for \$32.50.

MID-SEASON TO LATE FAVORITE

# BIG JOE



DEPENDABLE  
OLD-TIME  
FAVORITE

For twenty-two years this dependable old timer has been coming through with paying crops for growers throughout the country. Ripening at the height of the season just about the time of the last picking of Premier and Dorsett, this variety comes upon the market just when large fancy berries—like Big Joe—can command top market prices. The size and appetizing beauty of this variety and its appeal to the public—an appeal measured in cash returns—has brought Big Joe nothing but continued praise.

**OUTSTANDING WITH GROWERS THE NATION OVER BECAUSE OF:**

- **SIZE**—Large to very large berries.
- **COLOR**—Rich, beautiful, double green cap.
- **QUALITY**—None better—ranks with the best. Tops for flavor and shipping.
- **PRODUCTIVENESS**—Under favorable growing conditions, cannot be equalled.
- **VIGOR**—Strong grower on most all types of soil. At its best on clay, or well drained, springy loam soil.

PRICE LIST ON PAGE 69

FREE CULTURE DIRECTIONS WITH EVERY ORDER



# FAIRLAND

- Deep Feeder
- Drought Resistant
- Good Plant Maker
- Heavy Yields

ORIGINATED BY THE UNITED STATES DEPT. OF AGRICULTURE

**A** CROSS between Aberdeen and Fairfax and has been tested about 7 years in various parts of the United States under the supervision of the U. S. Department of Agriculture, known as variety No. 3205 at the time. It is an early berry, rather large, bright red fruit. Fairland is very productive, good plant maker. Berries are firmer than Catskill and Premier, being not as firm as Temple. It was held back for commercial production in this area, but so many other states testing Fairland, liked this variety so well that the Department of Agriculture more or less had to name it and to release the variety for propagation.

# POLAR QUEEN

## The "QUEEN" of All Strawberries for Quick Freezing



**VERSATILITY**—Admirably adapted to prosper and thrive in any locality where strawberries are produced. Not only a competitor to such berries as Blakemore, Premier, Fairfax, and Catskill, but definitely superior on many counts. A truly versatile strawberry inasmuch as it flourishes in any type soil. However, like most varieties, it grows best in damp, fertile soil.

**SIZE**—In comparison to such popular strawberries as the Blakemore and Fairfax, the Polar Queen fruit is oftentimes as much as 40 per cent larger and holds its size well, even to the last picking, thus insuring top prices on any market.

**EYE-APPEAL**—Especially appealing to a buyer's eye because of its beautiful, bright, shining red color that goes through to the very core; its complete absence of a green tip; its solid firmness and the tendency for the green cap to grow well away from the berry, making it easy to remove. Its solid red color runs well up under the cap showing a minimum of light red. Polar Queen

is a combination of outstanding features that can't be beaten.

**VIGOROUS PRODUCTIVITY**—Polar Queen makes a strong and healthy fruiting bed on a wide range of soils, and its extra-heavy yields are the talk of the trade.

### "1000 POLAR QUEEN MAKES OVER \$1000.00 PROFIT"

Hartford Co., Conn. July 13, 1950  
I planted 1000 Polar Queen, Spring, 1949,  
and picked the following year over 2500 quarts  
of berries, which sold for near \$1500.00. I will  
order 8000 Polar Queen for 1951 Planting.  
W. M. Simmons

### AN EXCLUSIVE BERRY INTRODUCED BY L. SHERMAN TOWNSEND

● Almost instantly acclaimed as the ideal berry for home use or market freezing, Polar Queen (trade market registered) has more than made its mark since its recent introduction by L. Sherman Townsend. Growers in state after state have been quick to realize the tremendous profit yielding potentialities of this truly superlative berry. Specifically developed for quick freezing, Polar Queen is the real Queen of them all. Don't miss this opportunity to be among the foremost to cash in on an assured profitable planting.

GROW  
POLAR QUEEN for  
MARKET and  
FREEZING

PRICES ON  
PAGE 69

NEW YORK  
Herald Tribune

ACCLAIMED BY NEW YORK HERALD-TRIBUNE  
for All Around Superiority

One of the greatest honors that can be bestowed upon any fruit variety was awarded to Polar Queen in February 1948 when the New York Herald-Tribune, through its board of leading nursery authorities, printed its recognition of Polar Queen as an outstanding variety in its class! Polar Queen is even superior to such old-time favorites as Blakemore, Premier, Fairfax, and Catskill!

**POLAR-QUEEN PLANTS ARE SOLD ONLY FOR THE PRODUCTION OF BERRIES**

These Plants are not to be Used for Propagation by Anyone

# STANDS ALONE AT THE TOP OF ITS CLASS

**TOWN KING**  
PRIDE OF AMERICA



## The MOST PERFECT *Late* STRAWBERRY!

Comparing **TOWN KING** with other *Late Varieties* "TOWN KING PROFIT-ABLE"

Jefferson Co., Ohio  
July 10th

The 4,000 Townking plants yielded 4800 quarts large berries that grossed \$2592.00. Your plants are vigorous growers and make big profits yearly. Roger L. Muller

"TOWN KING LEADS ALL LATE BERRIES—ORDERS TOWN KING AGAIN"

Cedarville, N. J.  
Sept. 28th

I consider **TOWN KING** the outstanding strawberry of today in every respect. I want 5,000 **TOWN KING** for Spring planting.

Elmer Bowe

**TOWN KING PRICES ON PAGE 69**

**T**OWNKING stands alone for money-making qualities. From the Atlantic to the Pacific, from Maine to Florida, including Texas, Townking stands as the undisputed king among profit yielding late berries. Premium prices, regardless of locality of the market, are always paid for this variety. Its outstanding color, shape, size and appearance are the prominent factors behind its appeal. Without a doubt, Townking definitely stands alone as the most perfect late strawberry ever grown. Cash in on this tremendous planting opportunity. Get your share—give it a trial this year.

### Compare These Points of Superiority:

- **PRODUCTIVENESS**—Tops the list of late varieties, for yields.
- **GROWTH**—Produces excellent fruiting beds under ordinary growing conditions. Foliage is free from rust and is dark green color.
- **SIZE**—Berries large to exceptionally large. Appealing and attractive to buyers.
- **COLOR**—A lustrous rich red berry.
- **FIRMNESS**—Excellent for long distance shipping, ideal for roadside market. Remains fresh on vines several days after ripening.
- **QUALITY**—Surpasses Chesapeake, Gandy, Lupton and Big Joe.

**OUR CUSTOMERS RECOMMEND TOWNKING! SO DO WE!**

# WORLD'S GREATEST BERRY PLANT OPERATION



Strawberry Plants Growing Under Irrigation



We Produce Millions Of Certified Select-Strain Plants



Hand Cleaning Assures Easier Planting



Selecting Plants For Heavy Crowns, Means Larger Berries and Big Crops For Townsend Customers

**S**TRAWBERRIES are the first fruit to ripen in the Spring. Nothing is more delicious than fresh picked berries from your own garden. What is nicer than to have a nice size strawberry patch coming along in the Spring before any other crops are ready to harvest, to give you extra cash income, be they strawberries in a garden plot or an acre on the farm.

Our new improved varieties make it easier than ever before to grow strawberries for pleasure as well as profit. You will find our culture instructions (shown in this catalog) very easy to follow. Why not plan to plant berry plants this Spring? If there are any questions, please write us. We are here to serve you, as we have helped thousands of others get started growing fruits.

**For Top Results**  
*Townsend*  
**Plants Tell the**  
**Story at**  
**HARVEST TIME**



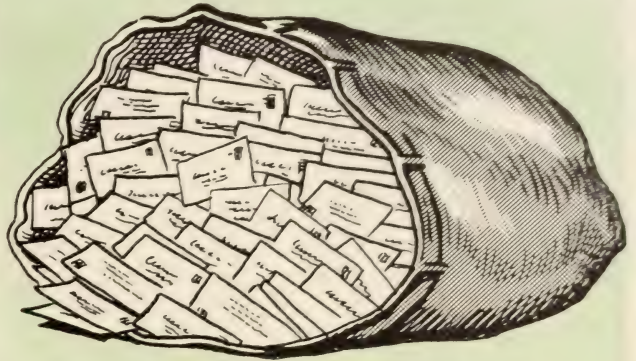
# We Take the GUESSWORK out of PLANTING for You!

"Value cannot be measured by price alone. If quality is lacking, value is destroyed. But when you are offered the combination of low prices and high quality, only then does the value of that product exist." This, the basis of every Townsend transaction, has been the foundation of our business since we started.

Consistent adherence to this principle has inspired the development of a system of inspection and selection second to none. The result: certified, select strain, true-to-name varieties on every shipment!

Townsend Nurseries is known the country over for better quality plants that produce bigger crops at no extra cost. Careful plant selection made by our Mr. L. Sherman Townsend, has made this "the world's largest growers and shippers of berry plants" . . . assuring top-quality, service and fair treatment at all times.

The letters reproduced on this page have been selected at random from thousands which similarly reflect our success in making every customer satisfied.



THOUSANDS OF LETTERS FROM  
SATISFIED CUSTOMERS PROVE THE

## Superiority

of TOWNSEND VALUE and QUALITY!

### "PLEASED WITH SERVICE"

Westport, Mass.  
My strawberry plants came through 100% and I am well satisfied. Your services to me have been of the kind that I will recommend you to any of my fellow farmers.

Jean B. Normandin

### "NEW YORK LIKES SERVICE"

Valley Falls, N. Y.  
My order of strawberry plants received in fine condition. I wish to thank you for your wonderful service.

W. J. McDermott

### "WELL PLEASED WITH PLANTS"

Linthicum Hgts., Maryland  
Please accept my sincere thanks for the wonderful strawberry plants you sent me. Also many thanks for the additional plants included. They arrived in very good shape and are growing nicely. You may rest assured that I have told every one that is interested in strawberries about these plants.

Mrs. Augusta A. Jobe

### "OLD TIMERS LIKE OUR PLANTS"

Indianapolis, Ind.  
I am 90 years old and am raising fine strawberries. I like your plants very much, and have never seen better. Send this order by express at once and oblige.

Luther Marts

### "TOWNSEND PLANTS PRODUCE WELL"

Malta, Ohio  
The berry plants arrived in good condition and are planted and doing well. Just want to thank you for the extra plants and to say your plants always have produced well for us.

Miller F. Hearing

### "TOWNSEND PLANTS GROWN NATIONALLY"

Bybee, Ky.  
I received the shipment of 10,000 Xtralate plants Monday morning. They were in perfect condition and the best looking plants that I had ever received. Thanking you for your splendid service I remain your customer and friend

Shelby Snowden

### "EXCEPTIONAL PACKING AND SERVICE"

English Center, Penna.  
The multiflora roses ordered sometime ago were received and set out today. In appearance, they are finely rooted and should really 'take off' in fine style. Thanks very much for the exceptional packing and service.

Major Fred L. Bowles

### "TOWNSEND PLANTS GUARANTEED"

Philadelphia, Pa.  
I want to take this opportunity to thank you for the strawberry plants sent to replace the ones shipped last Fall. These plants arrived in good condition and were excellent plants. It is gratifying to know that you stand back of your guarantee and your prompt attention was greatly appreciated.

Louis Rubla

### "PEOPLE GET THEIR MONEY'S WORTH"

Newport, R. I.  
I received my strawberry order and they are the best plants that I have looked at in a long time. I was surprised at the extra long roots. You sure do give the people their money's worth. Will give you my order next year.

Alfred Bryan

### "LIKES OUR PERSONAL INTEREST"

Lyons, Kansas  
Here is my order. It is very gratifying to know that such a large concern as "TOWNSEND NURSERIES" takes such a personal interest in the 'home Gardener'.

Mrs. J. B. Steele, Jr.

### "WILL ORDER AGAIN NEXT YEAR"

Blainstown, N. J.  
Received the strawberry plants and they were in excellent condition. Look like the thriftiest plants we ever had. Since you gave us such good service this year we are certainly going to continue our transactions and tell our friends and neighbors about your good service.

Walton Jagers



# GROW FRESH BERRIES



From TOWNSEND NURSERIES, Inc. Best Garden Selections

## Special Test GARDEN

### You can be the First in Your Neighborhood to Pick Ripe Strawberries

Here's two of the greatest budding, early fruiting varieties ever introduced. The quality of fruit is of the best and all strong vigorous growers, that have proven a success in practically all states. Set this Garden and have the first berries in your section.

- 250 BLAKEMORE
- 250 PREMIER

**\$6.95**

500 Plants — for only

Catalog Value \$12.50

### TOWNSEND'S BEST OFFER

- 50 Plants Best Early
- 50 Plants Best Mid-Season

- 50 Plants Best Late

150 plants for only **\$2.50**

### GARDEN OF BIG BERRIES

This garden will yield extra large berries of the very best quality and plenty of them from early season to late.

- 100 Premier 100 Temple
- 100 Fairland 100 Town-King

400 Plants for only **\$6.85**

Catalog Value \$13.30  
Planting Space 2000 Sq. Ft.  
Should yield 600 quarts berries.

### TOWNSEND'S FAMOUS X X OFFER

- 100 SPARKLE
- 100 TOWN-KING

200 Select Plants only **\$3.45**

*All Season Garden*

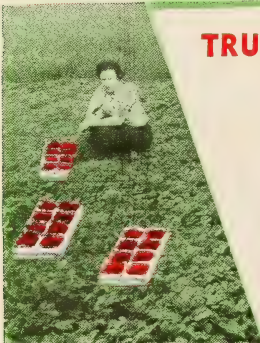
This garden will furnish the average family with rich red, delicious berries from early in the season to late fall.

- 25 PREMIER
- 25 CATSKILL
- 25 TOWNKING
- 25 GEM-EVERBEARING

Will plant 6-25 ft. rows

100 Plants Special **\$2.95**

WHEN ORDERING STRAWBERRY GARDENS PLEASE IDENTIFY BY STATING NAME OF GARDEN



### TRUCK GARDENER'S SPECIAL

- 500 PREMIER
- 500 SPARKLE
- 500 CATSKILL
- 500 TOWN KING

2000 PLANTS  
Catalog Value \$42.75 **\$28.95**

*Spare Time Garden*

With little attention you can realize a nice profit from this garden, should pick at least 400 quarts.

- 50 PREMIER
- 50 FAIRLAND
- 50 TEMPLE
- 50 TOWNKING

Requires Only 1000 sq. ft. Space

200 Plants Only  
Catalog Value \$8.65 **\$4.85**



Order These

# Big Bargain

"No Matter  
Where  
You Live—  
There's a  
Townsend  
Strawberry  
Garden  
For You"



Chosen by berry experts, these garden collections embrace hardy, proven varieties, selected for all-around productivity and fruiting superiority.

## STRAWBERRY GARDENS

Pick Delicious Strawberries  
Every Day From Your Garden

### NORTHERN STRAWBERRY PATCH

- 25 FAIRFAX
- 25 PREMIER
- 25 CATSKILL
- 25 RED STAR

100 Select Plants

Catalog Value \$5.25

**\$2.85**

**2** COMPLETE GARDENS AS ABOVE

**\$4.95**

50 OF EACH VARIETY

### TOWNSEND'S BIG CROPPING FALL-BEARING GARDENS

#### SMALL BACK YARD FALL-BEARING GARDEN

- 50 SUPERFECTION
- 50 TOWN-KING

100 Select Strain Plants

All For **\$3.95**

#### LARGE BACK YARD FALL-BEARING GARDEN

Will furnish plenty of delicious-berries for the average family.  
100 Premier 100 Gem

200 Plants for Only **\$5.95**

500 STREAMLINER

500 GEM

1000 Plants only **\$24.95**

**Big Profit-Making Fall-Bearing Garden**

## PROPAGATED UNDER IDEAL CLIMATIC CONDITIONS

Salisbury, Maryland, long established as the largest strawberry propagating center in America, has held this coveted position because of its ideally situated locale. Located on the Eastern Shore of Maryland 30 miles from the North Atlantic Ocean, Salisbury is subjected to varying intensities of climatic conditions throughout the year. Therefore, it can be readily understood that anything that can be propagated in this particular locality, can be successfully grown in any other part of the country—

permitting, of course, the presence of the proper type of soil. Our plants are preferred by growers in Maine, New Hampshire, Canada and other areas where temperatures drop to 20 degrees below zero. Townsend Nurseries, Inc., located in Salisbury, is the largest grower and shipper of strawberry plants in the world. Any nursery product bearing the Townsend label has to be the best obtainable, because Townsend's 50 years of Nursery experience stands behind every product.



PLEASE ORDER STRAWBERRY GARDENS BY NAME



PLANTS SET  
THIS SPRING

*Fruit in  
10 Weeks*

Plenty of Fruit Until Snow Flies

The most practical solution to year 'round profits unquestionably lies with everbearing varieties. Beginning as early as just 10 weeks after planting, Townsend's Select Strain Everbearing varieties, Gem, Gemzata, Streamliner, Superfection, New Evermore and Mastodon start making money for you. Amazing? Yes, but profits in the pocket of everbearing-wise growers cannot be denied. After the plants are set in early Spring, they fruit the entire Summer, continue through the Fall, and fruit heavily again in the Spring. Who could ask more? Townsend's everbearers give so much for so little in care and expense. No Home garden or commercial grower's acreage is complete without these famous everbearers.

Photo below—Picking Strawberries from  
A Townsend Everbearing Garden.



# EVERBEARING STRAWBERRIES

Pick Big, Red, Deliciously Flavored Berries  
SIX MONTHS IN THE YEAR

**J**UST think . . . within a few short months after your plants are set, you are ready to pick big, dark red all the way through FRESH STRAWBERRIES! And, best of all, you can continue to pick them from—

July until NOVEMBER

These rugged, everbearing varieties have literally taken the country by storm. Remember—with these varieties you do not have to wait a year for fresh berries.

## Big Bargain

Everbearing  
Gardens

50 STREAMLINER  
50 BLAKEMORE (Early Spring)  
50 GEMZATA

150 Select Plants **OFFER "A"**  
For Only **\$6.85**

Catalog Value \$8.10

Get Acquainted Strawberry Garden  
25 GEMZATA (Everbearing)  
25 Town King (Late Spring)

50 of Best Varieties  
For Only **\$1.95**

Catalog Value \$3.30



50 SUPERFECTION  
50 GEMZATA

**OFFER "B"**  
100 Select Plants  
For Only **\$3.95**

Catalog Value \$6.30

**CULTURE  
DIRECTIONS  
WITH  
EVERY  
ORDER**

THE NEAREST THING TO YEAR ROUND PROFITS

POPULAR *Everbearing*

**GEM**

One of the finest everbearing varieties of recent introduction, and a true "gem" of nature. The fine flavor and rich quality of this berry promises to establish it high in the ranks of everbearing leaders in short order. Gem is a heavy yielding, rugged plant maker, and in its long season of ripening, it fruits extra large, rich red berries that can't be equalled. Especially adapted for planting in northern states, this variety also flourishes as far west as Missouri, and produces during a long season—well into freezing weather.

● OUR REPUTATION IS BEHIND THIS RECOMMENDATION



**FREE!**

**CULTURE DIRECTIONS**

*With Each Order*

All orders are acknowledged promptly by "first class mail." Your copy of complete culture directions will be enclosed on all items that you purchase.



**NEW GEMZATA**

**STRAWBERRIES  
"EASY TO-GROW"**

Any good garden soil will do. Prepare soil soon as possible in the Spring. Plants can be set in MARCH-APRIL-MAY.

REMEMBER! The Earlier They Are Planted the better start they will make.

Plant in rows 42 inches apart, setting plants about 14 inches apart down the row. No fertilizer necessary until after planted. Our Culture Directions Will Give Full Data.



**NEW GEMZATA**

*A TRIBUTE TO BETTER BREEDING*

The development of a cross between Gem and Wayzata. Gemzata is a definite triumph in plant breeding. Being, in all probability, the greatest everbearing strawberry of all, our recommendation of this variety can only be at its best a gross understatement. Our own method of propagation has undoubtedly brought out the best qualities of this superior berry. The fruit of Gemzata resembles Gem but averages larger, and has a fine, sweet flavor. A vigorous grower, it is resistant to leaf spot and produces constantly throughout the summer months. Gemzata is truly a fine everbearing berry and we recommend it highly.

superior berry. The fruit of Gemzata resembles Gem but averages larger, and has a fine, sweet flavor. A vigorous grower, it is resistant to leaf spot and produces constantly throughout the summer months. Gemzata is truly a fine everbearing berry and we recommend it highly.



**EVERYBODY  
LIKES 'EM!**

**TOWNSEND'S MAKE  
IT EASY TO GROW**

# BLUEBERRIES

*Easy* **TO GROW!**

**B**LUEBERRIES can be classed as one of the easiest plants to transplant. For the home planting, set the plants about 5 ft. apart, (for commercial plantings, set in rows 8 to 10 ft. apart and space plants 4 ft. apart down the row). Blueberries require a somewhat ACID SOIL, (ranging in test P.H. 3.8 to 5.5). If your soil is not acid, it may be made so very easily by mixing with some pulverized PEAT and sand, half and half, mix thoroughly with water, and place in hole where the plant is to be set, below the root and above the roots. Fruit ripens over a period of several weeks.

THESE GIANT BLUEBERRIES—TOWNSEND'S BEST—lead all the rest in profit yields and delicious eating properties. Plant this season and be assured of getting a large yield of choice, luscious berries by next Spring. These select plants bear for many seasons—bigger and better yields each time—thus your first cost covers everything.

The large, delicious berries can be eaten right off the bush, and are ideal for either canning or quick freezing. Plant two or more varieties for cross-pollenization. If you plant for commercial reasons, the fact that these berries will bring up to, and often far beyond, 75 cents per pint will undoubtedly interest you. Blueberries demand and get the highest prices on the fruit market.



*Special!* **5 YEAR READY TO BEAR  
JUMBO SIZE**

2 RUBEL  
2 RANCOCAS  
1 JERSEY

*All 5 Jumbo  
Plants*

5

Free  
Culture  
Guide

**\$795**

**SAVE  
20%**

# BLUEBERRIES

ARE ORNAMENTAL AS WELL AS PROFITABLE

Every Home And Farm Should Have Blueberries



● **CABOT (Early)** One of the earliest of all varieties, this highly prolific blueberry plant is an established favorite with growers. Its dependable and heavy bearing habits, coupled with the extra large size of its well formed attractive berries, account for Cabot's popularity. A vigorous grower, Cabot develops naturally to well formed plants.

● **RANCOCAS (Medium Early)** This unusually heavy fruiting variety has a tendency to produce extra heavy crops on young plants. In fact, the yield is so heavy that special care must be taken to prune the bushes severely in order to insure a good crop in the following year. Rancocas ripens later than Cabot but earlier than Stanley, and the berries often exceed 19 mm in size.

● **CONCORD (Mid-season)** Often attaining height in excess of six feet, Concord is of upright habit and matures at about the same time as Stanley. Its berries are often three-quarters of an inch in diameter, and when its large clusters all ripen at the same time, they resemble Concord grapes. Concord berries are delicious to the taste, and if allowed to remain on the bush until they are fully ripe, they lose the excessive acidity they possess when they first turn blue. Not only does Concord possess tremendous commercial value, but it is also an attractive, eye-catching, ornamental plant.

● **STANLEY (Early Mid-season)** This grand variety has replaced the Pioneer blueberry as far as the better grower is concerned. Stanley is a very vigorous, tall growing plant, and is a good pollenizer for other varieties. Beautiful foliage producer of very large berries, that is considered to be the best flavored of all.

● **RUBEL (Large Mid-season Variety)** Recognized as the best of all commercial varieties, Rubel is undoubtedly one of the finest of the wild selections. The bush is upright, very vigorous, hardy and productive. Many of the present hybrid varieties can trace their parentage to this variety. Rubel is widely planted, and a profitable and popular favorite with thousands of commercial growers because of the excellent, though somewhat acidic, quality of its berries which not only ship well but are in constant demand. With Rubel blueberries as your product— you can't miss in a profit yielding market.

● **JERSEY (Season Late)** The berries of Jersey are unquestionably the largest of all the varieties, however until dead ripe, they are too acid for the taste of most persons. Jersey is a firm, robust berry that stands up well in transit, and is considered by growers to be one of the leading late varieties. Its light blue berries ripen about one week later than Rubel, and Jersey's remarkably beautiful growth also makes it attractive as an ornamental plant when grown in any home garden.

**CULTIVATED  
BLUEBERRIES  
ARE GROWN  
SUCCESSFULLY  
FROM  
MAINE TO  
NORTH CAROLINA**

- 1952 -

## Townsend Nurseries Select Strain Giant Blueberries

### NEW LOW PRICES

	Each	3-9 Plants Each	10-29 Plants Each	30-99 Plants Each	100-299 Plants Each	300-999 Plants Each	1000 or More Plants Each
1 year 3- 6 inch grade .....	\$0.50	\$0.45	\$0.40	\$0.35	\$0.30	\$0.29	\$0.28
2 year 9-12 inch grade .....	.85	.80	.70	.60	.50	.48	.45
3 year 12-18 inch grade .....	1.20	1.00	.85	.80	.60	.55	.50
4 year 18-24 inch grade .....	1.60	1.40	1.20	1.00	.80	.75	.70
5 year 24-36 inch Jumbo size .....	2.25	2.00	1.75	1.50	1.25	1.20	1.15

WE HAVE OVER 500,000 BLUEBERRY PLANTS FROM WHICH TO SELECT YOUR ORDER!

**FREE**  
CULTURE GUIDE  
WITH  
EVERY ORDER

FRESH FROM YOUR GARDEN EVERY YEAR

WHOLESOME • DELICIOUS • NUTRITIOUS

# ASPARAGUS

**A Must Item for the Complete Home Garden or Commercial Operation!**

Townsend asparagus roots are heavy bearers. Grown from "hand-selected seed" taken from the East's largest and finest asparagus farm where nothing but the best strains of asparagus are produced. Our roots will give you huge yields of large straight stalks of tender asparagus, of fresh delicious flavor. Tops for fresh table vegetable—easy to freeze. 50 roots will furnish ample supply for a family of four, as a permanent crop that will last for years without re-planting. Space required only 12 x 16 feet. Any standard garden soil will grow asparagus. Write for Free Culture Bulletin.

## SELECT STRAIN VARIETIES

- **MARY WASHINGTON**—Truly the "blue-blood" of the Asparagus world. Its extra heavy crowns and strong giant stalks have made it exclusive with commercial growers. Mary Washington is an exceptionally strong grower, its stalks are a rich green in color, and are as tender as can be. This much in demand variety is considered to be highly rust-resistant.
- **PARADISE**—This sensational new variety is drawing raves wherever it is planted. Growers are amazed to see the straight, large stalks that grow from roots set the previous Spring. Top quality crisp, tender stalks and exceptionally mild flavor, pays off at harvest time. Make sure your garden or farm acreage includes this new and superior money maker.

### New Low Prices on Asparagus Roots

	25	50	100	250	500	1000
1 Year No. 1 Grade .....	\$1.00	\$1.75	\$2.75	\$5.75	\$9.25	\$14.50
2 Year No. 1 Grade .....	1.75	2.85	4.75	9.65	14.85	24.00
3 Year Jumbo Grade .....	2.95	4.65	7.95	16.85	25.00	41.75



MARY WASHINGTON

**25**  
ROOTS  
Ready-to-Bear Size  
**\$2.95**

### Green Hill "For Sunny Lawns"

An exacting blend of better grasses to grow on either sandy or clay soils, assuring you of an excellent turf in short period. Professionals in Landscaping have demanded our blends of grasses for years—and have had too results. It is now being offered to the Home Gardener, for the first time—be the first in your neighborhood to plant "GREEN HILL". You too, will like the results.

### Lawn Grass Seeds of Merit

Sow at the rate of five pounds per 1000 square feet. 1 lb., \$1.75; 3 lbs., \$4.50; 5 lbs., \$7.25; 15 lbs., \$21.00; 25 lbs. and up, \$1.20 per lb. ALL PREPAID.

### Green Hill "For Shady Places"

Sow this grand mixture under trees or in other "shady areas" for lawn perfection. Similar blend to "GREEN HILL SUNNY"—but with other special grasses added to produce a superior long lasting turf in shade. All our Blends Resistant To Drought—Crab Grasses and Fungus.

For Better  
LAWNS  
Plant  
Only  
Quality  
"Green  
Hill"  
Seeds



**New!****PAM-PAM**  
Hardy**Dwarf! Easy to Grow!****EVERBEARING FIGS****WILL BEAR THIS YEAR**

PAM-PAM. New hardy variety grown in New Jersey, far north as N. Y. City, most of Penna., except extreme northern portion. Stands temperatures successfully of 10 degrees above Zero, without protection. Light green skin with crimson flesh, medium to large size—delicious fresh from the tree or to preserve. Truly an Everbearing Fig, that has no equal—SUPERIOR TO ALL OTHER OLD VARIETIES.

PRICES: Bearing-Size \$1.50 each; 3 for \$4.25; 10 or more \$1.25 each.

**HARDY, EVERBEARING PAM-PAM—ORDER YOUR TREES TODAY****Select Bush Cherries**

Large, glistening black, sweet hybrid Bush Cherry. Good to eat fresh or canned. Hardy, bear in cold climates, where standard Cherries fail. Borne in great quantities on low-growing bushes.

The beautiful pinkish-white blooms in Spring makes the bush extremely ornamental, plus colorful bronze foliage in Autumn. Trim to desired shape, set bushes 3 feet apart. Thrive and grow in any garden soil, or in the shrub border.

PRICE: 2 Yr., field-grown (QUICK-BEARING BUSHES) \$.85 each; 3 for \$2.25.

**GOLD DOLLAR Raspberry**

Sugar sweet flavor plus. GOLD DOLLAR RASPBERRY. Hardy vigorous grower, very productive. Bears large, rich golden berries. A must for your Garden-beautiful bush. PRICE - BEARING AGE PLANTS: \$1.00 each; 3 for \$2.50; 6 for \$4.50; 12 for \$8.50.



# Hardy

## Tall Growing Mums Large Flowering

Easy to grow, they offer a wide color range. Bloom every year Aug. to Nov., large, gorgeous flowers. ORDER TODAY. WE WILL SHIP AT YOUR PROPER PLANTING DATE.

PRICE: 55¢ each; 4 for \$1.75; 12 for \$4.95. PREPAID.



CARNIVAL

**OLD GOLD.** Firm golden pompons produced in mid-September. Long lasting and frost resistant.

**ALGONQUIN.** Golden yellow, very hardy double flowering. Double flowers 2½ inches across.

**AMBER GLOW.** Rosy bronze, large well formed flowers, blooms profusely Sept.-October.

**CHARLES NYE.** New outstanding yellow, with large blooms on long individual stems; from September through Oct. Double golden flowers 3" across.

**MELLOW GLOW.** Soft orange buff suffused peach-pink and bronze. Sturdy upright grower, large 4-6 inch flowers, well branched full bloom Oct. 5th.

**CARNIVAL.** Believe this to be the best of the brilliant cerise-red. Glowing burnt orange-tips, with red and golden-bronze shades. Full double blooms about 3½ inches across; make nicely branched sprays; truly a must for the garden this year. Height 2½ to 3 ft.

**LAVENDER LADY.** Popular soft lavender with double 4" flowers across. Tops in its color.

**MRS. P. S. DuPont.** The Nation's favorite bronze. Soft peach, tinted with rosy salmon, and fawn shades, overcast with bright sheen. Large perfect formed blooms 3½ to 4 inches across.

8 MUMS—ONE OF EACH ABOVE

VARIETIES ONLY

All Postpaid

**\$3.35**

**SPECIAL  
GROUP  
OFFER**

## Famous Cushion

### Dwarf Growing Mums

Normal growth 10-16 inches high  
A single plant will produce  
500 to 600 Blooms

### Six New Varieties to Select:

Apricot Glow—rich bronze; Coral Sea—salmon buff; Pink Cushion—deep pink; Powder Puff—new, and a fine white; Butterball—best rich yellow; Red Gold—bright rich red. 40¢ each; 3 for \$1.16; 6 for \$1.79. Postpaid.



*Bursting with Beauty*





## Rainbow Collection

50 Bulbs, 5 each of 10 different Colors  
Large Bulbs, unlabeled \$ **3.50** prepaid

100 Bulbs, 10 each of 10 different colors  
Large Bulbs  
Unlabeled  
\$ **6.50** prepaid

## Glad Garden Collection

50 Mixed Blooming Size Bulbs

\$ **2.00** prepaid

100 Mixed Blooming Size Bulbs

\$ **3.50** prepaid

RIOT  
OF  
COLORS  
FOR YOUR  
GARDEN

## Gladiolus

PLANT OUR "JUMBO" FLOWERING BULBS

## AMERICA'S FAVORITE CANNAS BLOOM ALL SUMMER

**EUREKA**—Giant creamy white blooms, grows 3½ ft. tall.

**KING MIDAS**—Finest of the bright-yellows, grows 4 ft. tall.

**PRESIDENT**—Truly America's Favorite (see color photo. below) continuous bloomer.

**RED KING HUMBERT**—Coppery foliage, orange-scarlet flowers, grows 3½ ft. tall.

3 for \$1.10

8 for 2.75

50 for 9.95

All Prepaid



# KING OF ALL RED APPLES!



**DOUBLE  
RED  
DELICIOUS**

- Colors Earlier
- Grows nearly everywhere
- Trees vigorous
- Large size
- Big cropper
- Eye appeal, shape
- Good for storage
- Extra fancy fruit
- Flavor rich

### JUMBO TREES

Ready-to-Bear  
on page 37

*Finest Flavored Red Apple Grown!*

**C**OLORS much earlier than the old standard Delicious apple, thus the fruit can be picked earlier while it is quite firm and will keep better in storage.

Large in size, solid red color, and outstanding

for its 5-knob end which makes it popular on any market and sells readily to consumer.

Picking season early September and keeps in storage until March. Every home and orchardist should plant Double Red Delicious this year.

**YELLOW  
DELICIOUS**

*Bears Young-Big Crops!*

**A SHINING GOLDEN YELLOW**

Queen of all winter apples; this grand variety bears fruit young and can be picked in the early days of September. Keeps well in storage until March.

Our trees of Yellow Delicious are propagated from buds selected from a famous early bearing Yellow Delicious orchard, which bears consistently big crops every year.



### GOOD REASON FOR PLANTING

- |                           |                        |
|---------------------------|------------------------|
| 1—Bears young-fast grower | 5—Real appetite appeal |
| 2—Disease resistant       | 6—Premium prices       |
| 3—Big crops every year    | 7—Excellent pollinizer |
| 4—Top money maker         | 8—Vigorous grower      |



Prices Page  
Jumbo Tree Prices Page

# Townsend's Improved Strains **APPLES**

For Commercial and Home Planting

- **YELLOW TRANSPARENT** Deliciously mild and juicy. Early, and easily the best yellow apple.
- **LODI** Reports indicate that there is a big future in store for this new, extra large summer apple. Lodi bears very young and ripens about the same time as Transparent, however the fruit is much larger and more firm. Early bearing.
- **EARLY McINTOSH** Resembling McIntosh in appearance, but bearing earlier, this firm, appetizing, handsome Red is tops for flavor.
- **IMP. ALL RED JONATHAN** For growers that want deeper color, richer looking Reds, this variety is definitely the answer. Bears a medium sized apple of superlative quality—appealingly attractive, and an excellent keeper.
- **IMP. ALL RED McINTOSH** A definite improvement on already famous McIntosh apples. The color is a solid red and commences to color weeks earlier. Highly recommended because of excellent shipping and storage qualities.
- **GRIMES GOLDEN** Known and acknowledged as the very best home orchard apple, Grimes Golden needs no introduction. Its sub-acid delicious flavoring has been a source of eating delight to those who eat apples raw, and it is unsurpassed for cooking. This variety is golden yellow in color, a Fall apple, firm and highly recommended by Townsend.

**ALL RED  
McINTOSH**



**RED  
STAYMAN**



**RED  
ROME  
BEAUTY**



**BE SURE** of quality before you buy. You can with Townsend's trees! Townsend Nurseries fruit trees must undergo a rigid system of grading and inspection before they are accepted by our packers for shipping. The improved strains of apple trees described here are certified "tops" for value and quality by Townsend inspectors.

**APPLE TREE PRICES**  
2 Year Certified Stock

	1-9	10-49	50 or more
	Each	Each	Each
Super 5-6 feet...	\$1.75	\$1.35	\$ .90
Fancy 4-5 feet...	1.30	1.05	.80
Select 3-4 feet...	1.00	.85	.70

**JUMBO TREES PAGE 37**

- **DOUBLE RED STAYMAN** A completely new red addition to the already popular Stayman. Unparalleled for cold storage keeping, and growers can pick a full three weeks before the older Winesap variety ripens. A big cropper and just fine for home cooking or commercial markets.
- **GALLIA BEAUTY (Red Rome)** A solid red, brilliantly colored apple that produces fancy fruit. Remarkable keeping qualities. One of the best, juicy and very large—a real honey of an apple.
- **BALDWIN** Highly regarded as an eating and cooking apple because of its sub-acid and aromatic flavoring, Baldwin for many years has been a popular northern favorite. Recommended highly by our New England customers for its white, meaty flesh and heavy yielding habits, Baldwin has been a winner every time.

## CRAB APPLES

- **DOLGO** New, unusual fruit of strikingly beautiful, fiery red. Makes ruby red jellies.
- **HYSLOP** Fruits large, excellent for jelly



# REDHAVEN

**EXTRA! EARLY**

**TOPS In Flavor**  
**TOPS In Freezing**  
**TOPS In Yield** ✓  
*Real Moneymaker*  
**COMMERCIALY**

This rather new variety has proven to be the best early ripening yellow freestone peach. Ripens before Golden Jubilee, a brilliant red color with creamy yellow background (see color photo) smooth skin, almost fuzzless. Large to medium size, heavy yield and of delicious flavor. Has successfully weathered temperatures as low as 13 degrees below zero, bearing same year big crop

**REDHAVEN PEACH**  
 They Taste as Good as They Look

smooth skin, almost fuzzless. Large to medium size, heavy yield and of delicious flavor. Has successfully weathered temperatures as low as 13 degrees below zero, bearing same year big crop

TOWNSEND GROWN FRUIT TREES ARE WORLD'S FINEST

**Special Home Orchard**  
 8 Super-Size Trees  
 1 each of the Following

HALE HAVEN	BELLE OF GEORGIA	
RED HAVEN	ELBERTA	
GOLDEN JUBILEE	BRACKETT	SAVE
EARLY ELBERTA	LIZZIE	\$4.05

**ALL FOR \$9.95**

*J. H. Hale*

**WORLD'S LARGEST QUALITY PEACH**

Supreme in flavor, this BIG BASEBALL SIZE PEACH—is truly a Giant. Ripens three days before Elberta, a yellow freestone that is a real beauty which you will like to show your friends. Tree vigorous but dwarf grower. ORDER YOURS TODAY!

**Hale Haven** Ripens Two Weeks Before Elberta

Ripens after Jubilee is through, prolongs the HAVEN PEACH SEASON. Admirable high red color, firm juicy yellow flesh and free-stone. 100% yielder of excellent quality fruit for all purposes "THE BEST PEACH FOR QUICK-FREEZING."

**Golden Jubilee** None More Delicious

Golden Jubilee is the Supreme Commander, in its field of seasonal ripening, which is after REDHAVEN. Valuable both for home and commercial harvest. High quality, fine delicious flavor, flesh deep rich-yellow. Ideal for Roadside stands, since it sells on sight. Tree vigorous grower; is outstanding for hardiness. Fruit beautiful bright red coloring of good appearance, oblong in shape.

**NEW LOW PRICES**



**GOLDEN**

**JUBILEE**

**TOWNSEND CERTIFIED PEACH TREES**

	1-9 Trees Each	10-49 Trees Each	50-300 Trees Each
Super Size 5-6 ft. 1 1/8 in. and up...	\$1.75	\$1.35	\$ .95
Large Select 4-5 ft. 7/8-1 1/8 in. ....	1.30	1.05	.85
Extra Fancy 3-4 ft. 7/8-7/8 in. ....	1.00	.85	.75
Select Planters 2-3 ft. 7/8-7/8 in. ....	.90	.75	.65

JUMBO SIZE PEACH TREES ON PAGE 37

**ORCHARDISTS PREFER** Townsend's Grown Fruit Trees!

Townsend Nurseries **ORIGINAL** Select Strain

# ELBERTA

America's Favorite **PEACH**

IT'S A **YELLOW**  
**FREESTONE!**

**E**LBERTA ripens about mid-season. Fruit is large to extra large, yellow flesh, free-stone; skin golden yellow with brilliant red shades and dark red blush where the peach is exposed to the sun. Elberta has been nationally recognized as being the practically perfect peach. Its uniform large size makes it attractive to the buyer. Elberta usually commands a premium price on any market.

**Uniform Shape—High Color**

- Best Canning Peach
- Supreme Commercial Variety
- Tree Vigorous Grower
- Excellent Long Distance Shipper
- Brilliant Colored, Yellow Flesh
- Rich in Flavor, Large in Size
- Grows in Widely Different Areas
- Dependable Sure Cropper



ELBERTA  
Peach—



## 4 SENSATIONAL VARIETIES

● **EARLY ELBERTA**—When true quality is desired, **PLANT TOWNSEND'S ORIGINAL STRAIN OF EARLY ELBERTA** (unusual size too). Ripening about 2 to 3 days before regular Elberta, this splendid variety bears consistently. Its yellow fleshed, large sized fruit is made more attractive by its fine skin that bears a soft blush of red. You can't go wrong with this Townsend original Freestone.

● **BELLE OF GEORGIA** Home canners prefer the "Belle". Known as the most popular of all peaches, this variety ripens in mid-season and is a consistent market favorite. Tree vigorous and highly productive. The best of all white peaches. Ripens 5 days before Elberta.

● **BRACKETT** Grand for canning and a fine market peach. Excellent quality and a freestone. This variety follows Elberta by about 5 days.

● **LIZZIE** Late, about 12 to 16 days after Elberta, and a distinctive freestone. In size it is large or larger than Elberta. When a late peach is wanted, Lizzie more than fills the bill.

**ALL SEASON  
PEACH GROVE**  
Pick Fresh Tree Ripened Peaches For 6  
Weeks—Preserve That Full Delicious  
Juicy Flavor—Also Plenty To Can  
And Freeze.

**4—ALL BIG 5 to 6 Ft. TREES  
WORTH \$7.00**  
1 Each **RED HAVEN**  
1 Each **GOLDEN HAVEN**  
1 Each **BELLE OF GEORGIA**  
1 Each **ELBERTA**  
**ALL 4 FOR \$5.95**

**BE SAFE!**

**PLANT TOWNSEND'S  
ORIGINAL SELECT STRAIN  
PEACH FOR SURE RESULTS!**

# PEAR TREES

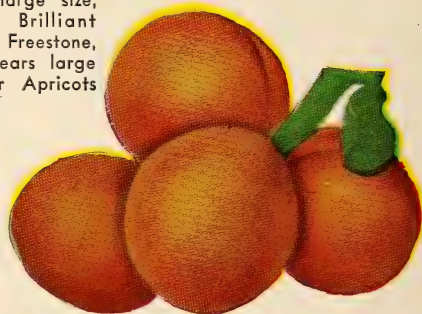


BARTLETT PEAR

- **BARTLETT**—This golden yellow, red cheeked dandy is undoubtedly the most popular pear for both home use and market purposes. Truly fine for desserts or eating raw. If you plant pears, don't miss up on this wonderful variety.
- **CLAPPS FAVORITE**—Resembling Bartlett in fine shape and beautiful coloring, this Variety is very hardy and does well everywhere. Its fruit is evenly grained with a fine, rich texture and is sweet and highly flavored.
- **KIEFFER**—Late bearing, extremely hardy, large yellow fruit of excellent quality.
- **SECKEL**—Its richness of flavor more than makes up for its smallness of size. Very desirable for pickling or preserving. Trees vigorous, bears late.

## NEW HARDY *Starglow* APRICOT

**A**mazing hardy variety that withstands zero temperatures. Very large size, delicious flavor, Brilliant Golden Yellow. Freestone, self pollinizing. Bears large crops when other Apricots fail.



### PRICES for STRONG, STURDY TREES

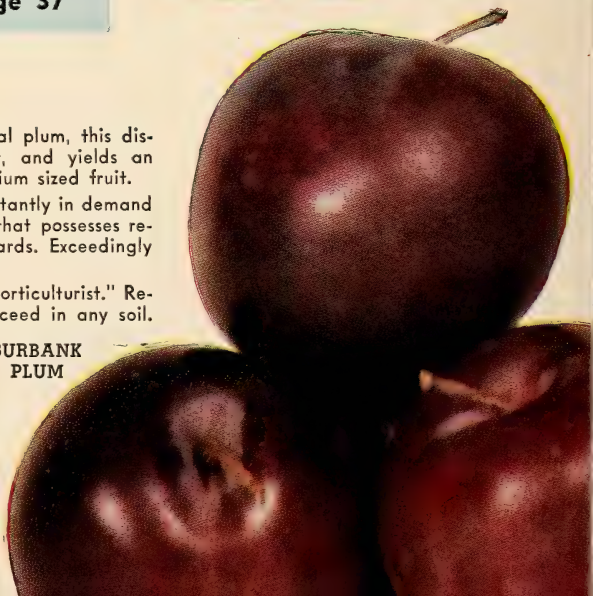
#### Pear-Plum-Apricot

	1-9	10-49	50 or more
5 to 6 Ft. Heavy Selects	\$2.25	\$2.00	\$1.90
3 to 5 Ft. Fancy Trees	1.75	1.65	1.55

**JUMBO SIZE FRUIT TREES — See Page 37**

## PLUMS

- **ABUNDANCE**—(Japanese) Probably the best oriental plum, this distinctive variety ripens late August to Early September, and yields an abundance of aromatic, tender but firm, cherry red, medium sized fruit.
- **BRADSHAW**—Bradshaw's very large sized fruit is constantly in demand because of its large, dark, violet red, yellow fleshed fruit that possesses remarkable keeping qualities and excellent shipping standards. Exceedingly productive and a hardy vigorous grower. August ripening.
- **BURBANK**—A triumph of the genius of "The Master Horticulturist." Remarkably successful all over the country. It seems to succeed in any soil. Fruit large, dark red or purplish with thin lilac bloom. Flesh amber yellow with rich sugary flavor. It's a dandy.
- **FRENCH DAMSON**—A large beautiful plum of good quality surpassing all other plums in this class.
- **ITALIAN PRUNE**—(Fellenberg) Excellent for drying, preserving or dessert. Large fine fruit that is firm, sweet and delicious. We have nothing to offer that will take its place. Every home should have a few trees.
- **STANLEY**—Dark blue, with splendid quality for dessert or culinary purposes.

BURBANK  
PLUM

Townsend Nurseries Brings You America's

**BEST***Cherries***BUY DIRECT!**ORDER EARLY FOR  
GUARANTEED  
SELECTIONS**New Low  
Cherry Prices**

2 Year Select Varieties

Healthy, vigorous trees produced under the famous Townsend standard of vital, select strain development.

	1-9	10-50
	Trees	Trees
5 6 ft. $1\frac{1}{2}$ - $7\frac{1}{2}$ in. cal.	\$2.25	\$1.70
4 5 ft. $1\frac{1}{8}$ - $1\frac{1}{4}$ in. cal.	1.85	1.60

Write for Prices Larger Lots.

For Jumbo Cherry Trees,

See page 37

**MONTMORENCY** *Best Sour Cherry*

**U**NIVERSAL favorite, the only profitable sour cherry to plant, regardless of your location. Trees of Montmorency are strong, vigorous, disease resistant, very hardy and usually start to bear fruit in 2 years. Large in size, ripens mid-season, red, slightly acid. Best sour cherry for pies, canning and commercial market.



NAPOLEON (Royal Ann) Sweet Cherry



BLACK TARTARIAN (SWEET)

**NAPOLEON** Best golden sweet cherry, known in some localities as Royal Ann. Large in size, sweet delicious flavor, prolific bearer, ripens mid-season.

**BLACK TARTARIAN** Favorite in most parts of the country, very large, sweet, purplish black color, rich flavor, bears large crops, ripens early, vigorous grower.

**GOVERNOR WOOD** Bears bumper crops, large yellow, sweet flavor. Fruits in mid-season, an old favorite.

**YELLOW SPANISH** Large, golden hued fruit attractively tinted with crimson. Ripens end of June—just fine for canning.

**SCHMIDT** Large, sweet, black, and fine flavor. Ripens mid-season.

**WINDSOR** Valuable late commercial sweet cherry. Hardy, extra firm.

**PLANT THE BEST IN 1952! SAVE 2 TO 3 YEARS BY PLANTING SUPER-SIZE, SUPER-GROWING FRUIT TREES AT HOME!**

# JUMBO FRUIT TREES

BIG ROOTS • BIG TRUNKS



## Selected Specimen Trees

For Orchard Replantings or Home Orchards



**SAVE TIME! BEAT THE MARKET!  
SAVE MONEY!**

Plant Jumbo a surprisingly this size tree have died or HOME ORCH these are ide been especial well develope 6 to 8 feet in



### 5-in-1

The famous family. Yes, fr grown on a siz with Yellow Anoka for se fall and wint for fall and v limited space quires only developed.

ORDER TODAY!

BIG STUR  
SELECTED TIE

## WHAT WE OFFER FOR YOUR MONEY

- A Superior Grown Tree
  - Grown Expressly for Sp
- where the Planter Wants  
Growth and Best Fruiting

*Townsend Nurseries Inc. "Home of Selected"*

### A Quick-Bearing Jumbo Apple Tree TOWNSEND GUARANTEE

On our Quick-Bearing, Jumbo trees you take no chance. If trees do not meet with your approval when they arrive, just re-pack them properly and return them to us within 24 hours, and your money will be refunded, when they arrive at our express office in good condition.

**WE MAKE THIS BROAD GUARANTEE KNOW-  
ING THAT OUR TREES WILL PLEASE**



**All Fruit  
3 Years  
Earlier!**

# YOU'LL AGREE

IT'S EASY  
TO GROW

*Luscious*

FRUIT AT  
HOME

**FRUIT QUICKER  
AT ONLY FEW CENTS MORE**

and pick large, luscious fruit in short time. Commercial growers use replacements for young trees that are injured in cultivation. For the U.S., where quick results are wanted, these quick bearing trees have been selected for their heavy roots and trunks. They are all Specimen Trees, with heavy trunks.

## THE APPLE TREE

A multiplet tree of the apple, separate varieties of apples on one tree. Each tree is budded independent for first early, second early, Red Jonathan for red and Yellow Delicious for yellow. For home gardens with limited space, this tree requires only 5-foot space when fully grown.

**\$3.85**

**KEY:**

**Special Trade  
Quick**

*Plants and Trees*



**TOWNSEND'S  
SELECT STRAIN  
JUMBO FRUIT TREES**  
Are **CERTIFIED** For  
**QUICK GROWTH** and  
**DOUBLE INSPECTED**  
for **HARDY FRUITING**

## REDHAVEN

EARLIEST YELLOW FREESTONE

### CHOICE VARIETIES JUMBO FRUIT TREES

*Listed in order of Ripening*

**APPLE—JUMBO 6 to 8 Feet**

- Yellow Transparent
- All Red Jonathan
- All Red McIntosh
- Grimes Golden
- Double Red Delicious
- Gallia Beauty (Red Rome)
- Baldwin

**PEACH—JUMBO 6 to 8 Feet**

- Red Haven
- Golden Jubilee
- Hale Haven
- Early Elberta
- Bella of Georgia
- Brackett
- Lizzie

**PRICES ON ABOVE APPLE and PEACH—ALL HEAVILY BRANCHED**  
\$3.00 each; for 3 for \$8.70; 6 for \$16.50; 10 for \$25.00; 25 for \$58.75.

**CHERRY—JUMBO 6 to 8 Feet**

- Black Tartarian (sweet)
- Napoleon (sweet)
- Windsor (sweet)
- Large Montmorency (sour)

**PLUM—JUMBO 6 to 8 Feet**

- Burbank
- Stanley Prune
- French Damson
- Italian Prune (Fellenberg)

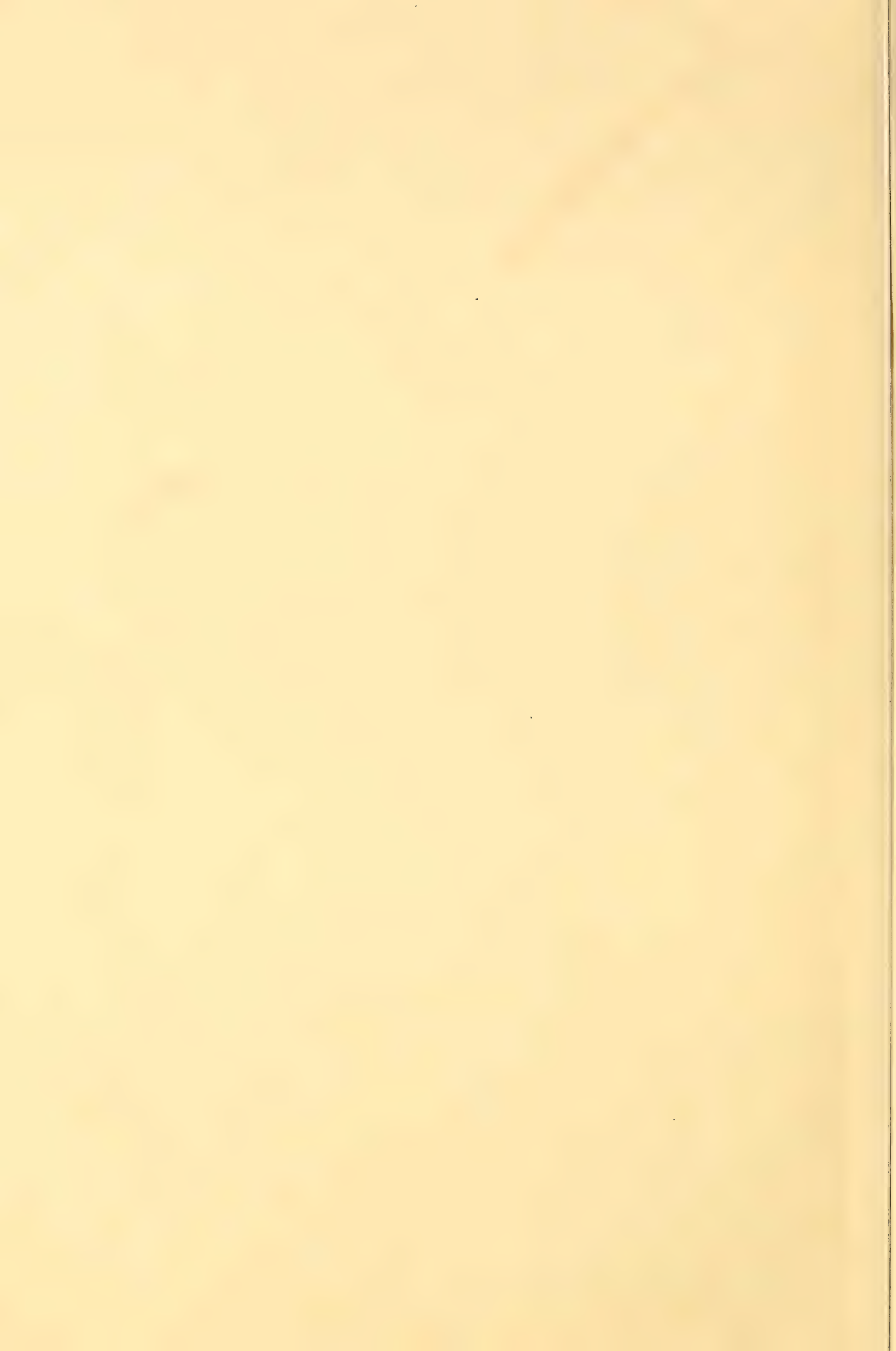
**APRICOT—JUMBO 6 to 8 Feet**

- Starglow (New and Hardy)
- Early Golden (best early)

**PEAR—JUMBO 6 to 8 Feet**

- Bartlett
- Kieffer

**PRICES ON CHERRY—APRICOT—PLUM—PEAR—ALL HEAVY STOCK**  
\$3.75 each; 3 for \$10.95; 6 for \$21.00; 10 for \$32.50.  
Choose as many varieties as you like for quantity price.



PLANT THE BEST IN 1952! SAVE 2 TO 3 YEARS BY PLANTING SUPER-SIZE, SUPER-GROWING FRUIT TREES AT HOME!

# JUMBO FRUIT TREES

BIG ROOTS - BIG TRUNKS

*Selected Specimen Trees*

For Orchard Replantings or Home Orchards



**SAVE TIME! BEAR FRUIT QUICKER**  
**SAVE MONEY! COST ONLY FEW CENTS MORE**

Plant Jumbo Trees and pick large, luscious fruit in a surprisingly short time. Commercial growers use this size tree as replacements for young trees that have died or been injured in cultivation. For the HOME ORCHARD, where quick results are wanted, these are ideal. These quick bearing trees have been especially selected for their heavy roots and well developed tops. They are all Specimen Trees, 6 to 8 feet in height with heavy trunks.

## 5-in-One APPLE TREE

The famous quintuplet tree of the apple family. Yes, five separate varieties of apples grown on a single tree. Each tree is budded with Yellow Transparent for first early, Anoka for second early, Red Jonathan for fall and winter, Red and Yellow Delicious for fall and winter. For home gardens with limited space this is ideal, for this tree requires only a 25-foot space when fully developed.

ORDER TODAY!

BIG STURDY  
SELECTED TREES

**\$3.85**

### WHAT WE OFFER FOR YOUR MONEY:

- A Superior Grown Tree!
- Grown Expressly for Special Trade where the Planter Wants Quick Growth and Best Fruiting!

*Townsend Nurseries Inc. "Home of Selected Plants and Trees"*

#### A Quick-Bearing Jumbo Apple Tree

**TOWNSEND GUARANTEE**

On our Quick-Bearing Jumbo trees you take no chance. If trees do not meet with your approval when they arrive, just re-pack them properly and return them to us within 24 hours, and your money will be refunded, when they arrive at our express office in good condition.

**WE MAKE THIS BROAD GUARANTEE KNOWING THAT OUR TREES WILL PLEASE**

# YOU'LL AGREE

IT'S EASY  
TO GROW

*Luscious*

FRUIT AT  
HOME



TOWNSEND'S  
SELECT STRAIN  
JUMBO FRUIT TREES  
Are CERTIFIED For  
QUICK GROWTH and  
DOUBLE INSPECTED  
for HARDY FRUITING

## REDHAVEN

EARLIEST YELLOW FREESTONE

### CHOICE VARIETIES JUMBO FRUIT TREES

Listed in order of Ripening

#### APPLE—JUMBO 6 to 8 Feet

- Yellow Transparent
- All Red Jonathan
- All Red McIntosh
- Grimes Golden
- Double Red Delicious
- Gallia Beauty (Red Rome)
- Baldwin

PRICES ON ABOVE APPLE and PEACH—ALL HEAVILY BRANCHED  
\$3.00 each; for for \$8.70; 6 for \$16.50; 10 for \$25.00; 25 for \$58.75.

#### CHERRY—JUMBO 6 to 8 Feet

- Black Tartarian (sweet)
- Napoleon (sweet)
- Windsor (sweet)
- Large Montmorency (sour)

#### APRICOT—JUMBO 6 to 8 Feet

- Starglow (New and Hardy)
- Early Golden (best early)

PRICES ON CHERRY—APRICOT—PLUM—PEAR—ALL HEAVY STOCK  
\$3.75 each; 3 for \$10.95; 6 for \$21.00; 10 for \$32.50  
Choose as many varieties as you like for quantity price.

#### PEACH—JUMBO 6 to 8 Feet

- Red Haven
- Golden Jubilee
- Hale Haven
- Early Elberta
- Belle of Georgia
- Brackett
- Lizzie

#### PLUM—JUMBO 6 to 8 Feet

- Burbank
- Stanley Prune
- French Damson
- Italian Prune (Fellenberg)

#### PEAR—JUMBO 6 to 8 Feet

- Bartlett
- Kieffer



# Peace

The World's  
Most Beautiful  
Rose



THE QUEEN OF ROSES



CHARLOTTE ARMSTRONG

**PEACE**—WINNER OF ALL ROSE AWARDS. The shades of color vary from flower to flower. Buds open with a breathtaking freshness that stays with the flower. Buds are golden with a rich flash of pink along each petal's edges. The color deepens as the flowers open—which is very slowly making the blooms longer lasting than any other Rose. Blooms are extra large showing delicate tints, of gold, cream, ivory and a flush of pink. (Pat. 591)

**PRICE: \$2.50 each; 3 for \$6.60; 12 for \$26.40—Prepaid**



**CHARLOTTE ARMSTRONG.** Carmine to spectrum-red buds open to blooms of deep cerise. Long, slender buds on long stems, produced in great quantities, usually one flower to each stem. (Pat. 455) **\$2.00 ea.; 3 for \$5.35. Prepaid.**

*For a winning  
combination*

All 3 Roses On  
This Page Only

**\$4<sup>95</sup>**



**TAFFETA** (above). ALL-AMERICA AWARD WINNER hybrid tea. Long stemmed; pink and salmon tones in changeable combinations. Rich carmine-rose predominates; reverse side shows yellow. Buds well formed, extremely fragrant. PRICE \$1.75 ea.; 3 for \$4.75. Prepaid. (Pat. 716.)



Nocturne

**NOCTURNE** (right). ALL-AMERICA award winner, hybrid tea, of bright cardinal red with dark shadings. Long graceful buds open in large double flowers. Very fragrant, vigorous grower and foliage disease resistant. (Pat. 713.) PRICE \$1.75 ea.; 3 for \$4.75. Prepaid.



**The Dynamic  
RED**  
*New Yorker*

A perfect vigorous grower, with brilliant, enormous red blooms that will measure 6½ inches or more across. This is truly the red rose that you will enjoy in showing as to size, as well to its sparkling, clear rich color that does not fade. Hardy, disease resistant, plants will grow 3 ft. with little care. Blooms all season from June until freezing weather—a beauty in your garden. (Pat. 823.) \$2.00 each; 3 for \$5.25; 12 for \$21.00. Prepaid.

NEW YORKER



**MISSION BELLS**



# 3 Magnificent

## ALL-AMERICA AWARD WINNING ROSES

**MISSION BELLS.** This glorious new rose won the 1950 All-America Rose Selection award. Since that time Mission Bells has' been planted nationally with remarkable success. A vigorous grower and free-blooming from June to Autumn. A magnificent shade of deep salmon-pink, which is always desired in Roses. The buds are well formed and pointed on long stems. When open the blooms will measure up to 5 inches across, and do retain their brilliant color and Tea Rose fragrance. Plants are bushy, grow to 3 1/2-4 ft. in height; resistant to black-spot. (Pat. No. 923) **Large Selected Plants \$2.25 each; 3 for \$6.00 Prepaid.**

**We send you full cultural directions with each rose order.**

**GRAND DUCHESS CHARLOTTE.** (Pat. 774) (Center right) An All-America winner for 1942. Medium sized buds of intense copper scarlet changing to glowing carmine in the open flower. Extremely free flowering, plants exceptionally vigorous and tall growing. **Large Selected Plants \$2.00 each; 3 for \$5.25**

**We Pay Postage  
On All Roses**



**GRAND DUCHESS CHARLOTTE**

## ORDER EARLY

### SUTTERS GOLD

←  
Another 1950 All America Rose Selection, award winner and three International Awards. A beautiful long pointed rose of brilliant gold shading to coppery-orange. Buds open to high centered blooms with 24 to 30 petals. Varies in color from rich orange gold to a tinged pink in the Fall. Vigorous grower with height of 2 1/2 to 3 ft. (Pat. No. 885) **Large Selected Plants \$2.25 each; 3 for \$6.00 Prepaid.**



*Save Money!*

WITH EVERY \$20.00  
ROSE ORDER YOU  
GET **3 BLAZE**  
**BUSHES FREE!**

**SPECIAL  
GROUP  
OFFER**

ALL FIVE ROSES  
ON PAGES 40-41

Only **\$8.75**

\$10.00 Value

Parcel Post Postpaid

All Jumbo Grade

No. 65



**MIRANDY.** All America Award winner and one of the outstanding roses of all time. An enormous size rose with 50 petals, extra large very double flowers borne on long sturdy stems. The color is of deep crimson, which it holds very well turning to deep wine at the end. Long, ovoid buds are borne freely on long stems and have a deep Damask fragrance. Blooms continually from June to freezing weather. (Pat. No. 632). Large selected plants \$1.75 each; 3 for \$4.65; 12 for \$18.60. Postage prepaid.



GOLDEN  
ANNIVERSARY

**GOLDEN ANNIVERSARY.** This everblooming, hybrid tea rose is outstanding and rated very high by the American Rose Society. Vigorous, handsome grower like its parent "Good News." Color varies between mellowed gold and flushed apricot. Best of all in a yellow rose, is the dense foliage, which Golden Anniversary carries right down to the ground. Be sure to add this new rose to your garden—you too will rate it very high. (Pat. No. 860). Large Selected plants \$1.75 each; 3 for \$4.65; 12 for \$18.60. Postage Prepaid.

**MORE PEOPLE PLANT  
TOWNSEND'S ROSES THAN  
ANY OTHER KIND**

# Everblooming Hybrid Teas

Your Choice of Varieties

\$1.35 each; 3 of same variety \$3.45; 12 for \$13.20

All Postage Paid

ALL OF THE  
"Finest Grade"



**MRS. PIERRE S. DU PONT.** Deep golden yellow that is a steady bloomer. Nice buds, very fragrant, double-flowers. Good bushy grower.



**PRESIDENT HERBERT HOOVER**—(above). Yellow-orange and scarlet in a luscious blend, true two-tone. Large glorious blooms on long stems that makes each flower a bouquet. Richly fragrant very vigorous grower, blooms freely.

**AMI QUINARD**—Blackish maroon, opening into semi-double flowers of rich velvety red, with blackish luster. Strong upright grower with old time rose fragrance.



**PICTURE.** A velvety clear rose pink. Double and high centered flower with slight fragrance.



ALL GUARANTEED TO GROW AND BLOOM

AMI QUINARD



**ALL 9 ROSES SHOWN  
ON THESE TWO PAGES**

**OFFER 38—\$9.95  
(VALUE \$12.15) PREPAID  
YOU SAVE \$2.20**



**Townsend's  
Jumbo Size  
Roses  
Are Guaranteed to  
Grow and Bloom**

**POINSETTIA**

**LUXEMBOURG.** Blooms freely June until cold weather, large roses of coppery yellow with a deeper colored center and yellow stains at base of the petals. An old favorite still in great demand. \$1.35 ea.; 3 for \$3.45.

**BETTER TIMES.** The Beloved Favorite of all roses of the writer, for many years. Brilliant cerise blooms with extra long stems, grace and beauty in each and every bud. Enchanting fragrance in its lovely graceful buds can be obtained in no other rose of love. \$1.35 ea.; 3 for \$3.45.



**CALEDONIA**

**POINSETTIA.** True everblooming, from June to Frost. Brilliant red rose, which buds are ideal perfect. A must for every rose garden. \$1.35 ea.; 3 for \$3.45.

**CALEDONIA.** (left) Pure ivory white long buds opening into double and high centered flowers. Delicate fragrance. No garden is complete without this one. \$1.35 ea.; 3 for \$3.45. Postpaid.

**EDITOR McFARLAND.** True Hybrid Tea of deep pink. Quite a rose in all respects in its field of color. Free blooming all summer and early fall. Beautiful buds and fragrance of true rose. Good vigorous grower too—\$1.35 ea.; 3 for \$3.45. Postpaid on all roses.



**BETTER TIMES**

**"ALL EVERBLOOMING"**



**EDITOR McFARLAND**

# Townsend's Hybrid Teas

EVERBLOOMING

Prices on Page 45



RED AMERICAN BEAUTY

**"A MUST IN EVERY  
ROSE GARDEN"**

The standard of which all other roses are judged. What a grand reputation over all the past years this Rose enjoys. Dependable free bloomer, grows anywhere. Tops for cut flowers with those long, long stems.

\$1.75 ea.; 3 for \$4.50. Prepaid.

COUNTESS VANDAL. (Below). We call this beauty in our rose garden "the Blond show-girl" certainly it has the most artistic bloom in the rose world. A brilliant bronze and pink, lightening to dazzling gold at the base. A Prized Exhibition Rose, tops for flower arrangements, and a vigorous grower.  
\$1.35 ea.; 3 for \$3.45. Prepaid.



COUNTESS VANDAL

E. G. HILL. (Left). Large flowers of lasting scarlet-crimson, never fading but becomes deeper in color as the flower opens. A favorite for many years, free bloomer from June to Frost. Add a few plants this year to your own collection.  
\$1.35 ea.; 3 for \$3.45. Prepaid.



E. G. HILL

**FREE ROSES!**  
Yes We Are Giving Away  
**3 BLAZE**  
With Every \$20.00 Rose Order



**RED RADIANCE**

**EVER POPULAR  
HYBRID TEAS  
EVERBLOOMING**

Endearing favorites that have always brought joy to the lover of roses—Can still be depended on to bring delight to "your Rose Garden" regardless of climate.

**YOUR SELECTION:—**

\$1.35 each; 3 Of Same Variety \$3.45; 12 For \$13.20—postage prepaid.



**KAISERIN AUGUSTE VIKTORIA**

**RED RADIANCE.** Will grow anywhere successfully, healthy free blooming with true Rose Fragrance. The color is clear genuine red. Your Garden Needs Red Radiance.

**TALISMAN** (right). A glorious combination of brilliant red and gold buds, opening into well shaped blooms of scarlet orange and rich yellow. Constantly in bloom. Every one prefers TALISMAN, for buds and cut flowers.



**TALISMAN**

**GOLDEN CHARM**—Bright buttercup yellow drenched with delightfully sweet perfume. An exquisite rose with the buds opening into long lasting flowers. Grown From Coast to Coast Successfully.

(Above) A strictly old time favorite of soft pearly white tinted with just enough lemon in the center to relieve the white. Remarkable fragrance, easy to grow and widely planted.

**ETOILE DE HOLLANDE**—Considered by many as the best of the bright reds—truly a favorite. Semi-double; fragrant, vigorous grower and dependable. Its perfect buds open beautifully into velvety crimson flowers. Free blooming Hybrid Tea from June to Frost. Order A Few This Spring.

**ORDER EARLY**



**GOLDEN CHARM**

**JUMBO**  
at no extra cost  
**ROSES**

**WE PAY  
POSTAGE  
ON ALL  
ROSES**



**ETOILE  
DE HOLLANDE**



**BLAZE—THE QUEEN OF ALL CLIMBERS**

*Everblooming*

## CLIMBING HYBRID TEAS

**CLIMBING MRS. PIERRE S. DUPONT.** Shapely and beautiful golden yellow buds—with large blooms **\$1.35 ea.**; 3 for \$3.75.

**CLIMBING GOLDEN CHARM.** One of the best yellow climbers. Extra large blooms of molten gold. **\$1.35 ea.**; 3 for \$3.75.

**CLIMBING PEACE.** (Plant Pat. 932) NEW and offered for the first time this year in climbers. "World's Most Beautiful Rose" See page 38 for complete description. **\$2.50 each Prepaid.**

**CLIMBING TALISMAN.** Beautiful two-tone gold buds, opening into beautiful orange-scarlet shapely blooms. Always in bloom. **\$1.35 ea.**; 3 for \$3.75.

**ALL ROSES SHIPPED PREPAID**

**ALL GUARANTEED TO GROW AND BLOOM**

LIKE STARS IN THE SKY  
BLOOMS ARE COUNTLESS ON—

**EVERBLOOMING**

# BLAZE

*America's Favorite  
Climbing Rose*

**T**hese blazing brilliant red climbing double roses (shown in photo) can easily be grown at the entrance of your own home. Thousands upon thousands of gorgeous blooms can be expected, when Blaze is planted around the fence, trellis, pergola etc., throughout June—also masses of wonderful brilliant roses in July, August and September.

## Easy to Grow

Exceptionally hardy, sturdy grower making a rich luxuriant growth in any type soil from Maine to California. Without any question the BLAZE CLIMBING, rose is more popular today than ever before, and enjoyed by millions throughout America.

**PRICES: \$1.45 each; 3 for \$3.75; 12 for \$14.40. Prepaid.**

CLIMBING

*Peace*

(Photo. Below)



## Lovely Floribundas

**FOR CONTINUOUS MASSES OF BLOOMS  
JUNE 'TIL FROST — DRAMATIC COLORS**

**I**DEAL low growing Roses for planting along the walkways—front of evergreen plantings—or for living fences.

**BETTY PRIOR.** Blooms all the time a mass of delicate pink blossoms. Buds are light red and when open, the flowers resemble the dogwood very much. Also one of the better shrub roses—height about 3½ feet. (Pat. 340) \$1.50 ea.; 3 for \$3.90; 12 for \$15.60; 35 for \$30.00—PREPAID.



**FLORADORA.** (Photo, right).

Color dazzling cinnabar-red, with shades of scarlet. Exquisitely beautiful Floribunda Rose that blooms profusely from JUNE until FROST. Without question the best red in floribunda Roses—fine for LIVING FENCES and BORDERS TOO. \$1.40 ea.; 3 for \$3.95; 12 or more \$1.25 each—All Prepaid.



**FLORADORA**

## Fashion

(Plant Pat. 789)



All-America Award Winner For 1950. The only Rose to win 5 INTERNATIONAL AWARDS. Claimed to be the best new rose in over six years. Blooms are bright coral peach, overlaid with gold which softens to clear coral. Buds are pointed, and of oriental red, slow to open. Will grow anywhere and be at home in any spot around your lawn and garden. \$2.00 ea.; 3 for \$5.25; 12 for \$21.00—All Prepaid.

**RED RIPPLES.** Free Everblooming Floribunda Favored For Living Fences where a Bright Red Color is desired. A NEW—double red flowering floribunda rose which seems to sparkle on the wavy rippling petals. The daintily modeled long lasting buds are perfect for flower arrangements and boutonnieres. \$1.35 ea.; 3 for \$3.45; 12 for \$12.00; 50 or more \$.85 each. All Prepaid.

Photo. At Left. Actual photograph of our ROSE Plants AS THEY WILL BE SHIPPED TO YOU. One can readily see the vast difference in this grade of TOWNSEND ROSES—Compared to what the Public has been getting in the past. All our roses are "fresh out of the nurseries soil," graded same day and "each Rose Individually wrapped" in proper damp material to preserve the root moisture. This costs us extra of course—but our customers like it this way and you get this "Service at no Extra Cost to you."



**BETTY PRIOR** ©



Build your own Rose Garden

FREE  
ROSES!

SPECIAL  
OFFER!

Value \$3.75 →

BUY 7 OFFERS  
YOU GET 1 FREE

SPECIAL GROUP OFFER

OFFER # 31

- 1—Better Times
- 1—Golden Ophelia
- 1—Betty Uprichard

VALUE \$4.05

SAVE \$1.10

\$2.95

## MASTERPIECES OF YESTERDAY'S ROSE GARDEN

Beloved and Admired by Amateurs and Experts Alike!  
You will find them planted in Public Parks Blooming  
June 'til freezing weather.

Easy to grow—these hardy roses  
will give you generous supply Cut Flowers.

ALL 12 ROSES

Prepaid \$11.50

### EVERBLOOMING

**PRES. HOOVER**—Most popular of all two-tone roses yellow orange with scarlet blend. Blooms profusely rich fragrant roses, grown nationally.

**PINK RADIANCE**—A brilliant carmine pink with salmon and yellow shadings at base of petals. An ideal bedding rose that continues to bloom throughout the hottest weather.

**ROUGE MALLERIN**—Brilliant red with strong Damask fragrance on a vigorous branching plant. The flower is of good size with plenty of petals—one of the better reds of all time.

**BETTY UPRICHARD**—A salmon pink rose with heavy rolling petals. Buds are long pointed and of a spicy fragrance—good growing pink.

**POINSETTIA**—Free blooming brilliant red rose, getting its name from the color of the famous Poinsettia Christmas plant. The buds are outstanding beauties—fine for cut flowers.

**PAUL NEYRON**—Full clear pink to rose-pink. Long strong stems, with dark green foliage. A very fragrant rose, one that holds its own in any rose garden.

**SOUER THERESE**—Long pointed buds of chrome yellow that are heavily marked with carmine. The open flower is a daffodil yellow, of very rich sweetbrier fragrance. An Old Favorite.

**CONDESA de SASTAGO**—A vigorous grower of large delightfully fragrant flowers. Fiery coppery-red inside and rich yellow outside. Known Nationally, as one of the most colorful roses in the garden. A must for this year's garden.

**RED SENSATION**—Brilliant flaming red, tops for cut flowers and exhibition. Beautiful foliage, long stems makes it truly a show rose.

**GOLDEN OPHELIA**—Golden yellow in center, paling slightly on outer petals. Remarkable foliage that is rich and glossy green all season.

**CHRISTOPHER-STONE**—A gorgeous glowing scarlet crimson. First roses are bright red like in first six weeks of bloom, then they grow a darker crimson of a beautiful shade. Supreme fragrance flower—good bloomer.

**WHITE AMERICAN BEAUTY**—Needs no introduction to the world's rose gardens, a true favorite. Profusely flowering all summer of white flowers sometimes tinged with carmine pink.

PRICES:—\$1.35 each; 3 for \$3.45 Postpaid.

ONE OF EACH FOR ONLY \$11.50

ALL GUARANTEED TO GROW  
AND BLOOM



# 3 BLAZE Climbing BUSHES

With every order for Roses amounting to only \$20.00 or more!

ALL TOP GRADE—  
EVERBLOOMING

### SPECIAL GROUP OFFER

OFFER NO. 32

- 1—Etoile de Hollande
- 1—White American Beauty
- 1—Condesa de Sastago

Value \$4.05  
**SAVE \$1.10**      **\$2.95**

### SPECIAL GROUP OFFER

OFFER NO. 33

- 1—Luxemburg
- 1—Pink Radiance
- 1—Poinsettia

Value \$4.05  
**SAVE \$1.10**      **\$2.95**

### SPECIAL GROUP OFFER

OFFER NO. 34

- 1—E. G. Hill
- 1—Souer Therese
- 1—Caledonia

Value \$4.05  
**SAVE \$1.10**      **\$2.95**

### SPECIAL GROUP OFFER

OFFER NO. 35

- 1—Golden Charm
- 1—Editor McFarland
- 1—Poinsettia

Value \$4.05  
**SAVE \$1.10**      **\$2.95**

### SPECIAL GROUP OFFER

OFFER NO. 36

- 1—Red Radiance
- 1—P. S. DuPont
- 1—Pink Sensation

Value \$4.05  
**SAVE \$1.10**      **\$2.95**



It's a dream garden with

Townsend's Jumbo Roses

### SPECIAL GROUP OFFER

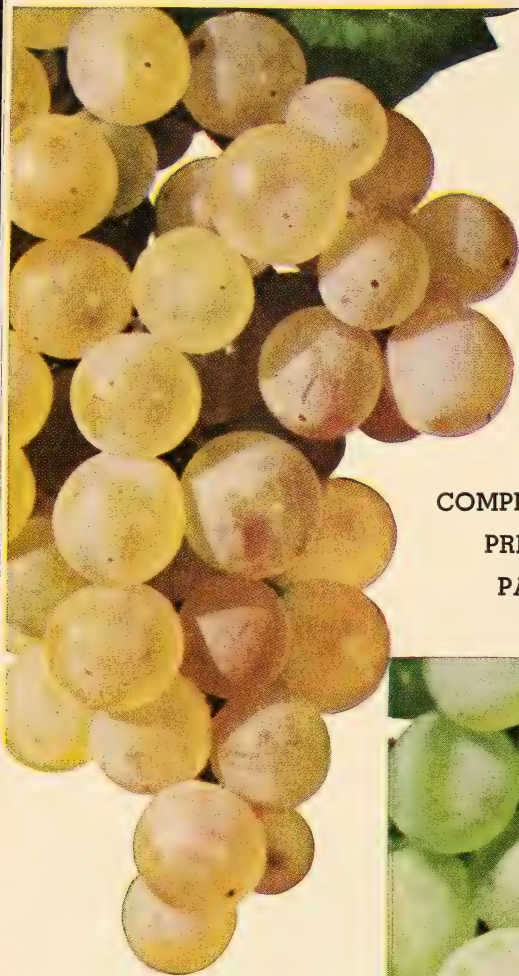
OFFER NO. 37  
ALL CLIMBERS

- 1—Cl. Red Talisman
- 1—Cl. Mrs. P. S. DuPont
- 1—Cl. Paul's Scarlet

Value \$4.05  
**SAVE \$1.10**      **\$2.95**



The Garden You've Pictured...by Townsend



COMPLETE GRAPE  
PRICES ON  
PAGE 68



CONCORD GRAPE

(ABOVE)

## NEW— GOLDEN MUSCAT

Extremely large, golden amber in color and possesses a delicious tangy, Muscat-like flavor. Grapes are sweet, juicy and tender. Oval shape fruit, vines are vigorous and hardy, a European type grape that should be in every home garden. BEARING-SIZE PLANTS. Price \$1.00 each; 3 for \$2.65.

## NEW—SENECA ➡➡➡

This one is certainly outstanding. Being a hardy California type grape and "skinless." Has a yellow color of its own, large compact tapering bunches, which fruit is honey sweet, ripen in September. Plant is vigorous grower anywhere—order early since there has never been enough plants to go around each Spring. BEARING-SIZE PLANTS. Price \$1.50 each; 3 for \$3.75.

SATISFACTION GUARANTEED





**EXTRA PROFITS IN HARDY, DEPENDABLE**

# GRAPE VINES

**Bigger and Better than Ever Before!**

## 4 "CHOICE" NEW VARIETIES

The best by far of the new—AND—approved by Townsend's for superior yields, quality fruit, and early fruiting habits. All of recent introduction.

### CACO (A Better Red)

This prolific new, amber red is considered the best and hardiest of its kind ever produced. Its bunches are large, and the flavor of its fruit can be compared with the finest for rich, sweet qualities. Holds fruit well after ripening.

### FREDONIA (A Fancy Black)

A fancy quality blue-black, and one of the earliest to ripen, Fredonia's juicy, but solid fruit grow abundantly on hardy vines and its large, compact bunches are real money-makers for any commercial grower.

### CHAMPAGNE (Richest Amber Yet)

Being all that its name implies, this new variety is unsurpassed for rich, very fine flavor. It produces large, beautifully colored amber grapes in tight, compact bunches. This variety is destined to become an all around favorite. Its vigorously growing, strong vines fruit at an early age. Champagne is one of the best varieties on our list.

### PORTLAND (White)

This new variety ripens earlier than any other known grape. Portland's call to fame lies in the taste of its grapes. Its large, beautiful, yellow colored fruit contain so much sugar that they can be eaten long before they are fully ripe.

## TOPS for

- QUALITY and
- HEAVY YIELD

## Townsend's *Select* Standard Varieties

The Famous **CONCORD** (Blue) This famous, ever dependable, sure cropper variety is the standard by which all other varieties are judged. Regardless of whatever other varieties are grown, no vineyard or arbor can really be called complete without a liberal planting of Concord. For almost a hundred years this old, reliable variety has been a constant money-maker, and it is still referred to as the "King" of all grapes. Its wonderful adaptability to all soils and its ready flourishing under varying climatic conditions go a long way in accounting for Concord's long-time popularity. Concord ripens mid-season to late and is unsurpassed for vigorous growing habits and productivity. For commercial growers, Townsend's winter-hardened Concord stands supreme.

The Mellow **CATAWBA** (Red) This variety keeps better than other grapes now being cultivated. A late ripening, very sweet, copper red fruit, Catawba is used extensively for wine making.

**MOORE'S EARLY** Money-making Black Ripening two weeks earlier than Concord, this seedling of Concord is an extra heavy producer of large excellent quality black fruit. It is planted extensively by commercial growers

The Magnificent **NIAGARA** (White) Receiving most of its characteristics from its parent Concord, this magnificently flavored, white grape is a true off-spring of the "King". Its impressing, compact clusters ripen with Concord.

The Heavily Fruiting **WORDEN** (Black) This ever popular, thin skinned variety is famous for tremendous yields, and is one of the earliest ripening of all varieties. Excellently flavored, Worden is a very hardy growing, bluish-black variety.

## Big Value Grape Offers

Select varieties to give you a fine all-around high quality grape garden. Perfect for ornamental effect.

### ALL 2-YEAR SELECT VINES

1 Fredonia, Black	8	Select
1 Caco, Red		Vines
1 Champagne, Amber		All for
1 Moore's Early Black		
1 Niagara, White		
1 Catawba, Red		
1 Worden, Black		
1 Concord, Blue		
	<b>\$2.65</b>	
<b>2 COLLECTIONS</b>		<b>\$5.00</b>

2 Champagne, Amber	14	Select
2 Caco, Red		Vines
2 Fredonia, Black		All for
2 Portland, White		
2 Concord, Blue		
2 Moore's Early		
2 Catawba, Red		
	<b>\$3.25</b>	
<b>2 COLLECTIONS</b>		<b>\$5.95</b>

**2 YEAR GRAPE VINE LIST ON PAGE 68**

**BEARING AGE VINES ON PAGE 61**



### COMMERCIAL CHINESE CHESTNUT PLANTING

← This beautiful and profitable chestnut orchard is only 4 years old, can be expected to produce an average of 3500 pounds per acre at maturity, at 55 cents per lb, this is not bad. NO SPRAYING NECESSARY

**TREES FINE FOR SHADE TOO!**

*Townsend Nurseries*  
**BLIGHT-RESISTANT CHESTNUT TREES**  
*Are Here to Stay*

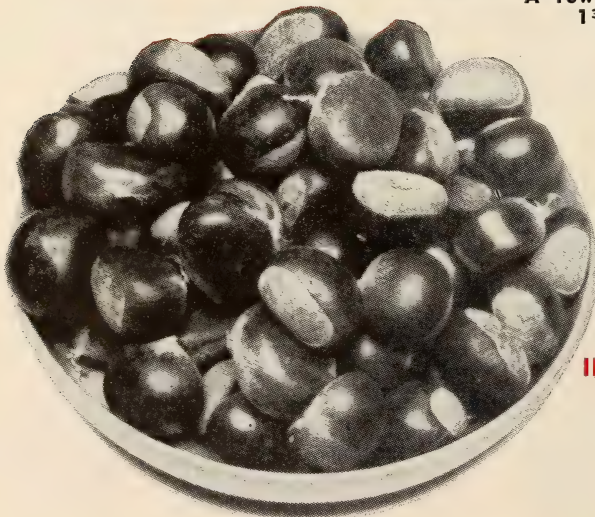


**A Townsend Chinese Chestnut Tree Producing 1 3/4 lbs. Nuts—Same Season Planted**

### Something *New* for the Younger Generation!

It gives us great pleasure to announce that once again it is possible to harvest "your own chestnuts" in the Fall. By planting Townsend's Blight-Resistant trees.

**Write for Free Nut Culture**



### ANY WELL DRAINED SOIL WILL DO!

● The sight of these trees once again flourishing cannot fail but to evoke many memories from the older element, whereas they will be something entirely new for the younger people. Of course the pleasure of roaming the woods at Autumn and gathering these tasty nuts is probably gone forever, but this fact does not prevent either commercial or home growers from realizing their own crops.

### ALL SELECT STRAIN TREES Blight-Resistant

#### IMPORTANT

Plant Two Chestnut Trees Or More For Pollenization

#### PRICES

- 1 to 5 trees -- \$1.95 each
- 6 to 10 trees -- \$1.75 each
- 11 or more trees \$1.50 each

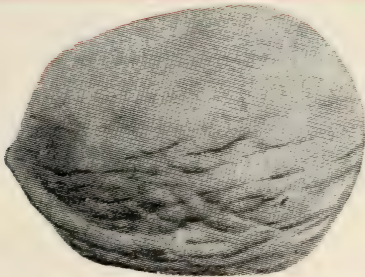
# PLANT TOWNSEND'S HARDY NUT TREES

*For Food and Shade*



## THOMAS GRAFTED BLACK WALNUT

Improved grafted Black Walnut, not to be confused with the old hard shell type. This is a grand variety bearing large meat, in thin shells that are easy to open, top walnut flavor. Bear soon after planted. **PRICES:** 3-4 ft. trees \$3.00 each; 2 trees or more \$2.75 each.

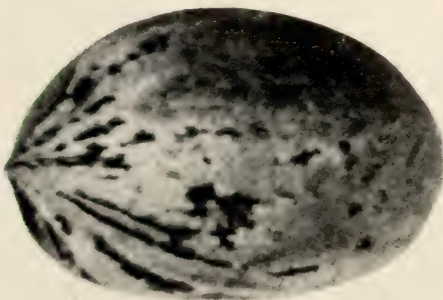


## HARDY ENGLISH WALNUT

Vary somewhat in size from the California grown walnut, being larger in most instances. Hardy in CANADA, where the nut falls free from the hull. A heavy producer of top quality nuts, hardy grower, does not need too much room. We suggest two trees for cross pollenization. Be sure to get your order placed early as supply is limited. **PRICES:** 2½-3 ft. trees, \$2.75 each, 2 or more \$2.25 each.

## PAPER SHELL PECAN

For warmer climates we offer this larger size nut in the paper shell pecan, in varieties Stuart, Schley and Success. This type of pecan should not be planted where winter temperatures drop below 20 degrees, for best results. **PRICES:** 2 to 3 ft. trees \$2.85 each; 2 trees or more \$2.50 each.



## HARDY PECAN

A beautiful growing shade tree as well as famous for top flavor nuts. We have a limited supply again of HARDY PECAN trees that are perfectly hardy except in extreme northern climates. Shells thin, open easily, trees strong growers yield big crops. 3 ft. trees up \$2.85 each; 3 or more \$2.60 each.



## AMERICAN FILBERT (Or Hazelnut)

QUICK-BEARING NUT TREES

Our well rooted, heavy branched trees will bear nuts only one year after planted. Bushy growing type can be planted in the lawn as an ornamental shrub. Bears large crops of nuts, in beautiful bronze and scarlet foliage. **PRICES:** BEARING SIZE \$2.00 each; 3 for \$5.75; 10 or more \$1.75 each.

# Easy to Grow! Dwarf FRUIT TREES

## Full Size Fruit on Dwarf Size Trees

**TREES ARE ORNAMENTAL—BEAR JUMBO SIZE PEARS and APPLES.**

Require no more space than a shrub; plant them in your blooming shrub border, side of lawn or back yard.

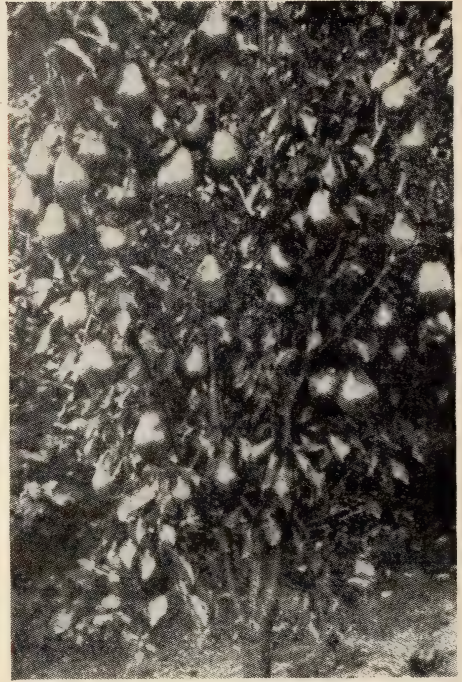
No spray required; Pears bear usually same year planted—Apples second year. Apples are grown on SPECIAL MAILING ROOT-STOCK, which makes the trees dwarf in size, but the fruit is as large as that grown on regular standard orchard trees. Same applies to our Dwarf Pear, except they are grown on Special Quince Stock, which makes them dwarf.

## DWARF PEARS

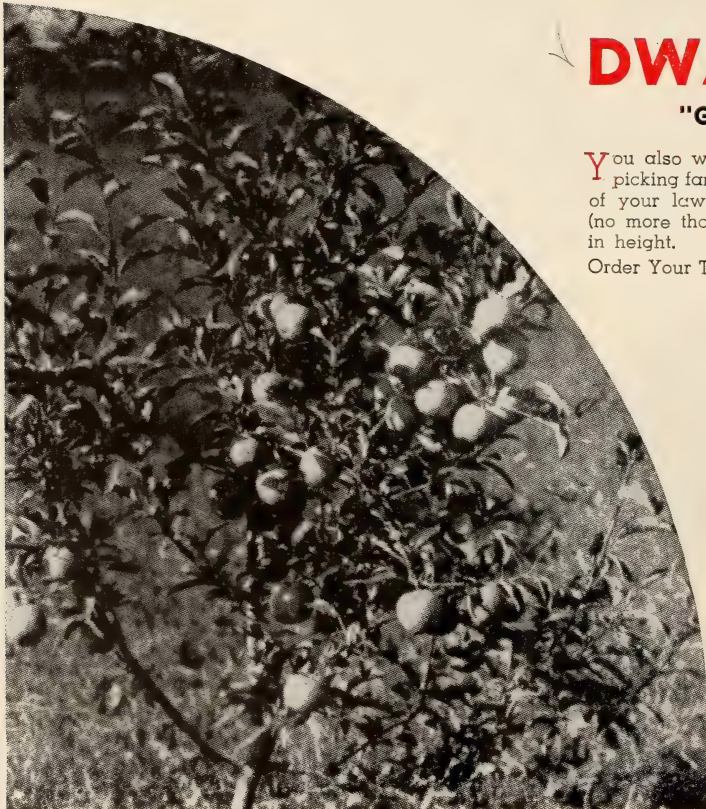
Trees bear young, top growth about 6-8 feet. A beautiful ornamental PLUS the huge fresh pears, which everyone enjoys picking.

**VARIETIES:** BARTLETT CLAPPS FAVORITE, DUCHESS, SECKEL.  
**PRICES:** Extra Selected Sturdy Trees, \$2.95 each; 3 for \$7.95; 10 for \$24.50.

(For descriptions see standard varieties, Page 30)



**DWARF BARTLETT PEAR  
Second Year After Planted**



## DWARF APPLES

"GARDEN PERFECTION"

You also will experience supreme enjoyment when picking fancy apples from these little trees right out of your lawn or garden. They require little space (no more than a large shrub), grow about 6-10 feet in height.

Order Your Trees Today. We will Ship At The Proper Planting Time.

**VARIETIES:** (Listed In Season Of Ripen. See Page 31 For Full Description.)

ANOKA

YELLOW TRANSPARENT

RED McINTOSH

GALLIA BEAUTY (Red Rome)

DOUBLE-RED DELICIOUS

YELLOW DELICIOUS

**PRICES:** Extra Selected Sturdy Trees, Ready-To-Bear, \$3.45 each; 3 for \$9.60; 8 or more \$2.95 each.

## Dwarf Peach

A Valuable Item For Your Garden

**VARIETIES:**

J. H. HALE GOLDEN JUBILEE

\$2.95 each; 3 for \$7.95

← Look at the Crop on This Young Tree!

# New RED LEAF PEACH

"BEAUTIFUL ORNAMENTAL THAT PRODUCES FULL CROP OF EDIBLE PEACHES"

There are ornamentals of all kinds—colors, berries, etc. Never before has there been ONE COMPLETE UNIT like the Red Leaf Peach. Bright Red foliage early in the Spring changing to maroon towards Fall. Beautiful on the lawn or other plantings with evergreens or shrubbery. Deep rose-pink blossoms in the Spring are gorgeous, truly something new to show your friends.

Produces a full crop of fruit that are delicious and perfectly round about 1½ inches in diameter. Flesh is white, many use the peaches for pickling. Ripen fairly late Summer, and are beauties, certainly can be classed as a year-around tree.



Our trees are extra nice and 2 year grade \$2.50 each; 3 or more \$1.95 each

**WHITE MOUNTAIN "DOGWOOD."** This one is the finest strain of all the white Dogwood trees that we have ever experienced. After many years of selection we find White Mountain, to be hardy, and to produce rapidly once started a tremendous amount of Ivory-White flowers—that resembles a mountain covered with snow. A wonderful tree that should be planted on everyone's property for a life-time of enjoyment. NICE 3 to 4 Feet Trees \$3.50 each; 3 for \$9.00; 12 or more \$2.75 each.

**PINK DOGWOOD.** This grand tree is KING OF THE LAWN—in its blooming season. Masses of pink blooms cover all the tree in the early Spring, and the foliage throughout the Summer and Fall is extremely attractive. Grows well anywhere even in shade. 3 to 4 feet trees \$4.50 each; 3 for \$12.00. Note: Our Dogwood are root pruned many times in the nursery row—which makes them easier to transplant.

**MAGNOLIA SOULANGEANA** (Hardy). This once very rare tree you only saw in City Parks or Large Estates. A beautiful tree both in bloom and afterwards, the foliage is supreme. Blooms in early Spring masses of enormous, pinkish white flowers, with some purple on the outside petals. A showy specimen plant, \$4.50 each ready-to-bloom.



**MAGNOLIA SOULANGEANA**

# TREES HARDY and ENDURING

*Beauty of Your Home*



Pin Oak



Silver Birch



Sycamore

## PIN OAK

### GIANT OF ALL SHADE TREES

Fastest growing of all the OAKS, hardy disease resistant, NO spraying necessary. A beautiful shaped tree, with very artistic rich-green foliage, that is deeply cut and colors to a gorgeous coppery-red in the Fall. ORDER YOUR PIN OAK—TODAY—it will be one of your best buys for generations. PRICES: 4 to 6 ft. \$5.00 each; 6 to 8 ft. \$6.00 each.

## CHINESE ELM

### WORLD'S QUICKEST GROWING TREE

Nationally planted, extremely hardy, makes rapid growth, as much as 5 feet per year until it reaches its normal height (30-40 ft.). Makes excellent shade in 4 to 5 years, foliage is rather small with the gracefulness of the Cut-Leaf Birch, drooping twigs. PRICES: 5 to 6 ft. \$1.95 each; 6 to 8 ft. \$2.95.

## SILVER BIRCH

### BEAUTIFUL BOTH WINTER AND SUMMER

This tree also known as CUT LEAF WEEPING BIRCH, the bark is attractive natural white winter and summer. Its leaves are gracious cut, limbs are weeping. A few of these trees spotted around adds "Beauty & Life" to your lawn—in all seasons. PRICES: 5 to 6 ft. \$3.75 each; 6 to 8 ft. \$4.95.

## SYCAMORE

### LARGE SHAPELY SHADE TREE ALSO KNOWN AS "ORIENTAL PLANE"

Tops for Street Planting, Parks, Highway Plantings, as well as lawns. A rapid upright grower, long lived, a beautiful tree, of gigantic trunk and foliage. Extremely hardy, disease resistant makes symmetrical form in growth, with "famous light bark." PRICE: 6 to 8 ft. \$3.50 each; 2 or more \$3.00 each.

## WEEPING WILLOW

Few trees are as graceful as the Willow, when planted near pools and streams of water. They are rapid hardy growers, do well in any soil also very effective along drive-ways and on lawns. Our Golden Willow is very showy both in winter and summer.

PRICES: 4 to 6 ft. \$2.25 ea.; 3 for \$5.95; 10 or more \$1.65 each. 6 to 8 ft. \$3.25 ea.; 3 for \$8.95; 10 or more \$2.50 each.



## RED MAPLE (Schwedler)

This is one of America's finest shade and ornamental trees. Beautiful in spring, summer and autumn. In the spring the foliage is a rich reddish purple, in the summer a bronzy green and in the fall it is an attractive golden yellow. A symmetrical grower—excellent lawn specimen. PRICES: 6 to 8 ft. \$6.00 each.



Weeping Willow (with Golden Twigs)

# Hardy Hedges

*Climbing*  
**Easy-to-Grow Vines**



**Spiraea Van Houtte**

Always makes an attractive hedge, grows to a height of 5-6 ft.; blooms small white flowers in clusters, bushes are like snow in MAY & JUNE, see photo, above. Plant 18 inches apart for dense hedge; 4 feet apart in borders, and groups. Can be trimmed any time, to any desired size.

	Each	3 to 7	8 to 50	51 or More Plants
2 to 3 feet	.75	.70 ea.	.65 ea.	.60 ea.
3 to 4 feet	.95	.90	.85	.70

**ALL WELL BRANCHED PLANTS—and POSTPAID**

All Strong, Hardy, Well-Rooted Plants For Quick And Permanent Hedges



**Barberry Hedge—Unsheared GREEN BARBERRY**

Makes an ideal low growing bushy hedge, for lawns, along driveways and is used extensively in groups of 3 to 5 plants, planted in corners on the lawn, etc. Green leaves turn gold to light scarlet in fall, red berries remain through the winter. Our plants are at least 2 years grown, good and bushy, set 18 inches apart.

	EACH	3 to 7	8 to 50	51 or More Plants
12 to 18 inches	.40	.35 ea.	.33 ea.	.30 ea.
18 to 24 inches	.55	.50	.43	.40

—ALL POSTPAID—



**California Privet**



## SILVER LACE VINE

Looks like a picture in a fairy-tale book, with its myriads of snowy white clusters of flowers from summer until fall. Rapid grower, free branching. Very hardy, easy to grow. \$1.00 each; 2 for \$1.75; 4 for \$2.95. ALL POSTPAID.

## GOLDFLAME HONEYSUCKLE

Beautiful flower clusters large as your hand. Brilliant rose-red outside and gold inside each flower. Curved petals and long stamens. Lovely for cutting. Blooms first year, every year from June until winter. Trim as vine, shrub or low hedge. Hardy, thrifty grower. 2-yr., field-grown vines, \$1.00 each; 2 for \$1.75; 4 for \$2.95. ALL POSTPAID.

## Beautiful WISTARIA VINES

These are the famous new grafted type Wistarias and are sure to bloom. Vigorous, hardy vines with dainty, pea-shaped flowers clustered thickly in racemes, often 18 to 24 inches long (on mature vines). Plant 10 feet apart in rich soil. Ideal for arches, trellises, etc. Your choice of Pink or Orchid. 2-yr., field-grown, \$1.35 each; 2 for \$2.25; 4 for \$3.65. ALL POSTPAID.

## CALIFORNIA PRIVET

(Ligustrum Ovalifolium)

The universal hedge in the East, for large estates, schools, public parks, farms, cemeteries, factory grounds, sub-divided property, etc. Best of all hardy hedge plants. Can be easily kept to any desired height and shape by little trimming. Has deep green foliage, that holds to mid-winter; very desirable to close out unsightly scenes.

	1 to 9	10 to 49	50 or More Plants
18 to 24 inches	.25 ea.	.20 ea.	.18 ea.
2 to 3 feet	.35	.27	.22

—ALL SHIPPED POSTPAID—

# Townsend's Famous Junior Evergreens



Siberian Arbor-Vitae    American Arbor-Vitae    Pyramidal Arbor-Vitae    Irish Juniper    Hicks Yew    Pathfinder Juniper    Woodward Globe Arbor-Vitae    Pfitzer Juniper

## SAVE—MAKE YOUR OWN EVERGREEN PLANTING

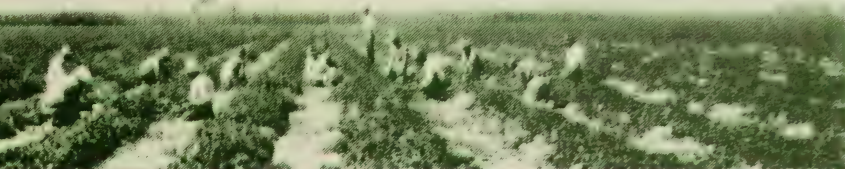
With these "select varieties" to choose from you can be the envy of your neighbors, and at the same time make yourself "big savings". The stock listed is tops in evergreen quality and hardy, fine for immediate planting around your home and winter gardens. We offer only sturdy plants that are 3 to 4 years o'd and twice transplanted. Many of our customers buy them by the hundreds and plant them in rows in their garden growing the evergreens on to 2½ to 4 feet—then transplanting them around the home grounds and selling the surplus at a nice profit to their neighbors.

	2 Trees For	4 to 9 Trees Each	10 Trees or More Each
Siberian Arbor-Vitae 10-12 in. ....	\$1.90	\$.85	\$.80
American Arbor-Vitae 12-15 in. ....	1.90	.85	.80
Pyramidal Arbor-Vitae 12-15 in. ....	1.90	.85	.80
Irish Juniper 12-15 in. ....	1.90	.85	.80
Hicks' Yew 10-12 in. ....	2.10	.95	.90
Pathfinder Juniper 12-15 in. Grafted .....	3.90	1.80	1.75
Woodward Globe Arbor-Vitae 10 in. ....	1.90	.85	.80
Pfitzer Juniper 12-15 in. ....	1.90	.85	.80
Spreading Yew 10-12 in. ....	2.10	.95	.90
Cannaert Juniper 12-15 in. Grafted Upright Type...	3.90	1.80	1.75
Hetz Blue Juniper 12-15 in. Spread .....	1.90	.85	.80
Pyramidal Dundee Juniper 12-15 in. Grafted .....	3.90	1.80	1.75
Spreading Juniper 12-15 in. Spread .....	1.90	.85	.80
Catawba Rhododendron 8-10 in. ....	2.40	1.10	1.00
Silver Virginia Juniper 12-15 in. Grafted .....	3.90	1.80	1.75
Upright Yew 10-12 in. ....	2.10	.95	.90



Spreading Yew    Cannaert Juniper    Hetz Blue Juniper    Pyramidal Dundee Juniper    Spreading Juniper    Catawba Rhododendron    Silver Virginia Juniper    Upright Yew





# NEW BOYSENBERRY

THAT ARE COMPLETELY

## THORNLESS

BOYSENBERRIES ARE LUSCIOUS

THE GREATEST VINE BERRY FOR HOME—MARKET

### SENSATIONAL PROFITS FOR COMMERCIAL OR HOME PLANTING

JUSTLY reputed to be the largest and finest berry ever produced, the Boysenberry is a grower's answer to certain profits. This newest addition to the berry family came as a result of crossing blackberries, raspberries and loganberries. Possessing the best attributes of its parents, the Boysenberry is a veritable giant—often growing more than 2 inches in length, and 1 inch in diameter. Its flavor is a subtle and absolutely delicious blending of its parent berries, and the tremendous yields, plus its excellent crop, spell success for the Boysenberry in a big way. And, tremendously important also is the fact that—it comes into bearing the next year after planting and one planting lasts for many years.

Commercial growers share with home gardeners their enthusiasm and delight in the abundant growth and remarkable quality of Boysenberry. The fruiting season generally lasts for as long as two months and it is not unusual to pick 20 baskets of berries to the plant the second year after planting. We strongly recommend that you give this extraordinary berry a trial. You're bound to be amazed at the results.

- By Far the Largest and Heaviest Producing Berry of the Blackberry or Dewberry Family.
  - Berries Often Exceed 2 Inches in Length.
  - 2200 Pints Picked From 100 Two-Year-Old Plants!
  - Average—35 Berries Per Quart Box!
  - Gross Returns—\$1760.00 From One Acre!
- IDEAL FOR QUICK FREEZING!**

**Don't Miss  
This Special  
Boysenberry  
Garden Offer**

14 — BIG

Ready-to-bear plants of  
Thornless Boysenberry  
For only **\$3.95**

These Plants Will Fruit  
Within 90 Days After  
Planted

COMPLETE CULTURE GUIDE ON REQUEST ● PRICE LIST ON PAGE 51

# DEWBERRIES

**HARDY  
PRODUCTIVE  
PROFITABLE**



MARKET prices in recent years are reasons why every commercial grower should plant Dewberries. Townsend's Select Strain Dewberry stock is in fine shape this year and just waiting to turn themselves into ready profits for thousands of market growers and home gardeners. The Dewberry is a trailing blackberry and a little less hardy. However, Dewberries ripen much earlier than blackberries, are a much larger fruit, and they have a finer flavor. It has been successfully grown on a large scale in the central and southern states, however since the advent of the Youngberry, the Boysenberry and the Nectarberry varieties, the planting section of the Dewberry has been advanced some two hundred miles north. Growers have been reporting excellent results as far north as Rhode Island and western New York. Due to the very fine texture of Dewberries, long hauls should be avoided and they should be placed on the market soon after picking.

## ● YOUNGBERRY

A new trailing variety of the Dewberry family. Combining all of the best features of the Raspberry, Blackberry and Dewberry, this new variety has a rich, spicy flavor that is delightful to the taste, and unsurpassed for sheer productivity. Its large, uniform, and practically seedless fruit place it among the highest price drawing fruit on any market. Excellent for jellies, canning, or eating fresh. Youngberry is tops for either commercial growers or home gardeners.

## ● LUCRETIA

Remarkably productive and exceptionally hardy, this variety is reputed to be the best of this class of fruit. Lucretia ripens early and its fruit are large, firm and meltingly delicious. Grown successfully and on a large scale in the south, this variety has also been a profitable winner in northern states.



**THORNY BOYSENBERRY**

Lancaster County, Pa  
Gentlemen:

Picking large crop of berries from your Thornless Boysenberry. Our field is talk of the community. Dated June 30th, 1949

Charles R. Devore

### THORNY-BOYSENBERRY

Same type of berry as its off-spring, the Thornless Boysenberry the old type does have thorns. Where the planter does not care about picking berries in thorns, then he can save a little in purchasing plants of the thorny type. We have plenty plants.

PRICES ON PAGE 51



# TOWNSEND'S

SELECT  STRAIN

## BLACKBERRIES

• **All Grown from Root Cuttings**  
They make a much more fibrous rooted plant and grow off much quicker after transplanting. One planting lasts for several years, and the first crop generally more than repays for the entire investment.

### NEW! HARDY and PRODUCTIVE DELICIOUS BLACKBERRIES

**HEDRICK**—New variety originating in N. Y. Experiment Station. Heavy producer of large fine quality berries, tops in flavor. We suggest that you plant a few for trial this year.

**EBONY KING**—A jet black early ripen large size berry, that are borne in great clusters. Upright grower, vigorous, hardy and so far blight resistant. Looks like a dandy—try a few.

3 for \$1.25; 6 for \$2.35; 12 for \$4.25; 25 for \$7.00

Prices Are For Above Varieties.

### Eldorado

#### IT LEADS THE FIELD

Famous for being the most widely planted of all commercial blackberries, Eldorado's unexcelled productiveness cannot be beaten. Its fragrant, jet black, large sized, practically coreless berry is in demand wherever and whenever blackberries are marketed. Eldorado does exceptionally well even under extreme cold weather, and you can depend upon this hardy variety for satisfaction far beyond your greatest expectations. Eldorado is a mid-season to late variety and is superb for making pies, jams, jellies and wines.

FOR  
PRICES  
BEARING  
AGE  
Blackberries  
SEE PAGE  
61

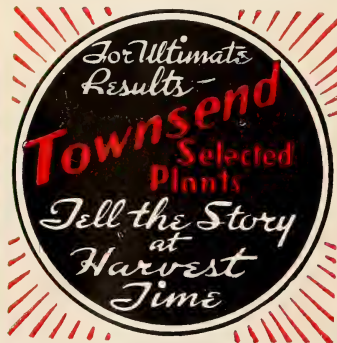
### New Alfred

#### SUCCEEDS ALMOST EVERYWHERE

Known to have successfully withstood 35 degrees below zero, the New Alfred's hardiness cannot be adequately evaluated. This rugged producer of large, sweet, coreless berries ripens a few days earlier than Eldorado. Alfred's northern locale origination has made it adaptable to all sections. Growers in all of the northwestern states as well as in Ohio, West Virginia, Indiana, Illinois, New York and Pennsylvania are loud in their praises as of the merits of this new variety. We recommend the New Alfred highly, and in our estimation, for a fine mid-season variety, there is none better.

### Early Harvest The Earliest Of All Blackberries

This variety is unquestionably the most productive of all the early ripening blackberries. Its growth is superlatively abundant and vigorous, and the canes are very hardy. It fruits a medium large but very firm berry that is excellently suited for shipping purposes. For a high quality early blackberry — plant Early Harvest.



COMPLETE PRICES ON PAGE 68

### Blowers

#### Always A Profitable Investment

Its vigorous and hardy vine, and its heavy fruiting qualities have established for Blowers the reputation of being one of the leading commercial varieties on the market. Its berries are borne in large clusters and are sweet and melting to the taste. Blowers is a heavy producer—especially in the northern states. Get in on Blowers profits this season, Order early.

FOR FRUIT THE FIRST SEASON -- SET TOWNSENT'S



# Bearing Age PLANTS

SELECTED For Quicker Results

## Fruits The First Season

By the time we have transplanted Bearing-age plants into our nursery rows, we have grown them a full year under the most idealistic growing conditions possible. A special twenty acre irrigation system nurtures them from original setting until transplanting, and in order to guarantee our customers well balanced, healthy plants, plenty of humus is added to the soil before setting. Cultivation and pruning is carefully carried out throughout the entire season, and a carefully supervised method of tying, bundling, and wrapping (the full length of the cane) is also performed in order to give a maximum amount of protection to the plants so that the customer will receive them in perfect condition. Bearing-age plants will more than pay for the slight difference in cost.



Bearing Age Grape Vines Strong Healthy Crops that will fruit this year.

HURRY! HURRY! HURRY!

Tremendously increased demand for Bearing age plants has seriously limited our supply. We try to grow enough stock to take care of all our customers, but we must impress growers with the necessity of ordering early—while they last. We feel certain that we shall be sold out early in the season, so don't delay—ORDER NOW.

### SPECIAL ANNOUNCEMENT TO ALL HOME GARDENERS

Quick fruiting results, the first season set, make Bearing-Age plants specifically adapted for home growers. And, too, Raspberry, Blackberry and Dewberry plants will produce excellent crops every year from three to five years from original planting, thereby providing your table with plenty of fresh, delicious berries directly from your own garden at an amazingly low cost. Bearing-age grapes bear from eight to twelve years. Be sure and include some of these Bearing-age plants in your next order, and to make sure your garden is complete, don't forget our Fall-bearing varieties in order to have fruit from early Spring clear through to November.

#### BEARING AGE GRAPE COLLECTION

- 2 NEW CACO, Red
- 2 NEW PORTLAND, White
- 2 NEW FREDONIA, Black
- 2 CONCORD, Blue

8 SELECT VINES **\$4.65**

#### BEARING AGE RASPBERRY OFFER

- 12 HEAVY YIELDING LATHAM, Red
- 12 SUNRISE, Red
- 12 ST. REGIS, Everbearing, Red

36 Plants **\$9.95**  
Special Price

#### BEARING AGE BLACKBERRY OFFER

- 12 ELDORADO BLACKBERRY
- 12 BOYSENBERRY—New Thornless

24 PLANTS ALL FOR **\$4.75**

### PRICES BEARING AGE PLANTS

#### BEARING AGE RED RASPBERRY PLANTS

	6 Plants	12 Plants	25 Plants	50 Plants	100 Plants
CHIEF .....	\$2.25	\$3.90	\$6.15	\$10.60	\$18.50
INDIAN SUMMER EVERBEARING.....	2.25	3.90	6.15	10.60	18.50
LATHAM .....	2.25	3.90	6.15	10.60	18.50
SUNRISE .....	2.25	3.90	6.15	10.60	18.50

#### BEARING AGE BLACK RASPBERRY PLANTS

CUMBERLAND .....	2.25	3.90	6.15	10.60	18.50
MORRISON (NEW) .....	2.50	4.35	6.95	11.45	19.95

#### BEARING AGE BLACKBERRY AND DEWBERRY PLANTS

ALFRED BLACKBERRY .....	1.75	2.95	4.65	7.95	13.45
ELDORADO BLACKBERRY .....	1.75	2.95	4.65	7.95	13.45
EARLY HARVEST (Earliest) .....	1.75	2.95	4.65	7.95	13.45
BOYSENBERRY—NEW THORNLESS .....	2.25	3.90	6.15	10.60	18.50

#### BEARING AGE GRAPES

	Each Plant	3 Plants	6 Plants	12 Plants	25 Plants
CONCORD—Blue .....	\$.90	\$2.25	\$3.65	\$6.25	\$12.75
CACO—Red .....	.90	2.25	3.65	6.25	12.75
CHAMPAGNE—Amber .....	.90	2.25	3.65	6.25	12.75
FREDONIA—Black .....	.90	2.25	3.65	6.25	12.75
MOORES EARLY—Black .....	.90	2.25	3.65	6.25	12.75
NIAGARA—White .....	.90	2.25	3.65	6.25	12.75
PORTLAND—White .....	.90	2.25	3.65	6.25	12.75
WORDEN—Black .....	.90	2.25	3.65	6.25	12.75

• FOR PARCEL POST RATES ON ABOVE STOCK—PAGE 68

# The Largest Size and Heaviest Yielding Raspberry **Latham**



● Latham has been the standard by which raspberries have been judged for years. This Blue Ribbon winner is unexcelled and unchallenged. Unprecedented enthusiasm and a demand that far surpasses the supply, has made this sensational berry a veritable king in the berry world. Latham, without a doubt, is the finest looking berry on the market, and is famous with commercial growers because it produces more berries than any other variety—and does so with an **AMAZINGLY SMALL AMOUNT OF CARE.**

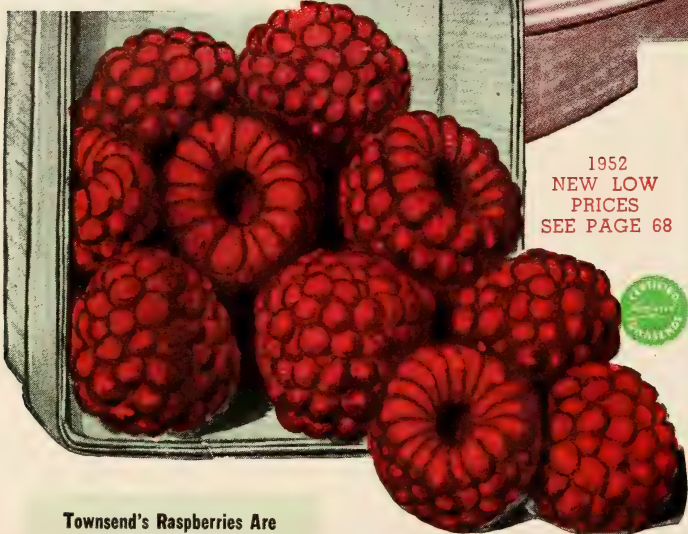
## 2 big value RASPBERRY OFFERS

12 SODUS, 1 Year Size  
12 LATHAM, 1 Year Size

Special Price  
24 Select Plants **\$3.65**

25 SELECT LATHAM  
25 SELECT SUNRISE

Special Price  
50 Plants **\$6.45**



1952  
NEW LOW  
PRICES  
SEE PAGE 68

## Sunrise Early Raspberry

Bright, glowing red, and extra large berries make this New variety stand out above any other early red-raspberry. Plants are healthy and good growers. Fruit fine for shipping or canning. Introduced by the New Jersey Experiment Station. Supply limited—order early.

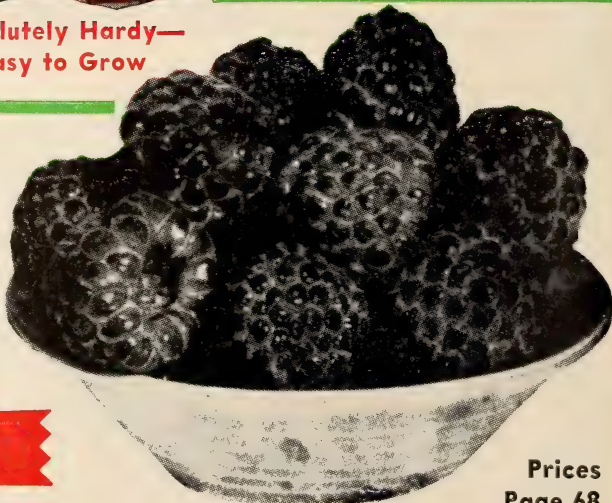
Townsend's Raspberries Are Certified FREE of Disease

**Absolutely Hardy—  
Easy to Grow**

**FOR QUICK FRUITING  
SEE PRICES ON PAGE 61**

Deliciously flavored with a zest unknown in other berries, many people believe the flavor of Sodus to be better than that of any of the red or black raspberries. To see for yourself just crush a cup of fully ripe Sodus, sugar lightly, and pour over a dish of vanilla ice cream. Now there is real flavor. When you have done this we believe you will agree that Sodus is tops in taste appeal. The husky plants are very heavy producers and are easy to grow. Don't miss another year—plant Sodus this spring.

PRICES: 1-year standard, 5 for \$1.25; 12 for \$2.15; 25 for \$3.55; 50 for \$6.15; 100 for \$10.50.



## SODUS Purplecap

Prices  
Page 68

# Fallbearing

## RASPBERRIES

Famous Townsend Select Strain



Field of Indian Summer—Leading Red Everbearing Variety That Produces Good Results Every Year

### Pick Berries Summer and Fall!

**T**HOUSANDS of growers in practically every state east of the Mississippi are reaping sensational profits by being able to harvest and pack berries for market throughout early Spring and the entire Summer and again in the Fall. Amazing? Yes—but it's easy to do when you plant Fallbearing varieties. Townsend's Fallbearing raspberries are easily grown, fruit the very first year set—and continue to do so for a number of years thereafter. Both commercial growers and home gardeners alike have found these varieties to be profitable investments. (To increase Fall production, the new growth should be sheared back about 18 inches after the Spring crop is harvested.)

### KATHERINE

DESIRABLE  
EVERBEARING RED

Numbered among the best red raspberries ever grown, Katherine is a consistently prolific producer from early Spring to late Fall. Fruits an uncommonly large, firm and attractive berry of excellent flavor. You can't go wrong with Katherine. Order early.

### ST. REGIS

AN EVERBEARING RED IN  
GREAT DEMAND

This variety ripens within 80 days of setting and flourishes in most any type of soil. Fruits well from initial ripening in early Spring and throughout the Summer. Produces mightily again in the Fall. St. Regis is a valuable investment for both market or home growers.

# INDIAN SUMMER

*Mammoth Red Everbearer*

A tremendous sensation because of its giant size, delicious taste and appealing beauty. And, sensational also in that it bears a bumper crop in June and an immense crop again in the Fall. Its wonderful keeping qualities and its unusually large, glossy red, cone shaped berries have earned for Indian Summer the reputation of being the greatest all-purpose raspberry yet. This variety is certainly a worthwhile investment. Be sure to order a good supply.



SEE PRICE LIST  
ON PAGE 68



**SPECIAL**  
HOME PLANTING OFFER  
12 Sunrise  
12 Indian  
Summer  
24 Best Plants  
1 Yr. No. 1 **\$3.95**

INDIAN SUMMER

**Double  
Inspected  
State  
Certified**

# BLACK RASPBERRIES

**Get in on Profits Yielded From One of America's Most Popular Small Fruits**

**A** PROLIFIC fruiting good black raspberry patch cannot be equalled. Black raspberries unquestionably have established themselves as one of the most

profitable of all farm crops. This is especially true when you set strong, healthy canes that are capable of maturing large crops. Our Select Strain certified raspberry plants are beyond a doubt the finest obtainable, and will lead the field in almost any respect regardless of the section they are planted in. These plants are "tops" in value, unsurpassed for quality, and a bargain you can't pass up.

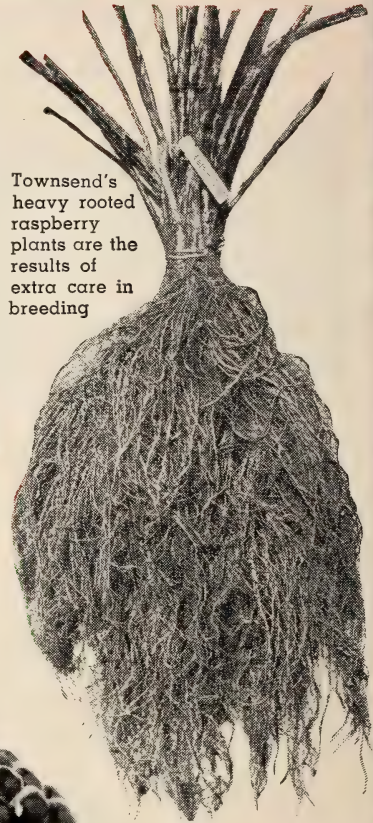
Diseased and run out fields average only from 800 to 1600 pints per acre—while healthy, disease-free plants will yield from 3200 to 6000 pints per acre. These figures tell the story. Invest in Townsend's Select Strain certified plants so as to profit from this big difference.

Place your order now. We'll ship when you're ready to set.

**FOR LOWER PRODUCTION COSTS and HIGHER PROFITS**

*New Mammoth* **MORRISON**

**M**ORRISON fruits the largest berries of any known variety—it is firm throughout with a fine rich texture, has less seeds than other black raspberries. A top variety for quick freezing and canning. This, in conjunction with Morrison's tremendous yields, makes it highly profitable variety in any field.



Townsend's heavy rooted raspberry plants are the results of extra care in breeding

**PRICE LIST  
ON  
PAGE 68**

**PLEASE  
PLACE  
YOUR  
ORDER  
EARLY**

**SPECIAL  
OFFER**

12 LATHAM  
12 MORRISON  
**ALL FOR \$2.95**

Townsend's  
**Certified**  
**SELECT**  
**STRAIN**

Raspberry Plants  
Is Your Insurance  
for  
Bigger Profits

**FRUIT GROWERS**  
in **48 States**  
Set Townsend's Select Strain  
**RASPBERRY PLANTS**

*Easy to Grow*



A fine block of Townsend's Certified Cumberland that averaged 5,300 pints of berries first year's crop. Get good plants. Treat them right and profitable yields will be yours.

*Be Sure to Grow*

*Cumberland*

**KING OF ALL BLACK RASPBERRIES**

**T**RULY the breadwinner of the black cap family, this variety is undoubtedly the most widely planted black raspberry grown today. Cumberland's outstanding leadership stems from continuous and consistent profits realized by commercial growers year after year. Unsurpassed for market value, this variety's large, plump and tasty fruit has proven itself to be a true family table delight. Cumberland is practically free from seedliness and crumbling, with exceedingly desirable firm texture, which makes it a fine shipper. The ripening season extends from mid-season to late, and its vigorous, hardy bushes are admirably capable of supporting Cumberland's large crop of fruit. Our stock this year of Certified Cumberland plants is exceptionally fine, and we are confident of the fine results that you will obtain from this variety. For a profitable fruit crop covering a long period, plant Cumberland.

PRICE LIST  
ON  
PAGE 68

NEW LOW PRICES  
ON CUMBERLAND  
THE BEST THAT  
MONEY CAN BUY

**HARDY  
FIELD  
GROWN**

# VEGETABLE PLANTS



## TOMATO PLANTS

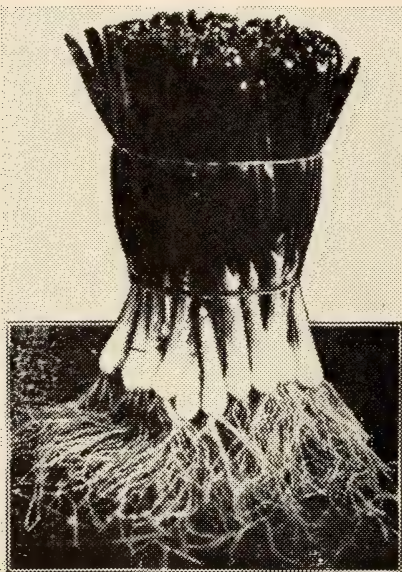
Grown from Ferry-Morse certified seed. Our big vigorous plants are sprayed regularly and come to you free from all disease. Plants ready for shipment April 15th; numbers after varieties named show days to maturity.

- EARLIANA - 64—The earliest ripening tomato, valuable for home garden and early market. Our strain superior in earliness and quality, medium size globe shape, deep scarlet red.
- GARDEN STATE - 84—Plant vigorous and partly resistant to wilt and late blight, this grand variety developed by a large soup company of New Jersey. Fruits flattened globe shape, thick skin, very attractive bright color.
- MARGLOBE - 75—Our strain is superb of this old favorite; fruit uniform, valuable for shipping and canning. Bears large crops, deep scarlet, fruit globe shape.
- RUTGERS - 73—Highly recommended as a second early maturing variety for canning and tomato juice, probably grown more extensively than any other variety of tomatoes.
- STOKESDALE - 70—Fruits large, sub-globe shape, smooth and well colored. Where length of growing season is less than average, then this variety is the best.

## ONION PLANTS

Grow big, early onions from our frost-proof plants for sweetness and mildness of flavor. After transplanting these plants, they will withstand temperatures of 20 degrees above zero. Plants ready for immediate shipment.

- YELLOW BERMUDA—Most widely planted variety, grown in Texas for early market, will produce in any climate. Light straw colored, flesh white and mild.



TOMATO		ONION	
50 plants less than 41c	in lots of 2,000	100 plants less than 26c	in lots of 6,000
50 plants each variety per bundle. Kindly give shipping date desired and varieties. All prices Postpaid except 2,000 plants or more, these shipped express collect.		Ready for immediate delivery—100 plants of variety to a bundle. Prices Postpaid up to 6,000 plants, then express collect.	
50 plants	Postpaid . . . . \$ 1.76	100 plants	Postpaid . . . . \$ .98
100 plants	Postpaid . . . . 2.65	200 plants	Postpaid . . . . 1.72
200 plants	Postpaid . . . . 4.11	300 plants	Postpaid . . . . 2.42
500 plants	Postpaid . . . . 6.96	500 plants	Postpaid . . . . 3.65
1,000 plants	Postpaid . . . . 11.96	1,000 plants	Postpaid . . . . 6.15
2,000 plants	Ex. Coll . . . . 16.29	2,000 plants	Postpaid . . . . 10.00
		6,000 plants	Ex. Coll . . . . 15.50

- CRYSTAL WAX BERMUDA—Similar to Yellow Bermuda, except skin which is pure white. A very popular variety for home and market.
- YELLOW SWEET SPANISH—Best of the very large mild varieties, good keeper, deep amber orange and globular shape.
- WHITE SWEET SPANISH—Similar to above except that the skin is white. Globular shape.
- EARLY YELLOW GLOBE—Ready for harvest normally 2 weeks ahead of other yellow varieties. Vigorous, and productive, excellent globe shape.



# ORDER FORM FOR ORNAMENTAL PLANTS

*Townsend Nurseries, Inc.*  
**PLANT FARMS**

**SALISBURY P.O. Box 110 MARYLAND**

WORLD'S FINEST NURSERY STOCK

Do Not Use Above Space

NAME \_\_\_\_\_ DATE \_\_\_\_\_

STREET (or R.F.D.) \_\_\_\_\_

CITY \_\_\_\_\_ ZONE \_\_\_\_\_ STATE \_\_\_\_\_  
 (Post Office)

EXPRESS OFFICE \_\_\_\_\_  
 (If different from Post Office)

WE WILL SHIP AT YOUR  
 PROPER PLANTING SEASON

**CUSTOMER SERVICE**—Should we be sold out of the variety ordered, we will ship another variety of same color and quality. If you do not wish this service check here  for refund.

Quan.		each	3 for	Total	Quan.		each	3 for	Total
	<b>LIVING FENCE</b>					Red American Beauty	1.75	4.50	
	Rose Multiflora:—					Red Radiance	1.35	3.45	
	Jumbo Grade					Red Sensation	1.35	3.45	
	Conservation Grade					Souer Therese	1.35	3.45	
	<b>HYBRID TEAS</b>					Sutters Gold (pat)	2.25	6.00	
	Ami Quinard	\$1.35	\$3.45			Taffeta (pat)	1.75	4.75	
	Better Times	1.35	3.45			Tailsman	1.35	3.45	
	Betty Uprichard	1.35	3.45			White American Beauty	1.35	3.45	
	Caledonia	1.35	3.45			<b>CLIMBERS</b>			
	Charlotte Armstrong (pat)	2.00	5.35			Blaze	1.45	3.75	
	Christopher Stone	1.34	3.45			Golden Charm	1.35	3.75	
	Condesa de Sastago	1.35	3.45			Peace (pat)	2.50		
	Countess Vandal	1.35	3.45			P. S. DuPont	1.35	3.75	
	E. G. Hill	1.35	3.45			Tailsman	1.35	3.75	
	Editor McFarland	1.35	3.45			<b>FLORIBUNDAS</b>			
	Etoile de Hollande	1.35	3.45			Betty Prior (pat)	1.50	3.90	
	Forty Niner (pat)	2.00	5.25			Fashion (pat)	2.00	5.25	
	Golden Anniversary (pat)	1.75	4.65			Red Floradora	1.40	3.95	
	Golden Charm	1.35	3.45			Red Ripples	1.35	3.45	
	Golden Ophelia	1.35	3.45			<b>SPECIAL OFFERS</b>			
	Gr. Du. Charlotte (pat)	2.00	5.25			Special Dozen Offer	11.50		
	K. A. Viktoria	1.35	3.45			3 in 1 Wrap Blaze	3.75		
	Luxembourg	1.35	3.45			Group Offer #31	2.95		
	Mirandy (pat)	1.75	4.65			Group Offer #32	2.95		
	Mission Bells (pat)	2.25	6.00			Group Offer #33	2.95		
	Mrs. P. S. DuPont	1.35	3.45			Group Offer #34	2.95		
	New Yorker (pat)	2.00	5.25			Group Offer #35	2.95		
	Nocturne (pat)	1.75	4.75			Group Offer #36	2.95		
	Paul Neyron	1.35	3.45			Group Offer #37	2.94		
	Peace (pat)	2.50	6.60			Group Offer #38	9.95		
	Picturue	1.35	3.45			Group Offer #39	4.95		
	Pink Radiance	1.35	3.45			Group Offer #50	7.25		
	Poinsetta	1.35	3.45			Group Offer #65	8.75		
	President Hoover	1.35	3.45						

TOTAL \$ \_\_\_\_\_ TOTAL THIS PAGE \$ \_\_\_\_\_

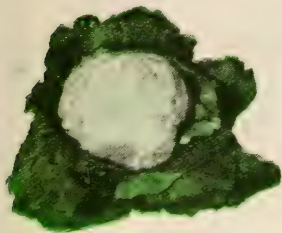
CONTINUED ON NEXT PAGE

Quan.	each	3 for	Total	Quan.	each	3 for	Total
<b>CANNAS</b>				Irish Juniper			
Eureka				Pfitzer Juniper			
King Midas				Pyramidal Arbor Vitae			
President				Pathfinder Juniper			
Red King Humbert				Pyramidal Dundee Juniper			
<b>GLADIOLUS</b>				Siberian Arbor Vitae			
Rainbow Collection:				Silver Virginia Juniper			
50 Bulbs 3.50				Spreading Juniper			
100 Bulbs 6.50				Spreading Yew			
Glad Garden Collection:				Upright Yew			
50 Bulbs 2.00				Woodward Globe Arbor Vitae			
100 Bulbs 3.50				Lawn Grass Seed			
<b>HARDY MUMS</b>				<b>SHADE TREES</b>			
Algonquin				Chinese Elm			
Amber Glow				Pin Oak			
Carnival				Red Maple			
Charles Nye				Silver Birch			
Lavender Lady				Sycamore			
Mellow Glow				Weeping Willow			
Mrs. P. S. DuPont				<b>FLOWERING TREES</b>			
Old Gold				Magnolia Soulangena			
Special Group Offer 3.50				Pink Dogwood			
<b>CUSHION MUMS</b>				Red Leaf Peach			
Apricot Glow				White Dogwood			
Butterball				<b>DWARF PEAR</b>			
Coral Sea				Bartlett			
Pink Cushion				Clapps Favorite			
Powder Puff				Duchess			
Red Gold				Seckel			
<b>HEDGES &amp; VINES</b>				<b>DWARF APPLE</b>			
California Privet				Anoka			
Goldflame Honeysuckle				Yellow Transparent			
Green Barberry				Red McIntosh			
Silver Lace Vine				Gallia Beauty			
Spirea Van. Houtte				Double Red Delicious			
Wistaria Vines				Yellow Delicious			
Rose Multiflora or							
Living Fence							
Jumbo Grade							
Conservation Grade							
<b>EVERGREENS</b>							
American Arbor Vitae							
Cannaert Juniper				Total for this page \$			
Catawba Rhododendron				Total from other side \$			
Hetz Blue Juniper				Shipping and Handling \$ .35			
Hicks Yew				<b>TOTAL ENCLOSED \$</b>			

DOES YOUR **ROSE** ORDER AMOUNT TO \$20.00? IF SO YOU MAY ADD 3 BLAZE AS A BONUS.

# HEAVY Rooted Weather Hardened Dependable Yielders Guaranteed!

## CABBAGE PLANTS



**COPENHAGEN MARKET**

firm, 6 to 7 in. in diameter and weighs 3 to 3½ lbs.

- **CHARLESTON OR LARGE WAKEFIELD—71**—Valuable home and market variety, heads broad heart shaped, 8 in. long, firm, weighs 4 to 5 lbs.
- **JERSEY QUEEN (YELLOW RESISTANT)—62**—About the same type as Early Jersey Wakefield, exceptionally resistant to yellows, and we recommend the variety to commercial growers where they are troubled with yellows in cabbage.

Frost Proof Cabbage Plants that have been winter hardened in the fields will save you 3 to 4 weeks' growth on tender seedling plants. All of our plants are grown from Ferry-Morse certified seed. These plants will carry over without injury in temperatures as low as 20 degrees above zero after transplanting.

- **EARLY JERSEY WAKEFIELD—62**—Extremely early variety, very valuable for home and market. Heads conical, firm, and weighs 2 to 2¼ lbs.
- **COPENHAGEN MARKET—66**—Our Select strain is extra early, ideal for early market, valuable as an early kraut variety. Heads uniformly round, firm, usually weigh 3 to 3½ lbs., inside clear white with excellent quality.
- **GOLDEN ACRE—66**—Earliest round headed variety especially for early market. Heads round, firm, 6 to 7 in. long, interior clear white and excellent quality.

### PRICES

50 Plants **33c** in lots  
Less than of 6,000

Not less than 50 plants of each variety sold. Plants ready for immediate shipment. State shipping date and variety.

50 plants	Postpaid....	\$ 1.28
100 plants	Postpaid....	2.05
150 plants	Postpaid....	2.58
200 plants	Postpaid....	3.28
500 plants	Postpaid....	6.20
1,000 plants	Postpaid....	8.81
2,000 plants	Postpaid....	13.83
6,000 plants	Ex. Coll....	38.98

## SWEET POTATO PLANTS

We grow millions of sweet potato plants. There is usually not enough plants to go around; thus we urgently request that you place your orders as early as possible for vegetable plants.

- **PORTO RICAN**—An extremely sweet flavored variety when thoroughly dried out before cooking, it is a yam type of potato and is one of the best flavored potatoes for home use that is grown today. Plants ready

for shipping about May 20th.

- **MARYLAND GOLDEN**—Specifically good for northern climates because of its early maturing habits. Its coloring is a rich yellow that remains with the potato even after cooking. It is a medium wet type of potato and is grown on a large commercial scale along the Atlantic seaboard. Plants ready about May 25th.



**CALIFORNIA WONDER**

## PEPPER PLANTS

These plants will be ready for shipment about May 10th. Figures after varieties named show date of maturity counting the days from setting plants.

- **CALIFORNIA WONDER—72**—A sweet pepper that is the standard of excellence. Commercial growers set more plants of this variety than any other sweet pepper. Plants a good grower, fruits very large, smooth and uniform shape, commonly 4½ in. long and 3½ in. through. Deep green becoming bright crimson when left on the vines.
- **RUBY KING—65**—Standard sweet pepper for home, and shipping. Fruits large 4½ to 5 in. long and 2½ in. through, early fruit deep green becoming bright red as season progresses.

## CAULIFLOWER

### SNOWBALL—

- The most popular early strain of Snowball Cauliflower. Plant-of medium height with rather waved and crumpled leaves, inner leaves covering head well, foliage is medium green. Heads a good depth of solid ivory white and fine quality. From the date plants are set, about 55 days to mature.

- **SNOWBALL X**—Adapted for use under wide range of conditions. Considered the most satisfactory strain for fall harvest. Heads are large, smooth, very deep, and solid, pure white, 65 days to maturity.

## BROCCOLI

Plants ready for shipment about May 20th.

- **CALABRESE, EARLY GREEN SPROUTING**—First heads usually ready for cutting in 55 days from date plants are set. Vigorous grower, firm and large compact central heads, popular item for the home garden as well as for the market gardener.

### PRICES

**SWEET POTATO — PEPPER**  
**CAULIFLOWER — BROCCOLI**

50 plants Postpaid... \$ 1.95	500 plants Postpaid... \$ 7.15
100 plants Postpaid... 2.64	1,000 plants Postpaid... 11.96
200 plants Postpaid... 4.54	2,000 plants Ex. Coll... 17.96

**Certified  
PLANTS**

# PRICE LIST

**Approved  
VARIETIES**

**FOR SPRING AND FALL 1952**

**RASPBERRIES**

**BLACKBERRIES**

**DEWBERRIES**

**GRAPES**

All prices quoted below are F. O. B. Salisbury, Maryland, and in effect from January 1st, 1952, until December 31st, 1952. Customers ordering plants sent PARCEL POST, PREPAID, see PARCEL POST RATES at bottom of page.

Description of varieties on page

**RED RASPBERRY PLANTS**

For Prices on Bearing Age Plants, See Page 61

Plants	Age Plants, See Page 61									
	5	12	25	50	100	250	400	500	1000	
62 LATHAM, Select 1 yr. No. 1	\$1.10	\$2.25	\$3.75	\$6.60	\$11.50	\$25.50	\$36.40	\$39.95	\$69.50	
62 SUNRISE, Select 1 yr. No. 1	1.50	2.50	4.10	6.95	12.25	26.25	37.50	42.95	74.95	
63 KATHERINE, Select 1 yr. No. 1	1.50	2.50	4.10	6.95	12.25	26.25	37.50	42.95	74.95	
63 ST. REGIS (Evg) Sel. 1 yr. No. 1	1.10	2.25	3.75	6.60	11.50	25.50	36.40	39.95	69.50	
63 INDIAN SUMMER (Evg) Sel. 1 yr. No. 1	1.50	2.50	4.10	6.95	12.25	26.25	37.50	42.95	74.95	

**BLACK & PURPLE RASPBERRY PLANTS**

For Prices on Bearing Age Plants, See Page 61

65 CUMBERLAND, Select 1 year No. 1	\$.95	\$2.00	\$3.25	\$5.65	\$9.85	\$21.25	\$29.50	\$34.00	\$57.85
64 NEW MORRISON, Select 1 year No. 1	1.25	2.15	3.55	6.15	10.50	23.40	31.60	36.95	64.95
62 SODUS—PURPLE, 1 year No. 1	1.25	2.15	3.55	6.15	10.50	23.40	31.60	36.95	64.95

**BLACKBERRY PLANTS**

For Prices on Bearing Age Plants, See Page 61

60 ALFRED, Select 1 year No. 1	\$1.20	\$2.10	\$3.30	\$5.70	\$9.90	\$23.75	\$37.00	\$45.00	\$78.50
60 BLOWERS, Select 1 year No. 1	1.20	2.10	3.30	5.70	9.90	23.75	37.00	45.00	78.50
60 ELDORADO, Select 1 year No. 1	1.20	2.10	3.30	5.70	9.90	23.75	37.00	45.00	78.50
60 EARLY HARVEST, Select 1 year No. 1	1.20	2.10	3.30	5.70	9.90	23.75	37.00	45.00	78.50

**BOYSENBERRY-DEWBERRY PLANTS**

For Prices on Bearing Age Plants, See Page 61

59 BOYSENBERRY THORNLESS, 1 yr. No. 1	\$1.50	\$2.45	\$4.35	\$7.65	\$13.45	\$29.85	\$43.00	\$47.50	\$79.95
59 BOYSENBERRY (Std. Type), 1 yr. No. 1	1.50	2.45	4.35	7.65	13.45	29.85	43.00	47.50	79.95
59 LUCRETIA, 1 year No. 1	1.20	2.10	3.30	5.70	9.90	23.75	37.00	45.00	78.50
59 YOUNGBERRY, 1 year No. 1	1.20	2.10	3.30	5.70	9.90	23.75	37.00	45.00	78.50

**GRAPES**

For Prices on Bearing Age Plants, See Page 61

Each	Vines					
	3	6	12	25	50	
51 CONCORD, 2 yr. No. 1	\$.50	\$1.45	\$2.50	\$4.20	\$6.95	\$12.45
51 CATAWBA, 2 yr. No. 1	.50	1.45	2.50	4.20	6.95	12.45
51 MOORE'S EARLY, 2 yr. No. 1	.50	1.45	2.50	4.20	6.95	12.45
51 NIAGARA, 2 yr. No. 1	.50	1.45	2.50	4.20	6.95	12.45
51 WORDEN, 2 yr. No. 1	.50	1.45	2.50	4.20	6.95	12.45
51 CACO, 2 yr. No. 1	.50	1.45	2.50	4.20	6.95	12.45
51 CHAMPAGNE, 2 yr. No. 1	.50	1.45	2.50	4.20	6.95	12.45
51 FREDONIA, 2 yr. No. 1	.50	1.45	2.50	4.20	6.95	12.45
51 PORTLAND, 2 yr. No. 1	.50	1.45	2.50	4.20	6.95	12.45

**STRAWBERRY  
PLANT PRICES  
SEE PAGE 69**

**Customers Ordering Plants By Mail, Use following Tables for Approximate Postage.**

Be sure to include sufficient postage for your order if plants are to be sent Parcel Post Prepaid. We will return every penny due you, or send extra plants if you send too much. If insufficient postage is sent, we will credit amount paid and send balance C. O. D.

**Parcel Post Rates on Strawberry Plants**

Add for Postage

25 Plants	17 cents
50 Plants	22 cents
100 Plants	28 cents
200 Plants	32 cents
300 Plants	39 cents
400 Plants	44 cents
500 Plants	52 cents
750 Plants	74 cents
1000 Plants	105 cents

These figures are average—the rate varies according to variety. Transportation Costs lower by parcel post in a radius of 850 miles of Philadelphia, Pa.

**Parcel Post Rates on Grape Vines, Raspberries, Blackberries, Blueberries and Dewberries**

Add for Postage

2 Plants	13 cents
3 to 6 Plants	20 cents
7 to 21 Plants	25 cents
13 to 20 Plants	32 cents
21 to 30 Plants	36 cents
31 to 50 Plants	44 cents
51 to 75 Plants	49 cents
76 to 100 Plants	56 cents

On all orders of 100 plants or more of above stock, rate is cheaper by Express beyond 2nd zone.

**Fruit and Nut trees are too large for Parcel Post shipment. These are shipped Express Collect.**



TRUE TO NAME  
PLANTS

1952 PRICES

GUARANTEED  
SATISFACTION

# STRAWBERRY PLANTS

All prices quoted below are F.O.B. Salisbury, Maryland, and in effect from January 1st until December 31, 1952. Customers ordering plants sent Parcel Post prepaid, See Parcel Post Rates on page 68. We ship a limited number of strawberry plants in late summer and fall. Customers wanting plants for planting at that time, may send their order along any time after June 15th. All plants are tied 25 to bundle. No less than 25 plants of variety sold.

Description of varieties  
on page

	25 Plants	50 Plants	100 Plants	200 Plants	250 Plants	400 Plants	500 Plants	1000 Plants	3000 Plants of One Variety Per 1000	5000 Plants of One Variety Per 1000
<b>EARLY VARIETIES</b>										
7 BLAKEMORE .....	\$1.10	\$1.80	\$2.85	\$4.95	\$5.75	\$7.80	\$9.00	\$12.00	\$11.40	11.00
10 DORSETT .....	1.25	2.10	3.25	5.95	6.75	9.00	10.50	14.50	13.90	13.50
11 FAIRFAX .....	1.25	2.10	3.25	5.95	6.75	9.00	10.50	14.50	13.90	13.50
15 FAIRLAND (NEW) .....	1.25	2.10	3.25	5.95	6.75	9.00	10.50	14.50	13.90	13.50
6 HOWARD 17 .....	1.25	2.10	3.25	5.95	6.75	9.00	10.50	14.50	13.90	13.50
6 MIDLAND (NEW) .....	1.40	2.35	3.55	6.30	7.15	9.75	11.25	17.95	17.35	16.95
16 POLAR QUEEN (NEW) .....	2.30	3.80	6.00	10.00	11.90	15.90	18.50	29.00	25.00	20.00
6 PREMIER .....	1.25	2.10	3.25	5.95	6.75	9.00	10.50	14.50	13.90	12.95
<b>MID-SEASON VARIETIES</b>										
15 BIG JOE .....	1.25	2.10	3.25	5.95	6.75	9.00	10.50	14.50	13.90	13.50
12 CATSKILL .....	1.25	2.10	3.25	5.95	6.75	9.00	10.50	14.50	13.90	12.95
8 SPARKLE (NEW) .....	1.25	2.10	3.25	5.95	6.75	9.00	10.50	14.50	13.90	13.50
7 ROBINSON .....	1.25	2.10	3.25	5.95	6.75	9.00	10.50	14.50	13.90	13.50
13 TEMPLE (NEW) .....	1.25	2.10	3.25	5.95	6.75	9.00	10.50	14.50	13.90	12.95
<b>LATE TO VERY LATE</b>										
CHESAPEAKE .....	1.50	2.40	3.85	6.70	7.90	10.55	12.30	16.50	15.90	15.50
14 FAIRPEAKE .....	1.50	2.40	3.85	6.70	7.90	10.55	12.30	16.50	15.90	15.50
RED STAR .....	1.50	2.40	3.85	6.70	7.90	10.55	12.30	16.50	15.90	15.50
17 TOWN KING .....	1.40	2.35	3.55	6.30	7.15	9.75	11.25	15.95	15.35	14.95
9 XTRALATE .....	1.50	2.40	3.85	6.70	7.90	10.55	12.30	16.50	15.90	15.50
9 SURPLUS PLANTS—Not less Than 1000 Plants Sold at These Special Low Prices								9.00	8.50	8.00
<b>EVERBEARING (OR FALL BEARING) VARIETIES</b>										
23 GEM .....	1.90	3.15	5.00	8.75	9.50	12.85	14.95	27.50	26.50	25.50
23 GEMZATA .....	1.90	3.15	5.00	8.75	9.50	12.85	14.95	27.50	26.50	25.50
2 STREAMLINER .....	1.90	3.15	5.00	8.75	9.50	12.85	14.95	27.50	26.50	25.50
2 SUPERFECTION .....	1.90	3.15	5.00	8.75	9.50	12.85	14.95	27.50	26.50	25.50

We Are The  
Original

Make All Checks or Money Orders Payable to:

Your Visit  
is  
Invited

## TOWNSEND NURSERIES, Inc.

P. O. Box 110, Salisbury, Maryland

L. Sherman Townsend, Mgr.

### WRITE FOR SPECIAL PRICES ON LARGER QUANTITIES THAN QUOTED ABOVE

Townsend's plants are used exclusively by the largest strawberry associations in the country. Any association, group of growers who wish to pool their orders, or any large grower interested in purchasing a variety in larger quantities than quoted above, should write us for our special price. When writing, just give Variety or Varieties wanted and approximate amount needed. You will be under no obligation to buy. It is part of Townsend's Service which we are rendering our customers, and which has helped us to build our business to the present standing as The World's Largest Growers—Shippers of Strawberry Plants.

**ORDERS CAN BE BOOKED IN ADVANCE OF SHIPPING DATE.** You can send along your order on receipt of this catalogue. A 25% deposit will reserve stock for you. We will dig and ship whenever we receive your shipping instructions. Thousands of our customers annually take advantage of this service. On long lists of varieties it insures them of getting varieties wanted.

Townsend's

...Plant This Spring  
By **SUMMER** you'll  
have a Beautiful

# LIVING FENCE

(Multi-Flora Roses)

TO PROTECT—TO BEAUTIFY—TO INCREASE THE VALUE OF YOUR PROPERTY

## Multiflora Rose



### for Living Fences

RECOMMENDED BY U.S. DEPT. OF AGRI. (photo by U.S.D.A.)

**EASY TO GROW—IN ANY TYPE SOIL  
SEASON TO PLANT—MARCH—APRIL—MAY  
FERTILIZER—ONE LB. To 10 Ft. FENCE  
BLOOMS—MAY and JUNE  
RED BERRIES—SEPT.—To MAY  
FORMAL HEDGE—EASILY TRIMMED TO DESIRE  
NATURAL FENCE—GROWS TO 8 to 10 feet  
PERFECTLY HARDY—NEEDS NO SPRAYING**

## NOW! 2 SIZES TO CHOOSE

### CONSERVATION SIZE:

10 plants for	.....\$1.25
25 plants for	..... 2.25
50 plants for	..... 4.15
100 plants for	..... 7.50
500 plants for	.....25.00

### JUMBO HEAVY 15 to 18"

10 plants for	.....\$2.65
25 plants for	..... 4.95
50 plants for	..... 9.45
100 plants for	.....18.75
500 plants for	.....69.95

ABOVE 8 TO 15" SIZE—ALL ROSES SENT PREPAID—GUARANTEED PLANTS

## MULTIFLORA ROSE

The tried and proven Living Fence that needs no repairs, painting or other maintenance expense. For large farm field plantings the U. S. Department of Agriculture recommends planting 12 inches apart (this is the smaller grade of plants, usually known as Conservation Grade). For the Home Grounds planting we recommend our "Jumbo Large Size" plants and set them 18 to 24 inches apart, for a beautiful Living Fence the year around.

**SO DENSE NO PERSON OR  
ANIMAL CAN GET THROUGH!**

### PRIVACY and a NATURAL SETTING!

You'll be free from intrusion without offense to your neighbor. Beautiful background for flower gardens. Dogs, and other animals cannot get through. If you want a height of 5 to 8 feet—then just trim each side of your fence—to keep it narrow naturally.

### BOUNDARY LINES SHOW POSSESSION!

Yet this Living Fence is beautiful—needs no repairs, grows rapidly in any soil; masses of flowers and berries. Trim lightly, if you want your fence low and broad.

### BRIGHT RED BERRIES!

Are all over the fence from early Fall till Spring. Fine for birds, and ornamental too.

### DRIVE-IN-THEATERS!

Demand Living Fence, to grow naturally for a "impregnable Screen wall" to keep out all intruders—will grow as high as 10 ft. Golf Courses—Memorial Parks—Industrial Plants—use our plants.

## HEDGE OF 1000 USES



## ROSEA MULTIFLORA

**Always a Mass of  
Blooms Like This!**



**Protects and  
Beautifies  
Your  
Property**

## MAKES FAST, HEALTHY GROWTH IN ANY SOIL

GROWS SEVERAL FEET IN WEEKS—IDEAL FOR FENCING OFF CHILDREN'S PLAY AREAS—LAUNDRY YARDS—KEEPS DOGS IN THEIR PLACE TOO.

Our Living Fence plants are guaranteed to be the toughest—most practical, easy to grow bushes ever offered. Our plants produce a "luxuriant glossy green foliage" and the branches are so dense in growth that nothing livable can get through the living fence.

The glorious colorful blooms every year in MAY and JUNE will delight you. Early FALL the Living Fence is loaded with great clusters of bright-red berries, which stay on the fence until the new foliage starts in the Spring. Wonderful for the "birds too."

# Living Fence

(OF MULTI-FLORA ROSES)



### A TOWNSEND LIVING FENCE AFTER 4 MONTHS GROWTH (in bloom following spring)

Your friends and neighbors will respect your boundaries and admire the beauty of your landscaping. Everyone will admire and praise your interest in keeping your property attractive and private. It's to your neighbors benefit too—and that makes for friendly feeling between all concerned.

TOWNSEND'S BIG VIGOROUS LIVING FENCE PLANTS GROW ANYWHERE—IN ANY TYPE SOIL AND ARE EASY TO PLANT—NEEDS NO CARE. ORDER NOW AND YOUR PLANTS WILL BE SHIPPED TO YOU AT YOUR PROPER PLANTING DATE—PARCEL POST PREPAID—GUARANTEED TO GROW AND BLOOM.

**FREE  
ROSES!**

**3**

**BLAZE**

*Climbing*  
**BUSHES**

**WITH EVERY ORDER FOR ROSES  
AMOUNTING TO ONLY \$20.00 OR MORE**

**ALL GUARANTEED TO GROW AND BLOOM**

**FORTY-NINER.** America's Best Bi-Color Rose. Inside petals are brilliant red changing to cherry-red. Long pointed buds of chrome yellow, overlaid with pink. Flowers are beautifully shaped with pleasant fragrances, blooms profusely all Summer and Fall. Vigorous grower with our 'big selected plants'. \$2.00 each; 3 or more \$1.75 each, all postpaid.



**SPECIAL  
GROUP  
OFFER**

No. 50

**ALL-AMERICA WINNERS**

- I—FORTY-NINER (pat. 792)
- I—CHARLOTTE ARMSTRONG (pat. 455)
- I—NOCTURNE (pat. 713)
- I—PEACE (pat. 591)

**ALL ABOVE \$7.25**  
Prepaid

**OTHER ROSES ON PAGES 38 TO 49**



*Townsend Nurseries*  
INC.  
**PLANT FARMS**

**SALISBURY · MARYLAND**